

# 2017 LED LIGHTING PRODUCT GUIDE

1ST EDITION

**CREE**  <sup>TM</sup>

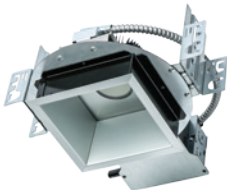
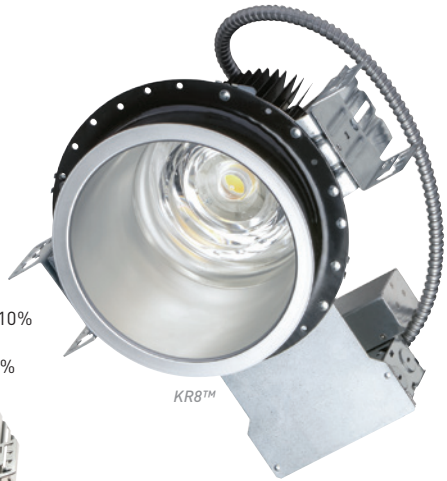


# LED ARCHITECTURAL DOWNLIGHTS

Cree® LED architectural downlights allow designers to meet interior lighting performance specifications while achieving beautiful color consistency with easy installation.

## KR Series

- Minimum 90 CRI
- CCT: 2700K, 3000K, 3500K, 4000K or 5000K
- Up to 8000 lumens
- Utilizes Cree TrueWhite® Technology
- 4" or 6" round and square apertures with Sunset dimming from 2700K to 1800K, and SmartCast® Technology
- 8" round with WaveMax® Technology for precise optical control
- Controls/Dimming: KR4 and KR6: Triac 5%, 0-10V 10% KR8: 0-10V 1%, Cree Sunset Dimming Technology (2700K – 1800K CCT), SmartCast® Technology to 5%
- 10-year limited warranty



KR6™ Square



KR6™ Round

**CREE** ⇄  
WAVEMAX® TECHNOLOGY

**CREE** ⇄  
SMARTCAST® TECHNOLOGY

## Essentia® by Cree LED Downlights

- 90 CRI
- CCT: 2700K, 3000K, 3500K or 4000K
- Up to 6790 lumens
- 4", 6" and 8" round apertures, along with wall wash and adjustable accent configurations
- Controls/Dimming: 0-10V continuous dimming to 1%, TRIAC dimming to 10%
- Available with Emergency Backup option
- 5-year limited warranty



## ESA Series Surface Cylinder

- Minimum 80 CRI
- CCT: 2700K, 3000K, 3500K or 4000K
- NanoOptic® Technology for precise optical control
- 0-10V dimming
- Multiple light distributions available
- 10-year limited warranty



## ESA Series Recessed

- Minimum 80 CRI
- CCT: 2700K, 3000K, 3500K or 4000K
- NanoOptic® Technology for precise optical control
- 0-10V dimming
- Available as downlight, adjustable and lensed wall wash
- 10-year limited warranty





## LED RETROFIT DOWNLIGHTS

Cree® LED retrofit downlights deliver beautiful light with superior color quality and high energy efficiency — a true no compromise solution that takes only seconds to install.

### LR Series

- 90 CRI
- CCT: 2700K, 3500K or 4000K
- 650, 1050 or 1800 lumens
- Utilizes Cree TrueWhite® Technology
- Shallow and deep recess options
- Continuous dimming to 5% (120V-forward phase; 277V trailing edge)
- 10-year limited warranty



### CR Series (CR4™ / CR6™)

- 90 CRI
- CCT: 2700K, 3000K, 3500K or 4000K
- 575, 625 or 800 lumens
- Utilizes Cree TrueWhite® Technology
- 4" and 6" sizes
- Dimmable with Triac dimmers at 120V
- 5-year limited warranty



### DR Series (DR4™ / DR6™)

- 90+ CRI
- CCT: 2700K, 5000K
- 575 to 1100 lumens
- Utilizes Cree TrueWhite® Technology
- 4" and 6" sizes
- Dimmable to 5% with select dimmers
- 5-year limited warranty





## LED TROFFERS

Built for both performance and payback, Cree® LED commercial fixtures prove that energy-efficient, high-quality lighting doesn't have to come at a premium.



SmartCast® Technology optional

### CR Series Troffers

- High efficacy of 90-130 LPW
- CCT: 3000K, 3500K, 4000K, 5000K or adjustable CCT with Cree SmartCast® Technology
- 2000 to 5000 lumens (High Efficacy 130 LPW)
- Utilizes Cree TrueWhite® Technology (90 CRI) or available in 80+ CRI
- Available with Cree SmartCast® Technology; step level to 50%, 0-10V dimming to 5% or Lutron EcoSystem® Enabled to 5%
- 10-year limited warranty

**CREE** ⇄  
SMARTCAST® TECHNOLOGY



SmartCast® Technology optional

Removable lens

### ZR Series Troffers

- High efficacy up to 130 LPW
- 80+ CRI for ZR-FD & ZR-C
- 90+ CRI for ZR-T & ZR Series
- CCT: 3000K, 3500K, 4000K or 5000K\*
- 3200 to 5000 lumen options
- Utilizes Cree TrueWhite® Technology in 90 CRI fixtures
- 0-10V dimming to 5% standard, SmartCast® Technology optional
- Available in gloss or matte finish
- Now available with intuitive removable lens
- 10-year limited warranty for ZR-FD, ZR-T and ZR Series  
5-year limited warranty on ZR-C Series

More Choices  
New  
130 LPW  
80+ CRI

**CREE** ⇄  
SMARTCAST® TECHNOLOGY

\* Not available on all types

### LR Series Troffers

- High efficacy of 100 LPW
- CCT: 3500K or 4000K
- 3400 lumens
- 0-10V dimming to 5%
- Utilizes Cree TrueWhite® Technology (90 CRI)
- 10-year limited warranty



### Essentia® by Cree Flat Panel

- 90 CRI
- CCT: 3500K, 4000K or 5000K
- 3400 or 5000 lumen options (2x2)
- 4000 or 5000 lumen options (2x4, 1x4)
- 100 LPW
- 0-10V dimming to 10%
- IP40 rated for protection against dust, bugs and debris
- EB option - 1400 lumens
- 5-year limited warranty





## LED UPGRADE SOLUTIONS

Cree® LED upgrade solutions offer customers the ability to maintain the existing aesthetic of a fluorescent fixture but take advantage of the greater energy efficiency and long lifespan of LED lights.

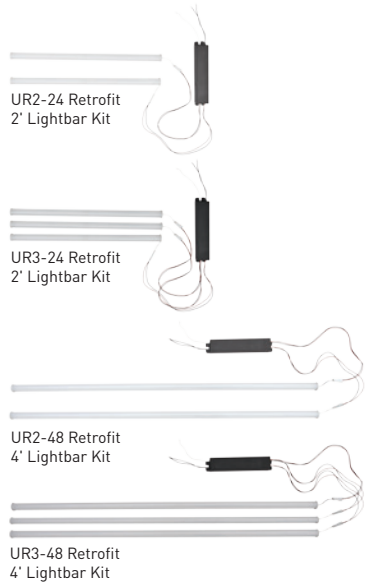
### ZR-RK Commercial Series LED Troffer Retrofit Kit

- Easy installation: 4 parts, 4 minutes
- 125 LPW
- 80+ CRI
- CCT: 3000K, 3500K or 4000K
- 3200 to 5000 lumens
- 0-10V dimming to 5%
- 5-year limited warranty



### UR Series LED Retrofit

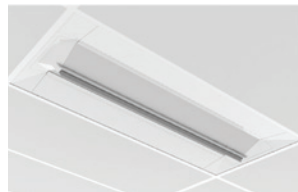
- 80 CRI
- CCT: 3500K or 4000K
- 3600 lumens for 2' lightbar
- 4500 lumens for 4' lightbar
- Step level to 50% or 0-10V dimming to 5%
- Available in 2 or 3 lamp options
- Up to 102 LPW
- 7-year limited warranty



### CR24 UPKIT

The CR24 UPKIT is an accessory that converts any Cree CR-LE light engine (sold separately) to a complete upgrade kit for existing 2' x 4' fluorescent luminaires. It installs in most fluorescent troffers and parabolic troffers that have a minimum depth of 3 1/8"

- Utilizes Cree TrueWhite® Technology
- Efficacy: 90-110 LPW
- Delivered Light Output: 2200, 3100, 4000, 5000 lumens
- Input Power: 22-50 watts
- CRI: 90
- Input Voltage: 120-277 VAC





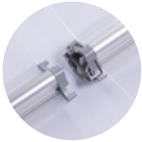
# LED SUSPENDED AMBIENT

Cree's suspended ambient indirect/direct luminaire gives architects an adaptable and supremely high-functioning light system with a super-modern, low-profile look at an appealing price point.



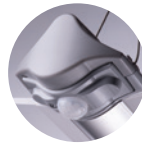
## LN Series

- High efficacy of 115 LPW
- CCT: 3500K or 4000K
- 3400 - 3700 lumens
- Utilizes WaveMax® Technology
- Utilizes Cree TrueWhite® Technology (90 CRI)
- 0-10V dimming to 5% or Cree SmartCast® Technology
- 10-year limited warranty



Interlocking Units

With the LN Series, design and installation are simpler, faster and more cost-effective thanks to a unique modular light engine and increased energy savings from integral SmartCast® Technology lighting controls.



SmartCast® Technology Ambient/Motion Sensor

**CREE**   
**SMARTCAST® TECHNOLOGY**



Suspended mount with optional reflectors



## LS Series

- 90+ CRI (LS) or 80+ CRI (LS-FD)
- Up to 130 LPW
- Available with Cree TrueWhite® Technology
- CCT: 3500K, 4000K or 5000K
- 4' and 8' sizes
- 2500, 4000 and 5000 lumens for 4'
- 8000 and 10,000 lumens for 8'
- 0-10V dimming to 5%
- Occupancy Sensor accessory and thru-wiring option available (S-WRAC-OC-1)
- 10-year limited warranty

**More Choices**  
**New**  
**130 LPW**  
**80+ CRI**



## LED SURFACE AMBIENT

Cree® surface ambient fixtures provide exceptional illumination performance, cost-effective lighting and are designed for easy installation to save time and money.

### Essentia® by Cree LED Surface Wrap **New**

- 80 CRI
- Up to 115 LPW
- CCT: 3000K, 3500K or 4000K
- 2' and 4' sizes
- 2070 lumens for 2'
- 4140 lumens for 4'
- 18-36 watts
- 0-10V dimming to 5%
- Available with Emergency Backup option
- Dimming occupancy sensor with photocell accessory available
- 5-year limited warranty



### LS Series

- 90+ CRI (LS) or 80+ CRI (LS-FD)
- Up to 130 LPW
- Available with Cree TrueWhite® Technology
- CCT: 3500K, 4000K or 5000K
- 4' and 8' sizes
- 2500, 4000 and 5000 lumens for 4'
- 8000 and 10,000 lumens for 8'
- 0-10V dimming to 5%
- Occupancy Sensor accessory and thru-wiring option available (S-WRAC-OC-1)
- 10-year limited warranty



*Suspended mount  
with optional  
reflectors*



**More Choices**  
**New**  
**130 LPW**  
**80+ CRI**

### WS Series

- Minimum 80 CRI
- CCT: 3500K, 4000K, 5000K or 5700K
- Up to 98 LPW
- 4700, 5000, 5900 and 6300 lumens
- 0-10V dimming to 5% (standard)
- IP65 rated
- UL wet listed
- 10-year limited warranty







## LED HIGH-BAY/LOW-BAY

Cree® interior high-bay and low-bay lighting is the ideal source for energy-efficient, low-maintenance illumination in large spaces.

### HXB Series

New

- 35,000 and 70,000 lumens
- Up to 140 LPW
- CCT: 3500K (35,000 lumen), 4000K, 5000K
- Operating temperature: -40°C to +65°C
- 70 CRI (70,000 lumen), 80 CRI (35,000 lumen)
- 0-10V dimming to 10%
- Flexible mounting choices
- 10-year limited warranty



### CXB Series

- 18,000 and 24,000 median lumens
- Up to 113 LPW
- CCT: 4000K, 5000K
- 80 CRI
- Low-profile, lightweight design
- Ships with universal mounting options for direct j-box/pendant or hook, cord and plug
- 0-10V dimming standard
- Multi-Level option
- 10-year limited warranty



### LS Series

- 90+ CRI (LS) or 80+ CRI (LS-FD)
- Up to 130 LPW
- Available with Cree TrueWhite® Technology
- CCT: 3500K, 4000K or 5000K
- 4' and 8' sizes
- 0-10V dimming to 5%
- Surface, suspended, cove or pendant mounting
- 10-year limited warranty



More Choices  
New  
130 LPW  
80+ CRI

### CS Series

- Minimum 90 CRI
- CCT: 3500K or 4000K
- 2200 to 8000 lumens
- Utilizes Cree TrueWhite® Technology
- Available with Cree SmartCast® Technology; 0-10V dimming to 5%
- 10-year limited warranty



**CREE** 

**SMARTCAST** TECHNOLOGY

### Cree Edge™ Series High Output

- 70 CRI (4000K & 5700K); 90 CRI (5000K)
- CCT: 5700K standard, 5000K, 4000K
- Lumen packages available up to 76,123 lumens
- Utilizes Cree TrueWhite® Technology on 5000K luminaires
- 0-10V dimming to 5%
- 10-year limited warranty



### 304 Series™

- Minimum 70 CRI
- CCT: 4000K or 5700K
- UL wet listed
- Multi-Level options
- IC rated and non-IC rated available
- Modular, low-profile design
- 10-year limited warranty







# LED LAMPS

Soft accents or dramatic highlights — Cree® LED lamps offer design freedom with beautiful, high-impact illumination for every lamp application.

## A19 Series

- 40, 60, & 75 watt equivalent
- 465 to 1150 lumens
- 5.0-5.5, 8.5-9.5, or 10.2-11.2 watts
- 85 CRI
- 2700K or 5000K
- Dimmable to 5% with select dimmers
- Suitable for damp locations
- 5-year limited warranty

New



## A21 Series

- 100 watt equivalent
- 1650 to 1700 lumens
- 15-16.5 watts
- 3-Way version available in 2700K
- 85 CRI
- 2700K or 5000K
- Dimmable to 5% with select dimmers
- Suitable for damp locations
- 5-year limited warranty

New



## BR Series

- 65 or 85 watt equivalent
- 7-8 watts (BR30)
- 12-12.5 watts (BR40)
- 85 CRI
- 2700K or 5000K
- Suitable for damp locations
- Dimmable to 5% with select dimmers
- 5-year limited warranty



BR30 Flood Lamp

New



BR40 Flood Lamp

## BR13 Candelabra

- 25 and 40 watt equivalent
- 3.1-5 watts
- 90+ CRI at 2700K
- E12 candelabra base
- 1800K-2700K Candlelight Dimming option available
- Dimmable to 5% with select dimmers
- Suitable for damp locations
- 5-year limited warranty

New



## PAR30 Series

- 75 watt equivalent
- 850 lumens
- 10.5 watts
- >90 CRI at 3000K
- Utilizes Cree TrueWhite® Technology
- Dimmable to 5% with select dimmers
- Multiple beam spread angles: 25° spot, 40° flood
- 5-year limited warranty



PAR30 Short 25° Flood



PAR30 Long 25° Spot or Long 40° Flood

## PAR38 Series

- 120 watt equivalent
- 1500 lumens
- 17 watts at 3000K
- 85 CRI
- 25° and 45° beam angles
- Dimmable to 5% with select dimmers and transformers
- 5-year limited warranty

New



## LBR Series

- 60 watt BR30 equivalent
- 12 watts
- Up to 94 CRI at 2700K
- Utilizes Cree TrueWhite® Technology
- 25° or 50° beam angles
- Dimmable to 20% with ELV dimmers
- 5-year limited warranty



LBR-30



## MR16 Series

- 50 watt MR16 equivalent
- 8.7 watts
- >90 CRI at 3000K
- 15°, 25° and 40° beam angles
- Dimmable to 5% with select dimmers and transformers
- Utilizes Cree TrueWhite® Technology
- 5-year limited warranty





# LED TRACK LIGHTING

## LED Integrated Track Heads

Essentia® by Cree is well-designed and well-made to deliver exceptional track lighting and is backed by Cree.

**ESSENTIA**  
by CREE

### Essentia® by Cree Flat Back LED Track Head

- 2500 lumens
- 80 CRI
- CCT: 3000K, 3500K and 4000K
- Available in White, Black and Silver finishes
- 20°, 30° & 40° reflectors included
- Dimmable to 10%
- Lifetime: Designed to last 35,000 hours



### Essentia® by Cree Beveled Cylinder LED Track Head

- 1000 lumens
- 80 CRI
- CCT: 3000K, 3500K and 4000K
- Available in White, Black and Silver finishes
- 20° spot reflector with optional 40° diffuser included
- Dimmable to 10%
- Lifetime: Designed to last 35,000 hours



### Essentia® by Cree Mini Flat Back LED Track Head

- 500 lumens
- 80 CRI
- CCT: 3000K, 3500K and 4000K
- Available in White, Black and Silver finishes
- 36° beam angle
- Utilizes Cree LEDs
- Lifetime: Designed to last 30,000 hours



### Essentia® by Cree Wall Wash Track Heads

- 3000 lumens 12" Wall Wash
- 6000 lumens 24" Wall Wash
- 80 CRI
- CCT: 3000K, 3500K and 4000K
- Up to 100 LPW
- Dimmable to 10% using compatible triac dimmers
- Lifetime: Designed to last 55,000 hours at 25°





# TRACK LIGHTING

## Track System and Lamp Heads

Essentia® by Cree products provide more options, flexibility, energy efficiency and better lighting quality.

**ESSENTIA**  
by CREE

### Essentia® by Cree Track Systems

- One and two circuit track
- Extensive collection of connectors available
- Available in White, Black and Silver finishes
- 4, 6 and 8 feet
- Fixtures can be surface or pendant mounted
- UL and cUL listed



### Essentia® by Cree Front Loading Gimbal Ring Track Heads

- Lamp compatibility: PAR38 Max. 150W
- Die-cast aluminum housing and polyester powder coated finish
- UL and cUL listed
- Easy relamping from the front of the gimbal ring
- Line voltage - medium base
- Recommended lamp: Cree PAR38



### Essentia® by Cree Rear Loading Gimbal Ring Track Heads

- Lamp compatibility: PAR20, PAR30, PAR38
- Deep-drawn steel housing with U-shaped double yoke and polyester powder coated finish
- Line voltage - medium base
- Fixture relamps from the back of the ring
- UL and cUL listed



### Essentia® by Cree Flat Back Line Voltage Track Heads

- Lamp compatibility: PAR20, BR30, PAR30L
- Deep-drawn steel round back housing and polyester powder coated finish
- Line voltage - medium base
- This classic shape utilizes has a U-shaped double yoke with a single-locking knob to secure the aiming angle
- UL and cUL listed



# TRACK ACCESSORIES

*Current Limiters, Power Feeds and Circuit Breakers*

**ESSENTIA**  
by CREE

## Essentia® by Cree Track Accessories

- Accessories including adaptors, connectors, clips, collars, caps and covers
- For use with all Essentia by Cree track products
- For either one-circuit or two-circuit applications
- Available in White, Black and Silver finishes
- 1-year limited warranty

<p>Current Limiter In-Line Adjustable Power Feed</p> 	<p>Current Limiter End Power Feed</p> 
<p>Title 24 Compliant Current Limiter In-Line Adjustable Power Feed</p> 	<p>Title 24 Compliant Current Limiter End Power Feed</p> 
<p>Current Limiter Mini End Power Feed</p> 	<p>Title 24 Compliant Current Limiter Mini End Power Feed</p> 
<p>Circuit Breakers</p> 	<p>Cord &amp; Plug Feed</p> 
<p>Floating Feed</p> 	<p>Conduit Feed</p> 

# TRACK ACCESSORIES

Power Feeds, Connectors and Mounting Options

**ESSENTIA**  
by CREE ⇨

Outlet Box Feed		T-Bar End Feed	
End Feed		Adjustable Connector/ Feed	
"T" Connector Feed		"X" Connector	
T-Bar Adjustable Connector/Feed		Mini Straight Connector	
Outlet Box Cover		Midpoint Mounting	
T-Bar Attachemnt Clips (Flush Tiles)		T-Bar Attachemnt Clips (Drop Tiles)	
Pendant Adaptor			

# CREE SMARTCAST® TECHNOLOGY

What if you could easily transform your existing facilities into energy-efficient spaces with automated intelligence that optimizes light levels and improves the effectiveness and productivity of your spaces — all in a way that’s so intuitive and simple, it just works.

With SmartCast® Technology, Cree is providing value beyond illumination, enabling smart buildings that are more efficient, deliver improved energy savings and lower maintenance costs.

Within each SmartCast®-enabled luminaire, integrated sensors, cutting-edge electronics and software all work together using the language of light and intelligent algorithms to automatically learn and interact with each other and with your space.

The result is a seamless application of scalable intelligent light strategies that can save you up to 70% in energy costs while delivering more comfortable, personalized lighting experiences, with the assurance of an industry-leading 10-year limited warranty. The best part — all of this is employed with OneButton™ Setup, enabling an entire building to be commissioned and connected at one time.

And with Cree SmartCast® Technology, you can now expand beyond making lighting more efficient to making buildings more efficient and businesses more profitable. Cree combines smart lighting products with the Internet of Things and innovative applications to create the SmartCast Intelligence Platform, where smart lighting enables smart building solutions that amplify savings and further optimize environments, delivering even more value.



**CREE**   
**SMARTCAST® TECHNOLOGY**

## So Easy, the Building of the Future Can Be the One You're Already In.

### Environmental Awareness and Control

Embedded sensors continually detect and share data on room occupancy and ambient light to fine-tune your environment and energy-saving strategies in real time.

### A Platform for Intelligent Lighting

SmartCast® Technology orchestrates the optimal environment for energy efficiency and productivity by setting parameters for brightness and color, adjusting color temperatures to tasks and personal preferences, and tracking improvements.



### Simple Set-Up and Commissioning

OneButton™ Setup commissions hundreds of luminaires in a single step, providing smart lighting that meets existing and emerging buildings codes, wirelessly and over Power over Ethernet (PoE) — live in minutes, not weeks.

### Value Beyond Lighting

SmartCast® Technology with PoE creates secure building-wide networks that connect seamlessly with other building management systems and with the cloud, for even more value.





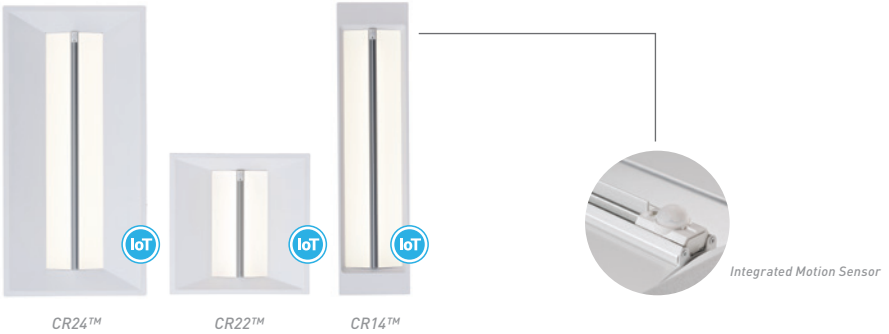
# LED CONTROLS

Cree® digital control options offer intelligent, fully-integrated solutions that deliver performance and savings from your entire lighting system.

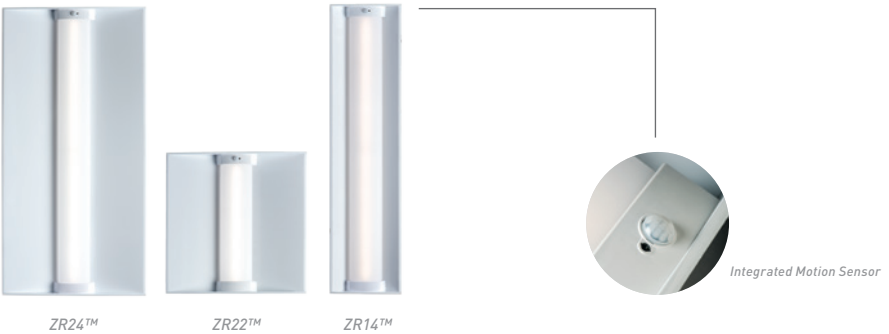
## Cree SmartCast® Technology Products

**CREE**   
SMARTCAST® TECHNOLOGY

### CR Series Architectural Troffers



### ZR Series Commercial Spec Troffers



### LN Series Suspended Ambient Indirect/Direct





# LED CONTROLS

Cree® digital control options offer intelligent, fully-integrated solutions that deliver performance and savings from your entire lighting system.

## Cree SmartCast® Technology Products



### KR Series Downlights



### CS Series Linear Luminaires



### Dimmers and Switches

Wireless dimmers or switches provide manual control of Cree luminaires with SmartCast® Technology.



### 0-10V Interface

Cree wireless 0-10V Interface with SmartCast® Technology enables control of 0-10V dimmable luminaires by other SmartCast® Technology devices.



### Configuration Tool

Cree Configuration Tool with SmartCast® Technology is used to set up and configure SmartCast® Technology-enabled devices.

## Lutron EcoSystem® Enabled

Lutron EcoSystem® Enabled Cree LED luminaires are designed with an intelligent, pre-tested microprocessor directly integrated into the Cree LED driver, eliminating the need for additional interfaces and enabling the fixture and controls to communicate directly with each other for instant and seamless interoperability.

- Fully-integrated solution
- Compatible with CR Series troffers
- Enables continuous dimming
- Robust set of control capabilities





## LED AREA

Diverse lighting options featuring NanoOptic® Technology for parking lots, roadways, pathways, security areas and flood applications.

New

### OSQ High Output Series

- Minimum 70 CRI (3000K, 4000K, 5700K); 90 CRI (5000K)
- CCT: 3000K, 4000K, 5000K, 5700K
- Up to 120 LPW
- Up to 68,691 lumens
- Replaces up to four 1000W MH fixtures
- Versatile mounting options, including flood



### OSQ Series (Medium & Large)

- Minimum 70 CRI (4000K & 5700K; 3000K asymmetric optics); 80 CRI (3000K symmetric optics)
- CCT: 3000K, 4000K, 5700K
- Versatile mounting
- NanoOptic® Precision Delivery Grid™ optic
- Multi-Level options
- Up to 27,103 lumens



### XSP High Output Series

- Minimum 70 CRI
- CCT: 3000K, 4000K, 5700K
- NanoOptic® Precision Delivery Grid™ optic
- UL wet listed
- Designed with 0-10V dimming capabilities
- Up to 18,523 lumens



### XSP Series

- Minimum 70 CRI
- CCT: 3000K, 4000K, 5700K
- NanoOptic® Precision Delivery Grid™ optic
- UL wet listed
- Designed with 0-10V dimming capabilities
- Up to 14,408 lumens



### Cree Edge™ Series

- Minimum 70 CRI (4000K & 5700K); 90 CRI (5000K)
- CCT: 4000K, 5000K, 5700K
- UL wet listed
- Utilizes Cree TrueWhite® Technology
- Multi-Level options
- Modular, low-profile design
- Up to 85,638 lumens



### Cree Edge™ Series Pathway

- Minimum 70 CRI
- CCT: 4000K, 5700K
- UL wet listed
- Two-Level options
- Multiple heights available
- Up to 2,716 lumens





## LED DECORATIVE STREET & ROADWAY

Maintain the day form, but modernize the incumbent technology with energy-efficient, low-maintenance LED solutions from Cree.

### DPT Series

- Minimum 70 CRI
- CCT: 3000K, 4000K
- Input voltage: Integral 120-277V, 50/60Hz
- Utilizes a standalone UL 1598 compliant light engine
- Made with Cree® LED technology
- Up to 3,780 lumens



*DPT Luminaire shown mounted to an existing luminaire base*

*DPT Series with optional Backlight Control Shield accessory: DPT-BLS*

### LED Upgrade Kit

- Minimum 70 CRI
- CCT: 2700K, 4000K
- 0-10V dimming option
- Field Adjustable Output for increased flexibility
- Reuses most of existing luminaire for little waste
- Up to 6,400 lumens



**BXRAAA**  
Kit for Holophane®  
Granville Acorn



**BXRAAB**  
Kit for Holophane®  
Washington PostLite® Acorn



**BXRAAD**  
Kit for King Luminaire  
Washington Acorn



**BXRAAE**  
Kit for Holophane®  
Esplanade® Teardrop



**BXRAAF**  
Kit for Lumec® New  
Westminster Globe



**BXRAAH**  
Kit for Holophane® Granville  
Utility Acorn w/ Hinged Door



**BXRAAK**  
Kit for Holophane® Granville  
Utility Acorn w/ Removable Door





## LED STREET & ROADWAY

From rural streets to major highways, we have economical LED street lighting solutions that reduce energy and maintenance costs without sacrificing illumination performance.

New

### RSW Series

- 70, 80 CRI
- CCT: 2700, 3000K, 4000K, 5000K
- Utilizes WaveMax® Technology
- DLC rated, premium classification
- Dark Sky Friendly
- IP66 rated optic box and driver
- Lightweight and easy to install
- Utility label and NEMA® Photocell Receptacle included
- Up to 9,500 lumens



### RUL Series

- Minimum 70 CRI
- CCT: 3000K, 4000K
- UL wet listed
- Significant energy and maintenance savings
- Easy installation
- Utility label and NEMA® Photocell Receptacle included
- Utility kits available
- Up to 5,682 lumens



RUL luminaire shown with reflector/  
refractor included in ES-K2 option

NEMA® Receptacle and  
Utility Label come standard



## LED STREET & ROADWAY

The word on the street is Cree. Communities are saving up to 70% on energy costs while enhancing driver and pedestrian safety.

### XSP High Output Series

- Minimum 70 CRI
- CCT: 3000K, 4000K, 5700K
- NanoOptic® Precision Delivery Grid™ optic
- UL wet listed
- Up to 18,523 lumens

### XSP Series

- Minimum 80 CRI (3000K); 70 CRI for 4000K and 5700K
- XSPR: Minimum 70 CRI (4000K & 5700K; 3000K asymmetric optics); 80 CRI (3000K symmetric optics)
- CCT: 3000K, 4000K, 5700K
- NanoOptic® Precision Delivery Grid™ optic
- UL wet listed
- Up to 14,408 lumens



### LEDway® High Output Series

- Minimum 70 CRI
- CCT: 3000K, 4000K, 5700K
- UL wet listed
- Field Adjustable option
- Utility option
- Up to 32,000 lumens

### LEDway® Series

- Minimum 70 CRI
- CCT: 4000K, 5700K
- UL wet listed
- Modular design
- Utility option
- Up to 24,717 lumens





## LED CANOPY & SOFFIT

Cree® recessed canopy and soffit luminaires efficiently light the way to exterior sites, surrounding areas and interior high-bay applications leading to an overall low total cost of ownership.

### CPY Series

- Minimum 70 CRI
- CCT: 3000K, 4000K, 5700K
- Direct, pendant mount or hook and cord
- Flat or drop lenses available
- Slim, low-profile design
- Easy and quick installation
- Up to 20,080 lumens



Flat Lens



Drop Lens

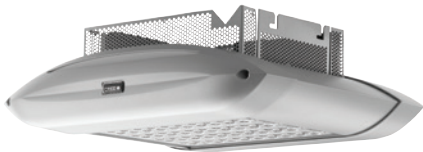
### 228 Series™

- Minimum 70 CRI
- CCT: 4000K, 5700K
- UL wet listed
- Multi-Level options
- Upgrade kit options
- Modular, flush mount design
- Up to 21,486 lumens



### 304 Series™

- Minimum 70 CRI
- CCT: 4000K, 5700K
- UL wet listed, IP66 rated
- Driver centrally located
- Convenient electrical inspection access from below
- Modular, flush mount design
- Up to 13,697 lumens



### Cree Edge™ Series

- Minimum 70 CRI
- CCT: 4000K, 5700K
- UL wet listed, IP66 rated
- Multi-Level options
- Modular, low-profile design
- Up to 31,193 lumens





## LED PARKING STRUCTURE

First impressions start in the garage. Cree® parking structure luminaires makes it a better one by providing clean, uniform, low-glare illumination with superior performance that enhances safety and visibility.

### IG Series

- Utilizes WaveMax® Technology
- Precise low-glare optics
- Class-leading efficacy up to 118 LPW
- UL wet listed, IP66 rated
- Minimum 80 CRI
- CCT: 3000K, 4000K, 5700K
- Up to 7,500 lumens
- Designed with 0-10V dimming capabilities standard (non-PML versions only)



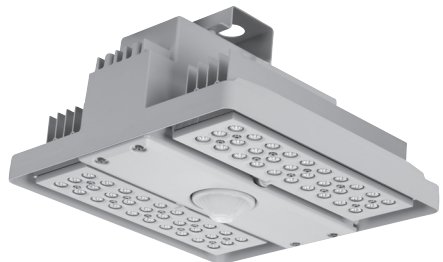
### VG Series

- Minimum 70 CRI
- CCT: 4000K, 5700K
- Low glare, indirect view LEDs
- Multi-Level options
- UL wet listed, IP66 rated
- Up to 3,870 lumens



### 304 Series™

- Minimum 70 CRI
- CCT: 4000K, 5700K
- UL wet listed, IP66 rated
- Multi-Level options
- Integrated occupancy sensor
- Low-profile design
- Up to 13,712 lumens





## LED FLOOD

Cree® luminaires for flood and sign lighting provide specific distributions of light for showcasing horizontal and vertical sign surfaces and architectural features.

### OSQ Series

- Minimum 70 CRI (4000K & 5700K; 3000K asymmetric optics); 80 CRI (3000K symmetric optics)
- CCT: 3000K, 4000K, 5700K
- Up to 27,103 lumens

### OSQ Series Utility

New

- CCT: 3000K, 4000K
- 45° Utility Arm (with Cord side or End Exit)
- Utility label & NEMA® Photocell Receptacle included
- Up to 22,675 lumens

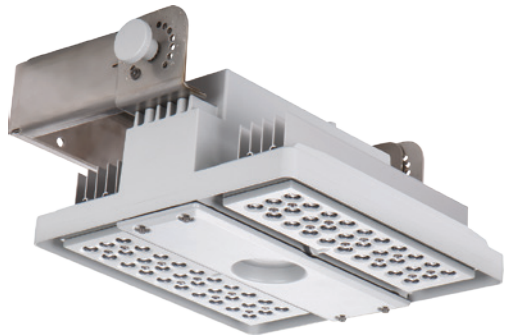


OSQ Series

OSQ Series Utility  
UA Mount

### 304 Series™

- Minimum 70 CRI
- CCT: 4000K, 5700K
- UL wet listed
- Multi-Level options
- Modular, low-profile design
- Up to 13,712 lumens



### Cree Edge™ Series

- Minimum 70 CRI (4000K & 5700K); 90 CRI (5000K)
- CCT: 4000K, 5000K (High Output), 5700K
- UL wet listed
- Multi-Level options
- Modular, low-profile design
- Up to 85,638 lumens



Cree Edge™ Flood Square

Cree Edge™ High Output Flood



## LED WALL MOUNT

Sleek and stylish security and perimeter lighting features a low-profile design that provides clean, uniform illumination for increased visibility and a secure environment.

### XSP Series

- Minimum 70 CRI
- CCT: 4000K, 5700K
- UL wet listed
- IP66 rated
- Multi-Level options
- Up to 4,109 lumens



XSP™

Available finishes:



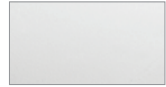
(T) Black



(Z) Bronze



(S) Silver



(W) White

### Cree Edge™ Series

- Minimum 70 CRI
- CCT: 4000K, 5700K
- UL wet listed
- Multi-Level options
- Modular, low-profile design
- Up to 13,990 lumens



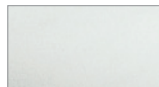
Available finishes:



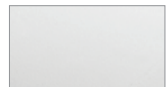
(BK) Black



(BZ) Bronze



(SV) Silver



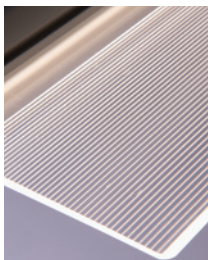
(WH) White

# PROVEN PERFORMANCE AND SUPERIOR VALUE.

The innovative technologies that make up Cree products have revolutionized the lighting industry by making high-quality, sustainable LED lighting affordable and available to all. With this advantage, we remain at the forefront today, dedicated to developing new LED lighting solutions that improve both our customers' spaces and their bottom lines, and all backed by an incredible warranty.

## Cree WaveMax® Technology

Cree WaveMax® Technology is a breakthrough in the execution of waveguide technology that challenges industry-standard assumptions of how light is delivered. Featuring up to 90% optical efficiency and precise optical control, Cree WaveMax® Technology enables customers to obtain unmatched visual comfort and improved color quality without sacrificing performance. This transformative technology redefines the limits of fixture design to optimize performance and provides more aesthetic options at an unmatched customer value.



LN Series



IG Series

### Comparison: Metal Halide Lighting vs. Cree WaveMax® Technology LED Lighting



Before: Metal Halide Lighting



After: Cree WaveMax® Technology LED Lighting

## Cree TrueWhite® Technology

Cree TrueWhite® Technology provides exceptional color quality to lighting applications. Featuring a broad spectral power distribution, Cree TrueWhite® Technology delivers 90+ CRI, high R9 values, and accurate and consistent color. The result is high performing, beautiful white light that can dramatically improve the visual appearance of both interior and exterior spaces — all while offering significant energy savings compared to traditional technologies. Cree TrueWhite® Technology – Saving Energy Never Looked So Good.

### Comparison: Fluorescent Lighting vs. Cree TrueWhite® Technology LED Lighting



Before: Fluorescent Lighting



After: Cree TrueWhite® Technology LED Lighting



---

## NanoOptic® Technology

With patented NanoOptic® Technology available in more than 20 distributions, Cree® outdoor LED fixtures provide precise optical control for exceptional application performance and energy savings. The NanoOptic® refractor system offers superior light control with more lumens delivered in the target area, improved uniformity ratios and controlled high-angle brightness.

## DeltaGuard® Finish

Cree's exclusive Colorfast DeltaGuard® Finish protects our LED outdoor fixtures without compromise. Immersive conditioning across 18 stages delivers an e-coat epoxy primer with an ultra-durable powder topcoat, providing unmatched protection against corrosion, UV light, fading and weathering complete with a 10-year limited warranty.

### Comparison: High Pressure Sodium Lighting vs. Cree Edge™ Series LED Lighting



---

## Cree 10-Year Limited Warranty

Cree offers a 10-year limited warranty that covers the broadest product range in the industry. As a leading innovator of LED chips, components and lighting, Cree has over 20 years of experience in commercial LED development, bringing an unprecedented level of expertise to all facets of the LED lighting design and development process. Cree's 10-year limited warranty covers nearly all globally-available, commercial-grade indoor and outdoor fixtures. To learn more, please visit [lighting.cree.com/warranty](http://lighting.cree.com/warranty).

---

## Essentia® by Cree

### Raise your expectations of industry standard LED lighting options.

Essentia® by Cree expands your choices for that essential mix of performance and cost savings --giving you more power to choose wisely and a greater ability to customize and control your ROI. Now every selection is a smart investment. Very smart because Essentia® by Cree gives you the assurance of a highly reliable "Just Right" choice backed by a leader you trust. Now you can choose with confidence.

- A full range of essential lighting products
- Industry competitive efficacy & light quality
- Full industry standard warranty
- Competitive pricing

And it's backed by Cree, the leader in lighting technology, to ensure that as configurations vary, quality will not.

**ESSENTIA®**  
by **CREE** 

Visit **lighting.cree.com** or contact a Cree lighting representative to learn more.

© 2017 Cree, Inc. All rights reserved. For informational purposes only. Not a warranty or specification. See [lighting.cree.com](http://lighting.cree.com) for warranty and specifications. Cree®, TrueWhite®, Cree TrueWhite®, SmartCast®, Colorfast DeltaGuard®, NanoOptic®, LEDway®, and WaveMax® are registered trademarks and the Cree logo, the Cree TrueWhite Technology logo, Precision Delivery Grid™, OneButton™, KR8™, KR6™, CR4™, CR6™, LN4™, Cree Edge™, XSP1™, XSP2™, XSPR™, XSPW™, 4Flow™, 228 Series™, 304 Series™, RUL™, and RSW™ are trademarks of Cree, Inc. Lutron® and Lutron EcoSystem® are registered trademarks of Lutron Electronics Co. Lumec is a registered trademark of Lumec Inc. Holophane®, Esplanade®, and Washington PostLite® are registered trademarks of ABL IP Holding LLC.  
CAT/CSJ-C004 Rev. Date 08/02/2017

