



# Distributor Luminaire Stocking Guide

---

Philips Chloride, Philips Controls,  
Philips Day-Brite, Philips Lightolier,  
and Philips Stonco

**PHILIPS**





Human life revolves around light. Light affects our mood, improves our well-being, and enables us to experience and achieve more. It is a vital part of making our lives fuller, more productive and safer.

At Philips Lighting, we focus on innovative ways of using light to simply enhance people's lives where they live and work—in the home, at school, at work, in shops and public places, as well as on the road. Recognizing how resource conservation and climate protection will play an increasingly significant part in human health and well-being, we pay special attention to maximizing the effects of lighting while minimizing the energy required to produce it.

Philips Lighting provides your business with the broadest portfolio of innovative, energy-efficient products your customers need to light their world, reduce their energy costs, and reduce their carbon footprint. We also offer a broad range of market development tools, promotional services, and educational resources to help you engage your customers more effectively.

**PHILIPS**

**PHILIPS  
CHLORIDE**

**PHILIPS  
Day-Brite**

**PHILIPS  
LIGHTOLIER**

**PHILIPS  
Stonco**

## DISTRIBUTOR STOCK GUIDE

Philips is committed to providing our customers with the products they need when they need them. This stock guide contains hundreds of our best selling Philips luminaires and controls. Our commitment is to ship these items within 48 hours from the time the order is entered and received by our Philips warehouses.

### Customer Service

In order to enhance our customer experience, we have embraced the concept of providing seamless support in the areas of customer fulfillment and sales support. We have established a customer contact center that provides a single point of contact across all brands and products, with first line technical support capability and three supporting hubs. This hub model will improve our efficiency and increase response time to our customers for quotations, order processing management, technical support, warranties and returns. Customers will also see improved fill rates and lead times to ensure on-time order delivery. Our goal is to be the industry leader in providing seamless support to our customer.

**Philips Contact Center:** 1-855-486-2216

**Fax Orders:** 1-800-519-2696

EDI is available to simplify your operations and improve efficiency.

### Warehouse Legend and Stock Availability

Philips Lighting maintains stock levels of our lighting products at multiple warehouses. Our warehouses are located in multiple regions across the US in order to provide our customers with quick access to the inventory they require.

Look for the code in the "Warehouse Location" column of this stock guide.

#### Warehouse legend:

- C** = Carrollton, Texas
- F** = Fontana, California
- N** = Norwich, Connecticut

*Stock orders for large quantities should be confirmed by customer service prior to order placement.*

In order to avoid delays, it is recommended that stock orders be "stand alone" so that they may be shipped within the promised time-frame.

Terms and Conditions may vary by product family. Please consult your Philips sales representative for relevant warranty, freight claims, etc...

Our delivery promise is backed by a significant investment in finished goods and component inventory. If any unforeseen issues arise or if order volume exceeds maximum order quantity, we will do our best to meet your needs.



Cover photo features Philips Day-Brite recessed LED fixtures installed in an office application.

## COMMERCIAL

4

- Troffers
- Direct/Indirect
- Strips
- Wraps

## DOWNLIGHTS

7

- Commercial
- Residential

## EMERGENCY

15

- Exits
- Combos
- Battery Packs

## INDUSTRIAL

20

- High Bays
- Low Bays
- Wet Location

## OUTDOOR

22

- Canopy Lighting
- Wall Packs
- Floods
- Wallprisms
- Sconces
- Roadway

## TRACK

28

- Basic
- Advent
- Lytespan
- Radius
- Track Heads

## CONTROLS

33

- OccuSwitch
- Relay Panel
- Sunrise
- MultiSet Pro

# COMMERCIAL

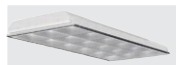


## DAY-BRITE FLUORESCENT Lens Troffers

UPC NUMBER	CATALOG NUMBER	DESCRIPTION	CASE QTY.	STOCKED IN
4097652	2TG8332-01-UNV-1/21-EB	2' x 4', Grid, 3 Lamp, 32T8, Universal Voltage (120/277V), (2) Electronic Ballasts	1	C, N, F
4097653	2TG8332-01-UNV-1/3-EB	2' x 4', Grid, 3 Lamp, 32T8, Universal Voltage (120/277V), (1) Electronic Ballast	1	C, N, F
4097659	2TG8432-01-UNV-1/4-EB	2' x 4', Grid, 4 Lamp, 32T8, Universal Voltage (120/277V), (1) Electronic Ballast	1	C, N, F
4098188	2TG8232-01-UNV-1/2-EB	2' x 4', Grid, 2 Lamp, 32T8, Universal Voltage (120/277V), Electronic Ballast	1	C, N, F
4098189	2TG8332-01-UNV-1/3-EB-LPT735	2' x 4', Grid, 3 Lamp, 32T8, Universal Voltage (120/277V), (1) Electronic Ballast, 3500K Lamps Inst.	1	C, N, F
4098190	2TG8432-01-UNV-1/4-EB-LPT735	2' x 4', Grid, 4 Lamp, 32T8, Universal Voltage (120/277V), (1) Electronic Ballast, 3500K Lamps Inst.	1	C, N, F
4098191	2TG8432-01-UNV-1/4-EB-LPT741	2' x 4', Grid, 4 Lamp, 32T8, Universal Voltage (120/277V), (1) Electronic Ballast, 4100K Lamps Inst.	1	C, N, F
4099684	2TG8432-01-UNV-2/2-EB	2' x 4', Grid, 4 Lamp, 32T8, Universal Voltage (120/277V), (2) Electronic Ballasts	1	C, N, F
7094377	2TG8231U6R-01-UNV-1/2-EB	2' x 2', Grid, 2 Lamp, 31U6T8, Universal Voltage (120/277V), Electronic Ballast	1	C, N, F

## DAY-BRITE FLUORESCENT Option/Accessory/Replacement

UPC NUMBER	CATALOG NUMBER	DESCRIPTION	CASE QTY.	STOCKED IN
4360864	DSP-1R	Distributor Spare Parts Kit, Fluorescent (Socket Plates, Lampholders, ¼ Turn Fasteners ) for T8	1	C, N, F



## DAY-BRITE FLUORESCENT Parabolic Troffers

UPC NUMBER	CATALOG NUMBER	DESCRIPTION	CASE QTY.	STOCKED IN
7013480	2LP3GS332-36AL-UNV-1/3-EB-LPT735	2' x 4', Grid, 3 Lamp, 32T8, 18 Cells, Universal Voltage (120/277V), (1) Electronic Ballast, Static, 3500K Lamps Inst.	1	C, N, F
4007987	2LP3GS231U6R-33AL-UNV-1/2-EB	2' x 2', Grid, 2 Lamp, 31U6T8, 9 Cells, Universal Voltage (120/277V), Electronic Ballast, Static	1	C, N, F
4060815	2LP3GC332-36AL-UNV-1/3-EB-ASC	2' x 4', Grid, 3 Lamp, 32T8, 18 Cells, Universal Voltage (120/277V) , (1) Electronic Ballast, Combo Air Supply/Return/Heat Removal w/Air Slot Covers	1	C, N, F
4072809	2LP3GS332-36AL-UNV-1/3-EB	2' x 4', Grid, 3 Lamp, 32T8, 18 Cells, Universal Voltage (120/277V), (1) Electronic Ballast, Static	1	C, N, F

C = Carrollton, Texas F = Fontana, California N = Norwich, Connecticut



### DAY-BRITE FLUORESCENT Parabolic Troffers

UPC NUMBER	CATALOG NUMBER	DESCRIPTION	CASE QTY.	STOCKED IN
4094180	2LP3GC231U6R-33AL-UNV-1/2-EB-ASC	2' x 2', Grid, 2 Lamp, 31U6T8, 9 Cells, Universal Voltage (120/277V), Electronic Ballast, Combo Air Supply/Return/Heat Removal w/Air Slot Covers	1	C, N, F
4097172	2LP3GS332-36AL-UNV-1/21-EB	2' x 4', Grid, 3 Lamp, 32T8, 18 Cells, Universal Voltage (120/277V), (2) Electronic Ballasts, Static	1	C, N, F



### DAY-BRITE FLUORESCENT Recessed Direct/Indirect

UPC NUMBER	CATALOG NUMBER	DESCRIPTION	CASE QTY.	STOCKED IN
662057204246	CFS2GPF232UNVHI	2' x 4', Grid, 2 Lamp, 32T8, Universal Voltage (120/277V), Electronic Ballast, Center Basket	1	C, N, F
662057204253	CFS2GPF332UNVH3	2' x 4', Grid, 3 Lamp, 32T8, Universal Voltage (120/277V), (1) Electronic Ballast, Center Basket	1	C, N, F
662057111940	CFS2GPF2FTUNVIB	2' x 2', Grid, 2 Lamp, Compact Fluorescent, 40WTT5, Universal Voltage (120/277V), Electronic Ballast, Center Basket	1	C, N, F



### DAY-BRITE FLUORESCENT Strips

UPC NUMBER	CATALOG NUMBER	DESCRIPTION	CASE QTY.	STOCKED IN
4077619	N132-UNV-1/1-EB	4' Length, 1 Lamp, 32T8, Universal Voltage (120/277V), Electronic Ballast	1	C, N, F
4060832	T232-UNV-1/2-EB	4' Length, 2 Lamp, 32T8, Universal Voltage (120/277V), Electronic Ballast	1	C, N, F
4060834	TT232-UNV-1/4-EB	8' Length, 2 Lamp Tandem (4 lamps), 32T8, Universal Voltage (120/277V), (1) Electronic Ballast	1	C, N, F
4069868	T259-UNV-1/2-EB	8' Length, 2 Lamp, 59T8, Universal Voltage (120/277V), Electronic Ballast	1	C, N, F
7006444	TH296HO-120-1/2-EB	8' Length, Heavy Duty Channel, 2 Lamp, 110T12HO 800mA, 120V, Electronic Ballast	1	C, N, F

C = Carrollton, Texas F = Fontana, California N = Norwich, Connecticut

# COMMERCIAL

## DAY-BRITE FLUORESCENT Wall Brackets

UPC NUMBER	CATALOG NUMBER	DESCRIPTION	CASE QTY.	STOCKED IN
4060836	WB232-WO-UNV-1/2-EB	4' Length, 2 Lamp, 32T8, White Opal Acrylic Lens, Universal Voltage (120-277V), Electronic Ballast	1	C, N, F

## DAY-BRITE FLUORESCENT Wraps

UPC NUMBER	CATALOG NUMBER	DESCRIPTION	CASE QTY.	STOCKED IN
4060828	OWN232-UNV-1/2-EB	8 $\frac{5}{8}$ " width, 4' Length, Narrow, 2 Lamp, 32T8, Universal Voltage (120-277V), Electronic Ballast	1	C, N, F
4060829	OWW432-UNV-1/4-EB	13 $\frac{7}{8}$ " width, 4' Length, Wide, 4 Lamp, 32T8, Universal Voltage (120-277V), (1) Electronic Ballast	1	C, N, F

C = Carrollton, Texas   F = Fontana, California   N = Norwich, Connecticut

# DOWNLIGHTS



## LIGHTOLIER DOWNLIGHTING 3¾" Recessed Frame

UPC NUMBER	CATALOG NUMBER	DESCRIPTION	CASE QTY.	STOCKED IN
78419720002	2000AIC	3¾" Recessed Aperture Incandescent Insulated Ceiling AirSeal® Frame-In Kit	2	N
78419720001	2000IC	3¾" Recessed Aperture Incandescent Insulated Ceiling Frame-In Kit	2	N
78419714667	2000LV	3¾" Recessed Aperture Low Voltage MR16 Standard Frame-In Kit	1	N
78419720005	2000LVR	3¾" Recessed Aperture Standard Low Voltage MR16 Remodeler Frame-in Kit	1	N
78419714665	2002PI	3¾" Recessed Aperture Incandescent Standard Non-IC Frame-In Kit	6	N
78419717459	2003R	3¾" Recessed Aperture Lytning Incandescent Non-IC Remodeler Frame-In-Kit	6	N
78419717614	2003RS	3¾" Recessed Aperture Lytning Incandescent Non-IC Remodeler Frame-In-Kit, Single Pack	1	N
78419723954	2004ICV	3¾" Recessed Aperture Lytning Low Voltage AirSeal® Insulated Frame-In-Kit, 50W MR16	1	N



## LIGHTOLIER DOWNLIGHTING 3¾" Recessed Trim

UPC NUMBER	CATALOG NUMBER	DESCRIPTION	CASE QTY.	STOCKED IN
78419714662	2013	3¾" Recessed Clear Specular Cone Reflector	6	N
78419720010	2005WH	3¾" Recessed Aperture Step Baffle Reflector Trim, Matte White	6	F
78419752904	2005WHS	3¾" Recessed Aperture Step Baffle Reflector Trim, Matte White, Single Pack	1	N
78419720130	2013WH	3¾" Recessed Aperture Cone Reflector Trim, Matte White	1	C
78419738696	2025WH	3¾" Recessed MR16 Mini Swivel Round Reflector Trim, Matte White	1	F
662057206080	2076WH	3¾" Recessed Aperture Step Baffle Reflector Trim, Gloss White	6	N

C = Carrollton, Texas F = Fontana, California N = Norwich, Connecticut

Pictures are representative of product categories and may not illustrate the exact products listed on the pages of this stock guide. Product information may change without notice. Contact your local Philips sales representative for additional product information.

# DOWNLIGHTS



## LIGHTOLIER DOWNLIGHTING 5" Recessed Frame

UPC NUMBER	CATALOG NUMBER	DESCRIPTION	CASE QTY.	STOCKED IN
78419711995	I000IC	5" Recessed Aperture Incandescent Insulated Ceiling, AirSeal® Frame-In Kit	4	N
78419712007	I002PI	5" Recessed Aperture Incandescent Non-IC Standard Frame-In Kit	6	N
78419717457	I003R	5" Recessed Aperture Lytning Incandescent Non-IC Remodeler Frame-In-Kit	6	N
78419717612	I003RS	5" Recessed Aperture Lytning Incandescent Non-IC Remodeler Frame-In-Kit, Single Pack	1	N
78419752398	I004F26ESN	5" Recessed Aperture Lytning 1 Lt 26W Quad / Triple Tube Compact Fluorescent IC Frame-In Kit	1	N
78419715929	I004IC	5" Recessed Aperture Lytning AirSeal® Incandescent Convertible IC/Non-IC Frame-In-Kit	8	N
78419719859	I004ICN	5" Recessed Aperture Lytning AirSeal® Incandescent Convertible IC/Non-IC Frame-In-Kit Pre-installed Nailer Bars	8	N
78419729183	I004ICNQ	5" Recessed Aperture Lytning AirSeal® Incandescent Convertible IC/Non-IC Frame-In-Kit Pre-installed Nailer Bars Quick Connectors	8	N
78419748773	I004ICNS	5" Recessed Aperture Lytning AirSeal® Incandescent Convertible IC/Non-IC Frame-In-Kit Pre-installed Nailer Bars, Single List	1	F
78419715932	I004ICR	5" Recessed Aperture Lytning Incandescent Convertible IC/Non-IC Remodeler Frame-In-Kit	1	N
78419717608	I004ICS	5" Recessed Aperture Lytning Incandescent Convertible IC/Non-IC Remodeler Frame-In-Kit	1	N
78419721982	I004ICX	5" Recessed Aperture Lytning High Wattage Incandescent AirSeal® Insulated Ceiling Frame-In Kit	4	N
78419719850	I004SIC	5" Recessed Aperture Lytning Shallow Incandescent Convertible IC/Non-IC Frame-In-Kit for 2 x 6 Constair	8	N



## LIGHTOLIER DOWNLIGHTING 5" Recessed Trim

UPC NUMBER	CATALOG NUMBER	DESCRIPTION	CASE QTY.	STOCKED IN
78419712045	I013	5" Recessed Aperture Cone Reflector Trim, Specular Clear	6	N
78419712069	I071	5" Recessed Aperture Basic White Open Reflector Trim	6	N
78419712070	I076	5" Recessed Aperture, Basic Black Baffle Reflector Trim	6	N
78419710760	I076WH	5" Recessed Aperture, Basic White Baffle Reflector Trim	6	N
78419706556	I076VHS	5" Recessed Aperture, Basic White Baffle Reflector Trim, Single Pack	1	N
78419735970	I013CD	5" Recessed Aperture Cone Reflector Trim, Clear Diffuse	6	N

C = Carrollton, Texas F = Fontana, California N = Norwich, Connecticut





## LIGHTOLIER DOWNLIGHTING 5" Recessed Trim

UPC NUMBER	CATALOG NUMBER	DESCRIPTION	CASE QTY.	STOCKED IN
78419710130	I013WH	5" Recessed Aperture Cone Reflector Trim, Matte White	1	N
78419710050	I005WH	5" Recessed Aperture Step Baffle Reflector Trim, Matte White	6	N
78419751354	I005WHS	5" Recessed Aperture Step Baffle Reflector Trim, Matte White, Single Pack	1	N
78419720587	C76WH	5" Recessed Spun White Baffle Reflector Trim	12	F



## LIGHTOLIER DOWNLIGHTING 6 3/4" Recessed Frame

UPC NUMBER	CATALOG NUMBER	DESCRIPTION	CASE QTY.	STOCKED IN
78419711023	I100IC	6 3/4" Recessed Aperture Incandescent Insulated Ceiling Non-IC Frame-In-Kit	4	N
78419711022	I102PI	6 3/4" Recessed Aperture Incandescent Standard Non-IC Frame-In Kit	6	N
78419700595	I102PJNEW	6 3/4" Recessed Aperture Incandescent Standard Frame-In Kit Single Pack	1	N
78419717458	I103R	6 3/4" Recessed Aperture Lytning Incandescent Non-IC Remodeler Frame-In-Kit	6	N
78419717613	I103RS	6 3/4" Recessed Aperture Lytning Incandescent Non-IC Remodeler Frame-In-Kit, Single Pack	1	N
662057517995	I104IC	6 3/4" Recessed Apertures Lytning Incandescent Convertible IC/Non-IC Frame-In-Kit	8	N
78419719858	I104ICN	6 3/4" Recessed Apertures Lytning Incandescent Convertible IC/Non-IC Frame-In-Kit Pre-Installed Nailer Bars	8	N
78419729181	I104ICNQ	6 3/4" Recessed Apertures Lytning Incandescent Convertible IC/Non-IC Frame-In-Kit Pre-Installed Nailer Bars Quick Connector	8	N
78419715933	I104ICR	6 3/4" Recessed Lytning AirSeal® IC/Non-IC Remodeler Frame-In Kit	1	N
78419717609	I104ICS	6 3/4" Recessed Lytning Shallow AirSeal® IC/Non-IC Frame-In Kit	1	N
78419721981	I104ICX	6 3/4" Recessed Aperture Lytning High Wattage Incandescent AirSeal® Insulated Ceiling Frame-In Kit	4	N
78419723901	I104ICXN	6 3/4" Recessed Aperture Lytning High Wattage Incandescent AirSeal® Insulated Ceiling Frame-In Kit Pre-Installed Nailer Bars	4	N

C = Carrollton, Texas F = Fontana, California N = Norwich, Connecticut

Pictures are representative of product categories and may not illustrate the exact products listed on the pages of this stock guide. Product information may change without notice. Contact your local Philips sales representative for additional product information.

# DOWNLIGHTS

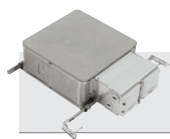


## LIGHTOLIER DOWNLIGHTING 6¾" Recessed Trim

UPC NUMBER	CATALOG NUMBER	DESCRIPTION	CASE QTY.	STOCKED IN
78419754606	1101CD	6¾" Recessed Aperture Vertical Open Downlight, Clear Diffuse	1	N
78419754605	1101CL	6¾" Recessed Aperture Vertical Open Downlight, Specular Clear	1	N
78419797309	1101HCD	6¾" Recessed Horizontal Open Downlight, Clear Diffuse	1	N
78419754614	1101HCL	6¾" Recessed Horizontal Open Downlight, Specular Clear	1	N
78419712335	1113	6¾" Recessed Aperture Cone Reflector Trim Specular Clear	6	F
78419711710	1171	6¾" Recessed Aperture Basic White Reflector Trim	6	N
78419700350	1176	6¾" Recessed Aperture Basic Baffle Reflector Trim, Black	6	N
78419711070	1105WH	6¾" Recessed Aperture Step Baffle Reflector Trim, Matte White	6	N
78419751144	1113S	6¾" Recessed Aperture Cone Reflector Trim, Specular Clear, Single Pack	1	N
78419724360	1117WH	6¾" Recessed White Baffle Reflector Trim	12	F
78419711352	1131WH	6¾" Recessed Aperture Shallow Slope Ceiling Reflector Trim 14°–30° Angle, ¾" – ½" Pitch, White Step Baffle	1	F
78419700351	1176WH	6¾" Recessed Aperture Basic White Baffle Reflector Trim	6	N
78419712036	1176WHSNEW	6¾" Recessed Aperture Basic White Baffle Reflector Trim	1	N
78419719475	1177LX	6¾" Recessed Aperture Flush Glass Shower Trim Reflector	1	N
78419729058	B17WH	6¾" Recessed Aperture Lytning B-Series Incandescent Reflector Trim, Gloss White	12	F

C = Carrollton, Texas F = Fontana, California N = Norwich, Connecticut

# DOWNLIGHTS



## LIGHTOLIER DOWNLIGHTING 5" XCEED LED

UPC NUMBER	CATALOG NUMBER	DESCRIPTION	CASE QTY.	STOCKED IN
662057482880	I050LRN0927	Xceed Lytecaster LED 5", Round Lensed Downlight, Light Engine, 900 Lumens, 2700K	1	N
662057483139	I050LRN0935	Xceed Lytecaster LED 5", Round Lensed Downlight, Light Engine, 900 Lumens, 3500K	1	N
662057482613	I050LRN09DI	Xceed Lytecaster LED 5", Round Lensed Downlight, 900 Lumen, 120V Dimming	1	N
662057482804	I050LRN09DIN	Xceed Lytecaster LED 5", Round Lensed Downlight, 900 Lumens, 120V Dimming, with Nailers Bars	1	N
662057483504	I050LRNDLCDW	Xceed Lytecaster LED 5", Round Lensed Downlight, Trim, Clear Diffuse, White Flange	1	N
662057483511	I050LRNDLWB	Xceed Lytecaster LED 5", Round Lensed Downlight, Trim, White Baffle, White Flange	1	N



## LIGHTOLIER DOWNLIGHTING 5" Lytensing LED Frame

UPC NUMBER	CATALOG NUMBER	DESCRIPTION	CASE QTY.	STOCKED IN
662057784625	I004ICNLED	5" Lytensing LED, IC Frame-in Kit, with Nails	8	N
662057788258	I004ICNLEDS	5" Lytensing LED, IC Frame-in Kit, with Nails, Single Pack	1	N
662057784618	I004ICLED	5" Lytensing LED, IC Frame-in Kit, with Screws	8	N
662057787398	I004ICLEDS	5" Lytensing LED, IC Frame-in Kit, with Screws, Single Pack	1	N



## LIGHTOLIER DOWNLIGHTING 5" Lytensing LED Trim

UPC NUMBER	CATALOG NUMBER	DESCRIPTION	CASE QTY.	STOCKED IN
662057788517	I076WHL27K	Lytensing LED, White Baffle Trim, 650 Lumen, 2700K, 120V, Dimming	1	N
662057788524	I076WHL30K	Lytensing LED, White Baffle Trim, 650 Lumen, 3000K, 120V, Dimming	1	N

## LIGHTOLIER DOWNLIGHTING 6" LED Retrofit

UPC NUMBER	CATALOG NUMBER	DESCRIPTION	CASE QTY.	STOCKED IN
3819092	PRL6K-G1-6-30K	6" LED Recessed Retrofit Downlight, 600 Lumens, 3000K	6	C, F

C = Carrollton, Texas F = Fontana, California N = Norwich, Connecticut

# DOWNLIGHTS



## LIGHTOLIER DOWNLIGHTING 6 3/4" CFL Non IC Uniframe

UPC NUMBER	CATALOG NUMBER	DESCRIPTION	CASE QTY.	STOCKED IN
78419754549	1101F2642U	6 3/4" Aperture, 1 Light, Compact Fluorescent, Non-IC, Frame-In Kit, 120/277V, 26W Quad / Triple, 32W Triple, 42W Triple	6	N
78419754548	1101F2642US	6 3/4" Aperture, 1 Light, Compact Fluorescent, Non-IC, Frame-In Kit, 120/277V, 26W Quad / Triple, 32W Triple, 42W Triple, Single Pack	1	N



## LIGHTOLIER DOWNLIGHTING 5" LED Non IC Uniframe

UPC NUMBER	CATALOG NUMBER	DESCRIPTION	CASE QTY.	STOCKED IN
662057383668	1001LED09N271	Lytecaster LED 5", Non-IC, 120V, 900 Lumens, 2700K, Frame-In-Kit	1	N
662057383750	1001LED09N352	Lytecaster LED 5", Non-IC, 277V, 900 Lumens, 3500K, Frame-In-Kit	1	N



## LIGHTOLIER DOWNLIGHTING 6 3/4" LED Non IC Uniframe

UPC NUMBER	CATALOG NUMBER	DESCRIPTION	CASE QTY.	STOCKED IN
662057441108	1101LED09N351	Lytecaster LED 6 3/4", 900 Lumen, Non-IC, 120V, 3500K	1	N
662057383538	1101LED09N352	Lytecaster LED 6 3/4", 900 Lumen, Non-IC 277V, 3500K	1	N



## LIGHTOLIER DOWNLIGHTING Accessories

UPC NUMBER	CATALOG NUMBER	DESCRIPTION	CASE QTY.	STOCKED IN
78419736723	LAS56	Lytecaster AirSeal® Gasket for Use with 1004 & 1104 Lytening Frame-In-Kits	12	N
78419714513	1956	T-Bar Ceiling Clips for Use with Series 2000, 1000 and 1102HF	12	N

C = Carrollton, Texas F = Fontana, California N = Norwich, Connecticut



# DOWNLIGHTS



## LIGHTOLIER DOWNLIGHTING Lytepoints

UPC NUMBER	CATALOG NUMBER	DESCRIPTION	CASE QTY.	STOCKED IN
662057037233	302MRIC7SPX	Lytepoints, MR16 Mag. 7" IC Frame-In-Kit Silent Pack, Accepts all 3¾" (95mm) 300X Series Trims, 50W	1	N
662057037226	302MRIC9SPX	Lytepoints, MR16 Mag. 9" IC Frame-In-Kit Silent Pack, Accepts all 3¾" (95mm) 300X Series Trims, 50W	1	N
78419731634	303MRE	3¾" Aperture Lytepoints Low Voltage MR16 12V Ultra Shallow Electronic Remodeler (Non-IC)	1	N
624563100962	304CCDX	Lytepoints, 3¾" (95mm) Aperture Adjustable Specular Cone MR16 & ES/ESD16, Clear Diffuse / White Flange, 50W	1	N
624563083418	304CLX	Lytepoints, 3¾" (95mm) Aperture Adjustable Specular Cone MR16 & ES/ESD16, Clear Specular / White Flange	1	N
624563083319	305WHWX	Lytepoints, 3¾" (95mm) Aperture Adjustable Premium Die-Cast Step Baffle MR16 & ES/ESD16, Matte White	1	N
78419743571	313WHX	Lytepoints, 3¾" (95mm) Aperture Deep Residence MR16, White	1	N
78419743601	3401MREX	Lytepoints, 3¾" (95mm) Aperture, Low Voltage MR16 12V, Low-Profile Electronic Remodeler	1	N
78419743607	374CHX	Lytepoints, 3¾" (95mm) Aperture Basic Adjustable Cone MR16 & ES/ESD16, Chrome/White Flange	1	F
78419743609	375WHX	Lytepoints, 3¾" (95mm) Aperture Basic Baffle MR16 & ES/ESD16, White Baffle/Flange	1	N
78419743633	378WHX	Lytepoints, 3¾" (95mm) Aperture Adjustable Elbow MR16, White	1	N



## LIGHTOLIER DOWNLIGHTING 6" Incandescent C Plus

UPC NUMBER	CATALOG NUMBER	DESCRIPTION	CASE QTY.	STOCKED IN
3816902	PR75ASICNB	6" AirSeal® / IC New Construction Recessed Housings	6	C, N, F
3801733	R10	6" Non-IC New Construction Recessed Housings	8	C, N, F
3861070	PRR75ICX	6" IC Remodeler Recessed Housings	8	C, N, F

C = Carrollton, Texas F = Fontana, California N = Norwich, Connecticut

Pictures are representative of product categories and may not illustrate the exact products listed on the pages of this stock guide. Product information may change without notice. Contact your local Philips sales representative for additional product information.

# DOWNLIGHTS



## LIGHTOLIER DOWNLIGHTING 6" Incandescent Trim

UPC NUMBER	CATALOG NUMBER	DESCRIPTION	CASE QTY.	STOCKED IN
3803702	RBC30WM	6" PAR38, PAR30, BR30 Cone Grooved Baffle, White	8	C, N, F
3813701	RBC30M	6" PAR38, PAR30, BR30 Cone Grooved Baffle, Black	8	C, N, F
3812138	RB30W	6" PAR38, PAR30, BR30 Grooved Baffle, White	8	C, N, F
3812139	RB40W	6" PAR38, BR40 Grooved Baffle, White	8	C, N, F
3803985	RB30	6" PAR38, PAR30, BR30 Grooved Baffle, Black	8	C, N, F
3803996	RS30W	6" PAR30 White Spay Trim	8	C, N, F
3815438	RF30W	6" PAR30 White Large Flange Trim	8	C, N, F
3812116	RI8P	6" Eyeball BR30, White	6	C, N, F
3801526	SHRI6IC	6" A19 Drop Opal Shower Light Vertical Plastic White Flange	6	C, N, F



## LIGHTOLIER DOWNLIGHTING 6" CFL Frame

UPC NUMBER	CATALOG NUMBER	DESCRIPTION	CASE QTY.	STOCKED IN
3818289	PR26ASICNBNEI	6" AirSeal® / IC 26W CFL Vertical New Construction Recessed Housings	1	C, N, F



## LIGHTOLIER DOWNLIGHTING 6" CFL Trim

UPC NUMBER	CATALOG NUMBER	DESCRIPTION	CASE QTY.	STOCKED IN
3816147	SHR6ICW	6" Regressed Shower Trim, Wet Location, CFL Vertical White	6	C, N, F
3803990	RC30C	6" Clear Cone for INC or CFL White Flange	8	C, N, F

C = Carrollton, Texas F = Fontana, California N = Norwich, Connecticut



### CHLORIDE 44R Line Exit Sign, Universal Edge Lit

UPC NUMBER	CATALOG NUMBER	DESCRIPTION	CASE QTY.	STOCKED IN
4023449	44RLU1R	44R LINE - LED Edge-lit (AC Only) Exit Sign, Universal Mounting; Surface (Ceiling, Wall, & End) and Recessed (Ceiling & Wall). Red, Single Face, Satin Aluminum Housing, 120/277V Selectable Input	3	C, N, F
4023450	44RLU2R	44R LINE - LED Edge-lit (AC Only) Exit Sign, Universal Mounting; Surface (Ceiling, Wall, & End) and Recessed (Ceiling & Wall). Red, Double Face, Satin Aluminum Housing, 120/277V Selectable Input	3	C, N, F
4023451	44RLU1G	44R LINE - LED Edge-lit (AC Only) Exit Sign, Universal Mounting; Surface (Ceiling, Wall, & End) and Recessed (Ceiling & Wall). Green, Single Face, Satin Aluminum Housing, 120/277V Selectable Input	3	C, F
4023452	44RLU2G	44R LINE - LED Edge-lit (AC Only) Exit Sign, Universal Mounting; Surface (Ceiling, Wall, & End) and Recessed (Ceiling & Wall). Green, Double Face, Satin Aluminum Housing, 120/277V Selectable Input	3	C, F
4023436	ER44RLDU1R	44R LINE - LED Edge-lit (Self-powered) Exit Sign, Universal Mounting; Surface (Ceiling, Wall, & End) and Recessed (Ceiling & Wall). Red, Single Face, Satin Aluminum Housing, 120/277V Selectable Input	3	C, N, F
4023437	ER44RLDU2R	44R LINE - LED Edge-lit (Self-powered) Exit Sign, Universal Mounting; Surface (Ceiling, Wall, & End) and Recessed (Ceiling & Wall). Red, Double Face, Satin Aluminum Housing, 120/277V Selectable Input	3	C, N, F
4023440	ER44RLDU1G	44R LINE - LED Edge-lit (Self-powered) Exit Sign, Universal Mounting; Surface (Ceiling, Wall, & End) and Recessed (Ceiling & Wall). Green, Single Face, Satin Aluminum Housing, 120/277V Selectable Input	3	C, N, F
4023441	ER44RLDU2G	44R LINE - LED Edge-lit (Self-powered) Exit Sign, Universal Mounting; Surface (Ceiling, Wall, & End) and Recessed (Ceiling & Wall). Green, Double Face, Satin Aluminum Housing, 120/277V Selectable Input	3	C, N, F



### CHLORIDE 55 Line Die Cast Aluminum LED Exit



UPC NUMBER	CATALOG NUMBER	DESCRIPTION	CASE QTY.	STOCKED IN
7010408	55L3R	55 LINE—Die Cast Aluminum (AC Only) Exit Sign, Black Housing with Brushed Aluminum Face Plate, Red Letters. Universal Mount, Single or Double Face, 120/277V Selectable Input, Concealed Chevrons	6	C, N, F
7010404	ER55L3R	55 LINE—Die Cast Aluminum (Self-powered) Exit Sign, Black Housing with Brushed Aluminum Face Plate, Red Letters. Universal mount, Single or Double Face, 120/277V Selectable Input, Concealed Chevrons	6	C, N, F
4339058	55L3WR	55 LINE—Die Cast Aluminum (AC Only) Exit Sign, White Housing with White Face Plate, Red Letters. Universal Mount, Single or Double Face, 120/277V Selectable Input, Concealed Chevrons	6	C, N, F
7062169	ER55L3WR	55 LINE—Die Cast Aluminum (Self-powered) Exit Sign, White Housing with White Face Plate, Red Letters. Universal Mount, Single or Double Face, 120/277V Selectable Input, Concealed Chevrons	6	C, F
7010405	ER55L3G	55 LINE—Die Cast Aluminum (Self-powered) Exit Sign, Black Housing with Brushed Aluminum Face, Green Letters, Universal Mount, Single or Double Face, 120/277V Selectable Input, Concealed Chevrons	6	C, F

C = Carrollton, Texas F = Fontana, California N = Norwich, Connecticut

# EMERGENCY



## CHLORIDE Architectural Patron Series Die Cast Emergency Unit

UPC NUMBER	CATALOG NUMBER	DESCRIPTION	CASE QTY.	STOCKED IN
7037985	PDNBZ	Patron Series—Die Cast Aluminum Emergency Unit, Nickel Cadmium Battery, Two 6V–6W Bi-pin Halogen Lamps, Wet Location, Operating Temperature Range 0°F–122°F, Dark Bronze Finish	2	C, N, F
7037988	PDNW	Patron Series—Die Cast Aluminum Emergency Unit, Nickel Cadmium Battery, Two 6V–6W Bi-pin Halogen Lamps, Wet Location, Operating Temperature Range 0°F–122°F, White Finish	2	C, N, F



## CHLORIDE Emergency Battery Packs

UPC NUMBER	CATALOG NUMBER	DESCRIPTION	CASE QTY.	STOCKED IN
4064359	DEB-1W	Fluorescent Emergency Ballast, Damp Listed, 350–400 Lumens, One or Two Lamp Operation—FIELD INSTALLED	20	C, N, F
4382342	DEB-7W	Fluorescent Emergency Ballast, Damp Listed, 600–700 Lumens, One or Two Lamp Operation—FIELD INSTALLED	20	C, N, F
4062402	DEB-5W	Fluorescent Emergency Ballast, Damp Listed, 1100–1400 Lumens, One or Two Lamp Operation, End of Lamp Life Compatible—FIELD INSTALLED	10	C, N, F



## CHLORIDE VALUE + VE Series Thermoplastic Exit

UPC NUMBER	CATALOG NUMBER	DESCRIPTION	CASE QTY.	STOCKED IN
4326300	VERW	Value+—VE Series (Contractor Grade) Thermoplastic Exit Sign, AC Only, White Housing, Red Letters, 120/277V Selectable Input, Removable Chevrons	12	C, N, F
4326303	VERWEM	Value+—VE Series (Contractor Grade) Thermoplastic Exit Sign, Self-powered, White Housing, Red Letters, 120/277V Selectable Input, Removable Chevrons	12	C, N, F
7021319	VRERWEM	Value+—VE Series (Contractor Grade) Thermoplastic Exit Sign, self-powered, White Housing, Red Letters, 120/277V Selectable Input, 22W Remote Capability	6	C, N, F
4326304	VEGWEM	Value+—VE Series (Contractor Grade) Thermoplastic Exit Sign, Self-powered, White Housing, Green Letters, 120/277V Selectable Input, Removable Chevrons	12	C, N, F

C = Carrollton, Texas F = Fontana, California N = Norwich, Connecticut





### CHLORIDE VALUE + VC Series Thermoplastic Unit

UPC NUMBER	CATALOG NUMBER	DESCRIPTION	CASE QTY.	STOCKED IN
4326298	VCRW	Value +--VC Series (Contractor Grade) White Thermoplastic Combo, 6V-5.4W Tungsten Lamps, Sealed Lead Calcium Battery, 120/277V Selectable Input, Red Letters, 12W Remote Capability	2	C, N, F
7090847	VCRWLRC	Value +--VC Series (Contractor Grade) White Thermoplastic Combo, 6V-5.4W Tungsten Lamps, Sealed Lead Calcium Battery, 120/277V Selectable Input, Red Letters	2	C, N, F
4326299	VCGW	Value +--VC Series (Contractor Grade) White Thermoplastic Combo, 6V-5.4W Tungsten Lamps, Sealed Lead Calcium Battery, 120/277V Selectable Input, Green Letters, 12W Remote Capability	2	C, F



### CHLORIDE VALUE + VU Series Thermoplastic Unit

UPC NUMBER	CATALOG NUMBER	DESCRIPTION	CASE QTY.	STOCKED IN
4357974	VU6F	Value +--VU6F Series (Contractor Grade) Fixed Lens Thermoplastic Unit, Sealed Lead Calcium Battery, 6V-5.4W Tungsten Lamps, White Housing, 120/277V Selectable Input	6	C, F
4355838	VU6-CS	Value +--VU6 Series (Contractor Grade) Thermoplastic Unit, Sealed Lead Calcium Battery, 6V-5.4W Tungsten Lamps, White Housing, 120/277V Selectable Input	6	C, N, F



### CHLORIDE VALUE II VX Series Thermoplastic Exit

UPC NUMBER	CATALOG NUMBER	DESCRIPTION	CASE QTY.	STOCKED IN
4375354	VXL3RW	Value+II-VX Series (Spec Grade) Thermoplastic Exit Sign, AC Only, White Housing, Red Letters, 120/277V Selectable Input, Removable Chevrons	12	C, N, F
4375355	VXL3GW	Value+II-VX Series (Spec Grade) Thermoplastic Exit Sign, AC Only, White Housing, Green Letters, 120/277V Selectable Input, Removable Chevrons	12	C, N, F
4375356	VXL3RWEM	Value+II-VX Series (Spec Grade) Thermoplastic Exit Sign, Self-powered, White Housing, Red Letters, 120/277V Selectable Input Removable Chevrons	12	C, N, F
4375357	VXL3GWEM	Value+II-VX Series (Spec Grade) Thermoplastic Exit Sign, Self-powered, White Housing, Green Letters, 120/277V Selectable Input, Removable Chevrons	12	C, N, F

C = Carrollton, Texas F = Fontana, California N = Norwich, Connecticut

# EMERGENCY



## CHLORIDE VALUE II VCA Series Thermoplastic Combo

UPC NUMBER	CATALOG NUMBER	DESCRIPTION	CASE QTY.	STOCKED IN
4375358	VCAL3RW	Value+II-VCA Series (Spec Grade) Semi-Recessed Lamp Heads Thermoplastic Combo, Sealed Lead Calcium Battery, White Housing, Red Letters, 6V-6W MR16 Lamps, 120/277V Selectable Input, Removable Chevrons	4	C, N, F
4375359	VCAL3GW	Value+II-VCA Series (Spec Grade) Semi-Recessed Lamp Heads Thermoplastic Combo, Sealed Lead Calcium Battery, White Housing, Green Letters, 6V-6W MR16 Lamps, 120/277V Selectable Input, Removable Chevrons	4	C, N, F
4375360	VCTL3RW	Value+II - VCA Series (Spec Grade) Thermoplastic Combo, Sealed Lead Calcium Battery, White Housing, Red Letters, 6V-6W MR16 Lamps, 120/277V Selectable Input, Removable Chevrons	4	C, N, F
4375361	VCTL3GW	Value+II - VCA Series (Spec Grade) Thermoplastic Combo, Sealed Lead Calcium Battery, White Housing, Green Letters, 6V-6W MR16 Lamps, 120/277V Selectable Input, Removable Chevrons	4	C, N, F



## CHLORIDE VALUE+ II CFX6 Series Thermoplastic Unit

UPC NUMBER	CATALOG NUMBER	DESCRIPTION	CASE QTY.	STOCKED IN
4375364	VF6	Value+II-VF6 Series (Spec Grade) Fixed Lens Thermoplastic Unit, Sealed Lead Calcium Battery, White Housing, 6V-5W MR11 Lamp, 120/277V Selectable Input	6	C, N, F



## CHLORIDE VALUE+ II CAX6 Series Thermoplastic Unit

UPC NUMBER	CATALOG NUMBER	DESCRIPTION	CASE QTY.	STOCKED IN
4375365	VA6	Value+ II-VA6 Series (Spec Grade) Semi-Recessed Lamp Head Thermoplastic Unit, Sealed Lead Calcium Battery, White Housing, 6V-6W MR16 Lamps, 120/277V Selectable Input	6	C, N, F



## CHLORIDE VALUE+ II VT6 Series Thermoplastic Unit

UPC NUMBER	CATALOG NUMBER	DESCRIPTION	CASE QTY.	STOCKED IN
4375366	VT6	Value+II-VT6 Series (Spec Grade) Thermoplastic Unit, Sealed Lead Calcium Battery, White Housing, 6V-5.4W Tungsten Lamps, 120/277V Selectable Input	6	C, N, F
4375367	VT618	Value+II-VT6 Series (Spec Grade) Thermoplastic Unit, Sealed Lead Calcium Battery, White Housing, 6V-9W Tungsten Lamps, 120/277V Selectable Input	6	C, N, F

C = Carrollton, Texas F = Fontana, California N = Norwich, Connecticut



### CHLORIDE VALUE+ II VT Series Thermoplastic Unit

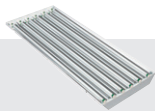
UPC NUMBER	CATALOG NUMBER	DESCRIPTION	CASE QTY.	STOCKED IN
4375368	VT6L24WCSWF	Value+II-VT Series (Spec Grade) Thermoplastic Unit, Sealed Lead Calcium Battery, White Housing, 6V-12W Halogen Lamps, 120/277V Selectable Input	6	C, N, F



### CHLORIDE CCRHP Series Outdoor Single Remote Metal Chrome Lamp Head

UPC NUMBER	CATALOG NUMBER	DESCRIPTION	CASE QTY.	STOCKED IN
4059257	CCRHP	Weatherproof Remote Metal Chrome Lamp Head (Includes Mounting Plate), 6V-6W Sealed Beam Halogen Lamps	1	C, N, F

# INDUSTRIAL



## DAY-BRITE FLUORESCENT High Bay

UPC NUMBER	CATALOG NUMBER	DESCRIPTION	CASE QTY.	STOCKED IN
4326400	FBD654HO-UNV-1/42-EB	T5 Fluorescent High Bay, Steel Housing w/Miro 4 Reflectors, 6 Lamp, 54WT5HO, 1-4 Lamp and 1-2 Lamp Universal Voltage Electronic Ballasts	1	C, N, F
4319955	FBD454HO-UNV-1/4-EB-2LS	Fluorescent High Bay, 4 Lamp, 54W T5HO, One Step Level Universal Voltage Electronic Ballast	1	C, N, F
4339340	FBD632-UNV-1/42-EB	T8 Fluorescent High Bay, Steel Housing w/Miro 4 Reflectors, 6 Lamp, 32WT8, 1-4 & 1-2 Lamp. Electronic Ballasts. 120-277V	1	C, N, F
7053122	FBF/FBE CHAIN KIT	2 Heavy Duty Mounting Chains & V Hooks , for FBF and FBE Fluorescent High Bays	1	C, N, F



## DAY-BRITE FLUORESCENT Industrial Solid Top Reflector

UPC NUMBER	CATALOG NUMBER	DESCRIPTION	CASE QTY.	STOCKED IN
4060825	TIS232-UNV-1/4-EB	8' Length, 2 Lamp Tandem (4 lamps), Solid Top, 32T8, Universal Voltage (120-277V), (1) Electronic Ballast	1	C, N, F
4060824	IS232-UNV-1/2-EB	4' Length, 2 Lamp, Solid Top, 32T8, Universal Voltage (120-277V), Electronic Ballast	1	C, N, F

## DAY-BRITE HID High Bay and Low Bay Accessories

UPC NUMBER	CATALOG NUMBER	DESCRIPTION	CASE QTY.	STOCKED IN
4015746	HMR-CS	Male Suspension Hook	1	C, N, F



## DAY-BRITE HID High Bay and Low Bay Ballast Assemblies

UPC NUMBER	CATALOG NUMBER	DESCRIPTION	CASE QTY.	STOCKED IN
4065500	EHO400PMT-PSC-OR	400W, Pulse Start MH, Open Rated Socket, Multi-Tap, Fabricated Steel Housing. Must be Shipped with LPV400P/BU/OR Lamp to Comply with CA Title 20	1	C, N, F
7098458	EHO400PMT-AL15-PSC-LP-OR-UP	400W, Pulse Start MH, Open Rated Socket, Multi-Tap, Fabricated Steel Housing w/15" Reflector & Open Rated Lamp, Unit Pack, "CA Title 20 Compliant"	1	C, N, F

C = Carrollton, Texas F = Fontana, California N = Norwich, Connecticut



**DAY-BRITE HID** Reflectors and Optical Assembly

UPC NUMBER	CATALOG NUMBER	DESCRIPTION	CASE QTY.	STOCKED IN
4001488	LR23-CS	23" Low Bay Optical Assembly	I	C, N, F
4040208	AL15	15" Aluminum Reflector	I	C, N, F

**DAY-BRITE** Special Purpose Industrial Wet Location

UPC NUMBER	CATALOG NUMBER	DESCRIPTION	CASE QTY.	STOCKED IN
4060826	DWAE232-UNV-1/2-EB	4' Length, 2 Lamp, 32T8, Universal Voltage (120-277V), Electronic Ballast	I	C, N, F

**STONCO** Smart Choice HID Temp

UPC NUMBER	CATALOG NUMBER	DESCRIPTION	CASE QTY.	STOCKED IN
78603492007	SSCII400PMAGHLOR-8	HID Temp Open Rated 400W Pulse Start MH w/Guard, Hook and Lamp, 120-277V	I	C

# OUTDOOR



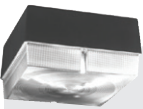
## STONCO Lyte Cube Canopy

UPC NUMBER	CATALOG NUMBER	DESCRIPTION	CASE QTY.	STOCKED IN
78603438009	LCQ105MAL-6	Lyte Cube 100W MH Dual Voltage w/Lamp	1	C
78603489329	LCQ155PMAL-8	Lyte Cube 150W PMA Multi-Tap w/Lamp	1	C



## STONCO Lyte Prism Series

UPC NUMBER	CATALOG NUMBER	DESCRIPTION	CASE QTY.	STOCKED IN
78603403776	LPQ155PMAL-8	Lyte Prism 150W PMA Multi-Tap w/Lamp	1	C



## STONCO Twilighter Series Canopy Light

UPC NUMBER	CATALOG NUMBER	DESCRIPTION	CASE QTY.	STOCKED IN
78603494585	TLC51NLXL-1	Twilighter Series 50W HPS 120V w/Lamp	6	C
78603494586	TLC51NMAL-1	Twilighter Series 50W MH 120V w/Lamp	6	C
78603494587	TLC71NLXL-1	Twilighter Series 70W HPS 120V w/Lamp	6	C



## STONCO Designer Canopy LED Luminaire

UPC NUMBER	CATALOG NUMBER	DESCRIPTION	CASE QTY.	STOCKED IN
78603495643	DCL20LED4K-8	LED Canopy 20 Hi-Lumen LEDs, 4700K ColorTemp Multi-Tap	6	C



## STONCO Twilighter LED Wall Pak

UPC NUMBER	CATALOG NUMBER	DESCRIPTION	CASE QTY.	STOCKED IN
78603495644	TLW10LED4KPCB-1	Twilighter LED Wall Pak 10 Hi-Lumen LEDs, 4K ColorTemp, Built in Photocontrol, 120V	6	C

C = Carrollton, Texas F = Fontana, California N = Norwich, Connecticut



## STONCO Dusk to Dawn LED

UPC NUMBER	CATALOG NUMBER	DESCRIPTION	CASE QTY.	STOCKED IN
78603495642	DTD12LED4KPCB-I	LED Dusk to Dawn Luminaire 12 Hi-Lumen LEDs, 4K Color Temp, Built in Photocontrol, 120V	1	C



## DAY-BRITE LED Micro Flood and Wall Light

UPC NUMBER	CATALOG NUMBER	DESCRIPTION	CASE QTY.	STOCKED IN
4352724	FSN24WLU	Mini Floodlight, 24W Neutral White LED, Unv Elec Driver; General Distribution, 1/2" NPT Swivel Mount	1	C, N, F
4352451	WTN24WLU	Mini Wall Light, 24W Neutral White LED, Unv Elec Driver	1	C, N, F



## STONCO SLA Mini-Flood

UPC NUMBER	CATALOG NUMBER	DESCRIPTION	CASE QTY.	STOCKED IN
78603483979	SLA101MAL-6	Mini-Flood Dual Voltage 100W MH w/Lamp	4	C
78603483980	SLA101NLXL-I	Mini-Flood 120V 100W HPS w/Lamp	4	C
78603489346	SLA150PMAL-6	Mini-Flood Dual Voltage 150W PMA w/Lamp	4	C
78603483981	SLA151NLXL-I	Mini-Flood 120V 150W HPS w/Lamp	6	C
78603483984	SLA71MAL-6	Mini-Flood Dual Voltage 70W MH w/Lamp	4	C
78603483985	SLA71NLXL-I	Mini-Flood 120V 70W HPS w/Lamp	6	C



## STONCO GP Flood

UPC NUMBER	CATALOG NUMBER	DESCRIPTION	CASE QTY.	STOCKED IN
78603485356	GP2A100PMAL-6	Small Floodlight 100W PMA Dual Voltage w/Lamp	2	C
78603485361	GP2A150PMAL-6	Small Floodlight 150W PMA Dual Voltage w/Lamp	2	C
78603488470	GP3S250PMAL-8	Medium Floodlight 250W PMA Multi-Tap w/Lamp and Tenon Slip Fitter	1	C

C = Carrollton, Texas F = Fontana, California N = Norwich, Connecticut

# OUTDOOR



## STONCO GP Flood

UPC NUMBER	CATALOG NUMBER	DESCRIPTION	CASE QTY.	STOCKED IN
78603485915	GP3S400PMAL-8	Medium Floodlight 400W PMA Multi-Tap w/Lamp and Tenon Slip Fitter	I	C
78603487890	GP3T250PMAL-8	Medium Floodlight 250W PMA Multi-Tap w/Lamp and Trunnion Mount	I	C
78603487495	GP3T400PMAL-8	Medium Floodlight 400W PMA Multi-Tap w/Lamp and Trunnion Mount	I	C
78603484385	GP5S1000MAL-8	X-Large Floodlight 1000W MH Multi-Tap w/Lamp and Tenon Slip Fitter	I	C
78603484401	GP5T1000MAL-8	X-Large Floodlight 1000W MH Multi-Tap w/Lamp and Trunnion Mount	I	C



## STONCO FloodPak Small

UPC NUMBER	CATALOG NUMBER	DESCRIPTION	CASE QTY.	STOCKED IN
78603476573	FPS100NLXL-I	FloodPak Size I 100W HPS 120V w/Lamp	I	C
78603476574	FPS150NLXL-I	FloodPak Size I 150W HPS 120V w/Lamp	I	C
78603477297	FPS42HFL-8	FloodPak Size I 42W CF 120V w/Lamp	I	C
78603476575	FPS70NLXL-I	FloodPak Size I 70W HPS 120V w/Lamp	I	C



## STONCO FloodPak Medium

UPC NUMBER	CATALOG NUMBER	DESCRIPTION	CASE QTY.	STOCKED IN
78603476570	FPM100PMAL-8	FloodPak Size 2 100W PMA Multi-Tap w/Lamp	I	C
78603477372	FPM150LXL-8	FloodPak Size 2 150W HPS Multi-Tap w/Lamp	I	C
78603476571	FPM150PMAL-8	FloodPak Size 2 150W PMA Multi-Tap w/Lamp	I	C
78603477132	FPM70PMAL-8	FloodPak Size 2 70W PMA Multi-Tap w/Lamp	I	C

C = Carrollton, Texas F = Fontana, California N = Norwich, Connecticut





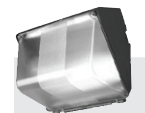
## STONCO FloodPak Large

UPC NUMBER	CATALOG NUMBER	DESCRIPTION	CASE QTY.	STOCKED IN
78603476566	FPL250LXL-8	FloodPak Size 3 250W HPS Multi-Tap w/Lamp	1	C
78603478757	FPL250PMAL-8	FloodPak Size 3 250W PMA Multi-Tap w/Lamp	1	C
78603482886	FPL400PMAL-8	FloodPak Size 3 400W PMA Multi-Tap w/Lamp	1	C



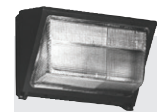
## STONCO EQX Quartz Flood

UPC NUMBER	CATALOG NUMBER	DESCRIPTION	CASE QTY.	STOCKED IN
78603448426	EQXI500	EQ w/Lens Frame 1500W *1500W Lamp Ordered Separately (Available in 208, 240 and 277V Only)	4	C
78603448446	EQXI50LBRZ	EQ Quartz Flood Dual Head 150W, Bronze	24	C
786034952675	EQXI50WHT	EQ Quartz Flood Dual Head 150W, White	NA	C
78603448428	EQX500L	EQ w/Lens Frame 500W, Bronze	12	C
78603448430	EQX500LWHT	EQ Quartz Flood Dual Head 500W, White	24	C



## STONCO WNPS Series Mini-Wallprism

UPC NUMBER	CATALOG NUMBER	DESCRIPTION	CASE QTY.	STOCKED IN
78603426688	WNPS101NLXL-1	Mini-Wallprism 120V 100W HPS w/Lamp	6	C

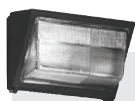


## STONCO WNPM Series Wallprism

UPC NUMBER	CATALOG NUMBER	DESCRIPTION	CASE QTY.	STOCKED IN
78603474342	WNPM101MAL-6	WPM Wallprism Dual Voltage 100W MH w/Lamp	1	C
78603489098	WNPM150PMAL-8	WPM Wallprism Multi-Tap 150W PMA w/Lamp	1	C
78603474343	WNPM151NLXL-1	WPM Wallprism 120V 150W HPS w/Lamp	1	C

C = Carrollton, Texas F = Fontana, California N = Norwich, Connecticut

# OUTDOOR



## STONCO WP Series Wallprism

UPC NUMBER	CATALOG NUMBER	DESCRIPTION	CASE QTY.	STOCKED IN
78603472899	WP25 ILX-8	WP Wallprism Multi-Tap 250W HPS	1	C
78603489276	WP25 IPMA-8	WP Wallprism Multi-Tap 250W PMA	1	C
78603492073	WP25 IPMAL-8	WP Wallprism Multi-Tap 250W PMA w/Lamp	1	C
78603472900	WP40 ILX-8	WP Wallprism Multi-Tap 400W HPS	1	C
78603489277	WP40 IPMA-8	WP Wallprism Multi-Tap 400W PMA	1	C
78603492074	WP40 IPMAL-8	WP Wallprism Multi-Tap 400W PMA w/Lamp	1	C



## STONCO WPM Series Wallprism

UPC NUMBER	CATALOG NUMBER	DESCRIPTION	CASE QTY.	STOCKED IN
78603469983	WPM7 I MAL-6	WP Wallprism Dual Voltage 70W MH w/Lamp	1	C
78603473918	WPM7 I MAL-8	WP Wallprism Multi-Tap 70W MH w/Lamp	1	C



## STONCO Twilghter Series Wallprism

UPC NUMBER	CATALOG NUMBER	DESCRIPTION	CASE QTY.	STOCKED IN
78603433877	TLW50NLXL-I	Twilghter Series Wallprism 50W HPS 120V w/Lamp	6	C
78603433878	TLW50NLXLPC-I	Twilghter Series Wallprism 50W HPS 120V Photo Control w/Lamp	6	C
78603474680	TLW42HFL-8	Twilghter Series Wallprism 42W CF Multi-tap w/Lamp	6	C
78603433864	TLW70NLXL-I	Twilghter Series Wallprism 70W HPS 120V w/Lamp	6	C
78603433865	TLW70NLXLPC-I	Twilghter Series Wallprism 70W HPS 120V Photo Control w/Lamp	6	C

C = Carrollton, Texas F = Fontana, California N = Norwich, Connecticut



## STONCO LytePro Architectural LED Wall Sconce

UPC NUMBER	CATALOG NUMBER	DESCRIPTION	CASE QTY.	STOCKED IN
78603495417	LP16T	LytePro 16, 16 Hi-Lumen LEDs, 2500 Lumens, Titanium Finish	6	C
78603495418	LP16W	LytePro 16, 16 Hi-Lumen LEDs, 2500 Lumens, White Finish	6	C
78603492862	LP7T	LytePro 7, 7 Hi-Lumen LEDs, 555 Lumens, Titanium Finish	6	C
78603492863	LP7W	LytePro 7, 7 Hi-Lumen LEDs, 555 Lumens, White Finish	6	C
78603495679	LP32T	LytePro 32, 32 Hi-Lumen LEDs, 5840 Lumens, Titanium Finish	3	C
78603495681	LP32W	LytePro 32, 32 Hi-Lumen LEDs, 5840 Lumens, White Finish	3	C
78603495680	LP32P	LytePro 32, 32 Hi-Lumen LEDs, 5840 Lumens, Bronze Finish	3	C



## STONCO Medium Cutoff Roadway Luminaire

UPC NUMBER	CATALOG NUMBER	DESCRIPTION	CASE QTY.	STOCKED IN
78603423708	MCL3250LX-8	MCL Cutoff HID 250W HPS Multi-Tap Type 3	1	C
78603478164	MCL3250PMA-8	MCL Cutoff HID 250W PMA Multi-Tap Type 3	1	C
78603403937	MCL3400PMA-8	MCL Cutoff HID 400W PMA Multi-Tap Type 3	1	C



## STONCO Medium Base Lampholder

UPC NUMBER	CATALOG NUMBER	DESCRIPTION	CASE QTY.	STOCKED IN
78603410011	I50L	250W Max Lampholder	12	C



## STONCO Architectural Bullet Series

UPC NUMBER	CATALOG NUMBER	DESCRIPTION	CASE QTY.	STOCKED IN
78603429321	920GRY	Gray Open Bullet, 75W Max	12	C

C = Carrollton, Texas F = Fontana, California N = Norwich, Connecticut

# TRACK

## LIGHTOLIER BASIC Lytespan Track

UPC NUMBER	CATALOG NUMBER	DESCRIPTION	CASE QTY.	STOCKED IN
78419759418	6000NBK	Basic Lytespan Track, 2' Ind Basic Track, Black	I	N
78419759419	6000NWH	Basic Lytespan Track, 2' Ind Basic Track, White	I	N
78419759420	6001NBK	Basic Lytespan Track, 4' Ind Basic Track, Black	I	N
78419759421	6001NWH	Basic Lytespan Track, 8' Ind Basic Track, White	I	N
78419759422	6002NBK	Basic Lytespan Track, 8' Ind Basic Track, Black	I	N
78419759423	6002NWH	Basic Lytespan Track, 8' Ind Basic Track, White	I	N
78419759425	6003NWH	Basic Lytespan Track, 8' Join Basic Track, White	I	N
78419759426	6004NBK	Basic Lytespan Track, 4' Ind Basic Track W/O Live End, Black	I	N
78419759427	6004NWH	Basic Lytespan Track, 4' Ind Basic Track W/O Live End, White	I	N
662057572185	6006NBK	Basic Lytespan Track, 6' Basic Plain Track W/O Live End, Black	I	N
78419759428	6008NBK	Basic Lytespan Track, 8' Basic Plain Track W/O Live End, Black	I	N
78419759429	6008NWH	Basic Lytespan Track, 8' Basic Plain Track W/O Live End, White	I	N



## LIGHTOLIER BASIC Track Accessories

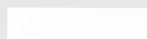
UPC NUMBER	CATALOG NUMBER	DESCRIPTION	CASE QTY.	STOCKED IN
78419759454	6046NBK	Basic Power Extension Connector, Black	I	N
78419759458	6048NBK	Basic Lytespan Track, Live End, Black	I	N
78419759459	6048NWH	Basic Lytespan Track, Live End, White	I	N
78419759456	6049NBK	Basic Lytespan Track, Basic Mini Coupler, Black	I	N

C = Carrollton, Texas F = Fontana, California N = Norwich, Connecticut



## LIGHTOLIER BASIC Track Accessories

UPC NUMBER	CATALOG NUMBER	DESCRIPTION	CASE QTY.	STOCKED IN
78419727432	7586	Basic Lytespan Track, 48" Stem Mounting Kit, Matte White	I	N
78419759457	6049NWH	Basic Lytespan Track, Basic Mini Coupler, White	I	N
78419759447	6050NWH	Basic Lytespan Track, Basic "L" Connector, White	I	N
78419759448	6051NBK	Basic Lytespan Track, Basic "T" Connector, Black	I	N
78419759449	6051NWH	Basic Lytespan Track, Basic "T" Connector, White	I	N
78419759450	6052NBK	Basic Lytespan Track, Basic "X" Connector, Black	I	N
78419759435	6054NWH	Basic Lytespan Track, Basic In-Line Connector, White	I	N
78419760601	6060BK	Track, Basic End Feed Canopy, Matte Black	I	N
78419760600	6060WH	Track, Basic End Feed Canopy, Matte White	I	N
78419760611	6061BK	Track, Floating Canopy Kit, Black	I	N



## LIGHTOLIER ADVENT Lytespan Two-Circuit Track

UPC NUMBER	CATALOG NUMBER	DESCRIPTION	CASE QTY.	STOCKED IN
78419757290	6102NWH	Advent Lytespan Two-Circuit Track, 8' Ind Advent Track , White	I	N
78419757293	6103NWH	Advent Lytespan Two-Circuit Track, 8' Join Advent Track , White	I	N
78419757295	6104NBK	Advent Lytespan Two-Circuit Track, 4' Track without Live End, Black	I	N
78419757299	6108NWH	Advent Lytespan Two-Circuit Track, 8' Track without Live End, White	I	N

C = Carrollton, Texas F = Fontana, California N = Norwich, Connecticut

# TRACK



## LIGHTOLIER ADVENT Lytespan Two-Circuit Track Accessories

UPC NUMBER	CATALOG NUMBER	DESCRIPTION	CASE QTY.	STOCKED IN
78419757319	6146NBK	Advent Lytespan Two-Circuit Track, Power Extension Connector; Black	1	N
78419757320	6146NWH	Advent Lytespan Two-Circuit Track, Power Extension Connector; White	1	N
78419757325	6148NWH	Advent Lytespan Two-Circuit Track, Advent Live End, White	1	N
78419761480	6148WH	Advent Lytespan Two-Circuit Track, Advent Live End, White	1	N
78419757308	6150NBK	Advent Lytespan Two-Circuit Track, Advent "L" Connector; Black	1	N
78419757311	6151NBK	Advent Lytespan Two-Circuit Track, Advent "T" Connector; Black	1	N
78419757312	6151NWH	Advent Lytespan Two-Circuit Track, Advent "T" Connector; White	1	N
78419757363	6152NBK	Advent Lytespan Two-Circuit Track, Advent "X" Connector; Black	1	N
78419757314	6152NWH	Advent Lytespan Two-Circuit Track, Advent "X" Connector; White	1	N
78419757306	6154NWH	Advent Lytespan Two-Circuit Track, Advent In-Line Connector; White	1	N



## LIGHTOLIER LYTESPAN Monopoint Track Heads

UPC NUMBER	CATALOG NUMBER	DESCRIPTION	CASE QTY.	STOCKED IN
78419761901	6190BK	Lytespan Monopoint, Matte Black	1	N
78419761902	6190WH	Lytespan Monopoint, Matte White	1	N

C = Carrollton, Texas F = Fontana, California N = Norwich, Connecticut



## LIGHTOLIER RADIUS Track

UPC NUMBER	CATALOG NUMBER	DESCRIPTION	CASE QTY.	STOCKED IN
78419791022	9106BK	RadiusTrack, 6' Plain Track, Matte Black	1	N
78419791024	9108WH	RadiusTrack, 8' Plain Track, Matte White	1	N



## LIGHTOLIER RADIUS Track Accessories

UPC NUMBER	CATALOG NUMBER	DESCRIPTION	CASE QTY.	STOCKED IN
78419700052	9147BK	RadiusTrack, Surface Feed Connector, Matte Black	1	N
78419791028	9148WH	RadiusTrack, Radius Live End Feed, Matte White	1	N
78419791032	9149WH	RadiusTrack, Mini Coupler, Matte White	1	N
78419791038	9150BK	RadiusTrack, Flush Non-Feed Conn Comb L or In-Line	1	N
78419791036	9150WH	RadiusTrack, Flush Non-Feed Conn Comb L or NL	1	N
78419717040	9151BK	RadiusTrack, Feed "T" Connector, Matte Black	1	N
78419713686	9155BK	RadiusTrack, Feed Conn Comb L or In-Line, Matte B	1	N
78419760850	6085	Convenience Outlet, Lytespan Track, White	1	N



## LIGHTOLIER Track Heads

UPC NUMBER	CATALOG NUMBER	DESCRIPTION	CASE QTY.	STOCKED IN
78419752630	6276BWH	Sof-Tech Low Voltage Enclosed Spot MR16, Matte White	1	N
78419782011	8201BK	PAR-Tech Low Profile Adapter, Black	1	N
78419782010	8201WH	PAR-Tech Low Profile Adapter, White	1	N
78419784202	8420BK	Sof-Tech Spots 50W, PAR20, Black	1	N

C = Carrollton, Texas F = Fontana, California N = Norwich, Connecticut

Pictures are representative of product categories and may not illustrate the exact products listed on the pages of this stock guide. Product information may change without notice. Contact your local Philips sales representative for additional product information.



# TRACK



## LIGHTOLIER Track Heads

UPC NUMBER	CATALOG NUMBER	DESCRIPTION	CASE QTY.	STOCKED IN
78419790211	9021BK	Mini-Universal 250W Max, Matte Black	I	N
78419790210	9021WH	Mini-Universal 250W Max, Matte White	I	N
78419790223	9022BK	Budget PAR 38 Ring, Matte Black	I	N
78419790220	9022WH	Budget PAR 38 Ring, Matte White	I	N
78419714041	9023BK	Budget PAR30 Ring, Matte Black	I	N
78419714049	9023WH	Budget PAR30 Ring, Matte White	I	N
78419748366	22MC6WH	Alcyon MRI 6 Mini Cylinder, White	I	N
78419748372	22OR6WH	Alcyon MRI 6 Open Ring, White	I	N
78419748363	22SS6WH	Alcyon MRI 6 Enclosed Step Spot, White	I	N
662057577555	LLAB030RNFBK	Lytespan Spot LED Narrow Flood 15W, 3000K, Black	I	N
662057577548	LLAB030RNFWH	Lytespan Spot LED Narrow Flood 15W, 3000K, White	I	N
662057610702	LLAB130RFWH	Lytespan Spot LED Large Flood 34W, 3000K, White	I	N
662057609645	LLAB130RNFBK	Lytespan Spot LED Large Narrow Flood, 34W, 3000K, Black	I	N
662057609638	LLAB130RNFWH	Lytespan Spot LED Large Narrow Flood, 34W, 3000K, White	I	N



## LIGHTOLIER TRACK ACCESSORY

UPC NUMBER	CATALOG NUMBER	DESCRIPTION	CASE QTY.	STOCKED IN
78419728242	AF2SF	2" Solite Diffusion Lens	I	N

C = Carrollton, Texas F = Fontana, California N = Norwich, Connecticut



## CONTROLS OccuSwitch Classic

UPC NUMBER	CATALOG NUMBER	DESCRIPTION	CASE QTY.	STOCKED IN
781087104163	LRS2210/00	Occupancy Sensor; Wall Mount, PIR, 120/277V, White	10	C
781087104200	LRS2220/00	Occupancy Sensor; Wall Mount, Dual Technology, 120/277V, White	10	C
781087102671	LRM2250/00	Occupancy Sensor; Ceiling Mount, PIR, 24VDC, 1500 sq. ft.	10	C
781087102688	LRM2255/00	Occupancy Sensor; Ceiling Mount, Dual Technology, 24VDC, 2000 sq. ft.	10	C
781087102480	LCA2285/00	Power Pack, 20A, 120/277V	10	C
781087098189	LRA1721/00	Wireless Occupancy Sensor Switch, 120/277V, White	10	C
781087098202	LRM1743/00	Wireless Occupancy Sensor; Ceiling Mount, PIR	10	C
781087098219	LRM1760/00	Wireless Occupancy Sensor; Ceiling Mount, PIR, Photocell	10	C



## CONTROLS Relay Panel

UPC NUMBER	CATALOG NUMBER	DESCRIPTION	CASE QTY.	STOCKED IN
N/A	LRC2410/00	Relay Panel, 8 Circuit, Timeclock, BACnet	1	C



## CONTROLS Sunrise

UPC NUMBER	CATALOG NUMBER	DESCRIPTION	CASE QTY.	STOCKED IN
78612103148	ZP600W	Preset Slide Dimmer; Incandescent, 600W, 120V, White	12	C
78612103146	ZP600VAW	Preset Slide Dimmer; Inductive, 600VA, 120V, White	12	C
78612103108	ZP600FAM120V	Preset Slide Dimmer; 0-10V, 600W, 120V, White	12	C
78612123266	ZP600EBW	Preset Slide Dimmer; Mark 10, 600VA, 120V, White	12	C

C = Carrollton, Texas F = Fontana, California N = Norwich, Connecticut

# CONTROLS



## CONTROLS MultiSet Pro

UPC NUMBER	CATALOG NUMBER	DESCRIPTION	CASE QTY.	STOCKED IN
78612108082	MSP600VAW	Digital Preset Dimmer; Inductive, 600VA, 120V, White	12	C
78612122637	MSP600EBW	Digital Preset Dimmer; Mark 10, 600VA, 120V, White	12	C
78612108112	MSP300QEW	Digital Preset Dimmer; Trailing Edge, 300W, 120V, White	12	C
78612122625	MSP5ESW	5-Scene, Plus Off Scene, Control Keypad	12	C

C = Carrollton, Texas F = Fontana, California N = Norwich, Connecticut

[illegible]



Philips Lighting Company  
200 Franklin Square Drive  
Somerset, NJ 08873  
1-855-486-2216  
A Division of Philips North America  
[www.philips.com](http://www.philips.com)



© 2013 Koninklijke Philips Electronics N.V. All rights reserved.  
Specifications are subject to change without notice. 7/13