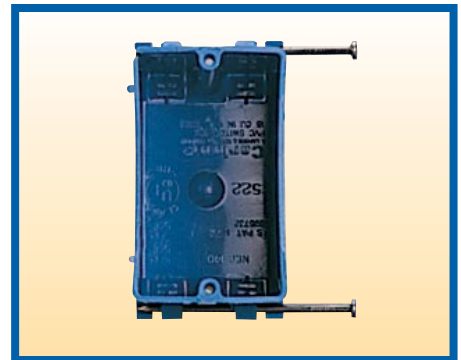
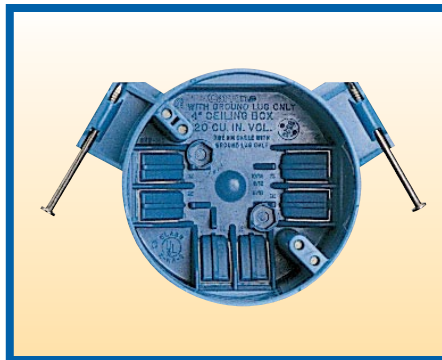
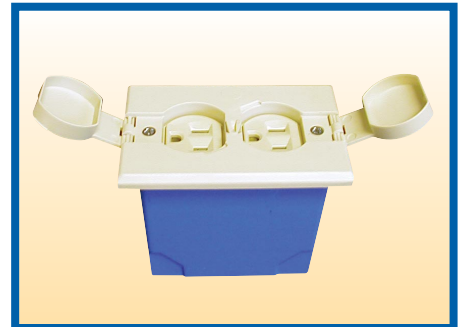
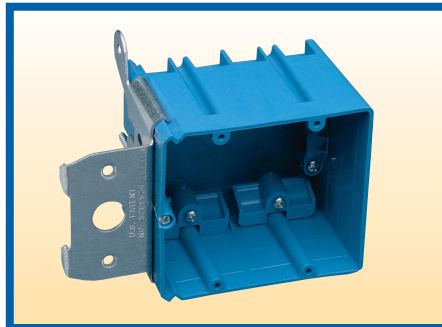
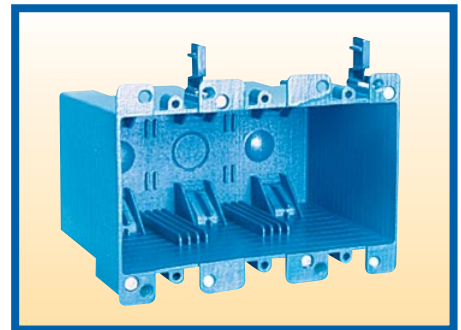


Carlon® Zip Box® Blue™ Nonmetallic Outlet and Switch Boxes

Adjustable
Single Gang
2, 3, 4 Gang
Old Work
Ceiling Boxes
SuperBlue™
Covers



Carlton® Zip Box® Blue™ Nonmetallic Switch and Outlet Boxes

Contents

Zip Box® Blue™

Features.....	1
Understanding Part Numbers	1

Adjust-A-Box® Adjustable Zip Boxes and Brackets

High Voltage.....	2
Low Voltage	2

Adjust-A-Box® Adjustable Residential Floor Boxes

Residential Floor Boxes	3
-------------------------------	---

Handy Box® and Covers

Box	4
Cover	4

Single Gang Nonmetallic Boxes

High Voltage Backed Boxes	5
Low Voltage Backless Bracket	5
Low Voltage Add-On Bracket.....	5

2-, 3-, 4-Gang and 4" Square

High Voltage Backed Boxes	6
Low Voltage Backless Bracket	6

Old Work Nonmetallic Boxes

Old Work Boxes: One-Gang, Two-Gang, Three-Gang, Four-Gang, Ceiling	7
Old Work Backless Brackets: Box Extender	8
Low Voltage Old Work Brackets: Single Gang, Two-Gang	8

Ceiling Boxes

Ceiling Boxes: 3/0, 3/0 - 4/0 combination, 4/0	9
Ceiling Boxes with Bar Hanger: 3/0 - 4/0 combination	10

SuperBlue™ Hard Shell Boxes

Wall Boxes: Single Gang, Two-Gang	11
Wall Boxes: Three-Gang, Four-Gang	12
Old Work Boxes: Single Gang , Two-Gang	12
Low Voltage Divider Plate	13
Ceiling Boxes: Ceiling Box, Ceiling Box with Grounding Lug, Ceiling Box with Hanger Bar, Ceiling Fan Box	14

Nonmetallic Covers

Nonmetallic Covers: Single Gang, Two-Gang, Round Plaster Ring, Round Blank Cover, Ceiling Box Cover - White.....	15
---	----

Features & Installation

Features.....	16
Installation	17

Carlton® Zip Box® Blue™ nonmetallic switch and outlet boxes – the contractor’s choice for easy installation. Carlton has long been the leader with the world’s broadest line of nonmetallic, nonconductive wiring management products designed for easier installation, greater performance, and lower installation cost. And that includes our full line of Zip Box® Blue™ nonmetallic switch and outlet boxes. Designed for use with nonmetallic sheath cable in accordance with Article 314 of the National Electrical Code®, they make fast work of any residential or light commercial application. Take a closer look, and you’ll see more reasons why they’re the right choice for you.

Features

- UL Listed, File No. E42728, for use as indicated in Article 314 of the NEC.
- UL Classified for fire resistance, File No. R8326. Reference UL Electrical Construction Equipment Directory, in product category QBWY or the UL Fire Resistance Directory, for two-hours or less classification period.
- UL Classified for fire resistance Category CEYY, in a two-hour fire resistive wall within the same partition cavity on opposite sides of the wall. Requires the use of mineral wool batt insulation.
- National Evaluation Service Report NER-140 covers use in two-hour or less fire resistive wall and floor-ceiling assembly.

Understanding Zip Box® Blue™ Part Numbers

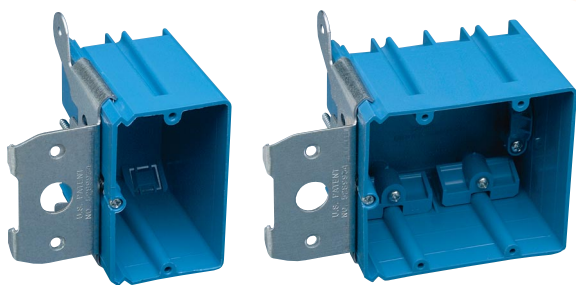
First Position	Second Position	Third Position	and/or	Fourth Position	Fourth or Fifth Position	and/or	Sixth Position
<u>B-Zip Box</u> <u>BH-SuperBlue</u>	<u>Gang Size</u> <u>1,2,3, or 4</u>	(<u> </u>) <u>Available cubic inches</u> <u>(ml) within the box</u>			<u>Securing Methods</u> <u>A = Nail On</u> <u>B = 3/8" – 5/8"</u> <u>(9.5mm – 15.9mm)</u> <u>Wallboard Bracket for</u> <u>Wood or Steel Studs</u> <u>H = 14 1/4" – 23 1/2"</u> <u>(362mm – 596.9mm)</u> <u>Adjustable Bar Hanger</u> <u>K = 18 1/4" – 26 3/4"</u> <u>(463.6mm – 679.5mm)</u> <u>Adjustable Bar Hanger</u> <u>L = Metal "L" Bracket for Ceilings</u> <u>N = Old Work Retainer Clamps</u> <u>P = Standard Nail On Box</u> <u>w/ Grounding Lug</u> <u>R = Old Work Box, includes</u> <u>Integral Clamps</u> <u>S = Screw On</u>		<u>Grounding Features</u> <u>G = Grounding Lug</u> <u>included</u> <u>P = Grounding Lug</u> <u>included</u>

For Example:

B 1 18 A

(B = Zip Box Blue, 1 = single gang, 18 = cubic inch (295 ml) capacity, A = Nail On.)

Adjust-A-Box™ Adjustable Zip Boxes and Brackets



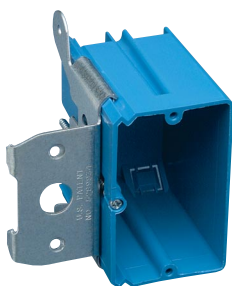
The Carlon Adjust-A-Box features a patented design that allows the box to be adjusted to most wall thicknesses with the turn of a screw. To install, simply clip the bracket onto the stud, secure with two screws to ensure the box won't move, then turn the adjustment screw clockwise or counterclockwise, and adjust the box flush with the wall covering.

The Adjust-A-Box is available in one- and two-gang versions, and by removing the box from the bracket the one-gang can easily be upgraded to a two-gang, an ideal feature for old work applications.

The Carlon Adjust-A-Box achieves professional results every time.

Features

- Adjusts to any wall thickness
- Ideal for new work or retrofit applications
- Available in backed box or backless bracket designer
- One- and two-gang versions
- Upgrades made easy
- Nonmetallic and durable
- UL Listed



B121ADJ

High Voltage

Part No.	Volume (cu. in.)	Description	Size	Std. Ctn. Qty.	Std. Ctn. Wt. (lbs.)
B121ADJ	21	Single Gang Adjustable Wall Box	3 7/8"W × 3 3/4"H × 3 3/8"D	24	10
B234ADJC	34	Double Gang Adjustable Wall Box w/ Range Knockout	5 5/8"W × 3 5/8"H × 3"D	16	8.5
B234ADJ	34	Double Gang Adjustable Wall Box	5 5/8"W × 3 5/8"H × 3"D	16	8.5



SC100ADJC

Low Voltage

Part No.	Description	Size	Std. Ctn. Qty.	Std. Ctn. Wt. (lbs.)
SC100ADJC	Single Gang Adjustable Backless Bracket	3 7/8"W × 3 3/4"H	24	7.5
SC100ADJC	Double Gang Adjustable Backless Bracket	5 5/8"W × 3 5/8"H	20	6.9



Adjust-A-Box™ Adjustable Residential Floor Boxes

NEW!



The Carlon Adjustable Residential Floor Box

provides a clean, aesthetically pleasing duplex floor outlet, ideal for residential and home office applications. It's designed to adjust to most finished floor heights by simply turning the adjustment screw clockwise or counterclockwise and adjusting the box flush to the floor.

The durable Nonmetallic and Brass Covers feature unique dual hinged duplex covers to keep dust and scrubwater out, and because they're attached, they won't get lost while in use. The Adjustable Floor Box has a full 20 cubic inch capacity, and comes complete with a cover, duplex receptacle, molded cable clamps, mounting bracket and mounting hardware.

The Carlon Residential Floor Box is ideal for retrofit and new construction and is a great alternative to the commercial-style covers available on the market today.

Features

- Adjusts to most finished floor heights (From 0" to 1³/₄")
- 20 cubic in. capacity
- Complete assembly includes box, duplex receptacle, cover, molded cable clamps, mounting bracket and mounting hardware
- UL listed
- UL 514C scrub water tested
- 2 hour fire classification



Part Number	Description	Cubic In.	Std. Ctn. Qty.	Std. Ctn. Wt. (lbs.)
B121BFBR	Residential Floor Box w/ Nonmetallic Ivory Cover	20	8	7.02
B121BFBB	Residential Floor Box w/ Brass Cover	20	8	14.50
B121BFBRW	Residential Floor Box w/ Nonmetallic White Cover	20	8	7.02

Installation



Install clip over subfloor.



Screw in to adjust to height of flooring or carpet



Beautiful flush fit every time!

Handy Box and Covers



Features

- Flexible, can be used for many applications
- Thermoplastic construction that will not rust or conduct electricity
- Built in cable clamps to hold wire firmly in place
- Six knockouts for easier wiring
- Four cover styles – blank, toggle switch, duplex receptacle, and GFCI
- UL Listed (E42728) and two hour fire classified for walls and ceilings

The Carlon Handy Box is a non-metallic switch and outlet box specifically designed for use with nonmetallic conduit systems and nonmetallic sheath cabling.

Unlike metal boxes, the Carlon Handy Box has two integral cable clamps. These clamps hold nonmetallic cable firmly in place without the need for separate clamps... simply push the wire into the clamp-opening, and the cable is held securely in place. The Carlon Handy Box also comes with six 1/2" knockouts on the sides and back for easier wiring and a variety of mounting options.

The Carlon Handy Box is constructed out of a thermoplastic material, which resists rust and corrosion. The Carlon Handy Box can be used with most wiring devices including ground fault circuit interrupters (GFCI). The Handy Box is designed to accept standard metal covers or the NEW Carlon nonmetallic Handy Box covers.

The Carlon Handy Box covers are made from a durable polycarbonate material for extra strength and durability. They're available in four styles including a duplex receptacle, toggle switch, ground fault circuit interrupter (GFCI), and a blank cover (the blank cover has a molded-in 1/2" knockout in the center). Corrosion resistant stainless screws are provided with each cover.



Box



Part No.	Description	Size	Std. Ctn. Qty.	Std. Ctn. Wt. (lbs.)
B112HB	Handy Box – Single Gang	1 7/8" × 4" × 2 1/8"	50	10.96

Covers

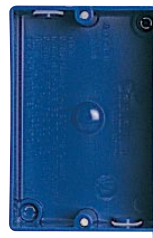


Part No.	Description	Size	Std. Ctn. Qty.	Std. Ctn. Wt. (lbs.)
HB1BL	Single Gang Nonmetallic Cover – Blank	.25" × 4.30" × 2.38"	25	1.0
HB1SW	Single Gang Nonmetallic Cover – Toggle Switch	.25" × 4.30" × 2.38"	25	1.0
HB1DP	Single Gang Nonmetallic Cover – Duplex Receptacle	.25" × 4.30" × 2.38"	25	1.0
HB1GF	Single Gang Nonmetallic Cover – GFCI Cover	.25" × 4.30" × 2.38"	25	1.0

Single Gang Nonmetallic Boxes



High Voltage Backed Boxes



B108B-UPC



B118A



B120A-UPC



B118B-UPC



B122A-UPC

Single Gang

Part No.	Volume (cu. in.)	Description	Size	Knockouts	Std. Ctn. Qty.	Std. Ctn. Wt. (lbs.)
B108B-UPC	8	Single Gang Bracketed Shallow Box	1 1/4"D × 2 3/8"W × 3 5/8"L	—	25	3
•B118A	18	Single Gang with captive nails	2 7/8"D × 2 1/4"W × 3 3/4"L	4 (2 each end)	100	22
•B120A-UPC	20	Single Gang with captive nails	3 1/4"D × 2 1/4"W × 3 7/8"L	4 (2 each end)	100	24
•B118B-UPC	18	Single Gang with bracket for 3/8" to 5/8" wallboard – steel & wood stud mounting	2 15/16"D × 2 1/4"W × 3 3/4"L	4 (2 each end)	50	10
•B122A-UPC	22	Single Gang with captive nails	3 1/2"D × 2 1/4"W × 3 3/4"L	4 (2 each end)	100	25

• Suitable for masonry walls

Low Voltage Backless Bracket



Open-backed to easily accommodate the bend radiuses required for low voltage cabling and deep devices such as volume controls, and is designed to fit a standard one-gang faceplate. It also features an easy nail-on mounting or screw-in bracket, while the hard shell provides increased durability and no racking. Accepts 3/4" Resi-Gard only.



Part No.	Vol. cu. in.	Description	Size	Knockouts	Std. Ctn. Qty.	Std. Ctn. Wt. (lbs.)
SC100A	—	Single Gang Backless Bracket	2.32" W × 3.73"L	—	24	7.5

Low Voltage Add-On Bracket



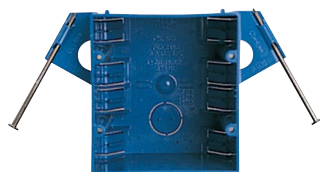
This low voltage bracket provides a low voltage outlet next to a previously installed high voltage outlet. Great for both new construction and rework, it attaches easily to most electrical boxes, and is designed to fit a standard two-gang faceplate. Resi-Rings accept 3/4" Resi-Gard only



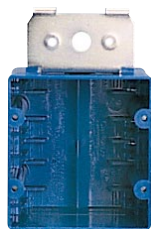
Part No.	Vol. cu. in.	Description	Size	Knockouts	Std. Ctn. Qty.	Std. Ctn. Wt. (lbs.)
SC100SC	—	Single Gang Add-On Bracket	1.80" W × 3.68"L	—	24	2.3

2-, 3-, 4-Gang and 4" Square

High Voltage Backed Boxes



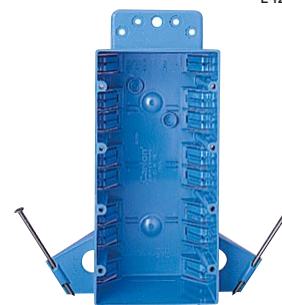
B232A-UPC



B232B-UPC



B344A-UPC



B455A-UPC

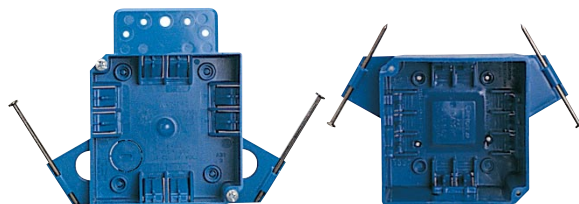
Two-Gang

Three-Gang

Four-Gang

Part No.	Volume (cu. in.)	Description	Size	Integral Clamps	Std. Ctn. Qty.	Std. Ctn. Wt. (lbs.)
•B232A-UPC	32	Two Gang with captive nails	3"D × 4"W × 3 3/4"L	8 (4 each side)	50	16
B232B-UPC	32	Two Gang with bracket for 3/8" to 5/8" wallboard – steel or wood stud mounting	3"D × 4"W × 3 3/4"L	8 (4 each side)	50	20
•B344A-UPC	44	Three Gang with captive nails	2 11/16"D × 3 3/4"W × 5 5/8"L	12 (6 each side)	50	21
•B455A-UPC	60	Four Gang with captive nails and bracket support	2 1/2"D × 3 7/10"W × 7 3/5"L	16 (8 each side)	25	14

- Suitable for masonry walls



B418A-UPC

B432A-UPC



4" Square

Part No.	Volume (cu. in.)	Description	Size	Integral Clamps	Std. Ctn. Qty.	Std. Ctn. Wt. (lbs.)
•B418A-UPC	18	Four Square with captive nails	1 5/8"D × 4"W × 4"L	10 (3 top, 3 bottom, 2 each side)	75	19
•B432A-UPC	32	Four Square with captive nails	2 5/8"D × 4"W × 4"L	10 (3 top, 3 bottom, 2 each side)	50	16

- Suitable for masonry walls

Low Voltage Backless Bracket



Open-backed to easily accommodate the bend radiuses required for low voltage cabling and deep devices such as volume controls, and is designed to fit a standard two-gang faceplate. It also features an easy nail-on mounting or screw-in bracket, while more hard shell provides increased durability and no racking. Accepts 3/4" Resi-Gard only.

Part No.	Vol. cu. in.	Description	Size	Knockouts	Std. Ctn. Qty.	Std. Ctn. Wt. (lbs.)
SC200A	—	Two Gang Backless Bracket	5.35" W × 3.81" L	—	24	7.7

Old Work Boxes

One-Gang



B108R-UPC



B114R-UPC



B120R



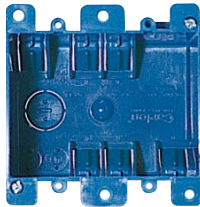
Part No.	Volume (cu. in.)	Description	Size	Integral Clamps	Std. Ctn. Qty.	Std. Ctn. Wt. (lbs.)
B108R-UPC	8	Single Gang Flanged Shallow Box	1 1/4"D × 2 3/8"W × 3 5/8"L	—	25	3
•†B114R-UPC	14	Single Gang Old Work Wall Case 2 Zip-Mount™ retainers and mounting ears	2 3/4"D × 2 1/4"W × 4 1/8"L	4 (2 each end)	50	10
•B120R	20	Single Gang with captive nails 2 Zip-Mount™ retainers and mounting ears	3 5/8"D × 2 5/16"W × 4 1/8"L	4 (2 each end)	50	12

• Suitable for masonry walls

† Not UL Classified for Fire Resistance



Two-Gang



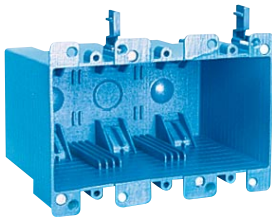
Part No.	Volume (cu. in.)	Description	Size	Integral Clamps	Std. Ctn. Qty.	Std. Ctn. Wt. (lbs.)
•†B225R-UPC	25	Two-Gang Old Work Case 2 Zip-Mount™ retainers and mounting flanges	2 3/4"D × 3 1/8"W × 3 15/16"L	6 (3 each side)	30	8

• Suitable for masonry walls

† Not UL Classified for Fire Resistance



Three-Gang



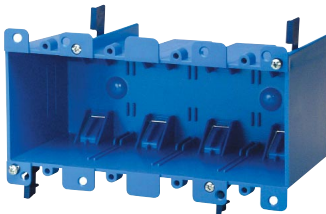
Part No.	Volume (cu. in.)	Description	Size	Integral Clamps	Std. Ctn. Qty.	Std. Ctn. Wt. (lbs.)
•†B355R	55	Three Gang Old Work Box with mounting ears	3.69"D × 2.79"W × 5.72"L	6	6	3

• Suitable for masonry walls

† Not UL Classified for Fire Resistance



Four-Gang



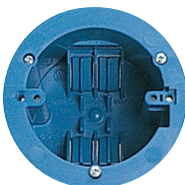
Part No.	Volume (cu. in.)	Description	Size	Integral Clamps	Std. Ctn. Qty.	Std. Ctn. Wt. (lbs.)
•†B468R	68	Four Gang Old Work Box with mounting ears	3.56"D × 2.89"W × 7.57"L	8	6	4.03

• Suitable for masonry walls

† Not UL Classified for Fire Resistance



Ceiling



Part No.	Volume (cu. in.)	Description	Size	Integral Clamps	Std. Ctn. Qty.	Std. Ctn. Wt. (lbs.)
†B618R-UPC	18	Round Old Work Case 3 Zip-Mount™ retainers	2 3/4"D	4	100	24

† Not UL Classified for Fire Resistance

Old Work Nonmetallic Boxes

Old Work Backless Brackets



Box Extender



Part No.	Volume (cu. in.)	Description	Size	Std. Ctn. Qty.	Std. Ctn. Wt. (lbs.)
•†B1EXTB	N/A	Single Gang Box Extender	2 1/4" × 3 1/4"	25	3

- Suitable for masonry walls
- † Not UL Classified for Fire Resistance

Low Voltage Old Work Brackets

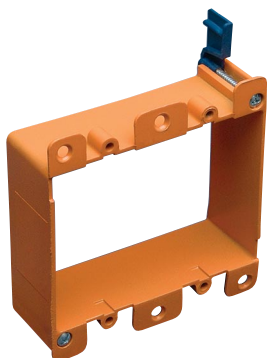


Single Gang



Part No.	Volume (cu. in.)	Description	Size	Std. Ctn. Qty.	Std. Ctn. Wt. (lbs.)
†SC100R	N/A	Single Gang Backless Old Work Bracket	2 1/4" × 3 1/4"	12	1.4

- † Not UL Classified for Fire Resistance



Two-Gang

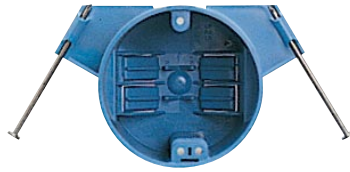


Part No.	Volume (cu. in.)	Description	Size	Std. Ctn. Qty.	Std. Ctn. Wt. (lbs.)
†SC200R	N/A	Two-Gang Backless Old Work Bracket	3.92" × 4.00"	6	.9

- † Not UL Classified for Fire Resistance

Ceiling Boxes

All ceiling boxes are produced from a high heat-resistant material developed specifically for fixture support applications.



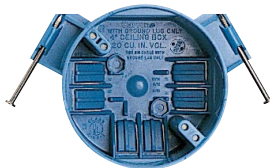
3/0

B518A-UPC

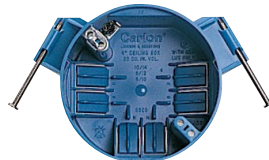


Part No.	Volume (cu. in.)	Description	Diameter	Depth	Integral Clamps	Std. Ctn. Qty.	Std. Ctn. Wt. (lbs.)
◇ B518A-UPC	18	Ceiling Box with captive nails	3"	2 3/4"	4	75	19
◇ B518P-UPC	18	Ceiling Box with captive nails Ground lug and screw attached	3"	2 3/4"	4	75	20

◇ Listed for fixture support up to 50 lbs.



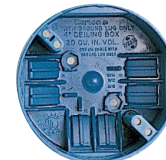
B520A-UPC



B520P-UPC



B620L-UPC



B720-SHK

35 lbs. maximum fan weight



3/0 - 4/0 Combination

Part No.	Volume (cu. in.)	Description	Diameter	Depth	Integral Clamps	Std. Ctn. Qty.	Std. Ctn. Wt. (lbs.)
◇ B520A-UPC	20	Ceiling Box with captive nails Fixture spacing for 2 3/4" and 3"	4"	2 1/4"	6	75	18
◇ B520P-UPC	20	Ceiling Box with captive nails Ground lug and screw attached Fixture spacing for 2 3/4" and 3 1/2"	4"	2 1/4"	6	75	18
◇ B620L-UPC	20	Ceiling Box with metal L bracket Fixture spacing for 2 3/4" and 3 1/2"	4"	2 1/4"	6	100	31
◇ B720-SHK	20	Ceiling Box Outlet Box with mounting screws	4"	2 1/4"	6	18	5

◇ Listed for fixture support up to 50 lbs.



35 lbs. maximum fan weight

4/0



Part No.	Volume (cu. in.)	Description	Diameter	Depth	Integral Clamps	Std. Ctn. Qty.	Std. Ctn. Wt. (lbs.)
◇ B708-SHK	8	Shallow Ceiling Fan Outlet Box with mounting screws	4"	5/8"	1	18	3

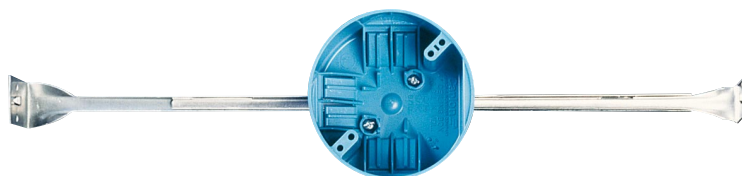
◇ Listed for fixture support up to 50 lbs.

Ceiling Boxes

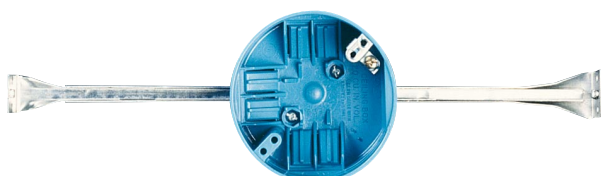
Ceiling Boxes with Bar Hanger



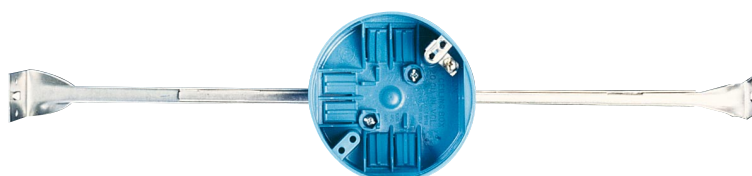
B620H-UPC



B620K



B620HG-UPC



B620KG-UPC

3/0 - 4/0 Combination

Part No.	Volume (cu. in.)	Description	Diameter	Depth	Integral Clamps	Std. Ctn. Qty.	Std. Ctn. Wt. (lbs.)
◇ B620H-UPC	20	Ceiling Box with 14 1/4" - 23 1/2" adjustable bar hanger Fixture spacing for 2 3/4" and 3 1/2"	4"	2 1/4"	6	75	43
◇ B620K	20	Ceiling Box with 18 1/4" - 26 3/4" adjustable bar hanger Fixture spacing for 2 3/4" and 3 1/2"	4"	2 1/4"	6	75	46
◇ B620HG-UPC	20	Ceiling Box with 14 1/4" - 23 1/2" adjustable bar hanger Ground lug and screw attached Fixture spacing for 2 3/4" and 3 1/2"	4"	2 1/4"	6	75	44
◇ B620KG-UPC	20	Ceiling Box with 18 1/4" - 26 3/4" adjustable bar hanger Ground lug and screw attached Fixture spacing for 2 3/4" and 3 1/2"	4"	2 1/4"	6	75	46
◇ B620DC	20	Ceiling Box with 24" grid bar hanger Fixture spacing for 2 3/4" and 3 1/2"	4"	2 1/4"	6	16	10

◇ Listed for fixture support up to 50 lbs.

Carlton® SuperBlue™ Hard Shell Boxes

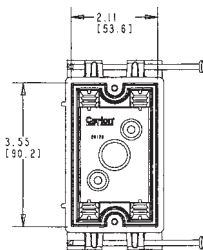


Features

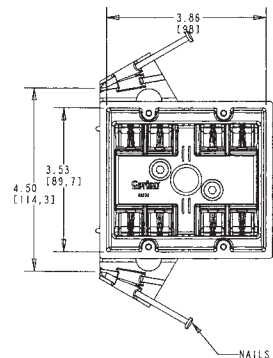
- Largest wirefill capacity in their class
- Won't crack or break in extreme environments
- Resist flexing
- Hold their shape
- Molded-in flanges and clamps
- Faster installation
- Lightweight
- Noncorrosive and nonconductive
- Nest inside one another
- UL Listed

Wall Boxes

Single Gang



Two Gang



Part No.	Description	Capacity	Depth	Std. Ctn. Qty.	Std. Ctn. Wt.
BH122A	Single Gang	22 cu. in.	3.63	100	31.3
BH122S	Single Gang with Screws	22 cu. in.	3.63	100	31.3

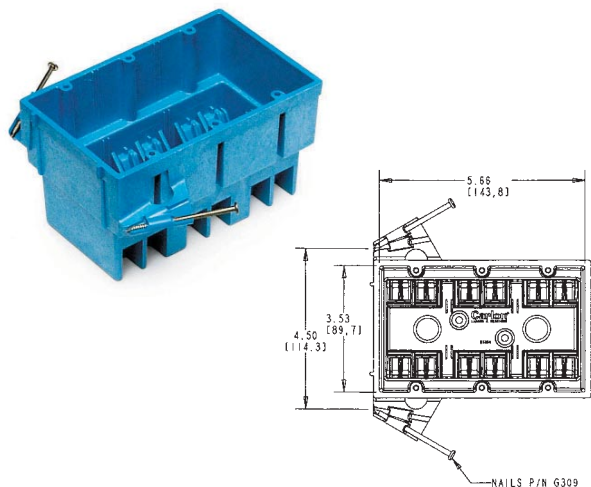
Part No.	Description	Capacity	Depth	Std. Ctn. Qty.	Std. Ctn. Wt.
BH235A	Two Gang	35 cu. in.	3.50	48	21.3
BH235S	Two Gang with Screws	35 cu. in.	3.50	48	21.3

Carlon® SuperBlue™ Hard Shell Boxes

Wall Boxes

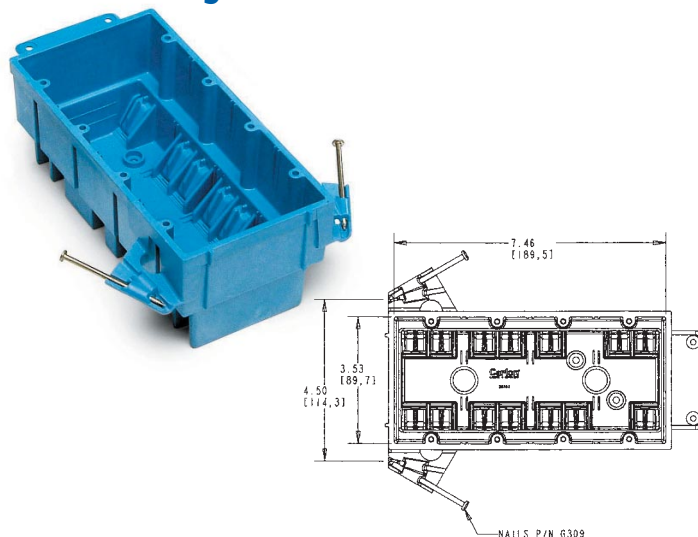


Three Gang



Part No.	Description	Capacity	Depth	Std. Ctn. Qty.	Std. Ctn. Wt.
BH353A	Three Gang	53 cu. in.	3.50	24	14.0
BH353S	Three Gang with Screws	53 cu. in.	3.50	24	14.0

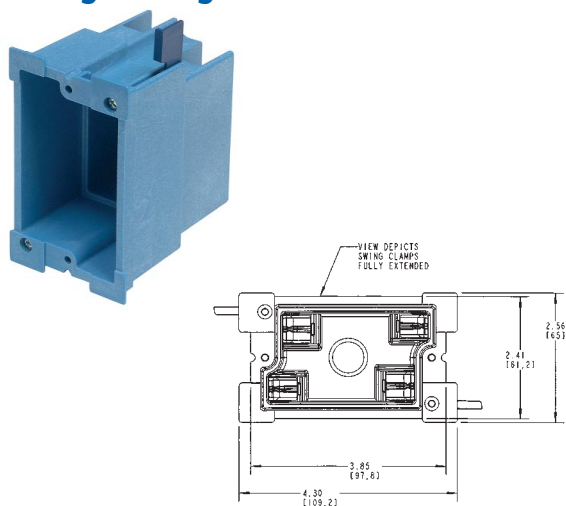
Four Gang



Part No.	Description	Capacity	Depth	Std. Ctn. Qty.	Std. Ctn. Wt.
BH464A	Four Gang	64 cu. in.	3.18	24	17.4
BH464S	Four Gang with Screws	64 cu. in.	3.18	24	17.4

Old Work Boxes

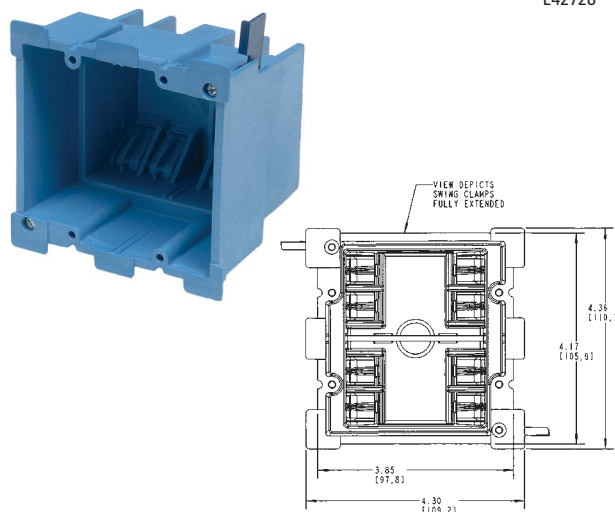
Single Gang Old Work



Part No.	Description	Capacity	Depth	Std. Ctn. Qty.	Std. Ctn. Wt.
†BH118R	Single Gang Old Work	18 cu. in.	3.64	36	10.9

† Not UL Classified for Fire Resistance

Two Gang Old Work

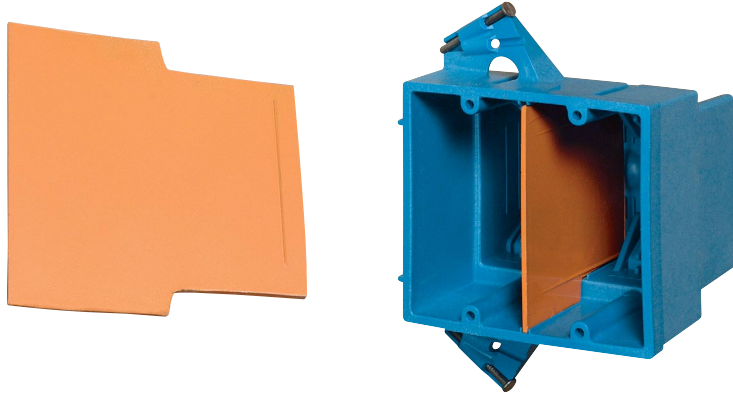


Part No.	Description	Capacity	Depth	Std. Ctn. Qty.	Std. Ctn. Wt.
†BH234R	Two Gang Old Work	34 cu. in.	3.59	18	7.71

† Not UL Classified for Fire Resistance

Carlton® SuperBlue™ Low Voltage Divider Plate

Carlton Low Voltage Divider Plate



Carlton SuperBlue boxes are easily divided into both high and low voltage use. Just insert the Low Voltage Divider Plate, and you're ready to go!

The 2002 National Electrical Code allows electrical conductors to share an outlet box when the conductors and signaling or communication cables are separated by a barrier within the box.

Features

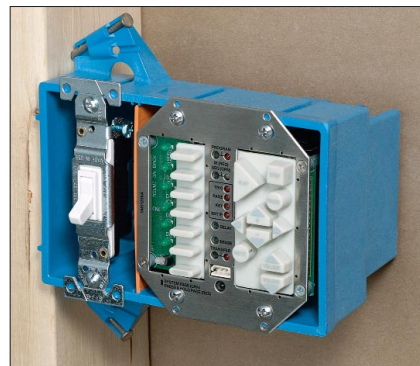
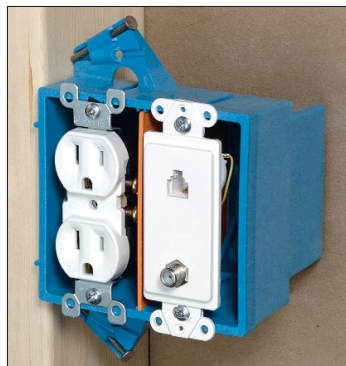
- Transforms a high voltage box into an accepted high and low voltage box
- Orange color signifies low voltage installations
- Designed to be used with Carlton's 2-, 3-, and 4- gang SuperBlue Boxes
- UL Listed
- Noncorrosive and nonconductive
- Great for situations requiring a high/low voltage fire-classified box



Part No.	Description	cu. in.	Std. Ctn. Qty.	Std. Ctn. Wt.
SCDIV	Low Voltage Divider Plate	-	50	2.2



Installation

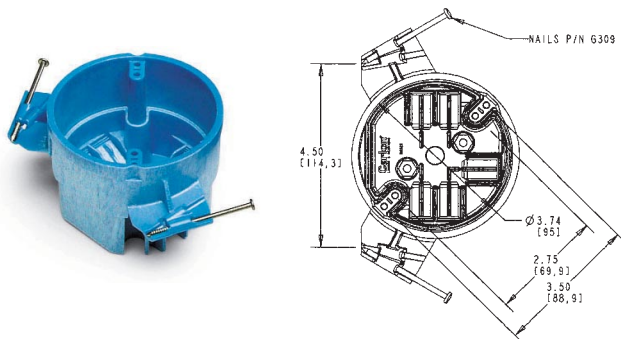


Carlon® SuperBlue™ Ceiling Boxes

Ceiling Boxes



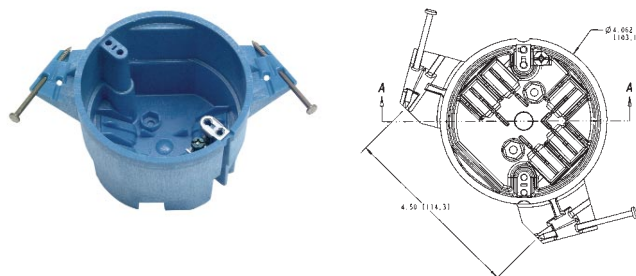
Ceiling Box



Part No.	Description	Capacity	Depth	Std. Ctn. Qty.	Std. Ctn. Wt.
◇ BH525A	Ceiling Box	25 cu. in.	3.00	48	16.3
◇ BH525S	Ceiling Box with Screws	25 cu. in.	3.00	48	16.3

◇ Listed for fixture support up to 50 lbs.

Ceiling Box with Grounding Lug

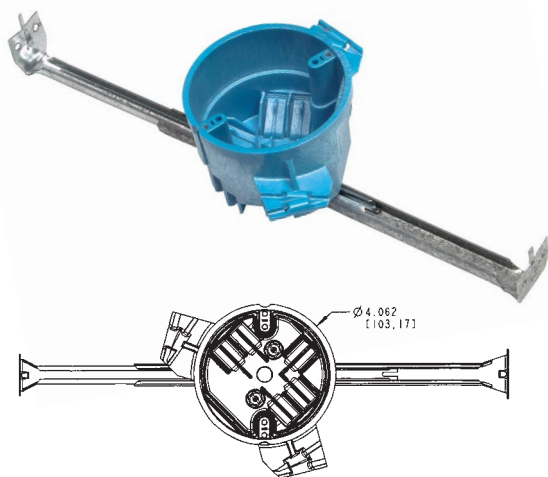


Part No.	Description	Capacity	Depth	Std. Ctn. Qty.	Std. Ctn. Wt.
◇ BH525P	Ceiling Box with Grounding Lug	25 cu. in.	3.00	24	9.4
◇ BH525SP	Ceiling Box w/Grounding Lug w/Screws	25 cu. in.	3.00	24	9.4

◇ Listed for fixture support up to 50 lbs.

Ceiling Box with Hanger Bar

*Hanger Bar adjusts from 11 1/2" to 18 1/2"

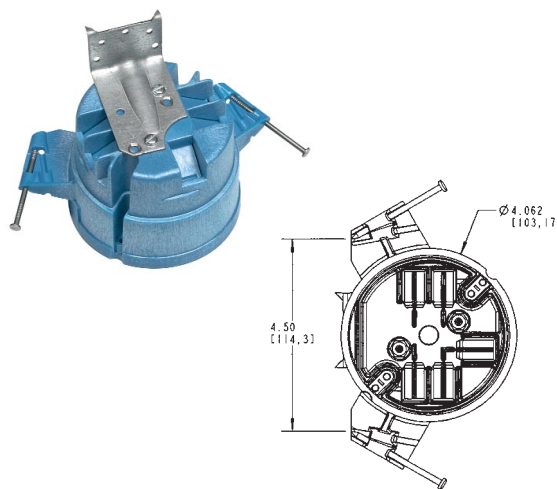


Part No.	Description	Capacity	Depth	Std. Ctn. Qty.	Std. Ctn. Wt.
◇ BH525H	Ceiling Box with Hanger Bar	25 cu. in.	2.95	20	13.2
◇ BH525HP	Ceiling Box with Hanger Bar with Grounding Lug	25 cu. in.	2.95	20	13.2

◇ Listed for fixture support up to 50 lbs.

Ceiling Fan Box

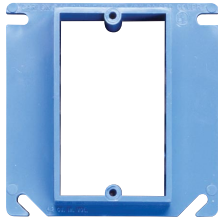
Listed for fan support up to 35 lbs.



Part No.	Description	Capacity	Depth	Std. Ctn. Qty.	Std. Ctn. Wt.
◇ BH525L	Ceiling Fan Box with Nails	25 cu. in.	3.06	24	12.2
◇ BH525SL	Ceiling Fan Box with Screws	25 cu. in.	3.06	24	12.2
◇ BH525LP	Ceiling Fan Box with Grounding Lug with Nails	25 cu. in.	3.06	24	12.2

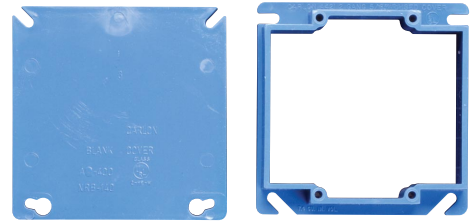
◇ Listed for fan support up to 35 lbs.

Nonmetallic Covers



Single-Gang – Covers

Part No.	Size	Cu. in.	Std. Ctn. Qty.	Std. Ctn. Wt. (lbs.)
A410	1/2"	3.5	100	8.0
A411	5/8"	4.2	50	6.0
A412	3/4"	5.0	50	6.0
A413	1"	6.6	40	5.0
A414	1 1/2"	8.1	30	5.0



Two-Gang – Covers

Part No.	Size	Cu. in.	Std. Ctn. Qty.	Std. Ctn. Wt. (lbs.)
A400	Blank	—	100	9.0
A420	1/2"	6.1	75	6.0
A421	5/8"	7.4	50	4.2
A422	3/4"	8.8	50	4.8



Round Plaster Ring

Part No.	Rise	Vol. (cu. in.)	Std. Ctn. Qty.	Std. Ctn. Wt. (lbs.)
◇ A471	1/2"	3.2	100	3.3
◇ A472	5/8"	4.0	100	3.8

◇ Listed for fixture support up to 50 lbs.



Round Blank Cover

Part No.	Rise	Vol. (cu. in.)	Std. Ctn. Qty.	Std. Ctn. Wt. (lbs.)
A470D	Blank with 1/2" KO	—	100	4.7

Ceiling Box Cover – White

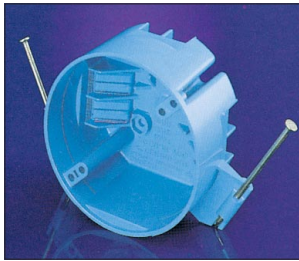
Part No.	Rise	Vol. (cu. in.)	Std. Ctn. Qty.	Std. Ctn. Wt. (lbs.)
CPC4WH	White Ceiling Box Cover	—	12	1.3

Features

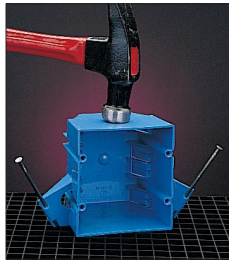
General Features



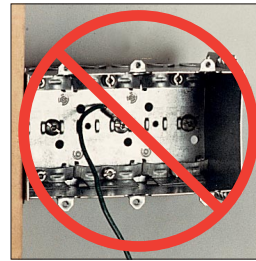
Electric Blue Color



Ceiling boxes with special engineered high heat resistant material for fixture support



High Impact
PVC Wall Boxes



Nonconductive...no
need to ground box



Lightweight



Engraved NEC
Wire Fill



Leveling Guides

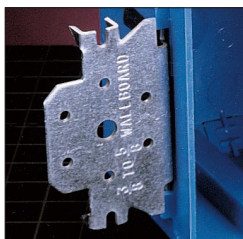


Clean Easy Knockout



Pre-installed Angled Nails

Special Nail-on and Bracket Boxes



Type B



Type L



Type H

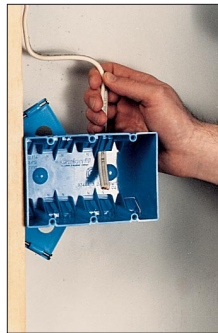


Type K

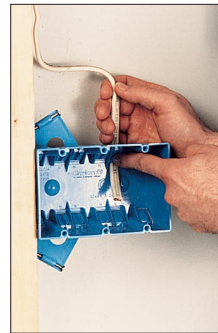
Zip Clamp™ Easy to wire, simply...



Align Wire

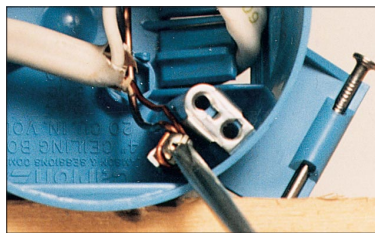


Push Through

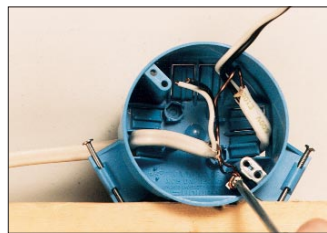


Secure Clamp

Grounding Lugs (No need to ground box itself) Easy to wire...

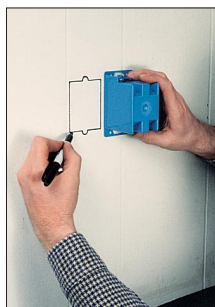


Pre-installed Lugs



Make Grounding Connection

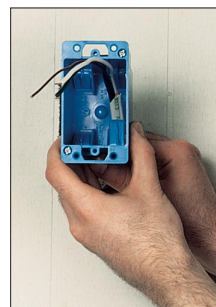
Old Work Boxes Easy to rework, simply...



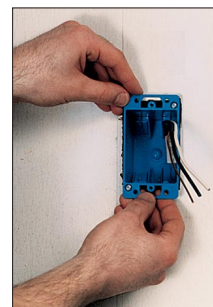
Trace Template



Cut Out Template



Insert Wires



Place Box in Wall



Secure Box in Wall



In USA, contact:

25701 Science Park Drive ■ Cleveland, Ohio 44122

1-800-3-CARLON (1-800-322-7566) ■ In Ohio, (216) 464-3400

Fax: (216) 766-6444

TDD/Hearing Impaired Access (216) 831-5918

www.carlon.com

In Canada, contact:

c/o Multimodal Logistics

415 Traders Boulevard East

Mississauga, Ontario ■ Canada L4Z 1P2

(905) 755-1262 ■ (888) 269-9902

Fax: (905) 755-1265 ■ (888) 229-8622