


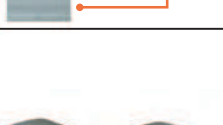



Hydronic & Architectural Electric Baseboard Heater Accessories

Field Installed Accessories

	DESCRIPTION	Standard White		Commercial Brown		LIST
		UPC# 686334	MODEL	UPC# 686334	MODEL	
	Single Pole, In-Built T-Stat, 22A @ 120-240V; 18A @ 277V; 50°-90° F	111874	3900T1	111959	3900T1C	61
	Double Pole, In-Built T-Stat, 22A @ 120-240V; 18A @ 277V; 50°-90° F	111881	3900T2	111966	3900T2C	79
	Air Conditioning Receptacle Section, 20 Amp @ 125-277V	111898	3900AC	111997	3900ACC	72
	120V. Receptacle Section, 15 Amp	111904	3900REC	112000	3900RECC	67
	Disconnect Switch, 20 Amp @ 125-277VAC; DPST	111942	3900DS	112048	3900DSC	99

Baseboard Sections



OUTSIDE CORNER

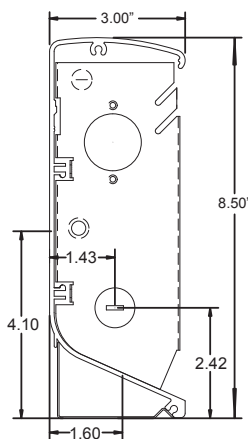


INSIDE CORNER

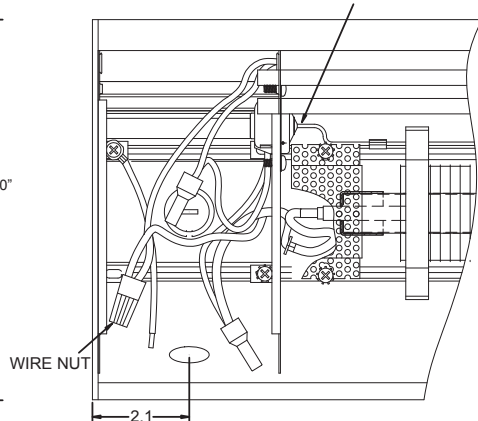
Outside and inside corner sections are 6" on longest side

STANDARD WHITE		COMMERCIAL BROWN		DESCRIPTION		LIST
UPC# 686334	MODEL	UPC# 686334	MODEL	SECTION	SIZE	
112154	39BS28	112215	39BS28C	Blank Section	28"	215
112161	39BS36	112222	39BS36C		36"	256
112178	39BS48	112239	39BS48C		48"	317
112185	39BS60	112246	39BS60C		60"	380
112192	39BS72	112253	39BS72C		72"	438
112208	39BS96	112260	39BS96C		96"	563
115094	39BS120	115100	39BS120C		120"	751
111911	3900-ICS	112017	3900-ICSC	Inside Corner	-	123
111928	3900-OCS	112024	3900-OCSC	Outside Corner	-	125
111935	3900-CS	112031	3900-CSC	Control Section	4" Blank	157

Dimension



TEMPERATURE LIMITING DEVICE



Wireway Covers (White Units Only)

UPC# 686334	MODEL	LENGTH	SHIP WT. (LBS)	LIST
112284	3900WW28	28"	2	47
112291	3900WW36	36"	2.5	52
112307	3900WW48	48"	3.5	62
112314	3900WW60	60"	4.5	68
112321	3900WW72	72"	5.5	73
112338	3900WW96	96"	7.5	96
115117	3900WW120	120"	7.5	129