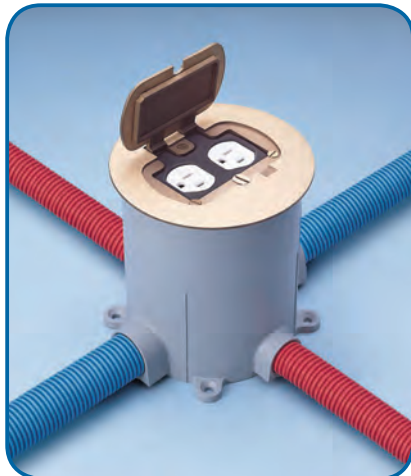


Floor Boxes



Round Floor Box

- Dual-voltage configurations available
- Brass, stainless steel and non-metallic covers



E97BR



E97SS2D



E97DSS

Floor Box Covers

Cat. Number	Description
-------------	-------------

Non-Metallic Covers (adapter ring included)

E97DSB	Duplex, Brown
E97DSC	Duplex, Caramel
E97DSS	Duplex, Slate
E97DSI	Duplex, Ivory
E97DST	Duplex, Taupe
E97SSRB	1/4" NPS, Brown
E97SSRC	1/4" NPS, Carmel
E97SSRS	1/4" NPS, Slate

Metallic Covers

E97ABR2	Adapter Ring for Metallic Covers — Required
E97BR2D	Duplex & 2 Data, Two-Door, Divider, Brass
E97SS2D	Duplex & 2 Data, Two-Door, Divider, Stainless Steel
E97BR2	Duplex, Two Door, Brass
E97SS2	Duplex, Two Door, Stainless Steel
E97BR	Duplex or GFCI, Single Door, Brass
E97SS	Duplex or GFCI, Single Door, Stainless Steel
E97BRG	1/4" NPS or Single Receptacle, Brass
E97SSG	1/4" NPS or Single Receptacle, Stainless Steel

Floor Box

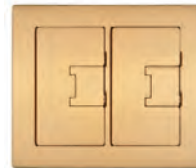
Cat. Number	Description
E971FB	4" Round Floor Box, PVC

Gangable Floor Box

- Gangable box for 1-, 2-, and 3-gang configurations
- Flush or recessed service
- Brass, stainless steel and non-metallic covers



E9761SS



E9762BR



E9763S

Covers

Cat. Number	Description
-------------	-------------

Non-Metallic Covers

E9761B	One-Gang, Brown
E9762B	Two-Gang, Brown
E9763B	Three-Gang, Brown
E9761C	One-Gang, Caramel
E9762C	Two-Gang, Caramel
E9763C	Three-Gang, Caramel
E9761S	One-Gang, Slate
E9762S	Two-Gang, Slate
E9763S	Three-Gang, Slate

Metallic Covers

E9761BR	One-Gang, Brass
E9762BR	Two-Gang, Brass
E9763BR	Three-Gang, Brass
E9761SS	One-Gang, Stainless Steel
E9762SS	Two-Gang, Stainless Steel
E9763SS	Three-Gang, Stainless Steel

Floor Box

Cat. Number	Description
Floor Box	
E976RFB	Rectangular Floor Box, Gangable to 3-Gang, PVC

Activation Kit

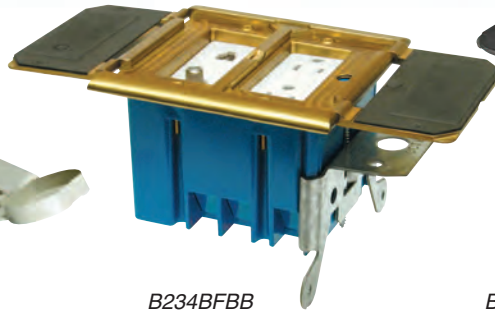
E976AK2	Activation Kit for Duplex, GFCI, Single Receptacle, 6 Data or Blank; Divider — 1 Required Per Gang
---------	---

Adjust-A-Box® Residential Floor Box

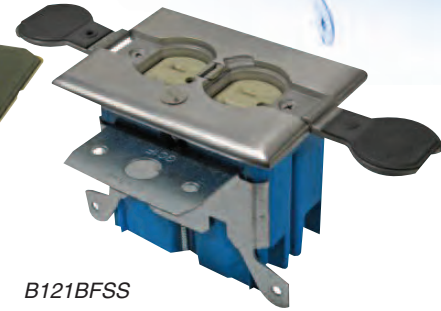
- 1-gang (21 cu. in.) and 2-gang (34 cu. in.) floor box kits for wood subfloor applications
- Patented adjusting screw to easily align with flooring height
- Brackets for new work and old work included
- Brass, stainless steel and non-metallic covers



SC100FBWC



B234BFBB



B121BFSS

Floor Box Kits

Cat. Number	Description
-------------	-------------

Floor Box Kits with Non-Metallic Covers

B121BFBRW	One-Gang, Duplex Receptacle Included, White
B121BFBR	One-Gang, Duplex Receptacle Included, Ivory
SC100FBWC	One-Gang, Low-Voltage Only, White
SC100FBVC	One-Gang, Low-Voltage Only, Ivory

Floor Box Kits with Metallic Covers

B121BFBB	One-Gang, Duplex Receptacle Included, Brass
B121BFSS	One-Gang, Duplex Receptacle Included, Stainless Steel
SC100FBBC	One-Gang, Low-Voltage Only, Brass
B234BFBB	Two-Gang, Divider, Brass
B234BFSS	Two-Gang, Divider, Stainless Steel

Drop-In Floor Box

- Drop-in box for wood subfloor applications
- Prewired single power receptacle (included) or two communications outlets
- Optional hole saw
- Brass and aluminum covers



E971FBDI-2

Residential Slab Floor Box

- Prewired single receptacle (included) and one communications outlet
- Brass and stainless steel covers



Floor Box Kits

Cat. Number	Description
-------------	-------------

Floor Box Kits

E971FBDI-2	Single Receptacle or 2 Data, Hole Saw, Brass
E971FBDIB-2	Single Receptacle or 2 Data, Brass
E971FADI-2	Single Receptacle or 2 Data, Hole Saw, Aluminum
E971FADIB-2	Single Receptacle or 2 Data, Aluminum

Floor Boxes & Covers

Cat. Number	Description
-------------	-------------

Boxes

E970CDX	Box with 1/2" Hubs
E970CEX	Box with 3/4" Hubs

Extension Sleeve

E970CES	Extension Sleeve — <i>Required</i>
----------------	------------------------------------

Covers

E970CEC	Cover, Single Receptacle Included, Brass
E970CECS	Cover, Single Recept. Included, Stainless Steel