



**CHATSWORTH PRODUCTS**

**Chatsworth Products (CPI) and Mayflex**



**CPI Equipment Storage  
and Cable Management Solutions**

**MAYFLEX**  
Converged IP Solutions

### Mayflex: Outstanding Service

Mayflex supports and services markets for Converged IP Solutions. As a leading distributor of cabling infrastructure, networking and electronic security products, Mayflex has a well-respected name and a proven track record in partnering installers, integrators and resellers. The Mayflex business model throughout Europe and the Middle East has come to represent the fast and efficient supply of advanced, reliable networking products, cabling infrastructure and electronic security solutions.

Mayflex's reputation is built on the highest levels of service, support, technical innovation and product choice. These core values drive the plans for continued expansion.

#### World Class Supply Chain of Services.

With project timescales getting tighter, the operational capabilities of a supply chain partner are now as critical as the choice of product. Whichever option is chosen, a service that endeavours to deliver the products on time and to any chosen destination is guaranteed on a daily basis.

Driven by a motto of "Service Excellence, Through Experience and Flexibility," Mayflex's goal is to offer the most attractive combination of product availability, customer service and value for money within the sector and to provide every customer with the tools they need in order to prosper.



We understand your need for IT infrastructure solutions that optimise equipment, operations and business.

### Chatsworth Products (CPI) and Mayflex: A Partnership for Success

Mayflex is the perfect partner to promote Chatsworth Products (CPI)'s wide breadth of IT infrastructure solutions and understands the need to give customer's high-quality products and a service that they deserve on a global scale.

This relationship enables you to benefit from:

- A single-source for all your IT infrastructure requirements
- Industry expertise and experience in networking
- Our commitment to Service Excellence

#### Become a Mayflex Partner Today

This brochure provides an overview of the products and support that Chatsworth Products (CPI) and Mayflex can offer you. To place your order for Chatsworth Products (CPI), call the Mayflex Sales Team on 0800 75 75 65 or email: [sales@mayflex.com](mailto:sales@mayflex.com).

At Chatsworth Products (CPI) it is our mission to provide solutions that solve your IT infrastructure challenges and provide a higher return on your investment. As a global manufacturer of voice, data and security products and service solutions that optimise, store and secure technology equipment, CPI delivers innovation, configurability, quality and value with a breadth of integrated system components covering virtually all physical layer needs. Unequalled customer service and technical support, as well as a global network of industry-leading distributors, assures customers that CPI is dedicated to delivering products and services designed to meet and exceed their needs.

## History

Twenty years ago, CPI began when 90 employees joined together and purchased the Dracon Division of Harris Corporation using an Employee Stock Ownership Plan (ESOP). With deregulation in the telecommunications industry and technological innovation in voice and data equipment, CPI focused on the explosive needs of the information technology market to manage IT infrastructure equipment. Today, CPI is a leading global supplier of integrated solutions that optimise technology equipment. This pioneering spirit is what motivates CPI to delight the customer by responding rapidly with standard and custom solutions that give them a higher return on their investment.

## ESOP

Since the 1991 buyout from a Fortune 500 company, the employee-owners of CPI have helped the company achieve phenomenal growth, unattainable under prior ownership. Despite being a profitable and respected business unit of the parent organisation, CPI's specialised product line no longer fit the corporation's core business strategy. Targeted for divestiture, employees were given an opportunity to purchase the business unit, setting the wheels in motion that would ultimately result in a 100 percent employee-owned company. The success the company enjoys today comes from a realised pride in ownership.

Through its Employee Stock Ownership Plan (ESOP) structure, all employees of CPI become beneficial owners. Such ownership, combined with CPI's inclusive and participatory culture, motivates employees to think and act like owners, creating a strong commitment to the attainment of an ultimate and core purpose: delighting the customer.

Fuelled by employee ownership, CPI has grown from a single location serving the domestic US market to a global company serving multi-national and international customers from locations in Westlake Village and Chatsworth, Calif.; Georgetown, Texas; New Bern, N.C.; Buckinghamshire, England; Pudong, Shanghai, China; Dubai, United Arab Emirates; Mexico City, Mexico; and Toronto, Canada.



## CPI Locations

Corporate Office: Westlake Village, Calif.

Operating Units: Chatsworth, Calif., Georgetown, Texas, New Bern, N.C.

International Offices: Buckinghamshire, UK, Dubai, UAE, Mexico City, Mexico, Shanghai, China, Toronto, Canada

## CPI Factories

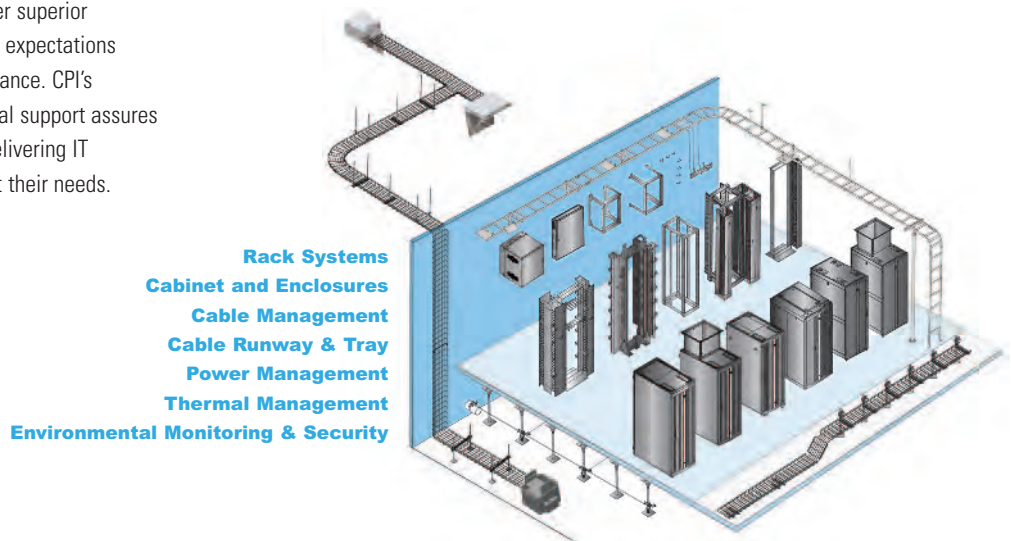
CPI's manufacturing facilities are located in the US, Asia and Europe.



## Why Choose CPI?

### Flexibility, Availability and Reliability

As an industry leader, CPI products deliver superior structural support that exceeds customer expectations through innovation, function and performance. CPI's unequalled customer service and technical support assures our customers that CPI is dedicated to delivering IT infrastructure solutions designed to meet their needs.

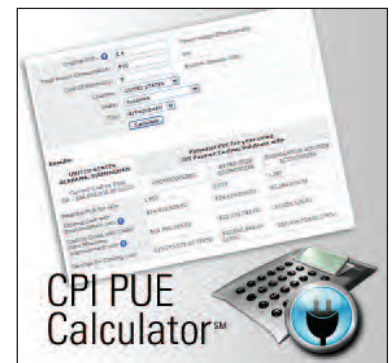


## Helping You Achieve Optimum Results

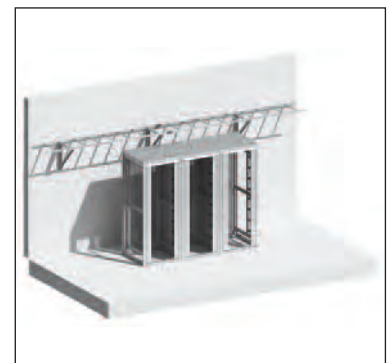
Constantly increasing heat loads are the main challenge in many data centres. Attempting to eliminate hot spots by adding supplemental cooling may be a costly and unnecessary step. High density computer and storage equipment requires heat containment to achieve cooling system efficiency. CPI offers a proven solution, the CPI Passive Cooling® Solution, which effectively isolates hot exhaust air to provide a uniform room temperature. When combined with many standard chilled water cooling systems, CPI Passive Cooling Solutions will increase cooling system efficiency, which in turn reduces PUE and opens the door for increased “free cooling” hours with economisers.

CPI offers the tools and assistance needed to help you develop high performance, enterprise data centre designs that tightly integrate standard or customised CPI products into a total design approach, delivering dramatically lower operating costs and data centre optimisation.

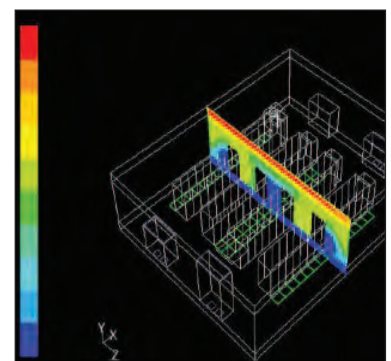
- See what is possible with the CPI PUE Calculator<sup>sm</sup> - determine your potential data centre cost savings when combining CPI Passive Cooling Solutions with today's most effective cooling strategies using the CPI PUE Calculator. Visit [www.chatsworth.com/pue-calculator](http://www.chatsworth.com/pue-calculator).
- Configure your cabinet with the Product Configurator – CPI's easy-to-use online Product Configurator guides you through the steps and selections necessary to create personalised data centre solutions. Visit [www.chatsworth.com/configurator](http://www.chatsworth.com/configurator).
- Plan your space with AutoCAD plan and elevation drawings – for customers using AutoCAD to design layouts, CPI supplies CAD Shapes of popular CPI Products featuring top, front, side and isometric views. Visio images and BIM Autodesk® Revit® drawings are also available.
- Optimise your design with Computational Fluid Dynamics (CFD) analysis – using state-of-the-art three-dimensional software, CPI provides simulation and analysis of your data centre's airflow and temperature patterns.
- Answer unique requirements with a customised solution – CPI will work with you to achieve a solution that fits your exact data centre and equipment needs.



Power Usage Effectiveness (PUE)



BIM Autodesk® Revit® drawing



CFD Analysis of data centre Airflow

## CPI Passive Cooling® Solutions - The Simply Efficient™ Choice

CPI Passive Cooling® Solutions offer innovative techniques that allow you to manage the flow of air throughout your data centre without the need for added cooling system units, in-row air conditioners or risky liquid cooling solutions. From small applications with heat loads of 2 kW per cabinet to large data centres with high heat densities up to 32 kW, CPI Passive Cooling Solutions offer smart, proven technology to reduce your data centre cooling cost. As the Simply Efficient™ choice, CPI Passive Cooling Solutions allow you to meet tiered requirements for operation of your IT equipment and to deploy the latest servers, switches and blade servers from HP, IBM, Dell, Cisco, Juniper Networks and Brocade with confidence.

### How CPI Passive Cooling Works

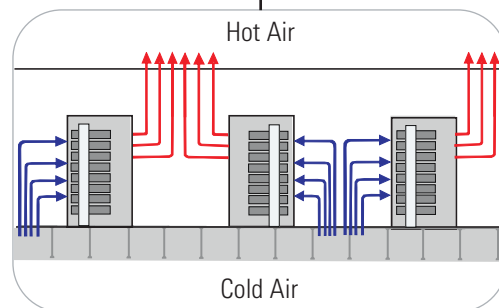
- Controls Airflow – CPI Passive Cooling Solutions control airflow through the cabinet using a specific combination of thermal management accessories. Solutions are available for traditional hot aisle/cold aisle environments and containment.
- Eliminates Re-circulation – CPI Passive Cooling Solutions create a one-way airflow pathway through the cabinet that eliminates the mixing of hot and cold air. The high density solution, which includes a Vertical Exhaust Duct to isolate hot air from the room, guarantees heat transfer directly from equipment to the cooling unit.
- Increases Cabinet Density – With a Vertical Exhaust Duct, there is no hot aisle, so cabinet heat loads are not limited by the amount of air that can be delivered through the access floor tiles positioned directly in front of the cabinet.
- Uses Existing Standard Cooling Equipment – If the cooling capacity of your existing chilled water computer room air conditioners (CRACs) or air handlers (CRAHs) exceeds your heat load, there is no need to add expensive supplemental in-row cooling.



### Low Heat Density

Combine:

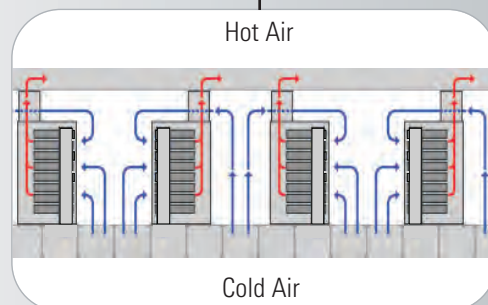
- GF-Series GlobalFrame® or F-Series TeraFrame® Cabinet with:
  - Perforated Front Door
  - Perforated Rear Door
  - Solid Side Panels or Seal Kits
  - Server Top Panel
- Bottom Panel
- Air Dam Kit
- Snap-In Filler Panels
- KoldLok® Raised Floor Grommet



### High Heat Density

Combine:

- GF-Series GlobalFrame® or F-Series TeraFrame® Cabinet with:
  - Perforated Front Door
  - Solid Rear Door
  - Solid Side Panels or Seal Kits
- Vertical Exhaust Duct System
  - Airflow Director
  - Rear Door Sealing Kit
- Bottom Panel
- Air Dam Kit
- Snap-In Filler Panels
- KoldLok® Raised Floor Grommet



### Advantages of using CPI Passive Cooling® Solutions – High Heat Density Solution with a Vertical Exhaust Duct

- Eliminates hot spots – isolating and removing hot exhaust air creates a uniform temperature in the room.
- No additional power or redundancy requirements – CPI Passive Cooling Solutions include no active components.
- Improves cooling system utilisation – capturing hot exhaust air means higher temperature return air, which improves utilisation of chilled water CRACs and CRAHs.
- Increases “free cooling” hours – isolating hot air allows you to confidently raise the supply air temperature, which in turn allows you to raise the chilled water temperature, which increases potential free cooling hours in most locations.
- Lowers your operating costs – the combined effect of better cooling system utilisation and more free cooling hours is lower operating cost.
- Lowers your Power Usage Effectiveness (PUE) – by enabling the use of economisers for free cooling, you lower your PUE.

## How to Configure CPI Cabinets with CPI Passive Cooling® Solutions

CPI Passive Cooling® Solutions are available for the GF-Series GlobalFrame® and F-Series TeraFrame® Cabinets described in this brochure. Simply add certain accessories to a base cabinet to control airflow through the cabinet depending on the environment. Recommended combinations are listed below.

### Low Density Solution for Traditional Hot Aisle/Cold Aisle Environment

- GF-Series GlobalFrame or F-Series TeraFrame Cabinet with solid top and side panels and perforated front and rear doors allows front-to-rear airflow through the cabinet
- Rail Seal Kit or Air Dam Kit and Snap-In Filler Panels create a front/rear barrier around equipment to separate hot and cold air within the cabinet
- Bottom Panel seals the bottom of the cabinet when the cabinet is elevated above the floor on leveling feet or casters



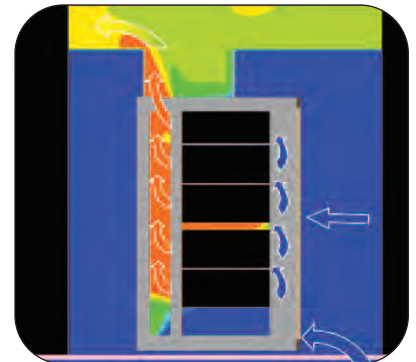
### High Density Solution for Hot Air Containment

- GF-Series GlobalFrame or F-Series TeraFrame Cabinet with solid top panel and Vertical Exhaust Duct, solid side panels, perforated front door and solid rear door with seal allows front-to-top airflow through the cabinet
- Rail Seal Kit or Air Dam Kit and Snap-In Filler Panels create a front/rear barrier around equipment to separate hot and cold air within the cabinet
- Bottom Panel seals the bottom of the cabinet when the cabinet is elevated above the floor on leveling feet or casters
- Airflow Director acts as a turning vane to guide hot air upward toward the duct when heat loads exceed 15 kW and the bottom rack-mount spaces hold equipment



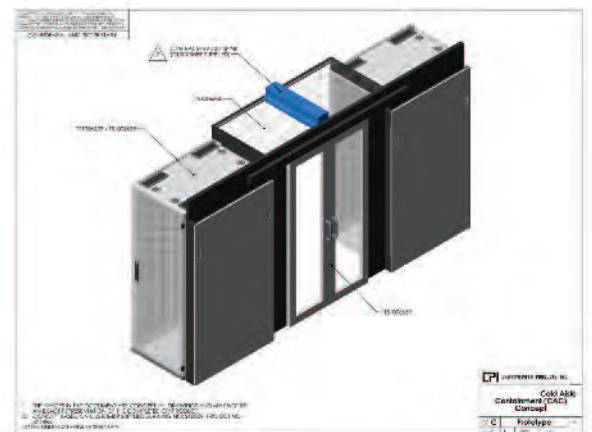
## Why Choose a Vertical Exhaust Duct?

Computational Fluid Dynamics (CFD) modeling, which is used to illustrate airflow patterns and temperature strata in the data centre, shows that using CPI Passive Cooling Solutions results in one-way airflow with reliable heat transfer and return through hot air. When compared with traditional hot aisle/cold aisle solutions, using the high density solution with Vertical Exhaust Duct effectively isolates hot exhaust air from the room. Room temperature is uniform and the whole room becomes the source for cool air, allowing you to increase density in your cabinet and use less floor space for the same amount of equipment. Additionally, unlike aisle containment, the duct provides a more comfortable working temperature range and enables cabinet-level refresh.



## Custom Solutions for Any Environment

Equipment and demands on IT infrastructure change rapidly. We understand this quick-paced environment and make it our goal to find solutions to address these challenges. Unlike most mass produced “cookie-cutter” solutions, CPI’s design engineering and manufacturing model allows the flexibility to create and alter products to solve unique problems. CPI’s team of specialists can help you address and design a solution to help solve issues with equipment installation, airflow, architectural obstacles, power and cooling limitations and beyond — in fact, you name it and we can devise a solution. If you need a special design that we don’t currently offer, we will work with you to create a new solution to fit your requirements.



CPI can provide you with conceptual drawings and design drawings to take your project from an idea to reality.



## Rack Systems

CPI's industry-leading two- and four-post systems provide unsurpassed strength, stability and durability for supporting patch panels, high-density blocks, cabling and other equipment. Rack Systems have a smaller footprint than cabinets, making them ideal for telecommunications closets and cross connect spaces where floor space is limited. With the addition of cable managers, shelves and special brackets, racks can be quickly adapted for your changing needs. CPI's two-post racks are constructed of high-strength, lightweight extruded aluminum and feature industry-standard hole patterns for mounting flexibility.

### Standard Rack

Supports interconnect equipment like patch panels and fibre enclosures. Equipment mounting spaces are marked and numbered making it easy to position equipment. Threaded attachment holes on the support channels allow quick installation of equipment. UL Listed. Supports 1000 lb (453 kg) of equipment.

#### CPI P/N 55053-703

45U x 19" EIA (2.1 m x 381 mm), Black



### Adjustable QuadraRack® (4-Post Rack)

Provides a sturdy, cost effective solution with mounting channels that provide front and rear support for equipment. Adjust rack depth by 1.25"(25 mm) increments prior to installation to match site requirements. Channel depth is fixed after installation. Includes a two-mounting hole ground terminal block for easy attachment to the telecommunications busbar. Supports up to 2000 lb (907.2 kg) of equipment.

#### CPI P/N 15211-703

45U x 19" EIA (2.1 m x 381 mm), Adjustable Depth 400 mm to 550 mm, Black

#### CPI P/N 15212-703

45U x 19" EIA (2.1 m x 381 mm), Adjustable Depth 575 mm to 725 mm, Black

#### CPI P/N 15213-703

45U x 19" EIA (2.1 m x 381 mm), Adjustable Depth 750 mm to 900 mm, Black

#### CPI P/N 15214-703

45U x 19" EIA (2.1 m x 381 mm), Adjustable Depth 925 mm to 1075 mm, Black



To learn more about CPI and our global capabilities, visit [www.chatsworth.com](http://www.chatsworth.com).

## Pathway Solutions

CPI's Cable Pathway makes up a vital part of the IT infrastructure solution by providing overhead or under floor horizontal and backbone cable pathways within the telecommunications equipment room or the data centre or to individual office spaces in commercial buildings.

Pathway Solutions decrease cable damage, simplify moves, adds and changes, prevent tangled cords, meet ANSI/TIA/EIA best practice installation guidelines for copper and fibre cables, provide an attractive installation and promote proper cable bend radii for better data transmission.

### PatchRack for CPI Cable Runway

The PatchRack is a miniature two-post rack that can be attached to CPI Cable Runway to save rack-mount space by placing patch panels or interconnect equipment above the rack or cabinet. Use Patch Rack to create a zone network in the data centre.

- Attaches to all CPI Cable Runway, but optimised for (38.1 mm x 9.53 mm) side stringers or cross members to Universal Cable Runway
- Supports 19"W rack-mount equipment
- Supports up to 27.2 kg

#### **CPI P/N 13395-704**

PatchRack with Side Stringer Brackets, 4U, Black

#### **CPI P/N 13395-708**

PatchRack with Side Stringer Brackets, 8U, Black

#### **CPI P/N 13394-704**

PatchRack with Cross Member Brackets, 4U, Black

#### **CPI P/N 13394-708**

PatchRack with Cross Member Brackets, 8U, Black

### PatchRack Accessories

Use Cross Member Hardware Kit for perpendicular mounting on all widths of Cable Runway. The D-Ring Kit provides cable management.

#### **CPI P/N 13399-702**

Cross Member Hardware Kit, Black

#### **CPI P/N 13396-704**

D-Rings for 4U Rack, 6 Rings, Black

#### **CPI P/N 13396-708**

D-Rings for 8U Rack, 10 Rings, Black



PatchRack with D-Rings installed on CPI Cable Runway above CPI TeraFrame® Cabinet.

Rear view of PatchRack installed on CPI Cable Runway above CPI TeraFrame® Cabinet.







## Cable Runway

Cable Runway provides continuous support for cable, but is open on the top, bottom and sides, allowing cables to easily enter and exit the pathway.

- High-quality welded tubular steel construction
- Straight sections are 3 meters long (3035 mm) and can be cut to length as required
- Cross members are spaced every 305 mm
- Simple splices allow sections to bolt together
- Supports up to 60 kg per linear 300 mm, with minimal deflection when supported every 1.5 m
- Individually boxed to prevent scratches and damage

### Cable Runway (H x W x L)

#### CPI P/N 10250-706

Cable Runway, 1.5" x 6" x 119.5" (38 mm x 150 mm x 3035 mm), Black

#### CPI P/N 10250-712

Cable Runway, 1.5" x 12" x 119.5" (38 mm x 300 mm x 3035 mm), Black

#### CPI P/N 10250-718

Cable Runway, 1.5" x 18" x 119.5" (38 mm x 460 mm x 3035 mm), Black

#### CPI P/N 10250-724

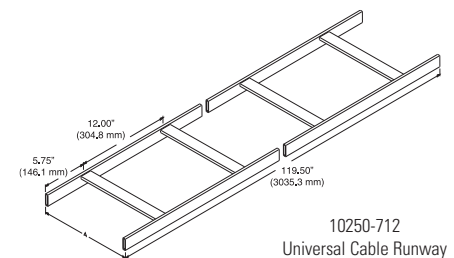
Cable Runway, 1.5" x 24" x 119.5" (38 mm x 610 mm x 3035 mm), Black

#### CPI P/N 10250-731

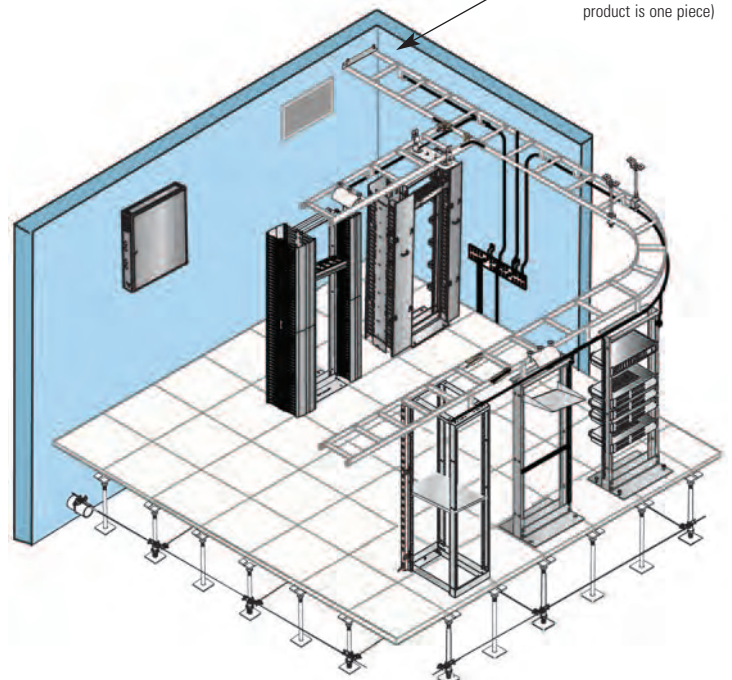
Cable Runway, 1.5" x 30" x 119.5" (38 mm x 760 mm x 3035 mm), Black

#### CPI P/N 10250-737

Cable Runway, 1.5" x 36" x 119.5" (38 mm x 910 mm x 3035 mm), Black



10250-712  
Universal Cable Runway  
(shown in two sections for  
illustration purposes, actual  
product is one piece)



## Cable Runway Support Products and Accessories

### Cable Runway Splices

Connect Cable Runway together to form straight sections, turns and intersections

#### **CPI P/N 11301-701**

Butt Splice Kit, For End-To-End Connection, Black

#### **CPI P/N 11302-701**

Junction Splice Kit, For 90-degree Intersections, Black



11302-701 Installed

### Cable Runway Pathway Components

Fabricated bends used to create a smooth radius when the pathway changes direction or elevation.

#### **CPI P/N 10822-718**

E-Bend, 90-degree Horizontal Turn, 18"W (460 mm), Black

#### **CPI P/N 11959-715**

Corner Bracket, 90-degree Corner for an Intersection, 15"W (380 mm), Black

**Other sizes are available.**



10822-718 Installed

### Cable Runway Supports

Attach Cable Runway to the wall, ceiling, floor or the tops of racks and cabinets. At minimum, support Cable Runway every 1.5 m and within 0.6 m of each intersection or change in elevation.

#### **CPI P/N 11421-718**

Wall Angle Support Kit, For 18"W (460 mm) Cable Runway, Black

#### **CPI P/N 11746-718**

Triangular Support Bracket, For 18"W (460 mm) Cable Runway, Black

#### **CPI P/N 11310-093**

Threaded Ceiling Kit, M10 Rod x 2 m. Includes Ceiling and Runway Brackets, Gold/Zinc plated

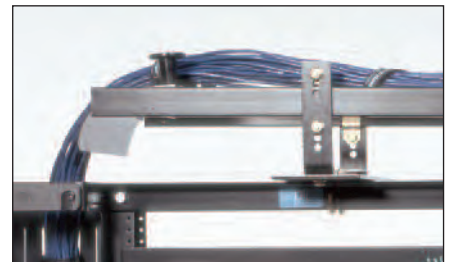
#### **CPI P/N 10595-718**

Rack-To-Runway Mounting Plate, For 18"W (460 mm) Cable Runway, Black

#### **CPI P/N 10506-706**

Elevation Kit, 100 mm-150 mm high, Black (Must be used with Rack-to-Runway Mounting Plate)

**Other sizes are available.**



10506-706 Installed

### Cable Runway Accessories

Protect and preserve cable by placing a Radius Drop at each point where cable enters or exits the Cable Runway and by covering the exposed ends of Cable Runway with End Caps. Use the Ground Strap Kit to bond Cable Runway sections together at each splice. Divide Cable Runway into multiple cable pathways in order to organise cables according to media type or destination.

#### **CPI P/N 12100-718**

Cross Member Radius Drop, 18"W (460 mm), Black

#### **CPI P/N 12101-701**

Side Stringer Radius Drop, 10.2"W (260 mm), Black

#### **CPI P/N 10642-001**

End Caps, Black

#### **CPI P/N 40164-001 / 40164-025**

Cable Runway Ground Strap Kit, Each / Pack of 25

#### **CPI P/N 10596-706 / 10596-756**

Cable Retaining Post, 6"H (150 mm), Each / Pack of 50

#### **CPI P/N 13392-712**

Universal Pathway Divider, fits 3/8"H x 1-1/2"W (9.53 mm x 38.1 mm) cross member, Pack of 25



12100-718 Installed



13392-712 Installed



## Cable Management Solutions

Cable Management Solutions create vertical and horizontal cable pathways on Rack Systems defining a specific pathway for premise cables and patch and jumper cords. Cable Management Solutions protect cables from damage and promote recommended best practices for cabling installation. CPI offers three styles of cable management to match specific applications and price requirements.

### Velocity® Cable Management

Velocity® Cable Management offers an easy to install, easy to transport and economical cable management solution suitable for use in telecommunications rooms for low and medium density applications.

- Vertical cable managers are available in single and double-sided versions
- Snap-together vertical cable managers delivered unassembled in a compact package
- Lightweight design, sides are molded plastic, covers are extruded plastic
- Quick and easy assembly takes less than five minutes to unpack, assemble and install
- Openings on the sides of the vertical managers align with each rack-mount unit (U) on the rack, simplifying cable management
- T-shaped cable guides with rounded edges protect and organise cables
- Openings on the back of the managers provide easy front-to-rear cabling
- Snap-on covers protect cables and swing open to the right or left for easy access



### Vertical Cable Managers

#### Single-Sided

##### CPI P/N 13901-703

45U x 3.6"W x 9.7"D (2045 mm x 91 mm x 246 mm), Black

##### CPI P/N 13902-703

45U x 6"W x 9.8"D (2045 mm x 152 mm x 249 mm), Black

##### CPI P/N 13904-703

45U x 10"W x 10.3"D (2045 mm x 254 mm x 262 mm), Black

##### CPI P/N 13905-703

45U x 12"W x 10.4"D (2045 mm x 305 mm x 264 mm), Black

#### Double-Sided

##### CPI P/N 13911-703

45U x 3.6"W x 16.4"D (2045 mm x 91 mm x 417 mm), Black

##### CPI P/N 13912-703

45U x 6"W x 16.6"D (2045 mm x 152 mm x 422 mm), Black

##### CPI P/N 13914-703

45U x 10"W x 17.5"D (2045 mm x 254 mm x 445 mm), Black

##### CPI P/N 13915-703

45U x 12"W x 17.8"D (2045 mm x 305 mm x 446 mm), Black



### Cable Ring Kit

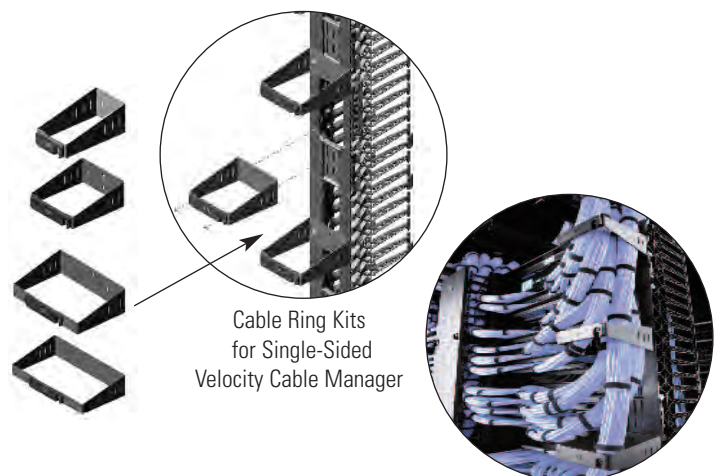
Creates a separate cable pathway on the back of the Single-Sided Velocity Cable Manager for premise cables.

**CPI P/N 13934-717** – 3.6"W (91 mm) Ring Kit, includes 8 rings, Black

**CPI P/N 13934-727** – 6"W (152 mm) Ring Kit, includes 8 rings, Black

**CPI P/N 13934-747** – 10"W (254 mm) Ring Kit, includes 8 rings, Black

**CPI P/N 13934-757** – 12"W (305 mm) Ring Kit, includes 8 rings, Black



Cable Ring Kits for Single-Sided Velocity Cable Manager

### Horizontal Cable Managers

#### CPI P/N 13930-701

1U x 19"EIA x 5.9"D (150 mm), Black

#### CPI P/N 13930-702

2U x 19"EIA x 5.9"D (150 mm), Black

#### CPI P/N 13930-703

3U x 19"EIA x 5.9"D (150 mm), Black



Other sizes are available.



## Cable Management Solutions

### Master Cabling Section (MCS)

### Combination Cabling Section (CCS)

### Universal Horizontal Cable Manager (UHCM)

Master Cabling Section (MCS) and Combination Cabling Section (CCS) offer a more substantial cable management solution suitable for use in telecommunications rooms and data centre computer rooms for low and medium density applications.

- MCS vertical cable managers are available in single- and double-sided versions
- Delivers fully assembled with door(s)
- Lightweight design, trough and door(s) are aluminium, T-shaped cable guides are plastic
- Patented T-shaped cable guides with rounded edges protect and organise cables
- Openings between the T-shaped cable guides align with each rack-mount unit (U) on the rack, simplifying cable management
- Openings in the middle of the double-sided managers provide easy front-to-rear cabling
- Sturdy metal door/cover hinges open to the right or left and includes a handle and mechanical latch that keeps the door in the closed position
- CCS vertical cable managers are double-sided managers with T-shaped cable guides and a door on the front side only, the back side has latches, but is mostly open to support larger cable bundles
- Matching single-sided horizontal cable managers – the Universal Horizontal Cable Manager – creates a side-to-side pathway above and below patch panels and switches



### MCS Vertical Cable Managers

#### Single-Sided

##### CPI P/N 30091-703

45U x 4.4"W x 8.08"D (2.1 m x 112 mm x 205 mm), Black

##### CPI P/N 30092-703

45U x 6"W x 8.08"D (2.1 m x 150 mm x 205 mm), Black

##### CPI P/N 30093-703

45U x 10"W x 8.08"D (2.1 m x 250 mm x 205 mm), Black

#### Double-Sided

##### CPI P/N 30094-703

45U x 4.4"W x 16.15"D (2.1 m x 112 mm x 410 mm), Black

##### CPI P/N 30095-703

45U x 6"W x 16.15"D (2.1 m x 150 mm x 410 mm), Black

##### CPI P/N 30096-703

45U x 10"W x 16.15"D (2.1 m x 250 mm x 410 mm), Black

### CCS Vertical Cable Managers for Standard and Universal Racks

#### Double-Sided

##### CPI P/N 30161-703

45U x 3.65"W x 12.2"D (2.1 m x 93 mm x 310 mm), Black

##### CPI P/N 30162-703

45U x 6"W x 12.2"D (2.1 m x 150 mm x 310 mm), Black

##### CPI P/N 30163-703

45U x 10"W x 12.2"D (2.1 m x 250 mm x 310 mm), Black



### Universal Horizontal Cable Managers

##### CPI P/N 30139-719

1U x 19"EIA x 4.96"D (126 mm), Black

##### CPI P/N 30130-719

2U x 19"EIA x 5.14"D (131 mm), Black

##### CPI P/N 30131-719

3U x 19"EIA x 5.14"D (131 mm), Black



Other sizes are available.

## Cable Management Solutions

### Evolution® Cable Management

CPI's largest, most feature rich cable manager includes a front door styled to match the TeraFrame® family of cabinets for side-by-side use in data centre computer rooms for medium and high density applications.

- Vertical cable managers are available in single and double-sided versions
- Delivers fully assembled with door(s)
- Heavy duty design, trough and doors are steel, T-shaped cable guides are plastic
- Patented T-shaped cable guides with rounded edges protect and organise cables
- Large cable openings between the T-shaped cable guides on the sides of the managers align with each rack-mount unit (U) space on the supporting rack
- Moveable Mid-Sections in double-sided vertical cable managers allow a 50/50, 40/60 or 60/40 front/rear split of the internal space
- The door features a two-point latch operated by a single knob, opens to the right or left and can be removed when cabling
- The door attaches at the top and bottom of the cable manager and does not limit or block access to any of the cable openings at the side of the manager

### Vertical Cable Managers

#### Double-Sided, g2

##### CPI P/N 35521-703

45U x 6"W x 24.5"D (2.1 m x 150 mm x 622 mm), Black

##### CPI P/N 35522-703

45U x 8"W x 24.5"D (2.1 m x 200 mm x 622 mm), Black

##### CPI P/N 35523-703

45U x 10"W x 24.5"D (2.1 m x 250 mm x 622 mm), Black

##### CPI P/N 35524-703

45U x 12"W x 24.5"D (2.1 m x 300 mm x 622 mm), Black

##### CPI P/N 35525-703

45U x 15"W x 24.5"D (2.1 m x 380 mm x 622 mm), Black

#### Combination, g3

##### CPI P/N 35571-703

45U x 6"W x 20.2"D (2.1 m x 150 mm x 513 mm), Black

##### CPI P/N 35572-703

45U x 8"W x 20.2"D (2.1 m x 200 mm x 513 mm), Black

##### CPI P/N 35573-703

45U x 10"W x 20.2"D (2.1 m x 250 mm x 513 mm), Black

##### CPI P/N 35574-703

45U x 12"W x 20.2"D (2.1 m x 300 mm x 513 mm), Black

##### CPI P/N 35575-703

45U x 15"W x 20.2"D (2.1 m x 380 mm x 513 mm), Black

### Horizontal Cable Managers

#### CPI P/N 35441-701

1U x 19"EIA x 8.2"D (208 mm), Black

#### CPI P/N 35441-702

2U x 19"EIA x 8.2"D (208 mm), Black

#### CPI P/N 35441-703

3U x 19"EIA x 8.2"D (208 mm), Black

Other sizes are available.



Evolution Cable Managers installed on a CPI 4-Post Rack



Evolution Cable Managers; shown left to right – Single-Sided g1, (2) Double-Sided g2 versions, and Combination g3 manager.



## GF-Series GlobalFrame® Cabinet System

The GF-Series GlobalFrame® Cabinet is a cost effective mixed-use equipment storage solution for computer, data storage, security and network equipment.

- Sturdy welded and bolted steel construction
- 3000 lb (1360 kg) equipment load capacity
- Adjustable depth mounting rails with marked and numbered rack-mount (U) spaces
- Front and rear support for 19" EIA rack-mount equipment
- Perforated doors for front-to-rear airflow
- Four large cable knockouts on the top panel, one per corner
- Half height side panels for easier handling
- Locking doors and side panels for physical security
- Factory installed earthing kit for easy bonding
- Easy movement on included casters
- Easy access to leveling feet

### Includes:

- Four-post frame with casters and leveling feet
- Equipment mounting rails, 19" EIA, two pairs
- Solid top panel with four large knockouts for cables
- Perforated front door with swing handle and keyed lock
- Double perforated rear door with swing handle and keyed lock
- Two-piece side panels with keyed locks
- PDU brackets, one pair, supports two PDUs
- Baying kit
- Floor attachment brackets
- Equipment installation hardware, 25 each M6 cage nuts and screws



CPI GlobalFrame Cabinet installation images courtesy of Gyron Internet Ltd.





# GF-Series GlobalFrame® Cabinet

**Ordering Information:**

Use the part number matrices below to select a GF-Series GlobalFrame Cabinet. Choose the **Height**, **Width**, **Depth**, **Side** panels and configuration to form a part number. **Example Part Number: GF-1A220**

**Standard Cabinets:**

- Supports front-to-rear airflow for hot aisle/cold aisle or enclosed aisle environments
- 30 frame sizes available - three heights, three widths, four depths
- Includes a cabinet frame, two pairs of 19"EIA square-punched equipment mounting rails, a top panel, a perforated metal front door, a double perforated metal rear door, swing handle latches, keyed locks, casters, leveling feet, floor attachment brackets and baying kit
- Supports 3000 lb (1360 kg) static load on leveling feet; 2250 lb (1020 kg) "rolling" load on casters
- Colour is black.

	Height			U	Width			Depth	Side Panels		Configuration			
	in	mm			in	mm			Description	Description				
GF-	1	79.3	2013	42U	A	23.6	600	2	39.4	1000	0	No Sides	0	Standard Top Panel/Standard Pallet
	2	84.5	2147	45U	B	29.5	750	3	41.3	1050	1	One Side		
	3	89.8	2280	48U				4	47.2	1200	2	Two Sides		

	Height			U	Width			Depth	Side Panels		Configuration			
	in	mm			in	mm			Description	Description				
GF-	1	79.3	2013	42U	C	31.5	800	1	31.5	800	0	No Sides	0	Standard Top Panel/Standard Pallet
	2	84.5	2147	45U				2	39.4	1000	1	One Side		
	3	89.8	2280	48U				3	41.3	1050	2	Two Sides		
					4	47.2	1200							



**High-Density Cabinets with Vertical Exhaust Duct:**

- Isolates hot exhaust air; supports front-to-top airflow with the Vertical Exhaust Duct
- 18 frame sizes to choose from - three heights, three widths, two depths
- Includes a cabinet frame, two pairs of 19"EIA square-punched equipment mounting rails, a Vertical Exhaust Duct and top panel, a bottom panel, a perforated metal front door, a solid metal rear door, a rear door sealing kit, swing handle latches, keyed locks, casters, leveling feet, floor attachment brackets and baying kit
- Supports 3000 lb (1360 kg) static load on leveling feet; 2250 lb (1020 kg) "rolling" load on casters
- Colour is black.

	Height			U	Width			Depth	Side Panels		Configuration			
	in	mm			in	mm			Description	Description				
GF-	1	79.3	2013	42U	A	23.6	600	3	41.3	1050	0	No Sides	1	Vertical Exhaust Duct, 20"- 34"H (508 mm - 863 mm)/Standard Pallet
	2	84.5	2147	45U	B	29.5	750	4	47.2	1200	1	One Side	2	Vertical Exhaust Duct, 34"- 60"H (863 mm - 1523 mm)/Standard Pallet
	3	89.8	2280	48U	C	31.5	800				2	Two Sides		



## GF-Series GlobalFrame® Cabinet System Accessories

### Cable Port Brush Kit

Set of two brush sealed grommets that cover the openings in the top panel when the cable knockouts are removed to help prevent bypass airflow. Each top panel has four knockouts, one in each corner. The two-piece design allows the grommet to be easily removed to pass large PDU plugs through the opening.

#### CPI P/N 25190-001

Cable Port Brush Kit, Pack of 2, Black

### Cable Ring Kit

Set of eight plastic D-Rings that attach to the cabinet's equipment mounting rails and creates a vertical cable pathway next to the rails.

#### CPI P/N 25104-001

Cable Ring Kit, 5.0"D (127 mm) Rings, For 23.6"W (600 mm) Cabinets, Black

#### CPI P/N 25106-002

Cable Ring Kit, 4.7"D (119 mm) Rings, For 31.5"W (800 mm) Cabinets, Black

### Vertical Cable Manager with Standard Fingers

Full height bracket that attaches to the cabinet's equipment mounting rails and includes plastic T-shaped cable guides that organise cables by rack-mount unit (U) on the cabinet.

#### CPI P/N 25110-700

Vertical Cable Manager, For 42U x 23.6"W (600 mm) Cabinets, Black

#### CPI P/N 25404-706

Vertical Cable Manager, For 42U x 31.5"W (800 mm) Cabinets, Black

#### CPI P/N 25110-702

Vertical Cable Manager, For 48U x 23.6"W (600 mm) Cabinets, Black

#### CPI P/N 25404-708

Vertical Cable Manager, For 48U x 31.5"W (800 mm) Cabinets, Black

### Cable Lashing Bracket

Two half-height cable lashing brackets that attach to the cabinet frame and provide attachment points to secure cable bundles with Saf-T-Grip® Straps.

#### CPI P/N 25221-701

Cable Lashing Bracket, 5"W (125 mm), For 42U Cabinets, Black

#### CPI P/N 25221-705

Cable Lashing Bracket, 5"W (125 mm), For 48U Cabinets, Black

### Rail Seal Kit

Two blanking panels that seal the space between the equipment mounting rails and the side panel to prevent internal hot air recirculation and allow cable pass through.

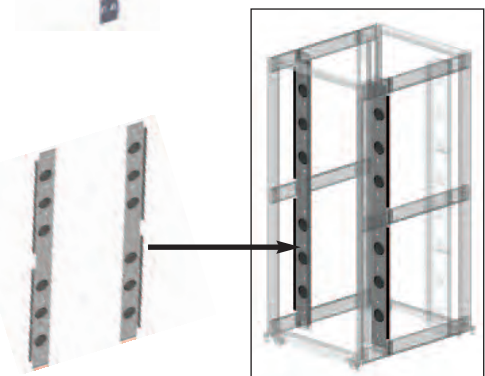
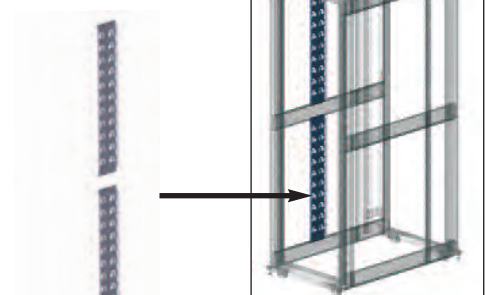
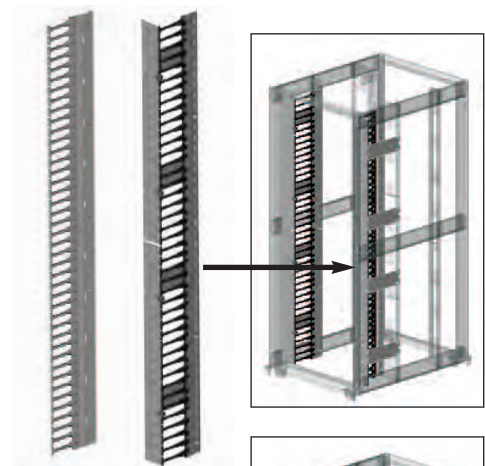
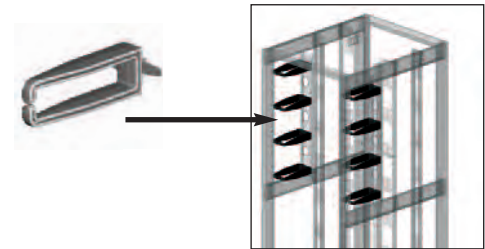
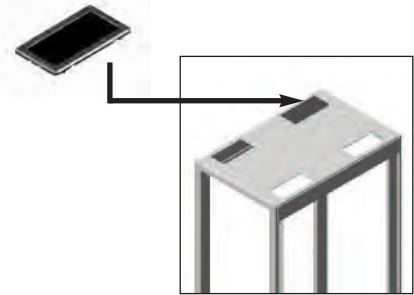
#### CPI P/N 25252-700

Rail Seal Kit, For 42U x 31.5"W (800 mm) Cabinets, Black

#### CPI P/N 25252-702

Rail Seal Kit, For 48U x 31.5"W (800 mm) Cabinets, Black

Additional accessory sizes available, visit [www.chatsworth.com/cabinets](http://www.chatsworth.com/cabinets)



# F-Series TeraFrame® Cabinet System

The F-Series TeraFrame® Cabinet System is designed primarily for server and storage applications in a data centre environment. F-Series is available in a wide range of sizes and configurations to match your facility requirements. The part number matrix below shows the configurations manufactured and available in Europe.

Combine the F-Series TeraFrame with CPI Passive Cooling® Solutions to overcome thermal issues associated with increasing densities. Start by selecting the Vertical Exhaust Duct System top panel option and contain hot exhaust air as it exits the cabinet.

- Available in a wide range of sizes and configurations
- Supports CPI Passive Cooling® Solutions and is adaptable for future changes and density increases
- Order with power and thermal management accessories integrated into the cabinet
- Sturdy welded and bolted steel and aluminum construction
- Up to 2500 lb (1134 kg) equipment load capacity in 23.6"W (600 mm) cabinets
- Up to 2000 lb (907.2 kg) equipment load capacity in 31.5"W (800 mm) cabinets
- Adjustable depth mounting rails with marked and numbered U spaces
- Front and rear support for 19"EIA rack-mount equipment
- Perforated doors for front-to-rear airflow
- Vertical Exhaust Duct System for front-to-top airflow
- Locking doors and side panels for physical security
- Factory-installed earthing kit for easy bonding



The following cabinet part number matrix represents a list of European F-Series TeraFrame Cabinet configurations. Choose the **Height**, **Width**, **Depth**, **Rail Style**, **Front Door**, **Rear Door**, **Latch**, **Colour**, **Top Panel Style** and **Side Panel Style**. Example part number: **FC3U-113A-C22**

F		H		W		D		-	R	FD	RD	L	-	C	TP	SP		
<b>1. Height</b>												<b>10. Side Panel Style</b>						
<b>Cabinet</b>		<b>Frame</b>				<b>U</b>												
<b>in</b>	<b>mm</b>	<b>in</b>	<b>mm</b>	<b>in</b>	<b>mm</b>													
78.3	1989	78.1	1984	42							<b>C</b>							
83.5	2121	83.4	2118	45							<b>F</b>							
87.0	2210	86.9	2207	47							<b>H</b>							
<b>2. Width</b>												<b>9. Top Panel Style</b>						
<b>Cabinet</b>		<b>EIA</b>		<b>Frame</b>														
<b>in</b>	<b>mm</b>			<b>in</b>	<b>mm</b>													
23.6	600	19"		23.4	594							<b>0</b> None						
31.5	800	19"		31.3	794							<b>2</b> Network, 4 Cable Openings						
												<b>4</b> Server, 2 Cable Openings						
												Vertical Exhaust Duct System, 20"-34"H (508 mm-863 mm)						
												Vertical Exhaust Duct System, 34"-60"H (863 mm-1523 mm)						
												<i>Note: For Vertical Exhaust Duct System, use 1050 mm to 1200 mm deep cabinets</i>						
<b>3. Depth</b>												<b>8. Colour</b>						
<b>Cabinet</b>		<b>Rails</b>		<b>Frame</b>														
<b>in</b>	<b>mm</b>	<b>in</b>	<b>mm</b>	<b>in</b>	<b>mm</b>													
35.3	897	28.6	726	31.5	800							<b>C</b> Black						
43.2	1097	36.5	926	39.4	1000													
44.2	1122	37.4	951	40.4	1025													
45.1	1147	38.4	976	41.3	1050													
51.0	1297	44.3	1126	47.2	1200													
<b>4. Rail Style</b>												<b>7. Latches (Door)</b>						
Square-Punched, 2 Pair												<b>A</b> Single-Point, Slam Latch, Keyed Lock						
												<b>C</b> Two-Point, Cam Latch, Keyed Lock						
												<b>K</b> Single-Point, Slam Latch, Combo Lock						
												<b>6. Rear Door</b>						
												<b>0</b> None						
												<b>1</b> Single, Solid Metal						
												<b>2</b> Single, Perforated Metal						
												<b>3</b> Double, Perforated Metal						
												<i>Note: Double door requires a two-point latch (C) or (E), see latches above.</i>						
<b>5. Front Door</b>																		
<b>0</b> None																		
<b>1</b> Single, Perforated Metal																		

For TeraFrame Cabinets accessories or additional configurations not found in this brochure, please use CPI's Product Configurator at [www.chatsworth.com/configurator](http://www.chatsworth.com/configurator) or contact CPI Sales/Europe at +44-1628-524-834 for more information.



## N-Series TeraFrame® Network Cabinet System

The N-Series TeraFrame® Network Cabinet complements the F-Series TeraFrame® Cabinet and supports networking applications in the data centre environment. The N-Series TeraFrame Network Cabinet features offset doors and side panels which provide additional interior space for managing cables and airflow around large modular network switches and interconnects.

The N-Series TeraFrame Network Cabinet is precisely engineered to combat thermal management challenges associated with network switches using side-to-side airflow. Not only does the N-Series TeraFrame provide the best choice for supporting your network infrastructure, but it also presents advanced cabling solutions for greater cable capacity and management.

- Offset doors and side panels provide additional interior space for cables and airflow
- Doors and side panels are easy to remove and provide full access to equipment and cabling
- Optional Network Switch Exhaust Duct isolates and re-directs hot exhaust air from network switches with side-to-side airflow out of the cabinet and into the hot aisle
- Cable knockouts around the perimeter of the top panel provide cable access
- T-shaped cable guides align with each rack-mount unit to precisely divide and organise cables as they enter and exit the rack-mount space
- Similar sizes and styling allows N-Series and F-Series to be placed side-by-side
- Sturdy welded steel construction
- Up to 2500 lb (1134 kg) equipment load capacity
- Adjustable depth mounting rails with marked and numbered U spaces
- Front and rear support for 19" EIA rack-mount equipment
- Perforated doors for front-to-rear airflow
- Locking doors and side panels for physical security

### Includes:

- Four-post frame with leveling feet
- Equipment mounting rails, 19" EIA, two pairs
- Solid top panel with perimeter cable access ports
- Optional Network Switch Exhaust Duct
- Perforated front door with swing handle and keyed lock
- Double perforated rear door with swing handle and keyed lock
- Optional side panels with keyed locks
- Floor attachment brackets
- Equipment installation hardware, 25 each M6 cage nuts and screws

### CPI P/N NF0U-113C-C42

45U (2.1 m) x 19" EIA x 51.1"D (800 mm x 1297 mm), Black  
For Cisco® Nexus® 7010 (no duct)

### CPI P/N NF2K-113C-C42

45U (2.1 m) x 19" EIA x 44.2"D (800 mm x 1122 mm), Black  
For Cisco® Catalyst® 6500 Series Switches and MDS 9509 Directors

### CPI P/N NF3K-113C-C42

45U (2.1 m) x 19" EIA x 44.2"D (800 mm x 1122 mm), Black  
For Cisco® MDS 9513 Directors

### CPI P/N NF4M-113C-C42

45U (2.1 m) x 19" EIA x 46.1"D (800 mm x 1172 mm), Black  
For Juniper Networks EX8208 and EX8216 Switches

### CPI P/N NF5U-143C-C42\*

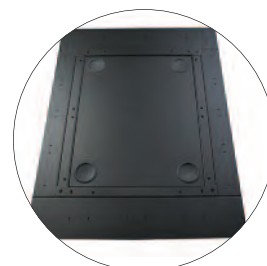
45U (2.1 m) x 19" EIA x 51.1"D (1016 mm x 1297 mm), Black, For Cisco® Nexus® 7018

*Other sizes and configurations are available.*

*\*P/N NF5U-143C-C42 is a special version of the N-Series TeraFrame® Network Cabinet made specifically for the Cisco® Nexus 7018 switch. It is wider than other N-Series to meet Cisco's requirements and features double front and rear doors and brushed openings along both sides of the top panel. Contact CPI Sales/Europe at +44-1628-524-834 for more information.*



The N-Series TeraFrame® Network Cabinet is approved as Cisco Compatible for use with Cisco Catalyst 6500, Cisco MDS 9500 and Cisco Nexus 7000 Series Switches.



Top Panel with knockouts



T-Shaped Cable Guides



Standoff Bracket



Side Mounted Spools

# Mayflex for the Full Range of Chatsworth Products (CPI) with the Very Best Level of Service and Support

**Order from 8.00 a.m. to 8.00 p.m.**

The Mayflex sales teams are available between 8.00 a.m. and 6.00 p.m. and you can order via the XTRA online ordering facility until 8.00 p.m. to have your orders shipped for next day, free of charge delivery to the UK Mainland.

## Stock Availability

Mayflex aims to meet all customers' needs. The company holds a large amount of CPI products in stock for next day delivery.

## Free Next Day Deliveries

Mayflex offers a free next day delivery service on all the items we have in stock to the UK Mainland.

## Technical Expertise

Experienced technical support staff are on hand for a range of pre and post sales support services.

## Projects Team

The Mayflex in-house Projects Team liaises with suppliers and customers in all aspects of major project tender support. They oversee both the commercial and financial elements of the project, ensuring that deadlines are met along with putting logistics in place.

## Demonstration Suites

Both our Birmingham and London offices house newly refurbished demonstration suites which feature a wide range of Chatsworth (CPI) products. These facilities are available for customers to utilise to demonstrate products to their own clients showing them products in an actual working environment.

## Website

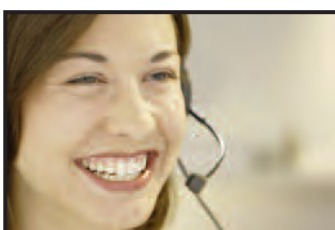
[www.mayflex.com](http://www.mayflex.com) includes a wealth of information about the products and services that the company offers. 'XTRA', the Mayflex online partner area, provides customers with a full online ordering facility, the ability to check stock, create planning lists for regularly ordered products, review previous orders and general account information. Customers can also personalise a range of branded literature and specification sheets with their own company logo and details.

## Track & Trace Facility

Customers can access the Track & Trace facility on the Mayflex website at any time. The company also offers email and text messaging to confirm the receipt of orders and deliveries.



**Service  
Excellence  
Through  
Experience  
and Flexibility**



**Mayflex Customer Service: 0800 093 1202**



[www.mayflex.com](http://www.mayflex.com)

**Mayflex Head Office**

Excel House  
Junction Six Industrial Park  
Electric Avenue  
Birmingham B6 7JJ  
United Kingdom  
United Kingdom  
Phone: +44 (0) 121 326 7557  
Fax: +44 (0) 121 327 1537  
sales@mayflex.com

**Mayflex London Office**

Holland House  
4 Bury Street  
London  
EC3A 5AW  
United Kingdom  
Phone: +44 (0) 207 220 4455  
Fax: +44 (0) 207 220 4450  
londonenquiries@mayflex.com



**Central Location**

The Mayflex head office is based in Birmingham, within easy access of the M6 motorway, (just off junction 6). This makes it a prime site for holding meetings and training sessions. Mayflex also has a sales office situated in the heart of London, opposite the landmark 'Gherkin' building.

**Quality**

Mayflex is devoted to providing the best quality service and products. To demonstrate this commitment the company has the ISO 9001:2008 quality accreditation and the ISO 14001 Environmental Management System. Through obtaining this Mayflex has been able to identify ways to make massive reductions to the environmental impact. Having already managed an 80% reduction in waste being sent to landfill, the company is committed to further implementing its strategies and actions to ensure that it makes a positive contribution to the environment.

For more information and to place your orders for Chatsworth Products (CPI) solutions call the Mayflex sales team on 0800 75 75 65.

This brochure includes details of a wide selection of Chatsworth (CPI) products. For details of items stocked in the UK and lead times for non-stock items please contact Mayflex on 0800 75 75 65.



**CHATSWORTH PRODUCTS**

[www.chatsworth.com](http://www.chatsworth.com)

**Chatsworth (CPI) Locations:**

**USA**

Westlake Village, CA  
Phone: +1-818-735-6100

**Europe**

Buckinghamshire, England  
Phone: +44-1628-524-834

**Middle East & Africa**

Dubai, United Arab Emirates  
Phone: +971-4-2602125