



DEVICE.



FOR EVOLVING
SPACES.

1 DEVICE

WORKS IN EVERY SPACE.



New heights are attainable when innovation is rooted in the framework of your building. A small environment can feel larger and a large environment can be more efficient. But where do you look to find such high-level change and innovation? The floor. When you install an Evolution Series Poke-Thru Device.

Enormous capacity, coupled with unique versatility, makes the Evolution Series Poke-Thru Device a highly capable tool for evolving spaces in new or retrofit construction. From open offices to conference rooms, lecture halls to common areas, it stands up to the most demanding applications and can handle all of your power, communications and A/V connections.

When you require innovation infused into every layer of your environment, the right place to start is right at your feet.



1 DEVICE. ANY FLOOR COVERING.



Carpet



Tile



Wood



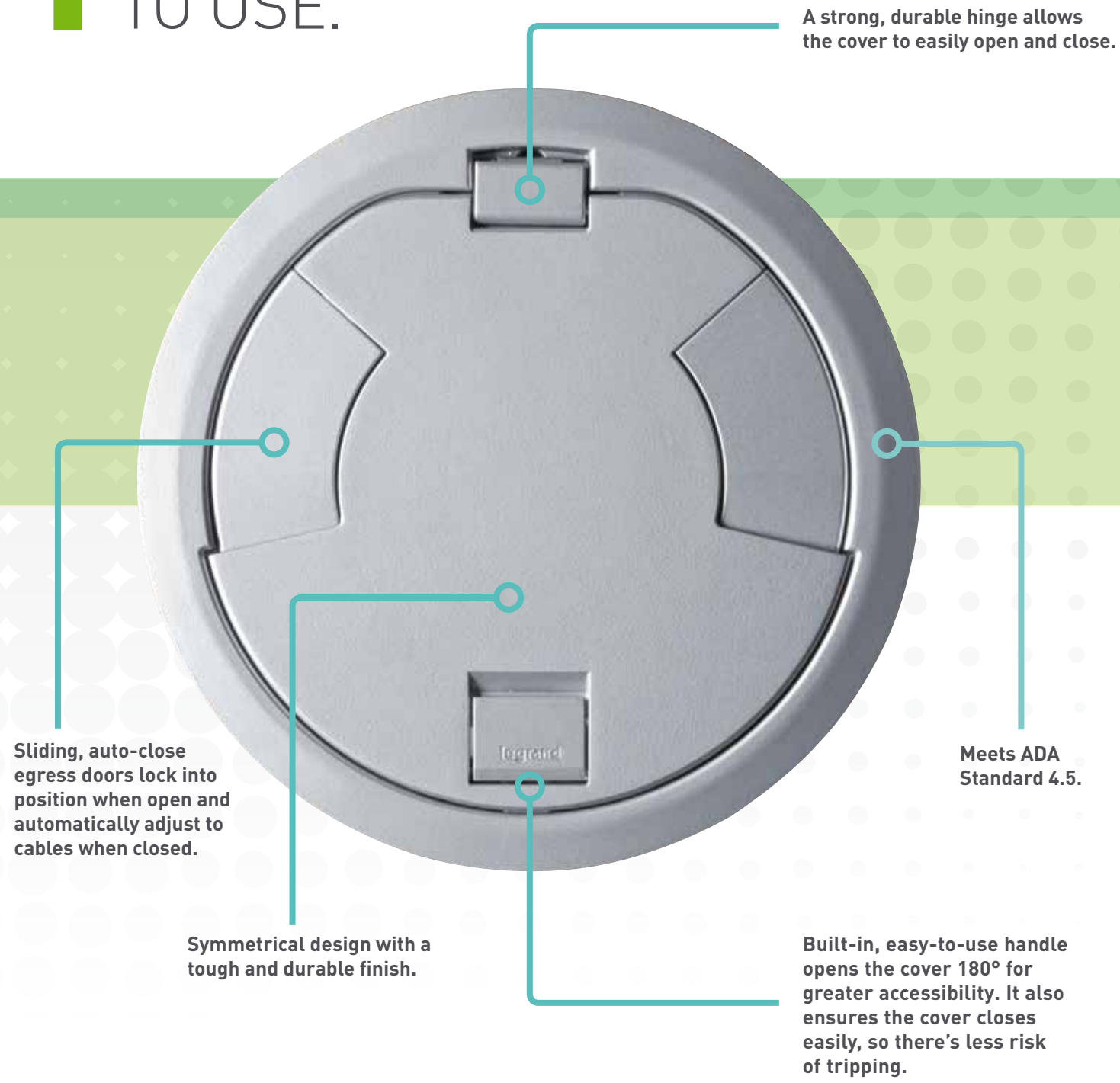
Polished Concrete



Terrazzo

1 DEVICE

EASIER TO USE.



Recessed Devices Provide Maximum Protection – All power, communications and A/V devices are recessed below floor level, providing device longevity.



Open System for Expanded Compatibility – Accepts industry standard power, communications and A/V devices from most manufacturers including Legrand AVIP, Extron® and more.



Two-Hour Fire Rating – Uses an intumescent material that maintains the fire rating of any floor for up to two hours.



Plug Load Control up to 30 Feet – Tested with Pass & Seymour® Wireless RF receptacles to control plug loads up to a distance of 30 feet when the cover is closed.

Six finishes are available to ensure the device will seamlessly match your environment.



Aluminum Nickel Brass Gray Bronze Black

All features are standard in our 6", 8" and 10" cover sizes.

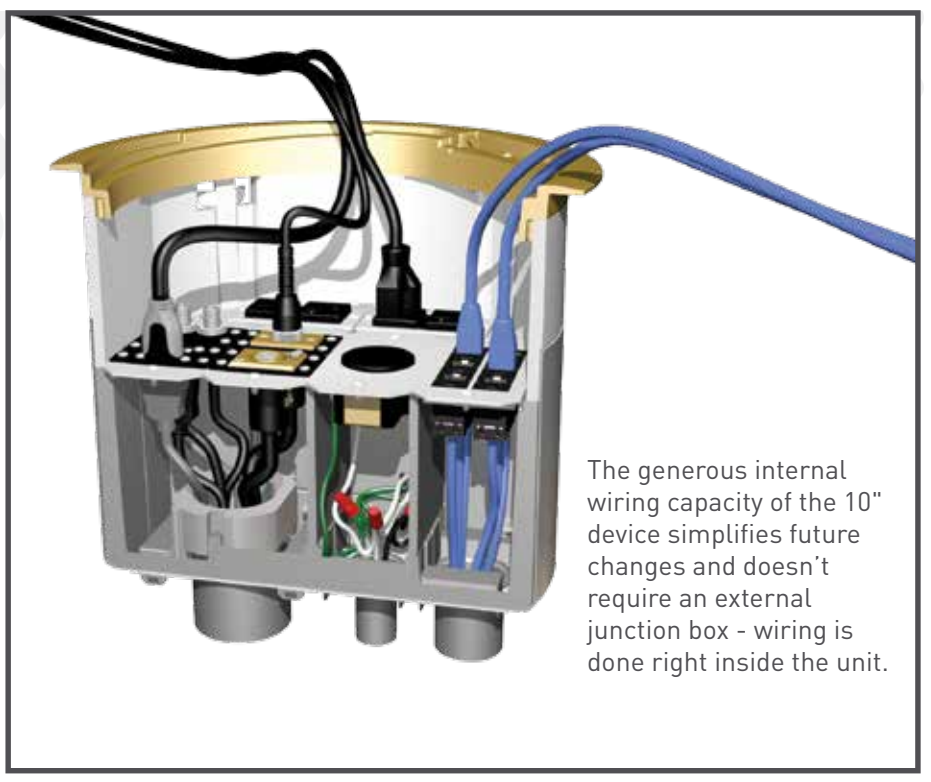
1 DEVICE MAXIMUM CAPACITY.

10" DEVICE

AN INDUSTRY FIRST: 8-gangs of capacity in the largest poke-thru ever



10" poke-thru device



The generous internal wiring capacity of the 10" device simplifies future changes and doesn't require an external junction box - wiring is done right inside the unit.

6" DEVICE



3-gangs of capacity

8" DEVICE



5-gangs of capacity

Configure an Evolution Poke-Thru Device to fit your needs: www.legrand.us/evolution.

designed to be better.™

©2016 Legrand All Rights Reserved ED1554R2 04/16



Electrical Wiring Systems

60 Woodlawn Street
West Hartford, CT 06110
1.877.BY.LEGRAND (295.3472)
www.legrand.us

570 Applewood Crescent
Vaughan, Ontario L4K 4B4
905.738.9195
www.legrand.ca

FOLLOW US

