



Siding Box Kits

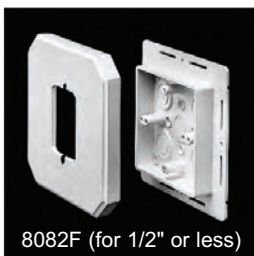
For smooth vertical mounting of fixtures and receptacles on sided structures. Paintable. UV rated plastic for long outdoor life.



8081



8081F



8082F (for 1/2" or less)



8081FC



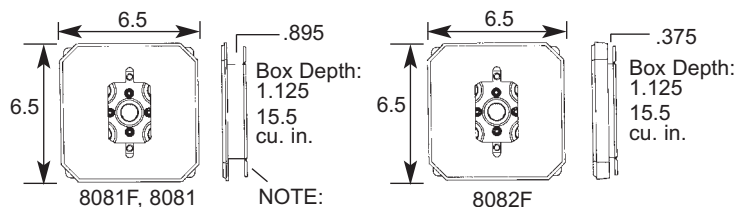
8081FB

CATALOG NUMBER	UPC/DCI/NAED MFG #018997	SIDING TYPE	USES	UNIT STD PKG PKG		STYLE
8081*	80812	All Types	Fixtures Devices	25	25	w/o Flange
8081F*	80814	All Types	Fixtures Devices	25	25	w/ Flange
8082F*	32240	1/2" or Less	Fixtures Devices	25	25	w/ Flange
8081FC*	10939	All Types	Fixtures Devices	25	25	Cover Only
8081FB*	10941	All Types	Fixtures Devices	25	25	Box Only

*Add suffix "GC" to Catalog # when ordering in Canada, for example 8081FGC.



E170558 LR49636



Features and Benefits

- UL Listed electrical box
- Works on all siding types – Before or After the siding is up!
- Flanges may be removed for retrofit work
- Textured, paintable surface
- NM cable connector included

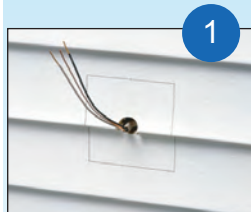
For Installation Instructions 'AFTER Siding is Up' see Below. For Installation Instructions 'BEFORE Siding is Up' see Page L-2.

Installation Instructions

AFTER Siding is Up...

Without Flange (8081 & 8081DBL)

NOTE: 8081F, 8081FDBL, 8082F, 8091F, and 8091FDBL may also be installed when siding is already up – Score and break off flanges before step one (below).



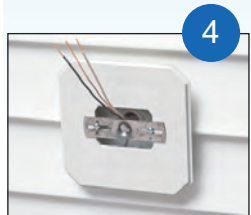
Disconnect electrical power. Place box section in desired location and pencil outline onto siding.



Cut along pencil line with razor knife and remove vinyl siding.



Mount box section to substrate. Caulk as required.



Place siding block over box section (8081 shown).



Connect wires and install fixture per manufacturer's instructions.

Siding Box Kits

For smooth vertical mounting of fixtures and GFCIs on sided structures. Paintable. UV rated plastic for long outdoor life.



CATALOG NUMBER	UPC/DCI/NAED MFG #018997	SIDING TYPE	USES	UNIT	STD	PKG	STYLE
8091*	17856	All Types	GFCIs, Fixtures	25	25		w/ Flange
8091FC	10946	All Types	GFCIs, Fixtures	10	10		Cover Only
8091FB*	10945	All Types	GFCIs, Fixtures	10	10		Box Only

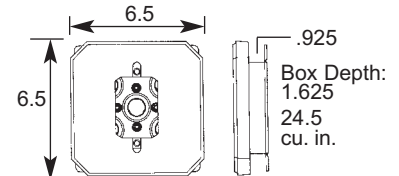
*Add suffix "GC" to Catalog # when ordering in Canada, for example 8091FGC.

PATENTED. ADDITIONAL PATENTS PENDING.



Features and Benefits

- UL Listed electrical box
- Works on all siding types – Before or After the siding is up!
- Flanges may be removed for retrofit work
- Textured, paintable surface
- NM cable connector included
- Works with fixtures and receptacles, but is deeper for use with GFCIs



For Installation Instructions 'BEFORE Siding is Up' see Below. For Installation Instructions 'AFTER Siding is Up' see Page L-1.

Installation Instructions

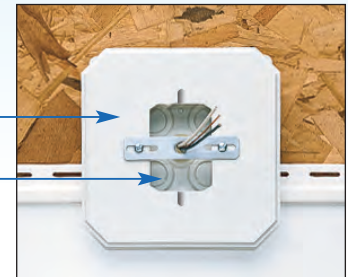
BEFORE Siding is Up...

With Flange (8081F, 8081FDBL, 8082F, 8091F, & 8091FDBL)



1. Before siding is installed, using the flanged style, screw the box to the wall using the holes provided in the flange.
2. Disconnect electrical power. Pull the wire through the knockout of your choice.
3. Install siding around box section and caulk as required.
4. Attach cover.
5. Connect the wires and install the fixture per manufacturer's instructions.

The All-in-One Electrical Box and Cover



Siding block cover is placed over the electrical box.

The rectangular hole provides access to the wire connections.



Siding Box Kits

For smooth vertical mounting of large fixtures on sided structures. Paintable, UV rated plastic for long outdoor life.



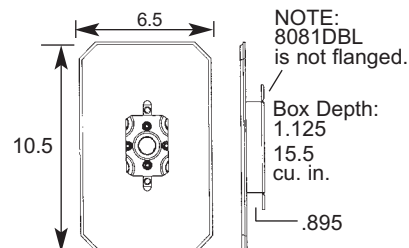
CATALOG NUMBER	UPC/DCI/NAED MFG #018997	SIDING TYPE	USES	UNIT STD PKG PKG		STYLE
8081DBL	80813	All Types	Large Fixtures	25	25	w/o Flange
8081FDBL	80815	All Types	Large Fixtures	25	25	w/ Flange
8081FDBLC	10943	All Types	Large Fixtures	10	10	Cover Only

Add suffix "GC" to Catalog # when ordering in Canada, for example 8081DBLGC



Features and Benefits

- UL Listed electrical box
- Works on all siding types — Before or After the siding is up!
- Flanges may be removed for retrofit work
- Textured, paintable surface
- NM cable connector included
- Perfect for installation of large fixtures



For Installation Instructions 'AFTER Siding is Up' see Page L-1. For Installation Instructions 'BEFORE Siding is Up' see Page L-2.

Siding Box Kit with MEGA Mounting Plate

Mount the largest coach lamps on all siding types with the sturdy MEGA Mounting Plate! It's an electrical box and cover all-in-one! Paintable. UV rated plastic for long outdoor life.



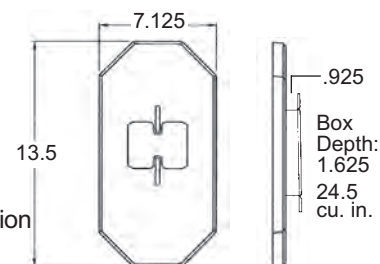
CATALOG NUMBER	UPC/DCI/NAED MFG #018997	SIDING TYPE	USES	UNIT STD PKG PKG		STYLE
8091FDBL	24168	All Types	GFCIs, Extra Large Fixtures	10	10	w/ Flange
8091FDBLC	10947	All Types	GFCIs, Extra Large Fixtures	10	10	Cover Only

Add suffix "GC" to Catalog # when ordering in Canada, for example 8091FDBLGC
PATENTED. ADDITIONAL PATENTS PENDING.



Features and Benefits

- Provides a solid mount for extra large fixtures
- UL Listed electrical box
- Use up or down to fit any mounting hole configuration
- Flanges may be removed for retrofit work
- Deep design to accommodate GFCIs



Installation Instructions

1. Disconnect electrical power. Insert provided NM cable connector through the KO of your choice and pull wires through.
2. Box section mounts to substrate. Caulk as required.
3. Place MEGA Plate over box section and install large fixture per manufacturer's instructions.



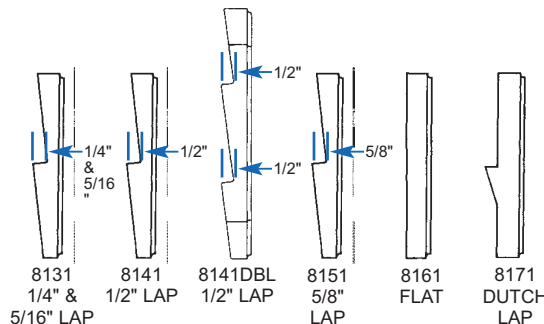
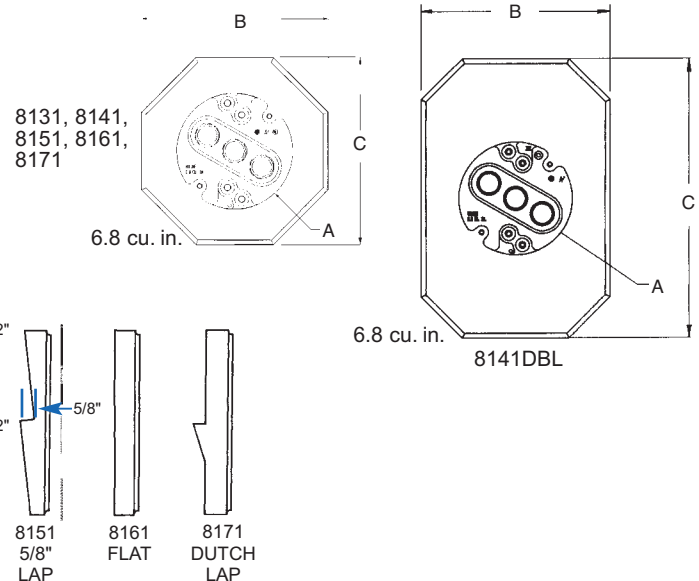
Siding Mounting Kits with Built-in Box

For smooth vertical mounting of light fixtures on all siding types. Kit includes mounting block with built-in electrical box, NM cable connector, and 4 screws. Paintable, UV rated plastic for long outdoor life.



CATALOG NUMBER	UPC/DCI/NAED MFG #018997	SIDING TYPE	UNIT	STD PKG	DIM A	DIM B	DIM C
8131	08131	1/4" & 5/16" Siding & Shingles	1	10	4" DIAMETER X 1/2" DEEP	6.625	6.625
8141	10751	1/2" Lap	1	10	4" DIAMETER X 1/2" DEEP	6.625	6.625
8141DBL	54524	1/2" Lap Double	1	10	4" DIAMETER X 1/2" DEEP	6.900	10.200
8151	10753	5/8" Lap	1	10	4" DIAMETER X 1/2" DEEP	6.625	6.625
8161	08161	Flat Surfaces	1	10	4" DIAMETER X 1/2" DEEP	6.625	6.625
8171	10757	Dutch Lap	1	10	4" DIAMETER X 1/2" DEEP	6.625	6.625

Add suffix "GC" to Catalog # when ordering in Canada, for example 8141GC.

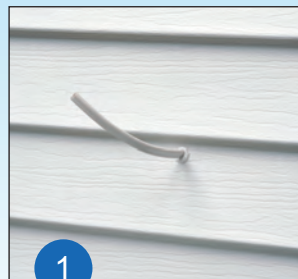


Features and Benefits

- Mounts light fixtures on all siding types, including T-111, HardiePlank® Lap Siding, and flat surfaces
- Fast and easy to install...after siding is up
- Textured, paintable surface
- NM cable connector included
- Built-in electrical box design ensures UL listed installation

Installation Instructions

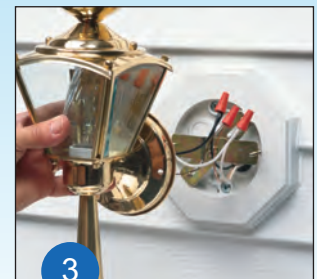
on Siding



1
Select location for light fixture and caulk opening around cable.



2
Remove knockout from electrical box and insert cable connector. Push cable through connector and position mounting block onto siding.



3
Secure mounting block with provided screws. Install fixture per manufacturer's instructions.



MEGA Siding Plate

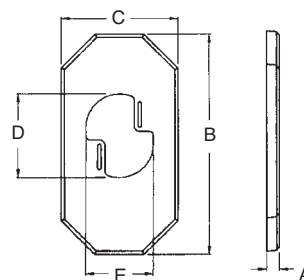
Use the 8100LP to convert octagonal size covers to MEGA covers for mounting large fixtures or coach lamps. UV rated plastic for long outdoor life.



CATALOG NUMBER	UPC/DCI/NAED MFG #018997	SIDING TYPE	UNIT PKG	STD PKG	DIM A	DIM B	DIM C	DIM D	DIM E
8100LP	10749	All Types	1	10	.783	3.500	7.125	5.125	4.105

Features and Benefits

- Accommodates light fixtures with mounting brackets up to 12"
- To center fixtures, use slotted mounting screw holes to provide adjustments up to 1"
- Provides a smooth, secure mounting surface for large fixtures
- Instantly converts a previously installed octagonal siding block to a MEGA Siding Plate
- Features alignment mounting slots to guarantee the MEGA Siding Plate will stay securely in position



Installation Instructions

The 8100LP MEGA Siding Plate is designed to install directly over the existing mounting block for installations of large light fixtures. If screw holes are offset, simply rotate the 8100LP 180°.

For use with Arlington's Siding Blocks ...

- 8131 • 8141 • 8141DBL
- 8151 • 8161 • 8171



SUPER MEGA Siding Plate

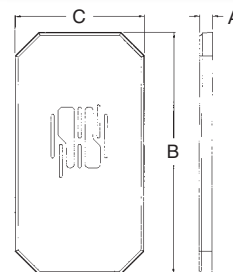
Converts existing octagonal block for installation of extra large light fixtures or coach lamps. Paintable, UV rated plastic for long outdoor life.



CATALOG NUMBER	UPC/DCI/NAED MFG #018997	SIDING TYPE	UNIT PKG	STD PKG	DIM A	DIM B	DIM C
8100MLP	10752	All Types	1	10	.838	16.000	8.500

Features and Benefits

- Supports light fixtures with canopies up to 8" wide x 15-1/2" tall
- To center fixtures, use slotted mounting screw holes to provide adjustments up to 2"
- Fits over all Arlington's octagonal siding blocks and 8091F
- Provides a sturdy, extra large mounting surface



Installation Instructions

Use with an existing mounting block. Disconnect electrical power. Align slots and secure the 8100MLP to the siding block. Install extra large fixture per manufacturer's instructions. If screw holes are offset, simply rotate the 8100MLP 180°.

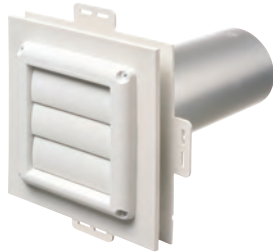
For use with Arlington's Siding Blocks ...

- 8091F • 8131 • 8141 • 8141DBL
- 8151 • 8161 • 8171



Dryer Vent Mounting Block Kit

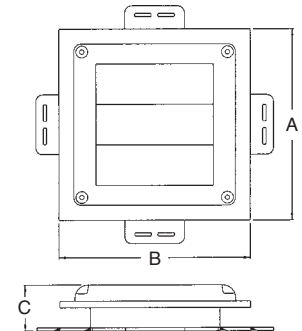
Non-metallic dryer vent mounting block for new construction.



CATALOG NUMBER	UPC/DCI/NAED MFG #018997	SIDING TYPE	UNIT PKG	STD PKG	DIM A	DIM B	DIM C
DV1	43607	All Types	1	1	7.226	7.226	1.738

Features and Benefits

- Provides a secure, attractive and time saving way to install dryer vents on new siding
- Installs before siding is up and fits 1/2" and 5/8" step, and dutch lap siding
- Textured, paintable surface
- Overhang covers cut ends of siding for a clean, neat look
- Easy to install – provides an attractive, flush-look mounting
- UV rated plastic for long outdoor life



Kit includes a low profile, louver-type hood; a snap together 4" diameter x 11" aluminum tube; and a siding block with built-in J-channel.

Siding Mounting Block

Mounting block with built-in electrical box for smooth vertical mounting of light fixtures on all siding types. Paintable. UV rated plastic for long outdoor life.



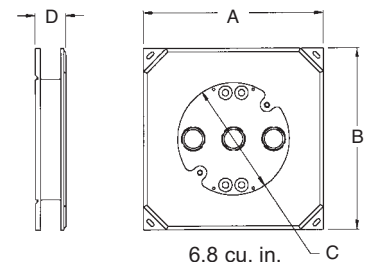
CATALOG NUMBER	UPC/DCI/NAED MFG #018997	SIDING TYPE	UNIT PKG	STD PKG	DIM A	DIM B	DIM C	DIM D
8141F	10761	All Types	10	10	6.652	6.652	4.125" Diameter x 1/2" Deep	1.126

Add suffix "GC" to Catalog # when ordering in Canada, for example 8141FGC.



Features and Benefits

- Installs before or after siding is installed. Remove break-away flanges for installation on previously sided structures.
- One-piece design
- Textured, paintable surface
- NM cable connector included



Installation Instructions

BEFORE siding is up...

1. Remove knockout from 8141F. Insert cable connector. Pull NM cable through connector.
2. Attach block to substrate with (2) screws mounted diagonally.
3. Install fixture according to manufacturer's instructions.

AFTER siding is up...

1. Cut hole in siding.
2. Break flanges off the back of the 8141F. Remove knockout. Insert cable connector in KO, then pull NM cable through connector.
3. Attach mounting block to substrate with (2) screws.
4. Install fixture according to manufacturer's instructions.

EASY TO INSTALL...
BEFORE OR AFTER
THE SIDING!



Weatherproof FS Outlet Box

For installing devices on all siding types. Paintable, UV rated plastic for long outdoor life.

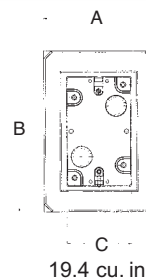


CATALOG NUMBER	UPC/DCI/NAED MFG #018997	SIDING TYPE	UNIT PKG	STD PKG	DIM A	DIM B	DIM C
FS8091F	17304	All Types	10	10	4.511	6.558	2.656

Add suffix "GC" to Catalog # when ordering in Canada, for example FS8091FGC.



E170558 LR49636



19.4 cu. in.

**EASY TO INSTALL...
BEFORE OR AFTER
THE SIDING!**

Costs Less Than Our 8081F and 8091F Siding Boxes

Features and Benefits

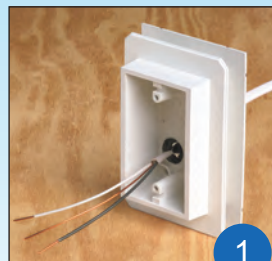
- Costs less...one-piece design
- For use with all single-gang devices, including GFCIs
- Installs before or after siding is installed. Remove break-away flanges for installation on previously sided structures.
- Can be installed vertically or horizontally
- For all types of siding
- Textured, paintable surface.
- UL listed

Installation Instructions

BEFORE siding is up...

1. Disconnect electrical power. Remove knockout. Insert cable connector. Pull NM cable through connector.
2. Attach outlet box to substrate with (2) screws.
3. Install device, FS8091F works with all single gang devices.

Complete installation with code required weatherproof while-in-use cover.



1



2



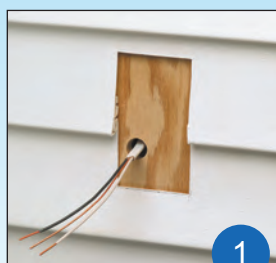
3

GFCI

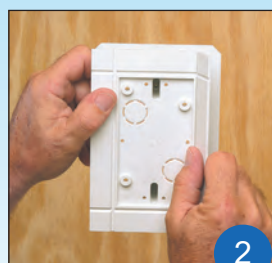
Standard Outlet

AFTER siding is up...

1. Disconnect electrical power. Cut hole in siding.
2. Break flanges off the back of the FS8091F. Remove knockout. Insert cable connector in KO, then pull NM cable through connector.
3. Attach outlet box to substrate with (2) screws.
4. Install single gang device (standard or GFCI). Complete installation with code required weatherproof while-in-use cover.



1



2



3



4

Standard Outlet

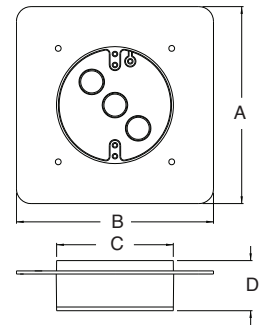
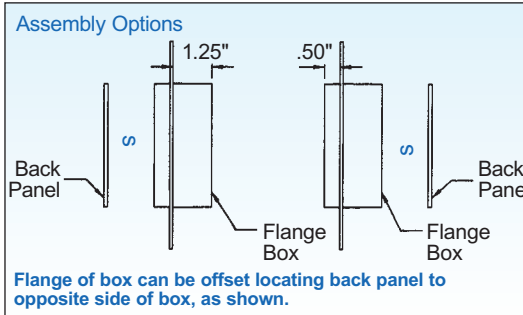
GFCI

Non-metallic FR Series Device & Fixture Box

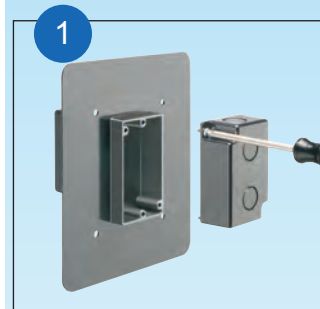
Flanged, reversible box for two different depths. Back panel works on either end of the box for both 1/2" or 1-1/4" depths. For new construction. Use for mounting coach lights on stucco and/or flat siding.



CATALOG NUMBER	UPC/DCI/NAED MFG #018997	APPLICATION	UNIT PKG	STD PKG	DIM A	DIM B	DIM C	DIM D
FR101F	12680	Device Box	10	10	7.875	7.125	3.750	3.525
FR405F	12681	Pan Box	10	10	6.750	6.750	4.000	1.375
FR420F	09615	Fixture Box	10	10	6.750	6.750	4.000	1.986



Installation Instructions



For 5/8" wall finish thickness, loosen two screws and remove the back.



Re-install the back on the OPPOSITE side of the box.



Assembled for 5/8" finish thickness.



Install supplied NM94 cable connector and NM900 plug as needed. Pull wire. Install box.



For 7/8" wall finish thickness install the 1/4" extension ring



Features and Benefits

- Wall mount – one-piece design for new installations
- Up to a 10 lb. fixture rating
- Ships with 1-1/4" box depth for foam/stucco applications
- Easily converts to 1/2" box depth by removing and reinstalling back plate
- The fixed flange is large enough to eliminate the need for a separate flashing
- No gasket needed to seal box from air infiltration
- Large 20 cubic inch volume
- Made of high strength polycarbonate



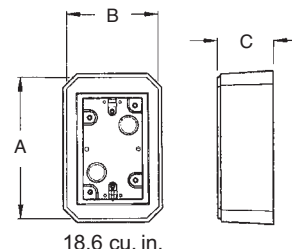
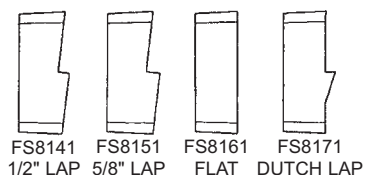
Weatherproof FS Boxes

One-piece construction electrical box provides a clean, weatherproof, UL Listed installation. Deep design for GFCIs. Paintable, UV rated plastic for long outdoor life.



CATALOG NUMBER	UPC/DCI/NAED MFG #018997	SIDING TYPE/STYLE	UNIT PKG	STD PKG	DIM A	DIM B	DIM C
FS8141	17340	1/2" Lap	25	25	5.093	3.312	2.056
FS8151	17341	5/8" Lap	25	25	5.093	3.312	2.056
FS8161	17342	Flat Surfaces	25	25	5.093	3.312	2.056
FS8171	17343	Dutch Lap	25	25	5.093	3.312	2.056

Add suffix "GC" to Catalog # when ordering in Canada, for example FS8141GC.



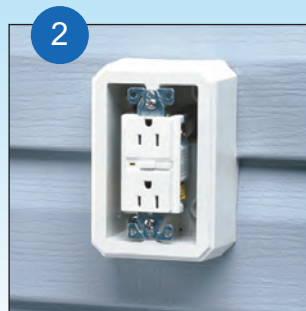
Features and Benefits

- Provides a solid, attractive, UL listed installation
- Accommodates GFCI, switches, and outlets
- For use with all siding types...1/2", 5/8", dutch lap, and flat surfaces

Installation Instructions



Remove KO from FS Box and insert NM cable connector. Push cable through connector and position box onto siding.



Mount box to siding and install your choice of either a GFCI, switch or duplex receptacle.

Complete installation with code required weatherproof while-in-use cover.

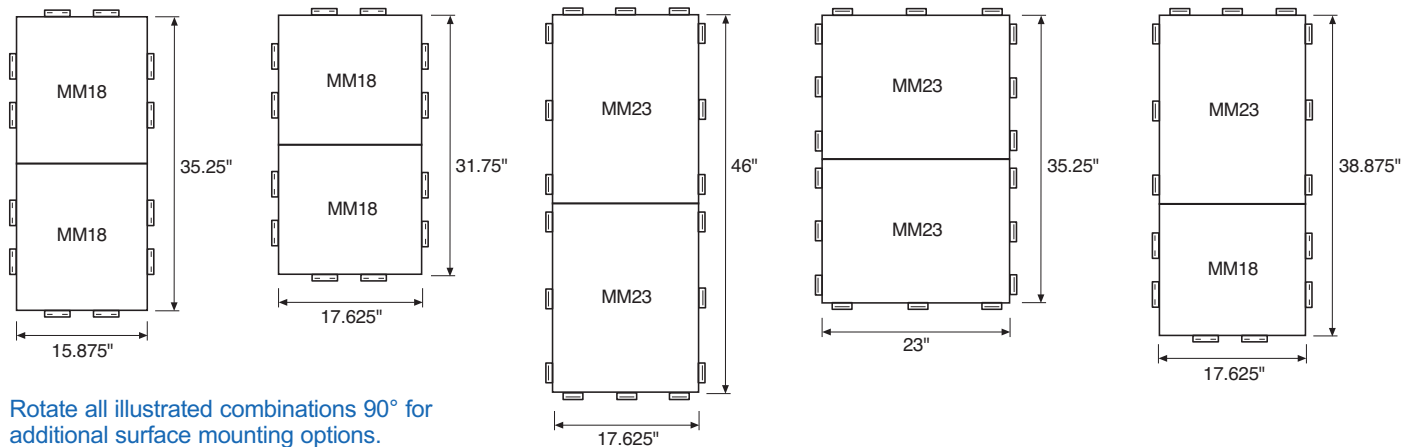
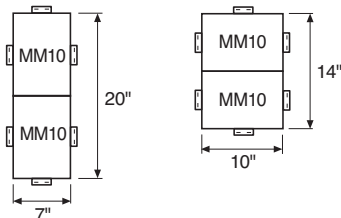
Meter Mounting Bases

One-piece construction. Paintable. Gangable. UV rated plastic for long outdoor life.



MM10 mounting block also mounts disconnects, time clocks, cable TV boxes, and more!

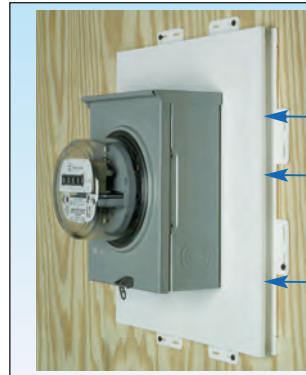
Gangable Meter Base Combinations...



CATALOG NUMBER	UPC/DCI/NAED MFG #018997	SIDING TYPE	UNIT PKG	STD PKG	DIM A	DIM B	DIM C	DIM D
MM10	42278	All Types	10	10	.750	1.125	10.000	7.000
MM18	42280	All Types	10	10	.750	1.125	17.625	15.875
MM23	42282	All Types	10	10	.750	1.125	23.000	17.625

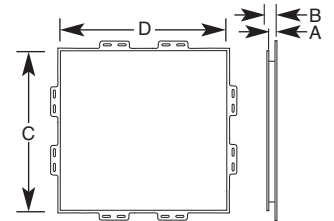
Installs before or after the siding is up and works with any siding type!

Installation Instructions... BEFORE siding is up



Note: For support, meter mounting nails or screws must penetrate through mounting base into substrate.

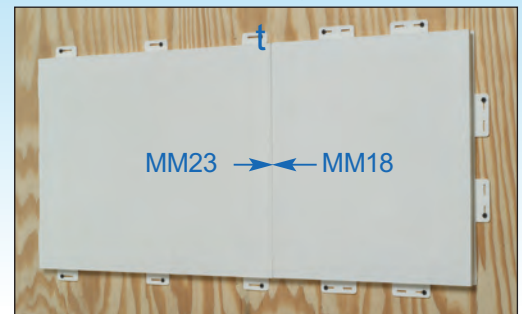
- Fasten to substrate through 'notched flanges'.
- Siding butts to edge of Meter Base, overlapping the 'notched flanges'.
- Meter Base mounting surface provides a 1" overhang to cover cut ends of siding.



Features and Benefits

- Provides a smooth, flat mounting surface
- Provides a 1" overhang to cover siding
- Gangable to accommodate most meter sizes
- Break off flanges for retrofit work

Seal joint channel with Arlington's DSC1 duct sealing compound. See page M-14.





Versatile Box for Power or Low Voltage

Mount security cameras,
fixtures, detectors, and more
inside or out.

New!

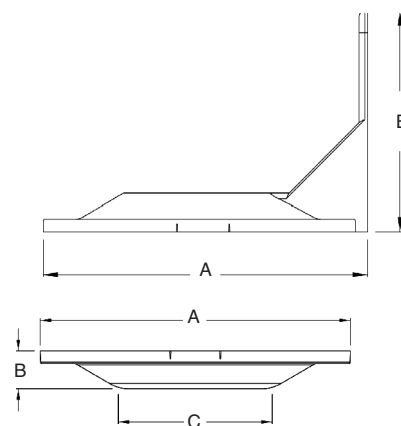
CATALOG NUMBER	UPC/DCI/NAED MFG #018997	DESCRIPTION	WEIGHT RATING	UNIT PKG	STD PKG	DIM A	DIM B	DIM C
8161BR	08881	Box w/ built-in bracket	50 lb/wall	1	10	10.921	6.451	-
8161BP	08880	Box w/ built-in base plate	50 lb/down rod	1	10	7.046	.844	3.500
8161CB	01530	Box w/ corner- mount bracket	50 lb/corner	1	5	10.921	6.451	-
8161PM	09020	Pole Mount Box	50 lb/pole	1	5	10.921	6.451	-
8161TR	00878	Box w/ threaded openings	50 lb/ceiling; 10 lb/wall	1	10	6.720	1.343	-

*Add suffix "GC" to Catalog # when ordering in Canada, for example 8161BRGC.



Features and Benefits

- Non-metallic, UV rated for long outdoor life
- For interior or exterior use in dry, damp or wet locations
- **OPTION** For cameras with base diameter smaller than 4.5" use Arlington's SC5 CAM-KIT™ camera mounting kit on top of the box.
- Mounts security cameras, electrical accessories and fixtures indoors or outdoors
- Screw pattern matches standard 4" fixture box
- Box includes 3/4" to 1/2" reducing bushing
- For dry, damp or wet locations



8161BR



8161BP



8161CB



8161PM



8161TR



Installation Shots



8161BP



8161BR



8161CB

Scan For Video



CAM-LIGHT™ BOX for Suspended Ceilings

Offers a great way to install fixtures and smoke detectors (and more) on a suspended ceiling, drywall ceiling or wall.



FL430

Features and Benefits

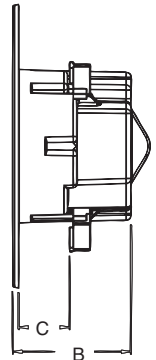
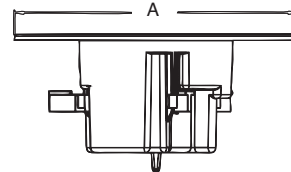
- Designed to install fixtures and more to a suspended ceiling panel – fast with a 4" hole saw
- Rated up to 50 lbs on a suspended ceiling (or drywall ceiling) in combination with the drop wire for support
- Rated up to 10 lbs on a drywall ceiling without drop wire (not for fixtures)
- Rated up to 7 lbs on walls
- Drop wire provides overhead support.
- Mounting wings hold bracket securely against wall when screws are tightened
- Box may be turned to any angle for proper inline positioning of exit signs and direct lighting
- White, non-metallic, paintable flange
- Steel box version for use where metal raceways are required
- Steel version installs with 4-1/2" hole saw
- Boxes have 1/2" and 3/4" knockouts
- To install a security camera on this box check out our CAM-KIT™ camera mounting kit (SC5) on page M-4

CATALOG NUMBER	UPC/DCI/NAED MFG #018997	DESCRIPTION/ CUBIC INCHES	UNIT	STD PKG	DIM A	DIM B	DIM C
FL430*	09740	Non-Metallic / 27.0	1	10	7.380	3.085	1.331
FL430S	09741	Steel / 17.0	1	10	7.345	2.375	1.688

*Add suffix "GC" to Catalog # when ordering in Canada, for example FL430GC. Box includes 12' of drop wire, and box. Non-metallic box also includes (2) NM94 cable connectors.



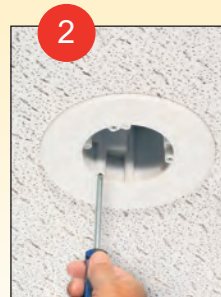
FL430S



Installation Instructions - FL430 for Fixtures



1 Cut hole in a ceiling grid with 4" hole saw. 4-1/2" for steel.



2 Install CAM-LIGHT™ box. Rotate to desired position. Tighten mounting wing screws.



3 Add drop wire to loop. Attach to framing member above.



4 **To Complete:** Using the appropriate KO (1/2" or 3/4") install NM94 cable connector (supplied) and pull cable. Install fixture per manufacturer's instructions.

Scan For Video





CAM-BOX™ KIT for Installations of a Security Camera

For installation of most security cameras on suspended ceilings, drywall ceiling, exterior soffits, or wall.



FLC430



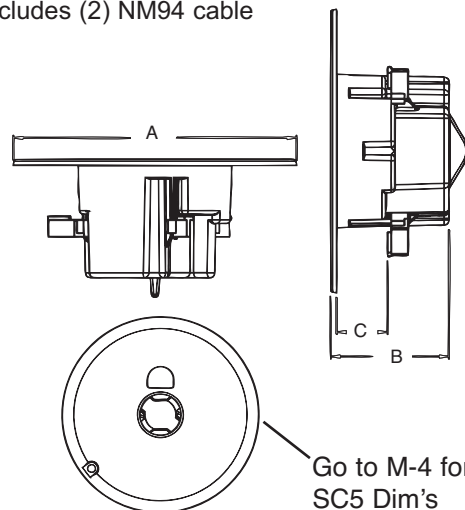
FLC430S

Features and Benefits

- Designed to install security cameras to a suspended ceiling panel – fast with a 4" hole saw
- Rated up to 50 lbs on a suspended ceiling (or drywall ceiling) in combination with the drop wire for support
- Rated up to 10 lbs on a drywall ceiling without drop wire
- Rated up to 7 lbs on walls
- For security cameras, it fits any hole pattern because you drill the holes in the appropriate location in the flange, cameras with mounting holes set wider than 4.5" apart install directly to the box flange
- Mounting wings hold bracket securely against wall when screws are tightened
- White, non-metallic, paintable flange box
- Steel version for use where metal raceways are required
- Steel version installs with 4-1/2" hole saw
- 1/2" and 3/4" knockouts
- Box rotates in either direction for proper camera position

CATALOG NUMBER	UPC/DCI/NAED MFG #018997	DESCRIPTION/ CUBIC INCHES	UNIT	STD PKG	DIM A	DIM B	DIM C
FLC430*	09742	Non-Metallic / 27.0	1	10	7.380	3.085	1.331
FLC430S	09743	Steel / 17.0	1	10	7.345	2.375	1.688

*Add suffix "GC" to Catalog # when ordering in Canada, for example FLC430GC. Kit includes 12' of drop wire, box, bracket, mounting plate, and installation screws. Non-metallic box also includes (2) NM94 cable connectors.



Installation Instructions - FLC430 for Security Cameras



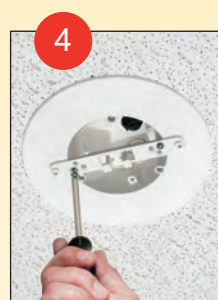
1 Cut hole in a ceiling grid with 4" hole saw. 4-1/2" for steel.



2 Install CAM-BOX™ kit. Rotate to desired position. Tighten mounting wing screws.



3 Add drop wire to loop. Attach to framing member above.



4 Add bracket to the box using screws provided.



5 Attach camera to mounting plate (screws provided). Box fits any camera hole pattern because YOU drill the holes in the appropriate location in the flange.



6 With camera mounted, install the mounting plate to the box by placing it on the bracket and turning clockwise to lock. Install set screw.



Finished installation.

For camera installations on existing boxes, check out our CAM-KIT™ camera mounting kit on page M-4

Scan For Video



CAM-KIT™

Security camera mounting kit. Universal bracket mounts to 3-1/2" and 4" round or octagonal boxes and single-gang device boxes. Also fits FL430 CAM-LIGHT™ BOX.



SC5

CATALOG NUMBER	UPC/DCI/NAED MFG #018997	UNIT PKG	STD PKG	DIM A	DIM B	DIM C	DIM D	DIM E	DIM F
SC5	18058	1	20	4.875	5.564	.703	5.375	.750	.718

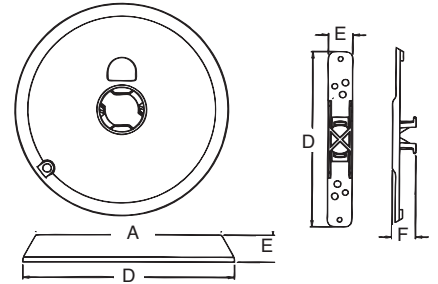
Includes 5" plastic mounting plate, camera mounting bracket and mounting screws.



E253895 LR49636

Features and Benefits

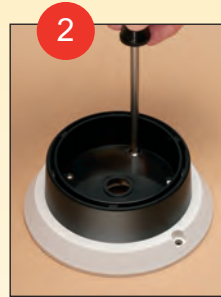
- Fits any camera hole pattern
- Low cost
- Installs in less than two minutes
- Installs cameras with a base diameter up to 4-1/2"



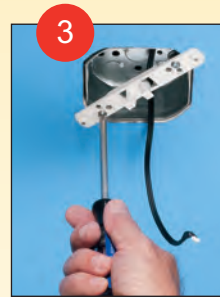
Installation Instructions - SC5 for Security Cameras



1 Use your camera base as a template and drill holes.



2 Attach camera to mounting plate (screws provided).



3 Mount the bracket to the existing box using screws provided.



4 With camera mounted, install the mounting plate to the box by placing it on the bracket and turning clockwise to lock. Install set screw.



Finished installation.

Scan For Video





Weatherproof, Non-Metallic Keypad Enclosures

Keypad cover protects against moisture and weather. Accommodates single or double-gang boxes and most keypad styles. Heavy-duty, white enclosure with paintable white or clear plastic cover.

New!

CATALOG NUMBER	UPC/DCI/NAED MFG #018997	DESCRIPTION	UNIT PKG	STD PKG	DIM A	DIM B	DIM C
DBK55C	77664	Clear, Inside Size 5" x 5" x 1-1/2"	1	10	6.207	5.733	1.937
DBK55W	77665	White, Inside Size 5" x 5" x 1-1/2"	1	10	6.207	5.733	1.937
DBK88C	77662	Clear, Inside Size 7-1/2" x 7-1/2" x 1-1/2"	1	5	8.140	8.480	1.810
DBK88W	77663	White, Inside Size 7-1/2" x 7-1/2" x 1-1/2"	1	5	8.140	8.480	1.810



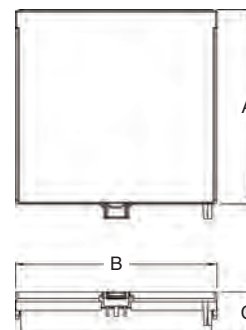
DBK88C



DBK88W

Features and Benefits

- Provides keypad protection (weatherproof with closed cover/vertical mounting)
- Versatile mounting, our keypad enclosure mounts horizontally or vertically
- Suitable for indoor or outdoor use
- Can be mounted, with or without a box, on flat surfaces for low voltage keypads
- Includes gasket
- Universal hole pattern accommodates most keypads and single, 2-gang, or 4x4 boxes!
- Lockable cover



DBK88C - Weatherproof keypad enclosure!



(keypad not included)



Non-Metallic Exterior Keypad Enclosures

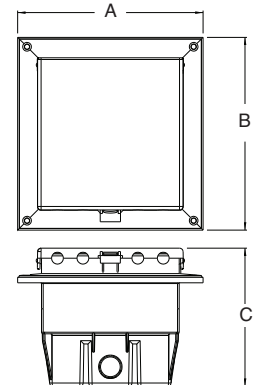
New!

Keypad cover protects against moisture and weather. Heavy-duty, white enclosure with paintable white or clear plastic cover.

CATALOG NUMBER	UPC/DCI/NAED MFG #018997	DESCRIPTION	UNIT PKG	STD PKG	DIM A	DIM B	DIM C
DBLVM2C	13580	Clear, New Construction	1	4	6.888	7.159	5.131
DBLVM2W	13581	White, New Construction	1	4	6.888	7.159	5.131
DBLVR2C	13582	Clear, Retrofit	1	4	6.888	7.159	5.131
DBLVR2W	13583	White, Retrofit	1	4	6.888	7.159	5.131
DBLVS2C	13584	Clear, New Construction	1	4	6.888	7.159	5.131
DBLVS2W	13585	White, New Construction	1	4	6.888	7.159	5.131

Features and Benefits

- White non-metallic 2-gang recessed enclosure with heavy-duty, clear or paintable white plastic cover
- Styles for new construction: stucco, textured surfaces, vinyl and rigid siding – and retrofit
- Fits most keypads and digital controllers
- Inside dimensions: 5" x 5"
- Textured, paintable trim plate covers edges of finished wall surface
- Horizontal or vertical mounting
(raintight ONLY when mounted with latch at bottom)



DBLVS2C



DBLVS2C



DBLVS2C



(keypad not included)



Non-Metallic Enclosures

Made of heavy-duty, non-metallic material.

New!

CATALOG NUMBER	UPC/DCI/NAED MFG #018997	DESCRIPTION	UNIT PKG	STD PKG	DIM A	DIM B	DIM C
EB0708	12672	7" x 8" x 3.5"	1	4	8.522	8.233	3.812
EB1111	12670	11" x 11" x 3.5"	1	5	11.916	13.133	3.812
EB1212	12671	12" x 12" x 4"	1	5	12.519	13.573	4.688
EBL1	11400	Optional Cam Lock	1	10	-	-	-



EB0708



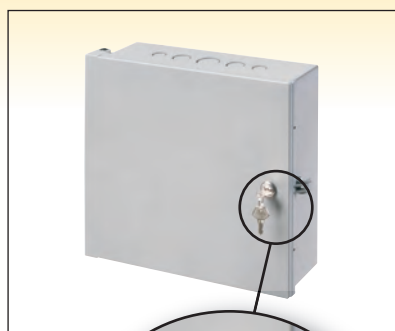
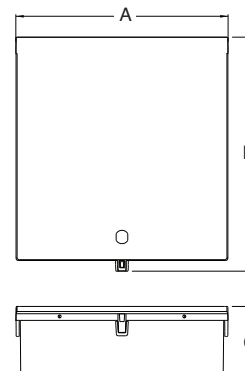
EB1111 w/ EBL1



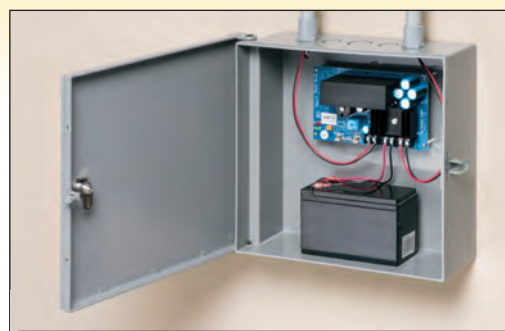
EB1212

Features and Benefits

- Optional cam lock, **sold separately**
- Handy 1/2" and 3/4" knockouts on top and bottom of enclosure box
- Non-metallic



Optional Cam Lock, EBL1





Multiple Gang Recessed TV BOX™ for Power and Low Voltage

For new or existing construction. Non-metallic, recessed combo boxes for power and low voltage for class 2 wiring of satellite or cable TV, speakers, etc.



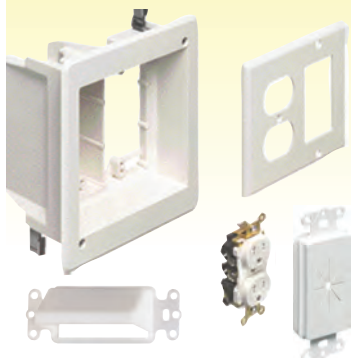
TVBU507



TVBU507BL

TVBR505K Kit

Includes: Recessed combo box; (1) tamper-resistant duplex receptacle; (1) CEDH1 & (1) CED130; and (1) wall plate.



Scan For Video

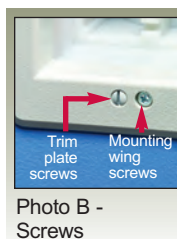


Photo B -
Screws

CATALOG NUMBER	UPC/DCI/NAED MFG #018997	DESCRIPTION	UNIT	STD PKG	DIM A	DIM B	DIM C
TVBU505*	90680	2-Gang, White, (1) Power/ (1) LV	1	4	6.942	6.254	3.750
TVBU505BL*	09681	2-Gang, Black, (1) Power/ (1) LV	1	4	6.942	6.254	3.750
TVBR505K*	09682	Kit, 2-Gang, White, (1) Power/ (1) LV	1	4	6.942	6.254	3.750
TVBU507	09661	3-Gang, White, (1) Power/ (2) LV	1	4	7.930	6.818	3.875
TVBU507BL	09662	3-Gang, Black, (1) Power/ (2) LV	1	4	7.930	6.818	3.875

Add suffix "GC" to Catalog # when ordering in Canada, for example TVBU505GC.

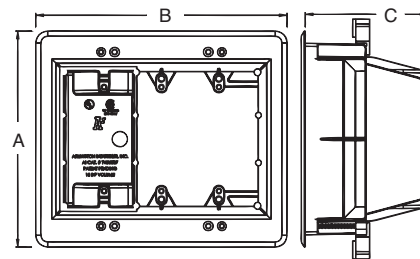
*Optional box covers available on page P-9.



E170558 LR49636

Features and Benefits

- Recessed combo box allows you to mount LCD/plasma TVs and other system components flush against the wall
- For new work...Use supplied screws to install on stud. For convenience, box positioning tabs are set for 1/2" or 5/8" drywall
- Trim plate is textured/paintable and covers edges of cut wall surface
- Mounting wings hold bracket securely against wall when screws are tightened
- For walls up to 1-1/2" thick
- Use with Arlington's SCOOP™ series entrance hoods and plates (see pages O-6 to O-8)



18.0 cu. in.

TVBU507

Includes...

Recessed combo box; (1) trim plate; (1) decorator style cover plate; and installation screws.

Installation Instructions - New Work (TVBU507 shown)



1 Attach box to stud. Use tabs for proper positioning of box depth. See 2.



2 Positioning tabs are set for 1/2" or 5/8" drywall.



3 Attach paintable trim plate with screws provided. See Photo B.



4 Tighten mounting wing screws to pull the box securely against the wall board. See Photo B.

Retrofit Work (TVBU507 shown)



1 Using box, without trim plate as a template, mark location. Cut hole.



2 Attach trim plate to box. See Photo B. Pull wire/cables. Install box assembly in opening.



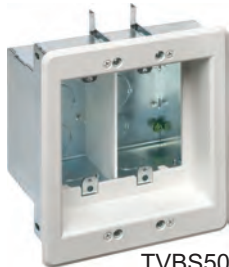
3 Tighten mounting wing screws to pull the box securely against the wall board. See Photo B.



4 TVBU505 with power in one side; low voltage in the other. CED13 (page O-6) used to secure wall plate to box.

Recessed Steel TV BOX™ *New!*

For new or existing construction. Metallic, recessed combo boxes for power and/or low voltage for class 2 wiring of satellite or cable TV, speakers, etc.



TVBS505



TVBS507



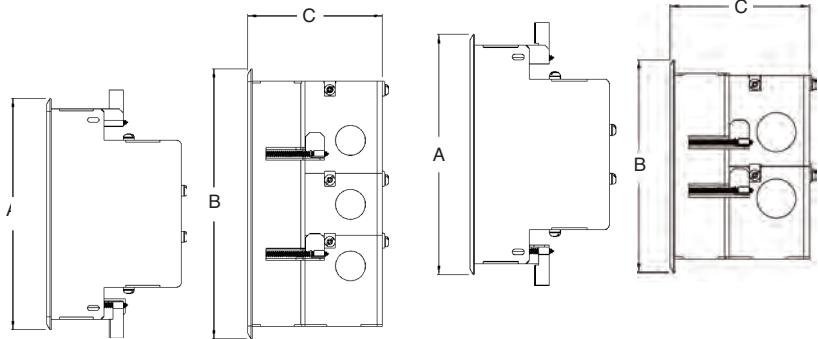
TVBS613

Features and Benefits

- Steel box with non-metallic paintable white or black trim plate
- Easy to install, secure installation
- Mounting wings on two-gang and three-gang styles hold boxes securely against the wall in retrofit projects
- Boxes screw-mount to stud in new construction
- Two hour fire rating
- Optional covers for unused boxes

CATALOG NUMBER	UPC/DCI/NAED MFG #018997	DESCRIPTION	UNIT PKG	STD PKG	DIM A	DIM B	DIM C
TVBS505*	37955	2-Gang steel box w/ white non-metallic trim plate	1	1	6.818	6.698	3.937
TVBS507	37956	3-Gang steel box w/ white non-metallic trim plate	1	1	6.818	7.930	3.937
TVBS613	09633	4-Gang steel box with white non-metallic trim plate	1	1	7.000	17.000	3.848
TVBS613BL	09660	4-Gang steel box with black non-metallic trim plate	1	1	7.000	17.000	3.848
TVB613C	09631	4-Gang white cover	5	5	7.000	17.000	.127

*Optional box covers available on page P-9.



Installation Instructions



New Work

Attach box to stud using #6 screws. Pull wires. (New Installation)



Retrofit

Cut a hole using enclosure, without trimplate, as a template. (Mounting wings hold box in wall. Retrofit)



After drywall is installed, add trim plate, then install enclosure assembly to the wall with outer screws.



Finished Installed Shot.

Scan For Video





Plastic Recessed TV Box™ with Angled Openings

For new or existing construction. Non-metallic, recessed combo boxes for power and low voltage for class 2 wiring of satellite or cable TV, speakers, etc.

New!

CATALOG NUMBER	UPC/DCI/NAED MFG #018997	DESCRIPTION	UNIT PKG	STD PKG	DIM A	DIM B	DIM C
TVB712	09712	Power and/or low voltage	1	1	10.210	7.561	3.906
TVB713	09713	Power and multiple low voltage openings w/ interchangeable tray.	1	1	17.000	7.000	3.906
TVB613C	09631	4-Gang white cover	5	5	17.000	7.000	.127

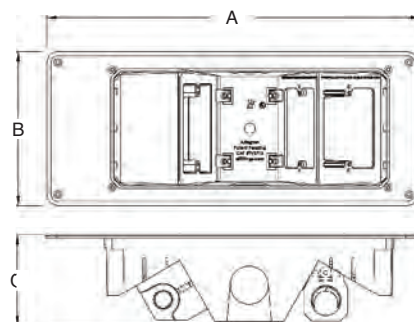
Add suffix "GC" to Catalog # when ordering in Canada, for example TVB713GC.



TVB712



TVB713



Installation Instructions

Retrofit



Cut a hole using enclosure next to stud. Use box without trim plate, as a template. Pull Wires and insert box in hole.



Assemble trim plate. (Retrofit must also use a minimum of (2) #6 x 1-5/8" wood screws in adjacent stud.)

New Work



Attach box to stud through slotted holes. Use minimum of (2) #6 x 1-5/8" wood screws. Pull wires.



Installed TVB712.

Installed TVB713.



Features and Benefits

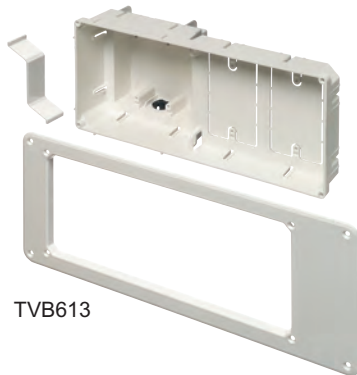
- Non-metallic, paintable trim plate
- For new or old work
 - Positioning tabs for 1/2" wall thickness assure accurate placement on stud in new construction
 - For retrofit, use enclosure (without the trim plate) as a template for the wall opening
- Optional cover available for TVB713

Scan For Video



Recessed TV BOX™ for Power and Low Voltage

Non-metallic and metallic, combination power and low voltage box. For power and phone/cable/speaker/surround sound installations.



TVB613

Note: Receptacle and cover plates are not included.



TVB613C

CATALOG NUMBER	UPC/DCI/NAED MFG #018997	DESCRIPTION/ PLATE COLOR	UNIT PKG	STD PKG	DIM A	DIM B	DIM C
TVB613	09630	4-Gang w/ white trim plate	1	1	7.000	17.000	3.880
TVB613BL	09634	4-Gang w/ black trim plate	1	1	7.000	17.000	3.880
TVB613C	09631	4-Gang white cover	1	1	7.000	17.000	.127

Add suffix "GC" to Catalog # when ordering in Canada, for example TVB613GC.

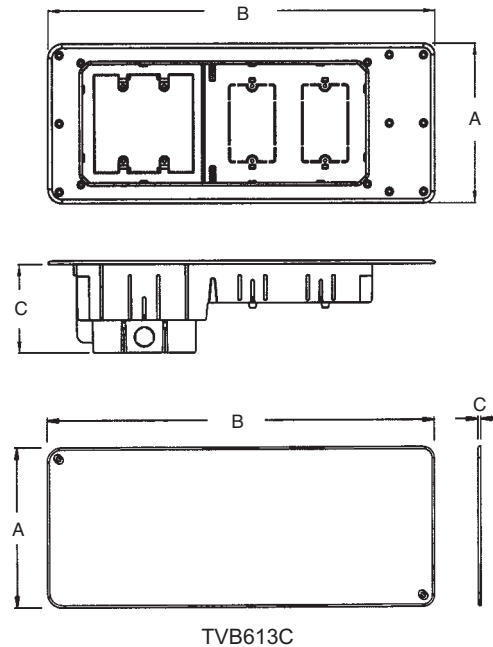


E170558 LR49636

Features and Benefits

- Use metallic boxes where metal raceways are required
- Perfect for flat screen plasma/LCD televisions
- For new or existing construction
- Recessed, so plugs do not protrude from wall
- Trim ring covers cut edge of drywall
- Trim ring (TVB613) and cover (TVB613C) are textured/paintable
- (2) low voltage mounts are built-in
- Low voltage separator provided for built-in 2-gang device box so power and low voltage can be combined

TVB613
26.0 cu.in.



Home Theater / AV

Install Shots



Scan For Video





TV BRIDGE™ II Kits

Non-metallic pre-wired, *New!*
pre-assembled box kits
for flat screen TV installations.

Features and Benefits

- Pre-wired for easy install
- Mounting wing screws hold the boxes secure against the wall
- Plugs and connections stay inside the recessed boxes so TV mounts flush against the wall
- No mess! - wires stay hidden behind the wall

CATALOG NUMBER	UPC/DCI/NAED MFG #018997	DESCRIPTION	UNIT PKG	STD PKG
TVBRA1K	24180	w/ single-gang boxes	1	1
TVBRA2K	24181	w/ 2-Gang power/low voltage box	1	1
TVBRA3K	24195	2-Gang power/low voltage box	1	1
TVB712BK	12781	w/ 2-Gang power/low voltage box (power w/ angled opening)	1	1

*Add suffix "GC" to Catalog # when ordering in Canada, for example TVBRA1KGC.



Kits				
	TVBRA1K	TVBRA2K	TVBRA3K	TVB712BK
Contents	Single gang recessed box containing an outlet is connected to 7 feet of NM cable. Second single gang recessed box connected to the NM cable and includes a pre-wired 4 foot 110V outlet plug, trim, and face plate.	Double gang recessed box containing low-voltage and power outlet connected to 7 feet of NM cable. Second Double Gang recessed box containing low-voltage and power connected to the NM cable and includes a pre-wired 4 foot 110V outlet plug, trim plate and face plate.	Double gang recessed box containing low-voltage and power outlet connected to 7 feet of NM cable. Second single gang recessed box connected to the NM cable and includes a pre-wired 4 foot 110V outlet plug, trim, and face plate.	Double gang recessed box containing low-voltage and an angled power outlet connected to 7 feet of NM cable. Second Double Gang recessed box containing low-voltage and power connected to the NM cable and includes a pre-wired 4 foot 110V outlet plug, trim plate and face plate.

Installation Instructions



Cut Top hole in wall for the TV. Cut Lower hole directly below the top hole, close to existing outlet. Drop the pre-wired device box assembly and cable through the top hole. Insert box and tighten wings.



Pull pre-wired device assembly through the bottom hole.

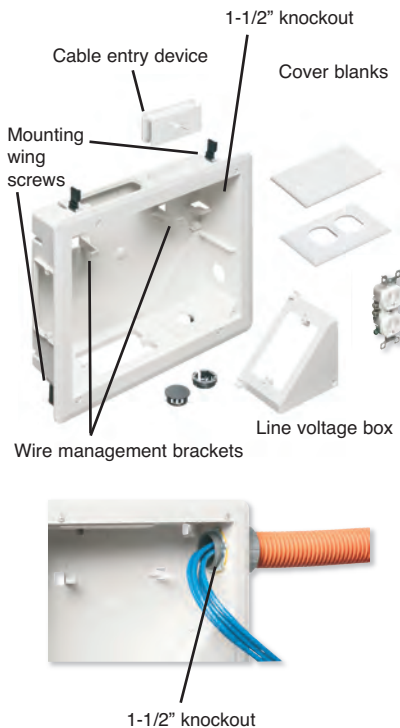


Attach device box to trim plate with screws provided. Secure trim plate to wall with mounting wing screws. Install CED130 in 2-Gang boxes. Pull cables.



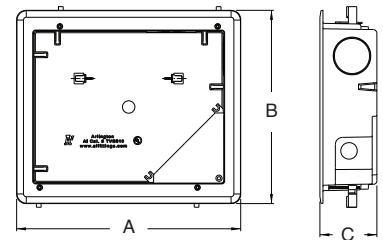
8 x 10 TV BOX™

Non-metallic, installation versatility, and perfect for Home Theater Installations. *New!*



CATALOG NUMBER	UPC/DCI/NAED MFG #018997	DESCRIPTION	UNIT PKG	STD PKG	DIM A	DIM B	DIM C
TVB810	24184	8"x10" power/low voltage box	1	1	11.810	10180	3.000

*Add suffix "GC" to Catalog # when ordering in Canada, for example TVB810GC.



Features and Benefits

- Accepts standard-style plates with receptacles and decorator-style devices with plates - and Arlington's SCOOP™ series entrance plates and hoods
- Mounting wing screws hold box secure against wall
- Supplied with cover blanks, wall plate, a SCOOP cable entry device (CED130) and cable connectors for unused openings
- 1-1/2" knockout for ENT or other low voltage wiring
- UL/CSA Listed

Install Shots

Ideal for home theater systems where multiple connections are needed for sound systems, satellite TV, cable TV, DVRs, and more.

Can be installed horizontally or vertically





Low Voltage Mounting Brackets

Single through 4-gang brackets for installations on existing construction. Designed to install LOW VOLTAGE Class 2 ONLY.

CATALOG NUMBER	UPC/DCI/NAED MFG #018997	UNIT PKG	STD PKG	DIM A	DIM B	DIM C	DIM D	DIM E
LV1	58175	10	100	5.460	4.250	2.500	1.690	1/4" - 1"
LV2	10952	5	50	5.460	4.250	4.185	1.750	1/4" - 1"
LV3	09600	5	50	5.570	4.250	6.000	1.700	1/4" - 1"
LV4	09601	5	50	5.570	4.250	7.810	1.700	1/4" - 1"

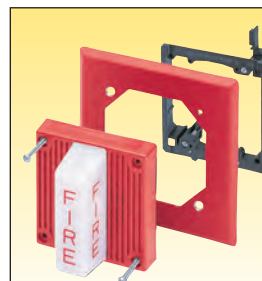
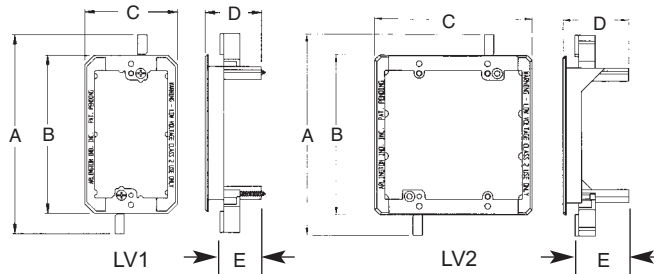
Dim E refers to wall thickness adjustment.



E253895 LR49636

Features and Benefits

- Non-metallic – better than metal and costs less too!
- For communications, cable TV, computer wiring.
- CAT 5 listed
- Adjusts to fit 1/4" to 1" thick wallboard, paneling, or drywall
- Bracket is its own template for cut out
- Mounting wings hold bracket securely against wall when screws are tightened



For Low Voltage Fire Alarm Installations too!

Arlington's LV2, for existing construction, and LVMB2, for new construction (see pg. O-4), can also be used for the installation of fire alarms.

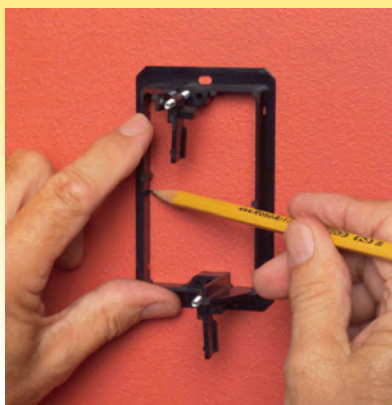
LV1

LV2

LV3

LV4

Installation Instructions



Locate bracket position. Level. Trace inside of LV1 and cut on the outside of the line.

Low Profile Low Voltage Mounting Bracket

Single gang for use with 1/4" or 5/8" drywall installed on cast concrete or concrete block walls with furring strips
LOW VOLTAGE Class 2 ONLY.

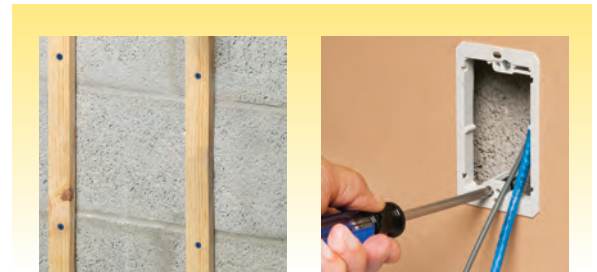
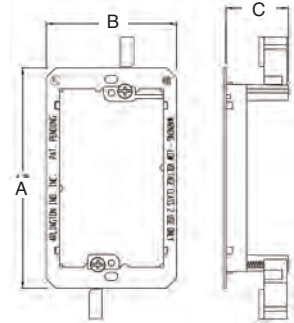


CATALOG NUMBER	UPC/DCI/NAED MFG #018997	DESCRIPTION	UNIT PKG	STD PKG	DIM A	DIM B	DIM C
LV1LP	58177	Single Gang	10	100	4.260	2.500	1.200
LV2LP	23102	2-Gang	5	50	4.260	4.185	1.200



Features and Benefits

- Non-metallic – better than metal and costs less too
- Bracket is its own template for cut out
- Adjusts to fit 1/4" to 5/8" thick wallboard, paneling, or drywall
- For communications, cable TV, computer wiring
- Mounting wings hold bracket securely against wall when screws are tightened



Non-Metallic Wire Bushings for Class 2 Wire

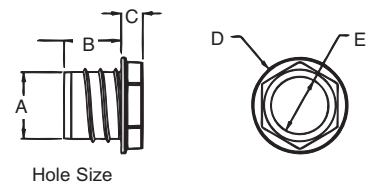
For installation of low voltage wire through wall finish.
Covers cut edges of opening.
Paintable. Designed to install
LOW VOLTAGE Class 2 ONLY.



CATALOG NUMBER	UPC/DCI/NAED MFG #018997	UNIT PKG	STD PKG	DIM A	DIM B	DIM C	DIM D	DIM E
WB500	52950	100	100	.500	.750	.281	.875	.400
WB875	52951	100	100	.875	.750	.281	1.250	.750
WB112	52952	50	50	1.125	.750	.281	1.500	1.000
WB200	52953	50	50	2.000	.750	.281	2.500	1.875

Features and Benefits

- Provides a great-looking job and easy, smooth insertion of cable through wall
- Quick installation with a drill bit or a hole saw
- Easy entry and exit of low voltage cable or speaker wire through wall
- The attractive way to finish cut edges





Nail or Screw On Low Voltage Mounting Brackets for New Construction

Single through 4-gang brackets
for the installation of LOW
VOLTAGE Class 2 ONLY.

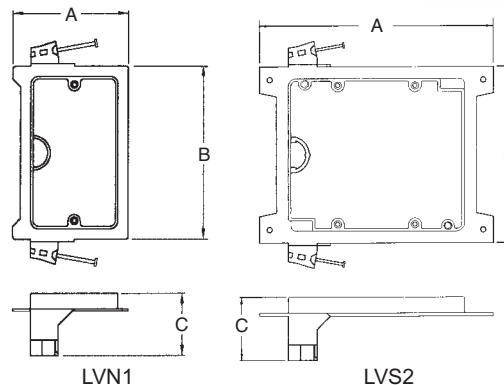
CATALOG NUMBER	UPC/DCI/NAED MFG #018997	DESCRIPTION	UNIT PKG	STD PKG	DIM A	DIM B	DIM C
LVN1	00261	Nail On Style	50	50	2.810	4.170	1.500
LVN2	00275	Nail On Style	25	25	5.492	4.170	1.500
LVN3	00277	Nail On Style	10	10	7.804	4.170	1.500
LVN4	00278	Nail On Style	10	10	9.615	4.170	1.500
LVS1	00262	Screw On Style	50	50	2.810	4.170	1.500
LVS2	00280	Screw On Style	25	25	5.492	4.170	1.500
LVS3	00282	Screw On Style	10	10	7.804	4.170	1.500
LVS4	00283	Screw On Style	10	10	9.615	4.170	1.500



E253895 LR49636

Features and Benefits

- Non-metallic
- Built-in loop to tie off cable
- Eliminates pushback
- Comes complete with nails
parked in place ready to install!
- Installs in 25% less time than
steel or plastic mud rings
- Nail-on ("N" styles) for
wood studs
- Screw-on ("S" styles) for
metal studs



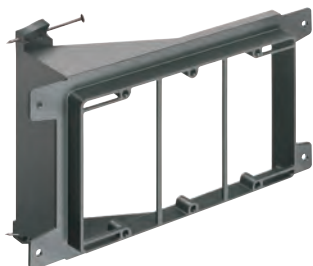
LOWER COST THAN
STEEL MUD RINGS



LVS1



LVN2



LVN3



LVS4



LVN1



LVN2



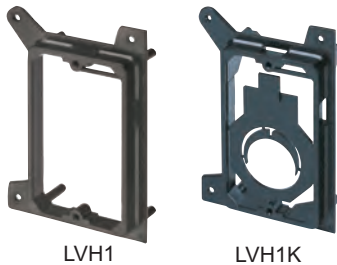
LVS1



LVS2

Low Voltage Mounting Brackets for New Construction

Designed to install LOW VOLTAGE Class 2 ONLY. Mounts vertical or horizontal on wood or metal studs.

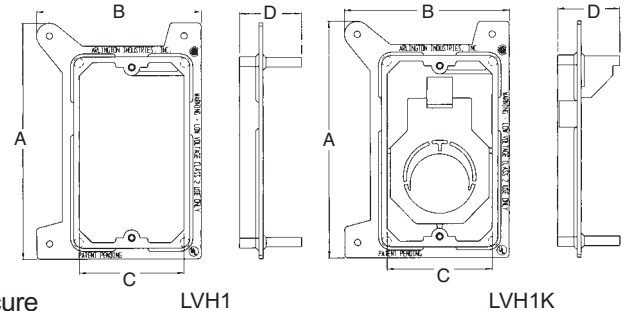


CATALOG NUMBER	UPC/DCI/NAED MFG #018997	UNIT PKG	STD PKG	DIM A	DIM B	DIM C	DIM E
LVH1	10979	50	50	4.552	3.187	2.000	1.205
LVH1K	10984	50	50	4.552	3.187	2.000	1.205



Features and Benefits

- Non-metallic
- Sturdy tabs provide extra-secure vertical or horizontal mounting of class 2, low voltage wiring.
- Convenient wire tie-off through slot at top
- Versatile LVH1K permits the use of 3/4" EMT or a 1" fitting.
- Costs 20% less than metal extension rings!



Low Voltage Mounting Brackets for New Construction

Designed to install LOW VOLTAGE Class 2 ONLY.

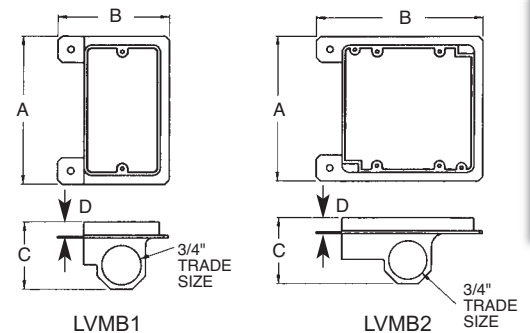


CATALOG NUMBER	UPC/DCI/NAED MFG #018997	UNIT PKG	STD PKG	DIM A	DIM B	DIM C	DIM E
LVMB1	14364	10	100	4.158	3.147	1.970	.375
LVMB2	14365	5	50	4.158	4.842	1.970	.375



Features and Benefits

- Non-metallic
- For communications, cable TV, computer wiring
- Cat 5 listed
- Permits the use of 3/4" EMT
- Works with 1/2" or 5/8" drywall
- Available in single or double-gang models





Cable Entry Bracket with Slotted Cover

New!

White non-metallic cable entry device with slotted cover for low-voltage wire.

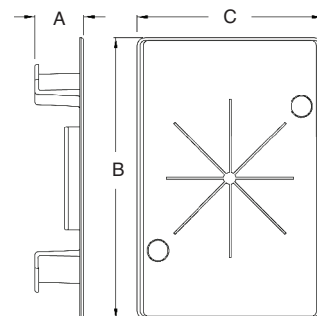


CATALOG NUMBER	UPC/DCI/NAED MFG #018997	DESCRIPTION	UNIT PKG	STD PKG	DIM A	DIM B	DIM C
CE1RP	10560	Non-metallic bracket with reinforced, slotted cover	25	25	.771	4.406	2.918

Features and Benefits

- Installs with a 3.5" hole saw in less than a minute
- Adjusts to fit 1/4" to 1-1/2" wall thicknesses

Installation Shots



Cable Entry Device with Slotted Cover

New!

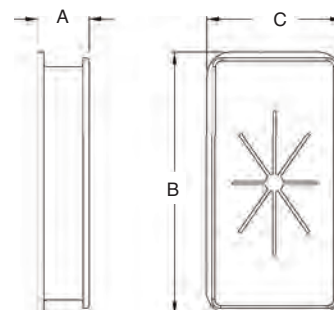
White non-metallic cable entry device with slotted cover for low-voltage wire.



CATALOG NUMBER	UPC/DCI/NAED MFG #018997	DESCRIPTION	UNIT PKG	STD PKG	DIM A	DIM B	DIM C
CED130	13015	Non-metallic bracket slotted cover	1	25	.534	2.730	1.415

Features and Benefits

- Non-metallic
- Organizes low voltage cable in a neat bundle



45° Knock-Out Entry Device

New!

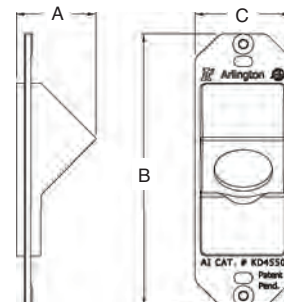
White, non-metallic 45° knock-out entry device for installation of 1/2" trade-size fittings.



CATALOG NUMBER	UPC/DCI/NAED MFG #018997	DESCRIPTION	UNIT PKG	STD PKG	DIM A	DIM B	DIM C
KD4550	83668	Single-Gang	1	25	1.198	4.125	1.450

Features and Benefits

- 1/2" KO at 45° for the installation of 1/2" trade size fittings
- Can also be used as a cable entry device for low voltage cable



THE SCOOP™ Reversible, Non-Metallic Cable Entrance Plates for Existing Cable

White cable entrance hood for use with decorator style wall plates. Protects cable and provides installation versatility. Designed to install LOW VOLTAGE Class 2 ONLY.



CED1



CEDH1



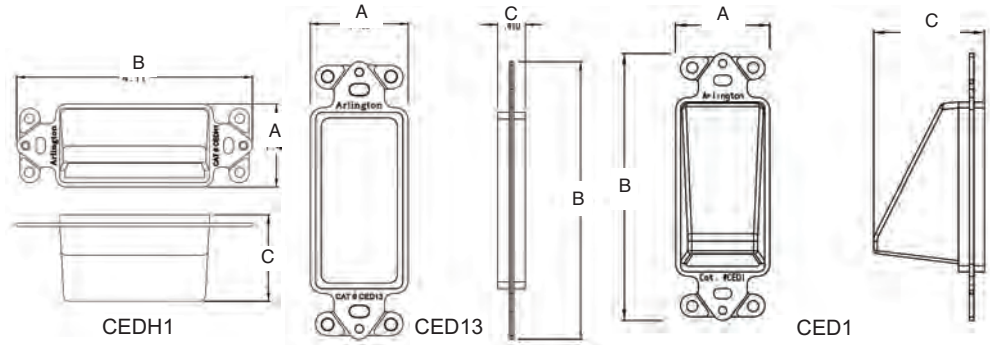
CED13

Features and Benefits

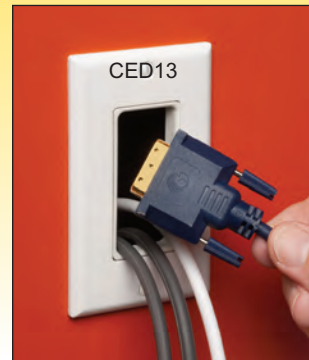
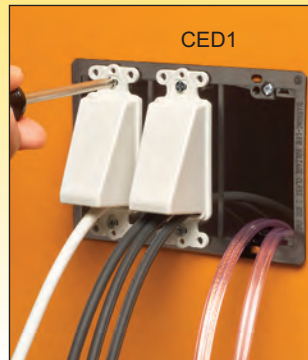
- Reversible for installation versatility – Use it facing IN or OUT!
- Protects low voltage cable against damage
- Best way to run cable where you need it
- CED13 provides widest opening for cables with large connectors

CATALOG NUMBER	UPC/DCI/NAED MFG #018997	DESCRIPTION/ PLATE COLOR	UNIT PKG	STD PKG	DIM A	DIM B	DIM C
CED1	10465	Single-Gang/White	25	25	1.450	4.112	1.708
CED13	13000	Single-Gang/White	25	25	1.450	4.112	.410
CEDH1	10478	Single-Gang, Horiz. /White	25	25	1.450	4.112	1.510

Includes(2) #6 screws.



Easy to Install

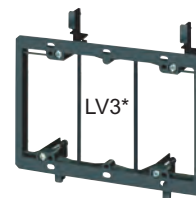


Installation Instructions

Use one or more of Arlington's low voltage mounting brackets (LV1 - LV4 not supplied) to install CED Series.



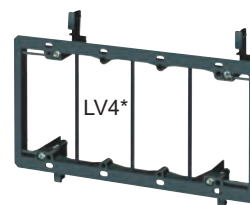
LV1*



LV3*



LV2*



LV4*

*Note: LV1 through LV4 are available on O-1

Scan For Video



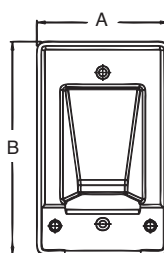


THE SCOOP™ Reversible, Non-Metallic Cable Entrance Plates for Existing Cable

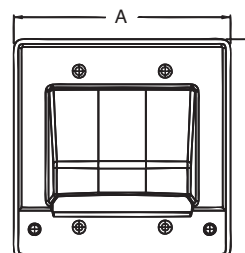
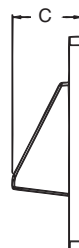
Protects cable and provides installation versatility. Non-rusting, white paintable plastic. Designed to install LOW VOLTAGE Class 2 ONLY.

CATALOG NUMBER	UPC/DCI/NAED MFG #018997	DESCRIPTION	UNIT PKG	STD PKG	DIM A	DIM B	DIM C
CE1	10460	Single-Gang	25	25	2.853	4.620	1.513
CE2	10461	2-Gang	25	25	4.562	4.620	1.759
CEH1	10480	Horz. Scoop Plt	25	25	4.620	2.853	1.500

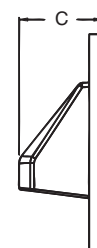
Includes screws that match plate color.



CER1



CER2



CE1



CE2

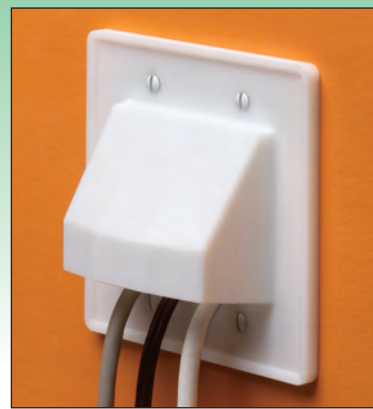
Features and Benefits

- Reversible for installation versatility – Use it facing IN or OUT!
- Offers both cable protection and good looks
- Best way to cover existing cable

Easy to Install



CE2 with SCOOP facing IN



CE2 with SCOOP facing OUT

Each of our SCOOPs mounts directly to the wall with drywall screws. For added support, mount to one of Arlington's low voltage mounting brackets; LV1 to LV4.



LV1*



LV2*

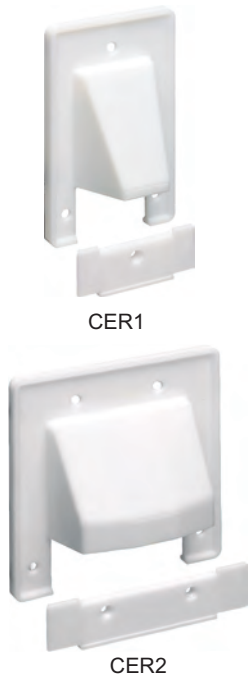
*Note: LV1 through LV4 are available on O-1

Scan For Video



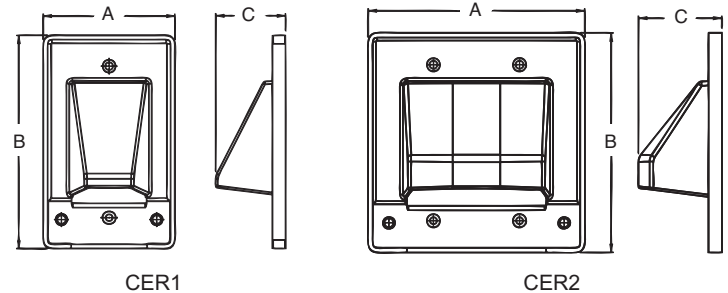
THE SCOOP™ Reversible, Non-Metallic Cable Entrance Plates for Existing Cable

Protects cable and provides installation versatility. Removable lower plate for easier access to cables that are already run. Non-rusting, white paintable plastic. Designed to install LOW VOLTAGE Class 2 ONLY.



CATALOG NUMBER	UPC/DCI/NAED MFG #018997	DESCRIPTION	UNIT PKG	STD PKG	DIM A	DIM B	DIM C
CER1	10473	Single-Gang	25	25	2.853	4.620	1.513
CER2	10474	2-Gang	25	25	4.562	4.620	1.759

Includes screws that match plate color.



Easy to Install



CER2 with Scoop facing **OUT** & lower plate removed.



CER2 with Scoop facing **OUT**. Lower plate secured.

Features and Benefits

- Reversible for installation versatility – Use it facing **IN** or **OUT**!
- Offers both cable protection and good looks
- Best way to cover existing cable
- Lower plate is removable for easier and quicker access to cables that are already run

Each of our SCOOPs mounts directly to the wall with drywall screws. For added support, mount to one of Arlington's low voltage mounting brackets; LV1 to LV4.

*Note: LV1 through LV4 are available on O-1