

Access Doors

www.karpinc.com



WORLD'S LEADING MANUFACTURER
OF ACCESS DOORS





Karp Today

Our state-of-the-art facility is complete with the newest automated technology. Moving to this expansive space has allowed us to redesign our environment to be more efficient while advanced robotic, laser and paint technology ensure we continue to create a superior product. Karp is proud to manufacture our products in the United States and enjoys partnerships with thousands of distributors across the country. We continue to innovate and create smarter products that better serve our customers.



Karp Robotics

Karp's Robotics Department includes robotic systems called "cells". Each "cell" produces doors at a rate 400% to 500% faster than humans. Over 75% of all Karp doors are produced in Karp's Robotics Department, giving Karp customers the best quality access door with the quickest availability. It also provides Karp with the ability to maintain a complete stock at all times of almost every door available. If out of stock, doors can be produced and shipped within 72 hours.



Custom Ordering

One size does not fit all. The dedicated staff at Karp's Special Custom Door Department are experts at special orders. Whether you need quotes, technical advice, order entry, engineering drawings or a manufacturing team, you'll find out why nobody knows access doors better. Join hundreds of architects, engineers and contractors who know that filling special orders is the standard way Karp does business.

Environmental Awareness

Karp is committed to protecting our environment. Whether in the manufacturing process or with our packing materials, we're constantly looking for new ways to be environmentally responsible.



All access doors are made with at least 35% post consumer and 35% post industrial recycled steel.



We recycle all scrap steel materials and excess powder paint that accumulates during the fabrication and painting process.



We use custom EPA-approved, high quality, durable, rust resistant powder paint on all access doors. This paint contains no Volatile Organic Compounds (VOC) or Hazardous Air Pollutants (HAP), so no toxic fumes are emitted.



Approximately 90% of the steel used in our access doors is extracted from within the United States.



KARP Access Doors are manufactured in Melville, NY, USA.



Our shipping cartons are made from recycled corrugate.



We donate catalogues and unused printed materials yearly to a community recycling facility.



Karp reduces energy demand on the local community by using our own generator when the local power authority is at maximum.



Karp encourages fuel conservation by implementing freight policies that encourage consolidated shipments.



DID YOU KNOW?

As the number one specified Access Door, Karp is a name you can trust by providing uniform construction and high quality that comply with ever-changing building codes and requirements.

Plastic Access Doors

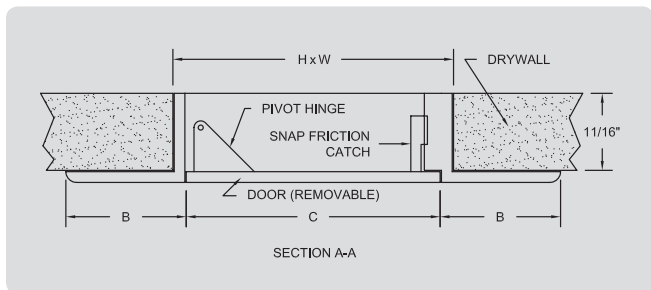
EASY INSTALL



HA Plastic Access Door with Removable-Hinged Door

The Handi-Access plastic door is suitable for all surfaces and can be installed easily by applying glue or caulking adhesive to the back of the frame and pressing into place.

MATERIAL	1/8" high impact styrene plastic
HINGE TYPE	Pivot hinge (enables door panel to be hinged and removable)
LATCH TYPE	Snap friction catch (no special tools required)
FINISH	White lightly textured exposed surface for easy painting or wallpapering



DOOR SIZE (H X W)	WALL SIZE (H X W)		SHIPPING WEIGHT (LBS)
	B	C	
6" x 4"	1"	5 ⁵ / ₈ " x 3 ⁵ / ₈ "	.25 lbs
9" x 6"	1"	8 ⁵ / ₈ " x 5 ⁵ / ₈ "	.5 lbs
8" x 8"	1"	7 ³ / ₄ "	.6 lbs
12" x 12"	1 ¹ / ₈ "	11 ⁵ / ₈ "	1.2 lbs
14" x 14"	1 ¹ / ₄ "	13 ³ / ₄ "	1.6 lbs
18" x 18"	1 ³ / ₈ "	17 ¹ / ₄ "	2.5 lbs
22" x 22"	1 ¹ / ₄ "	21 ⁵ / ₈ "	3.4 lbs
29" x 14"	1 ⁵ / ₈ "	29 ¹ / ₈ " x 13 ¹³ / ₁₆ "	29 ⁹ / ₈ " x 14 ¹ / ₈ " 3.8 lbs

Surface Mounted

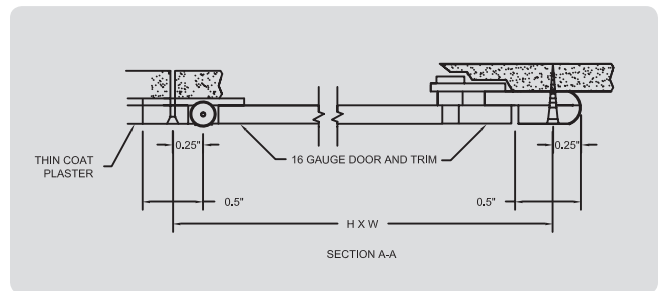
EASY INSTALL



DSB-214SM

The DSB-214SM is a surface mounted door that does not require framing, bracing or notching and cutting of inner wall obstructions. Single piece construction of the frame prevents unit from racking and allows door to sit perfectly within frame and to open to 175°.

MATERIAL	16 ga. steel (12" x 12" and smaller) 14 ga. steel (larger than 12" x 12")
HINGE TYPE	Exposed continuous piano hinge
LATCH TYPE	Flush & screwdriver operated or cylinder lock with dust shutter
FINISH	Prime coat of rust inhibitive electrostatic powder, painted white



DOOR SIZE (H X W)	NUMBER OF LATCHES	SHIPPING WEIGHT (LBS)
8" x 8"	1	1.8 lbs
12" x 12"	1	4.2 lbs
16" x 16"	2	7 lbs
24" x 24"	5	13.7 lbs

GFRG Access Doors

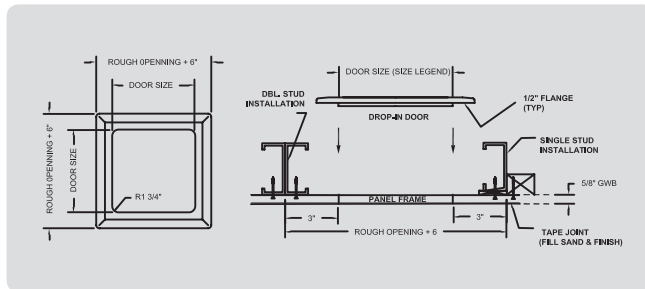
FOR DRYWALL CEILINGS



FG - Glass Fiber Reinforced Gypsum

Karp's FG glass fiber reinforced gypsum access doors provide unobstructed access and satisfy upscale design installation requirements by blending seamlessly into drywall ceilings.

- Perfect for retail
- A great commercial solution
- Meets design needs for hospitality



Drop-in Access Panel—
Typical Panel Elevations

Drop-in Access Panel—Side view
(single/double stud installation)

DOOR SIZE (H X W)	CEILING OPENING	WEIGHT PER DOOR (LBS)
9" x 9"	15" x 15"	6 lbs
12" x 12"	18" x 18"	9 lbs
16" x 16"	22" x 22"	10 lbs
18" x 18"	24" x 24"	11 lbs
24" x 24"	30" x 30"	16 lbs

Hinge FG door available for custom orders.
Special sizes and modifications available on request.

Acoustical Doors

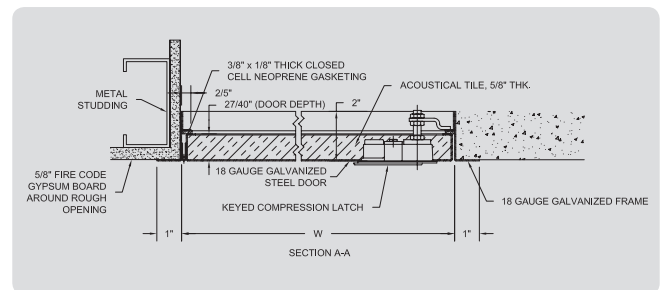
NOISE RESISTANT



STC Acoustical Access Door

The STC Acoustical Door is a high-quality, galvanized steel door fabricated with 5/8" thick acoustical tile, which provides a noise reduction coefficient (NRC) of .055. The 3/8" x 1/8" closed cell neoprene gasketing additionally contributes to the door's noise reduction capability.

MATERIAL	18 ga. galvanized steel 1" wide trim 5/8" acoustical tile 3/8" x 1/8" closed cell neoprene gasket
HINGE TYPE	Continuous piano hinge
LATCH TYPE	Lift and turn compression latch
FINISH	Prime coat of rust inhibitive electrostatic powder, painted white or stainless steel with No. 4 finish



Universal Access Doors

FOR ALL SURFACES



DSC-214M

The DSC-214M is a distinctly superior access door for new installations or for remodeling. The exposed flange adds rigidity to the unit and perfectly conceals the rough wall opening. Flexible anchor straps can be provided for installation within masonry.

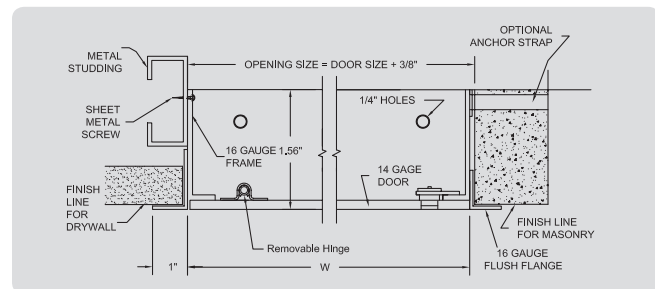
MATERIAL	Frame: 16 ga. steel / Door: 14 ga. steel
HINGE TYPE	Pin type hinge, spring loaded making door removable
LATCH TYPE	Flush & screwdriver operated or cylinder lock with dust shutter
FINISH	Prime coat of rust inhibitive electrostatic powder, painted white
TRIM	1" wide, one-piece construction
NOTES	Masonry anchor straps can be included on all frames if specified

DOOR SIZE (H X W)	WALL / CEILING OPENING	NUMBER OF LATCHES	SHIPPING WEIGHT (LBS)
6" x 6"	6 ³ / ₈ " x 6 ³ / ₈ "	1	2.1 lbs
8" x 8"	8 ³ / ₈ " x 8 ³ / ₈ "	1	3.1 lbs
10" x 10" *	10 ³ / ₈ " x 10 ³ / ₈ "	1	4.3 lbs
12" x 8"	12 ³ / ₈ " x 8 ³ / ₈ "	1	4.6 lbs
12" x 12"	12 ³ / ₈ " x 12 ³ / ₈ "	1	6.3 lbs
14" x 14"	14 ³ / ₈ " x 14 ³ / ₈ "	2	8.1 lbs
16" x 12"	16 ³ / ₈ " x 12 ³ / ₈ "	2	7.8 lbs
16" x 16" *	16 ³ / ₈ " x 16 ³ / ₈ "	2	9.9 lbs
18" x 12"	18 ³ / ₈ " x 12 ³ / ₈ "	2	8.9 lbs
18" x 18" *	18 ³ / ₈ " x 18 ³ / ₈ "	2	12.2 lbs
20" x 16"	20 ³ / ₈ " x 16 ³ / ₈ "	2	11.8 lbs
22" x 22"	22 ³ / ₈ " x 22 ³ / ₈ "	4	16.3 lbs
24" x 12"	24 ³ / ₈ " x 12 ³ / ₈ "	2	10.6 lbs
24" x 18"	24 ³ / ₈ " x 18 ³ / ₈ "	2	14.5 lbs
24" x 20"	24 ³ / ₈ " x 20 ³ / ₈ "	2	16.5 lbs
24" x 24" *	24 ³ / ₈ " x 24 ³ / ₈ "	5	18.7 lbs
30" x 20"	30 ³ / ₈ " x 20 ³ / ₈ "	5	20.1 lbs
30" x 22"	30 ³ / ₈ " x 22 ³ / ₈ "	5	21.7 lbs
30" x 24"	30 ³ / ₈ " x 24 ³ / ₈ "	5	23.6 lbs
30" x 30"	30 ³ / ₈ " x 30 ³ / ₈ "	5	27.8 lbs
36" x 22"	36 ³ / ₈ " x 22 ³ / ₈ "	5	25.6 lbs
36" x 24"	36 ³ / ₈ " x 24 ³ / ₈ "	5	28.2 lbs
36" x 36"	36 ³ / ₈ " x 36 ³ / ₈ "	5	36.8 lbs
48" x 24"	48 ³ / ₈ " x 24 ³ / ₈ "	6	34.4 lbs

* These sizes available as standard sizes in stainless steel.
Special sizes and modifications available on request.

The newly redesigned DSC-214M general purpose access door is now standard with:

- White finish of rust inhibitive electrostatic powder paint.
- Redesigned frame with radius corners and 1" wide trim.
- Spring-loaded pin hinge makes door removable.



DID YOU KNOW?

All Karp steel and stainless steel access doors are proudly made in America.



Flushed Access Doors

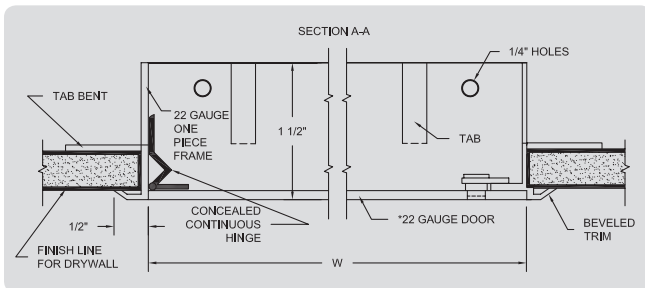
FOR DRYWALL



PF (Press-Fit)

The Press-Fit door is a unique lightweight door that installs easily by bending the tabs on the return back to grip the drywall. The frame, return and doorstop are one-piece construction with a beveled frame resulting in an attractive finished look.

MATERIAL	Trim, Return & Doorstop: one-piece construction, 22 ga. steel Door (< 18" x 18"): 22 ga. steel Door (≥ 18" x 18"): 20 ga. steel
HINGE TYPE	Concealed continuous piano hinge
LATCH TYPE	Flush & screwdriver operated or cylinder lock with dust shutter
FINISH	Prime coat of rust inhibitive electrostatic powder, painted white
NOTES	Return has bendable tabs for easy installation into drywall



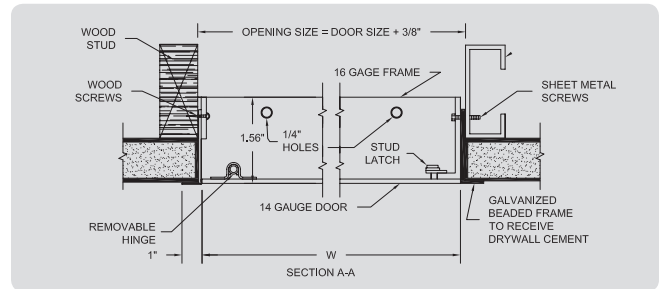
DOOR SIZE (H X W)	WALL / CEILING OPENING	NUMBER OF LATCHES	SHIPPING WEIGHT (LBS)
8" x 8"	7 ¹³ / ₁₆ " x 7 ¹³ / ₁₆ "	1	1.5 lbs
12" x 12"	11 ¹³ / ₁₆ " x 11 ¹³ / ₁₆ "	1	2.5 lbs
14" x 14"	13 ¹³ / ₁₆ " x 13 ¹³ / ₁₆ "	1	3 lbs
18" x 18"	17 ¹³ / ₁₆ " x 17 ¹³ / ₁₆ "	2	4.6 lbs
24" x 24"	23 ¹³ / ₁₆ " x 23 ¹³ / ₁₆ "	2	7.4 lbs



KDW

The KDW has a textured frame and bead so drywall joint compound can be applied in sufficient thickness to conceal the flange. Pre-punched holes in the flange facilitate fastening the flange to framing members with drywall screws.

MATERIAL	Frame: 16 ga. steel / Door: 14 ga. steel
HINGE TYPE	Pin type hinge, spring loaded making door removable
LATCH TYPE	Flush & screwdriver operated or cylinder lock with dust shutter
FINISH	Prime coat of rust inhibitive electrostatic powder, painted white



DOOR SIZE (H X W)	WALL / CEILING OPENING	NUMBER OF LATCHES	SHIPPING WEIGHT (LBS)
6" x 6"	6 ³ / ₈ " x 6 ³ / ₈ "	1	1.8 lbs
8" x 8"	8 ³ / ₈ " x 8 ³ / ₈ "	1	2.4 lbs
10" x 10"	10 ³ / ₈ " x 10 ³ / ₈ "	1	3.3 lbs
12" x 12"	12 ³ / ₈ " x 12 ³ / ₈ "	2	5.8 lbs
14" x 14"	14 ³ / ₈ " x 14 ³ / ₈ "	2	6.5 lbs
16" x 16"	16 ³ / ₈ " x 16 ³ / ₈ "	2	8.8 lbs
18" x 18"	18 ³ / ₈ " x 18 ³ / ₈ "	2	11.1 lbs
22" x 22"	22 ³ / ₈ " x 22 ³ / ₈ "	4	15.3 lbs
24" x 24"	24 ³ / ₈ " x 24 ³ / ₈ "	5	17.2 lbs
36" x 24"	36 ³ / ₈ " x 24 ³ / ₈ "	5	25.9 lbs

* Special sizes and modifications available on request.

Recessed Access Doors

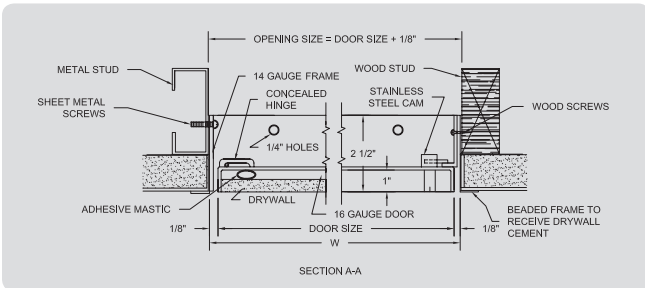
FOR DRYWALL



RDW

The RDW door is recessed to receive a panel of drywall to provide a dry wall finish on the door to match the texture of the surrounding drywall. The door frame includes a drywall bead so that drywall cement can be applied to conceal the flange.

MATERIAL	Frame: 14 ga. steel Door: 16 ga. steel, recessed 1"
HINGE TYPE	Concealed pivoting rod
LATCH TYPE	Flush to finished surface; Screwdriver operated with stainless steel cam and studs or cylinder lock with automatic dust shutter
FINISH	Prime coat of rust inhibitive electrostatic powder, painted white
NOTES	Galvanized steel drywall bead trim



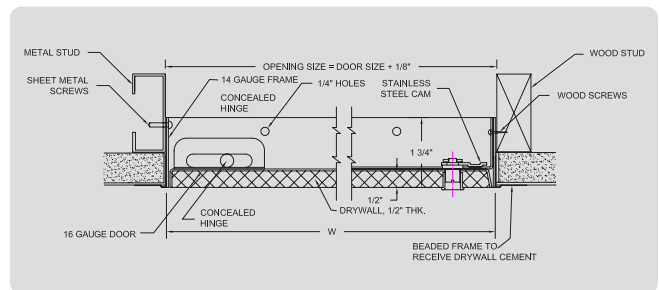
DOOR SIZE (H X W)	WALL / CEILING OPENING	NUMBER OF LATCHES	SHIPPING WEIGHT (LBS)
12" x 12"	12 ¹ / ₈ " x 12 ¹ / ₈ "	1	7.4 lbs
18" x 18"	18 ¹ / ₈ " x 18 ¹ / ₈ "	2	12.8 lbs
24" x 12"	24 ¹ / ₈ " x 12 ¹ / ₈ "	2	12.5 lbs
24" x 24"	24 ¹ / ₈ " x 24 ¹ / ₈ "	2	19.4 lbs
36" x 24"	36 ¹ / ₈ " x 24 ¹ / ₈ "	2	29 lbs



RDWPD

The RDWPD provides maximum concealment with minimal installation time and cost. The RDWPD's recessed door contains a factory installed 1/2" drywall to match the texture of the surrounding drywall. The door frame shall include a drywall bead so that drywall cement can be applied to conceal the flange.

MATERIAL	Frame: 14 ga. steel Door: 16 ga. steel, recessed 1/2" with 1/2" factory installed drywall
HINGE TYPE	Concealed pivoting rod
LATCH TYPE	Flush to finished surface; Screwdriver operated with stainless steel cam and studs or cylinder lock with automatic dust shutter
FINISH	Prime coat of rust inhibitive electrostatic powder, painted white
NOTES	Galvanized steel drywall bead trim



DOOR SIZE (H X W)	WALL / CEILING OPENING	NUMBER OF LATCHES	SHIPPING WEIGHT (LBS)
12" x 12"	12 ¹ / ₈ " x 12 ¹ / ₈ "	1	8 lbs
18" x 18"	18 ¹ / ₈ " x 18 ¹ / ₈ "	2	15 lbs
24" x 12"	24 ¹ / ₈ " x 12 ¹ / ₈ "	2	14 lbs
24" x 24"	24 ¹ / ₈ " x 24 ¹ / ₈ "	2	24.5 lbs
36" x 24"	36 ¹ / ₈ " x 24 ¹ / ₈ "	2	36.5 lbs

Recessed Access Doors

FOR DRYWALL



KATR

The KATR is designed to provide access in a suspended drywall ceiling that is part of a fire rated floor-ceiling assembly. The combination of steel and double thickness of drywall maintains the fire resistive qualities of the floor-ceiling assembly.

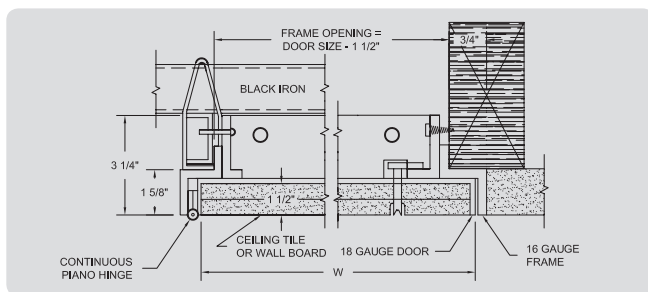
The KATR does not have any fire rated certification.

MATERIAL Frame: 16 ga. steel
Door: 18 ga. steel and recessed 1 1/2" to accommodate double thickness of drywall

HINGE TYPE Exposed continuous piano hinge

LATCH TYPE Flush to finished surface; Screwdriver operated with stainless steel cam and studs or cylinder lock with automatic dust shutter

FINISH Prime coat of rust inhibitive electrostatic powder, painted white



DOOR SIZE (H X W)	WALL / CEILING OPENING	NUMBER OF LATCHES	SHIPPING WEIGHT (LBS)
12" x 12"	10 1/2" x 10 1/2"	1	6.7 lbs
18" x 18"	16 1/2" x 16 1/2"	2	11.6 lbs
24" x 24"	22 1/2" x 22 1/2"	2	18.1 lbs
30" x 22"	28 1/2" x 20 1/2"	2	19.5 lbs

* Special sizes and modifications available on request.

FOR TILE



DSC-210

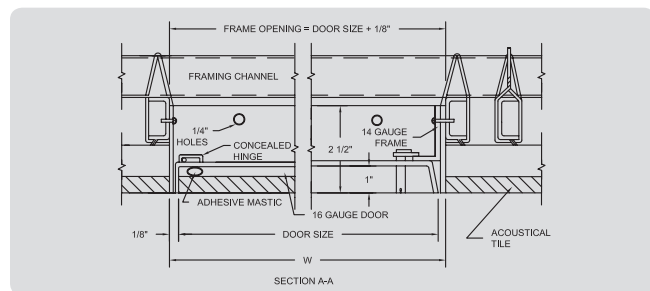
The DSC-210 is designed so that all makes and types of tile thickness up to 1" fit snugly to the recess of the panel. The unique concealed pivoting bar hinge operates completely out of sight so only the metal thickness of the door and frame is visible.

MATERIAL Frame: 14 ga. steel
Door: 16 ga. steel and recessed 1"

HINGE TYPE Concealed pivoting rod

LATCH TYPE Flush to finished surface; Screwdriver operated with stainless steel cam and studs or cylinder lock with automatic dust shutter

FINISH Prime coat of rust inhibitive electrostatic powder, painted white

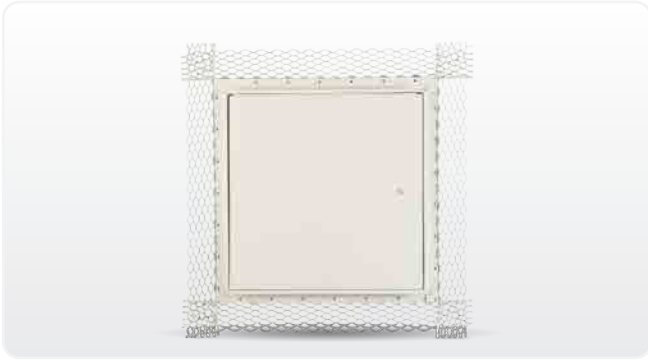


DOOR SIZE (H X W)	WALL / CEILING OPENING	NUMBER OF LATCHES	SHIPPING WEIGHT (LBS)
12" x 12"	12 1/8" x 12 1/8"	1	6.7 lbs
18" x 18"	18 1/8" x 18 1/8"	2	12.4 lbs
24" x 12"	24 1/8" x 12 1/8"	2	10.6 lbs
24" x 24"	24 1/8" x 24 1/8"	2	19.2 lbs
36" x 24"	36 1/8" x 24 1/8"	2	32 lbs

* Special sizes and modifications available on request.

Plaster Access Doors

FLUSHED DOORS



DSC-214PL

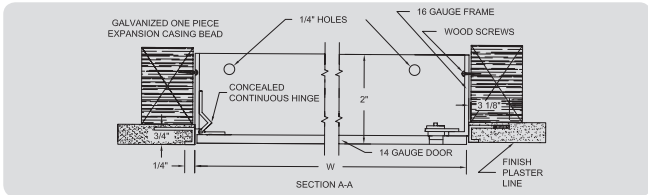
The DSC-214PL has an expansion casing bead with galvanized lath providing a neat, tight protected finish between frame and plaster, while furnishing added plaster reinforcement.

MATERIAL Frame: 16 ga. steel and surrounded by a 22 ga. expansion casing with metal bead lath
Door: 14 ga. steel

HINGE TYPE Concealed continuous piano hinge

LATCH TYPE Flush & screwdriver operated or cylinder lock with dust shutter

FINISH Prime coat of rust inhibitive electrostatic powder, painted white



DOOR SIZE (H X W)	WALL / CEILING OPENING	NUMBER OF LATCHES	SHIPPING WEIGHT (LBS)
8" x 8"	8 ³ / ₈ " x 8 ³ / ₈ "	1	3.5 lbs
10" x 10"	10 ³ / ₈ " x 10 ³ / ₈ "	1	4.5 lbs
12" x 12"	12 ³ / ₈ " x 12 ³ / ₈ "	1	6 lbs
14" x 14"	14 ³ / ₈ " x 14 ³ / ₈ "	2	8.5 lbs
16" x 16" *	16 ³ / ₈ " x 16 ³ / ₈ "	2	11 lbs
18" x 12"	18 ³ / ₈ " x 12 ³ / ₈ "	2	10 lbs
18" x 18"	18 ³ / ₈ " x 18 ³ / ₈ "	2	13 lbs
20" x 16"	20 ³ / ₈ " x 16 ³ / ₈ "	2	14 lbs
24" x 12"	24 ³ / ₈ " x 12 ³ / ₈ "	2	12 lbs
24" x 20"	24 ³ / ₈ " x 20 ³ / ₈ "	2	17 lbs
24" x 24"	24 ³ / ₈ " x 24 ³ / ₈ "	5	20 lbs
30" x 20"	30 ³ / ₈ " x 20 ³ / ₈ "	5	21 lbs
30" x 24"	30 ³ / ₈ " x 24 ³ / ₈ "	5	23.5 lbs
30" x 30"	30 ³ / ₈ " x 30 ³ / ₈ "	5	30 lbs
36" x 24"	36 ³ / ₈ " x 24 ³ / ₈ "	5	28 lbs
36" x 36"	36 ³ / ₈ " x 36 ³ / ₈ "	5	39 lbs

RECESSED DOORS



DSC-210PL

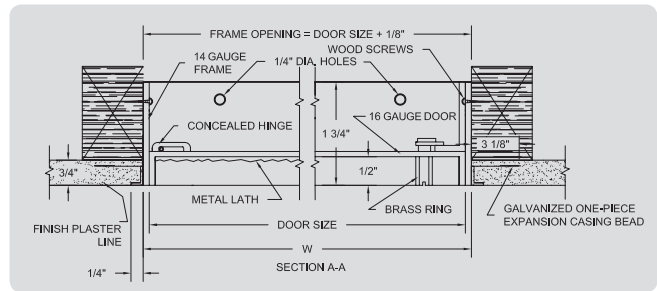
The DSC-210PL is recessed 1/2" and lined with self-furring metal lath allowing plaster of surrounding surfaces to continue without interruption over face of door.

MATERIAL Frame: 14 ga. steel and surrounded by a 22 ga. expansion casing with metal bead lath
Door: 16 ga. steel, recessed 1/2" and lined with self furring 3.4" flast ribbed galvanized steel lath

HINGE TYPE Concealed pivoting rod

LATCH TYPE Flush to finished surface; Screwdriver operated with stainless steel cam and studs or cylinder lock with automatic dust shutter

FINISH Prime coat of rust inhibitive electrostatic powder, painted white



DOOR SIZE (H X W)	WALL / CEILING OPENING	NUMBER OF LATCHES	SHIPPING WEIGHT (LBS)
12" x 12"	12 ¹ / ₈ " x 12 ¹ / ₈ "	1	6.7 lbs
18" x 18"	18 ¹ / ₈ " x 18 ¹ / ₈ "	2	12.4 lbs
24" x 12"	24 ¹ / ₈ " x 12 ¹ / ₈ "	2	10.6 lbs
24" x 24"	24 ¹ / ₈ " x 24 ¹ / ₈ "	2	19.2 lbs
36" x 24"	36 ¹ / ₈ " x 24 ¹ / ₈ "	2	32 lbs

* Special sizes and modifications available on request.

Non-Insulated Fire Rated Access Doors

FOR WALLS ONLY



KRP-250FR

The KRP-250FR is non-insulated and rated by Underwriters Laboratories for 1.5 hour "B" label in walls and may be used in a 2 hour fire rated wall assembly.

MATERIAL KRP-250FR Frame & Trim: 16 ga. steel with 1" wide trim
KRP-450FR Frame & Trim: 16 ga. steel surrounded by galvanized drywall bead
Door: 16 ga. steel

HINGE TYPE Continuous piano hinge

LATCH TYPE Spring-loaded sliding bolt type keyed paddle latch, all keyed alike. Door can be prepared for a rim cylinder lock

FINISH Prime coat of rust inhibitive electrostatic powder, painted white

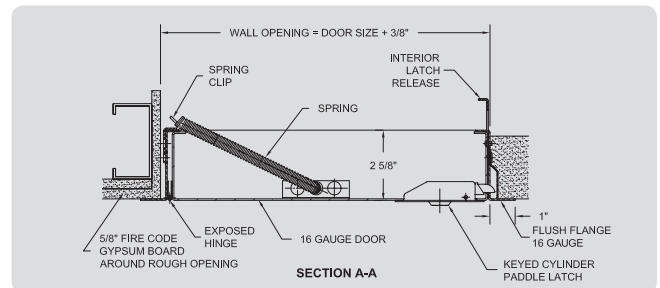
NOTES Opens to 175°; self-latching with automatic closer & interior latch release

DOOR SIZE (H X W)	WALL / CEILING OPENING	NUMBER OF LATCHES	SHIPPING WEIGHT (LBS)
8" x 8"	8 ³ / ₈ " x 8 ³ / ₈ "	1	5.1 lbs
12" x 12"	12 ³ / ₈ " x 12 ³ / ₈ "	1	8.5 lbs
14" x 14"	14 ³ / ₈ " x 14 ³ / ₈ "	1	9.8 lbs
16" x 16"	16 ³ / ₈ " x 16 ³ / ₈ "	1	11.7 lbs
18" x 18"	18 ³ / ₈ " x 18 ³ / ₈ "	1	13.8 lbs
24" x 24"	24 ³ / ₈ " x 24 ³ / ₈ "	1	20.5 lbs
30" x 22"	30 ³ / ₈ " x 22 ³ / ₈ "	1	22.6 lbs
30" x 30"	30 ³ / ₈ " x 30 ³ / ₈ "	1	28.2 lbs
36" x 24"	36 ³ / ₈ " x 24 ³ / ₈ "	2	28.5 lbs
36" x 36"	36 ³ / ₈ " x 36 ³ / ₈ "	2	39.6 lbs



KRP-450FR

The KRP-450FR has a textured frame and bead so drywall joint compound can be applied in sufficient thickness to conceal the flange.



DOOR SIZE (H X W)	WALL / CEILING OPENING	NUMBER OF LATCHES	SHIPPING WEIGHT (LBS)
8" x 8"	8 ³ / ₈ " x 8 ³ / ₈ "	1	4.3 lbs
12" x 12" *	12 ³ / ₈ " x 12 ³ / ₈ "	1	7.2 lbs
14" x 14"	14 ³ / ₈ " x 14 ³ / ₈ "	1	8.3 lbs
16" x 16"	16 ³ / ₈ " x 16 ³ / ₈ "	1	9.9 lbs
18" x 18" *	18 ³ / ₈ " x 18 ³ / ₈ "	1	11.7 lbs
24" x 24" *	24 ³ / ₈ " x 24 ³ / ₈ "	1	17.4 lbs
30" x 22"	30 ³ / ₈ " x 22 ³ / ₈ "	1	19.1 lbs
30" x 30"	30 ³ / ₈ " x 30 ³ / ₈ "	1	23.9 lbs
36" x 24"	36 ³ / ₈ " x 24 ³ / ₈ "	2	24.1 lbs
36" x 36"	36 ³ / ₈ " x 36 ³ / ₈ "	2	33.5 lbs

*These sizes also standard in stainless steel.
Special sizes and modifications available on request.

Insulated Fire Rated Access Doors

FOR WALLS & CEILINGS



KRP-150FR

The KRP-150FR is insulated and rated by Underwriters Laboratories for 1.5 hour "B" label in walls and may be used in a 2 hour fire rated wall assembly. Additionally, Warnock Hersey rates the KRP-150FR for 3 hours in ceilings.

MATERIAL	Frame & trim: 16 ga. steel with 1" wide trim Door: 20 ga. steel, welded pan type filled with 2" thick fire-rated insulation
HINGE TYPE	Continuous piano hinge
LATCH TYPE	Spring-loaded sliding bolt type keyed paddle latch, all keyed alike. Door can be prepared for a rim cylinder lock
FINISH	Prime coat of rust inhibitive electrostatic powder, painted white
NOTES	Opens to 175°; self-latching with automatic closer & interior latch release

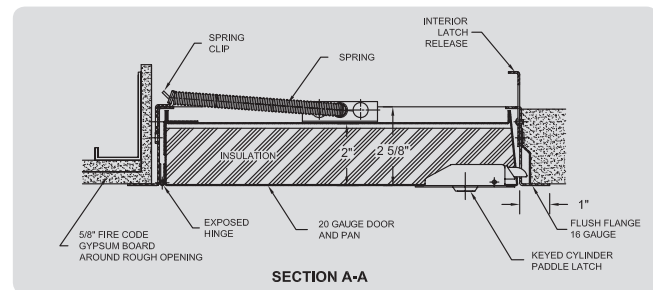
DOOR SIZE (H X W)	WALL / CEILING OPENING	NUMBER OF LATCHES	SHIPPING WEIGHT (LBS)
8" x 8"	8 ³ / ₈ " x 8 ³ / ₈ "	1	6.3 lbs
12" x 12"	12 ³ / ₈ " x 12 ³ / ₈ "	1	9.7 lbs
14" x 14"	14 ³ / ₈ " x 14 ³ / ₈ "	1	12.7 lbs
16" x 16" *	16 ³ / ₈ " x 16 ³ / ₈ "	1	14.1 lbs
18" x 18" *	18 ³ / ₈ " x 18 ³ / ₈ "	1	18.9 lbs
20" x 20"	20 ³ / ₈ " x 20 ³ / ₈ "	1	21.5 lbs
22" x 22"	22 ³ / ₈ " x 22 ³ / ₈ "	1	24 lbs
24" x 12"	24 ³ / ₈ " x 12 ³ / ₈ "	1	15.5 lbs
24" x 24" *	24 ³ / ₈ " x 24 ³ / ₈ "	1	26.7 lbs
30" x 22"	30 ³ / ₈ " x 22 ³ / ₈ "	1	27.8 lbs
30" x 24"	30 ³ / ₈ " x 24 ³ / ₈ "	1	32.2 lbs
30" x 30" **	30 ³ / ₈ " x 30 ³ / ₈ "	1	37.7 lbs
32" x 32" **	32 ³ / ₈ " x 32 ³ / ₈ "	1	41.3 lbs
36" x 22"	36 ³ / ₈ " x 22 ³ / ₈ "	2	34.4 lbs
36" x 24" *	36 ³ / ₈ " x 24 ³ / ₈ "	2	40.2 lbs
36" x 36" **	36 ³ / ₈ " x 36 ³ / ₈ "	2	52 lbs
48" x 24" **	48 ³ / ₈ " x 24 ³ / ₈ "	2	48.9 lbs
48" x 36" **	48 ³ / ₈ " x 36 ³ / ₈ "	2	62 lbs
48" x 48" **	48 ³ / ₈ " x 48 ³ / ₈ "	2	89 lbs

*These sizes also standard in stainless steel.

Special sizes and modifications available on request.

**Not for ceiling application.

The largest size available for ceiling installation is 36" x 24".



New Paddle Latch for added security!



DID YOU KNOW?

Underwriters Laboratories (UL) rates Karp access doors for locations rated up to and including "1½ hour-temperature rise, 30 minutes 450°F max".



Insulated Fire Rated Access Doors

FOR WALLS & CEILINGS



KRP-350FR

The KRP-350FR has a textured frame and bead so drywall joint compound can be applied in sufficient thickness to conceal the flange.

MATERIAL	Frame & trim: 16 ga. steel surrounded by galvanized drywall bead Door: 20 ga. steel, welded pan type filled with 2" thick fire-rated insulation
HINGE TYPE	Continuous piano hinge
LATCH TYPE	Spring-loaded sliding bolt type keyed paddle latch, all keyed alike. Door can be prepared for a rim cylinder lock.
FINISH	Prime coat of rust inhibitive electrostatic powder, painted white
NOTES	Opens to 175°; self-latching with automatic closer & interior latch release

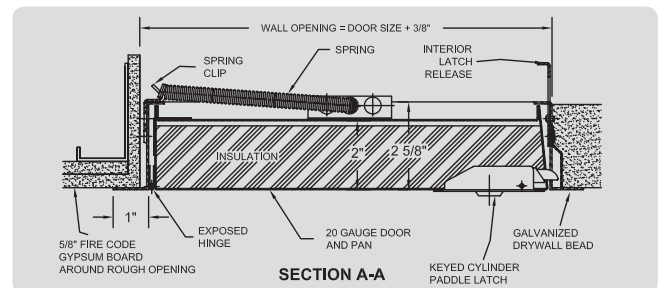
DOOR SIZE (H X W)	WALL / CEILING OPENING	NUMBER OF LATCHES	SHIPPING WEIGHT (LBS)
8" x 8"	8 ³ / ₈ " x 8 ³ / ₈ "	1	6.3 lbs
12" x 12"	12 ³ / ₈ " x 12 ³ / ₈ "	1	9.7 lbs
14" x 14"	14 ³ / ₈ " x 14 ³ / ₈ "	1	12.7 lbs
16" x 16" *	16 ³ / ₈ " x 16 ³ / ₈ "	1	14.1 lbs
18" x 18" *	18 ³ / ₈ " x 18 ³ / ₈ "	1	18.9 lbs
20" x 20"	20 ³ / ₈ " x 20 ³ / ₈ "	1	21.5 lbs
22" x 22"	22 ³ / ₈ " x 22 ³ / ₈ "	1	24 lbs
24" x 12"	24 ³ / ₈ " x 12 ³ / ₈ "	1	15.5 lbs
24" x 24" *	24 ³ / ₈ " x 24 ³ / ₈ "	1	26.7 lbs
30" x 22"	30 ³ / ₈ " x 22 ³ / ₈ "	1	27.8 lbs
30" x 24"	30 ³ / ₈ " x 24 ³ / ₈ "	1	32.2 lbs
30" x 30" **	30 ³ / ₈ " x 30 ³ / ₈ "	1	37.7 lbs
32" x 32" **	32 ³ / ₈ " x 32 ³ / ₈ "	1	41.3 lbs
36" x 22"	36 ³ / ₈ " x 22 ³ / ₈ "	2	34.4 lbs
36" x 24" *	36 ³ / ₈ " x 24 ³ / ₈ "	2	40.2 lbs
36" x 36" **	36 ³ / ₈ " x 36 ³ / ₈ "	2	52 lbs
48" x 24" **	48 ³ / ₈ " x 24 ³ / ₈ "	2	48.9 lbs
48" x 36" **	48 ³ / ₈ " x 36 ³ / ₈ "	2	62 lbs
48" x 48" **	48 ³ / ₈ " x 48 ³ / ₈ "	2	89 lbs

*These sizes also standard in stainless steel.

Special sizes and modifications available on request.

**Not for ceiling application.

The largest size available for ceiling installation is 36" x 24".

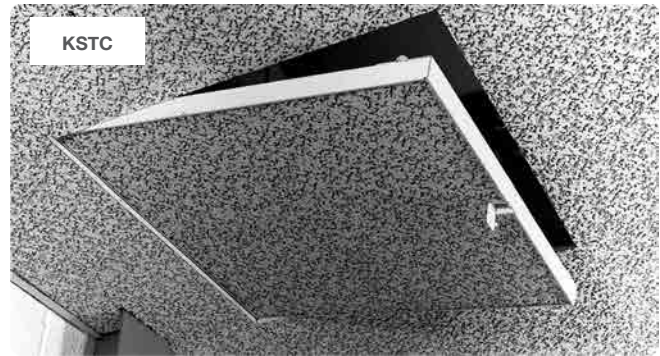


DID YOU KNOW?

Underwriters Laboratories has tested Karp access doors utilizing the standards for safety "ANSI/UL 10B," "Fire Test of Door Assemblies".



Specialty Access Doors



KSTDW, KSTE, & KSTC Sesame Access Doors

The **KSTDW** is designed for complete concealment in drywall ceilings. The **KSTC** & **KSTE** are designed for use with concealed and exposed grid systems, respectively. Panel opens up to receive tile. Door panel on the sesame doors will open to a check position for safety and then release for a 90° opening and is removable.

MATERIALS 20 ga. galvanized steel door & frame.
Door lined with 3/8" mineral fiberboard.

HINGE TYPE Concealed pivot with a controlled action device (CAD) on KSTDW model only, except for size 12" x 12"

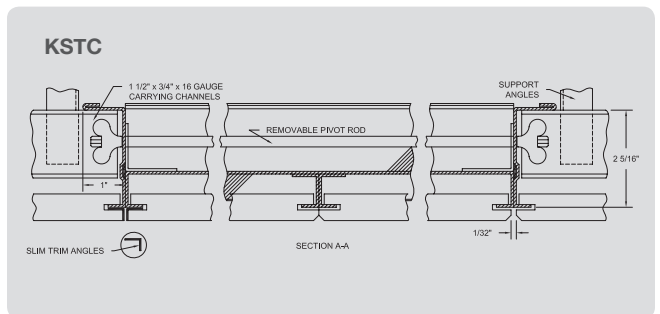
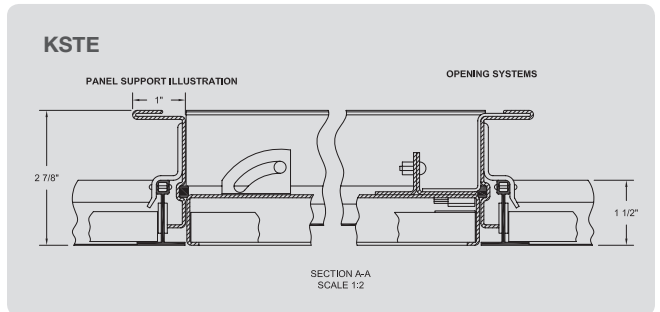
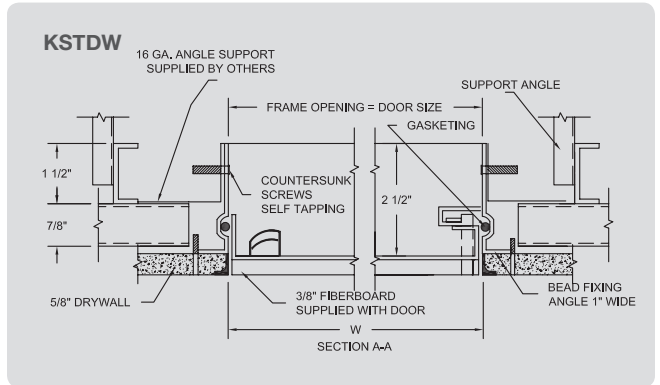
LATCH TYPE Plastic grommets; square head key wrench operated

NOTES Gasketing: flame retardant polyurethane

KSTDW DOOR SIZE (H X W)	SHIPPING WEIGHT (LBS)	KSTE & KSTC DOOR SIZE (H X W)	SHIPPING WEIGHT (LBS)
12" x 12"	8.2 lbs	24" x 24"	17.6 lbs
18" x 18"	17.6 lbs	48" x 24"	32.6 lbs
24" x 24"	28.8 lbs		
36" x 24"	44.4 lbs		
48" x 24"	51.1 lbs		

* Sizes are nominal for models KSTC and KSTE. Special sizes and modifications available on request.

NOTE: Please call Karp's Customer Service Department for framing information and installation instructions.



DID YOU KNOW?

From the White House to Yankee Stadium, from JFK International Airport to Windsor Castle, Karp access doors are vital to buildings everywhere providing safety, security and ease of access.

Security Access Doors

HIGH SECURITY



DSB-123SD

The DSB-123SD enables architects and institutions to bring maximum security to areas where access is required for repair or maintenance purposes.

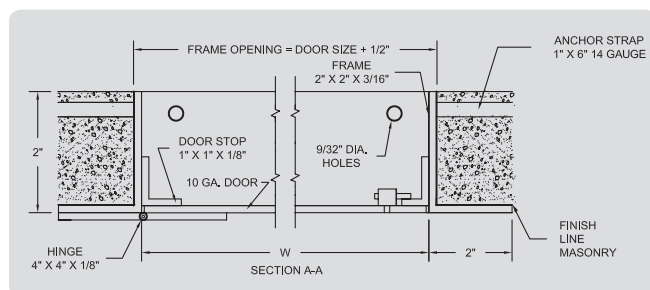
MATERIAL Frame: 2" x 2" x 3/16"
Angle welded with joints ground smooth
Door: 10 ga. steel

HINGE TYPE Heavy duty and welded to door and frame

LATCH TYPE Heavy duty detention type lock;
additional locking devices: flush
spanner head cam latches

FINISH Prime coat of rust inhibitive electrostatic
powder, painted white

NOTES Masonry anchor straps & 1/4" mounting
holes included on all frames



DOOR SIZE (H X W)	WALL / CEILING OPENING	SHIPPING WEIGHT (LBS)
12" x 12"	12½" x 12½"	6 lbs
16" x 16"	16½" x 16½"	9 lbs
18" x 18"	18½" x 18½"	10 lbs
24" x 24"	24½" x 24½"	11 lbs
36" x 24"	36½" x 24½"	16 lbs
36" x 36"	36½" x 36½"	115 lbs

* Special sizes and modifications available on request.

MEDIUM SECURITY



DSB-123SD-MS

The DSB-123SD-MS is ideal for medium security situations such as housing projects, hospitals, or in those instances where a more secure access door is required.

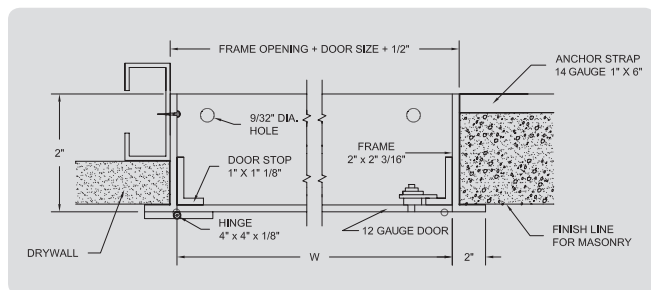
MATERIAL Frame: 2" x 2" x 3/16"
Angle welded with joints ground smooth
Door: 12 ga. steel

HINGE TYPE Heavy duty and welded to door and frame

LATCH TYPE Flush spanner head (tamperproof)
flush to finished surface of door

FINISH Prime coat of rust inhibitive electrostatic
powder, painted white

NOTES Trim: 2" wide; Masonry anchor straps & 1/4"
mounting holes included on all frames



DOOR SIZE (H X W)	WALL / CEILING OPENING	SHIPPING WEIGHT (LBS)
12" x 12"	12½" x 12½"	24 lbs
16" x 16"	16½" x 16½"	32 lbs
18" x 18"	18½" x 18½"	36 lbs
24" x 24"	24½" x 24½"	52 lbs
36" x 24"	36½" x 24½"	68 lbs
36" x 36"	36½" x 36½"	965 lbs

* Special sizes and modifications available on request.

Valve Boxes

RECESSED

KRVB



SURFACE MOUNTED

KSMB



KRVB & KSMB

Valve Boxes can have louvers, peepholes or glass panels. Boxes can be drilled or punched for pipes or conduits of all sizes.

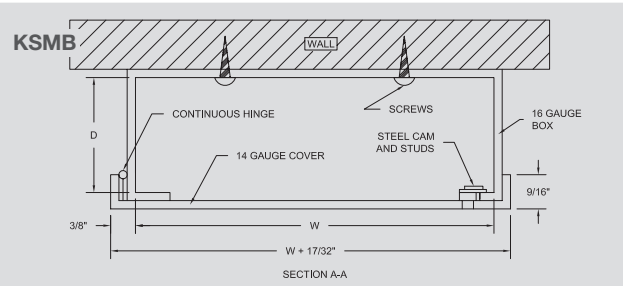
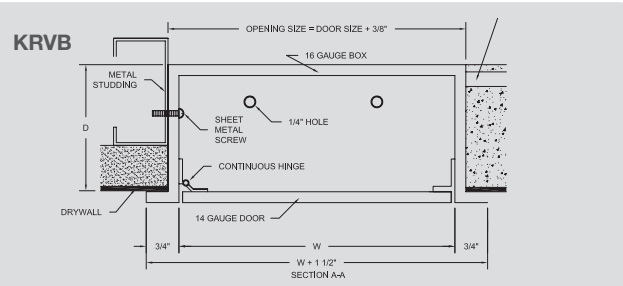
MATERIAL Box: 16 ga. steel / Door: 14 ga. steel

HINGE TYPE Continuous piano hinge;
KVRB: Concealed; KSMB: Exposed

LATCH TYPE Flush to finished surface; Screwdriver operated with stainless steel cam and studs or cylinder lock with automatic dust shutter

FINISH Prime coat of rust inhibitive electrostatic powder, painted white

NOTES KRVB Trim: 3/4" arc-welded and ground smooth; 1/4" holes provided for anchoring to wall; Only manufactured to custom specs



DID YOU KNOW?

Karp Access Doors provide vital access with security, safety and aesthetic appeal. Around the world, Karp doors are the brand of choice for architects, designers, and builders.

Duct Doors

KHD



KCD



KHD & KCD

Duct doors can be furnished with hinges and cam latch (KHD) or removable with double cam latches (KCD). Frames are easily attached to duct with notched knockover tabs.

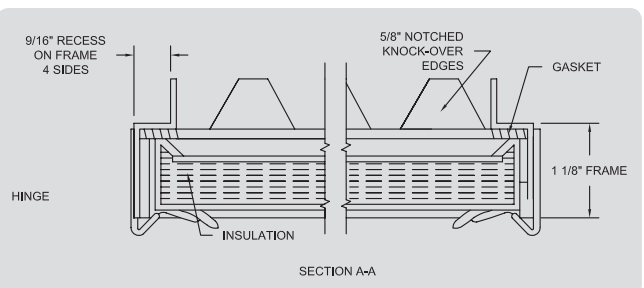
MATERIAL Frame: 22 ga. galvanized steel
Door ($\leq 12" \times 12"$): 24 ga. steel
Door ($> 12" \times 12"$): 22 ga. steel

HINGE TYPE Aluminum continuous piano

LATCH TYPE Zinc plated steel cam latches

NOTES 1/2" thick x 1/8" wide closed cell neoprene gasketing between door & frame. Back of frame has 5/8" notched knock-over edges
Door is filled with 2" thick fiberglass insulation compressed into 1". R factor equals 7.7

DOOR SIZE (H X W)	ACTUAL SIZE (H X W)	DUCT OPENING	CAMS KHD	CAMS KCD	SHIPPING WEIGHT (LBS)
6" x 6"	5½" x 5½"	4¾" x 4¾"	1	2	1.1 lbs
8" x 8"	7½" x 7½"	6¾" x 6¾"	1	2	1.8 lbs
10" x 10"	9½" x 9½"	8¾" x 8¾"	1	2	2.4 lbs
12" x 12"	11½" x 11½"	10¾" x 10¾"	1	2	3.2 lbs
14" x 14"	13½" x 13½"	12¾" x 12¾"	2	4	4.9 lbs
16" x 16"	15½" x 15½"	14¾" x 14¾"	2	4	5.5 lbs
18" x 18"	17½" x 17½"	16¾" x 16¾"	2	4	6.6 lbs
24" x 24"	23½" x 23½"	22¾" x 22¾"	2	4	11 lbs



DID YOU KNOW?

Karp ensures all special requests are processed starting with our Customs department that provides quoting, technical advice and information and engineering drawings.

Aluminum Floor Doors



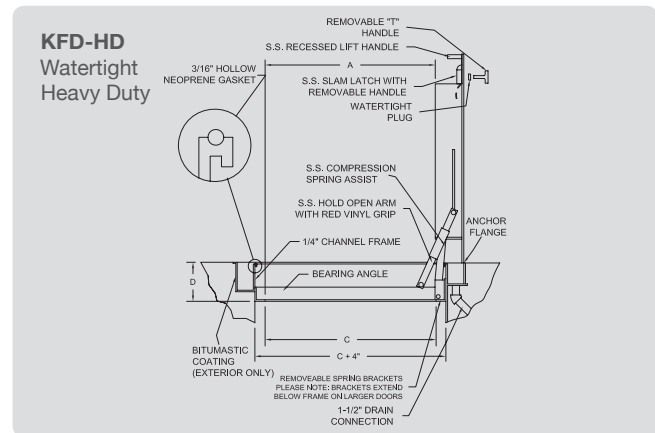
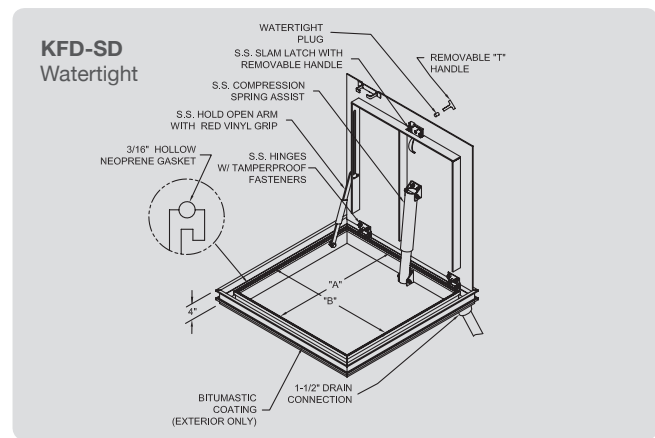
FRAME OPENING (A X B)	SHIPPING WEIGHT (LBS) KFD-SD	SHIPPING WEIGHT (LBS) KFD-HD
24" x 24"	50 lbs	71 lbs
30" x 24"	56 lbs	81 lbs
30" x 30"	63 lbs	93 lbs
36" x 24"	62 lbs	91 lbs
36" x 30"	70 lbs	105 lbs
36" x 36"	78 lbs	118 lbs
48" x 36"	97 lbs	147 lbs
48" x 48"	118 lbs	181 lbs
72" x 48"	158 lbs	248 lbs

KFD-SD & KFD-HD

The KFD provides sturdy access in any concrete application. The KFD-SD is standard duty (300#/sq.ft.) and the KFD-HD is heavy duty (H₂O loading without impact). When required, door can be made watertight, spring assisted and equipped with a stainless steel snap lock.

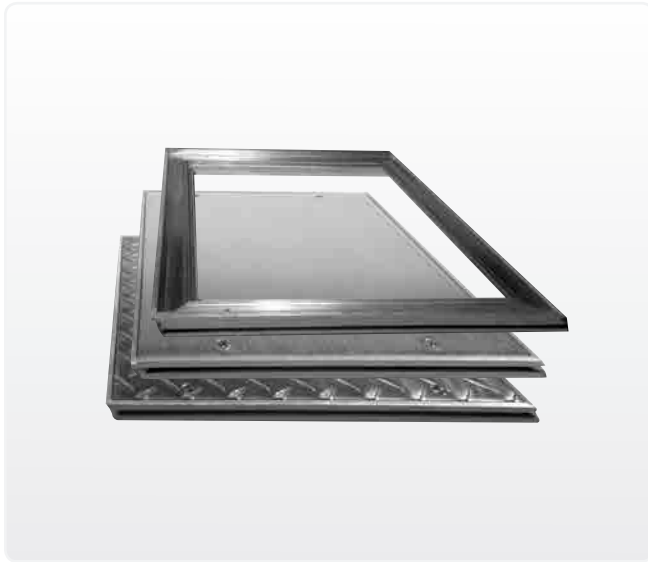
MATERIAL	Frame: aluminum extrusion with integral anchor flanges (watertight frame includes drain channel and neoprene gasket) All hardware: stainless steel
HINGE TYPE	Stainless steel
LATCH TYPE	Can be equipped with a staple, staple and hasp, stainless steel snap, brass pentahead or keyed cylinder lock
FINISH	Mill finish with bituminous coating applied to the exterior of the frame
NOTES	Door leaf: diamond tread plate; stainless steel compression springs (optional); hold open arm locks the door in 90° position

*All floor doors for custom orders only.
Watertight construction shown.
Non watertight floor doors are also available.*



Aluminum Floor Doors

REMOVABLE



KAFA

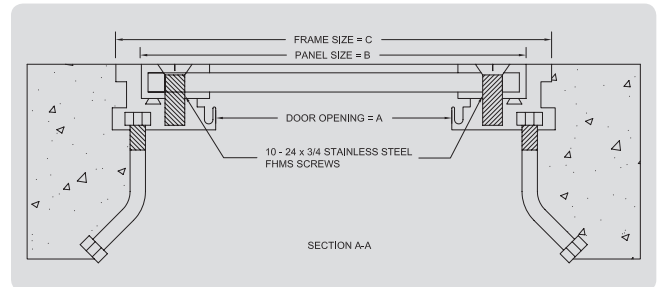
The KAFA is available in a variety of panels — recessed 1/8" for resilient tile, smooth, or embossed diamond pattern. Frames are easy to install and are sealed with a rubber cork strip.

MATERIAL Panels: 1/4" 6061-T651 aluminum with 2 options:
 (1) recessed 1/8" flush smooth plate
 or (2) flush-diamond plate;
 Frame: 6063-TS extruded aluminum with die cast corner connectors installed with rubber cork strip seal

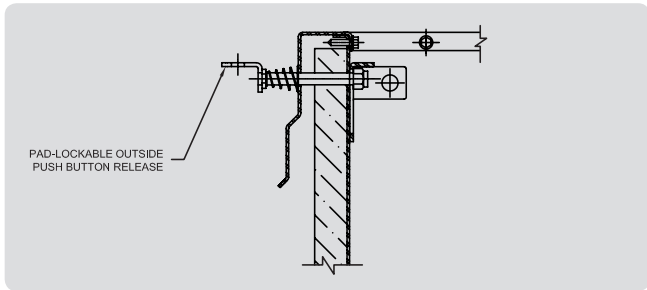
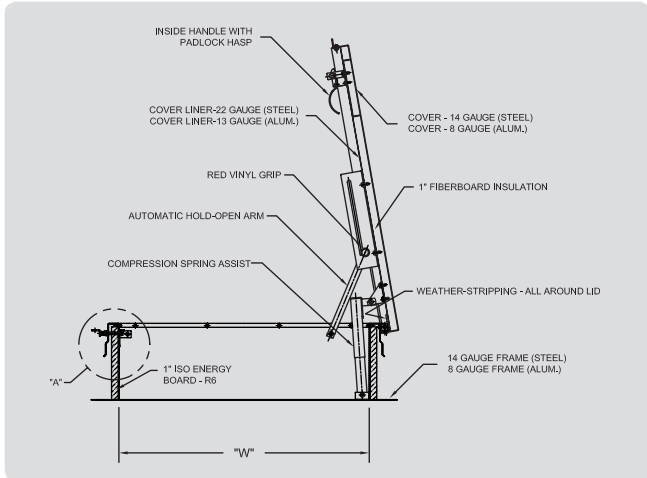
NOTES Panel secured with 10-24 x 3/4" stainless steel FHMS screws

(A) DOOR OPENING	(B) PANEL SIZE	(C) FRAME SIZE	SHIPPING WEIGHT (LBS)
12" x 12"	13½" x 13½"	14" x 14"	11 lbs
18" x 18"	19½" x 19½"	20" x 20"	19 lbs
24" x 24"	25½" x 25½"	26" x 26"	29 lbs
30" x 30"	31½" x 31½"	32" x 32"	53 lbs
36" x 36"	37½" x 36½"	38" x 38"	75 lbs

*All floor doors for custom orders only.
 Special sizes and modifications are available on request.*



Roof Hatches



KRHG & KRHA

Karp roof hatches are standard in aluminum (KRHA) and galvanized steel (KRHG). The hatch cover opens easily and remains open safely during use. The clear hatch opening is unobstructed.

MATERIAL

Curb: 12" high, 14 ga. galvanized steel or .125 aluminum, integral counterflashing, 3 1/2" wide mounting flange and 1" exterior fiberboard insulation with corner guards

Cover: 14 gauge galv. steel or .125 aluminum with 22 ga. galvanized liner

Cover is assisted by enclosed compression springs

HARDWARE

Cover: mounted on steel butt hinges with brass pin and be complete with closed-cell rubber weather seal

Automatic hold open arm with red vinyl grip and latching devices having inside and outside handles and padlock hasp

All hardware shall be zinc or cadmium plated

FINISH

Prime painted with rust-inhibiting grey primer

DOOR SIZE (H X W)	SHIPPING WEIGHT (LBS) KRHG	SHIPPING WEIGHT (LBS) KRHA
24" x 36"	135 lbs	70 lbs
30" x 36"	155 lbs	85 lbs
30" x 52"	225 lbs	135 lbs
30" x 72"	335 lbs	245 lbs

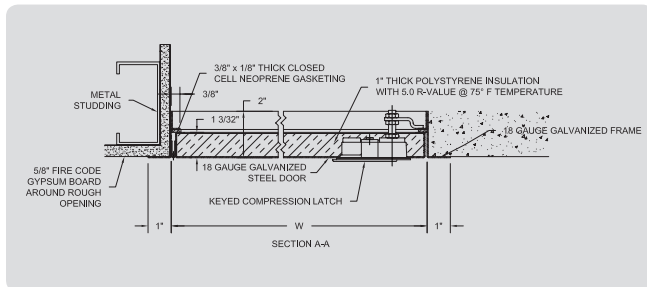
Exterior Access Doors



MX & MXPL

Karp engineered its MX Insulated Exterior Access Door to withstand years of exposure to severe outdoor elements.

This high-quality, galvanized steel door comes with a stainless steel hinge. The combination of these components with Karp's electrostatic rust-inhibitive powder finish provides two durable protective layers. To further weatherproof the door, Karp arc-welds and grounds smooth the corners of the trim and pan, which with the addition of closed cell neoprene gasket insures a watertight seal between the door and frame. Finally, the door includes Styrofoam insulation specifically designed for exterior uses because of its exceptional resistance to water and water vapor. All of these protective measures guarantee the MX Insulated Exterior Access Door's long term performance even in the most severe environments.



MATERIAL

Frame & door: 18 ga. galvanized steel with 3/8" x 1/8" thick closed cell neoprene gasketing

Door: welded, watertight pan

Trim: corners welded & ground smooth

Insulation: 1" thick polystyrene w/5.0 R-value at 75°F

MXPL model has an expansion casing bead with galvanized lath providing a neat tight protected finish between frame and plaster while furnishing added plaster reinforcement

HINGE TYPE

Continuous galvanized piano hinge

LATCH TYPE

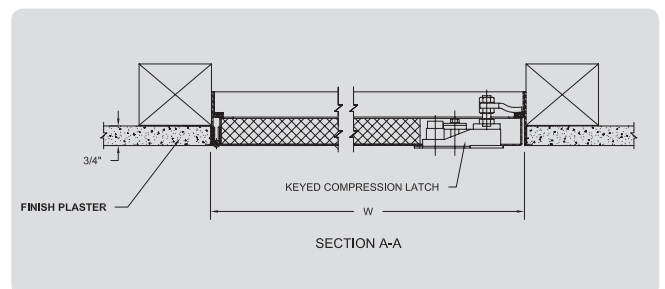
Keyed Lift & Turn Compression Latch including cup sealing gasket finished in textured chrome

FINISH

Prime coat of rust inhibitive electrostatic powder, painted white or stainless steel for custom orders only

DOOR SIZE (H X W)	WALL / CEILING SIZE (H X W)	NUMBER OF LATCHES	SHIPPING WEIGHT (LBS)
12" x 12"	12 ³ / ₈ " x 12 ³ / ₈ "	1	6.3 lbs
18" x 18"	18 ³ / ₈ " x 18 ³ / ₈ "	1	10.5 lbs
24" x 24"	24 ³ / ₈ " x 24 ³ / ₈ "	2	16 lbs

For sizes not listed above, call customer service.



DID YOU KNOW?

Karp paint is EPA-approved and contains no Volatile Compounds (VOC or Hazardous Air Pollutants (HAP).

Lock Options

The standard locking device on all doors, except the fire-rated doors is a screwdriver operated cam latch.

All fire-rated doors are supplied with a keyed paddle latch and are keyed alike. All flush and recessed doors are keyed alike. All security doors are keyed to specifications. Upon request, Karp also provides many other locking devices for custom requirements.

Locks for Flush & Recessed Doors



Paddle Handle



Cylinder Lock W/ Dust Shutter



Knob Turn



T-Handle



Allen Key Head



Spanner Head



1/2" Screw Driver



1" Screw Driver

Detention Lock and Key



Rim Cylinder with Latch

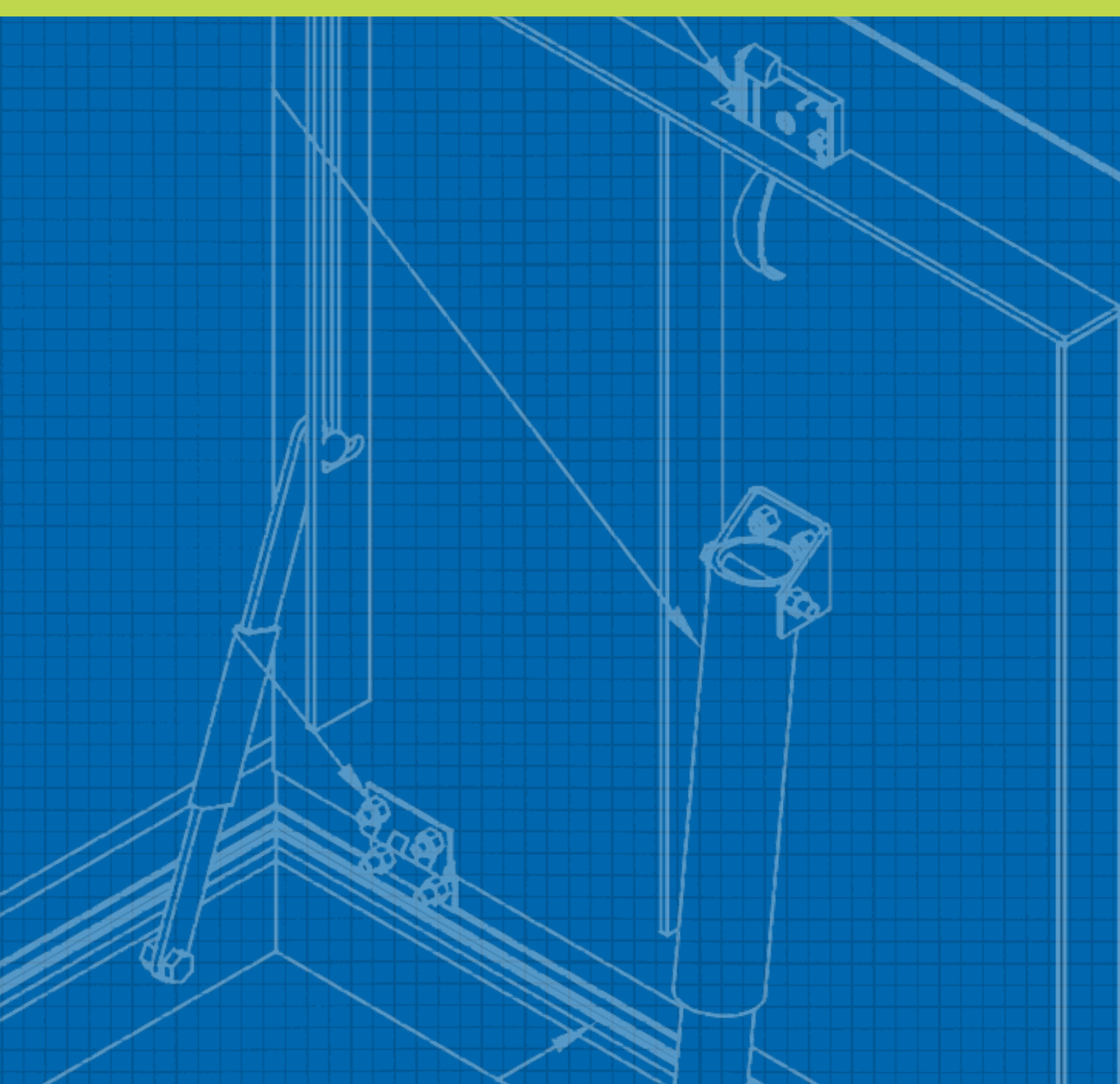


Mortise Cylinder Lock





All Karp steel and stainless steel access doors are proudly made in America.



Karp Associates, Inc. ©2014

260 Spagnoli Rd, Melville, NY 11747 | 631.768.8300 | 800.888.4212 | Fax 631.768.8350 | KarpInc.com