



DANGER

DO NOT REMOVE
USE THIS LOCKOUT DEVICE
AS SHOWN BELOW WITH
SECURE PADLOCK

NO RETIRAR
USE ESTE DISPOSITIVO
DE BLOQUEO COMO SE
MUESTRA ABAJO CON UN
CANDADO DE SEGURIDAD

PLUG LOCKOUT
DISPOSITIVO DE
BLOQUEO DE ENCHUFE
SYSTEME DE VERROUIL-
LAGE DE FICHE

NE PAS ENLEVER
UTILISER CE DISPOSITIF DE
VERROUILLAGE DE LA FACON
ILLUSTREE CI-DESSOUS AVEC
UN CADENAS DE SURETE



Safety

Basic Lockout/Tagout Kit



- A great selection of the most popular lockout/tagout devices
- Small nylon zipper pouch features belt loops and d-rings for easy attachment to belts, tool pouches, tool carts and more

Description		Cat. No.
Basic Lockout/Tagout Kit		44-970
Kit 44-970 Includes:	Qty.	Cat. No.
Hinged Single-Pole Breaker Lockout	2	44-810
Universal 277V Breaker Lockout/Single Pole	1	44-809
480/600V Breaker Lockout	1	44-807
Wall Switch Lockout	1	44-789
3/4 in. Red Padlock	1	44-906
1 in. Safety Lockout Hasp	1	44-800
Lockout Tags – Do Not Operate (striped)	5	44-849
Universal Multi-Pole Breaker Lockout	1	44-783
110V Plug Lockout	1	44-818
Zipper Pouch	1	IA-3240

Quantities listed in kit description are for individual pieces, not carded packages.

Starter Lockout/Tagout Kit



- A starter selection of the lockout/tagout devices every electrician/maintenance person needs
- Small nylon zipper pouch features belt loops and d-rings for easy attachment to belts, tool pouches, tool carts and more

Description		Cat. No.
Starter Lockout/Tagout Kit		44-973
Kit 44-973 Includes:	Qty.	Cat. No.
Universal 277V Breaker/Single-Pole Lockout	1	44-809
Universal Multi-Pole Lockout	1	44-783
3/4 in. Shackle Red Padlock	1	44-906
1 in. Safety Lockout Hasp	1	44-800
Lockout Tags – Do Not Operate (striped)	2	44-849
110V Plug Lockout	1	44-818
Zipper Pouch	1	IA-3240

Quantities listed in kit description are for individual pieces, not carded packages.

Personal Lockout Pouch Kit

- Easy to carry, zippered pouch holds a worker's personal padlocks and other small devices



Description		Cat. No.
Personal Lockout Pouch Kit		44-969
Kit 44-969 Includes:	Qty.	Cat. No.
1 in. Safety Lockout Hasp	1	44-800
Lockout Tags	12	44-833*
Red Safety Padlocks - Keyed Alike	3	44-916**
Personal Lockout Pouch	1	—

*Masterlock equivalent.

**Keyed alike and master keyed padlocks can be special ordered by contacting IDEAL Customer Service.

Standard Lockout/Tagout Kit



- Excellent selection of lockout/tagout devices, tags and locks for maintenance workers or contractors
- Small nylon zipper pouch features belt loops and d-rings for easy attachment to belts, tool pouches, tool carts and more

Description		Cat. No.
Standard Lockout/Tagout Kit		44-971
Kit 44-971 Includes:	Qty.	Cat. No.
Hinged Single-Pole Breaker Lockout	3	44-810
Universal 277V Breaker Lockout/Single Pole	2	44-809
480/600V Breaker Lockout	1	44-807
Wall Switch Lockout	1	44-789
110V Small Plug Lockout	1	44-818
2 in. Shackle Red Padlocks	2	44-907
1 in. Safety Lockout Hasps	2	44-800
Lockout Tags – Do Not Operate	5	44-848
Lockout Tags – Do Not Operate (striped)	5	44-849
Cleat for 277V Breaker Lockout	1	44-785
Cleat for 480/600V Breaker Lockout	1	44-786
Universal Multi-Pole Breaker Lockout	2	44-783
Zipper Pouch	1	IA-3240

Quantities listed in kit description are for individual pieces, not carded packages.

Group Lock Box

- Helps ensure maximum security for complex work team situations
- Allows up to 13 individuals to personally lock the closed box
- Heavy-duty steel construction resists unauthorized entry and job-site abuse
- Compact 8-3/4 in. x 3-1/2 in. x 6 in. design



Description	Cat. No.
Group Lock Box	44-804

Plant Facility Lockout/Tagout Kit



- Ideal for plant facility personnel to keep all lockout/tagout devices in one convenient place
- Polypropylene plastic tool box resists oil and chemicals

Description		Cat. No.
Plant Facility Lockout/Tagout Kit		44-972
Kit 44-972 Includes:	Qty.	Cat. No.
Hinged Single-Pole Breaker Lockout	5	44-810
Universal 277V Breaker/Single Pole Lockout	3	44-809
480/600V Breaker Lockout	1	44-807
Wall Switch Lockout	2	44-789
110V Plug Lockout	1	44-818
1 in. Safety Lockout Hasps	3	44-800
Red Labeled Lockout	1	44-791
220/550V Plug Lockout	1	44-819
Lockout Tags – Do Not Operate (striped)	10	44-849
Fuse Blockout	1	44-815
Fuse Blockout	1	44-816
Gate Valve Lockout	1	44-824
Cleat for 277V Breaker Lockout	1	44-785
Cleat for 480/600V Breaker Lockout	1	44-786
Universal Multi-Pole Breaker Lockout	3	44-783
Tool Box*	1	IA-3241

Quantities listed in kit description are for individual pieces, not carded packages.

*Tool box color may vary.

Lockout/Tagout Large Mouth Bag

- Ideal for both storage and portability of your lockout/tagout needs
- Top opens completely for easy access and re-inforced to hold itself open
- Durable multi-ply construction with removable shoulder strap



Description	Cat. No.
Lockout/Tagout Embroidered Bag - 16 in. long	44-980

Industrial Lockout/Tagout Kit



- An industrial selection of lockout/tagout devices
- Polypropylene plastic tool box resists oil and chemicals

Description		Cat. No.
Industrial Lockout/Tagout Kit		44-974
Kit 44-974 Includes:	Qty.	Cat. No.
Hinged Single-Pole Breaker Lockout	3	44-810
Universal 277V Breaker/Single Pole Lockout	2	44-809
480/600V Breaker Lockout	1	44-807
Wall Switch Lockout	1	44-789
110V Small Plug Lockout	1	44-818
Ball Valve Lockout	1	44-820
1 in. Safety Lockout Hasp	2	44-800
Red Labeled Lockout	1	44-791
220/550V Plug Lockout	1	44-819
Lockout Tags – Do Not Operate (striped)	10	44-849
Fuse Blockout	1	44-815
Fuse Blockout	1	44-816
Gate Valve Lockout	1	44-824
Cleat for 277V Breaker Lockout	1	44-785
Cleat for 480/600V Breaker Lockout	1	44-786
Red Lockout Padlocks	4	44-916
Universal Multi-Pole Breaker Lockout	2	44-783
Tool Box*	1	IA-3241

Quantities listed in kit description are for individual pieces, not carded packages.

*Tool Box color may vary.

Job Site Lockout/Tagout Kit



- Perfect kit for an individual worker; padlocks are keyed-alike for added worker convenience
- Excellent selection of lockout/tagout devices, tags and keyed-alike padlocks for most applications

Description		Cat. No.
Job Site Lockout/Tagout Kit		44-979
Kit 44-979 Includes:	Qty.	Cat. No.
Circuit Breaker Lockout - tall and wide toggles	2	44-956
Circuit Breaker Lockout - standard single and double toggles	3	44-957
Circuit Breaker Lockout Padlock	1	—
Red Lockout Padlocks	3	44-916**
1 in. Safety Lockout Hasp	1	44-800
Red Labeled Lockout	1	44-791*
Universal Wall Switch Lockout	1	44-772
Lockout Tags - Do Not Operate (striped)	12	44-833*
Tool Box	1	IA-3241*

*Masterlock equivalent.

**Reference part number is keyed-different, keyed-alike and master-keyed products can be special ordered by contacting IDEAL Customer Service at 800-435-0705.

Lock Stations

- Resilient polycarbonate material provides twice the heat resistance and quadruple the impact strength of typical stations
- Lockable cover prevents loss of valuable safety products and innovative hinge holds cover open for easy product selection



Description	Cat. No.
Four-Lock Station (board only)	44-777
Four-Lock Station Kit includes four red Safety Padlocks (44-916), 12 Heavy-Duty Lockout Tags and two 1 in. Safety Lockout Hasps (44-800)	44-778*
Ten-Lock Station (board only)	44-805
Ten-Lock Station Kit includes ten red Safety Padlocks (44-916), 24 Heavy-Duty Lockout Tags and two 1 in. Safety Lockout Hasps (44-800)	44-806

*Not shown.

Industrial Lockout/Tagout Station



- Large Lockout/Tagout Station can be wall mounted or easily transported
- All metal, lockable cabinets come with two adjustable shelves (extra shelves available)
- Lockout safety tips are conveniently located inside of door for frequent reminders of proper lockout procedures

Description	Qty.	Cat. No.
Industrial Lockout/Tagout Station – 16" H x 14" W x 6" D		44-975
Kit 44-975 Includes:		
Hinged Single-Pole Breaker Lockout	2	44-810
Universal Single-Pole Breaker Lockout	2	44-809
Cleat for Universal Single-Pole Lockout	2	44-785
Universal Multi-Pole Breaker Lockout	2	44-783
480/600V Breaker Lockout	1	44-807
Cleat for 480/600V Breaker Lockout	1	44-786
Wall Switch Lockout	1	44-789
1 in. Safety Lockout Hasp	3	44-800
Red Safety Padlocks	4	44-916
100V Small Plug Lockout	1	44-818
220/550V Plug Lockout	1	44-819
Lockout Tags – Do Not Operate	10	44-849
Gate Valve Lockout - 1 in. to 2-1/2 in.	1	44-824
Gate Valve Lockout - 2-1/2 in. to 5 in.	1	44-825
Ball Valve Lockout	1	44-820
Pneumatic Lockout	1	44-774
Cabinet w/two shelves	1	IA-4989

Description	Qty.	Cat. No.
Extra shelf	1	IA-4990

Lockout/Tagout Training Programs and Compliance Manuals

Lockout/Tagout Video Training Program for Employee Safety and OSHA Compliance.

- 10-minute video effectively conveys the importance of Lockout/Tagout in the workplace.
- Demonstrates the seven steps to properly apply and five steps to re-energize from Lockout/Tagout
- Provides instructions for maintaining Lockout/Tagout during shift changes
- Shows how to apply, remove and maintain lockout devices
- Also suitable for employee-refresher training sessions
- Includes video, ten Lockout/Tagout Procedure Employee Reference Cards, instructor's guide and employee quiz
- Additional Employee Reference Cards also available (44-954)

Compliance Manual to assist your facility in complying with Federal Lockout/Tagout Regulations

- 1 – Reviews the OSHA Standard in understandable, everyday language
- 2 – Provides a step-by-step program to help you develop your "Lockout/Tagout" Compliance Program
- 3 – Outlines the type of information required for employee training

The Real, Real Life Lockout/Tagout Training DVD

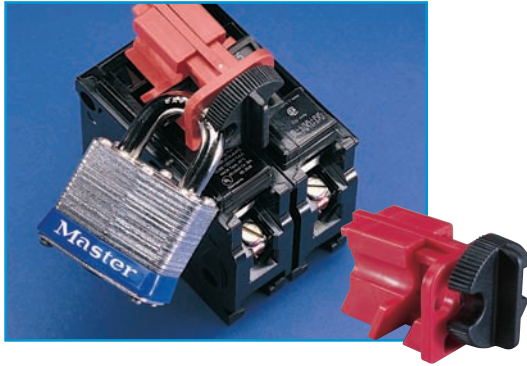
- 1 – Information you and your employees need to assist you in complying with OSHA's Lockout/Tagout Standards presented in an easy to understand and entertaining format
- 2 – This video comes in a plastic storage case and includes a leaders guide, training handbook with quiz, and wallet card reminder of the six steps to "Lock It and Tag It."



Lockout/Tagout

Description	Cat. No.
Lockout/Tagout Video Training Program	44-942
Lockout/Tagout Video Training Program Reference Cards	44-954
Lockout/Tagout Compliance Manual	44-940
Real, Real Life Lockout/Tagout Training DVD	44-941
Real, Real Life Lockout/Tagout Handbooks, 10/pack	44-953

Multi-Pole Breaker Lockout

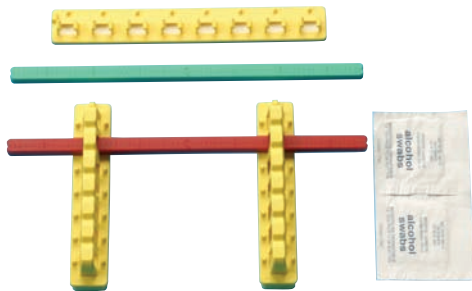


- Works with most major multi-pole breakers with tie-bar type switches including GE, ITE Sylvania, Challenger, Bryant, Westinghouse, Square D (2/3 poles) and General Switch Co.
- Easy to install – thumbscrew secures and locks tie bar in place; no cable ties or tools required
- Please see breaker guide for your application

Description	Qty.	Cat. No.
Multi-Pole Breaker Lockout	1	44-783

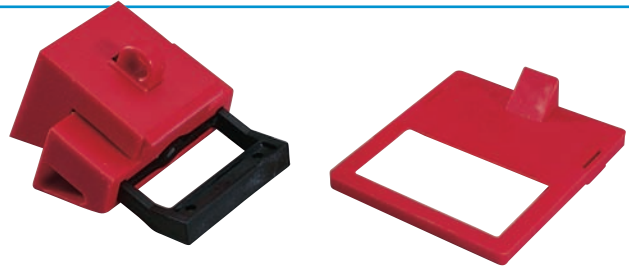
Oversized Circuit Breaker Lockout System

- Unique Lockout system for oversized 480/600V Circuit Breakers
- System can be permanently installed into an electrical panel putting all lockout items at the point of need
- Easy installation of adhesive mounting rails – no tools required
- Pegs in mounting rails mate with holes in locking arms for security of arm when lock is in place
- Red arms lock off, green arms lock on



Description	Qty.	Cat. No.
Oversized Circuit Breaker System – 480-600 Volt	1	44-822

480/600V Single/Multi-Pole Breaker Lockout



- Use thumbscrew to clamp lockout securely on to switch tongue, then pull cover over thumbscrew and lock in place to prevent clamp from being loosened
- New blade design provides tighter grip with less torque on thumbscrew

Description	Qty.	Cat. No.
480/600V Single/Multi-Pole Breaker Lockout	1	44-807
480/600V Single/Multi-Pole Breaker Lockout	50	44-1807
Cleat for 480/600V Single/Multi-Pole Lockout	1	44-786

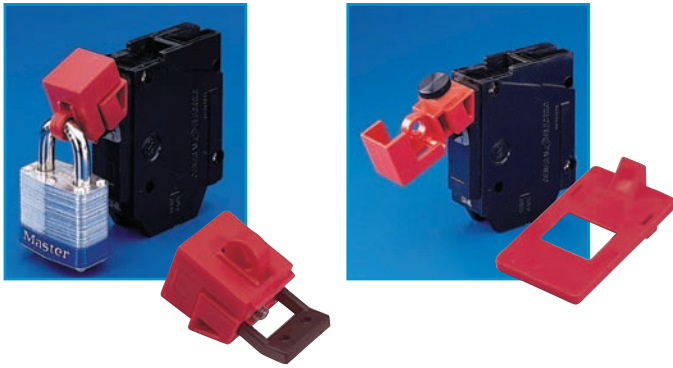
Large Breaker Lockout

- Designed to lockout large 480/600V breaker switches up to 2-1/2 in. wide and 7/8 in. thick
- Easy to install – no tools required



Description	Qty.	Cat. No.
Large Breaker Lockout	1	44-823

Universal 120/277V Breaker Lockout



- Use thumbscrew to clamp lockout securely on to switch tongue, then pull cover over thumbscrew and lock in place to prevent clamp from being loosened
- New blade design provides tighter grip with less torque on thumbscrew

Description	Qty.	Cat. No.
Single-Pole Breaker Lockout	3	44-809
Cleat for Single-Pole Breaker Lockout	3	44-785
Single-Pole Breaker Lockout	50	44-1809

Hinged Single-Pole Breaker Lockout



- Hinged single-pole lockout with locking post design, locks lever in off position to isolate and prevent breaker use
- Ideal for applications where panel closure is preferred
- Please see breaker guide for your application

Description	Qty.	Cat. No.
Hinged Single-Pole Breaker Lockout	3	44-810
Hinged Single-Pole Breaker Lockout	100	44-1810

Circuit Breaker Lockout

- Attaches securely to breaker with simple thumb turn and clamping handle
- 44-956 is designed for breakers with wide or tall toggles
- 44-957 fits standard height and tie-bar toggles
- The narrow profile permits side-by-side breaker lockout



Description	Cat. No.
Circuit Breaker Lockout, wide & tall toggles	44-956
Circuit Breaker Lockout, standard toggles	44-957



Circuit Breaker Lockout System

- Covers most 120V - 277V breakers!
- Works on wide range of breakers, including single- and multi-pole configurations
- Makes use of unique lock rail system, providing the following benefits:
 - Allows panel door to be closed even when lockouts are in place
 - Accommodates multiple locks, facilitating group lockout activity without hasps
 - Keeps weight off the breakers, protecting delicate electrical components from damage
 - Positions locks and tags outside the panel, making sure lockout activity is clearly visible to anyone in the area

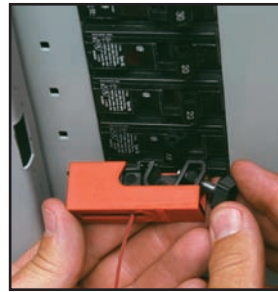
Technical Information

- Lockout devices constructed of high-impact Isoplast polymers
- Cables are 2 ft. in length
- Lock rails made of durable isoplast polymers with acrylic adhesive backing

How the System Works



1. Peel liner off bottom of the lock rail, exposing super-bond adhesive. Permanently affix to any location on the panel. No drilling required.



2. Attach the lockout device to the breaker and snap into locked position.



3. Pass plastic key through lock rail and attach lock, preventing key from sliding down cable and opening lockout device.



4. For group lockouts, run key through multiple loops in lock rail and apply locks. No hasps required!



5. Lockout device is unlocked by inserting and turning the red plastic key.



Perfect when locking out adjacent breaker lockouts.

Snap-on

For use on Square D NQO and other breakers that have a hole in the switch tongue. Just align pins with hole and snap closed. Pins prevent switch from being thrown.



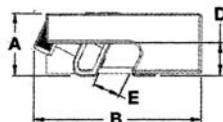
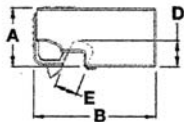
Clamp-on

For use on breakers that do not have a hole in the switch tongue, including multiple breakers with tie bars. Turn thumb-screw to clamp lockout securely onto switch, then snap the cover closed to prevent thumbwheel from being loosened.



"No Shackle" Locks

Especially useful when lockout devices will be kept at the panel in accordance with NEC regulations. Everything you need to lockout breakers is kept conveniently right at the point of need!



Description	Outer Dimensions (In.)			Switch Clearance (In.)	
	A	B	C	D	E
Snap-On	0.90	1.88	0.74	0.40	0.35
Clamp-On	0.95	2.56	0.74	0.35	0.42

Description:	Qty.	Cat. No.
Snap-on lockout for Square D NQO and other breakers with a hole in the switch tongue	1	44-768
Clamp-on lockout for breakers without hole in the switch tongue, including multi-pole breakers with tie bars	1	44-764
4 in. Lock Rail with seven lock loops	1	44-769
No shackle lock	1	444.001

Miniature Circuit Breaker Lockouts

Pins Out Standard



Pins In Standard



Pins Out Wide



Tie Bar



- A safe and effective method for locking out miniature circuit breakers, commonly used in European and Asian equipment
- Miniature Breaker Lockouts require NO TOOLS to install! The Lockout easily installs with the aid of a push button. The Tie Bar Style Lockout has a convenient thumb wheel for quick application.
- Recommended to lock with lightweight Xenoy padlocks (see page G-20) or other padlocks, the lockouts can take padlocks with a shackle diameter up to 9/32 in.
- Material: Glass-filled nylon

Description	Qty.	Cat. No.
Pins Out Standard	1	44-779
Pins In Standard	1	44-780
Pins Out Wide	1	44-784
Tie Bar	1	44-787

Wall Switch Lockouts

- Our patent pending universal Wall Switch Lockout locks out both toggle and decora wall switches
- The universal design assures switch is locked on or off. It also hinges open for unobstructed normal switch operation
- The standard wall switch lockout fits most wall-mounted single or three-way electrical switches



Plug Lockouts

- Accommodate a variety of electrical plug and cord sizes to prevent accidental connection or disconnection
- Durable plastic body resists wear, chemicals and job-site abuse
- Accommodates cable ties and padlocks (with up to 3/8 in. shackles)

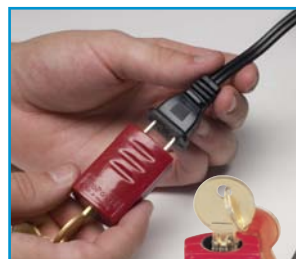


Description	Size	Cat. No.
Plug Lockouts – 110V	2 in. x 2 in. x 3-1/2 in.	44-818
Plug Lockouts – 220/550V	3-1/4 in. x 3-1/4 in. x 7 in.	44-819

Description	Qty./Card	Cat. No.
Universal Wall Switch Lockout	1	44-772
Standard Wall Switch Lockout (not shown)	1	44-789

Electric Plug Lockout

- Slides over cord prongs and locks in place to prevent cord from being plugged into an outlet
- Cannot be removed without key
- Works on any 2- or 3-prong plug



Description	Cat. No.
Electric Plug Lockout	44-782

Plug Lockouts

- Plug lockout, 44-792 works with high and low voltage plugs up to 3 in. in diameter and 5-1/2 in. in length, up to 1-1/4 in. cord diameter
- Plug lockout, 44-973 works with 110V/220V plugs up to 1-3/4 in. in diameter and 2-1/2 in. in length, up to a 1/2 in. cord diameter



Description	Cat. No.
Plug Lockout – up to 3 in. diameter	44-792
Plug Lockout – 110V/20V	44-793

Adjustable Cable Lockout

- Infinitely adjustable safety hasp and cable
- Ideal for multiple circuit breaker panels and side-by-side gate valve lockouts
- Feed the cable end through the points to be locked out, then back through the lockout body. Cinch it tight to remove any slack with the patented locking feature.
- Tough, flexible multi-stranded 6 ft. 1/4 in. dia. steel cable is insulated with a clear vinyl coating
- Tough, lightweight, dielectric Xenoy[®] thermoplastic body withstands chemicals; performs effectively in extreme conditions
- Up to four workers can apply their personal safety locks
- Complete with high-visibility, re-usable, write-on safety labels (English, French & Spanish). Identify the responsible person, then erase for the next job.



Description	Cat. No.
Adjustable Cable Lockout	44-808

Gate Valve Lockouts

- Unique patent pending rotating design allows for easier installation in confined space applications
- Each size rotates into itself and nests within the next larger size to save space in storage
- Up to four workers can apply their personal safety locks
- Complete with high-visibility permanent safety labels (English, French & Spanish) that can be written on to identify the responsible person, then erased for the next job
- Tough, lightweight, dielectric Xenoy thermoplastic bodies withstand chemicals and perform effectively in extreme conditions, temperature range: -50°F (-46°C) to +350°F (177°C)



Valve Size	Qty.	Cat. No.
1 in. to 3 in.	1	44-824
2 in. to 5 in.	1	44-825
Set of five sizes (1 in. to 13 in.)	—	44-817

Cable Lockout

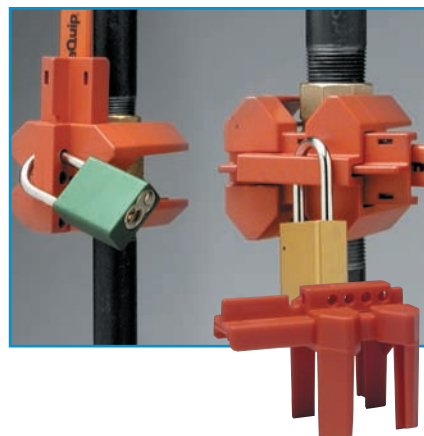
- 44-829 Unique hasp lockout device accepts up to six 9/32 in. padlocks and comes with a 6 ft. plastic-coated steel cable



Description	Cat. No.
Cable Lockout, 6 ft. cable	44-829

Ball Valve Lockout Devices

- Best available method for locking out ball valves
- Patented design fits most major brand ball valves
- Designed to lock in off position only
- Complies with OSHA lockout standard



Valve Size (In.)	Max. Shackle Length	Material	Cat. No.
1/2 to 1-1/4	—	Polypropylene	44-846
1-1/4 to 3	—	Polypropylene	44-847
1/4 to 1 (not shown)	9/32 in.	Nylon	44-820
1-1/4 to 3 (not shown)	9/32 in.	Heavy steel	44-821

Aluminum Safety Lockout Padlocks



- High visibility, baked-on powder coated finish stays bright
- Ideal for corrosive and tough environments
- 1-1/16 in. shackle clearance
- 1-9/16 in. wide lock with 1/4 in. shackle clearance
- Hardened shackles for superior resistance to cutting
- Keyed alike, master-keyed, additional colors and engraving available by special order

Bumper Color	Cat. No.
Blue	44-920
Black	44-921
Red	44-922
Yellow	44-923

Steel Padlocks

- Rustproofed, steel case with nickel-plated shackle withstands abuse and environmental hazards
- Includes two keys
- 1-1/2 in. wide lock with 9/32 in. shackle diameter
- Keyed-alike and Master-Keyed locks available by special order



Bumper Color	3/4 In. Shackle Clearance Cat. No.	2 In. Shackle Clearance Cat. No.
Blue	44-900	44-901
Black*	44-902	44-903
White*	44-904	44-905
Red	44-906	44-907
Green*	44-908	44-909
Yellow*	44-910	44-911

*Special order thru Customer Service.

Xenoy Safety Lockout Padlocks w/Key Retention

- Dedicated safety lockout device reduces confusion with other locks
- Complies with OSHA's "1-key, 1-lock"
- Non-conductive, lightweight Xenoy® body
- Key retention ensures keys do not get lost while not in use and that padlocks are not left untouched
- 1-1/2 in. shackle clearance
- 1-1/2 in. wide lock with 1/4 in. shackle
- Four colors for easy identification
- Keyed alike, Master-Keyed, 2nd key, additional colors and engraving available by special order



Bumper Color	Cat. No.
Blue	44-912
Black	44-914
Red	44-916
Yellow	44-918

Lock Labels



- Easy identification of employees' locks
- Write-on, vinyl labels with peel-off adhesive backing
- Polyester over laminate protects label

Description	Qty.	Cat. No.
Lock Labels	8 labels	44-898

Marking Pens

- Fast-drying, permanent ink will not smear
- Use on write-on marker cards and write-on cable-tie marker plates
- Color-coded in red or black



Description	Cat. No.
Marking Pen w/black ink	41-697
Marking Pen w/red ink	41-698

Heavy-Duty Lockout Tags



- High-visibility lettering
- Laminated plastic tags have non-fade legends, resist corrosive and harsh environmental conditions and a 7/8 in. grommet
- Vinyl tags are silk screened with a metal grommet; fastener included
- Exceeds OSHA's 50-lb. pullout requirement

Legend	Type	Qty.	Cat. No.
Do Not Operate	Heavy-Duty Laminated	Card of 5	44-830
	Heavy-Duty Laminated	Box of 100	44-1830
	Economy Vinyl	Bag of 25	44-848
Do Not Operate – Maintenance Department	Economy Vinyl	Bag of 25	44-844
Do Not Operate – Electricians at Work	Heavy-Duty Laminated	Card of 5	44-832
	Economy Vinyl	Bag of 25	44-843
Do Not Operate – (red striped background)	Heavy-Duty Laminated	Card of 5	44-833
	Heavy-Duty Laminated	Box of 100	44-1833
	Economy Vinyl	Bag of 25	44-849
Do Not Operate (Photo ID - Self Sealant)	Heavy-Duty Laminated	Card of 5	44-834

Bilingual Lockout Tags



- Spanish/English tags provide extra safety and information in bilingual situations
- High-visibility lettering
- Laminated plastic tags with non-fade legends resist corrosive and harsh environmental conditions
- Write-on tag with 7/8 in. grommet can be padlocked to device to help prevent unauthorized removal

Legend	Qty./Card	Cat. No.
Do Not Operate (striped)	5	44-841

Safety Lockout Hasps



- Allow up to six workers to lock out a single energy source
- Rustproofed, plated and vinyl-coated
- Labeled hasps feature anodized aluminum alloy construction for long-term durability
- Permanent “Do Not Operate” labels accept pens, pencils and permanent markers

Safety Lockout Hasps

Jaw Diameter	Qty.	Cat. No.
1 in.	3	44-800
1 in.	50	44-1800
1-1/2 in.	2	44-801

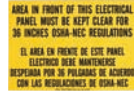
Labeled Safety Lockout Hasps

Legend	Color	Qty.	Cat. No.
Do Not Operate	Blue	1	44-790
	Red	1	44-791
	Red	50	44-1791

Lockout/Tagout

Lockout Signs

- Resistant to both chemicals and abrasion – protected graphics for indoor and outdoor use



Legend	Material	Size (In.)	Cat. No.
OSHA Regulation 36 in. clearance	Self-sticking polyester	3-1/2 x 10	44-877
OSHA Regulation – Bilingual 36 in. clearance	Self-sticking polyester	7 x 10	44-878
Danger – Breakers Locked Out	Magnetic	5 x 7	44-890

Safety Signs

- Resistant to both chemicals & abrasion – protected graphics for indoor & outdoor use

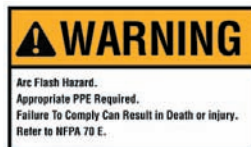


Legend	Material	Size (In.)	Cat. No.
Danger – High Voltage	Fiberglass	10 x 14	44-862
Danger – High Voltage	Self-Sticking Polyester	7 x 10	44-863
Danger – High Voltage – Keep Out	Fiberglass	10 x 14	44-880
Danger – High Voltage – Keep Out	Self-Sticking Polyester	7 x 10	44-881
Danger High Voltage – Spanish	Self-Sticking Polyester	7 x 10	44-865

Flash Protection Labels and Signs

National Electric Code 110.16 Flash Protection: *Switchboards, panel boards, industrial control panels and motor control centers*, in other than dwelling occupancies, that are likely to require examination, adjustment, servicing or maintenance while energized, shall be field marked to warn qualified persons of potential electric arc flash hazards. The marking shall be located so as to be clearly visible to qualified persons before examination, adjustment, servicing or maintenance of the equipment.

Required Labels –
44-892/44-893/44-892BK



Arc Flash Labels
44-894/44-895



Recommended Signs –
44-896



Description	Type	Size	Qty./Bag	Cat. No.
NEC Arc Flash, Warning	Self-Sticking polyester	3-1/2 in. x 5 in.	5	44-892
NEC Arc Flash, Warning		3-1/2 in. x 5 in.	100	44-892BK
NEC Arc Flash, Warning		5 in. x 7 in.	5	44-893
NEC Arc Flash, Danger		5 in. x 7 in.	5	44-894
NEC Arc Flash, Danger		4 in. x 6 in.	5	44-895
NEC Arc Flash, Warning		7 in. x 10 in.	1	44-896

Detectable Underground Tapes

- Solid aluminum foil core tapes for protection, location and identification of underground utility installations
- Meets or exceeds industry standards including the American Public Works Association (APWA) color code
- Formulated to resist degradation from acid and alkali found in soils
- Lead-free pigments and organic lead-free ink



Property	Method	Value
Thickness	ASTMD2103	5.0 Mils
Elongation	ASTMD882-75B	80%
Composition	IDEAL Specs.	Bottom layer PE Top layer PET Foil industry standard
Tensile Strength	ASTMD882	35 lbs./in. (15,000 PSI)

Legend	Color	Size	Cat. No.
Caution Buried Electric Line Below	Red	3 in. x 1,000 ft.	42-201
		6 in. x 1,000 ft.	42-251
Caution Buried Fiber Optic Line Below	Orange	6 in. x 1,000 ft.	42-252

Non-Detectable Underground Tapes

- For protection, location and identification of underground utility installations
- Formulated to resist degradation from acid and alkali found in soils
- Lead-free pigments and organic lead-free ink



Property	Method	Value
Thickness	ASTMD2103	4.0 Mils
Elongation	ASTMD882-75B	500%
Composition	IDEAL Specs.	LDPE
Tensile Strength	ASTMD882	2,750 PSI

Recommended Burial Depth

3 in. Tape – 4 in. to 6 in.

6 in. Tape – less than 12 in.

Legend	Color	Size	Cat. No.
Caution Buried Electric Line Below	Red	3 in. x 1,000 ft.	42-101
		3 in. x 250 ft.	42-131
	Yellow	3 in. x 1,000 ft.	42-102
Caution Buried Telephone Line Below	Orange	3 in. x 1,000 ft.	42-103
Caution Buried Fiber Optic Line Below	Orange	3 in. x 1,000 ft.	42-104
Caution Buried Electric Line Below	Red	6 in. x 1,000 ft.	42-151
	Yellow	6 in. x 1,000 ft.	42-152

Barricade Tapes



- High-visibility safety yellow or red polyethylene construction with bold black letters
- Meets OSHA specifications Section 1010.144 for marking physical hazards

Property	Method	Value
Elongation	ASTM D88-75B	≥ 400%
Composition	IDEAL Specs.	LDPE
Tensile Strength	ASTM D882	2,350 PSI TD 1,893 PSI MD

Legend	Color	Size	Thickness	Cat. No.
Caution	Yellow	3 in. x 1,000 ft.	4.0 Mils	42-001
Caution Do Not Enter	Yellow		4.0 Mils	42-002
Caution High Voltage	Yellow		4.0 Mils	42-003
Danger	Red		4.0 Mils	42-051
Danger High Voltage Keep Out	Red		4.0 Mils	42-052

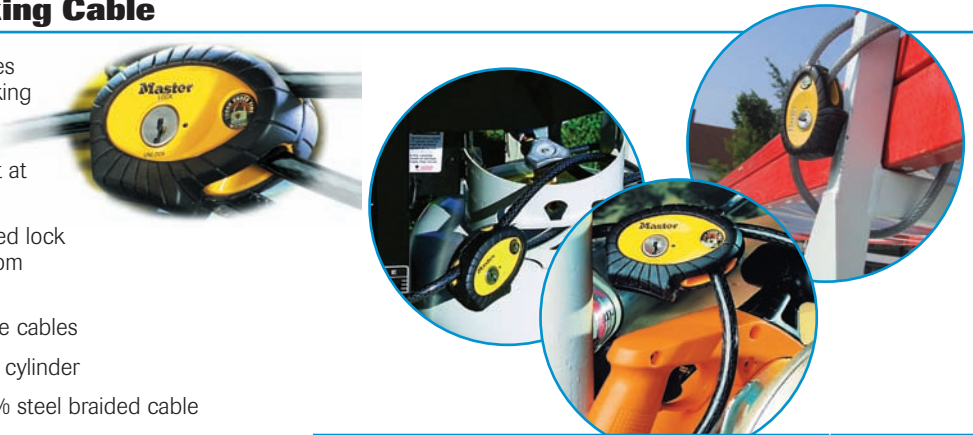
Legend	Color	Size	Thickness	Cat. No.
Caution	Yellow	3 in. x 250 ft.	2.0 Mils	42-031
Caution	Yellow	3 in. x 1,000 ft.	2.0 Mils	42-011
Caution Do Not Enter	Yellow		2.0 Mils	42-012
Danger	Red		2.0 Mils	42-015

Python™ Adjustable Locking Cable

Python™ Adjustable Locking Cable secures anything within its grasp. It's the only locking cable that is always the right length for your application. This exclusive, patented product holds the flexible steel cable tight at any position for infinite possibilities.

- Infinite Locking Positions – The patented lock holds the cable tight at any position from 1 ft. (30cm) to 6 ft. (1.8m)
- Application Flexibility – Interchangeable cables
- Keyed Alike Convenience – Rekeyable cylinder
- Cut Resistance – 3/8 in. (10mm), 100% steel braided cable
- Weather Tough – Rust resistant aluminum lock body
- Scratch Resistant – Vinyl cable sleeve and lock body bumper

Other Applications: Bikes, lawn furniture, lawn mowers, job sites, canoes, boats, skis, snowboards, generators, pickup truck cargo, spare tire locks and much more.



Description	Cat. No.
Master Lock Python Kit with 6 ft. Cable-keyed different	44-990
Master Lock Python Kit with 6 ft. Cable-keyed alike*	44-991
12 ft. (3.7m) x 3/8 in. (10mm) Cable for Python Lock*	44-992

*Special order thru Customer Service.

Pro-Series® Shackless Lock and Hasp

- Ideal for vans, trucks, gates and vending
- Defeats attempts to pry and cut
- Hardened solid steel lock body withstands forcible attacks
- Complete with high security 6-pin Pro Series® Cylinder

Description	Cat. No.
Hidden Shackle Solid Steel Padlock*	44-994
Solid Steel Hasp for use with 44-994*	44-993

*Special order thru Customer Service.

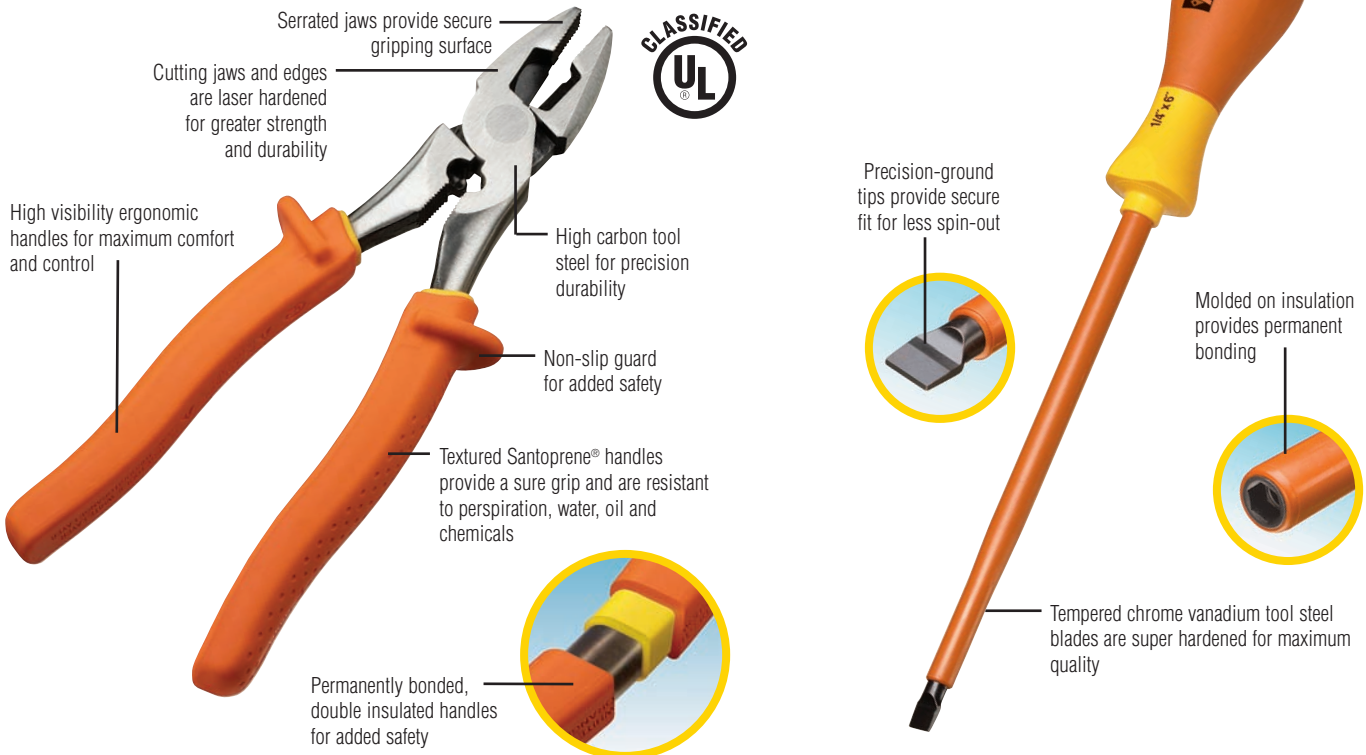


Insulated Tools

The IDEAL insulated tool line creates a perfect blend of safety, comfort and precision functionality. Each tool features double insulated Santoprene® handles with a soft, easy-to-grip outer surface. In addition to the ergonomic qualities found in our tools, the insulated coating process acts as an 'at-a-glance' safety check. If the orange outer coating reveals any of the inner yellow surface, an electrician will know that this tool needs to be replaced.

Tools feature:

- First UL tested and classified insulated pliers
- Each one designed and tested to meet ASTM F1505-01, EN DIN, and IEC 60 900 test standards
- Individually tested and VDE certified to 1000V AC (1500V DC)
- Meets OSHA requirements for insulated tools



Warning Whenever possible, always de-energize lines and equipment prior to working on or around them. 1000V insulated tools are designed only to reduce the chance of injury where the tool may make contact with an energized source. Work around energized circuits should only be done when absolutely necessary and only by qualified technicians. Property damage, personal injury or death may result if the following warnings are not heeded:

- Do not use any insulated tool if the insulation cracks, breaks or becomes damaged in any way. Destroy all dual-layer tools if the inner yellow layer shows through the orange outer layer.
- Do not touch the uninsulated portion of an insulated tool or any conductive object when either might contact an energized source.
- Tools must be kept clean and dry for proper insulating properties.
- Always inspect insulated tools before use.
- Use additional protection by wearing protective clothing and approved eye protection.
- Always use tools that are specifically designed for the task.
- **These tools meet UL 22PP, ASTM F1505-01 and IEC 60900 standards for insulated tools.**
- **Always follow OSHA 1910 S and NFPA 70E safety requirements when doing electrical work.**

REGULATIONS

Testing:

- Every 1000V insulated tool we sell is individually tested to ensure no failure when subjected to live current.

UL and VDE Certification:

Listed below are some of the tests we perform in order to pass certification:

- Tools are immersed in water for 24 hours, then tested under current for 3 minutes to ensure no current leakage or sparkover occurs.
- After being stored for 168 hours at -40° C (-40° F), tools are dropped to ensure no damage from impact.
- After being stored for 168 hours at +70° C (158° F), a tensile load is applied to ensure the grip is firmly bonded to the tool.
- Tools are subjected to flame for 10 seconds to ensure no flammability of the insulating material.

OSHA Regulations:

OSHA 1910.335(a)(2)(i) When working near exposed energized conductors or circuit parts, **each employee shall use insulated tools** or handling equipment if the tools or handling equipment might make contact with such conductors or parts.

OSHA 1910.335 (a)(1)(i) Employees working in areas where there are potential electrical hazards **shall be provided with, and shall use**, electrical protective equipment that is appropriate for the specific parts of the body to be protected and for the work to be performed.

Make sure you are in compliance by providing and using IDEAL insulated tools!

26-Piece Journeyman Kit - #35-9302



Kit Includes:

- Four insulated pliers (9-1/4 in. Linesman w/crimper, 8 in. Offset diagonal, 8-1/2 in. Long Nose, 10 in. Tongue and Groove)
- Eight insulated screwdrivers (1/8 x 3 in. slotted, 3/16 x 5 in. slotted, 1/4 x 6 in. slotted, 5/16 x 6 in. slotted, 3/8 x 8 in. slotted, #1 x 3 Phillips, #2 x 4 in. Phillips, #3 x 6 in. Phillips)
- Six insulated nutdrivers (3/16 x 5 in., 1/4 x 5 in., 5/16 x 5 in., 3/8 x 5 in., 7/16 x 5 in., 1/2 x 5 in.)
- 9-1/2 in. insulated High-Leverage Cable Cutter
- 9-3/4 in. insulated Multi-Crimp Tool
- Insulated Reflex™ Super T®-Stripper Wire Stripper
- Insulated Wire Stripper Cutter
- Insulated Electrician's Skinning Knife
- Volt-Sensor® NCV Tester
- 7-1/2 in. Non-Conductive Fuse Puller
- Heavy-Duty Soft Tool Case



18-Piece Standard Kit - #35-9301



Kit Includes:

- Four insulated pliers (9-1/4 in. Linesman w/crimper, 8 in. Offset diagonal, 8-1/2 in. Long Nose, 10 in. Tongue and Groove)
- Eight insulated screwdrivers (1/8 x 3 in. slotted, 3/16 x 5 in. slotted, 1/4 x 6 in. slotted, 5/16 x 6 in. slotted, 3/8 x 8 in. slotted, #1 x 3 Phillips, #2 x 4 in. Phillips, #3 x 6 in. Phillips)
- 9-1/2 in. Insulated High-Leverage Cable Cutter
- Insulated Reflex™ Super T®-Stripper Wire Stripper
- Insulated Electrician's Skinning Knife
- Volt-Sensor® NCV Tester
- 7-1/2 in. Non-Conductive Fuse Puller
- Heavy-Duty Soft Tool Case



10-Piece Basic Kit - #35-9300



Kit Includes:

- Three insulated pliers (9-1/4 in. Linesman w/crimper, 8 in. Offset diagonal, 8-1/2 in. Long Nose)
- Three insulated screwdrivers (3/16 x 5 in. slotted, 1/4 x 6 in., #2 x 4 in. Phillips, #3 x 6 in. Phillips)
- 9-1/2 in. Insulated High-Leverage Cable Cutter
- Insulated Reflex™ Super T®-Stripper Wire Stripper
- 7-1/2 in. Non-Conductive Fuse Puller
- Heavy-Duty Soft Tool Case



Insulated Pliers

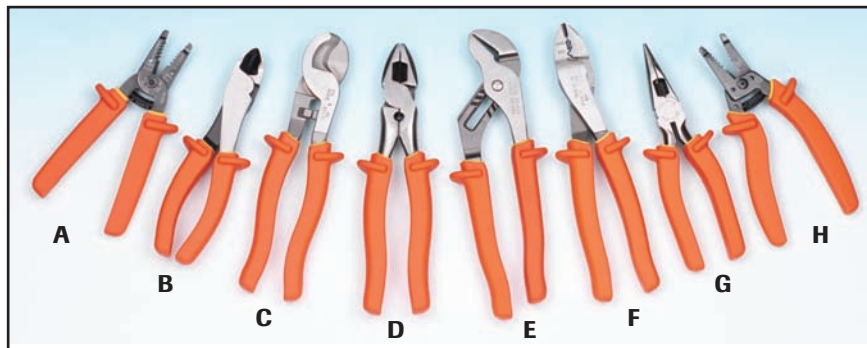


Fig.	Description	Cat. No.
A	Premium T [®] -Stripper Wire Stripper	45-9120
B	8 in. Diagonal Cutting Pliers w/angled head	35-9029
C	9-1/2 in. High-Leverage Cable Cutter	35-9052
D	9-1/4 in. Side Cutting Linesman Pliers	30-9430

Fig.	Description	Cat. No.
E	10 in. Tongue and Groove Pliers	35-9430
F	9-3/4 in. Multi-Crimp Tool	30-9429
G	8-1/2 in. Long-Nose Pliers	35-9038
H	Reflex™ Super T [®] -Stripper Wire Stripper	45-9615

Insulated Screwdrivers



Insulated Nutdrivers



Description	Shaft Length	Cat. No.
#1 Phillips Screwdriver	3 in.	35-9310
#2 Phillips Screwdriver	4 in.	35-9311
#3 Phillips Screwdriver	6 in.	35-9312
1/8 in. Slotted Screwdriver	4 in.	35-9320
3/16 in. Slotted Screwdriver	5 in.	35-9321
7/32 in. Slotted Screwdriver	7 in.	35-9322
1/4 in. Slotted Screwdriver	6 in.	35-9323
5/16 in. Slotted Screwdriver	7 in.	35-9324
3/8 in. Slotted Screwdriver	8 in.	35-9325

Description	Shaft Length	Cat. No.
3/16 in. Hex Nutdriver	5 in.	35-9330
1/4 in. Hex Nutdriver		35-9331
5/16 in. Hex Nutdriver		35-9332
3/8 in. Hex Nutdriver		35-9333
7/16 in. Hex Nutdriver		35-9334
1/2 in. Hex Nutdriver		35-9335
9/16 in. Hex Nutdriver		35-9336

Screwdriver Kit	Cat. No.
9-Piece Insulated Screwdriver Kit with hard case (Includes all nine screwdrivers listed above.)	35-9303

Nutdriver Kit	Cat. No.
7-Piece Insulated Nutdriver Kit with hard case (Includes all seven Nutdrivers listed above.)	35-9304

Insulated Knife



Description	Cat. No.
Insulated Electrician's Skinning Knife	35-9340

Cases



Description	Cat. No.
Soft Zipper Case for Basic Kit (35-9300)	35-9350
Soft Zipper Case for Standard Kit (35-9301)	35-9351
Soft Zipper Case for Journeyman Kit (35-9302)	35-9352
Hard Case for Screwdriver Kit (35-9303) & Nutdriver Kit (35-9304)	35-9353

Fuse Puller and Test Light

- Convenient pocket-sized tool safely pulls cartridge fuses and checks electrical connections
- Test prods fit parallel and tandem slot receptacles
- Built-in resistors limit current flow to eliminate false indication
- For 9/16 in. to 1 in. fuses
- For use on fuses to 100A/250V and 60A/600V
- Test capacity from 100V to 600V AC/DC



Description	Cat. No.
Fuse Puller & Test Light only	34-012

Safe-T-Grip® Fuse Pullers

- Maximum efficiency and convenience for removing or replacing cartridge-type fuses
- Three sizes handle fuses ranging from 0 to 600A
- Fully insulated, high-dielectric, glass-filled polypropylene construction
- Notched handles provide safe, no-slip grip
- Clearly marked amperage ranges
- Exceed MIL specifications



Description	Cat. No.
Small Puller for 250V, 9/32 in. to 1/2 in. dia. fuses; 5 in. long	34-001
Medium Puller for 0 to 100A/250V & 600V, 1/2 in. to 1 in. dia. fuses; 7-1/2 in. long	34-002
Large Puller for 31 to 600A/250V & 31 to 400A/600V, 3/4 in. to 2-1/2 in. dia. fuses; 11-3/4 in. long	34-003

Tuff-Grip™ Fish Tapes

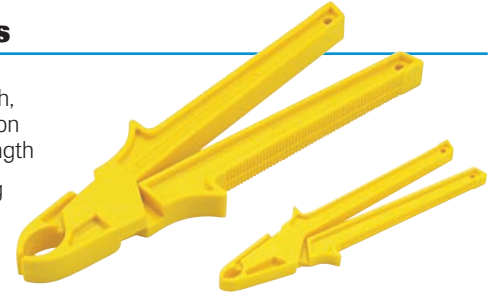
- Large 16 in. case accommodates long tape lengths
- Large, comfortable, durable handle provides secure grip and ease of use
- Durable impact-resistant case



Description	Cat. No.	Replacement Tape Cat. No.
S-Class® Fish Tape with Leader – 200 ft.	31-064	31-155
S-Class® Fish Tape with Eyelet – 200 ft.	31-065	31-165
Zoom™ – 200 ft.	31-096	31-097

Fuse Pullers

- Molded of tough, high-impact nylon for greater strength
- No-slip gripping surface and protective finger stops for added safety



Description	Cat. No.
Small Puller for 0 to 30A/250V, 1/4 in. to 1/2 in. dia. fuses; 5 in. long	34-015
Large Puller for 0 to 100A/250V & 0 to 60A/600V, 9/16 in. to 1 in. dia. fuses; 7-1/4 in. long	34-016

5-in-1 Non-Conductive Screwdriver/Nutdriver

- 1000V AC, 1500V DC rated per ASTM F 1505-01 and EN 60900 (IEC900)
- Contains: 1/4 in. slotted, 3/16 in. slotted, #1 Phillips, #2 Phillips and 1/4 in. nutdriver
- Accommodates most standard 1/4 in. hex bits
- Powerful magnet securely holds bits in place
- Handle will store up to eight standard bits
- Strong 6 in. non-conductive composite material shank



Description	Cat. No.
5-in-1 Non-Conductive Screwdriver/Nutdriver	35-9905
1/4 in. Slotted Replacement Bit	LA-4125
3/16 in. Slotted Replacement Bit	LA-4126
#1 Phillips Replacement Bit	LA-4127
#2 Phillips Replacement Bit	LA-4128

1000V Insulated Screw-Holding Screwdriver

- Split blade wedges into screw slot when collar is extended
- Holds screw in place when installing in hard to reach areas
- Easy to start screw when wearing gloves



Description	Cat. No.
1000V Insulated Screw Holding Screwdriver, 3/16 x 6 in. slotted Tip	35-9406



Circuit Breaker Mfg.	Breaker Type	# of Poles	Standard Breaker Lockouts					Circuit Breaker LO Sys.		Mini Circuit Breaker Lockouts			
			120V Snap On (w/hole) 44-810	120/277V Clamp On (no hole) 44-809	480/600V Clamp On (no hole) 44-807	Oversize 480/600V 44-823	Multi-Pole (tie bar) 44-783	Snap On (SQD 00) 44-768	Clamp On (Universal) 44-764	Pin Out Standard 44-779	Pin In Standard 44-780	Pin Out Wide 44-784	Multi-Pole w/Tie Bar 44-787
Airpax	Airpax	1		X*									
Allen Bradley	1492-CB1F	1								X			
Allen Bradley	1492-CB2F	2								X			
Allen Bradley	1492-CB3F	3								X			
Allen Bradley	1492-CB1G	1								X			
Allen Bradley	1492-CB2G	2								X			
Allen Bradley	1492-CB3G	3								X			
Allen Bradley	1492-CB1H	1								X			
Allen Bradley	1492-CB2H	2								X			
Allen Bradley	1492-CB3H	3								X			
Allen Bradley	1492-CB1DF	1								X			
Allen Bradley	1492-CB1DG	1								X			
Allen Bradley	1492-CB1DH	1								X			
Allen Bradley	1492-CB2DF	2								X			
Allen Bradley	1492-CB2DG	2								X			
Allen Bradley	1492-CB2DH	2								X			
ABB	JS	2-3			X**								
ABB	S1	3		X									
ABB	S3	3			X**								
ABB	F362	2								X			
ABB	F364	4								X			
ABB	F374	4								X			
ABB	E221	1								X			
ABB	E222	2								X			
ABB	E241	1								X			
ABB	E271	1								X			
ABB	E242	2								X			
ABB	E272	2								X			
ABB	E243	3								X			
ABB	E273	3								X			
ABB	E244	4								X			
ABB	E274	4								X			
ABB	S201-B	1								X			
ABB	S202-B	2								X			
ABB	S203-B	3								X			
ABB	S204-B	4								X			
ABB	S201-C	1								X			
ABB	S202-C	2								X			
ABB	S203-C	3								X			
ABB	S204-C	4								X			
ABB	S201-D	1								X			
ABB	S202-D	2								X			
ABB	S203-D	3								X			
ABB	S201-K	1								X			
ABB	S202-K	2								X			
ABB	S203-K	3								X			
ABB	S204-K	4								X			
ABB	S201P-K	1								X			
ABB	S202P-K	2								X			
ABB	S203P-K	3								X			
ABB	S222-K	4								X			
ABB	S221	1								X			
ABB	S222	2								X			
ABB	S223	3								X			
ABB	S224	4								X			
ABB	S251	1								X			
ABB	S252	2								X			
ABB	S253	3								X			
ABB	S261-B	1								X			
ABB	S262-B	2								X			
ABB	S263-B	3								X			
ABB	S264-B	4								X			
ABB	S261-C	1								X			

*Use with cleat #44-785

**Use with cleat #44-786

Lockout/Tagout

Circuit Breaker Mfg.	Breaker Type	# of Poles	Standard Breaker Lockouts					Circuit Breaker LO Sys.		Mini Circuit Breaker Lockouts			
			120V Snap On (w/hole) 44-810	120/277V Clamp On (no hole) 44-809	480/600V Clamp On (no hole) 44-807	Oversize 480/600V 44-823	Multi-Pole (tie bar) 44-783	Snap On (SQD 00) 44-768	Clamp On (Universal) 44-764	Pin Out Standard 44-779	Pin In Standard 44-780	Pin Out Wide 44-784	Multi-Pole w/Tie Bar 44-787
ABB	S262-C	2								X			
ABB	S263-C	3								X			
ABB	S264-C	4								X			
ABB	S261-D	1								X			
ABB	S262-D	2								X			
ABB	S263-D	3								X			
ABB	S271-K	1								X			
ABB	S272-K	2								X			
ABB	S273-K	3								X			
ABB	S274-K	4								X			
ABB	S281-K	1								X			
ABB	S282-K	2								X			
ABB	S283-K	3								X			
ABB	S503UC-K	3										X	
ABB	S504UC-K	4										X	
Cutler Hammer	BA	1		X						X			
Cutler-Hammer	BAB	1	X	X						X			
Cutler-Hammer	BAB	2-3						X					
Cutler-Hammer	BD	1	X	X						X			
Cutler-Hammer	BR	1	X	X						X			
Cutler-Hammer	BR	2-3						X		X			
Cutler-Hammer	BRH	1	X	X						X			
Cutler-Hammer	BRH	2-3						X		X			
Cutler-Hammer	BRHH	2						X		X			
Cutler-Hammer	CC	3		X*									
Cutler-Hammer	CH	1	X	X				X		X			
Cutler-Hammer	CH	2-3						X		X			
Cutler-Hammer	CHH	3		X*									
Cutler-Hammer	CH2	4						X		X			
Cutler-Hammer	CHB	1	X	X				X		X			
Cutler-Hammer	CHB	2-3						X		X			
Cutler-Hammer	CHKD	2-3			X								
Cutler-Hammer	CHLD	2-4				X							
Cutler-Hammer	CHMDL	2-3				X							
Cutler-Hammer	CHND	2-4			X**								
Cutler-Hammer	CHP	1	X	X				X		X			
Cutler-Hammer	CHP	2-3						X		X			
Cutler-Hammer	CHQ	1						X		X			
Cutler-Hammer	CHQ	2						X		X			
Cutler-Hammer	CHSW	2-3						X		X			
Cutler-Hammer	CKD	2-3			X								
Cutler-Hammer	CL	1	X	X				X		X			
Cutler-Hammer	CL	2						X		X			
Cutler-Hammer	CLD	2-4				X							
Cutler-Hammer	CLDC	2-4				X							
Cutler-Hammer	CMDL	2-3				X							
Cutler-Hammer	CND	2-4			X**								
Cutler-Hammer	CNDC	2-4			X**								
Cutler-Hammer	CSR	1		X						X			
Cutler-Hammer	DK	2-3			X								
Cutler-Hammer	E125B	1-4		X						X			
Cutler-Hammer	E125E	1-4		X						X			
Cutler-Hammer	E125H	1-4		X						X			
Cutler-Hammer	E125S	1-4		X						X			
Cutler-Hammer	ED	2-4		X						X			
Cutler-Hammer	EDC	2-4		X						X			
Cutler-Hammer	EDH	2-4		X						X			
Cutler-Hammer	EFH	1-4		X						X			
Cutler-Hammer	EGB	1-4		X						X			
Cutler-Hammer	EGE	1-4		X						X			
Cutler-Hammer	EGS	1-4		X						X			
Cutler-Hammer	EHC	1-4		X						X			
Cutler-Hammer	EHD	1-4		X						X			

*Use with cleat #44-785

**Use with cleat #44-786



Circuit Breaker Mfg.	Breaker Type	# of Poles	Standard Breaker Lockouts					Circuit Breaker LO Sys.		Mini Circuit Breaker Lockouts			
			120V Snap On (w/hole) 44-810	120/277V Clamp On (no hole) 44-809	480/600V Clamp On (no hole) 44-807	Oversize 480/600V 44-823	Multi-Pole (tie bar) 44-783	Snap On (SQD OD) 44-768	Clamp On (Universal) 44-764	Pin Out Standard 44-779	Pin In Standard 44-780	Pin Out Wide 44-784	Multi-Pole w/Tie Bar 44-787
Cutler-Hammer	FB	2-3		X					X				
Cutler-Hammer	FC	1-4		X					X				
Cutler-Hammer	FD	1-4		X					X				
Cutler-Hammer	FDB	2-4		X					X				
Cutler-Hammer	FDC	2-4		X					X				
Cutler-Hammer	FS	2-3		X					X				
Cutler-Hammer	GB	1-3		X					X				
Cutler-Hammer	GC	1-3		X					X				
Cutler-Hammer	GD	1-3		X					X				
Cutler-Hammer	GDB	1-3		X					X				
Cutler-Hammer	GHB	1-3		X					X				
Cutler-Hammer	GHBGFEP	1		X					X				
Cutler-Hammer	GHC	1-3		X					X				
Cutler-Hammer	HJD	2-4			X								
Cutler-Hammer	HKD	2-4			X								
Cutler-Hammer	HLD	2-4				X							
Cutler-Hammer	HMCP	2-3		X	X	X							
Cutler-Hammer	HMDL	2-3				X							
Cutler-Hammer	HMDLB	2-3				X							
Cutler-Hammer	HMPL	3			X**	X							
Cutler-Hammer	HND	2-4			X**								
Cutler-Hammer	HQP	1	X	X					X				
Cutler-Hammer	HQP	2					X						
Cutler-Hammer	PB	2-3				X							
Cutler-Hammer	QBGF	1		X									
Cutler-Hammer	QBGF	2							X				
Cutler-Hammer	QBGFEP	1		X									
Cutler-Hammer	QBGFEP	2							X				
Cutler-Hammer	QBHGF	1		X									
Cutler-Hammer	QBHGFEP	1		X									
Cutler-Hammer	QBHW	1	X	X					X				
Cutler-Hammer	QBHW	2-3					X						
Cutler-Hammer	QC	1	X	X					X				
Cutler-Hammer	QC	2-3					X		X				
Cutler-Hammer	QCD	1	X	X					X				
Cutler-Hammer	QCD	2-3					X		X				
Cutler-Hammer	QCGF	1		X									
Cutler-Hammer	QCGFEP	1		X									
Cutler-Hammer	QCHGF	1		X									
Cutler-Hammer	QCHGFEP	1		X									
Cutler-Hammer	QCHW	1	X	X					X				
Cutler-Hammer	QCHW	2-3					X		X				
Cutler-Hammer	QHCW	1	X	X					X				
Cutler-Hammer	QHCW	2-3					X		X				
Cutler-Hammer	QHCX	1	X	X					X				
Cutler-Hammer	QHCX	2-3					X		X				
Cutler-Hammer	QHPW	1	X	X					X				
Cutler-Hammer	QHPW	2-3					X						
Cutler-Hammer	QHPX	1	X	X					X				
Cutler-Hammer	QHPX	2-3					X						
Cutler-Hammer	QPGF	1		X									
Cutler-Hammer	QPGF	2							X				
Cutler-Hammer	QPGFEP	1		X									
Cutler-Hammer	QPGFEP	2							X				
Cutler-Hammer	QPHGF	1		X									
Cutler-Hammer	QPHGFEP	1		X									
Cutler-Hammer	QPHW	1	X	X					X				
Cutler-Hammer	QPHW	2-3					X						
Fed. Pacific Elec.	2B	2											
Fed. Pacific Elec.	BAB	1		X					X				
Fed. Pacific Elec.	NA-single	3			X**				X				
Fed. Pacific Elec.	NA-tie bar	2							X				
Fed. Pacific Elec.	NB	1		X*					X				

Lockout/Tagout

*Use with cleat #44-785

**Use with cleat #44-786

Circuit Breaker Mfg.	Breaker Type	# of Poles	Standard Breaker Lockouts					Circuit Breaker I.O. Sys.		Mini Circuit Breaker Lockouts			
			120V Snap On (w/hole) 44-810	120/277V Clamp On (no hole) 44-809	480/600V Clamp On (no hole) 44-807	Oversize 480/600V 44-823	Multi-Pole (tie bar) 44-783	Snap On (SOD 00) 44-768	Clamp On (Universal) 44-764	Pin Out Standard 44-779	Pin In Standard 44-780	Pin Out Wide 44-784	Multi-Pole w/Tie Bar 44-787
Fed. Pacific Elec.	NBH GFI	1		X					X				
Fed. Pacific Elec.	NE/NEF	1-3		X*									
Fed. Pacific Elec.	NEJ	1-3		X*									
Fed. Pacific Elec.	NFJ	1-3		X									
Fed. Pacific Elec.	NJJ	1-3			X								
Fed. Pacific Elec.	NJL	1-3			X								
Fed. Pacific Elec.	NM	1-3			X								
Fed. Pacific Elec.	NP-single	1		X					X				
General Electric	V	1-3								X			
General Electric	EH400	3			X								
General Electric	HQC	3		X					X				
General Electric	SED	2-3		X					X				
General Electric	SEH	2-3		X					X				
General Electric	SEL	2-3		X					X				
General Electric	SEP	2-3		X					X				
General Electric	SFH	2-3		X					X				
General Electric	SFL	2-3		X					X				
General Electric	SFP	2-3		X					X				
General Electric	SGD	2-3			X								
General Electric	SGH	2-3			X								
General Electric	SGL	2-3			X								
General Electric	SGLA	2-3			X								
General Electric	SGP	2-3			X								
General Electric	SRPG	3			X								
General Electric	TB	2		X*					X				
General Electric	TBC	2		X*					X				
General Electric	TE	1-3		X*					X				
General Electric	TEB	1-3		X*					X				
General Electric	TED	1-3		X*					X				
General Electric	TEF	1-3		X*					X				
General Electric	TEL	3		X*					X				
General Electric	TEML	3		X*					X				
General Electric	TEY	1-3		X					X				
General Electric	TF	1-3		X					X				
General Electric	TFC	3		X*					X				
General Electric	TFJ	2-3			X								
General Electric	TFK	2-3			X								
General Electric	TFL	3			X								
General Electric	THED	1-3		X*					X				
General Electric	THEF	1-3		X*					X				
General Electric	THFK	2-3			X								
General Electric	THHQB	2-3					X		X				
General Electric	THHQB-A	1	X	X					X				
General Electric	THHQB-S	1		X					X				
General Electric	THHQC	1-3					X		X				
General Electric	THHQC-A	1	X	X					X				
General Electric	THHQC-S	1		X					X				
General Electric	THHQL	2-3					X		X				
General Electric	THHQL-A	1	X	X					X				
General Electric	THHQL-S	1		X					X				
General Electric	THJK4	2-3			X**								
General Electric	THJK6	2-3			X**								
General Electric	THKM12	2-3				X							
General Electric	THKM8	2-3				X							
General Electric	THLC1	3		X*									
General Electric	THQB	2-3					X		X				
General Electric	THQB GF	1-2											
General Electric	THQB-A	1	X	X					X				
General Electric	THQB-S	1		X					X				
General Electric	THQC	2-3					X		X				
General Electric	THQC-A	1	X	X					X				
General Electric	THQC-AL	2-3					X		X				
General Electric	THQC-S	1		X					X				

*Use with cleat #44-785 **Use with cleat #44-786
 1-800-435-0705 for Customer Service



Circuit Breaker Mfg.	Breaker Type	# of Poles	Standard Breaker Lockouts					Circuit Breaker LO Sys.		Mini Circuit Breaker Lockouts			
			120V Snap On (w/hole) 44-810	120/277V Clamp On (no hole) 44-809	480/600V Clamp On (no hole) 44-807	Oversize 480/600V 44-823	Multi-Pole (tie bar) 44-783	Snap On (SQD 00) 44-768	Clamp On (Universal) 44-764	Pin Out Standard 44-779	Pin In Standard 44-780	Pin Out Wide 44-784	Multi-Pole w/Tie Bar 44-787
General Electric	THQD	2-3		X*					X				
General Electric	THQDBL	3							X				
General Electric	THQL	2-3					X		X				
General Electric	THQL-A	1	X	X					X				
General Electric	THQL-S	1		X					X				
General Electric	TJ2	2-3			X**	X							
General Electric	TJ4	3			X								
General Electric	TJC	2-3		X*					X				
General Electric	TJD	2-3			X**								
General Electric	TJJ	2-3			X**								
General Electric	TJK	2-3			X**								
General Electric	TJS	2-3			X**								
General Electric	TK4V	3			X								
General Electric	TKC	3		X*					X				
General Electric	TKM	2-3				X							
General Electric	TKMA8	3				X							
General Electric	TQB	2-3					X		X				
General Electric	TQB-A	1	X	X					X				
General Electric	TQB-S	1		X					X				
General Electric	TQC	2-3					X		X				
General Electric	TQC-A	1	X	X					X				
General Electric	TQC-S	1		X					X				
General Electric	TQD	2-3		X									
General Electric	TQL	1-3											
General Electric	TQL	2-3											
General Electric	TQL-A	1	X	X					X				
General Electric	TQL-S	1		X					X				
General Electric	V	1-4									X		
Merlin Gerin	B100A	2										X	X
Merlin Gerin	C32N	1-3								X			
Merlin Gerin	C45AD	3								X			
Merlin Gerin	C60a	1-4								X			
Merlin Gerin	C60H	1-4								X			
Merlin Gerin	C60N	1-4								X			
Merlin Gerin	C80A	3										X	X
Merlin Gerin	NC100H	1-3										X	
Merlin Gerin	NC125H	1-3										X	
Merlin Gerin	NC100L	1-4										X	
Merlin Gerin	NC100LH	1-4										X	
Merlin Gerin	NC100L MA	3										X	
Merlin Gerin	NC100N	1-4										X	
Merlin Gerin	C801N	3					X						
Merlin Gerin	C1251N	3					X						
Merlin Gerin	CE104N	3		X*									
Merlin Gerin	CK1200NA	3					X						
Merlin Gerin	CJ	3			X**								
Siemens ITE	5SX11	1										X	
Siemens ITE	5SX12	2											X
Siemens ITE	5SX13	3											X
Siemens ITE	5SX21	1										X	
Siemens ITE	5SQ11	1										X	
Siemens ITE	5SQ12	2											X
Siemens ITE	5SQ13	3											X
Siemens ITE	5SQ16	4											X
Siemens ITE	5SN22	2											X
Siemens ITE	BL	1	X	X				X	X				
Siemens ITE	BL	2-3						X	X				
Siemens ITE	BLF-GFI	2						X	X				
Siemens ITE	BLH	1	X	X					X				
Siemens ITE	BLH	2-3						X	X				
Siemens ITE	BQ	1	X	X					X				
Siemens ITE	BQ	2-3						X	X				
Siemens ITE	BQCH	1-3		X					X				

*Use with cleat #44-785

**Use with cleat #44-786

Lockout/Tagout

Circuit Breaker Mfg.	Breaker Type	# of Poles	Standard Breaker Lockouts					Circuit Breaker LO Sys.		Mini Circuit Breaker Lockouts			
			120V Snap On (w/hole) 44-810	120/277V Clamp On (no hole) 44-809	480/600V Clamp On (no hole) 44-807	Oversize 480/600V 44-823	Multi-Pole (tie bar) 44-783	Snap On (SQD 00) 44-768	Clamp On (Universal) 44-764	Pin Out Standard 44-779	Pin In Standard 44-780	Pin Out Wide 44-784	Multi-Pole w/Tie Bar 44-787
Siemens ITE	BQD	1-3		X					X				
Siemens ITE	BQH	1	X	X					X				
Siemens ITE	BQH	2-3						X	X				
Siemens ITE	CFD6	2-3			X**								
Siemens ITE	HBL	1	X	X					X				
Siemens ITE	HBL	2-3						X	X				
Siemens ITE	HBQ	1	X	X					X				
Siemens ITE	HBQ	2-3						X	X				
Siemens ITE	HE4	1-3		X					X				
Siemens ITE	HED4	1-3		X					X				
Siemens ITE	HED6	2-3		X					X				
Siemens ITE	HFD6	2-3			X**								
Siemens ITE	HFXD6	2-3			X**								
Siemens ITE	HHED6	2-3		X					X				
Siemens ITE	HHFD6	2-3			X**								
Siemens ITE	HHJD6	2-3			X								
Siemens ITE	HHJXD6	2-3			X								
Siemens ITE	HJD6	2-3			X								
Siemens ITE	HJXD6	2-3			X								
Siemens ITE	HMD6	2-3					X						
Siemens ITE	HMXD6	2-3					X						
Siemens ITE	HN3	2					X						
Siemens ITE	HND6	2-3					X						
Siemens ITE	HNXD6	2-3					X						
Siemens ITE	HPD6	3					X						
Siemens ITE	HPXD6	3					X						
Siemens ITE	HQJ2-H	3		X					X				
Siemens ITE	HQP	1	X	X					X				
Siemens ITE	HQP	2-3						X	X				
Siemens ITE	HQPP	1	X	X					X				
Siemens ITE	HQPP	2-3						X	X				
Siemens ITE	HQPPH	2						X	X				
Siemens ITE	HRD6	3					X						
Siemens ITE	HRXD6	3					X						
Siemens ITE	JD2	3					X						
Siemens ITE	JD6-A	2-3			X								
Siemens ITE	JJ3				X								
Siemens ITE	JJ6	3					X						
Siemens ITE	JL3	3			X								
Siemens ITE	NXD6	2-3					X						
Siemens ITE	PD6	3					X						
Siemens ITE	PXD6	3					X						
Siemens ITE	QJ2	2-3		X*					X				
Siemens ITE	QJ2-H	2-3		X*					X				
Siemens ITE	QJH2	2-3		X*					X				
Siemens ITE	QP	1	X	X					X				
Siemens ITE	QP	2-3						X	X				
Siemens ITE	QP1	1		X					X				
Siemens ITE	QPH	1	X	X					X				
Siemens ITE	QPH	2-4						X	X				
Siemens ITE	QPP	1	X	X					X				
Siemens ITE	QPP	2-3						X	X				
Siemens ITE	QPPH	1	X	X					X				
Siemens ITE	QPPH	2-3						X	X				
Siemens ITE	RD6	3					X						
Siemens ITE	RXD6	3					X						
Square D	EDB	1-3		X					X				
Square D	EGB	1-3		X					X				
Square D	EH4	1-3		X					X				
Square D	EHB	1-3		X					X				
Square D	EHB	2-3						X	X				
Square D	EJB	1-3		X					X				
Square D	EZ	3					X						

*Use with cleat #44-785

**Use with cleat #44-786



Circuit Breaker Mfg.	Breaker Type	# of Poles	Standard Breaker Lockouts					Circuit Breaker LO Sys.		Mini Circuit Breaker Lockouts			
			120V Snap On (w/hole) 44-810	120/277V Clamp On (no hole) 44-809	480/600V Clamp On (no hole) 44-807	Oversize 480/600V 44-823	Multi-Pole (tie bar) 44-783	Snap On (SOD QO) 44-768	Clamp On (Universal) 44-764	Pin Out Standard 44-779	Pin In Standard 44-780	Pin Out Wide 44-784	Multi-Pole w/Tie Bar 44-787
Square D	FA	1-3		X*									
Square D	FAL	1-3		X*									
Square D	FC	3		X*									
Square D	FCL	2-3		X*									
Square D	FDA			X						X			
Square D	FGA	3								X			
Square D	FH	1-3		X*									
Square D	FHL	1-3		X*									
Square D	FHL-DC	3		X*									
Square D	FHP	3		X*									
Square D	FI	3		X*									
Square D	FIL	3		X*									
Square D	FY	1		X*									
Square D	GJL	3		X*									
Square D	KA	2-3		X*									
Square D	KAL	2-3		X*									
Square D	KAP				X								
Square D	KC	2-3		X*									
Square D	KCL	2-3		X*									
Square D	KH	2-3		X*									
Square D	KHL	3		X*									
Square D	KI	2-3		X*									
Square D	KIL	2-3		X*									
Square D	LA	2-3			X**								
Square D	LAL	2-3			X**	X							
Square D	LAP	3			X**	X							
Square D	LC	3				X							
Square D	LCP	3				X							
Square D	LH	2-3			X**								
Square D	LHL	3			X**	X							
Square D	LHP				X**	X							
Square D	L2	3				X							
Square D	LXL	3				X							
Square D	Q1B	2-3		X						X			
Square D	Q1L	2-3		X						X			
Square D	Q2	2-3		X*									
Square D	Q2H	2-3		X*									
Square D	Q2L	2-3		X*									
Square D	Q2MT	2-3		X*									
Square D	Q4	2-3			X**								
Square D	Q4L	2-3			X**								
Square D	QO	1						X					
Square D	QO	2-3	X	X				X	X				
Square D	QOB	1						X					
Square D	QOB	2-3	X	X				X	X				
Square D	QOB-H	2						X					
Square D	QOB-VH	1	X	X				X					
Square D	QOB-VH	2-3											
Square D	QO-H	2						X					
Square D	QOM1-VH	2		X						X			
Square D	QOM2-VH	2		X						X			
Square D	QO-SWN	2-3	X	X				X	X				
Square D	QOU	1						X					
Square D	QOU	2-3		X				X	X				
Square D	QOU w/tie bar	2-3								X			
Square D	QO-VH	1						X					
Square D	QO-VH	2-3	X	X				X	X				
Square D	QYU	1						X					
Square D	Y1				X								
Westinghouse	RE			X						X			
Westinghouse	RH	3			X								
Westinghouse	WPHX	1	X	X						X			

*Use with cleat #44-785

**Use with cleat #44-786

Lockout/Tagout