

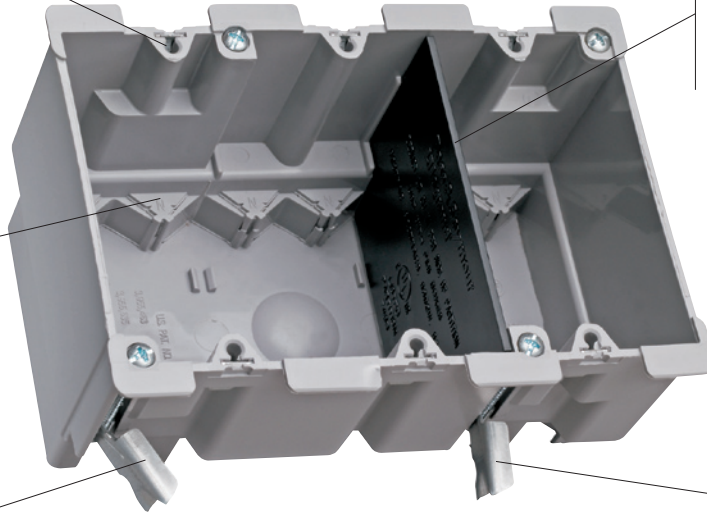
**Quick/Click® feature** secures devices quickly and easily. Does not strip when over-torqued. See Page P-14 for details.

**Big 52 cubic inch capacity.**

**Divider plate** (LVDIV1, sold separately) used when installing line and low-voltage devices or multiple 277 volt devices in same box. See Page P-5 for details.

**4 Auto/Clamps® on each end** eliminate the need for separate cable clamps. See Page P-14 for details.

**Easy installation,** rectangular cutout.



**Metal swing bracket** for quick mounting in existing walls.

**Swing bracket** adjusts from 1¼" to ½".

**S352W**  
3 Gang Old Work Box shown with  
Divider Plate, LVDIV-1

***Durable, impact-resistant thermoplastic boxes in a full range of sizes — complemented by innovative extras that cut installation time.***

## Index

Device	Page Number
Switch & Outlet Boxes	P-2, P-3
Old Work Boxes & Shallow Boxes	P-4
Low-Voltage Brackets	P-5
Wood & Steel Stud Bracket Boxes	P-6
Screw Mount Steel Stud Boxes	P-7
4" Square Boxes & Covers	P-8
4" Round Ceiling Boxes	P-9 – P-11
Round Ceiling Boxes	P-12
Floor Box Assemblies	P-13, P-14, P-17
Round Floor Box Assemblies	P-15, P-16
Round Floor Box Covers	P-16
Recessed TV Boxes	P-18
Applications & Product Features	P-19 – P-21

Pass &amp; Seymour



## Slater® Plastic Boxes Switch & Outlet Boxes

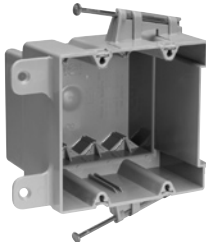
With Captive Mounting Nails on Each End with Quick/Click®



S118R



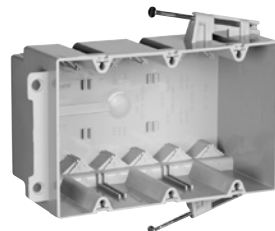
S122R



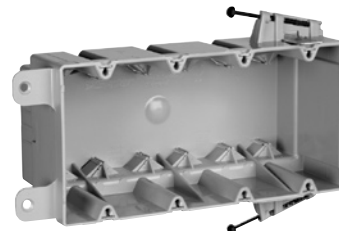
S235RAC



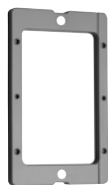
S235RACMH



S354RAC



S468RAC



EXT1



EXT2

Catalog Number	Cu. In. Vol.	Description	Dimensions (inches)			Wire Fill (AWG)	Qty. Per Carton
			L	W	D		
<b>Switch &amp; Outlet Boxes with Quick/Click®</b>							
S118R	18.0	Single gang. 2 Quick/Entries® each end.	3 <sup>3</sup> / <sub>4</sub>	2 <sup>1</sup> / <sub>4</sub>	2 <sup>23</sup> / <sub>32</sub>	9 No. 14 8 No. 12 7 No. 10	100
S235RAC	35.0	Two gang. 4 Auto/Clamps® each end.	3 <sup>31</sup> / <sub>32</sub>	3 <sup>31</sup> / <sub>32</sub>	3 <sup>3</sup> / <sub>8</sub>	17 No. 14 15 No. 12 14 No. 10	50
S235RACMH	35.0	Two gang. 4 Auto/Clamps® each end. 3" depth for manufactured housing walls.	3 <sup>3</sup> / <sub>4</sub>	4 <sup>1</sup> / <sub>16</sub>	3	17 No. 14 15 No. 12 14 No. 10	100
S354RAC	54.0	Three gang. 6 Auto/Clamps® each end.	3 <sup>31</sup> / <sub>32</sub>	5 <sup>25</sup> / <sub>32</sub>	3	27 No. 14 24 No. 12 21 No. 10	50
S468RAC	68.0	Four gang. Rear stabilizing bar virtually eliminates inward movement. 6 Auto/Clamps® each end.	3 <sup>13</sup> / <sub>16</sub>	7 <sup>13</sup> / <sub>16</sub>	3	34 No. 14 30 No. 12 27 No. 10	25
<b>Deep Switch &amp; Outlet Boxes with Quick/Click®</b>							
S122R	22.5	Single gang deep. 2 Quick/Entries® each end. Extra deep for dimmers, GFCIs and thermostats, yet suitable for 2 x 4 construction.	3 <sup>3</sup> / <sub>4</sub>	2 <sup>1</sup> / <sub>4</sub>	3 <sup>3</sup> / <sub>8</sub>	11 No. 14 10 No. 12 9 No. 10	100

All boxes are UL Listed.

UL Classified for 2 Hour Fire Resistance. (Does not apply to S468RAC.)

Catalog Number	Cu. In. Vol.	Description	Qty. Per Carton
<b>Wall Box Extension Rings</b>			
EXT1	1.0	Single gang. 1/4" thick. Stackable.	10
EXT2	2.0	Two gang. 1/4" thick. Stackable.	10

# Slater® Plastic Boxes Switch & Outlet Boxes

With Captive Mounting Nails on Each End

Pass & Seymour



Slater® Plastic Boxes

Catalog Number	Cu. In. Vol.	Description	Dimensions (inches)			Wire Fill (AWG)	Qty. Per Carton
			L	W	D		
<b>Switch &amp; Outlet Boxes with Threaded Mounting Holes</b>							
P118R	18.0	Single gang. 2 Quick/Entries® each end.	3¾	2¼	2 <sup>23</sup> / <sub>32</sub>	9 No. 14 8 No. 12 7 No. 10	100
P118RN	18.0	Single gang. Reverse angled captive mounting nail. 2 Quick/Entries® each end. Used for manufactured housing.	3¾	2¼	2 <sup>23</sup> / <sub>32</sub>	9 No. 14 8 No. 12 7 No. 10	100
P122C	22.0	Single gang. With EZ Grip – a temporary hold feature.	3¾	2¼	4	11 No. 14 10 No. 12 9 No. 10	100
PH122R	22.0	Single gang. Horizontal. Captive mounting nail each side.	3¾	2¼	3⅞	11 No. 14 10 No. 12 9 No. 10	100
P235RAC	35.0	Two gang. 4 Auto/Clamps® each end.	3 <sup>31</sup> / <sub>32</sub>	3 <sup>31</sup> / <sub>32</sub>	3⅞	17 No. 14 15 No. 12 14 No. 10	100
P235RACMH	35.0	Two gang. 4 Auto/Clamps® each end. 3" depth for manufactured housing walls.	3 <sup>31</sup> / <sub>32</sub>	3 <sup>31</sup> / <sub>32</sub>	3	17 No. 14 15 No. 12 14 No. 10	100
P354RACMH	54.0	Three gang. 6 Auto/Clamps® each end. 3½" depth for manufactured housing walls.	3 <sup>15</sup> / <sub>16</sub>	5 <sup>15</sup> / <sub>16</sub>	3½	27 No. 14 24 No. 12 21 No. 10	50
<b>Deep Switch &amp; Outlet Boxes with Threaded Mounting Holes</b>							
P122R	22.5	Single gang deep. 2 Quick/Entries® each end. Extra deep for dimmers, GFCIs and thermostats, yet suitable for 2 x 4 construction.	3¾	2¼	3⅞	11 No. 14 10 No. 12 9 No. 10	100
P122RN	22.5	Single gang deep. Reverse angled captive mounting nail. 2 Quick/Entries® each end. Extra deep for dimmers, GFCIs and thermostats, yet suitable for 2 x 4 construction.	3¾	2¼	3⅞	11 No. 14 10 No. 12 9 No. 10	100
P122N	22.5	Single gang deep. Vertical bracket mount.	3¾	2¼	3⅞	11 No. 14 10 No. 12 9 No. 10	100

All boxes are UL Listed.

UL Classified for 2 Hour Fire Resistance (Does not apply to P122N.)



P118R



P1-18-RN



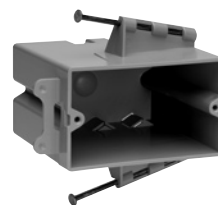
P1-22-R



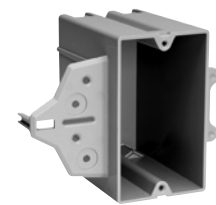
P122RN



P1-22-N



PH1-22-R



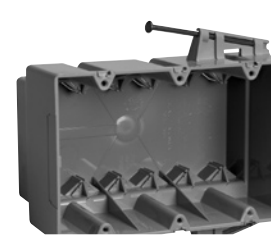
P1-22-C



P2-35-RAC



P2-35-RACMH



P354RACMH

All devices listed on this page conform to NEMA OS2.

Switch & Outlet Boxes

## Slater® Plastic Boxes Old Work Boxes & Shallow Boxes



S118W



S122W

NEW

NEW

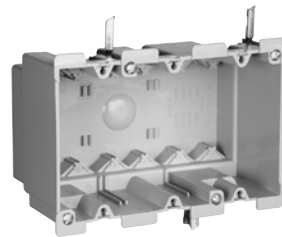
Catalog Number	Cu. In. Vol.	Description	Dimensions (inches)			Wire Fill (AWG)	Qty. Per Carton
			L	W	D		
<b>Old Work Switch &amp; Outlet Boxes with Quick/Click®</b>							
S116W	16.0	<b>Single gang.</b> Swing-bracket for mounting adjusts from 1¼" down to ⅝". 2 Auto/Clamps® each end.	3¾	2¼	3⅜	8 No. 14 7 No. 12 6 No. 10	100
S118W	18.0	<b>Single gang.</b> Swing-bracket for mounting adjusts from 1¼" down to ⅝". 2 Auto/Clamps® each end.	3¾	2¼	3⅜	9 No. 14 8 No. 12 7 No. 10	100
S232W	32.0	<b>Two gang.</b> Swing-bracket for mounting adjusts from 1¼" down to ⅝". 4 Auto/Clamps® each end.	3¾	4⅞	3⅜	16 No. 14 14 No. 12 12 No. 10	50
S352W	52.0	<b>Three gang.</b> Swing-bracket for mounting adjusts from 1¼" down to ⅝". 6 Auto/Clamps® each end.	3¾	5⅞	3⅜	26 No. 14 23 No. 12 20 No. 10	10
<b>Deep Old Work Switch &amp; Outlet Boxes with Quick/Click®</b>							
S122W	22.0	<b>Single gang deep.</b> Swing-bracket for mounting adjusts from 1¼" down to ⅝". 2 Auto/Clamps® each end.	3¾	2⅞	3⅜	–	50
<b>Old Work Switch &amp; Outlet Boxes with Threaded Mounting Holes</b>							
P116W	16.0	<b>Single gang.</b> Swing-bracket for mounting adjusts from 1¼" down to ⅝". 2 Auto/Clamps® each end.	3¾	2¼	3⅜	8 No. 14 7 No. 12 6 No. 10	100
<b>Shallow Switch &amp; Outlet Boxes for use in limited depth applications</b>							
P108W	8.0	<b>Single gang.</b> Old work flange box for retrofit applications.	3¾	2⅞	1⅞	–	20
P108N	8.0	<b>Single gang.</b> With vertical side bracket for new construction applications.	3¾	2⅞	1⅞	–	20

All boxes are UL listed.

UL Classified for 2 Hour Fire Resistance. (Does not apply to S232W, S352W, P108W, and P108N.)



S232W



S352W



P108N



P108W

# Slater® Plastic Boxes Low-Voltage Brackets

Pass & Seymour



Slater® Plastic Boxes

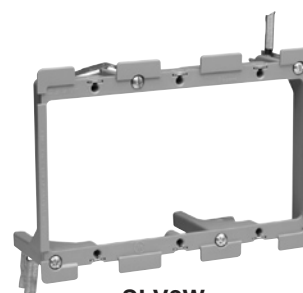
Low-Voltage Brackets

Catalog Number	Cu. In. Vol.	Description	Dimensions (inches)			Wire Fill (AWG)	Qty. Per Carton
			L	W	D		
<b>NEW</b> <b>Low-Voltage Brackets with Quick/Click®</b> for class 2 low-voltage applications							
SDV2B	22.5	<b>Two gang. For dual-voltage.</b> Face mount box and bracket for new construction.	3¾	4	3¾	11 No. 14 10 No. 12 9 No. 10	12
SLV1R	–	<b>Single gang.</b> Nail on for new construction.	3¾	2½	–	–	12
SLV1S	–	<b>Single gang.</b> Screw on for new construction.	3¾	2½	–	–	12
SLV1B	–	<b>Single gang.</b> Face mount bracket for new construction.	3¾	2½	–	–	12
SLV2B	–	<b>Two gang.</b> Face mount bracket for new construction.	3¾	4	–	–	12
SLV1W	–	<b>Single gang.</b> Swing bracket mount for old work.	3¾	2½	–	–	12
SLV2W	–	<b>Two gang.</b> Swing bracket mount for old work.	3¾	4	–	–	12
SLV3W	–	<b>Three gang.</b> Swing bracket mount for old work.	3¾	6	–	–	12
<b>Low-Voltage Brackets</b> for class 2 low-voltage applications							
P100WD	8.0	<b>Single Gang. Gangable.</b> Swing bracket for mounting, adjusts from 1¼" down to ½", for old work, stand alone applications.	3¾	2	–	–	15
P100ND	8.0	<b>Single gang.</b> With vertical side bracket for new construction, with wire retaining fingers.	3¾	2½	1¼	–	15
PDV2B	22.5	<b>Two gang. For dual-voltage.</b> Face mount box and bracket for new construction.	3¾	4	3¾	11 No. 14 10 No. 12 9 No. 10	12
PLV1R	–	<b>Single gang.</b> Nail on for new construction.	3¾	2½	–	–	12
PLV1S	–	<b>Single gang.</b> Screw on for new construction.	3¾	2½	–	–	12
PLV1B	–	<b>Single gang.</b> Face mount bracket for new construction.	3¾	2½	–	–	12
PLV2B	–	<b>Two gang.</b> Face mount bracket for new construction.	3¾	4	–	–	12
PLV1W	–	<b>Single gang.</b> Swing bracket mount for old work.	3¾	2½	–	–	12
PLV2W	–	<b>Two gang.</b> Swing bracket mount for old work.	3¾	4	–	–	12
<b>NEW</b> PLV3W	–	<b>Three gang.</b> Swing bracket mount for old work.	3¾	6	–	–	12
<b>Divider Plate</b>							
LVDIV1	-.5	Suitable for low-voltage or multiple 277V devices. For use with S235RAC, S235RACS, P235RAC, S235S50AC, S354RAC, S352W and S232W.	–	–	–	–	12

All boxes are UL listed.



SLV2B



SLV3W



PLV1W



PLVIR



LVDIV1

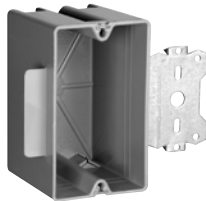
All devices listed on this page conform to NEMA OS2.

Pass &amp; Seymour

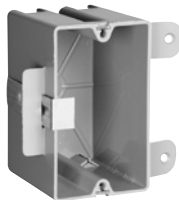


## Slater® Plastic Boxes Wood & Steel Stud Bracket Boxes

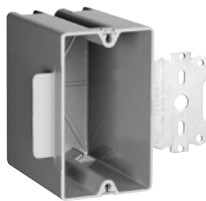
With Offset Bracket for Wood and/or Steel Mounting



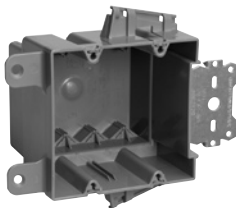
S118S50



S118B50



S122S50



S235S50AC



S354S50AC



S468S50AC



P122B



PH122B

Catalog Number	Cu. In. Vol.	Description	Dimensions (inches)			Wire Fill (AWG)	Qty. Per Carton
			L	W	D		
<b>Wood &amp; Steel Stud Bracket Boxes with Quick/Click®</b>							
S118S50	18.0	Single gang. 3/8" offset for wood and steel stud mounting. 2 Quick/Entries® each end. For use with 3/8" to 5/8" wallboard.	3 3/4	2 1/4	2 23/32	9 No. 14 8 No. 12 7 No. 10	100
S118B50	18.0	Single gang. 1/2" offset for wood and steel stud mounting. Rear stabilizing bar virtually eliminates inward movement. 2 Quick/Entries® each end. For use with 3/8" to 5/8" wallboard.	3 3/4	2 1/4	2 3/4	9 No. 14 8 No. 12 7 No. 10	100
S235S50AC	35.0	Two gang. 3/8" offset for wood and steel stud mounting. 4 Auto/Clamps® each end. For use with 3/8" to 5/8" wallboard.	3 31/32	3 31/32	3 3/8	17 No. 14 15 No. 12 14 No. 10	50
S354S50AC	54.0	Three gang. 3/8" offset for wood and steel stud mounting. 6 Auto/Clamps® each end. For use with 3/8" to 5/8" wallboard.	3 3/4	5 25/32	3	27 No. 14 24 No. 12 21 No. 10	25
S468S50AC	68.0	Four gang. 3/8" offset for wood and steel stud mounting. Rear stabilizing bar virtually eliminates inward movement. 6 Auto/Clamps® each end. For use with 3/8" to 5/8" wallboard.	3 3/4	7 13/16	3	34 No. 14 30 No. 12 27 No. 10	25
<b>Deep Wood &amp; Steel Stud Bracket Boxes with Quick/Click®</b>							
S122S50	22.5	Single gang deep. 3/8" offset for wood and steel stud mounting. 2 Quick/Entries® each end. For use with 3/8" to 5/8" wallboard.	3 3/4	2 1/4	3 3/8	11 No. 14 10 No. 12 9 No. 10	100

All boxes are UL Listed.

UL Classified for 2 Hour Fire Resistance. (Does not apply to S468S50AC.)

Catalog Number	Cu. In. Vol.	Description	Dimensions (inches)			Wire Fill (AWG)	Qty. Per Carton
			L	W	D		
<b>Steel Stud Bracket Boxes with Quick/Click®</b>							
S122B	22.0	Single gang. 1/2" offset for steel stud mount only. 2 stabilizer legs.	3 3/4	2 1/4	4 1/4	11 No. 14 10 No. 12 9 No. 10	100
SH122B	22.0	Single gang. Horizontal. 1/2" offset for for wood or steel stud mount. 2 stabilizer legs.	3 3/4	2 1/4	3 3/8	11 No. 14 10 No. 12 9 No. 10	100
<b>Steel Stud Bracket Boxes</b>							
P122B	22.0	Single gang. 1/2" offset for steel stud mount only. 2 stabilizer legs.	3 3/4	2 1/4	4 1/4	11 No. 14 10 No. 12 9 No. 10	100
PH122B	22.0	Single gang. Horizontal. 1/2" offset for for wood or steel stud mount. 2 stabilizer legs.	3 3/4	2 1/4	3 3/8	11 No. 14 10 No. 12 9 No. 10	100

All boxes are UL Listed.

UL Classified for 2 Hour Fire Resistance.

# Slater® Plastic Boxes Screw Mount Steel Stud Boxes

With Captive Combo Head Self Tapping Mounting Screws on Each End

Pass & Seymour



Slater® Plastic Boxes

Catalog Number	Cu. In. Vol.	Description	Dimensions (inches)			Wire Fill (AWG)	Qty. Per Carton
			L	W	D		
<b>Screw Mount, Steel Stud Boxes with Quick/Click®</b>							
S118RS	18.0	Single gang. 2 Quick/Entries® each end.	3¾	2¼	2 <sup>25</sup> / <sub>32</sub>	9 No. 14 8 No. 12 7 No. 10	100
S235RACS	35.0	Two gang. 4 Auto/Clamps® each end.	3 <sup>31</sup> / <sub>32</sub>	3 <sup>31</sup> / <sub>32</sub>	3¾	17 No. 14 15 No. 12 14 No. 10	50
S235RACSMH	35.0	Two gang. 4 Auto/Clamps® each end. 3" depth for manufactured housing walls.	3¾	4 <sup>1</sup> / <sub>16</sub>	3	17 No. 14 15 No. 12 14 No. 10	100
S354RACS	54.0	Three gang. 6 Auto/Clamps® each end.	3 <sup>31</sup> / <sub>32</sub>	5 <sup>25</sup> / <sub>32</sub>	3	27 No. 14 24 No. 12 21 No. 10	50
S468RACS	68.0	Four gang. 6 Auto/Clamps® each end. Rear stabilizing bar virtually eliminates inward movement.	3 <sup>19</sup> / <sub>16</sub>	7 <sup>19</sup> / <sub>16</sub>	3	34 No. 14 30 No. 12 27 No. 10	25
<b>Deep Screw Mount, Steel Stud Boxes with Quick/Click®</b>							
S122RS	22.5	Single gang deep. 2 Quick/Entries® each end. Extra deep for dimmers, GFCIs and thermostats, yet suitable for 2 x 4 construction.	3¾	2¼	3¾	11 No. 14 10 No. 12 9 No. 10	100

All boxes are UL Listed.

UL Classified for 2 Hour Fire Resistance. (Does not apply to S468RACS.)

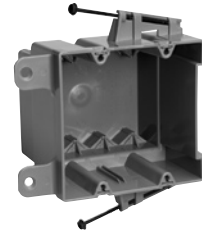
Note: 3¼" self-tapping, drill-point screws. Nails are 3¼".



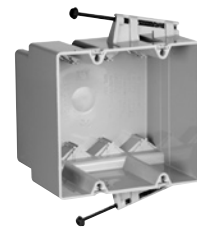
S118RS



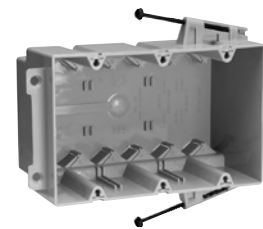
S122RS



S235RACS



S235RACSMH

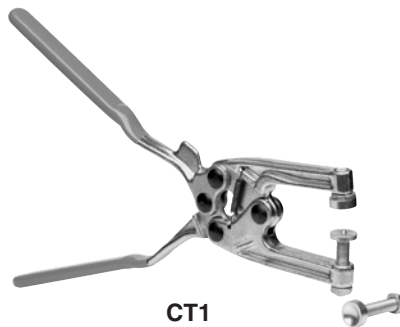


S354RACS



S468RACS

Catalog Number	Description	Qty. Per Carton
<b>Crimping Tool for Attaching Steel Stud Boxes</b>		
CT1	Crimping tool for attaching boxes to steel studs. Comes equipped with long and short anvils to meet most installation requirements.	1



CT1

Screw Mount Steel Stud Boxes

## Slater® Plastic Boxes 4" Square Boxes & Covers



4SBC



RC1



RC2



S4418BAC



S4421RAC



S4421SAC



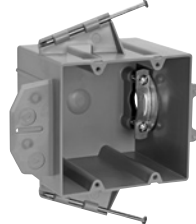
S4435RAC



S4435SAC



P242SRD



P242RRD

Catalog Number	Cu. In. Vol.	Description	Dimensions (inches)			Wire Fill (AWG)	Qty. Per Carton
			L	W	D		
<b>Covers for 4" Square Boxes</b>							
4SBC	–	4" square flat blank cover - gray	4¼	4¼	N/A	–	50
4SBCW	–	4" square flat blank cover - white	4¼	4¼	N/A	–	50
RC1	3.2	Single gang device cover, raised ⅜"	4¼	4¼	⅜	–	100
RC2	5.3	Two gang device cover, raised ⅜"	4¼	4¼	⅜	–	100
<b>4" Square Boxes with Threaded Mounting Holes</b>							
S4418BAC	17.0	Shallow 4" square. Captive mounting nail each end. 2 Auto/Clamps® each end. 2 #8 mounting screws factory installed.	4¼	4¼	1¼	9 No. 14 8 No. 12 7 No. 10	50
S4421RAC	21.0	4" square. Captive mounting nail each end. 3 Auto/Clamps® each end, 2 on side opposite to nails. 2 #8 mounting screws factory installed.	4¼	4¼	1½	10 No. 14 9 No. 12 8 No. 10	100
S4421SAC	21.0	4" square. For wood and steel stud mounting. 3 Auto/Clamps each end, 2 on side opposite bracket. 2 #8 mounting screws factory installed.	4¼	4¼	1½	10 No. 14 9 No. 12 8 No. 10	50
S4435RAC	35.0	4" square. Captive mounting nail each end. 3 Auto/Clamps® each end, 2 on side adjacent to nails. 2 #8 mounting screws factory installed.	4¼	4¼	2⅜	17 No. 14 15 No. 12 14 No. 10	50
S4435SAC	35.0	4" square. For wood and steel stud mounting. 3 Auto/Clamps® each end, 2 on side opposite bracket. 2 #8 mounting screws factory installed.	4¼	4¼	2⅜	17 No. 14 15 No. 12 14 No. 10	50

All boxes are UL Listed.

UL Classified for 2 Hour Fire Resistance. (Does not apply to 4SBC and 4SBCW.)

Catalog Number	Cu. In. Vol.	Description	Dimensions (inches)			Wire Fill (AWG)	Qty. Per Carton
			L	W	D		
<b>Range &amp; Dryer Boxes</b>							
P242SRD	42.0	1/2" offset for wood or steel stud mount with metal cable clamp. Captive mounting screw each end.	3¾	4	4	16 No. 10 14 No. 8 8 No. 6	12
P242RRD	42.0	1/2" offset for wood or steel stud mount with metal cable clamp. Captive mounting nail each end.	3¾	4	4	16 No. 10 14 No. 8 8 No. 6	12

All boxes are UL Listed.

UL Classified for 2 Hour Fire Resistance (pending).



# Slater® Plastic Boxes 4" Round Ceiling Boxes

Pass & Seymour



**Angled, rugged, metal mounting bracket** safely and securely fastens fans or fixtures to the building structure.

**Auto Clamp® cable clamps molded in** — hold wire securely in box.

**Dual mounting** accepts fans or fixtures with 2.75" or 3.5" straps.

**Phillips-head screws (#10-32 x 3")** mount the fan or fixture directly to the metal bracket.

**Fan mounts directly to bracket** through box with #10-32 screws (provided).

**UL Listed for fan and fixture support.**

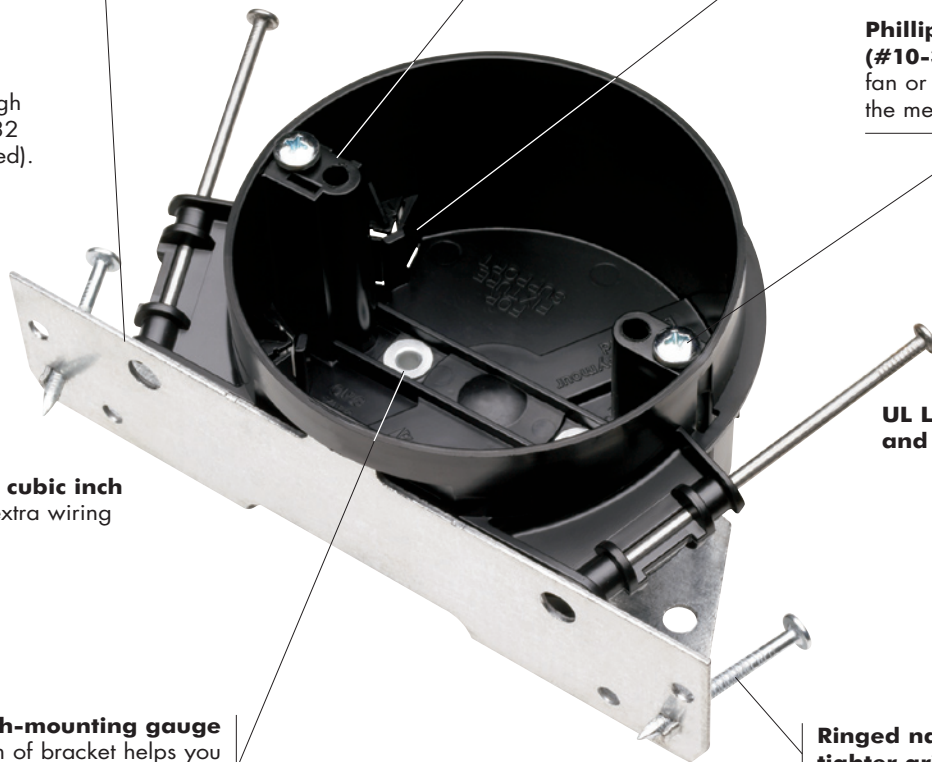
**Large, 20.25 cubic inch capacity** for extra wiring space.

**Depth-mounting gauge** at bottom of bracket helps you align the box at the proper depth relative to the ceiling.

**Ringed nails for tighter grip.**

**S120JFAN**

**Constructed of impact-resistant Noryl® thermoplastic**, making it virtually unbreakable and non-conductive.



Pass &amp; Seymour



## Slater® Plastic Boxes 4" Round Ceiling Boxes

With Dual Threaded Mounting Holes

**Easy installation.** One #10 x 1¼" screw holds the box at rough in. Two factory-supplied #10 x 2" screws secure the fan or fixture through the box, directly to the joist.

**UL Listed for fan and fixture support.**

**Mounts directly under a joist or on a joist cross member.**



**S116FAN**

**Impact-resistant Noryl®** means no ground wiring as with metal boxes.

**Screw lock** holds screws in box until needed. No lost hardware and no broken spiral saw bits.

Catalog Number	Cu. In. Vol.	Description	Dimensions (in.)		Wires (AWG)	Qty. Per Carton	UL Listed Max. Weight Rating	
			Dia.	Depth			Fan	Fixture
<b>Fan Boxes – Fan &amp; Fixture Rated</b>								
S120JFAN	20.25	Ceiling Fan Box – Premium Grade with integral fan mounting bracket and 4 Auto/Clamps®.	4	2⅞	10 No. 14 9 No. 12 8 No. 10	12	70 lbs.	150 lbs.
S120BFAN	20.25	Ceiling Fan Box – Construction Grade with 4 Auto/Clamps®.	4	2⅞	10 No. 14 9 No. 12 8 No. 10	30	70 lbs.	70 lbs.
S120RFAN	20.25	Ceiling Fan Box – Standard Grade 4 Auto/Clamps® with 2 captive mounting nails.	4	2⅞	10 No. 14	30	35 lbs.	50 lbs.
<b>4" Round Direct Mount Ceiling Fan Boxes – Fan &amp; Fixture Rated</b>								
S116FAN	16	Ceiling Fan Box – with Direct Mount.	4	2¾	8 No. 14 7 No. 12 6 No. 10	24	70 lbs.	210 lbs.
S109FAN	9	Ceiling Fan Box – with Direct Mount. Suitable for single or double joist.	4	2¾	4 No. 14 4 No. 12 3 No. 10	24	70 lbs.	210 lbs.

All boxes are UL listed.

UL Classified for 2 Hour Fire Resistance.

Dual mounting accommodates both 2.75" and 3.5" fixtures.



**S120JFAN**



**S120BFAN**



**S120RFAN**



**S109FAN**



**S116FAN**

# Slater® Plastic Boxes 4" Round Ceiling Boxes

With Dual Threaded Mounting Holes

Pass & Seymour



Slater® Plastic Boxes

Catalog Number	Cu. In. Vol.	Description	Dimensions (inches)		Wires (AWG)	Qty. Per Carton	UL Listed Max. Weight Rating Fixture
			Dia.	Depth			
<b>Ceiling Boxes</b>							
S120RAC	20.25	4" round. 2 captive mounting nails. 4 Auto/Clamps.	4	2 <sup>3</sup> / <sub>16</sub>	10 No. 14 9 No. 12 8 No. 10	50	50 lbs.
S120RGAC	20.25	4" round with ground lug. 2 captive mounting nails. 4 Auto/Clamps.	4	2 <sup>3</sup> / <sub>16</sub>	10 No. 14 9 No. 12 8 No. 10	50	50 lbs.
S120JAC	20.25	4" round. J-bracket with 2 captive mounting nails. 4 Auto/Clamps.	4	2 <sup>3</sup> / <sub>16</sub>	10 No. 14 9 No. 12 8 No. 10	50	50 lbs.
S120JGAC	20.25	4" round with ground lug. J-bracket with 2 captive mounting nails. 4 Auto/Clamps.	4	2 <sup>3</sup> / <sub>16</sub>	10 No. 14 9 No. 12 8 No. 10	50	50 lbs.
S120HAC	20.25	4" round. Bar-hanger adjusts to 16" or 24" joist spacing. 4 Auto/Clamps.	4	2 <sup>3</sup> / <sub>16</sub>	10 No. 14 9 No. 12 8 No. 10	50	50 lbs.
S120HGAC	20.25	4" round with ground lug. Bar-hanger adjusts to 16" or 24" joist spacing. 4 Auto/Clamps.	4	2 <sup>3</sup> / <sub>16</sub>	10 No. 14 9 No. 12 8 No. 10	50	50 lbs.
S120RACS	20.25	4" round. 2 captive mounting screws. 4 Auto/Clamps.	4	2 <sup>3</sup> / <sub>16</sub>	10 No. 14 9 No. 12 8 No. 10	50	50 lbs.

All boxes are UL listed.

UL Classified for 2 Hour Fire Resistance.

Dual mounting accommodates both 2.75" and 3.5" fixtures.



S120RAC



S120RGAC



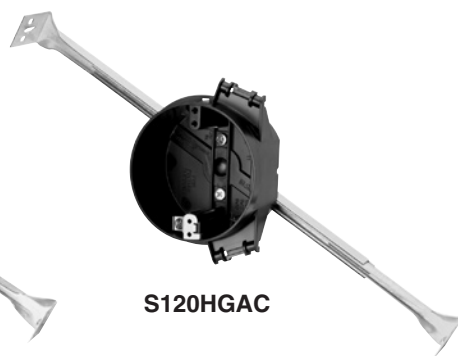
S120JAC



S120JGAC



S120HAC



S120HGAC



S120RACS

Catalog Number	Description	Qty. Per Carton
<b>Covers for 4" Round Boxes</b>		
4RBC	4" round flat blank cover – gray	50
4RBCW	4" round flat blank cover – white	50

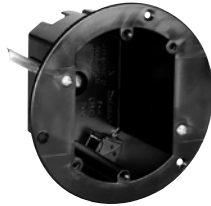


4RBC

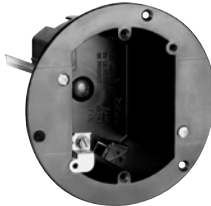
All devices listed on this page conform to NEMA OS2.

4" Round Ceiling Boxes

## Slater® Plastic Boxes Round Ceiling Boxes



C118WAC



C118WGAC



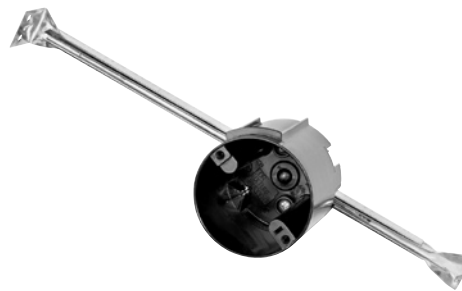
C118WACX



C118WGACX



C118HGAC



C118HAC

Catalog Number	Cu. In. Vol.	Description	Dimensions (inches)		Wires (AWG)	Qty. Per Carton	UL Listed Max. Weight Rating Fixture
			Dia.	Depth			
<b>3¾" Round Old Work Ceiling Boxes</b>							
C118WAC	18.0	3¾" round. Swing brackets for mounting adjust from 1¼" down to ⅞". 4 Auto/Clamps®. Includes device mounting holes.	3¾"	2⅞"	9 No. 14 8 No. 12 7 No. 10	50	20 lbs.
C118WGAC	18.0	3¾" round. With grounding lug. Swing brackets for mounting adjust from 1¼" down to ⅞". 4 Auto/Clamps®. Includes device mounting holes.	3¾"	2⅞"	9 No. 14 8 No. 12 7 No. 10	50	20 lbs.
<b>3¾" Round Old Work Ceiling Boxes</b>							
C118WACX	18.0	3¾" round. Same as C118WAC, except without swing brackets, for screw mounting into OSB or plywood. 4 Auto/Clamps®.	3¾"	2⅞"	9 No. 14 8 No. 12 7 No. 10	50	8 lbs.
C118WGACX	18.0	3¾" round. Same as C118WGAC, except without swing brackets, for screw mounting into OSB or plywood. 4 Auto/Clamps®.	3¾"	2⅞"	9 No. 14 8 No. 12 7 No. 10	50	8 lbs.
<b>3¾" Round Ceiling Boxes</b>							
C118RAC*	18.0	3¾" round. 2 captive mounting nails. 4 Auto/Clamps®. 7 No. 10	3¾"	3⅝"	9 No. 14 8 No. 12	50	50 lbs.
C118RGAC*	18.0	3¾" round with ground lug. 2 captive mounting nails. 4 Auto/Clamps®.	3¾"	3⅝"	9 No. 14 8 No. 12 7 No. 10	50	50 lbs.
C118HAC*	18.0	3¾" round. Bar-hanger adjusts to 16" or 24" joist spacing. 4 Auto/Clamps®.	3¾"	3⅝"	9 No. 14 8 No. 12 7 No. 10	50	50 lbs.
C118HGAC*	18.0	3¾" round with ground lug. Bar-hanger adjusts to 16" or 24" joist spacing. 4 Auto/Clamps®.	3¾"	3⅝"	9 No. 14 8 No. 12 7 No. 10	50	50 lbs.

UL Classified for 2 Hour Fire Resistance.

# Slater® Plastic Boxes Floor Box Assemblies

For Wood Sub-Floors

Pass & Seymour



Slater® Plastic Boxes

## Features – FB Series

- Rugged diecast cover plates.
- Meets UL514(c) and NEC 314.27(c).
- Scrub water compliant.
- With durable nickel or brass cover plates.
- Dual-voltage models available.
- Swing brackets mounting option eliminates drilling tile flooring for mounting screws.
- Wood sub-floors only.
- Wire Fill (AWG):  
10 No. 14, 9 No. 12, 8 No. 10.



FB1SRB



FB1SRKS1B

Catalog Number	Cu. In. Vol.	Description	Cover Plate Finish	Dimensions (inches)			Qty. Per Carton
				L	W	D	
<b>Floor Box Assemblies — One Gang for Wood Sub-Floors</b>							
FB1SRB FB1SRN	20.5	Single threaded screw plug. Includes 15A, 125V single receptacle.	Brass Nickel	4 $\frac{3}{4}$	3 $\frac{3}{4}$	4	1
FB1SRKS1B FB1SRKS1N	20.5	<b>Dual-voltage.</b> #8 duplex opening, 2 threaded screw plugs. Includes 15A, 125V single receptacle, Cat 5e jack, F-connector, blanks & low-voltage divider.	Brass Nickel	4 $\frac{3}{4}$	3 $\frac{3}{4}$	4	1
FB1KS2B FB1KS2N	20.5	<b>Low-voltage.</b> Single threaded screw plug, 2 openings. Includes Cat 5e jack, F-connector & blanks.	Brass Nickel	4 $\frac{3}{4}$	3 $\frac{3}{4}$	4	1
FB1DRB FB1DRN	20.5	#8 duplex opening, 2 threaded screw plugs. Includes 3232 15A, 125V duplex receptacle.	Brass Nickel	4 $\frac{3}{4}$	3 $\frac{3}{4}$	4	1
FB1KS4B FB1KS4N	20.5	<b>Low-voltage.</b> #8 duplex opening, 2 threaded screw plugs, 4 openings. Includes Cat 5e jack, F-connector & blanks.	Brass Nickel	4 $\frac{3}{4}$	3 $\frac{3}{4}$	4	1

**All floor box assemblies are compatible with Tamper-Resistant receptacles, for reference see Page B-33.**

Floor Box Assemblies

Pass &amp; Seymour



## Slater® Plastic Boxes Floor Box Assemblies

For Wood Sub-Floors

**Rugged, die-cast cover plate** with durable nickel or brass finish.

**Scrub water compliant without caulking**, supplied with foam gasket and O-ring-equipped plugs.

**Large box flange** rests on finished floor — no adjustments needed.

**Swing-bracket mounting**, great for tile floors — eliminates drilling for mounting screws.



Meet **UL514C** and **NEC314.27c** requirements including scrub water for tile floors.

Includes **15 Amp, 125 Volt duplex receptacle, low-voltage divider, Cat 5e jack, F-connector, and blanks.**

**Extra-deep design** leaves plenty of wiring room.

FB2DRKS4N

Catalog Number	Cu. In. Vol.	Description	Cover Plate Finish	Dimensions (inches)			Qty. Per Carton
				L	W	D	
<b>NEW</b> Floor Box Assemblies — Two Gang for Wood Sub-Floors							
FB2DRKS4B FB2DRKS4N	42.5	<b>Dual-voltage.</b> Two #8 duplex openings, 4 threaded screw plugs. Includes 3232 15A, 125V duplex receptacle, Cat 5e jack, F-connector, 10 blanks & low-voltage divider.	Brass Nickel	4¾	6½	4	1
FB2DR2B FB2DR2N	42.5	Two #8 duplex openings, 4 threaded screw plugs. Includes two 3232 15A, 125V duplex receptacles.	Brass Nickel	4¾	6½	4	1
FB2KS8B FB2KS8N	42.5	<b>Low-voltage.</b> Two #8 duplex openings, 4 threaded screw plugs, 8 openings. Includes Cat 5e jack, F-connector & 10 blanks.	Brass Nickel	4¾	6½	4	1

Wire File (AWG): 21 No. 14, 18 No. 12, 17 No. 10.

**All floor box assemblies are compatible with Tamper-Resistant receptacles, for reference see Page B-33.**

# Slater® Plastic Boxes Round Floor Box Assemblies

For Wood or Concrete Sub-Floors

Pass & Seymour



Slater® Plastic Boxes

Round Floor Box Assemblies

Features	
<ul style="list-style-type: none"> <li>■ Rugged diecast cover plates.</li> <li>■ Brass or aluminum.</li> <li>■ Smooth, nearly flush installation.</li> </ul>	<ul style="list-style-type: none"> <li>■ PS862 Series wood or concrete sub-floors only.</li> <li>■ Wire Fill (AWG): 11 No. 14, 9 No. 12, 8 No. 10.</li> </ul>



PS862CK12



PS862C



PS862KIT

Catalog Number	Cu. In. Vol.	Description	Cover Plate Finish	Dimensions (in.)		Qty. Per Carton
				Dia.	D	
<b>NEW Round Floor Box Assemblies for Hardwood or Tile Finished Floors</b>						
PS862DB PS862TAL	22.0	#8 duplex opening, 2 flip lids. Includes 3232 15A, 125V duplex receptacle.	Brass Aluminum	4 1/4	3 3/4	1
PS862TGFI PS862TGFIAL	22.0	#26 opening, flip lid. Includes 885 15A, 125V duplex Decorator receptacle.	Brass Aluminum	4 1/4	3 3/4	1
PS862TSP PS862TSPAL	22.0	#8 duplex opening, 2 threaded screw plugs. Includes 3232 15A, 125V duplex receptacle.	Brass Aluminum	4 1/4	3 3/4	1
PS862TCK12 PS862TCKAL12	22.0	1 1/2" to 3/4" threaded screw plugs.	Brass Aluminum	4 1/4	3 3/4	1
<b>NEW Round Floor Box Assemblies for Carpeted Finished Floors</b>						
PS862C PS862TCAL	22.0	#8 duplex opening, 2 flip lids. Includes 3232 15A, 125V duplex receptacle.	Brass Aluminum	5 1/2	3 3/4	1
PS862GFI PS862GFICAL	22.0	#26 opening, flip lid. Includes 885 15A, 125V duplex Decorator receptacle.	Brass Aluminum	5 1/2	3 3/4	1
PS862SP PS862SPCAL	22.0	#8 duplex opening, 2 threaded screw plugs. Includes 3232 15A, 125V duplex receptacle.	Brass Aluminum	5 1/2	3 3/4	1
PS862CK12 PS862CKAL12	22.0	1 1/2" to 3/4" threaded screw plugs.	Brass Aluminum	5 1/2	3 3/4	1

All floor box assemblies are compatible with Tamper-Resistant receptacles, for reference see Page B-33.

Catalog Number	Cu. In. Vol.	Description	Dimensions (in.)		Wire Fill (AWG)	Qty. Per Carton
			Dia.	Depth		
<b>NEW Round Floor Box for Hardwood, Tile or Carpeted Finish Floors</b>						
PS862	22.0	Box only.	3 3/4	2 1/16	11 No. 14 9 No. 12 8 No. 10	1
<b>NEW Concrete Kit</b>						
PS862KIT	-	Mud Cap, Gasket. Two 3/4" male PVC conduit fittings.	-	-	-	5

All devices listed on this page conform to NEMA OS2.

Pass &amp; Seymour



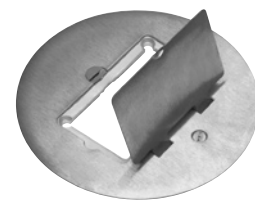
PS863DPCOM



PS863DRGFICOM



PS895SP



PS895GFI

## Slater® Plastic Boxes Round Floor Box Assemblies

For Wood Sub-Floors

### Features

- Rugged diecast cover plates.
- Brass or aluminum.
- Dual-voltage.
- Smooth, nearly flush installation.
- PS863 series wood sub-floors only.
- Includes Cat 5e & F-Connector.
- Wire Fill (AWG):  
11 No. 14, 10 No. 12, 9 No. 10.

Catalog Number	Cu. In. Vol.	Description	Cover Plate Finish	Dimensions (in.)		Qty. Per Carton
				Dia.	D	
<b>NEW Round Floor Box Assemblies</b>						
PS863DPCOM PS863DPCOMAL	23.5	<b>Dual-voltage.</b> #8 duplex opening, 2 flip lids and 2 low-voltage openings. Includes 3232 15A, 125V duplex receptacle, Cat 5e jack and F-connector.	Brass Aluminum	5¼	3½	1
PS863DRGFICOM PS863DRGFICOMAL	23.5	<b>Dual-voltage.</b> #26 opening, flip lid and 2 low-voltage openings. Includes 885 15A, 125V duplex Decorator receptacle, Cat 5e jack & F-connector.	Brass Aluminum	5¼	3½	1

All floor box assemblies are compatible with Tamper-Resistant receptacles, for reference see Page B-33.

## Round Floor Box Covers

For Wood or Concrete Sub-Floors

Catalog Number	Description	Cover Plate Finish	Diameter	Qty. Per Carton
<b>NEW Round Floor Box Covers for Hardwood or Tile Finished Floors</b>				
PS895T PS895TAL	#8 duplex opening, 2 flip lids. Cover only.	Brass Aluminum	4¼	8
PS895TSP PS895TSPAL	#8 duplex opening, 2 threaded screw plugs. Cover only.	Brass Aluminum	4¼	8
PS895TGFI PS895TGFIAL	#26 Decorator opening, flip lid. Cover only.	Brass Aluminum	4¼	8
PS896TCK12 PS896TCKAL12	Cover conversion kit. 1½" to ¾" threaded screw plug. Cover only.	Brass Aluminum	4¼	8
<b>NEW Round Floor Box Covers for Carpeted Finished Floors</b>				
PS895 PS895TCAL	#8 duplex opening, 2 flip lids. Cover only.	Brass Aluminum	5½	8
PS895SP PS895SPCAL	#8 duplex opening, 2 threaded screw plugs. Cover only.	Brass	5½	8
PS895GFI PS895GFICAL	Brass #26 Decorator opening, flip lid. Cover only.	Brass Aluminum	5½	8
PS896CK12 PS896CKAL12	Cover conversion kit. 1½" to ¾" threaded screw plug. Cover only.	Brass Aluminum	5½	8



# Plastic Boxes Floor Box Assemblies

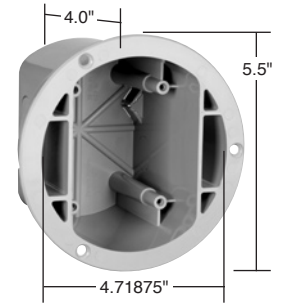
2 Pole, 3 Wire Grounding 15A, 125V

Pass & Seymour

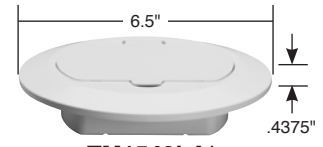


### Features

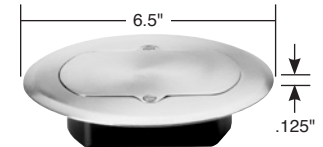
- Hinged door is removable and easily replaceable.
- Durable construction, impact and scratch resistant PVC construction.
- Standard Decorator opening that accepts GFCI, TVSS, DataCom or other Decorator devices.
- Auto/Clamps® and knockouts on both sides of box.
- Meets UL514(c) scrub water exclusion test.
- Threaded device mounting holes.
- Simple mounting box, fits into a 4-3/4" hole and mounts with 3 screws included.
- Ready for low-voltage wiring, drill guides on underside of cover.
- UL and cUL Listed.
- Captive screws on TM1542 series – screws will not be lost – new.
- Made in USA.



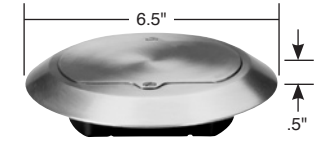
TM1542BOX



TM1542LA\*

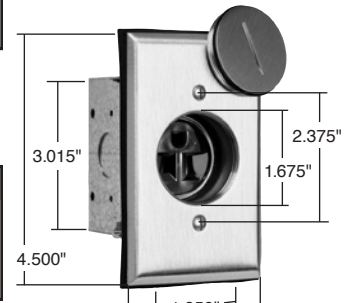


TM1542FM

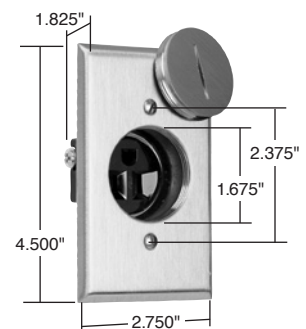


TM1542CF

\*See available colors at right.



1542FBA



1542DR

Catalog Number	Description	Color	NEMA Config. No.
<b>Floor Box</b>			
TM1542BOX	38 cu. in., with knockouts and Auto/Clamps®, 3 screws for mounting to floor.	Gray	5-15R
<b>Thermoplastic Covers</b>			
TM1542W TM1542BR TM1542GRY TM1542N TM1542BK TM1542LA	Includes 15A, 125V Decorator receptacle, matching detachable and replaceable hinged door; threaded device-mounting holes; drill guides for low-voltage poke-through holes; accepts any Decorator device; mounts on carpeting, hardwood, linoleum, tile floors; 4 mounting/leveling screws.	White Brown Gray Paintable Gray Black Light Almond	5-15R 5-15R 5-15R 5-15R 5-15R 5-15R
<b>Brass Covers</b>			
TM1542FM	Low-profile cover requires minimum 3/8" hardwood floor thickness.	Brass	5-15R
TM1542CF	High-profile cover fits any floor finish – including carpeting, linoleum, tile, etc. Both covers include an 885 15A, 125V Decorator duplex receptacle and will accept any Decorator device. Covers include captive screws to prevent loss.	Brass	5-15R

UL listed in accordance with 314.27(e).

### Features

- Solid brass covered plate with matching flush fitting brass cap.
- 15A, 125V single receptacle made of durable thermoplastic.
- UL and FSUL listed.

Catalog Number	Rating A. V.	Description	Color	NEMA Config. No.
<b>Floor Box Assembly**</b>				
1542FBA	15 125	Receptacle, brass plate, plug, gasket, O-ring, and metal 18 cu. in. box	Brown	5-15R
<b>Display Receptacle*</b>				
1542DR	15 125	Receptacle, brass plate and plug	Brown	5-15R

\*UL listed in accordance with 314.27(e).

\*\*Conforms to NEMA OS2.

**All floor box assemblies are compatible with Tamper-Resistant receptacles, for reference see Page B-33.**

All devices listed on this page conform to NEMA OS2.

## Plastic Boxes Recessed TV Boxes

**Ideal for flat-screen TVs, home office, kitchen counter tops, and behind furniture to allow snug-to-wall placement.**

Today's homeowners have more multimedia choices than ever — including flat panel, wall-mounted televisions. P&S Recessed TV Boxes offer a clean installation with the versatility to handle up to 12 multimedia connections, while providing surge protected power.

Their recessed design saves space and simplifies connections to cable or satellite boxes, DVRs, DVD players, surround-sound systems and more.

And they're available with or without TVSS receptacles to protect costly electronics from potentially damaging surges.



TV3WTVSSWLA



TV1WW



TV1WTVSSBK

### Features

- Clean, flush-mount appearance — snap-on end caps hide mounting screws.
- Flexible — position either line voltage or low-voltage in all three openings.
- Low-voltage connectors offer both terminated and pull-through capability.
- Plugs and multimedia connections stay recessed behind the wall surface.
- Molded-in template and rectangular cut-out.
- Accepts standard TP wall plates.
- Metal swing brackets ensure a solid mounting.
- Uses old-work-style boxes for line voltage.
- Accepts all P&S keystone low-voltage connectors, including Cat 5e and F-connectors (both supplied with TVSS kit), as well as RCA and audio binding posts.

Catalog Number	Description	Color
<b>Recessed TV Boxes</b>		
TV1WW TV1WBK TV1WLA	Single Gang Recessed TV Box — Frame Only.	White Black Light Almond
TV1WTVSSW TV1WTVSSBK TV1WTVSSLA	Single Gang Recessed TV Box with TVSS & Low-Voltage Kit. Includes TVSS Duplex Receptacle, Cat 5e Jack, F-Connector, Blanks, & Wall Plates.	White Black Light Almond
TV3WW TV3WBK TV3WLA	3 Gang Recessed TV Box — Frame Only.	White Black Light Almond
TV3WTVSSW TV3WTVSSBK TV3WTVSSLA	Single Gang Recessed TV Box with TVSS & Low-Voltage Kit. Includes TVSS Duplex Receptacle, Cat 5e Jack, F-Connector, Blanks, & Wall Plates.	White Black Light Almond

Single gang dimensions: 7.25" L x 4.875" W x 2.25" D

Three gang dimensions: 8.5" L x 4.875" W x 2.25" D

# Slater® Plastic Boxes Applications & Product Features

Pass & Seymour

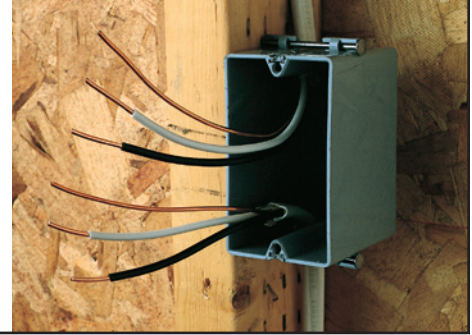


## Application

Slater Plastic Boxes, the Contractor's Choice designed with unique labor-saving features, include a complete range of wall, ceiling, and old work boxes for commercial and residential construction applications.

## UL Classified

All Slater Plastic Boxes are Underwriters Laboratories Listed. Slater Plastic Boxes shown that are UL Classified for Fire Resistance meet the requirements of UL263 and have a two hour fire resistance rating. These boxes may be used in fire resistant walls and ceilings. Installation information for Slater Plastic Boxes Classified for Fire Resistance may be found in the UL Fire Resistance Directory under category CEYY for Pass & Seymour/Legrand.



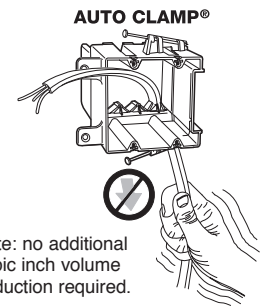
## Product Features

### Exclusive Auto/Clamp®

**Eliminates the need for separate cable clamps as well as the tools usually needed for installation.**

Auto/Clamp® is available on all multigang boxes, old work boxes, 4" square boxes, and 3-1/4" and 4" round ceiling boxes. A major installation advantage with Auto/Clamp® is that the clamp is molded as an integral part of the box (there are no separate clamps and screws to install, adjust or tighten). Each cable opening contains an Auto/Clamp®, therefore, the non-metallic sheathed cable may be inserted where needed or where most convenient. Auto/Clamp® does not take up as much room as conventional clamps, allowing more room for wire and devices – another important feature.

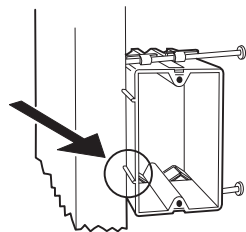
To install the cable, insert stripped or unstripped non-metallic wire into the Auto/Clamp® opening and pull through to the desired length. The cable is automatically secured and the installation is complete. There are no other operations for the electrician to perform. Contractors can look forward to saving time and money with every Auto/Clamp® plastic box installation.



Note: no additional cubic inch volume deduction required.

### Location Ribs

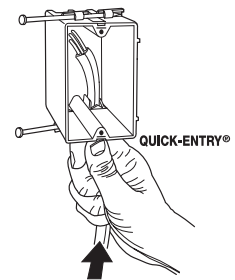
**Location Ribs enable the installer to quickly and accurately maintain a 1/2" offset.** Dual ribs also make it easy to keep the face of the box parallel to the stud. The ribs are .450" long to reduce the chance of the box protruding beyond the 1/2" sheetrock. They project .080" to span the rounded edges of wood studs but will not cause excessive canting of the box when used with thinner wallboard.



### Quick/Entry®

**Speeds installation by eliminating need for tools**

Another time-saving idea is Quick/Entry®, a method that allows you to push stripped or unstripped non-metallic cable into a single gang plastic box without removing knock-outs. Jagged edges usually formed in other boxes are eliminated. Staple wire to stud within 8" of the box [per NEC 314.17(c)] to complete installation.



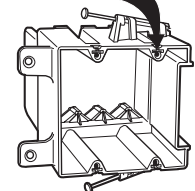
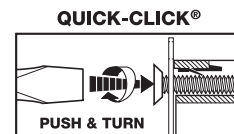
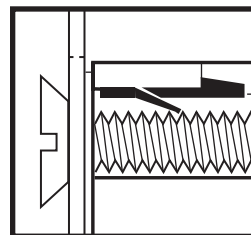
### Quick/Click®

**Fast, easy, and secure installations.**

The unique, labor-saving Quick/Click® design secures the wiring device quickly and easily. Simply push in the mounting screws with a screwdriver and turn the screw one turn.

**With Quick/Click® you cannot cross-thread or strip a device mounting screw.**

**Wall boxes are tested for a minimum 100 lb. total device pull-out resistance.**



### How Quick/Click® Works

The **spring steel** insert for quick mounting of switches and receptacles is a unique patented feature. (Refer to illustration.) Note how the spring acts as a locking ratchet and allows the screw to be pushed in and then tightened. The screw can only be released by unscrewing it in the conventional fashion.

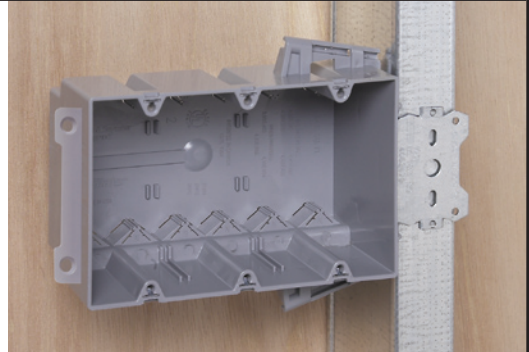
## Slater® Plastic Boxes Applications & Product Features

### Wood & Steel Stud Bracket Boxes

#### Application

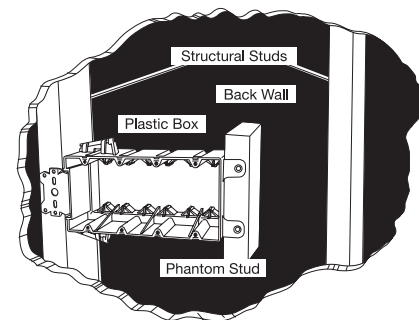
Single, two, three, four gang and 4" square wood and steel stud boxes feature Quick/Click®, the labor-saving device that assures quick and dependable installation of switches and receptacles. These high-impact thermoplastic boxes can be mounted quickly to steel or aluminum studs using the CT-1 Crimping Tool. They can also be mounted to wooden studs with common nails or screws.

On the single, two, three and four gang steel stud boxes, a steel mounting bracket is provided for mounting to the structural stud. The non-mounting side of the two and four gang box has provisions for attachment to a short section of stud (phantom stud), as shown in the illustration below, to give additional rigidity to the installation. This assembly may also be used without the phantom stud as a positioning tab to automatically realign the box to the wallboard surface. The brackets are 3/8" offset to accommodate 3/8" to 5/8" thick wallboard.



#### Features

- Available in single, two, three, four gang and 4" square boxes. Two, three and four gang boxes and 4" square include exclusive Auto/Clamp® feature.
- Single gang include Quick/Entry® feature.
- Quick/Click® feature offers fast and dependable installation of devices (single, two, three and four gang).
- Unique offset tab assures proper alignment to wall face. Available with 3/8" offsets.
- Can be used for steel, aluminum, or wooden studs. Can be installed on steel studs with most standard crimping tools in addition to CT-1 Crimping Tool.
- Molded of high-impact thermoplastic.



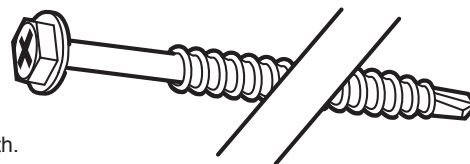
### Screw Mount: Steel Stud Boxes

#### Application

Single, deep single, two, three, four gang, and 4" round ceiling boxes come with combination Hex/Phillips washer head screws. They are designed to save labor and speed installation in steel stud construction. These innovative boxes are an alternative to bracket boxes, and can also be used on wood studs. The specially designed drill point on the screw rapidly penetrates medium gauge steel studs to securely fasten the box. Locator ribs 0.450" long help align the box on the stud and insure correct mounting depth.

#### Features

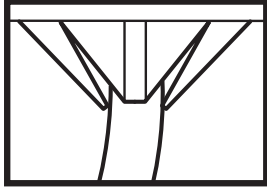
- Available in single, single deep, two, three and four gang, and 4" round ceiling boxes.
- All multi-gang and ceiling boxes include exclusive Auto/Clamp® feature.
- Single gang include Quick/Entry® feature.
- Specially designed drill point rapidly penetrates medium gauge steel studs.
- Screws have combination Hex/Phillips washer heads.
- Quick/Click® feature on wall boxes offers fast and dependable installation of devices.
- Can be used for steel, aluminum, or wood studs.
- Molded of high-impact thermoplastic.
- Locator ribs ensure proper alignment on stud and proper offset depth.



# Slater® Plastic Boxes Applications & Product Features

Pass & Seymour



Old Work Boxes	Features
Application	
Old Work Boxes provide fast, easy installation of an electrical device in a finished (dry walled) area where no box existed before. Old Work Boxes include the Auto/Clamp® and Quick/Click® features for convenient, labor-saving installations.	<ul style="list-style-type: none"> <li>■ Box designed so mounting strap of the device, <b>with plaster ears removed</b>, fits flush, allowing use of standard depth wall plate without unsightly gap between plate and wall surface.</li> <li>■ Swing out wing brackets permit installation of box in wall with 1-1/4" thick wallboard down to 1/8" thick paneling.</li> <li>■ New longer swing brackets have greater reach to clamp onto oversized cutouts.</li> <li>■ Made of high impact thermoplastic.</li> <li>■ Combination slotted/Phillips head swing bracket screws.</li> <li>■ Include exclusive Auto/Clamp® feature.</li> <li>■ Wall boxes include exclusive Quick/Click® feature.</li> <li>■ Available in ceiling box versions.</li> </ul>
	

Box Volume Required			
Total Conductor Fill Count	Cubic Inches Required For		
	#14 Wire	#12 Wire	#10 Wire
1	2.0	2.25	2.50
2	4.0	4.50	5.00
3	6.0	6.75	7.50
4	8.0	9.00	10.00
5	10.0	11.25	12.50
6	12.0	13.50	15.00
7	14.0	15.75	17.50
8	16.0	18.00	20.00
9	18.0	20.25	22.50
10	20.0	22.50	25.00
11	22.0	24.75	27.50
12	24.0	27.00	30.00
13	26.0	29.25	32.50
14	28.0	31.50	35.00
15	30.0	33.75	37.50
16	32.0	36.00	40.00
17	34.0	38.25	42.50
18	36.0	40.50	45.00
19	38.0	42.75	47.50
20	40.0	45.00	50.00

In addition to counting 1 conductor fill allowance for each conductor, 1 additional allowance must be counted for all cable clamps, and 1 additional allowance for all ground conductors. 2 additional fill allowances must be counted for each device strap. See NEC Section 314.16(b). The table above defines box volume required for resulting total conductor fill count, depending on AWG used.

