

## Carlton® Non-Metallic Boxes

### In this section...



#### Carlton® Non-Metallic Boxes

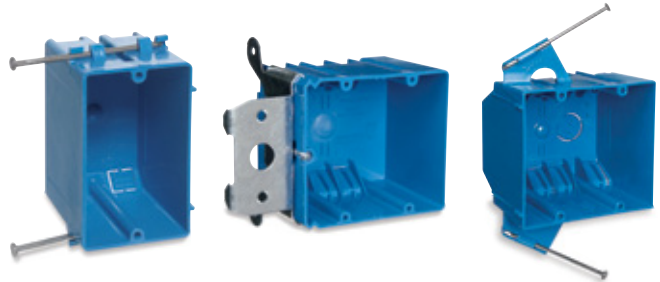
Overview .....	A-68-A-69
Carlton® Blue™ PVC Boxes .....	A-70-A-76
Carlton® SuperBlue® Boxes.....	A-77-A-79
Polycarbonate Boxes.....	A-80-A-91
Phenolic Boxes .....	A-92-A-104
Non-Metallic Covers and Accessories .....	A-105-A-106
Low-Voltage Structured Cable Management System .....	A-107-A-120

## Overview

### Recognized as the Industry Standard in Non-Metallic Boxes.

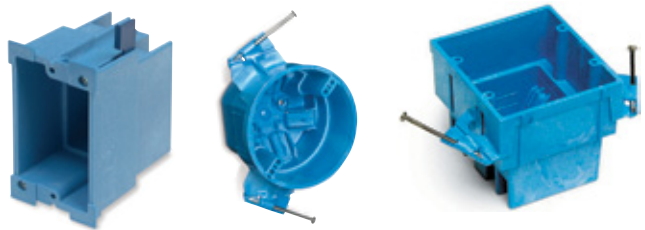
#### **Carlon® PVC** Carlon® Blue™ PVC Boxes

Carlon® non-metallic boxes feature PVC construction for easier installation, greater performance and lower installation cost. Designed and listed for use with non-metallic sheathed cable in accordance with Article 314 of the National Electrical Code®, they make fast work of any residential or light commercial application. Look for the trademarked color blue to be sure it is a quality Thomas & Betts PVC Box.



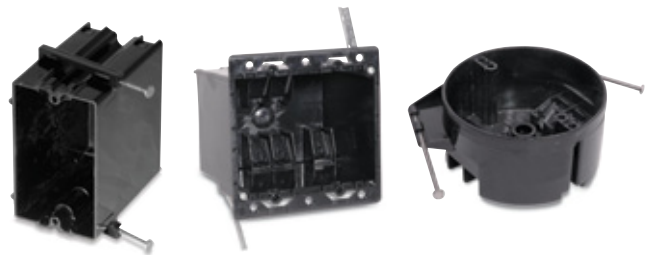
#### **Carlon® SuperBlue®** Carlon® SuperBlue® Boxes

Carlon® Super Blue® provides all of the desired features of a PVC box with the strength and durability of the heavy wall boxes. Rigid enough not to flex when nailed to a stud and strong enough to withstand a hammer blow in cold temperatures.



#### **Carlon® PC** Carlon® Black Polycarbonate Boxes

Carlon® non-metallic boxes feature a rugged polycarbonate construction to withstand extreme temperatures. The boxes will not distort or soften in heat and they won't become brittle in the cold.



#### **Carlon® PH** Carlon® Brown Phenolic Boxes

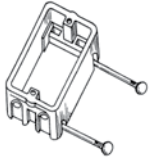
New Fire Rating! Carlon® phenolic boxes can be installed in the same stud cavity of a shared two-hour wall. They may also face opposite directions with only a 3" horizontal separation — ideal for multi-family construction!



NEC and National Electrical Code are registered trademarks of the National Fire Protection Association, Inc.

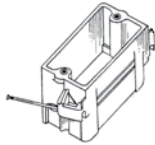
## Overview

### Bottom Nailed



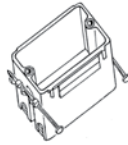
Most widely accepted for universal use

### Compound Angled Nails



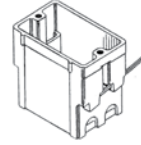
For easy installation and positioning in limited space

### Reverse Angled Side Nails



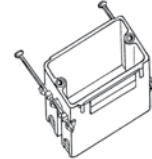
For use when installed from backside of drywall

### Recessed Angle Nails



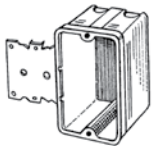
For quick positioning on narrow stud spacing

### Angled Side Nails



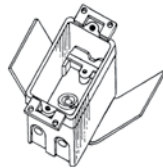
For quick positioning on narrow stud spacing

### SB, #5, #7 Offset Brackets



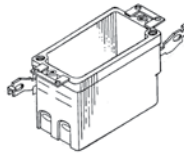
For face mount on wood or steel studs

### Ears, #8 Bracket



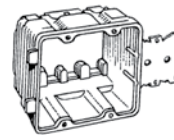
Snap-in bracket secures box to wall

### Ears, #4 Bracket



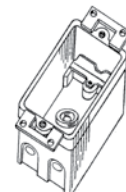
Swing bracket swings into place, secures box to wall

### #738 Offset Bracket



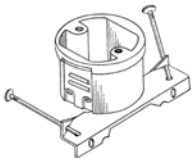
With 3/8" offset for face mount on wood or steel studs

### Ears



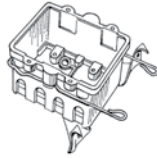
For screw mounting direct to paneling

### "N" Bracket



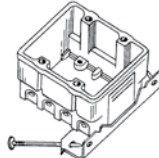
Easily positioned for maximum use of box depth

### #2 Bracket



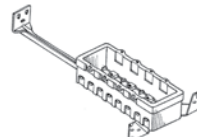
Sturdy side-mounting bracket, support wire adds rigidity

### "R" Bracket



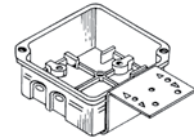
Reverse angled nails for use with narrow stud spacing

### Side Bracket Stabilizer Bar



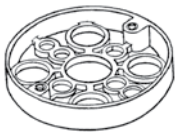
Bar extends for rigid installation between studs

### #1 Raised Face Bracket



For wood or steel studs, allows for 1/2" mud ring, 1/2" drywall

### Nails or Screws



Through bottom

### Screw Mount



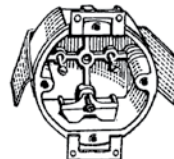
Flange with flash ring

### Compound Angled Side Nails



For easy installation and positioning in limited space

### Screws, #9 Snap-in Bracket



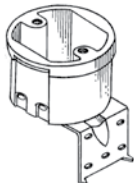
Snap-in bracket secures box to wall

### #94, #95 Bar Hangers (16" and 24")



For easy installation, exact centering of ceiling boxes

### #3 Bracket



Easily positioned for maximum use of box depth

### High Clamp Feature



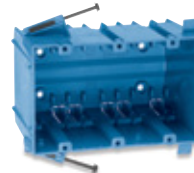
For easy cable entry

### Fast Set Feature



For fast device mounting

### Angled Screws



For fast mounting on steel stud

### Non-Metallic Clamp



For easy cable entry

## Carlon® Blue™ PVC Boxes

### Carlon® Blue™ PVC Boxes

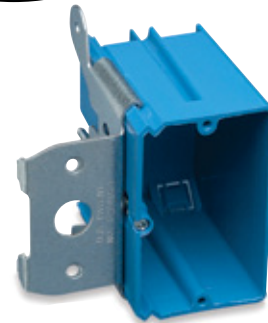
Carlon® non-metallic boxes feature PVC construction for easier installation, greater performance and lower installation cost. Designed and listed for use with non-metallic sheathed cable in accordance with Article 314 of the National Electrical Code®, they make fast work of any residential or light commercial application.

- All PVC boxes are listed to UL514C
- All PVC boxes are listed for masonry walls

- All PVC boxes are UL Classified for two-hour fire wall and/or fire ceiling
- All PVC boxes meet NEMA OS-2
- All PVC boxes are permissible for use with 90° C conductors
- UL File E11461 and R9140

### One-Gang Adjustable — For New Work

- Design enables adjustment from 0" to 1¾" after installation
- Ideal for new work or retrofit upgrade applications
- Backless low-voltage bracket and floor box designs available
- Ideal for various drywall thicknesses and wall finishes



B121ADJ

#### One-Gang Adjustable 21.0 Cu. In.



CAT. NO.	SIZE CU. IN.	MOUNTING MEANS	DESCRIPTION	DIMENSIONS (IN.)	STD. CTN.
B121ADJ	21.0	Adjustable Bracket	Adjusts 0"–1¾"	3.65 L x 2.25 W x 3.32 D	24

NEC and National Electrical Code are registered trademarks of the National Fire Protection Association, Inc.

### One-Gang Nail-On — For New Work

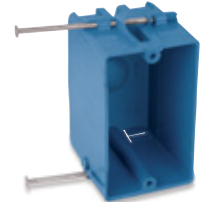
#### One-Gang Nail-On 18.0–20.5 Cu. In.



CAT. NO.	SIZE CU. IN.	MOUNTING MEANS	DESCRIPTION	DIMENSIONS (IN.)	STD. CTN.
B118A	18.0	Captive Nails	—	3¾ L x 2¼ W x 2⅞ D	100
N1-710-M	18.0	Reverse Angled Side Nails	½" Offset Wallboard Tabs	3¾ L x 2¼ W x 2⅞ D	100
RN-18-FS	18.0	Recessed Angled Nails	Fast-Set	3⅜ L x 2⅞ W x 3 D	100
SNO-18	18.0	Angled Side Nails	Hinge Closure	4⅞ L x 2⅞ opening 3⅞ overall W x 1¾ D	100
SNO-18-M	18.0	Angled Side Nails	Locating Tab Hinge Closure ⅝" Offset Wall Board Tabs	4⅞ L x 2⅞ opening 3⅞ overall W x 1¾ D	100
B120A-UPC	20.0	Captive Nails	—	3 L x 2¼ W x 3¼ D	100
RN-21-FS	20.5	Recessed Angled Nails	Fast-Set	3⅜ L x 2⅞ W x 3 D	100



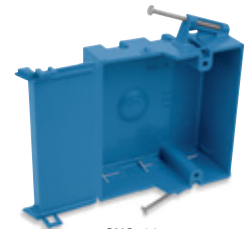
B118A



N1-710-M



RN-18-FS



SNO-18



B120A-UPC



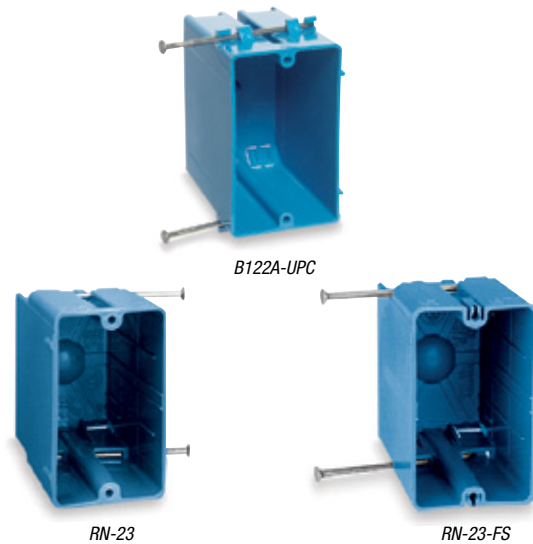
RN-21-FS

## Carlton® Blue™ PVC Boxes

### One-Gang Nail-On — For New Work

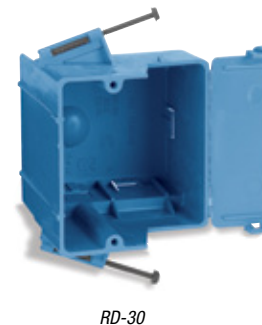
#### One-Gang Nail-On 22.0–22.5 Cu. In.

CAT. NO.	SIZE CU. IN.	MOUNTING MEANS	DESCRIPTION	DIMENSIONS (IN.)	STD. CTN.
B122A-UPC	22.0	Captive Nails	—	3¼ L x 2¼ W x 3½ D	100
RN-23	22.5	Recessed Angled Nails	—	3 <sup>23</sup> / <sub>32</sub> L x 2 <sup>5</sup> / <sub>16</sub> W x 3 <sup>3</sup> / <sub>8</sub> D	100
RN-23-FS	22.5	Recessed Angled Nails	Fast-Set	3 <sup>23</sup> / <sub>32</sub> L x 2 <sup>5</sup> / <sub>16</sub> W x 3 <sup>3</sup> / <sub>8</sub> D	100



#### One-Gang Nail-On 30.0 Cu. In.

CAT. NO.	SIZE CU. IN.	MOUNTING MEANS	DESCRIPTION	DIMENSIONS (IN.)	STD. CTN.
RD-30	30.0	Recessed Angled Nails	Large KO for #6 or #8 Cable	3 <sup>11</sup> / <sub>16</sub> L x 2 <sup>5</sup> / <sub>16</sub> opening overall W x 3 <sup>3</sup> / <sub>8</sub> D	50

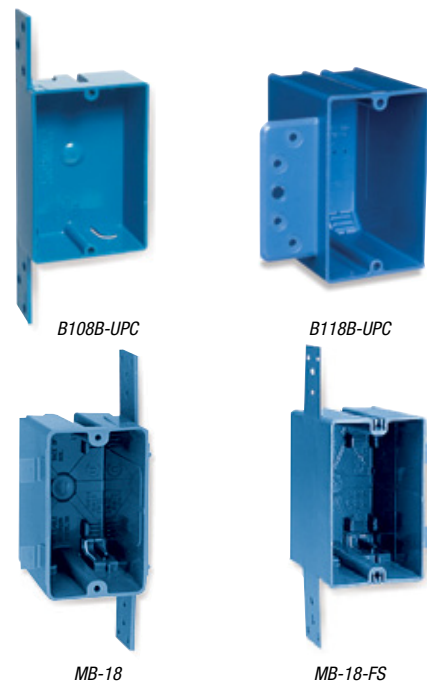


### One-Gang Brackets — For New Work

#### One-Gang Brackets 8.0–18.0 Cu. In.

CAT. NO.	SIZE CU. IN.	MOUNTING MEANS	DESCRIPTION	DIMENSIONS (IN.)	STD. CTN.
B108B-UPC	8.0	Bracket	—	3 <sup>3</sup> / <sub>8</sub> L x 2 <sup>3</sup> / <sub>8</sub> W x 1¼ D	25
B118B-UPC	18.0	Bracket for ¾" to 5/8" Wallboard — Steel and Wood Stud Mounting	—	3¼ L x 2¼ W x 2 <sup>5</sup> / <sub>16</sub> D	5
MB-18 •	18.0	Molded Side Bracket for Wood/Steel Studs	½" Depth Gage Lever Clamps	3 <sup>23</sup> / <sub>32</sub> L x 2 <sup>5</sup> / <sub>16</sub> W x 2 <sup>5</sup> / <sub>16</sub> D	100
MB-18-FS •	18.0	Molded Side Bracket for Wood/Steel Studs	Fast-Set	3 <sup>23</sup> / <sub>32</sub> L x 2 <sup>5</sup> / <sub>16</sub> W x 2 <sup>5</sup> / <sub>16</sub> D	100

• Manufactured housing — MB-18 and MB-18-FS.

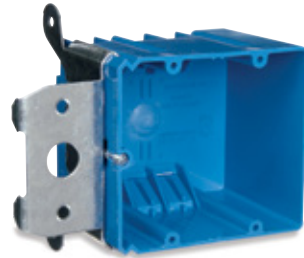


Boxes & Covers — Carlton® Non-Metallic Boxes

## Carlon® Blue™ PVC Boxes

### Two-Gang Adjustable — For New Work

- Design enables adjustment from 0" to 1¼" after installation
- Ideal for new work or retrofit upgrade applications
- Backless low-voltage bracket and floor box designs available
- Ideal for various drywall thicknesses and wall finishes



B234ADJ

#### Two-Gang Adjustable 34.0 Cu. In.



CAT. NO.	SIZE CU. IN.	MOUNTING MEANS	DESCRIPTION	DIMENSIONS (IN.)	STD. CTN.
B234ADJ	34.0	Adjustable Bracket	Adjusts 0"–1¼"	4 W x 3¾ H x 3 D	16
B234ADJC	34.0	Adjustable Bracket	Large 220V Knockout	5¾ W x 3¾ H x 3 D	16

### Two-Gang Nail-On — For New Work



B232A-UPC



N2-1614-RNC



SN-236-V



SN-241



N2-1614-MNC



SN-236



SN-236-FS



SN-241-FS

#### Two-Gang Nail-On 32.0–41.0 Cu. In.



CAT. NO.	SIZE CU. IN.	MOUNTING MEANS	DESCRIPTION	DIMENSIONS (IN.)	STD. CTN.
B232A-UPC	32.0	Captive Nails	—	3¾ L x 4 W x 3 D	50
N2-1614-MNC	32.0	Angled Side Nails	¾" Offset Wallboard Tabs Cable-Lok™ Clamps Bulk Packed	4½ L x 3¾ W x 2¾ D	50
N2-1614-RNC	32.0	Angled Side Nails	No Wallboard Tabs Cable-Lok™ Clamps Bulk Packed	4½ L x 3¾ W x 2¾ D	50
SN-236	36.0	Compound Angled Nails	¾" Offset Wallboard Tabs Molded Fast Clamp	4 L x 3¾ W x 3¾ D	50
SN-236-FS	36.0	Compound Angled Nails	¾" Offset Wallboard Tabs Molded Fast Clamp/Fast Set	4 L x 3¾ W x 3¾ D	50
SN-236-V	36.0	Compound Angled Nails	¾" Offset Wallboard Tabs Molded V-Clamp	4 L x 3¾ W x 3¾ D	50
SN-241	41.0	Compound Angled Nails	¾" Offset Wallboard Tabs Molded Fast Clamp	4 L x 3¾ W x 3¾ D	50
SN-241-FS	41.0	Compound Angled Nails	¾" Offset Wallboard Tabs Molded Fast Clamp/Fast Set	4 L x 3¾ W x 3¾ D	50

### Two-Gang Bracket — For New Work

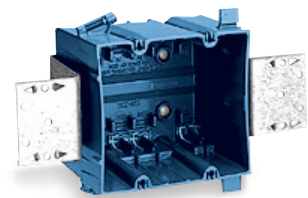
#### Two-Gang Bracket 32.0–36.0 Cu. In.



CAT. NO.	SIZE CU. IN.	MOUNTING MEANS	DESCRIPTION	DIMENSIONS (IN.)	STD. CTN.
B232B-UPC	32.0	Bracket for ¾" to ¾" Wallboard — Steel or Wood Stud Mounting	—	3¾ L x 4 W x 3 D	50
SB2-236-FS	36.0	Two ¾" Offset Wallboard Tabs; Molded Fast Clamps/Fast Set	¾" Offset	3¾ L x 4 W x 3¾ D	20



B232B-UPC



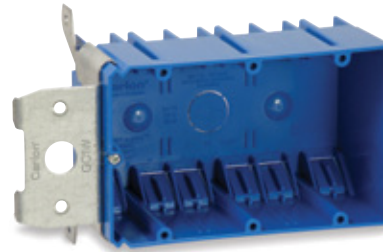
SB2-236-FS

## Carlton® Blue™ PVC Boxes

### Three-Gang Adjustable — For New Work

- Design enables adjustment from 0" to 1¼" after installation
- Ideal for new work or retrofit upgrade applications
- Backless low-voltage bracket and floor box designs available
- Ideal for various drywall thicknesses and wall finishes

Carlton  
Exclusive



B349ADJ

#### Three-Gang Adjustable 49.0 Cu. In.



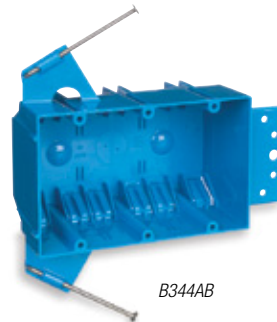
CAT. NO.	SIZE CU. IN.	MOUNTING MEANS	DESCRIPTION	DIMENSIONS (IN.)	STD. CTN.
B349ADJ	49.0	Adjustable Bracket	Adjusts 0"–1¼"	5 <sup>13</sup> / <sub>16</sub> L x 3 <sup>3</sup> / <sub>8</sub> W x 3 D	16

### Three-Gang Nail-On — For New Work

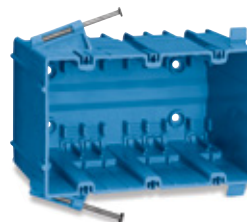
#### Three-Gang Nail-On 44.0–56.5 Cu. In.



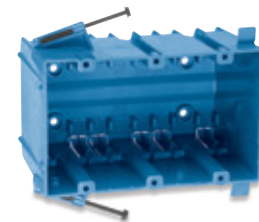
CAT. NO.	SIZE CU. IN.	MOUNTING MEANS	DESCRIPTION	DIMENSIONS (IN.)	STD. CTN.
B344AB	44.0	Captive Nails and Bracket Support	—	5 <sup>5</sup> / <sub>8</sub> L x 3 <sup>3</sup> / <sub>4</sub> W x 2 <sup>1</sup> / <sub>8</sub> D	30
SN-357	56.5	Compound Angled Nails	¾" Offset Wallboard Tabs Molded Fast Clamp	5 <sup>13</sup> / <sub>16</sub> L x 3 <sup>3</sup> / <sub>8</sub> W x 3 <sup>3</sup> / <sub>16</sub> D	20
SN-357-FS	56.5	Compound Angled Nails	¾" Offset Wallboard Tabs Molded Fast Clamps/Fast Set	5 <sup>13</sup> / <sub>16</sub> L x 3 <sup>3</sup> / <sub>8</sub> W x 3 <sup>3</sup> / <sub>16</sub> D	20



B344AB



SN-357-FS



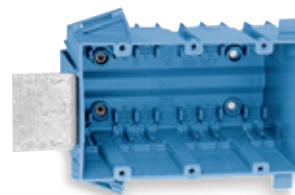
SS-357

### Three-Gang Bracket — For New Work

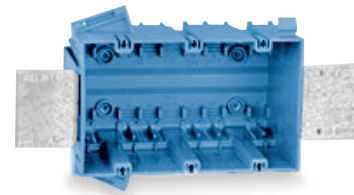
#### Three-Gang Bracket 56.5 Cu. In.



CAT. NO.	SIZE CU. IN.	MOUNTING MEANS	DESCRIPTION	DIMENSIONS (IN.)	STD. CTN.
SB-357	56.5	One ¾" Offset Bracket for Wood/Steel Studs	¾" Wallboard Tabs Molded Fast Clamps/Fast Set	3 <sup>3</sup> / <sub>8</sub> L x 5 <sup>13</sup> / <sub>16</sub> W x 3 <sup>3</sup> / <sub>16</sub> D	30
SB2-357-FS	56.5	Two ¾" Offset Brackets for Wood/Steel Studs	¾" Wallboard Tabs Molded Fast Clamps/Fast Set	3 <sup>3</sup> / <sub>8</sub> L x 5 <sup>13</sup> / <sub>16</sub> W x 3 <sup>3</sup> / <sub>16</sub> D	20



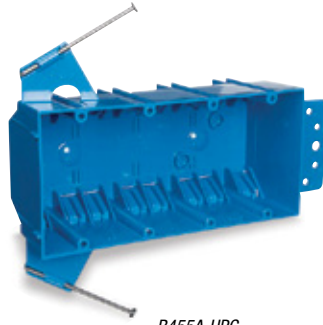
SB-357



SB2-357-FS

## Carlton® Blue™ PVC Boxes

### Four-Gang Nail-On — For New Work



B455A-UPC



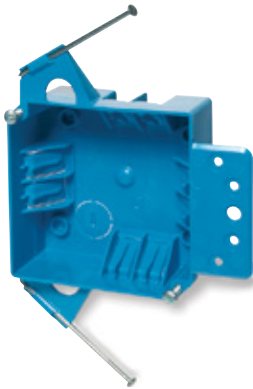
B455AH

#### Four-Gang Nail-On 55 Cu. In.



CAT. NO.	SIZE CU. IN.	MOUNTING MEANS	DESCRIPTION	DIMENSIONS (IN.)	STD. CTN.
B455AH	55.0	Captive Nails, Bracket Support and Hanger Bar	—	7 $\frac{1}{2}$ L x 3 $\frac{3}{16}$ W x 2 $\frac{1}{2}$ D	25
B455A-UPC	55.0	Captive Nails and Bracket Support	—	7 $\frac{1}{2}$ L x 3 $\frac{3}{16}$ W x 2 $\frac{1}{2}$ D	25

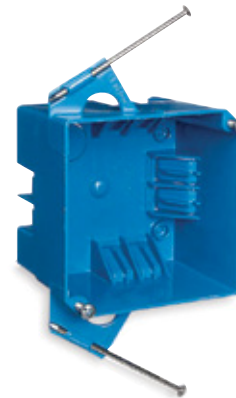
### 4" Square — For New Work



B418A-UPC



4S-812C



B432A-UPC

#### 4" Square 18.0–32.0 Cu. In.



CAT. NO.	SIZE CU. IN.	MOUNTING MEANS	DESCRIPTION	DIMENSIONS (IN.)	STD. CTN.
4S-812C	18.0	Angled Side Nails	—	1 $\frac{1}{16}$ D x 4 W x 4 L	100
B418A-UPC	18.0	Captive Nails	—	1 $\frac{1}{2}$ D x 4 W x 4 L	75
B432A-UPC	32.0	Captive Nails	—	2 $\frac{1}{2}$ D x 4 W x 4 L	50



## Carlton® Blue™ PVC Boxes

### One-Gang — For Old Work



B114R-UPC



B108R-UPC

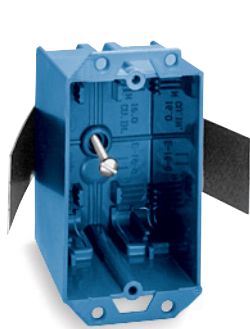


B117RSW

#### One-Gang 8.0–17.0 Cu. In.

CAT. NO.	SIZE CU. IN.	MOUNTING MEANS	DESCRIPTION	DIMENSIONS (IN.)	STD. CTN.
B108R-UPC •	8.0	Mounting Ears	—	3 $\frac{1}{2}$ L x 2 $\frac{1}{4}$ W x 1 $\frac{1}{4}$ D	25
B114R-UPC •	14.0	Mounting Ears and Swing Clamps	—	4 $\frac{1}{8}$ L x 2 $\frac{1}{4}$ W x 2 $\frac{3}{4}$ D	50
B117RSW •	17.0	Mounting Ears and Swing Clamps	Access Panel	3.64 L x 4.07 W x 2.00 D (2.20 opening)	30

• Not UL Classified for Fire Resistance.



E-16-8



E18-4



B120R

#### One-Gang 16.0–20.0 Cu. In.

CAT. NO.	SIZE CU. IN.	MOUNTING MEANS	DESCRIPTION	DIMENSIONS (IN.)	STD. CTN.
E-16-8	16.0	Thermoplastic Molded Ears #4 Snap-In	Molded Fast Clamps	3 $\frac{1}{2}$ L x 2 $\frac{1}{4}$ W x 2 $\frac{1}{16}$ D	50
E-18-4	18.0	Thermoplastic Molded Ears #4 Swing Brackets	Integral Molded V-Clamp	3 $\frac{3}{16}$ L x 2 $\frac{7}{16}$ W x 2 $\frac{1}{4}$ D	100
B120R •	20.0	Mounting Ears and Swing Bracket	—	4 $\frac{1}{8}$ L x 2 $\frac{5}{16}$ W x 3 $\frac{1}{8}$ D	50

• Not UL Classified for Fire Resistance.

## Carlon® Blue™ PVC Boxes

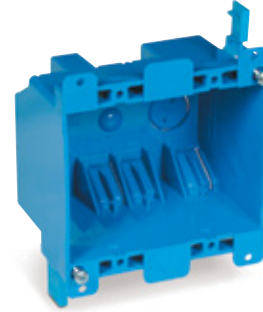
### Two-Gang — For Old Work

#### Two-Gang 25.0 Cu. In.



CAT. NO.	SIZE CU. IN.	MOUNTING MEANS	DESCRIPTION	DIMENSIONS (IN.)	STD. CTN.
<b>B225R-UPC</b> •	25.0	Mounting Ears and Two Swing Clamps	—	3 <sup>1</sup> / <sub>6</sub> L x 3 <sup>3</sup> / <sub>8</sub> W x 2 <sup>3</sup> / <sub>4</sub> D	30

• Not UL Classified for Fire Resistance.



B225R-UPC

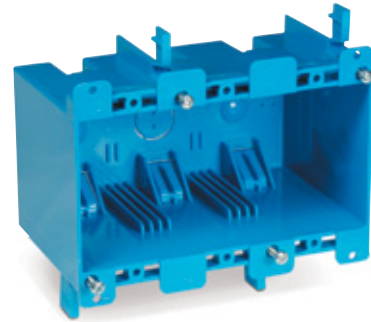
### Three-Gang — For Old Work

#### Three-Gang 55.0 Cu. In.



CAT. NO.	SIZE CU. IN.	MOUNTING MEANS	DESCRIPTION	DIMENSIONS (IN.)	STD. CTN.
<b>B355R</b> •	55.0	Mounting Ears and Two Swing Clamps	—	5.72 L x 2.79 W x 3.69 D	6

• Not UL Classified for Fire Resistance.



B355R

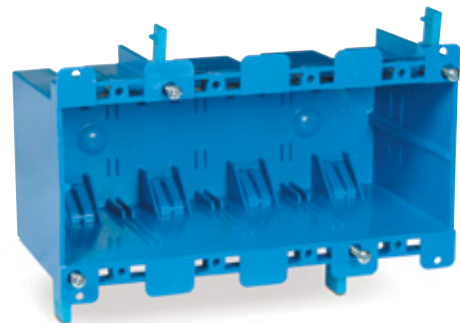
### Four-Gang — For Old Work

#### Four-Gang 68.0 Cu. In.



CAT. NO.	SIZE CU. IN.	MOUNTING MEANS	DESCRIPTION	DIMENSIONS (IN.)	STD. CTN.
<b>B468R</b> •	68.0	Mounting Ears and Two Swing Clamps	—	7.57 L x 2.89 W x 3.56 D	6

• Not UL Classified for Fire Resistance.



B468R

## Carlon® SuperBlue® Boxes

### Carlon® SuperBlue® Boxes

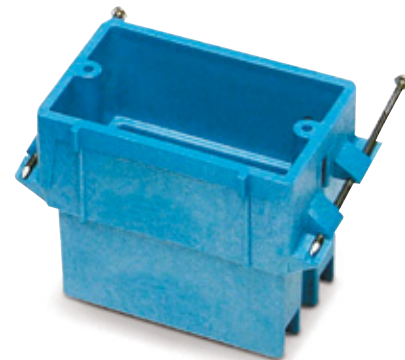
Combine the features of the hard-shell thermoset box and the thermoplastic PVC-style box to create a “new” rigid non-metallic wiring box. Molded out of specially formulated thermoplastic material, Carlon® SuperBlue® boxes are so strong they won’t crack or break in extreme environments. So rigid that they resist flexing and hold their shape even in the most challenging applications. The boxes are designed to nest inside each other to take up less space on the shelf or in the truck, while still providing the largest wirefill capacity in their class.

- All PVC boxes are listed to UL514C
- All PVC boxes are listed for masonry walls
- All PVC boxes are UL® Classified for two-hour fire wall and/or fire ceiling
- All PVC boxes meet NEMA OS-2
- All PVC boxes are permissible for use with 90° C conductors
- UL File E11461 and R9140

### One-Gang — For New Work

#### One-Gang 22.0 Cu. In.

CAT. NO.	SIZE CU. IN.	MOUNTING MEANS	DESCRIPTION	DIMENSIONS (IN.)	STD. CTN.
BH122A-UPC	22.0	Nails	One-Gang	3.55 L x 2.11 W x 3.63 D	100
BH122S	22.0	Screws	One-Gang	3.55 L x 2.11 W x 3.63 D	100

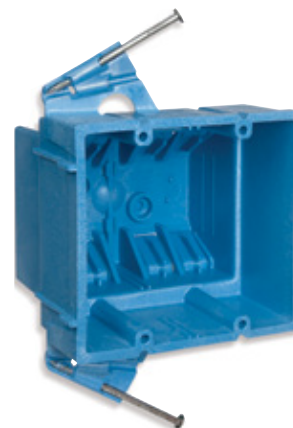


BH122A-UPC

### Two-Gang — For New Work

#### Two-Gang 35.0 Cu. In.

CAT. NO.	SIZE CU. IN.	MOUNTING MEANS	DESCRIPTION	DIMENSIONS (IN.)	STD. CTN.
BH235A	35.0	Nails	Two-Gang	3.55 L x 2.11 W x 3.50 D	48
BH235S	35.0	Screws	Two-Gang	3.55 L x 2.11 W x 3.50 D	48



BH235A

## Carlon® SuperBlue® Boxes

### Three-Gang — For New Work

#### Three-Gang 53 Cu. In.



CAT. NO.	SIZE CU. IN.	MOUNTING MEANS	DESCRIPTION	DIMENSIONS (IN.)	STD. CTN.
BH353A	53.0	Nails	Three-Gang	3.53 L x 5.66 W x 3.50 D	24
BH353S	53.0	Screws	Three-Gang	3.53 L x 5.66 W x 3.50 D	24



BH353A

### Four-Gang — For New Work

#### Four-Gang 64 Cu. In.



CAT. NO.	SIZE CU. IN.	MOUNTING MEANS	DESCRIPTION	DIMENSIONS (IN.)	STD. CTN.
BH464A	64.0	Nails	Four-Gang	3.53 L x 7.46 W x 3.18 D	36
BH464S	64.0	Screws	Four-Gang	3.53 L x 7.46 W x 3.18 D	36



BH464A

### One-Gang — For Old Work

#### One-Gang 18.0 Cu. In.



CAT. NO.	SIZE CU. IN.	MOUNTING MEANS	DESCRIPTION	DIMENSIONS (IN.)	STD. CTN.
BH118R •	18.0	Mounting Ears & Swing Clamps	One-Gang	4.30 L x 2.56 W x 3.64 D	36

• Not UL Classified for Fire Resistance.



BH118R

### Two-Gang — For Old Work

#### Two-Gang 34.0 Cu. In.



CAT. NO.	SIZE CU. IN.	MOUNTING MEANS	DESCRIPTION	DIMENSIONS (IN.)	STD. CTN.
BH234R •	34.0	Mounting Ears & Swing Clamps	Two-Gang	4.30 L x 4.36 W x 3.59 D	18

• Not UL Classified for Fire Resistance.



BH234R

## Carlton® SuperBlue® Boxes

### Ceiling Boxes

#### 3/0–4/0 Combination 25.0 Cu. In.

CAT. NO.	SIZE CU. IN.	MOUNTING MEANS	DESCRIPTION	DIMENSIONS (IN.)	STD. CTN.
BH525A-UPC •	25.0	Nails	Ceiling Box	4 Dia. x 3.00 D	48
BH525P •	25.0	Nails and Grounding Lug	Ceiling Box	4 Dia. x 3.00 D	24

• Listed for fixture support up to 50 lbs.



BH525A-UPC

BH525P

#### Fan Box 25.0 Cu. In.

CAT. NO.	SIZE CU. IN.	MOUNTING MEANS	DESCRIPTION	DIMENSIONS (IN.)	STD. CTN.
BH525L •	25.0	Nails	Ceiling Fan Box	4 Dia. x 3.06 D	24
BH525LP •	25.0	Grounding Lug with Nails	Ceiling Fan Box	4 Dia. x 3.00 D	24

• Listed for fan support up to 35 lbs. and fixture support up to 50 lbs.



BH525L

#### Ceiling Box with Hanger Bar 25.0 Cu. In.

CAT. NO.	SIZE CU. IN.	MOUNTING MEANS	DESCRIPTION	DIMENSIONS (IN.)	STD. CTN.
BH525H •	25.0	Hanger Bar 11½"–18½"	Ceiling Box	4 Dia. x 2.95 D	20
BH525HP •	25.0	Hanger Bar 11½"– 18½", Grounding Lug	Ceiling Box	4 Dia. x 2.95 D	20

• Listed for fixture support up to 50 lbs.



BH525H

#### 3½" 14.5 Cu. In.

CAT. NO.	SIZE CU. IN.	MOUNTING MEANS	DESCRIPTION	DIMENSIONS (IN.)	STD. CTN.
BH614R • †	14.5	Base, Ears & Snap-In Bracket	Round Old/ New Work Box	3½ Dia.	24
BH614RP • †	14.5	Base, Ears & Snap-In Bracket	Round Old/New Work Box w/ Ground Lug	3½ Dia.	24

• Listed for wall fixture support up to 10 lbs.

† Tighten screws to 10 in.-lbs.



BH614R

## Polycarbonate Boxes

### Carlton® Black Polycarbonate Boxes

Carlton® non-metallic boxes feature a rugged polycarbonate construction to withstand extreme temperatures. The boxes will not distort or soften in heat and they won't become brittle in the cold.

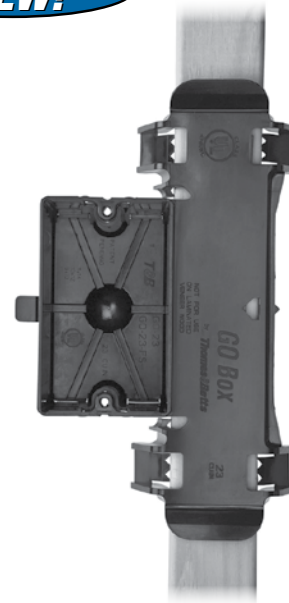
- All Polycarbonate boxes are listed to UL514C
- All Polycarbonate boxes are listed for masonry walls
- All Polycarbonate boxes are UL® Classified for 2-hr. fire wall and/or fire ceiling
- All Polycarbonate boxes meet NEMA OS-2
- All Polycarbonate boxes are permissible for use with 90° C conductors
- UL® File E11461 and R9140

#### Grip-On GO Box® Single-Gang Outlet Box

- Instead of nails or other fasteners, unique clamps are used to hold the box securely in place. Simply push onto the stud and go
- The GO Box® outlet box is removable for easy repositioning
- "Fast-Set" mounting holes enable quick installation of devices
- Perfectly aligned every time
- Perfect for drywall depth
- A locator hole in the mounting bracket helps position the box on marked studs for accurate installation

- The GO Box® design is UL® Listed
- 23.0 cu. in. capacity accommodates large devices and enables easy installation of wiring

It's a whole new ball game for high-volume residential products. That's because the Carlton® GO Box® product line is one of the most revolutionary labor-saving products ever designed. The GO stands for "Grip-On" and that's exactly how it works. Just push the box onto a stud and the specially designed clamps hold it in place. No tools or fasteners are required, reducing installation time, which means you can move on to the next job. When it comes to lower installed costs, this changes everything!



#### One-Gang 23.0 Cu. In.



CAT. NO.	SIZE CU. IN.	MOUNTING MEANS	DESCRIPTION	DIMENSIONS (IN.)	STD. CTN.
GO-23	23.0	Grip-On Bracket	—	3¼ L x 2¾ W x 2½ D	30
GO-23-FS	23.0	Grip-On Bracket	Fast-Set	3¼ L x 2¼ W x 2½ D	30

#### One-Gang Nail-On 18.0–22.5 Cu. In.



118-N



120-N



120-N-FS



122-N



122-N-FS



CAT. NO.	SIZE CU. IN.	MOUNTING MEANS	DESCRIPTION	DIMENSIONS (IN.)	STD. CTN.
118-N	18.0	Angled Side Nails	—	3¼ L x 2¼ W x 2½ D	100
120-N	20.3	Angled Side Nails	—	3¼ L x 2¼ W x 3¾ D	100
120-N-FS	20.3	Angled Side Nails	Fast-Set	3¼ L x 2¼ W x 3¾ D	100
122-N	22.5	Angled Side Nails	—	3¼ L x 2¼ W x 3¾ D	100
122-N-FS	22.5	Angled Side Nails	Fast-Set	3¼ L x 2¼ W x 3¾ D	100

## Polycarbonate Boxes

### New Work Boxes

Boxes & Covers — Carlton® Non-Metallic Boxes

#### One-Gang Brackets 18.0–22.5 Cu. In.



CAT. NO.	SIZE CU. IN.	MOUNTING MEANS	DESCRIPTION	DIMENSIONS (IN.)	STD. CTN.
118-LB	18.0	Molded Side Bracket for Wood/Steel Studs	—	3¾ L x 2¼ W x 2½ D	100
118-LBP	18.0	Molded Side Bracket for Wood/Steel Studs	POSI-SET® Fast-Set	3¾ L x 2¼ W x 2½ D	100
120-LB	20.3	Molded Side Bracket for Wood/Steel Studs	—	3¾ L x 2¼ W x 3⅝ D	100
120-LBP	20.3	Molded Side Bracket for Wood/Steel Studs	POSI-SET® Fast-Set	3¾ L x 2¼ W x 3⅝ D	100
122-LB	22.5	Molded Side Bracket for Wood/Steel Studs	—	3¾ L x 2¼ W x 3¾ D	100
122-LBP	22.5	Molded Side Bracket for Wood/Steel Studs	POSI-SET® Fast-Set	3¾ L x 2¼ W x 3¾ D	100



118-LB



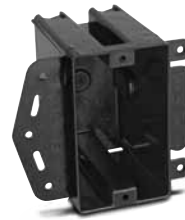
118-LBP



120-LB



120-LBP



122-LB



122-LBP

#### Two-Gang Nail-On 34.0 Cu. In.



CAT. NO.	SIZE CU. IN.	MOUNTING MEANS	DESCRIPTION	DIMENSIONS (IN.)	STD. CTN.
234-N	34.0	Angled Side Rails	POSI-WEDGE® Cable Clamps	3¾ L x 4 W x 3½ D	50
234-NP	34.0	Angled Side Rails	POSI-WEDGE® POSI-SET®	3¾ L x 4 W x 3½ D	50



234-N

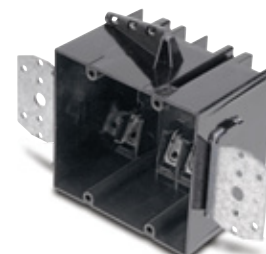


234-NP

#### Two-Gang Bracket 34.0 Cu. In.



CAT. NO.	SIZE CU. IN.	MOUNTING MEANS	DESCRIPTION	DIMENSIONS (IN.)	STD. CTN.
234-LB	34.0	Steel Side Bracket for Wood/Steel Studs	POSI-WEDGE® Cable Clamps	3¾ L x 4 W x 3½ D	50



234-LB

## Polycarbonate Boxes

### New Work Boxes

#### Three-Gang Nail-On 45.0 Cu. In.

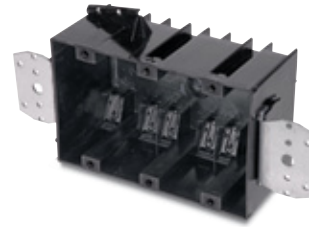
CAT. NO.	SIZE CU. IN.	MOUNTING MEANS	DESCRIPTION	DIMENSIONS (IN.)	STD. CTN.
345-N	45.0	Angled Side Nails & Steel Side Brackets	POSI-WEDGE® Cable Clamps	3¾ L x 5¼ W x 2¼ D	20



345-N

#### Three-Gang Bracket 45 Cu. In.

CAT. NO.	SIZE CU. IN.	MOUNTING MEANS	DESCRIPTION	DIMENSIONS (IN.)	STD. CTN.
345-LB	45.0	Steel Side Bracket for Wood/Steel Studs	POSI-WEDGE® Cable Clamps	3¾ L x 5¼ W x 2¼ D	25



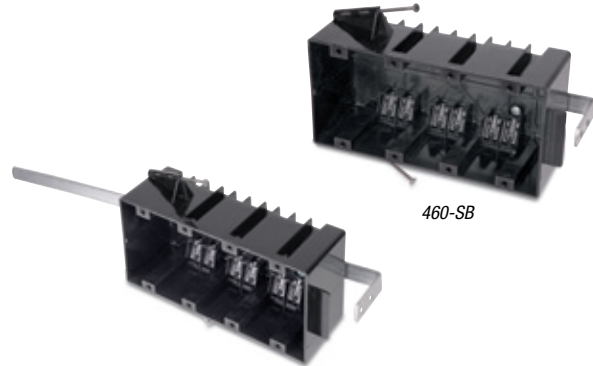
345-LB

#### Four-Gang Nail-On 60 Cu. In.

CAT. NO.	SIZE CU. IN.	MOUNTING MEANS	DESCRIPTION	DIMENSIONS (IN.)	STD. CTN.
460-SB	60.0	Angled Side Nails & Back Bracket	POSI-WEDGE® Cable Clamps	3¾ L x 7¼ W x 2¼ D	10
460-SB-24 •*	60.0	Angled Side Nails & Back Bracket	POSI-WEDGE® Cable Clamps	3¾ L x 7¼ W x 2¼ D	10

• 24" adjustable bracket.

\* Not UL Classified for fire wall and/or fire ceiling



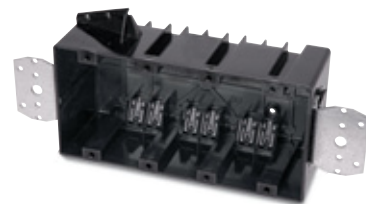
460-SB

460-SB-24

#### Four-Gang Bracket 60 Cu. In.

CAT. NO.	SIZE CU. IN.	MOUNTING MEANS	DESCRIPTION	DIMENSIONS (IN.)	STD. CTN.
460-LB	60.0	Steel Side Brackets	POSI-WEDGE® Cable Clamps	3¾ L x 7¼ W x 2¼ D	8

\* Not UL Classified for fire wall and/or fire ceiling



460-LB



## Polycarbonate Boxes

### New Work Box

#### 4" Square Boxes 32.0 Cu. In.

CAT. NO.	SIZE CU. IN.	MOUNTING MEANS	DESCRIPTION	DIMENSIONS (IN.)	STD. CTN.
4S-32-N	32.0	Angled Side Nails	POSI-WEDGE® Cable Clamps	4 L x 4 W x 3 <sup>3</sup> / <sub>16</sub> D	50



4S-32-N

### Old Work Boxes

#### One-Gang 14.0 Cu. In.

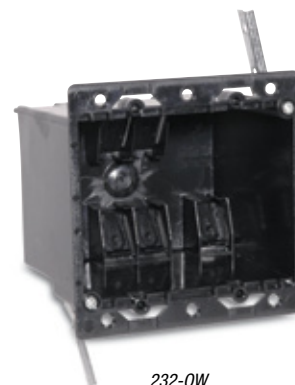
CAT. NO.	SIZE CU. IN.	MOUNTING MEANS	DESCRIPTION	DIMENSIONS (IN.)	STD. CTN.
114-OW	14.0	Swing-Ear Brackets	—	3 <sup>3</sup> / <sub>4</sub> L x 2 <sup>1</sup> / <sub>4</sub> W x 3 D	50



114-OW

#### Two-Gang 32.0 Cu. In.

CAT. NO.	SIZE CU. IN.	MOUNTING MEANS	DESCRIPTION	DIMENSIONS (IN.)	STD. CTN.
232-OW	32.0	Swing-Ear Brackets	POSI-WEDGE® Cable Clamps	3 <sup>3</sup> / <sub>8</sub> L x 4 <sup>1</sup> / <sub>16</sub> W x 3 <sup>3</sup> / <sub>16</sub> D	50



232-OW

Boxes & Covers — Carlton® Non-Metallic Boxes

## Polycarbonate Boxes

### Energy-Efficient Vapor Barrier Boxes

Vapor-barrier boxes are designed to meet the energy-efficiency requirements of modern homes. They feature a drywall flange covered with a foam gasket and additional gaskets over the cable entry points. These gaskets provide a vapor-tight seal, preventing the free flow of air through the box. This helps control heating costs in the winter and cooling costs in the summer.

- High-strength polycarbonate construction — will not shatter when cold or distort in heat
- V-clamps provide self-clamping cable entry (multi-gang and fan/fixture box)
- ½" offset flange to ensure a flush fit in ½" drywall
- Angled side nails for rapid installation
- Pre-drilled flanges for additional mounting options



FN-23

FN-236-V



FN-354-V

FN-460-V

#### One-, Two-, Three- and Four-Gang



CAT. NO.	SIZE CU. IN.	MOUNTING MEANS	DESCRIPTION	DIMENSIONS (IN.)	STD. CTN.
FN-23	22.5	Angled Side Nails	Vapor Barrier	3 5/8 L x 2 1/4 W x 3 5/8 D	50
FN-236-V	36.0	Angled Side Nails	Vapor Barrier	3 1/2 x 4 x 3 3/4 D	50
FN-354-V	54.0	Angled Side Nails	Vapor Barrier	3 1/2 x 5 5/8 x 3 1/4 D	20
FN-460-V*	60.0	Angled Side Nails	Vapor Barrier	3 1/2 x 7 1/2 x 2 3/4 D	10

\*Not UL Classified for fire wall and/or fire ceiling.



FN-426-C-V

#### Ceiling Fixture Box 26.0 Cu. In.



CAT. NO.	SIZE CU. IN.	MOUNTING MEANS	DESCRIPTION	DIMENSIONS (IN.)	STD. CTN.
FN-426-C-V	26.0	Angled Side Nails	—	4 L x 4 W x 2 3/4 D	50

Listed for fixture support up to 50 lbs.



FN-CFB

#### Ceiling Fan/Fixture 26.0 Cu. In.



CAT. NO.	SIZE CU. IN.	MOUNTING MEANS	DESCRIPTION	DIMENSIONS (IN.)	STD. CTN.
FN-CFB	26.0	#3 Bracket	—	4 L x 4 W x 2 3/4 D	50

Listed for fan support up to 35 lbs. and fixture support up to 50 lbs.

#### Voltage Partition



CAT. NO.	DESCRIPTION	STD. CTN.
FNP	Voltage Partition for NG & FN Series Multi-Gang Boxes	50

## Polycarbonate Boxes

### Saddle-Type Fan/Fixture 16.0 Cu. In.



CAT. NO.	SIZE CU. IN.	MOUNTING MEANS	DESCRIPTION	DIMENSIONS (IN.)	STD. CTN.
<b>CFB-16-F</b>	16.0	Center Screw	Ceiling Fan/Fixture	4 L x 4 W x 3 <sup>3</sup> / <sub>16</sub> D	50

Listed for fan support up to 70 lbs. and fixture support up to 70 lbs.



CFB-16-F

### Universal Flanged Nail-On Boxes



NG-236-V



NG-354-V

#### Two-, Three- and Four-Gang



CAT. NO.	SIZE CU. IN.	MOUNTING MEANS	DESCRIPTION	DIMENSIONS (IN.)	STD. CTN.
<b>NG-236-V •</b>	36.0	Angled Side Nails	2-Gang Wall	3 <sup>1</sup> / <sub>2</sub> L x 4 W x 3 <sup>1</sup> / <sub>4</sub> D	50
<b>NG-354-V •</b>	54.0	Angled Side Nails	3-Gang Wall	3 <sup>1</sup> / <sub>2</sub> L x 5 <sup>3</sup> / <sub>4</sub> W x 3 <sup>1</sup> / <sub>4</sub> D	20
<b>NG-460-V •*</b>	60.0	Angled Side Nails	4-Gang Wall	3 <sup>1</sup> / <sub>2</sub> L x 7 <sup>1</sup> / <sub>2</sub> W x 2 <sup>3</sup> / <sub>4</sub> D	10

• NG Boxes have 1/2" offset wallboard flange and V-type cable entry.

\* Not UL Classified for fire wall and/or fire ceiling.



NG-460-V

### Voltage Partition



CAT. NO.	DESCRIPTION	STD. CTN.
<b>FNP</b>	Voltage Partition for NG & FN Series Multi-Gang Boxes	50

## Polycarbonate Boxes

### Ceiling Boxes

All ceiling boxes are produced from a high heat-resistant material developed specifically for fixture support applications.

- Meets NEMA OS-2
- UL Listed to UL 514C



N-321-GC



N-321-C



#### 3½" 20.5 Cu. In.

CAT. NO.	SIZE CU. IN.	MOUNTING MEANS	DESCRIPTION	DIMENSIONS (IN.)	STD. CTN.
N-321-C •	20.5	Angled Side Nails	Molded Fast Clamps	3½ Dia. x 3¼ D	50
N-321-GC •	20.5	Angled Side Nails	Molded Fast Clamps, Ground Strap Installed	3½ Dia. x 3¼ D	50

- Listed for fixture support up to 50 lbs.



N-423-C-V



N-423-GC-V



#### 4" 22.5 Cu. In.

CAT. NO.	SIZE CU. IN.	MOUNTING MEANS	DESCRIPTION	DIMENSIONS (IN.)	STD. CTN.
N-423-C-V •	22.5	Angled Side Nails	Molded V-Clamps	4 Dia. x 2½ D	50
N-423-GC-V •	22.5	Angled Side Nails	Molded Fast Clamps	4 Dia. x 2½ D	50

- Listed for fixture support up to 50 lbs.

## Polycarbonate Boxes



B518P-UPC



### 3/0 18 Cu. In.

CAT. NO.	SIZE CU. IN.	MOUNTING MEANS	DESCRIPTION	DIMENSIONS (IN.)	STD. CTN.
B518A-UPC •	18.0	Captive Nails	—	3 Dia. x 2¼ D	75
B518P-UPC •	18.0	Captive Nails	Ground Lug and Screw Attached	3 Dia. x 2¼ D	75

• Listed for fixture support up to 50 lbs.



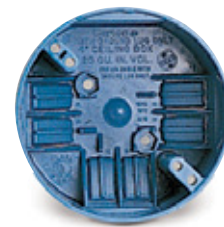
B520A-UPC



B620L-UPC



B520P-UPC



B720R-SHK  
35 lbs. maximum fan weight



### 3/0–4/0 Combination 20 Cu. In.

CAT. NO.	SIZE CU. IN.	MOUNTING MEANS	DESCRIPTION	DIMENSIONS (IN.)	STD. CTN.
B520A-UPC •	20.0	Captive Nails	Ground Lug and Screw Attached Fixture Spacing for 2¾" and 3"	4 Dia. x 2¼ D	75
B520P-UPC •	20.0	Captive Nails	Ground Lug and Screw Attached	4 Dia. x 2¼ D	75
B620L-UPC •	20.0	Metal L Bracket	Fixture Spacing for 2¾" and 3½"	4 Dia. x 2¼ D	100
B720R-SHK •	20.0	Mounting Screws	—	4 Dia. x 2¼ D	18

• Listed for fixture support up to 50 lbs.

## Polycarbonate Boxes

### Ceiling Boxes with Bar Hanger

- Meets NEMA OS-2



N-321-C-94



N-321-GC-94



N-321-C-95



N-321-GC-95

3½" 20.5 Cu. In.



CAT. NO.	SIZE CU. IN.	MOUNTING MEANS	DESCRIPTION	DIMENSIONS (IN.)	STD. CTN.
N-321-C-94 •	20.5	16" Bar Hanger, 12¼" Min.–19" Max.	Molded Fast Clamps	3½ Dia. x 3½ D	50
N-321-GC-94 •	20.5	16" Bar Hanger, 12¼" Min.–19" Max.	Molded Fast Clamps, Ground Strap Installed	3½ Dia. x 3½ D	50
N-321-C-95 •	20.5	24" Bar Hanger, 16½" Min.–27" Max.	Molded Fast Clamps	3½ Dia. x 3½ D	50
N-321-GC-95 •	20.5	24" Bar Hanger, 16½" Min.–27" Max.	Molded Fast Clamps, Ground Strap Installed	3½ Dia. x 3½ D	50

- Listed for fixture support up to 50 lbs.



N-423-C-94-V



N-423-GC-94-V



N-423-C-95-V



N-423-GC-95-V

4" 22.5 Cu. In.



CAT. NO.	SIZE CU. IN.	MOUNTING MEANS	DESCRIPTION	DIMENSIONS (IN.)	STD. CTN.
N-423-C-94-V •	22.5	16" Bar Hanger, 12¼" Min.–19" Max.	Molded Fast Clamps	4 Dia. x 2½ D	50
N-423-GC-94-V •	22.5	16" Bar Hanger, 12¼" Min.–19" Max.	Molded Fast Clamps, Ground Strap Installed	4 Dia. x 2½ D	50
N-423-C-95-V •	22.5	24" Bar Hanger, 16½" Min.–27" Max.	Molded Fast Clamps	4 Dia. x 2½ D	50
N-423-GC-95-V •	22.5	24" Bar Hanger, 16½" Min.–27" Max.	Molded Fast Clamps, Ground Strap Installed	4 Dia. x 2½ D	50

- Listed for fixture support up to 50 lbs.

## Polycarbonate Boxes



B620DC



B620HG-UPC



B620K



B620H-UPC



B620KG-UPC

### 3/0–4/0 Combination 20.0 Cu. In.



CAT. NO.	SIZE CU. IN.	MOUNTING MEANS	DESCRIPTION	DIMENSIONS (IN.)	STD. CTN.
<b>B620DC •</b>	20.0	24" T-Grid Bar Hanger	Ceiling Box Fixture Spacing for 2¾" and 3½"	4 Dia. x 2¼ D	18
<b>B620HG-UPC •</b>	20.0	11.50"–14.50" Adjustable Bar Hanger Ground Lug and Screw Attached	Ceiling Box Fixture Spacing for 2¾" and 3½"	4 Dia. x 2¼ D	75
<b>B620H-UPC •</b>	20.0	11.50"–14.50" Adjustable Bar Hanger	Ceiling Box Fixture Spacing for 2¾" and 3½"	4 Dia. x 2¼ D	75
<b>B620K •</b>	20.0	14.38"–22.50" Adjustable Bar Hanger	Ceiling Box Fixture Spacing for 2¾" and 3½"	4 Dia. x 2¼ D	75
<b>B620KG-UPC •</b>	20.0	14.38"–22.50" Adjustable Bar Hanger Ground Lug and Screw Attached	Ceiling Box Fixture Spacing for 2¾" and 3½"	4 Dia. x 2¼ D	75

• Listed for fixture support up to 50 lbs.

## Polycarbonate Boxes

### Ceiling Boxes



3R-16-N



3R-16-NGP

#### 3½" Nail-On 16.0 Cu. In.



CAT. NO.	SIZE CU. IN.	MOUNTING MEANS	DESCRIPTION	DIMENSIONS (IN.)	STD. CTN.
3R-16-N •	16.0	Angled Nails	POSI-WEDGE® Cable Clamps	2¼	50
3R-16-NGP •	16.0	Angled Nails	POSI-WEDGE® Cable Clamps	2¼	50

• Listed for fixture support up to 50 lbs.



3R-16-BH



3R-16-BHGP

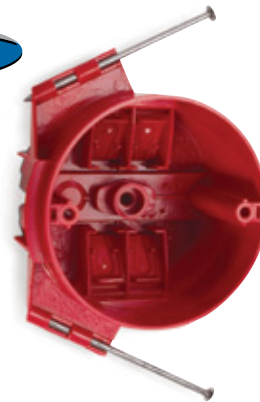
#### 3½" Ceiling Box with Bar Hanger 16.0 Cu. In.



CAT. NO.	SIZE CU. IN.	MOUNTING MEANS	DESCRIPTION	DIMENSIONS (IN.)	STD. CTN.
3R-16-BH •	16.0	Adjustable 16"-24" Bar Hanger	POSI-WEDGE® Cable Clamps	2¼	25
3R-16-BHGP •	16.0	Adjustable 16"-24" Bar Hanger	POSI-WEDGE® Cable Clamps	2¼	25

• Listed for fixture support up to 50 lbs.

**NEW!**



3R-16-N-RED

#### 3½" Fire Alarm Nail-On 16.0 Cu. In.



CAT. NO.	SIZE CU. IN.	MOUNTING MEANS	DESCRIPTION	DIMENSIONS (IN.)	STD. CTN.
3R-16-N-RED •	16.0	Angled Nails	POSI-WEDGE® Cable Clamps	2¼	50

• Red ceiling box for fire alarm applications.

• Listed for fixture support up to 50 lbs.



## Polycarbonate Boxes

### Saddle-Type Ceiling Fan Boxes



CFB-12



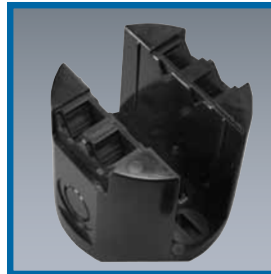
Easy press-fit onto the joist. Integrally molded ribs grip the joist and stop the box from falling.



Just one hand is required to mount the box using the pre-located mounting screw.



CFB-16



Integrally molded cable V-clamps provide easy and secure clamping for non-metallic cables.



CFB-16 features 1/2" KOs in addition to V-clamps.

#### Saddle-Type Fan 12.0–16.0 Cu. In.



CAT. NO.	SIZE CU. IN.	MOUNTING MEANS	DEPTH (IN.)	STD. CTN.
CFB-12 •	12.0	Non-Metallic Saddle-Type Ceiling Fan Box with V-Clamps for Non-Metallic Sheathed Cable	2 1/4	50
CFB-16 •	16.0	Non-Metallic Saddle-Type Ceiling Fan Box with V-Clamps for Non-Metallic Sheathed Cable and Two 1/2" KOs	2 1/4	50

• Listed for fan support up to 70 lbs. and fixture support up to 70 lbs.

### Old Work

#### 4" Round 18.0 Cu. In.



CAT. NO.	SIZE CU. IN.	MOUNTING MEANS	DESCRIPTION	DIMENSIONS (IN.)	STD. CTN.
B618R-UPC •	18.0	Swing Clamps	—	4 1/4 Dia.	100
B618RP-UPC •	18.0	Swing Clamps	Ground Lug	4 1/4 Dia.	100

• Not UL Classified for Fire Resistance or used for fixture support in the ceiling.



B618R-UPC

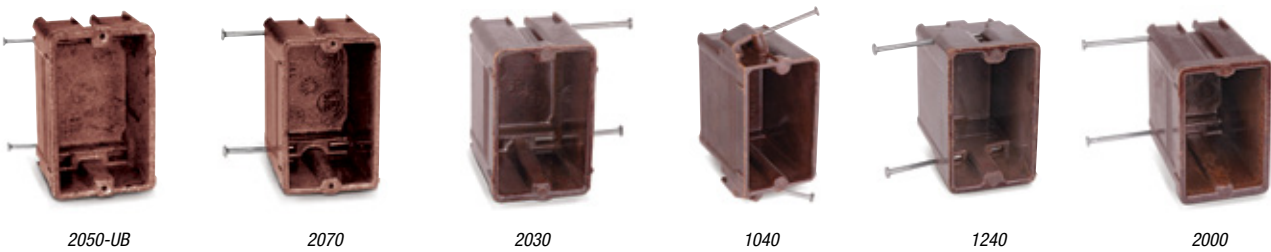
## Phenolic Boxes

### Carlon® Brown Phenolic Boxes

New Fire Rating! Carlon® phenolic boxes can be installed in the same stud cavity of a shared two-hour wall. They may also face opposite directions with only a 3" horizontal separation — ideal for multi-family construction!

- All Phenolic boxes are listed to UL514C
- All Phenolic boxes are listed for masonry walls
- All Phenolic boxes are UL® Classified for 2-hr. fire wall and/or fire ceiling
- All Phenolic boxes meet NEMA OS-2
- All Phenolic boxes are permissible for use with 90° C conductors
- UL® File E11461 and R9140

### One-Gang Nail-On 9.0–18.0 Cu. In.



CAT. NO.	SIZE CU. IN.	MOUNTING MEANS	DESCRIPTION	DIMENSIONS (IN.)	STD. CTN.
2050-UB	9.0	Bottom Nails	—	3 <sup>1</sup> / <sub>16</sub> L x 2 <sup>1</sup> / <sub>4</sub> W x 1 <sup>13</sup> / <sub>16</sub> D	100
2070	14.0	Bottom Nails	—	3 <sup>3</sup> / <sub>16</sub> L x 2 <sup>1</sup> / <sub>4</sub> W x 2 <sup>5</sup> / <sub>16</sub> D	100
2030	16.0	Bottom Nails	—	3 <sup>3</sup> / <sub>16</sub> L x 2 <sup>15</sup> / <sub>32</sub> W x 2 <sup>13</sup> / <sub>16</sub> D	100
1040	18.0	Compound Angled Nails	—	3 <sup>9</sup> / <sub>16</sub> L x 2 <sup>1</sup> / <sub>2</sub> W x 3 <sup>1</sup> / <sub>16</sub> D	100
1240	18.0	Recessed Angled Nails	—	3 <sup>1</sup> / <sub>16</sub> L x 2 <sup>1</sup> / <sub>4</sub> W x 3 <sup>3</sup> / <sub>16</sub> D	100
2000	18.0	Bottom Nails	"Classic"	3 <sup>1</sup> / <sub>16</sub> L x 2 <sup>1</sup> / <sub>4</sub> W x 3 <sup>1</sup> / <sub>16</sub> D	100

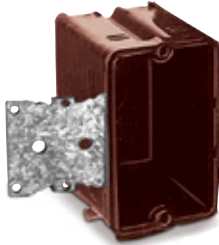
### One-Gang Nail-On 20.3–22.5 Cu. In.



CAT. NO.	SIZE CU. IN.	MOUNTING MEANS	DESCRIPTION	DIMENSIONS (IN.)	STD. CTN.
1250-UB	20.3	Recessed Angled Nails	—	3 <sup>1</sup> / <sub>16</sub> L x 2 <sup>1</sup> / <sub>2</sub> W x 3 <sup>3</sup> / <sub>16</sub> D	100
1250-UB-S	20.3	Recessed Angled Nails	—	3 <sup>1</sup> / <sub>16</sub> L x 2 <sup>1</sup> / <sub>2</sub> W x 3 <sup>3</sup> / <sub>16</sub> D	100
1050-UB	21.0	Compound Angled Nails	—	3 <sup>5</sup> / <sub>16</sub> L x 2 <sup>5</sup> / <sub>16</sub> W x 3 <sup>1</sup> / <sub>16</sub> D	50
1260	22.5	Recessed Angled Nails	—	3 <sup>7</sup> / <sub>16</sub> L x 2 <sup>3</sup> / <sub>4</sub> W x 3 <sup>21</sup> / <sub>32</sub> D	50
1260-S	22.5	Recessed Angled Nails	—	3 <sup>7</sup> / <sub>16</sub> L x 2 <sup>3</sup> / <sub>4</sub> W x 3 <sup>21</sup> / <sub>32</sub> D	50

## Phenolic Boxes

### One-Gang Brackets 16.0–20.3 Cu. In.



2030-502



2030-702



2000-738



1250-112



CAT. NO.	SIZE CU. IN.	MOUNTING MEANS	DESCRIPTION	DIMENSIONS (IN.)	STD. CTN.
2030-502	16.0	½" Offset Bracket for Wood/Steel Studs	—	3⅞ L x 2¼ W x 2¼ D	100
2030-702	16.0	¼" Offset Bracket for Wood/Steel Studs	—	3⅞ L x 2¼ W x 2¼ D	100
2000-738	18.0	¾" Offset Bracket for Wood/Steel Studs	—	3⅞ L x 2¼ W x 2¼ D	100
1250-112	20.3	½" Offset Bracket for Wood/Steel Studs	—	3⅞ L x 2¼ W x 2¼ D	50

### Two-Gang Nail-On 27.5–40.5 Cu. In.



1032-C



1032-UB



1052-C



1052-C-SQ



1052-PC



1052-UB



1072



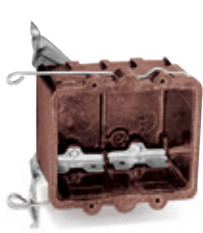
1072-C



CAT. NO.	SIZE CU. IN.	MOUNTING MEANS	DESCRIPTION	DIMENSIONS (IN.)	STD. CTN.
1032-C	27.5	Compound Angled Nails	High Clamps	3⅞ L x 4⅞ W x 2⅞ D	50
1032-UB	27.5	Compound Angled Nails	#36 Clamps, Bulk Packed	3⅞ L x 4⅞ W x 2⅞ D	50
1052-C	32.5	Compound Angled Nails	High Clamps	3⅞ L x 4⅞ W x 2⅞ D	50
1052-C-SQ	32.5	Angled Screws	High Clamps	3⅞ L x 4⅞ W x 2⅞ DD	50
1052-PC	32.5	Compound Angled Nails	Non-Metallic Clamps	3⅞ L x 4⅞ W x 2⅞ D	50
1052-UB	32.5	Compound Angled Nails	#36 Clamps, Bulk Packed	3⅞ L x 4⅞ W x 2⅞ D	50
1072	40.5	Compound Angled Nails	#36 Clamps, Bulk Packed	3⅞ L x 4⅞ W x 2⅞ D	50
1072-C	40.5	Compound Angled Nails	High Clamps	3⅞ L x 4⅞ W x 2⅞ D	50
1072-C-SQ	40.5	Angled Screws	High Clamps	3⅞ L x 4⅞ W x 2⅞ D	50
1072-PC	40.5	Compound Angled Nails	Non-Metallic Clamps	3⅞ L x 4⅞ W x 2⅞ D	50

## Phenolic Boxes

### Two-Gang Brackets 24.0–34.0 Cu. In.



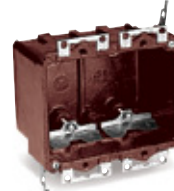
7072-2



7072-202



7072-N02



6062-402



6062-4-UB



7002-2



7002-202



2002-738



2002-738-C



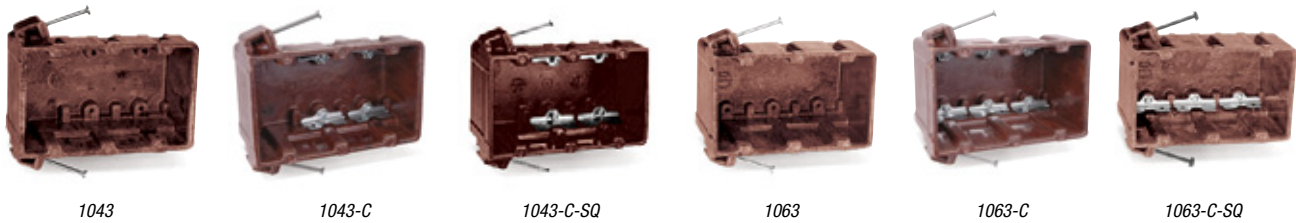
2002-R-C



CAT. NO.	SIZE CU. IN.	MOUNTING MEANS	DESCRIPTION	DIMENSIONS (IN.)	STD. CTN.
7072-2	24.0	#2 Bottom Bracket and Wire Support	High Clamps	3 <sup>1</sup> / <sub>16</sub> L x 4 W x 2 <sup>3</sup> / <sub>4</sub> D	50
7072-202	24.0	#2 Bottom Bracket and Wire Support	#36 Clamps, Bulk Packed	3 <sup>1</sup> / <sub>16</sub> L x 4 W x 2 <sup>3</sup> / <sub>4</sub> D	50
7072-N02	24.0	"N" Bracket	#36 Clamps	3 <sup>1</sup> / <sub>16</sub> L x 4 W x 2 <sup>3</sup> / <sub>4</sub> D	50
6062-402	25.0	Ears, #4 Swing Bracket	#36 Clamps, Bulk Packed	3 <sup>3</sup> / <sub>8</sub> L x 4 <sup>1</sup> / <sub>16</sub> W x 2 <sup>1</sup> / <sub>2</sub> D	50
6062-4-UB	25.0	Ears, #4 Swing Bracket	High Clamps	3 <sup>3</sup> / <sub>8</sub> L x 4 <sup>1</sup> / <sub>16</sub> W x 2 <sup>1</sup> / <sub>2</sub> D	50
6062-4-UB-SQ	25.0	Angled Screws	High Clamps	3 <sup>3</sup> / <sub>8</sub> L x 4 <sup>1</sup> / <sub>16</sub> W x 2 <sup>1</sup> / <sub>2</sub> D	50
7002-2	32.5	#2 Bottom Bracket and Wire Support	High Clamps	3 <sup>1</sup> / <sub>4</sub> L x 4 W x 3 <sup>5</sup> / <sub>8</sub> D	50
7002-202	32.5	#2 Bottom Bracket and Wire Support	#36 Clamps, Bulk Packed	3 <sup>1</sup> / <sub>4</sub> L x 4 W x 3 <sup>5</sup> / <sub>8</sub> D	50
2002-738	34.0	3 <sup>1</sup> / <sub>8</sub> " Offset Brackets for Wood/Steel Studs & #36 Clamps, Bulk Packet	3 <sup>1</sup> / <sub>8</sub> " Offset Wallboard Tabs	3 <sup>1</sup> / <sub>16</sub> L x 4 <sup>3</sup> / <sub>16</sub> W x 3 <sup>1</sup> / <sub>4</sub> D	50
2002-738-C	34.0	3 <sup>1</sup> / <sub>8</sub> " Offset Brackets for Wood/Steel Studs Tabs & High Clamps	3 <sup>1</sup> / <sub>8</sub> " Offset Wallboard	3 <sup>1</sup> / <sub>16</sub> L x 4 <sup>3</sup> / <sub>16</sub> W x 3 <sup>1</sup> / <sub>4</sub> D	50
2002-R-C	34.0	"R" Bracket	High Clamps	3 <sup>3</sup> / <sub>8</sub> L x 4 <sup>5</sup> / <sub>16</sub> W x 3 <sup>1</sup> / <sub>4</sub> D	50

## Phenolic Boxes

### Three-Gang Nail-On 42.9–58.5 Cu. In.



CAT. NO.	SIZE CU. IN.	MOUNTING MEANS	DESCRIPTION	DIMENSIONS (IN.)	STD. CTN.
1043	42.9	Compound Angled Nails	#36 Clamps, Bulk Packed	3 <sup>3</sup> / <sub>8</sub> L x 5 <sup>7</sup> / <sub>8</sub> W x 2 <sup>1</sup> / <sub>4</sub> D	20
1043-C	42.9	Compound Angled Nails	High Clamps	3 <sup>3</sup> / <sub>8</sub> L x 5 <sup>7</sup> / <sub>8</sub> W x 2 <sup>1</sup> / <sub>4</sub> D	20
1043-C-SQ	42.9	Angled Screws	High Clamps	3 <sup>3</sup> / <sub>8</sub> L x 5 <sup>7</sup> / <sub>8</sub> W x 2 <sup>1</sup> / <sub>4</sub> D	20
1063	58.5	Compound Angled Nails	#36 Clamps, Bulk Packed	3 <sup>7</sup> / <sub>8</sub> L x 5 <sup>1</sup> / <sub>8</sub> W x 3 <sup>1</sup> / <sub>2</sub> D	20
1063-C	58.5	Compound Angled Nails	High Clamps	3 <sup>7</sup> / <sub>8</sub> L x 5 <sup>1</sup> / <sub>8</sub> W x 3 <sup>1</sup> / <sub>2</sub> D	20
1063-C-SQ	58.5	Compound Angled Screws	High Clamps	3 <sup>7</sup> / <sub>8</sub> L x 5 <sup>1</sup> / <sub>8</sub> W x 3 <sup>1</sup> / <sub>2</sub> D	20

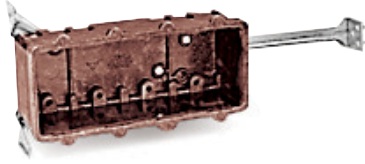
### Three-Gang Brackets 35.5–37.0 Cu. In.



CAT. NO.	SIZE CU. IN.	MOUNTING MEANS	DESCRIPTION	DIMENSIONS (IN.)	STD. CTN.
7073-2	35.5	#2 Bottom Bracket and Wire Support	High Clamps	3 <sup>3</sup> / <sub>8</sub> L x 5 <sup>1</sup> / <sub>8</sub> W x 2 <sup>5</sup> / <sub>8</sub> D	100
7073-202	35.5	#2 Bottom Bracket and Wire Support	#36 Clamps, Bulk Packed	3 <sup>3</sup> / <sub>8</sub> L x 5 <sup>1</sup> / <sub>8</sub> W x 2 <sup>5</sup> / <sub>8</sub> D	100
7073-238-02	35.5	Two 3/8" Offset Brackets for Wood/Steel Studs	#36 Clamps, Bulk Packed	3 <sup>3</sup> / <sub>8</sub> L x 5 <sup>1</sup> / <sub>8</sub> W x 2 <sup>5</sup> / <sub>8</sub> D	100
6063-4	37.0	Ears, #4 Swing Bracket	High Clamps	3 <sup>3</sup> / <sub>8</sub> L x 5 <sup>1</sup> / <sub>8</sub> W x 2 <sup>1</sup> / <sub>2</sub> D	100
6063-402	37.0	Ears, #4 Swing Bracket	#36 Clamps, Bulk Packed	3 <sup>3</sup> / <sub>8</sub> L x 5 <sup>1</sup> / <sub>8</sub> W x 2 <sup>1</sup> / <sub>2</sub> D	50

## Phenolic Boxes

### Four-Gang Brackets 48.0–60.0 Cu. In.



7074-02-BH



7074-BH



2004-02-BH



2004-BH



2004-238



2004-238-02



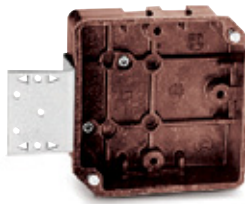
CAT. NO.	SIZE CU. IN.	MOUNTING MEANS	DESCRIPTION	DIMENSIONS (IN.)	STD. CTN.
<b>7074-02 BH</b>	48.0	Side Bracket & Stabilizing Bar	#36 Clamps, Bulk Packed	3 <sup>5</sup> / <sub>16</sub> L x 7 <sup>7</sup> / <sub>8</sub> W x 2 <sup>5</sup> / <sub>8</sub> D	10
<b>7074 BH</b>	48.0	Side Bracket & Stabilizing Bar	High Clamps	3 <sup>5</sup> / <sub>16</sub> L x 7 <sup>7</sup> / <sub>8</sub> W x 2 <sup>5</sup> / <sub>8</sub> D	10
<b>2004-02-BH</b>	60.0	Side Bracket & Stabilizing Bar	#36 Clamps, Bulk Packed	3 <sup>5</sup> / <sub>8</sub> L x 7 <sup>23</sup> / <sub>32</sub> W x 3 <sup>1</sup> / <sub>16</sub> D	10
<b>2004-BH</b>	60.0	Side Bracket & Stabilizing Bar	High Clamps	3 <sup>5</sup> / <sub>8</sub> L x 7 <sup>23</sup> / <sub>32</sub> W x 3 <sup>1</sup> / <sub>16</sub> D	10
<b>2004-238</b>	60.0	Two 3 <sup>5</sup> / <sub>8</sub> " Offset Brackets for Wood/Steel Studs	High Clamps	3 <sup>5</sup> / <sub>8</sub> L x 7 <sup>23</sup> / <sub>32</sub> W x 3 <sup>1</sup> / <sub>16</sub> D	20
<b>2004-238-02</b>	60.0	Two 3 <sup>5</sup> / <sub>8</sub> " Offset Brackets for Wood/Steel Studs	#36 Clamps, Bulk Packed	3 <sup>5</sup> / <sub>8</sub> L x 7 <sup>23</sup> / <sub>32</sub> W x 3 <sup>1</sup> / <sub>16</sub> D	20

## Phenolic Boxes

### 4" Square Boxes Nail-On Brackets 16.0–30.0 Cu. In.



4020-1



4020-1-02



4000-02



4000-1-UB



4000-N



4000-N02



CAT. NO.	SIZE CU. IN.	MOUNTING MEANS	DESCRIPTION	DIMENSIONS (IN.)	STD. CTN.
4020-1	16.0	½" Raised Face Bracket for Wood/Steel Studs	High Clamps	4 <sup>5</sup> / <sub>16</sub> L x 4 <sup>5</sup> / <sub>16</sub> W x 1 <sup>1</sup> / <sub>4</sub> D	50
4020-1-02	16.0	½" Raised Face Bracket for Wood/Steel Studs	#36 Clamps, Bulk Packed	4 <sup>5</sup> / <sub>16</sub> L x 4 <sup>5</sup> / <sub>16</sub> W x 1 <sup>1</sup> / <sub>4</sub> D	50
4000-02	30.0	Nails or Screws, Bulk Packed	#36 Clamps, Bulk Packed	4 <sup>1</sup> / <sub>4</sub> L x 4 <sup>1</sup> / <sub>4</sub> W x 2 <sup>3</sup> / <sub>8</sub> D	50
4000-1-UB	30.0	½" Raised Face Bracket for Wood/Steel Studs	High Clamps	4 <sup>1</sup> / <sub>4</sub> L x 4 <sup>1</sup> / <sub>4</sub> W x 2 <sup>3</sup> / <sub>8</sub> D	50
4000-N	30.0	"N" Bracket	High Clamps	4 <sup>1</sup> / <sub>4</sub> L x 4 <sup>1</sup> / <sub>4</sub> W x 2 <sup>3</sup> / <sub>8</sub> D	50
4000-N02	30.0	"N" Bracket with Nails	#36 Clamps, Bulk Packed	4 <sup>1</sup> / <sub>4</sub> L x 4 <sup>1</sup> / <sub>4</sub> W x 2 <sup>3</sup> / <sub>8</sub> D	50

### Plaster Rings and Covers for 4" Square Boxes



4041



4042-12



4043



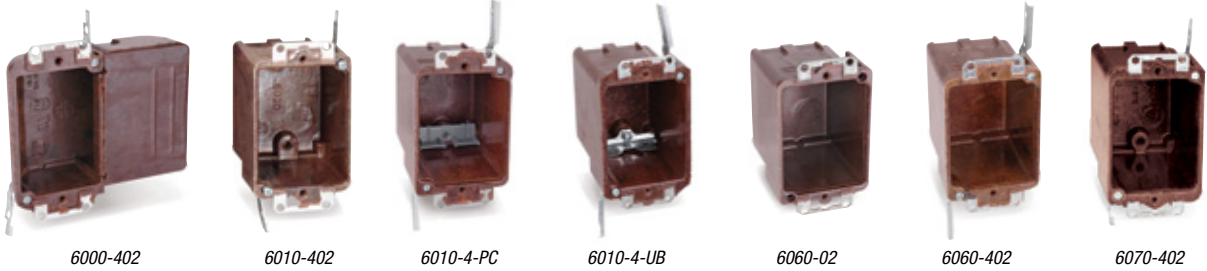
4022-12



CAT. NO.	SIZE CU. IN.	DESCRIPTION	DIMENSIONS (IN.)	STD. CTN.
4041	—	4" Square Flat Back	4 <sup>1</sup> / <sub>4</sub> L x 4 <sup>1</sup> / <sub>4</sub> W x 4 <sup>1</sup> / <sub>4</sub> D	100
4042-12	4.0	4" Square Single-Gang Plaster Ring, ½" Offset	4 <sup>1</sup> / <sub>4</sub> L x 4 <sup>1</sup> / <sub>4</sub> W x 4 <sup>1</sup> / <sub>4</sub> D	100
4043	4.5	4" Square Plaster Ring for 3/4" Fixture, ½" Offset	4 <sup>3</sup> / <sub>16</sub> L x 4 <sup>3</sup> / <sub>16</sub> W x 4 <sup>3</sup> / <sub>16</sub> D	100
4022-12	7.0	4" Square Two-Gang Plaster Ring, ½" Offset	4 <sup>3</sup> / <sub>16</sub> L x 4 <sup>3</sup> / <sub>16</sub> W x 4 <sup>3</sup> / <sub>16</sub> D	50

## Phenolic Boxes

### One-Gang Brackets

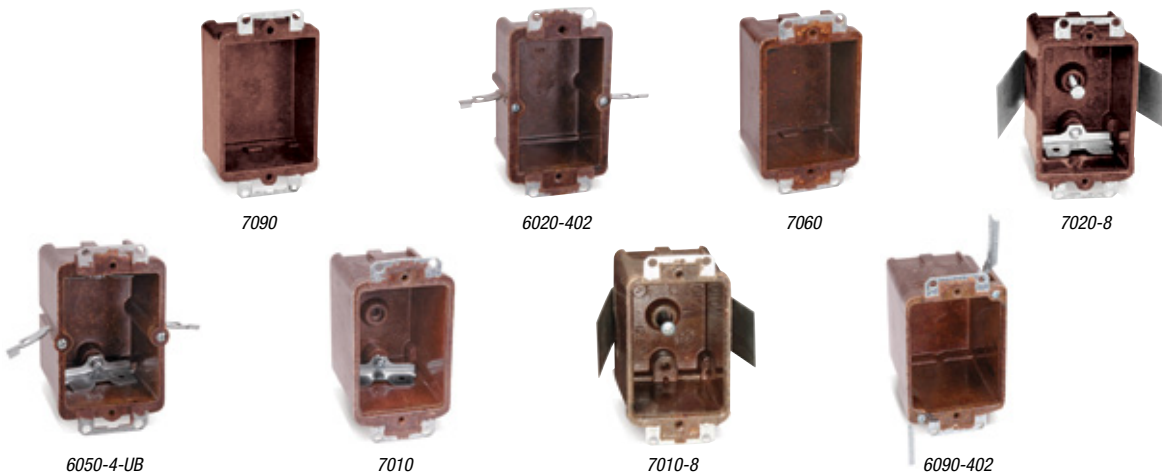


16.0–18.0 Cu. In.



CAT. NO.	SIZE CU. IN.	MOUNTING MEANS	DESCRIPTION	DIMENSIONS (IN.)	STD. CTN.
6000-402 •	16.0	Ears, #8 Swing Brackets	No Clamp Blocks	2 $\frac{3}{8}$ L x 2 $\frac{3}{8}$ W x 2 $\frac{3}{16}$ D	50
6010-402	16.0	Ears, #4 Swing Brackets	Bulk PK Clamps	3 $\frac{3}{8}$ L x 2 $\frac{7}{32}$ opening; 4 $\frac{1}{16}$ overall x 2 $\frac{7}{8}$ D	100
6010-4-PC	16.0	Ears, #4 Swing Brackets	Non-Metallic Clamps	3 $\frac{3}{8}$ L x 2 $\frac{3}{8}$ W x 2 $\frac{7}{8}$ D	100
6010-4-UB	16.0	Ears, #4 Swing Brackets	High Clamps	3 $\frac{3}{8}$ L x 2 $\frac{3}{8}$ W x 2 $\frac{7}{8}$ D	100
6060-02	16.0	Ears	—	3 $\frac{1}{4}$ L x 2 $\frac{3}{16}$ W x 2 $\frac{11}{16}$ D	100
6060-402	16.0	Ears, #4 Swing Brackets	No Clamp Blocks	3 $\frac{3}{8}$ L x 2 $\frac{3}{8}$ W x 2 $\frac{7}{8}$ D	100
6070-402	18.0	Ears, #4 Swing Brackets	#36 Clamps, Bulk Packed	3 $\frac{3}{8}$ L x 2 $\frac{3}{8}$ W x 3 $\frac{1}{4}$ D	50
6070-4-UB	18.0	Ears, #4 Swing Brackets	High Clamps	3 $\frac{3}{8}$ L x 2 $\frac{3}{8}$ W x 3 $\frac{1}{4}$ D	50

• Not UL Listed, UL Recognized component.



7.5–14.0 Cu. In.

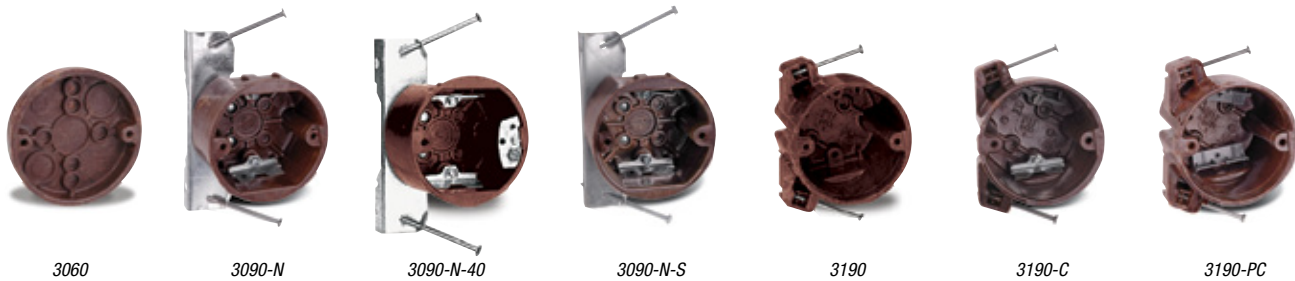


CAT. NO.	SIZE CU. IN.	MOUNTING MEANS	DESCRIPTION	DIMENSIONS (IN.)	STD. CTN.
7090	7.5	Ears	—	3 $\frac{1}{4}$ L x 2 $\frac{1}{4}$ W x 1 $\frac{1}{16}$ D	100
6020-402	8.0	Ears, #4 Swing Brackets	Ears	3 $\frac{1}{16}$ L x 2 $\frac{1}{4}$ W x 1 $\frac{1}{4}$ D	100
7060	9.0	Ears	Ears	3 $\frac{1}{16}$ L x 2 $\frac{1}{4}$ W x 1 $\frac{1}{4}$ D	100
7020-8	10.0	Ears, #8 Swing Brackets	High Clamps	3 $\frac{1}{4}$ L x 2 $\frac{3}{16}$ W x 2 $\frac{1}{4}$ D	50
6050-4-UB	10.5	Ears, #4 Swing Brackets	High Clamps	3 $\frac{1}{2}$ L x 2 $\frac{1}{4}$ W x 2 $\frac{1}{8}$ D	100
7010	12.5	Ears Clamps	High	3 $\frac{1}{4}$ L x 2 $\frac{3}{16}$ W x 2 $\frac{11}{16}$ D	100
7010-8	12.5	Ears, #8 Snap-In Bracket	High Clamps	3 $\frac{1}{4}$ L x 2 $\frac{3}{16}$ W x 2 $\frac{1}{16}$ D	50
6090-402	14.0	Ears, #4 Swing Brackets	No Clamp Blocks	3 $\frac{3}{8}$ L x 2 $\frac{3}{8}$ W x 2 $\frac{1}{2}$ D	100



## Phenolic Boxes

### Nail-On



#### 3 1/2" Nail-On 13.5–22.8 Cu. In.



CAT. NO.	SIZE CU. IN.	MOUNTING MEANS	DESCRIPTION	DIMENSIONS (IN.)	STD. CTN.
3060 †	3.5	Nails or Screw Mount, 3/16" O.D.	See NEC-725-2, 725-51, 725-52, Class 2	3 1/2 Dia. x 5/8 D	100
3090-N •	13.5	"N" Bracket	High Clamps	3 1/2 Dia. x 2 1/2 D	50
3090-N-40 •	13.5	"N" Bracket	High Clamps & #40 Ground Strap	3 1/2 Dia. x 2 1/2 D	50
3090-N-S •	13.5	"N" Bracket with Screws	High Clamps & #36 Clamps, Bulk Packed	3 1/2 Dia. x 2 1/2 D	50
3190 •	22.8	Compound Angled Nails	#36 Clamps, Bulk Packed	3 1/2 Dia. x 3 1/4 D	50
3190-C •	22.8	Compound Angled Nails	High Clamps	3 1/2 Dia. x 3 1/4 D	50
3190-PC •	22.8	Compound Angled Nails	Non-Metallic Clamps	3 1/2 Dia. x 3 1/4 D	50

• Listed for fixture support up to 50 lbs.

† Not UL Listed.

### Flanged



#### 3 1/2" Flanged for Manufactured Housing 11.5–20.5 Cu. In.



CAT. NO.	SIZE CU. IN.	MOUNTING MEANS	DESCRIPTION	DIMENSIONS (IN.)	STD. CTN.
3030-02-40 •	11.5		#36 Clamps, Bulk Packed & #40 Ground Strap	3 1/2 Dia. x 1 1/4 D	100
3030 •	14.0	Screw Mount (4/8" O.D. Flange or Flash Ring) Box O.D. 3/2"	High Clamps	3 1/2 Dia. x 1 1/4 D	100
3030-02 •	14.0		#36 Clamps, Bulk Packed	3 1/2 Dia. x 1 1/4 D	100
3030PC •	14.0		Non-Metallic Clamps	3 1/2 Dia. x 1 1/4 D	100
3000 •	20.5		High Clamps	3 1/2 Dia. x 2 1/2 D	50
3000-02 •	20.5		#36 Clamps, Bulk Packed	3 1/2 Dia. x 2 1/2 D	50
3000-PC •	20.5		Non-Metallic Clamps	3 1/2 Dia. x 2 1/2 D	50

• Listed for fixture support up to 50 lbs.

## Phenolic Boxes

### 4" Nail-On Brackets



13.5–21.5 Cu. In



CAT. NO.	SIZE CU. IN.	MOUNTING MEANS	DESCRIPTION	DIMENSIONS (IN.)	STD. CTN.
4060-02 •	13.5	Nail or Screws	#36 Clamps, Bulk Packed	4 Dia. x 1 $\frac{1}{8}$ D	100
4060-N02 •	13.5	"N" Bracket, Bulk Packed with Nails	#36 Clamps	4 Dia. x 1 $\frac{1}{8}$ D	50
4160-UB •	16.0	Compound Angled Side Nails	#36 Clamps, Bulk Packed	4 Dia. x 1 $\frac{1}{8}$ D	50
4070-302 •	20.8	#3 Bracket	#36 Clamps, Bulk Packed	4 Dia. x 2 $\frac{1}{8}$ D	50
4070-N •	20.8	"N" Bracket with Nails	High Clamps	4 Dia. x 2 $\frac{1}{8}$ D	50
4070-N02 •	20.8	"N" Bracket with Nails	#36 Clamps, Bulk Packed	4 Dia. x 2 $\frac{1}{8}$ D	50
4070-N-SQ •	20.8	"N" Bracket with screws	High Clamps	4 Dia. x 2 $\frac{1}{8}$ D	50
4170 •	21.5	Compound Angled Side Nails	#36 Clamps, Bulk Packed	4 Dia. x 2 $\frac{1}{8}$ D	50
4170-C •	21.5	Compound Angled Side Nails	High Clamps	4 Dia. x 2 $\frac{1}{8}$ D	50

• Listed for fixture support up to 50 lbs.

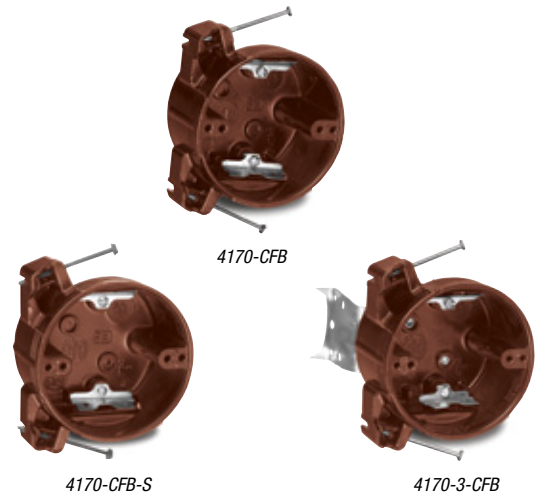
### 4" Round Outlet Box

21.5 Cu. In.



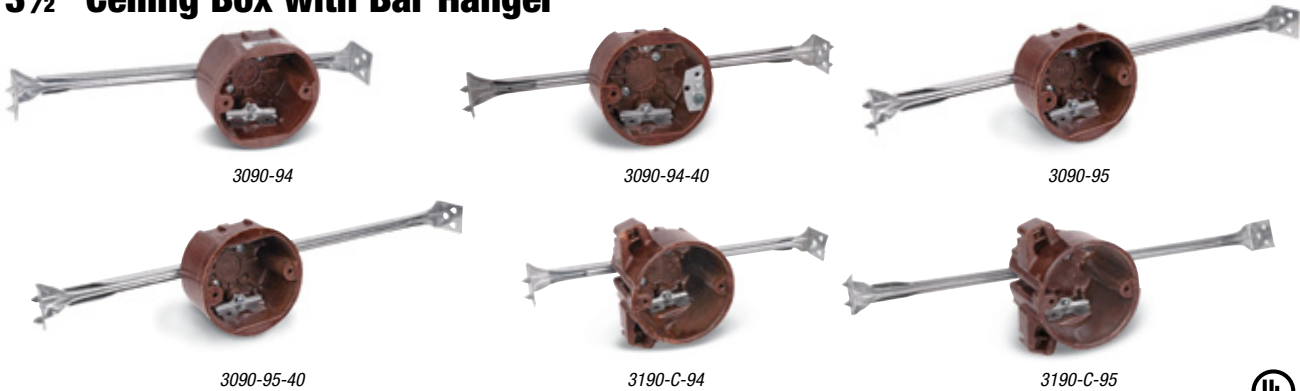
CAT. NO.	SIZE CU. IN.	MOUNTING MEANS	DIMENSIONS (IN.)	STD. CTN.
4170-CFB •	21.5	—	4 $\frac{1}{8}$ Dia.	10
4170-CFB-S •	21.5	Steel Stud Screws	4 $\frac{1}{8}$ Dia.	10
4170-3-CFB •	21.5	3" Bracket	4 $\frac{1}{8}$ Dia.	10

• UL Listed for support of light fixtures of up to 50 lbs. or ceiling fans up to 35 lbs.



## Phenolic Boxes

### 3½" Ceiling Box with Bar Hanger

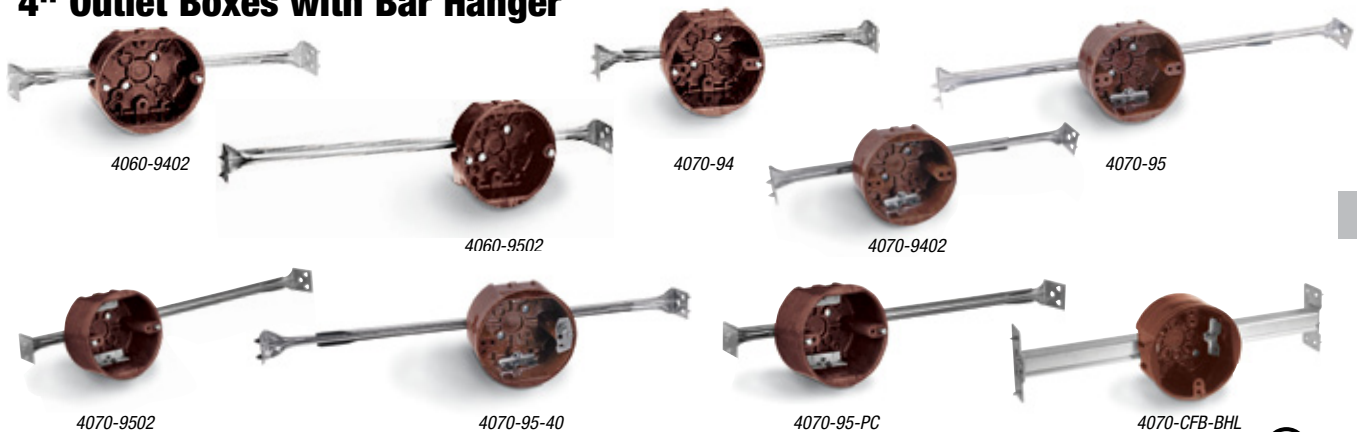


13.5–22.8 Cu. In.

CAT. NO.	SIZE CU. IN.	MOUNTING MEANS	DESCRIPTION	DIMENSIONS (IN.)	STD. CTN.
3090-94 •	13.5	16" Bar Hanger, 12¼" Min.–19" Max.	High Clamps	3½ Dia. x 2½ D	50
3090-94-40 •	13.5	16" Bar Hanger, 12¼" Min.–19" Max.	High Clamps & #40 Ground Strap	3½ Dia. x 2½ D	50
3090-95 •	13.5	24" Bar Hanger, 16½" Min.–27" Max.	High Clamps	3½ Dia. x 2½ D	50
3090-95-40 •	3.5	24" Bar Hanger, 16½" Min.–27" Max.	High Clamps & #40 Ground Strap	3½ Dia. x 2½ D	50
3190-C-94 •	22.8	16" Bar Hanger	High Clamps	3½ Dia. x 2½ D	25
3190-C-95 •	22.8	24" Bar Hanger	High Clamps	3½ Dia. x 2½ D	25

• Listed for fixture support up to 50 lbs.

### 4" Outlet Boxes with Bar Hanger



13.5–20.8 Cu. In.

CAT. NO.	SIZE CU. IN.	MOUNTING MEANS	DESCRIPTION	DIMENSIONS (IN.)	STD. CTN.
4060-9402 •	13.5	16" Bar Hanger	#36 Clamps, Bulk Packed	4 Dia. x 1½ D	50
4060-9502 •	13.5	24" Bar Hanger	#36 Clamps, Bulk Packed	4 Dia. x 1½ D	50
4070-94 •	20.8	16" Bar Hanger, 12¼" Min.–19" Max.	High Clamps	4 Dia. x 2½ D	50
4070-9402 •	20.8	16" Bar Hanger, 12¼" Min.–19" Max.	#36 Clamps, Bulk Packed	4 Dia. x 2½ D	50
4070-95 •	20.8	24" Bar Hanger, 16½" Min.–27" Max.	High Clamps	4 Dia. x 2½ D	50
4070-9502 •	20.8	24" Bar Hanger, 16½" Min.–27" Max.	#36 Strap, Bulk Packed	4 Dia. x 2½ D	50
4070-95-40 •	20.8	24" Bar Hanger, 16½" Min.–27" Max.	Ground Strap	4 Dia. x 2½ D	50
4070-95-PC •	20.8	24" Bar Hanger, 16½" Min.–27" Max.	Non-Metallic Clamps	4 Dia. x 2½ D	50
4070-CFB-BHL †	20.8	24" Bar Hanger, 12" to 24" Maximum Center	—	4⅞ Dia. x 2½ D	10

• Listed for fixture support up to 50 lbs.

† UL Listed for support of light fixtures of up to 50 lbs. or ceiling fans up to 35 lbs.

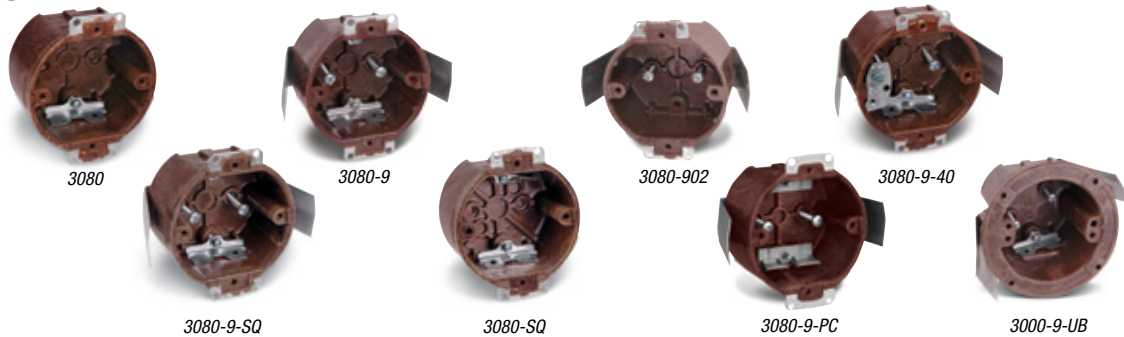
## Phenolic Boxes

### Plaster Rings and Covers for 4" Outlet Boxes



CAT. NO.	SIZE CU. IN.	DESCRIPTION	DIMENSIONS (IN.)	STD. CTN.
3051	—	Round Flat Blank, Fits #3000, #3020 & #3030 Boxes Only	3¼ Dia.	100
4051	—	Round Blank or Pendant, <sup>25</sup> / <sub>64</sub> " Diameter Knockout	3¼–4 Dia.	100
4052 BROWN	—	Round Flat Blank with 4" O.D.	3¼–4 Dia.	100
4052 IVORY	—	Round Flat Blank with 4" O.D.	3¼–4 Dia.	100
4052 WHITE	—	Round Flat Blank with 4" O.D.	3¼–4 Dia.	100
4061	4.5	Round Plaster Ring, ½" Offset for ¾ Mounting	4 Dia.	100
4062 BROWN	—	Round Flat Blank with 4½" O.D.	4 Dia.	100
4062 IVORY	—	Round Flat Blank with 4½" O.D.	4 Dia.	100
4062 WHITE	—	Round Flat Blank with 4½" O.D.	4 Dia.	100

### Ceiling Boxes — Old Work



#### 3½" Brackets 14.0–20.5 Cu. In.

CAT. NO.	SIZE CU. IN.	MOUNTING MEANS	DESCRIPTION	DIMENSIONS (IN.)	STD. CTN.
3080 †	14.0	Ears	High Clamps	3½ Dia. x 2½ D	50
3080-9 •	14.0	#9 Snap-In Bracket	High Clamps	3½ Dia. x 2½ D	50
3080-902 •	14.0	#9 Snap-In Bracket	#36 Clamps Bulk Packed	3½ Dia. x 2½ D	50
3080-9-40 •	14.0	#9 Snap-In Bracket	High Clamps & #40 Ground Strap	3½ Dia. x 2½ D	50
3080-9-PC •	14.0	#9 Snap-In Bracket	Non-Metallic Clamps	3½ Dia. x 2½ D	50
3080-9-SQ	14.0	#9 Snap-In Bracket	High Clamps	3½ Dia. x 2½ D	50
3080-SQ	14.0	Ears	High Clamps	3½ Dia. x 2½ D	50
3000-9-PC	20.5	#9 Snap-In Bracket	Non-Metallic Clamps	3½ Dia. x 2½ D	50
3000-9-UB •	20.5	#9 Snap-In Bracket	High Clamps	3½ Dia. x 2½ D	50

• Listed for fixture support up to 15 lb. in walls only.

† Listed for fixture support up to 50 lbs.

## Phenolic Boxes

### One-Gang

9.8–14.0 Cu. In.



CAT. NO.	SIZE CU. IN.	MOUNTING MEANS	DIMENSIONS (IN.)	STD. CTN.
5060 BROWN •	9.8	Screws	4½ L x 2¾ W x 1½ D	100
5060 IVORY	9.8	Screws	4½ L x 2¾ W x 1½ D	100
5060 WHITE	9.8	Screws	4½ L x 2¾ W x 1½ D	100
5070 BROWN •	14.0	Screws	4½ L x 2¾ W x 1½ D	100
5070 IVORY	14.0	Screws	4½ L x 2¾ W x 1½ D	100
5070 WHITE	14.0	Screws	4½ L x 2¾ W x 1½ D	100

• Note: Only the "Brown" is Phenolic — the White and Ivory are a urea material.



5060 BROWN



5060 IVORY



5060 WHITE



5070 BROWN



5070 IVORY



5070 WHITE

### Two-Gang

23.8 Cu. In.



CAT. NO.	SIZE CU. IN.	MOUNTING MEANS	DIMENSIONS (IN.)	STD. CTN.
5072 BROWN •	23.8	Screws	4¾ L x 4½ W x 1½ D	50
5072 IVORY	23.8	Screws	4¾ L x 4½ W x 1½ D	50
5072 WHITE	23.8	Screws	4¾ L x 4½ W x 1½ D	50

• Note: Only the "Brown" is Phenolic — the White and Ivory are a urea material.



5072 BROWN



5072 IVORY



5072 WHITE

### 6½" Outside Diameter

3.8 Cu. In.



CAT. NO.	SIZE CU. IN.	MOUNTING MEANS	DIMENSIONS (IN.)	STD. CTN.
5080 BROWN •	3.8	Screws, Box O.D.	6¼ L x 3½ W x ¾ D	50
5080 IVORY	3.8	Screws, Box O.D.	6¼ L x 3½ W x ¾ D	50
5080 WHITE	3.8	Screws, Box O.D.	6¼ L x 3½ W x ¾ D	50

• Note: Only the "Brown" is Phenolic — the White and Ivory are a urea material.



5080 BROWN



5080 IVORY



5080 WHITE

Boxes & Covers — Carlton® Non-Metallic Boxes

## Phenolic Boxes

### A0 Round Conduit Boxes and Covers



CAT. NO.	SIZE CU. IN.	MOUNTING MEANS	DESCRIPTION	DIMENSIONS (IN.)	STD. CTN.
A04-12 •	12.0	Four 1/2" Threaded KOs	Round Box	4 1/8 Dia. x 1 1/8 D	10
A04-34 •	12.0	Four 3/4" Threaded KOs	Round Box	4 1/8 Dia. x 1 1/8 D	10
A0-51 •	—	Stainless Steel Screws	Black Cover with Gaskets	—	10

• Not UL Listed.



A04-12



A04-34



A0-51

### Weatherproof Device Boxes and Covers



CAT. NO.	SIZE CU. IN.	MOUNTING MEANS	DESCRIPTION	DIMENSIONS (IN.)	STD. CTN.
FSC-12	16.0	One 1/2" Threaded KO in Each End	Device Box	4 7/16 L x 1 25/32 W x 2 9/16 D	10
FSC-34	16.0	One 3/4" Threaded KO in Each End	Device Box	4 7/16 L x 1 25/32 W x 2 9/16 D	10
FSC-51 •	—	Stainless Steel Screws	Blank Cover with Gaskets	—	10
FSC-53 •	—	Stainless Steel Screws	Duplex Receptacle Cover with Gasket	—	10
FSC-54 •	—	Stainless Steel Screws, 1.409" Dia.	Single Receptacle Cover with Gasket	—	10
FSC-55 •	—	Stainless Steel Screws	Switch Cover with Gasket	—	10

• Not UL Listed.



FSC-12



FSC-34



FSC-51



FSC-53



FSC-54



FSC-55

## Non-Metallic Covers and Accessories

### One-Gang



CAT. NO.	SIZE CU. IN.	DESCRIPTION	STD. CTN.
A410 •	3.5	½" Rise	100
A411 •	4.2	⅝" Rise	50
A412 •	5.0	¾" Rise	50
A413 •	6.6	1" Rise	40
A414 •	8.1	1¼" Rise	30

• UL Listed E11461.



A410

### Two-Gang

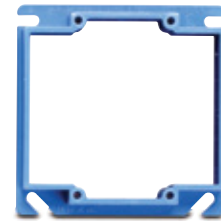


CAT. NO.	SIZE CU. IN.	DESCRIPTION	STD. CTN.
A400 •	—	Blank	100
A420 •	6.1	½" Rise	75
A421 •	7.4	⅝" Rise	50
A422 •	8.8	¾" Rise	50

• UL Listed E11461.



A400



A420

### Round Plaster Ring



CAT. NO.	SIZE CU. IN.	DESCRIPTION	STD. CTN.
A471 •	3.2	⅝" Rise	100
A472 •	4.0	¾" Rise	100

• UL Listed E11461.

Listed for fixture support up to 50 lbs.



A471

### Round Blank Cover



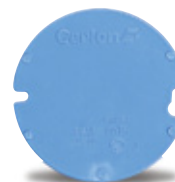
CAT. NO.	SIZE CU. IN.	COLOR	DESCRIPTION	STD. CTN.
A470D •	—	Blue	Blank with ½" KO	100
E460R-CAR •	—	Blue	Blank	35
CPC4WH •	—	White	Ceiling Box Cover	12

• UL Listed E11461.

Listed for fixture support up to 50 lbs.



A470D



E460R-CAR



CPC4WH

## Non-Metallic Covers and Accessories

### Box Extender



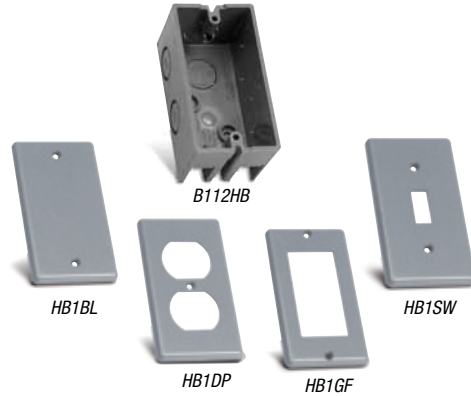
B1EXTB



CAT. NO.	SIZE CU. IN.	MOUNTING MEANS	DESCRIPTION	STD. CTN.
B1EXTB	—	Screws	3/4 L x 2 1/4 W	25

UL Listed E11461.

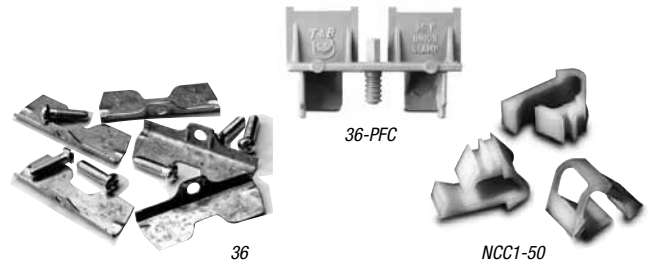
### Handy Box and Covers



CAT. NO.	SIZE CU. IN.	DESCRIPTION	STD. CTN.QTY.
B112HB	1 1/2 x 4 x 2 1/2	Handy Box — One-Gang	50
HB1BL	.25 x 4.30 x 2.38	Blank Cover	25
HB1DP	.25 x 4.30 x 2.38	Duplex Receptacle Cover	25
HB1GF	.25 x 4.30 x 2.38	GFCI Cover	25
HB1SW	.25 x 4.30 x 2.38	Toggle Switch Cover	25

### Accessory Clamps and Ground Strap

CAT. NO.	DESCRIPTION	STD. CTN.
36	Metal Stamped Clamp and Screw, Unassembled	50
36-PFC	Non-Metallic Clamp	50
NCC1-50	Non-Metallic Cable Lock Clamp for Strain Relief of Non-Metallic Cable	500 (10 bags of 50)
40-UB	Ground Strap for Phenolic Boxes	50



### NEC® Box Requirements\* Cubic Inches for 1–40 Conductors

WIRE SIZE (AWG)	CUBIC-INCH CAPACITY BY NUMBER OF CONDUCTORS																			
	1	2	3	4	5	6	7	8	9	10	11	12	13	14	15	16	17	18	19	20
#18	1.50	3.00	4.50	6.00	7.50	9.00	10.50	12.00	13.50	15.00	16.50	18.00	19.50	21.00	22.50	24.00	25.50	27.00	28.50	30.00
#16	1.75	3.50	5.25	7.00	8.75	10.50	12.25	14.00	15.75	17.50	19.25	21.00	22.75	24.50	26.25	28.00	29.75	31.50	33.25	36.00
#14	2.00	4.00	6.00	8.00	10.00	12.00	14.00	16.00	18.00	20.00	22.00	24.00	26.00	28.00	30.00	32.00	34.00	36.00	38.00	40.00
#12	2.25	4.50	6.75	9.00	11.25	13.50	15.75	18.00	20.25	22.50	24.75	27.00	29.25	31.50	33.75	36.00	38.25	40.50	42.75	45.00
#10	2.50	5.00	7.50	10.00	12.50	15.00	17.50	20.00	22.50	25.00	27.50	30.00	32.50	35.00	37.50	40.00	42.50	45.00	47.50	50.00
	<b>21</b>	<b>22</b>	<b>23</b>	<b>24</b>	<b>25</b>	<b>26</b>	<b>27</b>	<b>28</b>	<b>29</b>	<b>30</b>	<b>31</b>	<b>32</b>	<b>33</b>	<b>34</b>	<b>35</b>	<b>36</b>	<b>37</b>	<b>38</b>	<b>39</b>	<b>40</b>
#18	31.50	33.00	34.50	36.00	37.50	39.00	40.50	42.00	43.50	45.00	46.50	48.00	49.50	51.00	52.50	54.00	55.50	57.00	58.50	60.00
#16	36.75	38.50	40.25	42.00	43.75	45.50	47.25	49.00	50.75	52.50	54.25	56.00	57.75	59.50	61.25	63.00	64.75	66.50	68.25	70.00
#14	42.00	44.00	46.00	48.00	50.00	52.00	54.00	56.00	58.00	60.00	62.00	64.00	66.00	68.00	70.00	72.00	74.00	76.00	78.00	80.00
#12	47.25	49.50	51.75	54.00	56.25	58.50	60.75	63.00	65.25	67.50	69.75	72.00	74.25	76.50	78.75	81.00	83.25	85.50	87.75	90.00
#10	52.50	55.00	57.50	60.00	62.50	65.00	67.50	70.00	72.50	75.00	77.50	80.00	82.50	85.00	87.50	90.00	92.50	95.00	97.50	100.00

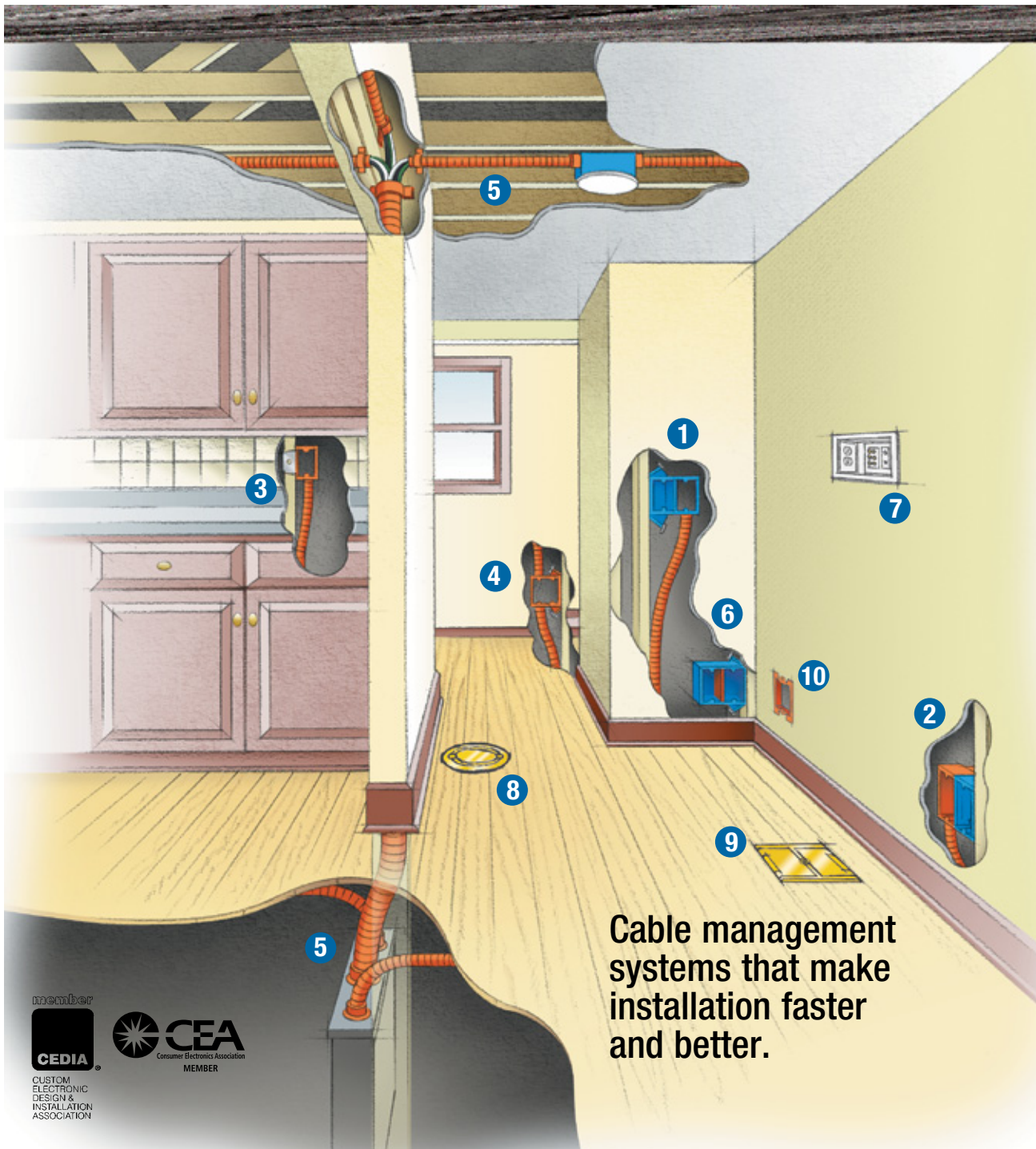
\* Make allowance of two additional conductors for each device, one for clamps if required and one for one or more grounding conductors entering the box. See NEC® 314.16(B).



## Low-Voltage Structured Cable Management System

### Carlton® Orange Structured Cable Management System

Carlton® Structured Cable Management System (SCMS) is designed for general-purpose low-voltage residential wire and cable management. This series of boxes and brackets are accompanied by a corrugated conduit system and accessories to future-proof your home.



Boxes & Covers — Carlton® Non-Metallic Boxes

member  
**CEDIA**  
CUSTOM  
ELECTRONIC  
DESIGN &  
INSTALLATION  
ASSOCIATION

**CEA**  
Consumer Electronics Association  
MEMBER

[www.tnb.com](http://www.tnb.com)

United States  
Tel: 901.252.8000  
800.816.7809  
Fax: 901.252.1354

Technical Services  
Tel: 888.862.3289

**Thomas&Betts**

## Low-Voltage Structured Cable Management System

1



### Dual-Voltage Box/Bracket

Here's a smart alternative for where you would normally use separate high- and low-voltage boxes. Designed to fit a standard two-gang faceplate, this component combines an electrical box and low-voltage bracket into a single unit for fast, easy installation. No alignment tools are required and easy nail-on mounting provides precise placement and a professionally finished appearance. Resi-Rings accept 3/4" Resi-Gard® fittings only...SC200DV



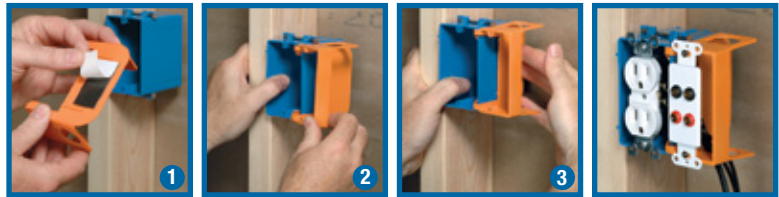
*Why waste time mounting, then trying to line up separate high-voltage and low-voltage boxes, and still end up with something not quite right? Our Dual-Voltage Box/Bracket lets you do it all in one fast, easy step with perfect alignment every time.*

2



### Low-Voltage Add-On Bracket

This low-voltage bracket provides a low-voltage outlet next to a previously installed high-voltage outlet. Great for both new construction and rework, it attaches easily to most electrical boxes and is designed to fit a standard two-gang faceplate. Resi-Rings accept 3/4" Resi-Gard® fittings only...SC100SC



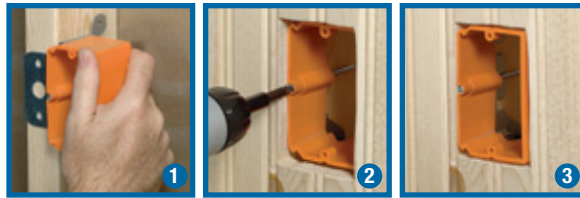
*Attaching the Add-On Bracket is a "snap." You just remove the back of the double-sided tape (1), clip the bracket in place (2) and press on the bracket to secure it against the box (3). Enables the installation of most rectangular yoke plates.*

3



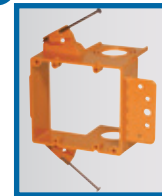
### Low-Voltage Adjustable Brackets

Our Low-Voltage Adjustable Brackets are the perfect solution for tile, paneling or stucco. A bracket enables quick, easy stud mounting and a turn of the screw adjusts to any wall thickness. It's great for retrofit/installation upgrades. Replace the single-gang bracket with a two-gang bracket or switch services to a high-voltage Adjust-A-Box™ device... SC100ADJC (shown) and SC200ADJC



*Our Low-Voltage Adjustable Brackets simplify installation with tile, paneling or stucco to save you time and effort. Just use the quick-mount bracket to clip it to the stud (1), add a screw for extra support if you want it (2), then use the adjustment screw to accommodate wall thickness (3). Also available in a two-gang version.*

4



### Low-Voltage Brackets

Here's the fast installation choice when only low voltage is required. Designed to fit a standard one-, two- or three-gang faceplate, these low-voltage brackets feature an easy nail-on mounting or screw-in bracket, while a hard shell provides increased durability and no racking. Resi-Rings accept 3/4", 1" and 1 1/4" Resi-Gard® fittings (one- and two-gang versions only)... SC100A, SC200A (shown) and SC300A



*Our Low-Voltage Brackets are open-backed to easily accommodate the bend radii required for low-voltage cabling and deep devices such as volume controls, while molded-in ports make it easy to connect flexible raceway for future-proofing. Or, you can use them to tie off cable to the bracket. They can also be attached to wood or steel studs.*

## Low-Voltage Structured Cable Management System

5



### Resi-Gard® Flexible Raceway and Fittings

Available in five sizes from 3/4" to 2", with factory-installed pull tape in sizes 1" to 2", our Resi-Gard® Flexible Raceway provides a main chase from the main distribution panel to a secondary hub in the attic or basement. Ideal for easy access to add cable or service upgrades or leave empty for future expansion.

you the split box you need for the low-voltage outlet... SCDIV



*Our complete line of quick-connect couplings, adapters, cable clips, conduit clamps and solvent cement make for quick, easy professional installation of Resi-Gard® Flexible Raceway.*

6



### Dual-Voltage Box/Bracket

For applications where a combined high- and low-voltage closed-back box is needed, such as placement in a fire-rated wall, we offer our Carlton® SuperBlue® two-, three- and four-gang wiring boxes with a slip-in-place divider to give

you the split box you need for the low-voltage outlet... SCDIV



*What could be easier than converting one of our Carlton® SuperBlue® boxes for both high- and low-voltage use? Just slip the divider into place and you're ready to go. Great for situations requiring a dual-voltage fire-rated box.*

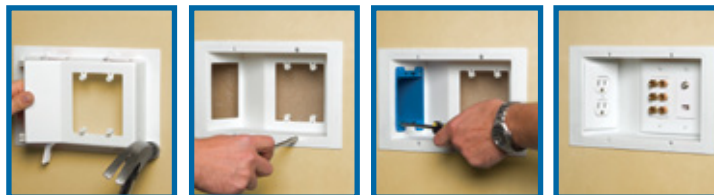
7



### Recessed Dual-Voltage 3-Gang Old Work Plate

The New Carlton® RDV 3-Gang Old Work Plate has been developed to simplify today's in-home entertainment/networking needs. The box is designed to accommodate the wires, cables and cords used with flat-panel display installations. It features a two-gang low-voltage opening and a one-gang opening for an outlet/switch box (boxes, devices and plates not included)... SC300PRB and SC300PRR

you the split box you need for the low-voltage outlet... SCDIV



*The high-gloss, recessed design eliminates unsightly wires, cables and cords and blends with any décor. The RDV Old Work Plate makes installing flat panel displays faster and easier!*

8



### Drop-In Floor Box

The Carlton® Drop-In Floor Box with Brass Cover combines many of the same features of our existing floor box line with the strength, durability and style necessary to accommodate today's residential electrical/telecommunication needs. The Carlton® Drop-In Floor Box is the fastest, easiest way for contractors to put a floor socket anywhere they need it! It's designed to accommodate line voltage and low-voltage applications... E971FBDI-2 and E971FBDIB-2

you the split box you need for the low-voltage outlet... SCDIV



*Turn off electricity before starting. Drill hole in floor using hole saw. Pull romex through floor. Connect receptacle wires to romex. Brass cover snaps into place. Use a small screwdriver to pry open brass cover to plug in appliance.*

*For more information about this floor box, refer to [www.tnb.com](http://www.tnb.com) or the Thomas & Betts Residential catalog.*

## Low-Voltage Structured Cable Management System

9



### Adjust-A-Box® Floor Box

Carlton® Adjust-A-Box® Floor Boxes make installing floor outlets fast and easy by providing maximum installation flexibility. The box features an adjustment screw designed to adjust the box from 0" to 1¼" by simply turning

the screw clockwise or counterclockwise, providing a flush mount every time... B234BFBB (brass cover) and B234BFSS (stainless steel)



Install clip over subfloor. Screw in to adjust to height of flooring or carpet. Beautiful flush fit every time!

For more information about this floor box, refer to [www.tnb.com](http://www.tnb.com) or the Thomas & Betts Residential catalog.

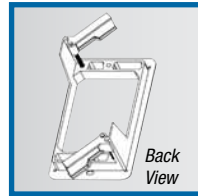
10



### Old Work Bracket

Carlton® Low-Voltage Old Work Brackets are specifically designed for the installation of low-voltage devices such as cable television, data communications or telephone jacks in an existing wall. The backless feature

provides the space needed for the bend radius requirements of coaxial or data/communication cables. It also eliminates the need for metal plates, lags or screws... SC100RR (shown) and SC200RR



Back View

1. Use the holes in the corners to mark the opening.
2. Cut out the drywall.
3. Place box in wall.
4. Secure box to wall.

## Low-Voltage Structured Cable Management System

### Dual-Voltage Box/Bracket

- Dual-voltage capability
- Accepts a two-gang faceplate
- ¾" Resi-Rings®
- Backless design accommodates large/deep low-voltage devices
- Eliminates cutting the backs off electrical boxes
- Accommodates bend-radius requirements for low-voltage cabling
- Provides ample space for installation



CAT. NO.	SIZE CU. IN.	MOUNTING MEANS	DIMENSIONS (IN.)	STD. CTN. QTY.
<b>E-18-4-DV•</b>	18.0	Dual Voltage	3¾ L x 4 W x 3 D	50
<b>SB-21-DV•</b>	20.5	Molded Bracket for Wood/Steel Studs	3¾ L x 4 W x 3¾ D	50
<b>SC200DV•</b>	20.5	Angled Side Nails	3.69 L x 4.04 W x 3.67 D	16
<b>SN-21-DV•</b>	20.5	Angled Side Nails	35/8 L x 4 W x 3¾ D	50

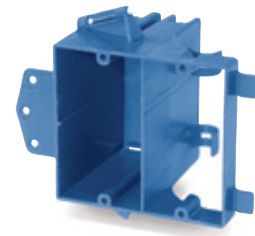
• UL Listed E11461.

Permissible for use with 90° C insulated conductors.

80° C heat-rated material.



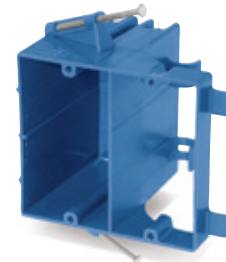
E-18-4-DV



SB-21-DV



SC200DV



SN-21-DV

### Low-Voltage Brackets

- Backless design accommodates large/deep low-voltage devices
- Eliminates cutting the backs off electrical boxes
- Accommodates bend-radius requirements for low-voltage cabling
- Provides ample space for installation
- Mount Flange for steel stud application

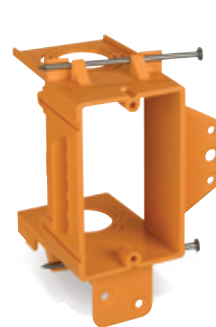
#### One- and two-gang versions only:

- Resi-Rings® with concentric knockouts
- Accepts ¾", 1" and 1¼" Resi-Gard®
- Horizontal mounting bracket (one-gang only)
- Breakaway drywall support flange provides easy alignment for ½" drywall
- Screw-mount option
- Breakaway vertical mounting flange
- Breakaway feature enables the use of the Low-Voltage Add-On Bracket



CAT. NO.	SIZE CU. IN.	MOUNTING MEANS	DESCRIPTION	DIMENSIONS (IN.)	STD. CTN. QTY.
<b>SC100A•</b>	N/A	Captive Nails	¾", 1", 1¼" Resi-Rings®	3.73 L x 2.32 W x 3.15 D	24
<b>SC200A•</b>	N/A	Captive Angled Nails	¾", 1", 1¼" Resi-Rings®	3.77 L x 4.07 W x 3.15 D	24
<b>SC300A▶</b>	44	Captive Angled Nails	—	3.69 L x 5.81 W x 1.50 D	5

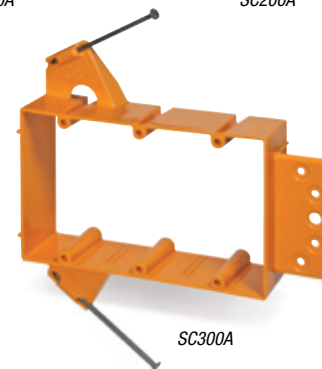
• UL Listed E216492.



SC100A



SC200A



SC300A

## Low-Voltage Structured Cable Management System

### Low-Voltage Add-On Bracket

- Dual-voltage capability accommodates high- and low-voltage devices in the same box
- Attaches to virtually any non-metallic electrical box as long as there's a side for the tape to stick to
- Accepts a two-gang faceplate
- 3/4" Resi-Rings®
- Enables the installation of most rectangular yoke plates



CAT. NO.	SIZE CU. IN.	MOUNTING MEANS	DESCRIPTION	DIMENSIONS (IN.)	STD. CTN.
SC100SC•	N/A	Tape	1-Gang	3.68 L x 2.36 W x 3.10 D	24

• UL Listed E216492.



SC100SC

### Low-Voltage Adjustable Brackets

- Accommodates varying finished-wall thicknesses — ideal for wood paneling, tile or stucco walls
- With the turn of a screw, adjust to any wall thickness
- Steel mounting bracket provides a secure mount
- Backless design accommodates large/deep low-voltage devices
- Eliminates cutting the backs off electrical boxes
- Accommodates bend-radius requirements for low-voltage cabling
- Provides ample space for installation
- Removable bracket and interchangeable mounting bracket — upgrade from a one-gang to a two-gang anytime



CAT. NO.	SIZE CU. IN.	MOUNTING MEANS	DESCRIPTION	DIMENSIONS (IN.)	STD. CTN.
SC100ADJC•	21	Adjustable Bracket	1-Gang	3.56 L x 3.88 W x 1.69 D	24
SC200ADJC•	34	Adjustable Bracket	2-Gang	3.56 L x 5.63 W x 1.69 D	20

• UL Listed E216492.



SC100ADJC

## Low-Voltage Structured Cable Management System

### Old Work Brackets

- Rectangular flange for faster/easier installation
- Shallow bracket — less material, easier to work with
- Marking hole for wall opening
- Thinner flange for less protrusion on the wall
- SINGLE-GANG ONLY — clamps stop at center point to prevent the bracket from twisting or bending out of the wall



CAT. NO.	SIZE CU. IN.	MOUNTING MEANS	DESCRIPTION	DIMENSIONS (IN.)	STD. CTN.
SC100RR•	N/A	Adjustable Bracket	1-Gang	4.32 L x 2.52 W x 1.66 D	12
SC200RR•	N/A	Adjustable Bracket	2-Gang	4.28 L x 4.28 W x 1.66 D	6

• UL Listed E216492.



SC100RR

SC200RR

### Low-Voltage Divider Plate



CAT. NO.	STD. CTN.
SCDIV•	50

• For use with Carlton® SuperBlue™ boxes only.



### Mud Ring (4" Square ½" Raised Cover)



CAT. NO.	DESCRIPTION	STD. CTN.
SCA410•	1-Gang	20

• **Note:** Classified for two-hour fire-resistive wall assemblies when used with Two-Gang Quick-Connect Outlet and Switch Boxes.

UL Listed E11461.



## Low-Voltage Structured Cable Management System

### Low-Voltage Adjustable Floor Bracket with Cover

The Carlton® Low-Voltage Adjustable Floor Bracket is specifically designed for the low-voltage, structured cabling market...the floor bracket is industry-standard orange to identify low-voltage applications, the open design provides the space needed for low-voltage bend radius requirements and the Leviton QuickPort® Quad 106® Insert provides up to four low-voltage outlet ports. The Carlton® Low-Voltage Adjustable Floor Bracket is ideal for any residential or commercial low-voltage application.

The floor bracket also features a unique screw design, enabling it to be adjusted to most finished-floor heights by simply turning the screw clockwise or counterclockwise and adjusting flush to the floor.

The floor bracket kit comes complete with a non-metallic (white or ivory) or brass cover, a Leviton QuickPort® Quad 106® Insert, new work and old work metal mounting brackets and mounting screws.

Carlton® Structured Cable Management Systems...Your Total Systems Solution!

- White, ivory or brass cover
- Orange — identifies low-voltage installations
- Open-design floor bracket — accommodates low-voltage bend radius requirements
- Adjustable screw — bracket adjusts to most finished-floor depths
- Leviton® QuickPort® Quad 106® Insert — install up to four low-voltage inserts
- Two-door design
- cUL-US Listed



*QuickPort® and Quad 106® are registered trademarks of Leviton Manufacturing Co., Inc.*

#### One-Gang Adjustable

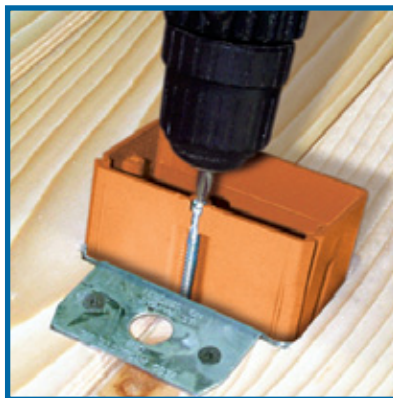
CAT. NO.	SIZE CU. IN.	MOUNTING MEANS	DESCRIPTION	DIMENSIONS (IN.)	STD. CTN.
SC100FBWC•	N/A	Adjustable Bracket	Non-Metallic — White	2.80 L x 4.36 W x 1.72 D	8
SC100FBVC•	N/A	Adjustable Bracket	Non-Metallic — Ivory	2.80 L x 4.36 W x 1.72 D	8
SC100FBBC•	N/A	Adjustable Bracket	Brass	2.80 L x 4.36 W x 1.72 D	8

• UL Listed E216492.

#### Installation:



Install clip over subfloor.



Screw in to adjust to height of flooring or carpet.



Beautiful flush fit every time!



## Low-Voltage Structured Cable Management System

### Recessed Dual-Voltage 3-Gang Old Work Plate

Boxes & Covers — Carlton® Non-Metallic Boxes



The New Carlton® RDV 3-Gang Old Work Plate has been developed to simplify today's in-home entertainment/networking needs. The box is designed to accommodate the wires, cables and cords used with flat-panel display installations. It features a two-gang low-voltage opening and a one-gang opening for an outlet/switch box (boxes, devices and plates not included). The hi-gloss, recessed design eliminates unsightly wires, cables and cords and blends with any décor. The RDV Old Work Plate makes installing flat-panel displays faster and easier!

## Low-Voltage Structured Cable Management System

### Recessed Dual-Voltage 3-Gang Old Work Plate (continued)

#### Features:

- 3-gang dual-service capability: accommodates one line voltage and two low-voltage services using one plate (boxes, devices and plates not included)
- Recessed low-profile design: eliminates unsightly wires and plug heads
- Universal 1-gang outlet/switch opening: select the size box you need
- Pre-assembled box and frame: reduces labor time and saves money
- Shallow design: provides ample room behind the drywall and between the studs and accommodates cable bend requirements
- Four swing-out clamps: locks the plate securely to the wall — horizontal or vertical mount
- Superior hi-gloss, paintable finish: professional appearance and blends with any décor
- Non-metallic, ABS material: lightweight and easy to handle

#### Installation:

Please read these instructions completely before attempting installation.

**IMPORTANT!** Before attempting installation, be sure power is off by removing the fuse or switching the circuit breaker to "off." Make sure the Recessed Dual-Voltage Plate is installed in accordance with the National Electrical Code® (NEC®) and local codes. NEC and National Electrical Code are registered trademarks of the National Fire Protection Association, Inc.



1. Locate studs and determine if they are 16" or 24" apart. If 16" apart, measure a maximum of 3" from edge of stud to determine plate location. If 24" apart, center plate between studs.  
**Note:** High-voltage side must be 3" from stud.
2. Place SC300PRB or SC300PRR face down against the wall. Using a hammer, tap around the edge of the plate to mark area to be cut out (Fig. 1). Remove plate from wall, a line should be visible on the drywall. Cutout should be approximately 6.25" x 9.25".
3. Carefully cut out area of drywall with a utility knife or drywall saw.
4. Place SC300PRB or SC300PRR in wall and secure by tightening down all four Zip-Mount retainers (Fig. 2).

5. Select device and outlet/switch box, CAT. NO. B114R (14 cu. in.) or B120R (20 cu. in.), based on wire fill needs (Fig. 3).
6. Insert wires through boxes (B114R or B120R and SC300PRB or SC300PRR). Make sure high- and low-voltage wires do not come in contact with one another.
7. Install Carlton® Old Work Zip Box®, model B114R or B120R (Fig. 4).
8. Install receptacle and faceplate per manufacturer's instructions (Fig. 5).
9. Install low-voltage devices and faceplate per manufacturer's instructions (Fig. 6 and Fig. 7).

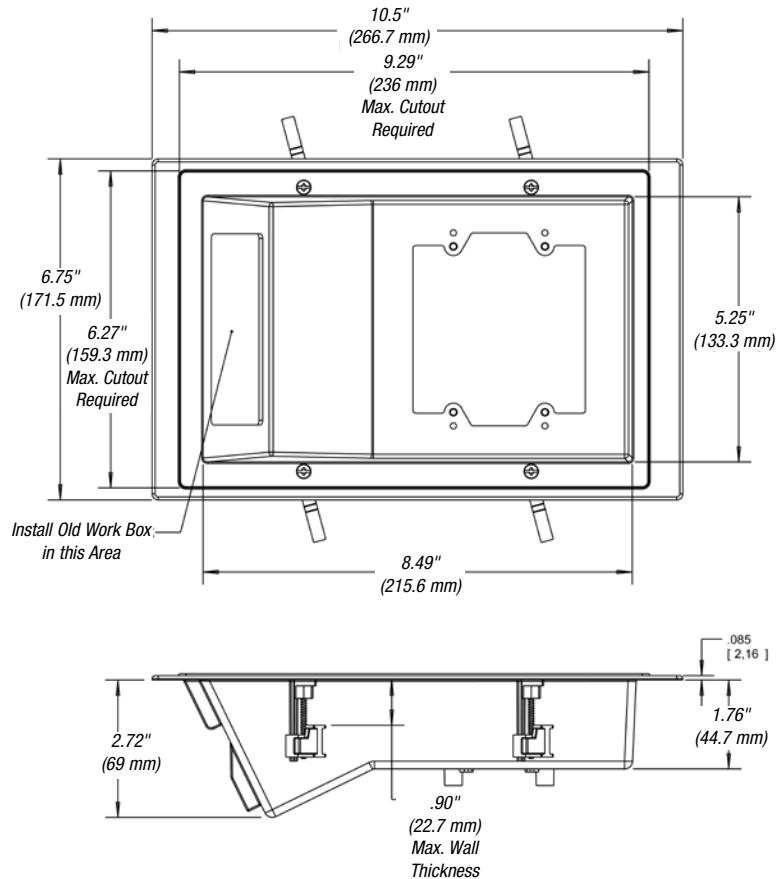
**Note:** When preparing for later installation of low-voltage devices, use a 2-gang blank plate to cover wall opening for a clean finished look.

## Low-Voltage Structured Cable Management System

Installed:



Top view showing ample room between drywall and studs



Boxes & Covers — Carlon® Non-Metallic Boxes

CAT. NO.	SIZE CU. IN.	MOUNTING MEANS	DESCRIPTION	DIMENSIONS (IN.)	STD. CTN.
SC300PRB	N/A	Zip-Mount Retainers	RDV 3-Gang Old Work Plate	6.75 L x 10.5 W x 2.72 D	20
SC300PRR	N/A	Zip-Mount Retainers	RDV 3-Gang Old Work Plate with Outlet Box (B114R)	6.75 L x 10.5 W x 2.72 D	3

## Low-Voltage Structured Cable Management System

### Resi-Gard® Flexible Raceway

Ideal for providing a main chase from the main distribution panel to a secondary hub in the attic or basement, Resi-Gard® non-metallic flexible raceway is available in ¾" to 2" diameter sizes with factory-installed pull tape in sizes 1" to 2". The raceway is hand bendable, lightweight and easily cut to length to reduce scrap. Bright orange color clearly signifies a low-voltage installation.



#### Standard-Length Coils



CAT. NO.	SIZE (IN.)	PULL TAPE	DESCRIPTION	REEL LENGTH (FT.)
<b>SCE4X1-100•</b>	¾	Empty*	Flexible Raceway	100
<b>SCF4X1C-100•</b>	1	900 lbs.	Flexible Raceway	100
<b>SCG4X1C-100•</b>	1¼	900 lbs.	Flexible Raceway	100
<b>SCH4X1C-50•</b>	1½	900 lbs.	Flexible Raceway	50
<b>SCJ4X1C-100•</b>	2	900 lbs.	Flexible Raceway	50

• UL Listed E151168.

FT-1 Rated

\* If installing own tape, a lubricated polyester is recommended.

#### Standard-Length Reels\*



CAT. NO.	SIZE (IN.)	PULL TAPE	DESCRIPTION	REEL LENGTH (FT.)
<b>SCE4X1-1000•</b>	¾	Empty	Flexible Raceway	1000
<b>SCF4X1C-1500•</b>	1	900 lbs.	Flexible Raceway	1500
<b>SCJ4X1C-500•</b>	2	900 lbs.	Flexible Raceway	500

\* Made to order

• UL Listed E151168.

FT-1 Rated

## Low-Voltage Structured Cable Management System

### Resi-Gard® Fittings

#### Quick-Connect Coupling



CAT. NO.	SIZE (IN.)	STD. CTN.
SCA240E•	¾	25
SCA240F•	1	20

• UL Listed E86720

#### Male Terminal Adapter\*



CAT. NO.	SIZE (IN.)	STD. CTN.
SCE943G•	1¼	50
SCE943H•	1½	25
SCE943J•	2	50

• UL Listed E23018.

\* Must be cemented to Resi-Gard® Flexible Raceway using ONLY Resi-Gard® Solvent Cement.

#### Quick-Connect Threaded Adapter



CAT. NO.	SIZE (IN.)	STD. CTN.
SCA243E•	¾	25
SCA243F•	1	20

• UL Listed E86720

#### Standard Couplings\*



CAT. NO.	SIZE (IN.)	STD. CTN.
SCE940G•	1¼	30
SCE940H•	1½	25
SCE940J•	2	30

• UL Listed E23018.

\* Must be cemented to Resi-Gard® Flexible Raceway using ONLY Resi-Gard® Solvent Cement.

#### Quick-Connect Snap-In-Adapter



CAT. NO.	SIZE (IN.)	STD. CTN.
SCA253E•	¾	25
SCA253F•	1	20

• UL Listed E86720

#### PVC Lock Nut



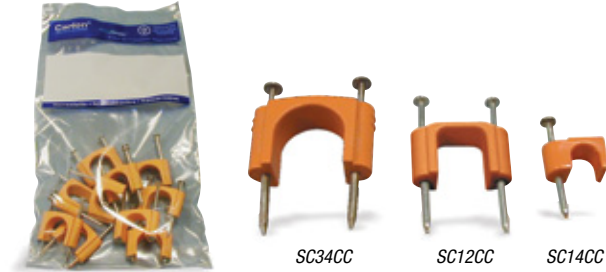
CAT. NO.	SIZE (IN.)	STD. CTN.
LT9E•	¾	700
LT9F•	1	600

• UL Recognized.

## Low-Voltage Structured Cable Management System

### Cable Clips

Pre-installed nails provide fast and easy installation for either a single cable, two to three cables or one bundled cable.



CAT. NO.	SIZE (IN.)	STANDARD BAG QUANTITY	STD. CTN.
SC14CC	¼	1 Ea. (Equals One Bag of 100 Clips)	10 Bags of 100
SC12CC	½	1 Ea. (Equals One Bag of 25 Clips)	310 Bags of 25
SC34CC	¾	1 Ea. (Equals One Bag of 10 Clips)	20 Bags of 10

### Conduit Clamps

Designed to secure Resi-Gard® raceway or bundled cable.



CAT. NO.	SIZE (IN.)	STANDARD BAG QUANTITY	STD. CTN.
SCE977EC	¾	1 Ea. (Equals One Bag of Five Clamps)	20 Bags of 5
SCE977FC	1	1 Ea. (Equals One Bag of Five Clamps)	12 Bags of 5
SCE977GC	1¼	1 Ea. (Equals One Bag of Five Clamps)	8 Bags of 5
SCE977HC	1½	1 Ea. (Equals One Bag of Five Clamps)	6 Bags of 5
SCE977JC	2	1 Ea. (Equals One Bag of Five Clamps)	6 Bags of 5

*Note: Each clamp requires two screws, two nuts and/or two bolts.*

### Resi-Gard® Solvent Cement

RECOMMENDED PIPE APPLICATION AND SIZES	SET-UP TIME (EVAPORATION RATE)	RECOMMENDED INSTALLATION TEMP.	LAP SHEAR @ 73° F	VISCOSITY AT 75° F AS MANUFACTURED
For use with Resi-Gard®, Riser-Gard®, P&C Flex™ and Carlton PVC fittings. <i>Up through 6" diameter.</i>	10°–30° F Use extra caution	40°–100° F	2 hrs. 350 psi	500–900 cps
	30°–50° F 5–6 minutes		16 hrs. 800 psi	
	50°–70° F 3–4 minutes		72 hrs. 1500 psi	
	70°–90° F 1–2 minutes			

CAT. NO.	SIZE (IN.)	APPLICATOR	DESCRIPTION	STD. CTN.
VC9963SC	Pint	Brush	Resi-Gard® Solvent Cement Clear	24

*Meets ASTM D-2564.*



### Cutters

Ideal for fast, smooth field cuts for up to 1" diameter Resi-Gard® non-metallic flexible raceway. The large PVC Cutter is ideal for cuts up to 2" diameter non-metallic rigid and flexible raceway.

#### Small Cutter

For fast, smooth field cuts of ½" through 1" innerduct.



CAT. NO.	SIZE (IN.)	STD. CTN.
CC120B	8	10

#### Medium Cutter

For fast square, smooth, field cuts on conduit ½" through 1¼".



CAT. NO.	SIZE (IN.)	STD. CTN.
CC125	9	1

#### Large Cutter

For clean cuts of conduit ½" through 2".



CAT. NO.	SIZE (IN.)	STD. CTN.
CC122	17½	1