



Task Lighting

Energy-Efficient
Undercabinet and
Workspace Lighting



Abeo-XE	22
Bantam	28
CounterAttack	14
CounterAttack LED	6
CounterAttack T5	20
Eco-Counter LED	2
Mach120	10
ProPuck	26
ProPuck LED	26
SpeedLink	19



CSL Task Lighting offers the latest technology combined with creative product design to deliver lighting solutions for undercabinet and work space needs.

CSL has long been a leader in task lighting solutions. Our innovative LED products and proven xenon and halogen models have made CSL the lighting solution for the office or residential work space. CSL's Task Lighting products reach beyond providing illumination by offering complete wiring, inter-connection and switching options.



Eco-Counter LED

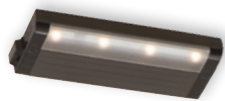
120V LED Task Lighting
Integrated
Linkable

Fixture

- Integrated 120V linkable system – no external remote transformers or drivers
- Warm White: 2,800°K, ±100, CRI 85
ELV dimmable
- SpeedLink system links a maximum of 24 units

Housing/Heat Sink

- Extruded aluminum body acts as a heat sink
- Low Profile – the $\frac{3}{4}$ " height makes it nearly invisible upon installation
- Special acrylic lens formulated for LED use
- Captive screws and SpeedLink™ technology (hardwire, portable, linkable) make for quick installation



ECL-8 Series
120V 6W LED



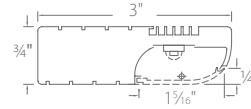
ECL-16 Series
120V 12W LED



ECL-24 Series
120V 16W LED

Eco-Counter LED

120V LED Task Lighting
Integrated
Linkable



ECO-Counter LED

120V input, on-board driver

	L X W X H	Diodes	Watts	Lumens	White – WT	Bronze – BZ	Satin Aluminum – SA
8"	8" x 3" x 3/4"	4	6	300	ECL-8-WT-D-1	ECL-8-BZ-D-1	ECL-8-SA-D-1
16"	16" x 3" x 3/4"	8	12	600	ECL-16-WT-D-1	ECL-16-BZ-D-1	ECL-16-SA-D-1
24"	24" x 3" x 3/4"	12	16	900	ECL-24-WT-D-1	ECL-24-BZ-D-1	ECL-24-SA-D-1

Details

Eco-Counter LED

Fixture

- Warm White 2,800°K ± 100°K
- 50,000 hour lamp life @ 70% lumen maintenance
- Integrated 120V system – no remote transformers or drivers.
- Dimming using an Electronic Low Voltage (ELV) dimmer
- Acrylic lens formulated for LED use
- No UV or infrared energy – objects will not discolor or fade over time
- Cool operating temperature
- 16" and 24" units offer direct hardwire option with romex and conduit
- Captive screws and SpeedLink™ technology (hardwire, portable, linkable) make for quick installation
- SpeedLink system links a maximum of 24 units
- On / Off switch
- UL/C-UL Listed for damp location
- Title 24-2008 and Energystar certification pending

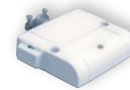


Wiring Modules

- EWM-1 controls multiple units from one switch. The Wiring Module / Switch may be connected to the end of the Eco-Counter fixture or mounted in a more convenient location and connected to the fixture with a SpeedLink interlink cable.
- EWM-2 is a wiring module for use with Romex or flex conduit.
- EWM-3 is a wiring module for use with Romex or flex conduit. For through wiring. Two KO's and connectors



EWM-1 Wiring Module/Switch



EWM-2 Wiring Module

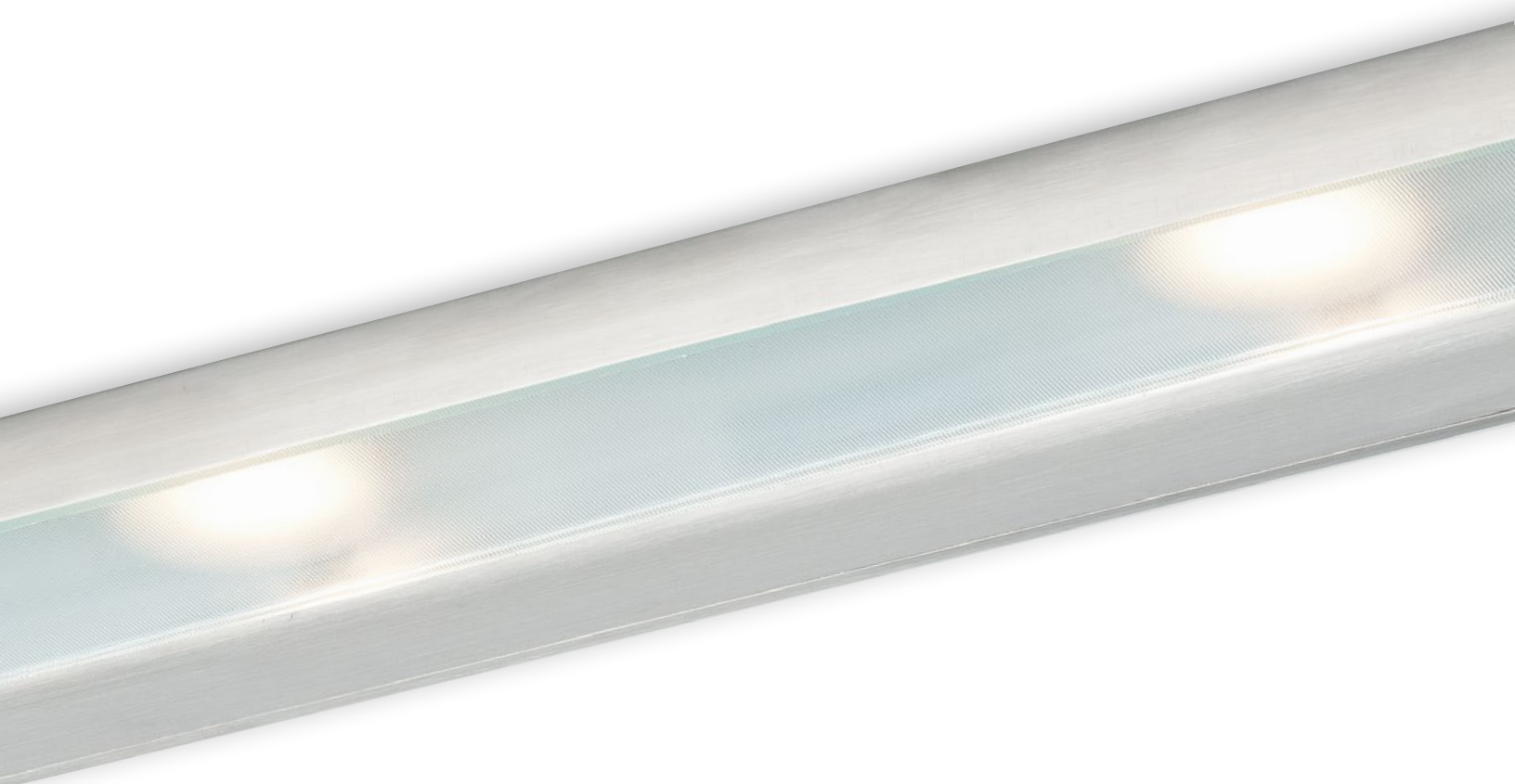


EWM-3 Wiring Module (for through wiring)

Wiring Modules

	L X W X H	White	Bronze	Satin Aluminum
Wiring Module/Switch	6" x 3" x 3/4"	EWM-1WT	EWM-1BZ	EWM-1SA
Wiring Module	3 1/2" x 3" x 3/4"	EWM-2WT	EWM-2BZ	EWM-2SA
Wiring Module for through wiring	6" x 3" x 3/4"	EWM-3WT	EWM-3BZ	EWM-3SA





CounterAttack LED

120V LED Task Lighting
Integrated
Linkable

Fixture

- 120v portable/hardwire
- 35,000 hour LED, 2,850k +/- 150k
- Dimmable with standard Incandescent dimmer (must meet minimum load of dimmer)
- Maximum of 120 LED light engines per power feed

Body

- Metal Construction
- Hinged, removable, UV coated, glass prismatic diffuser for maximum light distribution
- Trade-sized knockouts on back and top for through-wiring, wiremold, flex, romex or rigid conduit
- Internal connectors allow instant hardwiring without wire nuts
- On/Off switch
- UL/C-UL Listed for damp location

Finishes

- Bronze (BZ), Stainless Steel (SS) and White (WT)



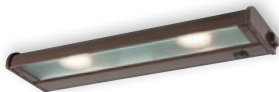
NCA-LED-8

120V 8" 1-4.5W Light Engine



NCA-LED-16

120V 16" 2-4.5W Light Engines



NCA-LED-24

120V 24" 3-4.5W Light Engines



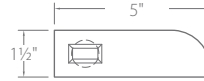
NCA-LED-32

120V 32" 4-4.5W Light Engines



CounterAttack LED

120V LED Task Lighting
Integrated
Linkable



CounterAttack LED

35,000 hour LED, 2,850k +/- 150k 120v portable/hardwire

	L X W X H	Lamps	Lumens	Type	White – WT	Bronze – BZ	Stainless Steel – SS
8"	8" x 5" x 1 1/2"	1	250	SPEED&LINK	NCA-LED-8-WT	NCA-LED-8-BZ	NCA-LED-8-SS
16"	16" x 5" x 1 1/2"	2	500	SPEED&LINK	NCA-LED-16-WT	NCA-LED-16-BZ	NCA-LED-16-SS
24"	24" x 5" x 1 1/2"	3	750	SPEED&LINK	NCA-LED-24-WT	NCA-LED-24-BZ	NCA-LED-24-SS
32"	32" x 5" x 1 1/2"	4	1000	SPEED&LINK	NCA-LED-32-WT	NCA-LED-32-BZ	NCA-LED-32-SS

Counter Attack LED

Fixture

- 120v portable/hardwire
- 35,000 hour LED, 2,850k +/- 150k
- Dimmable with standard Incandescent dimmer (must meet minimum load of dimmer)
- Maximum of 120 LED light engines per power feed

Finishes

- Bronze (BZ), Stainless Steel (SS) and White (WT)

Body

- Metal Construction
- Hinged, removable, UV coated, glass prismatic diffuser for maximum light distribution
- Trade-sized knockouts on back and top for through-wiring, wiremold, flex, romex or rigid conduit
- Internal connectors allow instant hardwiring without wire nuts
- On/Off switch
- UL/C-UL Listed for damp location



SpeedLink

- SpeedLink™ allows fast and easy linking of multiple units.
- Custom connectors allow end-to-end mounting with instant electrical connections – no wiring between units
- If not mounted end-to-end, SpeedLink™ inter-connect cables allow easy and fast linking.
- Master Switch module (CS-1) controls a run of CounterAttack SpeedLink™ with a single switch. Available in WT, BZ and SS.



End-to-End connections - standard CS-1 Master Switch Portable Cord and Plug

SpeedLink Accessories

See page 19 for more options.

	L X W X H	White	Bronze	Stainless Steel
Master Switch	5" x 3 3/4" x 1 1/2"	CS-1	CS-1BZ	CS-1SS
		White	Black	
Portable Cord	96"	PL-96 WT	PL-96 BK	





Mach120

120V Xenon Task Lighting
Linkable

Fixture

- 120V linkable system – no external remote transformers or drivers
- 35W/120V Long-life Xenon lamps included – dimmable with standard incandescent dimmer
- SpeedLink system links a maximum of 20 lamps

Body

- Extruded aluminum construction
- Bronze, Satin Aluminum and White finishes
- Glass prismatic diffuser for maximum light distribution
- Three power options – Hardwire, Interconnected with SpeedLink™ technology or Portable with cord and plug option



NMA120L-8
120V 8" 1-35W Xenon



NMA120L-16
120V 16" 2-35W Xenon



NMA120L-24
120V 24" 3-35W Xenon



NMA120L-32
120V 32" 4-35W Xenon



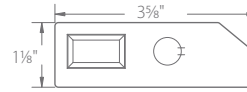
NMA120L-40 Series
120V 40" 5-35W Xenon



NMA120L-48
120V 48" 6-35W Xenon

Mach120

120V Xenon Task Lighting
Linkable



Mach120

120V 35W Xenon Lamps

	L X W X H	Lamps	White – WT	Bronze – BZ	Satin Aluminum – SA
8"	8" x 3 3/8" x 1 1/8"	1	NMA120L-8WT	NMA120L-8BZ	NMA120L-8SA
16"	16" x 3 3/8" x 1 1/8"	2	NMA120L-16WT	NMA120L-16BZ	NMA120L-16SA
24"	24" x 3 3/8" x 1 1/8"	3	NMA120L-24WT	NMA120L-24BZ	NMA120L-24SA
32"	32" x 3 3/8" x 1 1/8"	4	NMA120L-32WT	NMA120L-32BZ	NMA120L-32SA
40"	40" x 3 3/8" x 1 1/8"	5	NMA120L-40WT	NMA120L-40BZ	NMA120L-40SA
48"	48" x 3 3/8" x 1 1/8"	6	NMA120L-48WT	NMA120L-48BZ	NMA120L-48SA

Replacement Lamp 120V: **L-35** 35W Xenon Type JCD, G-8 Base Clear, 270 lumens, 2900°K

Details

Mach120

Fixture

- 120V linkable system – no external remote transformers or drivers
- 35W/120V Long-life Xenon lamps included – dimmable with standard incandescent dimmer
- Porcelain sockets
- 20 lamps maximum per power feed

Finishes

- Bronze (BZ), Satin Aluminum (SA) and White (WT)

Body

- Extruded aluminum construction
- Glass prismatic diffuser for maximum light distribution
- Knockouts on back for Romex, flex or rigid conduit – 1/2" MC connector included with each fixture
- SpeedLink option
- Internal connectors allow instant hardwiring without wire nuts
- Complete with mounting hardware
- On / Off switch
- UL/C-UL Listed for damp location

SpeedLink

- SpeedLink™ allows fast and easy linking of multiple units.
- Custom connectors allow end-to-end mounting with instant electrical connections – no wiring between units
- If not mounted end-to-end, SpeedLink™ inter-connect cables allow easy and fast linking.
- Master Switch module (NMS-1) controls a run of Mach 120 SpeedLink™ with a single switch. Available in WT, BZ and SA.



End-to-End connections - standard

NMS-1 Master Switch

Portable Cord and Plug standard

SpeedLink Accessories

See page 19 for more options.

	L X W X H	White	Bronze	Satin Aluminum
Master Switch	5 1/2" x 3 3/8" x 1 1/8"	NMS-1	NMS-1BZ	NMS-1SA
		White	Black	
Portable Cord	96"	PL-96 WT	PL-96 BK	







CounterAttack

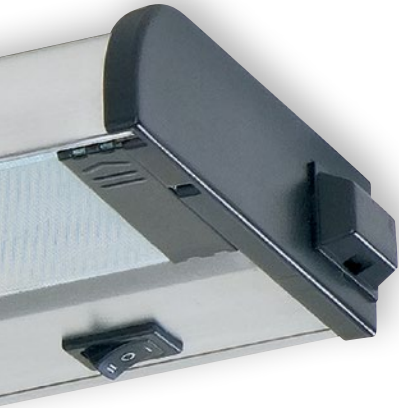
120V Xenon / Halogen
Linkable

Fixture

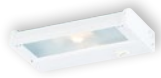
- 120V 35W Halogen non-linking and Xenon linking and non-linking versions
- 35W/120V lamps included – dimmable with standard incandescent dimmer
- Optional SpeedLink system links a maximum of 20 Xenon lamps

Body

- Metal construction – 1½" high
- Bronze, Stainless Steel and White finishes
- U.V. coated glass prismatic diffuser for maximum light distribution
- Patented cooling system promotes longer lamp life



NCA-120-8
120V 8" 1-35W Lamps



NCA-120-16
120V 16" 2-35W Lamps



NCA-120-24
120V 24" 3-35W Lamps



NCA-120-32
120V 32" 4-35W Lamps

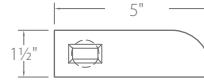


NCA-120-40
120V 40" 5-35W Lamps



CounterAttack

120V Xenon / Halogen
Linkable



CounterAttack

120V 35W Halogen & Xenon Lamps

	L X W X H	Lamps	Type	White – WT	Bronze – BZ	Stainless Steel – SS
8"	8" x 5" x 1½"	1	Halogen	NCA-120-8WT	NCA-120-8BZ	NCA-120-8SS
			Xenon	NCAX-120-8WT	NCAX-120-8BZ	NCAX-120-8SS
			SPEED&LINK	NCAX-120L-8WT	NCAX-120L-8BZ	NCAX-120L-8SS
16"	16" x 5" x 1½"	2	Halogen	NCA-120-16WT	NCA-120-16BZ	NCA-120-16SS
			Xenon	NCAX-120-16WT	NCAX-120-16BZ	NCAX-120-16SS
			SPEED&LINK	NCAX120L-16WT	NCAX120L-16BZ	NCAX120L-16SS
24"	24" x 5" x 1½"	3	Halogen	NCA-120-24WT	NCA-120-24BZ	NCA-120-24SS
			Xenon	NCAX-120-24WT	NCAX-120-24BZ	NCAX-120-24SS
			SPEED&LINK	NCAX120L-24WT	NCAX120L-24BZ	NCAX120L-24SS
32"	32" x 5" x 1½"	4	Halogen	NCA-120-32WT	NCA-120-32BZ	NCA-120-32SS
			Xenon	NCAX-120-32WT	NCAX-120-32BZ	NCAX-120-32SS
			SPEED&LINK	NCAX120L-32WT	NCAX120L-32BZ	NCAX120L-32SS
40"	40" x 5" x 1½"	5	Halogen	NCA-120-40WT	NCA-120-40BZ	NCA-120-40SS
			Xenon	NCAX-120-40WT	NCAX-120-40BZ	NCAX-120-40SS
			SPEED&LINK	NCAX120L-40WT	NCAX120L-40BZ	NCAX120L-40SS
Replacement Lamp 120V:		L-25 L-35		35W Halogen Type JCD G-8 Base Clear, 320 lumens, 2650°K 35W Xenon Type JCD, G-8 Base Clear, 270 lumens, 2900°K		

Details

CounterAttack

Fixture

- 120V 35W Halogen non-linking and Xenon linking and non-linking versions
- 35W/120V lamps included – dimmable with standard incandescent dimmer
- Porcelain sockets
- Maximum of 20 lamps per power feed

Finishes

- Bronze (BZ), Stainless Steel (SS) and White (WT)

Body

- Metal construction
- Hinged, removable, U.V coated, glass prismatic diffuser for maximum light distribution and easy lamp replacement
- Knockouts on ends (non-linking only), back and top for through-wiring, Wiremold, flex, Romex or rigid conduit
- Internal connectors allow instant hardwiring without wire nuts
- Captive mounting screws – fastest installation in undercabinet lighting (hardwire only)
- Hi-Off-Lo switch, dimmable
- UL/C-UL Listed for damp location

SpeedLink

- SpeedLink™ allows fast and easy linking of multiple units.
- Custom connectors allow end-to-end mounting with instant electrical connections – no wiring between units
- If not mounted end-to-end, SpeedLink™ inter-connect cables allow easy and fast linking.
- Master Switch module (CS-1) controls a run of CounterAttack SpeedLink™ with a single switch. Available in WT, BZ and SS.



End-to-End connections - standard

CS-1 Master Switch

Portable Cord and Plug

SpeedLink Accessories

See page 19 for more options.

	L X W X H	White	Bronze	Stainless Steel
Master Switch	5" x 3¾" x 1½"	CS-1	CS-1BZ	CS-1SS
Portable Cord	96"	White	Black	
		PL-96 WT	PL-96 BK	









End to end connection requires no wiring.



SpeedLink Interlink Cables



Portable Cord & Plug



Straight Connector



90° Connector



Cord connection for linking and portable cord

	Desc.	Black	White
Interlink Cables	10 inch	QL-10BK	QL-10WT
	18 inch	QL-18BK	QL-18WT
Portable Cord	96 inch	PL-96BK	PL-96WT
Straight Connector	Male	SL-M2M-BK	SL-M2M-WT
	Female	SL-F2F-BK	SL-F2F-WT
90° Connector	Male	SL-M2M-90-BK	SL-M2M-90-WT
	Female	SL-F2F-90-BK	SL-F2F-90-WT

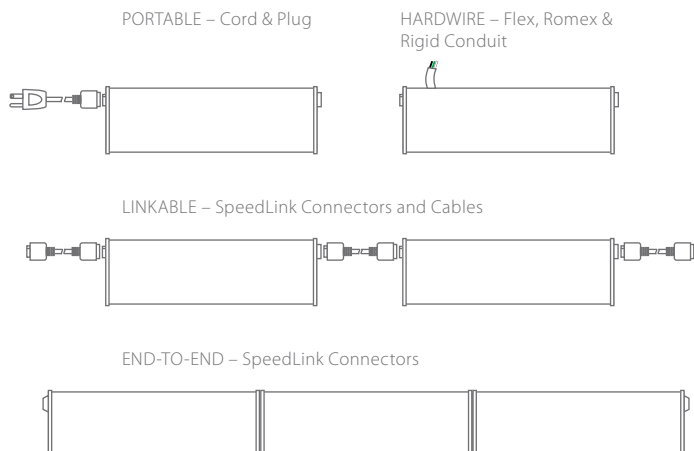


The SpeedLink System

- SpeedLink – fast and easy linking of multiple units
- Custom connectors that for end-to-end mounting with instant electrical connections – no wiring is required between units
- SpeedLink inter-connect cables allow easy and fast linking for non- end-to-end installation
- Two power feed options: hardwiring at any point along the run or cord and plug
- One power feed is required per run, up to the maximum number of lamps (20 lamps for 120 volt).

SpeedLink™

Linking Interconnect System





CounterAttack T5

T5 Fluorescent

CAF-16

1 x 8W T5 Fluorescent



CAF-24

1 x 13W T5 Fluorescent



CAF-40

2 x 8W
T5 Fluorescent





CounterAttack T5

120V T5 Fluorescent

	L X W X H	Watts	White – WT	Bronze – BZ	Silver Metallic – SM
16"	16" x 5" x 1½"	1 x 8W	CAF-16-WT	CAF-16-BZ	CAF-16-SM
24"	24" x 5" x 1½"	1 x 13w	CAF-24-WT	CAF-24-BZ	CAF-24-SM
40"	40" x 5" x 1½"	2 x 8W	CAF-40-WT	CAF-40-BZ	CAF-40-SM
Option	General Convenience Outlet		GCO-BK		GCO-WT

Fixture

- Cool operation, long-life, energy efficient
- T5 fluorescent lamps included
- Quiet – integral electronic ballast has no ballast hum
- Rapid start, no flickering, no starter

Finishes

- Bronze (BZ), Silver Metallic (SM) and White (WT)

Body

- Metal construction
- Fast easy installation – complete with mounting hardware
- Knockouts on ends, back and top for through-wiring, Wiremold, flex, Romex or rigid conduit
- Prismatic glass diffuser for smooth light distribution
- T5 fluorescent lamps included, no tools required for relamping
- On-Off switch
- Optional General Convenience Outlet (GCO)
- Protected by multiple US patents



CounterAttack T5

T5 Fluorescent



Abeo-XE

1" x 1"

12V & 24V Xenon

Fixture

- 5 watt, 10 watt or 20 watt, 12 volt— 150W max. or 24 volt— 300W max., G4 Xenon Bi-Pin lamps (sold separately)
- Requires remote electronic or magnetic transformers (sold separately)
- Dimmable – dimmer must match transformer requirements

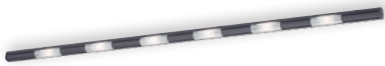
Construction

- Extruded aluminum body
- Low Profile – 1" x 1"
- Frosted glass lens with silicone engagement grommet



XE-BK

Black



XE-SA

Satin Aluminum



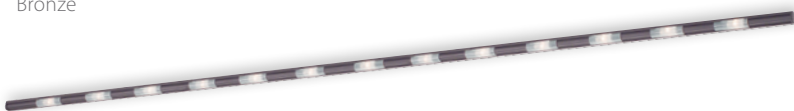
XE-WT

White



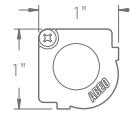
XE-BZ

Bronze



Abeo-XE

1" x 1"
12V & 24V Xenon



Abeo-XE
12V & 24V Xenon Lamp Fixtures

	L X W X H	Lamps	White – WT	Black – BK	Bronze – BZ	Satin Aluminum – SA
10"	10½" x 1" x 1"	1	XE-10-WT	XE-10-BK	XE-10-BZ	XE-10-SA
16"	16½" x 1" x 1"	2	XE-16-WT	XE-16-BK	XE-16-BZ	XE-16-SA
22"	22½" x 1" x 1"	3	XE-22-WT	XE-22-BK	XE-22-BZ	XE-22-SA
28"	28½" x 1" x 1"	4	XE-28-WT	XE-28-BK	XE-28-BZ	XE-28-SA
34"	34½" x 1" x 1"	5		XE-34-BK	XE-34-BZ	XE-34-SA
40"	40½" x 1" x 1"	6	XE-40-WT	XE-40-BK	XE-40-BZ	XE-40-SA
46"	46½" x 1" x 1"	7		XE-46-BK	XE-46-BZ	XE-46-SA
58"	58½" x 1" x 1"	9	XE-58-WT			XE-58-SA
70"	70½" x 1" x 1"	11	XE-70-WT	XE-70-BK	XE-70-BZ	
82"	82½" x 1" x 1"	13	XE-82-WT		XE-82-BZ	XE-82-SA
94"	94½" x 1" x 1"	15*	XE-94-WT		XE-94-BZ	XE-94-SA

* 24v only recommended for 15 lamp unit

Xenon Lamps

Voltage	5 watt – 60 lumens	10 watt – 125 lumens	20 watt – 250 lumens
12	L-160	L-105	L-161
24	L-108	L-109	L-162

All lamps Clear; G4 base; 2,650°K

Details

Fixture

Abeo-XE

- 5 watt, 10 watt or 20 watt, 12 volt— 150W max. or 24 volt— 300W max., G4 Xenon Bi-Pin lamps (sold separately)
- Requires remote electronic or magnetic transformers (sold separately)
- Dimmable – dimmer must match transformer requirements



No tools required for relamping. The frosted glass lens slides open to provide lamp access.



Terminal blocks are pre-installed at each end of the fixture for fast installation and linking without the use of wire nuts.

Finishes

- White (WT), Black (BK), Bronze (BZ), and Satin Aluminum (SA)

Construction

- Extruded aluminum body
- Low Profile – 1" x 1"
- Frosted glass lens with silicone engagement grommet
- Fast easy installation – complete with mounting hardware
- Speed snap conduit connectors



ABEO-90 Corner connector for 90° corners and attachment of flex conduit.

Abeo Accessories

	White	Black	Bronze	Satin Aluminum
90° Corner Connector	ABEO90-WT	ABEO90-BK	ABEO90-BZ	ABEO90-SA



Transformers

Electronic Transformers

Cat. No.	Wattage	Voltage	Description	Minimum Load	Dimensions	Weight
ELVT-IV2	60W	12V	Class 2 electronic transformer	10W w/o dimmer 20W w/ dimmer	1 ³ / ₁₆ " x 1 ⁵ / ₁₆ " x 2 ¹ / ₈ "	3 oz
T-30BK (Black)	60W	12V	Class 2 plug in electronic transformer	20W	1 ⁵ / ₁₆ " x 1 ¹ / ₂ " x 3 ³ / ₁₆ "	3 oz
T-30 (White)	60W	12V	Class 2 plug in electronic transformer	20W	1 ⁵ / ₁₆ " x 1 ¹ / ₂ " x 3 ³ / ₁₆ "	3 oz
T-14ENCL	150W	24V	Enclosed electronic transformer	50W	1 ⁷ / ₁₆ " x 1 ¹ / ₂ " x 6 ¹ / ₂ "	1 lb
T-16ENCL	300W	24V	Enclosed electronic transformer	50W	1 ⁷ / ₁₆ " x 1 ¹¹ / ₁₆ " x 9 ¹ / ₂ "	1.5 lbs

Magnetic Transformers

Cat. No.	Wattage	Voltage	Description	Dimensions	Weight
T-118	150W	12V	E.I. laminated magnetic transformer, multi-tap with primary and secondary internal circuit protection	5 ⁵ / ₈ " x 2 ⁷ / ₈ " x 3"	7 lbs
T-119	150W	24V	E.I. laminated magnetic transformer, multi-tap with primary and secondary internal circuit protection	5 ⁵ / ₈ " x 2 ⁷ / ₈ " x 3"	7 lbs
T-120	300W	12V	E.I. laminated magnetic transformer, multi-tap with primary and secondary internal circuit protection	6 ³ / ₈ " x 3 ¹ / ₂ " x 3"	10 lbs
T-121	300W	24V	E.I. laminated magnetic transformer, multi-tap with primary and secondary internal circuit protection	6 ³ / ₈ " x 3 ¹ / ₂ " x 3"	10 lbs
T-122	600W (2x300)	12V	E.I. laminated magnetic transformer, multi-tap with primary and secondary internal circuit protection	6 ³ / ₄ " x 4 ³ / ₄ " x 4 ³ / ₈ "	15 lbs
T-123	600W	24V	E.I. laminated magnetic transformer, multi-tap with primary and secondary internal circuit protection	6 ³ / ₄ " x 4 ³ / ₄ " x 4 ³ / ₈ "	15 lbs
T-124	300W	12V	Toroidal magnetic transformer, multi-tap with primary and secondary internal circuit protection	9" x 6" x 3 ¹ / ₄ "	17 lbs
T-125	300W	24V	Toroidal magnetic transformer, multi-tap with primary and secondary internal circuit protection	9" x 6" x 3 ¹ / ₄ "	17 lbs
T-126	600W (2x300)	12V	Toroidal magnetic transformer, multi-tap with primary and secondary internal circuit protection	9" x 6" x 3 ¹ / ₄ "	24 lbs
T-127	600W	24V	Toroidal magnetic transformer, multi-tap with primary and secondary internal circuit protection	9" x 6" x 3 ¹ / ₄ "	24 lbs

Abeo-XE

Transformers



Voltage Drop Chart

Use this chart to establish the correct wire gauge to minimize voltage drop at the specified wattage. The distance shown is the length of wire from the transformer to the first fixture in the run.

	< 5 feet	6 – 15 feet	16 – 20 feet	21 – 40 feet	41 – 60 feet	61 – 90 feet
12 Volt, 150 Watt	12 ga	8 ga	6 ga	4 ga	2 ga	1 ga
24 Volt, 300 Watt	14 ga	12 ga	10 ga	6 ga	6 ga	4 ga

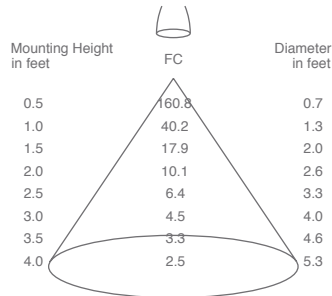


ProPuck

LED
20W 120V Xenon

ProPuck LED

CONE OF LIGHT DIAGRAM
(diameter shown is where fc value is half the fc at nadir)



	Black	Bronze	Satin Aluminum	White
ProPuck LED	PPL-BK	PPL-BZ	PPL-SA	PPL-WT
ProPuck Xenon	PP-BK-1	PP-BZ-1	PP-SA-1	PP-WT-1

4.5W LED system, 120 Volt

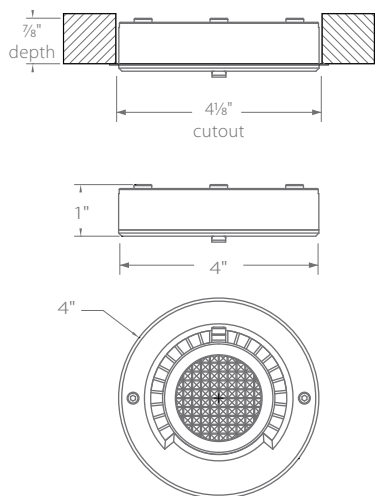
No transformer or drivers required

- High Power 4.5 Watt LED, 250lm, 4.5 Watt total consumption
- Color temperature, Warm White 2850°K ± 150°K
- Long lamp life: 35,000 hour lamp life @ 70% lumen maintenance.
- LED models may be linked with up to 100 units.
- Dimmable with standard Incandescent dimmer (must meet minimum load of dimmer).
- Solite lens included; additional accessory lenses available

Xenon system, 120 Volt

No transformer required

- 20 Watt / 120 Volt Xenon lamp, (7,000 hour rated)
- Xenon models may link up to 50 units
- Dimmable with standard Incandescent dimmer (must meet minimum load of dimmer).
- Included lens: Metal honeycomb. Additional accessory lenses available.



ProPuck LED and Xenon Features

- UL listed for portable & hardwire applications and as a wiring compartment; cUL when used with cUL strain relief
- Surface or recessed mount – not for recessed installation in ceilings or walls
- Complete with lamp, flange and clips for recessing, screws for surface mount and mini strain reliefs
- Dimmable with standard Incandescent dimmer (must meet minimum load of dimmer), LED and Xenon

Finishes

- Black (BK), Bronze (BZ), Satin Aluminum (SA) and White (WT)

Body

- Die cast aluminum construction for durability and excellent heat dissipation
- Hardwire knockouts on sides and back. Additional MC connectors available.
- Internal terminal block included, no wire nuts or connectors needed
- Integral mounting standoffs create an air-gap between fixture and mounting surface, minimizing heat transfer in surface mount applications.
- Multiple US patents pending



Accessory Lenses



0-19 Prismatic Spread



0-16 Mini Prismatic



0-18 Linear Spread



Part No.	Description
L-34A	20W 120V Frosted Xenon G8 150 lm, 7,000 hour rated life Fits only PP series



PP-CON	Flex conduit connector Fits up to 1/2" flex conduit Side knockout only
--------	--



INVWC3	Low profile wiring compartment 4"L 2 1/8"W 1"H
--------	---



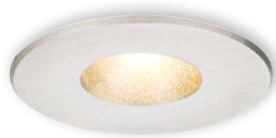
PP-PLG-BK	Black cord w/ plug, 6'
PP-PLG-WT	White cord w/ plug, 6'



PP-CRD-BK	Black linking cord – 10 ft.
PP-CRD-WT	White linking cord – 10 ft.
PP-CRD-100-BK	Black linking cord – 100 ft.
PP-CRD-100-WT	White linking cord – 100 ft.

ProPuck

Accessories



VLP-1000-SN



VLP-1001-SA



VLP-1002-SA



VLP-3000-SN

Bantam

LED Puck Lights

Fixture

- No visible hardware.
- Satin Nickel and Satin Aluminum finishes
- Die cast or machined aluminum housing.
- Recessed and surface mount fixtures.
- Suitable for cabinets and case goods.
- NOT for recessed installation in ceilings or walls.
- 2850°K ± 100° Cree XP-E, 80 CRI
- Remote driver; Triac dimming driver available

Driver #	Dimming	# of fixtures each driver can operate	
		VLP-1000 VLP-1001 VLP-1002	VLP-3000
D-121	No	1 to 10	1 to 3
D-122	No	3 to 18	1 to 6
D-123*	Yes/Triac	10 to 15	3 to 5

* Fixtures must be wired in series when using the D-123

Bantam

Description	Cat. No.	# of LEDs	Lumens	Wattage	Cutout	Dimensions
Mini Puck	VLP-1000-SN	1	80 lm	1.5 W	1 5/8"	1 5/16" dia x 5/8" h
Adjustable Puck - 10°	VLP-3000-SN	3	240 lm	4 W	2 1/4"	2 5/8" dia x 3/4" h
MiniCylinder	VLP-1001-SA	1	80 lm	1.5 W	1 1/8"	1 5/16" dia x 1 5/16" h
MiniCube	VLP-1002-SA	1	80 lm	1.5 W	1 1/8"	1 5/16" x 1 5/16" h

CAT. NO	PAGE	CAT. NO	PAGE	CAT. NO	PAGE
ABEO-90	24	NMA120L-40	11	T-16ENCL	25
CAF-16	20	NMA120L-48	11	T-30	25
CAF-24	20	NMA120L-8	11	UNVWC3	27
CAF-40	20	NMS-1	12	VLP-1000	28
CS-1	8, 16	PL-96	8, 12, 16, 19	VLP-1001	28
D-121	28	PP-1	26	VLP-1002	28
D-122	28	PP-CON	27	VLP-3000	28
D-123	28	PP-CRD	27	XE-10	24
ECL-16	3	PP-CRD-100	27	XE-16	24
ECL-24	3	PP-PLG	27	XE-22	24
ECL-8	3	PPL	26	XE-28	24
ELVT-IV2	25	QL-18	19	XE-34	24
EWM-1	4	QL10	19	XE-40	24
EWM-2	4	SL-F2F	19	XE-46	24
EWM-3	4	SL-F2F-90	19	XE-58	24
L-34A	27	SL-M2M	19	XE-70	24
NCA-120-16	15	SL-M2M-90	19	XE-82	24
NCA-120-24	15	T-118	25	XE-94	24
NCA-120-32	15	T-119	25		
NCA-120-40	15	T-120	25		
NCA-120-8	15	T-121	25		
NCA-LED-16	7	T-122	25		
NCA-LED-24	7	T-123	25		
NCA-LED-32	7	T-124	25		
NCA-LED-8	7	T-125	25		
NMA120L-16	11	T-126	25		
NMA120L-24	11	T-127	25		
NMA120L-32	11	T-14ENCL	25		



A Division of Troy-CSL Lighting, Inc.

14508 Nelson Avenue
City of Industry CA 91744
Tel: 626.336.4511
Fax: 626.330.4266
www.csllighting.com

