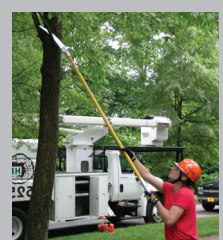




**Providing Solutions  
Wherever The Job Takes You**



**Inside Wiring - Underground Cabling and Locating - Aerial Cable Placement - Tree Trimming - Lighting**



**WWW.JAMESONLLC.COM**

## Providing Solutions Since 1956

Setting the standard as a solution provider, Jameson introduced the first fiberglass poles in 1956 as a stronger, lighter alternative to the wooden poles used by telecommunication companies.

Jameson soon released head tools for the poles to provide more solutions with the same pole, such as line clearance and aerial cable placement.

As these companies advanced with underground cabling, Jameson developed the first continuous fiberglass conduit rodder manufactured in the U.S. It became the foundation for the Buddy System of Rodders, Duct Hunter Traceable Rodders, and Live Tracers for gas and water utilities.

Jameson's commitment to innovation led to a line of splicer tools complemented by inside wire fishing tools and portable work lights.

In 2000, Jameson revolutionized expeditionary lighting systems with compact, high intensity shelter lights for the military. Today's lighting line-up includes wide area, equipment and hazardous location lights.

Jameson teamed with Huskie Tools in 2016 to offer customers a broader range of aerial cable construction tools.

Based on customer feedback, Jameson continues to develop products to make our customers' jobs easier.



### Jameson Corporate Headquarters

1451 Old North Main Street, Clover, South Carolina 29710



### Customer Service and Sales

800.346.1956  
sales@jamesonllc.com

**WWW.JAMESONLLC.COM**



### Notice

The information in this catalog is effective May 2016 and supersedes all previous catalogs. Since product improvement is a continual process at Jameson, specifications are subject to change without notice.

### Inside Wiring

Buddy® Fish Tapes	5-6
Microduct Fisher	7
Flexi-Magnet	7
Glow Fish Rods	8-9
Splicer Scissors and Knives	10-12

### Underground Cabling and Locating

Buddy® Rodders	13-17
Duct Hunter™ Traceable Rodders	18-20
Live Tracer - Water	21-22
Live Tracer - Gas	23-24
Cable and Pipe Locators	25
Sonde & Adapters	26

### Aerial Cable Placement Tools

Aerial Buddy Fiber Optic Sheave	27
Corner Blocks and Pole Mount Brackets	28
Stringing and Overlash Blocks	29
Telescoping Measuring Poles	30

### Aerial Bucket and Boom Tool Holders

Bucket and Boom Tool Holders	31-33
Canvas Tool Bags	34

### Fiberglass Poles and Lay Up Sticks

Poles Overview	35-36
JE Foam Core	37
FG Hollow Core	37
BL Lightweight Poles	38
LS Landscaper	38
Telescoping Poles	39

### Tree Care - Pole Tools and Hand Tools

Pruners	40-41
Pole Saws	42
Saw Blades	43
Hand Saws	44
Tree Trimming Packages	45
Pole Accessories	46-47

### Lighting

Handheld Portable Work Lights	48-50
Stringable Shelter Lights	50
Tripod Wide Area Light	51
ExoStar Area Light	52
JLlite Construction & Utility Lights	53
Hazardous Location Lights	54-55
LED Equipment Lights	56

### Parts

Replacement Parts	58-59
-------------------	-------

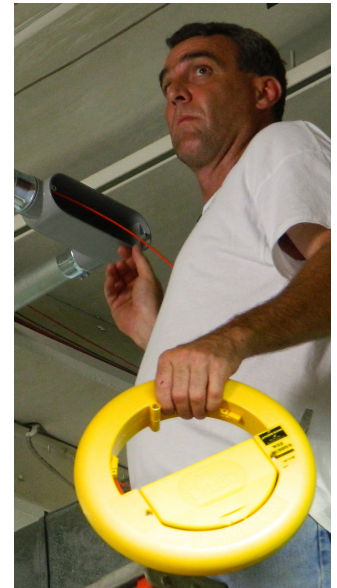
## BUDDY®

### Non-Conductive Fiberglass Fish Tapes

Jameson fish tapes feature a round, flexible rod that slides easily over wires in occupied conduit, offering exceptional bending strength for maneuvering tight turns.

See Pages 5-7

	Rod Diameter	Rod Core	Lengths Available	Bend Radius	Usage
Wee Buddy	1/8"	.080"	50' - 150'	1-1/2"	Inside wiring in occupied conduit as small as 1/2"
Little Buddy	3/16"	.130"	150' - 300'	2.5"	Inside and outside conduit drops; 3/4" to 1-1/2" conduit
Microduct Fisher	3.2 mm	.080"	165' - 350'	1.5"	Fiber microducts



## Glow Rod

### Non-Conductive Fiberglass Rods

Made with a luminescent resin, these non-conductive rods are perfect for drop ceilings, attics, floors, walls, and crawl spaces. Their high strength and flexibility handle turns easily without breaking.

See Page 8-9



### Splicer Snips and Knives

The leading provider of splicer snips and knives to the telecommunications market, Jameson uses a cryogenic process to improve wear resistance.

See Pages 10-12







**1/8"**  
**OD ROD**  
.080" Core



## Inside Wiring In Occupied Conduit As Small As 1/2"

The Wee Buddy's round rod slides easily over existing wires, especially at bends, and has a smooth, non-binding payout and return to canister.

Easy grip design allows for more efficient pushing and pulling when fishing telecom, voice, data or electrical conduit.

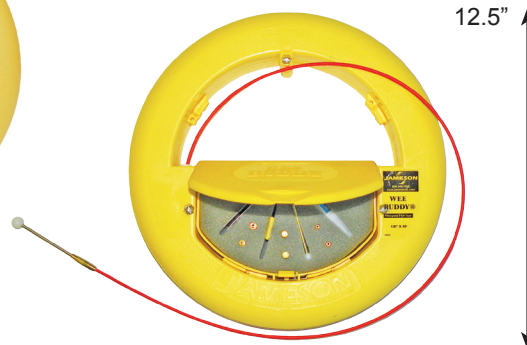
Canister features snap-on accessory kit.

- Recommended Conduit: 1/2"+
- Bend Radius: 1-1/2"
- Pull/Tensile Strength: 200-lb  
Strength rating of rod/end ferrule interface. Actual fiberglass rod has higher ultimate tensile strength
- Available With or Without Accessory Kit
- Dimensions: 12.5" Diameter x 2"

Part Number	Wee Buddy®
8-18-50	50' X 1/8" Wee Buddy
8-18-50K	50' X 1/8" Wee Buddy with Kit
8-18-100	100' X 1/8" Wee Buddy
8-18-100K	100' X 1/8" Wee Buddy with Kit
8-18-150	150' X 1/8" Wee Buddy
8-18-150K	150' X 1/8" Wee Buddy with Kit



Without Accessory Kit



With Accessory Kit

## Wee Buddy® Accessories



Accessory Kit  
Snaps On Canister For Easy Access



Flexible Spring Leader  
Guides Rod Through Bends,  
Sweeps, Misalignments

Part Number	Wee Buddy® Accessories	
8-160	Pulling Eye	Attaches to end fitting of rod for pull line attachment to rod
8-162	Large Spring Leader	Guides rod through bends, sweeps and misalignments
8-163	Small Spring Leader	
8-140	Splice Repair Kit	Splice Ferrule, Adhesive, Emery Cloth
8-146	End Ferrule Repair Kit	End Ferrule, Adhesive, Emery Cloth
8-18-AK	Accessory Kit	Small Leader, Large Leader, 2 Pulling Eyes, 2 Splice Ferrules, 2 End Ferrules, Adhesive, Emery Cloth, Plastic Case



## Fishes Conduit 3/4" To 1-1/2"

Lightweight, portable unit for running inside and outside conduit drops; home drops from the hand-hole box to a building; and light pole and control wiring or walker ducts.

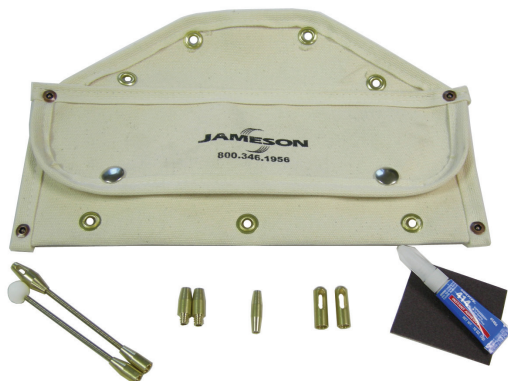
- Operates vertically or horizontally.
- Drag brake and safety feed eye to control payout.
- Bend Radius: 2.5"
- Pull/Tensile Strength: 300-lb  
Strength rating of rod/end ferrule interface.  
Actual fiberglass rod has higher ultimate tensile strength
- Accessory Kit included
- Dimensions: 22" x 17" x 7"

**3/16"**  
**OD ROD**  
.130" Core

Part Number	Little Buddy®
10-316-150	150' X 3/16" Little Buddy
10-316-200	200' X 3/16" Little Buddy
10-316-250	250' X 3/16" Little Buddy
10-316-300	300' X 3/16" Little Buddy



## Little Buddy® Accessories



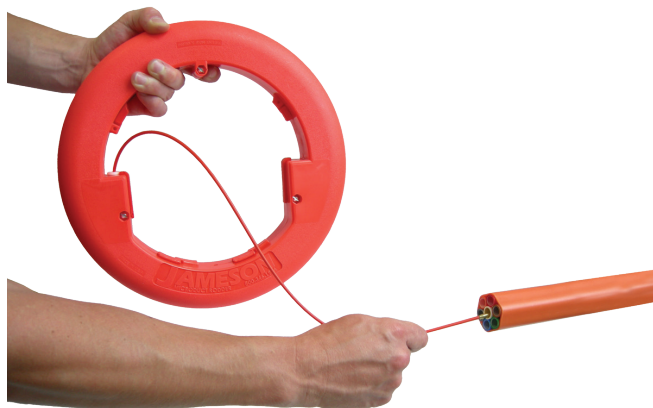
Accessory Kit  
Attaches To Canister's Frame For Easy Access



Flexible Spring Leader  
Guides Rod Through Bends,  
Sweeps, Misalignments

Part Number	Little Buddy® Accessories	
10-160	Pulling Eye	Attach to end fitting of rod for pull line attachment to rod
10-162	Flexible Leader w/Pull Eye	Guide rod through bends, sweeps and misalignments
10-163	Flexible Leader w/Ball Tip	
10-140	Splice Repair Kit	Splice Ferrule, Adhesive, Emery Cloth
10-146	End Ferrule Repair	End Ferrule, Adhesive, Emery Cloth
10-316-AK	Accessory Kit	2 Pulling Eyes, 2 Leaders, Splice Ferrule, 2 End Ferrules, Adhesive, Emery Cloth, Pouch





Lightweight Canister With Easy-Grip Design  
12.5" Diameter X 2" Width

**3.2 mm  
OD ROD**  
.080" Core



*Microduct*  
**FISHER™**  
For Fiber Microducts  
BY JAMESON

## For Fishing In Fiber Microduct

Jameson's Microduct Fisher features all fiberglass rod construction for safety and easy handling.

The low profile pulling eye is permanently mounted on the rod to move smoothly in fiber microducts as small as 6 mm, where traditional fish tapes are too large.

Smooth, round polymer jacket will not nick or scratch fiber or duct wall.

- 3.2 mm OD Fiberglass Rod
- 1.5" Bending Radius
- Permanent mount pulling eye
- Low profile tip moves easily in microduct

## Microduct Fisher II

Reel models feature longer length rod and convenient carrying handle.

Available in Handheld or Stand Model

Part Number	Microduct Fisher
8-18-165MDR	165' X 1/8" Microduct Fisher
10-18-350MDR	300' X 1/8" Microduct Fisher II, Handheld
10-18-350MDRS	350' X 1/8" Microduct Fisher II, Stand
8-146MDR	Pulling Eye Repair Kit
8-140MDR	Splice Repair Kit



Reel Models  
17" Diameter X 7" Width

## Flexi-Magnet

Bendable retriever features a powerful magnetic tip that grabs chain inside wall to pull wire.

Includes 10' length of ball chain with ring to hold in place.

Part Number	Flexi-Magnet
7-07A	Flexi-Magnet Kit (Retriever and Ball Chain with Ring)



## Glow Rod

### Non-Conductive Fiberglass Rods For Wiring

With our proprietary luminescent resin, Jameson is the original manufacturer of fiberglass glow rods.

These non-conductive rods are perfect for drop ceilings, attics, floors, walls, and crawl spaces. Their high strength and flexibility handle turns easily without breaking.

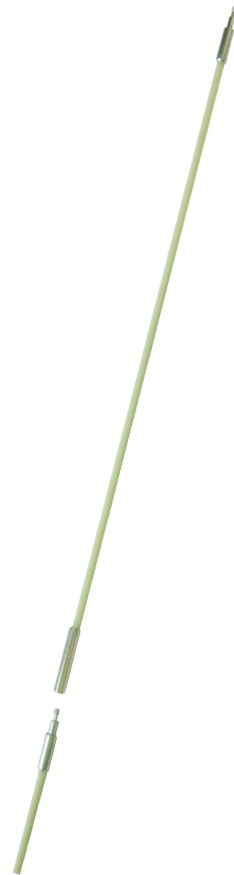
Designed for maximum versatility, threaded ferrules make it possible to customize rod length to any job and a variety of accessories make it easier to handle any wiring situation.

### What Size Do You Need?

Flexibility increases as rod diameter decreases:

- 1/4" for long spans requiring greater rigidity
- 3/16" for short spans or in limited space
- 5/32" for making tight turns

Featuring the same size ferrule threads (#8-32), different diameter rods can be used together in any combination for ultimate on-the-job customization.



### 1/4" Diameter

Most Rigid Glow Rod;  
Used For Long Spans

Minimum Bend Radius: 6"

Tensile/Pull Strength: 750 lbs

Part Number	Total Rod Length	Package Length	1/4" Glow Rod Kits
7-36-23T	24'	6'	Three 6' X 1/4" Rods, Two 3' X 1/4" Rods One Bullet Nose with Eyelet, One Hook
7-63T	18'	3'	Six 3' X 1/4" Rods One Bullet Nose with Eyelet, One Hook
7-34T	12'	4'	Three 4' X 1/4" Rods One Bullet Nose with Eyelet, One Hook
7-6	6'	*	One 6' X 1/4" Replacement Rod with Male and Female Ferrules
* Single rods are shipped with hanging tag, not in plastic kit tube			



### 3/16" Diameter

More Flexible For Short Runs  
Or Use In Limited Space

Minimum Bend Radius: 4"

Tensile/Pull Strength: 500 lbs

Part Number	Total Rod Length	Package Length	3/16" Glow Rod Kits
7S-45T	20'	5'	Four 5' X 3/16" Rods One Bullet Nose with Eyelet, One Hook
7S-718T	10.5'	18"	Seven 18" X 3/16" Rods One Bullet Nose with Eyelet, One Hook
7S-5	5'	*	One 5' X 3/16" Replacement Rod with Male and Female Ferrules
* Single rods shipped with hanging tag, not in plastic kit tube			





## 5/32" Diameter

<b>7SS-36T</b> <b>7SS-6</b> Permanently mounted bullet nose on each end.	Part Number	Total Rod Length	Package Length	5/32" Glow Rod Kits
	7SS-36T	18'	6'	Three 6' X 5/32" Rods One Bullet Nose with Eyelet, One Hook
	7SS-6	6'	*	One 6' X 5/32" Rod with Permanently Mounted Bullet Nose with Eyelet On Each End of Rod  * Single rods shipped with hanging tag, not in clear plastic kit tube

Smallest Diameter Offers Extreme Flexibility With High Strength

Ideal For Security and Alarm, Home Theater, CATV, Satellite Installation

Minimum Bend Radius: 3.5"  
Tensile/Pull Strength: 300 lbs

## Combo Kits

<b>7-8-IK</b>	Part Number	Total Rod Length	Package Length	Installer's Kit
	7-8-IK	35'	6'	Two 1/4" X 5' Rods, Two 1/4" X 2.5' Rods, Four 3/16" X 5' Rods Two Bullet Nose with Eyelet, Two Hooks, One Whisk
<b>7S-65K</b>	Part Number	Total Rod Length	Package Length	Deluxe Kit
	7S-65K	30'	6'	Six 3/16" X 5' Rods One Bullet Nose with Eyelet, One Hook, One Whisk, One Ball Chain Bullet Nose
<b>7-8-VK</b>	Part Number	Total Rod Length	Package Length	Versa Kit
	7-8-VK	34'	6'	Two 1/4" X 6' Rods, Two 3/16" X 5' Rods, One 5/32" X 6' Rod One 5/32" X 6' Rod - Permanently Mounted Bullet Eye On Each End One Hook, One Whisk

Kits Include A Variety Of Rod Sizes And Accessories For Greater Versatility On The Job

## Glow Rod Accessories



Part Number	Glow Rod Accessories
7-00A	Bullet Nose with Eyelet
7-01A	Hook
7-02A	Bullet Nose with Ring
7-03A	Whisk
7-04A	Ball Chain Bullet Nose
7-05A	Magnet
7-06AK	Accessory Kit



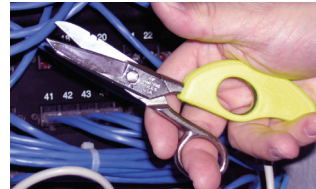
**Accessory Kit**  
Hook  
Magnet  
Whisk  
Ball Chain  
Bullet Nose with Ring  
Bullet Nose with Eyelet



## Splicer Snips and Knives

Jameson remains the leading provider of splicer snips and knives to the telecommunications market due to a commitment to the highest standards of durability, performance, and quality.

We use a cryogenic (ice tempering) process commonly used in the manufacture of surgical instruments. This significantly improves wear resistance - indispensable when working with fiber optic strands and copper wire.



### Splicer Snips

Precision ground for consistent quality, Jameson snips are ideal for telecommunication, electronic and electrical wiring jobs.

### Snip Grip® Ergonomic Handle

Designed to increase cutting leverage while reducing hand and wrist fatigue.

Sold separately or with Jameson snips.

### Splicer Skinning Knife

Straight style blade is molded into an easy-grip polymer handle that remains pliable in subzero temperatures. Blade is 20-25% thicker than comparable models.



Part Number	Scissors Without Snip Grip®
32-21NS	Scissors with Notched & Serrated Blade
	<b>Snip Grip®</b>
32-40	Snip Grip® Handle
32-41NS	Notched, Serrated Scissors with Snip Grip®
	<b>Skinning Knife</b>
32-24E	Skinning Knife - Ergonomic Handle
32-24J	Skinning Knife
32-25	Leather Knife Pouch; Slotted Belt Loop
32-24P	Skinning Knife with Slotted Loop Pouch

Part Number	Tool Pouches
32-11T	Tunnel Loop Leather Pouch for Scissors and Knife
32-11	Slotted Leather Pouch for Scissors and Knife
32-12	Slotted Leather Pouch for Scissors
32-25	Slotted Leather Pouch for Knife
32-16T	Black PVC Pouch for Scissors, Snip Grip® and Knife
32-30	Adjustable web belt for tool pouches
	<b>Splicer Tools and Pouch Sets without Snip Grip®</b>
32-24P	Slotted Pouch (32-25) with Knife
32-22NS	Slotted Pouch (32-11), Knife & Scissors (32-21NS)
32-23NS	Tunnel Pouch (32-11T), Knife & Scissors (32-21NS)
	<b>Splicer Tools and Pouch Sets with Snip Grip®</b>
32-42NS	Slotted Pouch (32-11), Knife, Snip Grip® & Scissors (32-21NS)
32-43NS	Tunnel Pouch (32-11T), Knife, Snip Grip® & Scissors (32-21NS)
32-16NS	PVC Pouch, Knife, Snip Grip® & Scissors (32-21NS)

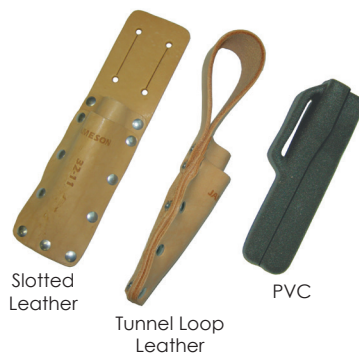


### Splicer Tool Pouches

Our line of leather and PVC belt pouches keep splicing tools close at hand.

Leather pouches are reinforced with steel rivets for durability. Available with slotted openings or tunnel loop to slide on belt.

Black PVC pouches will not split or tear with age and remain flexible, even in cold weather.



32-11T Tunnel Loop Leather Pouch with Snip Grip®, Scissors and Knife



32-11 Slotted Leather Pouch with Snip Grip®, Scissors, Knife



32-12 Slotted Leather Pouch with Scissors



32-30 Adjustable Belt for Tool Pouches



PVC Pouch with Snip Grip® and Scissors

PVC Pouch with Snip Grip®, Scissors and Knife



### Scissors and Knife Sharpener

Compact sharpener works on scissors and knives. Easy grip handle and finger stop for safety.

32-50	Scissors and Knife Sharpener
-------	------------------------------



### Fiber Optic Shears

Stainless steel alloy blades cut Kevlar® fibers, soft cable, wire insulation, tape, cable ties and other materials. The serrated edge grips material, limiting slippage while cutting.

Ergonomic handles are made of a high strength fiberglass/ nylon blend.

Web belt pouch included.

Shears measure 5.5" with a 1.625" cutting length.

32-60	Fiber Optic Shears with Pouch
-------	-------------------------------

## Hawkbill Skinning Knife

Designed to remove cable jackets in line work, Jameson's Hawkbill Skinning Knife is also a popular all-purpose knife.

Polished, high carbon steel blade is ice-tempered to maintain edge longer. The curved, double-edged blade easily cuts through cable jackets and insulation.

Features an ergonomic, cushioned handle with an expanded end to protect hand from slippage and a convenient built-in ring.

10" X 2"



Hawkbill Knives

Part Number	Description
32-70-C	Skinning Knife - Charcoal Handle
32-70-O	Skinning Knife - Orange Handle

## Tri-Hole Fiber Optic Stripper

Jameson's fiber optic strippers feature 3 openings to handle typical fiber stripping jobs:

- Strip 1.6-3 mm fiber jacket to 600-900 micron buffer coating
- Strip 900 micron buffer coating to 250 micron coating
- Strip 250 micron cable to glass fiber

Strips without scratching or nicking glass fiber.



Fiber Stripper



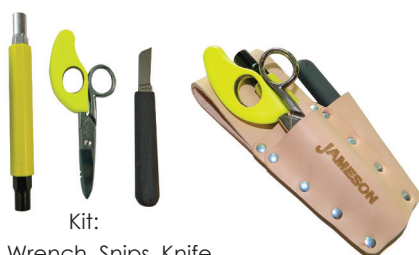
Fiber Shear

Part Number	Description
32-FS-375	Tri-Hole Fiber Optic Strippers
32-60-375	Kit: Fiber Stripper and Fiber Shear in Leather Tunnel Loop Pouch

## Can Wrench with Two Socket Sizes

Used to open telephone pedestal boxes and tighten binding post screws, Jameson's insulated Can Wrench has a high-visibility nylon handle with hardened alloy steel sockets. Thin walled sockets for access to tight places.

- 7/16" and 3/8" Sockets
- 1.25" Deep Socket Fits Over Long Binding Posts



Kit:  
Can Wrench, Snips, Knife



Can Wrench

Part Number	Description
32-216C	Can Wrench Only, .31 lbs., 7-1/2" X 5/8"
32-16NS-216C	Kit: Can Wrench, Notched Serrated Snip with Snip Grip, Splicer Knife and Leather Tunnel Loop Pouch

## BUDDY® SYSTEM

### Non-Conductive Fiberglass Conduit Rodders For Long Distance Cable Runs

Since 1980, Jameson's Buddy® System of rodders and fish tapes have evolved to become the most comprehensive in the industry.

Whether installing short run electrical wire or running long distance copper or fiber optic cable, Jameson has a Buddy® to handle the job for you.



#### The Jameson Fiberglass Advantage

- Fiberglass core is coated with high visibility polymer sheath to protect against rod abrasion and reduce friction.
- Round, flexible rod slides easily over wires in occupied conduit
- Exceptional bending strength for maneuvering tight turns
- Non-conductive and will not kink
- Accessories attach to fiberglass rod for greater versatility and easier fishing



	Rod Diameter	Rod Core	Lengths Available	Tensile/ Pull Strength*	Bend Radius	Recommended Conduit	Usage
Easy Buddy®	1/4"	.197"	300' - 400'	400-lb	4"	1" to 2"	Rodding conduit into buildings
Good Buddy®	3/8"	.250"	300' - 400'	1,000-lb	7"	2" to 4"	Confined areas; manhole to riser, riser to riser, cable vaults
Good Buddy® II	3/8"	.250"	400' - 600'	1,000-lb	7"	2" to 4"	Longer runs; manhole to riser, riser to riser, cable vaults
Good Buddy® III	3/8"	.250"	300' - 400'	1,000-lb	7"	2" to 4"	Maximum portability; manhole to riser, riser to riser, cable vaults
Big Buddy®	1/2"	.375"	400' - 1,000	1,000-lb	10"	4"+	Manhole to manhole or long run cable pulls
Mega Buddy®	1/2"	.375"	1,500	1,00-lb	10"	4"+	Manhole to manhole or long run cable pulls

\* Strength rating of rod/end ferrule interface. Actual fiberglass rod has higher ultimate tensile strength.

All Buddies® are shipped with End Ferrule and Pulling Eye

Custom rod lengths available for special applications





**1/4"**  
**OD ROD**  
.197" Core

**Easy  
BUDDY®**  
Fiberglass Conduit Rodder

## Flexible 1/4" Rod Handles Tight Turns And Long Runs

- Rod Or Fish Conduit Of 1-2"
- Drag Brake To Control Pay Out
- 4" Bending Radius
- 400-Lb Pull/Tensile Strength
- Includes End Ferrule And Pulling Eye
- Accessory Kit Sold Separately
- Dimensions: 36.25" X 24" X 13"



The Easy Buddy's new frame features a taller handle, wider base, and larger wheels. The updated design offers greater stability and easier maneuverability in the field.

Part Number	Easy Buddy®	Weight
6-14-300M	300' X 1/4" Easy Buddy	35 Lbs.
6-14-400M	400' x 1/4" Easy Buddy	39 Lbs.
6-14-500M	500' x 1/4" Easy Buddy	43 Lbs.

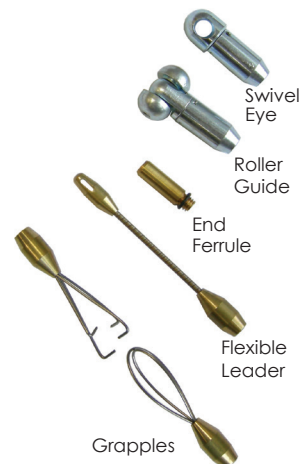
Rod is marked in 5' increments. Add 'MM' to part number for metric measure (1m increments).

## Easy Buddy® Accessories



Accessory Kit  
Attaches to Rodder Frame  
For Easy Access

Part Number	Accessories	
6-14-AK	Accessory Kit	Splice Ferrule, Pulling Eye, End Ferrule, Adhesive, Emery Cloth, Canvas Pouch
6-139	Swivel Eye	Attach pull line or grip to freely rotating eye
6-140	Splice Repair Kit	Splice Ferrule, Adhesive, Emery Cloth, Instructions
6-141	Roller Guide	Guide rod through bends, sweeps, misalignments, wires
6-143	Swivel Coupling	Connect two rods when single length is not long enough; provides rotation when pulling line, wire or rope.
6-146	End Ferrule Repair	End Ferrule, Adhesive, Emery Cloth, Instructions
6-148	Rod Grapple Set	Connect two rodders from opposite directions
6-160	Pulling Eye	Attach to end fitting of rod for pull line attachment to rod
6-162	Flexible Leader	Guide rod through bends, sweeps, misalignments
6-14-BAG	Zippered Bag	Protect Easy Buddy from moisture and UV rays when not in use and during transport
6-14-COV	Cover	





## Rod Or Fish Conduit 2-4" In Diameter

Jameson offers a comprehensive Good Buddy® family to meet various applications for 3/8" rod:

Manhole-to-riser, riser-to-riser, cable vaults and large conduit runs.

- 7" Bending Radius
- 1,000-lb Tensile/Pull Strength
- Accessory Kit, End Ferrule and Pulling Eye Included



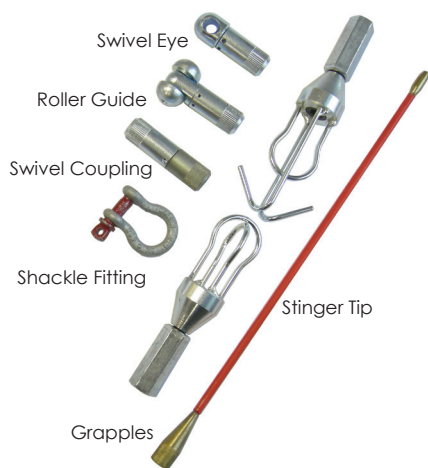
**3/8"**  
**OD ROD**  
.250" Core



See Next Page For All  
Good Buddy® Models

Part Number	Good Buddy® Rodders
9-25-300M	300' X 3/8" Good Buddy
9-25-400M	400' X 3/8" Good Buddy
11A-25-400M	400' X 3/8" Good Buddy II
11A-25-500M	500' X 3/8" Good Buddy II
11A-25-600M	600' X 3/8" Good Buddy II
9A-25-300M	300' X 3/8" Good Buddy III
9A-25-400M	400' X 3/8" Good Buddy III

All Good Buddy® conduit rodder models come standard with rod marked in 5' increments. Add 'MM' to part number for metric measure (1m increments).



All Terrain Wheels

## Good Buddy® Accessories

Part Number	Accessories	
9-25-AK	Accessory Kit	End Ferrule, Splice Ferrule, Adhesive, Emery Cloth, Canvas Pouch
9-139	Swivel Eye	Attach pull line or grip to freely rotating eye
9-141	Roller Guide	Guides rod through bends, sweeps, misalignments, wires
11-142	Shackle Fitting	Use with Swivel Eye for larger pulling loop to attach Pulling Eye. <b>Must use 11-139 Swivel Eye.</b>
9-143	Swivel Coupling	Connect two rods when single length is not long enough; provides rotation when pulling line, wire or rope.
9-148	Rod Grapples	Connects two rodgers from opposite directions
9-25-12ST	12" Stinger Tip	Guide rod through bends, sweeps, misalignments
9-25-24ST	24" Stinger Tip	
9-140	Splice Repair Kit	Splice Ferrule, Adhesive, Emery Cloth, Instructions
9-146	End Ferrule Repair	End Ferrule, Adhesive, Emery Cloth, Instructions
11A-AWK	AT Wheel Kit	Replacement All-Terrain Wheel Kit (2 wheels/axle) for Good Buddy II only



Accessory Kit  
Attaches to Rodder  
Frame For Easy Access





*Good*  
**BUDDY®**  
Fiberglass Conduit Rodder

## Detach or Fold Frame For Transport Into Confined Areas

- 300' and 400' lengths
- Folds to 10" width for carrying into manholes
- Reel detaches from frame for increased functionality in confined spaces.
- Frame handle for easier transport and handling
- Friction brake and safety roller feed
- Operates vertically or horizontally
- Accessory Kit Included

29"H x 29"L x 27"W (Folds to 10" Width)

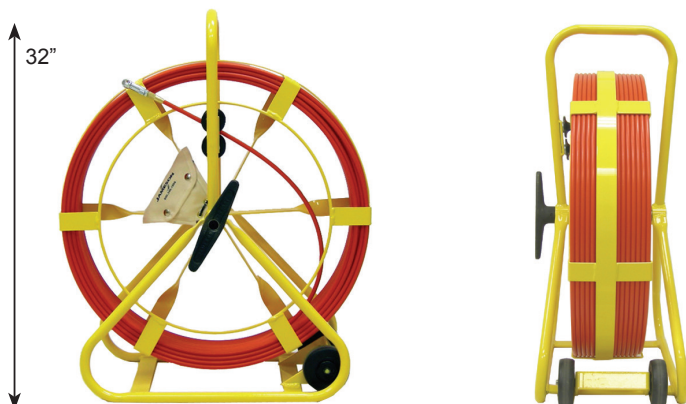


*Good*  
**BUDDY® II**  
Fiberglass Conduit Rodder

## Increased Rod Length For Longer Runs

- 400', 500' and 600' lengths
- Oversized wheels support weight of longer rod
- Frame handle and wheels for transport
- Friction brake and safety roller feed
- Operates vertically or horizontally
- Accessory Kit Included

39"H x 32"L x 18"W



*Good*  
**BUDDY® III**  
Fiberglass Conduit Rodder

## Smaller Frame For Maximum Portability

- 300' and 400' lengths
- Wheels and frame handle for transport
- Slimmer frame than GB or GB II
- Friction brake and safety roller feed
- Operates vertically or horizontally
- Accessory Kit Included

32"H x 28"L x 13"W





## Rod Or Fish Conduit 4" Or Larger

Heavy duty non-conductive rodder is ideal for manhole-to-manhole work or long-run cable pulls. With the ability to operate vertically or horizontally, the Big Buddy has the versatility to handle the toughest jobs.

- Drag brake and safety feed eye to control pay out.
- 10" Bending Radius
- 1,000- lb Pull/Tensile Strength
- Includes End Ferrule and Pulling Eye
- Accessory Kit sold separately
- Dimensions: 47.5" x 44" x 20"



**1/2"**  
**OD ROD**  
.375" Core



Part Number	Big Buddy®
11-38-400M	400' X 1/2" Big Buddy
11-38-500M	500' X 1/2" Big Buddy
11-38-600M	600' X 1/2" Big Buddy
11-38-800M	800' X 1/2" Big Buddy
11-38-1000M	1,000' X 1/2" Big Buddy
11-38-1500M	1,500' X 1/2" Mega Buddy

*Rod is marked in 5' increments.  
Add 'MM' to part number for metric  
measure (1m increments).*

Mega Buddy features 1,500'  
Rod and All Terrain Wheels  
for Longer Cable Pulls

## Big Buddy® Accessories

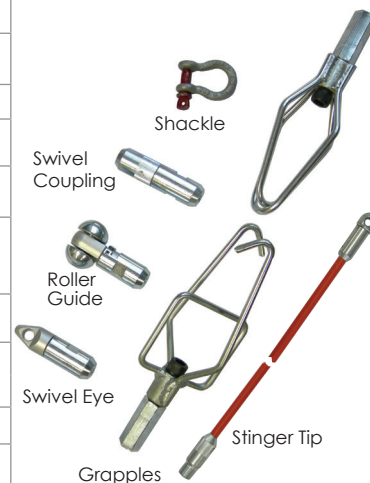


Repair Kit Attaches to Rodder Frame  
for Easy Access



Replacement All Terrain Wheel

Part Number	Accessories
11-38-RK	Repair Kit 2 Splice Ferrules, End Ferrule, Emery Cloth, Adhesive, Canvas Pouch
11-139	Swivel Eye Attaches pull line to rod
11-141	Roller Guide Guides rod around bends, sweeps, misalignments, wires
11-142	Shackle Fitting Use with swivel eye for larger pulling loop to attach pulling eye
11-143	Swivel Coupling Connects two rods when single length is not long enough; provides rotation when pulling line or wire
11-148	Rod Grapple Set Connects two rodgers from opposite directions
11-25-6ST	6' Stinger Tip Guides rod through bends, sweeps and misalignments
11-25-8ST	8' Stinger Tip Guides rod through bends, sweeps and misalignments
11-140	Splice Repair Kit Splice Ferrule, Adhesive, Emery Cloth
11-146	End Ferrule Repair End Ferrule, Adhesive, Emery Cloth
11-AWK	Wheel Kit All-Terrain Wheel Kit (2 wheels/axle) for Big and Mega Buddy





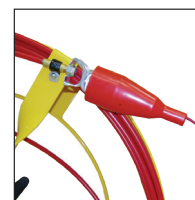
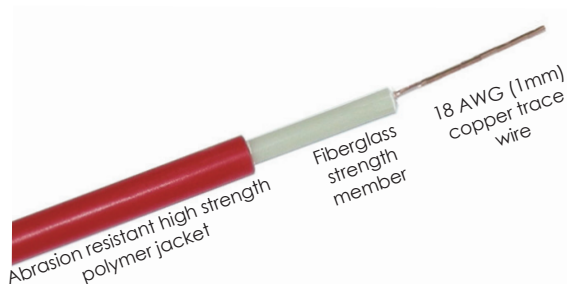
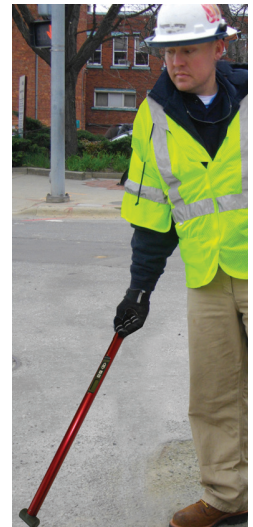
## Trace Underground Pipe Without Digging

- Less Disruption To Roads And Landscapes
- Minimal Pavement Breakage, Excavation, Restoration

Connecting a signal transmitter to the Duct Hunter™ energizes the unit with a specific frequency. When the energized Duct Hunter™ rod is pushed into underground pipe, the signal radiates outward through the soil to the surface.

A signal receiver detects the frequency applied to the Duct Hunter™, allowing the entire buried utility pipe to be traced and marked continuously from above ground by one man without digging. Rod's ferrule attaches to sonde, roller guide or pulling eye

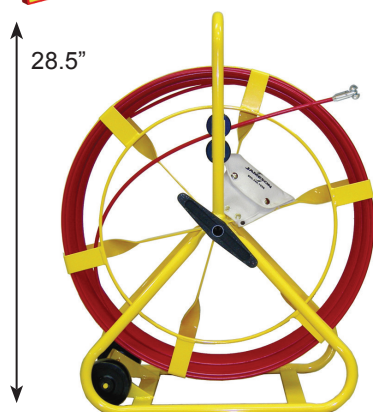
- Trace to depths up to 10'
- Locate sewer laterals to confirm no cross bore has occurred
- Locate ductile iron, plastic, tile or concrete pipe
- Accessory kit included
- Bend Radius: 5/16" Rod has 6" Bend; 7/16" Rod has 9" Bend
- Rigid frame and wheel construction



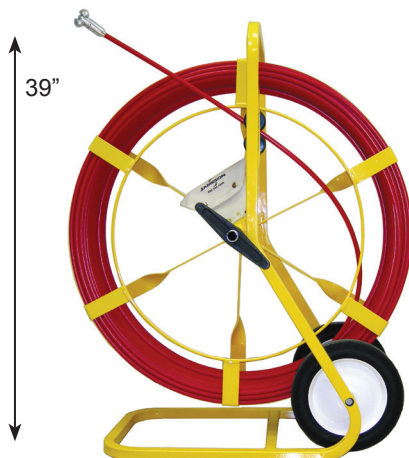
Attach alligator clip from standard field transmitter to Duct Hunter rod bolt. Attach the other transmitter clip to ground spike.

The copper wire inside rod is energized with an electromagnetic signal detectable above ground with a hand-held signal receiver.

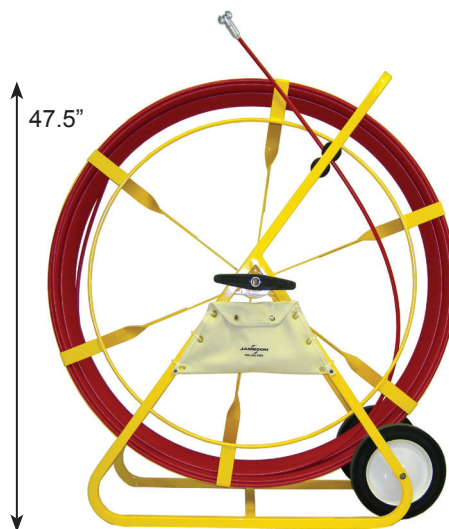




5/16" Rod  
300'-400'  
28.5" x 24" x 11"



**5/16"**  
**OD ROD**  
5/16" Rod  
500'-800'  
39" x 32" x 18"



**7/16"**  
**OD ROD**  
7/16" Rod  
500'-1,000'  
47.5" x 44" x 20"

Duct Hunter	Rod Diameter	Length	Recommended Conduit Size
12-516-300	5/16"	300'	2" - 4"
12-516-400	5/16"	400'	2" - 4"
12A-516-500	5/16"	500'	2" - 4"
12A-516-600	5/16"	600'	2" - 4"
12A-516-700	5/16"	700'	2" - 4"
12A-516-800	5/16"	800'	2" - 4"
13-716-400M-AWK *	7/16"	400'	4" or Larger
13-716-500	7/16"	500'	4" or Larger
13-716-600	7/16"	600'	4" or Larger
13-716-600M-AWK *	7/16"	600'	4" or Larger
13-716-800	7/16"	800'	4" or Larger
13-716-1000	7/16"	1000'	4" or Larger

\* With All Terrain Wheels  
Male end ferrule thread 3/8"-16

## Duct Hunter™ Accessories



Replacement All Terrain  
Wheels



Accessory Kit



Fiberglass Stinger Tip



Flexible Leader



Roller Guide with Spring Adapter

7/16" Duct Hunter	5/16" Duct Hunter	Accessories	
13-716-AK	12-516-AK	Accessory Kit	Roller Guide, End Ferrule, Splice Ferrule, 2 Adhesive, 2 Emery Cloth, Canvas Pouch
9-141	9-141	Roller Guide	Guides rod through bends, sweeps, misalignments and wires; Increases contact with pipe on lead end of rod to improve overall signal strength
9-171	9-171	Roller Guide with Spring Adapter	Heavy duty spring permanently attached to swivel roller guide helps push rod past difficult bends or debris in pipe
12-162	12-162	Flexible Leader	Guides rod through bends, sweeps, misalignments
9-25-12ST	9-25-12ST	12" Fiberglass Stinger Tip	Guides rod through bends, sweeps and misalignments
9-25-24ST	9-25-24ST	24" Fiberglass Stinger Tip	
9-139	9-139	Swivel Eye	Attaches pull line to rod
13-146	12-146	End Ferrule Repair Kit	End Ferrule, Adhesive, Emery Cloth, Instructions
13-140	12-140	Splice Repair Kit	Splice Ferrule, Adhesive, Emery Cloth, Instructions
11A-AWK	11A-AWK	Wheel Kit	All-Terrain Wheel Kit (2 wheels/axle) - Does not fit 300'-400' Duct Hunter model





## Trace Small Conduit or Pipes

Connecting a signal transmitter to the Duct Hunter™ energizes the unit with a specific frequency. When the energized Duct Hunter™ rod is pushed into pipe, the signal radiates outward to the surface.

A signal receiver detects the frequency applied to the Duct Hunter™, allowing the pipe to be traced inside walls, floors or underground.

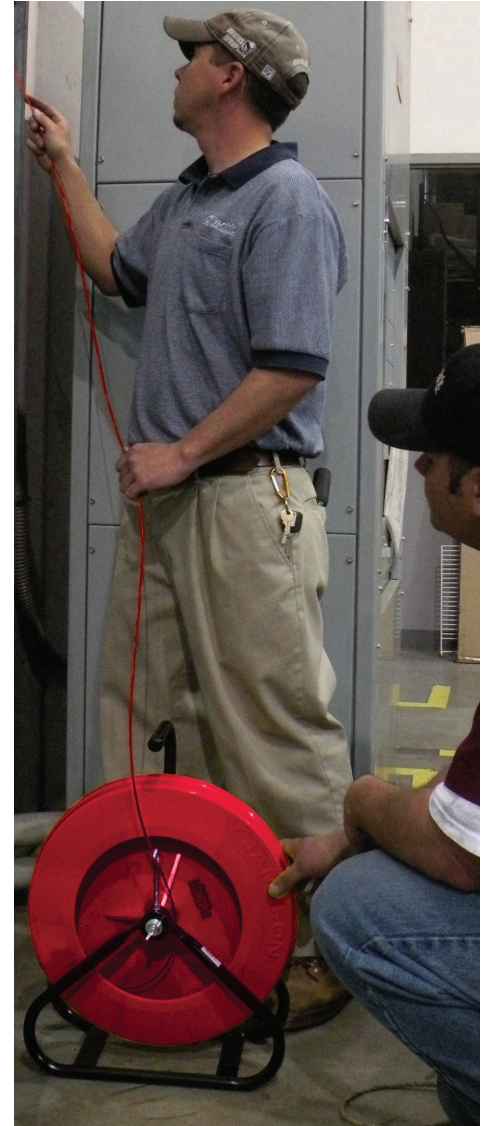
- Locate Fiber Optic Cables In PVC Pipe Without Tracer Wire
- Fiber To The Home Applications - Locate Fiber Optic Mini-Duct
- Plumbing Applications - Fiberglass Will Not Rust
- Trace Sewer Laterals (Up To 4" In Diameter) To Avoid Cross Bores
- Handle And Lightweight Frame For Easy Transport
- 3/16" Rod Has 2.5" Bend Radius - 1/8" Rod Has 1.75" Bend Radius
- 3/16" Rod End Ferrule - Standard 1/4"-20 Thread
- 1/8" Rod End Ferrule - #10-32 Thread
- Includes Accessory Kit
- Dimensions: 22" X 17" X 7"



Duct Hunter	Rod Diameter	Length	Recommended Conduit Size
15-316-100	3/16"	100'	1/2" - 1-1/2"
15-316-150	3/16"	150'	1/2" - 1-1/2"
15-316-200	3/16"	200'	1/2" - 1-1/2"
15-316-250	3/16"	250'	1/2" - 1-1/2"
15-316-300	3/16"	300'	1/2" - 1-1/2"
15-18-100	1/8"	100'	1/2" - 1"
15-18-150	1/8"	150'	1/2" - 1"
15-18-200	1/8"	200'	1/2" - 1"



Accessory Kit Mounts on Canister's Frame For Easy Access



Accessories	
15-163	Flexible Leader with Ball Tip - Guides rod around bends, sweeps, misalignments and wires
15-146	End Ferrule Repair Kit - End Ferrule, Adhesive, Emery Cloth
15-140	Splice Repair Kit - Splice Ferrule, Adhesive, Shrink Tube, Emery Cloth
15-160	Pulling Eye - Attaches to end fitting of rod so pull line can be attached to rod
15-168	Sonde Adapter
15-360	End Ferrule
15-316-AK	3/16" Accessory Kit: Flexible Spring Leader Tip, End Ferrule, Splice Ferrule, Pulling Eye, Adhesive, Emery Cloth, Canvas Pouch
15-18-AK	1/8" Accessory Kit: Flexible Spring Leader Tip, End Ferrule, Splice Ferrule, Pulling Eye, Adhesive, Emery Cloth, Canvas Pouch

## Live Tracer®

### Traceable Rodder Locates Live Water Lines From Meter To Main

Traceable rodder features fiberglass rod with tracer wire and Stuffing Box that does not leak water up to 125 PSI.

Use with transmitter and receiver to trace service lines from the customer's meter to the main water line or to the home.

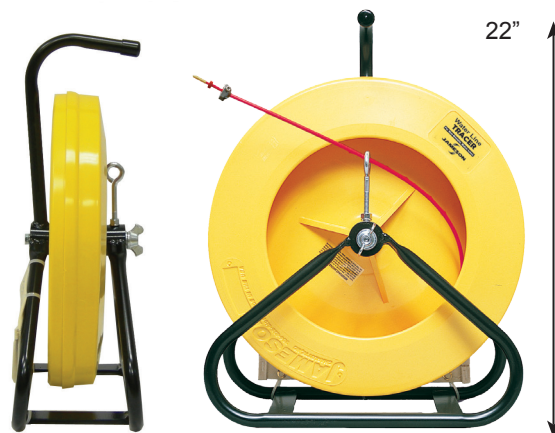
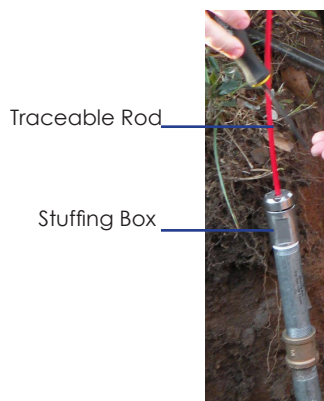
- Locate any plastic pipe without a tracer wire
- Stuffing box can be attached to yoke, which holds meter, with an adapter.

Accessory Kit Included

## 125 PSI Rating



**Accessory Kit Included with Live Tracer**  
Canvas Bag, Stuffing Box, 3 Screws, 6 O-Rings,  
Rod Lubricant, Hex Key Driver, Adhesive,  
Replacement Bullet Tip



Part Number	Live Tracer and Accessories
15-316-100-WL	3/16" X 100' Water Tracer Kit
15-316-150-WL	3/16" X 150' Water Tracer Kit
15-316-200-WL	3/16" X 200' Water Tracer Kit
15-316-250-WL	3/16" X 250' Water Tracer Kit
15-316-300-WL	3/16" X 300' Water Tracer Kit
15-18-150-WL	1/8" X 150' Water Tracer Kit
15-18-300-WL	1/8" X 300' Water Tracer Kit
15-SB	Stuffing Box for 3/16" W/3 Screws, 6 O-Rings
15-WIPE	Lubricated Wipes
15-146-GW	Bullet Tip Repair Kit
15-146-GW-T	Tapered Bullet Tip Repair Kit
15-170-GW	O-Ring, 12 Pack for 15-SB
16-170-516	O-Ring, 12 Pack for 12-SB
15-172	Cap Screw for Stuffing Box, 3-Pack





## Live Tracer Water Main

### Live Tracer™ For Water Mains Locate Live Plastic Mains

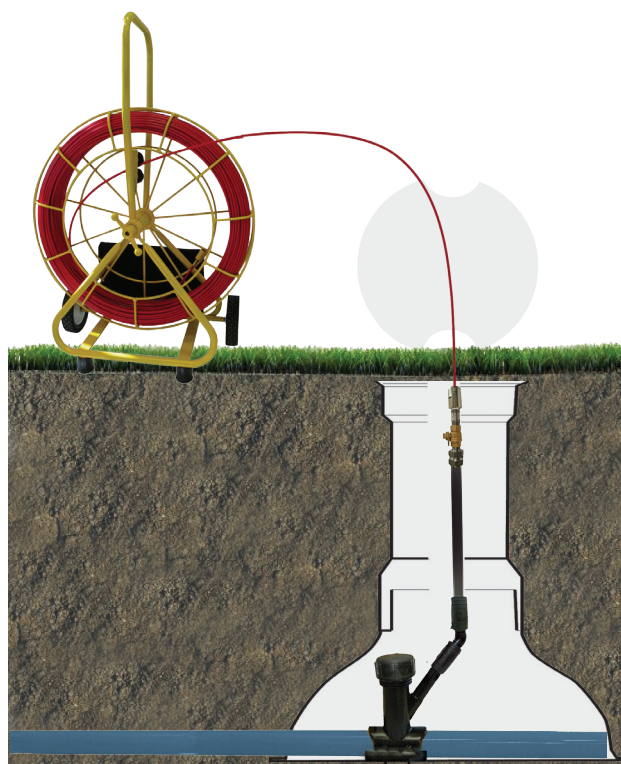
Will Not Leak While Feeding Rod Into Live Main

Trace Main From Above Ground With Transmitter  
And Receiver

Less Disruption To Roads And Landscapes

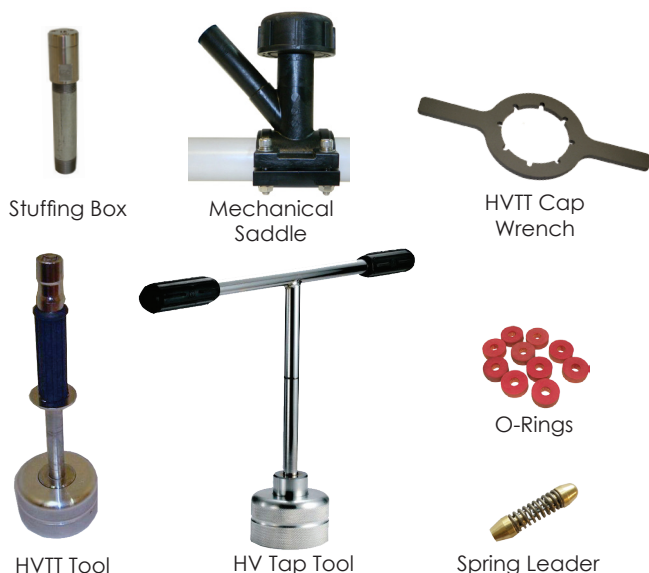
Minimal Pavement Breakage, Excavation And  
Restoration

#### For Tracing Non-Metallic Pipe



**Live Tracer Rodder** Features 1/4" Fiberglass Rod With Tracer  
Wire, Stuffing Box and Accessory Kit

**Accessory Kit** Canvas bag mounts to rodder's frame for  
easy access to: Stuffing Box, O-Rings, Rod Lubricant, Hex  
Key Driver, Adhesive, End Ferrule, Spring Leader, 3 Screws



**Coming Soon**  
**Mechanical Vertical Insertion Saddles**



Live Tracer and Accessories	
16-14-600-WL	Live Tracer for Water Main: 1/4" X 600' Locating Rodder
16-2-TEE-M	Mechanical Saddle for 2" IPS Pipe - <i>Coming Soon</i>
16-4-TEE-M	Mechanical Saddle for 4" IPS Pipe - <i>Coming Soon</i>
16-6-TEE-M	Mechanical Saddle for 6" IPS Pipe - <i>Coming Soon</i>
16-2-HVTAP	HV Tap Tool, 2" Saddle
16-HVTAP	HV Tap Tool, 4" and 6" Saddles
16-HVTTR	HVTT Tool, 4" & 6" Saddles - Required When Using 45° Elbow on Tee Outlet. <i>Does not include ratchet handle.</i>
16-CW	HVTT Cap Wrench
16-146	End Ferrule Repair Kit for 1/4" Gas Tracer
16-169	Spring Leader
16-170	O-Ring Replacements, 10 ct., for SB-16
16-SB	Stuffing Box for 1/4" Rod with 3 Screws, 6 O-Rings
16-172	3-Pack Replacement Screws for Stuffing Box (16-SB & 12-SB)
15-WIPE	Lubricating Wipes For Feeding Rod into Stuffing Box

Contact Our Customer Service Department  
For Additional Information

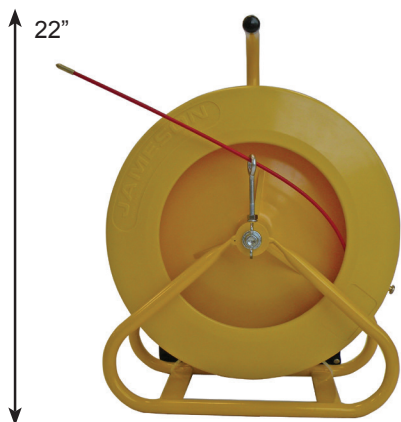


## Live Tracer®

### Traceable Rodder Locates Live Plastic Gas Service Lines From Meter To Main

- Stuffing Box attaches to any riser
- No blow-by while feeding rod into live line up to 125 PSI
- Small bullet tip guides rod from riser to service transition
- Use with transmitter & receiver to trace gas line from above ground
- Available with 1/8" rod to get past 90° elbow
- Dimensions: 22" X 17" X 7"

*Field evaluated by GTI*



**NO Blow By  
To 125 PSI**



#### Live Tracer For Gas Service Lines With Bullet Tip

15-316-100-GL	3/16" X 100'
15-316-150-GL	3/16" X 150'
15-316-200-GL	3/16" X 200'
15-316-250-GL	3/16" X 250'
15-316-300-GL	3/16" X 300'
15-316-325-GL	3/16" X 325'
15-18-150-GL	1/8" X 150'
15-18-300-GL	1/8" X 300'

#### Live Tracer For Gas Service Lines With Flexible Tip

Navigates difficult transitions and stab fittings; guides rod through Lyco fittings in 1/2" pipe.

15-18-150-GLFT	1/8" X 150' with Flexible Tip
15-18-300-GLFT	1/8" X 300' with Flexible Tip

#### Live Tracer Accessories And Parts

15-316-SB-KIT	Accessory Kit with Stuffing Box, 3/16"
15-SB	Stuffing Box 3/16", 3 Screws, 6 O-Rings
15-146-GW	Bullet Tip Repair Kit for 3/16"
15-146-GW-T	Tapered Tip for 3/16"
15-170-GW	O-Ring, 3/16", 12 Pack
15-WIPE	Lubricated Wipes
15-18-SB	Stuffing Box, 1/8"
15-18-146-GW	Bullet Tip Repair for 1/8".
15-18-168	Flexible Tip for 1/8" Live Tracer. Navigates difficult transitions and stab fittings; guides rod through Lyco fittings in 1/2" pipe.
15-18-170-GW	O-Rings, 1/8", 12-Pack



Contact Our Customer Service Department  
For Additional Information





## Traceable Rodder With Electrofusion or Mechanical Insertion Tee

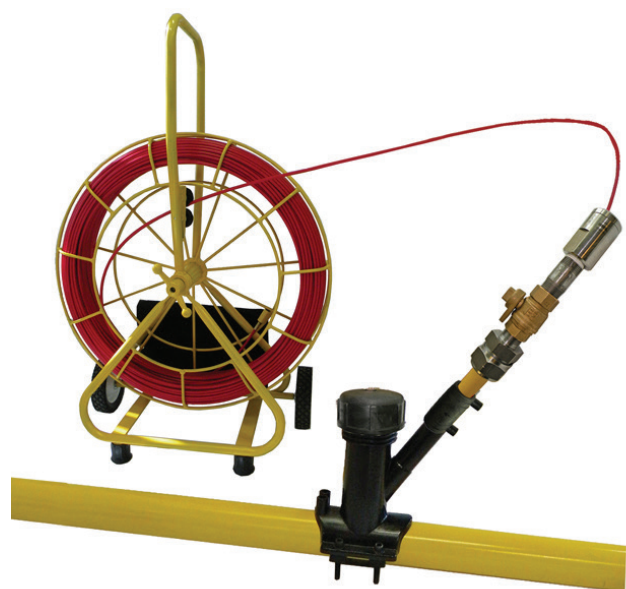
Connect a signal transmitter to Live Tracer to energize unit with a specific frequency. When energized rod is pushed into pipe, the signal radiates out to surface where a signal receiver detects the frequency.

The entire buried pipe can be traced and marked continuously from above ground by one man without digging.

Live Tracer Rodder Features 1/4" Fiberglass Rod With Tracer Wire, Stuffing Box, and Accessory Kit.



- No Blow-By While Feeding Rod Into Live Main up to 125 PSI
- Trace Main From Above Ground With Transmitter & Receiver
- Less Disruption To Roads And Landscapes
- Minimal Pavement Breakage, Excavation And Restoration
- Electrofusion or Mechanical Tees
- **Now Available With Rod Marked In 5' Increments**



## Insertion Tees For 2", 4", 6" Gas Mains

- Attach Stuffing Box To Electro-Fusion or Mechanical Insertion Tap Tee (*Patented*)
- Insert Traceable Rod Into Main
- Use With Transmitter And Receiver To Trace Main From Above Ground



Live Tracer Traceable Rodders With Accessory Kit	
16-14-600-GL	Live Tracer for Gas Main 1/4" X 600'
16-14-600M-GL	Live Tracer for Gas Main 1/4" X 600' With rod marked in 5' increments

Contact Our Customer Service Department For Additional Information About Accessories and Jameson's Certified Electrofusion Distributors



## Wand Signal Receiver

Part Number 17-100R

Compact, lightweight locator for one-hand operation. LCD display and function keys are located on wand and easy to operate.

Ideal for short runs. Locates energized conductive paths such as iron, steel and copper water lines, gas lines, tracer wire by plastic pipe, copper, telephone/TV cables and Jameson's Duct Hunter Traceable Rodders.

- 2 active frequencies
- 2 operating modes: Line tracing (82 kHz) and sonde locating (512 Hz).
- Includes carrying case, manual, batteries.



## Cable & Pipe Signal Receiver

Part Number 17-300R

Ergonomic design for one-hand operation. Highly visible display features depth indication with push of a button.

Locate any energized conductive path - iron, steel and copper water lines, gas lines, tracer wire by plastic pipe, telephone/TV cables, copper and aluminum wire, conduit, power lines and Duct Hunter Traceable Rodders.

- 4 active frequencies: 512 Hz, 8 kHz, 33kHz, 82 kHz.
- 2 passive frequencies: 60 Hz power and RF
- Operating Modes: Peak, null and sonde
- Includes case, manual, conductive clips, batteries.

## Transmitter

Part Number 17-500T

Digital transmitter energizes conductive paths and supports Jameson's receivers. Includes low frequencies for direct connect long runs, higher frequencies for tracing Duct Hunter rod in plastic pipes or inductive modes.

Lightweight unit with easy-to-read high contrast LCD screen.

Includes carrying case, batteries, ground spike and wire leads.

Active frequencies: 512 Hz, 8 KHz, 33KHz & 82 KHz. 1 Watt Max.



Part	Locators and Transmitter
17-100R	Wand Signal Receiver
17-100RTK	Wand Signal Receiver with Transmitter
17-300R	Cable and Pipe Receiver
17-300RTK	Cable and Pipe Receiver with Transmitter
17-500T	Transmitter





**Sonde #14-169**

## Locate Underground Pipe

Use with Jameson's Buddy® Rodders and Fish Tapes or Duct Hunter™ Traceable Rodders to Locate in Underground Pipes or Conduit. Adapters attach rod to sonde.



Little Buddy 3/16" Rod



Solid Adapter 10-170



Mini Duct Hunter 3/16" Rod  
3/16" Rod Fits Sonde without Adapter



Easy Buddy 1/4" Rod



Solid Adapter 6-170



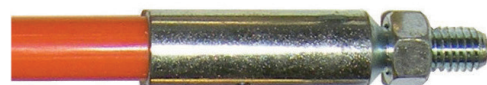
Good Buddy 3/8" Rod



Double Female 12-170



Solid Adapter 9-170



Big Buddy 1/2" Rod



Heavy Duty Flexible Adapter with Chain 9-169

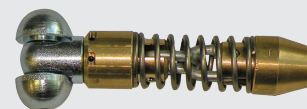


Duct Hunter 5/16" Rod



Duct Hunter 7/16" Rod

Part Number	Adapters
10-170	Solid Adapter, Fits Sonde and 3/16" Little Buddy
6-170	Solid Adapter, Fits Sonde and 1/4" Easy Buddy Rod
12-170	Solid Double Female Adapter, Fits 3/8", 1/2", 5/16", 7/16" Rod and M-10 Male Sonde
9-170	Solid Adapter, Fits Sonde and 3/8", 1/2", 5/16", 7/16" Rod
9-171	Flexible Adapter with Roller Guide, Fits 3/8", 1/2", 5/16", 7/16" Rod
9-169-M10	Heavy Duty Flexible Adapter with Chain, 3/8-16, Fits Sondes with M10 Stud and Jameson's 3/8", 5/16", 7/16" and 1/2" Buddy Rodders
9-169	Heavy Duty Flexible Adapter with Chain, Fits 3/8" and 1/2" Buddy Rodders; 5/16" and 7/16" Duct Hunters
12-165	Kit: Sonde 14-169 and Adapter 9-169
14-169	Sonde, Operates at 512 HZ, 1/4-20 Female Thread. .12 lbs, 2.25" X .75"



9-171 Flexible Adapter with Roller Guide

Guides rod through bends in pipe and helps prevent breaking end of rod when inserting into pipe. Fits 3/8", 1/2", 5/16", 7/16"



12-165 Kit: Adapter 9-169 & Sonde 14-169



## Sheave Designed To Protect ADSS Cable And Other Jacketed Fiber During Installation

- Spring loaded cable guard (patented) eliminates delays caused by cable and pull tape derailing. 2" Opening allows pulling grips to pass through easily.
- Lightweight, reinforced polymer weighs significantly less than aluminum and steel models. Reduces installation fatigue, one-man set up
- Easy latching mechanism for single-handed operation
- High strength, impact resistant unit is more durable than aluminum
- Chemical, UV, corrosion resistant construction for longer life
- Electrically insulated\* for safety
- Lift hoist swivels 360° and rotates 180° for unrestricted mounting and maneuverability

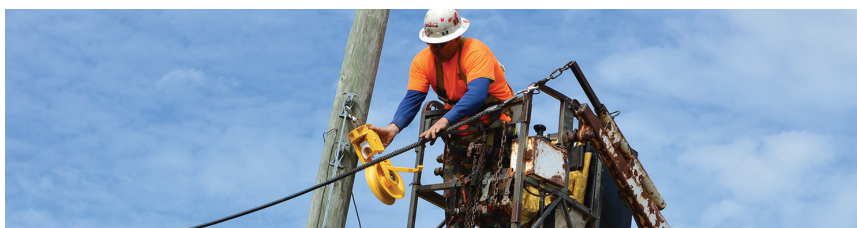
\* 100 KV/Ft Dielectric Withstand Stainless Steel Fasteners

### Cable and Pull Tape Stay On Wheel

### Levels Itself, Strapping Optional

### Lightweight

24" Model Weighs 40% Less Than  
Lightest Aluminum Model



8" Model For Straight Pulls  
24" Model For Set Up,  
Take Down, Turns



Cable Capture  
Prevents Pull Table Or  
Cable Jumping Edge



Self Levels



Hook and Shackle  
Accessories

### Specifications

#### 24" Aerial Sheave:

Weight: 14 lbs. (6.35 kgs)  
Maximum Load Rated for 1,600 lbs.

#### 8" Aerial Sheave:

Weight: 8 lbs (3.63kgs)  
Maximum Load Rated for 1,600 lbs.

SHV-8	8" Fiber Install Sheave
SHV-24	24" Fiber Install Sheave
SHV-HK	Slip Hook Accessory
SHV-SS	Safety Shackle Accessory



## Making Cable Placement Easier

With guidance from professional linemen, Jameson developed cable placement tools for fiber optic and coaxial cable installation and maintenance. Working from the ground or in the air, our tools make cable construction easier and safer.

### Corner Blocks

Corner blocks evenly distribute pressure on coax or fiber cable when pulling around corners. Steel side plates with straight base act as a strut for increased strength.

60 degree model offers more versatility than standard 45 degree blocks.

Steel side plates can be replaced in the field.

Nylon axle bushings provide easier swivel and longer axle life. Adjustable keeper arm holds cable in place as it is pulled through block.

Aluminum rollers reduce friction, preventing potential heat build up and damage to synthetic rollers.



90 Degree	60 Degree	Corner Blocks All Nylon Rollers
80-591	80-161	Corner Block - Single
80-592	80-162	Corner Block - Dual
80-594	80-164	Corner Block - Quad

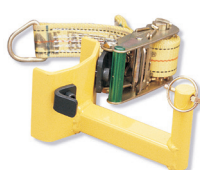
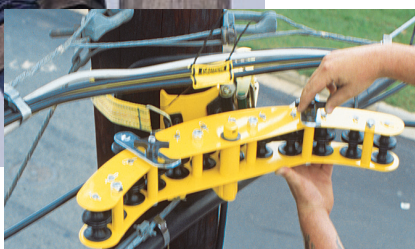
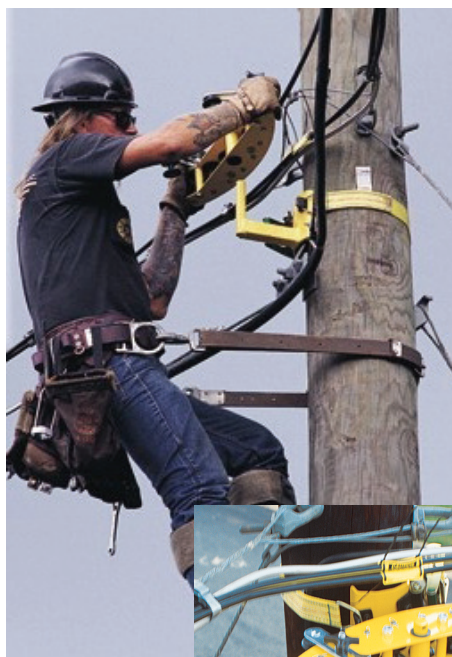
90 Degree	60 Degree	Corner Blocks with One Row Aluminum Rollers
80-591A	80-161-A	Corner Block - Single

### Pole Mount Brackets

Designed to save vertical space on crowded joint occupied poles, brackets are ideal for mounting corner blocks.

Nylon strap and ratchet make brackets easy to use and bracket is contoured to fit pole for maximum stability.

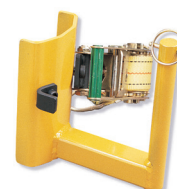
Ratchet strap will not damage existing cables and weighs less than chain straps. Can be adjusted to work from right or left hand side for convenient operation.



**70-101**  
Use With Single Row Corner Block



**70-102**  
Use With Dual Row Corner Block



**70-104**  
Use With Quad Row Corner Block



## Easy Rider™

Jameson overlap blocks are economical and lightweight, yet the high strength steel frame maintains cable alignment.

Easily snaps over a strand and cable package up to 2.25" in diameter. The 1.5" width provides convenient stacking when pushed by lasher.

Features a high, rounded bonnet to prevent block kicking under lasher. Stacks evenly. Non-binding roller axle allows rollers to "ride easily" and rotate smoothly.



90-400A  
**Easy Rider™ with  
Aluminum Roller**



90-400  
**Easy Rider® with  
Nylon Roller**

## Versa™ Blocks

Versa™ Blocks offer the versatility of stringing cable at midspan on new and existing overlap construction.

Offers easy cable placement from aerial buckets or the ground when used with Jameson lay-up sticks and wire raising tool.

Low profile frame reduces cable damage as it passes through block and wide keeper arm accommodates large cable bundles when used as overlap block.



90-100  
**Versa™ Block with  
Rubber Roller**  
For up to 1.5" cables.



90-100A  
**Versa™ Block with  
Aluminum Roller**  
For up to 2.5" diameter cable or  
bundles and winch lines.



## Pole Tag

For outside plant pole record systems.



Part Number	Aerial Tools
GTS2	Pole Tags for continuing property records



## Easy Height Measurement

Fiberglass poles offer fast, accurate one-person measuring of height clearances and horizontal distances. All measuring poles include carry bag and removable hook accessory. Ideal for overhead lines, telecommunications, railroad, CATV, bridges and structures.



Round Measuring Pole



Rectangular Measuring Pole



Oval Measuring Pole

Part Number	Retracted Length	Telescoping Measuring Poles
TP-125M	52"	25' Round Telescoping Measuring Pole, 5-Lb, English & Metric
TP-136M	59"	36' Round Telescoping Measuring Pole, 7-Lb, English & Metric
TP-25MH	66"	25' Rectangular Measuring Pole, 7-Lb, English Measure Only. Rectangular for increased stiffness, maintenance of hole alignment
TP-125N	58"	25' Oval Telescoping Measuring Pole, 5-Lb, English Measure Only. Oval for easy grip.
TP-25HK		Replacement Hook for Measuring Pole





## Safe, Convenient Storage

Jameson's heavy duty bucket mount tool holders offer safe, convenient storage for bucket truck tools.

Water repellent and UV resistant, holders withstand extreme weather conditions.



Adjustable clamp bracket allows tool holder to fit any size bucket, with or without liner, and mounts inside or outside bucket.



**24-14L**

### Chainsaw Scabbard with Removable Liner

Fits standard and hydraulic pistol grip chainsaws. Features a replaceable liner that protects scabbard from chainsaw heat and blade. Adjustable clamp bracket.



**24-14A**

### Chainsaw Scabbard

Fits standard and hydraulic pistol grip chainsaws. Adjustable clamp bracket



**24-18L**

### Fiberglass Chainsaw Holder With Removable Liner

Features high gloss gel coat finish to prevent fiberglass blooms and splinters. Fits standard and hydraulic pistol grip chainsaws. Adjustable clamp bracket.

**24-23**

### Long Reach Chainsaw Holder

Holds round and oval handled long reach chainsaws and gas powered pole pruners (standard and telescoping) for squirt boom trucks. Fixed mount. 18" X 13"



Part Number	Bucket Mount Tool Holders
24-14L	Chainsaw Scabbard with Removable Liner
24-14LIN	Replacement Liner for 24-14L
24-18L	Fiberglass Chainsaw Holder with Removable Liner
24-18LIN	Replacement Liner for 24-18L
24-23	Long Reach Chainsaw Holder - Fixed Mount





## 24-12A Impact Tool Holder

Features one-piece construction with adjustable clamp bracket. Accommodates most wrenches and drills.

## 24-12AH Impact Tool Holder with Scabbard

Expanded opening accommodates the most common wrenches and drills. Features two spare drill bit holders and adjustable clamp bracket.



## 24-15D Double Pocket Tool Holder

Inner pocket measures 6.25" X 2.25" X 17". Outer pocket measures 5.25" X 12.5" X 15"

- Thick neck and back for rigidity and strength.
- Tapered pocket edges for increased strength.
- Long back accommodates a variety of tools.
- Drain holes for moisture escape.
- Ribbed construction inside pocket base for increased strength when tools are dropped in pockets



## 24-25 Tool Board

Leather tool pouches and drop-in loops. Fixed bucket mount.  
22.5" X 18"



## 24-17 Tool Tray

Features removable dividers and fixed bucket mounts.  
23" X 14" X 8"

Part Number	Bucket Mount Tool Holders
24-12A	Impact Tool Holder
24-12AH	Impact Tool Holder with Scabbard
24-15D	Double Pocket Tool Holder
24-17	Tool Tray
24-25	Tool Board with Leather Tool Pouches



## Store Tools Outside The Bucket

Take the tools out of the bucket and mount them on the boom for safe, convenient access. Made from high impact plastic, Jameson's boom-mount tool holders can be strapped to round or square booms.



**24-02 Circular Saw Holder**  
12" X 9"



**24-04 Hydraulic Pruner Holder**  
12" X 13"



**24-03 Long Reach Chainsaw Holder**  
Fits most long reach chainsaws



## Boom Guard (24-03GUARD)

Protects boom from saw damage. Mount on boom in front of tool holder to avoid damaging boom when inserting tool into holder. 32" X 5"

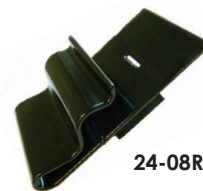


## Handle Unit For Boom Mount Tool Holders

All boom mount tool holders include the Jameson Handle Unit. This web strap and ratchet lock clamp fasten the hydraulic tool securely into a fixed position on the boom. Its rubberized liner prevents the tool handle from sliding out of the upper holder box. Fits round and square booms.



**24-09R Nylon Strap with Ratchet**



**24-08R Handle**

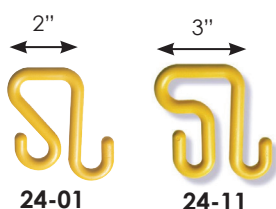
Part Number	Boom Mount Tool Holders
24-02	Circular Saw Holder with Locking Straps & Handle
24-04	Hydraulic Pruner Holder with Locking Straps & Handle
24-03	Long Reach Chainsaw Holder with Locking Straps & Handle
24-03GUARD	Boom Guard
<b>Replacement Parts</b>	
24-04R	Replacement Handle Unit (Handle, Strap & Ratchet)
24-08R	Handle Only
24-09R	5' Nylon Strap with Ratchet
24-02B	Saw Box with Strap & Ratchet
24-03B	Chainsaw Box with Strap & Ratchet
24-04B	Pruner Box with Strap & Ratchet



## Store and Organize Small Tools

Jameson tool bags feature reinforced sides and base to prevent sagging or water retention.

Available with inner and/or outer organizer pockets, bags can be mounted from the bucket with a rope hook or one of Jameson's high strength polymer "S" hooks.



S-Hooks attach canvas bags to aerial bucket lip. Molded from rugged, weather resistant polymer.



### 24-40 Bag Only

15 Inside Pockets, 2 Grommets for Hooks 15" X 7" X 10"



### 24-40S Bag & Two S-Hooks

15 Inside Pockets, 2 Grommets for Hooks 15" X 7" X 10"



### 24-41 Bag Only

### 24-41S Bag & Two S Hooks

15 Outside Pockets, Rope with Swivel Hook, Reinforced Hard Plastic Base, 2 Grommets for S Hooks 15" X 7" X 10"



### 24-42 Bag Only

### 24-42S Bag & Two S Hooks

13 Outside Pockets, Web Handles 2 Grommets for S Hooks 15" X 7" X 10"





## The Leader In Fiberglass Poles Since 1956

Jameson introduced the first fiberglass lay-up sticks in 1956 to meet the needs of telecommunication linemen. The strength and durability of fiberglass proved indispensable when lifting leak detection equipment overhead and soon replaced wooden poles as the industry standard.

Today, Jameson's pole line includes a variety of configurations, tools and accessories to serve telecommunication and CATV linemen, professional arborists and landscapers. By consistently providing the highest quality fiberglass poles, Jameson remains the professional's choice for line clearance and tree care.

All Jameson Poles Are Manufactured With A Polymer Protective Surface Veil To Prevent Fiber Blooming At Surface Due To Abrasion Or Ultra-Violet Light



Aircraft Grade Aluminum Ferrules With Exterior Leaf Spring Locking Button Provide A Secure Connection When Attaching Multiple Poles Or Tool Heads

### Choosing A Pole

- Select Pole Model Based On Typical Use - See Chart Below
- Select Configuration Based On Application (We Recommend Starting With A Base Pole) - Next Page
- Select Tool Head (Pruner, Pole Saw Or Accessory) With Adapter
- Attach Tool Head To Pole's Female Ferrule With Adapter
- For Additional Length, Attach Extension Pole(s) Into Base Pole

Pole Models					
	<b>JE Series</b>	<b>FG Series</b>	<b>BLITE</b>	<b>LS Series</b>	<b>Double Locking Telescoping Pole</b>
Typical Use	Line Clearance Aerial Construction	Professional Tree Care and/or Aerial Construction	Professional Tree Care The Ergonomic Choice for Prolonged Usage	Landscapers And Homeowners	Landscapers And Homeowners
Key Features	Foam Core Protects Against Moisture And Debris	Highest Strength. Industry Standard For Over 50 Years. Most Versatile.	Highly Durable Enamel Coating Lightest Weight	Light Duty Landscaping	Telescopes Saves Space
Dielectric Testing	Individually Tested To 100Kv Per Foot For 5 Minutes	Batch Tested To 100 Kv Per Foot For 5 Minutes	Batch Tested To 100 Kv Per Foot For 5 Minutes	No	No
Wall Thickness	Standard	Standard	Lowest	Low	Standard
Color	High Visibility Safety Yellow	Jameson Yellow	High Gloss Blue	Green	Jameson Yellow
Jameson Pole Models Can Be Used Together In A Variety Of Combinations - All Have Same Ferrules					

## Pole Configurations

Base Pole with Rubber End Cap and Female Ferrule



Extension Pole with Male Ferrule and Female Ferrule



Saw Head Pole with Male Ferrule and Permanently Mounted Saw Head for Attaching Saw Blade



Telescoping Pole with Female Ferrule

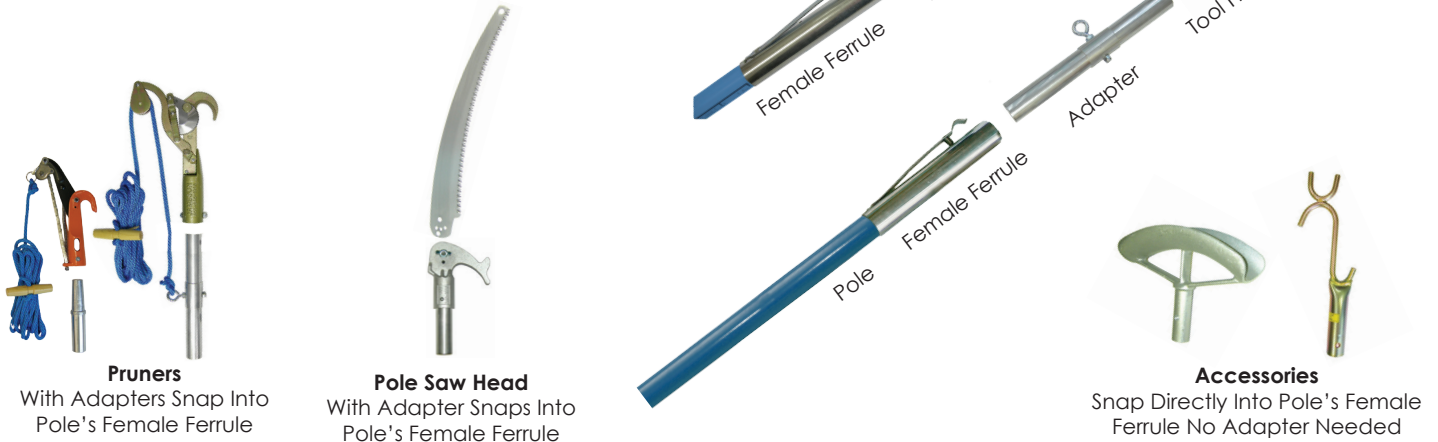


For Highest Performance And Safety, Jameson Recommends Using A Base Pole When Using One Pole Or Starting With Base Pole When Working With Multiple Poles.

## Unique Adapter and Pole Ferrule System

Makes it easy to change from a pruner head to pole saw head or pole lengths of 6' to 12'. The exterior leaf spring locking button on the ferrule offers a strong connection, whether attaching poles or tool heads.

This versatility saves time and money in the field.



## Pole Saw Options



### Pole and Accessory Compatibility

Model	Configuration	Base Pole	Extension Pole	Saw Head Pole	JA Pruners	PH Pruners	Saw Head With Adapter	Cable Lifter Accessory	Wire & Limb Raiser
JE, BL, FG, LS	Base		●	●	●	●	●	●	●
JE, BL, FG, LS	Extension	●	●	●	●	●	●	●	●
JE, BL, FG, LS	Saw Head	●	●	●	Only Saw Blade Can Be Mounted On Permanent Mount Saw Head Pole				
Telescoping	With Ferrule	We Do Not Recommend Attaching Additional Poles To Telescoping Pole			●	●	●	●	●





## JE and FG Fiberglass Poles

### Preferred For Aerial Construction And Line Clearance

Jameson's original foam core pole is the highest quality fiberglass pole available.

Foam core prevents debris and moisture build up inside pole and adds extra hoop strength and rigidity.

High visibility color.

Meets requirements of OSHA Subpart R 1910.269 (j)(1)(i):

**Every JE series pole is tested to 100KV per foot for 5 minutes.**

Not a "hot stick."

**JE Series**

**Safe-stik**  
FIBERGLASS  
SINCE 1956



Base Pole

Extension Pole

Sawhead Pole

Pole	6'	8'	10'	12'
Base	JE-6F	JE-8F	JE-10F	JE-12F
Extension	JE-6	JE-8	JE-10	JE-12
Sawhead	JE-6SFP	JE-8SFP	JE-10SFP	JE-12SFP

.110" Wall Thickness  
1.25" Pole Diameter  
2.6 Lbs  
Based On 6' Extension Pole



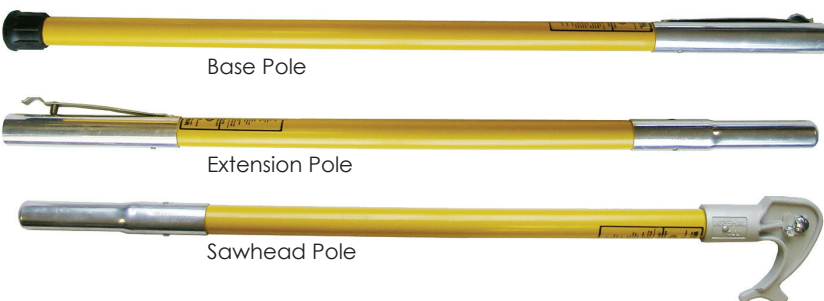
### Original Hollow Core Favorite Of Professional Arborists

Jameson's strongest and most popular pole is lighter than the JE series, offering greater control and exceptional bending strength.

**Batch tested to 100KV per foot for five minutes.**

Not a "hot stick."

**FG Series**



Base Pole

Extension Pole

Sawhead Pole

Pole	6'	8'	10'	12'
Base	FG-6F	FG-8F	FG-10F	FG-12F
Extension	FG-6	FG-8	FG-10	FG-12
Sawhead	FG-6SFP	FG-8SFP	FG-10SFP	FG-12SFP

.125" Wall Thickness  
1.25" Pole Diameter  
2.4 Lbs  
Based On 6' Extension Pole



For highest performance and safety, Jameson recommends a Base Pole when using one pole or starting with a Base Pole when working with multiple poles.  
Refer to "Pole Overview" for help determining what model and configuration you need.

## Lightweight Pole For Tree Trimming



**BLITE**

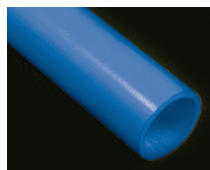
Jameson's thinnest walled pole is lightweight and easy to control, making it ideal for tree trimming.

Its lighter weight results in less fatigue during extended work periods and easier handling.

Durable, high gloss enamel coating for long life, easy cleaning, and prevention of fiber bloom.

**Batch tested to 100KV per foot for five minutes.**

Not a "hot stick."



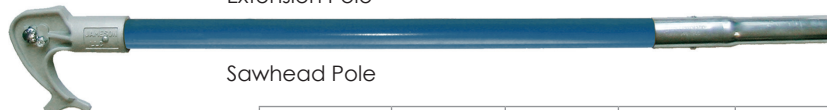
.075" Wall Thickness  
1.25" Pole Diameter  
1.6 Lbs  
Based On 6' Extension Pole



Base Pole



Extension Pole



Sawhead Pole

Pole	6'	8'	10'	12'
Base	BL-6F	BL-8F	BL-10F	BL-12F
Extension	BL-6	BL-8	BL-10	BL-12
Sawhead	BL-6SFP	BL-8SFP	BL-10SFP	BL-12SFP

## The Light Duty Pole For Landscapers



**LS Series**

Economical pole for landscapers and homeowners.

Lightweight, flexible.



.10" Wall Thickness  
1.25" Pole Diameter  
1.9 Lbs  
Based On 6' Extension Pole



Base Pole



Extension Pole



Sawhead Pole

Pole	6'	8'	10'	12'
Base	LS-6F	LS-8F	LS-10F	LS-12F
Extension	LS-6	LS-8	LS-10	LS-12
Sawhead	LS-6SFP	LS-8SFP	LS-10SFP	LS-12SFP

For highest performance and safety, Jameson recommends a Base Pole when using one pole or starting with a Base Pole when working with multiple poles.

Refer to "Pole Overview" for help determining what model and configuration you need.



## Saves Space - Adjusts To Fit The Job

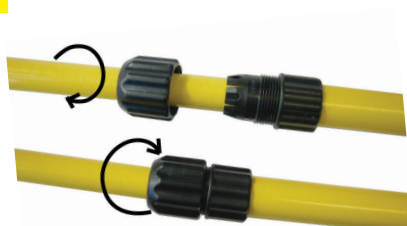
The leader in fiberglass poles brings you a high quality, lightweight telescoping pole that saves space and adjusts to fit your job.

Double locks (internal lock and external cap) ensure poles will not collapse, offering a secure connection at any length for maximum versatility and safety.

Lightweight, durable fiberglass will not crimp under high stress like aluminum poles.

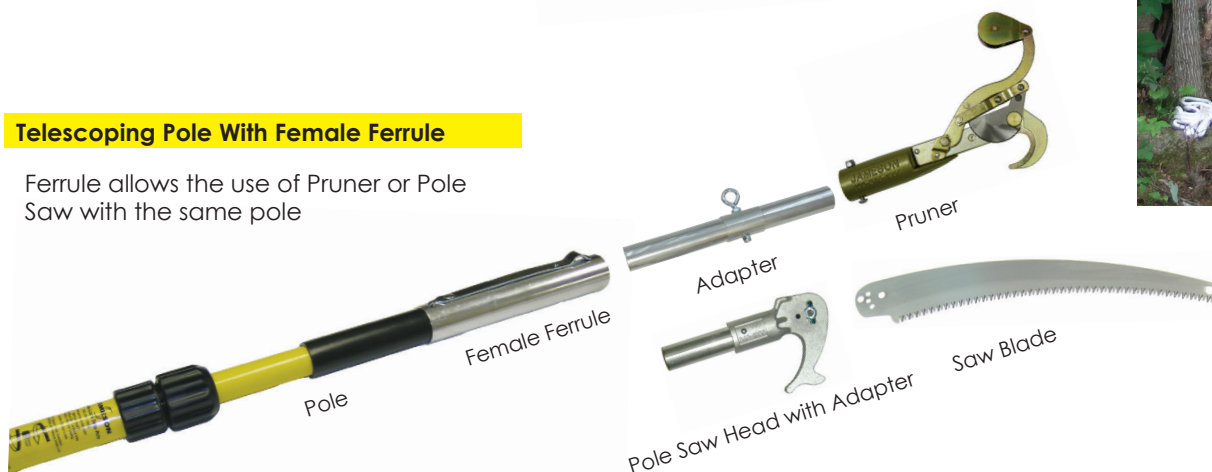
### Double Lock™ System

Extend pole sections to desired length, twist top pole to engage internal lock then tighten outer cap lock to secure.



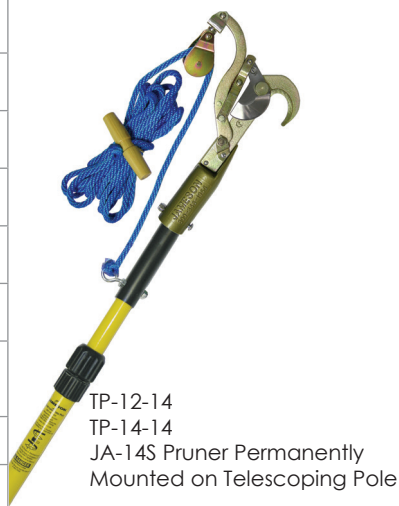
### Telescoping Pole With Female Ferrule

Ferrule allows the use of Pruner or Pole Saw with the same pole



TP-12-S and TP-14-S  
Sawhead Permanently  
Mounted On Pole

Part Number	Double-Lock™ Telescoping Poles
TP-12-14	6-12' Telescoping Pole with Fixed Mount JA-14S Pruner & Rope
TP-14-14	7-14' Telescoping Pole with Fixed Mount JA-14S Pruner & Rope
TP-12-S	6-12' Telescoping Pole with Fixed Mount SB-TE13 Tri-Cut Saw Blade
TP-14-S	7-14' Telescoping Pole with Fixed Mount SB-TE13 Tri-Cut Saw Blade
TP-12-11	6-12' Telescoping Pole with Fixed Mount PH-11 Pruner, SB-1T Saw Blade, Rope
TP-14-11	7-14' Telescoping Pole with Fixed Mount PH-11 Pruner, SB-1T Saw Blade, Rope
TP-12F	6-12' Telescoping Pole with Female Ferrule
TP-14F	7-14' Telescoping Pole with Female Ferrule
TP-12PKG1	TP-12F Telescoping Pole, JA-14 Pruner, Adapter, Rope, PS-3FP Pole Saw Head and 13" Tri-Cut Blade
TP-12	6-12' Telescoping Pole with Blank End
TP-14	7-14' Telescoping Pole with Blank End

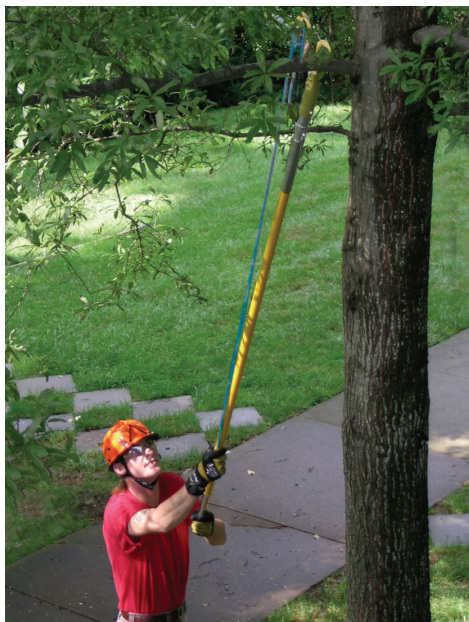


TP-12-14  
TP-14-14  
JA-14S Pruner Permanently  
Mounted on Telescoping Pole



TP-12-11  
TP-14-11  
PH-11 Pruner Permanently  
Mounted on Telescoping Pole

For safety, Jameson does not recommend attaching additional poles or Big Shot to Telescoping Poles.

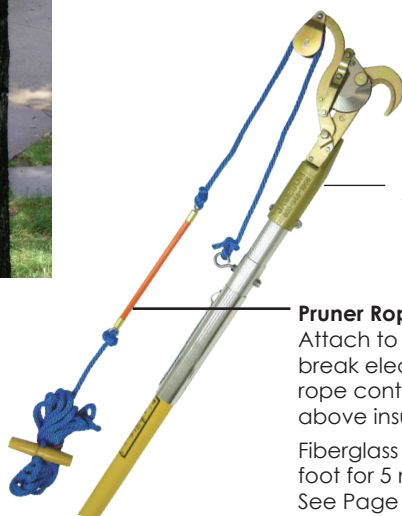


## Heavy Duty Side-Cut Pruners For Professional Arborists

The original JA-14 has a 1.25" cutting capacity. The Big Mouth Pruner has a larger 1.75" hook opening.

All JA Pruners feature a removable upper spring pin and blade bolt for easy blade replacement and sharpening.

- Forged steel components for added strength
- Enhanced spring for smoother cutting action
- Raised hook edge reduces blade drag



**JA-14  
Fixed Pulley Pruner**

### Pruner Rope Insulator

Attach to pruner rope to break electrical current if rope contacts energized lines above insulator.

Fiberglass tested to 100KV per foot for 5 minutes.  
See Page 39



**JA-14 S  
Swivel Pulley Pruner**

Swivel provides versatility in pull direction and more leverage with less pressure on pulley arm.  
*Shown with Rope and Adapter*



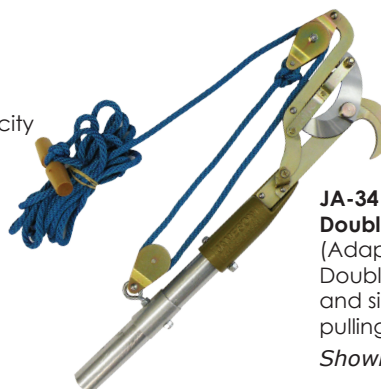
**JA-14 DP  
Double Pulley Pruner**

(Adapter Included)  
Double pulley for additional leverage and significant reduction in required pulling force.

*Shown with Rope*



**JA-34  
Big Mouth 1.75" Cut Pruner**  
*Shown with Rope and Adapter*



**JA-34 DP  
Double Pulley Big Mouth Pruner**

(Adapter Included)  
Double pulley for additional leverage and significant reduction in required pulling force.

*Shown with Rope*

Part Number	JA Pruners
JA-14	Standard Fixed Pulley Pruner
JA-14S	Swivel Pulley Pruner
JA-14DP	Double Pulley Pruner
JA-34	Big Mouth Pruner
JA-34DP	Double Pulley Big Mouth Pruner - Includes Adapter
PHA-14	Adapts JA-14, JA-14S or JA-34 Pruner To Pole
PHA-34DP	Replacement Adapter for JA-34DP Pruner (Note: This pruner is sold with adapter)

Part Number	Pruner Accessories
PR-20	Pruner Rope, 5/16" X 20' with Handle
PRI-7.5	Pruner Rope Insulator, 7"
PRI-12	Pruner Rope Insulator, 12"
32-18	Leather Pruner Blade Guard

Part Number	JA Pruner Packages
P-14-A	JA-14 Pruner and Adapter
P-14-AS	JA-14S Pruner and Adapter
P-34-A	JA-34 Pruner with Adapter
PH-14-PKG	JA-14 Pruner, Adapter and Rope
PH-14S-PKG	JA-14S Pruner, Adapter and Rope
JA-14DP-PKG	JA-14DP Pruner, Adapter and Rope
PH-34-PKG	JA-34 Pruner, Adapter and Rope
JA-34DP-PKG	JA-34DP Pruner, Adapter and Rope

Not For Use On Or Near Live Wires



## The Standard With Telecommunications

Jameson's steel PH pruners have become the standard in telecommunications and CATV for trimming around aerial lines or drops.

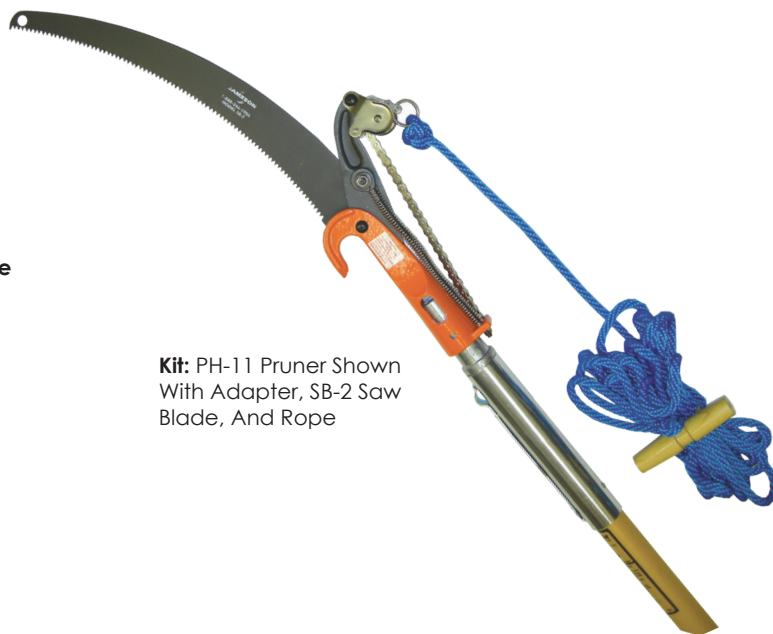
Both models feature a chain pulley and center cut blade.



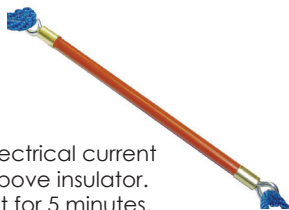
**PH-11 Pruner with 1" Center Cut**  
*"Bell B Pruner"*  
 Uses SB-1T or SB-2 Saw Blade  
 Shown with Rope and Adapter



**PH-12 Pruner with 1.5" Center Cut**  
**Does Not Accommodate Saw Blade**  
*"Bell C Pruner"*  
 Shown with Rope and Adapter



**Kit:** PH-11 Pruner Shown  
 With Adapter, SB-2 Saw  
 Blade, And Rope



### Pruner Rope Insulator

Attach to pruner rope to break electrical current if rope contacts energized lines above insulator. Fiberglass tested to 100KV per foot for 5 minutes.

Part Number	PH Pruner Packages
P-11-A	PH-11 Pruner with PHA-11 Adapter
P-12-A	PH-12 Pruner with PHA-12 Adapter
PH-11-PKG	PH-11 Pruner, Adapter, SB-1T Saw Blade, Rope, Canvas Scabbard
PH-12-PKG	PH-12 Pruner, Adapter and Rope

Part Number	Pruner Accessories
PR-20	Pruner Rope, 5/16" X 20' with Wooden Handle
PRI-7.5	Pruner Rope Insulator, 7"
PRI-12	Pruner Rope Insulator, 12"
32-18	Leather Pruner Blade Guard

Part Number	PH Pruners
PH-11	1" Center Cut Pruner
PH-12	1.5" Center Cut Pruner
<b>Adapters</b>	
PHA-11	Adapts PH-11 Pruner to Pole (Aluminum)
PHA-12	Adapts PH-12 Pruner to Pole (Aluminum)
WPA-11	Wooden Adapter - Adapts PH-11 Pruner, #20 Gilmore Pole Saw, Fanno #5

Not For Use On Or Near Live Wires



## Corrosion Resistant, Lightweight Aluminum Pole Saw Heads

Low profile design maneuvers easily in dense foliage. Convenient hook pulls loose limbs and branches free.



### PS-3FP Pole Saw Head

#### Center Blade Mount; Mounting Pin

Mounting Pin for easy blade replacement without tools. Includes pole adapter.

Fits Saw Blade SB-1C and all Barracuda Tri-Cut Saw Blades



### PS-3 Pole Saw Head Casting

Offset Blade Mount; Carriage Bolt Includes pole adapter.

Fits Saw Blade SB-2



### PS-3FPS1

Pole Saw Head with 13" Tri-Cut Blade

### PS-3FPK

Pole Saw Head, 13" Tri- Cut Blade, and Leather Scabbard

### PS-3SB

Pole Saw Head and SB-2 Blade

### SBC-2

Canvas Cover

Using SB-UC and UA-1 Adapters, saw blade unit snaps directly onto pole's ferrule.

### SB-UC Saw Blade Adapter

Adapt SB-2 or Tri-Cut Blades to any manufacturer's universal head hot stick or Jameson's UA-1 Adapter.

### UA-1 Universal Tool Adapter

Adapts any manufacturer's universal head tools to Jameson poles.

Part Number	Pole Saw Heads
PS-3	Pole Saw Head - Offset Blade Mount, Carriage Bolt & Adapter
PS-3FP	Pole Saw Head - Center Blade Mount, Mounting Pin & Adapter
<b>Pole Saw Kits (Head with Saw Blade)</b>	
PS-3K	PS-3 Pole Saw Head, SB-2 Saw Blade and Leather Scabbard
PS-3SB	PS-3 Pole Saw Head, SB-2 Saw Blade
PS-3FPS1	PS-3FP Pole Saw Head and SB-13TE Saw Blade
PS-3FPS2	PS-3FP Pole Saw Head and SB-16TE Saw Blade
PS-3FPK	PS-3FP Pole Saw Head, SB-13TE Saw Blade and Leather Scabbard
SB-UC	Saw Blade Adapter
UA-1	Universal Tool Adapter
SBL-2	Leather Scabbard
SBC-2	Canvas Cover

Not For Use On Or Near Live Wires



## Tri-Cut and Single Edge Saw Blades

Jameson's line of conventional 16" saw blades have long been an industry standard with CATV and telecommunication companies for line clearance.

Expanding our product line to meet the demands of professional arborists, Jameson introduced Barracuda™ Tri-Cut Saw Blades.

Hard-chrome plated with impulse hardened teeth, tri-cut blades provide a quicker, cleaner cut with less wear on the blade than traditional blades.



**SB-13TE**  
13" Tri-Cut Saw Blade



**SB-13TE-GUL**  
13" Tri-Cut Blade with Gullets  
Gullets allow chips and debris to exit cut.



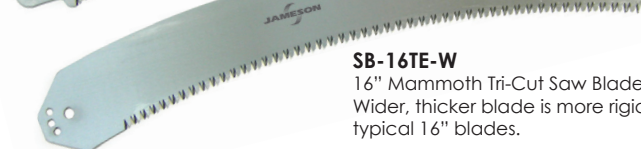
**SB-13TE-H**  
13" Tri-Cut Blade with Hook  
Prevents slipping off or pulling out of cut; pulls small branches or vines.



**SB-16TE**  
16" Tri-Cut Saw Blade



**SB-16TE-GUL**  
16" Tri-Cut Blade with Gullets



**SB-16TE-W**  
16" Mammoth Tri-Cut Saw Blade  
Wider, thicker blade is more rigid than typical 16" blades.



**SB-1C**  
16" Chrome Blade  
Fits PS-3FP Pole Saw Heads



**SB-1T**  
16" Teflon Coated Blade  
Fits PH-11 Pruner



**SB-2**  
16" Teflon Coated Blade  
Fits PS-3 Pole Saw Head and PH-11 Pruner



**SB-5U**  
SB-2 Blade with SB-UC  
Universal Adapter

Tri-Cut Blades Fit PS-3FP Saw Head, SB-UC Universal Saw Blade Casting and Hand Saw Handles

Part Number	Barracuda Tri-Cut Saw Blades
SB-13TE	13" Tri-Cut Saw Blade
SB-13TE-GUL	13" Tri-Cut Saw Blade with Gullet Edge
SB-13TE-H	13" Tri-Cut Saw Blade with Hook
SB-16TE	16" Tri-Cut Saw Blade
SB-16TE-GUL	16" Tri-Cut Saw Blade with Gullet Edge
SB-16TE-W	16" Mammoth Tri-Cut Saw Blade <i>Does not fit hand saw</i>
SB-13TEU	13" Tri-Cut Saw Blade with SB-UC Adapter
SB-16TEU	16" Tri-Cut Saw Blade with SB-UC Adapter

Part Number	16" Conventional Saw Blades
SB-1C	16" Chrome Saw Blade, Fits PS-3FP Saw Head
SB-1T	16" Teflon Coated Saw Blade, Fits PH-11 Pruner
SB-2	16" Teflon Coated Saw Blade, Fits PS-3 & PH-11 Pruner
SB-5U	SB-2 Saw Blade with SB-UC Adapter



## Tri-Cut Hand Saws Offer A Clean Cut

Featuring Jameson's Barracuda™ impulse hardened tri-cut teeth, our hand saws provide an efficient and clean cut. Blades are replaceable on soft grip and wood handle hand saws.

Available with ergonomic soft grip handle: Features index finger stop for safety and opening for lanyard line. Handle available in Orange or Green.

Also available with wooden handle



Rubber Belting Scabbard



Leather Scabbard



Ergonomic Handle - 13" Blade



Ergonomic Handle - Hook Blade



Wooden Handle



**pole<sup>2</sup>hand**  
saw

Snap Onto Pole to Reach Out-Of-The-Way Limbs  
Snap Off Pole To Use As Hand Saw

## 8" Tri-Cut Folding Saw

Blade folds into metal handle with rubber grip. Thumb lock automatically engages when closed or extended. All rubber and metal design for superior durability. Lanyard line opening in handle. Available with nylon sheath that fastens to belt or carabiner.



Part Number	Hand Saws
HS-13TE	13" Hand Saw <i>Specify Handle Color "G" or "O"</i>
HS-16TE	16" Hand Saw <i>Specify Handle Color "G" or "O"</i>
HS-13TE-S	13" Hand Saw with Leather Scabbard <i>Specify Handle Color</i>
HS-13TE-GUL	13" Hand Saw with Gullet Edge Blade <i>Specify Handle Color</i>
HS-16TE-GUL	16" Hand Saw with Gullet Edge Saw Blade <i>Specify Handle Color</i>
HS-13TE-H	13" Hand Saw with Hook <i>Specify Handle Color</i>
HS-16TE-H	16" Hand Saw with Hook <i>Specify Handle Color</i>
HS-H	Hand Saw Handle <i>Specify Handle Color</i>
HS-16TE-S	16" Hand Saw with Leather Scabbard <i>Specify Handle Color</i>
HS-13TE-WH	13" Hand Saw with Wooden Handle
HS-16TE-WH	16" Hand Saw with Wooden Handle
HSPS-13TE-O	Pole Hand Saw with 13" Blade, Orange
HSPS-13TE-G	Pole Hand Saw with 13" Blade, Green
HSPS-16TE-O	Pole Hand Saw with 16" Blade, Orange
HSPS-16TE-G	Pole Hand Saw with 16" Blade, Green
HS-13SL	13" Leather Scabbard for Hand Saw
HS-16SL	16" Leather Scabbard for Hand Saw
HS-13SB	13" Rubber Belting Scabbard for Hand Saw
HS-16SB	16" Rubber Belting Scabbard for Hand Saw
SB-8TE-F	8" Folding Saw
SB-8TE-FS	Nylon Sheath for 8" Folding Saw
SB-8TE-FPKG	8" Folding Saw with Nylon Sheath



## Popular Combinations in One Kit

Pre-packaged kits contain everything needed for trimming trees: Poles, Pruner, Pole Saw and/or Hand Saw. A variety of combinations make it easy to find the best fit for your needs.

### JE Series Kits With Pole Adapters

Pole Adapters Allow User To Replace Pruner Head Or Pole Saw Quickly And Easily Without Tools, Using The Same Pole

JE-14K	JA-14 Pruner with Pole Adapter & Pruner Rope Two 6' JE Extension Poles, One 6' JE Base Pole
JE-11K	PH-11 Pruner with Pole Adapter & Pruner Rope SB-1T Saw Blade, Canvas Scabbard Two 6' JE Extension Poles, One 6' JE Base Pole
JE-6PKG-2	JA-14 Pruner, Pole Adapter, Rope, Saw Head, 13" Tri-Cut Saw Blade, Wire & Limb Raiser, 13" Tri-Cut Hand Saw 6' JE Extension Pole, 6' JE Base Pole
JE-6PKG-7	JA-34DP Big Mouth Double Pulley Pruner With Adapter, Pruner Rope Saw Head, 16" Tri-Cut Saw Blade 6' JE Extension Pole, 6' JE Base Pole
JE-6PKG-8	JA-34DP Big Mouth Double Pulley Pruner With Adapter And Pruner Rope PS-3FP Saw Head, 16" Tri-Cut Saw Blade Hand Saw with Orange Handle, Limb Raiser, Two 6' JE Extension Pole, One 6' JE Base Pole

### FG Series Kits With Pole Adapters

Pole Adapters Allow User To Replace Pruner Head Or Pole Saw Quickly And Easily Without Tools, Using The Same Pole

FG-6PKG-1	JA-14 Pruner with Adapter & Pruner Rope 13" Tri-Cut Saw Blade, Saw Head 6' FG Extension Pole, 6' FG Base Pole
FG-6PKG-2	JA-14 Pruner with Adapter & Pruner Rope 13" Tri-Cut Saw Blade, Pole Saw Head Wire Raiser, 13" Tri-Cut Hand Saw 6' FG Extension Pole, 6' FG Base Pole
FG-6PKG-3	JA-14DP Pruner with Adapter & Pruner Rope 6' FG Extension Pole, 6' FG Base Pole
FG-6PKG-7	JA-34DP Big Mouth Double Pulley Pruner, Adapter And Pruner Rope PS-3FP Pole Saw Head, 16" Tri-Cut Saw Blade 6' FG Extension Pole, 6' FG Base Pole
FG-11K	PH-11 Pruner with Adapter & Rope SB-1T Saw Blade, Canvas Scabbard Two 6' FG Extension Poles, One 6' FG Base Pole
FG-12K	PH-12 Pruner with Adapter & Pruner Rope Two 6' FG Extension Poles, One 6' FG Base Pole
FG-14K	JA-14 Pruner with Adapter & Pruner Rope Two 6' FG Extension Poles, One 6' FG Base Pole

### LS Series Kits - Permanent Mount

#### No Pole Adapters - Permanently Mounted Tool Heads

LS-6PKG-1	JA-14 Pruner <b>Permanently Mounted on</b> 6' LS Pole with Male Ferrule on Bottom 6' LS Base Pole Pruner Rope
LS-6PKG-4	JA-14 Pruner <b>Permanently Mounted on</b> 6' LS Pole with Male Ferrule on Bottom 6' LS Base Pole and 6' LS Extension Pole Pruner Rope
LS-6PKG-2	JA-14 Pruner <b>Permanently Mounted on</b> 6' LS Pole with Male Ferrule on Bottom 6' LS Base Pole & 6' LS Sawhead Pole with PS-3FP Head Pruner Rope

### LS Series Kits With Pole Adapters

Pole Adapters Allow User To Replace Pruner Head Or Pole Saw Quickly And Easily Without Tools, Using The Same Pole

LS-8PKG-1	JA-14 Pruner, Adapter & Rope PS-3FP Pole Saw Head, 13" Tri-Cut Blade (SB-13TE) 8' LS Base Pole
LS-6PKG-3	JA-14 Pruner, Adapter & Rope PS-3FP Pole Saw Head 6' LS Base Pole and 6' LS Extension Pole
LS-6PKG-6	16" Tri-Cut Saw Blade (SB-16TE) 6' LS Sawhead Pole with PS-3FP Head 6' LS Base Pole and 6' LS Extension Pole
LS-6PKG-5	JA-14DP Pruner, Adapter & Rope PS-3FP Pole Saw Head, 13" Tri-Cut Blade (SB-13TE) 6' LS Base Pole and 6' LS Extension Pole
LS-6PKG-7	PH-11 Pruner, Adapter & Rope One 6' LS Base Pole and Two 6' LS Extension Poles
LS-6PKG-8	PH-12 Pruner, Adapter & Rope One 6' LS Base Pole and Two 6' LS Extension Poles

### BL Series Kits With Pole Adapters

Pole Adapters Allow User To Replace Pruner Head Or Pole Saw Quickly And Easily Without Tools, Using The Same Pole

BL-8PKG-1	JA-14 Pruner, Adapter & Rope PS-3FP Pole Saw Head, 16" Tri-Cut Blade (SB-16TE) One 8' B-Lite Base Pole and Two 8' B-Lite Extension Poles
BL-8PKG-5	JA-34DP Big Mouth Double Pulley Pruner Pole Adapter & Rope PS-3FP Pole Saw Head One 8' B-Lite Base Pole and Two 8' B-Lite Extension Poles
BL-6PKG-1	JA-14 Pruner, Adapter & Rope PS-3FP Pole Saw Head, 16" Tri-Cut Blade (SB-16TE) One 6' B-Lite Base Pole and Two 6' B-Lite Extension Poles
BL-6PKG-5	JA-34DP Big Mouth Double Pulley Pruner Pole Adapter & Rope PS-3FP Pole Saw Head One 6' B-Lite Base Pole and Two 6' B-Lite Extension Poles

Pole Storage Bag



Heavy duty vinyl bag conveniently carries poles and protects them during transport or storage. Features four 6' pole pockets, outside pruner head pocket and carrying straps.

Saw Blade Adapter

Allows direct mounting of saw blade to pole without saw head. Use SB-UC and UA-1 Adapters together to snap into pole's ferrule.



**SB-UC Saw Blade Adapter**  
Adapt SB-2 or Tri-Cut Blades to any manufacturer's universal head hot stick or Jameson's UA-1 Adapter.

**UA-1 Universal Tool Adapter**  
Adapts any manufacturer's universal head tools to Jameson poles.

Limb And Wire Raiser

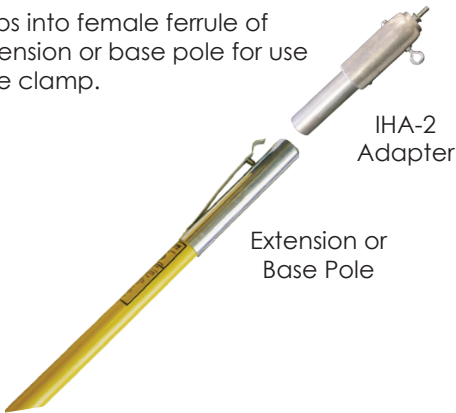
Plated steel wire raiser is designed for placing cable on rollers, construction blocks and hardware during line construction. Conveniently pulls or lifts branches out of dense foliage. No adapter needed. Not for use on or near live wires.



Accessories Snap Directly Into Pole's Ferrule

Inductive Clamp Adapter

Adapter snaps into female ferrule of Jameson extension or base pole for use with inductive clamp.



IHA-2 Adapter

Extension or Base Pole

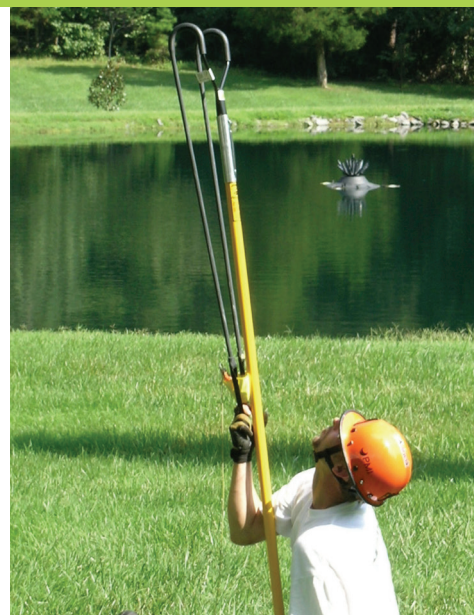
Part Number	Accessories
WR-1	Wire & Limb Raiser, Fits JE, FG and LS Poles
FG-6-3W	Kit: WR-1 Wire Raiser with Two 6' FG Extension Poles, One 3' FG Extension Pole, One 6' FG Base Pole
IHA-2	Inductive Head Clamp Adapter
SB-UC	Saw Blade Adapter
UA-1	Universal Tool Adapter
B-6V	Pole Storage Bag

Not For Use On Or Near Live Wires



## Big Shot

Shoots throw bag and line through tree limbs, delivering line up to 200'. For safety and effectiveness, use the Big Shot with two 4' Jameson poles or one 4' and one 6' pole. We recommend starting with a Base Pole.



## Soil Probe

Locate underground utility boxes, buried conduit and tree roots.

- Solid 1/2" fiberglass rod for increased strength and flexibility.
- Solid 1" fiberglass handle with double-coated PVC finger grips.
- Reinforced steel tip to penetrate ground.



### Big Shot Carrying Case

Hard case for Big Shot and poles

## Hand Lopper



## Hawk Bill Knife



Polished, high carbon steel blade is ice-tempered for longer life. Ergonomic handle has an expanded end to protect hand from slipping. 8.5" total length, including 3" blade.

Ideal for cutting root balls on plants or trees.

Part Number	Accessories
BS1	Big Shot
BS-CC	Big Shot Carrying Case
FG-BS-KIT1	Big Shot Package: Big Shot, 4' FG Extension Pole, 4' FG Base Pole
SP-48	48" Soil Probe
HL-BP200	Hand Lopper
32-70-C	Hawk Bill Knife, Charcoal
32-70-O	Hawk Bill Knife, Orange



**STUBBY  
LIGHT®**

## Compact, High Intensity Fluorescent Lighting For Small Workspaces

Twin fluorescent lamps are protected by patented bulb sockets, end caps and handles designed to absorb impact in addition to a shatterproof tube.

Electronic ballast technology offers:

- Eliminates cumbersome starter canisters
- Reduced heat output
- Flicker free lighting
- Does not interfere with tone test equipment

Meets ASTM specifications for water resistance.



Part Number	Stubby Light® 110 Volt Lights	Power Cord Length	Weight (lbs)
31-1325E	13 Watt	25'	2.7
31-1350E	13 Watt	50'	4.5
31-2425E	24 Watt	25'	3.6
31-2450E	24 Watt	50'	5.3
31-3625E	36 Watt	25'	4.0
31-3650E	36 Watt	50'	5.8
31-5025E	50 Watt	25'	4.2
31-5050E	50 Watt	50'	5.9



Two large, flexible hanging hooks come standard on 50, 36 and 24 watt lights. 13 watt light has one hanging hook.

## 12 Volt Stubby® Light

### Fluorescent Battery Powered Light

Ideal for emergency applications when power is not available; equipment rooms or basements where water is a concern; utility and supervisor vehicles.

- 13 Watt Stubby Light® with 10' coiled cord and plug adapter
- Operates off battery pack or direct 12 volt power source
- Battery Pack features "Smart Charger" that prevents overcharging
- Battery housed in nylon pouch on adjustable belt

Part Number	Rechargeable Battery Pack Light
31-131012VCC	13 Watt Light with 10' Coil Cord and Plug Adapter
31-BP-SC	12 Volt, 7.4 Ah Battery Pack with 110V Charger. Operates light 7 hours
31-1310-BP-SC	13 Watt Light with 7.4 Ah Battery Pack (31-BP-SC)





## Bright, Durable Fluorescent Lighting

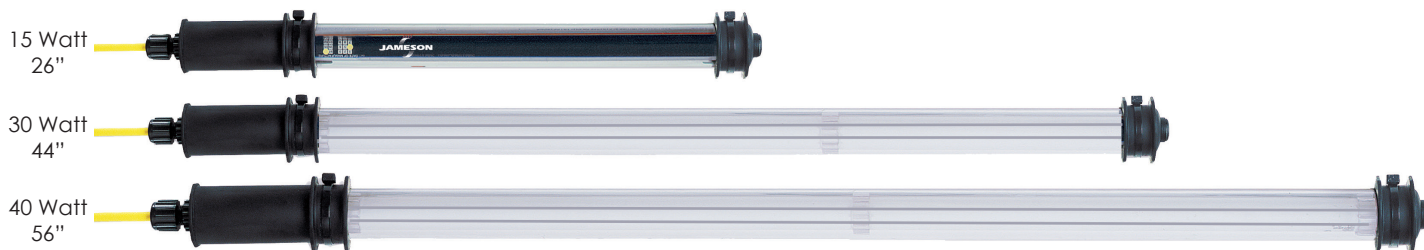
Single fluorescent lamp is protected by patented bulb sockets, end caps and handles designed to absorb impact in addition to a shatterproof tube.

Electronic ballast technology offers:

- Eliminates cumbersome starter canisters
- Reduced heat output
- Flicker free lighting
- Does not interfere with tone test equipment

**Handi-light®**

Meets ASTM specifications for water resistance.



Two large, flexible hanging hooks come standard on all Handi-light models

Part Number	Handi-Light® 110 Volt Lights	Power Cord Length	Weight (Lbs)
30-1525E	15 Watt, 110 Volt	25'	3.3
30-1550E	15 Watt, 110 Volt	50'	5.1
30-3025E	30 Watt, 110 Volt	25'	4.1
30-3050E	30 Watt, 110 Volt	50'	6.0
30-4025E	40 Watt, 110 Volt	25'	6.6
30-4050E	40 Watt, 110 Volt	50'	8.7

## Stubby® and Handi-Light® Accessories

### Inverter

Operates light off vehicle's 12 Volt DC power source



### Vinyl Carry Bag

Protects and transports light



Part Number	Accessories
23-15	29" Vinyl Carry Bag
23-30	46" Vinyl Carry Bag
23-40	60" Vinyl Carry Bag
29-01	12 Volt DC Inverter



## LED Light, 12 Volt

8 Watt  
12 VDC (5-14 VDC Range)  
10' Heavy Duty Coil Cord with Plug Adapter for use with Jameson Battery Pack or Vehicle Power Source.  
Light: 15" X 3.25"

## LED Light, AC Powered

10 Watt  
120 - 240 VAC, 50/60 Hz  
Light: 15" X 3.25"

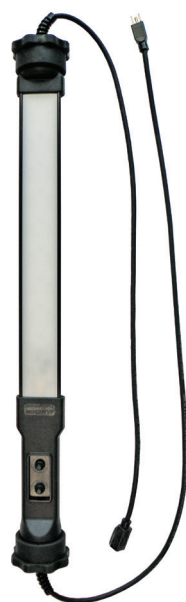
## LED Handheld Work Light

To meet the demand for greener lighting, Jameson developed LED work lights with the same design durability of our fluorescent models. LED technology offers reduced power consumption and a longer life.

- Compact design
- Convenient flexible hanging hook.
- Shock-absorbing handle and end cap combined with shatter proof tube shield for rugged durability.

Part Number	LED Work Lights
31-825-LED	LED Light, AC Powered, 25' Power Cord
31-850-LED	LED Light, AC Powered, 50' Power Cord
31-12VDC-LED	LED Light, 12 Volt
31-BP-LED-12VDC	Kit: 12 Volt Light with Battery Pack

## Stringable Shelter Lights



## Stringable Lighting

Ideal for emergency, first responder, military or new construction applications that require portable lighting.

Use an individual light to illuminate a confined space or string lights together to illuminate a larger area.

## STRING LIGHT

Part Number	String Lights and Accessories
31-5004M-IP	General Purpose String Light, 110 Volt, Hanging Straps
31-501-US	Multi-Volt String Light, 110-230 Volt, Hanging Straps
31-400B	LED String Light
23-30-B	Vinyl Carry Bag - Holds 2 Lights
31-MC	Transport Case - Holds 4 Lights

Specialized military lights available.  
Contact our customer service department to request a Military Lighting Catalog



## Tripod Wide Area Light

Featuring three light heads with 48 total LEDs, Jameson's Tripod Light offers intense, adjustable area lighting.

The 3 light heads offer 360° tilt and rotation to provide lighting for a variety of applications.

The adjustable tripod folds to a compact 59" height for convenient storage.

Available with heavy duty transport case.

Light Head Features:

- 16 LEDs Per Light Head
- Low Power Consumption, Long Life LEDs
- Water, Impact, And Shatter Resistant
- Housing Is Anodized Aluminum For Corrosion Protection (Mil-A-8625)
- Instant On
- Flicker Free
- Nema 4X Rated
- Retractable Coiled Cables
- 50' Power Cord



Part Number	Description
31-WA-3HD16-TR	Wide Area LED Light with Tripod
31-WA-3HD16-TR-C	Wide Area LED Light with Tripod in Transport/Storage Case
31-WA-3HD16-TR-B	Wide Area LED Light with Tripod in Storage Bag
31-ANCHOR KIT	Set of 3 Sand Bags and 3 Leg Stakes
31-WA-CASE	Transport Case Only for Wide Area LED Light
31-WA-BAG	Storage Bag Only for Wide Area LED Light

Specifications - Lights	
Power	160 Watts
Input Voltage	90-264 VAC
Effective Lumens	16,500
Weight Per Light Head	3.5 Lbs Each
Operating Temperature	-40° C to 50° C
Input	1 (Power In)
Output	3 (One Per Light)
Individual Light Head Dimensions	4.5" X 4.5" X 2.7" (114mm X 114mm X 68.58)
Cable Length	50'
Plug	NEMA 5-15
Specifications - Tripod	
Height	5' to 10' (Collapsed-Extended)
Base Wide	13" - 58" (Collapsed-Extended)
Support	3 - 15 Lb Sand Bags (Sold Separately) or Can Be Staked Into Ground
Material	Aluminum, Powder Coated
Bar Mount	Quick Release Pins - Removable for Storage
Folded Dimensions	59.0" X 13.0" X 13.0"
Lights and Transport Case	
Tripod Light Without Case	40 Lbs
Light and Case Weight	88 Lbs
Transport Case	66.5" X 22" X 12.5"

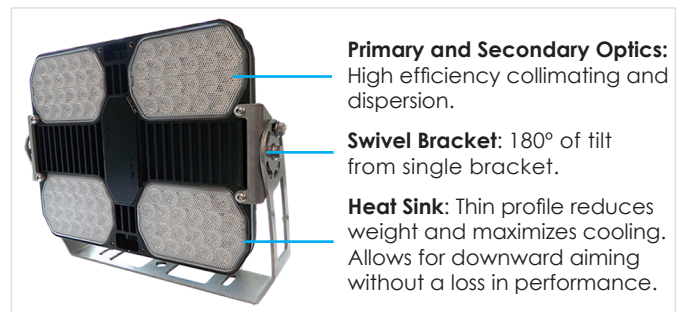
## ExoStar Area Light Large Perimeter Lighting

- 88 LEDs
- 360° Tilt
- IP69K Rated For High Pressure, High Temperature Spray, and Dust Ingress
- Coated Aluminum Housing for Corrosion Protection
- Corrosion Resistant Stainless Steel Bracket and Hardware
- Superior Hot and Cold Temperature Performance
- 4-Zone Thermal Management



Light Towers - Shovels - Draglines - Marine Vessels - High Bay Interiors

Specifications - Exostar Light with Bracket	
Power	300W
Operating Voltage	100-240 VAC
Actual Lumens	53° Wide: 18,925 9° Spot: 19,651
Weight	23 lbs. (Head Only)
Operating Temperature	-30° C to 50° C
Dimensions Light Head	18" X 15.5" X 8.5"



### Part Numbers and Options - Exostar Light Head Only

Several options are available for Exostar lights. Use chart to identify part number built to your specifications.

Example: part number **SD88D300ACNNDW**

Deutsch Connection, 300 Watts, AC, Natural Color, Nylon Lens, Double Trunnion Mount, Wide Beam Pattern

SD		88	D	300		AC		N		N		D		W		
Duty		LEDs	Connection		Power	Input Voltage		LED Color		Lens		Mount Style		Beam Pattern		
SD	Standard	88	D	Deutsch	300	AC	100-240 VAC	N	Natural 5000K	N	Nylon Plastic	D	Double Trunnion	W	Wide (53°)	
			A	Amphenol Eco-Mate	For Custom Configurations, Contact Customer Service										S	Spot (9°)
			N	Nema 5-15 Plug, 25-Ft												
			S	Short Blank Cable, 6-Ft												
			L	Long Blank Cable, 25-Ft												

For Custom Configurations,  
Contact Customer Service



### Tripod Mounted Exostar

31-WA-EXO-TR-W	Exostar with Tripod, Coiled Cable, Power Supply With On/Off Button - Wide Beam
31-WA-EXO-TR-S	Exostar with Tripod, Coiled Cable, Power Supply With On/Off Button - Spot Beam
31-WA-EXO-TR-W-C	Exostar with Tripod in Case - Wide Beam
31-WA-EXO-TR-S-C	Exostar with Tripod in Case - Spot Beam
31-WA-EXO-TR-W-B	Exostar with Tripod in Bag - Wide Beam
31-WA-EXO-TR-S-B	Exostar with Tripod in Bag - Spot Beam
31-WA-EXO-CASE	Case Only
31-WA-EXO-BAG	Bag Only

- 180° Tilt and 360° Rotation
- On/Off Switch On Tripod

### Tripod Mounted Exostar Specifications

Power	300W
Operating Voltage	100-240 VAC
Actual Lumens	53° Wide: 18,925 9° Spot: 19,651
Cable/Plug	25 ft., NEMA 5-15
Operating Temperature	-30° C to 50° C
Weight	23 lbs. (Head Only)
Weight (Tripod & Light)	47 Lbs.
Dimensions - Light Head	18" X 15.5" X 8.5"
Collapsed Height	77"
Extended Height	133"





## Construction And Utility Lighting

Ideal for light construction vehicles, utility trucks, lawn care, forklifts, ATV's, golf carts, construction, and boating.

- IP65 (Splashproof) Ingress Protection
- Diecast Aluminum Housing
- Polycarbonate Lens
- Stainless Steel Bracket
- 30,000 Hours Rated Life
- 6,000K Color Temperature
- -20° C to 50° C Operating Temperature
- 10-30VDC Input Voltage



### Versatile Portable or Permanent Light With Remote Control

Cordless Remote Control with 50' Range Operates Tilt, Rotation, On/Off and Strobe Functions. Carry handle.

- Base Has Magnetic or Fixed Based Option
- Full 360° Rotation Light Head
- 90 Watt
- 10° Spot or 90° Wide Beam
- 8100 Raw Lumens
- 9 Cree LEDs



Easy Light Placement

Part #10° Spot	JL9C90S-RC
Part # *90° Wide	JL9C90W-RC
7.75 X 8.0 X 7.52 in.	8.65 Lbs.



### Permanent Mount Lights

- 90 Watt
- 10° Spot or 90° Wide Beam
- 8100 Raw Lumens
- 9 Cree LEDs



Part Number - 10° Spot	JL9C90S
Part Number - 90° Wide	JL9C90W
6.3 x 5.3 x 4.7 in.	6.39 Lbs.



- 65 Watt
- 10° Spot or 90° Wide Beam
- 5460 Raw Lumens
- 13 Cree LEDs

Part Number - 10° Spot	JL13C65S
Part Number - 90° Wide	JL13C65W
6.5 x 5.6 x 3.7 in	2.69 Lbs.



- 48 Watt
- 90° Wide Beam
- 4320 Raw Lumens
- 13 Cree LEDs



Part Number	JL13C48W
5.7 x 4.9 x 2.8 in	1.1 Lbs.



- 28 Watt
- 30° or 60° Flood Light
- 4320 Raw Lumens
- 16 Osram LEDs



Part # 30°	JL16C28M
Part # 60°	JL16C28W
5.5 x 4.3 x 1.9 in	.71 Lbs.



- 7 Watt
- 8° Spot or 90° Wide Beam Pattern
- 840 Raw Lumens
- 2 Cree LEDs



Part # Spot Beam	JL2C7S
Part # Wide Beam	JL2C7W
3.7 x 2.4 x 1.8 in	.25 Lbs.



- 5 Watt
- 120° Wide Beam Pattern
- 726 Raw Lumens
- 33 Mid Power LEDs



Part Number	JL33C5W
3.7 x 3.0 x .91 in	.22 Lbs.

JLWH-DT1	10' harness, on/off switch, one Deutsch connector
JLWH-DT2	10' harness, on/off switch, two Deutsch connectors

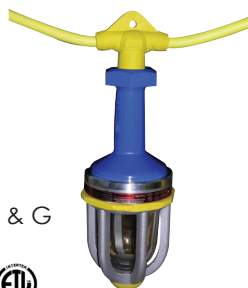


## For Use In Combustible Atmospheres

Oil And Gas Refineries, Pipeline Repairs, Gas Distribution Centers, Paint Booths, Underground Coal Mines, Paper And Textile Production, Grain Handling And Storage

### LED Explosion Proof String Lights - 55 Watt, 120 VAC

- 5 Lights On String
- Each Light Is Less Than 16" Overall Drop Length
- Rubber Nose Reduces Overhead Bump Hazards
- All Weather Use – Nema 3R And 4X Rated
- Rubberized Heavy Duty Cord #12/3 SEOW
- Classified, Rated For Class 1 & 2, Div 1 & 2, Groups C, D, F & G
- Complies With Standard(s) For Electric Luminaries For Use In Hazardous Locations (CAN/CSA-C22.2 No. 137)



Part Number	Description
37-12350	Explosion Proof String Light, 5 Lights

Watts	55
Voltage	120 VAC
Lumens	750 Per Light
String Length	50'
Light Spacing	10'

### LED Explosion Proof String Lights - 75 Watt, 12 Volt

- 5 Lights On String
- Aluminum Housing And Cage
- Tempered Glass Dome
- Classified And Rated For Class 1 & 2, Div 1 & 2, Groups C, D, F & G
- T-3 Rating



Part Number	Description
37-SLDWXP5	Explosion Proof String Light, 5 Lights, 12 Volt
37-TFBSL5	Transformer for 12 Volt String Light, 36 Lbs.

Watts	75
Voltage	12 VDC
Lumens	750 Per Light
String Length	50'
Light Spacing	10'

### Transformer For Use with 12 Volt String Light

- Steps Down 120V To 12V
- .50 kVa
- Nema 3R Metal Enclosure
- 6' 14/3 Seow Cord, 1447 Straight Blade Plug

### LED Explosion Proof Drop Light With Hanging Hook

- 11 Watts, 120VAC
- All Weather Use – Nema 3R And 4X Rated
- Classified, Rated For Class 1 & 2, Div 1 & 2, Groups C, D, F & G
- Complies With Requirements Of Standard(S) For Electric Luminaries For Use In Hazardous Locations (CAN/CSA-C22.2 No. 137)



Part Number	Description
37-2625	Drop Light, 25' Cord
37-2625-50	Drop Light, 50' Cord
37-2625-100	Drop Light, 100' Cord

### LED Explosion Proof Dive Light

- Explosion-Proof, Rated Class 1, Div 1, Groups A-F
- Suitable For The Harshes Environments, Including Underwater
- Head Is Constructed Of Aircraft-Grade Aluminum
- Body Is Mil-Spec Pom Resin
- Cree LED Q5 Chip With Reflector
- Triple Seals On Light Head
- Twist On/Off

3 AA Batteries Required (not included)



Part Number	Description
37-1001XP	Explosion Proof Dive Light

Lumens for 1-2 Hours	270
Lumens for 3-5 Hours	180
Lumens for 5-72 Hours	Decreasing to 80
Dimensions/Weight	6.3" X 1.57" 3.53 oz.
Pressure Depth Rating	600'
Kelvin Color Temp	5500 +/- 500 k
Operating Temp	40° F to 140° F



## Explosion Proof LED Flood Light

- Marine grade cast aluminum shell, cover and sealed fittings.
- Threaded joints lubricated with non-drying petroleum.
- Yellow thermoset powder coat.
- 3/4 inch thick tempered glass lens

## Telescoping Tripod


- Powder-coated aluminum
- Extends 5' to 10'



### Tripod Specifications

Height	5' to 10' (Collapsed-Extended)
Base Width	13" - 58" (Collapsed-Extended)
Support	3 - 15 Lb Sand Bags (Sold Separately) or Stake Into Ground
Folded Dimensions	59.0" X 13.0" X 13.0"

### LED Explosion Proof Light Specifications

Lumens	2540
Ambient Operating Temperature	-20°C to +40°C
Cord	100'
Wattage	39
Certifications	Class 1 Division 1, Groups C&D Class 1 Division 2, Groups A, B, C&D Class II Division 1&2, Groups F&G Class III Division 1&2 T6 Rating 
Dimensions (Light Only)	9.4" X 9.4" X 9.2"

Mining - Construction - Marine - Agriculture - Heavy Equipment - Wide Area



## XD

### Compact Extreme Duty Lighting Highest Shock Handling Capabilities

- Extreme Vibration Durability And Shock Handling
- Compact Design For Small Areas
- Type III Gray Anodized Aluminum for Corrosion Protection (Mil-A-8625)
- Corrosion Resistant Stainless Steel Bracket and Hardware
- IP69K Rated (High Pressure, High Temperature Spray, and Dust Ingress)

## HD

### Large Perimeter Lighting

Ideal for large tracked equipment requiring smooth, high-contrast lighting in a large area, the HD-32 provides perimeter and angle lighting.

- Illuminates Large Perimeter
- Housing is Type II Black Anodized Aluminum for Corrosion Protection (Mil-A-8625)
- Corrosion Resistant Stainless Steel Bracket and Hardware
- IP69K Rated (High Pressure, High Temperature Spray, and Dust Ingress)



## IDX

### Alpha-Numeric Identification Displays

Equipment identification displays. Characters are 18" in height for high visibility.

Displays are easy to change and all programming is stored in a non-volatile memory chip.

## ML

### High Visibility Marker Lights For Off Road Equipment

The ML-24 penetrates thick layers of dust or mud buildup, fog, snow, and rain. Fully encapsulated for waterproofing and features a hardened borosilicate lens. The ultimate upgrade to off-highway equipment. Type III Anodized Chassis.



### Contact

Jameson's Customer Service  
Department For Assistance With  
Customized Equipment Lighting  
Request Jameson's LED Equipment  
Lighting Catalog





**Huskie  
TOOLS**

**When It's On The Line, Count On Huskie Tools**

**Cutting And Compression Tools**

Since 1976, Huskie Tools has led the industry in hydraulic operated cutting and compression tools.

Huskie Tools is used by electrical utilities in over-head, underground, transmission, substation and distribution work.



**Contact Huskie Tools**

Customer Service and Sales  
800-860-6170  
info@huskietools.com

See The Huskie Tools Catalog At  
**WWW.HUSKIETOOLS.COM**



**Huskie  
TOOLS**

**Teaming Up  
To Offer More Solutions**



Part Number	Product Group	Replacement Part
24-02B	Bucket Boom	Saw Box and Lock/Strap
24-04R	Bucket Boom	Replacement Handle With Strap, Ratchet for Boom Tool Holder
24-08R	Bucket Boom	Handle Only for Boom Tool Holders
24-09R	Bucket Boom	Nylon 5' Strap with Ratchet
10-150RO	Buddy Fish Tape	Little Buddy - Rod Only 3/16" X 150'
10-18-350MDRO	Buddy Fish Tape	Microduct 350' X 1/8" Rod Only
10-200RO	Buddy Fish Tape	Little Buddy - Rod Only 3/16" X 200'
10-300RO	Buddy Fish Tape	Little Buddy - Rod Only 3/16" X 300'
11-10	Buddy Rodder	Big Buddy Rod End Clamp
11-1000ROM	Buddy Rodder	Big Buddy - Rod Only 1/2" X 1000'
11-100ROM	Buddy Rodder	Big Buddy - Rod Only 1/2" X 100'
11-15	Buddy Rodder	Big Buddy - Wheel & Axle
11-2	Buddy Rodder	Big Buddy Replacement Reel
11-200ROM	Buddy Rodder	Big Buddy - Rod Only 1/2" X 200'
11-38-RI	Buddy Rodder	Big Buddy Frame and Canister
11-5	Buddy Rodder	Big Buddy Feed Roller Kit
11-500ROM	Buddy Rodder	Big Buddy - Rod Only 1/2" X 500'
11-600ROM	Buddy Rodder	Big Buddy - Rod Only 1/2" X 600'
11-800ROM	Buddy Rodder	Big Buddy - Rod Only 1/2" X 800'
11A-15	Buddy Rodder	Good Buddy II Wheel and Axle Kit
11A-2	Buddy Rodder	Good Buddy II Replacement Reel
11A-25-RI	Buddy Rodder	Good Buddy II Frame and Canister
6-14-RI	Buddy Rodder	Easy Buddy Frame & Reel
6-15	Buddy Rodder	Easy Buddy Wheels and Axle
6-300ROM	Buddy Rodder	Easy Buddy - Rod Only 1/4" X 300'
6-400ROM	Buddy Rodder	Easy Buddy - Rod Only 1/4" X 400'
6-5	Buddy Rodder	Feed Roller for Easy Buddy
6-500ROM	Buddy Rodder	Easy Buddy - Rod Only 1/4" X 500'
9-100ROM	Buddy Rodder	Good Buddy - Rod Only 3/8" X 100'
9-2	Buddy Rodder	Good Buddy Replacement Reel
9-25-RI	Buddy Rodder	Good Buddy Frame and Canister
9-300ROM	Buddy Rodder	Good Buddy - Rod Only 3/8" X 300'
9-400ROM	Buddy Rodder	Good Buddy - Rod Only 3/8" X 400'
9-500ROM	Buddy Rodder	Good Buddy - Rod Only 3/8" X 500'
15-200RO	Duct Hunter Fisher	Mini Rod Only 3/16" X 200'
15-250RO	Duct Hunter Fisher	Mini DH Rod Only 3/16" X 250'
15-300RO	Duct Hunter Fisher	Mini DH Rod Only 3/16" X 300'
9-600ROM	Buddy Rodder	Good Buddy - Rod Only 3/8" X 600'
9A-15	Buddy Rodder	Good Buddy III Wheel and Axle Kit
9A-25-RI	Buddy Rodder	Good Buddy III Frame Assembly
9-ACA	Buddy Rodder	Good Buddy III Axle Assembly
9-LAK	Buddy Rodder	Good Buddy Legs and Axle Kit
15-100RO	Duct Hunter Fisher	Mini DH Rod Only 3/16" X 100'
15-150RO	Duct Hunter Fisher	Mini DH Rod Only 3/16" X 150'
15-200RO	Duct Hunter Fisher	Mini DH Rod Only 3/16" X 200'
15-250RO	Duct Hunter Fisher	Mini DH Rod Only 3/16" X 250'
15-300RO	Duct Hunter Fisher	Mini DH Rod Only 3/16" X 300'

Part Number	Product Group	Replacement Part
12-150RO	Duct Hunter Rodder	Duct Hunter Rod Only 150' X 5/16"
12-300RO	Duct Hunter Rodder	Duct Hunter Rod Only 300' X 5/16"
12-300ROM	Duct Hunter Rodder	Duct Hunter Rod Only Marked 300' X 5/16"
12-400RO	Duct Hunter Rodder	Duct Hunter Rod Only 400' X 5/16"
12-400ROM	Duct Hunter Rodder	Duct Hunter Rod Only Marked 400' X 5/16"
12-500RO	Duct Hunter Rodder	Duct Hunter Rod Only 500' X 5/16"
12-500ROM	Duct Hunter Rodder	Duct Hunter Rod Only Marked 500' X 5/16"
12-600RO	Duct Hunter Rodder	Duct Hunter Rod Only 600' X 5/16"
12-600ROM	Duct Hunter Rodder	Duct Hunter Rod Only Marked 600' X 5/16"
12-700RO	Duct Hunter Rodder	Duct Hunter Rod Only 700' X 5/16"
12-700ROM	Duct Hunter Rodder	Duct Hunter Rod Only Marked 700' X 5/16"
12-800RO	Duct Hunter Rodder	Duct Hunter Rod Only 800' X 5/16"
12-800ROM	Duct Hunter Rodder	Duct Hunter Rod Only Marked 800' X 5/16"
13-400RO	Duct Hunter Rodder	Duct Hunter Rod Only 400' X 7/16"
13-400ROM	Duct Hunter Rodder	Duct Hunter Rod Only Marked 400' X 7/16"
13-500RO	Duct Hunter Rodder	Duct Hunter Rod Only 500' X 7/16"
13-500ROM	Duct Hunter Rodder	Duct Hunter Rod Only Marked 500' X 7/16"
13-600RO	Duct Hunter Rodder	Duct Hunter Rod Only 600' X 7/16"
13-600ROM	Duct Hunter Rodder	Duct Hunter Rod Only Marked 600' X 7/16"
13-700RO	Duct Hunter Rodder	Duct Hunter Rod Only 700' X 7/16"
13-700ROM	Duct Hunter Rodder	Duct Hunter Rod Only Marked 700' X 7/16"
13-800RO	Duct Hunter Rodder	Duct Hunter Rod Only 800' X 7/16"
13-800ROM	Duct Hunter Rodder	Duct Hunter Rod Only Marked 800' X 7/16"
30-1-15	Lighting	15 Watt Replacement Lamp Kit
30-1-15-PKG	Lighting	15 Watt Replacement Kit, 6 Pack
30-1-30	Lighting	30 Watt Replacement Lamp Kit
30-1-30-PKG	Lighting	30 Watt Replacement Kit, 6 Pack
30-1-40	Lighting	40 Watt Replacement Lamp Kit
30-2-30	Lighting	30 Watt Tube and Label Kit
30-2-40	Lighting	40 Watt Tube and Label Kit
31-1-13	Lighting	13 Watt Replacement Lamp Kit
31-1-13-PKG	Lighting	13 Watt Replacement Kit, 6 Pack
31-1-24	Lighting	24 Watt Replacement Lamp Kit
31-1-24-PKG	Lighting	24 Watt Replacement Kit, 6 Pack
31-1-36	Lighting	36 Watt Replacement Lamp Kit
31-1-36-PKG	Lighting	36 Watt Replacement Kit 6 Pack
31-1-50	Lighting	50 Watt Replacement Lamp Kit
31-1-50-PKG	Lighting	50 Watt Replacement Kit 6 Pack
31-1-36-PKG	Lighting	36 Watt Replacement Kit 6 Pack
31-1-50	Lighting	50 Watt Replacement Lamp Kit
31-1-50-PKG	Lighting	50 Watt Replacement Kit 6 Pack



Part Number	Product Group	Replacement Part
31-2-13	Lighting	13 Watt Tube and Label Kit
31-2-24	Lighting	24 Watt Tube and Label Kit
31-2-36	Lighting	36 Watt Tube and Label Kit
31-2-50	Lighting	50 Watt Tube and Label Kit
31-RHK	Lighting	Light Hanger Hook Kit
15-100RO-GW	Live Tracer	Gas, Water Tracer Rod Only 3/16"X100'
15-150RO-GW	Live Tracer	Gas, Water Tracer Rod Only 3/16"X150'
15-170-GL	Live Tracer	Stuffing Box O-Rings (12 pack)
15-200RO-GW	Live Tracer	Gas, Water Tracer Rod Only 3/16"X200'
15-250RO-GW	Live Tracer	Gas, Water Tracer Rod Only 3/16"X250'
15-300RO-GW	Live Tracer	Gas, Water Tracer Rod Only 3/16"X300'
PS-RP-LF	Pole Saws	PS-3 Hardware - Lower/Centered-10 PK
PS-RP-LP	Pole Saws	PS-3 Hardware - Lower Pin-10 PK
PS-RP-U	Pole Saws	PS-3 Hardware - Upper-10 PK
FG-F	Poles	Female Ferrule with Spring
FG-M	Poles	Male Ferrule for 1-1/4" Poles
FG-MF	Poles	Set of Ferrules - Male & Female
FG-SC	Poles	Spring and Clip for Ferrule
PHA-34DP	Pruners - JA	Adapter for Big Mouth Double Pulley Pruner. Adapter includes pulley.
JAY102	Pruners - JA	JA-14 Pruner - Lever w/Lower Spring Pin
JAY104R	Pruners - JA	JA-14 Pruner - Casting
JAYY101A	Pruners - JA	JA-14 Pruner - JHook
JAZ101	Pruners - JA	JA-14 Pruner - Blade with Upper Pin
JAZ103	Pruners - JA	JA-14 Pruner - Link
JAZ104	Pruners - JA	JA-14 Pruner - Spring
JAZ105	Pruners - JA	JA-14 Pruner - Cap Screw & Nut
JAZ106	Pruners - JA	JA-14 Pruner - Upper Spring Pin
JAZ108	Pruners - JA	JA-14 Pruner - Link Pin
JAZ110	Pruners - JA	JA-14 Pruner - Lower Spring Pin/2 Rings
JAZ111A	Pruners - JA	JA-14 Pruner - Lever Block
JAZ114	Pruners - JA	JA-14 Pruner - Lever Nut
JAZ115	Pruners - JA	JA-14 Pruner - Pulley Assembly
JAZ115S	Pruners - JA	JA-14S Pulley Assembly - Swivel

Part Number	Product Group	Replacement Part
JAZ116	Pruners - JA	JA-14 Pruner - Pulley Trunnion Pin
JAZ117A	Pruners - JA	JA-14 Pruner - Pole Bolt & Nut
JAZ123	Pruners - JA	JA-14 Pruner - Blade Bolt Nut, Nylon Ins
JAZ124	Pruners - JA	JA-14 Pruner - Block Bolt & Nut
JAZ130	Pruners - JA	JA-14 Pruner - Rivet
JBM101	Pruners - JA	JA-34 Pruner - Blade
JBM102	Pruners - JA	JA-34 Blade Bolt
JBM104	Pruners - JA	JA-34 Pruner - Spring
JBM106A	Pruners - JA	JA-14 Pruner Spring Pin Kit: Pin & Nut, Upper
JBM108	Pruners - JA	JA-34 Pruner - Link Pin
JBM110	Pruners - JA	JA-34 Pruner - Lower Spring Pin
JE-F	Pruners - JA	Female Ferrule And Leaf Spring
JE-M	Pruners - JA	Male Ferrule With Screw & Nut
PHA-34DP	Pruners - JA	JA-34DP Pruner Adapter



Inside Wiring - Underground Cabling and Locating - Aerial Cable Placement - Tree Trimming - Lighting

800.346.1956

sales@jamesonllc.com

WWW.JAMESONLLC.COM

