



we know light.™



# OUR STORY CONTINUES...

**For OVER 20 YEARS, TCP®  
has been dedicated to offering  
energy efficient lighting products  
that provide the perfect ambiance  
for any space.**

Our cutting edge technology mixed with industry leading innovation has put us at the forefront of the lighting revolution. Today, we are a world leader in energy efficient lighting, we have shipped literally billions of high quality lamps, and our integrated technology and manufacturing, provides expedited speed-to-market. At TCP we are giving the world thousands of exceptional lighting choices to find the perfect light for any application.



# A NEW CLASS OF LED COMPANY

## **EXCEPTIONAL LED lighting variety to meet any application and every budget.**

Our LED products have been recognized as ideal solutions to meet the most demanding applications.

Many of our LEDs have achieved ENERGY STAR® certification and have been selected as the LED retrofit of choice by many retail establishments.

We are committed to providing brilliant LED lighting variety to meet any application and every budget.

- ◆ Smooth, uniform dimming
- ◆ A large variety of ENERGY STAR® qualified products
- ◆ Increased color temperature and beam angle options
- ◆ 41K, 30K, 27K, 24K
- ◆ Most popular LED options
- ◆ Up to 85% energy savings over traditional incandescent and halogen lamps
- ◆ Excellent color consistency—within 3 MacAdam ellipse tolerance
- ◆ Very low heat generation
- ◆ CRI 82
- ◆ Brilliant light distribution
- ◆ Variety of wet location options

# PREM

# STANDA



# MIUM

- ◆ Exceptional light distribution
- ◆ Chip on board (COB) LED technology
- ◆ Connected by TCP—Smart lighting system
- ◆ CRI >90 R9 >50
- ◆ Designer grade light output
- ◆ High performance dimming
- ◆ Two housing colors—black and white
- ◆ The most color temperature options

## PREMIUM

## STANDARD

## VALUE

# VALUE

- ◆ Non-dimming
- ◆ 27K and 50K
- ◆ Up to 85% energy savings over standard incandescent and halogen
- ◆ Long life—25,000 hours
- ◆ Cost saving option for that is great for a variety of applications
- ◆ Economical LED option for everyday applications
- ◆ Uniform light distribution
- ◆ Smooth, clean outside housing seamlessly blends into lighting applications

# RD

# THE START OF A NEW LIGHTING LEGACY

**LIGHTING** has dramatically changed from where  
it started over 100 years ago.

At TCP, we are committed to being at the forefront of lighting innovation, offering brilliant solutions to meet the most demanding applications. From our Elite Series by TCP™ LED lamps to our LED luminaires, we are constantly working to develop the highest quality lighting products. We may not know where the industry may take us, but at TCP we are sure about one thing—we know light™.





# LED Indoor Lighting

LED E-Series Flat Troffer  
2 x 2 and 2 x 4



LED Premier Series Flat Troffer  
2 x 2 and 2 x 4



2 x 2 LED Designer Series  
Volumetric Troffer  
2 x 2 and 2 x 4







At TCP®, we team with leading LED chip manufacturers while applying 20 years experience in designing and producing our own driver and lamp technology. The result: amazing light quality at an improved efficacy level that is 20% more efficient than our previous LED lineup. We offer a vast LED selection to give you the options you need to create the perfect light for any space. With TCP LEDs, you can count on brilliant technology, unparalleled choice, and outstanding quality all at an exceptional value.



TCP is redefining the LED market with our new Elite Series, offering a comprehensive LED lineup.



#### ADVANCED TECHNOLOGY:

TCP designs and manufactures the drivers, thermals and optics for its lamps, to ensure that key components are precisely matched for optimal performance and quality.

#### UNPRECEDENTED PERFORMANCE:

##### BETTER EFFICACY:

Our Elite series of LEDs provides up to 20% improved efficiency over previous generation LEDs. This accounts for up to 85% energy savings over incandescent lamps. The Elite series lamps use less watts while providing the same great lumen output.

##### PRODUCT EXCELLENCE:

- Excellent light distribution
- Long Life
- Smooth uniform dimming
- Variety
- Aesthetic look that seamlessly blends into applications





PAR38      PAR30      PAR30SN      PAR20

## PAR38, PAR30 & PAR20

### Features & Benefits

- Energy efficient: up to 85% less energy than standard halogen replacement.
- Smooth, uniform dimming.
- Unique full face optic that provides designer grade light quality with same look as halogen replacement.
- Smooth, clean outside housing seamlessly blends into lighting applications.



### Dimmable Designer Elite LED PAR Lamps

Item Number

ENERGY STAR®  
Item Description

Voltage

Lamp Watts

Lumens

Lumens Per Watt

\* CBCP

Beam Angle

CCT

CRI

STK/MTO

Case Quantity

#### 17W ELITE DESIGNER DIMMABLE PAR38 (REPLACES 120W)



LED17P38D24KFL	17W Smooth PAR38 - 2400K 40 Degree	120	17	1200	70.6	2231	40	2400K	82	MTO	12
LED17P38D24KNFL	17W Smooth PAR38 - 2400K 25 Degree	120	17	1200	70.6	5382	25	2400K	82	MTO	12
LED17P38D24KSP	17W Smooth PAR38 - 2400K 15 Degree	120	17	1200	70.6	12059	15	2400K	82	MTO	12
LED17P38D27KFL	17W Smooth PAR38 - 2700K 40 Degree	120	17	1200	70.6	2231	40	2700K	82	STK	12
LED17P38D27KNFL	★ 17W Smooth PAR38 - 2700K 25 Degree	120	17	1200	70.6	5382	25	2700K	82	STK	12
LED17P38D27KSP	17W Smooth PAR38 - 2700K 15 Degree	120	17	1200	70.6	12059	15	2700K	82	MTO	12
LED17P38D30KFL	★ 17W Smooth PAR38 - 3000K 40 Degree	120	17	1250	73.5	2231	40	3000K	82	STK	12
LED17P38D30KNFL	★ 17W Smooth PAR38 - 3000K 25 Degree	120	17	1250	73.5	5382	25	3000K	82	STK	12
LED17P38D30KSP	17W Smooth PAR38 - 3000K 15 Degree	120	17	1250	73.5	12059	15	3000K	82	MTO	12
LED17P38D35KFL	★ 17W Smooth PAR38 - 3500K 40 Degree	120	17	1275	75.0	2231	40	3500K	82	MTO	12
LED17P38D35KNFL	★ 17W Smooth PAR38 - 3500K 25 Degree	120	17	1275	75.0	5382	25	3500K	82	MTO	12
LED17P38D35KSP	★ 17W Smooth PAR38 - 3500K 15 Degree	120	17	1275	75.0	12059	15	3500K	82	MTO	12
LED17P38D41KFL	17W Smooth PAR38 - 4100K 40 Degree	120	17	1300	76.5	2231	40	4100K	82	MTO	12
LED17P38D41KNFL	17W Smooth PAR38 - 4100K 25 Degree	120	17	1300	76.5	5382	25	4100K	82	MTO	12
LED17P38D41KSP	17W Smooth PAR38 - 4100K 15 Degree	120	17	1300	76.5	12059	15	4100K	82	MTO	12
LED17P38D50KFL	17W Smooth PAR38 - 5000K 40 Degree	120	17	1300	76.5	2231	40	5000K	82	MTO	12
LED17P38D50KNFL	17W Smooth PAR38 - 5000K 25 Degree	120	17	1300	76.5	5382	25	5000K	82	MTO	12
LED17P38D50KSP	17W Smooth PAR38 - 5000K 15 Degree	120	17	1300	76.5	12059	15	5000K	82	MTO	12

★ ENERGY STAR® Rated (at time of print)



\*Minimum CBCP est. Consult [tcp.com](http://tcp.com) for most current photometry and LM79 data.

Item Number	ENERGY STAR®	Item Description	Voltage	Lamp Watts	Lumens	Lumens Per Watt	*CBCP	Beam Angle	CCT	CRI	STK/MTO	Case Quantity
-------------	--------------	------------------	---------	------------	--------	-----------------	-------	------------	-----	-----	---------	---------------

Dimmable  
Designer Elite  
LED PAR  
Lamps

**14W ELITE DESIGNER DIMMABLE PAR38 (REPLACES 90W)**

LED14P38D24KFL		14W Smooth PAR38 - 2400K 40 Degree	120	14	1050	75.0	1533	40	2400K	82	MTO	12
LED14P38D24KNFL		14W Smooth PAR38 - 2400K 25 Degree	120	14	1050	75.0	3697	25	2400K	82	MTO	12
LED14P38D24KSP		14W Smooth PAR38 - 2400K 15 Degree	120	14	1050	75.0	8284	15	2400K	82	MTO	12
LED14P38D27KFL	★	14W Smooth PAR38 - 2700K 40 Degree	120	14	1050	75.0	1533	40	2700K	82	STK	12
LED14P38D27KNFL	★	14W Smooth PAR38 - 2700K 25 Degree	120	14	1050	75.0	3697	25	2700K	82	STK	12
LED14P38D27KSP	★	14W Smooth PAR38 - 2700K 15 Degree	120	14	1050	75.0	8284	15	2700K	82	MTO	12
LED14P38D30KFL	★	14W Smooth PAR38 - 3000K 40 Degree	120	14	1100	78.6	1533	40	3000K	82	STK	12
LED14P38D30KNFL	★	14W Smooth PAR38 - 3000K 25 Degree	120	14	1100	78.6	3697	25	3000K	82	STK	12
LED14P38D30KSP		14W Smooth PAR38 - 3000K 15 Degree	120	14	1100	78.6	8284	15	3000K	82	MTO	12
LED14P38D35KFL		14W Smooth PAR38 - 3500K 40 Degree	120	14	1125	80.4	1533	40	3500K	82	MTO	12
LED14P38D35KNFL	★	14W Smooth PAR38 - 3500K 25 Degree	120	14	1125	80.4	3697	25	3500K	82	MTO	12
LED14P38D35KSP	★	14W Smooth PAR38 - 3500K 15 Degree	120	14	1125	80.4	8284	15	3500K	82	MTO	12
LED14P38D41KFL	★	14W Smooth PAR38 - 4100K 40 Degree	120	14	1150	82.1	1533	40	4100K	82	MTO	12
LED14P38D41KNFL	★	14W Smooth PAR38 - 4100K 25 Degree	120	14	1150	82.1	3697	25	4100K	82	MTO	12
LED14P38D41KSP		14W Smooth PAR38 - 4100K 15 Degree	120	14	1150	82.1	8284	15	4100K	82	MTO	12
LED14P38D50KFL		14W Smooth PAR38 - 5000K 40 Degree	120	14	1150	82.1	1533	40	5000K	82	MTO	12
LED14P38D50KNFL		14W Smooth PAR38 - 5000K 25 Degree	120	14	1150	82.1	3697	25	5000K	82	MTO	12
LED14P38D50KSP		14W Smooth PAR38 - 5000K 15 Degree	120	14	1150	82.1	8284	15	5000K	82	MTO	12



**14W ELITE DESIGNER DIMMABLE PAR30 (REPLACES 90W)**

LED14P30D24KFL		14W Smooth PAR30 - 2400K 40 Degree	120	14	1050	75.0	1758	40	2400K	82	MTO	12
LED14P30D24KNFL		14W Smooth PAR30 - 2400K 25 Degree	120	14	1050	75.0	3891	25	2400K	82	MTO	12
LED14P30D24KSP		14W Smooth PAR30 - 2400K 15 Degree	120	14	1050	75.0	8230	15	2400K	82	MTO	12
LED14P30D27KFL	★	14W Smooth PAR30 - 2700K 40 Degree	120	14	1050	75.0	1758	40	2700K	82	STK	12
LED14P30D27KNFL	★	14W Smooth PAR30 - 2700K 25 Degree	120	14	1050	75.0	3891	25	2700K	82	STK	12
LED14P30D27KSP		14W Smooth PAR30 - 2700K 15 Degree	120	14	1050	75.0	8230	15	2700K	82	MTO	12
LED14P30D30KFL	★	14W Smooth PAR30 - 3000K 40 Degree	120	14	1100	78.6	1758	40	3000K	82	STK	12
LED14P30D30KNFL		14W Smooth PAR30 - 3000K 25 Degree	120	14	1100	78.6	3891	25	3000K	82	STK	12
LED14P30D30KSP	★	14W Smooth PAR30 - 3000K 15 Degree	120	14	1100	78.6	8230	15	3000K	82	MTO	12
LED14P30D35KFL		14W Smooth PAR30 - 3500K 40 Degree	120	14	1125	80.4	1758	40	3500K	82	MTO	12
LED14P30D35KNFL	★	14W Smooth PAR30 - 3500K 25 Degree	120	14	1125	80.4	3891	25	3500K	82	MTO	12
LED14P30D35KSP	★	14W Smooth PAR30 - 3500K 15 Degree	120	14	1125	80.4	8230	15	3500K	82	MTO	12
LED14P30D41KFL	★	14W Smooth PAR30 - 4100K 40 Degree	120	14	1150	82.1	1758	40	4100K	82	MTO	12
LED14P30D41KNFL	★	14W Smooth PAR30 - 4100K 25 Degree	120	14	1150	82.1	3891	25	4100K	82	MTO	12
LED14P30D41KSP		14W Smooth PAR30 - 4100K 15 Degree	120	14	1150	80.4	8230	15	4100K	82	MTO	12
LED14P30D50KFL		14W Smooth PAR30 - 5000K 40 Degree	120	14	1150	82.1	1758	40	5000K	82	MTO	12
LED14P30D50KNFL		14W Smooth PAR30 - 5000K 25 Degree	120	14	1150	82.1	3891	25	5000K	82	MTO	12
LED14P30D50KSP		14W Smooth PAR30 - 5000K 15 Degree	120	14	1150	82.1	8230	15	5000K	82	MTO	12



★ ENERGY STAR® Rated (at time of print)



\*Minimum CBCP est. Consult tcp.com for most current photometry and LM79 data.



**Dimmable Designer Elite LED PAR Lamps**



Item Number	ENERGY STAR®	Item Description	Voltage	Lamp Watts	Lumens	Lumens Per Watt	*CBCP	Beam Angle	CCT	CRI	STK/MTO	Case Quantity
<b>12W ELITE DESIGNER DIMMABLE PAR30 (REPLACES 75W)</b>												
LED12P30D24KFL		12W Smooth PAR30 - 2400K 40 Degree	120	12	800	66.7	1315	40	2400K	82	MTO	12
LED12P30D24KNFL		12W Smooth PAR30 - 2400K 25 Degree	120	12	800	66.7	2910	25	2400K	82	MTO	12
LED12P30D24KSP		12W Smooth PAR30 - 2400K 15 Degree	120	12	800	66.7	6155	15	2400K	82	MTO	12
LED12P30D27KFL		12W Smooth PAR30 - 2700K 40 Degree	120	12	800	66.7	1315	40	2700K	82	STK	12
LED12P30D27KNFL	★	12W Smooth PAR30 - 2700K 25 Degree	120	12	800	66.7	2910	25	2700K	82	STK	12
LED12P30D27KSP	★	12W Smooth PAR30 - 2700K 15 Degree	120	12	800	66.7	6155	15	2700K	82	MTO	12
LED12P30D30KFL	★	12W Smooth PAR30 - 3000K 40 Degree	120	12	825	68.8	1315	40	3000K	82	STK	12
LED12P30D30KNFL	★	12W Smooth PAR30 - 3000K 25 Degree	120	12	825	68.8	2910	25	3000K	82	STK	12
LED12P30D30KSP	★	12W Smooth PAR30 - 3000K 15 Degree	120	12	825	68.8	6155	15	3000K	82	MTO	12
LED12P30D35KFL	★	12W Smooth PAR30 - 3500K 40 Degree	120	12	850	70.8	1315	40	3500K	82	MTO	12
LED12P30D35KNFL	★	12W Smooth PAR30 - 3500K 25 Degree	120	12	850	70.8	2910	25	3500K	82	MTO	12
LED12P30D35KSP	★	12W Smooth PAR30 - 3500K 15 Degree	120	12	850	70.8	6155	15	3500K	82	MTO	12
LED12P30D41KFL	★	12W Smooth PAR30 - 4100K 40 Degree	120	12	875	72.9	1315	40	4100K	82	MTO	12
LED12P30D41KNFL	★	12W Smooth PAR30 - 4100K 25 Degree	120	12	875	72.9	2910	25	4100K	82	MTO	12
LED12P30D41KSP	★	12W Smooth PAR30 - 4100K 15 Degree	120	12	875	72.9	6155	15	4100K	82	MTO	12
LED12P30D50KFL		12W Smooth PAR30 - 5000K 40 Degree	120	12	875	72.9	1315	40	5000K	82	MTO	12
LED12P30D50KNFL		12W Smooth PAR30 - 5000K 25 Degree	120	12	875	72.9	2910	25	5000K	82	MTO	12
LED12P30D50KSP		12W Smooth PAR30 - 5000K 15 Degree	120	12	875	72.9	6155	15	5000K	82	MTO	12

**12W ELITE DESIGNER DIMMABLE PAR30 SHORT NECK (REPLACES 75W)**



LED12P30SD24KFL		12W Smooth PAR30 SN - 2400K 40 Degree	120	12	800	66.7	1315	40	2400K	82	MTO	12
LED12P30SD24KNFL		12W Smooth PAR30 SN - 2400K 25 Degree	120	12	800	66.7	2910	25	2400K	82	MTO	12
LED12P30SD24KSP		12W Smooth PAR30 SN - 2400K 15 Degree	120	12	800	66.7	6155	15	2400K	82	MTO	12
LED12P30SD27KFL		12W Smooth PAR30 SN - 2700K 40 Degree	120	12	800	66.7	1315	40	2700K	82	STK	12
LED12P30SD27KNFL	★	12W Smooth PAR30 SN - 2700K 25 Degree	120	12	800	66.7	2910	25	2700K	82	STK	12
LED12P30SD27KSP	★	12W Smooth PAR30 SN - 2700K 15 Degree	120	12	800	66.7	6155	15	2700K	82	MTO	12
LED12P30SD30KFL	★	12W Smooth PAR30 SN - 3000K 40 Degree	120	12	825	68.8	1315	40	3000K	82	STK	12
LED12P30SD30KNFL	★	12W Smooth PAR30 SN - 3000K 25 Degree	120	12	825	68.8	2910	25	3000K	82	STK	12
LED12P30SD30KSP	★	12W Smooth PAR30 SN - 3000K 15 Degree	120	12	825	68.8	6155	15	3000K	82	MTO	12
LED12P30SD35KFL	★	12W Smooth PAR30 SN - 3500K 40 Degree	120	12	850	70.8	1315	40	3500K	82	MTO	12
LED12P30SD35KNFL	★	12W Smooth PAR30 SN - 3500K 25 Degree	120	12	850	70.8	2910	25	3500K	82	MTO	12
LED12P30SD35KSP	★	12W Smooth PAR30 SN - 3500K 15 Degree	120	12	850	70.8	6155	15	3500K	82	MTO	12
LED12P30SD41KFL	★	12W Smooth PAR30 SN - 4100K 40 Degree	120	12	875	72.9	1315	40	4100K	82	MTO	12
LED12P30SD41KNFL	★	12W Smooth PAR30 SN - 4100K 25 Degree	120	12	875	72.9	2910	25	4100K	82	MTO	12
LED12P30SD41KSP		12W Smooth PAR30 SN - 4100K 15 Degree	120	12	875	72.9	6155	15	4100K	82	MTO	12
LED12P30SD50KFL		12W Smooth PAR30 SN - 5000K 40 Degree	120	12	875	72.9	1315	40	5000K	82	MTO	12
LED12P30SD50KNFL		12W Smooth PAR30 SN - 5000K 25 Degree	120	12	875	72.9	2910	25	5000K	82	MTO	12
LED12P30SD50KSP		12W Smooth PAR30 SN - 5000K 15 Degree	120	12	875	72.9	6155	15	5000K	82	MTO	12

★ ENERGY STAR® Rated (at time of print)



\*Minimum CBCP est. Consult tcp.com for most current photometry and LM79 data.



Item Number	ENERGY STAR®	Item Description	Voltage	Lamp Watts	Lumens	Lumens Per Watt	*CBCP	Beam Angle	CCT	CRI	STK/MTO	Case Quantity	Dimmable Designer Elite LED PAR Lamps
-------------	--------------	------------------	---------	------------	--------	-----------------	-------	------------	-----	-----	---------	---------------	---------------------------------------

**10W ELITE DESIGNER DIMMABLE PAR30 SHORT NECK (REPLACES 60W)**

LED10P30SD24KFL		10W Smooth PAR30 SN - 2400K 40 Degree	120	10	600	60.0	957	40	2400K	82	MTO	12
LED10P30SD24KNFL		10W Smooth PAR30 SN - 2400K 25 Degree	120	10	600	60.0	2118	25	2400K	82	MTO	12
LED10P30SD24KSP		10W Smooth PAR30 SN - 2400K 15 Degree	120	10	600	60.0	4480	15	2400K	82	MTO	12
LED10P30SD27KFL	★	10W Smooth PAR30 SN - 2700K 40 Degree	120	10	600	60.0	957	40	2700K	82	STK	12
LED10P30SD27KNFL	★	10W Smooth PAR30 SN - 2700K 25 Degree	120	10	600	60.0	2118	25	2700K	82	STK	12
LED10P30SD27KSP	★	10W Smooth PAR30 SN - 2700K 15 Degree	120	10	600	60.0	4480	15	2700K	82	MTO	12
LED10P30SD30KFL	★	10W Smooth PAR30 SN - 3000K 40 Degree	120	10	650	65.0	957	40	3000K	82	STK	12
LED10P30SD30KNFL	★	10W Smooth PAR30 SN - 3000K 25 Degree	120	10	650	65.0	2118	25	3000K	82	STK	12
LED10P30SD30KSP	★	10W Smooth PAR30 SN - 3000K 15 Degree	120	10	650	65.0	4480	15	3000K	82	MTO	12
LED10P30SD35KFL		10W Smooth PAR30 SN - 3500K 40 Degree	120	10	675	67.5	957	40	3500K	82	MTO	12
LED10P30SD35KNFL		10W Smooth PAR30 SN - 3500K 25 Degree	120	10	675	67.5	2118	25	3500K	82	MTO	12
LED10P30SD35KSP	★	10W Smooth PAR30 SN - 3500K 15 Degree	120	10	675	67.5	4480	15	3500K	82	MTO	12
LED10P30SD41KFL	★	10W Smooth PAR30 SN - 4100K 40 Degree	120	10	700	70.0	957	40	4100K	82	MTO	12
LED10P30SD41KNFL		10W Smooth PAR30 SN - 4100K 25 Degree	120	10	700	70.0	2118	25	4100K	82	MTO	12
LED10P30SD41KSP	★	10W Smooth PAR30 SN - 4100K 15 Degree	120	10	700	70.0	4480	15	4100K	82	MTO	12
LED10P30SD50KFL		10W Smooth PAR30 SN - 5000K 40 Degree	120	10	700	70.0	957	40	5000K	82	MTO	12
LED10P30SD50KNFL		10W Smooth PAR30 SN - 5000K 25 Degree	120	10	700	70.0	2118	25	5000K	82	MTO	12
LED10P30SD50KSP		10W Smooth PAR30 SN - 5000K 15 Degree	120	10	700	70.0	4480	15	5000K	82	MTO	12



**10W ELITE DESIGNER DIMMABLE PAR20 (REPLACES 60W)**

LED10P20D24KFL		10W Smooth PAR20 - 2400K 40 Degree	120	10	600	60.0	1558	40	2400K	82	MTO	12
LED10P20D24KNFL		10W Smooth PAR20 - 2400K 25 Degree	120	10	600	60.0	3067	25	2400K	82	MTO	12
LED10P20D27KFL		10W Smooth PAR20 - 2700K 40 Degree	120	10	600	60.0	1558	40	2700K	82	STK	12
LED10P20D27KNFL		10W Smooth PAR20 - 2700K 25 Degree	120	10	600	60.0	3067	25	2700K	82	STK	12
LED10P20D30KFL		10W Smooth PAR20 - 3000K 40 Degree	120	10	650	65.0	1558	40	3000K	82	STK	12
LED10P20D30KNFL		10W Smooth PAR20 - 3000K 25 Degree	120	10	650	65.0	3067	25	3000K	82	STK	12
LED10P20D35KFL		10W Smooth PAR20 - 3500K 40 Degree	120	10	675	67.5	1558	40	3500K	82	MTO	12
LED10P20D35KNFL		10W Smooth PAR20 - 3500K 25 Degree	120	10	675	67.5	3067	25	3500K	82	MTO	12
LED10P20D41KFL		10W Smooth PAR20 - 4100K 40 Degree	120	10	700	70.0	1558	40	4100K	82	MTO	12
LED10P20D41KNFL		10W Smooth PAR20 - 4100K 25 Degree	120	10	700	70.0	3067	25	4100K	82	MTO	12
LED10P20D50KFL		10W Smooth PAR20 - 5000K 40 Degree	120	10	700	70.0	1558	40	5000K	82	MTO	12
LED10P20D50KNFL		10W Smooth PAR20 - 5000K 25 Degree	120	10	700	70.0	3067	25	5000K	82	MTO	12



★ ENERGY STAR® Rated (at time of print)



\*Minimum CBCP est. Consult tcp.com for most current photometry and LM79 data.

### Dimmable Designer Elite LED PAR Lamps

Item Number	ENERGY STAR® Item Description	Voltage	Lamp Watts	Lumens	Lumens Per Watt	*CBCP	Beam Angle	CCT	CRI	STK/MTO	Case Quantity
-------------	----------------------------------	---------	------------	--------	-----------------	-------	------------	-----	-----	---------	---------------

#### 8W ELITE DESIGNER DIMMABLE PAR20 (REPLACES 50W)



LED8P20D24KFL	8W Smooth PAR20 - 2400K 40 Degree	120	8	500	62.5	593	40	2400K	82	MTO	12
LED8P20D24KNFL	8W Smooth PAR20 - 2400K 25 Degree	120	8	500	62.5	1179	25	2400K	82	MTO	12
LED8P20D27KFL	★ 8W Smooth PAR20 - 2700K 40 Degree	120	8	500	62.5	593	40	2700K	82	STK	12
LED8P20D27KNFL	★ 8W Smooth PAR20 - 2700K 25 Degree	120	8	500	62.5	1179	25	2700K	82	STK	12
LED8P20D30KFL	★ 8W Smooth PAR20 - 3000K 40 Degree	120	8	515	64.4	593	40	3000K	82	STK	12
LED8P20D30KNFL	★ 8W Smooth PAR20 - 3000K 25 Degree	120	8	515	64.4	1179	25	3000K	82	STK	12
LED8P20D35KFL	★ 8W Smooth PAR20 - 3500K 40 Degree	120	8	525	65.6	593	40	3500K	82	MTO	12
LED8P20D35KNFL	★ 8W Smooth PAR20 - 3500K 25 Degree	120	8	525	65.6	1179	25	3500K	82	MTO	12
LED8P20D41KFL	★ 8W Smooth PAR20 - 4100K 40 Degree	120	8	530	66.3	593	40	4100K	82	MTO	12
LED8P20D41KNFL	★ 8W Smooth PAR20 - 4100K 25 Degree	120	8	530	66.3	1179	25	4100K	82	MTO	12
LED8P20D50KFL	8W Smooth PAR20 - 5000K 40 Degree	120	8	530	66.3	593	40	5000K	82	MTO	12
LED8P20D50KNFL	8W Smooth PAR20 - 5000K 25 Degree	120	8	530	66.3	1179	25	5000K	82	MTO	12

#### 19W DIMMABLE PAR38 WET LOCATION (REPLACES 120W)



LED19E26P3827KFLWL	19W PAR38 - 2700K 40 Degree	120	19	1200	63.2	2231	40	2700K	82	STK	12
LED19E26P3830KFLWL	19W PAR38 - 3000K 40 Degree	120	19	1300	68.4	2364	40	3000K	82	STK	12

#### 23W NON DIMMABLE PAR38 (REPLACES 150W)



LED23E26P3827KSPND	23W PAR38 - 2700K 15 Degree	120	23	1700	73.9	11517	15	2700K	82	MTO	12
LED23E26P3827KNFLND	23W PAR38 - 2700K 25 Degree	120	23	1700	73.9	1198	25	2700K	82	MTO	12
LED23E26P3827KFLND	23W PAR38 - 2700K 40 Degree	120	23	1700	73.9	2716	40	2700K	82	MTO	12
LED23E26P3830KSPND	23W PAR38 - 3000K 15 Degree	120	23	1700	73.9	12518	15	3000K	82	STK	12
LED23E26P3830KNFLND	23W PAR38 - 3000K 25 Degree	120	23	1700	73.9	7824	25	3000K	82	STK	12
LED23E26P3830KFLND	23W PAR38 - 3000K 40 Degree	120	23	1700	73.9	2952	40	3000K	82	STK	12
LED23E26P3841KSPND	23W PAR38 - 4100K 15 Degree	120	23	1700	73.9	13269	15	4100K	82	MTO	12
LED23E26P3841KNFLND	23W PAR38 - 4100K 25 Degree	120	23	1700	73.9	8293	25	4100K	82	MTO	12
LED23E26P3841KFLND	23W PAR38 - 4100K 40 Degree	120	23	1700	73.9	3130	40	4100K	82	MTO	12

#### 29W NON DIMMABLE PAR38 (REPLACES 200W)



LED29E26P3827KSP	29W PAR38 - 2700K 15 Degree	120	29	1800	62.1	19388	15	2700K	82	MTO	12
LED29E26P3827KNFL	29W PAR38 - 2700K 25 Degree	120	29	1800	62.1	8653	25	2700K	82	MTO	12
LED29E26P3827KFL	29W PAR38 - 2700K 40 Degree	120	29	1800	62.1	3587	40	2700K	82	MTO	12
LED29E26P3830KSP	29W PAR38 - 3000K 15 Degree	120	29	1900	65.5	19388	15	3000K	82	STK	12
LED29E26P3830KNFL	29W PAR38 - 3000K 25 Degree	120	29	1900	65.5	8653	25	3000K	82	STK	12
LED29E26P3830KFL	29W PAR38 - 3000K 40 Degree	120	29	1900	65.5	3587	40	3000K	82	STK	12
LED29E26P3841KSP	29W PAR38 - 4100K 15 Degree	120	29	2000	69.0	19388	15	4100K	82	MTO	12
LED29E26P3841KNFL	29W PAR38 - 4100K 25 Degree	120	29	2000	69.0	8653	25	4100K	82	MTO	12
LED29E26P3841KFL	29W PAR38 - 4100K 40 Degree	120	29	2000	69.0	3587	40	4100K	82	MTO	12

★ ENERGY STAR® Rated (at time of print)



\*Minimum CBCP est. Consult [tcp.com](http://tcp.com) for most current photometry and LM79 data.

# Non Dimmable

Non Dimmable  
Designer Elite  
LED PAR Lamps

## 17W ELITE DESIGNER NON DIMMABLE PAR38 (REPLACES 120W)

Item Number	ENERGY STAR® Item Description	Voltage	Lamp Watts	Lumens	Lumens Per Watt	*CBCP	Beam Angle	CCT	CRI	STK/MTO	Case Quantity
LED17P3824KFL	17W Smooth PAR38 - 2400K 40 Degree	120	17	1200	70.6	2231	40	2400K	82	MTO	12
LED17P3824KNFL	17W Smooth PAR38 - 2400K 25 Degree	120	17	1200	70.6	5382	25	2400K	82	MTO	12
LED17P3824KSP	17W Smooth PAR38 - 2400K 15 Degree	120	17	1200	70.6	12059	15	2400K	82	MTO	12
LED17P3827KFL	17W Smooth PAR38 - 2700K 40 Degree	120	17	1200	70.6	2231	40	2700K	82	STK	12
LED17P3827KNFL	★ 17W Smooth PAR38 - 2700K 25 Degree	120	17	1200	70.6	5382	25	2700K	82	STK	12
LED17P3827KSP	17W Smooth PAR38 - 2700K 15 Degree	120	17	1200	70.6	12059	15	2700K	82	MTO	12
LED17P3830KFL	★ 17W Smooth PAR38 - 3000K 40 Degree	120	17	1250	73.5	2231	40	3000K	82	STK	12
LED17P3830KNFL	★ 17W Smooth PAR38 - 3000K 25 Degree	120	17	1250	73.5	5382	25	3000K	82	STK	12
LED17P3830KSP	17W Smooth PAR38 - 3000K 15 Degree	120	17	1250	73.5	12059	15	3000K	82	MTO	12
LED17P3835KFL	★ 17W Smooth PAR38 - 3500K 40 Degree	120	17	1275	75.0	2231	40	3500K	82	MTO	12
LED17P3835KNFL	★ 17W Smooth PAR38 - 3500K 25 Degree	120	17	1275	75.0	5382	25	3500K	82	MTO	12
LED17P3835KSP	17W Smooth PAR38 - 3500K 15 Degree	120	17	1275	75.0	12059	15	3500K	82	MTO	12
LED17P3841KFL	★ 17W Smooth PAR38 - 4100K 40 Degree	120	17	1300	76.5	2231	40	4100K	82	MTO	12
LED17P3841KNFL	17W Smooth PAR38 - 4100K 25 Degree	120	17	1300	76.5	5382	25	4100K	82	MTO	12
LED17P3841KSP	★ 17W Smooth PAR38 - 4100K 15 Degree	120	17	1300	76.5	12059	15	4100K	82	MTO	12
LED17P3850KFL	17W Smooth PAR38 - 5000K 40 Degree	120	17	1300	76.5	2231	40	5000K	82	MTO	12
LED17P3850KNFL	17W Smooth PAR38 - 5000K 25 Degree	120	17	1300	76.5	5382	25	5000K	82	MTO	12
LED17P3850KSP	17W Smooth PAR38 - 5000K 15 Degree	120	17	1300	76.5	12059	15	5000K	82	MTO	12



## 14W ELITE DESIGNER NON DIMMABLE PAR38 (REPLACES 90W)

LED14P3824KFL	14W Smooth PAR38 - 2400K 40 Degree	120	14	1050	75.0	1533	40	2400K	82	MTO	12
LED14P3824KNFL	14W Smooth PAR38 - 2400K 25 Degree	120	14	1050	75.0	3697	25	2400K	82	MTO	12
LED14P3824KSP	14W Smooth PAR38 - 2400K 15 Degree	120	14	1050	75.0	8284	15	2400K	82	MTO	12
LED14P3827KFL	14W Smooth PAR38 - 2700K 40 Degree	120	14	1050	75.0	1533	40	2700K	82	STK	12
LED14P3827KNFL	★ 14W Smooth PAR38 - 2700K 25 Degree	120	14	1050	75.0	3697	25	2700K	82	STK	12
LED14P3827KSP	★ 14W Smooth PAR38 - 2700K 15 Degree	120	14	1050	75.0	8284	15	2700K	82	MTO	12
LED14P3830KFL	★ 14W Smooth PAR38 - 3000K 40 Degree	120	14	1100	78.6	1533	40	3000K	82	STK	12
LED14P3830KNFL	★ 14W Smooth PAR38 - 3000K 25 Degree	120	14	1100	78.6	3697	25	3000K	82	STK	12
LED14P3830KSP	★ 14W Smooth PAR38 - 3000K 15 Degree	120	14	1100	78.6	8284	15	3000K	82	MTO	12
LED14P3835KFL	★ 14W Smooth PAR38 - 3500K 40 Degree	120	14	1125	80.4	1533	40	3500K	82	MTO	12
LED14P3835KNFL	★ 14W Smooth PAR38 - 3500K 25 Degree	120	14	1125	80.4	3697	25	3500K	82	MTO	12
LED14P3835KSP	★ 14W Smooth PAR38 - 3500K 15 Degree	120	14	1125	80.4	8284	15	3500K	82	MTO	12
LED14P3841KFL	★ 14W Smooth PAR38 - 4100K 40 Degree	120	14	1150	82.1	1533	40	4100K	82	MTO	12
LED14P3841KNFL	14W Smooth PAR38 - 4100K 25 Degree	120	14	1150	82.1	3697	25	4100K	82	MTO	12
LED14P3841KSP	★ 14W Smooth PAR38 - 4100K 15 Degree	120	14	1150	82.1	8284	15	4100K	82	MTO	12
LED14P3850KFL	14W Smooth PAR38 - 5000K 40 Degree	120	14	1150	82.1	1533	40	5000K	82	MTO	12
LED14P3850KNFL	14W Smooth PAR38 - 4100K 25 Degree	120	14	1150	82.1	3697	25	5000K	82	MTO	12
LED14P3850KSP	14W Smooth PAR38 - 4100K 15 Degree	120	14	1150	82.1	8284	15	5000K	82	MTO	12

★ ENERGY STAR® Rated (at time of print)



\*Minimum CBCP est. Consult tcp.com for most current photometry and LM79 data.

**Non Dimmable  
Designer Elite  
LED PAR  
Lamps**



**14W ELITE DESIGNER NON DIMMABLE PAR30 (REPLACES 90W)**

Item Number	ENERGY STAR®	Item Description	Voltage	Lamp Watts	Lumens	Lumens Per Watt	*CBCP	Beam Angle	CCT	CRI	STK/MTO	Case Quantity
LED14P3024KFL		14W Smooth PAR30 - 2400K 40 Degree	120	14	1050	75.0	1758	40	2400K	82	MTO	12
LED14P3024KNFL		14W Smooth PAR30 - 2400K 25 Degree	120	14	1050	75.0	3891	25	2400K	82	MTO	12
LED14P3024KSP		14W Smooth PAR30 - 2400K 15 Degree	120	14	1050	75.0	8230	15	2400K	82	MTO	12
LED14P3027KFL	★	14W Smooth PAR30 - 2700K 40 Degree	120	14	1050	75.0	1758	40	2700K	82	STK	12
LED14P3027KNFL	★	14W Smooth PAR30 - 2700K 25 Degree	120	14	1050	75.0	3891	25	2700K	82	STK	12
LED14P3027KSP	★	14W Smooth PAR30 - 2700K 15 Degree	120	14	1050	75.0	8230	15	2700K	82	MTO	12
LED14P3030KFL	★	14W Smooth PAR30 - 3000K 40 Degree	120	14	1100	78.6	1758	40	3000K	82	STK	12
LED14P3030KNFL	★	14W Smooth PAR30 - 3000K 25 Degree	120	14	1100	78.6	3891	25	3000K	82	STK	12
LED14P3030KSP	★	14W Smooth PAR30 - 3000K 15 Degree	120	14	1100	78.6	8230	15	3000K	82	MTO	12
LED14P3035KFL	★	14W Smooth PAR30 - 3500K 40 Degree	120	14	1125	80.4	1758	40	3500K	82	MTO	12
LED14P3035KNFL	★	14W Smooth PAR30 - 3500K 25 Degree	120	14	1125	80.4	3891	25	3500K	82	MTO	12
LED14P3035KSP	★	14W Smooth PAR30 - 3500K 15 Degree	120	14	1125	80.4	8230	15	3500K	82	MTO	12
LED14P3041KFL		14W Smooth PAR30 - 4100K 40 Degree	120	14	1150	82.1	1758	40	4100K	82	MTO	12
LED14P3041KNFL	★	14W Smooth PAR30 - 4100K 25 Degree	120	14	1150	82.1	3891	25	4100K	82	MTO	12
LED14P3041KSP	★	14W Smooth PAR30 - 4100K 15 Degree	120	14	1150	82.1	8230	15	4100K	82	MTO	12
LED14P3050KFL		14W Smooth PAR30 - 5000K 40 Degree	120	14	1150	82.1	1758	40	5000K	82	MTO	12
LED14P3050KNFL		14W Smooth PAR30 - 5000K 25 Degree	120	14	1150	82.1	3891	25	5000K	82	MTO	12
LED14P3050KSP		14W Smooth PAR30 - 5000K 15 Degree	120	14	1150	82.1	8230	15	5000K	82	MTO	12

**12W ELITE DESIGNER NON DIMMABLE PAR30 (REPLACES 75W)**



LED12P3024KFL		12W Smooth PAR30 - 2400K 40 Degree	120	12	800	66.7	1315	40	2400K	82	MTO	12
LED12P3024KNFL		12W Smooth PAR30 - 2400K 25 Degree	120	12	800	66.7	2910	25	2400K	82	MTO	12
LED12P3024KSP		12W Smooth PAR30 - 2400K 15 Degree	120	12	800	66.7	6155	15	2400K	82	MTO	12
LED12P3027KFL	★	12W Smooth PAR30 - 2700K 40 Degree	120	12	800	66.7	1315	40	2700K	82	STK	12
LED12P3027KNFL	★	12W Smooth PAR30 - 2700K 25 Degree	120	12	800	66.7	2910	25	2700K	82	STK	12
LED12P3027KSP		12W Smooth PAR30 - 2700K 15 Degree	120	12	800	66.7	6155	15	2700K	82	MTO	12
LED12P3030KFL	★	12W Smooth PAR30 - 3000K 40 Degree	120	12	825	68.8	1315	40	3000K	82	STK	12
LED12P3030KNFL	★	12W Smooth PAR30 - 3000K 25 Degree	120	12	825	68.8	2910	25	3000K	82	STK	12
LED12P3030KSP	★	12W Smooth PAR30 - 3000K 15 Degree	120	12	825	68.8	6155	15	3000K	82	MTO	12
LED12P3035KFL	★	12W Smooth PAR30 - 3500K 40 Degree	120	12	850	70.8	1315	40	3500K	82	MTO	12
LED12P3035KNFL	★	12W Smooth PAR30 - 3500K 25 Degree	120	12	850	70.8	2910	25	3500K	82	MTO	12
LED12P3035KSP	★	12W Smooth PAR30 - 3500K 15 Degree	120	12	850	70.8	6155	15	3500K	82	MTO	12
LED12P3041KFL	★	12W Smooth PAR30 - 4100K 40 Degree	120	12	875	72.9	1315	40	4100K	82	MTO	12
LED12P3041KNFL		12W Smooth PAR30 - 4100K 25 Degree	120	12	875	72.9	2910	25	4100K	82	MTO	12
LED12P3041KSP	★	12W Smooth PAR30 - 4100K 15 Degree	120	12	875	72.9	6155	15	4100K	82	MTO	12
LED12P3050KFL		12W Smooth PAR30 - 5000K 40 Degree	120	12	875	72.9	1315	40	5000K	82	MTO	12
LED12P3050KNFL		12W Smooth PAR30 - 5000K 25 Degree	120	12	875	72.9	2910	25	5000K	82	MTO	12
LED12P3050KSP		12W Smooth PAR30 - 5000K 15 Degree	120	12	875	72.9	6155	15	5000K	82	MTO	12

★ ENERGY STAR® Rated (at time of print)



\*Minimum CBCP est. Consult [tcp.com](http://tcp.com) for most current photometry and LM79 data.



Item Number	ENERGY STAR®	Item Description	Voltage	Lamp Watts	Lumens	Lumens Per Watt	*CBCP	Beam Angle	CCT	CRI	STK/MTO	Case Quantity	Non Dimmable Designer Elite LED PAR Lamps
-------------	--------------	------------------	---------	------------	--------	-----------------	-------	------------	-----	-----	---------	---------------	---

**12W ELITE DESIGNER NON DIMMABLE PAR30 SHORT NECK (REPLACES 75W)**

LED12P30S24KFL		12W Smooth PAR30 SN - 2400K 40 Degree	120	12	800	66.7	1315	40	2400K	82	MTO	12
LED12P30S24KNFL		12W Smooth PAR30 SN - 2400K 25 Degree	120	12	800	66.7	2910	25	2400K	82	MTO	12
LED12P30S24KSP		12W Smooth PAR30 SN - 2400K 15 Degree	120	12	800	66.7	6155	15	2400K	82	MTO	12
LED12P30S27KFL		12W Smooth PAR30 SN - 2700K 40 Degree	120	12	800	66.7	1315	40	2700K	82	STK	12
LED12P30S27KNFL	★	12W Smooth PAR30 SN - 2700K 25 Degree	120	12	800	66.7	2910	25	2700K	82	STK	12
LED12P30S27KSP		12W Smooth PAR30 SN - 2700K 15 Degree	120	12	800	66.7	6155	15	2700K	82	MTO	12
LED12P30S30KFL		12W Smooth PAR30 SN - 3000K 40 Degree	120	12	825	68.8	1315	40	3000K	82	STK	12
LED12P30S30KNFL		12W Smooth PAR30 SN - 3000K 25 Degree	120	12	825	68.8	2910	25	3000K	82	STK	12
LED12P30S30KSP		12W Smooth PAR30 SN - 3000K 15 Degree	120	12	825	68.8	6155	15	3000K	82	MTO	12
LED12P30S35KFL		12W Smooth PAR30 SN - 3500K 40 Degree	120	12	850	70.8	1315	40	3500K	82	MTO	12
LED12P30S35KNFL		12W Smooth PAR30 SN - 3500K 25 Degree	120	12	850	70.8	2910	25	3500K	82	MTO	12
LED12P30S35KSP		12W Smooth PAR30 SN - 3500K 15 Degree	120	12	850	70.8	6155	15	3500K	82	MTO	12
LED12P30S41KFL		12W Smooth PAR30 SN - 4100K 40 Degree	120	12	875	72.9	1315	40	4100K	82	MTO	12
LED12P30S41KNFL		12W Smooth PAR30 SN - 4100K 25 Degree	120	12	875	72.9	2910	25	4100K	82	MTO	12
LED12P30S41KSP		12W Smooth PAR30 SN - 4100K 15 Degree	120	12	875	72.9	6155	15	4100K	82	MTO	12
LED12P30S50KFL		12W Smooth PAR30 SN - 5000K 40 Degree	120	12	875	72.9	1315	40	5000K	82	MTO	12
LED12P30S50KNFL		12W Smooth PAR30 SN - 5000K 25 Degree	120	12	875	72.9	2910	25	5000K	82	MTO	12
LED12P30S50KSP		12W Smooth PAR30 SN - 5000K 15 Degree	120	12	875	72.9	6155	15	5000K	82	MTO	12



**10W ELITE DESIGNER NON DIMMABLE PAR30 SHORT NECK (REPLACES 60W)**

LED10P30S24KFL		10W Smooth PAR30 SN - 2400K 40 Degree	120	10	600	60.0	957	40	2400K	82	MTO	12
LED10P30S24KNFL		10W Smooth PAR30 SN - 2400K 25 Degree	120	10	600	60.0	2118	25	2400K	82	MTO	12
LED10P30S24KSP		10W Smooth PAR30 SN - 2400K 15 Degree	120	10	600	60.0	4480	15	2400K	82	MTO	12
LED10P30S27KFL	★	10W Smooth PAR30 SN - 2700K 40 Degree	120	10	600	60.0	957	40	2700K	82	STK	12
LED10P30S27KNFL	★	10W Smooth PAR30 SN - 2700K 25 Degree	120	10	600	60.0	2118	25	2700K	82	STK	12
LED10P30S27KSP	★	10W Smooth PAR30 SN - 2700K 15 Degree	120	10	600	60.0	4480	15	2700K	82	MTO	12
LED10P30S30KFL	★	10W Smooth PAR30 SN - 3000K 40 Degree	120	10	650	65.0	957	40	3000K	82	STK	12
LED10P30S30KNFL	★	10W Smooth PAR30 SN - 3000K 25 Degree	120	10	650	65.0	2118	25	3000K	82	STK	12
LED10P30S30KSP	★	10W Smooth PAR30 SN - 3000K 15 Degree	120	10	650	65.0	4480	15	3000K	82	MTO	12
LED10P30S35KFL	★	10W Smooth PAR30 SN - 3500K 40 Degree	120	10	675	67.5	957	40	3500K	82	MTO	12
LED10P30S35KNFL	★	10W Smooth PAR30 SN - 3500K 25 Degree	120	10	675	67.5	2118	25	3500K	82	MTO	12
LED10P30S35KSP	★	10W Smooth PAR30 SN - 3500K 15 Degree	120	10	675	67.5	4480	15	3500K	82	MTO	12
LED10P30S41KFL		10W Smooth PAR30 SN - 4100K 40 Degree	120	10	700	70.0	957	40	4100K	82	MTO	12
LED10P30S41KNFL	★	10W Smooth PAR30 SN - 4100K 25 Degree	120	10	700	70.0	2118	25	4100K	82	MTO	12
LED10P30S41KSP	★	10W Smooth PAR30 SN - 4100K 15 Degree	120	10	700	70.0	4480	15	4100K	82	MTO	12
LED10P30S50KFL		10W Smooth PAR30 SN - 5000K 40 Degree	120	10	700	70.0	957	40	5000K	82	MTO	12
LED10P30S50KNFL		10W Smooth PAR30 SN - 5000K 25 Degree	120	10	700	70.0	2118	25	5000K	82	MTO	12
LED10P30S50KSP		10W Smooth PAR30 SN - 5000K 15 Degree	120	10	700	70.0	4480	15	5000K	82	MTO	12

★ ENERGY STAR® Rated (at time of print)



\*Minimum CBCP est. Consult tcp.com for most current photometry and LM79 data.

**Non Dimmable  
Designer Elite  
LED PAR  
Lamps**



Item Number	ENERGY STAR®	Item Description	Voltage	Lamp Watts	Lumens	Lumens Per Watt	* CBCP	Beam Angle	CCT	CRI	STK/MTD	Case Quantity
<b>10W ELITE DESIGNER NON DIMMABLE PAR20 (REPLACES 60W)</b>												
LED10P2024KFL		10W Smooth PAR20 - 2400K 40 Degree	120	10	600	60.0	1558	40	2400K	82	MTD	12
LED10P2024KNFL		10W Smooth PAR20 - 2400K 25 Degree	120	10	600	60.0	3067	25	2400K	82	MTD	12
LED10P2027KFL		10W Smooth PAR20 - 2700K 40 Degree	120	10	600	60.0	1558	40	2700K	82	STK	12
LED10P2027KNFL	★	10W Smooth PAR20 - 2700K 25 Degree	120	10	600	60.0	3067	25	2700K	82	STK	12
LED10P2030KFL	★	10W Smooth PAR20 - 3000K 40 Degree	120	10	650	65.0	1558	40	3000K	82	STK	12
LED10P2030KNFL		10W Smooth PAR20 - 3000K 25 Degree	120	10	650	65.0	3067	25	3000K	82	STK	12
LED10P2035KFL		10W Smooth PAR20 - 3500K 40 Degree	120	10	675	67.5	1558	40	3500K	82	MTD	12
LED10P2035KNFL		10W Smooth PAR20 - 3500K 25 Degree	120	10	675	67.5	3067	25	3500K	82	MTD	12
LED10P2041KFL		10W Smooth PAR20 - 4100K 40 Degree	120	10	700	70.0	1558	40	4100K	82	MTD	12
LED10P2041KNFL		10W Smooth PAR20 - 4100K 25 Degree	120	10	700	70.0	3067	25	4100K	82	MTD	12
LED10P2050KFL		10W Smooth PAR20 - 5000K 40 Degree	120	10	700	70.0	1558	40	5000K	82	MTD	12
LED10P2050KNFL		10W Smooth PAR20 - 5000K 25 Degree	120	10	700	70.0	3067	25	5000K	82	MTD	12
<b>8W ELITE DESIGNER NON DIMMABLE PAR20 (REPLACES 50W)</b>												
LED8P2024KFL		8W Smooth PAR20 - 2400K 40 Degree	120	8	500	62.5	593	40	2400K	82	MTD	12
LED8P2024KNFL		8W Smooth PAR20 - 2400K 25 Degree	120	8	500	62.5	1179	25	2400K	82	MTD	12
LED8P2027KFL	★	8W Smooth PAR20 - 2700K 40 Degree	120	8	500	62.5	593	40	2700K	82	STK	12
LED8P2027KNFL	★	8W Smooth PAR20 - 2700K 25 Degree	120	8	500	62.5	1179	25	2700K	82	STK	12
LED8P2030KFL	★	8W Smooth PAR20 - 3000K 40 Degree	120	8	515	64.4	593	40	3000K	82	STK	12
LED8P2030KNFL		8W Smooth PAR20 - 3000K 25 Degree	120	8	515	64.4	1179	25	3000K	82	STK	12
LED8P2035KFL	★	8W Smooth PAR20 - 3500K 40 Degree	120	8	525	65.6	593	40	3500K	82	MTD	12
LED8P2035KNFL	★	8W Smooth PAR20 - 3500K 25 Degree	120	8	525	65.6	1179	25	3500K	82	MTD	12
LED8P2041KFL	★	8W Smooth PAR20 - 4100K 40 Degree	120	8	530	66.3	593	40	4100K	82	MTD	12
LED8P2041KNFL	★	8W Smooth PAR20 - 4100K 25 Degree	120	8	530	66.3	1179	25	4100K	82	MTD	12
LED8P2050KFL		8W Smooth PAR20 - 5000K 40 Degree	120	8	530	66.3	593	40	5000K	82	MTD	12
LED8P2050KNFL		8W Smooth PAR20 - 5000K 25 Degree	120	8	530	66.3	1179	25	5000K	82	MTD	12

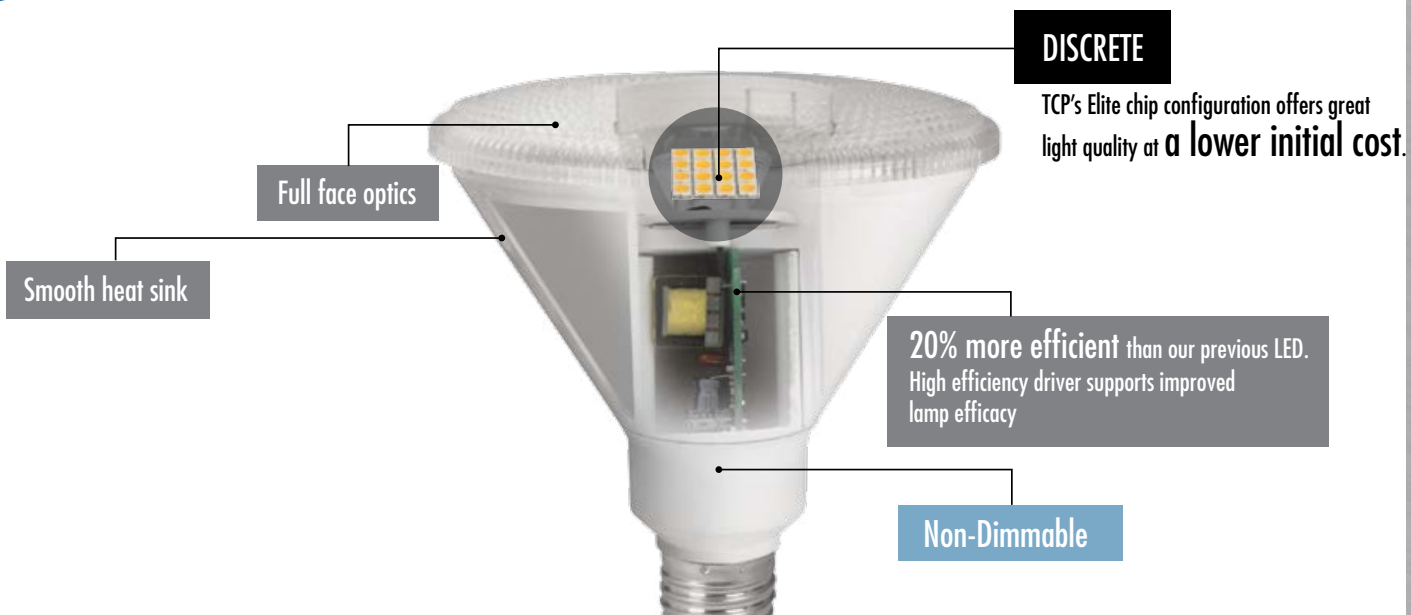
★ ENERGY STAR® Rated (at time of print)



\*Minimum CBCP est. Consult [tcp.com](http://tcp.com) for most current photometry and LM79 data.



The Elite Series LED PARs are an energy-efficient, cost-saving option – great for most applications.



TCP LED	Incandescent Replacement	Average Lumens	Average LPW
14W PAR38	90W PAR38	1050	75
12W PAR30LN	75W PAR30	850	71
10W PAR30SN	60W PAR30	600	60
8W PAR20	50W PAR20	500	62

**Non Dimmable  
Elite  
LED PAR  
Lamps**

Item Number	ENERGY STAR®	Item Description	Voltage	Lamp Watts	Lumens	Lumens Per Watt	*CBCP	Beam Angle	CCT	CRI	STK/MTO	Case Quantity
<b>17W ELITE NON DIMMABLE PAR38 (REPLACES 120W)</b>												
LED17P38V27KFL		17W Smooth PAR38 - 2700K 40 Degree	120	17	1200	70.6	2231	40	2700K	82	STK	12
LED17P38V30KFL		17W Smooth PAR38 - 3000K 40 Degree	120	17	1250	73.5	2231	40	3000K	82	STK	12
<b>14W ELITE NON DIMMABLE PAR38 (REPLACES 90W)</b>												
LED14P38V27KFL		14W Smooth PAR38 - 2700K 40 Degree	120	14	1050	75.0	1533	40	2700K	82	STK	12
LED14P38V30KFL		14W Smooth PAR38 - 3000K 40 Degree	120	14	1100	78.6	1533	40	3000K	82	STK	12
<b>14W ELITE NON DIMMABLE PAR30 (REPLACES 90W)</b>												
LED14P30V27KFL		14W Smooth PAR30 - 2700K 40 Degree	120	14	1050	75.0	1758	40	2700K	82	STK	12
LED14P30V30KFL		14W Smooth PAR30 - 3000K 40 Degree	120	14	1100	78.6	1758	40	3000K	82	STK	12
<b>12W ELITE NON DIMMABLE PAR30 (REPLACES 75W)</b>												
LED12P30V27KFL		12W Smooth PAR30 - 2700K 40 Degree	120	12	800	66.7	1315	40	2700K	82	STK	12
LED12P30V30KFL		12W Smooth PAR30 - 3000K 40 Degree	120	12	850	70.8	1315	40	3000K	82	STK	12
<b>12W ELITE NON DIMMABLE PAR30 SHORT NECK (REPLACES 75W)</b>												
LED12P30SV27KFL		12W Smooth PAR30 Short Neck - 2700K 40 Degree	120	12	800	66.7	1315	40	2700K	82	STK	12
LED12P30SV30KFL		12W Smooth PAR30 Short Neck - 3000K 40 Degree	120	12	850	70.8	1315	40	3000K	82	STK	12
<b>10W ELITE NON DIMMABLE PAR30 SHORT NECK (REPLACES 60W)</b>												
LED10P30SV27KFL		10W Smooth PAR30 Short Neck - 2700K 40 Degree	120	10	600	60.0	957	40	2700K	82	STK	12
LED10P30SV30KFL	★	10W Smooth PAR30 Short Neck - 3000K 40 Degree	120	10	650	65.0	957	40	3000K	82	STK	12
<b>10W ELITE NON DIMMABLE PAR20 (REPLACES 60W)</b>												
LED10P20V27KFL		10W Smooth PAR20 - 2700K 40 Degree	120	10	600	60.0	784	40	2700K	82	STK	12
LED10P20V30KFL		10W Smooth PAR20 - 3000K 40 Degree	120	10	650	65.0	784	40	3000K	82	STK	12
<b>8W ELITE NON DIMMABLE PAR20 (REPLACES 50W)</b>												
LED8P20V27KFL		8W Smooth PAR20 - 2700K 40 Degree	120	8	500	62.5	593	40	2700K	82	STK	12
LED8P20V30KFL		8W Smooth PAR20 - 3000K 40 Degree	120	8	515	64.4	593	40	3000K	82	STK	12



★ ENERGY STAR® Rated (at time of print)



\*Minimum CBCP est. Consult [tcp.com](http://tcp.com) for most current photometry and LM79 data.

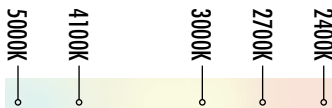


# Elite BR Series

TCP Elite Series BR Lamps are great for illuminating large areas with smooth, attractive light.



### Color temperature options



## CRI 82

Perfect for most applications

### TCP LED

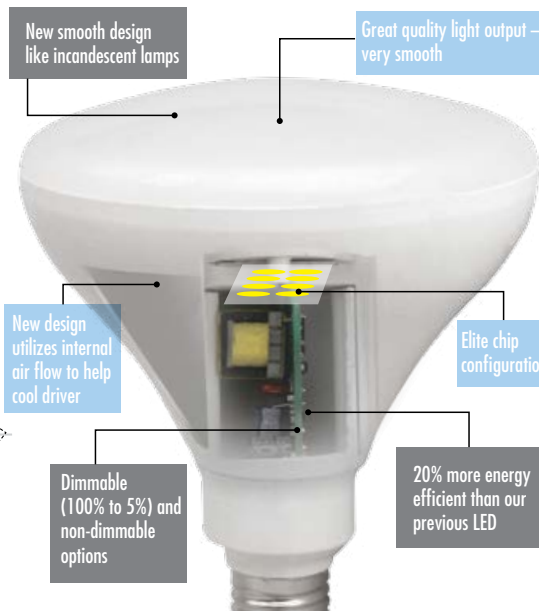
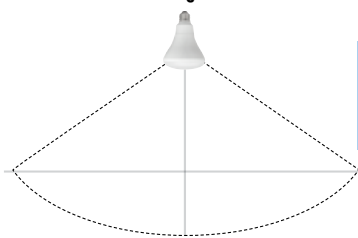
### Incandescent Replacement

17W BR40	120W BR40
12W BR30/40	85W BR30 & BR40
10W BR30	65W BR30
8W R20	50W R20



COLORED LENS BR30

### Uniform flood light distribution



Item Number	ENERGY STAR® Item Description	Voltage	Lamp Watts	Lumens	Lumens Per Watt	Beam Angle	CCT	CRI	STK/MTO	Case Quantity	Dimmable Elite LED BR Lamps
<b>12W ELITE DIMMABLE BR30 (REPLACES 85W) - COLORED LENS</b>											
LED12BR30DRD	Dimmable 12W Elite BR30 Red Lens	120	12	850	70.8	110	-	82	STK	12	
LED12BR30DAMB	Dimmable 12W Elite BR30 Amber Lens	120	12	850	70.8	110	-	82	STK	12	
LED12BR30DY	Dimmable 12W Elite BR30 Yellow Lens	120	12	850	70.8	110	-	82	STK	12	
LED12BR30DBL	Dimmable 12W Elite BR30 Blue Lens	120	12	850	70.8	110	-	82	STK	12	
LED12BR30DGR	Dimmable 12W Elite BR30 Green Lens	120	12	850	70.8	110	-	82	STK	12	

★ ENERGY STAR® Rated (at time of print)



**5 YEAR WARRANTY**

\*Based on 12 Hours per day

**Dimmable  
Elite  
LED BR  
Lamps**

**12W ELITE DIMMABLE BR30 (REPLACES 85W)**



Item Number	ENERGY STAR®	Item Description	Voltage	Lamp Watts	Lumens	Lumens Per Watt	Beam Angle	CCT	CRI	STK/MTO	Case Quantity
LED12BR30D24K		12W Smooth BR30 - 2400K	120	12	850	70.8	110	2400K	82	STK	12
LED12BR30D27K	★	12W Smooth BR30 - 2700K	120	12	850	70.8	110	2700K	82	STK	12
LED12BR30D30K	★	12W Smooth BR30 - 3000K	120	12	875	72.9	110	3000K	82	STK	12
LED12BR30D41K	★	12W Smooth BR30 - 4100K	120	12	900	75.0	110	4100K	82	STK	12
LED12BR30D50K		12W Smooth BR30 - 5000K	120	12	900	75.0	110	5000K	82	STK	12

**10W ELITE DIMMABLE BR30 (REPLACES 65W)**

LED10BR30D24K		10W Smooth BR30 - 2400K	120	10	650	65.0	110	2400K	82	STK	12
LED10BR30D27K	★	10W Smooth BR30 - 2700K	120	10	650	65.0	110	2700K	82	STK	12
LED10BR30D30K	★	10W Smooth BR30 - 3000K	120	10	675	67.5	110	3000K	82	STK	12
LED10BR30D41K	★	10W Smooth BR30 - 4100K	120	10	700	70.0	110	4100K	82	STK	12
LED10BR30D50K		10W Smooth BR30 - 5000K	120	10	700	70.0	110	5000K	82	STK	12

**17W ELITE DIMMABLE BR40 (REPLACES 120W)**



LED17BR40D24K		17W Smooth BR40 - 2400K	120	17	1200	70.6	110	2400K	82	STK	12
LED17BR40D27K	★	17W Smooth BR40 - 2700K	120	17	1200	70.6	110	2700K	82	STK	12
LED17BR40D30K	★	17W Smooth BR40 - 3000K	120	17	1250	73.5	110	3000K	82	STK	12
LED17BR40D41K	★	17W Smooth BR40 - 4100K	120	17	1300	76.5	110	4100K	82	STK	12
LED17BR40D50K		17W Smooth BR40 - 5000K	120	17	1300	76.5	110	5000K	82	STK	12

**12W ELITE DIMMABLE BR40 (REPLACES 85W)**

LED12BR40D24K		12W Smooth BR40 - 2400K	120	12	850	70.8	110	2400K	82	STK	12
LED12BR40D27K	★	12W Smooth BR40 - 2700K	120	12	850	70.8	110	2700K	82	STK	12
LED12BR40D30K	★	12W Smooth BR40 - 3000K	120	12	875	72.9	110	3000K	82	STK	12
LED12BR40D41K	★	12W Smooth BR40 - 4100K	120	12	900	75.0	110	4100K	82	STK	12
LED12BR40D50K		12W Smooth BR40 - 5000K	120	12	900	75.0	110	5000K	82	STK	12

**10W ELITE DIMMABLE R20 (REPLACES 65W)**



LED10R20D24K		10W Smooth R20 - 2400K	120	10	650	65.0	110	2400K	82	STK	12
LED10R20D27K	★	10W Smooth R20 - 2700K	120	10	650	65.0	110	2700K	82	STK	12
LED10R20D30K		10W Smooth R20 - 3000K	120	10	675	67.5	110	3000K	82	STK	12
LED10R20D41K		10W Smooth R20 - 4100K	120	10	700	70.0	110	4100K	82	STK	12
LED10R20D50K		10W Smooth R20 - 5000K	120	10	700	70.0	110	5000K	82	STK	12

**8W ELITE DIMMABLE R20 (REPLACES 50W)**

LED8R20D24K		8W Smooth R20 - 2400K	120	8	500	62.5	110	2400K	82	STK	12
LED8R20D27K	★	8W Smooth R20 - 2700K	120	8	500	62.5	110	2700K	82	STK	12
LED8R20D30K	★	8W Smooth R20 - 3000K	120	8	515	64.4	110	3000K	82	STK	12
LED8R20D41K	★	8W Smooth R20 - 4100K	120	8	530	66.3	110	4100K	82	STK	12
LED8R20D50K		8W Smooth R20 - 5000K	120	8	530	66.3	110	5000K	82	STK	12

★ ENERGY STAR® Rated (at time of print)



**5 YEAR**  
WARRANTY

\*Based on 12 Hours per day

Item Number	ENERGY STAR®	Item Description	Voltage	Lamp Watts	Lumens	Lumens Per Watt	Beam Angle	CCT	CRI	STK/MTO	Case Quantity	Non Dimmable Elite LED BR Lamps
<b>12W ELITE NON DIMMABLE BR30 (REPLACES 85W)</b>												
LED12BR3027K	★	12W Smooth BR30 - 2700K	120	12	850	70.8	110	2700K	82	STK	12	
LED12BR3030K	★	12W Smooth BR30 - 3000K	120	12	875	72.9	110	3000K	82	STK	12	
LED12BR3041K	★	12W Smooth BR30 - 4100K	120	12	900	75.0	110	4100K	82	STK	12	
<b>10W ELITE NON DIMMABLE BR30 (REPLACES 65W)</b>												
LED10BR3027K	★	10W Smooth BR30 - 2700K	120	10	650	65.0	110	2700K	82	STK	12	
LED10BR3030K		10W Smooth BR30 - 3000K	120	10	675	67.5	110	3000K	82	STK	12	
LED10BR3041K		10W Smooth BR30 - 4100K	120	10	700	70.0	110	4100K	82	STK	12	
<b>17W ELITE NON DIMMABLE BR40 (REPLACES 120W)</b>												
LED17BR4027K	★	17W Smooth BR40 - 2700K	120	17	1200	70.6	110	2700K	82	STK	12	
LED17BR4030K	★	17W Smooth BR40 - 3000K	120	17	1250	73.5	110	3000K	82	STK	12	
LED17BR4041K	★	17W Smooth BR40 - 4100K	120	17	1300	76.5	110	4100K	82	STK	12	
<b>12W ELITE NON DIMMABLE BR40 (REPLACES 85W)</b>												
LED12BR4027K	★	12W Smooth BR40 - 2700K	120	12	850	70.8	110	2700K	82	STK	12	
LED12BR4030K	★	12W Smooth BR40 - 3000K	120	12	875	72.9	110	3000K	82	STK	12	
LED12BR4041K	★	12W Smooth BR40 - 4100K	120	12	900	75.0	110	4100K	82	STK	12	
<b>10W ELITE NON DIMMABLE R20 (REPLACES 65W)</b>												
LED10R2027K	★	10W Smooth R20 - 2700K	120	10	650	65.0	110	2700K	82	STK	12	
LED10R2030K	★	10W Smooth R20 - 3000K	120	10	675	67.5	110	3000K	82	STK	12	
LED10R2041K	★	10W Smooth R20 - 4100K	120	10	700	70.0	110	4100K	82	STK	12	
<b>8W ELITE NON DIMMABLE R20 (REPLACES 50W)</b>												
LED8R2027K		8W Smooth R20 - 2700K	120	8	500	62.5	110	2700K	82	STK	12	
LED8R2030K	★	8W Smooth R20 - 3000K	120	8	515	64.4	110	3000K	82	STK	12	
LED8R2041K	★	8W Smooth R20 - 4100K	120	8	530	66.3	110	4100K	82	STK	12	

★ ENERGY STAR® Rated (at time of print)



**5 YEAR WARRANTY**

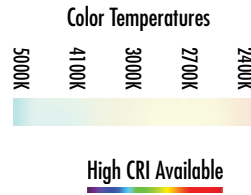
\*Based on 12 Hours per day



# Elite All Purpose

TCP's all-purpose and omni-directional options provide exceptional light distribution.

TCP LED	Incandescent Replacement	Average Lumens	Average LPW
7W All Purpose	40W A-Lamp	450	64
10W All Purpose	60W A-Lamp	800	73



All Purpose A-Lamps (230°)

Elite All Purpose A-Lamps	Item Number	ENERGY STAR®	Item Description	Voltage	Lamp Watts	Incandescent Equivalent	Lumens	Lumens Per Watt	Beam Angle	CCT	CRI	STK/MTO	Case Quantity
<b>10W DIMMABLE A19s - 230 DEGREE (REPLACES 60W)</b>													
	LED10A19D24K		Dimmable 10W Smooth A19 - 2400K	120	10	60	800	80.0	230	2400K	82	STK	12
	LED10A19D27K		Dimmable 10W Smooth A19 - 2700K	120	10	60	800	80.0	230	2700K	82	STK	12
	LED10A19D30K		Dimmable 10W Smooth A19 - 3000K	120	10	60	825	82.5	230	3000K	82	STK	12
	LED10A19D41K		Dimmable 10W Smooth A19 - 4100K	120	10	60	850	85.0	230	4100K	82	STK	12
	LED10A19D50K		Dimmable 10W Smooth A19 - 5000K	120	10	60	850	85.0	230	5000K	82	STK	12
<b>7W DIMMABLE A19s - 230 DEGREE (REPLACES 40W)</b>													
	LED7A19D24K		Dimmable 7W Smooth A19 - 2400K	120	7	40	450	64.3	230	2400K	82	STK	12
	LED7A19D27K		Dimmable 7W Smooth A19 - 2700K	120	7	40	450	64.3	230	2700K	82	STK	12
	LED7A19D30K		Dimmable 7W Smooth A19 - 3000K	120	7	40	475	67.9	230	3000K	82	STK	12
	LED7A19D41K		Dimmable 7W Smooth A19 - 4100K	120	7	40	500	71.4	230	4100K	82	STK	12
	LED7A19D50K		Dimmable 7W Smooth A19 - 5000K	120	7	40	500	71.4	230	5000K	82	STK	12
<b>10W NON DIMMABLE A19s - 230 DEGREE (REPLACES 60W)</b>													
	LED10A1927K		Non-Dimmable 10W Smooth A19 - 2700K	120	10	60	800	80.0	230	2700K	82	STK	12
	LED10A1930K		Non-Dimmable 10W Smooth A19 - 3000K	120	10	60	825	82.5	230	3000K	82	STK	12
	LED10A1941K		Non-Dimmable 10W Smooth A19 - 4100K	120	10	60	850	85.0	230	4100K	82	STK	12
<b>7W NON DIMMABLE A19s - 230 DEGREE (REPLACES 40W)</b>													
	LED7A1927K		Non-Dimmable 7W Smooth A19 - 2700K	120	7	40	450	64.3	230	2700K	82	STK	12
	LED7A1930K		Non-Dimmable 7W Smooth A19 - 3000K	120	7	40	475	67.9	230	3000K	82	STK	12
	LED7A1941K		Non-Dimmable 7W Smooth A19 - 4100K	120	7	40	500	71.4	230	4100K	82	STK	12

★ ENERGY STAR® Rated (at time of print)

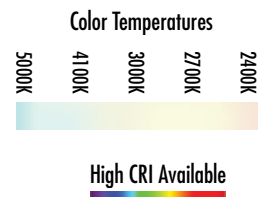


5 YEAR WARRANTY

\*Based on 12 Hours per day

# Elite Omni-Directional

TCP LED	Incandescent Replacement	Average Lumens	Average LPW
7W Omni	40W A-Lamp	450	64
10W Omni	60W A-Lamp	800	80



Omni-Directional A-Lamps Full Light Output (270°)

Item Number	ENERGY STAR®	Item Description	Voltage	Lamp Watts	Incandescent Equivalent	Lumens	Lumens Per Watt	Beam Angle	CCT	CRI	STK/MT0	Case Quantity	Elite Omni-Directional A-Lamps
<b>10W DIMMABLE A19s - OMNIDIRECTIONAL (REPLACES 60W)</b>													
LED10A19D0D24K		Dimmable 10W Omni-Directional A19 - 2400K	120	10	60	800	80.0	270	2400K	82	STK	12	
LED10A19D0D27K	★	Dimmable 10W Omni-Directional A19 - 2700K	120	10	60	800	80.0	270	2700K	82	STK	12	
LED10A19D0D30K	★	Dimmable 10W Omni-Directional A19 - 3000K	120	10	60	825	82.5	270	3000K	82	STK	12	
LED10A19D0D41K	★	Dimmable 10W Omni-Directional A19 - 4100K	120	10	60	850	85.0	270	4100K	82	STK	12	
LED10A19D0D50K		Dimmable 10W Omni-Directional A19 - 5000K	120	10	60	850	85.0	270	5000K	82	STK	12	
<b>7W DIMMABLE A19s - OMNIDIRECTIONAL (REPLACES 40W)</b>													
LED7A19D0D24K		Dimmable 7W Omni-Directional A19 - 2400K	120	7	40	450	64.3	270	2400K	82	STK	12	
LED7A19D0D27K	★	Dimmable 7W Omni-Directional A19 - 2700K	120	7	40	450	64.3	270	2700K	82	STK	12	
LED7A19D0D30K	★	Dimmable 7W Omni-Directional A19 - 3000K	120	7	40	475	67.9	270	3000K	82	STK	12	
LED7A19D0D41K	★	Dimmable 7W Omni-Directional A19 - 4100K	120	7	40	500	71.4	270	4100K	82	STK	12	
LED7A19D0D50K		Dimmable 7W Omni-Directional A19 - 5000K	120	7	40	500	71.4	270	5000K	82	STK	12	
<b>10W NON DIMMABLE A19s - OMNIDIRECTIONAL (REPLACES 60W)</b>													
LED10A19D0D27K	★	Non-Dimmable 10W Omni-Directional A19 - 2700K	120	10	60	800	80.0	270	2700K	82	STK	12	
LED10A19D0D30K	★	Non-Dimmable 10W Omni-Directional A19 - 3000K	120	10	60	825	82.5	270	3000K	82	STK	12	
<b>7W NON DIMMABLE A19s - OMNIDIRECTIONAL (REPLACES 40W)</b>													
LED7A19D0D27K		Non-Dimmable 7W Omni-Directional A19 - 2700K	120	7	40	450	64.3	270	2700K	82	STK	12	
LED7A19D0D30K		Non-Dimmable 7W Omni-Directional A19 - 3000K	120	7	40	475	67.9	270	3000K	82	STK	12	

★ ENERGY STAR® Rated (at time of print)



\*Based on 12 Hours per day

# Elite LED High Output A-Lamps

## Omni-Directional

TCP's High Output A lamps are ideal for use in areas where maximum light output is required. This high output lamp produces an even light similar to incandescent, all with an average life span of 25,000 hours.

### Omni-Directional



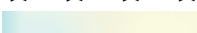
### All-Purpose



A21 A-Lamp

#### Color Temperatures

5000K 4100K 3000K 2700K



#### High CRI Available



- ✦ Best "technical" A-Lamp replacement
- ✦ Best "value" A-Lamp replacement
- ✦ Based on ENERGY STAR standard for omni-directional lamps.
- ✦ All-purpose lamp with excellent uniformity within 230 degrees that works well in all A-Lamp fixtures.
- ✦ Supported by many utility rebates.

### Elite 100W High Output A-Lamps

#### 18W DIMMABLE A21s - OMNI-DIRECTIONAL (REPLACES 100W)



Item Number	ENERGY STAR®	Item Description	Voltage	Lamp Watts	Incandescent Equivalent	Lumens	Lumens Per Watt	Beam Angle	CCT	CRI	STK/MTD	Case Quantity
LED18A21D0D27K	★	Dimmable 18W Omni-Directional A21 - 2700K	120	18	100	1600	88.9	270	2700K	82	STK	12
LED18A21D0D30K	★	Dimmable 18W Omni-Directional A21 - 3000K	120	18	100	1625	90.3	270	3000K	82	STK	12
LED18A21D0D41K	★	Dimmable 18W Omni-Directional A21 - 4100K	120	18	100	1650	91.7	270	4100K	82	STK	12
LED18A21D0D50K	★	Dimmable 18W Omni-Directional A21 - 5000K	120	18	100	1675	93.1	270	5000K	82	STK	12
<b>13W DIMMABLE A21s - OMNI-DIRECTIONAL (REPLACES 75W)</b>												
LED13A21D0D27K	★	Dimmable 13W Omni-Directional A21 - 2700K	120	13	75	1100	84.6	270	2700K	82	STK	12
LED13A21D0D30K		Dimmable 13W Omni-Directional A21 - 3000K	120	13	75	1125	86.5	270	3000K	82	STK	12
LED13A21D0D41K		Dimmable 13W Omni-Directional A21 - 4100K	120	13	75	1150	88.5	270	4100K	82	STK	12
LED13A21D0D50K	★	Dimmable 13W Omni-Directional A21 - 5000K	120	13	75	1175	90.4	270	5000K	82	STK	12

★ ENERGY STAR® Rated (at time of print)







5 YEAR WARRANTY

\*Based on 12 Hours per day



# Elite LED High Output A-Lamps

## All-Purpose

Item Number	ENERGY STAR®	Item Description	Voltage	Lamp Watts	Incandescent Equivalent	Lumens	Lumens Per Watt	Beam Angle	CCT	CRI	STK/MTD	Case Quantity	Elite 75W High Output A-Lamps
<b>16W DIMMABLE A21s - 230 DEGREE (REPLACES 100W)</b>													
LED16A21D27K		Dimmable 16W 230 Degree A21 - 2700K	120	16	100	1600	100.0	230	2700K	82	STK	12	
LED16A21D30K		Dimmable 16W 230 Degree A21 - 3000K	120	16	100	1625	101.6	230	3000K	82	STK	12	
LED16A21D41K		Dimmable 16W 230 Degree A21 - 4100K	120	16	100	1650	103.1	230	4100K	82	STK	12	
LED16A21D50K		Dimmable 16W 230 Degree A21 - 5000K	120	16	100	1675	104.7	230	5000K	82	STK	12	
<b>15W NON DIMMABLE A21s - 230 DEGREE (REPLACES 100W)</b>													
LED15A2127K		Non-Dimmable 15W 230 Degree A21 - 2700K	120	15	100	1600	106.7	230	2700K	82	STK	12	
LED15A2130K		Non-Dimmable 15W 230 Degree A21 - 3000K	120	15	100	1625	108.3	230	3000K	82	STK	12	
LED15A2141K		Non-Dimmable 15W 230 Degree A21 - 4100K	120	15	100	1650	110.0	230	4100K	82	STK	12	
LED15A2150K		Non-Dimmable 15W 230 Degree A21 - 5000K	120	15	100	1675	111.7	230	5000K	82	STK	12	
<b>13W DIMMABLE A21s - 230 DEGREE (REPLACES 75W)</b>													
LED13A21D27K		Dimmable 13W 230 Degree A21 - 2700K	120	13	75	1100	84.6	230	2700K	82	STK	12	
LED13A21D30K		Dimmable 13W 230 Degree A21 - 3000K	120	13	75	1125	86.5	230	3000K	82	STK	12	
LED13A21D41K		Dimmable 13W 230 Degree A21 - 4100K	120	13	75	1150	88.5	230	4100K	82	STK	12	
LED13A21D50K		Dimmable 13W 230 Degree A21 - 5000K	120	13	75	1175	90.4	230	5000K	82	STK	12	
<b>13W NON DIMMABLE A21s - 230 DEGREE (REPLACES 75W)</b>													
LED13A2127K		Non-Dimmable 13W 230 Degree A21 - 2700K	120	13	75	1100	84.6	230	2700K	82	STK	12	
LED13A2130K		Non-Dimmable 13W 230 Degree A21 - 3000K	120	13	75	1125	86.5	230	3000K	82	STK	12	
LED13A2141K		Non-Dimmable 13W 230 Degree A21 - 4100K	120	13	75	1150	88.5	230	4100K	82	STK	12	
LED13A2150K		Non-Dimmable 13W 230 Degree A21 - 5000K	120	13	75	1175	90.4	230	5000K	82	STK	12	

★ ENERGY STAR® Rated (at time of print)

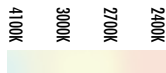


**5 YEAR WARRANTY**

\*Based on 12 Hours per day

## MR16

Color Temperatures



TCP LED MR16



Typical Halogen MR16



TCP's MR16 lamps make jewelry shimmer and sparkle for an eye-catching display.

TCP MR16 lamps, spotlight items in a powerful way while saving energy and lowering maintenance costs.

TCP LED	Incandescent Replacement	Average Lumens	Average LPW
7W MR16	50W MR16	500	71
7W PAR16	50W PAR16	500	71
7W GU10	50W GU10	500	71
5W MR16	35W MR16	350	60
7W PAR16	35W PAR16	350	60
7W GU10	35W GU10	350	60

Optics

20° Narrow Flood



MR16

40° Wide Flood



GU10

PAR16

High CRI Available

Fully Dimmable

Dimmable LED MR16

Item Number	ENERGY STAR®	Item Description	Voltage	Lamp Watts	Lumens	Lumens Per Watt	*CBCP	Beam Angle	CCT	CRI	STK/MTO	Case Quantity
-------------	--------------	------------------	---------	------------	--------	-----------------	-------	------------	-----	-----	---------	---------------

7W DIMMABLE ELITE 12V MR16s (50W EQUIVALENT)



LED712VVMR16V24KNFL		7W 12V MR16 - 2400K, 20 degree	12	7	450	64.3	2802	20	2400K	82	STK	12
LED712VVMR16V24KFL		7W 12V MR16 - 2400K, 40 degree	12	7	450	64.3	898	40	2400K	82	STK	12
LED712VVMR16V27KNFL	★	7W 12V MR16 - 2700K, 20 degree	12	7	500	71.4	3796	20	2700K	82	STK	12
LED712VVMR16V27KFL	★	7W 12V MR16 - 2700K, 40 degree	12	7	500	71.4	1057	40	2700K	82	STK	12
LED712VVMR16V30KNFL		7W 12V MR16 - 3000K, 20 degree	12	7	500	71.4	3796	20	3000K	82	STK	12
LED712VVMR16V30KFL		7W 12V MR16 - 3000K, 40 degree	12	7	500	71.4	1057	40	3000K	82	STK	12
LED712VVMR16V41KNFL	★	7W 12V MR16 - 4100K, 20 degree	12	7	525	75.0	3796	20	4100K	82	STK	12
LED712VVMR16V41KFL	★	7W 12V MR16 - 4100K, 40 degree	12	7	525	75.0	1057	40	4100K	82	STK	12

7W DIMMABLE DESIGNER ELITE 12V MR16s (50W EQUIVALENT)

LED712VVMR16824KNFL		7W 12V MR16 - 2400K, 20 degree	12	7	450	64.3	2802	20	2400K	82	STK	12
LED712VVMR16824KFL		7W 12V MR16 - 2400K, 40 degree	12	7	450	64.3	898	40	2400K	82	STK	12
LED712VVMR16827KNFL	★	7W 12V MR16 - 2700K, 20 degree	12	7	500	71.4	3796	20	2700K	82	STK	12
LED712VVMR16827KFL	★	7W 12V MR16 - 2700K, 40 degree	12	7	500	71.4	1057	40	2700K	82	STK	12
LED712VVMR16830KNFL		7W 12V MR16 - 3000K, 20 degree	12	7	500	71.4	3796	20	3000K	82	STK	12
LED712VVMR16830KFL	★	7W 12V MR16 - 3000K, 40 degree	12	7	500	71.4	1057	40	3000K	82	STK	12
LED712VVMR16841KNFL	★	7W 12V MR16 - 4100K, 20 degree	12	7	525	75.0	3796	20	4100K	82	STK	12
LED712VVMR16841KFL	★	7W 12V MR16 - 4100K, 40 degree	12	7	525	75.0	1057	40	4100K	82	STK	12

7W DIMMABLE DESIGNER ELITE 12V MR16s (50W EQUIVALENT)-HIGH CRI

LED712VVMR16924KNFL		7W 12V MR16 - 2400K, 20 degree, 9050	12	7	383	54.6	2381	20	2400K	92	STK	12
LED712VVMR16924KFL		7W 12V MR16 - 2400K, 40 degree, 9050	12	7	383	54.6	764	40	2400K	92	STK	12
LED712VVMR16927KNFL		7W 12V MR16 - 2700K, 20 degree, 9050	12	7	425	60.7	2802	20	2700K	92	STK	12
LED712VVMR16927KFL		7W 12V MR16 - 2700K, 40 degree, 9050	12	7	425	60.7	898	40	2700K	92	STK	12
LED712VVMR16930KNFL		7W 12V MR16 - 3000K, 20 degree, 9050	12	7	425	60.7	2802	20	3000K	92	STK	12
LED712VVMR16930KFL	★	7W 12V MR16 - 3000K, 40 degree, 9050	12	7	425	60.7	898	40	3000K	92	STK	12
LED712VVMR16941KNFL		7W 12V MR16 - 4100K, 20 degree, 9050	12	7	446	63.8	2802	20	4100K	92	STK	12
LED712VVMR16941KFL		7W 12V MR16 - 4100K, 40 degree, 9050	12	7	446	63.8	898	40	4100K	92	STK	12

5W DIMMABLE DESIGNER ELITE 12V MR16s (35W EQUIVALENT)

LED512VVMR1627KNFL		5W 12V MR16 - 2700K, 20 degree	12	5	350	70.0	2272	20	2700K	82	STK	12
LED512VVMR1627KFL		5W 12V MR16 - 2700K, 40 degree	12	5	350	70.0	728	40	2700K	82	STK	12
LED512VVMR1630KNFL		5W 12V MR16 - 3000K, 20 degree	12	5	375	75.0	2272	20	3000K	82	STK	12
LED512VVMR1630KFL		5W 12V MR16 - 3000K, 40 degree	12	5	375	75.0	728	40	3000K	82	STK	12
LED512VVMR1641KNFL		5W 12V MR16 - 4100K, 20 degree	12	5	400	80.0	2272	20	4100K	82	STK	12
LED512VVMR1641KFL		5W 12V MR16 - 4100K, 40 degree	12	5	400	80.0	728	40	4100K	82	STK	12

**Dimmable  
LED MR16**

Item Number	ENERGY STAR® Item Description	Voltage	Lamp Watts	Incandescent Equivalent	Lumens	Lumens Per Watt	Beam Angle	CCT	CRI	STK/MTD	Case Quantity
<b>7W DIMMABLE GU10 (50W EQUIVALENT)</b>											
LED7MR16GU1024KFL	7W GU10 MR16 - 2400K, 40 degree	120	7	500	71.4	TBD	40	2400K	82	STK	12
LED7MR16GU1024KNFL	7W GU10 MR16 - 2400K, 20 degree	120	7	500	71.4	TBD	20	2400K	82	STK	12
LED7MR16GU1027KNFL	7W GU10 MR16 - 2700K, 20 degree	120	7	500	71.4	3296	20	2700K	82	STK	12
LED7MR16GU1027KFL	7W GU10 MR16 - 2700K, 40 degree	120	7	500	71.4	1057	40	2700K	82	STK	12
LED7MR16GU1030KNFL	7W GU10 MR16 - 3000K, 20 degree	120	7	525	75.0	3296	20	3000K	82	STK	12
LED7MR16GU1030KFL	7W GU10 MR16 - 3000K, 40 degree	120	7	525	75.0	1057	40	3000K	82	STK	12
LED7MR16GU1041KNFL	7W GU10 MR16 - 4100K, 20 degree	120	7	550	78.6	3296	20	4100K	82	STK	12
LED7MR16GU1041KFL	7W GU10 MR16 - 4100K, 40 degree	120	7	550	78.6	1057	40	4100K	82	STK	12
<b>7W DIMMABLE GU10 (35W EQUIVALENT)</b>											
LED7GU10MR1627KNFL	7W GU10 MR16 - 2700K, 20 degree	120	7	350	50.0	2272	20	2700K	82	STK	12
LED7GU10MR1627KFL	7W GU10 MR16 - 2700K, 40 degree	120	7	350	50.0	728	40	2700K	82	STK	12
LED7GU10MR1630KNFL	7W GU10 MR16 - 3000K, 20 degree	120	7	375	53.6	2272	20	3000K	82	STK	12
LED7GU10MR1630KFL	7W GU10 MR16 - 3000K, 40 degree	120	7	375	53.6	728	40	3000K	82	STK	12
LED7GU10MR1641KNFL	7W GU10 MR16 - 4100K, 20 degree	120	7	400	57.1	2272	20	4100K	82	STK	12
LED7GU10MR1641KFL	7W GU10 MR16 - 4100K, 40 degree	120	7	400	57.1	728	40	4100K	82	STK	12
<b>7W DIMMABLE PAR16s (50W EQUIVALENT)</b>											
LED7P1624KNFL	7W PAR16 - 2400K, 20 degree	120	7	500	71.4	TBD	20	2400K	82	STK	12
LED7P1624KFL	7W PAR16 - 2400K, 40 degree	120	7	500	71.4	TBD	40	2400K	82	STK	12
LED7P1627KNFL	7W PAR16 - 2700K, 20 degree	120	7	500	71.4	3296	20	2700K	82	STK	12
LED7P1627KFL	7W PAR16 - 2700K, 40 degree	120	7	500	71.4	1057	40	2700K	82	STK	12
LED7P1630KNFL	7W PAR16 - 3000K, 20 degree	120	7	525	75.0	3296	20	3000K	82	STK	12
LED7P1630KFL	★ 7W PAR16 - 3000K, 40 degree	120	7	525	75.0	1057	40	3000K	82	STK	12
LED7P1641KNFL	7W PAR16 - 4100K, 20 degree	120	7	550	78.6	3296	20	4100K	82	STK	12
LED7P1641KFL	7W PAR16 - 4100K, 40 degree	120	7	550	78.6	1057	40	4100K	82	STK	12
<b>7W DIMMABLE PAR16s (35W EQUIVALENT)</b>											
LED7E26PAR1627KNFL	7W PAR16 - 2700K, 20 degree	120	7	350	50.0	2272	20	2700K	82	STK	12
LED7E26PAR1627KFL	7W PAR16 - 2700K, 40 degree	120	7	350	50.0	728	40	2700K	82	STK	12
LED7E26PAR1630KNFL	7W PAR16 - 3000K, 20 degree	120	7	375	53.6	2272	20	3000K	82	STK	12
LED7E26PAR1630KFL	7W PAR16 - 3000K, 40 degree	120	7	375	53.6	728	40	3000K	82	STK	12
LED7E26PAR1641KNFL	7W PAR16 - 4100K, 20 degree	120	7	400	57.1	2272	20	4100K	82	STK	12
LED7E26PAR1641KFL	7W PAR16 - 4100K, 40 degree	120	7	400	57.1	728	40	4100K	82	STK	12



★ ENERGY STAR® Rated (at time of print)



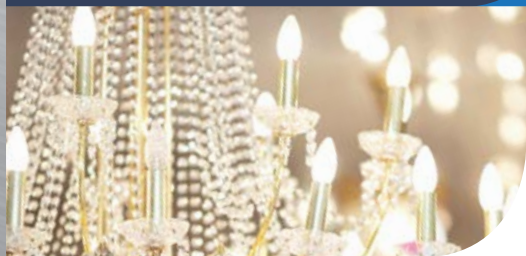
\*Based on 12 Hours per day

\*Minimum CBCP est. Consult tcp.com for most current photometry and LM79 data.



# Elite Decorative

These decorative lamps provide the look and feel of incandescent, but they last much longer.



### Color Temperatures



High CRI Available

Fully Dimmable

### TCP LED

TCP LED	Incandescent Replacement	Average Lumens	Average LPW
4W Torpedo	25W Torpedo	200	50
4W G16 Globe	25W G16 Globe	200	50
5W G25 Globe	40W G25 Globe	300	60
5W Torpedo	40W Torpedo	300	60
5W G16 Globe	40W G16 Globe	300	60
8W G25 Globe	60W G25 Globe	500	63



G40 Globe  
E26 Base  
Opaque



G25 Globe  
E26 Base  
Opaque



S14 Globe  
E26 Base  
Clear



Torpedo  
E12 Base  
Clear



Torpedo  
E26 Base  
Clear



Torpedo  
E12 Base  
Opaque



Torpedo  
E26 Base  
Opaque



G16 Globe  
E12 Base  
Clear



G16 Globe  
E26 Base  
Clear



G16 Globe  
E12 Base  
Opaque



G16 Globe  
E26 Base  
Opaque



Flame Tip  
E12 Base  
Clear



Flame Tip  
E26 Base  
Clear



Flame Tip  
E12 Base  
Opaque



Flame Tip  
E26 Base  
Opaque

### Non-Dimmable LED G40

### Dimmable LED G25

Item Number

ENERGY STAR®

Item Description

Voltage

Lamp Watts

Incandescent Comparison (Watts)

Lumens

LPW

CCT

CRI

STK/MTO

Case Quantity

### NON-DIMMABLE 31W G40, FROSTED



LEDG4031E2627KND

Non-Dimmable 31W G40 Globe - 2700K, Frosted

277

31

150W

2300

70.8

2700K

82

STK

12

LEDG4031E2641KND

Non-Dimmable 31W G40 Globe - 4100K, Frosted

277

31

150W

2500

80.0

4100K

82

STK

12

### DIMMABLE 5W & 8W G25 230 DEGREES, FROSTED



LED5G25D27KF

★ Dimmable 5W Smooth G25 - 2700K, Frosted

120

5

40W

300

60.0

2700K

82

STK

12

LED5G25D30KF

★ Dimmable 5W Smooth G25 - 3000K, Frosted

120

5

40W

325

65.0

3000K

82

STK

12

LED8G25D27KF

Dimmable 8W Smooth G25 - 2700K, Frosted

120

8

60W

500

62.5

2700K

82

STK

12

LED8G25D30KF

Dimmable 8W Smooth G25 - 3000K, Frosted

120

8

60W

525

65.6

3000K

82

STK

12

**Dimmable  
LED Deco Lamps**

Item Number	ENERGY STAR®	Item Description	Voltage	Lamp Watts	Incandescent Comparison (Watts)	Lumens	LPW	CCT	CRI	STK/MTO	Case Quantity
-------------	--------------	------------------	---------	------------	---------------------------------	--------	-----	-----	-----	---------	---------------

**LED DIMMABLE Deco Lamps, 5W**

LED5E26S1427K		LED 5W WET LOCATION S14 - 2700K	120	5	40W	300	60.0	2700K	82	STK	12
LED5E26S1430K		LED 5W WET LOCATION S14 - 3000K	120	5	40W	300	60.0	3000K	82	STK	12
LED5E26S1441K		LED 5W WET LOCATION S14 - 4100K	120	5	40W	300	60.0	4100K	82	STK	12
LED5E26S1427KF		LED 5W WET LOCATION S14 - 2700K Frosted	120	5	40W	300	60.0	2700K	82	STK	12
LED5E26S1430KF		LED 5W WET LOCATION S14 - 3000K Frosted	120	5	40W	300	60.0	3000K	82	STK	12
LED5E26S1441KF		LED 5W WET LOCATION S14 - 4100K Frosted	120	5	40W	300	60.0	4100K	82	STK	12
LED5E26S14RD		LED 5W WET LOCATION S14 - RED	120	5	40W	300	60.0	-	82	STK	12
LED5E26S14GR		LED 5W WET LOCATION S14 - GREEN	120	5	40W	300	60.0	-	82	STK	12
LED5E12B1127K	★	LED 5W DIM CANDELABRA BLUNT 2700K	120	5	40W	300	60.0	2700K	82	STK	12
LED5E26B1127K	★	LED 5W DIM BLUNT TIP - 2700K	120	5	40W	300	60.0	2700K	82	STK	12
LED5E12B1127KF	★	LED 5W DIM CANDELABRA FROST BLUNT - 2700K	120	5	40W	300	60.0	2700K	82	STK	12
LED5E26B1127KF		LED 5W DIM FROST BLUNT TIP - 2700K	120	5	40W	300	60.0	2700K	82	STK	12
LED5E12G1627K	★	LED 5W DIM CANDELABRA G16 GLOBE - 2700K	120	5	40W	300	60.0	2700K	82	STK	12
LED5E26G1627K	★	LED 5W DIM G16 GLOBE - 2700K	120	5	40W	300	60.0	2700K	82	STK	12
LED5E12G1627KF	★	LED 5W DIM CANDELABRA FROST G16 GLOBE - 2700K	120	5	40W	300	60.0	2700K	82	STK	12
LED5E26G1627KF	★	LED 5W DIM FROST G16 GLOBE - 2700K	120	5	40W	300	60.0	2700K	82	STK	12
LED5E12F1127K		LED 5W DIM CANDELABRA F11 Flame Tip - 2700K	120	5	40W	300	60.0	2700K	82	STK	12
LED5E26F1127K		LED 5W DIM F11 Flame Tip - 2700K	120	5	40W	300	60.0	2700K	82	STK	12
LED5E12F1127KF		LED 5W DIM CANDELABRA FROST F11 Flame - 2700K	120	5	40W	300	60.0	2700K	82	STK	12
LED5E26F1127KF		LED 5W DIM FROSTED F11 Flame Tip - 2700K	120	5	40W	300	60.0	2700K	82	STK	12

**LED DIMMABLE Deco Lamps, 4W**

LED4E12B1127K	★	LED 4W DIM CANDELABRA BLUNT TIP - 2700K	120	3.7	25W	200	50.0	2700K	82	STK	12
LED4E26B1127K	★	LED 4W DIM BLUNT TIP - 2700K	120	3.7	25W	200	50.0	2700K	82	STK	12
LED4E12B1127KF	★	LED 4W DIM CANDELABRA FROST BLUNT - 2700K	120	3.7	25W	200	50.0	2700K	82	STK	12
LED4E26B1127KF	★	LED 4W DIM FROST BLUNT TIP - 2700K	120	3.7	25W	200	50.0	2700K	82	STK	12
LED4E12G1627K	★	LED 4W DIM CANDELABRA G16 GLOBE - 2700K	120	3.7	25W	200	50.0	2700K	82	STK	12
LED4E26G1627K	★	LED 4W DIM G16 GLOBE - 2700K	120	3.7	25W	200	50.0	2700K	82	STK	12
LED4E12G1627KF	★	LED 4W DIM CANDELABRA FROST G16 GLOBE - 2700K	120	3.7	25W	200	50.0	2700K	82	STK	12
LED4E26G1627KF	★	LED 4W DIM FROST G16 GLOBE - 2700K	120	3.7	25W	200	50.0	2700K	82	STK	12
LED4E12F1127K		LED 4W DIM CANDELABRA F11 Flame - 2700K	120	3.7	25W	200	50.0	2700K	82	STK	12
LED4E26F1127K		LED 4W DIM F11 Flame Tip - 2700K	120	3.7	25W	200	50.0	2700K	82	STK	12
LED4E12F1127KF		LED 4W DIM CANDELABRA FROST F11 Flame - 2700K	120	3.7	25W	200	50.0	2700K	82	STK	12
LED4E26F1127KF		LED 4W DIM FROST F11 Flame Tip - 2700K	120	3.7	25W	200	50.0	2700K	82	STK	12



LED5E26S1430K



LED5E12B1127K  
LED4E12B1127K



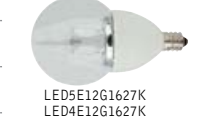
LED5E26B1127K  
LED4E26B1127K



LED5E12B1127KF  
LED4E12B1127KF



LED5E26B1127KF  
LED4E26B1127KF



LED5E12G1627K  
LED4E12G1627K



LED5E26G1627K  
LED4E26G1627K



LED5E12F1127K  
LED4E12F1127K



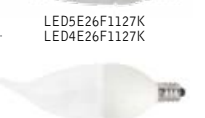
LED5E26F1127KF  
LED4E26F1127KF



LED5E12G1627KF  
LED4E12G1627KF



LED5E26G1627K  
LED4E26G1627K



LED5E12F1127KF  
LED4E12F1127KF



LED5E26F1127KF  
LED4E26F1127KF

★ ENERGY STAR® Rated (at time of print)



**5 YEAR WARRANTY**

\*Based on 12 Hours per day

# LED Six Packs

The same performance and reliability that you expect in TCP LED BR30s, A-Lamps and Deco lamps, but now with the convenience and savings of 6 packs.






Self shipping box!



## Features & Benefits

- Energy Efficient: Up to 85% more efficient than halogen.
- Great savings of buying lamps in bulk.
- Long life: 25,000 hours for Deco, 20,000 hours for BR30 and A-Lamps.
- ROI < 1 year for commercial applications.

LED Lamp 6 Packs	Item Number	ENERGY STAR®	Item Description	Voltage	Lamp Watts	Incandescent Comparison (Watts)	Lumens	LPW	CCT	CRI	M.O.L. (Inches)	Diameter (Inches)
<b>NON DIMMABLE 8.5W BR30 6 PACK</b>												
	LBR301027KND6		Non Dimmable 8.5W BR30 - 2700K, 6 Pack	120	8.5	65W	650	76.5	2700K	82	5.4"	3.8"
	LBR301050KND6		Non Dimmable 8.5W BR30 - 5000K, 6 Pack	120	8.5	65W	700	82.4	5000K	82	5.4"	3.8"
<b>NON DIMMABLE 8.7W A-LAMP 6 PACK</b>												
	LA1027KND6		Non Dimmable 8.7W A-Lamp - 2700K, 6 Pack	120	8.7	60W	800	92.0	2700K	82	4.4"	2.4"
	LA1050KND6		Non Dimmable 8.7W A-Lamp - 5000K, 6 Pack	120	8.7	60W	900	103.4	5000K	82	4.4"	2.4"
<b>DIMMABLE 4W DECO 6 PACK</b>												
	LDCT4W27K6		Dimmable 4W Deco - 2700K, E12 Base, 6 Pack	120	4	25W	200	50.0	2700K	82	3.8"	1.4"
	LDCT4W50K6		Dimmable 4W Deco - 5000K, E12 Base, 6 Pack	120	4	25W	200	50.0	5000K	82	3.8"	1.4"



Retrofitting to LED downlights has never been easier thanks to the all-in-one DR56 retrofit kit from TCP.

The DR56 and DR4 are the perfect choice for new construction and retrofit opportunities when a sleek, integrated look is preferred.

**Benefits:**

- Exceeds all industry standards.
- ENERGY STAR rated.
- ENERGY-EFFICIENT  
Highly efficient LEDs and Driver.  
Long Life: 35,000 hours.  
Up to 83% more efficient than incandescent.  
Less than six month ROI.
- FULLY DIMMABLE
- EXCELLENT COLOR  
Consistent color within 3 MacAdam ellipse tolerance.
- UL approved for damp locations.
- Easy installation and integrated trim.



# Recessed Downlights

5/6" Recessed Downlights



4" Recessed Downlights



TCP LED	Incandescent Replacement	Average Lumens	Average LPW
14W 5/6" Retro Can	85W 5-6" Recessed	850	61
12W 5/6" Retro Can	65W 5-6" Recessed	650	54
10W 4" Retro Can	50W 4" Recessed	500	50

Item Number	ENERGY STAR®	Item Description	Voltage	Lamp Watts	Lamp Replacement	Lumens	Lumens Per Watt	CCT	CRI	Case Quantity	Recessed Downlights
<b>6" RECESSED DOWNLIGHTS (14W REPLACES 85W, 12W REPLACES 65W)</b>											
LED14DR5630K	★	LED 14W 5/6" Recessed Downlight - 3000K	120	14	85	820	58.6	3000K	82	6	
LED14DR5627K	★	LED 14W 5/6" Recessed Downlight - 2700K	120	14	85	800	57.1	2700K	82	6	
LED12DR5630K	★	LED 12W 5/6" Recessed Downlight - 3000K	120	12	65	670	55.8	3000K	82	6	
LED12DR5627K	★	LED 12W 5/6" Recessed Downlight - 2700K	120	12	65	650	54.2	2700K	82	6	
<b>4" RECESSED DOWNLIGHTS (10W REPLACES 50W)</b>											
LED10DR430K	★	LED 10W 4" Recessed Downlight - 3000K	120	10	50	650	65.0	3000K	82	6	
LED10DR427K	★	LED 10W 4" Recessed Downlight - 2700K	120	10	50	600	60.0	2700K	82	6	

★ ENERGY STAR® Rated (at time of print)



\*Based on 12 Hours per day

# LED LUMINAIRES INDOOR



# LED Indoor Luminaires

TCP LED lay-in troffers are high efficiency alternatives to T12 and T8 linear fluorescent troffers. With 50,000 hours of excellent color consistency and superior lumen maintenance, TCP is the obvious choice for LED troffers.

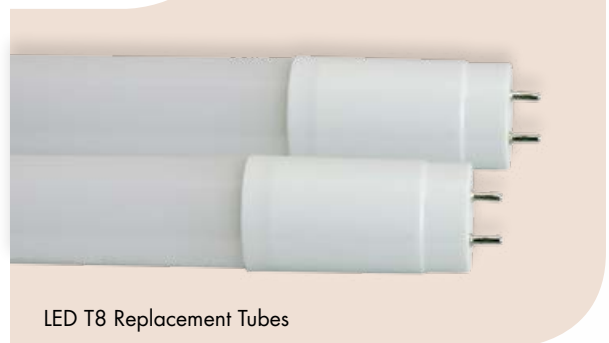
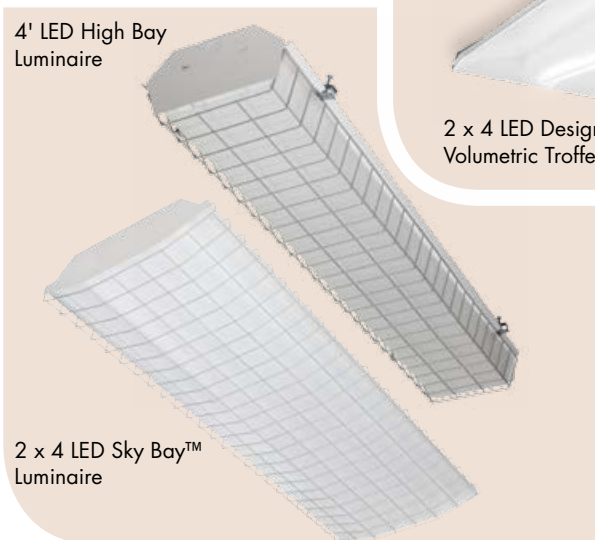
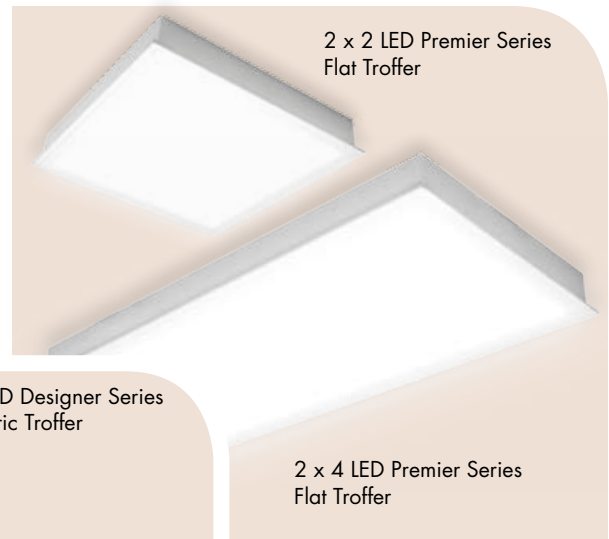
## Applications:

- |               |                  |
|---------------|------------------|
| Offices       | Schools          |
| Restaurants   | Hospitals        |
| Retail Stores | Any Grid Ceiling |
| Lobbies       |                  |

## FEATURES / BENEFITS

- High efficiency alternative to T12 and T8 linear fluorescent troffers
- Excellent color consistency and superior lumen maintenance
- Long life: 50,000 hours
- Smooth, uniform dimming (120V)\*
- UL/cUL listed

\*See [tcp.com](http://tcp.com) for dimming compatibility.





# LED E-Series

TCP's LED E-Series gives you the appearance of fluorescent technology with a tube-like glow. Your cost effective solution to maximize savings, while still taking advantage of utility rebates.

## TCP E-Series 2x2 LED Flat Panel Troffer



### 2' x 2' LED Flat Panel Troffer

#### Installation

Grid ceiling mounted. Flat edge design provides mounting into standard 1" and 9/16" tee bar grids. Before installation, please consult your local ordinances and building codes for compliance.

#### Warranty

Five years against defects in manufacturing.

**Listing**  
UL/cUL listed.



### Application

The TCP LED lay-in troffers are high efficiency alternatives to T8 and T12 linear fluorescent troffers. Our intelligent high performance LED light engines and drivers deliver long life, consistent color, and superior lumen maintenance. Applications include offices, schools, retail locations, hospitals, and any other grid ceiling.

### Construction

The TCP LED troffer is constructed of rugged cold-rolled steel, post painted with a highly diffuse white finish. End plates are designed to mount in a variety of grid ceiling types. The diffuser is a one piece impact resistant acrylic which provides a wide distribution.

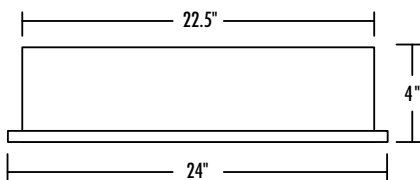
### Electrical

All electrical components are UL/cUL listed. TCP high efficiency drivers provide consistent power to ensure even lighting from the long life LEDs. Each driver is matched to a light engine to deliver 50,000 hours life. Full range dimming is optional.

### Optics

The one piece flat acrylic diffuser comes in two styles, opaque or A12 clear prismatic. The opaque lens provides an even glow while the clear prismatic lens mimics the look of traditional prismatic troffers.

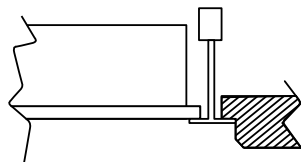
### Dimensions and Mounting Data



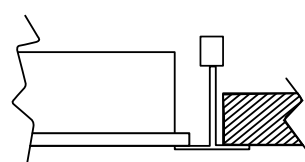
Length: 24"  
Width: 24"  
Depth: 4"

All dimensions are in inches unless otherwise specified.

9/16



15/16



### Catalog Ordering Matrix — 32 combinations available

Brand	Family	Size	Voltage and Controls	Lumen Package (Power)	Color
TCPE - TCP E-Series	TRF - Flat Opaque TRP - Flat Prismatic	2 - 2' x 2'	UNI - 120V-277V 120DIM - 120V, Line Dim	20 - 2000 Lumens (24W) 40 - 4000 Lumens (48W)	30K - 3000K 35K - 3500K 41K - 4100K 50K - 5000K



For the most up-to-date specs and warranty information, please visit [www.tcpi.com](http://www.tcpi.com).

## TCP E-Series 2x4 LED Flat Panel Troffer



### 2' x 4' LED Flat Panel Troffer

#### Installation

Grid ceiling mounted. Flat edge design provides mounting into standard 1" and 9/16" tee bar grids. Before installation, please consult your local ordinances and building codes for compliance.

#### Warranty

Five years against defects in manufacturing.

#### Listing

UL/cUL listed.



### Application

The TCP LED lay-in troffers are high efficiency alternatives to T8 and T12 linear fluorescent troffers. Our intelligent high performance LED light engines and drivers deliver long life, consistent color, and superior lumen maintenance. Applications include offices, schools, retail locations, hospitals, and any other grid ceiling.

### Construction

The TCP LED troffer is constructed of rugged cold-rolled steel, post painted with a highly diffuse white finish. End plates are designed to mount in a variety of grid ceiling types. The diffuser is a one piece impact resistant acrylic which provides a wide distribution.

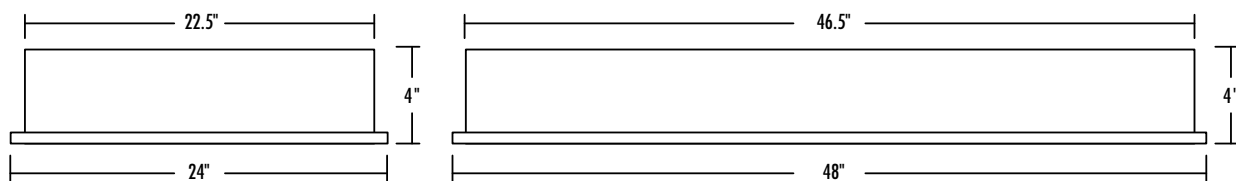
### Electrical

All electrical components are UL/cUL listed. TCP high efficiency drivers provide consistent power to ensure even lighting from the long life LEDs. Each driver is matched to a light engine to deliver 50,000 hours life. Full range dimming is optional.

### Optics

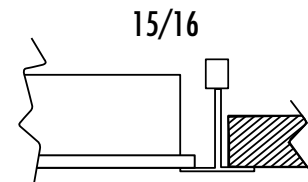
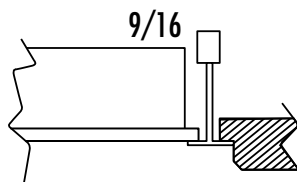
The one piece flat acrylic diffuser comes in two styles, opaque or A12 clear prismatic. The opaque lens provides an even glow while the clear prismatic lens mimics the look of traditional prismatic troffers.

### Dimensions and Mounting Data



Length: 48"  
Width: 24"  
Depth: 4"

All dimensions are in inches unless otherwise specified.



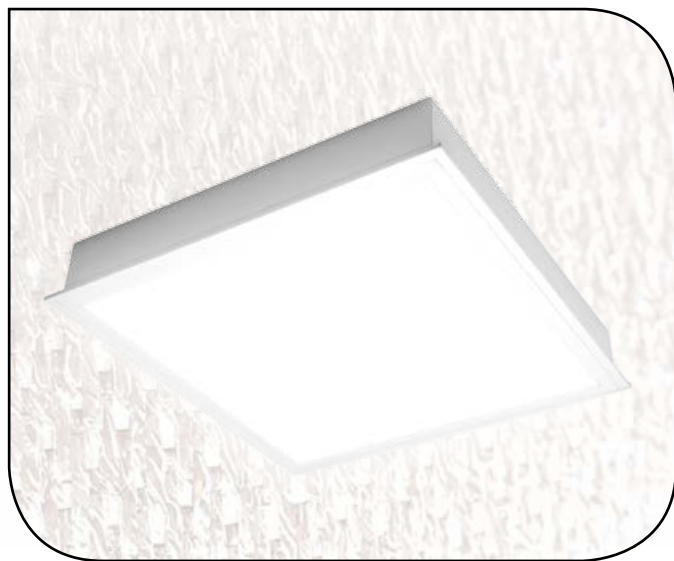
### Catalog Ordering Matrix — 32 combinations available

Brand	Family	Size	Voltage and Controls	Lumen Package (Power)	Color
TCP E - TCP E-Series	TRF - Flat Opaque TRP - Flat Prismatic	4 - 2' x 4'	UNI - 120V-277V 120DIM - 120V, Line Dim	40 - 4000 Lumens (45W) 68 - 6800 Lumens (70W)	30K - 3000K 35K - 3500K 41K - 4100K 50K - 5000K

# LED Premier Series

TCP's LED Premier Series gives you full body, full panel diffusion, with the appearance of a soft warm glow.

## TCP Premier Series 2x2 LED Flat Panel Troffer



### Application

The TCP LED lay-in troffers are high efficiency alternatives to T8 and T12 linear fluorescent troffers. Our intelligent high performance LED light engines and drivers deliver long life, consistent color, and superior lumen maintenance. Applications include offices, schools, retail locations, hospitals, and any other grid ceiling.

### Construction

The TCP LED troffer is constructed of rugged cold-rolled steel, post painted with a highly diffuse white finish. End plates are designed to mount in a variety of grid ceiling types. The diffuser is a one piece impact resistant acrylic which provides a wide distribution.

### Electrical

All electrical components are UL/cUL listed. TCP high efficiency drivers provide consistent power to ensure even lighting from the long life LEDs. Each driver is matched to a light engine to deliver 50,000 hours life. Full range dimming is optional.

### Optics

The one piece flat acrylic diffuser comes in two styles, opaque or A12 clear prismatic. The opaque lens provides an even glow while the clear prismatic lens mimics the look of traditional prismatic troffers.

### 2' x 2' LED Flat Panel Troffer

#### Installation

Grid ceiling mounted. Flat edge design provides mounting into standard 1" and 9/16" tee bar grids. Before installation, please consult your local ordinances and building codes for compliance.

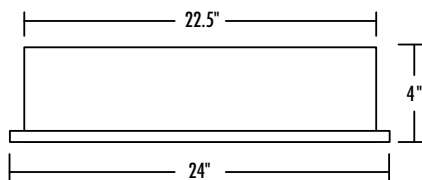
#### Warranty

Five years against defects in manufacturing.

**Listing**  
UL/cUL listed.



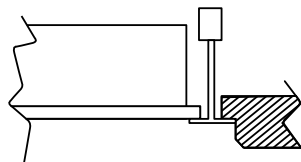
### Dimensions and Mounting Data



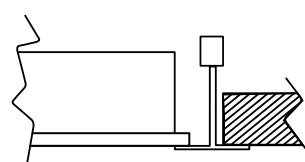
Length: 24"  
Width: 24"  
Depth: 4"

All dimensions are in inches unless otherwise specified.

9/16



15/16

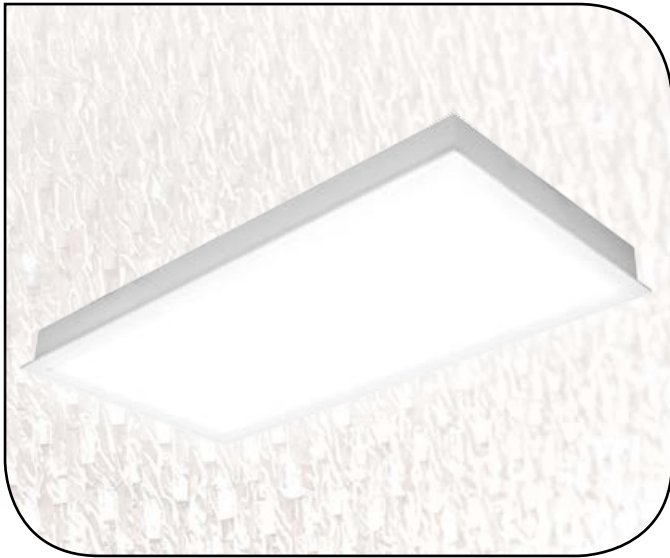


### Catalog Ordering Matrix — 32 combinations available

Brand	Family	Size	Voltage and Controls	Lumen Package (Power)	Color
TCP - TCP Premier	TRF - Flat Opaque TRP - Flat Prismatic	2 - 2' x 2'	UNI - 120V-277V 120DIM - 120V, Line Dim	32 - 3200 Lumens (35W) 40 - 4000 Lumens (45W)	30K - 3000K 35K - 3500K 41K - 4100K 50K - 5000K

For the most up-to-date specs and warranty information, please visit [www.tcpi.com](http://www.tcpi.com).

# TCP Premier Series 2x4 LED Flat Panel Troffer



## Application

The TCP LED lay-in troffers are high efficiency alternatives to T8 and T12 linear fluorescent troffers. Our intelligent high performance LED light engines and drivers deliver long life, consistent color, and superior lumen maintenance. Applications include offices, schools, retail locations, hospitals, and any other grid ceiling.

## Construction

The TCP LED troffer is constructed of rugged cold-rolled steel, post painted with a highly diffuse white finish. End plates are designed to mount in a variety of grid ceiling types. The diffuser is a one piece impact resistant acrylic which provides a wide distribution.

## Electrical

All electrical components are UL/cUL listed. TCP high efficiency drivers provide consistent power to ensure even lighting from the long life LEDs. Each driver is matched to a light engine to deliver 50,000 hours life. Full range dimming is optional.

## Optics

The one piece flat acrylic diffuser comes in two styles, opaque or A12 clear prismatic. The opaque lens provides an even glow while the clear prismatic lens mimics the look of traditional prismatic troffers.

### 2' x 4' LED Flat Panel Troffer

#### Installation

Grid ceiling mounted. Flat edge design provides mounting into standard 1" and 9/16" tee bar grids. Before installation, please consult your local ordinances and building codes for compliance.

#### Warranty

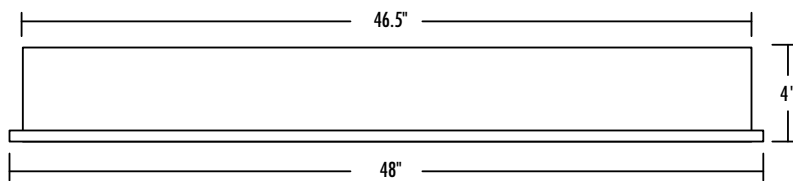
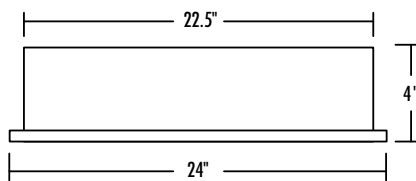
Five years against defects in manufacturing.

#### Listing

UL/cUL listed.

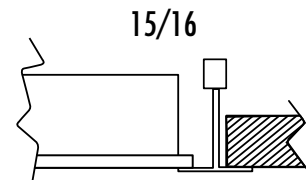
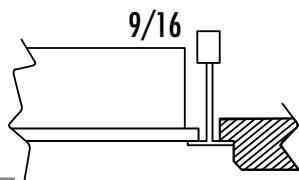


### Dimensions and Mounting Data



Length: 48"  
Width: 24"  
Depth: 4"

All dimensions are in inches unless otherwise specified.



### Catalog Ordering Matrix — 48 combinations available

Brand	Family	Size	Voltage and Controls	Lumen Package (Power)	Color
TCP - TCP Premier	TRF - Flat Opaque TRP - Flat Prismatic	4 - 2' x 4'	UNI - 120V-277V 120DIM - 120V, Line Dim	40 - 4000 Lumens (45W) 68 - 6800 Lumens (70W) 80 - 8000 Lumens (80W)	30K - 3000K 35K - 3500K 41K - 4100K 50K - 5000K

# LED Designer Series

When appearance is most important, TCP's LED Designer Series turns any location into something truly exceptional.

## TCP Designer Series 2x2 LED Volumetric Troffer



### Application

The TCP LED lay-in troffers are high efficiency alternatives to T8 and T12 linear fluorescent troffers. Our intelligent high performance LED light engines and drivers deliver long life, consistent color, and superior lumen maintenance. Applications include offices, schools, retail locations, hospitals, and any other grid ceiling.

### Construction

The TCP LED troffer is constructed of rugged cold-rolled steel, post painted with a highly diffuse white finish. End plates are designed to mount in a variety of grid ceiling types. The diffuser is a one piece impact resistant acrylic which provides a wide distribution.

### Electrical

All electrical components are UL/cUL listed. TCP high efficiency drivers provide consistent power to ensure even lighting from the long life LEDs. Each driver is matched to a light engine to deliver 50,000 hours life. Full range dimming is optional.

### Optics

The one piece acrylic diffuser conceals the LEDs while providing even light distribution across the luminaire. The smooth white reflector curves into the diffuser, creating volumetric illumination by softening and distributing the light evenly in a wide pattern. The curved design also softens the contrast between the luminaire and ceiling.

### 2' x 2' LED Volumetric Lay-In Troffer

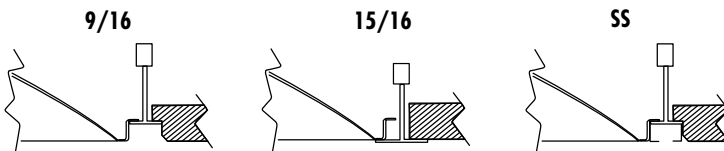
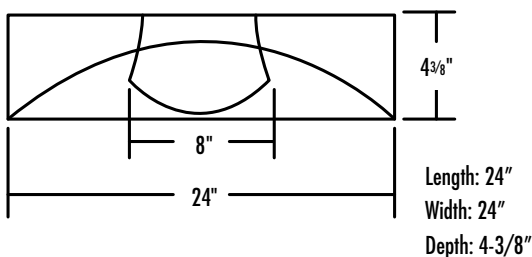
**Installation**  
Grid ceiling mounted. Edge design provides mounting into standard 1" and 9/16" tee bar or screw slot grids. Before installation, please consult your local ordinances and building codes for compliance.

**Warranty**  
Five years against defects in manufacturing.

**Listing**  
UL/cUL Listed - suitable for indoor applications.



### Dimensions and Mounting Data



All dimensions are in inches unless otherwise specified.

### Catalog Ordering Matrix — 24 combinations available

Brand	Family	Size	Voltage and Controls	Lumen Package (Power)	Color
TCP - TCP Designer	TRV - Volumetric	2 - 2' x 2'	UNI - 120V-277V 120DIM - 120V, Line Dim	22 - 2200 Lumens (22.5W) 35 - 3500 Lumens (35W) 44 - 4400 Lumens (45W)	30K - 3000K 35K - 3500K 41K - 4100K 50K - 5000K



For the most up-to-date specs and warranty information, please visit [www.tcpi.com](http://www.tcpi.com).

# TCP Designer Series 2x4 LED Volumetric Troffer



## Application

The TCP LED lay-in troffers are high efficiency alternatives to T8 and T12 linear fluorescent troffers. Our intelligent high performance LED light engines and drivers deliver long life, consistent color, and superior lumen maintenance. Applications include offices, schools, retail locations, hospitals, and any other grid ceiling.

## Construction

The TCP LED troffer is constructed of rugged cold-rolled steel, post painted with a highly diffuse white finish. End plates are designed to mount in a variety of grid ceiling types. The diffuser is a one piece impact resistant acrylic which provides a wide distribution.

## Electrical

All electrical components are UL/cUL listed. TCP high efficiency drivers provide consistent power to ensure even lighting from the long life LEDs. Each driver is matched to a light engine to deliver 50,000 hours life. Full range dimming is optional.

## Optics

The one piece acrylic diffuser conceals the LEDs while providing even light distribution across the luminaire. The smooth white reflector curves into the diffuser, creating volumetric illumination by softening and distributing the light evenly in a wide pattern. The curved design also softens the contrast between the luminaire and ceiling.

### 2' x 4' LED Volumetric Lay-In Troffer

#### Installation

Grid ceiling mounted. Edge design provides mounting into standard 1" and 9/16" tee bar or screw slot grids. Before installation, please consult your local ordinances and building codes for compliance.

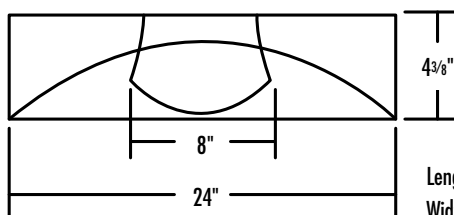
#### Warranty

Five years against defects in manufacturing.

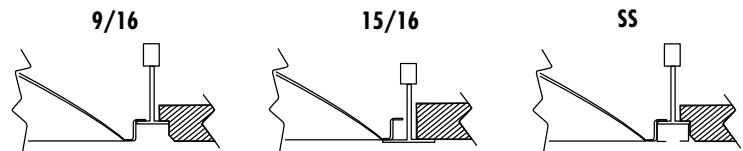
**Listing**  
UL/cUL Listed - suitable for indoor applications.



## Dimensions and Mounting Data



Length: 48"  
Width: 24"  
Depth: 4-3/8"



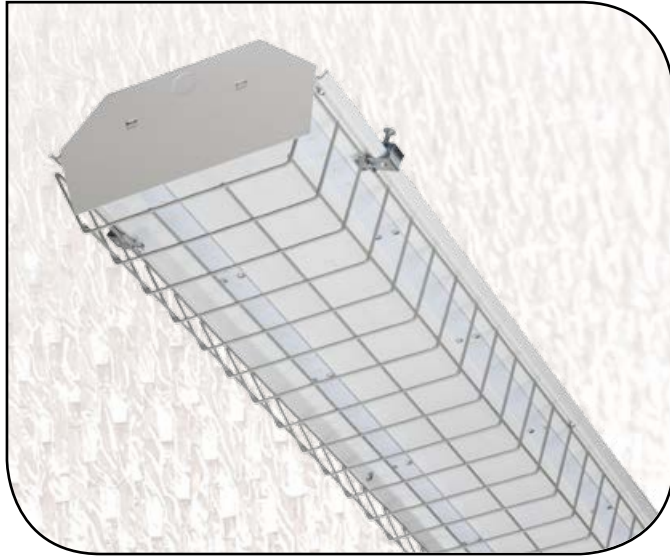
All dimensions are in inches unless otherwise specified.

## Catalog Ordering Matrix — 24 combinations available

Brand	Family	Size	Voltage and Controls	Lumen Package (Power)	Color
TCP - TCP Designer	TRV - Volumetric	4 - 2' x 4'	UNI - 120V-277V 120DIM - 120V, Line Dim	44 - 4400 Lumens (45W) 70 - 7000 Lumens (72W) 86 - 8600 Lumens (97W)	30K - 3000K 35K - 3500K 41K - 4100K 50K - 5000K

High efficiency LED Low Bays. Use anywhere you need exceptional light distribution for mounting heights up to 25 feet.

# TCP LED Low Bay



## Application

The LED Low Bay's superior lumen package is ideal for replacing traditional metal halide and linear fluorescent low bay systems. Benefits include high efficiency, excellent color rendering, long life, instant on, and improved uniformity. Suggested mounting heights from 10' - 25' with primary applications including warehousing, commercial facilities, manufacturing facilities, open and stack aisle applications.

## Description

The full body assembly features TCP high efficiency drivers and high output LEDs. The LED Low Bay's heavy duty 20 gauge housing and 8 gauge wireguard is code gauge steel and all components, excluding the wireguard, are post painted with a glossy, high reflectance white paint.

## Electrical

All drivers are class 2 rated and UL/cUL listed. Our drivers are tightly secured by mounting bolts.

## Finish

The baked white enamel finish is electrostatically applied and post painted with a glossy, highly reflective and durable white paint.

### LED Low Bay

#### Installation

Suspension by chain, cable, hook or monopoint with appropriate accessories.

#### Listing

UL/cUL Listed - Suitable for damp locations.

#### Warranty

Five year warranty against defects in manufacturing.

### Catalog Ordering Matrix

Brand	Family	Voltage and Controls	Lumen Package	Color Temperature	Options
TCP	LB4 - 4' LED Low Bay	UNI - 120V-277V 347 - 347V 480 - 480V	8 - 8,000 Lumens	41K - 4100K 50K - 5000K	(See Below)

#### OPTIONS (Add to catalog number in order shown)

#### Power Cords

- 6C - 6' PCord 300V 16/3 SJT00W NO PLUG
- 6C4 - 6' PCord 300V 18/4 SJT0W NO PLUG
- 6W - 6' WHIP PCord 600V 16/3 NO PLUG
- 2P - 8' PCord 125V 15A 16/3 SJT00W NEMA 5-15P
- 3P - 8' PCord 125V 15A 16/3 SJT0W NEMA L5-15P
- 8T - 8' PCord 480V 20A 16/3 SE0W NEMA L8-20P
- 9T - 8' PCord 250V 20A 16/3 SJT0W NEMA L6-20P
- 4T - 10' PCord 125V 20A 16/3 SJT0W NEMA L5-20P
- 10T - 10' PCord 277V 15A 14/3 SJT0W NEMA L7-15P
- 10T2 - 10' PCord 277V 20A 14/3 SJT0W NEMA L7-20P
- 10C - 10' PCord 277V SJT00W NO PLUG
- 10C6 - 10' PCord 600V 15A 16/3 STOW NO PLUG
- 20C - 20' PCord 277V 20A 16/3 SJT00W NO PLUG
- 20C4 - 20' PCord 300V 18/4 SJT0W NO PLUG

#### 2 Occupancy Sensors

- TS1 - TCP Occupancy Sensor w/bracket and interchangeable lenses, 40' or less, 120V, 277V, or 347V.
- TS1C - TCP Cold Storage Occupancy Sensor w/bracket and interchangeable lenses, 40' or less, 120V, 277V, or 347V.
- TS4 - TCP Occupancy Sensor w/bracket and interchangeable lenses, 40' or less, 480V.
- TS4C - TCP Cold Storage Occupancy Sensor w/bracket and interchangeable lenses, 40' or less, 480V.

#### 3 Wire Guard / Lens

- WG - Wire Guard
- PIL - Prismatic Insert Lens, to be used with Wire Guard
- PWL - Prismatic Wrap Lens, not to be used with Wire Guard

#### 4 Special Mounting

- HCB - Hub Connector Box - 3/4" Threaded Hub Mount

#### 5 Special Packaging

- SP - Single Packed

#### AVAILABLE HANGING KITS (ordered separately)

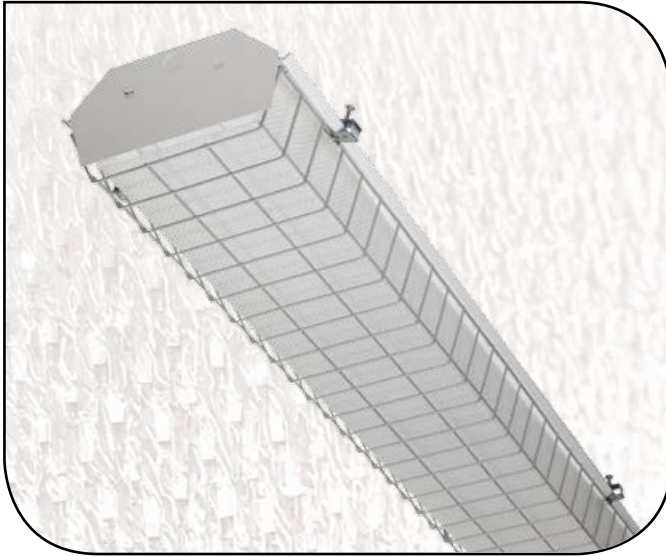
- EZHANGER - 15' adjustable aircraft cable hanging kit

#### AVAILABLE ACCESSORIES (ordered separately)

- PCWRAPLENS - Acrylic Prismatic Lens
- PCINSERTLENS - Acrylic Prismatic Lens For use with Wire Guard
- PCWG - Wire Guard Kit Complete with Mounting Hardware

High efficiency LED High Bays. Use anywhere you need exceptional light distribution for mounting heights up to 40 feet.

## TCP LED HighBay



### LED High Bay

#### Installation

Suspension by chain, cable, hook or monopoint with appropriate accessories.

#### Listing

UL/cUL Listed - Suitable for damp locations.

#### Warranty

Five year warranty against defects in manufacturing.

### Application

The LED High Bay's superior lumen package is ideal for replacing traditional metal halide and linear fluorescent high bay systems. Benefits include high efficiency, excellent color rendering, long life, instant on, and improved uniformity. Suggested mounting heights from 20'-40' with primary applications including warehousing, commercial facilities, manufacturing facilities, open and stack aisle applications.

### Description

The full body assembly features TCP high efficiency drivers and high output LEDs. The LED High Bay's heavy duty 20 gauge housing and 8 gauge wireguard is code gauge steel and all components, excluding the wireguard, are post painted with a glossy, high reflectance white paint.

### Electrical

All drivers are class 2 rated and UL/cUL listed. Our drivers are tightly secured by mounting bolts.

### Finish

The baked white enamel finish is electrostatically applied and post painted with a glossy, highly reflective and durable white paint.

### Catalog Ordering Matrix

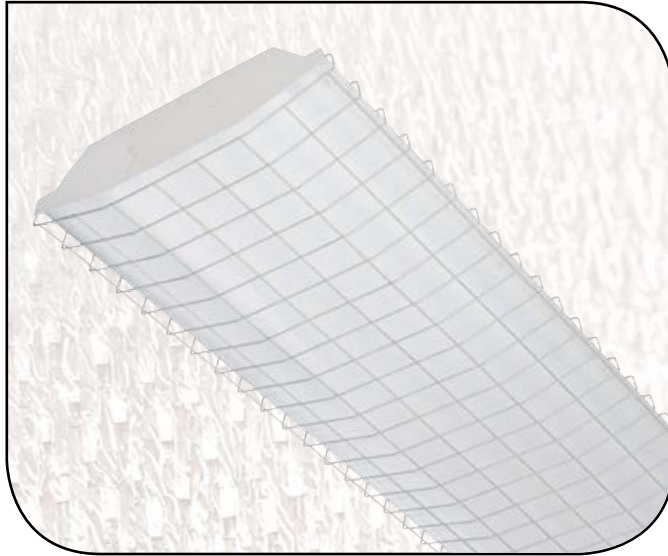
Brand	Family	Voltage and Controls	Lumen Package	Color Temperature	Options
TCP	HB4 - 4' LED High Bay	UNI - 120V-277V 347 - 347V 480 - 480V	12 - 12,000 Lumens	41K - 4100K 50K - 5000K	(See Below)

1

#### OPTIONS (Add to catalog number in order shown)

<p><b>1 Power Cords</b></p> <p><b>6C</b> - 6' PCord 300V 16/3 SJTOW NO PLUG</p> <p><b>6C4</b> - 6' PCord 300V 18/4 SJTOW NO PLUG</p> <p><b>6W</b> - 6' WHIP PCord 600V 16/3 NO PLUG</p> <p><b>2P</b> - 8' PCord 125V 15A 16/3 SJTOW NEMA 5-15P</p> <p><b>3P</b> - 8' PCord 125V 15A 16/3 SJTOW NEMA L5-15P</p> <p><b>8T</b> - 8' PCord 480V 20A 16/3 SEOW NEMA L8-20P</p> <p><b>9T</b> - 8' PCord 250V 20A 16/3 SJTOW NEMA L6-20P</p> <p><b>4T</b> - 10' PCord 125V 20A 16/3 SJTOW NEMA L5-20P</p> <p><b>10T</b> - 10' PCord 277V 15A 14/3 SJTOW NEMA L7-15P</p> <p><b>10T2</b> - 10' PCord 277V 20A 14/3 SJTOW NEMA L7-20P</p> <p><b>10C</b> - 10' PCord 277V SJTOW NO PLUG</p> <p><b>10C6</b> - 10' PCord 600V 15A 16/3 STOW NO PLUG</p> <p><b>20C</b> - 20' PCord 277V 20A 16/3 SJTOW NO PLUG</p> <p><b>20C4</b> - 20' PCord 300V 18/4 SJTOW NO PLUG</p>	<p><b>2 Occupancy Sensors</b></p> <p><b>TS1</b> - TCP Occupancy Sensor w/bracket and interchangeable lenses, 40' or less, 120V, 277V, or 347V.</p> <p><b>TS1C</b> - TCP Cold Storage Occupancy Sensor w/bracket and interchangeable lenses, 40' or less, 120V, 277V, or 347V.</p> <p><b>TS4</b> - TCP Occupancy Sensor w/bracket and interchangeable lenses, 40' or less, 480V.</p> <p><b>TS4C</b> - TCP Cold Storage Occupancy Sensor w/bracket and interchangeable lenses, 40' or less, 480V.</p>	<p><b>3 Wire Guard / Lens</b></p> <p><b>WG</b> - Wire Guard</p> <p><b>PIL</b> - Prismatic Insert Lens, to be used with Wire Guard</p> <p><b>PWL</b> - Prismatic Wrap Lens, not to be used with Wire Guard</p> <p><b>4 Special Mounting</b></p> <p><b>HCB</b> - Hub Connector Box - 3/4" Threaded Hub Mount</p> <p><b>5 Special Packaging</b></p> <p><b>SP</b> - Single Packed</p>	<p><b>AVAILABLE HANGING KITS (ordered separately)</b></p> <p><b>EZHANGER</b> - 15' adjustable aircraft cable hanging kit</p> <p><b>AVAILABLE ACCESSORIES (ordered separately)</b></p> <p><b>PCWRAPLENS</b> - Acrylic Prismatic Lens</p> <p><b>PCINSERTLENS</b> - Acrylic Prismatic Lens For Use with Wire Guard</p> <p><b>PCWG</b> - Wire Guard Kit Complete with Mounting Hardware</p>
---	---	---	---





### LED Sky Bay

#### Installation

Suspension by chain, cable, or hook with appropriate accessories.

#### Warranty

Five year warranty against defects in manufacturing.

#### Listing

UL/cUL Listed - Suitable for damp locations.

### Application

The LED Sky Bay's superior lumen package is ideal for replacing traditional metal halide and linear fluorescent high bay systems. Benefits include high efficiency, excellent color rendering, long life, instant on, and improved uniformity. Suggested mounting heights from 30'–60' with primary applications including warehousing, commercial facilities, manufacturing facilities, open and stack aisle applications.

### Description

The full body assembly features TCP high efficiency drivers and high output LEDs. The LED Sky Bay's heavy duty 20 gauge housing and 8 gauge wireguard is code gauge steel and all components, excluding the wireguard, are post painted with a glossy, high reflectance white paint.

### Electrical

All drivers are class 2 rated and UL/cUL listed. Our drivers are tightly secured by mounting bolts.

### Finish

The baked white enamel finish is electrostatically applied and post painted with a glossy, highly reflective and durable white paint.

## Catalog Ordering Matrix

Brand	Family	Voltage and Controls	Lumen Package	Color Temperature	Options
TCP	SB4 - 4' LED Sky Bay	UNI - 120V-277V 347 - 347V 480 - 480V	20 - 20,000 Lumens 24 - 24,000 Lumens	41K - 4100K 50K - 5000K	(See Below)

### OPTIONS (Add to catalog number in order shown)

#### 1 Power Cords

- 6C - 6' PCord 300V 16/3 SJT00W NO PLUG
- 6C4 - 6' PCord 300V 18/4 SJTOW NO PLUG
- 6W - 6' WHIP PCord 600V 16/3 NO PLUG
- 2P - 8' PCord 125V 15A 16/3 SJT00W NEMA 5-15P
- 3P - 8' PCord 125V 15A 16/3 SJTOW NEMA L5-15P
- 8T - 8' PCord 480V 20A 16/3 SEOW NEMA L8-20P
- 9T - 8' PCord 250V 20A 16/3 SJTOW NEMA L6-20P
- 4T - 10' PCord 125V 20A 16/3 SJTOW NEMA L5-20P
- 10T - 10' PCord 277V 15A 14/3 SJTOW NEMA L7-15P
- 10T2 - 10' PCord 277V 20A 14/3 SJTOW NEMA L7-20P
- 10C - 10' PCord 277V SJT00W NO PLUG
- 10C6 - 10' PCord 600V 15A 16/3 STOW NO PLUG
- 20C - 20' PCord 277V 20A 16/3 SJT00W NO PLUG
- 20C4 - 20' PCord 300V 18/4 SJTOW NO PLUG

#### 2 Occupancy Sensors

- TS1 - TCP Occupancy Sensor w/bracket and interchangeable lenses, 40' or less, 120V, 277V, or 347V.
- TS1C - TCP Cold Storage Occupancy Sensor w/bracket and interchangeable lenses, 40' or less, 120V, 277V, or 347V.
- TS4 - TCP Occupancy Sensor w/bracket and interchangeable lenses, 40' or less, 480V.
- TS4C - TCP Cold Storage Occupancy Sensor w/bracket and interchangeable lenses, 40' or less, 480V.

#### 3 Wire Guard / Lens

- WG - Wire Guard
- PWL - Acrylic Lens

#### 4 Special Packaging

- SP - Single Packed

#### AVAILABLE HANGING KITS (ordered separately)

- EZHANGER - 15' adjustable aircraft cable hanging kit

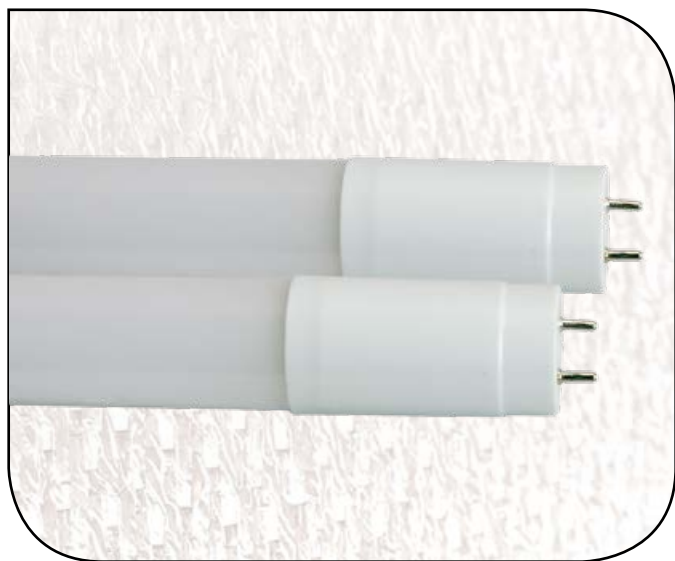
#### AVAILABLE ACCESSORIES (ordered separately)

- FWGL - Wire Guard kit complete with Wire Guard and hardware (for use with lens)

- ELITELENS - Acrylic Lens

## LED T8 Replacement Tubes

### LED Replacement T8 Tubes with Internal Driver



#### Application

LED replacement with internal driver for linear fixtures in which ballast is bypassed.

#### Features and Benefits

- >40% Energy Savings
- Long life - 50,000 hours
- Instant on/off
- No Mercury
- Shatter proof - no glass
- Bypass fluorescent ballast - no future replacements or compatibility issues
- 5 year warranty

### LED Replacement T8 Tubes with Instant Start Ballast Compatible

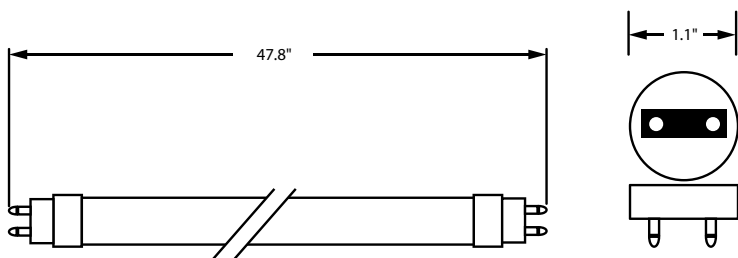
#### Application

T8 LED tubes that are direct replacements for 32W fluorescent lamps used with Instant Start Ballasts.\*

#### Features and Benefits

- >40% Energy Savings
- Long life - 50,000 hours
- Instant on/off
- No Mercury
- Shatter proof - no glass
- No re wiring of fixture - just replace fluorescent lamp with LED lamp
- 5 year warranty

#### Dimensions and Mounting Data



LED T8 with Internal Driver

Warranties and Certifications:	Item #	Description	Voltage	Wattage	Replacement	M.O.L. (inches)	Diameter (inches)	Base	Lumens	LPW	CCT	CRI	R9
LED18T84ID35K	LED 18W Internal Driver 4 Foot T8 - 3500K	100-300V	18	32W	47.8	1.1	G13	2000	111	3500K	82	>0	
LED18T84ID41K	LED 18W Internal Driver 4 Foot T8 - 4100K	100-300V	18	32W	47.8	1.1	G13	2075	115	4100K	82	>0	
LED18T84ID50K	LED 18W Internal Driver 4 Foot T8 - 5000K	100-300V	18	32W	47.8	1.1	G13	2150	119	5000K	82	>0	

LED T8 with Instant Start Ballast Compatible

Warranties and Certifications:	Item #	Description	Voltage	Wattage			Lamp Lumens			Base	CCT	CRI	R9
				LBF (0.78)	NBF (0.88)	HBF (1.18)	LBF (0.78)	NBF (0.88)	HBF (1.18)				
<b>5 YEAR WARRANTY</b> 	LED18T84IS30K	LED 18W Instant Start Compatible 4 Foot T8 - 3000K	100-300V	12.5	14	19.5	1250	1450	1850	G13	3000K	82	>0
	LED18T84IS35K	LED 18W Instant Start Compatible 4 Foot T8 - 3500K	100-300V	12.5	14	19.5	1300	1500	1900	G13	3500K	82	>0
	LED18T84IS41K	LED 18W Instant Start Compatible 4 Foot T8 - 4100K	100-300V	12.5	14	19.5	1350	1550	1950	G13	4100K	82	>0
	LED18T84IS50K	LED 18W Instant Start Compatible 4 Foot T8 - 5000K	100-300V	12.5	14	19.5	1400	1600	2000	G13	5000K	82	>0

\* Please refer to [www.tcp.com](http://www.tcp.com) for Instant Start Ballast Compatibility.



## OUTDOOR





# LED Outdoor Luminaires



Our LED luminaires are the energy efficient alternatives to metal halide and fluorescent fixtures. They are designed to last longer while increasing the amount of light output and reducing the amount of energy used to power them.

## Applications:

- |                   |                  |
|-------------------|------------------|
| Parking Garages   | Walk-in Coolers  |
| Warehouses        | Outdoor Lighting |
| Big Box Retailers | General Lighting |
| Stairwells        |                  |
| Building Facades  |                  |

## TCPBLAZER25

20W LED BLAZER WALL PACK  
20W / 1125 Lumens

Small wall pack with impact resistant non-yellowing lens provides maximum light output. Great for security lighting, building entrances and over doorways.

- Tested to LM 79 & LM 80
- IP 65 Rated, UL Wet Location
- Height dependant

L 13" W 7.75" H 5.5"



## TCPBLAZER35

30W LED BLAZER WALL PACK  
30W / 1950 Lumens

Fully shielded design is dark sky compliant. Great for security lighting, building entrances and over doorways.

- Tested to LM 79 & LM 80
- IP 65 Rated, UL Wet Location
- Height Dependant

L 14" W 9" H 11.5"



- ### FEATURES / BENEFITS
- Long life: 50,000 hours
  - LM80 certified LEDs
  - UL/cUL listed
  - Low maintenance
  - Excellent color consistency and superior lumen maintenance
  - Energy efficient



## TCPBLAZER50

45W LED BLAZER WALL PACK  
45W / 2500 Lumens

Medium wall pack with impact resistant non-yellowing lens provides maximum light output. Great for security lighting, building entrances and over doorways.

- Tested to LM 79 & LM 80
- IP 65 Rated, UL Wet Location
- Height Dependant

L 14" W 9" H 7"



## TCPBLAZER100

100W LED BLAZER WALL PACK  
100W / 5500 Lumens

Large wall pack with same impact resistant non-yellowing lens as our TCPBLAZER50. Perfect for lighting larger areas.

L 17" W 9.375" H 9"




## TCPBLAZER105

100W LED BLAZER WALL PACK  
100W / 7000 Lumens

Same great design as our TCPBLAZER35. It's perfect when you need to light a large area.

L17" W 13.75" H 9.125"

# TCP BLAZER25 LED WALL PACK

Catalog Number <b>TCPBLAZER25</b>	
Notes	Type
	

## Blazer 20W LED Wall Pack

### Installation

Wall mounted.  
Before installation, please consult your local ordinances and building codes for compliance.

### Warranty

Five years against defects in manufacturing.

### Listing

UL/cUL Listed - Suitable for wet locations

## Application

TCP's Blazer line of LED wall packs are designed for applications that require clean lighting with a long life and low maintenance requirement. Applications include overnight security lighting for buildings, entrance lighting, and overhead door lighting.

## Description

The Blazer 20 watt wall pack is a more efficient alternative to metal halide, high pressure sodium, and fluorescent wall packs. This LED wall pack is perfect for areas that require low maintenance and clean lighting.

## Construction

The Blazer 20 watt wall pack uses 15 High Power LumiLED Rebel LEDs. It is constructed from die cast aluminum with a durable brown powder coat finish. The 20 watt Blazer also features an impact resistant non-yellowing glass lens for maximum light output over the life of the luminaire. It is 13" tall by 7.5" wide and 5.5" deep. It has an IP65 weather rating.

## Electrical

The driver is UL listed, has a power factor of 0.99, and an input voltage of 120-277 VAC (50/60 Hz). The Luminaire is rated at 20 watts, 1125 lumens, with a THD of less than 10%. Electrical protections include OVP, OCP, SCP, and OTP.

## Performance

LED Life: 50,000 hrs  
 CCT: White 5500°K (Other color temperatures available upon request)  
 CRI: 71  
 Total Lumen Output: 1125 (LM-79-08 Test Procedure)  
 Lumens Per Watt: 55  
 Operating Temperature: -20°F ~ 140°F

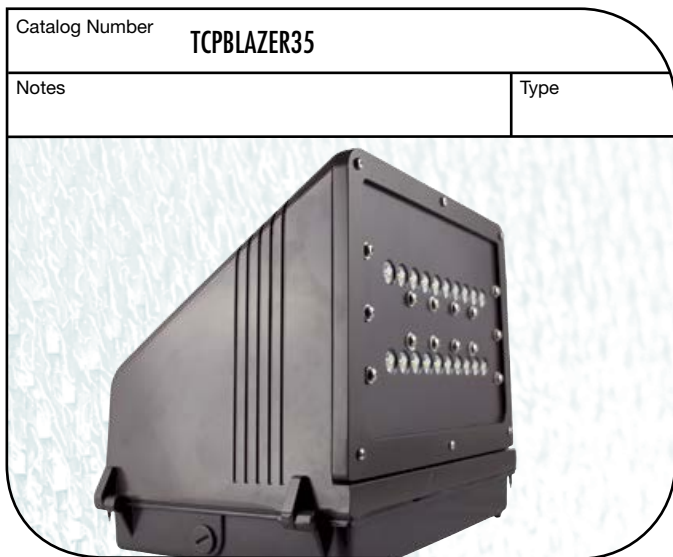


Front View



Side View

# TCP BLAZER35 LED WALL PACK



## Application

TCP's Blazer line of LED wall packs are designed for applications that require clean lighting with a long life and low maintenance requirement. Applications include overnight security lighting for buildings, entrance lighting, and overhead door lighting.

## Description

The Blazer 30 watt wall pack is a more efficient alternative to metal halide, high pressure sodium, and fluorescent wall packs. This full cutoff, Dark Sky compliant LED wall pack is perfect for hard to reach areas that require clean lighting.

## Construction

The Blazer 30 watt wall pack uses 20 High Power LumiLED Rebel LEDs. It is constructed from die cast aluminum with a durable brown powder coat finish. It is 9.0" tall by 14" wide and 11.5" deep. It has an IP65 rating.

## Electrical

The driver is UL listed, has a power factor of 0.99, and an input voltage of 120-277 VAC (50/60 Hz). The Luminaire is rated at 30 watts, 1950 lumens, with a THD of less than 10%. Electrical protections include OVP, OCP, SCP, and OTP.

## Performance

- LED Life: 50,000 hrs
- CCT: White 5500°K (Other color temperatures available upon request)
- CRI: 71
- Total Lumen Output: 1930 (LM-79-08 Test Procedure)
- Lumens Per Watt: 68
- Operating Temperature: -20°F ~ 140°F

### Blazer 30W LED Wall Pack

#### Installation

Wall mounted.  
Before installation, please consult your local ordinances and building codes for compliance.

#### Warranty

Five years against defects in manufacturing.

#### Listing

UL/cUL Listed - Suitable for wet locations  
DesignLights Consortium qualified

Bottom View




Side View





# TCP BLAZER50 LED WALL PACK

Catalog Number <b>TCPBLAZER50</b>	
Notes	Type
	

## Blazer 45W LED Wall Pack

### Installation

Wall mounted.  
Before installation, please consult your local ordinances and building codes for compliance.

### Warranty

Five years against defects in manufacturing.

### Listing

UL/cUL Listed - Suitable for wet locations

## Application

TCP's Blazer line of LED wall packs are designed for applications that require clean lighting with a long life and low maintenance requirement. Applications include overnight security lighting for buildings, entrance lighting, and overhead door lighting.

## Description

The Blazer 45 watt wall pack is a more efficient alternative to metal halide, high pressure sodium, and fluorescent wall packs. This LED wall pack is perfect for hard to reach areas that require clean lighting.

## Construction

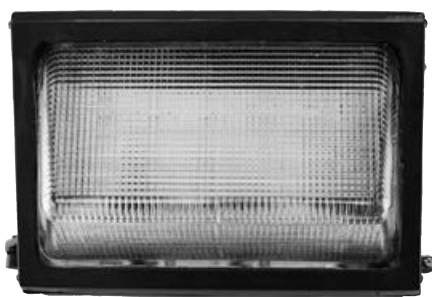
The Blazer 45 watt wall pack uses 20 High Power LumiLED Rebel LEDs. It is constructed from die cast aluminum with a durable brown powder coat finish. The Blazer 45 watt wall pack also features an impact resistant non-yellowing glass lens for maximum light output over the life of the luminaire. It is 7" tall by 14" wide and 9" deep. It has an IP65 weather rating.

## Electrical

The driver is UL listed, has a power factor of 0.99, and an input voltage of 120-277 VAC (50/60 Hz). The Luminaire is rated at 45 watts, 2500 lumens, with a THD of less than 10%. Electrical protections include OVP, OCP, SCP, and OTP.

## Performance

- LED Life: 50,000 hrs
- CCT: White 5500°K (Other color temperatures available upon request)
- CRI: 71
- Total Lumen Output: 2481 (LM-79-08 Test Procedure)
- Lumens Per Watt: 59
- Operating Temperature: -20°F ~ 140°F



Front View



Side View

# TCP BLAZER 100 LED WALL PACK



## Application

TCP's Blazer line of LED wall packs are designed for applications that require clean lighting with a long life and low maintenance requirement. Applications include overnight security lighting for buildings, entrance lighting, and overhead door lighting.

## Description

The Blazer 100 watt wall pack is a more efficient alternative to metal halide, high pressure sodium, and fluorescent wall packs. This LED wall pack is perfect for lighting pathways and doorways, where security and clarity are important.

## Construction

Traditional style with all the benefits of LED. The Blazer 100 watt wall pack utilizes highly efficient High Power LEDs. It is constructed from die cast aluminum with a durable brown powder coat finish. The Blazer 100 watt wall pack also features an impact resistant non-yellowing glass lens for maximum light output over the life of the luminaire. It is 9.375" tall by 17" wide and 9" deep. It has an IP65 weather rating.

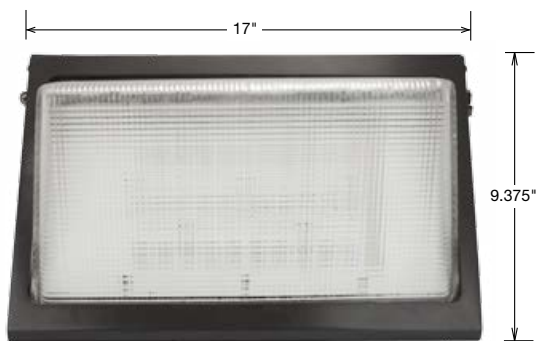
## Electrical

The driver is UL listed, has a power factor of 0.99, and an input voltage of 120-277 VAC (50/60 Hz). The Luminaire is rated at 94 watts, 6038 lumens, with a THD of less than 10%.

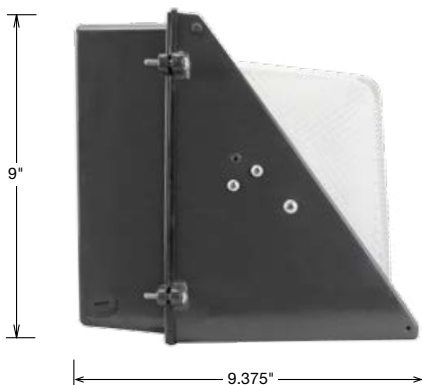
## Performance

- LED Life: 50,000 hrs
- CCT: White 5300°K (Other color temperatures available upon request)
- CRI: 70
- Total Lumen Output: 6038L
- Lumens Per Watt: 64.2 LPW
- Operating Temperature: -20°F ~ 140°F

Blazer 100W LED Wall Pack	
<b>Installation</b> Wall mounted. Before installation, please consult your local ordinances and building codes for compliance.	<b>Warranty</b> Five years against defects in manufacturing.  <b>Listing</b> UL/cUL Listed - Suitable for wet locations




Front View



Side View



# TCP BLAZER 105 LED WALL PACK

Catalog Number <b>TCPBLAZER105</b>	
Notes	Type
	

## Blazer 105W LED Wall Pack

### Installation

Wall mounted.  
Before installation, please consult your local ordinances and building codes for compliance.

### Warranty

Five years against defects in manufacturing.

### Listing

UL/cUL Listed - Suitable for wet locations

## Application

TCP's Blazer line of LED wall packs are designed for applications that require clean lighting with a long life and low maintenance requirement. Applications include overnight security lighting for buildings, entrance lighting, and overhead door lighting.

## Description

The Blazer 105 watt wall pack is a more efficient alternative to metal halide, high pressure sodium, and fluorescent wall packs. This LED wall pack is perfect for lighting pathways and doorways, where security and clarity are important.

## Construction

Traditional style with all the benefits of LED. The Blazer 105 watt wall pack utilizes highly efficient High Power LEDs. It is constructed from die cast aluminum with a durable brown powder coat finish. It is 13.75" tall by 17" wide and 9.125" deep. It has an IP65 weather rating.

## Electrical

The driver is UL listed, has a power factor of 0.99, and an input voltage of 120-277 VAC (50/60 Hz). The Luminaire is rated at 92.3 watts, 7293 lumens, with a THD of less than 10%.

## Performance

- LED Life: 50,000 hrs
- CCT: White 5300°K (Other color temperatures available upon request)
- CRI: 71
- Total Lumen Output: 7293L
- Lumens Per Watt: 78.3 LPW
- Operating Temperature: -20°F ~ 140°F

17"



13.75"

Front View

13.75"



9.125"

Side View





# INDEX



## LEDs ..... 8-31

TCP Elite Designer LED PAR Lamps, Fully Dimmable.....	8-12
TCP Elite Designer LED 17W PAR38, Fully Dimmable.....	8
TCP Elite Designer LED 14W PAR38, Fully Dimmable.....	9
TCP Elite Designer LED 14W PAR30, Fully Dimmable.....	9
TCP Elite Designer LED 12W PAR30, Fully Dimmable.....	10
TCP Elite Designer LED 12W PAR30 Short Neck, Fully Dimmable.....	10
TCP Elite Designer LED 10W PAR30 Short Neck, Fully Dimmable.....	11
TCP Elite Designer LED 10W PAR20, Fully Dimmable.....	11
TCP Elite Designer LED 8W PAR20, Fully Dimmable.....	12
TCP LED 19W PAR38, Wet Location.....	12
TCP LED 23W PAR38, Non Dimmable.....	12
TCP LED 29W PAR38, Non Dimmable.....	12
TCP Elite Designer LED PAR Lamps, Non Dimmable.....	13-16
TCP Elite Designer LED 17W PAR38, Non Dimmable.....	13
TCP Elite Designer LED 14W PAR38, Non Dimmable.....	13
TCP Elite Designer LED 14W PAR30, Non Dimmable.....	14
TCP Elite Designer LED 12W PAR30, Non Dimmable.....	14
TCP Elite Designer LED 12W PAR30 Short Neck, Non Dimmable.....	15
TCP Elite Designer LED 10W PAR30 Short Neck, Non Dimmable.....	15
TCP Elite Designer LED 10W PAR20, Non Dimmable.....	16
TCP Elite Designer LED 8W PAR20, Non Dimmable.....	16
TCP Elite LED PAR Lamps, Non Dimmable.....	18
TCP Elite LED 17W PAR38, Non Dimmable.....	18
TCP Elite LED 14W PAR38, Non Dimmable.....	18
TCP Elite LED 14W PAR30, Non Dimmable.....	18
TCP Elite LED 12W PAR30, Non Dimmable.....	18
TCP Elite LED 12W PAR30 Short Neck, Non Dimmable.....	18
TCP Elite LED 10W PAR30 Short Neck, Non Dimmable.....	18
TCP Elite LED 10W PAR20, Non Dimmable.....	18
TCP Elite LED 8W PAR20, Non Dimmable.....	18
TCP Elite LED BR Lamps, Fully Dimmable.....	19-20
TCP Elite LED 12W Colored Lens BR30, Dimmable.....	19
TCP Elite LED 12W BR30, Dimmable.....	20
TCP Elite LED 10W BR30, Dimmable.....	20
TCP Elite LED 17W BR40, Dimmable.....	20
TCP Elite LED 12W BR40, Dimmable.....	20
TCP Elite LED 10W R20, Dimmable.....	20
TCP Elite LED 8W R20, Dimmable.....	20
TCP Elite LED BR Lamps, Non Dimmable.....	21
TCP Elite LED 12W BR30, Non Dimmable.....	21
TCP Elite LED 10W BR30, Non Dimmable.....	21
TCP Elite LED 17W BR40, Non Dimmable.....	21
TCP Elite LED 12W BR40, Non Dimmable.....	21
TCP Elite LED 10W R20, Non Dimmable.....	21
TCP Elite LED 8W R20, Non Dimmable.....	21
TCP Elite LED A Lamps.....	22-25
TCP Elite LED 10W All Purpose Dimmable A19.....	22
TCP Elite LED 7W All Purpose Dimmable A19.....	22
TCP Elite LED 10W All Purpose Non Dimmable A19.....	22
TCP Elite LED 7W All Purpose Non Dimmable A19.....	22
TCP Elite LED 10W Omni-Directional Dimmable A19.....	23
TCP Elite LED 7W Omni-Directional Dimmable A19.....	23
TCP Elite LED 10W Omni-Directional Non Dimmable A19.....	23
TCP Elite LED 7W Omni-Directional Non Dimmable A19.....	23
TCP Elite LED 18W High Output Omni-Directional Dimmable A21.....	24
TCP Elite LED 16W High Output All Purpose Dimmable A21.....	24
TCP Elite LED 15W High Output All Purpose Non Dimmable A21.....	24
TCP Elite LED 13W High Output Omni-Directional Dimmable A21.....	25
TCP Elite LED 13W High Output All Purpose Dimmable A21.....	25
TCP Elite LED 13W High Output All Purpose Non Dimmable A21.....	25

TCP LED MR Lamps, Fully Dimmable.....	26-27
TCP Elite LED 7W 12V MR16 Lamps, Fully Dimmable.....	26
TCP Elite Designer LED 7W 12V MR16 Lamps, Fully Dimmable.....	26
TCP Elite Designer LED 7W 12V MR16 High CRI Lamps, Fully Dimmable.....	26
TCP Elite Designer LED 5W 12V MR16 Lamps, Fully Dimmable.....	26
TCP Elite Designer LED 7W GU10 MR16 Lamps, Fully Dimmable.....	27
TCP Elite LED 7W GU10 MR16 Lamps, Fully Dimmable.....	27
TCP Elite Designer LED 7W PAR16 Lamps, Fully Dimmable.....	27
TCP Elite LED 7W PAR16 Lamps, Fully Dimmable.....	27
TCP LED Decorative Lamps.....	28-29
TCP Elite LED 31W G40 Lamps, Frosted, Non Dimmable.....	28
TCP Elite LED 5W G25 Lamps, Fully Dimmable.....	28
TCP Elite LED 8W G25 Lamps, Fully Dimmable.....	28
TCP Elite LED 5W Decorative Lamps, Fully Dimmable.....	29
TCP Elite LED 4W Decorative Lamps, Fully Dimmable.....	29
TCP LED Lamp Six Packs.....	30
TCP LED BR30 Lamp Six Packs, Non Dimmable.....	30
TCP LED A Lamp Six Packs, Non Dimmable.....	30
TCP LED Decorative Lamp Six Packs, Fully Dimmable.....	30
TCP LED Recessed Downlights (Retrofit).....	31
TCP LED 6" Recessed Downlights (Retrofit), Fully Dimmable.....	31
TCP LED 4" Recessed Downlights (Retrofit), Fully Dimmable.....	31

## LED INDOOR LUMINAIRES ..... 32-43

E-Series 2x2 LED Flat Panel Troffer.....	34
E-Series 2x4 LED Flat Panel Troffer.....	35
Premier Series 2x2 LED Flat Panel Troffer.....	36
Premier Series 2x4 LED Flat Panel Troffer.....	37
Designer Series 2x2 LED Volumetric Troffer.....	38
Designer Series 2x4 LED Volumetric Troffer.....	39
LED Low Bay Luminaire.....	40
LED High Bay Luminaire.....	41
LED Sky Bay Luminaire.....	42
LED T8 Replacement Tubes.....	43

## LED OUTDOOR LUMINAIRES ..... 44-50

TCP Blazer25 Wall Pack.....	46
TCP Blazer35 Wall Pack.....	47
TCP Blazer50 Wall Pack.....	48
TCP Blazer100 Wall Pack.....	49
TCP Blazer105 Wall Pack.....	50



For more information on the quality and care that TCP can deliver, call us at  
800.324.1496 or visit [tcp.com](http://tcp.com)

©TCP 2014

325 Campus Drive | Aurora, Ohio 44202 | P: 800.324.1496 | F: 877.487.0516