

Boxes and Accessories

Stub Downs

Vertical Stub Down

Carlton® Vertical Stub Downs are designed to provide a quick, easy connection to a wood deck or transition from slab-to-slab using Carlton's® "Quick Connect" snap-in design... simply snap the ENT in place. The integral snaps provide a secure mount — preventing the ENT from pulling out while enabling easy removal of the fitting once the deck is removed. All in a concrete-tight application. The underside of this fitting provides ample room to attach a Carlton® coupling to the ENT to continue the run. Carlton® Vertical Stub Downs are manufactured out of a highly engineered thermoplastic material to provide extra strength and durability and are available in sizes ½", ¾" and 1".



CAT. NO.	SIZE	STD. CTN.	STD. WT. (LBS.)
A210D	½	50	3.8
A210E	¾	50	3.7
A210F	1	50	4.8

Vertical Stub Down Transition Adapter

Carlton® Non-Metallic Exclusive...Carlton® Vertical Stub Down Transition Adapters, like our Vertical Stub Downs, provide a means to transition from ENT to another wire-management product where code requires other wire-management means. The integral snaps provide a secure mount — preventing the ENT from slipping or pulling out, while the deck-mount flange has a threaded port, enabling connection to other conduit system using a terminal adapter. Carlton® Vertical Stub Down Transition Adapters are manufactured out of polycarbonate material to provide extra strength and durability. They're concrete tight and available in sizes ½", ¾" and 1".



CAT. NO.	SIZE	STD. CTN.	STD. WT. (LBS.)
A200D	½" Female ENT to NPSC (Female)	50	2.3
A200E	¾" Female ENT to NPSC (Female)	50	2.8
A200F	1" Female ENT to NPSC (Female)	50	3.9

45° Stub Down

Carlton® 45° Stub Downs are designed to provide a smooth transition from cross-deck ENT runs to vertical applications. The integral snaps provide a secure mount — preventing the ENT from slipping or pulling out — but also enable the stub to easily be removed. The underside of this fitting provides ample room to attach a Carlton® coupling to the ENT to continue the run. Carlton® 45° Stub Downs are manufactured out of a highly engineered thermoplastic material to provide extra strength and durability. They're concrete tight and available in sizes ½", ¾" and 1".



CAT. NO.	SIZE	STD. CTN.	STD. WT. (LBS.)
A220D	½	25	1.8
A220E	¾	25	2.0
A220F	1	25	2.6
A220G	1¼	25	2.8
A220H	1½	25	3.3
A220J	2	25	4.1

90° Stub Down Transition Adapter

Carlton® Non-Metallic Exclusive...Carlton® 90° Stub Downs are designed to provide a smooth transition from cross-deck ENT runs to vertical applications where code requires other wire-management means. The integral snaps provide a secure mount — preventing the ENT from slipping or pulling out, while the deck-mount flange has a threaded port, enabling connection to any conduit system using a terminal adapter. Carlton® 90° Stub Downs are manufactured out of polycarbonate material to provide extra strength and durability. They're concrete tight and available in sizes ½", ¾" and 1".

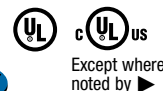


CAT. NO.	SIZE	STD. CTN.	STD. WT. (LBS.)
A230D	½" Female ENT to NPSC (Female)	25	2.0
A230E	¾" Female ENT to NPSC (Female)	25	2.4
A230F	1" Female ENT to NPSC (Female)	25	3.3

Boxes and Accessories

Mud Box Assemblies

Carlson® Mud Box Assemblies are available in five unique styles...blank, ceiling ring, one-gang, two-gang and 4-inch square. All Mud Box Assemblies are manufactured out of polycarbonate material to provide extra strength and durability, are concrete tight and have twelve integral connectors...two 1", six ¾" and four ½". Using our new ENT Reducers, this product will meet ANY jobsite application.



**Cement Caps
Included**

Mud Box Base with Blank Cover

CAT. NO.	SIZE	STD. CTN.	STD. WT. (LBS.)
A863BC ▶	Mud Box with Blank Cover	24	12.3

Mud Box with Ceiling Ring

- Threaded brass inserts for fan (#10-32 screws) and fixture (#8-32 screws) mountings
- Listed for fixture support up to 50 lbs.
- Listed for ceiling fans up to 35 lbs.

CAT. NO.	SIZE	STD. CTN.	STD. WT. (LBS.)
A863CF	Mud Box with Blank Cover	24	15.5
A863CFG ▶	Mud Box with Ceiling Ring & Ground Lug	24	16.1

Mud Box with One-Gang Ring

CAT. NO.	SIZE	STD. CTN.	STD. WT. (LBS.)
A863S	Mud Box with One-Gang Ring	24	16.8
A863SG ▶	Mud Box with One-Gang Ring & Ground Lug	24	16.2

Mud Box with Two-Gang Ring

CAT. NO.	SIZE	STD. CTN.	STD. WT. (LBS.)
A863D	Mud Box with Two-Gang Ring	24	15.8
A863DG ▶	Mud Box with Two-Gang Ring & Ground Lug	24	16.6

Mud Box with 4" Square Ring

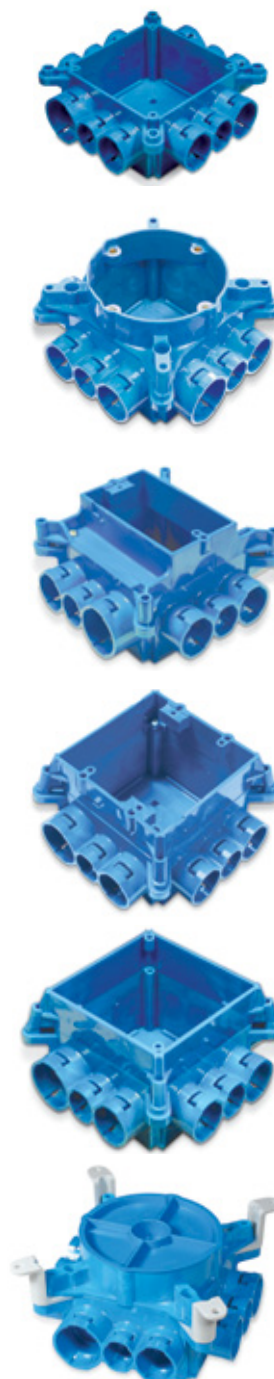
- 4" Square Ring not for luminaire

CAT. NO.	SIZE	STD. CTN.	STD. WT. (LBS.)
A863-4SQ ▶	Mud Box with 4-Inch Square Ring	24	15.2

Mud Box Assemblies with Mounting Feet

Carlson® Mud Box Assemblies with Mounting Feet are specifically engineered and designed for use in Tunnel Form applications. The mounting feet are located on all four corners and enable the box to attach directly to the wall of the form using pop rivets. The pop rivets help keep the box in position during the pour and provide a safe, secure and rust-resistant mount.

CAT. NO.	SIZE	STD. CTN.	STD. WT. (LBS.)
A863-4SQF	4-Square Ring	24	17.15
A863CFF	Ceiling Ring	24	16.61
A863CFGF	Ceiling Ring and Ground Lug	24	17.46
A863DF	Double-Gang	24	17.42
A863DGF	Double-Gang and Ground Lug	24	17.99
A863SF	Single-Gang	24	17.15
A863SGF	Single-Gang and Ground Lug	24	17.44

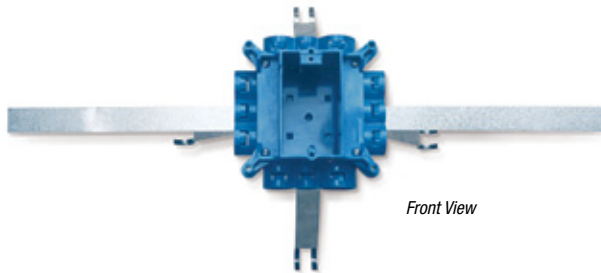


Boxes and Accessories

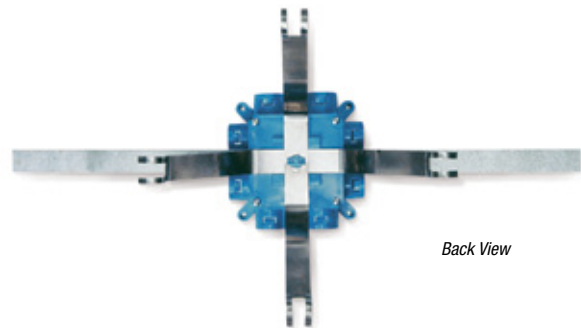
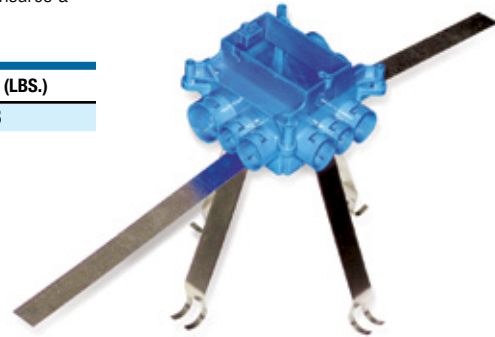
Mounting Brackets

CARLON® EXCLUSIVE...The Carlon® ENT Mounting Bracket is specifically designed for use with Carlon® ENT Mud Box Assemblies in vertical concrete walls where one- or two-gang boxes are needed. The stainless steel spring-loaded mechanism provides a secure outlet box between concrete forms while the soft-steel strap enables the outlet box to be secured to rebar. The bracket combination ensures a straight box opening and a concrete-tight fit. Mud Box not included.

CAT. NO.	SIZE	STD. CTN.	STD. WT. (LBS.)
A863MB	Mud Box Mounting Kit	1	.98



Front View



Back View

**Carlon
Exclusive**

Boxes & Covers — Carlon® Electrical Non-Metallic Tubing (ENT) System

ENT Bridge

CARLON® EXCLUSIVE...The Carlon® ENT Bridge is designed to support long ENT runs in concrete pour applications. This makes pulling wire/cable a snap. Installation is easy...simply mount the ENT bridge, using nails or screws, to the wood deck mounting and snap the ENT into place. The bridge is designed to hold the conduit in place while minimizing dips in the conduit over long runs. The Carlon® ENT Bridge is manufactured out of a highly engineered thermoplastic material to provide extra strength and durability and can accommodate ENT sizes ½", ¾" and 1". (The Carlon® ENT bridge can be used with rigid non-metallic conduit too.)

CAT. NO.	SIZE	STD. CTN.	STD. WT. (LBS.)
A293DEF	ENT Bridge	50	9.0



**Carlon
Exclusive**

Boxes and Accessories

Transition Adapters

Male ENT to Schedule 40 and 80 PVC Conduit

CARLON® EXCLUSIVE...Carlon® Male ENT to Schedule 40 & 80 PVC Conduit Transition Adapters are designed to connect Schedule 40 conduit to Carlon® Flex-Plus® Blue™ ENT boxes and fittings. Simply solvent cement the PVC adapter to the Schedule 40 conduit and snap the adapter into Carlon's® "Quick Connect" snap-in connector on the box or fitting. Carlon® Male ENT to Schedule 40 & 80 Adapters are concrete tight and available in sizes ½", ¾" and 1".

CAT. NO.	SIZE	STD. CTN.	STD. WT. (LBS.)
A263D	½" ENT to ½" Sch. 40 or Sch. 80	100	2.4
A263E	¾" ENT to ¾" Sch. 40 or Sch. 80	100	3.2
A263F	1" ENT to 1" Sch. 40 or Sch. 80	100	4.5



ENT to EMT

Carlon® ENT to EMT Transition Adapters are designed to easily transition from Carlon® Flex-Plus® Blue™ ENT to EMT using Carlon's® "Quick Connect" snap-in design. The EMT is held securely in place using the small screw (provided). This helps prevent the EMT from slipping/shifting out of the adapter. All ENT to EMT adapters are manufactured out of polycarbonate material to provide extra strength and durability. They're concrete tight and available in sizes ½", ¾" and 1".

CAT. NO.	SIZE	STD. CTN.	STD. WT. (LBS.)
A245D	½" ENT to ½" EMT	100	3.4
A245E	¾" ENT to ¾" EMT	100	4.1
A245F	1" ENT to 1" EMT	100	5.4



Reducers

CARLON® EXCLUSIVE...Carlon® ENT Reducers are designed to provide an easy transition from 1" Carlon® ENT to ¾" ENT or from ¾" Carlon® ENT to ½" ENT. They're concrete tight and manufactured out of polycarbonate material to provide extra strength and durability. Carlon® ENT Reducers provide flexibility while on the jobsite by minimizing the need to carry size-specific boxes and fittings. Carlon® ENT Reducers provide the versatility to convert Carlon® fittings and boxes to many different sizes and configurations.

CAT. NO.	SIZE	STD. CTN.	STD. WT. (LBS.)
A273DE	¾"–½"	100	3.2
A273EF	1"–¾"	100	2.4



Boxes and Accessories

Outlet and Switch Boxes — Eccentric Knockouts

CARLON® EXCLUSIVE...Carlon® ENT Outlet and Switch Boxes with Eccentric Knockouts are designed to enable selective ENT openings — ½", ¾" and 1" — based on application needs. They provide the largest capacity available on the market today — 22 cu. in. Single-Gang, and 38 cu. in. Double-Gang — and can be mounted to wood or steel studs. Carlon® ENT Outlet and Switch Boxes with Eccentric Knockouts are manufactured out of a highly engineered thermoplastic material to provide extra strength and durability and are available in single-gang and double-gang styles.

Note: The double-gang version is also a 4-in. square box.

Single-Gang — 22 Cu. In.

CAT. NO.	SIZE	CAPACITY CU. IN.	STD. CTN.	STD. WT. (LBS.)
A122	Single-Gang	22	25	6.8

UL Classified for 2-hour-or-less fire-resistant fire wall assemblies

Combination Two-Gang/Four-Inch Square Box — 38 Cu. In.

CAT. NO.	SIZE	CAPACITY CU. IN.	STD. CTN.	STD. WT. (LBS.)
A238	Two-Gang	38	25	8.9

UL Classified for 2-hour-or-less fire-resistant fire wall assemblies



Outlet Box Divider

Carlon® ENT Outlet Box Divider is specifically designed for applications where a combined high- and low-voltage closed-back box is needed, such as for placement in a fire-rated wall. Just slip the divider into place to get the split box you need. The Carlon® ENT Outlet Box Divider is UL® Recognized for use with the Carlon® A238 Box only.



CAT. NO.	SIZE	STD. CTN.	STD. WT. (LBS.)
A238DIV	—	50	1.87



1-800-453-1692

www.aboveboardelectronics.com

Boxes and Accessories

Quick-Connect Adapters and Couplings

- Carlon® one-piece ENT Quick-Connect Couplings, Threaded Adapters and Snap-In Terminator Adapters are suitable for damp locations
- Quick-Connect Couplings and Threaded Adapters are concrete-tight when used with Carlon® ENT
- All sizes of rigid non-metallic conduit fittings are compatible with ENT when using ENT cement
- Rigid non-metallic conduit fittings are recommended for use with Carlon® 1 1/4" -2" Flex-Plus® Blue™ ENT
- Use of ENT Blue™ Quick-Set Cement is required. See **page A-338** for details

- When One-Piece Quick-Connect Snap-In Terminator Adapters are installed in a concrete application, Carlon® flat sealing washers must be used on the box connection ends

Couplings

CAT. NO.	SIZE (IN.)	STD. CTN.	STD. WT. (LBS.)
A240D	1/2	150	2.90
A240E	3/4	100	3.00
A240F	1	50	2.30

Threaded Adapters

CAT. NO.	SIZE (IN.)	STD. CTN.	STD. WT. (LBS.)
A243D	1/2	150	2.55
A243E	3/4	100	2.30
A243F	1	50	2.00

Snap-In Adapters

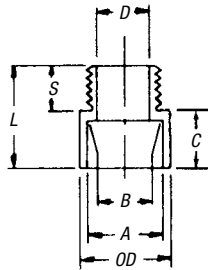
CAT. NO.	SIZE (IN.)	STD. CTN.	STD. WT. (LBS.)
A253D	1/2	150	2.70
A253E	3/4	100	2.90
A253F	1	50	2.30



Rigid Non-Metallic Conduit Adapters and Couplings

Male Terminal Adapters

For adapting non-metallic conduits to boxes, threaded fittings, metallic systems. Male threads on one end, socket end on other.

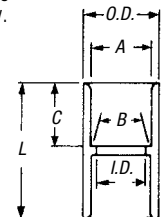


Standard Couplings

All socket fittings should be attached using ENT Blue™ Quick-Set Cement (**page A-338**). Using Carlon® fittings with Carlon® non-metallic conduit ensures system integrity.



Socket type for joining non-metallic conduit.



CAT. NO.	SIZE	STD. CTN.	TYPICAL		MIN. D	MAX. OD	TYPICAL			STD. WT. (LBS.)
			A	B			C	S	L	
E943D	1/2	150	.852	.836	.597	1 1/8	3/8	3/16	1 1/8	2.8
E943E	3/4	125	1.064	1.046	.800	1 1/2	3/4	3/16	1 3/8	3.5
E943F	1	50	1.330	1.310	1.018	1 3/4	1	1 1/8	1 3/4	3
E943G	1 1/4	50	1.677	1.655	1.332	2 1/2	1	3/4	1 1/2	4
E943H	1 1/2	25	1.918	1.894	1.566	2 3/4	1 1/8	3/4	2 1/8	2.5
E943J	2	50	2.393	2.369	2.000	3 1/2	1 3/8	3/4	2 3/8	7

*All measurements in inches, unless otherwise noted.

CAT. NO.	SIZE	STD. CTN.	TYPICAL		MIN. D	MAX. OD	TYPICAL		STD. WT. (LBS.)
			A	B			C	L	
E940D	1/2	150	.852	.836	.728	1 1/4	1 1/8	1 1/2	2.8
E940E	3/4	100	1.064	1.046	.840	1 3/4	1 1/4	1 3/4	3.5
E940F	1	50	1.330	1.310	1.210	2	1 3/4	2	3
E940G	1 1/4	30	1.677	1.655	1.535	2 3/4	1 3/4	2 1/2	4
E940H	1 1/2	25	1.918	1.894	1.755	3 1/4	2 1/4	2 3/4	2.5
E940J	2	30	2.393	2.369	2.190	4 1/4	2 3/4	3 1/2	7

*All measurements in inches, unless otherwise noted.

Thomas & Betts

United States
Tel: 901.252.8000
800.816.7809
Fax: 901.252.1354

Technical Services
Tel: 888.862.3289

www.tnb.com

Boxes and Accessories

2½" and 4" Mud Boxes and Covers

- UL Classified for 2-hour-or-less fire-resistant floor/ceiling assemblies

Base Rings

Listed for use with ceiling fans up to 35 lbs. and for fixture support up to 50 lbs.



E42728



LR31146

CAT. NO.	SIZE	STD. CTN.	STD. WT. (LBS.)
A861	Without Ground Lug	10	2.5
C861G	With Ground Lug	10	2.0

Covers

CAT. NO.	SIZE (IN.)	STD. CTN.	STD. WT. (LBS.)
A862D	2½ Deep (½" KOs)	10	2.5
A862E	2½ Deep (¾" KOs)	10	2.1
A864D	4 Deep (½" KOs)	10	2.9
A864E	4 Deep (¾" KOs)	10	2.9
A864F	4 Deep (1" KOs)	10	3.0



Quick-Connect Outlet and Switch Boxes

- Suitable for masonry walls
- Meets NEMA OS-2
- UL Classified for 2-hour-or-less fire-resistant wall assemblies



E42728

Single-Gang — 16 Cu. In.

CAT. NO.	SIZE (IN.)	STD. CTN.	STD. WT. (LBS.)
A58381D	3 x 2¼ x 3 (½" KOs)	25	4.6
A58381E	3 x 2¼ x 3 (¾" KOs)	25	4.6



4" Square — 20 Cu. In.

CAT. NO.	SIZE (IN.)	STD. CTN.	STD. WT. (LBS.)
A52151D	4 x 4 x 1½ (½" KOs)	100	22.6
A52151E	4 x 4 x 1½ (¾" KOs)	100	22.6
A521DE	4 x 4 x 1½ (½" & ¾" KOs)	100	22.6



4" Square — 30.3 Cu. In.

CAT. NO.	SIZE (IN.)	STD. CTN.	STD. WT. (LBS.)
A52171D	4 x 4 x 2¾ (½" KOs)	25	7.6
A52171E	4 x 4 x 2¾ (¾" KOs)	25	7.6
A5217DE	4 x 4 x 2¾ (½" & ¾" KOs)	25	7.6



Boxes and Accessories

ENT Box with Adapters

- UL Classified for 2-hour-or-less fire-resistant wall assemblies

4" Square — 24.75 Cu. In. ENT Box with Adapters



CAT. NO.	SIZE (IN.)	STD. CTN.	STD. WT. (LBS.)
A5329DE	4 x 4 x 1 3/4 (1/2" & 3/4" KOs)	50	14.8

UL Listed E42728



Box Back Wall Support

CAT. NO.	SIZE	STD. CTN.	STD. WT. (LBS.)
A540DS	For use with 1/2" Knockout	100	2.1



ENT Box Extenders

- UL Classified for 2-hour-or-less fire-resistant wall assemblies

Single-Gang



E42728

CAT. NO.	RISE (IN.)	CU. IN.	STD. CTN.	STD. WT. (LBS.)
A410	1/2	3.5	100	7.7
A411	3/8	4.2	50	4.6
A412	3/4	5.0	50	5.1
A413	1	6.6	40	5
A414	1 1/4	8.1	30	4.4



Two-Gang

CAT. NO.	RISE (IN.)	CU. IN.	STD. CTN.	STD. WT. (LBS.)
A400	Blank	—	100	7.7
A420	1/2	6.1	75	5.0
A421	3/8	7.4	50	4.2
A422	3/4	8.8	50	4.8



Request Info

1-800-453-1692

www.aboveboardelectronics.com

Boxes and Accessories

Round Covers for Octagon Ceiling Boxes

Round Plaster Rings

- Listed for fixture support up to 50 lbs.
- UL Classified for 2-hour-or-less fire-resistant assemblies



CAT. NO.	RISE (IN.)	CU. IN.	STD. CTN.	STD. WT. (LBS.)
A471	½	3.2	100	3.3
A472	¾	4.0	100	3.7

Round Blank Covers

CAT. NO.	RISE	CU. IN.	STD. CTN.	STD. WT. (LBS.)
E460R-CAR	Blank	—	35	2.2
A470D	Blank with ½" KO	—	100	4.7



Quick Connect 4" Octagon Ceiling Boxes

- Carlton® ceiling boxes and round plaster rings are produced from a special high heat-resistant engineered plastic material developed specifically for fixture support
- Listed for fixture support up to 50 lbs.
- UL Classified for 2-hour-or-less fire resistant floor/ceiling assemblies



Ceiling Box — 20.5 Cu. In.

CAT. NO.	SIZE (IN.)	STD. CTN.	STD. WT. (LBS.)
A615D	(4) 2 ½ Deep (½" KOs)	50	6.4
A615E	(4) 2 ½ Deep (¾" KOs)	50	6.4
A615DE	(4) 2 ½ Deep (½" & ¾" KOs)	50	6.4

Ceiling Box with J Mount — 20.5 Cu. In.

CAT. NO.	SIZE (IN.)	STD. CTN.	STD. WT. (LBS.)
A615DJ	(4) 2 ½ Deep (½" KOs)	50	18.7

Ceiling Box with L Bracket — 20.5 Cu. In.

CAT. NO.	SIZE (IN.)	STD. CTN.	STD. WT. (LBS.)
A615DL	(4) 2 ½ Deep (½" KOs)	50	6.4

Ceiling Box with Adjustable Hanger Bar — 20.5 Cu. In.

CAT. NO.	SIZE (IN.)	STD. CTN.	STD. WT. (LBS.)
A615DH	(4) 2 ½ Deep (½" KOs)	25	13.6

Adjust from 14 ¼" to 23 ¼"



Boxes and Accessories

PVC Conduit Cutters

Small Cutter

For fast, smooth field cuts of ½" through 1" Flex-Plus® Blue™ ENT.



CAT. NO.	SIZE (IN.)	STD. CTN.
CC120B	8	10

Medium Cutter

Handheld cutter makes fast, square, smooth field cuts on conduit from ½" through 1¼". Produces burr-free cut with no shavings. Fits into pocket or pouch.



CAT. NO.	SIZE (IN.)	STD. CTN.
CC125	9	12

Large Cutter

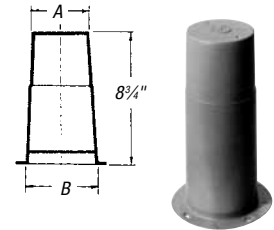
For clean cuts of conduit ½" through 2".



CAT. NO.	SIZE (IN.)	STD. CTN.
CC122	17½	1

Concrete Sleeves

Non-metallic concrete sleeve forms are the easy way to form holes in concrete. They install in seconds with nails, screws or staples and are easily removed. Concrete will not adhere to them. Concrete sleeves are adjustable to any slab thickness.



CAT. NO.	MIN. O.D. A (IN.)	B (IN.)	STD. CTN.	STD. WT. (LBS.)
E92CSH	1½	1¾	20	3
E92CSJ	2	2¼	25	6
E92CSL	3	3¼	25	8
E92CSN	4	4¼	18	8
E92CSP	5	5¼	15	8
E92CSR	6	6¼	12	8

Tape

Prelubricated, woven polyester tape made from low-friction, high abrasion-resistant yarns, providing a low coefficient of friction. Tape is printed with sequential footage markings for accurate measurements.



CAT. NO.	SIZE (IN.)	TENSILE STRENGTH (LBS.)	REEL LENGTHS (FT.)
TL14505	½	1250	5000
TL14510	½	1250	10000
TL38203	¾	1800	3000
TL38265	¾	1800	6500
TL38210	¾	1800	10000

Other tapes are available. Consult your sales service location for additional information.

Carlon® Low VOC Cement

(MSDS sheets available at www.carlon.com)

All Weather — ENT Blue

RECOMMENDED PIPE APPLICATION AND SIZES	SET-UP TIME (EVAPORATION RATE)	RECOMMENDED INSTALLATION TEMP.	LAP SHEAR @ 73° F	VISCOSITY AT 75° F AS MANUFACTURED
Required for use with Flex-Plus® ENT (Electrical Non-Metallic Tubing), Riser-Gard®, P&C Flex™ and Carlon® PVC fittings. Up through 6" diameter.	-5°–10° F	6–8 Minutes	-5° to 100° F	2 Hrs. 350 PSI
	10°–30° F	4–5 Minutes	16 Hrs. 800 PSI	
	30°–50° F	3–4 Minutes	72 Hrs. 1500 PSI	
	50°–70° F	1–2 Minutes		
	70°–90° F	½–1½ Minutes		



ENT cement required for use with ENT and Rigid Non-Metallic Conduit Fittings.

CAT. NO.	SIZE	APPLICATOR	DESCRIPTION	STD. CTN.	STD. WT. (LBS.)
VC9992	Quart	Dauber	All-Weather "Quick-Set" Blue	12	29.0

Meets ASTM D-2564.