



Industrial Electrical Infrastructure

Preferred Parts – EMEA

PANDUIT[™]

infrastructure for a connected world

Industrial Electrical Infrastructure

Partner with a company committed to meeting the challenges you face when designing, installing and maintaining cabling infrastructures within heavy-duty industrial environments. Our global distribution, manufacturing, sales and technical support teams make Panduit solutions readily accessible, allowing the right products to be delivered when and where they are needed.

This catalog features the most common offering for heavy-duty industrial environments. For the complete offering, please contact your local Panduit representative or visit us at www.panduit.com/buildnow.



Table of Contents

Cable Ties	3 – 8
Abrasion Protection	9 – 10
ReelSmart™ Terminals, Disconnects and Butt Splice	11
Cable Accessories	11 – 13
Wire Markers	13
Labeling Systems	13
Computer Printables	14
Safety Products	14
Stainless Steel	15 – 16

Loose Piece Cable Ties



Part Number	Description	Std. Pkg. Qty.	Std. Ctn. Qty.
Dome-Top™ Barb Ty Cable Ties			
BT1M-C	Metal barb tie, 4.0"L (102mm), 0.095"W (2.4mm), Miniature, nylon 6.6, Natural.	100	1000
BT1M-M	Metal barb tie, 4.0"L (102mm), 0.095"W (2.4mm), Miniature, nylon 6.6, Natural.	1000	50000
BT1.5M-C	Metal barb tie, 6.3"L (160mm), 0.095"W (2.4mm), Miniature, nylon 6.6, Natural.	100	1000
BT2M-C	Metal barb tie, 7.9"L (201mm), 0.095"W (2.4mm), Miniature, nylon 6.6, Natural.	100	1000
BT2M-M	Metal barb tie, 7.9"L (201mm), 0.095"W (2.4mm), Miniature, nylon 6.6, Natural.	1000	25000
BT1.5I-C	Metal barb tie, 6.1"L (155mm), 0.141"W (3.6mm), Intermediate, nylon 6.6, Natural.	100	1000
BT1.5I-M	Metal barb tie, 6.1"L (155mm), 0.141"W (3.6mm), Intermediate, nylon 6.6, Natural.	1000	25000
BT2I-C	Metal barb tie, 8.0"L (203mm), 0.141"W (3.6mm), Intermediate, nylon 6.6, Natural.	100	1000
BT2I-M	Metal barb tie, 8.0"L (203mm), 0.141"W (3.6mm), Intermediate, nylon 6.6, Natural.	1000	25000
BT3I-C	Metal barb tie, 11.3"L (287mm), 0.141"W (3.6mm), Intermediate, nylon 6.6, Natural.	100	1000
BT3I-M	Metal barb tie, 11.3"L (287mm), 0.141"W (3.6mm), Intermediate, nylon 6.6, Natural.	1000	10000
BT4I-C	Metal barb tie, 14.3"L (363mm), 0.141"W (3.6mm), Intermediate, nylon 6.6, Natural.	100	1000
BT2S-C	Metal barb tie, 8.0"L (203mm), 0.185"W (4.7mm), Standard, nylon 6.6, Natural.	100	1000
BT2S-M	Metal barb tie, 8.0"L (203mm), 0.185"W (4.7mm), Standard, nylon 6.6, Natural.	1000	10000
BT2S-MP	Metal barb tie, 8.0"L (203mm), 0.185"W (4.7mm), Standard, nylon 6.6, Natural in bulk box.	1000	10000
BT3S-C	Metal barb tie, 12.0"L (305mm), 0.185"W (4.7mm), Standard, nylon 6.6, Natural.	100	1000
BT3S-M	Metal barb tie, 12.0"L (305mm), 0.185"W (4.7mm), Standard, nylon 6.6, Natural.	1000	10000
BT4S-C	Metal barb tie, 15.1"L (384mm), 0.185"W (4.7mm), Standard, nylon 6.6, Natural.	100	1000
BT4S-M	Metal barb tie, 15.1"L (384mm), 0.185"W (4.7mm), Standard, nylon 6.6, Natural.	1000	5000
BT3LH-L	Metal barb tie, 11.8"L (300mm), 0.275"W (7.0mm), Light-Heavy, nylon 6.6, Natural.	50	500
BT4LH-L	Metal barb tie, 14.9"L (378mm), 0.275"W (7.0mm), Light-Heavy, nylon 6.6, Natural.	50	500
BT9LH-C	Metal barb tie, 30.7"L (780mm), 0.275"W (7.0mm), Light-Heavy, nylon 6.6, Natural.	100	1000
BT1.5M-M69	Metal barb tie, 6.3"L (160mm), 0.095"W (2.4mm), Miniature, flame retardant nylon 6.6, Ivory.	1000	50000
BT2I-M69	Metal barb tie, 8.0"L (203mm), 0.141"W (3.6mm), Intermediate, flame retardant nylon 6.6, Natural.	1000	25000
BT3S-M69	Metal barb tie, 12.0"L (305mm), 0.185"W (4.7mm), Standard, flame retardant nylon 6.6, Natural.	1000	10000
BT1M-C0	Metal barb tie, 4.0"L (102mm), 0.095"W (2.4mm), Miniature, weather resistant, Black.	100	1000
BT1M-M0	Metal barb tie, 4.0"L (102mm), 0.095"W (2.4mm), Miniature, weather resistant, Black.	1000	50000
BT1M-MP	Metal barb tie, 4.0"L (102mm), 0.095"W (2.4mm), Miniature, weather resistant, Natural in bulk box.	1000	20000
BT1.5M-C0	Metal barb tie, 6.3"L (160mm), 0.095"W (2.4mm), Miniature, weather resistant, Black.	100	1000
BT2M-C0	Metal barb tie, 7.9"L (201mm), 0.095"W (2.4mm), Miniature, weather resistant, Black.	100	1000
BT2M-M0	Metal barb tie, 7.9"L (201mm), 0.095"W (2.4mm), Miniature, weather resistant, Black.	1000	25000
BT1.5I-C0	Metal barb tie, 6.1"L (155mm), 0.141"W (3.6mm), Intermediate, weather resistant, Black.	100	1000
BT1.5I-M0	Metal barb tie, 6.1"L (155mm), 0.141"W (3.6mm), Intermediate, weather resistant, Black.	1000	25000
BT1.5I-MP	Metal barb tie, 6.1"L (155mm), 0.141"W (3.6mm), Intermediate, weather resistant, Natural in bulk box.	1000	10000
BT2I-C0	Metal barb tie, 8.0"L (203mm), 0.141"W (3.6mm), Intermediate, weather resistant, Black.	100	1000
BT2I-M0	Metal barb tie, 8.0"L (203mm), 0.141"W (3.6mm), Intermediate, weather resistant, Black.	1000	25000
BT3I-C0	Metal barb tie, 11.3"L (287mm), 0.141"W (3.6mm), Intermediate, weather resistant, Black.	100	1000
BT3I-M0	Metal barb tie, 11.3"L (287mm), 0.141"W (3.6mm), Intermediate, weather resistant, Black.	1000	10000
BT4I-C0	Metal barb tie, 14.3"L (363mm), 0.141"W (3.6mm), Intermediate, weather resistant, Black.	100	1000
BT2S-C0	Metal barb tie, 8.0"L (203mm), 0.185"W (4.7mm), Standard, weather resistant, Black.	100	1000
BT2S-M0	Metal barb tie, 8.0"L (203mm), 0.185"W (4.7mm), Standard, weather resistant, Black.	1000	10000
BT3S-M0	Metal barb tie, 12.0"L (305mm), 0.185"W (4.7mm), Standard, weather resistant, Black.	1000	10000
BT3S-C0	Metal barb tie, 12.0"L (305mm), 0.185"W (4.7mm), Standard, weather resistant, Black.	100	1000
BT4S-C0	Metal barb tie, 15.1"L (384mm), 0.185"W (4.7mm), Standard, weather resistant, Black.	100	1000
BT4S-M0	Metal barb tie, 15.1"L (384mm), 0.185"W (4.7mm), Standard, weather resistant, Black.	1000	5000
BT2LH-L0	Metal barb tie, 8.7"L (221mm), 0.275"W (7.0mm), Light-Heavy, weather resistant, Black.	50	500
BT3LH-L0	Metal barb tie, 11.8"L (300mm), 0.275"W (7.0mm), Light-Heavy, weather resistant, Black.	50	500
BT4LH-L0	Metal barb tie, 14.9"L (378mm), 0.275"W (7.0mm), Light-Heavy, weather resistant, Black.	50	500
BT9LH-C0	Metal barb tie, 30.7"L (780mm), 0.275"W (7.0mm), Light-Heavy, weather resistant, Black.	100	1000



(continued on page 4)

[< Previous Page](#) | [Table of Contents](#) | [Next Page >](#)

Loose Piece Cable Ties (continued)

Part Number	Description	Std. Pkg. Qty.	Std. Ctn. Qty.
BT1M-M30	Metal barb tie, 4.0"L (102mm), 0.095"W (2.4mm), Miniature, heat stabilized, Black.	1000	50000
BT2M-M30	Metal barb tie, 7.9"L (201mm), 0.095"W (2.4mm), Miniature, heat stabilized, Black.	1000	25000
BT1.5I-M30	Metal barb tie, 6.1"L (155mm), 0.141"W (3.6mm), Intermediate, heat stabilized, Black.	1000	25000
BT2S-M30	Metal barb tie, 8.0"L (203mm), 0.185"W (4.7mm), Standard, heat stabilized, Black.	1000	10000
BT4LH-TL300	Metal barb tie, 14.9"L (378mm), 0.275"W (7.0mm), Light-Heavy, heat stabilized weather resistant, Black.	250	2500

Hyper-V™ Cable Ties

HV940-C0	HyperV™ Cable Tie, 6.8"L (173mm), 0.35"W (8.9mm), weather resistant, Black.	100	1000
HV940-CP0	HyperV™ Cable Tie in a box, 6.8"L (173mm), 0.35"W (8.9mm), weather resistant, Black.	100	1000
HV965-C0	HyperV™ Cable Tie, 10.4"L (265mm), 0.35"W (8.9mm), weather resistant, Black.	100	1000
HV965-CP0	HyperV™ Cable Tie in a box, 10.4"L (265mm), 0.35"W (8.9mm), weather resistant, Black.	100	1000
HV9100-C0	HyperV™ Cable Tie, 14.4"L (367mm), 0.35"W (8.9mm), weather resistant, Black.	100	1000
HV9100-CP0	HyperV™ Cable Tie in a box, 14.4"L (367mm), 0.35"W (8.9mm), weather resistant, Black.	100	1000
HV9150-C0	HyperV™ Cable Tie, 20.7"L (525mm), 0.35"W (8.9mm), weather resistant, Black.	100	1000
HV9150-CP0	HyperV™ Cable Tie in a box, 20.7"L (525mm), 0.35"W (8.9mm), weather resistant, Black.	100	1000
HV9250-C0	HyperV™ Cable Tie, 33.1"L (841mm), 0.35"W (8.9mm), weather resistant, Black.	100	1000
HV9250-CP0	HyperV™ Cable Tie in a box, 33.1"L (841mm), 0.35"W (8.9mm), weather resistant, Black.	100	1000
HVTM-06-C0	HyperV™ Cable Tie mount, 0.81" (20.6mm) length, 0.68"W (17.3mm), weather resistant, Black.	100	500
HVMPM-08-C0	HyperV™ Masonry Push Mount, 0.47"W (11.9mm).	100	500

Specialty Ties

PLB2S-M0	Double loop tie, 7.6"L (193mm), 0.19"W (4.8mm), Standard, weather resistant, Black.	1000	10000
PLB3S-M0	Double loop tie, 11.8"L (300mm), 0.19"W (4.8mm), Standard, weather resistant, Black.	1000	10000
PLP1.5I-M	Push mount tie, 6.1"L (156mm), 0.135"W (3.4mm), Intermediate, nylon, Natural.	1000	25000
PLST30SC-D30	Stud mount tie, 5.7"L (146mm), 0.19"W (4.8mm), Standard, heat stabilized, Black.	500	5000
PLST4HS25-TL300	Stud mount tie, 15.3"L (389mm), 0.3"W (7.6mm), Light-Heavy, heat stabilized, weather resistant, Black.	250	2500
BC2S-S10-D	Metal barb tie clamp, 8.5"L (216mm), 0.185"W (4.7mm), Standard, nylon 6.6, Natural.	500	10000

Marker and Flag Ties

PLF1MB-C	Flag tie, miniature cross section, 0.098"W (2.5mm), 4.0" L (101mm), 0.31" x 0.92" (7.9 x 23.4mm) marker write-on area, nylon 6.6.	100	1000
PLF1M-C	Flag tie, miniature cross section, 0.098"W (2.5mm), 4.3" L (109mm), 0.31" x 0.75" (7.9 x 19.1mm) marker write-on area, nylon 6.6.	100	1000
PLF1MA-C	Flag tie, miniature cross section, 0.098"W (2.5mm), 5.1"L (130mm), 0.76" x 1.04" (19.1 x 26.4mm) marker write-on area, nylon 6.6.	100	1000
PLM1M-C	Marker tie, miniature cross section, 0.098"W (2.5mm), 3.9"L (99mm), 0.26" x 0.95" (6.6 x 24.1mm) marker write-on area, nylon 6.6.	100	1000
PLM2M-C	Marker tie, miniature cross section, 0.098"W (2.5mm), 8.0"L (203mm), 0.26" x 0.95" (6.6 x 24.1mm) marker write-on area, nylon 6.6.	100	1000
PLM2S-C	Marker tie, standard cross section, 0.185"W (4.7mm), 7.4"L (188mm), 0.44" x 0.87" (11.1 x 22.1mm) marker write-on area, nylon 6.6.	100	1000
PFX-0	Marking pen, fine tip, Black.	12	144

(continued on page 5)

Loose Piece Cable Ties



Part Number	Description	Std. Pkg. Qty.	Std. Ctn. Qty.
Pan-Ty™ Locking Cable Ties			
PLT.6SM-C	One-piece locking tie, 2.8"L (71mm), 0.07"W (1.8mm), Subminiature, nylon 6.6, Natural.	100	1000
PLT.6SM-C0	One-piece locking tie, 2.8"L (71mm), 0.07"W (1.8mm), Subminiature, weather resistant, Black.	100	1000
PLT.7M-M0	One-piece locking tie, 3.1"L (79mm), 0.09"W (2.3mm), Miniature, weather resistant, Black.	1000	50000
PLT1M-C	One-piece locking tie, 3.9"L (99mm), 0.098"W (2.5mm), Miniature, nylon 6.6, Natural.	100	1000
PLT1M-C0	One-piece locking tie, 3.9"L (99mm), 0.098"W (2.5mm), Miniature, weather resistant, Black.	100	1000
PLT1M-M69	One-piece locking tie, 3.9"L (99mm), 0.098"W (2.5mm), Miniature, nylon 6.6, flame retardant.	1000	25000
PLT1.5M-C	One-piece locking tie, 5.6"L (142mm), 0.098"W (2.5mm), Miniature, nylon 6.6, Natural.	100	1000
PLT1.5M-C0	One-piece locking tie, 5.6"L (142mm), 0.098"W (2.5mm), Miniature, weather resistant, Black.	100	1000
PLT2M-C	One-piece locking tie, 8.0"L (203mm), 0.098"W (2.5mm), Miniature, nylon 6.6, Natural.	100	1000
PLT2M-C0	One-piece locking tie, 8.0"L (203mm), 0.098"W (2.5mm), Miniature, weather resistant, Black.	100	1000
PLT1.5I-C	One-piece locking tie, 5.6"L (142mm), 0.142"W (3.6mm), Intermediate, nylon 6.6, Natural.	100	1000
PLT1.5I-C0	One-piece locking tie, 5.6"L (142mm), 0.142"W (3.6mm), Intermediate, weather resistant, Black.	100	1000
PLT2I-C	One-piece locking tie, 8.0"L (203mm), 0.142"W (3.6mm), Intermediate, nylon 6.6, Natural.	100	1000
PLT2I-C0	One-piece locking tie, 8.0"L (203mm), 0.142"W (3.6mm), Intermediate, weather resistant, Black.	100	1000
PLT2I-M69	One-piece locking tie, 8.0"L (203mm), 0.142"W (3.6mm), Intermediate, flame retardant, Ivory.	1000	25000
PLT3I-C	One-piece locking tie, 11.4"L (290mm), 0.145"W (3.7mm), Intermediate, nylon 6.6, Natural.	100	1000
PLT3I-C0	One-piece locking tie, 11.4"L (290mm), 0.145"W (3.7mm), Intermediate, weather resistant, Black.	100	1000
PLT4I-C	One-piece locking tie, 14.5"L (368mm), 0.145"W (3.7mm), Intermediate, nylon 6.6, Natural.	100	1000
PLT4I-C0	One-piece locking tie, 14.5"L (368mm), 0.145"W (3.7mm), Intermediate, weather resistant, Black.	100	1000
PLT1S-C	One-piece locking tie, 4.8"L (122mm), 0.19"W (4.8mm), Standard, nylon 6.6, Natural.	100	1000
PLT1S-C0	One-piece locking tie, 4.8"L (122mm), 0.19"W (4.8mm), Standard, weather resistant, Black.	100	1000
PLT1.5S-C	One-piece locking tie, 6.2"L (157mm), 0.19"W (4.8mm), Standard, nylon 6.6, Natural.	100	1000
PLT1.5S-C0	One-piece locking tie, 6.2"L (157mm), 0.19"W (4.8mm), Standard, weather resistant, Black.	100	1000
PLT2S-C	One-piece locking tie, 7.4"L (188mm), 0.19"W (4.8mm), Standard, nylon 6.6, Natural.	100	1000
PLT2S-C0	One-piece locking tie, 7.4"L (188mm), 0.19"W (4.8mm), Standard, weather resistant, Black.	100	1000
PLT2S-M60	One-piece locking tie, 7.4"L (188mm), 0.19"W (4.8mm), Standard, flame retardant, Black.	1000	10000
PLT2S-M69	One-piece locking tie, 7.4"L (188mm), 0.19"W (4.8mm), Standard, flame retardant, Ivory.	1000	10000
PLT2.5S-C	One-piece locking tie, 9.8"L (249mm), 0.19"W (4.8mm), Standard, nylon 6.6, Natural.	100	1000
PLT2.5S-C0	One-piece locking tie, 9.8"L (249mm), 0.19"W (4.8mm), Standard, weather resistant, Black.	100	1000
PLT3S-C	One-piece locking tie, 11.5"L (292mm), 0.19"W (4.8mm), Standard, nylon 6.6, Natural.	100	1000
PLT3S-C0	One-piece locking tie, 11.5"L (292mm), 0.19"W (4.8mm), Standard, weather resistant, Black.	100	1000
PLT3S-C30	One-piece locking tie, 11.5"L (292mm), 0.19"W (4.8mm), Standard, heat stabilized, Black.	100	1000
PLT4S-C	One-piece locking tie, 14.5"L (368mm), 0.19"W (4.8mm), Standard, nylon 6.6, Natural.	100	1000
PLT4S-C0	One-piece locking tie, 14.5"L (368mm), 0.19"W (4.8mm), Standard, weather resistant, Black.	100	1000
PLT4S-M69	One-piece locking tie, 14.5"L (368mm), 0.19"W (4.8mm), Standard, flame retardant, Ivory.	1000	5000
PLT5S-C	One-piece locking tie, 17.5"L (445mm), 0.19"W (4.8mm), Standard, nylon 6.6, Natural.	100	1000
PLT5S-C0	One-piece locking tie, 17.5"L (445mm), 0.19"W (4.8mm), Standard, weather resistant, Black.	100	1000

(continued on page 6)

[< Previous Page](#) | [Table of Contents](#) | [Next Page >](#)

Loose Piece Cable Ties (continued)

Part Number	Description	Std. Pkg. Qty.	Std. Ctn. Qty.
PLT2H-L0	One-piece locking tie, 8.1"L (206mm), 0.3"W (7.6mm), Light-Heavy, weather resistant, Black.	50	500
PLT3H-L	One-piece locking tie, 11.4"L (290mm), 0.3"W (7.6mm), Light-Heavy, nylon 6.6, Natural.	50	500
PLT3H-L0	One-piece locking tie, 11.4"L (290mm), 0.3"W (7.6mm), Light-Heavy, weather resistant, Black.	50	500
PLT4H-C	One-piece locking tie, 14.5"L (368mm), 0.3"W (7.6mm), Light-Heavy, nylon 6.6, Natural.	100	2500
PLT4H-C0	One-piece locking tie, 14.5"L (368mm), 0.3"W (7.6mm), Light-Heavy, weather resistant, Black.	100	2500
PLT4H-L00	One-piece locking tie, 14.5"L (368mm), 0.3"W (7.6mm), Light-Heavy, Military Spec weather resistant, Black.	50	500
PLT4H-TL69	One-piece locking tie, 14.6"L (371mm), 0.3"W (7.6mm), Light-Heavy, flame retardant, Ivory.	250	2500
PLT7LH-C	One-piece locking tie, 24.7"L (627mm), 0.3"W (7.6mm), Light-Heavy, nylon 6.6, Natural.	100	2000
PLT7LH-C0	One-piece locking tie, 24.7"L (627mm), 0.3"W (7.6mm), Light-Heavy, weather resistant, Black.	100	2000
PLT8LH-C0	One-piece locking tie, 27.6"L (701mm), 0.3"W (7.6mm), Light-Heavy, weather resistant, Black.	100	2000
PLT9LH-C0	One-piece locking tie, 30.5"L (775mm), 0.3"W (7.6mm), Light-Heavy, weather resistant, Black.	100	1000
PLT5H-C	One-piece locking tie, 17.7"L (450mm), 0.35"W (8.9mm), Heavy, nylon 6.6, Natural.	100	2000
PLT5H-C0	One-piece locking tie, 17.7"L (450mm), 0.35"W (8.9mm), Heavy, weather resistant, Black.	100	2000
PLT6H-C	One-piece locking tie, 20.9"L (530mm), 0.35"W (8.9mm), Heavy, nylon 6.6, Natural.	100	2000
PLT6H-C0	One-piece locking tie, 20.9"L (530mm), 0.35"W (8.9mm), Heavy, weather resistant, Black.	100	2000
PLT8H-C	One-piece locking tie, 30.6"L (779mm), 0.35"W (8.9mm), Heavy, nylon 6.6, Natural.	100	1500
PLT8H-C0	One-piece locking tie, 30.6"L (779mm), 0.35"W (8.9mm), Heavy, weather resistant, Black.	100	1500
PLT5EH-C0	One-piece locking tie, 20.1"L (511mm), 0.5"W (12.7mm), Extra-Heavy, weather resistant, Black.	100	1000
PLT6EH-C0	One-piece locking tie, 22.2"L (564mm), 0.5"W (12.7mm), Extra-Heavy, weather resistant, Black.	100	1000
PLT8EH-C0	One-piece locking tie, 28.3"L (719mm), 0.5"W (12.7mm), Extra-Heavy, weather resistant, Black.	100	1000
PLT10EH-C0	One-piece locking tie, 34.2"L (869mm), 0.5"W (12.7mm), Extra-Heavy, weather resistant, Black.	100	500
PLT12EH-C0	One-piece locking tie, 40.1"L (1019mm), 0.5"W (12.7mm), Extra-Heavy, weather resistant, Black.	100	500

Special Material Cable Ties



Part Number	Description	Std. Pkg. Qty.	Std. Ctn. Qty.
Pan-Ty™ PEEK for extreme temperature applications (up to 500°F/260° C)			
PLT1M-C71	Cable tie, 3.9"L (99mm), 0.101"W (2.6mm), Miniature, PEEK, Translucent Brown.	100	1000
PLT2S-C71	Cable tie, 7.4"L (188mm), 0.19"W (4.8mm), Standard, PEEK, Translucent Brown.	100	1000
PLT2S-M71	Cable tie, 7.4"L (188mm), 0.19"W (4.8mm), Standard, PEEK, Translucent Brown.	1000	10000
Pan-Ty™ Tefzel* for applications requiring resistance to environmental stresses and high temperatures (up to ... ° F / 150°C)			
PLT1M-C76	Cable tie, 4.0"L (102mm), 0.098"W (2.5mm), Miniature, Tefzel, Aqua.	100	1000
PLT2I-C76	Cable tie, 8.0"L (203mm), 0.135"W (3.4mm), Intermediate, Tefzel, Aqua.	100	1000
PLT2I-M76	Cable tie, 8.0"L (203mm), 0.135"W (3.4mm), Intermediate, Tefzel, Aqua.	1000	10000
PLT2S-C76	Cable tie, 7.4"L (188mm), 0.19"W (4.8mm), Standard, Tefzel, Aqua.	100	1000
PLT2S-M76	Cable tie, 7.4"L (188mm), 0.19"W (4.8mm), Standard, Tefzel, Aqua.	1000	10000
PLT3S-C76	Cable tie, 11.6"L (295mm) Standard, 0.19"W (4.8mm), Tefzel, Aqua.	100	1000
PLT4S-C76	Cable tie, 14.6"L (371mm), 0.19"W (4.8mm), Standard, Tefzel, Aqua.	100	1000
PLT4H-L76	Cable tie, 14.6"L (371mm), 0.3"W (7.6mm), Light-Heavy, Tefzel, Aqua.	50	500

*Tefzel is a registered trademark of E. I. du Pont de Nemours and Company.

(continued on page 7)

Special Material Cable Ties (continued)

Part Number	Description	Std. Pkg. Qty.	Std. Ctn. Qty.
Pan-Ty™ Heat Stabilized Nylon 6.6 for High Temperature Applications (Up to 239° F/115° C)			
PLT.6SM-M30	Cable tie, 2.8"L (71mm), 0.07"W (1.8mm), Subminiature, heat stabilized, Black.	1000	50000
PLT1M-C30	Cable tie, 3.9"L (99mm), 0.098"W (2.5mm), Miniature, heat stabilized, Black.	100	1000
PLT1M-M30	Cable tie, 3.9"L (99mm), 0.098"W (2.5mm), Miniature, heat stabilized, Black.	1000	50000
PLT1.5M-M30	Cable tie, 5.6"L (142mm), 0.098"W (2.5mm), Miniature, heat stabilized, Black.	1000	50000
PLT2M-M30	Cable tie, 8.0"L (203mm), 0.098"W (2.5mm), Miniature, heat stabilized, Black.	1000	25000
PLT1.5I-C30	Cable tie, 5.6"L (142mm), 0.142"W (3.6mm), Intermediate, heat stabilized, Black.	100	1000
PLT1.5I-C30	Cable tie, 5.6"L (142mm), 0.142"W (3.6mm), Intermediate, heat stabilized, Black.	1000	25000
PLT2I-C30	Cable tie, 8.0"L (203mm), 0.142"W (3.6mm), Intermediate, heat stabilized, Black.	100	1000
PLT2I-M30	Cable tie, 8.0"L (203mm), 0.142"W (3.6mm), Intermediate, heat stabilized, Black.	1000	25000
PLT3I-M30	Cable tie, 11.4"L (290mm), 0.145"W (3.7mm), Intermediate, heat stabilized, Black.	1000	10000
PLT1.5S-M30	Cable tie, 6.2"L (157mm), 0.19"W (4.8mm), Standard, heat stabilized, Black.	1000	10000
PLT1S-M30	Cable tie, 6.2"L (157mm), 0.19"W (4.8mm), Standard, heat stabilized, Black.	1000	10000
PLT2S-C30	Cable tie, 7.4"L (188mm), 0.19"W (4.8mm), Standard, heat stabilized, Black.	100	1000
PLT2S-M30	Cable tie, 7.4"L (188mm), 0.19"W (4.8mm), Standard, heat stabilized, Black.	1000	10000
PLT3S-M30	Cable tie, 11.5"L (292mm) Standard, 0.19"W (4.8mm), heat stabilized, Black.	1000	10000
PLT3S-M30	Cable tie, 14.5"L (368mm), 0.19"W (4.8mm), Standard, heat stabilized, Black.	1000	5000
PLT2H-TL30	Cable tie, 8.1"L (206mm), 0.3"W (7.6mm), Light-Heavy, heat stabilized, Black.	250	2500
PLT4H-TL30	Cable tie, 14.5"L (368mm), 0.3"W (7.6mm), Light-Heavy, heat stabilized, Black.	250	2500
Metal Detectable Cable Ties for Use in Food, Beverage, and Pharmaceutical Industries			
PLT2S-C186	Standard cross section, 7.3"L (186mm), 0.19"W (4.8mm), metal detectable polypropylene, Dark Blue.	100	1000
PLT2S-C86	Standard cross section, 7.3"L (186mm), 0.19"W (4.8mm), metal detectable nylon, Light Blue.	100	1000
PLT4S-C186	Standard cross section, 14.4" (366mm) length, 0.19"W (4.8mm), metal detectable polypropylene, Dark Blue.	100	1000
PLT4S-C86	Standard cross section, 14.5" (368mm) length, 0.19"W (4.8mm), metal detectable nylon 6.6, Light Blue.	100	1000
PLT4H-L186	Light-Heavy cross section, 14.4" (366mm), 0.3"W (7.6mm), metal detectable polypropylene, Dark Blue.	50	500
PLT4H-L86	Light-Heavy cross section, 14.4" (366mm) , 0.3"W (7.6mm), metal detectable nylon 6.6, Light Blue.	50	500



Wing Push Mount Ties

Part Number	Description	Std. Pkg. Qty.	Std. Ctn. Qty.
PLWP1M-C	Wing push mount tie, 4.3"L (109mm), 0.098"W (2.5mm), Miniature, nylon, Natural.	100	1000
PLWP1M-D30	Wing push mount tie, 4.3"L (109mm), 0.098"W (2.5mm), Miniature, heat stabilized, Black.	500	5000
PLWP1.5I-D	Wing push mount tie, 6.0"L (152mm), 0.135"W (3.4mm), Intermediate, nylon, Natural.	500	5000
PLWP1.5S-D30	Wing push mount tie, 6.8"L (173mm), 0.19"W (4.8mm), Standard, heat stabilized, Black.	500	5000
PLWP1S-D	Wing push mount tie, 5.2"L (132mm), 0.19"W (4.8mm), Standard, nylon, Natural.	500	5000
PLWP1S-D30	Wing push mount tie, 5.2"L (132mm), 0.19"W (4.8mm), Standard, heat stabilized, Black.	500	5000
PLWP2SB-D	Wing push mount tie, 7.8"L (198mm), 0.19"W (4.8mm), Standard, nylon, Natural.	500	5000
PLWP50SC-D30	Wing push mount tie, center mounted, 0.19"W (4.8mm), 8.2"L (208mm), Standard, heat stabilized.	500	5000
PRWP1.5S-D	Wing push mount tie, releasable, 0.19"W (4.8mm), 6.8"L (173mm), Standard, nylon.	500	5000
PRWP1SA-D	Wing push mount tie, releasable, 0.19"W (4.8mm), 5.1"L (130mm), Standard, nylon.	500	5000
PRLWP30S-D30	Wing push mount tie, ladder style, 0.38"W (9.7mm), releasable, 4.7"L (119mm), Standard.	500	5000
PRLWP50S-D30	Wing push mount tie, ladder style, 0.38"W (9.7mm), releasable, 7.1"L (180mm), Standard.	500	5000



Pan-Ty™ Releasable Cable Ties



Part Number	Description	Std. Pkg. Qty.	Std. Ctn. Qty.
PRT1S-C	Releasable, 4.8"L (122mm), 0.19"W (4.8mm), Standard, nylon 6.6, Natural.	100	1000
PRT1.5S-C	Releasable, 6.3"L (160mm), 0.19"W (4.8mm), Standard, nylon 6.6, Natural.	100	1000
PRT1.5S-C0	Releasable, 6.3"L (160mm), 0.19"W (4.8mm), Standard, weather resistant, Black.	100	1000
PRT2S-C	Releasable, 7.4"L (188mm), 0.19"W (4.8mm), Standard, nylon 6.6, Natural.	100	1000
PRT2S-C0	Releasable, 7.4"L (188mm), 0.19"W (4.8mm), Standard, weather resistant, Black.	100	1000
PRT3S-C	Releasable, 7.4"L (188mm), 0.19"W (4.8mm), Standard, weather resistant, Black.	100	1000
PRT3S-C0	Releasable, 11.5"L (292mm), 0.19"W (4.8mm), Standard, weather resistant, Black.	100	1000
PRT4S-C0	Releasable, 14.5"L (368mm), 0.19"W (4.8mm), Standard, weather resistant, Black.	100	1000
PRT4H-L0	Releasable, 14.5"L (368mm), 0.19"W (4.8mm), Standard, weather resistant, Black.	50	500
PRT5EH-C0	Releasable, 20.1"L (511mm), 0.5"W (12.7mm), Extra-Heavy, weather resistant, Black.	100	1000
PRT6EH-C0	Releasable, 22.2"L (564mm), 0.5"W (12.7mm), Extra-Heavy, weather resistant, Black.	100	1000
PRT8EH-C0	Releasable, 28.3"L (719mm), 0.5"W (12.7mm), Extra-Heavy, weather resistant, Black.	100	1000

Sta-Strap™ Two-Piece Cable Ties



Part Number	Description	Std. Pkg. Qty.	Std. Ctn. Qty.
SST1M-M	Two-piece tie, 4.0"L (102mm), 0.095"W (2.4mm), Miniature, nylon 6.6, Natural.	1000	50000
SST1M-M0	Two-piece tie, 4.0"L (102mm), 0.095"W (2.4mm), Miniature, weather resistant, Black.	1000	50000
SST1M-M30	Two-piece tie, 4.0"L (102mm), 0.095"W (2.4mm), Miniature, heat stabilized, Black.	1000	50000
SST1.5M-M	Two-piece tie, 5.5"L (140mm), 0.095"W (2.4mm), Miniature, nylon, Natural.	1000	50000
SST1.5M-M0	Two-piece tie, 5.5"L (140mm), 0.095"W (2.4mm), Miniature, weather resistant, Black.	1000	50000
SST2S-M	Two-piece tie, 6.7"L (172mm), 0.18"W (4.6mm), Standard, nylon 6.6, Natural.	1000	15000
SST2S-M0	Two-piece tie, 6.7"L (172mm), 0.18"W (4.6mm), Standard, nylon 6.6, Natural.	1000	15000
SST2S-M30	Two-piece tie, 6.7"L (172mm), 0.18"W (4.6mm), Standard, heat stabilized, Black.	1000	15000
SST3S-M	Two-piece tie, 11.0"L (279mm), 0.18"W (4.6mm), Standard, nylon 6.6, Natural.	1000	10000
SST3S-M0	Two-piece tie, 11.0"L (279mm), 0.18"W (4.6mm), Standard, weather resistant, Black.	1000	10000
SST3S-M0	Two-piece tie, 15.0"L (381mm), 0.18"W (4.6mm), Standard, nylon 6.6, Natural.	1000	5000
SST4H-D	Two-piece tie, 14.8"L (376mm), 0.3"W (7.6mm), Light-Heavy, nylon 6.6, Natural.	500	2500
SST4H-D0	Two-piece tie, 14.8"L (376mm), 0.3"W (7.6mm), Light-Heavy, weather resistant, Black.	500	2500
SST8H-D	Two-piece tie, 27.5"L (699mm), 0.3"W (7.6mm), Light-Heavy, nylon 6.6, Natural.	500	2000
SSM2S-C	Two-piece marker tie, 6.7"L (170mm), 0.18"W (4.6mm), Standard, nylon 6.6, Natural.	100	500

Cable Tie Installation Tools



GTH-E



GTS-E

Part Number	Description	Std. Pkg. Qty.	Std. Ctn. Qty.
GS2B	Cable tie tool for Miniature, Intermediate, Standard ties, adjustable tension.	1	—
GS4H	Cable tie tool for Standard, Heavy-Standard, Light-Heavy, Heavy ties, adjustable tension.	1	—
GTH-E	Ergonomic cable tie tool for Standard, Heavy-Standard, Light-Heavy, Heavy ties, adjustable tension.	1	—
GTS-E	Ergonomic cable tie tool for Subminiature, Miniature, Intermediate, Standard ties, adjustable tension.	1	—
TTLK3	Tool tension lock kit for GS2B, GS4H and PPTS tools.	1	—
STHV	Cable tie tool, low volume, for use with Light-Heavy, and Heavy ties.	1	—
PTS	Pneumatic cable tie tool for Subminiature, Miniature, Intermediate, and Standard ties – leased.	1	—
PPTS	Pneumatic cable tie tool for Miniature, Intermediate, Standard cable ties – leased.	1	—
KGTH-EBLD	Blade replacement kit for GTH-E tool.	1	—
KGTS-EBLD	Blade replacement kit for GTS and PTS tools.	1	—
KGTS-ETL	Tool tension lock kit for GTS-E tool.	1	—
KPTSG	Gripper replacement kit for PPTS tool.	1	—

Abrasion Protection



Part Number	Description	Std. Pkg. Qty.	Std. Ctn. Qty.
Pan-Wrap™ Split Harness Wrap			
PW50F-T20	0.50" (12.7mm) nominal I.D., 200 (61m) length per reel, polyethylene, Black.	1	—
PW75F-C20	0.75" (19.1mm) nominal I.D., 100 (30m) length per reel, polyethylene, Black.	1	—
PW100F-C20	1.00" (25.4mm) nominal I.D., 100 (30.5m) length per reel, polyethylene, Black.	1	—
PW150F-L20	1.50" (38.1mm) nominal I.D., 50 (15m) length per reel, polyethylene, Black.	1	—

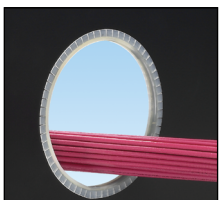


Pan-Wrap™ Tooling			
PWT50	Use with PW50F-series, Pan-Wrap™ Split Harness Wrap 0.50" (12.7mm), White.	1	10
PWT75	Use with PW75F-series, Pan-Wrap™ Split Harness Wrap 0.75" (19.1mm), White.	1	10
PWT100	Use with PW100F-series, Pan-Wrap™ Split Harness Wrap 1" (25.4mm), White.	1	10
PWT150	Use with PW150F-series, Pan-Wrap™ Split Harness Wrap 1.50" (38.1mm), White.	1	10



Corrugated Loom Tubing			
CLT25F-C20	Slit wall, 0.25" (6.4mm) x 100' (30.5m), polyethylene, Black.	1	—
CLT50F-C20	Slit wall, 0.50" (12.7mm) x 100' (30.5m), polyethylene, Black.	1	—
CLT75F-C20	Slit wall, 0.75" (19.1mm) x 100' (30.5m), polyethylene, Black.	1	—

Braided Expandable Sleeving			
SE25PSFR-TR0	0.25" diameter, Polyethylene Terephthalate (PET) flame retardant, Black, 200' (60.9m) per reel.	1	6
SE50PSFR-CLR0	0.50" (12.7mm) diameter, Polyethylene Terephthalate (PET) flame retardant, Black, 150' (45.7m) per reel.	1	2
SE50PFR-CR0	0.50" (12.7mm) diameter, Polyethylene Terephthalate (PET) flame retardant, Black, 100' (30.4m) per reel.	1	4
SE75PFR-CR0	0.75" (19.1mm) diameter, Polyethylene Terephthalate (PET) flame retardant, Black, 100' (30.4m) per reel.	1	4
SE125PFR-LR0	1.25" (31.8mm) diameter, Polyethylene Terephthalate (PET) flame retardant, Black, 50' (15.2m) per reel.	1	4
SE50P-DR0	0.50" (12.7mm) diameter, Polyethylene Terephthalate (PET) Black, 500' (152.4m) per reel.	1	2
SE50PS-CLR0	0.50" (12.7mm) diameter, Polyethylene Terephthalate (PET) Black, 150' (45.7m) per reel.	1	2
SE75P-CR0	0.75" (19.1mm) diameter, Polyethylene Terephthalate (PET) Black, 100' (30.4m) per reel.	1	4
SE75PS-CR0	0.75" (19.1mm) diameter, Polyethylene Terephthalate (PET) Black, 150' (45.7m) per reel.	1	2
SE100PS-CR0	1.00" (25.4mm) diameter, Polyethylene Terephthalate (PET) Black, 100' (30.4m) per reel.	1	2
SE125P-LR0	1.25" (31.8mm) diameter, Polyethylene Terephthalate (PET) Black, 50' (15.2m) per reel.	1	4
SE150PS-LQR0	1.50" (38.1mm) diameter, Polyethylene Terephthalate (PET) Black, 75' (22.8m) per reel.	1	2



Adhesive Lined Grommet Edging			
GEE62F-A-C	Slotted wall product, 0.062" (1.6mm) thickness, polyethylene, Natural.	1	—
GEE62F-A-C0	Slotted wall product, 0.062" (1.6mm) thickness, weather resistant polyethylene, Black.	1	—
GEE99F-A-C	Slotted wall product, 0.099" (2.5mm) thickness, polyethylene, Natural.	1	—
GEE99F-A-C0	Slotted wall product, 0.099" (2.55mm) thickness, weather resistant polyethylene, Black.	1	—
GEE144F-A-C	Slotted wall product, 0.144" (3.7mm) thickness, polyethylene, Natural.	1	—
GEE144F-A-C0	Slotted wall product, 0.144" (3.7mm) thickness, weather resistant polyethylene, Black.	1	—
GES62F-A-C	Solid wall product (use on straight edges only), 0.062" (1.6mm) thickness, polyethylene, Natural.	1	—
GES62F-A-C0	Solid wall product (use on straight edges only), 0.062" (1.6mm) thickness, weather resistant polyethylene, Black.	1	—

(continued on page 10)

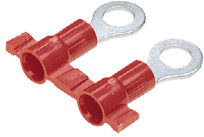
Abrasion Protection (continued)



Part Number	Description	Std. Pkg. Qty.	Std. Ctn. Qty.
Heat Shrink			
HSTT05-48-Q	Heat shrink thin wall, 0.05" (1.2mm) diameter, 4' (1.2m) length, Black cross-linked polyolefin.	25	—
HSTT06-48-Q	Heat shrink thin wall, 0.06" (1.6mm) diameter, 4' (1.2m) length, Black cross-linked polyolefin.	25	—
HSTT09-48-Q	Heat shrink thin wall, 0.09" (2.4mm) diameter, 4' (1.2m) length, Black cross-linked polyolefin.	25	—
HSTT12-48-Q	Heat shrink thin wall, 0.12" (3.2mm) diameter, 4' (1.2m) length, Black cross-linked polyolefin.	25	—
HSTT19-48-Q	Heat shrink thin wall, 0.19" (4.8mm) diameter, 4' (1.2m) length, Black cross-linked polyolefin.	25	—
HSTT25-48-Q	Heat shrink thin wall, 0.25" (6.4mm) diameter, 4' (1.2m) length, Black cross-linked polyolefin.	25	—
HSTT38-48-Q	Heat shrink thin wall, 0.38" (9.5mm) diameter, 4' (1.2m) length, Black cross-linked polyolefin.	25	—
HSTT75-48-5	Heat shrink thin wall, 0.75" (19.0mm) diameter, 4' (1.2m) length, Black cross-linked polyolefin.	5	—
HSTT100-48-5	Heat shrink thin wall, 1" (25.4mm) diameter, 4' (1.2m) length, Black cross-linked polyolefin.	5	—
HSTT150-48-5	Heat shrink thin wall, 1.5" (38.1mm) diameter, 4' (1.2m) length, Black cross-linked polyolefin.	5	—
HSTT200-48-5	Heat shrink thin wall, 2" (50.8mm) diameter, 4' (1.2m) length, Black cross-linked polyolefin.	5	—
BGHSTT05	Heat shrink thin wall, 0.046" (1.2mm) diameter, x 13.0m length per box, Black.	1	10
BGHSTT06	Heat shrink thin wall, 0.063" (1.6mm) diameter, x 13.0m length per box, Black.	1	10
BGHSTT09	Heat shrink thin wall, 0.093" (2.4mm) diameter, x 12.5m length per box, Black.	1	10
BGHSTT12	Heat shrink thin wall, 0.125" (3.2mm) diameter, x 12.5m length per box, Black.	1	10
BGHSTT12-45	Heat shrink thin wall, 0.125" (3.2mm) diameter, x 12.5m length per box, Yellow/Green.	1	10
BGHSTT19	Heat shrink thin wall, 0.187" (4.8mm) diameter, x 10.5m length per box, Black.	1	10
BGHSTT25	Heat shrink thin wall, 0.25" (6.4mm) diameter, x 8.5m length per box, Black.	1	10
BGHSTT38	Heat shrink thin wall, 0.375" (9.5mm) diameter, x 7.5m length per box, Black.	1	10
BGHSTT50	Heat shrink thin wall, 0.50" (12.7mm) diameter, x 7.5m length per box, Black.	1	10
BGHSTT50-45	Heat shrink thin wall, 0.50" (12.7mm) diameter, x 7.5m length per box, Yellow/Green.	1	10
BGHSTT75	Heat shrink thin wall, 0.75" (19.1mm) diameter, x 6.0m length per box, Black.	1	10
BGHSTT100	Heat shrink thin wall, 1.00" (25.4mm) diameter, x 4.3m length per box, Black.	1	10
Spiral Wrap			
T12F-C	Spiral wrap, 0.12" (3.2mm) outside diameter, x 100' (30.4m) length, polyethylene, Natural.	1	—
T25F-C	Spiral wrap, 0.25" (6.3mm) outside diameter, x 100' (30.4m) length, polyethylene, Natural.	1	—
T25F-C0	Spiral wrap, 0.25" (6.3mm) outside diameter, x 100' (30.4m) length, weather resistant Polyethylene, Black.	1	—
T38F-C	Spiral wrap, 0.38" (9.7mm) outside diameter, x 100' (30.4m) length, polyethylene, Natural.	1	—
T38F-C0	Spiral wrap, 0.38" (9.7mm) outside diameter, x 100' (30.4m) length, weather resistant Polyethylene, Black.	1	—
T50F-C	Spiral wrap, 0.50" (12.7mm) outside diameter, x 100' (30.4m) length, polyethylene, Natural.	1	—
T50F-C0	Spiral wrap, 0.50" (12.7mm) outside diameter, x 100' (30.4m) length, weather resistant polyethylene, Black.	1	—
T62F-C	Spiral wrap, 0.62" (15.8mm) outside diameter, x 100' (30.4m) length, polyethylene, Natural.	1	—
T75F-C0	Spiral wrap, 0.75" (19.1mm) outside diameter, x 100' (30.4m) length, weather resistant polyethylene, Black.	1	—
Vinyl Tubing			
TV105-6M20Y	Vinyl tubing, 6 AWG (4.52mm), 300V Black.	1	2
TV105-3M20Y	Vinyl tubing, 3 AWG (6.32mm), 300V Black.	1	2
TV105-1M20Y	Vinyl tubing, 1 AWG (8.81mm), 300V, Black.	1	—



Reel Smart™ Terminals, Disconnects and Butt Splice



Part Number	Description	Std. Pkg Qty.	Std. Ctn. Qty.
Ring Terminals			
PV18-8RB-3K	Ring terminal, vinyl insulated, 22 – 18 AWG, #8 stud size, funnel entry.	3000	—
PV14-8RB-3K	Ring terminal, vinyl insulated, 16 – 14 AWG, #8 stud size, funnel entry.	3000	—
PNF14-8R-3K	Ring terminal, nylon insulated, 16 – 14 AWG, #8 stud size, funnel entry.	3000	—
PV14-10RB-3K	Ring terminal, vinyl insulated, 16 – 14 AWG, #10 stud size, funnel entry.	3000	—
PV14-14RB-3K	Ring terminal, vinyl insulated, 16 – 14 AWG, 1/4" stud size, funnel entry.	3000	—
Disconnects			
DV18-250B-3K	Female disconnect, vinyl barrel insulated, 22 – 18 AWG, 0.250 (6.35mm) x 0.032 (0.81mm) tab size, butted seam.	3000	—
DNF18-250FIB-3K	Female disconnect, nylon fully insulated, 22 – 18 AWG, 0.250 (6.35mm) x 0.032 (0.81mm) tab size, funnel entry.	3000	—
DNF18-111FIB-3K	Female disconnect, nylon fully insulated, 22 – 18 AWG, 0.110 (2.79mm) x 0.020 (0.51mm) tab size, funnel entry.	3000	—
DNF14-250FIB-3K	Female disconnect, nylon fully insulated, 16 – 14 AWG, 0.250 (6.35mm) x 0.032 (0.81mm) tab size, funnel entry.	3000	—
Butt Splice			
BSN18-3K	Butt splice, nylon insulated, 22 – 16 AWG.	3000	—

Cable Accessories



Part Number	Description	Std. Pkg Qty.	Std. Ctn. Qty.
Cable Tie Mounts			
TM2S8-C	Cable tie mount, 0.43" (10.9mm)W, #8 screw (M4), nylon.	100	500
TM2S8-C0	Cable tie mount, 0.43" (10.9mm)W, #8 screw (M4), weather resistant nylon.	100	500
TM3S10-C	Cable tie mount, 0.62" (15.8mm)W, #10 screw (M5), nylon.	100	500
TM3S8-C	Cable tie mount, 0.62" (15.8mm)W, #8 screw (M4), nylon.	100	500
TM3S8-C0	Cable tie mount, 0.62" (15.8mm)W, #8 screw (M4), weather resistant nylon.	100	500
ABM1M-A-C	Cable tie mount, adhesive backed, 0.50" x 0.50" (12.7mm x 12.7mm), White.	100	500
ABMM-A-C	Cable tie mount, adhesive backed, 0.75" x 0.75" (19.1mm x 19.1mm), White.	100	500
ABM2S-A-C	Cable tie mount, adhesive backed, 1" x 1" (25.4mm x 25.4mm), White.	100	500
ABM100-A-C	Cable tie mount, adhesive backed, 1" x 1" (25.4mm x 25.4mm), White.	100	1000
ABMS-A-C	Cable tie mount, adhesive backed, 1.1" x 1.1" (27.9mm x 27.9mm), White.	100	500
ABM3H-A-L	Cable tie mount, adhesive backed, 1.5" x 1.5" (38.1mm x 38.1mm), White.	50	500
TMEH-S10-C0	Cable tie mount, Extra-Heavy, #10 screw (M5), weather resistant nylon.	100	500
TMEH-S25-C0	Cable tie mount, Extra-Heavy, 1/4 (6.35mm) screw, weather resistant nylon.	100	500
TMEH-S25-Q0	Cable tie mount, Extra-Heavy, 1/4 (6.35mm) screw, weather resistant nylon.	25	250
ABM100-AT-C0	Cable tie mount, high temperature adhesive backed, 1"x1" (25.4mm x 25.4mm), weather resistant, Black.	100	1000
ABM1M-AT-C	Cable tie mount, high temperature adhesive backed, 0.50"x 0.50" (12.7mm x 12.7mm), White.	100	500
ABMM-AT-C0	Cable tie mount, high temperature adhesive backed, 0.75"x 0.75" (19.1mm x 19.1mm), weather resistant, Black.	100	500
ABM2S-AT-C0	Cable tie mount, high temperature adhesive backed, 1"x1" (25.4mm x 25.4mm), weather resistant, Black.	100	500
TM2S8-C76	Tie mount, #8 (M4) screw, Tefzel, Aqua.	100	500
TM3S8-C76	Tie mount, #8 (M4) screw, Tefzel, Aqua.	100	500
PUM-071-2S-D30	Fir tree push mount assembly, 0.25" – 0.28" (6.3mm – 7.1mm) panel hole diameter range, heat stabilized, Black, bulk package.	500	5000
Flat Cable Tie Mounts			
FCM1-A-C14	Flat cable mount, adhesive backed, 1" (25.4mm) width cable.	100	500
FCC-A-C8	Flat cable clips, any width flat cable, 1.09" (27.7mm) width, gray, standard package.	100	1000
FCM2-A-C14	Flat cable mount, adhesive backed, 2" (50.8mm) width cable.	100	500

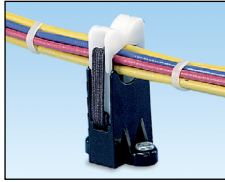
(continued on page 12)

Cable Accessories (continued)

Part Number	Description	Std. Pkg Qty.	Std. Ctn. Qty.
Specialty Mounts			
SGABM30-AV-C300	Super grip adhesive mount, VHB adhesive, 1.12" x 1.12" (28.6mm x 28.6mm), heat stabilized, weather resistant, Black.	100	500
MBMS-S10-CY	Cable tie mount, metal, #10 screw (M5).	100	1000
PWMS-H25-C	Cable tie mount, winged push mount, Natural.	100	1000
ASMS-A-T	Cable tie mount, swivel, epoxy, 1.13" x 1.13" (28.7mm x 28.7mm).	200	1000
TMEH-X2-L0Y	Swivel tie mount, weather resistant nylon 6.6, use with Miniature, Intermediate, Standard, Light-Heavy, Heavy, Extra-Heavy, HLM, HLT cable ties, Black.	50	500
Clips and Clamps			
ACC19-A-C	Cord clip, adhesive backed, 0.19" (4.8mm) bundle, Natural.	100	500
ACC38-A-C	Cord clip, adhesive backed, 0.38" (9.7mm) bundle, Natural.	100	500
ACC62-A-C	Cord clip, adhesive backed, 0.62" (15.8mm) bundle, Natural.	100	500
ARC.68-A-C14	Adjustable and releasable clamp, adhesive backed, 0.69" (17.5mm) bundle, Gray.	100	500
BECP75H25-L	Bevel entry cord clip, push mount, 0.75" (19.1mm) bundle, White.	50	500
MCMS12-P-C	Metal clip-on cable tie mount, 0.31" (8.0mm) height.	100	500
HCMP06C12-C20	Harness clip winged push mount, horizontal, 0.24" - 0.47" (5.9mm - 12.5mm) bundle range, Black.	100	500
CCS25-S8-C0	Fixed diameter clamp, 0.25" (6.4mm) bundle, #8 screw (M4), Black.	100	500
CCS12-S8-C	Fixed diameter clamp, 0.12" (3.2mm) bundle, #8 screw (M4), White.	100	500
CCH31-S10-C	Fixed diameter clamp, 0.31" (7.9mm) bundle, #10 screw (M5), White.	100	500
Multiple Tie Plate			
MTP1H-E6-C	Multiple tie plate, one bundle, M-H ties, #6 screw (M3).	100	1000
MTP1S-E6-C	Multiple tie plate, one bundle, M-S ties, #6 screw (M3).	100	1000
MTP2H-E6-C	Multiple tie plate, two bundle, M-H ties, #6 screw (M3).	100	1000
MTP2S-E10-C	Multiple tie plate, two bundle, M-S ties, #10 screw (M5).	100	1000
MTP3H-E6-C	Multiple tie plate, three bundle, M-H ties, #6 screw (M3).	100	1000
MTP3S-E10-C	Multiple tie plate, three bundle, M-S ties, #10 screw (M5).	100	1000
MTP4S-E10-C	Multiple tie plate, four bundle, M-S ties, #10 screw (M5).	100	1000
MTP5H-E6-C	Multiple tie plate, five bundle, M-H ties, #6 screw (M3).	100	1000
MTP6H-E6-C	Multiple tie plate, six bundle, M-H ties, #6 screw (M3).	100	1000
Quick-Build™ System			
QB-FN1-Q	Quick-Build™ Five Nail Base for use with HBN1-T, 25 per package.	25	250
QB-FN2-Q	Quick-Build™ Five Nail Base for use with HBN2-T, 25 per package.	25	250
QB-FN3-Q	Quick-Build™ Five Nail Base for use with HBN3-T, 25 per package.	25	250
QB-TILE	Quick-Build™ Grid Tile, 1' X 1', 8 per package.	1	—
QB-BASE120-Q	Quick-Build™ Mounting Base, 1.20" x 1.20", accepts #8 screws, 25 per package.	25	250
QB-BASE175-Q	Quick-Build™ Mounting Base, 1.75" x 1.75", accepts #4, #6, #8, and 1/4 screws, 25 per package.	25	250
QB-MOUNT-L	Quick-Build™ Mounting Peg for use with nail bases and mounting platforms, 50 per package.	50	500
QB-WASHER-Q	Quick-Build™ Replaceable Washer for QB-MOUNT-L, 25 per package.	25	250
QB-S6-500-C	Quick-Build™ Screws, #6 size, 1/2" long, 100 per package.	100	2500
QB-S8-500-C	Quick-Build™ Screws, #8 size, 1/2" long, 100 per package.	100	2500
QB-S8-750-C	Quick-Build™ Screws, #8 size, 3/4" long, 100 per package.	100	2500
QB-S25-1000-L	Quick-Build™ Screws, 1/4" size, 1" long, 50 per package.	50	1250
QB-S25-500-C	Quick-Build™ Screws, 1/4" size, 1/2" long, 100 per package.	100	2500
QB-SN1-Q	Quick-Build™ Single Nail Base for use with HBN1-T, 25 per package.	25	250
QB-SN2-Q	Quick-Build™ Single Nail Base for use with HBN2-T, 25 per package.	25	250
QB-SN3-Q	Quick-Build™ Single Nail Base for use with HBN3-T, 25 per package.	25	250
QB-CONN	Quick-Build™ Tile Connector, five per package.	1	10

(continued on page 13)

Cable Accessories (continued)



Part Number	Description	Std. Pkg Qty.	Std. Ctn. Qty.
Harness Board Accessories			
RER.75-S6-X	Elastic retainer, 0.75" (19.1mm) bundle, #6 screw (M3).	10	50
ER.5-E4-X	Elastic retainer, 0.50" (12.7mm) bundle, #4 screw.	10	100
RER.5-S6-X	Elastic retainer, 0.50" (12.7mm) bundle, #6 screw (M3).	10	50
ER1.25-E4-X	Elastic retainer, 1.25" (31.8mm) bundle, #4 screw.	10	100
RER1.25-S6-X	Elastic retainer, 1.25" (31.8mm) bundle, #6 screw (M3).	10	50
RER2.0-S6-X	Elastic retainer, 2.0" (50.8mm) bundle, #6 screw (M3).	10	50
BR.5-E6-C	Bundle retainer, 0.50" (12.7mm) bundle, #6 screw (M3), Black.	100	500
CPH.75-S8-X	Corner post, 0.75" (19.1mm) bundle, #8 screw (M4), high.	10	100
WEH-E8-C	Wire end holder, #28 – #16 AWG, #8 screw (M4).	100	1000
HBN1-T	Harness board nail, standard, 1.0" (25.4mm).	200	1000
HBN1.5-T	Harness board nail, standard, 1.5" (38.1mm).	200	1000
HBN2-T	Harness board nail, standard, 2.0" (50.8mm).	200	1000
HBN2.5-T	Harness board nail, standard, 2.5" (63.5mm).	200	1000
HBN3-T	Harness board nail, standard, 3.0" (76.2mm).	200	1000

Wire Markers



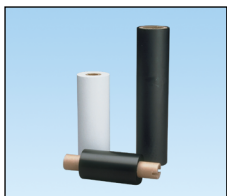
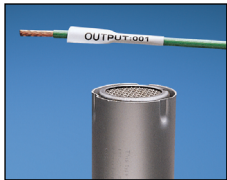
Part Number	Description	Std. Pkg Qty.	Std. Ctn. Qty.
PMD-0-9	Pre-printed marker tape dispenser, filled with one roll each 0 thru 9 legends, 8' (2.4 m) rolls.	1	10
PSCB-3Y	Write-on self-laminating wire marker cards, vinyl, 1.00" (25.4mm) W x 3.00" (76.2mm) L, 0.75" (19.05mm) print-on area, six markers.	1	10
PSCB-5Y	Write-on self-laminating wire marker cards, vinyl, 1.00" (25.4mm) W x 5.00" (127mm) L, 1.00" (25.4mm) print-on area, three markers.	1	10
S100X125VARY	Self-laminating dispenser with pen, vinyl, 1.00" (25.4 mm) W x 1.25" (31.75mm) H, 0.38" (9.65 mm) print-on area.	1	10
S100X225VARY	Self-laminating dispenser with pen, vinyl, 1.00" (25.4mm) W x 2.25" (57.15mm) H, 0.75" (19.05mm) print-on area, White/Clear.	1	10

Labeling Systems



Part Number	Description	Std. Pkg Qty.	Std. Ctn. Qty.
Computer Label Cassettes			
C060X020YJC	P1 cassette, component label, adhesive polyester, 0.60" (15.24mm) W x 0.20" (5.08mm) H, White.	1	10
C100X050YJC	P1 cassette, component label, adhesive polyester, 1.00" (25.4mm) W x 0.50" (12.7mm) H, White	1	10
C200X100YJC	P1 Cassette, component label, adhesive polyester, 2.00" (50.8mm) W x 1.00" (25.4mm) H, White.	1	10
Continuous Tape Cassettes			
T038X000VPC-BK	P1 cassette, continuous tape, vinyl, 0.38" (9.7mm) W x 25' (7.62m) L, Black on White.	1	10
T100X000VXC-BK	P1 cassette, continuous tape, vinyl, 1.00" (25.4mm) W x 25' (7.62m) L, Yellow/Black.	1	10
Self-Laminating Label Cassettes			
S050X075VAC	P1 cassette, self-laminating label, vinyl, 0.50" (12.7mm) W x 0.75" (19.05mm) H, 0.25" (6.35mm) print-on area, Clear/White.	1	10
S050X150VAC	P1 cassette, self-laminating label, vinyl, 0.50" (12.7mm) W x 1.50" (38.1 mm) H, 0.50" (12.7mm) print-on area, Clear/White.	1	10
S100X125VAC	P1 cassette, self-laminating label, vinyl, 1.00" (25.4mm) W x 1.25" (31.75mm) H, 0.38" (9.7mm) print-on area, Clear/White.	1	10
S100X150VAC	P1 cassette, self-laminating label, vinyl, 1.00" (25.4mm) W x 1.50" (38.1mm)H, 0.50" (12.7mm) print-on area, Clear/White.	1	10
Marker Plates			
M300X050Y7C	P1 marker plate 3" (76.2mm) x 0.50" (12.7mm) White.	1	10
M300X050Y6C	P1 marker plate 3" (76.2mm) x 0.50" (12.7m) Yellow.	1	10
Printer Kit			
LS8E-KIT	Includes LS8E hand-held printer, one cassette of S100X150VAC self-laminating labels, six AA alkaline batteries, LS8-CASE, LS8-PCKIT, LS8-IB, LS8-WS, quick reference card, and operator's manual.	1	2

Computer Printables



Part Number	Description	Std. Pkg Qty.	Std. Ctn. Qty.
Computer Labels			
C060X020YJT	Thermal transfer component label, adhesive polyester, 0.60" (15.24mm) W x 0.20" (5.08mm) H, White, 3" (76.2mm) core.	10000	40000
C100X025YJT	Thermal transfer component label, adhesive polyester, 1.00" (25.4mm) W x 0.25" (6.35mm) H, White, 3" (76.2mm) core.	10000	40000
C100X050APT	Raised panel label, component, 1.0"W x 0.5"H (25.4mm x 12.7mm), White.	500	—
Heat Shrink			
H050X025H1T	Thermal transfer, heatshrink tubing, Military grade polyolefin, 0.50" (12.7mm) W x 0.25" (6.35mm) H, White, 2000 pieces.	1	—
H100X034H1T	Thermal transfer, heatshrink tubing, Military grade polyolefin, 1.00" (25.4mm) W x 0.34" (8.63mm) H, White, 1000 pieces.	1	—
H200X025H1T	Thermal transfer, heatshrink tubing, Military grade polyolefin, 2.00"(50.8mm) W x 0.25"(6.35mm) H, White, 500 pieces.	1	—
H200X084H2T	Thermal transfer, heatshrink tubing, Military grade polyolefin, 2.00" (50.8mm)W x 0.84" (21.33mm) H, Yellow, 500 pieces.	1	—
Marker Plates			
M200X050Y7T	Thermal transfer, marker plate, polyester/polyolefin, 2.00" (50.8mm) W x 0.50" (12.7mm) H, White.	1	4
M200X050Y6T	Thermal transfer, marker plate, polyester/polyolefin, 2.00" (50.8mm) W x 0.50" (12.7mm) H, Yellow.	1	4
M300X050Y6T	Thermal transfer, marker plate, polyester/polyolefin, 3.00"(76.2mm) W x 0.50"(12.7mm) H, Yellow.	1	—
Self-Laminating Labels			
S050X075VA1Y	Thermal transfer, self-laminating label, vinyl, 0.50"(12.7mm)W x 0.75" H, 0.25" (6.35mm) print-on area, Clear/White, 3" (76.2mm) core.	5000	40000
S050X125VA1Y	Thermal transfer, self-laminating label, vinyl, 0.50" (12.7mm) W x 1.25" H, 0.375" (9.525mm) print-on area, Clear/White, 1" (25.4mm) core.	5000	20000
S050X150VA1Y	Thermal transfer, self-laminating label, vinyl, 0.50" (12.7mm) W x 1.50" H, 0.50"(12.7mm) print-on area, Clear/White, 1" (25.4mm) core.	5000	60000
S100X125VA1Y	Thermal transfer, self-laminating label, vinyl, 1.00" (25.4mm)W x 1.25" H, 0.38" (9.65mm) print-on area, Clear/White, 1" (25.4mm) core.	2500	10000
S100X150VA1Y	Thermal transfer, self-laminating label, vinyl, 1.00" (25.4mm) W x 1.50" H, 0.50" (12.7mm) print-on area, Clear/White, 1" (25.4mm) core.	2500	30000
S100X225VA1Y	Thermal transfer, self-laminating label, vinyl, 1.00" (25.4mm) W x 2.25" H, 0.75"(19.05mm) print-on area, Clear/White, 1" (25.4mm) core.	1500	18000
S100X400VA1Y	Thermal transfer, self-laminating label, vinyl, 1.00" (25.4mm) W x 4.00" H, 1.00" (25.4mm) print-on area, Clear/White, 1" (25.4mm) core.	1000	4000
S100X650VA1Y	Thermal transfer, self-laminating label, vinyl, 1.00" (25.4mm) W x 6.50" H, 1.50" (38.1mm) print-on area, Clear/White, 1" (25.4mm) core.	250	1000
S200X225VA1Y	Thermal transfer, self-laminating label, vinyl, 2.00" (50.8mm) W x 2.25" H, 0.75" (19.05mm) print-on area, Clear/White, 1" (25.4mm) core.	500	2000
R100X150V1T	Thermal transfer, Turn-Tell™ Label, vinyl, 1.00" (25.4mm) W X 1.50" H, 0.50" (12.7mm) print-on area, Clear/White, 3" (76.2mm) core.	2500	10000
Printer			
TDP43ME/E	300 dpi printer, including Easy-Mark™ Labeling Software and RMEH4BL hybrid ribbon.	1	—
TDP43ME-RS	External label roll stand to rear feed labels, supplied on 3" (76.2mm) cores.	1	—
Ribbon			
RMEH4BL	Ribbon, hybrid, 4.25" (107.95mm) wide, 300' (91.44m) long, for use with TDP43ME, Black.	1	12
RMER4BL	Ribbon, resin, 4.25" (107.95mm) wide, 300' (91.44m) long, for use with TDP43ME, Black.	1	12

Safety



PSL-MCBNT

Part Number	Description	Std. Pkg Qty.	Std. Ctn. Qty.
PSL-CBL	Large handle circuit breaker lockout device, 0.80" (20.32mm) thick x 3" (76.2mm) W, Red.	1	10
PSL-MCB	Miniature circuit breaker lockout device, set screw style, Red.	1	10
PSL-MCBNT	No-tool miniature circuit breaker lockout.	1	10
PSL-LOTO-TRAIN	OSHA lockout/tagout compliance training kit.	1	—

Stainless Steel



Part Number	Description	Std. Pkg Qty.	Std. Ctn. Qty.
Heat Trace			
HTMLT2.7WEH-LP	Heat trace MLT wave tie, 304 SS, Extra Heavy, 10.2" (259mm), 0.010" (0.25mm) thickness.	50	250
HTMLT4WEH-LP	Heat trace MLT wave tie, 304 SS, Extra Heavy, 17.1" (434mm), 0.010" (0.25mm) thickness.	50	250
HTMLT6WEH-LP	Heat trace MLT wave tie, 304 SS, Extra Heavy, 23.4" (594.4mm), 0.010" (0.25mm) thickness.	50	250
HTMLT8WEH-LP	Heat trace MLT wave tie, 304 SS, Extra Heavy, 29.7" (754.4mm), 0.010" (0.25mm) thickness.	50	250
HTMLT10WEH-LP	Heat trace MLT wave tie, 304 SS, Extra Heavy, 35.9" (912mm), 0.010" (0.25mm) thickness.	50	250
HTMLT12WEH-Q	Heat trace MLT wave tie, 304 SS, Extra Heavy, 43.0" (1092.2mm), 0.010" (0.25mm) thickness.	—	25
HTMLT16WEH-Q	Heat trace MLT wave tie, 304 SS, Extra Heavy, 55.75" (1416.1mm), 0.010" (0.25mm) thickness.	—	25
HTMLT26WEH-Q	Heat trace MLT wave tie, 304 SS, Extra Heavy, 87.0" (2209.8mm), 0.010" (0.25mm) thickness.	—	25
HTMLT38WEH-Q	Heat trace MLT wave tie, 304 SS, Extra Heavy, 124.75" (3168.6mm), 0.010" (0.25mm) thickness.	—	25



Stainless Steel Ties			
MLT1S-CP	MLT tie, 304 stainless steel, Standard, 5.0" (127mm), 0.010" (0.25mm) thickness.	100	500
MLT2S-CP	MLT tie, 304 stainless steel, Standard, 7.9" (201mm), 0.010" (0.25mm) thickness.	100	500
MLT4S-CP	MLT tie, 304 stainless steel, Standard, 14.3" (362mm), 0.010" (0.25mm) thickness.	100	500
MLT6S-CP	MLT tie, 304 stainless steel, Standard, 20.5" (521mm), 0.010" (0.25mm) thickness.	100	500
MLT8S-CP	MLT tie, 304 stainless steel, Standard, 26.8" (679mm), 0.010" (0.25mm) thickness.	100	500
MLT2H-LP	MLT tie, 304 stainless steel, Heavy, 7.9" (201mm), 0.010" (0.25mm) thickness.	50	250
MLT4H-LP	MLT tie, 304 stainless steel, Heavy, 14.3" (362mm), 0.010" (0.25mm) thickness.	50	250
MLT6H-LP	MLT tie, 304 stainless steel, Heavy, 20.5" (521mm), 0.010" (0.25mm) thickness.	50	250
MLT8H-LP	MLT tie, 304 stainless steel, Heavy, 26.8" (679mm), 0.010" (0.25mm) thickness.	50	250
MLT10H-LP	MLT tie, 304 stainless steel, Heavy, 33.0" (838mm), 0.010" (0.25mm) thickness.	50	250
MLT1S-CP316	MLT tie, 316 stainless steel, Standard, 5.0" (127mm), 0.010" (0.25mm) thickness.	100	500
MLT2S-CP316	MLT tie, 316 stainless steel, Standard, 7.9" (201mm), 0.010" (0.25mm) thickness.	100	500
MLT4S-CP316	MLT tie, 316 stainless steel, Standard, 14.3" (362mm), 0.010" (0.25mm) thickness.	100	500
MLT6S-CP316	MLT tie, 316 stainless steel, Standard, 20.5" (521mm), 0.010" (0.25mm) thickness.	100	500
MLT2H-LP316	MLT tie, 316 stainless steel, Heavy, 7.9" (201mm), 0.010" (0.25mm) thickness.	50	250
MLT4H-LP316	MLT tie, 316 stainless steel, Heavy, 14.3" (362mm), 0.010" (0.25mm) thickness.	50	250
MLT6H-LP316	MLT tie, 316 stainless steel, Heavy, 20.5" (521mm), 0.010" (0.25mm) thickness.	50	250
MLT8H-LP316	MLT tie, 316 stainless steel, Heavy, 26.8" (679mm), 0.010" (0.25mm) thickness.	50	250
MLT4SH-LP316	MLT tie, 316 stainless steel, Super Heavy, 17.1" (434mm), 0.015" (0.38mm) thickness.	50	250
MLT6SH-LP316	MLT tie, 316 stainless steel, Super Heavy, 23.4" (594mm), 0.015" (0.38mm) thickness.	50	250
MLTC2H-LP316	MLT tie, 316 stainless steel, selectively coated, Heavy, 7.9" (201mm), 0.010" (0.25mm) thickness.	50	250
MLTC4H-LP316	MLT tie, 316 stainless steel, selectively coated, Heavy, 14.3" (362mm), 0.010" (0.25mm) thickness.	50	250
MLTC6H-LP316	MLT tie, 316 stainless steel, selectively coated, Heavy, 20.5" (521mm), 0.010" (0.25mm) thickness.	50	250
MLTFC4S-CP316	MLT tie, 316 stainless steel, fully coated, Standard, 14.3" (362mm), 0.010" (0.25mm) thickness.	100	500
MLTFC2H-LP316	MLT tie, 316 stainless steel, fully coated, Heavy, 7.9" (201mm), 0.010" (0.25mm) thickness.	50	250
MLTFC4H-LP316	MLT tie, 316 stainless steel, fully coated, Heavy, 14.3" (362mm), 0.010" (0.25mm) thickness.	50	250
MLTFC6H-LP316	MLT tie, 316 stainless steel, fully coated, Heavy, 20.5" (521mm), 0.010" (0.25mm) thickness.	50	250

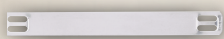


Cushion Sleeving			
PCSH-B-CR	Cushion Sleeving, Heavy, 100' (30.5m) x 0.47" (11.9mm) W.	1	—
PCSS-B-CR	Cushion Sleeving, Standard, 100' (30.5m) x 0.33" (8.4mm) W.	1	—
PCSSH-B-CR	Cushion Sleeving, Super-Heavy, 100' (30.5m) x 0.91" (23.1mm) W.	1	—

(continued on page 16)

[< Previous Page](#) | [Table of Contents](#) | [Next Page >](#)

Permanent Identification (continued)



MEHT187



ST4MT tool

Part Number	Description	Std. Pkg Qty.	Std. Ctn. Qty.
Custom Banding			
MTHH-C	Custom banding tie head, 304 stainless steel, Heavy.	100	1000
MBH-TLR	Custom banding, 304 stainless steel, Heavy, 250' (76m).	1	—
Tie Mounts			
MTM1H-C	Tie mount, 304 stainless steel, 1 hole foldover, #8 (4mm) screw.	100	1000
MTM1H25-C	Tie mount, 304 stainless steel, 1 hole foldover, 0.25" (6mm) screw.	100	1000
MTM2H-Q	Tie mount, 304 stainless steel, 2 way, #8 (4mm) screw.	25	250
Permanent Identification			
MMP350W38-C	Marker plate, 4 hole, 304 stainless steel, 3.5" x 0.38" x 0.010" (89mm x 10mm x 0.25mm) thickness.	100	1000
MMP350-C	Marker plate, 4 hole, 304 stainless steel, 3.5" x 0.75" x 0.010" (89mm x 19mm x 0.25mm) thickness.	100	1000
MMP350W38-C316	Marker plate, 4 hole, 316 stainless steel, 3.5" x 0.38" x 0.010" (89mm x 10mm x 0.25mm) thickness.	100	1000
MMP350W38-M316	Marker plate, 4 hole, 316 stainless steel, 3.5" x 0.38" x 0.010" (89mm x 10mm x 0.25mm) thickness, bulk package.	1000	4000
MMP350-M316	Marker plate, 4 hole, 316 stainless steel, 3.5" x 0.75" x 0.010" (89mm x 19mm x 0.25mm) thickness, bulk package.	1000	4000
MMP350H-M316	Marker plate, 4 hole, 316 stainless steel, heavy cross section, 3.5" x 0.75" x 0.010" (89mm x 19mm x 0.25mm) thickness, bulk package.	1000	4000
METS4-X	Embossing tape, 304 stainless steel, 0.5" X 21' (12.7mm x 6.4m).	10	40
METS3-X	Embossing tape, 316 stainless steel, 0.5" X 21' (12.7mm x 6.4m).	10	40
META-X	Embossing tape, aluminum, 0.5" X 16' (12.7mm x 4.9m).	10	40
MEHT187	Metal tape embossing tool.	1	—
PES197/E	Portable embossing system 3/16" (4.77mm) character, 11.5" (292mm) x 21.0" (534mm) x 19.0" (483mm), 95 lbs. (43 kg), 230 volt, 50 Hz with Easy-Mark™ Software.	1	—
Installation Tools			
BT2HT	Installation tool, MS strap, lever cut off.	1	—
HTMT	Installation tool, MLT ties, manual tension no cut off, Standard, Light-Heavy, Heavy cross section.	1	—
GS4MT	Installation tool, MLT ties, controlled tension gun style, Standard, Light-Heavy, Heavy cross section.	1	—
PBTMT/E	Power MLT tool CE.	1	—
RT2HT	Installation tool, MLT ties, controlled tension, Extra-Heavy and Super-Heavy cross section.	1	—
ST4MT	Installation tool, MLT ties, lever cut off.	1	1
ST2MT	Installation tool, MLT ties, twist cut off, Light-Heavy and Super-Heavy cross section.	1	—

PANDUIT™

Panduit CBC London
6 Broad Street Place
London
EC2M 7JH
UK

phone +44 (0) 208 601 7200

EMEA-CustomerServices@panduit.com

www.panduit.com

Additional information on power connectors can be found on www.panduit.com