

SAVE TIME • SOLVE PROBLEMS • LOOKS GREAT



INNOVATIVE PRODUCTS FOR

Low Voltage • Audio • Video
Security • Datacom Systems
Installations




PRODUCTS FOR THE PROS

In addition to a wide variety of innovative electrical products and more than 200 active utility patents, Arlington manufactures special products for the digital technology market that are easy to install and use.

They look great. And your audio, video and electronic system installations will too.

Since 1949, Arlington has been the leader in the manufacture of non-metallic and metallic electrical products that save installers time and money, while delivering a good-looking installation. The products in this catalog are just a few of the over 1,400 line items we make. To learn more about our other electrical products, visit our website at www.aifittings.com.


TABLE OF CONTENTS



PAGE 3

LV1
Single-gang
Low Voltage
Mounting
Bracket

Mounting Brackets for
Class 2 Low Voltage Wiring



PAGE 5

LVH1

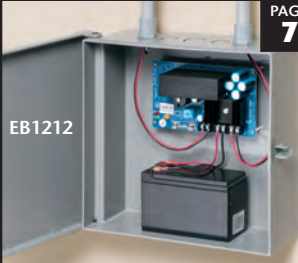
Low Voltage Mounting
Bracket for New Work



PAGE 6

LVD2

Combination Boxes for
Power and Low Voltage



PAGE 7

EB1212

Enclosure Boxes



PAGE 9

DBLV Series

Recessed Weatherproof
Enclosure



PAGE 11

FLC430
CAM-BOX KIT

Security Camera
Mounting



PAGE 12

8161
series
Boxes

Security Camera
Mounting



PAGE 14

TVB713
TV BOX™

PLASTIC Combo Box
w/ Angled Openings



PAGE 17

TVB810 TV Box™

8"x10" (or 10"x8")
TV Box™ for Flat Screen TV's



PAGE 18

TVBU505
TV BOX™

PLASTIC 2-, 3-, 4-gang
Recessed Boxes



PAGE 22

TVBS613
TV BOX™

STEEL Power/Low Voltage
Combo Boxes



PAGE 24

CED1 facing in

The SCOOP™ Reversible
Entrance Plates & Hoods

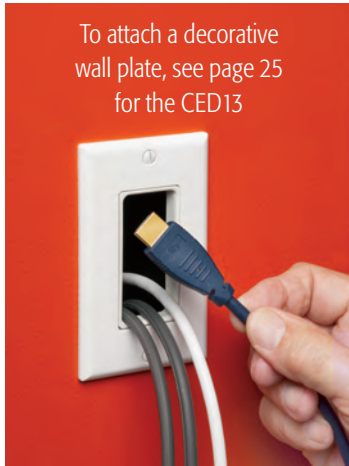


Mounting Brackets for Class 2 Low Voltage Wiring

Fast, Easy Installation in Existing Walls!

**Installs in
3 minutes**

To attach a decorative wall plate, see page 25 for the CED13

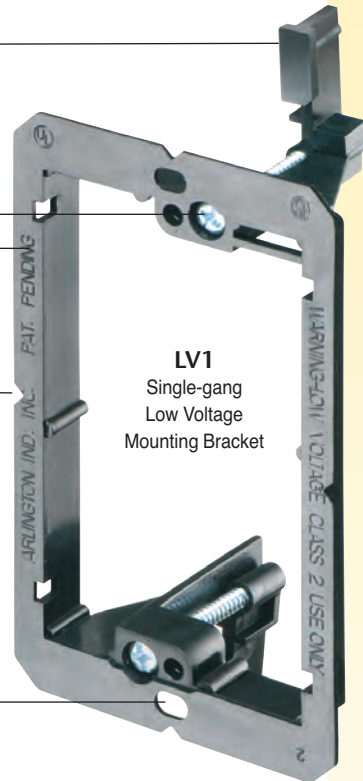


Wing Design
Centered mounting wing screws hold bracket secure, flush to wall

Recessed Screw Hole and Thin Front Lip
(and mounting wings) seat wall plate flush

Notches
level, center bracket

Oval Hole
Allows leveling of device



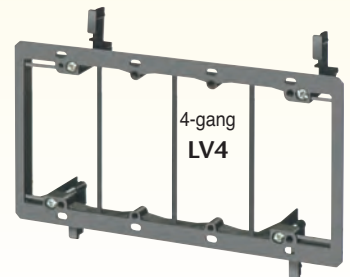
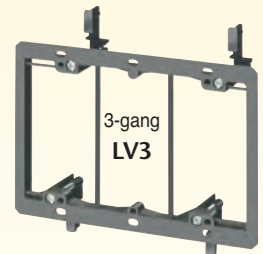
Arlington's non-metallic, Low Voltage Mounting Brackets are the time and money-saving solution for faster and easier mounting of Class 2 communications, computer and cable TV wiring.

The bracket is its own template.

Level the bracket on the wall, then use the bracket as a guide for the cutout by tracing a line around the inside of the bracket.

Designed to mount wall plates flush, our mounting brackets offer features – specially designed screw holes and more – that deliver a better-looking, easy-to-install job.

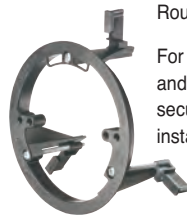
- LV1 through LV4 adjusts to fit 1/4" to 1" wall thicknesses; LVR1 fits thicknesses from 1/4" to 1-1/2"
- UL/CSA Listed



CATALOG NUMBER	UPC/DCI/NAED MFG. #018997	DESCRIPTION for Existing Construction	UNIT PKG	STD PKG
LV1	58175	Single-gang	10	100
LV1LP	58177	Single-gang/low profile	10	100
LV2	10952	2-gang	5	50
LV2LP	23102	2-gang/low profile	5	50
LV3	09600	3-gang	5	50
LV4	09601	4-gang	5	50
LVR1	58185	Round	–	25

Patented. Other Patents Pending.

LVR1
Round



For smoke detector and low voltage security camera installations

View Video



LV1

SPECIAL USE
Mounting Brackets for:

- cast concrete or block
- New Construction



Turn page for details.



EXISTING CONSTRUCTION (RETROFIT)

SPECIAL USE Mounting Brackets for Class 2 Low Voltage Wiring

Our new **single-gang, low profile** mounting brackets make quick work of installations using 1/2" or 5/8" drywall installed on furring strips that are attached to concrete walls.

For existing construction, our low-profile, low-voltage non-metallic mounting brackets...

- Adjust to fit 1/4" to 1" drywall, wallboard or paneling
- Install faster – cost less than metal
- Single and two-gang styles
- UL/CSA Listed



Low profile mounting brackets for installations on cast concrete or concrete block walls

NEW!



Wing Design

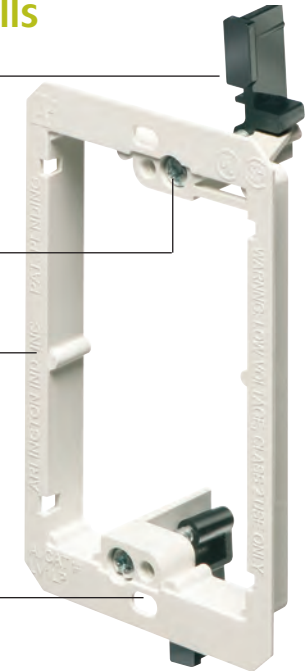
Centered mounting wing screws hold bracket secure, flush to wall

Recessed Screw Hole and Thin Front Lip

(and mounting wings seat wall plate flush)

Oval Hole

Allows leveling of device

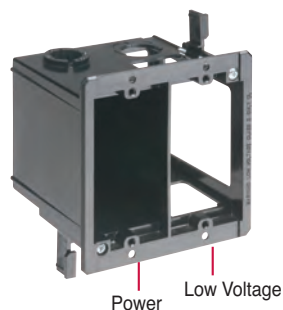


CATALOG NUMBER	UPC/DCI/NAED MFG. #018997	DESCRIPTION for Existing Construction	UNIT PKG	STD PKG
LV1LP	58177	Single-gang/Low Profile	10	100
LV2LP	23102	2-gang/Low Profile	5	50

These non-metallic, combination power and low voltage boxes are designed to accommodate power and low voltage installations like phone/cable and fiber optic installations in the same box.

They offer the best way to neatly install power and phone/cable outlets together, in one location, saving time and money.

- Two hour fire rating
- UL listed



LVDR2 For Existing Construction

- Fast and easy installation
- Adjusts to fit 1/4" to 1-1/2" thick wallboard, paneling or drywall
- For raceway, the low voltage side provides a combo 1/2" and 3/4" KO
- Protects cable from damage
- Mounting wing screws hold box securely in place
- Includes installed NM connector on power side

LVD2 For New Construction

- For wood stud installation, LVD2 features parked-in-place nails ready for use
- For metal stud installation, LVD2 features screw holes on either side of the front flange (screws not included)
- For raceway, the low voltage side provides a combo 1/2" and 3/4" KO



or **SCREW** onto Metal Stud!



Simple, **NAIL** on Installation...

CATALOG NUMBER	UPC/DCI/NAED MFG #01 8997	HEIGHT	WIDTH	CUBIC IN. POWER SIDE	UNIT/STD PKG
LVD2	10957	3.625	5.360	20.2	25
LVDR2	01000	4.250	4.185	17.0	25

Patented. Other Patents Pending.



Low Voltage Mounting Brackets for NEW CONSTRUCTION



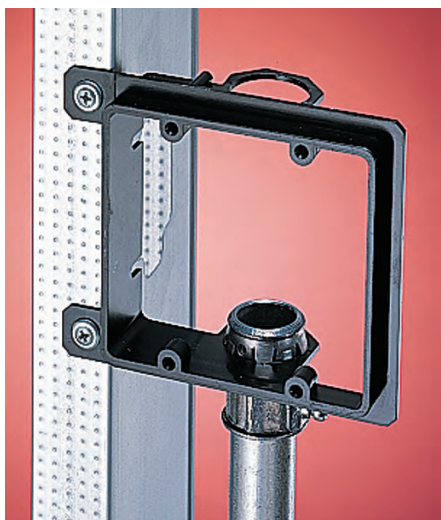
LVH1

- Non-metallic
- Sturdy tabs provide extra-secure mounting of class 2, low voltage wiring.
- Convenient wire tie-off through slot at top
- Costs 20% less than metal extension rings!

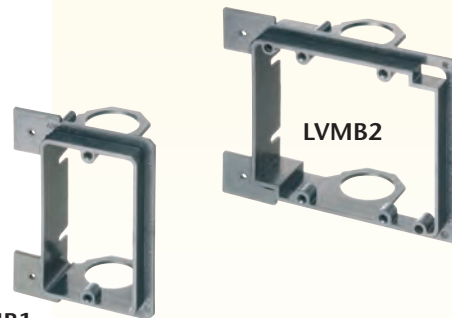
Mounts on wood or metal studs

CATALOG NUMBER	UPC/DCI/NAED MFG. #018997	DESCRIPTION for New Construction	UNIT PKG	STD PKG
LVH1	10979	Single-gang	50	50

Patented/Other patents pending



- Non-metallic
- For communications, cable TV, and computer wiring
- Cat 5 listed
- Permits the use of 3/4" EMT
- Works with 1/2" or 5/8" drywall
- Available in single or 2-gang models



LVMB1

LVMB2

CATALOG NUMBER	UPC/DCI/NAED MFG. #018997	DESCRIPTION for New Construction	UNIT PKG	STD PKG
LVMB1	14364	Single-gang	10	100
LVMB2	14365	2-gang	5	50

Patented

Mounting Brackets for Class 2 Low Voltage Wiring

Nail or Screw on to wood or metal studs in new construction

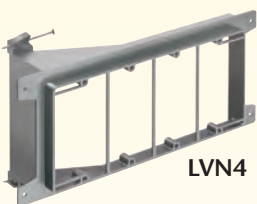
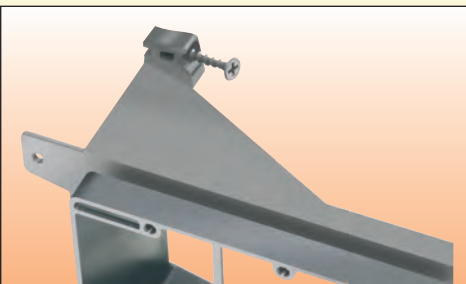
NEW CONSTRUCTION

Just nail or screw these non-metallic brackets to a wood or steel stud – and you're ready to install low voltage Class 2 wiring!

- Lower cost than extension rings or mud rings
- Ready to install - nails or screws come parked-in-place
- Built-in loop for tying off cable
- Easy, secure mounting of bracket to studs with nails or screws
- Allows wall plate to mount flush with wall surface
- UL/CSA Listed

25% faster installation over steel or plastic mud rings!

Corners on the 3- and 4-gang styles are reinforced for added support against the stud.



LVN4



LVS3



LVN1



LVN2



LVS1



LVS2

NAIL on low voltage mounting brackets:

CATALOG NUMBER	UPC/DCI/NAED MFG #01 8997	UNIT PKG	STD PKG	Height	Width	Depth
LVN1	Single-gang 00261	50	50	4.170	2.810	1.500
LVN2	2-gang 00275	25	25	4.170	5.492	1.500
LVN3	3-gang 00277	10	10	4.170	7.804	2.624
LVN4	4-gang 00278	10	10	4.170	9.617	2.624

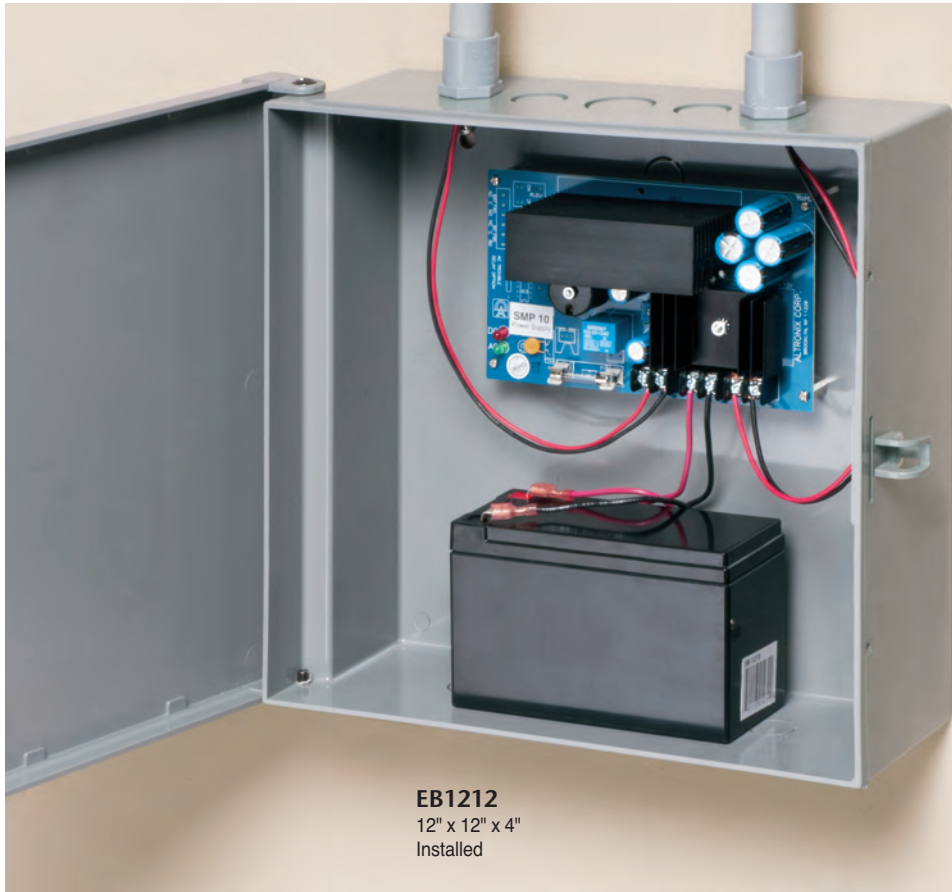
SCREW on low voltage mounting brackets:

CATALOG NUMBER	UPC/DCI/NAED MFG #01 8997	UNIT PKG	STD PKG	Height	Width	Depth
LVS1	Single-gang 00262	50	50	4.170	2.810	1.500
LVS2	2-gang 00280	25	25	4.170	5.492	1.500
LVS3	3-gang 00282	10	10	4.170	7.804	2.624
LVS4	4-gang 00283	10	10	4.170	9.617	2.624

Patented. Additional Patents Pending.

Enclosure Boxes Heavy-duty, Non-metallic • Protect Devices, Backups...More!

NEW & EXISTING CONSTRUCTION (RETROFIT)



EB1212
12" x 12" x 4"
Installed

Arlington's new, non-metallic enclosure boxes are the perfect solution to protecting and securing power backups, security devices and other valuable equipment – in a debris-free environment.

Made of heavy-duty, UV rated, non-metallic material, they're available in three convenient sizes:

- 7" x 8" x 3.5"
- 11" x 11" x 3.5"
- 12" x 12" x 4"

For added security Arlington's enclosure boxes are 'lockable' in a couple of ways. There's a knockout on the front of the box for an optional cam lock. And a latch that accommodates a padlock.



- Optional cam lock sold separately
- Handy 1/2" and 3/4" knockouts on top and bottom of enclosure box



EB0708

EB1111
Shown with **EBL1**
cam lock (sold separately)

EB1212

CATALOG NUMBER	UPC/DCI/NAED MFG. #018997	DESCRIPTION	UNIT PKG	STD PKG
EB0708	12672	Enclosure Box 7" x 8" x 3.5"	1	4
EB1111	12670	Enclosure Box 11" x 11" x 3.5"	1	5
EB1212	12671	Enclosure Box 12" x 12" x 4"	1	5
EBL1	11400	OPTIONAL Cam Lock	1	10

Weatherproof, Non-metallic Keypad Enclosures

Arlington's non-metallic keypad covers protect an exterior system keypad against bugs, moisture and weather, turning a keypad that's not weatherproof into a weatherproof enclosure – fast! They are suitable for interior systems too.

Our surface mount keypad covers accommodate single, two-gang or 4x4 boxes. That's important when local codes require a box or enclosure for power and low voltage applications. They have a universal mounting pattern, so they mount horizontally or vertically. And, you can mount them without a box on flat surfaces for low voltage keypads.

For low profile good looks, try Arlington's recessed IN BOX™ keypad enclosures. They install easily and securely to a variety of exterior surfaces through four mounting holes...without the need for gaskets.

The new one piece DBLV series enclosures install a power or low voltage keypad in the wall so less shows outside. Only the cover extends beyond the wall.

- White non-metallic 2-gang recessed enclosure with heavy-duty, clear or paintable white plastic cover
- Styles for new construction: stucco, textured surfaces, vinyl and rigid siding – and retrofit
- Fits most keypads and digital controllers
- Inside dimensions: 5" x 5"
- Textured, paintable trim plate covers edges of finished wall surface
- Horizontal or vertical mounting (raintight ONLY when mounted with latch at bottom)



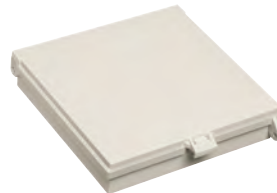
SURFACE MOUNT ENCLOSURE

DBK88C
Patent pending

Locking feature



DBK88C
clear cover



DBK88W
white paintable cover



DBK55W
white paintable cover



CATALOG NUMBER	UPC/DCI/NAED MFG. #018997	DESCRIPTION	COVER COLOR	STD PKG
DBK88C	77662	Weatherproof Keypad Enclosure	Clear	5
DBK88W	77663	7-1/2" x 7-3/4" x 1-1/2" (Inside Dimensions)	White	5
DBK55C	77664	5" x 5" x 1-1/2"	Clear	10
DBK55W	77665	(Inside Dimensions)	White	10



Weatherproof, Non-metallic Keypad Enclosures

NEW & EXISTING CONSTRUCTION (RETROFIT)

RECESSED ENCLOSURE



Low profile good looks, with a clear cover

DBLVR2C

New Construction



DBLVS2C
with clear cover

Retrofit Construction



(keypad not included)

DBLVR2W
keypad enclosure with weatherproof-in-use cover

Patent pending

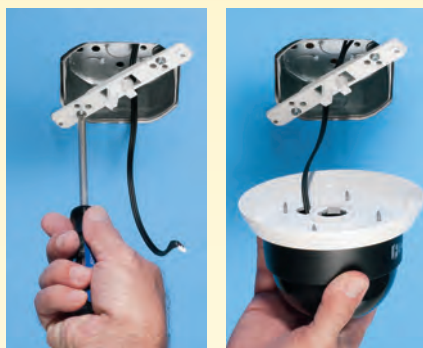
CATALOG NUMBER	UPC/DCI/NAED MFG. #018997	DESCRIPTION	COVER COLOR	UNIT PKG	STD PKG
Weatherproof IN BOX™ Enclosure					
For stucco, textured surfaces and rigid siding with clear or white, paintable cover					
DBLVM2C	13580	5" x 5"	Clear	1	4
DBLVM2W	13581	(Inside Dimensions)	White	1	4
For new vinyl siding					
DBLVS2C	13584	5" x 5"	Clear	1	4
DBLVS2W	13585	(Inside Dimensions)	White	1	4
For flat surfaces in existing condition					
DBLVR2C	13582	5" x 5"	Clear	1	4
DBLVR2W	13583	(Inside Dimensions)	White	1	4

CAM-KIT™

Security Camera Mounting Kit • Smoke Detector Installation

Arlington's new CAM-KIT™ security camera mounting kit offers the easy, secure way to install a security camera on a ceiling or wall.

- Includes a universal bracket, 5" mounting plate and mounting screws
- Fits ANY camera hole pattern because you drill the holes in the mounting plate
- Works with 3-1/2" and 4" fixture boxes and single-gang device boxes (also Arlington's FL430 fixture box)
- Secure attachment of low voltage or power security cameras to ceiling or wall-mounted boxes



1 Attach SC5 bracket to box.

2 Place assembly on bracket. Turn clockwise to lock. Install set screw.

CAM-KIT™

Installs in 2 minutes!

Secure, Universal Mounting to 3.5" and 4" Boxes



CATALOG NUMBER	UPC/DCI/NAED MFG. #018997	DESCRIPTION	MATERIAL	UNIT PKG	STD PKG
SC5	18058	Security camera mounting kit	Plastic	1	20

[View Video](#)



SC5

Arlington's round low voltage mounting bracket is perfect for low voltage smoke detector installations

- For smoke detectors, carbon monoxide detectors, cameras and more – or any low voltage products that mount to a standard 4" fixture box
- Mounting wing screws hold bracket secure
- Adjustable depth – fits 1/4" to 1-1/2" wall or ceiling thickness
- Fast, easy solution to mounting

Round Low Voltage Mounting Bracket

Mounting bracket for low voltage smoke detector installations



1 Bracket is template for opening



2 Pull cable and tighten mounting wing screws to hold bracket secure



3 Install mounting plate per manufacturer's instructions



4 Done! Fast, easy installation

See Page 3 for [LVR1](#) ordering information



LVR1



CAM-BOX™ KIT

Sturdy Security Camera Installation on a Suspended Ceiling



NEW!

View Video



FLC430

FLC430
CAM-BOX™ KIT
Plastic



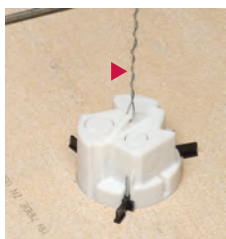
Includes box, drop wire, (2) NM94 cable connectors (plastic box only) and mounting bracket and plate for camera



1 Cut hole in the ceiling with 4" hole saw.



2 Align box as necessary. Tighten mounting wing screws.



3 Wrap drop wire twice through loop on top of box and around a framing member above ceiling. Wrap wire around itself six times minimum in both instances.



4 Install supplied NM94 cable connector (1/2" or 3/4").



5 Install mounting bracket to inside of box

Note: Cameras with a base diameter from 4.5" to 7" mount directly to the box flange (do not require the mounting plate).



6 Mount camera to mounting plate. Place assembly on bracket. Turn clockwise to lock. Install set screw.

Done! Secure camera installation, and no sagging ceiling.

Use Arlington's CAM-BOX™ KIT to install any security camera (with base diameter up to 7") on a suspended or drywall ceiling panel. For power or low voltage, it installs FAST with a 4" hole saw, saving time and money.

It's a tested assembly that holds up to 50 lbs on a suspended or drywall ceiling. It fits any security camera hole pattern because you drill the holes in the mounting plate. Larger cameras (base diameter from 4.5" to 7") mount directly to the box flange.

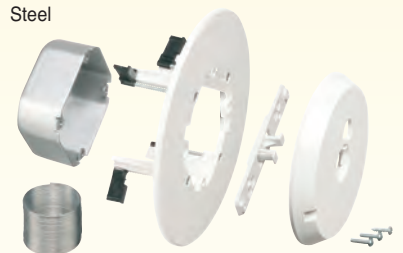
Unlike most multi-piece assemblies, CAM-BOX™ KIT is rated for:

- Up to 50 lbs on a suspended ceiling (or drywall ceiling) in combination with drop wire for support
- Up to 10 lbs on a drywall ceiling without drop wire (not rated for fixtures)
- Up to 7 lbs on walls

CAM-BOX™ KIT includes a drop wire for overhead support; mounting wings for attachment of box to the ceiling; 1/2" and 3/4" knockouts in the box, two NM94 non-metallic cable connectors – and a mounting bracket and plate for the camera.

- Rotates in either direction for proper positioning of camera
- Non-metallic 27.0 cu. inch box
- Paintable white plastic flange

FLC430S
CAM-BOX™ KIT
Steel



Includes steel box, drop wire, mounting bracket and plate for camera

CATALOG NUMBER	UPC/DCI/NAED MFG. #018997	DESCRIPTION	MATERIAL	UNIT PKG	STD PKG
FLC430	09742	Security Camera Mounting Kit	Plastic	1	10
FLC430S	09743	Security Camera Mounting Kit	Steel box w/ plastic flange	1	10

Add suffix "GC" to catalog number when ordering plastic box with ground clip for use in Canada (i.e. FLC430GC)



Arlington

8161 Boxes...The Easy Way to Mount Security Cameras, and more on Walls or Ceilings

EXISTING CONSTRUCTION (RETROFIT)

Arlington's **8161 series boxes** offer flexible solutions to mounting security cameras, detectors and other items outdoors! You can install a power or low voltage security camera – with mounting holes spaced wider than 4.5" apart – right on the box and mount it to a wall or ceiling.

These non-metallic boxes support security cameras, electrical accessories and fixtures up to 50 lbs on ceilings – 10 lbs on a wall. They have positionable threaded openings so you can install the camera where you need it now; then install additional cameras, etc. later.

- Use indoors or outdoors for dry, damp or wet locations
- UV rated for long outdoor life
- For cameras with base diameter smaller than 4.5" use our SC5 camera mounting kit (not included – see page 10)



The box with flexible installation options!



8161TR installation photos shown with SC5 CAM-KIT™ installed



Wall mounts up to 50 lbs, face down

8161BR includes sturdy, built-in wall-mount bracket, mounting screws and 3/4" to 1/2" reducing bushing.



Mounts up to 50 lbs, on a down rod

Includes installed threaded base plate and 3/4" to 1/2" reducing bushing for use with 1/2" or 3/4" NPT down rods. (Support pipe not included)



Corner mounts equipment up to 50 lbs

8161CB includes integral corner mount bracket.



Pole-mount – holds up to 50 lbs

Attaches to a round metallic or non-metallic pole with hose clamps. Includes integral mounting bracket. (Pole and hose clamps not included)



CATALOG NUMBER	UPC/DCI/NAED MFG. #018997	DESCRIPTION	WEIGHT RATING /MOUNTING	UNIT PKG	STD PKG
8161TR	00878	Box w/ threaded openings	50 lb/ceiling - 10 lb/wall	1	10
8161BR	08881	Box w/ built-in bracket	50 lb/wall mount	1	10
8161BP	08880	Box w/ built-in base plate	50 lb/on down rod	1	10
8161CB	01530	Box w/ corner-mount bracket	50 lb/corner	1	10
8161PM	09020	Pole mount Box	50 lb/pole	1	10

View Video



8161



Patents pending

Add suffix "GC" to catalog number when ordering with ground clip for use in Canada (i.e. 8161TRGC)

Security camera not included

PLASTIC For Flush-to-Wall Mounting of Flat Screen TVs

TV BOX

RECESSED POWER & LOW VOLTAGE COMBO BOXES

Arlington's PLASTIC recessed combination power and low voltage boxes – TV BOX™ and Indoor IN BOX™ – offer the secure, easy way to mount flat screen TVs flush against a wall.

The job looks great because plugs and connections stay inside these boxes without extending past the wall.

Available in 2-, 3- and 4-gang styles for new or old work. Each offers power and/or low voltage in one or more of the other openings.

There's a box to fit nearly any application!

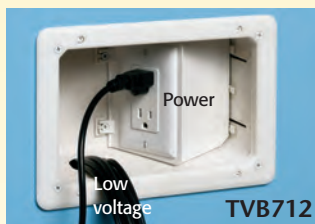
- Non-metallic box with paintable white or black trim plate
- In OLD work, mounting wing screws pull the box against the wall when tightened – In NEW construction, the box screw-mounts to a stud
- Easy to cover when not in use with (optional) covers
- UL/CSA Listed

We also offer TV BOX in steel for use in commercial, and other projects that use metal raceway. See pages 18-19.

Multiple Gang Combo Box with Angled Outlet Boxes

Designed for new or old work, these TV Boxes have angled outlet boxes that take convenience to a new level.

The versatile TVB712 offers power and/or low voltage. The larger



TVB713 has two angled outlet boxes that keep plugs behind the wall surface – and allow for the use of the new close-clearance TV mounting hardware. Now you really can mount a TV flush against a wall.

TVB713 has power and low voltage openings for video, audio and other datacom connections. It also includes a separate, interchangeable tray that you can use to hide the digital converter box, supplied by some cable companies, behind the TV.

- Non-metallic, paintable trim plate
- For new or old work
- Optional cover for unused 13" box
- Available with ground clip for use in Canada



4-GANG TVB713



TVB713 positions plugs behind the wall surface to allow for the use of the new close-clearance mounting hardware. Use the supplied tray to hide the digital converter box behind the TV.



View Video

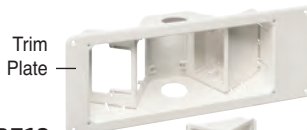


TVB713



TVB712

Power and/or Low Voltage



TVB713

Interchangeable tray



TVB613C

Cover

See next page for TVB713 installation guidelines

Patent pending

Installation Multiple Gang TV BOX™ with Angled Openings

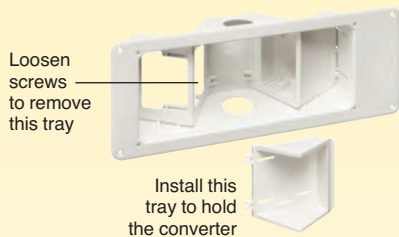
Installation of Arlington's TVB713 recessed TV BOX™ in new or old work is fast and easy.

The supplied interchangeable tray may be used to

hold the digital converter supplied by some cable companies.



Digital converter installed



Loosen screws to remove this tray

Install this tray to hold the converter

- Secure installation – TVB713 mounts between studs in new or old work. Positioning tabs for 1/2" wall thickness assure accurate placement on stud in new construction



- For retrofit, use enclosure (without trim plate) as a template for the wall opening



TVB712



TVB712

CATALOG NUMBER	UPC/DCI/NAED MFG. #018997	DESCRIPTION	UNIT/STD PKG
TVB712	09712	Power and/or low voltage Recessed Box w/ Angled Openings	1
TVB713	09713	Power and multiple low voltage openings w/ interchangeable tray	1
TVB613C	09631	Non-metallic, blank cover for TVB713	5

Add suffix "GC" to catalog number when ordering TV BOX with ground clip for use in Canada (i.e. TVB713GC)

TVB713

Old Work Installation



- 1 Cut hole next to stud (use enclosure, without trim plate, as a template). Pull wires. Insert box.



- 3 Install enclosure assembly to wall with outer screws.



- 2 Attach assembled enclosure w/ trim ring to stud through slotted holes in the side walls.



- 4 Install devices. Two low voltage, one power shown.

New Construction Installation



- 1 Attach box to stud through slotted holes.



- 2 Pull power and low voltage wire. After installing the wall, continue with OLD WORK steps 3 and 4 (above).



- 3 Make connections. Done...ready to accommodate close-clearance TV mounting hardware.



Patented. Other Patents Pending.

View Video



TVB713

4-gang Recessed Power and Low Voltage Electrical Boxes for Flat Screen TVs

PLASTIC

NEW & EXISTING CONSTRUCTION (RETROFIT)

Non-metallic TV BOX™



TVB613 includes recessed TV BOX w/ trim plate, low voltage separator, NM cable connector and installation screws



1 Install NM94 cable connector, and power and low voltage cables.



2 Install low voltage separator if using low voltage in two-gang box.



3 Install power and low voltage wiring devices.

Info/Video



TVB613



Arlington's recessed TV BOX™ for new or old work allows flat screen TVs to mount flush against a wall.

Its double-gang design allows you to install two duplex receptacles or low voltage devices. Or you can use the supplied box separator to install one low voltage device and one duplex receptacle. TV BOX also has two additional built-in mounts for low voltage, data/media connections (i.e. speakers or satellite TV).

The 13" wide, non-metallic TV BOX mounts between 16" o.c. studs for a secure horizontal or vertical installation.

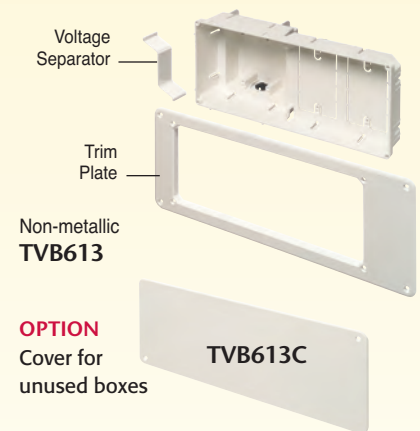
Looks great. Saves space.

Plugs stay inside the box without extending past the wall.

Textured, paintable trim plate covers edges of cut drywall.

UL/CSA Listed

See page 22
4-gang steel box



CATALOG NUMBER	UPC/DCI/NAED MFG. #018997	DESCRIPTION	UNIT/STD PKG
TVB613	09630	13" wide, recessed box (white) 2-gang, 26.2 cu. inch power/low voltage	1
TVB613C	09631	Non-metallic blank white cover fits 13" TV Box	5

Add suffix "GC" to catalog number when ordering TV BOX with ground clip for use in Canada (i.e. TVB613GC)

Patented. Other Patents Pending.

PLASTIC

Indoor IN BOX™ Recessed Electrical Boxes

Arlington's recessed indoor IN BOX™ for new or old work, allows LCD and plasma TVs (furniture too!) to be placed flush against the wall.

For power or low voltage, indoor IN BOX mounts securely to the stud (new construction) or drywall (old work).

It's a recessed box so plugs don't extend past the wall, like they do in a regular box. You can mount TVs flush or push furniture closer to the wall.

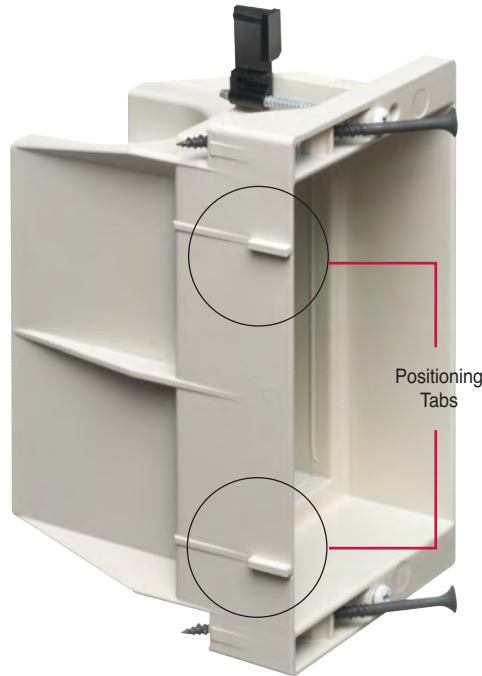
- Positioning tabs for 1/2" wall thickness assure accurate placement on stud
- Mounting wings hold box securely against wall when screws are tightened
- Textured, paintable trim plate covers edges of cut drywall
- Horizontal or vertical mounting
- Available in one-, two-, three- or four-gang styles for new construction or old work (retrofit) in existing walls
- UL/CSA Listed

View Video

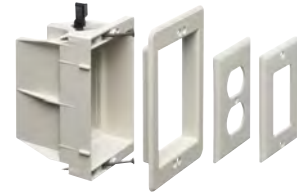


DVFR2

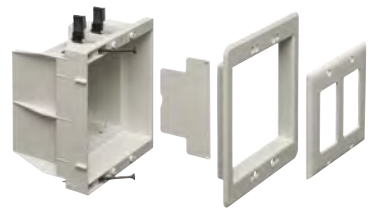
Single-gang



DVFR1W
Single-gang indoor IN BOX



DVFR2W
Two-gang indoor IN BOX



Two-gang



Three-gang



Four-gang



CATALOG NUMBER	UPC/DCI/NAED MFG. #018997	DESCRIPTION	COLOR	STD PKG
DVFR1W	14330	Single-gang Indoor IN BOX™	White	4
DVFR2W	14331	2-gang Indoor IN BOX™	White	4
DVFR3W	14340	3-gang Indoor IN BOX™	White	1
DVFR4W	14342	4-gang Indoor IN BOX™	White	1

Add suffix "GC" to catalog number when ordering with ground clip for use in Canada (i.e. DVFR1WGC)



Arlington

Patented. Other Patents Pending.

For **NEW** or **OLD** Work
Available in **White**

Ultra-Flexible Installation with 8" x 10" TV BOX™ • Optional Covers

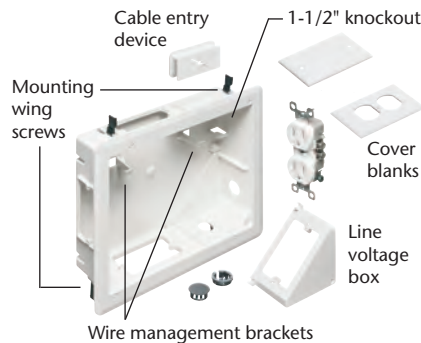
EXISTING CONSTRUCTION (RETROFIT) OPTIONAL COVERS



Install horizontal...



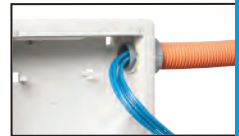
...or vertical



Arlington's TVB810 TV Box™ delivers the ultimate in versatility for installing wall-mounted TVs in retrofit projects. There's more room in the box for wires. And, you can install it horizontally or vertically to ensure proper positioning of low voltage connections behind the TV.

TVB810 is ideal for home theater systems where multiple connections are needed for sound systems, satellite TV, cable TV, DVRs, and more.

- Accepts standard-style plates with receptacles and decorator-style devices with plates - and Arlington's SCOOP™ series entrance plates and hoods
- Mounting wing screws hold box secure against wall
- Supplied with cover blanks, wall plate, a SCOOP cable entry device (CED130) and cable connectors for unused openings
- 1-1/2" knockout for ENT or other low voltage wiring
- UL/CSA Listed



CATALOG NUMBER	UPC/DCI/NAED MFG. #018997	DESCRIPTION Plastic TV BOX™	UNIT PKG	STD PKG
TVB810	24184	8"x10" power/low voltage box	1	1
TVB810GC	24185	8"x10" power/low voltage box with ground clip (for Canada)	1	1

OPTIONAL Box Cover for IN BOX™ or TV BOX™



Arlington's new optional box cover fits single- or 2-gang indoor IN BOX and 2-gang TV Box recessed mounting brackets. Use it to keep unused boxes clean until you're ready to complete the installation. Unused boxes at eye-level look better and blend into the wall with an Arlington Box Cover.

- Easy press-on installation
- Available in paintable white

Fits single- or 2-gang IN BOX™ and TV BOX™ (see pages 16, 18, 22)

CATALOG NUMBER	UPC/DCI/NAED MFG. #018997	DESCRIPTION	COVER COLOR	UNIT PKG	STD PKG
DVFRC	14337	OPTIONAL BOX cover fits unused single- or 2-gang IN BOX or TV BOX	White	10	10

PLASTIC Multiple gang TV BOX™

With Power AND Low Voltage in ONE easy-to-install recessed electrical box

Arlington's recessed two- and three-gang TV BOX™ for new or old work allows you to mount LCD and plasma TVs, and other system components flush against the wall.

These combo boxes offer power and low voltage for Class 2 wiring of satellite or cable TV, speakers, etc.

Secure installation. Good looks. A great finish.

Mounting wings tighten against the wallboard to hold the box firmly in place. There's no wobble once the box is installed. In new construction, box mounts to stud for extra-secure support.

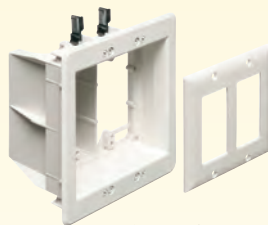
Plugs stay inside – don't protrude past the wall

- For walls up to 1-1/2" thick
- OPTIONAL blank cover for two-gang styles. See page 17
- UL/CSA Listed

View Video



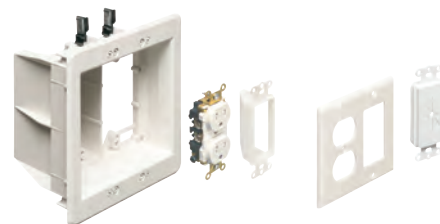
TVBU507



TVBU505
white



TVBU507
white



TVBR505K

Kit includes box, plus
 (1) tamper-resistant duplex receptacle
 (1) CEDH1 SCOOP™ Entrance Hood
 (1) CED130 Cable Entry Device
 (1) duplex decorator-style wall plate

Two-gang combo box for NEW or OLD Work

TVBU505



Easy Installation! Three-gang for NEW or OLD Work

TVBU507



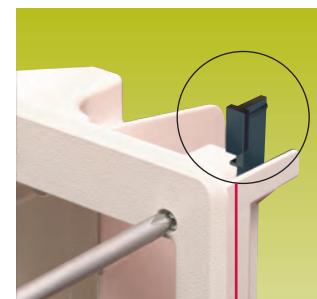
Old Work

Fast and easy installation...



New Construction

...of power and low voltage devices!



Mounting wings hold box secure

CATALOG NUMBER	UPC/DCI/NAED MFG. #018997	DESCRIPTION Non-metallic TV BOX™	STD PKG
TVBU505	09636 (white)	2-gang, power/low voltage	4
TVBR505K	09670 (white)	2-gang, power/low voltage kit	4
TVBU507	09661 (white)	3-gang, One power/two low voltage	4

Add suffix "GC" to catalog number when ordering with ground clip for use in Canada (i.e. TVBU505GC)



Arlington

Patented. Other Patents Pending.

Multiple gang TV BOX™ One Power, Two Low Voltage recessed Combo box

PLASTIC

NEW & EXISTING CONSTRUCTION (RETROFIT)

New Work Installation



1 Attach box to stud. Note tabs for proper positioning of box for drywall.



Positioning tabs



2 Attach paintable trim plate with screws provided.



OPTIONAL for new work: Tighten mounting wing screws to pull the box securely against the wallboard and provide added box stability.

For installation in Existing Wall



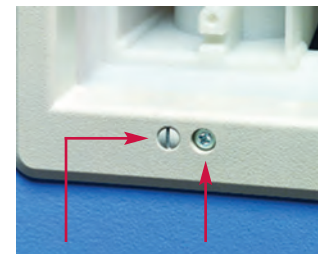
1 Determine box location. Use box (without trim plate) as template for hole.



2 Cut drywall. Attach trim plate to box. Install box assembly in opening.



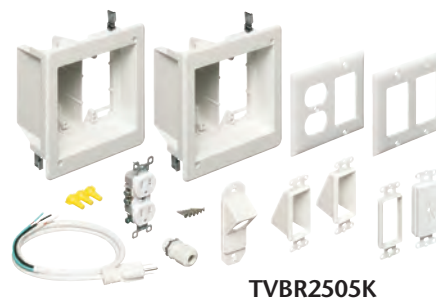
3 Tighten mounting wing screws to pull the box securely against the wallboard.



Trim plate screws

Mounting wing screws

TV Bridge™ – Complete, Easy-to-install Kit for Flat Screen TVs



TVBR2505K

What's included:

- (2) TVBR505 recessed dual voltage boxes
- (2) cover plates
- (2) CED1 entrance hoods
- (1) CED13 cable entry device
- (1) CED130 cable entry device
- (1) KD4550 45° knockout device
- (1) tamper-resistant duplex receptacle
- (1) 4 ft. 14 AWG cord
- (1) LPCG50W cord grip
- Installation screws
- (3) wire nuts

Arlington's **TVBR2505K TV Bridge™** includes TWO recessed power/low voltage combo boxes and all the connections you need (except NM cable) to install a flat screen TV and additional components.

The best part is, there's no need to run cable from a panel box – or cut holes in your framing members. Just cut two holes in the wall and access power from an existing, nearby source.

- Fast, easy, convenient – saves time and money!
- Secure installation. Good looks. A great finish.
- All wires stay hidden behind the wall – no messy wires running down the wall from TV to components
- Plugs stay inside the electrical box – don't protrude past the wall
- Mounting wings hold boxes securely against wall when screws are tightened
- Paintable trim plate
- 18.0 cubic inch recessed boxes

[View Video](#)



TVBR2505K

CATALOG NUMBER	UPC/DCI/NAED MFG #01 8997	DESCRIPTION	UNIT/STD PKG
TVBR2505K	09658	TV Bridge™	1
TVBR2505KGC	09018	TV Bridge™ with ground clip (for Canada)	1



TV BRIDGE™ II Kits

Pre-Wired, Pre-Assembled Box Kits for Flat Screen TV Installations

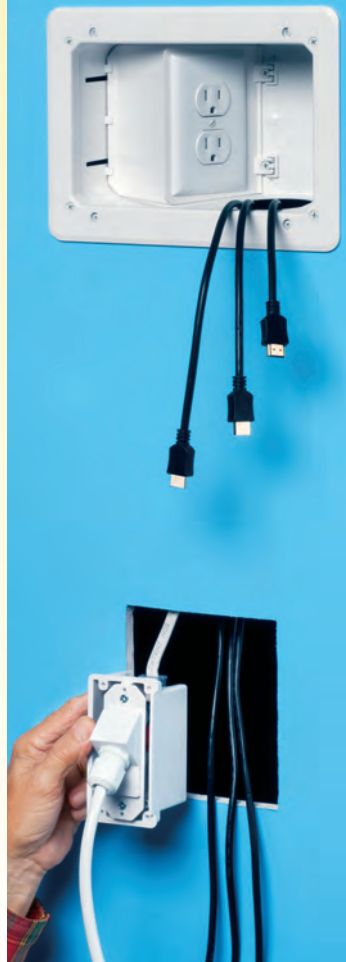
Arlington's new non-metallic **TV Bridge™ II** box kits are the easiest, fastest way to install a flat screen TV. They include two boxes and the necessary connections needed to install the TV and additional components.

Installation is *faster* because we've done the advance assembly work for you! You'll get a fully assembled, recessed box, with pre-wired receptacle, device, flexible cord and cord grip.

All you need to do is cut *two* openings in the wall, near a power source. There's no need to cut into your framing members or run power from a panel box.

- Mounting wing screws hold the boxes secure against the wall
- Plugs and connections stay inside the recessed boxes so TV mounts flush against the wall
- No mess! – wires stay hidden behind the wall
- **TV Bridge™ II** kits in four styles...
 - TVB712BK** power/low voltage box (power side angled)
 - TVBRA2K** (2) 2-gang power/low voltage boxes
 - TVBRA1K** (2) single gang power boxes
 - TVBRA3K** 2-gang power/low voltage box at top, power box at bottom

TVB712BK
TV Bridge II Kit with angled power side in recessed box



Pull pre-wired device assembly through bottom hole.



Completed TVB712BK installation

UPPER Box installation (TVB712BK shown)



1 Cut Top hole in wall for the TV Box.
Cut Lower hole directly below the top hole, close to an existing outlet.



2 Drop the pre-wired device box assembly and cable through the top hole, feeding it toward the bottom hole.



3 Place box in Top hole.
Feed low voltage cables for TV through opening in box.
Tighten mounting wing screws to secure box to wall.

(continue with Lower Box installation on facing page)



CERTIFIED to
CAN/CSA STD
C22.2 No. 18.2



ETL LISTED
CONFORMS to
UL STD 514C

TV BRIDGE™ II Kits Pre-Wired, Pre-Assembled Box Kits for Flat Screen TV Installations

Pre-wired TV Bridge™ II Kits in four styles...

EXISTING CONSTRUCTION (RETROFIT)

TVBRA1K
Single-gang power
w/ trim plate installed



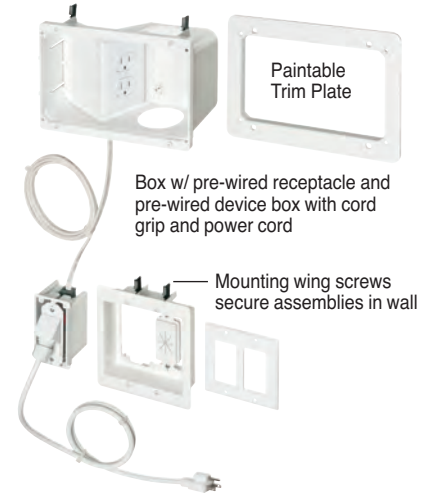
TVBRA2K
2-gang power/low voltage
w/ trim plate installed



TVBRA3K
2-gang power/low voltage
w/ trim plate installed



TVB712BK
w/ angled power box



Catalog Number	UPC/DEI/NAED Mfg. #018997	Description TV BRIDGE™ II Kit	Unit/Std Pkg
TVBRA1K	24180	w/ single-gang boxes	1
TVBRA1KGC	24182	w/ single-gang boxes - w/ ground clips for Canada	1
TVBRA2K	24181	w/ 2-gang power/low voltage box	1
TVBRA2KGC	24183	w/ 2-gang power/low voltage box - w/ ground clips for Canada	1
TVBRA3K	24195	2-gang power/low voltage upper box, single gang (lower)	1
TVBRA3KGC	24196	2-gang power/low voltage upper box, single gang (lower) - w/ ground clips for Canada	1
TVB712BK	12781	w/ 2-gang power/low voltage box (power w/ angled opening)	1
TVB712BKGC	12782	w/ 2-gang power/low voltage box (power angled) - w/ ground clips for Canada	1

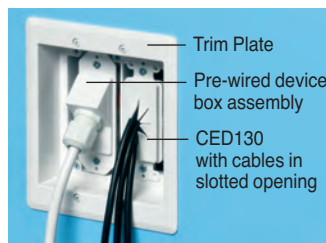
All kits include (2) recessed boxes, (1) pre-wired device box assembly, trim plates, cover plates and CED130 cable entry device.

Patent Pending.

LOWER Box installation



1 Pull pre-wired device assembly through *bottom* hole.



2 Attach device box to trim plate with screws provided. Secure trim plate to wall with mounting wing screws. Install CED130 in 2-gang boxes. Pull cables.



3 Attach cover plate to trim plate with screws provided.

To complete the installation:
Energize TV Bridge II by plugging into power source (existing outlet) or (optional) surge protector.

STEEL Recessed TV Box for Use with Metal Raceway

TV BOX

RECESSED POWER & LOW VOLTAGE COMBO BOXES

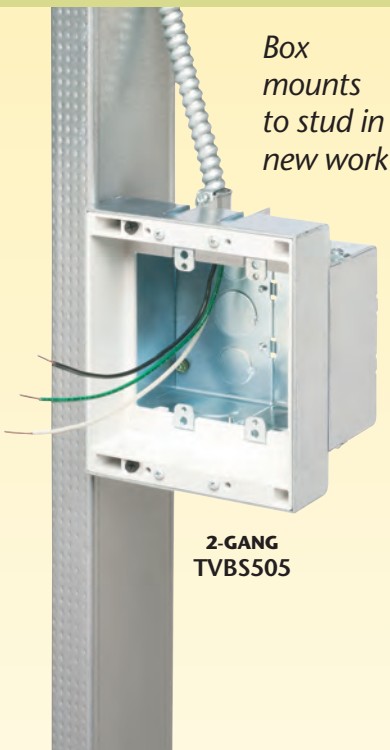
Designed for use in commercial and other construction where metal raceway is used, Arlington's STEEL combination TV BOX™ provides power and/or low voltage in one or more of the openings.

The recessed design of these steel boxes keeps plugs and connectors inside the box. Connections don't extend past the wall, so flat screen TVs mount flush against a wall.

TV BOX is available in 2-, 3- and 4-gang styles.

- Steel box with non-metallic paintable white trim plate
- Easy to install, secure installation
- Mounting wings on two- and three-gang styles hold boxes securely against the wall in retrofit projects
- Boxes screw-mount to stud in new construction
- Optional cover for unused boxes
- cULus Listed

NEW & EXISTING CONSTRUCTION (RETROFIT)



Box mounts to stud in new work

2-GANG TVBS505

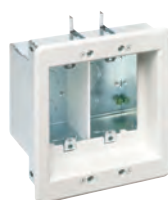


4-GANG TVBS613
Steel combination power/low voltage box



3-GANG TVBS507

In old work mounting wings secure box in wall



2-GANG
(voltage separator shown installed)
TVBS505



3-GANG
TVBS507

COVERS
for TVBS505
(2-gang) box



White cover DVFRC



Patented. Other Patents Pending.

Recessed Power and Low Voltage Electrical Boxes for Flat Screen TVs

STEEL

NEW & EXISTING CONSTRUCTION (RETROFIT)

Steel TV BOX™ Installation (2-gang TVBS505) – Existing Construction



Mounting wings hold 2- and 3-gang boxes securely in wall.



2 Pull cable. Insert box in hole. Tighten mounting wing screws to hold box securely against wall.



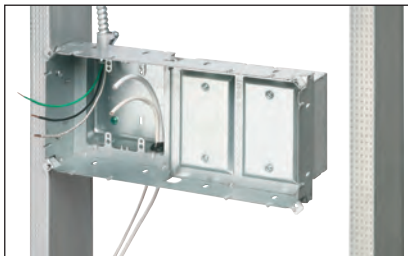
Note Install voltage separator for power and low voltage.



3 Install devices, then the wall plates.

1 Cut hole. Use enclosure (without trim plate) as a template.

Steel TV BOX™ Installation (4-gang TVBS613) – New Construction



1 Attach box to stud. Pull wire.



2 After drywall is installed, add trim plate, then install enclosure assembly to the wall with outer screws.



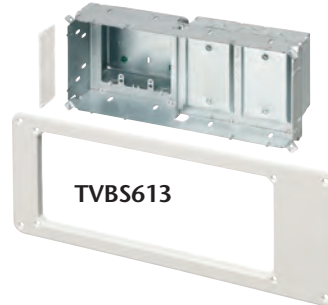
3 Install voltage separator.



4 Install devices and plates.



TVBS613
Non-metallic cover for TVBS613



View Video



Steel TV Box

CATALOG NUMBER	UPC/DCI/NAED MFG. #018997	DESCRIPTION	UNIT PKG	STD PKG
TVBS505	37955	2-gang, steel box w/ white non-metallic trim plate	1	4
TVBS507	37956	3-gang, steel box w/ white non-metallic trim plate	1	4
TVBS613	09633	2-gang, steel, power/low voltage (Plus two low voltage mounts)	1	1
DVFC	14337	White non-metallic blank cover for 2-gang TVBS505	10	10
TVB613C	09631	White non-metallic blank cover for 13" TVBS613	5	5

Patented. Other Patents Pending.



TVBS613

THE SCOOP™ series – Reversible Entrance Plates



NEW & EXISTING CONSTRUCTION (RETROFIT)

Get *The SCOOP™* reversible non-metallic, entrance hoods and plates. They not only protect cable, but deliver good looks and installation versatility.

- Easy to install facing IN or OUT
- Protect low voltage cable against damage
- Non-rusting white paintable plastic
- Best way to run low voltage cable where you need it

Arlington plates and hoods mount to a box or our LV1 thru LV4 series of low voltage mounting brackets. CED1 is designed especially for decorator style wall plates. In addition to great looks, you get installation versatility with the 'face in' or 'face out' orientation.

View Video

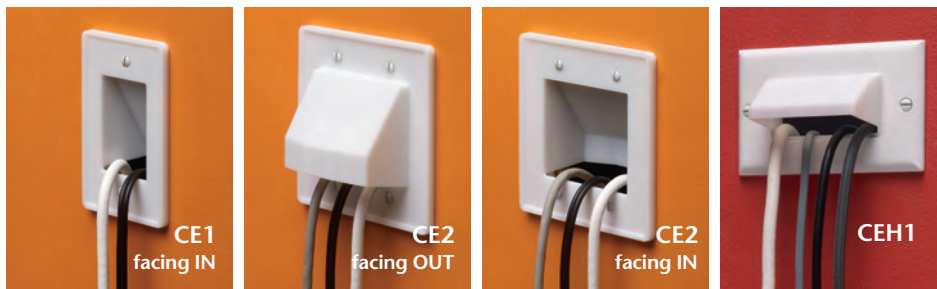


CE1

For added convenience and cost savings, you can fit HDMI and larger cable connectors through the single-gang horizontal style (CEH1) – without needing a 2-gang plate.

The lower plate on the CER1 and CER2 is removable to allow installation after cables have been installed.

PLATES that install facing IN or OUT



CATALOG NUMBER	UPC/DCI/NAED MFG. #018997	DESCRIPTION	UNIT/STD PKG
CE1	10460	Single-gang	25
CE2	10461	2-gang	25
CEH1	10480	Single-gang horizontal	25

Includes #6 screws



PLATES with removable lower plate for easy access to already installed cables



CATALOG NUMBER	UPC/DCI/NAED MFG. #018997	DESCRIPTION	UNIT/STD PKG
CER1	10473	Single-gang, w/ removable front plate	25
CER2	10474	2-gang, w/ removable front plate	25

Includes #6 screws



All SCOOP Plates available in White

Mounts to LV Series Mounting Brackets (see page 3)



Patents Pending.

THE SCOOP™ series – Reversible Entrance Hoods

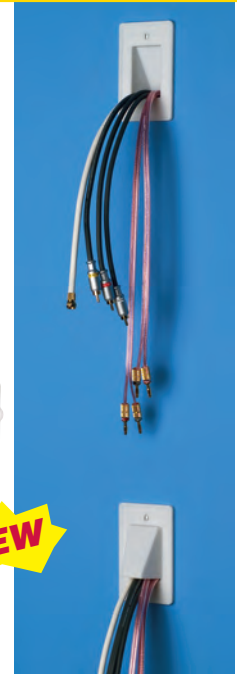
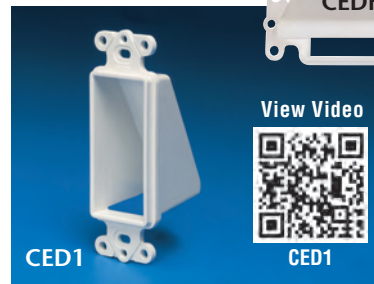
HOODS for use with decorator-style wall plates



CED1 on LV3 Mounting Bracket

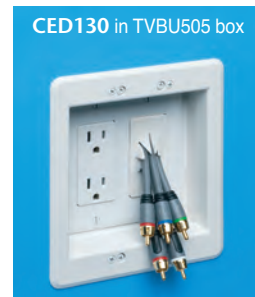
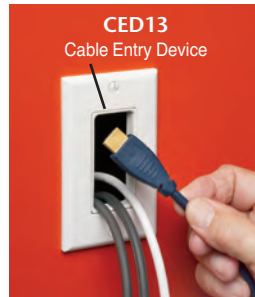
CATALOG NUMBER	UPC/DCI/NAED MFG. #018997	DESCRIPTION	UNIT/STD
		White non-metallic Cable Entrance Plate	PKG
CED1	10465	Single-gang	25
CEDH1	10478	Single-gang • Horizontal	25

Includes #6 screws



CABLE ENTRY DEVICES

The attractive way to organize and protect cable



CATALOG NUMBER	UPC/DCI/NAED MFG #01 8997	DESCRIPTION	UNIT	STD
		White non-metallic Cable Entry	PKG	PKG
CED13	13000	Device	25	25
CED130	13015	Device w/ slotted cover	1	25
CE1RP	10560	Cable entry Bracket w/ reinforced slotted cover	25	25

Arlington's **Cable Entry Devices** provide an aesthetically pleasing installation, while organizing and protecting low voltage cable against abrasion. CED13 and CED130 have mounting holes that allow the attachment of a decorator-style wall plate to the low voltage side of a box...providing extra secure support for the installation.

For the best of both worlds, we added a slotted cover to our mounting bracket design to bring you a heavy-duty **Cable Entry Bracket with Slotted Cover**. Its reinforced, slotted cover holds a bundle of low voltage cable secure and allows the pass-through of even the largest HDMI connectors. It's the fastest way to install a bundle of Class 2 low voltage wiring, and installs quickly and easily with a hole saw, saving time and money! When tightened, mounting wing screws hold the bracket securely against the wall. Level or straighten the CE1RP bracket by rotating it, then tightening the screws.

Installs with a 3.5" hole saw in less than a minute. Adjusts to fit 1/4" to 1-1/2" wall thicknesses.

- Installs with a 3.5" hole saw in less than a minute
- Adjusts to fit 1/4" to 1-1/2" wall thicknesses



Products for the PROS

NEW & EXISTING CONSTRUCTION (RETROFIT)

The LOOP™ Cable Hanger

Hanger for communications cable support. For CAT 5, 6, 7 cable and fiber optic cable.

CATALOG NUMBER	UPC/DCI/NAED MFG #01 8997	LOOP SIZE	# CAT 5 CABLES	UNIT PKG	STD PKG	LENGTH	WIDTH	LOAD RATING
TL20	38084	2"	60	100	100	11.375	.652	25
TL25	38085	2-1/2"	100	50	50	12.250	1.500	25
TL50	38086	5"	300	25	25	22.500	5.000	75
TL20P*	38087	2"	60	100	100	11.375	.652	25
TL25P*	38088	2-1/2"	100	50	50	12.250	1.500	25
TL50P*	38089	5"	300	25	25	22.500	5.000	75

*"P" indicates UV Rated, Patented.

Listed for use in environmental air handling spaces per 2011 NEC requirements 300-22(c).



View Video



The LOOP™



Non-Metallic Bushings for Metal Studs

These patented non-metallic bushings fit existing irregular shaped holes in metal studs. They alleviate the need to punch holes in the studs, and the possibility of weakening the structural member.

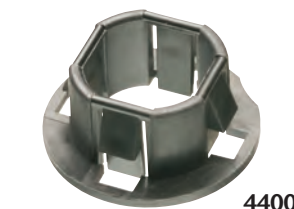
CATALOG NUMBER	UPC/DCI/NAED MFG. #018997	STUD SIZE	STD PKG
SB13	40115	2 x 4	500
SB130	40130	2 x 4	100



Snap-In Bushings

All-plastic, these snap-in type bushings protect cable as it runs through the knockouts in metal studs.

CATALOG NUMBER	UPC/DCI/NAED MFG #01 8997	TRADE SIZE	UNIT PKG	STD PKG
4400	04400	1/2	100	1000
4401	04401	3/4	100	1000
4402	04402	1	50	500
4403	04403	1-1/4	25	250
4404	04404	1-1/2	25	250
4405	04405	2	20	200
4406	04409	2-1/2	20	200



EMT50



EMT Bushings

Plastic Bushings for 1/2" to 4" EMT, rigid and PVC are Listed for air handling spaces.

CATALOG NUMBER	UPC/DCI/NAED MFG #01 8997	TRADE SIZE	UNIT PKG	STD PKG
EMT50	12200	1/2	100	1000
EMT75	12205	3/4	100	1000
EMT100	12220	1	100	100
EMT125	12225	1-1/4	100	100
EMT150	12230	1-1/2	100	100
EMT200	12235	2	50	50
EMT250*	12240	2-1/2	25	25
EMT300*	12245	3	25	25
EMT350*	12250	3-1/2	25	25
EMT400*	12255	4	25	25

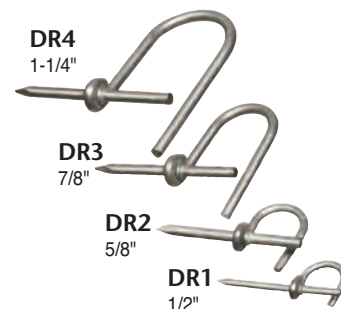
*Can also be used for rigid, IMC, and PVC rigid conduit.



Galvanized Drive Rings

Supports wire runs on walls, studs, rafters.

CATALOG NUMBER	UPC/DCI/NAED MFG #01 8997	DESCRIPTION	UNIT PKG	STD PKG
DR1	01551	1/2" Drive Ring	100	1000
DR2	01552	5/8"	50	500
DR3	01553	7/8"	50	500
DR4	01554	1-1/4"	25	250



CS4



CS7

Cable Standoffs

Positions non-metallic sheathed cable, phone/data cable, and coaxial cable. Installs with a screw or nail. Nail included with CS4.

CATALOG NUMBER	UPC/DCI/NAED MFG #01 8997	STD PKG	LENGTH
CS4	50174	100	4.100
CS7	71007	100	3.490



NOTE: For position only.



"D" Rings

Non-conductive. Smooth bearing surfaces for easy wire management.

CATALOG NUMBER	UPC/DCI/NAED MFG #01 8997	WIRING SPACE	STD PKG	HEIGHT	OUT TO OUT WIDTH	O.C. BETWEEN OUTER SCREW HOLES	O.C. BETWEEN INNER SCREW HOLES	INSIDE WIDTH
D22	40022	2.25 x 2	100	2.756	4.867	4.381	3.137	1.498
D33	40033	3.25 x 3.25	100	3.768	6.117	5.631	4.387	2.553
D35	40035	3.25 x 5	100	3.730	8.268	7.782	6.538	4.711



Wire Bushings

For installing low voltage wires/cables (such as speaker wire) through drywall.

- Use common drill and/or hole saw
- For single or double drywall thicknesses
- Provides smooth exit/entry of cables
- Protects drywall from chipping or flaking
- Made of high-impact plastic
- Color: Paintable (white)

CATALOG NUMBER	UPC/DCI/NAED MFG #01 8997	HOLE SIZE*	SIZE OF OPENING	STD PKG
WB500	52950	0.500	.43	100
WB875	52951	0.875	.75	100
WB112	52952	1.125	1.00	50
WB200	52953	2.125	2.00	50

* Drill or hole saw size





2012 Gold Medal Winner
in "Website" Category



Arlington's manufacturing facility in Scranton, PA



2009 Manufacturer's
Excellence Award



Arlington

1 Stauffer Industrial Park
Scranton, PA 18517
800/233.4717
Fax 570/562.0646
www.arlingtonlowvoltage.com

©2009 Arlington Industries, Inc.

REV0812/50M

