



Southwire[™]
CANADA



HOLE MAKING

PRODUCT CATALOGUE

SOUTHWIRE, THE COMPANY

Since 1950, Southwire has grown into one of the world's largest wire and cable producers and suppliers by offering a broad line of the highest-quality products.

SOUTHWIRE, THE PEOPLE

More than 7,000 people at sales offices, customer service centers and manufacturing facilities throughout North America are dedicated to developing the highest-quality products backed by quality service.

SOUTHWIRE, THE PRODUCTS

Southwire offers a full line of products for a wide range of applications. Now you can get it all from one supplier.

SOUTHWIRE, TOOLS & ACCESSORIES

A complete line of hand tools, meters and contractor equipment that offers premium quality, innovation and reliability to the electrical industry.

SOUTHWIRE, THE SERVICE

With customer service centers located throughout North America, Southwire provides all of your wire and cable needs in one delivery, saving you time and money.

SOUTHWIRE, THE INNOVATOR

Dedicated to technological innovation and backed by experience means Southwire is always one step ahead, expanding its product lines and services to meet the needs of customers.

HOLE MAKING

Southwire™ has developed industry leading tools for electrical contractors, including a comprehensive line of hole making solutions. With tools ranging from cutting dies to the original drill-powered knockout punch, you can make quick, accurate holes every time without the muscle or mess.

CONTENTS

- 1 | Knockouts
- 11 | Drilling & Cutting
- 16 | Accessories
- 17 | Index
- 17 | Warranties

Built for Durability.
Built for Reliability.
Built for Work.™

Since 1950, Southwire has provided high quality electrical wire and cable to the commercial and industrial construction industries. Now, the name you trust provides durable, cutting-edge professional grade tools, designed with safety and productivity in mind. Look to Southwire for all of your tool needs, from electrician's hand tools to contractor equipment, including the Maxis® product line.

MAX PUNCH® PRO KNOCKOUT TOOL

A heavy duty knockout punch driver for stainless and mild steel. Used with a cordless drill to draw punch dies together for quick accurate knockouts.

- Heavy duty knockout punch driver for mild and stainless steel
- No hydraulics, no ratcheting, no mess
- Thread-in / thread-out removable draw studs (universal to fit most common knockout dies)
- Rated to cut 10 gauge mild and stainless steel up to 4"
- Minimum drill recommendations:
 - 18V cordless, equivalent of 550 in-lb torque rated
- Includes:
 - MAX PUNCH® PRO drive unit (no case)



SPECIFICATIONS

MODEL #	STOCK #	LENGTH	WIDTH	DEPTH	WEIGHT
MP-01PRO	MAX PUNCH® PRO Drive Unit (no case)				
	57177501	8"	4.5"	4"	2.27 kg



MAX PUNCH® PRO STAINLESS STEEL SET

A heavy duty knockout punch driver for stainless and mild steel. Used with a cordless drill to draw punch dies together for quick accurate knockouts. Set includes stainless steel cutting dies.

- Heavy duty knockout punch driver for mild and stainless steel
 - No hydraulics, no ratcheting, no mess
 - Thread-in / thread-out removable draw studs (universal to fit most common knockout dies)
 - Rated to cut 10 gauge mild and stainless steel up to 4"
- Includes stainless steel cutting dies
 - Die features a unique 3 point cutting surface provides a cleaner, quicker and easier cut for 1" through 4" dies
 - Die cuts through 10 gauge stainless steel (3.5mm) as well as aluminum, fiberglass and plastics
 - Will not bow panel or leave jagged edges
- Minimum drill recommendations
 - 18V cordless, equivalent of 550 in-lb torque rated
- MP-01SDPRO Includes:
 - MAX PUNCH® PRO drive unit
 - 1/2" to 2" MAX PUNCH® Stainless steel cutting dies
 - 2 Draw studs sizes (3/4" & 7/16")
 - Southwire® MARKSMAN™ conduit layout tool
 - Step drill bit (3/16" to 7/8")
 - 2 nut drivers (3/8")
 - 1 Heavy duty carrying case
- MP-03PRO Includes:
 - 2½" to 4" MAX PUNCH® Stainless steel cutting dies
 - 1½" Draw stud
 - 1 Heavy duty carrying case



SPECIFICATIONS

MODEL #	STOCK #	LENGTH	WIDTH	DEPTH	WEIGHT
MP-01SD-PRO	MAX PUNCH® PRO Stainless Steel 1/2" to 2" Set				
	57177701	16.5"	13"	8.5"	6.6 kg
MP-03PRO	MAX PUNCH® Stainless Steel 2½" to 4" Set				
	57177201	16.5"	13"	5.0"	10.2 kg

MAX PUNCH® PRO MILD STEEL SET



A heavy duty knockout punch driver for stainless and mild steel. Used with a cordless drill to draw punch dies together for quick accurate knockouts. Set includes mild steel cutting dies.

- Heavy duty knockout punch driver for mild and stainless steel.
 - No hydraulics, no ratcheting, no mess
 - Thread-in / thread-out removable draw studs (universal to fit most common knockout dies)
 - Rated to cut 10 gauge mild and stainless steel up to 4"
- Includes mild steel cutting dies
 - Die features a unique 3 point cutting surface provides a cleaner, quicker and easier cut for 1" through 4" dies
 - Die cuts through 10 gauge mild steel (3.5mm) as well as aluminum, fiberglass and plastics
 - Will not bow panel or leave jagged edges
- Minimum drill recommendations
 - 18V cordless, equivalent of 550 in-lb torque rated
- MP-01SD Includes:
 - MAX PUNCH® PRO drive unit
 - 1/2" to 2" MAX PUNCH® Mild steel cutting dies
 - 2 Draw studs sizes (3/4" & 7/16")
 - Southwire® MARKSMAN™ conduit layout tool
 - Step drill bit (3/16" to 7/8")
 - 2 nut drivers (3/8")
 - 1 Heavy duty carrying case
- MP-03 Includes:
 - 2½" to 4" MAX PUNCH® Mild steel cutting dies
 - 1½" Draw stud
 - 1 Heavy duty carrying case

SPECIFICATIONS

MODEL #	STOCK #	LENGTH	WIDTH	DEPTH	WEIGHT
MP-01SD	MAX PUNCH® PRO Mild Steel 1/2" to 2" Set				
	56830901	16.5"	13.0"	8.5"	6.6 kg
MP-03	MAX PUNCH® Mild Steel 2½" to 4" Set				
	56825801	16.5"	13.0"	9.0"	10.2 kg

MAX PUNCH™ 360 HYDRAULIC KNOCKOUT TOOL

The MAX PUNCH™ 360 is a lightweight hydraulic knockout tool that features a full 360 degree articulating head for those tight spaces. The pump action knockout cuts 4" holes in 12 gauge stainless steel quickly and easily.

- Full 360 degree articulating lightweight aluminum head
- Cuts 4" holes in 12 gauge stainless steel
- Quick pump action for fast knockouts
- Compact pump with padded handle provides gripping comfort and greater control
- No awkward hoses or foot pumps required
- MP360SDPRO Includes:
 - MAX PUNCH™ 360 drive unit
 - 1/2"-2" MAX PUNCH™ Stainless steel cutting dies
 - 2 Draw studs sizes (3/4" & 7/16")
 - Southwire® MARKSMAN™ conduit layout tool
 - 1 Heavy duty carrying case
- MP360SD Includes:
 - MAX PUNCH™ 360 drive unit
 - 1/2"-2" MAX PUNCH™ Mild steel cutting dies
 - 2 Draw studs sizes (3/4" & 7/16")
 - Southwire® MARKSMAN™ conduit layout tool
 - 1 Heavy duty carrying case

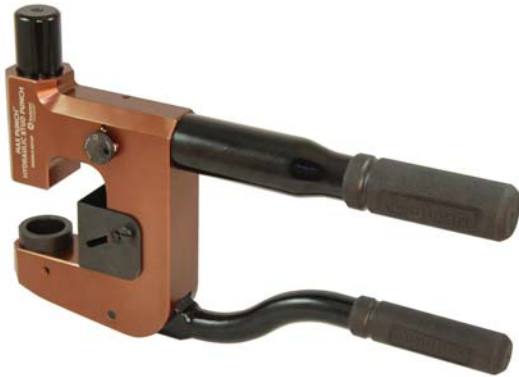
SPECIFICATIONS

MODEL #	STOCK #	LENGTH	WIDTH	DEPTH	WEIGHT
MP360HP	MAX PUNCH™ 360 (drive unit only)				
	58946301	4.50"	5.25"	3.75"	2.5 kg
MP360SD	MAX PUNCH™ 360 Mild Steel 1/2" - 2" Set				
	58946401	21.0"	12.0"	4.00"	6.8 kg
MP-03	MAX PUNCH™ Mild Steel 2½" to 4" Set (drive unit not included)				
	56825801	16.5"	13.0"	8.50"	10.4 kg
MP360 SDPRO	MAX PUNCH™ 360 Stainless Steel 1/2" - 2" Set				
	58973801	21.0"	12.0"	4.00"	6.8 kg
MP-03PRO	MAX PUNCH™ Stainless Steel 2½" to 4" Set (drive unit not included)				
	57177201	16.5"	13.0"	11.0"	10.9 kg



MP360SD & MP-03 shown here

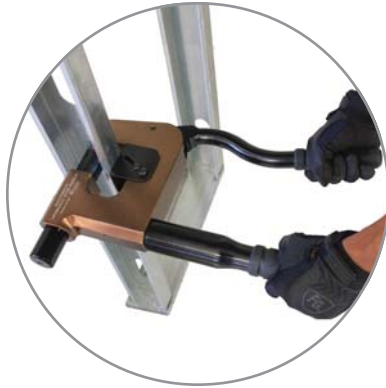
MAX PUNCH™ HYDRAULIC STUD PUNCH



The MAX PUNCH™ Hydraulic Stud Punch is designed to quickly punch holes through 16 gauge structural steel studs. The multifaceted design allows the MPHSP to easily adjust for 3 $\frac{5}{8}$ " and 6" studs as well as punch 7/8" or 1 $\frac{1}{32}$ " holes.

- Adjustable for 3 $\frac{5}{8}$ " and 6" studs
- Punches 7/8" or 1 $\frac{1}{32}$ " holes
- Punches holes in 16 gauge structural steel studs
- Compact design fits in tight spaces
- Padded handles provide gripping comfort and greater control

- Includes:
 - MAX PUNCH™ Hydraulic Stud Punch
 - Heavy Duty Carrying Case



SPECIFICATIONS

MODEL #	STOCK #	LENGTH	WIDTH	DEPTH	WEIGHT
MPHSP	MAX PUNCH™ Hydraulic Stud Punch				
	58946501	17.5"	10.5"	2.0"	5.0 kg

MAX PUNCH™ MANUAL STUD PUNCH



The MAX PUNCH™ Manual Stud Punch is designed punch 7/8" and 1 $\frac{1}{32}$ " size holes through 20 gauge steel studs.

- Punches 7/8" or 1 $\frac{1}{32}$ " holes.
- Punches holes in 20 gauge steel studs
- Lightweight punch makes accurate location of holes easier
- Padded handles provide gripping comfort and greater control
- Curved and elongated handle is designed for maximum leverage
- Lock to keep handle in place when not in use

- Includes:
 - MAX PUNCH™ Manual Stud Punch
 - Heavy Duty Carrying Case

SPECIFICATIONS

MODEL #	STOCK #	LENGTH	WIDTH	DEPTH	WEIGHT
MSP01	MAX PUNCH™ Manual Stud Punch				
	57576201	18.5"	8.55"	2.25"	3.4 kg

MAX PUNCH® RATCHET SET WITH 1/2" – 2" CUTTING DIES

The unique design profile of the cutting cups make electrician's hole making easier by splitting the slug in half making it extremely easy to remove. The flex head ratchet wrench allows for easy maneuverability around obstacles in the field. All tools fit securely in a durable plastic case for easy transportation and storage.

- Unique 3-point cup cutting surface provides a clean, quick and easy cut
- Easy Slug Ejection
- Cuts through 10 gauge mild steel as well as aluminum, fiberglass, and plastics
- Cup design creates crimping effect on slug for easy removal
- Ball bearing 7/16" and 3/4" draw studs for reduced friction
- 1" adjustable ratchet head allow you to get into cramped spaces and work with hard to manage angles
- Quick, easy attach and detach of saws
- Includes:
 - MAX PUNCH® Flex Head Ratchet
 - 1/2" to 2" MAX PUNCH® Mild steel cutting dies
 - 3/4" & 7/16" Bearing Draw studs
 - Southwire® MARKSMAN™ conduit layout tool
 - Heavy-Duty Case



SPECIFICATIONS

MODEL #	STOCK #	LENGTH	WIDTH	DEPTH	WEIGHT
MPR-01SD	MAX PUNCH® Ratchet Set				
	582892	16.5"	13.0"	8.5"	6.6 kg

MAX PUNCH® STAINLESS STEEL CUPS & CUTTERS



Cleaner, quicker stainless steel punch dies.

- Unique 3 point cutting surface provides a cleaner, quicker and easier cut for 1" through 4" dies
- Cuts through 10 gauge steel (3.5mm) as well as aluminum, fiberglass and plastics
- Will not bow panel or leave jagged edges
- Quicker, smoother cut
- Cup creates crimping effect on slug for easy removal
- Works with MAX PUNCH® PRO (Model # MP-01PRO), MAX PUNCH® 360 (Model # MP360HP) other popular knockout tools.

SPECIFICATIONS

MODEL #	STOCK #	DESCRIPTION	CONDUIT & PIPE SIZE	HOLE SIZE ACTUAL		CAPACITY S.S. GA
				IN	MM	
MP-02PRO	56825701	Small Die Set*	1/2" – 2"	0.89 - 2.42	23 - 62	10
MP-03PRO	57177201	Large Die Set*	2½" – 4"	2.92 - 4.54	74 - 115	10
MPKO50PRO	57174601	Cutter	1/2"	0.89	23	10
MPC50PRO	57176101	Cup	1/2"	0.89	23	10
MPKO75PRO	57174701	Cutter	3/4"	1.12	28	10
MPC75PRO	57176201	Cup	3/4"	0.12	28	10
MPKO100PRO	57174801	Cutter	1"	1.36	35	10
MPC100PRO	57176301	Cup	1"	1.36	35	10
MPKO125PRO	57174901	Cutter	1¼"	1.7	43	10
MPC125PRO	57176401	Cup	1¼"	1.7	43	10
MPKO150PRO	57175001	Cutter	1½"	1.95	50	10
MPC150PRO	57176501	Cup	1½"	1.95	50	10
MPKO200PRO	57175101	Cutter	2"	2.42	62	10
MPC200PRO	57176601	Cup	2"	2.42	62	10
MPKO250PRO	57175301	Cutter	2½"	2.92	74	10
MPC250PRO	57176701	Cup	2½"	2.92	74	10
MPKO300PRO	57175401	Cutter	3"	3.55	90	10
MPC300PRO	57176801	Cup	3"	3.55	90	10
MPKO350PRO	57175501	Cutter	3½"	4.04	103	10
MPC350PRO	57176901	Cup	3½"	4.04	103	10
MPKO400PRO	57175601	Cutter	4"	4.54	115	10
MPC400PRO	57177001	Cup	4"	4.54	115	10

* Drive unit not included

MAX PUNCH® MILD STEEL CUPS & CUTTERS

Cleaner, quicker mild steel punch dies.

- Unique 3 point cutting surface provides a cleaner, quicker and easier cut for 1" through 4" dies
- Cuts through 10 gauge steel (3.5mm) as well as aluminum, fiberglass and plastics
- Will not bow panel or leave jagged edges
- Quicker, smoother cut
- Cup creates crimping effect on slug for easy removal
- Works with MAX PUNCH® PRO knockout tool (model # MP-01PRO) and other popular knockout tools



SPECIFICATIONS

MODEL #	STOCK #	DESCRIPTION	CONDUIT & PIPE SIZE	HOLE SIZE ACTUAL		CAPACITY S.S. GA
				IN	MM	
MP-02	56825701	Small Die Set*	1/2" – 2"	0.89 - 2.42	23 - 62	10
MP-03	57177201	Large Die Set*	2½" – 4"	2.92 - 4.54	74 - 115	10
MPKO50	57174601	Cutter	1/2"	0.89	23	10
MPC50	57176101	Cup	1/2"	0.89	23	10
MPKO75	57174701	Cutter	3/4"	1.12	28	10
MPC75	57176201	Cup	3/4"	0.12	28	10
MPKO100	57174801	Cutter	1"	1.36	35	10
MPC100	57176301	Cup	1"	1.36	35	10
MPKO125	57174901	Cutter	1¼"	1.7	43	10
MPC125	57176401	Cup	1¼"	1.7	43	10
MPKO150	57175001	Cutter	1½"	1.95	50	10
MPC150	57176501	Cup	1½"	1.95	50	10
MPKO200	57175101	Cutter	2"	2.42	62	10
MPC200	57176601	Cup	2"	2.42	62	10
MPKO250	57175301	Cutter	2½"	2.92	74	10
MPC250	57176701	Cup	2½"	2.92	74	10
MPKO300	57175401	Cutter	3"	3.55	90	10
MPC300	57176801	Cup	3"	3.55	90	10
MPKO350	57175501	Cutter	3½"	4.04	103	10
MPC350	57176901	Cup	3½"	4.04	103	10
MPKO400	57175601	Cutter	4"	4.54	115	10
MPC400	57177001	Cup	4"	4.54	115	10

* Drive unit not included

OIL TIGHT PUNCHES WITH NOTCHES

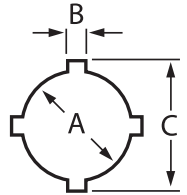


MPOPN78

MPOPN1732

Oil tight punch for special application punches.

- Includes:
 - Punch, die, draw stud, and nut



SPECIFICATIONS

MODEL #	STOCK #	HOLE SIZE						CAPACITY	
		A		B		C		GAUGE	MM
		IN	MM	IN	MM	IN	MM		
MPOPN78	7/8" Oil tight punch 58142201	0.875	0.125	1	22.5	3.2	25.4	14	2
MPOPN1732	1 7/32" Oil tight punch 58142301	1.21	0.19	1.38	30.5	4.8	36	10	3.5

MANUAL KNOCKOUT SETS

Manual knockout sets with unique 3-point cup cutting surface provides a clean, quick and easy cut, saving time.

- 3-point cutting surface for clean & quick hole cutting
- Slugs are split inside for easy removal
- Easily cuts through 10 gauge mild steel
- Punches holes cleanly and accurately
- KOKIT6 includes:
 - 1/2" - 1 1/4" MAX PUNCH™ Mild steel cutting dies
 - 2 Draw studs sizes (3/4" & 7/16")
 - Storage case

SPECIFICATIONS

MODEL #	STOCK #	LENGTH	DIAMETER	WEIGHT
KODRAW 1/2	1/2" Knockout Punch w/ Draw Studs			
	58297905	1"	1/2"	369g
KODRAW 3/4	3/4" Knockout Punch w/ Draw Studs			
	58298005	1"	3/4"	482g

MODEL #	STOCK #	HEIGHT	WIDTH	DEPTH	WEIGHT
KOKIT6	Manual Knockout Kit				
	58297805	8.5"	9.5"	2.75"	2.0 kg

KODRAW1/2



KODRAW3/4



KOKIT6



DRAW STUDS FOR MAX PUNCH® PRO DRIVE UNITS

For use with MAX PUNCH® PRO Drive Units. Universal to fit most standard cups and cutters.

SPECIFICATIONS

MAX PUNCH® PRO DRAW STUDS

MODEL #	STOCK #	LENGTH	DIAMETER	WEIGHT
PRDS34	3/4" Main Draw Stud			
	57717701	5.00"	3/4"	247g
PRDS716	7/16" Medium Draw Stud			
	57717901	4.25"	7/16" - 3/4"	130g
PRDS118	1 1/8" Large Draw Stud	4.44"	1 1/8"	442g

MAX PUNCH® DRAW STUDS

MODEL #	STOCK #	LENGTH	DIAMETER	WEIGHT
MPDS38	3/8" Small Draw Stud			
	56826001	3.00"	3/8"	34g
MPDS716	7/16" Medium Draw Stud			
	57717801	3.00"	7/16"	43g
MPDS12	1/2" Main Draw Stud	11.50"	15/16"	125g

MAX PUNCH® 360 DRAW STUDS

MODEL #	STOCK #	LENGTH	DIAMETER	WEIGHT
HPDS716	7/16" Medium Draw Stud			
	57717601	4.25"	7/16" - 3/4"	130g
HPDS34	3/4" Main Draw Stud	5.00"	3/4"	247g



BI-METAL HOLE SAW SET



Bi-metal hole saw kit for heavy-duty cutting in steel, aluminum, brass, wood and plastic.

- Unique tooth configuration for fast removal of cutting materials
- Easy slug ejection
- Quick, easy attach and detach of saws
- Includes:
 - 6 bi-metal hole saws
 - 7/8", 1 1/8", 1 3/8", 1 3/4", 2", 2 1/2"
 - One 3/8" hex shank mandrel
 - One 3/8" quick change mandrel
 - 2 pilot drills
 - Heavy-duty case

SPECIFICATIONS

MODEL #	STOCK #	HEIGHT	WIDTH	DEPTH	WEIGHT
BMHSKIT9	Bi-Metal Hole Saw Set (9-piece)				
	58297605	8.50"	9.50"	2.75"	1.36 kg

6 3/8" BI-METAL HOLE SAW

Bi-metal hole saws for heavy-duty, fast cutting of steel, aluminum, brass, wood, plastic, and drywall.

- Makes precise holes in drywall and ceiling tile
- Uses hole saw arbor
- Recommended for most major brands of 6" recessed lighting fixtures
- For use in drywall, ceiling tile, steel, wood, plastic, stainless steel and cast iron
- Use with Southwire Tools arbor. (Sold Separately)

SPECIFICATIONS

MODEL #	STOCK #	DEPTH	DIAMETER	WEIGHT
BMHS6-3/8	6 3/8" Bi-Metal Hole Saw			
	58297505	1.75"	6 3/8"	936g



HOLE SAW ARBOR WITH PINS

For use with bi-metal hole saws.

- For use with hole saws: 1¼" - 6⅞"
- Pins lock the saw to prevent over-tightening.
- Hardened mandrel for long thread life.

SPECIFICATIONS

MODEL #	STOCK #	LENGTH	WIDTH	DEPTH	WEIGHT
ABS1/2	1/2" Arbor Bit Shank				
	58295305	4.88"	1.38"	1.38"	227g

FLEX AUGER BITS

Flex auger bits with screw point tips, easily drill clean holes through wood inside walls.

- Easily drill holes through wood; Screw point tip pulls itself through wood
- Tapered back for easy bit retrieval
- Spring steel shaft resists deformation
- Drills holes through wood within a wall
- Hole in tip allows for use with wire or cable pulling grip
- 3-piece kit (FAB9/16X54) includes:
 - Folding placement tool
 - 1/2" OD pulling grip
 - 9/16" x 54" flexible drill bit

SPECIFICATIONS

MODEL #	STOCK #	LENGTH	DIAMETER	WEIGHT
FABK 9/16X54	Flex Auger Bit Kit (3 piece)			
	58297705	54"	9/16"	454g
FAB 9/16X54	9/16" Flex Auger Bit			
	58296905	54"	9/16"	199g
FAB 3/8X54	3/8" Flex Auger Bit			
	58296805	54"	3/8"	227g
FAB 3/4X54	3/4" Flex Auger Bit			
	58296705	54"	3/4"	425g
FAB1X54	1" Flex Auger Bit			
	58297005	54"	1"	482g



FABK9/16X54



FAB9/16X54



FAB3/8X54



FAB3/4X54



FAB1X54



SHIP AUGER BITS

SAB3/4X18

SAB7/8X18

SAB1X18


Heavy-duty Ship Auger Bit, featuring a self-feeding screw tip, drills clean holes through nails, wood, vinyl, plastic, and heavy timber.

- Pilot feed-screw draws bit into wood
- Drills through nails, wood, vinyl, plastics and heavy timber

SPECIFICATIONS

MODEL #	STOCK #	LENGTH	DIAMETER	WEIGHT
SAB 3/4X18	3/4" Ship Auger Bit			
	58295505	18"	3/4"	454g
SAB 7/8X18	7/8" Ship Auger Bit			
	58295605	18"	7/8"	567g
SAB 1X18	1" Ship Auger Bit			
	58295405	18"	1"	737g

WOOD AUGER BITS

WAB3/4X4-1/2

WAB7/8X4-1/2

WAB1X4-1/2


Heavy-duty, self-feeding wood boring bits cut clean holes in wood.

- Perfect for drilling between studs or inside walls
- 4½" length perfect for drilling between studs or inside walls
- Fast Switch attachment feature allows easy mounting in any 1/4" adapter
- Self-feeding screwpoint draws bit through wood
- Note: Not for use in wood with nails

SPECIFICATIONS

MODEL #	STOCK #	LENGTH	DIAMETER	WEIGHT
WAB 3/4X4-1/2	3/4" Wood Auger Bit			
	58296005	4½"	3/4"	57g
WAB 7/8X4-1/2	7/8" Wood Auger Bit			
	58296105	4½"	7/8"	142g
WAB 1X4-1/2	1" Wood Auger Bit			
	58295905	4½"	1"	312g

CARBIDE TIPPED HOLE CUTTERS

Heavy-duty, self-feeding wood boring bits cut clean holes in wood.

- For heavy-duty cutting specifically for sheet metal and stainless steel
- Precision ground carbide teeth for fast cutting of clean, round holes
- Split tip pilot drill prevents bit walking for faster starts
- Double helix grooved edge design to prevent extended penetration
- For use with 3/4" fittings
- Uses replacement pilot bit
- CHCKIT4 Includes:
 - 3 Carbide Tipped Hole Cutters: 7/8", 1 1/8" and 1 3/8"
 - 4 Pilot drill bits
 - Allen wrench
 - Heavy-duty case

SPECIFICATIONS

MODEL #	STOCK #	LENGTH	DIAMETER / W X D	WEIGHT
CHCKIT4	Carbide Tipped Hole Cutter Set (9 piece)			
	58295105	5.50"	8.5" x 2.25"	624g
CHC7/8	7/8" Carbide Tipped Hole Cutter			
	58295005	3.25"	7/8"	113g
CHC1-1/8	1 1/8" Carbide Tipped Hole Cutter			
	58294905	3.38"	1 1/8"	113g

STEP DRILL BITS

Step drill bits for clean hole drilling in metals, wood, and plastic.

- Works in most metals, plastic and wood
- Laser-etched hole sizes are easy-to-read and permanent
- Split point self-starting tip requires no pilot hole and penetrates faster
- Single flute cutter for a true round hole every time
- Tri-lobe shank for firm grip in drill chuck

SPECIFICATIONS

MODEL #	STOCK #	LENGTH	DIAMETER	WEIGHT
SB 3/16-7/8	3/16" - 7/8" Step Drill Bit			
	58297405	3.16"	3/16" to 7/8"	85 g
SB 1/4-1-3/8	3/16" - 1 3/8" Step Drill Bit			
	58297205	3.63"	3/16" to 1 3/8"	199 g

CHCKIT4



CHC7/8



CHC1-1/8



SB3/16-7/8



SB1/4-1-3/8



7-PC. COMBINATION DRILL AND TAP SET



Combination drill/tap bit seven piece set featuring a one-piece drill / tap design that saves time.

- One-piece drill/tap guarantees proper drill for tap size.
 - Tapered design prevents thread damage from over-drilling.
 - Made of high-speed steel for long life.
 - After completing tap, reverse the drill to back out.
 - Use of cutting oil recommended.
 - Clean tap of metal chips to extend life.
 - Capacity: 10 gauge (3.5mm).
 - 1/4" quick change adapter.
- Includes:
 - 6 Combination Drill/Tap Bits:
 - 6-32 NC, 8-32 NC, 10-24 NC, 10-32 NF, 12-24 NC and 1/4-20 NC
 - 1 Quick change adapter
 - Case

SPECIFICATIONS

MODEL #	STOCK #	LENGTH	WIDTH	DEPTH	WEIGHT
CDTBKIT	Combo Drill & Tap Bit Kit (7 piece)				
	58296305	4.13"	8.75"	1.38"	199 g

MARKSMAN® CONDUIT LAYOUT TOOL

This conduit layout tool will pinpoint a center knockout in seconds. The MARKSMAN™ tool is constructed of tough durable anodized aluminum. Its markings are laser etched for maximum durability.

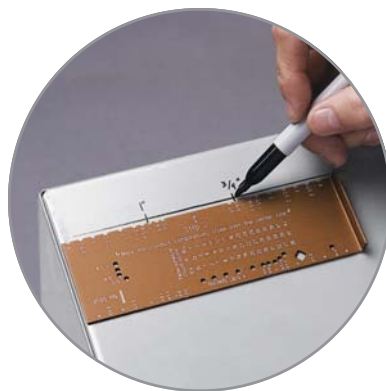
- 60 Times faster than a tape measure!
- Easy to use
- No math
- For knockout sizes 1/2" to 4"
- Underground and overhead
- Features a panel schedule showing the branch circuit number to its corresponding colour
- Constructed of tough durable anodizes aluminum
- Markings are etched for maximum durability

SPECIFICATIONS

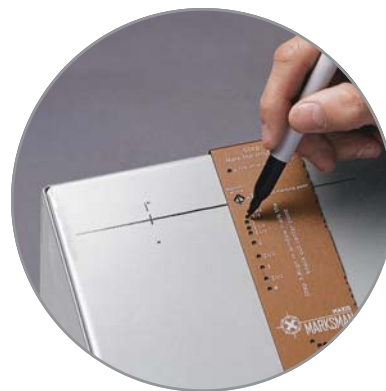
MODEL #	STOCK #	HEIGHT	WIDTH	DEPTH	WEIGHT
MM01	MARKSMAN™ Conduit Layout Tool				
	582819	6.5"	2.0"	0.25"	71 g



STEP 1
MARK STRUT LINE



STEP 2
MARK CONDUIT COMBINATION



STEP 3
MARK CENTER KNOCKOUT & DRILL

INDEX

ABS1/2	12	MPC50	8	MPKO125	8
BMHS6-3/8	11	MPC50PRO	7	MPKO125PRO	7
BMHSKIT9	11	MPC75	8	MPKO150	8
CDTBKIT	15	MPC75PRO	7	MPKO150PRO	7
CHC1-1/8	14	MPC100	8	MPKO200	8
CHC7/8	14	MPC100PRO	7	MPKO200PRO	7
CHCKIT3	14	MPC125	8	MPKO250	8
FAB1X54	12	MPC125PRO	7	MPKO250PRO	7
FAB3/4X54	12	MPC150	8	MPKO300	8
FAB3/8X54	12	MPC150PRO	7	MPKO300PRO	7
FAB9/16X54	12	MPC200	8	MPKO350	8
FAB9/16X54	12	MPC200PRO	7	MPKO350PRO	7
HPDS34	10	MPC250	8	MPKO400	8
HPDS716	10	MPC250PRO	7	MPKO400PRO	7
KODRAW1/2	9	MPC300	8	MPOPN78	9
KODRAW3/4	9	MPC300PRO	7	MPOPN1732	9
KOKIT6	9	MPC350	8	MPR-01SD	6
MM01	16	MPC350PRO	7	MSP01	5
MP-01CSPRO	2	MPC400	8	PRDS34	10
MP-01PRO	1	MPC400PRO	7	PRDS118	10
MP-01SD	3	MPDS12	10	PRDS716	10
MP-01SDPRO	2	MPDS38	10	SAB1X18	13
MP-02	8	MPDS716	10	SAB3/4X18	13
MP-02PRO	7	MPHSP	5	SAB7/8X18	13
MP-03	3, 4, 8	MPKO50	8	SB1/4-1-3/8	14
MP-03PRO	4	MPKO50PRO	7	SB3/16-7/8	14
MP03PRO	7	MPKO75	8	WAB1X4	13
MP360HP	4	MPKO75PRO	7	WAB3/4X4	13
MP360SD	4	MPKO100	8	WAB7/8X4	13
MP360SDPRO	4	MPKO100PRO	7		

6 $\frac{3}{8}$ " Bi-Metal Hole Saw	11
7-pc. Combination Drill and Tap Set	15
Bi-Metal Hole Saw Set	11
Carbide Tipped Hole Cutters	14
Draw Studs for MAX PUNCH® PRO Drive Units	10
Flex Auger Bits	12
Hole Saw Arbor with Pins	12
Manual Knockout Sets	9
MARKSMAN® Conduit Layout Tool	16
MAX PUNCH® Mild Steel Cups & Cutters	8
MAX PUNCH® PRO Knockout Tool	1
MAX PUNCH® PRO Mild Steel Set	3
MAX PUNCH® PRO Stainless Steel Set	2
MAX PUNCH® Ratchet Set with 1/2" – 2" Cutting Dies	6
MAX PUNCH® Stainless Steel Cups & Cutters	7
MAX PUNCH™ 360 Hydraulic Knockout Tool	4
MAX PUNCH™ Hydraulic Stud Punch	5
MAX PUNCH™ Manual Stud Punch	5
Oil Tight Punches with Notches	9
Ship Auger Bits	13
Step Drill Bits	14
Wood Auger Bits	13

WARRANTIES

HAND TOOLS

WARRANTY ON SOUTHWIRE ELECTRICIAN'S NON-ELECTRONIC HAND TOOLS

Southwire Company, LLC warrants this product to be free from defects in materials and workmanship for the life of the product. This warranty does not cover normal wear and tear resulting from product use, nor does it cover damage arising out of misuse, abuse, modification, and/or improper maintenance of the product. If the product breaches this warranty, Southwire will replace the product free of charge. If Southwire no longer manufactures the product, then it will, at its option, replace the nonconforming product with a substantially similar Southwire product or refund the purchase price. **SOUTHWIRE MAKES NO WARRANTY THAT THE PRODUCT WILL BE MERCHANTABLE OR FIT FOR ANY PARTICULAR PURPOSE. SOUTHWIRE MAKES NO OTHER WARRANTY, EXPRESSED OR IMPLIED, OTHER THAN THE WARRANTY SPECIFICALLY SET FORTH HEREIN. SOUTHWIRE WILL NOT BE LIABLE FOR ANY INCIDENTAL, CONSEQUENTIAL, INDIRECT, SPECIAL, OR PUNITIVE DAMAGES FOR ANY BREACH OF THIS WARRANTY.**

This warranty is void if this product is used for rental purposes. No product reseller is authorized to extend any other warranty on Southwire's behalf relating to this product, and no such reseller warranty will be binding on Southwire. If the product needs to be serviced, please contact the Customer Service Department at 1-855-SWTOOLS (1-855-798-6657) to obtain a return authorization from Southwire. The sender is responsible for all shipping, freight, insurance, and packaging costs associated with sending a product to Southwire. Southwire will not be responsible for lost or damaged products returned for service or returned under this warranty. All products returned to Southwire under this warranty should be mailed to:

Southwire Tools & Assembled Products Division
840 Old Bremen Road
Carrollton, GA 30117
Phone Number: 1-855-SWTOOLS

METERS AND TESTERS

LIMITED WARRANTY AND LIMITATION OF LIABILITY ON SOUTHWIRE METERS & TESTERS

Southwire Company, LLC warrants this product to be free from defects in material and workmanship for two years from the date of purchase. This warranty does not cover fuses, disposable batteries, or damage arising from an accident, neglect, misapplication, contamination, modification, improper maintenance or repair, operation outside of specifications, or abnormal handling of the product. Southwire's sole liability, and the purchaser's exclusive remedy, for any breach of this warranty is expressly limited to Southwire's repair or replacement of the product. Whether Southwire repairs or replaces the product will be a determination that Southwire makes at its sole discretion. **SOUTHWIRE MAKES NO WARRANTY THAT THE PRODUCT WILL BE MERCHANTABLE OR FIT FOR ANY PARTICULAR PURPOSE. SOUTHWIRE MAKES NO OTHER WARRANTY, EXPRESSED OR IMPLIED, OTHER THAN THE WARRANTY SPECIFICALLY SET FORTH HEREIN. SOUTHWIRE WILL NOT BE LIABLE FOR ANY INCIDENTAL, CONSEQUENTIAL, INDIRECT, SPECIAL, OR PUNITIVE DAMAGES FOR ANY BREACH OF THIS WARRANTY.**

This warranty is void if this product is used for rental purposes. No product reseller is authorized to extend any other warranty on Southwire's behalf relating to this product, and no such reseller warranty will be binding on Southwire. If you have a warranty claim, or if the product needs to be serviced during or after the

warranty period set forth above, please contact the Customer Service Department at 1-855-SWTOOLS (1-855-798-6657). The sender is responsible for all shipping, freight, insurance, and packaging costs associated with sending a product to Southwire. Southwire will not be responsible for lost or damaged products returned pursuant to this warranty. All products returned to Southwire under this warranty should be mailed to:

Southwire Tools & Assembled Products Division
840 Old Bremen Road
Carrollton, GA 30117
Phone Number: 1-855-SWTOOLS

WARRANTY ON SOUTHWIRE CONTRACTOR EQUIPMENT

What Does This Warranty Cover?

Limited Lifetime Warranty on Contractor Equipment

Under Southwire's Contractor Equipment Limited Lifetime Warranty, Southwire Company, LLC will warranty any and all product defects for the life of the equipment which is found to be caused by manufacturer defects. Rope, blades, dies, and draw studs and manufacturer defects relating to a product's motor are not covered by this Limited Lifetime Warranty. Under this Limited Lifetime Warranty, Southwire Company, LLC will not warranty items to include normal wear and tear resulting from product use, nor does it cover damage arising out of misuse, abuse, modification, and/or improper product maintenance. This warranty also does not cover Southwire Contractor Equipment products that have been modified by any party other than Southwire Company, LLC or its authorized third party designee. This Limited Lifetime Warranty is not transferrable to or enforceable by any person other than the product's original end user.

Limited Five-Year Warranty on Product Motors

Under Southwire's Contractor Equipment Limited Five-Year Warranty on product motors, Southwire Company, LLC will warranty any and all product motor defects that are found to be caused by manufacturer defects. Under this Limited Five-Year Warranty, Southwire Company, LLC will not warranty product motors to include normal wear and tear resulting from product use, nor does it cover damage arising out of misuse, abuse, modification, and/or improper product maintenance. This warranty also does not cover Southwire Contractor Equipment products that have been modified by any party other than Southwire Company, LLC or its authorized third party designee. This Limited Five-Year Warranty is not transferrable to or enforceable by any person other than the product's original end user.

Limited One-Year Warranty on Rope, Blades, Dies, and Draw Studs

Under Southwire's Contractor Equipment Limited One-Year Warranty, Southwire Company, LLC will warranty any and all product defects which are found to be caused by manufacturer defects. Under this Limited One-Year Warranty, Southwire Company, LLC will not warranty items to include normal wear and tear resulting from product use, nor does it cover damage arising out of misuse, abuse, modification, and/or improper product maintenance. This warranty also does not cover Southwire Contractor Equipment products that have been modified by any party other than Southwire Company, LLC or its authorized third party designee. This Limited One-Year Warranty is not transferrable to or enforceable by any person other than the product's original end user.

Exclusion of Incidental, Consequential, Indirect, Special and Punitive Damages

SOUTHWIRE MAKES NO WARRANTY THAT SOUTHWIRE CONTRACTOR EQUIPMENT PRODUCTS WILL BE MERCHANTABILITY OR FIT FOR ANY PARTICULAR PURPOSE. SOUTHWIRE MAKES NO OTHER WARRANTY, EXPRESSED OR IMPLIED, OTHER THAN THE RELEVANT WARRANTY SPECIFICALLY SET FORTH IN THIS WARRANTY SECTION. SOUTHWIRE WILL NOT BE LIABLE FOR ANY INCIDENTAL, CONSEQUENTIAL, INDIRECT, SPECIAL, OR PUNITIVE DAMAGES FOR ANY BREACH OF THIS LIMITED LIFETIME WARRANTY.

Some provinces do not allow the exclusion or limitation of incidental or consequential damages, so the above limitation or exclusion may not apply to you.

Warranty Claim Information/How Do You Get Service?

For all warranty, customer service, and product return authorizations and inquiries, please contact Southwire's Tools & Assembled Products Division at:

Southwire™ Tools & Assembled Products Division
840 Old Bremen Road
Carrollton, GA, 30117
Phone Number: 1-855-SWTOOLS

1. All warranty claims must be approved by Southwire's Tools & Assembled Products Warranty Department prior to return of product. If Southwire determines that a product is defective, Southwire will, at its option, repair or replace defective products or defective product components, free of charge.
2. Upon approval, Southwire will issue a Product Return Authorization Form which will include instructions on how and where to return the product. **The product serial number and the original date of delivery must be set forth on the Product Return Authorization Form.**
3. Southwire will cover standard freight charges (FedEx Ground rate) incurred in connection with products that Southwire ultimately determines to be defective.
4. All defective components and defective products that Southwire replaces under these Warranties will become Southwire's property and will be retained by Southwire.

Fixing Your Product When it is Out of Warranty

Southwire is happy to provide information about where a purchaser can send a product for repair at consumers' own expense, please contact 1-855-SWTOOLS (1-855-798-6657) or visit www.southwiretools.com/tools/home.do for more information about servicing for Southwire Products.

**Built for Durability.
Built for Reliability.
Built for Work.™**

**1-800-668-0303
www.southwiretools.ca**