



Electric Market Products

Order Guide

Effective April 21, 2014

The Right Enclosure • The Right Location • The Right Application



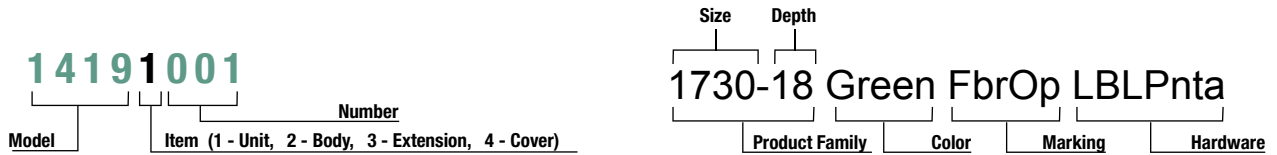
**Oldcastle Enclosure Solutions delivers
lasting performance in the field, protecting
and concealing critical infrastructure to
keep your community running strong.**



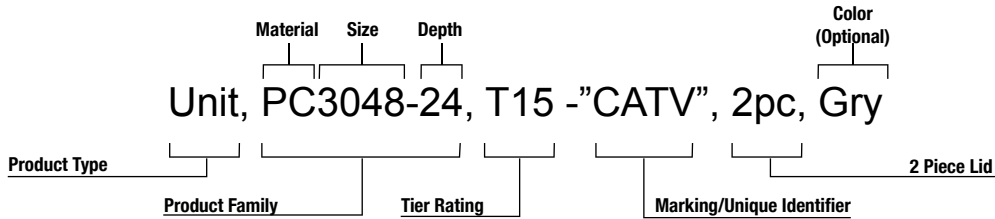
The Right ENCLOSURE
The Right APPLICATION
The Right LOCATION

Understanding Our Product Guide

Carson Products: SKU Format and Description Format



H-Series & Synertech: Description Format



Carson Abbreviations

Abbreviation	Description	Refers to:
HP	HDPE Body Polymer Ring & Cover	Product Material
HPC	Plastic Body Polymer Concrete Cover	
HLPC	Plastic Body Light Weight Polymer Concrete Cover	
PC	Polymer Concrete	
PPC	Polymer Concrete Body Polymer Concrete Cover	
PSC	Polymer Concrete Body Steel Cover	Product Color
Blk	Black	
Blk-Grn	Black Body Green Cover	
Grn	Green	
Gry	Gray	
Pur	Purple	
Tan	Tan	
Blank	Blank	Marking
Elec	Electric	
ICV	Irrigation Control Valve	
Swr	Sewer	
Wtr	Water	
Wtr Mtr	Water Meter	
RW	Reclaimed Water	
RWDND ES	Reclaimed Water Do Not Drink English & Spanish	

Abbreviation	Description	Refers to:	
CHBit	Captive Hex Bolt	Hardware Type	
CLPnta	Captive Large Penta Bolt		
Cpnta	Captive Penta Bolt		
Dlock	Dallas Lock		
Flick	Fargo Lock		
FtnNut	Floating Nut		
HBit	Hex Bolt		
Hnut	Hex Nut		
Bnut	Brass Nut		
LBit	L Bolt		
Lpnta	Large Penta Bolt		
CI T Cover	Cast Iron T Cover		Cover Type/Options
Cast Iron Rdr	Cast Iron Reader		
Flsh Cvr	Flush Cover		
Plastic Rdr	Plastic Reader		
Plt Mkr	Plate Marker		
Rnd Plt	Round Plate		
T Cov	T Cover		
EMS	E Marker		
TRH	Touch Read Hole		
MsHl	Mouse Hole		

H-Series Abbreviations

Abbreviation	Description	Refers to:
D	Drop In Lid	Lids
T	Bolt Down Lid	
FW	Flared Wall Body	Bodies
SW	Straight Wall Body	

Line Item Discount Chart

Line Item Discount	Product Group
OC01	Concrete
OC02	Drainage
OC03	HD - Polymer
OC04	Heavy Wall
OC06	LD - Plastic

Line Item Discount	Product Group
OC07	MD - SMC/HY
OC08	Other
OC09	Resale
OC10	Synertech
OC11	Fibrelyte
OC12	HVAC

Understanding Our Product Brands



HDPE enclosures are easy to install and provide strong, durable performance with water and chemical resistance.
Load Categories:



The R-Series is an extremely economical, high compression strength concrete material, which prevents lid and body chipping or cracking with a patented protective polypropylene ring guard on the lid and body.
Load Categories:



Carson Hybrids are specially designed to interchange various lid materials with a HDPE body to maximize load ratings and interior volume at a great overall installed value.
Load Categories:



Fibrelyte material is a proprietary composite designed to be lightweight, highly durable, and strong. Fibrelyte walls resist water impregnation when cut and modified in the field.
Load Categories:



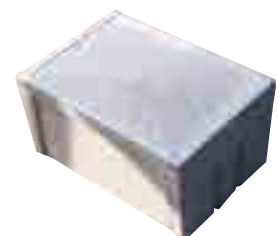
Synertech enclosures combine the exceptional strength of High-Density Polymer Concrete with the lightweight properties of Sheet Molding Compound to produce a tough, durable enclosure. Synertech products are the strongest, lightest composite enclosures, making them easier and safer to install.
Load Categories:



H-Series Polymer Concrete is produced using a precise dry mix of select aggregate, which is bound with resin and fiberglass fabric. Our new polymer concrete manufacturing process results in enclosures with high flexural and tensile strength, yet lower weight than traditional concrete.
Load Categories:



Christy concrete is reliable and cost effective. Boxes with a galvanized steel cover and frame in place are Traffic Rated.
Load Categories:



Selecting the Right Product and Accessories



Choose your Size and Brand

A wide variety of sizes are offered in round, square, and rectangular configurations. Choose the size and brand that best fits your need.



Know Your Required Performance Level

Our bodies and lids are rated for performance. Look for the load rating that matches your project application.



Select a Lid Style and Marking

Lids are available in a variety of materials and colors. Some are available with specialty markings, marking plates, and special locking options.



Choose Accessories, Hardware, and Other Options

Hardware & other additional items can be found for our enclosures in the back of this booklet.

Additional Information

For Christy Brand and Fibrelyte Brand products, please see the latest *Oldcastle Enclosure Solutions Christy Products Catalog*.

For more detailed information on a product, see the individual specification sheet located in the Oldcastle Enclosure Solutions Catalog Binder or online at oldcastleprecast.com/enclosuresolutions.



Available Sizes By Brand

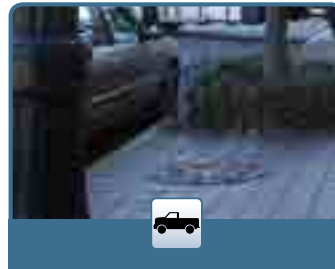
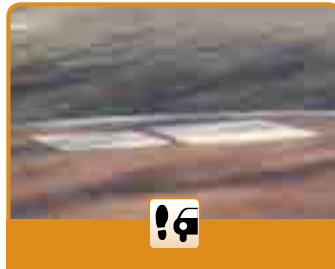
Select the appropriate size and shape for your application from our list of available products in each brand.

Brand	Material	Model	Size (LxW)	Shape	Wall Type	Depths	Design Load	Rating
	HDPE	809	6" Dia	○	Flared	9"	300 lb/ft ²	Ped
		910	9" Dia	○		10" 18" 20" 36"		
		1015	10" x 15"	□		6" 12"		
		1419	14" x 19"	□		6" 12" 24"		
		1520	15" x 20"	□		18" 36"		
		1220	12" x 20"	□		6" 12" 18" 24"		
		1324	13" x 24"	□		12" 15" 24" 30"		
		1730	17" x 30"	□		12" 15" 18" 24" 36" 48"		
		2200	12" Dia	○		15" 18" 21" 30" 36"		
		2424	24" x 24"	□		18" 24" 30" 36" 42" 48" *		
		2436	24" x 36"	□		18" 24" 30" 36" 42" 48" *		
		2448	24" x 48"	□		18" 24" 30" 36" 42" 48" *		
		2460	24" x 60"	□		18" 24" 30" 36" 42" 48" *		
		3636	36" x 36"	□		18" 24" 30" 36" 42" 48" *		
		3648	36" x 48"	□		18" 24" 30" 36" 42" 48" *		
3660	36" x 60"	□	18" 24" 30" 36" 42" 48" *					
	Concrete	N09R	10" x 17"	□	Straight	12" 24" 36" 48" 60"	300 lb/ft ²	Ped
		N16R	11" x 22"	□		12" 24" 36" 48" 60"		
		N30R	13" x 24"	□		12" 24" 36" 48" 60"		
		N36R	17" x 30"	□		12" 24" 36" 48" 60"		
		N40	24" x 36"	□		14" 24" 36" 48" 60"		
		N48	30" x 48"	□		14" 24" 36" 48" 60"		
		N52	30" x 60"	□		14" 24" 36" 48" 60"		
F08	8" Dia	○	12"					
	Hybrid	1324	13" x 24"	□	Flared	15" 18" 30" 36"	8,000 lbf	Tier 8
		1730	17" x 30"	□		12" 15" 18" 24" 36" 48"		
		2424	24" x 24"	□		18" 24" 30" 36" 42" 48" *		
		2436	24" x 36"	□		18" 24" 30" 36" 42" 48" *		
		2448	24" x 48"	□		18" 24" 30" 36" 42" 48" *		
		2460	24" x 60"	□		18" 24" 30" 36" 42" 48" *		
		3636	36" x 36"	□		18" 24" 30" 36" 42" 48" *		
		3648	36" x 48"	□		18" 24" 30" 36" 42" 48" *		
		3660	36" x 60"	□		18" 24" 30" 36" 42" 48" *		
	Composite	FL08	9" Dia	○	Flared	12"	8,000 lbf	Tier 8
		FL09	10" x 15"	□		12" 24"		
		FL12	12" x 20"	□		12" 24"		
		FL30	13" x 24"	□		12" 18" 24"		
		FL36	17" x 30"	□		12" 18" 24"		
	Composite	Duo 11x18	11" x 18"	□	Straight	12" 18" 24" 30" 36"	15,000 lbf	Tier 15
		Duo 12x12	12" x 12"	□		12" 18" 24" 30" 36"		
		Duo 13x24	13" x 24"	□		12" 18" 24" 30" 36" 42"		
		Duo 17x30	17" x 30"	□		12" 18" 24" 30" 36" 42"	22,500 lbf	Tier 22
		Duo 24x36	24" x 36"	□		18" 24" 36" 42" 48" 60"		
		Duo 30x48	30" x 48"	□		18" 24" 36" 42" 48" 60"		
		Duo 36x60	36" x 60"	□		24" 36" 48" 60" 72"		
	Polymer	910	9" Dia	○	Flared	10"	**	Tier 15 / 22
		1118	11" x 18"	□		12" 18" 24"		
		1212	12" x 12"	□	Straight	12" 24" 36"	8,000	T8
		1324	13" x 24"	□		12" 15" 18" 24" 30"		
		1324	13" x 24"	□	Flared	18"	15,000 lbf	T15
		1730	17" x 30"	□		12" 18" 24" 30" 36"		
		1730	17" x 30"	□	Flared	18"	15,000 lbf	T15
		2424	24" x 24"	□		24" 36" 48" 60"		
		2436	24" x 36"	□	Straight	18" 24" 36" 42"	**	Tier 15 / 22
		3048	30" x 48"	□		18" 24" 36" 42" 48"		
		3060	36" x 60"	□		24" 30" 36" 48"		
		3636	36" x 36"	□		36" 48" 72" 84" 96"		
4848	48" x 48"	□	36" 48" 72" 84" 96"					
	Concrete	B1017	10" x 17"	□	Straight	12" 24" 36"	16,000 lbf	N/A
		B1324	13" x 24"	□		12" 24" 36"		
		B1730	17" x 30"	□		12" 24" 36"		
		B2436	24" x 36"	□		12" 24" 36"		
		B3048	30" x 48"	□		12" 24" 36"		

* Models can be increased by 6" to a height you desire. **Tier 15 Design Load: 15,000 lbf Tier 22 Design Load: 22,500 lbf Blue - Stacked Body Units Orange - Extension Units



Performance Level and Load Ratings



Light Duty

Pedestrian Only

Class Vehicle	GVW (lb)	Max Wheel Load (lb)	Design Load	Test Load	Specification	Load Category
Pedestrian	-	-	300 lb/ft ²	-	ASTM C 857	A-0.3
Pedestrian	-	-	-	3000 lbf	ANSI/SCTE 77	Light Duty, Pedestrian
Pedestrian	-	-	850 lb	2200 lb	Telcordia GR-902	Greenway
Passenger Vehicle	6000	2400	2000 lbf	4340 lbf	WUC, Guide 3.6	Ped.Greenway Category 1

Medium Duty

Non-deliberate Traffic

Light Duty Truck, up to Class 3	14000	5600	5000	7500	ANSI/SCTE 77	Tier 5			
			8000	12000		Tier 8			
						3900	10400	Telcordia GR-902	Pedestrian/Light Duty Incidental
Medium Duty Truck, up to class 5	19500	7800	7800	20800	Telcordia GR-902	Non-Continuous Traffic			
						8000	17360	ASTM C 857	A-8
						8000	17360	WUC, Guide 3.6	Non-Continuous Traffic, Category 2
Medium Duty Truck, up to Class 7	33000	13200	15000	22500	ANSI/SCTE 77	Tier 15			

Heavy Duty

Non-deliberate Traffic

Heavy Duty Truck, up to Class 8	40000	16000	16000	34720	ASTM C 857	A-16			
						22500	33750	ANSI/SCTE 77	Tier 22
						16000	34720	WUC, Guide 3.6	In shoulder or parking area outside traffic lane, Category 3

Traffic Rated

Continuous Roadway Traffic

Vehicles up to Class 8	40000	16000	16000	45136	ASTM C 857	A-16
------------------------	-------	-------	-------	-------	------------	------

Traffic Rated products require steel covers to meet Traffic Rating Standards. Other cover options will meet Heavy Duty Standards.

LOAD RATINGS ARE DETERMINED BY THE LOWEST COMPONENT RATING

The Rural Utility Service (RUS) is a department of the US Department of Agriculture organized to facilitate rural developments. You will find Oldcastle Enclosure Solutions brand enclosures listed by the RUS. Please reference brand specific product data sheets for additional clarifications. All Oldcastle Enclosure Solutions brand enclosures conform to the RUS "Tamper Resistant" fastener design for buried pedestals found listed by code and group.

¹ The "Test Load" term is used in ANSI/ SCTE 77-2010 to designate the minimum load that an enclosure must be able to sustain to qualify for a particular performance rating. The term is synonymous with (minimum) Failure Load. It should be noted that within the ANSI/ SCTE 77-2010 specification, the "Test Load is 1.5 x the Design Load. Some specifications and Operating Companies select a higher multiple or Safety Factor for Proof of Design Load.



Lid Style and Markings

HDPE



Concrete



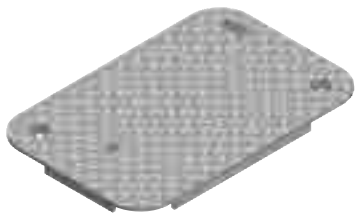
Composite



Polymer



Steel



Standard Markings

Lids are available with standard markings:
Blank/No Mark, Electric, Ground, Street Lighting,
Traffic Signal.



Marking Plate

4" x 8" Plate

Standard marking includes two lines of one inch text with a max of thirteen characters per line.

Custom markings are available.

Contact Customer Service for detailed information.

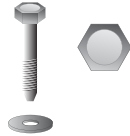


Security, Hardware, and Accessories

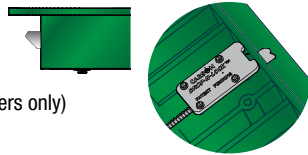
Enclosures come equipped with standard lid fastening hardware (varies per box type). Standard assembly is shown below.



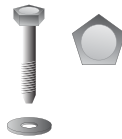
STANDARD HEX HEAD:
3/8 - 1/2 Stainless Steel Hex Head Bolt with Washer



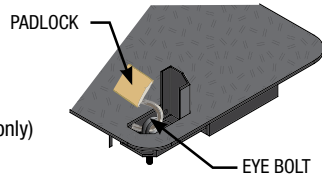
DROP-N-LOCK™:
Automatic locking system (available on select HDPE covers only)



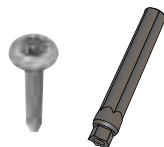
STANDARD PENTA HEAD:
3/8 - 1/2 Stainless Penta Head Bolt with Washer



PADLOCK & EYE:
Eye bolt and padlock (available on steel covers only)

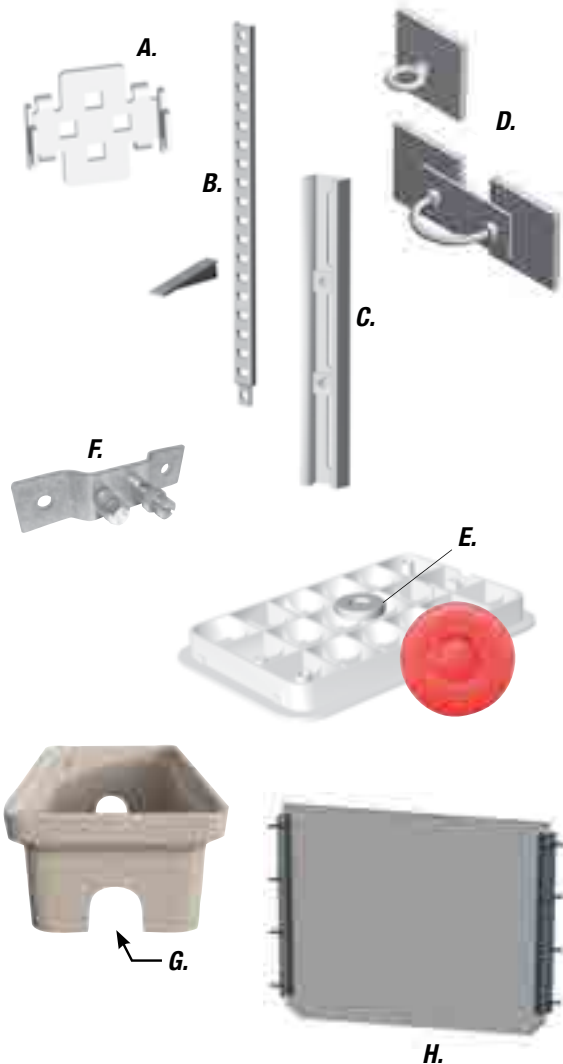


VANDAL PROOF:
Oldcastle Enclosures Vandal Proof bolt with specialty key.



Security Level	Typical Tool
Low	Fingers, Car Key, Pen Knife
Medium	Screwdriver, Hammer, Hacksaw, Pliers
High	Power Tools, Crowbar, Wedge, Hammer
Extreme	Sledge Hammer, Disc Grinder, Bolt Cutter

- A. Rack Mount
- B. Cable Racks/ Cable Arms
- C. Unistrut
- D. Pulling Eye - 1,000 lb. and 3,000 lb
- E. Electronic Marker
- F. Ground Buss
- G. Mouseholes / Circular Holes
- H. Dividers
- I. Solid Bottom (H-Series and Synertech)



Carson - 0708 Round

TrussT

 **Light Duty**
Pedestrian Only

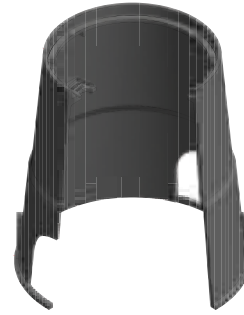
 **Pedestrian**



Snap-On



Twist-On
Accommodates
Optional Bolt Down



RATING	Part#	Description 1	Description 2	Color	Depth	Item Weight	Pallet Qty	List Price	Line Item Discount	Design Load
--------	-------	---------------	---------------	-------	-------	-------------	------------	------------	--------------------	-------------

Body - 0708 TrussT - features removable bolt provision

Ped	07082101	BODY_CA708-9_RD_BLK	2MH	Black	9	1.0	540	\$3.49	OC06	300 lb/ft ²
Ped	07082105	BODY_CA708-9_RD_GRN	2MH	Green	9	1.0	540	\$3.61	OC06	300 lb/ft ²

Lid - 0708 TrussT Twist-On Style (accommodates optional bolt)

Ped	07084125	LID_CA708_RD_GRN_'NO MARK'	TLD_TWL_000	Green	-	0.2	600	\$1.64	OC06	300 lb/ft ²
Ped	07084129	LID_CA708_RD_GRN_'ELECTRIC'	TLD_TWL_011	Green	-	0.2	600	\$1.64	OC06	300 lb/ft ²

Lid - 0708 TrussT Snap-On Style

Ped	07084145	LID_CA708_RD_GRN_'NO MARK'	TLD_SNP_000	Green	-	0.2	600	\$1.64	OC06	300 lb/ft ²
Ped	07084149	LID_CA708_RD_GRN_'ELECTRIC'	TLD_SNP_011	Green	-	0.2	600	\$1.64	OC06	300 lb/ft ²

Unit - 0708 TrussT Twist-On Style (accommodates optional bolt)

Ped	07081105	UNIT_CA708-9_RD_BLK:GRN_'NO MARK'	2MH:TLD_TWL_000	Blk-Grn	9	1.2	540	\$4.85	OC06	300 lb/ft ²
Ped	07081110	UNIT_CA708-9_RD_GRN:'NO MARK'	2MH:TLD_TWL_000	Green	9	1.2	540	\$4.96	OC06	300 lb/ft ²
Ped	07081111	UNIT_CA708-9_RD_BLK:GRN_'ELECTRIC'	2MH:TLD_TWL_011	Blk-Grn	9	1.2	540	\$4.85	OC06	300 lb/ft ²

Unit - 0708 TrussT Snap-On Style

Ped	07081135	UNIT_CA708-9_RD_BLK:GRN_'NO MARK'	2MH:TLD_SNP_000	Blk-Grn	9	1.2	540	\$4.85	OC06	300 lb/ft ²
Ped	07081140	UNIT_CA708-9_RD_GRN:'NO MARK'	2MH:TLD_SNP_000	Green	9	1.2	540	\$4.96	OC06	300 lb/ft ²
Ped	07081141	UNIT_CA708-9_RD_BLK:GRN_'ELECTRIC'	2MH:TLD_SNP_011	Blk-Grn	9	1.2	540	\$4.85	OC06	300 lb/ft ²

Carson - 0809 Round

TrussT

 **Light Duty**
Pedestrian Only

 **Pedestrian**



RATING	Part#	Description 1	Description 2	Color	Depth	Item Weight	Pallet Qty	List Price	Line Item Discount	Design Load
--------	-------	---------------	---------------	-------	-------	-------------	------------	------------	--------------------	-------------

Body - 0809 TrussT

P	08092001	809-09 Body Green 2 MsHI	-	Green	9	2.1	240	\$11.67	OC06	300 lb/ft ²
---	----------	--------------------------	---	-------	---	-----	-----	---------	------	------------------------

Lid - 0809 Truss T

P	08094003	809 T Cover Green Blank	-	Green	-	0.5	600	\$3.89	OC06	300 lb/ft ²
P	08094007	809 T Cover Green Elec	-	Green	-	0.5	600	\$3.89	OC06	300 lb/ft ²

Unit - 0809 TrussT

P	08091003	809-09 Green Blank	2 MsHI T Cover	Green	9	2.6	240	\$12.27	OC06	300 lb/ft ²
P	08091006	809-09 Green Elec	2 MsHI T Cover	Green	9	2.6	240	\$12.27	OC06	300 lb/ft ²

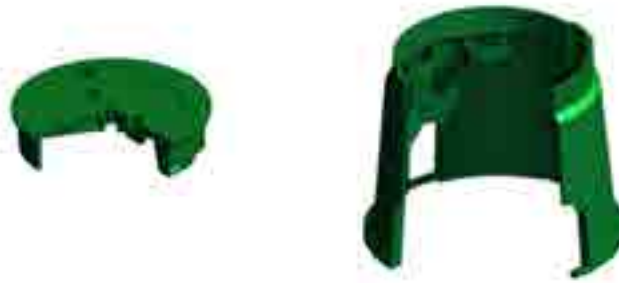
Carson - 0910
Specification Grade



Light Duty
Pedestrian Only



Pedestrian



RATING	Part#	Description 1	Description 2	Color	Depth	Item Weight	Pallet Qty	List Price	Line Item Discount	Design Load
Body - 0910										
Ped	09102001	910-10 Body Green 0 MsHI	-	Green	10	2.7	99	\$17.75	OC06	300 lb/ft ²
	09102002	910-10 Body Black 0 MsHI	-	Black	10	2.7	99	\$17.39	OC06	300 lb/ft ²
	09102005	910-10 Body Gray 0 MsHI	-	Gray	10	2.7	99	\$18.74	OC06	300 lb/ft ²
	09102014	910-10 Body Tan 0 MsHI	-	Tan	10	2.7	99	\$16.08	OC06	300 lb/ft ²
	09102017	910-10 Body Tan 2 MsHI	-	Tan	10	2.7	99	\$18.49	OC06	300 lb/ft ²
	09102018	910-18 Body Black 0 MsHI	-	Black	18	5.1	99	\$28.64	OC06	300 lb/ft ²

RATING	Part#	Description 1	Description 2	Color	Depth	Item Weight	Pallet Qty	List Price	Line Item Discount	Design Load
Lid - 0910										
Ped	09104005	910 T Cover Green Elec	-	Green	-	1.2	250	\$7.74	OC06	300 lb/ft ²
	09104007	910 T Cover Green Blank	-	Green	-	1.2	250	\$7.74	OC06	300 lb/ft ²
	09104026	910 Fish Cover Green Blank	-	Green	-	1.0	250	\$9.14	OC06	300 lb/ft ²

RATING	Part#	Description 1	Description 2	Color	Depth	Item Weight	Pallet Qty	List Price	Line Item Discount	Design Load
Unit - 0910										
Ped	09101012	910-10 Green Elec HBlit	0 MsHI T Cover	Green	10	3.9	99	\$26.35	OC06	300 lb/ft ²
	09101015	910-10 Green Blank HBlit	0 MsHI T Cover	Green	10	3.9	99	\$26.35	OC06	300 lb/ft ²
	09101016	910-10 Green Elec LPnta	0 MsHI T Cover	Green	10	3.9	99	\$29.17	OC06	300 lb/ft ²
	09101017	910-10 Black Elec HBlit	0 MsHI T Cover	Black	10	3.9	99	\$26.26	OC06	300 lb/ft ²
	09101022	910-10 Gray Elec HBlit	0 MsHI T Cover	Gray	10	3.9	99	\$27.59	OC06	300 lb/ft ²
	09101150	910-10 Green Ground HBlit	0 MsHI T Cover	Green	10	3.9	99	\$26.35	OC06	300 lb/ft ²

Carson - 1220
Specification Grade



Light Duty
Pedestrian Only



Pedestrian



RATING	Part#	Description 1	Description 2	Color	Depth	Item Weight	Pallet Qty	List Price	Line Item Discount	Design Load
Body - 1220										
P	12202007	1220-12 Body Black 0 MsHI	-	Black	12	9.3	48	\$56.33	OC06	300 lb/ft ²

RATING	Part#	Description 1	Description 2	Color	Depth	Item Weight	Pallet Qty	List Price	Line Item Discount	Design Load
Extension - 1220										
Ped	12203001	1220-6 Ext Green	-	Green	6	6.5	32	\$44.26	OC06	300 lb/ft ²
	12203002	1220-6 Ext Black	-	Black	6	6.5	32	\$42.67	OC06	300 lb/ft ²
	12203003	1220-6 Ext Tan	-	Tan	6	6.5	32	\$45.65	OC06	300 lb/ft ²

RATING	Part#	Description 1	Description 2	Color	Depth	Item Weight	Pallet Qty	List Price	Line Item Discount	Design Load
Lid - 1220										
P	12204018	1220 T Cover Green Elec	-	Green	-	4.7	150	\$24.87	OC07	300 lb/ft ²

RATING	Part#	Description 1	Description 2	Color	Depth	Item Weight	Pallet Qty	List Price	Line Item Discount	Design Load
Unit - 1220										
Ped	12201010	1220-12 Green Elec LPnta	0 MsHI Fish Cover	Green	12	15.0	48	\$74.65	OC06	300 lb/ft ²
	12201012	1220-12 Gray Elec HBlit	0 MsHI T Cover	Gray	12	15.0	48	\$72.06	OC06	300 lb/ft ²
	12201027	1220-12 Black Elec HBlit	0 MsHI T Cover	Black	12	15.0	48	\$68.41	OC06	300 lb/ft ²
	12201036	1220-12 Green Elec HBlit	0 MsHI T Cover	Green	12	15.0	48	\$70.45	OC06	300 lb/ft ²
	12201195	1220-12 Green Elec Pedestal	0 MsHI Fargo Lock CLPnta	Green	12	19.5	16	\$169.93	OC06	300 lb/ft ²

Carson - 1419
Specification Grade



Part#	Description 1	Description 2	Color	Depth	Item Weight	Pallet Qty	List Price	Line Item Discount	Design Load
-------	---------------	---------------	-------	-------	-------------	------------	------------	--------------------	-------------

Body - 1419

14192002	1419-12 Body Green 0 MsHI	-	Green	12	7.0	78	\$31.18	OC06	300 lb/ft ²
14192003	1419-12 Body Gray 0 MsHI	-	Gray	12	7.0	78	\$34.07	OC06	300 lb/ft ²
14192011	1419-24 Body Black 2 MsHI	-	Black	24	15.2	48	\$60.34	OC06	300 lb/ft ²

Extension - 1419

14193001	1419-6 Ext Green	-	Green	6	4.0	54	\$27.24	OC06	300 lb/ft ²
14193002	1419-6 Ext Black	-	Black	6	4.0	54	\$26.43	OC06	300 lb/ft ²

Lid - 1419

14194004	1419 T Cover Green Elec	-	Green	-	2.7	200	\$16.56	OC06	300 lb/ft ²
14194005	1419 T Cover Green Blank	-	Green	-	2.7	200	\$16.56	OC06	300 lb/ft ²

Unit - 1419

14191011	1419-12 Green Elec HBlit	0 MsHI T Cover	Green	12	9.7	78	\$45.01	OC06	300 lb/ft ²
14191012	1419-12 Green Elec LPnta	0 MsHI T Cover	Green	12	9.7	78	\$48.28	OC06	300 lb/ft ²
14191013	1419-12 Green Elec CLPnta	0 MsHI TCvr E Marker	Green	12	9.7	78	\$77.61	OC06	300 lb/ft ²
14191016	1419-12 Black Elec HBlit	0 MsHI T Cover	Black	12	9.7	78	\$44.09	OC06	300 lb/ft ²
14191017	1419-12 Gray Elec HBlit	0 MsHI T Cover	Gray	12	9.7	78	\$46.38	OC06	300 lb/ft ²
14191018	1419-12 Green Elec HBlit	0 MsHI Flsh Cover	Green	12	9.7	78	\$54.02	OC06	300 lb/ft ²
14191086	1419-12 Green St Lgtg HBlit	0 MsHI T Cover	Green	12	9.7	78	\$45.01	OC06	300 lb/ft ²
14191105	1419-12 Gray Traff Sg HBlit	0 MsHI T Cover	Gray	12	9.7	78	\$46.38	OC06	300 lb/ft ²
14191399	1419-12 Gray Elec SPnta	0 MsHI T Cover	Gray	12	9.7	78	\$58.93	OC06	300 lb/ft ²

Carson - 1324
Specification Grade



Part#	Description 1	Description 2	Color	Depth	Item Weight	Pallet Qty	List Price	Line Item Discount	Design Load
-------	---------------	---------------	-------	-------	-------------	------------	------------	--------------------	-------------

Body - 1324

13242001	1324-12 Body Green 0 MsHI	-	Green	12	14.5	16	\$112.12	OC06	300 lb/ft ²
13242019	1324-12 Body Black 0 MsHI	-	Black	12	14.5	16	\$112.12	OC06	300 lb/ft ²
13242002	1324-15 Body Green 0 MsHI	-	Green	15	16.8	16	\$126.36	OC06	300 lb/ft ²
13242004	1324-15 Body Black 0 MsHI	-	Black	15	16.8	16	\$126.36	OC06	300 lb/ft ²

Lid - 1324

13244002	1324 Flsh Cover Green Elec	-	Green	-	6.0	100	\$54.64	OC06	300 lb/ft ²
13244074	1324 T Cover Green Elec	2x Capt Prov RUS Compliant	Green	-	6.4	100	\$54.64	OC06	300 lb/ft ²

Unit - 1324

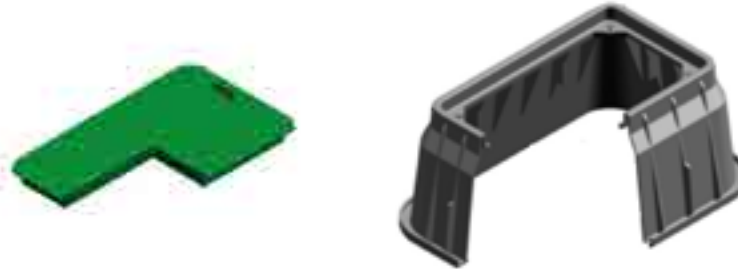
13241076	1324-12 Gray Elec LPnta	0 MsHI Flsh Cover	Gray	12	20.4	16	\$162.47	OC06	300 lb/ft ²
13241147	1324-12 Gray Elec HBlit	0 MsHI Flsh Cover	Gray	12	20.4	16	\$156.77	OC06	300 lb/ft ²
13241009	1324-15 Green Elec HBlit	0 MsHI Flsh Cover	Green	15	23.1	16	\$159.62	OC06	300 lb/ft ²
13241010	1324-15 Green Elec LBLPnta	0 MsHI T Cover	Green	15	23.1	16	\$164.37	OC06	300 lb/ft ²
13241011	1324-15 Green Elec LPnta	0 MsHI Flsh Cover	Green	15	23.1	16	\$165.33	OC06	300 lb/ft ²
13241012	1324-15 Green Elec CLPnta	0 MsHI FCvr EMS	Green	15	23.1	16	\$199.96	OC06	300 lb/ft ²
13241015	1324-15 Green Elec LBlit	0 MsHI Flsh Cover	Green	15	23.1	16	\$162.47	OC06	300 lb/ft ²
13241020	1324-15 ABS Gray Elec LPnta	0 MsHI FCvr	Gray	15	23.1	16	\$224.23	OC06	300 lb/ft ²
13241050	1324-15 Green Elec LPnta	0 MsHI T Cover RUS	Green	15	23.1	16	\$165.33	OC06	300 lb/ft ²
13241196	1324-15 Gray Elec LBLPnta	0 MsHI T Cover	Gray	15	23.1	16	\$166.27	OC06	300 lb/ft ²

Carson - 1520
Specification Grade



Part#	Description 1	Description 2	Color	Depth	Item Weight	Pallet Qty	List Price	Line Item Discount	Design Load
Body - 1520									
15202002	1520-18 Body Black 2 MsHl	-	Black	18	11.7	44	\$28.24	OC06	300 lb/ft ²
15202038	1520-18 Body Black 0 MsHl	1x EzLck Clip	Black	18	11.7	44	\$64.85	OC06	300 lb/ft ²
Extension - 1520									
15203001	1520-6 Ext Black	-	Black	6	4.0	42	\$24.42	OC06	300 lb/ft ²
Lid - 1520									
15204013	1520 T Cover Green Elec	-	Green	-	3.0	200	\$15.94	OC06	300 lb/ft ²
Unit - 1520									
15201007	1520-18 Blk-Grn Elec	0 MsHl EzLck T Cover	Blk-Grn	18	14.8	44	\$70.77	OC06	300 lb/ft ²
15201039	1520-18 Green Elec HBlT	2 MsHl T Cover	Green	18	14.8	44	\$77.71	OC06	300 lb/ft ²

Carson - 1730
Specification Grade



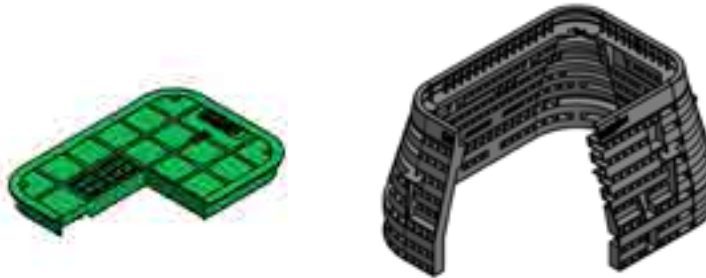
Part#	Description 1	Description 2	Color	Depth	Item Weight	Pallet Qty	List Price	Line Item Discount	Design Load
Body - 1730									
17302001	1730-12 Body Green 0 MsHl	-	Green	12	19.0	16	\$122.56	OC06	300 lb/ft ²
17302014	1730-12 Body Black 0 MsHl	-	Black	12	19.0	16	\$117.81	OC06	300 lb/ft ²
17302002	1730-15 Body Green 0 MsHl	-	Green	15	24.0	16	\$133.97	OC06	300 lb/ft ²
17302015	1730-15 Body Black 0 MsHl	-	Black	15	24.0	16	\$125.73	OC06	300 lb/ft ²
17302004	1730-18 Body Green 0 MsHl	-	Green	18	26.9	16	\$157.08	OC06	300 lb/ft ²
17302013	1730-18 Body Black 0 MsHl	-	Black	18	26.9	16	\$149.16	OC06	300 lb/ft ²
17302053	1730-24 Body Black 0 MsHl	4x Loc-Kit Clip	Black	24	51.6	6	\$204.27	OC06	300 lb/ft ²
Lid - 1730									
17304008	1730 Fish Cover Green Blank	-	Green	-	10.5	120	\$114.01	OC06	300 lb/ft ²
17304030	1730 T Cover Green Elec	-	Green	-	11.3	120	\$114.01	OC06	300 lb/ft ²
Unit - 1730									
17301007	1730-15 Green Elec HBlT	0 MsHl Fish Cover	Green	15	34.4	16	\$243.22	OC06	300 lb/ft ²
17301111	1730-15 Green Blank LBlT	0 MsHl T Cover	Green	15	34.4	16	\$245.13	OC06	300 lb/ft ²
17301017	1730-18 Green Elec HBlT	0 MsHl Fish Cover	Green	18	37.3	16	\$262.23	OC06	300 lb/ft ²
17301018	1730-18 Green Elec LPnta	0 MsHl TCvr 3/8 in. TRH	Green	18	37.3	16	\$268.87	OC06	300 lb/ft ²
17301019	1730-18 Green Elec LBLPnta	0 MsHl T Cover	Green	18	37.3	16	\$266.02	OC06	300 lb/ft ²
17301020	1730-18 Green Elec LPnta	0 MsHl Fish Cover	Green	18	37.3	16	\$266.97	OC06	300 lb/ft ²
17301086	1730-18 Gray Elec LBLPnta	0 MsHl Fish Cover	Gray	18	37.3	16	\$282.49	OC06	300 lb/ft ²
17301087	1730-18 Gray Elec HBlT	0 MsHl Fish Cover	Gray	18	37.3	16	\$278.38	OC06	300 lb/ft ²
17301229	1730-18 Black Elec HBlT	0 MsHl T Cover	Black	18	37.3	16	\$252.09	OC06	300 lb/ft ²
17301235	1730-24 Blk-Grn Blank	4x EzLck T Cover	Blk-Grn	24	64.3	7	\$255.58	OC06	300 lb/ft ²
17301237	1730-24 Blk-Grn Elec	2x EzLck T Cover	Blk-Grn	24	64.3	7	\$255.58	OC06	300 lb/ft ²
17301279	1730-24 Blk-Grn Blank HBlT	4x TCvr EMS	Blk-Grn	24	64.3	7	\$268.87	OC06	300 lb/ft ²

Carson - 2200
Specification Grade



RATING	Part#	Description 1	Description 2	Color	Depth	Item Weight	Pallet Qty	List Price	Line Item Discount	Design Load
Body - 2200										
P	22002001	2200-18 Body Black 2 MsHI	-	Black	18	13.0	56	\$33.97	OC06	300 lb/ft ²
Extension - 2200										
P	22003001	2200-6 Ext Black	-	Black	6	5.0	180	\$26.42	OC06	300 lb/ft ²
Lid - 2200										
P	22004002	2200 Fish Cover Black Blank	Dallas Lock	Black	-	3.0	180	\$29.25	OC06	300 lb/ft ²
Unit - 2200										
P	22001001	2200-18 Black Blank	2 MsHI Fish Cover	Black	18	17.0	56	\$72.31	OC06	300 lb/ft ²
P	22001002	2200-18 Black Blank	2 MsHI FCvr Dallas Lock	Black	18	17.0	56	\$75.14	OC06	300 lb/ft ²

Carson - 2436
Specification Grade



Call Customer Service for other custom vault sizes and options.

RATING	Part#	Description 1	Description 2	Color	Depth	Item Weight	Pallet Qty	List Price	Line Item Discount	Design Load
Body - 2436										
P	24362001	2436-18 Body Gray	2x 3/8 in. Fltg Nut	Gray	18	57.8	5	\$342.54	OC06	300 lb/ft ²
P	24362002	2436-24 Body Gray	2x 3/8 in. Fltg Nut	Gray	24	62.2	4	\$507.48	OC06	300 lb/ft ²
P	24362010	2436-36 HP Body Gray	2x 1/2 in. Fltg Nut	Gray	36	95.8	8	\$860.36	OC06	300 lb/ft ²
Lid - 2436										
P	24364053	2436 T Cover Green Elec	4x Bolt Hole	Green	-	18.9	26	\$136.82	OC06	300 lb/ft ²
P	24364087	2436 T Cover Gray Blank	4x Bolt Hole	Gray	-	18.9	26	\$136.82	OC06	300 lb/ft ²
P	24364111	2436 T Cover Gray Elec	4x Bolt Hole	Gray	-	18.9	26	\$136.82	OC06	300 lb/ft ²
Unit - 2436										
P	24361283	2436-18 Gray Electric HBlt	4x3/8 in T Cover	Gray	18	66.5	7	\$588.03	OC06	300 lb/ft ²
P	24361285	2436-18 Gray Blank HBlt	4x 3/8 in. T Cover	Gray	18	66.5	7	\$588.03	OC06	300 lb/ft ²
P	24361073	2436-24 Blk-Grn Blank	4x EzLck T Cover	Blk-Grn	24	82.5	5	\$422.12	OC06	300 lb/ft ²
P	24361180	2436-24 Blk-Grn Blank	6x EzLck TCvr 2pc Plug	Blk-Grn	24	82.5	5	\$456.05	OC06	300 lb/ft ²
P	24361188	2436-36 Gray Blank HBlt	4x 3/8 in. T Cover	Gray	36	114.1	2	\$892.72	OC06	300 lb/ft ²

Carson - 3636
Specification Grade

3636

 **Light Duty**
 Pedestrian Only

 **Pedestrian**

Call Customer Service for other custom vault sizes and options.



Part#	Description 1	Description 2	Color	Depth	Item Weight	Pallet Qty	List Price	Line Item Discount	Design Load	
Body - 3636										
P 36362003	3636-30 Body Gray	2x 3/8 in. Fltg Nut	Gray	30	103	3	\$1,047.98	OC06	300 lb/ft ²	
36362004	3636-36 Body Gray	2x 3/8 in. Fltg Nut	Gray	36	113	3	\$989.75	OC06	300 lb/ft ²	
Lid - 3636										
P 36364024	3636 T Cover Gray Blank	4x Bolt Hole	Gray	-	37	25	\$292.07	OC06	300 lb/ft ²	
36364032	3636 T Cover Green Blank	4x Bolt Hole	Green	-	37	25	\$292.07	OC06	300 lb/ft ²	
Unit - 3636										
P 36361029	3636-18 Green Elec LPnta	2x 3/8 in. FCvr 3/8 in. HI	Gray	18	97	4	\$806.36	OC06	300 lb/ft ²	
36361062	3636-18 Gray Blank HBlit	4x 3/8 in. T Cover	Gray	18	97	4	\$806.36	OC06	300 lb/ft ²	
36361040	3636-36 Gray Blank HBlit	4x 3/8 in. T Cover	Gray	36	150	3	\$1,281.82	OC06	300 lb/ft ²	

CARSON

Carson - 1324, 1419, 1730, 2436, 3636

Hybrid



Carson® Hybrids are specially designed to interchange various lid materials with a HDPE body to maximize load ratings and at the highest value.

RATING	Part#	Description 1	Description 2	Color	Depth	Item Weight	Pallet Qty	List Price	Line Item Discount	Design Load
--------	-------	---------------	---------------	-------	-------	-------------	------------	------------	--------------------	-------------

Unit - 1324

P	13241032	1324-18 HIP Gray Elec HBlt	Plastic Body PC Rng Flsh Cover	Gray	18	133	10	\$439.24	OC07	8000
---	----------	----------------------------	--------------------------------	------	----	-----	----	----------	------	------

Unit - 1419

P	14191050	1419-15 HIP Gray Elec	Plastic Body PC Rng Flsh Cover	Gray	15	50	18	\$292.69	OC07	8000
	14191051	1419-15 HIP Gray Blank	Plastic Body PC Rng Flsh Cover	Gray	15	7	18	\$292.69	OC07	8000

Unit - 1730

P	17301426	1730-18 HLPC Grn-Gry Blank HBlt	0 MsHI Flsh Cover	Gry-Grn	18	79	2	\$290.82	OC07	8000
	17301345	1730-24 HLPC Blk-Gry Blank	2x HBlt FCvr T5	Blk-Gry	24	104	2	\$497.40	OC07	8000

Unit - 2436

P	24361015	2436-18 HPC Gray Blank HBlt	2x 1 2 in. FCvr 20K	Gray	18	233	2	\$867.14	OC07	8000
	24361181	2436-24 HLPC Blk-Gry Blank	2x HBlt FCvr T8	Blk-Gry	24	164	2	\$1,037.38	OC07	8000

Unit - 3636

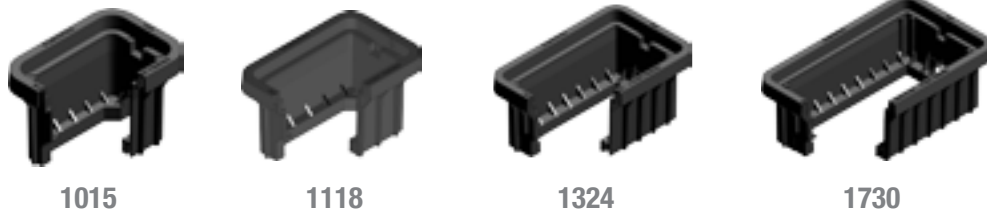
P	36361019	3636-36 HPC Gray Elec HBlt	2x 1 2 in. FCvr 20K	Gray	36	369	3	\$1,571.15	OC07	8000
---	----------	----------------------------	---------------------	------	----	-----	---	------------	------	------

Carson - 1015, 1118, 1324, 1730

Heavywall



These boxes are designed to be used with HDPE, Fibrelyte, and H-Series Covers.



RATING	Part#	Description 1	Description 2	Color	Depth	Item Weight	Pallet Qty	List Price	Line Item Discount	Design Load
--------	-------	---------------	---------------	-------	-------	-------------	------------	------------	--------------------	-------------

Body - 1015

TB	10152570	BODY_HW1015-12_RT_GRY	BCF_0MH_SW	Gray	12	12	24	\$47.37	OC04	8000
	10152580	BODY_HW1015-18_RT_GRY	BCF_0MH_SW	Gray	18	9	18	\$57.89	OC04	8000

Body - 1118

TB	11182570	BODY_HW1118-12_RT_GRY	BCF_0MH_SW	Gray	12	11	24	\$57.89	OC04	8000
	11182580	BODY_HW1118-18_RT_GRY	BCF_0MH_SW	Gray	18	14	18	\$68.42	OC04	8000

Body - 1324

TB	13242570	BODY_HW1324-12_RT_GRY	BCF_0MH_SW	Gray	12	15	16	\$78.95	OC04	8000
	13242580	BODY_HW1324-18_RT_GRY	BCF_0MH_SW	Gray	18	19	12	\$89.47	OC04	8000

Body - 1730

TB	17302570	BODY_HW1730-12_RT_GRY	BCF_0MH_SW	Gray	12	29	8	\$124.21	OC04	8000
	17302580	BODY_HW1730-18_RT_GRY	BCF_0MH_SW	Gray	18	20	6	\$147.37	OC04	8000

H-Series - 0910 Round

Polymer Concrete

 **Heavy Duty**
Non-deliberate Traffic

 **Tier 22***



*Products are rated by the lowest component rating. A tier 15 cover with a tier 22 body is rated tier 15. A tier 22 cover with a tier 22 body is rated tier 22.

See Accessories Section in the Back of this Manual for Options, Hardware, Specialty Markings and Other Accessories

RATING	Part#	Description 1	Description 2	Color	Depth	Item Weight	Pallet Qty	List Price	Line Item Discount	Design Load
--------	-------	---------------	---------------	-------	-------	-------------	------------	------------	--------------------	-------------

Body - 910

T22	09102011	Body, PC0910-10	PC091010FW	Gray	10	23	36	\$144.40	OC03	22500
-----	----------	-----------------	------------	------	----	----	----	----------	------	-------

Lid - 910

T22	09104027	Lid, PC0910 - "Electric"	PC0910-T22	Gray	-	11	100	\$65.87	OC03	22500
	09104029	Lid, PC0910 - No Mark	PC0910-T22	Gray	-	11	100	\$65.87	OC03	22500
	09104082	Lid, PC0910 - "Ground"	PC0910-T22	Gray	-	11	100	\$65.87	OC03	22500

Unit - 910 (Units come standard with Body-Open Bottom, Lid and SS Hex Bolt Floating Nut Hardware)

T22	09101049	Unit, PC0910-10, FW, Blank	PC0910T-T22	Gray	10	34	36	\$215.27	OC03	22500
	09101047	Unit, PC0910-10, FW, "Electric"	PC0910T-T22	Gray	10	34	36	\$215.27	OC03	22500
	09101187	Unit, PC0910-10, FW, "Ground"	PC0910T-T22	Gray	10	34	36	\$215.27	OC03	22500

H-Series - 1015 Flared Wall (FW)

Polymer Concrete

 **Medium Duty**
Non-deliberate Traffic

 **Heavy Duty**
Non-deliberate Traffic

 **Tier 8**



*Products are rated by the lowest component rating. A tier 15 cover with a tier 22 body is rated tier 15. A tier 22 cover with a tier 22 body is rated tier 22.

See Accessories Section in the Back of this Manual for Options, Hardware, Specialty Markings and Other Accessories

RATING	Part#	Description 1	Description 2	Color	Depth	Item Weight	Pallet Qty	List Price	Line Item Discount	Design Load
--------	-------	---------------	---------------	-------	-------	-------------	------------	------------	--------------------	-------------

Body - 1015

T8	10152035	Body, PC1015-18,FW	-	Gray	18	80	10	\$133.88	OC03	8000
----	----------	--------------------	---	------	----	----	----	----------	------	------

Lid - 1015

T22	10154150	Lid, PC1015/09 T - No Mark	PC1015T000	Gray	-	19	28	\$44.82	OC03	22500
	10154151	Lid, PC1015/09 T - "Electric"	PC1015T011	Gray	-	19	28	\$44.82	OC03	22500
	10154152	Lid, PC1015/09 T - "Street Lighting"	PC1015T022	Gray	-	19	28	\$44.82	OC03	22500
	10154154	Lid, PC1015/09 T - "Ground"	PC1015T017	Gray	-	19	28	\$44.82	OC03	22500
	10154156	Lid, PC1015/09 T - "Lighting"	PC1015T021	Gray	-	19	28	\$44.82	OC03	22500
	10154157	Lid, PC1015/09 T - "Signals"	PC1015T013	Gray	-	19	28	\$44.82	OC03	22500

H-Series - 1118
Polymer Concrete

-  **Medium Duty**
Non-deliberate Traffic
-  **Heavy Duty**
Non-deliberate Traffic
-  **Tier 15 & 22***



*Products are rated by the lowest component rating. A tier 15 cover with a tier 22 body is rated tier 15. A tier 22 cover with a tier 22 body is rated tier 22.

See Accessories Section in the Back of this Manual for Options, Hardware, Specialty Markings and Other Accessories

RATING	Part#	Description 1	Description 2	Color	Depth	Item Weight	Pallet Qty	List Price	Line Item Discount	Design Load
--------	-------	---------------	---------------	-------	-------	-------------	------------	------------	--------------------	-------------

Body - 1118

T22	11182001	Body, PC1118-12,SW	PC111812SW	Gray	12	47	28	\$98.55	OC03	22500
	11182003	Body, PC1118-18,SW	PC111818SW	Gray	18	70	28	\$115.24	OC03	22500

Lid - 1118

T15	11184606	Lid, PC1118-T, T15 -"Electric"	PC1118T-T15	Gray	-	20	60	\$79.93	OC03	15000
	11184608	Lid, PC1118-T, T15 -"Ground"	PC1118T-T15	Gray	-	20	60	\$79.93	OC03	15000
	11184609	Lid, PC1118-T, T15 -"Street Lighting"	PC1118T-T15	Gray	-	20	60	\$79.93	OC03	15000
	11184611	Lid, PC1118-T, T15 -"Traffic Signal"	PC1118T-T15	Gray	-	20	60	\$79.93	OC03	15000
	11184612	Lid, PC1118-T, T15, - Blank	PC1118T-T15	Gray	-	20	60	\$79.93	OC03	15000
T22	11184001	Lid, PC1118-T, T22 - "Electric"	PC1118T-T22	Gray	-	28	60	\$109.54	OC03	22500
	11184003	Lid, PC1118-T, T22 - Blank	PC1118T-T22	Gray	-	28	60	\$109.54	OC03	22500
	11184007	Lid, PC1118-T, T22 - "Street Lighting"	PC1118T-T22	Gray	-	28	60	\$109.54	OC03	22500
	11184009	Lid, PC1118-T, T22 - "Traffic Signal"	PC1118T-T22	Gray	-	28	60	\$109.54	OC03	22500
	11184613	Lid, PC1118-T, T22 - "Ground"	PC1118T-T22	Gray	-	28	60	\$109.54	OC03	22500

Unit - 1118 (Units come standard with Body-Open Bottom, Lid and SS Hex Bolt Floating Nut Hardware)

T15	11181604	Unit, PC1118-12, T15 - Blank	PC111812-T15	Gray	12	67	28	\$193.35	OC03	15000
	11181608	Unit, PC1118-12, T15 -"Electric"	PC111812-T15	Gray	12	67	28	\$193.35	OC03	15000
	11181610	Unit, PC1118-12, T15 -"Ground"	PC111812-T15	Gray	12	67	28	\$193.35	OC03	15000
	11181611	Unit, PC1118-12, T15 -"Street Lighting"	PC111812-T15	Gray	12	67	28	\$193.35	OC03	15000
	11181613	Unit, PC1118-12, T15 -"Traffic Signal"	PC111812-T15	Gray	12	67	28	\$193.35	OC03	15000
T22	11181001	Unit, PC1118-12, T22 - "Electric"	PC111812-T22	Gray	12	73	28	\$223.31	OC03	22500
	11181003	Unit, PC1118-12, T22 - Blank	PC111812-T22	Gray	12	73	28	\$223.31	OC03	22500
	11181616	Unit, PC1118-12, T22 - "Ground"	PC111812-T22	Gray	12	73	28	\$223.31	OC03	22500
	11181617	Unit, PC1118-12, T22 - "Street Lighting"	PC111812-T22	Gray	12	73	28	\$223.31	OC03	22500
	11181619	Unit, PC1118-12, T22 - "Traffic Signal"	PC111812-T22	Gray	12	73	28	\$223.31	OC03	22500
	11181007	Unit, PC1118-18 - "Electric"	PC111812-T22	Gray	18	100	21	\$241.93	OC03	22500
11181009	Unit, PC1118-18 - Blank	PC111812-T22	Gray	18	100	21	\$241.93	OC03	22500	

H-Series - 1212
Polymer Concrete

-  **Heavy Duty**
Non-deliberate Traffic
-  **Tier 8***



*Products are rated by the lowest component rating. A tier 15 cover with a tier 22 body is rated tier 15. A tier 22 cover with a tier 22 body is rated tier 22.

See Accessories Section in the Back of this Manual for Options, Hardware, Specialty Markings and Other Accessories

RATING	Part#	Description 1	Description 2	Color	Depth	Item Weight	Pallet Qty	List Price	Line Item Discount	Design Load
--------	-------	---------------	---------------	-------	-------	-------------	------------	------------	--------------------	-------------

Body - 1212

22	12122001	Body, PC 1212-12 SW, HLW	PC1212T-T22	Gray	12	35	36	\$110.83	OC03	22,500
----	----------	--------------------------	-------------	------	----	----	----	----------	------	--------

Lid - 1212

T8	12124001	Lid, PC 1212 HLW - "Electric"	PC1212T-T8	Gray	-	11	40	\$52.35	OC03	8000
	12124003	Lid, PC 1212 HLW - No Mark	PC1212T-T8	Gray	-	11	40	\$52.35	OC03	8000
	12124005	Lid, PC 1212 HLW - "Traffic"	PC1212T-T8	Gray	-	11	40	\$52.35	OC03	8000
	12124006	Lid, PC 1212 HLW - "Street Lighting"	PC1212T-T8	Gray	-	11	40	\$52.35	OC03	8000
	12124009	Lid, PC 1212 HLW - "Ground"	PC1212T-T8	Gray	-	11	40	\$52.35	OC03	8000
	12124010	Lid, PC1212 HLW - "Traffic Signal"	PC1212T-T8	Gray	-	11	40	\$52.35	OC03	8000

Unit - 1212 (Units come standard with Body-Open Bottom, Lid and SS Hex Bolt Floating Nut Hardware)

T8	12121001	Unit, PC 1212-12 HLW - "Electric"	PC1212T-T8	Gray	12	46	36	\$144.40	OC03	8000
	12121003	Unit, PC 1212-12 HLW - No Mark	PC1212T-T8	Gray	12	46	36	\$144.40	OC03	8000

H-Series - 1324 Rectangular & Flared Wall (FW)

Polymer Concrete

1324

Straight Wall

 **Medium Duty**
Non-deliberate Traffic

 **Heavy Duty**
Non-deliberate Traffic

 **Tier 15 & 22***



*Products are rated by the lowest component rating. A tier 15 cover with a tier 22 body is rated tier 15. A tier 22 cover with a tier 22 body is rated tier 22.

See Accessories Section in the Back of this Manual for Options, Hardware, Specialty Markings and Other Accessories

Flared Wall

 **Medium Duty**
Non-deliberate Traffic

 **Tier 15***



RATING	Part#	Description 1	Description 2	Color	Depth	Item Weight	Pallet Qty	List Price	Line Item Discount	Design Load
Body - 1324										
T15	13242600	Body, PC1324-18,FW	PC132418FW	Gray	18	71	15	\$131.94	OC03	15000
T22	13242020	Body, PC1324-12,SW	PC132412SW	Gray	12	50	20	\$113.01	OC03	22500
T22	13242023	Body, PC1324-18,SW	PC132418SW	Gray	18	52	15	\$130.38	OC03	22500
T22	13242038	Body, PC1324-24,SW	PC132424SW	Gray	24	89	10	\$179.12	OC03	22500

T22	13243001	Ext, PC 1324-9	PC13249X	Gray	9	50	16	\$157.07	OC03	22500
-----	----------	----------------	----------	------	---	----	----	----------	------	-------

Lid - 1324										
T15	13244603	Lid, PC1324-T, T15 - Blank	PC1324T-T15	Gray	-	38	30	\$119.90	OC03	15000
T15	13244607	Lid, PC1324-T, T15 -"Electric"	PC1324T-T15	Gray	-	38	30	\$119.90	OC03	15000
T15	13244609	Lid, PC1324-T, T15 -"Ground"	PC1324T-T15	Gray	-	38	30	\$119.90	OC03	15000
T15	13244610	Lid, PC1324-T, T15 -"Street Lighting"	PC1324T-T15	Gray	-	38	30	\$119.90	OC03	15000
T15	13244612	Lid, PC1324-T, T15 -"Traffic Signal"	PC1324T-T15	Gray	-	38	30	\$119.90	OC03	15000
T22	13244012	Lid, PC1324-T, T22 - "Electric"	PC1324T-T22	Gray	-	51	30	\$163.84	OC03	22500
T22	13244014	Lid, PC1324-T, T22 - Blank	PC1324T-T22	Gray	-	51	30	\$163.84	OC03	22500
T22	13244173	Lid, PC1324-T, T22 - "Traffic Signal"	PC1324T-T22	Gray	-	51	30	\$163.84	OC03	22500
T22	13244178	Lid, PC1324-T, T22 - "Street Lighting"	PC1324T-T22	Gray	-	51	30	\$163.84	OC03	22500
T22	13244613	Lid, PC1324-T, T22 - "Ground"	PC1324T-T22	Gray	-	51	30	\$163.84	OC03	22500

Unit - 1324 (Units come standard with Body-Open Bottom, Lid and SS Hex Bolt Floating Nut Hardware)										
T15	13241600	Unit, PC1324-12, T15 - Blank	PC132412-T15	Gray	12	90	20	\$248.09	OC03	15000
T15	13241603	Unit, PC1324-12, T15 -"Electric"	PC132412-T15	Gray	12	90	20	\$248.09	OC03	15000
T15	13241605	Unit, PC1324-12, T15 -"Street Lighting"	PC132412-T15	Gray	12	90	20	\$248.09	OC03	15000
T15	13241606	Unit, PC1324-12, T15 -"Traffic Signal"	PC132412-T15	Gray	12	90	20	\$248.09	OC03	15000
T15	13241610	Unit, PC1324-18, T15 - Blank	PC132418-T15	Gray	18	109	15	\$265.25	OC03	15000
T15	13241611	Unit, PC1324-18, T15 - Blank, FW	PC132418-T15	Gray	18	116	15	\$265.25	OC03	15000
T15	13241616	Unit, PC1324-18, T15 -"Electric"	PC132418-T15	Gray	18	109	15	\$265.25	OC03	15000
T15	13241617	Unit, PC1324-18, T15 -"Electric", FW	PC132418-T15	Gray	18	116	15	\$265.25	OC03	15000
T15	13241620	Unit, PC1324-18, T15 -"Street Lighting"	PC132418-T15	Gray	18	109	15	\$265.25	OC03	15000
T15	13241621	Unit, PC1324-18, T15 -"Street Lighting", FW	PC132418-T15	Gray	18	116	15	\$265.25	OC03	15000
T15	13241622	Unit, PC1324-18, T15 -"Traffic Signal"	PC132418-T15	Gray	18	109	15	\$265.25	OC03	15000
T15	13241623	Unit, PC1324-18, T15 -"Traffic Signal", FW	PC132418-T15	Gray	18	116	15	\$265.25	OC03	15000
T15	13241635	Unit, PC1324-24, T15 - Blank	PC132424-T15	Gray	24	127	10	\$313.42	OC03	15000
T15	13241638	Unit, PC1324-24, T15 -"Electric"	PC132424-T15	Gray	24	127	10	\$313.42	OC03	15000
T15	13241640	Unit, PC1324-24, T15 -"Street Lighting"	PC132424-T15	Gray	24	127	10	\$313.42	OC03	15000
T15	13241641	Unit, PC1324-24, T15 -"Traffic Signal"	PC132424-T15	Gray	24	127	10	\$313.42	OC03	15000
T22	13241021	Unit, PC1324-12, T22 - "Electric"	PC132412-T22	Gray	12	99	20	\$292.57	OC03	22500
T22	13241023	Unit, PC1324-12, T22 - Blank	PC132412-T22	Gray	12	99	20	\$292.57	OC03	22500
T22	13241124	Unit, PC1324-12, T22 - "Traffic Signal"	PC132412-T22	Gray	12	99	20	\$292.57	OC03	22500
T22	13241265	Unit, PC1324-12, T22 - "Street Lighting"	PC132412-T22	Gray	12	99	20	\$292.57	OC03	22500
T22	13241027	Unit, PC1324-18, T22 - "Electric"	PC132418-T22	Gray	18	118	15	\$309.73	OC03	22500
T22	13241029	Unit, PC1324-18, T22 - Blank	PC132418-T22	Gray	18	118	15	\$309.73	OC03	22500
T22	13241630	Unit, PC1324-18, T22 - "Street Lighting"	PC132418-T22	Gray	18	118	15	\$309.73	OC03	22500
T22	13241632	Unit, PC1324-18, T22 - "Traffic Signal"	PC132418-T22	Gray	18	118	15	\$309.73	OC03	22500
T22	13241164	Unit, PC1324-24, T22 - Blank	PC132424-T22	Gray	24	140	10	\$357.90	OC03	22500
T22	13241262	Unit, PC1324-24, T22 - "Electric"	PC132424-T22	Gray	24	140	10	\$357.90	OC03	22500
T22	13241271	Unit, PC1324-24, T22 - "Street Lighting"	PC132424-T22	Gray	24	140	10	\$357.90	OC03	22500
T22	13241644	Unit, PC1324-24, T22 - "Traffic Signal"	PC132424-T22	Gray	24	140	10	\$357.90	OC03	22500

H-SERIES

H-Series - 1730 Rectangular & Flared Wall (FW)

Polymer Concrete

Straight Wall

Medium Duty
Non-deliberate Traffic

Heavy Duty
Non-deliberate Traffic

Tier 15 & 22*



*Products are rated by the lowest component rating. A tier 15 cover with a tier 22 body is rated tier 15. A tier 22 cover with a tier 22 body is rated tier 22.

See Accessories Section in the Back of this Manual for Options, Hardware, Specialty Markings and Other Accessories

Flared Wall

Medium Duty
Non-deliberate Traffic

Tier 15*



Part#	Description 1	Description 2	Color	Depth	Item Weight	Pallet Qty	List Price	Line Item Discount	Design Load
Body - 1730									
17302600	Body, PC1730-18,FW	PC173018FW	Gray	18	88	6	\$171.85	OC03	15000
17302006	Body, PC1730-12,SW	PC173012SW	Gray	12	65	12	\$143.34	OC03	22500
17302030	Body, PC1730-18,SW	PC173018SW	Gray	18	96	9	\$162.81	OC03	22500
17302031	Body, PC1730-24,SW	PC173024SW	Gray	24	119	6	\$225.19	OC03	22500
17302046	Body, PC1730-30,SW	PC173030SW	Gray	30	166	6	\$263.42	OC03	22500

Extension - 1730									
17303001	Ext, PC 1730-9	PC17309X	Gray	9	48	15	\$119.70	OC03	22500

Lid - 1730									
17304604	Lid, PC1730-T, T15 - Blank	PC1730T-T15	Gray	-	62	25	\$138.34	OC03	15000
17304608	Lid, PC1730-T, T15 -"Electric"	PC1730T-T15	Gray	-	62	25	\$138.34	OC03	15000
17304610	Lid, PC1730-T, T15 -"Ground"	PC1730T-T15	Gray	-	62	25	\$138.34	OC03	15000
17304611	Lid, PC1730-T, T15 -"Street Lighting"	PC1730T-T15	Gray	-	62	25	\$138.34	OC03	15000
17304613	Lid, PC1730-T, T15 -"Traffic Signal"	PC1730T-T15	Gray	-	62	25	\$138.34	OC03	15000
17304016	Lid, PC1730-T, T22 - "Electric"	PC1730T-T22	Gray	-	85	25	\$188.66	OC03	22500
17304018	Lid, PC1730-T, T22 - Blank	PC1730T-T22	Gray	-	85	25	\$188.66	OC03	22500
17304147	Lid, PC1730-T, T22 - "Traffic Signal"	PC1730T-T22	Gray	-	85	25	\$188.66	OC03	22500
17304192	Lid, PC1730-T, T22 - "Street Lighting"	PC1730T-T22	Gray	-	85	25	\$188.66	OC03	22500
17304614	Lid, PC1730-T, T22 - "Ground"	PC1730T-T22	Gray	-	85	25	\$188.66	OC03	22500

Unit - 1730 (Units come standard with Body-Open Bottom, Lid and SS Hex Bolt Floating Nut Hardware)									
17301600	Unit, PC1730-12, T15 - Blank	PC173012-T15	Gray	12	129	12	\$296.72	OC03	15000
17301603	Unit, PC1730-12, T15 -"Electric"	PC173012-T15	Gray	12	129	12	\$296.72	OC03	15000
17301605	Unit, PC1730-12, T15 -"Street Lighting"	PC173012-T15	Gray	12	129	12	\$296.72	OC03	15000
17301606	Unit, PC1730-12, T15 -"Traffic Signal"	PC173012-T15	Gray	12	129	12	\$296.72	OC03	15000
17301611	Unit, PC1730-18, FW, T15 -"Street Lighting", FW	PC173018-T15	Gray	18	154	6	\$315.97	OC03	15000
17301612	Unit, PC1730-18, FW, T15 -"Traffic Signal", FW	PC173018-T15	Gray	18	154	6	\$315.97	OC03	15000
17301613	Unit, PC1730-18, T15 - Blank	PC173018-T15	Gray	18	154	9	\$315.97	OC03	15000
17301614	Unit, PC1730-18, T15 - Blank, FW	PC173018-T15	Gray	18	154	6	\$315.97	OC03	15000
17301619	Unit, PC1730-18, T15 -"Electric"	PC173018-T15	Gray	18	154	9	\$315.97	OC03	15000
17301620	Unit, PC1730-18, T15 -"Electric", FW	PC173018-T15	Gray	18	154	6	\$315.97	OC03	15000
17301623	Unit, PC1730-18, T15 -"Street Lighting"	PC173018-T15	Gray	18	154	9	\$315.97	OC03	15000
17301624	Unit, PC1730-18, T15 -"Traffic Signal"	PC173018-T15	Gray	18	154	9	\$315.97	OC03	15000
17301633	Unit, PC1730-24, T15 - Blank	PC173024-T15	Gray	24	181	6	\$377.60	OC03	15000
17301636	Unit, PC1730-24, T15 -"Electric"	PC173024-T15	Gray	24	181	6	\$377.60	OC03	15000
17301638	Unit, PC1730-24, T15 -"Street Lighting"	PC173024-T15	Gray	24	181	6	\$377.60	OC03	15000
17301639	Unit, PC1730-24, T15 -"Traffic Signal"	PC173024-T15	Gray	24	181	6	\$377.60	OC03	15000
17301026	Unit, PC1730-12, T22 - "Electric"	PC173012-T22	Gray	12	152	12	\$347.65	OC03	22500
17301028	Unit, PC1730-12, T22 - Blank	PC173012-T22	Gray	12	152	12	\$347.65	OC03	22500
17301103	Unit, PC1730-12, T22 - "Traffic Signal"	PC173012-T22	Gray	12	152	12	\$347.65	OC03	22500
17301610	Unit, PC1730-12, T22 - "Street Lighting"	PC173012-T22	Gray	12	152	12	\$347.65	OC03	22500
17301029	Unit, PC1730-18, T22 - "Electric"	PC173018-T22	Gray	18	177	9	\$366.90	OC03	22500
17301031	Unit, PC1730-18, T22 - Blank	PC173018-T22	Gray	18	177	9	\$366.90	OC03	22500
17301365	Unit, PC1730-18, T22 - "Traffic Signal"	PC173018-T22	Gray	18	177	9	\$366.90	OC03	22500
17301418	Unit, PC1730-18, T22 - "Street Lighting"	PC173018-T22	Gray	18	177	9	\$366.90	OC03	22500
17301032	Unit, PC1730-24, T22 - "Electric"	PC173024-T22	Gray	24	204	6	\$428.53	OC03	22500
17301034	Unit, PC1730-24, T22 - Blank	PC173024-T22	Gray	24	204	6	\$428.53	OC03	22500
17301368	Unit, PC1730-24, T22 - "Traffic Signal"	PC173024-T22	Gray	24	204	6	\$428.53	OC03	22500
17301641	Unit, PC1730-24, T22 - "Street Lighting"	PC173024-T22	Gray	24	204	6	\$428.53	OC03	22500

H-Series - 2424 Polymer Concrete

2424



Call for details on
Tier 22 availability



*Products are rated by the lowest component rating. A tier 15 cover with a tier 22 body is rated tier 15. A tier 22 cover with a tier 22 body is rated tier 22.

See Accessories Section in the Back of this Manual for Options, Hardware, Specialty Markings and Other Accessories

Rating	Part#	Description 1	Description 2	Color	Depth	Item Weight	Pallet Qty	List Price	Line Item Discount	Design Load
--------	-------	---------------	---------------	-------	-------	-------------	------------	------------	--------------------	-------------

Body - 2424

T22	24242600	Body, PC2424-24, SW	PC242424SW	Gray	24	156	8	\$305.98	OC03	22500
	24242601	Body, PC2424-36, SW	PC242436SW	Gray	36	219	8	\$499.39	OC03	22500

Lid - 2424

T15	24244605	Lid, PC2424-T, T15 - Blank	PC2424T-T15	Gray	-	75	20	\$194.38	OC03	15000
	24244609	Lid, PC2424-T, T15 - "Electric"	PC2424T-T15	Gray	-	75	20	\$194.38	OC03	15000
	24244611	Lid, PC2424-T, T15 - "Ground"	PC2424T-T15	Gray	-	75	20	\$194.38	OC03	15000
	24244612	Lid, PC2424-T, T15 - "Street Lighting"	PC2424T-T15	Gray	-	75	20	\$194.38	OC03	15000
T22	24244614	Lid, PC2424-T, T15 - "Traffic Signal"	PC2424T-T15	Gray	-	75	20	\$194.38	OC03	15000
	24244622	Lid, PC2424-T, T22 - "Traffic Signal"	PC2424T-T22	Gray	-	99	20	\$269.45	OC03	22500
	24244623	Lid, PC2424-T, T22 - Blank	PC2424T-T22	Gray	-	99	20	\$269.45	OC03	22500
	24244620	Lid, PC2424-T, T22 - "Street Lighting"	PC2424T-T22	Gray	-	99	20	\$269.45	OC03	22500
	24244617	Lid, PC2424-T, T22 - "Electric"	PC2424T-T22	Gray	-	99	20	\$269.45	OC03	22500
	24244619	Lid, PC2424-T, T22 - "Ground"	PC2424T-T22	Gray	-	99	20	\$269.45	OC03	22500
	24244624	Lid, PC2424-T, T22 - Marking Plate Required	PC2424T-T22	Gray	-	99	20	\$269.45	OC03	22500

Unit - 2424 (Units come standard with Body-Open Bottom, Lid and SS Hex Bolt Floating Nut Hardware)

T15	24241600	Unit, PC2424-24, T15 - Blank	PC242424-T15	Gray	24	224	8	\$520.35	OC03	15000
	24241603	Unit, PC2424-24, T15 - "Electric"	PC242424-T15	Gray	24	224	8	\$520.35	OC03	15000
	24241605	Unit, PC2424-24, T15 - "Street Lighting"	PC242424-T15	Gray	24	224	8	\$520.35	OC03	15000
	24241606	Unit, PC2424-24, T15 - "Traffic Signal"	PC242424-T15	Gray	24	224	8	\$520.35	OC03	15000
	24241617	Unit, PC2424-36, T15 - "Electric"	PC242436-T15	Gray	24	224	8	\$699.77	OC03	15000
	24241614	Unit, PC2424-36, T15 - Blank	PC242436-T15	Gray	36	282	8	\$699.77	OC03	15000
	24241619	Unit, PC2424-36, T15 - "Street Lighting"	PC242436-T15	Gray	36	282	8	\$699.77	OC03	15000
	24241620	Unit, PC2424-36, T15 - "Traffic Signal"	PC242436-T15	Gray	36	282	8	\$699.77	OC03	15000
	24241609	Unit, PC2424-24, T22 - "ELECTRIC"	PC242424-T22	Gray	24	272	8	\$590.43	OC03	22500
	24241612	Unit, PC2424-24, T22 - "Traffic Signal"	PC242424-T22	Gray	24	272	8	\$590.43	OC03	22500
T22	24241611	Unit, PC2424-24, T22 - "Street Lighting"	PC242424-T22	Gray	24	272	8	\$590.43	OC03	22500
	24241613	Unit, PC2424-24, T22 - Blank	PC242424-T22	Gray	24	272	8	\$590.43	OC03	22500
	24241623	Unit, PC2424-36, T22 - "Electric"	PC242436-T22	Gray	36	273	8	\$699.77	OC03	22500
	24241625	Unit, PC2424-36, T22 - "Street Lighting"	PC242436-T22	Gray	36	273	8	\$699.77	OC03	22500
	24241626	Unit, PC2424-36, T22 - "Traffic Signal"	PC242436-T22	Gray	36	273	8	\$699.77	OC03	22500
	24241627	Unit, PC2424-36, T22 - Blank	PC242436-T22	Gray	36	273	8	\$699.77	OC03	22500

H-SERIES



H-Series - 2436
Polymer Concrete

 **Medium Duty**
Non-deliberate Traffic

 **Heavy Duty**
Non-deliberate Traffic

 **Tier 15 & 22***



*Products are rated by the lowest component rating. A tier 15 cover with a tier 22 body is rated tier 15. A tier 22 cover with a tier 22 body is rated tier 22.

See Accessories Section in the Back of this Manual for Options, Hardware, Specialty Markings and Other Accessories

RATING	Part#	Description 1	Description 2	Color	Depth	Item Weight	Pallet Qty	List Price	Line Item Discount	Design Load
--------	-------	---------------	---------------	-------	-------	-------------	------------	------------	--------------------	-------------

Body - 2436

T22	24362016	Body, PC2436-18,SW	PC243618SW	Gray	18	142	4	\$282.23	OC03	22500
	24362214	Body, PC2436-24, SW	PC243624SW	Gray	24	180	4	\$394.13	OC03	22500
	24362212	Body, PC2436-30,SW	PC243630SW	Gray	30	221	2	\$445.65	OC03	22500
	24362227	Body, PC2436-36,SW	PC243636SW	Gray	36	249	2	\$499.39	OC03	22500

Extension - 2436

T22	24363001	Ext, PC 2436-9	PC24369X	Gray	-	60	10	\$336.30	OC03	22500
-----	----------	----------------	----------	------	---	----	----	----------	------	-------

Lid - 2436

T15	24364604	Lid, PC2436-T, T15 - Blank	PC2436T-T15	Gray	-	150	10	\$242.76	OC03	15000
	24364608	Lid, PC2436-T, T15 -"Electric"	PC2436T-T15	Gray	-	150	10	\$242.76	OC03	15000
	24364610	Lid, PC2436-T, T15 -"Ground"	PC2436T-T15	Gray	-	150	10	\$242.76	OC03	15000
	24364611	Lid, PC2436-T, T15 -"Street Lighting"	PC2436T-T15	Gray	-	150	10	\$242.76	OC03	15000
	24364613	Lid, PC2436-T, T15 -"Traffic Signal"	PC2436T-T15	Gray	-	150	10	\$242.76	OC03	15000
	24364008	Lid, PC2436-T, T22 - "Electric"	PC2436T-T22	Gray	-	204	10	\$329.53	OC03	22500
	24364010	Lid, PC2436-T, T22 - Blank	PC2436T-T22	Gray	-	204	10	\$329.53	OC03	22500
T22	24364017	Lid, PC2436-T, T22 - "Street Lighting"	PC2436T-T22	Gray	-	204	10	\$329.53	OC03	22500
	24364019	Lid, PC2436-T, T22 - "Traffic Signal"	PC2436T-T22	Gray	-	204	10	\$329.53	OC03	22500
	24364614	Lid, PC2436-T, T22 - "Ground"	PC2436T-T22	Gray	-	204	10	\$329.53	OC03	22500

Unit - 2436 (Units come standard with Body-Open Bottom, Lid and SS Hex Bolt Floating Nut Hardware)

T15	24361600	Unit, PC2436-18, T15 - Blank	PC243618-T15	Gray	18	295	6	\$544.65	OC03	15000
	24361603	Unit, PC2436-18, T15 -"Electric"	PC243618-T15	Gray	18	295	6	\$544.65	OC03	15000
	24361605	Unit, PC2436-18, T15 -"Street Lighting"	PC243618-T15	Gray	18	295	6	\$544.65	OC03	15000
	24361606	Unit, PC2436-18, T15 -"Traffic Signal"	PC243618-T15	Gray	18	295	6	\$544.65	OC03	15000
	24361610	Unit, PC2436-24, T15 - Blank	PC243624-T15	Gray	24	330	4	\$655.22	OC03	15000
	24361613	Unit, PC2436-24, T15 -"Electric"	PC243624-T15	Gray	24	330	4	\$655.22	OC03	15000
	24361615	Unit, PC2436-24, T15 -"Street Lighting"	PC243624-T15	Gray	24	330	4	\$655.22	OC03	15000
	24361616	Unit, PC2436-24, T15 -"Traffic Signal"	PC243624-T15	Gray	24	330	4	\$655.22	OC03	15000
	24361619	Unit, PC2436-30, T15 - Blank	PC243630-T15	Gray	30	371	2	\$703.41	OC03	15000
	24361622	Unit, PC2436-30, T15 -"Electric"	PC243630-T15	Gray	30	371	2	\$703.41	OC03	15000
	24361624	Unit, PC2436-30, T15 -"Street Lighting"	PC243630-T15	Gray	30	371	2	\$703.41	OC03	15000
	24361625	Unit, PC2436-30, T15 -"Traffic Signal"	PC243630-T15	Gray	30	371	2	\$703.41	OC03	15000
	24361630	Unit, PC2436-36, T15 - Blank	PC243636-T15	Gray	36	399	2	\$759.24	OC03	15000
	24361633	Unit, PC2436-36, T15 -"Electric"	PC243636-T15	Gray	36	399	2	\$759.24	OC03	15000
	24361635	Unit, PC2436-36, T15 -"Street Lighting"	PC243636-T15	Gray	36	399	2	\$759.24	OC03	15000
	24361636	Unit, PC2436-36, T15 -"Traffic Signal"	PC243636-T15	Gray	36	399	2	\$759.24	OC03	15000
	24361025	Unit, PC2436-18, T22 - "Electric"	PC243618-T22	Gray	18	345	6	\$632.47	OC03	22500
	24361027	Unit, PC2436-18, T22 - Blank	PC243618-T22	Gray	18	345	6	\$632.47	OC03	22500
	24361608	Unit, PC2436-18, T22 - "Street Lighting"	PC243618-T22	Gray	18	345	6	\$883.24	OC03	22500
	24361609	Unit, PC2436-18, T22 - "Traffic Signal"	PC243618-T22	Gray	18	345	6	\$883.24	OC03	22500
	24361028	Unit, PC2436-24, T22 - "Electric"	PC243624-T22	Gray	24	380	4	\$743.04	OC03	22500
	24361030	Unit, PC2436-24, T22 - Blank	PC243624-T22	Gray	24	380	4	\$743.04	OC03	22500
	24361617	Unit, PC2436-24, T22 - "Street Lighting"	PC243624-T22	Gray	24	380	4	\$743.04	OC03	22500
	24361618	Unit, PC2436-24, T22 - "Traffic Signal"	PC243624-T22	Gray	24	380	4	\$743.04	OC03	22500
T22	24361626	Unit, PC2436-30, T22 - "Electric"	PC243630-T22	Gray	30	425	2	\$790.18	OC03	22500
	24361628	Unit, PC2436-30, T22 - "Street Lighting"	PC243630-T22	Gray	30	425	2	\$790.18	OC03	22500
	24361629	Unit, PC2436-30, T22 - "Traffic Signal"	PC243630-T22	Gray	30	425	2	\$790.18	OC03	22500
	24361033	Unit, PC2436-30, T22 - Blank	PC243630-T22	Gray	30	425	2	\$790.18	OC03	22500
	24361638	Unit, PC2436-36, T22 - "Electric"	PC243630-T22	Gray	36	449	2	\$847.06	OC03	22500
	24361640	Unit, PC2436-36, T22 - "Street Lighting"	PC243630-T22	Gray	36	449	2	\$847.06	OC03	22500
	24361641	Unit, PC2436-36, T22 - "Traffic Signal"	PC243630-T22	Gray	36	449	2	\$847.06	OC03	22500
	24361642	Unit, PC2436-36, T22 - Blank	PC243630-T22	Gray	36	449	2	\$847.06	OC03	22500



H-Series - 3048

Polymer Concrete

3048

-  **Medium Duty**
Non-deliberate Traffic
-  **Heavy Duty**
Non-deliberate Traffic
-  **Tier 15 & 22***



*Products are rated by the lowest component rating. A tier 15 cover with a tier 22 body is rated tier 15. A tier 22 cover with a tier 22 body is rated tier 22.

See Accessories Section in the Back of this Manual for Options, Hardware, Specialty Markings and Other Accessories

RATING	Part#	Description 1	Description 2	Color	Depth	Item Weight	Pallet Qty	List Price	Line Item Discount	Design Load
Body - 3048										
T22	30482008	Body, PC3048-18,SW	PC304818SW	Gray	18	188	3	\$423.12	OC03	22500
	30482021	Body, PC3048-24,SW	PC304824SW	Gray	24	234	3	\$506.71	OC03	22500
	30482020	Body, PC3048-30,SW	PC304830SW	Gray	30	301	1	\$594.70	OC03	22500
	30482017	Body, PC3048-36,SW	PC304836SW	Gray	36	307	1	\$667.30	OC03	22500



T22	30483001	Ext, PC 3048-9	PC30489X	Gray	9	99	4	\$341.37	OC03	22500
-----	----------	----------------	----------	------	---	----	---	----------	------	-------

Lid - 3048										
T15	30484602	Lid, PC3048-T, T15 - Blank,2pc	PC3048T-T15	Gray	-	220	10	\$453.71	OC03	15000
	30484606	Lid, PC3048-T, T15 -"Electric",2pc	PC3048T-T15	Gray	-	220	10	\$453.71	OC03	15000
	30484608	Lid, PC3048-T, T15 -"Ground",2pc	PC3048T-T15	Gray	-	220	10	\$453.71	OC03	15000
	30484609	Lid, PC3048-T, T15 -"Street Lighting",2pc	PC3048T-T15	Gray	-	220	10	\$453.71	OC03	15000
	30484611	Lid, PC3048-T, T15 -"Traffic Signal",2pc	PC3048T-T15	Gray	-	220	10	\$453.71	OC03	15000
T22	30484001	Lid, PC3048-T, T22 - "Electric",2pc	PC3048T-T22	Gray	-	338	10	\$577.93	OC03	22500
	30484003	Lid, PC3048-T, T22 - Blank,2pc	PC3048T-T22	Gray	-	338	10	\$577.93	OC03	22500
	30484011	Lid, PC3048-T,T22 - "Electric"	PC3048T-T22 1pc	Gray	-	338	10	\$627.63	OC03	22500
	30484012	Lid, PC3048-T, T22 - "Fiber Optics",2pc	PC3048T-T22	Gray	-	338	10	\$577.93	OC03	22500
	30484015	Lid, PC3048-T, T22 - "Traffic Signal",2pc	PC3048T-T22	Gray	-	338	10	\$577.93	OC03	22500
	30484613	Lid, PC3048-T, T22 - "Street Lighting",2pc	PC3048T-T22	Gray	-	338	10	\$577.93	OC03	22500

Unit - 3048 (Units come standard with Body-Open Bottom, 2 Piece Lid and SS Hex Bolt Floating Nut Hardware)										
T15	30481600	Unit, PC3048-18, T15 - Blank	PC304818-T15	Gray	18	408	4	\$897.39	OC03	15000
	30481603	Unit, PC3048-18, T15 -"Electric"	PC304818-T15	Gray	18	408	4	\$897.39	OC03	15000
	30481605	Unit, PC3048-18, T15 -"Street Lighting"	PC304818-T15	Gray	18	408	4	\$897.39	OC03	15000
	30481606	Unit, PC3048-18, T15 -"Traffic Signal"	PC304818-T15	Gray	18	408	4	\$897.39	OC03	15000
	30481612	Unit, PC3048-24, T15 - Blank	PC304824-T15	Gray	24	454	4	\$979.98	OC03	15000
	30481615	Unit, PC3048-24, T15 -"Electric"	PC304824-T15	Gray	24	454	4	\$979.98	OC03	15000
	30481617	Unit, PC3048-24, T15 -"Street Lighting"	PC304824-T15	Gray	24	454	4	\$979.98	OC03	15000
	30481622	Unit, PC3048-30, T15 - Blank	PC304830-T15	Gray	30	521	2	\$1,063.41	OC03	15000
	30481625	Unit, PC3048-30, T15 -"Electric"	PC304830-T15	Gray	30	521	2	\$1,063.41	OC03	15000
	30481627	Unit, PC3048-30, T15 -"Street Lighting"	PC304830-T15	Gray	30	521	2	\$1,063.41	OC03	15000
	30481628	Unit, PC3048-30, T15 -"Traffic Signal"	PC304830-T15	Gray	30	521	2	\$1,063.41	OC03	15000
	30481618	Unit, PC3048-24, T15 -"Traffic Signal"	PC304824-T15	Gray	36	543	2	\$979.98	OC03	15000
	30481634	Unit, PC3048-36, T15 - Blank	PC304836-T15	Gray	36	543	2	\$1,138.02	OC03	15000
	30481637	Unit, PC3048-36, T15 -"Electric"	PC304836-T15	Gray	36	543	2	\$1,138.02	OC03	15000
	30481639	Unit, PC3048-36, T15 -"Street Lighting"	PC304836-T15	Gray	36	543	2	\$1,138.02	OC03	15000
	30481640	Unit, PC3048-36, T15 -"Traffic Signal"	PC304836-T15	Gray	36	543	2	\$1,138.02	OC03	15000
T22	30481001	Unit, PC3048-18, T22 - "Electric"	PC304818-T22	Gray	18	526	4	\$1,023.11	OC03	22500
	30481003	Unit, PC3048-18, T22 - Blank	PC304818-T22	Gray	18	526	4	\$1,023.11	OC03	22500
	30481610	Unit, PC3048-18, T22 - "Street Lighting"	PC304818-T22	Gray	18	526	4	\$1,023.11	OC03	22500
	30481611	Unit, PC3048-18, T22 - "Traffic Signal"	PC304818-T22	Gray	18	526	4	\$1,023.11	OC03	22500
	30481004	Unit, PC3048-24, T22 - "Electric"	PC304824-T22	Gray	24	572	4	\$1,105.70	OC03	22500
	30481006	Unit, PC3048-24, T22 - Blank	PC304824-T22	Gray	24	572	4	\$1,105.70	OC03	22500
	30481058	Unit, PC3048-24, T22 - "Traffic Signal"	PC304824-T22	Gray	24	572	4	\$1,105.70	OC03	22500
	30481621	Unit, PC3048-24, T22 - "Street Lighting"	PC304824-T22	Gray	24	572	4	\$1,105.70	OC03	22500
	30481632	Unit, PC3048-30, T22 - "Street Lighting"	PC304830-T22	Gray	30	639	2	\$1,187.63	OC03	22500
	30481633	Unit, PC3048-30, T22 - "Traffic Signal"	PC304830-T22	Gray	30	639	2	\$1,187.63	OC03	22500
	30481007	Unit, PC3048-30, T22 - "Electric"	PC304830-T22	Gray	30	639	2	\$1,187.63	OC03	22500
	30481009	Unit, PC3048-30, T22 - Blank	PC304830-T22	Gray	30	639	2	\$1,187.63	OC03	22500
	30481010	Unit, PC3048-36, T22 - "Electric"	PC304836-T22	Gray	36	661	2	\$1,263.75	OC03	22500
	30481012	Unit, PC3048-36, T22 - Blank	PC304836-T22	Gray	36	661	2	\$1,263.75	OC03	22500
30481643	Unit, PC3048-36, T22 - "Street Lighting"	PC304836-T22	Gray	36	661	2	\$1,263.75	OC03	22500	
30481644	Unit, PC3048-36, T22 - "Traffic Signal"	PC304836-T22	Gray	36	661	2	\$1,263.75	OC03	22500	

H-SERIES

H-Series - 3060
Polymer Concrete

-  **Heavy Duty**
Non-deliberate Traffic
-  **Tier 22***



*Products are rated by the lowest component rating. A tier 15 cover with a tier 22 body is rated tier 15. A tier 22 cover with a tier 22 body is rated tier 22.

See Accessories Section in the Back of this Manual for Options, Hardware, Specialty Markings and Other Accessories



RATING	Part#	Description 1	Description 2	Color	Depth	Item Weight	Pallet Qty	List Price	Line Item Discount	Design Load
Body - 3060										
T22	30602001	Body, PC 3060-24	4x 1/2 in. Fltg Nut	Gray	24	325	3	\$688.43	OC03	22500
	30602002	Body, PC 3060-30	4x 1/2 in. Fltg Nut	Gray	30	367	1	\$777.73	OC03	22500
	30602006	Body, PC 3060-36	4x 1/2 in. Fltg Nut	Gray	36	409	1	\$899.33	OC03	22500

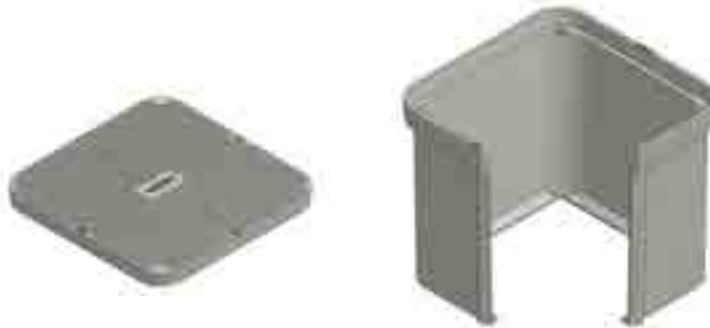
RATING	Part#	Description 1	Description 2	Color	Depth	Item Weight	Pallet Qty	List Price	Line Item Discount	Design Load
T22	30604002	Lid, PC 3060 2pc Kit - No Mark	2pc Assembly	Gray	-	480	10	\$867.03	OC03	22500

Unit - 3060 (Units come standard with Body-Open Bottom, 2 Piece Lid and SS Hex Bolt Floating Nut Hardware)

RATING	Part#	Description 1	Description 2	Color	Depth	Item Weight	Pallet Qty	List Price	Line Item Discount	Design Load
T22	30601002	Unit, PC 3060-24 w/HBlT- No Mark	4x 1/2 in. 2pc FCvr H20	Gray	24	805	1	\$1,364.83	OC03	22500
	30601007	Unit, PC 3060-24 w/HBlT - "Electric"	4x 1/2 in. 2pc FCvr H20	Gray	24	805	1	\$1,364.83	OC03	22500
	30601005	Unit, PC 3060-36 w/HBlT - "Electric"	4x 1/2 in. 2pc FCvr H20	Gray	36	889	1	\$1,843.00	OC03	22500
	30601006	Unit, PC 3060-36 w/HBlT - No Mark	4x 1/2 in. 2pc FCvr H20	Gray	36	889	1	\$1,843.00	OC03	22500

H-Series - 3636
Polymer Concrete

-  **Medium Duty**
Non-deliberate Traffic
-  **Heavy Duty**
Non-deliberate Traffic
-  **Tier 15 & 22***



*Products are rated by the lowest component rating. A tier 15 cover with a tier 22 body is rated tier 15. A tier 22 cover with a tier 22 body is rated tier 22.

See Accessories Section in the Back of this Manual for Options, Hardware, Specialty Markings and Other Accessories

RATING	Part#	Description 1	Description 2	Color	Depth	Item Weight	Pallet Qty	List Price	Line Item Discount	Design Load
Body - 3636										
T22	36362600	Body, PC3636-36,SW	PC363636SW	Gray	36	291	1	\$646.17	OC03	22500
	36362601	Body, PC3636-48,SW	PC363648SW	Gray	48	370	1	\$801.36	OC03	22500

RATING	Part#	Description 1	Description 2	Color	Depth	Item Weight	Pallet Qty	List Price	Line Item Discount	Design Load
Lid - 3636										
T15	36364604	Lid, PC3636-T, T15 - Blank	PC3636T-T15	Gray	-	235	5	\$505.88	OC03	15000
	36364608	Lid, PC3636-T, T15 -"Electric"	PC3636T-T15	Gray	-	235	5	\$505.88	OC03	15000
	36364610	Lid, PC3636-T, T15 -"Ground"	PC3636T-T15	Gray	-	235	5	\$505.88	OC03	15000
	36364611	Lid, PC3636-T, T15 -"Street Lighting"	PC3636T-T15	Gray	-	235	5	\$505.88	OC03	15000
	36364613	Lid, PC3636-T, T15 -"Traffic Signal"	PC3636T-T15	Gray	-	235	5	\$505.88	OC03	15000
	36364616	Lid, PC3636-T, T22 - "Electric"	PC3636T-T22	Gray	-	335	5	\$620.03	OC03	22500
	36364618	Lid, PC3636-T, T22 - "Ground"	PC3636T-T22	Gray	-	335	5	\$620.03	OC03	22500
	36364619	Lid, PC3636-T, T22 - "Street Lighting"	PC3636T-T22	Gray	-	335	5	\$620.03	OC03	22500
	36364621	Lid, PC3636-T, T22 - "Traffic Signal"	PC3636T-T22	Gray	-	335	5	\$620.03	OC03	22500
T22	36364622	Lid, PC3636-T, T22 - Blank	PC3636T-T22	Gray	-	335	5	\$620.03	OC03	22500

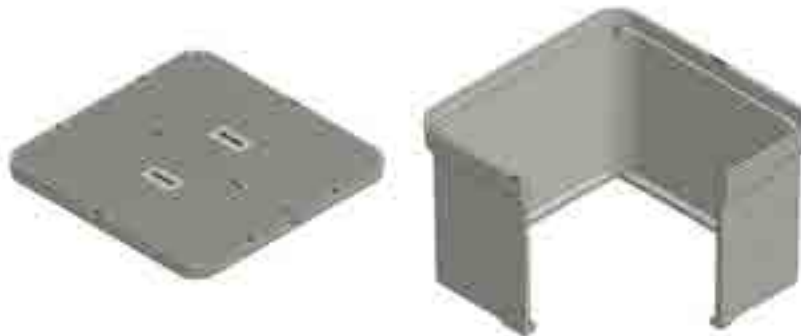
Part#	Description 1	Description 2	Color	Depth	Item Weight	Pallet Qty	List Price	Line Item Discount	Design Load
-------	---------------	---------------	-------	-------	-------------	------------	------------	--------------------	-------------

Unit - 3636 (Units come standard with Body-Open Bottom, Lid and SS Hex Bolt Floating Nut Hardware)

T15	36361600	Unit, PC3636-36, T15 - Blank	PC363636-T15	Gray	36	526	1	\$1,182.05	OC03	15000
	36361603	Unit, PC3636-36, T15 -"Electric"	PC363636-T15	Gray	36	526	1	\$1,182.05	OC03	15000
	36361605	Unit, PC3636-36, T15 -"Street Lighting"	PC363636-T15	Gray	36	526	1	\$1,182.05	OC03	15000
	36361606	Unit, PC3636-36, T15 -"Traffic Signal"	PC363636-T15	Gray	36	526	1	\$1,182.05	OC03	15000
	36361614	Unit, PC3636-48, T15 - Blank	PC363648-T15	Gray	48	605	1	\$1,337.24	OC03	15000
	36361617	Unit, PC3636-48, T15 -"Electric"	PC363648-T15	Gray	48	605	1	\$1,337.24	OC03	15000
T22	36361619	Unit, PC3636-48, T15 -"Street Lighting"	PC363648-T15	Gray	48	605	1	\$1,337.24	OC03	15000
	36361620	Unit, PC3636-48, T15 -"Traffic Signal"	PC363648-T15	Gray	48	605	1	\$1,337.24	OC03	15000
	36361609	Unit, PC3636-36, T22 - "Electric"	PC363636-T22	Gray	36	626	1	\$1,291.20	OC03	22500
	36361611	Unit, PC3636-36, T22 - "Street Lighting"	PC363636-T22	Gray	36	626	1	\$1,291.20	OC03	22500
	36361612	Unit, PC3636-36, T22 - "Traffic Signal"	PC363636-T22	Gray	36	626	1	\$1,291.20	OC03	22500
	36361613	Unit, PC3636-36, T22 - Blank	PC363636-T22	Gray	36	626	1	\$1,291.20	OC03	22500
	36361623	Unit, PC3636-48, T22 - "Electric"	PC363648-T22	Gray	48	705	1	\$1,446.40	OC03	22500
	36361625	Unit, PC3636-48, T22 - "Street Lighting"	PC363648-T22	Gray	48	705	1	\$1,446.40	OC03	22500
	36361626	Unit, PC3636-48, T22 - "Traffic Signal"	PC363648-T22	Gray	48	705	1	\$1,446.40	OC03	22500
	36361627	Unit, PC3636-48, T22 - Blank	PC363648-T22	Gray	48	705	1	\$1,446.40	OC03	22500

H-Series - 4848

Polymer Concrete



*Products are rated by the lowest component rating. A tier 15 cover with a tier 22 body is rated tier 15. A tier 22 cover with a tier 22 body is rated tier 22.

See Accessories Section in the Back of this Manual for Options, Hardware, Specialty Markings and Other Accessories

Part#	Description 1	Description 2	Color	Depth	Item Weight	Pallet Qty	List Price	Line Item Discount	Design Load
-------	---------------	---------------	-------	-------	-------------	------------	------------	--------------------	-------------

Body - 4848

T22	48482600	Body, PC4848-36, SW	PC484836SW	Gray	36	585	1	\$971.27	OC03	22500
	48482601	Body, PC4848-48, SW	PC484848SW	Gray	48	754	1	\$1,117.39	OC03	22500

Lid - 4848

T15	48484602	Lid, PC4848-T, T15 -"Blank",2PC	PC4848D-T15	Gray	-	410	5	\$994.25	OC03	15000
	48484606	Lid, PC4848-T, T15 -"Electric",2pc	PC4848T-T15	Gray	-	410	5	\$994.25	OC03	15000
	48484608	Lid, PC4848-T, T15 -"Ground",2pc	PC4848T-T15	Gray	-	410	5	\$994.25	OC03	15000
	48484609	Lid, PC4848-T, T15 -"Street Lighting",2pc	PC4848T-T15	Gray	-	410	5	\$994.25	OC03	15000
	48484611	Lid, PC4848-T, T15 -"Traffic Signal",2pc	PC4848T-T15	Gray	-	410	5	\$994.25	OC03	15000
	T22	48484614	Lid, PC4848-T, T22 - "Electric",2pc	PC4848T-T22	Gray	-	640	5	\$1,331.64	OC03
48484616		Lid, PC4848-T, T22 - "Ground",2pc	PC4848T-T22	Gray	-	640	5	\$1,331.64	OC03	15000
48484617		Lid, PC4848-T, T22 - "Street Lighting",2pc	PC4848T-T22	Gray	-	640	5	\$1,331.64	OC03	15000
48484619		Lid, PC4848-T, T22 - "Traffic Signal",2pc	PC4848T-T22	Gray	-	640	5	\$1,331.64	OC03	22500
48484620		Lid, PC4848-T, T22 - Blank,2pc	PC4848T-T22	Gray	-	640	5	\$1,331.64	OC03	22500

Unit - 4848 (Units come standard with Body-Open Bottom, 2 Piece Lid and SS Hex Bolt Floating Nut Hardware. Tier 22 comes with Additional Cross Brace)

T15	48481600	Unit, PC4848-36, T15 - Blank	PC484836-T15	Gray	36	995	1	\$1,980.52	OC03	15000
	48481603	Unit, PC4848-36, T15 -"Electric"	PC484836-T15	Gray	36	995	1	\$1,980.52	OC03	15000
	48481605	Unit, PC4848-36, T15 -"Street Lighting"	PC484836-T15	Gray	36	995	1	\$1,980.52	OC03	15000
	48481606	Unit, PC4848-36, T15 -"Traffic Signal"	PC484836-T15	Gray	36	995	1	\$1,980.52	OC03	15000
	48481614	Unit, PC4848-48, T15 - Blank	PC484848-T15	Gray	48	1225	1	\$2,126.64	OC03	15000
	48481617	Unit, PC4848-48, T15 -"Electric"	PC484848-T15	Gray	48	1225	1	\$2,126.64	OC03	15000
T22	48481619	Unit, PC4848-48, T15 -"Street Lighting"	PC484848-T15	Gray	48	1225	1	\$2,126.64	OC03	15000
	48481620	Unit, PC4848-48, T15 -"Traffic Signal"	PC484848-T15	Gray	48	1225	1	\$2,126.64	OC03	15000
	48481609	Unit, PC4848-36, T22 - "Electric"	PC484836-T22	Gray	36	1164	1	\$2,317.91	OC03	22500
	48481611	Unit, PC4848-36, T22 - "Street Lighting"	PC484836-T22	Gray	36	1164	1	\$2,317.91	OC03	22500
	48481612	Unit, PC4848-36, T22 - "Traffic Signal"	PC484836-T22	Gray	36	1164	1	\$2,317.91	OC03	22500
	48481613	Unit, PC4848-36, T22 - Blank	PC484836-T22	Gray	36	1164	1	\$2,317.91	OC03	22500
	48481623	Unit, PC4848-48, T22 - "Electric"	PC484848-T22	Gray	48	1394	1	\$2,464.03	OC03	22500
	48481625	Unit, PC4848-48, T22 - "Street Lighting"	PC484848-T22	Gray	48	1394	1	\$2,464.03	OC03	22500
	48481626	Unit, PC4848-48, T22 - "Traffic Signal"	PC484848-T22	Gray	48	1394	1	\$2,464.03	OC03	22500
	48481627	Unit, PC4848-48, T22 - Blank	PC484848-T22	Gray	48	1394	1	\$2,464.03	OC03	22500

Synertech - 1118

Duo Mold

 **Medium Duty**
Non-deliberate Traffic

 **Tier 15***



*Products are rated by the lowest component rating. A tier 15 cover with a tier 22 body is rated tier 15. A tier 22 cover with a tier 22 body is rated tier 22.

See Accessories Section in the Back of this Manual for Options, Hardware, Specialty Markings and Other Accessories

RATING	Part#	Description 1	Description 2	Color	Depth	Item Weight	Pallet Qty	List Price	Line Item Discount	Design Load
--------	-------	---------------	---------------	-------	-------	-------------	------------	------------	--------------------	-------------

Body - 1118

T15	32108101	Box, SYN1118 T 12" Duo	SYN1118TBOX12	Gray	12	25	56	\$96.96	OC10	15000
	32112101	Box, SYN1118 T 18" Duo	SYN1118TBOX18	Gray	18	30	32	\$107.94	OC10	15000
	32116101	Box, SYN1118 T 24" (2)	SYN1118T 2 STKDBXS	Gray	24	49	24	\$208.15	OC10	15000
	32117101	Box, SYN1118 T 30" (2)	SYN1118T 2 STKDBXS	Gray	30	55	24	\$239.87	OC10	15000
	32118101	Box, SYN1118 T 36" Duo (2)	SYN1118T 2 STKDBXS	Gray	36	60	16	\$264.96	OC10	15000

Lid - 1118

T15	31050121	Lid, SYN1118 T - No Mark	SYN1118T000	Gray	-	26	95	\$56.21	OC10	15000
	31050221	Lid, SYN1118 T - Electric	SYN1118T011	Gray	-	26	95	\$56.21	OC10	15000
	31051021	Lid, SYN1118 T - Lighting	SYN1118T021	Gray	-	26	95	\$56.21	OC10	15000
	31051121	Lid, SYN1118 T - Street Lighting	SYN1118T022	Gray	-	26	95	\$56.21	OC10	15000
	31051221	Lid, SYN1118 T - Traffic	SYN1118T102	Gray	-	26	95	\$56.21	OC10	15000
	31051321	Lid, SYN1118 T - Traffic Signal	SYN1118T032	Gray	-	26	95	\$56.21	OC10	15000

Unit - 1118

T15	38101100	Unit, SYN1118-12, T15 - Blank	SYN111812-T15	Gray	12	51	56	\$171.74	OC10	15000
	38101109	Unit, SYN1118-12, T15 - Marked Special	SYN111812-T15	Gray	12	51	56	\$171.74	OC10	15000
	38101130	Unit, SYN1118-12, T15 -"Electric"	SYN111812-T15	Gray	12	51	56	\$171.74	OC10	15000
	38101150	Unit, SYN1118-12, T15 -"Ground"	SYN111812-T15	Gray	12	51	56	\$171.74	OC10	15000
	38101160	Unit, SYN1118-12, T15 -"Street Lighting"	SYN111812-T15	Gray	12	51	56	\$171.74	OC10	15000
	38101180	Unit, SYN1118-12, T15 -"Traffic Signal"	SYN111812-T15	Gray	12	51	56	\$171.74	OC10	15000
	38101190	Unit, SYN1118-18, T15 - Blank	SYN111818-T15	Gray	18	56	32	\$182.72	OC10	15000
	38101199	Unit, SYN1118-18, T15 -Marked Special	SYN111818-T15	Gray	18	56	32	\$182.72	OC10	15000
	38101220	Unit, SYN1118-18, T15 -"Electric"	SYN111818-T15	Gray	18	56	32	\$182.72	OC10	15000
	38101240	Unit, SYN1118-18, T15 -"Ground"	SYN111818-T15	Gray	18	56	32	\$182.72	OC10	15000
	38101250	Unit, SYN1118-18, T15 -"Street Lighting"	SYN111818-T15	Gray	18	56	32	\$182.72	OC10	15000
	38101270	Unit, SYN1118-18, T15 -"Traffic Signal"	SYN111818-T15	Gray	18	56	32	\$182.72	OC10	15000

Synertech - 1212

Duo Mold

 **Medium Duty**
Non-deliberate Traffic

 **Tier 15***



*Products are rated by the lowest component rating. A tier 15 cover with a tier 22 body is rated tier 15. A tier 22 cover with a tier 22 body is rated tier 22.

See Accessories Section in the Back of this Manual for Options, Hardware, Specialty Markings and Other Accessories

RATING	Part#	Description 1	Description 2	Color	Depth	Item Weight	Pallet Qty	List Price	Line Item Discount	Design Load
--------	-------	---------------	---------------	-------	-------	-------------	------------	------------	--------------------	-------------

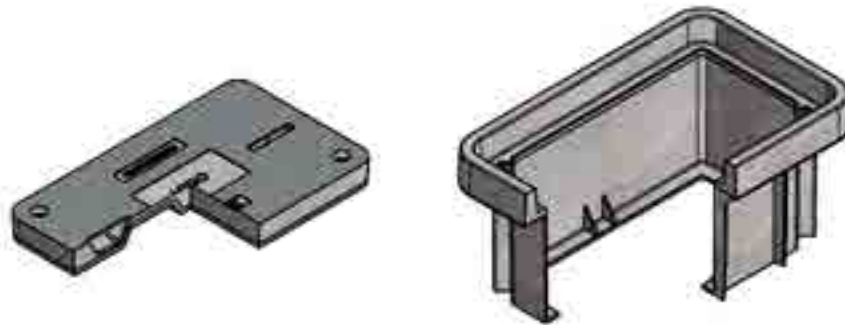
Body - 1212

T15	32120101	Box, SYN1212 T 12" Duo	SYN1212TBOX12	Gray	12	16	54	\$91.92	OC10	15000
	32124101	Box, SYN1212 T 18" Duo	SYN1212TBOX18	Gray	18	20	36	\$104.96	OC10	15000
	32128101	Box, SYN1212 T 24" Duo (2)	SYN1212T 2 STKDBXS	Gray	24	33	27	\$206.50	OC10	15000
	32129101	Box, SYN1212 T 30" Duo (2)	SYN1212T 2 STKDBXS	Gray	30	36	18	\$225.47	OC10	15000
	32130101	Box, SYN1212 T 36" Duo (2)	SYN1212T 2 STKDBXS	Gray	36	40	18	\$244.42	OC10	15000

RATING	Part#	Description 1	Description 2	Color	Depth	Item Weight	Pallet Qty	List Price	Line Item Discount	Design Load
Lid - 1212										
T15	31100121	Lid, SYN1212 T - No Mark	SYN1212T000	Gray	-	15	160	\$40.88	OC10	15000
	31100221	Lid, SYN1212 T - Electric	SYN1212T011	Gray	-	15	160	\$40.88	OC10	15000
	31100721	Lid, SYN1212 T - Ground	SYN1212T017	Gray	-	15	160	\$40.88	OC10	15000
	31101021	Lid, SYN1212 T - Lighting	SYN1212T021	Gray	-	15	160	\$40.88	OC10	15000
	31101121	Lid, SYN1212 T - Street Lighting	SYN1212T022	Gray	-	15	160	\$40.88	OC10	15000
	31101221	Lid, SYN1212 T - Traffic	SYN1212T102	Gray	-	15	160	\$40.88	OC10	15000
	31101321	Lid, SYN1212 T - Traffic Signal	SYN1212T032	Gray	-	15	160	\$40.88	OC10	15000

RATING	Part#	Description 1	Description 2	Color	Depth	Item Weight	Pallet Qty	List Price	Line Item Discount	Design Load
Unit - 1212										
T15	38102100	Unit, SYN1212-12, T15 - Blank	SYN121212-T15	Gray	12	31	54	\$146.80	OC10	15000
	38102109	Unit, SYN1212-12, T15 - Marked Special	SYN121212-T15	Gray	12	31	54	\$146.80	OC10	15000
	38102130	Unit, SYN1212-12, T15 -"Electric"	SYN121212-T15	Gray	12	31	54	\$146.80	OC10	15000
	38102150	Unit, SYN1212-12, T15 -"Ground"	SYN121212-T15	Gray	12	31	54	\$146.80	OC10	15000
	38102160	Unit, SYN1212-12, T15 -"Street Lighting"	SYN121212-T15	Gray	12	31	54	\$146.80	OC10	15000
	38102180	Unit, SYN1212-12, T15 -"Traffic Signal"	SYN121212-T15	Gray	12	31	54	\$146.80	OC10	15000
	38102190	Unit, SYN1212-18, T15 - Blank	SYN121218-T15	Gray	18	35	36	\$159.84	OC10	15000
	38102199	Unit, SYN1212-18, T15 - Marked Special	SYN121218-T15	Gray	18	35	36	\$159.84	OC10	15000
	38102220	Unit, SYN1212-18, T15 -"Electric"	SYN121218-T15	Gray	18	35	36	\$159.84	OC10	15000
	38102240	Unit, SYN1212-18, T15 -"Ground"	SYN121218-T15	Gray	18	35	36	\$159.84	OC10	15000
	38102250	Unit, SYN1212-18, T15 -"Street Lighting"	SYN121218-T15	Gray	18	35	36	\$159.84	OC10	15000
	38102270	Unit, SYN1212-18, T15 -"Traffic Signal"	SYN121218-T15	Gray	18	35	36	\$159.84	OC10	15000

Synertech - 1324
Duo Mold



*Products are rated by the lowest component rating. A tier 15 cover with a tier 22 body is rated tier 15. A tier 22 cover with a tier 22 body is rated tier 22.

See Accessories Section in the Back of this Manual for Options, Hardware, Specialty Markings and Other Accessories

RATING	Part#	Description 1	Description 2	Color	Depth	Item Weight	Pallet Qty	List Price	Line Item Discount	Design Load
Body - 1324										
T15	32132101	Box, SYN1324 T 12" Duo	SYN1324TBOX12	Gray	12	33	24	\$117.48	OC10	15000
	32136101	Box, SYN1324 T 18" Duo	SYN1324TBOX18	Gray	18	37	16	\$128.79	OC10	15000
	32140101	Box, SYN1324 T 24" Duo	SYN1324TBOX24	Gray	24	42	12	\$151.31	OC10	15000
	32141101	Box, SYN1324 T 30" Duo (2)	SYN1324T 2 STKDBXS	Gray	30	70	8	\$273.73	OC10	15000
	32142101	Box, SYN1324 T 36" Duo (2)	SYN1324T 2 STKDBXS	Gray	36	74	8	\$280.26	OC10	15000

RATING	Part#	Description 1	Description 2	Color	Depth	Item Weight	Pallet Qty	List Price	Line Item Discount	Design Load
Lid - 1324										
T15	31150121	Lid, SYN1324 T - No Mark	SYN1324T000	Gray	-	38	65	\$79.80	OC10	15000
	31150221	Lid, SYN1324 T - Electric	SYN1324T011	Gray	-	38	65	\$79.80	OC10	15000
	31150721	Lid, SYN1324 T - Ground	SYN1324T017	Gray	-	38	65	\$79.80	OC10	15000
	31151021	Lid, SYN1324 T - Lighting	SYN1324T021	Gray	-	38	65	\$79.80	OC10	15000
	31151121	Lid, SYN1324 T - Street Lighting	SYN1324T022	Gray	-	38	65	\$79.80	OC10	15000
	31151221	Lid, SYN1324 T - Traffic	SYN1324T102	Gray	-	38	65	\$79.80	OC10	15000
	31151321	Lid, SYN1324 T - Traffic Signal	SYN1324T032	Gray	-	38	65	\$79.80	OC10	15000

RATING	Part#	Description 1	Description 2	Color	Depth	Item Weight	Pallet Qty	List Price	Line Item Discount	Design Load
Unit - 1324										
T15	38103100	Unit, SYN1324-12, T15 - Blank	SYN132412-T15	Gray	12	71	24	\$215.85	OC10	15000
	38103109	Unit, SYN1324-12, T15 - Marked Special	SYN132412-T15	Gray	12	71	24	\$215.85	OC10	15000
	38103130	Unit, SYN1324-12, T15 -"Electric"	SYN132412-T15	Gray	12	71	24	\$215.85	OC10	15000
	38103150	Unit, SYN1324-12, T15 -"Street Lighting"	SYN132412-T15	Gray	12	71	24	\$215.85	OC10	15000
	38103160	Unit, SYN1324-12, T15 -"Traffic Signal"	SYN132412-T15	Gray	12	71	24	\$215.85	OC10	15000
	38103170	Unit, SYN1324-18, T15 - Blank	SYN132418-T15	Gray	18	75	16	\$227.15	OC10	15000
	38103179	Unit, SYN1324-18, T15 - Marked Special	SYN132418-T15	Gray	18	75	16	\$227.15	OC10	15000
	38103200	Unit, SYN1324-18, T15 -"Electric"	SYN132418-T15	Gray	18	75	16	\$227.15	OC10	15000
	38103220	Unit, SYN1324-18, T15 -"Street Lighting"	SYN132418-T15	Gray	18	75	16	\$227.15	OC10	15000
	38103230	Unit, SYN1324-18, T15 -"Traffic Signal"	SYN132418-T15	Gray	18	75	16	\$227.15	OC10	15000
	38103240	Unit, SYN1324-24, T15 - Blank	SYN132424-T15	Gray	24	80	12	\$249.67	OC10	15000
	38103249	Unit, SYN1324-24, T15 - Marked Special	SYN132424-T15	Gray	24	80	12	\$249.67	OC10	15000
	38103270	Unit, SYN1324-24, T15 -"Electric"	SYN132424-T15	Gray	24	80	12	\$249.67	OC10	15000
	38103290	Unit, SYN1324-24, T15 -"Street Lighting"	SYN132424-T15	Gray	24	80	12	\$249.67	OC10	15000
	38103300	Unit, SYN1324-24, T15 -"Traffic Signal"	SYN132424-T15	Gray	24	80	12	\$249.67	OC10	15000

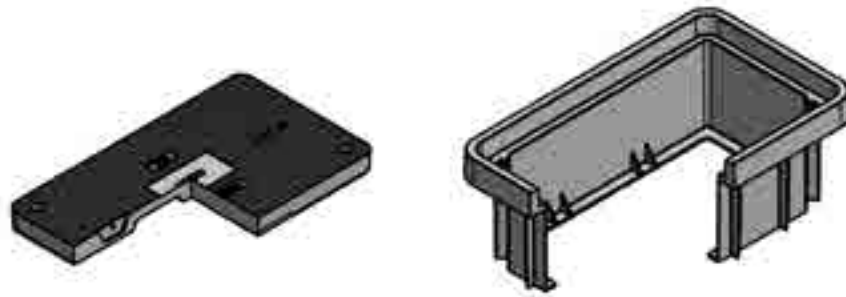


Synertech - 1730

Duo Mold

 **Medium Duty**
Non-deliberate Traffic

 **Tier 15***



*Products are rated by the lowest component rating. A tier 15 cover with a tier 22 body is rated tier 15. A tier 22 cover with a tier 22 body is rated tier 22.

See Accessories Section in the Back of this Manual for Options, Hardware, Specialty Markings and Other Accessories

RATING	Part#	Description 1	Description 2	Color	Depth	Item Weight	Pallet Qty	List Price	Line Item Discount	Design Load
--------	-------	---------------	---------------	-------	-------	-------------	------------	------------	--------------------	-------------

Body - 1730

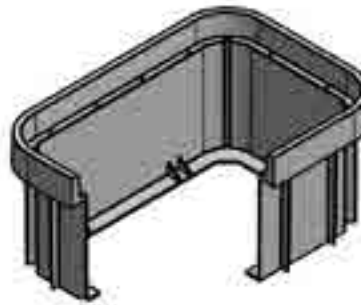
T15	32144101	Box, SYN1730 T 12" Duo	SYN1730TBOX12	Gray	12	42	12	\$147.18	OC10	15000
	32148101	Box, SYN1730 T 18" Duo	SYN1730TBOX18	Gray	18	49	8	\$168.92	OC10	15000
	32152101	Box, SYN1730 T 24" Duo	SYN1730TBOX24	Gray	24	54	6	\$202.34	OC10	15000
	32154101	Box, SYN1730 T 30" Duo (2)	SYN1730T 2 STKDBXS	Gray	30	91	4	\$340.92	OC10	15000
	32156101	Box, SYN1730 T 36" Duo (2)	SYN1730T 2 STKDBXS	Gray	36	98	4	\$351.82	OC10	15000
	32157101	Box, SYN1730 T 42" Duo (2)	SYN1730T 2 STKDBXS	Gray	42	103	2	\$378.65	OC10	15000

Lid - 1730

T15	31200121	Lid, SYN1730 T - No Mark	SYN1730T000	Gray	-	73	33	\$125.48	OC10	15000
	31200221	Lid, SYN1730 T - Electric	SYN1730T011	Gray	-	73	33	\$125.48	OC10	15000
	31200721	Lid, SYN1730 T - Ground	SYN1730T017	Gray	-	73	33	\$125.48	OC10	15000
	31201021	Lid, SYN1730 T - Lighting	SYN1730T021	Gray	-	73	33	\$125.48	OC10	15000
	31201121	Lid, SYN1730 T - Street Lighting	SYN1730T022	Gray	-	73	33	\$125.48	OC10	15000
	31201221	Lid, SYN1730 T - Traffic	SYN1730T102	Gray	-	73	33	\$125.48	OC10	15000
	31201321	Lid, SYN1730 T - Traffic Signal	SYN1730T032	Gray	-	73	33	\$125.48	OC10	15000

Unit - 1730

T15	38104100	Unit, SYN1730-12, T15 - Blank	SYN173012-T15	Gray	12	115	12	\$291.23	OC10	15000
	38104109	Unit, SYN1730-12, T15 - Marked Special	SYN173012-T15	Gray	12	115	12	\$291.23	OC10	15000
	38104130	Unit, SYN1730-12, T15 - "Electric"	SYN173012-T15	Gray	12	115	12	\$291.23	OC10	15000
	38104150	Unit, SYN1730-12, T15 - "Street Lighting"	SYN173012-T15	Gray	12	115	12	\$291.23	OC10	15000
	38104160	Unit, SYN1730-12, T15 - "Traffic Signal"	SYN173012-T15	Gray	12	115	12	\$291.23	OC10	15000
	38104170	Unit, SYN1730-18, T15 - Blank	SYN173018-T15	Gray	18	122	8	\$312.97	OC10	15000
	38104200	Unit, SYN1730-18, T15 - "Electric"	SYN173018-T15	Gray	18	122	8	\$312.97	OC10	15000
	38104220	Unit, SYN1730-18, T15 - "Street Lighting"	SYN173018-T15	Gray	18	122	8	\$312.97	OC10	15000
	38104230	Unit, SYN1730-18, T15 - "Traffic Signal"	SYN173018-T15	Gray	18	122	8	\$312.97	OC10	15000
	38104240	Unit, SYN1730-24, T15 - Blank	SYN173024-T15	Gray	24	127	6	\$346.39	OC10	15000
	38104270	Unit, SYN1730-24, T15 - "Electric"	SYN173024-T15	Gray	24	127	6	\$346.39	OC10	15000
	38104290	Unit, SYN1730-24, T15 - "Street Lighting"	SYN173024-T15	Gray	24	127	6	\$346.39	OC10	15000
	38104300	Unit, SYN1730-24, T15 - "Traffic Signal"	SYN173024-T15	Gray	24	127	6	\$346.39	OC10	15000



*Products are rated by the lowest component rating. A tier 15 cover with a tier 22 body is rated tier 15. A tier 22 cover with a tier 22 body is rated tier 22.

See Accessories Section in the Back of this Manual for Options, Hardware, Specialty Markings and Other Accessories

Rating	Part#	Description 1	Description 2	Color	Depth	Item Weight	Pallet Qty	List Price	Line Item Discount	Design Load
--------	-------	---------------	---------------	-------	-------	-------------	------------	------------	--------------------	-------------

Body - 2436

T22	32164101	Box, SYN2436 T 18" Duo	SYN2436TBOX18	Gray	18	80	4	\$261.58	OC10	22500
	32168101	Box, SYN2436 T 24" Duo	SYN2436TBOX24	Gray	24	91	3	\$294.01	OC10	22500
	32172101	Box, SYN2436 T 36" Duo	SYN2436TBOX36	Gray	36	112	2	\$382.80	OC10	22500
	32173101	Box SYN2436 T 42" DUO (2)	SYN2436T 2 STKDBXS	Gray	42	171	1	\$619.05	OC10	22500
	32174101	Box, SYN2436 T 48" Duo (2)	SYN2436T 2 STKDBXS	Gray	48	181	1	\$652.85	OC10	22500
	32175101	Box, SYN2436 T 54" Duo (2)	SYN2436T 2 STKDBXS	Gray	54	240	1	\$697.88	OC10	22500
	32176101	Box, SYN2436 T 60" Duo (2)	SYN2436T 2 STKDBXS	Gray	60	262	1	\$723.76	OC10	22500
	32177101	Box, SYN2436 T 72" Duo (2)	SYN2436T 2 STKDBXS	Gray	72	320	1	\$788.05	OC10	22500

Lid - 2436

T22	31250121	Lid, SYN2436 T - No Mark	SYN2436T000	Gray	-	147	20	\$236.76	OC10	22500
	31250221	Lid, SYN2436 T - Electric	SYN2436T011	Gray	-	147	20	\$236.76	OC10	22500
	31250721	Lid, SYN2436 T - Ground	SYN2436T017	Gray	-	147	20	\$236.76	OC10	22500
	31251021	Lid, SYN2436 T - Lighting	SYN2436T021	Gray	-	147	20	\$236.76	OC10	22500
	31251121	Lid, SYN2436 T - Street Lighting	SYN2436T022	Gray	-	147	20	\$236.76	OC10	22500
	31251221	Lid, SYN2436 T - Traffic	SYN2436T102	Gray	-	147	20	\$236.76	OC10	22500
	31251321	Lid, SYN2436 T - Traffic Signal	SYN2436T032	Gray	-	147	20	\$236.76	OC10	22500

Unit - 2436

T22	38104330	Unit, SYN2436-18, T22 - "Electric"	SYN243618-T22	Gray	18	227	4	\$530.73	OC10	22500
	38104350	Unit, SYN2436-18, T22 - "Street Lighting"	SYN243618-T22	Gray	18	227	4	\$530.73	OC10	22500
	38104360	Unit, SYN2436-18, T22 - "Traffic Signal"	SYN243618-T22	Gray	18	227	4	\$530.73	OC10	22500
	38104370	Unit, SYN2436-18, T22 - Blank	SYN243618-T22	Gray	18	227	4	\$530.73	OC10	22500
	38104379	Unit, SYN2436-18, T22 - Marked Special	SYN243618-T22	Gray	18	227	4	\$530.73	OC10	22500
	38104400	Unit, SYN2436-24, T22 - "Electric"	SYN243624-T22	Gray	24	238	3	\$563.16	OC10	22500
	38104420	Unit, SYN2436-24, T22 - "Street Lighting"	SYN243624-T22	Gray	24	238	3	\$563.16	OC10	22500
	38104430	Unit, SYN2436-24, T22 - "Traffic Signal"	SYN243624-T22	Gray	24	238	3	\$563.16	OC10	22500
	38104440	Unit, SYN2436-24, T22 - Blank	SYN243624-T22	Gray	24	238	3	\$563.16	OC10	22500
	38104449	Unit, SYN2436-24, T22 - Marked Special	SYN243624-T22	Gray	24	238	3	\$563.16	OC10	22500
	38104470	Unit, SYN2436-36, T22 - "Electric"	SYN243636-T22	Gray	36	259	2	\$651.95	OC10	22500
	38104490	Unit, SYN2436-36, T22 - "Street Lighting"	SYN243636-T22	Gray	36	259	2	\$651.95	OC10	22500
	38104500	Unit, SYN2436-36, T22 - "Traffic Signal"	SYN243636-T22	Gray	36	259	2	\$651.95	OC10	22500
	38104510	Unit, SYN2436-36, T22 - Blank	SYN243636-T22	Gray	36	259	2	\$651.95	OC10	22500
	38104519	Unit, SYN2436-36, T22 - Marked Special	SYN243636-T22	Gray	36	259	2	\$651.95	OC10	22500



Synertech - 3048

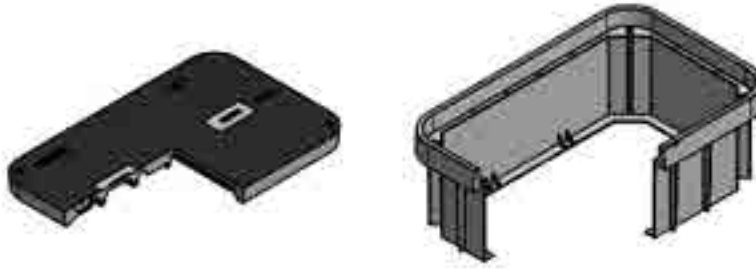
Duo Mold



Heavy Duty
Non-deliberate Traffic



Tier 22*



*Products are rated by the lowest component rating. A tier 15 cover with a tier 22 body is rated tier 15. A tier 22 cover with a tier 22 body is rated tier 22.

See Accessories Section in the Back of this Manual for Options, Hardware, Specialty Markings and Other Accessories

Part#	Description 1	Description 2	Color	Depth	Item Weight	Pallet Qty	List Price	Line Item Discount	Design Load
Body - 3048									
32180101	Box, SYN3048 T 18" Duo	SYN3048TBOX18	Gray	18	119	4	\$398.80	OC10	22500
32184101	Box, SYN3048 T 24" Duo	SYN3048TBOX24	Gray	24	145	3	\$449.29	OC10	22500
32188101	Box, SYN3048 T 36" Duo	SYN3048TBOX36	Gray	36	160	2	\$596.35	OC10	22500
32185101	Box, SYN3048 T 42" Duo (2)	SYN3048T 2 STKDBXS	Gray	42	252	2	\$863.28	OC10	22500
32187101	Box, SYN3048 T 48" Duo (2)	SYN3048T 2 STKDBXS	Gray	48	265	1	\$912.19	OC10	22500
32178101	Box SYN 3048-60 PC Body Gray Duo Mold	Syn3048PCBox60Duo	Gray	60	354	1	\$1,044.44	OC10	22500
32179101	Box, SYN3048 T 72" Duo (2)	SYN3048T 2 STKDBXS	Gray	72	320	1	\$1,177.12	OC10	22500

Part#	Description 1	Description 2	Color	Depth	Item Weight	Pallet Qty	List Price	Line Item Discount	Design Load
Lid - 3048									
31300121	Lid, SYN3048 T - No Mark	SYN3048T000	Gray	-	213	12	\$363.39	OC10	22500
31300221	Lid, SYN3048 T - Electric	SYN3048T011	Gray	-	213	12	\$363.39	OC10	22500
31300721	Lid, SYN3048 T - Ground	SYN3048T017	Gray	-	213	12	\$363.39	OC10	22500
31301021	Lid, SYN3048 T - Lighting	SYN3048T021	Gray	-	213	12	\$363.39	OC10	22500
31301121	Lid, SYN3048 T - Street Lighting	SYN3048T021	Gray	-	213	12	\$363.39	OC10	22500
31301221	Lid, SYN3048 T - Traffic	SYN3048T102	Gray	-	213	12	\$363.39	OC10	22500
31301321	Lid, SYN3048 T - Traffic Signal	SYN3048T032	Gray	-	213	12	\$363.39	OC10	22500

Part#	Description 1	Description 2	Color	Depth	Item Weight	Pallet Qty	List Price	Line Item Discount	Design Load
Unit - 3048									
38104540	Unit, SYN3048-18, T22 - "Electric"	SYN304818-T22	Gray	18	332	4	\$794.58	OC10	22500
38104560	Unit, SYN3048-18, T22 - "Street Lighting"	SYN304818-T22	Gray	18	332	4	\$794.58	OC10	22500
38104570	Unit, SYN3048-18, T22 - "Traffic Signal"	SYN304818-T22	Gray	18	332	4	\$794.58	OC10	22500
38104580	Unit, SYN3048-18, T22 - Blank	SYN304818-T22	Gray	18	332	4	\$794.58	OC10	22500
38104589	Unit, SYN3048-18, T22 - Marked Special	SYN304818-T22	Gray	18	332	4	\$794.58	OC10	22500
38104610	Unit, SYN3048-24, T22 - "Electric"	SYN304824-T22	Gray	24	346	3	\$845.07	OC10	22500
38104630	Unit, SYN3048-24, T22 - "Street Lighting"	SYN304824-T22	Gray	24	346	3	\$845.07	OC10	22500
38104640	Unit, SYN3048-24, T22 - "Traffic Signal"	SYN304824-T22	Gray	24	346	3	\$845.07	OC10	22500
38104650	Unit, SYN3048-24, T22 - Blank	SYN304824-T22	Gray	24	346	3	\$845.07	OC10	22500
38104659	Unit, SYN3048-24, T22 - Marked Special	SYN304824-T22	Gray	24	346	3	\$845.07	OC10	22500
38104680	Unit, SYN3048-36, T22 - "Electric"	SYN304836-T22	Gray	36	373	2	\$992.13	OC10	22500
38104700	Unit, SYN3048-36, T22 - "Street Lighting"	SYN304836-T22	Gray	36	373	2	\$992.13	OC10	22500
38104710	Unit, SYN3048-36, T22 - "Traffic Signal"	SYN304836-T22	Gray	36	373	2	\$992.13	OC10	22500
38104720	Unit, SYN3048-36, T22 - Blank	SYN304836-T22	Gray	36	373	2	\$992.13	OC10	22500
38104729	Unit, SYN3048-36, T22 - Marked Special	SYN304836-T22	Gray	36	373	2	\$992.13	OC10	22500



Synertech - 3660

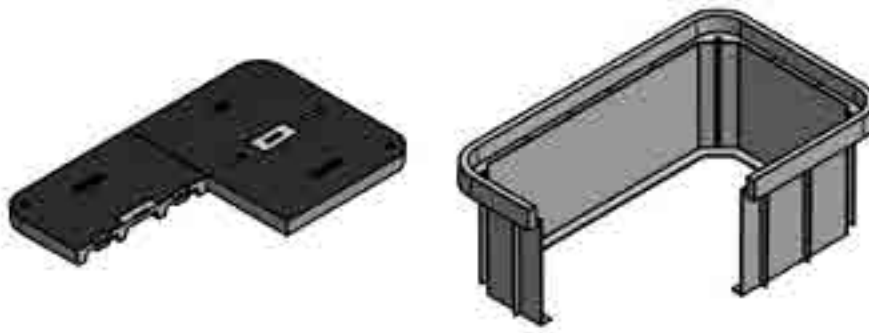
Duo Mold



Heavy Duty
Non-deliberate Traffic



Tier 22*



*Products are rated by the lowest component rating. A tier 15 cover with a tier 22 body is rated tier 15. A tier 22 cover with a tier 22 body is rated tier 22.

See Accessories Section in the Back of this Manual for Options, Hardware, Specialty Markings and Other Accessories

RATING	Part#	Description 1	Description 2	Color	Depth	Item Weight	Pallet Qty	List Price	Line Item Discount	Design Load
--------	-------	---------------	---------------	-------	-------	-------------	------------	------------	--------------------	-------------

Body - 3660

T22	32191101	Box, SYN3660 T 24" Duo	SYN3660TBOX24	Gray	24	188	3	\$577.60	OC10	22500
	32192101	Box, SYN3660 T 36" Duo	SYN3660TBOX36	Gray	36	226	2	\$714.64	OC10	22500
	32195101	Box, SYN3660 T 48" Duo (2)	SYN3660T 2 STKDBXS	Gray	48	376	2	\$1,203.45	OC10	22500
	32196101	Box, SYN3660 T 60" Duo (2)	SYN3660T 2 STKDBXS	Gray	60	413	1	\$1,329.02	OC10	22500
	32197101	Box, SYN3660 T 72" Duo (2)	SYN3660T 2 STKDBXS	Gray	72	451	1	\$1,453.46	OC10	22500

Lid - 3660

T22	31350121	Lid, SYN3660 T - No Mark	SYN3660T000	Gray	-	357	5	\$664.92	OC10	22500
	31350221	Lid, SYN3660 T - Electric	SYN3660T011	Gray	-	357	5	\$664.92	OC10	22500
	31350721	Lid, SYN3660 T - Ground	SYN3660T017	Gray	-	357	5	\$664.92	OC10	22500
	31351021	Lid, SYN3660 T - Lighting	SYN3660T021	Gray	-	357	5	\$664.92	OC10	22500
	31351121	Lid, SYN3660 T - Street Lighting	SYN3660T022	Gray	-	357	5	\$664.92	OC10	22500
	31351221	Lid, SYN3660 T - Traffic	SYN3660T102	Gray	-	357	5	\$664.92	OC10	22500
	31351321	Lid, SYN3660 T - Traffic Signal	SYN3660T032	Gray	-	357	5	\$664.92	OC10	22500

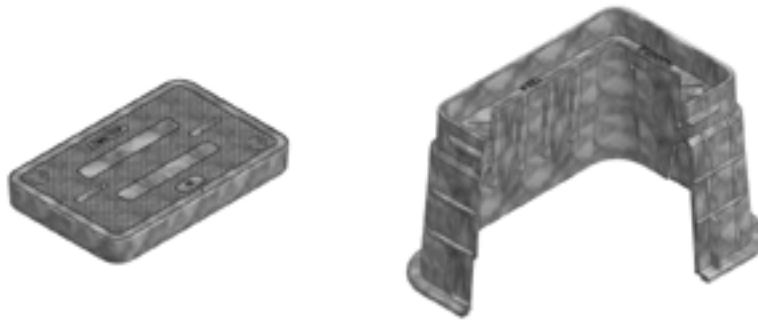
Unit - 3660

T22	38104750	Unit, SYN3660-24, T22 - "Electric"	SYN366024-T22	Gray	24	545	3	\$1,274.92	OC10	22500
	38104770	Unit, SYN3660-24, T22 - "Street Lighting"	SYN366024-T22	Gray	24	545	3	\$1,274.92	OC10	22500
	38104780	Unit, SYN3660-24, T22 - "Traffic Signal"	SYN366024-T22	Gray	24	545	3	\$1,274.92	OC10	22500
	38104790	Unit, SYN3660-24, T22 - Blank	SYN366024-T22	Gray	24	545	3	\$1,274.92	OC10	22500
	38104799	Unit, SYN3660-24, T22 - Marked Special	SYN366024-T22	Gray	24	545	3	\$1,274.92	OC10	22500
	38104800	Unit, SYN3660-36, T22 - Blank	SYN366036-T22	Gray	36	583	2	\$1,411.96	OC10	22500
	38104809	Unit, SYN3660-36, T22 - Marked Special	SYN366036-T22	Gray	36	583	2	\$1,411.96	OC10	22500
	38104830	Unit, SYN3660-36, T22 - "Electric"	SYN366036-T22	Gray	36	583	2	\$1,411.96	OC10	22500
	38104850	Unit, SYN3660-36, T22 - "Street Lighting"	SYN366036-T22	Gray	36	583	2	\$1,411.96	OC10	22500
	38104860	Unit, SYN3660-36, T22 - "Traffic Signal"	SYN366036-T22	Gray	36	583	2	\$1,411.96	OC10	22500
	38104870	Unit, SYN3660-48,(2) T22 - Blank	SYN366048-T22	Gray	48	733	2	\$1,862.47	OC10	22500
	38104879	Unit, SYN3660-48, (2) T22 - Marked Special	SYN366048-T22	Gray	48	733	2	\$1,862.47	OC10	22500
	38104900	Unit, SYN3660-48,(2) T22 - "Electric"	SYN366048-T22	Gray	48	733	2	\$1,862.47	OC10	22500
	38104920	Unit, SYN3660-48, (2) T22 - "Street Lighting"	SYN366048-T22	Gray	48	733	2	\$1,862.47	OC10	22500
	38104930	Unit, SYN3660-48,(2) T22 - "Traffic Signal"	SYN366048-T22	Gray	48	733	2	\$1,862.47	OC10	22500



Fibrelyte - FL09

Composite



RATING	Part#	Description 1	Description 2	Color	Depth	Item Weight	Pallet Qty	List Price	Line Item Discount	Design Load
--------	-------	---------------	---------------	-------	-------	-------------	------------	------------	--------------------	-------------

Body - FL09

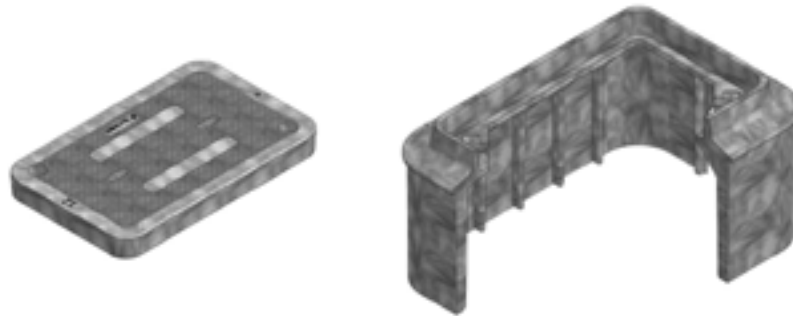
TB	02011000	Box, FL09 T	FL09TBOX	Gray	12	17	48	\$45.64	OC11	8000
----	----------	-------------	----------	------	----	----	----	---------	------	------

Lid - FL09

TB	02006165	Lid, FL09 T - No Mark	FL09T000	Gray	-	9	120	\$29.68	OC11	8000
	02006175	Lid, FL09 T - "Electric"	FL09T011	Gray	-	9	100	\$29.68	OC11	8000
	02006180	Lid, FL09 T - "Traffic Signal"	FL09T032	Gray	-	9	100	\$29.68	OC11	8000
	02006195	Lid, FL09 T - "Street Lighting"	FL09T022	Gray	-	9	100	\$29.68	OC11	8000

Fibrelyte - FL12

Composite



RATING	Part#	Description 1	Description 2	Color	Depth	Item Weight	Pallet Qty	List Price	Line Item Discount	Design Load
--------	-------	---------------	---------------	-------	-------	-------------	------------	------------	--------------------	-------------

Body - FL12

TB	02001029	Box, FL12 T 12 (No Mouseholes)	FL12TBOX12 - NM	Gray	12	28	30	\$73.34	OC11	8000
----	----------	--------------------------------	-----------------	------	----	----	----	---------	------	------

Lid - FL12

TB	02006209	Lid, FL12 T - No Mark	FL12T000	Gray	-	11	80	\$40.89	OC11	8000
	02006215	Lid, FL12 T - "Electric"	FL12T011	Gray	-	11	80	\$40.89	OC11	8000
	02006224	Lid, FL12 T - SPECIAL	FL12T099	Gray	-	11	80	\$40.89	OC11	8000

Fibrelyte - FL30

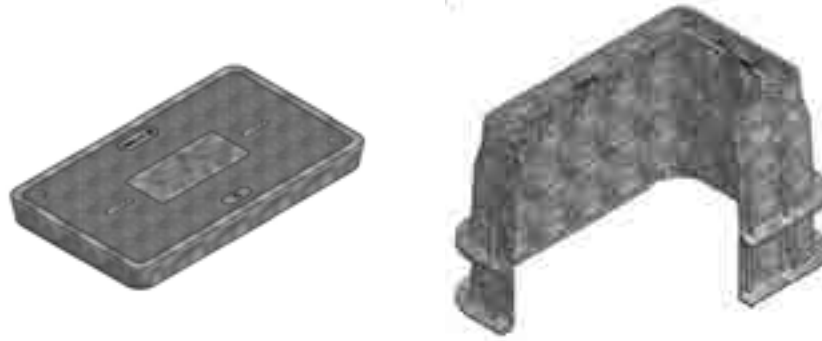
Composite



Medium Duty
Non-deliberate Traffic



Tier 8



RATING	Part#	Description 1	Description 2	Color	Depth	Item Weight	Pallet Qty	List Price	Line Item Discount	Design Load
Body - FL30										
TB	02006040	Box, FL30 T 12"	FL30TBOX12	Gray	12	28	24	\$77.11	OC11	8000
	02006045	Box, FL30 T 18"	FL30TBOX18	Gray	18	36	18	\$137.81	OC11	8000
	02006050	Box, FL30 T 20"	FL30TBOX20	Gray	20	38	18	\$146.98	OC11	8000
	02006052	Box, FL30 T 24"	FL30TBOX24	Gray	24	45	12	\$198.05	OC11	8000

Extension - FL30										
TB	02001090	Extension, FL30 6"	FL30X6	Gray	6	8	6	\$55.11	OC11	8000
	02001095	Extension, FL30 8"	FL30X8	Gray	8	10	8	\$64.32	OC11	8000

Lid - FL30										
TB	02006260	Lid, FL30 T - No Mark	FL30T000	Gray	-	21	60	\$73.47	OC11	8000
	02006270	Lid, FL30 T - "Electric"	FL30T011	Gray	-	21	60	\$73.47	OC11	8000
	02006275	Lid, FL30 T - "Traffic Signal"	FL30T032	Gray	-	21	60	\$73.47	OC11	8000
	02006285	Lid, FL30 T - "Street Lighting"	FL30T022	Gray	-	21	60	\$73.47	OC11	8000
	02006339	Lid, FL30 T - "Traffic"	FL30T102	Gray	-	21	60	\$73.47	OC11	8000
	02006552	Lid, FL30 T - "Ground"	FL30T017	Gray	-	21	60	\$73.47	OC11	8000
	02006557	Lid, FL30 T - "Lighting"	FL30T021	Gray	-	21	60	\$73.47	OC11	8000

Fibrelyte - FL36

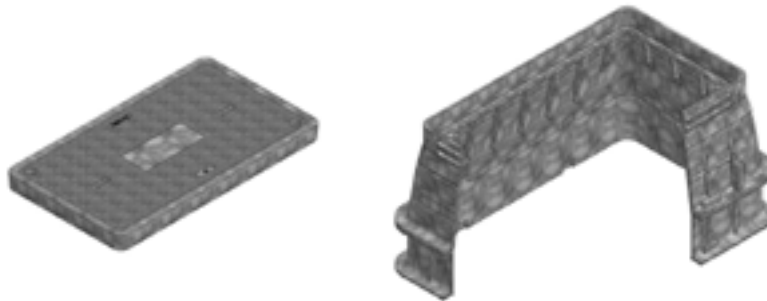
Composite



Medium Duty
Non-deliberate Traffic



Tier 8



RATING	Part#	Description 1	Description 2	Color	Depth	Item Weight	Pallet Qty	List Price	Line Item Discount	Design Load
Body - FL36										
TB	02006095	Box, FL36 T 12"	FL36TBOX12	Gray	12	45	16	\$119.42	OC11	8000
	02006100	Box, FL36 T 18"	FL36TBOX18	Gray	18	56	12	\$191.09	OC11	8000
	02006105	Box, FL36 T 20"	FL36TBOX20	Gray	20	61	10	\$202.09	OC11	8000
	02006110	Box, FL36 T 24"	FL36TBOX24	Gray	24	68	8	\$262.76	OC11	8000

Extension - FL36										
TB	02001160	Extension, FL36 6"	FL36X6	Gray	6	11	28	\$67.93	OC11	8000
	02001165	Extension, FL36 8"	FL36X8	Gray	8	17	18	\$79.04	OC11	8000

Lid - FL36										
TB	02006385	Lid, FL36 T - No Mark	FL36T000	Gray	-	36	30	\$116.08	OC11	8000
	02006395	Lid, FL36 T - "Electric"	FL36T011	Gray	-	36	30	\$116.08	OC11	8000
	02006400	Lid, FL36 T - "Traffic Signal"	FL36T032	Gray	-	36	30	\$116.08	OC11	8000
	02006410	Lid, FL36 T - "Street Lighting"	FL36T022	Gray	-	36	30	\$116.08	OC11	8000
	02006422	Lid, FL36 T - "Power"	FL36T019	Gray	-	36	30	\$116.08	OC11	8000
	02006432	Lid, FL36 T - "Lighting"	FL36T021	Gray	-	36	30	\$116.08	OC11	8000
	02006437	Lid, FL36 T - "Traffic"	FL36T102	Gray	-	36	30	\$116.08	OC11	8000
	02006598	Lid, FL36 T - "Signal"	FL36T013	Gray	-	36	30	\$116.08	OC11	8000

Christy - N09

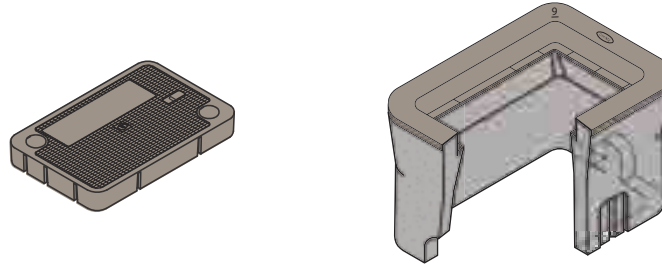
Concrete



Light Duty
Pedestrian Only



Pedestrian



RATING	Part#	Description 1	Description 2	Color	Depth	Item Weight	Pallet Qty	List Price	Line Item Discount	Design Load
--------	-------	---------------	---------------	-------	-------	-------------	------------	------------	--------------------	-------------

Body - N09 with Plastic Cap

P	1000025	Box, N09 Electrical	N09BOX	Gray	12	96	28	\$26.76	OC01	300 lb/ft ²
---	---------	---------------------	--------	------	----	----	----	---------	------	------------------------

Extension - B09

P	1000045	Extension, B09 X 12"	B09X12	Gray	12	98	28	\$20.89	OC01	300 lb/ft ²
---	---------	----------------------	--------	------	----	----	----	---------	------	------------------------

Lid - N09 with Plastic Cap

Ped	1020030	Lid, N09 R - "Electric"	N09R011	Gray	-	23	60	\$20.58	OC01	300 lb/ft ²
	1020050	Lid, N09 R - "Ground"	N09R017	Gray	-	23	60	\$20.58	OC01	300 lb/ft ²
	1020053	Lid, N09 R - "High Voltage"	N09R020	Gray	-	23	60	\$20.58	OC01	300 lb/ft ²
	1020060	Lid, N09 R - "Lighting"	N09R021	Gray	-	23	60	\$20.58	OC01	300 lb/ft ²
	1020075	Lid, N09 R - "Signal"	N09R013	Gray	-	23	60	\$20.58	OC01	300 lb/ft ²
	1020076	Lid, N09 R - "Site Lighting"	N09R184	Gray	-	23	60	\$20.58	OC01	300 lb/ft ²
	1020080	Lid, N09 R - "Street Lighting"	N09R022	Gray	-	23	60	\$20.58	OC01	300 lb/ft ²
	1020095	Lid, N09 R - "Traffic Signal"	N09R032	Gray	-	23	60	\$20.58	OC01	300 lb/ft ²
1020097	Lid, N09 R - "Traffic"	N09R102	Gray	-	23	60	\$20.58	OC01	300 lb/ft ²	

Christy - N16

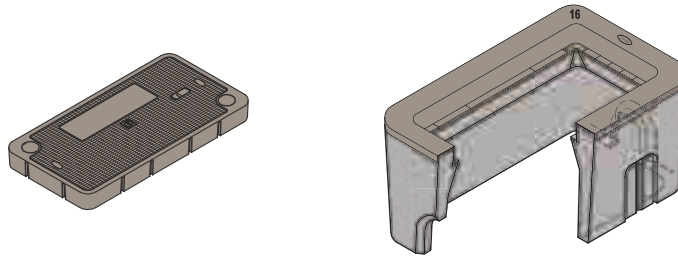
Concrete



Light Duty
Pedestrian Only



Pedestrian



RATING	Part#	Description 1	Description 2	Color	Depth	Item Weight	Pallet Qty	List Price	Line Item Discount	Design Load
--------	-------	---------------	---------------	-------	-------	-------------	------------	------------	--------------------	-------------

Body - N16 with Plastic Cap

P	1000090	Box, N16 Electrical	N16BOX	Gray	12	129	20	\$33.59	OC01	300 lb/ft ²
---	---------	---------------------	--------	------	----	-----	----	---------	------	------------------------

Extension - B16

P	1000100	Extension, B16 X 12"	B16X12	Gray	12	120	20	\$27.41	OC01	300 lb/ft ²
---	---------	----------------------	--------	------	----	-----	----	---------	------	------------------------

Lid - N16 with Plastic Cap

Ped	1020400	Lid, N16 R - No Mark	N16R000	Gray	-	36	40	\$28.22	OC01	300 lb/ft ²
	1020510	Lid, N16 R - "Electric"	N16R011	Gray	-	36	40	\$28.22	OC01	300 lb/ft ²
	1020520	Lid, N16 R - "Lighting"	N16R021	Gray	-	36	40	\$28.22	OC01	300 lb/ft ²
	1020530	Lid, N16 R - "Power"	N16R019	Gray	-	36	40	\$28.22	OC01	300 lb/ft ²
	1020545	Lid, N16 R - "Signal"	N16R013	Gray	-	36	40	\$28.22	OC01	300 lb/ft ²
	1020550	Lid, N16 R - "Street Lighting"	N16R022	Gray	-	36	40	\$28.22	OC01	300 lb/ft ²
	1020570	Lid, N16 R - "Traffic Signal"	N16R032	Gray	-	36	40	\$28.22	OC01	300 lb/ft ²

Christy - N30

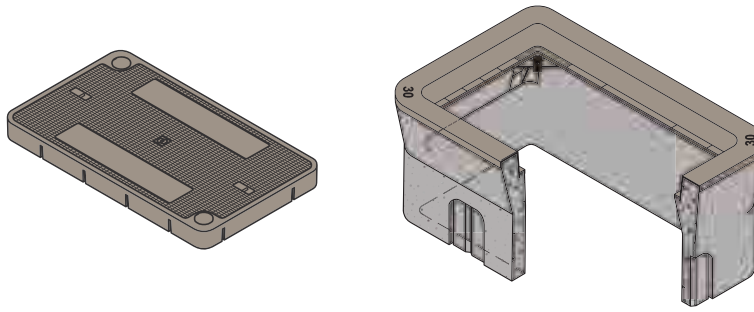
Concrete



Light Duty
Pedestrian Only



Pedestrian



RATING	Part#	Description 1	Description 2	Color	Depth	Item Weight	Pallet Qty	List Price	Line Item Discount	Design Load
--------	-------	---------------	---------------	-------	-------	-------------	------------	------------	--------------------	-------------

Body - N30 with Plastic Cap

P	1000115	Box, N30 Electric	N30BOX	Gray	12	152	16	\$38.38	OC01	300 lb/ft ²
---	---------	-------------------	--------	------	----	-----	----	---------	------	------------------------

Extension - N30

P	1000140	Extension, N30 X 12"	N30X12	Gray	12	154	16	\$35.80	OC01	300 lb/ft ²
---	---------	----------------------	--------	------	----	-----	----	---------	------	------------------------

Lid - N30 with Plastic Cap

Ped	1020700	Lid, N30 R - No Mark	N30R000	Gray	-	57	30	\$35.76	OC01	300 lb/ft ²
	1020750	Lid, N30 R - "Electric"	N30R011	Gray	-	57	30	\$35.76	OC01	300 lb/ft ²
	1020761	Lid, N30 R - "Ground"	N30R017	Gray	-	57	30	\$35.76	OC01	300 lb/ft ²
	1020782	Lid, N30 R - "Low Voltage"	N30R227	Gray	-	57	30	\$35.76	OC01	300 lb/ft ²
	1020800	Lid, N30 R - "Lighting"	N30R021	Gray	-	57	30	\$35.76	OC01	300 lb/ft ²
	1020840	Lid, N30 R - "Signal"	N30R013	Gray	-	57	30	\$35.76	OC01	300 lb/ft ²
	1020880	Lid, N30 R - "Street Lighting"	N30R022	Gray	-	57	30	\$35.76	OC01	300 lb/ft ²
	1020936	Lid, N30 R - "Traffic"	N30R102	Gray	-	57	30	\$35.76	OC01	300 lb/ft ²
	1020950	Lid, N30 R - "Traffic Signal"	N30R032	Gray	-	57	30	\$35.76	OC01	300 lb/ft ²

Christy - N36

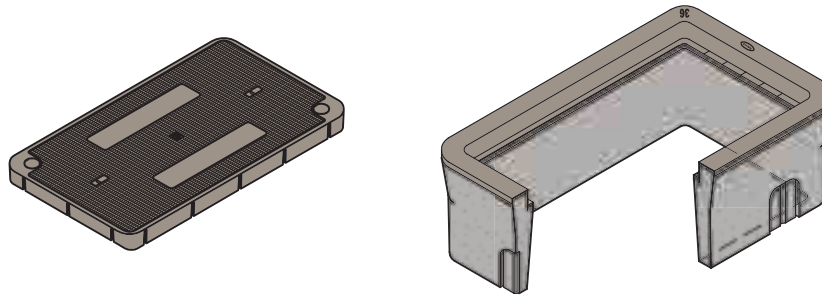
Concrete



Light Duty
Pedestrian Only



Pedestrian



RATING	Part#	Description 1	Description 2	Color	Depth	Item Weight	Pallet Qty	List Price	Line Item Discount	Design Load
--------	-------	---------------	---------------	-------	-------	-------------	------------	------------	--------------------	-------------

Body - N36 with Plastic Cap

P	1000155	Box, N36 Utility	N36BOX	Gray	12	212	8	\$51.64	OC01	300 lb/ft ²
---	---------	------------------	--------	------	----	-----	---	---------	------	------------------------

Extension - N36

P	1000185	Extension, N36 X 12"	N36X12	Gray	12	191	8	\$49.44	OC01	300 lb/ft ²
---	---------	----------------------	--------	------	----	-----	---	---------	------	------------------------

Lid - N36 with Plastic Cap

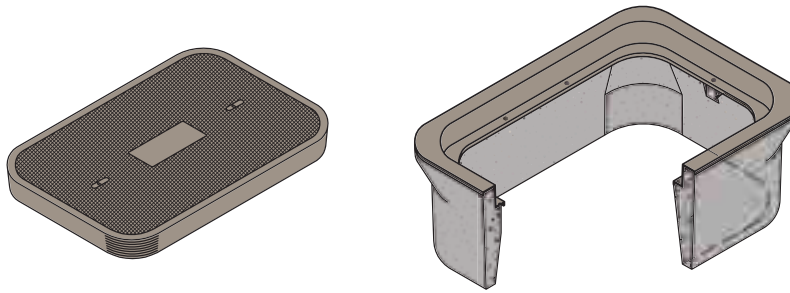
Ped	1021000	Lid, N36 R - No Mark	N36R000	Gray	-	90	10	\$50.77	OC01	300 lb/ft ²
	1021050	Lid, N36 R - "Electric"	N36R011	Gray	-	90	10	\$50.77	OC01	300 lb/ft ²
	1021056	Lid, N36 R - "Ground"	N36R017	Gray	-	90	10	\$50.77	OC01	300 lb/ft ²
	1021057	Lid, N36 R - "High Voltage"	N36R020	Gray	-	90	10	\$50.77	OC01	300 lb/ft ²
	1021065	Lid, N36 R - "Lighting"	N36R021	Gray	-	90	10	\$50.77	OC01	300 lb/ft ²
	1021068	Lid, N36 R - "Power"	N36R019	Gray	-	90	10	\$50.77	OC01	300 lb/ft ²
	1021090	Lid, N36 R - "Signal"	N36R013	Gray	-	90	10	\$50.77	OC01	300 lb/ft ²
	1021110	Lid, N36 R - "Street Lighting"	N36R022	Gray	-	90	10	\$50.77	OC01	300 lb/ft ²
	1021150	Lid, N36 R - "Traffic Signal"	N36R032	Gray	-	90	10	\$50.77	OC01	300 lb/ft ²

Christy - N40

Concrete

 **Light Duty**
Pedestrian Only

 **Pedestrian**



RATING	Part#	Description 1	Description 2	Color	Depth	Item Weight	Pallet Qty	List Price	Line Item Discount	Design Load
--------	-------	---------------	---------------	-------	-------	-------------	------------	------------	--------------------	-------------

Body - N40 with Plastic Cap

P	1000200	Box, N40 Utility	N40BOX	Gray	14	347	3	\$145.72	OC01	300 lb/ft ²
---	---------	------------------	--------	------	----	-----	---	----------	------	------------------------

Extension - N40

P	1000205	Extension, N40 X 10"	N40X10	Gray	10	324	4	\$106.25	OC01	300 lb/ft ²
---	---------	----------------------	--------	------	----	-----	---	----------	------	------------------------

Lid - N40 with Plastic Cap

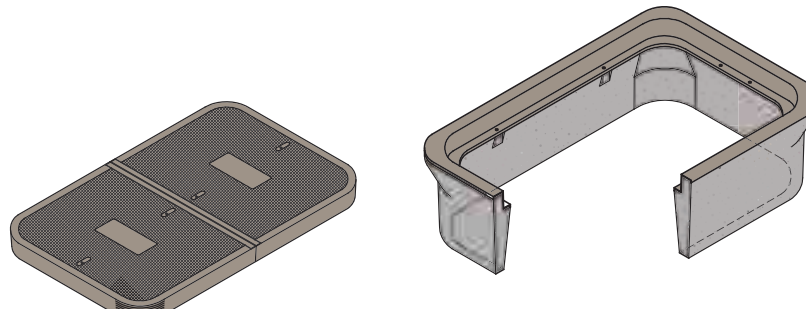
Ped	Part#	Description 1	Description 2	Color	Depth	Item Weight	Pallet Qty	List Price	Line Item Discount	Design Load
	1007140	Lid, N40 T - "Electric"	N40T011	Gray	-	201	5	\$142.08	OC01	300 lb/ft ²
	1007160	Lid, N40 T - "Lighting"	N40T021	Gray	-	201	5	\$142.08	OC01	300 lb/ft ²
	1007190	Lid, N40 T - "Power"	N40T019	Gray	-	201	5	\$142.08	OC01	300 lb/ft ²
	1007210	Lid, N40 T - "Signal"	N40T013	Gray	-	201	5	\$142.08	OC01	300 lb/ft ²
	1007250	Lid, N40 T - "Traffic Signal"	N40T032	Gray	-	201	5	\$142.08	OC01	300 lb/ft ²
	1007280	Lid, N40 T - No Mark	N40T000	Gray	-	201	5	\$142.08	OC01	300 lb/ft ²

Christy - N48

Concrete

 **Light Duty**
Pedestrian Only

 **Pedestrian**



RATING	Part#	Description 1	Description 2	Color	Depth	Item Weight	Pallet Qty	List Price	Line Item Discount	Design Load
--------	-------	---------------	---------------	-------	-------	-------------	------------	------------	--------------------	-------------

Body - N48 with Plastic Cap

P	1000230	Box, N48 Electrical	N48BOX	Gray	14	457	3	\$179.87	OC01	300 lb/ft ²
---	---------	---------------------	--------	------	----	-----	---	----------	------	------------------------

Extension - N48

P	1000245	Extension, N48 X 10"	N48X10	Gray	10	322	3	\$122.96	OC01	300 lb/ft ²
---	---------	----------------------	--------	------	----	-----	---	----------	------	------------------------

Lid - N48 with Plastic Cap

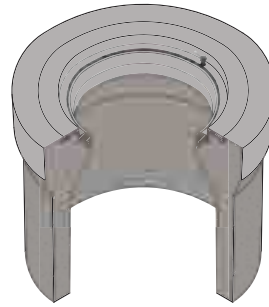
Ped	Part#	Description 1	Description 2	Color	Depth	Item Weight	Pallet Qty	List Price	Line Item Discount	Design Load
	1007850	Lid, N48 T2 1/2 - "Electric"	N48T1-011	Gray	-	184	5	\$126.99	OC01	300 lb/ft ²
	1007940	Lid, N48 T2 1/2 - "Power"	N48T1-019	Gray	-	184	5	\$126.99	OC01	300 lb/ft ²
	1007950	Lid, N48 T2 1/2 - "Signal"	N48T1-013	Gray	-	184	5	\$126.99	OC01	300 lb/ft ²
	1007990	Lid, N48 T2 1/2 - "Traffic Signal"	N48T1-032	Gray	-	184	5	\$126.99	OC01	300 lb/ft ²
	1008000	Lid, N48 T2 1/2 - "Traffic"	N48T1-102	Gray	-	184	5	\$126.99	OC01	300 lb/ft ²
	1008030	Lid, N48 T2 1/2 - No Mark	N48T1-000	Gray	-	184	5	\$126.99	OC01	300 lb/ft ²

Christy - G08

Concrete



Traffic Rated
Continuous Roadway Traffic



FRATING	Part#	Description 1	Description 2	Color	Depth	Item Weight	Pallet Qty	List Price	Line Item Discount	Design Load
Body - G08										
H20	1000430	Box, G08 Traffic Valve	G08BOX	Gray	12	93	10	\$60.35	OC01	36,400 lbf
Extension - G08										
H20	1000455	Extension, G08 X 12"	G08X12	-	12	48	36	\$24.17	OC01	36,400 lbf
Lid - G08										
H20	1000435	Box, G08 T Bolt Down Traffic Valve	G08TBOX	-	12	94	10	\$60.35	OC01	36,400 lbf

Christy - G05

Concrete



Traffic Rated
Continuous Roadway Traffic



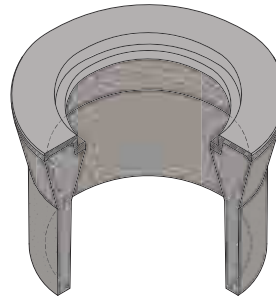
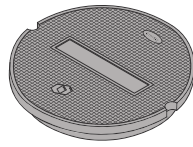
FRATING	Part#	Description 1	Description 2	Color	Depth	Item Weight	Pallet Qty	List Price	Line Item Discount	Design Load
Body - G05										
H20	1000415	Box, G05 T Bolt Down Traffic Valve	G05TBOX	Gray	12	66	36	\$35.75	OC01	16,000
Lid - G05										
H20	3000970	Lid, G05 CT Bolt Down - "Electric" IMPT	G05CT011	-	-	13	100	\$24.84	OC01	36,400 lbf
H20	3001000	Lid, G05 CT Bolt Down - "Ground" IMPT	G05CT017	-	-	13	100	\$24.84	OC01	36,400 lbf
H20	3001100	Lid, G05 CT Bolt Down - No Mark IMPT	G05CT000	-	-	13	100	\$24.84	OC01	36,400 lbf
H20	3001010	Lid, G05 CT Bolt Down - SPECIAL **IMPT	G05CT099	-	-	13	100	\$24.84	OC01	36,400 lbf
H20	3001011	Lid, G05 CT Bolt Down - SPECIAL **DOM	G05CT099	-	-	13	100	\$24.84	OC01	36,400 lbf
Grade Ring - G05										
H20	3001240	Grade Ring, G05T 1"	G05TGR10	-	1"	10	-	\$35.07	OC01	36,400 lbf
H20	3001250	Grade Ring, G05T 1-1/2"	G05TGR15	-	1 1/2"	14	-	\$40.32	OC01	36,400 lbf
H20	3001260	Grade Ring, G05T 2"	G05TGR20	-	2"	17	-	\$50.63	OC01	36,400 lbf

Christy - G12

Concrete



Traffic Rated
Continuous Roadway Traffic



FRATING	Part#	Description 1	Description 2	Color	Depth	Item Weight	Pallet Qty	List Price	Line Item Discount	Design Load
---------	-------	---------------	---------------	-------	-------	-------------	------------	------------	--------------------	-------------

Body - G12

H2O	1000450	Box, G12 Traffic Valve	G12BOX	Gray	12	110	10	\$141.56	OC01	36,400 lbf
-----	---------	------------------------	--------	------	----	-----	----	----------	------	------------

Extension - G12

H2O	1000456	Extension, G12 X 12"	G12X12	-	12	81	10	\$65.69	OC01	36,400 lbf
-----	---------	----------------------	--------	---	----	----	----	---------	------	------------

Lid - G12

H2O	3001170	Lid, G12 C - No Mark	G12C000	-	-	23	40	\$120.24	OC01	36,400 lbf
	3001140	Lid, G12 C - SPECIAL	G12C099	-	-	23	40	\$120.24	OC01	36,400 lbf

Christy - B1017

Concrete



Traffic Rated
Continuous Roadway Traffic



FRATING	Part#	Description 1	Description 2	Color	Depth	Item Weight	Pallet Qty	List Price	Line Item Discount	Design Load
---------	-------	---------------	---------------	-------	-------	-------------	------------	------------	--------------------	-------------

Body - B1017

H2O	1000275	Box, B1017 Utility H2O Load	B1017BOX	Gray	12	164	20	\$96.54	OC01	36,400 lbf
-----	---------	-----------------------------	----------	------	----	-----	----	---------	------	------------

Extension - B1017

H2O	1000280	Extension, B1017 X 12"	B1017X12	Gray	12	156	20	\$38.54	OC01	36,400 lbf
-----	---------	------------------------	----------	------	----	-----	----	---------	------	------------

Lid - B1017

H2O	2000560	Cover, B1017 51JH - "Electric"	B101751JH011	-	-	46	10	\$137.89	OC01	36,400 lbf
	2000730	Cover, B1017 51JH Galv - "Electric" *	B101751JH011G	-	-	90	10	\$161.10	OC01	36,400 lbf
	2000640	Cover, B1017 51JH - "Signal" *	B101751JH013	-	-	46	10	\$137.89	OC01	36,400 lbf
	2000600	Cover, B1017 51JH - "Power" **	B101751JH019	-	-	46	10	\$137.89	OC01	36,400 lbf
	2000580	Cover, B1017 51JH - "Lighting" *	B101751JH021	-	-	46	10	\$137.89	OC01	36,400 lbf
	2000750	Cover, B1017 51JH Galv - "Lighting" *	B101751JH021G	-	-	90	10	\$161.10	OC01	36,400 lbf
	2000650	Cover, B1017 51JH - "Street Lighting" **	B101751JH022	-	-	46	10	\$137.89	OC01	36,400 lbf
	2000770	Cover, B1017 51JH Galv - "Street Lighting" **	B101751JH022G	-	-	90	10	\$161.10	OC01	36,400 lbf
	2000670	Cover, B1017 51JH - "Traffic Signal" **	B101751JH032	-	-	46	10	\$137.89	OC01	36,400 lbf
	2000550	Cover, B1017 51JH - "Communication" *	B101751JH041	-	-	46	10	\$137.89	OC01	36,400 lbf
	2000590	Cover, B1017 51JH - SPECIAL **	B101751JH099	-	-	46	10	\$137.89	OC01	36,400 lbf
	2000760	Cover, B1017 51JH Galv - SPECIAL **	B101751JH099G	-	-	90	10	\$161.10	OC01	36,400 lbf

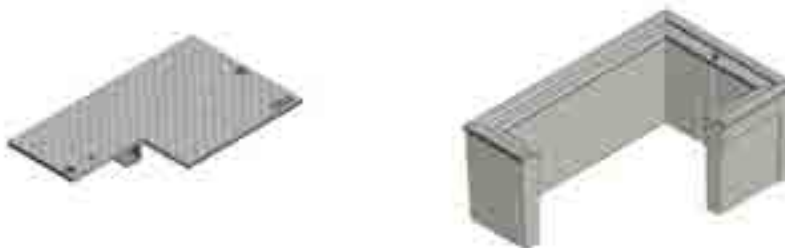


Christy - B1324

Concrete



Traffic Rated
Continuous Roadway Traffic



RATING	Part#	Description 1	Description 2	Color	Depth	Item Weight	Pallet Qty	List Price	Line Item Discount	Design Load
--------	-------	---------------	---------------	-------	-------	-------------	------------	------------	--------------------	-------------

Body - B1324

H20	1000285	Box, B1324 Utility H20 Load	B1324BOX	Gray	12	227	16	\$129.81	OC01	36,400 lbf
-----	---------	-----------------------------	----------	------	----	-----	----	----------	------	------------

Extension - B1324

H20	1000290	Extension, B1324 X 12"	B1324X12	Gray	12	215	16	\$54.22	OC01	36,400 lbf
-----	---------	------------------------	----------	------	----	-----	----	---------	------	------------

Lid - B1324

H20	2000980	Cover, B1324 51JH - "Electric"	B132451JH011	-	-	72	10	\$196.20	OC01	36,400 lbf
	2001070	Cover, B1324 51JH - "Street Lighting" *	B132451JH022	-	-	72	10	\$196.20	OC01	36,400 lbf
	2001100	Cover, B1324 51JH - "Traffic Signal" *	B132451JH032	-	-	72	10	\$196.20	OC01	36,400 lbf

Christy - B1730

Concrete



Traffic Rated
Continuous Roadway Traffic



RATING	Part#	Description 1	Description 2	Color	Depth	Item Weight	Pallet Qty	List Price	Line Item Discount	Design Load
--------	-------	---------------	---------------	-------	-------	-------------	------------	------------	--------------------	-------------

Body - B1730

H20	1000295	Box, B1730 Utility H20 Load	B1730BOX	Gray	12	272	6	\$251.93	OC01	36,400 lbf
-----	---------	-----------------------------	----------	------	----	-----	---	----------	------	------------

Extension - B1730

H20	1000300	Extension, B1730 X 12"	B1730X12	Gray	12	294	6	\$108.45	OC01	36,400 lbf
-----	---------	------------------------	----------	------	----	-----	---	----------	------	------------

Lid - B1730

H20	2001780	Cover, B1730 51JH - "Electric"	B173051JH011	-	-	111	10	\$338.83	OC01	36,400 lbf
	2001940	Cover, B1730 51JH Galv - "Electric" *	B173051JH011G	-	-	221	10	\$370.06	OC01	36,400 lbf
	2001830	Cover, B1730 51JH - "Signal" *	B173051JH013	-	-	111	10	\$338.83	OC01	36,400 lbf
	2001820	Cover, B1730 51JH - "Power" *	B173051JH019	-	-	111	10	\$338.83	OC01	36,400 lbf
	2001800	Cover, B1730 51JH - "Lighting" *	B173051JH021	-	-	111	10	\$338.83	OC01	36,400 lbf
	2001860	Cover, B1730 51JH - "Traffic Signal" *	B173051JH032	-	-	111	10	\$338.83	OC01	36,400 lbf
	2002020	Cover, B1730 51JH Galv - "Tr. Signal" **	B173051JH032G	-	-	221	10	\$370.06	OC01	36,400 lbf
	2001810	Cover, B1730 51JH - SPECIAL **	B173051JH099	-	-	111	10	\$338.83	OC01	36,400 lbf
	2001950	Cover, B1730 51JH Galv - SPECIAL **	B173051JH099G	-	-	221	10	\$370.06	OC01	36,400 lbf

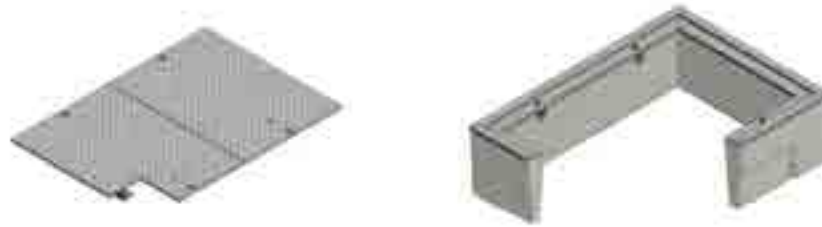


Christy - B2436

Concrete



Traffic Rated
Continuous Roadway Traffic



RATING	Part#	Description 1	Description 2	Color	Depth	Item Weight	Pallet Qty	List Price	Line Item Discount	Design Load
--------	-------	---------------	---------------	-------	-------	-------------	------------	------------	--------------------	-------------

Body - B2436

H20	1000305	Box, B2436 Utility H20 Load	B2436BOX	Gray	12	476	3	\$308.60	OC01	36,400 lbf
-----	---------	-----------------------------	----------	------	----	-----	---	----------	------	------------

Extension - B2436

H20	1000310	Extension, B2436 X 12"	B2436X12	Gray	12	451	3	\$138.47	OC01	36,400 lbf
-----	---------	------------------------	----------	------	----	-----	---	----------	------	------------

Lid - B2436

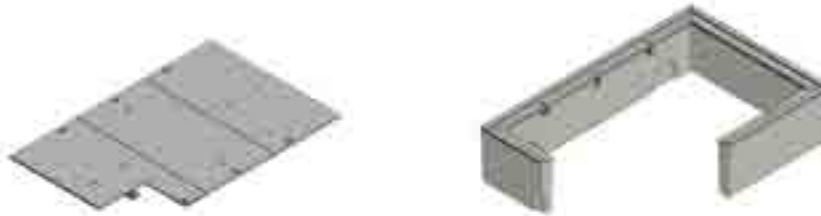
H20	2002180	Cover, B2436 52JH - "Electric"	B243652JH011	-	-	220	5	\$545.27	OC01	36,400 lbf
	2002280	Cover, B2436 52JH Galv - "Electric" *	B243652JH011G	-	-	438	5	\$708.23	OC01	36,400 lbf
	2002200	Cover, B2436 52JH - "Signal" *	B243652JH013	-	-	220	5	\$545.27	OC01	36,400 lbf
	2002240	Cover, B2436 52JH - No Mark	B243652JH000	-	-	220	5	\$545.27	OC01	36,400 lbf
	2002300	Cover, B2436 52JH Galv - No Mark **	B243652JH000G	-	-	438	5	\$708.23	OC01	36,400 lbf
	2002190	Cover, B2436 52JH - SPECIAL **	B243652JH099	-	-	220	5	\$545.27	OC01	36,400 lbf
	2002290	Cover, B2436 52JH Galv - SPECIAL **	B243652JH099G	-	-	438	5	\$708.23	OC01	36,400 lbf

Christy - B3048

Concrete



Traffic Rated
Continuous Roadway Traffic



RATING	Part#	Description 1	Description 2	Color	Depth	Item Weight	Pallet Qty	List Price	Line Item Discount	Design Load
--------	-------	---------------	---------------	-------	-------	-------------	------------	------------	--------------------	-------------

Body - B3048

H20	1000315	Box, B3048 Utility H20 Load	B3048BOX	Gray	12	471	3	\$332.16	OC01	36,400 lbf
-----	---------	-----------------------------	----------	------	----	-----	---	----------	------	------------

Extension - B3048

H20	1000320	Extension, B3048 X 12"	B3048X12	Gray	12	517	3	\$155.23	OC01	36,400 lbf
-----	---------	------------------------	----------	------	----	-----	---	----------	------	------------

Lid - B3048

H20	2002890	Cover, B3048 53JH - No Mark	B304853JH000	-	-	315	5	\$888.08	OC01	36,400 lbf
	2002810	Cover, B3048 53JH - "Electric"	B304853JH011	-	-	315	5	\$888.08	OC01	36,400 lbf
	2002815	Cover, B3048 53JH AG - "Electric"	B304853JH011A	-	-	313	5	\$2,949.28	OC01	36,400 lbf
	2002920	Cover, B3048 53JH Galv - "Electric"	B304853JH011G	-	-	627	5	\$1,181.51	OC01	36,400 lbf
	2002840	Cover, B3048 53JH - "Signal"	B304853JH013	-	-	315	5	\$888.08	OC01	36,400 lbf
	2002820	Cover, B3048 53JH - SPECIAL	B304853JH099	-	-	315	5	\$888.08	OC01	36,400 lbf
	2002900	Cover, B3048 53JH AG - SPECIAL	B304853JH099A	-	-	313	5	\$2,949.28	OC01	36,400 lbf
	2002930	Cover, B3048 53JH Galv - SPECIAL	B304853JH099G	-	-	627	5	\$1,181.51	OC01	36,400 lbf



Hardware & Accessories

RATING	Part#	Description 1	Description 2	For Use With:	List Price	Line Item Discount	Design Load
Carson Hardware							
	80002006	1x HBlit+ Wsh+ Rcfnt+ Clip	3/8"x2.5SSTCapt1220/1419 XX-50	1015, 1220, 1419	\$5.02	OC09	-
	80002008	1x HBlit+Wsh+ Rcfnt+Spring	3/8"-16 x 2.5 Capt 0910 Only	0910	\$5.35	OC09	-
	80002025	2x Hexbolt + 2x Wash SST	3/8" 16 x 2"	1324, 1730	\$10.31	OC09	-
	80002007	1x LgPnta+ Wsh+ Rcfnt+Clip	3/8" x 2.5 SST Cap 1220/1419	1015, 1220, 1419	\$9.06	OC09	-

H-Series Hardware

	80002005	Hex Bolt + Washer SST	Hex 3/8" 16 x 2-1/2"	1324, 1730	\$3.68	OC09	-
	80002025	2x Hexbolt + 2x Wash SST	Hex 3/8" 16 x 2"	1324, 1730	\$10.31	OC09	-
	80002052	2x Hexbolt + 2x Washer SST	Hex 1/2" 13 x 1-1/4"	1118, 1212	\$3.92	OC09	-
	80002033	2x Hexbolt + 2x Washer SST	Hex 1/2" 13 x 2-1/2"	1118, 1324, 1730	\$8.63	OC08	-
	80002029	2x Hexbolt + 2x Washer SST	Hex 1/2" 13 x 3-1/2"	2436, 3048, 3060	\$17.63	OC09	-
	80002026	2x LgPnta + 2x Washer SST	Penta 3/8" 16 x 2"	1324, 1730	\$15.73	OC09	-
	80002054	2x LgPnta + 2x Washer SST	Penta 1/2" 13 x 1-1/4"	1118, 1212	\$6.78	OC09	-
	80002034	2x LgPnta + 2x Washer SST	Penta 1/2" 13 x 2-1/2"	1118, 1324, 1730	\$10.41	OC09	-
	80002030	2x LgPnta + 2x Washer SST	Penta 1/2" 13 x 3-1/2"	2436, 3048, 3060	\$21.71	OC09	-

H-Series Accessories

	-	Dividers	-	-	Call Cust. Service	-	-
--	---	----------	---	---	--------------------	---	---

Synertech Hardware

	80002052	2x Hexbolt + 2x Washer SST	Hex 1/2" 13 x 1-1/4"	1212	\$3.92	OC09	-
	80002033	2x Hexbolt + 2x Washer SST	Hex 1/2" 13 x 2-1/2"	1118, 1324, 1730	\$8.63	OC08	-
	80002029	2x Hexbolt + 2x Washer SST	Hex 1/2" 13 x 3-1/2"	2436, 3048, 3636	\$17.63	OC09	-
	80002054	2x LgPnta + 2x Washer SST	Penta 1/2" 13 x 1-1/4"	1212	\$6.78	OC09	-
	80002034	2x LgPnta + 2x Washer SST	Penta 1/2" 13 x 2-1/2"	1118, 1324, 1730	\$10.41	OC09	-
	80002030	2x LgPnta + 2x Washer SST	Penta 1/2" 13 x 3-1/2"	2436, 3048, 3660	\$21.71	OC09	-

Synertech Accessories

	34358265	Terminators-3"	-	-	\$3.68	OC10	-
	34358270	Terminators-4"	-	-	\$5.11	OC10	-
	34358280	Terminators-5"	-	-	\$9.63	OC10	-
	34358290	Terminators-6"	-	-	\$14.99	OC10	-
	34358160	Trench, Pulling Eye/B. Oeil 3/8-16SS	-	-	\$35.60	OC10	-
	34358170	Trench, J Hook/Crochet en J, Zinc	-	-	\$3.87	OC10	-
	34358256	Hook cov. HB/Crochet cov. BH	-	-	\$32.26	OC10	-
	34358260	Terminators-2"	-	-	\$3.36	OC10	-
	34358450	Cable Rack Hook 7-1/2" #10A36	-	-	\$9.01	OC10	-
	-	Dividers	-	-	Call Cust Service	-	-

Enclosure Tools

	MS02200	Hook Wrench, Penta	Hook Wrench	-	\$158.61	OC09	-
	3005065	Hook, Universal Lifting, 36"	Hook	-	\$56.38	OC09	-

H-Series Steel Lids

RATING	Part#	Description 1	Description 2	For Use With:	List Price	Line Item Discount	Design Load
Steel Lids							
	11184054	1118 Steel T Cover Gal Blank	PC Box	1118	\$163.14	OC01	-
	13244180	1324 Steel T Cover Gal Blank	PC Box	1324	\$385.38	OC01	-
	17304186	1730 Steel T Cover Gal Blank	PC Box	1730	\$388.00	OC01	-
	24364011	2436 Steel T Cover Gal Blank	PC Box	2436	\$677.69	OC01	-
	30484019	3048 Steel T Cover Gal Blank	PC Box	3048	\$790.00	OC01	-
	30604013	3060 Steel T Cover Blank	2 Piece Over Under	3060	\$902.20	OC01	-

For solid bottom, dividers, and other H-Series options contact customer service.

H-Series & Synertech Marking Plates

RATING	Part#	Description 1	Description 2	Color/ Item	Depth	Item Weight	Pallet Qty	List Price	Line Item Discount	Design Load
Marking Plate										
	31901000	Marking Plate-Blank	4"x8"	-	-	-	-	\$7.86	OC10	-
	31901010	Marking Plate-Electric	4"x8"	-	-	-	-	\$7.86	OC10	-
	31901030	Marking Plate-Traffic Signal	4"x8"	-	-	-	-	\$7.86	OC10	-
	31901040	Marking Plate-Street Lighting	4"x8"	-	-	-	-	\$7.86	OC10	-
	31901050	Marking Plate-High Voltage	4"x8"	-	-	-	-	\$7.86	OC10	-
	31901070	Marking Plate-Lighting	4"x8"	-	-	-	-	\$7.86	OC10	-
	31901090	Marking Plate-Special	4"x8"	-	-	-	-	\$7.86	OC10	-

Marking Plate Adhesive

	31900100	Sealant, Surebond SB-12 10.2oz Cartridge	10 Lid Coverage	-	-	-	-	\$14.73	OC09	-
--	----------	--	-----------------	---	---	---	---	---------	------	---

H-Series Marking Plate Lids

RATING	Part#	Description 1	Description 2	Color	Depth	Item Weight	Pallet Qty	List Price	Line Item Discount	Design Load
1118 - Marking Plate Lid										
15	11184603	Lid, PC1118-T, T15 - Marking Plate Required	PC1118T-T15	Gray	-	20	60	\$79.93	OC03	15000
22	11184614	Lid, PC1118-T, T22 - Marking Plate Required	PC1118T-T22	Gray	-	28	60	\$109.54	OC03	22500
1324 - Marking Plate Lid										
15	13244600	Lid, PC1324-D, T15 - Marking Plate Required	PC1324D-T15	Gray	-	38	30	\$119.90	OC03	15000
	13244604	Lid, PC1324-T, T15 - Marking Plate Required	PC1324T-T15	Gray	-	38	30	\$119.90	OC03	15000
22	13244614	Lid, PC1324-T, T22 - Marking Plate Required	PC1324T-T22	Gray	-	51	30	\$163.84	OC03	22500
1730 - Marking Plate Lid										
15	17304600	Lid, PC1730-D, T15 - Marking Plate Required	PC1730D-T15	Gray	-	62	25	\$138.34	OC03	15000
	17304605	Lid, PC1730-T, T15 - Marking Plate Required	PC1730T-T15	Gray	-	62	25	\$138.34	OC03	15000
22	17304603	Lid, PC1730-D, T22 - Marking Plate Required	PC1730D-T22	Gray	-	85	25	\$188.66	OC03	22500
	17304615	Lid, PC1730-T, T22 - Marking Plate Required	PC1730T-T22	Gray	-	85	25	\$188.66	OC03	22500
2424 - Marking Plate Lid										
15	24244601	Lid, PC2424-D, T15 - Marking Plate Required	PC2424D-T15	Gray	-	75	20	\$194.38	OC03	15000
	24244606	Lid, PC2424-T, T15 - Marking Plate Required	PC2424T-T15	Gray	-	75	20	\$194.38	OC03	15000
2436 - Marking Plate Lid										
15	24364600	Lid, PC2436-D, T15 - Marking Plate Required	PC2436D-T15	Gray	-	150	10	\$242.76	OC03	15000
	24364605	Lid, PC2436-T, T15 - Marking Plate Required	PC2436T-T15	Gray	-	150	10	\$242.76	OC03	15000
22	24364603	Lid, PC2436-D, T22 - Marking Plate Required	PC2436D-T22	Gray	-	204	10	\$329.53	OC03	22500
3048 - Marking Plate Lid										
15	30484603	Lid, PC3048-T, T15 - Marking Plate Required	PC3048T-T15	Gray	-	220	10	\$453.71	OC03	15000
22	30484614	Lid, PC3048-T, T22 - Marking Plate Required, 2pc	PC3048T-T22	Gray	-	338	10	\$577.93	OC03	22500
3636 - Marking Plate Lid										
15	36364600	Lid, PC3636-D, T15 - Marking Plate Required	PC3636D-T15	Gray	-	235	5	\$505.88	OC03	15000
	36364605	Lid, PC3636-T, T15 - Marking Plate Required	PC3636T-T15	Gray	-	235	5	\$505.88	OC03	15000
4848 - Marking Plate Lid										
15	48484603	Lid, PC4848-T, T15 - Marking Plate Required	PC4848T-T15	Gray	-	410	5	\$994.25	OC03	15000

Standard Marking Plate: 4" x 8", 2 rows of lettering, max 13 characters each row. Options Available. Call Customer Service for Custom and Specialty Marking Orders

Synertech Marking Plate Lids

RATING	Part#	Description 1	Description 2	Color	Depth	Item Weight	Pallet Qty	List Price	Line Item Discount	Design Load
1118 - Marking Plate Lid										
15	31059821	Lid, SYN1118 T-Marking Plate Required	SYN1118T	Gray	-	26	26	\$56.21	OC10	15000
1212 - Marking Plate Lid										
15	31109821	Lid, SYN1212 T-Marking Plate Required	SYN1212T	Gray	-	15	160	\$40.88	OC10	15000
1324 - Marking Plate Lid										
15	31159821	Lid, SYN1324 T-Marking Plate Required	SYN1324T	Gray	-	42	65	\$79.80	OC10	15000
1730 - Marking Plate Lid										
15	31209821	Lid, SYN1730 T-Marking Plate Required	SYN1730T	Gray	-	64	33	\$125.48	OC10	15000
2436 - Marking Plate Lid										
22	31259821	Lid, SYN2436 T-Marking Plate Required	SYN2436T	Gray	-	125	20	\$236.76	OC10	22500
3048 - Marking Plate Lid										
22	31309821	Lid, SYN3048 T-Marking Plate Required	SYN3048T	Gray	-	193	12	\$363.39	OC10	22500
3660 - Marking Plate Lid										
22	31359821	Lid, SYN3660 T-Marking Plate Required	SYN3660T	3060	-	357	5	\$664.92	OC10	22500

Standard Marking Plate: 4" x 8", 2 rows of lettering, max 13 characters each row. Options Available. Call Customer Service for Custom and Specialty Marking Orders

ACCESSORIES

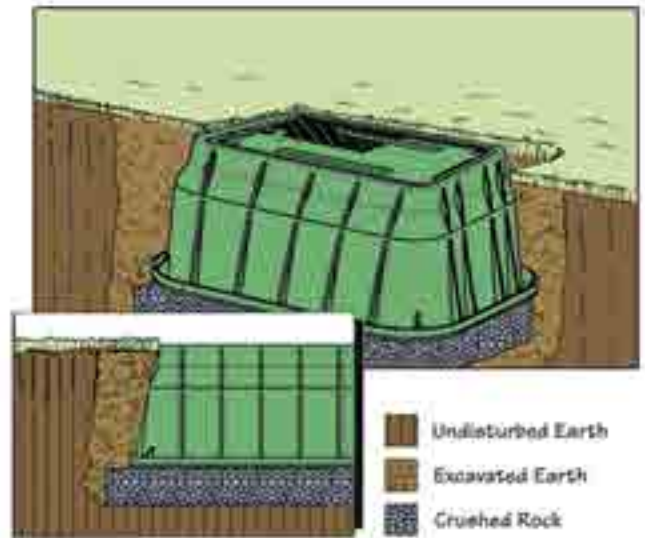


Light Duty Plastic Product

Typical grass surround installation

Crushed rock backfill is shown as specified in the Company's Installation Procedure. The tamped crushed rock supports the vault, preventing subsidence and allowing for drainage. The excavated spoils have been used for backfill.

Note the soil is free of rocks larger than three inches.



Light Duty Hybrid Product

Alternative for greenbelt location

Lateral load resistance is enhanced in this range of products. The polymer concrete cover offers an increased coefficient of friction (over HDPE) for foot traffic.

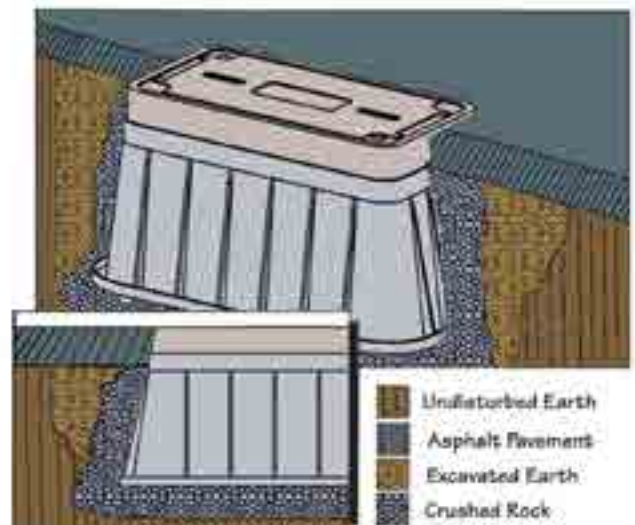
Note that backfill, although not crushed rock, is changed to specify compaction, thereby enhancing vault performance.



Light Duty Hybrid Product

Concrete or Asphalt Surround (shown)

Note compacted crushed rock surround. Dry mix could be added to crushed rock under "ring" to improve vertical load bearing.



CARSON® PLASTIC PRODUCTS ARE NOT INTENDED FOR INSTALLATION IN ANY DELIBERATE TRAFFIC AREA.

Oldcastle® underground enclosures are suitable for delivery to job sites on any construction vehicle. Enclosures can be safely handled by hand by the proper number of trained workers or proper lifting equipment for loading and unloading.

Site preparation

- Follow local guidelines and job requirements.

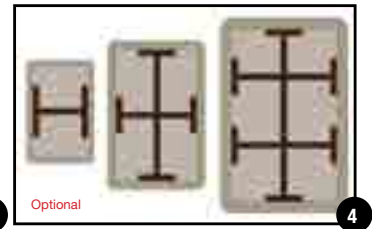
Excavation and preparation of enclosure hole (fig 1).

- Remove material to provide 1 – 2' of clearance all around the enclosure and 6" – 8" in additional depth allowing for bedding and rodent barrier.
- Place a suitable bedding material, such as crushed stone, at the base of the excavated hole.



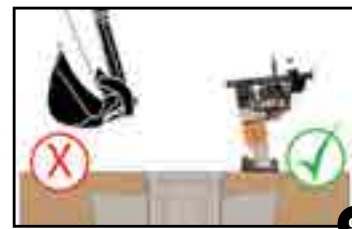
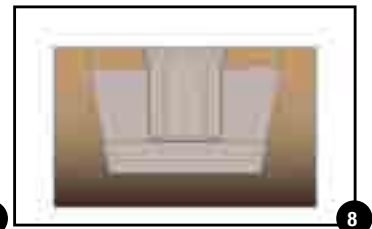
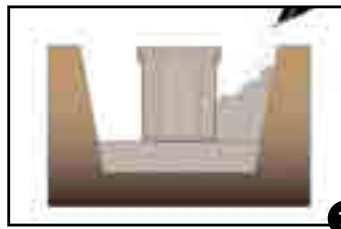
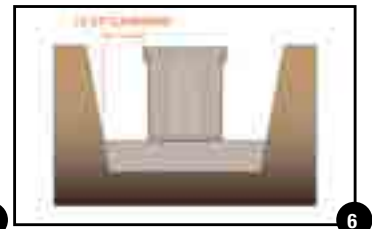
Removing enclosure from delivery vehicle and pallet.

- Remove shipping band from enclosure.
- Use proper hook to remove lid from the enclosure base (fig 2).
- Using proper lifting techniques, secure and remove box from truck. Lifting bolts are provided for boxes 2424 and larger (fig 3).
- The angle of the lifting lines should not exceed 65°.
- Optional : Install temporary brace supports in the interior of the enclosure to provide additional lateral rigidity and if 95% compaction is required (fig 4).



Enclosure placement into prepared hole.

- Reinstall the lid to the base of the enclosure prior to uniformly backfilling on all four sides. Nut, bolt threads, and cover seat should always be free of dirt and debris before tightening down the bolt.
- Bed the base of the hole with crushed stone. Then lift and place the enclosure into the bedded hole.
- Place crushed stone around the sides (fig 7 & 8).
- Position the enclosure to the proper grade level and check.
- Remove lid with proper lifting-eye tool.
- Make the necessary elevation adjustments and recheck the elevation.
- After the enclosure is set to the proper elevation, remove the temporary brace supports if used and reinstall the cover.
- Compact backfill per engineering specifications.
- Proper tamping tools such as a mechanical tamping device or hand operated device should be used. (fig 9)
- A hand shovel or backhoe should never be used for tamping as damage will occur.



Vibrator plate may also be used.

- 1** Synertech® underground enclosures can be delivered to the site on any construction maintenance vehicle and are easily handled by hand or boom truck for unloading.
-

- 2** Mark location and begin excavation, prepare excavation so there is room for at least 6" of bedding material. Depth of excavation = Box Height plus 6".
-

- 3** Place a suitable bedding material (compacted pea gravel or crushed rock) beneath the enclosure and level it to ensure that the enclosure is well supported beneath its walls. Install wire mesh on the level bedding material. Wire mesh is utilized to help prevent intrusion by pests and rodents after installation. On larger enclosures, utilize a boom to install enclosure into the excavated hole.
-

- 4** Install temporary supports in the interior of the underground enclosure to provide greater lateral rigidity. The number of supports varies depending on the size of Underground Enclosure.
-

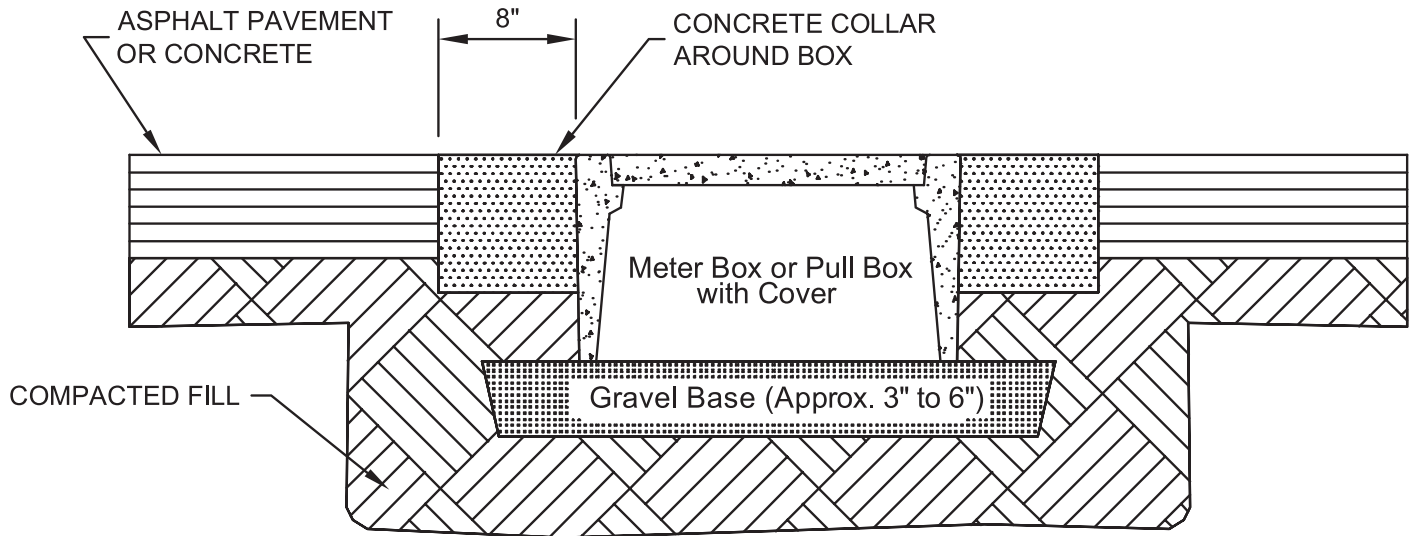
- 5** Place a temporary cover or the actual cover on the enclosure before backfilling uniformly on all four sides. Backfill to grade level. Compact every 6 inches to ensure well compacted backfill. A mechanical tamping device or alternative hand operated mechanical devices should be used. Do not use a tire or the shovel of a backhoe as tamping tools!
-

- 6** Be sure that the soil or pavement is to grade level before allowing vehicles in the vicinity of the enclosure.



PEDESTRIAN RATED ENCLOSURES

Installation in concrete or pavement for driveways, parking lots, and off-roadway applications where subject to occasional non-deliberate light vehicles.



Field preparation

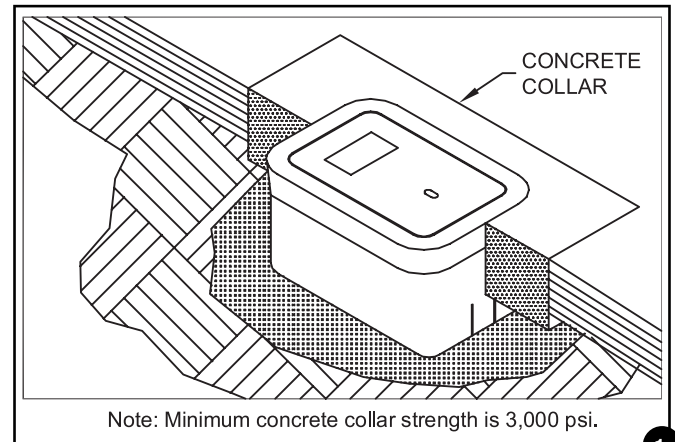
- Prepare the excavation approximately 6" deeper than the overall height of the enclosure.
- The length and width of the excavation should be determined by adding 4" to 6" to the overall length and width of the box.

Installation Recommendations

- Place 3" to 6" of compacted material such as sand or gravel because of its drainage characteristics.
- The compacted material should be leveled so the top of the box is flush to grade.

Backfilling

- Place select backfill into the excavation in 12" lifts and compact.
- The final 8" of the excavation should be finished with concrete
- This may be accomplished by providing a form around the enclosure that would produce an eight-inch wide collar (fig 1).



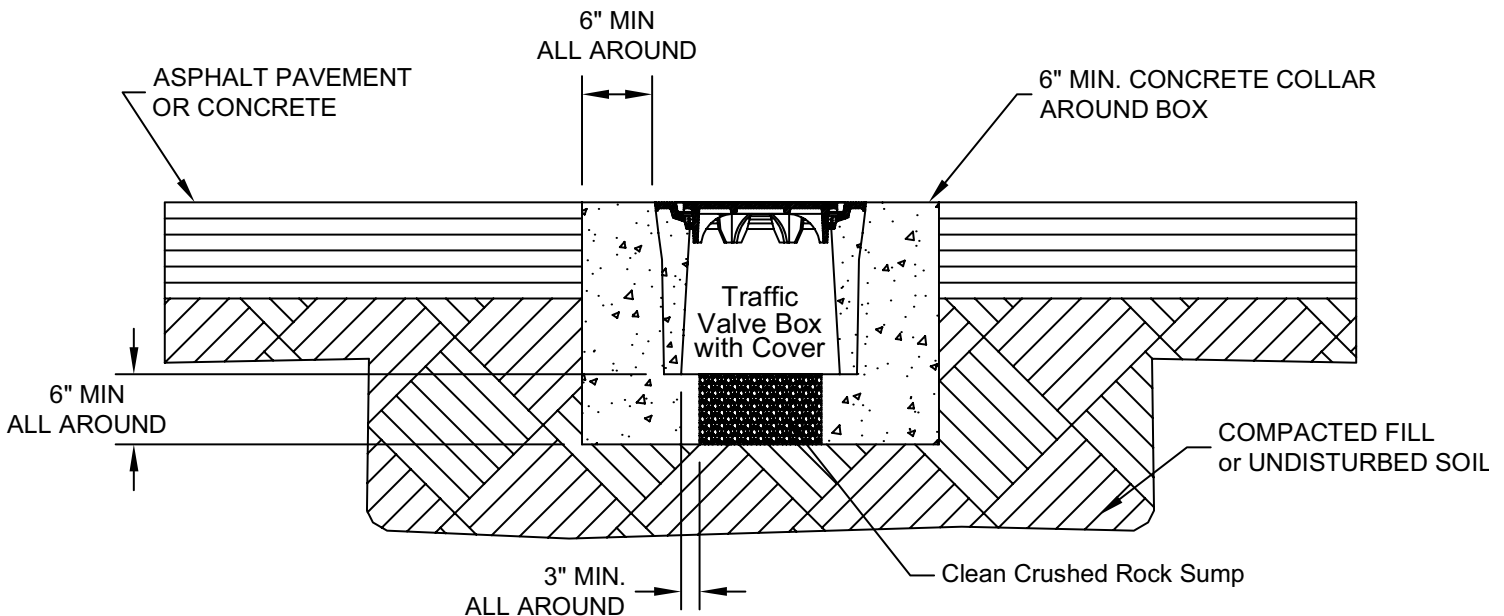
Quick Specification

Underground enclosures are manufactured by Oldcastle Enclosure Solutions. Boxes and covers shall be concrete and have a pedestrian rated minimum vertical test load of 350 pounds per square foot. The concrete shall test to a minimum of 4500 psi compressive strength.



TRAFFIC RATED VALVE BOXES

Installation in concrete or pavement for full traffic applications. This procedure is consistent with Caltrans Standard Plan ES-8B.



Field preparation

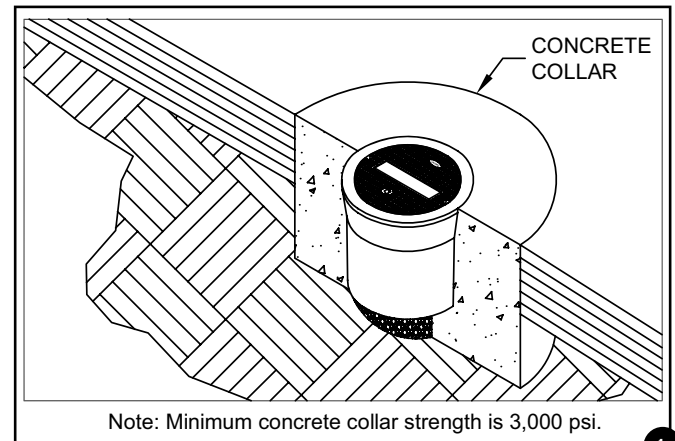
- Prepare the excavation approximately 6" deeper than the overall height of the enclosure.
- The diameter of the excavation should be determined by adding 12" to the overall diameter of the box.

Installation Recommendations

- Place at least 6" of compacted clean crushed rock, coarse gravel, or angular stone material because of its drainage characteristics.
- The compacted material should be leveled so the top of the box is flush to grade.

Backfilling

- Place select backfill into the excavation in 4" to 6" lifts and compact.
- The final 6" to 8" of the excavation should be finished with concrete collar. This may be accomplished by providing a form around the enclosure that would produce a six-inch minimum wide collar (fig 1).



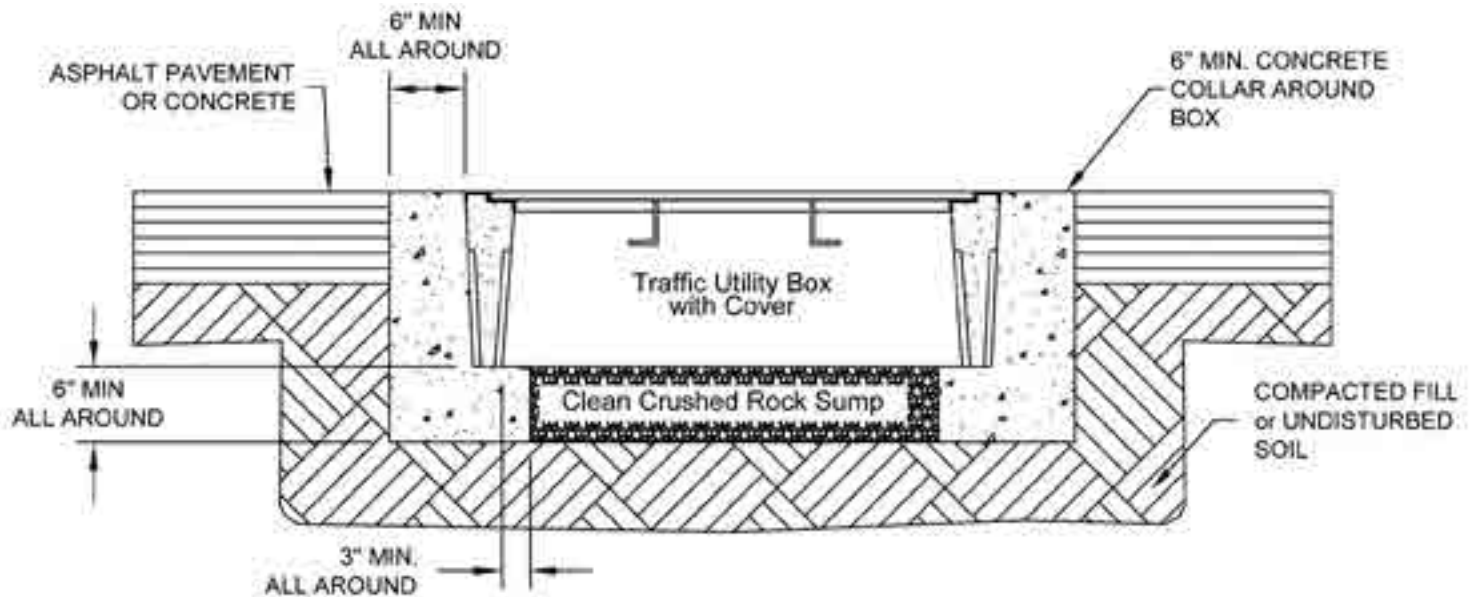
Quick Specification

Traffic-rated underground enclosures are manufactured by Oldcastle Enclosure Solutions. The box shall be precast concrete with a cast iron frame and cover with a 16,000 lbs design load. Traffic-rated enclosures shall be used where the box and cover may be exposed to vehicular traffic. The precast concrete mix shall exceed 4,500 PSI compressive strength. The concrete collar mix used in the installation shall exceed a minimum of 3,000 PSI compressive strength. Please contact Oldcastle Enclosure Solutions for a product cut sheet and possible applications.



TRAFFIC RATED ENCLOSURES

Traffic box installation procedure for installation in concrete or pavement for full traffic application. This procedure is consistent with Caltrans Standard Plan ES-8B.



Field preparation

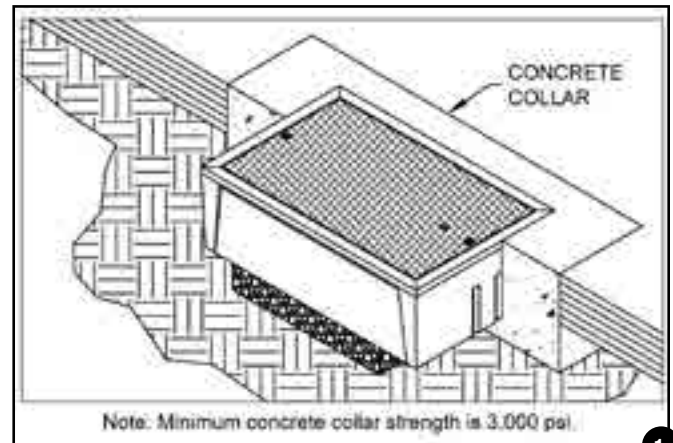
- Prepare the excavation approximately 6" deeper than the overall height of the enclosure.
- The length and width of the excavation should be determined by adding 12" to the overall length and width of the box.

Installation Recommendations

- Place at least 6" of compacted clean crushed rock, coarse gravel, or angular stone material because of drainage characteristics.
- The compacted material should be leveled so the top of the box is flush to grade.

Backfilling

- Place select backfill into the excavation in 4" to 6" lifts and compact.
- The final 6" to 8" of the excavation should be finished with concrete collar. This may be accomplished by providing a form around the enclosure that would produce a six-inch minimum wide collar (fig 1).



Quick Specification

Traffic-rated underground enclosures are manufactured by Oldcastle Enclosure Solutions. The box shall be precast concrete with a steel frame and cover with a 16,000 lbs design load. Traffic-rated enclosures shall be used where the box and cover may be exposed to vehicular traffic. The precast concrete mix shall exceed 4,500 PSI compressive strength. The concrete collar mix used in the installation shall exceed a minimum of 3,000 PSI compressive strength. Please contact Oldcastle Enclosure Solutions for a product cut sheet and possible applications.

Marking Plate Installation Guidelines

For Synertech and H-Series marking plate lids.

Product Description

The marking plate system allows common size Synertech and H-Series lids to be inventoried blank (without marking) and a marking plate to be applied at the time of sale or use (fig 1).

Lids must have a marking plate installed prior to field placement.

Installation

- For optimum results, both the lid and the marking plate should be clean and dry. The marking plate will have a grid pattern on the back side.
- Apply a moderate amount of Surebond SB-12 adhesive (approximately 1/8" bead) in a wave like pattern (fig 2) starting and ending approximately 3/8" from pocket sides (excessive adhesive will slow curing process).
- Place marking plate in pocket (fig 3) and apply continual pressure to the top of the plate for 10 seconds.
- Adjust marking plate to the center of the pocket and ensure it is below or flush with the lid surface before adhesive sets.
- Tack-free time is 10-20 minutes and full cure is approximately 24 hours.



Notes

Terms and Conditions

Electric Products

- Prices subject to change without notice.
- F.O.B. Oldcastle Facilities.
- Freight Pre-Paid on orders larger than \$5,000.
- Credit Terms: Net 30 days to approved customers.
- MINIMUM ORDER SIZE \$100.00 NET.
- Special requirements for color, materials, or hardware will be quoted upon request.
- Other sizes or type of bolt heads will be quoted upon request.
- Products being requested for return must have prior authorization and are subject to 25% restocking fee for standard products returned within 180 days of purchase. Products must be in saleable condition.
- Special order products cannot be returned.

Oldcastle Enclosure Solutions

Toll Free: 800-735-5566 Fax: 800-827-7111

www.oldcastleprecast.com/enclosuresolutions



For more information on enclosures or a distributor near you call (800) 735-5566



Oldcastle Enclosure Solutions manufactures the world's leading brands of grade-level utility access boxes for the Electrical, Communications, Water, and Irrigation markets. Our products deliver lasting performance in the field, protecting and concealing critical infrastructure to keep your community running strong.

oldcastleprecast.com/enclosuresolutions

