

PROGRESS<sup>®</sup>  
LIGHTING



PRODUCT  
SUPPLEMENT  
JANUARY 2016





# CONTENTS

Families . . . . .	2
Chandelier Additions . . .	70
Pendants . . . . .	78
Close-to-Ceiling . . . . .	83
Sconces . . . . .	92
Bath & Vanity . . . . .	93
Outdoor . . . . .	112
Security . . . . .	136
LED Surface Mount . . .	137
Recessed . . . . .	138
Step Lights . . . . .	140
Lamps . . . . .	141
Accessories . . . . .	141
Index . . . . .	144



# ELINA

## THREE-LIGHT SEMI-FLUSH

**P3672-104** Polished Nickel  
Stem and ceiling mounts both included. Includes one 6" stem, two 12" stems and 6 links of chain.  
Size: 18" dia., 13" ht. Overall ht. w/stem 55"; wire 12'.  
Lamps: Three medium base lamps, each 100w max.

## FOUR-LIGHT PENDANT

**P3987-104** Polished Nickel  
Size: 16" dia., 17-3/4" ht. Overall ht. w/stem 94"; wire 15'.  
Lamps: Four medium base lamps, each 100w max.

## SEVEN-LIGHT CHANDELIER

**P4733-104** Polished Nickel  
Size: 32" dia., 32" ht. Overall ht. w/stem 98"; wire 15'.  
Lamps: Seven medium base lamps, each 100w max.



P4733-104



*All Elina stem-hung fixtures shown here include one 6" stem, four 12" stems and 6 links of chain unless noted.*

*For additional Elina fixtures see Catalog 131.*

ELINA SPINS A TRADITIONAL CLASSIC AND MODERN FORM BY EXAGGERATING HEIRLOOM QUALITY DETAILS. TALL, TRUMPETED OPAL GLASS AND A POLISHED NICKEL FINISH CREATE A DISTINCTIVE SILHOUETTE.



**TWO-LIGHT BATH**  
**P2173-104** Polished Nickel  
 Size: 13-3/4" W., 10-1/4" ht.  
 Extends 6-3/8". H/CTR 4".  
 Lamps: Two medium base lamps, each 100w max.

**FOUR-LIGHT BATH**  
**P2174-104** Polished Nickel  
 Size: 32-1/4" W., 10-1/4" ht.  
 Extends 6-3/8". H/CTR 4".  
 Lamps: Four medium base lamps, each 100w max.

**MINI-PENDANT**  
**P5606-104** Polished Nickel  
 Size: 4-3/8" dia., 9-3/4" ht.  
 Overall ht. w/stem 76"; wire 10'.  
 Lamp: One medium base lamp, 100w max.



P2174-104

*Bath fixtures mount up or down.*

ESTEEM'S EXAGGERATED CLASSIC FRAME OFFERS CASUAL LUX STYLING FOR THE HOME. OVERSIZED SINGLE TIERED CHANDELIERS WITH K9 FINIAL ACCENTS. THE FOYER PENDANT FEATURES A FRAMELESS DESIGN, CREATING A FLOATING EFFECT FOR THIS ELEGANT FIXTURE.

# ESTEEM



**FIVE-LIGHT CHANDELIER**  
**P4615-20** Antique Bronze  
Size: 27" dia., 27" ht. Overall ht. w/chain 102"; wire 15'.  
Lamps: Five candelabra base lamps, each 60w max.

**SEVEN-LIGHT CHANDELIER**  
**P4616-20** Antique Bronze  
Size: 34" dia., 27" ht. Overall ht. w/chain 102"; wire 15'.  
Lamps: Seven candelabra base lamps, each 60w max.

**FOUR-LIGHT PENDANT**  
**P5120-20** Antique Bronze  
Size: 14" dia., 21-1/4" ht. Overall ht. w/chain 87"; wire 15'.  
Lamps: Four candelabra base lamps, each 60w max.

**ONE-LIGHT WALL SCONCE**  
**P7174-20** Antique Bronze  
Size: 5-3/4" W., 12-3/4" ht. Extends 8". H/CTR 7-1/2".  
Lamp: One candelabra base lamp, 60w max.



Harmony

HARMONY'S FIXTURES – CHARACTERIZED BY GEOMETRIC FRAMES AND FABRIC SHADES – ARE NOW AVAILABLE IN A BRUSHED NICKEL FINISH.



P3530-09

P3530-09  
shown close-to-ceiling



P3531-09

P3531-09  
shown close-to-ceiling



THREE-LIGHT CONVERTIBLE

**P3529-09** Brushed Nickel  
Size: 12-3/4" dia., 10-1/4" ht.  
Overall ht. w/stem 77"; wire 12'.  
Lamps: Three medium base lamps, each 75w max.

THREE-LIGHT CONVERTIBLE

**P3530-09** Brushed Nickel  
Size: 15" dia., 10-1/2" ht. Overall ht. w/stem 77"; wire 12'.  
Lamps: Three medium base lamps, each 100w max.

THREE-LIGHT CONVERTIBLE

**P3531-09** Brushed Nickel  
Size: 18" dia., 11-1/4" ht. Overall ht. w/stem 78"; wire 12'.  
Lamps: Three medium base lamps, each 100w max.

P3529-09



P3529-09  
shown close-to-ceiling



All Harmony stem-hung fixtures shown here include one 6" stem, four 12" stems and 6 links of chain.

# Draper



*Shown: P4719-104 chandelier with P2101-104 bath bracket.*

*All fixtures on this spread are shown with P7826-01 vintage lamps.*



WITH CHARM AND INTRIGUE, NEW OPTIONS IN THE DRAPER FAMILY ARE INSPIRED BY MID-CENTURY CLASSIC DESIGNS.

TO ADD A GREATER DESIGN EFFECT, SELECT EITHER TUBULAR OR GLOBE STYLE LAMPS TO CREATE A TRULY SIGNATURE STATEMENT FOR YOUR HOME.

FOR ADDED VERSATILITY, THE ANTIQUE BRONZE FIXTURES INCLUDE TWO FINIAL OPTIONS – NATURAL BRASS AND ANTIQUE BRONZE.

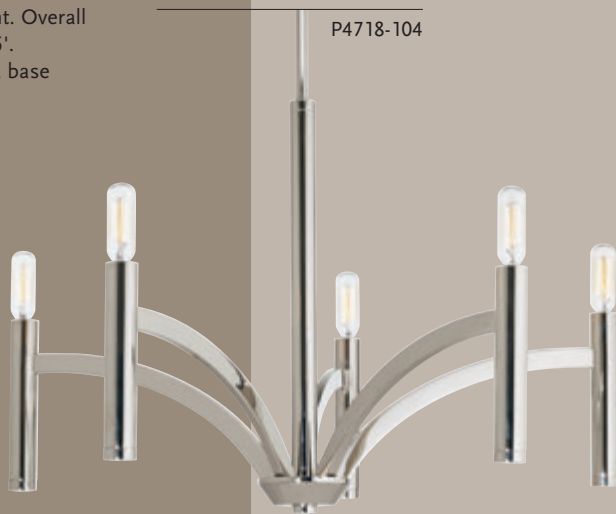
#### FIVE-LIGHT CHANDELIER

**P4718-20** Antique Bronze

**P4718-104** Polished Nickel

Size: 25" dia., 15-5/8" ht. Overall  
ht. w/chain 82"; wire 15'.

Lamps: Five candelabra base  
lamps, each 60w max.



All Draper hanging fixtures  
include one 6" stem, four 12"  
stems and 6 links of chain.

# Draper



## THREE-LIGHT CHANDELIER

**P4717-20** Antique Bronze

**P4717-104** Polished Nickel

Size: 13" dia., 16-1/4" ht. Overall  
ht. w/chain 82-1/4"; wire 15'.

Lamps: Three candelabra base  
lamps, each 60w max.

## MINI-PENDANT

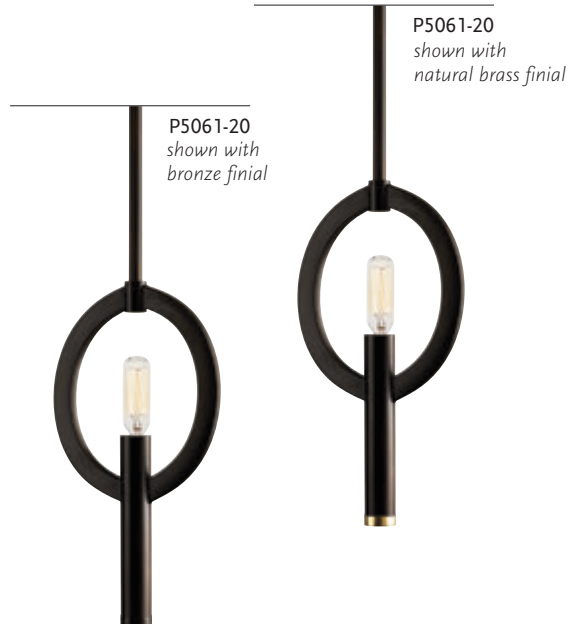
**P5061-20** Antique Bronze

**P5061-104** Polished Nickel

Size: 6-1/2" dia., 12-1/4" ht.

Overall ht. w/chain 78"; wire 10'.

Lamp: One candelabra base  
lamp, 60w max.



All fixtures on this spread are shown  
with P7826-01 vintage lamps.

WITH CHARM AND INTRIGUE, NEW OPTIONS IN THE DRAPER FAMILY ARE INSPIRED BY MID-CENTURY MODERN CLASSIC DESIGNS.

TO ADD A GREATER DESIGN EFFECT, SELECT EITHER TUBULAR OR GLOBE STYLE LAMPS TO CREATE A TRULY SIGNATURE STATEMENT FOR YOUR HOME.

#### NINE-LIGHT CHANDELIER

**P4719-20** Antique Bronze

**P4719-104** Polished Nickel

Two-tier.

Size: 32" dia., 21-3/4" ht. Overall ht. w/chain 88"; wire 15'.

Lamps: Nine candelabra base lamps, each 60w max.



P4719-104



All Draper hanging fixtures include one 6" stem, four 12" stems and 6 links of chain.

# Swing



P7159-20  
shown with P7825-01 lamp

## WALL SCONCE

**P7159-20** Antique Bronze  
Natural brass backplate.  
Size: 11-3/4" W., 11-3/4" ht.  
Extends 4". H/CTR 5-7/8".  
Lamp: One medium base lamp,  
60w max.



Shown: P4744-20 chandelier with P7825-01 vintage lamps and P2101 sconce with P7826-01 vintage lamp.

For additional Swing fixtures see Catalog 131.

NEW ADDITIONS TO THIS POPULAR VINTAGE ELECTRIC FAMILY. SPHERICAL PENDANTS WITHIN SWING FEATURES MIXED METAL ACCENTS. AND VINTAGE UNDERTONES. WALL SCONCE FEATURES NATURAL BRASS BACKPLATE.



P5180-20  
shown with  
P7827-01 vintage lamps



P5150-20  
shown with  
P7825-01 vintage lamps



P5190-20  
shown with  
P7827-01 vintage lamps

**FOUR-LIGHT PENDANT**

**P5150-20** Antique Bronze  
Size: 20" dia., 11-3/4" ht. Overall  
ht. w/chain 87"; wire 15'.  
Lamps: Four medium base  
lamps, each 100w max.

**ONE-LIGHT SMALL  
PENDANT**

**P5180-20** Antique Bronze  
Size: 14" dia., 23-1/4" ht. Overall  
ht. w/chain 92-1/2"; wire 12'.  
Lamp: One medium base lamp,  
60w max.

**FOUR-LIGHT MEDIUM  
PENDANT**

**P5190-20** Antique Bronze  
Size: 20" dia., 23-1/4" ht. Overall  
ht. w/chain 98-1/2"; wire 15'.  
Lamps: Four medium base  
lamps, each 60w max.

**FOUR-LIGHT LARGE  
PENDANT**

**P5191-20** Antique Bronze  
Size: 25" dia., 28-1/4" ht. Overall  
ht. w/chain 102"; wire 15'.  
Lamps: Four medium base  
lamps, each 60w max.



P5191-20  
shown with  
P7827-01 vintage lamps

# Trestle



*Shown: P5168-71 pendants with P7825-01 vintage lamps.*

FIXTURES WITHIN THE TRESTLE COLLECTION OFFER A HANDSOME LOOK FOR INDUSTRIAL OR RUSTIC LIVING SPACES. THE GILDED IRON FINISH IS ENHANCED BY HAND-PAINTED GOLDEN OAK ACCENTS.

**FOUR-LIGHT LINEAR CHANDELIER**

**P4720-71** Gilded Iron with hand-painted golden oak accents  
Size: 32-1/2" L., 15" W., 20-3/8" ht.  
Overall ht. w/chain 95"; wire 15'.  
Lamps: Four medium base lamps, each 60w max.

**ONE-LIGHT PENDANT**

**P5152-71** Gilded Iron with hand-painted golden oak accents  
Size: 14" dia., 8-3/4" ht. Overall ht. w/chain 72"; wire 10'.  
Lamp: One medium base lamp, 60w max.

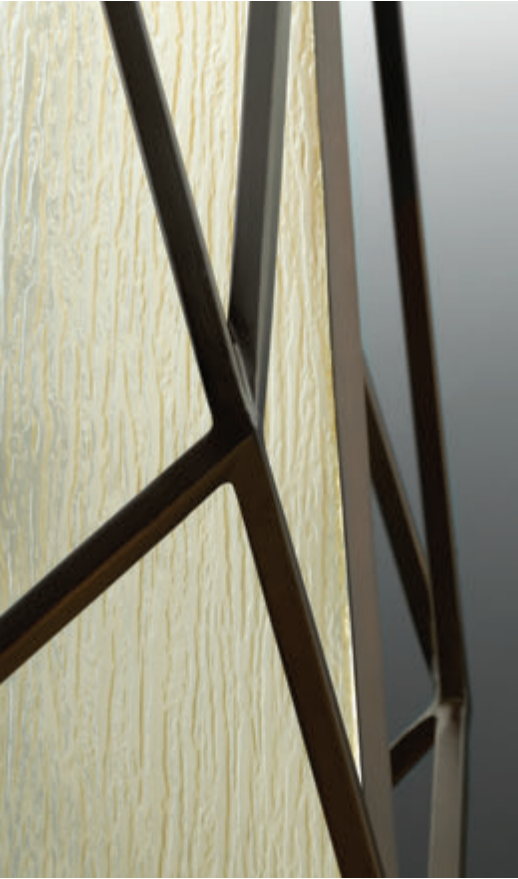
**FOUR-LIGHT PENDANT**

**P5168-71** Gilded Iron with hand-painted golden oak accents  
Size: 20" dia., 17" ht. Overall ht. w/stem 92"; wire 15'.  
Lamps: Four medium base lamps, each 60w max.



All fixtures on this page shown with P7825-01 vintage lamps.

# Marque



*Shown: P3598-20 foyer fixture*



MAKING A DISTINCT MARK ON TODAY'S INTERIORS, THIS NEW FASHION PENDANT COLLECTION EXUDES A CHIC SOPHISTICATION.

WITH ANTIQUE TEXTURED GLASS AND AN ANTIQUE BRONZE FRAME, THIS VINTAGE PENDANT FAMILY CAN BE USED AS A SLEEK SUBSTITUTE FOR CHANDELIERS IN A VARIETY OF LIVING SPACES, INCLUDING FOYERS AND HALLWAYS.

#### ONE-LIGHT FOYER

**P3598-20** Antique Bronze  
Size: 12" dia., 19-3/4" ht. Overall  
ht. w/stem 86"; wire 15'.  
Lamp: One medium base lamp,  
100w max.

#### THREE-LIGHT FOYER

**P3601-20** Antique Bronze  
Size: 18" dia., 28-3/4" ht. Overall  
ht. w/stem 95"; wire 15'.  
Lamps: Three medium base  
lamps, each 100w max.

#### MINI-PENDANT

**P5073-20** Antique Bronze  
Size: 7-3/4" dia., 9-1/4" ht.  
Overall ht. w/stem 75-1/4";  
wire 10'.  
Lamp: One medium base  
lamp, 100w max.



*All Marque stem-hung fixtures  
include one 6" stem, four 12"  
stems and 6 links of chain.*

COLLINS EMBRACES THE TREND TOWARDS STYLING WITH PENDANTS AS THE PRIMARY FIXTURE. THE WATER GLASS GALLERY CONTAINS BOTH RUSTIC AND MODERN UNDERTONES, WHILE A MICA SHADE PROVIDES RICH, GLIMMERING LIGHT.

# Collins



## ONE-LIGHT PENDANT

**P5102-20** Antique Bronze  
Size: 12" dia., 14" ht.  
Overall ht. w/chain 80"; wire 10'.  
Lamp: One medium base lamp, 100w max.

## ONE-LIGHT PENDANT

**P5115-20** Antique Bronze  
Size: 17" dia., 20" ht.  
Overall ht. w/chain 86"; wire 10'.  
Lamp: One medium base lamp, 100w max.



*All stem-hung fixtures shown on this spread include one 6" stem, four 12" stems and 6 links of chain.*

# Cirrine

CIRRINE APPEALS TO THE CREATIVE SPIRIT WITHIN ALL OF US. HAND FORMED ARCHING ELEMENTS ARE HIGHLIGHTED BY A PAINTED FINISH THAT FEATHERS FROM A RICH BRONZE TONE TO A VINTAGE BRASS ACCENT. ETCHED WHITE GLASS COMPLEMENTS THE ARTISTIC FRAME.

## THREE-LIGHT CHANDELIER

**P4699-20** Antique Bronze  
Size: 18" dia., 13-1/2" ht.  
Overall ht. w/stem 79"; wire 15'.  
Lamps: Three medium base lamps, each 100w max.

## FIVE-LIGHT CHANDELIER

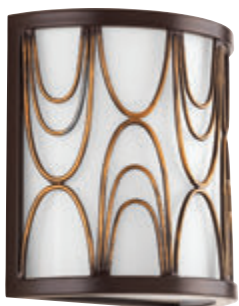
**P4700-20** Antique Bronze  
Size: 24" dia., 14-1/4" ht.  
Overall ht. w/stem 80"; wire 15'.  
Lamps: Five medium base lamps, each 100w max.

## MINI-PENDANT

**P5082-20** Antique Bronze  
Size: 6" dia., 9-3/4" ht.  
Overall ht. w/stem 76"; wire 10'.  
Lamp: One medium base lamp, 100w max.

## ONE-LIGHT WALL SCONCE

**P7149-20** Antique Bronze  
Size: 8" W., 8" ht.  
Extends 4". H/CTR 4".  
Lamp: One medium base lamp, 75w max.  
ADA



P7149-20



P5082-20



P4700-20

# Indi



*Shown: P4248-134 chandelier*

## MINI-PENDANT

**P5074-20** Antique Bronze

**P5074-134** Silver Ridge

Size: 9-1/2" dia., 11" ht.

Overall ht. w/stem 77"; wire 10'.

Lamp: One medium base lamp,  
100w max.



P5074-20



P5074-134

*All stem-hung fixtures shown on this spread include one 6" stem, four 12" stems and 6 links of chain.*

SLIGHTLY LARGER IN SCALE THAN A TRADITIONAL PENDANT, INDI FIXTURES ARE ARTISTICALLY STYLED AND CAN BE CLUSTERED TO FILL SPACIOUS INTERIOR AREAS. ANTIQUE MIRRORED GLASS SHINES THROUGH WHEN ILLUMINATED.



P4248-20



P4248-134

**THREE-LIGHT CHANDELIER**  
**P4248-20** Antique Bronze  
**P4248-134** Silver Ridge  
Size: 18" dia., 19-1/2" ht.  
Overall ht. w/stem 86"; wire 15'.  
Lamps: Three medium base lamps, each 100w max.

# Prosper



## THREE-LIGHT INVERTED PENDANT

**P3700-20** Antique Bronze  
Size: 17-3/8" dia., 23-1/2" ht.  
Overall ht. w/stem 89-1/2"; wire 15'.  
Lamps: Three medium base lamps,  
each 100w max.



SKG0905LED27 or P7818-01  
lamp recommended.



Shown: P4702-20 chandelier with  
P2151-20 wall bracket.

A FRAME INSPIRED BY MODERN GRAPHIC DESIGN  
THRIVES IN THIS COLLECTION BY PROVIDING ARTFUL  
DETAILS TO ENHANCE VISUAL SPACE.

EXQUISITE HANDMADE, POLISHED SEEDED GLASS IS  
ETCHED INSIDE FOR PLEASING ILLUMINATION.

**SEMI-FLUSH CONVERTIBLE**

**P3422-20** Antique Bronze  
Size: 13-3/8" dia., 11-3/4" ht.  
Overall ht. w/stem 78-1/2";  
wire 15'.  
Lamps: Two medium base  
lamps, each 100w max.

**FIVE-LIGHT CHANDELIER**

**P4702-20** Antique Bronze  
Size: 30" dia., 24-1/2" ht. Overall  
ht. w/stem 90-1/2"; wire 15'.  
Lamps: Five G9 halogen lamps,  
each 60w max.

**MINI-PENDANT**

**P5086-20** Antique Bronze  
Size: 9" dia., 7" ht. Overall ht.  
w/stem 73"; wire 10'.  
Lamp: One G9 halogen lamp,  
60w max.



*All Prosper hanging fixtures  
include one 6" stem, four 12"  
stems and 6 links of chain.*

# Prosper



## THREE-LIGHT CHANDELIER

**P4701-20** Antique Bronze  
Size: 25" dia., 20-1/2" ht. Overall  
ht. w/stem 86"; wire 15'.  
Lamps: Three G9 halogen lamps,  
each 60w max.

## NINE-LIGHT CHANDELIER

**P4703-20** Antique Bronze  
Two-tier.  
Size: 34-1/2" dia., 27-7/8" ht.  
Overall ht. w/stem 94"; wire 15'.  
Lamps: Nine G9 halogen lamps,  
each 60w max.



A FRAME INSPIRED BY MODERN GRAPHIC DESIGN  
THRIVES IN THIS COLLECTION BY PROVIDING ARTFUL  
DETAILS TO ENHANCE VISUAL SPACE.

**ONE-LIGHT BATH**

**P2150-20** Antique Bronze  
Size: 9" W., 14-1/4" ht.  
Extends 10-1/4". H/CTR 4-1/2".  
Lamp: One G9 halogen lamp,  
60w max.

**TWO-LIGHT BATH**

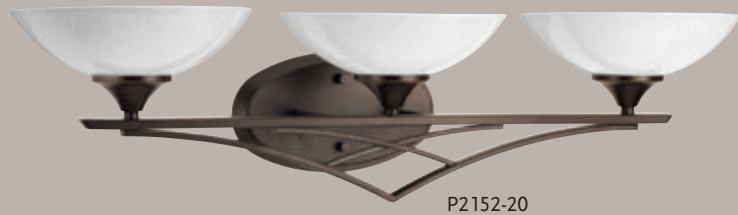
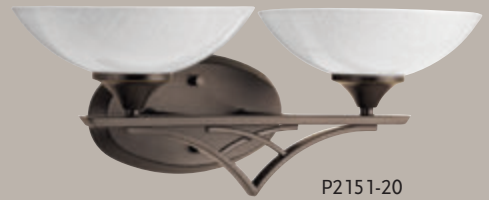
**P2151-20** Antique Bronze  
Size: 19-5/8" W., 7-1/2" ht.  
Extends 10". H/CTR 4-3/8".  
Lamps: Two G9 halogen lamps,  
each 60w max.

**THREE-LIGHT BATH**

**P2152-20** Antique Bronze  
Size: 30-1/8" W., 7-3/8" ht.  
Extends 10". H/CTR 4-3/8".  
Lamps: Three G9 halogen  
lamps, each 60w max.

**FOUR-LIGHT BATH**

**P2153-20** Antique Bronze  
Size: 40-5/8" W., 7-3/8" ht.  
Extends 10". H/CTR 4-3/8".  
Lamps: Four G9 halogen  
lamps, each 60w max.



SKG0905LED27 or P7818-01  
lamp recommended.

*Bath fixtures mount up or down.*

# Ridge

P4657-84



## FOUR-LIGHT CHANDELIER

**P4657-84** Espresso  
 Size: 16" dia., 19-3/4" ht. Overall  
 ht. w/chain 94"; wire 15'.  
 Lamps: Four medium base  
 lamps, each 100w max.

## FOUR-LIGHT LINEAR CHANDELIER

**P4698-84** Espresso  
 Includes two sets of stems.  
 Size: 36" L., 4" W., 11" ht. Overall  
 ht. w/stem 77"; wire 15'.  
 Lamps: Four medium base lamps,  
 each 100w max.

## MINI-PENDANT

**P5009-84** Espresso  
 Size: 6-1/4" dia., 10-3/4" ht.  
 Overall ht. w/stem 77"; wire 10'.  
 Lamp: One medium base lamp,  
 100w max.

P5009-84



P4698-84



## WALL BRACKET

**P7143-84** Espresso  
 Mounts up or down.  
 Size: 6-1/4" W., 10-3/4" ht.  
 Extends 5-3/8". H/CTR 5-3/8".  
 Lamp: One medium base lamp,  
 100w max.



P7143-84

*All Ridge stem-hung fixtures  
 include one 6" stem, four 12"  
 stems and 6 links of chain.*

A CLASSICALLY DESIGNED FIXTURE FAMILY FOR URBAN CHIC ENVIRONMENTS, RIDGE FEATURES A CLEAN, YET RUSTIC, MODERN FRAME. THE OPEN DESIGN ENCASES AN ETCHED ANTIQUE WATERMARK GLASS SHADE WITH A TAPERED SQUARE FORM.



P3571-84



P4658-84

**FOUR-LIGHT FOYER**  
**P3571-84** Espresso  
Size: 20-1/2" dia., 34-3/8" ht.  
Overall ht. w/chain 108-1/2";  
wire 15'.  
Lamps: Four medium base  
lamps, each 100w max.  
**FIVE-LIGHT CHANDELIER**  
**P4658-84** Espresso  
Size: 22" dia., 23-3/8" ht. Overall  
ht. w/chain 98"; wire 15'.  
Lamps: Five medium base  
lamps, each 100w max.

# Enclave

## THREE-LIGHT CONVERTIBLE

**P3671-71** Gilded Iron  
Size: 15" dia., 13-1/4" ht.  
Overall ht. w/chain 54"; wire 10'.  
Lamps: Three medium base lamps, each 100w max.

## THREE-LIGHT FOYER

**P3691-71** Gilded Iron  
Size: 16" dia., 26" ht.  
Overall ht. w/chain 101"; wire 15'.  
Lamps: Three candelabra base lamps, each 60w max.

## NINE-LIGHT FOYER

**P3692-71** Gilded Iron  
Two-tier.  
Size: 24" dia., 38" ht. Overall ht. w/chain 113"; wire 15'.  
Lamps: Nine candelabra base lamps, each 60w max.

P3671-71



P3671-71



P3692-71



P3691-71



Shown: Bottom of chandelier.

AN AUTHENTIC WROUGHT IRON FRAME AND CLASSIC SCROLLWORK ACCENTS EMBRACE THIS FAMILY. FINISHED WITH RICH, TEXTURED GLASS SHADES, THESE PIECES ARE IDEAL IN LARGER HOMES FEATURING UPSCALE STYLE PREFERENCES.



P7165-71

**ONE-LIGHT WALL SCONCE**

**P7165-71** Gilded Iron  
Size: 6" W., 16-1/2" ht.  
Extends 7". H/CTR 7".  
Lamp: One medium base lamp, 100w max.

**NINE-LIGHT CHANDELIER**

**P4731-71** Gilded Iron  
Two-tier.  
Size: 35" dia., 42" ht. Overall ht. w/chain 164"; wire 15'.  
Lamps: Nine medium base lamps, each 100w max.



AN AUTHENTIC WROUGHT IRON FRAME AND CLASSIC SCROLLWORK ACCENTS EMBRACE THIS FAMILY. FINISHED WITH RICH, TEXTURED GLASS SHADES, THESE PIECES ARE IDEAL IN LARGER HOMES FEATURING UPSCALE STYLE PREFERENCES.

# Enclave

## THREE-LIGHT CHANDELIER

**P4729-71** Gilded Iron  
Size: 24" dia., 22-3/8" ht.  
Overall ht. w/chain 97"; wire 15'.  
Lamps: Three medium base lamps, each 100w max.

## SIX-LIGHT CHANDELIER

**P4730-71** Gilded Iron  
Size: 28" dia., 26-3/8" ht.  
Overall ht. w/chain 101"; wire 15'.  
Lamps: Three medium base lamps, each 100w max.

## MINI-PENDANT

**P5071-71** Gilded Iron  
Includes one 6", four 12" stems and 6 links of chain.  
Size: 6" dia., 16-1/2" ht.  
Overall ht. w/stem 82"; wire 10'.  
Lamp: One medium base lamp, 100w max.



# Monogram

AN EXAMPLE OF GENUINE CRAFTSMANSHIP, MONOGRAM MAKES ITS MARK WITH MODERN, YET SIMPLE, SCROLLING FORMS. A WATERMARK FINISH CREATES RICH DEPTH ON THE GLASS DIFFUSERS SUPPORTED BY THE ELEGANT BRONZE FINISH FRAME.



P4738-102

## NINE-LIGHT CHANDELIER

**P4738-102** Roasted Java

Two-tier.

Size: 36" dia., 44" ht. Overall ht. w/chain 167"; wire 15'.

Lamps: Nine medium base lamps, each 100w max.

## ONE-LIGHT WALL SCONCE

**P7167-102** Roasted Java

Size: 6-7/8" W., 15-7/8" ht.

Extends 9-5/8". H/CTR 7-7/8".

Lamp: One medium base lamp, 100w max.



P7167-102

# Monogram



P3674-102

P3674-102



P3689-102

## TWO-LIGHT CONVERTIBLE

**P3674-102** Roasted Java  
Size: 17" dia., 14-7/8" ht.  
Overall ht. w/chain 55"; wire 10'.  
Lamps: Two medium base lamps, each 100w max.

## THREE-LIGHT INVERTED PENDANT

**P3689-102** Roasted Java  
Size: 22-1/4" dia., 33" ht.  
Overall ht. w/chain 108"; wire 15'.  
Lamps: Three medium base lamps, each 100w max.

## MINI-PENDANT

**P5621-102** Roasted Java  
Includes one 6", four 12" stems. and 6 links of chain.  
Size: 6-7/8" dia., 11-1/4" ht.  
Overall ht. w/stem 77"; wire 10'.  
Lamp: One medium base lamp, 100w max.



AN EXAMPLE OF GENUINE CRAFTSMANSHIP, MONOGRAM MAKES ITS MARK WITH MODERN, YET SIMPLE, SCROLLING FORMS. A WATERMARK FINISH CREATES RICH DEPTH ON THE GLASS DIFFUSERS SUPPORTED BY THE ELEGANT BRONZE FINISH FRAME.



P4736-102



P5621-102



P4737-102

#### THREE-LIGHT CHANDELIER

**P4736-102** Roasted Java  
Size: 24" dia., 21" ht.  
Overall ht. w/chain 96"; wire 15'.  
Lamps: Three medium base lamps, each 100w max.

#### SIX-LIGHT CHANDELIER

**P4737-102** Roasted Java  
Size: 28" dia., 33-3/4" ht.  
Overall ht. w/chain 109"; wire 15'.  
Lamps: Six medium base lamps, each 100w max.

# Lucky



## THREE-LIGHT CONVERTIBLE

**P3664-09** Brushed Nickel  
**P3664-15** Polished Chrome  
Includes one 12" stem and 6 links of chain.  
Size: 16-1/4" dia., 13-1/4" ht.  
Overall ht. w/stem 79"; wire 10'.  
Lamps: Three medium base lamps, each 100w max.

## THREE-LIGHT CHANDELIER

**P4721-09** Brushed Nickel  
**P4721-15** Polished Chrome  
Size: 22" dia., 16" ht.  
Overall ht. w/stem 82"; wire 15'.  
Lamps: Three medium base lamps, each 100w max.

## MINI-PENDANT

**P5088-09** Brushed Nickel  
**P5088-15** Polished Chrome  
Size: 5" dia., 7-1/4" ht.  
Overall ht. w/stem 73"; wire 10'.  
Lamp: One medium base lamp, 100w max.



LIGHT IS BEAUTIFULLY ILLUMINATED THROUGH SOFT PRISMATIC GLASS IN THE LUCKY COLLECTION. PRECISE DETAILS IN THE TUBING, FRAME AND SHADES ENHANCE THE VINTAGE DESIGN STYLING.



**FIVE-LIGHT CHANDELIER**

**P4722-09** Brushed Nickel  
**P4722-15** Polished Chrome  
 Size: 25" dia., 18" ht.  
 Overall ht. w/stem 82"; wire 15'.  
 Lamps: Five medium base lamps, each 100w max.

**ONE-LIGHT PENDANT**

**P5119-09** Brushed Nickel  
**P5119-15** Polished Chrome  
 Size: 16-1/4" dia., 14-3/4" ht.  
 Overall ht. w/stem 81"; wire 10'.  
 Lamp: One medium base lamp, 100w max.



*All stem-hung fixtures on this page includes one 6", four 12" stems, and 6 links of chain except where noted.*

LIGHT IS BEAUTIFULLY ILLUMINATED THROUGH SOFT PRISMATIC GLASS IN THE LUCKY COLLECTION. PRECISE DETAILS IN THE TUBING, FRAME AND SHADES ENHANCE THE VINTAGE DESIGN STYLING.

# Lucky



## SEVEN-LIGHT CHANDELIER

**P4724-09** Brushed Nickel

**P4724-15** Polished Chrome

Size: 31" dia., 22-1/2" ht.

Overall ht. w/stem 88"; wire 15'.

Lamps: Seven medium base lamps, each 100w max.





P3667-09



P3667-15



P4723-09



P4723-15

**THREE-LIGHT FLUSH MOUNT**

**P3667-09** Brushed Nickel  
**P3667-15** Polished Chrome  
 Size: 15" dia., 7" ht.  
 Lamps: Three medium base lamps, each 60w max.

*Shown: P5119-09 pendant.*

**FIVE-LIGHT CHANDELIER**

**P4723-09** Brushed Nickel  
**P4723-15** Polished Chrome  
 Size: 25" dia., 17" ht.  
 Overall ht. w/stem 83"; wire 15".  
 Lamps: Five medium base lamps, each 100w max.

*All stem-hung fixtures on this page includes one 6", four 12" stems, and 6 links of chain.*

SMOOTH FORMS AND WINDOWPANE STYLE GALLERY PRODUCE A BEAUTIFUL, MODERN GAS LIGHT EFFECT. OVERSCALE TUBING AND GLASS SHADES OFFER SUBSTANCE WITHIN THE SLEEK FRAME.

# Cascadia

## TWO-LIGHT CONVERTIBLE

**P3644-15** Polished Chrome

**P3644-20** Antique Bronze

Size: 14" dia., 10" ht.

Overall ht. w/chain 49"; wire 10'.

Lamps: Two medium base lamps, each 100w max.

## FIVE-LIGHT CHANDELIER

**P4613-15** Polished Chrome

**P4613-20** Antique Bronze

Size: 26" dia., 10-3/4" ht.

Overall ht. w/stem 83"; wire 15'.

Lamps: Five medium base lamps, each 100w max.





P3633-15



P4612-20



P3633-20



P4612-15

**TWO-LIGHT FLUSH MOUNT**

**P3633-15** Polished Chrome  
**P3633-20** Antique Bronze  
 Size: 14" dia., 6" ht.  
 Lamps: Two medium base lamps, each 60w max.

**THREE-LIGHT CHANDELIER**

**P4612-15** Polished Chrome  
**P4612-20** Antique Bronze  
 Size: 21" dia., 16-3/4" ht.  
 Overall ht. w/stem 83"; wire 15'.  
 Lamps: Three medium base lamps, each 100w max.

**MINI-PENDANT**

**P5066-15** Polished Chrome  
**P5066-20** Antique Bronze  
 Size: 5-7/8" dia., 6-3/4" ht.  
 Overall ht. w/stem 73"; wire 10'.  
 Lamp: One medium base lamp, 100w max.



P5066-20



P5066-15



*All stem-hung fixtures on this page include one 6", four 12" stems, and 6 links of chain.*

SMOOTH FORMS AND WINDOWPANE STYLE GALLERY  
PRODUCE A BEAUTIFUL, MODERN GAS LIGHT EFFECT.  
OVERSCALE TUBING AND GLASS SHADES OFFER  
SUBSTANCE WITHIN THE SLEEK FRAME.

# Cascadia

## NINE-LIGHT CHANDELIER

**P4614-15** Polished Chrome

**P4614-20** Antique Bronze

Two-tier

Size: 30" dia., 21-7/8" ht.

Overall ht. w/chain 88"; wire 15'

Lamps: Nine medium base  
lamps, each 100w max.



*All stem-hung fixtures on this page include one 6",  
four 12" stems, and 6 links of chain.*



### ONE-LIGHT BATH

**P2146-15** Polished Chrome  
**P2146-20** Antique Bronze  
Size: 5-7/8" W., 8" ht.  
Extends 6-1/2". H/CTR 5-1/2".  
Lamp: One medium base lamp, 100w max.

### TWO-LIGHT BATH

**P2147-15** Polished Chrome  
**P2147-20** Antique Bronze  
Size: 16" W., 8" ht.  
Extends 6-1/2". H/CTR 5-5/8".  
Lamps: Two medium base lamps, each 100w max.

### THREE-LIGHT BATH

**P2148-15** Polished Chrome  
**P2148-20** Antique Bronze  
Size: 24-1/8" W., 8" ht.  
Extends 6-1/2". H/CTR 5-5/8".  
Lamps: Three medium base lamps, each 100w max.

### FOUR-LIGHT BATH

**P2149-15** Polished Chrome  
**P2149-20** Antique Bronze  
Size: 32" W., 8" ht.  
Extends 6-1/2". H/CTR 5-5/8".  
Lamps: Four medium base lamps, each 100w max.



P2147-20



P2147-15



P2148-20



P2148-15



P2149-15



P2146-15



P2146-20



P2149-20

*All bath fixtures mount up or down.*

# CHERISH

## FIVE-LIGHT LINEAR CHANDELIER

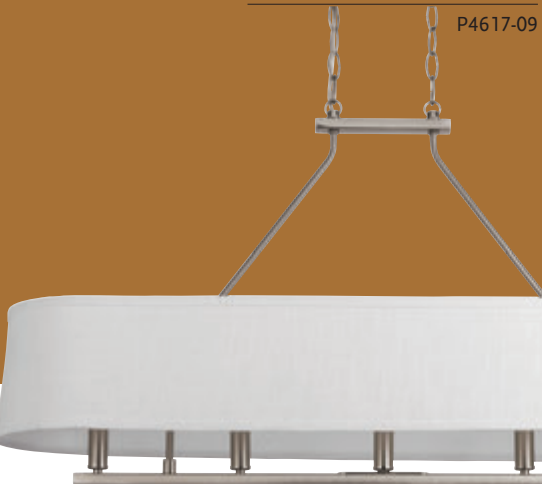
P4617-09 Brushed Nickel

P4617-20 Antique Bronze

Size: 40" L., 12" W., 20-3/8" ht.

Overall ht. w/chain 95"; wire 15'.

Lamps: Five candelabra base lamps, each 60w max.



*Coordinates with Markor and Arden fixtures.*

TRADITIONAL LINEAR ISLAND LIGHT AND ELEGANT CHANDELIER OPTIONS ARE MODERNIZED WITH A SUMMER LINEN SHADE. THE ANTIQUE BRONZE FIXTURES INCLUDE BOTH BRONZE AND NATURAL BRASS CANDLE COVER OPTIONS ALLOWING HOMEOWNERS TO COMPLEMENT MIXED METAL STYLING WITHIN A ROOM.



P7172-09



P7172-20  
Shown with natural brass  
candle covers



P7172-20  
Shown with antique bronze  
candle covers



P4618-20



P4618-09

#### SIX-LIGHT CHANDELIER

**P4618-09** Brushed Nickel

**P4618-20** Antique Bronze

Size: 24" dia., 22-3/8" ht.

Overall ht. w/chain 97"; wire 15'.

Lamps: Six candelabra base lamps, each 60w max.

#### TWO-LIGHT WALL SCONCE

**P7172-09** Brushed Nickel

**P7172-20** Antique Bronze

Size: 12" W., 9" ht.

Extends 6-1/2". H/CTR 4-3/4".

Lamps: Two candelabra base lamps, each 60w max.

# Arden



**FIVE-LIGHT CHANDELIER**  
**P4746-09** Brushed Nickel  
**P4746-20** Antique Bronze  
Size: 24-5/8" dia., 22-1/4" ht.  
Overall ht. w/chain 97"; wire 15'.  
Lamps: Five medium base  
lamps, each 100w max.

*Shown: P3905-09 pendant*

ARDEN OFFERS A COMFORTABLE SILHOUETTE THAT IS BOTH RUSTIC AND MODERN. A SUBSTANTIAL FRAME IS CRAFTED FROM OVERSCALE TUBING TO HEIGHTEN THE EFFECT. FIXTURES FEATURE EITHER ETCHED GLASS OR A SUMMER LINEN FABRIC SHADE THAT COORDINATE WELL WITH OTHER PROGRESS LIGHTING STYLES, SUCH AS CHERISH.

**TWO-LIGHT SEMI-FLUSH CONVERTIBLE**

**P3720-09** Brushed Nickel  
**P3720-20** Antique Bronze  
 Size: 14" dia., 11-3/8" ht. Overall ht. w/chain 50"; wire 10'.  
 Lamps: Two medium base lamps, each 100w max.



**TWO-LIGHT FLUSH MOUNT**

**P3739-09** Brushed Nickel  
**P3739-20** Antique Bronze  
 Size: 14" dia., 6-5/8" ht.  
 Lamps: Two medium base lamps, each 60w max.



P3739-20



P3739-09

**THREE-LIGHT CHANDELIER**

**P4745-09** Brushed Nickel  
**P4745-20** Antique Bronze  
 Size: 22" dia., 18-3/4" ht. Overall ht. w/chain 93"; wire 15'.  
 Lamps: Three medium base lamps, each 100w max.



P4745-20

**NINE-LIGHT CHANDELIER**

**P4747-09** Brushed Nickel  
**P4747-20** Antique Bronze  
 Two-tier  
 Size: 30-1/2" dia., 30" ht. Overall ht. w/chain 153"; wire 15'.  
 Lamps: Nine medium base lamps, each 100w max.



P4747-09



P4745-09



# Arden

## THREE-LIGHT INVERTED PENDANT

**P3905-09** Brushed Nickel  
**P3905-20** Antique Bronze  
Size: 18-1/8" dia., 24-5/8" ht.  
Overall ht. w/stem 99"; wire 10 ft.  
Lamps: Three medium base lamps, each 100w max.

## TWELVE-LIGHT CHANDELIER

**P4748-09** Brushed Nickel  
**P4748-20** Antique Bronze  
Three-tier.  
Size: 42" dia., 41-1/2" ht.  
Overall ht. w/chain 164"; wire 15'.  
Lamps: Twelve medium base lamps, each 75w max.

## MINI-PENDANT

**P5092-20** Antique Bronze  
**P5092-104** Polished Nickel  
Includes one 6", four 12" stems, and 6 links of chain.  
Size: 5-7/8" dia., 9-5/8" ht.  
Overall ht. w/chain 75-1/2"; wire 10'.  
Lamp: One medium base lamp, 100w max.

P4748-20



P3905-09



P3905-20



P5092-20



P5092-09



ARDEN OFFERS A COMFORTABLE SILHOUETTE THAT IS BOTH RUSTIC AND MODERN. A SUBSTANTIAL FRAME IS CRAFTED FROM OVERSCALE TUBING TO HEIGHTEN THE EFFECT. FIXTURES FEATURE EITHER ETCHED GLASS OR A SUMMER LINEN FABRIC SHADE THAT COORDINATE WELL WITH OTHER PROGRESS LIGHTING STYLES, SUCH AS CHERISH.

**ONE-LIGHT BATH**

**P2127-09** Brushed Nickel  
**P2127-20** Antique Bronze  
 Size: 5-7/8" W., 8" ht.  
 Extends 8-1/4". H/CTR 4".  
 Lamp: One medium base lamp, 100w max.

**TWO-LIGHT BATH**

**P2128-09** Brushed Nickel  
**P2128-20** Antique Bronze  
 Size: 16-1/2" W., 7-1/2" ht.  
 Extends 8-1/8". H/CTR 4-5/8".  
 Lamps: Two medium base lamps, each 100w max.

**THREE-LIGHT BATH**

**P2129-09** Brushed Nickel  
**P2129-20** Antique Bronze  
 Size: 24-1/2" W., 7-1/2" ht.  
 Extends 8-1/4". H/CTR 4-5/8".  
 Lamps: Three medium base lamps, each 100w max.

**FOUR-LIGHT BATH**

**P2130-09** Brushed Nickel  
**P2130-20** Antique Bronze  
 Size: 34" W., 7-1/2" ht.  
 Extends 8-1/4". H/CTR 4-5/8".  
 Lamps: Four medium base lamps, each 100w max.



P2127-09



P2127-20



P2128-20



P2129-09



P2129-20



P2128-09



P2130-09



P2130-20

All bath fixtures mount up or down.

# Keats



P3887-20

## THREE-LIGHT FOYER

**P3887-09** Brushed Nickel  
**P3887-20** Antique Bronze  
Size: 15" dia., 25-3/4" ht.  
Overall ht. w/chain 100-1/2";  
wire 15'.  
Lamps: Three medium base  
lamps, each 100w max.



Shown: P3891-20 chandelier



KEATS CONTRIBUTES TO A LIGHT AND OPEN ATMOSPHERE FOR TRADITIONAL STYLING. FROSTED RIBBED GLASS AND AN ELEGANT FRAME ENHANCE THE OVERALL EFFECT.



### THREE-LIGHT CHANDELIER

**P4749-09** Brushed Nickel  
**P4749-20** Antique Bronze  
Size: 19-5/8" dia., 19-3/8" ht.  
Overall ht. w/chain 95";  
wire 15'.  
Lamps: Three medium base  
lamps, each 100w max.



KEATS CONTRIBUTES TO A LIGHT AND OPEN ATMOSPHERE FOR TRADITIONAL STYLING. FROSTED RIBBED GLASS AND AN ELEGANT FRAME ENHANCE THE OVERALL EFFECT.

# Keats

## TWELVE-LIGHT CHANDELIER

**P4752-09** Brushed Nickel

**P4752-20** Antique Bronze

Three-tier.

Size: 44-1/2" dia., 45-1/4" ht.

Overall ht. w/chain 168"; wire 15'.

Lamps: Twelve medium base lamps, each 75w max.

P4752-09





**FOUR-LIGHT FOYER**

**P3891-09** Brushed Nickel

**P3891-20** Antique Bronze

Size: 21" dia., 32-3/4" ht.

Overall ht. w/chain 107"; wire 15'.

Lamps: Four medium base lamps, each 100w max.

**FIVE-LIGHT CHANDELIER**

**P4750-09** Brushed Nickel

**P4750-20** Antique Bronze

Size: 24-1/2" dia., 22-1/8" ht.

Overall ht. w/chain 97"; wire 15'.

Lamps: Five medium base lamps, each 100w max.



# Keats

## ONE-LIGHT BATH

**P2814-09** Brushed Nickel

**P2814-20** Antique Bronze

Size: 5-3/4" W., 9" ht.

Extends 8-1/8". H/CTR 5-1/4".

Lamp: One medium base lamp, 100w max.

## NINE-LIGHT CHANDELIER

**P4751-09** Brushed Nickel

**P4751-20** Antique Bronze

Two-tier.

Size: 30-1/2" dia., 32-3/4" ht.

Overall ht. w/chain 107"; wire 15'.

Lamps: Nine medium base lamps, each 100w max.

## MINI-PENDANT

**P5093-09** Brushed Nickel

**P5093-20** Antique Bronze

Includes one 6", four 12" stems, and 6 links of chain.

Size: 5-3/4" dia., 6-3/4" ht.

Overall ht. w/stem 73"; wire 10'.

Lamp: One medium base lamp, 100w max.



KEATS CONTRIBUTES TO A LIGHT AND OPEN ATMOSPHERE FOR TRADITIONAL STYLING. FROSTED RIBBED GLASS AND AN ELEGANT FRAME ENHANCE THE OVERALL EFFECT.

**TWO-LIGHT BATH**

**P2820-09** Brushed Nickel  
**P2820-20** Antique Bronze  
 Size: 15-1/2" W., 8-5/8" ht.  
 Extends 8-1/8". H/CTR 5-1/4".  
 Lamps: Two medium base lamps, each 100w max.

**THREE-LIGHT BATH**

**P2821-09** Brushed Nickel  
**P2821-20** Antique Bronze  
 Size: 24-3/8" W., 8-3/4" ht.  
 Extends 9-1/2". H/CTR 5-1/4".  
 Lamps: Three medium base lamps, each 100w max.

**FOUR-LIGHT BATH**

**P2822-09** Brushed Nickel  
**P2822-20** Antique Bronze  
 Size: 29-3/8" W., 8-3/4" ht.  
 Extends 9-1/2". H/CTR 5-1/4".  
 Lamps: Four medium base lamps, each 100w max.



P2822-09



P2821-20



P2821-09



P2820-20



P2820-09



P2822-20

All bath fixtures mount up or down.

[progresslighting.com](http://progresslighting.com)

Sally



P3795-09

FIVE-LIGHT CHANDELIER

P4741-09 Brushed Nickel

P4741-20 Antique Bronze

Size: 25" dia., 19" ht.

Overall ht. w/chain 95"; wire 15'.

Lamps: Five medium base lamps, each 100w max.



P4741-20



Shown: P3787-20 foyer

TALLY EMBRACES A SIMPLIFIED CLASSIC FORM THAT IS UPDATED WITH MODERN INSPIRATION. ANGULAR ARMS AND LINEN-FINISHED GLASS OFFER VISUAL INTEREST AND ENHANCE RELAXED ENVIRONMENTS.

**FOUR-LIGHT FOYER**

**P3786-09** Brushed Nickel  
**P3786-20** Antique Bronze  
 Size: 11-7/8" dia., 19-1/4" ht.  
 Overall ht. w/chain 94"; wire 15'.  
 Lamps: Four candelabra base lamps, each 60w max.

**FOUR-LIGHT FOYER**

**P3787-09** Brushed Nickel  
**P3787-20** Antique Bronze  
 Size: 16-3/4" dia., 26-1/2" ht.  
 Overall ht. w/chain 101"; wire 15'.  
 Lamps: Four candelabra base lamps, each 60w max.

**EIGHT-LIGHT FOYER**

**P3795-09** Brushed Nickel  
**P3795-20** Antique Bronze  
 Two-tier.  
 Size: 20-1/4" dia., 32-7/8" ht.  
 Overall ht. w/chain 108"; wire 15'.  
 Lamps: Eight candelabra base lamps, each 60w max.



Tally

TALLY EMBRACES A SIMPLIFIED CLASSIC FORM THAT IS UPDATED WITH MODERN INSPIRATION. ANGULAR ARMS AND LINEN-FINISHED GLASS OFFER VISUAL INTEREST AND ENHANCE RELAXED ENVIRONMENTS.



P4740-09



P4740-20



P4743-09



P4743-20

THREE-LIGHT CHANDELIER

**P4740-09** Brushed Nickel  
**P4740-20** Antique Bronze  
Size: 22" dia., 17-1/2" ht.  
Overall ht. w/chain 93"; wire 15'.  
Lamps: Three medium base lamps, each 100w max.

NINE-LIGHT CHANDELIER

**P4743-09** Brushed Nickel  
**P4743-20** Antique Bronze  
Two-tier.  
Size: 30" dia., 30" ht.  
Overall ht. w/chain 154"; wire 15'.  
Lamps: Nine medium base lamps, each 100w max.



P5664-09



P5664-20

MINI-PENDANT

**P5664-09** Brushed Nickel  
**P5664-20** Antique Bronze  
Includes one 6", four 12" stems. and 6 links of chain.  
Size: 6-1/4" dia., 7-1/4" ht.  
Overall ht. w/stem 73-1/2"; wire 10'.  
Lamp: One medium base lamp, 100w max.





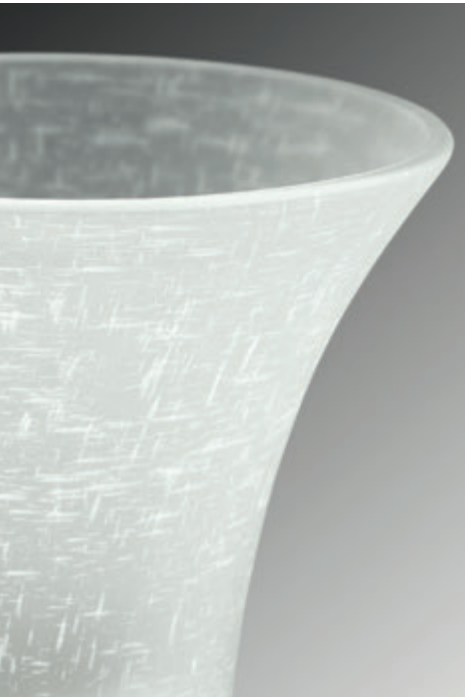
P2761-09



P2761-15



P2761-20



P2762-20



P2762-09



P2764-20

**ONE-LIGHT BATH**

**P2761-09** Brushed Nickel  
**P2761-15** Polished Chrome  
**P2761-20** Antique Bronze  
Size: 6-1/4" W., 10" ht.  
Extends 9-3/8". H/CTR 5".  
Lamp: One medium base lamp, 100w max.

**FOUR-LIGHT BATH**

**P2764-09** Brushed Nickel  
**P2764-15** Polished Chrome  
**P2764-20** Antique Bronze  
Size: 28-7/8" W., 10" ht.  
Extends 9-1/4". H/CTR 5".  
Lamps: Four medium base lamps, each 100w max..



P2764-15

**TWO-LIGHT BATH**

**P2762-09** Brushed Nickel  
**P2762-15** Polished Chrome  
**P2762-20** Antique Bronze  
Size: 13-3/4" W., 10" ht.  
Extends 9-1/4". H/CTR 5".  
Lamps: Two medium base lamps, each 100w max.



P2763-15

**THREE-LIGHT BATH**

**P2763-09** Brushed Nickel  
**P2763-15** Polished Chrome  
**P2763-20** Antique Bronze  
Size: 22-3/4" W., 10" ht.  
Extends 9". H/CTR 5".  
Lamps: Three medium base lamps, each 100w max.



P2763-09

*All bath fixtures mount up or down.*

# Alexa



## THREE-LIGHT FOYER

**P3846-20** Antique Bronze  
Size: 18" dia., 24-3/8" ht.  
Overall ht. w/chain 99"; wire 15'.  
Lamps: Three medium base  
lamps, each 100w max.



*Shown: P4459-20 chandelier and  
P2959-20 sconce.*

TRADITIONAL AND MODERN STYLES COME TOGETHER IN THE ALEXA COLLECTION. FEATURING A NEW -20 ANTIQUE BRONZE FINISH, THE ALEXA FAMILY OFFERS A FRESH TWIST TO CONTEMPORARY INDUSTRIAL STYLING.

ETCHED UMBER LINEN FINISHED GLASS – COMPLEMENTED WITH A CRISP, CLEAR EDGE ACCENT STRIP - ADDS A WARM FEEL TO THIS MODERN FIXTURE FAMILY.

#### FOUR-LIGHT FOYER

**P3977-20** Antique Bronze  
Size: 18" W., 44-3/8" ht. Overall ht. w/chain 119"; wire 15'.  
Lamps: Four medium base lamps, each 100w max.

#### THREE-LIGHT CHANDELIER

**P4458-20** Antique Bronze  
Size: 17" dia., 19-5/8" ht. Overall ht. w/chain 95"; wire 15'.  
Lamps: Three medium base lamps, each 100w max.

#### FIVE-LIGHT CHANDELIER

**P4459-20** Antique Bronze  
Size: 20" dia., 19-7/8" ht. Overall ht. w/chain 95"; wire 15'.  
Lamps: Five medium base lamps, each 100w max.

#### MINI-PENDANT

**P5147-20** Antique Bronze  
Includes two 6", one 12" and two 15" stems with 90° swivel.  
Size: 4" dia., 7-5/8" ht. Overall ht. w/stem 64"; wire 10'.  
Lamp: One medium base lamp, 100w max.



# Alexa



P4626-20



P4619-20

**NINE-LIGHT CHANDELIER**  
**P4626-20** Antique Bronze  
Two-tier.  
Size: 28" dia., 28-1/2" ht. Overall  
ht. w/chain 102"; wire 15'.  
Lamps: Nine medium base  
lamps, each 60w max.

**FOUR-LIGHT LINEAR  
CHANDELIER**  
**P4619-20** Antique Bronze  
Size: 34" L., 4-1/2" W., 20" ht.  
Overall ht. w/chain 93"; wire 15'.  
Lamps: Four medium base  
lamps, each 60w max.

TRADITIONAL AND MODERN STYLES COME TOGETHER IN THE ALEXA COLLECTION. FEATURING A NEW -20 ANTIQUE BRONZE FINISH, THE ALEXA FAMILY OFFERS A FRESH TWIST TO CONTEMPORARY INDUSTRIAL STYLING.

ETCHED UMBER LINEN FINISHED GLASS – COMPLEMENTED WITH A CRISP, CLEAR EDGE ACCENT STRIP - ADDS A WARM FEEL TO THIS MODERN FIXTURE FAMILY.

**TWO-LIGHT SEMI-FLUSH**

**P2851-20** Antique Bronze  
Size: 12-1/4" dia., 11" ht.  
Lamps: Two medium base lamps, each 100w max.

**ONE-LIGHT BATH**

**P2959-20** Antique Bronze  
Size: 4-1/2" W., 9-3/8" ht.  
Extends 6-1/8". H/CTR 5-7/8".  
Lamp: One medium base lamp, 100w max.

**TWO-LIGHT BATH**

**P2977-20** Antique Bronze  
Size: 13" W., 9-1/2" ht.  
Extends 6-1/8". H/CTR 7-1/4".  
Lamps: Two medium base lamps, each 100w max.

**THREE-LIGHT BATH**

**P2978-20** Antique Bronze  
Size: 22" W., 9-1/2" ht.  
Extends 6-1/8". H/CTR 7-1/4".  
Lamps: Three medium base lamps, each 100w max.

**FOUR-LIGHT BATH**

**P2998-20** Antique Bronze  
Size: 31" W., 9-1/2" ht.  
Extends 6-1/8". H/CTR 7-1/4".  
Lamps: Four medium base lamps, each 100w max.



P2977-20



P2978-20



P2851-20



P2959-20



P2998-20

# Applause



## SEMI-FLUSH CONVERTIBLE

**P3507-09** Brushed Nickel  
 Size: 15-3/4" dia., 12" ht.  
 Overall ht. w/chain 51"; wire 10'.  
 Lamps: Two medium base lamps, each 100w max.

## INVERTED PENDANT

**P3560-09** Brushed Nickel  
 Size: 19-5/8" dia., 21-3/8" ht.  
 Overall ht. w/stem 96-1/2"; wire 15'.  
 Lamps: Three medium base lamps, each 100w max.



## THREE-LIGHT CHANDELIER

**P4035-09** Brushed Nickel  
 Size: 20" dia., 15-3/4" ht. Overall ht. w/chain 91"; wire 15'.  
 Lamps: Three medium base lamps, each 100w max.

INDIVIDUALS DEMONSTRATE APPRECIATION AND PRAISE FOR ELEMENTS THAT ARE WORTHY OF ACCLAIM. A COLLECTION DESERVING OF RECOGNITION, APPLAUSE IS COMPRISED OF ETCHED PARCHMENT GLASS PAIRED WITH A CLASSIC IRON FORM.



#### FIVE-LIGHT CHANDELIER

**P4036-09** Brushed Nickel  
Size: 24-1/2" dia., 24-5/8" ht.  
Overall ht. w/chain 99"; wire 15'.  
Lamps: Five medium base lamps, each 100w max.

#### NINE-LIGHT CHANDELIER

**P4037-09** Brushed Nickel  
Two-tier.  
Size: 29-1/4" dia., 31-3/4" ht. Overall ht. w/chain 145-1/2"; wire 15'.  
Lamps: Nine medium base lamps, each 100w max.

#### MINI-PENDANT

**P5010-09** Brushed Nickel  
Includes one 6" stem, four 12" stems and 6 links of chain.  
Size: 7" dia., 6-1/2" ht.  
Overall ht. w/stem 72-1/2"; wire 10'.  
Lamp: One medium base lamp, 100w max.



# Applause

## TWO-LIGHT LINEAR CHANDELIER

**P4321-09** Brushed Nickel

**P4321-20** Antique Bronze

Size: 36" L., 14" W., 18-1/4" ht.

Overall ht. w/chain 93"; wire 15'.

Lamps: Two medium base lamps, each 100w max.

## TWELVE-LIGHT CHANDELIER

**P4654-09** Brushed Nickel

**P4654-20** Antique Bronze

Three-tier.

Size: 42" dia., 38" ht. Overall ht. w/ chain 161"; wire 15'.

Lamps: Twelve medium base lamps, each 75w max.





INDIVIDUALS DEMONSTRATE APPRECIATION AND PRAISE FOR ELEMENTS THAT ARE WORTHY OF ACCLAIM. A COLLECTION DESERVING OF RECOGNITION, APPLAUSE IS COMPRISED OF ETCHED PARCHMENT GLASS PAIRED WITH A CLASSIC IRON FORM.

**ONE-LIGHT BATH**

**P2095-09** Brushed Nickel  
 Size: 7" W., 9-1/8" ht.  
 Extends 7-7/8". H/CTR 5-3/4".  
 Lamp: One medium base lamp, 100w max.



P3617-09



P2095-09

**TWO-LIGHT BATH**

**P2096-09** Brushed Nickel  
 Size: 16-1/4" W., 8-1/2" ht.  
 Extends 9". H/CTR 6".  
 Lamps: Two medium base lamps, each 100w max.



P3617-20

**THREE-LIGHT BATH**

**P2097-09** Brushed Nickel  
 Size: 24" W., 8-1/2" ht.  
 Extends 9". H/CTR 6".  
 Lamps: Three medium base lamps, each 100w max.



P2096-09



P2097-09

**FOUR-LIGHT BATH**

**P2105-09** Brushed Nickel  
**P2105-20** Antique Bronze  
 Size: 34" W., 8-1/2" ht.  
 Extends 9". H/CTR 6".  
 Lamps: Three medium base lamps, each 100w max.

**TWO-LIGHT FLUSH MOUNT**

**P3617-09** Brushed Nickel  
**P3617-20** Antique Bronze  
 Size: 14" dia., 9" ht.  
 Lamps: Two medium base lamps, each 60w max.



P2105-09



P2105-20

*All bath fixtures mount up or down.*

# JOY

WITH SOPHISTICATED DESIGN STYLING, JOY FEATURES VOLUMINOUS CRUVES FOR A SOFT AND STYLISH PROFILE. JOY IS NOW AVAILABLE IN THE POPULAR ANTIQUE BRONZE FINISH WITH ETCHED WHITE GLASS SHADES FOR A CONTEMPORARY LOOK.

## THREE-LIGHT FOYER

**P3587-20W** Antique Bronze  
Size: 14-5/8" dia., 17" ht.  
Overall ht. w/chain 104"; wire 12'.  
Lamps: Three candelabra base lamps, each 60w max.

## THREE-LIGHT INVERTED PENDANT

**P3951-20W** Antique Bronze  
Size: 19-1/2" dia., 24-3/4" ht.  
Overall ht. w/chain 114"; wire 12'.  
Lamps: Three medium base lamps, each 100w max.

## THREE-LIGHT CHANDELIER

**P4489-20W** Antique Bronze  
Size: 20" dia., 16-3/8" ht.  
Overall ht. w/chain 103"; wire 12'.  
Lamps: Three medium base lamps, each 100w max.



## FIVE-LIGHT CHANDELIER

**P4490-20W** Antique Bronze  
Size: 24" dia., 18-7/8" ht.  
Overall ht. w/chain 106"; wire 12'.  
Lamps: Five medium base lamps, each 100w max.





P4490-20W

**NINE-LIGHT CHANDELIER**

**P4492-20W** Antique Bronze  
 Two-tier. 120" chain.  
 Size: 28" dia., 27-3/4" ht. Overall  
 ht. w/chain 115"; wire 15'.  
 Lamps: Nine medium base lamps,  
 each 100w max.

**TWELVE-LIGHT CHANDELIER**

**P4497-20W** Antique Bronze  
 Two-tier.  
 Size: 38" dia., 39-5/8" ht. Overall  
 ht. w/chain 174-1/2"; wire 15'.  
 Lamps: Nine medium base lamps,  
 each 75w max.



P4497-20W

**MINI-PENDANT**

**P5270-20W** Antique Bronze  
 Size: 6" dia., 7" ht.  
 Overall ht. w/chain or stem 94";  
 wire 12'.  
 Lamp: One medium base lamp,  
 100w max.



P5270-20W



P5270-20W

*Joy fixtures can be stem or chain hung.  
 All fixtures come with 72" of chain and  
 two 6" stems.*

WITH SOPHISTICATED DESIGN STYLING, JOY FEATURES VOLUMINOUS CRUVES FOR A SOFT AND STYLISH PROFILE. JOY IS NOW AVAILABLE IN THE POPULAR ANTIQUE BRONZE FINISH WITH ETCHED WHITE GLASS SHADES FOR A CONTEMPORARY LOOK.

# JOY

## ONE-LIGHT BATH

**P2000-20W** Antique Bronze  
Size: 6" W., 9-1/2" ht.  
Extends 7". H/CTR 6".  
Lamp: One medium base lamp, 100w max.



## TWO-LIGHT BATH

**P2001-20W** Antique Bronze  
Size: 14" W., 7-5/8" ht.  
Extends 8-1/8". H/CTR 4-1/8".  
Lamps: Two medium base lamps, each 100w max.



## THREE-LIGHT BATH

**P2002-20W** Antique Bronze  
Size: 22" W., 7-5/8" ht.  
Extends 8-1/8". H/CTR 4-1/8".  
Lamps: Three medium base lamps, each 100w max.



## FOUR-LIGHT BATH

**P2003-20W** Antique Bronze  
Size: 30" W., 7-5/8" ht.  
Extends 8-1/8". H/CTR 4-1/8".  
Lamps: Four medium base lamps, each 100w max.



# Bravo

A CURRENT, TRULY TRANSITIONAL STYLE IS ACHIEVED WITH BRAVO'S FREE FLOWING ARMS THAT ARE GRACEFULLY SUSPENDED WITH FLUTED SHAPED GLASS. THE POPULAR BRAVO COLLECTION NOW COMES WITH THE ANTIQUE BRONZE FINISH WITH WHITE ETCHED GLASS SHADES.



P3912-20W

### THREE-LIGHT FOYER

**P3821-20W** Antique Bronze  
 Size: 18" dia., 21-1/2" ht.  
 Overall ht. w/chain 96"; wire 12'.  
 Lamps: Three medium base lamps, each 100w max.

### THREE-LIGHT INVERTED PENDANT

**P3912-20W** Antique Bronze  
 Size: 21" dia., 23-1/2" ht.  
 Overall ht. w/chain 98"; wire 12'.  
 Lamps: Three medium base lamps, each 100w max.

### THREE-LIGHT CHANDELIER

**P4621-20W** Antique Bronze  
 Size: 23" dia., 20-1/8" ht.  
 Overall ht. w/chain 95"; wire 12'.  
 Lamps: Three medium base lamps, each 100w max.

### FOUR-LIGHT CHANDELIER

**P4622-20W** Antique Bronze  
 Size: 23" dia., 20-1/8" ht.  
 Overall ht. w/chain 95"; wire 12'.  
 Lamps: Four medium base lamps, each 100w max.

### FIVE-LIGHT CHANDELIER

**P4623-20W** Antique Bronze  
 Size: 27" dia., 23" ht.  
 Overall ht. w/chain 97"; wire 12'.  
 Lamps: Five medium base lamps, each 100w max.



P3821-20W



P4623-20W



P4621-20W



P4622-20W

All bath fixtures mount up or down.

# Bravo

## ONE-LIGHT FOYER

**P3969-20W** Antique Bronze

Size: 20" dia., 30-3/8" ht.

Overall ht. w/chain 105-1/2"; wire 12'.

Lamp: One medium base lamp, 100w max.

## NINE-LIGHT CHANDELIER

**P4625-20W** Antique Bronze

Two-tier.

Size: 32" dia., 31" ht.

Overall ht. w/chain 106"; wire 15'.

Lamps: Nine medium base lamps, each 100w max.

## TWELVE-LIGHT CHANDELIER

**P4687-20W** Antique Bronze

Three-tier.

Size: 38" dia., 44" ht.

Overall ht. w/chain 119"; wire 15'.

Lamps: Twelve medium base lamps, each 75w max.

## MINI-PENDANT

**P5300-20W** Antique Bronze

Includes 6' of chain and two 6" stems.

Size: 7-1/4" dia., 6-1/2" ht.

Overall ht. w/chain or stem 94"; wire 10'.

Lamp: One medium base lamp, 100w max.



A CURRENT, TRULY TRANSITIONAL STYLE IS ACHIEVED WITH BRAVO'S FREE FLOWING ARMS THAT ARE GRACEFULLY SUSPENDED WITH FLUTED SHAPED GLASS. THE POPULAR BRAVO COLLECTION NOW COMES WITH AN ANTIQUE BRONZE FINISH WITH WHITE ETCHED GLASS SHADES.

**ONE-LIGHT BATH**

**P2004-20W** Antique Bronze  
 Size: 7-1/4" W., 9" ht.  
 Extends 8-3/4". H/CTR 4-1/2".  
 Lamp: One medium base lamp, 100w max.



P2004-20W

**TWO-LIGHT BATH**

**P2005-20W** Antique Bronze  
 Size: 17" W., 8-1/2" ht.  
 Extends 8-3/4". H/CTR 6".  
 Lamps: Two medium base lamps, each 100w max.



P2005-20W

**THREE-LIGHT BATH**

**P2006-20W** Antique Bronze  
 Size: 26-3/4" W., 8-1/2" ht.  
 Extends 8-3/4". H/CTR 6".  
 Lamps: Three medium base lamps, each 100w max.



P2006-20W

**FOUR-LIGHT BATH**

**P2007-20W** Antique Bronze  
 Size: 37-1/4" W., 8-1/2" ht.  
 Extends 8-3/4". H/CTR 6".  
 Lamps: Four medium base lamps, each 100w max.



P2007-20W

**FIVE-LIGHT BATH**

**P2016-20W** Antique Bronze  
 Size: 46-1/4" W., 8-7/8" ht.  
 Extends 8-3/4". H/CTR 6-3/8".  
 Lamps: Five medium base lamps, each 100w max.

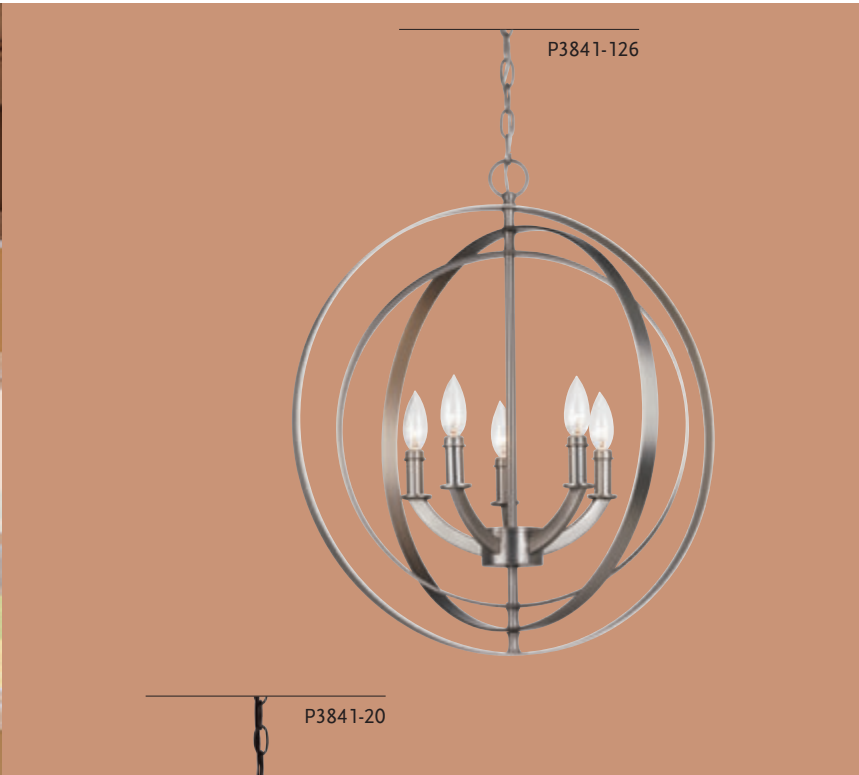


P2016-20W

*All bath fixtures mount up or down.*

INSPIRED BY ANCIENT ARMILLARY SPHERES, EQUINOX CONTINUES TO EXPAND WITH FIXTURE OPTIONS WITHIN ITS FAMILY.

# Equinox



**FIVE-LIGHT PENDANT**  
**P3841-126** Burnished Silver  
**P3841-20** Antique Bronze  
Size: 22" dia., 24-3/8" ht.  
Overall ht. w/chain 99-1/2";  
wire 15'.  
Lamps: Five candelabra base  
lamps, each 60w max.

For additional Legend, Orbitz and Clayton fixtures see Catalog 131.



## Orbitz

RECTILINEAR TUBING, FRAME  
AND RING STYLING WHITE  
ETCHED GLASS SHADES.



P4659-09

**FIVE-LIGHT CHANDELIER**  
**P4659-09** Brushed Nickel  
 Size: 23-1/4" dia., 18-1/2" ht. Overall  
 ht. w/chain 85"; wire 15'.  
 Lamps: Five medium base lamps,  
 each 100w max.

*Includes one 6" stem, four 12"  
 stems and 6 links of chain.*

## Clayton

CLASSIC VINTAGE STYLING MEETS  
MINIMALISTIC DESIGN. FRESH  
LOOK USING AUTHENTIC ARCHING  
ARMS, TURNKEY DECORATIVE  
DETAILS AND PLEATED DRUM  
SHADES IN WHITE LINEN FABRIC.



P4712-84

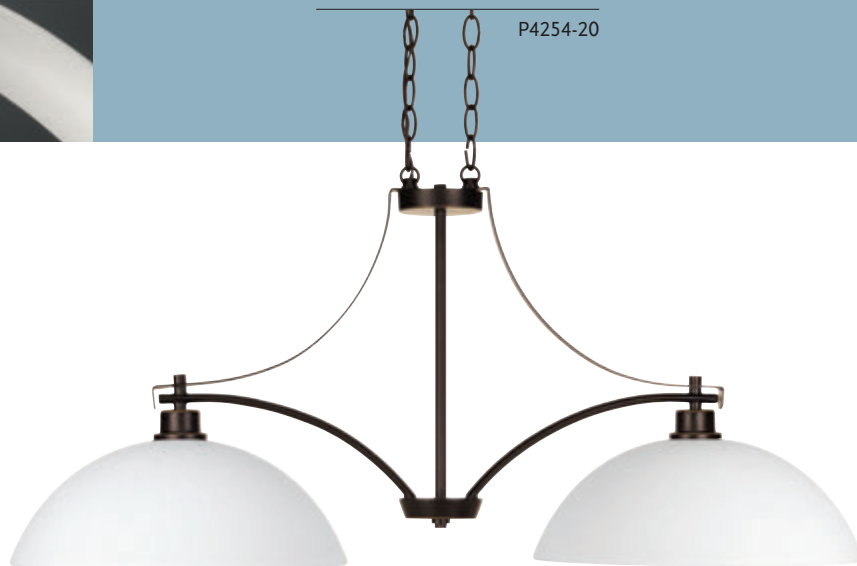
**NINE-LIGHT CHANDELIER**  
**P4712-84** Espresso  
 Two-tier. Shades do not pivot.  
 Size: 37-1/4" dia., 33" ht. Overall ht.  
 w/chain 156"; wire 15'.  
 Lamps: Nine medium base lamps,  
 each 100w max.

# Legend

A TWO-LIGHT ISLAND FIXTURE AND A TWELVE-LIGHT CHANDELIER ROUND OUT THE POPULAR FAMILY KNOWN FOR ITS STUNNING, SCULPTED GLASS. SMOOTH AND POLISHED ON THE OUTSIDE, YET DISPLAYING A SUBTLE, NATURE-INSPIRED PATTERN ON THE INSIDE, THIS ELEGANT DESIGN APPEARS TO COME ALIVE WHEN ILLUMINATED.



P4254-20



## TWO-LIGHT LINEAR CHANDELIER

**P4254-09** Brushed Nickel

**P4254-20** Antique Bronze

Size: 36" L., 14" W., 16-7/8" ht.

Overall ht. w/chain 92"; wire 15'.

Lamps: Two medium base lamps, each 100w max.

P4653-09



## TWELVE-LIGHT CHANDELIER

**P4653-09** Brushed Nickel

**P4653-20** Antique Bronze

Size: 44" dia., 44-1/8" ht. Overall ht. w/chain 168"; wire 15'.

Lamps: Twelve medium base lamps, each 75w max.

P4653-20



Invite

THIS NEW ADDITION TO THE INVITE COLLECTION HAS ELEGANT, ICONIC SCROLL ARMS, DUAL LAYER ETCHED GLASS SURROUNDED BY MYLAR DRUM SHADES AND CLEAR CYLINDRICAL FINIALS.

TWELVE-LIGHT CHANDELIER

P4725-09 Brushed Nickel

P4725-20 Antique Bronze

Three-tier.

Size: 49" dia., 38" ht. Overall ht. w/chain 161"; wire 15'.

Lamps: Twelve medium base lamps, each 75w max.



# Replay

SMOOTH FORMS, LINEAR DETAILS, WHITE GLASS AND A PLEASING ELEGANT FRAME ENHANCE A SIMPLIFIED MODERN LOOK.

## NINE-LIGHT CHANDELIER

**P4726-31** Black

**P4726-104** Polished Nickel

Size: 25-1/2" dia., 28" ht. Overall ht. w/chain 104"; wire 15'.

Lamps: Nine medium base lamps, each 100w max.



UPDATED TRADITIONAL FEEL WITH FLOWING OVAL ARMS AND OFF WHITE LINEN DRUM SHADES.

# Inspire

## SIX-LIGHT CHANDELIER

**P4739-09** Brushed Nickel

**P4739-20** Antique Bronze

Size: 30" dia., 22" ht.

Overall ht. w/chain 97"; wire 10'.

Lamps: Six candelabra base lamps, each 60w max.



# Gather

SIMPLIFIED FRAME WITH  
UPDATED STYLIND AND ELEGANT  
ETCHED GLASS SHADES.

## TWO-LIGHT CONVERTIBLE

**P3748-09** Brushed Nickel

**P3748-20** Antique Bronze

Size: 12-1/2" dia., 10-3/8" ht.

Overall ht. w/chain 24"; wire 6'.

Lamps: Two medium base  
lamps, each 100w max.

## THREE-LIGHT CHANDELIER

**P4734-09** Brushed Nickel

**P4734-20** Antique Bronze

Size: 19-1/2" dia., 16-1/2" ht.

Overall ht. w/chain 61"; wire 8'.

Lamps: Three medium base  
lamps, each 100w max.

## FIVE-LIGHT CHANDELIER

**P4735-09** Brushed Nickel

**P4735-20** Antique Bronze

Size: 23" dia., 17-1/2" ht.

Overall ht. w/chain 62"; wire 8'.

Lamps: Five medium base  
lamps, each 100w max.

P3748-20



P3748-09



P4735-09



P4734-09



P4735-20



P4734-20



# Heart

IRON ARMS THAT MIMIC THE SHAPE OF A HEART AND ETCHED GLASS SHADES GIVE A CURVACEOUS, FLOWING STYLE.

## THREE-LIGHT INVERTED PENDANT

**P3955-15** Polished Chrome  
Size: 17-3/4" dia., 21-3/4" ht.  
Overall ht. w/chain 66"; wire 96".  
Lamps: Three medium base lamps, each 100w max.

## THREE-LIGHT CHANDELIER

**P4664-15** Polished Chrome  
Size: 22" dia., 18" ht.  
Overall ht. w/chain 63"; wire 96".  
Lamps: Three medium base lamps, each 100w max.

## FIVE-LIGHT CHANDELIER

**P4666-15** Polished Chrome  
Size: 25-1/2" dia., 19-1/8" ht.  
Overall ht. w/chain 63"; wire 96".  
Lamps: Five medium base lamps, each 100w max.

## MINI-PENDANT

**P5131-15** Polished Chrome  
Includes 42" chain and two 6" stems.  
Size: 6" dia., 6" ht.  
Overall ht. w/chain or stem 63"; wire 96".  
Lamp: One medium base lamp, 100w max.

P4664-15



P4666-15



P3955-15



P5131-15



# Markor

A POPULAR PENDANT COLLECTION WITH LED AND CFL SOURCES NOW AVAILABLE. NEW COLORS INCLUDE CRIMSON, KHAKI, SUMMER LINEN AND HARVEST LINEN.



**10" DRUM SHADES**  
Acrylic bottom diffuser.  
For use with P5101 and P5198 only.  
Size: 10" dia., 8" ht.  
**P8828-30** Summer Linen  
**P8828-39** Crimson  
**P8828-56** Khaki  
**P8828-59** Harvest Linen



**P8828-30**  
*shown with pendant kit (sold separately)*



**P8828-39**  
*shown with pendant kit (sold separately)*



**P8828-56**  
*shown with pendant kit (sold separately)*



**P8828-59**  
*shown with pendant kit (sold separately)*

**16" DRUM SHADE**  
Acrylic bottom diffuser.  
For use with P5101 or P5107 and P5198 or P5199 (see Catalog 131).  
Size: 16" dia., 10" ht.  
**P8829-30** Summer Linen  
**P8829-39** Crimson  
**P8829-56** Khaki  
**P8829-59** Harvest Linen



**P8829-30**  
*shown with pendant kit (sold separately)*



**P8829-39**  
*shown with pendant kit (sold separately)*



**P8829-56**  
*shown with pendant kit (sold separately)*



**P8829-59**  
*shown with pendant kit (sold separately)*

*For more Markor shade and stem kit options see Catalog 131.*



## 22" DRUM SHADES

Acrylic bottom diffuser.  
For use with P5101 or P5107 and  
P5198 or P5199 (see Catalog 131).  
Size: 22" dia., 10" ht.

**P8830-30** Summer Linen

**P8830-39** Crimson

**P8830-56** Khaki

**P8830-59** Harvest Linen



## Pendant Kits for Markor Shades

Shades and pendant kits are sold separately. 9" and 10" shades can be used only with pendant kit P5101 or P5198 (see Catalog 131). 16" and 22" shades can be used with pendant kit P5101, P5107, P5198 or P5199 (see Catalog 131 for incandescent versions).

### ONE-LIGHT LED PENDANT KIT

**P5198-0930K9** Brushed Nickel  
**P5198-2030K9** Antique Bronze  
One-light pendant kit for all Markor shades. 3000K. 90+ CRI. 1211 lumens.  
Size: 5-3/4" dia., 5-3/8" ht. Overall ht. w/stem and lamps 62"; wire 10'.  
Lamp: One 17w LED module included.

### ONE-LIGHT CFL PENDANT KIT

**P5101-09** Brushed Nickel  
**P5101-20** Antique Bronze  
One-light pendant kit for use with all Markor shades.  
Size: 1-5/8" dia., 5-5/8" ht. Overall ht. w/stem and lamps 68"; wire 10'.  
Lamp: One 26w GU24 CFL lamp.

### THREE-LIGHT CFL PENDANT KIT

**P5107-09** Brushed Nickel  
**P5107-20** Antique Bronze  
Three-light pendant kit for use with most 16" and 22" shades only.  
Size: 4-3/4" dia., 6-1/4" ht. Overall ht. w/stem and lamps 68"; wire 10'.  
Lamps: Three 26w GU24 CFL lamps.



THIS UNIQUELY SHAPED PENDANT HAS A BRUSHED NICKEL FINISH WITH A WHITE LINEN INTERIOR FOR OPTIMAL LIGHT OUTPUT.

# Kiss LED

## LED MINI-PENDANT

**P5186-0930K9** Brushed Nickel  
 Size: 5" dia., 5-7/8" ht.  
 Overall ht. w/stem 72";  
 wire 10'.  
 Lamp: One 9w LED module included.



## LED PENDANT

**P5187-0930K9** Brushed Nickel  
 Size: 10" dia., 10-3/4" ht.  
 Overall ht. w/stem 77";  
 wire 10'.  
 Lamp: One 17w LED module included.



# AVANT

## LED MINI-PENDANT

**P5072-0930K9** Brushed Nickel  
**P5072-2030K9** Antique Bronze  
 Size: 9" dia., 4-3/4" ht.  
 Overall ht. w/stem 125";  
 wire 10'.  
 Lamp: One 9w LED module included.



A MODERN LED PENDANT FEATURING CONTRASTING TEXTURES, INCLUDING SANDBLASTED GLASS INSIDE ACCENTED BY A POLISHED OUTSIDE SURFACE.



- 120V AC Replaceable LED module
- 17w: 1211 lumens , 71.2 lumens/watt
- 9w: 623 lumens, 69.2 lumens/watt
- 3000K color temperature
- TM-21 60,000 hr. life
- Dimmable to 10% with many ELV type dimmers
- 90+ CRI
- CA Title 24 Compliant

*Includes one 6" stem, four 12" stems and 6 links of chain.*

A BOLD AND STRIKING PRISMATIC GLASS SHADE IS THE FOCAL POINT IN THESE LED PENDANTS. FEATURING A SLEEK BRUSHED NICKEL CAP AND STEMS HIGHLIGHTING THE INDUSTRIAL STYLING. BOTTOM OF FIXTURE IS ENCLOSED WITH ETCHED GLASS DIFFUSER.

# PRISMATIC



## LED MINI-PENDANT

**P5075-0930K9** Brushed Nickel  
 Size: 9-1/8" dia., 8-1/4" ht.  
 Overall ht. w/stem 74";  
 wire 10'.  
 Lamp: One 9w LED module included.



## LED PENDANT

**P5143-0930K9** Brushed Nickel  
 Size: 12-3/4" dia., 10-7/8" ht.  
 Overall ht. w/stem 77"; wire 10'.  
 Lamp: One 9w LED module included.



## LED LINEAR CHANDELIER

**P4715-0930K9** Brushed Nickel  
 Size: 9-1/8" W., xx" L., 12-5/8" ht.  
 Overall ht. w/stem xx"; wire 15'.  
 Lamps: Three 9w LED modules included.



P5143-0930K9



P5075-0930K9

- 120V AC Replaceable LED module
- 623 lumens per module
- 69.2 lumens/watt
- 3000K color temperature
- TM-21 60,000 hr. life
- Dimmable to 10% with many ELV type dimmers
- 90+ CRI
- CA Title 24 Compliant



P4715-0930K9

*Includes two 6" stems, one 12" stem, one 15" stem and a 90° swivel.*

# Pure LED

CORD HUNG LED PENDANTS WITH DESIGN ORIENTED DETAILS. ANTIQUE BRONZE AND WHITE HAVE AN ANODIZED GOLD INTERIOR. PISTACHIO AND BRUSHED NICKEL HAVE A GLOSS WHITE INTERIOR.

# Simple LED

THIS SIMPLE LED PENDANT HAS THE LED MODULE TUCKED INSIDE A FROSTED ACRYLIC SHADE. A LIGHT COMMERCIAL PENDANT IDEAL FOR RESTAURANT, BAR AND HOTEL APPLICATIONS.

## LED PENDANT

**P5175-0930K9** Brushed Nickel

**P5175-2030K9** Antique Bronze with Natural Brass Accents

**P5175-3030K9** White with Natural Brass Accents

**P5175-7930K9** Pistachio  
Size: 6-1/2" dia., 8-7/8" ht.  
Overall ht. w/cord 130";  
wire 10'.

Lamp: One 9w LED module included.



## LED PENDANT

**P5176-0930K9** Brushed Nickel

**P5176-2030K9** Antique Bronze

Size: 5-7/8" dia., 8-5/8" ht.

Overall ht. w/cord 130";

wire 10'.

Lamp: One 9w LED module included.



- 120v AC, replaceable module
- 9w - 623 lumens, 69.2 lumens/watt
- 3000K color temperature
- TM-21 60,000 hr. life
- Dimmable to 10% with many ELV type dimmers
- 90+ CRI
- CA Title 24 Compliant

# BLISS

THREE-LIGHT FLUSH MOUNT  
FROM THE BLISS COLLECTION  
FEATURES OVERSIZED K9  
BEADS IN AN ANTIQUE  
BRONZE IRON FRAME.

## THREE-LIGHT SEMI-FLUSH

**P3990-20** Antique Bronze

Size: 17" dia., 10" ht.

Lamps: Three candelabra base  
lamps, each 60w max.



P3990-20

# Flourish

CONTRASTING ARTISANAL GLASS AND TEXTURED  
SHADE ARE FEATURED IN FLOURISH'S NEW  
CONVERTIBLE, SEMI-FLUSH FIXTURE. CLEAR  
GEOMETRIC GLASS SHAPES WITH SMALLER BEADS  
AND LARGER PENDANTS ADORN THE COGNAC FINISH.

## THREE-LIGHT CONVERTIBLE

**P3710-72** Cognac

Size: 15-1/8" dia., 17-1/2" ht.

Overall ht. w/chain 57"; wire 10'.

Lamps: Three candelabra base  
lamps, each 60w max.



P3710-20

# STATUS

THE WHITE LINEN SHADE, SOFT  
FROSTED GLASS DIFFUSER AND K9  
GLASS ACCENT OF THIS TWO-LIGHT  
FLUSH MOUNT COMPLETE THIS  
SOPHISTICATED LOOK.

## TWO-LIGHT FLUSH MOUNT

**P3402-15** Polished Chrome

Size: 13" dia., 8" ht.

Lamps: Two medium base lamps,  
each 60w max.



P3402-15

*For more fixtures in the Bliss, Flourish and Status  
collections please see Catalog 131.*

# Legend

THE TWO-LIGHT FLUSH MOUNT OF THE LEGEND COLLECTION FEATURES SMOOTH GLASS ON THE OUTSIDE WITH A SUBTLE, NATURE-INSPIRED PATTERN ON THE INSIDE.



**TWO-LIGHT FLUSH MOUNT**  
**P3993-09** Brushed Nickel  
**P3993-20** Antique Bronze  
Size: 14" dia., 7-1/2" ht.  
Lamps: Two medium base lamps, each 60w max.



P3993-20



P3993-09

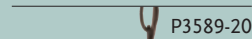
# Merge

THE CLEAN, MODERN SILHOUETTE OF THIS SEMI FLUSH CONVERTIBLE BLENDS WITH A GLASS SHADE AND IRON ELEMENTS.

**SEMI-FLUSH CONVERTIBLE**  
**P3589-20** Antique Bronze  
Size: 14-5/8" dia., 12" ht.  
Overall ht. w/chain 51"; wire 10'.  
Lamps: Two medium base lamps, each 100w max.



P3589-20



P3589-20



For additional fixtures in the Legend and Merge collections see Catalog 131.

# FLEET

FLEET FLUSH MOUNT AND CONVERTIBLE FIXTURES ARE COMPRISED OF A DISTINCT CIRCULAR RING INSET INTO THE ETCHED WHITE GLASS SHADE.

## TWO-LIGHT FLUSH MOUNT

**P3670-09** Brushed Nickel  
**P3670-15** Polished Chrome  
Size: 13" dia., 6-5/8" ht.  
Lamps: Two medium base lamps, each 60w max.

## TWO-LIGHT CONVERTIBLE

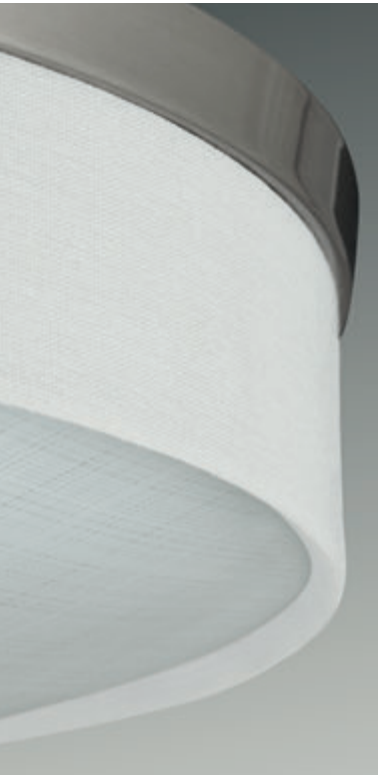
**P3669-09** Brushed Nickel  
**P3669-15** Polished Chrome  
Comes with two 12" stems and 6 links of chain.  
Size: 13" dia., 10-3/8" ht.  
Overall ht. w/chain 53"; wire 10'.  
Lamps: Two medium base lamps, each 100w max.



See pages 108-109 for matching bath fixtures.

THE WEAVER COLLECTION COMBINES LINEN DRUM SHADES WITH A LINEN GLASS DIFFUSER TO OFFER A WARM FEEL IDEAL FOR RESIDENTIAL APPLICATIONS, INCLUDING KITCHENS AND LAUNDRY ROOMS, AS WELL AS LIGHT COMMERCIAL ENVIRONMENTS.

# Weaver LED



P3610-0930K9

P3610-2030K9

P3611-0930K9

P3611-2030K9

P3612-0930K9

P3612-2030K9

## ONE-LIGHT FLUSH MOUNT

**P3610-0930K9** Brushed Nickel

**P3610-2030K9** Antique Bronze

Size: 10" dia., 3-1/2" ht.

Lamp: One 17w integral LED module included.



## TWO-LIGHT FLUSH MOUNT

**P3611-0930K9** Brushed Nickel

**P3611-2030K9** Antique Bronze

Size: 16" dia., 4" ht.

Lamps: Two 17w integral LED modules included.



## THREE-LIGHT FLUSH MOUNT

**P3612-0930K9** Brushed Nickel

**P3612-2030K9** Antique Bronze

Size: 22" dia., 4-1/2" ht.

Lamps: Three 17w integral LED modules included.



- 120V AC Replaceable LED module
- 1211 lumens per module
- 71.2 lumens/watt
- 3000K color temperature
- TM-21 60,000 hr. life
- Dimmable to 10% with many ELV type dimmers
- 90+ CRI
- CA Title 24 Compliant



Portal LED

A SERIES OF FLUSH MOUNTS ADORNED WITH INDUSTRIAL-INSPIRED ACCENTS AND ETCHED GLASS.



ONE-LIGHT FLUSH MOUNT

**P3658-0930K9** Brushed Nickel

**P3658-2030K9** Antique Bronze

Size: 11" dia., 3-3/4" ht.

Lamp: One 17w integral LED module included.



ONE-LIGHT FLUSH MOUNT

**P3659-0930K9** Brushed Nickel

**P3659-2030K9** Antique Bronze

Size: 14" dia., 5-1/2" ht.

Lamp: One 17w integral LED module included.



- 120V AC Replaceable LED module
- 1211 lumens per module
- 71.2 lumens/watt
- 3000K color temperature
- TM-21 60,000 hr. life
- Dimmable to 10% with many ELV type dimmers
- 90+ CRI
- CA Title 24 Compliant



P3658-2030K9

# Maier LED

THE MAIER LED FLUSH MOUNTS FEATURE AN ACRYLIC DIFFUSER WHICH TWISTS INTO THE FRAME SO THERE ARE NO EXPOSED FASTENERS FOR A CLEAN MODERN LOOK.

- 120v AC, replaceable module
- 1211 lumens, 71.2 lumens/watt
- 3000K color temperature;
- 90+ CRI
- TM-21 60,000 hr. life
- Dimmable to 10% with many ELV type dimmers
- CA Title 24 Compliant

## THREE-LIGHT FLUSH MOUNT

**P3675-2030K9** Antique Bronze  
**P3675-3030K9** White  
 Size: 18" dia., 5-1/4" ht.  
 Lamps: Three 17w integral LED modules included.



P3675-3030K9

## TWO-LIGHT FLUSH MOUNT

**P3911-2030K9** Antique Bronze  
**P3911-3030K9** White  
 Size: 14" dia., 4-3/4" ht.  
 Lamps: Two 17w integral LED modules included.



P3675-2030K9

## ONE-LIGHT FLUSH MOUNT

**P3910-2030K9** Antique Bronze  
**P3910-3030K9** White  
 Size: 9" dia., 4-3/8" ht.  
 Lamp: One 17w integral LED module included.



P3911-3030K9



P3910-3030K9



P3910-2030K9



P3911-2030K9

See Catalog 131 for Brushed Nickel versions of this LED collection.

# Milford LED

ETCHED GLASS SURROUNDED BY A DIE-CAST ALUMINUM FRAME. IDEAL FOR INDOOR AND OUTDOOR APPLICATIONS.

## ONE-LIGHT FLUSH MOUNT

**P3665-2030K9** Antique Bronze

**P3665-3130K9** Black

Size: 8-5/8" dia., 4-1/8" ht.

Lamp: One 17w integral LED module included.



## ONE-LIGHT FLUSH MOUNT

**P3673-2030K9** Antique Bronze

**P3673-3130K9** Black

Size: 10-5/8" dia., 4-7/8" ht.

Lamp: One 17w integral LED module included.



P3665-3130K9



P3665-2030K9



P3673-2030K9



P3673-3130K9

# Appeal

SOFT CONTEMPORARY DESIGN FEATURES SQUARE OPAL GLASS.

## ONE-LIGHT FLUSH MOUNT

**P3991-09** Brushed Nickel

**P3991-15** Polished Chrome

**P3991-20** Antique Bronze

Size: 7-1/2" sq., 3-1/2" ht.

Lamp: One medium base lamp, 75w max.



P3991-09

## THREE-LIGHT FLUSH MOUNT

**P3992-09** Brushed Nickel

**P3992-15** Polished Chrome

**P3992-20** Antique Bronze

Size: 13" sq., 5" ht.

Lamps: Three medium base lamps, each 60w max.



P3991-20



P3991-15



P3992-20



P3992-15



P3992-09

For more sizes of Appeal use Catalog 131.

# Incandescent Domes

DOME SHAPED ETCHED  
GLASS WITH SOLID TRIM AND  
DECORATIVE KNOBS

## ONE-LIGHT FLUSH MOUNT

**P3924-15ET** Polished Chrome  
Size: 11-3/8" dia., 5-1/2" ht.  
Lamp: One medium  
base lamp, 60w max.



P3924-15ET

## TWO-LIGHT FLUSH MOUNT

**P3925-15ET** Polished Chrome  
Size: 13-1/4" dia., 5-7/8" ht.  
Lamps: Two medium base lamps,  
each 75w max.



P3925-15ET

## THREE-LIGHT FLUSH MOUNT

**P3926-15ET** Polished Chrome  
Size: 15-1/4" dia., 6-5/8" ht.  
Lamps: Three medium base lamps,  
each 60w max.



P3926-15ET

## SEMI-FLUSH CONVERTIBLE

**P3927-15ET** Polished Chrome  
Size: 13-1/4" dia., 11-3/8" ht.  
Overall ht. w/chain 50"; wire 6'.  
Lamps: Two medium  
base lamps, each 100w max.



P3927-15ET

## ONE-LIGHT CFL WALL SCONCE

**P7188-30WB** White  
Etched Glass  
Size: 13" W., 5-1/4" ht.  
Extends 6-1/2". H/CTR 2-1/2".  
Lamp: One 13w GU24 CFL lamp,  
included.



P7188-30WB



P3927-15ET



P3410-20WB



P3410-30WB

## CFL Fitters

Product No.	Finish	Description	Size	Lamp(s)	
P3408-20WB	Antique Bronze	One-light	7-1/2" dia.,	1 13w GU24	
P3408-30WB	White	One-light	4-3/8" ht.	included	
P3410-20WB	Antique Bronze	Two-light	9-1/4" dia.,	2 13w GU24	
P3410-30WB	White	Two-light	5-1/8" ht.	included	

## LED Fitters

Product No.	Finish	Description	Size	Lamp(s)	
P3408-2030K9	Antique Bronze	One-light	7-1/2" dia.,	1 17w integral LED	
P3408-3030K9	White	One-light	4-11/16" ht.	Module included	

PROGRESS

## Melon Glass

Product No.	Finish	Description	Size	Lamp(s)	
P3702-09WB	Brushed Nickel	One-light	11-3/8" dia.,	1 13w GU24	
			6" ht.	included	
P3703-09WB	Brushed Nickel	Two-light	13-1/4" dia.,	2 13w GU24	
			7" ht.	included	
P3704-09WB	Brushed Nickel	Three-light	15-1/4" dia.,	2 13w GU24	
			7-1/2" ht.	included	



P3408-30WB  
P3408-3030K9



P3408-20WB  
P3408-2030K9



P3702-09WB

P3703-09WB

P3704-09WB

## Alabaster Glass

Product No.	Finish	Description	Size	Lamp(s)	
P3760-20EBWB	Antique Bronze	Two-light	16-3/4" dia.,	2 18w GU24 CFL.	
			5-1/2" ht.	(included)	
P3764-20EBWB	Antique Bronze	One-light	11-1/2" dia.,	1 13w GU24 CFL.	
			3-3/4" ht.	(included)	
P3765-20EBWB	Antique Bronze	Two-light	14" dia.,	2 13w GU24 CFL.	
			4-3/4" ht.	(included)	

P3764-20EBWB

P3765-20EBWB

P3760-20EBWB

# DASH LED

ARCHITECTURALLY MODERN LED SCONCES ARE RELEVANT, INCORPORATES A CREATIVE DESIGN TO SHAPE LIGHT ON THE WALL FOR A DRAMATIC EFFECT.

PROGRESS **LED**



P7163-12930K9

### ONE-LIGHT WALL SCONCE

**P7163-0930K9** Brushed Nickel with polished chrome accents

**P7163-12930K9** Architectural Bronze with natural brass accents

Size: 4-1/2" W., 12-1/2" ht.

Extends 3-1/4". H/CTR 10-1/4".

Lamp: One 9w LED module included.



- 623 lumens per module
- 69.2 lumens/watt
- 3000K color temperature
- Dimmable to 10% with many ELV type dimmers
- 90+ CRI



P7163-0930K9



# Archives

THIS TWO-LIGHT LINEAR BATH VANITY FIXTURE OFFERS A VINTAGE ELECTRIC FEEL. CLEAR GLASS SHADES FEATURED ON EITHER SIDE OF THE BACK PLATE ARE ACCENTED BY A TWO-TONE FINISH. MOUNT HORIZONTALLY OR VERTICALLY.

### TWO-LIGHT BATH

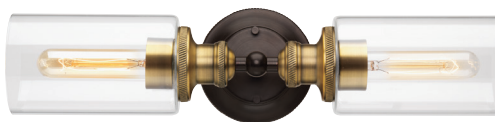
**P2809-20** Antique Bronze with natural brass accents

**P2809-81** Antique Nickel with polished chrome accents.

Size: 18-1/2" W., 4-3/4" ht.

Extends 7". H/CTR 2-3/8".

Lamps: Two medium base lamps, each 100w max.



P2809-20  
Shown with P7826-01  
vintage lamps



P2809-81  
Shown with P7826-01  
vintage lamps

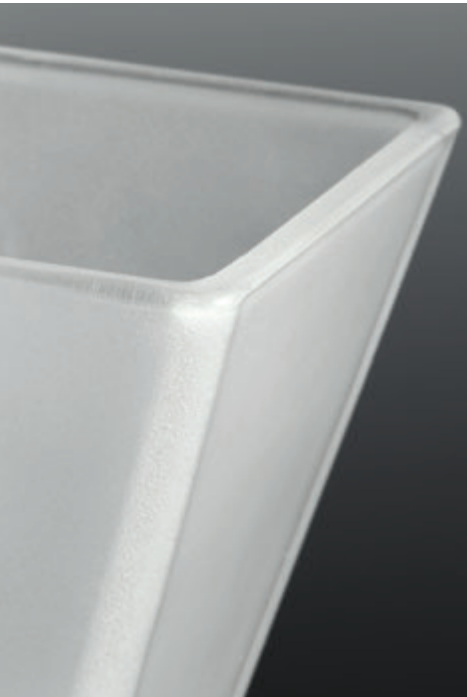


P2809-20  
Shown with P7826-01  
vintage lamps

For additional Archives fixtures see Catalog 131.

# STREAMING

WITH CLEAN AND UNCLUTTERED FEATURES, STREAMING FEATURES CLEAR, FROSTED GLASS AND A POLISHED CHROME FINISH. FIXTURES CAN BE MOUNTED UP OR DOWN. IN EITHER ORIENTATION, A PEEK OF LIGHT STREAMS FROM THE SHADE.



P2123-15



P2124-15



P2125-15

**ONE-LIGHT BATH**  
**P2123-15** Polished Chrome  
 Size: 5" W., 5" ht.  
 Extends 4-3/4". H/CTR 2-1/2".  
 Lamp: One candelabra/krypton  
 lamp, 60w max.

**TWO-LIGHT BATH**  
**P2124-15** Polished Chrome  
 Size: 14" W., 5" ht.  
 Extends 4-3/4". H/CTR 2-1/2".  
 Lamps: Two candelabra/  
 krypton lamps, each 60w max.

**THREE-LIGHT BATH**  
**P2125-15** Polished Chrome  
 Size: 22" W., 5" ht.  
 Extends 4-3/4". H/CTR 2-1/2".  
 Lamps: Three candelabra/  
 krypton lamps, each 60w max.

**FOUR-LIGHT BATH**  
**P2126-15** Polished Chrome  
 Size: 30" W., 5" ht.  
 Extends 4-3/4". H/CTR 2-1/2".  
 Lamps: Four candelabra/krypton  
 lamps, each 60w max.



P2126-15

*All bath fixtures mount up or down.*



*P7807-01 lamp recommended.*

# Rush

## ONE-LIGHT BATH

**P2715-09** Brushed Nickel

**P2715-20** Antique Bronze

Size: 8-5/8" W., 4-1/2" ht.

Extends 7-7/8". H/CTR 2-1/4".

Lamp: One G9 halogen lamp, 60w max.



P2715-09

## TWO-LIGHT BATH

**P2716-09** Brushed Nickel

**P2716-20** Antique Bronze

Size: 16" W., 4-1/2" ht.

Extends 4-7/8". H/CTR 2-1/4".

Lamps: Two G9 halogen lamps, each 60w max.



P2715-20

## THREE-LIGHT BATH

**P2717-09** Brushed Nickel

**P2717-20** Antique Bronze

Size: 24" W., 4-1/2" ht.

Extends 4-7/8". H/CTR 2-1/4".

Lamps: Three G9 halogen lamps, each 60w max.

## FOUR-LIGHT BATH

**P2718-09** Brushed Nickel

**P2718-20** Antique Bronze

Size: 32" W., 4-1/2" ht.

Extends 4-7/8". H/CTR 2-1/4".

Lamps: Four G9 halogen lamps, each 60w max.



P2718-20



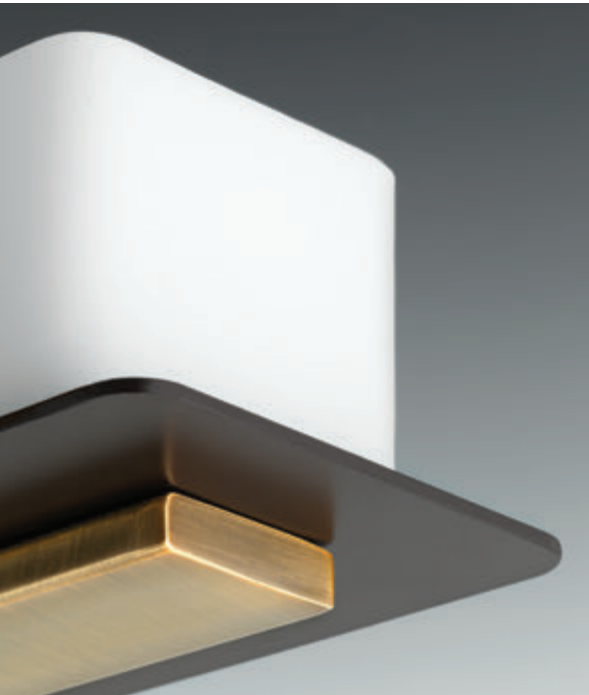
P2718-09



*P7818-01 lamp recommended.*

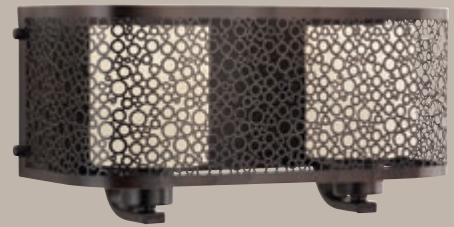
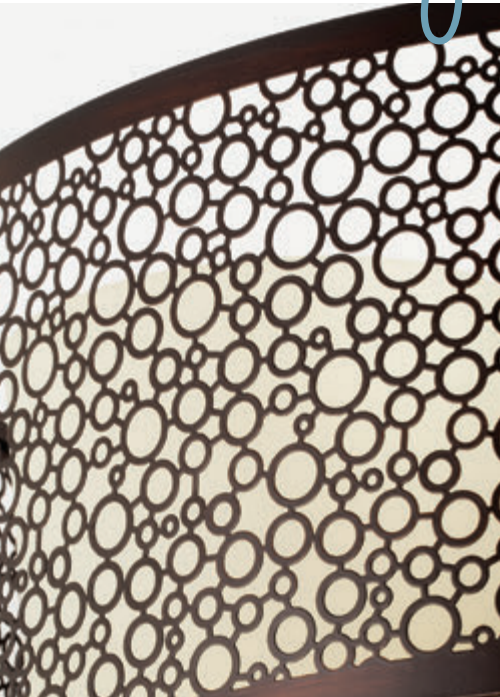


A COMPACT LINEAR BATH AND VANITY COLLECTION WITH BOTH MODERN AND NATURAL HIGHLIGHTS. ETCHED OPAL GLASS AND DUAL FINISHES – ANTIQUE BRONZE WITH NATURAL BRASS HIGHLIGHTS AND BRUSHED NICKEL WITH POLISHED CHROME HIGHLIGHTS.



*All bath fixtures mount up or down.*

# Mingle



P2162-20



P2162-09

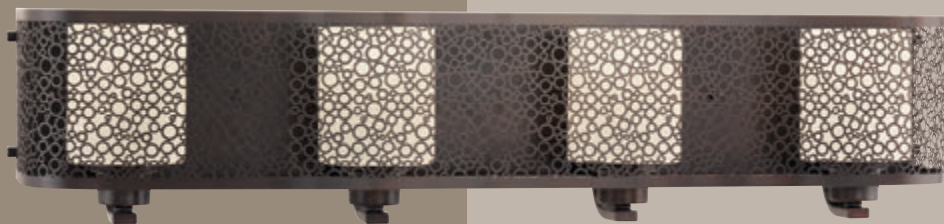


P2163-09



P2163-20

MINGLE FEATURES A DECORATIVE METAL FRAME WITH ALTERNATING CIRCULAR SHAPES. THE SOFTLY PATTERNED LIGHT SETS THE RIGHT MOOD FOR A VARIETY OF BATH AND VANITY SETTINGS. ANTIQUE BRONZE WITH NATURAL PARCHMENT GLASS OR BRUSHED NICKEL WITH ETCHED PARCHMENT GLASS.



P2164-20



P2164-09

#### ONE-LIGHT BATH

**P2161-09** Brushed Nickel  
**P2161-20** Antique Bronze  
 Size: 5-5/8" W., 7-1/4" ht.  
 Extends 6-1/4". H/CTR 2-7/8".  
 Lamp: One medium base lamp, 100w max.

#### TWO-LIGHT BATH

**P2162-09** Brushed Nickel  
**P2162-20** Antique Bronze  
 Size: 15" W., 7-1/4" ht.  
 Extends 6-1/4". H/CTR 2-7/8".  
 Lamps: Two medium base lamps, each 100w max.

#### THREE-LIGHT BATH

**P2163-09** Brushed Nickel  
**P2163-20** Antique Bronze  
 Size: 23-7/8" W., 7-1/4" ht.  
 Extends 6-1/4". H/CTR 2-7/8".  
 Lamps: Three medium base lamps, each 100w max.

#### FOUR-LIGHT BATH

**P2164-09** Brushed Nickel  
**P2164-20** Antique Bronze  
 Size: 32-3/4" W., 7-1/4" ht.  
 Extends 6-1/4". H/CTR 2-7/8".  
 Lamps: Four medium base lamps, each 100w max.



P2161-20



P2161-09

*All bath fixtures mount up or down.*

# Callison



P2176-15

P2176-09

## TWO-LIGHT BATH

**P2176-09** Brushed Nickel  
**P2176-15** Polished Chrome  
Size: 17-7/8" W., 9" ht.  
Extends 7-1/8". H/CTR 2-1/4".  
Lamps: Two medium base  
lamps, each 100w max.



Shown: P2117-09 bath fixture.

## ONE-LIGHT BATH

**P2175-09** Brushed Nickel  
**P2175-15** Polished Chrome  
Size: 5-3/4" W., 9" ht.  
Extends 7-1/8". H/CTR 3-1/4".  
Lamp: One medium base  
lamp, 100w max.

## THREE-LIGHT BATH

**P2177-09** Brushed Nickel  
**P2177-15** Polished Chrome  
Size: 24" W., 9" ht.  
Extends 7-1/8". H/CTR 2-1/4".  
Lamps: Three medium base  
lamps, each 100w max.

## FOUR-LIGHT BATH

**P2178-09** Brushed Nickel  
**P2178-15** Polished Chrome  
Size: 33-1/8" W., 9" ht.  
Extends 7-1/8". H/CTR 2-1/4".  
Lamps: Four medium base  
lamps, each 100w max.

COMPRISED OF BEAUTIFUL SQUARE GLASS AND A DETAILED PROFILE, CALLISON'S FINE DETAILS ADD SHADOW LINES AND CREATE CONTOURS WITHIN THE FIXTURE. THE DESIGN OFFERS AESTHETIC AND FUNCTIONAL BENEFITS – WITH UNIFORM LIGHT OUTPUT AND REDUCED GLARE. COORDINATES WITH DELTA® ASHLYN FAUCETS.



All bath fixtures mount up or down.

NATURALLY INSPIRED GLASS COMPLEMENTS THE ARCHING IRONWORK IN THE CLUB VANITY COLLECTION.

THE CHIC COMBINATION SERVES AS A PERFECT COMPANION TO DARKER WOOD FURNISHINGS WITHIN THE BATH AREA. FEATURES -20 ANTIQUE BRONZE FINISH.

# Club



P2055-20



P2058-20



P2057-20



P2056-20

## ONE-LIGHT BATH

**P2055-20** Antique Bronze  
Size: 6-7/8" W., 17-5/8" ht.  
Extends 9-5/8". H/CTR 10-1/4".  
Lamp: One medium base lamp, 100w max.

## TWO-LIGHT BATH

**P2056-20** Antique Bronze  
Size: 16" W., 10" ht.  
Extends 8-1/2". H/CTR 7-7/8".  
Lamps: Two medium base lamps, each 100w max.

## THREE-LIGHT BATH

**P2057-20** Antique Bronze  
Size: 25-1/8" W., 10" ht.  
Extends 8-1/2". H/CTR 7-7/8".  
Lamps: Three medium base lamps, each 100w max.

## FOUR-LIGHT BATH

**P2058-20** Antique Bronze  
Size: 34-3/8" W., 10" ht.  
Extends 8-1/2". H/CTR 7-7/8".  
Lamps: Four medium base lamps, each 100w max.

*One light mounts in up position only. Balance can mount up or down.*

OFFERING UPSCALE, TRADITIONAL DESIGN – WITH A TOUCH OF ELEGANCE – DAZZLE VANITY IS IDEAL FOR USE IN TODAY'S MONOCHROMATIC AND REFINED INTERIORS.

# DAZZLE

WITH A CLASSIC SHADE PROFILE AND -09 BRUSHED NICKEL FINISH, THE DAZZLING GLASS CREATES AN INVITING SHIMMER.

## ONE-LIGHT BATH

**P2050-09** Brushed Nickel  
Size: 6-7/8" W., 17-5/8" ht.  
Extends 9-5/8". H/CTR 10-1/4".  
Lamp: One medium base lamp, 100w max.

## TWO-LIGHT BATH

**P2051-09** Brushed Nickel  
Size: 16" W., 10" ht.  
Extends 8-1/2". H/CTR 7-7/8".  
Lamps: Two medium base lamps, each 100w max.

## THREE-LIGHT BATH

**P2052-09** Brushed Nickel  
Size: 25-1/8" W., 10" ht.  
Extends 8-1/2". H/CTR 7-7/8".  
Lamps: Three medium base lamps, each 100w max.

## FOUR-LIGHT BATH

**P2053-09** Brushed Nickel  
Size: 34-3/8" W., 10" ht.  
Extends 8-1/2". H/CTR 7-7/8".  
Lamps: Four medium base lamps, each 100w max.



P2051-09



P2052-09



P2053-09



P2050-09

*One light mounts in up position only. Balance can mount up or down.*

# Radiance

## ONE-LIGHT BATH

**P2169-09** Brushed Nickel  
**P2169-15** Polished Chrome  
**P2169-139** Rubbed Bronze  
Size: 5-1/2" W., 8-3/4" ht.  
Extends 7". H/CTR 6-3/8".  
Lamp: One medium base  
lamp, 100w max.



P2170-09

## TWO-LIGHT BATH

**P2170-09** Brushed Nickel  
**P2170-15** Polished Chrome  
**P2170-139** Rubbed Bronze  
Size: 15-3/8" W., 8-3/4" ht.  
Extends 7". H/CTR 6-3/8".  
Lamps: Two medium base  
lamps, each 100w max.



P2170-15



P2170-139

## THREE-LIGHT BATH

**P2171-09** Brushed Nickel  
**P2171-15** Polished Chrome  
**P2171-139** Rubbed Bronze  
Size: 24" W., 8-3/4" ht.  
Extends 7". H/CTR 6-3/8".  
Lamps: Three medium base  
lamps, each 100w max.



P2171-139

## FOUR-LIGHT BATH

**P2172-09** Brushed Nickel  
**P2172-15** Polished Chrome  
**P2172-139** Rubbed Bronze  
Size: 32-3/4" W., 8-3/4" ht.  
Extends 7". H/CTR 6-3/8".  
Lamps: Four medium base  
lamps, each 100w max.



P2171-15



VINTAGE-INSPIRED CLEAR RIBBED CLASS FINISHED WITH A METAL TRIM RING OFFERS A ROMANTIC EFFECT FOR THE BATH AND VANITY AREA. THREE FINISH OPTIONS PAIR NICELY WITH POPULAR PLUMBING FIXTURES. THE RUBBED BRONZE FINISH COMPLEMENTS DELTA® OIL RUBBED BRONZE (OB).



P2169-09



P2169-15



P2169-139



P2172-139



P2172-09



P2171-09

*All bath fixtures mount up or down.*

# Fuller



P2756-15



P2756-20

## ONE-LIGHT BATH

**P2756-15** Polished Chrome

**P2756-20** Antique Bronze

Size: 6" W., 8-5/8" ht.

Extends 7". H/CTR 5-5/8".

Lamp: One medium base lamp, 100w max.

## TWO-LIGHT BATH

**P2771-15** Polished Chrome

**P2771-20** Antique Bronze

Size: 14-3/4" W., 8-5/8" ht.

Extends 7". H/CTR 5-5/8".

Lamps: Two medium base lamps, each 100w max.



P2771-20



P2771-15

INDUSTRIAL ELEMENTS WITH MODERN ACCENTS OFFER A BEAUTIFUL EFFECT. ETCHED OPAL GLASS IS SUPPORTED BY TWO KNURLED BOLTS, OFFERING LITTLE DETAILS THAT MAKE A BIG STATEMENT WITHIN THE HOME.

**THREE-LIGHT BATH**

**P2773-15** Polished Chrome  
**P2773-20** Antique Bronze  
 Size: 24" W., 8-5/8" ht.  
 Extends 7". H/CTR 5-5/8".  
 Lamps: Three medium base lamps, each 100w max.

**FOUR-LIGHT BATH**

**P2774-15** Polished Chrome  
**P2774-20** Antique Bronze  
 Size: 33-1/4" W., 8-5/8" ht.  
 Extends 7". H/CTR 5-5/8".  
 Lamps: Four medium base lamps, each 100w max.



*All bath fixtures mount up or down.*

# FLEET

## ONE-LIGHT BATH

**P2165-09** Brushed Nickel  
**P2165-15** Polished Chrome  
Size: 5-1/4" W., 7-1/4" ht.  
Extends 6-1/2". H/CTR 4-3/4".  
Lamp: One medium base lamp, 100w max.



P2165-09

P2165-15

## TWO-LIGHT BATH

**P2166-09** Brushed Nickel  
**P2166-15** Polished Chrome  
Size: 14-1/8" W., 7-1/4" ht.  
Extends 6-1/2". H/CTR 5".  
Lamps: Two medium base lamps, each 100w max.



P2168-09

## THREE-LIGHT BATH

**P2167-09** Brushed Nickel  
**P2167-15** Polished Chrome  
Size: 24" W., 8-5/8" ht.  
Extends 6-1/2". H/CTR 5"..  
Lamps: Three medium base lamps, each 100w max.

## FOUR-LIGHT BATH

**P2168-09** Brushed Nickel  
**P2168-15** Polished Chrome  
Size: 33-1/4" W., 8-5/8" ht.  
Extends 6-1/2". H/CTR 5".  
Lamps: Four medium base lamps, each 100w max.



P2168-15



See matching close-to-ceiling fixtures on page 85.

A FLEETING SPARKLE OF METAL IS WHAT YOU NOTICE FIRST. EMULATING EUROPEAN FAUCET DESIGNS, FLEET IS COMPRISED OF A DISTINCT DIE CAST ARM AND CUP, HIGHLIGHTED BY ETCHED OPAL GLASS TO COMPLETE THE BATH AND VANITY COLLECTION.



*All bath fixtures mount up or down.*

A SIMPLE YET ELEGANT SERIES OF MODERN LED WALL FIXTURES. GEOMETRIC FROSTED GLASS SHADES PROVIDE EVENLY DIFFUSED ILLUMINATION FOR VANITY APPLICATIONS.

# ACE LED

## ONE-LIGHT BATH

**P2142-1530K9** Polished Chrome  
**P2142-2030K9** Antique Bronze  
Size: 7" W., 4-3/4" ht.  
Extends 4". H/CTR 2-3/4".  
Lamp: One integral 9w LED module included.  
ADA



## THREE-LIGHT BATH

**P2144-1530K9** Polished Chrome  
**P2144-2030K9** Antique Bronze  
Size: 24" W., 4-3/4" ht. Extends 4".  
H/CTR 2-3/8".  
Lamps: Three integral 9w LED modules included.  
ADA



## TWO-LIGHT BATH

**P2143-1530K9** Polished Chrome  
**P2143-2030K9** Antique Bronze  
Size: 15-1/2" W., 4-3/4" ht.  
Extends 4". H/CTR 2-3/8".  
Lamps: Two integral 9w LED modules included.  
ADA



## FOUR-LIGHT BATH

**P2145-1530K9** Polished Chrome  
**P2145-2030K9** Antique Bronze  
Size: 32-1/2" W., 4-3/4" ht.  
Extends 4". H/CTR 2-3/8".  
Lamps: Four integral 9w LED modules included.  
ADA



P2142-1530K9



P2143-1530K9



P2144-1530K9



P2145-1530K9

- 120V AC Replaceable LED module
- 623 lumens per module
- 69.2 lumens/watt
- 3000K color temperature
- TM-21 60,000 hr. life
- Dimmable to 10% with many ELV type dimmers
- 90+ CRI
- CA Title 24 Compliant



P2142-2030K9



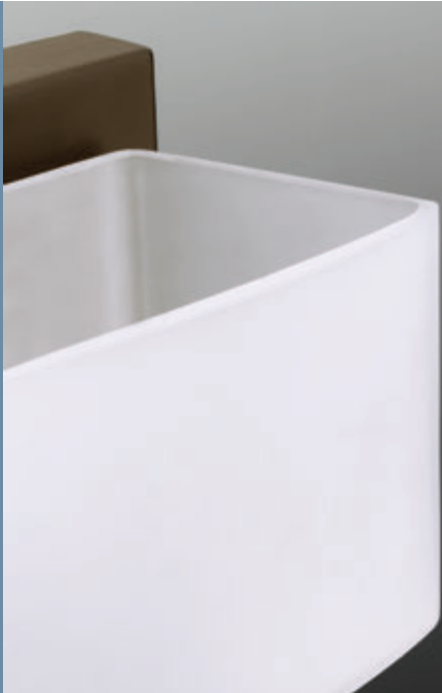
P2143-2030K9



P2144-2030K9



P2145-2030K9



All bath fixtures mount up or down.

# Appeal

DISTINCTIVE FORMS HIGHLIGHT SOFT MODERN ACCENTS. ETCHED WHITE GLASS SHADES BALANCE NICELY WITH THE FIXTURE'S FULL BACK PLATE AND SIMPLE SQUARE ARMS. CONTRIBUTES TO A DESIRED SPA-LIKE EFFECT.



### ONE-LIGHT BATH

**P2700-09** Brushed Nickel  
**P2700-15** Polished Chrome  
**P2700-20** Antique Bronze  
Size: 5-5/8" W., 6-1/4" ht.  
Extends 7-1/4". H/CTR 3-1/8".  
Lamp: One medium base lamp, 100w max.

### TWO-LIGHT BATH

**P2701-09** Brushed Nickel  
**P2701-15** Polished Chrome  
**P2701-20** Antique Bronze  
Size: 14-5/8" W., 6-1/4" ht.  
Extends 7-1/4". H/CTR 3-1/8".  
Lamps: Two medium base lamps, each 100w max.

### THREE-LIGHT BATH

**P2702-09** Brushed Nickel  
**P2702-15** Polished Chrome  
**P2702-20** Antique Bronze  
Size: 24" W., 6-1/4" ht.  
Extends 7-1/4". H/CTR 3-1/8".  
Lamps: Three medium base lamps, each 100w max.

### FOUR-LIGHT BATH

**P2703-09** Brushed Nickel  
**P2703-15** Polished Chrome  
**P2703-20** Antique Bronze  
Size: 33-1/2" W., 6-1/4" ht.  
Extends 7-1/4". H/CTR 3-1/8".  
Lamps: Four medium base lamps, each 100w max.



P2700-09



P2700-20



P2703-20



P2703-15





P2702-20



P2700-15



P2702-15



P2702-09



P2701-20



P2701-09



P2701-15



P2703-09

All bath fixtures mount up or down.

# Replay



P2131-104



P2131-09



P2158-20



P2158-104

## ONE-LIGHT BATH

**P2131-09** Brushed Nickel  
**P2131-20** Antique Bronze  
**P2131-104** Polished Nickel  
 Size: 5-1/8" W., 9-3/4" ht.  
 Extends 5-7/8". H/CTR 7-1/4".  
 Lamp: One medium base lamp, 100w max.

## FOUR-LIGHT BATH

**P2160-09** Brushed Nickel  
**P2160-20** Antique Bronze  
**P2160-104** Polished Nickel  
 Size: 31-1/8" W., 7-7/8" ht.  
 Extends 6". H/CTR 5-1/4".  
 Lamps: Four medium base lamps, each 100w max.



P2158-09

## TWO-LIGHT BATH

**P2158-09** Brushed Nickel  
**P2158-20** Antique Bronze  
**P2158-104** Polished Nickel  
 Size: 13" W., 7-7/8" ht.  
 Extends 6". H/CTR 5-1/4".  
 Lamps: Two medium base lamps, each 100w max.

## THREE-LIGHT BATH

**P2159-09** Brushed Nickel  
**P2159-20** Antique Bronze  
**P2159-104** Polished Nickel  
 Size: 22" W., 7-7/8" ht.  
 Extends 6". H/CTR 5-1/4".  
 Lamps: Three medium base lamps, each 100w max.



P2160-20

For additional Replay fixtures see Catalog 131.

HIGHLIGHTED BY SIMPLE FORMS, LINEAR DETAILS AND ETCHED OPAL GLASS. A PLEASINGLY ELEGANT FRAME ENHANCES A SIMPLIFIED MODERN LOOK WITHIN THE REPLAY COLLECTION.



P2159-104



P2159-20



P2159-09



P2160-09

*All bath fixtures mount up or down.*

# Signal Bay

SIGNAL BAY IS A FULL COLLECTION OF OUTDOOR FAMILY FIXTURES THAT INCORPORATES NAUTICAL DESIGN ELEMENTS, SUCH AS A SHIP'S FRAME OR A LIGHTHOUSE ON THE SHORE. CLEAR SEEDED GLASS AND AN OIL RUBBED BRONZE FINISH COMPLETE THE LINE.



## MEDIUM WALL LANTERN

**P5618-108** Oil Rubbed Bronze  
Size: 8" W., 12" ht. Extends 10-3/4". H/CTR 6-3/8".  
Lamp: One medium base lamp, 100w max.

## LARGE WALL LANTERN

**P5619-108** Oil Rubbed Bronze  
Size: 13-3/8" W., 14-3/4" ht. Extends 13-3/8". H/CTR 6-3/8".  
Lamp: One medium base lamp, 100w max.

## FLUSH MOUNT

**P5638-108** Oil Rubbed Bronze  
Size: 12" dia., 8-1/4" ht.  
Lamp: One medium base lamp, 100w max.

P5638-108



P5521-108



P5614-108



P5421-108

## POST LANTERN

**P5421-108** Oil Rubbed Bronze  
Size: 10" dia., 16-3/8" ht. Fits 3" post (order separately).  
Lamp: One medium base lamp, 100w max.

## HANGING LANTERN

**P5521-108** Oil Rubbed Bronze  
Size: 8" dia., 12-3/4" ht. Overall ht. w/chain 88"; wire 10".  
Lamp: One medium base lamp, 100w max.

## SMALL WALL LANTERN

**P5614-108** Oil Rubbed Bronze  
Size: 6" W., 9-1/4" ht. Extends 8-1/4". H/CTR 5-1/2".  
Lamp: One medium base lamp, 100w max.

P5618-108



P5619-108

# TOWNSHIP

ENJOY THE SIMPLE ELEGANCE OF TRADITIONAL STYLING. TOWNSHIP'S CLEAR BEVELED GLASS AND OIL RUBBED BRONZE FINISH CONTAINS NOTES OF NEW ENGLAND-INSPIRED STYLE FOR THIS CHARMING OUTDOOR LANTERN COLLECTION.



#### POST LANTERN

**P5404-108** Oil Rubbed Bronze  
Size: 8" dia., 22-1/2" ht. Fits 3" post (order separately).  
Lamps: Three candelabra base lamps, each 60w max.

#### HANGING LANTERN

**P5504-108** Oil Rubbed Bronze  
Size: 8" dia., 19-3/8" ht. Overall ht. w/chain 94"; wire 10'.  
Lamps: Three candelabra base lamps, each 60w max.

#### SMALL WALL LANTERN

**P5692-108** Oil Rubbed Bronze  
Size: 5-1/2" W., 14-3/4" ht. Extends 8". H/CTR 3-3/4".  
Lamp: One medium base lamp, 60w max.

#### MEDIUM WALL LANTERN

**P5693-108** Oil Rubbed Bronze  
Size: 6-1/2" W., 17-1/2" ht. Extends 10-1/2". H/CTR 4-1/4".  
Lamps: Two candelabra base lamps, each 60w max.



#### LARGE WALL LANTERN

**P5699-108** Oil Rubbed Bronze  
Size: 8" W., 22" ht. Extends 10-1/2". H/CTR 4-1/4".  
Lamps: Three candelabra base lamps, each 60w max.

# Maison

## MEDIUM WALL LANTERN

**P5754-31** Black

**P5754-108** Oil Rubbed Bronze

Size: 7-1/4" W., 20" ht. Extends 10-1/2". H/CTR 10-5/8".

Lamps: Three candelabra base lamps, each 60w max.

## LARGE WALL LANTERN

**P5755-31** Black

**P5755-108** Oil Rubbed Bronze

Size: 8-1/2" W., 23-3/4" ht.

Extends 12". H/CTR 13-1/2".

Lamps: Three candelabra base lamps, each 60w max.

## HANGING LANTERN

**P6532-31** Black

**P6532-108** Oil Rubbed Bronze

Size: 7-1/4" dia., 17-7/8" ht.

Overall ht. w/chain 93"; wire 10'.

Lamps: Two candelabra base lamps, each 60w max.



P5754-31



P5754-108



P5755-108



P5755-31



P6532-108



P6532-31

MAISON OFFERS ELEGANT FRENCH COUNTRY STYLING FOR A VARIETY OF HOME SETTINGS. CLASSIC AND FORMAL CLEAR WATER SEEDED GLASS COMPLEMENTS TWO FINISH OPTIONS – OIL RUBBED BRONZE AND BLACK.



P5753-31

P5753-108

**SMALL WALL LANTERN**

**P5753-31** Black

**P5753-108** Oil Rubbed Bronze

Size: 5-3/4" W., 16-1/4" ht.

Extends 8-5/8". H/CTR 9".

Lamp: One medium base lamp, 100w max.

**POST LANTERN**

**P6432-31** Black

**P6432-108** Oil Rubbed Bronze

Size: 7-1/4" dia., 20-5/8" ht. Fits

3" post (order separately).

Lamps: Two candelabra base lamps, each 60w max.



P6432-31



P6432-108

# Refuge

A CAPE COD-INSPIRED FRAME PAYS HOMAGE TO A CLASSIC NAUTICAL STYLE. LIGHT OUTPUT AND GEOMETRIC FORMS OFFER VISUAL INTEREST TO OUTDOOR EXTERIORS. CLEAR GLASS WINDOWS ARE PAIRED WITH A UNIQUE UMBER GLASS PANEL.



P6531-108



P6032-108



P6031-108



## SMALL WALL LANTERN

**P6030-108** Oil Rubbed Bronze  
Size: 6-1/2" W., 13-1/4" ht.  
Extends 6-7/8". H/CTR 4-1/4".  
Lamp: One medium base lamp,  
100w max.

## MEDIUM WALL LANTERN

**P6031-108** Oil Rubbed Bronze  
Size: 8" W., 16" ht. Extends  
8-1/8". H/CTR 5-3/4".  
Lamp: One medium base lamp,  
100w max.

## LARGE WALL LANTERN

**P6032-108** Oil Rubbed Bronze  
Size: 10-1/2" W., 21" ht. Extends  
10". H/CTR 7-1/2".  
Lamp: One medium base lamp,  
100w max.

## POST LANTERN

**P6431-108** Oil Rubbed Bronze  
Size: 8" dia., 18-5/8" ht. Fits 3"  
post (order separately).  
Lamp: One medium base lamp,  
100w max.

## HANGING LANTERN

**P6531-108** Oil Rubbed Bronze  
Size: 8" dia., 16" ht. Overall ht. w/  
chain 91"; wire 10'.  
Lamp: One medium base lamp,  
100w max.



P6030-108



P6431-108



# Endicott

WITH A CRAFTSMAN-INSPIRED MODERN SILHOUETTE, ENDICOTT OFFERS VISUAL INTEREST. THE ELONGATED FRAME IS ELEGANTLY FINISHED WITH UMBER LINEN GLASS.

## POST LANTERN

**P5400-20** Antique Bronze  
Size: 7-3/8" dia., 17-3/4" ht. Fits 3" post (order separately).  
Lamp: One medium base lamp, 100w max.

## HANGING LANTERN

**P5500-20** Antique Bronze  
Size: 7-3/8" dia., 15-1/4" ht.  
Overall ht. w/chain 91"; wire 12".  
Lamp: One medium base lamp, 100w max.

## SMALL WALL LANTERN

**P5605-20** Antique Bronze  
Size: 7-1/4" W., 10-1/2" ht.  
Extends 9-1/2". H/CTR 2-3/4".  
Lamp: One medium base lamp, 100w max.

## MEDIUM WALL LANTERN

**P5610-20** Antique Bronze  
Size: 7-1/4" W., 14-1/4" ht.  
Extends 9-1/2". H/CTR 3-5/8".  
Lamp: One medium base lamp, 100w max.

## LARGE WALL LANTERN

**P5611-20** Antique Bronze  
Size: 8-7/8" W., 12-1/2" ht.  
Extends 11". H/CTR 3-5/8".  
Lamp: One medium base lamp, 100w max.

## EXTRA LARGE WALL LANTERN

**P5613-20** Antique Bronze  
Size: 8-7/8" W., 18" ht. Extends 11". H/CTR 4-1/2".  
Lamp: One medium base lamp, 100w max.



P5605-20



P5500-20



P5610-20



P5610-20



P5613-20



P5400-20

# Archives

VINTAGE ELECTRIC DESIGN WITH A DOUBLE SHADE - CLEAR-SEEDED OVAL GLASS SURROUNDS OPAL GLASS AND NATURAL BRASS RODS.



**HANGING LANTERN**  
**P5564-20** Antique Bronze  
Size: 7-7/8" dia., 12-7/8" ht. Overall  
ht. w/chain 79"; wire 15'.  
Lamp: One medium base lamp,  
100w max.

**MEDIUM WALL LANTERN**  
**P5615-20** Antique Bronze  
Size: 7-7/8" W., 15-3/8" ht.  
Extends 8". H/CTR 3-1/4".  
Lamp: One medium base lamp,  
100w max.

P5615-20

*All stem hung fixtures on this spread include one 6" stem, four 12" stem, and 6 links of chain.*

# Botta

BOTTA'S STYLING PROVIDES A CASUAL FEEL TO COMPLEMENT INTERIORS AND EXTERIORS WITH VINTAGE FLAIR. FINELY CRAFTED ACCENTS HIGHLIGHT CLEAR SEEDED GLASS AND AN ANTIQUE BRONZE FINISH.

## SMALL HANGING LANTERN

**P5560-20** Antique Bronze  
Size: 6-1/4" dia., 9-3/4" ht. Overall ht. w/chain 76"; wire 15'.  
Lamp: One medium base lamp, 100w max.

## MEDIUM HANGING LANTERN

**P5561-20** Antique Bronze  
Size: 7-3/4" dia., 12" ht. Overall ht. w/chain 78"; wire 15'.  
Lamp: One medium base lamp, 100w max.

## SMALL WALL LANTERN

**P6043-20** Antique Bronze  
Size: 6-1/4" W., 11-5/8" ht. Extends 6-1/2". H/CTR 8-7/8".  
Lamp: One medium base lamp, 100w max.

## MEDIUM WALL LANTERN

**P6050-20** Antique Bronze  
Size: 7-3/4" W., 13-7/8" ht. Extends 8-3/8". H/CTR 11".  
Lamp: One medium base lamp, 100w max.



## TRADITIONAL / CASUAL

WISH MAXIMIZES AESTHETICS IN OUTDOOR AREAS FOR THOSE WHO DESIRE TO PRESERVE THE EXTERIOR ENVIRONMENT. INCLUDED DARK SKY SHIELD PROVIDES FULL CUT OFF ILLUMINATION OR REMOVE FOR A TRADITIONAL LIGHTING EFFECT.

# Wish

ANTIQUE BRONZE FINISH HAS ETCHED UMBER LINEN GLASS. BLACK FINISH HAS ETCHED WHITE LINEN GLASS.

### SMALL WALL LANTERN

**P6084-20** Antique Bronze

**P6084-31** Black

Size: 7" W., 10-3/8" ht. Extends 8-5/8". H/CTR 3-1/8".

Lamp: One medium base lamp, 75w max.

### POST LANTERN

**P6424-20** Antique Bronze

**P6424-31** Black

Dark Sky shield not included.

Size: 9" dia., 15-1/4" ht. Fits 3" post (order separately).

Lamp: One medium base lamp, 100w max.



*Dark sky cylinder included, except post lantern.*



P6084-20



P6084-31



P6424-20



P6424-31



**MEDIUM WALL LANTERN**

**P6085-20** Antique Bronze

**P6085-31** Black

Size: 9" W., 12-1/2" ht. Extends 10-1/2". H/CTR 3-1/8".

Lamp: One medium base lamp, 100w max.

**HANGING LANTERN**

**P6524-20** Antique Bronze

**P6524-31** Black

Size: 9" dia., 12-1/2" ht. Overall ht. w/chain 87-1/2"; wire 15'.

Lamp: One medium base lamp, 100w max.



P6085-31

# Wish LED

## SMALL WALL LANTERN

**P6084-2030K9** Antique Bronze

**P6084-3130K9** Black

Size: 7" W., 10-3/8" ht. Extends 8-5/8". H/CTR 3-1/8".

Lamp: One integral 9w LED module included.



P6084-2030K9



P6084-3130K9

## POST LANTERN

**P6424-2030K9** Antique Bronze

**P6424-3130K9** Black

Dark Sky shield not included.

Size: 9" dia., 15-1/4" ht. Fits 3" post (order separately).

Lamp: One integral 9w LED module included.



*Dark sky cylinder included, except post lantern.*

- 120V AC Replaceable LED module
- 17w: 1211 lumens , 71.2 lumens/watt  
9w: 623 lumens, 69.2 lumens/watt
- 3000K color temperature
- TM-21 60,000 hr. life
- Dimmable to 10% with many ELV type dimmers
- 90+ CRI
- CA Title 24 Compliant



P6524-2030K9



P6524-3130K9

WISH MAXIMIZES AESTHETICS IN OUTDOOR AREAS FOR THOSE WHO DESIRE TO PRESERVE THE EXTERIOR ENVIRONMENT. INCLUDED DARK SKY SHIELD PROVIDES FULL CUT OFF ILLUMINATION OR REMOVE FOR A TRADITIONAL LIGHTING EFFECT.

ANTIQUE BRONZE FINISH HAS ETCHED UMBER LINEN GLASS. BLACK FINISH HAS ETCHED WHITE LINEN GLASS.

MEDIUM WALL LANTERN

P6085-2030K9 Antique Bronze  
P6085-3130K9 Black  
Size: 9" W., 12-1/2" ht. Extends 10-1/2". H/CTR 3-1/8".  
Lamp: One integral 17w LED module included.



HANGING LANTERN

P6524-2030K9 Antique Bronze  
P6524-3130K9 Black  
Size: 9" sq., 12-1/2" ht. Overall ht. w/chain 87-1/2"; wire 15'.  
Lamp: One integral 17w LED module included.



P6085-3130K9

P6085-2030K9

# East Haven

EAST HAVEN OFFERS CONTEMPORARY STYLING TO COMPLEMENT A VARIETY OF HOME STYLES. A BLACK OR ANTIQUE BRONZE FRAME CRADLES A SEEDED GLASS SHADE.

## SMALL WALL LANTERN

**P6073-20** Antique Bronze

**P6073-31** Black

Size: 5-3/4" W., 10-3/8" ht.

Extends 7". H/CTR 5-3/4".

Lamp: One medium base lamp, 100w max.



P6073-20



P6073-31

## MEDIUM WALL LANTERN

**P6074-20** Antique Bronze

**P6074-31** Black

Size: 7-1/2" W., 12-3/4" ht.

Extends 9-1/2". H/CTR 7-1/4".

Lamp: One medium base lamp, 100w max.



P6074-31



P6075-20

## LARGE WALL LANTERN

**P6075-20** Antique Bronze

**P6075-31** Black

Size: 9-1/2" W., 15-1/8" ht.

Extends 11-1/2". H/CTR 9-3/4".

Lamp: One medium base lamp, 100w max.

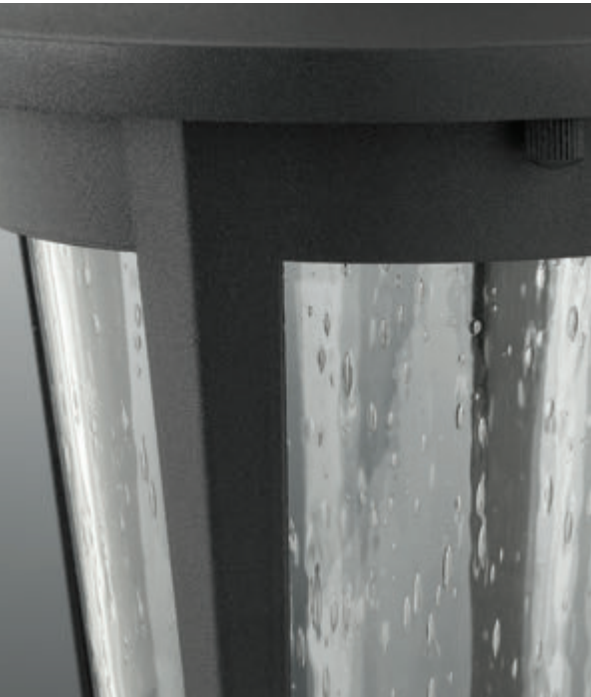


P6074-20



P6075-31





P6525-31

**POST LANTERN**

**P6425-20** Antique Bronze  
**P6425-31** Black  
Size: 7-1/2" dia., 15" ht. Fits 3" post (order separately).  
Lamp: One medium base lamp, 100w max.

**HANGING LANTERN**

**P6525-20** Antique Bronze  
**P6525-31** Black  
Size: 7-1/2" dia., 13-3/8" ht.  
Overall ht. w/chain 90"; wire 15'.  
Lamp: One medium base lamp, 100w max.



P6425-31



P6425-20



P6525-20

# East Haven LED

## SMALL WALL LANTERN

**P6077-2030K9** Antique Bronze

**P6077-3130K9** Black

Size: 5-3/4" W., 7-7/8" ht.

Extends 7-1/2". H/CTR 4-3/4".

Lamp: One integral 9w LED module included.



P6077-2030K9



## MEDIUM WALL LANTERN

**P6078-2030K9** Antique Bronze

**P6078-3130K9** Black

Size: 7-1/2" W., 9-3/4" ht.

Extends 9-1/8". H/CTR 4-3/4".

Lamp: One integral 9w LED module included.



P6077-3130K9



P6078-2030K9

## LARGE WALL LANTERN

**P6079-2030K9** Antique Bronze

**P6079-3130K9** Black

Size: 9-1/2" W., 12" ht. Extends

11-1/8". H/CTR 4-3/4".

Lamp: One integral 17w LED module included.



P6078-3130K9



P6079-2030K9

- 120V AC Replaceable LED module
- 17w: 1211 lumens , 71.2 lumens/watt
- 9w: 623 lumens, 69.2 lumens/watt
- 3000K color temperature
- TM-21 60,000 hr. life
- Dimmable to 10% with many ELV type dimmers
- 90+ CRI
- CA Title 24 Compliant



P6079-3130K9

EAST HAVEN OFFERS CONTEMPORARY STYLING TO COMPLEMENT A VARIETY OF HOME STYLES. A BLACK OR ANTIQUE BRONZE FRAME CRADLES A SEEDED GLASS SHADE.

**POST LANTERN**

**P6430-2030K9** Antique Bronze  
**P6430-3130K9** Black  
 Size: 7-1/2" dia., 15" ht. Fits 3" post (order separately).  
 Lamp: One integral 9w LED module included.



**HANGING LANTERN**

**P6530-2030K9** Antique Bronze  
**P6530-3130K9** Black  
 Size: 7-1/2" dia., 10-3/8" ht. Overall ht. w/chain 86-1/2"; wire 15'.  
 Lamp: One integral 9w LED module included.



DISTRICT'S METAL SHADE OFFERS AN INDUSTRIAL-INSPIRED DESIGN. AVAILABLE IN BOTH INCANDESCENT AND LED VERSIONS, THE VERSATILE VINTAGE FORM CAN BE USED IN INDOOR AND OUTDOOR APPLICATIONS. DARK SKY COMPLIANT.

# District



P5622-20  
P5622-2030K9



P5622-82  
P5622-8230K9



P5623-20  
P5623-2030K9



P5623-82  
P5623-8230K9

## LARGE HANGING LANTERN

**P5551-20** Antique Bronze  
**P5551-82** Metallic Gray  
Size: 12" dia., 8-1/4" ht. Overall ht. w/cord 130"; wire 12'.  
Lamp: One medium base lamp, 100w max.

## MEDIUM HANGING LANTERN

**P5535-20** Antique Bronze  
**P5535-82** Metallic Gray  
Size: 8" dia., 6-1/4" ht. Overall ht. w/cord 130"; wire 12'.  
Lamp: One medium base lamp, 100w max.

## MEDIUM WALL LANTERN

**P5622-20** Antique Bronze  
**P5622-82** Metallic Gray  
Size: 8" W., 8-1/4" ht. Extends 10-1/4". H/CTR 4-1/8".  
Lamp: One medium base lamp, 100w max.

## LARGE WALL LANTERN

**P5623-20** Antique Bronze  
**P5623-82** Metallic Gray  
Size: 12" W., 10-1/2" ht. Extends 13-1/4". H/CTR 5".  
Lamp: One medium base lamp, 100w max.

# District LED

## LARGE HANGING LANTERN

**P5551-2030K9** Antique Bronze  
**P5551-8230K9** Metallic Gray  
 Size: 12" dia., 8-1/4" ht. Overall ht. w/  
 cord 130"; wire 12'.  
 Lamp: One 9w LED module included.



## MEDIUM HANGING LANTERN

**P5535-2030K9** Antique Bronze  
**P5535-8230K9** Metallic Gray  
 Size: 8" dia., 6-1/4" ht. Overall ht.  
 w/cord 130"; wire 12'.  
 Lamp: One 9w LED module  
 included.



## MEDIUM WALL LANTERN

**P5622-2030K9** Antique Bronze  
**P5622-8230K9** Metallic Gray  
 Size: 8" W., 8-1/4" ht. Extends  
 10-1/4". H/CTR 4-1/8".  
 Lamp: One 9w LED module  
 included.



## LARGE WALL LANTERN

**P5623-2030K9** Antique Bronze  
**P5623-8230K9** Metallic Gray  
 Size: 12" W., 10-1/2" ht. Extends  
 13-1/4". H/CTR 5".  
 Lamp: One 9w LED module  
 included.



- 120V AC Replaceable LED module
- 623 lumens, 69.2 lumens/watt
- 3000K color temperature
- TM-21 60,000 hr. life
- Dimmable to 10% with many ELV type dimmers
- 90+ CRI
- CA Title 24 Compliant



P5535-20  
 P5535-2030K9



P5535-82  
 P5535-8230K9



P5551-20  
 P5621-2030K9



P5551-82  
 P5621-8230K9

# Edition

EDITION FEATURES CLEAR WATER GLASS ELEMENTS AND A DIE-CAST ALUMINUM, POWDER COATED FRAME. THE DISTINCT HEXAGONAL SHAPE OFFERS A CLASSICAL STYLE TO CONSIDER FOR UPDATING A HOME'S CURB APPEAL.



P6529-20



### SMALL WALL LANTERN

**P6070-20** Antique Bronze  
Size: 5-1/2" W., 9-1/8" ht.  
Extends 6-1/2". H/CTR 2-3/4".  
Lamp: One medium base lamp, 100w max.

### MEDIUM WALL LANTERN

**P6071-20** Antique Bronze  
Size: 7-1/8" W., 12-1/2" ht.  
Extends 8-1/8". H/CTR 3-1/8".  
Lamp: One medium base lamp, 100w max.

### LARGE WALL LANTERN

**P6072-20** Antique Bronze  
Size: 9" W., 15-7/8" ht.  
Extends 10". H/CTR 4-1/16".  
Lamp: One medium base lamp, 100w max.



P6072-20

### POST LANTERN

**P6429-20** Antique Bronze  
Size: 9" W., 21-7/8" ht. Fits 3" post (order separately).  
Lamp: One medium base lamp, 100w max.

### HANGING LANTERN

**P6529-20** Antique Bronze  
Size: 7-1/8" dia., 13" ht.  
Overall ht. w/chain 88"; wire 180".  
Lamp: One medium base lamp, 100w max.



P6429-20



P6071-20



P6070-20

# Essential

WHITE LINEN GLASS IS COMPLETED WITH A POWDER COATED ALUMINUM FRAME AND BLACK FINISH, WHILE AN UMBER LINEN GLASS SHADE COMPLEMENTS THE WARM ANTIQUE BRONZE FINISH.

## LARGE WALL LANTERN

**P6086-20** Antique Bronze

**P6086-31** Black

Size: 10" W., 13-7/8" ht. Extends 11-1/8". H/CTR 2-3/8".

Lamp: One medium base lamp, 100w max.

## POST LANTERN

**P6412-20** Antique Bronze

**P6412-31** Black

Size: 10" dia., 18-3/8" ht. Fits 3" post (order separately).

Lamps: Three candelabra base lamps, each 60w max.

## HANGING LANTERN

**P6512-20** Antique Bronze

**P6512-31** Black

Size: 8" dia., 11-1/2" ht. Overall ht. w/chain 87"; wire 15'.

Lamp: One medium base lamp, 100w max.



P6086-31



P6086-20



P6512-20



P6412-20



P6412-31



P6512-31

For additional Essential fixtures see Catalog 131.

FEATURING NAUTICAL UNDERTONES, THE BELL OUTDOOR COLLECTION OFFERS CAGE LIGHTS REMINISCENT OF INDUSTRIAL SPACES. IDEAL FOR USE IN BOTH INTERIOR AND EXTERIOR SETTINGS, THIS LED FIXTURE IS AVAILABLE IN CONVERTIBLE CEILING/PENDANT AND PENDANT AND WALL MOUNT OPTIONS.

# Bell LED

P6536-13630K9



P6536-20630K9



P6536-13630K9



P6536-2030K9



## CEILING/PENDANT

**P6536-2030K9** Antique Bronze  
**P6536-13630K9** Textured Graphite  
 Size: 6-5/8" dia., 11-3/8" ht.  
 Overall ht. w/chain 77"; wire 12'.  
 Lamp: One integral 9w LED module included.



## SMALL WALL LANTERN

**P5676-2030K9** Antique Bronze  
**P5676-13630K9** Textured Graphite  
 Size: 5-1/2" W., 10-5/8" ht. Extends 7-3/8". H/CTR 3".  
 Lamp: One integral 9w LED module included.



P5676-2030K9



P5676-13630K9

- 120V AC Replaceable LED module
- 623 lumens, 69.2 lumens/watt
- 3000K color temperature
- TM-21 60,000 hr. life
- 90+ CRI
- CA Title 24 Compliant



ROBUST AND ENERGY EFFICIENT, LED BULKHEADS ARE A GENERAL-PURPOSE LUMINAIRE. COMPRISED OF A DIE-CAST ALUMINUM FRAME AND POLYCARBONATE DIFFUSER. FITURES ARE IMPACT RESISTANT AND OFFER VARIOUS MOUNTING OPTIONS AND CAN BE WIDELY ADOPTED FOR INDOOR AND OUTDOOR APPLICATIONS.

# LED Bulkheads

**P3648-3030K9** White  
**P3648-3130K9** Black  
 Size: 9-1/2" W., 4-3/8" ht.  
 H/CTR 4-3/4".  
 Lamp: One integral 17w LED module included.



**P3649-3030K9** White  
**P3649-3130K9** Black  
 Size: 6-1/2" W., 10-1/2" ht.  
 Extends 4-1/2". H/CTR 5-1/4".  
 Lamp: One integral 9w LED module included.



**P3650-3030K9** White  
**P3650-3130K9** Black  
 Size: 9-1/2" dia., 4-1/2" ht.  
 H/CTR 4-3/4".  
 Lamp: One integral 17w LED module included.



**P3647-3030K9** White  
**P3647-3130K9** Black  
 Size: 6-1/2" W., 10-1/2" ht.  
 Extends 4-3/8". H/CTR 5-1/4".  
 Lamp: One integral 9w LED module included.



- 120V AC Replaceable LED module
- 17w: 1211 lumens , 71.2 lumens/watt
- 9w: 623 lumens, 69.2 lumens/watt
- 3000K color temperature
- TM-21 60,000 hr. life
- Dimmable to 10% with many ELV type dimmers
- 90+ CRI
- CA Title 24 Compliant



P3648-3030K9  
 shown ceiling-mounted



P3648-3130K9  
 shown wall-mounted



P3649-3130K9  
 shown wall-mounted



P3649-3030K9  
 shown ceiling-mounted



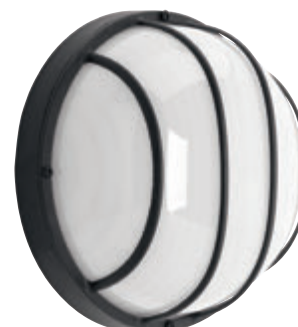
P3647-3030K9  
 shown wall-mounted



P3647-3130K9  
 shown ceiling-mounted



P3650-3030K9  
 shown ceiling-mounted



P3650-3130K9  
 shown wall-mounted 135

# Security Lighting

THESE LED SWIVEL FLOOD LIGHTS HAVE TEMPERED GLASS AND RUGGED DIE CAST CONSTRUCTION. CAN BE USED AS SINGLE OR MULTIPLE HEADS. ORDER BACKPLATE AND FLOODLIGHT SEPARATELY.

## FLOOD LIGHT HEAD

**P6342-20/30K** Antique Bronze

**P6342-28/30K** White

**P6342-82/30K** Metallic Gray

Size: 3-3/4" dia., 5" ht.

Extends 3-1/4".

Lamp: 13w LED

## BACK PLATE

**P6343-20** Antique Bronze

**P6343-28** White

**P6343-82** Metallic Gray

Five KO gaskets included. Die

cast aluminum construction.

Size: 4-1/2" dia.

- 1000 lumens
- 3000K color temperature
- 60,000 hr. life
- Wet location listed
- Multi-directional swivel joint



P6342-20/30K9



P6342-20/30K9



P6342-82/30K9



P6343-20



P6343-20  
shown with (2) P6342-20/30K heads

# LED Slim-Line Surface Mount

**P8107-20/30K** Antique Bronze  
**P8107-28/30K** White  
**P8107-31/30K** Black  
**P8107-82/30K** Metallic Gray  
 Flush mount that can mount into a minimum 2" box.  
 Size: 5-1/2" W., 2-3/4"  
 Lamp: 12w LED



- Flicker free dimming with many ELV dimmers
- Wet location listed
- 90+ CRI
- 120V input voltage AC
- 60,000 hr. life
- 12w: 630 lumens, 52.5 lumens per watt
- CA Title 24 Compliant



P8107-28/30K9



Bracket for P8107-28/30K9 shown mounted into JBox. JBox not included.



# LED Decorative Surface Mount

**P8147-09/30K9** Brushed Nickel  
**P8147-20/30K9** Antique Bronze  
**P8147-28/30K9** White  
**P8147-31/30K9** Black  
 Round with etched glass  
 Size: 7-1/4" dia., 2-3/4" ht.  
 Lamp: One 17w LED



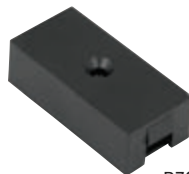
- Flicker free dimming with many ELV dimmers
- Wet location listed
- 90+ CRI
- 120V input voltage AC
- 60,000 hr. life
- 17w: 1050 lumens, 63 lumens per watt
- CA Title 24 Compliant



P8147-28/30K9

# Splice Box for Undercabinet

**P7024-31** Black  
 Splice box for Hide-a-Lite 4 LED tape system. Splicer with connection between Romex wire and low voltage cable or between two sections of low voltage cable. Mounting screws included.  
 Size: 2" W., 3/4" ht., 1/2" L.



P7024-31



THESE NEW 90 CRI VERSIONS OF THE 6" AND 5" TRIM REPLACE THOSE SHOWN IN CATALOG 131.

# LED Recessed Trims

## 6" NEW CONSTRUCTION or REMODEL TRIMS

**P8071-20/30K9-AC1-L07** Antique Bronze  
**P8071-28/30K9-AC1-L07** White  
**P8071-31/30K9-AC1-L07** Black  
**P8071-82/30K9-AC1-L07** Metallic Gray  
 Description: 717 lumen, 3000K, 90CRI



P8071-28/30K9-AC1-L07



P8071-20/30K9-AC1-L07



P8071-31/30K9-AC1-L07



P8071-82/30K9-AC1-L07



*Includes Edison base socket and Quick-Link connector*

- Frosted polycarbonate lens controls direct glare from the LEDs
- Dimmable to 10% with many ELV type dimmers
- 12-watt input power
- Lumen output 717 lumens
- Lumen output and distribution comparable to a 65w BR30 incandescent lamp
- 3000K color temperature
- 90+ CRI
- TM-21 60,000 hours life
- Suitable for use in IC or NON-IC applications
- CSAus listed for wet locations

## 5" P8061 NEW CONSTRUCTION or REMODEL (TRIMS ONLY)

**P8061-20/30K9-AC1-L06** Antique Bronze  
**P8061-28/30K9-AC1-L06** White  
**P8061-31/30K9-AC1-L06** Black  
**P8061-82/30K9-AC1-L06** Metallic Gray  
 Description: 683 lumen, 3000K, 90CRI



P8061-28/30K9-AC1-L06



P8061-20/30K9-AC1-L06



P8061-31/30K9-AC1-L06



P8061-82/30K9-AC1-L06



*Includes Edison base socket and Quick-Link connector*

- LED (Light Emitting Diode) lamp included
- Dimmable to 10% with many ELV type dimmers
- 12-watt input power
- Lumen output 683 lumens
- Lumen output and distribution comparable to 65w BR30 incandescent lamp
- 90+ CRI
- TM-21 60,000 hours life
- Suitable for use in IC or NON-IC applications
- cULus listed for wet locations

### P84-LED

Ceiling opening: 5-1/4".  
 Plaster frame: 7-7/8" x 10-3/4".  
 Recessed depth: 5-1/2".  
 Pryouts: 1/2" and 3/4".  
 Integral quick link connector mates with P8061 series trims.



RD2 OFFERS THE OPPORTUNITY TO CREATE CLEAN CEILING WITH MINIMAL OBTRUSIVENESS. THE DOWNLIGHT PROVIDES GENERAL, WORKABLE LIGHT OUTPUT IN NEW CONSTRUCTION AND RETROFIT APPLICATIONS SUCH AS – HIGH END RESIDENTIAL, HOSPITALITY AND PROFESSIONAL OFFICES.

## 2" RD2 Pro-Optic®

### 2" RD2 NEW CONSTRUCTION HOUSING & TRIM

Ceiling Opening	2-7/8"
Ceiling Thickness	1/2" - 1-1/4"
Pryouts	1/2"

### ACCESSORY FOR 2" RD2

Product No.	P8556-01
Description	IC Box with bar hangars.



P8152-21A/27K9  
Clear Alzak®



P8152-28/27K9  
White



- 120V high efficiency driver
- 2700K
- TM-21 50,000 hour life\*
- 900 lumens
- 21 watts
- 35° distribution
- 95+ CRI
- Suitable for wet locations, non-IC rated
- TRIAC forward phase dimmable to 10%
- 5 year warranty
- Completely accessible from below the ceiling

### WALL WASH

P8153-21A/27K9  
Clear Alzak®



P8153-28/27K9  
White



*\*Life is reduced to 25,000 hours when used with P8856-01 IC Box.*

## Easy Installation



Pull the pre-existing wire below the ceiling and connect to the J-tube assembly through the 1/2" knockout.



Simply slide the J-tube closed until locks into place with the springs on the opposite ends of the assembly.



Squeeze the retention rings inset light engine locking the fixture into place.



Once installed be careful not to leave fingerprints on the reflector.

DARK SKY NIGHTSAVER ACCESSORY SHIELD PROVIDES FULL CUTOFF ILLUMINATION FOR SELECTED OUTDOOR LANTERNS (SEE LIST BELOW). DESIGN IS COMPATIBLE WITH ALL MEDIUM BASE LAMPS INCLUDING CFL AND LED.

# Nightsaver

## SMALL DARK SKY SHIELD

**P8400-31** Black  
Size: 3-1/4" dia., 6.31" ht.

## MEDIUM DARK SKY SHIELD

**P8401-31** Black  
Size: 4-1/4" dia., 8-3/8" ht.

## LARGE DARK SKY SHIELD

**P8402-31** Black  
Size: 5-1/4" dia., 10-1/4" ht.

## DARK SKY COMPATIBILITY LIST

FAMILY NAME	SMALL	MEDIUM	LARGE
<b>ESSENTIAL</b>			
P6059	8400		
P6060		8401	
P6086			8402
P6512		8401	
<b>RESORT</b>			
P5987	8400		
P5988		8401	
P5989			8402
P6504		8401	
P6606			8402
<b>PRAIRIE</b>			
P5763	N/A		
P5764		8401	
P5563		8401	
P5463		8401	



P8400-31



P8402-31



P8401-31

4W 3000K COLOR TEMPERATURE WITH 84+ CRI AND A 120° BEAM SPREAD. LED STEP/WALL LIGHTS ARE AVAILABLE IN A VERTICAL OR HORIZONTAL CONFIGURATION FOR MOUNTING INTO A SINGLE-GANG WALLBOX.

# LED Step Lights

## **P6827-2030K** Antique Bronze

**P6827-3130K** Black  
Louvered horizontal step/wall light.  
Wet location listed.

Size: 5-1/4" W. , 3-1/2" ht.  
Lamp: 4w LED module included.



P6827-2030K



P6827-3130K



P6828-2030K



P6828-3130K

## **P6828-2030K** Antique Bronze

**P6828-3130K** Black  
Louvered vertical step/wall light.  
Wet location listed.

Size: 3-1/2" W. , 5-1/4" ht.  
Lamp: 4w LED module included.

# Vintage Lamps

THESE POPULAR LAMPS ARE AVAILABLE TO GO WITH MANY PROGRESS COLLECTIONS INCLUDING SWING, DRAPER, ARCHIVES AND PENN



P7825-01



P7827-01



P7826-01

**P7825-01**  
40w ST64 Edison E26 medium base. Vintage Amber bulb.  
Maximum overall length: 5-7/16"

**P7826-01**  
40w T8 E12 candelabra base. Vintage Amber bulb.  
Maximum overall length: 3-1/2"

**P7827-01**  
40w T9 E26 medium base. Vintage Amber bulb.  
Maximum overall length: 5-7/16"

## LED Replacement Lamp



**SKG0905DLED27**  
G9 5w LED dimmable lamp.  
2700K. 350 lumens.  
Size: 1-1/2" W., 2-1/5" ht.



SKG0905DLED27

## Stem Kit

**P8602-09** Brushed Nickel  
**P8602-20** Antique Bronze  
Size: 1/2" dia., 24" ht.  
Includes two 6" and one 12" stem.



P8602-20



P8602-09

*See Catalog 131 for additional stem and chain options.*

PENDANTS HAVE THE POWER TO CHANGE THE LOOK OF A ROOM INSTANTLY. TODAY, THEY CAN BE SEEN IN BATH AND VANITY AREAS, KITCHENS AND FOYERS – IN SINGLES OR IN MULTIPLES OF TWO OR MORE.

PROGRESS LIGHTING'S CANOPY ACCESSORY OFFERS A CONVENIENT WAY TO MOUNT GROUPINGS OF PENDANTS.

# Canopy



P8403-09



P8403-20

**P8403-09** Brushed Nickel  
**P8403-20** Antique Bronze  
Size: 15-1/2" dia., 1-3/8" ht.

Round canopy kit for three pendants. Maximum pendant width for three lights is 9" each.



**P8403-20**  
shown with P5023-2030K9  
mini-pendant



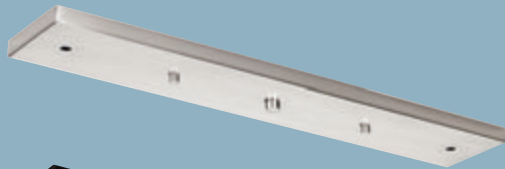
**P8403-09**  
shown with P5032-09  
mini-pendant



**P8403-09**  
shown with P5196-09  
mini-pendant



THE ROUND ACCESSORY  
 ACCOMMODATES 3 FIXTURES,  
 WHILE THE LINEAR OPTION CAN  
 MOUNT EITHER 2 OR 3 PENDANTS.  
 AVAILABLE IN -09 BRUSHED NICKEL  
 AND -20 ANTIQUE BRONZE FINISHES.



P8404-09



P8404-20

**P8404-09** Brushed Nickel  
**P8404-20** Antique Bronze  
 Size: 23-1/4" L., 4-1/4" ht.

Linear canopy can be used  
 with two or three pendants.  
 Maximum pendant size for two  
 lights is 18" each. Maximum  
 pendant size for three lights is  
 9" each.



**P8404-09**  
 shown with P5032-09  
 mini-pendant



**P8404-20**  
 shown with P5023-2030K9  
 mini-pendant



**P8404-20**  
 shown with P5079-20  
 mini-pendant

# Index



P2000.....	66	P2152.....	23	P2773.....	105	P3659.....	87
P2001.....	66	P2153.....	23	P2774.....	105	P3664.....	32
P2002.....	66	P2158.....	112	P2809.....	92	P3665.....	89
P2003.....	66	P2159.....	112	P2814.....	51	P3667.....	35
P2004.....	69	P2160.....	112	P2820.....	51	P3669.....	85
P2005.....	69	P2161.....	97	P2821.....	51	P3670.....	85
P2006.....	69	P2162.....	97	P2822.....	51	P3671.....	26
P2007.....	69	P2163.....	97	P2851.....	59	P3672.....	2
P2016.....	69	P2164.....	97	P2959.....	59	P3673.....	89
P2051.....	101	P2165.....	106	P2977.....	59	P3674.....	30
P2052.....	101	P2166.....	106	P2978.....	59	P3675.....	88
P2053.....	101	P2167.....	106	P2998.....	59	P3691.....	26
P2056.....	100	P2168.....	106			P3692.....	26
P2057.....	100	P2169.....	102	P3402.....	83	P3700.....	20
P2058.....	100	P2170.....	102	P3408.....	91	P3702.....	91
P2095.....	63	P2171.....	102	P3410.....	91	P3703.....	91
P2096.....	63	P2172.....	102	P3422.....	21	P3704.....	91
P2097.....	63	P2173.....	3	P3507.....	60	P3710.....	83
P2105.....	63	P2174.....	3	P3529.....	5	P3720.....	43
P2123.....	93	P2175.....	98	P3530.....	5	P3739.....	43
P2124.....	93	P2176.....	98	P3531.....	5	P3748.....	76
P2125.....	93	P2177.....	98	P3560.....	60	P3760.....	91
P2126.....	93	P2177.....	98	P3571.....	25	P3764.....	91
P2127.....	45	P2178.....	98	P3587.....	64	P3765.....	91
P2128.....	45	P2700.....	110	P3589.....	84	P3786.....	52
P2129.....	45	P2701.....	110	P3598.....	15	P3787.....	53
P2130.....	45	P2702.....	110	P3601.....	15	P3795.....	53
P2131.....	112	P2703.....	110	P3610.....	86	P3821.....	67
P2142.....	108	P2715.....	94	P3611.....	86	P3841.....	70
P2143.....	108	P2716.....	94	P3612.....	86	P3846.....	56
P2144.....	108	P2717.....	94	P3617.....	62	P3855.....	66
P2145.....	108	P2718.....	94	P3633.....	37	P3887.....	46
P2146.....	39	P2756.....	104	P3644.....	36	P3891.....	48
P2147.....	39	P2761.....	55	P3647.....	135	P3905.....	44
P2148.....	39	P2762.....	55	P3648.....	135	P3910.....	88
P2149.....	39	P2763.....	55	P3649.....	135	P3911.....	88
P2150.....	23	P2764.....	55	P3650.....	135	P3912.....	67
P2151.....	23	P2771.....	104	P3658.....	87	P3924.....	90

P3925. ....	90	P4626. ....	58	P4741. ....	53	P5180. ....	11	P5754. ....	116	P6827. ....	140
P3926. ....	90	P4653. ....	73	P4743. ....	54	P5186. ....	80	P5755. ....	116	P6828. ....	140
P3927. ....	90	P4654. ....	62	P4745. ....	43	P5187. ....	80			P6828. ....	140
P3951. ....	64	P4657. ....	24	P4746. ....	42	P5190. ....	11	P6030. ....	118		
P3955. ....	77	P4658. ....	25	P4747. ....	43	P5191. ....	11	P6031. ....	118	P7042. ....	137
P3969. ....	68	P4659. ....	70	P4748. ....	44	P5198. ....	79	P6032. ....	118	P7143. ....	24
P3977. ....	57	P4664. ....	77	P4749. ....	47	P5270. ....	65	P6043. ....	121	P7149. ....	17
P3987. ....	2	P4666. ....	77	P4750. ....	49	P5300. ....	68	P6050. ....	121	P7159. ....	10
P3989. ....	30	P4687. ....	68	P4751. ....	50	P5400. ....	119	P6070. ....	132	P7163. ....	92
P3990. ....	83	P4698. ....	24	P4752. ....	48	P5404. ....	115	P6071. ....	132	P7165. ....	27
P3991. ....	89	P4699. ....	17			P5421. ....	114	P6072. ....	132	P7167. ....	29
P3992. ....	89	P4700. ....	17	P5009. ....	24	P5500. ....	119	P6073. ....	126	P7172. ....	41
P3993. ....	84	P4701. ....	22	P5010. ....	61	P5504. ....	115	P6074. ....	126	P7174. ....	4
		P4702. ....	21	P5061. ....	8	P5521. ....	114	P6075. ....	126	P7188. ....	90
P4035. ....	60	P4703. ....	22	P5066. ....	36	P5535. ....	130, 131	P6077. ....	128	P7825. ....	141
P4036. ....	61	P4712. ....	71	P5071. ....	28	P5551. ....	130, 131	P6078. ....	128	P7826. ....	141
P4037. ....	61	P4715. ....	81	P5072. ....	80	P5560. ....	121	P6079. ....	128	P7827. ....	141
P4248. ....	19	P4717. ....	8	P5073. ....	15	P5561. ....	121	P6084. ....	122, 124		
P4254. ....	72	P4718. ....	7	P5074. ....	18	P5564. ....	120	P6085. ....	123, 125	P8061. ....	138
P4321. ....	62	P4719. ....	9	P5075. ....	81	P5605. ....	119	P6086. ....	133	P8071. ....	138
P4458. ....	57	P4720. ....	13	P5082. ....	17	P5606. ....	3	P6342. ....	136	P8107. ....	137
P4459. ....	57	P4721. ....	32	P5086. ....	21	P5610. ....	119	P6343. ....	136	P8147. ....	137
P4489. ....	64	P4722. ....	33	P5088. ....	32	P5611. ....	119	P6412. ....	133	P8152. ....	139
P4490. ....	64	P4723. ....	35	P5092. ....	44	P5613. ....	119	P6424. ....	122, 124	P8400. ....	140
P4492. ....	65	P4724. ....	34	P5093. ....	50	P5614. ....	114	P6425. ....	127	P8401. ....	140
P4497. ....	65	P4725. ....	74	P5101. ....	79	P5615. ....	120	P6429. ....	132	P8402. ....	140
P4612. ....	36	P4726. ....	75	P5102. ....	16	P5618. ....	144	P6430. ....	129	P8403. ....	142
P4613. ....	36	P4729. ....	28	P5107. ....	79	P5619. ....	114	P6431. ....	118	P8404. ....	143
P4614. ....	38	P4730. ....	28	P5115. ....	16	P5621. ....	31	P6432. ....	117	P8556. ....	139
P4615. ....	4	P4731. ....	27	P5119. ....	33	P5622. ....	130, 131	P6512. ....	133	P8602. ....	141
P4616. ....	4	P4733. ....	2	P5120. ....	4	P5623. ....	130, 131	P6524. ....	123, 125	P8828. ....	78
P4617. ....	40	P4734. ....	76	P5131. ....	77	P5638. ....	114	P6525. ....	127	P8829. ....	78
P4618. ....	41	P4735. ....	76	P5143. ....	81	P5664. ....	52	P6529. ....	132	P8830. ....	79
P4619. ....	58	P4736. ....	31	P5147. ....	57	P5676. ....	134	P6530. ....	129		
P4621. ....	67	P4737. ....	31	P5152. ....	13	P5692. ....	115	P6531. ....	118	SKG09. ....	141
P4622. ....	67	P4738. ....	29	P5168. ....	13	P5693. ....	115	P6532. ....	116		
P4623. ....	67	P4739. ....	75	P5175. ....	82	P5699. ....	115	P6536. ....	134		
P4625. ....	68	P4740. ....	54	P5176. ....	82	P5753. ....	116	P6827. ....	140		

Every effort has been made to ensure the accuracy of information in this catalog. Progress Lighting reserves the right to make product changes from time to time, without prior notification, which may change the information provided in this catalog. Errors brought to our attention will be corrected in subsequent issues.

UL Listed or Classified or CSA Certified unless otherwise noted.

Bulbs not included with fixtures unless specified. Specifications subject to change without notice.

Metal finishes not specified as "solid" have quality plated or painted finishes.

Finish representations are high resolution digital reproductions, and, while every effort has been made to render colors accurately, they may vary slightly from the actual product, especially hand-painted finishes, due to the nature of hand craftsmanship.

©Progress Lighting 2015  
All rights reserved.  
International Copyright Secured.

# PROGRESS LIGHTING

Progress Lighting

701 Millennium Boulevard  
Greenville, South Carolina  
29607

12/2015  
[progresslighting.com](http://progresslighting.com)

