

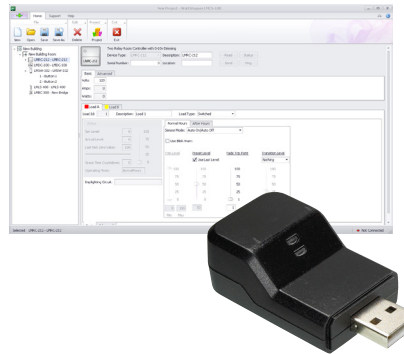
DLM COMPUTER INTERFACE TOOLS AND SOFTWARE

LMCI/LMCS-100

PC interface tool and software for configuring DLM systems

Components of Digital Lighting Management integrated control systems

Provides valuable calibration and setup documentation for LEED projects



Active real-time status of DLM system

Allows pre-configuration of rooms before installation



Description

The LMCI-100 Computer to DLM interface connects to a PC's USB port running the LMCS-100 Digital Lighting Management computer software and to a Digital Lighting Management (DLM) system through the RJ45 connector. The computer tools allow users to read, store and modify DLM system configurations.

Operation

The user connects the LMCI-100 to a DLM local network by plugging an LMRJ cable connected to that network into the device's RJ45 port. To connect to the LMCS-100 software, the user plugs the LMCI-100's USB connector into the USB port of a PC, then starts up the LMCS-100 software. **LMRJ cables should never be plugged into an Ethernet port on a computer or wall.**

Additionally, for networked DLM systems, LMCS can connect via the BAS network over BACnet/IP allowing for management from a central location. Firmware upgrade, parameter editing, and site-level configuration documentation are all possible via LMCS using BACnet/IP.

Features

LMCI-100:

- RJ45 and USB connectors to interface between DLM network and PC
- For use with LMCS-100 software
- The product meets the materials restrictions of RoHS

LMCS-100:

- Windows based
- Easy-to-use graphical user interface
- For use with LMCI-100 Computer to DLM Interface

PC-Based Configuration

LMCS-100 software features an intuitive user interface (UI) to identify current DLM system settings, allowing users to easily store or modify settings. With the software, users can also reconfigure DLM devices by changing parameters and/or setting operational values. LMCS software may also be used to load new firmware with enhanced features into DLM devices without removing installed products.

Applications

Designers can take advantage of these computer interface tools to simplify project design, startup and documentation. The LMCS software can be used to set up many advanced features of DLM devices that are beyond the scope of Plug n' Go™, Push n' Learn™ and the LMCT-100 wireless configuration tool. Furthermore, the LMCI-100 and LMCS-100 facilitate preparation of commissioning documentation through a variety of reports, which is especially helpful for LEED projects.

PROJECT	LOCATION/ TYPE

Specifications

LMCI-100:

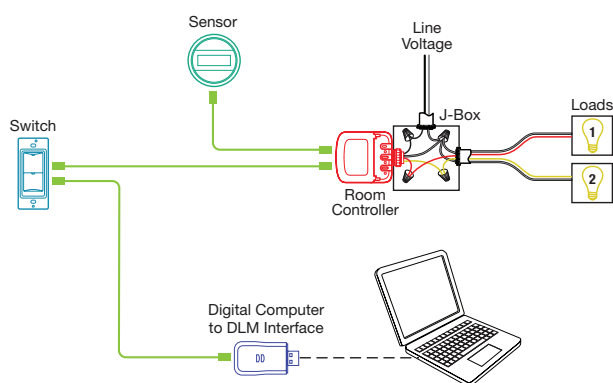
- NOT FOR USE WITH ETHERNET CONNECTIONS
- PC connection: USB connector with removable cover
- DLM local network connection: 1 RJ45 port
- LED for signal sent indication
- Operating temperature: 32 - 95°F (0 - 35°C)
- FCC part 15 compliant
- Five year warranty

LMCS-100:

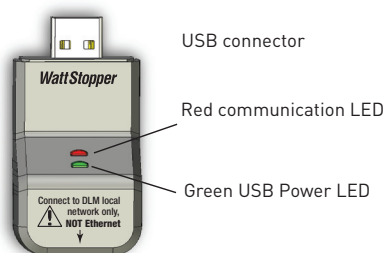
- Can also connect to DLM rooms via BACnet/IP
- Requires PC with USB port running Windows 7, Windows XP, or Vista

Connections to DLM System

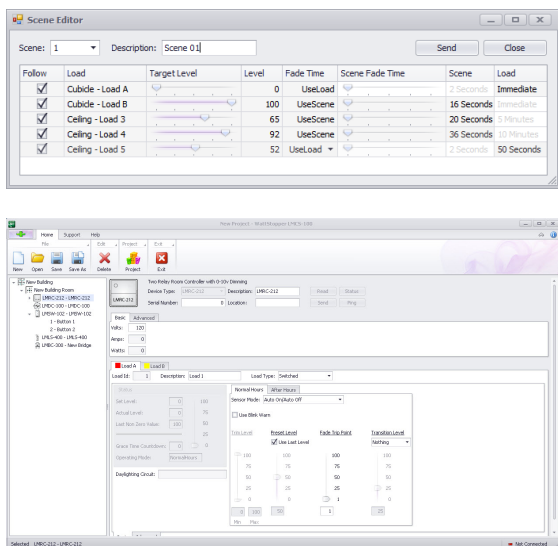
Connecting to a DLM Local Network



LMCI-100 Indicators

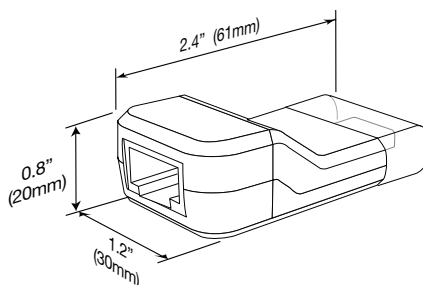


LMCS Software



Typical LMCS screens.

LMCI-100 Dimensions



Ordering Information

Catalog No.	Description
<input type="checkbox"/> LMCI-100	Computer to DLM Interface
<input type="checkbox"/> LMCS-100	DLM Computer Software (*free download from Wattstopper website)

*Download the LMCS-100 DLM Computer Software from:

<http://www.legrand.us/wattstopper/digital-lighting-management/configuration-controls/dlm-computer-interface-tools-and-software.aspx>