

# LIFT

INDUSTRIAL SAFETY GEAR



2016  
CATALOG







03	OIL & GAS GLOVES	
11	PRO SERIES GLOVES	
17	CUT RESISTANT GLOVES	
23	WORKMAN SERIES GLOVES	
29	COLD CONDITION GLOVES	
35	PROTECTIVE EYEWEAR	
43	KNEE PROTECTION	
49	HEAD PROTECTION	
53	HI-VIZ APPAREL	
59	GEAR BAGS	
63	COOLING GEAR	
65	HEARING PROTECTION	
67	SUPPORT GEAR	
71	APPAREL	
75	ACCESSORIES	
77	MERCHANDISING	
79	CUSTOM LOGO	
80	CUSTOM FORCE	
81	EVS CONNECTION	





# OIL AND GAS GLOVES

LIFT OIL & GAS GLOVES ARE DESIGNED FOR USE AND PROTECTION IN EXTREME ENVIRONMENTS. ALL GLOVES IN THE LINE FEATURE EXTENSIVE BACK OF HAND TPR IMPACT PROTECTION TO REDUCE CRUSHING AND FRACTURES AND MOST ARE CUT RESISTANT UP TO CUT LEVEL 5. CONSTRUCTED OF HEAVY DUTY MATERIALS AND REINFORCED STITCHING, THE ENTIRE OIL & GAS LINE WILL STAND UP TO THE RIGORS OF LONG HOURS ON THE RIG OR IN THE FIELD.







OIL RESISTANT DUPONT™ KEVLAR® PALM

PATENTED OUTDRY® MEMBRANE



PERFORATED 5MM INTERNAL PADDING

PRE-CURVED PALM

METACARPAL TPR IMPACT PROTECTION

KNUCKLE TPR IMPACT PROTECTION

### TECHNICAL

This standard applies to all kinds of protective gloves in respect to physical and mechanical aggressions caused by abrasion, blade cut, puncture and tearing.

EN-388



1 2 3 4

abrasion resistance  
blade cut resistance  
tear resistance  
puncture resistance

RIGGER WATERPROOF





## RIGGER "ORIGINAL"

The Rigger glove is a heavy duty, cut level 4 glove designed for use on and off the drill head. It features a durable DuPont™ Kevlar® fiber palm and finger sidewalls for extreme abrasion resistance. Full back of hand TPR impact protection reduces hand injuries while on the rig.

### Features

- Cut level 4 oil resistant DuPont™ Kevlar® fiber palm provides extreme abrasion resistance
- Stretch DuPont™ Kevlar® fiber finger sidewalls for additional abrasion protection
- Full finger, knuckle and metacarpal TPR impact & crush protection
- Perforated 5mm internal EVA foam padding provides secondary impact protection to dorsal region of hand
- Pre-curved palm for added dexterity and comfort

SIZE	PART# - HI-VIZ	PART# - BLACK
SMALL	GRX-13HVS	GRS-9HVS
MEDIUM	GRX-13HVM	GRS-9HVM
LARGE	GRX-13HVL	GRS-9HVL
X-LARGE	GRX-13HV1L	GRS-9HV1L
XX-LARGE	GRX-13HV2L	GRS-9HV2L
XXX-LARGE	GRX-13HV3L	GRS-9HV3L



EN-388  
4442

## RIGGER WATERPROOF WITH OUTDRY

OutDry

Based on the Original Rigger glove chassis, the Rigger Waterproof offers the same abrasion and back of hand protection the Oil & Gas Industry demands. It also features a patented OutDry® membrane to keep liquids out.

### Features

- Patented OutDry® membrane is 100% waterproof, oilproof, wind proof, breathable and drilling fluid resistant
- Cut level 4 oil resistant DuPont™ Kevlar® fiber palm provides extreme abrasion resistance
- Full finger, knuckle and metacarpal TPR impact and crush protection
- Perforated 5mm internal EVA foam padding provides secondary impact protection to dorsal region of hand
- Pre-curved palm for added dexterity and comfort

SIZE	PART#
MEDIUM	GRO-14HVM
LARGE	GRO-14HVL
X-LARGE	GRO-14HV1L
XX-LARGE	GRO-14HV2L
XXX-LARGE	GRO-14HV3L



EN-388  
4442



# RIGGER WINTER

The Rigger Winter glove offers the same abrasion and back of hand protection as the original Rigger with the added benefit of 3M™ Thinsulate™ for extreme cold protection and moisture resistance.

## Features

- Triple layer construction of poly spandex, fleece and 3M™ Thinsulate™ for extreme cold protection and moisture resistance
- Cut level 4 oil resistant DuPont™ Kevlar® fiber palm provides extreme abrasion resistance
- Full finger, knuckle and metacarpal TPR impact and crush protection
- Perforated 5mm internal EVA foam padding provides secondary impact protection to dorsal region of hand
- Pre-curved palm for added dexterity and comfort

SIZE	PART#
SMALL	GRW-OHVS
MEDIUM	GRW-OHVM
LARGE	GRW-OHVL
XLARGE	GRW-OHV1L
XXLARGE	GRW-OHV2L
XXX-LARGE	GRW-OHV3L



EN-388  
4442

# RIGGER TECH

The Rigger Tech glove features an industry first direct injected TPU palm, offering extreme abrasion resistance and increased grip. Built on the original Rigger chassis, it offers the same back of hand protection the oil & gas industry demands.

## Features

- Industry first high abrasion resistant direct injected TPU palm for maximum grip and protection
- Full finger, knuckle and metacarpal TPR impact and crush protection
- Perforated 5mm internal EVA foam padding provides secondary impact protection to dorsal region of hand
- Pre-curved palm for added dexterity and comfort

SIZE	PART#
SMALL	GRA-12HVS
MEDIUM	GRA-12HVM
LARGE	GRA-12HVL
X-LARGE	GRA-12HV1L
XX-LARGE	GRA-12HV2L
XXX-LARGE	GRA-12HV3L



EN-388  
4221



OIL & GAS



PRO SERIES



CUT RESISTANT



WORKMAN SERIES



COLD CONDITION



EYE PROTECTION



KNEE PROTECTION



HEAD PROTECTION



HI-VIZ APPAREL



GEAR BAG



COOLING



EAR PROTECTION



SUPPORT GEAR



APPAREL



ACCESSORIES



MERCHANDISING



CUSTOM LOGO



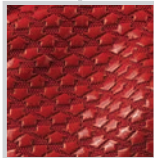
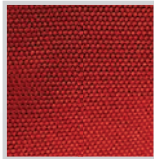
CUSTOM FORCE



EVS CONNECTION



# RIGGER<sup>XT</sup>

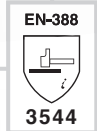


The Rigger XT glove features an innovative cut level 5 canvas palm with a silicone infused grip pattern offering maximum cut protection and increased grip on wet and oily surfaces. Full back of hand TPR impact protection reduces hand injuries while on the rig.

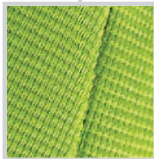
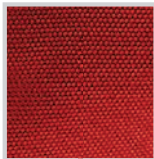
## Features

- Cut level 5 canvas palm provides abrasion resistance, grip and dexterity
- Silicone infused palm pattern provides maximum grip on wet and oily surfaces
- Full finger, knuckle and metacarpal TPR impact and crush protection
- Perforated 3mm internal EVA foam padding provides secondary impact protection to dorsal region of hand
- Pre-curved palm for added dexterity and comfort

SIZE	PART#
SMALL	GRH-13HVS
MEDIUM	GRH-13HVM
LARGE	GRH-13HVL
X-LARGE	GRH-13HV1L
XX-LARGE	GRH-13HV2L
XXX-LARGE	GRH-13HV3L



# RIGGER<sup>CP</sup>

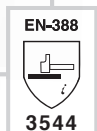


The Rigger CP glove features a soft and flexible cut level 5 canvas palm, offering increased dexterity and maximum cut protection. Full back of hand TPR impact protection reduces hand injuries while on the rig.

## Features

- Cut level 5 canvas palm provides abrasion resistance, grip and dexterity
- Full finger, knuckle and metacarpal TPR impact and crush protection
- Perforated 3mm internal EVA foam padding provides secondary impact protection to dorsal region of hand
- Pre-curved palm for added dexterity and comfort

SIZE	PART#
SMALL	GRC-14HVS
MEDIUM	GRC-14HVM
LARGE	GRC-14HVL
X-LARGE	GRC-14HV1L
XX-LARGE	GRC-14HV2L
XXX-LARGE	GRC-14HV3L





# CHEM 5 IMPACT

The Chem 5 Impact glove offers FiberWire™ cut level 5 protection covering the entire hand. Full back of hand TPR impact protection reduces hand injuries and the double dipped sandy nitrile palm is resistant to chemicals and caustic substances.

## Features

- 360° cut level 5 FiberWire™ 13 Ga. shell: High-density polyethylene HDPE & glass fiber
- Full finger, knuckle and metacarpal TPR impact protection
- Double dipped sandy nitrile palm for superior grip and resistance to chemicals and caustic substances

SIZE	PART#
SMALL	GFC-14KS
MEDIUM	GFC-14KM
LARGE	GFC-14KL
X-LARGE	GFC-14K1L
XX-LARGE	GFC-14K2L
XXX-LARGE	GFC-14K3L



EN-388  
4542

# CUT 5 IMPACT

The Cut 5 Impact glove offers FiberWire™ cut level 5 protection covering the entire hand. Full back of hand TPR impact protection reduces hand injuries and the etched latex palm provides superior grip on wet and oily surfaces.

## Features

- 360° cut level 5 FiberWire™ 13 Ga. shell: High-density polyethylene HDPE & glass fiber
- Full finger, knuckle and metacarpal TPR impact protection
- Crinkle Grip latex coating provides enhanced grip on wet and oily surfaces

SIZE	PART#
SMALL	GFT-13KS
MEDIUM	GFT-13KM
LARGE	GFT-13KL
X-LARGE	GFT-13K1L
XX-LARGE	GFT-13K2L
XXX-LARGE	GFT-13K3L



EN-388  
3544





## RIGGER FLEX



The Rigger Flex glove features a breathable, lightweight polyester shell. Full back of hand TPR impact protection reduces hand injuries and the double dipped sandy nitrile palm is resistant to chemicals and caustic substances.

### Features

- 13 Ga. polyester shell for superior breathability
- Full finger, knuckle and metacarpal TPR impact protection
- Double dipped sandy nitrile palm for superior grip and resistance to chemicals and caustic substances



SIZE	PART#
SMALL	GRF-12HVS
MEDIUM	GRF-12HVM
LARGE	GRF-12HVL
X-LARGE	GRF-12HV1L
XX-LARGE	GRF-12HV2L



EN-388



4131

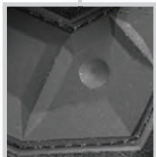
## RIGGER DIPPED



The Dipped Rigger glove is a heavy duty glove that is 100% water / oil proof. The 4x nitrile dip comes in smooth and sandy, and is resistant to chemicals and caustic substances. The internal liner features TPR and 5mm EVA foam impact protection on the back of hand.

### Features

- 4x smooth and sandy nitrile full dip is 100% water / oil proof and is resistant to chemicals and caustic substances
- Inner liner features full back of hand TPR impact protection
- Secondary layer of perforated 5mm EVA foam internal padding



SIZE	DIPPED - PART#	SANDY - PART#
LARGE	GDR-11HVL	GSR-13HVL
X-LARGE	GDR-11HV1L	GSR-13HV1L
XX-LARGE	GDR-11HV2L	GSR-13HV2L



EN-388



4222









# PRO SERIES GLOVES

LIFT PRO SERIES GLOVES ARE DESIGNED AND ENGINEERED TO BE TASK SPECIFIC IN NATURE. THERE ARE OPTIONS IDEAL FOR INDUSTRIES RANGING FROM INDUSTRIAL, HEAVY CONSTRUCTION TO DIY AND LIGHT DUTY WORK. HIGH QUALITY MATERIALS AND FORM FITTING CONSTRUCTION ENSURE EXTENDED USE AND EASY OPERATION.







TPR WRIST CLOSURE



TPR KNUCKLE IMPACT PROTECTION



GENUINE LEATHER PALM



EVA PADDED PALM

TACKER



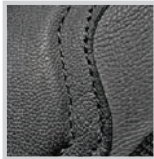
# TACKER

The Tacker glove is a heavy duty, genuine leather glove designed for superior abrasion resistance. It is fully machine washable and features a padded palm for impact and vibration absorption.



## Features

- Machine washable genuine leather for maximum abrasion resistance
- Genuine leather reinforcements on the palm, saddle, fourchettes and fingertips
- EVA padded palm for impact and vibration absorption
- TPR knuckle impact protection
- TPR wrist closure



SIZE	PART# - BLACK	PART# - TAN	PART# - CAMO
SMALL	GTA-9KS	GTA-9YS	GTA-15CFS
MEDIUM	GTA-9KM	GTA-9YM	GTA-15CFM
LARGE	GTA-9KL	GTA-9YL	GTA-15CFL
X-LARGE	GTA-9K1L	GTA-9Y1L	GTA-15CF1L
XX-LARGE	GTA-9K2L	GTA-9Y2L	GTA-15CF2L



# GRUNT

The Grunt glove is a tough work glove featuring synthetic leather reinforcements on the palm, saddle, fourchettes and fingertips. TPR knuckle impact protection keeps your hands safe from bumps and bruises.

## Features

- Reinforcements on the palm, saddle, fourchettes and fingertips
- TPR knuckle impact protection
- TPR wrist closure
- Terry cloth sweat wipe



SIZE	PART#
SMALL	GGT-6KS
MEDIUM	GGT-6KM
LARGE	GGT-6KL
X-LARGE	GGT-6K1L
XX-LARGE	GGT-6K2L





# FRAMED

The Framed glove is specifically designed for a framer or anyone needing maximum tactility while working. It features synthetic leather reinforcements on the palm, saddle, fourchettes and fingertips.

## Features

- Semi-fingerless design for better handling of nails and other small materials
- Reinforcements on the palm, saddle, fourchettes and fingertips
- TPR knuckle impact protection
- TPR wrist closure
- Terry cloth sweat wipe

SIZE	PART#
SMALL	GFD-6KS
MEDIUM	GFD-6KM
LARGE	GFD-6KL
X-LARGE	GFD-6K1L
XX-LARGE	GFD-6K2L



# HANDLER

The Handler glove features a silicone infused palm to offer maximum grip on any surface, wet or dry. It is reinforced in critical areas for increased abrasion resistance and features TPR knuckle impact protection.

## Features

- Silicone fused palm for maximum grip in dry, wet or oily conditions
- Reinforcements on the saddle, fourchettes and fingertips
- TPR knuckle impact protection
- TPR wrist closure
- Terry cloth sweat wipe

SIZE	PART# - BLACK	PART# - CAMO
SMALL	GHR-6KS	GHR-15CFS
MEDIUM	GHR-6KM	GHR-15CFM
LARGE	GHR-6KL	GHR-15CFL
X-LARGE	GHR-6K1L	GHR-15CF1L
XX-LARGE	GHR-6K2L	GHR-15CF2L

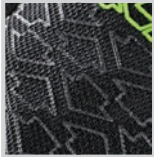


2016 NEW





# OPTION



The Option is a lightweight, breathable glove designed for medium duty work. It features a TPR wrist closure and a low profile, single piece palm for increased tactility.

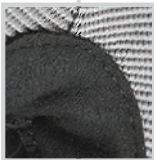
## Features

- Lightweight back of hand material maximizes air flow
- Single piece palm with saddle, fourchette and fingertip reinforcements
- TPR wrist closure

SIZE	PART# - BLACK	PART# - CAMO
SMALL	GON-10KS	GON-13CFS
MEDIUM	GON-10KM	GON-13CFM
LARGE	GON-10KL	GON-13CFL
X-LARGE	GON-10K1L	GON-13CF1L
XX-LARGE	GON-10K2L	GON-13CF2L



# TRADER



The Trader is a lightweight, open cuff glove designed for medium duty work. It features a low profile, single piece palm for increased tactility.

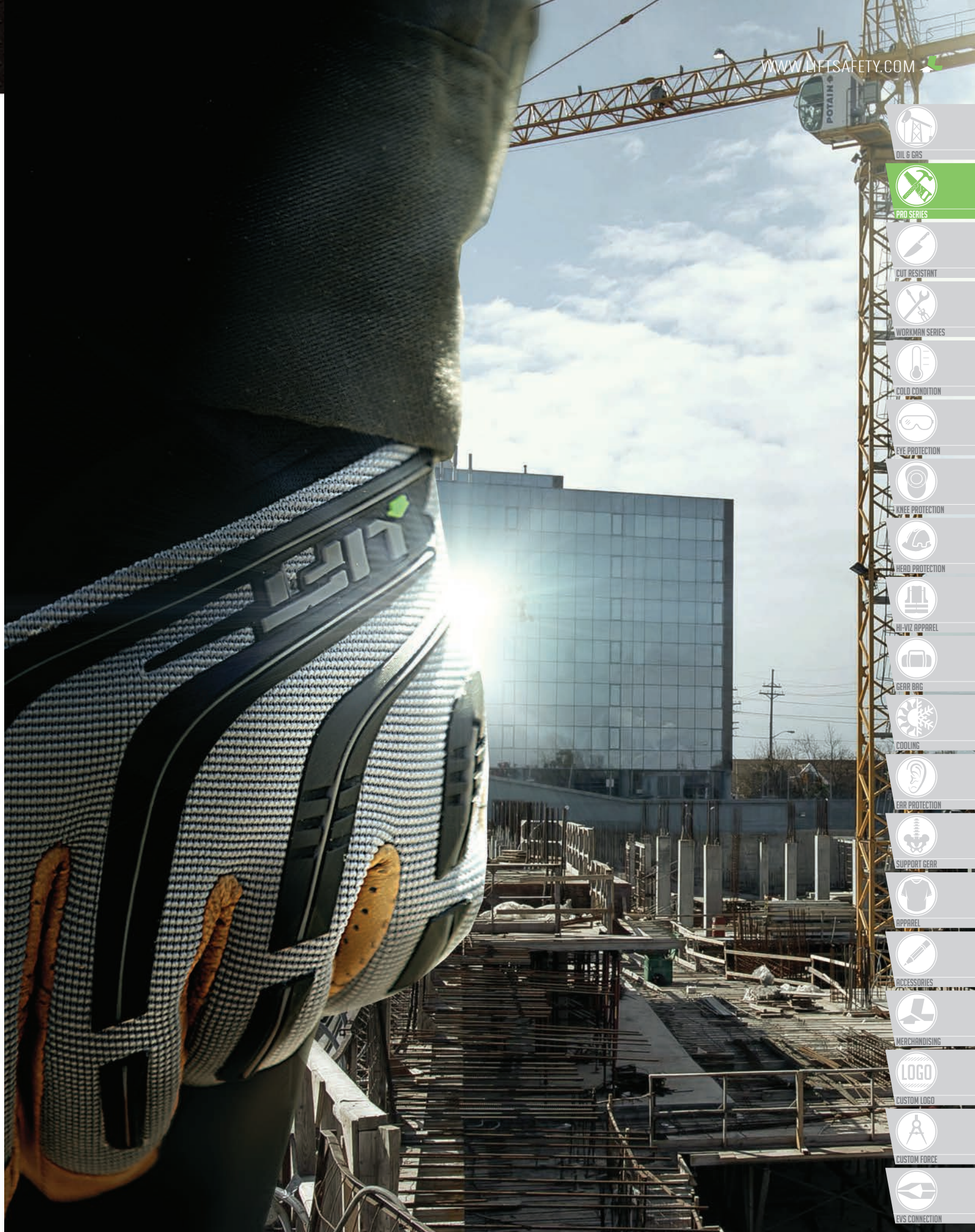
## Features

- Open cuff design for easy on/off operation
- Single piece palm with saddle, fourchette and fingertip reinforcements

SIZE	PART#
SMALL	GTR-6KS
MEDIUM	GTR-6KM
LARGE	GTR-6KL
X-LARGE	GTR-6K1L
XX-LARGE	GTR-6K2L







OIL & GAS



PRO SERIES



CUT RESISTANT



WORKMAN SERIES



COLD CONDITION



EYE PROTECTION



KNEE PROTECTION



HEAD PROTECTION



HI-VIZ APPAREL



GEAR BAG



COOLING



EAR PROTECTION



SUPPORT GEAR



APPAREL



ACCESSORIES



MERCHANDISING



CUSTOM LOGO



CUSTOM FORCE



EVS CONNECTION





# CUT RESISTANT GLOVES

LIFT CUT RESISTANT GLOVES ARE ENGINEERED FROM HIGH QUALITY CUT RESISTANT YARNS RANGING FROM CUT LEVEL 3 TO CUT LEVEL 5. THEY FEATURE EXTENDED CUFFS FOR INCREASED CUT PROTECTION FURTHER UP THE WRIST AND COME IN NITRILE, LATEX AND POLYURETHANE DIPS FOR DIFFERENT APPLICATIONS.





HIGH-DENSITY POLYETHYLENE  
HDPE & GLASS FIBER

METACARPAL TPR IMPACT  
PROTECTION

KNUCKLE TPR IMPACT  
PROTECTION

SANDY NITRILE PALM

### TECHNICAL

This standard applies to all kinds of protective gloves in respect to physical and mechanical aggressions caused by abrasion, blade cut, puncture and tearing.

EN-388



1 2 3 4

- abrasion resistance \_\_\_\_\_
- blade cut resistance \_\_\_\_\_
- tear resistance \_\_\_\_\_
- puncture resistance \_\_\_\_\_

CHEM 5 IMPACT



## CHEM 5 IMPACT



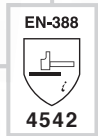
The Chem 5 Impact glove offers FiberWire™ cut level 5 protection covering the entire hand. Full back of hand TPR impact protection reduces hand injuries and the double dipped sandy nitrile palm is resistant to chemicals and caustic substances.

### Features

- 360° cut level 5 FiberWire™ 13 Ga. shell: High-density polyethylene HDPE & glass fiber
- Full finger, knuckle and metacarpal TPR impact protection
- Double dipped sandy nitrile palm for superior grip and resistance to chemicals and caustic substances



SIZE	PART#
SMALL	GFC-14KS
MEDIUM	GFC-14KM
LARGE	GFC-14KL
X-LARGE	GFC-14K1L
XX-LARGE	GFC-14K2L
XXX-LARGE	GFC-14K3L



## CUT 5 IMPACT



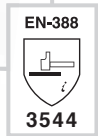
The Cut 5 Impact glove offers FiberWire™ cut level 5 protection covering the entire hand. Full back of hand TPR impact protection reduces hand injuries and the crinkle grip latex palm provides superior grip on wet and oily surfaces.

### Features

- 360° cut level 5 FiberWire™ 13 Ga. shell: High-density polyethylene HDPE & glass fiber
- Full finger, knuckle and metacarpal TPR impact protection
- Crinkle grip latex coating provides enhanced grip on wet and oily surfaces

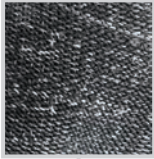


SIZE	PART#
SMALL	GFT-13KS
MEDIUM	GFT-13KM
LARGE	GFT-13KL
X-LARGE	GFT-13K1L
XX-LARGE	GFT-13K2L
XXX-LARGE	GFT-13K3L





# FIBERWIRE NITRILE



The FiberWire™ Nitrile glove is a glove offering 360° of cut level 5 protection. The double dipped sandy nitrile palm provides superior grip and is resistant to chemicals and caustic substances.

## Features

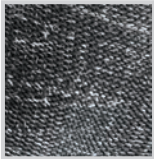
- 360° cut level 5 FiberWire™ 13 Ga. shell: High-density polyethylene HDPE & glass fiber
- Double dipped sandy nitrile palm for superior grip and resistance to chemicals and caustic substances

SIZE	PART#
SMALL	GFN-12KS
MEDIUM	GFN-12KM
LARGE	GFN-12KL
X-LARGE	GFN-12K1L
XX-LARGE	GFN-12K2L



EN-388  
4542

# FIBERWIRE LATEX



The Fiberwire™ Latex glove offers 360° of cut level 5 protection with a crinkle grip latex dip, ideal for superior grip on wet and slippery surfaces.

## Features

- 360° cut level 5 FiberWire™ 13 Ga. shell: High-density polyethylene HDPE & glass fiber
- Crinkle grip latex dip for superior grip in wet or dry conditions

SIZE	PART#
SMALL	GFL-12KS
MEDIUM	GFL-12KM
LARGE	GFL-12KL
X-LARGE	GFL-12K1L
XX-LARGE	GFL-12K2L

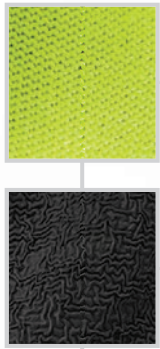


EN-388  
4544





# FIBERWIRE WINTER 2016 NEW

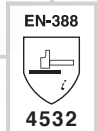


The FiberWire™ Winter is a cut level 5 glove for cold environments. The inner shell is a 7 Ga. brushed acrylic liner that keeps your hands warm while working.

### Features

- Hi Viz outer shell is 13 Ga. cut level 5 FiberWire™ High-density polyethylene HDPE & glass fiber
- Inner shell is 7 Ga. brushed acrylic for warmth
- Crinkle grip latex dip for increased grip in wet or dry conditions

SIZE	PART#
SMALL	GFW-15HVS
MEDIUM	GFW-15HVM
LARGE	GFW-15HVL
X-LARGE	GFW-15HV1L
XX-LARGE	GFW-15HV2L



# FIBERWIRE CUT 5 SLEEVE 2016 NEW

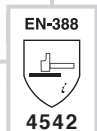


The Fiberwire™ cut 5 sleeve covers your entire arm with cut level 5 protection. The thumb loop keeps the sleeve in place, while the unique contour palm cut eliminates material bunching while wearing a glove. The adjustable bicep closure ensures a tight fit on most users.

### Features

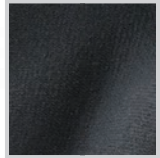
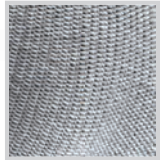
- 360° cut level 5 FiberWire™ 13 Ga. shell: High-density polyethylene HDPE & glass fiber
- Unique contour palm cut eliminates material bunching while wearing a glove
- Thumb loop to keep sleeve in place
- Adjustable bicep closure for a secure fit

SIZE	PART#
OSFM	SFV-15Y





# STARYARN NITRILE



The Staryarn™ Nitrile offers 360° of cut level 3 protection. The double dipped sandy nitrile palm provides superior grip and is resistant to chemicals and caustic substances.

## Features

- 360° cut level 3 Staryarn™ 13 Ga. shell: High-density polyethylene HDPE & polyester
- Double dipped sandy nitrile palm for superior grip and resistance to chemicals and caustic substances

SIZE	PART#
SMALL	GSN-12KS
MEDIUM	GSN-12KM
LARGE	GSN-12KL
X-LARGE	GSN-12K1L
XX-LARGE	GSN-12K2L



EN-388  
  
**3344**

# STARYARN LATEX



The Staryarn™ Latex offers 360° of cut level 3 protection with a crinkle grip latex dip, ideal for superior grip on wet and slippery surfaces.

## Features

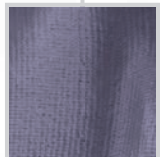
- 360° cut level 3 Staryarn™ 13 Ga. shell: High-density polyethylene HDPE & polyester
- Crinkle grip latex dip for superior grip in wet or dry conditions

SIZE	PART#
SMALL	GSC-13KS
MEDIUM	GSC-13KM
LARGE	GSC-13KL
X-LARGE	GSC-13K1L
XX-LARGE	GSC-13K2L



EN-388  
  
**3344**

# STARYARN PU



The Staryarn™ PU offers 360° of cut level 3 protection. The polyurethane palm dip provides grip and superior abrasion and liquid resistance.

## Features

- 360° cut level 3 Staryarn™ 13 Ga. shell: High-density polyethylene HDPE & polyester
- Polyurethane palm dip provides grip and superior abrasion and liquid resistance

SIZE	PART#
SMALL	GSL-12WS
MEDIUM	GSL-12WM
LARGE	GSL-12WL
X-LARGE	GSL-12W1L
XX-LARGE	GSL-12W2L



EN-388  
  
**4343**

-  OIL & GAS
-  PRO SERIES
-  CUT RESISTANT
-  WORKMAN SERIES
-  COLD CONDITION
-  EYE PROTECTION
-  KNEE PROTECTION
-  HEAD PROTECTION
-  HI-VIZ APPAREL
-  GEAR BAG
-  COOLING
-  EAR PROTECTION
-  SUPPORT GEAR
-  APPAREL
-  ACCESSORIES
-  MERCHANDISING
-  CUSTOM LOGO
-  CUSTOM FORCE
-  EVS CONNECTION





# WORKMAN SERIES GLOVES

LIFT WORKMAN SERIES GLOVES ARE DESIGNED FOR LIGHT TO MEDIUM DUTY WORK, FEATURING DIPPED KNIT SHELLS SUITABLE FOR MULTIPLE APPLICATIONS. THEIR THIN, FORM FITTING CONSTRUCTION IS EXTREMELY BREATHABLE AND OFFERS SUPERIOR DEXTERITY AND TACTILITY.







MICRO FOAM DIPPED


13 GA POLYESTER SHELL

MICRO.FOAM FINGER TIPS

**TECHNICAL**

This standard applies to all kinds of protective gloves in respect to physical and mechanical aggressions caused by abrasion, blade cut, puncture and tearing.

**EN-388**



1 2 3 4

abrasion resistance \_\_\_\_\_  
 blade cut resistance \_\_\_\_\_  
 tear resistance \_\_\_\_\_  
 puncture resistance \_\_\_\_\_

**PALMER MICRO FOAM**



## PALMER MICRO FOAM



The Palmer Micro Foam is a lightweight, low profile glove with a breathable polyester shell. The thin foamed nitrile palm offers super grip and tactility.

### Features

- 13 Ga. polyester shell for superior breathability
- Low profile micro-foam dip provides superior grip & dexterity



SIZE	PART#
SMALL	GPM-14KS
MEDIUM	GPM-14KM
LARGE	GPM-14KL
X-LARGE	GPM-14K1L
XX-LARGE	GPM-14K2L



EN-388



4131

## PALMER GREEN TAC



The Palmer Green tac is a lightweight, breathable dipped glove offering superior grip in wet or dry conditions. The soft and flexible bamboo shell provides superior comfort and breathability.

### Features

- Thin, soft, breathable bamboo shell provides excellent ventilation
- Foam nitrile dip offers superior grip in wet or dry conditions



SIZE	PART#
SMALL	GPG-1GS
MEDIUM	GPG-1GM
LARGE	GPG-1GL
X-LARGE	GPG-1G1L
XX-LARGE	GPG-1G2L



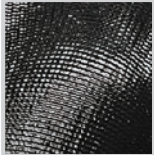
EN-388



4131



# PALMER NITRILE



The Palmer Nitrile is a lightweight, breathable glove with a nitrile dipped palm for increased grip and resistance to chemicals and caustic substances.

## Features

- Cotton & Polyester shell is breathable and lightweight
- Nitrile dipped palm offers grip and resistance to chemicals and caustic substances

SIZE	PART# - GREEN	PART# - BLACK
SMALL	GPR-6GS	GPR-6KS
MEDIUM	GPR-6GM	GPR-6KM
LARGE	GPR-6GL	GPR-6KL
X-LARGE	GPR-6G1L	GPR-6K1L
XX-LARGE	GPR-6G2L	GPR-6K2L

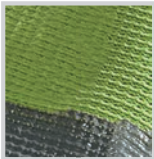


EN-388



4121

# PALMER FULL NITRILE



The Palmer Full Nitrile is a full nitrile dipped glove offering increased grip and resistance to chemicals and caustic substances over the entire hand.

## Features

- Cotton & Polyester shell is breathable and lightweight
- Nitrile full dip offers grip and resistance to chemicals and caustic substances over entire hand

SIZE	PART#
SMALL	GPF-6GS
MEDIUM	GPF-6GM
LARGE	GPF-6GL
X-LARGE	GPF-6G1L



EN-388



4121



OIL & GAS



PRO SERIES



CUT RESISTANT



WORKMAN SERIES



COLD CONDITION



EYE PROTECTION



KNEE PROTECTION



HEAD PROTECTION



HI-VIZ APPAREL



GEAR BAG



COOLING



EAR PROTECTION



SUPPORT GEAR



APPAREL



ACCESSORIES



MERCHANDISING



CUSTOM LOGO



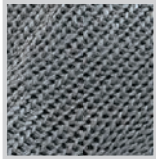
CUSTOM FORCE



EVS CONNECTION



# PALMER L-TAC



The Palmer L-Tac is a lightweight cotton and polyester glove with a crinkle grip latex palm for improved grip on wet or dry surfaces.

## Features

- Cotton & polyester shell is breathable and lightweight
- Crinkle grip latex palm for improved grip on wet or dry surfaces

SIZE	PART#
SMALL	GPL-10YS
MEDIUM	GPL-10YM
LARGE	GPL-10YL
X-LARGE	GPL-10Y1L
XX-LARGE	GPL-10Y2L

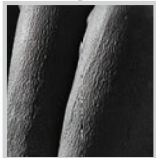
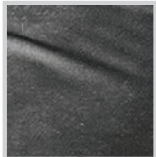


EN-388



2142

# NI-FLEX



The Ni-Flex is a powder free, 100% nitrile disposable glove, offering chemical resistance and textured fingertips for increased grip.

## Features

- Powder free 5 mil nitrile is chemical resistant and helps dissipate electrostatic charges
- Contains no natural rubber proteins known to cause allergic reactions
- Compliant with FDA food handling requirements, Meets FDA 21 CFR 170-199 specifications
- Textured fingertips for greater tactile sensitivity and grip on slippery surfaces

SIZE	PART#
SMALL	GNX-1KS
MEDIUM	GNX-1KM
LARGE	GNX-1KL
X-LARGE	GNX-1K1L
XX-LARGE	GNX-1K2L





# 8 SECONDS

The 8 Seconds glove is a durable yet comfortable top grain cowhide leather glove offering superior abrasion resistance. It features a keystone thumb design for increased dexterity and tactility.

## Features

- Unlined top grain cowhide construction
- Keystone thumb for better fit and flexibility
- Elastic wrist closure for secure fitment

SIZE	PART#
SMALL	G8S-6SS
MEDIUM	G8S-6SM
LARGE	G8S-6SL
X-LARGE	G8S-6S1L
XX-LARGE	G8S-6S2L



# OPERATOR

The Operator is heavy duty split leather glove featuring a keystone thumb for superior dexterity and tactility.

## Features

- Split leather and unlined construction
- Keystone thumb for better fit and flexibility
- Elastic wrist closure for secure fitment

SIZE	PART#
SMALL	GOR-6YS
MEDIUM	GOR-6YM
LARGE	GOR-6YL
X-LARGE	GOR-6Y1L



OIL & GAS



PRO SERIES



CUT RESISTANT



WORKMAN SERIES



COLD CONDITION



EYE PROTECTION



KNEE PROTECTION



HEAD PROTECTION



HI-VIZ APPAREL



GEAR BAG



COOLING



EAR PROTECTION



SUPPORT GEAR



APPAREL



ACCESSORIES



MERCHANDISING



LOGO



CUSTOM LOGO



CUSTOM FORCE



EVS CONNECTION





# COLD CONDITION GLOVES

LIFT COLD CONDITION GLOVES ARE DESIGNED TO KEEP YOUR HANDS WARM AND DRY WHILE WORKING IN CHILLY TO COLD ENVIRONMENTS. RANGING FROM LIGHT TO HEAVY DUTY, YOU ARE COVERED NO MATTER HOW COLD THE WEATHER GETS.







LARGE



13G POLYESTER OUTER SHELL FOR SUPERIOR BREATHABILITY

LOW PROFILE MICRO-FOAM DIP PROVIDES SUPERIOR GRIP & DEXTERITY

### TECHNICAL

This standard applies to all kinds of protective gloves in respect to physical and mechanical aggressions caused by abrasion, blade cut, puncture and tearing.

EN-388



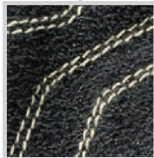
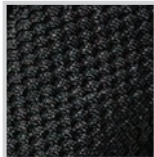
1 2 3 4

- abrasion resistance \_\_\_\_\_
- blade cut resistance \_\_\_\_\_
- tear resistance \_\_\_\_\_
- puncture resistance \_\_\_\_\_

## PALMER MICRO FOAM WINTER



# RIGGER WINTER



The Rigger Winter offers the same abrasion and back of hand protection as the Original Rigger with the added benefit of 3M™ Thinsulate™ for extreme cold protection and moisture resistance.

## Features

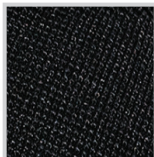
- Triple layer construction of poly spandex, fleece and 3M™ Thinsulate™ for extreme cold protection and moisture resistance
- Cut level 4 oil resistant DuPont™ Kevlar® fiber palm provides extreme abrasion resistance
- Full finger, knuckle and metacarpal TPR impact and crush protection
- Perforated 5mm internal EVA foam padding provides secondary impact protection to dorsal region of hand
- Pre-curved palm for added dexterity and comfort

SIZE	PART#
SMALL	GRW-OHVS
MEDIUM	GRW-OHVM
LARGE	GRW-OHVL
X-LARGE	GRW-OHV1L
XX-LARGE	GRW-OHV2L
XXX-LARGE	GRW-OHV3L



# TACKER WINTER

2016 NEW



We took our flagship genuine leather Tacker glove and added 3M™ Thinsulate™ and a Hipora® water resistant liner to keep your hands warm and dry while working.

## Features

- 3M™ Thinsulate™ for warmth and a breathable Hipora® water resistant liner
- Machine washable genuine leather for maximum abrasion resistance
- Genuine leather reinforcements on the palm, saddle, fourchettes and fingertips
- EVA padded palm for impact and vibration absorption
- TPR knuckle impact protection
- TPR wrist closure

SIZE	PART#
SMALL	GTW-15KS
MEDIUM	GTW-15KM
LARGE	GTW-15KL
X-LARGE	GTW-15K1L
XX-LARGE	GTW-15K2L





# HANDLER WINTER

2016 **NEW**

We took our popular Handler glove and added 3M™ Thinsulate™ and a Hipora® water resistant liner to keep your hands warm and dry while working.

## Features

- 3M™ Thinsulate™ for warmth and a breathable Hipora® water resistant liner
- Silicone fused palm for maximum grip in dry or wet conditions
- Reinforcements on the saddle, fourchettes and fingertips
- TPR knuckle impact protection
- TPR wrist closure
- Terry cloth sweat wipe

SIZE	PART#
SMALL	GHW-15KS
MEDIUM	GHW-15KM
LARGE	GHW-15KL
X-LARGE	GHW-15K1L
XX-LARGE	GHW-15K2L



# OPTION WINTER

We took our popular Option glove and added 3M™ Thinsulate™ and a Hipora® water resistant liner to keep your hands warm and dry while working.

## Features

- 3M™ Thinsulate™ for warmth and a breathable Hipora® water resistant liner
- Lightweight back of hand material maximizes air flow
- Single piece palm with saddle, fourchette and fingertip reinforcements
- TPR wrist closure

SIZE	PART# - BLACK	PART# - CAMO
SMALL	GOW-14KS	GOW-14CFS
MEDIUM	GOW-14KM	GOW-14CFM
LARGE	GOW-14KL	GOW-14CFL
X-LARGE	GOW-14K1L	GOW-14CF1L
XX-LARGE	GOW-14K2L	GOW-14CF2L



# WEATHERMAN

The Weatherman is a workhorse glove featuring 3M™ Thinsulate™ and a Hipora® water resistant liner to keep your hands warm and dry in extreme conditions.

## Features

- Triple layer poly spandex shell with 3M™ Thinsulate™ for maximum warmth
- Additional layer of breathable Hipora® water resistant liner
- Dual stitched reinforced thumb, palm and finger tips for increased abrasion resistance
- Rolled fingertips for increased tactility and dexterity
- 3" gauntlet cuff with cinch strap and draw string to keep the elements out

SIZE	PART#
SMALL	GWM-6KS
MEDIUM	GWM-6KM
LARGE	GWM-6KL
X-LARGE	GWM-6K1L
XX-LARGE	GWM-6K2L

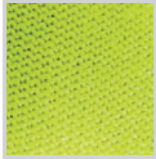




# FIBERWIRE WINTER

2016 NEW

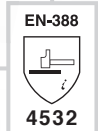
The FiberWire™ Winter is a cut level 5 glove for cold environments. The inner shell is a 7 Ga. brushed acrylic liner that keeps your hands warm while working.



## Features

- Hi Viz outer shell is 13 Ga. cut level 5 FiberWire™ High-density polyethylene HDPE & glass fiber
- Inner shell is 7 Ga. brushed acrylic for warmth
- Crinkle grip latex dip for increased grip in wet or dry conditions

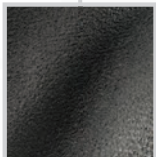
SIZE	PART#
SMALL	GFW-15HVS
MEDIUM	GFW-15HVM
LARGE	GFW-15HVL
X-LARGE	GFW-15HV1L
XX-LARGE	GFW-15HV2L



# PALMER MICRO FOAM WINTER

2016 NEW

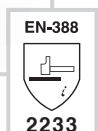
The Palmer Micro Foam Winter is a lightweight breathable polyester knit glove with a terry acrylic inner liner for increased warmth. The micro foam palm provides superior grip and tactility.



## Features

- 13g polyester outer shell with a 7g terry acrylic inner shell
- Low profile micro foam dip provides superior grip

SIZE	PART#
SMALL	GPW-15KS
MEDIUM	GPW-15KM
LARGE	GPW-15KL
X-LARGE	GPW-15K1L
XX-LARGE	GPW-15K2L





# THERMAL TAC PRO




The Thermal Tac Pro is a 10 Ga. brushed acrylic glove offering superior warmth and comfort. The crinkle grip latex palm offers superior grip on wet or dry surfaces.

## Features

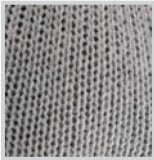
- 10 Ga. brushed acrylic thermal liner keeps hands warm and comfortable
- Crinkle grip latex dip for superior grip in wet or dry conditions

SIZE	PART#
SMALL	GPT-12KS
MEDIUM	GPT-12KM
LARGE	GPT-12KL
X-LARGE	GPT-12K1L
XX-LARGE	GPT-12K2L



EN-388  
  
 2242

# THERMAL TAC



The Thermal Tac is a 13 Ga. polyester staple fiber glove offering warmth and comfort. The crinkle grip latex palm offers superior grip on wet or dry surfaces.

## Features

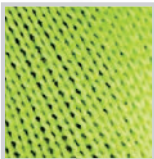
- 13 Ga. polyester staple fiber (PSF) liner keeps hands warm
- Crinkle grip latex dip for superior grip in wet or dry conditions

SIZE	PART#
SMALL	GPO-12KS
MEDIUM	GPO-12KM
LARGE	GPO-12KL
X-LARGE	GPO-12K1L
XX-LARGE	GPO-12K2L



EN-388  
  
 2242

# THERMAL LINER



Turn any Lift glove into a winter glove or wear by itself. Low profile design enables the liner to be worn under a regular glove for increased warmth when needed.

## Features

- Hi Viz 10 Ga. brushed acrylic is soft, flexible and adds warmth when needed

SIZE	PART#
SMALL	GTL-13HVS
MEDIUM	GTL-13HVM
LARGE	GTL-13HVL
X-LARGE	GTL-13HV1L
XX-LARGE	GTL-13HV2L







# PROTECTIVE EYEWEAR

OUR ENTIRE LINE OF PROTECTIVE EYEWEAR MEETS ANSI Z87.1 IMPACT RATINGS AND EXCEEDS UV-A / UV-B / UV-C. FROM OUR STYLE SERIES TO FULL GOGGLES, LIFT HAS YOUR EYES COVERED IN ANY SITUATION.







OPTICALLY CORRECT POLYCARBONATE LENSES

SOFT RUBBER NOSE BRIDGE

TR-90 FRAME CONSTRUCTION

SOFT RUBBER TEMPLE SUPPORT

**BOLD SUNGLASSES**



# STYLE SERIES ///



## /// BOLD

The Bold is large profile, stylish protective eyewear that is designed to offer maximum coverage. The optically correct polycarbonate lenses offer superior impact protection and are ANSI Z87.1 rated.

### Features

- Large profile fit
- Optically correct polycarbonate lenses meet ANSI Z87.1 impact ratings
- TR-90 frame construction with soft rubber temple and nose bridge
- Exceeds UV-A / UV-B / UV-C



### STYLES



GLOSS BLACK



MATTE BLACK



TORTOISE



WHITE

### LENS OPTIONS



CLEAR



SMOKE



POLARIZED



**2016 NEW**  
SILVER REVO

STYLE	PART# - CLEAR	PART# - SMOKE	PART# - POLARIZED	PART# - SILVER REVO
BLACK	EBD-10KC	EBD-10KST	EBD-10KP	
MATTE BLACK	EBD-14MKC	EBD-14MKST	EBD-14MKP	EBD-15MKS
TORTOISE	EBD-10TC	EBD-10TST	EBD-10TP	
WHITE	EBD-10WC	EBD-10WST	EBD-10WP	



# ALIAS

With a slightly lower profile than the Bold, the Alias offers a medium fit. The optically correct polycarbonate lenses offer superior impact protection and are ANSI Z87.1 rated.

## Features

- Medium profile fit
- Optically correct polycarbonate lenses meet ANSI Z87.1 impact ratings
- TR-90 frame construction with soft rubber temple and nose bridge
- Exceeds UV-A / UV-B / UV-C



## STYLES



GLOSS BLACK

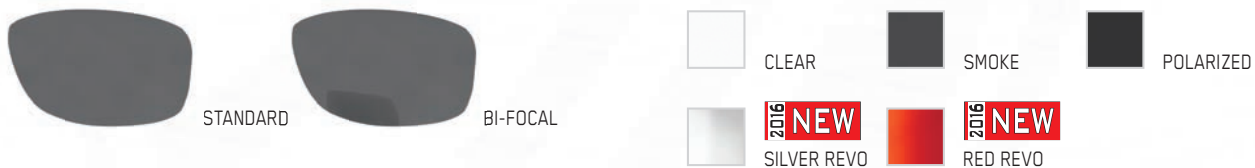
MATTE BLACK

TORTOISE

WHITE

**2016 NEW** CAMO

## LENS OPTIONS



STANDARD

BI-FOCAL

CLEAR

SMOKE

POLARIZED

**2016 NEW**  
SILVER REVO

**2016 NEW**  
RED REVO

STYLE	PART# - CLEAR	PART# - SMOKE	PART# - POLARIZED	PART# - SILVER REVO	PART# - RED REVO
BLACK	EAS-10KC	EAS-10KST	EAS-10KP		
MATTE BLACK	EAS-14MKC	EAS-14MKST	EAS-14MKP	EAS-15MKSR	EAS-15MKRR
TORTOISE	EAS-10TC	EAS-10TST	EAS-10TP		
WHITE	EAS-10WC	EAS-10WST	EAS-10WP		
CAMO	EAS-15CFC	EAS-15CFST	EAS-15CFP		

STYLE	PART# - BIFOCAL W/1.50	PART# - BIFOCAL W/2.00	PART# - BIFOCAL W/2.50	PART# - BIFOCAL W/3.00
BLACK/CLEAR	EAS-10KC15	EAS-10KC20	EAS-10KC25	EAS-10KC30
BLACK/SMOKE	EAS-13KST15	EAS-13KST20	EAS-13KST25	EAS-13KST30



OIL & GAS



PRO SERIES



CUT RESISTANT



WORKMAN SERIES



COLD CONDITION



EYE PROTECTION



KNEE PROTECTION



HEAD PROTECTION



HI-VIZ APPAREL



GEAR BAG



COOLING



EAR PROTECTION



SUPPORT GEAR



APPAREL



ACCESSORIES



MERCHANDISING



LOGO



CUSTOM LOGO



CUSTOM FORCE



EVS CONNECTION



# SWITCH

The Switch is our lowest profile protective eyewear in the Style Series line. The optically correct polycarbonate lenses offer superior impact protection and are ANSI Z87.1 rated.

## Features

- Small to medium profile fit
- Optically correct polycarbonate lenses meet ANSI Z87.1 impact ratings
- TR-90 frame construction with soft rubber temple and nose bridge
- Exceeds UV-A / UV-B / UV-C



## STYLES



GLOSS BLACK



MATTE BLACK



TORTOISE



WHITE



**2016 NEW** CAMO

## LENS OPTIONS



STANDARD



BI-FOCAL



CLEAR



SMOKE



POLARIZED



**2016 NEW**  
SILVER REVO



**2016 NEW**  
RED REVO

STYLE	PART# - CLEAR	PART# - SMOKE	PART# - POLARIZED	PART# - SILVER REVO	PART# - RED REVO
BLACK	ESH-10KC	ESH-10KST	ESH-10KP		
MATTE BLACK	ESH-14MKC	ESH-14MKST	ESH-14MKP	ESH-15MKSR	ESH-15MKRR
TORTOISE	ESH-10TC	ESH-10TST	ESH-10TP		
WHITE	ESH-10WC	ESH-10WST	ESH-10WP		
CAMO	ESH-15CFC	ESH-15CFST	ESH-15CFP		

STYLE	PART# - BIFOCAL W/1.50	PART# - BIFOCAL W/2.00	PART# - BIFOCAL W/2.50	PART# - BIFOCAL W/3.00
BLACK/CLEAR	ESH-10KC15	ESH-10KC20	ESH-10KC25	ESH-10KC30
BLACK/SMOKE	ESH-13KST15	ESH-13KST20	ESH-13KST25	ESH-13KST30





OIL & GAS



PRO SERIES



CUT RESISTANT



WORKMAN SERIES



COLD CONDITION



EYE PROTECTION



KNEE PROTECTION



HEAD PROTECTION



HI-VIZ APPAREL



GEAR BAG



COOLING



EAR PROTECTION



SUPPORT GEAR



APPAREL



ACCESSORIES



MERCHANDISING



LOGO

CUSTOM LOGO



CUSTOM FORCE



EYE CONNECTION

## QUEST

The Quest is sport styled, partial frame protective eyewear offering a lightweight, low profile option. The polycarbonate lenses meet ANSI Z87.1 impact ratings.

### Features

- Small to medium fit & coverage
- Optically correct polycarbonate lenses meet ANSI Z87.1 impact ratings
- TR-90 frame construction with soft rubber temple and nose bridge
- Exceeds UV-A / UV-B / UV-C

### STYLES



BLACK



CAMO



### LENS OPTIONS



CLEAR



SMOKE



AMBER

STYLE	PART# - CLEAR	PART# - CLEAR BULK	PART# - SMOKE	PART# - SMOKE BULK	PART# - AMBER	PART# - AMBER BULK
BLACK	EQT-12KC	EQT-12KCB	EQT-12KST	EQT-12KSTB	EQT-12KA	EQT-12KAB
CAMO	EQT-12CFC	EQT-12CFCB	EQT-12CFST	EQT-12CFSTB	EQT-12CFA	EQT-12CFAB

## STROBE

The Strobe is a lightweight, low profile safety glass with a nylon frame and polycarbonate lenses meeting ANSI Z87.1 impact ratings.

### Features

- Small to medium fit & coverage
- Optically correct polycarbonate lenses meet ANSI Z87.1 impact ratings
- Nylon frame construction with soft rubber temple and nose bridge
- Exceeds UV-A / UV-B / UV-C

### STYLES



BLACK



SILVER



CAMO



### LENS OPTIONS



CLEAR



SMOKE



AMBER



YELLOW

STYLE	PART# - CLEAR	PART# - CLEAR BULK	PART# - SMOKE	PART# - SMOKE BULK	PART# - AMBER	PART# - AMBER BULK	PART# - YELLOW	PART# - YELLOW BULK
BLACK	ESR-12KC	ESR-12KCB	ESR-12KST	ESR-12KSTB	ESR-12KA	ESR-12KAB	ESR-12KLT	ESR-12KLTB
SILVER	ESR-6C	ESR-6CB	ESR-6ST	ESR-6STB	ESR-12SA	ESR-12SAB	ESR-6LT	ESR-6LTB
CAMO	ESR-12CFC	ESR-12CFCB	ESR-12CFST	ESR-12CFSTB	ESR-12CFA	ESR-12CFAB	ESR-12CFLT	ESR-12CFLTB

STYLE	PART# - CLEAR ANTI-FOG BULK	PART# - YELLOW ANTI-FOG BULK
BLACK	ESR-12KCBFB	ESR-12KLTBFB
SILVER	ESR-6CBFB	ESR-6LTBFB
CAMO	ESR-12CFCBFB	ESR-12CFLTBFB



# SECTORLITE

The Sectorlite is extremely lightweight polycarbonate frameless protective eyewear offering ANSI Z87.1 and CSA Z94.3 impact ratings.

### Features

- Super lightweight and flexible polycarbonate frame / lens construction
- Impact protection meets ANSI Z87.1 and CSA Z94.3 specifications
- Soft rubber temple tail inserts and nose bridge
- Exceeds UV-A / UV-B / UV-C



STYLE	PART#	PART# - BULK	PART# - ANTI-FOG BULK
CLEAR	ESE-6C	ESE-6CB	ESE-6CFB
SMOKE	ESE-6ST	ESE-6STB	ESE-6STFB
MIRROR	ESE-9M	ESE-9MB	ESE-9MFB
YELLOW	ESE-6LT	ESE-6LTB	ESE-6LTFB

### STYLES



# FLANKER

The Flanker is adjustable, low profile protective eyewear with a partial frame. The polycarbonate lenses meet ANSI Z87.1 impact ratings.

### Features

- 4-point vertical ear and temple adjustment
- Co-molded soft rubber temple tail section
- Translucent polycarbonate partial frame with integrated side shields
- Impact resistant polycarbonate lenses meet ANSI Z87.1
- Exceeds UV-A / UV-B / UV-C



STYLE	PART#	PART# - BULK
CLEAR	EFR-6C	EFR-6CB
SMOKE	EFR-6ST	EFR-6STB

### STYLES



# TEAR OFF

The Tear Off is super light, frameless protective eyewear that meets ANSI Z87.1 impact ratings.

### Features

- Super lightweight frameless design
- Impact protection meets ANSI Z87.1
- Exceeds UV-A / UV-B / UV-C



STYLE	PART#
CLEAR	ETO-14STB
SMOKE	ETO-14CB

### STYLES





# SECTORLITE<sup>HYBRID</sup>

The Sectorlite Hybrid bridges the gap between protective eyewear and a goggle. It provides superior protection and ventilation and meets ANSI Z87.1 and CSA Z94.3 impact ratings.

## Features

- Lightweight and flexible polycarbonate frame construction
- Pliable foam molds and seals to face while providing superior ventilation and comfort
- Adjustable hinged headband fits securely and comfortably
- Impact resistant and anti-fog lenses
- Impact protection meets ANSI Z87.1 and CSA Z94.3 specifications
- Exceeds UV-A / UV-B / UV-C



STYLE	PART#
CLEAR	EHD-8C
SMOKE	EHD-8ST
BLUE	EHD-8B

## STYLES



# REFUGE<sup>GOGGLE</sup>

The Refuge Goggle is a low profile, lightweight goggle that keeps dust and particles out. The anti-fog lens meets ANSI Z87.1 impact ratings.

## Features

- Lightweight, low profile design gives comfort, protection and great styling
- Soft dual layer foam seals against dust & particles while improving comfort
- Impact resistant and anti-fog treated polycarbonate lens
- Impact protection meets ANSI Z87.1
- Exceeds UV-A / UV-B / UV-C



STYLE	PART#
CLEAR	ERE-8C
SMOKE	ERE-8ST

## STYLES



# SPRAYED<sup>GOGGLE</sup>

The Sprayed Goggle offers a full coverage, wide wrap design for enhanced peripheral vision. The polycarbonate lens meets ANSI Z87.1 impact ratings.

## Features

- Full coverage and comfortable protection
- Flexible PVC frame construction and polycarbonate lens
- Fully adjustable strap to fit head securely and comfortably
- Wide wrap design enhances peripheral vision
- Impact protection meets ANSI Z87.1
- Exceeds UV-A / UV-B / UV-C



STYLE	PART#
CLEAR	ESD-6C



OIL & GAS



PRO SERIES



CUT RESISTANT



WORKMAN SERIES



COLD CONDITION



EYE PROTECTION



KNEE PROTECTION



HEAD PROTECTION



HI-VIZ APPAREL



GEAR BAG



COOLING



EAR PROTECTION



SUPPORT GEAR



APPAREL



ACCESSORIES



MERCHANDISING



CUSTOM LOGO



CUSTOM FORCE



EYE CONNECTION





# KNEE PROTECTION

LIFT KNEE PROTECTION COMES IN MANY OPTIONS TO SUIT ANY WORK ENVIRONMENT. FROM NON-MARRING HARDSHELL PADS TO TPR GEL PADS FOR INCREASED GRIP, OUR COMPREHENSIVE LINE OF KNEE PROTECTION OFFERS SOMETHING FOR EVERYONE.







REMOVABLE HINGED UPPER SUPPORT STRAP

TEXTURED TPR KNEE CAP

INTERNAL GEL INSERT

BALLISTIC NYLON CONSTRUCTION

**APEX GEL**



# APEX GEL



The Apex Gel is our flagship knee pad. It offers an innovative internal gel insert that molds and forms to the patella and knee cap, maximizing stabilization and protection. The hinged upper support strap is removable and prevents binding while the TPR cap maximizes tracking and stability on all surfaces.

## Features

- Internal gel insert forms to patella and knee cap, maximizing stabilization and protection
- Hinged upper support strap is removable and prevents binding.
- Fully adjustable two strap design resists slipping
- Textured TPR knee cap maximizes traction and stability on all surfaces
- Ballistic nylon construction resists abrasion for increased durability
- Designed to prevent "roll-off" on hard surfaces



PART #  
KAX-OK



# APEX HARDSHELL

2016 NEW

The Apex Hardshell offers an innovative internal gel insert that molds and forms to the patella and knee cap, maximizing stabilization and protection. The hinged upper support strap is removable and prevents binding while the flat Polypropylene (PP) cap maximizes tracking and stability on all surfaces.

## Features

- Internal gel insert forms to patella and knee cap, maximizing stabilization and protection
- Hinged upper support strap is removable and prevents binding.
- Fully adjustable two strap design resists slipping
- Polypropylene (PP) knee cap provides knee protection and a stable platform
- Ballistic nylon construction resists abrasion for increased durability
- Designed to prevent "roll-off" on hard surfaces

PART#  
KAH-15K



# APEX NON MARRING

2016 NEW

The Apex Non Marring offers an innovative internal gel insert that molds and forms to the patella and knee cap, maximizing stabilization and protection. The hinged upper support strap is removable and prevents binding while the thermoplastic polyurethane (TPU) cap maximizes stability while minimizing marring and scuffing on sensitive surfaces.

## Features

- Internal gel insert forms to patella and knee cap, maximizing stabilization and protection
- Hinged upper support strap is removable and prevents binding.
- Fully adjustable two strap design resists slipping
- Thermoplastic polyurethane (TPU) knee cap minimizes marring and scuffing
- Ballistic nylon construction resists abrasion for increased durability
- Designed to prevent "roll-off" on hard surfaces

PART#  
KAN-15K



OIL & GAS



PRO SERIES



CUT RESISTANT



WORKMAN SERIES



COLD CONDITION



EYE PROTECTION



KNEE PROTECTION



HEAD PROTECTION



HI-VIZ APPAREL



GEAR BAG



COOLING



EAR PROTECTION



SUPPORT GEAR



APPAREL



ACCESSORIES



MERCHANDISING



CUSTOM LOGO



CUSTOM FORCE



EVS CONNECTION



## PIVOTAL 2

The Pivotal 2 features formed EVA padding and a TPR knee cap to keep your knee comfortable and protected. The ballistic nylon construction resists abrasion for increased durability.

### Features

- Formed EVA padding provides comfort and protection evenly across the knee
- Fully adjustable two strap system eliminates binding and slipping
- Textured TPR knee cap maximizes traction and stability on all surfaces
- Quick release buckle fasteners allow for easy application and removal
- Ballistic nylon construction resists abrasion for increased durability



PART#  
KP2-0K

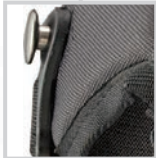
## PIVOTAL HARDSHELL

2016 NEW

The Pivotal Hardshell features formed EVA padding and a flat polypropylene (PP) knee cap to keep your knee protected and stable on flat surfaces. The ballistic nylon construction resists abrasion for increased durability.

### Features

- Formed EVA padding provides comfort and protection evenly across the knee
- Fully adjustable two strap system eliminates binding and slipping
- Polypropylene (PP) knee cap provides knee protection and a stable platform
- Quick release buckle fasteners allow for easy application and removal
- Ballistic nylon construction resists abrasion for increased durability



PART#  
KPH-15K



# PIVOTAL NON MARRING

2016 NEW



The Pivotal Non Marring features formed EVA padding and a thermoplastic polyurethane (TPU) knee cap to keep your knee comfortable and protected while minimizing marring and scuffing on sensitive surfaces. The ballistic nylon construction resists abrasion for increased durability.

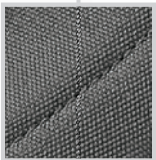
## Features

- Formed EVA padding provides comfort and protection evenly across the knee
- Fully adjustable two strap system eliminates binding and slipping
- Thermoplastic polyurethane (TPU) knee cap minimizes marring and scuffing
- Quick release buckle fasteners allow for easy application and removal
- Ballistic nylon construction resists abrasion for increased durability

PART#  
KPN-15K



# FACTOR



The Factor is a hardshell kneepad featuring PU foam padding for protection and comfort. The ballistic nylon construction resists abrasion for increased durability.

## Features

- PU foam padding provides comfort and protection
- Hard plastic cap offers durability and a flat platform to reduce "roll-off"
- Fully adjustable two strap system reduces binding and slipping
- Ballistic nylon construction resists abrasion for increased durability
- Quick release buckle fasteners allow for easy application and removal

PART#  
KFR-0K



OIL & GAS



PRO SERIES



CUT RESISTANT



WORKMAN SERIES



COLD CONDITION



EYE PROTECTION



KNEE PROTECTION



HEAD PROTECTION



HI-VIZ APPAREL



GEAR BAG



COOLING



EAR PROTECTION



SUPPORT GEAR



APPAREL



ACCESSORIES



MERCHANDISING



LOGO



CUSTOM LOGO



CUSTOM FORCE



EVS CONNECTION





# HEAD PROTECTION

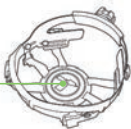
LIFT HARD HATS MEET ANSI Z89.1-2009 REQUIREMENTS AND FEATURE AN INNOVATIVE OVERSIZED RATCHETING KNOB FOR EASY OPERATION WHILE WEARING GLOVES. THEY FEATURE A PERFORATED CLARINO® SYNTHETIC LEATHER COMFORT DOME WITH A MOLDED EVA FOAM INSERT FOR ADDITIONAL SHOCK ABSORBING PROTECTION TO THE TOP OF HEAD.



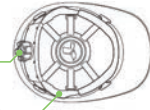
## SPECS/ FEATURES



Perforated Clarino® synthetic leather with comfort molded EVA Foam insert for additional shock absorbing protection



Large oversized ratchet knob to adjust size, easy to grip and use with gloves on



Moisture wicking foam backed microfiber liner reduces sweat build-up



Adjustable chin strap for secure fit and increased protection





OVERSIZED RATCHETING  
FITMENT DIAL



TRIPLE REINFORCED CROWN

FIBER REINFORCED PHENOLIC RESIN

SIX POINT SUSPENSION SYSTEM

RIM GRIP PANEL

DAX HARD HAT



# DAX HARD HAT

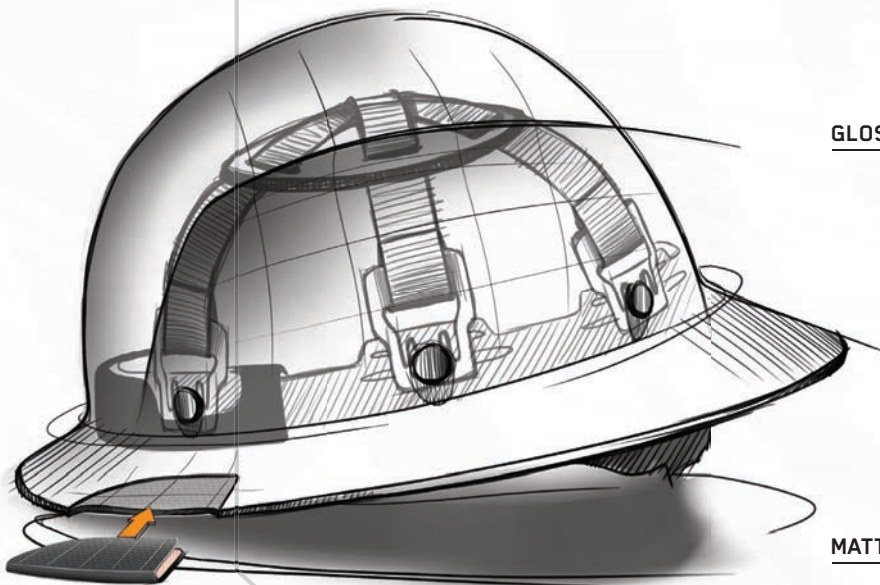
2016 NEW

The DAX Hard Hat is a full brim, fiber reinforced resin hard hat offering a 6 point suspension system for superior comfort and impact protection. It features an innovative Clarino® synthetic leather comfort dome and an oversized ratcheting fitment dial that makes adjustment easy even while wearing gloves.



## Features

- Fiber reinforced resin shell for superior impact protection
- Perforated Clarino® synthetic leather comfort dome with molded EVA foam insert for additional shock absorbing protection to the top of head
- Oversized ratcheting fitment dial to adjust size, easy to grip and use with gloves on
- Moisture wicking foam backed microfiber liner reduces sweat build-up
- 6 point suspension system for a secure, comfortable fit
- Triple reinforced crown for superior impact protection



GLOSS WHITE

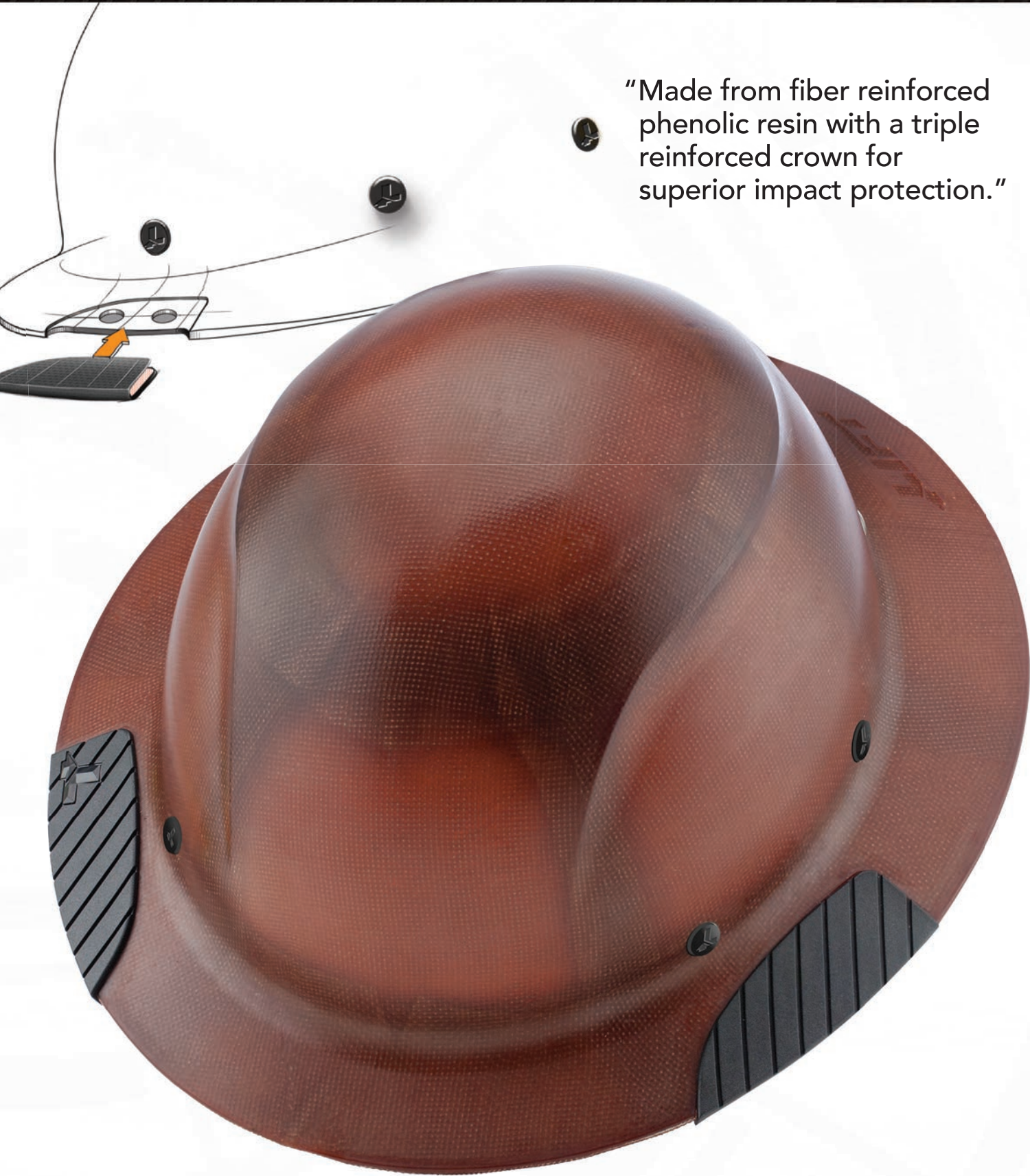


MATTE BLACK





“Made from fiber reinforced phenolic resin with a triple reinforced crown for superior impact protection.”



OIL & GAS



PRO SERIES



CUT RESISTANT



WORKMAN SERIES



COLD CONDITION



EYE PROTECTION



KNEE PROTECTION



HEAD PROTECTION



HI-VIZ APPAREL



GEAR BAG



COOLING



EAR PROTECTION



SUPPORT GEAR



APPAREL



ACCESSORIES



MERCHANDISING



CUSTOM LOGO



CUSTOM FORCE



EVS CONNECTION

COLOR	PART#
NATURAL	HDF-15NG
GLOSS WHITE	HDF-15WG
MATTE BLACK	HDF-15KG

• ANSI/ISEA Z89.1-2014 (Class G, Type I)





# HI-VIZ APPAREL

LIFT HI-VIZ APPAREL COMES IN RATINGS ANSI/ISEA CLASS 2 AND 3. THERE ARE OPTIONS FOR WARM AND COLD WEATHER TO KEEP YOU SAFE AND VISIBLE IN ANY SITUATION.





## BOMBER JACKET

REMOVABLE LINER



REMOVABLE HOOD



WATERPROOF 100% POLYESTER  
300D OXFORD SHELL

CHEST POCKET



2" WIDTH REFLECTIVE TAPE







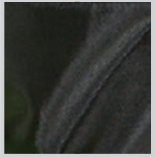
# BOMBER JACKET



The Bomber Jacket is a warm, waterproof jacket designed for extreme weather use. It features 2" width reflective tape for visibility in low light environments and a concealable, removable hood.

## Features

- Waterproof 100% polyester 300D oxford shell with sealed seams and PU coating
- 100% polyester anti-pillar polar fleece removable lining
- Concealable, removable hood
- 2" width reflective tape
- One chest pocket with flap
- Two zip closure slant pockets



SIZE	PART #
MEDIUM	AVB-14HVM
LARGE	AVB-14HVL
X-LARGE	AVB-14HV1L
XX-LARGE	AVB-14HV2L
XXX-LARGE	AVB-14HV3L
XXXX-LARGE	AVB-14HV4L



# HI-VIZ HOODIE

The Hi Viz Hoodie is designed to keep you warm and visible while working on chilly days. It features 2" width reflective tape for increased visibility and an adjustable drawstring hood.

## Features

- 100% polyester fleece shell
- 2" width reflective tape
- Adjustable drawstring hood
- Ribbed cuff and bottom

SIZE	PART #
MEDIUM	AVH-14HVM
LARGE	AVH-14HVL
X-LARGE	AVH-14HV1L
XX-LARGE	AVH-14HV2L
XXX-LARGE	AVH-14HV3L
XXXX-LARGE	AVH-14HV4L



# VIZ PRO 3

The Viz Pro 3 offers an ANSI/ISEA class 3 certification. It features polyester air mesh for superior breathability and 2" width reflective tape for increased visibility.

## Features

- Polyester air mesh maximizes airflow
- Provides ANSI/ISEA class 3 certification
- 2" width reflective tape
- Left lapel pen/pocket combo

SIZE	PART# - YELLOW	PART# - ORANGE
MEDIUM	AV3-14LM	AV3-14EM
LARGE	AV3-14LL	AV3-14EL
X-LARGE	AV3-14L1L	AV3-14E1L
XX-LARGE	AV3-14L2L	AV3-14E2L
XXX-LARGE	AV3-14L3L	AV3-14E3L
XXXX-LARGE	AV3-14L4L	AV3-14E4L



OIL & GAS



PRO SERIES



CUT RESISTANT



WORKMAN SERIES



COLD CONDITION



EYE PROTECTION



KNEE PROTECTION



HEAD PROTECTION



HI-VIZ APPAREL



GEAR BAG



COOLING



EAR PROTECTION



SUPPORT GEAR



APPAREL



ACCESSORIES



MERCHANDISING



CUSTOM LOGO



CUSTOM FORCE



EVS CONNECTION



## VIZ PRO 2



The Viz Pro 2 offers an ANSI/ISEA class 2 certification. It features polyester air mesh for superior breathability and 2" width reflective tape for increased visibility.

### Features

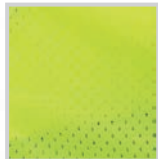
- Polyester air mesh maximizes airflow
- Provides ANSI/ISEA class 2 certification
- 2" width reflective tape
- Left lapel pen/pocket combo



SIZE	PART# - YELLOW	PART# - ORANGE
MEDIUM	AV2-10LM	AV2-10EM
LARGE	AV2-10LL	AV2-10EL
X-LARGE	AV2-10L1L	AV2-10E1L
XX-LARGE	AV2-10L2L	AV2-10E2L
XXX-LARGE	AV2-10L3L	AV2-10E3L
XXXX-LARGE	AV2-10L4L	AV2-10E4L



## VIZ PRO



The Viz Pro offers an ANSI/ISEA class 2 certification. It features polyester air mesh for superior breathability and 2" width reflective tape for increased visibility.

### Features

- Polyester air mesh maximizes airflow
- Provides ANSI/ISEA class 2 certification
- 2" width reflective tape
- Left lapel pen/pocket combo



SIZE	PART# - YELLOW	PART# - ORANGE
MEDIUM	AVV-10LM	AVV-10EM
LARGE	AVV-10LL	AVV-10EL
X-LARGE	AVV-10L1L	AVV-10E1L
XX-LARGE	AVV-10L2L	AVV-10E2L
XXX-LARGE	AVV-10L3L	AVV-10E3L
XXXX-LARGE	AVV-10L4L	AVV-10E4L

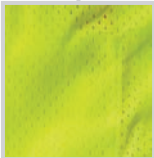




# VIZ PRO 5 - POINT



BREAK AWAY POINTS



The Viz Pro 5pt offers an ANSI/ISEA class 2 certification. It features a 5 point breakaway system for increased safety while working on or around heavy machinery and 2" width reflective tape for increased visibility.

## Features

- 5 point breakaway velcro on shoulders, sides and front
- Polyester air mesh maximizes airflow
- Provides ANSI/ISEA class 2 certification
- 2" width reflective tape
- Left lapel pen/pocket combo



SIZE	PART# - YELLOW	PART# - ORANGE
MEDIUM	AV5-13LM	AV5-13EM
LARGE	AV5-13LL	AV5-13EL
X-LARGE	AV5-13L1L	AV5-13E1L
XX-LARGE	AV5-13L2L	AV5-13E2L
XXX-LARGE	AV5-13L3L	AV5-13E3L
XXXX-LARGE	AV5-13L4L	AV5-13E4L

# VIZ PRO TEE



The Viz Pro Tee is a comfortable, breathable T-shirt with 2" width reflective tape offering ANSI/ISEA class 2 certification.

## Features

- Breathable polyester knit for maximum comfort
- Provides ANSI/ISEA Class 2 Certification
- 2" width reflective tape
- Left lapel pen/pocket combo



SIZE	PART# - YELLOW	PART# - ORANGE
MEDIUM	AVE-10LM	AVE-10EM
LARGE	AVE-10LL	AVE-10EL
X-LARGE	AVE-10L1L	AVE-10E1L
XX-LARGE	AVE-10L2L	AVE-10E2L







## GEAR BAGS

LIFT GEAR BAGS ARE MADE OF DURABLE MATERIALS LIKE 600D POLYESTER AND BALLISTIC NYLON. THEY FEATURE REINFORCED STITCHING AND ENGINEERED POLYURETHANE HIGH ABRASION RESISTANT BASES FOR INCREASED LIFE AND DURABILITY IN EXTREME ENVIRONMENTS. THEY WILL KEEP YOUR GEAR SAFE IN ANY SITUATION.







CAMO WIDE OPEN

POLYURETHANE HIGH ABRASION  
RESISTANT BASE



LARGE GATE-MOUTH



DURABLE 600D POLYESTER CONSTRUCTION



20 OUTER POCKETS



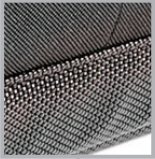


# WIDE OPEN

The Wide Open is a durable tool bag with a heavy duty padded base and over 24 pockets to keep your gear safe and organized.

## Features

- Durable 600D Polyester construction offers long lasting performance
- Engineered polyurethane high abrasion resistant base
- Large gate-mouth main pocket for power tool or large tool storage
- 2 internal and external end pockets offer additional storage
- 20 outer pockets for easy access tool storage



2016 NEW

STYLE	PART#
BLACK	ACW-6Y
CAMO	ACW-15C



# SHUTTLE

The Shuttle is a durable duffle bag with 6 compartments. It features a durable 600D polyester shell for increased abrasion resistance.

## Features

- Durable 600D Polyester construction offers long lasting performance
- Engineered polyurethane high abrasion resistant base
- 1 large main compartment with 5 additional smaller pockets

2016 **NEW**

STYLE	PART#
BLACK	ASE-14K
CAMO	ASE-15C



# BACKPACK

The Backpack offers 29 pockets and a durable polyurethane base. The durable ballistic nylon shell stands up to any environment.

## Features

- Ballistic nylon shell with reinforced stitching
- Engineered polyurethane high abrasion resistant base material
- 29 pockets with cell phone holder
- Durable front shell
- Curved zipper for easy access
- Padded shoulder and back for comfort

2016 **NEW**

STYLE	PART#
BLACK	ATB-14K
CAMO	ATB-15C



OIL & GAS



PRO SERIES



CUT RESISTANT



WORKMAN SERIES



COLD CONDITION



EYE PROTECTION



KNEE PROTECTION



HEAD PROTECTION



HI-VIZ APPAREL



GEAR BAG



COOLING



EAR PROTECTION



SUPPORT GEAR



APPAREL



ACCESSORIES



MERCHANDISING



CUSTOM LOGO



CUSTOM FORCE



EVS CONNECTION





# COOLING GEAR

LIFT COOLING GEAR IS DESIGNED TO KEEP YOUR CORE TEMPERATURE REGULATED IN HOT ENVIRONMENTS SO YOU CAN WORK MORE EFFICIENTLY. IT FEATURES LIGHTWEIGHT MULTI-FIBER POLYMER EMBEDDED FABRIC. ONCE SATURATED WITH WATER, THE MATERIAL ALLOWS IT TO SLOWLY EVAPORATE, EXTRACTING WARMTH AND DELIVERING COOL AIR TO YOUR BODY.

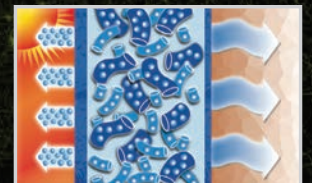


LIGHTWEIGHT MULTI-FIBER, POLYMER EMBEDDED FABRIC

COOLS THROUGH EVAPORATION OF WATER RETAINING POLYMER

“KEEP YOUR CORE TEMPERATURE REGULATED, SO YOU CAN WORK MORE EFFICIENTLY.”

COOLING SKULL CAP





# NECK SHADE

STYLE	PART#
SHADE	ANS-14K
CROWN COOLER/ SHADE	ACC-14K



SHADE

CROWN COOLER & SHADE

# NECK BAND

COLOR	PART#
BLUE	ACN-14B
BLACK	ACN-15K
FLAG	ACN-14F
TAN	ACN-14T
CAMO	ACN-15RT



# COOLING BEANIE

COLOR	PART#
BLUE	ACB-14B
BLACK	ACB-14K
FLAG	ACB-15F
CAMO	ACB-15RT



# SKULL CAP

COLOR	PART#
BLUE	ACS-14B
BLACK	ACS-14K
FLAG	ACS-14F
CAMO	ACS-15RT



- 1: Submerge item into water for 1-2 Minutes
- 2: Gently remove excess water
- 3: Re-hydrate as needed



OIL & GAS



PRO SERIES



CUT RESISTANT



WORKMAN SERIES



COLD CONDITION



EYE PROTECTION



KNEE PROTECTION



HEAD PROTECTION



HI-VIZ APPAREL



GEAR BAG



COOLING



EAR PROTECTION



SUPPORT GEAR



APPAREL



ACCESSORIES



MERCHANDISING



CUSTOM LOGO



CUSTOM FORCE



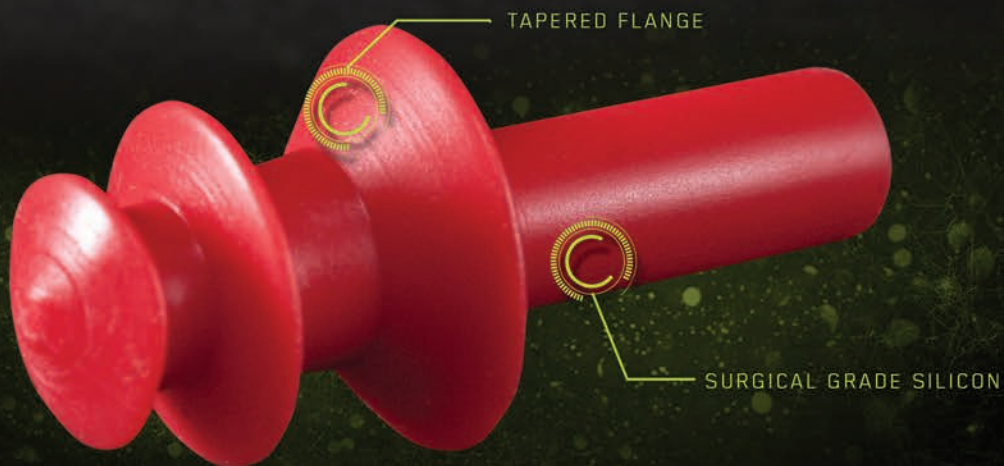
EVS CONNECTION





# HEARING PROTECTION

LIFT HEARING PROTECTION COMES IN TWO OPTIONS; FOAM DISPOSABLE EAR PLUGS AND SILICONE FLANGED PLUGS RANGING FROM 25DB - 32DB RATINGS.



FLANGE EAR PLUGS



# FOAM EAR PLUGS

Our Foam Ear Plugs are made of a soft polyurethane foam, allowing them to form comfortably to any ear for a complete seal.

## Features

- Soft polyurethane foam provides comfort and close fitting seal
- Smooth soil resistant coating offers clean, long lasting performance
- Self adjusting foam fits to almost any ear
- Rating: NRR 32dB / ANSI S3.19



QTY(PRS)	PART#
6	AFE-7G6
100	AFE-6GB



# FLANGE EAR PLUGS

Our Flange Ear Plugs are reusable and made from surgical grade silicone. They fit comfortably in most ears.

## Features

- Soft pliable tri-flange design provides comfort and effective protection
- Tapered flange contours to various ear sizes
- Made from surgical grade silicon for long lasting use
- Easy to clean with soap and water
- Rating: NRR25dB / / ANSI S3.19



QTY(PRS)	PART#
6	ACG-7G6
100	ACG-6GB



OIL & GAS



PRO SERIES



CUT RESISTANT



WORKMAN SERIES



COLD CONDITION



EYE PROTECTION



KNEE PROTECTION



HEAD PROTECTION



HI-VIZ APPAREL



GEAR BAG



COOLING



EAR PROTECTION



SUPPORT GEAR



APPAREL



ACCESSORIES



MERCHANDISING



CUSTOM LOGO



CUSTOM FORCE



EVS CONNECTION





# SUPPORT GEAR

LIFT SUPPORT GEAR IS ENGINEERED USING DURABLE, BREATHABLE MATERIALS. WE OFFER SUPPORT AND BRACE OPTIONS FOR BACK, WRIST, ELBOW, KNEE AND ANKLE.



REMOVABLE / ADJUSTABLE SUSPENDERS

VENTED / REMOVABLE LUMBAR PAD



TWO STAGE ADJUSTABLE HOOK/LOOP CLOSURE

**STRETCH BELT**



# STRETCH BELT

The Stretch Belt is ergonomically designed for back and abdominal support for heavy lifting. It is fully adjustable and features removable elastic suspenders.

## Features

- Ergonomically designed for maximum flexibility and support
- Removable and fully adjustable 1.5" elastic suspenders with hook/loop release tabs
- Two stage adjustable hook/loop closure system
- Vented and removable lumbar pad offers superior comfort



### SIZE CHART

SMALL	30" - 34"
MEDIUM	34" - 40"
LARGE	38" - 42"
X-LARGE	40" - 44"
XX-LARGE	42" - 46"
XXX-LARGE	44" - 48"

SIZE	PART#
SMALL	BSH-6KS
MEDIUM	BSH-6KM
LARGE	BSH-6KL
X-LARGE	BSH-6K1L
XX-LARGE	BSH-6K2L
XXX-LARGE	BSH-6K3L



OIL & GAS



PRO SERIES



CUT RESISTANT



WORKMAN SERIES



COLD CONDITION



EYE PROTECTION



KNEE PROTECTION



HEAD PROTECTION



HI-VIZ APPAREL



GEAR BAG



COOLING



EAR PROTECTION



SUPPORT GEAR



APPAREL



ACCESSORIES



MERCHANDISING



LOGO



CUSTOM LOGO



CUSTOM FORCE



EVS CONNECTION



## BRACER WRIST BRACE

The Bracer is a low profile, lightweight wrist brace designed to protect against wrist hyperextension. One size fits left or right hand.

### Features

- Ergonomically designed to protect against wrist hyperextension
- Delivers great support while recovering from injury
- Includes two high density flex pads
- One size fits left or right hand

PART#  
SBR-6Y



## HITCH WRIST & THUMB STABILIZER

The Hitch Stabilizer is a low profile, breathable wrap designed to support the thumb and wrist.

### Features

- Low profile 3mm neoprene wrap supports wrist and thumb
- Allows full wrist movement
- Fits comfortably in work glove
- One size fits left or right hand

PART#  
SHH-6Y



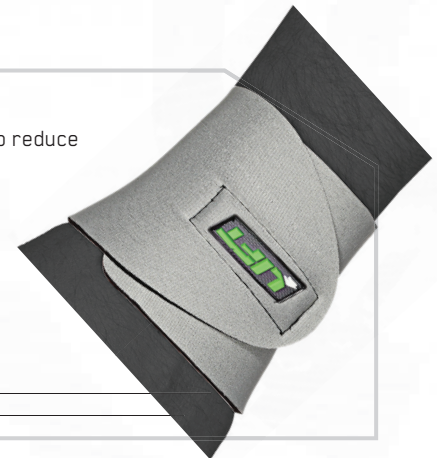
## NEO WRIST SUPPORT

The Neo Wrist Support is a low profile, breathable wrist support designed to reduce hyperextension.

### Features

- Ergonomically designed to protect against wrist hyperextension
- Delivers great support while recovering from injury
- Includes two high density flex pads
- Allows full wrist movement
- One size fits left or right hand

PART#  
SNO-6Y



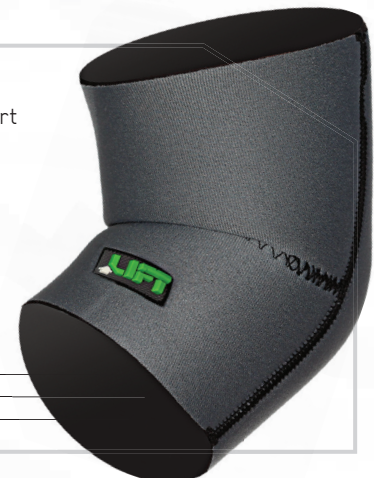
## NEO ES1 ELBOW SUPPORT

The Neo ES1 is a lightweight, breathable elbow support that relieves discomfort from tendonitis, bursitis and nerve compression in the elbow.

### Features

- Neoprene constructed elbow sleeve
- Provides warmth and support to the elbow
- Relieves discomfort from tendonitis, bursitis and nerve compression
- Finished edges provide longer product life
- One size fits left or right elbow

SIZE	PART#	SIZE	PART#
SMALL	SNE-6YS	LARGE	SNE-6YL
MEDIUM	SNE-6YM	X-LARGE	SNE-6Y1L





## NEO KS1 KNEE SUPPORT



The Neo KS1 is a lightweight, flexible knee support providing support and compression.

### Features

- 3mm neoprene sleeve provides support and compression
- Open patella cutout aids in comfort and patella positioning
- One size fits left or right knee

SIZE	PART#
SMALL	SN1-6YS
MEDIUM	SN1-6YM
LARGE	SN1-6YL
X-LARGE	SN1-6Y1L
XX-LARGE	SN1-6Y2L



## NEO KS2 KNEE STABILIZER



The Neo KS2 features dual spring stays and compression straps for superior support and compression.

### Features

- Dual compression straps provide support and prevent slipping
- Bilateral dual spring stays offer added support
- Open patella cutout aids in comfort and patella positioning
- One size fits left or right knee

SIZE	PART#
SMALL	SN2-6YS
MEDIUM	SN2-6YM
LARGE	SN2-6YL
X-LARGE	SN2-6Y1L
XX-LARGE	SN2-6Y2L



## NEO A6 ANKLE SUPPORT



The Neo A6 is a low profile, neoprene ankle support.

### Features

- Neoprene ankle sleeve offers support and protection
- Fits comfortably inside shoe or boot
- One size fits left or right foot

SIZE	PART#
SMALL	SN6-6YS
MEDIUM	SN6-6YM
LARGE	SN6-6YKL
X-LARGE	SN6-6Y1L







# APPAREL

REPRESENT THE LIFT BRAND WITH PRIDE ON THE JOB SITE, AND LOOK GREAT DOING IT. WE OFFER TEE SHIRTS, HATS AND BEANIES TO MATCH ANY STYLE.



**BAD ASS TEE**



# T-SHIRTS 100% COTTON TEES



## BAD ASS TEE

SIZE	PART #
MEDIUM	AOG-14KM
LARGE	AOG-14KL
X-LARGE	AOG-14K1L
XX-LARGE	AOG-14K2L
XXX-LARGE	AOG-14K3L

## RAZOR TEE



SIZE	PART #
MEDIUM	ARR-13YM
LARGE	ARR-13YL
X-LARGE	ARR-13Y1L
XX-LARGE	ARR-13Y2L
XXX-LARGE	ARR-13Y3L



## PROFILE II TEE

SIZE	PART #
MEDIUM	AP2-13KM
LARGE	AP2-13KL
X-LARGE	AP2-13K1L
XX-LARGE	AP2-13K2L
XXX-LARGE	AP2-13K3L

## CAMO ICON TEE



SIZE	PART #
MEDIUM	ACN-13WM
LARGE	ACN-13WL
X-LARGE	ACN-13W1L
XX-LARGE	ACN-13W2L
XXX-LARGE	ACN-13W3L



## BIKER TEE

SIZE	PART #
MEDIUM	ABR-13KM
LARGE	ABR-13KL
X-LARGE	ABR-13K1L
XX-LARGE	ABR-13K2L
XXX-LARGE	ABR-13K3L



OIL & GAS



PRO SERIES



CUT RESISTANT



WORKMAN SERIES



COLD CONDITION



EYE PROTECTION



KNEE PROTECTION



HEAD PROTECTION



HI-VIZ APPAREL



GEAR BAG



COOLING



EAR PROTECTION



SUPPORT GEAR



APPAREL



ACCESSORIES



MERCHANDISING



CUSTOM LOGO



CUSTOM FORCE



EVS CONNECTION



# HEADWEAR 1 SIZE FITS MOST

## SWEAT BEANIE

- Lightweight vented Lycra® thin material
- Jacquard brow band ensures a comfortable and reliable fit
- Wicks moisture and improves breathability

COLOR	PART#
BLACK	AST-6Y
GREY	AST-9R



## BEANIE

- Excellent for cool weather conditions
- Lightweight material improves comfort
- 100% acrylic

SIZE	PART#
MEDIUM	ARR-13YM
LARGE	ARR-13YL

## OFF CENTER FLEXFIT® HAT

COLOR	PART#
BLACK	AOC-6K



## OFF CENTER FLEXFIT® HAT CAMO

2016 NEW



COLOR	PART#
MOSSY OAK® CAMO	AOC-15C

## TRUCKEE FLEXFIT® HAT

COLOR	PART#
BLACK	ATE-10K



## BASE FLEXFIT® HAT

COLOR	PART#
GREY	ABE-10Y



## VERT FLEXFIT® HAT

COLOR	PART#
RED	AVT-6R





## MECHANIC'S APRON

### Features

- 7 placement top pocket for small tool or writing instrument storage
- 6 placement lower pocket for larger tool or material storage
- Lower seam split improves comfort and fit

SIZE	PART#
SMALL	ASA-6Y



## SUPPORT CREW SOCK

### Features

- Moisture wicking
- Compression knit arch
- Reinforced cushioned heel & toe

SIZE	PART#
S/M	ASW-0KSM
L/XL	ASW-0KL1L



## TEC CREW SOCK

### Features

- Moisture wicking
- Breathable upper design
- Seamless toe closure
- Reinforced cushioned bottom, heel & toe

SIZE	PART#
S/M	ATW-0KSM
L/XL	ATW-0KL1L



## SPORT SHORT SOCK

### Features

- Moisture wicking
- Ankle high sports fit
- Breathable mesh instep
- Reinforced cushioned heel & toe

SIZE	PART# - BLACK	SIZE	PART# - WHITE
S/M	ASY-0KSM	S/M	ASY-0WSM
L/XL	ASY-0KL1L	L/XL	ASY-0WL1L



## SHOE COVERS

### Features

- Latex free
- Fluid Repellant
- Breathable 40g spunbond material
- Anti-skid bottom
- One size fits most

PART# - BLACK QTY 100	PART# - BLUE QTY 100
ASC-14K	ASC-14B







# ACCESSORIES



LIFT UMBRELLA

50" UMBRELLA

PART#  
ACU-6Y



MOUSEPAD



PART#  
AMP-9K

MUG

PART#  
ACC-6Y







OIL & GAS



PRO SERIES



CUT RESISTANT



WORKMAN SERIES



COLD CONDITION



EYE PROTECTION



KNEE PROTECTION



HEAD PROTECTION



HI-VIZ APPAREL



GEAR BAG



COOLING



EAR PROTECTION



SUPPORT GEAR



APPAREL



ACCESSORIES



MERCHANDISING



CUSTOM LOGO



CUSTOM FORCE



EVS CONNECTION

## BOTTLE OPENER

PART#  
ACB-6K



## CARPENTER PENCIL

PART#  
ACP-6G



## PEN

2016 **NEW**

PART#  
APN-14K



## LANYARD

2016 **NEW**

PART#  
ALD-14K














## CAN KOOZIE

PART#  
ADK-10K



## DECALS

PART#  
SEE INDIVIDUAL DECALS

	
2.2\" PRINTED : GRN PLD-6Y2	3.5\" PRINTED : GRN PLD-6Y3
	
3\" ICON : GRN/GRN PLD-6G1Y3	3\" ICON : GRN/WHI PLD-6G1W3
	
4\" ICON : WHI PLD-12W4	4\" ICON : BLK PLD-12W4
	
5\" DIE CUT : GRN/GRN PLD-6G1Y5	6\" PRINTED : GRN PLP-6Y6
	
5\" DIE CUT : GRN/GRN PLD-6G1W5	6\" PRINTED : GRN PLP-6G6
	
24\" PRINTED : GRN PLP-6Y24	





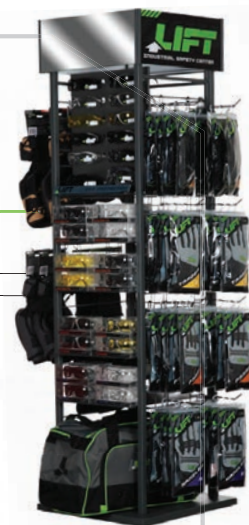
# MERCHANDISING



## 16" FLOOR DISPLAY

Dimensions 67" x 16" x 16"

PART#  
PFD-6Y



2016 **NEW**

## 24" FLOOR DISPLAY

Dimensions 67" x 24" x 24"

PART#  
PFD-15Y24



## MIDDLE MODULAR RACK

Dimensions 63" x 70" x 18"

PART#  
PMK-12Y

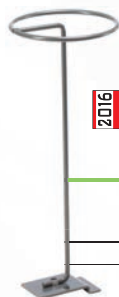
Build your own dual display with two 16" Floor Displays and one Middle Modular Rack



2016 **NEW**

## HARD HAT DISPLAY

PART#  
PHD-13Y





## WALL GRAPHIC

Dimensions 24" x 36"

PART#  
PWC-12G36



## 12 PAIR EYEWEAR DISPLAY

Dimensions 17" x 8" x 24.5"

PART#  
PSG-10Y

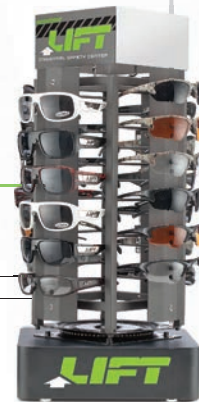


## 24 PAIR EYEWEAR DISPLAY

Dimensions 12" x 12" x 27"

PART#  
PSG-15Y24

2016 NEW



## 10' X 3' BANNER

PART#  
ABN-10K10

## 16" X 35" BANNER

PART#  
PBR-14K

2016 NEW



## 10' X 10' TENT

STYLE	PART#
FRAME & TENT COMBO	PTT-6Y
REPLACEMENT CANOPY	PTP-6Y
REPLACEMENT FRAME	PTF-6Y



OIL & GAS



PRO SERIES



CUT RESISTANT



WORKMAN SERIES



COLD CONDITION



EYE PROTECTION



KNEE PROTECTION



HEAD PROTECTION



HI-VIZ APPAREL



GEAR BAG



COOLING



EAR PROTECTION



SUPPORT GEAR



APPAREL



ACCESSORIES



MERCHANDISING



LOGO



CUSTOM LOGO



CUSTOM FORCE



EVS CONNECTION



# LIFT CUSTOM LOGO PROGRAM

Customize your workforce with your own logo. Add a professional look to your crew with our custom logo applications.

## CUSTOM LOGO

### PRINTING OPTIONS OFFERED ON:

- Viz Pro Tee
- Viz Pro 5-pt
- Strobe
- Viz Pro Vest
- Viz Pro Vest
- Sectorlite
- Viz Pro2 Vest
- Vantis Standard
- Tearoff
- Viz Pro3 Vest
- Vantis Full Brim

Ask your sales rep for details.





# LIFT CUSTOM FORCE

BACKED BY OVER 20 YEARS OF  
SAFETY INNOVATION, LIFT IS PROUD TO  
ANNOUNCE IT'S CUSTOM FORCE PROGRAM

In October of 2006 Lift Safety was approached by Precision Drilling to design and develop a glove that would reduce or potentially eliminate one of the more common work related injuries...HAND and FINGER INJURIES.

Over the course of 16 months, 7 prototypes and more than 25,000 hours of field testing resulted in a glove that went beyond Precision Drilling's expectations.

In July 2008 Precision Drilling received their first production shipment and implemented the Rigger Glove into their safety program.

## LIFT CUSTOM FORCE IS A POWERFUL PRODUCT DEVELOPMENT LAB

LIFT CUSTOM FORCE is a product problem-solver that enables you to come up with a custom solution to your specific safety product needs. Do you need a glove that performs better than anything currently available for your special application or do you need a protective eyewear that is comfortable but has a unique feature that you haven't found yet in the market?

This is where LIFT Custom Force comes in.

We provide access to our product development lab to co-develop a product that 100% meets your needs: YOUR idea, OUR developers, and with the legendary LIFT quality built in from the start, so it'll last past the finish.

Ask your LIFT Safety team member for more information.





# WORK HARD...

In 1985 two gentlemen developed a strategy that would forever change and revolutionize the sport of motocross. Over the last quarter of a century EVS Sports has become the leader in innovation and advanced technology, developing head to toe products for the majority of today's extreme sports athletes. What started out as one knee brace has evolved into an extensive line of knees braces, neck supports, helmets, chest/back protection and a long list of protective gear products to keep any athlete safe when doing what they love. We pour the same amount of dedication and determination into our products as you do into becoming the best that you can possibly be.





# PLAY HARDER.



OIL & GAS



PRO SERIES



CUT RESISTANT



WORKMAN SERIES



COLD CONDITION



EYE PROTECTION



KNEE PROTECTION



HEAD PROTECTION



HI-VIZ APPAREL



GEAR BAG



COOLING



EAR PROTECTION



SUPPORT GEAR



APPAREL



ACCESSORIES



MERCHANDISING



CUSTOM LOGO



CUSTOM FORCE



EVS CONNECTION

## INNOVATION TECHNOLOGY



THE ORIGINAL  
PROTECTIVE GEAR  
COMPANY





**LIFT**  
INDUSTRIAL SAFETY GEAR

LIFT SAFETY  
2130 E. Gladwick Street  
Rancho Dominguez, CA 90220  
T: 310.637.6162  
F: 310.637.6111