

HOMETHEATER, CABLE PLATES, HDMI

HIGH SPEED PREMIUM HDMI CABLES

DataComm Electronics' is proud to announce a new line of High Speed Premium HDMI Cables that offer true high speed and performance. These high quality cables support every function and feature within the HDMI high speed specifications.

Some of these features include :

- HDMI High Speed Premium Cables
- Full HD Ready : 720p, 1080i, 4K x 2K, 1440p
- 48 Bit Deep Color
- 3D Signal Integrity
- Data Speed Transfer Exceeds 10.2 Gbps
- HDMI Ethernet Connectivity
- 100 Mbps base Ethernet
- Audio Return Channel
- 5.1 & 5.7 Surround Sound
- Full Plug and Play Compatible
- Backwards Compatible for all HDMI Versions



- 46-7503 BK 3 Ft High Speed Premium HDMI Cable, Black
- 46-7506 BK 6 Ft High Speed Premium HDMI Cable, Black
- 46-7509 BK 9 Ft High Speed Premium HDMI Cable, Black
- 46-7512 BK 12 Ft High Speed Premium HDMI Cable, Black
- 46-7515 BK 15 Ft High Speed Premium HDMI Cable, Black



CAT 5e AND CAT 6 PATCH CORDS

DataComm Electronics' new, high performance Cat 5e and cat 6 patch cords make it easy to meet your installation requirements. Our patch cords snap securely into place connecting with patch panels, switches, hubs and other networking equipment.

Some of these features include :

- Cat 5e performance tested to 350 MHz
- Cat 6 performance tested to 550 MHz
- Stranded conductor fo longer flex life
- Improved strain relief
- Materials : 24 AWG, UTP stranded conductor, 8-conductor plug, 94 V-0 rated
- Cat 5e complies with all TSB-95 requirements
- Cat 6 complies with all TIA/EIA-568B.2-1 requirements
- Meets FCC Part 68
- UL Listed
- ETL Verified for performance



CAT 5e PATCH CORDS

- 20-6501 BL, WH Cat 5e Patch Cord, 1 ft, Blue/White
- 20-6503 BL, WH Cat 5e Patch Cord, 3 ft, Blue/White
- 20-6507 BL, WH Cat 5e Patch Cord, 7 ft, Blue/White
- 20-6515 BL, WH Cat 5e Patch Cord, 15 ft, Blue/White
- 20-6525 BL, WH Cat 5e Patch Cord, 25 ft, Blue/White

CAT 6 PATCH CORDS

- 20-6601 BL, WH Cat 6 Patch Cord, 1 ft, Blue/White
- 20-6603 BL, WH Cat 6 Patch Cord, 3 ft, Blue/White
- 20-6607 BL, WH Cat 6 Patch Cord, 7 ft, Blue/White
- 20-6615 BL, WH Cat 6 Patch Cord, 15 ft, Blue/White
- 20-6625 BL, WH Cat 6 Patch Cord, 25 ft, Blue/White



HDMI DECOR & KEYSTONE INSERTS

DataComm Electronics' HDMI Inserts and Pigtail Wall Plates are the solution to connecting HDMI products behind the wall while maintaining a clean, sleek look. These HDMI connectors are designed with female ends on both the front and back, making fo an easy attachment to standard male-to-male HDMI products. DataComm offers various styles of HDMI Inserts and Pigtail Wall Plates in order to meet the needs of all unique installations and applications.

DECOR INSERTS SINGLE AND DUAL HDMI

Features :

- Decor insterts (20-4501 WH, 20-4502 WH)
- Available with a single or dual 90° HDMI connector
- Compatible with High Speed HDMI cords with Ethernet
- Can be installed with any manufacturer's decor style wall plate

20-4501WH



20-4502WH



PIGTAIL WALL PLATES

Features :

- Pigtail Wall Plates (20-4503 WH, 20-4505 WH)
- Available with a single or dual HDMI connector and pigtail
- Compatible with High Speed HDMI cords with Ethernet
- Decor insert can be removed from wall plate and used in multi-gang applications

20-4503WH



20-4505WH



KEYSTONE INSERTS

Features :

- Keystone Insert (20-4504 WH)
- Snaps into any standard keystone wall plate
- Compatible with High Speed HDMI cords with Ethernet

20-4504WH

Front View



20-4504WH

Back View



CABLE PLATE WITH FLEXIBLE OPENING

DataComm Electronics' new, patented Cable Plate with Flexible Opening is used to install low voltage cables behind your flat panel TV, your amplifier or other audio video devices. This Cable Plate allows you to pass low voltage cables through the wall, while keeping the opening in the wall covered.

- Low profile design fits behind the industry's thinnest mounts and TV's
- Conceal multiple low voltage cables behind you flat panel TV
 - 1-Gang holds up to 6 cables
 - 2-Gang holds up to 12 cables
- Available in 4 colors : black, ivory, lite almond, white
- Quick and easy install
- Mounting wings are molded into the media plate and fasten tightly against the back of the drywall
- No low voltage mounting plate or old work ring required
- No additional parts necessary



Front View

Back View

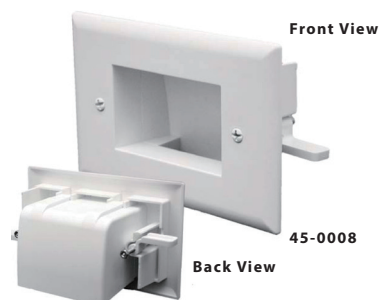
- 45-0014 BK 1-Gang, Black
- 45-0014 IV 1-Gang, Ivory
- 45-0014 LA 1-Gang, Lite Almond
- 45-0014 WH 1-Gang, White
- 45-0015 BK 2-Gang, Black
- 45-0015 IV 2-Gang, Ivory
- 45-0015 LA 2-Gang, Lite Almond
- 45-0015 WH 2-Gang, White



EASY MOUNT LOW VOLTAGE CABLE PLATE

DataComm Electronics' new Easy Mount Recessed Low Voltage Cable Plates are designed to be installed without "low voltage mounting plates" or "old work mud rings". The mounting wings are molded into the Easy Mount wall plate and fasten tightly against the back of the drywall. Use the Easy Mount Recessed Low Voltage Cable Plate to install low voltage cables behind your flat panel TV, your amplifier or other audio and video devices. The wall plate can be installed upright or upside down. Mounting wings are designed for use in walls up to 1" in thickness.

- 45-0008 BK Easy Mount Recessed Cable Plate, Black
- 45-0008 IV Easy Mount Recessed Cable Plate, Ivory
- 45-0008 LA Easy Mount Recessed Cable Plate, Lite Almond
- 45-0008 WH Easy Mount Recessed Cable Plate, White
- 45-0009 LA Easy Mount Recessed Cable Plate, Slim Fit, Lite Almond
- 45-0009WH Easy Mount Recessed Cable Plate, Slim Fit, White



Front View

Back View

45-0008



Slim Fit

45-0009

The new Slim Fit version is designed for use in concrete wall applications where the wall cavity is 3/4" to 1" in depth.



RECESSED LOW VOLTAGE CABLE PLATES

DataComm Electronics' Recessed Low Voltage Cable Plates are used to install low voltage cables behind your flat panel TV, your amplifier or other audio and video devices. These plates are designed to be used with 1-gang, 2-gang and 3-gang low voltage mounting brackets made by any major manufacturer. The cable plate can be installed upright or upside down.

• 45-0001 * Color

• 45-0002 * Color

• 45-0003 * Color

• Recessed Low Voltage Cable Plates come in various colors. Black, Brown, Ivory, Lite Almond, and White



1-Gang



2-Gang



3-Gang

RECESSED LOW VOLTAGE CABLE PLATES WITH RECESSED POWER

Features :

- Low profile design fits behind the industry's thinnest mounts and TV's
- Conceal multiple AV cables behind your flat panel TV
- Grounded recessed receptacle allows you to install power
- Mounting wings are molded into the plate and fasten tightly against the back of the drywall ; the wings are designed for use in walls up to 1" thick



• 45-0021 WH

Recessed Cable Plate with Recessed Power White

• 45-0021 BK

Recessed Cable Plate with Recessed Power Black

• 45-0021GY

Recessed Cable Plate with Recessed Power Gray

RECESSED COMMERCIAL GRADE LOW VOLTAGE CABLE PLATE WITH 20 AMP RECESSED POWER

Use DataComm Electronics patent pending new Recessed Commercial Grade Low Voltage Cable Plate with 20 Amp Recessed Power to install power and low voltage cables behind your flat panel TV, your amplifier or other audio and video devices. The 45-0020 can be installed upright or upside down.

Use either a single gang retrofit work box, or for new construction installations, use a new nail on box. Once you have wired the receptacle, then begin by inserting the receptacle portion of the plate into the work box. Once the entire recessed plate is flush to the wall, using the two white screws supplied, screw the receptacle portion of the plate to the work box. Next, screw down the screws with wings. These wings will fasten tightly against the back of the drywall. Plug in all necessary video and audio cables. Install your flat panel TV mounting bracket per the flat panel TV bracket manufacturer's instructions.



• 45-0020 WH

Recessed Commercial Grade Cable Plate with 20 Amp Recessed Power, White

RECESSED PRO-POWER KIT WITH LOCKING INLET

Use DataComm Electronics' Recessed Pro-Power Kit with Locking Inlet to install power and low voltage cables from behind your flat panel TV, your amplifier or other audio and video devices to your equipment room.

Using the local electrical code approved installation, pull an approved 14/2 with ground or 12/2 with ground building wire cable from the installed Recessed Low Voltage Cable Plate with Power to the selected site in the equipment room. Install a new or old workbox before installing the Recessed Pro-Power Cable Plate with Locking Inlet. This is a non-energized connection. To energize this connection, simply plug the supplied 5 ft locking extension cord into the recessed locking inlet and plug the straight blade end of the extension cord into your rack mounted surge protector.



• 45-0021 WH

Plate

• 45-0022 WH

Plate & 6 Ft locking extension cord

RECESSED PRO-POWER KIT WITH STRAIGHT BLADE INLET

Use DataComm Electronics' Recessed Pro-Power Kit with Straight Blade Inlet is used to install power and low voltage cables behind you HDTV, your amplifier or other audio/video devices. This power relocation kit allows you to pass low voltage cables and power through the wall, creating a professional, lean look for every home theater. Can be installed upright or upside down.

Features :

- Low profile design fits behind the industry's thinnest TV mounts and HDTV's
- Grounded recessed single receptacle allows power to be installed behind an HDTV or other similar applications
- Perfect for eliminating connections at the wall
- Mounting wings are molded into the media plate and fasten tightly against the back of the wall
- No low voltage mounting plate or old work ring required

Parts Included :

- Recessed Cable Plate with Power
- Recessed Cable Plate with Straight Blade Inlet
- Two Electrical outlet boxes
- 6 Ft 16/2 with Ground Extension Cord
- Three Wire Nuts



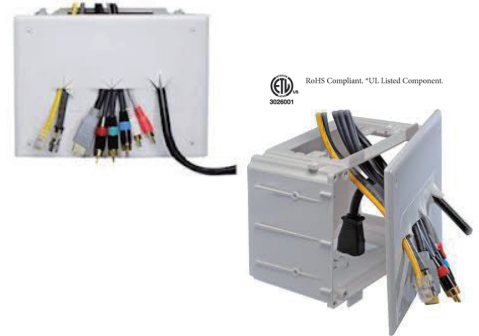
RoHS Compliant, *UL Listed Component
3028001

• 45-0023 WH Recessed Pro-Power Kit with Straight Blade Inlet, White

RECESSED MEDIA BOX

Use DataComm Electronics' Recessed Media Box to install power and low voltage cables from behind you flat panel TV, your amplifier or other audio and video devices to your equipment room or use in your equipment room to organize your incoming audio and video cables.

The 45-0010 Recessed Media Box is designed for new construction or retrofit installations. The 4-gang flexible cover plate gives our Recessed Media Box the clean finish look your customers expect. The Recessed Media box is offered with either a white or black cover plate.



RoHS Compliant, *UL Listed Component
3028001

• 45-0010 WH or BK Recessed Media Box, White or Black

ENCLOSURES, MULTI-FAMILY, MODULES

DISTRIBUTION AMPLIFIER

The new HDTV Adjustable Distribution Amplifier is packed with features to increase overall system performance, reduce unnecessary service calls, and streamline industrial, commercial, and residential installations. The Applications file, below, demonstrates a satellite/source application.

With HDTV Adjustable Distribution Amplifier you can :

- Instantly acknowledge cable signal strength. LED dBmV level indicator prevents unnecessary and expensive service calls.
- Independently adjust outputs. Eight adjustable output ports eliminate the need for screw-on attenuators. Clean up your installation and reduce parts inventory.
- Extend precise signal strength. No more guessing games-extend exact dB gain up to 250 feet per output.
- Meet tomorrow's Cable TV demands-today. Amplified 54-1.2 GHz forward bandwidth and amplified 5-42 MHz return path bandwidth and an additional 5 dB gain exceed today's cable modem and PPV requirements.
- Protect expensive equipment. The majority of voltage insertion comes from low voltage wiring. Integrated surge protection on all 9 ports protects each device.



RoHS Compliant, *UL Listed Component
3028001

• 70-0039 HDTV Adjustable Distribution Amplifier

HCC (HOME COMMAND CENTER) SMALL ENCLOSURE

The HCC Enclosure is designed to provide even more options for meeting your digital and analog communication needs. The new, larger 12" X 15" enclosure offers :

- Hinged door with key lock (70-0010)
- Phone and video module
- New mounting holes for phone and video modules made by DataComm and major manufacturers and for the security industry's best-selling security boards.
- Support bracket for added stability

The 70-0020 phone and video module included with the 70-0010 enclosure features :

- Up to 4 lines to 10 locations
- RJ45 test port and RJ31X jack for security board installations

Products in this Category :

- 1 x 8 1GHz video splitter for satellite and cable TV
- 70-0015 HC 12" X 15" Enclosure with Hinge Cover
- 70-0099 Bracket for 15", 28", and 44" enclosure



• 70-0010 Hinged door with key lock enclosure

HCC (HOME COMMAND CENTER) LARGE ENCLOSURE

Our Large Home Command Centers allow you to meet current infrastructure requirements while preserving space for future technologies. The 12" X 28" and 12" X 44" enclosures offer :

- Screw cover or hinged door (your choice is packed separately in the enclosure box for storage until final installation)
- Supports bracket for added stability (one for 28" and two for 44" enclosures)
- Additional side knockouts for terminating voice, data, video, and security cables
- Additional bottom knockouts for adding UL switch boxes
- Additional vents for more cooling (44" enclosure doors)
- New mounting holes for phone and video modules made by DataComm and major manufacturers
- New mounting holes for the security industry's best-selling board

Bulk-wire management outside the enclosure to facilitate installation for internal components. Phone and video distribution modules (available separately) easily mount in top enclosure area which simplifies wiring.

- | | |
|-----------------------------------|-----------------------------------|
| • 70-0016-E 12" X 28" Enclosure | • 70-0017-E 12" X 44" Enclosure |
| • 70-0016-H 12" X 28" Hinge Door | • 70-0017-H 12" X 44" Hinge Door |
| • 70-0016-S 12" X 28" Screw Cover | • 70-0017-S 12" X 44" Screw Cover |



HCC (HOME COMMAND CENTER) II

The Home Command Center II is our most economical structured-cabling solution. Surface mounting simplifies installation while allowing signal distribution up to 8 locations. The unique patented design provides all these benefits in an efficient 6.5" by 6.5" enclosure.

- An economical solution for multi-family and single-family homes
- Ideal for existing construction or installing phone and video services

The Home Command Center II includes :

- Up to 4 phone line inputs to 8 locations
- 1 video input and 8 video outputs with a frequency response up to 1 GHz for satellite and cable TV
- RJ45 test port

Surface mount and convenient cutouts in the mounting plate :

- Facilitate cable runs
- Conceal cables from view



• 70-0050 Multi-family



2-GANG 110 PHONE PLATE

The Phone Plate is a simple solution for terminating phone lines on jobs that don't involve structured wiring.

Features :

- Up to 4 phone lines to 8 locations
- Mounts into a NEMA 2-gang, low voltage mounting bracket
- RJ45 test port



• 70-0080 2-Gang Phone Plate + PCB

4-GANG 110 PHONE PLATE WITH VIDEO DISTRIBUTION

This 4-gang plate is another simple solution for terminating phone and video in one location.

Features :

- Up to 4 phone lines to 8 locations
- 6-way 1 GHz splitter for satellite and cable TV
- Mounts into a NEMA 4-gang box or 4-gang mounting bracket
- RJ45 test port



• 70-0078 4-Gang Phone Plate & Splitter

10 PORT PHONE MODULE

- Allows you to add up to 4 phone lines to 10 locations
- Use to expand the phone lines from the stock module supplied with the Home Command Center (70-0010) to additional rooms
- Ports : RJ31X security jacks, RJ45 test port
- Connections : Color Coded 110 Style punch-down connections
- Specifications : Meets ISO/IEC Standards size 3.0" x 9.5"



• 70-0070 10 port Telephone Expansion Module

1 X 6 COAXIAL 4 X 6 PHONE MODULE

The Coax/Phone installs in any home Command Center with an all-metal enclosure.

- Up to 4 lines to 6 rooms
- 1 video input to 6 video outputs with a frequency response up to 1 GHz
- RJ45 test port
- 1 RJ31X security jack

The color-coded, 110-punch-down connections are designed for professional installation.



• 70-0021 1x6 1gig Splitter with 4x6 Phone Punch-Down with RJ31

1 X 6 COAXIAL 4 X 6 PHONE MODULE WITH 4 PORT PASSIVE DATA

This new module provides a compact option for distributing structured wiring. It also includes a quick disconnect for testing inside or outside a residence.

- Up to 4 phone lines to 6 rooms for phone / fax
- Up to 4 rooms for data
- RJ45 test port
- 6-way 1 GHz video splitter for satellite and cable TV
- 1 RJ31X security jack



• 70-0022 1x6 Coaxial 4x6 Phone 4 Data Module

1 X 8 COAXIAL 4 X 10 PHONE MODULE

The Coax / Phone Module installs in any Home Command Center with an all-metal enclosure.

- Up to 4 phone lines to 10 locations
- RJ45 test port and RJ31X jack for security board installations
- 1 x 8 1 GHz video splitter for satellite and cable TV



• 70-0020 1x8 1 gig Splitter with 4x10 Phone Punchdown with RJ31

1 X 8 COAXIAL 4 X 16 RJ45 PHONE MODULE

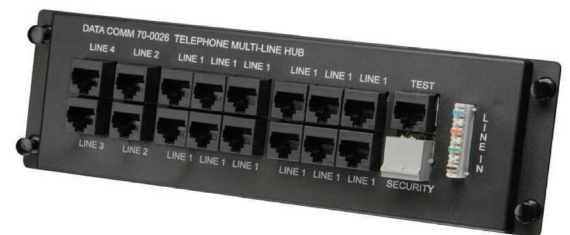
- Allows for 2 to 4 lines of distribution for up to 16 locations in the house
- For the primary phone line - 12 RJ45 ports are designated as Line 1, 2 RJ45 ports are designated as Line 2, 1 RJ45 port is designated as Line 3, 1 RJ45 ports is designated as Line 4
- Each RJ45 port can handle up to four separate phone lines
- The RJ45 port are configured to TIA/EIA 586A standards
- RJ45 plugs are required on the end of each home run connected to the 70-0025 telephone module (DataComm part number 20-5703)
- RJ31X port is provided for line 1 seizure by the security system
- RJ45 test port is provided for testing incoming service or as an expansion of second 70-0025
- 1 video input to 8 video outputs with a frequency response up to 1 GHz



• 70-0025 1x8 Coax 4 x16 Phone Module

4 X 16 RJ45 TELEPHONE MODULE

- Allows for 2 to 4 lines of distribution for up to 16 locations in the house
- For the primary phone line - 12 RJ45 ports are designated as Line 1, 2 RJ45 ports are designated as Line 2, 1 RJ45 port is designated as Line 3, 1 RJ45 ports is designated as Line 4
- Each RJ45 port can handle up to four separate phone lines
- The RJ45 port are configured to TIA/EIA 586A standards
- RJ45 plugs are required on the end of each home run connected to the 70-0026 telephone module (DataComm part number 20-5703)
- RJ31X port is provided for line 1 seizure by the security system
- RJ45 test port is provided for testing incoming service or as an expansion of second 70-0026



• 70-0026 4x16 RJ45 Phone Module

4 X 6 PHONE FOR DATA MODULE

The Coax / Phone Module installs in any home command center with an all-metal enclosure.

- Up to 4 lines to 6 rooms
- Up to 4 rooms fro data
- RJ45 test port
- 1 RJ31X security jack

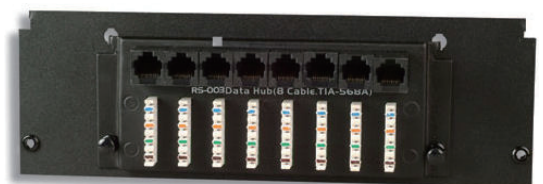
Includes a quick disconnect for testing inside or outside a residence



• 70-0023 4x6 Phone 4 Data Module

8 PORT PASSIVE DATA MODULE FOR CAT 5e

- The Passive Data Module routes data or modem signals to up to 8 locations
- It operates in combination with an active 10/100 Base-T Switching Hub or router
- A homeowner or an installer can easily reconfigure the ports as needed
- Connections : 8 HYB RJ45 jacks
- Specifications : Meets EIA/ITIA Standards for T568A
- Size : 3.0" x 9.5"



• 70-0030 8 Port Passive Data Hub

BATTERY SHELF

The Battery Shelf Plate is intended for the back-up batteries used in home security. It features heavy-gauge metal and fits any Home Command Center with an all-metal enclosure.



• 70-0047 Battery Shelf

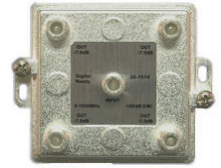
SPLITTER (BRACKET-MOUNTED)

- 70-0034 4-way gold-plated 2 GHz Splitter with mounting bracket
- 70-0036 6-way gold-plated 2 GHz Splitter with mounting bracket
- 70-0038 8-way gold-plated 2 GHz Splitter with mounting bracket



SPLITTER

- 30-1512 2-Way 1 GHz Splitter with Printed Circuits
- 30-1513 3-Way 1 GHz Splitter with Printed Circuits
- 30-1514 4-Way 1 GHz Splitter with Printed Circuits
- 30-1516 6-Way 1 GHz Splitter with Printed Circuits
- 30-1518 8-Way 1 GHz Splitter with Printed Circuits



UNIVERSAL ROUTER BRACKET

Our new universal router bracket is truly universal. This bracket will hold any device and will install in almost any enclosure on the market today.

The universal router bracket will hold routers, modems, sling baxes, etc. This bracket will fit into almost any structured wiring enclosure.



• 70-0048 Universal Router Bracket

PATCH PANELS & BRACKETS

CAT 5e & CAT 6 PATCH PANEL

- Designed and color coded for T586A and T-586B wiring configurations
- Meets all UL standards and requirements for Cat 5e & Cat 6 patch panels
- Intertek ETL Semko verified and tested to Cat 5e & Cat 6 industry standards & certifications
- 3P - Third Party Testing verified and tested to Cat 5e & Cat 6 industry standards & certifications
- Meets or exceeds all published TIA/EIA-568-B guidelines for Category 5e & Cat 6 requirements; meets FCC Part 68
- Designed to fit all standard 19" racks and cabinets
- Patch panels come pre-configured with easy to read 110-style punch downs on the rear side and six-port RJ-45 front modules
- 16 gauge steel, blackpainted panel with UL 94V-0 rated jacke housing
- Connector spring wire contracts are 50 micro inches gold over nickel
- All panels are RoHS compliant

- | | |
|-----------|--|
| • 20-5502 | Cat 5e 12-Port Mini Patch Panel with 89D |
| • 20-5512 | Cat 5e Universal 12 Port Patch Panel |
| • 20-5524 | Cat 5e Universal 24 Port Patch Panel |
| • 20-5548 | Cat 5e Universal 48 Port Patch Panel |
| • 20-5602 | Cat 6 12-Port Mini Patch Panel with 89D |
| • 20-5612 | Cat 6 Universal 12 Port Patch Panel |
| • 20-5624 | Cat 6 Universal 24 Port Patch Panel |
| • 20-5648 | Cat 6 Universal 48 Port Patch Panel |



12 Port Mini Patch Panel



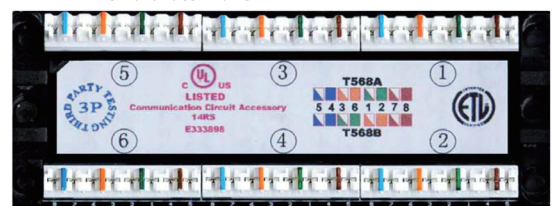
12 Port Patch Panel



24 Port Patch Panel



48 Port Patch Panel



The 110 termination blocks are color coded for easy wiring identification.



1 AND 2 PORT SURFACE MOUNTING BOX FOR CAT 5e JACKS

1 PORT SURFACE MOUNTING BOX

20-5312



- Single port Surface Mtd box for Keystone Modules White

2 PORT SURFACE MOUNTING BOX

20-5322



- Two port Surface Mtd box for Keystone Modules White

FLAT CABLE MODULAR PLUG

RJ 11 MODULAR PLUG

20-5701



- RJ 11 Moulded Plug for round cable 4 conductor

RJ 45 MODULAR PLUG

20-5703



- RJ 45 Moulded Plug for round cable 8 conductor

KEYSTONE JACKS, PLATES, & INSERTS

CATEGORY 3 JACKS

DataComm Electronics' high performance Cat 3 Jacks will meet all of your everyday voice and data installation requirements. These jacks are designed to work with DataComm Electronics' keystone wallplates and surface mount boxes.

- Dual wiring code label allows connector to be wired to standard telephone wire or Cat 5e wire
- Snaps easily into any DataComm keystone style wall plate
- Available in 5 colors
- Designed to work with residential or light commercial installations
- 110-type insulation displacement connectors (IDC)
- High-performance voice and data transmission
- UL listed
- Meets FCC Part 68 requirements

• 20-3423-BK	Cat 3 Jack	Black
• 20-3423-BR	Cat 3 Jack	Brown
• 20-3423-IV	Cat 3 Jack	Ivory
• 20-3423-LA	Cat 3 Jack	Light Almond
• 20-3423-WH	Cat 3 Jack	White



• 20-3423* Cat 3 Jack

KEYSTONE CATEGORY 5e JACKS

Our Cat 5e high-performance jacks feature color-coded wiring labels for T568A and T568B. All of these keystone jacks are UL listed. Our Cat 5e jacks are designed to meet all of your residential and light commercial needs.

• 20-3425 AL	Cat 5e Jack, Almond Color	• 20-3425 IV	Cat 5e Jack, Ivory Color
• 20-3425 BK	Cat 5e Jack, Black Color	• 20-3425 LA	Cat 5e Jack, Lite Almond Color
• 20-3425 BL	Cat 5e Jack, Blue Color	• 20-3425 OR	Cat 5e Jack, Orange Color
• 20-3425 BR	Cat 5e Jack, Brown Color	• 20-3425 WH	Cat 5e Jack, White Color
• 20-3425 GY	Cat 5e Jack, Gray Color		



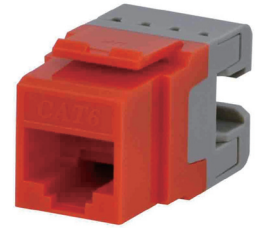
• 20-3425* Cat 5e Jack

NEW DESIGN KEYSTONE CATEGORY 6 JACKS WITH 180° CONFIGURATION

- Dual wiring code label allows connector to be wired to either T568A or T568B
- Available in 9 colors
- 180° configurations for rear termination
- 110-type insulation displacement connectors (IDC)
- High-performance data transmission supported for applications up to 250 MHz
- UL listed
- Complies with all TIA/EIA-568 requirements
- Meets FCC Part 68 requirements

- 20-3426 AL
- 20-3426 BK
- 20-3426 BL
- 20-3426 BR
- 20-3426 GY
- 20-3426 IV
- 20-3426 LA
- 20-3426 OR
- 20-3426 WH

- Cat 6 Jack, Almond Color
- Cat 6 Jack, Black Color
- Cat 6 Jack, Blue Color
- Cat 6 Jack, Brown Color
- Cat 6 Jack, Gray Color
- Cat 6 Jack, Ivory Color
- Cat 6 Jack, Lite Almond Color
- Cat 6 Jack, Orange Color
- Cat 6 Jack, White Color

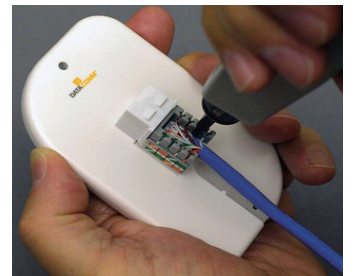


• 20-3426* Cat 6 Jack

HAND-SAVER FOR CAT JACK INSTALLATION

- Hand Saver available for the following jacks :
 - 20-3405, 20-3423, 20-3425
 - Not available for the 20-3426

- 20-5400 Hold Down Disk for DataComm Electronics' Cat 5e 20-3405 series jacks
- 20-5500 Hold Down Disk for DataComm Electronics' 20-3423 and 20-3425 series jacks



• 20-5500 Hand Saver

MIDI BLANKWALL PLATE

BLANK WALL PLATE

- Smooth wall plate for covering outlet box not in use. Fits a NEMA single gang box.

- 22-0702 Blank Mid Size White Plate UL



• 22-0702 Blank Wall Plate

DECOR WALL PLATES AND INSERTS

DECOR PLATE INSERT FOR 1 KEYSTONE



- 20-5142 Insert for 1 Keystone White
- 20-5143 Insert for 1 Keystone Ivory
- 20-5145 Insert for 1 Keystone Lite Almond

DECOR PLATE INSERT FOR 2 KEYSTONE



- 20-5152 Insert for 2 Keystone White
- 20-5153 Insert for 2 Keystone Ivory
- 20-5155 Insert for 2 Keystone Lite Almond

DECOR PLATE INSERT FOR 3 KEYSTONE



- 20-5162 Insert for 3 Keystone White
- 20-5163 Insert for 3 Keystone Ivory
- 20-5165 Insert for 3 Keystone Lite Almond

DECOR PLATE INSERT FOR 4 KEYSTONE



- 20-5172 Insert for 4 Keystone White
- 20-5173 Insert for 4 Keystone Ivory
- 20-5175 Insert for 4 Keystone Lite Almond

1-GANG, 2-GANG, & 3-GANG DECOR WALL PLATE

1-GANG



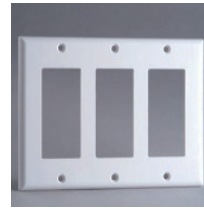
- 20-5112 Single Gang White
- 20-5111 Single Gang Ivory
- 20-5115 Single Gang Lite Almond

2-GANG



- 20-5122 Two Gang White
- 20-5121 Two Gang Ivory
- 20-5125 Two Gang Lite Almond

3-GANG



- 20-5132 Two Gang White
- 20-5135 Two Gang Lite Almond

SNAP-INS

KEYSTONE BLANK SNAP-IN INSERT

DataComm Electronics' Keystone Blank Snap-In Inserts are designed to be used with DataComm Electronics Keystone Wall Plates and Decor Inserts. All of these keystone inserts are UL listed.

- | | | |
|--|--------------|--|
| • Safely and easily protect unused keystone ports | • 20-3101 AL | Keystone Blank Snap-In Insert, Almond |
| • Cover up unused keystone ports to keep out dust and debris | • 20-3101 BK | Keystone Blank Snap-In Insert, Black |
| • Easily removable for adjustments and wiring changes | • 20-3101 BR | Keystone Blank Snap-In Insert, Brown |
| • Available in 6 colors | • 20-3101 IV | Keystone Blank Snap-In Insert, Ivory |
| • UL listed | • 20-3101 LA | Keystone Blank Snap-In Insert, Lite Almond |
| | • 20-3101 WH | Keystone Blank Snap-In Insert, White |



• 20-3101* Blank Snap-In

KEYSTONE JACK WITH 2.4 GHz F-CONNECTOR

DataComm Electronics' nickel-plated female-to-female connectors have screw-on front and rear connections for easy termination. All of these 2.4 GHz keystone jacks are UL listed.

- | | | |
|---|--------------|---|
| Applications : | • 20-3202 AL | Keystone Jack with 2.4 GHz F-Connector, Almond |
| • TV, DVD, VCR, satellite, home theater | • 20-3202 BR | Keystone Jack with 2.4 GHz F-Connector, Brown |
| | • 20-3202 IV | Keystone Jack with 2.4 GHz F-Connector, Ivory |
| Cable : | • 20-3202 LA | Keystone Jack with 2.4 GHz F-Connector, Lite Almond |
| • Coaxial cable terminated with "F" plugs | • 20-3202 WH | Keystone Jack with 2.4 GHz F-Connector, White |



• 20-3202* Keystone Jack

KEYSTONE JACK WITH 1 GHz F-CONNECTOR

DataComm Electronics' nickel-plated female-to-female connectors have screw-on front and rear connections for easy termination. All of these 1 GHz keystone jacks are UL listed.

Applications :

- TV, DVD, VCR, satellite, home theater

Cable :

- Coaxial cable terminated with "F" plugs

• 20-3102 AL

Keystone Jack with 1 GHz F-Connector, Almond

• 20-3102 BR

Keystone Jack with 1 GHz F-Connector, Brown

• 20-3102 IV

Keystone Jack with 1 GHz F-Connector, Ivory

• 20-3102 LA

Keystone Jack with 1 GHz F-Connector, Lite Almond

• 20-3102 WH

Keystone Jack with 1 GHz F-Connector, White



• 20-3102* Keystone Jack

KEYSTONE FEMALE BINDING POST

• 20-3106 AL/BK

Almond with Black Bezel

• 20-3106 LA/BK

Lite Almond with Black Bezel

• 20-3106 AL/RD

Almond with Red Bezel

• 20-3106 LA/RD

Lite Almond with Red Bezel

• 20-3106 AL/WH

Almond with White Bezel

• 20-3106 LA/WH

Lite Almond with White Bezel

• 20-3106 AL/YW

Almond with Yellow Bezel

• 20-3106 LA/YW

Lite Almond with Yellow Bezel

• 20-3106 IV/BK

Ivory with Black Bezel

• 20-3106 WH/BK

White with Black Bezel

• 20-3106 IV/RD

Ivory with Red Bezel

• 20-3106 WH/RD

White with Red Bezel

• 20-3106 IV/WH

Ivory with White Bezel

• 20-3106 WH/WH

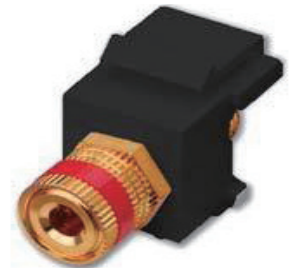
White with White Bezel

• 20-3106 IV/YW

Ivory with Yellow Bezel

• 20-3106 WH/YW

White with Yellow Bezel



• 20-3106* Female Binding Post

KEYSTONE INSERT FEMALE RCA

• 20-3103 AL/BK

Almond with Black Bezel

• 20-3103 LA/GR

Lite Almond with Green Bezel

• 20-3103 AL/RD

Almond with Red Bezel

• 20-3103 LA/BL

Lite Almond with Blue Bezel

• 20-3103 AL/WH

Almond with White Bezel

• 20-3103 WH/BK

White with Black Bezel

• 20-3103 AL/YW

Almond with Yellow Bezel

• 20-3103 WH/RD

White with Red Bezel

• 20-3103 IV/BK

Ivory with Black Bezel

• 20-3103 WH/WH

White with White Bezel

• 20-31063IV/RD

Ivory with Red Bezel

• 20-3103 WH/YW

White with Yellow Bezel

• 20-3106 3V/WH

Ivory with White Bezel

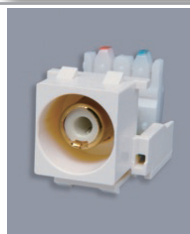
• 20-3106 3V/YW

Ivory with Yellow Bezel



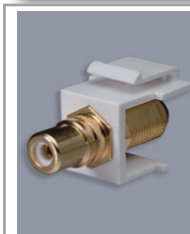
• 20-3103* Keystone Insert Female RCA

KEYSTONE RCA TO 110 PUNCH DOWN INSERT



• 20-3105 WH Keystone Insert RCA to 110, White

KEYSTONE RCA TO FEMALE CONNECTOR



• 20-3104 WH Keystone RCA to Female Connector, White

KEYSTONE S VIDEO MALE TO FEMALE INSERT



• 20-3107 WH Keystone S Video Male to Female Insert, White with Black Bezel

BNC & COAXIAL CONNECTORS

BNC (Bayone-Neil-Concelman) connectors and adapters provide strength at the weakest point of a cable.

BNC DOUBLE FEMALE ADAPTER



• 41-0055 BNC Double Female Adapter

BNC FEMALE TO F MALE



• 41-0075 BNC Female to F Male

BNC FEMALE TO RCA MALE



• 41-0080 BNC Female to RCA Male

BNC MALE TO F FEMALE



• 41-0070 BNC Male to F Female

BNC MALE TO RCA FEMALE



• 41-0065 BNC Male to RCA Female

BNC MALE TO RCA MALE



• 41-0060 BNC Male to RCA Male

IN-LINE F SPLICE : FEMALE TO FEMALE



• 30-1400 F Connector Splice

RCA FEMALE TO F FEMALE



• 42-0015 RCA Female to F Female

RCA MALE TO F FEMALE



• 42-0016 RCA Male to F Female

RCA MALE TO F MALE



• 42-0005 RCA Male to F Male