



Architektur 2" LED Downlight Accessories



Regional Distribution Center Stock List

Part Number	Catalog Number	UPC Code	Description	CA 03	IL 06	PA 10	SC 07	Wt. each	# on Carton	Price
BG1437200	D2FRM	785235429987	Optional Mounting Frame for D2LED	●				3.5	2	
BG1437300	D2ICAT	785235429993	Optional IC Rated Air Tight housing for D2LED	●				7.5	1	



5-Day Quick Ship Ordering Guide Order Limit Per Fixture Selection: 20 Pieces or Less

D2LED		2D9LED	9L	30K	8	MD25		
J-TUBE ASSEMBLY	VOLTAGE	LIGHT ENGINE	OUTPUT	LED COLOR	CRI	BEAM ANGLE	REFLECTOR FINISH	REFLECTOR COLORS
D2LED 2" J-Tube Assembly with 0-10 Dimming standard	Blank 120V 277 277V	2D9LED 2" Open Reflector/Light Engine Assembly	9L 900 Lumens 12L 1200 Lumens	30K 3000 Kelvin 35K 3500 Kelvin	8 Nominal 80+ CRI	WFL45 Spun Aluminum reflector with a 45° wide flood distribution MD25 Spun Aluminum reflector with a 25° medium distribution FL35 Spun Aluminum reflector with a 35° flood distribution WW Wall Wash	Blank Specular	Blank Clear Alzak

*Reflector finishes other than clear specular are not QS items.



10-Day Quick Ship Ordering Guide Order Limit Per Fixture Selection: 50 Pieces or Less

D2LED		2D9LED	9L	30K	8	MD25			WT
J-TUBE ASSEMBLY	VOLTAGE	LIGHT ENGINE	OUTPUT	LED COLOR	CRI	BEAM ANGLE	REFLECTOR FINISH	REFLECTOR COLORS	REFLECTOR OPTIONS
D2LED 2" J-Tube Assembly with 0-10 Dimming standard A2LED 2" J-Tube Assembly with 0-10 Dimming standard	Blank 120V 277 277V	2D9LED 2" Open Reflector/Light Engine Assembly	9L 900 Lumens 12L 1200 Lumens	30K 3000 Kelvin 35K 3500 Kelvin	8 Nominal 80+ CRI	WFL45 Spun Aluminum reflector with a 45° wide flood distribution MD25 Spun Aluminum reflector with a 25° medium distribution FL35 Spun Aluminum reflector with a 35° flood distribution WW Wall Wash	Blank Specular	Blank Clear Alzak	WT White trim

*Reflector finishes other than clear specular are not QS items.

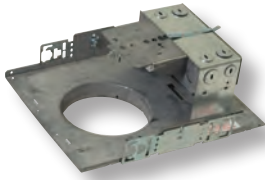


Architektur 4" Vertical CFL Open Downlight and Trim



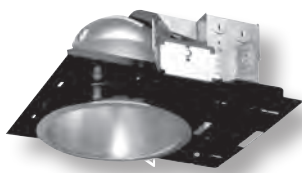
Regional Distribution Center Stock List

Part Number	Catalog Number	UPC Code	Description	CA 03	IL 06	PA 10	SC 07	Wt. each	# on Carton	Price
BG948000	D432EB	785235046992	4" housing, 1-lamp, 26 or 32W triple tube 4-pin, multi-volt electronic ballast (32W Lutron only)				●	6.5	2	
BG949600	4D5	785235047005	4" Alzak Reflector				●	0.86	1	



Architektur 6" & 8" Triple Tube Horizontal Housing, Multi-volt Electronic Ballasts and Trims

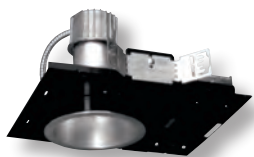
Part Number	Catalog Number	UPC Code	Description	CA 03	IL 06	PA 10	SC 07	Wt. each	# on Carton	Price
BE827500	CFT632HEB	785235221078	6" housing, 1-lamp, 26/32/42W	●	●	●	●	6.6	1	
BG1227900	STF602H	785235046947	6" Self trim clear Alzak	●	●	●	●	0.7	1	
BG1239800	STF602HWT	785235047036	6" White trim clear Alzak	●	●		●	0.7	1	
BE831600	STF602HWW	785235113274	6" Self trim clear Alzak wall washer	●			●	0.8	1	
BE827700	CFT832HEB	785235221092	8" housing, 1-lamp, 26/32/42W	●	●		●	6.6	1	
BG1228000	STF802H	785235046954	8" Self trim clear Alzak	●			●	1	2	
BG1240000	STF802HSS	785235047050	8" Self trim Semi-Specular Alzak	●				.09	1	
BG117700	CFTD832HEB	785235112840	8" housing, 2-lamp, 26/32/42W	●			●	6.5	1	
BG1228100	STFD802H	785235046961	8" Self trim clear Alzak, for two lamp housing	●			●	1.46	2	



Architektur 6" & 8" Quad Tube Horizontal Housings, Multi-volt Electronic Ballasts and Trims

35 SCHEDULED STOCK SHIPMENTS Regional Distribution Center Stock List

Part Number	Catalog Number	UPC Code	Description	CA 03	IL 06	PA 10	SC 07	Wt. each	# on Carton	Price
BE602600	CFR626EB	785235220866	6" housing, 2-lamp, 26W Quad	●	●	●	●	6.5	2	
BG280900	CFR6126EB	785235429122	6" housing, 2-lamp, 26W Quad	●				6.5	2	
BG1227500	ST372A	785235046916	6" Self trim clear Alzak	●	●	●	●	1.0	2	
BE864500	CFR826UEB	785235900102	8" housing, 2-lamp, 26W Quad	●	●		●	6.6	1	
BG1227700	ST492A	785235046930	8" Self trim clear Alzak	●			●	0.8	2	



Architektur 6" & 8" Vertical Triple Tube Housings with Multi-volt HPF Electronic Ballast and Trims

Part Number	Catalog Number	UPC Code	Description	CA 03	IL 06	PA 10	SC 07	Wt. each	# on Carton	Price
BG123600	CFT632EB	785235051071	6" housing, 1-lamp, 26/32/42W	●	●	●	●	5.3	2	
BE681800	STF602	785235101363	6" Self trim clear Alzak	●	●	●	●	0.9	1	
BE681900	STF602WT	785235113724	6" White trim clear Alzak	●	●		●	9.0	1	
BG124000	CFT832EB	785235221047	8" housing, 1-lamp, 26/32/42W	●			●	5	2	
BE680800	STF802	785235101370	8" Self trim clear Alzak	●			●	0.9	2	

All Non-Stocked Architektur Standard, DM & EM Only 4", 6", 8" & 9" Horizontal and Vertical CFL Housings & Clear Spec Trims are Quick Ship. Excludes Cross Baffle

QS7 10-Day Quick Ship Ordering Guide
Order Limit Per Fixture Selection: 50 Pieces or Less



Retroficient™ 6" LiteFrame® Commercial LED Housing and Trims

35 SCHEDULED STOCK SHIPMENTS

Regional Distribution Center Stock List

Part Number	Catalog Number	UPC Code	Description	CA 03	IL 06	PA 10	SC 07	Wt. each	# on Carton	Price
BG1482900	RLC6LED120	785235429948	6" housing, Commercial retrofit, LED, 120V	●				4.66	1	
BG1483000	RLC6LED120 DM	785235429962	6" housing, Commercial retrofit, LED, 120V w/0-10V dimming to 10%	●				4.66	1	
BG1483100	RLC6LED277	785235429955	6" housing Commercial retrofit LED, 277V	●				4.66	1	
BG1483200	RLC6LED277 DM	785235429979	6" housing, Commercial retrofit LED, 277V w/0-10V dimming to 10%	●				4.66	1	
BG1468400	6LCLED535K8	785235429238	6" Commercial LED Light Engine Assembly, 1000 lumens, 3500 Kelvin, 80 CRI with clear reflector	●	●			1.72	1	
BG1497301	6LCLED535K8WT	785235430005	6" Commercial LED Light Engine Assembly, 1000 lumens, 3500 Kelvin, 80 CRI with clear reflector and white trim	●				1.72	1	
BG1468500	6LCLED635K8	785235429245	6" Commercial LED Light Engine Assembly, 1400 lumens, 3500 Kelvin, 80 CRI with clear reflector	●	●		●	1.72	1	
BG1497401	6LCLED635K8WT	785235430012	6" Commercial LED Light Engine Assembly, 1400 lumens, 3500 Kelvin, 80 CRI with clear reflector and white trim	●				1.72	1	
BG1497601	6LCLED635K8WHWT	785235430036	6" Commercial LED Light Engine Assembly, 1400 lumens, 3500 Kelvin, 80 CRI with white reflector and trim	●				1.72	1	
BG1549500	6LCLED640K8	785235431125	6" Commercial LED Light Engine Assembly, 1400 lumens, 4000 Kelvin, 80 CRI with clear reflector		●			1.47	1	
BG1468600	6LCLED735K8	785235429252	6" Commercial LED Light Engine Assembly, 1800 lumens, 3500 Kelvin, 80 CRI with clear reflector	●	●			1.72	1	
BG1546100	6LCLED740K8	785235431088	6" Commercial LED Light Engine Assembly, 1800 lumens, 4000 Kelvin, 80 CRI with clear reflector		●			1.72	1	
BG1497501	6LCLED735K8WT	785235430029	6" Commercial LED Light Engine Assembly, 1800 lumens, 3500 Kelvin, 80 CRI with clear reflector and white trim	●	●			1.72	1	



10-Day Quick Ship Ordering Guide
Order Limit Per Fixture Selection: 50 Pieces or Less

All Non Stocked Retroficient LiteFrame Commercial Housings are Quick Ship.



Retroficient™ 6" LiteFrame® LED Housing and Trims



Regional Distribution Center Stock List

Part Number	Catalog Number	UPC Code	Description	CA 03	IL 06	PA 10	SC 07	Wt. each	# on Carton	Price
BG1501800	RLF6LEDG4	785235430180	6" housing, High Efficacy LED Retrofit with 0-10V dimming to 10%	●				5	1	
BG1500900	6LFLED5G435K	785235430098	6" Open Reflector/LED Light Engine Assembly, 1100 lumens, 3500 Kelvin, clear reflector	●	●		●	3	1	
BG1509101	6LFLED5G435KWT	785235430364	6" Open Reflector/LED Light Engine Assembly, 1100 lumens, 3500 Kelvin, clear reflector and white trim	●		●		3	1	
BG1513000	6LFLED6G435K	785235430753	6" Open Reflector/LED Light Engine Assembly, 1500 lumens, 3500 Kelvin, clear reflector	●	●		●	3	1	
BG1513001	6LFLED6G435KWT	785235430760	6" Open Reflector/LED Light Engine Assembly, 1500 lumens, 3500 Kelvin, clear reflector and white trim	●				3	1	
BG1502300	6LFLED7G435K	785235430241	6" Open Reflector/LED Light Engine Assembly, 2000 lumens, 3500 Kelvin, clear reflector	●	●		●	3	1	
BG1509201	6LFLED7G435KWT	785235430371	6" Open Reflector/LED Light Engine Assembly, 2000 lumens, 3500 Kelvin, clear reflector and white trim	●		●		3	1	
BG1513100	6LFLED7G440K	785235430715	6" Open Reflector/LED Light Engine Assembly, 2000 lumens, 4000 Kelvin, clear reflector	●	●			3	1	
BG1513101	6LFLED7G440KWT	785235430777	6" Open Reflector/LED Light Engine Assembly, 2000 lumens, 4000 Kelvin, clear reflector and white trim	●				3	1	



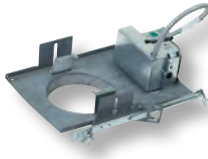
10-Day Quick Ship Ordering Guide
Order Limit Per Fixture Selection: 50 Pieces or Less

All Non Stocked Retroficient LiteFrame LED Housings are Quick Ship. Except HDM & 2DM



Retroficient™ 8" LiteFrame® LED Housing and Trim

Part Number	Catalog Number	UPC Code	Description	CA 03	IL 06	PA 10	SC 07	Wt. each	# on Carton	Price
BG1501900	RLF8LEDG4	785235430197	8" housing, High Efficacy LED Retrofit with 0-10V dimming to 10%	●	●			5	1	
BG1513200	8LFLED7G435K	785235430784	8" Open Reflector/LED Light Engine Assembly, 2000 lumens, 3500 Kelvin, clear reflector	●				3.5	1	



LiteFrame® Commercial LED 6" Housings and Trims

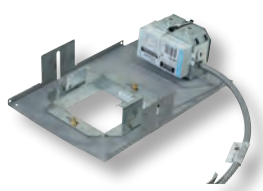
35 SCHEDULED STOCK SHIPMENTS

Regional Distribution Center Stock List

Part Number	Catalog Number	UPC Code	Description	CA 03	IL 06	PA 10	SC 07	Wt. each	# on Carton	Price
BG1468700	LC6LED120	785235429269	6" housing, Commercial LED, 120V	●	●		●	5.58	2	
BG1468800	LC6LED120DM	785235429276	6" housing, Commercial LED, 120V 0-10% dimming	●	●		●	5.58	2	
BG1521600	LC6LED120DMEM	785235430876	6" housing, Commercial LED, 120V 0-10% dimming, emergency ballast	●				11.125	1	
BG1471800	LC6LED277	785235429283	6" housing, Commercial LED, 277V	●	●		●	5.58	2	
BG1471900	LC6LED277DM	785235429290	6" housing, Commercial LED, 277V 0-10% dimming	●	●		●	6	2	
BG1521700	LC6LED277DMEM	785235430883	6" housing, Commercial LED, 120V 0-10% dimming, emergency ballast	●				11.125	1	
BG1525000	LC6LED8120	785235430968	6" housing, Commercial LED, 120V, 0-10% dimming for 2400 or 3000 lumens	●				5.58	2	
BG1525100	LC6LED8277	785235430975	6" housing, Commercial LED, 277V 0-10% dimming for 2400 or 3000 lumens	●				5.58	2	
BG1468400	6LCLED535K8	785235429238	6" Commercial LED Light Engine Assembly, 1000 lumens, 3500 Kelvin, 80 CRI, clear reflector	●	●			1.72	1	
BG1497301	6LCLED535K8WT	785235430005	6" Commercial LED Light Engine Assembly, 1000 lumens, 3500 Kelvin, 80 CRI, clear reflector and white trim	●				1.72	1	
BG1468500	6LCLED635K8	785235429245	6" Commercial LED Light Engine Assembly, 1400 lumens, 3500 Kelvin, 80 CRI, clear reflector	●	●		●	1.72	1	
BG1497401	6LCLED635K8WT	785235430012	6" Commercial LED Light Engine Assembly, 1400 lumens, 3500 Kelvin, 80 CRI, clear reflector and white trim	●				1.72	1	
BG1497601	6LCLED6358WHWT	785235430036	6" Commercial LED Light Engine Assembly, 1400 lumens, 3500 Kelvin, 80 CRI, white reflector and trim	●				1.72	1	
BG1468600	6LCLED735K8	785235429252	6" Commercial LED Light Engine Assembly, 1800 lumens, 3500 Kelvin, 80 CRI with clear reflector	●	●			1.72	1	
BG1497501	6LCLED735K8WT	785235430029	6" Commercial LED Light Engine Assembly, 1800 lumens, 3500 Kelvin, 80 CRI, clear reflector and white trim	●	●			1.72	1	
BG1546100	6LCLED740K8	785235431088	6" Commercial LED Light Engine Assembly, 1800 lumens, 4000 Kelvin, 80 CRI with clear reflector		●			1.72	1	
BG1525900	6LCLED835K8	785235430982	6" Commercial LED Light Engine Assembly, 2400 lumens, 35 Kelvin, 80 CRI, clear reflector	●				3.77	1	
BG1526000	6LCLED935K8	78523540999	6" Commercial LED Light Engine Assembly, 3000 lumens, 35 Kelvin, 80 CRI, clear reflector	●				3.77	1	

QS7.5 5-Day Quick Ship Ordering Guide
Order Limit Per Fixture Selection: 20 Pieces or Less

LC6LED	120	6LCLED	7	30K	8	WH	WT
HOUSING	VOLTAGE	TRIM	OUTPUT	KELVIN	CRI	REFLECTOR COLOR	REFLECTOR OPTION
LC6LED 6" LED Housing	120 120V	6LCLED 6" Open Reflector/ Light Engine Assembly	5 Nominal 1000 lumens delivered	27K 2700 Kelvin	8 Nominal 80+ CRI	WH White	WT
LC6LED8 6" LED Housing for the LED8 & LED9	277 277V		6 Nominal 1400 lumens delivered	30K 3000 Kelvin			WW
			7 Nominal 1600 lumens delivered	35K 3500 Kelvin			EM
			8 Nominal 2400 Lumens delivered	40K 4000 Kelvin			
			9 Nominal 3000 Lumens delivered				



 LiteFrame® 4" LED Square Housing

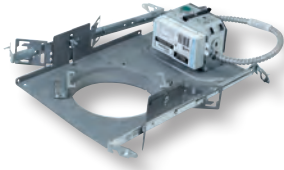
Part Number	Catalog Number	UPC Code	Description	CA 03	IL 06	PA 10	SC 07	Wt. each	# on Carton	Price
BG1501400	LF4SQLEDG4	785235430142	4" housing, High Efficacy LED Square with 0-10V dimming to 10%	•	•			6.45	2	
BG1501500	LF4SQLEDG4WW	785235430159	4" housing, High Efficacy LED Square Wall Wash with 0-10V dimming to 10%	•	•			6.45	1	

QS7.10 10-Day Quick Ship Ordering Guide
Order Limit Per Fixture Selection: 50 Pieces or Less **All Non Stocked LiteFrame Squares LED Housings are Quick Ship. Except HDM & 2DM**



 LiteFrame® 4" LED Housing and Trims

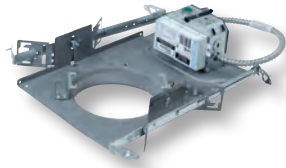
Part Number	Catalog Number	UPC Code	Description	CA 03	IL 06	PA 10	SC 07	Wt. each	# on Carton	Price
BG1500800	LF4LEDG4	785235430081	4" housing, High Efficacy LED with 0-10V dimming to 10%	•	•			6.6	2	
BG1512900	LF4LEDG4EMR	785235430708	4" housing, High Efficacy LED with Remote Emergency Battery Pack, 0-10V dimming to 10%	•				10.68	1	
BG1501000	4LFLED5G435K	785235430104	4" Open Reflector/LED Light Engine Assembly, 1100 lumens, 3500 Kelvin with clear reflector	•	•			3.03	1	
BG1508901	4LFLED5G435KWT	785235430340	4" Open Reflector/LED Light Engine Assembly, 1100 lumens, 3500 Kelvin with clear reflector and white trim	•				4.4	1	
BG1502400	4LFLED7G435K	785235430258	4" Open Reflector/LED Light Engine Assembly, 2000 lumens, 3500 Kelvin with clear reflector	•				4.4	1	



LiteFrame® 6" LED Housing and Trims

35 SCHEDULED STOCK SHIPMENTS Regional Distribution Center Stock List

Part Number	Catalog Number	UPC Code	Description	CA 03	IL 06	PA 10	SC 07	Wt. each	# on Carton	Price
BG1500700	LF6LEDG4	785235430074	6" housing, High Efficacy LED with 0-10V dimming to 10%	●	●	●	●	5.15	2	
BG1502500	LF6LEDG4WW	785235430333	6" housing, High Efficacy LED Wall Wash with 0-10V dimming to 10%	●	●	●		5.15	1	
BG1503200	LF6LEDG4EM	785235430326	6" housing, High Efficacy LED with Remote Emergency Battery Pack, 0-10V dimming to 10%	●	●			9.97	1	
BG1545000	LF6LED8G4	785235431095	6" housing, High Efficacy 3000 lumen LED with 0-10V dimming to 10%, 120V-277V	●	●			5.15	2	
BG1500900	6LFLED5G435K	785235430098	6" Open Reflector/LED Light Engine Assembly, 1100 lumens, 3500 Kelvin, clear reflector	●	●		●	3	1	
BG1509101	6LFLED5G435KWT	785235430364	6" Open Reflector/LED Light Engine Assembly, 1100 lumens, 3500 Kelvin, clear reflector with white trim	●		●		3	1	
BG1513000	6LFLED6G435K	785235430753	6" Open Reflector/LED Light Engine Assembly, 1500 lumens, 3500 Kelvin, clear reflector	●			●	3	1	
BG1513001	6LFLED6G435KWT	785235430760	6" Open Reflector/LED Light Engine Assembly, 1500 lumens, 3500 Kelvin, clear reflector with white trim	●				3	1	
BG1502300	6LFLED7G435K	785235430241	6" Open Reflector/LED Light Engine Assembly, 2000 lumens, 3500 Kelvin, clear reflector	●	●		●	3	1	
BG1509201	6LFLED7G435KWT	785235430371	6" Open Reflector/LED Light Engine Assembly, 2000 lumens, 3500 Kelvin, clear reflector with white trim	●		●		3	1	
BG1513100	6LFLED7G440K	785235430715	6" Open Reflector/LED Light Engine Assembly, 2000 lumens, 4000 Kelvin, clear reflector	●				3	1	
BG1513101	6LFLED7G440KWT	785235430777	6" Open Reflector/LED Light Engine Assembly, 2000 lumens, 4000 Kelvin, clear reflector with white trim	●				3	1	
BG1344900	LFSC6	785235047654	6" Reflector screw cover	●				0.24	12	
BG1374400	LFSC6EM	785235051989	6" Reflector screw cover with EM	●				0.24	12	



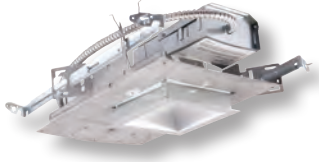
LiteFrame® 8" LED Housing and Trim

3 SCHEDULED STOCK SHIPMENTS Regional Distribution Center Stock List

Part Number	Catalog Number	UPC Code	Description	CA 03	IL 06	PA 10	SC 07	Wt. each	# on Carton	Price
BG1502000	LF8LEDG4	785235430272	8" housing, High Efficacy LED with 0-10V dimming to 10%	●				5.24	2	
BG1545100	LF8LED8G4	785235431101	8" housing, High Efficacy 3000 lumen LED with 0-10V dimming to 10%, 120V-277V	●	●			5.24	2	
BG1513200	8LFLED7G435K	785235430784	8" Open Reflector/LED Light Engine Assembly, 2000 lumens, 3500 Kelvin, clear reflector	●				4.4	1	

QS 10 10-Day Quick Ship Ordering Guide Order Limit Per Fixture Selection: 50 Pieces or Less

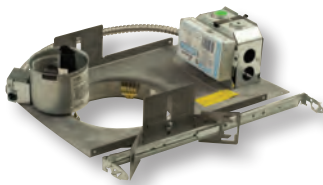
LF4LEDG4	4LFLED7G4	30K		WH	WT
HOUSING	TRIM	LED COLOR TEMP	REFLECTOR FINISH	REFLECTOR COLORS	REFLECTOR OPTIONS
LF4LEDG4 4" High Efficacy LED Housing with 0-10V Dimming to 10% LF6LEDG4 6" High Efficacy LED Housing with 0-10V Dimming to 10%, for 1100, 1500, or 2000 Lumen module LF6LEDG4EM 6" High Efficacy LED Remote Emergency Battery Pack Housing with 0-10V dimming to 10% LF6LED8G4* 6" High Efficacy 3000 lumen LED Housing with 0-10V dimming to 10% LF8LEDG4 8" High Efficacy LED Housing with 0-10V Dimming to 10%, for 1100, 1500, or 2000 Lumen module LF8LED8G4* 8" High Efficacy 3000 lumen LED Housing with 0-10V dimming to 10%	4LFLED5G4 4" Open Reflector/Light Engine Assembly, 1100 lumen module 4LFLED6G4 4" Open Reflector/Light Engine Assembly, 1500 lumen module 4LFLED7G4 4" Open Reflector/Light Engine Assembly, 2000 lumen module 6LFLED5G4 6" Open Reflector/Light Engine Assembly, 1100 lumen module 6LFLED6G4 6" Open Reflector/Light Engine Assembly, 1500 lumen module 6LFLED7G4 6" Open Reflector/Light Engine Assembly, 2000 lumen module 6LFLED8G4 6" Open Reflector/Light Engine Assembly, 3000 lumen module 8LFLED5G4 8" Open Reflector/Light Engine Assembly, 1100 lumen module 8LFLED6G4 8" Open Reflector/Light Engine Assembly, 1500 lumen module 8LFLED7G4 8" Open Reflector/Light Engine Assembly, 2000 lumen module 8LFLED8G4 8" Open Reflector/Light Engine Assembly, 3000 lumen module	30K 3000 Kelvin, 80 CRI 35K 3500 Kelvin, 80 CRI 40K 4000 Kelvin, 80 CRI	Blank Alzak	Blank Clear Alzak WH White Paint	WT White Trim TRG Trim Ring Gasket (factory installed) WW Wall Wash EM Emergency Battery Pack with integral test switch and indicator light
			*Can only be used with corresponding 3000 lumen module trim		



LiteFrame® 4" and 6" Square Compact Fluorescent Housing and Trim

35 SCHEDULED STOCK SHIPMENTS Regional Distribution Center Stock List

Part Number	Catalog Number	UPC Code	Description	CA 03	IL 06	PA 10	SC 07	Wt. each	# on Carton	Price
BG1423600	LF4SQCFH132EB	785235428859	4" housing, Horizontal 1-lamp 26/32/42W Triple Tube	●				4	2	
BG1426400	4SQCFH1	785235428897	4" Alzak semi-diffuse reflector	●				0.65	1	
BG1423800	LF6SQCFH132EB	785235428873	6" housing, Horizontal 1-lamp 26/32/42W Triple Tube	●				4	2	



LiteFrame® 6" Compact Fluorescent Housing and Trims

Part Number	Catalog Number	UPC Code	Description	CA 03	IL 06	PA 10	SC 07	Wt. each	# on Carton	Price
BG743600	LF6CFH213EB	785235128247	6" horizontal, 2-lamp 13W Quad tube housing	●				4.3	2	
BG744300	LF6CFH218EB	785235128254	6" horizontal, 2-lamp 18W Quad tube housing	●	●				2	
BG745000	LF6CFH226EB	785235128261	6" horizontal, 2-lamp 26W Quad tube housing	●	●		●	7.2	2	
BG946500	LF6CFH132EB	785235041423	6" horizontal, 1-lamp 26/32/42W Triple tube housing	●	●	●	●	6	2	
BG1078000	6CFH	785235044615	6" horizontal, 2-lamp CF, clear Alzak	●	●		●	3.1	6	
BG1077900	6CFH1	785235044608	6" horizontal, 1-lamp clear Alzak for triple tube housing	●	●	●	●	3.1	6	
BG749200	LF6CFV32EB	785235128292	6" vertical, 26/32/42W Triple tube housing	●	●	●	●	4.8	2	
BG1077800	6CFV	785235044592	6" vertical, 2-lamp CF, clear Alzak	●	●	●	●	3.7	6	
BG1077801	6CFVWT	785235045766	6" vertical, 2-lamp CF, clear Alzak with white trim	●	●			3.7	6	

LiteFrame® 8" Compact Fluorescent Housing and Trims

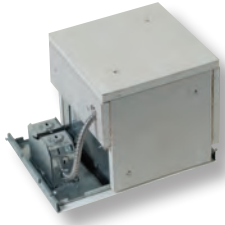
Regional Distribution Center Stock List

Part Number	Catalog Number	UPC Code	Description	CA 03	IL 06	PA 10	SC 07	Wt. each	# on Carton	Price
BG747800	LF8CFH226EB	785235128278	8" horizontal, 2-lamp 26W quad tube housing	●				4.3	2	
BG748500	LF8CFH132EB	785235128285	8" horizontal, 1-lamp 26/32/42W triple tube housing	●			●	4.3	2	
BG934300	LF8CFH232EB	785235041379	8" horizontal, 2-lamp, 26/32/42W Triple tube housing	●			●	4.3	2	
BG1078300	8CFH	785235044646	8" horizontal, 2-lamp Quad CF, clear Alzak	●				4.8	6	
BG1078200	8CFH1	785235044639	8" horizontal, 1-lamp Triple CF, clear Alzak	●			●	4.8	6	
BG749900	LF8CFV32EB	785235128308	8" vertical, 1-lamp 26/32/42W triple tube housing	●				3.8	2	
BG1078100	8CFV	785235044622	8" vertical CF, clear Alzak	●				5.6	6	

10-Day Quick Ship Ordering Guide

Order Limit Per Fixture Selection: 50 Pieces or Less

LF6CFH226EB		6CFH		WT
HOUSING	HOUSING OPTIONS	REFLECTORS	REFLECTOR COLORS	REFLECTOR OPTIONS
<p>LF6CFH132EB 6" (1) 26/32/42W Triple tube, multi-volt electronic ballast (120-277V)</p> <p>LF6CFH213EB 6", (2) 13W Quad, multi-volt electronic ballast (120-277V)</p> <p>LF6CFH218EB 6", (2) 18W Quad, multi-volt electronic ballast (120-277V)</p> <p>LF6CFH226EB 6", (2) 26W Quad, multi-volt electronic ballast (120-277V)</p> <p>LF8CFH132EB 8" (1) 26/32/42W Triple tube, multi-volt electronic ballast (120-277V)</p> <p>LF8CFH213EB 8", (2) 13W Quad, multi-volt electronic ballast (120-277V)</p> <p>LF8CFH218EB 8", (2) 18W Quad, multi-volt electronic ballast (120-277V)</p> <p>LF8CFH226EB 8", (2) 26W Quad, multi-volt electronic ballast (120-277V)</p> <p>LF8CFH232EB 8" (2) 32/42W Triple tube, multi-volt electronic ballast (120-277V)</p>	<p>DM Electronic dimming ballast to 5%, 4-wire, 0-10V, (120V thru 277V)</p>	<p>6CFH 6" Alzak semi-diffuse reflector (2-lamp)</p> <p>6CFH1 6" Alzak semi-diffuse reflector (1-lamp)</p> <p>8CFH 8" Alzak semi-diffuse reflector (2-lamp Quad or Twin)</p> <p>8CFH1 8" Alzak semi-diffuse reflector (1-lamp Triple tube)</p> <p>8CFHT 8" Alzak semi-diffuse reflector (2-lamp Triple)</p>	<p>BLANK Clear Alzak</p>	<p>WW Wall Wash</p> <p>WT White flange (Alzak only)</p> <p>TRG Trim Ring Gasket (Factory installed)</p>



FireTight™ 6" Fire-Resistant Housings and Trims

35 SCHEDULED STOCK SHIPMENTS Regional Distribution Center Stock List

Part Number	Catalog Number	UPC Code	Description	CA 03	IL 06	PA 10	SC 07	Wt. each	# on Carton	Price
BG590700	FT6	785235301527	6" housing, FireTight Incandescent Line Voltage non-IC rated	●				11	1	
BG590800	FT6CF	785235041393	6" housing, FireTight Compact Fluorescent non-IC rated	●				16	1	
BG233800	TA60	785235514316	6" White eyeball	●				0.7	6	
BG234100	TAW65	785235514323	6" White regressed eyeball	●				0.9	6	
BG234200	TB60	785235514330	Stepped black baffle		●			1.2	12	
BG234300	TBW60	785235514347	6" Stepped white baffle	●	●	●	●	0.2	12	
BG234500	TBW61	785235514354	6" Long-neck white baffle	●	●	●	●	0.2	12	
BG234600	TBW62	785235514378	6" High wattage white baffle		●			0.2	12	
BG234800	TL60	785235514385	6" Drop Opal shower trim. non-metallic flange. Wet location listed.				●	1.7	6	
BG235000	TL62	785235514408	6" Fresnel shower trim. non-metallic flange. Wet location listed.		●			0.8	6	
BG235100	TL63	785235514415	6" Domed polycarbonate shower trim. Wet location listed.		●			0.5	6	
BG235200	TL64	785235514422	6" White albalite flush glass shower trim. Wet location listed.	●			●	0.5	6	
BG235600	TO6	785235517188	6" White cone	●	●			0.2	12	
BG235700	TO60C	785235514460	6" Clear anodized reflector	●			●	0.2	12	
BG236000	TO61	785235514477	6" White open splay	●	●		●	0.2	12	
BG236200	TO62	785235514484	6" White open trim	●				0.4	12	
BG236300	TO63WL	785235514491	6" White open shower trim.	●	●			0.2	12	
BE120201	TL42	785235161800	6" Fresnel glass with reflector 60W A-19	●				1.4	6	

FireTight™ 6" Fire-Resistant Housing and LED Trims

Part Number	Catalog Number	UPC Code	Description	CA 03	IL 06	PA 10	SC 07	Wt. each	# on Carton	Price
BG1332000	FT6QLIC	785235429177	6" housing, FireTight LED, IC rated for QuickLink	●						
BG1488400	LB6LEDA8L30K WH	785235429726	6" White trim, 800 Lumen LED up to 15% dimming, 3000K	●			●	4.2	8	
BG1477800	LB6LEDA10L30K WH	785235429337	6" White trim, 120V w/ dimming to 15% 1000 Lumen 3000K	●			●	1.5	8	
BG1477900	LB6LEDA10L35K WH	785235429344	6" White trim, 120V w/ dimming to 15% 1000 Lumen 3500K	●			●	1.5	8	

FireTight™ 4" Line Voltage Housing and Trims

35 SCHEDULED STOCK SHIPMENTS Regional Distribution Center Stock List

Part Number	Catalog Number	UPC Code	Description	CA 03	IL 06	PA 10	SC 07	Wt. each	# on Carton	Price
BG590500	FT4LV	78523501541	4" housing, Fire-Resistant, low voltage	●				17.2	1	
BG202100	TA12WBF	785235182034	4" White baffle	●				0.4	6	
BG202200	TA12BF	785235182041	4" Black baffle	●				0.4	6	
BG202300	TA12C	785235182058	4" Clear anodized reflector	●				0.4	6	
BG202700	TA12PS	785235182096	4" Pinhole spot	●				0.4	6	
BG202500	TA12E	785235182072	4" Eyeball w/ black interior	●				0.5	6	

LiteBox®



LiteBox® 4" LED Downlight New & Retrofit Applications

Part Number	Catalog Number	UPC Code	Description	CA 03	IL 06	PA 10	SC 07	Wt. each	# on Carton	Price
BG1527100	LB4LEDA6L30K9 WH	785235429078	4" White trim, 120V w/ dimming to 20% 10W LED module 3000K	●			●	1.33	6	



LiteBox® 6" LED Downlight New & Retrofit Applications

Part Number	Catalog Number	UPC Code	Description	CA 03	IL 06	PA 10	SC 07	Wt. each	# on Carton	Price
BG1443200	DBXQL	785235428989	6" housing, QuickLink LED, for new construction. Dual labeled for IC/non-IC.	●			●	4.9	8	
BG1488400	LB6LEDA8L30K WH	785235429726	6" White trim, 800 Lumen LED up to 15% dimming, 3000K	●			●	4.2	8	
BG1477800	LB6LEDA10L30K WH	785235429337	6" White trim, 120V w/ dimming to 15% 1000 Lumen 3000K	●			●	1.5	8	
BG1477900	LB6LEDA10L35K WH	785235429344	6" White trim, 120V w/ dimming to 15% 1000 Lumen 3500K	●			●	1.5	8	



LiteBox® 5" LED Surface Downlight New & Retrofit Applications

Part Number	Catalog Number	UPC Code	Description	CA 03	IL 06	PA 10	SC 07	Wt. each	# on Carton	Price
BG1529200	LBS5LEDA6L30K9 WH	785235430944	Surface Mount LED Module 1000 lumens, 3000 Kelvin, 90 CRI, j-box mount	●			●	0.91	8	



LiteBox® 6" LED Surface Downlight New & Retrofit Applications



Regional Distribution Center Stock List

Part Number	Catalog Number	UPC Code	Description	CA 03	IL 06	PA 10	SC 07	Wt. each	# on Carton	Price
BG1505100	LBSLEDA10L30K9 WH	785235430128	Surface Mount LED Module 1000 lumens, 3000 Kelvin, 90 CRI	●	●	●	●	1.4	8	
BG1521300	LBSQLEDA10L30K9 WH	785235430869	Square Surface Mount LED Module 1000 lumens, 3000 Kelvin, 90 CRI	●				1.4	8	
BG1535600	LBSMTGKIT	785235431064	Mounting Kit for LiteBox LED Surface fixtures	●				0.4	8	



LiteBox® 6" and Line Voltage IC/Non-IC Housings and Trims

Part Number	Catalog Number	UPC Code	Description	CA 03	IL 06	PA 10	SC 07	Wt. each	# on Carton	Price
BG1443000	DBX	785235428712	6" housing, line voltage, for new construction. Dual labeled for IC/ non-IC.	●	●	●	●	4.2	8	
BG1443100	DBXQC	785235428972	6" housing, line voltage, for new construction. Dual labeled for IC/ non-IC, quick connect.	●	●		●	4.2	8	
BG233700	RMNICD	785235514309	6" housing, line voltage remodel, Dual labeled for IC/ non-IC.	●	●		●	3.3	6	
BG233800	TA60	785235514316	6" White eyeball	●				0.7	6	
BG234100	TAW65	785235514323	6" White regressed eyeball	●				0.9	6	
BG234200	TB60	785235514330	Stepped black baffle		●			1.2	12	
BG234300	TBW60	785235514347	6" Stepped white baffle	●	●	●	●	0.2	12	
BG234500	TBW61	785235514354	6" Long-neck white baffle	●	●	●	●	0.2	12	
BG234600	TBW62	785235514378	6" High wattage white baffle		●			0.2	12	
BG234800	TL60	785235514385	6" Drop Opal shower. non-metallic flange. Wet location listed.				●	1.7	6	
BG234900	TL61	785235514392	6" Glass drop opal shower. Wet location listed.	●				2	6	
BG235000	TL62	785235514408	6" Fresnel shower. non-metallic flange. Wet location listed.		●			0.8	6	
BG235100	TL63	785235514415	6" Domed polycarbonate shower. Wet location listed.		●			0.5	6	
BG235200	TL64	785235514422	6" White Albalite flush glass shower. Wet location listed.	●			●	0.5	6	
BG235600	TO6	785235517188	6" White cone	●	●			0.2	12	
BG235700	TO60C	785235514460	6" Clear anodized reflector	●			●	0.2	12	
BG236000	TO61	785235514477	6" White open splay	●	●		●	0.2	12	
BG236200	TO62	785235514484	6" White open trim	●				0.4	12	
BG236300	TO63WL	785235514491	6" White open shower, wet location listed.	●	●			0.2	12	



LiteBox® 6" Compact Fluorescent IC/AirShield™
Rated Downlights and Trims



Regional Distribution Center Stock List

Part Number	Catalog Number	UPC Code	Description	CA 03	IL 06	PA 10	SC 07	Wt. each	# on Carton	Price
BG1443600	IBX26ICAT	785235429023	6" housing, 26W CFL, IC/AirShield	●				7	8	
BG234200	TB60	785235514330	Stepped black baffle		●			1.2	12	
BG234300	TBW60	785235514347	6" Stepped white baffle	●	●	●	●	0.2	12	
BG234500	TBW61	785235514354	6" Long-neck white baffle	●	●	●	●	0.2	12	
BG234600	TBW62	785235514378	6" High wattage white baffle		●			0.2	12	
BG234800	TL60	785235514385	6" Drop Opal shower. non-metallic flange. Wet location listed.				●	1.7	6	
BG234900	TL61	785235514392	6" Glass drop opal shower. Wet location listed.	●				2	6	
BG235100	TL63	785235514415	6" Domed polycarbonate shower. Wet location listed.		●			0.5	6	
BG235200	TL64	785235514422	6" White Albalite flush glass shower. Wet location listed.	●			●	0.5	6	
BG235600	TO6	785235517188	6" White cone	●	●			0.2	12	
BG235700	TO60C	785235514460	6" Clear anodized reflector	●			●	0.2	12	
BG236000	TO61	785235514477	6" White open splay	●	●		●	0.2	12	
BG236200	TO62	785235514484	6" White open trim	●				0.4	12	

LiteBox® 6" Line Voltage IC Rated Shallow Plenum Housings and Trims

Part Number	Catalog Number	UPC Code	Description	CA 03	IL 06	PA 10	SC 07	Wt. each	# on Carton	Price
BG1467000	IBXS	785235429221	6" housing, line voltage shallow plenum, IC rated, remodel	●				4.12	6	
BG237100	TA61	785235514576	6" White eyeball	●				0.7	6	
BG237400	TBW63	785235514590	6" Stepped white baffle	●				0.2	12	
BG237500	TO65	785235514606	6" White open trim	●				0.2	12	



LiteBox® 4" Low Voltage IC and Non-IC Trims



Regional Distribution Center Stock List

Part Number	Catalog Number	UPC Code	Description	CA 03	IL 06	PA 10	SC 07	Wt. each	# on Carton	Price
BG202100	TA12WBF	785235182034	4" White baffle	●				0.4	6	
BG202200	TA12BF	785235182041	4" Black baffle	●				0.4	6	
BG202300	TA12C	785235182058	4" Clear anodized reflector	●				0.4	6	
BG202500	TA12E	785235182072	4" Eyeball w/ black interior	●				0.5	6	
BG202700	TA12PS	785235182096	4" Pinhole spot	●				0.4	6	



LiteBox® 4" Line Voltage IC/Non-IC Housings and Trims

Part Number	Catalog Number	UPC Code	Description	CA 03	IL 06	PA 10	SC 07	Wt. each	# on Carton	Price
BG977600	BX4-120	785235043618	4" housing, line voltage, non-IC rated, for new construction.	●	●			4.9	6	
BG1475100	IBX4-120	785235430722	4" housing, line voltage, IC rated, for new construction. AirShield™ rated	●			●	6.7	4	
BG202900	RMN4-120	785235182355	4" housing, line voltage, non-IC remodel	●				0.8	6	
BG203100	TA120WBF	785235182133	4" White baffle	●				0.4	6	
BG203200	TA120BF	785235182140	4" Black baffle	●				0.4	6	
BG203400	TA120C	785235182164	4" Clear anodized reflector	●				0.4	6	



LiteBox® 6" & 8" Housings for 9° to 45° Sloped Ceilings and Trims

Part Number	Catalog Number	UPC Code	Description	CA 03	IL 06	PA 10	SC 07	Wt. each	# on Carton	Price
BG977700	SCIBX	785235043625	6" housing, 45° sloped ceiling line voltage, IC rated, for new construction.	●				5	1	
BG204100	TSC6WBF	785235182232	6" White baffle	●				1	6	
BG204300	SCIBX8	785235182256	8" housing, 45° sloped ceiling line voltage, IC rated, for new construction. AirShield™ rated	●				6	1	
BG204600	TSC8WBF	785235044493	8" White baffle	●				2	1	



LiteBox® Accessories

3 SCHEDULED STOCK SHIPMENTS Regional Distribution Center Stock List

Part Number	Catalog Number	UPC Code	Description	CA 03	IL 06	PA 10	SC 07	Wt. each	# on Carton	Price
BG939700	ICBOX	785235041355	Recessed Enclosure for non-IC housings in IC applications				•	1	1	



Downlighting Accessories

Part Number	Catalog Number	UPC Code	Description	CA 03	IL 06	PA 10	SC 07	Wt. each	# on Carton	Price
AE101000	B6	785235208567	Set of two bar hangers for ceiling joists up to 24" centers	•	•	•	•	0.9	1	
BE767500	B24	785235103633	Set of two 24" bar hangers for T-bar ceilings	•	•	•	•	1.6	1	
SA201000	FSDFI	785235514712	Fuse kit for field installation	•	•			1	1	
BE766300	PKT-301	785235156011	Converts bar hangers to supports for 24"x24" T-bar grid	•				0.3	1	

QS 10 10-Day Quick Ship Ordering Guide
Order Limit Per Fixture Selection: 50 Pieces or Less

LBC6	W	WH
HOUSING LBC6 6" cylinder housing	MOUNTING W Wall Mount, Down P Pendant Mount S Surface Mount CM Cord Mount	FINISH OPTIONS WH White BL Black Z Zet BA Brushed Aluminum BZ Bronze

QS7 10-Day Quick Ship Ordering Guide
Order Limit Per Fixture Selection: 50 Pieces or Less

ORDERING INFORMATION

SLELED135KBL

SLELED	35K	BL		
HOUSING	LED COLOR TEMP	HOUSING FINISH	HOUSING OPTION	HOUSING ACCESSORIES
SLELED1 High output 13W LED step light SLELED2 Recessed 13W LED step light SLELED3 Residential 9W LED step light	35K 3500 Kelvin 50K 5000 Kelvin	WH White BL Black Z Zet (Metallic Silver) BZ Bronze	Blank 120V 277 277V	SLMB Dry wall bar hanger installation kit SLD12CMB Concrete mounting box SLELED1 and SLELED2 SLD3CMB Concrete mounting box SLELED3

ORDERING INFORMATION

EXAMPLE: MSLHL30K8 WH

MSL	HL	30K	8	WH
HOUSING	COVER PLATE	LED COLOR	CRI	FINISH
MSL Mini Step Light	HL Horizontal Louver VL Vertical Louver HH Horizontal Hood VH Vertical Hood	30K 3000 Kelvin 40K 4000 Kelvin 50K 5000 Kelvin	8 80 CRI	WH White BL Black BN Brushed Nickel AB Antique Bronze

All ArchiTrak products are stocked except the following:

Catalog Number	Description
AKT6LED3	6" 14W Track Mounted LED 120V-277V
AKTSLED3/4	6" 14W OR 28W Track Mounted
AKTQ24T	Two 24W T5 HO Minature bi-pin HO wall wash. Quest, Zet only
AKTCLS	Current Limiter Device



10-Day Quick Ship Ordering Guide
Order Limit Per Fixture Selection: 50 Pieces or Less

ORDERING INFORMATION		EXAMPLE: AKTMLED25L35K8XFL55BL				
AKTMLED	25L	35K	8	XFL55	BL	
FIXTURE	OUTPUT	COLOR	CRI	BEAM SPREAD	FINISH	
AKTMLED	25L 2500 Delivered Lumens	27K 2700 Kelvin 30K 3000 Kelvin 35K¹ 3500 Kelvin	8 80+ CRI 9¹ 90+ CRI	MD25 25 Degree Cutoff FL35 35 Degree Cutoff XFL55 55 Degree Cutoff	BL Black WH White	

NOTES

¹ 35K not available in 90 CRI

LiteForms®



10-Day Quick Ship Ordering Guide
Order Limit Per Fixture Selection: 50 Pieces or Less

ORDERING INFORMATION		EXAMPLE: LCC6LEDP18L35K8WFL45 BL							
LCC6LED	P	18L	35K	8			WFL45		BL
HOUSING	MOUNTING	LED COLOR TEMP	CRI	VOLTAGE	OPTIONS	BEAM	REFLECTOR FINISH	REFLECTOR COLOR	CYLINDER COLOR
LCC6LED 6" LED Cylinder	P Pendant S Surface CM^{1,2} Cord Mount W Wall Mount	27K 2700 Kelvin 30K 3000 Kelvin 35K 3500 Kelvin 40K 4000 Kelvin 50K 5000 Kelvin	8 80+ CRI	Blank 120V-277V 120V 120 Volt (for 2DM)	Blank Standard 0-10V dimming to 10%	WFL45 Nominal 45 Degree Cutoff	Blank Clear Alzak, Semi-Dif-fuse	BC Painted Black Cone WC Painted White Cone	BA Brushed Aluminum BZ Bronze BL Matte Black WH Matte White Z Zet
		OUTPUT							
		10L 1000 Delivered Lumens 14L 1400 Delivered Lumens 18L 1800 Delivered Lumens							

NOTES

¹ Cord length 6 feet, clear sleeve

² Plastic bushings are grey on white, brushed aluminum and zet cylinder; black on black and bronze