

Price List & Catalog Q4 2016



Table of Contents

SnapNrack Roof Attachments	1
L FOOT FLASHING KITS	1
L FOOT ACCESSORIES	1
METAL ROOF BASE ATTACHMENTS	2
SEAM CLAMP ATTACHMENTS	2
CORRUGATED STRADDLE BLOCK ATTACHMENTS	2
HANGER BOLT	2
TILE ROOF HOOKS	3
STANDOFF KITS	3
TILT KITS	3
STANDOFF MOUNT ACCESSORIES	4
HD STANDOFF KITS	5
HD TILT KITS	5
HD STANDOFF MOUNT ACCESSORIES	5
STANDOFF FLASHINGS	6
LAG SCREWS	6
SnapNrack Rails	7
BLACK STANDARD RAIL SETS	7
SILVER STANDARD RAIL SETS	7
MILL FINISH	8
STANDARD RAIL SETS	8
STANDARD RAIL SPLICES	8
STANDARD RAIL ACCESSORIES	8
SnapNrack Module Attachments	9
MID CLAMPS	9
UNIVERSAL END CLAMP	9
ADJUSTABLE END CLAMPS	9
SnapNrack Accessories	10
MODULE LEVEL POWER ELECTRONICS	10
GROUNDING	10
CONDUIT SUPPORTS	10
JUNCTION BOX	11
WIRE MANAGEMENT	11
CHANNEL NUTS	11
ARRAY SKIRT	12
ARRAY EDGE SCREEN	12
SnapNrack Ground Mount	13
GROUND RAIL	13
GROUND RAIL ACCESSORIES	13
STRUCTURAL FITTINGS	13

SnapRack Roof Attachments

L FOOT FLASHING KITS

Description	Item Number	MSRP	Standard Package Qty	Standard Package Wt
Black L Foot, Black Galv Flashing, and Base Kit	242-92051	\$13.00	20 Kits	25 lbs
Silver L Foot, Black Galv Flashing and Base Kit	242-92050	\$12.25	20 Kits	25 lbs
Black L Foot, Black Alum Flashing and Base Kit	242-92048	\$15.75	20 Kits	18 lbs
Silver L Foot, Silver Alum Flashing and Base Kit	242-92047	\$13.25	20 Kits	18 lbs
L Foot Base and Black Galv Flashing Kit (no L Foot)	242-92049	\$9.00	20 Kits	21 lbs



**BLACK L FOOT, BLACK GALV FLASHING, AND BASE KIT
242-92051**



L Foot Flashing Kits include a L Foot Flashing, L Foot Base and the Composition L Foot.

L FOOT ACCESSORIES

Description	Item Number	MSRP	Standard Package Qty	Standard Package Wt
L Foot Flashing, 12" x 12", Black Galv	232-01060	\$6.25	20 EA	17 lbs
L Foot Flashing, 12" x 12", Black Alum	232-01151	\$9.00	20 EA	10 lbs
L Foot Flashing, 12" x 12", Silver Alum	232-01150	\$7.25	20 EA	10 lbs
L Foot Base (includes flange nut)	242-00016	\$3.25	20 EA	3.6 lbs
Black Composition L Foot (92 Deg)	242-09015	\$4.50	20 EA	4.4 lbs
Silver Composition L Foot (92 Deg)	242-09005	\$3.75	20 EA	4.4 lbs
Black All Purpose L Foot (90 Deg)	242-09020	\$5.25	20 EA	4.4 lbs
Silver All Purpose L Foot (90 Deg)	242-09019	\$4.50	20 EA	4.4 lbs



**SILVER COMPOSITION L FOOT (92 DEG)
242-09005**



**BLACK ALL PURPOSE L FOOT (90 DEG)
242-09020**

SnapNrack Roof Attachments

METAL ROOF BASE ATTACHMENTS

Description	Item Number	MSRP	Standard Package Qty	Standard Package Wt
Metal Roof Base with L Foot	242-02037	\$10.00	20 EA	8 lbs
Metal Roof Base	242-02036	\$6.00	20 EA	3 lbs



METAL ROOF BASE WITH L FOOT
242-02037

SEAM CLAMP ATTACHMENTS

Description	Item Number	MSRP	Standard Package Qty	Standard Package Wt
Standard Base Seam Clamp with L Foot	242-05150	\$12.50	20 EA	13 lbs
Standard Base Seam Clamp	242-05000	\$7.25	20 EA	8 lbs
Wide Base Seam Clamp with L Foot	242-05151	\$13.50	20 EA	14 lbs
Wide Base Seam Clamp	242-05001	\$8.25	20 EA	9 lbs



STANDARD BASE SEAM CLAMP WITH L FOOT
242-05150

CORRUGATED STRADDLE BLOCK ATTACHMENTS

Description	Item Number	MSRP	Standard Package Qty	Standard Package Wt
Corrugated Straddle Block with L Foot	242-02046	\$8.75	20 Kits	11 lbs
Corrugated Straddle Block	232-02421	\$3.75	20 EA	6 lbs



CORRUGATED STRADDLE BLOCK WITH L FOOT
242-02046

HANGER BOLT

Description	Item Number	MSRP	Standard Package Qty	Standard Package Wt
Hanger Bolt Clamp	242-01102	\$5.50	20 EA	4 lbs



Hanger Bolt Clamp
242-01102



WIDE BASE SEAM CLAMP WITH L FOOT
242-05151

SnapRack Roof Attachments

TILE ROOF HOOKS

Description	Item Number	MSRP	Standard Package Qty	Standard Package Wt
Flat Tile Hook	242-02045	\$15.00	20 EA	24 lbs
Universal Tile Hook	242-02044	\$31.75	20 EA	44 lbs
Flexible Flashing Kit for 20 Flat Tile Hooks	242-92001	\$140.00	1 EA	3 lbs



STANDOFF KITS

Description	Item Number	MSRP	Standard Package Qty	Standard Package Wt
Standoff Kit, 5 1/2"	242-92057	\$11.75	20 Kits	18 lbs
Standoff Kit, 7"	242-92059	\$12.50	20 Kits	20 lbs
Standoff Kit, 8 1/2"	242-92061	\$13.25	20 Kits	22 lbs
Standoff Kit, 10"	242-92055	\$14.00	20 Kits	22 lbs



Standoff Kits include a 1-Hole Base, Standoff Shaft, Rubber Rain Collar, and a Standoff Clamp Assembly.

TILT KITS

Description	Item Number	MSRP	Standard Package Qty	Standard Package Wt
10° Tilt Kit w/ 5 1/2" and 10" Standoffs	242-92077	\$31.75	20 Kits	51 lbs
10° - 45° Variable Tilt Hardware Kit	242-92083	\$11.00	20 Kits	12 lbs



Tilt Kits include two standoff mounts each comprised of a 1-Hole Base, Standoff Shaft, Rubber Rain Collar, and a Standoff Clamp and L Foot Assembly.

The 10° - 45° Variable Tilt Hardware Kit can be combined with a pair of Standoff Kits and a short piece of Standard Rail to achieve a wide range of tilt angles.



Tilt angles are relative to the roof pitch and assume a 30" North-South attachment spacing.



SnapNrack Roof Attachments

STANDOFF MOUNT ACCESSORIES

Description	Item Number	MSRP	Standard Package Qty	Standard Package Wt
Standoff Base, 1-Hole	242-00017	\$3.75	20 EA	6 lbs
Standoff Base, 4-Hole	232-02412	\$3.75	20 EA	3.6 lbs
Standoff Shaft, 3"	232-01048	\$2.00	20 EA	4.2 lbs
Standoff Shaft, 5 1/2"	232-01054	\$3.75	20 EA	8 lbs
Standoff Shaft, 7"	232-01055	\$4.50	20 EA	10 lbs
Standoff Shaft, 8 1/2"	232-01056	\$5.25	20 EA	12 lbs
Standoff Shaft, 10"	232-01057	\$6.00	20 EA	14 lbs
1" Standoff Spacer w/ Connector Screw	242-92081	\$1.75	20 EA	1.6 lbs
Rubber Rain Collar	232-01000	\$1.25	20 EA	0.7 lbs
Standoff Clamp Assembly	242-04100	\$3.00	20 EA	4.2 lbs
Standoff Clamp and L Foot Assembly	242-09002	\$6.25	20 EA	8 lbs



1" STANDOFF SPACER
w/ CONNECTOR SCREW
242-92081



STANDOFF CLAMP
AND L FOOT ASSEMBLY
242-09002



STANDOFF SHAFT, 5 1/2"
232-01054



STANDOFF CLAMP ASSEMBLY
242-04100

SnapNrack Roof Attachments

HD STANDOFF KITS

Description	Item Number	MSRP	Standard Package Qty	Standard Package Wt
HD Standoff Kit, 7"	242-92073	\$14.50	20 Kits	23 lbs
HD Standoff Kit, 12"	242-92074	\$17.50	20 Kits	31 lbs
HD Standoff Kit, 18"	242-92075	\$21.25	20 Kits	40 lbs



HD Standoff Kits include a 6-Hole HD Base, HD Standoff Shaft, Rubber Rain Collar, and a Standoff Clamp assembly.



HD Standoff Kit, 12"
242-92074

HD TILT KITS

Description	Item Number	MSRP	Standard Package Qty	Standard Package Wt
20° HD Tilt Kit w/ 7" and 18" HD Standoffs	242-92079	\$42.25	20 Kits	70 lbs
10° - 45° Variable Tilt Hardware Kit	242-92083	\$8.00	20 Kits	12 lbs



HD Tilt Kits include two standoff mounts each comprised of a 6-Hole HD Base, HD Standoff Shaft, Rubber Rain Collar, and a Standoff Clamp and L Foot Assembly.

The 10° - 45° Variable Tilt Hardware Kit can be combined with a pair of HD Standoff Kits and a short piece of Standard Rail to achieve a wide range of tilt angles.



Tilt angles are relative to the roof pitch and assume a 30" North-South attachment spacing.

HD STANDOFF MOUNT ACCESSORIES

Description	Item Number	MSRP	Standard Package Qty	Standard Package Wt
HD Standoff Base, 6-Hole	232-02413	\$5.75	20 EA	9 lbs
HD Standoff Shaft, 7"	232-01062	\$4.50	20 EA	10 lbs
HD Standoff Shaft, 12"	232-01063	\$7.50	20 EA	18 lbs
HD Standoff Shaft, 18"	232-01021	\$11.25	20 EA	26 lbs
Rubber Rain Collar	232-01000	\$1.25	20 EA	0.7 lbs
Standoff Clamp Assembly	242-04100	\$3.00	20 EA	4.2 lbs
Standoff Clamp and L Foot Assembly	242-09002	\$6.25	20 EA	8 lbs



RUBBER RAIN COLLAR
232-01000

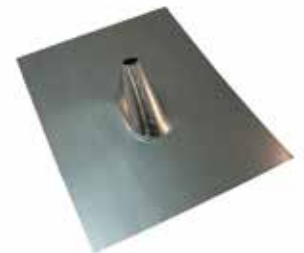
SnapNrack Roof Attachments

STANDOFF FLASHINGS

Description	Item Number	MSRP	Standard Package Qty	Standard Package Wt
Standoff Flashing, Verde 1.0STF, Skinny Cone for Tile, 20" x 20" x 3", Dead Soft Alum	175-05001	\$16.25	25 EA	25 lbs
Standoff Flashing, Offset Cone for 1-Hole Base on Comp, 12" x 15" x 4", Galv (Box of 25)	175-05012	\$330.00	1 Box	27 lbs
Standoff Flashing, Offset Cone for 1-Hole Base on Flat Tile, 18 3/4" x 15" x 4", Galv	131-01216	\$13.00	20 EA	17 lbs
Standoff Flashing, Oatey 11830, No Caulk Rubber Cone, 9" x 12 1/2", Galv	015-00162	\$11.00	12 EA	8 lbs
Standoff Flashing, Verde 1.0SSO, Deck Level for 1-Hole Base, 10" x 12" x 1", Galv	175-05005	\$5.75	25 EA	17 lbs



**Standoff Flashing,
Oatey No Caulk
015-00162**



**Standoff Flashing,
4" Offset Cone, 18 3/4" x 15"
131-01216**

LAG SCREWS

Description	Item Number	MSRP	Standard Package Qty	Standard Package Wt
Lag Screw and Washer, 5/16" x 3 1/2", SS (Pack of 100)	014-06508	\$124.25	1 Pack	7 lbs
Lag Screw and Washer, 5/16" x 5", SS (Pack of 100)	014-06509	\$198.00	1 Pack	9 lbs

SnapNrack Rails

BLACK STANDARD RAIL SETS

Description	Item Number	MSRP	Standard Package Qty	Standard Package Wt
Standard Rail Set, 122", Black (Box of 2)	015-09816	\$178.00	1 Box	20 lbs
Standard Rail Set, 122", Black (Box of 6)	015-09822	\$472.25	1 Box	51 lbs
Standard Rail, 122", Black (Bundle of 112, priced as each)	232-01067	\$71.25	112 EA	900 lbs
Standard Rail Set, 162", Black (Box of 2)	015-09818	\$223.00	1 Box	29 lbs
Standard Rail Set, 162", Black (Box of 6)	015-09826	\$599.50	1 Box	66 lbs
Standard Rail, 162", Black (Bundle of 112, priced as each)	232-01069	\$90.50	112 EA	1,200 lbs



Standard Black Rail
015-09816

SILVER STANDARD RAIL SETS

Description	Item Number	MSRP	Standard Package Qty	Standard Package Wt
Standard Rail Set, 122", Silver (Box of 2)	015-09814	\$144.00	1 Box	20 lbs
Standard Rail Set, 122", Silver (Box of 6)	015-09813	\$369.00	1 Box	51 lbs
Standard Rail, 122", Silver (Bundle of 112, priced as each)	232-01068	\$55.00	112 EA	900 lbs
Standard Rail Set, 162", Silver (Box of 2)	015-09817	\$186.00	1 Box	29 lbs
Standard Rail Set, 162", Silver (Box of 6)	015-09824	\$489.00	1 Box	66 lbs
Standard Rail, 162", Silver (Bundle of 112, priced as each)	232-01070	\$73.25	112 EA	1,200 lbs



Standard Silver Rail
015-09814

 Rails are anodized black or clear to achieve a lasting finish and the desired color.

SnapNrack Rails

MILL FINISH STANDARD RAIL SETS

Description	Item Number	MSRP	Standard Package Qty	Standard Package Wt
Standard Rail, 122", Mill Finish (Bundle of 112, priced as each)	232-02112	\$49.50	112 EA	900 lbs
Standard Rail, 162", Mill Finish (Bundle of 112, priced as each)	232-02113	\$65.00	112 EA	1,200 lbs

! Appearance of mill finish products may vary and change over time.

STANDARD RAIL SPLICES

Description	Item Number	MSRP	Standard Package Qty	Standard Package Wt
Bonding Standard Rail Splice, Black	242-04015	\$11.50	20 EA	13 lbs
Bonding Standard Rail Splice, Silver	242-04014	\$10.75	20 EA	13 lbs

STANDARD RAIL ACCESSORIES

Description	Item Number	MSRP	Standard Package Qty	Standard Package Wt
Standard Rail End Cap	232-01023	\$2.25	20 EA	0.8 lbs
UEC Rail Cutting Tool	232-02284	\$15.00	20 EA	12 lbs



**Bonding Standard Rail Splice,
Black
242-04015**



**Standard Rail End Cap
232-01023**



**UEC Rail Cutting Tool
232-02284**

SnapNrack Module Attachments

MID CLAMPS

Description	Item Number	MSRP	Standard Package Qty	Standard Package Wt
Bonding Mid Clamp, 1.20" - 1.48", Black	242-02053	\$4.25	20 EA	3 lbs
Bonding Mid Clamp, 1.20" - 1.48", Silver	242-02050	\$3.75	20 EA	3 lbs
Bonding Mid Clamp, 1.31" - 1.77", Black	242-02054	\$4.25	20 EA	3.2 lbs
Bonding Mid Clamp, 1.31" - 1.77", Silver	242-02051	\$3.75	20 EA	3.2 lbs
Bonding Mid Clamp, 1.50" - 2.00", Black	242-02055	\$4.25	20 EA	3.3 lbs
Bonding Mid Clamp, 1.50" - 2.00", Silver	242-02052	\$3.75	20 EA	3.3 lbs
Bonding Mid Clamp, 1.95" - 2.23", Black	242-02057	\$4.25	20 EA	3.4 lbs
Bonding Mid Clamp, 1.95" - 2.23", Silver	242-02056	\$3.75	20 EA	3.4 lbs



**Bonding Mid Clamp,
1.31" - 1.77", Black
242-02054**

UNIVERSAL END CLAMP

Description	Item Number	MSRP	Standard Package Qty	Standard Package Wt
Universal End Clamp	242-02215	\$5.75	20 EA	6 lbs



**Universal End Clamp
242-02215**

ADJUSTABLE END CLAMPS

Description	Item Number	MSRP	Standard Package Qty	Standard Package Wt
Bonding Adjustable End Clamp, 1.20" - 1.48", Black	242-02067	\$7.50	20 EA	3.6 lbs
Bonding Adjustable End Clamp, 1.20" - 1.48", Silver	242-02065	\$6.75	20 EA	3.6 lbs
Bonding Adjustable End Clamp, 1.49" - 2.00", Black	242-02068	\$7.50	20 EA	3.6 lbs
Bonding Adjustable End Clamp, 1.49" - 2.00", Silver	242-02066	\$6.75	20 EA	3.6 lbs



**Bonding Adjustable End Clamp,
1.49" - 2.00", Black
242-02068**

SnapNrack Accessories

MODULE LEVEL POWER ELECTRONICS

Description	Item Number	MSRP	Standard Package Qty	Standard Package Wt
MLPE Rail Attachment Kit	242-92093	\$3.00	20 Kits	3.2 lbs



MLPE Rail Attachment Kit includes over-sized Fender Washer, Channel Nut and serrated Flange Bolt.



**MLPE Rail Attachment Kit
242-92093**

GROUNDING

Description	Item Number	MSRP	Standard Package Qty	Standard Package Wt
Ground Lug R, 6-12 AWG	242-02101	\$5.00	20 EA	5 lbs
Lay-in Lug w/ Bolt and Keys Lock Nut, 4-14 AWG (Pack of 10)	051-03418	\$45.00	1 Pack	0.72 lbs



**Ground Lug R for 6-12 AWG
242-02101**

CONDUIT SUPPORTS

Description	Item Number	MSRP	Standard Package Qty	Standard Package Wt
Conduit Support for Tile, 3/4" EMT	242-02104	\$6.00	20 EA	1.5 lbs
Conduit Support Kit for Comp, 3/4" EMT	242-02106	\$11.00	20 Kits	22 lbs



**Conduit Support Kit for Comp,
3/4" EMT
242-02106**



**Conduit Support for Tile, 3/4"
EMT
242-02104**

SnapNrack Accessories

JUNCTION BOX

Description	Item Number	MSRP	Standard Package Qty	Standard Package Wt
Junction Box R	242-01104	\$30.00	1 EA	1.2 lbs



Junction Box R
242-01104

WIRE MANAGEMENT

Description	Item Number	MSRP	Standard Package Qty	Standard Package Wt
4-Wire Clamp for Rail	242-02102	\$3.75	20 EA	2.4 lbs
Trunk Cable Clamp for Rail	242-02103	\$3.75	20 EA	2.7 lbs
Snap-in Wire Retention Clip	232-01106	\$0.50	20 EA	0.02 lbs
48" Rail Cover, Silver	232-01033	\$7.50	20 EA	13 lbs



Trunk Cable Clamp & 4-Wire Clamp for Rail
242-02103
242-02102



Snap-in Wire Retention Clip
232-01106

CHANNEL NUTS

Description	Item Number	MSRP	Standard Package Qty	Standard Package Wt
Bonding Channel Nut	232-02009	\$1.50	20 EA	0.90 lbs
Original Channel Nut	232-02005	\$0.75	20 EA	0.90 lbs



Bonding and Original Channel Nuts
232-02009
232-02005

SnapNrack Accessories

ARRAY SKIRT

Description	Item Number	MSRP	Standard Package Qty	Standard Package Wt
Skirt Frame Mount	242-92211	\$5.00	20 EA	4.6 lbs
Skirt Splice	232-01251	\$2.50	20 EA	2.6 lbs
Skirt End Cap Pair	232-01250	\$2.25	20 EA	1.0 lbs
Skirt Kit, 162" (2) + Mounts (8) + Splice (1) + End Cap Pairs (2)	015-11788	\$251.00	1 Kit	27 lbs
Skirt, 162" (Bundle of 60, priced as each)	232-01259	\$82.25	60 EA	550 lbs



**Skirt, 162" (Bundle of 60)
232-01259**



**Skirt Frame Mount
242-92211**



**Skirt Splice
232-01251**



**Skirt End Cap Pair
232-01250**

ARRAY EDGE SCREEN

Description	Item Number	MSRP	Standard Package Qty	Standard Package Wt
Array Edge Screen Kit, 4" x 100', 40 Clips	015-11176	\$160.00	1 Kit	14 lbs
Array Edge Screen Kit, 8" x 100', 40 Clips	015-11177	\$255.00	1 Kit	27 lbs
Array Edge Screen Clip, 4"	232-03993	\$2.25	20 EA	2 lbs
Array Edge Screen Clip, 8"	232-03994	\$2.75	20 EA	4 lbs
Add-A-Lip Box Frame Adapter, Black	242-01101	\$6.75	20 EA	6 lbs



**Array Edge Screen Kit,
4" x 100', 40 Clips
015-11176**



Array Edge Screen Kits include 100 ft. of Array Edge Screen and 40 Array Edge Screen Clips.



Add-A-Lip Box Frame Adapter is for use with module frames that do not have a bottom lip for attaching the Array Edge Screen Clip.

SnapNrack Ground Mount

GROUND RAIL

Description	Item Number	MSRP	Standard Package Qty	Standard Package Wt
Ground Rail Set, 122", Silver (Box of 4)	015-09839	\$315.00	1 Box	38 lbs
Ground Rail, 122", Silver (Bundle of 112, priced as each)	232-02183	\$71.00	112 EA	1,252 lbs
Ground Rail Set, 162", Silver (Box of 2)	015-09819	\$202.00	1 Box	29 lbs
Ground Rail Set, 162", Silver (Box of 4)	015-09855	\$360.00	1 Box	49 lbs
Ground Rail, 162", Silver (Bundle of 112, priced as each)	232-01072	\$83.50	112 EA	1,790 lbs



Ground Rail Set, 122", Silver
015-09839



Ground Rail End Cap
232-01043

GROUND RAIL ACCESSORIES

Description	Item Number	MSRP	Standard Package Qty	Standard Package Wt
Ground Rail End Cap	232-01043	\$2.75	20 EA	1.6 lbs

STRUCTURAL FITTINGS

Description	Item Number	MSRP	Standard Package Qty	Standard Package Wt
Bonding Pipe Clamp for 1 1/2"	242-09004	\$7.00	20 EA	9 lbs
Single Socket Tee, Hollaender (5E-8), 1 1/2", AL-MG	172-05800	\$12.50	1 EA	0.55 lbs
Single Adjustable Socket Tee, Hollaender (17-8), 1 1/2", AL-MG	172-05803	\$18.75	1 EA	1.1 lbs
Double Adjustable Socket Tee, Hollaender (19E-8), 1 1/2", AL-MG	172-05804	\$24.00	1 EA	0.85 lbs
Rectangular Base Flange, Hollaender (46-8), 1 1/2", AL-MG	172-05807	\$18.50	1 EA	0.55 lbs
Plug End, Hollaender (62-8), 1 1/2" Sched 40, AL	172-05808	\$5.00	1 EA	0.16 lbs
Plug End, Hollaender (62P-8), 1 1/2" Sched 40, Plastic	172-05811	\$4.00	1 EA	0.05 lbs



Bonding Pipe Clamp for 1 1/2"
242-09004



Single Socket Tee, Hollaender
172-05800

Place Your Order

Contact your SnapNrack distributor, which can be found at www.SnapNrack.com/where-to-buy, contact us directly at contact@SnapNrack.com or call us Toll Free at (877) 732-2860.

In addition to SnapNrack's online support, the SnapNrack distributors all have trained knowledgeable staff that can provide product design and ordering assistance.

If you have questions that the distributor is unable to answer please contact us directly at contact@SnapNrack.com or call us Toll Free at (877) 732-2860.

Warranty

All SnapNrack products are covered by a 20-year limited warranty. For complete details please visit www.snapnrack.com/resources.

MSRP

Prices published in this document are for reference only and are Manufacturer Suggested Retail Prices. All prices are subject to change without prior notice. The MSRP listed is for each item per the description. The Standard Package Qty is how the items are typically packaged and serve as the preferred order multiple for each item.