



# SustainabLEDesign

Guía General  
de productos LED

Versión 1.0



## Cooper Lighting

by **EATON**

Ametrix  
AtLite  
Corelite  
Fail-Safe  
Halo LED  
Invue  
io LED  
Iris  
Lumark  
Lumière

McGraw-Edison  
Metalux  
MWS  
Neo-Ray  
Portfolio  
Regent  
RSA  
Streetworks  
Sure-Lites  
Shaper

# Tecnología Squar

Eficiencia Superior y control

## AccuLED Optics™

Cuenta con una eficiencia mayor al 95%, la patente de sistema óptico AccuLED es un 30% mas eficiente que el sistema óptico tradicional HID.

Disponble en doce distribuciones de haz, el sistema óptico de AccuLed proporciona flexibilidad junto con el rendimiento requerido para aplicaciones en el aire libre.



Los diseñadores en iluminación, arquitectos, e ingenieros prefieren fuentes de luz que proporcionan un balance y distribución de la luz cálida y blanca.

Muchas de las Soluciones LED estandarizan en una temperatura de color correlacionada (CCT) en un frio azul 6000K-6500K temperatura de color correlacionada (CCT) para un flujo luminoso.

Ahorro de  
**ENERGÍA+COMPROMISO**  
con el medio ambiente



### LARGA VIDA

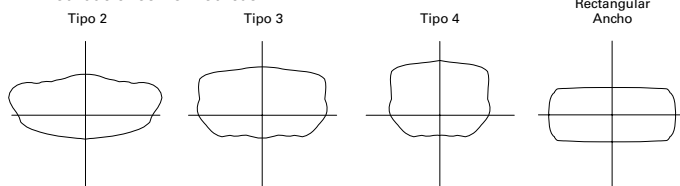
- Temperaturas ambiente desde -40°C a 40°C
- Sistema de protección hasta 10KV en aplicación estándar
- Vida de 60k horas a 90% salida luminosa a 40°C
- 120-277V, 347V o 480V de operación

### Potencia y lumens entregados por Square

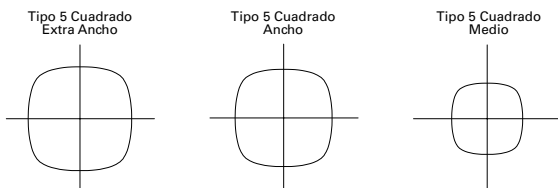
Números de LightBARs	Power (Watts)	DISTRIBUCIÓN										
		T2	T3	T4	SL2	SL3	SL4	5MQ	5WQ	5XQ	RW	SLL/SLR
21 LED LIGHTBAR												
1	51	3,873	3,858	3,699	3,795	3,748	3,811	4,070	4,046	3,947	3,867	3,625
2	103	8,372	8,340	7,995	8,201	8,101	8,237	8,797	8,745	8,531	8,359	7,835
3	154	12,245	12,198	11,694	11,996	11,849	12,048	12,867	12,791	12,478	12,226	11,459
4	206	16,131	16,069	15,405	15,803	15,609	15,871	16,951	16,850	16,437	16,106	15,096
5	257	19,993	19,916	19,093	19,586	19,345	19,671	21,009	20,884	20,373	19,962	18,710
6	309	23,493	23,403	22,436	23,015	22,732	23,115	24,687	24,540	23,940	23,457	21,986
7	360	27,458	27,353	26,222	26,899	26,569	27,016	28,853	28,681	27,979	27,415	25,696
8	412	31,329	31,209	29,919	30,692	30,314	30,824	32,921	32,725	31,924	31,280	29,319
9	463	35,095	34,961	33,516	34,382	33,959	34,530	36,879	36,659	35,762	35,041	32,844
10	510	38,720	38,572	36,978	37,933	37,467	38,097	40,688	40,446	39,456	38,660	36,236
B12	285	27,194	27,091	26,369	25,971							

### 12 Optical Distributions

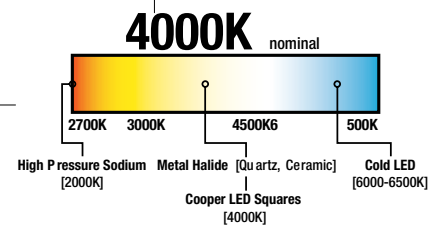
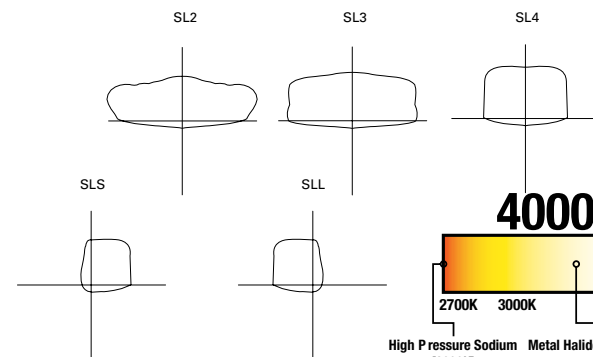
4 Distribuciones Asimétricas



3 Distribuciones Simétricas



5 Spill Light Eliminator Distribution





### LARGA VIDA

- Temperaturas ambiente desde -30°C a 40°C
- Sistema de protección hasta 10KV en aplicación estándar
- Vida de 50k horas a 70% salida luminosa a 40°C
- 120-277V, 347V o 480V de operación

## Potencia y lumens entregados por LightBAR en tecnología "B"

Números de LightBARs	Power (Watts)	DISTRIBUCIÓN											
		T2	T3	T3S	T4	SL2	SL3	SL4	5MQ	5WQ	5XQ	RW	SLR/SLL
<b>21 LED LIGHTBAR</b>													
B02	51	4,512	4,495	4,375	4,309	4,421	4,366	4,440	4,741	4,714	4,598	4,505	4,223
B03	73	6,832	6,806	6,625	6,525	6,693	6,611	6,722	7,179	7,137	6,962	6,822	6,394
B04	95	9,295	9,259	9,013	8,877	9,106	8,995	9,146	9,767	9,710	9,472	9,281	8,698
B05	124	11,350	11,307	11,006	10,840	11,120	10,984	11,168	11,927	11,857	11,567	11,333	10,622
B06	146	13,787	13,735	13,369	13,167	13,508	13,342	13,566	14,488	14,403	14,050	13,767	12,903
B07	168	15,951	15,891	15,467	15,234	15,628	15,436	15,696	16,762	16,664	16,256	15,927	14,928
B08	190	17,811	17,744	17,271	17,010	17,450	17,236	17,526	18,717	18,607	18,151	17,784	16,669
B09	219	20,664	20,586	20,037	19,735	20,246	19,997	20,333	21,715	21,587	21,059	20,633	19,339
B10	241	23,047	22,960	22,348	22,011	22,580	22,303	22,678	24,219	24,076	23,487	23,012	21,569
B11	263	25,223	25,127	24,458	24,089	24,712	24,408	24,818	26,505	26,349	25,704	25,185	23,609
B12	285	27,194	27,091	26,369	25,971	26,643	26,315	26,758	28,576	28,408	27,712	27,152	25,449

## Potencia y lumens entregados por LightBAR en tecnología "C"

Number of LightBARs	Power (Watts)	DISTRIBUCIÓN											
		T2	T3	T3S	T4	SL2	SL3	SL4	5MQ	5WQ	5XQ	RW	SLR/SLL
<b>7 LED LIGHTBAR</b>													
C02	54	3,668	3,654	3,557	3,503	3,594	3,550	3,610	3,855	3,832	3,738	3,663	3,433
C03	77	5,554	5,533	5,386	5,305	5,442	5,375	5,465	5,837	5,802	5,660	5,546	5,198
C04	101	7,557	7,528	7,327	7,217	7,404	7,313	7,435	7,941	7,894	7,701	7,545	7,072
C05	131	9,228	9,193	8,948	8,813	9,041	8,930	9,080	9,697	9,640	9,404	9,214	8,636
C06	154	11,209	11,167	10,869	10,705	10,982	10,847	11,030	11,779	11,710	11,423	11,192	10,490
C07	178	12,969	12,919	12,575	12,385	12,706	12,550	12,761	13,628	13,548	13,216	12,949	12,137
C08	202	14,481	14,426	14,041	13,830	14,187	14,013	14,249	15,217	15,127	14,757	14,459	13,552
C09	232	16,800	16,737	16,291	16,045	16,460	16,258	16,531	17,654	17,550	17,121	16,775	15,723
C10	255	18,738	18,667	18,169	17,895	18,358	18,133	18,437	19,690	19,574	19,095	18,709	17,536
C11	279	20,506	20,429	19,884	19,584	20,091	19,844	20,178	21,549	21,422	20,898	20,475	19,191
C12	303	22,109	22,025	21,438	21,114	21,661	21,395	21,754	23,232	23,096	22,530	22,075	20,690

# Area / Site



**RC LED Cobrahead**  
Lumark



**RL LED Cobrahead**  
Lumark



**VXS / VXM**  
InVue



**TLM Talon LED**  
Mc Graw-Edison



**VTS Ventus LED**  
Mc Graw-Edison



**RV Ridgeview LED**  
Lumark



**GLEON Galleon LED**  
Mc Graw-Edison

**GAN Galleon LED**  
Streetworks



**NVN Navion**  
Streetworks

**NAV Navion**  
LUMARK



**XNV 2 LED**  
Streetworks



**Trailmaster**  
LUMARK  
**XNV**  
Streetworks



# Decorative / Colonial



**TRR Traditionaire**  
Mc Graw-Edison



**UTLD Traditionaire LED**  
Lumark



**GLC Generation**  
Mc Graw-Edison



**GAR Generation**  
Mc Graw-Edison



**MSA Mesa LED**  
InVue



**ECL/ECM Epic**  
InVue



**GAT Generation**  
Mc Graw-Edison



**GAT Generation Avenue**  
Mc Graw-Edison



**EMM/EML Epic**  
InVue

# Wall Mount / Muros



**ISW Impact Elite Small Wedge**  
Mc Graw-Edison



**ENC Entri LED**  
InVue



**ENT Entri LED**  
InVue



**ENV Entri LED**  
InVue



**ISC Impact Elite Small Cylinder**  
Mc Graw-Edison



**ISS Impact Elite Small Quarter Sphere**  
Mc Graw-Edison



**IST Impact Elite Small Trapezoid**  
Mc Graw-Edison



**WP Wal-Pak Full Cutoff Door**  
Lumark



**WP Wal-Pak Flat Lens**  
Lumark



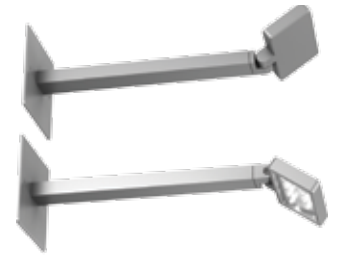
**WP Wal-Pak Glass**  
Lumark



**Crosstour LED**  
Lumark



**Crosstour MAXX LED**  
Lumark



**Eon 303 S1**  
Lumiere



**Cambria 922**  
Lumiere



**Westwood 904 and 904-2**  
Lumiere



**Eon 303 W1**  
Lumiere



**Eon 303 W2**  
Lumiere

# Floodlighting / Proyectores



**FSS1530LPCES**  
Consumer Products



**VFS/VFM Vision Flood**  
InVue



**Crosstour LED Floodlight kit**  
**\*XTORFLD-KNC**  
Lumark



**Crosstour LED Floodlight kit**  
**\*XTORFLD-TRN**  
Lumark



**MSS11315LES**  
Consumer Products



**MST27920LES** (270°)Energy Star  
**MST18920L** (180°)  
Consumer Products



**FFL LED**  
Fail Safe



**MAQ Marquis LED**  
Mc Graw-Edison

\* No incluye luminaria

# Parking Garage



VPL Valet LED  
Mc Graw-Edison



Quadcast LED  
Lumark



TopTier LED  
Mc Graw-Edison

# Canopy / Gasolineras



LRC LED  
Mc Graw-Edison





# Security / Seguridad



**LED 110**  
Consumer Products



**Led 120**  
Consumer Products



**LED 130**  
Consumer Products



**LED 125**  
Consumer Products



**LED 130 C**  
Consumer Products



**MSLED180**  
Consumer Products



**Suburbana LED**  
Metalux



**MSLED 18060**  
Consumer Products



**LED 60**  
Consumer Products



**LED 117**  
Consumer Products



**LEDWK60**  
Consumer Products



**LEDWKT260**  
Consumer Products



**FSL230L**  
Consumer Products



**Caretaker**  
Lumark

# Pathway / Luz de cortesía



**SRF**  
InVue



**SQF**  
InVue



**Rio 1237 SQ**  
Lumiere



**Rio 1237L RD**  
Lumiere



**SRS**  
InVue



**SQS**  
InVue



**Rio 1237C RD**  
Lumiere



**Rio 1237C SQ**  
Lumiere

# Pathway / Luz de cortesía



Luxrail  
io LED



Plane Step  
io LED



Rio 1237L SQ  
Lumiere



Rio 1237 RD  
Lumiere



Rio 1235 RD  
Lumiere



Rio 1235L RD  
Lumiere



Rio 1235E RD  
Lumiere



Rio 1235C RD  
Lumiere



Rio 1235L SQ  
Lumiere



Rio 1235C SQ  
Lumiere



Rio 1235 SQ  
Lumiere



Rio 1235E SQ  
Lumiere

# Sign Light / Anuncios Espectaculares



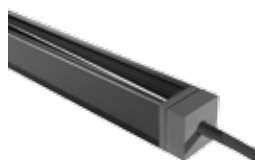
MQS Marquis LED  
Streetworks



# Cove / Fachadas



Raye  
iO LED



Line .75Symmetric  
iO LED



Line .75 Asymmetric  
iO LED



Line 2.0 Asymmetric  
iO LED



Line 2.0 Symmetric  
iO LED

# Landscape / Paisaje



Cambria 203  
Lumiere



Cambria 213  
Lumiere



Cambria 230  
Lumiere



Sanibel 301  
Lumiere



Boca 696  
Lumiere



Luxrail  
io LED

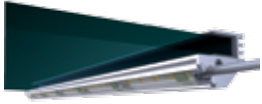


Koi k2  
io LED



Koi k3  
io LED

# Specialty / Especialidades



**LEDge**  
io LED



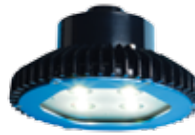
**MCL, MSN, MHN, MLN,  
Nightlights**  
Fail Safe



**Radii 38 SAA**  
io LED



**Radii 38 SMD**  
io LED



**FLL LED**  
Fail Safe



**FHL LED**  
Fail Safe



**Balance Beam**  
io LED



**Plane Custom**  
io LED



**Plane Marker**  
io LED



**Closet Rod 1.5**  
io LED



**Plane Cube**  
io LED



**Plane Pyramid**  
io LED



**Tile G2**  
io LED



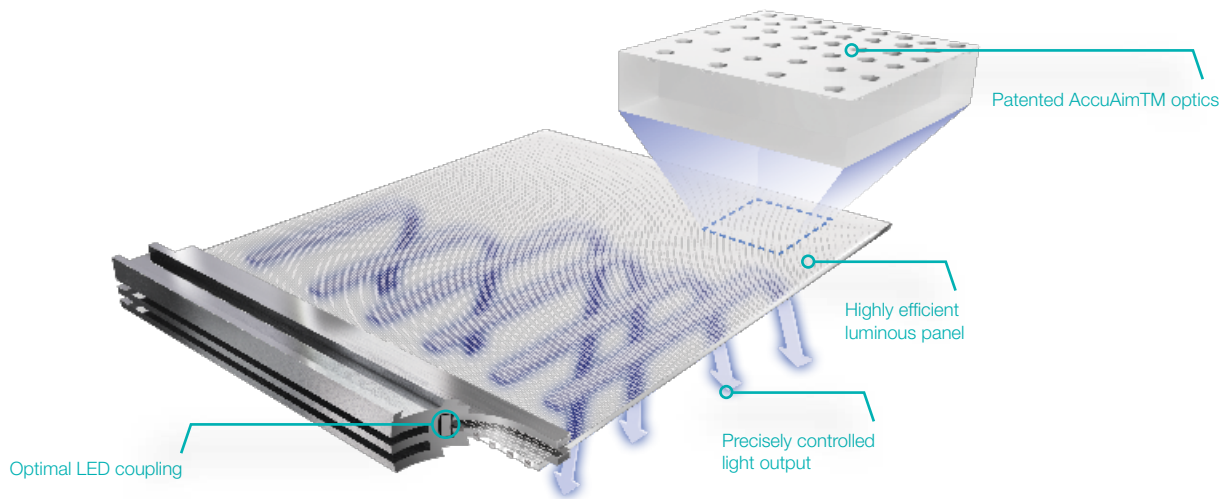
**22 DW LED**  
Neo-Ray

# Tecnología WaveStream

La tecnología Wave Stream está perfeccionando las aplicaciones de iluminación y estética. Proporcionando un diseño innovador con altos niveles de energía, contando con un rendimiento óptico y de control de brillo.

La tecnología WaveStream, esta basada en un panel de acrílico alineado con los Accuaim LEDs para tener una óptica moldeada en el mismo, de esta forma se reduce el deslumbramiento y se tiene una apariencia luminosa más uniforme dando como resultado mayor eficiencia.

La tecnología WaveStream se trata de una hoja de acrílico moldeado por inyección con una óptica microscópica dentro de ella para transmitir la luz a través de su superficie ofreciendo un control óptico superior en un diseño arquitectónico.



## Eficiencia energética

La alta eficiencia del sistema proporciona el máximo ahorro energético.

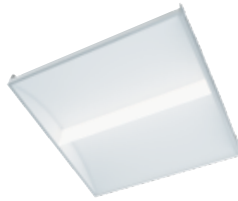
## Control óptico

La colocación precisa de la luz ofrece un patrón de salida óptima.

## Productos con tecnología WaveStream



Encounter  
Metalux



SkyRidge  
Metalux



Divide  
Corelite



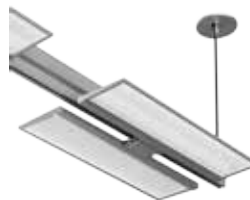
TopTier  
McGraw-Edison



SLD 4" y 6"  
Halo



SkyBar  
Metalux



Index  
Neoray

# Direct / Indirect



**Accord LED**  
Metalux



**ArcLine**  
Metalux



**Encounter**  
Metalux



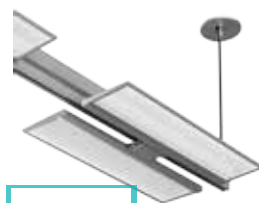
**GR LED**  
Metalux



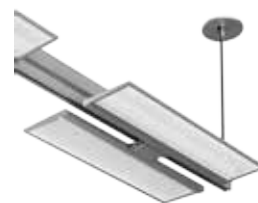
**SkyRidge**  
Metalux



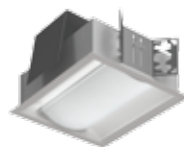
**Divide**  
Corelite



**Index**  
Neoray



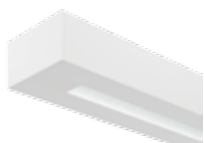
**23DP Streight & Narrow**  
Neoray



**Clas R mini/Class Zmini**  
Corelite



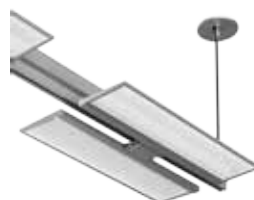
**Class R3/ Class Z3**  
Corelite



**Element Micro**  
Corelite



**Loft Micro Wall**  
Corelite



**MAO LED Medical**  
Fail Safe

**JAYLUM**  
Corelite

# Direct / Indirect



**Arrowlinear Individ.  
Linear LED Ceiling**  
Ametrix



**Arrowlinear Linear LED  
(1 Way)**  
Ametrix



**Arrowlinear Cont.  
Linear LED Wall**  
Ametrix



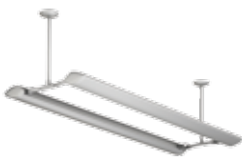
**Arrowlinear Individ.  
Linear LED Base**  
Ametrix



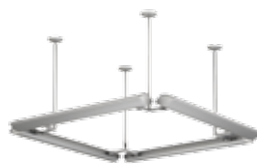
**Arrowlinear Individ.  
Linear LED Cantilever**  
Ametrix



**Arrowlinear Cont.  
Linear LED Ceiling**  
Ametrix



**Arrowlinear Linear LED  
(2 Way)**  
Ametrix



**Arrowlinear Linear LED  
(4 Way)**  
Ametrix



**Arrowlinear Individ.  
Linear LED Wall**  
Ametrix

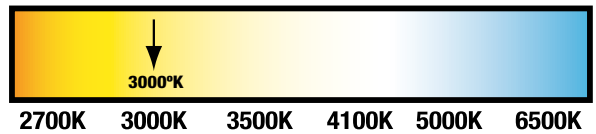




# SLD LED WaveStream



3000°K nominal



Accesorios de instalación

SLD6



SLD4



## Caja de registro compatible con:



4" octagon light fixture/  
fan steel box  
4" x 4" x 2-1/8"  
(102mm x 102mm x 54mm)



4" octagon steel box  
4" x 4" x 1-1/2"  
(102mm x 102mm x 38mm)



4" square deep steel box  
4" x 4" x 2-1/8"  
(102mm x 102mm x 54mm)



4" square standard steel box  
4" x 4" x 1-1/2"  
(102mm x 102mm x 38mm)



3-1/2" round new work  
non-metallic ceiling box  
3-1/2" x 2-3/4"  
(89mm x 70mm)



4" round new work  
non-metallic light fixture/  
fan box  
4" x 2-3/16"  
(102mm x 56mm)



4-1/4" round old work  
non-metallic box  
4-1/4" flange x 2-5/8"; 3-1/2" I.D.  
(108mm x 67mm, 89mm I.D.)



# Recessed / Empotrar

## HALO LED

### PASO 1

Selección de housing



Housing remodel  
H750RINTD010

### PASO 2

Selección de módulo LED



Serie 600, 900, 1200  
ML70

### PASO 3

Selección de trim



Satin Niquel



RL56  
Halo



RL4  
Halo



Black baffle



493PS06



TBZ



494OPTIC



6"  
SLD 12393754



4"  
SLD 12393754



AX LED Square Fixed  
RSA



Combo Next-Gen 38w  
RSA



ELG4058  
Halo



ELSG4058xWH  
Halo



LDSO4  
Portfolio



LD6, LD6R, LD6HO, LD6I  
Portfolio



Combo Next-Gen 18W  
RSA



Combo Next-Gen 8W  
RSA

# Track / Rieles



806/807 LEDTrack Fixture Halo



Stasis LED Large Stasis LED Wall Wash Halo



Stasis LED Small Halo



Stasis LED Medium Halo

# Undercabinet



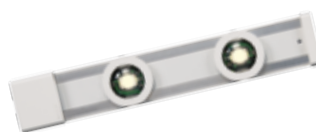
LED 10 PuckLight RSA



LED 13 PuckLight RSA



UCL Fail Safe



HU20 LED Undercabinet Halo



HU10 LED Undercabinet Halo

# Exit / Emergencias



EXL Exit Sign, LED  
Fail Safe



CX  
Sure Lite



SLX  
Sure Lite



UX Exit Sign LED  
Fail Safe



APX  
Sure Lite



TPX  
Sure Lite



APC/APCH  
Sure Lite



LPX  
Sure Lite



AEL2  
Sure Lite



APEL  
Sure Lite



LEM  
Sure Lite



EEX  
Sure Lite

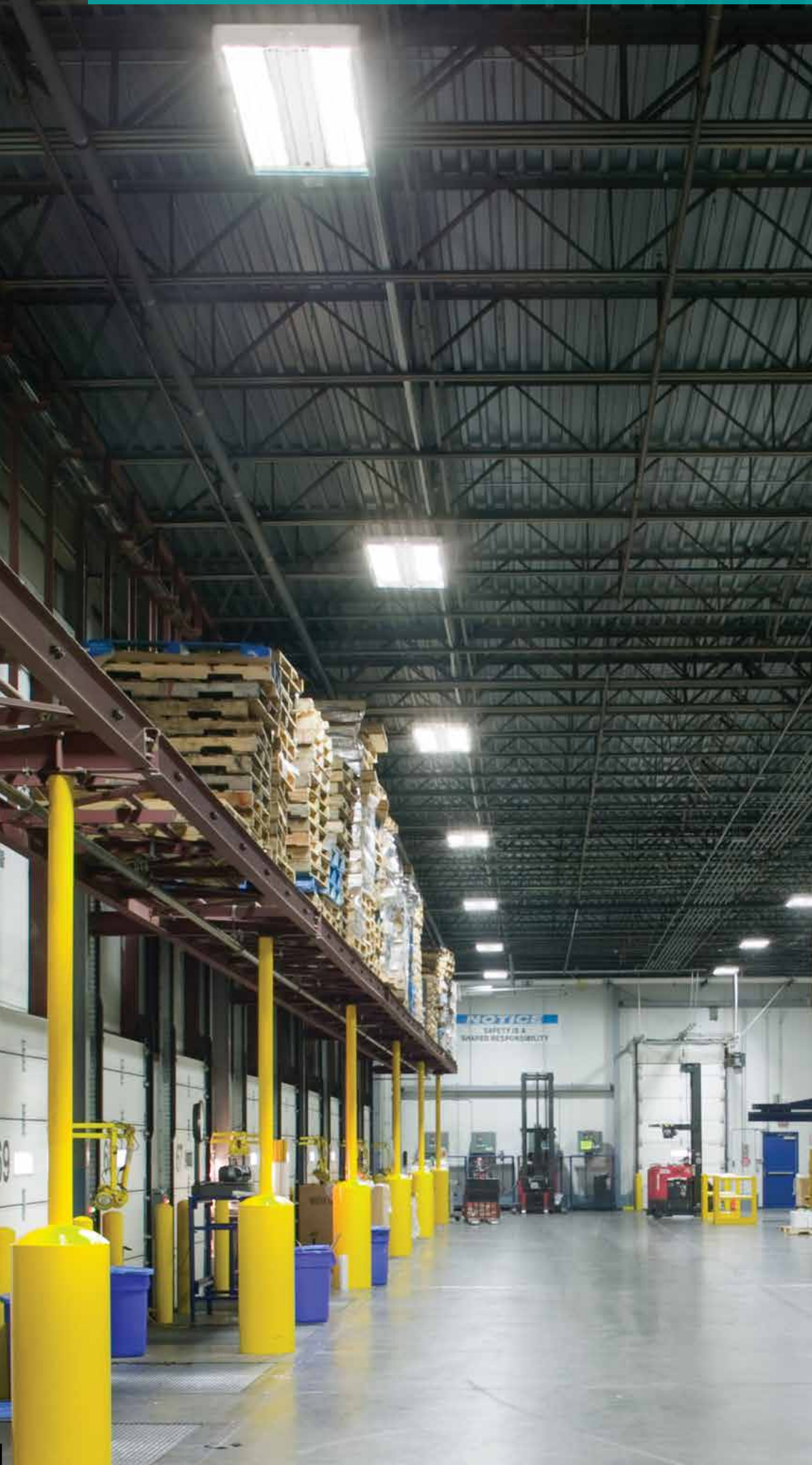


EU  
Sure Lite



ELX  
Sure Lite





**SkyBar**  
Metalux



**WN LED**  
Metalux



**SN LED**  
Metalux



**VT4 LED**  
Metalux



**HB LED**  
Metalux



**Vaportite LED**  
Metalux

# Confinement / Reclusorios



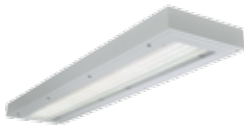
**FCC Clamshell Corner  
Confinement LED**  
Fail Safe



**FMB Wall  
Confinement LED**  
Fail Safe



**FMR Recessed Flange  
Confinement LED**  
Fail Safe



**FMSLP Surface Low Profile  
Confinement LED**  
Fail Safe

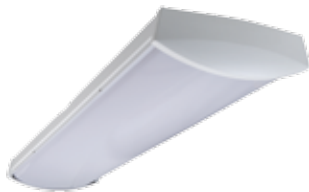


**FSR Recessed Grid  
Confinement LED**  
Fail Safe



**FUSL LED**  
Fail Safe

# Vandal Resistant / Antivandalicas



**HVL 12**  
Fail Safe



**HVL 8**  
Fail Safe



- Soporte y asesoría en estudios de iluminación
- Cálculo en software de iluminación
- Análisis y soluciones de iluminación en base a sus necesidades
- Apoyo con cross reference's
- Propuesta para control de iluminación

Notas :

Tiempo de respuesta : 3 a 5 días (según proyecto)

Cross reference : 1 a 3 días (según partidas)

Horario Lunes a Viernes de 8:30am a 6:30pm



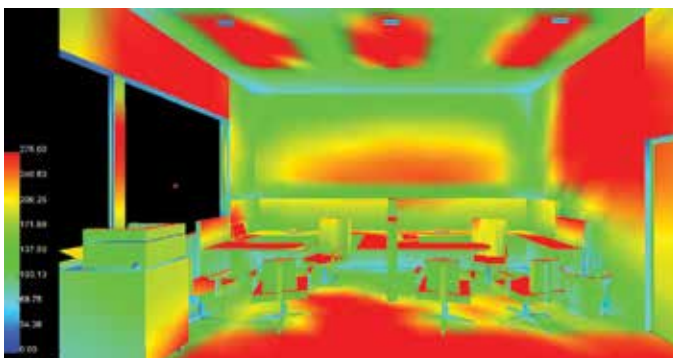
## ¿Qué requerimos?

- Enviar planos arquitectónicos \*
- Cortes y/o elevaciones \*
  - Plano de plafones (opcional)
  - Niveles de iluminación (opcional)
  - Voltajes de operación

## ¿Qué entregamos?

- Planos de iluminación y control \*
- Planos en PDF de iluminación y control
- Fichas técnicas de los productos propuestos
- Renders (opcional).

\* Planos en archivo autocad



Contáctanos a través de nuestra red de distribuidores autorizados



Tiempo de respuesta de 3 a 5 días hábiles (según dimensión del proyecto)

# Cooper Lighting

by **EAT•N**

Centro de Servicio al Cliente y Soporte Técnico México:  
01 800 7 COOPER (266737)  
[www.cooperlighting.com](http://www.cooperlighting.com)  
[lightingtech.support@com](mailto:lightingtech.support@com)  
[LightingCustomerService@eaton.com](mailto:LightingCustomerService@eaton.com)

Oficinas Regionales de Ventas:  
Monterrey  
Av. Vasconcelos No.210 Ote.,Piso #1  
Col.Residencial San Agustín  
San Pedro Garza Garcia, C.P. 66260

México, D.F.  
Javier Rojo Gómez No.1170  
Col. Guadalupe del Moral  
Iztapalapa C.P. 09300

Guadalajara  
Santo Domingo No.1113  
Col. Campo de Polo Chapalita  
Guadalajara, Jalisco C.P. 45040

Distribuidor Autorizado

311013CMD



Cooper Industries, Ltd.  
600 Travis, Ste. 5800, Houston, TX 77002-1001  
P: 713-209-8400  
[www.cooperindustries.com](http://www.cooperindustries.com)  
Impreso en México