



PRE-formance™

Giving you the convenience of a pre-fabricated product - plus the flexibility to accommodate job-site requirements

COOPER Crouse-Hinds



PRE-formance™

Giving you the convenience of a pre-fabricated product-plus the flexibility to accommodate job-site requirements.

Contractors are continually looking for ways to improve job site efficiency and properly align skilled resources to meet tight commercial construction project deadlines. PRE-formance™ delivers the pre-engineered & pre-assembled combination of mounting method, outlet box, plaster ring, devices and leads to simplify branch wiring installation.



Certifications and Compliances:

- UL Listed and cUL Listed



Basic

- Available with the most popular drawn & welded boxes with ground screw and pigtail lead already installed
- Patented Uni-mount™ cover combines plaster ring & mounting method
- Standard Pre-fabricated assemblies with mounting brackets, boxes, mud rings, ground screw and pigtail leads
- Available from stock



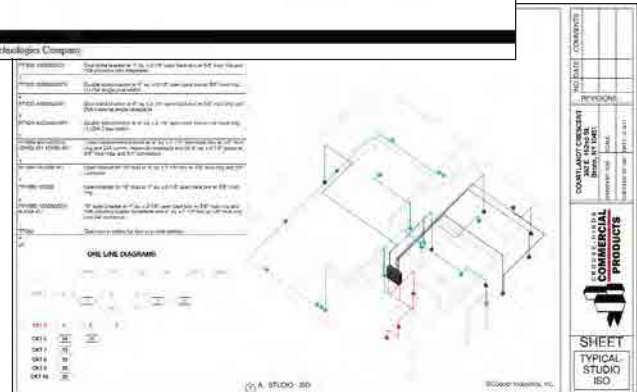
Custom

- Cafeteria style selection of Cooper Crouse-Hinds extensive line of mounting brackets, boxes, plaster rings, wiring devices, push-in connectors, and other associated branch wiring accessories
- Assembled-to-order pre-fabricated products for both AC/MC & EMT applications
- Can be ordered with devices, customer specified connectors and cable whips attached to suit almost any customer application
- Assembled from stock components to meet tight job requirements



Complete

- The most complete turn-key solution for commercial construction projects. The process begins with your architectural and electrical engineering drawings and delivers a total pre-fabricated branch wiring system: custom produced, labeled, packaged by room and floor, and delivered to your exact location
- Ideal for hotel projects, assisted living facilities, dormitories, barracks and office buildings
- Job specific labeling included with every cable run indicates starting position, ending position, device and mounting type, cable size, length, path, drawing number and date.
- Safe, secure transmission of drawings to secure file exchange server where our technical team completes a preliminary take-off analysis
- Innovative PRE-formance products are designed by contractors for contractors to give you the ease of wiring & job site flexibility to get the job done right & on-time!
- Includes mounting brackets & open back boxes that are designed with pre-fabrication, productivity & job site speed in mind
- Contractors can realize 30 to 40% labor savings over traditional "stick-build" wiring methods for greatly improved jobsite efficiency



Uni-Mount™ Assemblies

Cooper Crouse-Hinds Pre-Fabricated Boxes take labor savings to a whole new level! Includes the Uni-Mount™ cover attached to a 4" square box with ground screw and lead installed.

Step 1 – Receive Uni-Mount™ Pre-Fabricated Box (Includes Uni-Mount cover attached to box with ground screw + lead installed)

Step 2 – Attach to wood or metal stud. You're done!



UL and cUL Listed



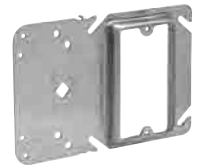
UL File No. E-23156

Pre-Fabricated Box Features:

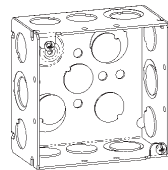
- Uni-Mount provides a secure box support and features a built-in plaster ring
- Can be field assembled with outlet box for power applications or used without a box for low voltage applications
- Pre-fabricated Uni-Mount is available with most popular outlet boxes with a choice of 1/2", 5/8" or 3/4" raised cover and includes ground screw and lead
- Rigid bracket design eliminates the need for far-side support
- Guide tabs ensure alignment on studs

Uni-Mount Features:

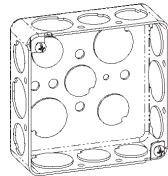
- Uni-Mount combines the features of a mounting device plate with those of a box support; giving you one universal plate for all of your needs. Specifically designed for use with metal or wood studs.
- New and improved Uni-Mount incorporates four small holes on the left side (support side) of the bracket. These holes allow for the attachment of box mounting brackets to allow for use of both sides of the stud. The holes are strategically located to accept either the B-Line BB423 bracket. Additionally, the viewing hole has been significantly enlarged (and is now diamond shaped) to make it even easier to find mark lines on the stud.



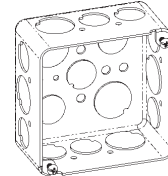
TP404
1 1/2" Deep – Welded
22.0" Cubic Capacity



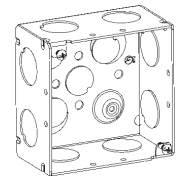
TP403
2 1/8" Deep – Welded
30.3" Cubic Capacity



TP414
1 1/2" Deep – Welded
21.0" Cubic Capacity



TP434
2 1/8" Deep – Welded
30.3" Cubic Capacity



TP436
2 1/8" Deep – Welded
30.3" Cubic Capacity

Cat. #	Description	Capacity Cu. In.	Unit Qty.	Wt. Lbs. Per 100
For Conduit				
TP30404PF	1 1/2" Deep Welded Box, 1/2" Raised Single Gang Uni-Mount Cover, ground screw and lead	25.8	25	115
TP30414PF	1 1/2" Deep Drawn Box, 1/2" Raised Single Gang Uni-Mount Cover, ground screw and lead	24.8	25	110
TP31404PF	1 1/2" Deep Welded Box, 5/8" Raised Single Gang Uni-Mount Cover, ground screw and lead	26.3	25	118
TP31414PF	1 1/2" Deep Drawn Box, 5/8" Raised Single Gang Uni-Mount Cover, ground screw and lead	25.3	25	113
TP32404PF	1 1/2" Deep Welded Box, 3/4" Raised Single Gang Uni-Mount Cover, ground screw and lead	27.5	25	122
TP32414PF	1 1/2" Deep Drawn Box, 3/4" Raised Single Gang Uni-Mount Cover, ground screw and lead	26.5	25	117
TP35404PF	1 1/2" Deep Welded Box, 1/2" Raised Two Gang Uni-Mount Cover, ground screw and lead	28.0	25	110
TP35414PF	1 1/2" Deep Drawn Box, 1/2" Raised Two Gang Uni-Mount Cover, ground screw and lead	27.0	25	105
TP36404PF	1 1/2" Deep Welded Box, 5/8" Raised Two Gang Uni-Mount Cover, ground screw and lead	30.0	25	124
TP36414PF	1 1/2" Deep Drawn Box, 5/8" Raised Two Gang Uni-Mount Cover, ground screw and lead	29.0	25	119
TP37404PF	1 1/2" Deep Welded Box, 3/4" Raised Two Gang Uni-Mount Cover, ground screw and lead	31.0	25	126
TP37414PF	1 1/2" Deep Drawn Box, 3/4" Raised Two Gang Uni-Mount Cover, ground screw and lead	30.0	25	121
TP30403PF	2 1/8" Deep Welded Box, 1/2" Raised Single Gang Uni-Mount Cover, ground screw and lead	34.1	25	107
TP30434PF	2 1/8" Deep Drawn Box, 1/2" Raised Single Gang Uni-Mount Cover, ground screw and lead	34.1	25	127
TP31403PF	2 1/8" Deep Welded Box, 5/8" Raised Single Gang Uni-Mount Cover, ground screw and lead	34.6	25	110
TP31434PF	2 1/8" Deep Drawn Box, 5/8" Raised Single Gang Uni-Mount Cover, ground screw and lead	34.6	25	130
TP31436PF	2 1/8" Deep Welded Box, 5/8" Raised Single Gang Uni-Mount Cover, ground screw and lead	26.3	25	130
TP32403PF	2 1/8" Deep Welded Box, 3/4" Raised Single Gang Uni-Mount Cover, ground screw and lead	35.8	25	114
TP32434PF	2 1/8" Deep Drawn Box, 3/4" Raised Single Gang Uni-Mount Cover, ground screw and lead	35.8	25	134
TP35403PF	2 1/8" Deep Welded Box, 1/2" Raised Two Gang Uni-Mount Cover, ground screw and lead	36.3	25	102
TP35434PF	2 1/8" Deep Drawn Box, 1/2" Raised Two Gang Uni-Mount Cover, ground screw and lead	36.3	25	122
TP36403PF	2 1/8" Deep Welded Box, 5/8" Raised Two Gang Uni-Mount Cover, ground screw and lead	38.3	25	116
TP36434PF	2 1/8" Deep Drawn Box, 5/8" Raised Two Gang Uni-Mount Cover, ground screw and lead	38.3	25	136
TP37403PF	2 1/8" Deep Welded Box, 3/4" Raised Two Gang Uni-Mount Cover, ground screw and lead	39.3	25	118
TP37434PF	2 1/8" Deep Drawn Box, 3/4" Raised Two Gang Uni-Mount Cover, ground screw and lead	39.3	25	138

PRE-formance™ Basic Assemblies

Cat. #	Description	Capacity Cu. In.	Unit Qty.	Wt. Lbs. Per 100
Pre-Fabricated Box, Cover, Ground Screw and Lead Assembly				
For AC/MC Cable				
TP30454PF	1 1/2" Deep Welded Box assembled to 1/2" Raised Single Gang Uni-Mount Cover	24.8	25	114
TP31454PF	1 1/2" Deep Welded Box assembled to 5/8" Raised Single Gang Uni-Mount Cover	25.3	25	117
TP32454PF	1 1/2" Deep Welded Box assembled to 3/4" Raised Single Gang Uni-Mount Cover	26.5	25	121
TP35454PF	1 1/2" Deep Welded Box assembled to 1/2" Raised Two Gang Uni-Mount Cover	27.0	25	109
TP36454PF	1 1/2" Deep Welded Box assembled to 5/8" Raised Two Gang Uni-Mount Cover	29.0	25	123
TP37454PF	1 1/2" Deep Welded Box assembled to 3/4" Raised Two Gang Uni-Mount Cover	30.0	25	125
TP30431PF	2 1/8" Deep Welded Box assembled to 1/2" Raised Single Gang Uni-Mount Cover	34.1	25	134
TP31431PF	2 1/8" Deep Welded Box assembled to 5/8" Raised Single Gang Uni-Mount Cover	34.6	25	137
TP32431PF	2 1/8" Deep Welded Box assembled to 3/4" Raised Single Gang Uni-Mount Cover	35.8	25	141
TP35431PF	2 1/8" Deep Welded Box assembled to 1/2" Raised Two Gang Uni-Mount Cover	36.3	25	129
TP36431PF	2 1/8" Deep Welded Box assembled to 5/8" Raised Two Gang Uni-Mount Cover	38.3	25	143
TP37431PF	2 1/8" Deep Welded Box assembled to 3/4" Raised Two Gang Uni-Mount Cover	39.3	25	145



Open Back Box

Innovative Open Back Boxes maximize working area to reduce wiring time and eliminate interference problems. Eliminates the need for disassembly at the job site. All open back box assemblies are shipped with TP472 flat, blank back covers.

Cat. #	Description	Capacity Cu. In.	Unit Qty.	Wt. Lbs. Per 100
Pre-Fabricated Open Back Box, Cover, Ground Screw and Lead Assembly				
For Conduit				
TP3040DPF	2 1/8" Deep Welded Open Back Box, 1/2" Raised Single Gang Uni-Mount Cover, ground screw, lead, and back cover	34.1	25	107
TP3140DPF	2 1/8" Deep Welded Open Back Box, 5/8" Raised Single Gang Uni-Mount Cover, ground screw, lead, and back cover	34.1	25	110
TP3240DPF	2 1/8" Deep Welded Open Back Box, 3/4" Raised Single Gang Uni-Mount Cover, ground screw, lead, and back cover	34.1	25	114
TP3540DPF	2 1/8" Deep Welded Open Back Box, 1/2" Raised Two Gang Uni-Mount Cover, ground screw, lead, and back cover	34.1	25	112
TP3640DPF	2 1/8" Deep Welded Open Back Box, 5/8" Raised Two Gang Uni-Mount Cover, ground screw, lead, and back cover	34.1	25	116
TP3740DPF	2 1/8" Deep Welded Open Back Box, 3/4" Raised Two Gang Uni-Mount Cover, ground screw, lead, and back cover	34.1	25	118

Additional Uni-Mount / box configurations available. Consult factory for details.
Remove the PF for boxes without ground screw and lead.
For stranded wire replace PF with PFA

Single Sided Assemblies

Single Sided Direct Mount Assemblies - all catalog numbers contain a single sided direct mount bracket (for 2½" and 3½" studs), 4" square steel box, mud ring, 8" insulated solid ground wire with ground screw and SmartGuard™

UL and cUL Listed



UL File No. E-324733



Cat. #	Description
	Pre-Fabricated Box, Cover, Ground Screw and Lead Assembly
PFH3 40D58	BB423 Single sided bracket, Open back 2½" deep box with pigtail, ⅝" raised 1G mud ring
PFH3 40D75	BB423 Single sided bracket, Open back 2½" deep box with pigtail, ¾" raised 1G mud ring
PFH3 40DAR*	BB423 Single sided bracket, Open back 2½" deep box with pigtail, Adjustable 1G mud ring
PFH3 4D58	BB423 Single sided bracket, TP403 2½" deep box with pigtail, ⅝" raised 1G mud ring
PFH3 4D75	BB423 Single sided bracket, TP403 2½" deep box with pigtail, ¾" raised 1G mud ring
PFH3 4DAR*	BB423 Single sided bracket, TP403 2½" deep box with pigtail, Adjustable 1G mud ring
PFH3 4S58	BB423 Single sided bracket, TP404 1½" deep box with pigtail, ⅝" raised 1G mud ring
PFH3 4S75	BB423 Single sided bracket, TP404 1½" deep box with pigtail, ¾" raised 1G mud ring
PFH3 40D258	BB423 Single sided bracket, Open back 2½" deep box with pigtail, ⅝" raised 2G mud ring
PFH3 40D275	BB423 Single sided bracket, Open back 2½" deep box with pigtail, ¾" raised 2G mud ring
PFH3 4D258	BB423 Single sided bracket, TP403 2½" deep box with pigtail, ⅝" raised 2G mud ring
PFH3 4D275	BB423 Single sided bracket, TP403 2½" deep box with pigtail, ¾" raised 2G mud ring
PFH3 4S258	BB423 Single sided bracket, TP404 1½" deep box with pigtail, ⅝" raised 2G mud ring
PFH3 4S275	BB423 Single sided bracket, TP404 1½" deep box with pigtail, ¾" raised 2G mud ring

- 4" and 6" Far side supports are available. Replace PFH3 (for 2½" and 3½" studs) with PFH4 (4") (BB44) or PFH6 (6") (BB46)
- Refer to the PRE-formance Catalog Numbering System at the end of this section for additional assembly options and configurations.

Double Sided Assemblies

Double Sided Assemblies

Double Sided Direct Mount Assemblies - all catalog numbers contain a double sided direct mount bracket (for 2½" and 3½" studs), 4" square steel box, mud ring, 8" insulated solid ground wire with ground screw and SmartGuard™

UL and cUL Listed



UL File No. E-324733



Cat. #	Description
	Pre-Fabricated Box, Cover, Ground Screw and Lead Assembly
PF3DS 40D58	BB73 Double sided bracket, Open back 2½" deep box with pigtail, ⅝" raised 1G mud ring
PF3DS40D75	BB73 Double sided bracket, Open back 2½" deep box with pigtail, ¾" raised 1G mud ring
PF3DS 40DAR*	BB73 Double sided bracket, Open back 2½" deep box with pigtail, Adjustable 1G mud ring
PF3DS 4D58	BB73 Double sided bracket, TP403 2½" deep box with pigtail, ⅝" raised 1G mud ring
PF3DS 4D75	BB73 Double sided bracket, TP403 2½" deep box with pigtail, ¾" raised 1G mud ring
PF3DS 4DAR*	BB73 Double sided bracket, TP403 2½" deep box with pigtail, Adjustable 1G mud ring
PF3DS 4S58	BB73 Double sided bracket, TP404 1½" deep box with pigtail, ⅝" raised 1G mud ring
PF3DS 4S75	BB73 Double sided bracket, TP404 1½" deep box with pigtail, ¾" raised 1G mud ring
PF3DS 40D258	BB73 Double sided bracket, Open back 2½" deep box with pigtail, ⅝" raised 2G mud ring
PF3DS 40D275	BB73 Double sided bracket, Open back 2½" deep box with pigtail, ¾" raised 2G mud ring
PF3DS 4D258	BB73 Double sided bracket, TP403 2½" deep box with pigtail, ⅝" raised 2G mud ring
PF3DS 4D275	BB73 Double sided bracket, TP403 2½" deep box with pigtail, ¾" raised 2G mud ring
PF3DS 4S258	BB73 Double sided bracket, TP404 1½" deep box with pigtail, ⅝" raised 2G mud ring
PF3DS 4S275	BB73 Double sided bracket, TP404 1½" deep box with pigtail, ¾" raised 2G mud ring

- 4" and 6" Far side supports are available. Replace PF3DS (for 2½" and 3½" studs) with PF4DS (4") (BB44) or PF6DS (6") (BB46)
- Refer to the PRE-formance Catalog Numbering System at the end of this section for additional assembly options and configurations.

Floor Mount Assemblies

Floor Mount Assemblies - all catalog numbers contain a 18" floor mount bracket, 4" square steel box, mud ring, 8" insulated solid ground wire with ground screw and SmartGuard™

UL and cUL Listed



UL File No. E-324733



Cat. #	Description Pre-Fabricated Box, Cover, Ground Screw and Lead Assembly
PF18FM 40D58	BBF18 Floor mount bracket, Open back 2 1/8" deep box with pigtail, 5/8" raised 1G mud ring
PF18FM 40D75	BBF18 Floor mount bracket, Open back 2 1/8" deep box with pigtail, 3/4" raised 1G mud ring
PF18FM 40DAR*	BBF18 Floor mount bracket, Open back 2 1/8" deep box with pigtail, Adjustable 1G mud ring
PF18FM 4D58	BBF18 Floor mount bracket, TP403 2 1/8" deep box with pigtail, 5/8" raised 1G mud ring
PF18FM 4D75	BBF18 Floor mount bracket, TP403 2 1/8" deep box with pigtail, 3/4" raised 1G mud ring
PF18FM 4DAR*	BBF18 Floor mount bracket, TP403 2 1/8" deep box with pigtail, Adjustable 1G mud ring
PF18FM 4S58	BBF18 Floor mount bracket, TP404 1 1/2" deep box with pigtail, 5/8" raised 1G mud ring
PF18FM 4S75	BBF18 Floor mount bracket, TP404 1 1/2" deep box with pigtail, 3/4" raised 1G mud ring
PF18FM 40D258	BBF18 Floor mount bracket, Open back 2 1/8" deep box with pigtail, 5/8" raised 2G mud ring
PF18FM 40D275	BBF18 Floor mount bracket, Open back 2 1/8" deep box with pigtail, 3/4" raised 2G mud ring
PF18FM 4D258	BBF18 Floor mount bracket, TP403 2 1/8" deep box with pigtail, 5/8" raised 2G mud ring
PF18FM 4D275	BBF18 Floor mount bracket, TP403 2 1/8" deep box with pigtail, 3/4" raised 2G mud ring
PF18FM 4S258	BBF18 Floor mount bracket, TP404 1 1/2" deep box with pigtail, 5/8" raised 2G mud ring
PF18FM 4S275	BBF18 Floor mount bracket, TP404 1 1/2" deep box with pigtail, 3/4" raised 2G mud ring

• Refer to the PRE-formance Catalog Numbering System at the end of this section for additional assembly options and configurations.

*Not UL Listed. All components are third party certified.

Telescoping and Multi-Mount Assemblies

Telescoping Slider Assemblies

Telescoping Slider Assemblies - all catalog numbers contain a 11-18" telescoping slider bracket, 4" square steel box, mud ring, 8" insulated solid ground wire with ground screw and SmartGuard™



UL and cUL Listed



UL File No. E-324733

Cat. #	Description
	Pre-Fabricated Box, Cover, Ground Screw and Lead Assembly
PF16TS 4D58	BB216TS Telescoping slider bracket, TP403 2 1/8" deep box with pigtail, 5/8" raised 1G mud ring
PF16TS 4D75	BB216TS Telescoping slider bracket, TP403 2 1/8" deep box with pigtail, 3/4" raised 1G mud ring
PF16TS 4DAR	BB216TS Telescoping slider bracket, TP403 2 1/8" deep box with pigtail, Adjustable 1G mud ring
PF16TS 4S58	BB216TS Telescoping slider bracket, TP404 1 1/2" deep box with pigtail, 5/8" raised 1G mud ring
PF16TS 4S75	BB216TS Telescoping slider bracket, TP404 1 1/2" deep box with pigtail, 3/4" raised 1G mud ring
PF16TS 4D258	BB216TS Telescoping slider bracket, TP403 2 1/8" deep box with pigtail, 5/8" raised 2G mud ring
PF16TS 4D275	BB216TS Telescoping slider bracket, TP403 2 1/8" deep box with pigtail, 3/4" raised 2G mud ring
PF16TS 4D2AR	BB216TS Telescoping slider bracket, TP403 2 1/8" deep box with pigtail, adjustable 2G mud ring
PF16TS 4S258	BB216TS Telescoping slider bracket, TP404 1 1/2" deep box with pigtail, 5/8" raised 2G mud ring
PF16TS 4S275	BB216TS Telescoping slider bracket, TP404 1 1/2" deep box with pigtail, 3/4" raised 2G mud ring

- 15"-26" Telescoping Slider Assemblies are available. Replace PF16TS (BB216TS) with PF24TS (BB224TS).
- Refer to the PRE-formance Catalog Numbering System at the end of this section for additional assembly options and configurations.

Multi-Mount Assemblies

Multi-Mount Assemblies - all catalog numbers contain a 16" stud spanning Multiple Mount Bracket. Each Position may contain a 4" square steel box, mud ring, 8" insulated solid ground wire with ground screw and SmartGuard™



UL and cUL Listed



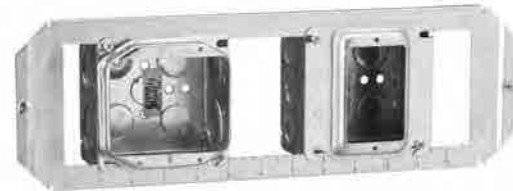
UL File No. E-324733

Cat. #	Description
	Pre-Fabricated Box, Cover, Ground Screw and Lead Assembly
PF3MM 4D58 X X	BB816 Multiple box bracket, 1st Position TP403 2 1/8" deep box with pigtail, 5/8" raised 1G mud ring, 2nd and 3rd positions open
PF3MM 4D75 X X	BB816 Multiple box bracket, 1st Position TP403 2 1/8" deep box with pigtail, 3/4" raised 1G mud ring, 2nd and 3rd positions open
PF3MM 4D258 X X	BB816 Multiple box bracket, 1st Position TP403 2 1/8" deep box with pigtail, 5/8" raised 2G mud ring, 2nd and 3rd positions open
PF3MM 4D275 X X	BB816 Multiple box bracket, 1st Position TP403 2 1/8" deep box with pigtail, 3/4" raised 2G mud ring, 2nd and 3rd positions open
PF3MM 4D58 5DN58 X	BB816 Multiple box bracket, 1st Position TP403 2 1/8" deep box with pigtail, 5/8" raised 1G mud ring, 2nd position TP525 4 11/16" Square 2 1/8" Deep box, 5/8" raised 1G mud ring, no pigtail, 3rd position open
PF3MM 4D75 5DN75 X	BB816 Multiple box bracket, 1st Position TP403 2 1/8" deep box with pigtail, 3/4" raised 1G mud ring, 2nd position TP525 4 11/16" Square 2 1/8" Deep box, 3/4" raised 1G mud ring, no pigtail, 3rd position open
PF3MM 4D258 5DN58 X	BB816 Multiple box bracket, 1st Position TP403 2 1/8" deep box with pigtail, 5/8" raised 2G mud ring, 2nd position TP525 4 11/16" Square 2 1/8" Deep box, 5/8" raised 1G mud ring, no pigtail, 3rd position open
PF3MM 4D275 5DN75 X	BB816 Multiple box bracket, 1st Position TP403 2 1/8" deep box with pigtail, 3/4" raised 2G mud ring, 2nd position TP525 4 11/16" Square 2 1/8" Deep box, 3/4" raised 1G mud ring, no pigtail, 3rd position open
PF3MM 40D58 X X	BB816 Multiple box bracket, 1st Position Open back 2 1/8" deep box with pigtail, 5/8" raised 1G mud ring, 2nd and 3rd positions open
PF3MM 40D75 X X	BB816 Multiple box bracket, 1st Position Open back 2 1/8" deep box with pigtail, 3/4" raised 1G mud ring, 2nd and 3rd positions open
PF3MM 40D258 X X	BB816 Multiple box bracket, 1st Position Open back 2 1/8" deep box with pigtail, 5/8" raised 2G mud ring, 2nd and 3rd positions open
PF3MM 40D275 X X	BB816 Multiple box bracket, 1st Position Open back 2 1/8" deep box with pigtail, 3/4" raised 2G mud ring, 2nd and 3rd positions open
PF3MM 40D58 5DN58 X	BB816 Multiple box bracket, 1st Position Open back 2 1/8" deep box with pigtail, 5/8" raised 1G mud ring, 2nd position TP525 4 11/16" Square 2 1/8" Deep box, 5/8" raised 1G mud ring, no pigtail, 3rd position open
PF3MM 40D75 5DN75 X	BB816 Multiple box bracket, 1st Position Open back 2 1/8" deep box with pigtail, 3/4" raised 1G mud ring, 2nd position TP525 4 11/16" Square 2 1/8" Deep box, 3/4" raised 1G mud ring, no pigtail, 3rd position open
PF3MM 40D258 5DN58 X	BB816 Multiple box bracket, 1st Position Open back 2 1/8" deep box with pigtail, 5/8" raised 2G mud ring, 2nd position TP525 4 11/16" Square 2 1/8" Deep box, 5/8" raised 1G mud ring, no pigtail, 3rd position open
PF3MM 40D275 5DN75 X	BB816 Multiple box bracket, 1st Position Open back 2 1/8" deep box with pigtail, 3/4" raised 2G mud ring, 2nd position TP525 4 11/16" Square 2 1/8" Deep box, 3/4" raised 1G mud ring, no pigtail, 3rd position open

- Refer to the PRE-formance Catalog Numbering System at the end of this section for additional assembly options and configurations.

Open Bracket Assemblies

Open Bracket Assemblies - all catalog numbers contain a 16" stud spanning Open Bracket. Each Position may contain a 4" square steel box, mud ring, 8" insulated solid ground wire with ground screw and SmartGuard™



UL and cUL Listed



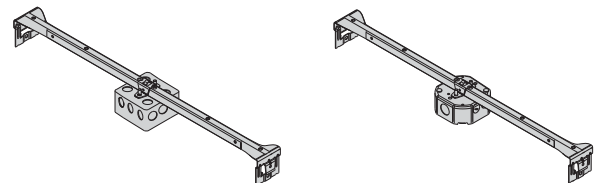
UL File No. E-324733

Cat. #	Description Pre-Fabricated Box, Cover, Ground Screw and Lead Assembly
PF16BO 4D58 X X	BB716 Open bracket, 1st Position TP403 2 1/8" deep box with pigtail, 5/8" raised 1G mud ring, 2nd and 3rd positions open
PF16BO 4D75 X X	BB716 Open bracket, 1st Position TP403 2 1/8" deep box with pigtail, 3/4" raised 1G mud ring, 2nd and 3rd positions open
PF16BO 4D258 X X	BB716 Open bracket, 1st Position TP403 2 1/8" deep box with pigtail, 5/8" raised 2G mud ring, 2nd and 3rd positions open
PF16BO 4D275 X X	BB716 Open bracket, 1st Position TP403 2 1/8" deep box with pigtail, 3/4" raised 2G mud ring, 2nd and 3rd positions open
PF16BO 4D58 5DN58 X	BB716 Open bracket, 1st Position TP403 2 1/8" deep box with pigtail, 5/8" raised 1G mud ring, 2nd position TP525 4 11/16" Square 2 1/8" Deep box, 5/8" raised 1G mud ring, no pigtail, 3rd position open
PF16BO 4D75 5DN75 X	BB716 Open bracket, 1st Position TP403 2 1/8" deep box with pigtail, 3/4" raised 1G mud ring, 2nd position TP525 4 11/16" Square 2 1/8" Deep box, 3/4" raised 1G mud ring, no pigtail, 3rd position open
PF16BO 4D258 5DN58 X	BB716 Open bracket, 1st Position TP403 2 1/8" deep box with pigtail, 5/8" raised 2G mud ring, 2nd position TP525 4 11/16" Square 2 1/8" Deep box, 5/8" raised 1G mud ring, no pigtail, 3rd position open
PF16BO 4D275 5DN75 X	BB716 Open bracket, 1st Position TP403 2 1/8" deep box with pigtail, 3/4" raised 2G mud ring, 2nd position TP525 4 11/16" Square 2 1/8" Deep box, 3/4" raised 1G mud ring, no pigtail, 3rd position open
PF16BO 40D58 X X	BB716 Open bracket, 1st Position Open back 2 1/8" deep box with pigtail, 5/8" raised 1G mud ring, 2nd and 3rd positions open
PF16BO 40D75 X X	BB716 Open bracket, 1st Position Open back 2 1/8" deep box with pigtail, 3/4" raised 1G mud ring, 2nd and 3rd positions open
PF16BO 40D258 X X	BB716 Open bracket, 1st Position Open back 2 1/8" deep box with pigtail, 5/8" raised 2G mud ring, 2nd and 3rd positions open
PF16BO 40D275 X X	BB716 Open bracket, 1st Position Open back 2 1/8" deep box with pigtail, 3/4" raised 2G mud ring, 2nd and 3rd positions open
PF16BO 40D58 5DN58 X	BB716 Open bracket, 1st Position Open back 2 1/8" deep box with pigtail, 5/8" raised 1G mud ring, 2nd position TP525 4 11/16" Square 2 1/8" Deep box, 5/8" raised 1G mud ring, no pigtail, 3rd position open
PF16BO 40D75 5DN75 X	BB716 Open bracket, 1st Position Open back 2 1/8" deep box with pigtail, 3/4" raised 1G mud ring, 2nd position TP525 4 11/16" Square 2 1/8" Deep box, 3/4" raised 1G mud ring, no pigtail, 3rd position open
PF16BO 40D258 5DN58 X	BB716 Open bracket, 1st Position Open back 2 1/8" deep box with pigtail, 5/8" raised 2G mud ring, 2nd position TP525 4 11/16" Square 2 1/8" Deep box, 5/8" raised 1G mud ring, no pigtail, 3rd position open
PF16BO 40D275 5DN75 X	BB716 Open bracket, 1st Position Open back 2 1/8" deep box with pigtail, 3/4" raised 2G mud ring, 2nd position TP525 4 11/16" Square 2 1/8" Deep box, 3/4" raised 1G mud ring, no pigtail, 3rd position open

• Refer to the PRE-formance Catalog Numbering System at the end of this section for additional assembly options and configurations.

T-Bar Assemblies

T-Bar Assemblies - all catalog numbers contain BA50 T-Bar fastener, 4" square or octagon box



UL and cUL Listed



UL File No. E-324733

Cat. #	Description Pre-Fabricated Box, Cover, Ground Screw and Lead Assembly
PFBH24 4SN	BA50 Bar hanger, TP404 1 1/2" deep box
PFBH24 4DN	BA50 Bar hanger, TP403 2 1/8" deep box
PFBH24 278N	BA50 Bar hanger, TP278 1 1/2" deep octagon box
PFBH24 292N	BA50 Bar hanger, TP292 2 1/8" deep octagon box

Uni-Mount™ Assemblies with Wiring Devices

Cooper Crouse-Hinds PRE-formance Uni-Mount Assemblies - All catalog numbers contain a Uni-mount cover (TP31000-37000), 4" square open back box, an 8" insulated solid box ground wire, one or two pre-wired Cooper Wiring Devices with leads, push-in connectors, and device protect plates.

Uni-Mount assemblies with wiring devices are shipped standard with open back boxes. Open back boxes maximize the working area to reduce wiring time and eliminate interference problems. They virtually eliminate the need for disassembly at the job site. Open back boxes are available in either 1½" or 2⅞" deep with ½ & ¾ eccentric knockouts. All 4" square open back box assemblies are shipped with TP472 flat, blank back covers.



- All assemblies are shown with ivory colored devices. At the end of the catalog number, replace the "V" with "W" for white colored device. Other device colors and types are available. Consult factory for details.

UL and cUL Listed
UL File No. E324733



Commonly ordered catalog examples are listed below

See Uni-Mount assembly catalog numbering system at the end of the Uni-Mount assembly pages for more information on how to construct catalog numbers for almost any customer application

Duplex Receptacle



Commercial Grade Receptacle	Industrial Grade Receptacle	Hospital Grade Receptacle		
Assembly Catalog Number with CR20V Commercial Grade 20A Duplex Receptacle Installed	Assembly Catalog Number with 5362V Industrial Grade 20A Duplex Receptacle Installed	Assembly Catalog Number with 8300V Hospital Grade 20A Duplex Receptacle Installed	4" Square Steel Open Back Box	Uni-Mount
Single 20A Duplex Receptacle				
TP3140D C20DV	TP3140D I20DV	TP3140D H20DV	2⅞" Deep	⅝" Single Gang
TP3140S C20DV	TP3140S I20DV	TP3140S H20DV	1½" Deep	⅝" Single Gang
TP3240D C20DV	TP3240D I20DV	TP3240D H20DV	2⅞" Deep	¾" Single Gang
TP3240S C20DV	TP3240S I20DV	TP3240S H20DV	1½" Deep	¾" Single Gang
Double 20A Duplex Receptacle				
TP3640D C20DDV	TP3640D I20DDV	TP3640D H20DDV	2⅞" Deep	⅝" Two Gang
TP3640S C20DDV	TP3640S I20DDV	TP3640S H20DDV	1½" Deep	⅝" Two Gang
TP3740D C20DDV	TP3740D I20DDV	TP3740D H20DDV	2⅞" Deep	¾" Two Gang
TP3740S C20DDV	TP3740S I20DDV	TP3740S H20DDV	1½" Deep	¾" Two Gang

GFCI Receptacle



Specification Grade GFCI Receptacle	Hospital Grade GFCI Receptacle			
Assembly Catalog Number with VGF20 Specification Grade 20A GFCI Receptacle Installed	Assembly Catalog Number with VGFH20V Hospital Grade 20A GFCI Receptacle Installed	4" Square Steel Open Back Box	Uni-Mount	
Single 20A GFCI Receptacle				
TP3140D S20GV	TP3140D H20GV	2⅞" Deep	⅝" Single Gang	
TP3140S S20GV	TP3140S H20GV	1½" Deep	⅝" Single Gang	
TP3240D S20GV	TP3240D H20GV	2⅞" Deep	¾" Single Gang	
TP3240S S20GV	TP3240S H20GV	1½" Deep	¾" Single Gang	
Double 20A GFCI Receptacle				
TP3640D S20GGV	TP3640D H20GGV	2⅞" Deep	⅝" Two Gang	
TP3640S S20GGV	TP3640S H20GGV	1½" Deep	⅝" Two Gang	
TP3740D S20GGV	TP3740D H20GGV	2⅞" Deep	¾" Two Gang	
TP3740S S20GGV	TP3740S H20GGV	1½" Deep	¾" Two Gang	

Commonly ordered catalog examples are listed below

See Uni-Mount assembly catalog numbering system at the end of the Uni-Mount assembly pages for more information on how to construct catalog numbers for almost any customer application

Single Pole Switch



Commercial Grade Single Pole Switch	Industrial Grade Single Pole Switch		
Assembly Catalog Number with CS120V Commercial Grade 20A Single Pole Switch Installed	Assembly Catalog Number with AH1221V Industrial Grade 20A Single Pole Switch Installed	4" Square Steel Open Back Box	Uni-Mount
Single 20A Single Pole Switch			
TP3140D C20SPV	TP3140D I20SPV	2 1/8" Deep	5/8" Single Gang
TP3140S C20SPV	TP3140S I20SPV	1 1/2" Deep	5/8" Single Gang
TP3240D C20SPV	TP3240D I20SPV	2 1/8" Deep	3/4" Single Gang
TP3240S C20SPV	TP3240S I20SPV	1 1/2" Deep	3/4" Single Gang
Double 20A Single Pole Switch			
TP3640D C20SPSPV	TP3640D I20SPSPV	2 1/8" Deep	5/8" Two Gang
TP3640S C20SPSPV	TP3640S I20SPSPV	1 1/2" Deep	5/8" Two Gang
TP3740D C20SPSPV	TP3740D I20SPSPV	2 1/8" Deep	3/4" Two Gang
TP3740S C20SPSPV	TP3740S I20SPSPV	1 1/2" Deep	3/4" Two Gang

Three Way Switch

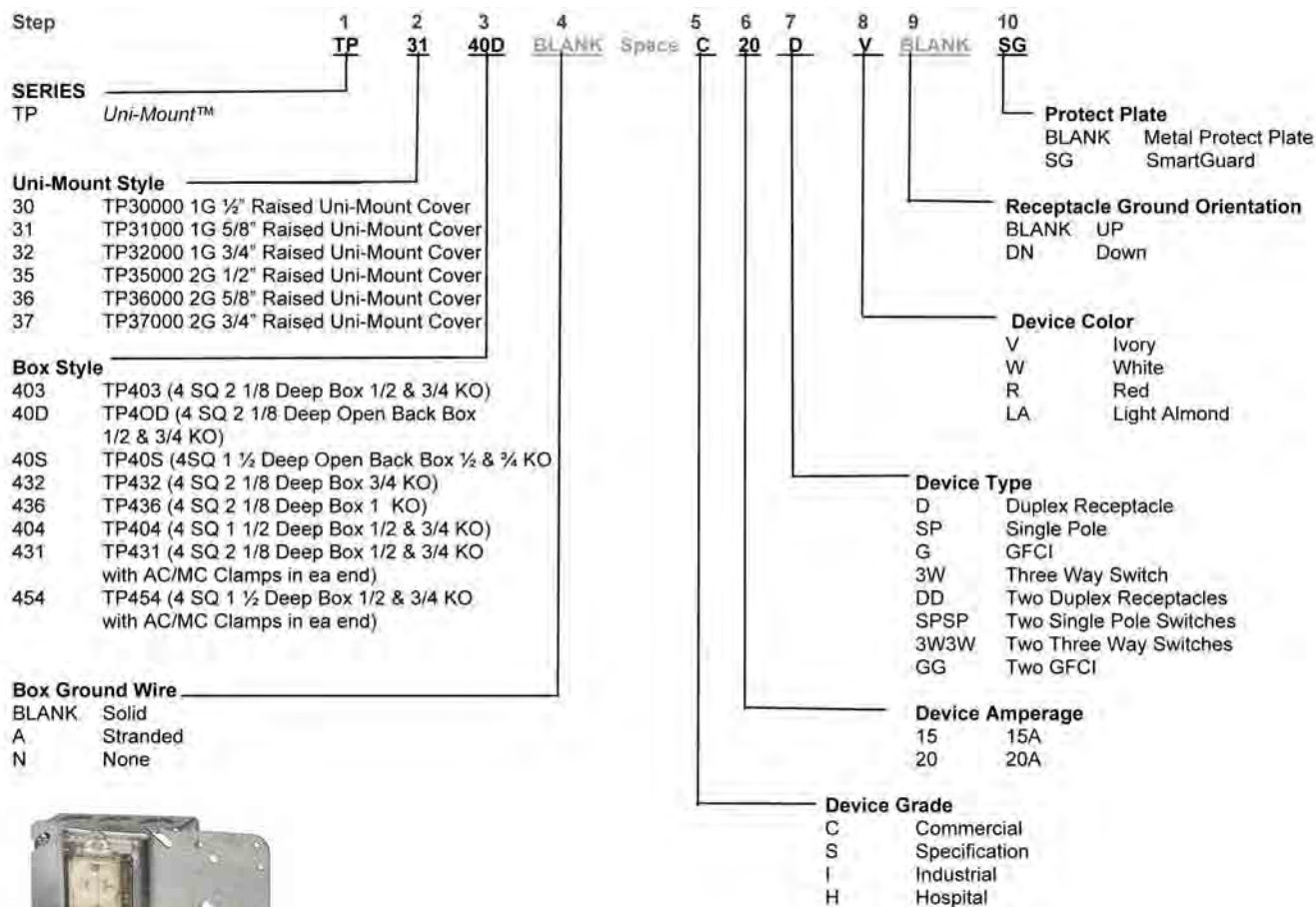


Commercial Grade Three Way Switch	Industrial Grade Three Way Switch		
Assembly Catalog Number with CS320V Commercial Grade 20A Three Way Switch Installed	Assembly Catalog Number with AH1223V Industrial Grade 20A Three Way Switch Installed	4" Square Steel Open Back Box	Uni-Mount
Single 20A Three Way Switch			
TP3140D C203WV	TP3140D I203WV	2 1/8" Deep	5/8" Single Gang
TP3140S C203WV	TP3140S I203WV	1 1/2" Deep	5/8" Single Gang
TP3240D C203WV	TP3240D I203WV	2 1/8" Deep	3/4" Single Gang
TP3240S C203WV	TP3240S I203WV	1 1/2" Deep	3/4" Single Gang
Double 20A Three Way Switch			
TP3640D C203W3WV	TP3640D I203W3WV	2 1/8" Deep	5/8" Two Gang
TP3640S C203W3WV	TP3640S I203W3WV	1 1/2" Deep	5/8" Two Gang
TP3740D C203W3WV	TP3740D I203W3WV	2 1/8" Deep	3/4" Two Gang
TP3740S C203W3WV	TP3740S I203W3WV	1 1/2" Deep	3/4" Two Gang

- All open back box assemblies are shipped with TP472 flat, blank back covers, ground screw and lead.
- Other box types, device colors, mud ring depths, brackets and assembly configurations are available. Consult factory for details.
- To change the color of device from Ivory (as shown) to white, substitute V (Ivory) with W (White). For ex. TP3140D C20DV becomes TP3140D C20DW.
- All receptacles are shipped standard ground up. Add suffix DN for ground down.
- All assemblies shipped standard with metal device protect plates, add suffix SG for SmartGuard plastic protect plate.
- Pre-installed connectors available on all assembly types. Consult factory for details

Uni-Mount™ Assemblies with Wiring Devices

PRE-formance™ Catalog Numbering System for Uni-Mount™ Assemblies with Devices



TP3140D C20DVSG

Standard Cooper Wiring Devices used in PRE-formance Assemblies

CCH Wiring Device Nomenclature (without color suffix)	CWD Catalog Number used (shown without color suffix)	Description	CCH Wiring Device Nomenclature (without color suffix)	CWD Catalog Number used (shown without color suffix)	Description
C20D	CR20	Commercial Grade 20A Duplex Receptacle	C20SP	CS120	Commercial Grade 20A Single Pole Switch
I20D	5362	Industrial Grade 20A Duplex Receptacle	I20SP	AH1221	Industrial Grade 20A Single Pole Switch
H20D	8300	Hospital Grade 20A Duplex Receptacle	C203W	CS320	Commercial Grade 20A Three Way Switch
S20G	VGf20	Specification Grade 20A GFCI Receptacle	I203W	AH1223	Industrial Grade 20A Three Way Switch
H20G	VGfH20	Hospital Grade 20A GFCI Receptacle			

Single Sided Assemblies with Wiring Devices

Cooper Crouse-Hinds PRE-formance Single Sided Assemblies - All catalog numbers contain a single sided bracket (BB4-23 for 3 1/2" and 2 1/2" studs), 4" square box, an 8" insulated solid box ground wire, one or two pre-wired Cooper Wiring Devices with leads and push-in connectors, and device protect plates

Single Sided Assemblies with wiring devices are shipped standard with open back boxes. Open back boxes maximize the working area to reduce wiring time and eliminate interference problems. They virtually eliminate the need for disassembly at the job site. Open back boxes are available in either 1 1/2" or 2 1/8" deep with 1/2" & 3/4" eccentric knock-outs. All 4" square open back box assemblies are shipped with TP472 flat, blank back covers.







- All assemblies are shown with ivory colored devices. At the end of the catalog number, replace the "V" with "W" for white colored device. Other device colors and types are available. Consult factory for details. Double sided direct mount assemblies are also available. Substitute PFH3 in the catalog number with PF3DS (BB73 double sided bracket).
- 4" and 6" Far side supports are available. Replace PFH3 (for 2 1/2" and 3 1/2" studs) with PFH4 (4") (BB44) or PFH6 (6") (BB46).

UL and cUL Listed
UL File No. E-324733



Commonly ordered catalog examples are listed below

See assembly catalog numbering system at the end of this section for more information on how to construct catalog numbers for almost any customer application

	Commercial Grade Receptacle	Industrial Grade Receptacle	Hospital Grade Receptacle		
Duplex Receptacle  	Assembly Catalog Number with CR20V Commercial Grade 20A Duplex Receptacle Installed	Assembly Catalog Number with 5362V Industrial Grade 20A Duplex Receptacle Installed	Assembly Catalog Number with 8300V Hospital Grade 20A Duplex Receptacle Installed	4" Square Steel Open Back Box	Mud Ring
	Single 20A Duplex Receptacle				
	PFH3 40D58C20DV	PFH3 40D58I20DV	PFH3 40D58H20DV	2 1/8" Deep	5/8" Single Gang
	PFH3 40S58C20DV	PFH3 40S58I20DV	PFH3 40S58H20DV	1 1/2" Deep	5/8" Single Gang
	PFH3 40D75C20DV	PFH3 40D75I20DV	PFH3 40D75H20DV	2 1/8" Deep	3/4" Single Gang
	PFH3 40S75C20DV	PFH3 40S75I20DV	PFH3 40S75H20DV	1 1/2" Deep	3/4" Single Gang
	Double 20A Duplex Receptacle				
	PFH3 40D258C20DDV	PFH3 40D258I20DDV	PFH3 40D258H20DDV	2 1/8" Deep	5/8" Two Gang
	PFH3 40S258C20DDV	PFH3 40S258I20DDV	PFH3 40S258H20DDV	1 1/2" Deep	5/8" Two Gang
	PFH3 40D275C20DDV	PFH3 40D275I20DDV	PFH3 40D275H20DDV	2 1/8" Deep	3/4" Two Gang
PFH3 40S275C20DDV	PFH3 40S275I20DDV	PFH3 40S275H20DDV	1 1/2" Deep	3/4" Two Gang	
GFCI Receptacle  	Specification Grade GFCI Receptacle	Hospital Grade GFCI Receptacle			
	Assembly Catalog Number with VGF20 Specification Grade 20A GFCI Receptacle Installed	Assembly Catalog Number with VGFH20V Hospital Grade 20A GFCI Receptacle Installed	4" Square Steel Open Back Box	Mud Ring	
	Single 20A GFCI Receptacle				
	PFH3 40D58S20GV	PFH3 40D58H20GV	2 1/8" Deep	5/8" Single Gang	
	PFH3 40S58S20GV	PFH3 40S58H20GV	1 1/2" Deep	5/8" Single Gang	
	PFH3 40D75S20GV	PFH3 40D75H20GV	2 1/8" Deep	3/4" Single Gang	
	PFH3 40S75S20GV	PFH3 40S75H20GV	1 1/2" Deep	3/4" Single Gang	
	Double 20A GFCI Receptacle				
	PFH3 40D258S20GGV	PFH3 40D258H20GGV	2 1/8" Deep	5/8" Two Gang	
	PFH3 40S258S20GGV	PFH3 40S258H20GGV	1 1/2" Deep	5/8" Two Gang	
PFH3 40D275S20GGV	PFH3 40D275H20GGV	2 1/8" Deep	3/4" Two Gang		
PFH3 40S275S20GGV	PFH3 40S275H20GGV	1 1/2" Deep	3/4" Two Gang		

Single Sided Assemblies with Wiring Devices

Single Pole Switch



Commercial Grade Single Pole Switch

Assembly Catalog Number with
CS120V Commercial Grade 20A Sin-
gle Pole Switch Installed

Single 20A Single Pole Switch

PFH3 40D58C20SPV
PFH3 40S58C20SPV
PFH3 40D75C20SPV
PFH3 40S75C20SPV

Double 20A Single Pole Switch

PFH3 40D258C20SPSPV
PFH3 40S258C20SPSPV
PFH3 40D275C20SPSPV
PFH3 40S275C20SPSPV

Industrial Grade Single Pole Switch

Assembly Catalog Number with
AH1221V Industrial Grade 20A
Single Pole Switch Installed

PFH3 40D58I20SPV
PFH3 40S58I20SPV
PFH3 40D75I20SPV
PFH3 40S75I20SPV

4" Square
Steel Open
Back Box

Mud Ring

2 1/8" Deep 5/8" Single Gang
1 1/2" Deep 5/8" Single Gang
2 1/8" Deep 3/4" Single Gang
1 1/2" Deep 3/4" Single Gang

2 1/8" Deep 5/8" Two Gang
1 1/2" Deep 5/8" Two Gang
2 1/8" Deep 3/4" Two Gang
1 1/2" Deep 3/4" Two Gang

Three Way Switch



Commercial Grade Three Way Switch

Assembly Catalog Number with
CS320V Commercial Grade 20A
Three Way Switch Installed

Single 20A Three Way Switch

PFH3 40D58C203WV
PFH3 40S58C203WV
PFH3 40D75C203WV
PFH3 40S75C203WV

Double 20A Three Way Switch

PFH3 40D258C203W3WV
PFH3 40S258C203W3WV
PFH3 40D275C203W3WV
PFH3 40S275C203W3WV

Industrial Grade Three Way Switch

Assembly Catalog Number with
AH1223V Industrial Grade 20A
Three Way Switch Installed

PFH3 40D58I203WV
PFH3 40S58I203WV
PFH3 40D75I203WV
PFH3 40S75I203WV

4" Square
Steel Open
Back Box

Mud ring

2 1/8" Deep 5/8" Single Gang
1 1/2" Deep 5/8" Single Gang
2 1/8" Deep 3/4" Single Gang
1 1/2" Deep 3/4" Single Gang

2 1/8" Deep 5/8" Two Gang
1 1/2" Deep 5/8" Two Gang
2 1/8" Deep 3/4" Two Gang
1 1/2" Deep 3/4" Two Gang

- All open back box assemblies are shipped with TP472 flat, blank back covers, ground screw and lead.
- Other box types, device colors, mud ring depths, brackets and assembly configurations are available. Consult factory for details.
- To change the color of device from Ivory (as shown) to white, substitute V (Ivory) with W (White). For ex. PFH3 40D58C20DV becomes PFH3 40D58C20DW.
- All receptacles are shipped standard ground up. Add suffix DN for ground down.
- All assemblies shipped standard with metal device protect plates, add suffix SG for SmartGuard plastic protect plate.
- Pre-installed connectors available on all assembly types. Consult factory for details

Double Sided Assemblies with Wiring Devices

Cooper Crouse-Hinds PRE-formance Double Sided Assemblies - All catalog numbers contain a double sided bracket (BB73 for 3 1/2" and 2 1/2" studs), 4" square box, an 8" insulated solid box ground wire, one or two pre-wired Cooper Wiring Devices with leads and push-in connectors, and device protect plates

Double Sided Assemblies with wiring devices are shipped standard with open back boxes. Open back boxes maximize the working area to reduce wiring time and eliminate interference problems. They virtually eliminate the need for disassembly at the job site. Open back boxes are available in either 1 1/2" or 2 1/8" deep with 1/2" & 3/4" eccentric knockouts. All 4" square open back box assemblies are shipped with TP472 flat, blank back covers.





- All assemblies are shown with ivory colored devices. At the end of the catalog number, replace the "V" with "W" for white colored device. Other device colors and types are available. Consult factory for details.
- 4" and 6" Far side supports are available. Replace PF3DS (for 2 1/2" and 3 1/2" studs) with PF4DS (4") (BB44) or PF6DS (6") (BB46).

UL and cUL Listed
UL File No. E-324733



Commonly ordered catalog examples are listed below

See assembly catalog numbering system at the end of this section for more information on how to construct catalog numbers for almost any customer application

	Commercial Grade Receptacle	Industrial Grade Receptacle	Hospital Grade Receptacle	4" Square Steel Open Back Box	Mud Ring
Duplex Receptacle 	Assembly Catalog Number with CR20V Commercial Grade 20A Duplex Receptacle Installed	Assembly Catalog Number with 5362V Industrial Grade 20A Duplex Receptacle Installed	Assembly Catalog Number with 8300V Hospital Grade 20A Duplex Receptacle Installed		
	Single 20A Duplex Receptacle				
	PF3DS 40D58C20DV	PF3DS 40D58I20DV	PF3DS 40D58H20DV	2 1/8" Deep	5/8" Single Gang
	PF3DS 40S58C20DV	PF3DS 40S58I20DV	PF3DS 40S58H20DV	1 1/2" Deep	5/8" Single Gang
	PF3DS 40D75C20DV	PF3DS 40D75I20DV	PF3DS 40D75H20DV	2 1/8" Deep	3/4" Single Gang
	PF3DS 40S75C20DV	PF3DS 40S75I20DV	PF3DS 40S75H20DV	1 1/2" Deep	3/4" Single Gang
	Double 20A Duplex Receptacle				
	PF3DS 40D258C20DDV	PF3DS 40D258I20DDV	PF3DS 40D258H20DDV	2 1/8" Deep	5/8" Two Gang
	PF3DS 40S258C20DDV	PF3DS 40S258I20DDV	PF3DS 40S258H20DDV	1 1/2" Deep	5/8" Two Gang
	PF3DS 40D275C20DDV	PF3DS 40D275I20DDV	PF3DS 40D275H20DDV	2 1/8" Deep	3/4" Two Gang
PF3DS 40S275C20DDV	PF3DS 40S275I20DDV	PF3DS 40S275H20DDV	1 1/2" Deep	3/4" Two Gang	
GFCI Receptacle 	Specification Grade GFCI Receptacle	Hospital Grade GFCI Receptacle			
	Assembly Catalog Number with VGF20 Specification Grade 20A GFCI Receptacle Installed	Assembly Catalog Number with VGFH20V Hospital Grade 20A GFCI Receptacle Installed		4" Square Steel Open Back Box	Mud Ring
	Single 20A GFCI Receptacle				
	PF3DS 40D58S20GV	PF3DS 40D58H20GV		2 1/8" Deep	5/8" Single Gang
	PF3DS 40S58S20GV	PF3DS 40S58H20GV		1 1/2" Deep	5/8" Single Gang
	PF3DS 40D75S20GV	PF3DS 40D75H20GV		2 1/8" Deep	3/4" Single Gang
	PF3DS 40S75S20GV	PF3DS 40S75H20GV		1 1/2" Deep	3/4" Single Gang
	Double 20A GFCI Receptacle				
	PF3DS 40D258S20GGV	PF3DS 40D258H20GGV		2 1/8" Deep	5/8" Two Gang
	PF3DS 40S258S20GGV	PF3DS 40S258H20GGV		1 1/2" Deep	5/8" Two Gang
PF3DS 40D275S20GGV	PF3DS 40D275H20GGV		2 1/8" Deep	3/4" Two Gang	
PF3DS 40S275S20GGV	PF3DS 40S275H20GGV		1 1/2" Deep	3/4" Two Gang	

Double Sided Assemblies with Wiring Devices

Single Pole Switch



Commercial Grade Single Pole Switch	Industrial Grade Single Pole Switch		
Assembly Catalog Number with CS120V Commercial Grade 20A Single Pole Switch Installed	Assembly Catalog Number with AH1221V Industrial Grade 20A Single Pole Switch Installed	4" Square Steel Open Back Box	Mud Ring
Single 20A Single Pole Switch			
PF3DS 40D58C20SPV	PF3DS 40D58I20SPV	2 1/8" Deep	5/8" Single Gang
PF3DS 40S58C20SPV	PF3DS 40S58I20SPV	1 1/2" Deep	5/8" Single Gang
PF3DS 40D75C20SPV	PF3DS 40D75I20SPV	2 1/8" Deep	3/4" Single Gang
PF3DS 40S75C20SPV	PF3DS 40S75I20SPV	1 1/2" Deep	3/4" Single Gang
Double 20A Single Pole Switch			
PF3DS 40D258C20SPSPV	PF3DS 40D258I20SPSPV	2 1/8" Deep	5/8" Two Gang
PF3DS 40S258C20SPSPV	PF3DS 40S258I20SPSPV	1 1/2" Deep	5/8" Two Gang
PF3DS 40D275C20SPSPV	PF3DS 40D275I20SPSPV	2 1/8" Deep	3/4" Two Gang
PF3DS 40S275C20SPSPV	PF3DS 40S275I20SPSPV	1 1/2" Deep	3/4" Two Gang

Three Way Switch



Commercial Grade Three Way Switch	Industrial Grade Three Way Switch		
Assembly Catalog Number with CS320V Commercial Grade 20A Three Way Switch Installed	Assembly Catalog Number with AH1223V Industrial Grade 20A Three Way Switch Installed	4" Square Steel Open Back Box	Mud ring
Single 20A Three Way Switch			
PF3DS 40D58C203WV	PF3DS 40D58I203WV	2 1/8" Deep	5/8" Single Gang
PF3DS 40S58C203WV	PF3DS 40S58I203WV	1 1/2" Deep	5/8" Single Gang
PF3DS 40D75C203WV	PF3DS 40D75I203WV	2 1/8" Deep	3/4" Single Gang
PF3DS 40S75C203WV	PF3DS 40S75I203WV	1 1/2" Deep	3/4" Single Gang
Double 20A Three Way Switch			
PF3DS 40D258C203W3WV	PF3DS 40D258I203W3WV	2 1/8" Deep	5/8" Two Gang
PF3DS 40S258C203W3WV	PF3DS 40S258I203W3WV	1 1/2" Deep	5/8" Two Gang
PF3DS 40D275C203W3WV	PF3DS 40D275I203W3WV	2 1/8" Deep	3/4" Two Gang
PF3DS 40S275C203W3WV	PF3DS 40S275I203W3WV	1 1/2" Deep	3/4" Two Gang

- All open back box assemblies are shipped with TP472 flat, blank back covers, ground screw and lead.
- Other box types, device colors, mud ring depths, brackets and assembly configurations are available. Consult factory for details.
- To change the color of device from Ivory (as shown) to white, substitute V (Ivory) with W (White). For ex. PF3DS 40D58C20DV becomes PF3DS 40D58C20DW.
- All receptacles are shipped standard ground up. Add suffix DN for ground down.
- All assemblies shipped standard with metal device protect plates, add suffix SG for SmartGuard plastic protect plate.
- Pre-installed connectors available on all assembly types. Consult factory for details

For more information on all PRE-formance products or how to submit drawings for quotation, please email CCHPREformance@cooperindustries.com or call 315-477-5592

Cooper Crouse-Hinds PRE-formance Floor Mount Assemblies - All catalog numbers contain a floor mount bracket (BBF18) which positions device at 18" on center, 4" square Box, an 8" insulated solid box ground wire with one or two pre-wired Cooper Wiring Devices with leads and push-in connectors, and device protect plates.

Floor mount assemblies with wiring devices are shipped standard with open back boxes. Open back boxes maximize the working area to reduce wiring time and eliminate interference problems. They virtually eliminate the need for disassembly at the job site. Open back boxes are available in either 1 1/2" or 2 1/8" deep with 1/2 & 3/4 eccentric knockouts. All 4" square open back box assemblies are shipped with TP472 flat, blank back covers.

- All assemblies are shown with ivory colored devices. At the end of the catalog number, replace the "V" with "W" for white colored device. Other device colors and types are available. Consult factory for details.

UL and cUL Listed
UL File No. E324733



Commonly ordered catalog examples are listed below

See assembly catalog numbering system at the end of this section for more information on how to construct catalog numbers for almost any customer application

Single Receptacle



Commercial Grade Receptacle

Assembly Catalog Number with CR20V Commercial Grade 20A Duplex Receptacle Installed

Industrial Grade Receptacle

Assembly Catalog Number with 5362V Industrial Grade 20A Duplex Receptacle Installed

Hospital Grade Receptacle

Assembly Catalog Number with 8300V Hospital Grade 20A Duplex Receptacle Installed

4" Square Steel Open Back Box

Mud Ring

Single 20A Duplex Receptacle

PF18FM 40D58C20DV
PF18FM 40S58C20DV
PF18FM 40D75C20DV
PF18FM 40S75C20DV

PF18FM 40D58I20DV
PF18FM 40S58I20DV
PF18FM 40D75I20DV
PF18FM 40S75I20DV

PF18FM 40D58H20DV
PF18FM 40S58H20DV
PF18FM 40D75H20DV
PF18FM 40S75H20DV

2 1/8" Deep
1 1/2" Deep
2 1/8" Deep
1 1/2" Deep

5/8" Single Gang
5/8" Single Gang
3/4" Single Gang
3/4" Single Gang

Double Receptacle



Double 20A Duplex Receptacle

PF18FM 40D258C20DDV
PF18FM 40S258C20DDV
PF18FM 40D275C20DDV
PF18FM 40S275C20DDV

PF18FM 40D258I20DDV
PF18FM 40S258I20DDV
PF18FM 40D275I20DDV
PF18FM 40S275I20DDV

PF18FM 40D258H20DDV
PF18FM 40S258H20DDV
PF18FM 40D275H20DDV
PF18FM 40S275H20DDV

2 1/8" Deep
1 1/2" Deep
2 1/8" Deep
1 1/2" Deep

5/8" Two Gang
5/8" Two Gang
3/4" Two Gang
3/4" Two Gang

- All open back box assemblies are shipped with TP472 flat, blank back covers, ground screw and lead.
- Other box types, device colors, mud ring depths, brackets and assembly configurations are available. Consult factory for details.
- To change the color of device from Ivory (as shown) to white, substitute V (Ivory) with W (White). For ex. PF18FM 40D58C20DV becomes PF18FM 40D58C20DW.
- All receptacles are shipped standard ground up. Add suffix DN for ground down.
- All assemblies shipped standard with metal device protect plates, add suffix SG for SmartGuard plastic protect plate.
- Pre-installed connectors available on all assembly types. Consult factory for details

Telescoping Slider Assemblies with Wiring Devices

Cooper Crouse-Hinds PRE-formance Telescoping Slider Assemblies - All catalog numbers contain a Telescoping Slider Bracket (BB216TS 11"-18"), 4" square traditional closed back box, an 8" insulated stranded box ground wire with ground screw, one or two pre-wired Cooper Wiring Devices with leads and push-in connectors, and device protect plates

- All assemblies are shown with ivory colored devices. At the end of the catalog number, replace the "V" with "W" for white colored device. Other device colors and types are available. Consult factory for details.
- 15"-26" Telescoping Slider assemblies are available. Replace PF16TS (BB216TS) with PF24TS (BB224TS).



UL and cUL Listed



UL File No. E324733

Commonly ordered catalog examples are listed below

See assembly catalog numbering system at the end of this section for more information on how to construct catalog numbers for almost any customer application

Duplex Receptacles



Commercial Grade Receptacle	Industrial Grade Receptacle	Hospital Grade Receptacle	4" Square Steel Box (Not Open Back)	Mud Ring
Assembly Catalog Number with CR20V Commercial Grade 20A Duplex Receptacle Installed	Assembly Catalog Number with 5362V Industrial Grade 20A Duplex Receptacle Installed	Assembly Catalog Number with 8300V Hospital Grade 20A Duplex Receptacle Installed		
Single 20A Duplex Receptacle				
PF16TS 4DA58C20DV	PF16TS 4DA58I20DV	PF16TS 4DA58H20DV	2 1/8" Deep	5/8" Single Gang
PF16TS 4SA58C20DV	PF16TS 4SA58I20DV	PF16TS 4SA58H20DV	1 1/2" Deep	5/8" Single Gang
PF16TS 4DA75C20DV	PF16TS 4DA75I20DV	PF16TS 4DA75H20DV	2 1/8" Deep	3/4" Single Gang
PF16TS 4SA75C20DV	PF16TS 4SA75I20DV	PF16TS 4SA75H20DV	1 1/2" Deep	3/4" Single Gang
Double 20A Duplex Receptacle				
PF16TS 4DA258C20DDV	PF16TS 4DA258I20DDV	PF16TS 4DA258H20DDV	2 1/8" Deep	5/8" Two Gang
PF16TS 4SA258C20DDV	PF16TS 4SA258I20DDV	PF16TS 4SA258H20DDV	1 1/2" Deep	5/8" Two Gang
PF16TS 4DA275C20DDV	PF16TS 4DA275I20DDV	PF16TS 4DA275H20DDV	2 1/8" Deep	3/4" Two Gang
PF16TS 4SA275C20DDV	PF16TS 4SA275I20DDV	PF16TS 4SA275H20DDV	1 1/2" Deep	3/4" Two Gang

GFCI Receptacles



Specification Grade GFCI Receptacle	Hospital Grade GFCI Receptacle	4" Square Steel Box (Not Open Back)	Mud Ring
Assembly Catalog Number with VGF20 Specification Grade 20A GFCI Receptacle Installed	Assembly Catalog Number with VGFH20V Hospital Grade 20A GFCI Receptacle Installed		
Single 20A GFCI Receptacle			
PF16TS 4DA58S20GV	PF16TS 4DA58H20GV	2 1/8" Deep	5/8" Single Gang
PF16TS 4SA58S20GV	PF16TS 4SA58H20GV	1 1/2" Deep	5/8" Single Gang
PF16TS 4DA75S20GV	PF16TS 4DA75H20GV	2 1/8" Deep	3/4" Single Gang
PF16TS 4SA75S20GV	PF16TS 4SA75H20GV	1 1/2" Deep	3/4" Single Gang
Double 20A GFCI Receptacle			
PF16TS 4DA258S20GGV	PF16TS 4DA258H20GGV	2 1/8" Deep	5/8" Two Gang
PF16TS 4SA258S20GGV	PF16TS 4SA258H20GGV	1 1/2" Deep	5/8" Two Gang
PF16TS 4DA275S20GGV	PF16TS 4DA275H20GGV	2 1/8" Deep	3/4" Two Gang
PF16TS 4SA275S20GGV	PF16TS 4SA275H20GGV	1 1/2" Deep	3/4" Two Gang

Telescoping Slider Assemblies with Wiring Devices

Single Pole Switch



**Commercial Grade
Single Pole Switch**

Assembly Catalog
Number with CS120V
Commercial Grade 20A
Single Pole
Switch Installed

Single 20A Single Pole Switch

PF16TS 4DA58C20SPV
PF16TS 4SA58C20SPV
PF16TS 4DA75C20SPV
PF16TS 4SA75C20SPV

**Industrial Grade
Single Pole Switch**

Assembly Catalog
Number with AH1221V
Industrial Grade 20A
Single Pole
Switch Installed

PF16TS 4DA58I20SPV
PF16TS 4SA58I20SPV
PF16TS 4DA75I20SPV
PF16TS 4SA75I20SPV

**4" Square
Steel Box
(Not Open
Back)**

Mud Ring

2 1/8" Deep
1 1/2" Deep
2 1/8" Deep
1 1/2" Deep

5/8" Single Gang
5/8" Single Gang
3/4" Single Gang
3/4" Single Gang

Double 20A Single Pole Switch

PF16TS 4DA258C20SPSPV
PF16TS 4SA258C20SPSPV
PF16TS 4DA275C20SPSPV
PF16TS 4SA275C20SPSPV

PF16TS 4DA258I20SPSPV
PF16TS 4SA258I20SPSPV
PF16TS 4DA275I20SPSPV
PF16TS 4SA275I20SPSPV

2 1/8" Deep
1 1/2" Deep
2 1/8" Deep
1 1/2" Deep

5/8" Two Gang
5/8" Two Gang
3/4" Two Gang
3/4" Two Gang

Three Way Switch



**Commercial Grade
Three Way Switch**

Assembly Catalog
Number with CS320V
Commercial Grade 20A
Three Way
Switch Installed

Single 20A Three Way Switch

PF16TS 4DA58C203WV
PF16TS 4SA58C203WV
PF16TS 4DA75C203WV
PF16TS 4SA75C203WV

**Industrial Grade
Three Way Switch**

Assembly Catalog
Number with AH1223V
Industrial Grade 20A
Three Way
Switch Installed

PF16TS 4DA58I203WV
PF16TS 4SA58I203WV
PF16TS 4DA75I203WV
PF16TS 4SA75I203WV

**4" Square
Steel Box
(Not Open
Back)**

Mud Ring

2 1/8" Deep
1 1/2" Deep
2 1/8" Deep
1 1/2" Deep

5/8" Single Gang
5/8" Single Gang
3/4" Single Gang
3/4" Single Gang

Double 20A Three Way Switch

PF16TS 4DA258C203W3WV
PF16TS 4SA258C203W3WV
PF16TS 4DA275C203W3WV
PF16TS 4SA275C203W3WV

PF16TS 4DA258I203W3WV
PF16TS 4SA258I203W3WV
PF16TS 4DA275I203W3WV
PF16TS 4SA275I203W3WV

2 1/8" Deep
1 1/2" Deep
2 1/8" Deep
1 1/2" Deep

5/8" Two Gang
5/8" Two Gang
3/4" Two Gang
3/4" Two Gang

- Other box types, device colors, mud ring depths, brackets and assembly configurations are available. Consult factory for details.
- To change the color of device from Ivory (as shown) to white, substitute V (Ivory) with W (White). For ex. PF16TS 4DAC20DV becomes PF16TS 4DAC20DW.
- All receptacles are shipped standard ground up. Add suffix DN for ground down.
- All assemblies shipped standard with metal device protect plates, add suffix SG for SmartGuard plastic protect plate.
- Pre-installed connectors available on all assembly types. Consult factory for details
- Telescoping Slider bracket assemblies are shipped with traditional closed back box, ground screw and stranded leads on box and devices.
- Device leads and push-in connectors are left inside the box and will not be pulled out of knockouts prior to shipment unless specified by customer.

Multi-Mount Assemblies with Wiring Devices

Cooper Crouse-Hinds PRE-formance Multi Mount Assemblies - All catalog numbers contain a multiple mount bracket (available in either 16" stud spanning or 24" stud spanning). Each position may contain an outlet box, an 8" insulated solid box ground wire with ground screw, one or two pre-wired Cooper Wiring Devices with leads and push-in connectors, and device protect plates.

UL and cUL Listed



UL File No. E324733

Commonly ordered catalog examples are listed below

See assembly catalog numbering system at the end of this section for more information on how to construct catalog numbers for almost any customer application



PF3MM 40D58C20DV 5D58 X

3MM Bracket

BB816 3 hole Multiple Mount Bracket for 16" Stud spacing

4MM Bracket (not shown)

BB824 4 hole Multiple Mount Bracket for 24" Stud spacing



PFUBH 40D58C20DV

UBH Bracket

UBH Universal Horizontal Bracket for 8 - 24" stud spacing



PF16BO 40D58C20DV X 40D258C20DDV

16BO Bracket

BB716 Open Mount Bracket for 16" Stud spacing

24BO Bracket (not shown)

BB724 Open Mount Bracket for 24" Stud spacing

Commonly Ordered Catalog Numbers	Description
PF3MM 40D58C20DV 5DN58 X	Assembly - BB816 Multiple Box Bracket, 4" square open back box with ground screw, lead and back cover, TP489 5/8" raise 1G mud ring, pre-wired CR20V 20A commercial duplex receptacle ivory with leads and push-in connectors and protect plate (not shown), 2nd position TP525 4 11/16" box, TP579 4 11/16" 5/8 raise 1G mud ring, no ground wire
PF16BO 40D58C20DV X 40D58C20DDV	Assembly - BB716 Open Bracket, 4" square open back box with ground screw, lead and back cover, TP489 5/8" raise 1G mud ring, pre-wired CR20V 20A commercial duplex receptacle ivory with leads, push-in connectors and protect plate, 2nd position open, 3rd position 4" square open back box with ground screw, lead and back cover, TP499 5/8" raise 2G mud ring, two pre-wired CR20v 20A commercial duplex receptacles ivory with leads, push-in connectors and protect plates
PFUBH 40D58C20DV	Assembly - Universal Bracket Mounted Horizontally, 4" square open back box with ground screw, lead and back cover, TP489 5/8" Raise 1G mud ring, pre-wired CR20V 20A commercial duplex receptacle ivory with leads, push-in connectors and protect plate (not shown)

- All open back box assemblies are shipped with TP472 flat, blank back covers, ground screw and lead.
- Other box types, device colors, mud ring depths, brackets and assembly configurations are available. Consult factory for details.
- To change the color of device from Ivory (as shown) to white, substitute V (Ivory) with W (White).
- All receptacles are shipped standard ground up. Add suffix DN for ground down.
- All assemblies shipped standard with metal device protect plates, add suffix SG for SmartGuard plastic protect plate.
- Pre-installed connectors available on all assembly types. Consult factory for details

PRE-formance™ Catalog Numbering System for additional assembly configurations

Positions 2 and 3 are only added for multi-mount or open mount assemblies. Insert a space, replace "X", and repeat steps 3-11 for additional boxes on assembly. If 1st or 2nd positions are blank, then insert "X" and use steps 3-11 in position where box is required.

Step	1	2	3	4	5	6	7	8	9	10	11				
SERIES	PF	H3	SPACE	40D	BLANK	58	C	20	D	V	BLANK	SG	X	X	
Bracket Style															
H3	BB423 Single Sided Bracket for 2 1/2 and 3 1/2 Studs														
H4	BB44 Single Sided for 4" Studs														
H6	BB46 Single Sided for 6" Studs														
3DS	BB73 Double Sided Bracket for 2 1/2 and 3 5/8 Studs														
4DS	BB74 Double Sided for 4" Studs														
6DS	BB76 Double Sided for 6" Studs														
16TS	BB216TS Telescoping Slider Bracket for 16" Stud Spacing														
24TS	BB224TS Telescoping Slider Bracket 24" Stud Spacing														
18FM	BBF18 Floor Mount Bracket 18" On Center														
3MM	BB816 3 hole Multiple Mount Bracket for 16" Stud spacing														
4MM	BB824 4 hole Multiple Mount Bracket for 24" Stud spacing														
16BO	BB716 Open Mount Bracket for 16" Stud spacing														
24BO	BB724 Open Mount Bracket for 24" Stud spacing														
UBV	Universal Bracket for vertical mounting followed by mounting height														
UBH	Universal Bracket Horizontally Mounted														
BH24	BA50 T-Bar														
Box Style															
4D	TP403 (4 SQ 2 1/8 Deep Box 1/2 & 3/4 KO)														
40D	TP40D (4 SQ 2 1/8 Deep Open Back Box 1/2 & 3/4 KO)														
40S	TP40S (4SQ 1 1/2 Deep Open Back Box 1/2 & 3/4 KO)														
432	TP432 (4 SQ 2 1/8 Deep Box 3/4 KO)														
436	TP436 (4 SQ 2 1/8 Deep Box 1 KO)														
4S	TP404 (4 SQ 1 1/2 Deep Box 1/2 & 3/4 KO)														
431	TP431 (4 SQ 2 1/8 Deep Box 1/2 & 3/4 KO with AC/MC Clamps in ea end)														
5D	TP525 (4 11/16 Welded 2 1/8 Deep box 1/2 and 3/4 KO)														
50D	TP50D (4 11/16 2 1/8 Deep Open Back box 1/2 and 3/4 KO)														
560	TP560 (4 11/16 2 1/8 Deep box 1 KO)														
562	TP562 (4 11/16 2 1/8 Deep box 1 1/4 KO)														
278	TP278 (4" 1 1/2" Deep Octagon box 1/2 & 3/4 KO)														
292	TP292 (4" 2 1/8" Deep Octagon box 1/2 & 3/4 KO)														
Box Ground Wire															
BLANK	Solid														
A	Stranded														
N	None														
Device Grade															
C	Commercial														
S	Specification														
I	Industrial														
H	Hospital														
Mud Ring Depth and Gang															
50	1/2" Raised 1 gang														
58	5/8" Raised 1 gang														
75	3/4" Raised 1 gang														
100	1" Raised 1 gang														
125	1 1/4" Raised 1 gang														
AR	Adjustable 1 gang														
250	1/2" Raised 2 gang														
258	5/8" Raised 2 gang														
275	3/4" Raised 2 gang														
2100	1" Raised 2 gang														
2125	1 1/4" Raised 2 gang														
2100	1" Raised 2 gang														
Position 3 Open															
	(Only use with Multi / Open Mount Brackets)														
Position 2 Open															
	(Only use with Multi / Open Mount Brackets)														
Protect Plate															
BLANK	Metal Protect Plate														
SG	SmartGuard														
Receptacle Ground Orientation															
BLANK	UP														
DN	Down														
Device Color															
V	Ivory														
W	White														
R	Red														
LA	Light Almond														
Device Type															
D	Duplex Receptacle														
SP	Single Pole														
G	GFCI														
3W	Three Way Switch														
DD	Two Duplex Receptacles														
SPSP	Two Single Pole Switches														
3W3W	Two Three Way Switches														
GG	Two GFCI Receptacles														
Device Amperage															
15	15A														
20	20A														

Catalog Numbering System

Standard Cooper Wiring Devices used in PRE-formance Assemblies

PFH3 40D58C20DVSG
(protect plate not shown)



CCH Wiring Device Nomenclature (without color suffix)	CWD Catalog Number used (shown without color suffix)	Description	CCH Wiring Device Nomenclature (without color suffix)	CWD Catalog Number used (shown without color suffix)	Description
C20D	CR20	Commercial Grade 20A Duplex Receptacle	C20SP	CS120	Commercial Grade 20A Single Pole Switch
I20D	5362	Industrial Grade 20A Duplex Receptacle	I20SP	AH1221	Industrial Grade 20A Single Pole Switch
H20D	8300	Hospital Grade 20A Duplex Receptacle	C203W	CS320	Commercial Grade 20A Three Way Switch
S20G	VGF20	Specification Grade 20A GFCI Receptacle	I203W	AH1223	Industrial Grade 20A Three Way Switch
H20G	VGFH20	Hospital Grade 20A GFCI Receptacle			

HomeRunner™ Junction Box

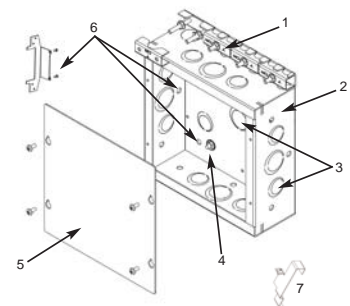
Applications:

The Cooper Crouse-Hinds HomeRunner™ Junction Box is designed specifically for commercial construction applications to provide a spacious, flexible junction box for terminating Home Run and other electrical wiring. Its patented clamping design and flexibility make it the most convenient, labor savings junction box available.

- The HomeRunner Junction Box has extensive built-in features for maximum job site flexibility and efficiency
- It can be used to terminate multiple wiring methods including AC, MC, MCI-A, NM or EMT
- Designed for use in commercial construction projects, it is ideal for hotels, motels, condos, assisted living centers, etc.

Features and Call-outs:

1. Patented clamping system - provides maximum flexibility and maximum grip. Third party certified for use with AC, MC, MCI-A or Non-metallic sheathed cable
2. 8 x 8 welded steel construction - provides strong, dependable service and large cubic capacity (177 cu. in.) for ease of wiring
3. Combination eccentric knockouts - on sides for quick & easy access, combination ko's in the back of the box are ideal of applications where joist spacing is too tight for side entry
4. Terminal cup washer and flanged nut - quick, easy service ground termination or attachment of grounding bus-bar, if desired
5. 2 cover options - square for surface mounted applications or oversized for flush mount applications
6. Extensive mounting flexibility - pre-drilled holes in side and back for direct mounting or optimal mounting bracket (purchased separately)
7. Far-side support snaps on quickly and easily and is perforated which allows for adjustment in dual thickness, fire-rated walls



Certifications and Compliances:

- For US & Canada : CSA File #248782
- Certified to UL50 & UL514B and CSA C22.2, No. 18.3-04 & No. 40-M1989

Standard Materials:

- Pre-galvanized steel

Cat.#	Description	Dimensions	Knockouts	Wire Fill	Built-In Clamps	Cu Vol	Unit Qty.	Wt. Per 100
HR080803	HomeRunner Box	8"H x 8"W x 3"D	(10) 1/2 and 3/4 eccentric, (7) 3/4 & 1 eccentric	(7) 14 AWG, (6) 12 AWG, (5) 10 AWG	(1) 1 1/3 to 1 1/2, (5) 1 1/2 to 1 2/3	177	5	400
HRC0808S	Surface Mount Cover for HomeRunner Box	8"H x 8"W x .06"D					5	100
HRC0808F	Flush Mount Cover for HomeRunner Box	9.38"H x 9.38"W x .06"D					5	160
HRSB1	Stud Bracket for HomeRunner Box						20	35

The most complete turn-key solution for commercial construction projects.

The process begins with your architectural and electrical engineering drawings and delivers a total pre-fabricated branch wiring system: custom produced, labeled, packaged by room and floor, and delivered to your exact location.

PRE-formance Complete delivers:

- Ideal for hotels, condos, commercial and retail offices, hospitals and apartments
- Total prefabricated branch wiring system custom produced with Cooper components, labeled, packaged by room and floor, delivered to your exact location
- Lower total cost of ownership
- Skill set allocation to match job requirements
- Elimination of job site material "piles" and inefficient searching for pieces and parts at the job site
- Elimination of job site "engineering"
- Reduction of overages and scrap, including expensive wire and cable
- Contractors can realize 30 to 40% labor savings over traditional "stick-build" wiring methods for greatly improved jobsite efficiency.



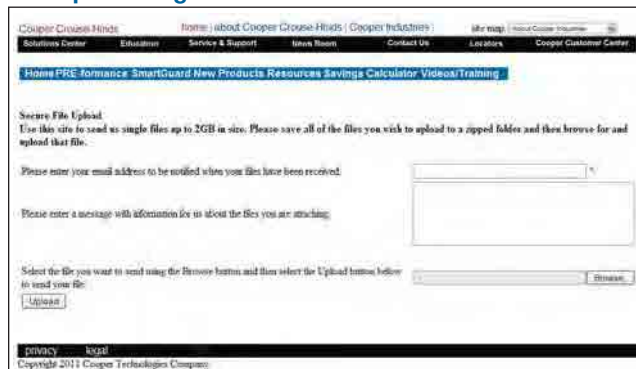
PRE-formance Complete quotation process provides:

- Safe, secure transmission of drawings to secure file exchange server, CDs, or hard copy drawings if customer prefers, where our technical team (consisting of engineers and former contractors) completes a preliminary take-off analysis.
- A clearly defined, mutually agreed upon scope of work proposal easily identifies inclusions and exclusions and includes formal approval/sign-off procedures to ensure a clear, mutual understanding before work begins. Our team of engineers provides technical support and will answer your questions throughout the entire process. Mutual understanding of the requirements is an integral part of the process.

Product receipt and installation made fast, easy and accurate.

- Unique, custom data layout table gets applied and shipped to each CAD drawing for each and every different room or area type
- Simplifies installation, eliminates guess work and helps eliminate job-site engineering
- Job specific labeling included with every cable run indicates starting position, ending position, device type, mounting type, cable size, cable length, box type, cable path, drawing number and date
- Includes mounting brackets & open back boxes that are designed with pre-fabrication, productivity & job site speed in mind.

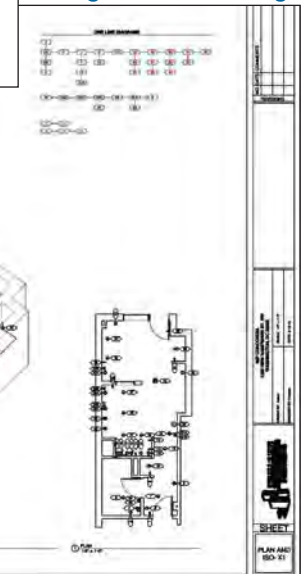
File Upload Page on Contractor Corner



Contractor Corner

Check the Contractor Corner for links to PRE-formance Complete tools and secure file upload.

Engineered Drawings



Detailed Assembly Label

Room# 714 FLOOR 7 EAST			
Item#	Fed From	Path	FW
Assembly: 1120-400 CROSWAY			
Style: Standard	Mounting: V		
Height: 443"			
Circuit# ID:	Cables:	Length:	
4	12-2	12' - 0"	
RED			
Drawing:	PRE-formance™		

Item#	Fed From	Path	FW
1	2		
2	3		
3	4		
4	5		
5	6		
6	7		
7	8		
8	9		
9	10		
10	11		
11	12		
12	13		
13	14		
14	15		
15	16		
16	17		
17	18		
18	19		
19	20		
20	21		
21	22		
22	23		
23	24		
24	25		
25	26		
26	27		
27	28		
28	29		
29	30		
30	31		
31	32		
32	33		
33	34		
34	35		
35	36		
36	37		
37	38		
38	39		
39	40		
40	41		
41	42		
42	43		
43	44		
44	45		
45	46		
46	47		
47	48		
48	49		
49	50		
50	51		
51	52		
52	53		
53	54		
54	55		
55	56		
56	57		
57	58		
58	59		
59	60		
60	61		
61	62		
62	63		
63	64		
64	65		
65	66		
66	67		
67	68		
68	69		
69	70		
70	71		
71	72		
72	73		
73	74		
74	75		
75	76		
76	77		
77	78		
78	79		
79	80		
80	81		
81	82		
82	83		
83	84		
84	85		
85	86		
86	87		
87	88		
88	89		
89	90		
90	91		
91	92		
92	93		
93	94		
94	95		
95	96		
96	97		
97	98		
98	99		
99	100		

For more information:

If further assistance is required, please contact an authorized Cooper Crouse-Hinds Distributor, Sales Office, or Customer Service Department

U.S. (Global Headquarters):

Cooper Crouse-Hinds

Wolf & Seventh North Streets
Syracuse, NY 13221
(866) 764-5454
FAX: (315) 477-5179
FAX Orders Only: (866) 653-0640
crouse.customerctr@cooperindustries.com

Canada:

Cooper Crouse-Hinds Canada

Toll Free: 800-265-0502
FAX: (800) 263-9504
FAX Orders only: (866) 653-0645

Mexico/Latin America/Caribbean:

Cooper Crouse-Hinds, S.A. de C.V.

52-555-804-4000
FAX: 52-555-804-4020
mxmercadotecnia@cooperindustries.com

Europe (Germany):

Cooper Crouse-Hinds GmbH

49 (0) 6271 806-500
49 (0) 6271 806-476
sales.CCH.de@cooperindustries.com

Middle East (Dubai):

Cooper Crouse-Hinds LLC

971 4 4272500
FAX: 971 4 4298521
sales.CCH.me@cooperindustries.com

Singapore:

Cooper Crouse-Hinds Pte. Ltd.

65-6297-4849
FAX: 65-6297-4819
chsi-sales@cooperindustries.com

China:

Cooper Crouse-Hinds Pte. Ltd.

86-21-2899-3600
FAX: 86-21-2899-4055
cchsales@cooperindustries.com

Korea:

Cooper Crouse-Hinds Korea

82-2-3484-6783
82-2-3484-6778
CCHK-sales@cooperindustries.com

Australia:

Cooper Electrical Australia

61-2-8787-2777
FAX: 61-2-9609-2342
CEASales@cooperindustries.com

India:

Cooper India Pvt. Ltd.

91-124-4683888
FAX: 91-124-4683899
cchindia@cooperindustries.com

www.crouse-hinds.com

Cooper Crouse-Hinds is a registered trademark of Cooper Industries, Inc.
©2012 Cooper Industries, Inc.

Your Authorized Cooper Crouse-Hinds Distributor is:

Cooper Industries, Ltd.

600 Travis, Ste. 5800
Houston, TX 77002-1001
P: 713-209-8400
www.cooperindustries.com