



**MILBANK**<sup>®</sup>  
ENERGY AT WORK



# Commercial Pedestals

*Product Catalog*



# Milbank Overview

## Energy At Work since 1927

Milbank builds solutions that move power for the residential, commercial, industrial, utility and transportation sectors. Milbank combines more than 85 years of expertise in electrical engineering design and manufacturing with a commitment to develop and globally implement sustainable, integrated and intelligent power solutions. With 22 stocking locations across the U.S., and our OneSERT program to help during emergency situations, Milbank's portfolio includes electric metering systems, PowerGen™ industrial and standby generators, transfer switches, portable power and intelligent energy management solutions. A third-generation, family-owned business, Milbank is headquartered in Kansas City, Mo. For more information, please visit [milbankworks.com](http://milbankworks.com).



### METERING & ENCLOSURES

Milbank meter sockets have set the standard for quality since 1927. With a 99.97% quality performance rating, thousands of products to meet your utility's requirements and tens of millions of sockets installed across the globe, our products help keep energy at work. When it comes to enclosures, we offer a complete line of junction boxes, telephone cabinet covers, transformer cabinets, wireways, push-button enclosures, consoles and thermal management products. We specialize in custom-designed enclosures to fit your specific project.



### ENERGY MANAGEMENT

Milbank's PowerGen™ division is the go-to resource for any application involving backup power generation and intelligent energy management. Whether you're looking for an off-the-shelf product or a custom solution designed and built to project specifications, Milbank provides the tools you need to power on. Our broad portfolio of energy management solutions includes generators, transfer switches, enclosed controls and commercial pedestals for the recreational, residential, commercial and industrial markets.



Utility requirements for this equipment may vary. Always consult the serving utility for their requirements prior to ordering or installing this equipment. This product must be installed by a licensed electrician. Installation of this equipment may require local electrical inspector approval.

## Commercial Pedestals

---

Commercial Pedestals Overview .....	4-5
Catalog Number Logic.....	6
Main Load Center Series.....	7
Switched Load Center Series .....	8
400 Amp Series.....	9
Irrigation Control Series.....	10
Battery Backup Series.....	11
Power Transfer Series .....	12
CT Metered Series .....	13
Slimline Series.....	14
Accessories .....	15
Specifications Example .....	16
Detailed Drawings .....	17-26
Product Worksheet.....	27
Application Examples .....	28-37

Utility requirements for this equipment may vary. Always consult the serving utility for their requirements prior to ordering or installing this equipment. This product must be installed by a licensed electrician. Installation of this equipment may require local electrical inspector approval.



# Commercial Pedestals

*Attractive | Easy to Install | Secure | Cost-Effective*

**Milbank Commercial Pedestals** are pad-mounted, weatherproof electrical enclosures consisting of a utility pull section with optional meter socket, and a customer section containing distribution and control equipment. Milbank Commercial Pedestals are an attractive, secure, easy to install and cost-effective solution when underground remote site power distribution and control equipment is required, replacing unsightly and inefficient strut and backboard structures.



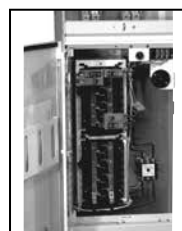
Strut and backboard



Commercial pedestal

## Standard Features

- Type 3R rainproof, vandal-resistant cabinet of polyurethane powder-coated steel (aluminum or stainless steel also available)
- UL-listed
- Isolated lockable & sealable utility metering and lug landing sections
- Lockable customer section for distribution and control equipment with internal deadfront
- Print pocket inside customer section door contains wiring schematics and installation instructions
- Most load centers are UL-listed for use with various manufacturers' circuit breakers
- All stainless steel external hardware (screws, bolts, hinges, handles, hasps and sealing screws)



Utility requirements for this equipment may vary. Always consult the serving utility for their requirements prior to ordering or installing this equipment. This product must be installed by a licensed electrician. Installation of this equipment may require local electrical inspector approval.

# Commercial Pedestals

Attractive | Easy to Install | Secure | Cost-Effective

5  
COMMERCIAL  
PEDESTALS

These units are ideal for controlling and metering:

- Traffic signals
- Street lighting
- Irrigation and sprinkler systems
- Cell towers and telephone vaults
- Pump stations
- Temporary power for fairgrounds, swap meets, outdoor markets, portable offices, holiday lights, etc.
- Outdoor lighting for athletic fields, tennis and basketball courts, parking lots, landscaping and subdivision entrances, etc.

## Available Factory-Installed Options

- Meter sockets: ring type or ringless, up to 400 amp
- Main and branch breakers or T fuses
- Distribution: copper load centers and panel boards
- Clocks, timers and relays
- Photoelectric cells and controls
- Power receptacles: pin and sleeve, twist lock or straight blade
- Contactors: definite purpose, electrical or mechanically held, IEC and mercury types
- Surge protection and lightning arrestors
- Reserve inlet generator receptacle with interlocked circuit breakers
- Motor starters and relays
- Push button controls
- Thermostat controls, fans and heating strips
- Power blocks and terminal blocks
- Steel, aluminum and plywood backboards
- Transformers
- Interlock devices for circuit breakers
- Available in steel, aluminum (unpainted, painted or anodized) or stainless steel construction with powder-coated finish available in eight standard colors or special-ordered RAL colors
- Available for applications up to 400 amp, 120V, 208V, 240V, 277V, 480V - 1Ø or 3Ø



Utility requirements for this equipment may vary. Always consult the serving utility for their requirements prior to ordering or installing this equipment. This product must be installed by a licensed electrician. Installation of this equipment may require local electrical inspector approval.



# Catalog Number Logic

For Commercial Pedestals



**1. Meter Socket**

- 0 No socket
- 1 1 ring type socket (w/ test bypass)
- 2 2 ring type sockets (w/ test bypass)
- 3 2 ring type sockets (1 w/ test bypass, 1 without test bypass)
- 4 1 ring type socket (no test bypass)
- 5 1 ringless socket (w/ lever bypass)
- 6 2 ringless sockets (w/ lever bypass)
- 7 1 ringless socket (no test bypass)
- 8 1 bolt-on meter (w/ manual bypass)
- 9 1 ringless socket (-KK horn bypass)
- A 2 ringless sockets (-KK horn bypass)
- B 1 ring type socket (w/ test switches)
- C 1 ringless type socket (w/ test switches)

**2. Amp Rating**

0 No rating	4 400 amps
1 100 amps	5 (Reserved)
2 200 amps	6 600 Amp
3 125 amps	8 800 Amp

**3. System Voltage**

- 0 120V, 1Ø, 2W (4 jaw)
- 1 120V/240V, 1Ø, 3W (4 jaw)
- 2 208Y/120V, 1Ø, 3W (4 jaw + 105J)
- 3 240/480V, 1Ø, 3W (4 jaw)
- 4 480Y/277V, 1Ø, 3W (4 jaw + 105J)
- 5 208Y/120V, 3Ø, 4W (7 jaw)
- 6 240Δ/120V, 3Ø, 4W (7 jaw)
- 7 240ΔV, 3Ø, 4W (5 jaw)
- 8 480Y/277V, 3Ø, 4W (7 jaw)
- 9 480ΔV, 3Ø, 3W (5 jaw)
- A No rating
- B 480Δ/240V, 3Ø, 4W (7 jaw)
- C 120/240V, 1Ø, 3W (5 jaw)
- D 240/480V, 1Ø, 3W (5 jaw)
- E 480V, 1Ø, 2W (4 jaw)

**4. Main Disconnect**

- 0 No main (up to 6 disconnects max)
- 1 (1) circuit breaker main
- 2 (2) circuit breaker mains
- 3 (1) T-fuse pullout main
- 4 (3) circuit breaker mains
- 5 (Obsolete)
- 6 (1) 4-pole main (100 amps max)
- 7 (Obsolete)
- 8 (1) 4-pole 100A & (1) 2-pole 100A
- 9 (Reserved)
- A (Obsolete)
- B (2) circuit breaker mains w/ interlock
- C (2) T-fuse pullout mains

**6. Enclosure Size**

- A 16"W x 17"D x 48"H
- B 24"W x 17"D x 48"H
- C 24"W x 30"D x 48"H
- C 16"W x 5"D x 46"H (CP2B)
- D 44"W x 24"D x 60"H
- D 12"W x 9"D x 64"H (CP3A)
- E 16"W x 17"D x 41"H
- F 12"W x 9"D x 64"H
- G 16"W x 17"D x 48"H
- H 24"W x 17"D x 48"H
- J 16"W x 17"D x 32"H
- K 32"W x 20"D x 60"H
- L 16"W x 17"D x 48"H
- M 24"W x 17"D x 41"H
- N 16"W x 6"D x 46"H
- X 24"W x 24"D x 60"H
- Y 32"W x 24"D x 60"H
- Z 32"W x 24"D x 64"H

**5. Distribution Interior**

- 0 (2) 16-circuit loadcenters
- 1 (1) metered 8-circuit loadcenter & (1) unmetered 8-circuit loadcenter
- 2 (2) 8-circuit loadcenters
- 3 (1) 12-circuit loadcenter
- 4 (1) 12-circuit loadcenter & (1) 8-circuit loadcenter
- 5 (1) 16-circuit loadcenter
- 6 Lug-lug main & branch breakers only
- 7 (1) 8-circuit loadcenter & (1) 16-circuit loadcenter
- 8 Fused pullout switch
- 9 (1) 24 circuit loadcenter
- A (2) metered 8-circuit loadcenters & (1) unmetered 8-circuit loadcenter
- B (2) 24-circuit loadcenters
- C (1) 24-circuit panelboard
- D (1) 42-circuit panelboard
- E (1) 30-circuit panelboard
- F (1) 18-circuit panelboard
- G (1) 30-circuit loadcenter
- H (2) 12-circuit loadcenters
- J No distribution (main only)
- K (1) metered 4-circuit loadcenter & (1) unmetered 4-circuit loadcenter
- L No branch breakers (distribution blocks only)
- M (Obsolete)
- N Metered & unmetered lug-lug breakers
- P Metered lug-lug breakers
- R (1) metered 8-circuit loadcenter, (1) unmetered 8-circuit loadcenter, & (1) metered 12-circuit loadcenter
- T (1) 8-circuit loadcenter
- U Unmetered lug-lug breakers
- V (1) 6-circuit loadcenter
- W (2) 6-circuit loadcenters
- X Non-standard
- Y (1) 42 circuit loadcenter

**Note:** Due to size and regulatory constraints, not all combinations will result in a valid catalog number.



Utility requirements for this equipment may vary. Always consult the serving utility for their requirements prior to ordering or installing this equipment. This product must be installed by a licensed electrician. Installation of this equipment may require local electrical inspector approval.

# Commercial Pedestals

## CP3B "ML" Main Load Center Series



**CP3B11115A22**  
(see drawing on pg. 17)

### Typical Applications

Remote site service for multiple loads.

The **Milbank Main Load Center Commercial Pedestals** are designed to handle the vast majority of all requirements in a standard, stocked configuration.

- No waiting or extra charge
- Units feature a load center with a plug-on, back-fed main breaker
- Load center has 16 positions for the 100 amp pedestals and 24 circuits for the 200 amp pedestals
- Both sizes include sub-feed lugs to allow feeding an external panel

If your application requires turning loads on based on "dusk-to-dawn" requirements, be sure to see the **Milbank Switched Load Center Commercial Pedestal** products on the next page.

### Features

These units include everything required for remote site service:

- Type 3R construction
- Expandable: load centers allow for future expansion without costly modifications
- All units feature 200 amp meter socket with optional field-installable fifth terminal kit available
- Optional mounting base can be embedded in concrete for fast, easy installation
- Separate sealable and lockable utility termination section
- Separate sealable and lockable metering section with the option of either a ring-type socket with test/bypass blocks (conforms to EUSERC 308) or a heavy duty ringless socket with lever bypass
- A separate sealable and lockable customer section with a load center for "always on" loads that includes:
  - Main circuit breaker
  - 20 (200 or 125 amp models) or 14 (100 amp models) blank breaker spaces
  - A circuit directory to document configuration

Stocked Pedestals*	Optional Fifth Terminal Kit	Main CB		Load Center Circuits	Meter Socket Type
		Amps	Spaces		
CP3B11115A22	105J	100	1,2	16	Ring type with test / bypass blocks
CP3B12119A22	105J	200	1,2,3,4	24	Ring type with test / bypass blocks
CP3B51115A22	K3865	100	1,2	16	Ringless socket with lever bypass
CP3B52119A22	K3865	200	1,2,3,4	24	Ringless socket with lever bypass

\*Note: Chart shows standard, stocked items. Other options and features are available. Contact factory for options details and availability.

Utility requirements for this equipment may vary. Always consult the serving utility for their requirements prior to ordering or installing this equipment. This product must be installed by a licensed electrician. Installation of this equipment may require local electrical inspector approval.



# Commercial Pedestals

## CP3B "SL" Switched Load Center Series



**CP3B11110A22SL1**  
(see drawing on pg. 17)

Typical Applications
Traffic signals, parking lots, highways & athletic field lighting

The **Milbank Switched Load Center Commercial Pedestals** are designed to not only provide power for various loads, but also to switch specific loads on and off under certain conditions. A photoelectric cell is used for these controlled loads, and an optional time clock is also available.

### Features

These units include everything required for remote service:

- Type 3R construction
- Expandable: load centers allow for future expansion without costly modifications
- All units feature 200 amp meter socket with optional field-installable fifth terminal kit available
- Optional mounting base can be embedded in concrete for fast, easy installation
- Separate sealable and lockable utility termination section
- Separate sealable and lockable metering section with the option of either a ring-type socket with test / bypass blocks (conforms to EUSERC 308) or a heavy duty ringless socket with lever bypass
- A separate sealable and lockable customer section with:
- Control circuit including:
  - PE receptacle, Lexan® window and glare shield
  - Hand-Off-Auto (HOA) switch
  - Contactor controlling a 16-circuit load center for controlled loads
  - Pre-mounted DIN rail and pre-wired connector to add an optional plug-and-play time clock kit for PE on and TC off operation
  - A circuit directory to document configuration
- A load center for "always on" loads that includes a main circuit breaker, a control power circuit breaker, a switched load center main breaker, and 9 (200 amp model) or 11 (100 amp model) blank breaker spaces
- A circuit directory to document configuration

Stocked Pedestals*	Optional Fifth Terminal Kit	Main CB		Contactor Amperage	Meter Socket Type
		Amps	Spaces		
CP3B11110A22SL1	105J	100	1,3	60	Ring type with test / bypass blocks
CP3B12110A22SL1	105J	200	1,2,3,4	100	Ring type with test / bypass blocks
CP3B51110A22SL1	K3865	100	1,3	60	Ringless socket with lever bypass
CP3B52110A22SL1	K3865	200	1,2,3,4	100	Ringless socket with lever bypass

*\*Note: Chart shows standard, stocked items. Other options and features are available. Contact factory for options details and availability.*



Utility requirements for this equipment may vary. Always consult the serving utility for their requirements prior to ordering or installing this equipment. This product must be installed by a licensed electrician. Installation of this equipment may require local electrical inspector approval.



# Commercial Pedestals

## CP3B "400" 400 Amp Series



**CP3B1411JB22**  
(see drawing on pg. 18)

### Typical Applications

Remote site service for residential and commercial jobsites

The **Milbank 400 Amp Commercial Pedestal** is designed to provide a weather and vandal resistant metered enclosure for various loads and distribution. Each pedestal has been designed to handle a wide range of applications using standard, stocked configurations.

- Choice of a single main breaker or twin service disconnect breakers gives flexibility to the pedestal design.
- Optional distribution with feed-thru lugs below the service disconnect breakers allows the pedestal to handle numerous applications.
- Typical applications include remote homes where the metering is best located at the curb side or other remote area. The pedestal can also provide power to secondary residence, on-site business, workshop, irrigation, lighting, security or other secondary load.
- Available in custom colors to match home or landscaping.

### Features

These units include everything required for remote service:

- Type 3R construction
- Main circuit breaker or dual service disconnects
- Expandable: load center units allow for future expansion without costly modifications
- Optional mounting base can be embedded in concrete for fast, easy installation
- Separate sealable and lockable utility termination section with lug termination
- Separate sealable and lockable metering section
- A separate sealable and lockable customer section with a circuit directory and a print pocket to hold all documentation
- Meter socket options include ring type with bypass studs, ringless with heavy duty lever bypass, or K-Type bolt-on

Standard Pedestals*	Optional fifth Terminal Kit	Main CB	Load Center Circuits	Meter Socket Type
<b>CP3B1411JB</b>	N/A	320 amp (400 max)	0	Ring-type with test / bypass studs
<b>CP3B14120B</b>	N/A	2-200 amp	(2) 12 circuit <sup>1</sup>	Ring-type with test / bypass studs
<b>CP3B54120B22</b>	K3865	2-200 amp	(2) 12 circuit <sup>1</sup>	Ringless with lever bypass
<b>CP3B5411JB22</b>	K3865	320 amp (400 max)	0	Ringless with lever bypass

**\*NOTE:** Chart shows standard, stocked items. Other options and features are available. Contact factory for options details and availability.

Stud utility landing is standard. Lug kits are available from factory.

Units with load centers have (2) #6-250 sub-feed lugs on each load center. (Each load center is 200 amp rated and UL Listed with: Siemens, General Electric and Cutler-Hammer plug-in style circuit breakers.)

Utility requirements for this equipment may vary. Always consult the serving utility for their requirements prior to ordering or installing this equipment. This product must be installed by a licensed electrician. Installation of this equipment may require local electrical inspector approval.



# Commercial Pedestals

## CP3B "IR" Irrigation Control Series



**CP3B0281UMWIR04**

Milbank's "IR" Series irrigation pedestals install quickly and simply – often in less than an hour with a single technician—a fraction of the time typically needed for strut farm and other installation set ups. Additionally, the pedestal comes pre-wired, so the technician simply drops in the pre-drilled concrete box pad, fastens the pedestal and runs the wires. Pre-wired landing lugs are provided in a separate utility side so that there is no more need to wrestle with hard-to-bend wires. Simply run the utility wire up and land on the lugs. With both the motor starter and disconnect in the same enclosure, all the controls are housed in a safe, lockable pedestal that protects against vandalism and energy theft.

### Features

- 3Ø4W, 480Y/277 volt
- One technician can install in under an hour with use of Milbank's pre-drilled box pad
- All units are UL listed and service entrance rated
- Fused disconnect with accessible handle through the deadfront
- HOA and push button start
- Separate accessible utility side with pre-wired landing lugs
- NEMA rated starters (sizes 1-5)
- Soft start units sizes 30HP-150HP
- 30 amp fuse block for pivot pre-wired in the unit
- White powder coated paint finish helps keep components cooler
  - Options include:
    - Hour meter
    - Chemical injection receptacle
    - Multiple injection receptacle
    - Multiple 30A fuse blocks possible

### Typical Applications

Power pedestal for irrigation systems or other pump control applications

STOCKED PEDESTALS*	EXTERIOR CABINET	NEMA RATING
CP3B0281UMWIR04	White	4
CP3B0281UMWIR03	White	3
CP3B0181UMWIR02	White	2

\*NOTE: Chart shows standard, stocked items. Other options and features are available. Contact factory for options details and availability.



Utility requirements for this equipment may vary. Always consult the serving utility for their requirements prior to ordering or installing this equipment. This product must be installed by a licensed electrician. Installation of this equipment may require local electrical inspector approval.

# Commercial Pedestals

## CP3B "BBS" Battery Backup Series



**CP3B5111TCAWSP1**  
(see drawing on pg. 22)

### Typical Applications

Metered emergency uninterrupted power for traffic intersections, wireless, phone and communications equipment, parking lots, camera and security locations

The **Milbank BBS Series Commercial Pedestals** are designed to provide battery backup power for various loads, and to switch specific loads on and off under certain conditions; a photoelectric cell or time clock to control lighting circuits, as an example. Metered and non-metered power distribution options are available. The back-up power pedestal is designed to handle the vast majority of today's back-up power requirements. By using 19" rack design, shelves can be adjusted to accommodate the required batteries and manufactures DC to AC inverters, transfer switches and other related equipment. This design gives the user a wide range of design and configuration options. Complete turnkey, ready to power-up pedestals are offered along with basic units ready to accept batteries and inverters supplied by others.

### Features

- Type 3R construction
- 100 through 320 amp meter socket with the option of either a ring type socket (conforms to EUSERC 308) with or without test / bypass blocks or a heavy duty ringless socket with lever bypass
- Separate sealable utility termination compartment
- An isolated separate customer section with service disconnects, power distribution options and power control
- 19" wide rack in customer compartment for easy layout of equipment
- Battery trays
- Thermostat with cooling fan
- Filtered louvers for heat rise flow through ventilation
- Three point door latch (key or pad lockable)

### Options

- Manual bypass switch
- Transfer switch for generator power back-up
- Generator inlet receptacles 30A through 200A
- Pad lockable provision for receptacles
- Police access door
- Metered load center distribution
- Non metered load center distribution
- Photo electric controls (for street lighting)
- Time clocks
- HOA switches
- Contactors
- GFI duplex receptacles
- Thermostat for heating control
- Heating pads or elements
- Roll out shelves for batteries
- Surge arrestors and lighting arrestors

Utility requirements for this equipment may vary. Always consult the serving utility for their requirements prior to ordering or installing this equipment. This product must be installed by a licensed electrician. Installation of this equipment may require local electrical inspector approval.



# Commercial Pedestals

## CP3B "Power Transfer" Series



The **Milbank Power Transfer Series Pedestals** provide non metered AC power, distribution, surge suppression, mechanical interlock and stand-by generator receptacle—all in a neat, compact pedestal.

### Features

- 120/240V 1Ø3W thru 277/480V 3Ø4W ratings
- Metered or unmetered units
- Choice of EUSERC ring type or ringless meter sockets
- 60 amps thru 400 amp ratings
- UL Listed Type 3R rated
- Pad lockable, isolated utility compartments
- 20 amp GFI convenience receptacle
- Lockable recessed generator receptacle door
- Utility and generator indicator light options
- All stainless steel hardware
- Galvanized steel, aluminum or stainless steel cabinet options
- Custom designs available



(see drawing on pg. 18)

### Typical Applications

Traffic intersections, cell sites, cable TV, pump and lift stations requiring utility power with backup generator power



Utility requirements for this equipment may vary. Always consult the serving utility for their requirements prior to ordering or installing this equipment. This product must be installed by a licensed electrician. Installation of this equipment may require local electrical inspector approval.

# Commercial Pedestals

## CP3BB "CT Metered" Series



(see drawing on pg. 21)

The **Milbank CT Metered Series Commercial Pedestals** are designed to be used where a smaller service package would be a better choice over large 3R rated combination switchboards. These pedestals have amperage ratings of 400 to 800 amps at voltages up through 480 volt three phase.

### Features

- UL Listed, freestanding Type 3R service
- A low profile CT pedestal
- All utility equipment is isolated in separated pad lockable and sealable compartments
- Separate customer compartment designed to hold distribution and control equipment
- Dead front customer construction
- Optional mounting base
- Optional construction in steel, aluminum and stainless steel.
- Wide choice of powder paint colors

### Typical Applications

Large homes, pumping & lift stations, motor control, water treatment plants, EV charging stations, commercial buildings, large remote service requirements, commercial and industrial control systems

Utility requirements for this equipment may vary. Always consult the serving utility for their requirements prior to ordering or installing this equipment. This product must be installed by a licensed electrician. Installation of this equipment may require local electrical inspector approval.



# Commercial Pedestals

## CP3A "Slimline" Series



The **Milbank Slimline Series Commercial Pedestals** provide a sleeker, smaller footprint and wireway access on the side of the unit rather than the back, allowing maximum flexibility to place the pedestal in tighter spaces.

### Features

- UL Listed as service equipment
- 100 or 200 amps
- Vandal-resistant, secure and attractive design
- Customer compartment with distribution and control equipment with swing dead front door, secured with both a hasp/latch and draw latch outer door
- Utility metering compartment protected with a hinged hood, increasing resistance to meter vandalism
- Small footprint
- Wireway located on left side of pedestal for utility incoming wire, allowing pedestal to be mounted with back very close to a wall (14")
- Available in 12" and 20" widths and 50" and 63" (metered) and 43" (nonmetered) heights
- Includes a print pocket for plans and drawings
- 200 amp main available
- Voltage range: 120V–480V
- Compatible with both ringless and ring-type meter sockets, 4–7 terminals
- Available in any color upon request
- Pedestal mounting base option saves time and labor to install on a cement pad—no anchor bolts required
- Powder-coated G90 galvanized steel, raw, anodized or powder-coated aluminum and stainless steel exterior options

(see drawings on pgs. 23–26)

### Typical Applications

Roadway lighting and signage, wastewater treatment facilities, parks and landscaping, and any application where physical space is at a premium



Utility requirements for this equipment may vary. Always consult the serving utility for their requirements prior to ordering or installing this equipment. This product must be installed by a licensed electrician. Installation of this equipment may require local electrical inspector approval.

# Commercial Pedestals

## Accessories

			
<p><b>CP-ABK5/8</b> Anchor bolt kit (includes four 5/8-13" x 18" anchor bolts)</p>	<p><b>K3865</b> Fifth terminal kit for use with ringless lever bypass meter sockets</p>	<p><b>CP-TC7D</b> 7-day time clock kit <b>CP-TC24H</b> 24-hour time clock kit <b>CP-TCWIRE</b> Male 4-pin connector and wiring harness for use with time clocks other than shown</p>	<p><b>105J</b> Fifth terminal kit for use with ring type meter sockets</p>
			
<p><b>CP-16PDMNT-CALT</b> Pedestal mounting base for 16" pedestal <b>CP-24PDMNT-CALT</b> Pedestal mounting base for 24" pedestal (includes mounting hardware) <b>CP-32PDMNT</b> Pedestal mounting base for 32" pedestal (includes mounting hardware)</p>	<p><b>CP-PE-HOA-3POS</b> HOA (Hand-Off-Auto) switch for field installation</p>	<p><b>CP-PE-TYP5-2POS</b> Two position PE control kit</p>	

Utility requirements for this equipment may vary. Always consult the serving utility for their requirements prior to ordering or installing this equipment. This product must be installed by a licensed electrician. Installation of this equipment may require local electrical inspector approval.



### Example of Specifications for a Metered Commercial Pedestal

Commercial pedestal shall be type \_\_\_\_\_

Catalog # \_\_\_\_\_

Voltage rating : \_\_\_\_ (120/240v 1P 3W) \_\_\_\_

SCCR rating: \_\_\_\_ 10 \_\_\_\_

Amperage rating : \_\_\_\_ (100 amps) \_\_\_\_

The pedestal shall be of Type 3R rainproof construction and shall be UL Listed. External construction shall comply with UL50 requirements and shall be of G90 galvanized steel with light green #14672 Federal Specification 595 polyurethane industrial grade powder paint of 1.7 mil minimum thickness (unless otherwise specified). Aluminum and stainless steel are other factory options available. Internal construction shall be G90 galvanized steel and 1.7 mil minimum thickness polyurethane industrial grade powder coat painted or bare aluminum. No fasteners except sealing screws shall be removable by external access. Hinges shall be stainless steel and of the continuous piano hinge type.

The pedestal mounting bolts shall not be externally accessible. The pedestal shall be offered with an optional base designed to be embedded in concrete in place of anchor bolts. Either pedestal mounting base or anchor bolt kit is required for installation.

The service pedestal must have three separate isolated sections for metering equipment, utility termination and customer equipment.

The metering section must be pad-lockable and sealable and have a hinged swing back hood

with an integral hinged polycarbonate sealable window for access to demand meters. An external nameplate shall be permanently attached to the hood. A stainless steel handle shall be provided on the front exterior of the hood. Meter socket type shall meet the requirements of the serving utility.

The utility termination section must be pad-lockable and sealable and shall have a stainless steel handle provided on a lift-off cover. Sufficient clearance shall be provided for a 4-inch diameter conduit for utility cables entrance. Utility landing lugs shall accommodate #6 – 350 kcmil conductors.

The customer compartment door to be hinged on the left hand side. A stainless pad-lockable hasp provided to secure customer compartment. A door keeper provided to keep the door in an open position. A print pocket on the inside of the door shall hold all wiring schematics, circuit directories and instructions in a clear, weatherproof sleeve. Required labeling shall be located on the inside of the customer door. Distribution and control equipment shall be behind an internal dead-front door with a quarter-turn securing latch and be hinged to open more than 90 degrees. The dead-front door shall be hinged on the same side as the customer section door. All distribution and control equipment shall be factory wired using 600 volt wire sized to UL requirements.

The provided documentation shall list circuit breaker combinations and those to be used for de-rated operation for series ratings.

Utility requirements for this equipment vary. Always consult the serving utility for their requirements before ordering or installing this equipment.



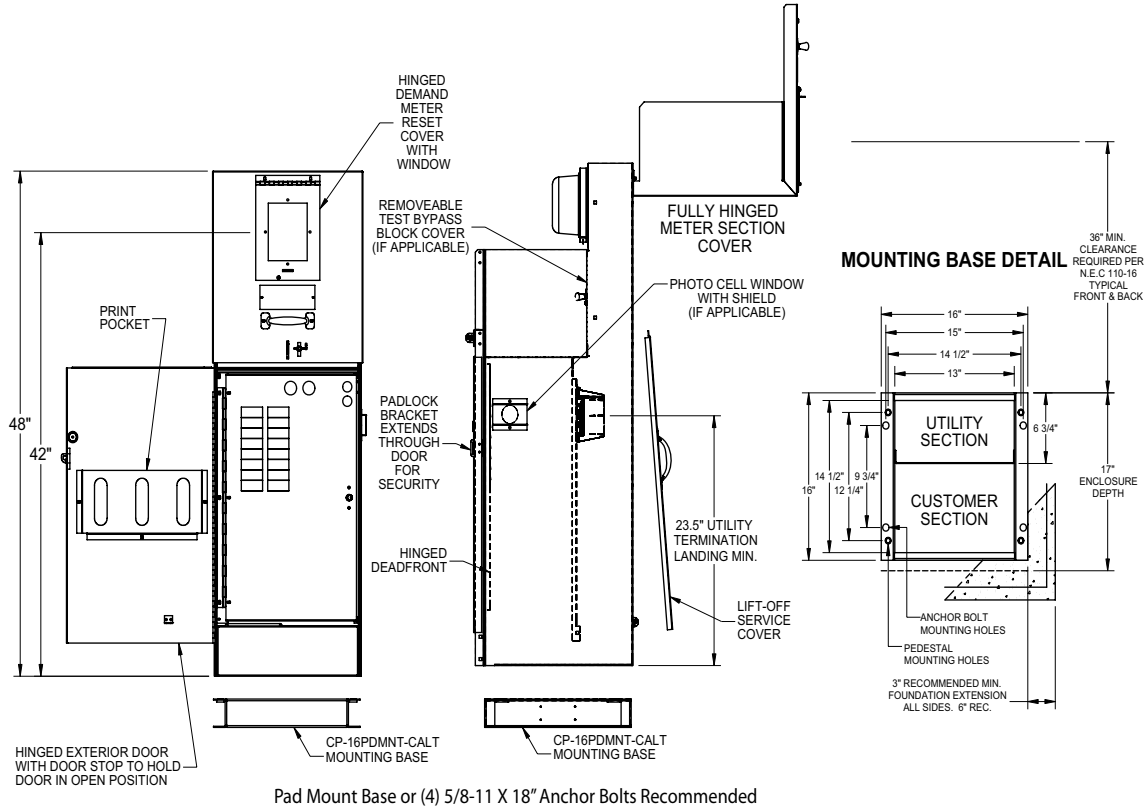
Utility requirements for this equipment may vary. Always consult the serving utility for their requirements prior to ordering or installing this equipment. This product must be installed by a licensed electrician. Installation of this equipment may require local electrical inspector approval.



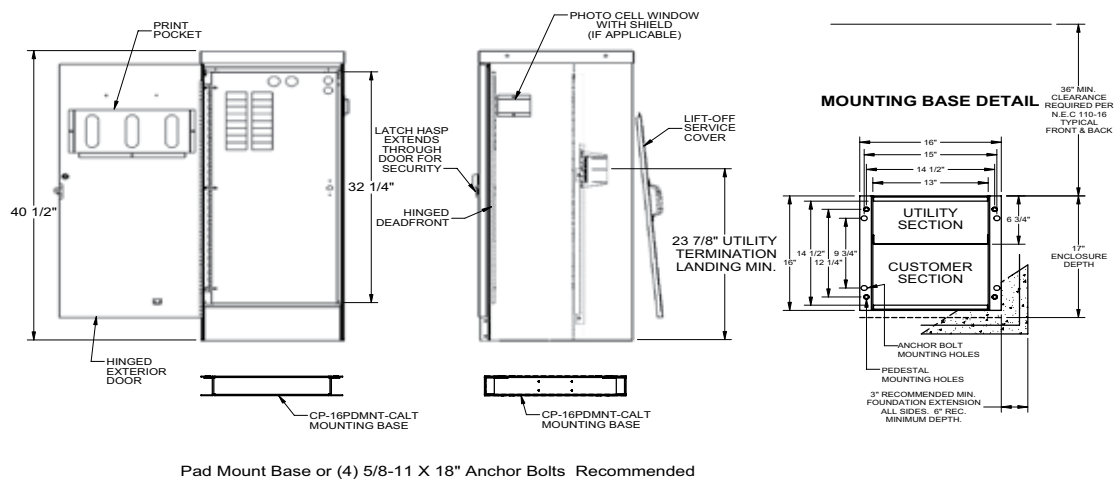
# Commercial Pedestals

## 16" Metered & Unmetered Drawings

### "A" Style 16" Metered Commercial Pedestal



### "E" Style 16" Unmetered Commercial Pedestal | Low Profile



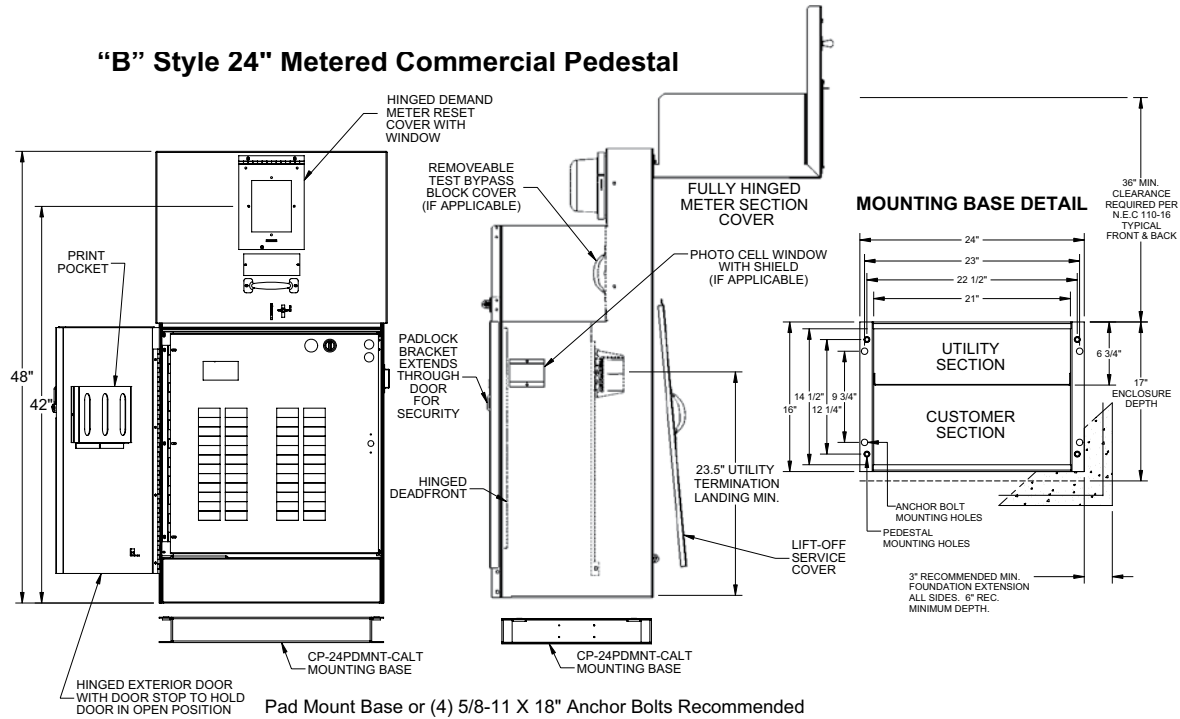
Utility requirements for this equipment may vary. Always consult the serving utility for their requirements prior to ordering or installing this equipment. This product must be installed by a licensed electrician. Installation of this equipment may require local electrical inspector approval.



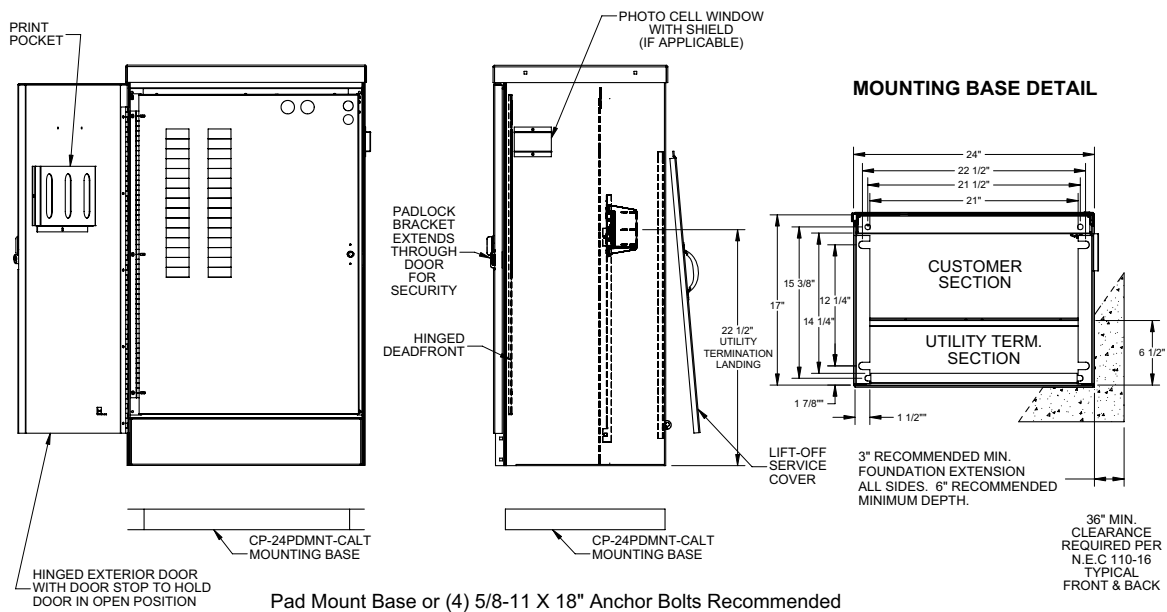
# Commercial Pedestals

## 24" Metered & Unmetered Drawings

### "B" Style 24" Metered Commercial Pedestal (with one or two meters)



### "M" Style 24" Unmetered Commercial Pedestal

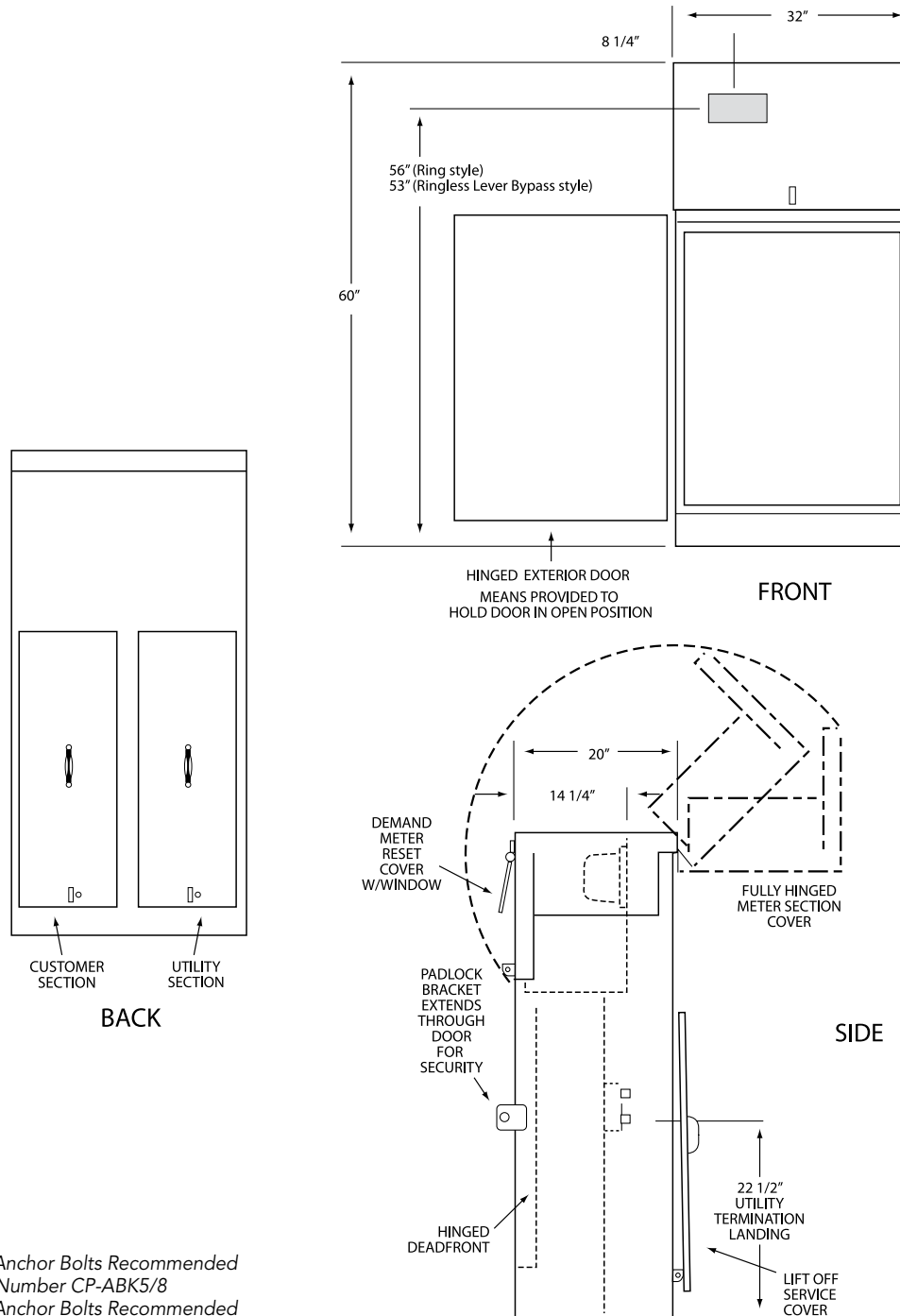


Utility requirements for this equipment may vary. Always consult the serving utility for their requirements prior to ordering or installing this equipment. This product must be installed by a licensed electrician. Installation of this equipment may require local electrical inspector approval.

# Commercial Pedestals

32" Metered Drawings

## "K" Style 32" Metered Commercial Pedestal (with one or two meters)

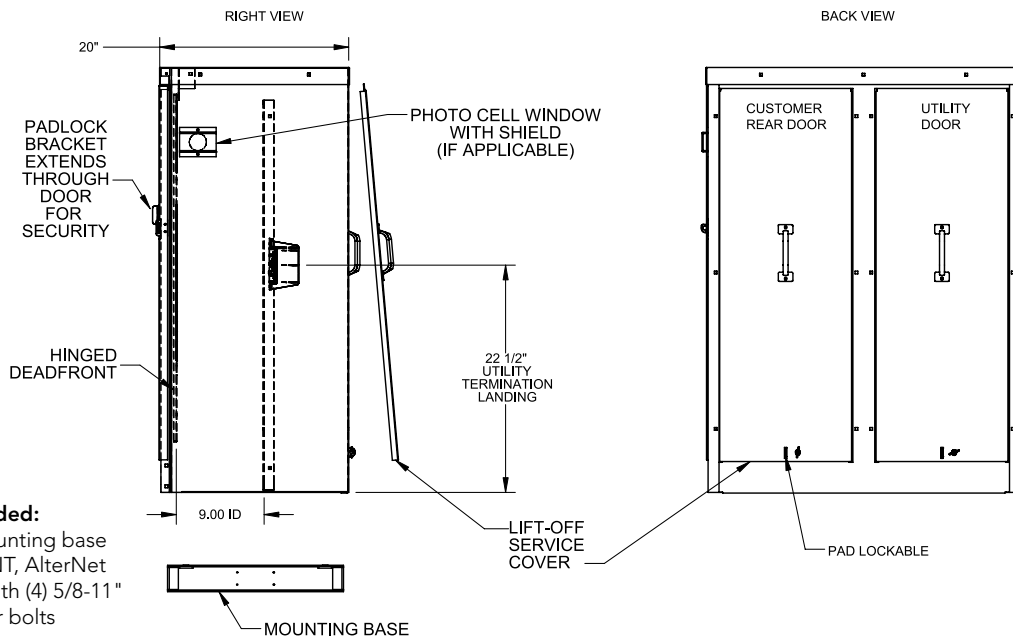
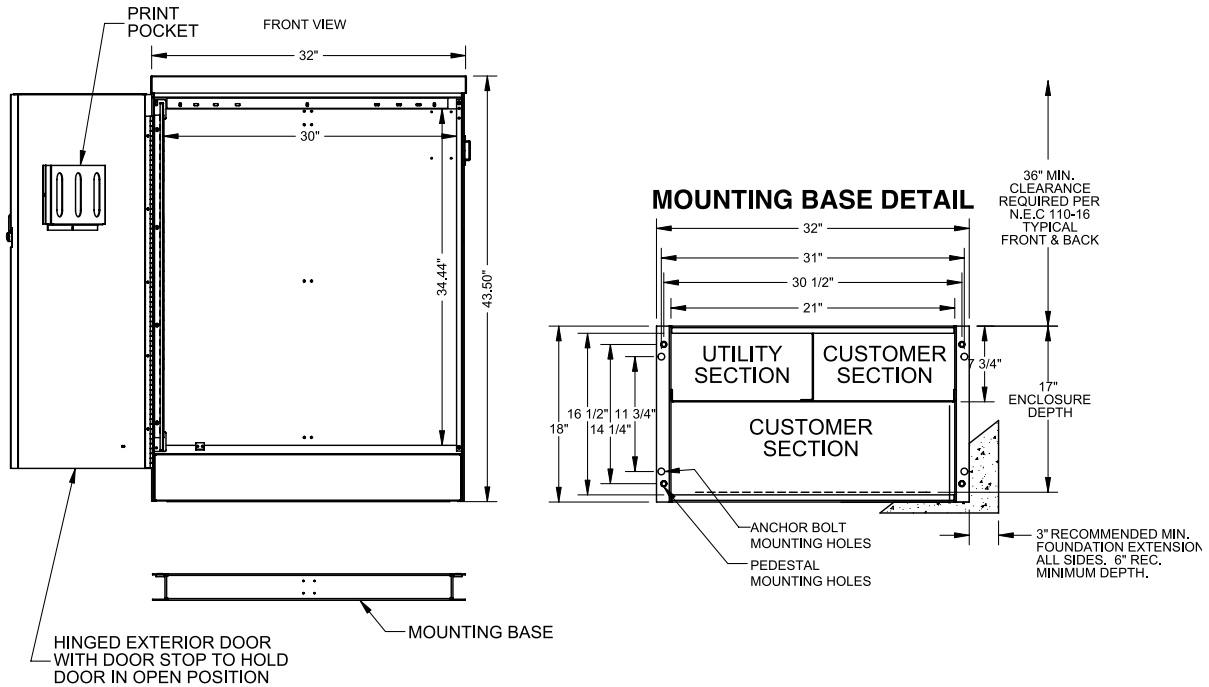


- (4) 5/8-11 X 18" Anchor Bolts Recommended  
Catalog Number CP-ABK5/8
- (4) 5/8-11 X 18" Anchor Bolts Recommended

Utility requirements for this equipment may vary. Always consult the serving utility for their requirements prior to ordering or installing this equipment. This product must be installed by a licensed electrician. Installation of this equipment may require local electrical inspector approval.



### "Q" Style 32" Unmetered Commercial Pedestal



**Recommended:**  
Milbank mounting base CP-32PDMNT, AlterNet mounting with (4) 5/8-11" x 18" anchor bolts



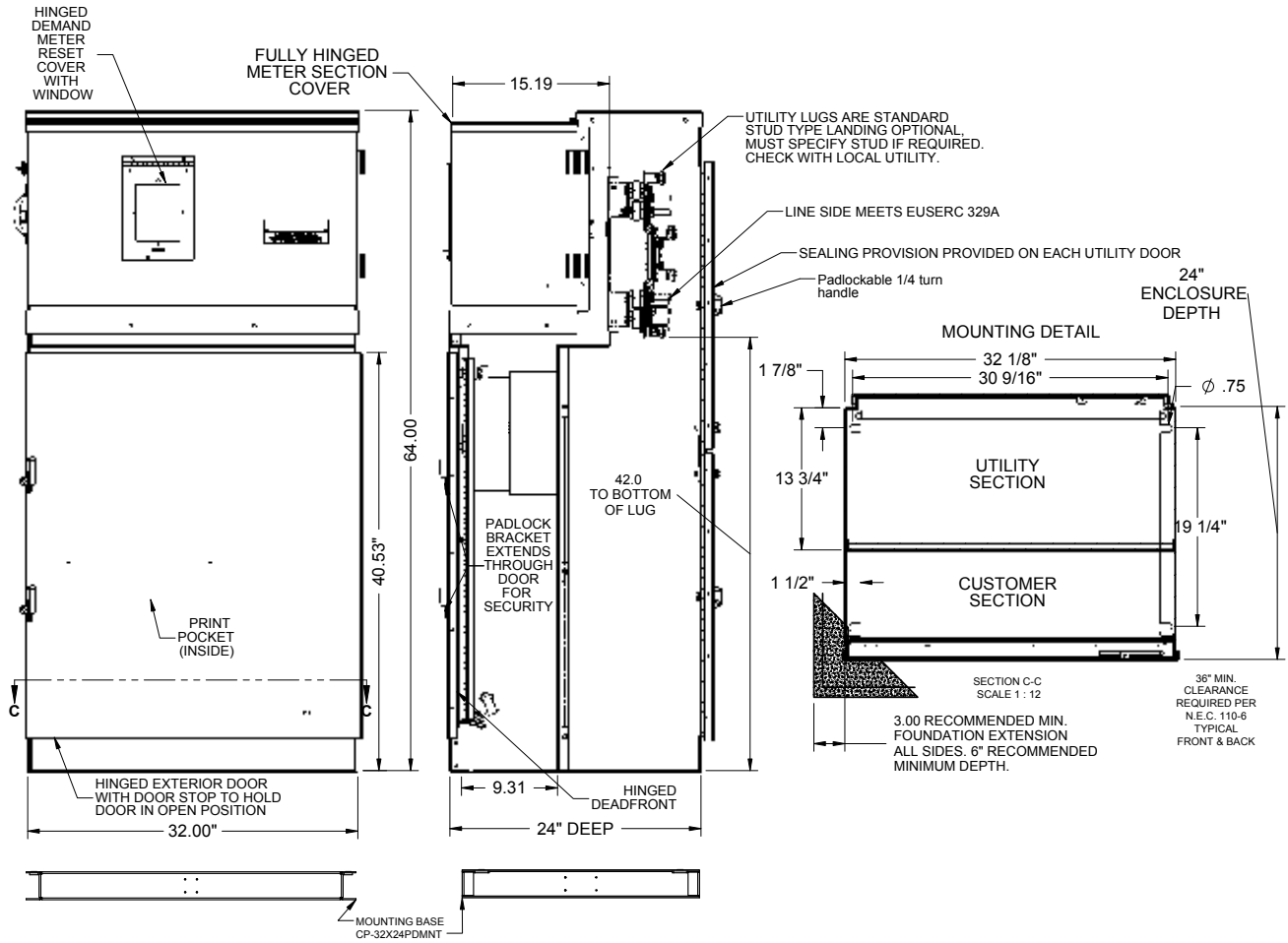
Utility requirements for this equipment may vary. Always consult the serving utility for their requirements prior to ordering or installing this equipment. This product must be installed by a licensed electrician. Installation of this equipment may require local electrical inspector approval.



# Commercial Pedestals

32" Metered Drawings

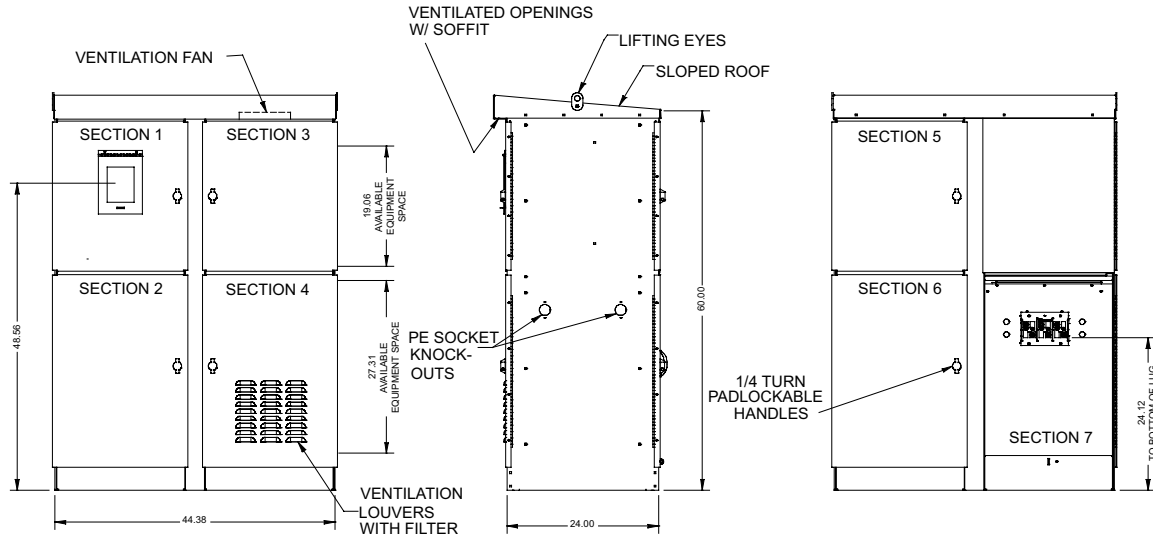
## "Z" Style 32" Metered Commercial Pedestal



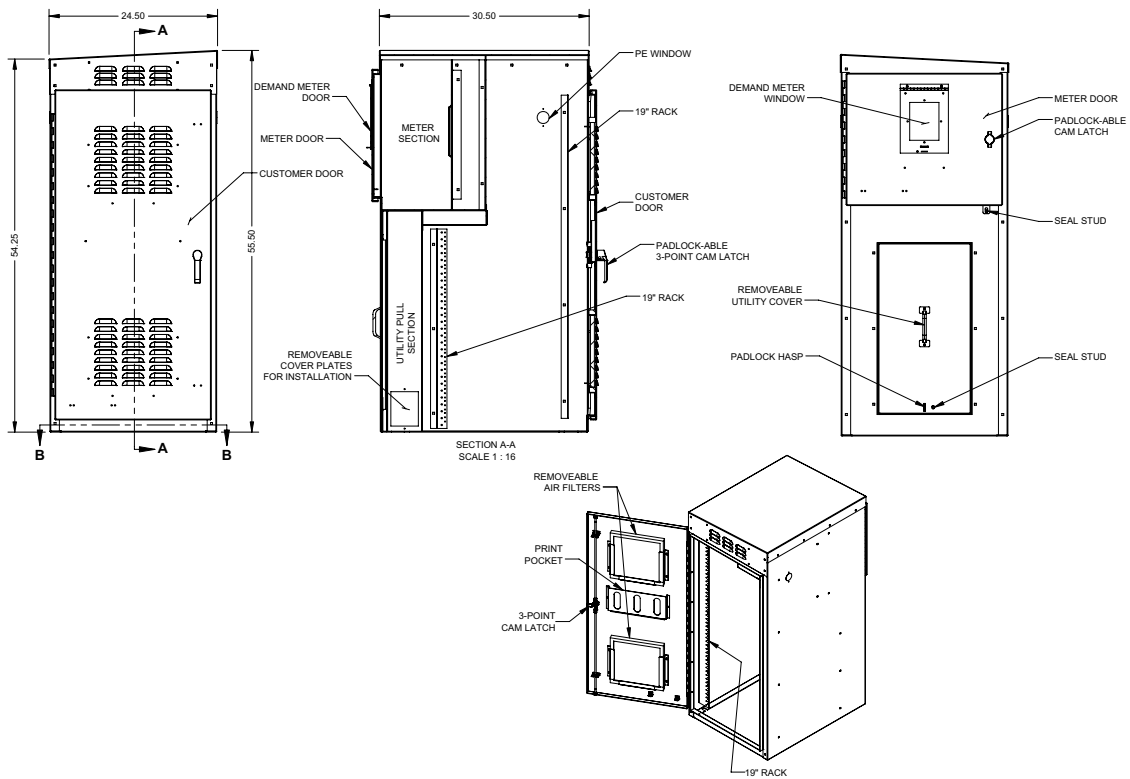
Utility requirements for this equipment may vary. Always consult the serving utility for their requirements prior to ordering or installing this equipment. This product must be installed by a licensed electrician. Installation of this equipment may require local electrical inspector approval.



### "D" Style Metered Commercial Pedestal



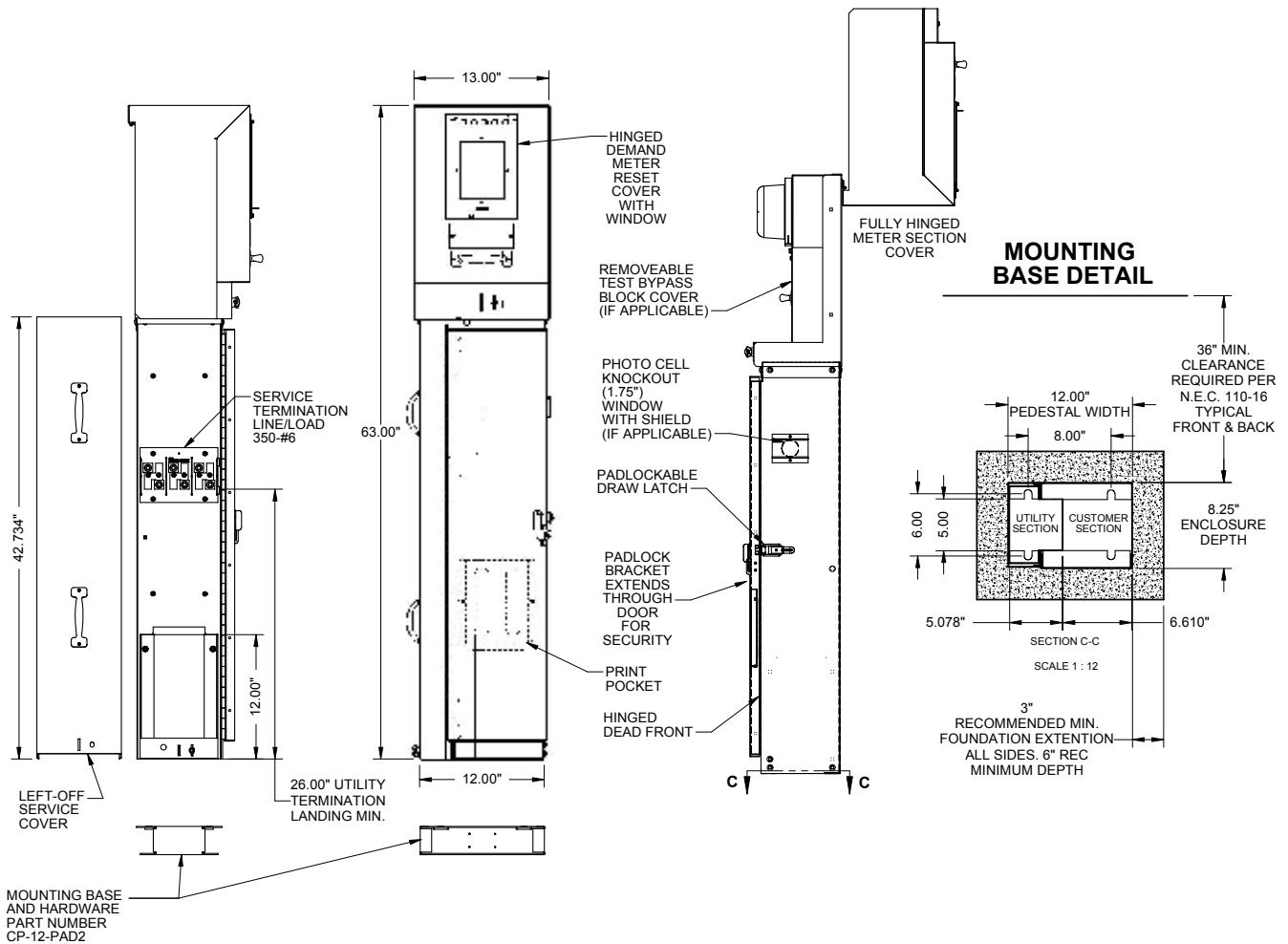
### "C" Style 54" Metered Commercial Pedestal



# Commercial Pedestals

## Slimline "A" Style Drawing

### "A" Style Slimline Metered Commercial Pedestal



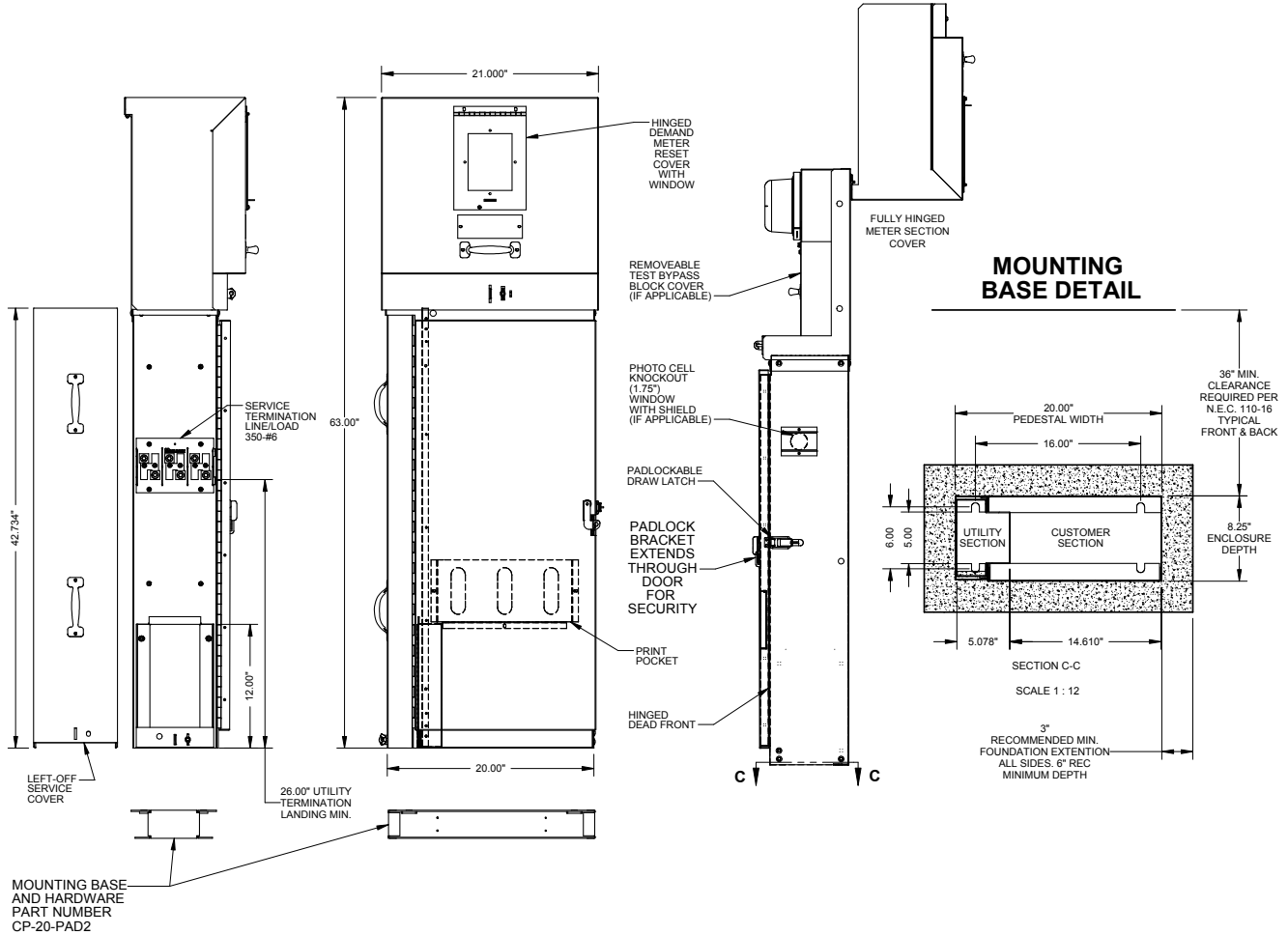
Utility requirements for this equipment may vary. Always consult the serving utility for their requirements prior to ordering or installing this equipment. This product must be installed by a licensed electrician. Installation of this equipment may require local electrical inspector approval.



# Commercial Pedestals

## Slimline "B" Style Drawing

### "B" Style Slimline Metered Commercial Pedestal



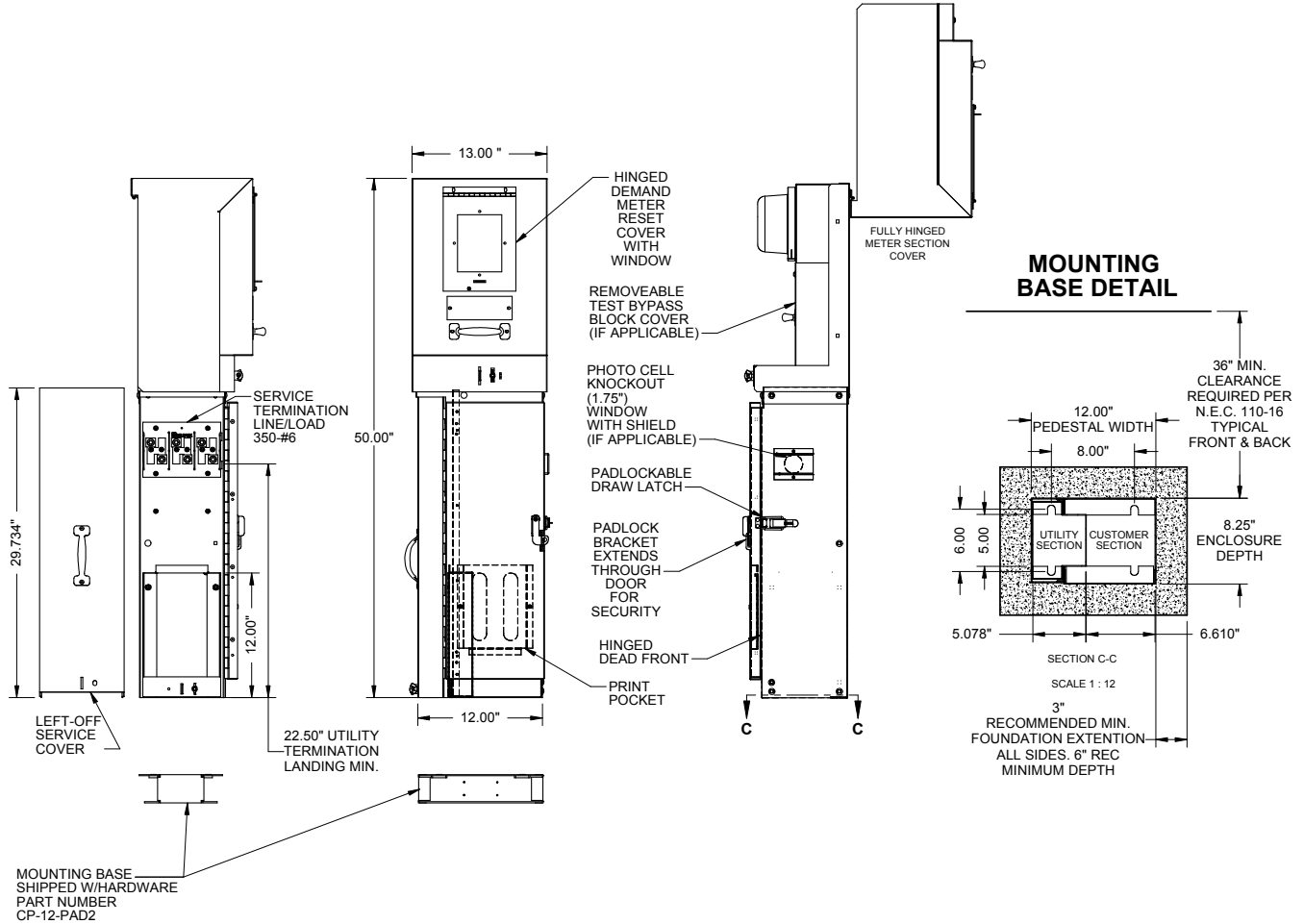
Utility requirements for this equipment may vary. Always consult the serving utility for their requirements prior to ordering or installing this equipment. This product must be installed by a licensed electrician. Installation of this equipment may require local electrical inspector approval.



# Commercial Pedestals

## Slimline "I" Style Drawing

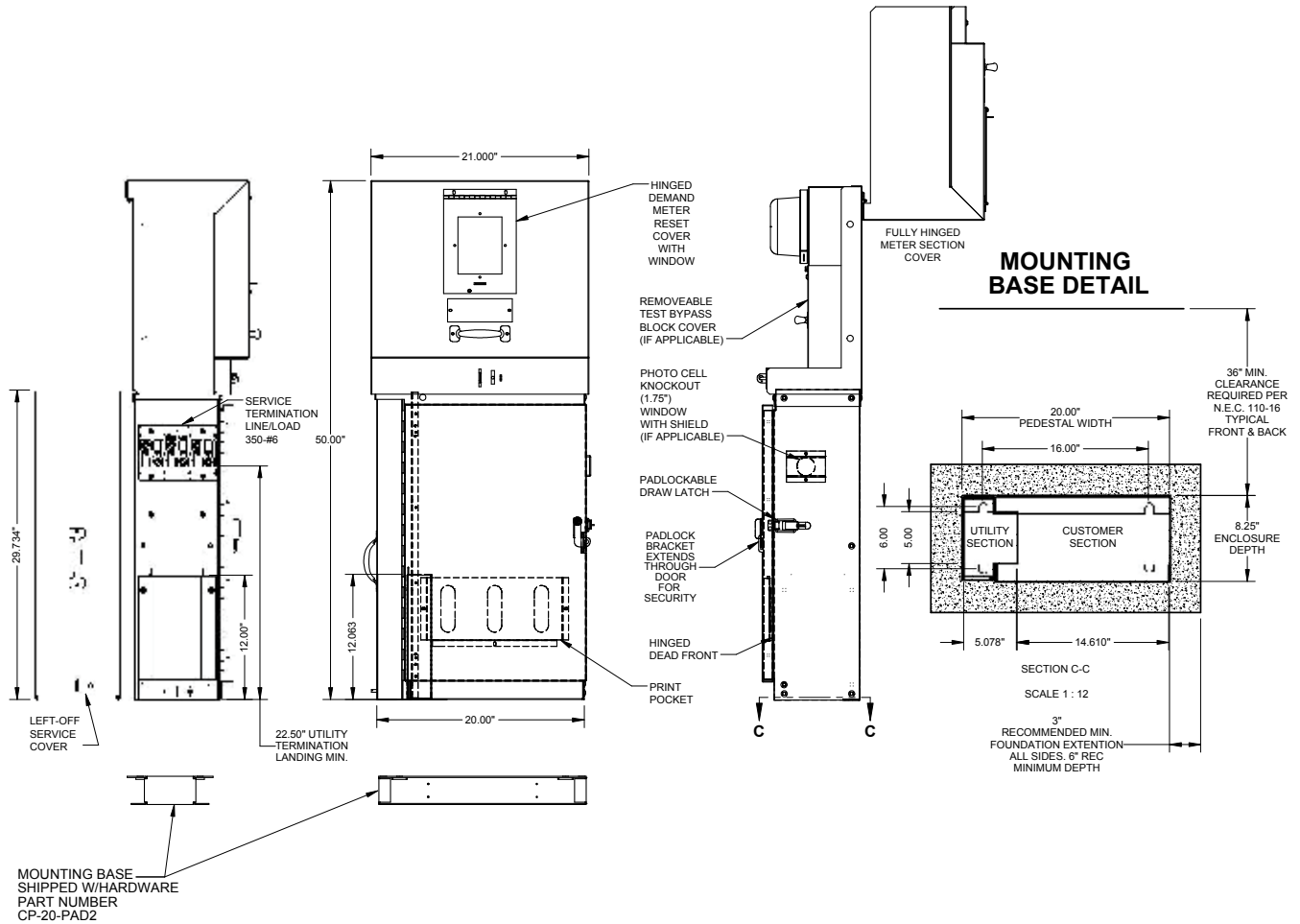
### "I" Style Slimline Metered Commercial Pedestal



Utility requirements for this equipment may vary. Always consult the serving utility for their requirements prior to ordering or installing this equipment. This product must be installed by a licensed electrician. Installation of this equipment may require local electrical inspector approval.



### "J" Style Slimline Metered Commercial Pedestal



Utility requirements for this equipment may vary. Always consult the serving utility for their requirements prior to ordering or installing this equipment. This product must be installed by a licensed electrician. Installation of this equipment may require local electrical inspector approval.

# Commercial Pedestals

## Product Worksheet

Please answer all of the questions listed below. Any additional information regarding application and/or future requirements will enable Milbank to configure the best product for your project.

Distributor: \_\_\_\_\_ Phone: \_\_\_\_\_ Fax: \_\_\_\_\_

Contact Name: \_\_\_\_\_ Application: \_\_\_\_\_

Milbank Representative: \_\_\_\_\_ Salesmen: \_\_\_\_\_

Project Name & Location: \_\_\_\_\_

Agency Specifications: (DOT-City-Other) \_\_\_\_\_

Unit Amperage: \_\_\_\_\_ Voltage: \_\_\_\_\_ Phase: \_\_\_\_\_ Wire: \_\_\_\_\_

Meter socket (200 Amp) RING-TYPE RINGLESS Fifth Terminal? NO YES (at \_\_\_\_\_ o'clock)

Meter socket (200 Amp) RING-TYPE RINGLESS Fifth Terminal? NO YES (at \_\_\_\_\_ o'clock)

Main breaker requirements: Amp: \_\_\_\_\_ Poles: \_\_\_\_\_ KAIC: \_\_\_\_\_

Main breaker requirements: Amp: \_\_\_\_\_ Poles: \_\_\_\_\_ KAIC: \_\_\_\_\_

Interior #1 0-42 circuits \_\_\_\_\_ Load center \_\_\_\_\_ Panel board \_\_\_\_\_ Metered? YES NO

Interior #2 0-42 circuits \_\_\_\_\_ Load center \_\_\_\_\_ Panel board \_\_\_\_\_ Metered? YES NO

**Branch breakers:** Amps: \_\_\_\_\_ Poles: \_\_\_\_\_ KAIC: \_\_\_\_\_ Label & Special Requirements: \_\_\_\_\_

Qty \_\_\_\_\_ Breakers \_\_\_\_\_

Qty \_\_\_\_\_ Breakers \_\_\_\_\_

Qty \_\_\_\_\_ Breakers \_\_\_\_\_

Qty \_\_\_\_\_ Breakers \_\_\_\_\_

Qty \_\_\_\_\_ Breakers \_\_\_\_\_

Qty \_\_\_\_\_ Breakers \_\_\_\_\_

### Controls:

Qty \_\_\_\_\_ Time Clock: 24 Hr \_\_\_\_\_ 7 Day \_\_\_\_\_ 365 Day Astro \_\_\_\_\_ Description: \_\_\_\_\_

Qty \_\_\_\_\_ Photo Electric Control Receptacle

Qty \_\_\_\_\_ Test switch: 2 Pos. \_\_\_\_\_ 3 Pos. \_\_\_\_\_ HOA Type \_\_\_\_\_ Other \_\_\_\_\_

Qty \_\_\_\_\_ Control Transformer \_\_\_\_\_ Voltage \_\_\_\_\_ VA Size (required for all 277/480v)

### Contractors:

Type: Lighting - LI / Definite Purpose - DP / Mechanical Held - MH / Mercury - MV / IEC - IC

Qty \_\_\_\_\_ Type \_\_\_\_\_ Amps \_\_\_\_\_ Poles \_\_\_\_\_ Coil voltage \_\_\_\_\_ Other \_\_\_\_\_

Qty \_\_\_\_\_ Type \_\_\_\_\_ Amps \_\_\_\_\_ Poles \_\_\_\_\_ Coil voltage \_\_\_\_\_ Other \_\_\_\_\_

Qty \_\_\_\_\_ Type \_\_\_\_\_ Amps \_\_\_\_\_ Poles \_\_\_\_\_ Coil voltage \_\_\_\_\_ Other \_\_\_\_\_

**Cabinet / Finish requirements:** Alum - Untreated = AO / Alum Anodized = AL / Stainless Steel = SS

Aluminum - Painted = A / GALVANIZED STEEL PAINTED (standard) \_\_\_\_\_ (specify paint below):

MINT GREEN (standard) = G / PINE GREEN = PG / Dark Green = DG / Black = BK / Desert Tan = DT

White = W / Gray = P / Summerland Gray = SG / Other: (RAL finish number) \_\_\_\_\_

Other Requirements: \_\_\_\_\_

*Please send any drawings, plans, specifications, and load/panel board schedules with worksheet.*

Utility requirements for this equipment may vary. Always consult the serving utility for their requirements prior to ordering or installing this equipment. This product must be installed by a licensed electrician. Installation of this equipment may require local electrical inspector approval.





**Location:** Huntington Beach, CA

**Description:** Wells Fargo ATM parking lot kiosk. Milbank pedestal supplies power for the ATM machine, irrigation controller and overhead lighting. In addition to the power distribution equipment is a isolated compartment for phone company phone lines and equipment. Telco 24 volt equipment must be separated from the high voltage 120 volt equipment. Steel powder painted.



Utility requirements for this equipment may vary. Always consult the serving utility for their requirements prior to ordering or installing this equipment. This product must be installed by a licensed electrician. Installation of this equipment may require local electrical inspector approval.

# Commercial Pedestals

## Application Examples



**Location:** Mission Viejo, CA

**Description:** Pedestal is supplying power for the irrigation and pump control pedestals left of the Milbank pedestal. Also includes walk-way lighting control equipment. Anodized aluminum.

**Location:** Costa Mesa, CA

**Description:** Milbank commercial pedestal supplying power for an underground telephone equipment vault. Meter socket, generator receptacle and surge protection are all installed inside this pedestal.



Utility requirements for this equipment may vary. Always consult the serving utility for their requirements prior to ordering or installing this equipment. This product must be installed by a licensed electrician. Installation of this equipment may require local electrical inspector approval.



# Commercial Pedestals

## Application Examples

**Location:** Lacy, WA

**Description:** Traffic signal control cabinet next to a Milbank power supply and street lighting control pedestal. Mounted on a raised pad for winter snow conditions. Anodized aluminum.



**Location:** Cleveland, OH

**Description:** Milbank pedestals supplied for Rapid Transit Bus Stops providing security and normal lighting. Pedestals looped together for efficiency.



Utility requirements for this equipment may vary. Always consult the serving utility for their requirements prior to ordering or installing this equipment. This product must be installed by a licensed electrician. Installation of this equipment may require local electrical inspector approval.

# Commercial Pedestals

## Application Examples

31

COMMERCIAL  
PEDESTAL  
APPLICATION  
EXAMPLES



**Location:** Interstate 70, MO

**Description:** Milbank pedestal providing remote distribution for Dynamic Message Signs along I-70 between Kansas City and St. Louis, MO. Operated through MoDOT, these stationary traffic control devices provide travelers with real-time traffic-related messages.

Utility requirements for this equipment may vary. Always consult the serving utility for their requirements prior to ordering or installing this equipment. This product must be installed by a licensed electrician. Installation of this equipment may require local electrical inspector approval.



# Commercial Pedestals

## Application Examples



**Location:** *Manchester, TN*

**Description:** Milbank pedestals used for annual outdoor music and arts festival. Operating in remote farmland, multiple pedestals provide temporary power receptacles for organizer's use. Shown with in-use cover which allows for security and safety for plugs-in-use.



Utility requirements for this equipment may vary. Always consult the serving utility for their requirements prior to ordering or installing this equipment. This product must be installed by a licensed electrician. Installation of this equipment may require local electrical inspector approval.



# Commercial Pedestals

## Application Examples



**Location:** Rio Rancho, NM

**Description:** Battery back-up pedestal. The unit contains an inverter and batteries providing uninterrupted power to traffic signals at a busy intersection in the event of a utility power failure. Milbank pedestal supplies power for the intersection signal heads and control cabinet using utility power and, if necessary, a backup system. The batteries can run the entire intersection traffic lights for 4 hours in full operation mode and an additional 4 hours in flashing mode. Aluminum powder painted tan.

Utility requirements for this equipment may vary. Always consult the serving utility for their requirements prior to ordering or installing this equipment. This product must be installed by a licensed electrician. Installation of this equipment may require local electrical inspector approval.



# Commercial Pedestals

## Application Examples



**Location:** Anaheim, CA

**Description:** Disneyland parking lot lighting and control. Two pedestals were provided as customer required both 120 and 480 volts. Steel painted customer-requested green.



**Location:** Dubuque, IA

**Description:** Parking lot lighting power and control application. Steel painted black.



Utility requirements for this equipment may vary. Always consult the serving utility for their requirements prior to ordering or installing this equipment. This product must be installed by a licensed electrician. Installation of this equipment may require local electrical inspector approval.

# Commercial Pedestals

## Application Examples

**Location:** *Kansas City, MO*

**Description:** Zona Rosa Shopping Center. Multiple pedestal locations throughout shopping area providing street lighting and traffic signal distribution.



Utility requirements for this equipment may vary. Always consult the serving utility for their requirements prior to ordering or installing this equipment. This product must be installed by a licensed electrician. Installation of this equipment may require local electrical inspector approval.





**Location:** *Kansas City, MO*

**Description:** Kansas City International Airport. Multiple pedestal locations providing lighting distribution for rental car facility parking lot.

**Location:** *Anaheim, CA*

**Description:** Milbank pedestal supplying power for the traffic signal cabinet (seen in picture). Pedestal also holds the control equipment for the intersection and roadway street lighting. Anodized aluminum.



Utility requirements for this equipment may vary. Always consult the serving utility for their requirements prior to ordering or installing this equipment. This product must be installed by a licensed electrician. Installation of this equipment may require local electrical inspector approval.



# Commercial Pedestals

## Application Examples



**Location:** *Louisville, KY*

**Description:** The Parklands of Floyd's Fork multi-phase park project. Provides power and automated controls for area and walkway lighting. Includes receptacles for temporary power for concerts, festivals and other events.



Utility requirements for this equipment may vary. Always consult the serving utility for their requirements prior to ordering or installing this equipment. This product must be installed by a licensed electrician. Installation of this equipment may require local electrical inspector approval.



---

---

---

---

---

---

---

---

---

---

---

---

---

---

---

---

---

---

---

---

---

---

---



Utility requirements for this equipment may vary. Always consult the serving utility for their requirements prior to ordering or installing this equipment. This product must be installed by a licensed electrician. Installation of this equipment may require local electrical inspector approval.

---

---

---

---

---

---

---

---

---

---

---

---

---

---

---

---

---

---

---

---

---

---

---

---

---

---

---

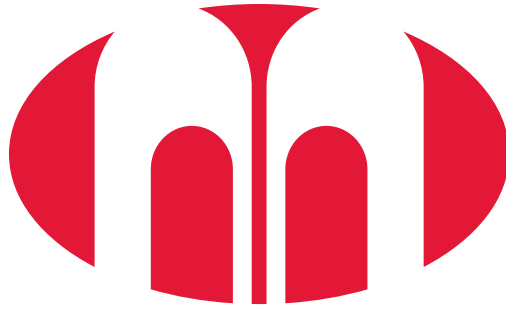
---

---

---

Utility requirements for this equipment may vary. Always consult the serving utility for their requirements prior to ordering or installing this equipment. This product must be installed by a licensed electrician. Installation of this equipment may require local electrical inspector approval.





# MILBANK<sup>®</sup>

ENERGY AT WORK

