

SMD
Surface Mount LED Downlight

HALO



EATON

Powering Business Worldwide

SMD

Surface Mount Downlighting

The Halo Surface Mount LED Downlight (SMD) is an ultra-low profile surface mounting luminaire with a modern look and high performance. SMD4 (4") and SMD6 (6") are designed for installation in recessed housings and many 3-1/2" and 4" square, octagon, or round junction boxes. Suitable for use in clothes closets when installed with NEC® 410.16 spacing requirements.

The SMD series also offers a direct mount (DM) version which can be installed directly into the ceiling with no additional junction box or housing required. Utilizing the integral Halo enclosure, this version of the SMD provides a quick installation and flush finish with the ceiling.

Energy Data

Cat. No.	CRI	CCT	Lumens	Power (W)	LPW
SMD4R - 4" Round					
SMD4R6927WH	93	2700	690	9.50	72.6
SMD4R6930WH	93	3000	700	9.70	72.2
SMD4R6935WH	94	3500	740	9.70	76.3
SMD4R6940WH	94	4000	760	9.80	77.6
SMD4R6950WH	91	5000	786	9.70	81.0
SMD4S - 4" Square					
SMD4S6927WH	92	2700	750	9.50	78.9
SMD4S6930WH	92	3000	790	9.90	79.8
SMD4S6935WH	93	3500	740	9.90	74.7
SMD4S6940WH	93	4000	800	10.10	79.2
SMD4S6950WH	90	5000	810	10.00	81.0
SMD6R - 6" Round					
SMD6R6927WH	93	2700	754	9.6	78.5
SMD6R6930WH	92	3000	758	9.6	78.7
SMD6R6935WH	95	3500	740	9.6	77.0
SMD6R6940WH	94	4000	792	9.8	80.5
SMD6R6950WH	92	5000	788	9.6	81.9
SMD6S - 6" Square					
SMD6S6927WH	92	2700	750	10.0	75.0
SMD6S6930WH	92	3000	790	9.9	79.8
SMD6S6935WH	93	3500	740	10.0	74.0
SMD6S6940WH	92	4000	760	10.3	73.8
SMD6S6950WH	90	5000	815	9.9	82.3



SMD

LED Surface Mount Downlight

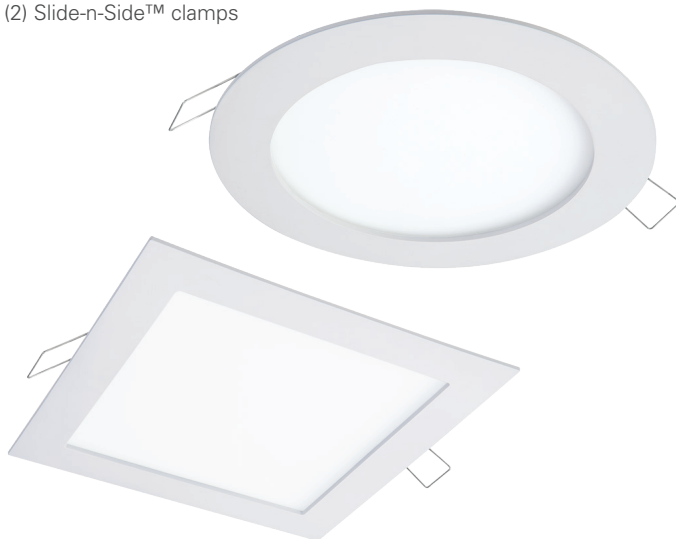
- Fits most j-boxes and 5-inch or 6-inch recessed housings
- Ceiling or wall mounting in compatible junction boxes
- Replaces bulbs, flush mounts, and recessed trims



SMD-DM

Direct Ceiling Mount

- Install into drywall without a housing or junction box
- Integral junction box
 - (2) conduit knock-outs
 - (2) Slide-n-Side™ clamps



Features

- 4" and 6" ultra-low profile surface mounting
 - Recessed Housings or Junction Box installations (approx. 0.5" thick below ceiling)
 - Direct Mount (DM) version that installs directly into ceiling
- 4" SMD4 Round and Square
 - Output: up to 810 lumens
 - Wattage: 9.5W – 10.1W
 - Voltage: 120V, 50/60Hz
- 6" SMD6 Round and Square
 - Output: up to 815 lumens
 - Wattage: 9.6W – 10.3W
 - Voltage: 120V, 50/60Hz
- 2700K, 3000K, 3500K, 4000K, and 5000K CCT
- 90 CRI; R9>50
- Lumen maintenance L70 at 50,000 hours
- Installs in many 3-1/2" and 4" ceiling junction boxes
- Retrofits 4", 5", and 6" recessed downlight housings
- Non-conductive and non-corrosive polymer (plastic) lens and trim
- Dimmable to 5% with many 120V leading-edge and trailing-edge phase control dimmers
- cULus Listed for Halo housings
- UL Classified for other housings
- Damp Location Listed for walls
- Wet Location Listed for showers and outdoor protected ceilings
- Air-Tite™ and wet location without caulk
- Dimmable down to 5%
- Plug-in LED connector for easy installation
 - Supply wire adapter connection, for junction box wiring*
 - Screwbase adapter for recessed housing retrofit**



*supply wire adapter with LED connector



**screwbase adapter with LED connector

Compliances



Refer to ENERGY STAR® Certified Products List.

Can be used to comply with California Title 24 High Efficacy requirements. Certified to California Title 20 Appliance Efficiency Database.

SMD Ordering Information

SMD4 Sample Number: SMD4R6930WH=4" Round Surface Mount Downlight, 90CRI, 3000K

Models	Lumens	CRI / CCT	Finish	Accessories
SMD4R= 4" Round Surface Mount Downlight, 120V SMD4S= 4" Square Surface Mount Downlight, 120V	6-600 lumen series (nominal) (see table)	927-90CRI, 2700K 930-90CRI, 3000K 935-90CRI, 3500K 940-90CRI, 4000K 950-90CRI, 5000K	WH=Matte White	<u>Designer Trims</u> SMD4RTRMSN=4" Round SMD Satin Nickel SMD4RTRMTBZ=4" Round SMD Tuscan Bronze SMD4RTRMWH=4" Round SMD White (paintable) SMD4STRMSN=4" Square SMD Satin Nickel SMD4STRMTBZ=4" Square SMD Tuscan Bronze SMD4STRMWH=4" Square SMD White (paintable)

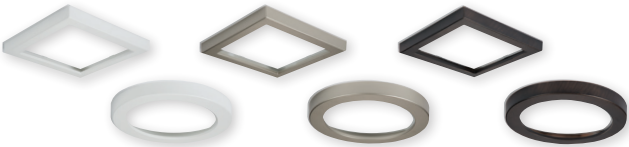
SMD6 Sample Number: SMD6R6930WH=6" Round Surface Mount Downlight, 90CRI, 3000K

Models	Lumens	CRI / CCT	Finish	Accessories
SMD6R= 6" Round Surface Mount Downlight, 120V SMD6S= 6" Square Surface Mount Downlight, 120V	6-600 lumen series (nominal) (see table)	927-90CRI, 2700K 930-90CRI, 3000K 935-90CRI, 3500K 940-90CRI, 4000K 950-90CRI, 5000K	WH=Matte White	<u>Designer Trims</u> SMD6RTRMSN=6" Round SMD Satin Nickel SMD6RTRMTBZ=6" Round SMD Tuscan Bronze SMD6RTRMWH=6" Round SMD White (paintable) SMD6STRMSN=6" Square SMD Satin Nickel SMD6STRMTBZ=6" Square SMD Tuscan Bronze SMD6STRMWH=6" Square SMD White (paintable)

Junction Box Installation: Order junction box separately, as supplied by others, to complete installation.
Recessed Installation: Order Halo recessed housing separately to complete installation.
See website for more information.

SMD Designer Trims

- Exclusively for use with Halo SMD4 and SMD6 LED modules
- Round or square trims
- Finishes: white (paintable), satin nickel, tuscan bronze



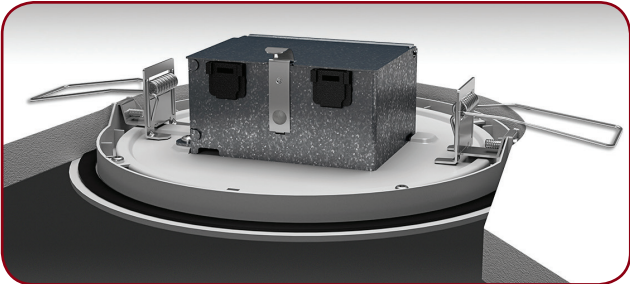
SMD-DM Ordering Information

SMD4-DM Sample Number: SMD4R6930WHDM=4" Round Surface Mount Downlight, 90CRI, 3000K, Spring Clips

Models	Lumens	CRI / CCT	Finish	Mounting
SMD4R= 4" Round Surface Mount Downlight, 120V SMD4S= 4" Square Surface Mount Downlight, 120V	6-600 lumen series (nominal) (see table)	927-90CRI, 2700K 930-90CRI, 3000K 935-90CRI, 3500K 940-90CRI, 4000K 950-90CRI, 5000K	WH=Matte White	DM=Direct Mount

SMD6-DM Sample Number: SMD6R6930WHDM=6" Round Surface Mount Downlight, 90CRI, 3000K, Spring Clips

Models	Lumens	CRI / CCT	Finish	Mounting
SMD6R= 6" Round Surface Mount Downlight, 120V SMD6S= 6" Square Surface Mount Downlight, 120V	6-600 lumen series (nominal) (see table)	927-90CRI, 2700K 930-90CRI, 3000K 935-90CRI, 3500K 940-90CRI, 4000K 950-90CRI, 5000K	WH=Matte White	DM=Direct Mount



no housing or jbox required

Eaton

1121 Highway 74 South
Peachtree City, GA 30269
P: 770-486-4800
www.eaton.com/lighting

Canada Sales

5925 McLaughlin Road
Mississauga, Ontario L5R 1B8
P: 905-501-3000
F: 905-501-3172

Our Lighting Product Lines

Halo
Halo Commercial
Portfolio
IRiS
RSA
Metalux
Corelite
Neo-Ray
Fail-Safe
MWS
Ametrix
Shaper
io
Lumark
McGraw-Edison
Invue
Ephesus
Lumière
Streetworks
AtLite
Sure-Lites

Our Controls Product Lines

Greengate
iLumin
Zero 88
Fifth Light Technology
iLight (International Only)

Connected Lighting Systems

LumaWatt Pro
WaveLinx
Distributed Low-Voltage Power
ConnectWorks

Eaton

1121 Highway 74 South
Peachtree City, GA 30269
P: 770-486-4800
www.eaton.com/lighting

© 2017 Eaton
All Rights Reserved
Printed in USA
Publication No. BR518034EN
May 2017

Products, specifications and
compliances are subject to
change without notice.

Eaton is a registered trademark.

All other trademarks are property
of their respective owners.



Powering Business Worldwide