

# 66 BLOCK SYSTEM

Suttle's 66 Block system is used in equipment rooms or in remote and intermediate wiring closets to connect voice or data wiring to customer premise equipment.

- Blocks are molded of flame retardant thermoplastic with quick-connect 66 clips for ease of installation and proven termination reliability

## FIELD TERMINATED 66M BLOCKS

### CATEGORY 5 CONNECTING BLOCKS



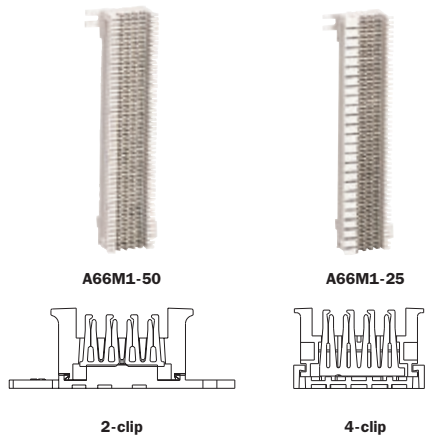
Designed to fill the need for CAT5 distribution using familiar quick-clips for termination.

- Ability to transmit data rates up to 100 MHz
- Exceeds TIA/EIA 568-B specifications for Category 5 performance
- Includes cover labeled CAT5

PART#	DESCRIPTION	PAIR CAPACITY	TERMINAL
<b>66M1-50-C5</b>	4 x 50, Category 5, 66M connecting block	50	2-clip
DIMENSIONS: 10"H x 3.4"W x 1.25"D			
COLORS (-xx):  White = (85)			

PART#	DESCRIPTION	PAIR CAPACITY	TERMINAL
<b>66M1-50-C5-62</b>	4 x 50, Category 5, 66M connecting block	50	2-clip
DIMENSIONS: 10"H x 3.4"W x 1.25"D			
COLORS (-xx):  Blue = (62)			

### 4 x 50 BLOCKS

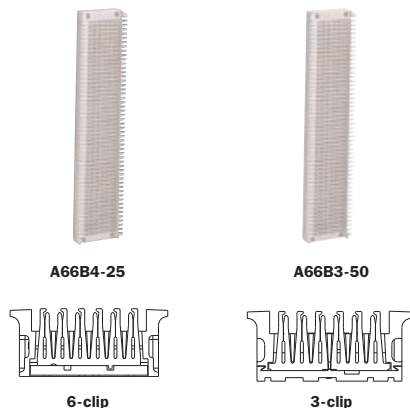


PART#	DESCRIPTION	PAIR CAPACITY	TERMINAL
<b>A66M1-25</b>	4 x 50, 66M connecting block, includes 1 designation strip	25	4-clip
DIMENSIONS: 10"H x 3.4"W x 1.2"D			

PART#	DESCRIPTION	PAIR CAPACITY	TERMINAL
<b>A66M1-50</b>	4 x 50, 66M connecting block, includes 2 designation strips	50	2-clip
DIMENSIONS: 10"H x 3.4"W x 1.2"D			

## FIELD TERMINATED 66B BLOCKS

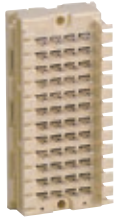
### 6 x 50 BLOCKS



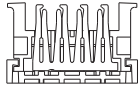
PART#	DESCRIPTION	PAIR CAPACITY	TERMINAL
<b>A66B4-25</b>	6 x 50, 66B connecting block	25	6-clip
DIMENSIONS: 13.44"H x 2.8"W x 1.25"D			

PART#	DESCRIPTION	PAIR CAPACITY	TERMINAL
<b>A66B3-50</b>	6 x 50, 66B connecting block	50	3-clip
DIMENSIONS: 13.44"H x 2.8"W x 1.25"D			

## 4 x 12 BLOCKS



66CB1-6



4-clip

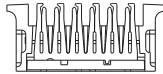
PART#	DESCRIPTION	PAIR CAPACITY	TERMINAL
<b>66CB1-6</b>	4 x 12, 66CB connecting block	6	4-clip

DIMENSIONS: 2"H x 4.25"W x 1.4"D

## 6 x 6 BLOCKS



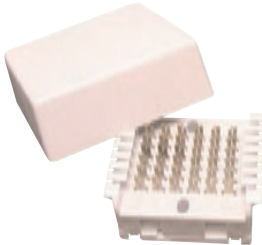
A66B4-3



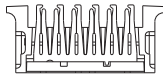
6-clip

PART#	DESCRIPTION	PAIR CAPACITY	TERMINAL
<b>A66B4-3</b>	6 x 6, 66B connecting block	3	6-clip

DIMENSIONS: 2.4"H x 2.8"W x 1.2"D



A66B6-3



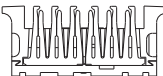
6-clip

PART#	DESCRIPTION	PAIR CAPACITY	TERMINAL
<b>A66B6-3</b>	6 x 6, 66B connecting block, includes a snap-on cover	3	6-clip

DIMENSIONS: 3.5"H x 3.5"W x 1.25"D w/cover



A66B3-6



3-clip

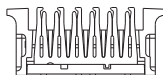
PART#	DESCRIPTION	PAIR CAPACITY	TERMINAL
<b>A66B3-6</b>	6 x 6, 66B connecting block, includes a snap-on cover	6	3-clip

DIMENSIONS: 3.5"H x 3.5"W x 1.25"D w/cover

## 6 x 12 Blocks



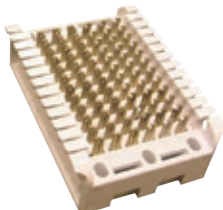
66B1-6



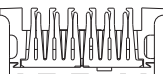
6-clip

PART#	DESCRIPTION	PAIR CAPACITY	TERMINAL
<b>66B1-6</b>	6 x 12, 66B connecting block	6	6-clip

DIMENSIONS: 3.9"H x 2.8"W x 1.2"D



66B1-12



6-clip

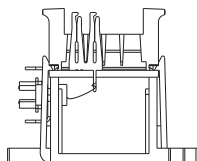
PART#	DESCRIPTION	PAIR CAPACITY	TERMINAL
<b>66B1-12</b>	6 x 12, 66B connecting block	12	3-clip

DIMENSIONS: 3.9"H x 2.8"W x 1.2"D

## PRE-WIRED 66M2 CONNECTING BLOCKS



66M2-3W

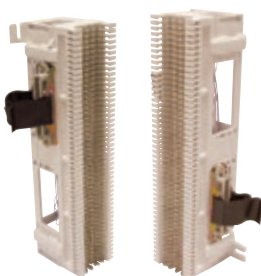


2-clip

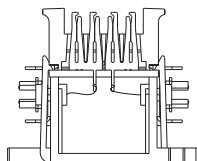
These are connectorized quick connect blocks designed for rapid installation of key telephone systems, PBX systems, cables and other low voltage terminal equipment.

- Available with female connectors, designed for top cable entry
- Pre-wired to the 25-pair connectors on the side

PART#	DESCRIPTION	PAIR CAPACITY	TERMINAL
<b>66M2-3W</b>	One female 25-pair connector	25	2-clip



66M2-5W



2-clip

PART#	DESCRIPTION	PAIR CAPACITY	TERMINAL
<b>66M2-5W</b>	Two female 25-pair connectors	50	2-clip

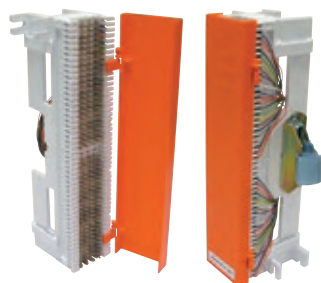
## CONNECTORIZED NETWORK INTERFACE JACKS



Provides clear demarcation between the telephone company and the customer-owned equipment.

- Furnished with an attached hinged cover
- Fulfills FCC requirement for a registered interface for connection of customer terminal equipment to the network

PART#	DESCRIPTION	CONNECTING ARRANGEMENT	PAIRS	TERMINAL
<b>AJK-700A-66-B1-25</b>	Ideal for most installations, this 66 terminal block consists of a RJ21X female connector pre-wired to the right side.	RJ21X	25	2-clip



PART#	DESCRIPTION	CONNECTING ARRANGEMENT	PAIRS	TERMINAL
<b>AJK-700B-66-B1-12</b>	This 66 terminal block consists of a RJ71C self-shortening female connector pre-wired to the right side column of the block, and provides automatic circuit continuation between the network and equipment when disconnecting ancillary equipment.	RJ71C	12	2-clip

## 66C CONNECTING BLOCK WITH HOUSING



A66C2-16

Each block is mounted on a metal base for mounting directly to walls and includes a distribution ring for dressing of cable.

- Provides termination of 16 incoming pairs

PART#	DESCRIPTION	PAIR CAPACITY	TERMINAL
<b>A66C2-16</b>	4 x 32, 66C connecting block, equipped with metal housing	16	4-clip

DIMENSIONS: 10"H x 5"W x 2.5"D

## ➔ 66 ACCESSORIES

### BRIDGING CLIP

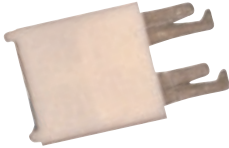


1127-A1

These clips can be used to bridge terminals on a block having two 2-clips or two 3-clips across a row.

PART#	DESCRIPTION	DIMENSIONS
<b>1127-A1</b>	66 block bridging clip	0.5"W x 0.25"H

### CAPACITY EXPANDING BLOCK ADAPTERS



183A2

These can be installed on every row but not side by side on a 66 connecting block to expand capacity. This adapter is not for use on CAT5 rated 66M1-50 blocks.

- Provides additional connections without interfering with already connected wires
- Provides positive insulation from one row to the adjacent row

PART#	DESCRIPTION
<b>183A3</b>	66 block adapter, 1 single quick clip
<b>183A2</b>	66 block adapter, 1 double quick clip

### COVERS : PROTECTIVE



For use with 66B and 66M connecting blocks.

- Self-extinguishing transparent plastic
- Snaps on for convenience

PART#	DESCRIPTION	DIMENSIONS
<b>66BC6</b>	Transparent cover for 6 x 50, 66B blocks	12.63"H x 3"W x 0.36"D
<b>66MC-4</b>	Transparent cover for 4 x 50, 66M blocks	10"H x 2.3"W x 0.29"D



### COVERS : HINGED




031709-97

For use with 66M connecting blocks.

- Self-extinguishing plastic

PART#	DESCRIPTION	DIMENSIONS
<b>031709-97</b>	Hinged cover	10"H x 2.26"W x 0.5"D

COLOR:  Orange \* Additional colors may be available by request.

### 66 BLOCK APPARATUS BOXES



A115C1

A115D1

Used to terminate and fan out horizontal distribution cable.

- Furnished with a snap-on cover, distribution rings and mounting hardware
- These offer greater flexibility where space is limited

PART#	DESCRIPTION	DIMENSIONS
<b>A115C1</b>	Fits one 4 x 50 or 6 x 50 block	17.25"W x 5.2"H x 2.5"D
<b>A115D1</b>	Fits two 4 x 50 or 6 x 50 blocks	17.25"H x 9.25"W x 2.5"D

## BACKBOARDS

Used to mount 66 type connecting blocks and for horizontal jumper runs.

- Available in several different sizes and colors for identification of functional areas in cross-connect fields
- 66M1-50 blocks ordered separately



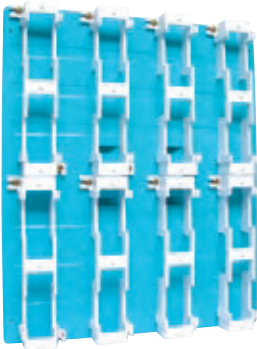
**A183A1**

PART#	DESCRIPTION	DIMENSIONS
<b>A183A1</b>	200-pair capacity via four 66M1-50 blocks, equipped with four 89B brackets	20"H x 8.5"W

COLOR:  Blue

PART#	DESCRIPTION	DIMENSIONS
<b>A183A2</b>	200-pair capacity via four 66M1-50 blocks, equipped with four 89B brackets	20"H x 8.5"W

COLOR:  Green



**A183B1**

PART#	DESCRIPTION	DIMENSIONS
<b>A183B1</b>	400-pair capacity via eight 66M1-50 blocks, equipped with eight 89B brackets	20"H x 17"W

COLOR:  Blue

PART#	DESCRIPTION	DIMENSIONS
<b>A183B2</b>	400-pair capacity via eight 66M1-50 blocks, equipped with eight 89B brackets	20"H x 17"W

COLOR:  Green



**A183C1**

PART#	DESCRIPTION	DIMENSIONS
<b>A183C1</b>	100-pair capacity via two 66M1-50 blocks, equipped with two 89B brackets	10"H x 8.5"W

COLOR:  Blue



**A187A1**

PART#	DESCRIPTION	DIMENSIONS
<b>A187A1</b>	Wire management backboard; equipped with eight A20A distributing posts/spools and 2 distributing rings	6.6"H x 8.5"W

COLOR:  White



**A187B1**

PART#	DESCRIPTION	DIMENSIONS
<b>A187B1</b>	Wire management backboard; equipped with eight A20A distributing posts/spools and 4 distributing rings	6.63"H x 17"W

COLOR:  White

## 66 BLOCK MOUNTING BRACKETS

- Durable self-extinguishing thermoplastic
- Mounting holes are provided for use in a variety of mounting options




89D

A89B



66B8-10

PART#	DESCRIPTION	
<b>89D</b>	For use with 66M1-25 and 66M1-50 blocks	
<b>A89B</b>	For use with 66M1-25 and 66M1-50 blocks	

PART#	DESCRIPTION
<b>66B8-10</b>	For use with 66B blocks

STRUCTURED  
WIRING

## CABLE MANAGEMENT : WIRE AND CABLE HANGERS



66146

PART#	DESCRIPTION	DIMENSIONS
<b>66145</b>	Wall mounting	4.12"D x 2.5"H
<b>66146</b>	Wall mounting	3.8"D x 5.87"H



606P

PART#	DESCRIPTION
<b>606P</b>	Organizer ring, clips on side of A89B or 89D bracket

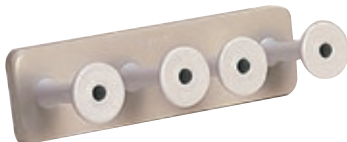
## CABLE MANAGEMENT : WIRE DISTRIBUTION SPOOLS AND MANAGEMENT FRAMES

- Provides control and dressing of distribution cables and jumper wires
- Allows rapid and easy access for moves and changes



A20A

PART#	DESCRIPTION
<b>A20A</b>	Spool without screw
<b>A20B</b>	Spool with #10 wood screw
<b>A20C</b>	Spool with #12-24 machine screw

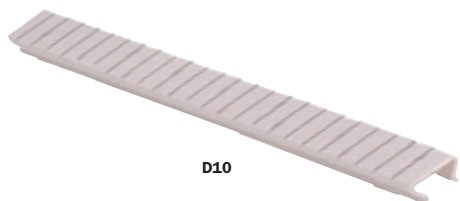


A198A

PART#	DESCRIPTION	DIMENSIONS
<b>A198A</b>	Management frame with 4 spools	2.4"H x 8.5"W

## DESIGNATION STRIPS

- Designated for use on most 66M or 66B type connecting blocks to identify the circuits terminated on the block
- Strips are installed by snap-fitting to the side of the block

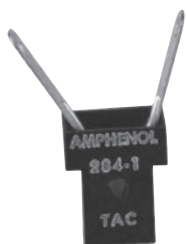


D10

PART#	DESCRIPTION
<b>D10</b>	Designation strip for 66M connecting block
<b>D13</b>	Designation strip for 66B connecting block

## TEST APPARATUS CONNECTOR

- Provides a fast, safe access to any pair of quick-clip contacts in a 66 type block
- The TAC (test apparatus connector) grips the contact firmly to prevent annoying disconnection from the line being tested

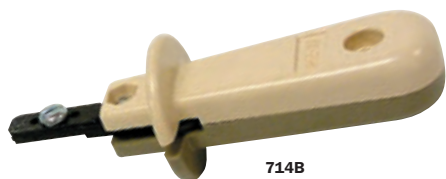


284-1

PART#	DESCRIPTION
<b>284-1</b>	Apparatus test connector

## TERMINATING TOOLS

Designed for terminating 66 type quick-connect blocks, simply place the wire in position, set the tool over the split terminal and with slight pressure push the wire into the terminal. The blade will cut off the excess wire automatically, reducing a termination step.



714B

PART#	DESCRIPTION
<b>714B</b>	66 Style termination tool

## TERMINATING TOOLS

The 814B impact tool is designed for termination of 22-26 AWG station wire on 110 or 66 type terminations. Spring-loaded and fully adjustable. This tool is ideal when working with wires of varying thickness. Reversible Termination Blade can terminate and cut off excess wire or terminate only.

- Spring loaded feature provides consistent connections
- Replacement blades available for 110 and 66 clip style terminations



814B

PART#	DESCRIPTION
<b>814B</b>	Automatic impact tool
<b>81401-110-88</b>	Replacement blade for 814B tool, 110 clip style
<b>81401-66</b>	Replacement blade for 814B tool, 66 clip style