

Pipe Straps, Conduit Clamps and Hangers

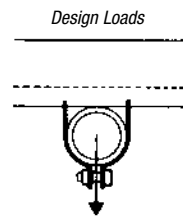
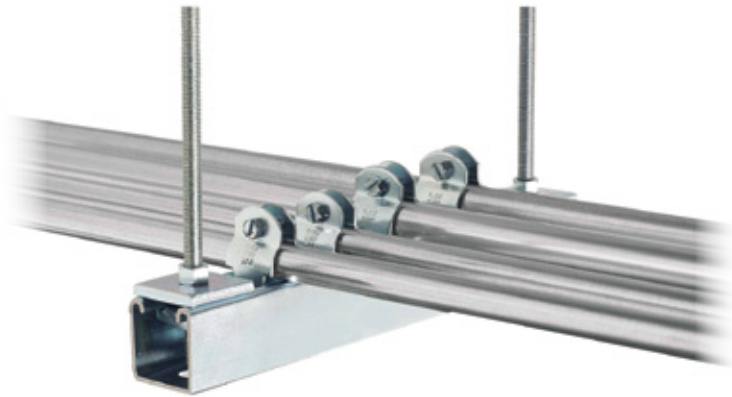
Pre-assembled for easy handling and sorting.

Superstrut® Pipe Straps

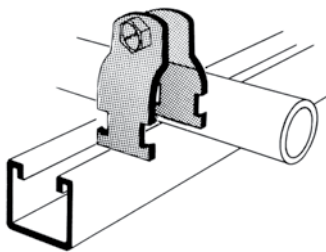
Superstrut® Pipe Straps are designed to be twist inserted anywhere along the slot side of the channel. Pipes can be placed as closely as pipe couplings permit.

Some unique features of the straps include:

- Bolt head is combination slot and hex head for flexibility of attachment
- Square nut is captivated on the shoulder for easy one-handed tightening
- Straps are interchangeable with 1½" strut for broader application
- Straps are shipped assembled so counting and sorting are easier
- Pipe or conduit sizes are shown on the strap for easy identification
- All Superstrut® Straps are preassembled for easy handling and sorting



700 — Superstrut® Straps for EMT



CAT. NO.	EMT SIZE (IN.)	O.D. SIZE (IN.)	STEEL STRAP THICKNESS	DESIGN LOAD (LBS.)	STD. CTN.
700 3/8-STR	3/8	.577	14 ga.	750	100
700-1/2-STR	1/2	.706	14 ga.	750	100
700-3/4-STR	3/4	.922	14 ga.	750	100
700-1-STR	1	1.163	14 ga.	750	100
700-1-1/4-STR	1 1/4	1.510	14 ga.	750	50
700-1-1/2-STR	1 1/2	1.740	12 ga.	800	50
700-2-STR	2	2.197	12 ga.	800	50

Standard Finish — GoldGalv®

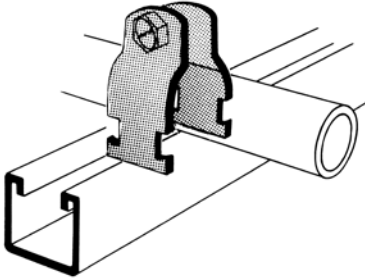
701 — Superstrut® Straps for O.D. Tubing

CAT. NO.	TUBING O.D. (IN.)	STEEL STRAP THICKNESS	DESIGN LOAD (LBS.)	STD. CTN.
701-1/4	1/4	14 ga.	750	100
701-3/8	3/8	14 ga.	750	100
701-1/2-STR	1/2	14 ga.	750	100
701-5/8	5/8	14 ga.	750	100
701-3/4	3/4	14 ga.	750	100
701-7/8	7/8	14 ga.	750	100
701-1-STR	1	14 ga.	750	50
701-1-1/8	1 1/8	14 ga.	1,000	100
701-1-1/4	1 1/4	14 ga.	1,000	25
701-1-3/8	1 3/8	14 ga.	1,000	100
701-1-1/2	1 1/2	14 ga.	1,000	25
701-1-5/8	1 5/8	14 ga.	1,000	100
701-1-3/4	1 3/4	12 ga.	1,000	25
701-1-7/8	1 7/8	12 ga.	1,000	50
701-2	2	12 ga.	1,000	50
701-2-1/8	2 1/8	12 ga.	1,300	50
701-2-1/4	2 1/4	12 ga.	1,300	25
701-2-3/8	2 3/8	12 ga.	1,300	25
701-2-1/2	2 1/2	12 ga.	1,300	25
701-2-5/8	2 5/8	12 ga.	1,300	50

(continued on following page)

Pipe Straps, Conduit Clamps and Hangers

701 — Superstrut® Straps for O.D. Tubing (continued)



CAT. NO.	TUBING O.D. (IN.)	STEEL STRAP THICKNESS	DESIGN LOAD (LBS.)	STD. CTN.
701-2-3/4	2¾	12 ga.	1,300	25
701-2-7/8	2¾	12 ga.	1,300	25
701-3	3	12 ga.	1,300	25
701-3-1/8	3¼	12 ga.	1,300	25
701-3-1/4	3¼	12 ga.	1,300	25
701-3-3/8	3¾	12 ga.	1,300	25
701-3-1/2	3½	12 ga.	1,300	25
701-3-5/8	3¾	11 ga.	1,650	25
701-3-3/4	3¾	11 ga.	1,650	25
701-3-7/8	3¾	11 ga.	1,650	25
701-4	4	11 ga.	1,650	25
701-4-1/8	4¼	11 ga.	1,650	25
701-4-1/4	4¼	11 ga.	1,650	25
701-4-3/8	4¾	11 ga.	1,650	25
701-4-1/2	4½	11 ga.	1,650	10
701-4-5/8	4¾	11 ga.	1,650	10
701-4-3/4	4¾	11 ga.	1,650	10
701-4-7/8	4¾	11 ga.	1,650	10
701-5	5	11 ga.	1,650	25
701-5-1/8	5¼	11 ga.	1,650	10
701-5-1/4	5¼	11 ga.	1,650	10
701-5-3/8	5¾	11 ga.	1,650	10
701-5-1/2	5½	11 ga.	1,650	10
701-5-5/8	5¾	10 ga.	1,650	10
701-5-3/4	5¾	10 ga.	1,650	10
701-5-7/8	5¾	10 ga.	1,650	10
701-6	6	10 ga.	1,650	10
701-6-1/8	6¼	10 ga.	1,650	10
701-6-1/4	6¼	10 ga.	1,650	10
701-6-3/8	6¾	10 ga.	1,650	10
701-6-1/2	6½	10 ga.	1,650	10
701-6-5/8	6¾	10 ga.	1,650	10
701-6-3/4	6¾	10 ga.	1,650	10
701-6-7/8	6¾	10 ga.	1,650	10
701-8	8	10 ga.	1,650	10

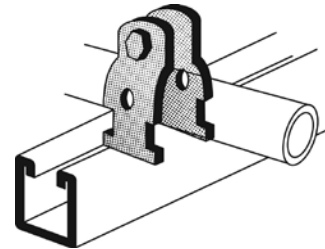
702 — Superstrut® Straps for Rigid Conduit, IMC and Pipe

- For Rigid or IMC Conduit, Pipe and Electric Metal Tubing (EMT)

CAT. NO.	RIGID CONDUIT OR PIPE SIZE (IN.)	O.D. SIZE (IN.)	STEEL STRAP THICKNESS	DESIGN LOAD (LBS.)	STD. CTN.
702-3/8	¾	.675	14 ga.	750	100
702-1/2	½	.840	14 ga.	750	100
702-3/4	¾	1.050	14 ga.	750	100
702-1	1	1.315	14 ga.	750	100
702-1-1/4	1¼	1.660	14 ga.	800	50
702-1-1/2	1½	1.900	12 ga.	800	50
702-2-STR	2	2.375	12 ga.	800	50
702-2-1/2	2½	2.875	12 ga.	1,000	50
702-3	3	3.500	12 ga.	1,650	50
702-3-1/2	3½	4.000	11 ga.	1,650	25
702-4	4	4.500	11 ga.	1,650	25
702-4-1/2	4½	5.000	11 ga.	1,650	25
702-5	5	5.563	11 ga.	1,650	25
702-6	6	6.625	11 ga.	1,650	10
702-8	8	8.625	11 ga.	1,650	10
702-10	10	10.750	10 ga.	1,650	25
702-12	12	12.750	10 ga.	1,650	25

Standard Finish — GoldGalv® brand. For Electro-Galvanized (Silver), add EG suffix.

703 — Universal Clamp



CAT. NO.	PIPE O.D. (IN.)	STEEL STRAP THICKNESS	DESIGN LOAD (LBS.)	STD. CTN.
703-1/2	.706-.840	16 ga.	400	100
703-3/4	.932-1.050	14 ga.	550	100
703 1	1.163-1.315	14 ga.	550	100
703-1-1/4	1.508-1.660	14 ga.	800	50
703-1-1/2	1.738-1.900	14 ga.	800	50
703-2	2.195-2.375	14 ga.	800	50

Standard Finish — GoldGalv®

Pipe Straps, Conduit Clamps and Hangers

Angled for easy tightening!

Angler® Pipe and Conduit Clamp



Metal Framing & Cable Tray — Superstrut® Metal Framing System

Universal Series — for EMT, IMC, Rigid and Standard Pipe



CAT. NO.	SIZE (IN.)	STRAP THICKNESS	DESIGN LOAD (LBS.)	INSTALL TORQUE (IN. LBS.)	STD. CTN.
GoldGalv® Finish					
C 109 1/2	1/2	14 ga.	400	40	100
C 109 3/4	3/4	14 ga.	500	40	100
C 109 1	1	14 ga.	500	40	100
C 109 1 1/4	1 1/4	14 ga.	500	40	100
C 109 1 1/2	1 1/2	12 ga.	800	60	50
C 109 2	2	12 ga.	800	60	50
C 109 2 1/2	2 1/2	12 ga.	800	60	50
C 109 3	3	12 ga.	800	60	50
C 109 3 1/2	3 1/2	11 ga.	1,200	60	25
C 109 4	4	11 ga.	1,200	60	25

SilverGalv® Finish

C 109 1/2 EG	1/2	14 ga.	400	40	100
C 109 3/4 EG	3/4	14 ga.	500	40	100
C 109 1 EG	1	14 ga.	500	40	100
C 109 1 1/4 EG	1 1/4	14 ga.	500	40	100
C 109 1 1/2 EG	1 1/2	12 ga.	800	60	50
C 109 2 EG	2	12 ga.	800	60	50
C 109 2 1/2 EG	2 1/2	12 ga.	800	60	50
C 109 3 EG	3	12 ga.	800	60	50
C 109 3 1/2 EG	3 1/2	11 ga.	1,200	60	25
C 109 4 EG	4	11 ga.	1,200	60	25

Rigid Series — for Rigid Conduit and Standard Pipe



CAT. NO.	SIZE (IN.)	STRAP THICKNESS	DESIGN LOAD (LBS.)	INSTALL TORQUE (IN. LBS.)	STD. CTN.
GoldGalv® Finish					
C 109R 1/2	1/2	14 ga.	600	40	100
C 109R 3/4	3/4	14 ga.	600	40	100
C 109R 1	1	14 ga.	600	40	100
C 109R 1 1/4	1 1/4	14 ga.	600	40	100
C 109R 1 1/2	1 1/2	12 ga.	800	60	50
C 109R 2	2	12 ga.	800	60	50
C 109 2 1/2	2 1/2	12 ga.	800	60	50
C 109 3	3	12 ga.	800	60	50
C 109 3 1/2	3 1/2	11 ga.	1,200	60	25
C 109 4	4	11 ga.	1,200	60	25

SilverGalv® Finish

C 109R 1/2 EG	1/2	14 ga.	600	40	100
C 109R 3/4 EG	3/4	14 ga.	600	40	100
C 109R 1 EG	1	14 ga.	600	40	100
C 109R 1 1/4 EG	1 1/4	14 ga.	600	40	100
C 109R 1 1/2 EG	1 1/2	12 ga.	800	60	50
C 109R 2 EG	2	12 ga.	800	60	50
C 109 2 1/2 EG	2 1/2	12 ga.	800	60	50
C 109 3 EG	3	12 ga.	800	60	50
C 109 3 1/2 EG	3 1/2	11 ga.	1,200	60	25
C 109 4 EG	4	11 ga.	1,200	60	25

Hex head size 3/8" for 1/2" to 1 1/4" sizes, 1/2" for 1 1/2" to 4" sizes.

Material: Stamped Steel.

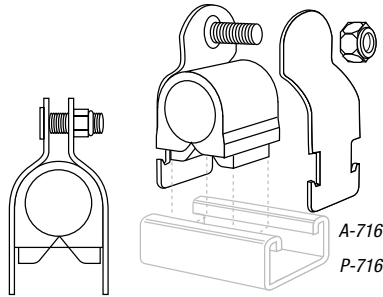
Pipe sizes 2 1/2" to 4" utilize the same clamps for the Rigid Series and the Universal Series.

Pipe Straps, Conduit Clamps and Hangers

A-716 — Snap•Guard® Cushioned Clamp Tube Series

P-716 — Pipe Series

- Assembly consisting of GoldGalv® finish steel clamp with bolt/locknut and cushion
- Secure pipes, tubes and hoses for fluid conductors
- Installation is easy and requires no more time than a simple pipe clamp installation
- Cushion absorbs the shocks and associated vibrations from fluid surges in tubes, pipes and hoses
- Can handle temperatures from -40° F to 300° F
- Cushioned Clamp assemblies are available individually bagged

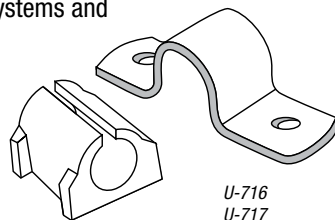


O.D. TUBING SIZES		STANDARD PIPE SIZES		
ASSEMBLY CAT. NO.	TUBE O.D. (IN.)	ASSEMBLY CAT. NO.	NOMINAL PIPE SIZE (IN.)	STD. CTN.
A-716-1/4	¼	P-716-1/4	¼	25
A-716-3/8	⅜	P-716-3/8	⅜	25
A-716-1/2	½	P-716-1/2	½	25
A-716-5/8	⅝	P-716-3/4	¾	25
A-716-3/4	¾	P-716-1	1	25
A-716-7/8	⅞	P-716-1-1/4	1¼	25
A-716-1	1	P-716-1-1/2	1½	10
A-716-1-1/8	1⅛	P-716-2	2	10
A-716-1-1/4	1¼	P-716-2-1/2	2½	10
A-716-1-3/8	1⅜	P-716-3	3	10
A-716-1-1/2	1½	P-716-3-1/2	3½	10
A-716-1-5/8	1⅝	P-716-4	4	10
A-716-1-3/4	1¾	—	—	10
A-716-1-7/8	1⅞	—	—	10
A-716-2	2	—	—	10
A-716-2-1/8	2⅛	—	—	10
A-716-2-3/8	2⅜	—	—	10
A-716-2-5/8	2⅝	—	—	10
A-716-3-1/8	3⅛	—	—	10
A-716-4-1/8	4⅛	—	—	10

Standard Finishes — GoldGalv® brand. Available in Stainless Steel — use SS suffix. (i.e) A-716-1SS, Electro-Galvanized (Silver) — use EG suffix. (i.e) A-716-1EG

U-716, U-717 — Two-Hole Cushioned Clamp

- Guides, protects and uniformly spaces line runs. Low-cost, time-saving method of attaching tubing and hose to equipment
- Cushion is built to withstand the effects of most oils, chemical and industrial cleaning compounds, in temperatures from -50° F to 275° F. Interlock edge ensures cushion remains in place
- Clamp available in steel with the GoldGalv® hardware finish
- Attached with two standard fasteners to any flat surface, this clamp eliminates the use of special channels, providing a savings in both space requirements and cost
- Cushioned clamps reduce vibration, shock and noise in fluid systems and eliminate electrolysis



ASSEMBLY CAT. NO.	COPPER AND STEEL TUBING O.D. (IN.)	COPPER WATER PIPE (NOM.) (IN.)	NOMINAL PIPE SIZE (IN.)	STD. CTN.
U716 1/4	¼	—	—	25
U-716-3/8	⅜	¼	—	25
U-716-1/2	½	⅜	¼	25
U-716-5/8	⅝	½	⅜	25
U-716-3/4	¾	⅝	—	25
U-716-7/8	⅞	¾	½	25
U-716-1	1	—	—	25
U-716-1-1/8	1⅛	1	—	25
U-716-1-1/4	1¼	—	—	10
U-716-1-3/8	1⅜	1¼	—	10
U-716-1-1/2	1½	—	—	10
U-716-1-5/8	1⅝	1½	—	10
U-716-1-3/4	1¾	—	—	10
U-716-1-7/8	1⅞	—	1½	10
U-716-2	2	—	—	10
U-716-2-1/8	2⅛	—	—	10
U-716-2-3/8	2⅜	—	—	10
U-717-3/4	—	—	¾	25
U-717-1	—	—	1	10
U-717-1-1/4	—	—	1¼	10

Standard Finish — GoldGalv®

Pipe Straps, Conduit Clamps and Hangers

C-716 — Isolator for Copper Tubing

Features:

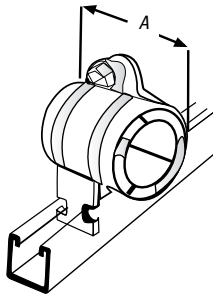
Designed for use with Superstrut® channel and pipe straps and Superstrut® C-711 Hangers, and may also be used with all standard flatbar or malleable iron hangers.

Materials:

Manufactured from one-piece steel shell with reinforcing ribs for stiffening and alignment. Padding is of processed non-conducting hairfelt and is cemented to the metal. Design of ribs creates a hinge so isolator may be opened and closed to install.

Application:

To provide a means to effectively isolate copper tubing from its supports to prevent the transmission of sound and vibration.



CAT. NO.	SIZE (IN.)	NOMINAL PIPE SIZE (IN.)	HANGER, C-711 OR PIPE STRAP, 702	WIDTH A (IN.)	STD. CTN.
C716 1/2	1/2	1/2	3/4	2 5/8	100
C-716-3/4	3/4	3/4	3/4	2 5/8	100
C-716-1	1	1	1	2 5/8	100
C-716-1-1/4	1 1/4	1 1/4	1 1/4	2 5/8	50
C-716-1-1/2	1 1/2	1 1/2	1 1/2	2 5/8	50
C-716-2	2	2	2 1/2	2 5/8	50
C-716-2-1/2	2 1/2	2 1/2	3	2 15/32	50
C-716-3	3	3	3 1/2	2 5/8	50
C-716-3-1/2	3 1/2	3 1/2	4	4 1/4	30
C-716-4	4	4	5	4 1/4	20

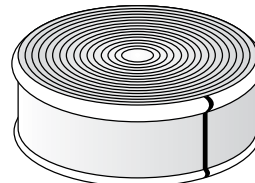
Order by Cat. No. and size.
Standard Finish — GoldGalv®

S716 — Cushioned Strip — For Isolation and Vibration Applications

For use with 701 O.D. tubing and pipe clamp. To determine 701 clamp size, add 1/4" to O.D. tube size to allow for the cushioned strip material.

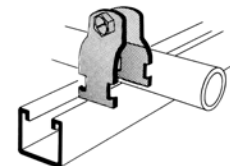
1/4" markings for fast measuring and cutting. Measurement chart is printed on back of carton. 20 feet included in each carton.

Prevent metal-to-metal contact with the cushioned strip material. It aids in sound insulation, shock absorption and protects against corrosion, distortion and abrasion. Cushioned strip material is designed for optimal use between -30° F and 300° F. Cushioned strip material combined with the Superstrut® 701 pipe strap can handle clamping assignments from 1/4" to 6.

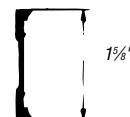
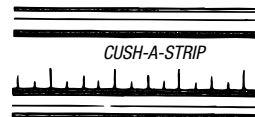


S716

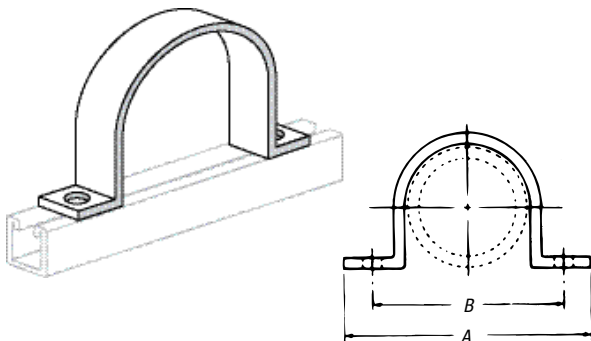
Sold in a carton of 20 feet.



Order 701 clamp separately.



C-708-U — Short Strap for Channel or Wall Mounting



CAT. NO.	PIPE SIZE	DIMENSIONS (IN.)			STOCK SIZE	DESIGN LOAD LBS.	STD. CTN.
		A	B	HOLE SIZE			
C-708-U-1/2	1/2	2 1/8	2	5/32	1/8 x 1 1/8	650	50
C-708-U-3/4	3/4	3 1/16	2 3/16	5/32	1/8 x 1 1/8	650	50
C-708-U-1	1	3 3/8	2 1/2	5/32	1/8 x 1 1/8	650	50
C-708-U-1-1/4	1 1/4	3 11/16	2 3/16	5/32	1/8 x 1 1/8	650	25
C-708-U-1-1/2	1 1/2	3 15/16	3 1/16	5/32	1/8 x 1 1/8	650	25
C-708-U-2	2	5 3/4	4 1/8	7/16	1/4 x 1 5/8	650	25
C-708-U-2-1/2	2 1/2	6 3/16	4 9/16	7/16	1/4 x 1 5/8	1,000	25
C-708-U-3	3	6 3/16	5 3/16	7/16	1/4 x 1 5/8	1,000	25
C-708-U-3-1/2	3 1/2	7 7/16	5 11/16	7/16	1/4 x 1 15/32	1,000	25
C-708-U-4	4	7 13/16	6 3/16	7/16	1/4 x 1 15/32	1,200	25
C-708-U-5	5	8 7/8	7 1/4	7/16	1/4 x 1 15/32	1,200	10
C-708-U-6	6	9 15/16	8 3/16	7/16	1/4 x 1 15/32	1,200	10

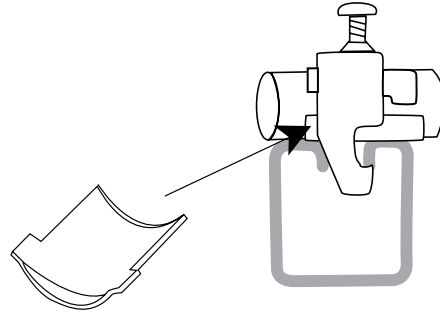
Carbon Steel.
Standard Finish — GoldGalv®

Pipe Straps, Conduit Clamps and Hangers

CB118 — Counter Bed

CAT. NO.	STD. CTN.
<i>Counter Bed</i>	
CB118-047PG	100
CB118-055PG	100
CB118-070PG	100
CB118-090PG	100
CB118-110PG	100

CAT. NO.	STD. CTN.
<i>Counter Bed</i>	
CB118-140PG	100
CB118-175PG	100
CB118-200PG	100
CB118-250PG	100
CB118-300PG	100

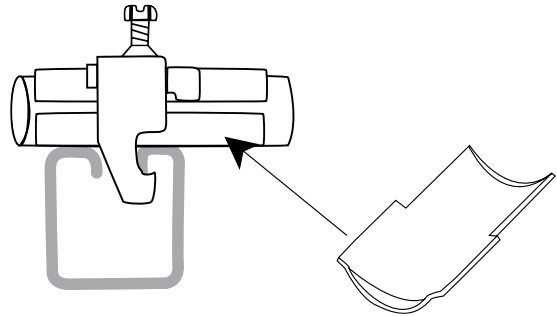


CB118
Counter Bed

EB118 — Extended Bed

CAT. NO.	STD. CTN.
<i>Extended Bed</i>	
EB118-047PG	100
EB118-055PG	100
EB118-070PG	100
EB118-090PG	100
EB118-110PG	100

CAT. NO.	STD. CTN.
<i>Extended Bed</i>	
EB118-140PG	100
EB118-175PG	1
EB118-200PG	1
EB118-250PG	1
EB118-300PG	1



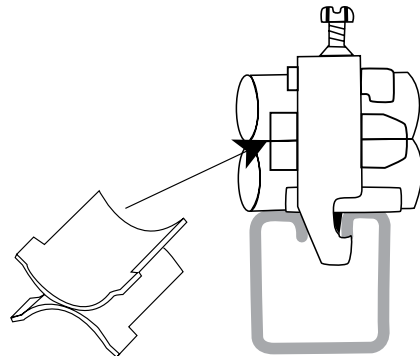
EB118
Extended Bed

DB118 — Double Bed

CAT. NO.	STD. CTN.
<i>Double Bed</i>	
DB118-047PG	1
DB118-055PG	1

CAT. NO.	STD. CTN.
<i>Double Bed</i>	
DB118-070PG	1
DB118-090PG	1

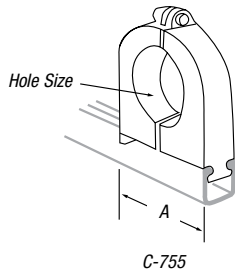
Note: Not sold in pairs.



DB118
Double Bed

Pipe Straps, Conduit Clamps and Hangers

C-755 — Porcelain Cable Clamps



CAT. NO.	HOLE SIZE (IN.)	A (IN.)	STD. CTN.
C-755-1A	3/8	1 1/16	10
C-755-1B	1/2	1 1/16	10
C-755-1C	5/8	1 1/16	10
C-755-2	3/4	2 5/32	10
C-755-2A	7/8	2 5/32	10
C-755-2B	1	2 5/32	10
C-755-2C	1 1/8	2 5/32	10
C-755-3	1 1/4	2 5/8	10
C-755-3A	1 3/8	2 5/8	10
C-755-3B	1 1/2	2 5/8	10
C-755-3C	1 5/8	2 5/8	10
C-755-4	1 3/4	3 3/8	10
C-755-4A	1 7/8	3 3/8	10
C-755-4B	2	3 3/8	10
C-755-4C	2 1/8	3 3/8	10
C-755-5	2 1/4	4 1/4	10
C-755-5A	2 3/8	4 1/4	10
C-755-5B	2 1/2	4 1/4	10
C-755-5C	2 5/8	4 1/4	10
C-755-6	2 5/8	4 3/8	10
C-755-6A	2 7/8	4 3/8	10
C-755-6B	3	4 3/8	10
C-755-6C	3 1/8	4 3/8	10
C-755-7	3 1/4	5 1/16	10
C-755-7A	3 3/8	5 1/16	10
C-755-7B	3 1/2	5 1/16	10
C-755-7C	3 5/8	5 1/16	10
C-755-8	3 3/4	6 3/8	5
C-755-8A	3 7/8	6 3/8	5
C-755-8B	4	6 3/8	5
C-755-8C	4 1/8	6 3/8	5
C-755-8D	4 1/4	6 3/8	5
C-755-8E	4 3/8	6 3/8	5
C-755-8F	4 1/2	6 3/8	5

Finish – GoldGalv® brand with bronze hardware.

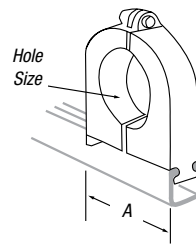
Also fits 1 1/2" wide channel.

C-755 — TPE Cable Clamps

An easy-to-use one-piece insulator made from Sarlink 4339D, a flame-retardant, high hardness grade TPE polymer that is UL Listed. The tapered flange of the insulator ensures complete isolation and protection of the cable. Options include a Stainless Steel Clamp and hardware or an Electro-Galvanized Clamp with Everdur nut and bolt.



- Non-breakable TPE material
- Exceptional chemical resistance
- Dielectric strength of 640 volts per mil
- Stainless Steel Clamps Type 304 or 316
- Electro-Galvanized Steel Clamps with Everdur Nut and Bolt
- Flame-retardant TPE insulator
- Excellent UV resistance



CAT. NO.	HOLE SIZE (IN.)	A (IN.)	CAT. NO.	HOLE SIZE (IN.)	A (IN.)
C755 1ATP	3/8	1.36	C-755-5B-TP	2 1/2	3.36
C-755-1B-TP	1/2	1.36	C-755-5C-TP	2 5/8	3.36
C-755-1C-TP	5/8	1.36	C-755-6-TP	2 3/4	3.86
C-755-2-TP	3/4	1.86	C-755-6A-TP	2 7/8	3.86
C-755-2A-TP	7/8	1.86	C-755-6B-TP	3	3.86
C-755-2B-TP	1	1.86	C-755-6C-TP	3 1/8	3.86
C-755-2C-TP	1 1/8	1.86	C-755-7-TP	3 1/4	4.36
C-755-3-TP	1 1/4	2.36	C-755-7A-TP	3 3/8	4.36
C-755-3A-TP	1 3/8	2.36	C-755-7B-TP	3 1/2	4.36
C-755-3B-TP	1 1/2	2.36	C-755-7C-TP	3 5/8	4.36
C-755-3C-TP	1 5/8	2.36	C-755-8-TP	3 3/4	4.86
C-755-4-TP	1 3/4	2.86	C-755-8A-TP	3 7/8	4.86
C-755-4A-TP	1 7/8	2.86	C-755-8B-TP	4	4.86
C-755-4B-TP	2	2.86	C-755-8C-TP	4 1/8	4.86
C-755-4C-TP	2 1/8	2.86	C-755-8D-TP	4 1/4	5.24
C-755-5-TP	2 1/4	3.36	C-755-8E-TP	4 3/8	5.24
C-755-5A-TP	2 3/8	3.36	C-755-8F-TP	4 1/2	5.24

Pipe Straps, Conduit Clamps and Hangers

HS Series Two-Hole Pipe Strap



CAT. NO.	PIPE SIZE (IN.)	STD. CTN.
HS901	1/2	500
HS902	3/4	500
HS903	1	500
HS904	1 1/4	250
HS905	1 1/2	250
HS906	2	125
HS907	2 1/2	125
HS908	3	100
HS909	3 1/2	75
HS910	4	50

Standard Finish — Galvanized.

Carbon steel.

Specify pipe size and catalog number.

For stainless steel, add suffix SS.

HS Series One-Hole Pipe Straps

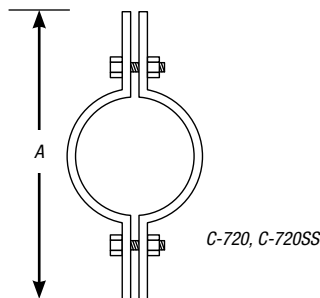


CAT. NO.	PIPE SIZE (IN.)	STD. CTN.
HS100	3/8	500
HS101	1/2	500
HS102	3/4	500
HS103	1	500
HS104	1 1/4	250
HS105	1 1/2	250
HS106	2	50
HS107	2 1/2	25
HS108	3	25
HS109	3 1/2	25
HS110	4	25

For stainless steel, add suffix SS.

C-720, C-720SS — Extension Riser Clamp

Designed for the support or steadying of vertical pipe risers. It is made of carbon steel and is designed to hold tight to the pipe, transmitting the load to the structure through the ears on each end. When possible, the clamp should be placed under a coupling, hub or lugs welded to the pipe.



C-720, C-720SS

Specifications

- Material: Carbon Steel
- Compliance: Federal Specification A-A-1192A Type 8, MSS-SP-69 (Type 8) and BSPSS-BS3974.
- Finish: Standard Finish – GoldGalv®, Black (add suffix “-B”), Electro-Galvanized (add suffix “-EG”).

Note: This product is not designed to be supported with rods. Install using the maximum suggested torque values shown in the Technical Section of this catalog.

CAT. NO.	PIPE SIZE (IN.)	MAX. LOAD (LBS.)	A (IN.)	WT. EACH
C-720-1/2	1/2	255	9	1.00
C-720-3/4	3/4	255	8 3/4	1.08
C-720-1	1	255	8 3/4	1.08
C-720-1-1/4	1 1/4	255	10	1.86
C-720-1-1/2	1 1/2	255	10 1/4	1.22
C-720-2	2	255	10 1/4	1.30
C-720-2-1/2	2 1/2	390	11 1/4	1.74
C-720-3	3	530	11 3/8	1.98
C-720-3-1/2	3 1/2	670	12 3/8	2.14
C-720-4	4	810	12 3/8	2.28
C-720-5	5	1,160	13 3/4	3.60
C-720-6	6	1,570	14 3/4	3.68
C-720-8	8	2,500	18 1/2	7.26
C720 10	10	2,500	20 3/4	11.00
C-720-12	12	2,700	22 3/4	15.94
C-720-14	14	2,700	24	17.36
C-720-16	16	2,900	26	29.68
C-720-18	18	2,900	28	31.64
C-720-20	20	2,900	30	34.84
C-720-24	24	2,900	34	50.00

Standard Finish – GoldGalv®, unless otherwise stated.

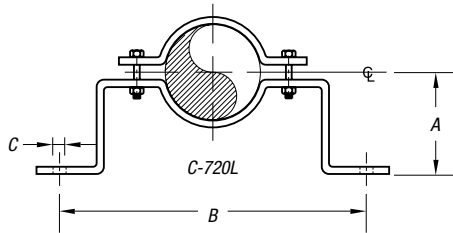
Pipe Straps, Conduit Clamps and Hangers

C-720L — Offset Pipe Clamp

The Offset Pipe Clamp is used on pipe lines running at a fixed distance from a wall or floor. The standard clearance is two inches from the O.D. of pipe to the face of the surface. Non-standard clearances can be fabricated upon request.

Specifications

- Material: Carbon Steel
- Load Rating: Up to 650° F (343° C)
- Finish: Standard Finish – GoldGalv®, Black (add suffix “-B”), Electro-Galvanized (add suffix “-EG”)
- Ordering: Specify pipe size, catalog number and finish



CAT. NO.	PIPE SIZE (IN.)	MAX. LOAD (LBS.)	A (IN.)	B (IN.)	C (IN.)	WT. EACH (LBS.)
C-720L-1/2	1/2	190	2 1/16	8 1/2	7/16	1.1
C-720L-3/4	3/4	190	2 3/4	8 3/4	7/16	1.3
C-720L-1	1	190	2 7/8	9 1/4	7/16	1.4
C-720L-1-1/4	1 1/4	190	3 1/16	9 3/4	7/16	1.5
C-720L-1-1/2	1 1/2	190	3 3/16	10	7/16	1.6
C-720L-2	2	420	3 1/2	11 1/4	9/16	2.8
C-720L-2-1/2	2 1/2	420	3 3/4	11 3/4	9/16	2.9
C-720L-3	3	420	4 1/16	12 7/8	9/16	3.2
C-720L-4	4	610	4 9/16	13 7/8	9/16	4.2
C-720L-5	5	610	5 1/16	15 5/8	1 1/16	6.5
C-720L-6	6	870	5 3/4	16 3/4	1 1/16	7.2
C-720L-8	8	870	6 3/8	18 3/4	1 1/16	8.3
C-720L-10	10	1,050	7 1/8	21 1/2	1 3/16	12.4
C-720L-12	12	1,200	8 3/8	24 7/8	1 3/16	21.0

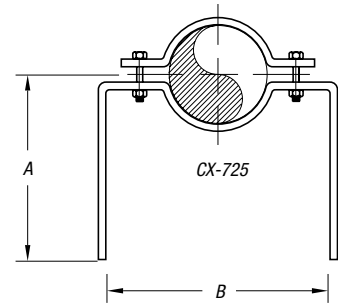
Standard Finish – GoldGalv®, unless otherwise stated.

CX-725 — Extended Offset Pipe Clamp

Designed to attach directly to piping where the exact distance between the structure and the pipe cannot be determined until the piping is in place. The extended legs can be modified in the field to suit the location. Legs of longer lengths can be furnished on order.

Specifications

- Material: Carbon Steel
- Finish: Standard Finish – Black (add suffix “-B”), Electro-Galvanized (add suffix “-EG”)
- Ordering: Specify pipe size, catalog number and finish



CAT. NO.	PIPE SIZE (IN.)	A (IN.)	B (IN.)	WT. EACH (LBS.)
CX-725-3/8	3/8	12	3 3/4	1.85
CX-725-1/2	1/2	12	3 3/4	1.85
CX-725-3/4	3/4	12	4 3/4	1.85
CX-725-1	1	12	5 1/2	2.34
CX-725-1-1/4	1 1/4	12	5 5/8	2.40
CX-725-1-1/2	1 1/2	12	6 1/8	2.45
CX-725-2	2	12	7	3.13
CX-725-2-1/2	2 1/2	12	7 1/2	4.21
CX-725-3	3	12	7 7/8	4.47
CX-725-4	4	12	10 1/2	4.90
CX-725-5	5	12	12 1/4	4.90
CX-725-6	6	12	13	5.32
CX-725-8	8	12	15 1/4	11.20
CX-725-10	10	12	18 3/4	13.50
CX-725-12	12	12	20 3/4	22.00
CX-725-14	14	12	21	35.00

Standard Finish – GoldGalv®, unless otherwise stated.

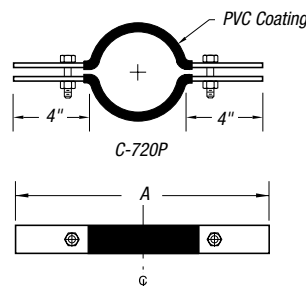
C-720P — PVC-Coated Riser Clamp

The C-720P is normally used for the support of uninsulated vertical piping where no movement will occur. PVC coating the contact surface prevents galvanic corrosion with the pipe. Please use our C-720 for carbon steel piping or CT-720 for copper tubing requirements.

Note: This product is not designed to be supported with rods. Install using the maximum suggested torque values shown in the Technical Section of this catalog.

Specifications

- Material: Carbon Steel
- Compliance: Federal Specification A-A-1192A Type 8, MSS-SP-69 T 1400° F/600° C
- Finish: Polyvinyl Chloride
- Ordering: Specify pipe size and catalog number



CAT. NO.	PIPE SIZE (IN.)	MAX. LOAD (LBS.)	A (IN.)	WT. EACH (LBS.)
C720P-1/2	1/2	225	9 5/8	1.30
C-720P-3/4	3/4	225	9 5/8	1.36
C-720P-1	1	225	9 5/8	1.38
C-720P-1-1/4	1 1/4	225	10	1.95
C-720P-1-1/2	1 1/2	225	10 5/8	2.01
C-720P-2	2	225	10 3/4	2.17
C-720P-2-1/2	2 1/2	390	11 1/4	2.29
C-720P-3	3	530	12	2.50
C-720P-4	4	810	13 1/2	3.42

Standard Finish – GoldGalv®, unless otherwise stated.

Pipe Straps, Conduit Clamps and Hangers

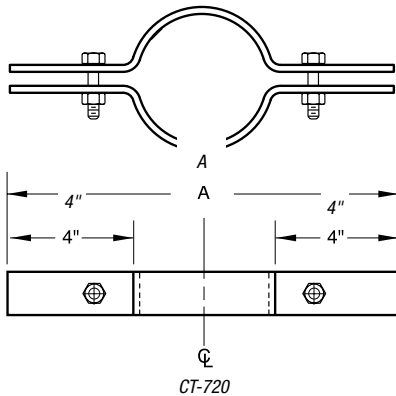
CT-720 — Copper Riser Clamp

Normally used for the support of uninsulated vertical tubing where no movement will occur. Please use C-720 for carbon steel piping or C-720P for plastic coating requirements.

Note: This product is not designed to be supported with rods. Install using the maximum suggested torque values shown in the Technical Section of this catalog.

Specifications

- Material: Carbon Steel
- Compliance: Federal Specification A-A-1192A Type 8, MSS-SP-69 Type 8
- Finish: Copper
- Ordering: Specify tubing size and catalog number



CAT. NO.	TUBE SIZE (IN.)	MAX. LOAD (LBS.)	A (IN.)	WT. EACH (LBS.)
CT-720-1/2	1/2	220	9 ⁹ / ₁₆	.70
CT-720-3/4	3/4	220	9 ⁹ / ₁₆	.74
CT720 1	1	220	9 ¹ / ₂	.75
CT-720-1-1/4	1 ¹ / ₄	220	9 ³ / ₄	.77
CT-720-1-1/2	1 ¹ / ₂	220	10 ¹ / ₈	.80
CT-720-2	2	220	10 ¹ / ₂	.84
CT-720-2-1/2	2 ¹ / ₂	390	11	1.60
CT-720-3	3	530	11 ¹ / ₂	1.80
CT-720-3-1/2	3 ¹ / ₂	530	12 ¹ / ₂	1.95
CT-720-4	4	530	13 ¹ / ₂	2.04
CT-720-5	5	810	14	3.50
CT-720-6	6	1,570	15	5.25

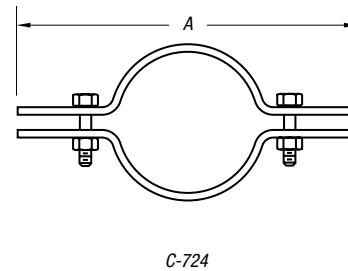
Standard Finish — GoldGalv®, unless otherwise stated.

C-724 — Ductile Iron Pipe Clamp

Can be used to secure mechanical joint piping or socket fittings together to prevent separation under pressure either under or above ground, vertically or horizontally. If used in this fashion, two (2) W-724 Socket Clamp Washers and Figure 133 Rods are also required, but must be ordered separately. The C-724 may also be used to support and guide vertical ductile iron pipe.

Specifications

- Materials: Carbon Steel
- Finish: Standard Finish — GoldGalv®, Black (add suffix "-B"), Electro-Galvanized (add suffix "-EG")
- Ordering: Specify pipe size, catalog number and finish



CAT. NO.	PIPE SIZE (IN.)	ACTUAL PIPE O.D.	A (IN.)	WASHER SIZE (IN.)	WT. EACH (LBS.)
C-724-3	3	3.96	12 ¹ / ₄	3/4	9.00
C-724-4	4	4.8	13 ³ / ₄	3/4	9.00
C-724-6	6	6.9	15 ³ / ₄	3/4	10.70
C-724-8	8	9.05	18	3/4	12.20
C-724-10	10	11.1	20 ¹ / ₈	3/4	14.60
C-724-12	12	13.2	22 ¹ / ₈	3/4	16.60
C-724-14	14	15.3	25 ¹ / ₂	1 ¹ / ₄	41.90
C-724-16	16	17.4	28	1 ¹ / ₄	61.90
C-724-18	18	19.5	33	1 ¹ / ₄	65.10
C-724-20	20	21.6	35 ¹ / ₂	1 ¹ / ₂	92.20
C-724-24	24	25.8	40 ¹ / ₂	1 ¹ / ₂	122.70
C-724-30	30	32	48	1 ¹ / ₂	184.00

Standard Finish — GoldGalv®, unless otherwise stated.

Pipe Straps, Conduit Clamps and Hangers

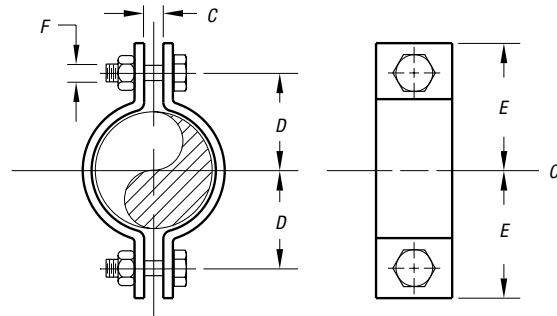
C-725 — Two-Bolt Pipe Clamp

Designed to suspend cold or hot pipe lines where little or no insulation is required. The C-725 is usually used with an E-120-A Weldless Eyerut or E-157 Welded Eyerod. See Figure 298 heavy-duty Two-Bolt Clamp when higher loads are required. We will also design to meet special requirements such as special pipe sizes.

Rated Loads are for up to 750° F (399° C).

Specifications

- Material: Carbon Steel
- Compliance: Federal Specification A-A-1192A Type 4, MSS-SP-69 Type 4 and BSPSS-BS3974
- Finish: Standard Finish – GoldGalv®, Black (add suffix “-B”), Electro-Galvanized (add suffix “-EG”)
- Ordering: Specify catalog number, finish and pipe size. Also, include any special requirements for C-725



C-726

CAT. NO.	PIPE SIZE (IN.)	MAXIMUM LOAD		C (IN.)	ROD TAKE OUT		F (IN.)	WT. EACH (LBS.)
		650° F/343° C	750° F/343° C		D (IN.)	E (IN.)		
C725 1/2	1/2	500	445	3/8	1 1/8	1 1/8	3/8	.31
C-725-3/4	3/4	500	445	3/8	1 1/4	1 3/4	3/8	.35
C-725-1	1	500	445	3/8	1 3/8	1 7/8	3/8	.39
C-725-1-1/4	1 1/4	500	445	3/8	1 7/8	2 1/8	3/8	.40
C-725-1-1/2	1 1/2	800	715	3/8	1 3/4	2 1/4	3/8	.45
C-725-2	2	1,040	930	1/2	2 1/8	2 3/8	1/2	1.23
C-725-2-1/2	2 1/2	1,040	930	5/8	2 3/8	3 1/8	1/2	1.33
C-725-3	3	1,040	930	5/8	3	3 1/2	1/2	1.53
C-725-4	4	1,040	930	3/4	3 3/8	4 1/8	1/2	2.20
C-725-5	5	1,040	930	3/4	4 1/4	5	1/2	2.39
C-725-6	6	1,615	1,440	7/8	5 1/4	6 1/4	3/4	5.87
C-725-8	8	1,615	1,440	1	6 3/8	7 3/8	3/4	6.95
C-725-10	10	2,490	2,220	1	7 3/8	8 3/4	7/8	14.39
C-725-12	12	2,490	2,220	1 1/8	8 3/4	10 1/4	7/8	16.73
C-725-14	14	2,490	2,220	1 1/8	9 1/4	10 3/8	7/8	21.26
C-725-16	16	2,490	2,220	1 1/8	10 1/4	11 1/8	7/8	23.39
C-725-18	18	3,060	2,730	1 1/4	11 1/8	13	1	32.96
C-725-20	20	3,060	2,730	1 3/8	12 3/4	14 1/8	1 1/8	36.74
C-725-24	24	3,060	2,730	1 1/2	15 1/4	16 3/8	1 1/8	52.96
C-725-30	30	3,500	3,360	2	18 1/2	20 3/4	1 1/2	103.50

Standard Finish – GoldGalv®, unless otherwise stated.

Pipe Straps, Conduit Clamps and Hangers

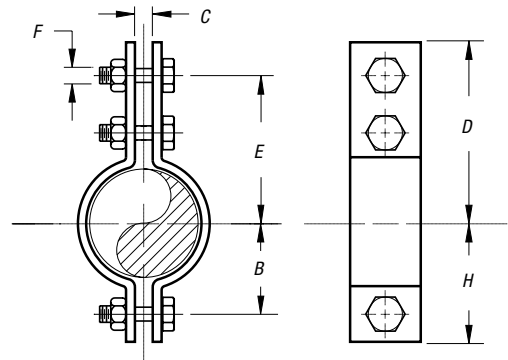
C-726 — Three-Bolt Pipe Clamp

Designed for hot-insulated pipe lines up to 750° F. The spacer on the top inner bolt provides uniform space for the connecting eyerod or weldless eyenut. We will also design to meet special requirements such as special pipe sizes.

Rated Loads are for up to 750° F (399° C).

Specifications

- Material: Carbon Steel
- Finish: Standard Finish – GoldGalv®, Black (add suffix “-B”), Electro-Galvanized (add suffix “-EG”)
- Federal Specification A-A-1192A Type 3, MSS-SP-69 Type 3 and BSPSS-BS3974
- Ordering: Specify catalog number, finish and pipe size. Also, include any special requirements



C-726

CAT. NO.	PIPE SIZE (IN.)	MAXIMUM LOAD		B (IN.)	C (IN.)	D (IN.)	TAKE OUT E (IN.)	F (IN.)	H (IN.)	WT. EACH (LBS.)
		650° F/343° C	750° F/399° C							
C-726-1/2	1/2	950	845	1	5/8	2 1/8	2 1/4	3/8	1 1/8	.61
C-726-3/4	3/4	950	845	1 1/8	5/8	3 1/4	2 1/2	3/8	1 3/4	.66
C-726-1	1	950	845	1 1/2	5/8	3 3/4	2 1/2	3/8	2 1/4	.69
C-726-1/4	1 1/4	950	845	1 1/2	3/4	3 3/8	2 1/8	3/8	2 1/4	.75
C-726-1-3/4	1 3/4	1,545	1,380	1 3/4	1	4 7/8	4 1/4	5/8	2 1/2	2.14
C-726-2	2	1,545	1,380	2 1/4	1 1/4	5 1/8	5 1/4	5/8	2 3/4	2.43
C-726-2-3/4	2 3/4	1,545	1,380	2 1/4	1 1/4	6 1/4	5 3/8	5/8	3	2.92
C-726-3	3	1,545	1,380	2 3/4	1 1/4	6 5/8	6	5/8	3 1/2	3.19
C-726-4	4	2,500	2,230	3 3/8	1	7 3/8	6 1/2	3/4	4 1/2	7.12
C-726-5	5	2,500	2,230	4	1 1/4	8 1/4	7	3/4	5 1/4	7.96
C-726-6	6	2,865	2,555	4 3/4	1 1/4	9 5/8	8 1/4	7/8	6 1/4	11.85
C-726-8	8	2,865	2,555	5 3/4	1 1/4	10 5/8	9 1/4	7/8	7 1/4	13.59
C-726-10	10	3,240	2,890	6 3/8	1 1/4	12	10 1/2	1	8 1/4	21.33
C-726-12	12	3,240	2,890	8 3/8	1 1/2	13	11 1/2	1	9 5/8	23.65
C-726-14	14	4,300	3,835	9 1/4	2	14 3/8	12 3/4	1 1/4	10 3/4	38.78
C-726-16	16	4,300	3,835	10	2	15 5/8	14	1 1/4	11 1/4	42.89
C-726-18	18	4,300	3,835	11 3/8	2	16 3/4	15 1/4	1 1/4	13 1/4	46.35
C-726-20	20	4,500	4,015	12 3/8	2	17 1/2	15 5/8	1 3/8	14	58.67
C-726-24	24	5,490	4,900	14 3/4	2	19 3/8	17 3/8	1 1/2	16 3/8	89.32
C-726-30	30	7,500	6,690	18 1/2	1 1/2	26 3/8	23 3/8	1 1/2	21	140.89
C-726-36	36	1,0500	9,360	22 1/2	3	32 1/4	28 3/4	1 3/4	26	246.44

Standard Finish – GoldGalv® unless otherwise stated.

Pipe Straps, Conduit Clamps and Hangers

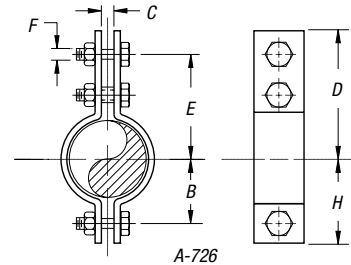
Pipe Clamps — A-726, Alloy Three-Bolt Pipe Clamp

Designed for hot-insulated pipelines. The spacer on the top inner bolt provides uniform space for the connecting eyerod or weldless eyenut.

Temperature range: above 750° F (399° C) to 1050° F (566° C).

Specifications

- Material: Chromium Molybdenum Steel, ASTM A-387 Grade 22
- Compliance: Federal Specification A-A-1192A Type 3, MSS-SP-69 Type 3 and BSPSS-BS3974
- Finish: Standard Finish – GoldGalv®, Black (add suffix “-B”), Electro-Galvanized (add suffix “-EG”)
- Ordering: Specify catalog number and pipe size



CAT. NO.	PIPE SIZE (IN.)	MAXIMUM LOAD			B (IN.)	C (IN.)	D (IN.)	TAKE OUT E (IN.)	F (IN.)	H (IN.)	(LBS.)
		950° F/510° C	1000° F/538° C	1050° F/566° C							
A-726-3/4	¾	870	600	440	1½	¾	3	2½	¾	1½	1.09
A-726-1	1	870	600	440	1¼	¾	3½	2½	¾	1¾	1.14
A-726-1-1/4	1¼	870	600	440	1½	¾	3¾	2½	¾	2¼	1.23
A-726-1-1/2	1½	1,400	1,000	700	1¾	1	4½	4½	¾	2½	2.48
A-726-2	2	1,400	1,000	700	2½	1	5½	5½	¾	2¾	2.70
A-726-2-1/2	2½	1,400	1,000	700	2¾	1	6½	5½	¾	3	2.76
A-726-3	3	1,400	1,000	700	2¾	1	6¾	6	¾	3½	3.19
A-726-4	4	2,300	1,600	1,100	3¾	1	7¾	6½	¾	4½	7.30
A-726-5	5	2,300	1,600	1,100	4	1½	8½	7	¾	5½	7.96
A-726-6	6	2,600	1,800	1,300	4¾	1¼	10	8½	¾	6½	12.26
A-726-8	8	2,600	1,800	1,300	5¾	1¼	11	9½	¾	7½	14.04
A-726-10	10	3,000	2,100	1,500	6½	1¼	12	10½	1	8¼	21.33
A-726-12	12	3,000	2,100	1,500	8½	1½	13½	11½	1	9½	24.00
A-726-14	14	3,900	2,800	2,000	9½	2	14½	12¾	1¼	10¾	38.78
A-726-16	16	3,900	2,800	2,000	10	2	15½	14	1¼	11¾	43.13
A-726-18	18	39	2,800	2,000	11½	2	16¾	15½	1¼	13¼	47.78
A-726-20	20	5,000	3,200	2,000	12½	2	17½	15½	1½	14	58.67
A-726-24	24	5,500	3,500	2,700	14¾	1½	19½	17½	1½	16½	90.82

Standard Finish – GoldGalv®, unless otherwise stated.

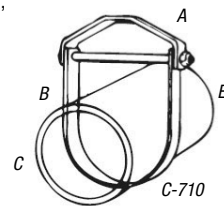
Pipe Hangers — C-710, C-710F, C-710P, C-710SS

Designed to support non-insulated, stationary lines from above, allowing for approximately 1" to 1½" of vertical adjustment after the pipe is in place. The lower nut (not furnished) adjusts the pipe line to the proper elevation, the top nut (not furnished) prevents loosening due to vibration and must be tightened securely to assure proper hanger performance.

Rated Loads are for up to 650° F (343° C) for carbon steel. Maximum PVC temperature is 140° F (60° C).

Specifications

- Material: Carbon Steel (Also available in Stainless Steel as C-710SS)
- Compliance: Federal Specification A-A-1192A Type 1, MSS-SP-69 Type 1, BSPSS-BS3974, UL and FM
- Finish: Standard Finish – GoldGalv®, Black (add suffix “-B”), Electro-Galvanized (add suffix “-EG”)
- Ordering: Specify catalog number, finish and pipe size



CAT. NO.	PIPE SIZE (IN.)	MAX. LOAD (LBS.)	A (IN.)	B (IN.)	C (IN.)	ROD TAKE OUT E (IN.)	WT. EACH (LBS.)
C-710-1/2	½	610	¾	2¼	3½	1½	.27
C-710-3/4	¾	610	¾	2½	2¾	1½	.29
C-710-1	1	610	¾	3	3¾	2¼	.33
C-710-1-1/4	1¼	610	¾	3½	4	2¼	.36
C-710-1-1/2	1½	610	¾	3¾	4¼	2¾	.42
C-710-2	2	610	¾	3¾	4½	3½	.52
C-710-2-1/2	2½	1,130	½	4½	5½	3½	.61
C-710-3	3	1,130	½	5	6¼	4½	.90
C-710-3-1/2	3½	1,130	½	4½	6½	3½	.99
C-710-4	4	1,430	¾	5½	7¾	4½	1.40
C-710-5	5	1,430	¾	6	8½	5	2.10
C-710-6	6	1,940	¾	7	10½	5½	3.00

Standard Finish – GoldGalv®, unless otherwise stated.

CAT. NO.	PIPE SIZE (IN.)	MAX. LOAD (LBS.)	A (IN.)	B (IN.)	C (IN.)	ROD TAKE OUT E (IN.)	WT. EACH (LBS.)
C-710-7	7	2,000	¾	7½	11¼	6½	5.42
C-710-8	8	2,000	¾	8½	12¾	6¾	5.25
C-710-10	10	3,600	¾	10	15½	8¼	9.10
C-710-12	12	3,800	¾	11½	17½	9¼	11.75
C-710-14	14	4,200	1	12½	19½	10½	14.25
C-710-16	16	4,800	1	15	23	13½	20.75
C-710-18	18	4,800	1¼	15¾	24¾	13¾	23.00
C-710-20	20	4,800	1¼	17½	27½	15¼	41.50
C-710-24	24	4,800	1¼	19½	31½	17½	50.00
C-710-30	30	6,000	1¼	24¾	40¾	21¾	68.08
C-710-36	36	9,500	1½	32½	50½	30	68.68

Standard Finish – GoldGalv®, unless otherwise stated.

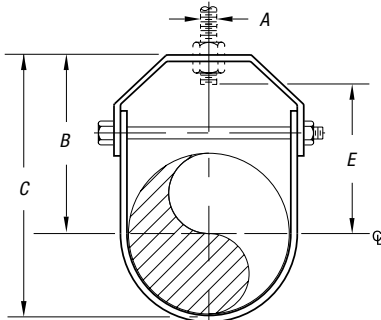
Pipe Straps, Conduit Clamps and Hangers

CL-710 — Light-Duty Clevis Hanger

Designed to support non-insulated, stationary lines from above, allowing for approximately 1" to 1½" of vertical adjustment after the pipe is in place. The lower nut (not furnished) adjusts the pipe line to the proper elevation, the top nut (not furnished) prevents loosening due to vibration and must be tightened securely to assure proper hanger performance.

Specifications

- Material: Carbon Steel
- Compliance: Federal Specification A-A-1192A Type 1, MSS-SP-69 Type 1
- Finish: Standard Finish – GoldGalv®, Black (add suffix "-B"), Electro-Galvanized (add suffix "-EG")
- Ordering: Specify catalog number, finish and pipe size



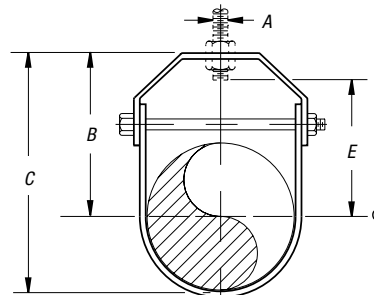
CL-710

CTL-710 — Copper Clevis Hanger

Designed to support non-insulated, stationary copper tubing lines from above, allowing for approximately 1" to 1½" of vertical adjustment after the tubing is in place. The lower nut (not furnished) adjusts the pipe line to the proper elevation. The top nut (not furnished) prevents loosening due to vibration and must be tightened securely to assure proper hanger performance.

Specifications

- Material: Carbon Steel
- Compliance: Federal Specification A-A-1192A Type 1, MSS-SP-69 Type 1 and BSPSS-BS3974. Rated Loads are for up to 650° F (343° C)
- Finish: Copper
- Ordering: Specify tubing size and catalog number



CTL-710

CAT. NO.	PIPE SIZE (IN.)	MAX. LOAD (LBS.)	A (IN.)	B (IN.)	C (IN.)	E (IN.)	WT. EACH (LBS.)
CL710 1/2	½	150	¾	1½	2½	¾	.27
CL-710-3/4	¾	250	¾	2½	2½	1½	.29
CL-710-1	1	250	¾	2½	3¾	1½	.33
CL-710-1-1/4	1¼	250	¾	2½	3¾	2½	.36
CL-710-1-1/2	1½	250	¾	3	4	2¼	.42
CL-710-2	2	250	¾	3½	4¾	2¾	.52
CL-710-2-1/2	2½	350	½	4	5½	2½	.81
CL-710-3	3	350	½	4¼	6½	3¼	.90
CL-710-3-1/2	3½	350	½	4¾	6½	3¾	.99
CL-710-4	4	400	¾	5½	7½	4¾	1.40

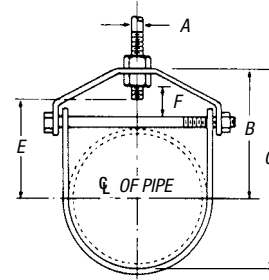
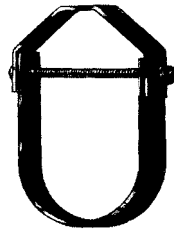
Standard Finish – GoldGalv®, unless otherwise stated.

CAT. NO.	PIPE SIZE (IN.)	MAX. LOAD (LBS.)	A (IN.)	B (IN.)	C (IN.)	ROD TAKE OUT E (IN.)	WT. EACH (LBS.)
CTL710 1/2	½	150	¾	2½	3½	2¼	.16
CTL-710-3/4	¾	250	¾	2½	3	1½	.16
CTL-710-1	1	250	¾	2½	3¾	1½	.19
CTL-710-1-1/4	1¼	250	¾	3¾	3¾	2½	.22
CTL-710-1-1/2	1½	250	¾	3¾	4¾	2½	.29
CTL-710-2	2	250	¾	3¾	4¾	2½	.32
CTL-710-2-1/2	2½	350	½	3¾	4¾	2½	.72
CTL-710-3	3	350	½	3¾	5¾	2½	.82
CTL-710-3-1/2	3½	350	½	4¾	5¾	3¾	.91
CTL-710-4	4	350	½	4½	6¼	3½	1.07
CTL-710-5	5	900	¾	5	7¾	3¾	1.76
CTL-710-6	6	900	¾	5¾	8¾	4¾	1.92

Standard Finish – GoldGalv®, unless otherwise stated.

Pipe Straps, Conduit Clamps and Hangers

ETL-710 — Light-Duty Clevis Hanger



CAT. NO.	TUBING SIZE (IN.)	MATERIAL SIZE	DIMENSIONS (IN.)					STD. CTN.
			A	B	C	E	F	
ETL710 1/2	1/2	16 ga x 7/8	3/8	1 13/16	2 3/8	1 1/4	9/16	100
ETL-710-3/4	3/4	16 ga x 7/8	3/8	1 1/4	2 1/4	1 1/4	9/16	100
ETL-710-1	1	16 ga x 7/8	3/8	1 5/8	2 3/8	1 1/8	1/2	100
ETL-710-1-1/4	1 1/4	16 ga x 7/8	3/8	2	2 3/4	1 1/8	1 1/16	100
ETL-710-1-1/2	1 1/2	16 ga x 7/8	3/8	2 1/8	3 1/8	1 1/4	1	100
ETL-710-2	2	13 ga x 7/8	3/8	2 1 1/16	4	1 1/2	1 1/16	100
ETL-710-2-1/2	2 1/2	1/8 x 1 1/4	1/2	3 1/4	4 1 1/16	2	1 1/8	100
ETL-710-3	3	1/8 x 1 1/4	1/2	3 1/2	5 3/16	2 1/4	1 3/16	100
ETL-710-3-1/2	3 1/2	1/8 x 1 1/4	1/2	3 3/4	5 1 1/16	2 1/2	1 1/8	100
ETL-710-4	4	1/8 x 1 1/4	1/2	4 5/16	6 1/2	3	1 3/16	100
ETL-710-5	5	3/16 x 1 1/4	5/8	5	7 1 1/16	3 3/8	1 3/16	50
ETL-710-6	6	3/16 x 1 1/4	5/8	5 1 1/16	8 3/8	4 1/8	1 1/4	50

Standard Finish – GoldGalv®.

Carbon Steel.

Copper tube sized.

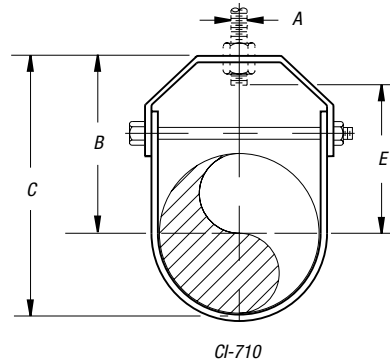
For the suspension of stationary copper tubing lines. Order by Cat. No., tubing size.

CI-710 — Clevis Hanger for Ductile Iron and A.W.W.A. Cast Iron Pipe

Designed to support non-insulated, stationary ductile iron and A.W.W.A. cast iron lines from above, allowing for approximately 1" to 1 1/2" of vertical adjustment after the pipe is in place. The lower nut (not furnished) adjusts the pipe line to the proper elevation. The top nut (not furnished) prevents loosening due to vibration and must be tightened securely to assure proper hanger performance.

Specifications

- Material: Carbon Steel
- Compliance: MSS-SP-69 Type 1, A-A-1192A Type 1
- Finish: Standard Finish – GoldGalv®, Black (add suffix "-B"), Electro-Galvanized (add suffix "-EG")
- Ordering: Specify pipe size, catalog number and finish



CAT. NO.	PIPE SIZE (IN.)	MAX. LOAD (LBS.)	DIMENSIONS (IN.)			ROD TAKE OUT E (IN.)	WT. EACH (LBS.)
			A	B	C		
CI-710-4	4	1,430	3/4	5 3/4	8 1/8	4 3/8	2.08
CI-710-6	6	1,940	7/8	7	10 3/8	5 1/2	2.78
CI-710-8	8	2,000	7/8	9 1/4	13 3/4	7 3/4	4.47
CI-710-10	10	3,600	7/8	10 1/4	15 3/4	8 3/8	8.87
CI-710-12	12	3,800	7/8	12 5/8	19 1/4	11	12.0
CI-710-14	14	4,200	1	14 1/8	21 3/4	12 1/4	15.2
CI-710-16	16	4,800	1	14 7/8	23 3/8	13	23.6
CI-710-18	18	4,800	1 1/4	16 1/2	26 1/4	14 1/2	25.9
CI-710-20	20	4,800	1 1/4	18 3/4	29 1/2	16 1/2	44.3
CI-710-24	24	4,800	1 1/4	21 1/8	34 3/4	19 1/2	53.5

Standard Finish – GoldGalv®, unless otherwise stated.

Pipe Straps, Conduit Clamps and Hangers

C-711 — J Pipe Hanger

Standard Finish – GoldGalv® brand

Complies with Specification MSS SP 58, Type 5. Sizes through 5" conform to Ca. Code Title 24, Div. T22 for seismic restraint bracing.

C-711F — Felt-Lined J Pipe Hanger

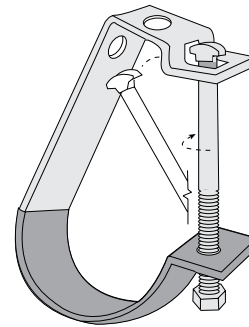
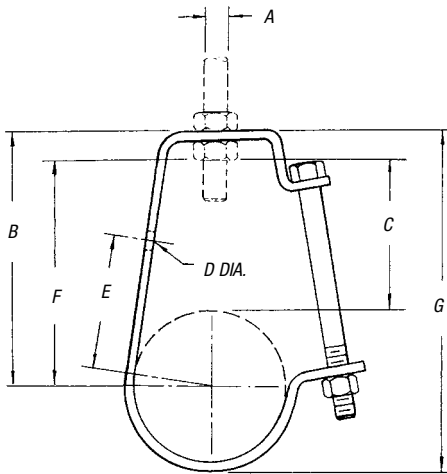
Standard Finish – GoldGalv® brand

Available in sizes up to 8".

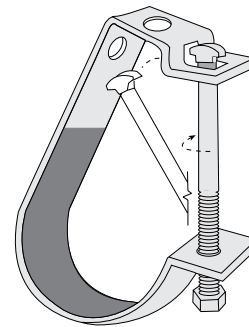
C-711P — Plastic-Coated J Pipe Hanger

Standard Finish – GoldGalv® brand

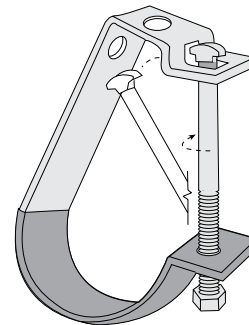
Isolates hanger from glass and other piping for corrosion or cushioning purposes. Available in sizes up to 4". Order by Cat. No. and pipe size. Hole provided for side mounting to wall as bracket.



Standard



Felt Lined



Plastic Coated

CAT. NO.	PIPE SIZE (IN.)	A ROD SIZE (IN.)	DIMENSIONS (IN.)					BOLT SIZE (IN.)	G (IN.)	STOCK SIZE	MAX REC LOADS (LBS.)	STD. CTN.
			B	C	D	E	F					
C-711-1/2	1/2	3/8	2 5/8	1 3/4	7/16	1 1/2	1 15/16	1/4	3 5/32	12 ga x 3/4	400	50
C-711-3/4	3/4	3/8	2 7/8	1 7/8	7/16	1 11/16	2 1/8	1/4	3 1/2	12 ga x 3/4	400	50
C-711-1	1	3/8	2 15/16	1 15/16	7/16	1 13/16	2 3/8	1/4	3 11/16	12 ga x 3/4	400	50
C-711-1-1/4	1 1/4	3/8	3 1/4	2	7/16	2 1/8	2 5/8	1/4	4 1/8	12 ga x 3/4	400	50
C-711-1-1/2	1 1/2	3/8	3 9/16	2 3/16	7/16	2 1/8	2 7/8	1/4	4 5/8	12 ga x 3/4	400	50
C-711-2	2	3/8	3 11/16	2 1/8	7/16	2 9/16	3 1/8	1/4	5	12 ga x 3/4	400	50
C-711-2-1/2	2 1/2	1/2	4 7/16	2 7/16	9/16	3 3/16	3 5/8	3/8	6	12 ga x 1 1/4	500	25
C-711-3	3	1/2	4 13/16	2 9/16	9/16	3 1/2	4 1/8	3/8	6 21/32	12 ga x 1 1/4	500	25
C-711-3-1/2	3 1/2	1/2	5 1/8	2 5/8	9/16	3 3/4	4 3/8	3/8	7 5/16	3/16 x 1 1/4	500	25
C-711-4	4	5/8	6 1/8	3 9/16	9/16	4 5/8	5 3/16	3/8	8 9/16	3/16 x 1 1/4	550	10
C-711-5	5	5/8	6 3/4	3 3/4	9/16	5 1/8	5 3/8	3/8	9 23/32	3/16 x 1 1/4	550	10
C-711-6	6"	3/4	7 3/4	3 9/16	9/16	5 13/16	6 3/8	3/8	11 1/4	3/16 x 1 3/4	600	10
C-711-8	8"	7/8	9 3/16	3 9/16	9/16	6 15/16	8	3/8	13 11/16	3/16 x 1 3/4	760	8

*Hangers 6" and over have hole instead of slot.

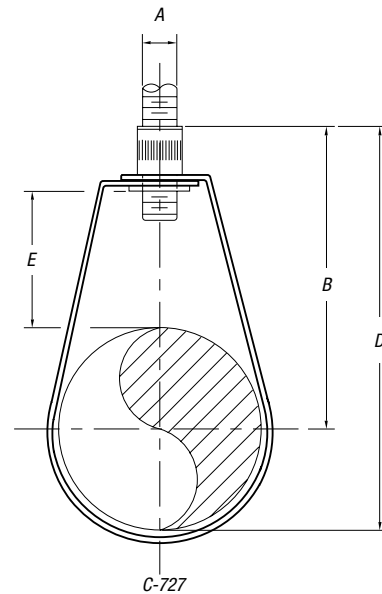
Pipe Straps, Conduit Clamps and Hangers

C-727 — Adjustable Swivel Ring

Designed for the support of non-insulated static pipe lines. The swivel nut is knurled to provide a gripping surface when adjusting the pipe elevation.

Specifications

- Compliance: Federal Specification A-A-1192A Type 10, MSS SP-69 Type 10, UL Listed and FM Approved (¾" through 8"). We also offer Swivel Ring hangers that are for Copper Tubing (CT-727), PVC coated (C-727-P) and for NFPA requirements (C-727-NFPA) in this catalog
- Material: Carbon Steel
- Finish: Standard Finish – Pre-Galv, Electro-Galvanized (add suffix "-EG") Black (add suffix "-B")
- Ordering: Specify pipe size, catalog number and finish



CAT. NO.	PIPE SIZE (IN.)	MAX LOAD (LBS.)	DIMENSIONS (IN.)				WT. EACH (LBS.)
			A	B	D	E	
C-727-1/2	½	300	⅜	2¾	3⅛	1⅛	.09
C-727-¾	¾	300	⅜	2½	3⅛	1⅛	.10
C-727-1	1	300	⅜	2½	3⅛	1	.10
C-727-1-1/4	1¼	300	⅜	2⅜	3⅞	1⅛	.10
C-727-1-1/2	1½	300	⅜	3⅛	3⅞	1⅛	.11
C-727-2	2	300	⅜	3⅞	4⅜	1⅛	.12
C-727-2-1/2	2½	600	½	3⅞	5⅞	1¼	.32
C-727-3	3	600	½	4	5⅞	1⅞	.35
C-727-3-1/2	3½	600	½	4⅞	6⅞	1½	.39
C-727-4	4	1,000	⅝	4⅞	7⅞	1¼	.43
C-727-5	5	1,000	⅝	5⅞	8½	1⅞	.65
C-727-6	6	1,250	¾	6⅞	10⅞	2	1.09
C-727-8	8	1,800	⅞	8⅞	12⅞	2⅞	1.24

Standard Finish: Pre-Galv only.

Add "F" suffix for felt lining.

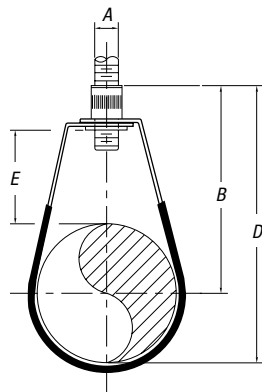
Pipe Straps, Conduit Clamps and Hangers

C-727-P — PVC-Coated Adjustable Swivel Ring

Designed for the support of non-insulated static pipe lines and to protect the pipe from coming into direct contact with the hanger by having the contact surface PVC coated. The swivel nut is knurled to provide a gripping surface when adjusting the pipe elevation.

Specifications

- Compliance: Federal Specification A-A-1192A Type 10, MSS SP-69 Type 10, UL Listed and FM Approved (¾" through 8")
 - Material: Carbon Steel
 - Finish: Standard Finish — GoldGalv®, Black (add suffix "-B"), Electro-Galvanized (add suffix "-EG")
 - Ordering: Specify pipe size and catalog number
- We also offer Swivel Ring hangers that are for Copper Tubing (CT-727) and for NFPA requirements (C-727-NFPA) in this catalog. Operating temperature should not exceed 140° F/60° C



C-727-P

CAT. NO.	PIPE SIZE (IN.)	MAX. LOAD (LBS.)	DIMENSIONS (IN.)				WT. EACH (LBS.)
			A	B	D	E	
C727P 1/2	½	300	¾	2¼	3¼	1¼	.11
C-727-P-3/4	¾	300	¾	2½	3¼	1½	.13
C-727-P-1	1	300	¾	2½	3¼	1	.13
C-727-P-1-1/4	1¼	300	¾	2¾	3¾	1¼	.15
C-727-P-1-1/2	1½	300	¾	3	3¾	1¼	.17
C-727-P-2	2	300	¾	3¼	4¾	1½	.18
C-727-P-2-1/2	2½	600	½	3¾	5¾	1¼	.34
C-727-P-3	3	600	½	4	5¾	1½	.39
C-727-P-3-1/2	3½	600	½	4¾	6¾	1½	.42
C-727-P-4	4	1,000	¾	4¾	7¾	1¼	.48
C-727-P-5	5	1,000	¾	5¾	8¾	1¾	.69
C-727-P-6	6	1,250	¾	6¾	10¾	2	1.13
C-727-P-8	8	1,800	¾	8¾	12¾	2¾	1.29

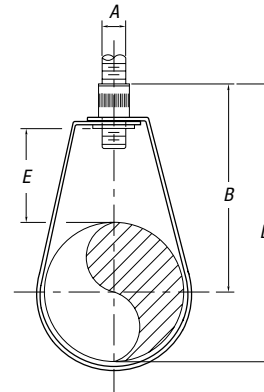
Standard Finish — GoldGalv®, unless otherwise stated.

C-727-NFPA — NFPA Swivel Ring

Designed for the support of non-insulated static pipe lines. The swivel nut is knurled to provide a gripping surface when adjusting the tubing elevation and is tapped to the reduced rod standards of NFPA.

Specifications

- Compliance: Federal Specification A-A-1192A Type 10, MSS SP-69 Type 10, UL Listed and FM Approved (¾" through 8") and NFPA standards
 - Material: Carbon Steel
 - Finish: Standard Finish — GoldGalv®, Black (add suffix "-B"), Electro-Galvanized (add suffix "-EG")
 - Ordering: Specify pipe size, catalog number and finish
- We also offer Swivel Ring hangers that are for standard commercial pipe (C-727), copper tubing (CT-727) and PVC coated (C-727-P) in this catalog



C-727-P

CAT. NO.	PIPE SIZE (IN.)	MAX. LOAD (LBS.)	DIMENSIONS (IN.)				WT. EACH (LBS.)
			A	B	D	E	
C-727-NFPA-1/2	½	300	¾	2¼	3¼	1¼	.09
C-727-NFPA-3/4	¾	300	¾	2½	3¼	1½	.10
C-727-NFPA-1	1	300	¾	2½	3¼	1	.10
C-727-NFPA-1-1/4	1¼	300	¾	2¾	3¾	1¼	.10
C-727-NFPA-1-1/2	1½	300	¾	3	3¾	1¼	.11
C-727-NFPA-2	2	300	¾	3¼	4¾	1½	.12
C-727-NFPA-2-1/2	2½	525	¾	3¾	5	1¼	.25
C-727-NFPA-3	3	525	¾	3¾	5¾	1½	.30
C-727-NFPA-3-1/2	3½	525	¾	4¾	6¾	1½	.33
C-727-NFPA-4	4	650	¾	4¾	7	1¾	.41
C-727-NFPA-5	5	1,000	½	5¾	8¾	2¼	.58
C-727-NFPA-6	6	1,000	½	6¾	9¾	2¼	.92
C-727-NFPA-8	8	1,000	½	7¾	12¼	2¾	1.16

Standard Finish — GoldGalv®, unless otherwise stated.

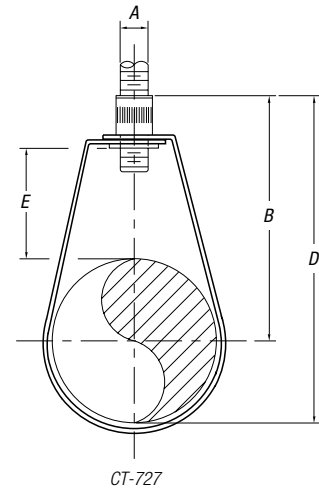
Pipe Straps, Conduit Clamps and Hangers

CT-727 — Copper Tubing Swivel Ring

Designed for the support of non-insulated static copper tubing lines. The swivel nut is knurled to provide a gripping surface when adjusting the tubing elevation.

Specifications

- Compliance: Federal Specification A-A-1192A Type 10, MSS SP-69 Type 10. We also offer Swivel Ring hangers that are for carbon steel pipe (C-727), PVC coated (C-727-P) and for NFPA requirements (C-727-NFPA) in this catalog
- Material: Carbon Steel
- Finish: Copper
- Ordering: Specify copper tubing size



CAT. NO.	PIPE SIZE (IN.)	MAX. LOAD (LBS.)	DIMENSIONS (IN.)				WT. EACH (LBS.)
			A	B	D	E	
CT727 1/2	1/2	300	3/8	2 3/8	3 1/4	1 11/16	.11
CT-727-3/4	3/4	300	3/8	2 3/8	3 1/8	1 3/8	.11
CT-727-1	1	300	3/8	2 1/2	3 1/8	1	.11
CT-727-1-1/4	1 1/4	300	3/8	2 3/4	3 1/4	1 1/8	.13
CT-727-1-1/2	1 1/2	300	3/8	2 15/16	3 3/8	1 1/8	.13
CT-727-2	2	300	3/8	3 3/16	4 1/8	1 1/8	.15
CT-727-2-1/2	2 1/2	525	3/8	4	4 3/8	1 1/8	.16
CT-727-3	3	525	1/2	4 9/16	5 3/16	1 3/16	.32
CT-727-3-1/2	3 1/2	525	1/2	4 9/16	5 5/8	1 1/8	.35
CT-727-4	4	650	1/2	5 1/16	6 1/2	1 3/16	.38
CT-727-5	5	1,000	1/2	6 1/4	8 3/8	1 3/8	.58
CT-727-6	6	1,000	1/2	7 3/16	9 3/16	2 1/4	.92

Standard Finish — GoldGalv® unless otherwise stated.

ET-727 Copper Sized Adjustable Ring

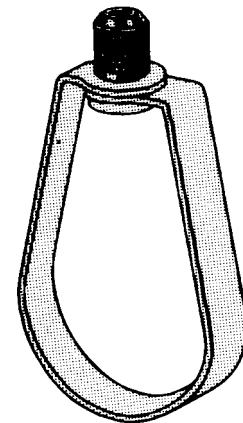
Standard Finish — GoldGalv® barrier for separation of dissimilar metals. Available in sizes 1/2" through 2". Sized for Copper Tubing.

CAT. NO.	TUBING SIZE (IN.)	ROD SIZE (IN.)	DIMENSIONS (IN.)			STOCK SIZE	MAX REC. LOAD (LBS.)	STD. CTN.
			A	B	C			
ET727 1/2	1/2	3/8	3 3/8	2 3/4	1 1/2	16 ga x 3/8	400	100
ET-727-3/4	3/4	3/8	3 1/8	2 3/8	1 1/4	16 ga x 3/8	400	100
ET-727-1	1	3/8	3 3/8	2 1/2	1	16 ga x 3/8	400	100
ET-727-1-1/4	1 1/4	3/8	3 3/4	2 1/2	1	16 ga x 3/8	400	100
ET-727-1-1/2	1 1/2	3/8	3 3/8	3	1 1/4	16 ga x 3/8	400	100
ET-727-2	2	3/8	4 1/2	3 3/8	1 1/2	16 ga x 3/8	400	100
ET-727-2-1/2	2 1/2	3/8*	5 1/2	4 3/8	2	14 ga x 1 3/16	600	100
ET-727-3	3	1/2	6 3/8	4 3/4	2	14 ga x 1 3/16	600	100
ET-727-3-1/2	3 1/2	1/2	6 3/8	4 1/2	1 1/2	14 ga x 1 3/16	600	50
ET-727-4	4	1/2*	7 3/8	5 1/4	2	14 ga x 1 1/4	1,250	100
ET-727-5	5	5/8	8 3/8	5 3/4	2	12 ga x 1 1/4	1,250	25
ET-727-6	6	5/8	9 1/2	6 3/8	1 3/8	12 ga x 1 1/4	1,250	25

2 1/2" CT filled with water weighs less than 2" IP filled with water, 4" CT less than 3 1/2" IP with water.

2 1/2" CT available with 1/2" thread and 4" CT available with 3/8" thread for Government Specs.

Standard Finish — GoldGalv®, unless otherwise stated.



Pipe Straps, Conduit Clamps and Hangers

M-718, M-718-B — Extension Ring Hanger

M-718 — (Rod Tapped – Electro-Galvanized)

M-718-B — (Rod Tapped – Plain Finish)

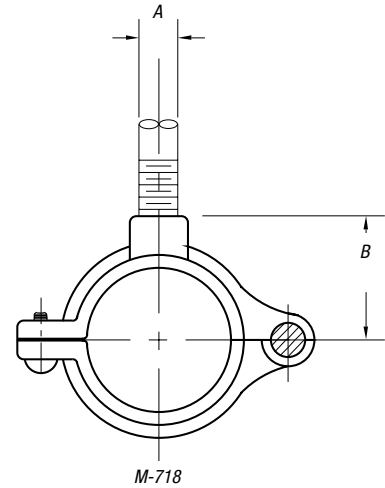
This split ring hanger is designed for the support of non-insulated stationary pipe lines. Also available in a two-screw design. The MT-742-R Ceiling Plate is normally used with this product.

Specifications

- Material: Malleable Iron.
- Finish: Standard Finish – EG (silver), Black (add suffix “-B”), Electro-Galvanized (add suffix “-EG”)
- Compliance: Federal Specification A-A-1192A Type 12, MSS-SP-69 Type 12
- Ordering: Specify pipe size and catalog number.

CAT. NO.	PIPE SIZE (IN.)	MAX LOAD (LBS.)	PIPE SIZE A (IN.)	ROD SIZE A (IN.)	B (IN.)	WT. EACH (LBS.)
M-718-3/8	3/8	180	1/4	3/8	13/16	.16
M-718-1/2	1/2	180	1/4	3/8	7/8	.17
M-718-3/4	3/4	180	1/4	3/8	1	.20
M-718-1	1	180	1/4	3/8	1 1/8	.21
M-718-1-1/4	1 1/4	180	1/4	3/8	1 1/16	.29
M-718-1-1/2	1 1/2	180	1/4	3/8	1 5/16	.31
M-718-2	2	180	1/4	3/8	1 11/16	.35
M-718-2-1/2	2 1/2	480	1/2	1/2	2 1/8	.57
M-718-3	3	480	1/2	1/2	2 7/16	.72
M-718-4	4	480	1/2	1/2	3 1/8	1.16

Standard Finish – EG (silver).



MT-718 — Copper Extension Ring Hanger

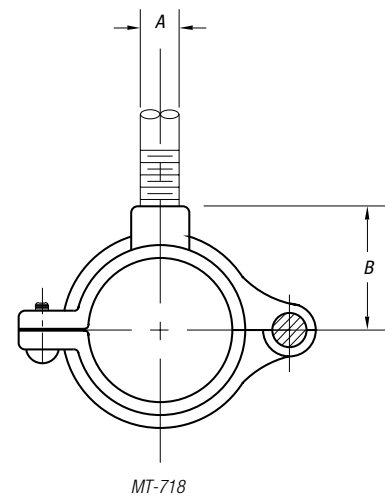
This split ring hanger is designed for the support of non-insulated copper tubing lines. The MT-718 is furnished tapped for bolt thread and is used with the MT-742-R Ceiling Plate. Also available in a two-bolt design.

Specifications

- Material: Malleable Iron
- Finish: Copper
- For Electro-Galvanizing please see M-718.
- Compliance: Federal Specification A-A-1192A Type 12, MSS-SP-69 Type 12
- Ordering: Specify tube size and catalog number.

CAT. NO.	TUBE SIZE (IN.)	MAX LOAD (LBS.)	ROD SIZE A (IN.)	B (IN.)	WT. EACH (LBS.)
MT718-1/4	1/4	180	3/8	1/2	.10
MT-718-3/8	3/8	180	3/8	1/2	.12
MT-718-1/2	1/2	180	3/8	3/4	.13
MT-718-5/8	5/8	180	3/8	3/4	.14
MT-718-3/4	3/4	180	3/8	7/8	.15
MT-718-1	1	180	3/8	1	.16
MT-718-1-1/4	1 1/4	180	3/8	1 1/4	.19
MT-718-1-1/2	1 1/2	180	3/8	1 1/4	.22
MT-718-2	2	180	3/8	1 1/2	.27
MT-718-2-1/2	2 1/2	480	1/2	2	.72
MT-718-3	3	480	1/2	2 1/4	1.07

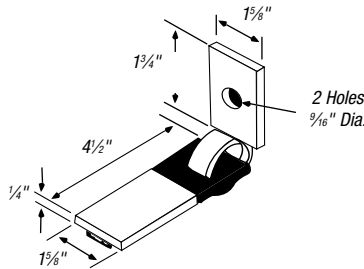
Standard Finish – GoldGal®, unless otherwise stated.



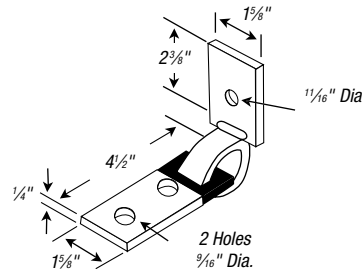
Pipe Straps, Conduit Clamps and Hangers

Seismic Bracing

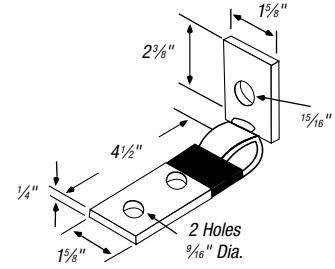
(Consult Superstrut® Seismic Hanger bulletin for additional information.)



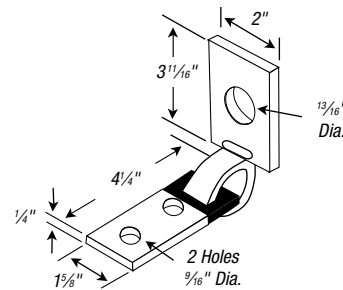
CAT. NO. C749N
Seismic Brace
1,500 lb. load safety factor of 3



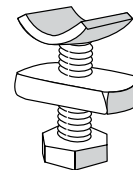
CAT. NO. C749N 5/8
Seismic Brace
1,650 lb. load safety factor of 3



CAT. NO. C749N 7/8
Seismic Brace
1,650 lb. load safety factor of 3



CAT. NO. C-749-N-1-1/8
Seismic Brace
1,650 lb. load safety factor of 3

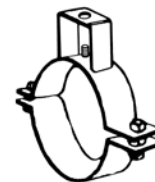


CAT. NO. ES-142
Size: 1/2" x 1 1/4" Bolt Size: 1/2"
Seismic bracing rod stiffener connector

All braces have plastisol coating on the flat member. Plastisol insulates against vibration noise transmission and eliminates rattle at the connection points.

Standard Finish – GoldGalv® brand. Approved for seismic applications.

S-720 — Adjustable Pipe Hanger



CAT. NO.	PIPE SIZE (IN.)	ROD SIZE (IN.)	ADJUSTMENT (IN.)	BOLT CENTERS (IN.)	STOCK SIZE (IN.)	BOLT SIZE (IN.)	DESIGN LOAD (LBS.)	STD. CTN.
S720 3/4	3/4	3/8	1 5/8	4 1/2	3/16 X 1 1/4	1/2-1 1/4	550	10
S-720-1	1	3/8	1 1/2	4 1/2	3/16 X 1 1/4	1/2-1 1/4	550	10
S-720-1-1/4	1 1/4	3/8	1 3/8	5	3/16 X 1 1/4	1/2-1 1/4	550	10
S-720-1-1/2	1 1/2	3/8	1 1/2	4 1/2	3/16 X 1 1/4	1/2-1 1/4	550	10
S-720-2	2	3/8	1 1/2	5	1/4 X 1 1/4	1/2-1 1/4	700	10
S-720-2-1/2	2 1/2	1/2	2 1/8	5 3/8	1/4 X 1 1/4	1/2-1 1/4	700	10
S-720-3	3	1/2	2 1/4	6 1/4	1/4 X 1 1/4	1/2-1 1/4	1,100	10
S-720-3-1/2	3 1/2	1/2	2 1/4	6 3/4	1/4 X 1 1/4	1/2-1 1/4	1,100	10
S-720-4	4	1/2	2 1/4	7 1/4	1/4 X 1 1/4	1/2-1 1/4	1,300	10
S-720-5	5	5/8	2 1/4	8 1/2	1/4 X 1 1/2	5/8-1 1/2	1,600	10
S-720-6	6	5/8	2 1/4	9 1/2	1/4 X 1 1/2	5/8-1 1/2	1,600	5
S-720-8	8	3/4	2 1/8	11 1/2	1/4 X 2	3/4-2	2,000	5

Standard Finish – GoldGalv®, unless otherwise stated.

Pipe Straps, Conduit Clamps and Hangers

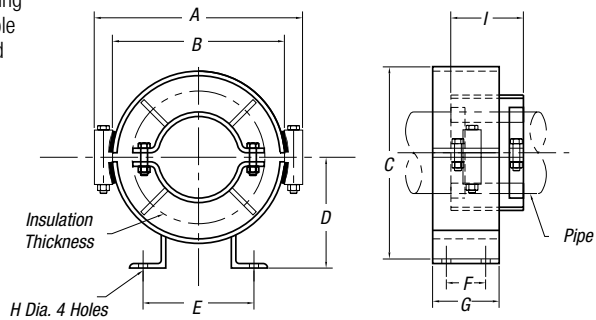
PG-794 — Pipe Alignment Guide

Designed to maintain the axial alignment of piping as it expands and contracts during operation. It is most typically installed adjacent to expansion joints and at reasonable distances between the expansion joint and the anchor point. Our Figures 1007 and 1010 also offer alternative means for your piping alignment needs.

Note: Guides are not designed to carry dead weight loads. Maximum temperature is 750° F.

Specifications

- Material: Carbon Steel
 - Finish: EG (Silver), Black (add suffix "-B"), Electro-Galvanized (add suffix "-EG")
 - Ordering: Specify pipe size, insulation thickness, catalog number and finish.
- Example Catalog Number:** PG794 T3-2-1/2 would be 2 1/2" pipe with 2" thick insulation.



M-718

SIZE	DIMENSIONS (IN.)									WT. EACH (LBS.)
	A	B	C	D	E	F	G	H		
1	6 3/4	4 1/2	5 5/8	3 3/8	5	1 1/2	3	5/8	5.8	
2	7 1/4	5 5/8	6 3/8	3 1/2	6 3/4	1 1/2	3	5/8	7.2	
3	8 3/8	6 3/8	7 3/8	4	6 3/4	1 1/2	3	5/8	8.2	
4	10 5/8	8 3/8	9 3/8	5	7 3/8	1 1/2	3	5/8	10.6	
5	12 1/2	10 3/4	11 3/8	6 1/4	7 3/8	2	4	5/8	15.6	
6	14 3/8	12 3/4	13 3/8	7 1/4	8	2	4	5/8	19.5	
7	16 3/8	14 3/4	15 3/8	8 1/2	9 3/4	2	4	3/4	26.8	
8	18 3/8	16 3/4	17 3/8	9 1/2	10 1/4	4	6	3/4	35.6	
9	22 3/8	19	20	10 1/2	11 1/4	4	6	3/4	44.2	
10	23 3/8	21	22	11 1/2	14 3/8	4	6	7/8	52.6	
11	25 3/8	23	24	12 1/2	14 3/4	4	6	7/8	66.3	
12	28 3/8	25 3/4	26 3/8	13 3/4	15 3/8	4	6	1	79.7	
13	32 3/8	29 1/2	30 1/2	15 3/4	16 3/8	5 1/2	8	1	106.3	
14	36 3/8	33 1/2	34 1/2	17 3/4	17 3/8	5 1/2	8	1	116.8	

SIZE NUMBER	THICKNESS OF INSULATION (IN.)					
	1	1 1/2	2	2 1/2	3	4
1	1					
2	1 1/4-2	1				
3	2 1/2	1 1/4-2	1			
4	3-4	2 1/2-3 1/2	1 1/4-2 1/2	1-2	1	
5	5-6	4-5	3-4	2 1/2-3 1/2	1 1/4-2 1/2	1
6		6	5-6	4-5	3-4	1 1/4-2 1/2
7		8	8	6	5-6	3-4
8		10	10	8	8	5-6
9		12	12	10	10	8
10			14	12-14	12	10
11				16	16	14
12						16-18 14-16
13						20 18-20
14						24 24

Standard Finish — EG (silver).

PIPE SIZE (IN.)	DIM. I	MAX. MVT
1-6	4	4
8-16	6	6
18-24	8	8

Insulation Thickness Table

PRODUCT DESIGNATION	INSULATION THICKNESS (IN.)	FOR PIPE SIZES
T1	1	1/2-24
T2	1 1/2	1/2-24
T3	2	1/2-24
T4	2 1/2	1/2-24
T5	3	1/2-24
T6	3 1/2	1/2-24
T7	4	1/2-24

Standard Finish — GoldGalv®, unless otherwise stated.

Pipe Straps, Conduit Clamps and Hangers

Structure Attachments

M-742-R Ceiling Flange

M-742-R, M-742-RB, MT-742-R – Single Plate

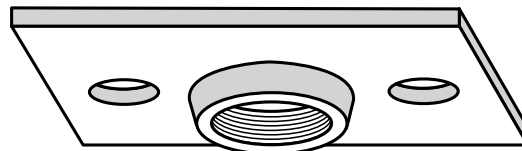
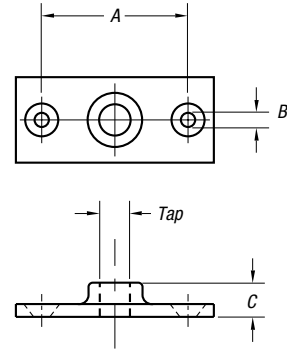
M-742-R — (Rod Tapped – Electro-Galvanized)

M-742-RB — (Rod Tapped – Plain Finish)

MT-742-R — (Rod Tapped – Copper Finish)

Designed for attaching a rod to a wooden member.

This part is normally used in conjunction with our M-718 Split Ring.



M-742-R
Rod Sizes: 3/8" & 1/2"

Specifications

- Material: Malleable Iron. M-742-R is Carbon Steel.
- Ordering: Specify rod size and catalog number.

CAT. NO.	ROD TAP (IN.)	MAX. LOAD (LBS.)	DIMENSIONS (IN.)			WT. EACH (LBS.)
			A	B	C	
M-742-R-3/8	3/8	180	2	1/4	1/2	.19
M-742-R-1/2	1/2	180	2	1/4	1/2	.18

Standard Finish – Black (B), EG (Silver) or Copper-Colored Epoxy Paint.

C-736-Side Clip — Steel Bracket Clip

Clip can be used to support piping 3 1/2" or smaller from the horizontal member of a C-736 Steel Bracket. The clip is composed of two steel plates and one bolt and nut.

Specifications

- Material: Carbon Steel
- Finish: Standard Finish – GoldGalv®, Black (add suffix "-B"), Electro-Galvanized (add suffix "-EG")
- Ordering: Specify size number, catalog number and finish.

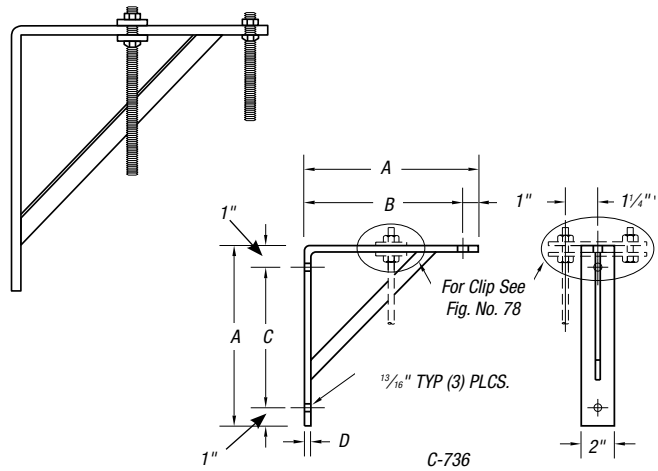
CAT. NO.	ROD SIZE (IN.)	SIZE (IN.)	MAX. LOAD (LBS.)	WT. EACH (LBS.)
C-736-SIDE CLIP-1	1	3/8	750	6.99
C-736-SIDE CLIP-2	2	1/2	750	10.10

Standard Finish – GoldGalv®, unless otherwise stated.

Pipe Straps, Conduit Clamps and Hangers

C-736 — Light Welded Steel Bracket

Designed to support up to 6" pipe. This bracket is for installation to walls as shown or inverted, and may require a backing plate. Holes for up to 3/4" rods are located at each end of the bracket to allow for use in either orientation. The C-736 Side Clip Steel Bracket Clip can be attached to the C-736 to support piping 3 1/2" or smaller. Please see Figure 79 for more information.



Specifications

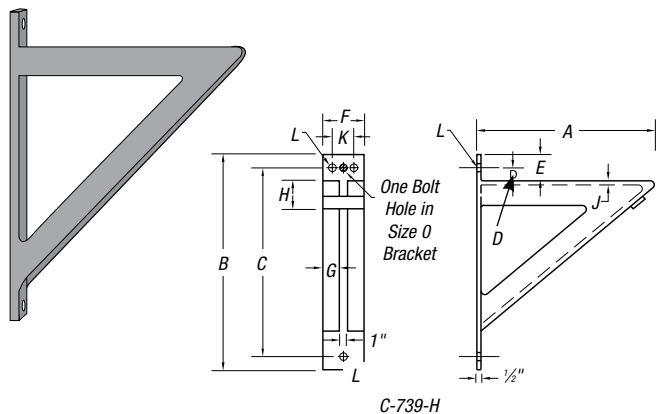
- Compliance: A-A-1192A Type 31, MSS-SP 69 Type 31
- Finish: Standard Finish – GoldGalv®, Black (add suffix "-B"), Electro-Galvanized (add suffix "-EG")
- Ordering: Specify size number, catalog number and finish.

CAT. NO.	ROD TAP	MAX. LOAD (LBS.)	DIMENSIONS (IN.)			WT. EACH (LBS.)
			A	B	C	
C-736-1	1	750	9	8	6 1/2	6.99
C-736-2	2	750	13	12	10 1/2	10.10
C-736-3	3	750	19	18	16 1/2	10.50

Standard Finish – GoldGalv®, unless otherwise stated.

C-739-H — Heavy Welded Steel Bracket

Designed to support pipe from either above or below. Slotted construction allows for drop rod use along the length of the bracket. This bracket is for bolted installation to walls and may require a backing plate. Special steel brackets can be fabricated to customers loads and/or dimensions.



Specifications

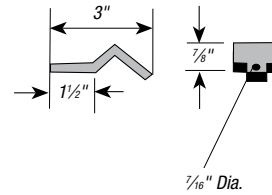
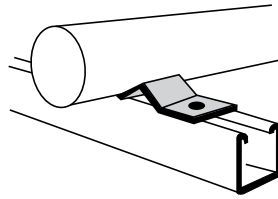
- Compliance: A-A-1192A Type 33, MSS-SP 69 Type 33
- Finish: Standard Finish – GoldGalv®, Black (add suffix "-B"), Electro-Galvanized (add suffix "-EG")
- Ordering: Specify size number, catalog number and finish.

CAT. NO.	SIZE	MAX. LOAD (LBS.)	DIMENSIONS (IN.)											WT. EACH (LBS.)
			A	B	C	D	E	F	G	H	J	K	L	
C-739-H-0	0	3,000	12	18	15 1/4	1 1/2	2 3/4	4 1/2	1 1/2	2	1/4	NA	1 3/16	25.1
C-739-H-1	1	3,000	18	24	21 3/4	1 1/2	2 3/4	5	1 1/2	2	3/8	2 3/4	1 3/16	44.8
C-739-H-2	2	3,000	24	30	27 1/2	1 1/2	2 3/4	5	1 1/2	2 1/2	3/8	2 1/2	1 1/16	60.7
C-739-H-3	3	3,000	30	36	33 1/4	1 5/8	3	6	2	2 1/2	3/8	2 1/2	1 1/16	98.1
C-739-H-4	4	3,000	36	42	39	1 1/2	3	6	2	3 1/2	3/8	3 1/2	1 1/16	129.4
C-739-H-5	5	3,000	42	50	46	1 1/2	3 1/2	7	2 1/2	3 1/2	3/8	3 1/2	1 1/16	177.2

Pipe Straps, Conduit Clamps and Hangers

PG-795 — Pipe Block

Standard Finish — Black (B).



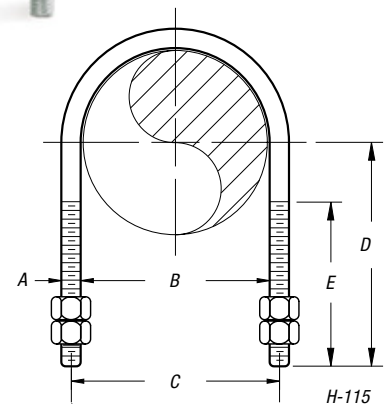
Pipe Attachments

H-115, H-115SS — Standard U-Bolt

Our standard U-Bolts are recommended for use as supports or guides for piping. They are supplied with four hex nuts. The H-115SS is recommended for support of stainless steel piping. Please specify the grade of stainless steel you require when ordering. Load Ratings shown are for Carbon Steel. PVC coating should not exceed 140° F/60° C.



H-115-1/2



Specifications

- Materials: Carbon Steel, Stainless Steel
- Compliance: Federal Specification A-A-1192A Type 24, MSS-SP 69 Type 24, and BSPSS-BS3974
- Finish: Standard Finish — GoldGalv®, Black (add suffix “-B”), Electro-Galvanized (add suffix “-EG”), SS (add suffix SS), SS6 = 316

Side loads are given for the H-115 for a maximum temperature of 650° F/343° C.

When the loading condition requires the simultaneous application of a normal load and side load, the following interaction equation must be used to determine if the H-115 can be used.

(Actual Load / Maximum Design Load) + (Actual Side Load/Maximum Side Load). The result of this equation cannot exceed the value of 1.0 if the H-115 is to be used.

- Ordering: Specify pipe size, catalog number and finish.

CAT. NO.	PIPE SIZE (IN.)	MAX. LOAD (LBS.)		MAX. SIDE LOAD (LBS.) 650° F/343° C	DIMENSIONS (IN.)					WT. EACH (LBS.)
		650° F/ 343° C	750° F/ 399° C		A	B	C	D	E	
H-115-1/2	1/2	485	435	63	1/4	1 1/8	1 1/8	2 3/4	2 1/8	.11
H-115-3/4	3/4	485	435	63	1/4	1 1/8	1 1/8	2 3/4	2 1/8	.12
H-115-1	1	485	435	63	1/4	1 3/8	1 3/8	2 3/4	2 1/8	.12
H-115-1/2	1/2	1,200	1,070	316	3/8	1 3/8	1 1/4	2 3/4	2 1/8	.16
H-115-3/4	3/4	1,200	1,070	240	3/8	1 1/8	1 1/2	2 3/4	2 1/8	.16
H-115-1	1	1,200	1,070	186	3/8	1 3/8	1 3/4	2 3/4	2 1/8	.19
H-115-1-1/4	1 1/4	1,220	1,090	194	3/8	1 3/4	2 1/8	2 7/8	2 1/8	.28
H-115-1-1/2	1 1/2	1,220	1,090	194	3/8	2	2 3/8	3	2 1/2	.30
H-115-2	2	1,220	1,090	194	3/8	2 1/2	2 3/8	3 1/4	2 1/2	.33
H-115-2-1/2	2 1/2	2,260	2,020	184	1/2	3	3 1/2	3 3/4	3	.70
H-115-3	3	2,260	2,020	184	1/2	3 3/8	4 1/8	4	3	.78
H-115-3-1/2	3 1/2	2,260	2,020	184	1/2	4 1/8	4 3/8	4 1/2	3	.84
H-115-4	4	2,260	2,020	184	1/2	4 3/8	5 1/8	4 1/2	3	.90

Pipe Straps, Conduit Clamps and Hangers

Beam Attachments

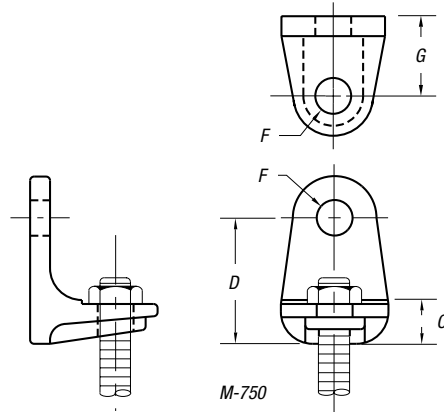
M-750 — Side Beam Bracket

Designed for bolt connections.

Specifications

- Compliance: A-A-1192A Type 34 and MSS-SP 69 Type 34
- Material: Malleable Iron (Maximum Temperature 450° F/232° C)
- Standard Finish — GoldGalv®, Black (add suffix “-B”), Electro-Galvanized (add suffix “-EG”)
- Ordering: Specify rod size and catalog number.

CAT. NO.	MAX LOAD (LBS.)		WITH BOLT TO STEEL	DIMENSIONS (IN.)				WT. EACH (LBS.)
	ROD SIZE (IN.)	WITH LAG SCREW		C	D	F	G	
M-750-3/8	3/8	390	610	5/8	1 1/16	7/16	7/8	.26
M-750-1/2	1/2	640	1,130	3/4	1 3/8	9/16	1 1/16	.54
M-750-5/8	5/8	760	1,810	7/8	2 1/8	3/4	1 1/16	.94



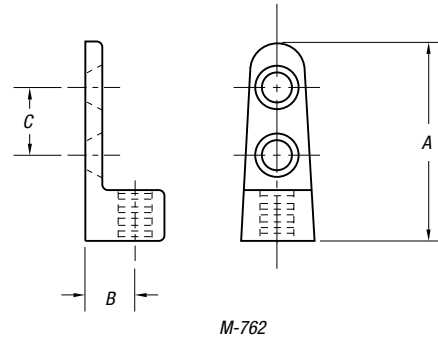
M-762 — Side Beam Connector

Designed for use on buildings of wood construction. They can be secured to the side of beams or joists by means of our Figure 166 Drive Screws (ordered separately).

Specifications

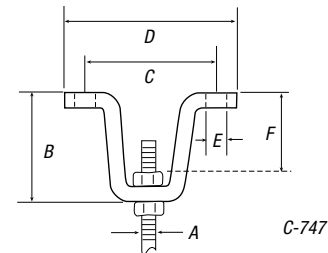
- Material: Malleable Iron
- Standard Finish — GoldGalv®, Black (add suffix “-B”), Electro-Galvanized (add suffix “-EG”)
- Ordering: Specify size, catalog number and finish.

CAT. NO.	SIZE (IN.)	MAX LOAD (LBS.)	DIMENSIONS (IN.)			WT. EACH (LBS.)
			A	B	C	
M-762-3/8	3/8 rod	250	2 3/8	3/4	3/4	.13
M-762-1/2	1/2 rod	480	2 3/4	3/4	3/4	.25
M-762-1/4	1/4 pipe	250	2 3/4	3/4	3/4	.25



C-747 — Adjustable Beam Attachment

For attachment to timber with coach screws or to the bottom of beams with bolts.



CAT. NO.	ROD SIZE A (IN.)	HOLE SIZE (IN.)	DIMENSIONS (IN.)					STOCK SIZE (IN.)	DESIGN LOAD (LBS.)	STD. CTN.
			B	C	D	E	F			
C-747-3/8B	3/8B	7/16	2 3/4	3 3/8	4 7/8	7/16	2 1/8	1/4 x 1 1/4	610	50
C-747-1/2B	1/2B	9/16	3 1/8	4 3/4	6	9/16	2 5/16	3/8 x 1 1/2	1,130	50
C-747-5/8B	5/8B	1 1/16	3 3/8	4 3/4	6	9/16	2 3/16	3/8 x 1 1/2	1,810	50
C-747-3/4B	3/4B	1 3/16	3 11/16	6 1/4	7 3/4	1 1/16	2 9/16	1/2 x 2	2,710	50
C-747-7/8B	7/8B	1 5/16	3 3/4	6 3/8	8 1/4	1 3/16	2 1/2	1/2 x 2	3,770	50

Standard Finish — Black (B).

Order by Cat. No., rod size.

Pipe Straps, Conduit Clamps and Hangers

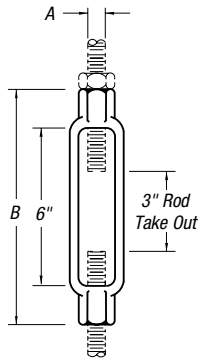
Rods and Rod Attachments

F-112 — Turnbuckle

Used to connect right- and left-hand threaded rods together and provide for adjustment.

Specifications

- Material: Forged Steel
- Compliance: Federal Specification A-A-1192A Type 13, MSS-SP 69 Type 13 and BSPSS-BS3974
- Finish: Standard Finish – GoldGalv®, Black (add suffix “-B”), Electro-Galvanized (add suffix “-EG”)
- Specify catalog number, finish and rod size.



F-112

CAT. NO.	ROD SIZE (IN.)	MAX LOAD (LBS.)		B (IN.)	WT. EACH (LBS.)
		650° F/343° C			
F-112-3/8	3/8	610		7 1/8	.30
F-112-1/2	1/2	1,130		7 1/2	.60
F-112-5/8	5/8	1,810		7 7/8	1.00
F-112-3/4	3/4	2,710		8 1/4	1.20
F-112-7/8	7/8	3,370		8 5/8	1.90
F-112-1	1	4,960		9	2.50
F-112-1-1/4	1 1/4	8,000		9 1/2	3.80
F-112-1-1/2	1 1/2	11,630		9 3/4	5.70
F-112-1-3/4	1 3/4	15,700		10 5/8	8.20
F-112-2	2	20,700		11	14.20
F-112-2-1/4	2 1/4	27,200		12 5/8	27.00
F-112-2-1/2	2 1/2	33,500		13 1/2	33.00

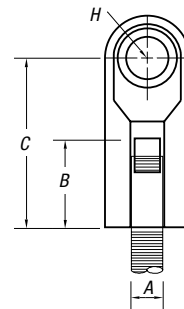
Standard Finish – GoldGalv®, unless otherwise stated.

M-129 — Extension Piece

Designed for attaching rods to the M-732-EXT Clamp and similar types of attachments.

Specifications

- Material: Malleable Iron
- Compliance: Federal Specification A-A-1192A Type 30, MSS-SP-69 Type 30 when used with a Figure 82
- Finish: Standard Finish – GoldGalv®, Black (add suffix “-B”), Electro-Galvanized (add suffix “-EG”)
- Specify rod size, catalog number and finish



M-129

CAT. NO.	ROD SIZE (IN.)	MAX LOAD (LBS.)	DIMENSIONS (IN.)				WT. EACH (LBS.)
			B	C	G	H	
M-129-3/8	3/8	610	1 1/4	2 1/8	1/2	1/2	.20
M-129-1/2	1/2	1,130	1 3/8	2 3/8	5/8	1/2	.40
M-129-5/8	5/8	1,810	1 1/2	2 1/2	5/8	1/2	.44
M-129-3/4	3/4	2,710	1 3/4	2 7/8	5/8	1/2	.65
M-129-7/8	7/8	2,950	1 7/8	3	3/4	9/16	.78

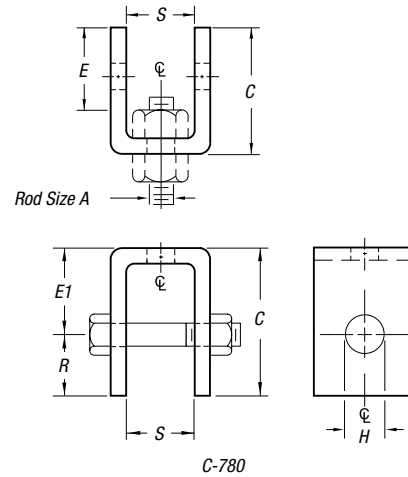
Standard Finish – GoldGalv®, unless otherwise stated.

Pipe Straps, Conduit Clamps and Hangers

Structure Attachments

C-780 W/OB, C-780 W/HWB — Welded Beam Attachment

Recommended for attachment to the bottom of beams when little or no pipe movement is expected. C-780 W/HWB is recommended for attachment to the bottom of beams, when pipe movement is expected. A bolt and nut or pin is supplied. A pin with cotters is normally supplied for rod sizes over 1".



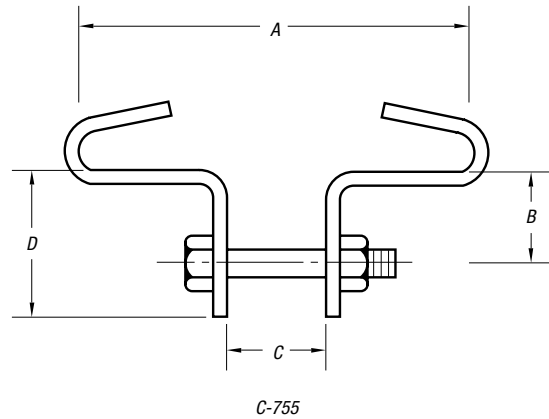
- Specifications**
- Compliance: Federal Specification A-A-1192A Type 22, MSS SP-69 Type 22 and BSPSS-BS3974
 - Material: Carbon Steel
 - Finish: Standard Finish – GoldGalv®, Black (add suffix “-B”), Electro-Galvanized (add suffix “-EG”)
 - Ordering: Specify catalog number, rod size and finish.

CAT. NO.	ROD SIZE (IN.)	MAX. LOAD (LBS.) 650° F/ 343° C	BOLT OR PIN SIZE (IN.)	C (IN.)	ROD TAKEOUT C-780 W/OB E (IN.)	ROD TAKEOUT C-780 W/HWB E1 (IN.)	H (IN.)	R (IN.)	S (IN.)	WT. EACH (LBS.)	
										C-780 W/OB W/O B&N	C-780 W/HWB W B&N
C-780-3/8	3/8	610	1/2	2 7/8	1 7/8	2	9/16	7/8	1 1/4	.96	1.20
C-780-1/2	1/2	1,130	5/8	2 7/8	1 3/4	2	1 1/16	7/8	1 1/4	.96	1.20
C-780-5/8	5/8	1,810	3/4	2 7/8	1 3/4	2	1 3/16	7/8	1 1/4	.96	1.60
C-780-3/4	3/4	2,710	7/8	3 3/8	1 1/2	2	1 15/16	1 1/8	2 1/8	1.90	2.80
C-780-7/8	7/8	3,770	1	4 1/4	2 5/8	3	1 1/2	1 1/4	2 1/2	2.50	3.90
C-780-1	1	4,960	1 1/8	4 1/2	3	3 1/2	1 1/4	1 1/2	2 3/8	4.30	6.30
C-780-1-1/4	1 1/4	8,000	1 3/8	5	2	3	1 1/2	2	3	8.10	10.20
C-780-1-1/2	1 1/2	11,600	1 5/8	5 1/2	2 1/2	4	1 3/4	2 1/2	3	15.60	19.00
C-780-1-3/4	1 3/4	15,700	1 7/8	7 3/4	2 3/4	5	2	2 3/4	3 3/4	18.70	24.20
C-780-2	2	20,700	2 1/4	8 1/4	N/A	5	2 3/8	3 1/4	3 3/4	—	30.60
C-780-2-1/4	2 1/4	27,200	2 1/2	9 3/4	N/A	6 1/4	2 3/8	3 1/2	3 3/4	—	36.80
C-780-2-1/2	2 1/2	33,500	2 3/4	9 3/4	N/A	6 1/4	2 3/8	3 3/4	3 3/4	—	39.70
C-780-2-3/4	2 3/4	41,580	3	9 3/4	N/A	5 3/4	3 3/8	4	3 3/4	—	39.70
C-780-3	3	50,580	3 1/4	10 1/4	N/A	6 1/4	3 3/8	4	3 3/4	—	49.00
C-780-3-1/4	3 1/4	71,280	3 1/2	11 1/2	N/A	7	3 3/8	4 1/2	4 1/4	—	67.60
C-780-3-1/2	3 1/2	71,280	3 3/4	12	N/A	7 1/2	3 3/8	4 1/2	4 1/4	—	79.30

Pipe Straps, Conduit Clamps and Hangers

C-755 — Beam Clamp

Designed to attach to the bottom of flanged beams. Normally used with the E-157 Eye Rod or E-120-A Eye Nut.



Specifications

- Material: Carbon Steel
- Compliance: Federal Specification A-A-1192A Type 21, MSS-SP-69 Type 21
- Finish: Standard Finish – GoldGalv®, Black (add suffix “-B”), Electro-Galvanized (add suffix “-EG”), Thermoplastic (add suffix “-TP”)
- Ordering: Specify clamp size, flange width, flange thickness, catalog number and finish.

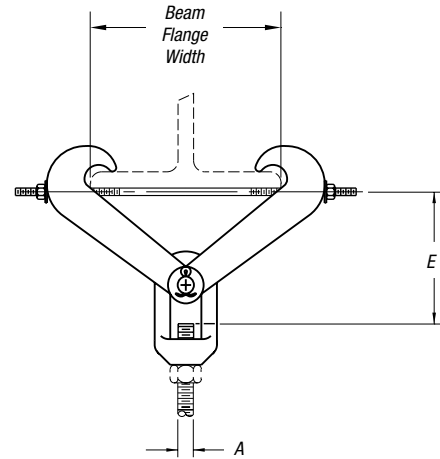
CAT. NO.	CLAMP SIZE	MAX. LOAD (LBS.)	DIMENSIONS (IN.)			BOLT SIZE (IN.)
			B	C	D	
C-755-1	1	500	7/8	1/2	1 1/2	3/8
C-755-2	2	700	1 1/8	5/8	1 3/4	1/2
C-755-3	3	800	1 1/4	5/8	2	1/2
C-755-4	4	1,000	1 3/8	3/4	2 3/8	5/8
C-755-5	5	3,000	1 7/8	7/8	2 7/8	3/4
C-755-6	6	3,000	2	1	3	7/8
C-755-7	7	5,000	2 1/8	1 1/8	4 1/8	1

CAT. NO.	CLAMP SIZE	WEIGHT EACH (LBS.) BEAM WIDTH — DIMENSION “A”							
		2	3	4	5	6	7	8	10
C-755-1	1	.52	.62	.78	.88	.95	—	—	—
C-755-2	2	.74	.82	1.09	1.21	1.31	1.39	—	—
C-755-3	3	1.26	1.49	1.89	2.12	2.29	2.45	2.69	—
C-755-4	4	—	2.32	2.85	3.18	3.39	3.60	3.92	—
C-755-5	5	—	3.40	4.08	4.52	4.80	5.10	5.51	6.23
C-755-6	6	—	—	6.00	6.45	7.00	7.40	7.90	8.80
C-755-7	7	—	—	—	11.95	12.75	13.55	14.35	15.95

Pipe Straps, Conduit Clamps and Hangers

M-732-H — Steel Beam Clamp with Weldless Eyenut

The M-732-H beam clamp with eyenut is used for support where some movement is expected and welding to the structure is prohibited. The clamping effect is produced by the "ice-tong" action of the arms and is locked in place by the through bolt located just under the beam flange.



M-732-H

Specifications

- Material: Carbon Steel with Forged Steel Eyenut
- Compliance: Federal Specification A-A-1192A Type 28, MSS-SP-69 Type 28 and BSPSS-BS3974
- Finish: Standard Finish – GoldGalv®, Black (add suffix "-B"), Electro-Galvanized (add suffix "-EG")
- Ordering: Specify catalog number, rod size, clamp number and finish.

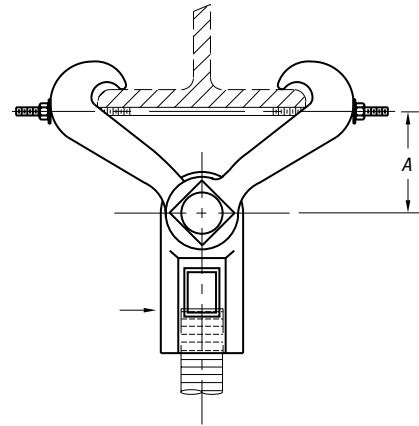
CAT. NO.	CLAMP SIZE	MAX. LOAD (LBS.)	MAX. ROD SIZE A (IN.)	BEAM WIDTH	BODY SIZE (IN.)	MAX. FLANGE THICKNESS (IN.)	WT. EACH (LBS.)
M-732-H-1	1	2,710	3/4	3-8	25/32	.6	5.5
M-732-H-2	2	4,960	1	3-8	25/32	.6	5.5
M-732-H-3	3	4,960	1	4-11	27/32	.6	9.0
M-732-H-4	4	4,960	1	4-12	29/32	1.03	29.0
M-732-H-5	5	4,960	1	11-15	1/64	1.03	33.3
M-732-H-6	6	11,500	1 1/2	4-12	29/32	1.03	29.0
M-732-H-7	7	11,500	1 1/2	11-15	1/64	1.03	33.3
M-732-H-8	8	11,500	2	4-12	29/32	1.03	29.0

CAT. NO.	CLAMP SIZE	BODY SIZE (IN.)	DIMENSIONS (IN.)														
			3	4	5	6	7	8	9	10	11	12	13	14	15		
M-732-H-1	1	25/32	5 5/16	5 1/8	5	4 13/16	4 3/8	3 15/16	—	—	—	—	—	—	—		
M-732-H-2	2	25/32	5 5/16	5 1/8	5	4 13/16	4 3/8	3 15/16	—	—	—	—	—	—	—		
M-732-H-3	3	27/32	—	8 1/4	8 1/8	8 1/8	7 7/8	7 7/8	7 3/8	7	6 1/2	—	—	—	—		
M-732-H-4	4	27/32	—	8 5/8	8 5/8	8 1/2	8 5/8	8 5/8	7 7/8	7 3/8	7	6 3/8	—	—	—		
M-732-H-5	5	1/64	—	—	—	—	—	—	—	—	9 1/2	9 1/4	8 3/8	8 3/8	7 7/8		
M-732-H-6	6	3/8	—	8 5/8	8 5/8	8 1/2	8 5/8	8 5/8	7 7/8	7 3/8	7	6 3/8	—	—	—		
M-732-H-7	7	1/64	—	—	—	—	—	—	—	—	9 5/8	9 1/2	9 1/8	8 5/8	8 5/8		
M-732-H-8	8	3/8	—	11 5/8	11 1/2	11 1/2	11 5/8	11 5/8	10 7/8	10 7/8	10 1/2	10	—	—	—		

Pipe Straps, Conduit Clamps and Hangers

M-732-EXT — Adjustable Beam Clamp

Designed to attach to the bottom of flanged beams without requiring welding. Normally used with the M-129 Extension Piece (not furnished) up to a maximum 7/8" (M20) rod diameter. Loading is achieved through the clamp jaws while locking is accomplished by tightening the through-bolt located directly below the flange. Maximum flange thickness is .60 inches.



M-732-EXT

Specifications

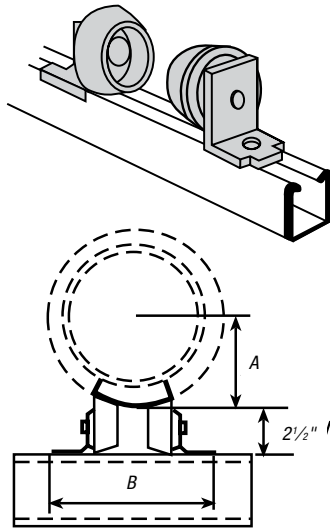
- Material: Malleable Iron
- Compliance: Federal Specification A-A-1192A Type 30, MSS-SP-69 Type 30 when used with a Figure 157
- Finish: Standard Finish – GoldGalv®, Black (add suffix “-B”), Electro-Galvanized (add suffix “-EG”)
- Ordering: Specify catalog number and finish. Order M-129 separately if required.

CAT. NO.	MAX. ROD SIZE (IN.)	MAX. LOAD (LBS.)	ROD TAKE OUT BEAM FLANGE WIDTH — B (IN.)						WT. EACH (LBS.)
			2C	3	4	5	6	7	
			60	76	101	127	152	177	
M-732-EXT-3/8	3/8	610	3 1/2	3 7/16	3 5/16	2 15/16	2 9/16	1 7/8	1.91
M-732-EXT-1/2	1/2	1,130	3 1/2	3 7/16	3 5/16	2 15/16	2 9/16	1 7/8	2.11
M-732-EXT-5/8	5/8	1,365	3 1/2	3 7/16	3 5/16	2 15/16	2 9/16	1 7/8	2.15
M-732-EXT-3/4	3/4	1,365	3 1/2	3 7/16	3 5/16	2 15/16	2 9/16	1 7/8	2.36
M-732-EXT-7/8	7/8	1,365	3 1/2	3 7/16	3 5/16	2 15/16	2 9/16	1 7/8	2.49

Pipe Straps, Conduit Clamps and Hangers

C-728 — Pipe Roller (Pair)

- Cast aluminum rollers, steel brackets
- Designed for standard saddles
- Order separately for each pair of rollers: Two ½" x ⅝" hex head cap screws, two ½" channel nuts
- Space to fit O.D. of pipe and wrapping
- Adjustable for radius up to 8"



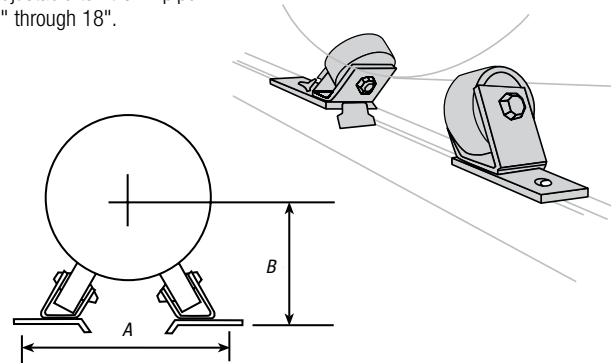
CAT. NO.	A MAX OS RADIUS (IN.)	B (IN.)	DESIGN LOAD (LBS.)	STD. CTN.
C728	3¾	6¼	2,350	5 pair (10 pieces)
	4¾	7½	2,350	5 pair (10 pieces)
	6¾	8½	2,350	5 pair (10 pieces)
	8½	9⅞	2,350	5 pair (10 pieces)

C728H — Pipe Roller Assembly (Pair)

Cast aluminum roller, steel brackets. Order separately for each pair of rollers:

- Two ½" x ⅝" hex head cap screws
- Two ½" channel nuts

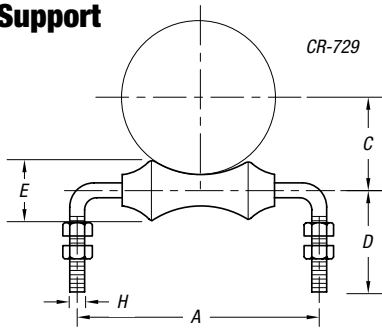
Adjustable to fit O.D. pipe 6" through 18".



CAT. NO.	PIPE SIZE (IN.)	A (IN.)	B (IN.)	DESIGN LOAD (LBS.)	STD. CTN.
C728H	6	10⅜	6⅞	3,920	5 pair (10 pieces)
	8	11⅜	7⅞	3,920	5 pair (10 pieces)
	10	12⅞	8⅞	3,920	5 pair (10 pieces)
	12	13⅞	9⅞	3,920	5 pair (10 pieces)
	14	14½	9¾	3,920	5 pair (10 pieces)
	16	15½	10⅞	3,920	5 pair (10 pieces)
	18	16½	11⅞	3,920	5 pair (10 pieces)

CR-729 — Roller Support

Used on steam or hot water systems where pipe is to be supported in tunnels, trenches, structural brackets and frames. Adjustment is made by raising and lowering the top nut on the legs and locked into position by tightening the lower nut.



CR-729 PIPE SIZE OF ROLL	C-789 1" COV. 25	C-789A 1½" COV. 38	C-789B 2" COV. 51	C-789C 2½" COV. 64	C-789D 3" COV. 76	C-789E 4" COV. 100
4	2½-3	2-2½	—	—	—	—
5	3½	—	—	—	—	—
6	4-5	3-3½	2-2½	—	—	—
7	6	4-5	3-4	2-2½	2-2½	—
8	8	6	5	3-3½	3-3½	—
10	—	8	6	4-5	4-5	—
12	10	10	8	6	6-8	4-6
14	12	12	10	8	—	—
16	14	14	12-14	10	8	8

Specifications

- Material: Steel Axle, Cast Iron Roll
- Finish: Standard Finish – GoldGalv®, Black (add suffix "-B"), Electro-Galvanized (add suffix "-EG")

CAT. NO.	PIPE SIZE (IN.)	MAX. LOAD (LBS.)	DIMENSIONS (IN.)					WT. EACH (LBS.)
			A	C	D	E	H	
CR-729-2	2	300	4½	1¾	3¼	1⅞	¾	.79
CR-729-2-1/2	2½	600	5	1⅞	4½	1¾	½	1.44
CR-729-3	3	600	5½	2¼	4½	1⅞	½	1.62
CR-729-3-1/2	3½	600	7	2¾	4½	1¾	½	1.64
CR-729-4	4	700	7	2⅞	4½	1⅞	½	1.82
CR-729-5	5	700	8½	3⅞	4½	2	¾	2.90
CR-729-6	6	1,000	10	4⅞	4½	2¾	¾	4.66
CR-729-8	8	1,300	12	5½	5¼	2¼	¾	7.29
CR-729-10	10	1,700	14	6¼	5½	3¾	¾	10.23
CR-729-12	12	2,300	16	7⅞	6	3⅞	¾	12.27
CR-729-14	14	3,075	17	8¾	7	4¼	1	21.39
CR-729-16	16	3,075	19	9⅞	8	5⅞	1	27.76

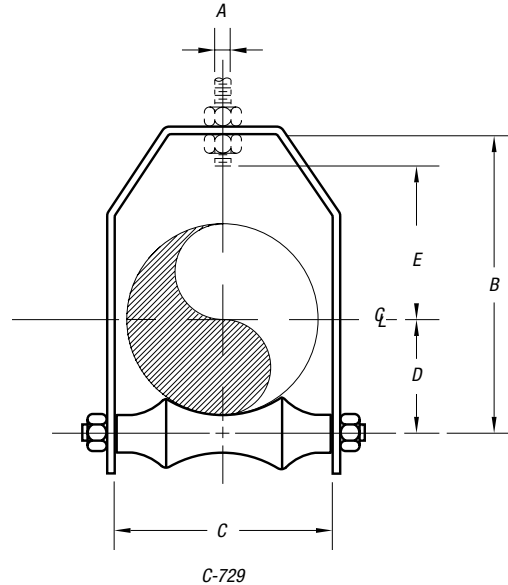
Pipe Straps, Conduit Clamps and Hangers

C-729 — Harvard Roll Hanger

Designed to support piping lines from above, allowing for vertical adjustment and axial movement in the piping. The lower nut (not furnished) adjusts the pipe line to the proper elevation. The top nut (not furnished) prevents loosening due to vibration and must be tightened securely to assure proper hanger performance.

Specifications

- Material: Carbon Steel frame with a Cast Iron Roll. Do not exceed 450° F/232° C at the contact point to the roll.
- Compliance: A-A-1192A Type 43 and MSS-SP-69 Type 43
- Finish: Black (add suffix "-B"), Electro-Galvanized (add suffix "-HDG")
- For pipe with insulation and a pipe covering protection saddle the C-729 will have to be oversized to suit. Please see the table below showing the correct sizing for insulated pipe.
- Ordering: Specify pipe size, catalog number and finish.



CAT. NO.	PIPE SIZE (IN.)	MAX. LOAD (LBS.)	DIMENSIONS (IN.)					WT. EACH (LBS.)
			ROD SIZE	A	B	C	D	
C-729-2	2	150	1/2	4 1/4	2 3/4	1 5/8	2 5/8	1.60
C-729-2-1/2	2 1/2	225	1/2	4 5/8	3 1/4	2	2 7/8	2.00
C-729-3	3	310	1/2	6 1/4	3 3/8	2 1/4	3 1/8	2.30
C-729-3-1/2	3 1/2	390	1/2	6 5/8	4 1/8	2 5/8	3 1/2	2.50
C-729-4	4	475	5/8	7 1/2	4 3/8	2 3/4	3 5/8	4.00
C-729-5	5	685	5/8	8 3/8	6 3/8	3 1/2	4 1/2	5.30
C-729-6	6	780	3/4	9 3/8	7 3/8	4	5	7.00
C-729-7	7	780	3/4	11 1/8	8 3/4	4 3/4	5 1/4	9.40
C-729-8	8	780	7/8	12 3/8	9 1/2	5 1/8	6 1/8	12.30
C-729-10	10	965	7/8	15	11 1/4	6 1/4	7 1/4	19.30
C-729-12	12	965	7/8	17 3/8	13 1/2	7 1/2	8 3/8	23.10
C-729-14	14	1,200	1	18 3/8	14 3/8	8 3/8	8 3/4	35.50
C-729-16	16	1,400	1	20 1/2	17 1/4	9 1/2	9 3/4	46.50
C-729-18	18	1,400	1	23 3/8	19	10 1/2	11 1/2	57.00
C-729-20	20	1,600	1 1/4	24 1/2	21	11 1/8	12 1/4	75.90
C-729-24	24	1,800	1 1/2	29 3/8	24 1/4	14	15 1/4	119.30

Standard Finish – GoldGalv®, unless otherwise stated.

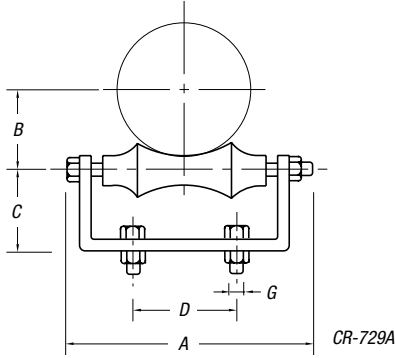
C-729 PIPE SIZE OF ROLL	C-789 1" COV. 25	C-789A 1 1/2" COV. 38	C-789B 2" COV. 51	C-789C 2 1/2" COV. 64	C-789D 3" COV. 76	C-789E 4" COV. 100
2 1/2	3/4	—	—	—	—	—
3	1-1 1/2	—	—	—	—	—
4	2-2 1/2	1-1 1/2	—	—	—	—
5	3-3 1/2	2-2 1/2	3/4-1 1/2	—	—	—
6	4	3-3 1/2	2-2 1/2	3/4-1	—	—
7	5	4	3-3 1/2	1 1/4-1 1/2	2	—
8	6	5	4	2-3	2 1/2	—
10	8	6	5-6	3 1/2-5	3-4	—
12	10	8	8	6	5-6	—
14	12	10	—	8	5-6	—
16	14	12	10	10	8	8
18	—	14	14	12	12	10
20	—	16	16	14	14	12
24	—	20	20	18	18	16

Standard Finish – GoldGalv®, unless otherwise stated.

Pipe Straps, Conduit Clamps and Hangers

CR-729A — Roller Chair

Designed for longitudinal movement of pipe where vertical adjustment is not required. Although two bolts are supplied for installation, the chair can be alternatively welded in position.



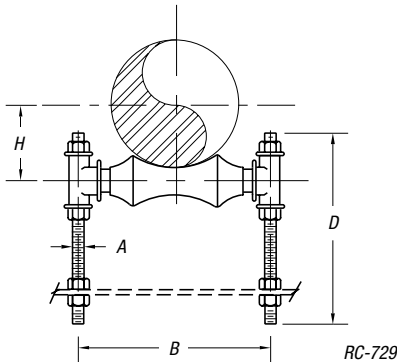
Specifications

- Material: Carbon Steel Chair and Axle with Cast Iron Pipe Roll. Use a Figure 17 when a Cast Iron Chair is required. Do not exceed 450° F/232° C at the contact point to the roll.
- Finish: Standard Finish – GoldGalv®, Black (add suffix “-B”), Electro-Galvanized (add suffix “-EG”).
- For pipe with insulation and a pipe covering protection saddle, the CR-729A will have to be oversized to suit.
- Please see the Table for the RC-729A which shows the correct sizing for insulated pipe.
- Ordering: Specify pipe size, catalog number and finish.

CAT. NO.	PIPE SIZE (IN.)	MAX. LOAD (LBS.)	DIMENSIONS (IN.)				BOLT SIZE G (IN.)	WT. EACH (LBS.)
			A	B	C	D		
CR-729-2A	2	300	4 $\frac{1}{8}$	1 $\frac{1}{2}$	1 $\frac{1}{2}$	2	$\frac{3}{8}$ x 1 $\frac{1}{2}$	1.10
CR-729-2-1/2A	2 $\frac{1}{2}$	600	4 $\frac{1}{8}$	2	1 $\frac{1}{2}$	2	$\frac{3}{8}$ x 1 $\frac{1}{2}$	1.40
CR-729-3A	3	600	6	2 $\frac{1}{4}$	1 $\frac{1}{4}$	2	$\frac{3}{8}$ x 1 $\frac{1}{2}$	1.60
CR-729-3-1/2A	3 $\frac{1}{2}$	600	6 $\frac{1}{2}$	2 $\frac{3}{8}$	2 $\frac{1}{2}$	2	$\frac{3}{8}$ x 1 $\frac{1}{2}$	2.60
CR-729-4A	4	700	7	2 $\frac{3}{8}$	2 $\frac{3}{8}$	2 $\frac{1}{2}$	$\frac{3}{8}$ x 1 $\frac{1}{2}$	2.90
CR-729-5A	5	700	7 $\frac{3}{8}$	3 $\frac{1}{2}$	2 $\frac{1}{2}$	3	$\frac{1}{2}$ x 2	3.90
CR-729-6A	6	1,000	9 $\frac{3}{4}$	4	2 $\frac{3}{4}$	3 $\frac{1}{4}$	$\frac{1}{2}$ x 2	6.00
CR-729-8A	8	1,300	11 $\frac{1}{2}$	5 $\frac{1}{8}$	3	4 $\frac{1}{2}$	$\frac{3}{4}$ x 2	9.00
CR-729-10A	10	1,700	14 $\frac{1}{2}$	6 $\frac{3}{8}$	3 $\frac{3}{8}$	5	$\frac{3}{4}$ x 2 $\frac{1}{2}$	13.80
CR-729-12A	12	2,300	16 $\frac{3}{4}$	7 $\frac{1}{2}$	4 $\frac{1}{8}$	6	$\frac{3}{4}$ x 2 $\frac{1}{2}$	18.90
CR-729-14A	14	3,100	18 $\frac{1}{2}$	8 $\frac{3}{8}$	4 $\frac{3}{4}$	6 $\frac{1}{2}$	$\frac{3}{4}$ x 2 $\frac{1}{2}$	28.10
CR-729-16A	16	3,900	20	9 $\frac{3}{8}$	5 $\frac{1}{2}$	10	$\frac{3}{4}$ x 3	34.90
CR-729-18A	18	4,200	22 $\frac{3}{4}$	10 $\frac{1}{2}$	6	9 $\frac{3}{4}$	$\frac{3}{4}$ x 2 $\frac{1}{2}$	44.40
CR-729-20A	20	4,500	25 $\frac{1}{2}$	11 $\frac{1}{8}$	6 $\frac{1}{2}$	10 $\frac{1}{4}$	$\frac{3}{4}$ x 2 $\frac{1}{2}$	56.30
CR-729-24	24	6,000	30	14	7 $\frac{1}{8}$	12 $\frac{1}{4}$	$\frac{7}{8}$ x 3 $\frac{1}{2}$	87.50

Standard Finish – GoldGalv®, unless otherwise stated.

RC-729 — Adjustable Roll Support



Specifications

- Material: Cast Iron Pipe Roll and Sockets, Carbon Steel Axle, Continuous Thread Rods and Hex Nuts. Do not exceed 450° F/232° C at the contact point to the roll.
- Finish: Standard Finish – GoldGalv®, Black (add suffix “-B”), Electro-Galvanized (add suffix “-EG”).
- For pipe with insulation and a pipe covering protection saddle, the RC-729 will have to be oversized to suit.
- Please see the table for the RC-729A which shows the correct sizing for insulated pipe.
- Ordering: Specify pipe size, catalog number and finish.

CAT. NO.	PIPE SIZE (IN.)	MAX. LOAD (LBS.)	DIMENSIONS (IN.)				WT. EACH (LBS.)
			A	B	D	H	
RC-729-1-1/4	1 $\frac{1}{4}$	300	$\frac{3}{8}$	3 $\frac{3}{8}$	7 $\frac{1}{4}$	1 $\frac{1}{4}$	1.08
RC-729-1-1/2	1 $\frac{1}{2}$	300	$\frac{3}{8}$	3 $\frac{3}{8}$	7 $\frac{1}{4}$	1 $\frac{1}{4}$	1.11
RC-729-2	2	300	$\frac{3}{8}$	4 $\frac{1}{8}$	7 $\frac{1}{4}$	1 $\frac{1}{8}$	1.65
RC-729-2-1/2	2 $\frac{1}{2}$	600	$\frac{1}{2}$	5 $\frac{1}{2}$	8	2	2.72
RC-729-3	3	600	$\frac{1}{2}$	6 $\frac{1}{8}$	8	2 $\frac{1}{4}$	2.72
RC-729-3-1/2	3 $\frac{1}{2}$	700	$\frac{1}{2}$	7 $\frac{1}{8}$	8	2 $\frac{3}{8}$	2.72
RC-729-4	4	700	$\frac{5}{8}$	7 $\frac{1}{8}$	8 $\frac{1}{2}$	2 $\frac{3}{8}$	3.91
RC-729-5	5	700	$\frac{5}{8}$	8 $\frac{3}{8}$	9	3 $\frac{1}{2}$	4.63
RC-729-6	6	1,000	$\frac{3}{4}$	9 $\frac{3}{8}$	9	4	7.07
RC-729-8	8	1,300	$\frac{7}{8}$	12	10	5 $\frac{1}{8}$	11.40
RC-729-10	10	1,700	$\frac{7}{8}$	14 $\frac{1}{8}$	11	6 $\frac{1}{8}$	13.70
RC-729-12	12	2,300	$\frac{7}{8}$	16 $\frac{1}{8}$	12	7 $\frac{1}{2}$	15.90
RC-729-14	14	3,075	1	17 $\frac{1}{4}$	12	8 $\frac{3}{8}$	28.70
RC-729-16	16	3,970	1	19 $\frac{1}{4}$	18	9 $\frac{1}{2}$	42.50
RC-729-18	18	4,200	1	21 $\frac{1}{8}$	18	10 $\frac{1}{2}$	46.60
RC-729-20	20	4,550	1 $\frac{1}{4}$	24 $\frac{1}{4}$	18	11 $\frac{1}{8}$	66.20
RC-729-24	24	6,160	1 $\frac{1}{2}$	28 $\frac{3}{8}$	24	14	102.50
RC-729-30	30	7,290	1 $\frac{1}{2}$	35 $\frac{1}{2}$	24	17 $\frac{1}{2}$	186.80

Standard Finish – GoldGalv®, unless otherwise stated.

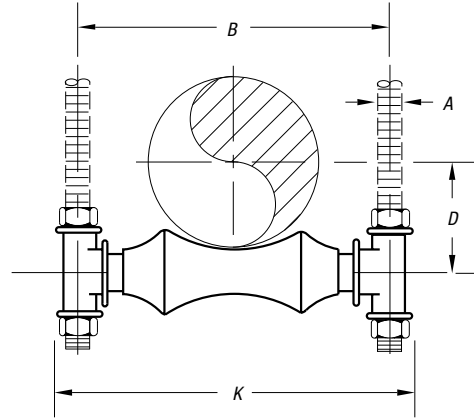
Pipe Straps, Conduit Clamps and Hangers

RC-729A — Adjustable Roll Support

Designed for longitudinal movement of pipe where vertical adjustment is required. Although primarily used for support of the pipe, this component may also be placed over the pipe to act as a guide.

Specifications

- Material: Cast Iron Pipe Roll and Sockets with a Carbon Steel Axle. Do not exceed 450° F/232° C at the contact point to the roll.
 - Compliance: A-A-1192A Type 42, MSS SP-69 Type 41.
 - Finish: Black (add suffix "-B"). Electro-Galvanized (add suffix "-HDG").
- For pipe with insulation and a pipe covering protection saddle, the RC-729A will have to be oversized to suit.
- Please see the table below which shows the correct sizing for insulated pipe.
- Ordering: Specify pipe size, catalog number and finish.



RC-729A

CAT. NO.	PIPE SIZE (IN.)	MAX. LOAD (LBS.)	DIMENSIONS (IN.)				WT. EACH (LBS.)
			ROD SIZE A	B	D	K	
RC-729A-1	1	600	3/8	3	1	4 1/2	.45
RC-729A-1-1/4	1 1/4	600	3/8	3 3/8	1 1/4	4 1/2	.48
RC-729A-1-1/2	1 1/2	600	3/8	3 3/8	1 3/8	4 3/4	.51
RC-729A-2	2	600	3/8	4 1/8	1 3/8	5 1/4	.57
RC-729A-2-1/2	2 1/2	600	1/2	5 1/2	2	7	1.48
RC-729A-3	3	700	1/2	6 1/8	2 1/4	7 3/8	1.48
RC-729A-4	4	700	5/8	7 1/8	2 3/8	8 3/8	1.78
RC-729A-5	5	700	5/8	8 3/8	3 1/2	9 3/8	2.42
RC-729A-6	6	1,000	3/4	9 3/8	4	11 3/8	3.96
RC-729A-7	7	1,200	3/4	10 3/4	4 3/4	12 1/2	5.99
RC-729A-8	8	1,300	7/8	12	5 1/8	14	6.43
RC-729A-10	10	1,700	7/8	14 1/8	6 1/4	16	8.45
RC-729A-12	12	2,400	7/8	16 1/8	7 1/2	18	10.20
RC-729A-14	14	3,100	1	17 3/4	8 3/8	20	20.90
RC-729A-16	16	3,900	1	19 3/8	9 1/2	22 1/2	26.07
RC-729A-18	18	4,200	1	22 1/2	10 1/2	24 3/4	36.59
RC-729A-20	20	4,500	1 1/4	24 1/8	11 3/8	26 3/4	39.00
RC-729A-24	24	6,100	1 1/2	28 3/8	14	32 1/2	66.90
RC-729A-30	30	7,200	1 1/2	35 1/2	17 1/2	39 3/4	134.00

RC-729A PIPE SIZE OF ROLL	PIPE SIZE OF COVERING PROTECTION SADDLE TO BE USED WITH RC-729A					
	C-789 1" COV. 25	C-789A 1 1/2" COV. 38	C-789B 2" COV. 51	C-789C 2 1/2" COV. 64	C-789D 3" COV. 76	C-789E 4" COV. 100
2 1/2	3/4-1	—	—	—	—	—
3	1 1/4-1 1/2	3/4-1	—	—	—	—
4	2 1/2-3	1 1/2	3/4-1	—	—	—
5	3 1/2	2-2 1/2	1 1/4-1 1/2	3/4-1	—	—
6	4-5	3-3 1/2	2-2 1/2	1 1/4-1 1/2	—	—
7	6	4-5	3-4	2-2 1/2	2-2 1/2	—
8	—	6	5	3-3 1/2	3-3 1/2	—
10	8	8	6	4-5	4-5	—
12	10	10	8	6	6-8	4-6
14	12	12	10	8	—	—
16	14	14	12-14	10	10	8
18	16	16	16	12-14	12-14	10
20	18	18	—	16	—	12
24	20	20	18-20	18-20	16-20	14-18
30	24	24	24	24	24	20-24

Standard Finish — GoldGalv®, unless otherwise stated.

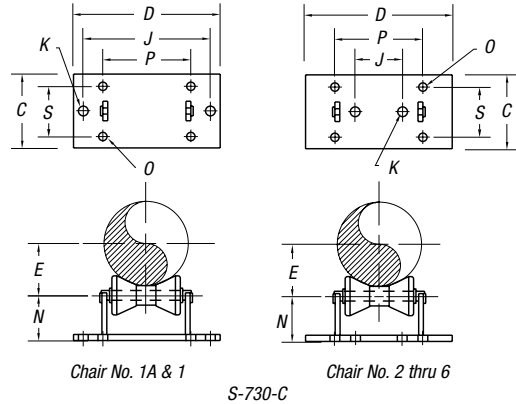
Pipe Straps, Conduit Clamps and Hangers

S-730-C — Chair and Roll

Designed for longitudinal movement of pipe where vertical adjustment is not required. Because the chair is made of steel, it can be either welded or bolted in position.

Specifications

- Material: Carbon Steel Chair and Axle with Cast Iron Pipe Roll. Use a Figure 17 when a Cast Iron Chair is required. Do not exceed 450° F/232° C at the contact point to the roll.
- Compliance: Federal Specification A-A-1192A Type 44, MSS-SP-69 Type 44.
- Finish: Black (add suffix "-B"). Electro-Galvanized (add suffix "-HDG").
- For pipe with insulation and a pipe covering protection saddle, the S-730-C will have to be oversized to suit.
- Please see the Table below showing the correct sizing for insulated pipe.
- Ordering: Specify chair number, catalog number and finish.



CHAIR NO.	BARE PIPE SIZE	C-789 1" COV. 25	C-789A 1½" COV. 38	C-789B 2" COV. 51	C-789C 2½" COV. 64	C-789D 3" COV. 76	C-789E 4" COV. 102
1 ^{25/32}	2	—	—	—	—	—	—
—	2½	¾-3	¾-2½	¾-1¼	—	—	—
—	3	20-80	20-65	20-40	—	—	—
—	3½	—	—	—	—	—	—
1	4	4-6	3-5	2-4	¾-1½	—	—
—	5	100-150	80-125	50-100	20-40	—	—
—	6	—	—	—	—	—	—
2	8	8	6-8	5-8	2-5	2-6	4-5
—	10	200	150-200	125-200	50-125	50-150	100-125
3	12	10-12	10-12	10-12	6-8	8	6-8
—	14	250-300	250-300	250-300	150-200	200	150-200
4	16	14-18	14-18	14-18	10-16	10-14	10-12
—	18	350-450	350-450	350-450	250-400	250-350	250-300
—	20	—	—	—	—	—	—
5	24	20	20	18-20	18-20	16-18	14-18
5	600	500	500	450-500	450-500	400-450	350-450
6	30	24	24	24	24	20-24	20-24
6	750	600	600	600	600	500-600	500-600
7	36	30	30	30	30	30	28
—	900	750	750	750	750	750	700
7	42	40	36	36	36	36	32
—	1,050	1,000	900	900	900	900	800

CAT. NO.	CHAIR NO.	MAX. LOAD (LBS.)	BARE PIPE SIZE (IN.)	DIMENSIONS (IN.)										WT. EACH (LBS.)
				C	D	E	J	K	M	N	O	P	S	
S-730-C-1A	1 ^{25/32}	390	2	6	8½	1½	6½	1	¼	2	4/64	3½	4½	7.0
			2½											
			3											
S-730-C-1	1	950	4	6	10½	2¼	8	1	¼	2¾	4/64	4¾	4¾	10.5
			5											
			6											
S-730-C-2	2	2,100	8	7	9	5½	4	1	¾	3¾	1/16	7	5	16.5
			10											
S-730-C-3	3	3,075	12	8	11	7¾	5¼	1	¾	4¾	1/16	9	6	26.8
			14											
S-730-C-4	4	4,980	16	9	12½	8¾	6¼	1	½	4¾	1/16	10	6½	40.5
			18											
			20											
S-730-C-5	5	6,100	24	8¾	13¾	13	7½	1	¾	4¾	1/16	11½	6¾	51.0
S-730-C-6	6	7,500	30	11	17¼	16¼	10	1	¾	5¾	1/16	14¾	8	89.8
S-730-C-7	7	12,000	36	12	20	20	12	1	1	5¾	1/16	17	9	145
			42											

Pipe Straps, Conduit Clamps and Hangers

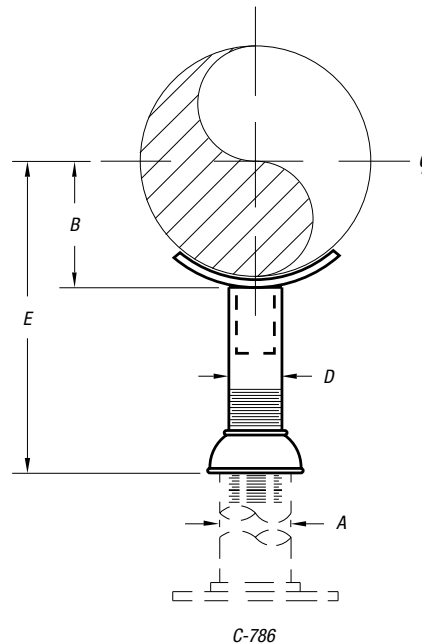
C-786 — Adjustable Pipe Support

Used for support of piping from below without welding to the pipe, and consists of a steel saddle, nipple and pipe reducer. It connects to a threaded pipe standard and base.

Rated loads are for up to 650° F (343° C).

Specifications

- Materials: Reducer is Cast Iron, Pipe saddle and nipple are carbon steel.
- Compliance: Federal Specification A-A-1192A Type 39, MSS-SP-69 Type 39.
- Finish: Standard Finish – GoldGalv®, Black (add suffix “-B”), Electro-Galvanized (add suffix “-EG”).
- Ordering: Specify pipe size, catalog number and finish.



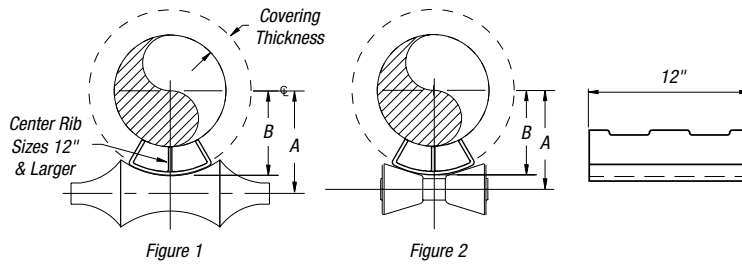
CAT. NO.	PIPE SIZE (IN.)	MAX. LOAD (LBS.)	DIMENSIONS (IN.)					WT. EACH (LBS.)
			A	B	D	MIN. E	MAX. E	
C-786-1-1/2	1½	5,000	2½	1¼	1½	8	13	4.75
C-786-2	2	5,000	2½	1½	1½	8	13	4.80
C-786-2-1/2	2½	5,000	2½	1¾	1½	8	13	4.90
C-786-3	3	5,000	2½	2¼	1½	8¼	13¼	5.00
C-786-4	4	7,000	3	2¾	2½	9½	14½	9.30
C-786-5	5	7,000	3	3¼	2½	9¾	14¾	9.65
C-786-6	6	7,000	3	3¾	2½	10¼	15¼	11.70
C-786-8	8	7,000	3	4¾	2½	11¼	16¼	12.90
C-786-10	10	7,000	3	5¾	2½	12¾	17¾	14.10
C-786-12	12	7,000	3	6¾	2½	13¾	18¾	15.30
C-786-14	14	7,000	4	7¾	3	15½	20½	21.70
C-786-16	16	7,000	4	8¾	3	16¾	21¾	25.40
C-786-18	18	7,000	6	9¾	4	19¾	24¾	39.30
C-786-20	20	7,000	6	10¾	4	20¾	25¾	44.90
C-786-24	24	10,000	6	12¾	4	22¼	27¼	54.30
C-786-30	30	10,000	6	15¾	4	25¼	30¼	62.40
C-786-36	36	10,000	6	18¾	4	28¼	33¼	70.20

Standard Finish – GoldGalv®, unless otherwise stated.

Pipe Straps, Conduit Clamps and Hangers

C-789, C-789A, C789B, C-789C, C-789D, C-789E — Pipe Covering Protection Saddle

The C-789 saddles are used to protect the insulation against damage and keep heat loss to a minimum. They are designed for 1" to 5" of covering. All Saddles are 12" long with three tabs on each side for welding to pipe. Sizes 12" and larger have a welded-in center rib.



C-789

Specifications

- Material: Carbon Steel (except C-789 and C-789-8 which are Chromium Molybdenum Steel).
- Compliance: Federal Specification A-A-1192A Type 39A or 39B, MSS-SP-69 Type 39A or 39B and BSPSS-BS3974.
- Finish: Standard Finish – GoldGalv®, Black (add suffix “-B”), Electro-Galvanized (add suffix “-EG”).
- Ordering: Specify catalog number and pipe size.

Pipe Saddles and Pipe Shields

CAT. NO.	PIPE SIZE (IN.)	MAX. COVERING THICKNESS (IN.)	ACTUAL COVERING THICKNESS (IN.)	MAX. LOAD (LBS.)	FIGURE 1 (IN.)			FIGURE 2 (IN.)			WT. EACH (LBS.)
					ROLL SIZE	A	B	ROLL SIZE	A	B	
C-789-3/4	3/4	1	15/16	1,200	2 1/2	2 1/8	1 3/8	2-3 1/2	2 5/16	1 3/8	1.15
C-789A-3/4	3/4	1 1/2	1 1/2	1,200	3	2 3/8	2 1/8	2-3 1/2	2 11/16	2 1/4	2.10
C-789B-3/4	3/4	2	2	1,200	4	3 1/4	2 3/8	2-3 1/2	3 3/8	2 3/8	2.63
C-789-1	1	1	1 1/16	1,200	2 1/4	2 3/4	1 3/4	2-3 1/2	2 7/16	1 3/4	1.15
C-789A-1	1	1 1/2	1 3/16	1,200	3	2 7/8	2 3/8	2-3 1/2	2 5/16	2 3/8	2.10
C-789B-1	1	2	2 1/8	1,200	4	3 3/8	2 3/4	2-3 1/2	3 1/2	2 3/4	2.63
C-789-1-1/4	1 1/4	1	7/8	1,200	3	2 1/2	2	2-3 1/2	2 3/16	2	1.25
C-789A-1-1/4	1 1/4	1 1/2	1 3/8	1,200	3 1/2	3	2 1/2	2-3 1/2	3 3/16	2 1/2	2.10
C-789B-1-1/4	1 1/4	2	1 5/16	1,200	5	3 3/8	3 1/16	2-3 1/2	3 11/16	3 1/16	2.63
C-789C-1-1/4	1 1/4	2 1/2	2 1/2	1,200	6	4 1/4	3 1/2	4-6	4 1/16	3 1/2	3.25
C-789-1-1/2	1 1/2	1	1 1/16	1,200	3	2 1/2	2	2-3 1/2	2 11/16	2	1.50
C-789A-1-1/2	1 1/2	1 1/2	1 3/16	1,200	4	3 1/8	2 3/8	2-3 1/2	3 3/16	2 3/8	2.10
C-789B-1-1/2	1 1/2	2	2 3/8	1,800	5	4 9/16	3 3/8	2-3 1/2	3 3/4	3 3/8	3.10
C-789C-1-1/2	1 1/2	2 1/2	2 3/8	1,800	6	4 3/8	3 3/8	4-6	4 3/16	3 3/8	3.75
C-789-2	2	1	1 1/16	1,200	3 1/2	2 3/8	2 3/8	2-3 1/2	2 15/16	2 3/8	1.63
C-789A-2	2	1 1/2	1 3/16	1,200	4	3 3/16	2 3/8	2-3 1/2	3 3/16	2 3/8	2.10
C-789B-2	2	2	2 1/8	1,800	6	4 1/4	3 1/2	4-6	3 3/8	3 1/2	3.12
C-789C-2	2	2 1/2	2 3/8	1,800	7	4 3/4	4	4-6	4 13/16	4	3.63
C-789D-2	2	3	3 1/16	1,800	7	5 1/4	4 1/2	7-10	5 5/16	4 1/2	4.40
C-789-2-1/2	2 1/2	1	1 1/16	1,200	4	3 1/2	2 3/8	2-3 1/2	3 3/16	2 3/8	1.75
C-789A-2-1/2	2 1/2	1 1/2	1 3/8	1,200	6	4 1/2	3 3/8	2-3 1/2	3 3/4	3 3/8	2.40
C-789B-2-1/2	2 1/2	2	2 3/8	1,800	6	4 3/8	3 3/8	4-6	4 3/16	3 3/8	3.12
C-789C-2-1/2	2 1/2	2 1/2	2 3/8	1,800	7	5 1/16	4 3/8	7-10	5 1/16	4 3/8	3.63
C-789D-2-1/2	2 1/2	3	3 3/8	1,800	7	5 3/8	4 3/8	7-10	5 3/16	4 3/8	4.40

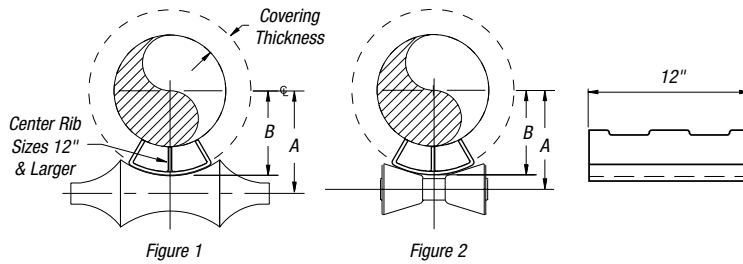
Standard Finish – GoldGalv®, unless otherwise stated.

Pipe Straps, Conduit Clamps and Hangers

Pipe Saddles and Pipe Shields (Continued)

CAT. NO.	PIPE SIZE (IN.)	MAX. COVERING THICKNESS (IN.)	ACTUAL COVERING THICKNESS (IN.)	MAX. LOAD (LBS.)	FIGURE 1 (IN.)			FIGURE 2 (IN.)			WT. EACH (LBS.)
					ROLL SIZE	A	B	ROLL SIZE	A	B	
C-789-3	3	1	1 ¹ / ₁₆	1,200	4	3 ¹ / ₂	2 ¹ / ₈	2-3 ¹ / ₂	3 ³ / ₁₆	2 ¹ / ₈	1.75
C-789A-3	3	1 ¹ / ₂	1 ⁹ / ₁₆	1,800	6	4 ¹ / ₂	3 ³ / ₄	4-6	4 ¹ / ₁₆	3 ³ / ₄	2.75
C-789B-3	3	2	2 ¹ / ₁₆	1,800	7	4 ³ / ₄	4	4-6	4 ⁹ / ₁₆	4	3.50
C-789C-3	3	2 ¹ / ₂	2 ⁹ / ₁₆	1,800	8	5 ³ / ₈	4 ⁵ / ₈	7-10	5 ³ / ₈	4 ⁵ / ₈	3.93
C-789D-3	3	3	3 ¹ / ₁₆	1,800	8	5 ¹ / ₂	5	7-10	6	5	4.40
C-789-4	4	1	1 ¹ / ₁₆	5,000	6	4 ¹ / ₄	3 ¹ / ₂	4-6	4	3 ¹ / ₂	2.13
C-789A-4	4	1 ¹ / ₂	1 ⁹ / ₁₆	5,000	7	4 ³ / ₄	4	4-6	4 ¹ / ₁₆	4	3.00
C-789B-4	4	2	2 ¹ / ₁₆	5,000	7	5 ³ / ₈	4 ⁵ / ₈	4-6	5 ¹ / ₈	4 ⁵ / ₈	3.50
C-789C-4	4	2 ¹ / ₂	2 ⁹ / ₁₆	5,000	10	6	5 ¹ / ₈	7-10	5 ¹ / ₈	5 ¹ / ₈	3.93
C-789D-4	4	3	3 ¹ / ₈	5,000	10	6 ³ / ₈	5 ³ / ₄	7-10	6 ³ / ₈	5 ³ / ₄	5.00
C-789E-4	4	4	4 ¹ / ₈	5,000	12	7 ¹ / ₄	6 ¹ / ₂	7-10	7 ¹ / ₁₆	6 ¹ / ₂	6.30
C-789-4	4	4	4 ¹ / ₁₆	5,000	12	7 ³ / ₄	6 ¹ / ₂	7-10	7 ³ / ₄	6 ¹ / ₂	14.45
C-789-4	4	5 ¹ / ₂	5 ¹ / ₁₆	5,000	16	9 ³ / ₈	8 ¹ / ₄	16	9 ¹ / ₂	8 ¹ / ₄	26.40
C-789-5	5	1	1 ¹ / ₁₆	1,800	6	4 ⁷ / ₈	4 ¹ / ₂	4-6	4	4 ¹ / ₂	2.38
C-789A-5	5	1 ¹ / ₂	1 ⁹ / ₁₆	1,800	7	5 ¹ / ₂	4 ³ / ₄	4-6	5 ¹ / ₁₆	4 ³ / ₄	3.00
C-789B-5	5	2	2 ¹ / ₁₆	1,800	8	6	5 ¹ / ₄	7-10	6	5 ¹ / ₄	3.62
C-789C-5	5	2 ¹ / ₂	2 ⁹ / ₁₆	1,800	10	6 ³ / ₈	5 ³ / ₄	7-10	6 ¹ / ₁₆	5 ³ / ₄	4.06
C-789D-5	5	3	3 ¹ / ₁₆	1,800	10	7 ³ / ₈	6 ¹ / ₄	7-10	7 ³ / ₃₂	6 ¹ / ₄	5.00
C-789E-5	5	4	4 ¹ / ₄	1,800	12	8 ¹ / ₄	7	7-10	8 ³ / ₃₂	7	6.30
C-789-5	5	4	4 ³ / ₁₆	5,000	12	8 ³ / ₈	7 ¹ / ₈	7-10	8 ¹ / ₄	7 ¹ / ₈	14.95
C-789-5	5	5 ¹ / ₂	5 ¹ / ₁₆	5,000	18	10 ³ / ₁₆	8 ³ / ₄	18	10 ³ / ₄	8 ³ / ₄	27.40
C-789-6	6	1	1	1,800	7	5 ³ / ₈	4 ⁵ / ₈	4-6	5 ¹ / ₈	4 ⁵ / ₈	3.85
C-789A-6	6	1 ¹ / ₂	1 ¹ / ₂	1,800	8	5 ³ / ₈	5	7-10	6 ³ / ₁₆	5	4.75
C-789B-6	6	2	2 ¹ / ₁₆	1,800	10	6 ³ / ₈	5 ¹ / ₂	7-10	6 ¹ / ₈	5 ¹ / ₂	6.28
C-789C-6	6	2 ¹ / ₂	2 ⁹ / ₁₆	1,800	12	7	6	12-15	7 ¹ / ₈	6	7.09
C-789D-6	6	3	3 ¹ / ₁₆	1,800	12	7 ³ / ₄	6 ¹ / ₂	7-10	7 ¹ / ₈	6 ¹ / ₂	8.10
C-789E-6	6	4	4 ³ / ₁₆	1,800	12	8 ³ / ₈	7 ¹ / ₈	12-15	8 ³ / ₁₆	7 ¹ / ₈	10.15
C-789-6	6	4	4 ¹ / ₈	7,200	12	8 ³ / ₈	7 ¹ / ₈	12-15	8 ³ / ₈	7 ¹ / ₈	16.00
C-789-6	6	5 ¹ / ₂	5 ³ / ₈	7,200	18	11 ¹ / ₁₆	10	18	11 ¹ / ₂	10	27.50
C-789-8	8	1	1 ¹ / ₁₆	1,800	10	7	6	7-10	6 ¹ / ₁₆	6	5.05
C-789A-8	8	1 ¹ / ₂	1 ⁹ / ₁₆	1,800	10	7	6	7-10	7 ¹ / ₁₆	6	5.25
C-789B-8	8	2	2 ¹ / ₁₆	1,800	12	7 ¹ / ₂	6 ¹ / ₂	7-10	7 ¹ / ₁₆	6 ¹ / ₂	7.00
C-789C-8	8	2 ¹ / ₂	2 ¹ / ₁₆	1,800	14	8 ¹ / ₄	7	12-15	8 ¹ / ₁₆	7	7.55
C-789D-8	8	3	3 ¹ / ₁₆	1,800	12	8 ³ / ₈	7 ³ / ₈	12-15	8 ³ / ₃₂	7 ³ / ₈	9.90
C-789E-8	8	4	4 ³ / ₁₆	1,800	16	10	8 ³ / ₄	12-15	9 ³ / ₁₆	8 ³ / ₄	10.13
C-789-8	8	4	4 ³ / ₁₆	7,200	16	10	8 ³ / ₄	12-15	9 ³ / ₈	8 ³ / ₄	16.90
C-789-8	8	5 ¹ / ₂	5 ⁹ / ₁₆	7,200	20	11 ¹ / ₁₆	10 ¹ / ₄	20	11 ¹ / ₄	10 ¹ / ₄	34.10
C-789-10	10	1	1	1,800	10	8 ¹ / ₄	7 ¹ / ₄	7-10	6 ¹ / ₁₆	7 ¹ / ₄	5.05
C-789A-10	10	1 ¹ / ₂	1 ¹ / ₈	1,800	10	8 ¹ / ₄	7 ¹ / ₄	7-10	7 ¹ / ₁₆	7 ¹ / ₄	5.25
C-789B-10	10	2	2 ¹ / ₁₆	1,800	12	9 ¹ / ₈	7 ¹ / ₈	7-10	7 ¹ / ₁₆	7 ¹ / ₈	7.0
C-789C-10	10	2 ¹ / ₂	2 ¹ / ₈	1,800	16	9 ³ / ₈	8 ³ / ₈	16-20	9 ¹ / ₁₆	8 ³ / ₈	8.75
C-789D-10	10	3	3 ¹ / ₈	5,000	16	10 ³ / ₈	8 ³ / ₈	16-20	10 ³ / ₈	8 ³ / ₈	10.70
C-789E-10	10	4	4 ¹ / ₈	5,000	18	11 ¹ / ₈	9 ³ / ₄	16-20	11 ¹ / ₁₆	9 ³ / ₄	13.88
C-789-10	10	4	4 ¹ / ₁₆	7,200	18	11 ¹ / ₈	9 ³ / ₄	16-20	11 ¹ / ₈	9 ³ / ₄	17.50
C-789-10	10	5 ¹ / ₂	5 ⁹ / ₁₆	7,200	20	13 ³ / ₈	11 ¹ / ₄	20	12 ³ / ₈	11 ¹ / ₄	36.60
C-789-12	12	1	1 ¹ / ₁₆	2,500	14	9 ³ / ₈	8 ³ / ₈	12-15	9 ¹ / ₄	8 ³ / ₈	7.30
C-789A-12	12	1 ¹ / ₂	1 ¹ / ₈	5,000	14	9 ³ / ₈	8 ³ / ₈	12-15	9 ¹ / ₈	8 ³ / ₈	7.35
C-789B-12	12	2	2 ¹ / ₈	5,000	16	10	8 ³ / ₈	16-20	9 ³ / ₁₆	8 ³ / ₈	9.20
C-789C-12	12	2 ¹ / ₂	2 ¹ / ₈	5,000	18	10 ¹ / ₂	9 ³ / ₈	16-20	10 ¹ / ₁₆	9 ³ / ₈	10.04
C-789D-12	12	3	3 ¹ / ₈	5,000	18	11 ¹ / ₄	9 ³ / ₄	16-20	11 ¹ / ₈	9 ³ / ₄	11.00
C-789E-12	12	4	4 ¹ / ₈	5,000	20	12 ¹ / ₄	10 ³ / ₄	16-20	12 ¹ / ₁₆	10 ³ / ₄	14.45
C-789-12	12	4	4 ¹ / ₈	11,000	20	12 ¹ / ₄	10 ³ / ₄	16-20	12 ¹ / ₈	10 ³ / ₄	28.00
C-789-12	12	5 ¹ / ₂	5 ⁹ / ₁₆	11,000	24	14 ¹ / ₄	12 ³ / ₈	24	13 ³ / ₄	12 ³ / ₈	36.60

Pipe Straps, Conduit Clamps and Hangers



C-789

Pipe Saddles and Pipe Shields (Continued)

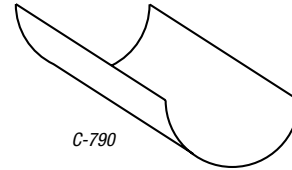
CAT. NO.	PIPE SIZE (IN.)	MAX. COVERING THICKNESS (IN.)	ACTUAL COVERING THICKNESS (IN.)	MAX. LOAD (LBS.)	FIGURE 1 (IN.)			FIGURE 2 (IN.)			WT. EACH (LBS.)
					ROLL SIZE	A	B	ROLL SIZE	A	B	
C-789A-14	14	1½	1½	5,000	16	10¼	9	16-20	10⅝	9	8.25
C-789B-14	14	2	2	5,000	18	10¼	9⅝	16-20	10¼	9⅝	9.20
C-789C-14	14	2½	2⅝	5,000	18	11⅝	9⅝	16-20	11¼	9⅝	10.04
C-789D-14	14	3	3	5,000	18	12	10½	16-20	11¾	10½	11.00
C-789E-14	14	4	4	5,000	24	13¼	11¾	22-24	12⅜	11¾	15.50
C-789-14	14	4	4	11,000	24	12¾	11¼	22-24	11⅞	11¼	27.60
C-789-14	14	5½	5½	11,000	24	15	13⅝	24	14½	13⅝	36.60
C-789A-16	16	1½	1½	5,000	18	11⅝	9¼	16-20	11¼	9¼	8.25
C-789B-16	16	2	2	5,000	20	11¾	10¼	16-20	11⅝	10¼	9.20
C-789C-16	16	2½	2½	7,200	20	12¼	10¾	16-20	12¼	10¾	13.69
C-789D-16	16	3	3	7,200	24	12⅝	11⅝	22-24	12⅞	11⅝	14.65
C-789E-16	16	4	4	7,200	24	14	12¼	22-24	13⅞	12¼	15.50
C-789-16	16	4	4	11,000	24	14	12¼	22-24	13⅝	12¼	30.10
C-789-16	16	5½	5½	11,000	30	16⅝	13⅞	30	15¼	13⅞	39.00
C-789A-18	18	1½	1½	5,000	20	12¼	10¾	16-20	12¼	10¾	9.35
C-789B-18	18	2	2	7,200	24	13⅝	11⅝	22-24	12⅜	11⅝	12.00
C-789C-18	18	2½	2½	7,200	24	13½	11¾	22-24	13	11¾	14.19
C-789D-18	18	3	3	7,200	24	14	12¼	22-24	13½	12¼	15.25
C-789E-18	18	4	4	7,200	24	15⅝	13⅞	22-24	14⅞	13⅞	21.00
C-789-18	18	4	4	13,200	24	15⅝	13⅞	22-24	14⅞	13⅞	40.30
C-789-18	18	5½	5½	13,200	30	17⅓	15	30	16⅞	15	52.10
C-789A-20	20	1½	1½	7,200	24	13½	11¾	22-24	13	11¾	11.05
C-789B-20	20	2	2	7,200	24	14	12¼	22-24	13½	12¼	12.40
C-789C-20	20	2½	2½	7,200	24	14⅞	12⅞	22-24	14⅞	12⅞	14.19
C-789D-20	20	3	3	7,200	24	15¼	13¾	26-30	14⅞	13¾	15.25
C-789E-20	20	4	4	7,200	30	16½	14¼	26-30	15¼	14¼	22.80
C-789-20	20	4	4	13,200	7	16⅝	14⅞	26-30	15⅞	14⅞	44.80
C-789-20	20	5½	5½	13,200	30	18⅓	16	30	17⅞	16	52.10
C-789A-24	24	1½	1½	7,200	30	16⅞	14⅞	26-30	15¼	14⅞	12.90
C-789B-24	24	2	2	7,200	30	16⅞	14⅞	26-30	15¼	14⅞	13.90
C-789C-24	24	2½	2½	7,200	30	17	14¾	26-30	16⅞	14¾	18.07
C-789D-24	24	3	3	7,200	30	17½	15¼	26-30	17⅞	15¼	19.35
C-789E-24	24	4	4	7,200	30	18¾	16½	26-30	18	16½	23.10
C-789-24	24	4	4	13,200	30	18⅞	16⅝	26-30	18⅞	16⅝	45.40

Standard Finish - GoldGalv®, unless otherwise stated.

Pipe Straps, Conduit Clamps and Hangers

C-790 — Insulation Shield

Designed to protect the insulation and distribute the load at the hanger point. This item is usually used with our C-710 Clevis Hanger.



Specifications

- Approvals: Federal Specification A-A-1192A Type 40, MSS-SP-69 Type 40
- Material: Carbon Steel
- Finish: Standard Finish – GoldGalv®, Black (add suffix “-B”), Electro-Galvanized (add suffix “-EG”)
- Ordering: Specify hanger size and catalog number

Shield Size Selection Table

PIPE SIZES	1/2	3/4	1	1 1/2	2
Insulation Thickness (Inches)					
1/2	1A*	1A	—	—	—
3/4	1A	1A	2A	4A	6A
1	1A	2A	3A	5A	7A
1 1/4	2A	3A	4A	6A	7A
1 1/2	2A	3A	4A	6A	7A
2	3A	4A	5A	7A	8A
2 1/2	4A	5A	6A	7A	8A
3	5A	6A	7A	8A	9A
3 1/2	—	—	8A	9A	10A
4	—	—	8A	9A	10A
5	—	—	9B	10B	11B
6	—	—	10B	11B	12B
8	—	—	—	13C	14C
10	—	—	14C	15C	16C
12	—	—	16C	17C	19C
14	—	—	17C	19C	—

CAT. NO.	INSIDE DIAMETER (IN.)	CLEVIS HANGER SIZE (IN.)	LENGTH (IN.)	WT. EACH (LBS.)
C-790-1A	2 3/8	2	12	.62
C-790-2A	2 7/8	2 1/2	12	.76
C-790-3A	3 1/2	3	12	.92
C-790-4A	4	3 1/2	12	1.04
C-790-5A	4 1/2	4	12	1.16
C-790-6A	5	5	12	1.32
C-790-7A	5 5/8	5	12	1.46
C-790-8A	6 5/8	6	12	1.58
C-790-9A	7 5/8	7	12	1.74
C-790-10A	8 5/8	8	12	2.02
C-790-11B	9 5/8	10	12	2.28
C-790-12B	10 3/4	10	12	2.54
C-790-13C	11 3/4	12	12	2.84
C-790-14C	12 3/4	12	12	4.18
C-790-15C	14	14	12	4.58
C-790-16C	15	16	12	4.90
C-790-17C	16	16	12	5.20
C-790-18C	17	18	12	5.53

Standard Finish – GoldGalv®, unless otherwise stated.

M-117 — Eye Socket

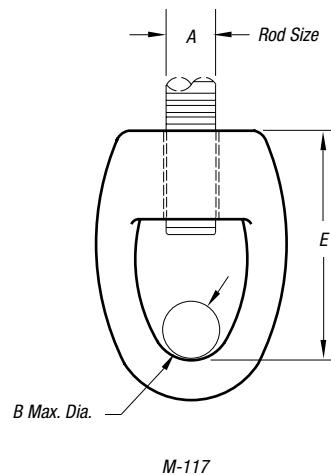
Designed for attaching a rod to split ring type clamps. M-117 is only available in 1/4", 3/8" and 1/2" rod sizes.

Specifications

- Material: Malleable Iron
- Compliance: Federal Specification WW-H-171E Type 16, MSS-SP-69 (Type 16)
- Finish: Plain, Copper
- Ordering: Specify rod size and catalog number

CAT. NO.	ROD SIZE A (IN.)	MAX LOAD (LBS.)	MAX B (IN.)	E (IN.)	WT. EACH (LBS.)
M-117-1/4	1/4	240	1/4	1 5/8	.08
M-117-3/8	3/8	610	1/4	1 5/8	.08
M-117-1/2	1/2	1,000	1/4	1 15/16	.11
M-117-5/8	5/8	1,400	3/8	1 3/4	.22
M-117-3/4	3/4	2,200	1/2	2 1/4	.30
M-117-7/8	7/8	2,300	1/2	2 15/16	.32

Standard Finish – GoldGalv®, unless otherwise stated.



Pipe Straps, Conduit Clamps and Hangers

Rods and Rod Attachments

Shield Size Selection Table

CAT. NO.	PIPE SIZES	D	F	1	1D	2
<i>Insulation Thickness (Inches)</i>						
C-790-1/2	1/2	1A*	1A	—	—	—
C-790-3/4	3/4	1A	1A	2A	4A	6A
C-790-1	1	1A	2A	3A	5A	7A
C-790-1-1/4	1 1/4	2A	3A	4A	6A	7A
C-790-1-1/2	1 1/2	2A	3A	4A	6A	7A
C-790-2	2	3A	4A	5A	7A	8A
C-790-2-1/2	2 1/2	4A	5A	6A	7A	8A
C-790-3	3	5A	6A	7A	8A	9A
C-790-3-1/2	3 1/2	—	—	8A	9A	10A
C-790-4	4	—	—	8A	9A	10A
C-790-5	5	—	—	9B	10B	11B
C-790-6	6	—	—	10B	11B	12B
C-790-8	8	—	—	—	13C	14C
C-790-10	10	—	—	14C	15C	16C
C-790-12	12	—	—	16C	17C	18C
C-790-14	14	—	—	17C	18C	—

*For Unarco foam, specify X1A

Sizes of CL-710 or C-710 Clevis

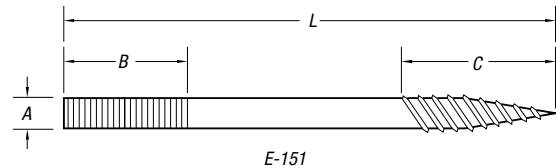
PIPE SIZES	1/2	3/4	1	1 1/2	2
<i>For Use with Shields Outside of Insulation. Insulation Thickness (Inches)</i>					
1/2	2	2	—	—	—
3/4	2	2	2 1/2	3 1/2	5
1	2	2 1/2	3	4	5
1 1/4	2 1/2	3	3	5	5
1 1/2	2 1/2	3	3 1/2	5	5
2	3	3 1/2	4	5	6
2 1/2	3 1/2	4	5	5	6
3	4	5	5	6	8
3 1/2	—	—	6	8	8
4	—	—	6	8	8
5	—	—	8	8	10
6	—	—	8	10	10
8	—	—	—	12	12
10	—	—	12	—	—

E-151 — Lag Rod

Designed for a vertical rod connection to wood.

Specifications

- Material: Carbon Steel
- Finish: Standard Finish – GoldGalv®, Black (add suffix “-B”), Electro-Galvanized (add suffix “-EG”)
- Ordering: Specify rod diameter, rod length, catalog number and finish



CAT. NO.	ROD SIZE (IN.)	MAX LOAD (LBS.)	MIN. LENGTH (IN.)		WT. EACH (LBS.)				
			MACHINE B	COACH C	LENGTH — DIMENSION L				
					4	6	8	10	12
E-151-3/8	3/8	390	2 1/2	2	.12	.19	.25	.31	.37
E-151-1/2	1/2	640	2 1/2	2	.22	.34	.44	.56	.67
E-151-5/8	5/8	750	2 1/2	2 1/2	.35	.53	.70	.87	.99

Standard Finish – GoldGalv®, unless otherwise stated

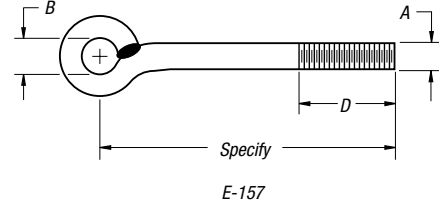
Pipe Straps, Conduit Clamps and Hangers

E-157 — Machine Thread Eye Rod

Welded Eyeroads are designed to permit swing in the attachment component due to pipe movement.

Specifications

- Material: Carbon Steel. Larger rod diameters over 2 1/2", special materials and special eye dimensions can be furnished upon request
- Finish: Standard Finish – GoldGalv®, Black (add suffix "-B"), Electro-Galvanized (add suffix "-EG")
- Ordering: Specify catalog number, finish, rod size, rod length and thread length if other than standard



A (IN.)	3/8	1/2	5/8	3/4	7/8	1	1 1/4	1 1/2	1 3/4	2	2 1/4	2 1/2
B (IN.)	3/4	7/8	1	1 1/8	1 1/4	1 3/8	1 1/2	1 3/4	2	2 1/4	3	3 1/4
Thread	3	3	3	3	4	4	4	6	6	6	6	6
Length D (IN.)												
Load at (LBS.) 650° F/343° C	610	1,130	1,810	2,710	3,770	4,960	8,000	11,630	15,700	20,700	27,200	33,500
Load at (LBS.) 750° F/399° C	540	1,010	1,610	2,420	3,360	4,420	7,140	10,370	14,000	18,460	24,260	29,880

Standard Finish – GoldGalv®, unless otherwise stated

Pipe Straps, Conduit Clamps and Hangers

F-111 — Forged Steel Clevis

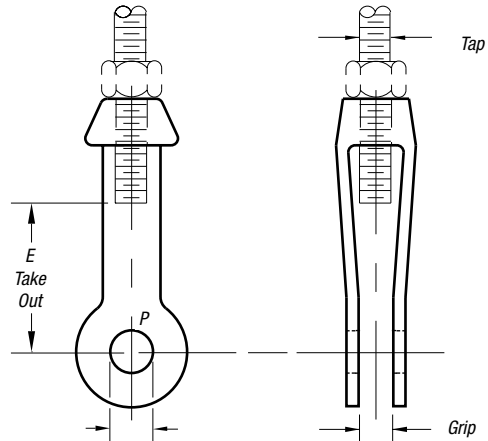
Used to connect rod ends with structural steel welding lug plates or lugs welded to pipe. It provides a pivot point and adjustment. It can be supplied with a pin as F-111.

Specifications

- Material: Forged Steel
- Compliance: Federal Specification A-A-1192A Type 14, MSS-SP 69 Type 14 and BSPSS-BS3974
- Finish: Standard Finish – GoldGalv®, Black (add suffix “-B”), Electro-Galvanized (add suffix “-EG”)
- Ordering: Specify catalog number, rod size, pin size, grip “G” and finish

CAT. NO.	ROD SIZE	MAX. LOAD 650° F/343° C	PIN/BOLT DIA.	SIZE NO.	P	WT. EACH (LBS.)
F-111-3/8	3/8	610	1/2	2	3/16	.77
F-111-1/2	1/2	1,130	3/8	2	1/16	.77
F-111-5/8	5/8	1,810	3/4	2	1/16	.77
F-111-3/4	3/4	2,710	7/8	2 1/2	1	2.50
F-111-7/8	7/8	3,770	1	2 1/2	1 1/8	2.50
F-111-1	1	4,960	1 1/8	3	1 1/4	4.00
F-111-1-1/4	1 1/4	8,000	1 3/8	3	1 1/2	4.00
F-111-1-1/2	1 1/2	11,630	1 3/8	3 1/2	1 3/4	6.00
F-111-1-3/4	1 3/4	15,700	1 3/8	4	2	8.00
F-111-2	2	20,700	2 1/4	5	2 3/8	16.00
F-111-2-1/4	2 1/4	27,200	2 1/2	6	2 3/8	26.00
F-111-2-1/2	2 1/2	33,500	2 3/4	6	2 3/8	36.00

Standard Finish – GoldGalv®, unless otherwise stated



F-111

Note: Pins and Cotter Pins supplied when requested as Fig. F-111.

E-120-A — Forged Weldless Eyenut

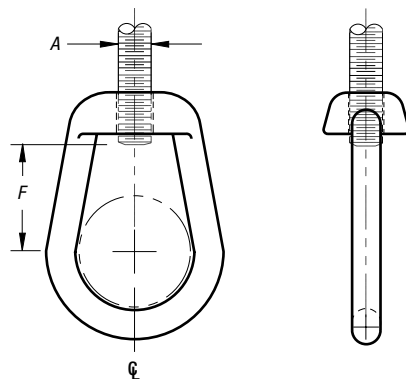
Used to connect rod ends with structural steel welded beam attachments or pipe clamps as a substitute for a welded eyerod. It provides a pivot point and adjustment. It can also be supplied tapped left hand as E-120-A.

Specifications

- Material: Forged Steel
- Compliance: Federal Specification A-A-1192A Type 14, MSS-SP 69 Type 14 and BSPSS-BS3974
- Finish: Standard Finish – GoldGalv®, Black (add suffix “-B”), Electro-Galvanized (add suffix “-EG”)
- Ordering: Specify catalog number, rod size and finish

CAT. NO.	ROD TAP A	MAX. LOAD 650° F/343° C	F	WT. EACH (LBS.)
E-120-A-3/8	3/8	610	1	.20
E-120-A-1/2	1/2	1,130	1	.31
E-120-A-5/8	5/8	1,810	1	.55
E-120-A-3/4	3/4	2,710	1	1.00
E-120-A-7/8	7/8	3,770	1 1/8	1.55
E-120-A-1	1	4,960	1 1/4	2.45
E-120-A-1-1/4	1 1/4	8,000	1 3/4	3.75
E-120-A-1-1/2	1 1/2	11,630	1 3/4	6.75
E-120-A-1-3/4	1 3/4	15,700	3 1/4	16.40
E-120-A-2	2	20,700	3 1/4	16.75
E-120-A-2-1/4	2 1/4	27,200	3 1/4	16.75
E-120-A-2-1/2	2 1/2	33,500	3 1/4	16.75

Standard Finish – GoldGalv®, unless otherwise stated



E-120-A