

CATALOG



List Price Book
ELECTRICAL & MECHANICAL SUPPORT SYSTEMS

Metal Framing • Pipe Supports • Fittings, Nuts & Hardware

A PART OF



SECTION	DESCRIPTION	PAGE
1	Channel.....	4 – 10
2	Fittings and Accessories	11 – 39
3	Pipe Hangers ••New Product**	40–41
-	Material and Finish Specifications	42
-	Ordering Information	42
-	Terms and Conditions	43

Product Codes	
Code	Product Category
A	CHANNELS
B	PIPE CLAMPS
C	CHANNEL NUTS
D	GENERAL FITTINGS & HARDWARE
F	CONCRETE INSERTS
G	CUSHIONED CLAMPS
H	SLOTTED ANGLE

Warning: Power-Strut products are carefully designed and manufactured to the listed standards, as applicable. However, Power-Strut reserves the right to revise product design without notification. Power-Strut products included in this catalog are intended for installation and service only as described or specified herein. Care should be exercised by installers and end-users to install, use and maintain these products properly to avoid an possible on-the-job accidents. Prices subject to change upon notice.

Note: P.O.A. = Priced on Availability



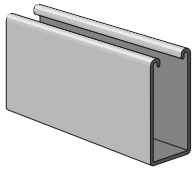
POWER-STRUT®



Part No. & Length Std Qty Wt./100 List Price per 100 ft.

PS 100

1 5/8" x 3 1/4" x 12 Ga. Channel

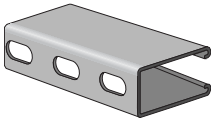


PS 100 10	GR	300	307	\$1,286.79
PS 100 10	HG	300	315	\$2,442.25
PS 100 10	PG	300	315	\$1,384.92
PS 100 10	PL	300	307	\$1,170.93
PS 100 20	GR	400	307	\$1,311.65
PS 100 20	HG	400	315	\$2,548.44
PS 100 20	PG	400	315	\$1,384.92
PS 100 20	PL	400	307	\$1,221.85
PS 100 20	ZD	400	307	\$1,445.08

PS 100 EH

1 5/8" x 3 1/4" x 12 Ga. Channel

With 1 1/8" x 9/16" Elongated Holes On 2" Centers

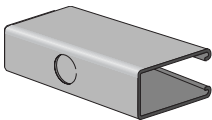


PS 100 EH 10	GR	300	298	\$1,513.89
PS 100 EH 10	HG	300	310	\$2,832.82
PS 100 EH 10	PG	300	306	\$1,606.26
PS 100 EH 10	PL	300	298	\$1,506.70
PS 100 EH 10	ZD	300	315	\$1,606.21
PS 100 EH 20	GR	400	298	\$1,513.89
PS 100 EH 20	HG	400	310	\$2,832.82
PS 100 EH 20	PG	400	300	\$1,606.26
PS 100 EH 20	PL	400	298	\$1,572.21
PS 100 EH 20	ZD	400	311	\$1,676.04

PS 100 K06

1 5/8" x 3 1/4" x 12 Ga. Channel

With 7/8" Knock Out On 6" Centers

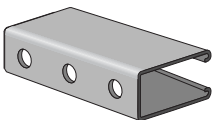


PS 100 K06 10	GR	300	307	\$1,909.24
PS 100 K06 10	PG	300	315	\$2,040.21
PS 100 K06 20	GR	400	307	\$1,909.24
PS 100 K06 20	PG	400	315	\$1,955.20
PS 100 K06 20	PL	400	307	\$1,725.90

PS 100 H

1 5/8" x 3 1/4" x 12 Ga. Channel

With 9/16" Holes On 1 7/8" Centers

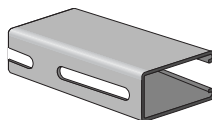


PS 100 H 10	GR	300	302	\$1,940.21
PS 100 H 10	HG	300	310	\$2,955.99
PS 100 H 10	PG	300	310	\$1,987.84
PS 100 H 10	PL	300	302	\$1,740.73
PS 100 H 20	GR	400	302	\$1,940.21
PS 100 H 20	HG	600	310	\$2,955.99
PS 100 H 20	PG	400	310	\$1,987.84
PS 100 H 20	PL	400	302	\$1,740.73

PS 100 S

1 5/8" x 3 1/4" x 12 Ga. Channel

With 13/32" x 3" Slots On 4" Centers



PS 100 S 10	GR	300	296	\$1,887.93
PS 100 S 10	HG	300	301	\$2,955.99
PS 100 S 10	PG	300	304	\$1,990.47
PS 100 S 10	PL	300	296	\$1,752.98
PS 100 S 20	GR	400	296	\$1,941.87
PS 100 S 20	HG	400	301	\$2,955.99
PS 100 S 20	PG	400	304	\$1,990.47
PS 100 S 20	PL	400	296	\$1,752.98



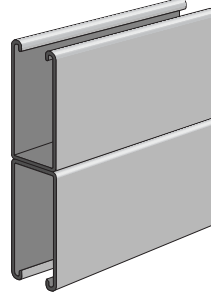
POWER-STRUT®



Part No. & Length Fin. Std Qty Wt./100 List Price per 100 ft.

PS 100 2T3

Two PCS PS 100 Welded Back To Back 1 5/8" x 6 1/2" x 12 Ga.



PS 100 2T3 10	GR	150	614	\$3,630.22
PS 100 2T3 10	HG	150	630	\$4,420.36
PS 100 2T3 10	PG	150	630	\$3,655.15
PS 100 2T3 20	GR	200	614	\$3,630.22
PS 100 2T3 20	HG	200	630	\$4,773.99
PS 100 2T3 20	PG	200	630	\$3,655.15
PS 100 2T3 20	PL	200	614	\$3,280.54
PS 100 2T3 20	ZD	200	614	\$3,947.61

PS 100 2T3

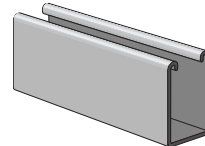
Two PCS PS 100 Welded Back To Back

With 1 1/8" x 9/16" Elongated Holes On 2" Centers

PS 100 EH 2T3 20	GR	200	600	\$4,189.34
PS 100 EH 2T3 20	PG	200	600	\$4,271.94
PS 100 EH 2T3 20	PL	200	600	\$3,614.59

PS 150

1 5/8" x 2 7/16" x 12 Ga. Channel

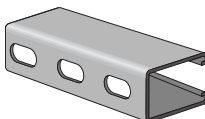


PS 150 10	GR	400	249	\$1,035.94
PS 150 10	HG	400	254	\$1,305.55
PS 150 10	PG	400	254	\$1,233.25
PS 150 10	PL	400	249	\$939.23
PS 150 10	ZD	400	254	\$1,286.87
PS 150 20	GR	400	249	\$1,035.94
PS 150 20	HG	400	254	\$1,362.31
PS 150 20	PG	400	254	\$1,233.25
PS 150 20	PL	400	249	\$939.23
PS 150 20	ZD	400	249	\$1,286.87

PS 150 EH

1 5/8" x 2 7/16" x 12 Ga. Channel

With 1 1/8" x 9/16" Elongated Holes On 2" Centers

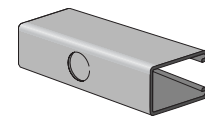


PS 150 EH 10	GR	400	240	\$1,229.52
PS 150 EH 10	HG	400	245	\$1,443.08
PS 150 EH 10	PG	400	245	\$1,317.12
PS 150 EH 10	ZD	400	245	\$1,374.39
PS 150 EH 20	GR	400	240	\$1,229.52
PS 150 EH 20	HG	400	245	\$1,382.95
PS 150 EH 20	PG	400	245	\$1,317.12
PS 150 EH 20	PL	400	240	\$1,183.95
PS 150 EH 20	ZD	400	245	\$1,374.39

PS 150 K06

1 5/8" x 2 7/16" x 12 Ga. Channel

With 7/8" Knock Outs On 6" Centers



PS 150 K06 10	GR	400	249	\$1,546.05
PS 150 K06 10	HG	400	254	\$1,465.80
PS 150 K06 10	PG	400	254	\$1,648.63
PS 150 K06 10	PL	400	249	\$1,404.84
PS 150 K06 20	GR	400	249	\$1,546.05
PS 150 K06 20	HG	400	254	\$1,465.80
PS 150 K06 20	PG	400	254	\$1,648.63



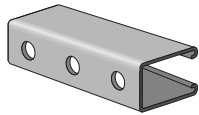
POWER-STRUT®



Part No. & Length Std Qty Wt./100 List Price per 100 ft.

PS 150 H

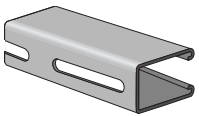
1 5/8" x 2 7/16" x 12 Ga. Channel
With 9/16" Holes On 1 7/8" Centers



PS 150 H 10	GR	400	244	\$1,555.95
PS 150 H 10	HG	400	249	\$1,443.08
PS 150 H 10	PG	400	249	\$1,581.85
PS 150 H 10	PL	400	244	\$1,412.85
PS 150 H 20	GR	400	244	\$1,555.95
PS 150 H 20	HG	400	242	\$1,443.08
PS 150 H 20	PG	400	249	\$1,650.63
PS 150 H 20	PL	400	244	\$1,412.85

PS 150 S

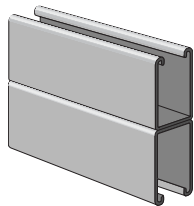
1 5/8" x 2 7/16" x 12 Ga. Channel
With 13/32" x 3" Slots On 4" Centers



PS 150 S 10	GR	400	238	\$1,500.89
PS 150 S 10	HG	400	243	\$1,432.09
PS 150 S 10	PG	400	243	\$1,581.85
PS 150 S 20	GR	400	238	\$1,566.14
PS 150 S 20	HG	400	243	\$1,432.09
PS 150 S 20	PG	400	243	\$1,650.63
PS 150 S 20	PL	400	238	\$1,400.03

PS 150 2T3

Two PCS. PS 150 Welded Back To Back 1 5/8" x 4 7/8" x 12 Ga.



PS 150 2T3 10	GR	200	498	\$2,667.16
PS 150 2T3 10	HG	200	508	\$3,022.27
PS 150 2T3 10	PG	200	508	\$2,748.89
PS 150 2T3 10	PL	200	498	\$2,617.70
PS 150 2T3 20	GR	200	498	\$2,508.63
PS 150 2T3 20	HG	200	508	\$3,022.27
PS 150 2T3 20	PG	200	508	\$2,655.94
PS 150 2T3 20	PL	200	498	\$2,420.79
PS 150 2T3 20	ZD	200	498	\$2,868.41

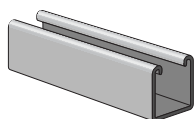
PS 150 2T3

Two PCS. PS 150 Welded Back To Back
With 1 1/8" x 9/16" Elongated Holes On 2" Centers

PS 150 EH 2T3 20	GR	200	490	\$3,614.08
PS 150 EH 2T3 20	PG	200	490	\$3,556.85
PS 150 EH 2T3 20	ZD	200	490	\$3,711.50

PS 200

1 5/8" x 1 5/8" x 12 Ga. Channel



PS 200 10	GR	500	191	\$697.68
PS 200 10	HG	500	194	\$1,049.05
PS 200 10	PG	500	194	\$679.57
PS 200 10	PL	500	191	\$648.56
PS 200 10	ZD	500	190	\$703.30
PS 200 20	GR	500	191	\$697.68
PS 200 20	HG	500	194	\$1,059.80
PS 200 20	PG	500	194	\$679.57
PS 200 20	PL	500	191	\$648.56
PS 200 20	ZD	500	190	\$703.30



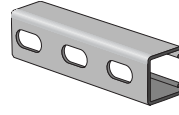
POWER-STRUT®



Part No. & Length Std Qty Wt./100 List Price per 100 ft.

PS 200 EH

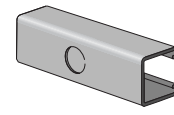
1 5/8" x 1 5/8" x 12 Ga. Channel;
With 1 1/8" x 9/16" Elongated Holes On 2" Centers



PS 200 EH 10	GR	500	182	\$740.73
PS 200 EH 10	HG	500	185	\$1,011.85
PS 200 EH 10	PG	500	185	\$755.20
PS 200 EH 10	PL	500	182	\$758.99
PS 200 EH 10	ZD	500	182	\$765.72
PS 200 EH 20	GR	500	182	\$755.54
PS 200 EH 20	HG	500	185	\$1,032.81
PS 200 EH 20	PG	500	185	\$755.20
PS 200 EH 20	PL	500	182	\$758.99
PS 200 EH 20	ZD	500	182	\$781.57

PS 200 KO6

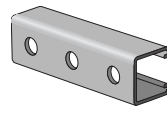
1 5/8" x 1 5/8" x 12 Ga. Channel;
With 7/8" Knock Outs On 6" Centers



PS 200 KO6 10	GR	500	191	\$801.76
PS 200 KO6 10	PG	500	194	\$845.66
PS 200 KO6 10	PL	500	191	\$790.89
PS 200 KO6 20	GR	500	191	\$801.76
PS 200 KO6 20	PG	500	187	\$845.66
PS 200 KO6 20	PL	500	191	\$790.89

PS 200 H

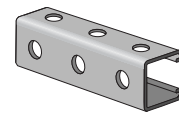
1 5/8" x 1 5/8" x 12 Ga. Channel
With 9/16" Holes On 1 7/8" Centers



PS 200 H 10	GR	500	186	\$803.81
PS 200 H 10	HG	500	189	\$792.33
PS 200 H 10	PG	500	189	\$788.09
PS 200 H 10	PL	500	186	\$790.89
PS 200 H 10	ZD	500	186	\$796.17
PS 200 H 20	GR	500	186	\$803.81
PS 200 H 20	HG	500	189	\$1,046.30
PS 200 H 20	PG	500	189	\$796.17
PS 200 H 20	PL	500	186	\$790.89

PS 200 H3

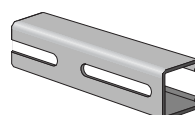
1 5/8" x 1 5/8" x 12 Ga. Channel
With 9/16" Holes On 1 7/8" Centers



PS 200 H3 10	GR	500	174	\$1,140.51
PS 200 H3 10	HG	500	174	\$1,238.33
PS 200 H3 10	PG	500	175	\$1,143.72
PS 200 H3 10	PL	500	174	\$1,049.09
PS 200 H3 20	GR	500	174	\$1,140.51
PS 200 H3 20	HG	1000	174	\$1,578.53
PS 200 H3 20	PG	500	175	\$1,149.17
PS 200 H3 20	PL	500	174	\$1,049.09

PS 200 S

1 5/8" x 1 5/8" x 12 Ga. Channel
With 13/32" x 3" Slots On 4" Centers



PS 200 S 10	GR	500	180	\$774.61
PS 200 S 10	HG	500	183	\$1,032.81
PS 200 S 10	PG	500	183	\$794.84
PS 200 S 10	PL	500	180	\$794.55
PS 200 S 10	ZD	500	180	\$806.53
PS 200 S 20	GR	500	180	\$785.83
PS 200 S 20	HG	500	183	\$1,032.81
PS 200 S 20	PG	500	183	\$818.22
PS 200 S 20	PL	500	180	\$794.55
PS 200 S 20	ZD	500	180	\$841.60



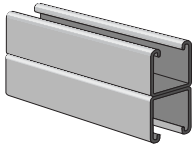
POWER-STRUT®



Part No. & Length Std Qty Wt./100 List Price per 100 ft.

PS 200 2T3

Two PCS. PS 200 Welded Back To Back 1 5/8" x 3 1/4" x 12 Ga.



PS 200 2T3 10	HG	250	388	\$2,202.95
PS 200 2T3 10	PG	250	388	\$1,508.97
PS 200 2T3 10	PL	250	382	\$1,401.93
PS 200 2T3 10	ZD	250	382	\$1,488.13
PS 200 2T3 20	GR	300	382	\$1,508.29
PS 200 2T3 20	HG	300	388	\$2,202.95
PS 200 2T3 20	PG	300	388	\$1,508.97
PS 200 2T3 20	PL	300	382	\$1,401.93
PS 200 2T3 20	ZD	300	382	\$1,488.13

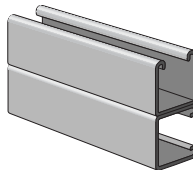
PS 200 2T3

Two PCS. PS 200 Welded Back To Back With 1 1/8" x 9/16" Elongated Holes On 2" Centers

PS 200 EH 2T3 10	GR	250	370	\$2,975.83
PS 200 EH 2T3 10	HG	250	370	\$3,033.14
PS 200 EH 2T3 10	ZD	250	370	\$3,063.60
PS 200 EH 2T3 20	HG	300	364	\$3,033.14
PS 200 EH 2T3 20	PG	300	364	\$3,001.44
PS 200 EH 2T3 20	ZD	300	364	\$3,063.60

PS 200 2T4

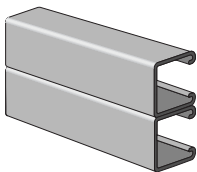
Two PCS. PS 200 Welded Side To Back 1 5/8" x 3 1/4" x 12 Ga.



PS 200 2T4 10	GR	250	382	\$2,411.64
PS 200 2T4 10	HG	250	388	\$2,912.03
PS 200 2T4 10	PG	250	388	\$2,712.58
PS 200 2T4 10	PL	250	382	\$1,442.12
PS 200 2T4 20	GR	300	382	\$2,987.43
PS 200 2T4 20	HG	300	388	\$3,144.99
PS 200 2T4 20	PG	300	388	\$2,712.58
PS 200 2T4 20	PL	300	382	\$2,137.46

PS 200 2T5

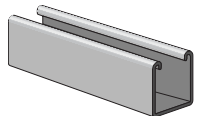
Welded Channel
Two PCS. PS 200 Welded Side To Side 1 5/8" x 3 1/4" x 12 Ga.



PS 200 2T5 10	GR	250	382	\$2,311.15
PS 200 2T5 10	HG	250	378	\$3,144.99
PS 200 2T5 10	PG	160	388	\$2,712.58
PS 200 2T5 20	GR	300	382	\$2,987.43
PS 200 2T5 20	HG	300	388	\$2,912.03
PS 200 2T5 20	PG	300	388	\$2,830.52
PS 200 2T5 20	PL	300	382	\$2,137.46

PS 210

1 5/8" x 1 5/8" x 14 Ga. Channel



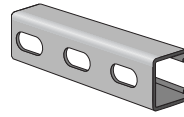
PS 210 10	GR	500	141	\$599.91
PS 210 10	HG	500	142	\$871.31
PS 210 10	PG	500	142	\$621.38
PS 210 10	PL	500	141	\$561.75
PS 210 10	ZD	500	141	\$636.05
PS 210 20	GR	500	141	\$599.91
PS 210 20	HG	500	149	\$871.31
PS 210 20	PG	500	142	\$621.38
PS 210 20	PL	500	141	\$561.75
PS 210 20	ZD	500	141	\$636.05



Part No. & Length Fin. Std Qty Wt./100 List Price per 100 ft.

PS 210 EH

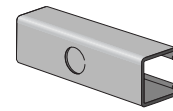
1 5/8" x 1 5/8" x 14 Ga. Channel
With 1 1/8" x 9/16" Elongated Holes On 2" Centers



PS 210 EH 10	GR	500	135	\$680.04
PS 210 EH 10	HG	500	143	\$837.81
PS 210 EH 10	PG	500	143	\$667.54
PS 210 EH 10	PL	500	135	\$668.63
PS 210 EH 10	ZD	500	135	\$700.86
PS 210 EH 20	GR	500	135	\$680.04
PS 210 EH 20	HG	500	143	\$861.75
PS 210 EH 20	PG	500	143	\$704.25
PS 210 EH 20	ZD	500	135	\$700.86

PS 210 KO6

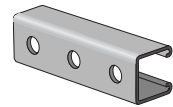
1 5/8" x 1 5/8" x 14 Ga. Channel
With 7/8" Knock Outs On 6" Centers



PS 210 KO6 10	GR	500	141	\$883.90
PS 210 KO6 10	PG	500	149	\$905.14
PS 210 KO6 10	PL	500	141	\$874.23
PS 210 KO6 20	GR	500	141	\$883.90
PS 210 KO6 20	PG	500	149	\$905.14
PS 210 KO6 20	PL	500	141	\$874.23

PS 210 H

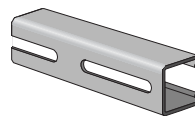
Steel Channel With Holes
9/16" Holes On 1 7/8" Centers 1 5/8" x 1 5/8" x 14 Ga.



PS 210 H 10	GR	500	138	\$889.05
PS 210 H 10	HG	500	146	\$954.99
PS 210 H 10	PG	500	137	\$873.67
PS 210 H 10	PL	500	138	\$800.56
PS 210 H 10	ZD	500	141	\$894.32
PS 210 H 20	GR	500	138	\$889.05
PS 210 H 20	HG	500	146	\$954.99
PS 210 H 20	PG	500	137	\$894.38
PS 210 H 20	PL	500	138	\$800.56

PS 210 S

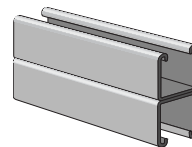
1 5/8" x 1 5/8" x 14 Ga. Channel
With 13/32" x 3" Slots On 4" Centers



PS 210 S 10	GR	500	133	\$746.24
PS 210 S 10	PG	500	141	\$829.28
PS 210 S 10	PL	500	133	\$757.34
PS 210 S 10	ZD	500	133	\$848.93
PS 210 S 20	GR	500	133	\$746.24
PS 210 S 20	PG	500	141	\$829.28
PS 210 S 20	PL	500	133	\$757.34
PS 210 S 20	ZD	500	133	\$848.93

PS 210 2T3

Welded Channel Two PCS.
PS 210 Welded Back To Back 1 5/8" x 3 1/4" x 14 Ga.



PS 210 2T3 10	GR	250	282	\$1,693.98
PS 210 2T3 10	HG	250	298	\$1,918.57
PS 210 2T3 10	PG	250	298	\$1,663.67
PS 210 2T3 10	PL	250	282	\$1,552.06
PS 210 2T3 20	GR	300	282	\$1,767.63
PS 210 2T3 20	HG	300	286	\$1,918.57
PS 210 2T3 20	PG	300	286	\$1,721.90
PS 210 2T3 20	PL	300	282	\$1,552.06



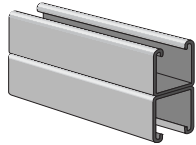
POWER-STRUT®



Part No. & Length	Fin.	Std Qty	Wt./ 100	List Price per 100 ft.
-------------------	------	---------	----------	------------------------

PS 210 2T3

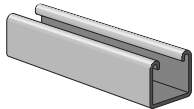
Two PCS. PS 210 Welded Back To Back 1 5/8" x 3 1/4" x 14 Ga.
With 1 1/8" x 9/16" Elongated Holes On 2" Centers



PS 210 EH 2T3 10	PG	250	290	\$2,785.81
PS 210 EH 2T3 20	HG	300	290	\$3,125.19
PS 210 EH 2T3 20	PG	300	290	\$2,785.81
PS 210 EH 2T3 20	PL	300	290	\$2,082.85

PS 300

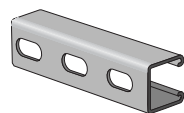
1 5/8" x 1 3/8" x 12 Ga. Channel



PS 300 10	GR	500	173	\$747.38
PS 300 10	HG	500	176	\$960.83
PS 300 10	PG	500	176	\$781.86
PS 300 10	PL	500	173	\$691.75
PS 300 20	HG	500	176	\$960.83
PS 300 20	PG	500	176	\$781.86
PS 300 20	PL	500	173	\$675.73

PS 300 EH

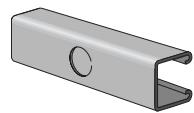
1 5/8" x 1 3/8" x 12 Ga. Channel
With 1 1/8" x 9/16" Elongated Holes On 2" Centers



PS 300 EH 10	GR	500	164	\$938.43
PS 300 EH 10	HG	500	167	\$1,196.20
PS 300 EH 10	PG	500	167	\$957.71
PS 300 EH 10	PL	500	164	\$954.93
PS 300 EH 10	ZD	500	167	\$953.17
PS 300 EH 20	GR	500	164	\$938.43
PS 300 EH 20	HG	500	167	\$1,196.20
PS 300 EH 20	PG	500	167	\$957.71
PS 300 EH 20	PL	500	164	\$954.93
PS 300 EH 20	ZD	500	167	\$980.41

PS 300 K06

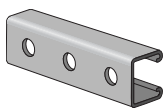
1 5/8" x 1 3/8" x 12 Ga. Channel
With 7/8" Knock Outs On 6" Centers



PS 300 K06 10	GR	500	173	\$1,079.55
PS 300 K06 10	PG	500	176	\$1,091.80
PS 300 K06 10	PL	500	173	\$969.82
PS 300 K06 20	GR	500	173	\$1,079.55
PS 300 K06 20	PG	500	176	\$1,091.80
PS 300 K06 20	PL	500	173	\$969.82

PS 300H

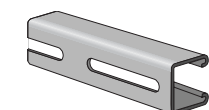
1 5/8" x 1 3/8" x 12 Ga. Channel; With 9/16" Holes On 1 7/8" Centers



PS 300 H 10	GR	500	168	\$1,031.52
PS 300 H 10	HG	500	171	\$1,335.92
PS 300 H 10	PG	500	171	\$1,095.12
PS 300 H 10	PL	500	168	\$982.07
PS 300 H 20	GR	500	168	\$1,031.52
PS 300 H 20	PG	500	171	\$1,095.12
PS 300 H 20	PL	500	168	\$982.07

PS 300 S

1 5/8" x 1 3/8" x 12 Ga. Channel; With 13/32" x 3" Slots On 4" Centers



PS 300 S 10	GR	500	162	\$1,079.55
PS 300 S 10	PG	500	170	\$1,095.63
PS 300 S 10	PL	500	162	\$973.48
PS 300 S 20	GR	500	162	\$1,054.56
PS 300 S 20	PG	500	170	\$1,070.27
PS 300 S 20	PL	500	162	\$973.48



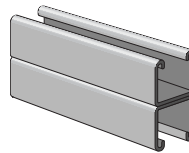
POWER-STRUT®



Part No. & Length	Fin.	Std Qty	Wt./ 100	List Price per 100 ft.
-------------------	------	---------	----------	------------------------

PS 300 2T3

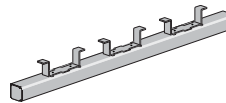
Welded Channel Two PCS.
PS 300 Welded Back To Back 1 5/8" x 2 3/4" x 12 Ga.



PS 300 2T3 10	GR	250	346	\$1,857.78
PS 300 2T3 10	PG	250	352	\$1,828.43
PS 300 2T3 10	PL	250	346	\$1,686.18
PS 300 2T3 20	GR	300	354	\$1,857.78
PS 300 2T3 20	HG	300	366	\$2,327.95
PS 300 2T3 20	PG	300	366	\$1,828.43
PS 300 2T3 20	PL	300	354	\$1,686.18

PS 349

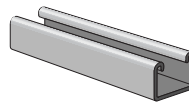
Continuous Concrete Insert; Without Closure Strip and End Cap



PS 349 CS/EC 10HG	250	1823	\$18,713.99
PS 349 CS/EC 10PG	250	1793	\$13,643.26
PS 349 CS/EC 10PL	250	1793	\$13,070.18
PS 349 CS/EC 20HG	250	3630	\$31,490.85
PS 349 CS/EC 20PG	200	3630	\$24,073.93
PS 349 CS/EC 20PL	250	3570	\$24,780.74
PS 349 W/O 10 HG	250	1807	\$14,652.12
PS 349 W/O 10 PG	250	1807	\$11,842.27
PS 349 W/O 10 PL	250	1777	\$10,962.20
PS 349 W/O 20 HG	250	3614	\$27,210.01
PS 349 W/O 20 PG	250	3614	\$21,930.29
PS 349 W/O 20 PL	250	3554	\$20,303.77

PS 400

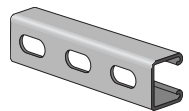
1 5/8" x 1" x 12 Ga. Channel



PS 400 10	HG	500	149	\$864.52
PS 400 10	PG	500	149	\$682.22
PS 400 10	PL	500	146	\$548.75
PS 400 20	GR	500	146	\$625.63
PS 400 20	HG	500	149	\$889.22
PS 400 20	PG	500	149	\$682.22
PS 400 20	PL	500	146	\$548.75

PS 400 EH

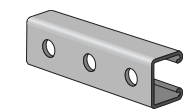
1 5/8" x 1" x 12 Ga. Channel
With 1 1/8" x 9/16" Elongated Holes On 2" Centers



PS 400 EH 10	GR	500	137	\$761.51
PS 400 EH 10	HG	500	140	\$897.08
PS 400 EH 10	PG	500	140	\$773.81
PS 400 EH 10	PL	500	137	\$720.54
PS 400 EH 20	GR	500	137	\$761.51
PS 400 EH 20	HG	500	140	\$922.71
PS 400 EH 20	PG	500	140	\$792.14
PS 400 EH 20	PL	500	137	\$720.54

PS 400 H

1 5/8" x 1" x 12 Ga. Channel; With 9/16" Holes On 1 7/8" Centers



PS 400 H 10	GR	500	141	\$937.02
PS 400 H 10	PG	500	144	\$953.33
PS 400 H 20	GR	500	141	\$937.02
PS 400 H 20	PG	500	144	\$931.26
PS 400 H 20	PL	500	141	\$836.62



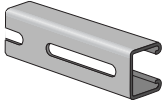
POWER-STRUT®



Part No. & Length Std Qty Wt./100 List Price per 100 ft.

PS 400 S

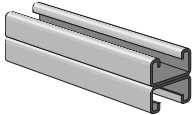
1 5/8" x 1" x 12 Ga. Channel
With 13/32" x 3" Slots On 4" Centers



PS 400 S 10	GR	500	135	\$847.78
PS 400 S 10	HG	500	135	\$1,027.69
PS 400 S 10	PG	500	138	\$842.53
PS 400 S 10	PL	500	135	\$807.71
PS 400 S 20	GR	500	135	\$847.78
PS 400 S 20	PG	500	138	\$862.49
PS 400 S 20	PL	500	135	\$807.71

PS 400 2T3

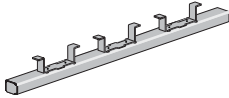
Welded Back To Back 1 5/8" x 2" x 12 Ga.



PS 400 2T3 10	GR	250	292	\$1,789.09
PS 400 2T3 10	HG	250	298	\$1,835.83
PS 400 2T3 10	PG	250	298	\$1,748.23
PS 400 2T3 10	PL	250	292	\$1,606.84
PS 400 2T3 20	GR	300	292	\$1,789.09
PS 400 2T3 20	HG	300	298	\$1,915.65
PS 400 2T3 20	PG	300	298	\$1,824.24
PS 400 2T3 20	PL	300	292	\$1,606.84

PS 449

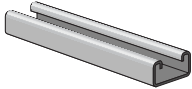
Continuous Concrete Insert; w/o Closure Strip and End Cap



PS 449 CS/EC 10HG	250	1549	\$19,242.20
PS 449 CS/EC 10PL	250	1519	\$11,593.90
PS 449 CS/EC 20PG	250	3086	\$25,044.68
PS 449 CS/EC 20PL	250	3026	\$23,187.64
PS 449 W/O 10 PG	250	1537	\$10,650.48
PS 449 W/O 10 PL	250	1507	\$9,864.34
PS 449 W/O 20 HG	250	3074	\$28,484.40
PS 449 W/O 20 PG	250	3074	\$19,723.10
PS 449 W/O 20 PL	250	3014	\$20,247.79

PS 500

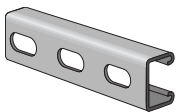
1 5/8" x 13/16" x 14 Ga. Channel



PS 500 10	AL	500	45	\$832.42
PS 500 10	GR	500	100	\$479.30
PS 500 10	HG	500	105	\$599.91
PS 500 10	PG	500	98	\$464.49
PS 500 10	PL	500	100	\$439.89
PS 500 10	ZD	500	100	\$490.04
PS 500 20	GR	500	100	\$479.30
PS 500 20	HG	500	105	\$614.13
PS 500 20	PG	500	98	\$490.04
PS 500 20	PL	500	100	\$439.89
PS 500 20	ZD	500	100	\$490.04

PS 500 EH

1 5/8" x 13/16" x 14 Ga. Channel
With 1 1/8" x 9/16" Elongated Holes On 2" Centers



PS 500 EH 10	GR	500	94	\$526.77
PS 500 EH 10	HG	500	99	\$575.59
PS 500 EH 10	PG	500	87	\$534.56
PS 500 EH 10	PL	500	94	\$540.90
PS 500 EH 10	ZD	500	94	\$546.32
PS 500 EH 20	GR	500	94	\$555.74
PS 500 EH 20	HG	500	99	\$575.59
PS 500 EH 20	PG	500	87	\$534.56
PS 500 EH 20	ZD	500	94	\$563.96



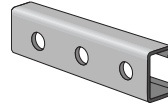
POWER-STRUT®



Part No. & Length Std Qty Wt./100 List Price per 100 ft.

PS 500 H

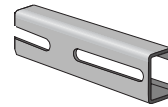
1 5/8" x 13/16" x 14 Ga. Channel; With 9/16" Holes On 1 7/8" Centers



PS 500 H 10	GR	500	97	\$590.80
PS 500 H 10	HG	500	102	\$698.21
PS 500 H 10	PG	500	87	\$595.61
PS 500 H 10	PL	500	97	\$581.90
PS 500 H 10	ZD	500	97	\$609.72
PS 500 H 20	GR	500	97	\$590.80
PS 500 H 20	HG	500	102	\$698.21
PS 500 H 20	PG	500	87	\$595.61

PS 500 S

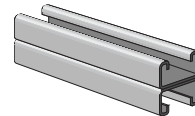
1 5/8" x 13/16" x 14 Ga. Channel; With 13/32" x 3" Slots On 4" Centers



PS 500 S 10	GR	500	92	\$583.98
PS 500 S 10	HG	500	100	\$682.05
PS 500 S 10	PG	500	97	\$586.50
PS 500 S 10	ZD	500	92	\$609.72
PS 500 S 20	GR	500	92	\$583.98
PS 500 S 20	HG	500	100	\$698.21
PS 500 S 20	PG	500	97	\$596.63
PS 500 S 20	PL	500	92	\$581.90
PS 500 S 20	ZD	1000	92	\$609.72

PS 500 2T3

Two Pcs. PS 500 Welded Back to Back 1 5/8" x 1 5/8" x 14 Ga.



PS 500 2T3 10	GR	250	200	\$1,227.44
PS 500 2T3 10	HG	250	210	\$1,460.73
PS 500 2T3 10	PG	250	210	\$1,335.61
PS 500 2T3 10	PL	250	200	\$1,229.34
PS 500 2T3 10	ZD	500	174	\$1,335.55
PS 500 2T3 20	GR	300	200	\$1,227.44
PS 500 2T3 20	HG	300	210	\$1,524.24
PS 500 2T3 20	PG	300	210	\$1,335.61
PS 500 2T3 20	PL	300	200	\$1,178.12
PS 500 2T3 20	ZD	300	174	\$1,393.62

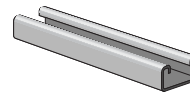
PS 500 2T3

Two Pcs. PS 500 Welded Back to Back
With 1 1/8" x 9/16" Elongated Holes On 2" Centers

PS 500 EH 2T3 10	GR	250	200	\$1,862.33
PS 500 EH 2T3 10	PG	250	174	\$1,987.29
PS 500 EH 2T3 20	PG	300	174	\$1,987.29
PS 500 EH 2T3 20	ZD	300	174	\$2,073.69

PS 520

1 5/8" x 13/16" x 12 Ga. Channel



PS 520 10	GR	500	127	\$642.46
PS 520 10	HG	500	127	\$865.25
PS 520 10	PG	500	127	\$653.42
PS 520 10	PL	500	127	\$602.04
PS 520 10	ZD	500	127	\$653.42
PS 520 20	GR	500	127	\$642.46
PS 520 20	HG	500	127	\$889.97
PS 520 20	PG	500	127	\$653.42
PS 520 20	PL	500	127	\$602.04
PS 520 20	ZD	500	127	\$668.91



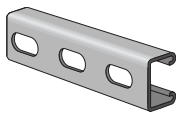
POWER-STRUT®



Part No. Std Wt./ List Price
& Length Fin. Qty 100 per 100 ft.

PS 520 EH

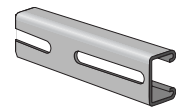
1 5/8" x 13/16" x 12 Ga. ; With 1 1/8" x 9/16" Elongated Holes On 2" Centers



PS 520 EH 10	GR	500	127	\$739.31
PS 520 EH 10	HG	500	119	\$897.77
PS 520 EH 10	GR	500	127	\$739.31
PS 520 EH 10	PL	500	119	\$719.79
PS 520 EH 10	ZD	500	127	\$746.97
PS 520 EH 20	GR	500	127	\$739.31
PS 520 EH 20	HG	500	99	\$919.05
PS 520 EH 20	PG	500	127	\$746.97
PS 520 EH 20	PL	500	119	\$736.85
PS 520 EH 20	ZD	1000	127	\$764.67

PS 520 S

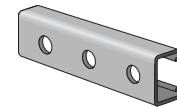
1 5/8" x 13/16" x 12 Ga. Channel; With 13/32" x 3" Slots On 4" Centers



PS 520 S 10	GR	500	127	\$752.84
PS 520 S 10	HG	500	127	\$883.16
PS 520 S 10	PG	500	127	\$780.80
PS 520 S 10	PL	500	116	\$769.08
PS 520 S 10	ZD	500	127	\$799.30
PS 520 S 20	GR	500	127	\$738.57
PS 520 S 20	HG	500	123	\$883.16
PS 520 S 20	PG	500	127	\$780.80
PS 520 S 20	PL	500	116	\$769.08
PS 520 S 20	ZD	1000	127	\$799.30

PS 520 H

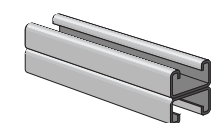
1 5/8" x 13/16" x 12 Ga. Channel; With 9/16" Holes On 1 7/8" Centers



PS 520 H 10	GR	500	119	\$778.62
PS 520 H 10	HG	500	99	\$883.16
PS 520 H 10	PG	500	127	\$782.25
PS 520 H 10	PL	500	119	\$769.08
PS 520 H 20	GR	500	127	\$797.07
PS 520 H 20	PG	500	119	\$800.79
PS 520 H 20	PL	500	119	\$751.27

PS 520 2T3

Two pcs. PS 520 Welded Back to Back 1 5/8" x 1 5/8" x 12 Ga.



PS 520 2T3 10	GR	250	254	\$1,478.45
PS 520 2T3 10	HG	250	254	\$1,920.97
PS 520 2T3 10	PG	250	254	\$1,453.16
PS 520 2T3 10	PL	250	254	\$1,465.46
PS 520 2T3 20	GR	300	254	\$1,478.45
PS 520 2T3 20	HG	300	254	\$1,920.97
PS 520 2T3 20	PG	300	254	\$1,453.16
PS 520 2T3 20	PL	300	254	\$1,465.46
PS 520 2T3 20	ZD	300	254	\$1,516.34

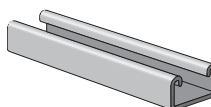
PS 520 2T3

Two pcs. PS 520 Welded Back to Back.
With 1 1/8" x 9/16" Elongated Holes On 2" Centers

PS 520 EH 2T3 20	GR	300	256	\$2,362.01
PS 520 EH 2T3 20	HG	300	268	\$2,303.91
PS 520 EH 2T3 20	PG	300	256	\$2,374.43
PS 520 EH 2T3 20	ZD	300	256	\$2,374.43

PS 560

1 5/8" x 13/16" x 16 Ga. Channel



PS 560 10	GR	500	82	\$431.72
PS 560 10	PG	500	82	\$441.86
PS 560 20	GR	500	82	\$431.72
PS 560 20	HG	500	82	\$695.64
PS 560 20	PG	500	82	\$450.19



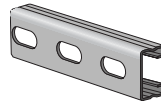
POWER-STRUT®



Part No. Std Wt./ List Price
& Length Fin. Qty 100 per 100 ft.

PS 560 EH

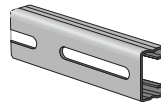
1 5/8" x 13/16" x 16 Ga. Channel
With 1 1/8" x 9/16" Elongated Holes On 2" Centers



PS 560 EH 10	GR	500	79	\$513.13
PS 560 EH 10	PG	500	79	\$534.45
PS 560 EH 10	PL	500	79	\$482.99
PS 560 EH 20	GR	500	79	\$525.29
PS 560 EH 20	PG	500	79	\$534.45

PS 560 S

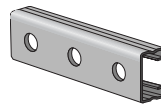
1 5/8" x 13/16" x 16 Ga. Channel; With 13/32" x 3" Slots On 4" Centers



PS 560 S 10	GR	500	78	\$593.98
PS 560 S 10	PG	500	78	\$722.37
PS 560 S 10	PL	500	78	\$546.53
PS 560 S 20	GR	500	78	\$593.98
PS 560 S 20	PG	500	78	\$722.37
PS 560 S 20	PL	500	78	\$546.53

PS 560 H

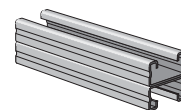
1 5/8" x 13/16" x 16 Ga. Channel; With 9/16" Holes On 1 7/8" Centers



PS 560 H 10	GR	500	79	\$593.98
PS 560 H 10	PG	500	79	\$722.37
PS 560 H 10	PL	500	79	\$546.53
PS 560 H 20	GR	500	79	\$593.98
PS 560 H 20	PG	500	79	\$722.37
PS 560 H 20	PL	500	79	\$546.53

PS 560 2T3

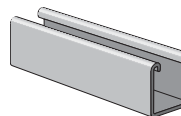
Welded Channel; 1 5/8" x 1 5/8" x 16 Ga.



PS 560 2T3 10	GR	250	164	\$1,270.04
PS 560 2T3 10	HG	250	164	\$1,685.43
PS 560 2T3 10	PG	250	164	\$1,326.42
PS 560 2T3 20	GR	300	164	\$1,270.04
PS 560 2T3 20	HG	300	164	\$1,685.43
PS 560 2T3 20	PG	300	164	\$1,326.42
PS 560 2T3 20	PL	300	164	\$1,122.19

PS 600J

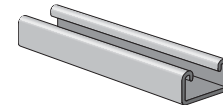
Channel Junior Strut - 13/16" x 13/16" x 19 Ga.



PS 600J 10	GR	500	37	\$578.04
PS 600J 10	PG	500	37	\$647.99
PS 600J 10	PL	500	37	\$580.49
PS 600J 16	GR	800	37	\$554.43

PS 700J

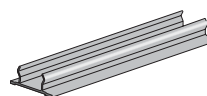
13/16" x 13/32" x 19 Ga. Channel



PS 700J 10	GR	1000	26	\$416.48
PS 700J 10	PG	1000	26	\$477.77
PS 700J 10	PL	1000	26	\$414.82

PS 707, PS707P

Raceway Closure Strip; For All 1 5/8" Width Channels (10' length);
U.L. Listed When Used With Channel To Form Surface Raceway



PS 707 10	GR	PVC	200	10	\$387.57
PS 707 10	GR		500	41	\$356.96
PS 707 10	PVC		200	10	\$387.57
PS 707 10	PG		500	41	\$345.58
PS 707 10	PL		500	41	\$273.44
PS 707P 10	GR		200	10	\$805.06
PS 707P 10	GREY		500	11	\$770.02
PS 707P 10	WHITE		200	10	\$757.87



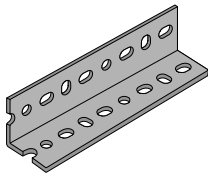
POWER-STRUT®



Part No. & Length	Fin.	Std Qty	Wt./ 100	List Price per 100 pcs
-------------------	------	---------	----------	------------------------

PA 158

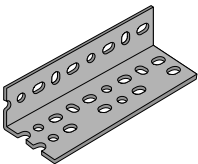
Slotted Angle
1 5/8" x 1 5/8" x 14 ga.



per 100 ft.				
PA 158 10	GR	100	66	\$424.64
PA 158 10	PG	100	66	\$408.01
PA 158 10	ZD	100	66	\$427.81
PA 158 12	PG	120	66	\$424.64

PA 238

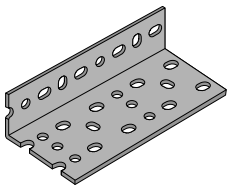
Slotted Angle
1 5/8" x 2 3/8" x 14 ga.



per 100 ft.				
PA 238 10	GR	100	80	\$477.98
PA 238 10	PG	100	80	\$459.04
PA 238 10	ZD	100	80	\$589.71
PA 238 12	GR	120	80	\$487.00
PA 238 12	PG	120	80	\$472.57

PA 318

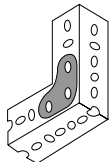
Slotted Angle
1 5/8" x 3 1/8" x 12 ga.



per 100 ft.				
PA 318 10	GR	100	130	\$664.61
PA 318 10	PG	100	130	\$639.53
PA 318 10	ZD	100	130	\$677.15
PA 318 12	GR	120	130	\$677.15
PA 318 12	PG	120	130	\$657.09

PA 1 GP

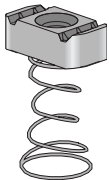
Gusset Plate



PA 1 GP	PG	25	9	\$265.44
---------	----	----	---	----------

PS LS

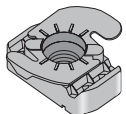
Clamping Nut With Long Spring
Use With PS 100 and PS 150 Channel



PS LS 1/2	EG	50	9	\$322.87
PS LS 1/2	HG	50	10	\$862.54
PS LS 1/4	EG	50	7	\$301.80
PS LS 3/4	EG	50	13	\$619.28
PS LS 3/8	EG	50	10	\$304.72
PS LS 5/8	EG	50	15	\$549.28

PS TG

Top Grip Nut With Spring On Top
Use With All 1 5/8" Channel



PS TG 1/4	EG	100	7	\$253.40
PS TG 1/4	ZD	100	7	\$269.84
PS TG 3/8	EG	100	10	\$263.99
PS TG 3/8	ZD	100	10	\$279.08
PS TG 5/16	EG	100	9	\$270.95
PS TG 1/2	EG	100	8	\$282.31



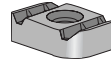
POWER-STRUT®



Part No. & Length	Fin.	Std Qty	Wt./ 100	List Price per 100 pcs
-------------------	------	---------	----------	------------------------

PS NS

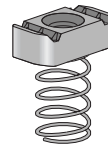
Clamping Nut With Out Spring; Use With All 1 5/8" Wide Channel



PS NS 1/2	EG	100	11	\$181.49
PS NS 1/2	HG	100	9	\$507.14
PS NS 1/2	ZD	100	11	\$191.41
PS NS 1/4	EG	100	5	\$176.93
PS NS 1/4	HG	100	5	\$626.95
PS NS 1/4	ZD	100	5	\$186.60
PS NS 10-24	EG	100	6	\$510.81
PS NS 10-32	EG	100	6	\$514.75
PS NS 3/4	EG	100	11	\$410.08
PS NS 3/4	HG	100	11	\$419.80
PS NS 3/8	EG	100	8	\$159.90
PS NS 3/8	HG	100	8	\$522.02
PS NS 3/8	ZD	100	8	\$172.69
PS NS 5/16	EG	100	5	\$204.38
PS NS 5/8	EG	100	13	\$354.10
PS NS 5/8	HG	100	13	\$763.58
PS NS 7/8	EG	100	11	\$427.81
PS NS 7/8	HG	100	13	\$1,064.15
PS NS 8-32	EG	100	7	\$512.41
PS NS S 1/2	EG	100	7	\$218.93
PS NS S 3/4	EG	100	8	\$484.08
PS NS S 3/8	EG	100	8	\$150.11
PS NS S 5/8	EG	100	10	\$433.31

PS RS

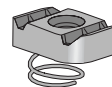
Clamping Nut With Regular Spring; Use With PS 200, PS 210 and PS 300



PS RS 1/2	EG	100	10	\$210.46
PS RS 1/2	HG	100	10	\$676.68
PS RS 1/2	ZD	100	10	\$223.09
PS RS 1/4	EG	100	6	\$176.70
PS RS 1/4	ZD	100	6	\$187.30
PS RS 10-24	EG	100	6	\$555.32
PS RS 10-32	EG	100	6	\$550.81
PS RS 3/4	EG	100	12	\$511.92
PS RS 3/4	HG	100	12	\$1,203.74
PS RS 3/8	EG	100	8	\$189.58
PS RS 3/8	HG	100	8	\$636.03
PS RS 3/8	ZD	100	8	\$200.79
PS RS 5/16	EG	100	6	\$242.30
PS RS 5/16	HG	100	6	\$633.65
PS RS 5/8	EG	100	14	\$450.28
PS RS 7/8	EG	100	21	\$683.84
PS RS 8/32	EG	100	6	\$557.96

PS SS

Clamping Nut With Short Spring Use With PS 400 and PS 500



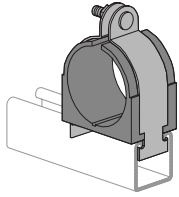
PS SS 1/2	EG	100	7	\$227.42
PS SS 1/2	ZD	100	7	\$231.65
PS SS 1/4	EG	100	6	\$195.96
PS SS 1/4	HG	100	8	\$526.21
PS SS 1/4	ZD	100	6	\$199.60
PS SS 10-24	EG	100	8	\$552.55
PS SS 10-32	EG	100	6	\$654.56
PS SS 3/8	EG	100	8	\$208.54
PS SS 3/8	HG	100	10	\$689.23
PS SS 3/8	ZD	100	8	\$208.48
PS SS 5/16	EG	100	8	\$228.82
PS SS 8/32	EG	100	6	\$553.89
PS SS S 3/4	EG	100	9	\$720.06
PS SS S 5/8	EG	100	10	\$738.79



POWER-STRUT®

A PART OF **atkore**
INTERNATIONAL

Part No. & Length	Fin.	Std Qty	Wt./ 100	List Price per 100 pcs
PS 004T thru PS 106N				
<i>Cush, AiA, AiClamp-Æ Assembly</i>				
PS 004T	EG	25	10	\$757.87
PS 004T	SS	25	10	\$1,910.44
PS 004T	ZD	25	10	\$775.83
PS 006T	EG	25	11	\$757.87
PS 006T	SS	25	11	\$1,910.44
PS 006T	ZD	25	11	\$757.87
PS 008T	EG	25	13	\$757.87
PS 008T	SS	25	13	\$1,968.36
PS 008T	ZD	25	13	\$757.87
PS 009N	EG	25	13	\$774.37
PS 009N	SS	25	13	\$2,053.94
PS 009N	ZD	25	13	\$792.72
PS 010T	EG	25	14	\$774.37
PS 010T	SS	25	14	\$2,204.83
PS 010T	ZD	25	14	\$774.37
PS 011N	EG	25	14	\$793.66
PS 011N	SS	25	14	\$2,204.83
PS 011N	ZD	25	14	\$812.46
PS 012T	EG	25	14	\$793.66
PS 012T	SS	25	14	\$2,597.55
PS 012T	ZD	25	14	\$793.66
PS 014N	EG	25	15	\$897.99
PS 014N	SS	25	15	\$3,337.89
PS 014N	ZD	25	15	\$919.27
PS 014T	EG	25	15	\$897.99
PS 014T	SS	25	15	\$3,337.89
PS 014T	ZD	25	15	\$897.99
PS 016T	EG	20	17	\$1,036.27
PS 016T	SS	20	17	\$3,458.56
PS 016T	ZD	25	17	\$1,036.27
PS 017N	EG	25	17	\$1,066.02
PS 017N	SS	25	17	\$4,062.44
PS 017N	ZD	25	17	\$1,091.22
PS 018T	EG	10	18	\$1,066.02
PS 018T	SS	20	18	\$4,062.44
PS 018T	ZD	10	18	\$1,065.96
PS 020T	EG	10	18	\$1,394.98
PS 020T	SS	20	18	\$4,304.22
PS 020T	ZD	10	18	\$1,394.98
PS 021N	EG	20	19	\$1,375.05
PS 021N	SS	20	19	\$4,681.72
PS 021N	ZD	20	19	\$1,394.98
PS 022T	EG	10	20	\$1,223.43
PS 022T	SS	20	20	\$4,334.92
PS 022T	ZD	20	20	\$1,276.62
PS 024N	EG	10	33	\$1,495.26
PS 024N	SS	20	33	\$4,502.62
PS 024N	ZD	20	33	\$1,473.90
PS 026N	EG	10	35	\$1,478.62
PS 026N	SS	20	35	\$6,524.27
PS 026N	ZD	20	35	\$1,478.62
PS 026T	ZD	20	35	\$1,542.90
PS 027N	EG	20	35	\$1,831.61
PS 027N	SS	20	35	\$6,947.16
PS 027N	ZD	20	35	\$1,911.24
PS 028N	EG	10	37	\$1,896.72
PS 028N	SS	10	37	\$6,432.56
PS 028N	ZD	10	37	\$1,979.19
PS 030N	EG	10	39	\$2,405.94
PS 030N	SS	10	39	\$7,702.33
PS 030N	ZD	10	39	\$2,803.86



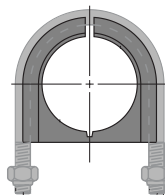
POWER-STRUT®

A PART OF **atkore**
INTERNATIONAL

Part No. & Length	Fin.	Std Qty	Wt./ 100	List Price per 100 pcs
PS 032N	EG	10	41	\$3,142.81
PS 032N	SS	10	41	\$8,457.50
PS 032N	ZD	10	41	\$3,142.81
PS 034N	EG	10	46	\$2,803.86
PS 034N	SS	10	46	\$8,759.55
PS 034T	ZD	10	46	\$2,803.86
PS 038N	EG	10	47	\$3,251.15
PS 038N	SS	10	47	\$10,571.88
PS 038N	ZD	10	47	\$3,251.09
PS 040N	EG	10	49	\$3,505.43
PS 040N	SS	10	49	\$12,384.05
PS 040N	ZD	10	49	\$3,505.43
PS 042N	EG	5	51	\$3,173.53
PS 042N	SS	5	51	\$14,196.44
PS 042N	ZD	5	51	\$3,311.51
PS 046N	EG	5	55	\$4,313.03
PS 046N	ZD	5	55	\$4,500.55
PS 048N	EG	5	57	\$4,429.05
PS 048N	SS	5	57	\$17,820.93
PS 048N	ZD	5	57	\$4,621.61
PS 050N	EG	5	60	\$4,615.40
PS 050N	SS	5	60	\$19,633.26
PS 050N	ZD	5	60	\$4,984.63
PS 056N	EG	5	64	\$6,502.25
PS 056N	SS	5	64	\$21,445.82
PS 056N	ZD	5	64	\$7,022.43
PS 058N	EG	5	70	\$7,214.59
PS 058N	SS	5	70	\$21,672.38
PS 058N	ZD	5	70	\$7,214.59
PS 064N	EG	5	88	\$9,443.46
PS 064N	SS	10	88	\$21,974.21
PS 064N	ZD	5	88	\$8,743.94
PS 066N	EG	10	94	\$9,412.14
PS 066N	SS	10	94	\$22,049.88
PS 066N	ZD	10	94	\$9,412.14
PS 069N	ZD	5	94	\$14,045.49
PS 072N	EG	10	111	\$13,681.58
PS 072N	ZD	10	111	\$14,776.11
PS 082N	EG	10	125	\$20,746.70
PS 082N	ZD	10	125	\$20,746.70
PS 089N	EG	10	130	\$21,983.02
PS 089N	ZD	10	130	\$21,983.02
PS 098N	EG	10	130	\$27,878.51
PS 098N	ZD	10	130	\$27,878.51
PS 106N	EG	10	140	\$28,632.42
PS 106N	ZD	10	140	\$28,632.42

PS UB

Cush, AiA, AiClamp-Æ Assembly U, AiBolt Series



PS UB 1	EG	25	12	\$2,515.30
PS UB 1-1/2	EG	10	36	\$3,489.35
PS UB 1-1/4	EG	10	32	\$3,272.30
PS UB 1/2	EG	25	9	\$2,465.84
PS UB 10	EG	-	492	\$31,512.91
PS UB 12	EG	5	563	\$40,399.42
PS UB 2	EG	10	42	\$3,641.27
PS UB 2-1/2	EG	10	72	\$5,245.07
PS UB 3	EG	-	84	\$5,195.27
PS UB 3-1/2	EG	-	93	\$5,614.16
PS UB 3/4	EG	25	10	\$2,558.91
PS UB 4	EG	-	102	\$5,955.19
PS UB 5	EG	-	123	\$8,312.45
PS UB 6	EG	-	243	\$11,801.80
PS UB 8	EG	-	293	\$18,935.79

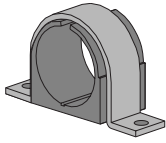


POWER-STRUT®

A PART OF **Atkore**
INTERNATIONAL

Part No. & Length	Fin.	Std Qty	Wt./ 100	List Price per 100 pcs
-------------------	------	---------	----------	------------------------

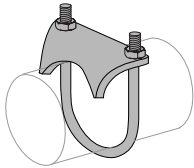
Cush,ÄiA,ÄiClamp-ÄE Assembly Omega Series



PS 004M	ZD	5	3	\$708.63
PS 006M	ZD	5	4	\$725.17
PS 008M	ZD	5	6	\$738.85
PS 010M	ZD	5	6	\$738.85
PS 012M	ZD	5	7	\$753.85
PS 014M	ZD	5	7	\$784.13
PS 016M	ZD	5	8	\$795.45
PS 018M20	ZD	5	8	\$829.29
PS 018M21	ZD	5	8	\$810.10
PS 020M	ZD	10	17	\$1,070.39
PS 021M	ZD	10	20	\$1,087.39
PS 022M	ZD	10	19	\$1,100.61
PS 024M	ZD	10	20	\$1,115.78
PS 026M	ZD	10	23	\$1,145.83
PS 027M	ZD	10	32	\$1,266.55
PS 028M	ZD	10	32	\$1,326.77
PS 030M	ZD	10	34	\$1,372.04
PS 032M	ZD	10	36	\$1,417.43
PS 034M	ZD	10	41	\$1,522.76
PS 038M	ZD	10	41	\$1,907.25

PS 51

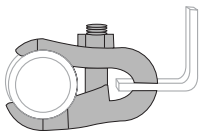
Right Angle Pipe Or Conduit Clamp



PS 51 1	EG	50	47	\$869.89
PS 51 1	HG	50	47	\$1,643.82
PS 51 1-1/2	EG	50	57	\$1,197.10
PS 51 1-1/4	EG	50	54	\$1,002.75
PS 51 1/2	EG	50	41	\$809.71
PS 51 2	EG	50	85	\$1,565.34
PS 51 2	HG	50	85	\$6,081.41
PS 51 2-1/2	EG	25	106	\$1,591.34
PS 51 3	EG	25	110	\$2,127.88
PS 51 3-1/2	EG	25	128	\$2,870.32
PS 51 3/4	EG	50	42	\$815.38
PS 51 3/8	EG	50	25	\$895.23
PS 51 4	EG	15	140	\$3,153.02
PS 51 6	EG	-	375	\$14,332.67

PS 52 E

Parallel Pipe And Conduit Clamp



PS 52E 1	EG	50	70	\$1,360.68
PS 52E 1-1/2	EG	50	93	\$1,870.95
PS 52E 1-1/4	EG	50	72	\$1,653.55
PS 52E 1/2	EG	50	59	\$1,321.63
PS 52E 2	EG	50	128	\$3,054.87
PS 52E 2-1/2	EG	25	135	\$4,430.20
PS 52E 3	EG	10	155	\$4,604.21
PS 52E 3-1/2	EG	10	190	\$4,926.59
PS 52E 3/4	EG	50	64	\$1,356.36
PS 52E 4	EG	10	205	\$5,056.15



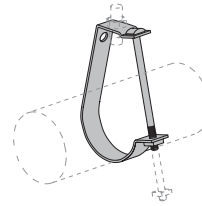
POWER-STRUT®

A PART OF **Atkore**
INTERNATIONAL

Part No. & Length	Fin.	Std Qty	Wt./ 100	List Price per 100 pcs
-------------------	------	---------	----------	------------------------

PS 67

Pipe Or Conduit Hanger



PS 67 1-1/2	EG	50	29	\$622.39
PS 67 1-1/4	EG	50	27	\$762.14
PS 67 1/2	EG	50	21	\$472.24
PS 67 2	EG	50	31	\$979.72
PS 67 2-1/2	EG	25	71	\$1,355.53
PS 67 3	EG	25	78	\$1,578.34
PS 67 3-1/2	EG	20	84	\$2,534.44
PS 67 3/4	EG	50	22	\$702.19
PS 67 4	EG	15	139	\$2,951.94
PS 67 5	EG	10	166	\$2,485.04
PS 67 6	EG	10	226	\$5,466.67
PS 67 8	EG	5	332	\$7,677.78

PS 69

E-Z Grip Hanger



PS 69 1	EG	50	9	\$292.47
PS 69 1-1/2	EG	50	11	\$317.21
PS 69 1-1/4	EG	50	10	\$296.35
PS 69 1/2	EG	50	9	\$286.13
PS 69 2-1/2	EG	25	25	\$512.64
PS 69 3/4	EG	50	9	\$282.64
PS 69 6	EG	25	118	CALL

PS 83

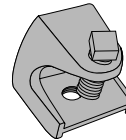
Hexagon Nut



PS 83 1/2	EG	100	4	\$69.81
PS 83 1/2	ZD	250	4	\$72.12
PS 83 1/4	EG	500	1	\$31.07
PS 83 1/4	ZD	500	1	\$40.03
PS 83 3/4	EG	50	12	\$175.11
PS 83 3/8	EG	500	2	\$39.24
PS 83 3/8	ZD	500	2	\$40.62
PS 83 5/16	EG	200	1	\$39.90
PS 83 5/8	EG	100	7	\$101.18
PS 83 7/8	EG	25	19	\$445.44

PS 85

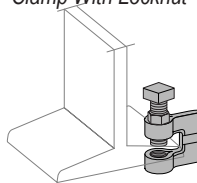
Rod Or Insulator Support



PS 85 1/2	EG	25	202	\$2,245.72
PS 85 1/2	HG	25	145	\$4,285.56
PS 85 1/4	EG	50	23	\$586.68
PS 85 3/8	EG	25	18	\$1,459.53

PS 86

Clamp With Locknut



PS 86 1/2	EG	50	28	\$1,143.15
PS 86 3/8	EG	50	29	\$848.49
PS 86 5/8	EG	50	42	\$1,810.90



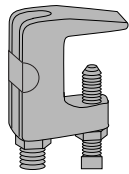
POWER-STRUT®



Part No. & Length	Fin.	Std Qty	Wt./ 100	List Price per 100 pcs
-------------------	------	---------	----------	------------------------

PS 93

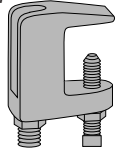
Top Beam "C" Clamp



PS 92 1/2	EG	50	63	\$1,677.53
PS 92 1/2	ZD	50	63	\$1,677.53
PS 93 1/2	EG	50	75	\$1,271.30
PS 93 1/2	PL	50	75	\$1,246.40
PS 93 1/2	ZD	50	75	\$1,311.94
PS 93 3/8	EG	50	41	\$952.97
PS 93 3/8	PL	50	36	\$940.68
PS 93 3/8	ZD	50	41	\$953.30

PS 94

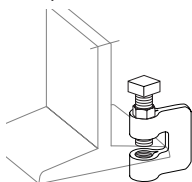
Top Beam "C" Clamp



PS 94 5/8	EG	25	66	\$1,960.30
PS 94 5/8	EG	25	66	\$1,960.30
PS 94 5/8	PL	25	66	\$1,781.91

PS 95

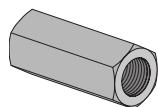
Clamp With Locknut



PS 95 1/2	EG	50	41	\$825.38
PS 95 1/2	PL	50	41	\$808.06
PS 95 1/2	ZD	50	41	\$850.59
PS 95 3/8	EG	50	35	\$781.97
PS 95 3/8	PL	50	33	\$757.00
PS 95 3/8	ZD	50	35	\$796.72
PS 95 5/8	EG	50	67	\$1,531.23
PS 95 5/8	PL	50	67	\$1,454.64
PS 95 5/8	ZD	50	67	\$1,531.17

PS 135

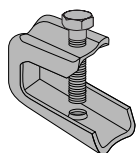
Rod Coupling



PS 135 1	EG	-	71	\$1,639.24
PS 135 1-1/2	EG	5	126	\$5,332.65
PS 135 1-1/4	EG	10	131	\$5,829.38
PS 135 1/2	EG	50	11	\$409.06
PS 135 1/2	ZD	50	11	\$423.98
PS 135 1/4	EG	100	2	\$208.15
PS 135 1/4	ZD	100	2	\$212.07
PS 135 3/4	EG	25	29	\$1,265.30
PS 135 3/4X5/8	EG	50	32	\$894.55
PS 135 3/8 1/4	EG	100	1	\$125.30
PS 135 3/8	EG	100	11	\$280.10
PS 135 3/8	ZD	100	11	\$295.42
PS 135 5/16	EG	100	13	\$380.59
PS 135 5/8	EG	25	24	\$778.54
PS 135 7/8	EG	10	57	\$3,142.48

PS 135x

Beam Clamp Light Duty



PS 135X 1/4	EG	50	14	\$446.79
-------------	----	----	----	----------



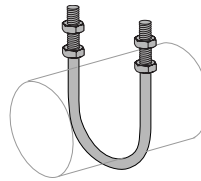
POWER-STRUT®



Part No. & Length	Fin.	Std Qty	Wt./ 100	List Price per 100 pcs
-------------------	------	---------	----------	------------------------

PS 137

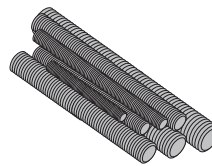
"U" Bolt With Nuts Long Tangent



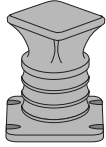
PS 137 1 1/2	EG	50	30	\$726.39
PS 137 1 1/4	EG	50	23	\$706.04
PS 137 2 1/2	EG	50	87	\$1,217.78
PS 137 2	EG	50	33	\$733.63
PS 137 3	EG	50	96	\$1,326.78
PS 137 3/4	EG	100	11	\$583.47
PS 137 4	EG	25	110	\$1,446.31
PS 137 8	EG	25	230	\$4,973.73

PS 146

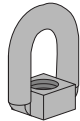
Continuous Threaded Rod



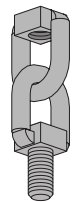
PS 146 1 X 10	EG	20	220	\$1,419.67
PS 146 1 X 12	EG	24	219	\$1,419.67
PS 146 1 X 3	EG	6	220	\$1,419.67
PS 146 1 X 6	EG	12	220	\$1,419.67
PS 146 1-1/2 X 10	EG	10	510	\$3,195.42
PS 146 1-1/2 X 12	EG	12	425	\$3,451.06
PS 146 1-1/2 X 6EG	EG	6	236	\$3,451.06
PS 146 1-1/4 X 10	EG	10	352	\$2,393.72
PS 146 1-1/4 X 12	EG	12	352	\$2,393.72
PS 146 1-1/8 X 10	EG	10	287	\$1,880.11
PS 146 1-1/8 X 12	EG	12	236	\$1,880.11
PS 146 1/2 X 10	EG	120	53	\$290.03
PS 146 1/2 X 12	EG	144	53	\$300.23
PS 146 1/2 X 3	EG	36	53	\$305.89
PS 146 1/2 X 6	EG	72	53	\$300.23
PS 146 1/2 X 6 ZD	EG	72	53	\$300.23
PS 146 1/4 X 10	EG	500	12	\$98.83
PS 146 1/4 X 12	EG	600	12	\$102.30
PS 146 1/4 X 3	EG	150	12	\$104.23
PS 146 1/4 X 6	EG	300	12	\$102.30
PS 146 1/4 X 6 ZD	EG	300	12	\$104.23
PS 146 3/4 X 10	EG	50	123	\$726.90
PS 146 3/4 X 12	EG	60	123	\$733.82
PS 146 3/4 X 3	EG	15	123	\$747.67
PS 146 3/4 X 6	EG	30	123	\$726.90
PS 146 3/8 X 10	EG	250	29	\$150.26
PS 146 3/8 X 10 ZD	EG	250	29	\$159.27
PS 146 3/8 X 12	EG	300	29	\$156.57
PS 146 3/8 X 3	EG	75	29	\$162.28
PS 146 3/8 X 6	EG	150	29	\$156.57
PS 146 3/8 X 6 ZD	EG	150	29	\$162.28
PS 146 5/16 X 10	EG	350	20	\$159.27
PS 146 5/16 X 12	EG	420	20	\$162.28
PS 146 5/8 X 10	EG	80	84	\$492.92
PS 146 5/8 X 12	EG	96	84	\$502.22
PS 146 5/8 X 6	EG	48	84	\$492.92
PS 146 7/8 X 10	EG	40	169	\$1,061.00
PS 146 7/8 X 12	EG	96	169	\$1,061.00
PS 146 7/8 X 6	EG	24	85	\$1,061.00

**POWER-STRUT®**A PART OF **Atkore**
INTERNATIONALPart No. & Length
Fin. Std Qty Wt./100 List Price per 100 pcs**PS 152***Screw Concrete Insert*

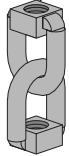
PS 152 1/2	PL	35	32	\$2,754.16
PS 152 3/4	PL	15	64	\$4,060.61
PS 152 3/8	PL	35	31	\$2,406.88
PS 152 5/8	PL	30	37	\$3,340.81
PS 152 7/8	PL	15	71	\$4,302.39

PS 202*Eyelet*

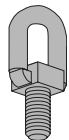
PS 202 1/2	EG	100	14	\$2,593.38
PS 202 3/8	EG	25	11	\$2,335.79

PS 203*Linked Eyelet With Stud*

PS 203 1/2	EG	50	37	\$2,744.09
PS 203 3/8	EG	50	26	\$2,336.13

PS 204*Linked Eyelet*

PS 204 1/2	EG	50	28	\$2,911.71
PS 204 3/8	EG	100	21	\$2,827.07

PS 205*Eyelet With Stud*

PS 205 1/2	EG	100	18	\$1,916.30
PS 205 3/8	EG	25	13	\$1,583.13

PS 209*Flat Washer*

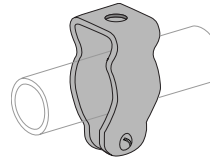
PS 209 1/2	EG	100	4	\$45.06
PS 209 1/2	ZD	250	4	\$45.84
PS 209 1/4	EG	200	1	\$23.45
PS 209 1/4	ZD	500	1	\$32.82
PS 209 3/4	EG	100	11	\$163.20
PS 209 3/8	ZD	500	2	\$34.85
PS 209 5/16	EG	200	0	\$24.61
PS 209 5/8	EG	100	8	\$96.69

PS 211*Lock Washer*

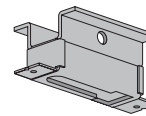
PS 211 1/2	EG	100	1	\$38.09
PS 211 1/2	ZD	100	1	\$38.81
PS 211 1/4	EG	1500	2	\$23.37
PS 211 1/4	ZD	1500	2	\$23.81
PS 211 3/4	EG	100	4	\$114.83
PS 211 3/8	AL	100	1	\$125.99
PS 211 3/8	EG	100	1	\$31.42
PS 211 3/8	ZD	100	1	\$25.07
PS 211 5/8	EG	100	2	\$60.22

**POWER-STRUT®**A PART OF **Atkore**
INTERNATIONALPart No. & Length
Fin. Std Qty Wt./100 List Price per 100 pcs**PS 230***Fender Washer*

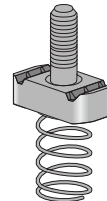
PS 230 1/2	ZD	100	5	\$126.90
PS 230 1/4	ZD	100	2	\$95.42
PS 230 3/4	EG	100	11	\$181.68
PS 230 3/8	ZD	100	2	\$98.17

PS 270*Conduit Clamp*

PS 270 1	EG	50	9	\$144.49
PS 270 1-1/2	EG	25	19	\$274.33
PS 270 1-1/4	EG	25	11	\$188.03
PS 270 2 1/2	EG	25	23	\$621.80
PS 270 2	EG	25	27	\$347.47
PS 270 3 1/2	EG	25	42	\$857.57
PS 270 3	EG	25	29	\$689.74
PS 270 3/4	EG	50	8	\$132.87
PS 270 3/8-1/2	EG	50	6	\$114.83

PS 285*Light Weight Concrete Insert*

PS 285 1/2 NUT EG	50	12	\$339.05
PS 285 1/2 NUT PL	100	12	\$187.35
PS 285 1/4 NUT EG	100	9	\$419.36
PS 285 3/8 NUT EG	100	13	\$605.63
PS 285 5/8 NUT EG	100	11	\$802.47
PS 285 BOX PG	-	53	\$893.63

PS 517*Stud Nut With Regular Spring*

PS 517 1/2 X 1 1/2	EG	100	17	\$1,491.54
PS 517 1/2 X 1 1/4	EG	100	16	\$1,478.72
PS 517 1/2 X 1	EG	50	15	\$1,429.94
PS 517 1/2 X 2	EG	100	19	\$1,534.17
PS 517 1/4 X 1 1/2	EG	100	9	\$1,122.60
PS 517 1/4 X 1 1/4	EG	50	8	\$1,109.83
PS 517 1/4 X 1	EG	50	8	\$1,577.27
PS 517 1/4 X 2	EG	100	9	\$1,079.80
PS 517 3/8 X 1 1/2	EG	100	14	\$1,355.07
PS 517 3/8 X 1 1/4	EG	50	14	\$1,207.22
PS 517 3/8 X 1	EG	50	13	\$1,563.11
PS 517 3/8 X 2	EG	100	15	\$1,403.97



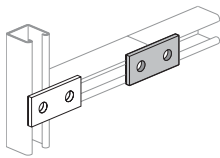
POWER-STRUT®



Part No. & Length	Fin.	Std Qty	Wt./ 100	List Price per 100 pcs
-------------------	------	---------	----------	------------------------

PS 601

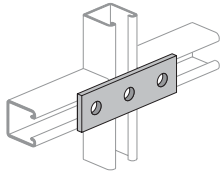
Two Hole Splice Plate



PS 601	AL	50	13	\$670.17
PS 601	EG	50	36	\$323.83
PS 601	GR	50	36	\$335.81
PS 601	HG	50	36	\$509.96
PS 601	ZD	50	36	\$338.19

PS 602

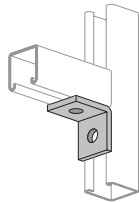
Three Hole Splice Plate



PS 602	EG	25	54	\$484.35
PS 602	GR	25	54	\$504.41
PS 602	ZD	25	54	\$495.24

PS 603

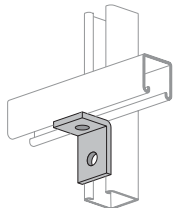
Two Hole End Angle



PS 603	EG	50	37	\$291.18
PS 603	GR	50	37	\$302.32
PS 603	HG	50	38	\$487.94
PS 603	ZD	50	37	\$304.01

PS 604

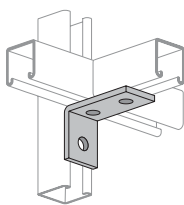
Two Hole Corner Angle



PS 604	EG	50	36	\$310.44
PS 604	GR	50	36	\$322.32
PS 604	HG	50	37	\$518.67
PS 604	ZD	50	37	\$324.12

PS 605

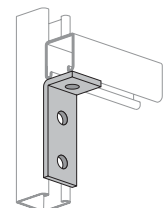
Three Hole Corner Angle



PS 605	EG	50	58	\$431.85
PS 605	GR	50	58	\$441.74
PS 605	ZD	50	58	\$444.22

PS 606

Three Hole Corner Angle



PS 606	EG	50	50	\$432.24
PS 606	GR	50	50	\$442.14
PS 606	HG	50	50	\$662.82
PS 606	ZD	50	50	\$442.14



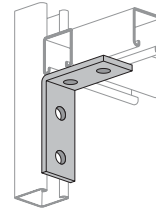
POWER-STRUT®



Part No. & Length	Fin.	Std Qty	Wt./ 100	List Price per 100 pcs
-------------------	------	---------	----------	------------------------

PS 607

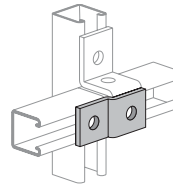
Four Hole Corner Angle



PS 607	EG	25	78	\$562.63
PS 607	GR	25	78	\$574.79
PS 607	HG	25	79	\$841.21
PS 607	ZD	25	78	\$595.79

PS 609

Two Hole Offset "Z" Support

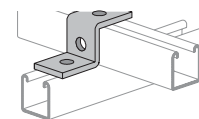


PS 609	EG	25	38	\$625.52
PS 609	GR	25	38	\$604.80

PS 611

Zee Support

Use With PS 200, PS 210 and PS 500 2T3

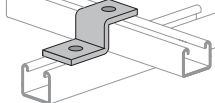


PS 611	EG	50	51	\$601.34
PS 611	GR	50	51	\$619.80
PS 611	HG	50	52	\$662.04
PS 611	ZD	50	51	\$613.56

PS 612

Zee Support

Use With PS 400

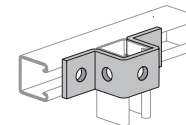


PS 612	EG	25	47	\$1,003.58
PS 612	GR	25	47	\$1,003.58

PS 613

"U" Support

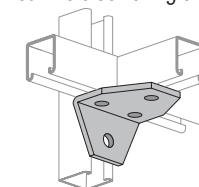
Use With PS 200, PS 210, and PS 500 2T3



PS 613	EG	25	85	\$729.84
PS 613	GR	25	85	\$743.95
PS 613	HG	25	87	\$1,203.32
PS 613	ZD	25	85	\$743.26

PS 614

Four Hole Joint Angle Connector



PS 614	EG	25	99	\$2,159.22
PS 614	GR	25	99	\$2,225.15



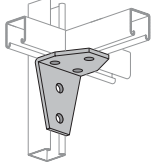
POWER-STRUT®



Part No. & Length	Fin.	Std Qty	Wt./ 100	List Price per 100 pcs
-------------------	------	---------	----------	------------------------

PS 615

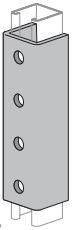
Five Hole Shelf Joint Angle Connector



PS 615	EG	10	133	\$2,309.96
PS 615	GR	10	133	\$2,380.50

PS 616

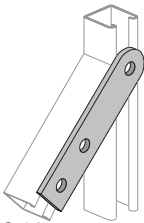
Four Hole Splice Clevis; Use With PS 200 and PS 210



PS 616	EG	10	268	\$2,192.68
PS 616	GR	10	268	\$2,210.59
PS 616	HG	10	273	\$2,541.17
PS 616	ZD	10	268	\$2,240.09

PS 617

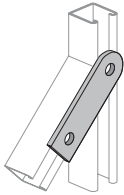
Three Hole Swivel Plate



PS 617	EG	25	76	\$1,549.09
PS 617	GR	25	73	\$1,520.92
PS 617	HG	50	76	\$1,626.34
PS 617	ZD	25	76	\$1,520.92

PS 618

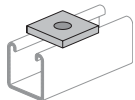
Two Hole Swivel Plate



PS 618	EG	25	56	\$656.18
PS 618	GR	50	56	\$639.60
PS 618	HG	50	56	\$710.81

PS 619

Square Washer



PS 619 1/2	EG	100	17	\$152.65
PS 619 1/2	GR	100	17	\$162.55
PS 619 1/2	HG	100	17	\$238.51
PS 619 1/2	ZD	100	17	\$162.55
PS 619 1/4	EG	100	18	\$177.71
PS 619 1/4	GR	100	18	\$185.63
PS 619 1/4	HG	100	18	\$244.47
PS 619 1/4	ZD	100	18	\$185.63
PS 619 3/4	EG	100	16	\$285.22
PS 619 3/4	GR	100	16	\$285.22
PS 619 3/4	HG	100	16	\$304.95
PS 619 3/4	ZD	100	16	\$278.01
PS 619 3/8	EG	100	17	\$152.65
PS 619 3/8	GR	100	17	\$158.59
PS 619 3/8	HG	100	17	\$238.51
PS 619 3/8	ZD	100	17	\$162.55
PS 619 5/8	EG	50	16	\$206.12
PS 619 5/8	GR	50	16	\$206.12
PS 619 5/8	HG	50	18	\$247.45
PS 619 5/8	ZD	50	16	\$200.91
PS 619 7/8	EG	100	14	\$350.23
PS 619 7/8	GR	100	14	\$341.38
PS 619 7/8	HG	100	19	\$396.16



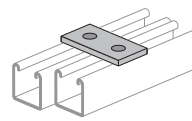
POWER-STRUT®



Part No. & Length	Fin.	Std Qty	Wt./ 100	List Price per 100 pcs
-------------------	------	---------	----------	------------------------

PS 620

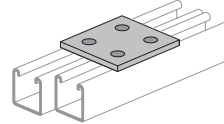
Two Hole Connecting Plate



PS 620	EG	50	34	\$400.03
PS 620	GR	50	34	\$397.14
PS 620	HG	50	34	\$566.15
PS 620	ZD	50	34	\$400.03

PS 621

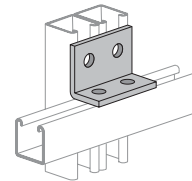
Four Hole Connecting Plate



PS 621 4	EG	-	73	\$1,092.68
PS 621 4	GR	-	73	\$1,104.96
PS 621	HG	-	73	\$1,196.03

PS 622

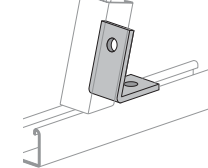
Four Hole Corner Connector



PS 622 4	EG	-	73	\$1,315.23
PS 622 4	GR	-	73	\$1,315.23

PS 624

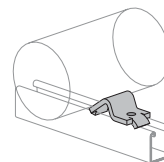
Two Hole Closed Angle Connector



PS 624 30 DEG	EG	50	91	\$850.83
PS 624 30 DEG	GR	25	91	\$835.36
PS 624 37-1/2 DEG	EG	50	58	\$850.83
PS 624 37-1/2 DEG	GR	25	58	\$835.36
PS 624 45 DEG	EG	25	58	\$674.93
PS 624 45 DEG	GR	50	58	\$690.62
PS 624 45 DEG	HG	25	59	\$678.07
PS 624 45 DEG	ZD	25	58	\$690.62
PS 624 52-1/2 DEG	EG	25	58	\$835.36
PS 624 52-1/2 DEG	GR	25	58	\$835.36
PS 624 60 DEG	EG	25	58	\$850.83
PS 624 60 DEG	GR	25	58	\$835.36
PS 624 67-1/2 DEG	EG	25	58	\$835.36
PS 624 67-1/2 DEG	GR	25	58	\$835.36
PS 624 75 DEG	EG	25	58	\$850.83
PS 624 75 DEG	GR	25	58	\$835.36
PS 624 75 DEG	HG	25	58	\$928.20
PS 624 82-1/2 DEG	EG	25	58	\$850.83
PS 624 82-1/2 DEG	GR	25	58	\$835.36
PS 624 82-1/2 DEG	HG	25	58	\$928.20

PS 626

Pipe Stop



PS 626	EG	20	38	\$835.32
PS 626	GR	20	38	\$820.13



POWER-STRUT®



Part No. & Length	Fin.	Std Qty	Wt./100	List Price per 100 pcs
-------------------	------	---------	---------	------------------------

PS 629

Three Hole Splice Clevis

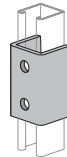


PS 629	EG	20	197	\$2,037.67
PS 629	GR	20	197	\$2,072.17
PS 629	HG	20	197	\$2,300.25

PS 631

Two Hole Splice Clevis

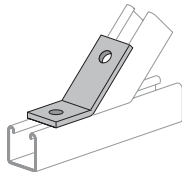
Use With PS 200 and PS 210



PS 631	EG	25	119	\$1,561.49
PS 631	GR	25	119	\$1,534.49
PS 631	HG	25	119	\$1,705.01

PS 633

Two Hole Open Angle Connector

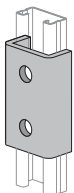


PS 633 15 DEG	EG	25	58	\$835.32
PS 633 15 DEG	GR	25	58	\$820.13
PS 633 22-1/2 DEG	EG	25	58	\$835.32
PS 633 22-1/2 DEG	GR	25	58	\$820.13
PS 633 22-1/2 DEG	HG	25	58	\$820.13
PS 633 30 DEG	EG	25	58	\$835.32
PS 633 30 DEG	GR	25	58	\$835.32
PS 633 30 DEG	HG	25	69	\$820.13
PS 633 37-1/2 DEG	EG	25	58	\$835.32
PS 633 37-1/2 DEG	GR	25	58	\$820.13
PS 633 45 DEG	EG	25	58	\$598.66
PS 633 45 DEG	GR	25	58	\$623.46
PS 633 45 DEG	ZD	25	58	\$627.82
PS 633 52-1/2 DEG	EG	25	58	\$820.13
PS 633 52-1/2 DEG	GR	25	58	\$820.13
PS 633 60 DEG	EG	25	58	\$835.32
PS 633 60 DEG	GR	25	58	\$820.13
PS 633 60 DEG	HG	25	69	\$820.13
PS 633 67-1/2 DEG	EG	25	58	\$820.13
PS 633 67-1/2 DEG	GR	25	58	\$820.13
PS 633 67-1/2 DEG	HG	25	60	\$820.13
PS 633 7-1/2 DEG	EG	25	58	\$820.13
PS 633 7-1/2 DEG	GR	25	58	\$820.13
PS 633 75 DEG	EG	25	58	\$841.40
PS 633 75 DEG	GR	25	58	\$820.13
PS 633 75 DEG	HG	25	58	\$820.13
PS 633 82-1/2 DEG	EG	25	58	\$820.13
PS 633 82-1/2 DEG	GR	25	58	\$820.13
PS 633 82-1/2 DEG	HG	25	58	\$820.13

PS 644

Two Hole Splice Clevis

Use With PS 500



PS 644	EG	20	78	\$1,168.81
PS 644	GR	20	78	\$1,149.97



POWER-STRUT®



Part No. & Length	Fin.	Std Qty	Wt./100	List Price per 100 pcs
-------------------	------	---------	---------	------------------------

PS 645

Three Hole Splice Clevis; Use With PS 500



PS 645	EG	10	125	\$1,597.67
PS 645	GR	10	125	\$1,596.19
PS 645	HG	10	125	\$1,773.52

PS 646

Four Hole Splice Clevis; Use With PS 500



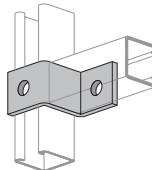
PS 646	EG	10	175	\$1,944.93
PS 646	GR	10	175	\$1,977.87
PS 646	HG	10	175	\$2,195.67
PS 646	ZD	10	175	\$1,977.87

PS 647

Zee Connector

1 7/8" Offset Zee Connection;

Use For PS 200 and PS 210

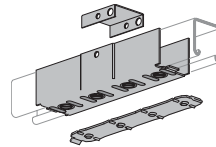


PS 647	EG	25	9	\$890.96
PS 647	GR	25	55	\$890.14

PS 649

Raceway Splice Plate

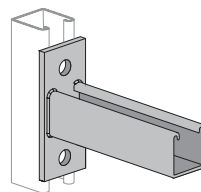
U.L. Listed Use With PS 200, PS 210



PS 649	EG	50	134	\$1,478.48
PS 649	GR	50	134	\$1,517.83
PS 649	ZD	50	134	\$1,517.83

PS 651

Reversible Strut Bracket



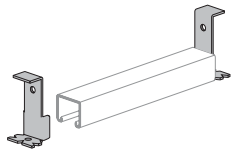
PS 651 12	EG	20	293	\$3,510.03
PS 651 12	GR	20	293	\$3,613.47
PS 651 12	HG	20	293	\$5,643.33
PS 651 12	ZD	20	293	\$3,723.75
PS 651 14	EG	-	342	\$3,838.80
PS 651 14	GR	-	342	\$3,838.80
PS 651 14	HG	-	342	\$6,436.92
PS 651 18	EG	10	401	\$3,893.27
PS 651 18	GR	10	401	\$4,008.00
PS 651 18	HG	10	401	\$6,459.27
PS 651 18	ZD	10	401	\$4,130.38
PS 651 24	EG	5	509	\$5,133.88
PS 651 24	GR	5	509	\$5,285.18
PS 651 24	HG	5	509	\$7,561.06
PS 651 24	ZD	5	509	\$5,285.18
PS 651 30	EG	-	600	\$7,261.54
PS 651 36	EG	-	700	\$8,021.61
PS 651 6	EG	5	185	\$3,117.18
PS 651 6	GR	5	185	\$3,153.29
PS 651 6	ZD	5	185	\$3,249.57
PS 651 9	EG	-	239	\$5,260.81
PS 651 9	GR	-	239	\$5,260.81



Part No. & Length	Fin.	Std Qty	Wt./ 100	List Price per 100 pcs
-------------------	------	---------	----------	------------------------

PS 653

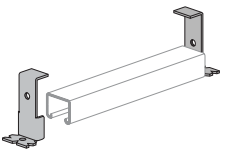
Type "B" End Cap
Use With PS 349 Insert



PS 653	EG	100	14	\$304.02
--------	----	-----	----	----------

PS 654

Type "B" End Cap
Use With PS 449 Insert



PS 654	PG	50	12	\$305.67
--------	----	----	----	----------

PS 655, PS 656

Type "A" End Cap
Use PS 655 With PS 200 Channel
Use PS 656 With PS 300 Channel and PS 349 Concrete Insert
U.L. Listed



PS 655	HG	100	15	\$145.49
PS 655	PG	100	8	\$126.85
PS 655	ZD	100	8	\$122.32
PS 656	PG	100	7	\$135.74

PS 658

Channel Hanger
Use With PS 200, PS 210, and PS 300; U.L. Listed



PS 658	EG	50	28	\$922.01
--------	----	----	----	----------

PS 659

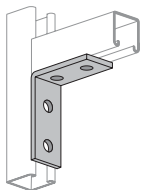
Channel Hanger
Use With PS 400 and PS 500; U.L. Listed



PS 659	EG	25	28	\$1,051.86
--------	----	----	----	------------

PS 660

Four Hole Corner Angle



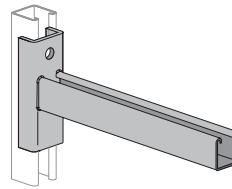
PS 660	EG	25	78	\$717.42
PS 660	GR	25	78	\$729.96
PS 660	HG	25	79	\$998.46
PS 660	ZD	25	78	\$746.68



Part No. & Length	Fin.	Std Qty	Wt./ 100	List Price per 100 pcs
-------------------	------	---------	----------	------------------------

PS 661 T1

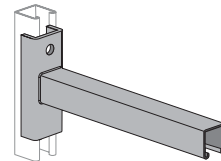
Strut Bracket (Slot Up)



PS 661 T1 12	EG	-	275	\$3,845.76
PS 661 T1 12	GR	-	275	\$3,963.18
PS 661 T1 12	HG	-	275	\$5,937.62
PS 661 T1 12	PG	-	275	\$3,963.18
PS 661 T1 12	ZD	-	275	\$3,963.18
PS 661 T1 18	EG	5	413	\$4,792.34
PS 661 T1 18	GR	5	413	\$4,939.01
PS 661 T1 18	HG	5	425	\$7,395.74
PS 661 T1 18	PG	5	413	\$4,938.67
PS 661 T1 24	EG	-	540	\$5,685.34
PS 661 T1 24	GR	-	540	\$5,685.34
PS 661 T1 6	EG	20	190	\$3,111.52
PS 661 T1 6	GR	20	190	\$3,206.53
PS 661 T1 6	HG	20	190	\$4,920.92

PS 661 T2

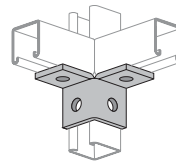
Strut Bracket (Slot Down)



PS 661 T2 18	EG	5	413	\$7,621.56
PS 661 T2 18	GR	5	413	\$4,938.67
PS 661 T2 6	HG	20	190	\$4,920.92

PS 665

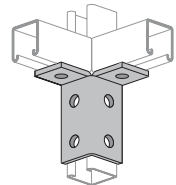
Four Hole Double Corner Connector



PS 665	EG	25	76	\$1,317.99
PS 665	GR	25	76	\$1,340.31
PS 665	ZD	25	76	\$1,340.31

PS 666

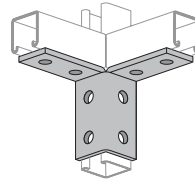
Six Hole Double Corner Connector



PS 666	EG	25	115	\$1,741.25
PS 666	GR	25	115	\$1,739.64
PS 666	ZD	25	115	\$1,739.64

PS 667

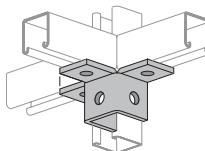
Eight Hole Double Corner Connector



PS 667	EG	10	155	\$2,344.45
PS 667	GR	10	155	\$2,416.04
PS 667	HG	10	155	\$2,684.44
PS 667	ZD	10	155	\$2,456.95

PS 668

Six Hole Three Angle Connector



PS 668	EG	10	107	\$2,148.03
PS 668	GR	10	107	\$2,146.04
PS 668	HG	10	109	\$2,384.50
PS 668	ZD	10	107	\$2,146.04



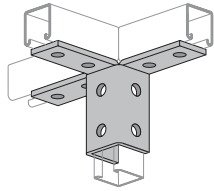
POWER-STRUT®



Part No. & Length	Fin.	Std Qty	Wt./100	List Price per 100 pcs
-------------------	------	---------	---------	------------------------

PS 669

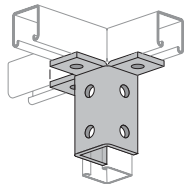
Twelve Hole Three Angle Clevis Connector



PS 669	EG	10	239	\$3,750.43
PS 669	GR	10	239	\$3,810.41
PS 669	HG	10	239	\$4,233.70
PS 669	ZD	10	239	\$3,810.41

PS 670

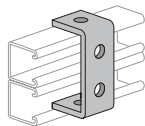
Nine Hole Three Angle Clevis Connector



PS 670	EG	10	193	\$2,507.92
PS 670	GR	10	193	\$2,567.09
PS 670	ZD	10	193	\$2,610.56

PS 671

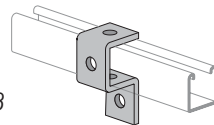
Strut Suspension Member



PS 671	EG	25	69	\$1,138.30
PS 671	GR	25	69	\$1,127.86

PS 677

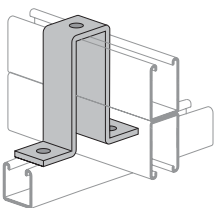
Cup Support For Standard Single Strut
Use With PS 200, PS 210



PS 677	EG	25	76	\$1,184.65
PS 677	GR	25	76	\$1,183.55

PS 678

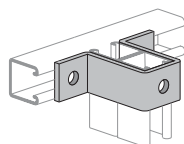
Three Hole "U" Support



PS 678	GR	10	197	\$2,616.96
--------	----	----	-----	------------

PS 679

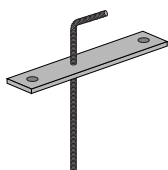
"U" Support
Use For PS 100 and PS 200 2T3



PS 679	EG	25	120	\$1,756.42
PS 679	GR	25	120	\$1,786.17
PS 679	ZD	25	120	\$1,786.17

PS 680

Concrete Deck Insert



PS 680 1/2	PL	1	60	\$2,078.74
PS 680 1/2 PLATE ONLY	PL	1	105	\$1,598.60
PS 680 3/8	PL	1	86	\$2,452.74
PS 680 5/8	PL	15	130	\$1,772.95



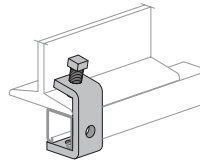
POWER-STRUT®



Part No. & Length	Fin.	Std Qty	Wt./100	List Price per 100 pcs
-------------------	------	---------	---------	------------------------

PS 684

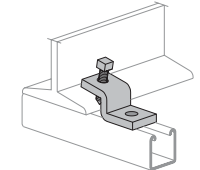
Beam Clamp
Includes Cup Point Set Screw



PS 684	EG	25	94	\$1,607.39
PS 684	GR	25	94	\$1,656.47
PS 684	HG	25	90	\$2,260.29

PS 685

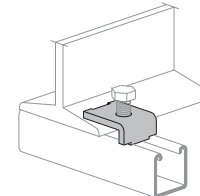
Beam Clamp
Includes Cup Point Set Screw



PS 685	EG	20	63	\$1,575.23
PS 685	GR	20	63	\$1,575.23
PS 685	HG	20	63	\$1,764.36

PS 686

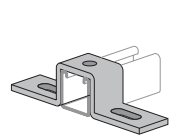
Beam Clamp
Order PS 6024 1/2" x 1 1/2" Separately.



PS 686	EG	50	26	\$442.65
PS 686	GR	50	26	\$453.59
PS 686	HG	50	26	\$504.04
PS 686	ZD	50	26	\$454.43

PS 687

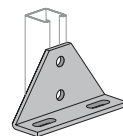
Slotted "U" Support
Use With PS 200 and PS 210



PS 687 A	EG	10	96	\$1,860.76
PS 687 A	GR	10	96	\$1,860.76
PS 687 B	EG	10	111	\$2,080.67
PS 687 B	GR	10	111	\$2,080.67
PS 687 C	EG	20	129	\$2,247.60
PS 687 C	GR	20	129	\$2,245.53

PS 689

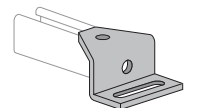
Adjustable Double Slotted Corner Connector



PS 689 A	EG	10	190	\$2,059.53
PS 689 A	GR	10	190	\$2,224.29
PS 689 B	EG	10	242	\$3,325.59
PS 689 B	GR	10	242	\$3,325.59

PS 692

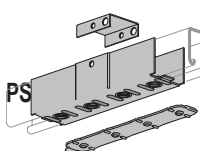
1 5/8" Offset Zee Connector



PS 692	EG	25	106	\$2,505.54
PS 692	GR	10	102	\$2,503.22

PS 693

Raceway Splice Plate
Use With PS 400; U.L. Listed



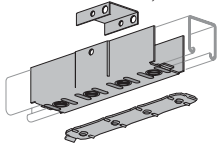
PS 693	EG	25	114	\$1,808.67
PS 693	GR	25	114	\$1,808.67



Part No. & Length	Fin.	Std Qty	Wt./ 100	List Price per 100 pcs
-------------------	------	---------	----------	------------------------

Raceway Splice Plate

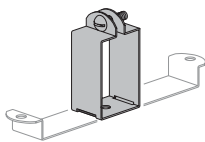
Use With PS 300; U.L. Listed



PS 694	EG	50	97	\$1,808.67
PS 694	GR	50	97	\$1,808.67

PS 702, PS 703

Fluorescent Fixture Hanger
U.L. Listed



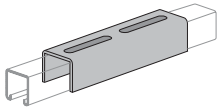
PS 702	EG	100	17	\$908.66
PS 703	EG	100	17	\$969.92
PS 702D	EG	100	20	\$1,215.47
PS 703D	EG	100	18	\$1,233.01

PS 704

Slotted Joiner

Use With PS 200 S and PS 210 S

Order PS 6072 Machine Screws and PS 6108 Square Nut Separately

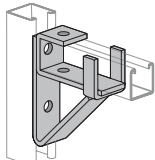


PS 704	GR	25	126	\$1,954.30
PS 704	HG	25	126	\$1,938.16

PS 708

Single Channel Bracket Support

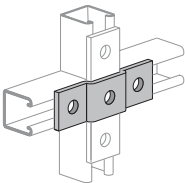
Use With PS 200 and PS 210



PS 708	EG	20	235	\$5,642.68
PS 708	GR	20	235	\$5,882.33
PS 708	HG	20	235	\$6,342.35

PS 709

Three Hole Offset Plate Connector

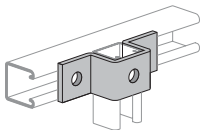


PS 709	EG	20	58	\$989.62
PS 709	GR	20	58	\$988.71

PS 710

"U" Support

Use With PS 300

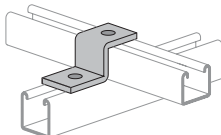


PS 710	EG	25	84	\$1,414.17
PS 710	GR	25	84	\$1,414.17

PS 711

Zee Support

Use With PS 300



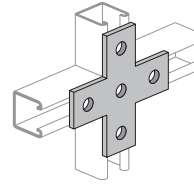
PS 711	EG	25	53	\$1,122.57
PS 711	GR	25	53	\$1,085.38
PS 711	HG	50	53	\$1,205.93
PS 711	ZD	25	53	\$1,085.38



Part No. & Length	Fin.	Std Qty	Wt./ 100	List Price per 100 pcs
-------------------	------	---------	----------	------------------------

PS 712

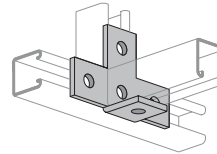
Cross Plate



PS 712	EG	10	105	\$1,794.14
PS 712	GR	10	105	\$1,823.16
PS 712	HG	10	105	\$2,025.86
PS 712	ZD	10	105	\$1,843.64

PS 713

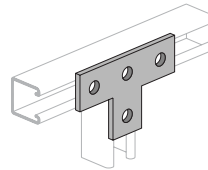
Cross Plate Connector



PS 713	EG	10	105	\$2,056.91
PS 713	GR	10	105	\$2,119.71

PS 714

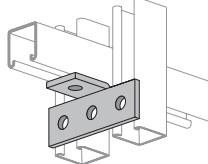
Tee Plate



PS 714	AL	25	26	\$1,427.57
PS 714	EG	25	80	\$979.16
PS 714	GR	25	80	\$1,019.27
PS 714	HG	25	82	\$1,119.68
PS 714	ZD	25	80	\$1,037.91

PS 715

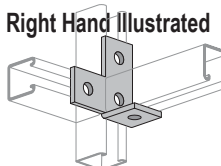
Tee Plate 90° Angle



PS 715	EG	20	71	\$1,391.99
PS 715	GR	20	71	\$1,391.99

PS 716

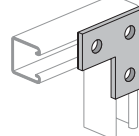
LH & RH Angle Tee Plate



PS 716 L	EG	25	80	\$1,276.62
PS 716 L	GR	25	80	\$1,315.60
PS 716 R	EG	25	80	\$1,276.62
PS 716 R	GR	25	80	\$1,315.60

PS 718

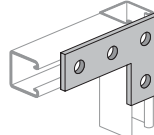
Flat Angle Plate



PS 718	EG	50	58	\$670.82
PS 718	GR	50	58	\$698.61
PS 718	HG	50	58	\$805.88
PS 718	ZD	50	58	\$698.61

PS 719

Four Hole Corner Plate

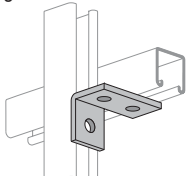


PS 719	EG	20	58	\$1,238.08
PS 719	GR	20	58	\$1,265.33
PS 719	HG	20	75	\$1,405.87



POWER-STRUT®

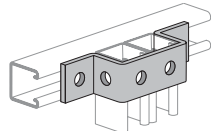


Part No. & Length	Fin.	Std Qty	Wt./ 100	List Price per 100 pcs
PS 720				
<i>LH & RH</i>				
<i>Angle Plate Connector</i>				
 PS 720 L	EG	25	55	\$1,259.22
PS 720 L	GR	25	55	\$1,282.98
PS 720 L	ZD	25	55	\$1,282.98
PS 720 R	EG	25	55	\$1,259.22
PS 720 R	GR	25	55	\$1,282.98
PS 720 R	ZD	25	55	\$1,282.98

PS 721

"U" Support

Use With PS 100 PS 200 2T3, PS 210 2T3

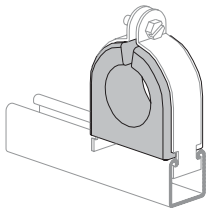


PS 721	EG	25	104	\$2,359.42
PS 721	GR	10	104	\$2,359.25
PS 721	HG	25	105	\$2,663.32

PS 722

100 Pair Porce-A-Clamp

Includes Pipe Strap, Nut and Bolt



PS 722 1	EV	10	37	\$3,286.71
PS 722 1	SS	10	37	\$4,652.24
PS 722 1-1/2	EV	10	58	\$4,246.69
PS 722 1-1/2	SS	10	58	\$6,066.58
PS 722 1-1/4	EV	10	58	\$4,246.69
PS 722 1-1/4	SS	10	58	\$6,066.58
PS 722 1-1/8	EV	10	37	\$3,286.71
PS 722 1-1/8	SS	10	37	\$4,652.24
PS 722 1-3/4	EV	10	76	\$5,385.94
PS 722 1-3/4	SS	10	76	\$7,694.09
PS 722 1-3/8	EV	10	58	\$4,246.69
PS 722 1-3/8	SS	10	58	\$6,066.58
PS 722 1-5/8	EV	10	58	\$4,246.69
PS 722 1-5/8	SS	10	58	\$6,066.58
PS 722 1-7/8	EV	10	76	\$5,385.94
PS 722 1-7/8	SS	10	76	\$7,694.09
PS 722 1/2	EV	10	25	\$2,527.50
PS 722 1/2	SS	10	25	\$3,624.49
PS 722 2	EV	10	76	\$5,385.94
PS 722 2	SS	10	76	\$7,694.09
PS 722 2-1/2	EV	5	90	\$6,696.45
PS 722 2-1/2	SS	5	90	\$9,566.52
PS 722 2-1/4	EV	5	90	\$6,696.45
PS 722 2-1/4	SS	5	90	\$9,566.52
PS 722 2-1/8	EV	5	76	\$5,385.94
PS 722 2-1/8	SS	5	76	\$7,694.09
PS 722 2-3/4	EV	5	109	\$7,706.91
PS 722 2-3/4	SS	5	109	\$11,009.60
PS 722 2-3/8	EV	5	90	\$6,696.45
PS 722 2-3/8	SS	5	90	\$9,566.52
PS 722 2-5/8	EV	5	90	\$6,696.45
PS 722 2-5/8	SS	5	90	\$9,566.52
PS 722 2-7/8	EV	5	109	\$7,706.91
PS 722 2-7/8	SS	5	109	\$11,009.60
PS 722 3	EV	5	109	\$7,760.94
PS 722 3	SS	5	109	\$11,086.76
PS 722 3-1/2	EV	5	130	\$8,756.23
PS 722 3-1/2	SS	5	130	\$12,508.77
PS 722 3-1/4	EV	5	130	\$8,756.23
PS 722 3-1/4	SS	5	130	\$12,508.77
PS 722 3-1/8	EV	5	109	\$7,760.94
PS 722 3-1/8	SS	5	109	\$11,086.76



POWER-STRUT®

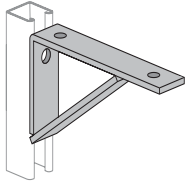


Part No. & Length	Fin.	Std Qty	Wt./ 100	List Price per 100 pcs
PS 722 3-3/4	EV	5	160	\$10,022.27
PS 722 3-3/4	SS	5	160	\$14,316.93
PS 722 3-3/8	EV	5	130	\$8,756.23
PS 722 3-3/8	SS	5	130	\$12,508.77
PS 722 3-5/8	EV	5	130	\$8,756.23
PS 722 3-5/8	SS	5	130	\$12,508.77
PS 722 3-7/8	SS	5	160	\$14,316.93
PS 722 3/4	EV	10	37	\$3,286.71
PS 722 3/4	SS	10	37	\$4,652.24
PS 722 3/8	EV	10	25	\$2,527.50
PS 722 3/8	SS	10	25	\$3,577.61
PS 722 4	EV	5	160	\$10,022.04
PS 722 4	SS	5	160	\$14,316.93
PS 722 4-1/2	EV	5	160	\$10,204.85
PS 722 4-1/2	SS	5	160	\$14,966.20
PS 722 4-1/4	EV	5	160	\$10,476.47
PS 722 4-1/4	SS	5	160	\$14,966.20
PS 722 4-1/8	EV	5	160	\$10,476.47
PS 722 4-1/8	SS	5	160	\$14,966.20
PS 722 4-3/8	EV	5	160	\$10,476.47
PS 722 4-3/8	SS	5	160	\$14,966.20
PS 722 5/8	EV	10	37	\$2,527.50
PS 722 5/8	SS	10	37	\$3,577.61
PS 722 7/8	EV	10	37	\$3,256.56
PS 722 7/8	SS	10	37	\$4,652.24
PS 722-304	CC	50	10	\$861.92



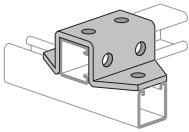
Part No. & Length Std Qty Wt./100 List Price per 100 pcs

PS 732
Shelf Bracket



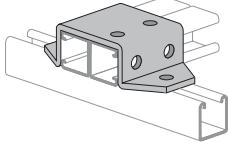
PS 732 10	EG	10	202	\$3,797.38
PS 732 10	GR	10	202	\$3,913.38
PS 732 12	EG	20	258	\$3,995.22
PS 732 12	GR	10	258	\$3,995.22
PS 732 12	HG	10	258	\$6,594.56
PS 732 14	EG	10	292	\$6,662.95
PS 732 14	GR	10	292	\$6,662.95
PS 732 16	EG	1	381	\$9,386.49
PS 732 16	GR	1	381	\$9,386.49
PS 732 16	HG	1	381	\$10,550.82
PS 732 18	EG	1	416	\$9,841.17
PS 732 18	GR	1	416	\$9,841.17
PS 732 20	EG	1	461	\$10,177.58
PS 732 20	GR	1	461	\$10,295.41
PS 732 8	EG	15	168	\$3,456.29
PS 732 8	GR	15	168	\$3,666.79
PS 732 8	HG	15	168	\$5,127.73

PS 733
Six Hole "U" Support



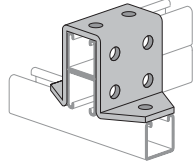
PS 733	EG	10	171	\$3,655.75
PS 733	GR	10	171	\$3,652.37

PS 734
Eight Hole "U" Support



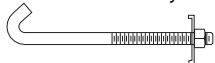
PS 734	EG	10	209	\$4,004.78
PS 734	GR	10	209	\$4,001.08

PS 735
Eight Hole "U" Support



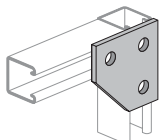
PS 735	EG	10	257	\$4,121.42
PS 735	GR	10	257	\$4,187.33

PS 736
Hook Rod Assembly



PS 736 10	EG	25	33	\$3,797.38
PS 736 6	EG	25	24	\$1,072.22

PS 744
Flat Corner Connector

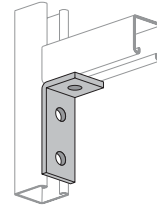


PS 744	EG	25	69	\$1,118.89
PS 744	GR	25	69	\$1,098.55



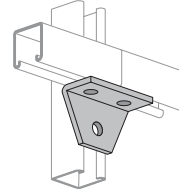
Part No. & Length Fin. Std Qty Wt./100 List Price per 100 pcs

PS 745
Three Hole Corner Angle



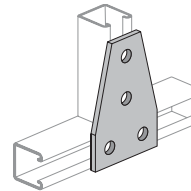
PS 745	EG	50	58	\$497.20
PS 745	GR	50	58	\$497.20
PS 745	HG	50	58	\$673.49
PS 745	ZD	50	58	\$500.91

PS 746
Three Hole Corner Joint Connector



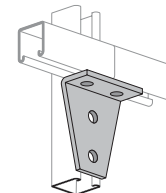
PS 746	EG	25	72	\$1,492.95
PS 746	GR	25	72	\$1,459.53

PS 747
Symmetrical Four Hole Connector



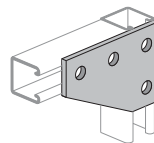
PS 747	EG	20	104	\$1,780.60
PS 747	GR	20	104	\$1,728.80
PS 747	HG	20	104	\$1,942.38

PS 748
Four Hole Corner Joint Connector



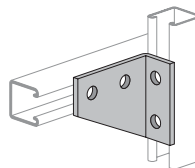
PS 748	EG	25	105	\$1,854.61
PS 748	GR	25	105	\$1,854.61
PS 748	HG	25	105	\$2,123.55

PS 750
Four Hole Corner Connector



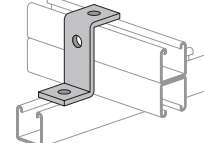
PS 750	EG	20	105	\$1,420.75
PS 750	GR	20	105	\$1,404.97
PS 750	HG	20	105	\$1,560.91

PS 752 LH & RH
Lh & Rh Four Hole Corner Connector



PS 752 L	EG	25	101	\$1,620.39
PS 752 L	GR	25	101	\$1,620.39
PS 752 L	HG	25	101	\$1,855.38
PS 752 R	EG	25	101	\$1,620.39
PS 752 R	GR	25	101	\$1,620.39
PS 752 R	HG	25	101	\$1,855.38

PS 756
Zee Support



PS 756	EG	25	70	\$1,038.89
PS 756	GR	25	70	\$1,008.62
PS 756	ZD	25	70	\$1,037.93



POWER-STRUT®

A PART OF **atkore**
INTERNATIONAL

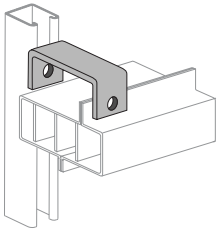
Part No. & Length	Fin.	Std Qty	Wt./ 100	List Price per 100 pcs
-------------------	------	---------	----------	------------------------

PS 760-1

Bus Duct Connection Clevis

760-1 Inside Width 12 9/32";

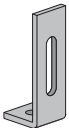
760-2 Inside Width 3 9/32"; 760-3 Inside Width 4 1/4"



PS 760 1	EG	25	57	\$1,025.51
PS 760 1	GR	25	57	\$1,025.51
PS 760 2	EG	25	73	\$1,167.19
PS 760 2	GR	25	73	\$1,156.48
PS 760 2	HG	25	75	\$1,285.04
PS 760 3	EG	25	84	\$1,426.11
PS 760 3	GR	25	84	\$1,413.03

PS 763

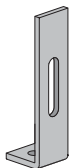
Two Hole Adjustable Corner Angle



PS 763	EG	25	65	\$1,015.87
PS 763	GR	25	65	\$1,023.45

PS 764

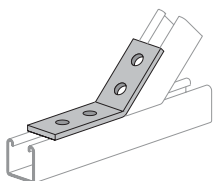
Slotted Adjustment Angle



PS 764	EG	25	85	\$1,363.70
PS 764	GR	25	85	\$1,333.17

PS 781

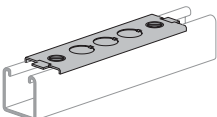
Four Hole Open Angle Connector



PS 781 15 DEG	EG	25	78	\$1,103.30
PS 781 15 DEG	GR	25	78	\$1,103.30
PS 781 22-1/2 DEG	EG	25	78	\$1,103.30
PS 781 22-1/2 DEG	GR	25	78	\$1,103.30
PS 781 30 DEG	EG	25	78	\$1,103.30
PS 781 30 DEG	GR	25	78	\$1,091.04
PS 781 37-1/2 DEG	EG	25	78	\$1,123.73
PS 781 37-1/2 DEG	GR	25	78	\$1,103.30
PS 781 45 DEG	EG	25	79	\$1,040.53
PS 781 45 DEG	GR	25	78	\$1,083.15
PS 781 45 DEG	HG	25	79	\$1,190.16
PS 781 45 DEG	ZD	25	79	\$1,103.21
PS 781 52-1/2 DEG	EG	25	78	\$1,103.30
PS 781 52-1/2 DEG	GR	25	78	\$1,091.04
PS 781 60 DEG	EG	25	78	\$1,103.30
PS 781 60 DEG	GR	25	78	\$1,103.30
PS 781 67-1/2 DEG	EG	25	78	\$1,103.30
PS 781 67-1/2 DEG	GR	25	78	\$1,091.04
PS 781 7-1/2 DEG	EG	25	78	\$1,103.30
PS 781 7-1/2 DEG	GR	25	78	\$1,103.30
PS 781 75 DEG	EG	25	78	\$1,103.30
PS 781 75 DEG	GR	25	78	\$1,103.30
PS 781 82-1/2 DEG	EG	25	78	\$1,103.30
PS 781 82-1/2 DEG	GR	25	78	\$1,103.30

PS 791

Electrical Box Adapter Plate



PS 791 7/8	EG	50	32	\$1,139.42
PS 791 7/8	GR	25	32	\$1,098.72



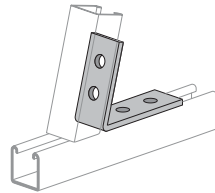
POWER-STRUT®

A PART OF **atkore**
INTERNATIONAL

Part No. & Length	Fin.	Std Qty	Wt./ 100	List Price per 100 pcs
-------------------	------	---------	----------	------------------------

PS 793

Four Hole Closed Angle Connector



PS 793 37-1/2 DEG	EG	25	113	\$1,788.06
PS 793 37-1/2 DEG	GR	25	113	\$1,808.15
PS 793 45 DEG	EG	25	104	\$1,425.54
PS 793 45 DEG	GR	25	104	\$1,466.38
PS 793 45 DEG	HG	25	104	\$1,629.23
PS 793 52-1/2 DEG	EG	25	104	\$1,788.06
PS 793 52-1/2 DEG	GR	25	104	\$1,808.15
PS 793 52-1/2 DEG	HG	25	104	\$1,788.06
PS 793 60 DEG	EG	25	104	\$1,788.06
PS 793 60 DEG	GR	25	104	\$1,788.06
PS 793 67-1/2 DEG	EG	25	104	\$1,788.06
PS 793 67-1/2 DEG	GR	25	104	\$1,808.15
PS 793 75 DEG	EG	25	104	\$1,788.06
PS 793 75 DEG	GR	25	104	\$1,808.15
PS 793 82-1/2 DEG	EG	25	104	\$1,788.06
PS 793 82-1/2 DEG	GR	25	104	\$1,808.15

PS 803

1/2" Fixture Nipple



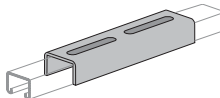
PS 803 1/2	EG	50	14	\$1,689.37
------------	----	----	----	------------

PS 804

Slotted Joiner

Use With PS 400S, PS 500S, PS 520S & PS 560S

Order PS 6072 Machine Screws and PS 6108 Square Nuts Separately

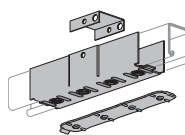


PS 804	EG	25	80	\$1,693.92
PS 804	GR	25	80	\$1,693.92

PS 805

Raceway Splice Plate

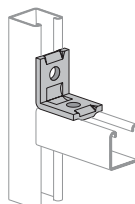
Use With PS 100 Channel U.L. Listed



PS 805	EG	50	144	\$2,137.80
PS 805	GR	50	144	\$2,137.80

PS 806

Two Hole Angle With Impressions on Both Legs

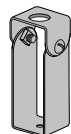


PS 806	EG	50	40	\$462.14
PS 806	GR	50	40	\$465.59
PS 806	HG	50	40	\$644.29

PS 807

Channel Hanger

Use For PS 100 and PS 150; U.L. listed



PS 807	EG	25	33	\$1,415.42
--------	----	----	----	------------



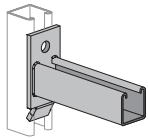
POWER-STRUT®

A PART OF **atkore**
INTERNATIONAL

Part No. & Length	Fin.	Std Qty	Wt./ 100	List Price per 100 pcs
----------------------	------	---------	----------	------------------------

PS 808 T1

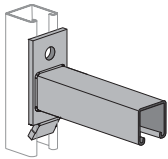
Interlocking Channel Bracket (Slot Up)



PS 808 T1 12	EG	1	250	\$3,298.65
PS 808 T1 12	GR	1	250	\$3,336.86
PS 808 T1 12	HG	1	250	\$5,213.29
PS 808 T1 12	PG	1	250	\$3,438.75
PS 808 T1 18	EG	1	350	\$3,977.62
PS 808 T1 18	GR	1	350	\$3,977.62
PS 808 T1 18	PG	1	350	\$4,099.07
PS 808 T1 24	EG	1	450	\$5,246.79
PS 808 T1 24	GR	1	450	\$5,307.56
PS 808 T1 24	HG	1	450	\$7,053.42
PS 808 T1 24	PG	1	450	\$5,469.63
PS 808 T1 6	EG	1	150	\$2,900.56
PS 808 T1 6	GR	1	150	\$2,989.13
PS 808 T1 6	PG	1	150	\$2,989.13

PS 808 T2

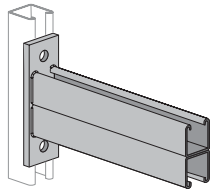
Interlocking Channel Bracket (Slot Down)



PS 808 T2 12	EG	1	250	\$3,336.86
PS 808 T2 12	HG	1	250	\$5,319.89
PS 808 T2 18	HG	1	383	\$6,060.08
PS 808 T2 20	EG	1	400	\$5,196.19
PS 808 T2 24	EG	1	450	\$5,307.56
PS 808 T2 24	HG	1	450	\$6,912.08
PS 808 T2 6	EG	1	150	\$2,989.13

PS 809

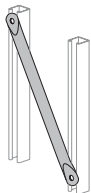
Double Channel Bracket



PS 809 12	EG	1	505	\$7,330.86
PS 809 12	GR	1	505	\$7,330.86
PS 809 12	ZD	1	505	\$7,554.71
PS 809 18	EG	1	710	\$8,543.87
PS 809 18	GR	1	710	\$8,718.58
PS 809 18	HG	1	710	\$12,883.21
PS 809 18	ZD	1	710	\$8,984.79
PS 809 24	EG	1	915	\$9,958.07
PS 809 24	GR	1	915	\$10,251.53
PS 809 24	HG	1	915	\$14,516.69
PS 809 24	ZD	1	915	\$10,564.56
PS 809 30	EG	1	1120	\$11,434.27
PS 809 30	GR	1	1120	\$11,668.07
PS 809 30	HG	1	1120	\$16,749.80
PS 809 36	EG	1	1325	\$13,172.55
PS 809 36	GR	1	1325	\$13,560.73
PS 809 36	HG	1	1325	\$18,759.26

PS 810

Diagonal Tube Brace



PS 810 36	EG	1	255	\$3,891.58
PS 810 42	EG	1	241	\$4,325.28
PS 810 48	EG	1	274	\$4,620.70



POWER-STRUT®

A PART OF **atkore**
INTERNATIONAL

Part No. & Length	Fin.	Std Qty	Wt./ 100	List Price per 100 pcs
----------------------	------	---------	----------	------------------------

PS 812

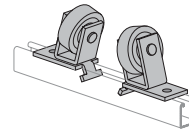
45° Diagonal Tube Brace



PS 812 12	EG	1	88	\$2,840.52
PS 812 12	GR	1	88	\$2,927.25
PS 812 18	EG	25	120	\$3,019.65
PS 812 18	GR	1	120	\$3,019.65
PS 812 24	EG	25	152	\$3,405.51
PS 812 24	GR	1	152	\$3,351.90
PS 812 30	EG	1	185	\$3,812.15
PS 812 36	EG	1	218	\$4,218.46
PS 812 36	GR	1	218	\$4,347.26

PS 815

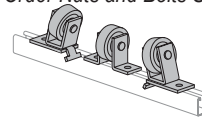
*Pair (6" to 18" Pipe) Double Roller Pipe Support
Order Nuts and Bolts Separately*



PS 815 6-18	EG	5	616	\$11,021.73
PS 815 6-18	GR	5	294	\$11,021.73
PS 815 6-18	HG	5	524	\$13,458.10

PS 816

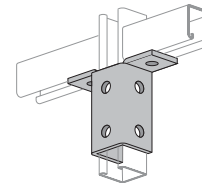
*Sets (20" to 30" Pipe) Three Roller Pipe Support
Order Nuts and Bolts Separately*



PS 816 20-30	EG	5	818	\$16,557.13
PS 816 20-30	GR	5	818	\$16,557.13
PS 816 20-30	HG	5	818	\$22,889.65

PS 821

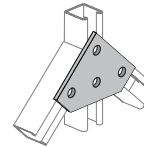
Eight Hole Double Angle Connector



PS 821	EG	25	177	\$2,420.49
PS 821	GR	25	177	\$2,415.84
PS 821	HG	10	177	\$2,791.54
PS 821	ZD	25	177	\$2,441.43

PS 822

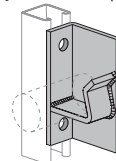
Double 45° Connector



PS 822	EG	25	112	\$1,558.93
PS 822	GR	25	112	\$1,576.45

PS 825 RH/LH

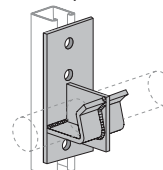
*Pipe Axle Support
Specify RH or LH (1 1/2" Max. Pipe)*



PS 825 L	EG	10	225	\$3,290.25
PS 825 L	GR	10	225	\$3,328.36
PS 825 R	EG	10	225	\$3,290.25
PS 825 R	GR	10	225	\$3,328.36

PS 826

Double Pipe Axle Support; (1 1/2" Max. Pipe)



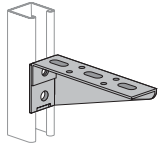
PS 826	EG	5	360	\$8,714.95
PS 826	GR	5	360	\$10,710.63



POWER-STRUT®

A PART OF **atkore**
INTERNATIONAL

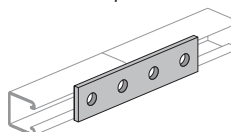
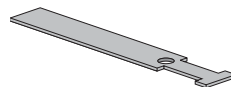
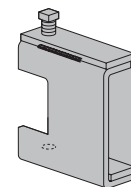
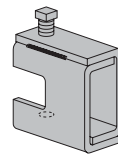
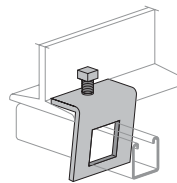
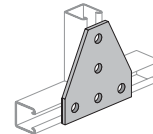
Part No. & Length	Fin.	Std Qty	Wt./ 100	List Price per 100 pcs
PS 838 RH/LH 6" Thru 30" Shelf Bracket				
PS 838 10 LH	EG	25	114	\$4,603.96
PS 838 10 LH	GR	25	114	\$4,287.38
PS 838 10 LH	ZD	25	114	\$4,108.96
PS 838 10 RH	EG	25	114	\$4,603.96
PS 838 10 RH	GR	25	114	\$4,287.38
PS 838 10 RH	ZD	25	114	\$4,108.96
PS 838 12 LH	EG	1	149	\$4,274.13
PS 838 12 LH	GR	1	149	\$4,513.60
PS 838 12 LH	ZD	1	149	\$4,274.13
PS 838 12 RH	EG	25	149	\$4,274.13
PS 838 12 RH	GR	1	149	\$4,513.60
PS 838 12 RH	ZD	25	149	\$4,274.13
PS 838 14 LH	EG	25	174	\$4,491.64
PS 838 14 LH	GR	25	174	\$4,773.46
PS 838 14 LH	ZD	25	174	\$4,491.64
PS 838 14 RH	EG	25	174	\$4,491.64
PS 838 14 RH	GR	25	174	\$4,773.46
PS 838 14 RH	ZD	25	174	\$4,491.64
PS 838 16 LH	EG	20	225	\$4,672.86
PS 838 16 LH	GR	20	225	\$5,042.39
PS 838 16 LH	ZD	20	225	\$4,672.86
PS 838 16 RH	EG	20	225	\$4,672.86
PS 838 16 RH	GR	20	225	\$5,068.64
PS 838 16 RH	ZD	20	225	\$4,672.86
PS 838 18 LH	EG	20	255	\$4,894.78
PS 838 18 LH	GR	20	255	\$5,313.44
PS 838 18 LH	ZD	20	255	\$4,894.78
PS 838 18 RH	EG	20	255	\$4,894.78
PS 838 18 RH	GR	20	255	\$5,313.44
PS 838 18 RH	ZD	20	255	\$4,894.78
PS 838 20 LH	EG	20	295	\$5,667.16
PS 838 20 LH	GR	20	295	\$6,149.51
PS 838 20 RH	EG	20	295	\$5,667.16
PS 838 20 RH	GR	20	295	\$6,149.51
PS 838 22 LH	EG	1	361	\$5,135.74
PS 838 22 LH	GR	1	361	\$6,581.01
PS 838 22 RH	EG	1	361	\$5,135.74
PS 838 22 RH	GR	1	361	\$6,581.01
PS 838 24 LH	EG	1	396	\$5,322.34
PS 838 24 LH	GR	1	396	\$6,880.10
PS 838 24 RH	EG	1	396	\$5,322.34
PS 838 24 RH	GR	1	396	\$6,880.10
PS 838 26 LH	EG	1	456	\$5,803.56
PS 838 26 LH	GR	1	456	\$7,255.49
PS 838 26 RH	EG	1	456	\$5,803.56
PS 838 26 RH	GR	1	456	\$7,255.49
PS 838 28 LH	EG	1	479	\$6,165.43
PS 838 28 LH	GR	1	479	\$6,165.43
PS 838 28 RH	EG	1	479	\$6,165.43
PS 838 28 RH	GR	1	479	\$6,165.43
PS 838 30 LH	EG	1	544	\$6,551.18
PS 838 30 LH	GR	1	544	\$6,551.18
PS 838 30 RH	EG	1	544	\$6,357.07
PS 838 30 RH	GR	1	544	\$6,551.18
PS 838 6 LH	EG	25	58	\$3,822.13
PS 838 6 LH	GR	25	58	\$3,913.87
PS 838 6 LH	ZD	25	58	\$3,822.13
PS 838 6 RH	EG	25	58	\$4,372.12
PS 838 6 RH	GR	25	58	\$3,913.86
PS 838 6 RH	ZD	25	58	\$3,822.12
PS 838 8 LH	EG	25	83	\$4,481.30



POWER-STRUT®

A PART OF **atkore**
INTERNATIONAL

Part No. & Length	Fin.	Std Qty	Wt./ 100	List Price per 100 pcs
PS 838 8 LH	GR	25	83	\$4,086.29
PS 838 8 LH	ZD	25	83	\$3,947.80
PS 838 8 RH	EG	25	83	\$3,947.80
PS 838 8 RH	GR	25	83	\$4,086.29
PS 838 8 RH	ZD	25	83	\$3,947.80
PS 854 Flat Connector				
PS 854	EG	25	145	\$2,551.09
PS 854	GR	25	145	\$2,551.09
PS 854	HG	25	145	\$2,834.56
PS 854	ZD	25	145	\$2,579.75
PS 855 Angular "I" Beam Clamp PS 855 1 - Use With PS 200; PS 855 2-Use With PS 500				
PS 855 1	EG	25	107	\$1,034.19
PS 855 1	GR	25	107	\$1,050.23
PS 855 1	HG	25	107	\$1,773.08
PS 855 2	EG	25	98	\$1,274.12
PS 855 2	GR	25	98	\$1,313.03
PS 858 Heavy Duty Suspension Rod Beam Clamps Includes Set Screw (Safety Anchor Strap PS 871 To Be Ordered Separately According To Length Required)				
PS 858 1/2	EG	10	97	\$2,316.95
PS 858 1/2	HG	10	97	\$4,532.30
PS 858 1/4	HG	10	93	\$3,625.36
PS 858 3/4	EG	10	150	\$4,735.52
PS 858 3/8	EG	10	95	\$2,097.69
PS 858 5/8	EG	10	150	\$4,903.19
PS 858 5/8	HG	10	150	\$10,787.28
PS 865 Wide Throat Heavy Duty Beam Clamp Includes Set Screw (Safety Anchor Strap PS 871 To Be Ordered Separately According To Length Required)				
PS 865 1/2	EG	10	195	\$4,560.96
PS 865 1/2	HG	10	195	\$6,874.52
PS 865 1/4	HG	10	151	\$5,483.02
PS 865 3/8	EG	10	151	\$3,738.14
PS 865 3/8	HG	10	151	\$5,978.08
PS 865 5/8	EG	10	225	\$7,249.34
PS 865 5/8	HG	10	225	\$14,660.54
PS 871 Safety Anchor Strap (For Heavy Duty Beam Clamps)				
PS 871 10	EG	1	26	\$937.19
PS 871 12	EG	1	35	\$562.88
PS 871 15	EG	1	59	\$647.12
PS 871 6	EG	100	16	\$542.69
PS 871 8	EG	1	24	\$582.25
PS 871 9	EG	1	35	\$560.17
PS 888 Four Hole Splice Plate				
PS 888	AL	25	75	\$1,082.81
PS 888	EG	25	75	\$639.14
PS 888	GR	25	75	\$653.51
PS 888	HG	25	75	\$894.17
PS 888	ZD	25	75	\$665.61





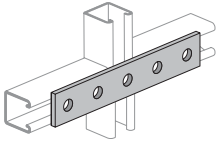
POWER-STRUT®



Part No. & Length	Fin.	Std Qty	Wt./ 100	List Price per 100 pcs
-------------------	------	---------	----------	------------------------

PS 889

Five Hole Splice Plate



PS 889	EG	50	105	\$1,066.13
PS 889	GR	50	105	\$1,035.12
PS 889	HG	50	105	\$1,163.06
PS 889	ZD	50	105	\$1,046.75

PS 901, PS 902

Type "A" End Cap

Use With PS 100, PS 400; U.L. Listed and PS 449 Series

Inserts U.L. Listed

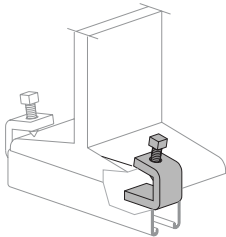


PS 901	PG	100	6	\$146.46
PS 902	PG	100	19	\$826.91

PS 907

"I" Beam Clamp

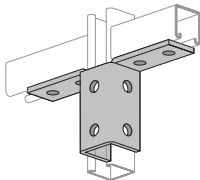
Includes Cup Point Set Screw



PS 907	EG	50	26	\$1,196.54
PS 907	GR	50	26	\$1,242.57
PS 907	HG	50	26	\$1,370.40

PS 913

Ten Hole Two Angle Clevis Connector

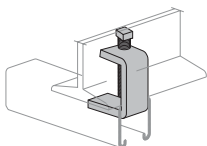


PS 913	EG	10	202	\$4,142.58
PS 913	GR	10	202	\$4,269.09
PS 913	HG	10	202	\$4,743.41
PS 913	ZD	10	202	\$4,337.36

PS 916

Beam Clamp

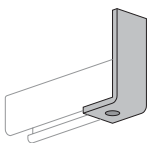
For Beams 7/8" To 2" Thick



PS 916	EG	25	60	\$1,453.31
PS 916	GR	25	60	\$1,497.68
PS 916	HG	25	60	\$2,134.72

PS 921

One Hole Angle



PS 921A 3-7/8	EG	25	60	\$832.24
PS 921A 3-7/8	GR	25	60	\$813.61
PS 921A 3-7/8	HG	25	60	\$931.70
PS 921B 5-7/8	EG	25	83	\$1,042.91
PS 921B 5-7/8	GR	25	83	\$1,042.91
PS 921C 7 7/8	GR	25	105	\$1,253.35
PS 921C 7-7/8	EG	25	105	\$1,253.35
PS 921D 9-7/8	EG	25	130	\$1,475.53
PS 921D 9-7/8	GR	25	130	\$1,520.58



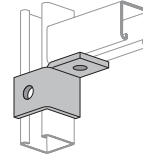
POWER-STRUT®



Part No. & Length	Fin.	Std Qty	Wt./ 100	List Price per 100 pcs
-------------------	------	---------	----------	------------------------

PS 922 LH & RH

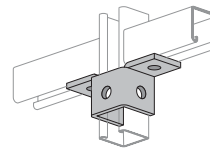
Two Hole Single Corner Angle Connection



PS 922 LH	EG	20	60	\$1,633.10
PS 922 LH	GR	20	60	\$1,660.75
PS 922 LH	HG	20	64	\$1,843.64
PS 922 LH	ZD	20	60	\$1,659.22
PS 922 RH	EG	20	60	\$1,633.10
PS 922 RH	GR	20	60	\$1,660.75
PS 922 RH	HG	20	64	\$1,843.64
PS 922 RH	ZD	20	60	\$1,659.22

PS 923

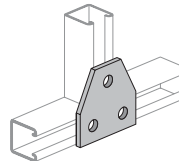
Five Hole Two Angle Connector



PS 92 3/8	EG	50	30	\$840.42
PS 92 3/8	PL	50	30	\$1,044.74
PS 92 3/8	ZD	50	30	\$840.42
PS 923	EG	20	93	\$2,124.60
PS 923	GR	20	93	\$2,188.36
PS 923	HG	20	93	\$2,422.63
PS 923	ZD	20	93	\$2,186.34

PS 925

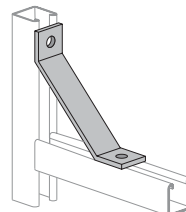
Symmetrical 3 Hole Joint Connector



PS 925	EG	25	70	\$1,376.35
PS 925	GR	25	70	\$1,336.31

PS 926

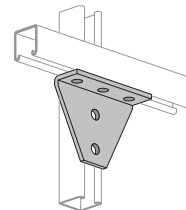
Strut Brace



PS 926 12	EG	15	160	\$1,741.06
PS 926 12	GR	15	160	\$1,757.41
PS 926 12	ZD	15	160	\$1,790.89
PS 926 18	EG	1	218	\$1,824.96
PS 926 18	GR	1	218	\$1,862.28
PS 926 18	HG	1	218	\$3,008.53
PS 926 18	ZD	1	218	\$1,897.76
PS 926 24	EG	1	280	\$2,365.55
PS 926 24	GR	1	280	\$2,392.95
PS 926 24	HG	1	280	\$3,462.62

PS 927

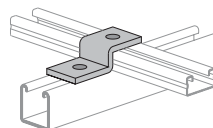
Five Hole Corner Connector



PS 927	EG	10	198	\$2,593.79
PS 927	GR	10	198	\$2,672.99

PS 928

Zee Support; Use For PS 500



PS 928	EG	50	47	\$729.75
PS 928	GR	50	47	\$735.53
PS 928	ZD	50	47	\$735.53



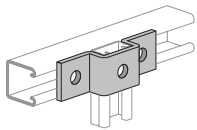
POWER-STRUT®



Part No. & Length	Fin.	Std Qty	Wt./ 100	List Price per 100 pcs
-------------------	------	---------	----------	------------------------

PS 929

"U" Support
Use With PS 500



PS 929	EG	25	65	\$1,059.75
PS 929	GR	25	65	\$1,041.42
PS 929	HG	25	65	\$1,157.16
PS 929	ZD	25	65	\$1,041.42

PS 930

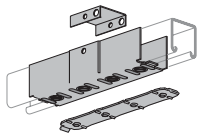
Type "A" End Cap
Use With PS 500



PS 930	PG	200	4	\$143.54
--------	----	-----	---	----------

PS 942

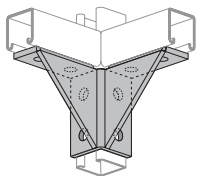
Raceway Splice Plate
Use With PS 500, PS 520; U.L. Listed



PS 942	EG	50	85	\$1,809.01
PS 942	GR	50	85	\$1,809.01

PS 943

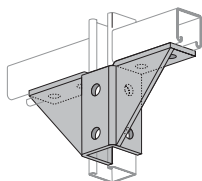
Eight Hole Double Gusseted Corner Connector



PS 94 3/4	EG	25	86	\$2,538.59
PS 94 3/4	PL	25	86	\$2,378.15
PS 943	EG	10	217	\$5,279.37
PS 943	GR	10	217	\$5,403.92
PS 943	HG	10	217	\$7,600.84

PS 945

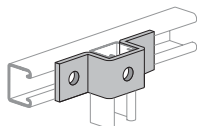
Double Wing Gusseted Connector



PS 945	EG	10	257	\$6,816.55
PS 945	GR	10	285	\$7,088.95
PS 945	HG	10	257	\$8,201.81

PS 978

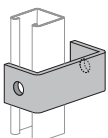
"U" Support
Use With PS 400



PS 978	EG	20	71	\$1,193.02
PS 978	GR	20	71	\$1,153.50

PS 993

Inside Clevis



PS 993 4	EG	25	78	\$1,091.89
PS 993 4	GR	25	78	\$1,090.88
PS 993 5	EG	25	89	\$1,156.52
PS 993 5	GR	25	89	\$1,190.13
PS 993 6	EG	25	101	\$1,311.49
PS 993 6	GR	25	101	\$1,310.28
PS 993 7	EG	25	112	\$1,429.34
PS 993 7	GR	25	112	\$1,429.34
PS 993 8	EG	20	124	\$1,503.18
PS 993 8	GR	20	124	\$1,503.18



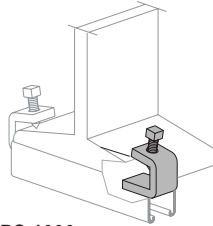
POWER-STRUT®



Part No. & Length	Fin.	Std Qty	Wt./ 100	List Price per 100 pcs
-------------------	------	---------	----------	------------------------

PS 998

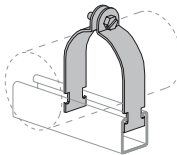
"I" Beam Clamp; Includes Set Screw



PS 998	EG	25	60	\$1,239.79
PS 998	HG	25	65	\$2,038.19

PS 1000

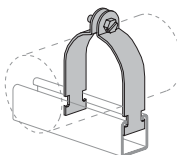
Conduit Clamps



PS 1000 1 1/2	AL	50	10	\$816.70
PS 1000 1 1/2	EG	50	27	\$311.36
PS 1000 1 1/2	HG	50	27	\$662.50
PS 1000 1 1/2	SS	50	27	\$1,004.18
PS 1000 1 1/2	ZD	50	27	\$328.39
PS 1000 1 1/4	AL	100	6	\$529.70
PS 1000 1 1/4	EG	100	16	\$253.18
PS 1000 1 1/4	ZD	100	16	\$267.02
PS 1000 1	AL	100	5	\$508.46
PS 1000 1	EG	100	14	\$226.10
PS 1000 1	HG	100	14	\$425.81
PS 1000 1	SS	100	14	\$637.10
PS 1000 1	ZD	100	14	\$238.46
PS 1000 1/2	AL	100	4	\$533.37
PS 1000 1/2	EG	100	9	\$189.46
PS 1000 1/2	HG	100	9	\$396.90
PS 1000 1/2	SS	100	9	\$506.31
PS 1000 1/2	ZD	100	9	\$199.82
PS 1000 2	AL	50	12	\$821.78
PS 1000 2	EG	50	30	\$328.56
PS 1000 2	HG	50	33	\$759.66
PS 1000 2	ZD	50	33	\$346.53
PS 1000 3/4	AL	100	5	\$544.33
PS 1000 3/4	EG	100	10	\$193.66
PS 1000 3/4	HG	100	10	\$392.59
PS 1000 3/4	SS	100	10	\$552.66
PS 1000 3/4	ZD	100	10	\$205.28

PS 1000 AS

Pre-Assembled EMT Conduit Clamps

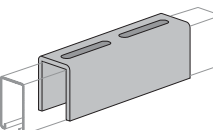


PS 1000 AS 1	EG	100	14	\$236.59
PS 1000 AS 1	ZD	100	14	\$250.73
PS 1000 AS 1-1/2EG	50	27	\$331.33	
PS 1000 AS 1-1/2ZD	50	27	\$342.98	
PS 1000 AS 1-1/4EG	100	16	\$272.12	
PS 1000 AS 1-1/4ZD	100	16	\$281.69	
PS 1000 AS 1/2 EG	100	9	\$204.55	
PS 1000 AS 1/2 ZD	100	9	\$211.74	
PS 1000 AS 2	EG	50	30	\$353.04
PS 1000 AS 2	ZD	50	30	\$365.45
PS 1000 AS 3/4 EG	100	10	\$204.85	
PS 1000 AS 3/4 ZD	100	10	\$213.45	

PS 1004

Slotted Joiner Use With PS 150 S;

Order PS 6072 Machine Screws and PS 6108 Square Nut Separately



PS 1004	EG	25	140	\$2,211.85
PS 1004	GR	25	140	\$2,211.85
PS 1004	HG	25	140	\$2,328.27



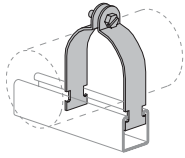
POWER-STRUT®



Part No. & Length Std Qty Wt./100 List Price per 100 pcs

PS 1100, 1116, 1117

Rigid Steel Conduit Clamps; Also For IMC and GRC



PS 1100 1 1/2	EG	100	28	\$304.06
PS 1100 1 1/2	HG	50	28	\$564.44
PS 1100 1 1/2	ZD	100	28	\$328.39
PS 1100 1 1/4	EG	100	18	\$253.18
PS 1100 1 1/4	ZD	100	18	\$262.08
PS 1100 1	AL	100	5	\$335.96
PS 1100 1	EG	100	15	\$220.80
PS 1100 1	HG	100	15	\$389.45
PS 1100 1	ZD	100	15	\$234.05
PS 1100 1/2	EG	100	10	\$189.46
PS 1100 1/2	HG	100	10	\$365.11
PS 1100 1/2	ZD	100	10	\$199.82
PS 1100 10 AS	EG	10	143	\$2,551.47
PS 1100 10 AS	ZD	10	143	\$2,662.40
PS 1100 10	EG	10	143	\$2,190.01
PS 1100 10	HG	10	143	\$7,082.71
PS 1100 10	ZD	10	143	\$2,089.26
PS 1100 12 AS	EG	10	174	\$3,259.32
PS 1100 12 AS	ZD	10	174	\$3,401.03
PS 1100 12	EG	10	174	\$2,712.01
PS 1100 12	ZD	10	174	\$2,587.31
PS 1100 2 1/2	EG	50	39	\$372.52
PS 1100 2 1/2	HG	50	39	\$658.23
PS 1100 2 1/2	ZD	50	39	\$385.56
PS 1100 2	EG	50	33	\$320.86
PS 1100 2	HG	50	33	\$619.59
PS 1100 2	ZD	50	33	\$346.13
PS 1100 3 1/2	EG	25	55	\$475.25
PS 1100 3 1/2	HG	25	55	\$965.39
PS 1100 3 1/2	ZD	25	55	\$490.60
PS 1100 3	EG	50	44	\$407.20
PS 1100 3	HG	50	44	\$717.45
PS 1100 3	ZD	50	44	\$419.53
PS 1100 3/4	EG	100	13	\$193.66
PS 1100 3/4	HG	100	13	\$375.48
PS 1100 3/4	ZD	100	13	\$205.28
PS 1100 3/8	EG	100	9	\$243.93
PS 1100 3/8	HG	100	9	\$369.38
PS 1100 3/8	ZD	100	9	\$248.54
PS 1100 4	AL	25	21	\$789.41
PS 1100 4	EG	25	61	\$531.75
PS 1100 4	HG	25	61	\$1,007.85
PS 1100 4	ZD	25	61	\$548.92
PS 1100 5	EG	25	73	\$827.32
PS 1116 1 1/4	AL	100	5	\$485.90
PS 1116 1	AL	100	4	\$466.52
PS 1116 1/2	AL	100	3	\$431.48
PS 1116 2 1/2	AL	50	11	\$893.63
PS 1116 2	AL	50	9	\$827.15
PS 1116 3 1/2	AL	50	14	\$1,551.32
PS 1116 3	AL	50	12	\$951.50
PS 1116 3/4	AL	100	4	\$451.57
PS 1116 4	AL	25	16	\$1,533.03
PS 1116 5	AL	25	20	\$1,682.28
PS 1116 6	AL	25	25	\$2,133.05
PS 1117 1 1/2	AL	50	11	\$609.92
PS 1117 1 1/4	AL	100	7	\$517.70
PS 1117 1	AL	100	7	\$402.30
PS 1117 1/2	AL	100	5	\$460.23
PS 1117 10	AL	25	55	\$4,072.68
PS 1117 2 1/2	AL	50	16	\$721.92



POWER-STRUT®

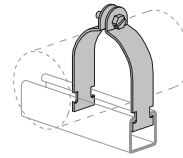


Part No. & Length Fin. Std Qty Wt./100 List Price per 100 pcs

PS 1117 2	AL	50	28	\$650.91
PS 1117 3 1/2	AL	50	20	\$967.31
PS 1117 3	AL	50	18	\$778.28
PS 1117 3/4	AL	100	6	\$387.75
PS 1117 4	AL	25	28	\$1,003.13
PS 1100 5	HG	25	73	\$1,088.76
PS 1100 5	ZD	25	73	\$827.32
PS 1100 6	EG	25	98	\$975.38
PS 1100 6	HG	25	98	\$1,521.82
PS 1100 6	ZD	25	98	\$1,017.78
PS 1100 8 AS	EG	25	123	\$2,418.14
PS 1100 8 AS	ZD	25	123	\$2,425.77
PS 1100 8	EG	25	123	\$1,704.34
PS 1100 8	HG	25	123	\$1,626.07
PS 1100 8	ZD	25	123	\$1,570.95

PS 1100 AS

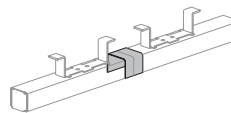
*Pre-Assembled Rigid Steel Conduit And Pipe Clamps
Also For IMC and GRC*



PS 1100 AS 1 1/2	EG	50	28	\$329.59
PS 1100 AS 1 1/2	ZD	50	28	\$341.18
PS 1100 AS 1 1/4	EG	100	18	\$271.96
PS 1100 AS 1 1/4	ZD	100	18	\$281.52
PS 1100 AS 1	EG	100	15	\$240.53
PS 1100 AS 1	ZD	100	15	\$248.99
PS 1100 AS 1/2	EG	100	10	\$204.06
PS 1100 AS 1/2	ZD	100	10	\$211.24
PS 1100 AS 2 1/2	EG	50	39	\$385.95
PS 1100 AS 2 1/2	ZD	50	39	\$409.10
PS 1100 AS 2	EG	50	33	\$347.83
PS 1100 AS 2	ZD	50	33	\$360.06
PS 1100 AS 3 1/2	EG	25	55	\$510.95
PS 1100 AS 3 1/2	ZD	25	55	\$527.45
PS 1100 AS 3	EG	50	44	\$423.10
PS 1100 AS 3	ZD	50	44	\$448.48
PS 1100 AS 3/4	EG	100	13	\$204.85
PS 1100 AS 3/4	ZD	100	13	\$217.14
PS 1100 AS 3/8	EG	100	9	\$261.74
PS 1100 AS 3/8	ZD	100	9	\$266.68
PS 1100 AS 4	EG	25	61	\$551.68
PS 1100 AS 4	ZD	25	61	\$582.02
PS 1100 AS 5	EG	25	73	\$902.30
PS 1100 AS 5	ZD	25	73	\$902.24
PS 1100 AS 6	ZD	25	98	\$1,163.06

PS 1154

*Splice Connection
Use With PS 349 Continuous Insert*



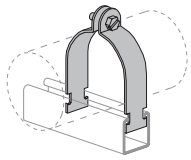
PS 1154	EG	50	10	\$493.64
PS 1154B	PG	50	8	\$486.83



POWER-STRUT®

A PART OF **atkore**
INTERNATIONAL

Part No. & Length	Fin.	Std Qty	Wt./ 100	List Price per 100 pcs
PS 1200				
<i>O.D. Tubing Clamp</i>				
PS 1200 1 1/2 ASEG		100	16	\$418.14
PS 1200 1 1/2 ASZD		100	16	\$418.14
PS 1200 1 1/2 CC		100	12	\$288.26
PS 1200 1 1/2 EG		100	16	\$383.60
PS 1200 1 1/2 ZD		100	16	\$390.83
PS 1200 1 1/4 ASEG		100	14	\$396.33
PS 1200 1 1/4 ASZD		100	14	\$396.33
PS 1200 1 1/4 EG		100	14	\$363.48
PS 1200 1 1/4 ZD		100	14	\$370.34
PS 1200 1 1/8 ASEG		100	14	\$383.43
PS 1200 1 1/8 CC		100	14	\$441.13
PS 1200 1 1/8 EG		100	14	\$358.09
PS 1200 1 3/4 ASEG		50	27	\$554.43
PS 1200 1 3/4 ASZD		50	27	\$554.43
PS 1200 1 3/4 EG		50	27	\$518.31
PS 1200 1 3/4 ZD		50	27	\$518.31
PS 1200 1 3/8 ASCPLT		100	15	\$558.61
PS 1200 1 3/8 ASEG		100	15	\$399.95
PS 1200 1 3/8 ASZD		100	15	\$407.49
PS 1200 1 3/8 CC		100	15	\$512.53
PS 1200 1 3/8 EG		100	15	\$380.76
PS 1200 1 3/8 ZD		100	15	\$380.76
PS 1200 1 5/8 ASEG		100	17	\$418.65
PS 1200 1 5/8 ASZD		100	17	\$426.55
PS 1200 1 5/8 CC		100	17	\$535.17
PS 1200 1 5/8 EG		100	17	\$398.56
PS 1200 1 5/8 ZD		100	17	\$398.56
PS 1200 1 7/8 ASEG		50	28	\$544.16
PS 1200 1 7/8 ASZD		50	28	\$554.43
PS 1200 1 7/8 EG		50	28	\$518.31
PS 1200 1 7/8 HG		50	28	\$603.88
PS 1200 1 7/8 ZD		50	28	\$518.31
PS 1200 1 AS EG		100	13	\$361.93
PS 1200 1 AS ZD		100	13	\$361.93
PS 1200 1 CC		100	13	\$427.81
PS 1200 1 EG		100	13	\$348.77
PS 1200 1 ZD		100	13	\$355.35
PS 1200 1-1/8 ASCC		100	14	\$480.93
PS 1200 1-1/8 ASZD		100	14	\$390.66
PS 1200 1-5/8 ASCC		50	17	\$583.33
PS 1200 1/2 AS CC		100	8	\$452.37
PS 1200 1/2 AS EG		100	8	\$300.23
PS 1200 1/2 AS ZD		100	8	\$305.89
PS 1200 1/2 CC		100	8	\$358.60
PS 1200 1/2 EG		100	8	\$286.52
PS 1200 1/2 ZD		100	8	\$291.92
PS 1200 1/4 AS CC		100	7	\$308.81
PS 1200 1/4 AS EG		100	7	\$298.74
PS 1200 1/4 AS ZD		100	7	\$298.74
PS 1200 1/4 CC		100	7	\$288.66
PS 1200 1/4 EG		100	7	\$274.10
PS 1200 1/4 ZD		100	7	\$279.27
PS 1200 10 1/8 EG		25	144	\$9,018.33
PS 1200 12 5/8 EG		25	170	\$10,843.14
PS 1200 2 1/2 ASEG		50	34	\$622.94
PS 1200 2 1/2 ASZD		50	34	\$622.94
PS 1200 2 1/2 CC		50	34	\$617.56
PS 1200 2 1/2 EG		50	34	\$571.29
PS 1200 2 1/2 HG		50	34	\$790.48
PS 1200 2 1/2 ZD		50	34	\$582.07
PS 1200 2 1/4 ASEG		50	32	\$599.82



POWER-STRUT®

A PART OF **atkore**
INTERNATIONAL

Part No. & Length	Fin.	Std Qty	Wt./ 100	List Price per 100 pcs
PS 1200 2 1/4 EG		50	32	\$550.28
PS 1200 2 1/4 ZD		50	32	\$560.67
PS 1200 2 1/8 ASEG		50	29	\$554.38
PS 1200 2 1/8 ASZD		50	29	\$564.84
PS 1200 2 1/8 CC		50	31	\$726.07
PS 1200 2 1/8 EG		50	31	\$528.21
PS 1200 2 1/8 ZD		50	31	\$528.21
PS 1200 2 3/4 ASEG		50	37	\$655.34
PS 1200 2 3/4 EG		50	37	\$472.52
PS 1200 2 3/4 ZD		50	37	\$472.52
PS 1200 2 3/8 AL		50	11	\$680.98
PS 1200 2 3/8 ASEG		50	33	\$599.82
PS 1200 2 3/8 ASZD		50	33	\$599.82
PS 1200 2 3/8 EG		50	33	\$550.28
PS 1200 2 3/8 HG		50	33	\$716.13
PS 1200 2 3/8 ZD		50	33	\$560.67
PS 1200 2 5/8 ASEG		50	35	\$611.41
PS 1200 2 5/8 ASZD		50	35	\$622.94
PS 1200 2 5/8 CC		50	35	\$809.83
PS 1200 2 5/8 EG		50	35	\$571.29
PS 1200 2 5/8 ZD		50	35	\$582.07
PS 1200 2 7/8 ASEG		50	39	\$653.51
PS 1200 2 7/8 EG		50	39	\$601.13
PS 1200 2 7/8 ZD		50	39	\$612.47
PS 1200 2 AS EG		50	29	\$554.95
PS 1200 2 AS ZD		50	29	\$565.42
PS 1200 2 CC		50	29	\$537.77
PS 1200 2 EG		50	29	\$518.43
PS 1200 2 HG		50	0	\$633.53
PS 1200 2 ZD		50	29	\$528.21
PS 1200 2-1/8 ASCC		50	31	\$780.75
PS 1200 2-5/8 ASCC		50	35	\$882.81
PS 1200 3 1/2 ASEG		50	44	\$558.43
PS 1200 3 1/2 EG		50	44	\$682.92
PS 1200 3 1/2 HG		50	44	\$889.05
PS 1200 3 1/2 ZD		50	44	\$695.81
PS 1200 3 1/4 ASEG		50	42	\$728.61
PS 1200 3 1/4 EG		50	42	\$668.15
PS 1200 3 1/4 ZD		50	42	\$680.76
PS 1200 3 1/8 ASEG		50	41	\$692.25
PS 1200 3 1/8 ASZD		50	41	\$705.31
PS 1200 3 1/8 CC		50	41	\$881.33
PS 1200 3 1/8 EG		50	41	\$646.97
PS 1200 3 1/8 ZD		50	41	\$659.18
PS 1200 3 3/4 ASEG		25	53	\$859.34
PS 1200 3 3/4 EG		25	53	\$784.54
PS 1200 3 3/4 HG		50	58	\$1,125.68
PS 1200 3 3/4 ZD		25	53	\$803.13
PS 1200 3 3/8 ASEG		50	43	\$744.52
PS 1200 3 3/8 EG		50	43	\$682.92
PS 1200 3 3/8 ZD		50	43	\$695.81
PS 1200 3 5/8 ASEG		25	51	\$779.67
PS 1200 3 5/8 ASZD		25	51	\$779.67
PS 1200 3 5/8 CC		25	51	\$1,115.04
PS 1200 3 5/8 EG		25	51	\$711.69
PS 1200 3 5/8 ZD		25	51	\$728.61
PS 1200 3 7/8 ASEG		25	54	\$976.00
PS 1200 3 7/8 EG		25	54	\$890.84
PS 1200 3 7/8 ZD		25	54	\$911.95
PS 1200 3 AS EG		50	39	\$689.17
PS 1200 3 AS ZD		50	39	\$689.17
PS 1200 3 CC		50	39	\$673.83



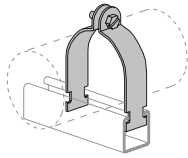
POWER-STRUT®

A PART OF **atkore**
INTERNATIONAL

Part No. Std Wt./ List Price
& Length Fin. Qty 100 per 100 pcs

PS 1200 [CONTINUED]

O.D. Tubing Clamp



PS 1200 3	EG	50	39	\$632.03
PS 1200 3	HG	50	39	\$841.60
PS 1200 3	ZD	50	39	\$643.95
PS 1200 3-1/8	ASCC	50	41	\$965.24
PS 1200 3/4	AS CC	100	11	\$403.08
PS 1200 3/4	AS EG	100	11	\$327.30
PS 1200 3/4	AS ZD	100	11	\$327.30
PS 1200 3/4	CC	100	11	\$376.93
PS 1200 3/4	EG	100	11	\$300.56
PS 1200 3/4	ZD	100	11	\$306.23
PS 1200 3/8	AS CC	100	7	\$382.99
PS 1200 3/8	AS EG	100	7	\$301.29
PS 1200 3/8	AS ZD	100	7	\$306.98
PS 1200 3/8	CC	100	7	\$349.44
PS 1200 3/8	EG	100	7	\$281.69
PS 1200 3/8	ZD	100	7	\$287.00
PS 1200 4 1/2	ASEG	25	61	\$1,134.68
PS 1200 4 1/2	EG	25	61	\$1,060.43
PS 1200 4 1/2	HG	25	61	\$462.84
PS 1200 4 1/2	ZD	25	61	\$1,085.56
PS 1200 4 1/4	ASEG	25	59	\$1,196.20
PS 1200 4 1/4	EG	25	59	\$1,092.30
PS 1200 4 1/4	ZD	25	59	\$1,118.18
PS 1200 4 1/8	ASCC	25	57	\$1,196.95
PS 1200 4 1/8	ASEG	25	57	\$1,055.06
PS 1200 4 1/8	ASZD	25	57	\$1,080.06
PS 1200 4 1/8	CC	25	57	\$1,118.53
PS 1200 4 1/8	EG	25	57	\$985.84
PS 1200 4 1/8	ZD	25	57	\$1,009.20
PS 1200 4 3/4	ASEG	25	64	\$797.47
PS 1200 4 3/4	EG	25	64	\$1,101.97
PS 1200 4 3/4	ZD	25	64	\$745.26
PS 1200 4 3/8	ASEG	25	60	\$1,161.57
PS 1200 4 3/8	CC	25	60	\$2,635.44
PS 1200 4 3/8	EG	25	60	\$1,060.43
PS 1200 4 3/8	ZD	25	60	\$1,085.56
PS 1200 4 5/8	ASEG	25	62	\$699.64
PS 1200 4 5/8	EG	25	62	\$1,079.38
PS 1200 4 5/8	ZD	25	62	\$1,104.96
PS 1200 4 7/8	ASEG	25	65	\$1,229.69
PS 1200 4 7/8	EG	25	65	\$1,122.49
PS 1200 4 7/8	ZD	25	65	\$1,149.09
PS 1200 4 AS	EG	25	55	\$975.83
PS 1200 4 AS	ZD	25	55	\$975.83
PS 1200 4	EG	25	55	\$890.84
PS 1200 4	ZD	25	55	\$911.95
PS 1200 5 1/2	ASEG	25	72	\$1,351.49
PS 1200 5 1/2	EG	25	72	\$1,233.82
PS 1200 5 1/2	ZD	25	72	\$1,263.06
PS 1200 5 1/4	ASEG	25	70	\$1,363.97
PS 1200 5 1/4	EG	25	70	\$1,244.56
PS 1200 5 1/4	ZD	25	70	\$1,274.05
PS 1200 5 1/8	ASEG	25	68	\$1,272.22
PS 1200 5 1/8	ASZD	25	68	\$1,272.22
PS 1200 5 1/8	CC	25	68	\$2,739.51
PS 1200 5 1/8	EG	25	68	\$1,161.35
PS 1200 5 1/8	ZD	25	68	\$1,188.87
PS 1200 5 3/4	ASEG	25	87	\$1,652.06
PS 1200 5 3/4	EG	25	87	\$1,508.08
PS 1200 5 3/4	ZD	25	87	\$1,543.82
PS 1200 5 3/8	ASEG	25	71	\$1,338.67



POWER-STRUT®

A PART OF **atkore**
INTERNATIONAL

Part No. Std Wt./ List Price
& Length Fin. Qty 100 per 100 pcs

PS 1200 5 3/8	EG	25	71	\$1,221.97
PS 1200 5 3/8	ZD	25	71	\$1,250.92
PS 1200 5 5/8	ASEG	25	85	\$1,613.77
PS 1200 5 5/8	EG	25	85	\$1,473.19
PS 1200 5 5/8	ZD	25	85	\$1,508.10
PS 1200 5 7/8	ASEG	25	88	\$1,676.04
PS 1200 5 7/8	EG	25	88	\$1,530.11
PS 1200 5 7/8	ZD	25	88	\$1,566.37
PS 1200 5 AS	EG	25	67	\$1,229.69
PS 1200 5 AS	ZD	25	67	\$1,229.69
PS 1200 5	EG	25	67	\$1,122.49
PS 1200 5	HG	25	79	\$1,327.91
PS 1200 5	ZD	25	67	\$1,149.09
PS 1200 5/8	AS CC	100	8	\$389.72
PS 1200 5/8	AS EG	100	8	\$310.06
PS 1200 5/8	AS ZD	100	8	\$315.91
PS 1200 5/8	CC	100	8	\$364.38
PS 1200 5/8	EG	100	8	\$289.94
PS 1200 6 1/2	ASEG	25	98	\$2,007.01
PS 1200 6 1/2	EG	25	98	\$1,797.54
PS 1200 6 1/2	ZD	25	98	\$1,875.70
PS 1200 6 1/4	EG	25	93	\$1,614.00
PS 1200 6 1/4	ZD	25	93	\$1,614.00
PS 1200 6 1/8	ASEG	25	91	\$1,692.19
PS 1200 6 1/8	ASZD	25	91	\$1,692.19
PS 1200 6 1/8	CC	25	91	\$3,083.98
PS 1200 6 1/8	EG	25	91	\$1,515.48
PS 1200 6 1/8	ZD	25	91	\$1,581.37
PS 1200 6 3/4	EG	25	100	\$1,948.96
PS 1200 6 3/4	ZD	25	100	\$1,948.96
PS 1200 6 3/8	CC	25	95	\$3,163.88
PS 1200 6 3/8	EG	25	95	\$1,557.99
PS 1200 6 3/8	ZD	25	95	\$1,625.73
PS 1200 6 5/8	EG	25	99	\$1,837.53
PS 1200 6 5/8	ZD	25	99	\$1,917.48
PS 1200 6 7/8	EG	25	101	\$1,891.62
PS 1200 6 7/8	ZD	25	101	\$1,973.86
PS 1200 6 AS	EG	25	90	\$1,675.53
PS 1200 6 AS	ZD	25	90	\$1,675.53
PS 1200 6	EG	25	90	\$1,500.56
PS 1200 6	ZD	25	90	\$1,565.80
PS 1200 7 1/2	EG	25	109	\$2,021.02
PS 1200 7 1/2	ZD	25	109	\$2,108.89
PS 1200 7 1/4	EG	25	106	\$2,058.69
PS 1200 7 1/4	ZD	25	106	\$2,058.69
PS 1200 7 1/8	EG	25	104	\$1,949.05
PS 1200 7 1/8	ZD	25	104	\$2,033.79
PS 1200 7 3/4	EG	25	112	\$2,153.77
PS 1200 7 3/4	ZD	25	112	\$2,153.71
PS 1200 7 3/8	EG	25	107	\$2,021.02
PS 1200 7 3/8	ZD	25	107	\$2,108.89
PS 1200 7 5/8	EG	25	110	\$2,059.81
PS 1200 7 5/8	ZD	25	110	\$2,149.36
PS 1200 7 7/8	EG	25	113	\$2,219.14
PS 1200 7 7/8	ZD	25	113	\$2,219.14
PS 1200 7	EG	25	102	\$1,891.62
PS 1200 7	ZD	25	102	\$1,973.86
PS 1200 7/8	AS CC	100	10	\$424.05
PS 1200 7/8	AS EG	100	12	\$334.33
PS 1200 7/8	AS ZD	100	12	\$340.64
PS 1200 7/8	CC	100	10	\$396.35
PS 1200 7/8	EG	100	12	\$318.14
PS 1200 8 1/2	EG	25	121	\$2,309.78



POWER-STRUT®



Part No. & Length	Fin.	Std Qty	Wt./ 100	List Price per 100 pcs
-------------------	------	---------	----------	------------------------

PS 1200 [CONTINUED]

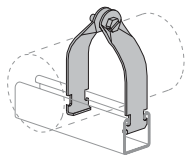
O.D. Tubing Clamp

PS 1200 8 1/2	ZD	25	121	\$2,410.15
PS 1200 8 1/4	EG	25	118	\$2,310.38
PS 1200 8 1/4	ZD	25	118	\$2,310.32
PS 1200 8 1/8	ASEG	25	117	\$2,531.61
PS 1200 8 1/8	EG	25	117	\$2,366.02
PS 1200 8 1/8	ZD	25	117	\$2,366.02
PS 1200 8 3/4	EG	25	125	\$1,761.56
PS 1200 8 3/8	EG	25	120	\$2,380.33
PS 1200 8 3/8	ZD	25	120	\$2,380.33
PS 1200 8 5/8	EG	25	123	\$2,410.20
PS 1200 8 5/8	ZD	25	123	\$2,410.15
PS 1200 8 7/8	EG	25	126	\$2,462.35
PS 1200 8	EG	25	115	\$2,126.67
PS 1200 8	ZD	25	115	\$2,219.14
PS 1200 9 1/2	EG	25	137	\$4,644.85
PS 1200 9 1/4	EG	10	132	\$9,658.85
PS 1200 9 1/8	EG	25	130	\$6,351.18
PS 1200 9 3/8	EG	25	135	\$4,393.39
PS 1200 9 5/8	EG	25	139	\$3,959.87
PS 1200 9	EG	25	128	\$2,439.46

PS 1300

Universal Pipe Clamp

For EMT, IMC, GRC, Pipe, or O.D. Tube



PS 1300 1 1/2	EG	100	30	\$311.36
PS 1300 1 1/2	HG	100	30	\$633.49
PS 1300 1 1/4	EG	100	19	\$247.25
PS 1300 1 1/4	HG	100	19	\$631.19
PS 1300 1 1/4	ZD	100	19	\$262.08
PS 1300 1	EG	100	17	\$226.10
PS 1300 1	HG	100	17	\$285.45
PS 1300 1	ZD	100	17	\$234.05
PS 1300 1-1/2	ZD	100	20	\$322.30
PS 1300 1/2	EG	100	11	\$185.02
PS 1300 1/2	HG	100	11	\$474.22
PS 1300 1/2	ZD	100	11	\$196.12
PS 1300 2	EG	100	25	\$328.56
PS 1300 2	HG	100	35	\$607.81
PS 1300 2	ZD	100	25	\$340.11
PS 1300 3/4	EG	100	15	\$193.66
PS 1300 3/4	HG	100	15	\$281.86
PS 1300 3/4	ZD	100	15	\$205.28
PS 1300 AS 1 1/2	EG	100	30	\$329.76
PS 1300 AS 1 1/2	ZD	100	30	\$341.35
PS 1300 AS 1 1/4	EG	100	19	\$269.19
PS 1300 AS 1 1/4	ZD	100	19	\$278.60
PS 1300 AS 1	EG	100	17	\$234.90
PS 1300 AS 1	ZD	100	17	\$248.99
PS 1300 AS 1/2	EG	100	11	\$203.85
PS 1300 AS 1/2	ZD	100	11	\$211.01
PS 1300 AS 2	EG	100	30	\$342.59
PS 1300 AS 2	ZD	100	30	\$363.09
PS 1300 AS 3/4	EG	100	15	\$204.85
PS 1300 AS 3/4	ZD	100	15	\$217.14



POWER-STRUT®

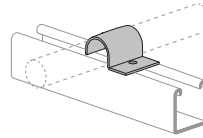


Part No. & Length	Fin.	Std Qty	Wt./ 100	List Price per 100 pcs
-------------------	------	---------	----------	------------------------

PS 1450

One Hole Clamp For O.D. Tubing

Use With 1 5/8 Wide Channel

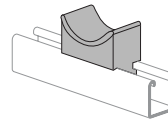


PS 1450 1	EG	50	7	\$400.34
PS 1450 1/2	EG	100	4	\$291.24
PS 1450 1/2	HG	100	4	\$344.70
PS 1450 1/4	EG	100	3	\$270.90
PS 1450 3/4	EG	100	6	\$362.59
PS 1450 3/4	HG	100	6	\$388.83
PS 1450 3/8	EG	100	4	\$274.10
PS 1450 3/8	HG	100	4	\$342.30
PS 1450 5/8	EG	100	5	\$352.94
PS 1450 7/8	EG	50	6	\$387.92

PS 1500

Porcelain Cable Rack Insulator

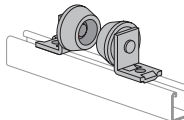
Use With All 1 5/8 Wide Channel



PS 1500 3	PL	10	74	\$1,467.46
PS 1500 4 1/2	PL	10	103	\$1,610.85

PS 1901

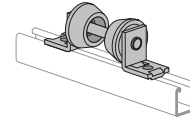
(1"-8" Pipe) Pipe Roller Support



PS 1901 1-8	EG	10	140	\$5,391.66
PS 1901 1-8	GR	10	140	\$5,391.66

PS 1902

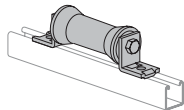
Pipe Roller Support



PS 1902 1-2	EG	10	309	\$8,269.92
PS 1902 1-2	GR	10	309	\$8,806.43
PS 1902 10	EG	10	344	\$8,561.73
PS 1902 10	GR	10	344	\$8,774.72
PS 1902 12	EG	10	350	\$8,623.26
PS 1902 12	GR	10	350	\$8,836.48
PS 1902 2 1/2-3 1/2	EG	10	315	\$6,901.37
PS 1902 2 1/2-3 1/2	GR	10	315	\$6,901.37
PS 1902 2 1/2-3 1/2	HG	10	315	\$8,558.98
PS 1902 4-6	EG	10	325	\$6,909.27
PS 1902 4-6	GR	10	325	\$6,909.27
PS 1902 8	EG	10	338	\$7,047.90
PS 1902 8	GR	10	338	\$7,047.90
PS 1902 8	HG	10	338	\$8,784.11

PS 1911

Pipe Roller



PS 1911 2-3 1/2	EG	25	160	\$7,941.94
PS 1911 2-3 1/2	GR	25	160	\$2,916.95
PS 1911 2-3 1/2	HG	25	160	\$3,442.99
PS 1911 4-6	EG	15	215	\$5,864.20
PS 1911 4-6	GR	15	215	\$2,986.90
PS 1911 4-6	HG	20	215	\$3,593.18
PS 1911 8-10	EG	1	525	\$11,346.11



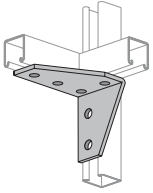
POWER-STRUT®



Part No. & Length	Fin.	Std Qty	Wt./ 100	List Price per 100 pcs
-------------------	------	---------	----------	------------------------

PS 2007 LH & RH

Five Hole Corner Connector

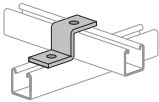


PS 2007 L	EG	10	135	\$3,069.42
PS 2007 L	GR	10	135	\$2,928.83
PS 2007 R	EG	10	135	\$3,069.42
PS 2007 R	GR	10	135	\$2,928.83

PS 2010

Zee Support

Use With PS 600 J

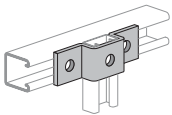


PS 2010	EG	100	7	\$485.47
---------	----	-----	---	----------

PS 2011

"U" Support

Use With PS 600 J

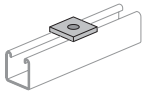


PS 2011	EG	50	12	\$682.42
---------	----	----	----	----------

PS 2013

Square Washer

Use With Junior Strut

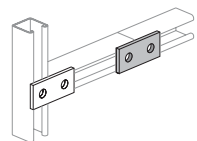


PS 2013	EG	100	2	\$254.22
---------	----	-----	---	----------

PS 2014

Two Hole Splice Plate

Use With Junior Strut

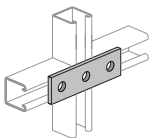


PS 2014	EG	100	5	\$280.17
---------	----	-----	---	----------

PS 2015

Three Hole Splice Plate

Use With Junior Strut

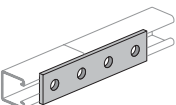


PS 2015	EG	100	8	\$313.41
---------	----	-----	---	----------

PS 2016

Four Hole Splice Plate

Use With Junior Strut



PS 2016	EG	50	11	\$346.47
---------	----	----	----	----------



POWER-STRUT®

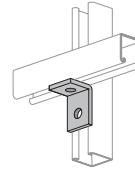


Part No. & Length	Fin.	Std Qty	Wt./ 100	List Price per 100 pcs
-------------------	------	---------	----------	------------------------

PS 2017

Two Hole Corner Angle

Use With Junior Strut

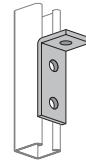


PS 2017	EG	100	5	\$366.74
---------	----	-----	---	----------

PS 2018

Three Hole Corner Angle

Use With Junior Strut

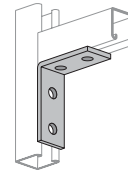


PS 2018	EG	100	8	\$426.33
---------	----	-----	---	----------

PS 2019

Four Hole Corner Angle

Use With Junior Strut

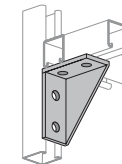


PS 2019	EG	100	11	\$524.49
---------	----	-----	----	----------

PS 2023 RH & LH

Four Hole Shelf Bracket

Use With Junior Strut

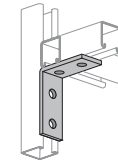


PS 2023 L	EG	50	19	\$996.10
PS 2023 R	EG	50	19	\$996.10

PS 2024

Four Hole Corner Angle

Use With Junior Strut

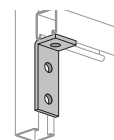


PS 2024	EG	50	11	\$599.11
---------	----	----	----	----------

PS 2025

Three Hole Corner Angle

Use With Junior Strut



PS 2025	EG	100	8	\$355.52
---------	----	-----	---	----------



POWER-STRUT®

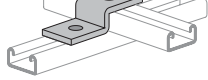


Part No. & Length	Fin.	Std Qty	Wt./ 100	List Price per 100 pcs
-------------------	------	---------	----------	------------------------

PS 2026

Zee Support

Use With PS 700 J



PS 2026	EG	100	6	\$429.53
---------	----	-----	---	----------

PS 2029

End Cap

Use With PS 600 J

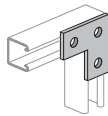


PS 2029	EG	100	8	\$698.63
---------	----	-----	---	----------

PS 2033

Flat Angle Plate

Use With Junior Strut

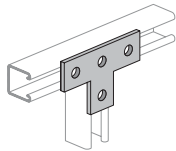


PS 2033	EG	100	8	\$828.49
---------	----	-----	---	----------

PS 2034

Tee Plate

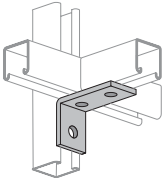
Use With Junior Strut



PS 2034	EG	100	11	\$928.08
---------	----	-----	----	----------

PS 2037

Four Hole Corner Angle

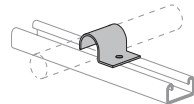


PS 2037	EG	100	8	\$478.93
---------	----	-----	---	----------

PS 2041

O.D. Tubing Clamps

Use With Junior Strut

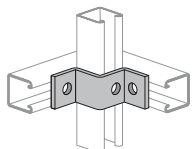


PS 2041 1	EG	100	3	\$307.64
PS 2041 1/2	EG	200	2	\$280.49
PS 2041 1/4	EG	200	2	\$269.80
PS 2041 3/4	EG	100	3	\$281.85
PS 2041 3/8	EG	200	2	\$265.02
PS 2041 5/8	EG	100	2	\$274.52
PS 2041 7/8	EG	100	3	\$289.00

PS 2054

Corner Connector

Use With PS 200, PS 210



PS 2054	EG	10	93	\$1,213.77
PS 2054	GR	10	93	\$1,213.77



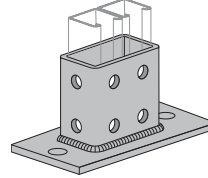
POWER-STRUT®



Part No. & Length	Fin.	Std Qty	Wt./ 100	List Price per 100 pcs
-------------------	------	---------	----------	------------------------

PS 2064

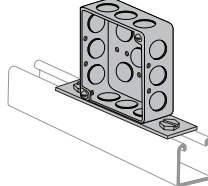
Double Column Post Base



PS 2064	EG	5	311	\$7,148.20
PS 2064	GR	5	311	\$7,231.00
PS 2064	HG	5	315	\$7,040.65

PS 2094

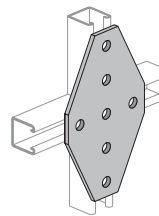
14" Receptacle Box



PS 2094	EG	10	93	\$6,416.32
---------	----	----	----	------------

PS 2112

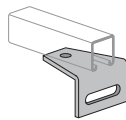
Cross Connector



PS 2112	EG	10	240	\$3,410.33
PS 2112	GR	10	240	\$3,448.65
PS 2112	ZD	10	240	\$3,448.65

PS 2113

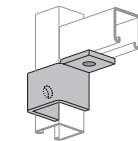
Slotted Corner Connector



PS 2113	EG	25	97	\$1,960.82
PS 2113	GN	25	97	\$1,960.82

PS 2117 RH & LH

Wrap Around Connector

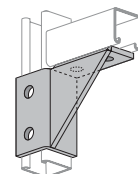


PS 2117 LH	GR	10	70	\$2,144.78
PS 2117 RH	EG	10	70	\$2,084.21
PS 2117 RH	GR	10	70	\$2,144.78

PS 2119

"U" Connector

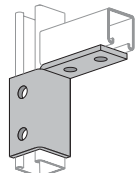
Use With PS 200 and PS 210



PS 2119	EG	25	95	\$1,653.59
PS 2119	GR	25	95	\$1,656.87

PS 2128 RH & LH

Six Hole Corner Connector



PS 2128 LH	EG	10	119	\$2,245.77
PS 2128 LH	GR	10	119	\$2,243.69
PS 2128 RH	EG	10	119	\$2,245.77
PS 2128 RH	GR	10	119	\$2,245.77



POWER-STRUT®

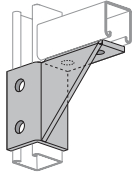


Part No. & Length	Fin.	Std Qty	Wt./ 100	List Price per 100 pcs
-------------------	------	---------	----------	------------------------

PS 2129 RH & LH

Single Corner Gussetted Connection

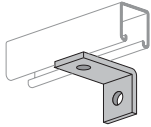
PS 2129 RH As Illustrated; PS 2129 LH Opposite Hand



PS 2129 LH	EG	10	176	\$3,800.74
PS 2129 LH	GR	10	176	\$3,861.52
PS 2129 RH	EG	10	176	\$3,800.74
PS 2129 RH	GR	10	176	\$3,800.74

PS 2144

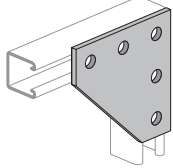
Corner Angle



PS 2144 3 1/2	EG	25	54	\$804.10
PS 2144 3 1/2	GR	25	54	\$795.00
PS 2144 3 1/2	HG	50	54	\$862.32
PS 2144 3	EG	25	49	\$725.34
PS 2144 3	GR	25	49	\$725.34
PS 2144 3	HG	25	49	\$778.24
PS 2144 4	EG	25	61	\$835.17
PS 2144 4	GR	25	61	\$825.72
PS 2144 4	HG	25	61	\$895.81

PS 2190

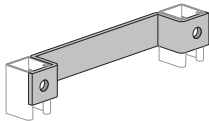
Flat Corner Connector



PS 2190	EG	20	150	\$2,251.76
PS 2190	GR	20	150	\$2,251.76
PS 2190	HG	25	150	\$2,371.59

PS 2401

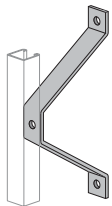
Ladder Rung



PS 2401	GR	10	186	\$2,209.98
PS 2401	HG	10	186	\$2,530.48
PS 2402	GR	20	221	\$2,268.19
PS 2402	HG	20	221	\$2,675.23
PS 2403	GR	20	254	\$2,616.96
PS 2403	HG	20	254	\$2,791.54

PS 2404

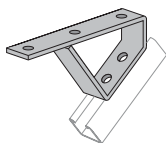
Wall Ladder Bracket



PS 2404	GR	10	113	\$1,552.76
PS 2404	HG	10	113	\$1,702.37
PS 2405	GR	10	164	\$2,151.71
PS 2405	HG	10	164	\$2,212.21
PS 2406	GR	10	216	\$2,595.96
PS 2406	HG	10	216	\$2,765.31
PS 2407	GR	10	267	\$2,965.83
PS 2407	HG	10	267	\$3,070.14
PS 2408	GR	10	78	\$3,295.65
PS 2408	HG	10	267	\$3,634.41

PS 2421

45° Stair Tread Support



PS 2421	GR	20	222	\$3,160.23
PS 2421	HG	20	222	\$3,385.96



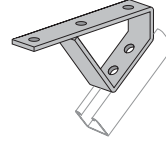
POWER-STRUT®



Part No. & Length	Fin.	Std Qty	Wt./ 100	List Price per 100 pcs
-------------------	------	---------	----------	------------------------

PS 2422

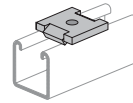
37- 1/2° Stair Tread Support



PS 2422	GR	25	213	\$3,198.69
PS 2422	HG	25	213	\$3,198.69

PS 2504

Square Washer With Channel Guide



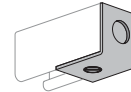
PS 2504 1/2	EG	100	18	\$279.23
PS 2504 1/2	GR	100	17	\$272.18
PS 2504 1/2	HG	100	18	\$295.73
PS 2504 1/2	ZD	100	18	\$279.23
PS 2504 1/4	EG	100	18	\$319.05
PS 2504 1/4	GR	100	18	\$319.05
PS 2504 1/4	ZD	100	18	\$310.98
PS 2504 3/4	HG	100	16	\$253.52
PS 2504 3/8	EG	100	17	\$279.23
PS 2504 3/8	GR	100	17	\$279.23
PS 2504 3/8	HG	100	17	\$295.73
PS 2504 3/8	ZD	100	17	\$279.23
PS 2504 5/8	HG	100	16	\$310.81

PS 2511

End Cap With Knock Out

Use With PS 100, PS 200, PS 210 and PS 300

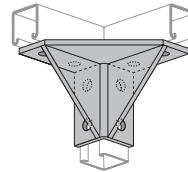
Specify 1/2" or 3/4" U.L. Listed



PS 2511 1 1/2	EG	50	31	\$1,159.74
PS 2511 1 3/4	EG	50	31	\$1,159.74
PS 2511 2 1/2	EG	50	21	\$895.61
PS 2511 2 3/4	EG	50	21	\$936.69
PS 2511 3 1/2	EG	50	19	\$1,078.06
PS 2511 3 3/4	EG	50	19	\$1,078.06

PS 2514

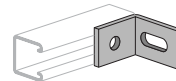
8 Hole Full Gussetted Corner Connector



PS 2514	EG	10	300	\$7,882.77
PS 2514	GR	10	300	\$7,987.97

PS 2520

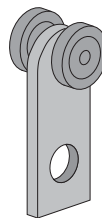
2 Hole Adjustment Angle



PS 2520	EG	25	42	\$856.10
PS 2520	GR	25	42	\$856.10
PS 2520	HG	25	42	\$882.24
PS 2520	SS	25	42	\$1,947.25

PS 2521

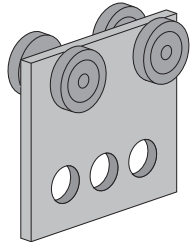
2-Wheel Trolley



PS 2521	EG	25	46	\$5,174.42
---------	----	----	----	------------

**POWER-STRUT®**A PART OF **atkore**
INTERNATIONAL

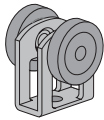
Part No. & Length	Fin.	Std Qty	Wt./ 100	List Price per 100 pcs
-------------------	------	---------	----------	------------------------

PS 25224-Wheel Trolley
9/16" Hole

PS 2522	EG	10	110	\$7,480.33
---------	----	----	-----	------------

PS 2524

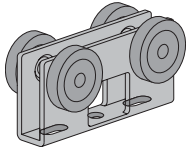
Two Wheel Light Duty Trolley



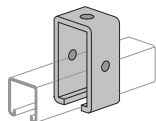
PS 2524	EG	25	21	\$3,503.95
PS 2524H	EG	25	21	\$3,938.46

PS 2525

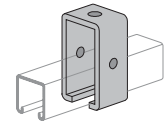
Four Wheel Light Duty Trolley



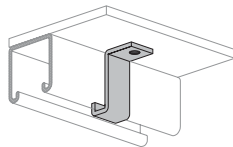
PS 2525	EG	25	55	\$5,110.12
PS 2525 H	EG	25	63	\$6,071.68

PS 2528Trolley Beam Standard Support
Use With PS 200 and PS 210

PS 2528	EG	10	102	\$2,278.03
PS 2528	GR	10	102	\$2,278.03

PS 2528-1Trolley Beam Joint Support
Use With PS 200 and PS 210

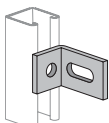
PS 2528-1	EG	10	220	\$3,088.15
PS 2528-1	GR	10	220	\$3,085.29

PS 2532Shelf Attachment Zee
Use With PS 200 and PS 210

PS 2532	EG	100	9	\$655.10
PS 2532	GR	50	9	\$643.78
PS 2532-100	EG	100	13	\$769.65

PS 2545

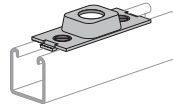
Slotted 90° Angle



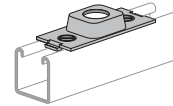
PS 2545	EG	50	36	\$788.11
PS 2545	GR	50	36	\$783.72
PS 2545	HG	50	36	\$829.64

**POWER-STRUT®**A PART OF **atkore**
INTERNATIONAL

Part No. & Length	Fin.	Std Qty	Wt./ 100	List Price per 100 pcs
-------------------	------	---------	----------	------------------------

PS 25601/2" Conduit Connector
U.L. Listed

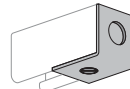
PS 2560 1/2	EG	50	28	\$1,256.09
-------------	----	----	----	------------

PS 25613/4" Conduit Connector Fitting Assembly
U.L. Listed

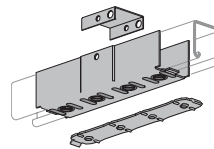
PS 2561 3/4	EG	25	28	\$1,452.50
-------------	----	----	----	------------

PS 2580Type "A" End Cap
Use With PS 150 U.L. Listed

PS 2580	PG	50	16	\$582.13
---------	----	----	----	----------

PS 2581End Cap With Knock-Out
Use With PS 150 Specify 1/2" or 3/4" U.L. Listed

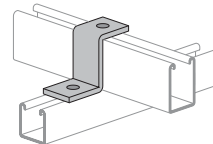
PS 2581 1/2	EG	50	24	\$1,057.71
PS 2581 3/4	EG	50	24	\$1,002.04

PS 2582Raceway Splice Plate
Use With PS 150; U.L. Listed

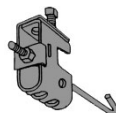
PS 2582	EG	50	150	\$1,810.27
---------	----	----	-----	------------

PS 2585Type "A" End Cap
Use With PS 210 U.L. Listed

PS 2585	PG	100	10	\$147.44
---------	----	-----	----	----------

PS 2601Zee Support
Use With PS 150

PS 2601	EG	20	67	\$1,255.31
PS 2601	GR	20	67	\$1,291.79

PS 2622J6/J10 Beam Clamp w/Hook Rod
Use For 1/4"- 3/8"- 1/2" Rod

PS 2622	EG	25	41	\$640.70
PS 2622 J 6 3/8 X 6	EG	25	78	\$1,331.22
PS 2622J 10 3/8 X 10	EG	20	91	\$1,900.77



POWER-STRUT®

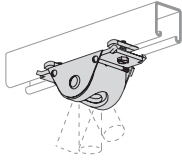


Part No. & Length	Fin.	Std Qty	Wt./100	List Price per 100 pcs
-------------------	------	---------	---------	------------------------

PS 2623

Swivel Adaptor

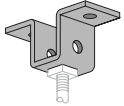
Use With PS 2622 Beam Clamp or PS 2624 Wood Beam Hanger



PS 2623	EG	50	31	\$537.59
PS 2623	HG	50	31	\$1,202.50

PS 2624

Wood Beam Hanger



PS 2624	EG	25	22	\$789.74
---------	----	----	----	----------

PS 2625

Wiring Stud Nut

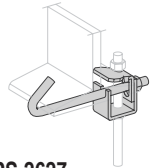
1/2" Conduit Size 1" Thread Length U.L. Listed



PS 2625 1/2	EG	50	6	\$1,152.08
PS 2625-2 5/8	EG	50	18	\$1,129.29

PS 2626-6

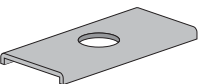
Beam Clamp



PS 2626-12	EG	25	171	\$2,072.18
PS 2626-6	EG	25	125	\$1,515.85
PS 2626-9	EG	25	140	\$1,862.28

PS 2627

Space Clevis



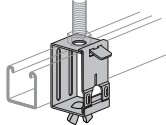
PS 2627	EG	25	24	\$732.79
---------	----	----	----	----------

PS 2631

Swing Gate Fixture Hanger

Use With PS 200, PS 210, PS 300, PS 400 and PS 500

U.L. Listed

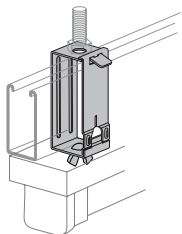


PS 2631 9/16	EG	20	27	\$996.95
--------------	----	----	----	----------

PS 2631D

(Formerly PS 2056) Swing Gate Fixture Hanger

Use With PS 100 and PS 150



PS 2631 D 9/16	EG	20	33	\$1,441.33
----------------	----	----	----	------------



POWER-STRUT®

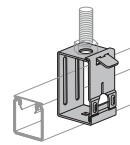


Part No. & Length	Fin.	Std Qty	Wt./100	List Price per 100 pcs
-------------------	------	---------	---------	------------------------

PS 2632

Swing Gate Strut Hanger

Use With PS 200, PS 210, PS 300, PS 400 and PS 500 U.L. Listed

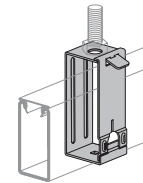


PS 2632 7/8	EG	20	25	\$612.12
PS 2632 9/16	EG	20	25	\$507.34

PS 2632D

Swing Gate Strut Hanger

Use With PS 100 and PS 150 U.L. Listed

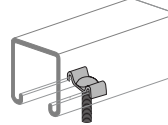


PS 2632 D 9/16	EG	20	30	\$749.39
----------------	----	----	----	----------

PS 2636

Fixture Stud Nut

1/4"x 20 x 1 1/4"

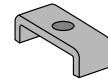


PS 2636	EG	100	5	\$232.10
---------	----	-----	---	----------

PS 2637

Fixture Nut

1/4"x20

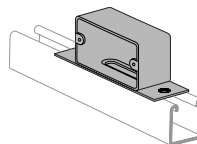


PS 2637 1/4	EG	200	2	\$154.61
-------------	----	-----	---	----------

PS 2639

Outlet Box

U.L. Listed Less Receptacle



PS 2639 1 7/8	EG	20	83	\$3,158.74
---------------	----	----	----	------------

PS 2640

Wire Retainer

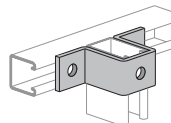


PS 2640	PL	250	0	\$91.67
---------	----	-----	---	---------

PS 2648

"U" Support

Use With PS 150



PS 2648	EG	10	108	\$1,942.52
PS 2648	GR	10	108	\$1,940.72
PS 2648	HG	25	110	\$2,045.53



POWER-STRUT®



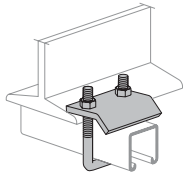
Part No. & Length	Fin.	Std Qty	Wt./ 100	List Price per 100 pcs
-------------------	------	---------	----------	------------------------

PS 2651

Beam Clamp

T1 Use With PS 200, PS 210, 300, 400, 500 2T3T2

Use With PS 100, 150, and 200 T3



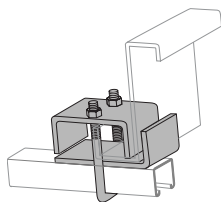
PS 2651 T1	EG	25	80	\$809.85
PS 2651 T1	EG	25	80	\$809.85
PS 2651 T1	HG	25	80	\$1,654.18
PS 2651 T1	ZD	25	80	\$852.81
PS 2651 T2	EG	25	93	\$977.86
PS 2651 T2	EG	25	93	\$977.86
PS 2651 T2	HG	25	93	\$1,790.64
PS 2651 T2	SS	25	93	\$2,870.32
PS 2651 T3	EG	10	105	\$1,442.64

PS 2653

Purlin Clamp

T1 Use With PS 200, 210, 300, 400, 500T2

Use With PS 100, 150, 200 2T3



PS 2653 T1	EG	-	175	\$2,862.21
PS 2653 T2	EG	-	179	\$3,121.30

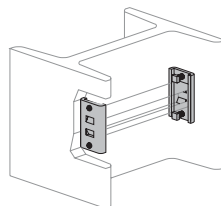
PS 2654

Column Attachment

Use PS 2654 With PS 200

Use PS 2654 A With PS 500

Note: Price/100 pair



PS 2654 A	EG	25	104	\$2,765.86
PS 2654 A	GR	25	62	\$2,987.13
PS 2654	EG	25	136	\$2,542.83
PS 2654	GR	25	136	\$2,633.29

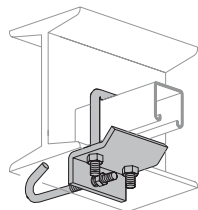
PS 2656

"U" Boltbeam Clamp With Hook

Specify 6" or 12" Max. Flange Width

T1 Use With PS 200, 210, 300, 400, 500, 520

T2 Use With PS 100, 150, 200 2T3



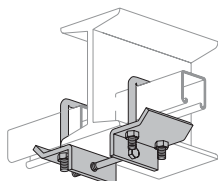
PS 2656 T1 12	EG	10	142	\$2,156.27
PS 2656 T1 6	EG	25	130	\$2,052.74
PS 2656 T2 12	EG	10	153	\$2,631.61
PS 2656 T2 6	EG	10	141	\$2,165.27
PS 2656 T3 2-1/2-6	EG	10	156	\$2,165.27
PS 2656 T3 6-12	EG	10	168	\$2,220.04

PS 2657

Double "U" Boltbeam Clamp [Specify 6" or 12" Max. Flange Width]

T1 Use With PS 200, 210, 300, 400, 500, 520

T2 Use With PS 100, 150, 200 2T3



PS 2657 T1 12	EG	10	210	\$3,831.53
PS 2657 T2 12	EG	10	232	\$4,196.38
PS 2657 T2 6	EG	10	226	\$4,066.27
PS 2657 T3 2-1/2-6	EG	10	249	\$4,000.33
PS 2657 T1 6	EG	10	204	\$3,705.23



POWER-STRUT®

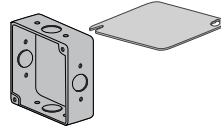


Part No. & Length	Fin.	Std Qty	Wt./ 100	List Price per 100 pcs
-------------------	------	---------	----------	------------------------

PS 2660

(Box), PS 2661 (Cover)

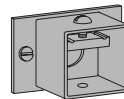
Junction Box With Cover



PS 2660	EG	1	113	\$4,650.43
---------	----	---	-----	------------

PS 2662

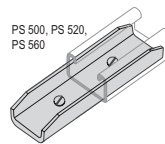
Hub Assembly With Hardware



PS 2662A	EG	25	27	\$3,057.36
----------	----	----	----	------------

PS 2700

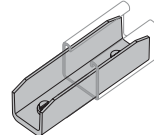
Inside Strut Joiner



PS 2700	AL	50	20	\$2,129.29
---------	----	----	----	------------

PS 2800

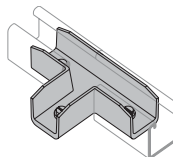
Inside Strut Joiner



PS 2800	AL	50	20	\$2,793.02
---------	----	----	----	------------

PS 2801

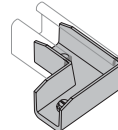
"T" Inside Strut Joiner



PS 2801	AL	20	35	\$4,826.53
---------	----	----	----	------------

PS 2802

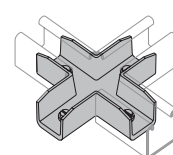
"Elbow" Inside Strut Joiner



PS 2802	AL	25	27	\$4,059.35
---------	----	----	----	------------

PS 2803

"Cross" Inside Strut Joiner

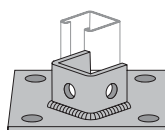


PS 2803	AL	25	45	\$5,718.09
---------	----	----	----	------------

PS 3013

Single Column Base One Hole Attachment

Use With PS 200 and PS 210



PS 3013	EG	10	307	\$4,490.18
PS 3013 FL	EG	10	307	\$4,365.59
PS 3013 FL	GR	10	307	\$4,365.59
PS 3013	GR	10	307	\$4,490.18
PS 3013	HG	10	307	\$5,423.26
PS 3013	ZD	10	307	\$4,489.68



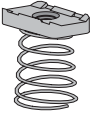
POWER-STRUT®



Part No. & Length Std Qty Wt./100 List Price per 100 pcs

PS 3017

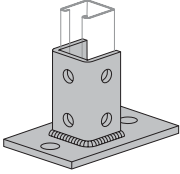
Junior Strut Nuts
Use With PS 600 J



PS 3017 1/4	EG	200	1	\$175.79
PS 3017 10/24	EG	200	1	\$175.79
PS 3017 10/32	EG	200	1	\$175.79
PS 3017 8/32	EG	200	1	\$175.79

PS 3025

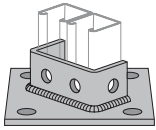
Post Base
Use With PS 200 and PS 210



PS 3025	EG	10	282	\$3,919.69
PS 3025 FL	EG	10	282	\$3,844.22
PS 3025 FL	GR	10	282	\$3,888.75
PS 3025 FL	HG	10	282	\$5,960.59
PS 3025	GR	10	282	\$3,999.83
PS 3025	HG	10	296	\$5,960.59
PS 3025	ZD	10	282	\$4,007.49

PS 3029

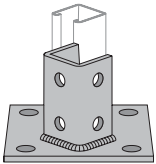
Double Column Post Base
Use With All 3 1/4" Channels



PS 3029	EG	10	325	\$5,048.28
PS 3029	GR	10	325	\$5,048.28
PS 3029	HG	5	325	\$5,927.16
PS 3029 SQ	EG	10	325	\$4,908.03
PS 3029 SQ	HG	5	325	\$6,108.14

PS 3033

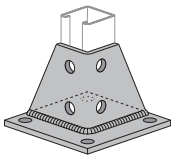
Post Base
Use With PS 200 and PS 210



PS 3033	AL	10	154	\$10,501.26
PS 3033	EG	10	373	\$4,332.51
PS 3033	GR	10	373	\$4,336.10
PS 3033	HG	10	377	\$6,073.79
PS 3033 SQ	EG	10	392	\$4,332.51
PS 3033 SQ	GR	10	358	\$4,286.45
PS 3033 SQ	HG	10	377	\$6,073.79
PS 3033	ZD	10	373	\$4,336.10

PS 3040

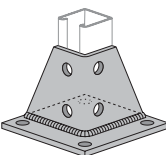
Post Base
Use With PS 200 and PS 210



PS 3040	EG	10	297	\$4,589.05
PS 3040	GR	10	297	\$4,589.05

PS 3041

Double Column Post Base
Use With All 3 1/4" Channels



PS 3041	EG	20	130	\$3,025.87
PS 3041	GR	20	130	\$3,118.26
PS 3041	HG	20	130	\$3,196.28



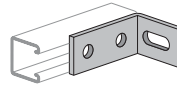
POWER-STRUT®



Part No. & Length Fin. Std Qty Wt./100 List Price per 100 pcs

PS 3049

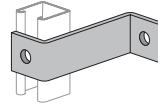
4 Hole Slotted 90° Corner Connector



PS 3049	EG	25	59	\$1,054.62
PS 3049	GR	25	59	\$1,054.62
PS 3049	HG	25	59	\$1,080.81

PS 3060

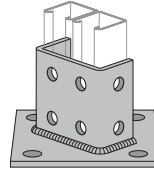
Offset Connector



PS 3060 4	EG	25	81	\$1,277.23
PS 3060 4	GR	25	81	\$1,276.05
PS 3060 5	EG	25	92	\$1,342.83
PS 3060 6	GR	25	104	\$1,412.51
PS 3060 7	EG	25	115	\$1,492.25
PS 3060 7	GR	25	115	\$1,490.87
PS 3060 8	EG	25	127	\$1,851.40

PS 3064

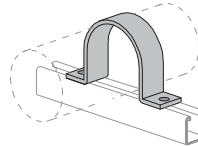
Double Column Post Base
Use With All 3 1/4" Channels



PS 3064	EG	10	404	\$6,288.74
PS 3064 FL	EG	10	404	\$6,417.33
PS 3064	GR	10	404	\$6,417.33
PS 3064	HG	10	404	\$6,796.25
PS 3064 SQ	EG	10	404	\$6,343.85
PS 3064 SQ	GR	10	404	\$6,417.33
PS 3064 SQ	HG	5	400	\$6,796.25
PS 3064	ZD	10	404	\$6,613.28

PS 3126

Hold Down Clamp



PS 3126 1 1/2	EG	25	45	\$905.88
PS 3126 1 1/2	HG	25	45	\$950.95
PS 3126 1 1/4	EG	25	41	\$881.56
PS 3126 1 1/4	HG	25	41	\$947.32
PS 3126 1	EG	25	35	\$847.00
PS 3126 1	HG	25	35	\$889.38
PS 3126 1/2	EG	50	29	\$780.00
PS 3126 1/2	HG	50	29	\$834.27
PS 3126 2 1/2	EG	25	113	\$1,544.57
PS 3126 2 1/2	HG	25	113	\$1,668.03
PS 3126 2	EG	25	100	\$1,418.13
PS 3126 2	HG	25	100	\$1,467.76
PS 3126 3 1/2	EG	10	146	\$1,222.00
PS 3126 3	EG	25	132	\$1,634.51
PS 3126 3	HG	25	132	\$1,716.47
PS 3126 3/4	EG	50	32	\$801.54
PS 3126 3/4	HG	50	32	\$861.58
PS 3126 4	EG	10	166	\$1,845.82
PS 3126 4	HG	10	166	\$2,084.51
PS 3126 5	EG	10	191	\$2,648.89
PS 3126 5	HG	10	201	\$2,905.27
PS 3126 6	EG	10	223	\$2,807.70
PS 3126 6	HG	10	223	\$3,014.37



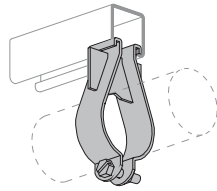
POWER-STRUT®



Part No. & Length Fin. Std Qty Wt./100 List Price per 100 pcs

PS 3138

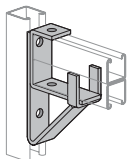
Parallel Pipe Clamp



PS 3138 1 1/2	EG	50	40	\$1,535.99
PS 3138 1 1/4	EG	50	38	\$1,337.36
PS 3138 1	EG	50	31	\$1,192.88
PS 3138 1/2	EG	50	29	\$1,164.57
PS 3138 2 1/2	EG	25	66	\$1,941.87
PS 3138 2	EG	50	47	\$1,685.04
PS 3138 3 1/2	EG	25	87	\$2,171.51
PS 3138 3	EG	25	78	\$1,965.51
PS 3138 3/4	EG	50	30	\$1,132.81
PS 3138 3/8	EG	25	27	\$1,334.32
PS 3138 4	EG	25	90	\$2,398.64

PS 3164

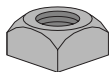
Double Channel Bracket Support
Use With All 3 1/4" Channels



PS 3164	EG	10	173	\$7,594.64
PS 3164	GR	10	173	\$7,594.64
PS 3164	HG	10	178	\$7,972.67

PS 3201

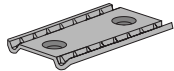
Swivel Nut Only; Use With PS 2622 Beam Clamp



PS 3201 1/2	EG	200	3	\$281.16
PS 3201 3/8	EG	200	4	\$240.59

PS 3281

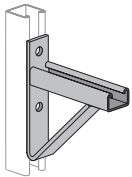
Double Conveyor Adjusting Nut
Use For All 1 5/8" Wide Power-Strut Channels



PS 3281 3/8	EG	50	18	\$500.79
-------------	----	----	----	----------

PS 3282

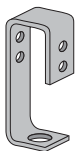
Cable Tray Strut Bracket PS 400 Channel



PS 3282 12	EG	1	388	\$11,262.15
PS 3282 12	GR	1	388	\$7,117.63
PS 3282 18	EG	1	506	\$12,098.70
PS 3282 18	GR	1	506	\$8,813.67
PS 3282 24	EG	1	672	\$24,453.83
PS 3282 24	GR	1	672	\$14,371.19
PS 3282 36	EG	50	1352	\$25,375.61

PS 3301

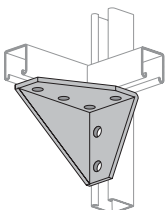
Mercury Vapor Fixture Hanger



PS 3301	EG	20	154	\$2,285.50
---------	----	----	-----	------------

PS 3326

LH & RH Five Hole Gussetted Corner Connector



PS 3326 L	EG	10	230	\$5,576.34
PS 3326 L	GR	10	230	\$6,022.45
PS 3326 R	EG	10	230	\$5,576.34
PS 3326 R	GR	10	230	\$6,022.45



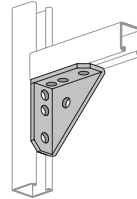
POWER-STRUT®



Part No. & Length Fin. Std Qty Wt./100 List Price per 100 pcs

PS 3373

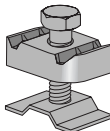
Universal Angle Bracket



PS 3373	EG	20	151	\$1,165.95
PS 3373	GR	20	151	\$1,184.03
PS 3373	HG	20	151	\$1,246.41
PS 3373	PL	15	151	\$1,138.50
PS 3373	ZD	20	151	\$1,184.03
PS 3373W	HG	15	160	\$2,607.12

PS 3500

Seismic Rod Stiffener



PS 3500 3/8-5/8	EG	25	16	\$944.09
-----------------	----	----	----	----------

PS 4017

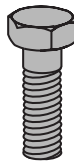
Junior Strut Nuts
Use With PS 700 J



PS 4017 1/4	EG	200	1	\$177.42
PS 4017 10/24	EG	200	1	\$180.76
PS 4017 10/32	EG	200	1	\$177.42
PS 4017 8/32	EG	200	1	\$177.42

PS 6024

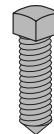
Hex Headcap Screw



PS 6024 1/2 X 1 1/2	EG	100	12	\$153.53
PS 6024 1/2 X 1 1/4	EG	100	10	\$117.88
PS 6024 1/2 X 1 3/4	EG	100	13	\$291.74
PS 6024 1/2 X 1	EG	100	9	\$106.24
PS 6024 1/2 X 15/16	EG	100	9	\$93.76
PS 6024 1/2 X 2	EG	100	14	\$204.75
PS 6024 1/2 X 3/4	EG	100	8	\$101.01
PS 6024 1/4 X 1 1/2	EG	100	2	\$79.61
PS 6024 1/4 X 1 1/4	EG	100	2	\$73.31
PS 6024 1/4 X 1	EG	500	2	\$65.88
PS 6024 1/4 X 3/4	EG	100	2	\$67.02
PS 6024 3/8 X 1 1/2	EG	100	6	\$100.11
PS 6024 3/8 X 1 1/2	ZD	200	6	\$102.00
PS 6024 3/8 X 1 1/4	EG	100	5	\$78.54
PS 6024 3/8 X 1 1/4	ZD	200	5	\$80.02
PS 6024 3/8 X 1	EG	100	4	\$67.65
PS 6024 3/8 X 1	ZD	200	4	\$68.82
PS 6024 3/8 X 2	EG	100	7	\$110.24
PS 6024 3/8 X 2	ZD	200	7	\$110.24
PS 6024 3/8 X 3/4	EG	100	4	\$67.02
PS 6024 3/8 X 3/4	ZD	250	4	\$68.29

PS 6064

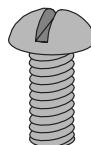
Square Head Cup Point Set Screw



PS 6064 1/2 X 2	EG	100	11	\$561.60
PS 6064 1/2 X 1 1/2	EG	100	9	\$276.18
PS 6064 3/8 X 1 1/2	EG	100	5	\$168.86
PS 6064 3/8 X 2	EG	100	6	\$692.46

PS 6072

Round Head Machine Screw



PS 6072 1/4 X 1 1/4	EG	100	2	\$60.39
PS 6072 1/4 X 3/4	EG	100	1	\$45.05
PS 6072 3/8 X 1 1/2	EG	100	6	\$147.45
PS 6072 3/8 X 1 1/4	EG	100	5	\$98.32
PS 6072 3/8 X 1	EG	100	4	\$93.26



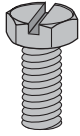
POWER-STRUT®



Part No. & Length	Fin.	Std Qty	Wt./ 100	List Price per 100 pcs
-------------------	------	---------	----------	------------------------

PS 6075

Slotted Hex Head Machine Screw



PS 6075 1/4 X 1	EG	100	2	\$65.06
PS 6075 1/4 X 3/4	EG	100	1	\$47.98
PS 6075 3/8 X 1 1/4	EG	100	6	\$123.82
PS 6075 5/16 X 1 1/2	EG	100	3	\$70.45
PS 6075 5/16 X 1 1/4	EG	100	3	\$117.92
PS 6075 5/16 X 1	EG	100	3	\$66.28

PS 6108

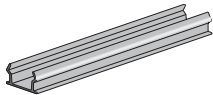
Square Nut



PS 6108 1/2	EG	200	6	\$89.89
PS 6108 1/4	EG	500	1	\$25.63
PS 6108 3/8	EG	500	3	\$55.90
PS 6108 5/16	EG	500	2	\$37.58

PS 6151

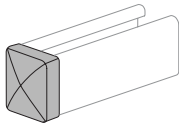
Plastic Closure Strip, 10Ft. Length
Use With All Continuous Inserts



PS 6151 10	PL	100	47	\$860.68
------------	----	-----	----	----------

PS 6152

Decorative End Cap
Use With PS 200 and PS 210

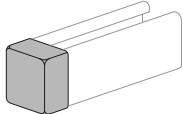


PS 6152	EG	50	10	\$1,234.04
---------	----	----	----	------------

PS 6153

Safety End Cap

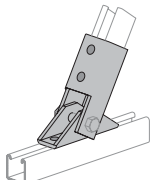
1 Use With PS 100; 2 Use With PS 200 and PS 210;
3 Use With PS 300; 5 Use With PS 500



PS 6153 1	RED	-	5	\$995.98
PS 6153 1	WHITE	-	5	\$937.52
PS 6153 2	RED	-	2	\$892.95
PS 6153 2	WHITE	-	32	\$892.95
PS 6153 3	RED	-	2	\$948.63
PS 6153 4	RED	-	5	\$698.88
PS 6153 5	RED	-	1	\$924.20
PS 6153 5	WHITE	-	1	\$698.71

PS 9400

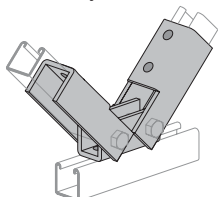
Adjustable Brace



PS 9400	EG	10	307	\$4,327.29
PS 9400	GR	10	307	\$4,396.49
PS 9400	HG	10	310	\$4,849.94

PS 9401

Double Adjustable Brace



PS 9401	EG	5	497	\$7,523.79
PS 9401	GR	5	497	\$7,644.12



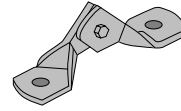
POWER-STRUT®



Part No. & Length	Fin.	Std Qty	Wt./ 100	List Price per 100 pcs
-------------------	------	---------	----------	------------------------

PS 9402

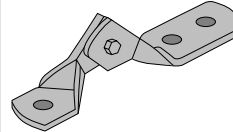
Two Hole Hinge Connector



PS 9402 1/2	EG	15	90	\$3,894.71
PS 9402 3/4	EG	15	86	\$4,708.62
PS 9402 5/8 - 1/2	EG	15	88	\$4,496.98
PS 9402 5/8	EG	15	88	\$4,568.90

PS 9403

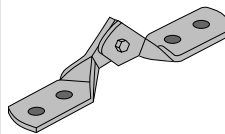
Three Hole Hinge Connector



PS 9403 1/2	EG	15	108	\$4,261.40
PS 9403 3/4	EG	15	106	\$4,985.95
PS 9403 5/8	EG	15	107	\$4,708.29

PS 9404

Four Hole Hinge Connector



PS 9404 1/2	EG	15	126	\$4,527.69
-------------	----	----	-----	------------



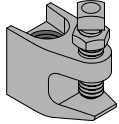
POWER-STRUT®



Part No. & Length Std Qty Wt./100 List Price per 100 pcs

P8000, P8001

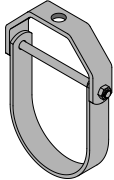
Jr. Beam Clamp



P8000	EG	100	33	\$429.53
P8000	PL	100	33	\$133.53
P8001	EG	100	34	\$339.63
P8001	PL	100	34	\$313.01

P8105 - P8109

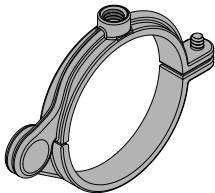
Light Weight Clevis Hangr



P8105	EG	50	17	\$234.90
P8105	PL	50	17	\$156.15
P8107	EG	25	57.1	\$434.03
P8107	PL	25	57.1	\$307.58
P8109	EG	25	72.7	\$577.13
P8109	PL	25	72.7	\$380.48

P8200 - P8313

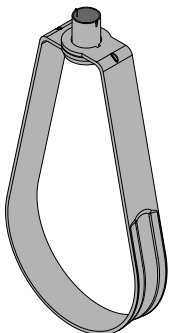
Split Ring Clamp



P8200	CT	100	7	\$237.15
P8200	EG	100	13	\$294.15
P8200	PL	100	13	\$252.60
P8201	CT	100	8	\$252.60
P8201	EG	100	15	\$299.10
P8201	PL	100	15	\$263.10
P8202	CT	100	9	\$270.90
P8202	EG	100	17	\$301.80
P8202	PL	100	17	\$273.60
P8203	CT	100	12	\$284.10
P8203	EG	100	28	\$407.55
P8203	PL	100	28	\$371.55
P8204	CT	100	14	\$351.15
P8204	EG	100	26	\$523.35
P8204	PL	100	26	\$449.10
P8205	CT	100	23	\$351.15
P8205	EG	100	20	\$702.15
P8205	PL	100	20	\$600.90

P8300 - P8315

Ring Hanger



P8300	CT	100	11	\$131.40
P8300	NFPA	100	10	\$69.08
P8301	CT	100	11	\$131.40
P8301	NFPA	100	10	\$69.08
P8302	CT	100	12	\$131.40
P8302	NFPA	100	10	\$69.08
P8303	CT	100	13	\$131.40
P8303	NFPA	100	11	\$77.18
P8304	CT	100	14	\$138.83
P8304	NFPA	100	11	\$77.18
P8305	CT	100	16	\$147.38
P8305	NFPA	100	14	\$80.78
P8306	NFPA	50	19	\$147.15
P8307	NFPA	50	23	\$157.95
P8309	NFPA	20	30	\$233.78
P8310	NFPA	20	50	\$376.20
P8311	NFPA	20	58	\$456.75
P8313	NFPA	20	90	\$596.25



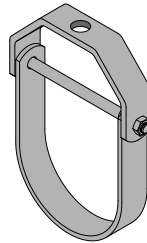
POWER-STRUT®



Part No. & Length Fin. Std Qty Wt./100 List Price per 100 pcs

P8400 - P8413

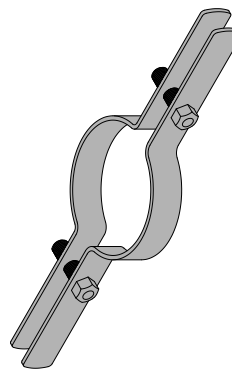
Standard Clevis Hanger



P8400	EG	50	31	\$189.68
P8400	PL	50	31	\$131.18
P8401	EG	50	33	\$195.53
P8401	PL	50	33	\$131.18
P8402	EG	50	34	\$212.18
P8402	PL	50	41	\$165.83
P8403	EG	50	41	\$225.45
P8403	PL	50	34	\$153.90
P8404	EG	50	43	\$259.88
P8404	PL	50	43	\$171.68
P8405	EG	50	53	\$292.28
P8405	PL	50	53	\$189.68
P8406	EG	25	74	\$425.70
P8406	PL	25	74	\$307.58
P8407	EG	25	99	\$487.80
P8407	PL	25	99	\$328.05
P8409	EG	20	143	\$744.08
P8409	PL	20	143	\$468.68
P8410	EG	10	162	\$1,035.00
P8410	PL	10	162	\$699.98
P8411	EG	10	326	\$1,379.70
P8411	PL	10	326	\$886.05
P8413	EG	5	439	\$2,096.33
P8413	PL	5	439	\$1,465.88

P8500 - P8513

Standard Riser Clamp



P8500	CT	25	63	\$404.33
P8500	EG	25	80	\$626.18
P8500	PL	25	80	\$404.33
P8501	CT	25	65	\$432.90
P8501	EG	25	80	\$626.18
P8501	PL	25	80	\$401.85
P8502	CT	25	70	\$549.68
P8502	EG	25	106	\$671.40
P8502	PL	25	106	\$431.78
P8503	CT	25	72	\$577.13
P8503	EG	25	104	\$653.40
P8503	PL	25	104	\$413.78
P8504	CT	25	108	\$660.60
P8504	EG	25	108	\$697.73
P8504	PL	25	108	\$452.03
P8505	CT	25	119	\$868.05
P8505	EG	25	116	\$720.23
P8505	PL	25	116	\$463.95
P8507	EG	25	156	\$1,036.35
P8507	PL	25	156	\$611.78
P8509	EG	15	170	\$1,213.88
P8509	PL	15	170	\$810.90
P8511	EG	Bulk	370	\$2,264.63
P8511	PL	Bulk	370	\$1,335.60
P8513	EG	Bulk	740	\$3,968.55
P8513	PL	Bulk	740	\$2,584.13



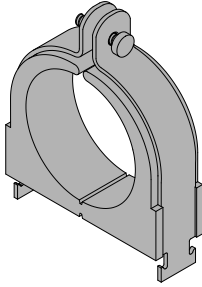
POWER-STRUT®



Part No. & Length Std Qty Wt./ 100 List Price per 100 pcs

P8600

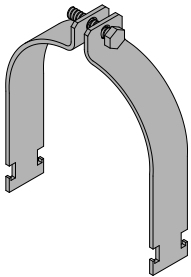
Cushion Clamp



P8600-125	EG	100	15	\$550.00
P8600-150	EG	100	16	\$723.50
P8600-1	EG	100	13	\$459.75
P8600-250	EG	50	33	\$1,378.00
P8600-25	EG	100	7	\$343.25
P8600-2	EG	50	28	\$1,211.00
P8600-37	EG	100	7	\$343.25
P8600-3	EG	25	38	\$1,766.25
P8600-4	EG	25	58	\$3,340.25
P8600-50	EG	100	8	\$343.25
P8600-62	EG	100	8	\$343.25
P8600-75	EG	100	9	\$351.25
P8600-87	EG	100	9	\$393.50

P8700

CT Strut Clamp



P8700-125	CP	100	15	\$210.75
P8700-150	CP	100	16	\$235.75
P8700-1	CP	100	13	\$186.75
P8700-250	CP	50	33	\$369.75
P8700-2	CP	50	28	\$282.25
P8700-3	CP	25	38	\$383.00
P8700-4	CP	25	58	\$560.50
P8700-50	CP	100	8	\$155.00
P8700-75	CP	100	9	\$172.25



POWER-STRUT®



Part No. & Length Fin. Std Qty Wt./ 100 List Price per 100 pcs

MATERIAL, FINISH SPECIFICATIONS, ORDERING INFORMATION

POWER-STRUT® - ordering information

Standard Length of Channel – 10' and 20' for all 1⁵/₈" wide strut, 10' for PS 600 and PS 700 (1³/₁₆" wide) Junior Strut

Aluminum or Stainless Steel Channel and Fittings – Some aluminum components are listed in this book. Many other items in this book are available in aluminum or stainless steel materials. Price and delivery information available on request.

PVC Coated Channel and Fittings – Most of the channel and fittings shown in this price sheet are available with a PVC coating. Price and delivery information available on request. There may be a minimum charge for PVC coating depending upon order size.

WARNING: PVC COATED MATERIAL MUST BE USED WITH CAUTION! WHEN SMOLDERING OR BURNING, PVC EMITS HIGHLY TOXIC HYDROGEN CHLORIDE GAS (HCL). EVEN SHORT TERM EXPOSURE MAY BE HAZARDOUS.

Fiberglass Channel and Fittings – Most of the channel and fittings shown in this price sheet are available in FiberReinforced Plastic (FRP). Price and delivery information available on request.

Special Components and Finishes – POWER-STRUT® can provide custom components to your design or special finishes when required. Price quotations are prepared on request. A minimum charge and order size may be required, and overruns of up to 10% may be manufactured, shipped, and invoiced.

Some items cannot be provided in a hot-dipped galvanized finish due to closure of threads. Check with the factory when threads are involved. Items ordered hot-dipped galvanized will be supplied with electro-galvanized threaded components unless otherwise stated in our proposal.

Material Specifications

Channel* & Closures – Pre-Galvanized: ASTM A653 Grade 33, Steel Sheet Zinc Coated by Hot Dip Process

Channel* – Plain, Painted or Hot Dip Galvanized: ASTM A-1011 SS Grade 33, Hot Rolled Carbon Steel Sheet and Strip, Structural Quality

Channel* – Stainless Steel: ASTM A-240, Type 304, Heat Resisting Chromium and Chromium-Nickel Stainless Steel Plate, Sheet, Strip for Pressure Vessel

Channel* – Aluminum: ASTM B-221, Type 6063 T6, Aluminum Alloy Extruded Bar, Rod, Wire, Shape and Tube

Closures – Plain, Painted or Hot Dip Galvanized: ASTM A366, Steel, Strip, Carbon, Cold-Rolled

Fittings* – Steel: ASTM A-575 and A576† (1/4" Nominal Thickness); A36 Structural Steel (3/8" Nominal Thickness)

Fittings* – Aluminum: ASTM B-209

Accessories – Steel: Less than 1/4" Nominal Thickness – ASTM A-569, 1008-1010 Grade, or (when Pre-Galvanized) ASTM A-527/Coating Designation G90

Pipe Clamps – Steel: A1011 SS Grade 33

Pipe Clamps – Stainless Steel: ASTM A-240, Type 304

Pipe Clamps – Aluminum: ASTM B-209, 5052, H32 Grade, Sheet and Plate

Channel Nuts: ASTM (3/8" & 1/2") A-576 Grade 1015M, A-675 (1/4") Grade 60, Case Hardened to RC25 min.

Hex Nuts and Bolts: ASTM A-563, Grade A and ASTM A-307, Grade A

Threaded Rod: ASTM A-510, Hot Rolled, 1008-1010 Grade

Net Cutting Charges – The following schedule of cutting charges applies when nonstandard lengths are ordered.

Square Cuts-all Lengths – Following charges will be invoiced as a separate item, and are not subject to discount.

	Single Channel	Compound Channel
Square Cuts	.1.06/ea.	.2.12/ea.

Cutting Tolerance – Cutting tolerance is plus or minus 1/8"

POA Items – Price On Application. Provide quantities with inquiries for a quotation on price and availability.

Warning: Power-Strut products are carefully designed and manufactured to the listed standards, as applicable. However, Power-Strut reserves the right to revise product design without notification. Power-Strut products included in this catalog are intended for installation and service only as described or specified herein. Care should be exercised by installers and end-users to install, use and maintain these products properly to avoid any possible on-the-job accidents. Prices subject to change with out notice.

Finish Specifications

Channel and Closures – Pre Galvanized: ASTM A-525, Grade 90 Gen. Requirement for Steel Sheet, Zinc-Coated (Galvanized) by Hot Dip Process

Channel, Closures and Fittings – Power-Green™: Acrylic enamel applied by electro-deposition process

Channel and Closures - Hot Dip Galvanized After Fab.: ASTM A-123, Zinc Coating (Hot Dip) on Iron and Steel

Bolts, Nuts, Clamps and Fittings – Electroplated (EG): ASTM B-633, SC1 Electroplated Coatings of Zinc on Iron and Steel

Bolts, Nuts, Clamps and Fittings – Hot Dip Galvanized After Fabrication: ASTM A-153 or ASTM A-123, Zinc Coatings (Hot Dip) on Iron and Steel Hardware

FINISHES (Ordering): When ordering, add the finish to the part number. For example, PS 200-10 PG

The abbreviation for available finishes:

GR	Painted Green
EG	Electro-Galvanized
PG	Pre-Galvanized
AL	Aluminum
HG	Hot Dipped Galvanized
PL	Plain
SS	Stainless Steel
EV	Everdur (Silicon Bronze)
ZD	Zinc Dichromate

* Channel referenced is 1⁵/₈" wide, fittings referenced are for 1⁵/₈" channel.

† Some 1/4" fittings are produced from A-36 Structural Steel.

1. COMPLETE AGREEMENT: This proposal, including these Conditions and Terms of Sale, constitutes the sole offer of Atkore International (Seller), and shall control with respect to any purchase order or sale of Seller's products. No other terms and conditions, alterations or modifications shall be binding upon Seller unless accepted by Seller in writing. No modifications of any of these terms will be effected by Seller's shipment of goods following receipt of Buyer's purchase order, shipping request or similar forms containing printed terms and conditions conflicting or inconsistent with the terms herein. Acceptance of delivery by Buyer will constitute Buyer's assent to these terms and conditions.

2. CHANGES, TERMINATION, HOLDS, RETURNS: Any changes to specifications, drawings, and/or quantities originally ordered must be made in writing and will be accepted by Seller only upon Buyer's written acceptance of an equitable adjustment in costs, time, and material involved. Seller's election to proceed without such prior written agreement in any instance shall not be deemed a waiver of Seller's right to receive price and schedule adjustments there for or to insist upon such prior written agreement for any subsequent changes in work.

Termination of this agreement as to any portion of goods then not shipped must be made in writing and shall be subject to an equitable adjustment as to any work in progress, costs, incurred by Seller for special material and/or labor requirement, etc. Buyer shall be liable for the total cost of engineering services expended, special tools and/or non-standard products manufactured or purchased specifically for the Buyer. Non-standard products include made-to-order items as well as items and/or quantities not normally made-to-stock by the factory.

In case of Buyer requested holds in fabrication and/or shipment any associated costs shall be to Buyer's account.

Seller's acceptance of returns are subject to its written permission and receipt of material at Seller's plant in first-class condition. Buyer shall be credited as follows: (a) Any cost of restoring material to saleable condition will be deducted from credit memoranda. (b) A twenty five percent (25%) restocking charge shall apply to all returns. (c) Transportation charges shall be paid by Buyer. (d) Non-standard and purchased items are considered non-returnable. (e) Any excess material on the lump sum contract is the property of the Seller, and the Buyer is obligated to make the Seller aware of any excess material, with no credit being allowed for this material.

3. DELIVERY AND FORCE MAJEURE: Seller shall not be liable for non-performance or delays in performance, shipment, or delivery due to causes beyond the reasonable control of Seller, including without limitation to such causes as war, riots, insurrection, fire, flood or other casualties, labor disturbances or disruptions, acts of defaults of suppliers or carriers, unavailability of material or supplies, or governmental rules or regulations. It is further assumed that all required information (including complete, final and approved de-

sign drawings and specifications and approval of shop drawings, if any) is received by Seller in such times and manner as will not delay or interfere with Seller's performance. In the event of any such delay, the delivery date shall be extended not to exceed the period of such delay or in the event such delay shall continue for a period of sixty (60) days, Seller (without liability of any nature) reserves the right to terminate any contract by written notice to Buyer.

4. SHIPMENT: The cost of any special packaging or special handling in accordance with Buyer's requirement or requests, shall be added to the amount of the order. Buyer agrees to inspect the material upon delivery and no claims for shortages or delivery of apparently improper or defective material will be accepted by Seller unless written notice is sent to Seller within ten (10) days from the date of delivery. Claims for shortages, products damaged or lost in transit, on F.O.B. Point of Shipment Orders, should be directed to the transportation company.

5. DESIGNS: Product designs subject to change without notice.

6. PRICES AND PAYMENT: Unless specifically stated in our proposal, all prices are subject to change without notice, and payment shall be 2% (two percent), 15th prox. net cash immediately thereafter.

7. TAXES: Any taxes subject to the purchase of our products shall be to the account of the Buyer.

8. FREIGHT ALLOWANCE: All prices F.O.B. point of shipment. On individual shipment weighing 5,00 pounds or more, rail freight or motor freight at the lowest published rate is allowed to all U.S. rail points or all U.S. Highway points listed in published tariffs (Hawaii and Alaska excluded).

2,500 lbs for hangers only (section 3) sold in full carton quantities. There is no minimum required for hangers when combined with a freight allowed Freight order.

9. LIMITED WARRANTY: Seller warrants to Buyer that the goods to be shipped hereunder will meet applicable specifications. THE FOREGOING EXPRESS WARRANTY IS EXCLUSIVE AND IN LIEU OF ANY AND ALL OTHER WARRANTIES, WHETHER WRITTEN, ORAL, EXPRESSED OR IMPLIED, INCLUDING ANY WARRANTY OF MERCHANTABILITY OR OF FITNESS FOR A PARTICULAR PURPOSE.

No allowance will be made for labor expenses for repairing or replacing defective products or workmanship or damage resulting from same unless previously and specifically authorized by Allied Tube and Conduit Corporation. Any product replaced pursuant to this warranty shall be subject to the same terms contained herein.

Seller shall not be responsible for any losses or damage sustained by Buyer or any other person as the result of the use of Seller's product by Buyer other than as illustrated or described in its catalog.

10. REMEDY: If it appears within thirty (30) days from the date of receipt by Buyer or Buyer's agent that the goods shipped do not meet the Seller's above express warranty and Buyer notifies Seller in writing, within such period, Seller, at its option, will repair or replace

such defective or nonconforming goods or return the purchase price paid therefor by Buyer. THE LIABILITY OF SELLER TO BUYER ARISING OUT OF THE SUPPLYING OF SAID GOODS OR THEIR USE, WHETHER ON WARRANTY, CONTRACT OR NEGLIGENCE IS LIMITED SOLELY TO THE REPLACEMENT OR REPAIR OF DEFECTIVE GOODS OR RETURN OF THE PURCHASE PRICE, AS HEREIN PROVIDED, AND UPON THE EXPIRATION OF SAID THIRTY (30) DAY PERIOD ALL SUCH LIABILITY SHALL TERMINATE. THE FORGOING SHALL CONSTITUTE THE SOLE REMEDY OF THE BUYER AND THE SOLE LIABILITY OF SELLER, IN NO EVENT SHALL THE SELLER BE LIABLE FOR SPECIAL, INCIDENTAL OR CONSEQUENTIAL DAMAGES. Buyer shall bear all cost of disassembly, shipment and reinstallation of any defective, repaired or replaced goods and shall return to Seller, only upon written authorization of Seller, all goods for which refund or purchase price is made.

11. MINIMUM INVOICE: .100.00 PER ORDER NET PLUS TRANSPORTATION.

12. RETURN OR GOODS: NO GOODS SHOULD BE RETURNED WITHOUT FIRST OBTAINING WRITTEN PERMISSION FROM THE FACTORY FOR AUTHORIZATION AND SHIPPING INSTRUCTIONS.

13. INDEMNITY: Buyer agrees to indemnify and shall hold Seller harmless against any and all claims, losses, costs, damages, causes of action at law or equity, lawsuits, or judgements as a result of any act, failure to act or negligence of Buyer or as a result of the failure or any defect in any of Seller's products manufactured by Seller pursuant to any designs, prints, engineering or fabrication work supplied by Buyer.

14. PATENT INFRINGEMENT: If any article furnished to your specifications, or the process of its fabrication is covered by a patent, buyer agrees to hold seller harmless from any action, cost or expenses occasioned by any contract, of such patent or patents.

15. BUYER'S CREDIT: Delivery by Seller of goods hereunder shall at all times be subject to the approval of Buyer's credit by Seller. Seller may at any time withhold delivery of any goods hereunder pending receipt of payment of amounts due Seller from Buyer and/or security for payment of the amount to become due Seller as a result of the delivery of the goods.

16. MISCELLANEOUS: Any action or suit arising in any way under this agreement must be commenced within one (1) after such cause of action has accrued, and otherwise, shall be forever waived, released, discharged and barred. This agreement shall be construed in accordance with the laws of the State of Illinois. Waiver by either party of any default by the other hereunder shall not be deemed a waiver by such party of any default by the other which my thereafter occur.

16100 South Lathrop Avenue

Harvey, IL 60426

TOLL-FREE / 800-882-5543

FAX / 708-339-7814

www.power-strut.com



Columbia-MBF

UNISTRUT
Construction

KAF-TECH



COPE



GEM
FABRICATION



RAZOR
RIBBON

