

# Switch & Outlet Boxes – Technical Data

## General Information:

A box, with or without a bracket or bar hanger, intended for support of a fixture/luminaire weighing 50 lbs. or less is marked "FOR FIXTURE/LUMINAIRE SUPPORT" on the carton to indicate that the box is intended for fixture/luminaire support. A box, with or without a bracket or bar hanger, intended for support of a fixture/luminaire weighing more than 50 lbs. is marked with the weight of the fixture/luminaire to be supported. Metallic device boxes and device plaster rings have not been investigated for support of a ceiling fixture/luminaire unless marked for use in ceilings, walls and with the weight of the product to be supported. Metallic device boxes intended to be installed in an existing structure have been investigated for the support of utilization equipment weighing not more than 6 lbs.

Article 314 of the National Electrical Code® (NEC®) covers the installation and use of boxes. The article includes table references that guide the electrician in the selection of the proper size box necessary to safely accommodate electrical service requirements. The box capacity table is reproduced in part from NEC as a quick reference and guide. The NEC should be consulted for complete details.

Eaton's Crouse-Hinds Series products are produced in accordance with the requirements of UL514A, UL514B and UL514C, and are classified for fire resistance according to the standard, Fire Tests of Building Construction and Materials, ANSI/UL263, ASTM E 119 and NFPA 251. This listing is based on products when used in a fire rated (2 HR) wall or ceiling. Eaton's Crouse-Hinds Series steel boxes are listed with UL File No. E-23156 and Eaton's Crouse-Hinds Series non-metallic boxes are listed with UL File No. E-102328 and UL (2 HR fire rated) File No. R9933.

Eaton's Crouse-Hinds Series switch and outlet boxes comply with the requirements of NEMA Standard OS-1, NFPA 70-370 and Federal Spec. #W-J-800E.

Under File No. E-23156, Eaton's Crouse-Hinds Series concentric and "moon" KO style boxes, the following is stated "Suitable for bonding without any additional bonding means around concentric (or eccentric) knockouts where used in circuits above or below 250V."

Wall thickness on all steel boxes is 0.0625" with minimum galvanization thickness of G60.

**Table 314.16(A) Metal Boxes**

Box Dimension (In.)	Cu. In.	Maximum Number of Conductors (arranged by AWG size)							
		Cap.	No. 18	No. 16	No. 14	No. 12	No. 10	No. 8	No. 6
Trade Size or Type									
4 x 1 1/4 Round or Octagonal	12.5	8	7	6	5	5	4	2	
4 x 1 1/2 Round or Octagonal	15.5	10	8	7	6	6	5	3	
4 x 2 1/8 Round or Octagonal	21.5	14	12	10	9	8	7	4	
4 x 1 1/4 Square	18.0	12	10	9	8	7	6	3	
4 x 1 1/2 Square	21.0	14	12	10	9	8	7	4	
4 x 2 1/8 Square	30.3	20	17	15	13	12	10	6	
4 1/16 x 1 1/4 Square	25.5	17	14	12	11	10	8	5	
4 1/16 x 2 1/2 Square	29.5	19	16	14	13	11	9	5	
4 1/16 x 2 1/8 Square	42.0	28	24	21	18	16	14	8	
3 x 2 x 1 1/2 Device	7.5	5	4	3	3	3	2	1	
3 x 2 x 2 Device	10.0	6	5	5	4	4	3	2	
3 x 2 x 2 1/4 Device	10.5	7	6	5	4	4	3	2	
3 x 2 x 2 1/2 Device	12.5	8	7	6	5	5	4	2	
3 x 2 x 2 3/4 Device	14.0	9	8	7	6	5	4	2	
3 x 2 x 3 1/2 Device	18.0	12	10	9	8	7	6	3	
4 x 2 1/8 x 1 1/2 Device	10.3	6	5	5	4	4	3	2	
4 x 2 1/8 x 1 1/8 Device	13.0	8	7	6	5	5	4	2	
4 x 2 1/8 x 2 1/8 Device	14.5	9	8	7	6	5	4	2	
3 3/4 x 2 x 2 1/2 Masonry Box/Gang	14.0	9	8	7	6	5	4	2	
3 3/4 x 2 x 3 1/2 Masonry Box/Gang	21.0	14	12	10	9	8	7	4	
FS-Minimum Internal Depth 1 3/4 Single Cover Gang	13.5	9	7	6	6	5	4	2	
FD-Minimum Internal Depth 2 3/8 Single Cover Gang	18.0	12	10	9	8	7	6	3	
FS-Minimum Internal Depth 1 3/4 Multiple Cover Gang	18.0	12	10	9	8	7	6	3	
FD-Minimum Internal Depth 2 3/8 Multiple Cover Gang	24.0	16	13	12	10	9	8	4	

Outlet Boxes

**Table 314.16(B) Volume Required per Conductor**

Size of Conductor	Free Space Within Box for Each Conductor
No. 18	1.5 cubic inches
No. 16	1.75 cubic inches
No. 14	2 cubic inches
No. 12	2.25 cubic inches
No. 10	2.5 cubic inches
No. 8	3 cubic inches
No. 6	5 cubic inches

For SI units: one cubic inch = 16.4 cm<sup>3</sup>.

Reprinted with permission from NFPA 70-2005, the National Electrical Code®, Copyright® 2005 National Fire Protection Association, Quincy MA 02269. This reprinted material is not the complete and official position of the National Fire Protection Association, on the referenced subject which is represented only by the standard in its entirety. National Electrical Code® and NEC® are registered trademarks of the National Fire Protection Association, Inc., Quincy, MA 02269.

# Switch & Outlet Boxes – Technical Data

## OUTLET BOXES & COVERS

Eaton's Crouse-Hinds Division has assembled one of the most complete outlet box product lines in the business. We've been leading in quality and selection for decades, and throughout the steel outlet box offering, you will find innovative products and solutions that save labor, cut material costs and increase productivity.

We have a complete offering of:

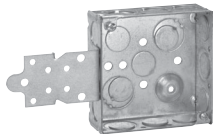
- 4" and 4<sup>1</sup>/<sub>16</sub>" square drawn and welded boxes
- 4" square and 4<sup>1</sup>/<sub>16</sub>" square, switch, masonry, utility, outlet, ceiling, fan and gangable boxes
- Drawn boxes available with concentric knockouts, combining 1/2" and 3/4" knockout
- Complete line of covers, partitions, extension rings and accessories
- Uni-Mount™ covers
- PRE-formance™ products
- Pre-assembled boxes which includes Uni-Mount cover attached to 4" square box
- Pre-fabricated boxes which includes Uni-Mount cover attached to 4" square box with ground screw and lead installed
- Fire alarm boxes and covers



### Standard Materials – Steel Covers, Outlet and Switch Boxes:

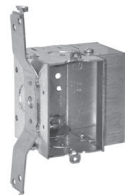
- Steel boxes and covers are made of .0625 inch thick pre-galvanized sheet steel
- Handy box covers are made of .030 inch thick galvanized sheet steel

### BRACKETS USED ON BOXES



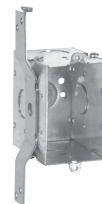
**"F" BRACKET**

Mounts on face of stud. See catalog number for set back. For wood studs.



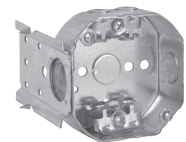
**"D" BRACKET**

Side mount bracket with set up hook and guide tabs for automatic positioning. Standard bracket set back is 5/8". For wood and metal studs.



**"S" BRACKET**

Side mount brackets with set up hook for wood or metal studs. Standard bracket set back is 5/8".



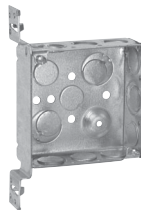
**"C" BRACKET**

Ceiling box bracket for wood studs.



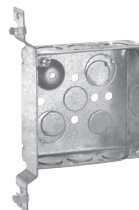
**"VS" BRACKET**

Plain flat mounted bracket for use on wood or metal studs. No set back.



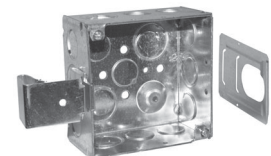
**"VMS" BRACKET**

Side bracket for use with wood or metal studs. Provides set up tabs to position on face of stud.



**"VP" BRACKET**

Side bracket with set up hooks for wood studs.



**"SSB" BRACKET**

Positions box on either side of a steel stud.



**"MSB" BRACKET**

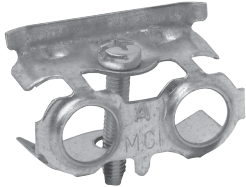
Position box on either side of steel stud.

Outlet Boxes

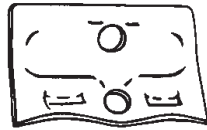
# Switch & Outlet Boxes – Technical Data

## CLAMPS USED ON BOXES

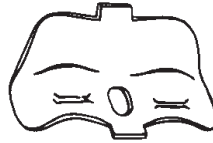
Cat. # TP900



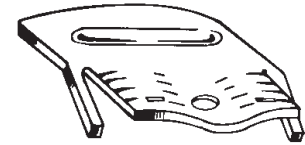
**MC-BX**  
FOR ARMoured & METAL-CLAD (MCI) CABLE



**NM-1**



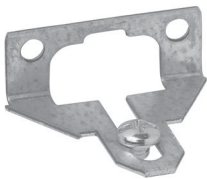
**NM-2**  
FOR NON-METALLIC CABLE



**NM-4**

## MOUNTING EARS

Cat. # TP901



**ONE SCREW EAR**

Cat. # TP902



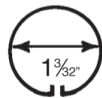
**TWO SCREW EAR**

Mounting ears are available on many of our switch boxes. They are set forward in  $\frac{1}{16}$ " the "old way" position. Two screw ears are generally used on shallow boxes and one screw ears on deep boxes.

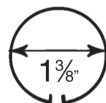
## BOX ENTRY DETAILS



**1/2" Conduit KO**



**3/4" Conduit KO**



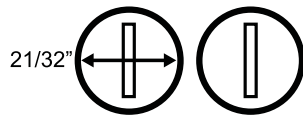
**1" Conduit KO**



**Concentric 1/2" and 3/4" KO**



**Eccentric 1/2" and 3/4" KO**



**Cable Pry-outs Always in Pairs**

## Knockouts and Pry-outs

Conduit KOs have standard trade size dimensions. KOs are uniform and true for attachment of cable or conduit connectors. Pry-outs for cable entrance are slotted – a twist with screwdriver removes them. KOs and pry-outs are precision stamped to permit easy removal, but remain sufficiently strong and sturdy when not removed.

4" square drawn boxes feature a  $\frac{1}{2}$ " and  $\frac{3}{4}$ " "inverted" concentric KO – easily removed. Our 4" square welded boxes feature our  $\frac{1}{2}$ " eccentric KO which also features easy removability of both the  $\frac{1}{2}$ " and  $\frac{3}{4}$ " KOs.

**Note:** These KOs are suitable for bonding without bonding jumpers around concentric (or eccentric) knockouts where used in circuits above or below 250V.

# Steel Square Boxes

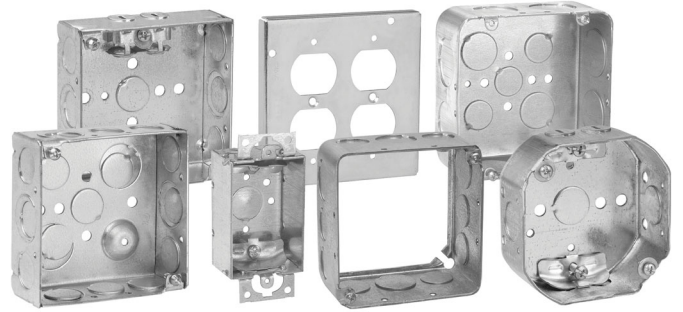
## 4" SQUARE OUTLET BOXES & COVERS

### Applications:

- For use with conduit
- Available in red for fire alarm applications

### Features:

- Ideal for exposed work applications, providing an easy method for the installation of electrical devices (switches, receptacles, fans, lights, etc.)
- Raised ground screw location in the welded boxes saves time in installation
- Available with pre-installed ground screws and pigtails for increased labor savings
- Knockouts are suitable for use without a bonding jumper in circuits above or below 250 volts
- Available in two depths for differing cubic capacity requirements
- Welded or drawn construction to match customer preference
- Extensive cover offering to meet various customer applications and needs



### Certifications and Compliances:

- UL Listed

## 4" SQUARE OUTLET BOXES – 18.0 CUBIC INCH CAPACITY

1¼" DEEP – FOR CONDUIT

UL LISTED



TP408

#### Knockouts

Cat. #	Bracket	Description	Knockouts		Unit Qty.	Wt. Lbs. Per 100
			Sides	Bottom		
TP408	-	Drawn	12 – ½"	5 – ½"	50	61

Steel Boxes

# Steel Square Boxes

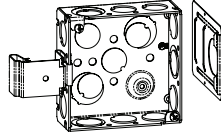
## 4" SQUARE OUTLET BOXES – 22.0 CUBIC INCH CAPACITY (WELDED)† 21.0 CUBIC INCH CAPACITY (DRAWN)

1½" DEEP – FOR CONDUIT

UL LISTED



TP404/TP404PF



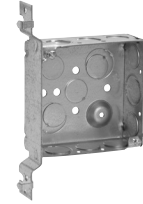
TP404SSB



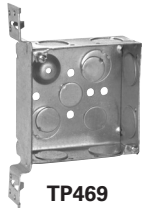
TP404MSB



TP404RED



TP425



TP469



TP830\*



TP405



TP412  
TP839\*



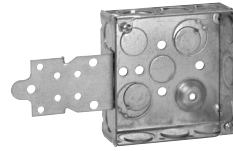
TP410



TP414RED



TP414



TP418



TP423RED

### Knockouts

Cat. #	Metal Stud Sizes	Bracket	Description	Sides	Bottom	Unit Qty.	Wt. Lbs. Per 100
TP404**	-	-	Welded	8 - ½", 4 - ½" + ¾" E	2 - ½", 2 - ½" + ¾" E	50	72
TP404MSB	-	MSB	Welded	8 - ½", 4 - ½" + ¾" E	2 - ½", 2 - ½" + ¾" E	25	83
TP404RED	-	-	Welded	8 - ½", 4 - ½" + ¾" E	2 - ½", 2 - ½" + ¾" E	50	72
TP404REDMSB	-	MSB	Welded	8 - ½", 4 - ½" + ¾" E	2 - ½", 2 - ½" + ¾" E	25	83
TP404PF†**	-	-	Welded	8 - ½", 4 - ½" + ¾" E	2 - ½", 2 - ½" + ¾" E	50	72
TP404SSB	-	SSB	Welded	8 - ½", 4 - ½" + ¾" E	2 - ½", 2 - ½" + ¾" E	50	83
TP425**	All	"VP"	Welded	6 - ½", 3 - ½" + ¾" E	2 - ½", 2 - ½" + ¾" E	25	82
TP423**	All	"VMS"	Welded	6 - ½", 3 - ½" + ¾" E	2 - ½", 2 - ½" + ¾" E	25	81
TP423RED	All	"VMS"	Welded	6 - ½", 3 - ½" + ¾" E	2 - ½", 2 - ½" + ¾" E	25	81
TP405	-	-	Drawn	4 - ½", 6 - ½" + ¾" C	3 - ½", 2 - ¾"	50	67
TP410	-	-	Drawn	12 - ½"	5 - ½"	50	67
TP412	-	-	Drawn	8 - ¾"	3 - ½", 2 - ¾"	50	67
TP414	-	-	Drawn	8 - ½", 4 - ¾"	3 - ½", 2 - ¾"	50	67
TP414RED	-	-	Drawn	8 - ½", 4 - ¾"	3 - ½", 2 - ¾"	50	67
TP418	-	"F", Set Flush	Welded	6 - ½", 3 - ½" + ¾" E	2 - ½", 2 - ½" + ¾" E	25	84
TP467	-	-	Welded	8 - ¾"	2 - ½", 2 - ½" + ¾" E	50	72
TP467MSB	-	MSB	Welded	8 - ¾"	2 - ½", 2 - ½" + ¾" E	25	78
TP469	All	"VMS"	Welded	6 - ¾"	2 - ½", 2 - ½" + ¾" E	25	81
<b>Air Plenum</b>							
TP830*	-	-	Drawn	8 - ½", 4 - ¾"	3 - ½", 2 - ¾"	50	72
TP839*	-	-	Drawn	8 - ¾" C	3 - ½", 2 - ¾"	50	72

\*For Air Plenum (no mounting holes) - not UL Listed.

\*\*cUL Listed.

†All welded 4" Square Outlet Boxes have a raised dimple for ground screw.

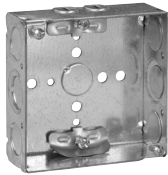
‡TP404PF includes ground screw with pigtail lead.

Steel Boxes

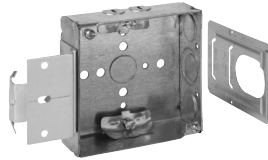
# Steel Square Boxes

## 4" SQUARE OUTLET BOXES – 22.0 CUBIC INCH CAPACITY

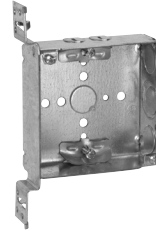
1½" DEEP  
FOR NON-METALLIC CABLE – CLAMPS IN EACH END  
UL LISTED



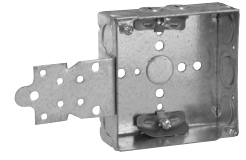
TP444



TP444MSB



TP449



TP446

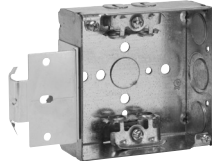
Cat. #	Bracket	Description	Knockouts		Unit Qty.	Wt. Lbs. Per 100
			Sides	Bottom		
TP444	-	Welded	4 - Cable, 4 - ½", 2 - ½" + ¾" E	1 - ½"	50	77
TP444MSB	MSB	Welded	4 - Cable, 4 - ½", 2 - ½" + ¾" E	1 - ½"	25	81
TP444SSB	SSB	Welded	4 - Cable, 4 - ½", 2 - ½" + ¾" E	1 - ½"	50	88
TP446	"F", Set Flush	Welded	4 - Cable, 2 - ½", 1 - ½" + ¾" E	1 - ½"	25	88
TP449	"VMS"	Welded	4 - Cable, 2 - ½", 1 - ½" + ¾" E	1 - ½"	25	85

## 4" SQUARE OUTLET BOXES – 22.0 CUBIC INCH CAPACITY

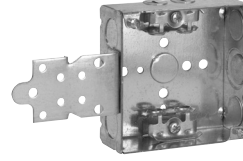
1½" DEEP  
FOR ARMoured & METAL-CLAD (MCI) CABLE & HCF CABLE – CLAMPS IN EACH END  
UL LISTED



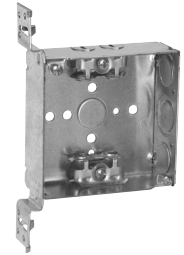
TP454



TP454MSB



TP456



TP459

Cat. #	Bracket	Description	Knockouts		Unit Qty.	Wt. Lbs. Per 100
			Sides	Bottom		
TP459	"VMS"	Welded	4 - Cable, 2 - ½", 1 - ½" + ¾" E	1 - ½"	25	89
TP454*	-	Welded	4 - Cable, 4 - ½", 2 - ½" + ¾" E	1 - ½"	50	81
TP454MSB	MSB	Welded	4 - Cable, 4 - ½", 2 - ½" + ¾" E	1 - ½"	25	91
TP454PFF†	-	Welded	4 - Cable, 4 - ½", 2 - ½" + ¾" E	1 - ½"	50	81
TP454SSB*	SSB	Welded	4 - Cable, 4 - ½", 2 - ½" + ¾" E	1 - ½"	25	82
TP456*	"F", Set Flush	Welded	4 - Cable, 2 - ½", 1 - ½" + ¾" E	1 - ½"	25	92
TP456PFF†	"F", Set Flush	Welded	4 - Cable, 2 - ½", 1 - ½" + ¾" E	1 - ½"	25	92

\*UL approved for use with aluminum interlocking grounding metal-clad cable, Type MCIA (Southwire MCAP™).  
MCAP™ is a registered trademark of Southwire Company.  
†TP catalog numbers ending in PF include ground screw with pigtail lead.

Steel Boxes



# Steel Square Boxes

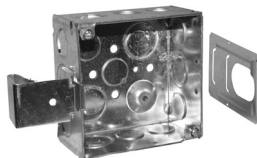
## 4" SQUARE OUTLET BOXES – 30.3 CUBIC INCH CAPACITY

2 1/8" DEEP – FOR CONDUIT

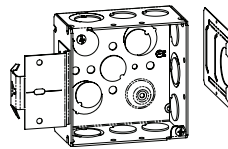
UL LISTED



TP403/TP403PF



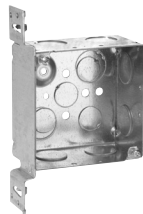
TP403SSB



TP403MSB



TP432



TP432VMS



TP434



TP438  
TP831\*



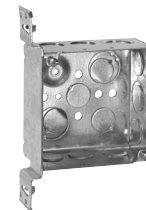
TP403RED



TP434RED



TP451RED



TP451

Steel Boxes

Cat. #	Bracket	Description	Knockouts		Unit Qty.	Wt. Lbs. Per 100
			Sides	Bottom		
TP403**	-	Welded	8 - 1/2", 4 - 1/2" + 3/4" E	2 - 1/2", 2 - 1/2" + 3/4" E	25	84
TP403MSB	MSB	Welded	8 - 1/2", 4 - 1/2" + 3/4" E	2 - 1/2", 2 - 1/2" + 3/4" E	25	95
TP403RED	-	Welded	8 - 1/2", 4 - 1/2" + 3/4" E	2 - 1/2", 2 - 1/2" + 3/4" E	25	84
TP403REDMSB	MSB	Welded	8 - 1/2", 4 - 1/2" + 3/4" E	2 - 1/2", 2 - 1/2" + 3/4" E	25	95
TP403PF†**	-	Welded	8 - 1/2", 4 - 1/2" + 3/4" E	2 - 1/2", 2 - 1/2" + 3/4" E	25	84
TP403SSB	SSB	Welded	8 - 1/2", 4 - 1/2" + 3/4" E	2 - 1/2", 2 - 1/2" + 3/4" E	25	95
TP432**	-	Welded	8 - 3/4"	2 - 1/2", 2 - 1/2" + 3/4" E	25	84
TP432MSB	MSB	Welded	8 - 3/4"	2 - 1/2", 2 - 1/2" + 3/4" E	25	95
TP432REDMSB	MSB	Welded	8 - 3/4"	2 - 1/2", 2 - 1/2" + 3/4" E	25	95
TP432VMS	"VMS"	Welded	6 - 3/4"	2 - 1/2", 2 - 1/2" + 3/4" E	25	99
TP436	-	Welded	8 - 1"	2 - 1/2", 2 - 1/2" + 3/4" E	25	84
TP436MSB	MSB	Welded	8 - 1"	2 - 1/2", 2 - 1/2" + 3/4" E	25	95
TP434	-	Drawn	8 - 1/2", 4 - 3/4"	3 - 1/2", 2 - 3/4"	25	84
TP434RED	-	Drawn	8 - 1/2", 4 - 3/4"	3 - 1/2", 2 - 3/4"	25	84
TP438	-	Drawn	4 - 1/2", 6 - 1/2" + 3/4" C	3 - 1/2", 2 - 3/4"	25	84
TP438PF†	-	Drawn	4 - 1/2", 6 - 1/2" + 3/4" C	3 - 1/2", 2 - 3/4"	25	84
TP451	"VMS"	Welded	6 - 1/2", 3 - 1/2" + 3/4" E	2 - 1/2", 2 - 1/2" + 3/4" E	25	96
TP451PF†	"VMS"	Welded	6 - 1/2", 3 - 1/2" + 3/4" E	2 - 1/2", 2 - 1/2" + 3/4" E	25	96
TP451RED	"VMS"	Welded	6 - 1/2", 3 - 1/2" + 3/4" E	2 - 1/2", 2 - 1/2" + 3/4" E	25	96
TP437	"VP"	Welded	6 - 1/2", 3 - 1/2" + 3/4" E	2 - 1/2", 2 - 1/2" + 3/4" E	25	98
<b>Air Plenum</b>						
TP831*	-	Drawn	8 - 1/2", 4 - 3/4"	3 - 1/2", 2 - 3/4"	25	90

\*For Air Plenum (no mounting holes) - not UL Listed.

\*\*cUL Listed.

†TP catalog numbers ending in PF include ground screw with pigtail lead.

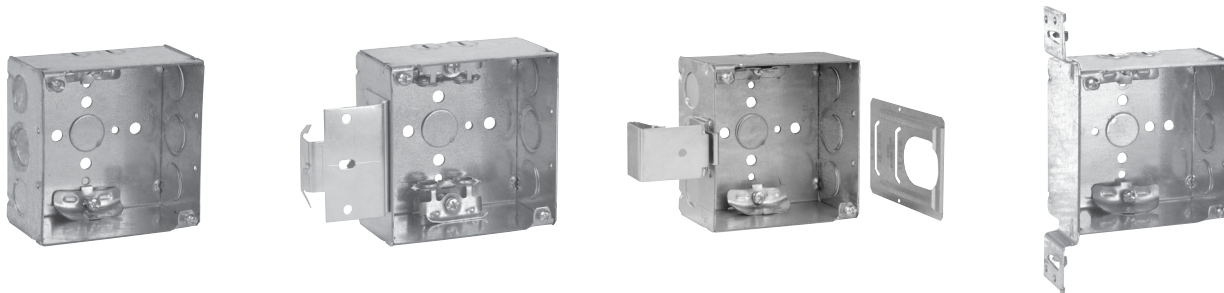
# Steel Square Boxes

## 4" SQUARE OUTLET BOXES – 30.3 CUBIC INCH CAPACITY

2 1/8" DEEP

FOR NON-METALLIC CABLE – CLAMPS IN EACH END

UL LISTED



TP450

TP450MSB

TP450SSB

TP452

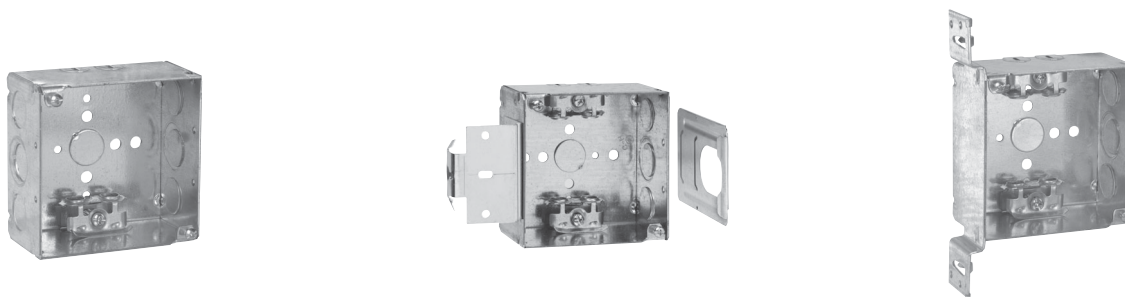
Cat. #	Bracket	Description	Knockouts		Unit Qty.	Wt. Lbs. Per 100
			Sides	Bottom		
TP450	-	Welded	4 - Cable, 4 - 1/2", 2 - 1/2" + 3/4" E	1 - 1/2"	25	90
TP450MSB	MSB	Welded	4 - Cable, 4 - 1/2", 2 - 1/2" + 3/4" E	1 - 1/2"	25	101
TP450SSB	SSB	Welded	4 - Cable, 4 - 1/2", 2 - 1/2" + 3/4" E	1 - 1/2"	25	101
TP452	"VMS"	Welded	4 - Cable, 2 - 1/2", 1 - 1/2" + 3/4" E	1 - 1/2"	25	104

## 4" SQUARE OUTLET BOXES – 30.3 CUBIC INCH CAPACITY

2 1/8" DEEP

FOR ARMoured & METAL-CLAD (MCI) CABLE & HCF CABLE – CLAMPS IN EACH END

UL LISTED



TP431

TP431MSB

TP440

Cat. #	Metal Stud Sizes	Bracket	Description	Knockouts		Unit Qty.	Wt. Lbs. Per 100
				Sides	Bottom		
TP431*	-	-	Welded	4 - Cable, 4 - 1/2", 2 - 1/2" & 3/4" E	1 - 1/2"	25	91
TP431PF†	-	-	Welded	4 - Cable, 4 - 1/2", 2 - 1/2" & 3/4" E	1 - 1/2"	25	91
TP431MSB	-	MSB	Welded	4 - Cable, 4 - 1/2", 2 - 1/2" & 3/4" E	1 - 1/2"	25	91
TP431SSB*	-	SSB	Welded	4 - Cable, 4 - 1/2", 2 - 1/2" & 3/4" E	1 - 1/2"	25	102
TP440*	All	"VMS"	Welded	4 - Cable, 2 - 1/2", 1 - 1/2" & 3/4" E	1 - 1/2"	25	103

\*UL approved for use with aluminum interlocking grounding metal-clad cable, Type MCIA (Southwire MCAP™).

MCAP™ is a registered trademark of Southwire Company.

†TTP catalog numbers ending in PF include ground screw with pigtail lead.

Steel Boxes



# Steel Square Boxes

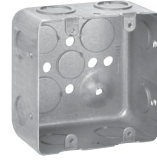
## 4" SQUARE TWO DEVICE BOXES – 30.3 CUBIC INCH CAPACITY

2 1/8" DEEP – FOR CONDUIT

UL LISTED



TP391



TP395

Cat. #	Bracket	Description	Knockouts		Unit Qty.	Wt. Lbs. Per 100
			Sides	Bottom		
TP391	"VS", Set 7/8"	Drawn	6 - 1/2", 3 - 3/4"	3 - 1/2", 2 - 3/4"	25	95
TP395	-	Drawn	8 - 1/2", 4 - 3/4"	3 - 1/2", 2 - 3/4"	25	84

## 4" SQUARE OUTLET BOXES – 46.0 CUBIC INCH CAPACITY

3 1/2" DEEP – FOR CONDUIT

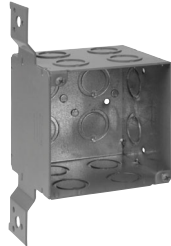
UL LISTED, FILE NO. E-15022

### Applications:

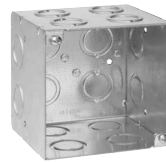
- 4" square, 3 1/2" deep outlet boxes are ideal for applications requiring increased capacity, including the installation of speaker boxes, fire alarms, strobes, security cameras and other oversized devices
- For use with rigid/IMC and EMT conduit



TP411



TP411RED



TP413



TP413RED

Cat. #	Bracket	Description	Knockouts		Unit Qty.	Wt. Lbs. Per 100
			Sides	Bottom		
TP411	Side	Welded	12 - 1/2" + 3/4" C	4 - 1/2" + 3/4" C	10	137
TP411RED	Side	Welded	12 - 1/2" + 3/4" C	4 - 1/2" + 3/4" C	10	137
TP413	-	Welded	12 - 1/2" + 3/4" C	4 - 1/2" + 3/4" C	20	125
TP413RED	-	Welded	12 - 1/2" + 3/4" C	4 - 1/2" + 3/4" C	20	125

# Steel Square Covers

## 4" SQUARE EXTENSION RINGS

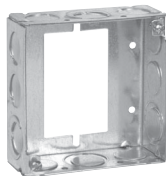
1 1/2" DEEP WITH CONDUIT KNOCKOUTS – 21.0 CUBIC INCH CAPACITY

2 1/8" DEEP WITH CONDUIT KNOCKOUTS – 30.3 CUBIC INCH CAPACITY

UL LISTED



TP424



TP422†



TP426



TP428RED



TP443 (2 1/8" Deep)



TP428, TP833\*

Cat. #	Knockouts		Unit Qty.	Wt. Lbs. Per 100
	Sides	Bottom		
<b>1 1/2" Deep</b>				
TP424	12 - 1/2"	-	50	46
TP426	8 - 3/4"	-	50	46
TP428	8 - 1/2", 4 - 3/4"	-	50	46
TP428RED	8 - 1/2", 4 - 3/4"	-	50	46
TP833*	8 - 1/2", 4 - 3/4"	-	50	48
<b>2 1/8" Deep</b>				
TP443	8 - 1/2", 4 - 3/4"	-	25	66
TP465	8 - 1"	-	25	60
<b>1 1/2" Deep Switch &amp; Masonry Box Extension Ring</b>				
TP422†	8 - 1/2", 4 - 1/2" + 3/4" E	-	50	50

\*For Air Plenum (no mounting holes). Requires the use of TP854; purchase separately - not UL Listed.

†For use as extension with switch box, not four square box.

## FLEXIBLE FIXTURE HANGERS

TPSFH Square Flexible Fixture Hangers are used in commercial or light industrial applications where HID high bay and low bay lighting fixtures are used. Specific applications include storage facilities, shipping warehouses, retail and DIY facilities.

### Features:

- Suitable for use with 1/2" or 3/4" fixture conduit stems, these hangers allow the conduit stem of the fixture (luminaire) to swing in any direction; maximum swing angle is 26° from vertical max. slope angles 22 1/2°
- Available for attachment to 4" square steel boxes
- Quickly and easily attached by two screws
- Hangers are drilled and tapped for use with 3/4" conduit stem as standard and come supplied with a 3/4" - 1/2" reducer for 1/2" conduit stem applications

### Certifications and Compliances:

- UL1598
- CSA C22.2 No. 250
- Suitable for damp locations

### Standard Materials and Finishes:

- Material – sheet steel
- Finish – zinc chromate for corrosion resistance



Cat. #	Description	Support Wt. (Lbs.)
TPSFH12	For use with 4" Square Boxes	50

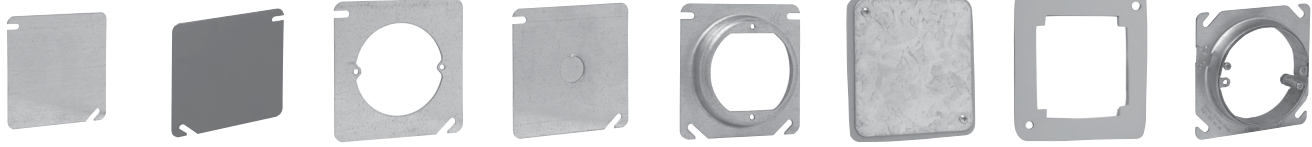
Steel Boxes

# Steel Square Covers

## COVERS FOR 4" SQUARE BOXES – CUBIC INCH CAPACITY (SEE BELOW)

UL LISTED

#8-32 Screw Used on Covers



TP472 TP472RED TP474 TP478 TP478 TP487 TP473, TP475, TP476, TP477, TP479, TP483 TP850\* TP854\* AMR0

Cat. #	Description	Unit Qty.	Wt. Lbs. Per 100	Capacity Cu. In.
TP472†	Flat Blank	50	31	-
TP472RED	Flat Blank, Red	50	31	-
TP474†	Flat, Open with Ears 2 <sup>3</sup> / <sub>4</sub> "	50	21	-
TP478†	Flat, with 1/2" KO	50	31	-
TP487†	Flat, with 3/4" KO	50	29	-
TP473†	Raised 1/4", Open with Ears 2 <sup>3</sup> / <sub>4</sub> "	50	23	1.3
TP476†	Raised 1/2", Open with Ears 2 <sup>3</sup> / <sub>4</sub> "	50	26	4.0
TP477†	Raised 5/8", Open with Ears 2 <sup>3</sup> / <sub>4</sub> "	50	27	5.0
TP475†	Raised 3/4", Open with Ears 2 <sup>3</sup> / <sub>4</sub> "	25	31	6.0
TP479†	Raised 1", Open with Ears 2 <sup>3</sup> / <sub>4</sub> "	25	34	7.0
TP483†	Raised 1 1/4", Open with Ears 2 <sup>3</sup> / <sub>4</sub> "	25	37	8.5
AMR0**	3/4" - 1 1/2" Round Adjustable Mud Ring	25	44	6.1

### Air Plenum

TP850*	Flat Blank Gasketed with Captive Screws	25	31	-
TP854*	Flat Ring Double Gasketed	25	12	-

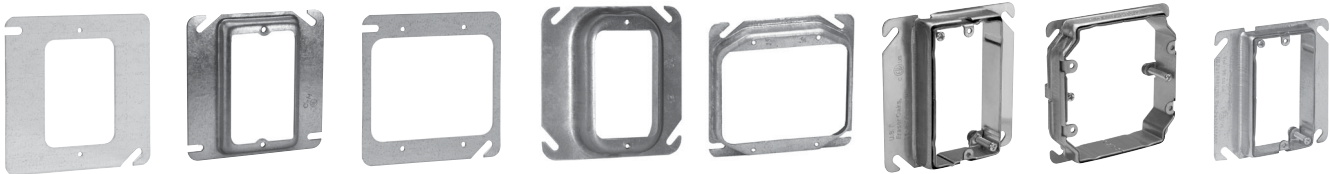
\*For Air Plenum (no mounting holes) - not UL Listed.

\*\*ETL listed.

†CSA certified.

## MUD RINGS FOR 4" SQUARE STEEL OUTLET BOXES

UL LISTED



TP480 TP482, TP484, TP486, TP489 TP494 TP488, TP490 TP496, TP499, TP500, TP501, TP502 AMR1 AMR2 AMR158

Cat. #	Description	Unit Qty.	Wt. Lbs. Per 100	Capacity Cu. In.
<b>One Device</b>				
TP480†	Flat	50	20	-
TP482†	1/4" Raised	50	21	1.8
TP484†	1/2" Raised	50	23	3.8
TP489†	5/8" Raised	50	26	4.3
TP486†	3/4" Raised	50	30	5.5
TP488	1" Raised	50	34	6.8
TP490	1 1/4" Raised	25	39	8.5
AMR1**	3/4" - 1 1/2" Raised Adjustable	25	47	-
AMR158**	5/8" - 1 1/4" Raised Adjustable	25	44	6.0
<b>Two Device</b>				
TP494†	Flat	50	12	-
TP496†‡	1/4" Raised	50	13	3.0
TP498†‡	1/2" Raised	50	18	6.0
TP499†‡	5/8" Raised	50	22	8.0
TP500†‡	3/4" Raised	50	24	9.0
TP501	1 1/4" Raised	25	31	14.0
TP502	1" Raised	25	30	11.7
AMR2**	5/8" - 1 1/2" Raised Adjustable	25	50	11.3

\*\*cULus Listed.

†CSA certified.

‡Slotted design for use with 4" square box partitions.

# Steel Square Covers

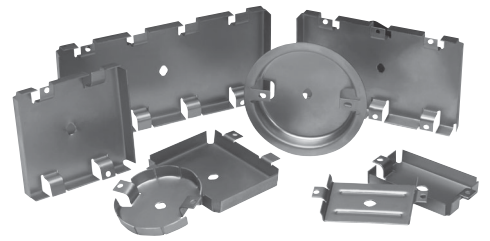
## METALGUARD™ PROTECTIVE PLATES

### Applications:

- For use with single, two, three and four gang commercial or residential boxes/plaster rings; with or without devices, switches, GFCI, etc. installed
- Commercial or residential ceiling boxes

### Features:

- Seals out sheetrock mud, sanding dust and paint overspray to keep the electrical box and its wiring free from contaminants
- Heavy duty reusable metallic plate provides mechanical protection to box and wiring and speeds up trim process
- Easy to install; all you have to do is push them in; they come out easy – just put a screwdriver into the slot in front, turn and pull them out
- Reduces risk of callbacks and expense of rework because of wire and box damage
- MetalGuard serves as a guide for router in cutting out boxes



### Standard Material & Finish:

- 18 gauge steel
- Natural finish

Cat. #	Description	Unit Qty.	Wt. Lbs. Per 100
<b>MGRK</b>	Contractor Kit (120-1G, 40-2G, 20-3G, 5-4G, and 20-Rnd)	1	33.00
<b>MGR1</b>	1G Residential Wire Protector	60	8.20
<b>MGR2</b>	2G Residential Wire Protector	20	4.80
<b>MGR4</b>	4G Residential Wire Protector	5	3.00
<b>MGR0</b>	Rnd Residential Wire Protector	20	4.00
<b>MGMR1</b>	1G Wire Protector for Commercial MR	50	6.55
<b>MGMR2</b>	2G Wire Protector for Commercial MR	50	10.25
<b>MGMRO</b>	Rnd Wire Protector for Commercial MR	50	6.00

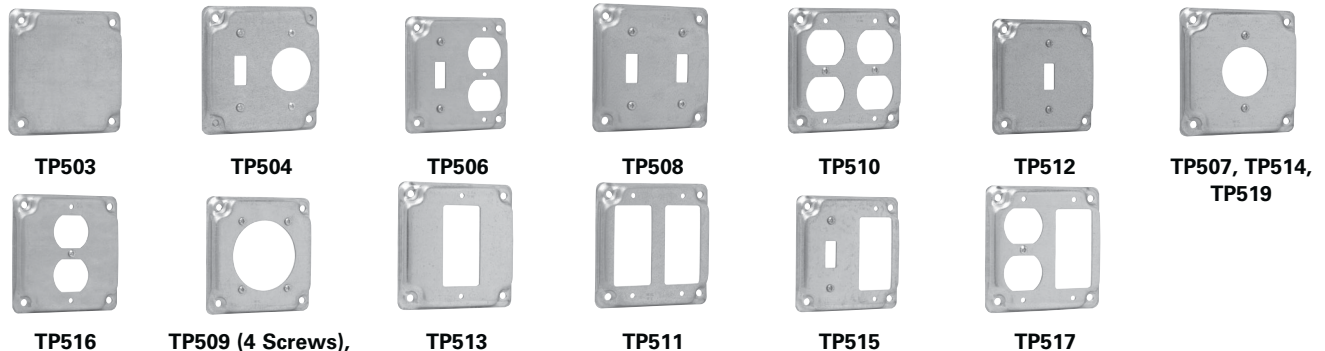
## 4" SQUARE SURFACE COVERS – 5.5 CUBIC INCH CAPACITY

RAISED 1/2"

UL LISTED

CSA LISTED

Screw(s) provided in raised cover kit are for use with the center hole on duplex receptacles. Nuts that are provided in kit are to be used in conjunction with the screws that are provided as standard packaging with devices to mount device to raised cover. For GFCI device installation, no screw is needed; please disregard.



Cat. #	Description	Unit Qty.	Wt. Lbs. Per 100
<b>TP503</b>	Raised Blank	50	35
<b>TP504</b>	For One Toggle Switch and One Single Receptacle 1 <sup>13</sup> / <sub>32</sub> " Dia.	50	31
<b>TP506</b>	For One Toggle Switch and One Duplex Receptacle	50	31
<b>TP508</b>	For Two Toggle Switches	50	35
<b>TP510</b>	For Two Duplex Receptacles	50	26
<b>TP512</b>	For One Toggle Switch	50	35
<b>TP507</b>	For One 20 Amp Single Receptacle 1 <sup>19</sup> / <sub>32</sub> " Dia.	50	37
<b>TP514</b>	For One Single Receptacle 1 <sup>13</sup> / <sub>32</sub> " Dia.	50	34
<b>TP519</b>	For One 30 Amp Twist-Lock Single Receptacle 1 <sup>29</sup> / <sub>32</sub> " Dia.	50	37
<b>TP516</b>	For One Duplex Receptacle	50	31
<b>TP509</b>	For One 30-60 Amp Receptacle (4-wire) 2 <sup>7</sup> / <sub>16</sub> " Dia.	50	23
<b>TP518</b>	For One 30-50 Amp Receptacle 2 <sup>9</sup> / <sub>64</sub> " Dia.	50	34
<b>TP513</b>	For One GFCI Receptacle	50	31
<b>TP511</b>	For Two GFCI Receptacles	50	26
<b>TP515</b>	For One Toggle Switch and One GFCI Receptacle	50	31
<b>TP517</b>	For One Duplex Receptacle and One GFCI Receptacle	50	26

# Steel Square Covers

## UNI-MOUNT™ COVERS

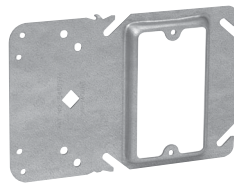
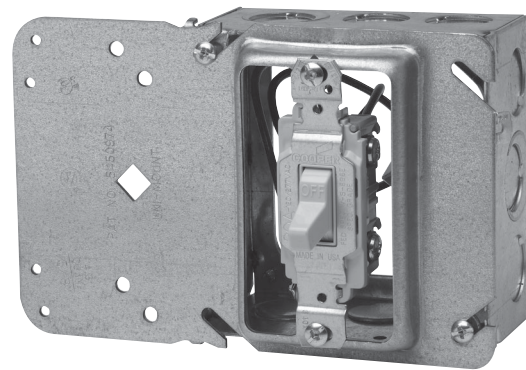
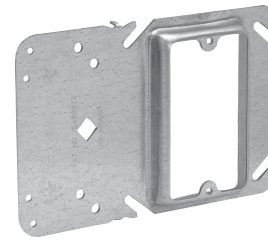
The Uni-Mount combines the features of a mounting device plate with those of a box support, giving you one universal plate for all of your needs. Specifically designed for use with metal or wood studs:

The new and improved version incorporates four small holes on the left side (support side) of the bracket. These holes allow for the attachment of box mounting brackets to allow for use of both sides of the stud. The holes are strategically located to accept either the Eaton's B-Line Series BB423 bracket or the Caddy H23 bracket. Additionally, the viewing hole has been significantly enlarged (and is now diamond shaped) to make it even easier to find mark lines on the stud.

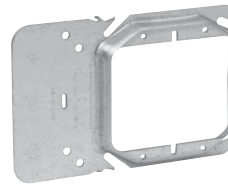
### Features:

- Guide tabs ensure consistent alignment on stud
- Stud alignment hole ensures consistent mounting height
- Rigid bracket design eliminates the need for far side support
- Available as a single or two device cover
- Universal design fits all 4" square boxes
- Available in 1/2", 5/8" and 3/4" raised
- Can be ordered pre-assembled to popular 4" square boxes
- Fast and easy installation
- Can be used in multiple applications, resulting in less items to stock
- Less labor intensive
- Less material handling
- No multiple assemblies to handle
- Can be used in Class II communications outlets for low voltage without a box
- UL Listed and CSA certified\*
- UL File No. E-23156

\*CSA requires a far side support.



Single Gang

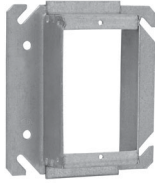


Two Gang

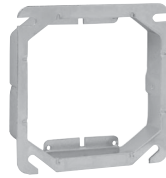
Cat. #	Description	Capacity Cu. In.	Unit Qty.	Wt. Lbs. Per 100
<b>Single Gang</b>				
TP30000	1/2" Raised	3.8	50	43
TP31000	5/8" Raised	4.3	50	46
TP32000	3/4" Raised	5.5	50	50
<b>Two Gang</b>				
TP35000	1/2" Raised	6.0	50	38
TP36000	5/8" Raised	8.0	50	52
TP37000	3/4" Raised	9.0	50	54
<b>Low Profile Screws – Reduces Risk of Sheetrock Bulge</b>				
TP710	L.P. Screws	-	1000	0.5

# Steel Square Covers

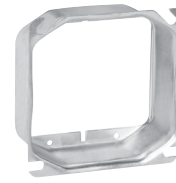
## TILE WALL COVERS FOR 4" SQUARE BOXES – CUBIC INCH CAPACITY (SEE BELOW) UL LISTED



TP524



TP534



TP540

### Applications:

- Typically used with tile or brick

### Features:

- Rounded corners help guide cuts around devices

Cat. #	Description	Capacity Cu. In.	Unit Qty.	Wt. Lbs. Per 100
<b>One Device</b>				
TP520	1/2" Raised	3.7	50	30
TP522	3/4" Raised	5.5	50	36
TP524	1" Raised	7.4	50	40
TP526	1 1/4" Raised	9.3	25	46
TP528	1 1/2" Raised	11.0	25	50
TP530	2" Raised	14.8	25	62
<b>Two Device</b>				
TP532	1/2" Raised	5.0	10	24
TP534	3/4" Raised	7.8	10	30
TP536	1" Raised	10.3	10	36
TP538	1 1/4" Raised	13.0	10	44
TP540	1 1/2" Raised	15.5	10	50
TP542	2" Raised	20.8	10	66

## 4" SQUARE BOX PARTITIONS



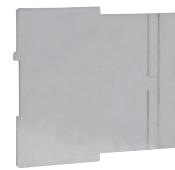
TP860



TP861



TP862



TP863

Cat. #	Description	Unit Qty.	Wt. Lbs. Per 100
<b>For 1 1/2" Deep Box with Square Cut Tile Wall Two Gang Covers</b>			
TP860	For 1/2", 3/4", 1" Raised Covers	25	13
TP861	For 1 1/4", 1 1/2", 2" Raised Covers	25	18
<b>For 2 1/2" Deep Box with Square Cut Tile Wall Two Gang Covers</b>			
TP862	For 1/2", 3/4", 1" Raised Covers	25	16
TP863	For 1 1/4", 1 1/2", 2" Raised Covers	25	21

Steel Boxes



# Steel Square Boxes

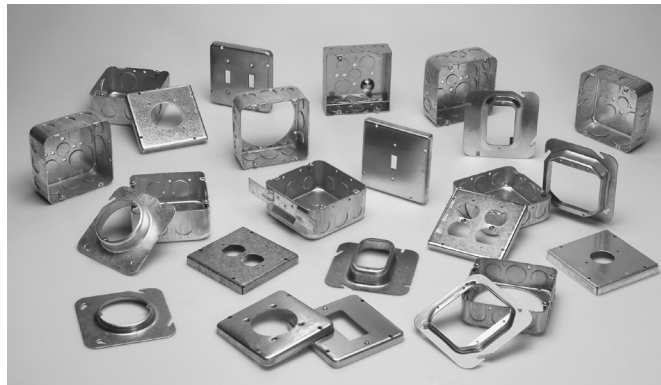
## 4<sup>11</sup>/<sub>16</sub>" SQUARE OUTLET BOXES & COVERS

### Applications:

- For use with conduit
- For use in commercial and industrial applications, where larger sized conductor or wiring devices are needed and additional volume is required
- Available in red for fire alarm applications

### Features:

- Ideal for exposed work applications, providing an easy method for the installation of electrical devices (switches, receptacles, fans, lights, etc.)
- Raised ground screw location in the welded boxes saves time in installation
- Concentric knockouts have a 1/2" and 3/4" knockout in the same location for customer flexibility
- Knockouts are suitable for use without a bonding jumper in circuits above or below 250 volts
- Available in two depths for differing cubic capacity requirements
- Welded or drawn construction to match customer preference
- Extensive cover offering to meet various customer applications and needs



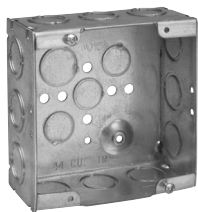
### Certifications and Compliances:

- UL Listed

## 4<sup>11</sup>/<sub>16</sub>" SQUARE OUTLET BOXES – 29.5 CUBIC INCH CAPACITY

### 1<sup>1</sup>/<sub>2</sub>" DEEP WITH CONDUIT KOs

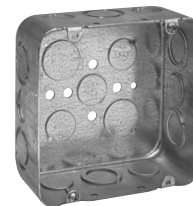
### UL LISTED



TP523



TP548



TP549

Cat. #	Description	Knockouts		Unit Qty.	Wt. Lbs. Per 100
		Sides	Bottom		
TP523	Welded	12 - 1/2" + 3/4" C	2 - 1/2", 2 - 3/4"	25	99
TP523PF†	Welded	12 - 1/2" + 3/4" C	2 - 1/2", 2 - 3/4"	25	99
TP548	Drawn	8 - 1/2", 4 - 3/4"	3 - 1/2", 2 - 3/4"	25	84
TP549	Drawn	6 - 1/2", 6 - 1/2" + 3/4" C	3 - 1/2", 2 - 3/4"	25	84

†TTP catalog numbers ending in PF include ground screw with pigtail lead.

# Steel Square Boxes

## 4<sup>11/16</sup>" SQUARE OUTLET BOXES – 42.0 & 44.0 CUBIC INCH CAPACITY

2<sup>1/8</sup>" DEEP WITH CONDUIT KOs

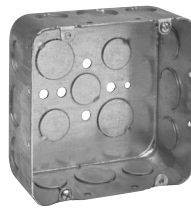
UL LISTED



TP563



TP554  
TP842\*



TP556  
TP832\*



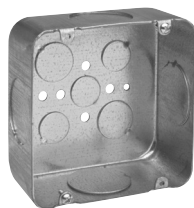
TP556RED



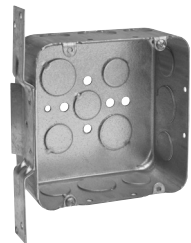
TP558  
TP835\*



TP560  
TP836\*



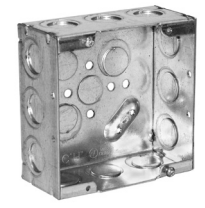
TP562



TP557



TP521



TP525

Cat. #	Description	Bracket	Knockouts		Unit Qty.	Wt. Lbs. Per 100
			Sides	Bottom		
<b>42.0 Cubic Inch Capacity</b>						
TP563	Drawn	-	6 - 1/2", 6 - 1/2" + 3/4" C	3 - 1/2", 2 - 3/4"	25	104
TP554	Drawn	-	8 - 3/4"	3 - 1/2", 2 - 3/4"	25	104
TP556	Drawn	-	8 - 1/2", 4 - 3/4"	3 - 1/2", 2 - 3/4"	25	104
TP556PF†	Drawn	-	8 - 1/2", 4 - 3/4"	3 - 1/2", 2 - 3/4"	25	104
TP556RED	Drawn	-	8 - 1/2", 4 - 3/4"	3 - 1/2", 2 - 3/4"	25	104
TP558	Drawn	-	4 - 3/4", 4 - 1"	3 - 1/2", 2 - 3/4"	25	104
TP558PF†	Drawn	-	4 - 3/4", 4 - 1"	3 - 1/2", 2 - 3/4"	25	104
TP560	Drawn	-	8 - 1"	3 - 1/2", 2 - 3/4"	25	104
TP562‡	Drawn	-	4 - 1 1/4"	3 - 1/2", 2 - 3/4"	25	104
TP557	Drawn	"VS"	5 - 1/2", 4 - 1/2" + 3/4" C	3 - 1/2", 2 - 3/4"	25	120
<b>44.0 Cubic Inch Capacity</b>						
TP521	Welded	-	12 - 1/2" + 3/4" C	2 - 1/2", 2 - 3/4"	25	115
TP521PF†	Welded	-	12 - 1/2" + 3/4" C	2 - 1/2", 2 - 3/4"	25	115
TP525**	Welded	-	12 - 1/2" + 3/4" E	2 - 1/2", 2 - 1/2" + 3/4" E	25	115
TP525PF†	Welded	-	12 - 1/2" + 3/4" E	2 - 1/2", 2 - 1/2" + 3/4" E	25	115
<b>Air Plenum</b>						
TP835*	-	-	4 - 3/4", 4 - 1"	3 - 1/2", 2 - 3/4"	25	115
TP836*	-	-	8 - 1"	3 - 1/2", 2 - 3/4"	25	115
TP842*	-	-	12 - 3/4"	3 - 1/2", 2 - 3/4"	25	115
TP832*	-	-	8 - 1/2", 4 - 3/4"	3 - 1/2", 2 - 3/4"	25	115

\*For Air Plenum (no mounting holes) - not UL Listed.

\*\*Raised ground bump contains holes for two ground screws.

†TP catalog numbers ending in PF include ground screw with pigtail lead.

‡Not UL Listed.

Steel Boxes

# Steel Square Covers

## 4<sup>11</sup>/<sub>16</sub>" SQUARE EXTENSION RINGS

1<sup>1</sup>/<sub>2</sub>" DEEP WITH CONDUIT KOs – 29.5 CUBIC INCH CAPACITY

2<sup>1</sup>/<sub>8</sub>" DEEP WITH CONDUIT KOs – 42.0 CUBIC INCH CAPACITY

UL LISTED



TP550



TP564



TP837\*



TP564RED

Cat. #	Description	Knockouts		Unit Qty.	Wt. Lbs. Per 100
		Sides	Bottom		
<b>1<sup>1</sup>/<sub>2</sub>" Deep – 29.5 Cubic Inch Capacity</b>					
TP550		8 - 1/2", 4 - 3/4"	-	25	66
<b>2<sup>1</sup>/<sub>8</sub>" Deep – 42.0 Cubic Inch Capacity</b>					
TP564		8 - 1/2", 4 - 3/4"	-	25	84
TP564RED		8 - 1/2", 4 - 3/4"	-	25	84
<b>Air Plenum</b>					
TP837*	2 <sup>1</sup> / <sub>8</sub> " Deep	8 - 1/2", 4 - 3/4"	-	25	84

\*For Air Plenum (no mounting holes) - not UL Listed.  
TP837 requires the use of TP852, purchased separately.

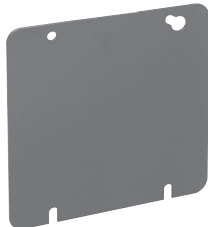
# Steel Square Covers

## 4<sup>11/16</sup>" SQUARE COVERS – CUBIC INCH CAPACITY (SEE BELOW)

UL LISTED



TP568



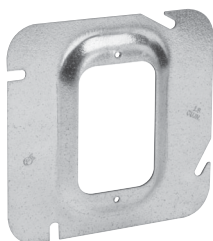
TP568RED



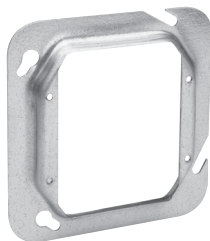
TP569, TP570, TP571,  
TP573, TP575



TP572



TP574 - TP582,  
TP529, TP531



TP584, TP586, TP589,  
TP593, TP541, TP543



TP851\*



TP852\*

Cat. #	Description	Capacity Cu. In.	Unit Qty.	Wt. Lbs. Per 100
<b>Flat and Raised</b>				
TP568†	Flat Blank	-	25	40
TP568RED	Flat Blank, Red	-	25	40
TP569‡	1/2" Raised, with Ears 2 3/4"	3.3	25	36
TP570	5/8" Raised, with Ears 2 3/4"	3.8	25	38
TP571‡	3/4" Raised, with Ears 2 3/4"	5.0	25	40
TP572†	Flat, with 1/2" KO	-	25	40
TP573‡	1" Raised, with Ears 2 3/4"	7.0	25	44
TP575‡	1 1/4" Raised, with Ears 2 3/4"	9.0	25	48
<b>Air Plenum</b>				
TP851*	Flat Blank Gasketed with Captive Screws	-	50	42
TP852*	Flat Ring Double Gasketed	-	25	20
<b>One Device</b>				
TP574	1/4" Raised	1.8	25	32
TP576	1/2" Raised	3.3	25	36
TP578	3/4" Raised	5.0	25	42
TP579	5/8" Raised	4.5	25	39
TP580	1" Raised	6.8	25	46
TP582	1 1/4" Raised	8.5	25	52
TP529	1 1/2" Raised	11.3	25	64
TP531	2" Raised	15.0	25	76
<b>Two Device</b>				
TP590‡	Flat	-	25	21
TP583‡	1/4" Raised	3.0	25	26
TP584	1/2" Raised	6.0	25	30
TP587	5/8" Raised	8.0	25	32
TP586	3/4" Raised	8.8	25	34
TP589	1" Raised	11.7	25	38
TP593	1 1/4" Raised	14.0	25	42
TP541	1 1/2" Raised	18.8	25	63
TP543	2" Raised	24.5	25	79

Steel Boxes

\*For Air Plenum (no mounting holes).

†CSA certified.

‡Not UL Listed.

# Steel Square Covers

## 4<sup>11</sup>/<sub>16</sub>" SQUARE SURFACE COVERS – 9.0 CUBIC INCH CAPACITY

1/2" RAISED



TP720



TP722



TP724, TP730,  
TP736



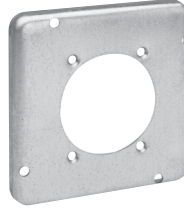
TP726



TP728



TP732



TP734



TP738



TP740

Cat. #	Description	Unit Qty.	Wt. Lbs. Per 100
TP720	For One Toggle Switch	10	52
TP722	For One Duplex Receptacle	10	49
TP724	For One Single Receptacle 1 <sup>13</sup> / <sub>32</sub> " Dia.	10	53
TP730	For One 20 Amp Single Receptacle 1.620" Dia.	10	50
TP736	For One 1.730" Dia. Power Outlet	10	51
TP726	For Two Toggle Switches	10	52
TP728	For Two Duplex Receptacles	10	44
TP732	For One 2.125" Dia. Range/Dryer Receptacle	10	48
TP734	For One 2.480" Dia. Power Outlet	10	45
TP738	For One Ground Fault Interrupter	10	45
TP740	For One GFI Receptacle and One Toggle	25	45
TP741	For Two GFI Receptacles	10	43

Steel Boxes

# Steel Utility Boxes & Covers

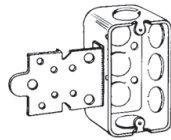
## UTILITY BOXES – CUBIC INCH CAPACITY (SEE BELOW)

4" LONG x 2 1/8" WIDE

UL LISTED



TP588, TP647



TP591



TP592, TP600,  
TP602



TP598, TP605



TP594, TP596



TP604, TP606

Cat. #	Bracket	Knockouts		Unit Qty.	Wt. Lbs. Per 100
		Sides	Bottom		
<b>1 1/4" Deep – 8.5 Cubic Inch Capacity</b>					
TP647	-	8 - 1/2"	3 - 1/2"	50	40
<b>1 1/2" Deep – 10.3 Cubic Inch Capacity</b>					
TP588	-	8 - 1/2"	3 - 1/2"	50	42
TP591	"F", Set 1/4"	5 - 1/2"	3 - 1/2"	50	51
<b>1 1/2" Deep Extension Rings – 10.3 Cubic Inch Capacity</b>					
TP592	-	8 - 1/2"	-	50	36
<b>1 7/8" Deep – 13.0 Cubic Inch Capacity</b>					
TP594	-	8 - 1/2"	3 - 1/2"	50	50
TP596	-	6 - 3/4"	3 - 1/2"	50	50
TP598	"S", Set 1/2"	5 - 1/2"	3 - 1/2"	50	60
<b>1 1/8" Deep Extension Rings – 13.0 Cubic Inch Capacity</b>					
TP600	-	8 - 1/2"	-	50	41
TP602	-	6 - 3/4"	-	50	41
<b>2 1/8" Deep – 14.5 Cubic Inch Capacity</b>					
TP604	-	8 - 1/2"	3 - 1/2"	50	56
TP606	-	6 - 3/4"	3 - 1/2"	50	56
TP605	"S", Set 1/2"	5 - 1/2"	3 - 1/2"	50	66

## UTILITY BOX COVERS

UL LISTED



TP608



TP610



TP612



TP613



TP614



TP616



TP618

Cat. #	Description	Unit Qty.	Wt. Lbs. Per 100
TP608*	Blank	100	10
TP610*	For 20 and 30 Amp, Twist Lock, 1 1/2" Dia.	100	9
TP612*	Single Receptacle, 1 1/2" Dia.	100	9
TP613*	For GFCI Device	100	7
TP614*	1/2" KO	100	10
TP616*	Duplex Receptacle	100	8
TP618*	One Toggle Switch	100	10

\*CSA certified.

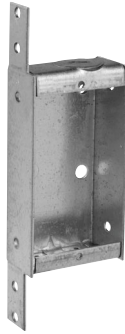
Steel Boxes



# Steel Switch Boxes

## 1" DEEP – NON-GANGABLE – 6.5 CUBIC INCH CAPACITY

1<sup>15</sup>/<sub>16</sub>" WIDE x 3<sup>3</sup>/<sub>4</sub>" LONG



TP101



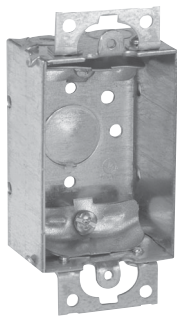
TP103

Cat. #	Bracket	Plastic Clamp	Knockouts		Unit Qty.	Wt. Lbs. Per 100
			Conduit	Cable		
TP101	"S"	No	1 - 1/2"	2	25	38
TP103	"S"	Yes	1 - 1/2"	2	25	39

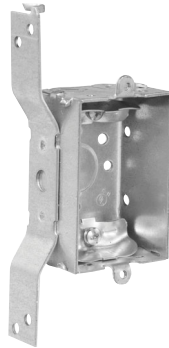
## 1 1/2" DEEP – NON-GANGABLE – 7.5 CUBIC INCH CAPACITY

2" WIDE x 3" LONG

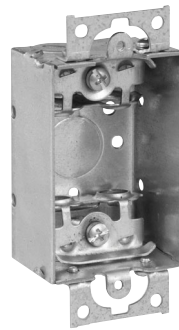
UL LISTED



TP100



TP104



TP106



TP114

Cat. #	Bracket	Ears	Knockouts			Unit Qty.	Wt. Lbs. Per 100
			Each End	Each Side	Bottom		
<b>For Non-metallic Cable – Clamps in Each End</b>							
TP100	-	Yes	2 - Cable	-	1 - 1/2"	50	43
TP104	"S", Set 1/2"	-	2 - Cable	-	1 - 1/2"	50	50
<b>For Armoured &amp; Metal-clad (MCI) Cable – Clamps in Each End</b>							
TP106*	-	Yes	2 - Cable	-	1 - 1/2"	50	44
<b>For Conduit – No Clamps, Flush Device</b>							
TP114	-	Yes	1 - 1/2"	-	1 - 1/2"	50	39

\*UL approved for use with aluminum interlocking grounding metal-clad cable, Type MCIA (Southwire MCAP™). MCAP™ is a registered trademark of Southwire Company.

Steel Boxes

# Steel Switch Boxes

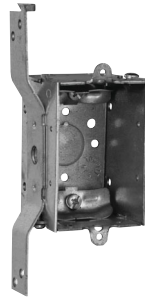
**2" DEEP – GANGABLE – 10.0 CUBIC INCH CAPACITY**

**2" WIDE x 3" LONG**

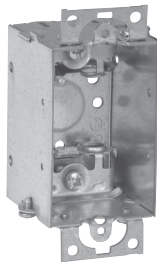
**UL LISTED**



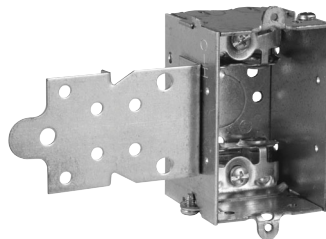
**TP116**



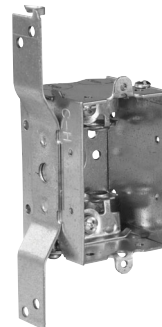
**TP118**



**TP120**



**TP123**



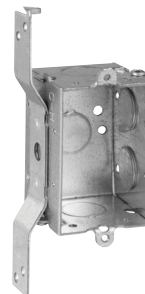
**TP124**



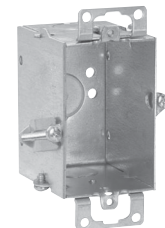
**TP126**



**TP130**



**TP132**



**TP131 Hold-Tite**

Steel Boxes

Cat. #	Bracket	Ears	Knockouts			Unit Qty.	Wt. Lbs. Per 100
			Each End	Each Side	Bottom		
<b>For Non-metallic Cable – Clamps in Each End</b>							
<b>TP116</b>	-	Yes	2 - Cable	-	1 - 1/2"	50	53
<b>TP118</b>	"S", Set 5/8"	-	2 - Cable	-	1 - 1/2"	50	60
<b>For Armoured &amp; Metal-clad (MCI) Cable – Clamps in Each End</b>							
<b>TP120*</b>	-	Yes	2 - Cable	-	1 - 1/2"	50	54
<b>TP123*</b>	"F", Set 1/2"	-	2 - Cable	-	1 - 1/2"	50	63
<b>TP124*</b>	"S", Set 5/8"	-	2 - Cable	-	1 - 1/2"	50	61
<b>For Conduit – No Clamps, Flush Device</b>							
<b>TP126</b>	-	-	1 - 1/2"	2 - 1/2"	1 - 1/2"	50	47
<b>TP130</b>	-	Yes	1 - 1/2"	2 - 1/2"	1 - 1/2"	50	48
<b>TP132</b>	"S", Set 5/8"	-	1 - 1/2"	2 - 1/2", 1 Side	1 - 1/2"	50	58
<b>TP131</b>	Hold-Tite	Yes	1 - 1/2" - T	-	1 - 1/2"	50	52

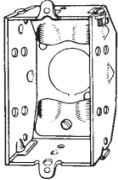
\*UL approved for use with aluminum interlocking grounding metal-clad cable, Type MCIA (Southwire MCAP™). MCAP™ is a registered trademark of Southwire Company.

# Steel Switch Boxes

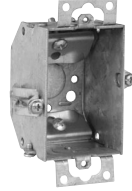
## 2 1/4" DEEP – GANGABLE – BEVELED CORNERS – 10.5 CUBIC INCH CAPACITY

2" WIDE x 3" LONG

UL LISTED



TP134



TP137 Hold-Tite



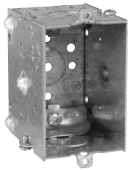
TP138

Cat. #	Description	Ears	Bumps	Knockouts			Unit Qty.	Wt. Lbs. Per 100
				Each End	Each Side	Bottom		
<b>Clamp Screws Through Beveled Corners</b>								
TP134	Gangable	-	Yes	2 - Cable	-	1 - 1/2"	50	51
TP137	Gangable	Yes	-	2 - Cable	-	1 - 1/2"	50	57
TP138	Gangable	Yes	-	2 - Cable	-	1 - 1/2"	50	55

## 2 1/2" DEEP – GANGABLE – 12.5 CUBIC INCH CAPACITY

2" WIDE x 3" LONG

UL LISTED



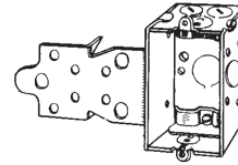
TP158



TP162



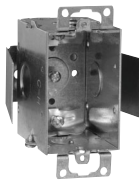
TP163



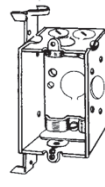
TP164, TP168



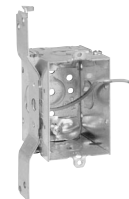
TP170



TP161



TP172



TP174



TP171

Cat. #	Bracket	Ears	Ground Pigtail	Leveling Bumps	Knockouts			Unit Qty.	Wt. Lbs. Per 100
					Each End	Each Side	Bottom		
<b>For Non-metallic Cable – Clamps in Each End</b>									
TP158	-	-	-	Yes	2 - Cable, 1 - 1/2"	-	1 - 1/2"	50	59
TP115*	-	Yes	Yes	-	2 - Cable	1 - 1/2"	1 - 1/2"	50	63
TP161	Snap-in	Yes	-	-	2 - Cable	1 - 1/2"	-	50	73
TP162	-	Yes	-	-	2 - Cable	1 - 1/2"	1 - 1/2"	50	62
TP163	Hold-Tite	Yes	-	-	2 - Cable	-	1 - 1/2"	50	65
TP164	"F", Set 1/2"	-	-	-	2 - Cable, 1 - 1/2"	1 - 1/2"	1 - 1/2"	50	71
TP168	"F", Set 1/4"	-	-	-	2 - Cable, 1 - 1/2"	1 - 1/2"	1 - 1/2"	50	71
TP170	"S", Set 5/8"	-	-	-	2 - Cable, 1 - 1/2"	1 - 1/2"	1 - 1/2"	50	69
TP172	"D", Set 5/8"	-	-	-	2 - Cable, 1 - 1/2"	1 - 1/2"	1 - 1/2"	50	70
TP174	"D", Set 5/8"	-	Yes	-	2 - Cable, 1 - 1/2"	1 - 1/2"	1 - 1/2"	50	71
TP171	"VP", Set 1/2"	-	-	-	2 - Cable, 1 - 1/2"	1 - 1/2"	1 - 1/2"	50	73

\*Not UL Listed.

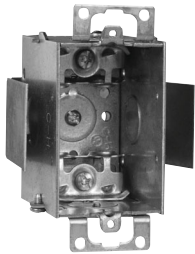
Steel Boxes

# Steel Switch Boxes

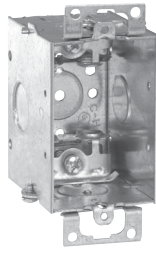
## 2½" DEEP – GANGABLE – 12.5 CUBIC INCH CAPACITY

2" WIDE x 3" LONG FOR ARMoured & METAL-CLAD (MCI) CABLE – CLAMPS IN EACH END

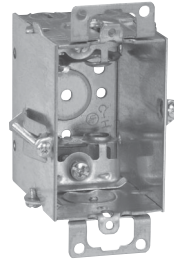
UL LISTED



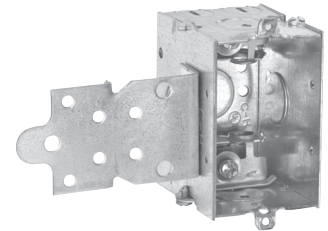
TP177



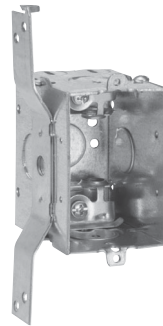
TP178



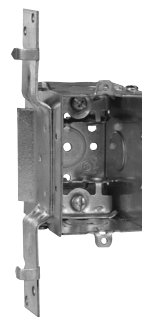
TP179 Hold-Tite



TP180



TP184



TP185

Cat. #	Bracket	Ears	Knockouts			Unit Qty.	Wt. Lbs. Per 100
			Each End	Each Side	Bottom		
TP177*	Snap-in	Yes	2 - Cable	1 - ½"	-	50	74
TP178*	-	Yes	2 - Cable	1 - ½"	1 - ½"	50	63
TP179*	Hold-Tite	Yes	2 - Cable	-	1 - ½"	50	66
TP180*	"F", Set ½"	-	2 - Cable, 1 - ½"	1 - ½"	1 - ½"	50	72
TP184*	"S", Set ⅝"	-	2 - Cable, 1 - ½"	1 - ½"	1 - ½"	50	70
TP185*	"VP", Set ½"	-	2 - Cable, 1 - ½"	1 - ½"	1 - ½"	50	74

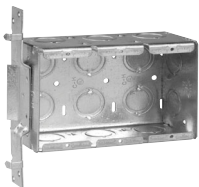
\*UL approved for use with aluminum interlocking grounding metal-clad cable, Type MCIA (Southwire MCAP\*). MCAP\* is a registered trademark of Southwire Company.

Steel Boxes

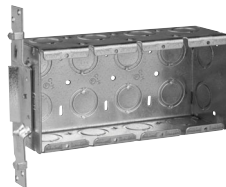
## GANG BOXES SET BACK ½"

2½" DEEP – 3¾" HIGH – ½" & ¾" CONCENTRIC KOs

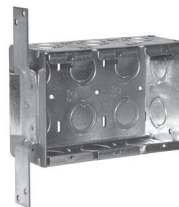
UL LISTED



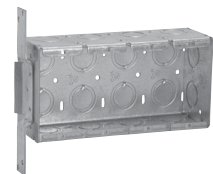
TP632



TP633



TP637



TP638

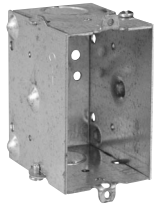
Cat. #	Gang	Bracket	Width	Knockouts			Capacity Cu. In.	Unit Qty.	Wt. Lbs. Per 100
				Each End	Each Side	Bottom			
TP632	3	VP	5⅞"	2	3	6	46.5	5	143
TP633	4	VP	7⅞"	2	4	8	62.0	5	179
TP637	3	VS	5⅞"	2	3	6	46.5	5	143
TP638	4	VS	7⅞"	2	4	8	62.0	5	179

# Steel Switch Boxes

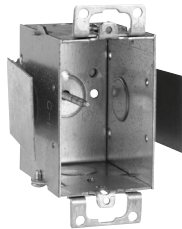
**2½" DEEP – GANGABLE – 12.5 CUBIC INCH CAPACITY**

**2" WIDE x 3" LONG  
FOR CONDUIT – NO CLAMPS**

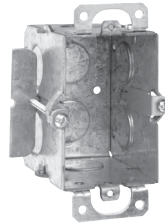
**UL LISTED**



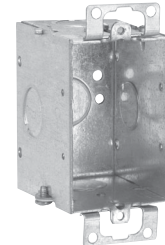
TP214



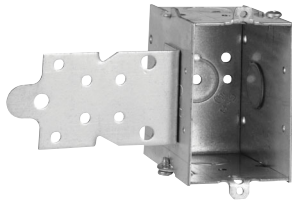
TP216



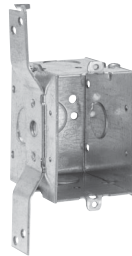
TP217



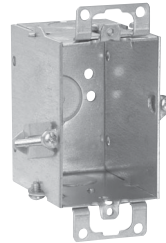
TP218



TP220



TP222



TP224

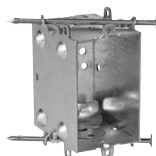
Cat. #	Bracket	Ears	Leveling Bumps	Knockouts			Unit Qty.	Wt. Lbs. Per 100
				Each End	Each Side	Bottom		
TP214	-	-	Yes	1 - ½"	-	1 - ½"	50	55
TP216	Snap-in	Yes	-	1 - ½"	1 - ½"	-	50	69
TP217	-	Yes	-	1 - ½"	-	1 - ½"	50	64
TP218	-	Yes	-	1 - ½"	1 - ½"	1 - ½"	50	58
TP220	"F", Set ½"	-	-	1 - ½"	1 - ½", 1 Side	1 - ½"	50	66
TP222	"S", Set ⅝"	-	-	1 - ½"	1 - ½", 1 Side	1 - ½"	50	65
TP224	Hold-Tite	Yes	-	1 - ½"	-	1 - ½"	50	61

# Steel Switch Boxes

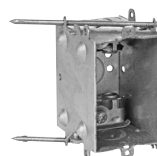
## 2½" DEEP SWITCH BOXES – "INSTANT ON" – 12.5 CUBIC INCH CAPACITY

2" WIDE x 3" LONG

WITH BUMPS – CLAMPS IN EACH END (BUMPS LEVEL THE BOX AGAINST THE SIDE OF STUD, TOP TO BOTTOM, FRONT TO BACK)



TP210



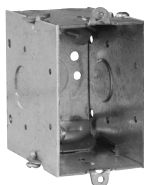
TP213

Cat. #	Clamps	Nails	Knockouts			Unit Qty.	Wt. Lbs. Per 100
			Each End	Each Side	Bottom		
TP210	NM Cable	Angle	2 - Cable, 1 - ½"	-	1 - ½"	50	66
TP213	Armoured Cable	Angle	2 - Cable, 1 - ½"	-	1 - ½"	50	66

## 2¾" DEEP – GANGABLE – 14.0 CUBIC INCH CAPACITY

2" WIDE x 3" LONG

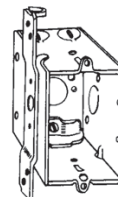
UL LISTED



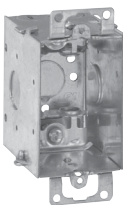
TP660



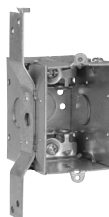
TP662



TP664



TP668



TP670

Cat. #	Bracket	Ears	Knockouts			Unit Qty.	Wt. Lbs. Per 100
			Each End	Each Side	Bottom		
<b>For Non-metallic Cable – Clamps in Each End</b>							
TP660	-	-	2 - Cable	1 - ½"	1 - ½"	50	62
TP662	-	Yes	2 - Cable	1 - ½"	1 - ½"	50	67
TP664	"S", Set ⅝"	-	2 - Cable	1 - ½"	1 - ½"	50	70
<b>For Armoured &amp; Metal-clad (MCI) Cable – Clamps in Each End</b>							
TP668*	-	Yes	2 - Cable	1 - ½"	1 - ½"	50	68
TP670*	"S", Set ⅝"	-	2 - Cable	1 - ½"	1 - ½"	50	71

\*UL approved for use with aluminum interlocking grounding metal-clad cable, Type MCI (Southwire MCAP\*). MCAP™ is a registered trademark of Southwire Company.

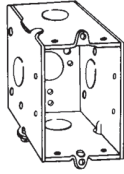


# Steel Switch Boxes

## 2<sup>3</sup>/<sub>4</sub>" DEEP – GANGABLE – 14.0 CUBIC INCH CAPACITY

2" WIDE x 3" LONG  
FOR CONDUIT – NO CLAMPS

UL LISTED



TP672, TP674



(TP676 – 1 screw ear),  
(TP678 – 2 screw ears)



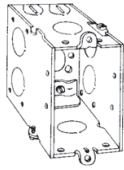
TP680, TP677

Cat. #	Bracket	Ears	Knockouts			Unit Qty.	Wt. Lbs. Per 100
			Each End	Each Side	Bottom		
TP672	-	-	1 - 1/2"	1 - 1/2"	1 - 1/2"	50	59
TP674	-	-	1 - 3/4"	1 - 3/4"	1 - 1/2"	50	59
TP676	-	Yes	1 - 1/2"	1 - 1/2"	1 - 1/2"	50	61
TP678	-	Yes	1 - 3/4"	1 - 3/4"	1 - 1/2"	50	61
TP680	"S", Set 5/8"	-	1 - 1/2"	1 - 1/2", 1 Side	1 - 1/2"	50	70
TP677	"S", Set 5/8"	-	1 - 3/4"	1 - 3/4", 1 Side	1 - 1/2"	50	70

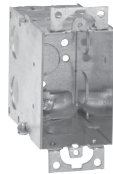
## 3<sup>1</sup>/<sub>2</sub>" DEEP – GANGABLE – 18.0 CUBIC INCH CAPACITY

2" WIDE x 3" LONG  
FOR NON-METALLIC CABLE – CLAMPS IN EACH END

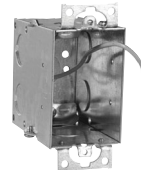
UL LISTED



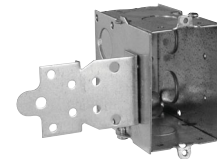
TP236



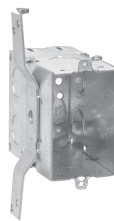
TP238



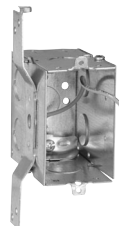
TP239



TP240



TP242



TP243

Cat. #	Bracket	Ground Pigtail	Ears	Knockouts			Unit Qty.	Wt. Lbs. Per 100
				Each End	Each Side	Bottom		
TP236	-	-	-	2 - Cable, 1 - 1/2"	2 - 1/2"	1 - 1/2"	25	78
TP238	-	-	Yes	2 - Cable, 1 - 1/2"	2 - 1/2"	1 - 1/2"	25	80
TP239	-	Yes	Yes	2 - Cable, 1 - 1/2"	2 - 1/2"	1 - 1/2"	25	81
TP240	"F", Set 1/2"	-	-	2 - Cable, 1 - 1/2"	2 - 1/2"	1 - 1/2"	25	88
TP242	"S", Set 7/8"	-	-	2 - Cable, 1 - 1/2"	2 - 1/2"	1 - 1/2"	25	87
TP243	"S", Set 7/8"	Yes	-	2 - Cable, 1 - 1/2"	2 - 1/2"	1 - 1/2"	25	88

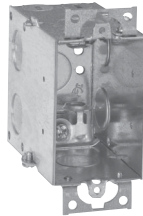
# Steel Switch Boxes

## 3 1/2" DEEP – GANGABLE – 18.0 CUBIC INCH CAPACITY

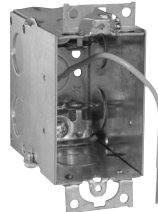
2" WIDE x 3" LONG

FOR ARMoured & METAL-CLAD (MCI) CABLE – CLAMPS IN EACH END

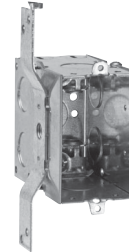
UL LISTED



TP244



TP249



TP246

Cat. #	Bracket	Ground Pigtail	Ears	Knockouts			Unit Qty.	Wt. Lbs. Per 100
				Each End	Each Side	Bottom		
TP244*	-	-	Yes	2 - Cable, 1 - 1/2"	2 - 1/2"	1 - 1/2"	25	81
TP249*	-	Yes	Yes	2 - Cable, 1 - 1/2"	2 - 1/2"	1 - 1/2"	25	82
TP246*	"S", Set 7/8"	-	-	2 - Cable, 1 - 1/2"	2 - 1/2"	1 - 1/2"	25	88

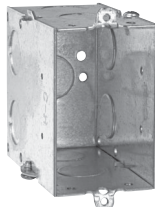
\*UL approved for use with aluminum interlocking grounding metal-clad cable, Type MCI (Southwire MCAP™). MCAP™ is a registered trademark of Southwire Company.

## 3 1/2" DEEP – GANGABLE – 18.0 CUBIC INCH CAPACITY

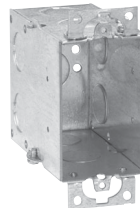
2" WIDE x 3" LONG

FOR CONDUIT – NO CLAMPS

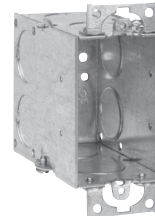
UL LISTED



TP248, TP250



TP252

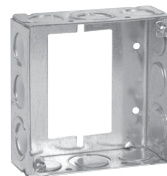


TP254

Cat. #	Bracket	Ears	Knockouts			Unit Qty.	Wt. Lbs. Per 100
			Each End	Each Side	Bottom		
TP248	-	-	2 - 1/2"	2 - 1/2"	1 - 1/2"	25	74
TP250	-	-	2 - 3/4"	2 - 3/4"	1 - 1/2"	25	74
TP252	-	Yes	2 - 1/2"	2 - 1/2"	1 - 1/2"	25	76
TP254	-	Yes	2 - 3/4"	2 - 3/4"	1 - 1/2"	25	76

Steel Boxes

## 1 1/2" DEEP SWITCH & MASONRY BOX EXTENSION RING



TP422†

Cat. #	Knockouts		Unit Qty.	Wt. Lbs. Per 100
	Sides	Bottom		
<b>1 1/2" Deep Switch &amp; Masonry Box Extension Ring</b>				
TP422†	8 - 1/2", 4 - 1/2" + 3/4" E	-	50	50

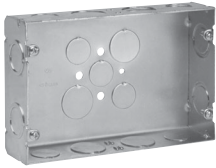
†For use as extension with switch box, not four square box. See page 181 for 4" steel square covers.

# Steel Gang Boxes

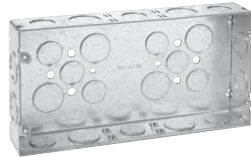
## GANG BOXES

1<sup>5</sup>/<sub>8</sub>" DEEP x 4<sup>1</sup>/<sub>2</sub>" HIGH  
1/2" & 3/4" KOs

UL LISTED



TP629



TP630



TP640

Cat. #	Gang	Cubic Inches	Width	Knockouts			Unit Qty.	Wt. Lbs. Per 100
				Each End	Each Side	Bottom		
TP629	2	45	6 <sup>3</sup> / <sub>16</sub> "	1 - 1/2", 1 - 3/4"	2 - 1/2", 2 - 3/4"	3 - 1/2", 2 - 3/4"	5	45
TP630	3	58	8 <sup>5</sup> / <sub>8</sub> "	1 - 1/2", 1 - 3/4"	3 - 1/2", 2 - 3/4"	6 - 1/2", 4 - 3/4"	5	58
TP631	4	70	10 <sup>7</sup> / <sub>16</sub> "	1 - 1/2", 1 - 3/4"	3 - 1/2", 3 - 3/4"	6 - 1/2", 4 - 3/4"	5	70
TP640	5	85	12 <sup>1</sup> / <sub>4</sub> "	1 - 1/2", 1 - 3/4"	4 - 1/2", 3 - 3/4"	6 - 1/2", 4 - 3/4"	1	85
TP641	6	95	14 <sup>1</sup> / <sub>16</sub> "	1 - 1/2", 1 - 3/4"	4 - 1/2", 4 - 3/4"	6 - 1/2", 4 - 3/4"	1	95

## GANG BOXES

2<sup>1</sup>/<sub>2</sub>" DEEP x 4<sup>1</sup>/<sub>2</sub>" HIGH  
3/4" & 1" KOs

UL LISTED



TP871



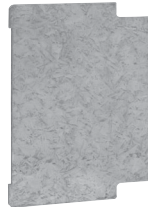
TP873

Cat. #	Gang	Cubic Inches	Width	Knockouts			Unit Qty.	Wt. Lbs. Per 100
				Each End	Each Side	Bottom		
TP870	2	71	6 <sup>3</sup> / <sub>16</sub> "	1 - 3/4", 1 - 1"	2 - 3/4", 1 - 1"	3 - 1/2", 2 - 3/4"	10	147
TP871	3	90	8 <sup>5</sup> / <sub>8</sub> "	1 - 3/4", 1 - 1"	4 - 3/4", 1 - 1"	6 - 1/2", 4 - 3/4"	10	183
TP872	4	110	10 <sup>7</sup> / <sub>16</sub> "	1 - 3/4", 1 - 1"	2 - 3/4", 2 - 1"	6 - 1/2", 4 - 3/4"	5	216
TP873	5	132	12 <sup>1</sup> / <sub>4</sub> "	1 - 3/4", 1 - 1"	3 - 3/4", 2 - 1"	6 - 1/2", 4 - 3/4"	5	263
TP874	6	150	14 <sup>1</sup> / <sub>16</sub> "	1 - 3/4", 1 - 1"	3 - 3/4", 3 - 1"	6 - 1/2", 4 - 3/4"	5	282

## GANG BOX PARTITIONS



TP876



TP877

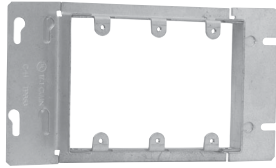
Cat. #	Description	Unit Qty.	Wt. Lbs. Per 100
TP876	For 1 <sup>5</sup> / <sub>8</sub> " Deep Box	25	19
TP877	For 2 <sup>1</sup> / <sub>2</sub> " Deep Box	50	24

# Steel Gang Box Covers

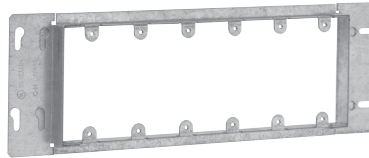
## GANG BOX COVERS

RAISED  $\frac{13}{16}$ " FOR PLASTER

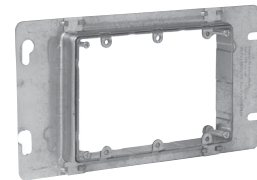
UL LISTED



TP653



TP667



AMR3

Cat. #	Gang	Length	Capacity Cu. In.	Unit Qty.	Wt. Lbs. Per 100
TP657	2	7"	8.5	5	53
TP653	3	$8\frac{13}{16}$ "	13.5	5	60
AMR3**†	3	$\frac{3}{4}$ " - $1\frac{1}{2}$ " Raised Adjustable	10.4	25	78
TP655	4	$10\frac{5}{8}$ "	18.3	5	66
TP661	5	$12\frac{7}{16}$ "	23.0	5	75
TP667	6	$14\frac{1}{4}$ "	28.3	5	85

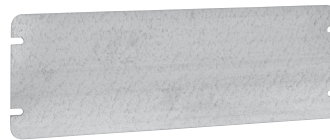
\*\*ETL listed.  
†CSA certified.

## GANG BOX COVERS, FLAT, BLANK

UL LISTED



TP803



TP806

Cat. #	Gang	Length	Unit Qty.	Wt. Lbs. Per 100
TP802	2	7"	5	66
TP803	3	$8\frac{13}{16}$ "	5	85
TP804	4	$10\frac{5}{8}$ "	5	94
TP805	5	$12\frac{7}{16}$ "	1	122
TP806	6	$14\frac{1}{4}$ "	1	132

Steel Boxes

# Steel Masonry Boxes

## MASONRY BOXES

2 1/2" DEEP x 3 3/4" HIGH  
1/2" & 3/4" CONCENTRIC KOs

UL LISTED



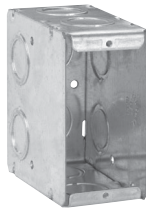
TP682

Cat. #	Gang	Width	Knockouts			Capacity Cu. In.	Unit Qty.	Wt. Lbs. Per 100
			Each End	Each Side	Bottom			
TP682	1	1 15/16"	1	2	2	15.5	20	70
TP683	2	3 3/4"	2	2	4	31.0	10	103
TP684	3	5 9/16"	3	2	6	46.5	5	129
TP685	4	7 3/8"	4	2	8	62.0	5	165
TP686	5	9 3/16"	5	2	10	77.5	5	189
TP687	6	11"	6	2	12	93.0	1	230

## MASONRY BOXES

3 1/2" DEEP x 3 3/4" HIGH  
1/2" & 3/4" CONCENTRIC KOs

UL LISTED



TP690



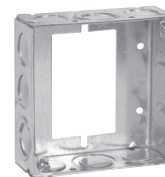
TP691

Cat. #	Gang	Width	Knockouts			Capacity Cu. In.	Unit Qty.	Wt. Lbs. Per 100
			Each End	Each Side	Bottom			
TP690	1	1 15/16"	2	2	2	22.0	20	84
TP691	2	3 3/4"	4	2	4	44.0	10	120
TP692	3	5 9/16"	6	2	6	66.5	10	155
TP693	4	7 3/8"	8	2	8	88.0	5	207
TP694	5	9 3/16"	10	2	10	110.0	5	235
TP695	6	11"	12	2	12	132.0	1	287

## MASONRY BOX PARTITIONS & EXTENSION RING



TP820



TP422†

Cat. #	Description	Unit Qty.	Wt. Lbs. Per 100
<b>Masonry Box Partitions</b>			
TP820	Non-metallic Partition for 2 1/2" Deep Masonry Boxes	25	3
TP821	Non-metallic Partition for 3 1/2" Deep Masonry Boxes	25	4

Cat. #	Sides	Bottom	Unit Qty.	Wt. Lbs. Per 100
<b>1 1/2" Deep Switch &amp; Masonry Box Extension Ring</b>				
TP422†	8 - 1/2", 4 - 1/2" + 3/4" E	-	50	50

†For use as extension with switch box, not four square box. See page 181 for 4" steel square covers.

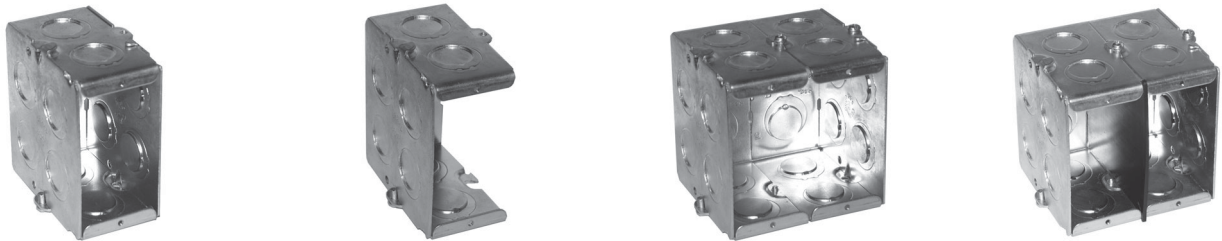
# Steel Masonry Boxes

## GANGABLE MASONRY BOXES

### UL LISTED

#### Features:

- The gangable feature allows the option of creating a multiple gang box from a single gang box by simply removing the combo head screw holding the side with a #2 bit and connecting the two (or more) boxes together re-using the screws
- Non-metallic partitions (ordered separately) install quickly and easily without tools in multi-gang boxes and are used to separate power and control circuits within the same box, as required by the National Electrical Code®



Cat. #	Width	Knockouts			Capacity Cu. In.	Unit Qty.	Wt. Lbs. Per 100
		Each End	Each Side	Bottom			
<b>2 1/2" Deep x 3 3/4" High, 1/2" &amp; 3/4" Concentric KOs</b>							
TP671	1 15/16"	2	2	2	15.5	20	63
<b>3 1/2" Deep x 3 3/4" High, 1/2" &amp; 3/4" Concentric KOs</b>							
TP675	1 15/16"	2	4	2	22.0	20	82

## GANGABLE MASONRY BOX PARTITIONS



TP654

Cat. #	Description	Unit Qty.	Wt. Lbs. Per 100
TP654	Non-metallic Partition for 2 1/2" Deep Gangable Masonry Boxes	25	4
TP656	Non-metallic Partition for 3 1/2" Deep Gangable Masonry Boxes	25	6



# Steel Octagon Boxes & Ceiling Pans

## 3 1/4" ROUND CEILING PANST – 4.0 CUBIC INCH CAPACITY

1/2" DEEP  
CLAMPS IN BOTTOM  
FIXTURE RATED  
UL LISTED



TP266

Cat. #	Knockouts		Unit Qty.	Wt. Lbs. Per 100
	Cable	Conduit		
TP266	4 - Cable	1 - 1/2"	50	30

†Weight limit for 3 1/4" and 4" Octagon Outlet Boxes and Ceiling Pans is 50 lbs. for fixture/luminaire. Not suitable for fans.

## 3 1/4" OCTAGON OUTLET BOXEST – 9.0 CUBIC INCH CAPACITY

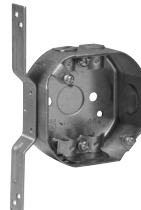
1 1/2" DEEP  
FIXTURE RATED  
UL LISTED



TP256



TP258



TP259



TP260



TP264

Cat. #	Description	Knockouts		Unit Qty.	Wt. Lbs. Per 100
		Sides	Bottom		
<b>For Conduit – No Clamps</b>					
TP256	-	4 - 1/2"	1 - 1/2"	50	41
TP258	Extension Ring	4 - 1/2"	-	50	31
<b>For Non-metallic Cable with Clamps</b>					
TP259	"S" Bracket, Set 1/2"	4 - Cable, 1 - 1/2"	1 - 1/2"	50	53
TP260	-	4 - Cable, 2 - 1/2"	1 - 1/2"	50	44
TP264	Two Screw Ears	4 - Cable, 2 - 1/2"	1 - 1/2"	50	47

†Weight limit for 3 1/4" and 4" Octagon Outlet Boxes and Ceiling Pans is 50 lbs. for fixture/luminaire. Not suitable for fans.

## 3 1/4" ROUND CEILING COVERS

UL LISTED



TP270



TP272

Cat. #	Knockouts		Unit Qty.	Wt. Lbs. Per 100
	Cable	Conduit		
TP270	Flat Blank		100	18
TP272	Flat, 1/2" KO in Center		100	18

Steel Boxes

# Steel Octagon Boxes & Ceiling Pans

## 4" ROUND CEILING PANS\* – 6.0 CUBIC INCH CAPACITY

1/2" DEEP  
FIXTURE RATED  
UL LISTED



TP269



TP267

Cat. #	Description	Knockouts		Unit Qty.	Wt. Lbs. Per 100
		Sides	Bottom		
TP269	KOs Only	-	5 - 1/2"	50	35
TP267	KOs and Clamps	-	4 - Cable, 3 - 1/2"	50	39

\*Weight limit for 3/4" and 4" Octagon Outlet Boxes and Ceiling Pans is 50 lbs. for fixture. Not suitable for fans.

## 4" OCTAGON OUTLET BOXES† – 15.5 CUBIC INCH CAPACITY

1 1/2" DEEP  
FOR CONDUIT – NO CLAMPS  
FIXTURE RATED  
UL LISTED



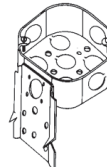
TP274, TP278,  
TP834\*



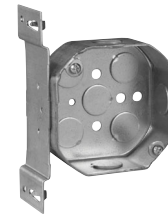
TP276



TP273



TP280



TP282



TP284, TP286

Cat. #	Description	Knockouts		Unit Qty.	Wt. Lbs. Per 100
		Sides	Bottom		
TP274	-	4 - 1/2"	5 - 1/2"	50	50
TP273	Blank Bottom	4 - 1/2"	-	50	51
TP276	-	4 - 3/4"	3 - 1/2", 2 - 3/4"	50	50
TP278	-	2 - 1/2", 2 - 3/4"	3 - 1/2", 2 - 3/4"	50	50
TP280	"C" Bracket	4 - 1/2"	5 - 1/2"	50	60
TP282	"S" Bracket, Set 1/2"	3 - 1/2"	5 - 1/2"	50	58
<b>Air Plenum</b>					
TP834*	For Air Plenum	4 - 1/2"	5 - 1/2"	50	52
<b>Octagon Extension Rings – (Slot &amp; Key Permit Mounting without Removing Box Screws)</b>					
TP284‡	-	4 - 1/2"	-	50	36
TP286‡	-	2 - 1/2", 2 - 3/4"	-	50	36

\*For Air Plenum (no mounting holes) - not UL Listed.

†Weight limit for 3/4" and 4" Octagon Outlet Boxes and Ceiling Pans is 50 lbs. for fixture/luminaire. Not suitable for fans.

‡CSA certified.

Steel Boxes

# Steel Octagon Boxes & Ceiling Pans

## 4" OCTAGON OUTLET BOXES† – 15.5 CUBIC INCH CAPACITY

1½" DEEP

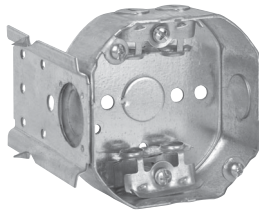
FOR ARMoured & METAL-CLAD (MCI) CABLE – CLAMPS IN EACH END

FIXTURE RATED

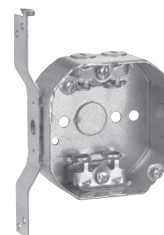
UL LISTED



TP310



TP312



TP314

Cat. #	Description	Knockouts		Unit Qty.	Wt. Lbs. Per 100
		Sides	Bottom		
TP310*	-	4 - Cable, 2 - ½"	1 - ½"	50	57
TP312*	"C" Bracket	4 - Cable, 2 - ½"	1 - ½"	50	66
TP314*	"S" Bracket, Set ½"	4 - Cable, 1 - ½"	1 - ½"	50	64

\*UL approved for use with aluminum interlocking grounding metal-clad cable, Type MCIA (Southwire MCAP™).

MCAP™ is a registered trademark of Southwire Company.

†Weight limit for 3¼" and 4" Octagon Outlet Boxes and Ceiling Pans is 50 lbs. for fixture/luminaire. Not suitable for fans.

## 4" OCTAGON OUTLET BOXES† – 15.5 CUBIC INCH CAPACITY

1½" DEEP

FOR NON-METALLIC CABLE – WITH CLAMPS

FIXTURE RATED

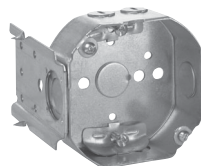
UL LISTED



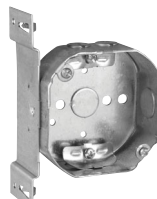
TP298



TP300



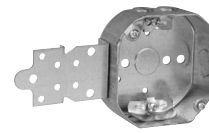
TP302



TP304



TP306



TP308

Cat. #	Description	Knockouts		Unit Qty.	Wt. Lbs. Per 100
		Sides	Bottom		
TP298	-	4 - Cable, 2 - ½"	1 - ½"	50	56
TP300	With Side Nail Holes	4 - Cable, 2 - ½"	1 - ½"	50	55
TP302	"C" Bracket	4 - Cable, 2 - ½"	1 - ½"	50	65
TP304	"S" Bracket, Set ½"	4 - Cable, 1 - ½"	1 - ½"	50	64
TP306	Two Screw Ears	4 - Cable, 2 - ½"	1 - ½"	50	58
TP308	"F" Bracket, Set ½"	4 - Cable, 1 - ½"	1 - ½"	50	64

†Weight limit for 3¼" and 4" Octagon Outlet Boxes and Ceiling Pans is 50 lbs. for fixture/luminaire. Not suitable for fans.

Steel Boxes

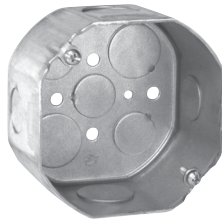
# Steel Octagon Boxes & Ceiling Pans

## 4" OCTAGON OUTLET BOXES† – 21.5 CUBIC INCH CAPACITY

2 1/8" DEEP  
FOR CONDUIT – NO CLAMPS  
FIXTURE RATED  
UL LISTED



TP288, TP290, TP294



TP292, TP838\*



TP292RED



TP339

Cat. #	Description	Knockouts		Unit Qty.	Wt. Lbs. Per 100
		Sides	Bottom		
TP288	-	4 - 1/2"	3 - 1/2", 2 - 3/4"	25	64
TP288PF‡	-	4 - 1/2"	3 - 1/2", 2 - 3/4"	25	64
TP290	-	4 - 3/4"	3 - 1/2", 2 - 3/4"	25	64
TP290PF‡	-	4 - 3/4"	3 - 1/2", 2 - 3/4"	25	64
TP292	-	2 - 1/2", 2 - 3/4"	3 - 1/2", 2 - 3/4"	25	64
TP292PF‡	-	2 - 1/2", 2 - 3/4"	3 - 1/2", 2 - 3/4"	25	64
TP292RED	-	2 - 1/2", 2 - 3/4"	3 - 1/2", 2 - 3/4"	25	64
TP294	-	4 - 1"	3 - 1/2", 2 - 3/4"	25	64
TP339	Blank Bottom	4 - 1/2"	-	25	65
<b>Air Plenum</b>					
TP838*	For Air Plenum	2 - 1/2", 2 - 3/4"	3 - 1/2", 2 - 3/4"	25	62

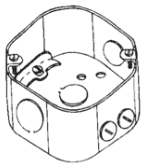
\*For Air Plenum (no mounting holes) - not UL Listed.

†Weight limit for 3/4" and 4" Octagon Outlet Boxes and Ceiling Pans is 50 lbs. for fixture/luminaire. Not suitable for fans.

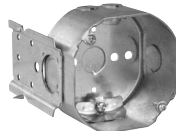
‡TP catalog numbers ending in PF include ground screw with pigtail lead.

## 4" OCTAGON OUTLET BOXES† – 21.5 CUBIC INCH CAPACITY

2 1/8" DEEP – WITH CABLE CLAMPS  
FIXTURE RATED  
UL LISTED



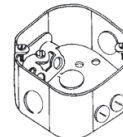
TP316



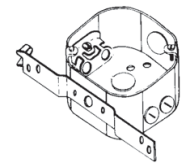
TP318



TP320



TP317



TP338

Cat. #	Description	Knockouts		Unit Qty.	Wt. Lbs. Per 100
		Sides	Bottom		
<b>For Non-metallic Cable</b>					
TP316	-	4 - Cable, 2 - 1/2"	1 - 1/2"	25	68
TP318	"C" Bracket	4 - Cable, 2 - 1/2"	1 - 1/2"	25	88
TP320	"S" Bracket, Set 1/2"	4 - Cable, 1 - 1/2"	1 - 1/2"	25	81
<b>For Armoured &amp; Metal-clad (MCI) Cable – Clamps in Each End</b>					
TP317*	-	4 - Cable, 2 - 1/2"	1 - 1/2"	25	69
TP338*	"S" Bracket, Set 1/2"	4 - Cable, 1 - 1/2"	1 - 1/2"	25	82
TP338PF‡	"S" Bracket, Set 1/2"	4 - Cable, 1 - 1/2"	1 - 1/2"	25	82

\*UL approved for use with aluminum interlocking grounding metal-clad cable, Type MCIA (Southwire MCAP™).

MCAP™ is a registered trademark of Southwire Company.

†Weight limit for 3/4" and 4" Octagon Outlet Boxes and Ceiling Pans is 50 lbs. for fixture/luminaire. Not suitable for fans.

‡TP catalog numbers ending in PF include ground screw with pigtail lead.

Steel Boxes

# Steel Octagon Covers & Accessories

## 4" OCTAGON BOX & ADJUSTABLE BAR SETS – 15.5 CUBIC INCH CAPACITY

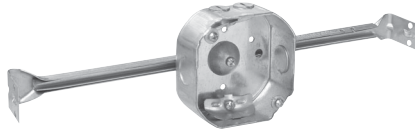
1½" DEEP BOX SETS  
FIXTURE RATED

UL LISTED

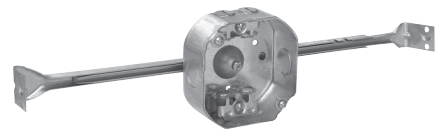
Weight limits: 50 lbs. at 16".



TP372



TP377



TP367

Cat. #	Stud Spacing	Stud	Unit Qty.	Wt. Lbs. Per 100
<b>For Conduit – No Clamps</b>				
TP372*	16"	Yes	25	85
<b>For Non-metallic Cable – with Clamps</b>				
TP377	16"	-	25	102
<b>For Armoured &amp; Metal-clad (MCI) Cable – Clamps in Each End</b>				
TP367	16"	-	25	100
TP367PF†	16"	-	25	100

\*4" Octagon Box and Adjustable Bar Sets have ½" KOs for conduit.  
†TP catalog numbers ending in PF include ground screw with pigtail lead.

## ADJUSTABLE BAR HANGERS

UL LISTED

### Features:

- Holding prong holds box in place for nailing
- Design resists bending and twisting
- Locking tabs to hold bar in position

Steel Boxes



TP356



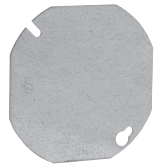
TP352

Cat. #	Stud Spacing	Fan Rated	16" Fan Weight (Lbs.)	24" Fan Weight (Lbs.)	Fixture Rated	16" Fixture Weight (Lbs.)	24" Fixture Weight (Lbs.)	Unit Qty.	Wt. Lbs. Per 100
TP356	16"	No	-	-	Yes	50	-	50	41.0
TP352	16" - 24"	Yes	70	-	Yes	90	50	50	34.1

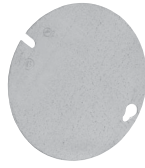
# Steel Octagon Covers & Accessories

## 4" OCTAGON BOX COVERS – CUBIC CAPACITY (SEE BELOW)

### UL LISTED



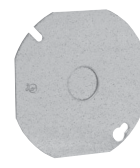
TP322, TP853\*



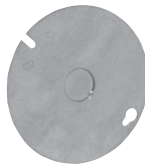
TP323



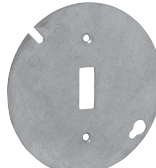
TP326, TP331,  
TP332, TP333



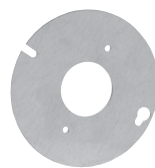
TP328



TP329



TP335



TP334



TP336

Cat. #	Description	Capacity Cu. In.	Unit Qty.	Wt. Lbs. Per 100
TP322†	Flat Blank, Octagon Shape	-	50	22
TP322RED†	Flat Blank, Octagon Shape	-	50	22
TP323†	Flat Blank, Round Shape	-	50	24
TP333	Raised 1", Open with Ears 2 <sup>3</sup> / <sub>4</sub> "	7.0	25	30
TP332	Raised 1/2", Open with Ears 2 <sup>3</sup> / <sub>4</sub> "	3.3	50	22
TP326	Raised 3/8", Open with Ears 2 <sup>3</sup> / <sub>4</sub> "	3.8	50	20
TP331	Raised 3/4", Open with Ears 2 <sup>3</sup> / <sub>4</sub> "	5.0	50	26
TP328†	Flat with 1/2" KO, Octagon Shape	-	50	22
TP329†	Flat with 1/2" KO, Round Shape	-	50	24
TP335	Flat, for Toggle Switch	-	50	23
TP334‡	Flat, Single Receptacle 1 <sup>13</sup> / <sub>32</sub> "	-	50	21
TP336	Flat, for Duplex Receptacle	-	50	18
<b>Air Plenum</b>				
TP853*‡	Flat, Blank with PVC Gasket	-	50	24

\*For Air Plenum (no mounting holes).

†CSA certified.

‡Not UL Listed.

## FLEXIBLE FIXTURE HANGERS

TPRFH Flexible Fixture Hangers are used in commercial or light industrial applications where HID high bay and low bay lighting fixtures are used. Specific applications include storage facilities, shipping warehouses, retail and DIY facilities.

### Features:

- Suitable for use with 1/2" or 3/4" fixture conduit stems, these hangers allow the conduit stem of the fixture (luminaire) to swing in any direction; maximum swing angle is 26° from vertical max. slope angles 22 1/2°
- Available for attachment to round or octagonal steel boxes
- Quickly and easily attached by two screws
- Hangers are drilled and tapped for use with 3/4" conduit stem as standard and come supplied with a 3/4" - 1/2" reducer for 1/2" conduit stem applications

### Certifications and Compliances:

- UL1598
- CSA C22.2 No. 250
- Suitable for damp locations



### Standard Materials and Finishes:

- Material – sheet steel
- Finish – zinc chromate for corrosion resistance

Cat. #	Description	Support Wt. (Lbs.)
TPRFH12	For use with 4" Round or Octagon Boxes	50

Steel Boxes



# Steel Specialty Boxes

## LAMPHOLDERS

### Applications:

- For use with 4" octagon boxes

### Standard Material:

- Plastic molded of heat- and impact-resistant material that prevents discoloring and reduces breakage



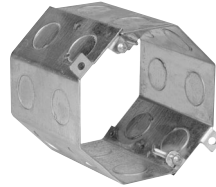
Cat. #	Description	Unit Qty.	Wt. Lbs. Per 100
TP16099	Lampholder, Keyless, Feed Through	50	23

## 4" OCTAGON CONCRETE BOXES & HUNG CEILING BOXES\*

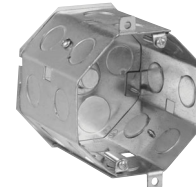
### UL LISTED



TP620, TP622, TP628



TP635, TP636, TP644



TP623, TP624  
(Bars Not Included)

Cat. #	Depth	Knockouts	Capacity Cu. In.	Unit Qty.	Wt. Lbs. Per 100
TP620*	2"	1/2" and 3/4" Single Row	23.0	25	60
TP622*	2 1/2"	1/2" and 3/4" Single Row	29.0	25	72
TP628*	3"	1/2" and 3/4" Single Row	35.0	20	85
TP634†	3"	1" and 3/4" Single Row	30.3	20	77
TP635*	3 1/2"	1/2" Double Row	43.0	20	93
TP636*	3 1/2"	1/2" and 3/4" Double Row	43.0	20	93
TP639†	3 1/2"	1" and 3/4" Double Row	41.0	20	89
TP642†	4"	1" and 3/4" Double Row	47.0	20	106
TP644*	4"	1/2" and 3/4" Double Row	47.0	20	113
<b>Hung Ceiling Boxes (with TP650 Cover; Bars Not Included)</b>					
TP623*	3 1/2"	1/2" Double Row	43.0	20	93
TP624*	3 1/2"	1/2" and 3/4" Double Row	43.0	20	93

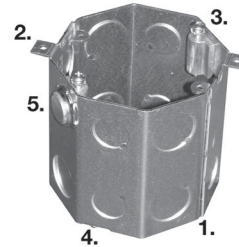
\*Weight limit for 4" Octagon Concrete Boxes is 50 lbs. Not suitable for fans.  
†Not UL Listed.

# Steel Specialty Boxes

## 4" FAN RATED OCTAGON CONCRETE BOX UL LISTED



TP643



### Applications:

- Used in poured deck applications
- Typical construction includes: high rises, apartments, condominiums and restaurants with outdoor dining areas
- Installed on wooden or steel forms and concrete poured around
- Upon removal of the forms, the box is flush with the concrete
- It is common, and continuing to become even more so, to have ceiling fans mounted to these boxes; because of the additional mounting support boss, this new box is suitable for use with fans of up to 70 pounds and fixtures up to 90 pounds

### Features:

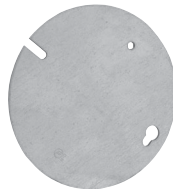
1. The TP643 Fan Rated Concrete Box is made from two-piece welded construction and is supplied with two rows of  $\frac{1}{2}$ " and  $\frac{3}{4}$ " dedicated KOs
2. The box is also supplied with two external mounting ears which are used to secure the box to the forms
3. The fan (or fixture) is held securely in place by the two 10-32 x  $1\frac{1}{2}$ " long pan head screws and lock washers; the screws attach to the specially designed boss
4. There are two 8-32 x  $\frac{1}{2}$ " screws provided for attachment of a box plate/cover (TP648, TP649 or TP650 – ordered separately)
5. Mounting support boss and locknuts allow the TP643 box to be used with fans of up to 70 pounds and fixtures up to 90 pounds

Cat. #	Depth	Knockouts	Capacity Cu. In.	Unit Qty.	Wt. Lbs. Per 100
TP643	4"	$\frac{1}{2}$ " and $\frac{3}{4}$ "	46.0	20	102

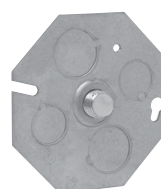
## CONCRETE BOX PLATES UL LISTED



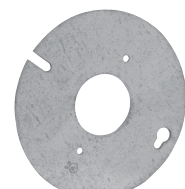
TP648



TP649



TP650



TP652

Cat. #	Description	Unit Qty.	Wt. Lbs. Per 100
TP648	No Stud, 3 - $\frac{1}{2}$ " and 2 - $\frac{3}{4}$ " KOs	50	28
TP649	Flat, Blank	50	28
TP650	$\frac{3}{8}$ " Stud, 2 - $\frac{1}{2}$ " and 2 - $\frac{3}{4}$ " KOs	50	33
TP652	Single Receptacle	50	24

Steel Boxes

# Ceiling Fan Boxes & Supports

## CEILING FAN BOXES & SUPPORTS – CUBIC INCH CAPACITY (SEE BELOW)

### UL LISTED

Weight limits:

TP261 – 35 lbs. max. for fans; 50 lbs. max. for fixture.

TP301 – Fan is supported independent of outlet box. Mounting screws go through box and into joist. Box will support fans up to 70 lbs. and fixtures up to 90 lbs.

TP275 – 70 lbs. max. for fans; 90 lbs. max. for fixtures.



TP275



TP261



TP301



TP315



TP379



TP352

Cat. #	Description	Stud Spacing	Capacity Cu. In.	Knockouts		Unit Qty.	Wt. Lbs. Per 100	Weight Limits (Lbs.)	
				Sides	Bottom			Fans	Fixtures
TP275	1 1/2" Deep, Clamps and Mounting Screws (Polybagged)	-	15.5	4 - Cable, 2 - 1/2"	1 - 1/2"	20	66.6	70	90
TP315†	1 1/2" Deep Octagon, Fan Box with New Work Bar Hanger	16" - 24"	15.5	2 - 1/2"	2 - 1/2"	12	192.0	35	50
TP379	1 1/2" Deep with Fan Brace Old Work Bar Hanger	16" - 24"	15.5	4 - 1/2"	2 - 1/2"	12	207.0	35	50
TP261	5/8" Deep with External Clamp and Mounting Screws (Polybagged)	-	8.0	-	2 - 1/2"	20	50.0	35	50
TP301*	1/2" Deep, 4" Round, with NM Snap-in Connector, Mtg. Screws, Protective Cover (No Bag)	-	6.8	-	3 - 1/2"	20	51.0	70*	90*

\*TP301 Fan is supported independent of outlet box.

†TP315 comes with Romex clamp installed on one side. The other three sides have a 1/2" KO, a bagged MC clamp and screw, and a bagged plastic NM connector.

## ADJUSTABLE BAR HANGERS

Cat. #	Stud Spacing	Fan Rated	16" Fan Weight (Lbs.)	24" Fan Weight (Lbs.)	Fixture Rated	16" Fixture Weight (Lbs.)	24" Fixture Weight (Lbs.)	Unit Qty.	Wt. Lbs. Per 100
TP352	16" - 24"	Yes	70	-	Yes	90	50	50	34.1

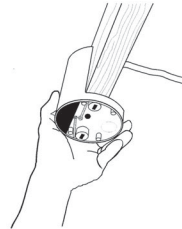
Steel Boxes

# Ceiling Fan Boxes & Supports

## CEILING FAN BOXES – PVC

### UL LISTED

Weight limits: fans and fixtures are supported independent of outlet box. Mounting screws go through box and into joist. Box will support up to 70 lbs. for fans and 90 lbs. for fixtures. Provided with Romex connector.



TP1300

Cat. #	Description	Capacity Cu. In.	Knockouts	Integral Clamp	Unit Qty.	Wt. Lbs. Per 100
TP1300	4 $\frac{1}{16}$ " Dia., $\frac{1}{2}$ " Deep Pan Section, 4" Deep Overall – with Mtg. Hardware and External Clamp, Protective Cover	14.0	3 - $\frac{1}{2}$ "	1	24	34

## NON-METALLIC CEILING FAN BOXES

### 2 $\frac{3}{16}$ " DEEP

### UL LISTED

With clamps for non-metallic cable.

All mounting hardware supplied; suitable for support of fans weighing up to 35 lbs.

### Features:

- Made of heavy duty, engineered thermoplastic material
- Offers the labor saving feature of quick entry and integral clamping
- Eliminates the need to use a screwdriver to break open pry-outs
- The easy access entry point serves as a wire clamp, eliminating time required to mechanically secure the wire to the box



TP16511

Cat. #	Diameter	Mounting Method	Capacity Cu. In.	No. of Clamp Openings	Unit Qty.	Wt. Lbs. Per 100
TP16511	4"	Nails Only	22.5	6	25	21

Steel Boxes

# Steel Box Accessories

## GROUNDING SCREW & PIGTAIL



TP711



TP701



TP704



TP704BULK

Cat. #	Description	Std. Pkg.	Unit Qty.	Wt. Lbs. Per 100
TP701	Grounding Screw with 8" Insulated No. 12 Stranded Wire	1000	1000	2.0
TP711	Grounding Screw with 8" Insulated No. 12 Copper Wire	1000	1000	2.0
TP704	#10-32 x 3/8" Grounding Screw	1000	1000	0.5
TP704BULK	#10-32 x 3/8" Grounding Screws in Jar	1000	1000	0.4

## LOW PROFILE MOUNTING & DRILLING & TAPPING SCREWS



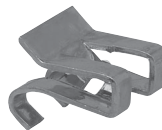
TP710



STS8BULK

Cat. #	Description	Unit Qty.	Wt. Lbs. Per 100
<b>Low Profile Screws – Reduces Risk of Sheetrock Bulge</b>			
TP710	#8 x 1/2" L.P. Screws	1000	0.5
STS8BULK	#8 x 1/2" Self-tapping Screw Jar	1000	0.4

## GROUNDING CLIP



TP706

Cat. #	Description	Std. Pkg.	Unit Qty.	Wt. Lbs. Per 100
TP706	For Grounding Switch and Outlet Boxes Using Non-metallic Sheathed Cables No. 14 and No. 12, with Grounding Wire	1000	100	0.5

## OLD WORK CLIP



TP651

Cat. #	Description	Std. Pkg.	Unit Qty.	Wt. Lbs. Per 100
TP651	Clips Lock Old Work Steel Switch Boxes Tightly to Wall; Two Required Per Box	250 Sets	25 Sets	4

## REPLACEMENT PARTS



TP900



TP901



TP902

Cat. #	Description	Unit Qty.	Wt. Lbs. Per 100
TP900	MC-BX Clamp with Screws	200	17.3
TP901	One Screw Mounting Ear with Screws	200	3.2
TP902	Two Screw Mounting Ear with Screws	200	2.7

# Steel Box Accessories

## HOLD-IT SWITCH BOX SUPPORTS

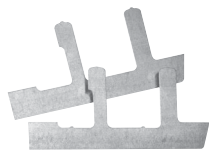


FIG. 1

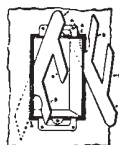


FIG. 2

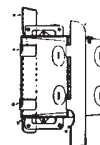


FIG. 3

Cat. #	Description	Unit Qty.	Wt. Lbs. Per 100
TP708	Two Metal Holders for Mounting Old Work Switch Boxes in All Types of Wall Materials	500 Sets	5

## SWITCH BOX EXTENSIONS



TP709

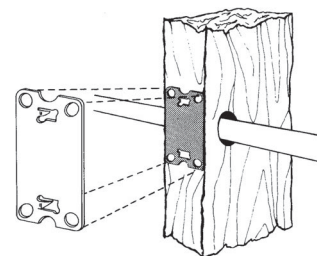
Cat. #	Description	Capacity Cu. In.	Unit Qty.	Wt. Lbs. Per 100
TP709*	Fits Snugly Inside All 3" x 2" Width Boxes; Maximum Adjustable Depth 0.78"; Furnished with Mounting Screws	3.5	50	13

\*Not UL Listed.

## STEEL STUD SAFETY PLATES

### Features:

- Meets requirement of National Electric Code®
- Same size as face of stud
- No nails required
- Protects electrical cable and copper water pipes



Cat. #	Description	Unit Qty.	Wt. Lbs. Per 100
TP659	2" x 3 1/8" Steel Plate	100	11

## "BACK TO BACK" BOX CONNECTORS – ZINC DIE CAST

### Applications:

- For use as a short raceway between two boxes
- Width 1.00"; length 1.12"



Cat. #	Size	Unit Qty.	Wt. Lbs. Per 100
5050	1/2"	25	8

Steel Boxes



# Steel Square Boxes

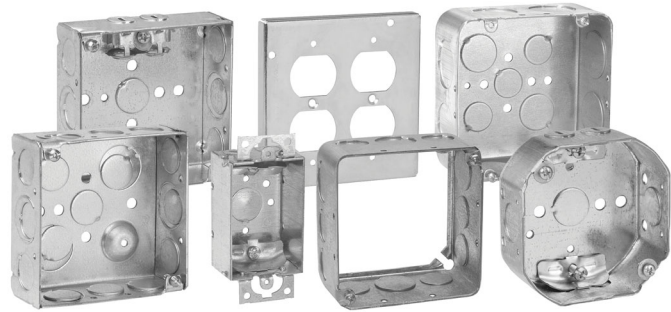
## 4" SQUARE OUTLET BOXES & COVERS

### Applications:

- For use with conduit

### Features:

- Ideal for exposed work applications, providing an easy method for the installation of electrical devices (switches, receptacles, fans, lights, etc.)
- Raised ground screw location in the welded boxes saves time in installation
- Standard with pre-installed ground screws and available with ground pigtails for increased labor savings
- Knockouts are suitable for use without a bonding jumper in circuits above or below 250 volts
- Available in different depths for differing cubic capacity requirements
- Welded or drawn construction to match customer preference
- Extensive cover offering to meet various customer applications and needs



### Certifications and Compliances:

- CSA Listed
- CSA File No. LR 97704-2

## 4" SQUARE OUTLET BOXES – 22.0 CUBIC INCH CAPACITY (WELDED) 21.0 CUBIC INCH CAPACITY (DRAWN)

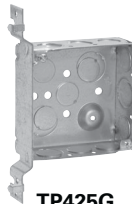
1½" DEEP – FOR CONDUIT

UL LISTED

CSA LISTED



TP404G



TP425G



TP414G

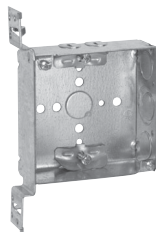
Cat. #	Metal Stud Sizes	Bracket	Description	Knockouts		Unit Qty.	Wt. Lbs. Per 100
				Sides	Bottom		
TP404G	-	-	Welded	8 - ½", 4 - ½" + ¾" E	2 - ½", 2 - ½" + ¾" E	50	72
TP425G	All	"VP"	Welded	6 - ½", 3 - ½" + ¾" E	2 - ½", 2 - ½" + ¾" E	25	82
TP423G	All	"VMS"	Welded	6 - ½", 3 - ½" + ¾" E	2 - ½", 2 - ½" + ¾" E	25	81
TP414G	-	-	Drawn	8 - ½", 4 - ¾"	3 - ½", 2 - ¾"	50	67



# Steel Square Boxes

## 4" SQUARE OUTLET BOXES – 22.0 CUBIC INCH CAPACITY

1½" DEEP  
 FOR NON-METALLIC CABLE – CLAMPS IN EACH END  
 UL LISTED  
 CSA LISTED

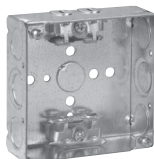


TP449G

Cat. #	Bracket	Description	Knockouts		Unit Qty.	Wt. Lbs. Per 100
			Sides	Bottom		
TP449G	"VMS"	Welded	4 - Cable, 2 - ½", 1 - ½" + ¾" E	1 - ½"	25	85

## 4" SQUARE OUTLET BOXES – 22.0 CUBIC INCH CAPACITY

1½" DEEP  
 FOR ARMoured & METAL-CLAD (MCI) CABLE & HCF CABLE – CLAMPS IN EACH END  
 UL LISTED  
 CSA LISTED



TP454G

Cat. #	Bracket	Description	Knockouts		Unit Qty.	Wt. Lbs. Per 100
			Sides	Bottom		
TP454G*	-	Welded	4 - Cable, 4 - ½", 2 - ½" + ¾" E	1 - ½"	50	81

\*UL approved for use with aluminum interlocking grounding metal-clad cable, Type MCI (Southwire MCAP™). MCAP™ is a registered trademark of Southwire Company.



# Steel Square Boxes

## 4" SQUARE OUTLET BOXES – 30.3 CUBIC INCH CAPACITY

2 1/8" DEEP – FOR CONDUIT

UL LISTED

CSA LISTED



TP403G/TP403PFG



TP432G



TP434G



TP438G



TP451G

Cat. #	Bracket	Description	Knockouts		Unit Qty.	Wt. Lbs. Per 100
			Sides	Bottom		
TP403G	-	Welded	8 - 1/2", 4 - 1/2" + 3/4" E	2 - 1/2", 2 - 1/2" + 3/4" E	25	84
TP403PFG†	-	Welded	8 - 1/2", 4 - 1/2" + 3/4" E	2 - 1/2", 2 - 1/2" + 3/4" E	25	84
TP432G	-	Welded	8 - 3/4"	2 - 1/2", 2 - 1/2" + 3/4" E	25	84
TP436G	-	Welded	8 - 1"	2 - 1/2", 2 - 1/2" + 3/4" E	25	84
TP434G	-	Drawn	8 - 1/2", 4 - 3/4"	3 - 1/2", 2 - 3/4"	25	84
TP438G	-	Drawn	4 - 1/2", 6 - 1/2" + 3/4" C	3 - 1/2", 2 - 3/4"	25	84
TP451G	"VMS"	Welded	6 - 1/2", 3 - 1/2" + 3/4" E	2 - 1/2", 2 - 1/2" + 3/4" E	25	96

†TP catalog numbers ending in PF include ground screw with pigtail lead.

Steel Boxes



# Steel Square Boxes & Covers

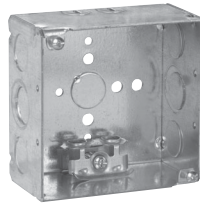
## 4" SQUARE OUTLET BOXES – 30.3 CUBIC INCH CAPACITY

2 1/8" DEEP

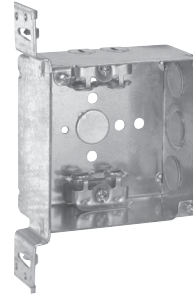
FOR ARMoured & METAL-CLAD (MCI) CABLE & HCF CABLE – CLAMPS IN EACH END

UL LISTED

CSA LISTED



TP431G



TP440G

Cat. #	Metal Stud Sizes	Bracket	Description	Knockouts		Unit Qty.	Wt. Lbs. Per 100
				Sides	Bottom		
TP431G*	-	-	Welded	4 – Cable, 4 – 1/2", 2 – 1/2" & 3/4" E	1 – 1/2"	25	91
TP440G*	All	"VMS"	Welded	4 – Cable, 2 – 1/2", 1 – 1/2" & 3/4" E	1 – 1/2"	25	103

\*UL approved for use with aluminum interlocking grounding metal-clad cable, Type MClA (Southwire MCAP®). MCAP® is a registered trademark of Southwire Company.

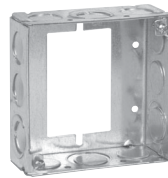
## 4" SQUARE EXTENSION RINGS

1 1/2" DEEP WITH CONDUIT KNOCKOUTS – 21.0 CUBIC INCH CAPACITY

2 1/8" DEEP WITH CONDUIT KNOCKOUTS – 30.3 CUBIC INCH CAPACITY

UL LISTED

CSA LISTED



TP422†



TP443 (2 1/8" Deep)

Cat. #	Knockouts		Unit Qty.	Wt. Lbs. Per 100
	Sides	Bottom		
<b>1 1/2" Deep Switch &amp; Masonry Box Extension Ring</b>				
TP422†	8 – 1/2", 4 – 1/2" + 3/4" E	-	50	50
<b>2 1/8" Deep</b>				
TP443	8 – 1/2", 4 – 3/4"	-	25	66
TP465	8 – 1"	-	25	60

†For use as extension with switch box, not four square box.



# Steel Square Covers

## COVERS FOR 4" SQUARE BOXES – CUBIC INCH CAPACITY (SEE BELOW)

UL LISTED

CSA LISTED

#8-32 Screw Used on Covers



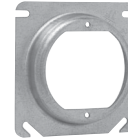
TP472



TP474



TP478  
TP487



TP473, TP475,  
TP476, TP477,  
TP479, TP483

Cat. #	Description	Unit Qty.	Wt. Lbs. Per 100	Capacity Cu. In.
TP472	Flat Blank	50	31	-
TP474	Flat, Open with Ears 2 <sup>3</sup> / <sub>4</sub> "	50	21	-
TP478	Flat, with 1/2" KO	50	31	-
TP487	Flat, with 3/4" KO	50	29	-
TP473	Raised 1/4", Open with Ears 2 <sup>3</sup> / <sub>4</sub> "	50	23	1.3
TP476	Raised 1/2", Open with Ears 2 <sup>3</sup> / <sub>4</sub> "	50	26	4.0
TP477	Raised 5/8", Open with Ears 2 <sup>3</sup> / <sub>4</sub> "	50	27	5.0
TP475	Raised 3/4", Open with Ears 2 <sup>3</sup> / <sub>4</sub> "	25	31	6.0
TP479	Raised 1", Open with Ears 2 <sup>3</sup> / <sub>4</sub> "	25	34	7.0
TP483	Raised 1 1/4", Open with Ears 2 <sup>3</sup> / <sub>4</sub> "	25	37	8.5

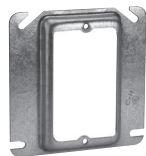
## MUD RINGS FOR 4" SQUARE STEEL OUTLET BOXES

UL LISTED

CSA LISTED



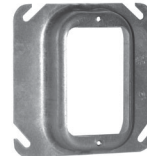
TP480



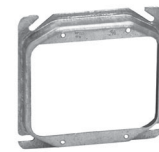
TP482, TP484,  
TP486, TP489



TP494



TP488, TP490



TP496, TP499,  
TP500, TP501,  
TP502

Cat. #	Description	Unit Qty.	Wt. Lbs. Per 100	Capacity Cu. In.
<b>One Device</b>				
TP480	Flat	50	20	-
TP482	1/4" Raised	50	21	1.8
TP484	1/2" Raised	50	23	3.8
TP489	5/8" Raised	50	26	4.3
TP486	3/4" Raised	50	30	5.5
TP488	1" Raised	50	34	6.8
TP490	1 1/4" Raised	25	39	8.5
<b>Two Device</b>				
TP494	Flat	50	12	-
TP496†	1/4" Raised	50	13	3.0
TP498†	1/2" Raised	50	18	6.0
TP499†	5/8" Raised	50	22	8.0
TP500†	3/4" Raised	50	24	9.0
TP501	1 1/4" Raised	25	31	14.0
TP502	1" Raised	25	30	11.7

†Slotted design for use with 4" square box partitions.



# Steel Square Covers

## 4" SQUARE SURFACE COVERS – 5.5 CUBIC INCH CAPACITY

RAISED 1/2"

UL LISTED

CSA LISTED



Screw(s) provided in raised cover kit are for use with the center hole on duplex receptacles. Nuts that are provided in kit are to be used in conjunction with the screws that are provided as standard packaging with devices to mount device to raised cover. For GFCI device installation, no screw is needed; please disregard.



TP503



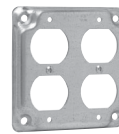
TP504



TP506



TP508



TP510



TP512



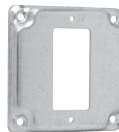
TP507, TP514,  
TP519



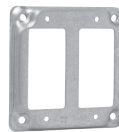
TP516



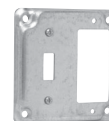
TP509 (4 Screws),  
TP518 (2 Screws)



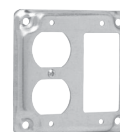
TP513



TP511



TP515



TP517

Cat. #	Description	Unit Qty.	Wt. Lbs. Per 100
TP503	Raised Blank	50	35
TP504	For One Toggle Switch and One Single Receptacle 1 <sup>13</sup> / <sub>32</sub> " Dia.	50	31
TP506	For One Toggle Switch and One Duplex Receptacle	50	31
TP508	For Two Toggle Switches	50	35
TP510	For Two Duplex Receptacles	50	26
TP512	For One Toggle Switch	50	35
TP507	For One 20 Amp Single Receptacle 1 <sup>19</sup> / <sub>32</sub> " Dia.	50	37
TP514	For One Single Receptacle 1 <sup>13</sup> / <sub>32</sub> " Dia.	50	34
TP519	For One 30 Amp Twist-Lock Single Receptacle 1 <sup>23</sup> / <sub>32</sub> " Dia.	50	37
TP516	For One Duplex Receptacle	50	31
TP509	For One 30-60 Amp Receptacle (4-wire) 2 <sup>7</sup> / <sub>16</sub> " Dia.	50	23
TP518	For One 30-50 Amp Receptacle 2 <sup>3</sup> / <sub>64</sub> " Dia.	50	34
TP513	For One GFCI Receptacle	50	31
TP511	For Two GFCI Receptacles	50	26
TP515	For One Toggle Switch and One GFCI Receptacle	50	31
TP517	For One Duplex Receptacle and One GFCI Receptacle	50	26

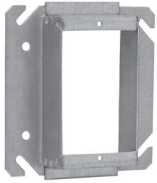




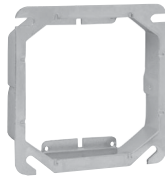
# Steel Square Covers

## TILE WALL COVERS FOR 4" SQUARE BOXES – CUBIC INCH CAPACITY (SEE BELOW)

UL LISTED  
CSA LISTED



TP524



TP534



TP540

### Applications:

- Typically used with tile or brick

### Features:

- Rounded corners help guide cuts around devices

Cat. #	Description	Capacity Cu. In.	Unit Qty.	Wt. Lbs. Per 100
<b>One Device</b>				
TP520	1/2" Raised	3.7	50	30
TP522	3/4" Raised	5.5	50	36
TP524	1" Raised	7.4	50	40
TP526	1 1/4" Raised	9.3	25	46
TP528	1 1/2" Raised	11.0	25	50
TP530	2" Raised	14.8	25	62
<b>Two Device</b>				
TP532	1/2" Raised	5.0	10	24
TP534	3/4" Raised	7.8	10	30
TP536	1" Raised	10.3	10	36
TP538	1 1/4" Raised	13.0	10	44
TP540	1 1/2" Raised	15.5	10	50
TP542	2" Raised	20.8	10	66

# Steel Square Boxes

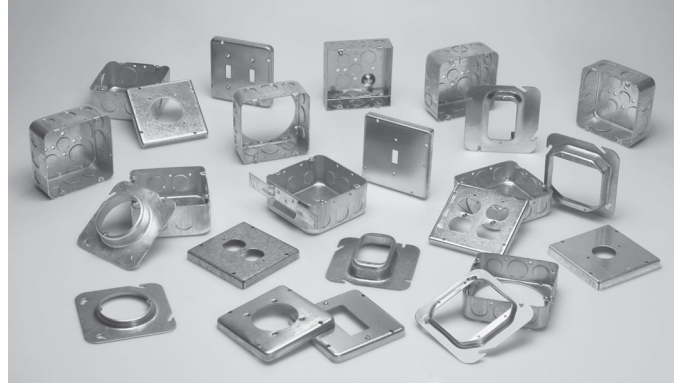
## 4<sup>11</sup>/<sub>16</sub>" SQUARE OUTLET BOXES & COVERS

### Applications:

- For use with conduit
- For use in commercial and industrial applications, where larger sized conductor or wiring devices are needed and additional volume is required

### Features:

- Ideal for exposed work applications, providing an easy method for the installation of electrical devices (switches, receptacles, fans, lights, etc.)
- Raised ground screw location in the welded boxes saves time in installation
- Concentric knockouts have a 1/2" and 3/4" knockout in the same location for customer flexibility
- Knockouts are suitable for use without a bonding jumper in circuits above or below 250 volts
- Available in two depths for differing cubic capacity requirements
- Welded or drawn construction to match customer preference
- Extensive cover offering to meet various customer applications and needs



### Certifications and Compliances:

- CSA Listed

## 4<sup>11</sup>/<sub>16</sub>" SQUARE OUTLET BOXES – 29.5 CUBIC INCH CAPACITY

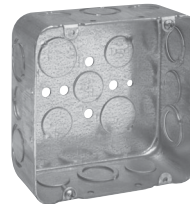
1<sup>1</sup>/<sub>2</sub>" DEEP WITH CONDUIT KOs

UL LISTED

CSA LISTED



TP548G



TP549G

Cat. #	Description	Knockouts		Unit Qty.	Wt. Lbs. Per 100
		Sides	Bottom		
TP548G	Drawn	8 - 1/2", 4 - 3/4"	3 - 1/2", 2 - 3/4"	25	84
TP549G	Drawn	6 - 1/2", 6 - 1/2" + 3/4" C	3 - 1/2", 2 - 3/4"	25	84

# Steel Square Boxes & Covers

## 4<sup>11</sup>/<sub>16</sub>" SQUARE OUTLET BOXES – 42.0 & 44.0 CUBIC INCH CAPACITY

2<sup>1</sup>/<sub>8</sub>" DEEP WITH CONDUIT KOs

UL LISTED

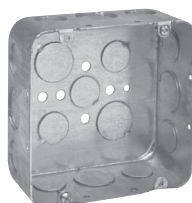
CSA LISTED



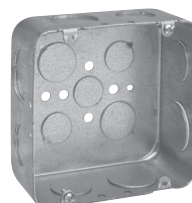
TP563G



TP554G



TP556G



TP558G



TP560G

Cat. #	Description	Bracket	Knockouts		Unit Qty.	Wt. Lbs. Per 100
			Sides	Bottom		
<b>42.0 Cubic Inch Capacity</b>						
TP563G	Drawn	-	6 - 1/2", 6 - 1/2" + 3/4" C	3 - 1/2", 2 - 3/4"	25	104
TP554G	Drawn	-	8 - 3/4"	3 - 1/2", 2 - 3/4"	25	104
TP556G	Drawn	-	8 - 1/2", 4 - 3/4"	3 - 1/2", 2 - 3/4"	25	104
TP558G	Drawn	-	4 - 3/4", 4 - 1"	3 - 1/2", 2 - 3/4"	25	104
TP560G	Drawn	-	8 - 1"	3 - 1/2", 2 - 3/4"	25	104

## 4<sup>11</sup>/<sub>16</sub>" SQUARE EXTENSION RINGS

1<sup>1</sup>/<sub>2</sub>" DEEP WITH CONDUIT KOs – 29.5 CUBIC INCH CAPACITY

2<sup>1</sup>/<sub>8</sub>" DEEP WITH CONDUIT KOs – 42.0 CUBIC INCH CAPACITY

UL LISTED

CSA LISTED



TP550



TP564

Cat. #	Description	Knockouts		Unit Qty.	Wt. Lbs. Per 100
		Sides	Bottom		
<b>1<sup>1</sup>/<sub>2</sub>" Deep – 29.5 Cubic Inch Capacity</b>					
TP550		8 - 1/2", 4 - 3/4"	-	25	66
<b>2<sup>1</sup>/<sub>8</sub>" Deep – 42.0 Cubic Inch Capacity</b>					
TP564		8 - 1/2", 4 - 3/4"	-	25	84

Steel Boxes



# Steel Square Covers

## 4<sup>11/16</sup>" SQUARE COVERS – CUBIC INCH CAPACITY (SEE BELOW)

UL LISTED  
CSA LISTED



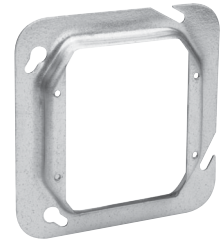
TP568



TP572



TP574 - TP582,  
TP529, TP531



TP584, TP586, TP589,  
TP593, TP541, TP543

Cat. #	Description	Capacity Cu. In.	Unit Qty.	Wt. Lbs. Per 100
<b>Flat and Raised</b>				
TP568	Flat Blank	-	25	40
TP572	Flat, with 1/2" KO	-	25	40
<b>One Device</b>				
TP574	1/4" Raised	1.8	25	32
TP576	1/2" Raised	3.3	25	36
TP578	3/4" Raised	5.0	25	42
TP579	5/8" Raised	4.5	25	39
TP580	1" Raised	6.8	25	46
TP582	1 1/4" Raised	8.5	25	52
TP529	1 1/2" Raised	11.3	25	64
TP531	2" Raised	15.0	25	76
<b>Two Device</b>				
TP590	Flat	-	25	21
TP583	1/4" Raised	3.0	25	26
TP584	1/2" Raised	6.0	25	30
TP587	5/8" Raised	8.0	25	32
TP586	3/4" Raised	8.8	25	34
TP589	1" Raised	11.7	25	38
TP593	1 1/4" Raised	14.0	25	42
TP541	1 1/2" Raised	18.8	25	63
TP543	2" Raised	24.5	25	79



# Steel Square Covers

## 4<sup>11</sup>/<sub>16</sub>" SQUARE SURFACE COVERS – 9.0 CUBIC INCH CAPACITY

1/2" RAISED

CSA LISTED



TP720



TP722



TP724, TP730,  
TP736



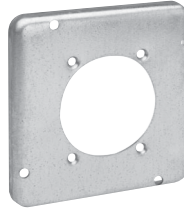
TP726



TP728



TP732



TP734



TP738



TP740

Cat. #	Description	Unit Qty.	Wt. Lbs. Per 100
TP720	For One Toggle Switch	10	52
TP722	For One Duplex Receptacle	10	49
TP724	For One Single Receptacle 1 <sup>13</sup> / <sub>32</sub> " Dia.	10	53
TP730	For One 20 Amp Single Receptacle 1.620" Dia.	10	50
TP736	For One 1.730" Dia. Power Outlet	10	51
TP726	For Two Toggle Switches	10	52
TP728	For Two Duplex Receptacles	10	44
TP732	For One 2.125" Dia. Range/Dryer Receptacle	10	48
TP734	For One 2.480" Dia. Power Outlet	10	45
TP738	For One Ground Fault Interrupter	10	45
TP740	For One GFI Receptacle and One Toggle	25	45
TP741	For Two GFI Receptacles	10	43

Steel Boxes



# Steel Utility Boxes & Covers

## UTILITY BOXES – CUBIC INCH CAPACITY (SEE BELOW)

4" LONG x 2 1/8" WIDE

UL LISTED

CSA LISTED



TP588G



TP594G, TP596G



TP604G, TP606G

Cat. #	Bracket	Knockouts		Unit Qty.	Wt. Lbs. Per 100
		Sides	Bottom		
<b>1 1/2" Deep – 10.3 Cubic Inch Capacity</b>					
TP588G	-	8 - 1/2"	3 - 1/2"	50	42
<b>1 7/8" Deep – 13.0 Cubic Inch Capacity</b>					
TP594G	-	8 - 1/2"	3 - 1/2"	50	50
TP596G	-	6 - 3/4"	3 - 1/2"	50	50
<b>2 1/8" Deep – 14.5 Cubic Inch Capacity</b>					
TP604G	-	8 - 1/2"	3 - 1/2"	50	56
TP606G	-	6 - 3/4"	3 - 1/2"	50	56

## UTILITY BOX COVERS

UL LISTED

CSA LISTED



TP608



TP610



TP612



TP613



TP614



TP616



TP618



Cat. #	Description	Unit Qty.	Wt. Lbs. Per 100
TP608	Blank	100	10
TP610	For 20 and 30 Amp, Twist Lock, 1 19/32" Dia.	100	9
TP612	Single Receptacle, 1 19/32" Dia.	100	9
TP613	For GFCI Device	100	7
TP614	1/2" KO	100	10
TP616	Duplex Receptacle	100	8
TP618	One Toggle Switch	100	10

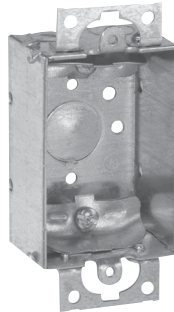
# Steel Switch Boxes

**1½" DEEP – NON-GANGABLE – 7.5 CUBIC INCH CAPACITY**

**2" WIDE x 3" LONG**

**UL LISTED**

**CSA LISTED**



**TP100G**

Cat. #	Bracket	Ears	Knockouts			Unit Qty.	Wt. Lbs. Per 100
			Each End	Each Side	Bottom		
For Non-metallic Cable – Clamps in Each End							
<b>TP100G</b>	-	Yes	2 - Cable	-	1 - ½"	50	43

**2" DEEP – GANGABLE – 10.0 CUBIC INCH CAPACITY**

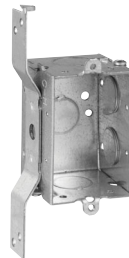
**2" WIDE x 3" LONG**

**UL LISTED**

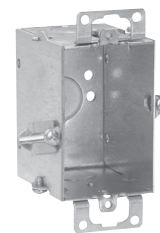
**CSA LISTED**



**TP130G**



**TP132G**



**TP131G Hold-Tite**

Cat. #	Bracket	Ears	Knockouts			Unit Qty.	Wt. Lbs. Per 100
			Each End	Each Side	Bottom		
For Conduit – No Clamps, Flush Device							
<b>TP130G</b>	-	Yes	1 - ½"	2 - ½"	1 - ½"	50	48
<b>TP132G</b>	"S", Set 5/8"	-	1 - ½"	2 - ½", 1 Side	1 - ½"	50	58
<b>TP131G</b>	Hold-Tite	Yes	1 - ½" - T	-	1 - ½"	50	52

Steel Boxes





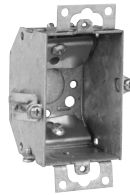
# Steel Switch Boxes

## 2¼" DEEP – GANGABLE – BEVELED CORNERS – 10.5 CUBIC INCH CAPACITY

2" WIDE x 3" LONG

UL LISTED

CSA LISTED



TP137G Hold-Tite



TP138G

Cat. #	Description	Ears	Bumps	Knockouts			Unit Qty.	Wt. Lbs. Per 100
				Each End	Each Side	Bottom		
Clamp Screws Through Beveled Corners								
TP137G	Gangable	Yes	-	2 - Cable	-	1 - ½"	50	57
TP138G	Gangable	Yes	-	2 - Cable	-	1 - ½"	50	55

## 2½" DEEP – GANGABLE – 12.5 CUBIC INCH CAPACITY

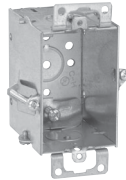
2" WIDE x 3" LONG

UL LISTED

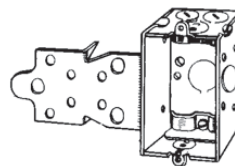
CSA LISTED



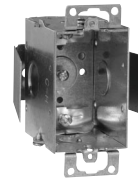
TP162G



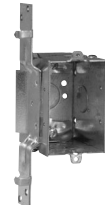
TP163G



TP164G, TP168G



TP161G



TP171G

Cat. #	Bracket	Ears	Ground Pigtail	Leveling Bumps	Knockouts			Unit Qty.	Wt. Lbs. Per 100
					Each End	Each Side	Bottom		
For Non-metallic Cable – Clamps in Each End									
TP161G	Snap-in	Yes	-	-	2 - Cable	1 - ½"	-	50	73
TP162G	-	Yes	-	-	2 - Cable	1 - ½"	1 - ½"	50	62
TP163G	Hold-Tite	Yes	-	-	2 - Cable	-	1 - ½"	50	65
TP164G	"F", Set ½"	-	-	-	2 - Cable, 1 - ½"	1 - ½"	1 - ½"	50	71
TP168G	"F", Set ¼"	-	-	-	2 - Cable, 1 - ½"	1 - ½"	1 - ½"	50	71
TP171G	"VP", Set ½"	-	-	-	2 - Cable, 1 - ½"	1 - ½"	1 - ½"	50	73



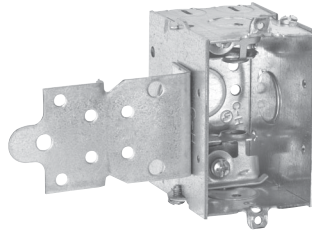
# Steel Switch Boxes

## 2 1/2" DEEP – GANGABLE – 12.5 CUBIC INCH CAPACITY

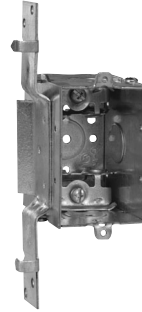
2" WIDE x 3" LONG FOR ARMoured & METAL-CLAD (MCI) CABLE – CLAMPS IN EACH END

UL LISTED

CSA LISTED



TP180G



TP185G

Cat. #	Bracket	Ears	Knockouts			Unit Qty.	Wt. Lbs. Per 100
			Each End	Each Side	Bottom		
TP180G*	"F", Set 1/2"	-	2 - Cable, 1 - 1/2"	1 - 1/2"	1 - 1/2"	50	72
TP185G*	"VP", Set 1/2"	-	2 - Cable, 1 - 1/2"	1 - 1/2"	1 - 1/2"	50	74

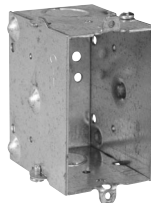
\*UL approved for use with aluminum interlocking grounding metal-clad cable, Type MCIA (Southwire MCAP™). MCAP™ is a registered trademark of Southwire Company.

## 2 1/2" DEEP – GANGABLE – 12.5 CUBIC INCH CAPACITY

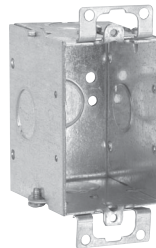
2" WIDE x 3" LONG FOR CONDUIT – NO CLAMPS

UL LISTED

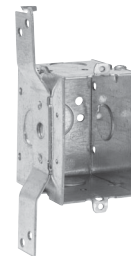
CSA LISTED



TP214G



TP218G



TP222G

Cat. #	Bracket	Ears	Leveling Bumps	Knockouts			Unit Qty.	Wt. Lbs. Per 100
				Each End	Each Side	Bottom		
TP214G	-	-	Yes	1 - 1/2"	-	1 - 1/2"	50	55
TP218G	-	Yes	-	1 - 1/2"	1 - 1/2"	1 - 1/2"	50	58
TP222G	"S", Set 5/8"	-	-	1 - 1/2"	1 - 1/2", 1 Side	1 - 1/2"	50	65

Steel Boxes



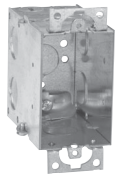
# Steel Switch Boxes

## 3 1/2" DEEP – GANGABLE – 18.0 CUBIC INCH CAPACITY

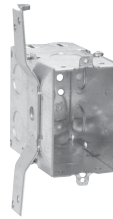
2" WIDE x 3" LONG  
FOR NON-METALLIC CABLE – CLAMPS IN EACH END

UL LISTED

CSA LISTED



TP238G



TP242G

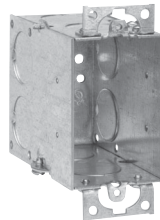
Cat. #	Bracket	Ground Pigtail	Ears	Knockouts			Unit Qty.	Wt. Lbs. Per 100
				Each End	Each Side	Bottom		
TP238G	-	-	Yes	2 - Cable, 1 - 1/2"	2 - 1/2"	1 - 1/2"	25	80
TP242G	"S", Set 7/8"	-	-	2 - Cable, 1 - 1/2"	2 - 1/2"	1 - 1/2"	25	87

## 3 1/2" DEEP – GANGABLE – 18.0 CUBIC INCH CAPACITY

2" WIDE x 3" LONG  
FOR CONDUIT – NO CLAMPS

UL LISTED

CSA LISTED

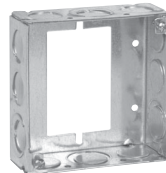


TP254G

Cat. #	Bracket	Ears	Knockouts			Unit Qty.	Wt. Lbs. Per 100
			Each End	Each Side	Bottom		
TP254G	-	Yes	2 - 3/4"	2 - 3/4"	1 - 1/2"	25	76



## 1 1/2" DEEP SWITCH & MASONRY BOX EXTENSION RING



TP422†



Cat. #	Knockouts		Unit Qty.	Wt. Lbs. Per 100
	Sides	Bottom		
<b>1 1/2" Deep Switch &amp; Masonry Box Extension Ring</b>				
TP422†	8 - 1/2", 4 - 1/2" + 3/4" E	-	50	50

†For use as extension with switch box, not four square box. See page 219 for 4" steel square covers.

# Steel Octagon Boxes & Ceiling Pans

## 4" ROUND CEILING PANS\* – 6.0 CUBIC INCH CAPACITY

1/2" DEEP  
 FIXTURE RATED  
 UL LISTED  
 CSA LISTED



TP269G

Cat. #	Description	Knockouts		Unit Qty.	Wt. Lbs. Per 100
		Sides	Bottom		
TP269G	KOs Only	-	5 - 1/2"	50	35

\*Weight limit for 3/4" and 4" Octagon Outlet Boxes and Ceiling Pans is 50 lbs. for fixture. Not suitable for fans.

## 4" OCTAGON OUTLET BOXES† – 15.5 CUBIC INCH CAPACITY

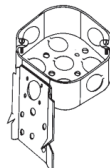
1 1/2" DEEP  
 FOR CONDUIT – NO CLAMPS  
 FIXTURE RATED  
 UL LISTED  
 CSA LISTED



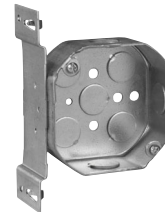
TP274G, TP278G



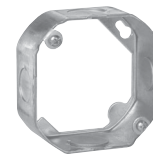
TP276G



TP280G



TP282G



TP284, TP286

Cat. #	Description	Knockouts		Unit Qty.	Wt. Lbs. Per 100
		Sides	Bottom		
TP274G	-	4 - 1/2"	5 - 1/2"	50	50
TP276G	-	4 - 3/4"	3 - 1/2", 2 - 3/4"	50	50
TP278G	-	2 - 1/2", 2 - 3/4"	3 - 1/2", 2 - 3/4"	50	50
TP280G	"C" Bracket	4 - 1/2"	5 - 1/2"	50	60
TP282G	"S" Bracket, Set 1/2"	3 - 1/2"	5 - 1/2"	50	58

### Octagon Extension Rings – (Slot & Key Permit Mounting without Removing Box Screws)

TP284	-	4 - 1/2"	-	50	36
TP286	-	2 - 1/2", 2 - 3/4"	-	50	36

†Weight limit for 3/4" and 4" Octagon Outlet Boxes and Ceiling Pans is 50 lbs. for fixture/luminaire. Not suitable for fans.



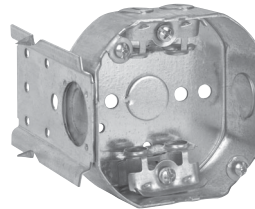
# Steel Octagon Boxes & Ceiling Pans

## 4" OCTAGON OUTLET BOXES† – 15.5 CUBIC INCH CAPACITY

1½" DEEP  
FOR ARMoured & METAL-CLAD (MCI) CABLE – CLAMPS IN EACH END  
FIXTURE RATED  
UL LISTED  
CSA LISTED



TP310G



TP312G

Cat. #	Description	Knockouts		Unit Qty.	Wt. Lbs. Per 100
		Sides	Bottom		
TP310G*	-	4 - Cable, 2 - ½"	1 - ½"	50	57
TP312G*	"C" Bracket	4 - Cable, 2 - ½"	1 - ½"	50	66

\*UL approved for use with aluminum interlocking grounding metal-clad cable, Type MCI (Southwire MCAP™). MCAP™ is a registered trademark of Southwire Company.

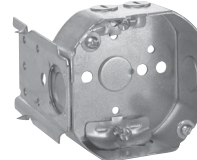
†Weight limit for 3¼" and 4" Octagon Outlet Boxes and Ceiling Pans is 50 lbs. for fixture/luminaire. Not suitable for fans.

## 4" OCTAGON OUTLET BOXES† – 15.5 CUBIC INCH CAPACITY

1½" DEEP  
FOR NON-METALLIC CABLE – WITH CLAMPS  
FIXTURE RATED  
UL LISTED  
CSA LISTED



TP300G



TP302G

Cat. #	Description	Knockouts		Unit Qty.	Wt. Lbs. Per 100
		Sides	Bottom		
TP300G	With Side Nail Holes	4 - Cable, 2 - ½"	1 - ½"	50	55
TP302G	"C" Bracket	4 - Cable, 2 - ½"	1 - ½"	50	65

†Weight limit for 3¼" and 4" Octagon Outlet Boxes and Ceiling Pans is 50 lbs. for fixture/luminaire. Not suitable for fans.



# Steel Octagon Boxes & Ceiling Pans

## 4" OCTAGON OUTLET BOXES† – 21.5 CUBIC INCH CAPACITY

2 1/8" DEEP  
FOR CONDUIT – NO CLAMPS  
FIXTURE RATED  
UL LISTED  
CSA LISTED



TP288G, TP290G, TP294G



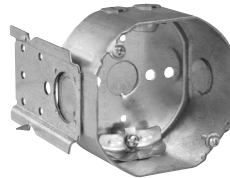
TP292G

Cat. #	Description	Knockouts		Unit Qty.	Wt. Lbs. Per 100
		Sides	Bottom		
TP288G	-	4 - 1/2"	3 - 1/2", 2 - 3/4"	25	64
TP290G	-	4 - 3/4"	3 - 1/2", 2 - 3/4"	25	64
TP292G	-	2 - 1/2", 2 - 3/4"	3 - 1/2", 2 - 3/4"	25	64
TP294G	-	4 - 1"	3 - 1/2", 2 - 3/4"	25	64

†Weight limit for 3/4" and 4" Octagon Outlet Boxes and Ceiling Pans is 50 lbs. for fixture/luminaire. Not suitable for fans.

## 4" OCTAGON OUTLET BOXES† – 21.5 CUBIC INCH CAPACITY

2 1/8" DEEP – WITH CABLE CLAMPS  
FIXTURE RATED  
UL LISTED  
CSA LISTED



TP318G

Cat. #	Description	Knockouts		Unit Qty.	Wt. Lbs. Per 100
		Sides	Bottom		
<b>For Non-metallic Cable</b>					
TP318G	"C" Bracket	4 - Cable, 2 - 1/2"	1 - 1/2"	25	88

†Weight limit for 3/4" and 4" Octagon Outlet Boxes and Ceiling Pans is 50 lbs. for fixture/luminaire. Not suitable for fans.

Steel Boxes



# PVC Switch Boxes

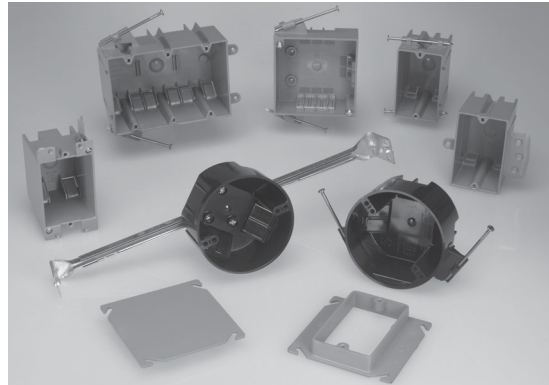
## Applications:

Non-metallic Switch and Outlet Boxes are used:

- In branch circuit wiring as a splice point
- To mount wiring devices such as switches and receptacles
- To provide mechanical protection for wiring systems and electrical devices

## Features:

- Available for use with wood or metal studs to meet any construction preference
- Quick entry feature on all non-metallic boxes offers labor savings – no need to break out knockouts – simply push the non-metallic cable into the box; no tools are required; no need to remove knockouts
- Unique configuration of this quick entry feature on single gang boxes provides a self-feeding feature that eliminates the need to reach inside the box to pull the wire out
- Integral labor saving clamping feature on two, three and four gang boxes; the multiple gang box unique entry also serves as a clamp, eliminating the need to mechanically secure the cable inside the box
- There are no separate clamps or screws to install or tighten; each entry into the multiple gang boxes has the quick entry feature, allowing the installer to simply push the cable into the box without the need for tools or removal of knockouts, so the cable can be inserted where it is required



## Certifications and Compliances:

- UL File No. E-102328
- Classified for use in fire rated (2 HR) wall or ceiling; Fire Rating No. R9933

## Standard Materials:

- PVC (Polyvinyl Chloride Compound)

## SWITCH BOXES – ANGLED NAILS

### UL LISTED



TP1800



TP2000



TP2300

Cat. #	Bracket or Nails	Capacity Cu. In.	H	W	D	Unit Qty.	Wt. Lbs. Per 100
TP1800	Nails	18.0	3 <sup>3</sup> / <sub>4</sub> "	2 <sup>1</sup> / <sub>4</sub> "	2 <sup>3</sup> / <sub>4</sub> "	100	23
TP2000	Nails	20.3	3 <sup>3</sup> / <sub>4</sub> "	2 <sup>1</sup> / <sub>4</sub> "	3 <sup>7</sup> / <sub>16</sub> "	100	25
TP2300	Nails	23.0	3 <sup>3</sup> / <sub>4</sub> "	2 <sup>1</sup> / <sub>4</sub> "	3 <sup>7</sup> / <sub>16</sub> "	100	27

## SWITCH BOXES – INTEGRAL CLAMPS

### UL LISTED



TP1690  
(Old Work)



TP2030  
(For Wood or Metal Stud)

Cat. #	Bracket or Nails	Capacity Cu. In.	H	W	D	Unit Qty.	Wt. Lbs. Per 100
TP1690	Swing Clips and Integral Clamps	16.0	3 <sup>7</sup> / <sub>8</sub> "	2 <sup>7</sup> / <sub>16</sub> "	2 <sup>3</sup> / <sub>4</sub> "	50	20
TP2030	Face Bracket (1/2" Offset)	20.3	3 <sup>11</sup> / <sub>16</sub> "	2 <sup>1</sup> / <sub>4</sub> "	3 <sup>7</sup> / <sub>16</sub> "	100	24



# PVC Switch Boxes

## 3" DEEP SWITCH BOXES – TWO GANG

UL LISTED



**TP3490**  
(Old Work)



**TP3600**



**TP3635**

Cat. #	Bracket or Nails	Capacity Cu. In.	H	W	D	Unit Qty.	Wt. Lbs. Per 100
<b>TP3490</b>	Swing Clips	25.0	3 <sup>9</sup> / <sub>16</sub> "	4"	3 <sup>3</sup> / <sub>16</sub> "	50	29
<b>TP3600</b>	Nails	32.0	3 <sup>3</sup> / <sub>4</sub> "	4"	3"	25	37
<b>TP3635*</b>	Brackets and Nails	48.0	3 <sup>3</sup> / <sub>4</sub> "	4"	3"	50	42

\*Face bracket on PVC Boxes are offset 1/2" unless stated otherwise.

## 2<sup>11</sup>/<sub>16</sub>" DEEP SWITCH BOXES – THREE GANG

UL LISTED



**TP4600**



**TP4635**

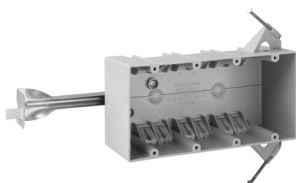
Cat. #	Bracket or Nails	Capacity Cu. In.	Unit Qty.	Wt. Lbs. Per 100
<b>TP4600</b>	Nails	44.0	50	45
<b>TP4635*</b>	Brackets and Nails	74.0	25	50

\*Face bracket on PVC Boxes are offset 1/2" unless stated otherwise.

PVC Boxes

## 2<sup>11</sup>/<sub>16</sub>" DEEP SWITCH BOXES – FOUR GANG

UL LISTED



**TP6180**

Cat. #	Bracket or Nails	Capacity Cu. In.	Unit Qty.	Wt. Lbs. Per 100
<b>TP6180†</b>	Nails and Bar Support	55.0	25	85

†Not two hour fire rated.

# PVC Switch Boxes

---

## LOW VOLTAGE PARTITION – TWO, THREE OR FOUR GANG PVC



TP1000, TP1001

<b>Cat. #</b>	<b>Use with the Following Boxes</b>	<b>Unit Qty.</b>	<b>Wt. Lbs. Per 100</b>
TP1000	TP3600, TP4600	20	3
TP1001	TP3490, TP3635, TP4635, TP6180	50	4

# PVC Switch Boxes & Covers

## 4" SQUARE WITH INTEGRAL CLAMPS – 18.0 CUBIC INCH CAPACITY

1<sup>5</sup>/<sub>8</sub>" DEEP

UL LISTED



TP1900

Cat. #	Bracket	Capacity Cu. In.	Unit Qty.	Wt. Lbs. Per 100
TP1900	Yes	18.0	75	26

## 4" SQUARE PVC DEVICE COVERS

UL LISTED



TP1013



TP1023

Cat. #	Raised	Capacity Cu. In.	Unit Qty.	Wt. Lbs. Per 100
TP1013	1/2"	3.8	100	8
TP1023	1/2"	5.8	100	8

# Ceiling Boxes

## 3 1/2" NON-METALLIC CEILING BOXES – PVC

2 7/8" DEEP

UL LISTED

Weight limit: 50 lbs. for fixture except where indicated.



**TP16200,**  
**(TP16201 – 2 1/8" Deep)**  
**Old Work**



**TP16201**



**TP16311**

Cat. #	Clamps	Ground Plate	Bracket/ Bar Hanger	Capacity Cu. In.	No. of Clamp Openings	Unit Qty.	Wt. Lbs. Per 100
TP16200†	Yes	-	Snap	16.0	4	50	27
TP16201†	Yes	Yes	Snap	16.0	4	50	29
TP16311*	Yes	Yes	Nails	20.0	4	75	20

\*Nail bracket is set 1 7/16" back from the face of the box.

†Weight limit is 6 lbs. for wall mounted fixtures only.

# Ceiling Boxes

## 4" NON-METALLIC CEILING BOXES – PVC

2<sup>1</sup>/<sub>4</sub>" DEEP

UL LISTED

Weight limit: 50 lbs. for fixture except where indicated.



TP16111, TP16110



TP16122, TP16123

Cat. #	Clamps	Ground Plate	Bracket/ Bar Hanger	Capacity Cu. In.	No. of Cable Pry-outs	Unit Qty.	Wt. Lbs. Per 100
TP16111	Yes	-	Nails	20.3	4	75	19
TP16110	Yes	Yes	Nails	20.0	4	75	21
TP16122	Yes	-	14" - 16"	20.8	4	20	59
TP16123	Yes	Yes	14" - 16"	20.8	4	20	61

## NON-METALLIC CEILING FAN BOXES

2<sup>3</sup>/<sub>16</sub>" DEEP

UL LISTED

With clamps for non-metallic cable.

All mounting hardware supplied; suitable for support of fans weighing up to 35 lbs.

### Features:

- Made of heavy duty, engineered thermoplastic material
- Offers the labor saving feature of quick entry and integral clamping
- Eliminates the need to use a screwdriver to break open pry-outs
- The easy access entry point serves as a wire clamp, eliminating time required to mechanically secure the wire to the box



TP16511

Cat. #	Diameter	Mounting Method	Capacity Cu. In.	No. of Clamp Openings	Unit Qty.	Wt. Lbs. Per 100
TP16511	4"	Nails Only	22.5	6	25	21

# Ceiling Boxes

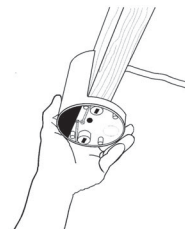
## CEILING FAN BOXES – PVC

### UL LISTED

Weight limits: fans and fixtures are supported independent of outlet box. Mounting screws go through box and into joist. Box will support up to 70 lbs. for fans and 90 lbs. for fixtures. Provided with Romex connector.

### Applications:

- For use with wood studs only



TP1300

Cat. #	Description	Capacity Cu. In.	Knockouts	Integral Clamp	Unit Qty.	Wt. Lbs. Per 100
TP1300	4 <sup>1</sup> / <sub>16</sub> " Dia., 1/2" Deep Pan Section, 4" Deep Overall – with Mtg. Hardware and External Clamp, Protective Cover	14.0	3 - 1/2"	1	24	34

## ROUND BLANK COVER – PVC

4<sup>3</sup>/<sub>4</sub>" DIA. (FOR 3<sup>1</sup>/<sub>2</sub>" & 4" ROUND CEILING BOXES)



TP1040

Cat. #	Color	Screws	Unit Qty.	Wt. Lbs. Per 100
TP1040	Gray	-	100	10