

THE WALL OF ORANGE™



BUILT FOR WHAT MATTERS



BRIDGEPORT
BPTFITTINGS.COM



**TEAM "DONE THAT"
SUPPORT**

**NEW PRODUCT
SOLUTIONS**

**TROUBLE-FREE
INSTALLATIONS**

COMPLIANCE

**INNOVATION BUILT BY
A TEAM WHO'S
BEEN THERE AND
DONE THAT**

TABLE OF CONTENTS

Product	Page
Mighty-Rite® Split Grounding Bushings	6 & 7
Mighty-Rite® Steel Split Grounding Bushings	8 & 9
Mighty-Rite® Nonmetallic Split Bushings.....	10 & 11
Mighty-Hold® Universal Straps.....	12 & 13
Mighty-Hold® Duplex Universal Straps	14 & 15
Mighty-Hold® Universal Clamp Straps	16 & 17
Mighty-Hold® Polyolefin Coated Universal Clamp Straps.....	18 & 19
Whipper-Snap® “U” Shaped Strap Duplex Connectors.....	20 & 21
Whipper-Snap® 802SP Single Screw 90°Connectors	22 & 23
Whipper-Snap® 84690SP 90° Duplex Connectors	24 & 25
Double-Snap Snap-In Connectors for Old Work	26 & 27
AMC-50QI E-Z Lock™ Quick Install Connectors	28 & 29
AMC-52QI E-Z Lock™ Quick Install Duplex Connectors.....	30 & 31
Squeeze Connectors with Grounding Lug	32 & 33
Mighty-Merge® Transition Couplings with Grounding Lug	34 & 35
Mighty-Align® EMT Slip Connectors	36 & 37
Mighty-Align® EMT Slip Couplings	38 & 39
Quick Install EMT Connectors.....	40 & 41
Mighty-Bite® PUSH-EMT® Fittings.....	42 & 43
Mighty-Seal® PUSH-EMT® Fittings	44 & 45
Mighty-Seal® PVC Jacketed MC and TECK Cable Connectors	46 & 47
Mighty-Seal® Raintight Reducing Sealing Washers.....	48 & 49
Mighty-Seal® Raintight Offset Nipples	50 & 51
Mighty-Align® Self-Aligning, Raintight 3-piece Conduit Couplings.....	52 & 53
Mighty-Seal® RT2XL EMT Connectors	54 & 55
Mighty-Merge® Raintight EMT to Rigid Transition Couplings	56 & 57
Mighty-Merge® 280SP Transition Couplings.....	58 & 59
Mighty-Merge® 280SPMB Series Transition Couplings	60 & 61
Mighty-Merge® 4050 Series Transition Couplings.....	62 & 63
Mighty-Merge® 4157-DC Transition Couplings	64 & 65
Mighty-Merge® 5157-DC Compression Transition Couplings	66 & 67
Mighty-Merge® Two-to-One EMT Combination Couplings.....	68 & 69
Mighty-Merge® Multi-Port Transition Couplings.....	70 & 71
Mighty-Bond® Intersystem Bonding Bridge	72 & 73
Mighty-Bond® Intersystem Ground Rod Bridge Clamp	74 & 75
Wire Mesh Cable Tray Grounding Lugs	76 & 77
Grounding Locknuts.....	78 & 79
Mighty-Move® Steel Expansion Couplings.....	80 & 81
630-NM2 Multi Nonmetallic Cable Connectors.....	82 & 83
Mighty-Merge® 4357-NM Transition Couplings	84 & 85

BRIDGEPORT

SEE TIME AND LABOR



**WANT TO
DO MORE
THAN PROTECT
CONDUCTORS?**

SEE THE
MIGHTY-RITE®
NONMETALLIC
SPLIT BUSHINGS
ON **PAGES 10 & 11**



**NEED TO
CONNECT
IN A LIMITED
SPACE?**

SEE THE
MIGHTY-ALIGN®
EMT SLIP COUPLINGS
ON **PAGES 38 & 39**

HUNDREDS OF WAYS THAT DIFFERENT IS BETTER

These are just four of the hundreds of Bridgeport solutions designed specifically to help you save time and money on every job. It's what we call the Bridgeport Fittings Difference.

Ready to do more with less? Add Bridgeport innovation and get on to your next job faster.

EPORT

SAVINGS EVERY DAY



NEED TO RESTORE NEMA SR RATING?

SEE THE MIGHTY-SEAL®
RAINTIGHT REDUCING
SEALING WASHERS
ON **PAGES 48 & 49**



WOULD YOU LIKE TO MAKE A FAST CHANGE?

SEE THE
MIGHTY-MERGE®
SNAP-IN/PUSH-ON
TRANSITION
COUPLINGS
ON **PAGES 60 & 61**

TURN THE PAGE TO SEE
HOW THE WALL OF ORANGE™
CAN MAKE A DIFFERENCE FOR YOU.

SEE THE DIFFERENCE
ORANGE MAKES™

MIGHTY-RITE® SPLIT GROUNDING BUSHINGS



JOB SITE
**PROBLEM
SOLVER**
FOR THE
CONTRACTOR

SGB SERIES

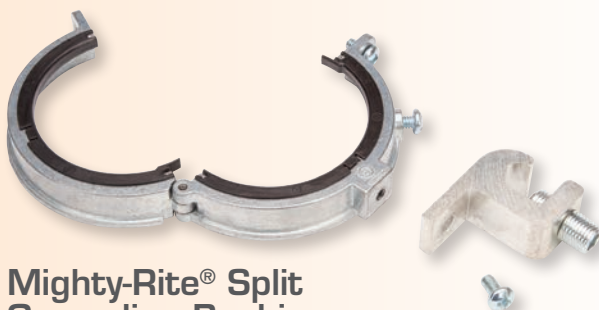


WHAT MAKES IT DIFFERENT?

SAVES TIME AND EFFORT EVERY TIME.

- Installs after wire pull
- 360° ground lug positioning
- Suitable for service entrance equipment
- UL Listed, AHJ approved
- New standard is first choice for roughing-in

FOR MORE INFORMATION, VISIT:
WWW.BPTFITTINGS.COM



Mighty-Rite® Split Grounding Bushings

Mighty-Rite's hinged design and adjustable grounding lug deliver installation flexibility on every job. Aluminum alloy lug. Available with stainless steel hardware. Contact factory. Patented.

cULus File No. E20412

Zinc Die Cast / Nylon Insulator - 150°C

Catalog Number	Grounding Lug Wire Capacity		Trade Size	Unit Qty.	Std. Pkg. Qty.
	Min. Solid Strand	Max.			
SGB-382CL	#14 to #4		3/4"	25	250
SGB-383CL	#14 to #4		1"	25	250
SGB-38414	#14 to #4		1 1/4"	20	200
SGB-384CL	#14 to #1/0		1 1/4"	20	200
SGB-38514	#14 to #4		1 1/2"	20	200
SGB-385CL	#14 to #1/0		1 1/2"	20	200
SGB-38614	#14 to #4		2"	10	100
SGB-386CL	#14 to #1/0		2"	10	100
SGB-38740	#6 to 250 MCM		2 1/2"	---	25
SGB-387CL	#14 to #1/0		2 1/2"	---	25
SGB-38840	#6 to 250 MCM		3"	---	25
SGB-388CL	#14 to #1/0		3"	---	25
SGB-38940	#6 to 250 MCM		3 1/2"	---	25
SGB-389CL	#6 - #3/0		3 1/2"	---	25
SGB-39040	#6 to 250 MCM		4"	---	20
SGB-390CL	#6 to #3/0		4"	---	20

**LOOK FOR
BRIDGEPORT ORANGE**



**FOR PRODUCT INFORMATION ON DEMAND
VISIT: [YOUTUBE.COM/BRIDGEPORTFITTINGS](https://www.youtube.com/bridgeportfittings)**

**SEE THE DIFFERENCE
ORANGE MAKES™**

MIGHTY-RITE® STEEL SPLIT GROUNDING BUSHINGS



SGBS SERIES



WHAT MAKES IT DIFFERENT?
DOES MORE THAN JUST PROTECT CONDUCTORS.

- No more burning through bushings or fighting with pullers
- Pulling wire is easier when you can install grounding bushings after wire pull
- Adjustable lay-in lugs position conductors for easy alignment and access
- cULus Listed; AHJ approved
- Patented & Patents Pending

FOR MORE INFORMATION, VISIT:
WWW.BPTFITTINGS.COM



Mighty-Rite® Steel Split Grounding Bushings

Install your bushings before or after pulling wire and making connections. Mighty-Rite's innovative hinged design adjusts and aligns easier – even in tight spots. Our adjustable lay-in lugs accept and position conductors for simple access. Mighty-Rite's unique split design and ease-of-use allows shorter facility downtime when upgrading existing power and data systems.

cULus File No. E20412

Steel / Aluminum Alloy Lug

Catalog Number	Grounding Lug Wire Capacity		Trade Size	Unit Qty.	Std. Pkg. Qty.
	Min. Solid	Max. Strand			
SGBS-381CL	14	4	1/2"	25	250
SGBS-382CL	14	4	3/4"	25	250
SGBS-383CL	14	4	1"	25	250
SGBS-38414	14	4	1 1/4"	20	200
SGBS-384CL	14	1/0	1 1/4"	20	200
SGBS-38514	14	4	1 1/2"	20	200
SGBS-385CL	14	1/0	1 1/2"	20	200
SGBS-38614	14	4	2"	10	100
SGBS-386CL	14	1/0	2"	10	100
SGBS-38740	6	250 MCM	2 1/2"	---	25
SGBS-387CL	14	1/0	2 1/2"	---	25
SGBS-38840	6	250 MCM	3"	---	25
SGBS-388CL	14	1/0	3"	---	25
SGBS-38940	6	250 MCM	3 1/2"	---	25
SGBS-389CL	6	3/0	3 1/2"	---	25
SGBS-39040	6	250 MCM	4"	---	20
SGBS-390CL	6	3/0	4"	---	20
SGBS-39050	350	500MCM	4"	---	10
SGBS-39150	350	500MCM	5"	---	10
SGBS-39250	350	500MCM	6"	---	10

**LOOK FOR
BRIDGEPORT ORANGE**



**FOR PRODUCT INFORMATION ON DEMAND
VISIT: [YOUTUBE.COM/BRIDGEPORTFITTINGS](https://www.youtube.com/bridgeportfittings)**

**SEE THE DIFFERENCE
ORANGE MAKES™**

MIGHTY-RITE® NONMETALLIC SPLIT BUSHINGS



SB SERIES

WHAT MAKES IT DIFFERENT? DOES MORE THAN JUST PROTECT CONDUCTORS.

- No more burning through bushings or fighting with pullers
- Can be installed before or after pulling wire
- Self-aligning latch provides a simple, one-handed install
- cULus Listed
- Patented

FOR MORE INFORMATION, VISIT:
WWW.BPTFITTINGS.COM



Mighty-Rite® Nonmetallic Split Bushings

Patented split design allows for installation after conductors have been pulled. Used with a locknut to terminate threaded rigid and IMC to a box or enclosure. Used with a connector to prevent damage to wire insulation. Rated 105°C.

cULus File No. E9391

Nonmetallic Split Bushing

Catalog Number	Trade Size	Unit Qty.	Std. Pkg. Qty.
SB-383NM	1"	25	250
SB-384NM	1 1/4"	20	200
SB-385NM	1 1/2"	20	200
SB-386NM	2"	10	100
SB-387NM	2 1/2"	---	25
SB-388NM	3"	---	25
SB-389NM	3 1/2"	---	25
SB-390NM	4"	---	20

**LOOK FOR
BRIDGEPORT ORANGE**



**FOR PRODUCT INFORMATION ON DEMAND
VISIT: [YOUTUBE.COM/BRIDGEPORTFITTINGS](https://www.youtube.com/bridgeportfittings)**

SEE THE DIFFERENCE
ORANGE MAKES™

MIGHTY-HOLD® UNIVERSAL STRAPS



JOB SITE
PROBLEM
SOLVER
FOR THE
CONTRACTOR

US AND
USS SERIES

WHAT MAKES IT DIFFERENT?

PACK LESS. HOLD MORE.

- Supports multiple sizes
- Fewer parts in the van and on the job
- Oval hole design
- cULus Listed
- Patented

FOR MORE INFORMATION, VISIT:
WWW.BPTFITTINGS.COM



Mighty-Hold® Universal Straps

The US-4461 is for 14/2 (.425") to 10/3 (.61") AC/MC and MCI-A cable and 3/8" Flexible Metal Conduit.

The US-6171 is for 10/4 (.61") to 8/3 (.71") AC/MC and MCI-A cable.

The USS-6171 is constructed of stainless steel and is for PVC jacketed MCI-A cable. Suitable for wet locations.

cULus File No. E161206

Steel

Catalog Number	Flex Trade Size	Hole Size	Unit Qty.	Std. Pkg. Qty.
US-4461	3/8"	.210"	100	1000
US-6171	---	.210"	100	1000

Stainless Steel

Catalog Number	Hole Size	Unit Qty.	Std. Pkg. Qty.
USS-6171	.210"	100	1000

**LOOK FOR
BRIDGEPORT ORANGE**



**FOR PRODUCT INFORMATION ON DEMAND
VISIT: [YOUTUBE.COM/BRIDGEPORTFITTINGS](https://www.youtube.com/bridgeportfittings)**

**SEE THE DIFFERENCE
ORANGE MAKES™**

MIGHTY-HOLD® DUPLEX UNIVERSAL STRAPS



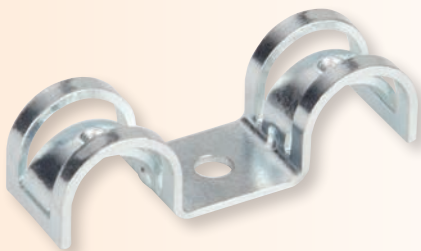
USD SERIES

WHAT MAKES IT DIFFERENT?

TWICE THE STRAP. HALF THE TIME.

- Duplex style saves time and money
- One strap supports multiple cable sizes
- Neatly arranges cables for connection
- Fewer parts in the van and on the job
- cULus Listed
- Patented

FOR MORE INFORMATION, VISIT:
WWW.BPTFITTINGS.COM



Mighty-Hold® USD-4461 Duplex Universal Straps

For AC/MC/MCI-A cable and flexible metal conduit.
Supports multiple sizes. Patented.

cULus File No. E161206

Zinc Die Cast

Catalog Number	Hole Size	Trade Size		Unit Qty.	Std. Pkg. Qty.
		Min.	Max.		
USD-4461	.210"	14/2 (.425")	10/3 (.61")	100	1000
USD-6171	.210"	10/4 (.61")	8/3 (.71")	100	1000

**LOOK FOR
BRIDGEPORT ORANGE**



**FOR PRODUCT INFORMATION ON DEMAND
VISIT: [YOUTUBE.COM/BRIDGEPORTFITTINGS](https://www.youtube.com/bridgeportfittings)**

**NOW AVAILABLE
IN STAINLESS
STEEL**

**SEE THE DIFFERENCE
ORANGE MAKES™**

MIGHTY-HOLD® UNIVERSAL CLAMP STRAPS



UCS SERIES



WHAT MAKES IT DIFFERENT?

IT HOLDS EVERYTHING. BETTER.

- One piece clamp back & strap
- One strap secures cable or conduit – EMT, Rigid, IMC, Liquid Tight Metallic and Nonmetallic, FMC, AC/MC, and Schedule 40 and Schedule 80 PVC
- Available in Zinc Plated Steel and Stainless Steel

FOR MORE INFORMATION, VISIT:
WWW.BPTFITTINGS.COM



Mighty-Hold® Universal Clamp Straps

One piece clamp back and strap secures both steel and aluminum AC/MC as well as a variety of conduit – EMT, Rigid, IMC, Metallic Liquid Tight, Nonmetallic Liquid Tight, FMC, and Schedule 40 and Schedule 80 PVC, as well as .710" Ø to 1.10" Ø steel and aluminum AC/MC cable.

Patented.

cULus File No. E161206

Zinc Plated Steel

Catalog Number	Trade Size	Unit Qty.	Std. Pkg. Qty.
UCS-5075	1/2" - 3/4"	50	250
UCS-75100	3/4" - 1"	50	250
UCS-100125	1" - 1 1/4"	25	100
UCS-125150	1 1/4" - 1 1/2"	---	25
UCS-150200	1 1/2" - 2"	---	25

Stainless Steel

Catalog Number	Trade Size	Unit Qty.	Std. Pkg. Qty.
UCSS-5075	1/2" - 3/4"	50	250
UCSS-75100	3/4" - 1"	50	250
UCSS-100125	1" - 1 1/4"	25	100
UCSS-125150	1 1/4" - 1 1/2"	---	25
UCSS-150200	1 1/2" - 2"	---	25

**LOOK FOR
BRIDGEPORT ORANGE**



**FOR PRODUCT INFORMATION ON DEMAND
VISIT: [YOUTUBE.COM/BRIDGEPORTFITTINGS](https://www.youtube.com/bridgeportfittings)**

**SEE THE DIFFERENCE
ORANGE MAKES™**

MIGHTY-HOLD® POLYOLEFIN COATED UNIVERSAL CLAMP STRAPS



UCSC SERIES



WHAT MAKES IT DIFFERENT?

HOLD MORE. WITH LESS. ANYWHERE.

- One clamp strap secures both cable or conduit
- Polyolefin coating for superior chemical, corrosion and UV protection
- Stronger than two hole PVC conduit straps
- Suitable for direct burial applications
- cETLus Listed
- Patented

FOR MORE INFORMATION, VISIT:
WWW.BPTFITTINGS.COM



Mighty-Hold® Coated Universal Clamp Straps

Polyolefin coating offers a superior level of chemical and corrosion protection and provides an extremely strong environmental and UV shield that prolongs the life of the fittings. The polyolefin is thermally bonded to prevent corrosive intrusion.

One-piece clamp back and strap secures both steel and aluminum AC/MC as well as a variety of conduit - EMT/Rigid/IMC, coated Rigid/IMC, Metallic Liquid Tight, Nonmetallic Liquid Tight, FMC, and Schedule 40 and Schedule 80 PVC.

cETLus Listed

Polyolefin Coated Steel

Catalog Number	Trade Size	Unit Qty.	Std. Pkg. Qty.
UCSC-5075	1/2" - 3/4"	50	250
UCSC-75100	3/4" - 1"	50	250
UCSC-100125	1" - 1 1/4"	25	100
UCSC-125150	1 1/4" - 1 1/2"	---	25
UCSC-150200	1 1/2" - 2"	---	25

**LOOK FOR
BRIDGEPORT ORANGE**



FOR PRODUCT INFORMATION ON DEMAND
VISIT: [YOUTUBE.COM/BRIDGEPORTFITTINGS](https://www.youtube.com/bridgeportfittings)

SEE THE DIFFERENCE
ORANGE MAKES™

WHIPPER-SNAP® “U” SHAPED STRAP DUPLEX CONNECTORS



SG3838ASP



WHAT MAKES IT DIFFERENT?

FAST & RUGGED.

- Installs in 1/3 time
- U-shaped straps ensure grounding continuity
- Greater pull-out protection
- Easily removable

FOR MORE INFORMATION, VISIT:
WWW.BPTFITTINGS.COM



Whipper-Snap® Snap-In “U” Shaped Strap Duplex Connectors

For connecting 14/2 (.42" Ø min) to 10/3 (.61" Ø max) AC/MC cable or 3/8" flexible metal conduit to box or enclosure. Connectors simply snap into the electrical box. Suitable for maintaining grounding continuity when installed in accordance with the NEC. Patented Whipper-Snap design.

cULus File No. E20534

Zinc Die Cast / Insulated Throat - 105°C

Catalog Number	Trade Size	K.O. Size	Unit Qty.	Std. Pkg. Qty.
SG3838ASP	3/8"	1/2"	20	200

**LOOK FOR
BRIDGEPORT ORANGE**



**FOR PRODUCT INFORMATION ON DEMAND
VISIT: [YOUTUBE.COM/BRIDGEPORTFITTINGS](https://www.youtube.com/bridgeportfittings)**

**SEE THE DIFFERENCE
ORANGE MAKES™**

WHIPPER-SNAP®

802SP SINGLE SCREW 90° CONNECTORS



WHAT MAKES IT DIFFERENT?

SIMPLE AND FAST.

- Quick install single screw design
- Ideal for connecting AC/MC and 3/8" FMC to pumps and motors
- Unique low profile locking device is easy to install and remove
- Stays securely connected in vibration environments
- cULus Listed
- Patented

**FOR MORE INFORMATION, VISIT:
WWW.BPTFITTINGS.COM**



Whipper-Snap® Single Screw 90° Connector

90° fitting with cover used for connecting AC/MC cable to box or enclosure. Single screw design saves time and money. Patented Whipper-Snap design snaps into electrical box!

cULus File No. E9391

Zinc Die Cast

Catalog Number	K.O. Size	Flex Trade Size	AC/MC Cable Range		Unit Qty.	Std. Pkg. Qty.
			Min.	Max.		
802SP	1/2"	3/8"	12/2 (.48")	10/3 (.58")	25	250

**LOOK FOR
BRIDGEPORT ORANGE**



**FOR PRODUCT INFORMATION ON DEMAND
VISIT: [YOUTUBE.COM/BRIDGEPORTFITTINGS](https://www.youtube.com/bridgeportfittings)**

SEE THE DIFFERENCE
ORANGE MAKES™

WHIPPER-SNAP®

84690SP 90° DUPLEX CONNECTORS



WHAT MAKES IT DIFFERENT?

SIMPLE AND FAST.

- Low profile locking device prevents damage to conductors
- Less wasted MC or FMC between fixtures
- Secure two screw strap design
- Unique design allows installation in tight spaces
- cULus Listed
- Patented

FOR MORE INFORMATION, VISIT:
WWW.BPTFITTINGS.COM



Whipper-Snap® 90° Duplex Connectors

90° fitting with steel cover used to connect AC/MC cable or flexible metal conduit to box or enclosure. Simply snap connector into electrical box! Patented Whipper-Snap design.

cULus File No. E20534

Zinc Die Cast

Catalog Number	K.O. Size	Flex Trade Size	AC/MC/MCI-A Cable Range		Unit Qty.	Std. Pkg. Qty.
			Min.	Max.		
84690SP	1/2"	3/8"	14/4 (.44")	10/3 (.61")	25	100
			14/4 (.42")	10/3 (.56")		

**LOOK FOR
BRIDGEPORT ORANGE**



**FOR PRODUCT INFORMATION ON DEMAND
VISIT: [YOUTUBE.COM/BRIDGEPORTFITTINGS](https://www.youtube.com/bridgeportfittings)**

SEE THE DIFFERENCE
ORANGE MAKES™

DOUBLE-SNAP SNAP-IN CONNECTORS FOR OLD WORK



JOB SITE

TIME
SAVER

FOR THE
CONTRACTOR

38ACDS

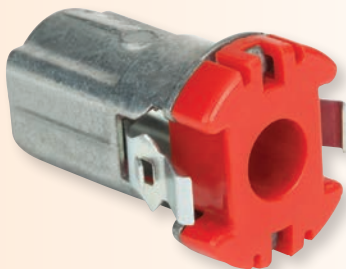


WHAT MAKES IT DIFFERENT?

CONNECT FROM THE INSIDE

- Simple and fast
- No tools required
- Reusable
- cULus Listed

FOR MORE INFORMATION, VISIT:
WWW.BPTFITTINGS.COM



Double-Snap Snap-In Connectors for Old Work

Pull cable into box, push cable armor into the connector and snap connector into the box. No tools required!

Listed for use with 14/2 to 10/3 (.40" - .63") aluminum and steel AC/MC/MCI-A/HCF and 3/8" FMC.

cULus File No. E20534

Zinc Die Cast / Insulated Throat – 105°C

Catalog Number	K.O. Size	Flex Trade Size	AC/MC Cable Range		Unit Qty.	Std. Pkg. Qty.
			Min.	Max.		
38ACDS	1/2"	3/8"	14/2 (.40")	10/3 (.63")	50	500

**LOOK FOR
BRIDGEPORT ORANGE**



**FOR PRODUCT INFORMATION ON DEMAND
VISIT: [YOUTUBE.COM/BRIDGEPORTFITTINGS](https://www.youtube.com/bridgeportfittings)**

SEE THE DIFFERENCE
ORANGE MAKES™

AMC-50QI E-Z LOCK™ QUICK INSTALL CONNECTORS



JOB SITE
TIME
SAVER
FOR THE
CONTRACTOR

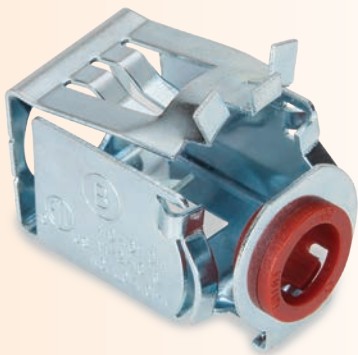
AMC-50QI

WHAT MAKES IT DIFFERENT?

NO TOOLS REQUIRED

- Lever action
- Easy in; Easy out
- Square design requires less effort to install
- Open pass-through eliminates damage to conductors
- Prefab alternative
- Patent Pending

FOR MORE INFORMATION, VISIT:
WWW.BPTFITTINGS.COM



AMC-50QI Quick Install Connectors

The AMC-50QI is a zinc plated steel quick install connector, used to connect 14/2 to 10/3 (.40" - .61" diameter) AC/MC/MCI-A/HCF/HCFMCI-A and 3/8" FMC cable to box or enclosure. No Tools required. Simply snap the connector onto the cable, squeeze the lever and set into the knockout.

cETLus Listed

Zinc Plated Steel

Catalog Number	K.O. Size	Fixed Trade Size	Unit Qty.	Std. Pkg. Qty.
AMC-50QI	1/2"	3/8"	50	500

**LOOK FOR
BRIDGEPORT ORANGE**



**FOR PRODUCT INFORMATION ON DEMAND
VISIT: [YOUTUBE.COM/BRIDGEPORTFITTINGS](https://www.youtube.com/bridgeportfittings)**

**SEE THE DIFFERENCE
ORANGE MAKES™**

AMC-52QI E-Z LOCK™

QUICK INSTALL DUPLEX CONNECTORS



AMC-52QI

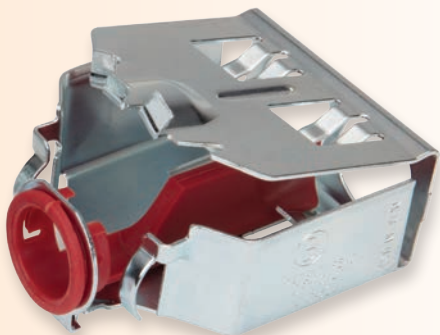


WHAT MAKES IT DIFFERENT?

NO TOOLS REQUIRED.

- Lever action
- Easy in; easy out
- Rectangular design requires less effort to install
- Open pass-through eliminates damage to conductors
- Prefab alternative
- Made in the USA
- Patent Pending

**FOR MORE INFORMATION, VISIT:
WWW.BPTFITTINGS.COM**



AMC-52QI E-Z Lock™ Quick Install Duplex Connectors

The AMC-52QI is a zinc plated steel quick install duplex connector, used to connect 14/2 to 10/2 (.40" - .59" diameter) AC/MC/MCI-A/HCF/HCFMCI-A and 3/8" FMC cable to box or enclosure. No Tools required. Simply snap the connector onto the cable, squeeze the lever and set into the knockout.

cETLus Listed

Zinc Plated Steel

Catalog Number	K.O. Size	Trade Size	Unit Qty.	Std. Pkg. Qty.
AMC-52QI	1/2"	3/8"	25	250
14/2 (.40") – 10/2 (.59")				

**LOOK FOR
BRIDGEPORT ORANGE**



**FOR PRODUCT INFORMATION ON DEMAND
VISIT: [YOUTUBE.COM/BRIDGEPORTFITTINGS](https://www.youtube.com/bridgeportfittings)**

SEE THE DIFFERENCE
ORANGE MAKES™

SQUEEZE CONNECTORS WITH GROUNDING LUG



JOB SITE
PROBLEM
SOLVER
FOR THE
CONTRACTOR

407-DC2G



WHAT MAKES IT DIFFERENT?

PRACTICAL SOLUTION FOR BONDING
FLEXIBLE METAL CONDUIT.

- Allows for needed flexibility after installation
- Provides for visual inspection and easy access for maintenance
- Meets NEC Art. 348.60 equipment grounding and 250.102 installation of bonding jumpers
- Suitable for use in health care applications
- cULus Listed
- Patented

FOR MORE INFORMATION, VISIT:
WWW.BPTFITTINGS.COM



Squeeze Connectors with Grounding Lug

Used to connect and bond flexible metal conduit and AC/HCF cables to box or enclosure. External lug is for inspection or redundancy of equipment bond.
 .86 to .92 AC/HCF Cables.

cULus File No. E9391

Zinc Die Cast

Catalog Number	K.O. Size	Flex Trade Size	Ground Lug Range		Unit Qty.	Std. Pkg. Qty.
			Min.	Max.		
407-DC2G	1/2"	1/2"	14 AWG	6 AWG	50	200

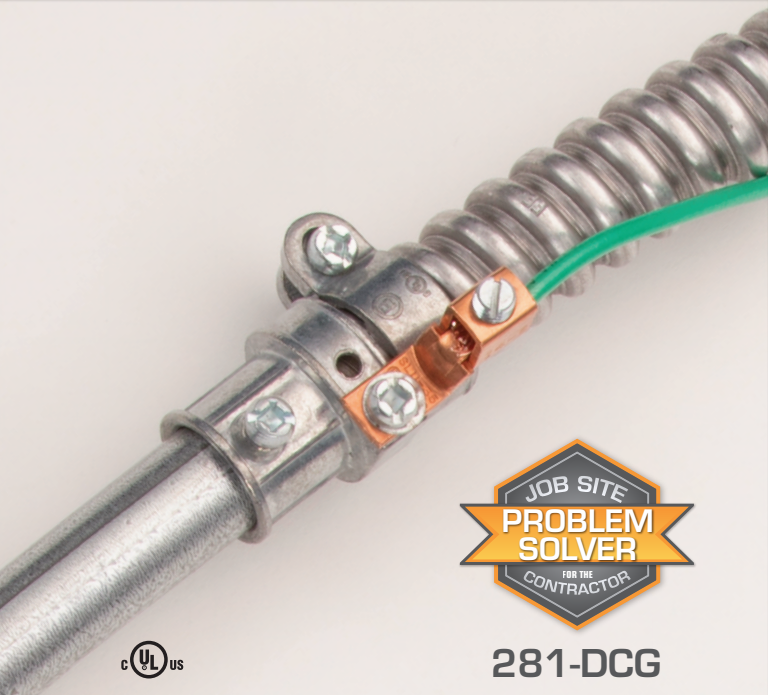
**LOOK FOR
BRIDGEPORT ORANGE**



**FOR PRODUCT INFORMATION ON DEMAND
VISIT: [YOUTUBE.COM/BRIDGEPORTFITTINGS](https://www.youtube.com/bridgeportfittings)**

**SEE THE DIFFERENCE
ORANGE MAKES™**

MIGHTY-MERGE® TRANSITION COUPLINGS



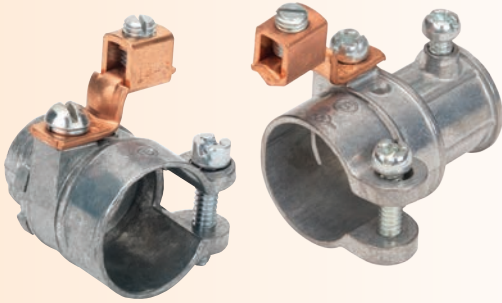
281-DCG

WHAT MAKES IT DIFFERENT?

PRACTICAL SOLUTION FOR BONDING FLEXIBLE METAL CONDUIT.

- Cost effective solution to ensure equipment grounding of flexible metal conduit
- Provides visual inspection of equipment grounding conductor
- Meets the requirements of NEC Articles 348.60 and 250.118
- cULus Listed
- Save time and material on prefabricated motor applications

FOR MORE INFORMATION, VISIT:
WWW.BPTFITTINGS.COM



Set Screw EMT to Squeeze FMC with Grounding Lug

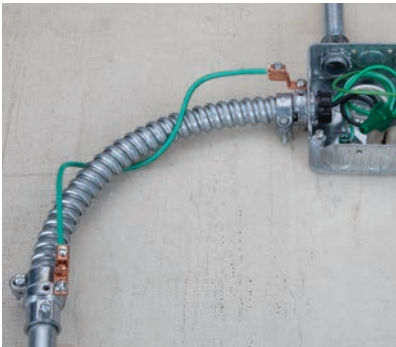
Used to transition and bond 1/2" flexible metal conduit to 1/2" EMT. The external mechanical copper lug is a cost effective way to meet the requirements for equipment grounding of FMC where flexibility is needed during operation or maintenance.

.86 to .92 AC/MC and HCF cables along with 1/2" FMC.

cULus File No. E9391

Zinc Die Cast

Catalog Number	EMT Trade Size	Flex Trade Size	Ground Lug Range		Unit Qty.	Std. Pkg. Qty.
			Min.	Max.		
281-DCG	1/2"	1/2"	14 AWG	6 AWG	50	200



Use the 407-DC2G grounding connector in conjunction with the 281-DCG transition fitting to connect and bond the flexible metal conduit system to EMT.

**LOOK FOR
BRIDGEPORT ORANGE**



**FOR PRODUCT INFORMATION ON DEMAND
VISIT: [YOUTUBE.COM/BRIDGEPORTFITTINGS](https://www.youtube.com/bridgeportfittings)**

SEE THE DIFFERENCE
ORANGE MAKES™

MIGHTY-ALIGN® DC2SLP SLIP EMT CONNECTORS



232-DC2SLP SERIES

WHAT MAKES IT DIFFERENT?

SLIDE AND SET.

- Use in limited space applications
- Use to connect EMT/IMC/Rigid between mounted enclosures and equipment
- No more wasting time with short conduit cuts
- Full length raceways improve equipment bonding integrity
- Meets the requirements of national and local electrical codes
- Patents Pending

FOR MORE INFORMATION, VISIT:
WWW.BPTFITTINGS.COM



Mighty-Align® DC2SLP Slip EMT Connectors

No more wasting time with short conduit cuts. Simply measure between the fittings end stops for proper EMT/conduit installation.

cULus File No. E9391

Zinc Die Cast

Catalog Number	Trade Size	Unit Qty.	Std. Pkg. Qty.
232-DC2SLP	1"	25	250
233-DC2SLP	1 1/4"	10	100
234-DC2SLP	1 1/2"	10	100
235-DC2SLP	2"	10	60
237-DC2SLP	3"	1	6
239-DC2SLP	4"	1	6

**LOOK FOR
BRIDGEPORT ORANGE**



FOR PRODUCT INFORMATION ON DEMAND
VISIT: [YOUTUBE.COM/BRIDGEPORTFITTINGS](https://www.youtube.com/bridgeportfittings)

**SEE THE DIFFERENCE
ORANGE MAKES™**

MIGHTY-ALIGN® EMT SLIP COUPLINGS



DCSLP SERIES



WHAT MAKES IT DIFFERENT?

SLIDES ALONG CONDUIT TO JOIN.

- Use in limited space applications
- Save time joining racked runs
- Use for pre-fab construction
- cULus Listed
- Patents Pending

FOR MORE INFORMATION, VISIT:
WWW.BPTFITTINGS.COM



Mighty-Align[®] EMT Slip Couplings

Used to join two lengths of EMT in tight or limited access applications. Back out center screw, slide coupling over one end of conduit, then slide other conduit into place. Fully install center screw between conduits and tighten set screws.

cULus File No. E24001

Zinc Die Cast

Catalog Number	Trade Size	Unit Qty.	Std. Pkg. Qty.
241-DCSLP	3/4"	25	250
242-DCSLP	1"	25	250
245-DCSLP	2"	10	60
247-DCSLP	3"	---	12
249-DCSLP	4"	---	6

**LOOK FOR
BRIDGEPORT ORANGE**



**FOR PRODUCT INFORMATION ON DEMAND
VISIT: [YOUTUBE.COM/BRIDGEPORTFITTINGS](https://www.youtube.com/bridgeportfittings)**

SEE THE DIFFERENCE
ORANGE MAKES™

QUICK INSTALL EMT CONNECTORS



1700 SERIES

WHAT MAKES IT DIFFERENT?

Set and Go one-piece installation with no locknuts

- Installs in 1/3 the time as conventional locknut type connectors
- Suitable for Equipment Grounding
- Insulated and non-insulation versions
- cULus Listed

FOR MORE INFORMATION, VISIT:
WWW.BPTFITTINGS.COM



Quick Install EMT Connectors



Quickly connect 1/2" and 3/4" EMT to a box or enclosure without the use of a locknut.

Simply:

Insert the fitting into the knockout

Insert the EMT into the fitting

Tighten the set screw to simultaneously secure the EMT and the fitting into the knockout

cULus File No. E24001

Zinc Die Cast

Catalog Number	Trade Size	Unit Qty	Std Pkg Qty
1701-DC	1/2"	50	500
1702-DC	3/4"	25	250

Zinc Die Cast/Insulated Throat - 105°C

Catalog Number	Trade Size	Unit Qty	Std Pkg Qty
1701-DCI	1/2"	50	500
1702-DCI	3/4"	25	250

**LOOK FOR
BRIDGEPORT ORANGE**



FOR PRODUCT INFORMATION ON DEMAND
VISIT: [YOUTUBE.COM/BRIDGEPORTFITTINGS](https://www.youtube.com/bridgeportfittings)

SEE THE DIFFERENCE
ORANGE MAKES™

MIGHTY-BITE® PUSH-EMT® FITTINGS



WHAT MAKES IT DIFFERENT?

ALL IT TAKES IS A PUSH.

- No tools required
- Easy removal
- Great for: stadiums, box stores, airports, schools, data centers and go-pipe runs
- Patented

FOR MORE INFORMATION, VISIT:
WWW.BPTFITTINGS.COM



Mighty-Bite® PUSH-EMT® Fittings

Connecting EMT has never been this fast and easy. Simply push the fitting onto the conduit. Removable and reusable. Approximately 75% quicker to install than conventional fittings.

cULus File No. E24001

Coupling/Zinc Die Cast

Catalog Number	Trade Size	Unit Qty.	Std. Pkg. Qty.
260-MB	1/2"	25	250
261-MB	3/4"	25	250

Connector/Zinc Die Cast

Catalog Number	Trade Size	Unit Qty.	Std. Pkg. Qty.
250-MB	1/2"	25	250
251-MB	3/4"	25	250

Insulated Connector/Zinc Die Cast

Catalog Number	Trade Size	Unit Qty.	Std. Pkg. Qty.
250-MBI	1/2"	25	250
251-MBI	3/4"	25	250

**LOOK FOR
BRIDGEPORT ORANGE**



FOR PRODUCT INFORMATION ON DEMAND
VISIT: [YOUTUBE.COM/BRIDGEPORTFITTINGS](https://www.youtube.com/bridgeportfittings)

**SEE THE DIFFERENCE
ORANGE MAKES™**

MIGHTY-SEAL® PUSH-EMT® FITTINGS



WHAT MAKES IT DIFFERENT?

PUSH, PUSH AND YOU'RE DONE.

- No tools required
- Ideal for:
 - Rooftop applications
 - Parking garages
 - Stadiums
 - Go-pipe runs
- UL Listed

**FOR MORE INFORMATION, VISIT:
WWW.BPTFITTINGS.COM**



Mighty-Seal® PUSH-EMT® Fittings

Connecting EMT has never been this fast and easy. Simply push the fittings onto the conduit for a raintight/wet location seal. Removable and reusable. Approximately **75% quicker** to install than conventional fittings. Patented.

cULus File No. E24001

Coupling/Zinc Die Cast

Catalog Number	Trade Size	Unit Qty.	Std. Pkg. Qty.
260-MSRT	1/2"	25	250
261-MSRT	3/4"	25	250

Connector/Zinc Die Cast

Catalog Number	Trade Size	Unit Qty.	Std. Pkg. Qty.
250-MSRT	1/2"	25	250
251-MSRT	3/4"	25	250

Insulated Connector/Zinc Die Cast

Catalog Number	Trade Size	Unit Qty.	Std. Pkg. Qty.
250-MSRTI	1/2"	25	250
251-MSRTI	3/4"	25	250

**LOOK FOR
BRIDGEPORT ORANGE**



FOR PRODUCT INFORMATION ON DEMAND
VISIT: [YOUTUBE.COM/BRIDGEPORTFITTINGS](https://www.youtube.com/bridgeportfittings)

SEE THE DIFFERENCE
ORANGE MAKES™

MIGHTY-SEAL® PVC JACKETED MC AND TECK CABLE CONNECTORS



590 AND 890 SERIES

WHAT MAKES IT DIFFERENT?

CORROSION RESISTANT MATERIAL

- Zinc alloy body
- Polyolefin coated versions DB rated
- Raintight
- Concrete tight
- Patented

FOR MORE INFORMATION, VISIT:
WWW.BPTFITTINGS.COM



Mighty-Seal® PVC Jacketed MC and TECK Cable Connectors

For connecting PVC jacketed MC cable (parking deck/lot cable) or TECK cable to box or enclosure. Simply strip 7/8" to 1" of jacket from end of cable, loosen nut, and push cable into connector until cable reaches end stop. Tighten nut for raintight connection. Knockout gasket provides positive seal at 1/2" K.O. NPT tapered threads permits installation in threaded boxes.

The 595-DC2C, 596-DC2C and 895-DC2C have a polyolefin coating and are listed for direct burial. Nicks or cuts in polyolefin coating can be repaired by heating surface until coating flows. Environmentally safe. UV resistant. Salt spray resistance is greater than 2000 hrs.

cULus File No. E20534 (595-DC2, 596-DC2, 895-DC2, 595-DCI2, 596-DCI2 and 895-DCI2)

cETLus Listed (595-DC2C, 596-DC2C and 895-DC2C)

Catalog Number	K.O. Size	TECK		AC/MC		Unit Qty.	Std. Pkg. Qty.
		Cable Range Min.	Cable Range Max.	Cable Range Min.	Cable Range Max.		

Zinc Die Cast / Insulated Throat

595-DC2	1/2"	14/2 (.61")	12/2 (.72")	12/2 (.50")	10/3 (.61")	15	60
596-DC2	1/2"	14/3 (.685")	10/3 (.80")	10/4 (.61")	8/3 (.69")	15	60
895-DC2*	1/2"	14/2 (.61")	12/2 (.72")	12/2 (.50")	10/3 (.61")	10	40

Zinc Die Cast / Insulated Throat – 105°C

595-DCI2	1/2"	14/2 (.61")	12/2 (.72")	12/2 (.50")	10/3 (.61")	15	60
596-DCI2	1/2"	14/3 (.685")	10/3 (.80")	10/4 (.61")	8/3 (.69")	15	60
895-DCI2*	1/2"	14/2 (.61")	12/2 (.72")	12/2 (.50")	10/3 (.61")	10	40

Zinc Die Cast / Insulated Throat – Polyolefin Coated

595-DC2C	1/2"	14/2 (.61")	12/2 (.72")	12/2 (.50")	10/3 (.61")	10	40
596-DC2C	1/2"	14/3 (.685")	10/3 (.80")	10/4 (.61")	8/3 (.69")	15	60
895-DC2C*	1/2"	14/2 (.61")	12/2 (.72")	12/2 (.50")	10/3 (.61")	10	40

*90° Version

**LOOK FOR
BRIDGEPORT ORANGE**



**FOR PRODUCT INFORMATION ON DEMAND
VISIT: [YOUTUBE.COM/BRIDGEPORTFITTINGS](https://www.youtube.com/bridgeportfittings)**

SEE THE DIFFERENCE
ORANGE MAKES™

MIGHTY-SEAL® RAINTIGHT REDUCING SEALING WASHERS



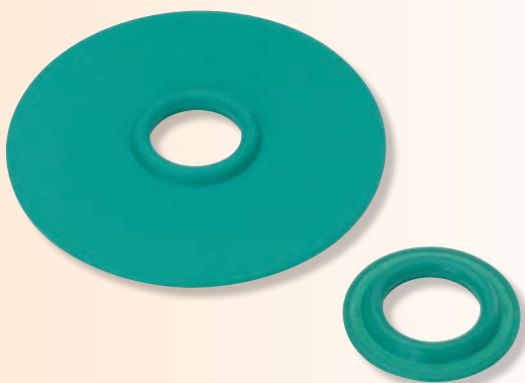
1060-RT SERIES

WHAT MAKES IT DIFFERENT?

NO MORE "OOOPS" WITH THE WRONG-SIZE
KNOCKOUT IN WET LOCATIONS

- Maintain NEMA 3R Rating & UL Listing
- No silicone required
- Saves money
- Allows easy equipment reuse

FOR MORE INFORMATION, VISIT:
WWW.BPTFITTINGS.COM



Mighty-Seal® Raintight Reducing Sealing Washers

Used when a concentric knockout breaks out larger than expected. Maintains NEMA 3R rating on listed enclosures. Includes one coated and one uncoated washer. Coated washer installs on the exterior of the box. Sunlight resistant. Patent Pending.

cULus File No. E11259

Coated Galvanized Steel

Catalog Number	Trade Size	Unit Qty.	Std. Pkg. Qty.
1061-RT	3/4" - 1/2"	20	200
1062-RT	1" - 1/2"	20	200
1063-RT	1" - 3/4"	20	200
1064-RT	1 1/4" - 1/2"	20	200
1065-RT	1 1/4" - 3/4"	20	200
1066-RT	1 1/4" - 1"	20	200
1071-RT	2" - 1/2"	10	100
1072-RT	2" - 3/4"	10	100
1073-RT	2" - 1"	10	100
1074-RT	2" - 1 1/4"	10	100

**LOOK FOR
BRIDGEPORT ORANGE**



FOR PRODUCT INFORMATION ON DEMAND
VISIT: [YOUTUBE.COM/BRIDGEPORTFITTINGS](https://www.youtube.com/bridgeportfittings)

SEE THE DIFFERENCE
ORANGE MAKES™

MIGHTY-SEAL® RAINTIGHT OFFSET NIPPLES



1520-RT SERIES

WHAT MAKES IT DIFFERENT?

NOW EASY TO STAY DRY.

- Only Listed wet location, offset nipple
- Maintains wet location/raintight rating
- Completely assembled with locknuts and sealing washers
- Meets NEC Article 314.15

FOR MORE INFORMATION, VISIT:
WWW.BPTFITTINGS.COM



Mighty-Seal® Raintight Offset Nipples

Bridgeport's raintight offset nipples are used to offset the axis of a raceway 3/4" between enclosure runs. Rugged zinc die cast construction ensures mechanical protection and durability. Integrated sealing washers maintain wet location/raintight seal. Patented.

cETLus Listed

Zinc Die Cast

Catalog Number	Trade Size	Unit Qty.	Std. Pkg. Qty.
1520-RT	1/2"	20	200
1521-RT	3/4"	10	100
1522-RT	1"	5	50

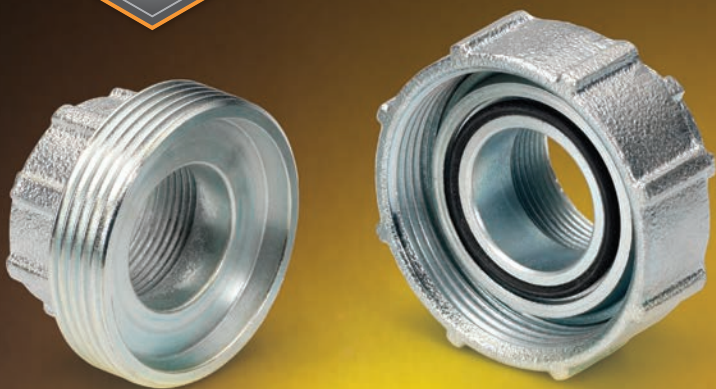
**LOOK FOR
BRIDGEPORT ORANGE**



**FOR PRODUCT INFORMATION ON DEMAND
VISIT: [YOUTUBE.COM/BRIDGEPORTFITTINGS](https://www.youtube.com/bridgeportfittings)**

**SEE THE DIFFERENCE
ORANGE MAKES™**

MIGHTY-ALIGN® SELF-ALIGNING, RAIN TIGHT 3-PIECE CONDUIT COUPLINGS



1120-RT SERIES



WHAT MAKES IT DIFFERENT?

LINES ITSELF UP FOR SUCCESS.

- Self-aligning for easier installation
- Maintains wet-location compliance per NEC Article 314.15
- Smooth interior throat allows easy wire pull
- Durable malleable iron body with internal sealing o-ring
- Patented

FOR MORE INFORMATION, VISIT:
WWW.BPTFITTINGS.COM



Mighty-Align® Self-Aligning, Raintight, Three-Piece Conduit Couplings

Used to join two lengths of threaded rigid and IMC conduit. Mighty-Align delivers a solid connection with its quick, auto-aligning raintight design. Patented.

cULus File No. E9391

Malleable Iron

Catalog Number	Trade Size	Unit Qty.	Std. Pkg. Qty.
1121-RT	1/2"	25	100
1122-RT	3/4"	10	100
1123-RT	1"	5	50
1124-RT	1 1/4"	---	25
1125-RT	1 1/2"	---	20
1126-RT	2"	---	10
1127-RT	2 1/2"	---	5
1128-RT	3"	---	5
1129-RT	3 1/2"	---	4
1130-RT	4"	---	5

**LOOK FOR
BRIDGEPORT ORANGE**



FOR PRODUCT INFORMATION ON DEMAND
VISIT: [YOUTUBE.COM/BRIDGEPORTFITTINGS](https://www.youtube.com/bridgeportfittings)

SEE THE DIFFERENCE
ORANGE MAKES™

MIGHTY-SEAL® RT2XL EMT CONNECTORS

EXTRA THREAD
LENGTH FOR
THICK WALLED
ENCLOSURES.

PERFECT FOR
SOLAR COMBINER
BOXES AND
INVERTERS.

JOB SITE
PROBLEM
SOLVER

FOR THE
CONTRACTOR

RT2XL

WHAT MAKES IT DIFFERENT?

EXTRA LONG THREADS

- Ideal for Solar Combiner Boxes and Inverters
- Accommodates both a locknut and a grounding bushing when used on thick walled enclosures
- cULus Listed Raintight
- Patented

FOR MORE INFORMATION, VISIT:
WWW.BPTFITTINGS.COM



RT2XL MIGHTY-SEAL® EMT Connectors

Compression style connector with internal sealing ring and knockout gasket. Extra long threads to create a raintight seal when connecting EMT to thick wall boxes or enclosures.

Patented.

cULus Listed Raintight

Zinc Die Cast

Catalog Number	Trade Size	Unit Qty.	Std. Pkg. Qty.
250-RT2XL	1/2"	50	500
251-RT2XL	3/4"	25	250
252-RTXL	1"	15	150

**LOOK FOR
BRIDGEPORT ORANGE**



FOR PRODUCT INFORMATION ON DEMAND
VISIT: [YOUTUBE.COM/BRIDGEPORTFITTINGS](https://www.youtube.com/bridgeportfittings)

**SEE THE DIFFERENCE
ORANGE MAKES™**

MIGHTY-MERGE®

RAINTIGHT EMT TO RIGID TRANSITION COUPLINGS



290-RT SERIES

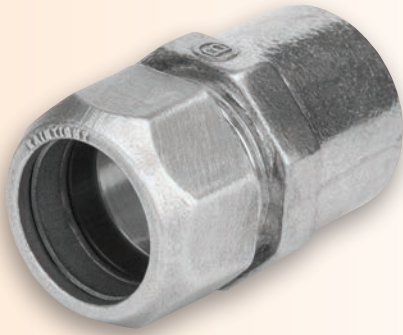


WHAT MAKES IT DIFFERENT?

RAINTIGHT DONE RIGHT.

- Simplified stub-up in a wet location
- Rooftop transition solution
- Saves time & money
- ETL Listed solution

**FOR MORE INFORMATION, VISIT:
WWW.BPTFITTINGS.COM**



Mighty-Merge® Raintight EMT to Rigid Transition Couplings

Couplings used to transition EMT to rigid for a secure raintight/wet location seal. Patented.

cETLus Listed

Zinc Die Cast

Catalog Number	EMT Trade Size	Rigid Trade Size	Unit Qty.	Std. Pkg. Qty.
290-RT	1/2"	1/2"	25	100
291-RT	3/4"	3/4"	25	100
292-RT	1"	1"	10	50

**LOOK FOR
BRIDGEPORT ORANGE**



**FOR PRODUCT INFORMATION ON DEMAND
VISIT: [YOUTUBE.COM/BRIDGEPORTFITTINGS](https://www.youtube.com/bridgeportfittings)**

**SEE THE DIFFERENCE
ORANGE MAKES™**

MIGHTY-MERGE® TRANSITION COUPLINGS

SNAP-IN/SET SCREW DESIGN



280SP



WHAT MAKES IT DIFFERENT?

ONE FITTING DOES THE WORK OF THREE.

- Pull box replacement – no box mounting or splicing required
- Set screw end for EMT
- Patented snap-in end for cable & FMC
- cULus Listed
- Patented

FOR MORE INFORMATION, VISIT:
WWW.BPTFITTINGS.COM



Mighty-Merge® Snap-in/Set Screw Transition Couplings

The patented Mighty-Merge design has a set screw end for EMT and a quick install snap-in end for AC/MC cables and flexible metal conduit. Ideal for transitioning fixture whips above the drop ceiling and for continuing the speed of MC down the wall to emergency lights.

cULus File No. E9391

Zinc Die Cast

Catalog Number	EMT	Flex	AC/MC		Unit Qty.	Std. Pkg. Qty.
	Trade Size	Trade Size	Cable Min.	Range Max.		
280SP	1/2"	3/8"	14/2 (.43")	10/3 (.61")	25	100

**LOOK FOR
BRIDGEPORT ORANGE**



**FOR PRODUCT INFORMATION ON DEMAND
VISIT: [YOUTUBE.COM/BRIDGEPORTFITTINGS](https://www.youtube.com/bridgeportfittings)**

SEE THE DIFFERENCE
ORANGE MAKES™

MIGHTY-MERGE® TRANSITION COUPLINGS

SNAP-IN/PUSH-ON DESIGN



280SPMB SERIES

WHAT MAKES IT DIFFERENT?

ONE FITTING DOES THE WORK OF THREE.

- Pull box replacement – no boxes or tools required
- Snap-in end for cable and FMC
- Easily removable, push-on end for EMT
- cULus Listed
- Transition above ceilings, in walls and connect to equipment
- Patented

FOR MORE INFORMATION, VISIT:
WWW.BPTFITTINGS.COM



Mighty-Merge® 280SPMB Series Snap-in/Push-on Transition Couplings

The patented Mighty-Merge design has a quick install snap-in end for AC/MC cables and flexible metal conduit and a labor saving push-on end for EMT. Ideal for transitioning to fixtures and equipment above ceilings and for continuing the speed of armored cables down the wall to emergency lights, devices and panels. The 281SPMB is great for use with larger diameter MC-PCS Luminary Cable.

cULus File No. E9391

Zinc Die Cast

Catalog Number	EMT	Flex	AC/MC		Unit Qty.	Std. Pkg. Qty.
	Trade Size	Trade Size	Min.	Max.		
280SPMB	1/2"	3/8"	1 1/2 (.43")	10/3 (.61")	25	100
281SPMB	3/4"	3/8"	10/4 (.61")	8/3 (.69")	25	100

**LOOK FOR
BRIDGEPORT ORANGE**



**FOR PRODUCT INFORMATION ON DEMAND
VISIT: [YOUTUBE.COM/BRIDGEPORTFITTINGS](https://www.youtube.com/bridgeportfittings)**

SEE THE DIFFERENCE
ORANGE MAKES™

MIGHTY-MERGE® TRANSITION COUPLINGS



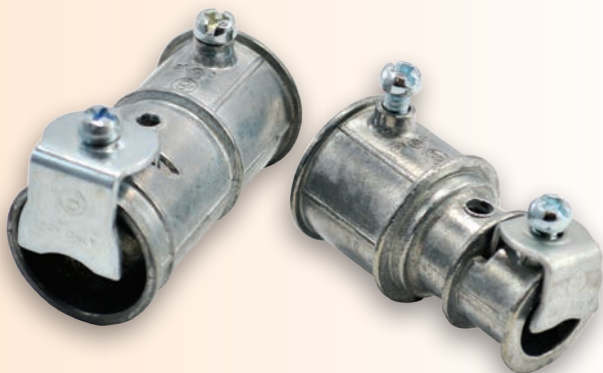
4050 SERIES

WHAT MAKES IT DIFFERENT?

ONE FITTING DOES THE WORK OF THREE.

- Installs in 1/3 time
- 1/3 material cost
- ETL Listed & meets NEC Article 300.15(F)
- Low profile – installs in confined spaces

FOR MORE INFORMATION, VISIT:
WWW.BPTFITTINGS.COM



Mighty-Merge® Combination Couplings

Couplings used to join EMT to flexible metal conduit and AC/MC cable. The 4057-DC is also listed for MCI-A cable. Patented.

cETLus Listed

Zinc Die Cast

Catalog Number	EMT Trade Size	FMC Trade Size	Cable Range	Unit Qty.	Std. Pkg. Qty.
4057-DC	3/4"	3/8"	14/2 - 10/3	25	100
4058-DC	3/4"	1/2"	10/4 - 6/4	25	100

**LOOK FOR
BRIDGEPORT ORANGE**



**FOR PRODUCT INFORMATION ON DEMAND
VISIT: [YOUTUBE.COM/BRIDGEPORTFITTINGS](https://www.youtube.com/bridgeportfittings)**

SEE THE DIFFERENCE
ORANGE MAKES™

MIGHTY-MERGE® TRANSITION COUPLINGS



SKIP THE BOX



4157-DC



WHAT MAKES IT DIFFERENT?

STOP WASTING TIME AND SPACE.

- Installs in 1/3 time of traditional box
- 1/3 material cost
- UL Listed & meets NEC Article 300.15(F)
- Prefab alternative

FOR MORE INFORMATION, VISIT:
WWW.BPTFITTINGS.COM



Mighty-Merge® Duplex MC to EMT Transition Couplings

Used to join duplex 14/2 (.44" Ø min) to 10/3 (.61" Ø max) armored or metal clad cable or 3/8" flexible metal conduit to 3/4" EMT. Set screw type transitional fitting ideal for commercial and institutional facilities. A labor savings, compared to the traditional junction box installation. Ensure that cables are inserted such that the cable armor is visible in the inspection holes. Patented and Patents Pending.

cULus File No. E20534

Zinc Die Cast

Catalog Number	EMT Trade Size	Flex Trade Size	Unit Qty.	Std. Pkg. Qty.
4157-DC	3/4"	3/8"	25	100

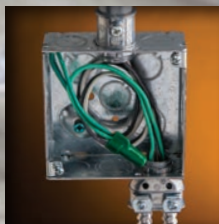
**LOOK FOR
BRIDGEPORT ORANGE**



**FOR PRODUCT INFORMATION ON DEMAND
VISIT: [YOUTUBE.COM/BRIDGEPORTFITTINGS](https://www.youtube.com/bridgeportfittings)**

**SEE THE DIFFERENCE
ORANGE MAKES™**

MIGHTY-MERGE® TRANSITION COUPLINGS



SKIP THE BOX



5157-DC



WHAT MAKES IT DIFFERENT?

STOP WASTING TIME AND SPACE.

- Installs in 1/3 time of traditional box
- 1/3 material cost
- UL Listed & meets NEC Article 300.15(F)
- Prefab alternative
- Patented

**FOR MORE INFORMATION, VISIT:
WWW.BPTFITTINGS.COM**



Mighty-Merge® Compression EMT to Duplex MC Transition Coupling

A compression type transition fitting ideal for securely joining 3/4" EMT to two AC/MC/MCIA/HCF cables or 3/8" FMC. Saves time and money when compared to the traditional junction box or fitting assembly installation.

When using AC/MC/FMC cable simply remove the armor and expose the conductors to the desired length needed to reach the device box or enclosure. The inspection holes will provide a visual end stop for the cable or flex conduit. Tighten both steel strap screws between the armor convolutions and the compression nut for the 3/4" EMT conduit.

cULus File No. E20534

Zinc Die Cast

Catalog Number	EMT Trade Size	Flex Trade Size	Unit Qty.	Std. Pkg. Qty.
5157-DC	3/4"	3/8"	25	100

**LOOK FOR
BRIDGEPORT ORANGE**



**FOR PRODUCT INFORMATION ON DEMAND
VISIT: [YOUTUBE.COM/BRIDGEPORTFITTINGS](https://www.youtube.com/bridgeportfittings)**

**SEE THE DIFFERENCE
ORANGE MAKES™**

MIGHTY-MERGE®

TWO-TO-ONE EMT COMBINATION COUPLINGS



4250 SERIES



WHAT MAKES IT DIFFERENT?

NO PULL BOX REQUIRED!

- Save time and material running EMT
- Inspection cover allows for easy access to cables or conductors
- Easily drop down into walls and transition into floor boxes
- cULus Listed
- Patented

FOR MORE INFORMATION, VISIT:
WWW.BPTFITTINGS.COM



Mighty-Merge® Two-to-One EMT Combination Couplings

Used to join two lengths of EMT conduit into one.
The 4256-DC joins two 1/2" EMT to one 3/4" EMT.
The 4258-DC joins two 3/4" EMT to one 1" EMT. Patented.
cULus File No. E20534

Zinc Die Cast

Catalog Number	Trade Size	Unit Qty.	Std. Pkg. Qty.
4256-DC	(2) 1/2" to (1) 3/4"	10	40
4258-DC	(2) 3/4" to (1) 1"	10	40

**LOOK FOR
BRIDGEPORT ORANGE**



**FOR PRODUCT INFORMATION ON DEMAND
VISIT: [YOUTUBE.COM/BRIDGEPORTFITTINGS](https://www.youtube.com/bridgeportfittings)**

SEE THE DIFFERENCE
ORANGE MAKES™

MIGHTY-MERGE®

MULTI-PORT TRANSITION COUPLINGS



4357-DC
and 4457-DC

WHAT MAKES IT DIFFERENT?

STOP WASTING TIME AND SPACE

- Less labor to strap and support cable
- Material savings – fewer connectors, boxes and enclosures needed
- Promotes both speed and workmanship
- Prefab opportunity

FOR MORE INFORMATION, VISIT:
WWW.BPTFITTINGS.COM



Mighty-Merge® MC to EMT Transition Couplings

Used to join 1" EMT to multiple 14/2 (.43" min) to 10/3 (.61" max) AC/MC/MCI-A/HCF/HCFMCI-A or 3/8" flexible metal conduit cables.

Patented.

cETLus Listed

Zinc Die Cast

Catalog Number	EMT Trade Size	Flex Trade Size	Number of Cables	Unit Qty.	Std. Pkg. Qty.
4357-DC	1"	3/8"	3	5	20
4457-DC	1"	3/8"	4	5	20

**LOOK FOR
BRIDGEPORT ORANGE**



**FOR PRODUCT INFORMATION ON DEMAND
VISIT: [YOUTUBE.COM/BRIDGEPORTFITTINGS](https://www.youtube.com/bridgeportfittings)**

SEE THE DIFFERENCE
ORANGE MAKES™

MIGHTY-BOND® INTERSYSTEM BONDING BRIDGE



JOB SITE
**PROBLEM
SOLVER**
FOR THE
CONTRACTOR

IGB SERIES

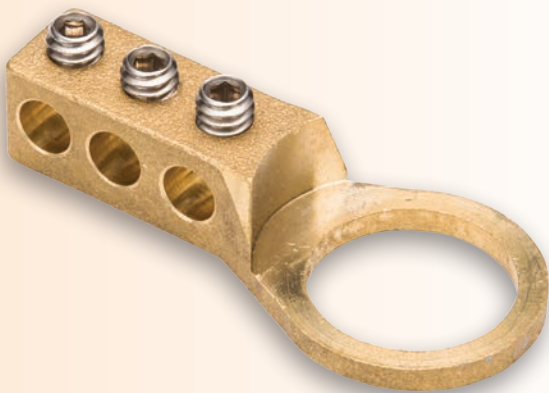


WHAT MAKES IT DIFFERENT?

COMPLEX BECOMES EASY.

- UL Listed grounding & bonding
- Meets NEC Article 250.94
- Versatile, easy install
- Suitable for use with EMT & Rigid fittings

FOR MORE INFORMATION, VISIT:
WWW.BPTFITTINGS.COM



Mighty-Bond® Intersystem Bonding Bridge

Intersystem Bonding Bridge used inside or outside of an enclosure or panel board. 3-Equipment bonding terminations. Meets the requirement of NEC Article 250.94. Patented.

UL File No. E20412

Brass with Stainless Steel Hardware

Catalog Number	Trade Size	Conductor Range	Unit Qty.	Std. Pkg. Qty.
IGB-050	1/2"	#14 - 4	25	100
IGB-075	3/4"	#14 - 4	25	100

**LOOK FOR
BRIDGEPORT ORANGE**



**FOR PRODUCT INFORMATION ON DEMAND
VISIT: [YOUTUBE.COM/BRIDGEPORTFITTINGS](https://www.youtube.com/bridgeportfittings)**

SEE THE DIFFERENCE
ORANGE MAKES™

MIGHTY-BOND® INTERSYSTEM GROUND ROD BRIDGE CLAMP



IGBC SERIES

WHAT MAKES IT DIFFERENT?

FASTER, BETTER, COSTS LESS.

- One item replaces three
- 2/3 cost of traditional solution
- Installs less than 1/2 time
- Direct burial rated
- Meets NEC Article 250.94

FOR MORE INFORMATION, VISIT:
WWW.BPTFITTINGS.COM



Mighty-Bond® Intersystem Ground Rod Bridge Clamp

Intersystem Ground Rod Bridge Clamp used as an Intersystem bonding means by utilizing 4-terminal points for connecting communication systems to the same electrical grounding electrode/rod. Listed for 1/2" and 5/8" ground rods. Meets the requirement of NEC Article 250.94. Patented.

cULus File No. E20412

Brass with Stainless Steel Hardware

Catalog Number	Trade Size	AWG Wire Capacity	Unit Qty.	Std. Pkg. Qty.
IGBC-063	1/2"	#14 - 4	25	100
IGBC-075	3/4"	#14 - 4	25	100

**LOOK FOR
BRIDGEPORT ORANGE**



**FOR PRODUCT INFORMATION ON DEMAND
VISIT: [YOUTUBE.COM/BRIDGEPORTFITTINGS](https://www.youtube.com/bridgeportfittings)**

SEE THE DIFFERENCE
ORANGE MAKES™

WIRE MESH CABLE TRAY GROUNDING LUGS



ALI-WMCT

WHAT MAKES IT DIFFERENT?

SIMPLE AND FAST

- 1/4-20 stainless steel hex head screws
- Tin plated aluminum body
- Aluminum or copper #4-#14 AWG
- Meets NEC Article 250.96(A)

FOR MORE INFORMATION, VISIT:
WWW.BPTFITTINGS.COM



Wire Mesh Cable Tray Bonding and Grounding Lugs

Bridgeport's ALI-WMCT wire mesh cable tray bonding and grounding lugs securely attach grounding conductors to cable trays to provide an easy-to-install grounded connection. These items meet NEC Code requirements under NEC Article 250.96(A) which states: "Metal raceways, cable trays, cable armor, cable sheath, enclosures, frames, fittings, and other metal noncurrent-carrying parts that are to serve as grounding conductors, with or without the use of supplementary equipment grounding conductors, shall be bonded where necessary to ensure electrical continuity and the capacity to conduct safely any fault current likely to be imposed on them."

cULus File No. E20534

Tin Plated Aluminum

Catalog Number	Lug Size	Unit Qty.	Std. Pkg. Qty.
ALI-WMCT	14 - 4	25	250

**LOOK FOR
BRIDGEPORT ORANGE**



**FOR PRODUCT INFORMATION ON DEMAND
VISIT: [YOUTUBE.COM/BRIDGEPORTFITTINGS](https://www.youtube.com/bridgeportfittings)**

SEE THE DIFFERENCE
ORANGE MAKES™

GROUNDING LOCKNUTS



JOB SITE
**PROBLEM
SOLVER**

FOR THE
CONTRACTOR

160 SERIES



WHAT MAKES IT DIFFERENT?

ALLOWS USE WHEN THREAD LENGTH IS LIMITED

- Ground and connect with just a locknut
- Perfect for tight, confined spaces
- Use in place of a grounding bushing and standard lock-nut
- Listed for use with EMT and rigid connectors
- Suitable for service entrance equipment

FOR MORE INFORMATION, VISIT:
WWW.BPTFITTINGS.COM



Grounding Locknuts

These versatile locknuts are ETL Listed for use with all of Bridgeport Fittings' EMT and Rigid connectors, as well as threaded Rigid/IMC conduit. Bridgeport's grounding locknuts provide a secure connection to the enclosure, and its 3 tapped lay-n-lug holes allow for access in tight spaces.

Use in place of a grounding bushing and standard locknut when thread length is limited. Simply remove the standard locknut and thread on the grounding locknut.

Also suitable for service entrance equipment.

cETLus Listed

Zinc Die Cast

Catalog Number	Trade Size	Lug Size	Unit Qty.	Std. Pkg. Qty.
161-G	1/2"	14 - 4	10	50
162-G	3/4"	14 - 4	10	50
163-G	1"	14 - 4	10	50
164-G	1 1/4"	14 - 1/0	10	50
165-G	1 1/2"	14 - 1/0	10	50
166-G	2"	14 - 1/0	10	50
167-G	2 1/2"	14 - 1/0	5	25
168-G	3"	14 - 1/0	1	10
169-G	3 1/2"	6 - 3/0	1	5
170-G	4"	6 - 3/0	1	5

**LOOK FOR
BRIDGEPORT ORANGE**



**FOR PRODUCT INFORMATION ON DEMAND
VISIT: [YOUTUBE.COM/BRIDGEPORTFITTINGS](https://www.youtube.com/bridgeportfittings)**

**SEE THE DIFFERENCE
ORANGE MAKES™**

MIGHTY-MOVE® STEEL EXPANSION COUPLINGS



EC SERIES



WHAT MAKES IT DIFFERENT?

INSTALLED SAVINGS EXPANDS YOUR PROFIT.

- Least expensive dry-location expansion coupling available
- Suitable for Rigid & IMC conduit
- Zinc-plated steel
- Patented

FOR MORE INFORMATION, VISIT:
WWW.BPTFITTINGS.COM



Mighty-Move[®] Steel Expansion Couplings

Assembles like a regular Rigid/IMC set screw coupling. To install, simply slide coupling end stop onto fixed end of conduit and tighten set screw. Place movable conduit end completely into coupling and mark engagement, remove conduit and mark half the distance of engagement, reinstall conduit to half the distance. Bonding jumper purchased separately. Patented.

cULus File No. E9391

Zinc Plated Steel

Catalog Number	Trade Size	Unit Qty.	Std. Pkg. Qty.
EC-075R	3/4"	15	60
EC-100R	1"	10	40
EC-125R	1-1/4"	8	40
EC-150R	1-1/2"	6	30
EC-200R	2"	---	4
EC-250*	2-1/2"	---	1
EC-300*	3"	---	1
EC-350*	3-1/2"	---	1
EC-400*	4"	---	1

*2 1/2" thru 4" suitable for use with EMT or Rigid/IMC conduit.

**LOOK FOR
BRIDGEPORT ORANGE**



**FOR PRODUCT INFORMATION ON DEMAND
VISIT: [YOUTUBE.COM/BRIDGEPORTFITTINGS](https://www.youtube.com/bridgeportfittings)**

**SEE THE DIFFERENCE
ORANGE MAKES™**

MULTI NONMETALLIC CABLE CONNECTORS



630-NM2

WHAT MAKES IT DIFFERENT?

NO TOOLS REQUIRED.

- Squeeze tabs to install/remove cable
- Prefab alternative for bundles of NM and for temporary power outlets
- Group cables for easy circuit identification
- Save time connecting and supporting cable and installing panels
- Add circuits without sub panels
- Patent Pending
- cETLus Listed

FOR MORE INFORMATION, VISIT:
WWW.BPTFITTINGS.COM



630-NM2 Multi Nonmetallic Connector

Push-in nonmetallic fitting used to connect multiple nonmetallic cables to box or enclosure.

cETLus Listed

Plastic

Catalog Number	K.O. Size	Nonmetallic Cable Range	Unit Qty.	Std. Pkg. Qty.
630-NM2	3/4"		10	40

Connector Cable Fill

One cable per port: 14/2 to 10/3

Two cables per port: 14/2 , 12/2, 10/2

**LOOK FOR
BRIDGEPORT ORANGE**



**FOR PRODUCT INFORMATION ON DEMAND
VISIT: [YOUTUBE.COM/BRIDGEPORTFITTINGS](https://www.youtube.com/bridgeportfittings)**

SEE THE DIFFERENCE
ORANGE MAKES™

MIGHTY-MERGE® TRANSITION COUPLINGS



4357-NM

WHAT MAKES IT DIFFERENT?

TRANSITION AND PROTECT
NON-METALLIC CABLE.

- Squeeze tabs to install/remove cable
- Prefab alternative for bundles of NM
- Quickly connect and support NM cables
- Physically protect circuits using field cut EMT
- Group cables for circuit identification
- Add circuits in limited space
- Patent Pending
- cETLus Listed

FOR MORE INFORMATION, VISIT:
WWW.BPTFITTINGS.COM



Mighty-Merge® 4357-NM Multi Nonmetallic Cable to EMT Transition Couplings

Push-in multi nonmetallic to set screw EMT.

cETLus Listed

Plastic

Catalog Number	EMT Trade Size	Nonmetallic Cable Range	Unit Qty.	Std. Pkg. Qty.
4357-NM	3/4"		10	40

Connector Cable Fill

One cable per port: 14/2 to 10/3

Two cables per port: 14/2 , 12/2, 10/2

**LOOK FOR
BRIDGEPORT ORANGE**



FOR PRODUCT INFORMATION ON DEMAND
VISIT: [YOUTUBE.COM/BRIDGEPORTFITTINGS](https://www.youtube.com/bridgeportfittings)

**SEE THE DIFFERENCE
ORANGE MAKES™**



BRIDGEPORT

Bridgeport Fittings, Inc.
705 Lordship Blvd.
Stratford, CT 06615-7313

Voice: 203.377.5944
Fax: 203.381.3488
E-mail: sales@bptfittings.com

www.bptfittings.com

CONNECT ONLINE



facebook.com/BridgeportFittings



youtube.com/BridgeportFittings



twitter.com/CallMightyB