



LED Outdoor Lighting

Westgate's full line of Outdoor Lighting products is designed using the latest generation of LED components and drivers from leading manufacturers and carries an industry first, full 7-Year Limited Warranty.

WML2

A1

LED NON-CUTOFF WALL PACKS SECOND GENERATION



Bottom LED array ensures seamless coverage in proximity of the fixture

TECHNICAL SPECIFICATIONS:

- :: Die-cast aluminum housing with powder coat finish (Dark Bronze)
- :: Same footprint as traditional HID wall packs
- :: Polycarbonate Optic Lens
- :: Includes mounting hardware
- :: Four 1/2" hubs: 1 top, 1 on each side, 1 rear
- :: Chip: Philips Lumileds LEDs
- :: CRI: >80
- :: Power Factor: 95%
- :: Operating Temp: -40°F to 104°F
- :: 70,000 hour rated life
- :: 7-year warranty
- :: Suitable for Wet Locations, IP65

APPLICATIONS:

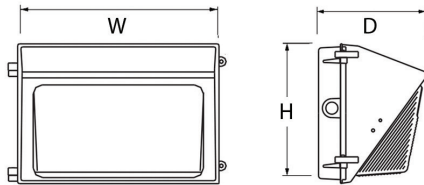
- :: Ideal for general site lighting, alleys, loading docks, doorway, pathway and parking areas



LED NON-CUTOFF SECOND GENERATION WALL PACKS

CATALOG NO.	WATTS	LUMENS/WATT	LUMENS	COLOR TEMP	REPLACEMENT RANGE	DIMENSIONS
WML2-28W-50K-HL-SM	28W	121	3780LM	5000K	100~150 MH	10"(W) x 5-3/4"(H) x 5-1/2"(D)
WML2-28W-40K-HL-SM	28W	121	3640LM	4000K	100~150 MH	
WML2-28W-30K-HL-SM	28W	121	3500LM	3000K	100~150 MH	
WML2-50W-50K-SM	50W	112	6000LM	5000K	100~200 MH	
WML2-50W-40K-SM	50W	112	5750LM	4000K	100~200 MH	
WML2-50W-30K-SM	50W	112	5500LM	3000K	100~200 MH	14-1/4"(W) x 9-1/4"(H) x 7-3/8"(D)
WML2-50W-50K-HL	48W	135	6480LM	5000K	175~250 MH	
WML2-50W-40K-HL	48W	135	6240LM	4000K	175~250 MH	
WML2-50W-30K-HL	48W	135	6000LM	3000K	175~250 MH	
WML2-80W-50K-HL	80W	126	10530LM	5000K	250~400 MH	
WML2-80W-40K-HL	80W	126	10140LM	4000K	250~400 MH	18-1/2"(W) x 9"(H) x 8-1/2"(D)
WML2-80W-30K-HL	80W	126	9750LM	3000K	250~400 MH	
WML2-120W-50K-HL-LG	120W	132	16200LM	5000K	250~450 MH	
WML2-120W-40K-HL-LG	120W	132	15600LM	4000K	250~450 MH	
WML2-120W-30K-HL-LG	120W	132	15000LM	3000K	250~450 MH	
WML2-150W-50K-LG	150W	120	19200LM	5000K	250~450 MH	18-1/2"(W) x 9"(H) x 8-1/2"(D)
WML2-150W-40K-LG	150W	120	18450LM	4000K	250~450 MH	
WML2-150W-30K-LG	150W	120	17700LM	3000K	250~450 MH	

WML



TECHNICAL SPECIFICATIONS:

- :: Die-cast aluminum with powder coat finish (Dark Bronze), optimized for LED
- :: Same footprint as traditional HID wall packs
- :: Prismatic borosilicate glass lens
- :: Four 1/2" hubs: 1 top, 1 on each side, 1 rear
- :: Chip: Philips Lumileds LEDs
- :: CRI: >80
- :: Power Factor: 95%
- :: Operating Temp: -40°F to 104°F
- :: 70,000 hour rated life
- :: 7-year warranty
- :: Suitable for Wet Locations, IP54

APPLICATIONS:

- :: Ideal for general site lighting, alleys, loading docks, doorway, pathway and parking areas.
- :: Replace existing HID wall packs
- :: Great for use with photocell



A2

LED NON-CUTOFF WALL PACKS (MEDIUM & LARGE)

LED NON-CUTOFF WALL PACKS

CATALOG NO.	WATTS	LUMENS	COLOR TEMP	REPLACEMENT RANGE	DIMENSIONS
WML-30CW-SM	30W	3300LM	5000K	100~150 MH	8-1/2"(W) x 9"(H) x 7-1/4"(D)
WML-30NW-SM	30W	3200LM	4000K	100~150 MH	
WML-30WW-SM	30W	2400LM	3000K	100~150 MH	
WML-50CW	50W	5400LM	5000K	100~200 MH	13-1/4"(W) x 9-1/2"(H) x 7-1/2"(D)
WML-50NW	50W	5300LM	4000K	100~200 MH	
WML-50WW	50W	3840LM	3000K	100~200 MH	
WML-60CW	60W	6600LM	5000K	175~250 MH	
WML-60NW	60W	6400LM	4000K	175~250 MH	
WML-60WW	60W	4840LM	3000K	175~250 MH	
WML-80CW	80W	9100LM	5000K	250~400 MH	18-1/4"(W) x 9"(H) x 9-1/4"(D)
WML-80NW	80W	9000LM	4000K	250~400 MH	
WML-80WW	80W	7040LM	3000K	250~400 MH	
WML-120CW-LG	120W	12000LM	5000K	250~450 MH	18-1/4"(W) x 9"(H) x 9-1/4"(D)
WML-120NW-LG	120W	12000LM	4000K	250~450 MH	
WML-120WW-LG	120W	12000LM	3000K	250~450 MH	

LW360

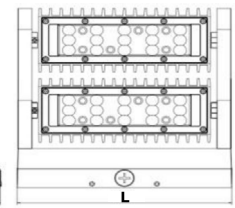
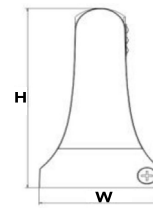
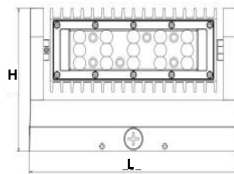


LW360-60W
LW360-80W



LW360-25W
LW360-40W

25W & 40W
Available in white



TECHNICAL SPECIFICATIONS:

- :: Rotatable heads (both in 60W & 80W) with set screw
- :: Die-cast aluminum housing with powder coat finish (Dark Bronze or White)
- :: TIR optic lens - TYPE II
- :: Voltage: 120~277V
- :: Includes mounting hardware
- :: Three 1/2" threaded hubs: 1 top, 1 on each side
- :: Chip: Philips Lumileds LEDs
- :: CRI: >80
- :: Beam Angle: 60°
- :: Power Factor: 95%
- :: Operating Temp: -40°F to 104°F
- :: 70,000 hour rated life
- :: 7-year warranty
- :: Suitable for Wet Locations, IP65

APPLICATIONS:

- :: Ideal for general site lighting, alleys, loading docks, doorway, pathway and parking areas



LED ROTATABLE WALL PACKS

CATALOG NO.		WATTS	LUMENS	COLOR TEMP	NO. OF LIGHT HEADS	REPLACEMENT RANGE	DIMENSIONS
BRONZE	WHITE						
LW360-25W-30K	LW360-25W-30K-WH	25W	3375LM	3000K	1	100~150 MH	5.4"(H) x 5.2"(W) x 9.1"(L)
LW360-25W-50K	LW360-25W-50K-WH	25W	3375LM	5000K	1	100~150 MH	
LW360-40W-30K	LW360-40W-30K-WH	40W	5400LM	3000K	1	100~200 MH	
LW360-40W-50K	LW360-40W-50K-WH	40W	5400LM	5000K	1	100~200 MH	8.8"(H) x 5.2"(W) x 9.1"(L)
LW360-60W-30K	-	60W	8100LM	3000K	2	200~300 MH	
LW360-60W-50K	-	60W	8100LM	5000K	2	200~300 MH	
LW360-80W-30K	-	80W	10800LM	3000K	2	250~400 MH	
LW360-80W-50K	-	80W	10800LM	5000K	2	250~400 MH	

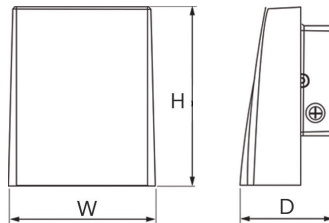
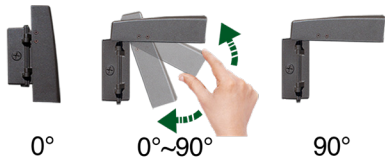
LWA



12W, 20W, 30W, 50W
Available in white



Optional Posts for LWA-12W
see page A36



TECHNICAL SPECIFICATIONS:

- :: 0~90° Adjustable Cutoff Wall Packs locks into position
- :: Die-cast aluminum with powder coat finish (Dark Bronze or White)
- :: Philips Lumileds Lexeon 3030 high flux LED
- :: Polycarbonate Optic Lens
- :: 120~277V
- :: CRI: >80
- :: Beam Angle: 100°X80°
- :: Power Factor: 95%
- :: Operating Temp: -40°F to 104°F
- :: 70,000 hour rated life
- :: 7-year warranty
- :: Suitable for Wet Locations, IP54

APPLICATIONS:

- :: Ideal for general site lighting, alleys, loading docks, doorway, pathway and parking areas.
- :: Replace existing HID flood lights/ wall packs
- :: Great for use with motion sensors or other instant on/off controls



A4

LED FULL CUTOFF WALL PACKS

LED CUTOFF & ADJUSTABLE WALL PACKS

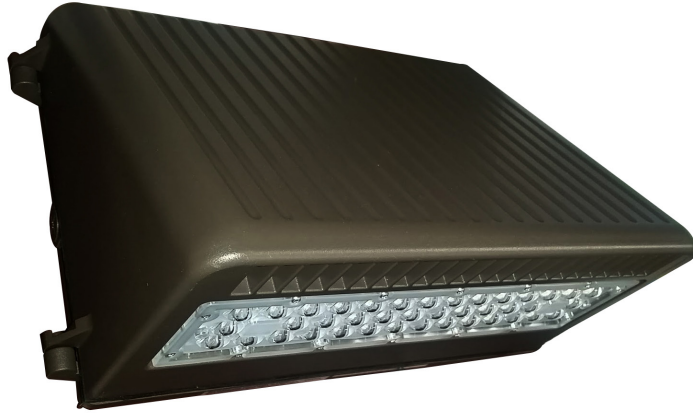
CATALOG NO.		WATTS	LUMENS	COLOR TEMP	REPLACEMENT RANGE	DIMENSIONS
BRONZE	WHITE					
LWA-12WW	LWA-12WW-WH	12W	1100LM	3000K	50~70 MH	5" (w) x 6" (H) x 4" (D)
LWA-12CW	LWA-12CW-WH	12W	1200LM	5000K	50~70 MH	
LWA-20WW	LWA-20WW-WH	20W	2000LM	3000K	70~100 MH	8" (w) x 9" (H) x 4.5" (D)
LWA-20CW	LWA-20CW-WH	20W	2200LM	5000K	70~100 MH	
LWA-30WW	LWA-30WW-WH	30W	3000LM	3000K	100~125 MH	
LWA-30CW	LWA-30CW-WH	30W	3200LM	5000K	100~125 MH	
LWA-50WW	LWA-50WW-WH	50W	4900LM	3000K	150~200 MH	11" (w) x 13" (H) x 6" (D)
LWA-50CW	LWA-50CW-WH	50W	5200LM	5000K	150~200 MH	
LWA-80WW	-	80W	8800LM	3000K	200~300 MH	11" (w) x 13" (H) x 6" (D)
LWA-80CW	-	80W	9000LM	5000K	200~300 MH	
LWA-120WW	-	120W	13700LM	3000K	300~400 MH	
LWA-120CW	-	120W	13700LM	5000K	300~400 MH	

LWA-KNU



1/2" knuckle adapter with back plate and screws for use as a Flood Light, for 20W and 30W only

LWP2

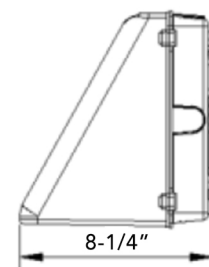
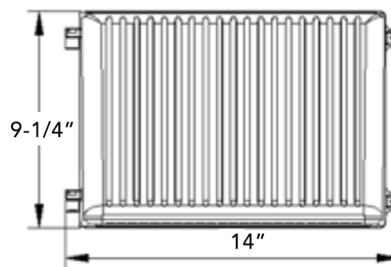


TECHNICAL SPECIFICATIONS:

- :: Full cutoff, dark sky compliant
- :: Die-cast aluminum with powder coat finish (Dark Bronze)
- :: Philips Lumileds Lexeon 3030 high flux LED
- :: Polycarbonate Optic Lens
- :: 120~277V
- :: Includes mounting hardware
- :: Redesigned for high-performance LED
- :: CRI: >80
- :: Power Factor: 95%
- :: Operating Temp: -40°F to 104°F
- :: 70,000 hour rated life
- :: 7-year warranty
- :: Suitable for Wet Locations, IP54

APPLICATIONS:

- :: Ideal for general site lighting, alleys, loading docks, doorway, pathway and parking areas.
- :: Replace existing HID flood lights/ wall packs
- :: Great for use with motion sensors or other instant on/off controls



LED FULL CUTOFF WALL PACKS

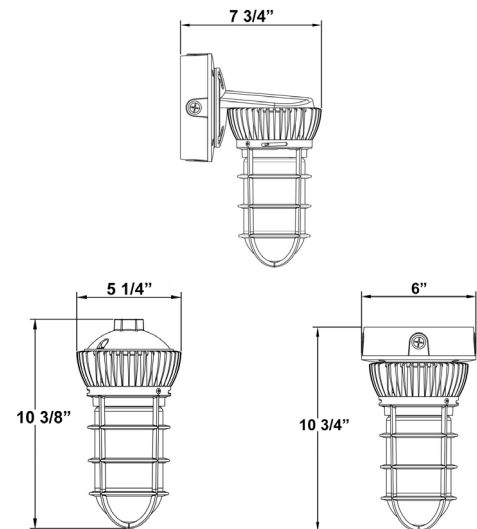
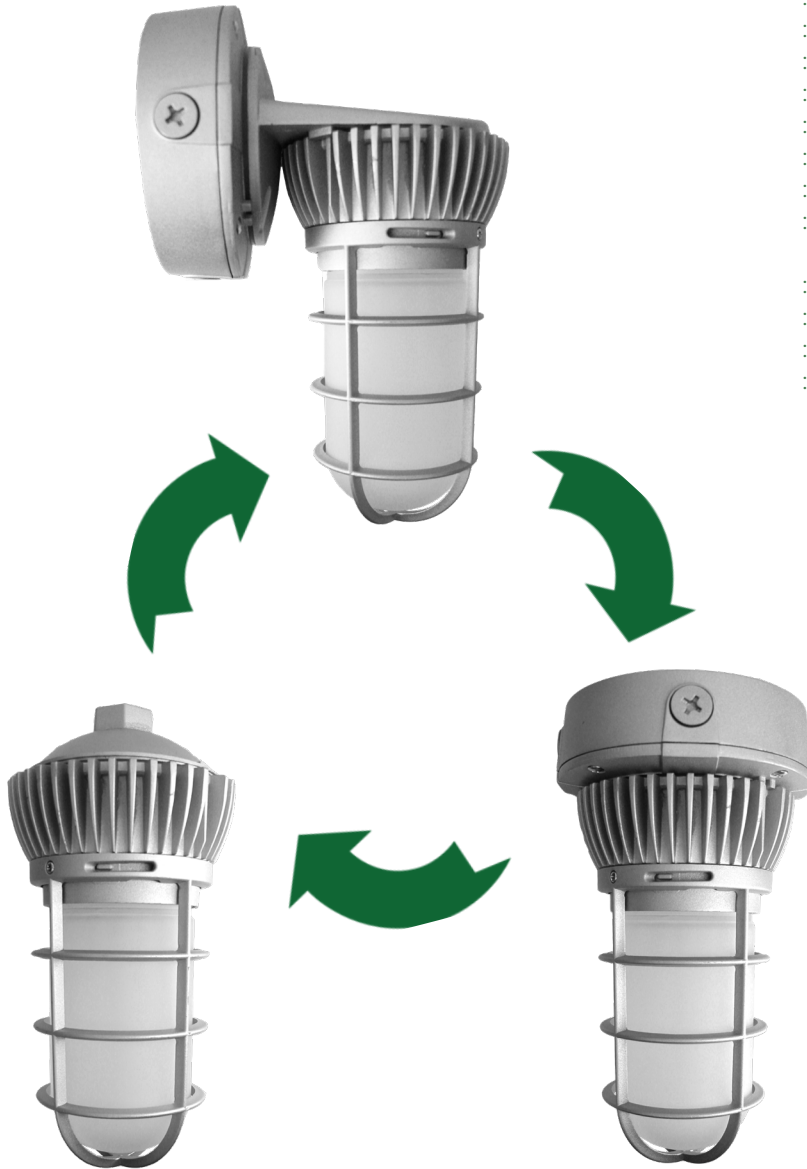
CATALOG NO.	WATTS	LUMENS	COLOR TEMP	REPLACEMENT RANGE	DIMENSIONS
LWP2-50CW	50W	5500LM	5000K	175~250 MH	14" (w) x 9-1/4" (H) x 8-1/4" (D)
LWP2-50WW	50W	5000LM	3000K	175~250 MH	
LWP2-80CW	80W	9000LM	5000K	320~400 MH	
LWP2-80WW	80W	8000LM	3000K	320~400 MH	

VTU
UNIVERSAL
ALL MOUNTING OPTIONS IN ONE BOX

120~277V

TECHNICAL SPECIFICATIONS:

- :: Silver powder-coated finish
- :: Die-cast housing and guard
- :: Frosted borosilicate glass
- :: Voltage: 120~277V
- :: Wattage: 12W & 20W
- :: Lumens: 900LM & 1785LM
- :: LED Chip: Luminus XNova COB
- :: Beam Angle: 175°
- :: CRI: >80
- :: Junction box can be replaced with standard round weatherproof boxes.
- :: Power Factor: 95%
- :: 7-year warranty
- :: UL listed
- :: NEMA 3R, IP65



A6

LED VAPOR LIGHTS

LED UNIVERSAL VAPOR LIGHTS

CATALOG NO.	WATTS	LUMENS	COLOR TEMP	DIMENSIONS
VTU-12W-30K	12W	840LM	3000K	10 3/4" (H)
VTU-12W-50K	12W	900LM	5000K	
VTU-20W-30K	20W	1685LM	3000K	
VTU-20W-50K	20W	1785LM	5000K	

LSW

A7

LED NON-CUTOFF WALL PACKS

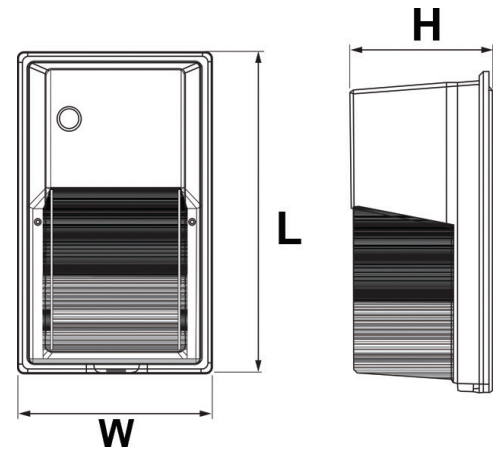


TECHNICAL SPECIFICATIONS:

- :: Back plate: Die-cast aluminum with mounting/gasket installed. Threaded 1/2" HUB provided on top section of the back
- :: Front: Polycarbonate lens and housing
- :: Includes pre-wired photo electric control, prewired to 120 volts
- :: 100~277V AC
- :: Non-cutoff optics ideal for maximum light distribution
- :: Vandal resistant housing ideal for exposed areas
- :: CRI: >80
- :: Power Factor: 95%
- :: Operating Temp: -40°F to 104°F
- :: 70,000 hour rated life
- :: 7-year warranty
- :: Suitable for Wet Locations, IP54

APPLICATIONS:

- :: Ideal for general site lighting, loading docks, doorway, pathway and parking areas.



LED NON-CUTOFF WALL PACKS WITH PHOTOCELL

CATALOG NO.	WATTS	LUMENS	COLOR TEMP	REPLACEMENT RANGE	DIMENSIONS
LSW-22CW-PC	20W	2100LM	5000K	50~100 MH	11"(L) x 6-3/4"(W) x 5-1/8"(H)
LSW-22WW-PC	20W	2000LM	3500K	50~100 MH	
LSW-30CW-PC	30W	2900LM	5000K	100~125 MH	
LSW-30WW-PC	30W	2700LM	3500K	100~125 MH	

LESW



TECHNICAL SPECIFICATIONS:

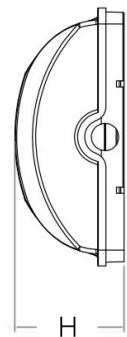
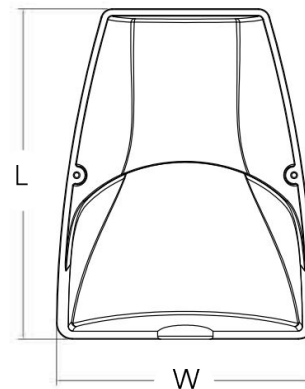
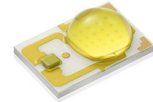
- :: ADC12 Aluminum heat sink, outdoor powder coated
- :: Optical Lens: High transmittance PC, Anti-UV & Fire resistant
- :: Includes pre-wired photo electric control
- :: 120V AC, 60Hz
- :: Non-cutoff optics ideal for maximum light distribution
- :: CRI: >80
- :: Power Factor: 95%
- :: Operating Temp: -40°F to 104°F
- :: 70,000 hour rated life
- :: 7-year warranty
- :: Suitable for Wet Locations, IP54

APPLICATIONS:

- :: Ideal for general site lighting, loading docks, doorway, pathway and parking areas.



PHILIPS LUMILEDS



LED SMALL NON-CUTOFF WALL PACKS WITH PHOTOCELL

CATALOG NO.	WATTS	LUMENS	COLOR TEMP	DIMENSIONS
LESW-12W-50K-P	12W	1300LM	5000K	8.5"(L) x 6.7"(W) x 2.8"(H)
LESW-12W-30K-P	12W	1225LM	3000K	

WMV

A9

LED VERSATILE WALL PACKS

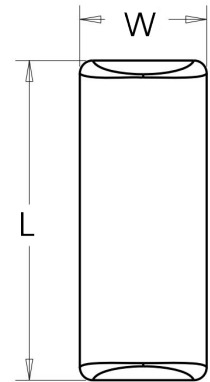
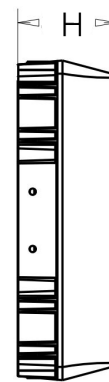


TECHNICAL SPECIFICATIONS:

- :: ADC12 Aluminum heat sink, outdoor powder coated
- :: Optical Lens: High transmittance PC, Anti-UV & Fire resistant
- :: 100~277V AC, 60Hz
- :: Vandal resistant housing & high impact PC lens, ideal for exposed areas
- :: CRI: >70
- :: Beam Angle: 110°X130°
- :: Power Factor: 90%
- :: Operating Temp: -40°F to 104°F
- :: 70,000 hour rated life
- :: 7-year warranty
- :: Suitable for Wet Locations, IP54

APPLICATIONS:

- :: Ideal for general site lighting, loading docks, doorway, pathway and parking areas.



LED VERSATILE WALL PACKS

CATALOG NO.	WATTS	LUMENS	COLOR TEMP	REPLACEMENT RANGE	DIMENSIONS
WMV-20W-50K	20W	2000LM	5000K	50~100 MH	11.4"(L) x 4.5"(W) x 3.5"(H)
WMV-20W-40K	20W	1900LM	4000K	50~100 MH	
WMV-20W-30K	20W	1800LM	3000K	50~100 MH	

LTW



TECHNICAL SPECIFICATIONS:

- :: Die-cast aluminum with powder coat finish (Dark Bronze), optimized for LED
- :: Polycarbonate front housing and prismatic lens provide vandal resistance
- :: Four 1/2" HUBS: 1 top, 1 on each side, 1 rear
- :: Chip: Philips Lumileds LEDs
- :: CRI: >70
- :: Power Factor: 95%
- :: Operating Temp: -40°F to 104°F
- :: 70,000 hour rated life
- :: 7-year warranty
- :: Suitable for Wet Locations, IP54

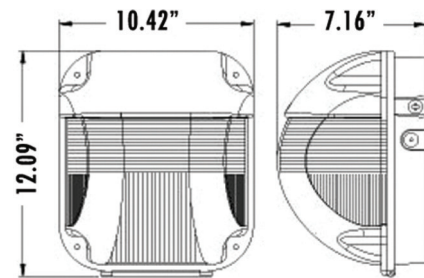
APPLICATIONS:

- :: Ideal for general site lighting, alleys, loading docks, doorway, pathway and parking areas.
- :: Replace existing HID flood lights/ wall packs
- :: Great for use with photocell



A10

LED SEMI-CUTOFF WALL PACKS



LED SEMI-CUTOFF VANDAL-PROOF WALL PACKS

CATALOG NO.	WATTS	LUMENS	COLOR TEMP	REPLACEMENT RANGE
LTW-50CW	50W	4400LM	5000K	150~250 MH
LTW-50WW	50W	4400LM	3000K	150~250 MH

LRS-PC

A11

LED RESIDENTIAL LANTERNS



LRS-A-PC



LRS-B-PC

TECHNICAL SPECIFICATIONS:

- :: Westgate's Residential Lantern Series
- :: Aluminum housing, powder coated
- :: Includes pre-wired photocell
- :: 120V AC, 60Hz
- :: LED Type: DOB
- :: CRI: >80
- :: Power Factor: 95%
- :: Operating Temp: -40°F to 104°F
- :: 50,000 hour rated life
- :: 7-year warranty
- :: Suitable for Wet Locations, IP65

APPLICATIONS:

- :: Ideal for general site lighting, residential houses, doorway, pathway and garages.



LED RESIDENTIAL LANTERNS WITH PHOTOCELL

CATALOG NO.	WATTS	LUMENS	COLOR TEMP	GLASS TYPE	DIMENSIONS
LRS-A-30K-PC	12W	1150LM	3000K	Frosted	9-1/2"(L) x 7-3/4"(W) x 4-1/2"(D)
LRS-A-40K-PC	12W	1150LM	4000K	Frosted	
LRS-B-30K-PC	6W	550LM	3000K	Clear Beveled	8-1/2"(L) x 4-1/2"(W) x 5-3/4"(D)
LRS-B-40K-PC	6W	550LM	4000K	Clear Beveled	

LRS DIMMABLE



LRS-C-D



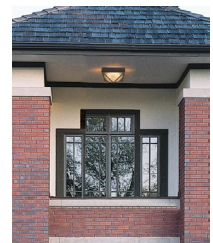
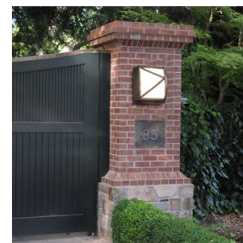
LRS-D-D

TECHNICAL SPECIFICATIONS:

- :: Westgate's Residential Series
- :: Aluminum housing, powder coated
- :: Dimmable with standard LED dimmers (TRIAC)
- :: 120V AC, 60Hz
- :: LED Type: DOB
- :: CRI: >80
- :: Power Factor: 95%
- :: Operating Temp: -40°F to 104°F
- :: 50,000 hour rated life
- :: 7-year warranty
- :: Suitable for Wet Locations, IP65

APPLICATIONS:

- :: Ideal for general site lighting, residential houses, doorway, pathway and garages.
- :: Model LRS-D can be used as a Pier Mount Light on top of entry posts



LED DIMMABLE RESIDENTIAL LIGHTS

CATALOG NO.	WATTS	LUMENS	COLOR TEMP	GLASS TYPE	DIMENSIONS
LRS-C-30K-D	12W	1100LM	3000K	Frosted	10-5/8"(L) x 10-5/8"(W) x 4-3/4"(D)
LRS-C-40K-D	12W	1100LM	4000K	Frosted	
LRS-D-30K-D	12W	1100LM	3000K	Frosted	10-1/4"(L) x 10-1/4"(W) x 5"(D)
LRS-D-40K-D	12W	1100LM	4000K	Frosted	

LF3-HL

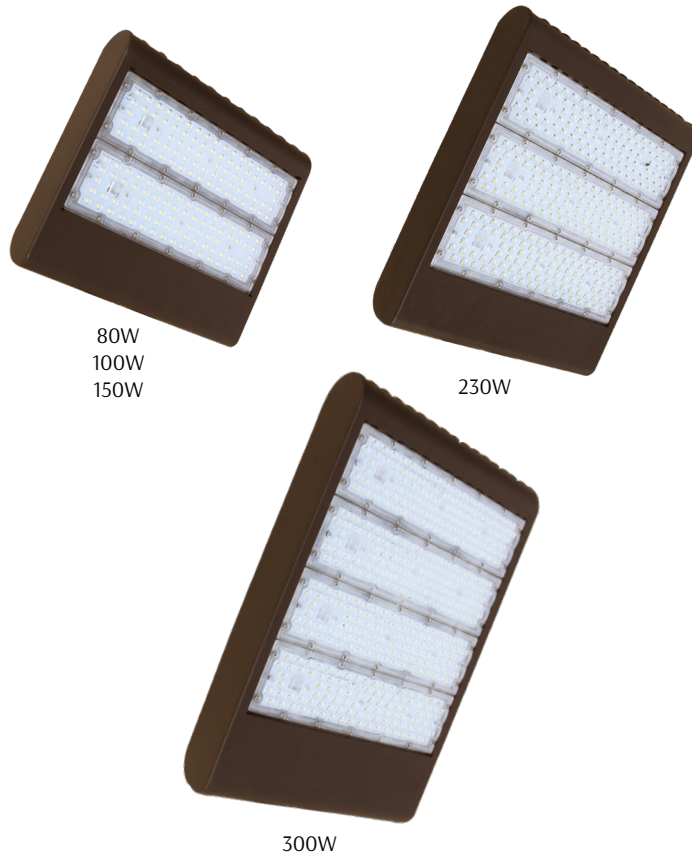
DLC PREMIUM & HIGH-LUMEN

TECHNICAL SPECIFICATIONS:

- :: With snap-on & bolt mounting options for one-person installations. Select a mounting option (Sold separately)
- :: Housing: Die-cast aluminum housing with powder coat finish (Dark Bronze)
- :: Philips Lumileds Lixeon 3030 high flux LED
- :: TIR optic lens - TYPE III
- :: Cord type: 6' SJTW 18/3 AWG cable
- :: Voltage: 100~277V; 60Hz AC
- :: Operating Temp: -40°F to 104°F
- :: Up to 135 lumens per watt
- :: CRI: 82~84
- :: Beam Angle: 120°X90°
- :: 70,000 hour rated life
- :: 7-year warranty
- :: Suitable for Wet Locations, IP65
- :: Solid state lighting technology for long life, no maintenance needed and high-efficiency

APPLICATIONS:

- :: Ideal for general site lighting, alleys, loading docks, doorway, pathway and parking areas.
- :: Replace existing HID flood lights/ wall packs



Shown with Slip Fitter



Shown with Yoke



Shown with Straight Arm



LED HIGH LUMEN LF3 FLOOD LIGHT SERIES

CATALOG NO.	WATTAGE/LUMENS		CCT		MOUNTING		VOLTAGE	DIMENSIONS
LF3-HL	80W	80W/10400LM	50K	5000K	SF	SLIP FITTER	120~277V	80W/100W/150W:
	100W	100W/13200LM	30K	3000K	YK	YOKE	480V	11"(L) x 12-5/8"(W) x 3-3/8"(D)
	150W	150W/20680LM			EXTARM	STRAIGHT ARM		230W:
	230W	230W/31000LM			REARM	RECTANGULAR ARM		14-1/8"(L) x 12-5/8"(W) x 3-3/8"(D)
	300W	300W/39000LM						300W:
								18-1/2"(L) x 12-5/8"(W) x 3-1/2"(D)

ORDERING SAMPLE:

LF3-HL-150W-30K-YK



Optional Multi-Level Programmable Motion Sensors See Page A53

LF3-HL-TR



TECHNICAL SPECIFICATIONS:

- :: Housing: Die-cast aluminum housing with powder coat finish (Dark Bronze)
- :: Philips Lumileds Lixeon 3030 high flux LED
- :: TIR optic lens - TYPE II
- :: Cord type: 6' SJTW 18/3 AWG cable
- :: Voltage: 100~277V; 60Hz AC
- :: Operating Temp: -40°F to 104°F
- :: Up to 135 lumens per watt
- :: CRI: 82~84
- :: Beam Angle: 120°X90°
- :: 70,000 hour rated life
- :: 7-year warranty
- :: Suitable for Wet Locations, IP65
- :: Solid state lighting technology for long life, no maintenance needed and high-efficiency

APPLICATIONS:

- :: Ideal for general site lighting, alleys, loading docks, doorway, pathway and parking areas.
- :: Replace existing HID flood lights/ wall packs



A14

HIGH LUMEN LF3 SERIES

LED HIGH LUMEN LF3 FLOOD LIGHT SERIES WITH "U" BRACKET

CATALOG NO.	WATTS	LUMENS	COLOR TEMP	REPLACEMENT RANGE	DIMENSIONS
LF3-HL-80W-50K-TR	80W	10400LM	5000K	150~250 MH	11.4"(L) x 4.5"(W) x 3.5"(H)
LF3-HL-80W-30K-TR	80W	10400LM	3000K	150~250 MH	
LF3-HL-100W-50K-TR	100W	13200LM	5000K	200~400 MH	
LF3-HL-100W-30K-TR	100W	13000LM	3000K	200~400 MH	
LF3-HL-150W-50K-TR	150W	20680LM	5000K	320~400 MH	14-1/8"(L) x 12-5/8"(W) x 3-3/8"(D)
LF3-HL-150W-30K-TR	150W	19700LM	3000K	320~400 MH	
LF3-HL-230W-50K-TR	230W	31000LM	5000K	350~400 MH	18-1/2"(L) x 12-5/8"(W) x 3-1/2"(D)
LF3-HL-230W-30K-TR	230W	30100LM	3000K	350~400 MH	
LF3-HL-300W-50K-TR	300W	39000LM	5000K	1000 MH	18-1/2"(L) x 12-5/8"(W) x 3-1/2"(D)
LF3-HL-300W-30K-TR	300W	37300LM	3000K	1000 MH	

LF3-KN

TECHNICAL SPECIFICATIONS:

- :: Housing: Die-cast aluminum housing with powder coat finish (Dark Bronze or White)
- :: Philips Lumileds Lexeon 3030 high flux LED
- :: TIR optic lens - TYPE II
- :: Cord type: 13" #18 AWG stranded wires
- :: Voltage: 120~277V; 60Hz AC
- :: Operating Temp: -40°F to 104°F
- :: Up to 110 lumens per watt
- :: CRI: 82~84
- :: Beam Angle: 120°X90°
- :: 70,000 hour rated life
- :: 7-year warranty
- :: Suitable for Wet Locations, IP65
- :: Solid state lighting technology for long life, no maintenance needed and high-efficiency

APPLICATIONS:

- :: Ideal for general site lighting, alleys, loading docks, doorway, pathway and parking areas.
- :: Replace existing HID flood lights/ wall packs
- :: Great for use with motion sensors or other instant on/off controls



LF3-15-KN

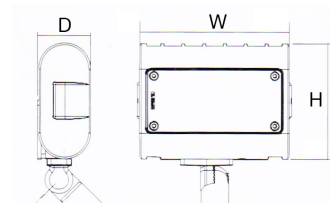


LF3-30-KN



LF3-50-KN

Available in White



LF3 FLOOD LIGHT SERIES WITH 1/2" KNUCKLE

CATALOG NO.		WATTS	LUMENS	COLOR TEMP	REPLACEMENT RANGE	DIMENSIONS
BRONZE	WHITE					
LF3-15CW-KN	LF3-WH-15CW-KN	15W	1600LM	5000K	50~70 MH	4-1/4"(W) x 3-1/7"(H) x 1-1/2"(D) x 2-1/3"(K)
LF3-15WW-KN	LF3-WH-15WW-KN	15W	1500LM	3000K	50~70 MH	
LF3-30CW-KN	LF3-WH-30CW-KN	30W	3500LM	5000K	70~100 MH	6-3/4"(W) x 5-1/8"(H) x 1-3/5"(D) x 3-2/3"(K)
LF3-30WW-KN	LF3-WH-30WW-KN	30W	3400LM	3000K	70~100 MH	
LF3-50CW-KN	LF3-WH-50CW-KN	50W	6000LM	5000K	100~175 MH	8-1/2"(W) x 6"(H) x 1-4/5"(D) x 3-2/3"(K)
LF3-50WW-KN	LF3-WH-50WW-KN	50W	5600LM	3000K	100~175 MH	

LF3-TR



LF3-15-TR



LF3-30-TR



LF3-50-TR



1/2" strain-relief connector for TR series up to 50W

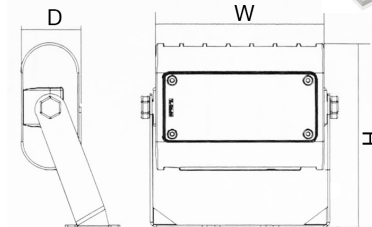
LF THREAD

TECHNICAL SPECIFICATIONS:

- :: Housing: Die-cast aluminum housing with powder coat finish (Dark Bronze or White)
- :: Philips Lumileds Lexeon 3030 high flux LED
- :: TIR optic lens - TYPE II
- :: Cord type: 18" SJTW 18/3 AWG cable
- :: Voltage: 120~277V; 60Hz AC
- :: Operating Temp: -40°F to 104°F
- :: Up to 110 lumens per watt
- :: CRI: 82~84
- :: Beam Angle: 120°X90°
- :: 70,000 hour rated life
- :: 7-year warranty
- :: Suitable for Wet Locations, IP65
- :: Solid state lighting technology for long life, no maintenance needed and high-efficiency

APPLICATIONS:

- :: Ideal for general site lighting, alleys, loading docks, doorway, pathway and parking areas.
- :: Replace existing HID flood lights/ wall packs
- :: Great for use with motion sensors or other instant on/off controls



LF3 FLOOD LIGHT SERIES WITH TRUNNION

CATALOG NO.		WATTS	LUMENS	COLOR TEMP	REPLACEMENT RANGE	DIMENSIONS
BRONZE	WHITE					
LF3-15CW-TR	-	15W	1600LM	5000K	50~70 MH	4-1/4"(W) x 3-1/7"(H) x 1-1/2"(D)
LF3-15WW-TR	-	15W	1500LM	3000K	50~70 MH	4-1/4"(W) x 3-1/7"(H) x 1-1/2"(D)
LF3-30CW-TR	-	30W	3500LM	5000K	70~100 MH	6-3/4"(W) x 5-1/8"(H) x 1-3/5"(D)
LF3-30WW-TR	LF3-WH-30WW-TR	30W	3400LM	3000K	70~100 MH	6-3/4"(W) x 5-1/8"(H) x 1-3/5"(D)
LF3-50CW-TR	-	50W	6000LM	5000K	100~175 MH	8-1/2"(W) x 6"(H) x 1-4/5"(D)
LF3-50WW-TR	-	50W	5600LM	3000K	100~175 MH	8-1/2"(W) x 6"(H) x 1-4/5"(D)
LF-THREAD	1/2" hub adapter for fixtures with trunnion bracket (on fixtures up to 50W)					

LF3-TR

TECHNICAL SPECIFICATIONS:

- :: Housing: Die-cast aluminum housing with powder coat finish (Dark Bronze or White)
- :: Philips Lumileds Lexeon 3030 high flux LED
- :: TIR optic lens - TYPE II (TYPE III & IV see page A55)
- :: Cord type: 6' SJTW 18/3 AWG cable
- :: Voltage: 120~277V; 60Hz AC
- :: Operating Temp: -40°F to 104°F
- :: Up to 110 lumens per watt
- :: CRI: 82~84
- :: Beam Angle: 120°X90°
- :: 70,000 hour rated life
- :: 7-year warranty
- :: Suitable for Wet Locations, IP65
- :: Solid state lighting technology for long life, no maintenance needed and high-efficiency
- :: 1/2" HUB for photocell or sensor installation

APPLICATIONS:

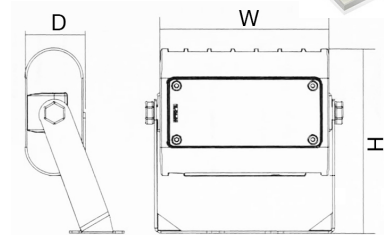
- :: Ideal for general site lighting, alleys, loading docks, doorway, pathway and parking areas.
- :: Replace existing HID flood lights/ wall packs
- :: Great for use with motion sensors or other instant on/off controls



LF3-80-TR
LF3-100-TR
LF3-150-TR



LF3-PK
Photocell Kit for LF3



LF3 FLOOD LIGHT SERIES WITH TRUNNION

CATALOG NO.	WATTS	LUMENS	COLOR TEMP	REPLACEMENT RANGE	DIMENSIONS
LF3-80CW-TR	80W	9800LM	5000K	150~250 MH	12-1/2"(W) x 12-1/2"(H) x 2-1/2"(D)
LF3-80WW-TR	80W	9600LM	3000K	150~250 MH	
LF3-100CW-TR	100W	11500LM	5000K	200~400 MH	
LF3-100WW-TR	100W	10000LM	3000K	200~400 MH	
LF3-150CW-TR	150W	18000LM	5000K	320~400 MH	
LF3-150WW-TR	150W	15500LM	3000K	320~400 MH	
LF3-PK	Photocell Kit for LF3 series, Field installed				

LF3-TR



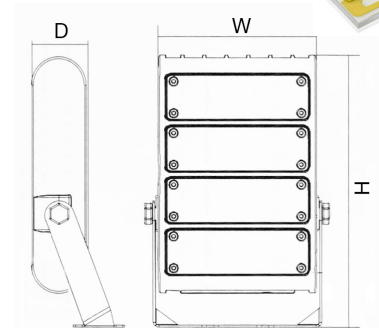
LF3-220-TR
LF3-300-TR

TECHNICAL SPECIFICATIONS:

- :: Housing: Die-cast aluminum housing with powder coat finish (Dark Bronze or White)
- :: Philips Lumileds Lexeon 3030 high flux LED
- :: TIR optic lens - TYPE II (TYPE III & IV see page A55)
- :: Cord type: 6' SJTW 18/3 AWG cable
- :: Voltage: 120~277V; 60Hz AC
- :: Operating Temp: -40°F to 104°F
- :: Up to 110 lumens per watt
- :: CRI: 82~84
- :: Beam Angle: 120°X90°
- :: 70,000 hour rated life
- :: 7-year warranty
- :: Suitable for Wet Locations, IP65
- :: Solid state lighting technology for long life, no maintenance needed and high-efficiency
- :: 1/2" HUB for photocell or sensor installation

APPLICATIONS:

- :: Ideal for general site lighting, alleys, loading docks, doorway, pathway and parking areas.
- :: Replace existing HID flood lights/ wall packs
- :: Great for use with motion sensors or other instant on/off controls



LF3 FLOOD LIGHT SERIES WITH TRUNNION

CATALOG NO.	WATTS	LUMENS	COLOR TEMP	REPLACEMENT RANGE	DIMENSIONS
LF3-220CW-TR	220W	25000LM	5000K	350~400 MH	12-1/2"(W) x 20"(H) x 2-3/4"(D)
LF3-220WW-TR	220W	22000LM	3000K	350~400 MH	
LF3-300CW-TR	300W	33000LM	5000K	1000 MH	
LF3-300WW-TR	300W	30800LM	3000K	1000 MH	
LF3-PK	Photocell Kit for LF3 series, Field installed				

LF3-SF

TECHNICAL SPECIFICATIONS:

- :: Housing: Die-cast aluminum housing with powder coat finish (Dark Bronze)
- :: Installed slip fitter for mounting on mounting tubes (tenon) of max 2-3/4" O.D.
- :: Voltage: 120~277V; 60Hz AC
- :: 0~10V dimming (except 80W)
- :: TIR optic lens - TYPE II (TYPE III & IV see page A55)
- :: Cord type: 13' #18 AWG stranded wires
- :: Power Factor: .9~.97
- :: Operating Temp: -40°F to 104°F
- :: Up to 110 lumens per watt
- :: CRI: 82~84
- :: Beam Angle: 120°X90°
- :: 70,000 hour rated life
- :: 7-year warranty
- :: Suitable for Wet Locations, IP65
- :: 1/2" HUB for photocell or sensor installation

APPLICATIONS:

- :: Ideal for general site lighting, alleys, loading docks, doorway, pathway and parking areas.
- :: Replace existing HID flood lights/ wall packs
- :: Great for use with motion sensors or other instant on/off controls

A19

LF3 SERIES



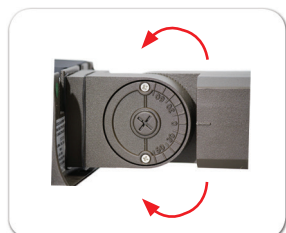
Optional Multi-Level Programmable Motion Sensors See Page A53



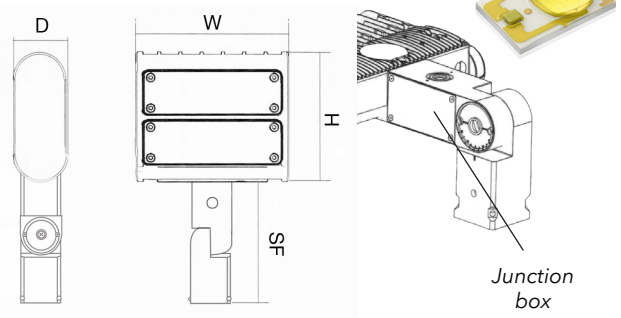
LF3-PK Photocell Kit for LF3



4" square pole adapter with 2-3/8" tenon (see accessories) page A51



Slip fitter adjust 90° above and below center. Fits on up to 2-3/4" O.D. tenons.



LF3 FLOOD LIGHT SERIES WITH SLIP FITTER

CATALOG NO.	WATTS	LUMENS	COLOR TEMP	REPLACEMENT RANGE	DIMENSIONS
LF3-80CW-SF	80W	9800LM	5000K	150~250 MH	12-1/2"(W) x 9-3/4"(H) x 2-1/2"(D) x 12-1/4"(SF)
LF3-80WW-SF	80W	9600LM	3000K	150~250 MH	
LF3-100CW-SF	100W	11500LM	5000K	200~400 MH	
LF3-100WW-SF	100W	10000LM	3000K	200~400 MH	
LF3-150CW-SF	150W	18000LM	5000K	320~400 MH	
LF3-150WW-SF	150W	15500LM	3000K	320~400 MH	
LF3-PK	LF3-PK Photocell Kit for LF3 80W, 100W & 150W Field installed				

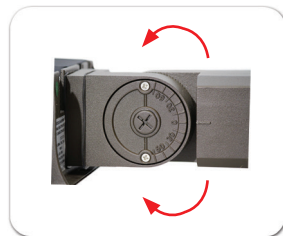
LF3-SF



Optional Multi-Level Programmable Motion Sensors See Page A53



4" square pole adapter with 2-3/8" tenon (see accessories) page A51



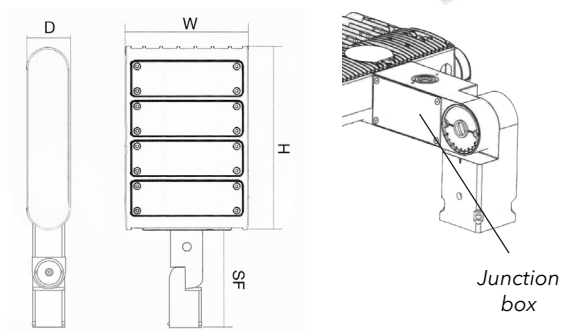
Slip fitter adjust 90° above and below center. Fits on up to 2-3/4" O.D. tenons.

TECHNICAL SPECIFICATIONS:

- :: Housing: Die-cast aluminum housing with powder coat finish (Dark Bronze)
- :: Installed slip fitter for mounting on mounting tubes (tenon) of max 2-3/4" O.D.
- :: Voltage: 120~277V; 60Hz AC
- :: 0~10V dimming (except 80W)
- :: TIR optic lens - TYPE II (TYPE III & IV see page A55)
- :: Cord type: 13" #18 AWG stranded wires
- :: Power Factor: .9~.97
- :: Operating Temp: -40°F to 104°F
- :: Up to 110 lumens per watt
- :: CRI: 82~84
- :: Beam Angle: 120°X90°
- :: 70,000 hour rated life
- :: 7-year warranty
- :: Suitable for Wet Locations, IP65
- :: 1/2" HUB for photocell or sensor installation

APPLICATIONS:

- :: Ideal for general site lighting, alleys, loading docks, doorway, pathway and parking areas.
- :: Replace existing HID flood lights/ wall packs
- :: Great for use with motion sensors or other instant on/off controls



LF3 FLOOD LIGHT SERIES WITH SLIP FITTER

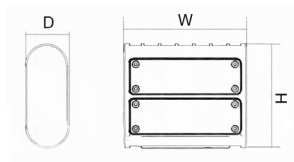
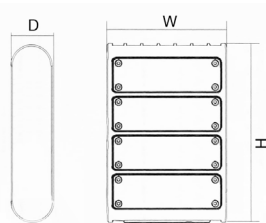
CATALOG NO.	WATTS	LUMENS	COLOR TEMP	REPLACEMENT RANGE	DIMENSIONS
LF3-220CW-SF	220W	25000LM	5000K	350~400 MH	12-1/2"(W) x 17"(H) x 2-3/4"(D) x 12-1/4"(SF)
LF3-220WW-SF	220W	22000LM	3000K	350~400 MH	
LF3-300CW-SF	300W	33000LM	5000K	1000 MH	
LF3-300WW-SF	300W	30800LM	3000K	1000 MH	

LF3 WITH MOUNTING OPTIONS



LF3-220YK
LF3-300YK

LF3-80YK
LF3-100YK
LF3-150YK



TECHNICAL SPECIFICATIONS:

- :: Mounting yoke provided in the package
- :: Housing: Die-cast aluminum housing with powder coat finish (Dark Bronze)
- :: Voltage: 120~277V; 60Hz AC
- :: Cord type: 6" SJTW 18/3 AWG cable
- :: 0~10V dimming (except 80W)
- :: TIR optic lens - TYPE II (TYPE III & IV see page A55)
- :: 6" SJTW 18/3 AWG cable
- :: Power Factor: .9~.97
- :: Operating Temp: -40°F to 104°F
- :: Up to 110 lumens per watt
- :: CRI: 82~84
- :: 70,000 hour rated life
- :: 7-year warranty
- :: Suitable for Wet Locations, IP65

APPLICATIONS:

- :: Ideal for general site lighting, alleys, loading docks, doorway, pathway and parking areas.
- :: Great for use with motion sensors or other instant on/off controls



LF3 FLOOD LIGHT SERIES WITHOUT MOUNTING (120V-277V)

CATALOG NO.	WATTS	LUMENS	COLOR TEMP	REPLACEMENT RANGE	DIMENSIONS
LF3-80CW-YK	80W	9800LM	5000K	150~250 MH	12-1/2"(W) x 9-3/4"(H) x 2-1/2"(D)
LF3-80WW-YK	80W	9600LM	3000K	150~250 MH	
LF3-100CW-YK	100W	11500LM	5000K	200~400 MH	
LF3-100WW-YK	100W	10000LM	3000K	200~400 MH	
LF3-150CW-YK	150W	18000LM	5000K	320~400 MH	12-1/2"(W) x 17"(H) x 2-3/4"(D)
LF3-150WW-YK	150W	15500LM	3000K	320~400 MH	
LF3-220CW-YK	220W	25000LM	5000K	350~400 MH	
LF3-220WW-YK	220W	22000LM	3000K	350~400 MH	
LF3-300CW-YK	300W	33000LM	5000K	1000 MH	1000 MH
LF3-300WW-YK	300W	30800LM	3000K	1000 MH	

LF3-PK

Photocell Kit for LF3 series, Field installed

Optional mounts - Field installed, must be ordered separately



LF3-EXTARM
Extension arm
(4" wide to fit 4" pole)



LF3-STR
Street light arm
(6" long to fit 2"-2-1/2" pipe)



Optional Multi-Level Programmable Motion Sensors
See Page A53



LF3-PK
Photocell Kit for LF3 80W, 100W & 150W
Field installed



LF3-YOK
Included in the box
Not used when other mounting options ordered

Ordering example: LF3-220CW-YK + LF3-EXTARM

LF3-480V



LF3-220-480V-YK
LF3-300-480V-YK



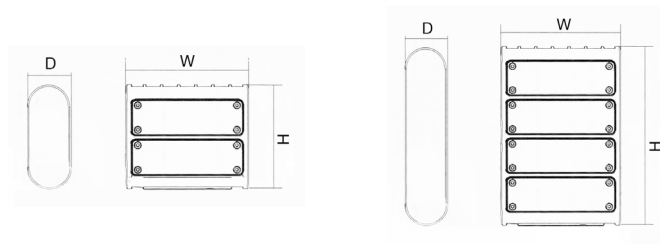
LF3-150-480V-YK

TECHNICAL SPECIFICATIONS:

- :: Mounting yoke included in the package not mounted
- :: Housing: Die-cast aluminum housing with powder coat finish (Dark Bronze)
- :: Voltage: 347~480V
- :: 0~10V dimming
- :: TIR optic lens - TYPE II (TYPE III & IV see page A55)
- :: Cord type: 6" SJTW 18/3 AWG cable
- :: Power Factor: .9~.97
- :: Operating Temp: -40°F to 104°F
- :: Up to 110 lumens per watt
- :: CRI: 82~84
- :: 70,000 hour rated life
- :: 7-year warranty
- :: Suitable for Wet Locations, IP65

APPLICATIONS:

- :: Ideal for general site lighting, alleys, loading docks, doorway, pathway and parking areas.
- :: Great for use with motion sensors or other instant on/off controls



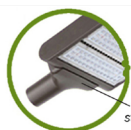
LF3 FLOOD LIGHT SERIES WITH MOUNTING OPTIONS (347V-480V)

CATALOG NO.	WATTS	LUMENS	COLOR TEMP	REPLACEMENT RANGE	DIMENSIONS
LF3-150CW-480V-YK	150W	18000LM	5000K	320~400 MH	12-1/2"(W) x 9-3/4"(H) x 2-1/2"(D)
LF3-220CW-480V-YK	220W	25000LM	5000K	350~400 MH	12-1/2"(W) x 17"(H) x 2-3/4"(D)
LF3-300CW-480V-YK	300W	34017LM	5000K	1000 MH	

Optional mounts - Field installed, must be ordered separately



LF3-EXTARM
Extension arm
(4" wide to fit 4" pole)



LF3-STR
Street light arm
(6" long to fit 2"-2-1/2" pipe)



LF3-SF
Slip Fitter
(12-1/4" long to fit 2"-2-1/2" pipe)

LF3-YOK

Included in the box

Not used when other mounting options ordered



Ordering example: LF3-220CW-480V-YK + LF3-EXTARM

LF3-EXTARM

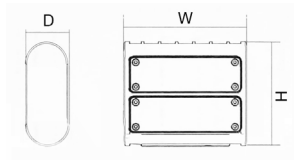
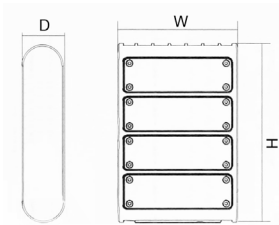
A23
LF3 SERIES



LF3-220-EXTARM
LF3-300-EXTARM



LF3-80-EXTARM
LF3-100-EXTARM
LF3-150-EXTARM



TECHNICAL SPECIFICATIONS:

- :: Housing: Die-cast aluminum housing with powder coat finish (Dark Bronze)
- :: Voltage: 120~277V; 60Hz AC
- :: Cord type: 6" SJTW 18/3 AWG cable
- :: 0~10V dimming (except 80W)
- :: TIR optic lens - TYPE II (TYPE III & IV see page A55)
- :: Cord type: 13" #18 AWG stranded wires
- :: Power Factor: .9~.97
- :: Operating Temp: -40°F to 104°F
- :: Up to 110 lumens per watt
- :: CRI: 82~84
- :: 70,000 hour rated life
- :: 7-year warranty
- :: Suitable for Wet Locations, IP65

APPLICATIONS:

- :: Ideal for general site lighting, alleys, loading docks, doorway, pathway and parking areas.
- :: Great for use with motion sensors or other instant on/off controls



LF3 FLOOD LIGHT SERIES WITH EXTENSION ARM (120V-277V)

CATALOG NO.	WATTS	LUMENS	COLOR TEMP	REPLACEMENT RANGE	DIMENSIONS
LF3-80CW-EXTARM	80W	9800LM	5000K	150~250 MH	12-1/2"(W) x 9-3/4"(H) x 2-1/2"(D)
LF3-80WW-EXTARM	80W	9600LM	3000K	150~250 MH	
LF3-100CW-EXTARM	100W	11500LM	5000K	200~400 MH	
LF3-100WW-EXTARM	100W	10000LM	3000K	200~400 MH	
LF3-150CW-EXTARM	150W	18000LM	5000K	320~400 MH	
LF3-150WW-EXTARM	150W	15500LM	3000K	320~400 MH	12-1/2"(W) x 17"(H) x 2-3/4"(D)
LF3-220CW-EXTARM	220W	25000LM	5000K	350~400 MH	
LF3-220WW-EXTARM	220W	22000LM	3000K	350~400 MH	
LF3-300CW-EXTARM	300W	33000LM	5000K	1000 MH	
LF3-300WW-EXTARM	300W	30800LM	3000K	1000 MH	
LF3-PK	Photocell Kit for LF3 series, Field installed				



LF3-PK
Photocell Kit for
LF3 80W, 100W & 150W
Field installed



Optional Multi-Level
Programmable Motion Sensors
See Page A53

LF3-EXTARM-480V



LF3-220-480V-EXTARM
LF3-300-480V-EXTARM



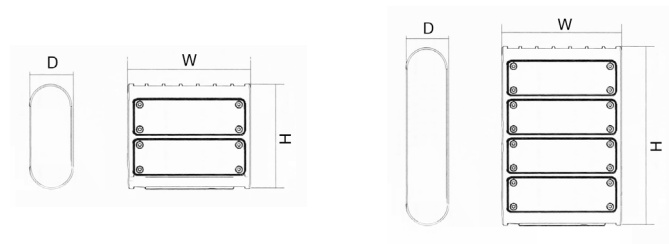
LF3-150-480V-EXTARM

TECHNICAL SPECIFICATIONS:

- :: Housing: Die-cast aluminum housing with powder coat finish (Dark Bronze)
- :: Voltage: 347~480V
- :: 0~10V dimming
- :: TIR optic lens - TYPE II (TYPE III & IV see page A55)
- :: Cord type: 13" #18 AWG stranded wires
- :: Power Factor: .9~.97
- :: Operating Temp: -40°F to 104°F
- :: Up to 110 lumens per watt
- :: CRI: 82~84
- :: 70,000 hour rated life
- :: 7-year warranty
- :: Suitable for Wet Locations, IP65

APPLICATIONS:

- :: Ideal for general site lighting, alleys, loading docks, doorway, pathway and parking areas.
- :: Great for use with motion sensors or other instant on/off controls



LF3 FLOOD LIGHT SERIES WITH EXTENSION ARM(347V-480V)

CATALOG NO.	WATTS	LUMENS	COLOR TEMP	REPLACEMENT RANGE	DIMENSIONS
LF3-150CW-480V-EXTARM	150W	18000LM	5000K	320~400 MH	12-1/2"(W) x 9-3/4"(H) x 2-1/2"(D)
LF3-220CW-480V-EXTARM	220W	25000LM	5000K	350~400 MH	12-1/2"(W) x 17"(H) x 2-3/4"(D)
LF3-300CW-480V-EXTARM	300W	33000LM	5000K	1000 MH	

LF4-KN

TECHNICAL SPECIFICATIONS:

- :: Housing: Die-cast aluminum housing with powder coat finish (Dark Bronze)
- :: Voltage: 120~277V; 60Hz AC
- :: TIR optic lens - TYPE II
- :: Cord type: 13" #18 AWG stranded wires
- :: Power Factor: .9~.97
- :: Operating Temp: -40°F to 104°F
- :: Up to 110 lumens per watt
- :: CRI: 82~84
- :: 70,000 hour rated life
- :: 7-year warranty
- :: Suitable for Wet Locations, IP65

APPLICATIONS:

- :: Ideal for general site lighting, alleys, loading docks, doorway, pathway and parking areas.
- :: Great for use with motion sensors or other instant on/off controls



LF4-12W-KN

LF4-30W-KN



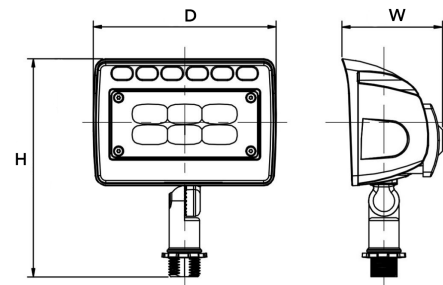
LF4-50W-KN



BACK VIEW



Shown with Optional Shroud
See Page A51



LF4 ARCHITECTURAL SERIES WITH 1/2" ADJUSTABLE KNUCKLE (120V-277V)

CATALOG NO.	WATTS	LUMENS	COLOR TEMP	REPLACEMENT RANGE	DIMENSIONS
LF4-12CW-KN	12W	1300LM	5000K	50~70 MH	5.6"(H) x 2-5/8"(W) x 4-3/4"(D)
LF4-12WW-KN	12W	1200LM	3000K	50~70 MH	
LF4-30CW-KN	30W	3300LM	5000K	70~100 MH	4.7"(H) x 3-1/8"(W) x 6-7/8"(D)
LF4-30WW-KN	30W	3100LM	3000K	70~100 MH	
LF4-50CW-KN	50W	5600LM	5000K	100~175 MH	9.4"(H) x 3-1/2"(W) x 8-5/8"(D)
LF4-50WW-KN	50W	5400LM	3000K	100~175 MH	

LF4-TR



LF4-80W-TR
LF4-100W-TR



LF4-12W-TR



LF4-30W-TR



LF4-150W-TR



LF4-50W-TR



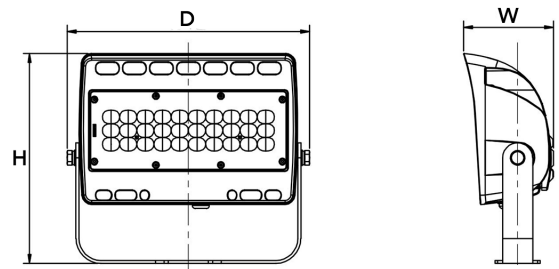
Shown with Optional Shroud
See Page A51

TECHNICAL SPECIFICATIONS:

- :: Housing: Die-cast aluminum housing with powder coat finish (Dark Bronze)
- :: Voltage: 120~277V
- :: 0~10V dimming (except 80W)
- :: TIR optic lens - TYPE II
- :: Cord type: 18" SJTW 18/3 AWG cable
- :: Power Factor: .9~.97
- :: Operating Temp: -40°F to 104°F
- :: Up to 110 lumens per watt
- :: CRI: 82~84
- :: 70,000 hour rated life
- :: 7-year warranty
- :: Suitable for Wet Locations, IP65

APPLICATIONS:

- :: Ideal for general site lighting, alleys, loading docks, doorway, pathway and parking areas.
- :: Great for use with motion sensors or other instant on/off controls



LF4 ARCHITECTURAL SERIES WITH TRUNNION (120V-277V)

CATALOG NO.	WATTS	LUMENS	COLOR TEMP	REPLACEMENT RANGE	DIMENSIONS
LF4-12CW-TR	12W	1300LM	5000K	50~70 MH	4.9"(H) x 2-5/8"(W) x 4-3/4"(D)
LF4-12WW-TR	12W	1200LM	3000K	50~70 MH	
LF4-30CW-TR	30W	3300LM	5000K	70~100 MH	7.2"(H) x 3-1/8"(W) x 6-7/8"(D)
LF4-30WW-TR	30W	3100LM	3000K	70~100 MH	
LF4-50CW-TR	50W	5600LM	5000K	100~175 MH	8.2"(H) x 3-1/2"(W) x 8-5/8"(D)
LF4-50WW-TR	50W	5400LM	3000K	100~175 MH	
LF4-80CW-TR	80W	9500LM	5000K	100~175 MH	
LF4-80WW-TR	80W	9500LM	3000K	100~175 MH	16.4"(H) x 4-1/8"(W) x 11"(D)
LF4-100CW-TR	100W	11200LM	5000K	150~250 MH	
LF4-100WW-TR	100W	11200LM	3000K	150~250 MH	
LF4-150CW-TR	150W	17000LM	5000K	200~400 MH	
LF4-150WW-TR	150W	17000LM	3000K	200~400 MH	12.4"(H) x 4-1/8"(W) x 11"(D)

LF4-SF

A27

LF4 SERIES



LF4-80W-SF
LF4-100W-SF



LF4-150W-SF



BACK VIEW



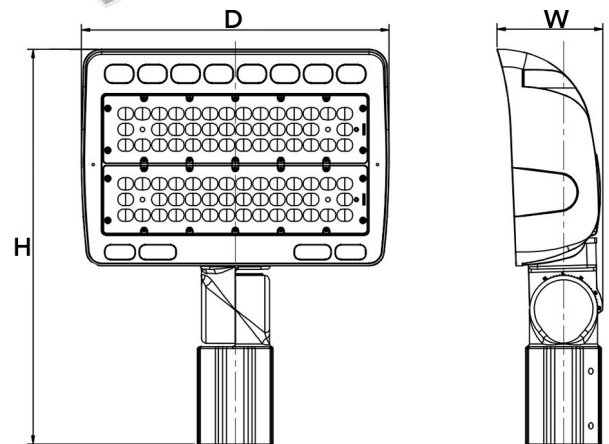
Shown with Optional Shroud
See Page A51

TECHNICAL SPECIFICATIONS:

- :: Housing: Die-cast aluminum housing with powder coat finish (Dark Bronze)
- :: Voltage: 120~277V; 60Hz AC
- :: 0~10V dimming
- :: TIR optic lens - TYPE II
- :: Cord type: 13" #18 AWG stranded wires
- :: Power Factor: .9~.97
- :: Operating Temp: -40°F to 104°F
- :: Up to 110 lumens per watt
- :: CRI: 82~84
- :: 70,000 hour rated life
- :: 7-year warranty
- :: Suitable for Wet Locations, IP65

APPLICATIONS:

- :: Ideal for general site lighting, alleys, loading docks, doorway, pathway and parking areas.
- :: Great for use with motion sensors or other instant on/off controls



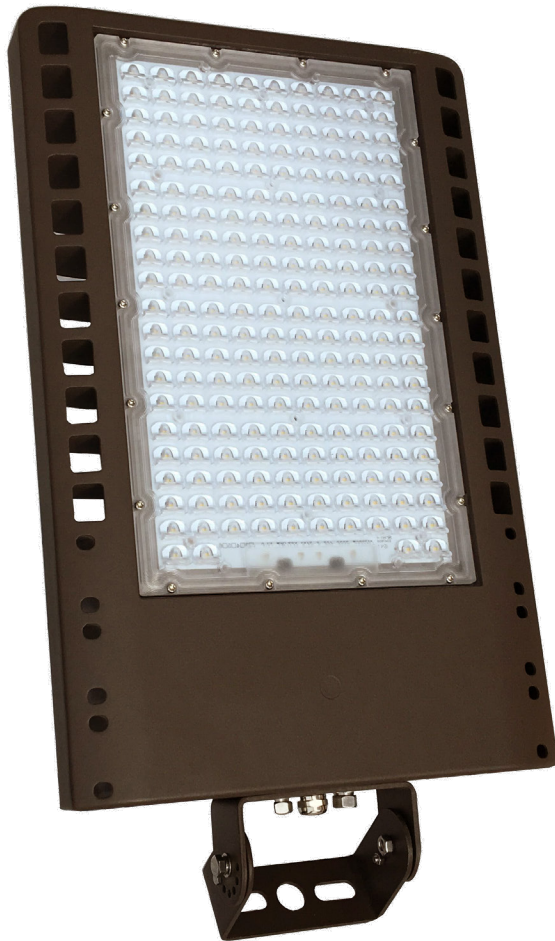
LF4 ARCHITECTURAL SERIES WITH SLIP FITTER (120V-277V)

CATALOG NO.	WATTS	LUMENS	COLOR TEMP	REPLACEMENT RANGE	DIMENSIONS
LF4-80CW-SF	80W	9500LM	5000K	150~250 MH	11.8"(H) x 4-1/8"(W) x 11"(D)
LF4-80WW-SF	80W	9500LM	3000K	150~250 MH	
LF4-100CW-SF	100W	11200LM	5000K	200~400 MH	
LF4-100WW-SF	100W	11200LM	3000K	200~400 MH	
LF4-150CW-SF	150W	17000LM	5000K	320~400 MH	17"(H) x 4-1/2"(W) x 13-1/4"(D)
LF4-150WW-SF	150W	17000LM	3000K	320~400 MH	

LF5

380W

120~277V & 480V

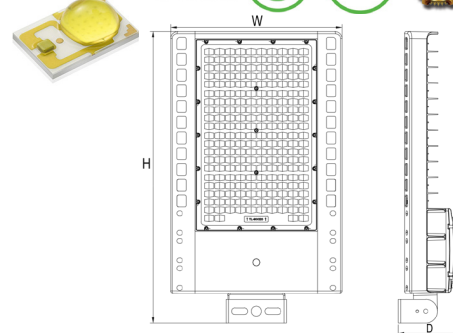


TECHNICAL SPECIFICATIONS:

- :: Housing: Die-cast aluminum housing with powder coat finish (Dark Bronze)
- :: Mounting Yoke provided in the package
- :: Voltage: 120~277V & 347~480V
- :: 0~10V dimming
- :: TIR optic lens - TYPE III (TYPE II & IV by request)
- :: Cord type: 6" SJTW 18/3 AWG cable
- :: Power Factor: .9~.97
- :: Operating Temp: -40°F to 104°F
- :: Up to 110 lumens per watt
- :: CRI: 82~84
- :: 70,000 hour rated life
- :: 7-year warranty
- :: Suitable for Wet Locations, IP65

APPLICATIONS:

- :: Ideal for general site lighting, alleys, loading docks, doorway, pathway and parking areas.
- :: Great for use with motion sensors or other instant on/off controls



LF5 SERIES WITH MOUNTING OPTIONS

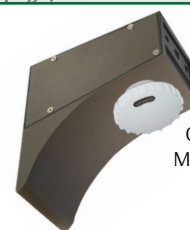
CATALOG NO.	WATTS	LUMENS	COLOR TEMP	REPLACEMENT RANGE	VOLTAGE	DIMENSIONS
LF5-380CW-YK	380W	46000LM	5000K	1000~1200 MH	120-277V	21.7"(H) x 14.2"(W) x 4.7"(D)
LF5-380CW-480V	380W	46000LM	5000K	1000~1200 MH	347-480V	
LF-AD-SF	Slips onto pole top 2" Dim. Fixture mounts directly on the side or top of this device					
LF5-EXTARM	Used to mount fixture directly on side of square poles. Discard mounting yoke when this mounting is used. For round poles use PSR4 adapter (see accessories page).					



LF-AD-SF
Slip Fitter Adapter



LF5-EXTARM
Extension Arm Adapter
for Wall or Pole mounting



Optional Field Installed
Multi-Level Programmable
Motion Sensor
See Page A53

LOHB

WALL WASH / SIGN / SUSPENDED

TECHNICAL SPECIFICATIONS:

- :: Ideal for Wall Wash, Sign, Suspended Outdoor/ Indoor Lighting
- :: Housing: Die-cast aluminum housing with black powder coat
- :: Voltage: 120~277V; 60Hz AC
- :: 0~10V dimming (120W only)
- :: Power Factor: .9~.97
- :: Beam Angle: 90°
- :: Operating Temp: -40°F to 104°F
- :: CRI: >80
- :: 70,000 hour rated life
- :: 7-year warranty
- :: Suitable for Wet Locations, IP65

APPLICATIONS:

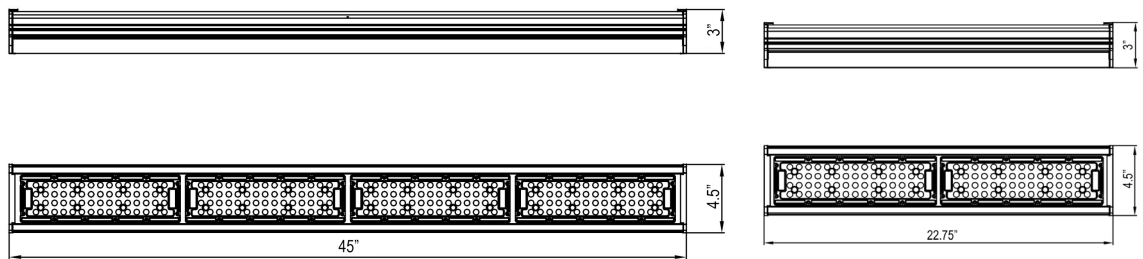
- :: Ideal for indoor or outdoor highbay lighting, small stadium and tracks, sign lighting.



Mounting options on opposite page



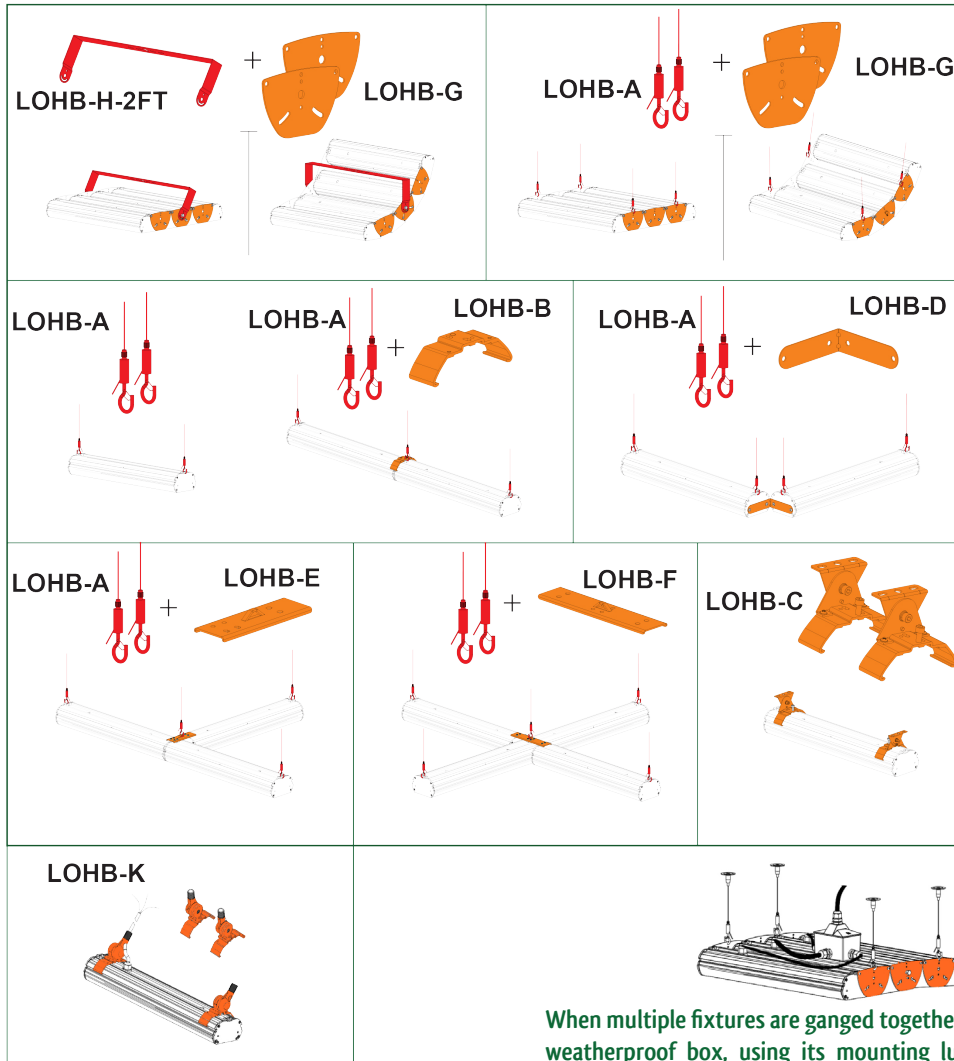
Shown as a Sign/Wall Wash Light with Shroud & LOHB-K & WE167



LED OUTDOOR HIGHBAY / AREA / SIGN LIGHTS (120V-277V)

CATALOG NO.	WATTS	LUMENS	COLOR TEMP	REPLACEMENT RANGE	DIMENSIONS
LOHB-2FT-50W-30K	50W	6700LM	3000K	150~250 MH	22.75"(L) x 3"(H) x 4.5"(W)
LOHB-2FT-50W-50K	50W	6500LM	5000K	150~250 MH	
LOHB-4FT-120W-30K	120W	15000LM	3000K	200~400 MH	45"(L) x 3"(H) x 4.5"(W)
LOHB-4FT-120W-50K	120W	15000LM	5000K	200~400 MH	
LOHB-SH-2FT			Shroud for LOHB-2FT		
LOHB-SH-4FT			Shroud for LOHB-4FT		

LOHB MOUNTING ACCESSORIES



When multiple fixtures are ganged together, install a 1-Gang weatherproof box, using its mounting lugs, on the back channels of one of the fixtures. Use cord-grip connectors to connect the cables from all fixtures inside the box. (Box & Connectors not Included)

A30

LOHB MOUNTING ACCESSORIES

LOHB MOUNTING ACCESSORIES

CATALOG NO.	DESCRIPTION
LOHB-A	3.3 Ft. Adjustable Aircraft Suspension Cables with hooks and 2.5" round ceiling mounting plate (set of 2)
LOHB-B	Tandem Coupling Bracket, Die-cast Aluminum
LOHB-C	Surface Mounting Brackets, Adjustable angle (set of 2), Die-cast Aluminum
LOHB-D	"L" Bracket, Stainless Steel
LOHB-E	"T" Mounting Bracket, Stainless Steel
LOHB-F	"X" Mounting Bracket, Stainless Steel
LOHB-G	Side by Side Fixture Coupling Brackets (set of 2), allows curve installation, Stainless Steel
LOHB-H-2FT	2Ft. Mounting Bracket, Hot-Rolled Steel
LOHB-K	1/2" NPT Threaded-Knuckle Adapter (set of 2)

FLD2

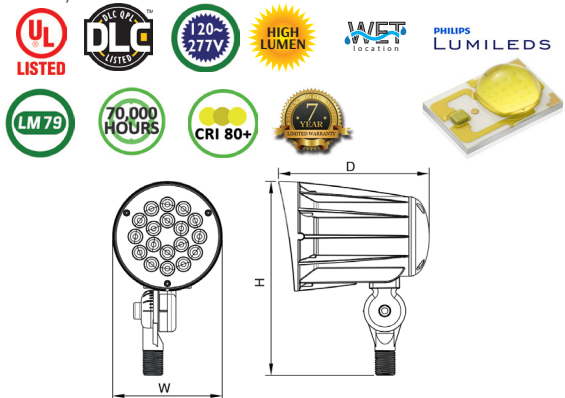
120~277V

TECHNICAL SPECIFICATIONS:

- :: Westgate's powerful bullets
- :: LED: Philips LUMILEDS
- :: Optical Lens: High transmittance PC, anti-UV and fire resistant
- :: Cord type: 13" #18 AWG stranded wires
- :: 60° beam angle
- :: Housing: Cast aluminum with powder coat finish (Bronze)
- :: Mounting: 1/2" NPT knuckle
- :: Voltage: 120~277V AC, 50/60Hz
- :: Operating Temp: -40°F to 104°F
- :: CRI: >80
- :: Power Factor: >0.9
- :: Maintenance free
- :: 70,000 hour rated life
- :: 7-year warranty
- :: Suitable for Wet Locations, IP65

APPLICATIONS:

- :: Ideal for general site lighting, alleys, loading docks, doorway, pathway and parking areas.
- :: Replace existing HID flood lights/ wall packs
- :: Great for use with motion sensors or other instant on/off controls



FLD2-15-KN



FLD2-28-KN



FLD2-42-KN



FLD2-50-KN

See page A51 for shrouds



LED BULLET FLOOD LIGHTS WITH KNUCKLE

CATALOG NO.	WATTS	LUMENS	COLOR TEMP	REPLACEMENT RANGE	DIMENSIONS
FLD2-15CW-KN	15W	1650LM	5000K	50~70 MH	3"(W) x 5-1/2"(H) x 4-1/4"(D)
FLD2-15WW-KN	15W	1530LM	3000K	50~70 MH	3"(W) x 5-1/2"(H) x 4-1/4"(D)
FLD2-28CW-KN	28W	3000LM	5000K	70~100 MH	4"(W) x 7-1/2"(H) x 5-3/4"(D)
FLD2-28WW-KN	28W	2760LM	3000K	70~100 MH	4"(W) x 7-1/2"(H) x 5-3/4"(D)
FLD2-42CW-KN	42W	4500LM	5000K	100~175 MH	4-1/2"(W) x 8"(H) x 6-1/4"(D)
FLD2-42WW-KN	42W	4200LM	3000K	100~175 MH	4-1/2"(W) x 8"(H) x 6-1/4"(D)
FLD2-50CW-KN	50W	5200LM	5000K	175~225 MH	5.4"(W) x 8.8"(H) x 8.14"(D)
FLD2-50WW-KN	50W	5000LM	3000K	175~225 MH	5.4"(W) x 8.8"(H) x 8.14"(D)

A31

LED BULLET FLOOD LIGHTS WITH KNUCKLE

FLD2

120~277V

TECHNICAL SPECIFICATIONS:

- :: Westgate's powerful bullets
- :: LED: Philips LUMILEDS
- :: Optical Lens: High transmittance PC, anti-UV and fire resistant
- :: Cord type: 18" SJTW 18/3 AWG cable
- :: 60° beam angle
- :: Housing: Cast aluminum with powder coat finish (Bronze)
- :: 1/2" hole on bracket for mounting with LF-THREAD (see accessories) or other strain-relief connectors
- :: Voltage: 120~277V AC, 50/60Hz
- :: Operating Temp: -40°F to 104°F
- :: CRI: >80
- :: Power Factor: >0.9
- :: Maintenance free
- :: 70,000 hour rated life
- :: 7-year warranty
- :: Suitable for Wet Locations, IP65

APPLICATIONS:

- :: Ideal for general site lighting, alleys, loading docks, doorway, pathway and parking areas.
- :: Replace existing HID flood lights/ wall packs
- :: Great for use with motion sensors or other instant on/off controls



A32

LED BULLET FLOOD LIGHTS WITH TRUNNION

LED BULLET FLOOD LIGHTS WITH TRUNNION

CATALOG NO.	WATTS	LUMENS	COLOR TEMP	REPLACEMENT RANGE	DIMENSIONS
FLD2-15CW-TR	15W	1650LM	5000K	50~70 MH	3"(W) x 5-1/2"(H) x 4-1/4"(D)
FLD2-15WW-TR	15W	1530LM	3000K	50~70 MH	3"(W) x 5-1/2"(H) x 4-1/4"(D)
FLD2-28CW-TR	28W	3000LM	5000K	70~100 MH	4"(W) x 7-1/2"(H) x 5-3/4"(D)
FLD2-28WW-TR	28W	2760LM	3000K	70~100 MH	4"(W) x 7-1/2"(H) x 5-3/4"(D)
FLD2-42CW-TR	42W	4500LM	5000K	100~175 MH	4-1/2"(W) x 8"(H) x 6-1/4"(D)
FLD2-42WW-TR	42W	4200LM	3000K	100~175 MH	4-1/2"(W) x 8"(H) x 6-1/4"(D)
FLD2-50CW-TR	50W	5200LM	5000K	175~225 MH	5.4"(W) x 8.8"(H) x 8.14"(D)
FLD2-50WW-TR	50W	5000LM	3000K	175~225 MH	5.4"(W) x 8.8"(H) x 8.14"(D)

FLS

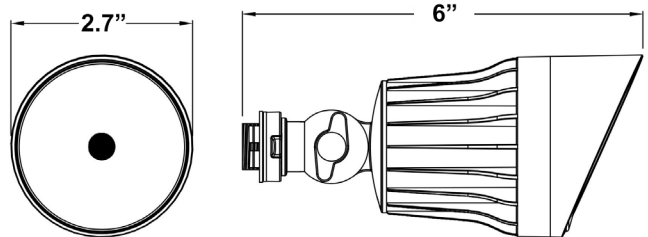
120V

TECHNICAL SPECIFICATIONS:

- :: Die-cast aluminum with powder coat finish
- :: Cover type: Transparent PC
- :: White Reflector
- :: Driver: Non-dimmable driver
- :: Cord type: 13" #18 AWG stranded wires
- :: Power: 10W
- :: Lumens: 950LM
- :: Light Efficiency: 95LM/W
- :: Voltage: 100~130V, 50/60Hz
- :: CRI: >80
- :: Source: COB
- :: Beam Angle: 100°
- :: IP Rating: Wet Location
- :: Rotating directional hood
- :: 70,000 hour rated life
- :: Suitable for Wet Locations, IP65
- :: 7-year warranty

APPLICATIONS:

- :: A modern replacement for weatherproof PAR38 lamp holders and 100W quartz fixtures



120V LED WEATHERPROOF FLOOD HEADS

CATALOG NO.	WATTS	LUMENS	COLOR TEMP	FINISH	DIMENSIONS
FLS-10W-30K-BR	10W	950LM	3000K	Bronze	6"(L) x 2.7"(D)
FLS-10W-50K-BR	10W	950LM	5000K	Bronze	
FLS-10W-30K-WH	10W	950LM	3000K	White	
FLS-10W-50K-WH	10W	950LM	5000K	White	

A33
120V LED FLOOD HEAD

WMC



Bronze Finish
(Up/Down Light)



Brushed Nickel Finish
(Up/Down Light)



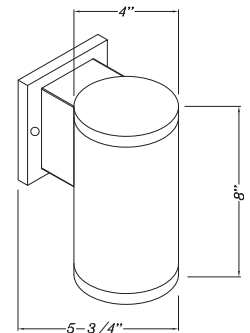
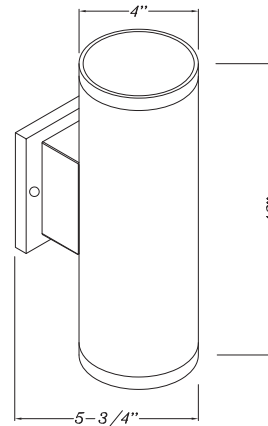
Bronze Finish
(Down Light)



Brushed Nickel Finish
(Down Light)

TECHNICAL SPECIFICATIONS:

- :: Outdoor Wall Cylinders
- :: Housing: Die-cast aluminum
- :: Finish: Bronze & Brushed Nickel
- :: LED: COB technology with prismatic reflector and frosted lens
- :: TRIAC Dimming
- :: Input voltage: 120V
- :: Wattage: 15W (Down light); 20W (Up/Down light, 10W per end)
- :: Color Temperatures: 3000K, 5000K
- :: Beam angle: 40° for each side
- :: CRI: >80
- :: 70,000 hour rated life
- :: IP65, providing a reliable weather-tight seal
- :: 7-year warranty



LED WALL MOUNT CYLINDER LIGHTS

CATALOG NO.	DESCRIPTION	WATTS	LUMENS	COLOR TEMP	DIMENSIONS
WMC-DL-15W-30K-BR	Down light	15W	1144LM	3000K	4" x 8" x 5-3/4"
WMC-DL-15W-50K-BR	Down light	15W	1144LM	5000K	
WMC-UDL-20W-30K-BR	Up/Down light	20W	1667LM	3000K	4" x 12" x 5-3/4"
WMC-UDL-20W-50K-BR	Up/Down light	20W	1667LM	5000K	
WMC-DL-15W-30K-BN	Down light	15W	1144LM	3000K	4" x 8" x 5-3/4"
WMC-DL-15W-50K-BN	Down light	15W	1144LM	5000K	
WMC-UDL-20W-30K-BN	Up/Down light	20W	1667LM	3000K	4" x 12" x 5-3/4"
WMC-UDL-20W-50K-BN	Up/Down light	20W	1667LM	5000K	

WMS

A35

LED STEP LIGHTS



Available in White



Bottom View



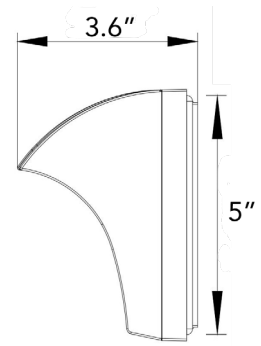
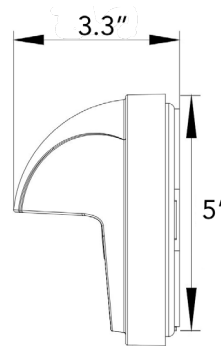
Optional Posts see page A28

TECHNICAL SPECIFICATIONS:

- :: Die-cast aluminum with powder coat finish (Dark Bronze or White), optimized for LED
- :: Polycarbonate front housing and prismatic lens provide vandal resistance
- :: Four 1/2" HUB
- :: LED: Philips Lumileds LEDs
- :: Voltage: 100~277V AC, 50/60Hz
- :: CRI: >80
- :: Beam Angle: 110°X65°
- :: Power Factor: 95%
- :: Operating Temp: -40°F to 104°F
- :: 70,000 hour rated life
- :: 7-year warranty
- :: Suitable for Wet Locations, IP54

APPLICATIONS:

- :: Ideal for general site lighting, alleys, loading docks, doorway, pathway and parking areas.



LED WALL/STEP LIGHTS

CATALOG NO.		WATTS	LUMENS	COLOR TEMP	SHAPE
BRONZE	WHITE				
WMS-S-50K-BR	WMS-S-50K-WH	6W	660LM	5000K	SQUARE
WMS-S-30K-BR	WMS-S-30K-WH	6W	630LM	3000K	
WMS-R-50K-BR	WMS-R-50K-WH	6W	660LM	5000K	ROUND
WMS-R-30K-BR	WMS-R-30K-WH	6W	630LM	3000K	

WMS-POST

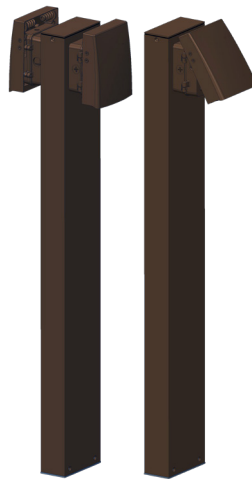
FIXTURES NOT INCLUDED



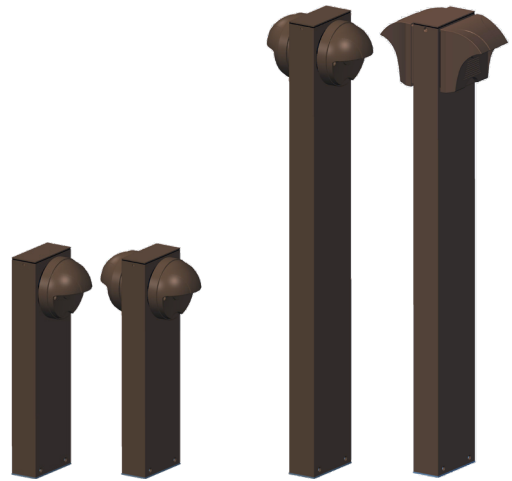
WMS-POST1-18
WMS-POST2-18



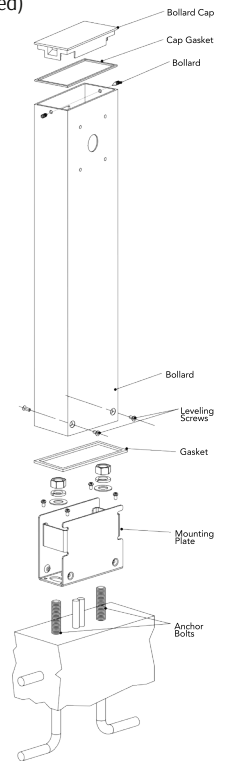
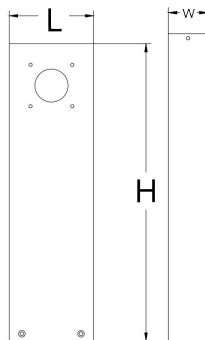
WMS-POST1-36
WMS-POST2-36



Mounting Options
Shown with LWA-12W
(Fixtures not included)



Mounting Options
Shown with WMS series
(Fixtures not included)



A36

LED STEP LIGHTS

LED WALL/STEP LIGHTS

CATALOG NO.	DESCRIPTION	DIMENSIONS
WMS-POST1-18	18" One side post for WMS & LWA-12W series, Dark Bronze Finish	18"(H) x 5"(L) x 2.3"(W)
WMS-POST2-18*	18" Two side post for WMS & LWA-12W series, Dark Bronze Finish	18"(H) x 5"(L) x 2.3"(W)
WMS-POST1-36	36" One side post for WMS & LWA-12W series, Dark Bronze Finish	36"(H) x 5"(L) x 2.3"(W)
WMS-POST2-36*	36" Two side post for WMS & LWA-12W series, Dark Bronze Finish	36"(H) x 5"(L) x 2.3"(W)

* Double sided posts have blank plate and gasket to cover one side

LR2

A37

LED YARD AND ROADWAY LIGHTS



LR2-50CW-P



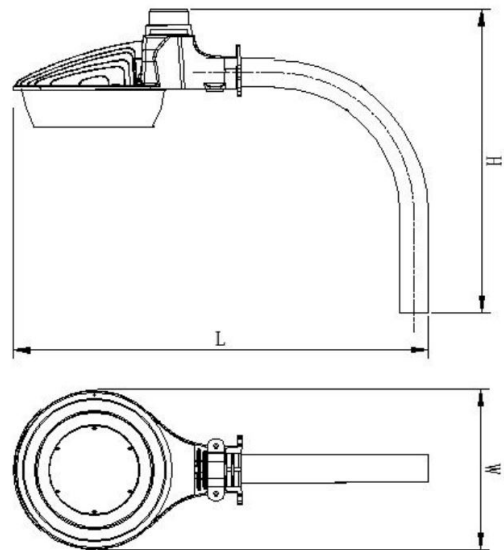
LR2-80CW-P
LR2-120CW-P

TECHNICAL SPECIFICATIONS:

- :: Die-cast aluminum with powder coat finish (Dark Bronze)
- :: 90° EMT Arm and Wall Bracket included
- :: Polycarbonate lens
- :: LED: Philips Lumileds LEDs
- :: Driver located in isolated compartment for improved thermal management
- :: Beam Angel: 103° (50W), 90° (80W & 120W)
- :: Twist lock, UL listed dusk-to-dawn photocell
- :: CRI: >80
- :: 70,000 hour rated life
- :: 7-year warranty
- :: Suitable for Wet Locations, IP65



DIMMING
0-10V
Except 50W



LED YARD/ROADWAY LIGHTS WITH NEMA TWIST-LOCK PHOTOCELL

CATALOG NO.	WATTS	LUMENS	COLOR TEMP	BEAM ANGLE	REPLACEMENT RANGE	DIMENSIONS
LR2-50CW-P	50W	5050LM	5000K	103°	100-175 MH	24"(L) x 9.5"(W) x 21 1/4"(H)
LR2-80CW-P	80W	9500LM	5000K	90°	250-300 MH	24"(L) x 11"(W) x 21 1/4"(H)
LR2-120CW-P	120W	14000LM	5000K	90°	320-400 MH	

LR-ECO



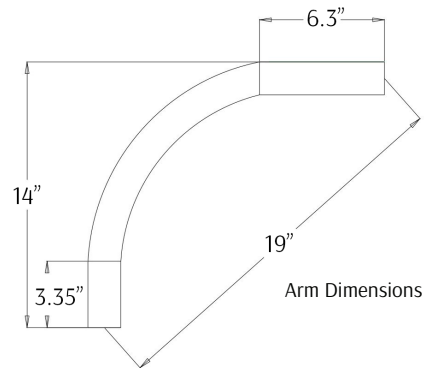
with Photocell



LR-ECO-ARM
Optional 90° Arm

TECHNICAL SPECIFICATIONS:

- :: Die-cast aluminum with powder coat finish (Dark Bronze)
- :: Optional 90° Arm
- :: Polycarbonate lens
- :: Driver located in isolated compartment for improved thermal management
- :: Beam Angel: 90°
- :: UL listed photocell
- :: CRI: >80
- :: 50,000 hour rated life
- :: 7-year warranty
- :: Suitable for Wet Locations, IP65



LED BARN LIGHTS WITH PHOTOCELL

CATALOG NO.	WATTS	LUMENS	COLOR TEMP	BEAM ANGLE	REPLACEMENT RANGE	DIMENSIONS
LR-ECO-20W-50K-P	20W	2400LM	5000K	90°	70-100 MH	10.5"(L) x 7"(W) x 5.6"(H)
LR-ECO-20W-30K-P	20W	2400LM	3000K	90°	70-100 MH	
LR-ECO-ARM			90° Arm for LR-ECO series			

LGP

A39

LED GARDEN/SIDE WALK LIGHTS

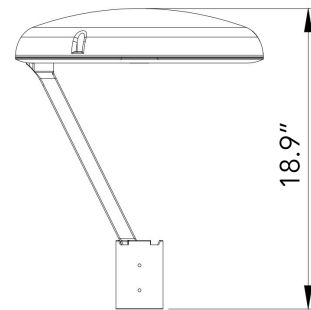


TECHNICAL SPECIFICATIONS:

- :: ADC12 Aluminum heat sink, outdoor powder coated
- :: Optical Lens: High transmittance PC, Anti-UV & Fire resistant
- :: Cord type: 4' SJTW 18/3 AWG cable
- :: LED: Philips Lumileds LEDs
- :: Voltage: 100~277V AC, 50/60Hz
- :: Optional photocell (add "-P")
- :: CRI: >70
- :: Beam Angle: 90°
- :: Power Factor: 95%
- :: Operating Temp: -40°F to 104°F
- :: 70,000 hour rated life
- :: Suitable for Wet Locations, IP65
- :: 7-year warranty

APPLICATIONS:

- :: Ideal for general site lighting, alleys, loading docks, doorway, pathway and parking areas.
- :: Great for use with photocell



LED GARDEN/SIDE WALK LIGHTS

CATALOG NO.	WATTS	LUMENS	COLOR TEMP	REPLACEMENT RANGE	DIMENSIONS
LGP-42W-50K	42W	5000LM	5000K	50~70 MH	15-3/4"(H) x 3-1/2"(D)
LGP-42W-40K	42W	5000LM	4000K	50~70 MH	
LGP-42W-30K	42W	5000LM	3000K	70~100 MH	
LGP-100W-50K	100W	12000LM	5000K	70~100 MH	
LGP-100W-40K	100W	12000LM	4000K	100~175 MH	
LGP-100W-30K	100W	12000LM	3000K	100~175 MH	
LGP-EXTARM	Optional Straight Arm for Wall/Post Mounting - Not Included				
LGP-A2	Auxiliary Second Arm - Not Included				

GS



TECHNICAL SPECIFICATIONS:

- :: LED: SMD technology (PHILIPS LUXEON 3030 2D)
- :: Easy installation
- :: Recessed or shoebox installation
- :: Voltage: 120~277V; 60Hz AC
- :: High light efficiency: 130LM/W
- :: Eliminate the relamping cycle
- :: Ultra slim at 18mm
- :: IP66, providing a reliable weather-tight seal
- :: Power efficiency: More than 95%
- :: CRI: >80
- :: Color temperature: 5000K
- :: Operating Temp: -30°F~130°F
- :: 70,000 hour rated life
- :: Suitable for Wet Locations, IP65
- :: 7-year warranty

A40

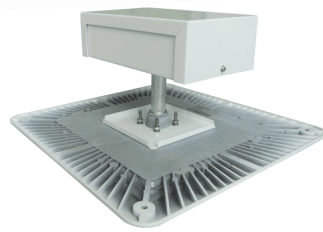
LED CANOPIES

APPLICATIONS:

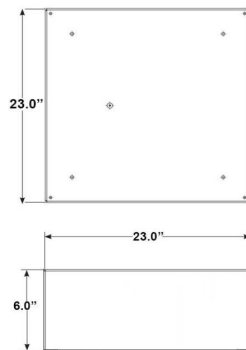
- :: Airport, auto dealership, corporate and office, education, government, healthcare, industrial and warehouse, municipal, parking, gas station and convenience stores, recreation and public venues, restaurants and hospitality, retail and grocery.



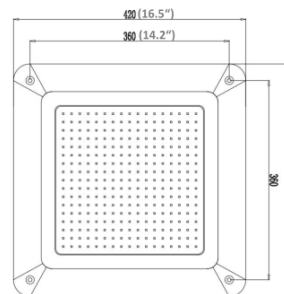
GS-CANOPY-SMB



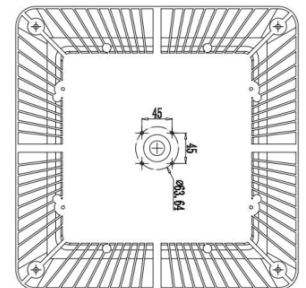
Top view



GS-CANOPY-SMB



GS-CANOPY



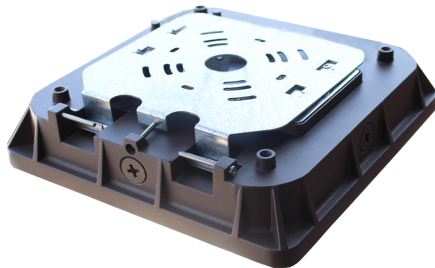
LED GAS STATION/CANOPIE LIGHTS

CATALOG NO.	WATTS	LUMENS	COLOR TEMP	DIMENSIONS
GS-CANOPY-100W-50K	100W	13600LM	5000K	
GS-CANOPY-120W-50K	120W	16300LM	5000K	16" square x 8"-3/5 (H)
GS-CANOPY-150W-50K	150W	20558LM	5000K	
GS-CANOPY-SMB	Optional surface mounting shoebox - fixture not included			18" square x 5" (H)

CDL2

A41

LED CANOPIES



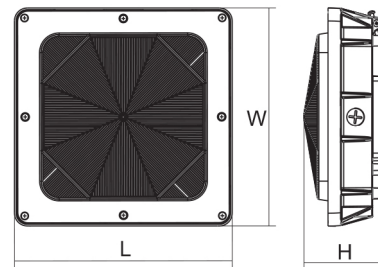
Back view

TECHNICAL SPECIFICATIONS:

- :: Housing: Die-cast aluminum with prismatic polycarbonate lens redesigned for LED
- :: 1/2" threaded hubs located on two sides of the housing
- :: Voltage: 120~277V; 60Hz AC
- :: CRI: >80
- :: Power Factor: 90%
- :: Operating Temp: -40°F to 104°F
- :: 70,000 hour rated life
- :: Suitable for Wet Locations, IP65
- :: 7-year warranty

APPLICATIONS:

:: Ideal for indoor parking lots, commercial buildings, schools, warehouses, retail centers, apartment complexes. Designed for 9 to 16-foot mounting heights.



LED LOW PROFILE CANOPY/GARAGE LIGHT

CATALOG NO.	WATTS	LUMENS	COLOR TEMP	BEAM ANGLE	REPLACEMENT RANGE	DIMENSIONS
CDL2-45CW	45W	4400LM	5000K	150°	100~150 MH	10" (L) x 10" (W) x 8" (H)
CDL2-45NW	45W	4300LM	4000K	150°	100~150 MH	
CDL2-45WW	45W	4200LM	3000K	150°	100~150 MH	
CDL2-60CW	60W	7400LM	5000K	120°	150~200 MH	14" (L) x 14" (W) x 4" (H)
CDL2-60NW	60W	7100LM	4000K	120°	150~200 MH	
CDL2-60WW	60W	7100LM	3000K	120°	150~200 MH	
CDL2-80CW	80W	9500LM	5000K	120°	250~320 MH	
CDL2-80NW	80W	9400LM	4000K	120°	250~320 MH	
CDL2-80WW	80W	9400LM	3000K	120°	250~320 MH	

CDL2-M

WITH BI-LEVEL ULTRASONIC MOTION SENSOR



TECHNICAL SPECIFICATIONS:

- :: Housing: Die-cast aluminum with prismatic polycarbonate lens redesigned for LED
- :: 1/2" threaded hubs located on two sides of the housing
- :: Voltage: 120~277V; 60Hz AC
- :: CRI: >80
- :: Power Factor: 90%
- :: Operating Temp: -40°F to 104°F
- :: 70,000 hour rated life
- :: Suitable for Wet Locations, IP65
- :: 7-year warranty

APPLICATIONS:

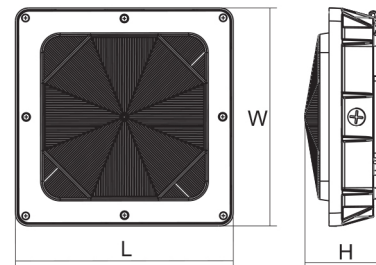
- :: Ideal for indoor parking lots, commercial buildings, schools, warehouses, retail centers, apartment complexes. Designed for 9 to 16-foot mounting heights.



Bi-Level Ultrasonic Motion Sensor

1. Daylight sensor turns light on when ambient light falls below preset illumination level.
2. When movement is detected, light is switched on.
3. No motion detected, dims to preset level after hold time.
4. After dimmed stand-by period, if no movement is detected, fixture is switched off.

All above settings are adjustable by DIP switches on the sensor



A42

LED CANOPIES

LED LOW PROFILE CANOPY/GARAGE LIGHT WITH ULTRASONIC MOTION SENSOR

CATALOG NO.	WATTS	LUMENS	COLOR TEMP	BEAM ANGLE	REPLACEMENT RANGE	DIMENSIONS
CDL2-45CW-M	45W	4400LM	5000K	150°	100~150 MH	10" (L) x 10" (W) x 8" (H)

STL

A43

LED STREET AND ROADWAY LIGHTS



STL-30W



STL-60W
STL-90W



STL-100W
STL-150W



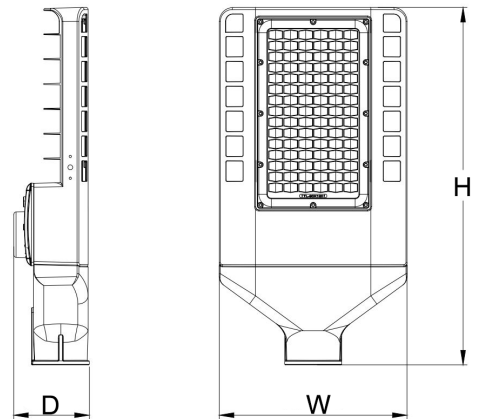
STL-220W
STL-300W

TECHNICAL SPECIFICATIONS:

- :: Die-cast aluminum with powder coat finish (Light Grey)
- :: Lens Type: 30W with Optical TYPE III Lens, 60W~300W with Optical TYPE IV Lens. Other lens options available for job orders with lead time.
- :: Voltage: 120~277V; 60Hz AC
- :: Cord type: 40" SJTW 18/3 AWG cable
- :: With 2-5/8" diameter slip fit with set screws
- :: Driver located in isolated compartment for improved thermal management
- :: Optional Nema Twist-lock photocell (add "-P")
- :: CRI: >80
- :: 50,000 hour rated life
- :: 7-year warranty
- :: Suitable for Wet Locations, IP65



DIMMING
0-10V
Except 30W



LED STREET/ROADWAY LIGHTS WITH NEMA TWIST-LOCK PHOTOCELL OPTION

CATALOG NO.	WATTS	LUMENS	COLOR TEMP	VOLTAGE	DIMENSIONS
STL-30W-50K(-P)	30W	3450LM	5000K	120-277	17.4"(L) x 6.3"(H) x 4.4"(D)
STL-60W-50K(-P)	60W	6900LM	5000K	120-277	19"(L) x 9.5"(H) x 5.25"(D)
STL-90W-50K(-P)	90W	10500LM	5000K	120-277	
STL-100W-50K-480V(-P)	100W	11500LM	5000K	277-480	20.6"(L) x 10.8"(H) x 4.3"(D)
STL-120W-50K(-P)	120W	13800LM	5000K	120-277	
STL-150W-50K(-P)	150W	17250LM	5000K	100-277	
STL-150W-50K-480V(-P)	150W	17250LM	5000K	277-480	26"(L) x 12.2"(H) x 4"(D)
STL-220W-50K(-P)	220W	25300LM	5000K	120-277	
STL-220W-50K-480V(-P)	220W	25300LM	5000K	277-480	
STL-300W-50K(-P)	300W	34500LM	5000K	120-277	
STL-300W-50K-480V(-P)	300W	34500LM	5000K	277-480	

SOLF SOLAR

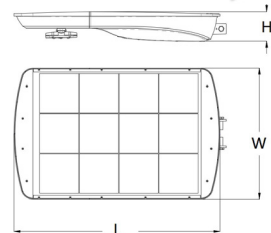


Smart Controller Features:

- (1) Ultrasonic sensor with detection range: 50' H 33' W, detection angle: 65°.
- (2) Remote Control to adjust brightness, e.g., 100% brightness 8:00PM-1:00AM, 50% 1:00-5:00AM, 30% during 5:00-6:00AM.
- (3) Using the Remote Control the unit can be set to switch to full brightness when motion sensed in detection range and reverts back to preset levels after Hold Time" of 0-250 seconds; factory setting is 10s
- (4) Photocell Hold time after sunset can be set 0-50 min. Factory setting: 0 min.

TECHNICAL SPECIFICATIONS:

- :: No Wires
- :: Die-cast aluminum with powder coat finish (Light Grey)
- :: TIR optic lens - TYPE III
- :: Beam Angle: 70°X150° (Directional LED Panel)
- :: Philips Lumileds Luxeon 5050
- :: Efficiency: Up to 200LM/W
- :: Battery Type: LiFePO4
- :: Battery Life: More than 2000 Cycles (2000/365 Days=+5.47 Years) with Overcharge and Over-Discharge Protection.
- :: Smart Lighting Controller & Remote Control to Change Settings Included
- :: Battery charge time to full level: 7 hours.
- :: Operation on full charge: 32 to 36 hours depending on fixture model.
- :: CRI: >70
- :: Operating Temp: 14°F to 122°F
- :: 50,000 hour rated life
- :: 5-year warranty
- :: Suitable for Wet Locations, IP65
- :: UL & DLC do not have certification category for Solar LED Street & Flood Lights yet



LED SOLAR ROADWAY / FLOOD LIGHTS

CATALOG NO.	SOLAR PANEL	LED WATTS	BATTERY	LUMENS	COLOR TEMP	DIMENSIONS
SOLF-17W-50K	17W	8W	115WH	1600LM	5000K	20"(L) x 11-5/8"(W) x 3-1/4"(H)
SOLF-36W-50K	36W	20W	245WH	4000LM	5000K	26-3/8"(L) x 16-3/4"(W) x 3-3/4"(H)
SOLF-54W-50K	54W	30W	385WH	6000LM	5000K	36"(L) x 16-3/4"(W) x 3-3/4"(H)
SOLF-RC	Remote Control for SOLF series					

MOUNTING OPTIONS (NOT INCLUDED)

SOLF-SFA	Adjustable Slip Fitter for Poles up to 2-3/4" O.D.
SOLF-PMR-17W	Round Pole Mount for SOLF-17W
SOLF-PMR-36W/54W	Round Pole Mount for SOLF-36W & 54W
SOLF-PMS-17W	Square Pole Mount for SOLF-17W
SOLF-PMS-36W/54W	Square Pole Mount for SOLF-36W & 54W
SOLF-WM-17W	Wall Mount for SOLF-17W
SOLF-WM-36W/54W	Wall Mount for SOLF-36W & 54W

CL | A/C
(BALLAST
OVERRIDE)

A45

LED CORN LAMPS



TECHNICAL SPECIFICATIONS:

- :: Input voltage: 120~277V AC
- :: CCT: 3000K and 5000K
- :: CRI: >80
- :: Lamp base: E26 Medium Base, E39 Mogul Base for 36W, 45W, 54W
- :: Beam angle: 360°
- :: Operating Temp: 4°F~113°F
- :: 5-year warranty

APPLICATIONS:

- :: Ideal for retrofitting existing HID highbay, shoebox, flood light or wall pack fixtures
- :: Can be used in enclosed luminaires



LED CORN LAMPS

CATALOG NO.	WATTS	BASE	LUMENS	COLOR TEMP	REPLACEMENT RANGE
CL-HL-14W-50K-E26	14W	E26	1820LM	5000K	30~50 MH
CL-HL-14W-30K-E26	14W	E26	1820LM	3000K	30~50 MH
CL-HL-18W-50K-E26	18W	E26	2340LM	5000K	50~60 MH
CL-HL-18W-30K-E26	18W	E26	2340LM	3000K	50~60 MH
CL-HL-27W-50K-E26	27W	E26	3510LM	5000K	50~70 MH
CL-HL-27W-30K-E26	27W	E26	3510LM	3000K	50~70 MH
CL-HL-36W-50K-E26	36W	E26	4680LM	5000K	50~100 MH
CL-HL-36W-30K-E26	36W	E26	4680LM	3000K	50~100 MH
CL-HL-36W-50K-E39	36W	E39	4680LM	5000K	50~100 MH
CL-HL-36W-30K-E39	36W	E39	4680LM	3000K	50~100 MH
CL-HL-45W-50K-E39	45W	E39	5850LM	5000K	70~100 MH
CL-HL-45W-30K-E39	45W	E39	5850LM	3000K	70~100 MH
CL-HL-54W-50K-E39	54W	E39	7020LM	5000K	70~125 MH
CL-HL-54W-30K-E39	54W	E39	7020LM	3000K	70~125 MH

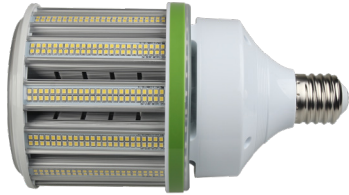
E26-ENLARGER

ENLARGES E26 BULB TO BE USED IN E39 SOCKET

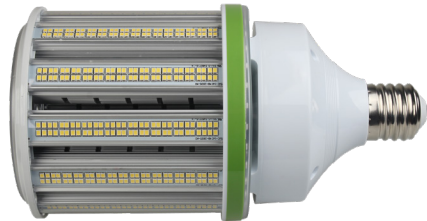
CL



CL-HL-75W-E39



CL-HL-100W-E39



CL-HL-125W-E39



CL-HL-125W-50K-E39-NRW
Directional Beam
Suitable for High Bay Lights



CL-PT2-40W-E39

Reversible Mogul Base



Improved heat sink

LED on the bottom as well to provide 360° illumination

TECHNICAL SPECIFICATIONS:

- :: Input voltage: 120~277V AC
- :: CCT: 3000K and 5000K
- :: CRI: >80
- :: Lamp base: E39 Mogul Base
- :: Beam angle: 360°
- :: Operating Temp: 4°F~113°F
- :: 5-year warranty

APPLICATIONS:

- :: Ideal for retrofitting existing HID highbay, shoebox, flood light or wall pack fixtures
- :: Can be used in enclosed luminaires



A46

LED CORN LAMPS

LED CORN LAMPS

CATALOG NO.	WATTS	BASE	LUMENS	COLOR TEMP	REPLACEMENT RANGE
CL-HL-75W-50K-E39	75W	E39	9750LM	5000K	100~125 MH
CL-HL-75W-30K-E39	57W	E39	9750LM	3000K	100~125 MH
CL-HL-100W-50K-E39	100W	E39	10200LM	5000K	100~175 MH
CL-HL-100W-30K-E39	100W	E39	10200LM	3000K	100~175 MH
CL-HL-125W-50K-E39	125W	E39	16250LM	5000K	200~400 MH
CL-HL-125W-30K-E39	125W	E39	16250LM	3000K	200~400 MH
CL-HL-125W-50K-E39-NRW	125W	E39	16250LM	5000K	200~400 MH
CL-PT2-40W-50K-E39	40W	E39	5200LM	5000K	70~125 MH
CL-PT2-40W-30K-E39	40W	E39	5200LM	3000K	70~125 MH

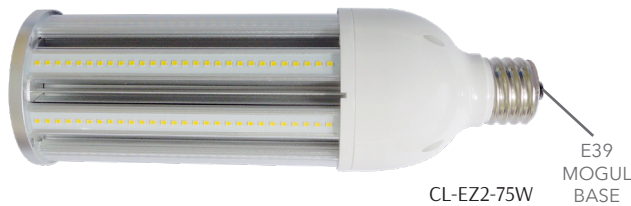
E39-REDUCER

REDUCES E39 BULB TO BE USED IN E26 SOCKET

CL-EZ2 | A/C DIRECT OR BALLAST COMPATIBLE

A47

LED CORN LAMPS EZ2



TECHNICAL SPECIFICATIONS:

- :: Input voltage: 120~277V AC or use with most HID ballast
- :: CRI: 84
- :: Chip: Samsung LED chips with Rubycon driver
- :: Beam angle: 360°
- :: Operating Temp: 4°F~149°F
- :: 5-year warranty

APPLICATIONS:

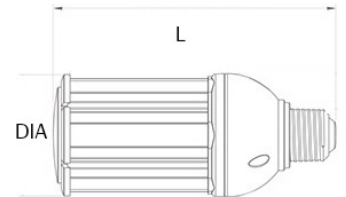
- :: Ideal for retrofitting existing HID highbay, shoebox, flood light or wall pack fixtures
- :: Can be used in enclosed luminaires



2 EASY WAYS TO INSTALL:

- Bypass ballast and directly connect to 120~277V AC
- Use with existing HID ballast

WARNING
 HID ballast consumes electricity when the switch is on. For best energy-saving results, ballast should be bypassed. Consult factory for list of compatible ballast.



LED CORN LAMPS EZ2 (BALLAST COMPATIBLE)

CATALOG NO.	WATTS	BASE	LUMENS	COLOR TEMP	REPLACEMENT RANGE	DIMENSIONS
CL-EZ2-16W-50K	16W	E26	1650LM	5000K	50~100 MH	7" (L) x 2-3/4" (Dia)
CL-EZ2-16W-30K	16W	E26	1650LM	3000K	50~100 MH	
CL-EZ2-27W-50K	27W	E39	2168LM	5000K	70~150 MH	7-3/4" (L) x 3-1/2" (Dia)
CL-EZ2-27W-30K	27W	E39	2168LM	3000K	70~150 MH	
CL-EZ2-75W-50K	75W	E39	5048LM	5000K	150~320 MH	11-3/4" (L) x 3-3/4" (Dia)
CL-EZ2-75W-30K	75W	E39	4720LM	3000K	150~320 MH	
CL-EZ2-100W-50K-HL	100W	E39	12290LM	5000K	320~400 MH	11-1/2" (L) x 4-3/4" (Dia)
CL-EZ2-100W-30K-HL	100W	E39	12280LM	3000K	320~400 MH	

E26-ENLARGER ENLARGES E26 BULB TO BE USED IN E39 SOCKET

E39-REDUCER REDUCES E39 BULB TO BE USED IN E26 SOCKET

STG

24 FT. 12 LED LAMPS

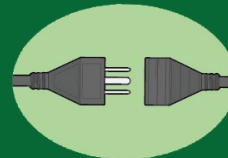


TECHNICAL SPECIFICATIONS:

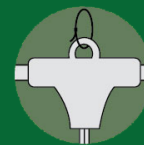
- :: Westgate's linkable outdoor LED string lights
- :: 24 Ft. long, 12 lamps
- :: Lamp Base: E26 (Medium)
- :: Lamp type: LED S14 1W, 2700K, Clear
- :: 2 Spare lamps included
- :: Heavy duty 16/3 AWG cable
- :: Linkable, 1 Male and 1 female ends for chain connection
- :: Connect up to 18 sets end to end
- :: Check spec sheet for number of sets if original lamps are changed
- :: CRI: >70
- :: Light beam angle: 120°
- :: Wattage: 12W total
- :: Voltage: 120V
- :: Life span: 15,000 hrs.
- :: Suitable for Wet Locations, IP65
- :: 7-year warranty



ALL SEASON - INDOOR/OUTDOOR



CONNECT UP TO 18 SETS



FLEXIBLE MOUNTING OPTIONS (NOT INCLUDED)



LED BULBS INCLUDED (2 SPARE)

LED STRING LIGHTS WITH S14 BULBS

CATALOG NO.	WATTS	LUMENS	COLOR TEMP	TOTAL LED
STG-2412-27K	1W per bulb	75LM per S14 bulb	2700K	12

SL-D
DIMMABLE



28W



40W



20W



30W



TECHNICAL SPECIFICATIONS:

- :: Westgate's versatile Dimmable Flood Lights with motion sensor and photocell options
- :: Can be installed with any standard LED dimmers (TRIAC types)
- :: Mounts flush on wall or 4" round weatherproof box
- :: Housing: Die-cast aluminum with powder coat finish
- :: Cover type: clear lens
- :: CRI: 80
- :: Operating Temp: -40°F to 104°F
- :: Power factor: .90~.97
- :: Light beam angle: 120° (28W & 40W) - 100° (20W & 30W per head)
- :: Voltage: 120V AC 50/60Hz
- :: Suitable for Wet Locations, IP65
- :: 7-year warranty

APPLICATIONS:

- :: Ideal for doorway, pathway and alleys
- :: Great for use with optional motion sensors or photocell

MOTION SENSORS



SL-PIR-WH
180°, 200W Max Load,
Outdoor Motion Sensor
(White & Bronze)



SL-PIR-BZ
180°, 200W Max Load,
Outdoor Motion Sensor
(White & Bronze)



SL-HPIR-WH
240°, 500W Max Load
Outdoor Motion Sensor
(White & Bronze)



SL-HPIR-BZ
240°, 500W Max Load
Outdoor Motion Sensor
(White & Bronze)



SL-PC
UL-listed mini photocell
for SL series security
lights only



LED SECURITY LIGHTS WITH OPTIONAL MOTION SENSOR OR PHOTOCELL

CATALOG NO.		WATTS	LUMENS	COLOR TEMP	REPLACEMENT RANGE
BRONZE	WHITE				
SL-20W-50K-BZ-D	SL-20W-50K-WHT-D	20W	1900LM	5000K	70~100 MH
SL-20W-30K-BZ-D	SL-20W-30K-WHT-D	20W	1900LM	3000K	70~100 MH
SL-30W-50K-BZ-D	SL-30W-50K-WHT-D	30W	2800LM	5000K	70~100 MH
SL-30W-30K-BZ-D	SL-30W-30K-WHT-D	30W	2800LM	3000K	70~100 MH
SL-28W-50K-BZ-D	SL-28W-50K-WHT-D	28W	3400LM	5000K	100~150 MH
SL-28W-30K-BZ-D	SL-28W-30K-WHT-D	28W	3400LM	3000K	100~150 MH
SL-40W-50K-BZ-D	SL-40W-50K-WHT-D	40W	4800LM	5000K	150~175 MH
SL-40W-30K-BZ-D	SL-40W-30K-WHT-D	40W	4800LM	3000K	150~175 MH
SL-PIR-BZ	120V AC, 180°, 200W Max Load, OUTDOOR MOTION SENSOR (WHITE or BRONZE)				
SL-PIR-WH					
SL-HPIR-BZ	120V AC, 240°, 500W Max Load, OUTDOOR MOTION SENSOR (WHITE or BRONZE)				
SL-HPIR-WH					
SL-PC	120V AC, Optional Photocell Component for the above series security lights, Incl. WH & BR trims to match security light color				

SL-P

80% DIM (OR OFF) WHEN NO MOTION DETECTED



SL-28W-BZ-P



SL-28W-WH-P



SL-20W-WH-P



SL-20W-WH-P



SL-30W-WH-P



SL-30W-WH-P

TECHNICAL SPECIFICATIONS:

- :: Westgate's dimming function security lights
- :: Mounts flush on wall or 4" round weatherproof box
- :: Housing: Die-cast aluminum with powder coat finish
- :: High-impact Polycarbonate lens
- :: CRI: 80
- :: Operating Temp: -40°F to 104°F
- :: Power factor: .90~.97
- :: Sensor angle: 180°
- :: Light beam angle: 120° (28W) - 100° (20W & 30W per head)
- :: Voltage: 120V AC 50/60Hz
- :: Suitable for Wet Locations, IP65
- :: 7-year warranty

Sensor Functions:

1. Always On: Set function lever to on-time. Lights always on; and can be controlled with a wall switch.
2. On with Motion Only: Set function lever to Auto. Lights turn on with motion detected from dusk to down. When object moves away, Lights turn off after 5s to 50min (Set with time dial)
3. On at 20% brightness from dusk to down with no motion detected: Set function lever to Dim. Lights turn on to full brightness when motion detected from dusk to down. When object moves away, Lights dim to 20% after 5s to 5min (Set with time dial)



LED SECURITY LIGHTS WITH PIR SENSOR

CATALOG NO.	FINISH	WATTS	LUMENS	COLOR TEMP	REPLACEMENT RANGE
SL-28W-50K-BZ-P	Bronze	28W	3400LM	5000K	100~150 MH
SL-28W-30K-BZ-P	Bronze	28W	3400LM	3000K	100~150 MH
SL-28W-50K-WH-P	White	28W	3400LM	5000K	100~150 MH
SL-28W-30K-WH-P	White	28W	3400LM	3000K	100~150 MH
SL-20W-50K-BZ-P	Bronze	20W	1900LM	5000K	70~100 MH
SL-20W-30K-BZ-P	Bronze	20W	1900LM	3000K	70~100 MH
SL-20W-50K-WH-P	White	20W	1900LM	5000K	70~100 MH
SL-20W-30K-WH-P	White	20W	1900LM	3000K	70~100 MH
SL-30W-50K-BZ-P	Bronze	30W	2800LM	5000K	100~150 MH
SL-30W-30K-BZ-P	Bronze	30W	2800LM	3000K	100~150 MH
SL-30W-50K-WH-P	White	30W	2800LM	5000K	100~150 MH
SL-30W-30K-WH-P	White	30W	2800LM	3000K	100~150 MH

FIXTURE ACCESSORIES

Polycarbonate Shroud
(Bronze)
(Fixture not Included)



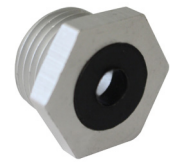
- FL-SH1** Fits FLD2-15W, FLV12-6W
- FL-SH2** Fits FLD2-28W, FLV12-12W & 24W
- FL-SH3** Fits FLD2-42W, FLV12-32W
- FL-SH4** Fits FLD2-50W



SPS-75
4" SQ. Swivel-Type cover
3/4" hub with 1/2" reducer



HB-HOOK
High Bay 2-1/2" Heavy-duty Zinc Alloy Hook with 1/2" Steel Lock Knot, Set Screw, Cable Bushing

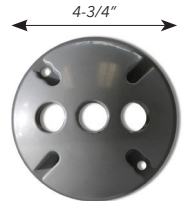


LF-THREAD
1/2" hub adapter for fixtures with trunnion bracket (on fixtures up to 50W)



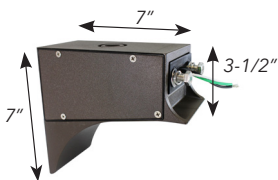
Shroud for LF4 series
(Bronze)
(Fixture not Included)

- LF4-SH1** Fits LF4-12W, LF4-12V-6W & 12W (Polycarbonate)
- LF4-SH2** Fits LF4-30W, LF4-12V-24W & 30W (Polycarbonate)
- LF4-SH3** Fits LF4-50W, LF4-12V-50W (Polycarbonate)
- LF4-SH4** Fits LF4-80W & 100W (Aluminum)
- LF4-SH5** Fits LF4-150W (Aluminum)

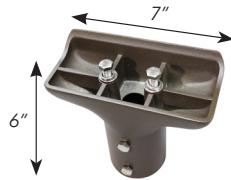


WRC-3-BRZ
Weatherproof cover with three (3) 1/2" hubs

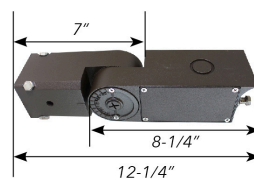
MOUNTING ACCESSORIES FOR LF3 SERIES



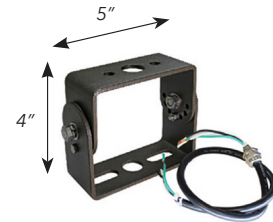
LF3-EXTARM
Straight extension arm for shoe box application, with K/O to install PC or sensor (LF3-80, 100, 150, 220 & 300)



LF3-STR
Street light arm with 20" wire and strain relief connector (LF3-80, 100, 150, 220 & 300)

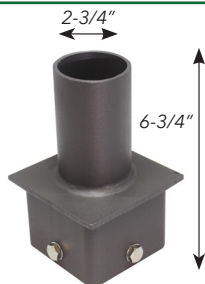


LF3-SF
Adjustable slip fitter for pole mount 2"-2-1/2" with K/O to install PC or sensor (LF3-80, 100, 150, 220 & 300)



LF3-YOK
Adjustable U-shaped yoke mount with 20" wire & strain relief connector (LF3-80, 100, 150, 220 & 300)

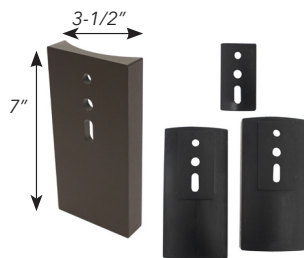
POLE ACCESSORIES / Adapters



PSS3SVTZ (3")
PSS4SVTZ (4")
PSS5SVTZ (5")
3" or 4" or 5" square pole vertical tenon, bronze. Goes on 3" or 4" or 5" pole to accept 2" slip fitter.



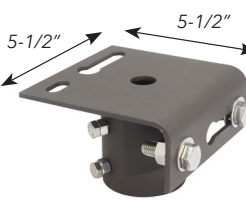
PRPT3 (3")
PRPT4 (4")
PRPT5 (5")
Tenon adapter, 3" or 4" or 5" round pole, to standard tenon, bronze



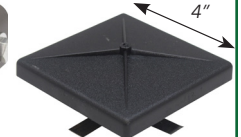
PSR4
Adapter kit for 3", 4" and 5" round poles. Separate gasket provided for each size pole.



LF-AD-KNU
2" slip fitter adapter with 1/2" NPT hub in the top. Goes on 2" pipe and accepts a knuckle fixture.

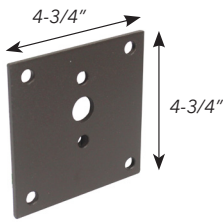


LF-AD-SF
2" slip fitter adapter for LF flood lights with trunnion. Goes on 2" pipe and accepts a trunnion fixture.

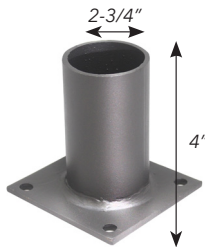


PSS4C
Pole cap polycarbonate

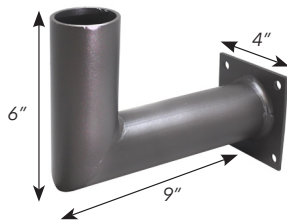
WALL MOUNT ACCESSORIES



ACC-WM1
Wall mount plate bronze 4-3/4" square

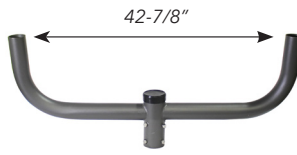


ACC-WM2
Wall mount bracket bronze with 2" tenon to be used with Westgate slip fitter fixtures (-SF)

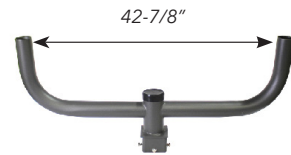


ACC-WM3
Wall mount bracket 90°, bronze with 2" tenon to be used with Westgate slip fitter fixtures (-SF)

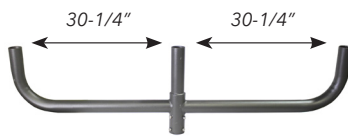
BULLHORNS



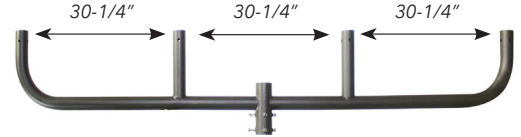
PT2-180
Double in-line at 180°, 1' (H), 3' between centers, slips on 2-3/8" pole



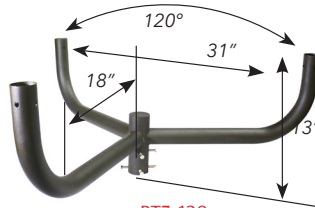
PT2-180-S
Double in-line at 180°, 1' (H), 3' between centers, slips on 4" pole



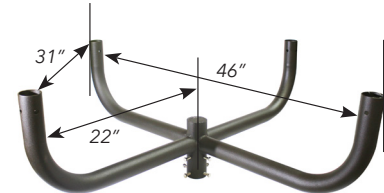
PT3-180
Double in-line at 180°, 1' (H), 2'-7" between centers, slips on 2-3/8" pole



PT4-180
Quad in-line at 180°, 1' (H), 2'-7" between centers, slips on 2-3/8" pole

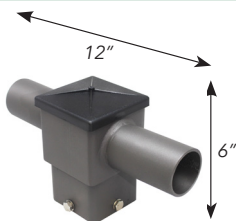


PT3-120
Triple at 120°, 1' (H), 3'-5" between centers, slips on 2-3/8" tenon

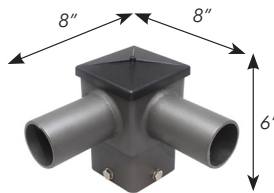


PT4-090
Quad at 90°, 1' (H), 2'-10" between centers, slips on 2-3/8" tenon

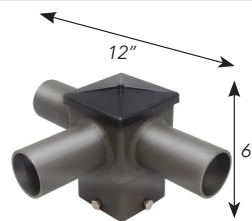
TENONS



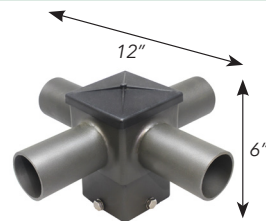
PSS4T180HTZ
Square (twin) horizontal tenon, 180°, bronze. Slips on 4" pole. No adapter needed.



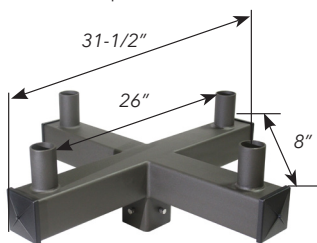
PSS4T90HTZ
Square (twin) horizontal tenon, 90°, bronze. Slips on 4" pole. No adapter needed.



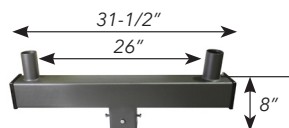
PSS4TR90HTZ
Square (triple) horizontal tenon, 90°, bronze. Slips on 4" pole. No adapter needed.



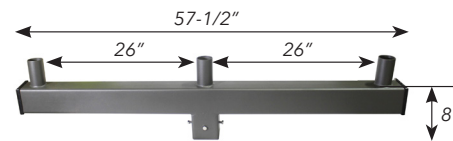
PSS4Q90HTZ
Square (quad) horizontal tenon, 90°, bronze. Slips on 4" pole. No adapter needed.



PSS4Q90VTZ
4" 90° quad square vertical tenon



PSS4TVTZ
Twin square vertical tenon for 4" square pole, slips 2-3/8" vertical tenon. Two 2-3/8" vertical tenons.



PSS4TRVTZ
Triple square vertical tenon for 4" square pole, slips 2-3/8" vertical tenon. Three 2-3/8" vertical tenons.

OUTDOOR MOTION SENSORS

PRODUCTS FEATURES:

- :: Wet location listed (NEMA 3R rated)
- :: 1-year warranty



A53

ACCESSORIES



SK618
Suitable for Outdoor Flood Lights & Wall Packs and Linear Vapor-Tight Fixtures
Not suitable for new LF3-HL series

MSO-IP66-I
MSO-REMOTE1 (needed to set MSO-IP66-KN & MSO-IP66-I)

DIMMING 0-10V



SK618-RC (needed to set SK618 & SK618-601X)

SK618-601X
Suitable for all Outdoor Flood Lights & Wall Packs and Vapor-Tight Fixtures

MSO-IP66-KN
MSO-REMOTE1 (needed to set MSO-IP66-KN & MSO-IP66-I)

DIMMING 0-10V



MSK-IP66-KN
Suitable for all Outdoor Flood Lights & Wall Packs



OUTDOOR MOTION SENSORS

CATALOG NO.	DESCRIPTION
MSK-IP66-KN	Outdoor Ultrasonic Multi-Level Programmable Motion Sensor Kit with 1/2" Moun, with daylight harvesting - 120-277V AC, DIP switch settings
MSO-IP66-I	Outdoor Ultrasonic Multi-Level Programmable Motion Sensor Internal Mount - 120-277V AC, Needs RC (Remote Control) to set
MSO-IP66-KN	Outdoor Ultrasonic Multi-Level Programmable Motion Sensor with 1/2" Mount (4-1/16" Diameter) - 120-277V AC, Needs RC to set
MSO-REMOTE1	Remote Control for Programming MSO-IP66 series (Batteries Included)
SK618	Outdoor PIR Multi-Level Programmable Motion Sensor Controls 0-10V LED Drivers - 120-277V AC, Needs RC (Remote Control) to set
SK618-601X	Outdoor PIR Multi-Level Programmable Motion Sensor with 1/2" Mount Controls 0-10V LED Drivers - 120-277V AC, Needs RC to set
SK618-RC	Remote Control for Programming SK618 & SK618-601X Motion Sensors (2 X AAA Batteries not Included)
SL-PIR-BZ	PIR Motion Sensor, 180°, 200W Max Load, Outdoor Motion Sensor (White & Bronze) - 120V
SL-PIR-WH	
SL-HPIR-BZ	PIR Motion Sensor, 240°, 500W Max Load, Outdoor Motion Sensor (White & Bronze) - 120V
SL-HPIR-WH	

OUTDOOR PHOTOCONTROLS

PRODUCT FEATURES:

- :: Polycarbonate construction
- :: Ideal for dusk to dawn operation
- :: 1/2 NPT threads fit into 1/2" weatherproof box outlets*
- :: Wet location listed (NEMA 3R rated)
- :: 1-year warranty



PC-B1



PC-B1-W



PC-FS1



PC-SM1



PC-SMWS1



PC-B2



PC-SM2



A54

ACCESSORIES

PHOTOCONTROLS (120V)

CATALOG NO.	DESCRIPTION	RATING
PC-B1	BUTTON PHOTOCONTROL 120V MAX 500W	120V/500W
PC-B1-W	BUTTON PHOTOCONTROL 120V WITH WALL PLATE MAX 500W	120V/500W
PC-FS1	PHOTOCONTROL SWIVEL 120V MAX 1800W	120V/1800W
PC-SM1	STEM-MOUNT PHOTOCONTROL 120V MAX 1800W	120V/1800W
PC-SMWS1	STEM-MOUNT PHOTOCONTROL WITH SWIVEL 120V MAX 1800W	120V/1800W

PHOTOCONTROLS (208~277V)

CATALOG NO.	DESCRIPTION	RATING
PC-B2	BUTTON PHOTOCONTROL 277V MAX 500W	208~277V/500W
PC-SM2	BUTTON PHOTOCONTROL WITH WALL PLATE 277V MAX 1800W	208~277V/500W

TYPE III & TYPE IV LENSES FOR LF3 FLOOD SERIES

A55

LF3 LENSES



Order 2 Lens Panels for LF3 SERIES 80W, 100W, & 150W



Order 4 Lens Panels for LF3 SERIES 220W & 300W

TECHNICAL SPECIFICATIONS:

- :: Optical PC Precision lenses designed for Westgate LF3 Series Flood Lights
- :: These lenses are replaceable by the factory or field replaced by installers
- :: See opposite page for selection guide
- :: Each table entry below represents 1 lens panel. Order the correct number of panels depending on your fixture size (See images below)

Model No.	Beam Angle (°)		
	Type 2	Type 3	Type 4
LF3-80W	120X90	140x80	140x100
LF3-100W	120X90	140x80	140x100
LF3-150W	120X90	140x80	140x100
LF3-220W	120X90	140x80	140x100
LF3-300W	120X90	140x80	140x100

TYPE 3 & TYPE 4 LENSES FOR LF3-HL & LF3 SERIES

CATALOG NO.	DESCRIPTION
LF3-HL-TYPEII-100W	TYPE 2 lens for LF3-HL series 100W (Order 2)
LF3-HL-TYPEII-150W/230W/300W	TYPE 2 lens for LF3-HL series 150W, 230W, & 300W (Order 4)
LF3-HL-TYPEIII-100W	TYPE 3 lens for LF3-HL series 100W (Order 2)
LF3-HL-TYPEIII-150W/230W/300W	TYPE 3 lens for LF3-HL series 150W, 230W, & 300W (Order 4)
LF3-HL-TYPEIV-100W	TYPE 4 lens for LF3-HL series 100W (Order 2)
LF3-HL-TYPEIV-150W/230W/300W	TYPE 4 lens for LF3-HL series 150W, 230W, & 300W (Order 4)
LF3-TYPEIII-150W/300W	TYPE 3 lens for LF3 series 150W & 300W (Order 2 for 150W or 4 for 300W)
LF3-TYPEIII-80W/100W/220W	TYPE 3 lens for LF3 series 80W, 100W, & 220W (Order 2 for 80W & 100W or 4 for 220W)
LF3-TYPEIV-150W/300W	TYPE 4 lens for LF3 series 150W & 300W (Order 2 for 150W or 4 for 300W)
LF3-TYPEIV-80W/100W/220W	TYPE 4 lens for LF3 series 80W, 100W, & 220W (Order 2 for 80W & 100W or 4 for 220W)

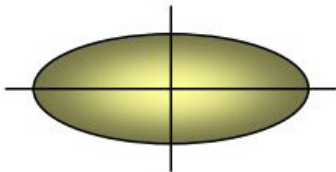
LENS TYPES EXPLAINED

SELECTING THE BEST DISTRIBUTION TYPE FOR YOUR OUTDOOR PROJECT

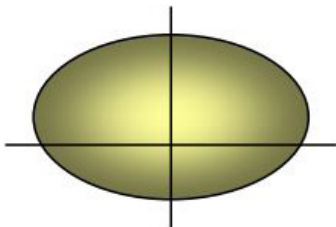
“Distribution Type” defines how far forward of the luminaire (i.e., on the streetside) the effective output reaches.

A56

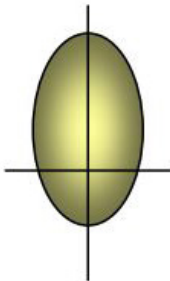
LF3 LENSES



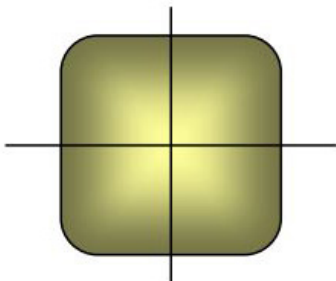
Type 2 is still linear but wider in the front to accommodate 4 lane roadways, or wider drive lanes.



Type 3 (commonly known as a “Bat-Wing”) is suitable for perimeters, often where other interior pole placements fill the site.



Type 4 (commonly known as a “Forward Throw” or Asymmetric) is best along perimeters where spill light is a concern or there are no place to add poles within a site.



Type 5 – is available in a round or square pattern. Best suited for interior areas within a site or on the median of 4-6 lane roadways.

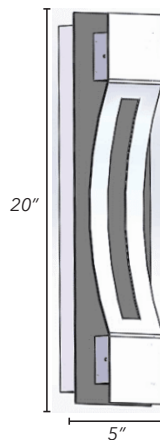


CREST BY WESTGATE



TECHNICAL SPECIFICATIONS:

- ❑ Crest Series by Westgate
- ❑ Patent-Pending design with separate light engine (base) and interchangeable designer trims expand the series to multiple color temperatures and models.
- ❑ Series can be stocked as separate engines and trims to offer a versatile collection at the store level.
- ❑ Die-cast Aluminum weatherproof housing, steel backplate, Aluminum Trim (Dark Bronze or Silver)
- ❑ LED: Philips Lumileds LEDs
- ❑ Wattage: 10W (2.5W X 4)
- ❑ Total Lumens: 900LM
- ❑ Color Temperatures: 3000K & 4000K & 5000K
- ❑ Voltage: 100~277V AC, 50/60Hz
- ❑ CRI: >70
- ❑ Power Factor: 95%
- ❑ Operating temp: -40°F to 104°F
- ❑ 50,000 hour rated life
- ❑ 7-year warranty
- ❑ IP65, Suitable for Wet Locations



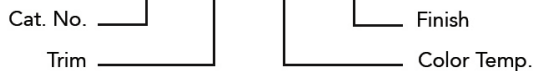
- Depths:
- 01 5.5"
 - 02 3.3"
 - 03 4.0"
 - 04 3.3"
 - 05 4.3"
 - 06 3.3"
 - 07 3.9"
 - 08 4.5"

CREST BY WESTGATE LED WALL SCONCES

CATALOG NO.	TRIM		COLOR TEMPERATURE		FINISH	
	CODE	DESCRIPTION	CODE	DESCRIPTION	CODE	DESCRIPTION
CRE	01	Lunette	30K	3000K	BR	Bronze
	02	Aperture	40K	4000K	SIL	Silver
	03	Grasp	50K	5000K		
	04	Curve				
	05	Pen				
	06	Still				

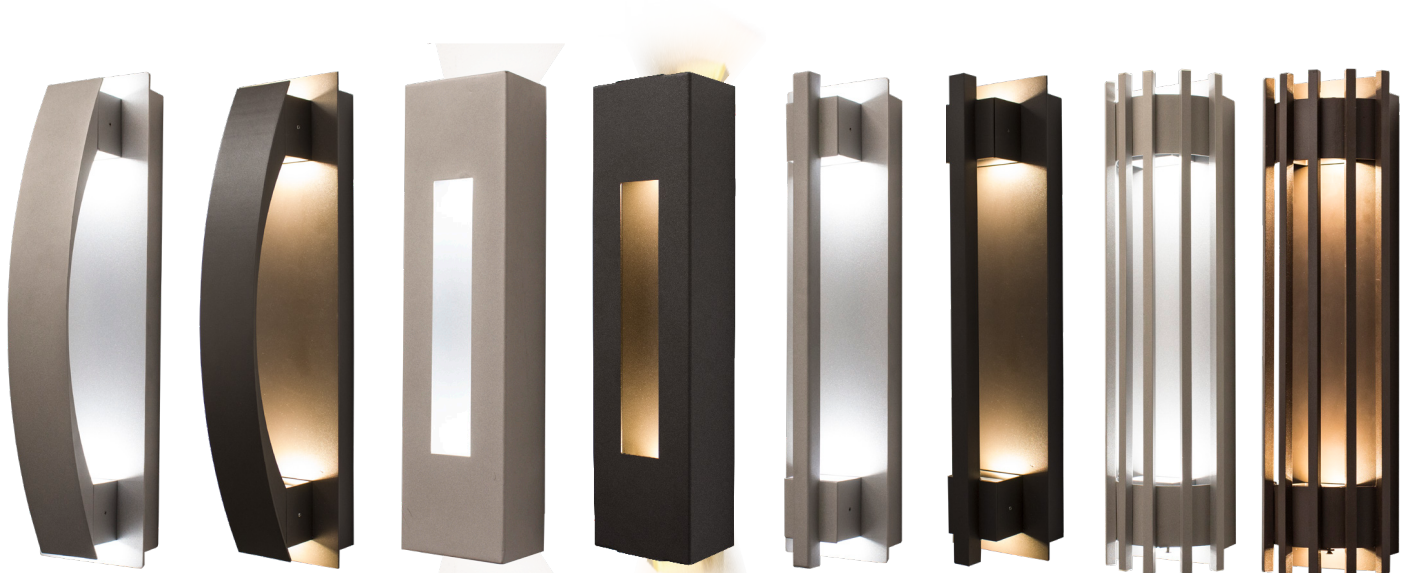
Sample Order:

CRE-03-30K-BR





CREST BY WESTGATE



01
Lunette

02
Aperture

03
Grasp

05
Pen



04
Curve



06
Still



07
Passage

A58

LED WALL SCONCES