



LIFT
INDUSTRIAL SAFETY GEAR

2 0 1 7 C A T A L O G

WE PROTECT YOU TODAY, SO YOU CAN BUILD YOUR TOMORROW



1 HEAD PROTECTION	3
2 IMPACT GLOVES	7
3 PRO SERIES GLOVES	10
4 CUT RESISTANT GLOVES	14
5 WORKMAN SERIES GLOVES	17
6 GOLD CONDITION GLOVES	20
7 PROTECTIVE EYEWEAR	24
8 KNEE PROTECTION	29
9 HI VIZ APPAREL	32
10 GEAR BAGS	35
11 COOLING GEAR	37
12 HEARING PROTECTION	39
13 SUPPORT GEAR	41
14 APPAREL	44
15 ACCESSORIES	48
16 MERCHANDISING	50
CUSTOM PRODUCT	52
GUARDMOR	54



1

HEAD PROTECTION





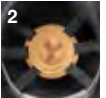
2017
NEW

DAX CARBON

Built by the EVS-Sports design team, the race inspired DAX is a full brim, carbon fiber reinforced hard hat, offering a 6 point suspension system for superior comfort and impact protection. It features an innovative Clarino® synthetic leather comfort dome and an oversized ratcheting fitment dial that makes adjustment easy, even while wearing gloves.

1. Fiber reinforced resin shell for superior impact protection
2. Perforated Clarino® synthetic leather comfort dome with molded EVA foam insert for additional shock absorbing protection
3. Oversized ratcheting fitment dial to adjust size, easy to grip and use with gloves on
4. Meets ANSI Z89.1-2014 REQUIREMENTS FOR TYPE 1 CLASS C
5. Moisture wicking foam backed microfiber liner reduces sweat build-up
6. 6 point suspension system for a secure, comfortable fit
7. Triple reinforced crown for superior impact protection

PART #
HDC-15KG



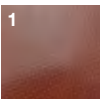
2017
NEW

DAX FIBER REINFORCED

The DAX Hard Hat is a full brim, fiber reinforced resin composite hard hat offering a 6 point suspension system for superior comfort and impact protection. It features an innovative Clarino® synthetic leather comfort dome and an oversized ratcheting fitment dial that makes adjustment easy even while wearing gloves.

1. Fiber reinforced resin shell for superior impact protection
2. Perforated Clarino® synthetic leather comfort dome with molded EVA foam insert for additional shock absorbing protection
3. Oversized ratcheting fitment dial to adjust size, easy to grip and use with gloves on
4. Meets ANSI Z89.1-2014 REQUIREMENTS FOR TYPE 1 CLASS G
5. Moisture wicking foam backed microfiber liner reduces sweat build-up
6. 6 point suspension system for a secure, comfortable fit
7. Triple reinforced crown for superior impact protection

COLOR	PART #
NATURAL	HDF-15NG
WHITE	HDF-15WG
BLACK	HDF-15KG



BLACK



WHITE

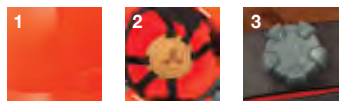
COMING
LATE
2017

BRIGGS FULL BRIM

The Briggs Full Brim hard hat is a sophisticated and stylish departure from the norm. When you're on the job site you only want the best in safety, comfort, and of course style. With the oversized retention knob, dialing in the fit is a breeze so you never waste any time getting ready to get to work. The 6-point interior suspension system gives you the ultimate protection from overhead impacts while a synthetic Clarino leather dome keeps you cool and comfortable all day long.

1. Meets ANSI Z89.1-2014 REQUIREMENTS FOR TYPE 1 CLASS G & C, vented model meets ANSI Z89.1-2014 REQUIREMENTS FOR TYPE 1 CLASS C
2. Perforated Clarino® synthetic leather comfort dome with molded EVA foam insert for additional shock absorbing protection
3. Oversized ratcheting fitment dial to adjust size, easy to grip and use with gloves on
4. 4 Point Suspension System for a secure, comfortable fit
5. Adjustable chin strap for secure fit and increased protection
6. Available in vented or non vented versions

COLOR	NON VENTED PART #	VENTED PART #
ORANGE	HBFE-7O	HBFC-7O
WHITE	HBFE-7W	HBFC-7W
GREY	HBFE-7Y	HBFC-7Y
YELLOW	HBFE-7L	HBFC-7L
BLUE	HBFE-7B	HBFC-7B



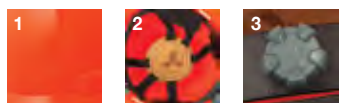
COMING
LATE
2017

BRIGGS CAP

The Briggs Cap hard hat is a sophisticated and stylish departure from the norm. When you're on the job site you only want the best in safety, comfort, and of course style. With the oversized retention knob, dialing in the fit is a breeze so you never waste any time getting ready to get to work. The 6-point interior suspension system gives you the ultimate protection from overhead impacts while a synthetic Clarino leather dome keeps you cool and comfortable all day long.

1. Meets ANSI Z89.1-2014 REQUIREMENTS FOR TYPE 1 CLASS G & C, vented model meets ANSI Z89.1-2014 REQUIREMENTS FOR TYPE 1 CLASS C
2. Perforated Clarino® synthetic leather comfort dome with molded EVA foam insert for additional shock absorbing protection
3. Oversized ratcheting fitment dial to adjust size, easy to grip and use with gloves on
4. 4 Point Suspension System for a secure, comfortable fit
5. Adjustable chin strap for secure fit and increased protection
6. Available in vented or non vented versions

COLOR	NON-VENTED PART #	VENTED PART #
ORANGE	HBSE-7O	HBSC-7O
WHITE	HBSE-7W	HBSC-7W
GREY	HBSE-7Y	HBSC-7Y
YELLOW	HBSE-7L	HBSC-7L
BLUE	HBSE-7B	HBSC-7B



2

IMPACT GLOVES

TECHNICAL

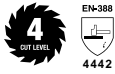
This standard applies to all kinds of protective gloves in respect to physical and mechanical aggressions caused by abrasion, blade cut, puncture and tearing.

EN-388



1 2 3 4

abrasion resistance
blade cut resistance
tear resistance
puncture resistance



RIGGER "ORIGINAL"

The Rigger glove is a heavy duty, cut level 4 glove designed for use on and off the drill head. It features a durable DuPont™ Kevlar® fiber palm and finger sidewalls for extreme abrasion resistance. Full back of hand TPR impact protection reduces hand injuries while on the rig.

1. Cut level 4 oil resistant DuPont™ Kevlar® fiber palm provides extreme abrasion resistance
2. Full finger, knuckle and metacarpal TPR impact & crush protection
3. Stretch DuPont™ Kevlar® fiber finger sidewalls for additional abrasion protection
4. Perforated 5mm internal EVA foam padding provides secondary impact protection to dorsal region of hand
5. Pre-curved palm for added dexterity and comfort

SIZE	HI-VIZ PART #	BLACK PART #
MEDIUM	GRX-13HVM	GRS-9HVM
LARGE	GRX-13HVL	GRS-9HVL
X-LARGE	GRX-13HV1L	GRS-9HV1L
XX-LARGE	GRX-13HV2L	GRS-9HV2L
XXX-LARGE	GRX-13HV3L	GRS-9HV3L



RIGGER WINTER

The Rigger Winter glove offers the same abrasion and back of hand protection as the original Rigger with the added benefit of 3M™ Thinsulate™ for extreme cold protection and moisture resistance.

1. Triple layer construction of poly spandex, fleece and 3M™ Thinsulate™ for extreme cold protection and moisture resistance
2. Cut level 4 oil resistant DuPont™ Kevlar® fiber palm provides extreme abrasion resistance
3. Full finger, knuckle and metacarpal TPR impact and crush protection
4. Perforated 5mm internal EVA foam padding provides secondary impact protection to dorsal region of hand
5. Pre-curved palm for added dexterity and comfort

SIZE	PART #
MEDIUM	GRW-0HVM
LARGE	GRW-0HVL
X-LARGE	GRW-0HV1L
XX-LARGE	GRW-0HV2L
XXX-LARGE	GRW-0HV3L



RIGGER WATERPROOF WITH OUTDRY

Based on the Original Rigger glove chassis, the Rigger Waterproof offers the same abrasion and back of hand protection designed for the Oil & Gas Industry. It also features a patented OutDry® membrane to keep liquids out.

1. Patented OutDry® membrane is 100% waterproof, oil proof, wind proof, breathable and drilling fluid resistant
2. Cut level 4 oil resistant DuPont™ Kevlar® fiber palm provides extreme abrasion resistance
3. Full finger, knuckle and metacarpal TPR impact and crush protection
4. Perforated 5mm internal EVA foam padding provides secondary impact protection to dorsal region of hand
5. Pre-curved palm for added dexterity and comfort

SIZE	PART #
MEDIUM	GRO-14HVM
LARGE	GRO-14HVL
X-LARGE	GRO-14HV1L
XX-LARGE	GRO-14HV2L
XXX-LARGE	GRO-14HV3L



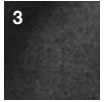
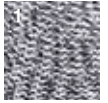


CHEM 5 IMPACT

The Chem 5 Impact glove offers FiberWire™ cut level 5 protection covering the entire hand. Full back of hand TPR impact protection reduces hand injuries and the double dipped sandy nitrile palm is chemical and caustic substance resistant.

1. 360° cut level 5 FiberWire™ 13 Ga. shell: High-density polyethylene (HDPE) & glass fiber
2. Full finger, knuckle and metacarpal TPR impact protection
3. Double dipped sandy nitrile palm provides a superior grip and is chemical and caustic substance resistant

SIZE	PART #
MEDIUM	GFC-14KM
LARGE	GFC-14KL
X-LARGE	GFC-14K1L
XX-LARGE	GFC-14K2L
XXX-LARGE	GFC-14K3L

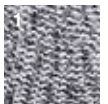


CUT 5 IMPACT

The Cut 5 Impact glove offers FiberWire™ cut level 5 protection covering the entire hand. Full back of hand TPR impact protection reduces hand injuries and the etched latex palm provides superior grip on wet and oily surfaces.

1. 360° cut level 5 FiberWire™ 13 Ga. shell: High-density polyethylene (HDPE) & glass fiber
2. Full finger, knuckle and metacarpal TPR impact protection
3. Crinkle Grip latex coating provides enhanced grip on wet and oily surfaces

SIZE	PART #
MEDIUM	GFT-13KM
LARGE	GFT-13KL
X-LARGE	GFT-13K1L
XX-LARGE	GFT-13K2L
XXX-LARGE	GFT-13K3L



3

PRO SERIES GLOVES

TECHNICAL

This standard applies to all kinds of protective gloves in respect to physical and mechanical aggressions caused by abrasion, blade cut, puncture and tearing.

EN-388



1 2 3 4

- abrasion resistance
- blade cut resistance
- tear resistance
- puncture resistance

2017
UPDATED



TACKER

The Tacker glove is a heavy duty, genuine leather glove designed for superior abrasion resistance. It is fully machine washable and features a padded palm for impact and vibration absorption.

1. Genuine leather reinforcements on the palm, saddle, fourchettes and fingertips for impact and vibration absorption
2. EVA padded palm for impact and vibration absorption
3. TPR knuckle impact protection
4. Embossed airprene comfort cuff
5. Touch screen finger tip
6. Machine washable genuine leather for maximum abrasion resistance
7. TPR wrist closure

SIZE	BLACK PART #	CAMO PART #	BROWN PART #	HI-VIZ PART #
SMALL	GTA-17KKS	GTA-17CFBRS	GTA-17KBS	GTA-17HVKS
MEDIUM	GTA-17KKM	GTA-17CFBRM	GTA-17KBM	GTA-17HVKM
LARGE	GTA-17KKL	GTA-17CFBRL	GTA-17KBL	GTA-17HVKL
X-LARGE	GTA-17KK1L	GTA-17CFBR1L	GTA-17KB1L	GTA-17HVK1L
XX-LARGE	GTA-17KK2L	GTA-17CFBR2L	GTA-17KB2L	GTA-17HVK2L



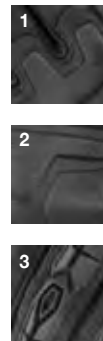
CAMO

BROWN

HI-VIZ



BLACK



2017
UPDATED

GRUNT

The Grunt glove is a tough work glove featuring synthetic leather reinforcements on the palm, saddle, fourchettes and fingertips. TPR knuckle impact protection keeps your hands safe from bumps and bruises.

1. Genuine leather reinforcements on the palm, saddle, fourchettes and fingertips for impact and vibration absorption.
2. TPR knuckle impact protection
3. TPR wrist closure
4. Abrasion resistant posterior dorsal panel for increased durability
5. Breathable stretch knit dorsal for maximum fit and comfort
6. Embossed airprene wrist closure
7. Touch Screen Finger Tip

SIZE	GREY PART #	BROWN PART #	HI-VIZ PART #
SMALL	GGT-17YKS	GGT-17BRBRS	GGT-17HVHVS
MEDIUM	GGT-17YKM	GGT-17BRBRM	GGT-17HVHVM
LARGE	GGT-17YKL	GGT-17BRBRL	GGT-17HVHVL
X-LARGE	GGT-17YK1L	GGT-17BRBR1L	GGT-17HVHV1L
XX-LARGE	GGT-17YK2L	GGT-17BRBR2L	GGT-17HVHV2L



BROWN

HI-VIZ



GREY



2017
UPDATED

FRAMED

The Framed glove is specifically designed for a framer or anyone needing maximum tactility while working. It features synthetic leather reinforcements on the palm, saddle, fourchettes and fingertips (black model) and genuine leather palm (brown model).

1. Semi-fingerless design for better handling of nails and other small materials
2. Reinforcements on the palm, saddle, fourchettes and fingertips for impact and vibration absorption
3. TPR knuckle impact protection
4. TPR wrist closure
5. Abrasion resistant posterior dorsal panel for increased durability
6. Breathable stretch knit dorsal for maximum fit and comfort
7. Embossed ariaprene wrist closure

SIZE	BLACK PART #	BROWN PART #
SMALL	GFD-17KKS	GFD-17KBRS
MEDIUM	GFD-17KKM	GFD-17KBRM
LARGE	GFD-17KKL	GFD-17KBRL
X-LARGE	GFD-17KK1L	GFD-17KBR1L
XX-LARGE	GFD-17KK2L	GFD-17KBR2L



BLACK



BROWN



GENUINE
LEATHER PALM



2017
UPDATED

OPTION

The Option is a lightweight, breathable glove designed for medium duty work. It features a TPR wrist closure and a low profile, single piece palm for increased tactility.

1. Single piece palm with saddle, fourchette and fingertip reinforcements for impact and vibration absorption.
2. Breathable stretch knit dorsal for maximum fit and comfort
3. TPR wrist closure

SIZE	BLACK PART #	CAMO PART #	GREY PART #	HI-VIZ PART #
SMALL	GON-17KKS	GON-17CFBRS	GON-17YYS	GON-17HVBRS
MEDIUM	GON-17KKM	GON-17CFBRM	GON-17YYM	GON-17HVBRM
LARGE	GON-17KKL	GON-17CFBRL	GON-17YYL	GON-17HVBRL
X-LARGE	GON-17KK1L	GON-17CFBR1L	GON-17YY1L	GON-17HVBR1L
XX-LARGE	GON-17KK2L	GON-17CFBR2L	GON-17YY2L	GON-17HVBR2L



BLACK



CAMO



GREY



HI-VIZ



2017
UPDATED

HANDLER

The Handler glove features a silicone infused palm to offer maximum grip on any surface, wet or dry. It is reinforced in critical areas for increased abrasion resistance and features TPR knuckle impact protection.

1. Silicone fused palm for maximum grip in dry, wet or oily conditions
2. Reinforcements on the saddle, fourchettes and fingertips for impact and vibration absorption
3. TPR knuckle impact protection
4. TPR wrist closure
5. Abrasion resistant posterior dorsal panel for increased durability
6. Breathable stretch knit dorsal for maximum fit and comfort
7. Embossed ariaprene wrist closure
8. Touch screen finger tip

SIZE	GREY PART #	HI-VIZ PART #
SMALL	GHR-17YBRS	GHR-17HVYS
MEDIUM	GHR-17YBRM	GHR-17HVYM
LARGE	GHR-17YBRL	GHR-17HVYL
X-LARGE	GHR-17YBR1L	GHR-17HVY1L
XX-LARGE	GHR-17YBR2L	GHR-17HVY2L



2017
UPDATED

TRADER

The Trader is a lightweight, open cuff glove designed for medium duty work. It features a low profile, single piece palm for increased tactility.

1. Open cuff design for easy on/off operation
2. Reinforcements on the saddle, fourchettes and fingertips for impact and vibration absorption
3. Breathable stretch knit dorsal for maximum fit and comfort
4. Touch sreen finger tip
5. Abrasion resistant posterior dorsal panel for increased durability

SIZE	GREY PART #	HI-VIZ PART #
SMALL	GTR-17YBRS	GTR-17HVKS
MEDIUM	GTR-17YBRM	GTR-17HVKM
LARGE	GTR-17YBRL	GTR-17HVKL
X-LARGE	GTR-17YBR1L	GTR-17HVK1L
XX-LARGE	GTR-17YBR2L	GTR-17HVK2L



4

CUT RESISTANT GLOVES

TECHNICAL

This standard applies to all kinds of protective gloves in respect to physical and mechanical aggressions caused by abrasion, blade cut, puncture and tearing.

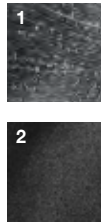
EN-388



1 2 3 4

abrasion resistance
blade cut resistance
tear resistance
puncture resistance





FIBERWIRE NITRILE

The FiberWire™ Nitrile glove offers 360° of cut level 5 protection. The double dipped sandy nitrile palm provides superior grip and is chemical and caustic substance resistant.

1. 360° cut level 5 FiberWire™ 13 Ga. shell: High-density polyethylene (HDPE) & glass fiber
2. Double dipped sandy nitrile palm provides a superior grip and is chemical and caustic substance resistant

SIZE	PART #
MEDIUM	GFN-12KM
LARGE	GFN-12KL
X-LARGE	GFN-12K1L
XX-LARGE	GFN-12K2L



FIBERWIRE WINTER

The FiberWire™ Winter is a cut level 5 glove for cold environments. The inner shell is a 7 Ga. brushed acrylic liner that keeps your hands warm while working.

1. Hi Viz outer shell is 13 Ga. cut level 5 FiberWire™ High-density polyethylene (HDPE) & glass fiber
2. Crinkle grip latex dip for increased grip in wet or dry conditions
3. Inner shell is 7 Ga. brushed acrylic for warmth

SIZE	PART #
SMALL	GFW-15HVS
MEDIUM	GFW-15HVM
LARGE	GFW-15HVL
X-LARGE	GFW-15HV1L
XX-LARGE	GFW-15HV2L

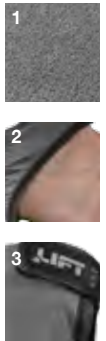


FIBERWIRE LATEX

The FiberWire™ Latex glove offers 360° of cut level 5 protection with a crinkle grip latex dip, ideal for superior grip on wet and slippery surfaces.

1. 360° cut level 5 FiberWire™ 13 Ga. shell: High-density polyethylene (HDPE) & glass fiber
2. Crinkle grip latex dip for superior grip in wet or dry conditions

SIZE	PART #
MEDIUM	GFL-12KM
LARGE	GFL-12KL
X-LARGE	GFL-12K1L
XX-LARGE	GFL-12K2L



FIBERWIRE CUT 5 SLEEVE

The FiberWire™ cut 5 sleeve covers your entire arm with cut level 5 protection. The thumb loop keeps the sleeve in place, while the unique contour palm cut eliminates material bunching while wearing a glove. The adjustable bicep closure ensures a tight fit on most users.

1. 360° cut level 5 FiberWire™ 13 Ga. shell: High-density polyethylene (HDPE) & glass fiber
2. Unique contour palm cut eliminates material bunching while wearing a glove
3. Adjustable bicep closure for a secure fit
4. Thumb loop to keep sleeve in place
5. Sold as a pair

SIZE	PART #
OSFM	SFV-15Y



STARYARN NITRILE

The Staryarn™ Nitrile offers 360° of cut level 3 protection. The double dipped sandy nitrile palm provides superior grip and is resistant to chemicals and caustic substances.

1. 360° cut level 3 Staryarn™ 13 Ga. shell: High-density polyethylene (HDPE) & polyester
2. Double dipped sandy nitrile palm for superior grip and resistance to chemicals and caustic substances

SIZE	PART #
MEDIUM	GSN-12KM
LARGE	GSN-12KL
X-LARGE	GSN-12K1L
XX-LARGE	GSN-12K2L

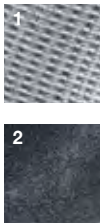


STARYARN LATEX

The Staryarn™ Latex offers 360° of cut level 3 protection with a crinkle grip latex dip, ideal for superior grip on wet and slippery surfaces.

1. 360° cut level 3 Staryarn™ 13 Ga. shell: High-density polyethylene (HDPE) & polyester
2. Crinkle grip latex dip for superior grip in wet or dry conditions

SIZE	PART #
MEDIUM	GSC-13KM
LARGE	GSC-13KL
X-LARGE	GSC-13K1L
XX-LARGE	GSC-13K2L



STARYARN PU

The Staryarn™ PU offers 360° of cut level 3 protection. The polyurethane palm dip provides grip and superior abrasion and liquid resistance.

1. 360° cut level 3 Staryarn™ 13 Ga. shell: High-density polyethylene (HDPE) & polyester
2. Polyurethane palm dip provides grip and superior abrasion and liquid resistance

SIZE	PART #
MEDIUM	GSL-12WM
LARGE	GSL-12WL
X-LARGE	GSL-12W1L
XX-LARGE	GSL-12W2L



5

WORKMAN SERIES GLOVES



TECHNICAL

This standard applies to all kinds of protective gloves in respect to physical and mechanical aggressions caused by abrasion, blade cut, puncture and tearing.

EN-388



1 2 3 4

abrasion resistance
blade cut resistance
tear resistance
puncture resistance



EN-388
4121

PALMER MICRO FOAM

The Palmer Micro Foam is a lightweight, low profile glove with a breathable polyester shell. The thin foamed nitrile palm offers super grip and dexterity.

1. 13 Ga. polyester shell for superior breathability
2. Low profile micro-foam dip provides superior grip & dexterity

SIZE	PART #
MEDIUM	GPM-14KM
LARGE	GPM-14KL
X-LARGE	GPM-14K1L
XX-LARGE	GPM-14K2L



EN-388
4121

PALMER NITRILE

The Palmer Nitrile is a lightweight, breathable glove with a nitrile dipped palm for increased grip and is chemical and caustic substance resistant.

1. Cotton & Polyester shell is breathable and lightweight
2. Nitrile dipped palm offers grip and resistance to chemicals and caustic substances

SIZE	GREEN PART #	BLACK PART #
MEDIUM	GPR-6GM	GPR-6KM
LARGE	GPR-6GL	GPR-6KL
X-LARGE	GPR-6G1L	GPR-6K1L
XX-LARGE	GPR-6G2L	GPR-6K2L



EN-388
4131

PALMER GREEN TAC

The Palmer Green tac is a lightweight, breathable dipped glove offering superior grip in wet or dry conditions. The soft and flexible bamboo shell provides superior comfort and breathability.

1. Thin, soft, breathable bamboo shell provides excellent ventilation
2. Foam nitrile dip offers superior grip in wet or dry conditions

SIZE	PART #
MEDIUM	GPG-1GM
LARGE	GPG-1GL
X-LARGE	GPG-1G1L
XX-LARGE	GPG-1G2L



EN-388
4121

PALMER FULL NITRILE

The Palmer Full Nitrile is a full nitrile dipped glove offering increased grip and resistance to chemicals and caustic substances over the entire hand.

1. Cotton & Polyester shell is breathable and lightweight
2. Nitrile full dip offers grip and resistance to chemicals and caustic substances over entire hand

SIZE	PART #
MEDIUM	GPF-6GM
LARGE	GPF-6GL
X-LARGE	GPF-6G1L
XX-LARGE	GPF-6G2L

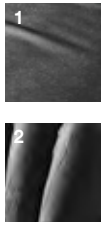


PALMER L-TAC

The Palmer L-Tac is a lightweight cotton and polyester glove with a crinkle grip latex palm for improved grip on wet or dry surfaces.

- 1. Cotton & polyester shell is breathable and lightweight
- 2. Crinkle grip latex palm for improved grip on wet or dry surfaces

SIZE	PART #
MEDIUM	GPL-10YM
LARGE	GPL-10YL
X-LARGE	GPL-10Y1L
XX-LARGE	GPL-10Y2L
XXX-LARGE	GPL-10Y3L



NI-FLEX

The Ni-Flex is a powder free, 100% nitrile disposable glove, offering chemical resistance and textured fingertips for increased grip. *Glove is not medical grade

- 1. Powder free 5 mil nitrile is chemical resistant and helps dissipate electrostatic charges
- 2. Textured fingertips for greater tactile sensitivity and grip on slippery surfaces
- 3. Compliant with FDA food handling requirements
- 4. Box contains 100 gloves

SIZE	PART #
MEDIUM	GNX-1KM
LARGE	GNX-1KL
X-LARGE	GNX-1K1L
XX-LARGE	GNX-1K2L



8 SECONDS

The 8 Seconds glove is durable, comfortable, top-grain cowhide leather glove offering superior abrasion resistance. It features a keystone thumb design for increased dexterity and tactility.

- 1. Unlined top grain cowhide construction
- 2. Keystone thumb for better fit and flexibility
- 3. Elastic wrist closure for secure fitment

SIZE	PART #
MEDIUM	G8S-6SM
LARGE	G8S-6SL
X-LARGE	G8S-6S1L
XX-LARGE	G8S-6S2L
XXX-LARGE	G8S-6S3L



OPERATOR

The Operator is heavy duty split leather glove featuring a keystone thumb for superior dexterity and tactility.

- 1. Split leather and unlined construction
- 2. Keystone thumb for better fit and flexibility
- 3. Elastic wrist closure for secure fitment

SIZE	PART #
MEDIUM	GOR-6YM
LARGE	GOR-6YL
X-LARGE	GOR-6Y1L
XX-LARGE	GOR-6Y2L
XXX-LARGE	GOR-6Y3L

2017 NEW

L-FLEX



The L-Flex is a powder free, 100% Latex disposable glove, offering 15 mil thickness for extreme durability *Glove is not medical grade

- 1. Extra Thick Latex Protection
- 2. Textured palm and fingers for greater tactile sensitivity and grip on slippery surfaces
- 3. 12 Inches long for maximum protection
- 4. 15 mil Latex
- 5. Box contains 50 gloves

SIZE	PART #
MEDIUM	GLX-16BM
LARGE	GLX-16BL
X-LARGE	GLX-16B1L



6

COLD CONDITION GLOVES

TECHNICAL

This standard applies to all kinds of protective gloves in respect to physical and mechanical aggressions caused by abrasion, blade cut, puncture and tearing.

EN-388

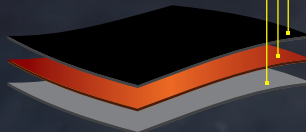


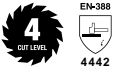
1 2 3 4

abrasion resistance
blade cut resistance
tear resistance
puncture resistance

COLD CONDITION LAYERS

Water resistant shell
Insulated liner
Comfort liner





RIGGER WINTER

The Rigger Winter glove offers the same abrasion and back of hand protection as the original Rigger with the added benefit of 3M™ Thinsulate™ for extreme cold protection and moisture resistance.

1. Triple layer construction of poly spandex, fleece and 3M™ Thinsulate™ for extreme cold protection and moisture resistance
2. Cut level 4 oil resistant DuPont™ Kevlar® fiber palm provides extreme abrasion resistance
3. Full finger, knuckle and metacarpal TPR impact and crush protection
4. Perforated 5mm internal EVA foam padding provides secondary impact protection to dorsal region of hand
5. Pre-curved palm for added dexterity and comfort

SIZE	PART #
SMALL	GRW-0HVS
MEDIUM	GRW-0HVM
LARGE	GRW-0HVL
X-LARGE	GRW-0HV1L
XX-LARGE	GRW-0HV2L
XXX-LARGE	GRW-0HV3L



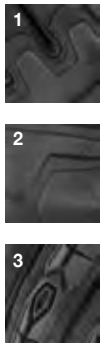
2017
UPDATED

TACKER WINTER

We took our flagship genuine leather Tacker glove and added 3M™ Thinsulate™ and a Hipora® water resistant liner to keep your hands warm and dry while working.

1. Genuine leather reinforcements on the palm, saddle, for impact and vibration absorption
2. EVA padded palm for impact and vibration absorption
3. TPR knuckle impact protection
4. Embossed ariaprene comfort cuff
5. Touch screen finger tip
6. Machine washable genuine leather for maximum abrasion resistance
7. TPR wrist closure

SIZE	PART #
SMALL	GTW-17KKS
MEDIUM	GTW-17KKM
LARGE	GTW-17KKL
X-LARGE	GTW-17KK1L
XX-LARGE	GTW-17KK2L



WEATHERMAN

The Weatherman is a workhorse glove featuring 3M™ Thinsulate™ and a Hipora® water resistant liner to keep your hands warm and dry in extreme conditions.

1. Triple layer poly spandex shell with 3M™ Thinsulate™ for maximum warmth
2. Dual stitched reinforced thumb, palm and finger tips for increased abrasion resistance
3. Additional layer of breathable Hipora® water resistant liner
4. Rolled fingertips for increased tactility and dexterity
5. 3" gauntlet cuff with cinch strap and draw string to keep the elements out

SIZE	PART #
MEDIUM	GWM-6KM
LARGE	GWM-6KL
X-LARGE	GWM-6K1L
XX-LARGE	GWM-6K2L



2017
UPDATED

OPTION WINTER

We took our popular Option glove and added 3M™ Thinsulate™ and a Hipora® water resistant liner to keep your hands warm and dry while working.

1. Single piece palm with saddle, fourchette and fingertip reinforcements for impact and vibration absorption
2. Breathable stretch knit dorsal for maximum fit and comfort
3. TPR wrist closure

SIZE	BLACK PART #	HI-VIZ PART #
SMALL	GOW-17KKS	GOW-17HVBR5
MEDIUM	GOW-17KKM	GOW-17HVBRM
LARGE	GOW-17KKL	GOW-17HVBR1
X-LARGE	GOW-17KK1L	GOW-17HVBR1L
XX-LARGE	GOW-17KK2L	GOW-17HVBR2L



HI-VIZ



BLACK

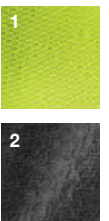


FIBERWIRE WINTER

The FiberWire™ Winter is a cut level 5 glove for cold environments. The inner shell is a 7 Ga. brushed acrylic liner that keeps your hands warm while working.

1. Hi Viz outer shell is 13 Ga. cut level 5 FiberWire™ High-density polyethylene (HDPE) & glass fiber
2. Crinkle grip latex dip for increased grip in wet or dry conditions
3. Inner shell is 7 Ga. brushed acrylic for warmth

SIZE	PART #
SMALL	GFW-15HVS
MEDIUM	GFW-15HVM
LARGE	GFW-15HVL
X-LARGE	GFW-15HV1L
XX-LARGE	GFW-15HV2L





EN-388
4131

PALMER MICRO FOAM WINTER

The Palmer Micro Foam Winter is a lightweight breathable polyester knit glove with a terry acrylic inner liner for increased warmth. The micro foam palm provides superior grip and tactility.

1. 13g polyester outer shell with a 7g terry acrylic inner shell
2. Low profile micro foam dip provides superior grip

SIZE	BLACK PART #
MEDIUM	GPW-15KM
LARGE	GPW-15KL
X-LARGE	GPW-15K1L
XX-LARGE	GPW-15K2L



EN-388
2242

THERMAL TAC PRO

The Thermal Tac Pro is a 10 Ga. brushed acrylic glove offering superior warmth and comfort. The crinkle grip latex palm offers superior grip on wet or dry surfaces.

1. 10 Ga. brushed acrylic thermal liner keeps hands warm and comfortable
2. Crinkle grip latex dip for superior grip in wet or dry conditions

SIZE	BLACK PART #
MEDIUM	GPT-12KM
LARGE	GPT-12KL
X-LARGE	GPT-12K1L
XX-LARGE	GPT-12K2L



THERMAL LINER

Turn any Lift glove into a winter glove or wear by itself. Low profile design enables the liner to be worn under a regular glove for increased warmth when needed.

1. Hi Viz 10 Ga. brushed acrylic is soft, flexible and adds warmth when needed

SIZE	BLACK PART #
MEDIUM	GTL-13HVM
LARGE	GTL-13HVL
X-LARGE	GTL-13HV1L
XX-LARGE	GTL-13HV2L



EN-388
2242

THERMAL TAC

The Thermal Tac is a 13 Ga. polyester staple fiber glove offering warmth and comfort. The crinkle grip latex palm offers superior grip on wet or dry surfaces.

1. 13 Ga. polyester staple fiber (PSF) liner keeps hands warm
2. Crinkle grip latex dip for superior grip in wet or dry conditions

SIZE	BLACK PART #
MEDIUM	GPO-12KM
LARGE	GPO-12KL
X-LARGE	GPO-12K1L
XX-LARGE	GPO-12K2L

7 PROTECTIVE EYEWEAR



STYLE SERIES



BOLD

The Bold is large profile, stylish protective eyewear that is designed to offer maximum coverage. The optically correct polycarbonate lenses offer superior impact protection and are ANSI Z87.1 rated.

1. Large profile fit
2. Optically correct polycarbonate lenses meet ANSI Z87.1 impact ratings
3. TR-90 frame construction with soft rubber temple and nose bridge
4. Exceeds UV-A / UV-B / UV-C



GLOSS BLACK



MATTE BLACK



TORTOISE



WHITE

2017 NEW



CAMO

2017 NEW



DESERT CAMO

STYLE	CLEAR PART #	SMOKE PART #	POLARIZED PART #	SILVER REVO PART #
BLACK	EBD-10KC	EBD-10KST	EBD-10KP	
MATTE BLACK	EBD-14MKC	EBD-14MKST	EBD-14MKP	EBD-15MKSR
TORTOISE	EBD-10TC	EBD-10TST	EBD-10TP	
WHITE	EBD-10WC	EBD-10WST	EBD-10WP	
CAMO		EBD-17CST		
DESERT CAMO		EBD-17DST		



CLEAR



SMOKE



POLARIZED



SILVER REVO



ALIAS

With a slightly lower profile than the Bold, the Alias offers a medium fit. The optically correct polycarbonate lenses offer superior impact protection and are ANSI Z87.1 rated.

1. Medium profile fit
2. Optically correct polycarbonate lenses meet ANSI Z87.1 impact ratings
3. TR-90 frame construction with soft rubber temple and nose bridge
4. Exceeds UV-A / UV-B / UV-C



GLOSS BLACK



MATTE BLACK



TORTOISE



WHITE

2017 NEW



CAMO

2017 NEW



DESERT CAMO

STYLE	CLEAR PART #	SMOKE PART #	POLARIZED PART #	SILVER REVO PART #	RED REVO PART #
BLACK	EAS-10KC	EAS-10KST	EAS-10KP		
MATTE BLACK	EAS-14MKC	EAS-14MKST	EAS-14MKP	EAS-15MKSR	EAS-15MKRR
TORTOISE	EAS-10TC	EAS-10TST	EAS-10TP		
WHITE	EAS-10WC	EAS-10WST	EAS-10WP		
CAMO		EAS-17CST			
DESERT CAMO		EAS-17DST			



CLEAR



SMOKE



POLARIZED



SILVER REVO



RED REVO

STYLE	BIFOCAL W/1.50 PART #	BIFOCAL W/2.00 PART #	BIFOCAL W/2.50 PART #	BIFOCAL W/3.00 PART #
BLACK/CLEAR	EAS-10KC15	EAS-10KC20	EAS-10KC25	EAS-10KC30
BLACK/SMOKE	EAS-13KST15	EAS-13KST20	EAS-13KST25	EAS-13KST30



STANDARD



BI-FOCAL



SWITCH

The Switch is our lowest profile protective eyewear in the Style Series line. The optically correct polycarbonate lenses offer superior impact protection and are ANSI Z87.1 rated.

1. Small to medium profile fit
2. Optically correct polycarbonate lenses meet ANSI Z87.1 impact ratings
3. TR-90 frame construction with soft rubber temple and nose bridge
4. Exceeds UV-A / UV-B / UV-C

STYLE	CLEAR PART #	SMOKE PART #	POLARIZED PART #	SILVER REVO PART #	RED REVO PART #
BLACK	ESH-10KC	ESH-10KST	ESH-10KP		
MATTE BLACK	ESH-14MKC	ESH-14MKST	ESH-14MKP	ESH-15MKSR	ESH-15MKRR
TORTOISE	ESH-10TC	ESH-10TST	ESH-10TP		
WHITE	ESH-10WC	ESH-10WST	ESH-10WP		
CAMO		ESH-17CST			
DESERT CAMO		EBD-17DST			

STYLE	BIFOCAL W/1.50 PART #	BIFOCAL W/2.00 PART #	BIFOCAL W/2.50 PART #	BIFOCAL W/3.00 PART #
BLACK/CLEAR	ESH-10KC15	ESH-10KC20	ESH-10KC25	ESH-10KC30
BLACK/SMOKE	ESH-13KST15	ESH-13KST20	ESH-13KST25	ESH-13KST30



GLOSS BLACK



TORTOISE



MATTE BLACK



WHITE



CAMO



DESERT CAMO



CLEAR



SMOKE



POLARIZED



SILVER REVO



RED REVO



STANDARD



BI-FOCAL



QUEST

The Quest is sport styled, partial frame protective eyewear offering a lightweight, low profile option. The polycarbonate lenses meet ANSI Z87.1 impact ratings.

1. Small to medium fit & coverage
2. Optically correct polycarbonate lenses meet ANSI Z87.1 impact ratings
3. TR-90 frame construction with soft rubber temple and nose bridge
4. Exceeds UV-A / UV-B / UV-C



BLACK



CAMO



CLEAR



SMOKE



AMBER

STYLE	CLEAR PART #	CLEAR BULK PART #	SMOKE PART #	SMOKE BULK PART #	AMBER PART #	AMBER BULK PART #
BLACK	EQT-12KC	EQT-12KCB	EQT-12KST	EQT-12KSTB	EQT-12KA	EQT-12KAB
CAMO	EQT-12CFC	EQT-12CFCB	EQT-12CFST	EQT-12CFSTB	EQT-12CFA	EQT-12CFAB

STROBE

The Strobe is a lightweight, low profile safety glass with a nylon frame and polycarbonate lenses meeting ANSI Z87.1 impact ratings.

1. Small to medium fit & coverage
2. Optically correct polycarbonate lenses meet ANSI Z87.1 impact ratings
3. Nylon frame construction with soft rubber temple and nose bridge
4. Exceeds UV-A / UV-B / UV-C

STYLE	CLEAR PART #	CLEAR BULK PART #	SMOKE PART #	SMOKE BULK PART #
BLACK	ESR-12KC	ESR-12KCB	ESR-12KST	ESR-12KSTB
SILVER	ESR-6C	ESR-6CB	ESR-6ST	ESR-6STB
CAMO	ESR-12CFC	ESR-12CFCB	ESR-12CFST	ESR-12CFSTB

STYLE	AMBER PART #	AMBER BULK PART #	YELLOW PART #	YELLOW BULK PART #
BLACK	ESR-12KA	ESR-12KAB	ESR-12KLT	ESR-12KLTB
SILVER	ESR-12SA	ESR-12SAB	ESR-6LT	ESR-6LTB
CAMO	ESR-12CFA	ESR-12CFAB	ESR-12CFLT	ESR-12CFLT B

STYLE	CLEAR ANTI FOG BULK PART #	SMOKE ANTI-FOG BULK PART #
BLACK	ESR-12KCFB	ESR-12KSTFB
SILVER	ESR-6CFB	ESR-6STFB
CAMO	ESR-12CFCFB	ESR-12CFSTFB



SECTORLITE

The Sectorlite is extremely lightweight polycarbonate frameless protective eyewear offering ANSI Z87.1 and CSA Z94.3 impact ratings.

1. Super lightweight and flexible polycarbonate frame / lens construction
2. Impact protection meets ANSI Z87.1 and CSA Z94.3 specifications
3. Soft rubber on temple tail inserts and nose bridge
4. Exceeds UV-A / UV-B / UV-C

STYLE	PART #	BULK PART #	ANTI-FOG BULKPART #
CLEAR	ESE-6C	ESE-6CB	ESE-6CFB
SMOKE	ESE-6ST	ESE-6STB	ESE-6STFB
MIRROR	ESE-9M	ESE-9MB	
YELLOW	ESE-6LT	ESE-6LTB	
AMBER			ESE-13AFB



FLANKER

The Flanker is adjustable, low profile protective eyewear with a partial frame. The polycarbonate lenses meet ANSI Z87.1 impact ratings.

1. 4-point vertical ear and temple adjustment
2. Co-molded soft rubber temple tail section
3. Translucent polycarbonate partial frame with integrated side shields
4. Impact resistant polycarbonate lenses meet ANSI Z87.1
5. Exceeds UV-A / UV-B / UV-C

STYLE	PART #	BULK PART #
CLEAR	EFR-6C	EFR-6CB
SMOKE	EFR-6ST	EFR-6STB





CLEAR



SMOKE

TEAR OFF

The Tear Off is super light, frameless protective eyewear that meets ANSI Z87.1 impact ratings.

1. Super lightweight frameless design
2. Impact protection meets ANSI Z87.1
3. Exceeds UV-A / UV-B / UV-C

STYLE	PART #
CLEAR	ETO-14CB
SMOKE	ETO-14STB



CLEAR



SMOKE

REFUGE GOGGLE

The Refuge Goggle is a low profile, lightweight goggle that keeps dust and particles out. The anti-fog lens meets ANSI Z87.1 impact ratings.

1. Lightweight, low profile design gives comfort, protection and great styling
2. Soft dual layer foam seals against dust & particles while improving comfort
3. Impact resistant and anti-fog treated polycarbonate lens
4. Impact protection meets ANSI Z87.1
5. Exceeds UV-A / UV-B / UV-C

STYLE	PART #
CLEAR	ERE-8C
SMOKE	ERE-8ST



CLEAR



SMOKE



BLUE

SECTORLITE HYBRID

The Sectorlite Hybrid bridges the gap between protective eyewear and a goggle. It provides superior protection and ventilation and meets ANSI Z87.1 and CSA Z94.3 impact ratings.

1. Lightweight and flexible polycarbonate frame construction
2. Pliable foam molds and seals to face while providing superior ventilation and comfort
3. Adjustable hinged headband fits securely and comfortably
4. Impact resistant and anti-fog lenses
5. Impact protection meets ANSI Z87.1 and CSA Z94.3 specifications
6. Exceeds UV-A / UV-B / UV-C

STYLE	PART #
CLEAR	EHD-8C
SMOKE	EHD-8ST
BLUE	EHD-8B



SPRAYED GOGGLE

The Sprayed Goggle offers a full coverage, wide wrap design for enhanced peripheral vision. The polycarbonate lens meets ANSI Z87.1 impact ratings.

1. Full coverage and comfortable protection
2. Flexible PVC frame construction and polycarbonate lens
3. Fully adjustable strap to fit head securely and comfortably
4. Wide wrap design enhances peripheral vision
5. Impact protection meets ANSI Z87.1
6. Exceeds UV-A / UV-B / UV-C

STYLE	PART #
CLEAR	ESD-6C

8

KNEE PROTECTION





APEX GEL



The Apex Gel is our flagship knee pad. It offers an innovative internal gel insert that molds and forms to the patella and knee cap, maximizing stabilization and protection. The hinged upper support strap is removable and prevents binding while the TPR knee cap maximizes tracking and stability on all surfaces.

1. Hinged upper support strap is removable and prevents binding
2. Fully adjustable two strap design resists slipping
3. Textured TPR knee cap maximizes traction and stability on all surfaces
4. Internal gel insert forms to patella and knee cap, maximizing stabilization and protection
5. Ballistic nylon construction resists abrasion for increased durability
6. Designed to prevent "roll-off" on hard surfaces

PART #
KAX-0K

APEX HARDSHELL



The Apex Hardshell offers an innovative internal gel insert that molds and forms to the patella and knee cap, maximizing stabilization and protection. The hinged upper support strap is removable and prevents binding while the flat polypropylene (PP) cap maximizes tracking and stability on all surfaces.

1. Hinged upper support strap is removable and prevents binding
2. Polypropylene (PP) knee cap provides knee protection and a stable platform
3. Ballistic nylon construction resists abrasion for increased durability
4. Fully adjustable two strap design resists slipping
5. Internal gel insert forms to patella and knee cap, maximizing stabilization and protection
6. Designed to prevent "roll-off" on hard surfaces

PART #
KAH-15K

APEX NON MARRING



The Apex Non Marring offers an innovative internal gel insert that molds and forms to the patella and knee cap, maximizing stabilization and protection. The hinged upper support strap is removable and prevents binding while the thermoplastic polyurethane (TPU) cap maximizes stability while minimizing marring and scuffing on sensitive surfaces.

1. Hinged upper support strap is removable and prevents binding
2. Thermoplastic polyurethane (TPU) knee cap minimizes marring and scuffing
3. Ballistic nylon construction resists abrasion for increased durability
4. Internal gel insert forms to patella and knee cap, maximizing stabilization and protection
5. Fully adjustable two strap design resists slipping
6. Designed to prevent "roll-off" on hard surfaces

PART #
KAN-15K

PIVOTAL 2



The Pivotal 2 features formed EVA padding and a TPR knee cap to keep your knee comfortable and protected. The ballistic nylon construction resists abrasion for increased durability.

1. Formed EVA padding provides comfort and protection evenly across the knee
2. Textured TPR knee cap maximizes traction and stability on all surfaces
3. Quick release buckle fasteners allow for easy application and removal
4. Fully adjustable two strap system eliminates binding and slipping
5. Ballistic nylon construction resists abrasion for increased durability

PART #
KP2-0K



PIVOTAL NON MARRING

The Pivotal Non Marring features formed EVA padding and a thermoplastic polyurethane (TPU) knee cap to keep your knee comfortable and protected while minimizing marring and scuffing on sensitive surfaces. The ballistic nylon construction resists abrasion for increased durability.

1. Formed EVA padding provides comfort and protection evenly across the knee
2. Quick release buckle fasteners allow for easy application and removal
3. Ballistic nylon construction resists abrasion for increased durability
4. Fully adjustable two strap system eliminates binding and slipping
5. Thermoplastic polyurethane (TPU) knee cap minimizes marring and scuffing

PART #
KPN-15K



PIVOTAL HARDSHELL

The Pivotal Hardshell features formed EVA padding and a flat polypropylene (PP) knee cap to keep your knee protected and stable on flat surfaces. The ballistic nylon construction resists abrasion for increased durability.

1. Polypropylene (PP) knee cap provides knee protection and a stable platform
2. Quick release buckle fasteners allow for easy application and removal
3. Ballistic nylon construction resists abrasion for increased durability
4. Formed EVA padding provides comfort and protection evenly across the knee
5. Fully adjustable two strap system eliminates binding and slipping

PART #
KPH-15K



FACTOR

The Factor is a hardshell kneepad featuring PU foam padding for protection and comfort. The ballistic nylon construction resists abrasion for increased durability.

1. Hard plastic cap offers durability and a flat platform to reduce "roll-off"
2. Ballistic nylon construction resists abrasion for increased durability
3. Quick release buckle fasteners allow for easy application and removal
4. PU foam padding provides comfort and protection
5. Fully adjustable two strap system reduces binding and slipping

PART #
KFR-0K



2017
NEW

KNEELING MAT

The Kneeling Mat is made of medium density closed cell polyurethane foam, and provides excellent shock absorption and cushioning. The mat reduces knee fatigue and joint discomfort while kneeling.

1. Easy carry handle slot
2. Waterproof anti slip polyethylene
3. Compact footprint for workspace convenience
4. Dimensions 20.5" X 14"
5. 25mm thickness

PART #
KKM-16K

9

HI VIZ
APPAREL



BOMBER JACKET

The Bomber Jacket is a warm, waterproof jacket designed for extreme weather use. It features 2" reflective tape for visibility in low light environments and a concealable, removable hood.

1. Waterproof 100% polyester 300D oxford shell with sealed seams and PU coating
2. Concealable, removable hood
3. 2" reflective tape
4. 100% polyester anti-pillar polar fleece removable lining
5. One chest pocket with flap
6. Two zip closure slant pockets

SIZE	PART #
MEDIUM	AVB-14HVM
LARGE	AVB-14HVL
X-LARGE	AVB-14HV1L
XX-LARGE	AVB-14HV2L
XXX-LARGE	AVB-14HV3L
XXXX-LARGE	AVB-14HV4L

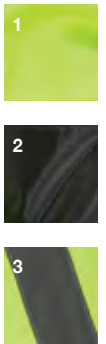


HI-VIZ HOODIE

The Hi Viz Hoodie is designed to keep you warm and visible while working on chilly days. It features 2" reflective tape for increased visibility and an adjustable drawstring hood.

1. 100% polyester fleece shell
2. Adjustable drawstring hood
3. 2" reflective tape
4. Ribbed cuff and bottom

SIZE	PART #
MEDIUM	AVH-14HVM
LARGE	AVH-14HVL
X-LARGE	AVH-14HV1L
XX-LARGE	AVH-14HV2L
XXX-LARGE	AVH-14HV3L
XXXX-LARGE	AVH-14HV4L



VIZ PRO 3

The Viz Pro 3 offers an ANSI/ISEA class 3 certification. It features polyester air mesh for superior breathability and 2" reflective tape for increased visibility.

1. Polyester air mesh maximizes airflow
2. 2" reflective tape
3. Left lapel combo pocket
4. Provides ANSI/ISEA class 3 certification

SIZE	YELLOW PART #	ORANGE PART #
MEDIUM	AV3-14LM	AV3-14EM
LARGE	AV3-14LL	AV3-14EL
X-LARGE	AV3-14L1L	AV3-14E1L
XX-LARGE	AV3-14L2L	AV3-14E2L
XXX-LARGE	AV3-14L3L	AV3-14E3L
XXXX-LARGE	AV3-14L4L	AV3-14E4L



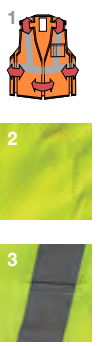


VIZ PRO 2

The Viz Pro 2 offers an ANSI/ISEA class 2 certification. It features polyester air mesh for superior breathability and 2" reflective tape for increased visibility.

1. Polyester air mesh maximizes airflow
2. 2" reflective tape
3. Provides ANSI/ISEA class 2 certification
4. Left lapel combo pocket

SIZE	YELLOW PART #	ORANGE PART #
MEDIUM	AV2-10LM	AV2-10EM
LARGE	AV2-10LL	AV2-10EL
X-LARGE	AV2-10L1L	AV2-10E1L
XX-LARGE	AV2-10L2L	AV2-10E2L
XXX-LARGE	AV2-10L3L	AV2-10E3L
XXXX-LARGE	AV2-10L4L	AV2-10E4L



VIZ PRO 5 POINT

The Viz Pro 5pt offers an ANSI/ISEA class 2 certification. It features a 5 point breakaway system for increased safety while working on or around heavy machinery and 2" reflective tape for increased visibility.

1. 5 point breakaway velcro on shoulders, sides and front
2. Polyester air mesh maximizes airflow
3. 2" reflective tape
4. Provides ANSI/ISEA class 2 certification
5. Left lapel combo pocket

SIZE	YELLOW PART #	ORANGE PART #
MEDIUM	AV5-13LM	AV5-13EM
LARGE	AV5-13LL	AV5-13EL
X-LARGE	AV5-13L1L	AV5-13E1L
XX-LARGE	AV5-13L2L	AV5-13E2L
XXX-LARGE	AV5-13L3L	AV5-13E3L
XXXX-LARGE	AV5-13L4L	AV5-13E4L



VIZ PRO

The Viz Pro offers an ANSI/ISEA class 2 certification. It features polyester air mesh for superior breathability and 2" reflective tape for increased visibility.

1. Polyester air mesh maximizes airflow
2. 2" reflective tape
3. Provides ANSI/ISEA class 2 certification
4. Left lapel combo pocket

SIZE	YELLOW PART #	ORANGE PART #
MEDIUM	AVV-10LM	AVV-10EM
LARGE	AVV-10LL	AVV-10EL
X-LARGE	AVV-10L1L	AVV-10E1L
XX-LARGE	AVV-10L2L	AVV-10E2L
XXX-LARGE	AVV-10L3L	AVV-10E3L
XXXX-LARGE	AVV-10L4L	AVV-10E4L



VIZ PRO TEE

The Viz Pro Tee is a comfortable, breathable T-shirt with 2" reflective tape offering ANSI/ISEA class 2 certification.

1. Breathable polyester knit for maximum comfort
2. 2" reflective tape
3. Left lapel combo pocket
4. Provides ANSI/ISEA Class 2 Certification

SIZE	YELLOW PART #	ORANGE PART #
MEDIUM	AVE-10LM	AVE-10EM
LARGE	AVE-10LL	AVE-10EL
X-LARGE	AVE-10L1L	AVE-10E1L
XX-LARGE	AVE-10L2L	AVE-10E2L

10

GEAR BAGS



WIDE OPEN

The Wide Open is a durable tool bag with a heavy duty padded base and over 24 pockets to keep your gear safe and organized.

1. Durable 600D Polyester construction offers long lasting performance
2. Engineered polyurethane high abrasion resistant base
3. 20 outer pockets for easy access tool storage
4. Large gate-mouth main pocket for power tool or large tool storage
5. 2 internal and external end pockets offer additional storage
6. Dimensions: 15" x 12" x 8"

STYLE	PART #
BLACK	ACW-6Y
CAMO	ACW-15C



SHUTTLE

The Shuttle is a durable duffel bag with 6 compartments. It features a durable 600D polyester shell for increased abrasion resistance.

1. Durable 600D Polyester construction offers long lasting performance
2. Engineered polyurethane high abrasion resistant base
3. 1 large main compartment with 5 additional smaller pockets
4. Dimensions: 22" x 12" x 8"

STYLE	PART #
BLACK	ASE-14K
CAMO	ASE-15C



BACKPACK

The Backpack offers 29 pockets and a durable polyurethane base. The durable ballistic nylon shell stands up to any environment.

1. Ballistic nylon shell with reinforced stitching
2. Durable front shell
3. Engineered polyurethane high abrasion resistant base material
4. 29 pockets and a cell phone holder
5. Curved zipper for easy access
6. Padded shoulder and back for comfort
7. Dimensions: 14" x 16" x 8"

STYLE	PART #
BLACK	ATB-14K
CAMO	ATB-15C



1

COOLING GEAR



- 1: Submerge item into water for 1-2 Minutes
- 2: Gently remove excess water
- 3: Re-hydrate as needed



SHADE



CROWN COOLER & SHADE



BLUE

BLACK

FLAG



TAN

CAMO

NECK SHADE

STYLE	PART #
SHADE	ANS-14K
CROWN COOLER/SHADE	ACC-14K

NECK BAND

COLOR	PART #
BLUE	ACN-14B
BLACK	ACN-15K
FLAG	ACN-14F
TAN	ACN-14T
CAMO	ACN-15RT



BLUE

BLACK

FLAG

CAMO



BLUE

BLACK

FLAG

CAMO

COOLING BEANIE

COLOR	PART #
BLUE	ACB-14B
BLACK	ACB-14K
FLAG	ACB-15F
CAMO	ACB-15RT

SKULL CAP

COLOR	PART #
BLUE	ACS-14B
BLACK	ACS-14K
FLAG	ACS-14F
CAMO	ACS-15RT

12

HEARING PROTECTION



FOAM EAR PLUGS

Our Foam Ear Plugs are made of a soft polyurethane foam, allowing them to form comfortably to any ear for a complete seal.

1. Soft polyurethane foam provides comfort and close fitting seal
2. Smooth soil resistant coating offers clean, long lasting performance
3. Self adjusting foam fits to almost any ear
4. Rating: NRR 32dB / ANSI S3.19

QTY (PRS)	PART #
6	AFE-7G6
100	AFE-6GB



FLANGE EAR PLUGS

Our Flange Ear Plugs are reusable and made from surgical grade silicone. They fit comfortably in most ears.

1. Soft pliable tri-flange design provides comfort and effective protection
2. Tapered flange contours to various ear sizes
3. Made from surgical grade silicon for long lasting use
4. Easy to clean with soap and water
5. Rating: NRR25dB // ANSI S3.19

QTY (PRS)	PART #
6	ACG-7G6
100	ACG-6GB



13

SUPPORT GEAR





STRETCH BELT

The Stretch Belt is ergonomically designed for back and abdominal support for heavy lifting. It is fully adjustable and features removable elastic suspenders.

1. Removable and fully adjustable 1.5" elastic suspenders with hook/loop release tabs
2. Two stage adjustable hook/loop closure system
3. Vented and removable lumbar pad offers superior comfort
4. Ergonomically designed for maximum flexibility and support

SIZE	PART #
SMALL	BSH-6KS
MEDIUM	BSH-6KM
LARGE	BSH-6KL
X-LARGE	BSH-6K1L
XX-LARGE	BSH-6K2L
XXX-LARGE	BSH-6K3L



SIZE CHART	
SMALL	30" - 34"
MEDIUM	34" - 40"
LARGE	38" - 42"
X-LARGE	40" - 44"
XX-LARGE	42" - 46"
XXX-LARGE	44" - 48"



BRACER WRIST BRACE

The Bracer is a low profile, lightweight wrist brace designed to protect against wrist hyperextension. One size fits left or right hand.

1. Ergonomically designed to protect against wrist hyperextension
2. Delivers great support while recovering from injury
3. Includes two high density flex pads
4. One size fits left or right hand

PART #
SBR-6Y

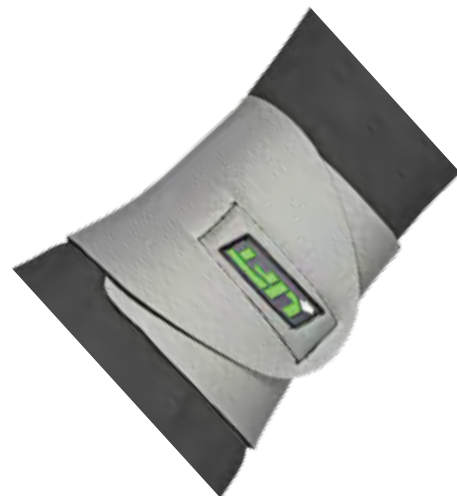


HITCH WRIST & THUMB STABILIZER

The Hitch Stabilizer is a low profile, breathable wrap designed to support the thumb and wrist.

1. Low profile 3mm neoprene wrap supports wrist and thumb
2. Allows full wrist movement
3. Fits comfortably in work glove
4. One size fits left or right hand

PART #
SHH-6Y



NEO WRIST SUPPORT

The Neo Wrist Support is a low profile, breathable wrist support designed to reduce hyperextension.

1. Ergonomically designed to protect against wrist hyperextension
2. Delivers great support while recovering from injury
3. Includes two high density flex pads
4. Allows full wrist movement
5. One size fits left or right hand

PART #
SNO-6Y



NEO ES1 ELBOW SUPPORT

The Neo ES1 is a lightweight, breathable elbow support that relieves discomfort from tendonitis, bursitis and nerve compression in the elbow.

1. Neoprene constructed elbow sleeve
2. Provides warmth and support to the elbow
3. Relieves discomfort from tendonitis, bursitis and nerve compression
4. Finished edges provide longer product life
5. One size fits left or right elbow

SIZE	PART #
SMALL	SNE-6YS
MEDIUM	SNE-6YM
LARGE	SNE-6YL
X-LARGE	SNE-6Y1L



NEO KS2 KNEE STABILIZER

The Neo KS2 features dual spring stays and compression straps for superior support and compression.

1. Dual compression straps provide support and prevent slipping
2. Bilateral dual spring stays offer added support
3. Open patella cutout aids in comfort and proper alignment
4. One size fits left or right knee

SIZE	PART #
SMALL	SN2-6YS
MEDIUM	SN2-6YM
LARGE	SN2-6YL
X-LARGE	SN2-6Y1L
XX-LARGE	SN2-6Y2L



NEO KS1 KNEE SUPPORT

The Neo KS1 is a lightweight, flexible knee product providing knee support and compression.

1. 3mm neoprene sleeve provides support and compression
2. Open patella cutout aids in comfort and proper alignment
3. One size fits left or right knee

SIZE	PART #
SMALL	SN1-6YS
MEDIUM	SN1-6YM
LARGE	SN1-6YL
X-LARGE	SN1-6Y1L
XX-LARGE	SN1-6Y2L



NEO A6 ANKLE SUPPORT

The Neo A6 is a low profile, neoprene ankle support.

1. Neoprene ankle sleeve offers support and protection
2. Fits comfortably inside shoe or boot
3. One size fits left or right foot

SIZE	PART #
SMALL	SN6-6YS
MEDIUM	SN6-6YM
LARGE	SN6-6YKL
X-LARGE	SN6-6YL

14

APPAREL





RAZOR



BAD ASS



PROFILE II



BIKER



CAMO ICON

RAZOR TEE

SIZE	PART #
MEDIUM	ARR-13YM
LARGE	ARR-13YL
X-LARGE	ARR-13Y1L
XX-LARGE	ARR-13Y2L
XXX-LARGE	ARR-13Y3L

BAD ASS TEE

SIZE	PART #
MEDIUM	AOG-14KM
LARGE	AOG-14KL
X-LARGE	AOG-14K1L
XX-LARGE	AOG-14K2L
XXX-LARGE	AOG-14K3L

PROFILE II TEE

SIZE	PART #
MEDIUM	AP2-13KM
LARGE	AP2-13KL
X-LARGE	AP2-13K1L
XX-LARGE	AP2-13K2L
XXX-LARGE	AP2-13K3L

BIKER TEE

SIZE	PART #
MEDIUM	ABR-13KM
LARGE	ABR-13KL
X-LARGE	ABR-13K1L
XX-LARGE	ABR-13K2L
XXX-LARGE	ABR-13K3L

CAMO ICON TEE

SIZE	PART #
MEDIUM	ACN-13WM
LARGE	ACN-13WL
X-LARGE	ACN-13W1L
XX-LARGE	ACN-13W2L
XXX-LARGE	ACN-13W3L



SWEAT BEANIE

- 1. Lightweight vented Lycra® material
- 2. Jacquard brow band ensures a comfortable and reliable fit
- 3. Wicks moisture and improves breathability

COLOR	PART #
BLACK	AST-6Y
GREY	AST-9R



BEANIE

- 1. Excellent for cool weather conditions
- 2. Lightweight material improves comfort
- 3. 100% acrylic

COLOR	PART #
OSFM	AB1-6Y



OFF CENTER FLEX FIT® HAT

COLOR	PART #
BLACK	AOC-6K



OFF CENTER FLEX FIT® HAT CAMO

COLOR	PART #
MOSSY OAK® CAMO	AOC-15C



TRUCKEE SNAPBACK HAT

COLOR	PART #
BLACK	ATE-10K



VERT FLEX FIT® HAT

COLOR	PART #
BLACK	AVT-6R



BASE FLEX FIT® HAT

COLOR	PART #
GREY	ABE-10Y



MECHANICS APRON

1. 7 placement top pocket for small tool or writing instrument storage
2. 6 placement lower pocket for larger tool or material storage
3. Lower seam split improves comfort and fit

COLOR	PART #
SMALL	ASA-6Y



SUPPORT CREW SOCK

1. Moisture wicking
2. Compression knit arch
3. Reinforced heel and toe cushion

COLOR	PART #
S/M	ASW-OKSM
L/XL	ASW-OKL1L



TEC CREW SOCK

1. Moisture wicking
2. Breathable upper design
3. Seamless toe
4. Reinforced heel and toe cushion

COLOR	PART #
S/M	ATW-0KSM
L/XL	ATW-0KL1L



SPORT SHORT SOCK

1. Moisture wicking
2. Ankle high sports fit
3. Breathable mesh instep
4. Reinforced heel and toe cushion

COLOR	BLACK PART #	WHITE PART #
S/M	ASY-0KSM	ASY-0WSM
L/XL	ASY-0KL1L	ASY-0WL1L



SHOE COVER

1. Latex free
2. Fluid Repellant
3. Breathable 40g spunbond material
4. Anti-skid bottom
5. One size fits most
6. Sold in 100 quantity boxes

BLACK PART #	BLUE PART #	WATERPROOF PART #
ASC-14K	ASC-14B	ASC-16BW

15 ACCESSORIES





UMBRELLA

PART #
ACU-6Y



MOUSEPAD

PART #
AMP-9K



MUG

PART #
ACC-6Y



BOTTLE OPENER

PART #
ACB-6K



CARPENTER PENCIL

PART #
ACP-6G



PEN

PART #
APN-14K



LANYARD

PART #
ALD-14K



CAN KOOZIE

PART #
ADK-10K

2.2" PRINTED : GRV
PLI-6Y2



3.5" PRINTED : GRV
PLI-6Y3

3" ICON : GRV/GRN
PID-6GY3



3" ICON : GRN/WHT
PID-6GW3

4" ICON : WHITE
PLD-12W4



4" ICON : BLACK
PLD-12W4

5" DIE CUT : GRV/GRN
PLD-6GY5



6" PRINTED : GRV
PLP-6Y6

5" DIE CUT : GRV/GRN
PLD-6GW5



6" PRINTED : GRN
PLP-6G6

24" PRINTED : GRV
PLP-6Y24



DECALS

PART #
SEE INDIVIDUAL DECALS

16

MERCHANDISING



DIMENSIONS 67"X16"X16"

16" FLOOR DISPLAY

PART #
PFD-6Y



DIMENSIONS 67" X 24" X 24"

24" FLOOR DISPLAY

PART #
PFD-15Y24



DIMENSIONS 63" X 70" X 16"

MIDDLE MODULAR RACK

1. Shown rack is built from two 16" Floor Displays and one Middle Modular Rack

PART #
PMK-12Y



HARD HAT DISPLAY

PART #
PHD-13Y



DIMENSIONS 24" X 36"

WALL GRAPHIC

PART #
PSW-16K



10' X 3' BANNER

PART #
ABN-10K10



DIMENSIONS 17" X 8" X 24.5"

EYEWEAR DISPLAY 12 PAIR

PART #
PSG-10Y



16" X 35" BANNER

PART #
PBR-14K



DIMENSIONS 12" X 12" X 27"

EYEWEAR DISPLAY 24 PAIR

PART #
PSG-15Y24



10' X 10' TENT

STYLE	PART #
FRAME & TENT COMBO	PTT-6Y
REPLACEMENT CANOPY	PTP-6Y
REPLACEMENT FRAME	PTF-6Y

LIFT CUSTOM LOGO PROGRAM

Customize your workforce with your own logo. Add a professional look to your crew with our custom logo applications.

CUSTOM LOGO PRINTING OPTIONS OFFERED ON:

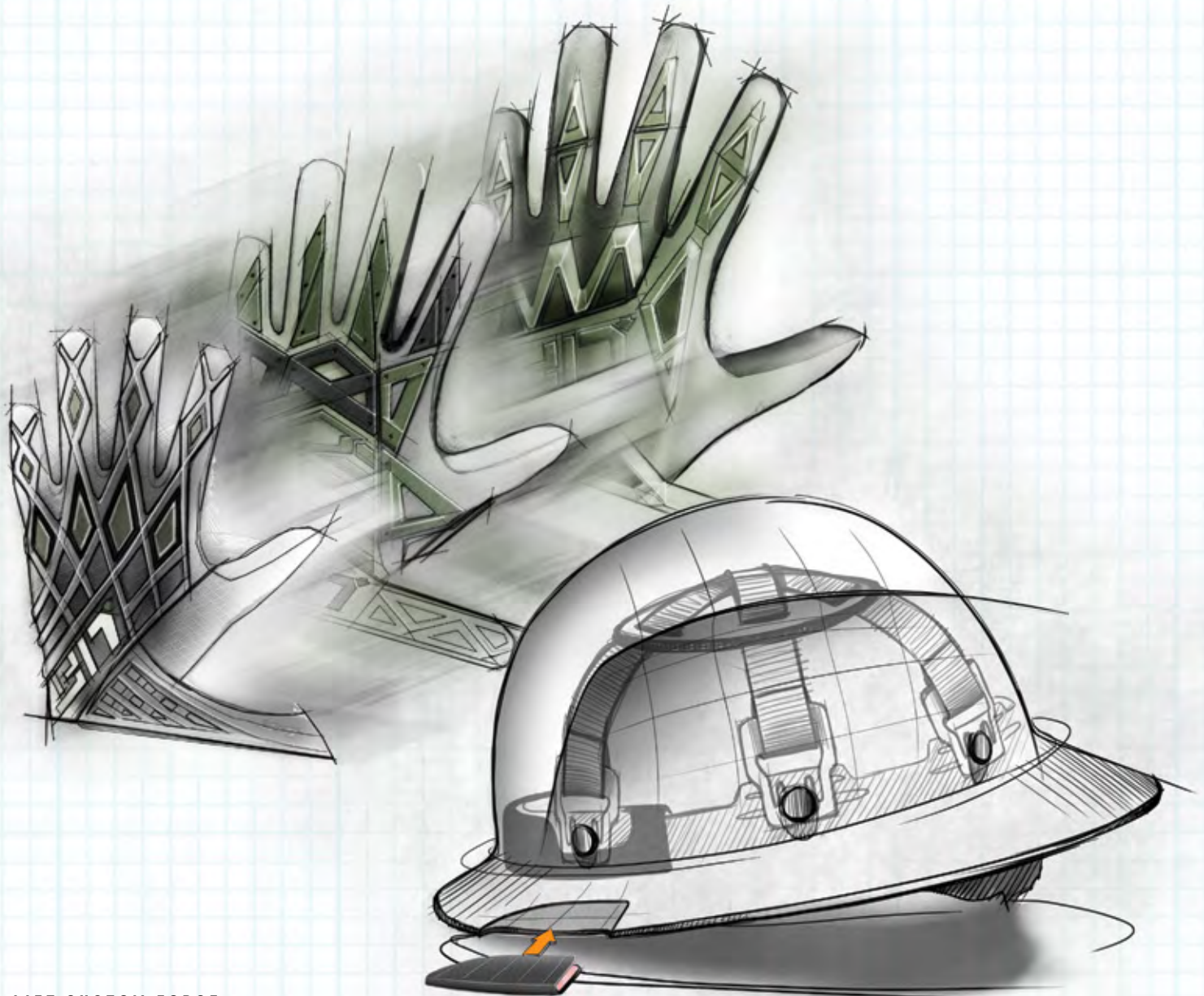
- Viz Pro Tee
- Viz Pro 5-pt
- Briggs Full Brim
- Viz Pro Vest
- Strobe
- Briggs Cap
- Viz Pro2 Vest
- Sectorlite
- Viz Pro3 Vest
- Tearoff

Ask your sales rep for details.



LIFT CUSTOM FORCE

LIFT Custom Force is a powerful product development lab.



LIFT CUSTOM FORCE

Backed by over 20 years of safety innovation, LIFT is proud to announce it's Custom Force program

In October of 2006 Lift Safety was approached by Precision Drilling to design and develop a glove that would reduce or potentially eliminate one of the more common work related injuries...HAND and FINGER INJURIES.

Over the course of 16 months, a series of prototypes, and more than 25,000 hours of field testing resulted in a glove that went beyond Precision Drilling's expectations.

In July 2008 Precision Drilling received their first production shipment and implemented the Rigger Glove into their safety program.

LIFT Custom Force is a product problem-solver that enables you to come up with a custom solution to your specific safety product needs. Do you need a glove that performs better than anything currently available for your specific application or do you need a protective eyewear that is comfortable, but has a unique feature that you haven't found yet in the market?

This is where LIFT Custom Force comes in.

We provide access to our product development lab to co-develop a product that 100% meets your needs: YOUR idea, OUR developers, and with the legendary LIFT quality built in from the start, so it'll last past the finish.

Ask your LIFT Safety team member for more information.



A DIVISION OF LIFT SAFETY

2017 CATALOG



01	GENERAL PURPOSE GLOVES	P. 56
02	DIPPED GLOVES	P. 57-58
03	CUT RESISTANT GLOVES	P. 59
04	DISPOSABLES	P. 59
05	T-SHIRTS	P. 60
06	VINYL BANNER	P. 61

COTTON UTILITY

- + 100% jersey cotton construction
- + Soft knit cuff
- + Ideal for landscaping, gardening, light duty chores

Size	Item#
Medium	G15PK7-BM
Large	G15PK7-BL
X-Large	G15PK7-B1L

*All gloves are packaged in poly bags of 12 pairs.



SPLIT LEATHER

- + Cotton canvas upper construction
- + Split leather palm
- + Improved GRIP lasting performance
- + Ideal for landscaping and Light construction

Size	Item#
Medium	G15SLD-KM
Large	G15SLD-KL
X-Large	G15SLD-K1L

*All gloves are packaged in poly bags of 12 pairs.



CRINKLE LATEX PALM

- + 13 gauge seamless knit polyester liner
- + Latex palm provides abrasion and puncture protection
- + Enhanced grip on wet and dry conditions
- + Ideal for construction, landscaping, and maintenance

Size	Item#
Medium	G15PCL-KM
Large	G15PCL-KL
X-Large	G15PCL-K1L

*All gloves are packaged in poly bags of 12 pairs.



SMOOTH NITRILE PALM

- + 13 gauge seamless knit polyester liner
- + Oil resistant smooth nitrile palm
- + Excellent for handling oils, grease or solvents
- + Ideal for manufacturing, precision machinery, and assembly

Size	Item#
Medium	G15PSN-KM
Large	G15PSN-KL
X-Large	G15PSN-K1L

*All gloves are packaged in poly bags of 12 pairs.



LATEX PALM

- + Comfortable seamless knit mixed fiber liner
- + Latex palm provides abrasion and puncture protection
- + Enhanced grip on wet and dry conditions
- + Ideal for landscaping, masonry, and roofing

Size	Item#
Medium	G15MCL-WM
Large	G15MCL-WL
X-Large	G15MCL-W1L

*All gloves are packaged in poly bags of 12 pairs.



PU COATED PALM

- + 13 gauge seamless knit polyester liner
- + Oil resistant polyurethane coated palm
- + Enhanced grip on wet and dry conditions
- + Ideal for general maintenance, construction, and mechanical assembly

Size	Item#
Medium	G15PSP-KM
Large	G15PSP-KL
X-Large	G15PSP-K1L

*All gloves are packaged in poly bags of 12 pairs.





CUT RESISTANT W/ PU PALM

- + 13 Gauge seamless knit chassis cut resistant liner
- + Oil resistant polyurethane coated palm
- + Enhanced grip on wet and dry conditions
- + EN-388 (4341) cut rated
- + Ideal for metal and glass handling, and construction

Size	Item#
Medium	G15GKP-KM
Large	G15GKP-KL
X-Large	G15GKP-K1L



*All gloves are packaged in poly bags of 12 pairs.



5MIL DISPOSABLE LATEX GLOVE

This 5mil latex glove is a light, powder free option protecting your hands and offering chemical resistance when needed.
*Glove is not medical grade

- + Powder free 5 mil latex is chemical resistant and helps dissipate electrostatic charges
- + Contains no natural rubber proteins known to cause allergic reactions
- + Compliant with FDA food handling requirements, Meets FDA 21 CFR 170-199 specifications

Size	Item#
Medium	G16DL5-BM
Large	G16DL5-BL
X-Large	G16DL5-B1L

*Box Contains 100 pairs



SAFETY GLASSES

The Tear Off is super light, frameless protective eyewear that meets ANSI Z87.1 impact ratings.

- + Level UV Protection 400
- + Lightweight Polycarbonate Frame / Lens Construction
- + Impact Protection Meets ANSI Z87.1 Specifications
- + Comes in packs of 12

Size	Item#
Black	G16SG1-ST
Clear	G16SG1-C



Black



Clear

05 / T-SHIRTS

GUARDMOR T-SHIRT

100% cotton T-shirt with a durable rib neckband



Shield Grey	Item #
Medium	T16SD-YM
Large	T16SD-YL
XL	T16SD-Y1L
XXL	T16SD-Y2L
XXXL	T16SD-Y3L

Shield Black	Item #
Medium	T16SD-KM
Large	T16SD-KL
XL	T16SD-K1L
XXL	T16SD-K2L
XXXL	T16SD-K3L

Traditional	Item #
Medium	T-16TL-KM
Large	T-16TL-KL
XL	T-16TL-K1L
XXL	T-16TL-K2L
XXXL	T-16TL-K3L



10' x 3' BANNER

Our banners are made of heavy duty vinyl materials which makes them great for indoor or outdoor use. They come preassembled with grommets for easy hanging.



17" x 35" BANNER



Product	Item#
Guardmor Large Outdoor Banner 10'x3'	GBN-10K16
Guardmor Small Outdoor Banner 17"x35"	GBR-16K



EVS-SPORTS.COM

In 1985 two gentlemen developed a strategy that would forever change and revolutionize the sport of motocross. Over the last quarter of a century EVS Sports has become the leader in innovation and advanced technology, developing head to toe products for the majority of today's extreme sports athletes. What started out as one knee brace has evolved into an extensive line of knees braces, neck supports, helmets, chest/back protection and a long list of protective gear products to keep any athlete safe when doing what they love. We pour the same amount of dedication and determination into our products as you do into becoming the best that you can possibly be.



KNEE BRACES



HELMETS



CHEST PROTECTION



RACE COLLARS



GLOVES



2130 E. GLADWICK STREET RANCHO DOMINGUEZ, CA 90220
TOLL FREE: 877.543.8444 T: 310.637.6162 F: 310.637.6111