

ELCO Slant
Sloped Ceiling Lighting



Sloped Ceiling Recessed Fixtures

LED Housings and Inserts
Medium Base Housings and Trims

EL **ELCO Lighting**
The Best Choice in Lighting

Over two and a half decades ago, in the heart of Los Angeles, ELCO Lighting was founded on the philosophy that high quality lighting products should be sold at a fair market price. Our commitment to this philosophy and dedication to exceptional customer service serve as the very soul of our company. We take pride in our perpetual commitment to such standards that enable us to continually prosper in a highly competitive and unpredictable industry. With our expanding LED product line that entails recessed, track, undercabinet, outdoor and emergency lighting, we are ready to fulfill a variety of lighting demands. Quality engineering, fair market value, professional customer service, and micro-managed inventory are the cornerstones of ELCO Lighting.

Contents

LED Housings & Inserts

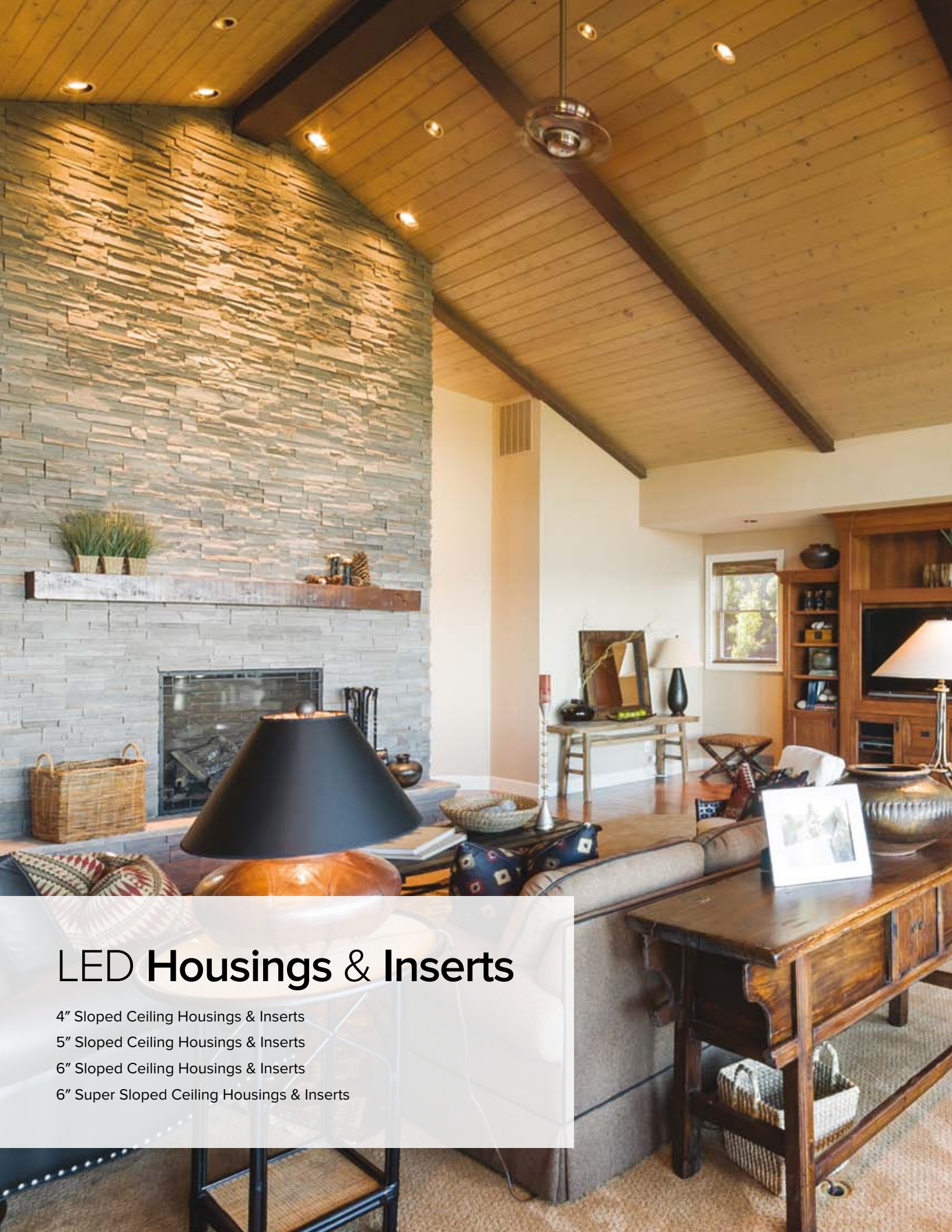
4" LED Sloped Ceiling IC Housing	6
4" Sloped Ceiling LED Inserts	7
5" LED Sloped Ceiling IC Housing	8
5" Sloped Ceiling LED Inserts	9
6" LED Sloped Ceiling IC Housing	10
6" Sloped Ceiling LED Inserts	11
6" LED Super Sloped Ceiling IC Housing	12
6" Super Sloped Ceiling LED Inserts	13

Medium Base Housings & Trims

5" Sloped Ceiling Medium Base IC Housing	16
5" Sloped Ceiling Trims	17
6" Sloped Ceiling Medium Base IC Housing	18
6" Sloped Ceiling Medium Base Non-IC Housing	19
6" Sloped Ceiling Trims	20
6" Super Sloped Ceiling Medium Base IC Housing	22
6" Super Sloped Ceiling Medium Base Non-IC Housing	23
6" Super Sloped Ceiling Trims	24

Accessories	25
-------------	----

Photometrics	26
--------------	----



LED Housings & Inserts

4" Sloped Ceiling Housings & Inserts

5" Sloped Ceiling Housings & Inserts

6" Sloped Ceiling Housings & Inserts

6" Super Sloped Ceiling Housings & Inserts

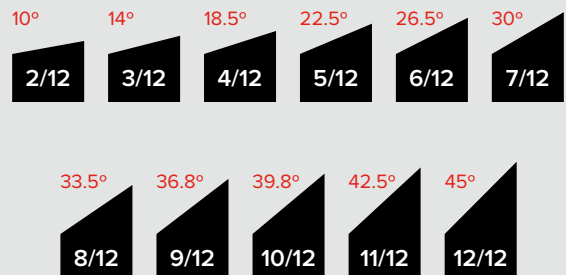
LED Dedicated Sloped Ceiling Housing and Inserts

LED Dedicated Housings are UL rated as IC Airtight for use in insulated ceilings



U.S. PATENT NO. **5548499**

Recessed downlighting has quickly become the most elegant way to add lighting to a vaulted or sloped ceiling. ELCO Lighting's Slant product family is designed specifically for sloped ceilings. Slant's innovative-patented solution allows for installation in sloped ceilings ranging from 2/12 (10°) to 12/12 (45°).



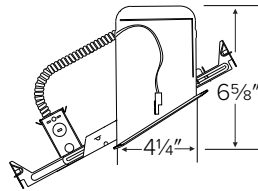
4" Dedicated LED Sloped Ceiling IC Housing



4" IC Airtight Single Wall New Construction

Item: **EL470ICA**

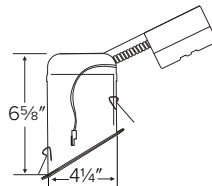
- Can be used in insulated ceilings
- Fits in 2" x 8" joist construction
- Input voltage 120V AC
- Ceiling Slopes Pitch Range from 2/12 to 6/12
- Junction Box listed for Through Branch circuit wiring with five 1/4" knockouts and 4 true pryout slots for Romex cable
- Captive Hanger Bars Span up to 24" joists with Real Nail
- 7 1/2" Height allows for use in 2" x 8" construction
- Aluminum Construction Single Wall Housing
- Damp Location UL Listed
- Feed Through UL Listed
- Direct contact with Insulation UL Listed
- Airtight per ASTM E-283
- CA T24 High Efficacy Luminaire



4" IC Airtight Remodel

Item: **EL470RICA**

- Can be used in insulated ceilings
- Fits in 2" x 8" joist construction
- Input voltage 120V AC
- Ceiling Slopes Pitch Range from 2/12 to 6/12
- Junction Box listed for Through Branch circuit wiring with five 1/4" knockouts and 4 true pryout slots for Romex cable
- 7 1/2" Height allows for use in 2" x 8" construction
- Damp Location UL Listed
- Feed Through UL Listed
- Direct contact with Insulation UL Listed
- Airtight per ASTM E-283
- CA T24 High Efficacy Luminaire



4" Sloped Ceiling LED Inserts

Compatible with most incandescent and low voltage dimmers



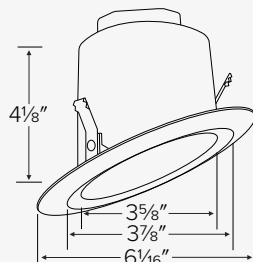
Adjustable Gimbal Baffle Trim (25° Tilt)

Item	Lumens	Color Temp
EL42330W	960 lm	3000K



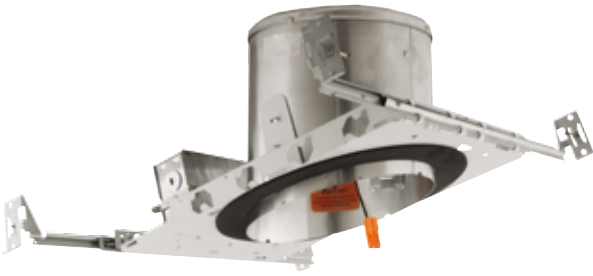
Adjustable Gimbal Reflector Trim (25° Tilt)

Item	Lumens	Color Temp
EL42530W	960 lm	3000K



- 12W
- CRI 90+
- UL Listed
- Dimmable Triac/ELV
- Damp Location
- Title 24 compliant
- 6 1/16" Outer Diameter

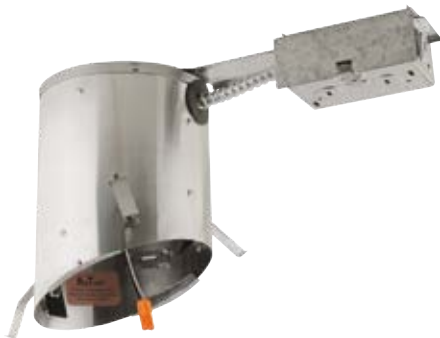
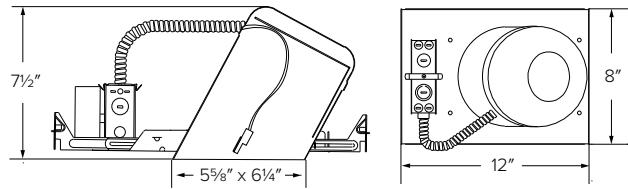
5" Dedicated LED Sloped Ceiling IC Housing



5" IC Airtight Single Wall New Construction

Item: **EL590ICA**

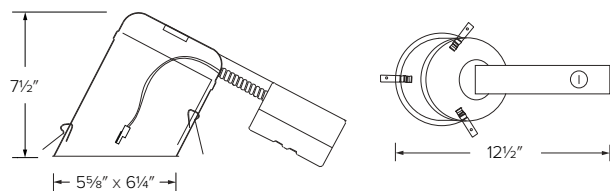
- Can be used in insulated ceilings
- Fits in 2" x 8" joist construction
- Input voltage 120V AC
- Ceiling Slopes Pitch Range from 2/12 to 6/12
- Junction Box listed for Through Branch circuit wiring with five 1/4" knockouts and 4 true pryout slots for Romex cable
- Captive Hanger Bars Span up to 24" joists with Real Nail
- 7 1/2" Height allows for use in 2" x 8" construction
- Aluminum Construction Single Wall Housing
- Damp Location UL Listed
- Feed Through UL Listed
- Direct contact with Insulation UL Listed
- Airtight per ASTM E-283
- CA T24 High Efficacy Luminaire



5" IC Airtight Remodel

Item: **EL590RICA**

- Can be used in insulated ceilings
- Fits in 2" x 8" joist construction
- Input voltage 120V AC
- Ceiling Slopes Pitch Range from 2/12 to 6/12
- Junction Box listed for Through Branch circuit wiring with five 1/4" knockouts and 4 true pryout slots for Romex cable
- 7 1/2" Height allows for use in 2" x 8" construction
- Damp Location UL Listed
- Feed Through UL Listed
- Direct contact with Insulation UL Listed
- Airtight per ASTM E-283
- CA T24 High Efficacy Luminaire



5" Sloped Ceiling LED Inserts

Sloped Ceiling LED Inserts feature an integral gimbal for $\pm 25^\circ$ adjustability. Compatible with most incandescent and electronic low voltage dimmers.

5" Baffle Inserts



Item	Lm	CCT	Watt
EL51127W	1050 lm	2700K	15W
EL51130W	1050 lm	3000K	15W

Item	Lm	CCT	Watt
EL51127B	1050 lm	2700K	15W
EL51130B	1050 lm	3000K	15W

Item	Lm	CCT	Watt
EL51127BZ	1050 lm	2700K	15W
EL51130BZ	1050 lm	3000K	15W

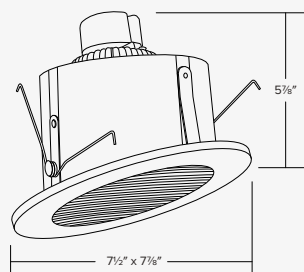
5" Reflector Inserts



Item	Lm	CCT	Watt
EL51227W	1050 lm	2700K	15W
EL51230W	1050 lm	3000K	15W

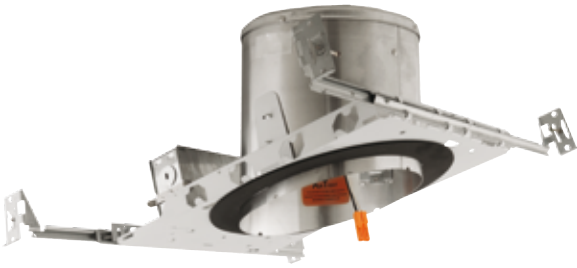
Item	Lm	CCT	Watt
EL51227C	1050 lm	2700K	15W
EL51230C	1050 lm	3000K	15W

Item	Lm	CCT	Watt
EL51227B	1050 lm	2700K	15W
EL51230B	1050 lm	3000K	15W



- Input voltage 120V
- CRI 90+
- Lumen (wattage) 1050 lm (15W)
- Color temperature 2700K or 3000K
- Adjustability $\pm 25^\circ$ tilt
- Dimmable Triac and ELV
- Damp location UL listed
- Life span 50,000 hours L70
- Compatibility EL590ICA, EL590RICA

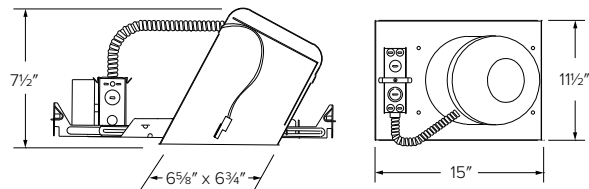
6" Dedicated LED Sloped Ceiling IC Housing



6" IC Airtight Single Wall New Construction

Item: **EL970ICA**

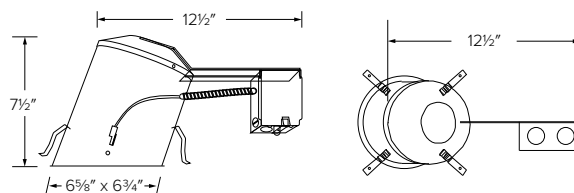
- Can be used in insulated ceilings
- Fits in 2" x 8" joist construction
- Input voltage 120V AC
- Ceiling Slopes Pitch Range from 2/12 to 6/12
- Junction Box listed for Through Branch circuit wiring with five 1/4" knockouts and 4 true pryout slots for Romex cable
- Captive Hanger Bars Span up to 24" joists with Real Nail
- 7 1/2" Height allows for use in 2" x 8" construction
- Aluminum Construction Single Wall Housing
- Damp Location UL Listed
- Feed Through UL Listed
- Direct contact with Insulation UL Listed
- Airtight per ASTM E-283
- CA T24 High Efficacy Luminaire
- U.S. Patent No. 5548499



6" IC Airtight Remodel

Item: **EL970RICA**

- Can be used in insulated ceilings
- Fits in 2" x 8" joist construction
- Input voltage 120V AC
- Ceiling Slopes Pitch Range from 2/12 to 6/12
- Junction Box listed for Through Branch circuit wiring with five 1/4" knockouts and 4 true pryout slots for Romex cable
- 7 1/2" Height allows for use in 2" x 8" construction
- Damp Location UL Listed
- Feed Through UL Listed
- Direct contact with Insulation UL Listed
- Airtight per ASTM E-283
- CA T24 High Efficacy Luminaire
- U.S. Patent No. 5548499



6" Sloped Ceiling LED Inserts

Sloped Ceiling LED Inserts feature an integral gimbal for $\pm 25^\circ$ adjustability. Compatible with most incandescent and low voltage dimmers.

6" Baffle Inserts



Item	Lm	CCT	Watt
EL71327W	1050 lm	2700K	15W
EL71330W	1050 lm	3000K	15W
EL71427W	1200 lm	2700K	18W
EL71430W	1200 lm	3000K	18W

Item	Lm	CCT	Watt
EL71327B	1050 lm	2700K	15W
EL71330B	1050 lm	3000K	15W
EL71427B	1200 lm	2700K	18W
EL71430B	1200 lm	3000K	18W

Item	Lm	CCT	Watt
EL71327BZ	1050 lm	2700K	15W
EL71330BZ	1050 lm	3000K	15W
EL71427BZ	1200 lm	2700K	18W
EL71430BZ	1200 lm	3000K	18W

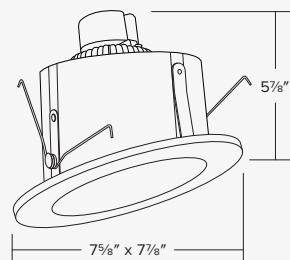
6" Reflector Inserts



Item	Lm	CCT	Watt
EL71527W	1050 lm	2700K	15W
EL71530W	1050 lm	3000K	15W
EL71627W	1200 lm	2700K	18W
EL71630W	1200 lm	3000K	18W

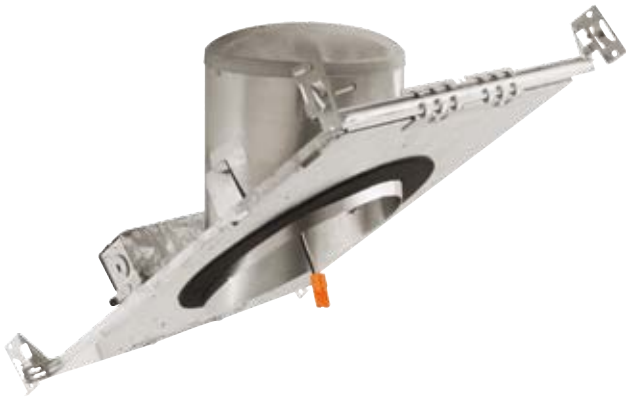
Item	Lm	CCT	Watt
EL71527C	1050 lm	2700K	15W
EL71530C	1050 lm	3000K	15W
EL71627C	1200 lm	2700K	18W
EL71630C	1200 lm	3000K	18W

Item	Lm	CCT	Watt
EL71527B	1050 lm	2700K	15W
EL71530B	1050 lm	3000K	15W
EL71627B	1200 lm	2700K	18W
EL71630B	1200 lm	3000K	18W



- Input voltage 120v
- CRI 90+
- Lumen (wattage) 1050 lm (15W) or 1200 lm (18W)
- Color temperature 2700K or 3000K
- Adjustability $\pm 25^\circ$ tilt
- Dimmable Triac and ELV
- Damp location UL listed
- Life span 50,000 hours L70
- Compatibility EL970ICA, EL970RICA
- U.S. Patent No. 5548499

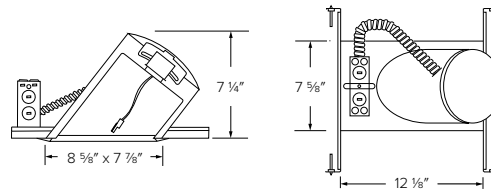
6" Dedicated LED Super Sloped Ceiling IC Housing



6" IC Airtight Single Wall New Construction

Item: **EL971ICA**

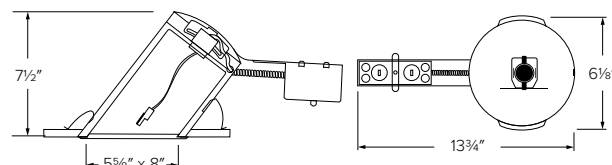
- Can be used in insulated ceilings
- Fits in 2" x 8" joist construction
- Input voltage 120V AC
- Ceiling Slopes Pitch Range from 7/12 to 12/12
- Junction Box listed for Through Branch circuit wiring with five 1/4" knockouts and 4 true pryout slots for Romex cable
- Captive Hanger Bars Span up to 24" joists with Real Nail
- 7 1/2" Height allows for use in 2" x 8" construction
- Aluminum Construction Single Wall Housing
- Damp Location UL Listed
- Feed Through UL Listed
- Direct contact with Insulation UL Listed
- Airtight per ASTM E-283
- CA T24 High Efficacy Luminaire



6" IC Airtight Remodel

Item: **EL971RICA**

- Can be used in insulated ceilings
- Fits in 2" x 8" joist construction
- Input voltage 120V AC
- Ceiling Slopes Pitch Range from 7/12 to 12/12
- Junction Box listed for Through Branch circuit wiring with five 1/4" knockouts and 4 true pryout slots for Romex cable
- 7 1/2" Height allows for use in 2" x 8" construction
- Damp Location UL Listed
- Feed Through UL Listed
- Direct contact with Insulation UL Listed
- Airtight per ASTM E-283
- CA T24 High Efficacy Luminaire



6" Super Sloped Ceiling LED Inserts

Sloped Ceiling LED Inserts feature an integral gimbal for $\pm 25^\circ$ adjustability. Compatible with most incandescent and low voltage dimmers.

6" Baffle Inserts



Item	Lm	CCT	Watt
EL76327W	1050 lm	2700K	15W
EL76330W	1050 lm	3000K	15W
EL76427W	1200 lm	2700K	18W
EL76430W	1200 lm	3000K	18W

Item	Lm	CCT	Watt
EL76327B	1050 lm	2700K	15W
EL76330B	1050 lm	3000K	15W
EL76427B	1200 lm	2700K	18W
EL76430B	1200 lm	3000K	18W

Item	Lm	CCT	Watt
EL76327BZ	1050 lm	2700K	15W
EL76330BZ	1050 lm	3000K	15W
EL76427BZ	1200 lm	2700K	18W
EL76430BZ	1200 lm	3000K	18W

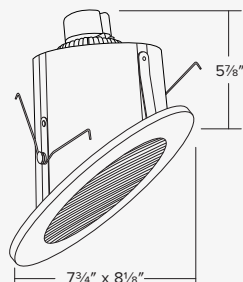
6" Reflector Inserts



Item	Lm	CCT	Watt
EL76127W	1050 lm	2700K	15W
EL76130W	1050 lm	3000K	15W
EL76227W	1200 lm	2700K	18W
EL76230W	1200 lm	3000K	18W

Item	Lm	CCT	Watt
EL76127C	1050 lm	2700K	15W
EL76130C	1050 lm	3000K	15W
EL76227C	1200 lm	2700K	18W
EL76230C	1200 lm	3000K	18W

Item	Lm	CCT	Watt
EL76127B	1050 lm	2700K	15W
EL76130B	1050 lm	3000K	15W
EL76227B	1200 lm	2700K	18W
EL76230B	1200 lm	3000K	18W



- Input voltage 120V
- CRI 90+
- Lumen (wattage) 1050 lm (15W) or 1200 lm (18W)
- Color temperature 2700K or 3000K
- Adjustability $\pm 25^\circ$ tilt
- Dimmable Triac and ELV
- Damp location UL listed
- Life span 50,000 hours L70
- Compatibility EL971ICA, EL971RICA



Medium Base **Housings & Trims**

5" Sloped Ceiling Housings & Inserts

6" Sloped Ceiling Housings & Inserts

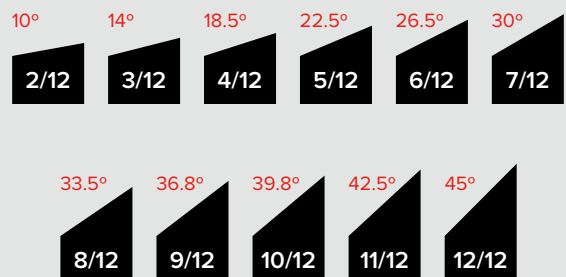
6" Super Sloped Ceiling Housings & Inserts

Medium Base Housing and Trims

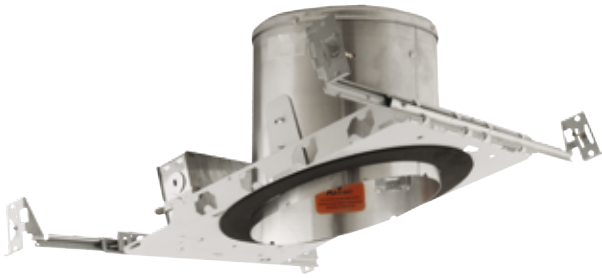
Medium base housings are UL rated as IC Airtight for use in insulated ceilings. They can be used with LED or traditional medium base lamps.



Recessed downlighting has quickly become the most elegant way to add lighting to a vaulted or sloped ceiling. ELCO Lighting's Slant product family is designed specifically for sloped ceilings. Slant's innovative-patented solution allows for installation in sloped ceilings ranging from 2/12 (10°) to 12/12 (45°).



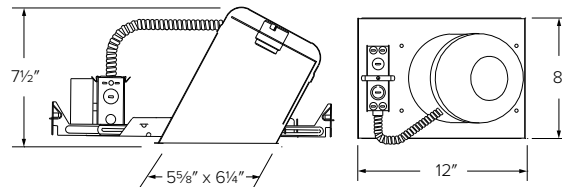
5" Sloped Ceiling Medium Base IC Housing



5" IC Airtight New Construction

Item: **EL518ICA**

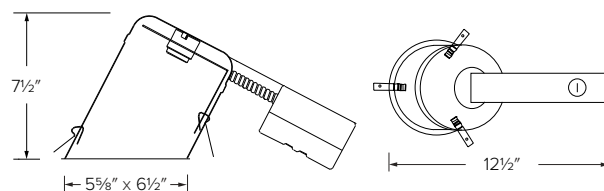
- Can be used in insulated ceilings with lamps up to 75W
- Fits in 2" x 8" joist construction
- Input voltage 120V AC
- Ceiling Slopes Pitch Range from 2/12 to 6/12
- Junction Box listed for Through Branch circuit wiring with five 1/4" knockouts and 4 true pryout slots for Romex cable
- Thermal Protector Guards protect against improper lamping
- Captive Hanger Bars Span up to 24" joists with Real Nail
- 7 1/2" Height allows for use in 2" x 8" construction
- Aluminum Construction Single Wall Housing
- Socket medium base E26
- Damp Location UL Listed
- Feed Through UL Listed
- Direct contact with Insulation UL Listed
- Airtight per ASTM E-283
- Lamps medium base incandescent or LED lamp Max. 75W



5" IC Airtight Remodel

Item: **EL518RICA**

- Can be used in insulated ceilings with lamps up to 75W
- Fits in 2" x 8" joist construction
- Input voltage 120V AC
- Ceiling Slopes Pitch Range from 2/12 to 6/12
- Junction Box listed for Through Branch circuit wiring with five 1/4" knockouts and 4 true pryout slots for Romex cable
- Thermal Protector Guards protect against improper lamping
- 7 1/2" Height allows for use in 2" x 8" construction
- Socket Medium Base E26
- Damp Location UL Listed
- Feed Through UL Listed
- Direct contact with Insulation UL Listed
- Airtight per ASTM E-283
- Lamps Medium Base or LED Incandescent Lamp Max 75W



5" Sloped Ceiling Trims



Baffle Trim

Item	Color
EL550W	White
EL550B	Black

Lamp: 75W Max.
PAR30
O.D. 7 1/8" x 7 1/2"



Reflector Trim

Item	Color
EL555W	White
EL555B	Black
EL555C	Clear

Lamp: 75W Max.
PAR30
O.D. 7 1/8" x 7 1/2"



Regressed Eyeball w/ Reflector Trim

Item	Color
EL519WW-OM5W	White
EL519BB-OM5W	Black

White Metal Trim Ring
Lamp: 75W MAX. PAR30
O.D. 7 1/4"



Regressed Albalite Lens w/Reflector Trim

Item	Color
ELS542W-OM5W	White
ELS542B-OM5W	Black
ELS542C-OM5W	Clear
ELS542G-OM5W	Gold

White Metal Trim Ring
Lamp: 60W A19
O.D. 7 1/4"



Regressed Albalite Lens w/Baffle Trim

Item	Color
EL542W-OM5W	White
EL542B-OM5W	Black

White Metal Trim Ring
Lamp: 60W A19
O.D. 7 1/4"



Regressed Drop Opal Lens w/Baffle Trim

Item	Color
EL546W-OM5W	White
EL546B-OM5W	Black

White Trim Ring
Lamp: 60W A19
O.D. 7 1/4"



Regressed Eyeball w/Baffle Trim

Item	Color
EL575W-OM5W	White
EL575B-OM5W	Black

White Metal Trim Ring
Lamp: 75W PAR30
O.D. 7 1/4"



Adjustable Gimbal w/Baffle Trim

Item	Color
EL576W-OM5W	White
EL576B-OM5W	Black

Lamp: 75W Max. PAR30
O.D. 7 1/4"
U.S. Patent 6364511



Baffle w/Gimbal

Item	Color
EL560W	White
EL560BZ	Black
EL560BZ	Bronze

Lamp: 75W Max.
PAR30
O.D. 7 1/4"



Reflector w/Gimbal

Item	Color
EL561W	White
EL561B	Black
EL561C	Clear

Lamp: 75W Max.
PAR30
O.D. 7 1/4"



Adjustable Gimbal with Reflector

Item	Color
EL577W-OM5W	White
EL577B-OM5W	Black
EL577C-OM5W	Clear
EL577G-OM5W	Gold

White Metal Trim Ring
Lamp: 75W PAR30
O.D. 7 1/4"



Baffle with Adjustable Lamp Holder

Item	Color
ELM531KW	White
ELM531KB	Black

Lamp: 75W Max. PAR30
O.D. 7 1/4"
U.S. Patent 6364511



Reflector with Adjustable Lamp Holder

Item	Color
ELS531KW	White
ELS531KB	Black
ELS531KC	Clear
ELS531KG	Gold

Lamp: 75W Max. PAR30
O.D. 7 1/4"
U.S. Patent 6364511

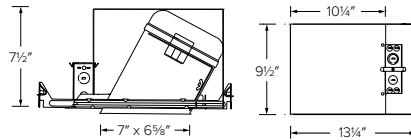
6" Sloped Ceiling Medium Base IC Housing



6" IC Airtight Double Wall New Construction

Item: **EL936ICA**

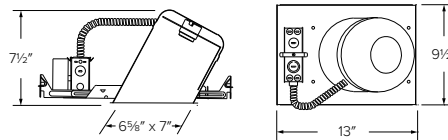
- Can be used in insulated ceilings with lamps up to 90W
- Fits in 2" x 8" joist construction
- Input voltage 120V AC
- Ceiling Slopes Pitch Range from 2/12 to 6/12
- Junction Box listed for Through Branch circuit wiring with five 1/4" knockouts and 4 true pryout slots for Romex cable
- Thermal Protector Guards protect against improper lamping
- Captive Hanger Bars span up to 24" joists with Real Nail
- Aluminum Construction Single Wall Housing
- Damp Location UL Listed
- Feed Through UL Listed
- Direct contact with Insulation UL Listed
- Airtight per ASTM E-283
- Lamps medium base incandescent or LED lamp Max. 90W



6" IC Airtight Single Wall New Construction

Item: **EL918ICA**

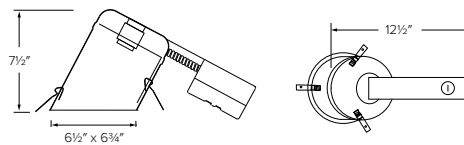
- Can be used in insulated ceilings with lamps up to 75W
- Fits in 2" x 8" joist construction
- Input voltage 120V AC
- Ceiling Slopes Pitch Range from 2/12 to 6/12
- Junction Box listed for Through Branch circuit wiring with five 1/4" knockouts and 4 true pryout slots for Romex cable
- Thermal Protector Guards protect against improper lamping
- Captive Hanger Bars span up to 24" joists with Real Nail
- Aluminum Construction Single Wall Housing
- Damp Location UL Listed
- Feed Through UL Listed
- Direct contact with Insulation UL Listed
- Airtight per ASTM E-283
- Lamps medium base incandescent or LED lamp Max. 75W
- U.S. Patent 5548499



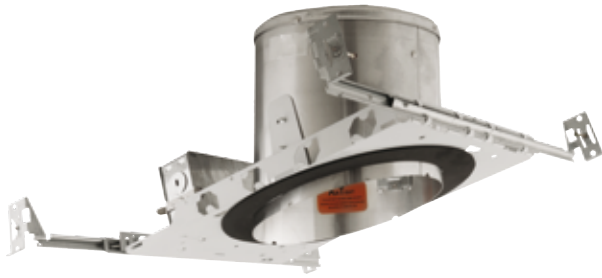
6" IC Airtight Remodel

Item: **EL918RICA**

- Can be used in insulated ceilings with lamps up to 75W
- Fits in 2" x 8" joist construction
- Input voltage 120V AC
- Ceiling Slopes Pitch Range from 2/12 to 6/12
- Junction Box listed for Through Branch circuit wiring with five 1/4" knockouts and 4 true pryout slots for Romex cable
- Thermal Protector Guards protect against improper lamping
- Damp Location UL Listed
- Feed Through UL Listed
- Direct contact with Insulation UL Listed
- Airtight per ASTM E-283
- Lamps medium base incandescent or LED lamp Max. 75W
- U.S. Patent 5548499



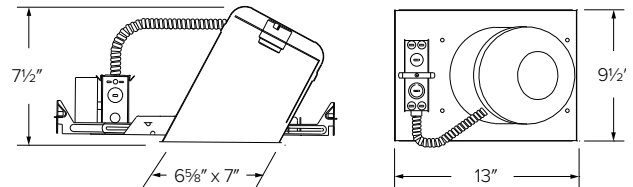
6" Sloped Ceiling Medium Base Non-IC Housing



6" Non-IC New Construction

Item: **EL900HT**

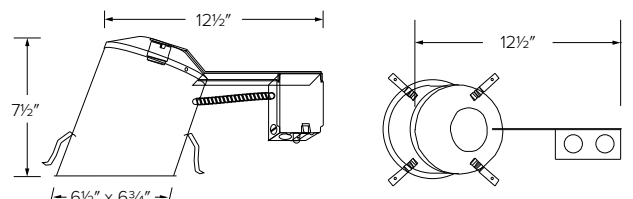
- Fits in 2" x 8" joist construction
- Input voltage 120V AC
- Ceiling Slopes Pitch Range from 2/12 to 6/12
- Junction Box listed for Through Branch circuit wiring with five 1/4" knockouts and 4 true pryout slots for Romex cable
- Thermal Protector Guards protect against improper lamping
- Captive Hanger Bars Span up to 24" joists with Real Nail
- 7 1/2" Height allows for use in 2" x 8" construction
- Damp Location UL Listed
- Feed Through UL Listed
- Lamps medium base incandescent or LED lamp Max. 150W
- U.S. Patent 5548499



6" Non-IC Remodel

Item: **EL900RT**

- Fits in 2" x 8" joist construction
- Input voltage 120V AC
- Ceiling Slopes Pitch Range from 2/12 to 6/12
- Junction Box listed for Through Branch circuit wiring with five 1/4" knockouts and 4 true pryout slots for Romex cable
- Thermal Protector Guards protect against improper lamping
- 7 1/2" Height allows for use in 2" x 8" construction
- Damp Location UL Listed
- Feed Through UL Listed
- Lamps medium base incandescent or LED lamp Max. 150W
- U.S. Patent 5548499



6" Sloped Ceiling Trims



Albalite Shower Trim

Item	Color
EL12W	White
EL12B	Black
EL12G	Gold
EL12N	Nickel
EL12BZ	Bronze
EL12SH	White Lexan Ring

Lamp: 60W Max. A19
OD: 8"



Albalite Shower Trim

Item	Color
EL12CP	Copper

Lamp: 60W Max. A19
OD: 8"



Fresnel Shower Trim

Item	Color
EL13W	White
EL13B	Black
EL13G	Gold
EL13N	Nickel
EL13BZ	Bronze
EL13SH	White Lexan Ring

Lamp: 60W Max. A19
OD: 8"



Fresnel Shower Trim

Item	Color
EL13CP	Copper

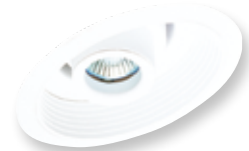
Lamp: 60W Max. A19
OD: 8"



Adjustable Baffle w/Reflector Trim

Item	Color
EL601W	Copper
EL601B	Black

Angle: 30° Adjustment
Lamp: 75W Max. PAR30 or PAR38
OD: 8"



Adjustable Spot w/Baffle Trim

Item	Color
EL610W	Copper
EL610B	Black

Angle: 30° Adjustment
Lamp: 75W Max. JDR, 120V MR16 with PSA28/PSA29, or LED PSA34
OD: 8"



Adjustable Spot w/Reflector Trim

Item	Color
EL611W	White
EL611B	Black
EL611C	Clear
EL611G	Gold

Angle: 30° Adjustment
Lamp: 75W Max. JDR, 120V MR16 with PSA28/PSA29, or LED PSA34
OD: 8"



Reflector Trim

Item	Color
EL616W	White
EL616B	Black
EL616C	Clear
EL616G	Gold

Lamp: 120W Max. PAR38, 75W PAR30
OD: 7 3/8" x 7 5/8"



Adjustable Trim w/Adjustable Bracket

Item	Color
EL616KC	Clear
EL616KW	White

Lamp: 120W Max. PAR38, 75W PAR30
OD: 8"

6" Sloped Ceiling Trims



Regressed Eyeball Baffle

Item	Color
EL618W	White
EL618B	Black

Lamp: 75W Max. PAR30, R30
OD: 8"



Regressed Eyeball Reflector

Item	Color
EL619CW	Clear w/White
EL619WW	White w/White

Lamp: 75W Max. PAR30, R30
OD: 8"



Phenolic Baffle

Item	Color
EL622W	White
EL622B	Black
EL622BG	Black w/Gold Ring

Lamp: 120W Max.
OD: 7 5/8" x 7 7/8"



Phenolic Baffle w/Adjustable Lamp Holder

Item	Color
EL622KW	White
EL622KB	Black
EL622KBZ	Bronze
EL622KBB	All Black
EL622KBBG	Black w/Gold Ring

Lamp: 120W Max. PAR38 or 75W PAR30
OD: 7 5/8" x 7 7/8"



Phenolic Baffle w/Gimbal Ring

Item	Color
EL624W	White
EL624B	Black

Lamp: 75W Max. PAR30
OD: 7 5/8" x 7 7/8"



Phenolic Baffle w/Gimbal Ring

Item	Color
EL626W	White
EL626B	Black

Lamp: 120W Max. PAR38
OD: 7 1/8" x 7 3/8"



Reflector w/Albalite Lens Trim

Item	Color
EL642W	White
EL642B	Black
EL642C	Clear
EL642G	Gold

Lamp: 60W MAX. A19
OD: 8"

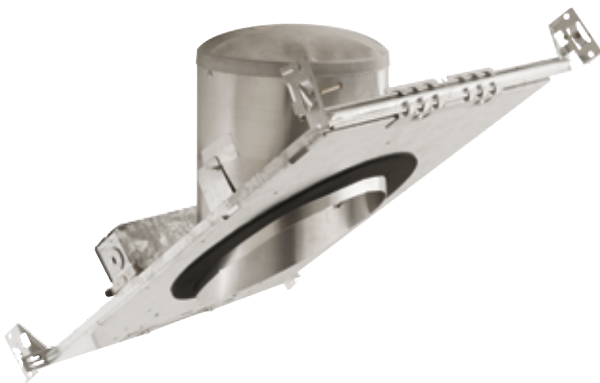
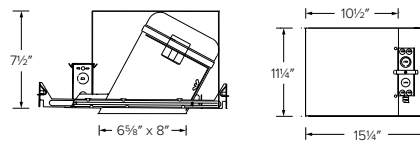
6" Super Sloped Ceiling Medium Base IC Housing



6" IC Airtight Double Wall New Construction

Item: **EL946ICA**

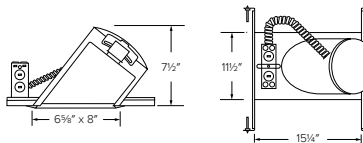
- Can be used in insulated ceilings with lamps up to 90W
- Fits in 2" x 8" joist construction
- Input voltage 120V AC
- Ceiling Slopes Pitch Range from 7/12 to 12/12
- Junction Box listed for Through Branch circuit wiring with five 1/4" knockouts and 4 true pryout slots for Romex cable
- Thermal Protector Guards protect against improper lamping
- Captive Hanger Bars Span up to 24" joists with Real Nail
- 7 1/2" Height allows for use in 2" x 8" construction
- Aluminum Construction Double Wall Housing
- Damp Location UL Listed
- Feed Through UL Listed
- Direct contact with Insulation UL Listed
- Airtight per ASTM E-283
- Lamps traditional or LED PAR30/PAR38 Max. 90W



6" IC Airtight Single Wall New Construction

Item: **EL901ICA**

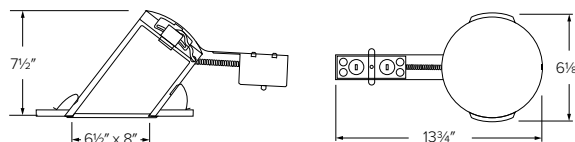
- Can be used in insulated ceilings with lamps up to 75W
- Fits in 2" x 8" joist construction
- Input voltage 120V AC
- Ceiling Slopes Pitch Range from 7/12 to 12/12
- Junction Box listed for Through Branch circuit wiring with five 1/4" knockouts and 4 true pryout slots for Romex cable
- Thermal Protector Guards protect against improper lamping
- Captive Hanger Bars Span up to 24" joists with Real Nail
- 7 1/2" Height allows for use in 2" x 8" construction
- Aluminum Construction Single Wall Housing
- Damp Location UL Listed
- Feed Through UL Listed
- Direct contact with Insulation UL Listed
- Airtight per ASTM E-283
- Lamps traditional or LED PAR30/PAR38 Max. 90W



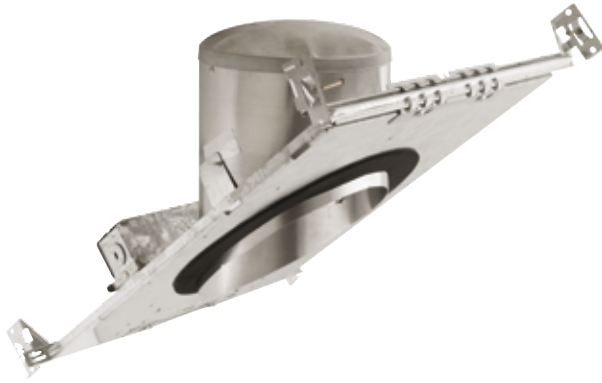
6" IC Airtight Remodel

Item: **EL901RICA**

- Can be used in insulated ceilings with lamps up to 75W
- Fits in 2" x 8" joist construction
- Input voltage 120V AC
- Ceiling Slopes Pitch Range from 7/12 to 12/12
- Junction Box listed for Through Branch circuit wiring with five 1/4" knockouts and 4 true pryout slots for Romex cable
- Thermal Protector Guards protect against improper lamping
- 7" Height allows for use in 2" x 8" construction
- Damp Location UL Listed
- Feed Through UL Listed
- Direct contact with Insulation UL Listed
- Airtight per ASTM E-283
- Lamps traditional or LED PAR30/BR30/PAR38 Max. 75W



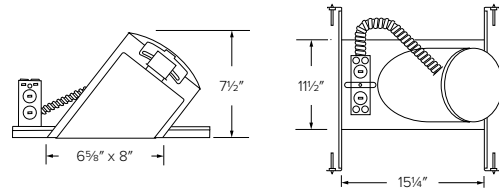
6" Super Sloped Ceiling Medium Base Non-IC Housing



6" Non-IC New Construction

Item: **EL901HT**

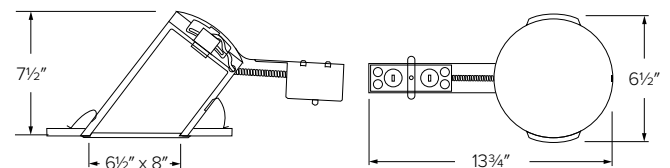
- Fits in 2" x 8" joist construction
- Input voltage 120V AC
- Ceiling Slopes Pitch Range from 7/12 to 12/12
- Junction Box listed for Through Branch circuit wiring with five 1/4" knockouts and 4 true pryout slots for Romex cable
- Thermal Protector Guards protect against improper lamping
- Captive Hanger Bars Span up to 24" joists with Real Nail
- 7 1/2" Height allows for use in 2" x 8" construction
- Damp Location UL Listed
- Feed Through UL Listed
- Lamps traditional or LED PAR30/PAR38 Max. 90W R30 Max. 85W



6" Non-IC Remodel

Item: **EL901RT**

- Fits in 2" x 8" joist construction
- Input voltage 120V AC
- Ceiling Slopes Pitch Range from 7/12 to 12/12
- Junction Box listed for Through Branch circuit wiring with five 1/4" knockouts and 4 true pryout slots for Romex cable
- Thermal Protector Guards protect against improper lamping
- 7 1/2" Height allows for use in 2" x 8" construction
- Damp Location UL Listed
- Feed Through UL Listed
- Lamps medium base incandescent or LED lamp Max. 150W
- Lamps traditional or LED PAR30/PAR38 Max. 90W R30 Max. 85W



6" Super Sloped Ceiling Trims



Baffle Trim

Item	Color
EL602W	White
EL602B	Black

Lamp: 90W Max. PAR30/
PAR38, 75W BR30



Reflector Trim

Item	Color
EL606W	White
EL606B	Black
EL606G	Gold
EL606C	Clear

Lamp: 90W Max. PAR30/
PAR38, 75W BR30



Baffle Trim w/PAR30 Gimbal

Item	Color
EL603W	White
EL603B	Black

Lamp: 75W Max. PAR30



Reflector Trim w/PAR30 Gimbal

Item	Color
EL604W	White
EL604B	Black
EL604G	Gold
EL604C	Clear

Lamp: 75W Max. PAR30



Baffle Trim w/PAR38 Gimbal

Item	Color
EL607W	White
EL607B	Black

Lamp: 90W Max. PAR38



Reflector Trim w/PAR38 Gimbal

Item	Color
EL608W	White
EL608B	Black
EL608G	Gold
EL608C	Clear

Lamp: 90W Max. PAR38

Accessories



PAR30 LED Lamp

Item: **PAR30FSLD**

11W PAR30 LED lamp with medium base. 800 lm, 3000K, CRI 90, dimmable, flood beam, 120V.



Long Neck PAR30 LED Lamp

Item: **PAR30FLD**

10W Long Neck PAR30 LED lamp with medium base. 800 lm, 3000K, CRI 90, dimmable, flood beam, 120V.



PAR38 LED Lamp

Item: **PAR38FLD**

17W PAR38 LED lamp with medium base. 1200 lm, 3000K, CRI 90, dimmable, flood beam, 120V.



PAR20 LED Lamp

Item: **PAR20FLD**

7W PAR20 LED lamp with medium base. 470 lm, 3000K, CRI 90, dimmable, flood beam, 120V.



LED Lamp

Item: **PSA34**

7W LED COB lamp with medium base socket. 500 lm, 3000K, CRI 90, Dimmable, 120V.



Quick Connect LED MR16 Lamp

Item: **PSA37**

7W LED COB lamp with quick connector. 500 lm, 3000K, CRI 90, dimmable, 120V.



LED GU10 Lamp

Item: **MR120-GU10LD**

7W, 500 lm, 3000K, CRI 90, 120V, Dimmable.



Socket Adaptor

Item: **PSA30**

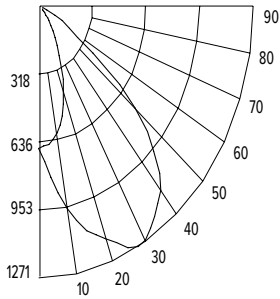
Socket adaptor E26 to quick connector.

5" Slope Baffle Insert

Multiplier: 3000K (x 0.96)

PHOTOMETRIC REPORT

Product #: EL51127 with EL590ICA
Input Watts: 15W
Luminaire LPW: 70 lm/W



CANDLEPOWER SUMMARY

Degrees Vertical	0°
0	668.55
5	803.13
15	1089.94
25	1245.40
35	1198.76
45	961.26
55	389.73
65	105.60
75	1.61
85	0
90	0

ILLUMINANCE AT A DISTANCE

Distance to Target Plane	Footcandles Beam Center	Beam Diameter
4'	41.8	4.2'
6'	18.6	6.3'
8'	10.4	8.4'
10'	6.69	10.5'

ZONAL LUMEN SUMMARY

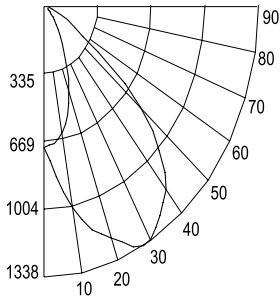
Zone	Lumens	%Luminaire
0-30°	467.83	44.90%
0-40°	726.75	69.70%
0-60°	1019.96	97.90%
0-90°	1042.37	100.00%

5" Slope Reflector Insert

Multiplier: 3000K (x 0.96)

PHOTOMETRIC REPORT

Product #: EL51227 with EL590ICA
Input Watts: 15W
Luminaire LPW: 70 lm/W



CANDLEPOWER SUMMARY

Degrees Vertical	0°
0	703.73
5	845.39
15	1147.30
25	1310.94
35	1261.85
45	1011.85
55	410.24
65	111.16
75	1.69
85	0
90	0

ILLUMINANCE AT A DISTANCE

Distance to Target Plane	Footcandles Beam Center	Beam Diameter
4'	44	4.2'
6'	19.5	6.3'
8'	11	8.4'
10'	7.04	10.5'

ZONAL LUMEN SUMMARY

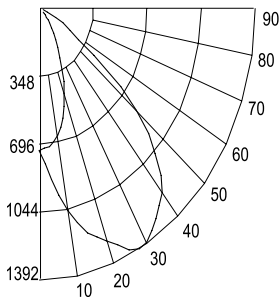
Zone	Lumens	%Luminaire
0-30°	492.2	44.90%
0-40°	764.6	69.70%
0-60°	1072.9	97.90%
0-90°	1096.5	100.00%

6" Slope Baffle Insert

Multiplier: 3000K (x 0.96) - 1150 lm (x 1.09)

PHOTOMETRIC REPORT

Product #: EL71327 with EL970ICA
Input Watts: 18W
Luminaire LPW: 64 lm/W



CANDLEPOWER SUMMARY

Degrees Vertical	0°
0	732.29
5	879.62
15	1193.75
25	1364.02
35	1312.95
45	1052.82
55	426.85
65	115.66
75	1.76
85	0
90	0

ILLUMINANCE AT A DISTANCE

Distance to Target Plane	Footcandles Beam Center	Beam Diameter
4'	45.8	4.2'
6'	20.3	6.3'
8'	11.4	8.4'
10'	7.32	10.5'

ZONAL LUMEN SUMMARY

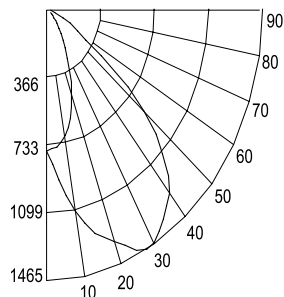
Zone	Lumens	%Luminaire
0-30°	512.1	44.9%
0-40°	795.5	69.7%
0-60°	1116.3	97.9%
0-90°	1140.9	100%

6" Slope Reflector Insert

Multiplier: 3000K (x 0.96) - 1150 lm (x 1.09)

PHOTOMETRIC REPORT

Product #: EL71527 with EL9701CA
Input Watts: 18W
Luminaire LPW: 64 lm/W



CANDLEPOWER SUMMARY

Degrees Vertical	0°
0	770.75
5	925.90
15	1256.57
25	1436.79
35	1382.03
45	1108.22
55	449.31
65	121.75
75	1.85
85	0
90	0

ILLUMINANCE AT A DISTANCE

Distance to Target Plane	Footcandles Beam Center	Beam Diameter
4'	48.2	4.2'
6'	21.4	6.3'
8'	12	8.4'
10'	7.71	10.5'

ZONAL LUMEN SUMMARY

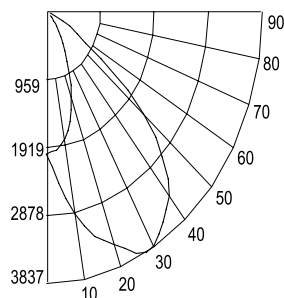
Zone	Lumens	%Luminaire
0-30°	539	44.9%
0-40°	837.4	69.7%
0-60°	1175.1	97.9%
0-90°	1200.9	100%

6" Super Slope Baffle Insert

Multiplier: 3000K (x 0.96) - 1150 lm (x 1.09)

PHOTOMETRIC REPORT

Product #: EL76327 with EL9711CA
Input Watts: 18W
Luminaire LPW: 64 lm/W



CANDLEPOWER SUMMARY

Degrees Vertical	0°
0	446.89
5	615.517
15	1833.96
25	3833.65
35	3544.58
45	996.43
55	109.58
65	17.80
75	2.31
85	7
90	0

ILLUMINANCE AT A DISTANCE

Distance to Target Plane	Footcandles Beam Center	Beam Diameter
4'	27.9	1.8'
6'	12.4	2.8'
8'	6.98	3.7'
10'	4.47	4.6'

ZONAL LUMEN SUMMARY

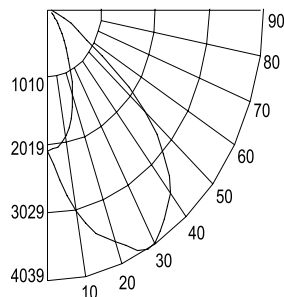
Zone	Lumens	%Luminaire
0-30°	321.4	44.9%
0-40°	521.0	69.7%
0-60°	893.5	97.9%
0-90°	1057.2	100%

6" Super Slope Reflector Insert

Multiplier: 3000K (x 0.96) - 1150 lm (x 1.09)

PHOTOMETRIC REPORT

Product #: EL76127 with EL9711CA
Input Watts: 18W
Luminaire LPW: 64 lm/W



CANDLEPOWER SUMMARY

Degrees Vertical	0°
0	470.40
5	647.90
15	1930.45
25	4035.35
35	3731.07
45	1048.85
55	115.351
65	18.735
75	2.43
85	0
90	0

ILLUMINANCE AT A DISTANCE

Distance to Target Plane	Footcandles Beam Center	Beam Diameter
4'	29.4	1.8'
6'	13.1	2.8'
8'	7.35	3.7'
10'	4.70	4.7'

ZONAL LUMEN SUMMARY

Zone	Lumens	%Luminaire
0-30°	591.5	49.6%
0-40°	963.2	80.80%
0-60°	1180.4	99.1%
0-90°	1191.6	100%

ELCAT1040



Corporate Headquarters

2042 E. Vernon Ave.
Vernon, CA 90058
323.231.2600
elcolighting.com

Customer Service

Tel: 800.522.2626
Fax: 800.644.2626
customerservice@elcolighting.com
sales@elcolighting.com

© ELCO Lighting. The marks appearing in this catalog are registered trademarks of ELCO Lighting. Other marks used herein are recognized trademarks of their respective companies. Products shown in this brochure may be covered by U.S. and international patents. Specifications subject to change without notice.

