

Beam Clamps, Straps, Clamps and Clamp Backs for Rigid Metal Conduit or IMC

CEC:
Listed for Ordinary (Unclassified) Locations

Type 14-S

Application

- To support Rigid Conduit and IMC.

Features

- Snap type - double ribbed

Standard Materials

- Steel

Standard Finishes

- Zinc plated

CEC Certifications and Compliances

- Fed. Spec: FF-S-760

Type THR

Application

- To support Rigid Conduit and IMC.

Features

- Snap type - double ribbed

Standard Materials

- Steel

Standard Finishes

- Zinc plated

CEC Certifications and Compliances

- CSA Standard: C22.2 No. 18.3
- CSA Certified: 104691
- Fed. Spec: FF-S-760

Type 14-G

Application

- To support Rigid Conduit and IMC.

Standard Materials

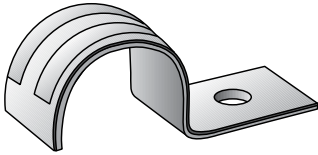
- Malleable iron

Standard Finishes

- Hot dipped galvanized

CEC Certifications and Compliances

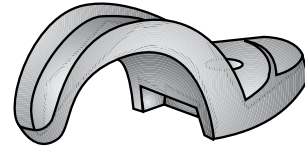
- CSA Standard: C22.2 No. 18.3
- CSA Certified: 009795
- Fed. Spec: FF-S-760



Type 14-S



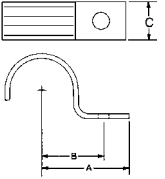
Type THR

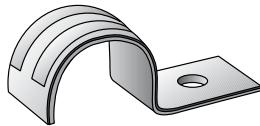


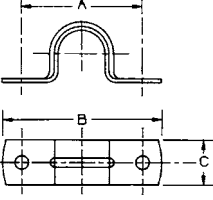
Type 14-G

Beam Clamps, Straps, Clamps and Clamp Backs for Rigid Metal Conduit or IMC

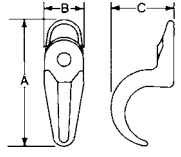
CEC:
Listed for Ordinary (Unclassified) Locations

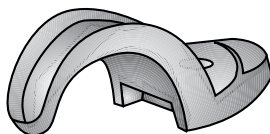
Dimensions in Millimeters (Inches)						
Trade Size (Inches)	A	B	C	Minimum Recommended Bolt Dia.	Catalog Number	
Type 14-S						
1/2	54.1 (2.13)	17.5 (0.69)	19.1 (0.75)	0.25	14-50S	
3/4	65.0 (2.56)	23.9 (0.94)	19.1 (0.75)	0.25	14-75S	
1	69.9 (2.75)	23.9 (0.94)	19.1 (0.75)	0.25	14-100S	
1-1/4	88.9 (3.5)	41.4 (1.63)	25.4 (1.00)	0.31	14-125S	
1-1/2	98.6 (3.88)	46.0 (1.81)	28.7 (1.13)	0.38	14-150S	
2	111.3 (4.38)	54.1 (2.13)	31.8 (1.25)	0.38	14-200S	
2-1/2	157.2 (6.19)	66.8 (2.63)	31.8 (1.25)	0.50	14-250S	
3	171.5 (6.75)	76.2 (3.00)	31.8 (1.25)	0.50	14-300S	
3-1/2	193.8 (7.63)	90.4 (3.56)	38.1 (1.50)	0.63	14-350S	
4	206.5 (8.13)	101.6 (4.00)	38.1 (1.50)	0.63	14-400S	



Dimensions in Millimeters (Inches)						
Trade Size (Inches)	A	B	C	Minimum Recommended Bolt Dia.	Catalog Number	
Type THR						
1/2	44.5 (1.75)	57.2 (2.25)	16.0 (0.63)	4.8 (0.19)	THR-50S	
3/4	46.7 (1.84)	58.7 (2.31)	19.1 (0.75)	4.8 (0.19)	THR-75S	
1	58.7 (2.31)	74.7 (2.94)	18.3 (0.72)	6.4 (0.25)	THR-100S	
1-1/4	74.7 (2.94)	92.2 (3.63)	18.3 (0.72)	6.4 (0.25)	THR-125S	
1-1/2	80.3 (3.16)	100.1 (3.94)	18.3 (0.72)	6.4 (0.25)	THR-150S	
2	108.0 (4.25)	127.0 (5.00)	18.3 (0.72)	6.4 (0.25)	THR-200S	
2-1/2	119.1 (4.69)	145.3 (5.72)	25.4 (1.00)	7.9 (0.31)	THR-250S	
3	144.5 (5.69)	171.5 (6.75)	25.4 (1.00)	7.9 (0.31)	THR-300S	
3-1/2	160.3 (6.31)	185.7 (7.31)	25.4 (1.00)	7.9 (0.31)	THR-350S	
4	173.7 (6.84)	198.4 (7.81)	25.4 (1.00)	7.9 (0.31)	THR-400S	



Dimensions in Millimeters (Inches)						
Conduit Size Inches	A	B	C	Minimum Recommended Bolt Dia.	Catalog Number	
Type 14-G						
1/8	49.3 (1.94)	12.7 (0.5)	12.7 (0.50)	#10	14-18G	
1/4	40.4 (1.59)	15.0 (0.59)	16 (0.63)	6.4 (0.25)	14-25G	
3/8	44.5 (1.75)	16.0 (0.63)	19.1 (0.75)	6.4 (0.25)	14-38G	
1/2	57.2 (2.25)	16.8 (0.66)	23.9 (0.94)	6.4 (0.25)	14-50G	
3/4	65.0 (2.56)	19.1 (0.75)	31.0 (1.22)	6.4 (0.25)	14-75G	
1	77.7 (3.06)	20.6 (0.81)	38.1 (1.50)	6.4 (0.25)	14-100G	
1-1/4	93.7 (3.69)	22.4 (0.88)	47.8 (1.88)	9.7 (0.38)	14-125G	
1-1/2	98.3 (3.87)	25.4 (1.00)	54.1 (2.13)	9.7 (0.38)	14-150G	
2	128.5 (5.06)	28.7 (1.13)	65.0 (2.56)	12.7 (0.50)	14-200G	
2-1/2	150.9 (5.94)	35.1 (1.38)	77.7 (3.06)	12.7 (0.50)	14-250G	
3	189.0 (7.44)	41.4 (1.63)	77.7 (3.06)	12.7 (0.50)	14-300G	
3-1/2	208.0 (8.19)	46.0 (1.81)	111.3 (4.38)	16.0 (0.63)	14-350G	
4	220.7 (8.69)	50.8 (2.00)	127.0 (5.00)	16.0 (0.63)	14-400G	
5	277.9 (10.94)	69.9 (2.75)	165.1 (6.50)	16.0 (0.63)	14-500G	
6	317.5 (12.5)	79.5 (3.13)	190.5 (7.50)	25.4 (1.00)	14-600G	



Beam Clamps, Straps, Clamps and Clamp Backs for Rigid Metal Conduit or IMC

CEC:
Listed for Ordinary (Unclassified) Locations

Application

- Provides spacing from mounting surface when used with malleable iron pipe straps.

Standard Materials

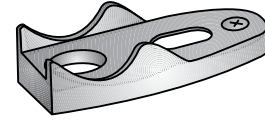
- Malleable iron

Standard Finishes

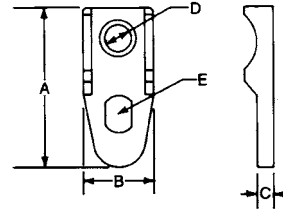
- Hot dip galvanized

NEC/CEC Certifications and Compliances

- CSA Standard: C22.2 No. 18
- CSA Certified: 009795



Clamp Back



Trade Size (Inches)	Dimensions in Millimeters (Inches)					Catalog Number
	A	B	C	D	E	
1/2	36.58 (1.44)	17.53 (0.69)	6.35 (0.25)	9.65 (0.38)	9.65 (0.38) x 12.7 (0.50)	141G
3/4	63.50 (2.50)	28.70 (1.13)	6.35 (0.25)	9.65 (0.38)	14.22 (0.56) x 11.18 (0.44)	142G
1	81.03 (3.19)	23.88 (0.94)	7.87 (0.31)	9.65 (0.38)	14.22 (0.56) x 11.18 (0.44)	143G
1-1/4	93.73 (3.69)	36.58 (1.44)	7.87 (0.31)	12.70 (0.50)	14.22 (0.56) x 13.46 (0.53)	144G
1-1/2	100.08 (3.94)	38.10 (1.50)	7.87 (0.31)	14.22 (0.56)	15.00 (0.59) x 18.29 (0.72)	145G
2	130.3 (5.13)	50.80 (2.00)	9.65 (0.38)	14.22 (0.56)	16.00 (0.63) x 20.57 (0.81)	146G
2-1/2	146.05 (5.75)	63.50 (2.50)	9.65 (0.38)	0.76 (0.03)	16.00 (0.63) x 28.7 (1.13)	147G
3	181.10 (7.13)	71.37 (2.81)	9.65 (0.38)	11.94 (0.47)	16.00 (0.63) x 28.7 (1.13)	148G
3-1/2	203.20 (8.00)	81.79 (3.22)	11.18 (0.44)	11.94 (0.47)	17.53 (0.69) x 34.04 (1.34)	149G
4	222.25 (8.75)	87.38 (3.44)	9.65 (0.38)	11.94 (0.47)	18.29 (0.72) x 32.51 (1.28)	150G
5	255.52 (10.06)	93.73 (3.69)	12.70 (0.50)	13.46 (0.53)	21.34 (0.84) x 33.27 (1.31)	151G
6	152.40 (6.00)	304.80 (12.00)	100.08 (3.94)	14.22 (0.56)	31.75 (1.25) x 50.80 (2.00)	152G

Beam Clamps, Straps, Clamps and Clamp Backs for Rigid Metal Conduit or IMC

NEC/CEC:
Listed for Ordinary (Unclassified) Locations

Application

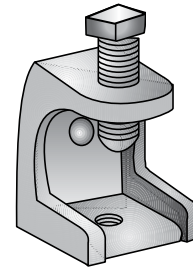
- Provide support for conduit hanging systems.

Standard Materials

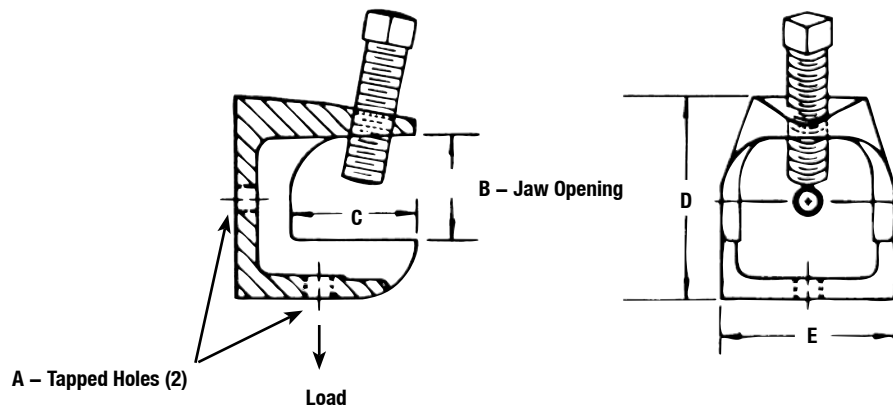
- Malleable iron clamp
- Steel screw, case hardened

Standard Finishes

- Clamp - hot dip galvanized
- Screw - zinc electroplated



Type IS



A Tapped Holes	B Jaw Opening	Dimensions in Millimeters (Inches)			Max. Load kgs. (lbs.)	Catalog Number
		C	D	E		
1/4 - 20	23.9 (0.94)	22.4 (0.88)	41.4 (1.63)	25.4 (1.00)	152 (335)	IS-500
10 - 24	23.9 (0.94)	22.4 (0.88)	41.4 (1.63)	25.4 (1.00)	152 (335)	IS-509
5/16 - 18	23.9 (0.94)	28.7 (1.13)	46.0 (1.81)	38.1 (1.50)	238 (525)	IS-501
3/8 - 16	25.4 (1.00)	35.1 (1.38)	52.3 (2.06)	50.8 (2.00)	340 (750)	IS-502
1/2 - 13	28.7 (1.13)	42.9 (1.69)	57.2 (2.25)	66.8 (2.63)	408 (900)	IS-503