

Carlton[®] PVC New Work Boxes



Carlton[®] Blue PVC Boxes

Carlton[®] Blue PVC Boxes Carlton[®] non-metallic boxes feature PVC construction for easier installation, greater performance, and lower installation cost. Designed and listed for use with non-metallic sheathed cable in accordance with Article 314 of the National Electrical Code[®], they make fast work of any residential or light commercial application.

- All PVC boxes are listed to UL514C
- All PVC boxes are listed for masonry walls
- All PVC boxes are UL Classified for 2 hr. fire wall and/or fire ceiling
- All PVC boxes meet NEMA OS-2
- All PVC boxes are permissible for use with 90 degree C conductors
- UL File E11461 and R9140

One-Gang Adjustable

- Patented design allows for adjustment from 0" to 1³/₄" after installation
- Ideal for new work or retrofit upgrade applications
- Backless low voltage bracket and floor box designs available
- Ideal for various drywall thicknesses and wall finishes



B121ADJ



One-Gang Adjustable 21.0 Cu. In

CAT. NO.	SIZE CU. IN.	MOUNTING MEANS	DESCRIPTION	DIMENSIONS (IN.)	STD. CTN. QTY.
B121ADJ	21.0	Adjustable bracket	Adjusts 0" - 1 ³ / ₄ "	3 ³ / ₄ L x 3 ⁷ / ₈ W x 3 ³ / ₈ D	24

One-Gang Nail-On



One-Gang Nail-On 18.0 - 20.5 Cu. In.

CAT. NO.	SIZE CU. IN.	MOUNTING MEANS	DESCRIPTION	DIMENSIONS (IN.)	STD. CTN. QTY.
B118A	18.0	Captive nails	—	3 ³ / ₄ L x 2 ¹ / ₄ W x 2 ⁷ / ₈ D	100
N1-710-M	18.0	Reverse angled side nails	7 ³ / ₃₂ " offset wallboard tabs	3 ³ / ₄ L x 2 ¹ / ₄ W x 2 ¹¹ / ₁₆ D	100
RN-18-FS	18.0	Recessed angled nails	Fast set	3 ² / ₃₂ L x 2 ⁵ / ₁₆ W x 3 D	100
SNO-18	18.0	Angled side nails	Hinge closure	4 ¹ / ₁₆ L x 2 ⁵ / ₁₆ opening 3 ⁷ / ₈ overall W x 1 ³ / ₄ D	100
SNO-18-M	18.0	Angled side nails	Locating tab hinge closure 3 ¹ / ₁₆ " offset wall board tabs	4 ¹ / ₁₆ L x 2 ⁵ / ₁₆ opening 3 ⁷ / ₈ overall W x 1 ³ / ₄ D	100
B120A-UPC	20.0	Captive nails	—	3 ⁷ / ₈ L x 2 ¹ / ₄ W x 3 ¹ / ₄ D	100
RN-21-FS	20.5	Recessed angled nails	Fast set	3 ² / ₃₂ L x 2 ⁵ / ₁₆ W x 3 ³ / ₈ D	100



United States
Tel: 901.252.8000
Fax: 901.252.1354

Technical Services
Tel: 888.862.3289

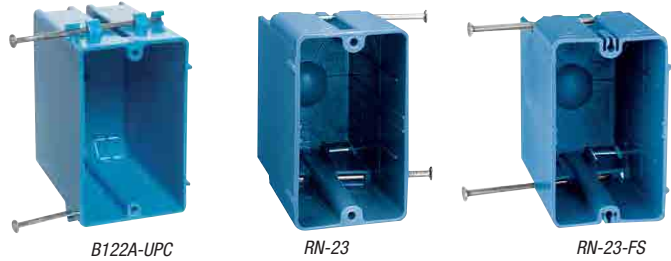
Thomas & Betts

www.tnb.com

Carlton® PVC New Work Boxes

Carlton® Blue PVC Boxes

One-Gang Nail-On



One-Gang Nail-On 22.0 - 22.5 Cu. In.

CAT. NO.	SIZE CU. IN.	MOUNTING MEANS	DESCRIPTION	DIMENSIONS (IN.)	STD. CTN. QTY.
B122A-UPC	22.0	Captive nails	—	3 ³ / ₄ L x 2 ¹ / ₄ W x 3 ¹ / ₂ D	100
RN-23	22.5	Recessed angled nails	—	3 ² / ₃₂ L x 2 ⁵ / ₁₆ W x 3 ³ / ₈ D	100
RN-23-FS	22.5	Recessed angled nails	Fast set	3 ² / ₃₂ L x 2 ⁵ / ₁₆ W x 3 ³ / ₈ D	100



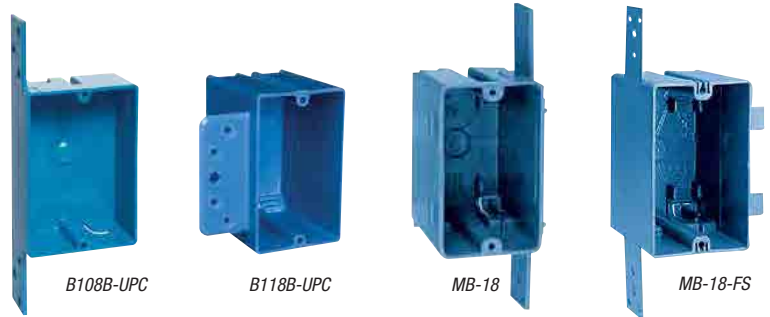
One-Gang Nail-On 30.0 Cu. In.



CAT. NO.	SIZE CU. IN.	MOUNTING MEANS	DESCRIPTION	DIMENSIONS (IN.)	STD. CTN. QTY.
RD-30	30.0	Recessed angled nails	Large KO for #6 or #8 cable	3 ¹¹ / ₁₆ L x 2 ⁵ / ₁₆ opening 3 ⁷ / ₈ overall W x 3 ⁵ / ₈ D	50



One-Gang Brackets



One-Gang Brackets 8.0 - 18.0 Cu.In.

CAT. NO.	SIZE CU. IN.	MOUNTING MEANS	DESCRIPTION	DIMENSIONS (IN.)	STD. CTN. QTY.
B108B-UPC	8.0	Bracket	—	3 ⁵ / ₈ L x 2 ³ / ₈ W x 1 ¹ / ₄ D	25
B118B-UPC	18.0	Bracket for 3/8" to 5/8" wallboard – steel and wood stud mounting	—	3 ³ / ₄ L x 2 ¹ / ₄ W x 2 ¹⁵ / ₁₆ D	50
• MB-18	18.0	Molded side bracket for wood/steel studs	1/2" depth gage Lever clamps	3 ² / ₃₂ L x 2 ⁵ / ₁₆ W x 2 ¹⁵ / ₁₆ D	100
• MB-18-FS	18.0	Molded side bracket for wood/steel studs	Fast set	3 ² / ₃₂ L x 2 ⁵ / ₁₆ W x 2 ¹⁵ / ₁₆ D	100



• Manufactured housing — MB-18 and MB-18-FS.



Carlon[®] PVC New Work Boxes



Carlon[®] Blue PVC Boxes

Two-Gang Adjustable

- Patented design allows for adjustment from 0" to 1³/₄" after installation
- Ideal for new work or retrofit upgrade applications
- Backless low voltage bracket and floor box designs available
- Ideal for various drywall thicknesses and wall finishes

**CARLON
EXCLUSIVE**



B234ADJ



B234ADJC



Two-Gang Adjustable 34.0 Cu. In

CAT. NO.	SIZE CU. IN.	MOUNTING MEANS	DESCRIPTION	DIMENSIONS (IN.)	STD. CTN. QTY.
B234ADJ	34.0	Adjustable bracket	Adjusts 0" - 1 ³ / ₄ "	5 ⁵ / ₈ W x 3 ⁵ / ₈ H x 3 D	16
B234ADJC	34.0	Adjustable bracket	Large knockout	5 ⁵ / ₈ W x 3 ⁵ / ₈ H x 3 D	16

Two-Gang Nail-On



B232A-UPC

N2-1614-MNC

N2-1614-RNC

SN-236

SN-236-FS

SN-236-V

SN-241

SN-241-FS



Two-Gang Nail-On 32.0 - 41.0 Cu. In.

CAT. NO.	SIZE CU. IN.	MOUNTING MEANS	DESCRIPTION	DIMENSIONS (IN.)	STD. CTN. QTY.
B232A-UPC	32.0	Captive nails	—	3 ³ / ₄ L x 4 W x 3 D	50
N2-1614-MNC	32.0	Angled side nails	7 ³ / ₃₂ " offset wallboard tabs Cable-Lok™ clamps bulk packed	4 ¹ / ₁₆ L x 3 ⁵ / ₈ W x 2 ³ / ₄ D	50
N2-1614-RNC	32.0	Angled side nails	No wallboard tabs Cable-Lok™ clamps bulk packed	4 ¹ / ₁₆ L x 3 ⁵ / ₈ W x 2 ³ / ₄ D	50
SN-236	36.0	Compound angled nails	3 ⁸ / ₈ " offset wallboard tabs molded fast clamp	4 L x 3 ⁵ / ₈ W x 3 ¹ / ₈ D	50
SN-236-FS	36.0	Compound angled nails	3 ⁸ / ₈ " offset wallboard tabs molded fast clamp/fast set	4 L x 3 ⁵ / ₈ W x 3 ¹ / ₈ D	50
SN-236-V	36.0	Compound angled nails	3 ⁸ / ₈ " offset wallboard tabs molded V-clamp	4 L x 3 ⁵ / ₈ W x 3 ¹ / ₈ D	50
SN-241	41.0	Compound angled nails	3 ⁸ / ₈ " offset wallboard tabs molded fast clamp	4 L x 3 ⁵ / ₈ W x 3 ⁵ / ₈ D	50
SN-241-FS	41.0	Compound angled nails	3 ⁸ / ₈ " offset wallboard tabs molded fast clamp/fast set	4 L x 3 ⁵ / ₈ W x 3 ⁵ / ₈ D	50

Two-Gang Bracket



B232B-UPC

SB2-236-FS



Two-Gang Bracket 32.0 - 36.0 Cu. In.

CAT. NO.	SIZE CU. IN.	MOUNTING MEANS	DESCRIPTION	DIMENSIONS (IN.)	STD. CTN. QTY.
B232B-UPC	32.0	Bracket for 3 ⁸ / ₈ " to 5 ⁸ / ₈ " wallboard – steel or wood stud mounting	—	3 ³ / ₄ L x 4 W x 3 D	50
SB2-236-FS	36.0	Two 3 ⁸ / ₈ " offset brackets for wood/steel studs	3 ⁸ / ₈ " offset	3 ⁹ / ₁₆ L x 4 W x 3 ⁹ / ₁₆ D	20



United States
Tel: 901.252.8000
Fax: 901.252.1354

Technical Services
Tel: 888.862.3289

Thomas & Betts

www.tnb.com

Carlton® PVC New Work Boxes

Carlton® Blue PVC Boxes

Three-Gang Adjustable

- Patented design allows for adjustment from 0" to 1³/₄" after installation
- Ideal for new work or retrofit upgrade applications
- Backless low voltage bracket and floor box designs available
- Ideal for various drywall thicknesses and wall finishes



Three-Gang Adjustable 49.0 Cu. In.

CAT. NO.	SIZE CU. IN.	MOUNTING MEANS	DESCRIPTION	DIMENSIONS (IN.)	STD. CTN. QTY.
B349ADJ	49.0	Adjustable bracket	Adjusts 0" - 1 ³ / ₄ "	5 ¹³ / ₁₆ L x 3 ⁵ / ₈ W x 3 D	16

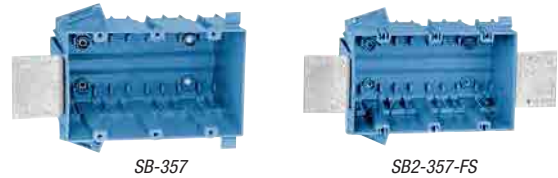
Three-Gang Nail-On



Three-Gang Nail-On 44.0 - 56.5 Cu. In.

CAT. NO.	SIZE CU. IN.	MOUNTING MEANS	DESCRIPTION	DIMENSIONS (IN.)	STD. CTN. QTY.
B344AB	44.0	Captive nails and bracket support	—	5 ⁵ / ₈ L x 3 ³ / ₄ W x 2 ¹¹ / ₁₆ D	30
SN-357	56.5	Compound angled nails	3/8" offset wallboard tabs molded Fast Clamp	5 ¹³ / ₁₆ L x 3 ⁵ / ₈ W x 3 ⁷ / ₁₆ D	20
SN-357-FS	56.5	Compound angled nails	3/8" offset wallboard tabs molded Fast Clamps/Fast Set	5 ¹³ / ₁₆ L x 3 ⁵ / ₈ W x 3 ⁷ / ₁₆ D	20

Three-Gang Bracket



Three-Gang Bracket 56.5 Cu. In.

CAT. NO.	SIZE CU. IN.	MOUNTING MEANS	DESCRIPTION	DIMENSIONS (IN.)	STD. CTN. QTY.
SB-357	56.5	One 3/8" offset bracket for wood/steel studs	3/8" wallboard tabs molded Fast Clamps	3 ⁵ / ₈ L x 5 ¹³ / ₁₆ W x 3 ⁷ / ₁₆ D	30
SB2-357-FS	56.5	Two 3/8" offset brackets for wood/steel studs	3/8" wallboard tabs molded Fast Clamps/Fast Set	3 ⁵ / ₈ L x 5 ¹³ / ₁₆ W x 3 ⁷ / ₁₆ D	20

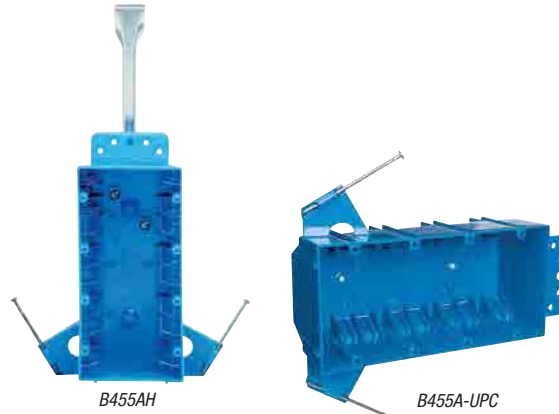


Carlton[®] PVC New Work Boxes



Carlton[®] Blue PVC Boxes

Four-Gang Nail-On

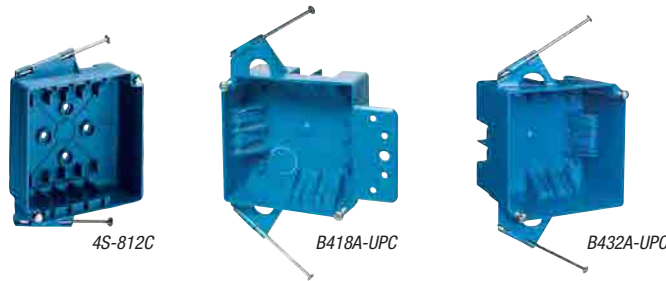


Four-Gang Nail-On 55 Cu.In.

CAT. NO.	SIZE CU. IN.	MOUNTING MEANS	DESCRIPTION	DIMENSIONS (IN.)	STD. CTN. QTY.
B455AH	55.0	Captive nails, bracket support and hanger bar	—	7 ³ / ₅ L x 3 ⁷ / ₁₀ W x 2 ¹ / ₂ D	25
B455A-UPC	55.0	Captive nails and bracket support	—	7 ³ / ₅ L x 3 ⁷ / ₁₀ W x 2 ¹ / ₂ D	25



4" Square



4" Square 18.0 - 32.0 Cu. In

CAT. NO.	SIZE CU. IN.	MOUNTING MEANS	DESCRIPTION	DIMENSIONS (IN.)	STD. CTN. QTY.
4S-812C	18.0	Angled side nails	—	4 L x 4 W x 1 ⁷ / ₁₆ D	100
B418A-UPC	18.0	Captive nails and molded bracket	—	4 L x 4 W x 1 ⁵ / ₈ D	75
B432A-UPC	32.0	Captive nails	—	4 L x 4 W x 2 ⁵ / ₈ D	50



United States
Tel: 901.252.8000
Fax: 901.252.1354

Technical Services
Tel: 888.862.3289

Thomas & Betts

www.tnb.com

Carlton[®] PVC Old Work Boxes

Carlton[®] Blue PVC Boxes

One-Gang



B108R-UPC



B114R-UPC



B117RSW



One-Gang 8.0 - 17.0 Cu. In.

CAT. NO.	SIZE CU. IN.	MOUNTING MEANS	DESCRIPTION	DIMENSIONS (IN.)	STD. CTN. QTY.
B108R-UPC	8.0	Mounting ears	—	3 ⁵ / ₈ L x 2 ³ / ₈ W x 1 ¹ / ₄ D	25
B114R-UPC	14.0	Mounting ears and swing clamps	Integral Clamps	4 ¹ / ₈ L x 2 ¹ / ₄ W x 2 ³ / ₄ D	50
• B117RSW	17.0	Mounting ears and swing clamps	Access panel	3.64 L x 4.07 W x 2.00 D (2.20" opening)	30

• Not UL Classified for Fire Resistance



E-16-8



E-18-4



B120R



One-Gang 16.0 - 20.0 Cu. In.

CAT. NO.	SIZE CU. IN.	MOUNTING MEANS	DESCRIPTION	DIMENSIONS (IN.)	STD. CTN. QTY.
E-16-8	16.0	Thermoplastic molded ears #8 snap in	Molded fast clamps	3 ¹ / ₂ L x 2 ¹ / ₄ W x 2 ¹¹ / ₁₆ D	50
E-18-4	18.0	Thermoplastic molded ears #4 swing brackets	Integral molded V-clamp	3 ²⁵ / ₃₂ L x 2 ⁷ / ₃₂ W x 3 D	100
B120R	20.0	Mounting ears and swing bracket	Integral clamps	4 ¹ / ₈ L x 2 ⁵ / ₁₆ W x 3 ⁵ / ₈ D	50



Carlton[®] PVC Old Work Boxes



Two-Gang



B225R-UPC



Two-Gang 25.0 Cu. In.

CAT. NO.	SIZE CU. IN.	MOUNTING MEANS	DESCRIPTION	DIMENSIONS (IN.)	STD. CTN. QTY.
B225R-UPC	25.0	Mounting ears and 2 swing clamps	Integral clamps	3 ¹⁵ / ₁₆ L x 3 ¹ / ₈ W x 2 ³ / ₄ D	30

Three-Gang



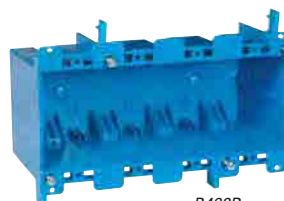
B355R



Three-Gang 55.0 Cu. In.

CAT. NO.	SIZE CU. IN.	MOUNTING MEANS	DESCRIPTION	DIMENSIONS (IN.)	STD. CTN. QTY.
B355R	55.0	Mounting ears and 2 swing clamps	Integral clamps	5.72 L x 2.79 W x 3.69 D	6

Four-Gang



B468R



Four-Gang 68.0 Cu. In.

CAT. NO.	SIZE CU. IN.	MOUNTING MEANS	DESCRIPTION	DIMENSIONS (IN.)	STD. CTN. QTY.
B468R	68.0	Mounting ears and 2 swing clamps	Integral clamps	7.57 L x 2.89 W x 3.56 D	6

• Not UL Classified for Fire Resistance

Carlton[®] Blue PVC Boxes



United States
Tel: 901.252.8000
Fax: 901.252.1354

Technical Services
Tel: 888.862.3289

Thomas & Betts

www.tnb.com



Carlton[®] PVC

Ceiling Boxes – New Work

Carlton[®] Blue PVC Boxes



B518A-UPC



B518P-UPC



3/0 18 Cu. In.

CAT. NO.	SIZE CU. IN.	MOUNTING MEANS	DESCRIPTION	DIMENSIONS (IN.)	STD. CTN. QTY.
• B518A-UPC	18.0	Captive nails	Integral clamps	3 Dia. x 2 ³ / ₄ D	75
• B518P-UPC	18.0	Captive nails	Ground lug and screw attached; integral clamps	3 Dia. x 2 ³ / ₄ D	75

• Listed for fixture support up to 50 lbs.



B520A-UPC



B520P-UPC



B620L-UPC



B720R-SHK
35 lbs. maximum fan weight



3/0 - 4/0 Combination 20 Cu. In.

CAT. NO.	SIZE CU. IN.	MOUNTING MEANS	DESCRIPTION	DIMENSIONS (IN.)	STD. CTN. QTY.
• B520A-UPC	20.0	Captive nails	Fixture spacing for 2 ³ / ₄ " and 3"; 6 integral clamps	4 Dia. x 2 ¹ / ₄ D	75
• B520P-UPC	20.0	Captive nails	Ground lug and screw attached; fixture spacing for 2 ³ / ₄ " and 3 ¹ / ₂ "; 6 integral clamps	4 Dia. x 2 ¹ / ₄ D	75
• B620L-UPC	20.0	Metal L bracket	Fixture spacing for 2 ³ / ₄ " and 3 ¹ / ₂ "; 6 integral clamps	4 Dia. x 2 ¹ / ₄ D	100
• B720R-SHK	20.0	Mounting screws	6 integral clamps	4 Dia. x 2 ¹ / ₄ D	18

• Listed for fixture support up to 50 lbs.



Carlton[®] PVC

Ceiling Boxes – New Work



Ceiling Boxes with Bar Hanger



Carlton[®] Blue PVC Boxes

3/0 - 4/0 Combination 20.0 Cu. In.



CAT. NO.	SIZE CU. IN.	MOUNTING MEANS	DESCRIPTION	DIMENSIONS (IN.)	STD. CTN. QTY.
• B620DC	20.0	24" T-Grid bar hanger	Ceiling box fixture spacing for 2 ³ / ₄ " and 3 ¹ / ₂ "	4 Dia. x 2 ¹ / ₄ D	6
• B620H-UPC	20.0	11.50" - 18.50" adjustable bar hanger	Ceiling box fixture spacing for 2 ³ / ₄ " and 3 ¹ / ₂ "; integral clamps	4 Dia. x 2 ¹ / ₄ D	75
• B620HG-UPC	20.0	11.50" - 18.50" adjustable bar hanger	Ceiling box fixture spacing for 2 ³ / ₄ " and 3 ¹ / ₂ "; ground lug and screw attached; integral clamps	4 Dia. x 2 ¹ / ₄ D	75
• B620K	20.0	14.38" - 22.50" adjustable bar hanger	Ceiling box fixture spacing for 2 ³ / ₄ " and 3 ¹ / ₂ "; integral clamps	4 Dia. x 2 ¹ / ₄ D	75
• B620KG-UPC	20.0	14.38" - 22.50" adjustable bar hanger	Ceiling box fixture spacing for 2 ³ / ₄ " and 3 ¹ / ₂ "; ground lug and screw attached; integral clamps	4 Dia. x 2 ¹ / ₄ D	75

• Listed for fixture support up to 50 lbs.

Old Work



B618R-UPC

B618RP-UPC



4" Round 18.0 Cu. In.

CAT. NO.	SIZE CU. IN.	MOUNTING MEANS	DESCRIPTION	DIMENSIONS	STD. CTN. QTY.
• B618R-UPC	18.0	Swing clamps	Integral clamps	4 ¹ / ₄ Dia. x 2 ⁵ / ₈ D	100
• B618RP-UPC	18.0	Swing clamps	Integral clamps; ground lug	4 ¹ / ₄ Dia. x 2 ⁵ / ₈ D	100

• Not listed for fixture support in ceilings



United States
Tel: 901.252.8000
Fax: 901.252.1354

Technical Services
Tel: 888.862.3289

Thomas & Betts

www.tnb.com