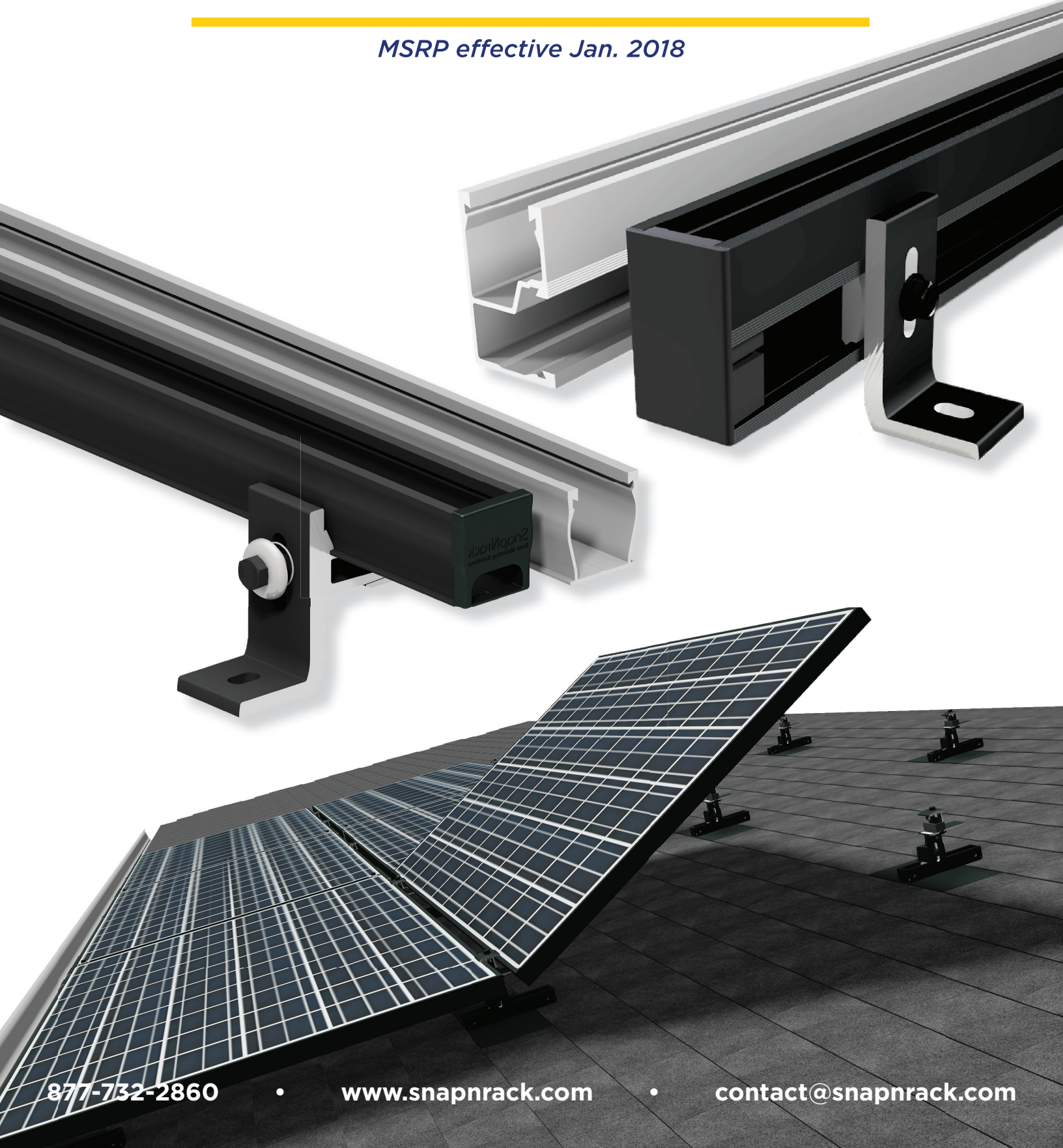


# 2018 Product Catalog

*MSRP effective Jan. 2018*



# Quality. Innovative. Superior.

---

**SnapNrack Product Selector . . . . . 2**

**SnapNrack RL . . . . . 3**

**SnapNrack Series 100 . . . . . 7**

**SnapNrack Ultra Rail . . . . . 15**

**SnapNrack Module Attachments . . . . . 16**

**SnapNrack Accessories . . . . . 16**

**SnapNrack Series 200 . . . . . 21**

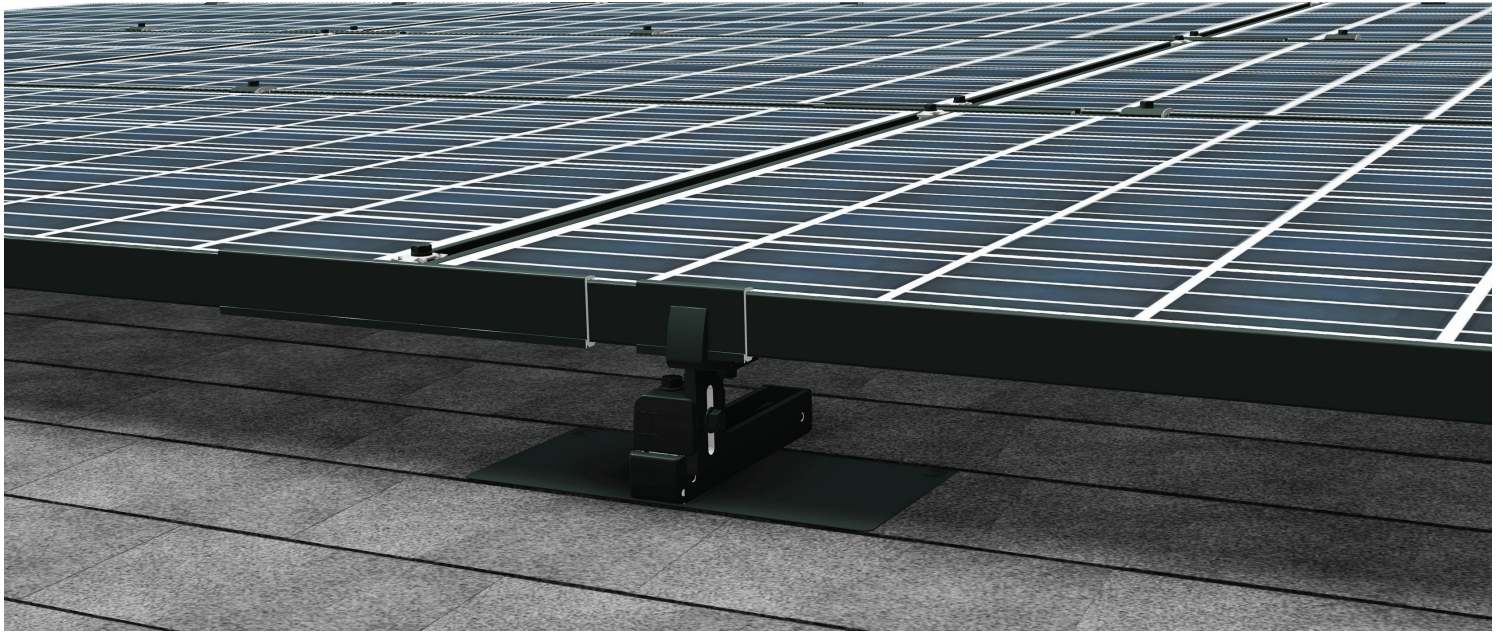
## **SnapNrack Mission**

To provide products and services that simplify the process of installing solar systems and lower installation costs, maximize productivity and profits for our customers with top-notch quality.

# SnapNrack Product Selector

RL	Series 100	Ultra Rail
The greatest labor efficiencies realized through elimination of rails. No longer are you dealing with 14 foot long sticks of rail both on the roof or in the warehouse. The intuitive design allows modules to lay down in place by a single installer. Focus on ergonomics and installation mechanics with features like top side bolting.	The most comprehensive residential roof mount racking system on the market with solutions for virtually any installation type. Superior strength and performance with allowable spans up to 10 ft. Dual integrated wire management channels along with a full suite of wire management accessories that ensures a top quality install that lasts the life of the system.	Our newest rail system optimized for low load regions. Unique snap-in mounts and splices while still maintaining the SnapNrack wire management channel and compatibility with our full suite of wire management accessories and module attachments.

	RL	S100	Ultra Rail
Composition Shingle	✓	✓	✓
Tile		✓	✓
Standing Seam and Corrugated Metal		✓	✓
Universal End Clamps Keep Racking Hidden Underneath Array		✓	✓
Sleek Black Mounts for Front of Array	✓		
Integrated Wire Management Channel		✓	✓
Dual wire channels for separation of circuits/voltages		✓	
Snap-in Wire Clamps, Junction Boxes and More		✓	✓
Module Frame Wire Management w/ Smart Clip & Wire Saver	✓		
1½ inches Vertical Leveling	✓	✓	✓
Flash Track w/ 6" North-South Adjustability	✓		
Elimination of Rails for Improved Labor Efficiency	✓		
Features for Single Person Install	✓		
Capable of 6 ft. Spans	✓	✓	✓
Capable of 8 ft. Spans		✓	
Capable of 10 ft. Spans		✓	



## **SnapRack RL** **The Fastest Mounting System Period**

SnapRack RL Mounting System is designed to provide the fastest, most intuitive install experience on the roof. As Simple as A, B, C the entire system consists only of 4 parts: the A Mounts, B Mounts, C Links, and Flash Tracks making planning and ordering straightforward. The installer focused process allows the system to be installed by a single person.

- Industry leading railless aesthetics with sleek A Mount design that provides a clean finish to the front of the array without the need for a skirt
- System designed with maximum versatility allowing for any array configuration including staggered modules
- Flash Track with patented Umbrella technology provides weatherproofing with a long-lasting mechanical seal and 6 inches of North-South adjustability
- Designed with Wire Management as a priority utilizing new Smart Clips to firmly retain wires within the module frame and new Wire Saver for securing hanging cables post install
- Incredible span capabilities for a mounting system without rails reaching 6 foot spans in most regions

## RL Flash Track



RL Comp Flash Track

Description	SKU	MSRP	QTY	WT
RL Comp Flash Track Kit	242-92250	\$12.60	20 Kits	20 lbs
RL Flash Track Spacer	242-92254	\$8.98	20 EA	5 lbs

## RL A Mounts



RL A Mount

Description	SKU	MSRP	QTY	WT
RL A Mount, 32mm	242-92332	\$12.32	20 EA	16 lbs
RL A Mount, 35mm	242-92335	\$12.32	20 EA	16 lbs
RL A Mount, 38mm	242-92338	\$12.32	20 EA	16 lbs
RL A Mount, 40mm	242-92340	\$12.32	20 EA	16 lbs

## RL B Mounts



RL B Mount

Description	SKU	MSRP	QTY	WT
RL B Mount, 32mm	242-92432	\$12.65	20 EA	16 lbs
RL B Mount, 35mm	242-92435	\$12.65	20 EA	16 lbs
RL B Mount, 38mm	242-92438	\$12.65	20 EA	16 lbs
RL B Mount, 40mm	242-92440	\$12.65	20 EA	16 lbs

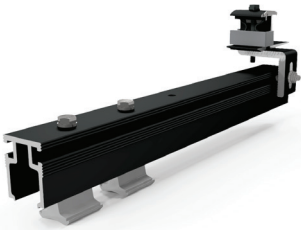
## RL C Links



RL C Link

Description	SKU	MSRP	QTY	WT
RL C Link, 32mm	242-92532	\$5.50	20 EA	13 lbs
RL C Link, 35mm	242-92535	\$5.50	20 EA	13 lbs
RL C Link, 38mm	242-92538	\$5.50	20 EA	13 lbs
RL C Link, 40mm	242-92540	\$5.50	20 EA	13 lbs

## RL Ridge Mount



RL Ridge Mount

Description	SKU	MSRP	QTY	WT
RL Ridge Mount, 32mm	242-92632	\$30.49	20 EA	47 lbs
RL Ridge Mount, 35mm	242-92635	\$30.49	20 EA	47 lbs
RL Ridge Mount, 38mm	242-92638	\$30.49	20 EA	47 lbs
RL Ridge Mount, 40mm	242-92640	\$30.49	20 EA	47 lbs

## RL Mount Sleeve



RL Mount Sleeve

Description	SKU	MSRP	QTY	WT
RL Mount Sleeve, 32mm	232-01532	\$1.56	20 EA	2.4 lbs
RL Mount Sleeve, 35mm	232-01535	\$1.56	20 EA	2.4 lbs
RL Mount Sleeve, 38mm	232-01538	\$1.56	20 EA	2.4 lbs
RL Mount Sleeve, 40mm	232-01540	\$1.56	20 EA	2.4 lbs

## RL Wire Management



Smart Clip I

Description	SKU	MSRP	QTY	WT
Smart Clip I	232-01170	\$0.40	100 EA	1.0 lbs
Smart Clip II	232-01173	\$0.40	100 EA	1.0 lbs
Wire Saver	242-92262	\$2.69	20 EA	0.42 lbs
Junction Box S with Comp Kit	242-01113	\$34.87	1 Kit	2.2 lbs
Junction Box XL with Comp Kit	242-92121	\$49.95	1 Kit	4.7 lbs
Universal Wire Clamp for J Box	242-09025	\$3.87	1 EA	0.20 lbs



Wire Saver

## RL Grounding

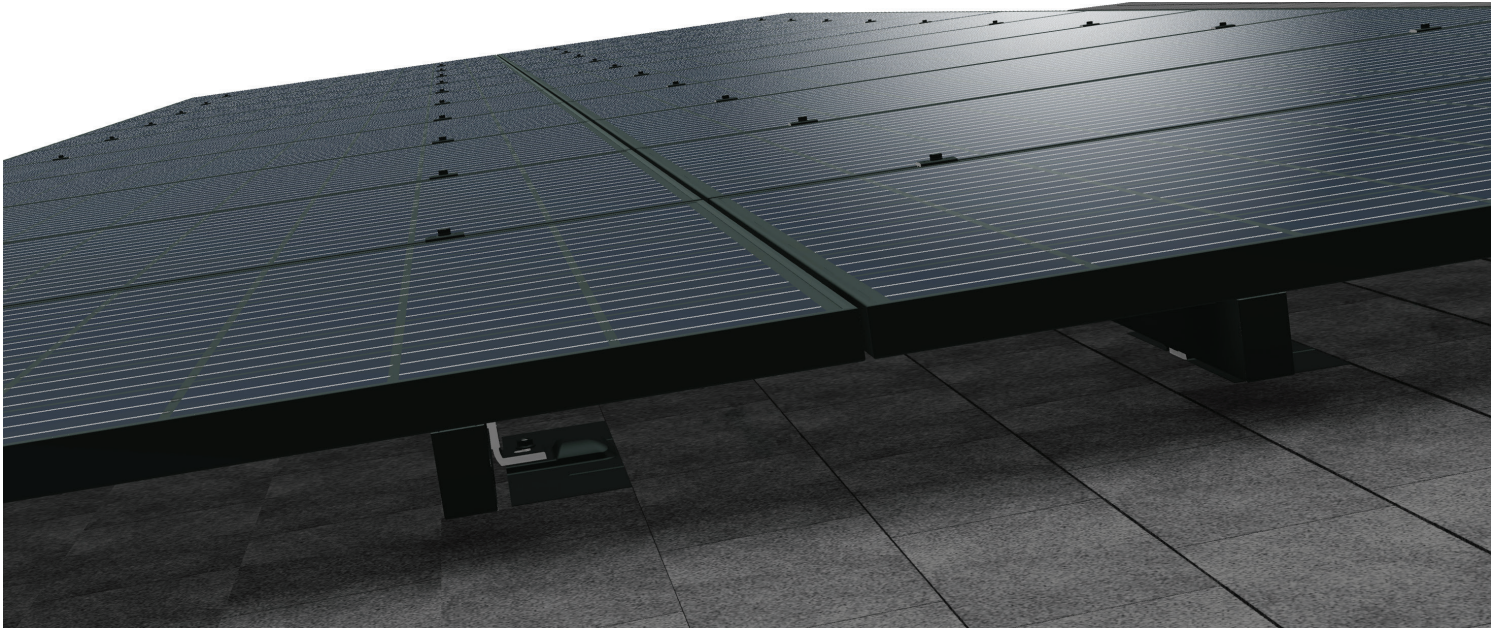


RL Ground Lug

Description	SKU	MSRP	QTY	WT
Ground Lug RL	242-92202	\$5.15	20 EA	2.0 lbs
MLPE Frame Attachment Kit	242-02151	\$4.25	20 EA	2.7 lbs



MLPE Frame Attachment Kit



## **SnapNrack Series 100** **The Installer's Choice for Residential Solar Mounting**

Series 100 is the most complete system solution for mounting solar modules on the roof in any region or loading condition. The top-of-the-line features of this SnapNrack mounting solution reduce install times and labor cost while eliminating the need for service calls creating the lowest installed lifecycle cost of any mounting system. Industry-leading aesthetics with Universal End Clamps and snap-in End Caps make this mounting system invisible underneath the array.

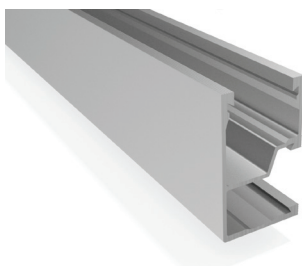
- Undeniable aesthetics using Universal End Clamps that render the mounting system invisible by fastening on the inside of the modules underneath the array
- Optional Array Skirt provides a sleek look and attractive design to the front of the array
- Two rail channels keep wires neatly organized providing a clean finished look to every install
- Industry's largest offering of wire management accessories include snap-in Junction Boxes and Universal Wire Clamps, as well as conduit clamps for both composition shingle and tile roofs
- The largest span capabilities of any SnapNrack mounting system



## Series 100 Rail



S100 Rail, Black



S100 Rail, Silver



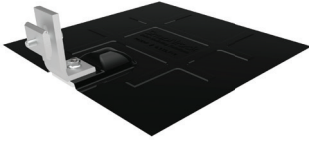
Bonding Standard Rail Splice, Black



Standard Rail End Cap

Description	SKU	MSRP	QTY	WT
<b>Black Rail</b>				
Standard Rail Set, 122", Black (Box of 2)	015-09816	\$169.10	1 Box	20 lbs
Standard Rail Set, 122", Black (Box of 6)	015-09822	\$448.63	1 Box	51 lbs
Standard Rail, 122", Black (Bundle of 112, priced as each)	232-01067	\$67.68	112 EA	900 lbs
Standard Rail Set, 162", Black (Box of 2)	015-09818	\$211.85	1 Box	29 lbs
Standard Rail Set, 162", Black (Box of 6)	015-09826	\$569.52	1 Box	66 lbs
Standard Rail, 162", Black (Bundle of 112, priced as each)	232-01069	\$85.97	112 EA	1,200 lbs
<b>Silver Rail</b>				
Standard Rail Set, 122", Silver (Box of 2)	015-09814	\$136.80	1 Box	20 lbs
Standard Rail Set, 122", Silver (Box of 6)	015-09813	\$350.55	1 Box	51 lbs
Standard Rail, 122", Silver (Bundle of 112, priced as each)	232-01068	\$52.25	112 EA	900 lbs
Standard Rail Set, 162", Silver (Box of 2)	015-09817	\$176.70	1 Box	29 lbs
Standard Rail Set, 162", Silver (Box of 6)	015-09824	\$464.55	1 Box	66 lbs
Standard Rail, 162", Silver (Bundle of 112, priced as each)	232-01070	\$69.58	112 EA	1,200 lbs
<b>Mill Finish Rail</b>				
Standard Rail, 122", Mill Finish (Bundle of 112, priced as each)	232-02112	\$47.02	112 EA	900 lbs
Standard Rail, 162", Mill Finish (Bundle of 112, priced as each)	232-02113	\$61.75	112 EA	1,200 lbs
<b>Rail Accessories</b>				
Bonding Standard Rail Splice, Black	242-04015	\$10.92	20 EA	13 lbs
Bonding Standard Rail Splice, Silver	242-04014	\$10.21	20 EA	13 lbs
Standard Rail End Cap	232-01023	\$2.13	20 EA	0.80 lbs

## Comp Shingle Roof Attachments



Comp Kit with Silver Composition L Foot



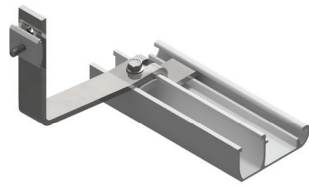
L Foot

Description	SKU	MSRP	QTY	WT
S100 Comp Kit w/ Silver Composition L Foot, Silver Alum Flashing, & Base	242-92047	\$11.53	20 Kits	18 lbs
S100 Comp Kit w/ Black Composition L Foot, Black Galv Flashing, & Base	242-92051	\$11.94	20 Kits	25 lbs
L Foot Flashing, 12" x 12", Black Galv	232-01060	\$5.93	20 EA	17 lbs
L Foot Flashing, 12" x 12", Black Alum	232-01151	\$8.55	20 EA	10 lbs
L Foot Flashing, 12" x 12", Silver Alum	232-01150	\$5.76	20 EA	10 lbs
Flashed L Foot Base (includes flange nut)	242-00016	\$3.08	20 EA	3.6 lbs
S100 Composition L Foot (92°), Black	242-09015	\$4.27	20 EA	4.4 lbs
S100 Composition L Foot (92°), Silver	242-09005	\$3.56	20 EA	4.4 lbs
S100 All Purpose L Foot (90°), Black	242-09020	\$4.98	20 EA	4.4 lbs
S100 All Purpose L Foot (90°), Silver	242-09019	\$4.27	20 EA	4.4 lbs
Standoff Spacer, 1"	242-92081	\$1.66	20 EA	1.6 lbs
Lag Screw & Washer, 5/16" x 3½", SS (Pack of 12)	014-06500	\$17.50	1 Pack	0.87 lbs
Lag Screw & Washer, 5/16" x 3½", SS (Pack of 100)	014-06508	\$124.25	1 Pack	7 lbs
Lag Screw & Washer, 5/16" x 5", SS (Pack of 12)	014-06502	\$27.75	1 Pack	1.1 lbs
Lag Screw & Washer, 5/16" x 5", SS (Pack of 100)	014-06509	\$198.00	1 Pack	9 lbs

## Tile Roof Attachments



S100 S Tile Replacement



S100 Universal Tile Hook

Description	SKU	MSRP	QTY	WT
S100 Flat Tile Replacement Kit	242-01110	\$24.98	10 Kits	26 lbs
S100 W Tile Replacement Kit	242-01112	\$24.98	10 Kits	26 lbs
S100 S Tile Replacement Kit	242-01114	\$24.98	10 Kits	27 lbs
Umbrella Spacer, 1"	242-01109	\$5.15	20 EA	5 lbs
S100 Flat Tile Hook	242-02045	\$14.25	20 EA	24 lbs
S100 Universal Tile Hook	242-02044	\$30.16	20 EA	44 lbs

## Metal Roof Attachments



S100 Metal Roof Base w/ L Foot



S100 Standard Base Seam Clamp w/ L Foot

Description	SKU	MSRP	QTY	WT
S100 Metal Roof Base w/ All Purpose L Foot	242-02037	\$9.50	20 EA	8 lbs
Metal Roof Base	242-02036	\$5.70	20 EA	3.0 lbs
S100 Standard Base Seam Clamp w/ All Purpose L Foot	242-05150	\$11.87	20 EA	13 lbs
Standard Base Seam Clamp	242-05000	\$6.88	20 EA	8 lbs
S100 Wide Base Seam Clamp w/ All Purpose L Foot	242-05151	\$12.82	20 EA	14 lbs
Wide Base Seam Clamp	242-05001	\$7.83	20 EA	9 lbs
S100 Corrugated Straddle Block w/ All Purpose L Foot	242-02046	\$8.31	20 Kits	11 lbs
Corrugated Straddle Block	232-02421	\$3.56	20 EA	6 lbs
S100 Hanger Bolt Clamp	242-01102	\$5.22	20 EA	4.0 lbs

## Standoff Mount Roof Attachments



S100 Standoff Kit, 5 1/2"



HD Standoff Base, 6-Hole



S100 Standoff Clamp Assembly

Description	SKU	MSRP	QTY	WT
S100 Standoff Kit, 5 1/2"	242-92057	\$11.16	20 Kits	18 lbs
S100 Standoff Kit, 7"	242-92059	\$11.87	20 Kits	20 lbs
S100 Standoff Kit, 8 1/2"	242-92061	\$12.58	20 Kits	22 lbs
S100 Standoff Kit, 10"	242-92055	\$13.30	20 Kits	22 lbs
S100 HD Standoff Kit, 7"	242-92073	\$13.77	20 Kits	23 lbs
S100 HD Standoff Kit, 12"	242-92074	\$16.62	20 Kits	31 lbs
S100 HD Standoff Kit, 18"	242-92075	\$20.18	20 Kits	40 lbs
Standoff Base, 1-Hole	242-00017	\$3.56	20 EA	6 lbs
Standoff Base, 4-Hole	232-02412	\$3.56	20 EA	3.6 lbs
HD Standoff Base, 6-Hole	232-02413	\$5.46	20 EA	9 lbs
Standoff Shaft, 3"	232-01048	\$1.90	20 EA	4.2 lbs
Standoff Shaft, 5 1/2"	232-01054	\$3.56	20 EA	8 lbs
Standoff Shaft, 7"	232-01055	\$4.27	20 EA	10 lbs
Standoff Shaft, 8 1/2"	232-01056	\$4.98	20 EA	12 lbs
Standoff Shaft, 10"	232-01057	\$5.70	20 EA	14 lbs
HD Standoff Shaft, 7"	232-01062	\$4.27	20 EA	10 lbs
HD Standoff Shaft, 12"	232-01063	\$7.12	20 EA	18 lbs
HD Standoff Shaft, 18"	232-01021	\$10.68	20 EA	26 lbs
Standoff Spacer, 1"	242-92081	\$1.66	20 EA	1.6 lbs
S100 Standoff Clamp Assembly	242-04100	\$2.85	20 EA	4.2 lbs

## Tilt System Roof Attachments



10° Tilt Kit w/ 5 1/2" & 10" Standoffs

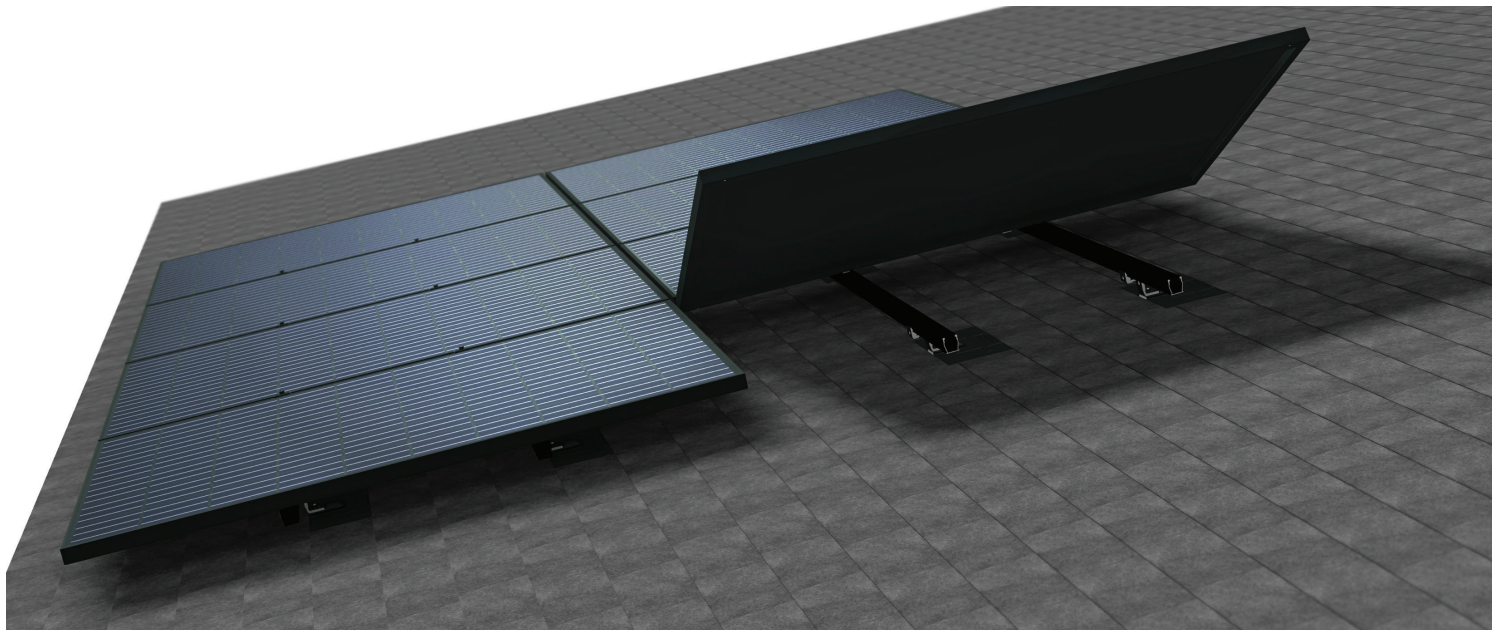
Description	SKU	MSRP	QTY	WT
S100 10° Tilt Kit w/ 5 1/2" & 10" Standoffs	242-92077	\$30.16	20 Kits	51 lbs
S100 20° HD Tilt Kit w/ 7" & 18" HD Standoffs	242-92079	\$40.13	20 Kits	70 lbs
10° - 30° Variable Tilt Hardware Kit	242-92083	\$10.45	20 Kits	12 lbs
S100 Standoff Clamp & L Foot Assembly	242-09002	\$5.93	20 EA	8 lbs

## Standoff Flashings & Accessories



Rubber Rain Collar

Description	SKU	MSRP	QTY	WT
E-Curb, 4.5" x 3.5", Gray, Pourable (Pack of 3)	131-01357	\$140.00	1 Pack	28 lbs
Rubber Rain Collar	232-01000	\$1.18	20 EA	0.70 lbs
Standoff Flashing, Straight Cone for HD Base, 18" X 18" X 4", Galv	131-01213	\$18.04	12 EA	17 lbs
Standoff Flashing, Verde 1.0STF, Skinny Cone for Tile, 20" x 20" x 3", Dead Soft Alum	175-05001	\$16.25	25 EA	25 lbs
Standoff Flashing, Offset Cone for 1-Hole Base on Flat Tile, 18 3/4" x 15" x 4", Galv	131-01216	\$13.00	20 EA	17 lbs
Standoff Flashing, Oatey 11830, No Caulk Rubber Cone, 9" x 12 1/2", Galv	015-00162	\$11.00	12 EA	8 lbs
Standoff Flashing, Verde 1.0SSO, Deck Level for 1-Hole Base, 10" x 12" x 1", Galv	175-05005	\$5.75	25 EA	17 lbs



## **SnapRack Ultra Rail** **The Ultimate Value in Rooftop Solar**

Ultra Rail is a sleek, lightweight rail solution for mounting solar modules on the roof. The entire system is a snap to install utilizing new Ultra Rail Mounts that include snap-in brackets for attaching rail. Compatibility with all existing module clamps maintains the same intuitive install experience installers know and love.

- Industry-leading aesthetics with Universal End Clamps and snap-in End Caps that make the mounting system invisible underneath the array
- Unparalleled wire management solutions with accessories such as Junction Boxes, Universal Wire Clamps, MLPE Attachment Kits, and Conduit Clamps
- Low profile rail maintains the open channel with room for running wires resulting in a top quality finished install
- The largest span capabilities of any light rail solution

## UR-40 Rail



UR-40 Rail, Silver



UR-40 Rail, Black



Ultra Rail Splice

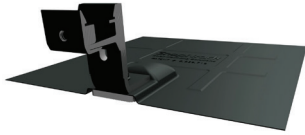


UR-40 End Cap

Description	SKU	MSRP	QTY	WT
UR-40 Rail, 168", Silver (Bundle of 144, priced as each)	232-02450	\$51.76	144 EA	655 lbs
UR-40 Rail, 168", Black (Bundle of 144, priced as each)	232-02451	\$60.12	144 EA	655 lbs
UR-40 Rail, 168", Mill (Bundle of 144, priced as each)	232-02449	\$45.25	144 EA	655 lbs
Ultra Rail Splice, Silver	242-01213	\$9.03	20 EA	10 lbs
Ultra Rail Splice, Black	242-01214	\$9.36	20 EA	10 lbs
UR-40 End Cap	232-02452	\$0.70	20 EA	0.24 lbs

# SnapRack Ultra Rail

## Comp Shingle Roof Attachments



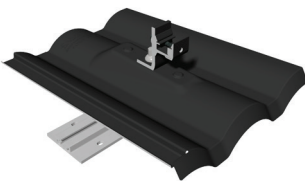
Ultra Rail Comp Kit



Ultra Rail Comp L Foot

Description	SKU	MSRP	QTY	WT
Ultra Rail Comp Kit with Silver Composition L Foot, Silver Alum Flashing, and Base	242-01235	\$13.80	20 EA	22 lbs
Ultra Rail Comp Kit with Black Composition L Foot, Black Galv Flashing, and Base	242-01236	\$14.61	20 EA	22 lbs
Ultra Rail Composition L Foot (92°), Silver	242-01237	\$6.00	20 EA	9 lbs
Ultra Rail Composition L Foot (92°), Black	242-01238	\$6.70	20 EA	9 lbs
Ultra Rail All Purpose L Foot (90°), Silver	242-01223	\$6.68	20 EA	9 lbs
Ultra Rail All Purpose L Foot (90°), Black	242-01239	\$7.38	20 EA	9 lbs
Ultra Rail Mounting Hardware, Silver	242-01229	\$3.42	20 EA	22 lbs
Flashed L Foot Flashing, 12" x 12", Black Galv	232-01060	\$5.93	20 EA	17 lbs
Flashed L Foot Flashing, 12" x 12", Black Alum	232-01151	\$8.55	20 EA	10 lbs
Flashed L Foot Flashing, 12" x 12", Silver Alum	232-01150	\$5.76	20 EA	10 lbs
Flashed L Foot Base (includes flange nut)	242-00016	\$3.08	20 EA	3.6 lbs
Standoff Spacer, 1"	242-92081	\$1.66	20 EA	1.6 lbs

## Tile Roof Attachments



Ultra Rail W Tile Replacement

Description	SKU	MSRP	QTY	WT
Ultra Rail Flat Tile Replacement Kit	242-01226	\$28.09	20 EA	39 lbs
Ultra Rail S Tile Replacement Kit	242-01227	\$28.09	20 EA	52 lbs
Ultra Rail W Tile Replacement Kit	242-01228	\$28.09	20 EA	51 lbs
Ultra Rail Flat Tile Hook	242-01224	\$16.69	20 EA	28 lbs
Umbrella Spacer, 1"	242-01109	\$5.15	20 EA	5 lbs



# SnapNrack Module Attachments

## SnapNrack Module Attachments - Ultra Rail - S100 - S200

**Module Clamps** are available in different sizes to match PV module frame thickness/depth. **Universal End Clamps** are a unique one-size-fits-all time saver that slips inside the module frame - completely out of sight. The rails are cut flush with the modules and finished with SnapNrack End Caps to create a system with a flush, clean line homeowners love. All Module Clamps work with Series 100, Ultra Rail and Series 200 Ground Mount.

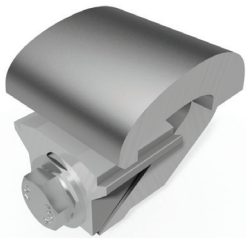
### Mid Clamps



Bonding Mid Clamp,  
Black

Description	SKU	MSRP	QTY	WT
Bonding Mid Clamp, 30-38mm (1.19-1.49"), Black	242-02053	\$4.03	20 EA	3.0 lbs
Bonding Mid Clamp, 30-38mm (1.19-1.49"), Silver	242-02050	\$3.56	20 EA	3.0 lbs
Bonding Mid Clamp, 33-45mm (1.30-1.77"), Black	242-02054	\$4.03	20 EA	3.2 lbs
Bonding Mid Clamp, 33-45mm (1.30-1.77"), Silver	242-02051	\$3.56	20 EA	3.2 lbs
Bonding Mid Clamp, 38-51mm (1.49-2.00"), Black	242-02055	\$4.03	20 EA	3.3 lbs
Bonding Mid Clamp, 38-51mm (1.49-2.00"), Silver	242-02052	\$3.56	20 EA	3.3 lbs
Bonding Mid Clamp, 49-57mm (1.93-2.24"), Black	242-02057	\$4.03	20 EA	3.4 lbs
Bonding Mid Clamp, 49-57mm (1.93-2.24"), Silver	242-02056	\$3.56	20 EA	3.4 lbs

### End Clamps



Universal End Clamp



Bonding Adjustable  
End Clamp, Black

Description	SKU	MSRP	QTY	WT
Universal End Clamp	242-02215	\$5.46	20 EA	6 lbs
Bonding Adjustable End Clamp, 30-38mm (1.19-1.49"), Black	242-02067	\$7.12	20 EA	3.6 lbs
Bonding Adjustable End Clamp, 30-38mm (1.19-1.49"), Silver	242-02065	\$6.41	20 EA	3.6 lbs
Bonding Adjustable End Clamp, 38-51mm (1.49-2.00"), Black	242-02068	\$7.12	20 EA	3.6 lbs
Bonding Adjustable End Clamp, 38-51mm (1.49-2.00"), Silver	242-02066	\$6.41	20 EA	3.6 lbs

## SnapNrack Accessories - Ultra Rail - S100 - S200

SnapNrack offers the largest set of mounting accessories to enhance the install process. SnapNrack **Wire Management Solutions** comprise a set of dedicated components to reliably and cost-effectively secure PV module and microinverter leads. All components are made of materials which have been selected for their ability to handle high UV exposure and extreme rooftop temperatures common under solar arrays. The UL-listed **Junction Box R for rail** and **Junction Box XL for rail** provide a quick and easy method for concealing and protecting electrical connections with a NEMA 4X rating and integrated DIN rail mounts inside. The **Universal Wire Clamp** offers a strong and reliable solution for securing up to four PV conductor cables or up to two microinverter Q cables along SnapNrack rail channels, transitioning in and out of channels, and even routing across rails. **Snap-In Wire Retention Clips** allow you to quickly secure PV conductors, Q Cables, and AC trunk lines in the rail channels. With materials selected to handle high UV exposure and extreme rooftop temperatures these solutions provide wire management that will last the life of the system after a quick and cost-effective installation.

### Wire Management



Junction Box XL



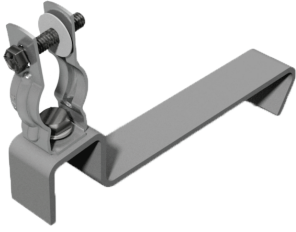
Universal Wire Clamp



Wire Retention Clip

Description	SKU	MSRP	QTY	WT
Junction Box R for Rail	242-01104	\$28.50	1 EA	1.2 lbs
Junction Box XL for Rail	242-92120	\$44.95	1 EA	2.2 lbs
Junction Box S with Comp Kit	242-01113	\$34.87	1 Kit	2.2 lbs
Junction Box XL with Comp Kit	242-92121	\$49.95	1 Kit	4.7 lbs
Universal Wire Clamp for Rail	242-02150	\$3.56	20 EA	3.2 lbs
Universal Wire Clamp for J Box	242-09025	\$3.87	1 EA	0.20 lbs
Engage Cable Clamp for Rail	242-02103	\$3.56	20 EA	2.7 lbs
Snap-in Wire Retention Clip	232-01106	\$0.47	20 EA	0.02 lbs
Smart Clip I	232-01170	\$0.40	100 EA	1.0 lbs
Smart Clip II	232-01173	\$0.40	100 EA	1.0 lbs
48" Rail Cover, Silver	232-01033	\$7.12	20 EA	13 lbs

## Conduit Supports



Conduit Support - Tile

Description	SKU	MSRP	QTY	WT
Conduit Support for Tile, 3/4" EMT	242-02104	\$5.70	20 EA	1.5 lbs
Conduit Support Kit for Comp, 3/4" EMT	242-02106	\$10.45	20 Kits	22 lbs
Conduit Support for Tile, 1" EMT	242-02108	\$6.21	20 EA	1.5 lbs
Conduit Support Kit for Comp, 1" EMT	242-02109	\$10.96	20 Kits	22 lbs



Conduit Support - Comp

## Grounding



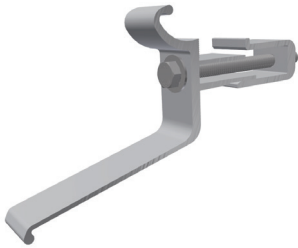
Ground Lug R, 6-12 AWG

Description	SKU	MSRP	QTY	WT
Ground Lug R, 6-12 AWG	242-02101	\$4.75	20 EA	5 lbs
Ground Lug RL	242-92202	\$5.15	20 EA	2.0 lbs
Lay-in Lug w/ Bolt and Keps Lock Nut, 4-14 AWG (Pack of 10)	051-03418	\$45.00	1 Pack	0.72 lbs
MLPE Rail Attachment Kit	242-92093	\$2.85	20 Kits	3.2 lbs

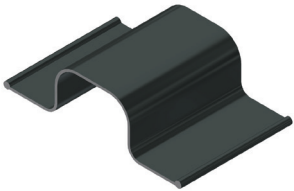
## Array Skirt



Skirt, 162"



Skirt Frame Mount



Skirt Splice



Skirt End Cap Pair

Description	SKU	MSRP	QTY	WT
Skirt Set, 162" (Box of 6)	015-11787	\$506.35	1 Box	61 lbs
Skirt Frame Mount	242-92211	\$4.75	20 EA	4.6 lbs
Skirt Splice	232-01251	\$2.37	20 EA	2.6 lbs
Skirt End Cap Pair	232-01250	\$2.13	20 EA	1.0 lbs
Skirt, 162" (Bundle of 60, priced as each)	232-01259	\$78.13	60 EA	550 lbs

## Array Edge Screen

Description	SKU	MSRP	QTY	WT
Array Edge Screen Kit, 4" x 100', 40 Clips	015-11176	\$152.00	1 Kit	14 lbs
Array Edge Screen Kit, 8" x 100', 40 Clips	015-11177	\$242.25	1 Kit	27 lbs
Array Edge Screen Clip, 4"	232-03993	\$2.13	20 EA	2.0 lbs
Array Edge Screen Clip, 8"	232-03994	\$2.61	20 EA	4.0 lbs
Add-A-Lip Box Frame Adapter, Black	242-01101	\$6.41	20 EA	6 lbs

## Deck Level Flashing for Tile

Description	SKU	MSRP	QTY	WT
PS45 Deck Level Flashing Set, 9x9 and 4X13 Pcs (Flat Tile Hook)	242-02723	\$3.98	20 Sets	8 lbs
PS45 Deck Level Flashing Set, 5X13 and 4X17 Pcs (Tile Replacement & Universal Tile Hook)	242-02728	\$3.98	20 Sets	8 lbs
Protecto-Tak Spray Adhesive	131-01347	\$29.99	20 EA	22 lbs

## Misc

Description	SKU	MSRP	QTY	WT
Original Channel Nut	232-02005	\$0.71	20 EA	0.90 lbs
Bonding Channel Nut	232-02009	\$1.42	20 EA	0.90 lbs
UEC Rail Cutting Tool	232-02284	\$14.25	20 EA	12 lbs

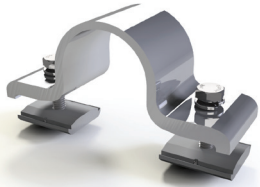


## **SnapNrack Series 200** **The Adaptable High Quality Solution for** **Ground Mount Installations**

The Series 200 Ground Mount System is designed to attach easily to a standard galvanized pipe structure using structural pipe fittings. Using a standard three to four-module high assembly, the system is efficient and flexible while optimizing materials and minimizing system footprint. Industry leading installation times are achieved with unique snap-in fasteners.

- Assembles easily using snap-in bonding pipe clamps that connect the rails
- Fully compatible with all SnapNrack module clamps and accessories
- Ground rail channel keeps wires neatly organized providing a clean finished look to every install
- Industry's largest offering of Wire Management accessories include snap-in Junction Boxes, Universal Wire Clamps, as well as ground rail channel to keep wires neatly organized
- Maximum versatility with the ability to configure easily to desired tilt between 0 and 45 degrees
- Using pipe structural fittings, labor hours to install the system are typically less than required for a more complicated racking system not using standardized components

## Structural Fittings



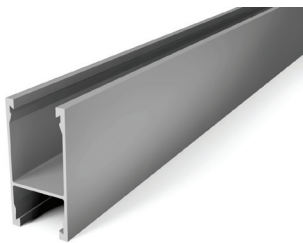
Bonding Pipe Clamp



Double Adjustable  
Socket Tee, Hollaender

Description	SKU	MSRP	QTY	WT
Bonding Pipe Clamp for 1 1/2"	242-09004	\$6.65	20 EA	9 lbs
Single Socket Tee, Hollaender (5E-8), 1 1/2", AL-MG	172-05800	\$12.50	1 EA	0.55 lbs
Single Adjustable Socket Tee, Hollaender (17-8), 1 1/2", AL-MG	172-05803	\$18.75	1 EA	1.1 lbs
Double Adjustable Socket Tee, Hollaender (19E-8), 1 1/2", AL-MG	172-05804	\$24.00	1 EA	0.85 lbs
Rectangular Base Flange, Hollaender (46-8), 1 1/2", AL-MG	172-05807	\$18.50	1 EA	0.55 lbs
Plug End, Hollaender (62-8), 1 1/2" Sched 40, AL	172-05808	\$5.00	1 EA	0.16 lbs
Plug End, Hollaender (62P-8), 1 1/2" Sched 40, Plastic	172-05811	\$4.00	1 EA	0.05 lbs

## Series 200 Rail



Ground Rail

Description	SKU	MSRP	QTY	WT
Ground Rail Set, 122", Silver (Box of 4)	015-09839	\$299.25	1 Box	38 lbs
Ground Rail, 122", Silver (Bundle of 112, priced as each)	232-02183	\$67.45	112 EA	1,252 lbs
Ground Rail Set, 162", Silver (Box of 2)	015-09819	\$191.90	1 Box	29 lbs
Ground Rail Set, 162", Silver (Box of 4)	015-09855	\$342.00	1 Box	49 lbs
Ground Rail, 162", Silver (Bundle of 112, priced as each)	232-01072	\$79.32	112 EA	1,790 lbs
Ground Rail End Cap	232-01043	\$2.61	20 EA	1.6 lbs

# Quality. Innovative. Superior.

SnapNrack Solar Mounting Solutions are engineered to optimize material use and labor resources and improve overall installation quality and safety.

## **Warranty**

All SnapNrack products are covered by a **20-year limited warranty**. For complete details please visit [www.snapnrack.com/resources](http://www.snapnrack.com/resources).

## **MSRP**

Prices published in this document are for reference only and are Manufacturer Suggested Retail Prices. All prices are subject to change without prior notice. The MSRP listed is for each item per the description. The Qty and Wt shown are how the items are typically packaged and serve as the preferred order multiple for each item.

Contact your SnapNrack distributor, which can be found at [www.SnapNrack.com/where-to-buy](http://www.SnapNrack.com/where-to-buy), contact us directly at [contact@SnapNrack.com](mailto:contact@SnapNrack.com), or call us **Toll Free at (877) 732-2860** for technical support.

SnapNrack distributors have trained knowledgeable staff that can provide product design and ordering assistance.

