

CATALOG

Calbrite®

Stainless Steel Conduit Systems

PRODUCT CATALOG



A PART OF



Broadest Selection. Better Response. Best Performance.

Headquartered in Hobart, IN, Calbrite® is the leading name in stainless steel conduit systems for harsh and corrosive environments. We provide the largest stainless steel conduit systems offering in the industry, with over 2,000 SKU's manufactured to strict guidelines set forth by UL and NEMA.

Calbrite® supports its customers throughout the USA and Canada from two manufacturing and distribution centers in the USA. Calbrite® is committed to providing quality products with the shortest lead times, combined with friendly, personal, and reliable service. If you have a need for a unique product, or need a product converted to stainless steel, we can work with you to develop custom products quickly and at a competitive price.

The durability, cost-effectiveness, and design flexibility makes Calbrite® stainless steel the preferred choice for a range of applications and industries.

Food and Beverage

Our stainless steel conduit, fittings, and applicable accessories are ideal for food and beverage processing applications due to stainless steel's ability to stand up to the often acidic content of wash-down chemicals commonly used in these environments. Cleaning agents and chemical disinfectants can quickly corrode other equipment, promoting bacterial growth and enabling food contamination. Stainless steel is a safer, more hygienic choice in these applications as it provides resistance to pitting and stress corrosion cracking, and is easily sterilized to prevent bacterial growth.

- There are typically three constants and requirements when working with food or beverage processing work stations and equipment: extremely easy to clean, corrosion and damage resistance, and easy to sanitize. Cleanliness and

Our quality assurance program complies with industry standards established by Underwriters Laboratories (UL), ANSI and NEMA.

UL listings:

- Approval file number for stainless steel rigid conduit, nipples, elbows and couplings is E230584 (ANSI / UL 6A / cUL 6A)
- Approval file number for stainless steel EMT is E315441 (ANSI / UL 797A / cUL 797A)
- Approval file number for stainless steel IMC is E363502 (ANSI / UL 1242A/cUL 1242A)
- Approval file number for stainless steel conduit bodies and device boxes is E307133 (ANSI / UL 514A / cUL 514A)
- Approval file number for stainless steel locknuts is E308159 (ANSI / UL 514B / cUL 514B)
- Approval file number for stainless steel three piece couplings is E308159 (ANSI / UL 514B / cUL 514B)
- Approval file number for stainless steel explosion fittings is E468171 (ANSI UL 1203 / CSA C22.2-25 & 30)
- Approval file number for stainless steel pulling elbows is E308159 (ANSI UL 514B / CSA C22.2- 18.3-12)
- Approval file number for stainless steel grounding bushings is E352416 (ANSI / UL 467 / CSA C22-41 Listed, UL 514B / CSA C22.2-18.3 Listed, UL 486A-486B / CSA C22.2-65-13 Listed)



hygiene are critical in these environments, and stainless steel has proven to have a wide range of preferred qualities in comparison to traditional conduit systems used, such as galvanized, aluminum and PVC Coated.

- The smooth polished surface of Calbrite® stainless steel conduit and fittings not only promotes cleanliness, but also greatly reduces the risk of corrosion.

Pharmaceutical, Petrochemical and Chemical Industries

Stainless steel resists corrosion in aqueous, gaseous and high-temperature environments, maintains its mechanical properties in all temperatures and its long-term value attribute allows for substantial cost savings. In these applications, use of acidic, toxic and flammable chemical combinations can rapidly deteriorate traditional conduit systems.



Stainless steel's corrosion-resistance, weld ability, strength, ductility, fabrication versatility and composition stability can significantly guard against product contamination. It is also important that the surfaces of the conduit and fittings are smooth, easy to maintain and clean, to minimize microbial contamination, reduce corrosion and prevent the adherence of particulates to the surfaces of the equipment and product.

Pulp and Paper

In pulp and paper applications, stainless steel is used extensively because of its good mechanical properties and its resistance to liquor used in the process. These benefits will become even more of a priority as pulp mills move into the realm of biorefineries.



Stainless steel's properties prevent contamination of the end product and are resistant to process corrosion. Although the process is mostly standard at all mills, there can be small mill-to-mill differences that may affect levels of corrosion. Stainless steel is able to withstand these differences in a stable, uniform manner that makes it the most reliable choice for these applications.

Some of the more common applications for stainless steel conduit in the pulp and paper industry include:

- Batch and continuous digesters
- Brown stock washers
- Black liquor equipment and tanks and recovery circuits
- Bleach plant
- Lime kiln (for high temperature properties)
- Air and water pollution control equipment
- Waste paper recycling
- Stock preparation equipment
- Paper machines including suction rolls

Water and Waste Water

In recent years, the use of stainless steel in water and wastewater treatment plants (WWTP) has grown significantly, as type 304 and 316 grades are increasingly utilized as standard materials of construction due to superior performance and cost-saving factors. A WWTP is a complex, sophisticated system with a high-level of standards for the entire plant, including technical installations. The materials needed to construct a WWTP must be able to withstand the wide range of corrosive conditions. For a clean, environmentally safe and cost-effective plant, there is no better material than stainless steel. Stainless steel will improve efficiency, reduce maintenance, and in many cases, provide the most cost-effective solution.



Benefits to this industry include:

- Corrosion resistance to a wide range of waters, chemicals, such as Hydrogen Sulphide (H₂S)
- A protective layer forms naturally on all stainless steels because of the inclusion of chromium. Even if damaged and oxygen is present, the invisible passive layer "self-heals" and protects the steel from corrosion, ensuring a long life
- Stainless steel is not harmful to people during its production or use, recycling and ultimate disposal
- Good strength and ductility
- Ease of fabrication
- Lightweight and easy to transport
- Availability in a wide range of product forms
- Durability
- Fully recyclable



Transportation / Infrastructure

Structure owners and users are becoming increasingly aware of the liabilities and the costs of corrosion. Carrying out remedial work particularly on highway structures, bridges and tunnels has led to a renewed interest in the use of stainless steel reinforcement, to minimize the risk of corrosion to structures exposed to marine / coastal environments, road de-icing salts, chlorides, and other harsh elements. The use of stainless steel conduit systems drastically reduces or even eliminates the need for difficult future maintenance.

Power Plants, Energy and Power Generation



Whether the form of energy production is nuclear, fossil or renewable, the safety and long term value are the utmost concerns for energy and power generation companies with the nuclear power industry requiring absolute reliability. These characteristics are

provided by high quality stainless steel. Stainless steel is now extensively used in the power generation industry to combat corrosion, particularly at elevated temperatures. In particular, type 304 and 316 stainless are used for high temperature, strength and oxidation resistance in fossil fueled power plants.

The nuclear power industry also uses large quantities of stainless, often specified for both power generation and radiation containment. Steam and gas turbines also use stainless because of its corrosion resistant and heat-resistant qualities.

Stainless Steel in Harsh Environments

Non-corrosive - Durable - UL Listed

Stainless steel is the highest quality, most durable, easiest to install, UL Listed conduit material available. Corrosion damages equipment, which results in downtime and expensive maintenance and repairs. That is why stainless steel conduit systems designed for harsh environments are the material of choice for a wide range of industries.

- Corrosion-resistance. Both 304 and 316 stainless steel alloys provide excellent resistance to corrosives at extreme temperatures and in most industrial environments. When scratched, stainless steel's exposed metal "self-heals", oxidizing over the abrasion to protect against further corrosion.
- Longevity. The durability of a stainless steel conduit system, frequently in excess of 50 years, reduces the need for costly maintenance or replacement needs, providing long-term protection for your facility and optimizing your equipment investment.
- Lowest total cost of ownership. For many applications, stainless steel has the lowest maintenance cost and the lowest total life-cycle cost of any other UL Listed conduit material. This is due to the durability of stainless steel. It will outlast other materials, require little, if any maintenance, and is easy to install (contractors only need their standard tools).
- Environmentally-friendly. Stainless steel retains structural and anti-corrosive properties in temperatures ranging from cryogenic to hundreds of degrees and does not burn and emit dangerous smoke and carcinogens. Additionally, stainless steel is recyclable.
- Easy to install. Calbrite® stainless steel conduit and fittings do not require installers to use special tools or labor-intensive procedures for installation, and stainless is in full NEC® compliance for all facilities.

THE CALBRITE® DIFFERENCE

Known for our custom machining and fabrication capabilities and developing products that meet specific customer requirements, we take pride in being able to listen and understand our customers' special requests and quickly respond with solutions designed to meet their needs. With manufacturing and distribution centers in Indiana and California, we have established a customer centric product development process that enables us to react and respond to custom requirements with the shortest lead times in the industry.

If you do not find the exact part you are looking for in our product catalog, call us at (800) 536-2248 and we'll develop a special solution for you...fast.

About Stainless Steel

Though no metal aside from gold and platinum is completely corrosion proof, stainless steel is the most widely used and economical option for harsh or corrosive environments.

- The basic resistance of stainless steel occurs because of its ability to form a protective coating on the metal surface. This coating is a "passive" film that resists further oxidation or rusting. The formation of this film is instantaneous in an oxidizing atmosphere such as air, water, or other fluids that contain sufficient oxygen.
- The lifespan of stainless steel is often parallel to the lifespan of the structure, and the need for replacement is rare.
- Stainless steel is an iron-based alloy containing a minimum of 10.5 percent chromium. By adding other elements and increasing the chromium content, it will increase corrosion resistance, heat-resisting properties, mechanical properties and improve its fabricating characteristics.
- Type 304L stainless is manufactured with approximately 18% chromium and 8% nickel, allowing for use in a wide range of atmospheric environments. Type 316L stainless is manufactured with approximately 16% chromium, 12% nickel, and 3% molybdenum. Type 316L's molybdenum and increased nickel content enhance the resistance to many industrial chemicals and solvents with specific resistance to chloride pitting.
- Electrical contractors, equipment manufacturers, and Calpipe's own engineers find that most common "field" tools and equipment will suffice when making small-scale modifications to galvanized steel conduit and stainless steel conduit, with few special requirements.
- Atkore International can provide any quantity, in very reasonable time frames, of UL listed Calbrite® stainless steel conduit nipples, elbows and custom lengths of conduit.



On large projects, and special applications, when on-site, and numerous alterations may be required, we offer these recommendations on the following page.

WARNING Welding or any hot work should not be performed on this product it may potentially expose you to chemicals including [Chromium (hexavalent compounds)], which are known to the State of California to cause cancer. For more information go to www.P65Warnings.ca.gov.

TABLE OF CONTENTS

STAINLESS STEEL CONDUIT, ELBOWS AND NIPPLES

Rigid Conduit	7
Nipples.....	7
IMC Conduit	8
EMT Conduit.....	8
Rigid Elbows	9
EMT Elbows	9

STAINLESS STEEL CONDUIT FITTINGS

Compression Fittings	10
EMT Compression Fittings	10
EMT Set Screw Fittings.....	10
Flex Conduit	11
Flexible Connectors	11
3-Piece Couplings	12
Couplings	12
Grounding Hubs	12
Line Terminator Hubs	12
GUAT & GUAX Explosion Proof Outlet Boxes	12
UNY Explosion Proof Union	12
EYS Explosion Proof Sealing Fitting	12
Conduit Bodies – Form 8 Style	13
C & X Conduit Bodies - Form 8 Style	14

CALSTRUT™ STAINLESS STEEL STRUT

Slotted Strut	14
Solid Strut	14
Back-to-Back Strut.....	14
Post Bases for Channel.....	14
Food Grade Channel.....	14
BriteRail™	14

STAINLESS STEEL STRUT ACCESSORIES

4-Hole Flat Angle Plate	15
4-Hole Splice Plate	15
3-Hole Flat Angle Plate.....	15
Cross Plate	15
Tee Plate	15
4-Hole & 2-Hole Angle Bracket	15
Saddle Washers	15
Channel Nuts with Spring	15
U-Fitting 14.....	15
Wall Spacers	15
L-Bracket	15
Hanger Rod	15
BriteRail™ Accessories.....	15

STAINLESS STEEL CORD GRIP CONNECTORS

Cord Grip Connectors	16
----------------------------	----

STAINLESS STEEL DEVICE BOXES

FS Single Gang Box.....	17
FDC Single Gang Box	17
FDCC & FSXC Single Gang Boxes.....	17
FSCT & FDCT Single Gang Boxes	17
FD Single Gang Box.....	17
FDC Double Gang Box.....	17
FDX & FSX Single Gang Boxes	17
In-Use Covers.....	17
Device Box Covers & Plates.....	17

STAINLESS STEEL ACCESSORIES

Locknuts	18
Standard, Lock, & Fender Washers	18
Grounding Locknuts	18
Hex Nuts.....	18
Square Washers	18
Hex Head Cap Screws	18
Slotted Machine Screws	18
Split Ring Clamps	19
Split Ring Extensions	19
Split Ring Mounting Plates	19
Right Angle Clamps	19
Beam Clamps	19
Parallel Clamps	19
Right Angle Beam Clamps	19
Strut Clamps	19
Clamp Backs & Clamp Back Spacers	20
2-Hole Straps & 1-Hole Straps	20
Conduit Hangers	20

MISCELLANEOUS

Counter Sunk Hex Plugs	21
Box Connectors	21
Threaded Conduit Caps	21
Face Bushings	21
Conduit Body Cover, Gasket & Screw Sets	21
Threaded Rod	22
Rod Couplings	22
Wedge & Drop-In Anchors.....	22
Wall Flanges & Floor Flanges	22
U-Bolts.....	22
Drain Plugs.....	23
Thread Covers.....	23
Ground Rod.....	23
Grounding Bushings.....	23
Pulling Elbows.....	23
Additional Resources.....	24

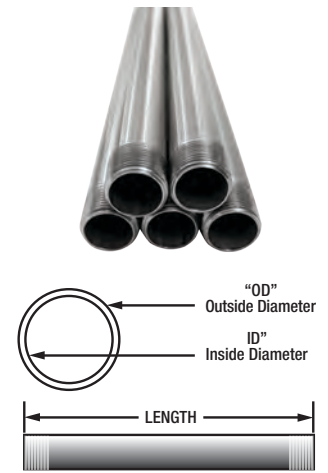
SUBMITTAL DOCUMENTS

Calbrite® Letter of Product Specifications.....	25
Calbrite® Standards Conformities	26
UL Certification Directory Files	27 - 30
Calbrite® Certified Installer Program.....	31

STAINLESS STEEL RIGID CONDUIT



Trade Size	Metric Size	Diameters		Wt/Ft	10' Length w/ Coupling		5' Length w/ Coupling	
		OD	ID		Type 304	Type 316	Type 304	Type 316
1/2"	16	0.840"	0.622"	0.82	S40510CT00	S60510CT00	S40505CT00	S60505CT00
3/4"	21	1.050"	0.824"	1.09	S40710CT00	S60710CT00	S40705CT00	S60705CT00
1"	27	1.315"	1.049"	1.61	S41010CT00	S61010CT00	S41005CT00	S61005CT00
1 1/4"	35	1.660"	1.380"	2.18	S41210CT00	S61210CT00	S41205CT00	S61205CT00
1 1/2"	41	1.900"	1.610"	2.63	S41510CT00	S61510CT00	S41505CT00	S61505CT00
2"	53	2.375"	2.067"	3.50	S42010CT00	S62010CT00	S42005CT00	S62005CT00
2 1/2"	63	2.875"	2.469"	5.59	S42510CT00	S62510CT00	S42505CT00	S62505CT00
3"	78	3.500"	3.068"	7.27	S43010CT00	S63010CT00	S43005CT00	S63005CT00
4"	103	4.500"	4.026"	10.08	S44010CT00	S64010CT00	S44005CT00	S64005CT00
5"	129	5.563"	5.073"	14.61	S45010CT00	S65010CT00	S45005CT00	S65005CT00
6"	155	6.625"	6.093"	18.97	S46010CT00	S66010CT00	S46005CT00	S66005CT00



Calbrite® stainless steel rigid conduit is manufactured in type 304 and 316 stainless to meet stringent sanitary requirements and withstand harsh corrosive environments. The conduit is polished to a bright, easily maintainable finish that allows for minimal cleaning, enhances the appearance, and improves the surface's resistance to pitting & bacterial corrosion in CIP (clean-in-place) and SIP (sterilize-in-place) systems.

Calbrite® stainless steel rigid conduit is highly resistant to damage from impact. Easy to cut, form and join, stainless steel conduit avoids the labor-intensive procedures that come with PVC-coated installation. No special tools or complicated maintenance and repair procedures are required. In addition to the ease of installation and maintenance, stainless steel is 100% recyclable standard rigid conduit threads allow for trouble-free installations.

- Trade sizes 1/2" to 6"
- Includes one coupling with each length purchased
- Custom lengths and diameters are available

Compliances: Underwriter Laboratories Listed for USA and Canada standard UL6A File # E230584 American National Standards Institute (ANSI) specification C80.1



STAINLESS STEEL RIGID NIPPLES Custom lengths available upon request

Type 304 SS									
Trade Size	Close	1 1/2"	2"	2 1/2"	3"	3 1/2"	4"	5"	6"
1/2"	S405CLCN00	S40515CN00	S40520CN00	S40525CN00	S40530CN00	S40535CN00	S40540CN00	S40550CN00	S40560CN00
3/4"	S407CLCN00	S40715CN00	S40720CN00	S40725CN00	S40730CN00	S40735CN00	S40740CN00	S40750CN00	S40760CN00
1"	S410CLCN00		S41020CN00	S41025CN00	S41030CN00	S41035CN00	S41040CN00	S41050CN00	S41060CN00
1 1/4"	S412CLCN00		S41220CN00	S41225CN00	S41230CN00	S41235CN00	S41240CN00	S41250CN00	S41260CN00
1 1/2"	S415CLCN00		S41520CN00	S41525CN00	S41530CN00	S41535CN00	S41540CN00	S41550CN00	S41560CN00
2"	S420CLCN00				S42030CN00	S42035CN00	S42040CN00	S42050CN00	S42060CN00
2 1/2"	S425CLCN00							S42550CN00	S42560CN00
3"	S430CLCN00							S43050CN00	S43060CN00
4"	S440CLCN00							S44050CN00	S44060CN00

Type 316 SS									
Trade Size	Close	1 1/2"	2"	2 1/2"	3"	3 1/2"	4"	5"	6"
1/2"	S605CLCN00	S60515CN00	S60520CN00	S60525CN00	S60530CN00	S60535CN00	S60540CN00	S60550CN00	S60560CN00
3/4"	S607CLCN00	S60715CN00	S60720CN00	S60725CN00	S60730CN00	S60735CN00	S60740CN00	S60750CN00	S60760CN00
1"	S610CLCN00		S61020CN00	S61025CN00	S61030CN00	S61035CN00	S61040CN00	S61050CN00	S61060CN00
1 1/4"	S612CLCN00		S61220CN00	S61225CN00	S61230CN00	S61235CN00	S61240CN00	S61250CN00	S61260CN00
1 1/2"	S615CLCN00		S61520CN00	S61525CN00	S61530CN00	S61535CN00	S61540CN00	S61550CN00	S61560CN00
2"	S620CLCN00				S62030CN00	S62035CN00	S62040CN00	S62050CN00	S62060CN00
2 1/2"	S625CLCN00							S62550CN00	S62560CN00
3"	S630CLCN00							S63050CN00	S63060CN00
4"	S640CLCN00							S64050CN00	S64060CN00



STAINLESS STEEL IMC CONDUIT



Threaded IMC Conduit						
Trade Size	Metric Size	Outside Dia.	Inside Dia.	Wt/Ft	Type 304	Type 316
½"	16	0.815"	0.660"	0.62	S50510CTWT	S70510CTWT
¾"	21	1.029"	0.864"	0.84	S50710CTWT	S70710CTWT
1"	27	1.290"	1.120"	1.19	S51010CTWT	S71010CTWT
1 ½"	41	1.883"	1.703"	1.94	S51510CTWT	S71510CTWT
2"	53	2.360"	2.170"	2.56	S52010CTWT	S72010CTWT



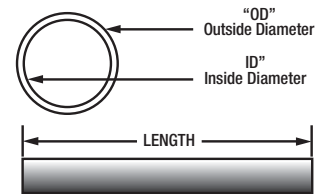
Non-Threaded IMC Conduit						
Trade Size	Metric Size	Outside Dia.	Inside Dia.	Wt/Ft	Type 304	Type 316
½"	16	0.815"	0.660"	0.62	S50510CT00	S70510CT00
¾"	21	1.029"	0.864"	0.84	S50710CT00	S70710CT00
1"	27	1.290"	1.120"	1.19	S51010CT00	S71010CT00
1 ½"	41	1.883"	1.703"	1.94	S51510CT00	S71510CT00
2"	53	2.360"	2.170"	2.56	S52010CT00	S72010CT00



Stainless steel IMC conduit is often specified in corrosive environments where it's subject to harsh chemical treatments or wash-downs due to its lighter weight, precise tolerances, and ease of installation.

Calbrite® IMC conduit is manufactured with or without threads. The non-threaded conduit is joined together by utilizing compression fittings, and the threaded conduit can be used with standard threaded couplings, allowing for lowered costs and simplified installations

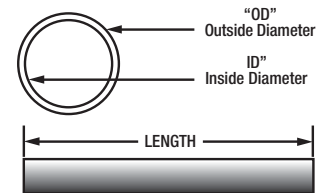
- Custom lengths available
- Trade sizes ½", ¾", 1", 1-½", 2"
- Underwriter Laboratories listed for USA and Canada standard 1242 - File # E363502



STAINLESS STEEL EMT CONDUIT



EMT Conduit							
Trade Size	Diameters		Wt/Ft	10' Length w/ Coupling		5' Length w/ Coupling	
	OD	ID		Type 304	Type 316	Type 304	Type 316
½"	0.706"	0.622"	0.30	S10510CT00	S20510CT00	S10505CT00	S20505CT00
¾"	0.922"	0.824"	0.50	S10710CT00	S20710CT00	S10705CT00	S20705CT00
1"	1.163"	1.050"	0.68	S11010CT00	S21010CT00	S11005CT00	S21005CT00
1 ¼"	1.510"	1.380"	1.00	S11210CT00	S21210CT00	S11205CT00	S21205CT00
1 ½"	1.740"	1.610"	1.10	S11510CT00	S21510CT00	S11505CT00	S21505CT00
2"	2.200"	2.067"	1.40	S12010CT00	S22010CT00	S12005CT00	S22005CT00



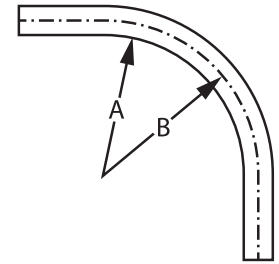
Calbrite® stainless steel EMT conduit and fittings combine strength with ductility, resulting in a lightweight and easy-to-handle conduit assembly. EMT conduit can be installed indoors and outdoors in accordance with NEC®, providing it will not be subject to severe physical damage during and after installation.

Calbrite® stainless steel EMT conduit provides superior performance in applications subject to corrosive environments, harsh chemical treatments, and required wash-downs. In addition to the ease of installation and maintenance, stainless steel is 100% recyclable. Calbrite® EMT conduit enhances the appearance and the surface's resistance to pitting & bacterial corrosion in CIP (clean-in-place) and SIP (sterilize-in-place) systems.

- Trade sizes ½" to 2"
- Underwriter Laboratories Listed for USA and Canada standard UL797A - File #E315441

STAINLESS STEEL RIGID ELBOWS (Type 304 & 316)

Standard Radius Elbows 90°							
Trade Size	Metric Size	Diameters		A	B	Type 304 Part Number	Type 316 Part Number
		OD	ID				
½"	16	0.840"	0.622"	3.79"	4.00"	S40590EL00	S60590EL00
¾"	21	1.050"	0.824"	3.94"	4.50"	S40790EL00	S60790EL00
1"	27	1.315"	1.049"	5.05"	5.75"	S41090EL00	S61090EL00
1 ¼"	35	1.660"	1.380"	6.38"	7.25"	S41290EL00	S61290EL00
1 ½"	41	1.900"	1.610"	7.26"	8.25"	S41590EL00	S61590EL00
2"	53	2.375"	2.067"	8.27"	9.50"	S42090EL00	S62090EL00
2 ½"	63	2.875"	2.469"	9.02"	10.50"	S42590EL00	S62590EL00
3"	78	3.500"	3.068"	11.21"	13.00"	S43090EL00	S63090EL00
4"	103	4.500"	4.026"	13.71"	16.00"	S44090EL00	S64090EL00



Standard Radius Elbows 45°							
Trade Size	Metric Size	Diameters		A	B	Type 304 Part Number	Type 316 Part Number
		OD	ID				
½"	16	0.840"	0.622"	3.79"	4.00"	S40545EL00	S60545EL00
¾"	21	1.050"	0.824"	3.94"	4.50"	S40745EL00	S60745EL00
1"	27	1.315"	1.049"	5.05"	5.75"	S41045EL00	S61045EL00
1 ¼"	35	1.660"	1.380"	6.38"	7.25"	S41245EL00	S61245EL00
1 ½"	41	1.900"	1.610"	7.26"	8.25"	S41545EL00	S61545EL00
2"	53	2.375"	2.067"	8.27"	9.50"	S42045EL00	S62045EL00
2 ½"	63	2.875"	2.469"	9.02"	10.50"	S42545EL00	S62545EL00
3"	78	3.500"	3.068"	11.21"	13.00"	S43045EL00	S63045EL00
4"	103	4.500"	4.026"	13.71"	16.00"	S44045EL00	S64045EL00



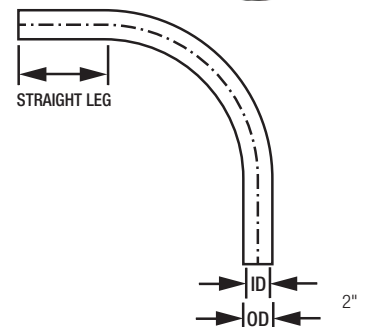
- Large radius rigid stainless elbows are available upon request in 24", 36", 48" and 60"
- Contact factory for 5" and 6" Conduit Elbow info.

STAINLESS STEEL EMT ELBOWS

Standard Radius Elbows 90°						
Trade Size	Diameters		Min. Radius	Straight Leg Each End	Type 304 Part Number	Type 316 Part Number
	OD	ID				
½"	0.706"	0.622"	4"	2"	S10590EL00	S20590EL00
¾"	0.922"	0.824"	4 ½"	2"	S10790EL00	S20790EL00
1"	1.163"	1.050"	5 ¾"	2"	S11090EL00	S21090EL00



Standard Radius Elbows 45°						
Trade Size	Diameters		Min. Radius	Straight Leg Each End	Type 304 Part Number	Type 316 Part Number
	OD	ID				
½"	0.706"	0.622"	4"	2"	S10545EL00	S20545EL00
¾"	0.922"	0.824"	4 ½"	2"	S10745EL00	S20745EL00
1"	1.163"	1.050"	5 ¾"	2"	S11045EL00	S21045EL00



- IMC elbows are also available upon request
- Contact factory for 1-¼" - 2" EMT Elbow info.

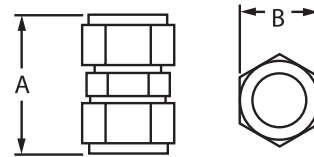
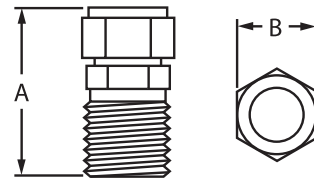
STAINLESS STEEL COMPRESSION FITTINGS (Type 316SS)

Male Compression Connectors			NEMA4X		
Trade Size	Metric Size	Wt/Ft (lbs)	A	B	Part Number
½"	16	0.17	1.725"	1.200"	S60500MC00
¾"	21	0.28	1.920"	1.450"	S60700MC00
1"	27	0.40	2.000"	1.750"	S61000MC00
1 ½"	41	0.71	2.250"	2.390"	S61500MC00
2"	53	1.12	2.530"	2.950"	S62000MC00

Compression Unions			NEMA4X		
Trade Size	Metric Size	Wt/Ft (lbs)	A	B	Part Number
½"	16	0.28	2.150"	1.200"	S60500CC00
¾"	21	0.42	2.400"	1.450"	S60700CC00
1"	27	0.60	2.650"	1.750"	S61000CC00
1 ½"	41	1.04	3.000"	2.390"	S61500CC00
2"	53	1.63	3.000"	2.920"	S62000CC00

• Compatible for use with stainless steel IMC and rigid conduit

Suitable for Damp Locations



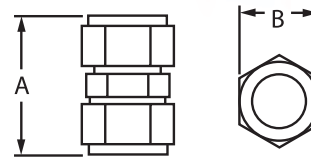
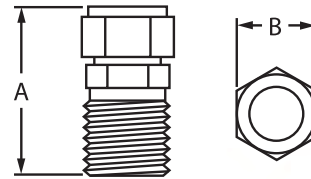
STAINLESS STEEL EMT COMPRESSION FITTINGS (Type 316SS)

EMT Male Compression Connectors			NEMA4X		
Trade Size	Metric Size	Wt/Ft (lbs)	A	B	Part Number
½"	16	0.11	1.620"	1.050"	S20500MC00
¾"	21	0.15	1.700"	1.250"	S20700MC00
1"	27	0.23	1.840"	1.540"	S21000MC00
1 ¼"	35	0.33	1.850"	1.925"	S21200MC00
1 ½"	41	0.43	2.050"	2.250"	S21500MC00
2"	53	0.59	2.140"	2.750"	S22000MC00

EMT Compression Unions			NEMA4X		
Trade Size	Metric Size	Wt/Ft (lbs)	A	B	Part Number
½"	16	0.16	2.100"	1.050"	S20500CC00
¾"	21	0.21	2.100"	1.250"	S20700CC00
1"	27	0.31	2.200"	1.550"	S21000CC00
1 ¼"	35	0.47	2.500"	1.930"	S21200CC00
1 ½"	41	0.65	2.700"	2.250"	S21500CC00
2"	53	0.87	2.770"	2.750"	S22000CC00

• Compatible for use with stainless steel EMT conduit

Suitable for Damp Locations



EMT Set Screw Male Connectors		
Trade Size	Metric Size	Part Number
½"	16	S20500MCSS
¾"	21	S20700MCSS
1"	27	S21000MCSS
1 ¼"	35	S21200MCSS
1 ½"	41	S21500MCSS
2"	53	S22000MCSS



EMT Set Screw Couplings		
Trade Size	Metric Size	Part Number
½"	16	S20500CCSS
¾"	21	S20700CCSS
1"	27	S21000CCSS
1 ¼"	35	S21200CCSS
1 ½"	41	S21500CCSS
2"	53	S22000CCSS



• Not suitable for damp locations

STAINLESS STEEL FLEXIBLE CONDUIT (Type 316SS)

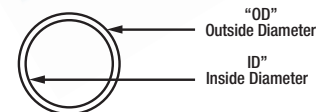
Coated Flex Conduit 25' Length		NEMA4X Suitable for damp locations				
Trade Size	Metric Size	Diameters		Bend	Wt. 25 Coil (lbs)	Part Number
		OD	ID			
½"	16	0.840"	0.610"	4 ½"	5.50"	S60500CTFC
¾"	21	1.050"	0.790"	6"	7.00"	S60700CTFC
1"	27	1.315"	1.010"	10"	9.00"	S61000CTFC
1 ¼"	35	1.660"	1.330"	11"	11.00"	S61200CTFC
1 ½"	41	1.900"	1.520"	12"	12.00"	S61500CTFC
2"	53	2.370"	2.060"	14"	20.00"	S62000CTFC



Clear Coated Flex Conduit 25' Length		NEMA4X Suitable for damp locations				
Trade Size	Metric Size	Diameters		Bend	Wt. 25 Coil (lbs)	Part Number
		OD	ID			
½"	16	0.840"	0.610"	4 ½"	5.50"	S60500CTCC
¾"	21	1.050"	0.790"	6"	7.00"	S60700CTCC
1"	27	1.315"	1.010"	10"	9.00"	S61000CTCC
1 ¼"	35	1.660"	1.330"	11"	11.00"	S61200CTCC
1 ½"	41	1.900"	1.520"	12"	12.00"	S61500CTCC
2"	53	2.370"	2.060"	14"	20.00"	S62000CTCC

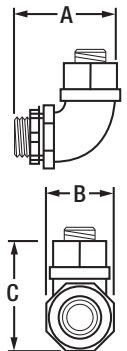


Bare Flex Conduit 25' Length		NEMA4X Suitable for damp locations				
Trade Size	Metric Size	Diameters		Bend	Wt. 25 Coil (lbs)	Part Number
		OD	ID			
½"	16	0.744"	0.610"	4"	4.50"	S60500CTFX
¾"	21	0.960"	0.790"	4 ½"	5.50"	S60700CTFX
1"	27	1.160"	1.010"	6"	7.00"	S61000CTFX
1 ¼"	35	1.500"	1.330"	7 ½"	8.50"	S61200CTFX
1 ½"	41	1.750"	1.520"	9"	10.00"	S61500CTFX
2"	53	2.125"	2.020"	10"	13.00"	S62000CTFX

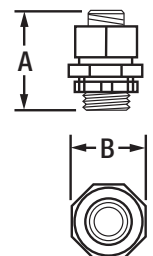


STAINLESS STEEL FLEXIBLE CONNECTORS (Type 316SS)

Flex Connector Male 90 Elbow			NEMA4X Suitable for damp locations			
Trade Size	Metric Size	Wt. (lbs)	A	B	C	Part Number
½"	16	0.27	1.950"	1.250"	2.150"	S60500FC90
¾"	21	0.50	2.250"	1.540"	2.630"	S60700FC90
1"	27	0.72	2.800"	1.860"	3.000"	S61000FC90
1 ¼"	35	0.95	3.150"	2.250"	3.150"	S61200FC90
1 ½"	41	1.55	3.750"	2.580"	3.750"	S61500FC90
2"	53	2.35	4.450"	3.050"	4.750"	S62000FC90



Flex Connector Male Straight			NEMA4X Suitable for damp locations		
Trade Size	Metric Size	Wt. (lbs)	A	B	Part Number
½"	16	0.17	1.950"	1.250"	S60500FCS0
¾"	21	0.24	2.250"	1.540"	S60700FCS0
1"	27	0.33	2.800"	1.650"	S61000FCS0
1 ¼"	35	0.58	3.150"	2.250"	S61200FCS0
1 ½"	41	0.85	3.750"	2.650"	S61500FCS0
2"	53	1.19	4.450"	3.210"	S62000FCS0



• 45° Flex Connectors available in ½", ¾" and 1"

STAINLESS STEEL EXPLOSION PROOF (Type 316SS)

EYS Explosion Proof Sealing Fitting	
Trade Size	Part Number
¾"	S60700EYS0
1"	S61000EYS0



GUAT Explosion Proof Outlet Box	
Trade Size	Part Number
¾"	S60700GUAT
1"	S61000GUAT



GUAX Explosion Proof Outlet Box	
Trade Size	Part Number
¾"	S60700GUAX
1"	S61000GUAX



UNY Explosion Proof Union	
Trade Size	Part Number
¾"	S60700UNY0
1"	S61000UNY0



STAINLESS STEEL COUPLINGS

(Type 316SS)



Standard Couplings				
Trade Size	Metric Size	Wt. (lbs)	A	Part Number
½"	16	0.17	1.570	S60500CP00
¾"	21	0.29	1.630	S60700CP00
1"	27	0.34	2.000	S61000CP00
1 ¼"	35	0.51	2.050	S61200CP00
1 ½"	41	0.61	2.063	S61500CP00
2"	53	0.90	2.125	S62000CP00
2 ½"	63	1.87	3.190	S62500CP00
3"	78	1.93	3.250	S63000CP00
4"	103	3.97	3.540	S64000CP00
5"	129	5.96	3.970	S65000CP00
6"	155	9.94	4.270	S66000CP00



STAINLESS STEEL 3-PIECE COUPLINGS

(Type 316SS)



3-Piece Standard Couplings			
Trade Size	Metric Size	Wt. (lbs)	Part Number
½"	16	0.44	S605003U00
¾"	21	0.58	S607003U00
1"	27	0.94	S610003U00
1 ¼"	35	1.19	S612003U00
1 ½"	41	1.47	S615003U00
2"	53	2.27	S620003U00
2 ½"	63	3.09	S625003U00
3"	78	2.50	S630003U00
4"	103	6.44	S640003U00



STAINLESS STEEL LINE TERMINATOR HUBS

(Type 316SS)

LT Hubs			
Trade Size	Metric Size	Wt. (lbs)	Part Number
½"	16	0.19	S60500LT00
¾"	21	0.25	S60700LT00
1"	27	0.45	S61000LT00
1 ¼"	35	0.67	S61200LT00
1 ½"	41	0.72	S61500LT00
2"	53	1.08	S62000LT00
2 ½"	63	1.91	S62500LT00
3"	78	2.43	S63000LT00
4"	103	4.09	S64000LT00



STAINLESS STEEL GROUNDING HUBS

(Type 316SS)

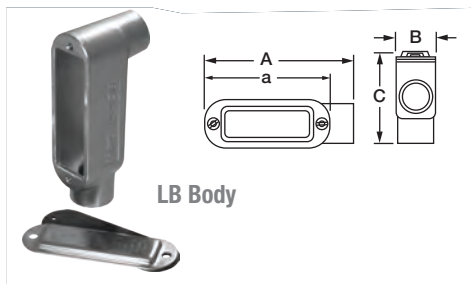
LT Hubs			
Trade Size	Metric Size	Wt. (lbs)	Part Number
½"	16	0.40	S60500LTV2
¾"	21	0.54	S60700LTV2
1"	27	0.75	S61000LTV2
1 ¼"	35	1.00	S61200LTV2
1 ½"	41	1.16	S61500LTV2
2"	53	1.62	S62000LTV2
2 ½"	63	2.85	S62500LTV2
3"	78	3.81	S63000LTV2
4"	103	5.35	S64000LTV2



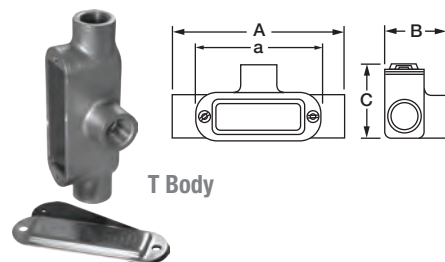
STAINLESS STEEL CONDUIT BODIES - FORM 8 STYLE (Type 316SS)



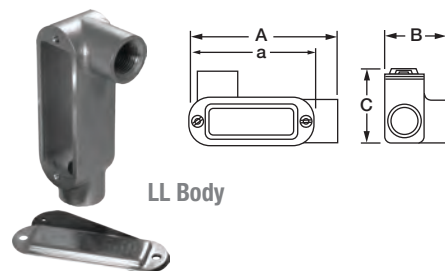
	Trade Size	Wt. (lbs)	Cubic In.	A	B	C	a	Part Number
LB Body	½"	0.95	4"	5.132"	1.320"	2.510"	4.320"	S60500LB00
	¾"	1.25	7"	5.739"	1.550"	2.929"	4.950"	S60700LB00
	1"	1.80	11"	6.680"	1.750"	3.250"	5.650"	S61000LB00
	1 ¼"	2.90	20"	7.635"	2.170"	3.925"	6.530"	S61200LB00
	1 ½"	4.25	35"	8.868"	2.530"	4.150"	7.810"	S61500LB00
	2"	7.75	71"	11.274"	3.460"	4.478"	10.00"	SS6200LB00
	2 ½"	13.10	157"	13.612"	4.650"	6.237"	12.00"	S62500LB00
	3"	13.75	177"	13.695"	4.650"	6.320"	12.00"	S63000LB00
4"	29.25	380"	16.420"	5.850"	7.770"	14.63"	S64000LB00	



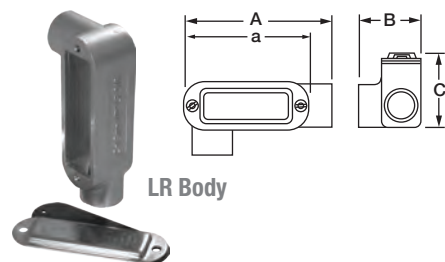
	Trade Size	Wt. (lbs)	Cubic In.	A	B	C	a	Part Number
T Body	½"	1.28	5"	5.940"	2.132"	2.030"	4.320"	S60500TE00
	¾"	1.89	9"	6.538"	2.474"	2.320"	4.940"	S60700TE00
	1"	2.50	13"	7.690"	2.830"	2.330"	5.650"	S61000TE00
	1 ¼"	3.50	24"	8.520"	3.190"	2.900"	6.530"	S61200TE00
	1 ½"	5.00	35"	9.923"	3.585"	3.000"	7.810"	S61500TE00
	2"	9.82	77"	12.30"	4.700"	3.880"	10.00"	S62000TE00
	2 ½"	14.32	160"	15.29"	6.200"	4.550"	12.00"	S62500TE00
	3"	15.00	177"	15.33"	6.280"	4.520"	12.00"	S63000TE00
4"	30.00	382"	18.34"	7.610"	5.930"	14.63"	S64000TE00	



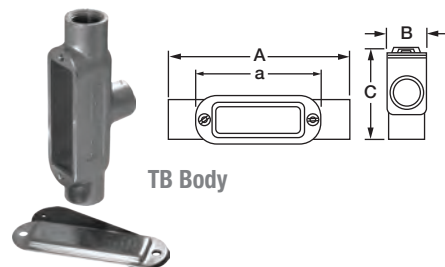
	Trade Size	Wt. (lbs)	Cubic In.	A	B	C	a	Part Number
LL Body	½"	1.00	4"	5.132"	2.132"	1.700"	4.320"	S60500LL00
	¾"	1.40	7"	5.739"	2.474"	1.975"	4.950"	S60700LL00
	1"	2.00	11"	6.680"	2.790"	2.225"	5.650"	S61000LL00
	1 ½"	4.40	35"	8.868"	3.585"	3.095"	7.810"	S61500LL00
	2"	6.85	71"	11.274"	4.610"	3.353"	10.00"	S62000LL00



	Trade Size	Wt. (lbs)	Cubic In.	A	B	C	a	Part Number
LR Body	½"	1.00	4"	5.132"	2.132"	1.700"	4.320"	S60500LR00
	¾"	1.40	7"	5.739"	2.474"	1.975"	4.950"	S60700LR00
	1"	2.00	11"	6.680"	2.790"	2.225"	5.650"	S61000LR00
	1 ½"	4.40	35"	8.868"	3.585"	3.095"	7.810"	S61500LR00
	2"	6.85	71"	11.274"	4.610"	3.353"	10.00"	S62000LR00



	Trade Size	Wt. (lbs)	Cubic In.	A	B	C	a	Part Number
TB Body	½"	1.10	5"	5.994"	1.350"	2.847"	4.320"	S60500TB00
	¾"	1.75	9"	6.538"	1.550"	3.215"	4.950"	S60700TB00
	1"	2.25	13"	7.690"	1.750"	3.234"	5.650"	S61000TB00
	1 ½"	5.25	35"	9.923"	2.530"	4.150"	7.810"	S61500TB00
	2"	7.90	77"	12.554"	3.500"	4.500"	10.00"	S62000TB00



Conduit bodies continued on page 14

*Cover, gasket and screws included with all models

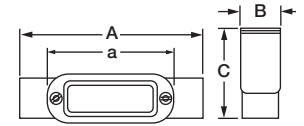
STAINLESS STEEL CONDUIT BODIES - FORM 8 STYLE (Type 316SS)



	Trade Size	Wt. (lbs)	Cubic In.	A	B	C	a	Part Number
C Body	1/2"	1.15	5"	5.994"	1.320"	1.700"	4.320"	S60500CE00
	3/4"	1.60	9"	6.538"	1.550"	1.975"	4.950"	S60700CE00
	1"	2.05	13"	7.690"	1.750"	2.225"	5.650"	S61000CE00
	1 1/4"	3.15	24"	8.695"	2.1750"	2.630"	6.530"	S61200CE00
	1 1/2"	4.50	35"	9.898"	2.530"	3.095"	7.810"	S61500CE00
	2"	8.20	77"	12.554"	3.460"	3.353"	10.00"	S62000CE00



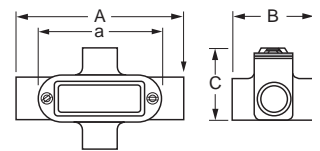
C Body



	Trade Size	Wt. (lbs)	Cubic In.	A	B	C	a	Part Number
TB Body	1/2"	1.00	4"	5.132"	2.132"	1.700"	4.320"	S60500XB00
	3/4"	1.40	7"	5.739"	2.474"	1.975"	4.950"	S60700XB00
	1"	2.00	11"	6.680"	2.790"	2.225"	5.650"	S61000XB00
	1 1/2"	4.40	35"	8.868"	3.585"	3.095"	7.810"	S61500XB00
	2"	6.85	71"	11.274"	4.610"	3.353"	10.00"	S62000XB00



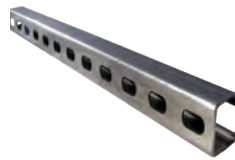
X Body



CALSTRUT™ STAINLESS STEEL STRUT

Available in other sizes, styles and gauges upon request. Available in 10' lengths.

Slotted Strut				
Trade Size	Gauge	Type	Part Number	
1 5/8" x 1 5/8"	12	SS304	S45810ST58	
1 5/8" x 7/8"	14	SS304	S45810ST78	
1 5/8" x 1 5/8"	12	SS316	S65810ST58	
1 5/8" x 7/8"	14	SS316	S65810ST78	



Solid Strut				
Trade Size	Gauge	Type	Part Number	
1 5/8" x 1 5/8"	12	SS304	S45810SL58	
1 5/8" x 7/8"	14	SS304	S45810SL78	
1 5/8" x 1 5/8"	12	SS316	S65810SL58	
1 5/8" x 7/8"	14	SS316	S65810SL78	



Back-To-Back Strut				
Trade Size	Gauge	Type	Part Number	
1 5/8" x 1 5/8"	12	SS304	S45810SB58	
1 5/8" x 7/8"	14	SS304	S45810SB78	
1 5/8" x 1 5/8"	12	SS316	S65810SB58	
1 5/8" x 7/8"	14	SS316	S65810SB78	



Post Base for Channel			
Trade Size	Type	Part Number	
Fits 1 5/8" channel holes - 3/4" dia.	SS304	S45800PB00	
	SS316	S65800PB00	



Square Post Base for Channel			
Trade Size	Type	Part Number	
Fits 1 5/8" channel holes - 3/4" dia.	SS304	S45800PBSQ	
	SS316	S65800PBSQ	



BRITERAIL™ SANITARY STRUT

Length	Weight (ft.) per lb.	Part Number
10'	1.03	S40000STBR



STAINLESS STEEL STRUT & BRITERAIL™ ACCESSORIES (Type 316SS)

4-Hole Flat Angle Plate	
Hole Diameter	Part Number
9/16"	S600004BF0



4-Hole Splice Plate	
Hole Diameter	Part Number
9/16"	S60000PL4S



3-Hole Flat Angle Plate	
Hole Diameter	Part Number
9/16"	S600003BF0



Cross Plate	
Hole Diameter	Part Number
9/16"	S60000PLCR



Tee Plate	
Hole Diameter	Part Number
9/16"	S60000PLTE



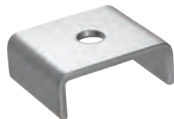
4-Hole Angle Bracket	
Hole Diameter	Part Number
9/16"	S600004B00



2-Hole Angle Bracket	
Hole Diameter	Part Number
9/16"	S600002B00



Saddle Washers	
Hole Diameter	Part Number
3/8"	S60300STSW
1/2"	S60500STSW
5/8"	S60600STSW



Channel Nuts with Spring	
Thread Diameter	Part Number
1/4" - 20"	S60000CN11
3/8" - 16"	S60000CN31
1/2" - 13"	S60000CN41
5/8" - 11"	S60000CN51
7/8" - 9"	S60000CN61



U-Fitting	
Hole Diameter	Part Number
Fits 1 5/8" channel holes - 9/16" dia.	S60000UF00



BriteRail™ U-Bolts	
Description	Part Number
3/8" x 12' BriteRail™ Hanger Rod w/thread SS316	S60312HRBR
3/8" x 6' BriteRail™ Hanger Rod w/thread SS316	S60306HRBR
3/8" x 3' BriteRail™ Hanger Rod w/thread SS316	S60303HRBR
3/8" x 1' BriteRail™ Hanger Rod w/thread SS316	S60301HRBR
3/8" x 12' BriteRail™ Hanger Rod plain end SS316	S60312HRBR-PE



BriteRail™ Accessories	
Description	Part Number
3/8" SS Nyloc Nut	S60300NN00
3/8" SS Acorn Nut	S60300AN00
3/8" SS Curved Washer	S60300WABR
3/8" SS Drop-in Anchor	S60300DR00
3/8" Wall Spacer	S60000WS00
3/8" Heavy-Duty Wall Spacer	S60000WSHD
SS L Bracket	S60000BRLO



BriteRail™ Hanger Rods	
Description	Part Number
1/2" SS316 BriteRail™ U-Bolt	S60500UBBR
3/4" SS316 BriteRail™ U-Bolt	S60700UBBR
1" SS316 BriteRail™ U-Bolt	S61000UBBR
1 1/4" SS316 BriteRail™ U-Bolt	S61200UBBR
1 1/2" SS316 BriteRail™ U-Bolt	S61500UBBR
2" SS316 BriteRail™ U-Bolt	S62000UBBR



BriteRail™ Mini Hangers	
Description	Part Number
1/2" SS316 Mini-Hanger, 3/8" mounting hole	S60500MH03
3/4" SS316 Mini-Hanger, 3/8" mounting hole	S60700MH03
1" SS316 Mini-Hanger, 3/8" mounting hole	S61000MH03
1 1/4" SS316 Mini-Hanger, 3/8" mounting hole	S61200MH03
1 1/2" SS316 Mini-Hanger, 3/8" mounting hole	S61500MH03
2" SS316 Mini-Hanger, 3/8" mounting hole	S62000MH03



STAINLESS STEEL CORD GRIP

CONNECTORS (Type 304SS)



Post Base for Channel		
Trade Size	Type	Part Number
½"	0.125" - 0.188"	S40501GR00
½"	0.188" - 0.250"	S40502GR00
½"	0.250" - 0.312"	S40503GR00
½"	0.312" - 0.375"	S40504GR00
½"	0.375" - 0.438"	S40505GR00
½"	0.438" - 0.500"	S40506GR00
½"	0.500" - 0.562"	S40507GR00
½"	0.562" - 0.625"	S40508GR00
¾"	0.438" - 0.500"	S40701GR00
¾"	0.500" - 0.562"	S40702GR00
¾"	0.500" - 0.625"	S40703GR00
¾"	0.562" - 0.688"	S40704GR00
¾"	0.625" - 0.750"	S40705GR00
¾"	0.688" - 0.812"	S40706GR00
1"	0.438" - 0.562"	S41001GR00
1"	0.500" - 0.562"	S41002GR00
1"	0.500" - 0.625"	S41003GR00
1"	0.562" - 0.688"	S41004GR00
1"	0.625" - 0.750"	S41005GR00
1"	0.688" - 0.812"	S41006GR00
1"	0.750" - 0.875"	S41007GR00
1"	0.812" - 0.938"	S41008GR00
1"	0.875" - 1.000"	S41009GR00
1 ¼"	0.562" - 0.688"	S41201GR00
1 ¼"	0.688" - 0.812"	S41202GR00
1 ¼"	0.750" - 0.875"	S41203GR00
1 ¼"	0.875" - 1.000"	S41204GR00
1 ¼"	1.000" - 1.125"	S41205GR00
1 ¼"	1.125" - 1.250"	S41206GR00
1 ¼"	1.250" - 1.375"	S41207GR00
1 ½"	0.562" - 0.688"	S41501GR00
1 ½"	0.688" - 0.812"	S41502GR00
1 ½"	0.750" - 0.875"	S41503GR00
1 ½"	0.875" - 1.000"	S41504GR00
1 ½"	1.000" - 1.125"	S41505GR00
1 ½"	1.125" - 1.250"	S41506GR00
1 ½"	1.250" - 1.375"	S41507GR00
2"	1.250" - 1.375"	S42001GR00
2"	1.438" - 1.562"	S42002GR00
2"	1.562" - 1.688"	S42003GR00
2"	1.688" - 1.812"	S42004GR00
2"	1.812" - 1.938"	S42005GR00
2"	1.938" - 2.062"	S42006GR00
2"	2.062" - 2.188"	S42007GR00
2"	2.188" - 2.312"	S42008GR00
2"	2.312" - 2.438"	S42009GR00



STAINLESS STEEL CORD GRIP CONNECTORS

W/ MESH (Type 304SS)



Post Base for Channel		
Trade Size	Type	Part Number
½"	0.188" - 0.250"	S40502GRWM
½"	0.250" - 0.312"	S40503GRWM
½"	0.312" - 0.375"	S40504GRWM
½"	0.375" - 0.438"	S40505GRWM
½"	0.438" - 0.500"	S40506GRWM
½"	0.500" - 0.562"	S40507GRWM
½"	0.562" - 0.625"	S40508GRWM
¾"	0.438" - 0.500"	S40701GRWM
¾"	0.500" - 0.562"	S40702GRWM
¾"	0.500" - 0.625"	S40703GRWM
¾"	0.562" - 0.688"	S40704GRWM
¾"	0.625" - 0.750"	S40705GRWM
¾"	0.688" - 0.812"	S40706GRWM
1"	0.438" - 0.562"	S41001GRWM
1"	0.500" - 0.562"	S41002GRWM
1"	0.500" - 0.625"	S41003GRWM
1"	0.562" - 0.688"	S41004GRWM
1"	0.625" - 0.750"	S41005GRWM
1"	0.688" - 0.812"	S41006GRWM
1"	0.750" - 0.875"	S41007GRWM
1"	0.812" - 0.938"	S41008GRWM
1"	0.875" - 1.000"	S41009GRWM
1 ¼"	0.562" - 0.688"	S41201GRWM
1 ¼"	0.688" - 0.812"	S41202GRWM
1 ¼"	0.750" - 0.875"	S41203GRWM
1 ¼"	0.875" - 1.000"	S41204GRWM
1 ¼"	1.000" - 1.125"	S41205GRWM
1 ¼"	1.125" - 1.250"	S41206GRWM
1 ¼"	1.250" - 1.375"	S41207GRWM
1 ½"	0.562" - 0.688"	S41501GRWM
1 ½"	0.688" - 0.812"	S41502GRWM
1 ½"	0.750" - 0.875"	S41503GRWM
1 ½"	0.875" - 1.000"	S41504GRWM
1 ½"	1.000" - 1.125"	S41505GRWM
1 ½"	1.125" - 1.250"	S41506GRWM
1 ½"	1.250" - 1.375"	S41507GRWM
2"	1.250" - 1.375"	S42001GRWM
2"	1.438" - 1.562"	S42002GRWM
2"	1.562" - 1.688"	S42003GRWM
2"	1.688" - 1.812"	S42004GRWM
2"	1.812" - 1.938"	S42005GRWM
2"	1.938" - 2.062"	S42006GRWM
2"	2.062" - 2.188"	S42007GRWM
2"	2.188" - 2.312"	S42008GRWM
2"	2.312" - 2.438"	S42009GRWM



STAINLESS STEEL DEVICE BOXES

FS Single Gang Box			
Size	Wt. (lbs)	Cubic In.	Part Number
¾"	2.03	18"	S60700FS00



(Type 316SS) S = Shallow, D = Deep

FD Single Gang Box			
Size	Wt. (lbs)	Cubic In.	Part Number
¾"	2.45	25"	S60700FD00



FDC Single Gang Boxes			
Size	Wt. (lbs)	Cubic In.	Part Number
¾"	2.40	25"	S60700FDCS
1"	3.10	25"	S61000FDCS



FDC Double Gang Boxes			
Size	Wt. (lbs)	Cubic In.	Part Number
¾"	3.52	45"	S60700FDCD
1"	3.95	45"	S61000FDCD



FDCC & FSCC Single Gang Boxes				
Model	Size	Wt. (lbs)	Cubic In.	Part Number
FDCC	¾"	2.50	25"	S60700FDCC
FSCC	¾"	2.10	18"	S60700FSCC



FDX & FSX Single Gang Boxes				
Model	Size	Wt. (lbs)	Cubic In.	Part Number
FDX	¾"	2.60	25"	S60700FDX0
FSX	¾"	2.22	18"	S60700FSX0



FDCT & FSCT Gang Boxes				
Model	Size	Wt. (lbs)	Cubic In.	Part Number
FDCT	¾"	2.50	25"	S60700FDCT
FSCT	¾"	2.16	18"	S60700FSCT



In-Use Covers		
Style	Size	Part Number
Single Gang	Shallow	S60000FVCS
Single Gang	Deep	S60000FVCD
Double Gang	Shallow	S60000FV2S



NEMA4X Suitable for damp environments

STAINLESS STEEL DEVICE BOX COVERS

Not suitable for damp environments



Duplex Receptacle
(Horizontal)
#S607HDCVRS



Toggle Switch
(Horizontal)
#S6071TCVLS



GFCI Receptacle
(Vertical)
#S607VGCVLS



Single Gang Blank
(1 Gang)
#S607BLPLTS



Two Gang Blank
(2 Gang)
#S607BLPLTD



Two Toggle Switch
(Vertical)
#S6072TCVRD

STAINLESS STEEL DEVICE BOX PLATES

Non suitable for damp environments



One Toggle Switch
(1 Gang)
#S6071TPLTS



Two Toggle Switch
(2 Gang)
#S6072TPLTD



One GFCI Receptacle
(1 Gang)
#S6071GPLTS



Two GFCI Receptacle
(2 Gang)
#S6072GPLTD

STAINLESS STEEL WEATHERPROOF DEVICE COVERS



GFCI Receptacle
(Vertical)
#S60000GFCI



Toggle Switch
(Vertical)
#S60000VTSO



Duplex Receptacle
(Vertical)
#S60000VDRO

STAINLESS STEEL WASHERS, NUTS AND SCREWS



Locknuts	
Trade Size	Part Number
1/2"	S60500LN00
3/4"	S60700LN00
1"	S61000LN00
1 1/4"	S61200LN00
1 1/2"	S61500LN00
2"	S62000LN00
2 1/2"	S62500LN00
3"	S63000LN00
4"	S64000LN00



Grounding Locknuts	
Trade Size	Part Number
1/2"	S60500LNWG
3/4"	S60700LNWG
1"	S61000LNWG
1 1/4"	S61200LNWG
1 1/2"	S61500LNWG
2"	S62000LNWG
2 1/2"	S62500LNWG
3"	S63000LNWG
4"	S64000LNWG



Sealing Locknuts	
Trade Size	Part Number
1/2"	S60500LNWS
3/4"	S60700LNWS
1"	S61000LNWS
1 1/4"	S61200LNWS
1 1/2"	S61500LNWS
2"	S62000LNWS



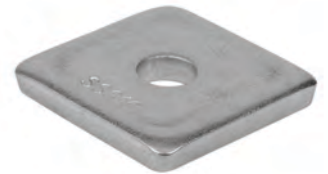
Hex Nuts	
Trade Size	Part Number
1/4"	S60200HN00
3/8"	S60300HN00
1/2"	S60500HN00
3/4"	S60600HN00



Standard Washers	
Trade Size	Part Number
1/4"	S60200WA00
3/8"	S60300WA00
1/2"	S60500WA00
5/8"	S60600WA00



Square Washers	
Trade Size	Part Number
1/4"	S60200SW00
3/8"	S60300SW00
1/2"	S60500SW00
5/8"	S60600SW00



Lock Washers	
Trade Size	Part Number
1/4"	S60200LW00
3/8"	S60300LW00
1/2"	S60500LW00
5/8"	S60600LW00



Hex Head Cap Screws	
Trade Size	Part Number
Various	S60000HC00



Fender Washers	
Trade Size	Part Number
1/4" x 1"	S60200FW10
1/4" x 1 1/4"	S60200FW12
3/8" x 1 1/4"	S60300FW12



Slotted Machine Screws 316SS	
Trade Size	Part Number
Various	S60000MS00



CLAMPS

Beam Clamps	
Trade Size	Part Number
1/4" - 20"	S60200BC00
3/8" - 16"	S60300BC00
1/2" - 13"	S60500BC00



Split Ring Clamps	
Trade Size	Part Number
1/2"	S60500SP00
3/4"	S60700SP00
1"	S61000SP00
1 1/4"	S61200SP00
1 1/2"	S61500SP00
2"	S62000SP00
2 1/2"	S62500SP00
3"	S63000SP00
4"	S64000SP00



Right Angle Clamps	
Trade Size	Part Number
1/2"	S60500RA00
3/4"	S60700RA00
1"	S61000RA00
1 1/4"	S61200RA00
1 1/2"	S61500RA00
2"	S62000RA00
2 1/2"	S62500RA00
3"	S63000RA00
4"	S64000RA00



Right Angle Beam Clamp	
Trade Size	Part Number
1 5/8" x 1 5/8"	S60000RB00



Split Ring Mounting Plates		
Trade Size	Description	Part Number
3/8"	For Clamps 1/2" - 2"	S60300SPMP
1/2"	For Clamps 2 1/2" - 4"	S60500SPMP



Parallel Clamps	
Trade Size	Part Number
3/4"	S60700PC00
1/2"	S61000PC00



Split Ring Extensions		
Trade Size	Description	Part Number
3/8" x 1"	For Clamps 1/2" - 2"	S60301SPX0
3/8" x 2"	For Clamps 1/2" - 2"	S60302SPX0
3/8" x 4"	For Clamps 1/2" - 2"	S60304SPX0
3/8" x 6"	For Clamps 1/2" - 2"	S60306SPX0
1/2" x 2"	For Clamps 2 1/2" - 4"	S60502SPX0
1/2" x 4"	For Clamps 2 1/2" - 4"	S60504SPX0
1/2" x 6"	For Clamps 2 1/2" - 4"	S60506SPX0



Strut Clamps	
Trade Size	Part Number
1/2"	S60500SC00
3/4"	S60700SC00
1"	S61000SC00
1 1/4"	S61200SC00
1 1/2"	S61500SC00
2"	S62000SC00
2 1/2"	S62500SC00
3"	S63000SC00
3 1/2"	S63500SC00
4"	S64000SC00

(Also Available in SS EMT)



STAINLESS STEEL CLAMPS (Type 316SS)

Clamp Backs	
Trade Size	Part Number
½"	S60500CB00
¾"	S60700CB00
1"	S61000CB00



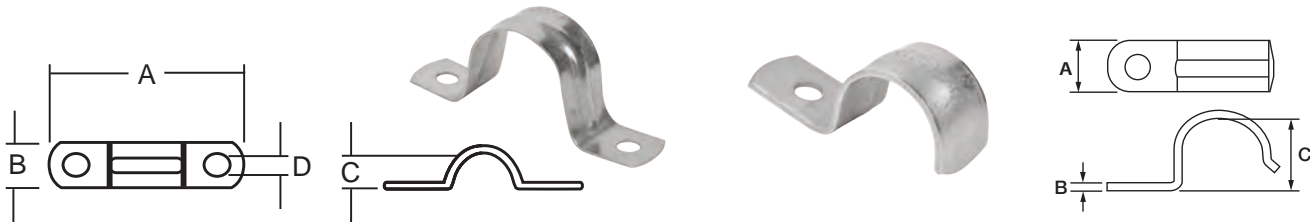
Clamp Back Spacers		
Trade Size	Description	Part Number
½" - 1"	Universal Clamp Back Spacer	S60510CBSP



STAINLESS STEEL STRAPS AND HANGERS (Type 316SS)

2-Hole Straps		(Also Available in SS EMT)			
Trade Size	A	B	C	Bolt Hole	Part Number
½"	2.427"	0.627"	1.840"	¼"	S605002S00
¾"	2.925"	0.750"	1.050"	¼"	S607002S00
1"	3.580"	0.750"	1.300"	¼"	S610002S00
1 ¼"	4.440"	0.875"	1.660"	¼"	S612002S00
1 ½"	4.440"	1.240"	1.900"	¼"	S615002S00
2"	5.290"	1.245"	2.370"	¼"	S620002S00
2 ½"	6.250"	1.250"	2.874"	¼"	S625002S00
3"	7.190"	1.250"	3.500"	¼"	S630002S00
4"	9.750"	1.250"	4.500"	¼"	S640002S00

1-Hole Straps		(Also Available in SS EMT)			
Trade Size	A	B	C	Bolt Hole	Part Number
½"	0.750"	0.060"	0.840"	¼"	S605001S00
¾"	0.750"	0.080"	1.050"	¼"	S607001S00
1"	0.750"	0.080"	1.300"	¼"	S610001S00
1 ¼"	0.875"	0.100"	1.660"	½"	S612001S00
1 ½"	0.880"	0.125"	1.900"	½"	S615001S00
2"	0.880"	0.125"	2.370"	¾"	S620001S00
2 ½"	1.250"	0.190"	2.874"	¾"	S625001S00
3"	1.250"	0.190"	3.500"	¾"	S630001S00
4"	1.250"	0.190"	4.500"	¾"	S640001S00



Conduit Hangers		(Also Available in SS EMT)
Trade Size	Part Number	
½"	S60500MH00	
¾"	S60700MH00	
1"	S61000MH00	
1 ¼"	S61200MH00	
1 ½"	S61500MH00	
2"	S62000MH00	
2 ½"	S62500MH00	
3"	S63000MH00	
4"	S64000MH00	



MISCELLANEOUS (Type 316SS)

Counter-Sunk Hex Plugs		
Trade Size	a	Part Number
½"	0.375"	S60500CSHP
¾"	0.563"	S60700CSHP
1"	0.625"	S61000CSHP
1 ¼"	0.750"	S61200CSHP
1 ½"	1.000"	S61500CSHP
2"	1.000"	S62000CSHP
2 ½"	1.000"	S62500CSHP
3"	1.000"	S63000CSHP
4"	1.000"	S64000CSHP
5"	1.000"	S65000CSHP
6"	1.000"	S66000CSHP



Box Connectors	
Trade Size	Part Number
½"	S60500CH00
¾"	S60700CH00
1"	S61000CH00
1 ¼"	S61200CH00
1 ½"	S61500CH00
2"	S62000CH00
2 ½"	S62500CH00
3"	S63000CH00
4"	S64000CH00



Face / Reducing Bushings	
Trade Size	Part Number
¾" x ½"	S60700FB05
1" x ½"	S61000FB05
1" x ¾"	S61000FB07
1 ¼" x ½"	S61200FB05
1 ¼" x ¾"	S61200FB07
1 ¼" x 1"	S61200FB10
1 ½" x ½"	S61500FB05
1 ½" x ¾"	S61500FB07
1 ½" x 1"	S61500FB10
1 ½" x 1 ¼"	S61500FB12
2" x ½"	S62000FB05
2" x ¾"	S62000FB07
2" x 1"	S62000FB10
2" x 1 ¼"	S62000FB12
2" x 1 ½"	S62000FB15
2 ½" x ½"	S62500FB05
2 ½" x ¾"	S62500FB07
2 ½" x 1"	S62500FB10

Face / Reducing Bushings	
Trade Size	Part Number
2 ½" x 1 ¼"	S62500FB12
1 ½" x 1 ½"	S62500FB15
2 ½" x 2"	S62500FB20
3" x ½"	S63000FB05
3" x ¾"	S63000FB07
3" x 1"	S63000FB10
3" x 1 ¼"	S63000FB12
3" x 1 ½"	S63000FB15
3" x 2"	S63000FB20
3" x 2 ½"	S63000FB25
4" x ½"	S64000FB05
4" x ¾"	S64000FB07
4" x 1"	S64000FB10
4" x 1 ¼"	S64000FB12
4" x 1 ½"	S64000FB15
4" x 2"	S64000FB20
4" x 2 ½"	S64000FB25
4" x 3"	S64000FB30

Threaded Conduit Caps	
Trade Size	Part Number
½"	S60500CA00
¾"	S60700CA00
1"	S61000CA00
1 ¼"	S61200CA00
1 ½"	S61500CA00
2"	S62000CA00
2 ½"	S62500CA00
3"	S63000CA00
4"	S64000CA00



Cover, Gasket and Screw Set	
Trade Size	Part Number
½"	S60500CG00
¾"	S60700CG00
1"	S61000CG00
1 ½"	S61500CG00
2"	S62000CG00



MISCELLANEOUS

Threaded Rod		
Trade Size	Type 304 Part Number	Type 316 Part Number
½"	S40212TR00	S60212TR00
¾"	S40312TR00	S60312TR00
1"	S40512TR00	S60512TR00

• Sold in 12' Lengths



Rod Couplings	
Trade Size	Type 316 Part Number
¼"	S60200RC00
¾"	S60300RC00
½"	S60500RC00
¾"	S60700RC00



Escutcheon Plates/Wall Flanges		
Trade Size	OD	Part Number
½"	3"	S40500EP00
¾"	3"	S40700EP00
1"	3"	S41000EP00
1 ¼"	6"	S41200EP00
1 ½"	6"	S41500EP00
2"	6"	S42000EP00
2 ½"	6"	S42500EP00
3"	6"	S43000EP00
4"	6"	S44000EP00



Wedge Anchors	
Trade Size	Part Number
VARIOUS	S60000WR00



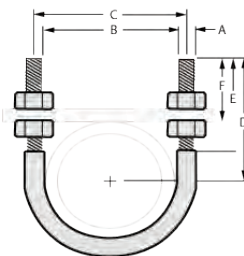
Drop-In Anchors	
Trade Size	Part Number
¼"	S60200DR00
¾"	S60300DR00
½"	S60500DR00
¾"	S60600DR00
¾"	S60700DR00



Floor Flanges	
Trade Size	Part Number
½"	S60500FF00
¾"	S60700FF00
1"	S61000FF00
1 ¼"	S61200FF00
1 ½"	S61500FF00
2"	S62000FF00



Standard U-Bolts								
Trade Size	A	B	C	D	E	F	Wt. (lbs)	Part Number
½"	¼"	0.950"	1.400"	2.750"	2.250"	2.313"	10	S60500UB00
¾"	¼"	1.250"	1.650"	2.500"	2.250"	2.219"	11	S60700UB00
1"	¼"	1.375"	1.825"	2.750"	2.500"	2.094"	12	S61000UB00
1 ¼"	¾"	1.750"	2.350"	3.000"	2.500"	2.031"	28	S61200UB00
1 ½"	¾"	2.000"	2.700"	3.000"	2.500"	2.063"	29	S61500UB00
2"	¾"	2.438"	2.813"	3.250"	2.500"	2.063"	32	S62000UB00
2 ½"	½"	3.000"	3.875"	3.750"	3.000"	2.250"	73	S62500UB00
3"	½"	3.650"	4.500"	4.000"	3.000"	2.250"	79	S63000UB00
3 ½"	½"	4.063"	4.563"	4.250"	3.000"	2.250"	82	S63500UB00
4"	½"	5.375"	5.375"	4.750"	3.000"	2.250"	50	S64000UB00



MISCELLANEOUS

Drain Plugs	
Trade Size	Part Number
½"	S60500DP00
¾"	S60700DP00
1"	S61000DP00



Thread Covers	
Trade Size	Part Number
½"	S60500TC00
¾"	S60700TC00
1"	S61000TC00
1 ¼"	S61200TC00
1 ½"	S61500TC00
2"	S62000TC00



• Contact factory for 2 ½" - 6" info

Pulling Elbows		
Trade Size	Wt. (lbs)	Part Number
¾"	0.31	S60700P900
1"	0.64	S61000P900



Grounding Bushings	
Trade Size	Part Number
¾"	S60700GB00
1"	S61000GB00
1 ½"	S61500GB00



ADDITIONAL RESOURCES

VISIT CALBRITE.COM:

- Quick and easy access to online catalog and brochures
- Educational resources and latest news
- Product videos
- Submittal sheets
- Price guide
- Rep locator
- Mobile friendly



ENVIRONMENTAL SUSTAINABILITY THE CALPIPE COMMITMENT

- Steel is the most recycled material in North America
- One ton of recycled steel saves 2,500 pounds of iron ore, 1,400 pounds of coal and 120 pounds of limestone
- In addition to manufacturing a fully recyclable product, Calbrite® is committed to minimizing their carbon footprint by constantly implementing new environmental sustainable practices



Source: Steel Recycling Institute

Calbrite®

Stainless Steel Conduit Systems



6451 Northwind Parkway
Hobart, IN 46342

OFFICE / 219-844-6800
TOLL FREE / 800-536-2248
WEB / www.calbrite.com

CALBRITE® LETTER OF PRODUCT SPECIFICATIONS

This letter is in reference to the Calbrite® stainless steel conduit and conduit fittings product specifications.

There are four applicable standards for stainless steel conduit that govern its design and performance:

1. UL
2. NEMA 4X
3. ANSI C80.1
4. NSF® / ANSI 169

The UL (Underwriters Laboratories) requirement covers electrical stainless steel rigid conduit, elbows, couplings, and nipples for use as a metal raceway for the installation of wires and cables.

The NEMA (National Electrical Manufacturers Association) 4X standard ensures protection against corrosion, wind-blown dust and rain, splashing water, hose-directed water and damage from external ice formation in indoor or outdoor environments.

ANSI C80.1 (American National Standards Institute) standard covers the requirement for electrical rigid conduit for use as an electrical wire and cable raceway.

The NSF® / ANSI 169 standard establishes minimum food protection and sanitation requirements for the materials, design, fabrication, construction, and performance of special purpose food handling and processing equipment. The NSF® certification process entails rigorous testing procedures to determine that the product complies with regulatory standards for safety, quality and performance.

Calbrite® produces various options that satisfy all four regulatory requirements while maintaining cost-effectiveness.

CALBRITE® STANDARDS CONFORMITIES

1.01 Summary

- A 1. Metallic conduit
- A 2. Conduit bodies
- A 3. Conduit fittings and accessories
- A 4. Electrical Metallic Tubing (EMT)
- A 5. Intermediate Metal Conduit (IMC)
- A 6. Standard for explosion-proof and dust-ignition-proof electrical equipment for use

1.02 Reference

- B. American National Standards Institute ANSI
 - 1. C80.1 - Electrical Rigid Steel Conduit
 - 2. C80.3 - Steel Electrical Metallic Tubing
- C. National Electrical Manufacturers Association
- D. Underwriters Laboratories UL
 - 1. 6A - Standard for Electrical Rigid Metal Conduit - Aluminum, Red Brass, and Stainless Steel.
 - 2. 514A - Standard for Electrical Stainless Steel Device Boxes and Conduit Bodies
 - 3. 514B - Standard for Fittings for use with cable and conduit intended for installation in accordance with the National Electrical Code, ANSI/NFPA 70
 - 4. 797A - Standard for Electrical Metallic Tubing – Steel (Stainless)
 - 5. 1242 - Standard for Electrical Intermediate Metal Conduit
 - 6. 1203 - Standard for Explosion-proof and Dust-Ignition-Proof Electrical Equipment for Use in Hazardous (Classified) Locations

1.3 Definitions

- A. Conduit bodies: A separate portion of a conduit system that provides access through a removable cover to the interior of the system at a junction of 2 or more conduit sections. Includes, but not limited to: shapes C, LB, LL, LR, T, TB, X
- B. Conduit fitting: An accessory that serves primarily a mechanical purpose. Includes, but not limited to: bushings, locknuts, hubs, couplings, reducers, etc.
- C. EMT: Electrical Metallic Tubing
- D. IMC: Intermediate Metal Conduit
- E. Explosion proof: Designed to contain and suppress a potential hazard that could lead to an electrical fire or explosion due to the presence of flammable gases, vapors, combustible dust, etc...



ONLINE CERTIFICATIONS DIRECTORY

DYWV.E230584 Rigid Nonferrous Metallic Conduit

Rigid Nonferrous Metallic Conduit

[See General Information for Rigid Nonferrous Metallic Conduit](#)

Atkore International
16100 South Lathrop Ave.
Harvey, IL 60426 USA

E230584

Trademark and/or Tradename:

Calconduit® Calbond® Calbrite®

Aluminum rigid conduit, elbows, bends, and nipples, trade sizes 1/2, 3/4, 1, 1-1/4, 1-1/2, 2, 2-1/2, 3, 3-1/2, 4, 5, and 6.

Aluminum rigid conduit, Polymer or PVC coated, trade sizes 1/2, 3/4, 1, 1-1/4, 1-1/2, 2, 2-1/2, 3, 3-1/2, 4, 5, and 6.

Aluminum rigid conduit, elbows, Polymer or PVC coated, trade sizes 1/2, 3/4, 1, 1-1/4, 1-1/2, 2, 2-1/2, 3, 3-1/2, 4, 5, and 6.

Aluminum rigid conduit, bends, Polymer or PVC coated, trade sizes 1/2, 3/4, 1, 1-1/4, 1-1/2, 2, 2-1/2, 3, 3-1/2, 4, 5, and 6.

Aluminum rigid conduit, nipples, Polymer or PVC coated, trade sizes 1/2, 3/4, 1, 1-1/4, 1-1/2, 2, 2-1/2, 3, 3-1/2, 4, 5, and 6.

Rigid nonferrous metal stainless steel conduits, trade sizes 1/2, 3/4, 1, 1-1/4, 1-1/2, 2, 2-1/2, 3, 3-1/2, 4, 5, and 6.

Rigid nonferrous metal stainless steel conduit elbows, trade sizes 1/2, 3/4, 1, 1-1/4, 1-1/2, 2, 2-1/2, 3, 3-1/2, 4.

Rigid nonferrous metal stainless steel conduit nipples, trade sizes 1/2, 3/4, 1, 1-1/4, 1-1/2, 2, 2-1/2, 3, 3-1/2, 4.

Rigid nonferrous metal stainless steel conduit couplings, trade sizes 1/2, 3/4, 1, 1-1/4, 1-1/2, 2, 2-1/2, 3, 3-1/2, 4, 5, and 6.

[Last Updated](#) on 2014-01-17

© 2014 UL LLC

When the UL Leaf Mark is on the product, or when the word "Environment" is included in the UL Mark, please search the [UL Environment database](#) for additional information regarding this product's certification.

The appearance of a company's name or product in this database does not in itself assure that products so identified have been manufactured under UL's Follow-Up Service. Only those products bearing the UL Mark should be considered to be Certified and covered under UL's Follow-Up Service. Always look for the Mark on the product.

UL permits the reproduction of the material contained in the Online Certification Directory subject to the following conditions: 1. The Guide Information, Assemblies, Constructions, Designs, Systems, and/or Certifications (files) must be presented in their entirety and in a non-misleading manner, without any manipulation of the data (or drawings). 2. The statement "Reprinted from the Online Certifications Directory with permission from UL" must appear adjacent to the extracted material. In addition, the reprinted material must include a copyright notice in the following format: "© 2014 UL LLC".

Calbrite®

Stainless Steel Conduit Systems

A PART OF  **atkore**
INTERNATIONAL

6451 Northwind Parkway
Hobart, IN 46342

OFFICE / 219-844-6800
TOLL FREE / 800-536-2248
WEB / www.calbrite.com



ONLINE CERTIFICATIONS DIRECTORY

FJMX.E315441 Electrical Metallic Tubing

Electrical Metallic Tubing

[See General Information for Electrical Metallic Tubing](#)

Atkore International
16100 South Lathrop Ave.
Harvey, IL 60426 USA

E315441

Electrical metallic tubing elbows and bends, trade sizes 1/2, 3/4, 1, 1-1/4, 1-1/2, 2, 2-1/2, 3, 3-1/2, 4.

Stainless steel electrical metallic tubing, bends and elbows, in trade sizes of 1/2, 3/4, 1, 1-1/4, 1-1/2, 2.

Last Updated on 2013-09-18

© 2014 UL LLC

When the UL Leaf Mark is on the product, or when the word "Environment" is included in the UL Mark, please search the [UL Environment database](#) for additional information regarding this product's certification.

The appearance of a company's name or product in this database does not in itself assure that products so identified have been manufactured under UL's Follow-Up Service. Only those products bearing the UL Mark should be considered to be Certified and covered under UL's Follow-Up Service. Always look for the Mark on the product.

UL permits the reproduction of the material contained in the Online Certification Directory subject to the following conditions: 1. The Guide Information, Assemblies, Constructions, Designs, Systems, and/or Certifications (files) must be presented in their entirety and in a non-misleading manner, without any manipulation of the data (or drawings). 2. The statement "Reprinted from the Online Certifications Directory with permission from UL" must appear adjacent to the extracted material. In addition, the reprinted material must include a copyright notice in the following format: "© 2014 UL LLC".

Calbrite®

Stainless Steel Conduit Systems

6451 Northwind Parkway
Hobart, IN 46342

OFFICE / 219-844-6800
TOLL FREE / 800-536-2248
WEB / www.calbrite.com

A PART OF  **atkore**
INTERNATIONAL



ONLINE CERTIFICATIONS DIRECTORY

DYBY.E363502 Intermediate Ferrous Metal Conduit

Intermediate Ferrous Metal Conduit

[See General Information for Intermediate Ferrous Metal Conduit](#)

Atkore International
16100 South Lathrop Ave.
Harvey, IL 60426 USA

E363502

Trademark and/or Tradename:

Calconduit® Calbond® Calbrite®

Stainless Steel Intermediate ferrous metal conduit, trade sizes trade sizes 1/2, 3/4, 1, 1-1/2, 2, in

[Last Updated](#) on 2016-06-09

© 2016 UL LLC

The appearance of a company's name or product in this database does not in itself assure that products so identified have been manufactured under UL's Follow-Up Service. Only those products bearing the UL Mark should be considered to be Certified and covered under UL's Follow-Up Service. Always look for the Mark on the product.

UL permits the reproduction of the material contained in the Online Certification Directory subject to the following conditions: 1. The Guide Information, Assemblies, Constructions, Designs, Systems, and/or Certifications (files) must be presented in their entirety and in a non-misleading manner, without any manipulation of the data (or drawings). 2. The statement "Reprinted from the Online Certifications Directory with permission from UL" must appear adjacent to the extracted material. In addition, the reprinted material must include a copyright notice in the following format: "© 2016 UL LLC".

Calbrite®

Stainless Steel Conduit Systems

6451 Northwind Parkway
Hobart, IN 46342

OFFICE / 219-844-6800
TOLL FREE / 800-536-2248
WEB / www.calbrite.com



ONLINE CERTIFICATIONS DIRECTORY

EBNV.E465422

Conduit Fittings for Use in Hazardous Locations

Conduit Fittings for Use in Hazardous Locations

See General Information for Conduit Fittings for Use in Hazardous Locations

Atkore International
16100 South Lathrop Ave.
Harvey, IL 60426 USA

E465422

Trademark and/or Tradename:

Calconduit® Calbrite®

Class I, Groups A, B, C and D; Class II, Groups E, F and G; Class III, conduit sealing fitting, conduit size 3/4 in., Model(s) 3/4" NPT EYS

Class I, Groups A, B, C and D; Class II, Groups E, F and G; Class III, conduit unions, conduit sizes 1 in., Model(s) 1" NPT UNY

Class I, Groups A, B, C and D; Class II, Groups E, F and G; Class III, conduit unions, conduit sizes 3/4 in., Model(s) 3/4" NPT UNY

Last Updated on 2016-08-17

© 2016 UL LLC

The appearance of a company's name or product in this database does not in itself assure that products so identified have been manufactured under UL's Follow-Up Service. Only those products bearing the UL Mark should be considered to be Certified and covered under UL's Follow-Up Service. Always look for the Mark on the product.

UL permits the reproduction of the material contained in the Online Certification Directory subject to the following conditions: 1. The Guide Information, Assemblies, Constructions, Designs, Systems, and/or Certifications (files) must be presented in their entirety and in a non-misleading manner, without any manipulation of the data (or drawings). 2. The statement "Reprinted from the Online Certifications Directory with permission from UL" must appear adjacent to the extracted material. In addition, the reprinted material must include a copyright notice in the following format: "© 2016 UL LLC".

Course Overview

The Calbrite® Certified Installer Program provides the proper procedures and proven techniques to ensure a quality corrosion resistant conduit system. With proper installation, one can expect a long lasting, superior corrosion resistant conduit system that requires little to no maintenance.

Course Content

Standards Review

- ▶ Review of the industry standards applicable to stainless steel conduit systems.

Field Installation Topics

- ▶ Cutting
 - Highlight the various tools and techniques for cutting and preparing stainless steel for threading and bending in field setting.
- ▶ Threading
 - List the appropriate threading tools and machinery for each trade size of stainless steel conduit.
- ▶ Bending
 - Proper bending techniques for custom field bending on stainless steel conduit.
- ▶ Maintenance
 - Recommended maintenance for Type 304 and 316 stainless steel to prevent corrosion and add to the service life of your conduit system.
- ▶ Certification Process
 - Written examination.

Class Curriculum

- ▶ 30 minutes - Plant Operations Tour
- ▶ 1 hour - Classroom Instruction: Understanding Corrosion and its Consequences and Prevention
- ▶ 2 hours - Training Center - Hands-on Training
- ▶ 1 hour - Classroom Instruction - Standards, Installation Tools, Standards and Compliances
- ▶ 30 minutes - Written Test Administered
- ▶ Closing - Presentation of Course Completion Materials

65% Practical 35% Theory

Qualification

- Calbrite® Certified Installer

Who should attend

- Installers and electricians who install Calbrite® Stainless Steel Conduit Systems

Benefits of attending the course

- Quality installation by trained professionals
- Meet industry specifications required by certified installers of stainless steel conduit systems
- Lower cost of ownership

Course objectives

- To have a full understanding of current applicable specifications along with the skills and expertise to install Calbrite® Stainless Steel Conduit Systems

Prerequisites

- Suggested 2 years experience installing stainless steel conduit systems

Course Location

- Rancho Dominguez, CA
- Hobart, IN

On-site training requires minimum of 5 participants, pre-registration and a \$100/per attendee fee that will be applied to your next purchase

Register @ [Calbrite.com/register](https://www.calbrite.com/register)

6451 Northwind Pkwy

Hobart, IN 46342

PHONE / 219-844-6800

TOLL-FREE / 800-536-2248

FAX / 219-844-6884

www.calbrite.com

*Want to join a company that helps you build
the mindset, skill set and tool set for success?
Visit us at atkore.com/careers*



UNISTRUT®



RAZOR RIBBON



Konkore FITTINGS



Columbia-MBF™



TECTRON Tube®



KAF-TECH®

UNISTRUT Construction



SCI STEEL COMPONENTS INC.

marco cablemanagement

FLEXICON FLEXIBLE CONDUIT SOLUTIONS

Calconduit®

Calbrite®

Calbond®

