

GET TUNED ON

elite
LED LIGHTING

MAXILUME
ARCHITECTURAL LIGHTING

fusion
LIGHTING

ORACLE
LIGHTING



Tunable White
SMART WHITE TECHNOLOGY



Warm Dimming
SMART DIM TECHNOLOGY



RGB + White
SMART HUE TECHNOLOGY

OUR BRANDS

WWW.IUSEELITE.COM



Highly sustainable and ultra-efficient recessed lighting solutions from 2" to 8" apertures, track, cove, under-cabinet, task and accent lighting in LED and traditional light sources, all in a variety of colors for commercial and residential applications.



A complete line of high-performance round and square Architectural Downlighting and cylinders in 2" to 10" apertures, exit and emergency lighting for all architectural commercial, retail, hospitality, health care, and assisted living applications, with a full range of dimming options for general, task, and accent lighting. High quality illumination with up to 96 CRI and 98 R9 values, creatively crafted to offer a vivid appearance of pure color.



A broad array of the highest-quality recessed downlights and architectural track lighting, combo lighting for retail and commercial interiors, plus high-end residential. Recessed available round & square, flange and trim-less rotating fixtures that lock in position, all precision task and accent aiming to produce a full range of textures and hues for any retail, hospitality, and entertainment location.

At Elite Lighting, *brand development* continues non-stop to better meet the demands of an ever-changing lighting world. The Elite *brand family* encompasses the following lighting brands:



Sustainable, state-of-the-art, comprehensive line of linear products for Architectural, commercial, industrial applications, indoor Architectural, recessed and linear, suspended, surface, and pendant mounts applications available in LED, fluorescent, and HID for use in hospitals, schools, offices, assisted living, commercial and residential, as well as exterior environments.



Custom-designed and expertly-crafted to insure the highest performing bath, ceiling, and pendant lights, chandeliers, floor/table lamps, wall sconces, fans, outdoor lanterns and sconces available in multiple light sources to create "must see" interior and exterior Architectural, commercial, residential, retail, assisted living, and hospitality settings worthy of the name "Elite."



Groundbreaking and proprietary fire-resistant technology, fully-assembled and easy-to-install, superior materials designed to meet or exceed One or Two-hour Fire-Rated IC and Non-IC codes, available in recessed Downlights with multiple light sources, expertly crafted to offer unsurpassed protection for high-rise residential, hospitality, assisted living, and commercial locations.

AVAILABLE TECHNOLOGIES

TUNABLE WHITE



Smart White

Tunes from 5000K to 2700K

Tunable White with Smart White technology is designed to allow you to color tune your space without compromising delivered light levels all the while maintaining CRI of 90+ across the tunable range of 5000K to 2700K.

WARM DIM



Smart Dimming

Dims from 3000K to 1800K

Warm Dim with Smart Dimming technology offers the brilliance of incandescent halogen dimming all while adhering to the most demanding energy codes today's market. Using Smart Dim, you can dim smoothly from 3000K to 1800K following the **Black Body Curve**.

PERFORMANCE LIGHTING

FOR ALL ASPECTS OF LIFE!

SMART HUE

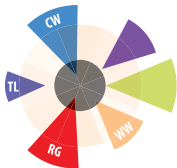


Tunable White & RGB

Tunes from 6000K to 2700K or
4000K to 1650K and add color

Smart Hue is a lighting technology. Smart Hue can change a space's atmosphere by manipulating the color temperature of the room. Smart Hue Cool+RGB offers a tunable white Color range of 2700 to 6000K or 1650 to 4000K as well as 1-100% color saturation.

VIBRANT



32K, 34K, 37K, 42K

R9 values of up to 98
and CRI of up to 96

Vibrant provides a high chromatic option in Architectural downlighting, track, combo, pendant lighting. Vibrant enables a vivid appearance of all colors. Vibrant Series offers 4 different technologies: Crisp White (CW), Warm White (WW), Twilight (TL), Red Glow (RG).



TUNABLE WHITE

Smart White | 5000K to 2700K | CRI of 90+ | 1% Standard Dimming

5000K

Tunable white technology

2700K



5000K



2700K

CATEGORIES	TUNABLE WHITE
LUMEN DOWNLIGHT	Up to 2500
LUMEN LINEAR	Up to 8000
CRI	90+
CCT	From 5000K to 2700K
DIMMING CONTROL POWER SUPPLY	DIM10 - 0-10v 1% Dimming LUTH - Lutron Hi-Lume LUT2W - Lutron 2-wire ELDO10-1 - EldoLed 0-10v .1% ELDODALI-.1 - EdloLed DALI ELDODMX -.1 - EldoLed DMX
MACADAMS ELLIPSE BINNING	2 step MacAdam Ellipse Scale
DISTRIBUTIONS	ND/ MD/ WD
VOLTAGE	120V/ 277V

AVAILABLE LUMINARIES

- Architectural Recessed Specification Downlighting
- Architectural Recessed Small Aperture Specification Downlighting
- Cylinder
- LED Tape Lighting
- Recessed Commercial Downlighting
- Recessed Multi-lamp Downlighting
- Flex Linear Slot Series
- Recessed Linear
- Suspended Linear
- Surface Linear

APPLICATIONS

Healthcare

ICU Rooms
Assisted Living Facilities
Hospital Rooms

Commercial Spaces

Office Spaces
Lobbies & Entrances
Conference & Meeting Rooms
Sports Complexes

Education

Learning Centers
Childcare Facilities
Schools



TUNABLE WHITE

AVAILABLE PRODUCTS

APERTURE SIZE

3"



ER3 LED **IC RATED**

HIGH PERFORMANCE SMALL
APERTURE SMART ARCHITECTURAL DOWNLIGHT



Trim-less



Trim



Trim-less



Trim

UP TO 2000 LUMENS | CRI: 90+ | 2-Step MacAdam Ellipse



ARCHITECTURAL DOWNLIGHTS

Round

4 INCH

HH4-LED

5 INCH

HH5-LED

6 INCH

HH6-LED

7 INCH

HH7-LED

8 INCH

HH8-LED

10 INCH

HH10-LED



SQUARE DOWNLIGHTS

Square

4 INCH

HH4SQ-LED

6 INCH

HH6SQ-LED



CYLINDER

Round

6 INCH

SCH6-LED

8 INCH

SCH8-LED



TUNABLE WHITE

AVAILABLE PRODUCTS

LED COMBO LIGHTING

TUNABLE WHITE



FC1-LED



FC2-LED



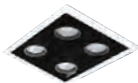
FC3-LED



FC4-LED



FCL-LED



FCX-LED

CRI 90+

CCT TWH -50K-27K

COLOR QUALITY 2-Step MacAdam Ellipse

OPTIC Narrow, Medium, Wide, Very Wide distributions



LUMEN OUTPUT Up to 2000 Lumens/ head

WARRANTY 5 Years



LED TAPE LIGHTING

TUNABLE WHITE

16"

Max. Continuous Run
(1 power)

LB102-RGBW (Indoor)

24

Voltage

4.8

Watts/Ft

50,000

Life (hours)

TWH

LED Type



Listing



TUNABLE WHITE

AVAILABLE PRODUCTS

FLEX LINEAR SLOT SERIES

CALCULATED
L70
LIFETIME
150,000 HRS

CALCULATED
L85
LIFETIME
65,000 HRS



| 2" |

OLS-D-LED



OLS-DI-LED



| 4" |

OLS-WD-LED



OLS-WDI-LED



1% DIMMING STANDARD



Corner Detail



Wall to Ceiling



Grid



Trimless



Trim Flange



Surface Mount

CRI

90+

CCT

TWH -50K-27K

COLOR QUALITY

3-Step MacAdam Ellipse

OPTIC

Medium distributions



LUMEN OUTPUT

Up to 1000 Lumens / foot

APERTURES

2" & 4"

LENGTH

2', 4' & 8'

FINISH

White, Silver & Custom Colors



TUNABLE WHITE

AVAILABLE PRODUCTS

ARCHITECTURAL LED SUSPENDED LINEAR DIRECT/INDIRECT SYSTEM

ASI5-LED



ASI7-LED



CALCULATED
L70
LIFETIME
150,000 HRS

CALCULATED
L85
LIFETIME
65,000 HRS

CRI	90+	CCT	TWH -50K-27K
COLOR QUALITY	3-Step MacAdam Ellipse	OPTIC	Medium distributions 
LUMEN OUTPUT	Up to 8000 Lumens	APERTURES	2" & 4"
LENGTH	4' & 8'	FINISH	White, Silver & Custome Colors



TUNABLE WHITE

AVAILABLE PRODUCTS

2X4 LED RECESSED VOLUMETRIC LUMINAIRE

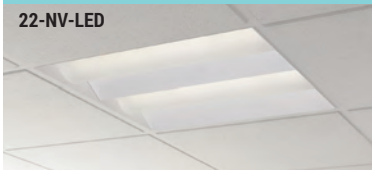
24-NV-LED



LUMEN PACKAGE **4000** | **5000** | **6000** | **8000**

2X2 LED RECESSED VOLUMETRIC LUMINAIRE

22-NV-LED



LUMEN PACKAGE **2400** | **3400** | **4000** | **5000**

2X4 LED RECESSED VOLUMETRIC

24-OD1V-LED



LUMEN PACKAGE **4000** | **5000** | **6000** | **8000**

2X2 LED RECESSED VOLUMETRIC

22-OD1V-LED



LUMEN PACKAGE **2400** | **3400** | **4000**

CRI 80+

COLOR QUALITY 3-Step MacAdam Ellipse

LUMEN OUTPUT Up to 8000 Lumens

CCT TWH -50K-27K

OPTIC highly efficient lighting

WARRANTY 5 Years



TUNABLE WHITE

AVAILABLE PRODUCTS

2X2 LED RECESSED VOLUMETRIC LUMINAIRE

24-ODVH-LED



LUMEN PACKAGE **4000** | **5000** | **6000** | **8000**

2X4 LED RECESSED VOLUMETRIC LUMINAIRE

22-ODVH-LED



LUMEN PACKAGE **2400** | **3400** | **4000** | **5000**

2X4 LED SHALLOW RECESSED VOLUMETRIC LUMINAIRE

24-OVHP-LED



LUMEN PACKAGE **4000** | **5000** | **6000** | **8000**

2X2 LED SHALLOW RECESSED VOLUMETRIC LUMINAIRE

22-OVHP-LED



LUMEN PACKAGE **2400** | **3400** | **4000** | **5000**

LENGTH

1'x4", 2'x 2' and 2'x 4'

DIMMING

Dimmable down to 1%

FINISH

White

CALCULATED

L70

LIFETIME
150,000 HRS

CALCULATED

L85

LIFETIME
65,000 HRS



WARM DIM

Smart Dimming | 3000K to 1800K | CRI of 90+ | Black Body Curve Dimming

3000K

Dims smoothly from 3000K to 1800K

1800K



Warm dimming is a new technology designed to mimic traditional incandescent dimming



3000K

1800K

CATEGORIES	WARM DIMMING
LUMEN DOWNLIGHT	Up to 2000
LUMEN LINEAR	Up to 8000
CRI	90+
CCT	From 3000K to 1800K
DIMMING CONTROL POWER SUPPLY	DIM10 - 0-10v 1% Dimming DIMTR - TRIAC DIMMING LUTH - Lutron Hi-Lume LUT2W - Lutron 2-wire ELDO10-1 - EldoLed 0-10v .1% ELDODALI-.1 - EdloLed DALI ELDODMX -.1 - EldoLed DMX
MACADAMS ELLIPSE BINNING	2 step MacAdam Ellipse Scale
DISTRIBUTIONS	ND/ MD/ WD
VOLTAGE	120V/ 277V

AVAILABLE LUMINARIES

- Architectural Recessed Specification Downlighting
- Architectural Recessed Small Aperture Specification Downlighting
- Cylinder
- Fire Rated Recessed Downlight
- LED Tape Lighting
- Recessed Commercial Downlighting
- Recessed Multi-lamp Downlighting
- Recessed Residential Downlighting
- Recessed Retrofit Downlighting
- Track Lighting

APPLICATIONS

Hospitality Applications:

Hotel Lobby, Entrances,
Lounges, Rooms.
Restaurants
Bars and Nightclubs
Movie Theater

Healthcare Applications:

Hospital Rooms
Assisted Living Facilities
Occupant's Quarters
Entertainment:
Sports Complexes

Residential Applications:

Media Rooms
Residential Living Rooms
Dinning Rooms
Kitchens
Bedrooms

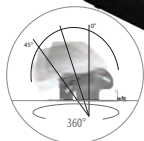


WARM DIM

AVAILABLE PRODUCTS

APERTURE SIZE

3"



ER3 LED **IC RATED**

HIGH PERFORMANCE SMALL
APERTURE SMART ARCHITECTURAL DOWNLIGHT



Trim-less

Trim

Trim-less

Trim

UP TO 2000 LUMENS | CRI: 90+ | 2-Step MacAdam Ellipse



ARCHITECTURAL DOWNLIGHTS

Round

4 INCH

HH4-LED

5 INCH

HH5-LED

6 INCH

HH6-LED

7 INCH

HH7-LED

8 INCH

HH8-LED

10 INCH

HH10-LED



SQUARE DOWNLIGHTS

Square

4 INCH

HH4SQ-LED

6 INCH

HH6SQ-LED



CYLINDER

Round

6 INCH

SCH6-LED

8 INCH

SCH8-LED



WARM DIM

AVAILABLE PRODUCTS



ET-LED-390
LED TRACK LIGHT

ET-LED-385
LED TRACK LIGHT

LED TRACK LIGHTING

WARM DIMMING TECHNOLOGY

CRI	90+	CCT	WDM -30K-18K
COLOR QUALITY	2-Step MacAdam Ellipse	OPTIC	Narrow, Medium, Wide distributions
LUMEN OUTPUT	Up to 2000 Lumens	WARRANTY	5 Years

LED COMBO LIGHTING

WARM DIMMING TECHNOLOGY



FC1-LED

FC2-LED

FC3-LED

FC4-LED

FCL-LED

FCX-LED

CRI	90+	CCT	WDM -30K-18K
COLOR QUALITY	2-Step MacAdam Ellipse	OPTIC	Narrow, Medium, Wide, Very Wide distributions
LUMEN OUTPUT	Up to 2000 Lumens/ head	WARRANTY	5 Years



LED TAPE LIGHTING

WARM DIMMING TECHNOLOGY

LB102-SMD (Indoor)

16"

Max. Continuous Run
(1 power)

24

Voltage

4.8

Watts/Ft

50,000

Life (hours)

SMD

LED Type



Listing



WARM DIM

AVAILABLE PRODUCTS

6" LED HOUSING



B6IC-LED & B5IC-LED
NEW CONSTRUCTION



B6RIC-LED & B5RIC-LED
REMODEL

4" LED HOUSING



LED2-4
NEW CONSTRUCTION



LED2-4-R
REMODEL



LED2-4-IC
IC RATED

2" LED HOUSING



B2-LED
NEW CONSTRUCTION



B2R-LED
REMODEL



B2IC-LED
IC RATED

CRI

90+

CCT

WDM -30K-18K

LUMEN OUTPUT

2" & 4"-900 LUMENS
5" & 6"-1000 LUMENS

APERTURES

2", 4", 5" & 6"

OPTIC

Narrow, Medium distributions



WARRANTY

5 Years



WARM DIM

AVAILABLE PRODUCTS

TRIM COLOR OPTIONS



W-WH
White White



P-BK
Black Black



BZ-BZ
Bronze Bronze



CP-CP
Copper Copper



SN-SN
Satin Nickel



CL-WH
Clear White



CL-CH
Clear Chrome



SN-SN
Satin Nickel



W-WH
White White



SN-WH
Satin White



MB-WH
Black White



RG-WH
Gold White



RG-PB
Gold Polish Brass



BZ-BZ
Bronze Bronze



CP-CP
Copper Copper



MB-BK
Black Black

LED RETROFIT LIGHTING



RL429

4" LED RETROFIT (REFLECTOR)



RL435

4" LED RETROFIT (BAFFLE)



RL629

6" LED RETROFIT (REFLECTOR)



RL635

6" LED RETROFIT (BAFFLE)

CRI

90+

COLOR QUALITY

3-Step MacAdam Ellipses

LUMEN OUTPUT

4"-750 LUMENS & 6"-1000 LUMENS

CCT

WDM -30K-18K

OPTIC

45° CUT- OFF

WARRANTY

5 years warranty



WARM DIM

AVAILABLE PRODUCTS

FLEX LINEAR SLOT SERIES



| 2" |

OLS-D-LED



OLS-DI-LED



| 4" |

OLS-WD-LED



OLS-WDI-LED



1% DIMMING STANDARD



Corner Detail



Wall to Ceiling



Grid



Trim-less



Trim Flange




Surface Mount

CRI 90+

CCT WDM -30K-18K

COLOR QUALITY 3-Step MacAdam Ellipse

OPTIC Medium distributions 

LUMEN OUTPUT Up to 1000 Lumens / foot

APERTURES 2" & 4"

LENGTH 2', 4' & 8' & CUSTOM

FINISH White, Silver & Custome Colors



WARM DIM

AVAILABLE PRODUCTS

2X4 LED RECESSED VOLUMETRIC LUMINAIRE

24-NV-LED



LUMEN PACKAGE **4000 | 5000 | 6000 | 8000**

2X2 LED RECESSED VOLUMETRIC LUMINAIRE

22-NV-LED



LUMEN PACKAGE **2400 | 3400 | 4000 | 5000**

2X4 LED RECESSED VOLUMETRIC

24-OD1V-LED



LUMEN PACKAGE **4000 | 5000 | 6000 | 8000**

2X2 LED RECESSED VOLUMETRIC

22-OD1V-LED



LUMEN PACKAGE **2400 | 3400 | 4000**

2X2 LED RECESSED VOLUMETRIC LUMINAIRE

24-ODVH-LED



LUMEN PACKAGE **4000 | 5000 | 6000 | 8000**

2X4 LED RECESSED VOLUMETRIC LUMINAIRE

22-ODVH-LED



LUMEN PACKAGE **2400 | 3400 | 4000 | 5000**

2X4 LED SHALLOW RECESSED VOLUMETRIC LUMINAIRE

24-OVHP-LED



LUMEN PACKAGE **4000 | 5000 | 6000 | 8000**

2X2 LED SHALLOW RECESSED VOLUMETRIC LUMINAIRE

22-OVHP-LED



LUMEN PACKAGE **2400 | 3400 | 4000 | 5000**



RGB+WHITE

With SMART HUE - Tunable White + RGB 6000K to 2700K 4000K to 1650K

Tunable white + RGB technology



Tunable White Color range of 6000 to 2700K or 4000 to 1650K as well as 1-100% color saturation

CATEGORIES	SMART DIMMING
LUMENS	Up to 2400
CRI	90+
R9	Greater than 90
CCT	RGB + W
DIMMING CONTROL POWER SUPPLY	DMX BLUETOOTH
DIMMING	0.10%
MACADAMS ELLIPSE BINNING	2 step MacAdam Ellipse Scale
DISTRIBUTIONS	ND/ MD/ WD
VOLTAGE	120V/ 277V

AVAILABLE LUMINARIES

- Architectural Recessed Specification Downlighting
- Architectural Recessed Small Aperture Specification Downlighting
- Cylinder
- Fire Rated Recessed Downlight
- LED Tape Lighting
- Recessed Commercial Downlighting
- Recessed Multi-lamp Downlighting
- Recessed Residential Downlighting
- Recessed Retrofit Downlighting
- Track Lighting
- Recessed Linear
- Suspended Linear
- Surface Linear

APPLICATIONS

Hospitality

Hotel Lobbies
Restaurants, Bars
Nightclubs

Education

Laboratories

Healthcare

Oncology Labs
Radiation Treatment
Operating Rooms
Alzheimer's and Dementia
Facilities
Light Therapy

Commercial Spaces

Boardrooms
Lobbies
Canopies
Retail Spaces
Sales Floor
Visual Merchandising

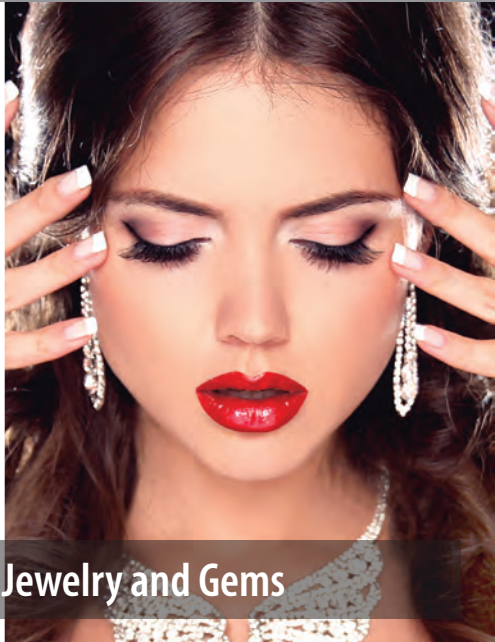


VIBRANT CRISP WHITE

(4200K) CRI 96, R9 93 Part #: CW-(42K/96/93)

Standard Light

Vibrant technology

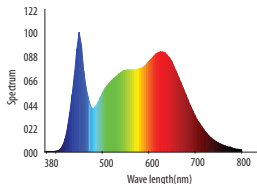


Retail applications, Jewelry and Gems

CATEGORIES	SMART DIMMING
LUMENS	Up to 2000
CRI	96
R9	93
CCT	CW (42K/96/93)
DIMMING CONTROL POWER SUPPLY	DIM-10 0-10V. LUTRON HI-LUME LUTRON ECO-SYSTEM 2 WIRE ELDOLED-0.1 DMX DALI
DIMMING	1% / 0.1%
MACADAMS ELLIPSE BINNING	2 step MacAdam Ellipse Scale
DISTRIBUTIONS	ND/ MD/ WD
VOLTAGE	120V/ 277V

AVAILABLE LUMINARIES

- Architectural Recessed Specification
Downlighting
- Architectural Recessed Small Aperture
Specification Downlighting
- Cylinder
- Recessed Commercial Downlighting
- Recessed Multi-lamp Downlighting
- Recessed Residential Downlighting
- Recessed Retrofit Downlighting
- Track Lighting



Vibrant provides a high chromatic option in Architectural Lighting, enabling a vivid appearance of all colors.



VIBRANT WARM WHITE

(3200K) CRI 96, R9 98 Part #: TL-(32K/96/98)

Standard Light

Vibrant technology

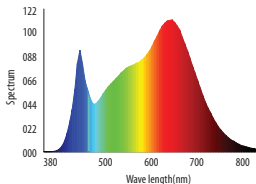


Healthcare applications

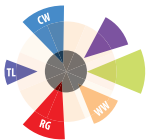
CATEGORIES	SMART DIMMING
LUMENS	Up to 2000
CRI	96
R9	98
CCT	WW (34K/95/93)
DIMMING CONTROL POWER SUPPLY	DIM-10 0-10V. LUTRON HI-LUME LUTRON ECO-SYSTEM 2 WIRE ELDOLED-0.1 DMX DALI
DIMMING	1% / 0.1%
MACADAMS ELLIPSE BINNING	2 step MacAdam Ellipse Scale
DISTRIBUTIONS	ND/ MD/WD
VOLTAGE	120V/ 277V

AVAILABLE LUMINARIES

- Architectural Recessed Specification Downlighting
- Architectural Recessed Small Aperture Specification Downlighting
- Cylinder
- Recessed Commercial Downlighting
- Recessed Multi-lamp Downlighting
- Recessed Residential Downlighting
- Recessed Retrofit Downlighting
- Track Lighting



It is beneficial in healthcare application as it assist medical staff to make accurate diagnosis by being able to detect for cyanosis in patients and also allow them to clearly see veins for placement of a cannula.



VIBRANT TWILIGHT

(3200K) CRI 96, R9 98 Part #: TL-(32K/96/98)

Standard Light

Vibrant technology

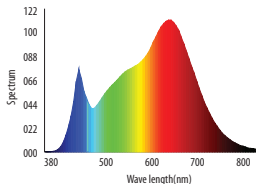


Hospitality and Residential applications

CATEGORIES	SMART DIMMING
LUMENS	Up to 2000
CRI	96
R9	98
CCT	TL (32K/96/98)
DIMMING CONTROL POWER SUPPLY	DIM-10 0-10V. LUTRON HI-LUME LUTRON ECO-SYSTEM 2 WIRE ELDOLED-0.1 DMX DALI
DIMMING	1% / 0.1%
MACADAMS ELLIPSE BINNING	2 step MacAdam Ellipse Scale
DISTRIBUTIONS	ND/ MD/WD
VOLTAGE	120V/ 277V

AVAILABLE LUMINARIES

- Architectural Recessed Specification Downlighting
- Architectural Recessed Small Aperture Specification Downlighting
- Cylinder
- Recessed Commercial Downlighting
- Recessed Multi-lamp Downlighting
- Recessed Residential Downlighting
- Recessed Retrofit Downlighting
- Track Lighting



Rich in the brown and purple spectrum but also pops the complimentary yellow, orange and red spectrum to allow for a very warm ambiance in a space and is ideal for a hospitality or residential application



VIBRANT RED GLOW

(3700K) CRI 66 Part #: RG-(37K/66)

Standard Light

Vibrant technology

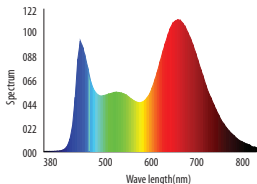


Grocery Stores , Food and Restaurants

CATEGORIES	SMART DIMMING
LUMENS	Up to 2000
CRI	66
CCT	RG (37K/66)
DIMMING CONTROL POWER SUPPLY	DIM-10 0-10V. LUTRON HI-LUME LUTRON ECO-SYSTEM 2 WIRE ELDOLED-0.1 DMX DALI
DIMMING	1% / 0.1%
MACADAMS ELLIPSE BINNING	2 step MacAdam Ellipse Scale
DISTRIBUTIONS	ND/ MD/ WD
VOLTAGE	120V/ 277V

AVAILABLE LUMINARIES

- Architectural Recessed Specification Downlighting
- Architectural Recessed Small Aperture Specification Downlighting
- Cylinder
- Recessed Commercial Downlighting
- Recessed Multi-lamp Downlighting
- Recessed Residential Downlighting
- Recessed Retrofit Downlighting
- Track Lighting



Red Glow technology is designed to be used in restaurants and grocery stores, especially to show products in the produce, meat, fish, and poultry departments.

MAXI LUME

ARCHITECTURAL LIGHTING

DOWNLIGHT, WALL WASH & ADJUSTABLE ARCHITECTURAL LED HOUSINGS

1% STANDARD DIMMING

Round

ARCHITECTURAL DOWNLIGHTS

4 INCH

UP TO 2000L



NEW CONSTRUCTION

HH4-LED HH5-LED HH6-LED
HH8-LED HH10-LED

5 INCH

UP TO 2000L



RETROFIT

HHJ4-LED HHJ5-LED HHJ6-LED
HHJ8-LED HHJ10-LED

6 INCH

UP TO 4000L

7 INCH

UP TO 1500L

8 INCH

UP TO 8000L

10 INCH

UP TO 8000L



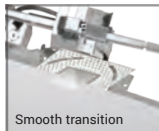
REMODEL

HHR4-LED HHR6-LED HHR8-LED



Smooth transition

ROUND TRIM-LESS



Smooth transition

SQUARE TRIM-LESS



CRI

90+

COLOR QUALITY

2-Step MacAdam Ellipse

LUMEN OUTPUT

Up to 8000 Lumens

CCT

27K, 30K, 35K, 40K, 50K

OPTIC

45 Degrees Cut-Off

LISTING



DISTRIBUTIONS



NARROW



MEDIUM



WIDE



WARM DIM
UP TO 2000L



TUNABLE WHITE
UP TO 2500L



RGB+TUNABLE WHITE
UP TO 2000L



VIBRANT
UP TO 2000L

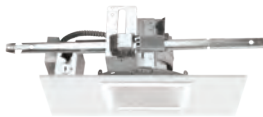


HIGH PERFORMANCE
UP TO 8000L

SQUARE ARCHITECTURAL DOWNLIGHTS



HH4SQ-LED



HH6SQ-LED

Square

DOWNLIGHT

4 INCH

UP TO
2000L

6 INCH

UP TO
3000L

CYLINDER ARCHITECTURAL DOWNLIGHTS



SCH6-LED-PM
SCH8-LED-PM
CEILING MOUNT



SCH6-LED-SM
SCH8-LED-SM
CEILING MOUNT
(AIRCRAFT)



SCH6-LED-CM
SCH8-LED-CM
SURFACE
CEILING MOUNT



SCH6-LED-WM
SCH8-LED-WM
WALL MOUNT

Round

CYLINDER

6 INCH

UP TO
4000L

8 INCH

UP TO
8000L

DIMMING INFORMATION

DIM10 (0-10V 1% Dimming)

LUTH (Lutron® Hi-Lume A-Series 3-Wire or Eco System 1% Dimming up to 4000 lumens only)

LUT2W (Lutron® Hi-Lume A-Series 2-Wire Forward Phase Control 1% Dimming in 120V only and up to 3000 lumens only)

ELDO10 (EldoLed 0-10V 1% Dimming up to 3000 lumens only, consult factory for the EldoLed driver options)

DIMTR (Triac & Electronic Low Voltage Dimming)

DESIGN OPTIONS



HH_-_501
Reflector with
Diffuse Lens



HH_-_509
Deco Glass Reflector
with Diffuse Lens



HH_-_521
Standard Ring
Glass Reflector with
Diffuse Lens



HH_-_528(WH)
Reflector with
Aluminum Disk &
Diffuse Lens-White



HH_-_507
Wall Wash Reflector
with Diffuse Lens



HH_-_510
Double Ring Glass
Reflector with Diffuse Lens



HH_-_523
Prismo Deco Ring Glass
with Diffuse Lens



HH_-_528(AL)
Reflector w/ Aluminum Disk
& Diffuse Lens Aluminum



HH_-_577
Double Wall Wash
Reflector with Diffuse Lens



HH_-_511
Triple Ring Glass Reflector
with Diffuse Lens



HH_-_522
Euro Deco Ring Glass
with Diffuse Lens



HH_-_528(BZ)
Reflector with Aluminum
Disk & Diffuse Lens Bronze



HH_-_525
Central Etched Float Glass
with Diffuse Lens

MAXILUME TRIM ARCHITECTURAL LIGHTING OPTIONS

* For 4", 5", 6", 8" & 10" optics, replace "-" in the optics's part number with 4, 5, 6, 8 & 10. Example: HH8-8501 for 8" optic.

COLOR OPTIONS REFLECTOR - RING FINISH



CL - WH
Specular clear Reflector/ Self
Flanged White Trim Ring



WT - WH
(Wheat Reflector/ Self Flanged
White Trim Ring)



W - WH
(White Reflector/ Self Flanged
White Trim Ring)



CL - SCH
(Specular clear Reflector/ Self
Flanged White Trim Ring)



SHZ - WH
(Satin Haze Reflector/ Self
Flanged White Trim Ring)



SHZ - SHZ
(Satin Haze Refl./ Self Flanged
Satin Haze Trim Ring)



MB - WH
(Black Reflector/ Self Flanged
White Trim Ring)



CL
Specular clear
Reflector



SHZ
Satin Haze
Reflector

TRIM-LESS COLOR OPTIONS

4" and 6" SQUARE TRIM OPTIONS



MOS_614-CL
Reflector with Frosted Glass
Diffuse Lens



MOS_607-CL
Wall Wash Reflector
with Diffuse Lens



MOS_615-CL
Reflector with Tempered
Glass Lens



MOS_601-CL
Open Reflector

* For 4" & 6" optics, replace " _ " in the optics's part number with 4, or 6. Example: HH4SQ-6614 for 4" optic.

fusion
LIGHTING

ER3 LED

SMALL APERTURE ARCHITECTURAL DOWNLIGHT

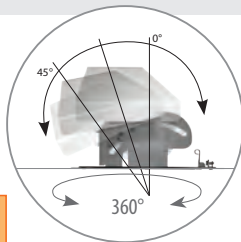
3"



TOOL-LESS
ADJUSTABLE

IC
RATED

1% STANDARD
DIMMING



ONE DOWNLIGHT WITH MANY TRIM OPTIONS



Round Trim-less



Round Trim



Square Trim-less



Square Trim

FEATURES

CRI

90+

COLOR QUALITY

2-Step MacAdam Ellipse

LUMEN OUTPUT

Up to 2000 Lumens

CCT

27K, 30K, 35K, 40K, 50K

DISTRIBUTIONS



NARROW



MEDIUM



WIDE

- Downlight
- Wall Wash
- Accent
- Adjustable



10° or 18°

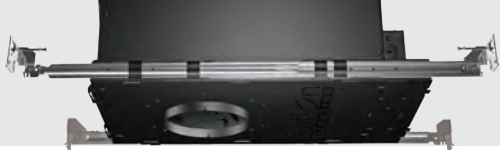


25° or 35°



45° or 50°

UP TO 2000 LUMENES



ADJUSTABILITY



NUMERICAL DEGREES

Precisely aim and lock the beam angle in as little as 1 degree increments.



VERTICAL LOCKING SYSTEM

Locked in position using the Rigid Screw Lock System. Simply twist the Rigid Screw Lock System until it is tight to lock in place.



365 DEGREE ROTATION

Effortlessly rotates on a 365° horizontal rotational smooth slotted groove track system.



HORIZONTAL LOCKING SYSTEM

You can position the fixture at any degree on the 365 degree rotational horizontal track.

OPTICS



Optical Holder



LED Source



Zhaga Compliant LED holder



Optical



Distribution Filters



Color Filters



Honeycomb



Threaded Adjustable Ring Adapter

LED SHALLOW



ROUND



ESR-LED

LED ROUND SMALL APERTURE SHALLOW ARCHITECTURAL DOWNLIGHT



SQUARE



ESS-LED

LED SQUARE SMALL APERTURE SHALLOW ARCHITECTURAL DOWNLIGHT

LED SHALLOW

ER3-S-LED

LED ROUND & SQUARE SMALL APERTURE SHALLOW
ARCHITECTURAL DOWNLIGHT



ONE DOWNLIGHT WITH MULTIPLE TRIM OPTIONS

TRIM-LESS



TRIM



SQUARE






ROUND

3"
APERTURE

Round Trim-less

Round Trim

Open		
Lensed		
Open Adjustable Accent		
Lensed Adjustable Accent		
Pinhole		
Slot		

TRIM-LESS OPTIONS

- ER3-TL-1302** Open Downlight
- ER3-TL-1328** Lensed Adjustable
- ER3-TL-1363** Open Wall Wash
- ER3-TL-1307** Lensed Wall Wash
- ER3-TL-1314** Pinhole Downlight
- ER3-TL-1333** Pinhole Adjustable
- ER3-TL** Mud Ring

TRIM-LESS OPTIONS

- ER3-F-1302** Open Downlight
- ER3-F-1328** Lensed Adjustable
- ER3-F-1363** Open Wall Wash
- ER3-F-1307** Lensed Wall Wash
- ER3-F-1314** Pinhole Downlight
- ER3-F-1333** Pinhole Adjustable

TRIM COLOR

- W-WH**- White
- CL-WH**- Chrome
- SHZ-WH**- Satin Haze
- BK-WH**- Black



MUG RING

	Square Trim-less	Square Trim
Open		
Lensed		
Open Adjustable Accent		
Lensed Adjustable Accent		
Pinhole		

TRIM-LESS OPTIONS

- ES3-TL-1302** Open Downlight
- ES3-TL-1328** Lensed Adjustable
- ES3-TL-1363** Open Wall Wash
- ES3-TL-1307** Lensed Wall Wash
- ES3-TL-1314** Pinhole Downlight
- ES3-TL-1333** Pinhole Adjustable
- ES3-TL** Mud Ring

TRIM-LESS OPTIONS

- ES3-F-1302** Open Downlight
- ES3-F-1328** Lensed Adjustable
- ES3-F-1363** Open Wall Wash
- ES3-F-1307** Lensed Wall Wash
- ES3-F-1314** Pinhole Downlight
- ES3-F-1333** Pinhole Adjustable

TRIM COLOR

- W-WH**- White
- CL-WH**- Chrome
- SHZ-WH**- Satin Haze
- BK-WH**- Black

AVAILABLE IN THIS COLOR

-  White
-  Black
-  Clear
-  Satin Haze



MUG RING



ET-LED-385
2200L



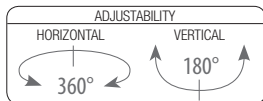
ET-LED-381
1000L



ET-LED-390
3000L

1 circuit 2 circuit

DIMMING DOWN TO 10% OF FULL LIGHT



HIGH PERFORMANCE SERIES

CRI

90+

COLOR QUALITY

2-Step MacAdam Ellipse

LUMEN OUTPUT

Up to 3000 Lumens

CCT

27K, 30K, 35K, 40K, 50K

DISTRIBUTIONS



SPOT



FLOOD



WIDE

COLOR



White

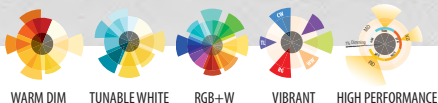


Black



Silver

fusion LIGHTING COMBO LIGHTING



WARM DIM

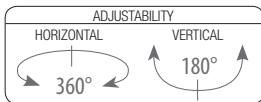
TUNABLE WHITE

RGB+W

VIBRANT

HIGH PERFORMANCE

DIMMING DOWN TO 10% OF FULL LIGHT



HIGH PERFORMANCE SERIES

CRI

90+

COLOR QUALITY

2-Step MacAdam Ellipse

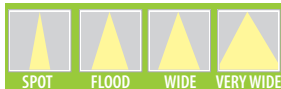
LUMEN OUTPUT

Up to 2000 Lumens

CCT

27K, 30K, 35K, 40K, 50K

DISTRIBUTIONS



SPOT

FLOOD

WIDE

VERY WIDE

COLOR



White



Black

TYPE

TRIM or TRIM-LESS

6" LED RETROFIT MODULES



RL629 - UNIVERSAL LED SMART DIMMING
RETROFIT DIE-CAST ALUMINUM LENSED
WHITE REFLECTOR

1000
LUMENS



REL637 - ECONOMY UNIVERSAL
5 INCH , 6 INCH LED RETROFIT
BAFFLE LIGHTING MODULE

950
LUMENS



RL631 - UNIVERSAL LED
RETROFIT DIE-CAST ALUMINUM
LENSED WHITE BAFFLE

950
LUMENS



RL627 - UNIVERSAL LED RETROFIT
DIE-CAST ALUMINUM LENSED
CLEAR REFLECTOR

950
LUMENS



RL628 - UNIVERSAL LED
RETROFIT DIE-CAST ALUMINUM
LENSED WHITE REFLECTOR

950
LUMENS



RL664 - UNIVERSAL LED ADJUST-
ABLE RETROFIT MODULE

900
LUMENS

NEW
ADJUSTABLE
DESIGN

90+ CRI | 27K, 30K, 40K, 50K

6" LED RETROFIT MODULES

RL670 - UNIVERSAL
RECESSED AND SURFACE
MOUNT LED MODULE



1000
LUMENS

RECESSED
AND
SURFACE
MOUNT

RL677 - UNIVERSAL RECESSED
AND SURFACE MOUNT LED
MODULE



850
LUMENS

RECESSED
AND
SURFACE
MOUNT

RL685 - UNIVERSAL LED
RETROFIT SQUARE DOWN-
LIGHTING



950
LUMENS

RL675 - LED RETROFIT MODULE



900
LUMENS



DIMMABLE

DIMMABLE DOWN TO 15%
OF INITIAL LIGHT OUTPUT

4" LED RETROFIT MODULES



RL429 - UNIVERSAL LED SMART DIMMING
RETROFIT DIE-CAST ALUMINUM LENSED
WHITE REFLECTOR

750
LUMENS



REL437 - ECONOMY UNIVERSAL
LED RETROFIT DIE-CAST ALUMINUM
LENSED WHITE Baffle

700
LUMENS



RL431 - UNIVERSAL LED
RETROFIT DIE-CAST ALUMINUM
LENSED WHITE BAFFLE

650
LUMENS



RL428 - UNIVERSAL LED RETROFIT
DIE-CAST ALUMINUM LENSED
WHITE REFLECTOR

650
LUMENS



RL461 - ROUND ADJUSTABLE
LED RETROFIT MODULE

650
LUMENS



RL481 - SQUARE ADJUSTABLE
LED RETROFIT MODULE

650 **NEW**
LUMENS **ADJUSTABLE**
DESIGN

90+ CRI | 27K, 30K, 40K, 50K

4" LED RETROFIT MODULES

RL470 - UNIVERSAL
RECESSED AND SURFACE
MOUNT LED MODULE



650
LUMENS

RECESSED
AND
SURFACE
MOUNT

RL403 - EYEBALL LED RETROFIT
MODULE (12°, 24°, 38° BEAM
ANGLE)



600
LUMENS

RL485 - UNIVERSAL
LED RETROFIT SQUARE
DOWNLIGHTING



650
LUMENS

RL475 - LED RETROFIT MODULE



700
LUMENS

5" LED RETROFIT MODULES

RL528 - UNIVERSAL LED
SMART DIMMING RETROFIT
DIE-CAST ALUMINUM LENSED
WHITE REFLECTOR



950
LUMENS

RL531 - UNIVERSAL LED
RETROFIT DIE-CAST ALUMINUM
LENSED WHITE BAFFLE



950
LUMENS



LED RETROFIT

AVAILABLE COLOR INSERTS FOR RL431, RL531 & RL631



RL431 - UNIVERSAL LED RETROFIT
DIE-CAST ALUMINUM LENSED
WHITE BAFFLE

650
LUMENS



RL531 - UNIVERSAL LED RETROFIT
DIE-CAST ALUMINUM LENSED
WHITE BAFFLE

950
LUMENS



RL631 - UNIVERSAL LED RETROFIT
DIE-CAST ALUMINUM LENSED
WHITE BAFFLE

950
LUMENS

INSTALLATION



90+ CRI | 27K, 30K, 40K, 50K

AVAILABLE COLOR INSERTS FOR RL431, RL531 & RL631

REFLECTORS



RL431-RT-SHZ-WH



RL431-RT-RG-WH



RL431-RT-CP-CP



RL431-RT-BZ-BZ



RL431-RT-CL-WH



RL431-RT-SHZ-SHZ



RL431-RT-MB-WH



RL431-RT-SN-SN



RL431-RT-MB-BK



RL431-RT-CL-CH

REFLECTORS



RL531-RT-SHZ-WH



RL531-RT-RG-WH



RL531-RT-CP-CP



RL531-RT-BZ-BZ



RL531-RT-CL-WH



RL531-RT-SHZ-SHZ



RL531-RT-MB-WH



RL531-RT-SN-SN



RL531-RT-MB-BK



RL531-RT-CL-CH

REFLECTORS



RL631-RT-SHZ-WH



RL631-RT-RG-WH



RL631-RT-CP-CP



RL631-RT-BZ-BZ



RL631-RT-CL-WH



RL631-RT-SHZ-SHZ



RL631-RT-MB-WH



RL631-RT-SN-SN



RL631-RT-MB-BK



RL631-RT-CL-CH

BAFFLES



RL431-BT-P-BK



RL431-BT-BZ-BZ



RL431-BT-SN-SN



RL431-BT-P-WH

BAFFLES



RL531-BT-P-BK



RL531-BT-BZ-BZ



RL531-BT-SN-SN



RL531-BT-P-WH

BAFFLES



RL631-BT-P-BK



RL631-BT-BZ-BZ



RL631-BT-SN-SN



RL631-BT-P-WH

TAPE LIGHTING



LB100 SERIES

up to
127
*LUMENS
per foot

16'
Maximum
Continuous run

12V
DC
Voltage

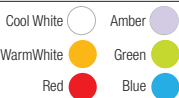
140°
View
Angle

15'
feet

Features:

- Pre-applied 3M tape allows for fast, hassle free installation
- Field cuttable every 2" or 3 LED's.
- Easy connectors allow for simple plug and play installation.
- UV rays and infrared wavelength are non existent.

COLOR



LB102 SERIES

up to
127
*LUMENS
per foot

32'
Maximum
Continuous run

24V
DC
Voltage

120°
View
Angle

30'
feet

Features:

- Pre-applied 3M tape allows for fast, hassle free installation
- Field cuttable every 2" or 3 LED's.
- Easy connectors allow for simple plug and play installation.
- UV rays and infrared wavelength are non existent.

COLOR



LB103 SERIES

up to
400
*LUMENS
per foot

16'
Maximum
Continuous run

12V
DC
Voltage

130°
View
Angle

HIGH
LUMEN

Features:

- Pre-applied 3M tape allows for fast, hassle free installation
- Field cuttable every 2" or 3 LED's.
- Easy connectors allow for simple plug and play installation.
- UV rays and infrared wavelength are non existent.

COLOR





LB101 SERIES



COLOR



Features:

- Pre-applied 3M tape allows for fast, hassle free installation
- Field cuttable every 2" or 3 LED's.
- Easy connectors allow for simple plug and play installation.
- UV rays and infrared wavelength are non existent.



LB200 SERIES

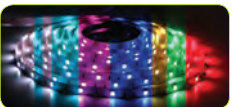


COLOR



Features:

- Pre-applied 3M tape allows for fast, hassle free installation
- Field cuttable every 2" or 3 LED's.
- Easy connectors allow for simple plug and play installation.
- UV rays and infrared wavelength are non existent.



LB201 SERIES



COLOR



Features:

- Pre-applied 3M tape allows for fast, hassle free installation
- Field cuttable every 2" or 3 LED's.
- Easy connectors allow for simple plug and play installation.
- UV rays and infrared wavelength are non existent.



EXIT & EMERGENCY LIGHTING



ELX-603-R-W
Red LED Exit Sign with Battery
Back-Up



ELX-503-R-W
Red LED Exit Sign with AC Only



ELX-703-R-W
Red LED Exit/Emergency Light
Combo w/ Battery Back-up



ELM-807-WH
Outdoor Die-Cast Emergency Light
w/ Battery Back-up



ELM-809-WH
MR16 Emergency Light w/ Battery
Back-up



ELM-803-WH
Red LED Exit Sign with Battery
Back-Up



ELX-LED-735-R-W
Red LED Exit/Emergency Light
Combo w/ Battery Back-up



ELM-LED-860
Adjustable LED Emergency Light



ELX-611
Adjustable LED Edge-Lit with
Emergency Battery Back-Up



HIGH PERFORMANCE LED SLIM LINK ELS-LED SERIES

• LED Slim Link Profile / 120V High Performance •

6"	12"	24"	36"	48"
152L	312L	560L	758L	1125L



EUL-LED SERIES

LED Undercabinet Fixture
1-1/2 Inch LED Under Cabinet

8"	16"	24"	32"
300L	450L	600L	800L

WHITE
 BRONZE
 SATIN NICKEL



3000K
CCT



EU-LED SERIES

LED Undercabinet Fixture
Polycarbonate w/ UV Radiation Protection

12"	24"	34"	42"	46"
450L	900L	1300L	1600L	1800L



30K, 35K, 40K
CCT



LSC1

Linear LED High Performance Indoor Cove Luminaire



10° x 10°



10° x 60°



30° x 60°

OPTICS

Delivered distribution angle depends on actual luminaire specified. Please consult factory for complete details.

Adjustability. Create with no limits.



12" & 48" | UP TO 1100 LUMEN/FOOT

Power supply and driver is integral to the fixture

LSWG

Linear LED High Performance Indoor Wall Grazer Luminaire



2700K

3000K

3500K

4000K

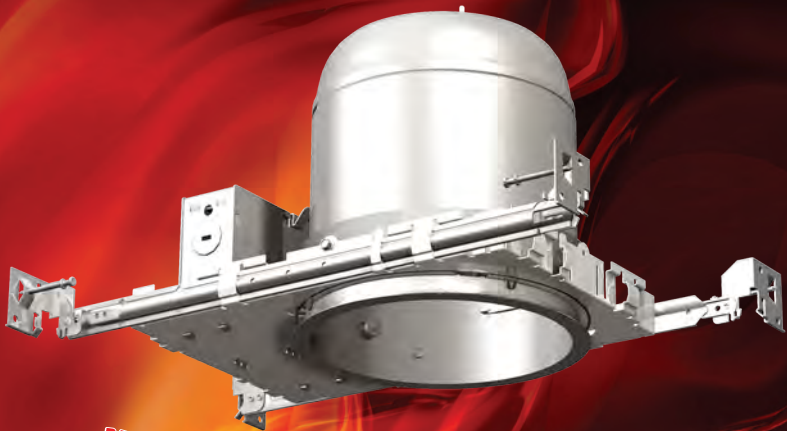


Different color options to choose from for different project applications.





FIRE SHIELD



RECESSED LIGHTING FIXTURE CONFORMS TO **ASTM STD 119**

1-HOUR FIRE RATED

Fire rated floor/ceiling assembly
refer to UL Design No. L500 & P500

2-HOUR FIRE RATED

Fire rated floor/ceiling assembly
refer to UL Design No. L505

WWW.FIRESHIELDLIGHTING.COM



Available in different aperture sizes...

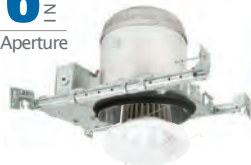
4 INCH
Aperture



5 INCH
Aperture



6 INCH
Aperture



Available in different lighting solution...



COMPACT
FLUORESCENT



INCANDESCENT

OUR WAY



SAVE CONSTRUCTION COST BY REDUCING LABOR
AND COMPLETING CONSTRUCTION FASTER

THE OLD WAY





& HOSPITALITY

We excel at lighting that makes a difference. Let us work with your designers from conception and 3-D renderings until project completion to create a must-see, one-of-a-kind environment that exceeds your contract and hospitality needs. Our lamp type, lamp source, color, and shade experts will add unparalleled style to hotels, museums showrooms, retail, high-rise residential buildings and virtually any public or private space. Elite Lighting can transform your setting into a unique “go-to” location, giving your clients customers, friends, and guests a reason to visit again and again. If you envision it, Elite Lighting can make it real. Please visit our website or call us for more details.

Elite Contract and Hospitality Products...

Bath Lighting
Ceiling Lights
Chandeliers

Floor/ table Lamps
Pendant lighting
Wall Sconce
Fans

Outdoor Lanterns
Outdoor Wall/ Ceiling
Sconce



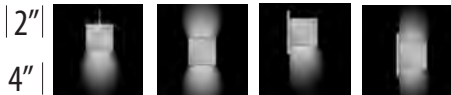
ORACLE

L I G H T I N G

FLEX

SERIES

OLS-LED-SERIES



1% DIMMING STANDARD



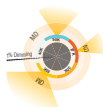
SMART WHITE



SMART DIM



SMART HUE



HIGH PERFORMANCE



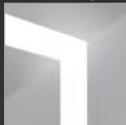
Trim-less Mud-in



Trim Flange



Grid



Wall to Ceiling



Corner Detail



End Detail



Suspended



Wall Mount

ORACLE FLEX

LIGHTING SERIES

SIZE 4 ft, 8 ft

CRI 80+

COLOR QUALITY 3-Step MacAdam ellipses

LUMEN OUTPUT 4ft: Up to 4000L
8ft: Up to 8000L

LUMENS PER WATT 95+ LPW

CCT 30K, 35K, 40K, 50K

STANDARDS LM-79, LM-80

DIMMING DIM10 (0-10V) & LUTH (Lutron)

LIFETIME TM-21 Calculated L70 lifetime: 150,000 hrs
TM-21 Calculated L85 lifetime: 65,000 hrs

WARRANTY 5 Years (Limited Warranty)



AILA-LED
2'-1500L



COSMO-LED
2'-1200L



GROVE-LED
2'-2500L



CIRCA-LED
2'-2000L



GLOW-LED
2'x2'-3000L



ORBIT-LED
2'-2000L



OPEN-LED

1'-2000L, 2'-3000L, 3'-7000L, 4'- 11000L



DISC-LED

2'-3000L



ORBIT-LED

1.7'x3.6 -5500L

2X4 LED RECESSED VOLUMETRIC LUMINAIRE

24-NV-LED



LUMEN PACKAGE **4000** | **5000** | **6000** | **8000**

2X2 LED RECESSED VOLUMETRIC LUMINAIRE

22-NV-LED



LUMEN PACKAGE **2400** | **3400** | **4000** | **5000**

2X4 LED RECESSED VOLUMETRIC

24-OD1V-LED



LUMEN PACKAGE **4000** | **5000** | **6000** | **8000**

2X2 LED RECESSED VOLUMETRIC

22-OD1V-LED



LUMEN PACKAGE **2400** | **3400** | **4000**

CRI 80+

COLOR QUALITY 3-Step MacAdam Ellipse

LUMEN OUTPUT Up to 8000 Lumens

CCT 30K, 35, 40K, 50K

OPTIC highly efficient lighting

WARRANTY 5 Years

CALCULATED
L70
LIFETIME
150,000 HRS

CALCULATED
L85
LIFETIME
65,000 HRS



WARM DIM



TUNABLE WHITE



HIGH PERFORMANCE

2X4 LED RECESSED VOLUMETRIC LUMINAIRE

24-ODVH-LED



LUMEN PACKAGE **4000 | 5000 | 6000 | 8000**

2X4 LED RECESSED VOLUMETRIC LUMINAIRE

22-ODVH-LED



LUMEN PACKAGE **2400 | 3400 | 4000 | 5000**

2X4 LED SHALLOW RECESSED VOLUMETRIC LUMINAIRE

24-OVHP-LED



LUMEN PACKAGE **4000 | 5000 | 6000 | 8000**

2X2 LED SHALLOW RECESSED VOLUMETRIC LUMINAIRE

22-OVHP-LED



LUMEN PACKAGE **2400 | 3400 | 4000 | 5000**

SIZE

1'x 4', 2'x 2' and 2'x 4'

DIMMING

Dimmable down to 1%

FINISH

White



CALCULATED
L70
LIFETIME
150,000 HRS

CALCULATED
L85
LIFETIME
65,000 HRS

2' X 4' FPL1-LED SERIES

2X4 LED FLAT PANEL LUMINAIRE



CATALOG NO.	LUMENS		VOLTAGE	CCT
<input type="checkbox"/> 24-FPL1-LED	<input type="checkbox"/> 3000L <input type="checkbox"/> 4000L <input type="checkbox"/> 5000L <input type="checkbox"/> 6000L	<input type="checkbox"/> DIM10 - 0-10V Dimming <input type="checkbox"/> DIMST - Step Dimming <input type="checkbox"/> LUTH - Lutron Hilume <input type="checkbox"/> OS-OT1 - Osram Optotronic	<input type="checkbox"/> MVOLT	<input type="checkbox"/> 30K-(3000K) <input type="checkbox"/> 35K-(3500K) <input type="checkbox"/> 40K-(4000K) <input type="checkbox"/> 50K-(5000K)
		<input type="checkbox"/> EMERG-LED		

1' X 4' FPL1-LED SERIES

1X4 LED FLAT PANEL LUMINAIRE



CATALOG NO.	LUMENS		VOLTAGE	CCT
<input type="checkbox"/> 14-FPL1-LED	<input type="checkbox"/> 2400L <input type="checkbox"/> 3400L <input type="checkbox"/> 4000L <input type="checkbox"/> 5000L	<input type="checkbox"/> DIM10 - 0-10V Dimming <input type="checkbox"/> DIMST - Step Dimming <input type="checkbox"/> LUTH - Lutron Hilume <input type="checkbox"/> OS-OT1 - Osram Optotronic	<input type="checkbox"/> MVOLT	<input type="checkbox"/> 30K-(3000K) <input type="checkbox"/> 35K-(3500K) <input type="checkbox"/> 40K-(4000K) <input type="checkbox"/> 50K-(5000K)
		<input type="checkbox"/> EMERG-LED		

ORACLE LIGHTING LED FLAT PANEL

2' X 2' FPL1-LED SERIES

2X2 LED FLAT PANEL LUMINAIRE



CATALOG NO.	LUMENS		VOLTAGE	CCT
<input type="checkbox"/> 22-FPL1-LED	<input type="checkbox"/> 2400L	<input type="checkbox"/> DIM10 - 0-10V Dimming	<input type="checkbox"/> MVOLT	<input type="checkbox"/> 30K-(3000K)
	<input type="checkbox"/> 3400L	<input type="checkbox"/> DIMST - Step Dimming		<input type="checkbox"/> 35K-(3500K)
	<input type="checkbox"/> 4000L	<input type="checkbox"/> LUTH - Lutron Hilume		<input type="checkbox"/> 40K-(4000K)
	<input type="checkbox"/> 5000L	<input type="checkbox"/> OS-OT1 - Osram Optotronic		<input type="checkbox"/> 50K-(5000K)
		<input type="checkbox"/> EMERGENCY	<input type="checkbox"/> EMG-LED	

FLAT PANEL SURFACE MOUNT KIT

1'X4'



14-FPL1-LED-SMK

2'X4'



24-FPL1-LED-SMK

2'X2'



22-FPL1-LED-SMK

UNIVERSAL RECESSED DRYWALL FLANGE KIT

1'X4'



14-FPL1-LED-SMK

2'X4'



24-FPL1-LED-SMK

2'X2'



22-FPL1-LED-SMK

LED HIGH BAY

CALCULATED
L70
LIFETIME
150,000 HRS

CALCULATED
L85
LIFETIME
65,000 HRS

DIGI OPTIC
DLC
LISTED

COOL
BEAM

CB4-LED



LUMES: 10000L | 12000L | 16000

CB12-LED



LUMES: 36000L 48000L

CB6-LED



LUMES: 20000L | 24000L | 30000

DISTRIBUTIO

CORRIDORS



NARROW DISTRIBUTION

OPEN SPACES



WIDE DISTRIBUTION



AVAILABLE WITH WIRE GUARD

MOTION SENSOR OFFERING



Watt Stopper[®]

LED HIGH BAY

CALCULATED
L70
LIFETIME
150,000 HRS

CALCULATED
L85
LIFETIME
65,000 HRS

DLC
QUALIFIED
EFFECTIVE

COOL
BEAM

CB2-LED



LUMES: 13000L | 26000L

Exceptional energy saving requiring 26% less energy than fluorescent and 54% less energy than HID.

Post-painted high-gloss enamel finish ensures maximum adhesion and rust resistance.

95% reflective premium reflector material is engineered to optimize performance for 93% total fixture efficiency.



AVAILABLE WITH WIRE GUARD

CB3-LED



LUMES: 12000L | 15000L | 22500

Binned to a 3-step MacAdam ellipses to achieve consistent color from fixture to fixture.

85+ CRI rated & available in multiple CCTs
Life tested to ensure light output up to 83,000 hours of operation to L70B50.

Tested to LM-79 and LM-80 standards.
Future Proof - LED light engine is completely removable and upgradable.

HIGH BAY LED



LUMEN PACKAGES

10000L	12000	20000L	24000L
30000L	37000	48000L	



HD1B-LED Surface and suspended mounting
87% high reflective reflectors
Consistent in color, upgradable
Dimmable down to 10%
85+ CRI
Tested to LM-79, LM-80
Hydro Beam
Same Day shipping on most options



OW1IP-LED Surface and suspended mounting
93% high reflective reflectors
Consistent in color, upgradable
Dimmable down to 10%
85+ CRI
Tested to LM-79, LM-80
Hydro Beam
Same Day shipping on most options

ORACLE WALL PACK LIGHTING

OWP-FC-103-LED



OWP-FC-103-LED-2500L-MVOLT-50K-BZ

LED Small Full Cut-Off Wall Pack

2500
LUMENS

5000K
CCT



OWP-NC-201-LED



OWP-NC-201-LED-4000L-MVOLT-41K-BZ

LED Medium Full Cut-Off Wall Pack

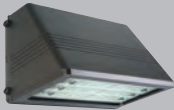
4000
LUMENS

6000
LUMENS

4000K
CCT



OWP-FC-201-LED



OWP-FC-201-LED-6000L-MVOLT-41K-BZ

LED Medium Full Cut-Off Wall Pack

6000
LUMENS

4000K
CCT



OVR-101-LED



OVR-101-LED-6000L-MVOLT-75-40K-BZ

LED CANOPY

6000
LUMENS

4000K
CCT



OUR BRANDS

At Elite Lighting, brand development continues non-stop to better meet the demands of an ever-changing lighting world. The Elite brand family encompasses the following lighting brands:



www.iuseelite.com

Main Office: Los Angeles, CA

- WWW.IUSEELITE.COM
- Tel: 1-323-888-1973 / 1-877-375-5555
- Fax: 1-323-888-1977 / 1-877-375-3333

© Copyright 2017. Elite Lighting. All Rights Reserved / Rev1.0-2016