

Section D: Electrical Fittings



EMT Fittings

STEEL EMT CONNECTORS SET-SCREW TYPE

Features:

- Steel
- Zinc Electro-Plated
- Concrete-Tight when Taped
- Suitable for applications above 600V

Note:

- Sizes 2-1/2" to 4" are also listed for RIGID and IMC Conduits



Cat. No.	Trade Size	Std. Pkg.	Master Ctn.
OF7701	1/2"	50	500
OF7702	3/4"	25	250
OF7703	1"	10	100
OF7704	1-1/4"	10	100
OF7705	1-1/2"	10	50
OF7706	2"	5	50
OF7707	2-1/2"	-	12
OF7708	3"	-	12
OF7709	3-1/2"	-	6
OF7710	4"	-	6

STEEL EMT CONNECTORS SET-SCREW TYPE INSULATED

Features

- Steel
- Zinc Electro-Plated
- With Insulated Throat
- Concrete-Tight when Taped
- Suitable for applications above 600V

Note:

- Sizes 2-1/2" to 4" are also listed for RIGID and IMC Conduits



Cat. No.	Trade Size	Std. Pkg.	Master Ctn.
OF7701-S	1/2"	50	500
OF7702-S	3/4"	25	250
OF7703-S	1"	10	100
OF7704-S	1-1/4"	10	100
OF7705-S	1-1/2"	10	50
OF7706-S	2"	5	50
OF7707-S	2-1/2"	-	12
OF7708-S	3"	-	12
OF7709-S	3-1/2"	-	6
OF7710-S	4"	-	6

STEEL EMT COUPLINGS SET-SCREW TYPE

Features:

- Steel
- Zinc Electro-Plated
- Concrete-Tight when Taped
- Suitable for applications above 600V

Note:

- Sizes 2-1/2" to 4" are also listed for RIGID and IMC Conduits

Certification:

- Meets UL Standard 514B



Cat. No.	Trade Size	Std. Pkg.	Master Ctn.
OF7711	1/2"	50	500
OF7712	3/4"	25	250
OF7713	1"	10	100
OF7714	1-1/4"	10	100
OF7715	1-1/2"	10	50
OF7716	2"	5	50
OF7717	2-1/2"	-	12
OF7718	3"	-	12
OF7719	3-1/2"	-	6
OF7720	4"	-	6

EMT Fittings

Electrical Fittings

STEEL EMT CONNECTORS COMPRESSION TYPE & RAIN TIGHT

Features:

- Steel
- Zinc Electro-Plated
- Compression Type is Concrete-Tight
- Suitable for applications above 600V

Note:

- Sizes 2-1/2" to 4" are also listed for RIGID and IMC Conduits



Compression Type



Rain-Tight

Cat. No. Compression	Cat. No. Rain Tight	Trade Size	Std. Pkg.	Master Ctn.
OF7601	OF7601-W	1/2"	25	250
OF7602	OF7602-W	3/4"	25	250
OF7603	OF7603-W	1"	10	100
OF7604	OF7604-W	1-1/4"	10	100
OF7605	OF7605-W	1-1/2"	10	50
OF7606	OF7606-W	2"	5	50
OF7607	OF7607-W	2-1/2"	-	12
OF7608	OF7608-W	3"	-	12
OF7609	OF7609-W	3-1/2"	-	6
OF7610	OF7610-W	4"	-	6

STEEL EMT CONNECTORS COMPRESSION TYPE & RAIN TIGHT INSULATED

Features:

- Steel
- Zinc Electro-Plated
- With Insulated Throat
- Compression Type is Concrete-Tight
- Suitable for applications above 600V

Note:

- Sizes 2-1/2" to 4" are also listed for RIGID and IMC Conduits



Compression Type



Rain-Tight

Cat. No. Compression	Cat. No. Rain Tight	Trade Size	Std. Pkg.	Master Ctn.
OF7601-S	OF7601-SW	1/2"	25	250
OF7602-S	OF7602-SW	3/4"	25	250
OF7603-S	OF7603-SW	1"	10	100
OF7604-S	OF7604-SW	1-1/4"	10	100
OF7605-S	OF7605-SW	1-1/2"	10	50
OF7606-S	OF7606-SW	2"	5	50
OF7607-S	OF7607-SW	2-1/2"	-	12
OF7608-S	OF7608-SW	3"	-	12
OF7609-S	OF7609-SW	3-1/2"	-	6
OF7610-S	OF7610-SW	4"	-	6

STEEL EMT COUPLINGS COMPRESSION TYPE & RAIN TIGHT

Features:

- Steel
- Zinc Electro-Plated
- Compression Type is Concrete-Tight
- Suitable for applications above 600V

Note:

- Sizes 2-1/2" to 4" are also listed for RIGID and IMC Conduits



Compression Type



Rain-Tight

Cat. No. Compression	Cat. No. Rain Tight	Trade Size	Std. Pkg.	Master Ctn.
OF7611	OF7611-W	1/2"	25	250
OF7612	OF7612-W	3/4"	25	250
OF7613	OF7613-W	1"	10	100
OF7614	OF7614-W	1-1/4"	10	100
OF7615	OF7615-W	1-1/2"	10	50
OF7616	OF7616-W	2"	5	50
OF7617	OF7617-W	2-1/2"	-	12
OF7618	OF7618-W	3"	-	12
OF7619	OF7619-W	3-1/2"	-	6
OF7620	OF7620-W	4"	-	6

Certification:

- Meets UL Standard 514B

EMT Fittings

ZINC DIE-CAST EMT CONNECTORS SET-SCREW TYPE

Features:

- Concrete-Tight when Taped
- Combo-Head Set Screw
- Suitable for applications above 600V

Note:

- Sizes 2-1/2" to 4" are also listed for RIGID and IMC Conduits



Cat. No.	Trade Size	Std. Pkg.	Master Ctn.
OF701	1/2"	100	1000
OF702	3/4"	50	500
OF703	1"	10	100
OF704	1-1/4"	10	100
OF705	1-1/2"	10	50
OF706	2"	5	50
OF707	2-1/2"	-	12
OF708	3"	-	12
OF709	3-1/2"	-	6
OF710	4"	-	6

ZINC DIE-CAST EMT CONNECTORS SET-SCREW TYPE INSULATED

Features:

- Concrete-Tight when Taped
- Combo-Head Set Screw
- With Insulated Throat
- Suitable for applications above 600V

Note:

- Sizes 2-1/2" to 4" are also listed for RIGID and IMC Conduits



Cat. No.	Trade Size	Std. Pkg.	Master Ctn.
OF701-S	1/2"	50	500
OF702-S	3/4"	25	250
OF703-S	1"	10	100
OF704-S	1-1/4"	10	100
OF705-S	1-1/2"	10	50
OF706-S	2"	5	50
OF707-S	2-1/2"	-	12
OF708-S	3"	-	12
OF709-S	3-1/2"	-	6
OF710-S	4"	-	6

ZINC DIE-CAST EMT COUPLINGS SET-SCREW TYPE

Features:

- Concrete-Tight when Taped
- Combo-Head Set Screw
- Suitable for applications above 600V

Note:

- Sizes 2-1/2" to 4" are also listed for RIGID and IMC Conduits

Certification:

- Meets UL Standard 514B



Cat. No.	Trade Size	Std. Pkg.	Master Ctn.
OF711	1/2"	50	500
OF712	3/4"	25	250
OF713	1"	10	100
OF714	1-1/4"	10	100
OF715	1-1/2"	10	50
OF716	2"	5	50
OF717	2-1/2"	-	12
OF718	3"	-	12
OF719	3-1/2"	-	6
OF720	4"	-	6

EMT Fittings

Electrical Fittings

ZINC DIE-CAST EMT CONNECTORS COMPRESSION TYPE & RAIN TIGHT

Features:

- Concrete-Tight
- Suitable for applications above 600V

Note:

- Sizes 2-1/2" to 4" are also listed for RIGID and IMC Conduits



Rain-Tight

ZINC DIE-CAST EMT CONNECTORS COMPRESSION TYPE INSULATED

Features:

- Concrete-Tight
- With Insulated Throat
- Suitable for applications above 600V

Note:

- Sizes 2-1/2" to 4" are also listed for RIGID and IMC Conduits



ZINC DIE-CAST EMT COUPLINGS COMPRESSION TYPE & RAIN TIGHT

Features:

- Concrete-Tight
- Suitable for applications above 600V

Note:

- Sizes 2-1/2" to 4" are also listed for RIGID and IMC Conduits

Certification:

- Meets UL Standard 514B



Rain-Tight

Cat. No. Compression	Cat. No. Rain Tight	Trade Size	Std. Pkg.	Master Ctn.
OF601	OF601-W	1/2"	50	500
OF602	OF602-W	3/4"	25	250
OF603	OF603-W	1"	10	100
OF604	OF604-W	1-1/4"	10	100
OF605	OF605-W	1-1/2"	10	50
OF606	OF606-W	2"	5	50
OF607	-	2-1/2"	-	12
OF608	-	3"	-	12
OF609	-	3-1/2"	-	6
OF610	-	4"	-	6

Cat. No.	Cat. No. Raintight	Trade Size	Std. Pkg.	Master Ctn.
OF601-S	OF601-SW	1/2"	50	500
OF602-S	OF602-SW	3/4"	25	250
OF603-S	OF603-SW	1"	10	100
OF604-S	OF604-SW	1-1/4"	10	100
OF605-S	OF605-SW	1-1/2"	10	50
OF606-S	OF606-SW	2"	5	50
OF607-S	-	2-1/2"	-	12
OF608-S	-	3"	-	12
OF609-S	-	3-1/2"	-	6
OF610-S	-	4"	-	6

Cat. No. Compression	Cat. No. Rain Tight	Trade Size	Std. Pkg.	Master Ctn.
OF611	OF611-W	1/2"	50	500
OF612	OF612-W	3/4"	25	250
OF613	OF613-W	1"	10	100
OF614	OF614-W	1-1/4"	10	100
OF615	OF615-W	1-1/2"	10	50
OF616	OF616-W	2"	5	50
OF617	-	2-1/2"	-	12
OF618	-	3"	-	12
OF619	-	3-1/2"	-	6
OF620	-	4"	-	6

EMT Fittings

ZINC DIE-CAST EMT OFFSET CONNECTORS SET-SCREW TYPE

Features:

- Concrete-Tight when Taped
- Combo-Head Set Screw
- Suitable for applications above 600V



Cat. No.	Trade Size	Std. Pkg.	Master Ctn.
OCS-50	1/2"	100	1000
OCS-75	3/4"	50	500

ZINC DIE-CAST EMT OFFSET CONNECTORS COMPRESSION TYPE

Features:

- Concrete-Tight
- Combo-Head Set Screw
- Suitable for applications above 600V



Cat. No.	Trade Size	Std. Pkg.	Master Ctn.
OCC-50	1/2"	100	1000
OCC-75	3/4"	50	500

ZINC DIE-CAST EMT INSIDE CORNER SET-SCREW TYPE

Features:

- Combo-Head Set Screw
- Suitable for applications above 600V



Cat. No.	Trade Size	Std. Pkg.	Master Ctn.
ECS-50	1/2"	100	1000
ECS-75	3/4"	50	500

Flex Connectors



FLEX CONNECTORS SCREW-IN TYPE

Features:

- Zinc Die-Cast



Cat. No.	Trade Size	Std. Pkg.	Master Ctn.
OF671	3/8"	100	1000
OF672	1/2"	100	1000
OF673	3/4"	100	500
OF674	1"	25	250
OF675	1-1/4"	10	100
OF681	1-1/2"	5	50
OF682	2"	3	30

Electrical Fittings

FLEX CONNECTORS SCREW-IN TYPE INSULATED

Features:

- Zinc Die-Cast
- With Insulated Throat



Cat. No.	Trade Size	Std. Pkg.	Master Ctn.
OF671-S	3/8"	100	1000
OF672-S	1/2"	100	1000
OF673-S	3/4"	100	500
OF674-S	1"	25	250
OF675-S	1-1/4"	10	100
OF681-S	1-1/2"	5	50
OF682-S	2"	3	30

FLEX COUPLINGS SCREW-IN TYPE

Features:

- Zinc Die-Cast



Cat. No.	Trade Size	Std. Pkg.	Master Ctn.
OF676	1/2"	100	1000
OF677	3/4"	100	500
OF678	1"	25	250
OF679	1-1/4"	10	100
OF685	1-1/2"	5	50
OF686	2"	3	30

FLEX BUSHING

Features:

- Used to Insulate Cut Flex when the Conduit is used for Data Cables without a Junction Box
- Zinc Plated Steel



Shown Installed

Cat. No.	Trade Size	Std. Pkg.	Master Ctn.
FB-50	1/2"	100	1000
FB-75	3/4"	100	500
FB-100	1"	25	250

Certification:

- Meets UL Standard 514B

Flex Connectors

FLEX CONNECTORS SQUEEZE TYPE

Features:

- Zinc Die-Cast

Note:

- Sizes 3/8" & 1/2" are also for AC (BX)



Cat. No.	Trade Size	Std. Pkg.	Master Ctn.
OF730	3/8"	50	500
OF731	1/2"	25	250
OF732	3/4"	25	250
OF733	1"	10	100
OF734	1-1/4"	10	100
OF735	1-1/2"	5	50
OF736	2"	4	40
OF737	2-1/2"	2	6
OF738	3"	1	2
OF739	3-1/2"	1	2
OF740	4"	1	2

FLEX CONNECTORS SQUEEZE TYPE WITH INSULATED THROAT

Features:

- Zinc Die-Cast

Note:

- Sizes 3/8" & 1/2" are also for AC (BX)



Cat. No.	Trade Size	Std. Pkg.	Master Ctn.
OF730-S	3/8"	50	500
OF731-S	1/2"	25	250
OF732-S	3/4"	25	250
OF733-S	1"	10	100
OF734-S	1-1/4"	10	100
OF735-S	1-1/2"	5	50
OF736-S	2"	4	40
OF737-S	2-1/2"	2	6
OF738-S	3"	1	2
OF739-S	3-1/2"	1	2
OF740-S	4"	1	2

FLEX CONNECTORS SET-SCREW TYPE

Features:

- Zinc Die-Cast
- Steel Screw

Note:

- For Steel FLEX only

Certification:

- Meets UL Standard 514B



Cat. No.	Trade Size	Std. Pkg.	Master Ctn.
OF654	1/2"	100	500
OF655	3/4"	75	375



90° ANGLE AC(BX)/MC CONNECTORS SQUEEZE TYPE



Features:

- Zinc Die-Cast



90° ANGLE FLEX CONNECTORS SQUEEZE TYPE



Features:

- Zinc Die-Cast



EMT TO FLEX COUPLINGS COMPRESSION/SCREW-IN



Features:

- Zinc Die-Cast



EMT TO FLEX COUPLINGS SET-SCREW/SQUEEZE



Features:

- Die Cast Zinc



EMT TO FLEX COUPLINGS SET-SCREW/CLAMP-TYPE



Features:

- Die Cast Zinc

Certification:

- Meets UL Standard 514B

Cat. No.	Trade Size	Std. Pkg.	Master Ctn.
OF643	3/8"	25	250
OF644	1/2"	25	250
OF645	3/4"	25	250

Cat. No.	Trade Size	Std. Pkg.	Master Ctn.
OF6463	1"	5	25
OF6464	1-1/4"	-	5
OF6465	1-1/2"	-	5
OF6466	2"	-	5
OF6467	2-1/2"	-	5
OF6468	3"	-	5
OF6469	3-1/2"	-	1
OF6470	4"	-	1

Cat. No.	Trade Size	Std. Pkg.	Master Ctn.
OF1611	1/2"	50	500
OF1612	3/4"	25	250
OF1613	1"	10	100

Cat. No.	Trade Size	Std. Pkg.	Master Ctn.
OF530	1/2" to 3/8"	50	500
OF531	1/2" to 1/2"	25	250
OF532	3/4" to 3/4"	25	100
OF533	1" to 1"	10	40

Cat. No.	Trade Size	Std. Pkg.	Master Ctn.
OF520	1/2" to 3/8"	50	500
OF521	1/2" to 1/2"	25	250
OF522	3/4" to 3/4"	25	250
OF523	1" to 1"	10	40

Cable Connectors

90° ANGLE FLEX CONNECTOR SCREW-IN TYPE



Features:

- Zinc Die-Cast
- Sliding Cover for Easy Wire Pulls



Cat. No.	Trade Size	Std. Pkg.	Master Ctn.
OF9672	3/8"	25	250
OF9673	1/2"	25	250
OF9674	3/4"	25	250

PVC NON-METALLIC (NM) CABLE CONNECTOR



Features:

- Heavy-Duty PVC



Cat. No.	For Use With	Trade Size	Std. Pkg.	Master Ctn.
NM-50	One or Two 14-2, 14-3, 12-2 One 12-3, 10-2, 10-3 One or Two 0.300" or 0.600" cords	1/2"	50	500

NON-METALLIC CABLE CONNECTORS



Features:

- Zinc Die-Cast

Note:

- Sizes 1" to 2" are also Suitable for Service Entrance



Cat. No.	For Use With	Trade Size	Std. Pkg.	Master Ctn.
RX-50	One 14-2 to 10-2 NM, Two 14-2 or 12-2 NM 0.340 to 0.380 Dia. Flex Cord (Dry Location) 14-3, 16-2, and 16-3 SJO	3/8" 1/2" K.O.	100	1000
RX-75	Two 14-2 NM, AWG 0.340 to 0.515 Dia. Flex Cord (Dry Location) 14-3, 14-2 SJO	3/4"	25	250

For Service Entrance:

RX-100	Four 14-2, One 8-3, 8-2, 6-2, 6-3, 4-2, 4-3 NM One 2 SE Cable	1"	10	100
RX-125	4-3 or 2-3 NM	1-1/4"	5	50
RX-150	2/O-3 or 4/O-3 NM	1-1/2"	5	50
RX-200	2/O-3 or 4/O-3 NM	2"	5	50



METAL CLAD (MC) SADDLE-TYPE CONNECTORS

Features:

- Zinc Die-Cast
- Combo-Head Set-Screw
- With Insulated Throat
- Suitable for Dry Location Only



Cat. No.	Description	Trade Size	Std. Pkg.	Master Ctn.
OF6231	AC & MC Interlocking Steel 0.450 to 0.590 Dia.	3/8"	100	500
	AC & MC Interlocking AL 0.440 to 0.600 Dia.	1/2" K.O.		
	Round Corrugated AL, MC .574 to 12/4			
	Square Corrugated AL, MC .527, .254, 12/3			
	AL FMC, 3/8" Steel and RW FMC, 3/8" Steel			
OF6232	AC & MC Interlocking Steel 0.661 to 0.711 Dia.	3/4"	50	250
	AC & MC Interlocking AL 0.775 to 0.825 Dia.			
	AC, AL, & Steel 0.650 to 0.810 Dia. & Flex, 1/2" Steel			

METAL CLAD (MC) & AC (BX) CONNECTOR

Features:

- Zinc Die-Cast



Cat. No.	Description	Trade Size	Std. Pkg.	Master Ctn.
OF653	AC 14/2 AWG and MC 0.500 to 0.550 dia.	3/8" 1/2" K.O.	100	500

METAL CLAD (MC) & AC (BX) CONNECTOR

Features:

- Zinc Die-Cast



Cat. No.	Description	Trade Size	Std. Pkg.	Master Ctn.
OF6620	AC (BX) 14-2 to 10-2, MC 14-2 to 10-3	3/8" 1/2" K.O.	100	500

METAL CLAD (MC) CONNECTOR CLAMP-TYPE

Features:

- Zinc Die-Cast
- With Insulated Throat



Note:

- For Dry Location Only

Cat. No.	Trade Size	Std. Pkg.	Master Ctn.
MC-CL-100	1"	10	100
MC-CL-125	1-1/4"	25	100
MC-CL-150	1-1/2"	10	100
MC-CL-200	2"	10	100
MC-CL-250	2-1/2"	-	10
MC-CL-300	3"	-	5
MC-CL-350	3-1/2"	-	5

DUPLEX AC (BX) FLEX - MC CONNECTOR

Features:

- Zinc Die-Cast



Cat. No.	Description	Trade Size	Std. Pkg.	Master Ctn.
MC-DX-50	14-2 to 10-2 AC (BX), 14-2 to 10-2 AL & CCS for FMC 3/8"	1/2"	25	250

AC/MC Connectors

STEEL "FASTLOCK" CONNECTOR

For AC, MCI, RWFCM, ALFMC

Features:

- Steel
- Zinc Electro-Plated
- Saddle-Base Connector
- Combo-Head Set-Screw



Cat. No.	Description	Trade Size	Std. Pkg.	Master Ctn.
FLC-50	Steel AC 14-2 (0.454) to 12-4 (0.556)	1/2"	50	500
	AL AC 14-2 (0.485) to 12-4 (0.565)			
	Steel MC Interlocking (MCI) 14-2 (0.470) to 12-4 (0.520)			
	AL MC Interlocking (MCI) 14-2 (0.460) to 12-4 (0.590)			
	Steel RWFCM, AL RWFCM, AL FMC 3/8"			

STEEL "FASTLOCK" WIDE-THROAT CONNECTORS

For AC, MCI, RWFCM, ALFMC

Features:

- Steel
- Zinc Electro-Plated
- Saddle-Base Connector
- Combo-Head Set-Screw



Cat. No.	Description	Trade Size	Std. Pkg.	Master Ctn.
FLC-50L	Steel AC 10-4 (0.625) to 6-3 (0.842)	1/2"	50	500
	AL AC 10-4 (0.625) to 8-4 (0.770)			
	Steel MC Interlocking (MCI) 10-3 (0.594) to 6-2 (0.746)			
	AL MC Interlocking (MCI) 10-3 (0.582) to 8-2 (0.650)			
	Steel RWFCM, AL RWFCM, AL FMC 1/2"			
FLC-75L	Steel AC 10-4 (0.625) to 6-3 (0.842)	3/4"	25	250
	AL AC 10-4 (0.625) to 8-4 (0.770)			
	Steel MC Interlocking (MCI) 10-3 (0.594) to 6-2 (0.746)			
	AL MC Interlocking (MCI) 10-3 (0.582) to 8-2 (0.650)			
	Steel RWFCM, AL RWFCM, AL FMC 1/2"			

STEEL "FASTLOCK" DUPLEX CONNECTOR

For AC, MCI, MCC, RWFCM

Features:

- Steel
- Zinc Electro-Plated
- Combo-Head Set-Screw



Cat. No.	Description	Trade Size	Std. Pkg.	Master Ctn.
FLD-50	Steel AC 14-2 (0.440) to 10-3	1/2"	25	250
	AL AC 14-2 (0.475) to 10-3			
	Steel MC Interlocking (MCI) 0.437 TO 0.565 in. O.D.			
	AL MC Interlocking (MCI) 0.525 TO 0.629 in. O.D.			
	AL Corrugated Continuous (MCC) 0.350 to 0.592 in. O.D.			
	Steel and Aluminum Flex RWFCM 3/8"			

ANTI-SHORT BUSHINGS THERMOPLASTIC

Features:

- High-Temperature Plastic
- Fits BX (AC) and Flex Conduits



Cat. No.	For Use With	Trade Size	Std. Pkg.	Master Ctn.
ASB-516	14/2, 14/3, 12/2	5/16"	35	3500
ASB-38	14/4, 12/3, 6/1, 4/1	3/8"	35	2100
ASB-716	12/4, 10/2, 10/3, 2/1	7/16"	35	700
ASB-50	10/4, 8/2, 8/3, 1/1	1/2"	20	400
ASB-75	8/4, 6/2, 4/2, 4/3, 6/4	3/4"	16	320

Liquid Tight Connectors



NON-METALLIC (PVC) LIQUIDTIGHT CONNECTORS STRAIGHT



Features:

- PVC Type-B
- Corrosion-Resistant
- Steel Locknut



Orbit Cat. No.	Trade Size	Std. Pkg.	Master Ctn.
NMLT-50	1/2"	25	250
NMLT-75	3/4"	15	150
NMLT-100	1"	8	80
NMLT-125	1-1/4"	5	50
NMLT-150	1-1/2"	4	40
NMLT-200	2"	1	36

Electrical Fittings

90° ANGLE



Orbit Cat. No.	Trade Size	Std. Pkg.	Master Ctn.
NMLT90-50	1/2"	15	150
NMLT90-75	3/4"	10	100
NMLT90-100	1"	5	50
NMLT90-125	1-1/4"	4	40
NMLT90-150	1-1/2"	2	20
NMLT90-200	2"	1	15

STEEL EMT TO FLEX COMBINATION COUPLINGS



Features:

- Steel
- Zinc Electro-Plated
- Concrete-Tight



Orbit Cat. No.	Trade Size	Std. Pkg.	Master Ctn.
EMTLT-50	1/2"	25	250
EMTLT-75	3/4"	10	100

Liquid Tight Connectors

DIE-CAST ZINC LIQUID TIGHT CONNECTORS STRAIGHT



Features:

- Die-Cast Zinc



Orbit Cat. No.	Trade Size	Std. Pkg.	Master Ctn.
LT-38	3/8"	25	250
LT-50	1/2"	25	250
LT-75	3/4"	15	150
LT-100	1"	8	80
LT-125	1-1/4"	5	50
LT-150	1-1/2"	4	40
LT-200	2"	1	36
LT-250	2-1/2"	1	14
LT-300	3"	1	8
LT-350	3-1/2"	1	8
LT-400	4"	1	6

90° ANGLE



Orbit Cat. No.	Trade Size	Std. Pkg.	Master Ctn.
LT90-38	3/8"	15	150
LT90-50	1/2"	15	150
LT90-75	3/4"	10	100
LT90-100	1"	5	50
LT90-125	1-1/4"	4	40
LT90-150	1-1/2"	2	20
LT90-200	2"	1	15
LT90-250	2-1/2"	1	10
LT90-300	3"	1	4
LT90-350	3-1/2"	1	3
LT90-400	4"	1	3

STRAIGHT INSULATED THROAT



Orbit Cat. No.	Trade Size	Std. Pkg.	Master Ctn.
LTI-38	3/8"	25	250
LTI-50	1/2"	25	250
LTI-75	3/4"	15	150
LTI-100	1"	8	80
LTI-125	1-1/4"	5	50
LTI-150	1-1/2"	4	40
LTI-200	2"	1	36
LTI-250	2-1/2"	1	14
LTI-300	3"	1	8
LTI-350	3-1/2"	1	8
LTI-400	4"	1	6

90° ANGLE INSULATED THROAT



Orbit Cat. No.	Trade Size	Std. Pkg.	Master Ctn.
LT190-38	3/8"	15	150
LT190-50	1/2"	15	150
LT190-75	3/4"	10	100
LT190-100	1"	5	50
LT190-125	1-1/4"	4	40
LT190-150	1-1/2"	2	20
LT190-200	2"	1	15
LT190-250	2-1/2"	1	10
LT190-300	3"	1	4
LT190-350	3-1/2"	1	3
LT190-400	4"	1	3



Liquid Tight Connectors



STEEL LIQUIDTIGHT CONNECTORS STRAIGHT

Features:

- Steel
- Zinc Electro-Plated



Orbit Cat. No.	Trade Size	Std. Pkg.	Master Ctn.
MLT-38	3/8"	25	250
MLT-50	1/2"	25	250
MLT-75	3/4"	15	150
MLT-100	1"	8	80
MLT-125	1-1/4"	5	50
MLT-150	1-1/2"	4	40
MLT-200	2"	1	20

STRAIGHT INSULATED THROAT



Orbit Cat. No.	Trade Size	Std. Pkg.	Master Ctn.
MLTI-38	3/8"	25	250
MLTI-50	1/2"	25	250
MLTI-75	3/4"	15	150
MLTI-100	1"	8	80
MLTI-125	1-1/4"	5	50
MLTI-150	1-1/2"	4	40
MLTI-200	2"	1	20

45° ANGLE



Orbit Cat. No.	Trade Size	Std. Pkg.	Master Ctn.
MLT45-38	3/8"	15	150
MLT45-50	1/2"	15	150
MLT45-75	3/4"	10	100
MLT45-100	1"	5	50
MLT45-125	1-1/4"	4	40
MLT45-150	1-1/2"	2	20
MLT45-200	2"	1	15

45° ANGLE INSULATED THROAT



Orbit Cat. No.	Trade Size	Std. Pkg.	Master Ctn.
MLTI45-38	3/8"	25	150
MLTI45-50	1/2"	25	150
MLTI45-75	3/4"	15	100
MLTI45-100	1"	8	50
MLTI45-125	1-1/4"	5	40
MLTI45-150	1-1/2"	4	20
MLTI45-200	2"	1	15

90° ANGLE



Orbit Cat. No.	Trade Size	Std. Pkg.	Master Ctn.
MLT90-38	3/8"	15	150
MLT90-50	1/2"	15	150
MLT90-75	3/4"	10	100
MLT90-100	1"	5	50
MLT90-125	1-1/4"	4	40
MLT90-150	1-1/2"	2	20
MLT90-200	2"	1	15

90° ANGLE INSULATED THROAT



Orbit Cat. No.	Trade Size	Std. Pkg.	Master Ctn.
MLTI90-38	3/8"	25	150
MLTI90-50	1/2"	25	150
MLTI90-75	3/4"	15	100
MLTI90-100	1"	8	50
MLTI90-125	1-1/4"	5	40
MLTI90-150	1-1/2"	4	20
MLTI90-200	2"	1	15



Rigid Connectors

STEEL RIGID CONNECTORS SET-SCREW TYPE

Features:

- Steel
- Zinc Electro-Plated
- For use in dry location



Orbit Cat. No.	Trade Size	Std. Pkg.	Master Ctn.
RS-50	1/2"	25	250
RS-75	3/4"	25	250
RS-100	1"	10	100
RS-125	1-1/4"	1	25
RS-150	1-1/2"	1	25
RS-200	2"	1	10

STEEL RIGID COUPLINGS SET-SCREW TYPE

Features:

- Steel
- Zinc Electro-Plated
- For use in dry location



Orbit Cat. No.	Trade Size	Std. Pkg.	Master Ctn.
RSC-50	1/2"	25	250
RSC-75	3/4"	25	250
RSC-100	1"	10	100
RSC-125	1-1/4"	1	25
RSC-150	1-1/2"	1	25
RSC-200	2"	1	10

STEEL RIGID CONNECTORS COMPRESSION TYPE (THREADLESS)

Features:

- Steel
- Zinc Electro-Plated
- Concrete-Tight



Orbit Cat. No.	Trade Size	Std. Pkg.	Master Ctn.
RT-50	1/2"	25	250
RT-75	3/4"	25	250
RT-100	1"	10	100
RT-125	1-1/4"	1	25
RT-150	1-1/2"	1	25
RT-200	2"	1	10

STEEL RIGID COUPLINGS COMPRESSION TYPE (THREADLESS)

Features:

- Steel
- Zinc Electro-Plated
- Concrete-Tight



Orbit Cat. No.	Trade Size	Std. Pkg.	Master Ctn.
RTC-50	1/2"	25	250
RTC-75	3/4"	25	250
RTC-100	1"	10	100
RTC-125	1-1/4"	1	25
RTC-150	1-1/2"	1	25
RTC-200	2"	1	10

Rigid Connectors



RIGID TO FLEX COUPLINGS SET-SCREW



Features:

- Zinc Die-Cast
- For Steel FLEX Only



Cat. No.	Trade Size	Std. Pkg.	Master Ctn.
OF694	1/2"	25	250
OF695	3/4"	25	250

RIGID TO FLEX COUPLING CLAMP-TYPE



Features:

- Zinc Die-Cast
- For Steel FLEX Only

Cat. No.	Trade Size	Std. Pkg.	Master Ctn.
OF697	1/2"	25	250

RIGID FLOOR FLANGES

MAILLABLE
IRON



Cat. No.	Trade Size	Std. Pkg.	Master Ctn.
FR-50	1/2"	-	50
FR-75	3/4"	-	50
FR-100	1"	-	50
FR-125	1-1/4"	-	25
FR-150	1-1/2"	-	25
FR-200	2"	-	25

THREAD PROTECTOR BUSHINGS



Features:

- Plastic
- Fits and Protects Rigid Threads



Cat. No.	Trade Size	Std. Pkg.	Master Ctn.
TPB-50	1/2"	100	1000
TPB-75	3/4"	100	1000
TPB-100	1"	50	500
TPB-125	1-1/4"	25	250
TPB-150	1-1/2"	25	250
TPB-200	2"	10	100
TPB-250	2-1/2"	10	100
TPB-300	3"	-	20
TPB-350	3-1/2"	-	20
TPB-400	4"	-	10

Grounding

GROUND BUSHINGS INSULATED UNIVERSAL LAY-IN LUG



Features:

- Zinc Die-Cast
- 105°C rated Throat Insulator



Cat. No.	Trade Size	Lug Range	Std. Pkg.	Master Ctn.
GBLL-50	1/2"	#14 - #2/0	50	500
GBLL-75	3/4"	#14 - #2/0	40	400
GBLL-100	1"	#14 - #2/0	15	150
GBLL-125	1-1/4"	#14 - #2/0	15	150
GBLL-150	1-1/2"	#14 - #2/0	10	100
GBLL-200	2"	#14 - #250MCM	5	50
GBLL-250	2-1/2"	#6 - #250MCM	5	50
GBLL-300	3"	#6 - #250MCM	5	50
GBLL-350	3-1/2"	#6 - #250MCM	4	40
GBLL-400	4"	#6 - #250MCM	4	40

Electrical Fittings

GROUNDING (BONDING) RIGID LOCKNUTS



Features:

- Steel
- Zinc Electro-Plated



Orbit Cat. No.	Trade Size	Std. Pkg.	Master Ctn.
GL-50	1/2"	50	200
GL-75	3/4"	25	100
GL-100	1"	25	100
GL-125	1-1/4"	10	50
GL-150	1-1/2"	10	50
GL-200	2"	10	50
GL-250	2-1/2"	5	25
GL-300	3"	5	25
GL-350	3-1/2"	-	5
GL-400	4"	-	5



DIE CAST ZINC BARE GROUND CLAMP

- Steel Screws



Cat. No.	Trade Size	Ground Wire Max.	Std. Pkg.	Master Ctn.
GCBZ-50/100	1/2" to 1"	2 Stranded	25	200

BRONZE BARE GROUND CLAMPS

- Steel Screws



Cat. No.	Trade Size	Ground Wire Max.	Std. Pkg.	Master Ctn.
GCB-50/100	1/2" to 1"	2 Stranded	25	200
GCB-125/200	1-1/4" to 2"	2 Stranded	10	80
GCB-250/400	2-1/2" to 4"	2 Stranded	-	15
GCB-450/600	4-1/2" to 6"	2 Stranded	-	5

BRONZE BARE GROUND CLAMP

- Brass Screws



Cat. No.	Trade Size	Ground Wire Max.	Std. Pkg.	Master Ctn.
GCBR-50/100	1/2" to 1"	2 Stranded	25	200

BRONZE ARMORED GROUND CLAMPS

- Steel Screws



Cat. No.	Trade Size	Ground Wire Max.	Std. Pkg.	Master Ctn.
GCA-50/100	1/2" to 1"	2 Stranded	20	160
GCA-125/200	1-1/4" to 2"	2 Stranded	10	80
GCA-250/400	2-1/2" to 4"	2 Stranded	-	15
GCA-450/600	4-1/2" to 6"	2 Stranded	-	5

BRONZE DIRECT BURIAL* BARE GROUND CLAMPS

- Bronze Screws



Cat. No.	Trade Size	Ground Wire Max.	Std. Pkg.	Master Ctn.
GCBB-50/100	1/2" to 1"	2 Stranded	25	200
GCBB-125/200	1-1/4" to 2"	2 Stranded	10	80

*UL Listed for direct burial in earth or concrete.

BRONZE DIRECT BURIAL* ARMORED GROUND CLAMP

- Bronze Screws



Cat. No.	Trade Size	Ground Wire Max.	Std. Pkg.	Master Ctn.
GCAB-50/100	1/2" to 1"	2 Stranded	25	200

*UL Listed for direct burial in earth or concrete.

BRONZE GROUND CLAMPS WITH ADAPTER

- Steel Screws



Cat. No.	Trade Size	Ground Wire Max.	Std. Pkg.	Master Ctn.
GCAH-50/100	1/2" to 1"	4/0 Stranded	10	80
GCAH-125/200	1-1/4" to 2"	4/0 Stranded	5	40

Electrical Fittings

Grounding

HEAVY DUTY BRONZE DIRECT BURIAL FOR REBAR GROUND CLAMP

- Bronze Screws



Cat. No.	Pipe Size	Ground Wire Max.	Std. Pkg.	Master Ctn.
GCR-50/100	3/8" to 1"	2 AWG	25	200

*UL Listed for direct burial in earth or concrete.

BRONZE GROUND CLAMPS WITH ADAPTER FOR RIGID CONDUIT

- Steel Screws



Cat. No.	Water Pipe Size	Hub Size	Ground Wire Max.	Std. Pkg.	Master Ctn.
GCH-50/100-50	1/2" to 1"	1/2"	6 Stranded	10	50
GCH-50/100-75	1/2" to 1"	3/4"	2/0 Stranded	10	50
GCH-50/100-100	1/2" to 1"	1"	3/0 Stranded	10	50

BRONZE GROUND CLAMPS FOR RIGID CONDUIT WITH FLEXIBLE COPPER STRAP

- Steel Screws



Cat. No.	Water Pipe Size	Hub Size	Ground Wire Max.	Std. Pkg.
AGS-50	1/2" to 1"	1/2"	6 Stranded	50
AGS-75	1/2" to 1"	3/4"	2/0 Stranded	50
AGS-100	1/2" to 1"	1"	3/0 Stranded	50

BRONZE 360° SWING TYPE CONDUIT HUB

- Steel Screws



Cat. No.	Pipe Size	Ground Wire Range	Std. Pkg.	Master Ctn.
H-50	1/2"	#10 Solid - #6 Stranded	25	200
H-75	3/4"	#10 Solid - 2/0 Stranded	25	200
H-100	1"	#10 Solid - 3/0 Stranded	20	160

BRONZE DIRECT BURIAL GROUND ROD CLAMPS

- Bronze Screws



Cat. No.	Ground Rod Size	Ground Wire Max.	Std. Pkg.	Master Ctn.
GRC-50	1/2"	1/0 Stranded	35	280
GRC-58	5/8"	1/0 Stranded	30	240
GRC-75	3/4"	1/0 Stranded	20	160

*UL Listed for direct burial in earth or concrete.



RIGID TO BOX PULL ELBOWS WITH GASKET



RIGID

Features:

- Die Cast Zinc
- Aluminum Cover



Cat. No.	Trade Size	Std. Pkg.	Master Ctn.
PEB-50	1/2"	10	100
PEB-75	3/4"	5	50
PEB-100	1"	-	25
PEB-125	1-1/4"	-	20

RIGID TO RIGID PULL ELBOWS WITH GASKET



RIGID

Cat. No.	Trade Size	Std. Pkg.	Master Ctn.
PE-50	1/2"	10	100
PE-75	3/4"	5	50
PE-100	1"	-	25
PE-125	1-1/4"	-	20

EMT TO BOX PULL ELBOWS SET-SCREW TYPE WITH GASKET



SET-SCREW
EMT

Cat. No.	Trade Size	Std. Pkg.	Master Ctn.
SSPEB-G50	1/2"	10	100
SSPEB-G75	3/4"	5	50
SSPEB-G100	1"	-	25
SSPEB-G125	1-1/4"	-	20

EMT TO BOX PULL ELBOWS SET-SCREW TYPE WITHOUT GASKET



SET-SCREW
EMT

Cat. No.	Trade Size	Std. Pkg.	Master Ctn.
SSPEB-50	1/2"	10	100
SSPEB-75	3/4"	5	50
SSPEB-100	1"	-	25
SSPEB-125	1-1/4"	-	20

EMT TO EMT PULL ELBOWS SET-SCREW TYPE WITH GASKET



SET-SCREW
EMT

Cat. No.	Trade Size	Std. Pkg.	Master Ctn.
SSPE-G50	1/2"	10	100
SSPE-G75	3/4"	5	50
SSPE-G100	1"	-	25
SSPE-G125	1-1/4"	-	20

EMT TO EMT PULL ELBOWS SET-SCREW TYPE WITHOUT GASKET



SET-SCREW
EMT

Cat. No.	Trade Size	Std. Pkg.	Master Ctn.
SSPE-50	1/2"	10	100
SSPE-75	3/4"	5	50
SSPE-100	1"	-	25
SSPE-125	1-1/4"	-	20

Conduit Bodies

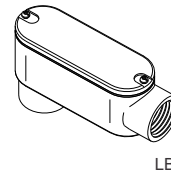
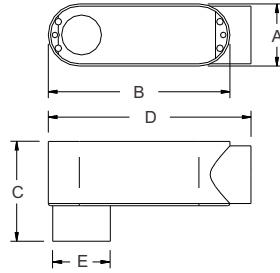
THREADED CONDUIT BODIES "LB" SERIES

Features:

- Die Cast Copper-Free Aluminum
- With Die Cast Cover
- Neoprene Gasket



Cat. No.	Trade Size	DIMENSIONS - LB SERIES					Color	Std. Pkg.
		A	B	C	D	E		
LB-50A	1/2"	1-5/16"	3-7/8"	2-3/64"	4-3/8"	1-7/16"	Gray	10
LB-75A	3/4"	1-1/2"	4-5/8"	2-5/16"	5-1/8"	1-11/16"	Gray	10
LB-100A	1"	1-3/4"	5-3/8"	2-21/32"	5-15/16"	1-15/16"	Gray	5
LB-125A	1-1/4"	2-1/2"	6-5/8"	3-15/32"	6-7/8"	2-7/8"	Gray	2
LB-150A	1-1/2"	2-1/2"	6-5/8"	3-15/32"	6-7/8"	2-7/8"	Gray	2
LB-200A	2"	3-1/8"	8-1/2"	3-7/8"	9-7/32"	3-7/16"	Gray	1



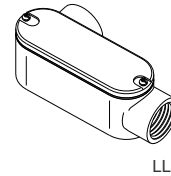
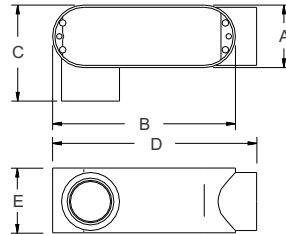
THREADED CONDUIT BODIES "LL" SERIES

Features:

- Die Cast Copper-Free Aluminum
- With Die Cast Cover
- Neoprene Gasket



Cat. No.	Trade Size	DIMENSIONS - LL SERIES					Color	Std. Pkg.
		A	B	C	D	E		
LL-50A	1/2"	1-5/16"	3-7/8"	2-3/64"	4-3/8"	1-7/16"	Gray	10
LL-75A	3/4"	1-1/2"	4-5/8"	2-5/16"	5-1/8"	1-11/16"	Gray	10
LL-100A	1"	1-3/4"	5-3/8"	2-21/32"	5-15/16"	1-15/16"	Gray	5
LL-125A	1-1/4"	2-1/2"	6-5/8"	3-15/32"	6-7/8"	2-7/8"	Gray	2
LL-150A	1-1/2"	2-1/2"	6-5/8"	3-15/32"	6-7/8"	2-7/8"	Gray	2
LL-200A	2"	3-1/8"	8-1/2"	3-7/8"	9-7/32"	3-7/16"	Gray	1



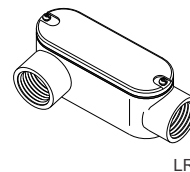
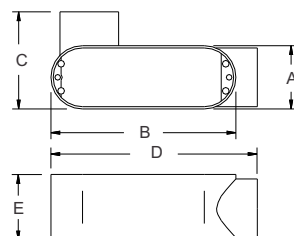
THREADED CONDUIT BODIES "LR" SERIES

Features:

- Die Cast Copper-Free Aluminum
- With Die Cast Cover
- Neoprene Gasket



Cat. No.	Trade Size	DIMENSIONS - LR SERIES					Color	Std. Pkg.
		A	B	C	D	E		
LR-50A	1/2"	1-5/16"	3-7/8"	2-3/64"	4-3/8"	1-7/16"	Gray	10
LR-75A	3/4"	1-1/2"	4-5/8"	2-5/16"	5-1/8"	1-11/16"	Gray	10
LR-100A	1"	1-3/4"	5-3/8"	2-21/32"	5-15/16"	1-15/16"	Gray	5
LR-125A	1-1/4"	2-1/2"	6-5/8"	3-15/32"	6-7/8"	2-7/8"	Gray	2
LR-150A	1-1/2"	2-1/2"	6-5/8"	3-15/32"	6-7/8"	2-7/8"	Gray	2
LR-200A	2"	3-1/8"	8-1/2"	3-7/8"	9-7/32"	3-7/16"	Gray	1



Conduit Bodies



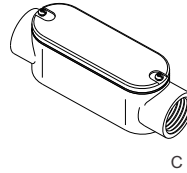
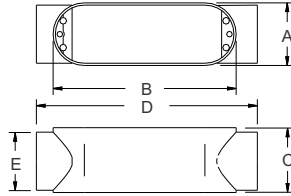
THREADED CONDUIT BODIES "C" SERIES

Features:

- Die Cast Copper-Free Aluminum
- With Die Cast Cover
- Neoprene Gasket



Cat. No.	Trade Size	DIMENSIONS - C SERIES					Color	Std. Pkg.
		A	B	C	D	E		
C-50A	1/2"	1-5/16"	3-7/8"	1-7/16"	4-29/32"	1-1/16"	Gray	10
C-75A	3/4"	1-1/2"	4-5/8"	1-11/16"	5-1/2"	1-11/32"	Gray	10
C-100A	1"	1-3/4"	5-3/8"	1-15/16"	6-7/16"	1-21/32"	Gray	5
C-125A	1-1/4"	2-1/2"	6-5/8"	2-7/8"	8-7/16"	2-1/4"	Gray	2
C-150A	1-1/2"	2-1/2"	6-5/8"	2-7/8"	8-7/16"	2-1/4"	Gray	2
C-200A	2"	3-1/8"	8-1/2"	3-7/16"	10-3/4"	2-15/16"	Gray	1



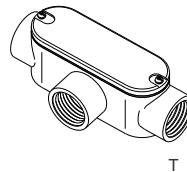
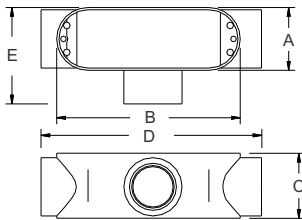
THREADED CONDUIT BODIES "T" SERIES

Features:

- Die Cast Copper-Free Aluminum
- With Die Cast Cover
- Neoprene Gasket



Cat. No.	Trade Size	DIMENSIONS - T SERIES					Color	Std. Pkg.
		A	B	C	D	E		
T-50A	1/2"	1-5/16"	3-7/8"	1-7/16"	4-29/32"	2-1/8"	Gray	10
T-75A	3/4"	1-1/2"	4-5/8"	1-11/16"	5-1/2"	2-11/32"	Gray	10
T-100A	1"	1-3/4"	5-3/8"	1-15/16"	6-7/16"	2-21/32"	Gray	5
T-125A	1-1/4"	2-1/2"	6-5/8"	2-7/8"	8-7/16"	3-19/32"	Gray	2
T-150A	1-1/2"	2-1/2"	6-5/8"	2-7/8"	8-7/16"	3-19/32"	Gray	2
T-200A	2"	3-1/8"	8-1/2"	3-7/16"	10-3/4"	4-1/32"	Gray	1



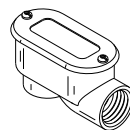
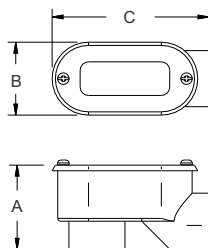
CONDUIT ENTRANCE ELLS "SLB" SERIES

Features:

- Die Cast Copper-Free Aluminum
- With Die Cast Cover
- Neoprene Gasket



Cat. No.	Trade Size	DIMENSIONS - SLB SERIES			Color	Std. Pkg.
		A	B	C		
SLB-50	1/2"	1-5/8"	1-13/32"	3-9/32"	Gray	20
SLB-75	3/4"	1-16/64"	1-45/64"	3-13/16"	Gray	20
SLB-100	1"	2-1/8"	1-9/16"	4-5/16"	Gray	10
SLB-125	1-1/4"	3-9/16"	2-7/16"	5-9/16"	Gray	10
SLB-150	1-1/2"	2-19/32"	2-5/8"	6-1/4"	Gray	6
SLB-200	2"	3-1/8"	3-5/64"	6-3/4"	Gray	3



SLB

Conduit Bodies

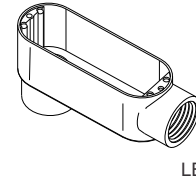
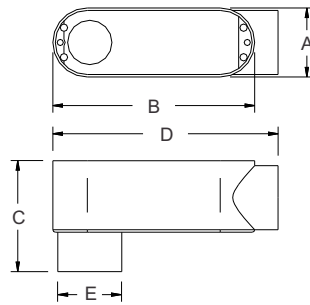
THREADED CONDUIT BODIES "LB" SERIES

Features:

- Die Cast Copper-Free Aluminum
- Without Covers



Cat. No.	Trade Size	DIMENSIONS - LB SERIES					Color	Std. Pkg.
		A	B	C	D	E		
LB-50	1/2"	1-5/16"	3-7/8"	2-3/64"	4-3/8"	1-7/16"	Gray	10
LB-75	3/4"	1-1/2"	4-5/8"	2-5/16"	5-1/8"	1-11/16"	Gray	10
LB-100	1"	1-3/4"	5-3/8"	2-21/32"	5-15/16"	1-15/16"	Gray	5
LB-125	1-1/4"	2-1/2"	6-5/8"	3-15/32"	6-7/8"	2-7/8"	Gray	2
LB-150	1-1/2"	2-1/2"	6-5/8"	3-15/32"	6-7/8"	2-7/8"	Gray	2
LB-200	2"	3-1/8"	8-1/2"	3-7/8"	9-7/32"	3-7/16"	Gray	1
LB-250	2-1/2"	4-9/16"	12-1/4"	6"	13-1/8"	4"	Gray	1
LB-300	3"	4-9/16"	12-1/4"	6"	13-1/8"	4-3/4"	Gray	1
LB-350	3-1/2"	5-1/2"	12-1/4"	7"	15"	4-3/4"	Gray	1
LB-400	4"	5-7/16"	14-7/8"	6-1/4"	15-3/8"	5-1/2"	Gray	1



Electrical Fittings

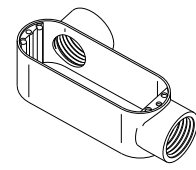
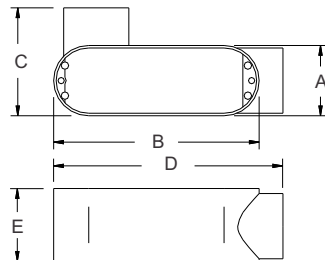
THREADED CONDUIT BODIES "LL" SERIES

Features:

- Die Cast Copper-Free Aluminum
- Without Covers



Cat. No.	Trade Size	DIMENSIONS - LL SERIES					Color	Std. Pkg.
		A	B	C	D	E		
LL-50	1/2"	1-5/16"	3-7/8"	2-3/64"	4-3/8"	1-7/16"	Gray	10
LL-75	3/4"	1-1/2"	4-5/8"	2-5/16"	5-1/8"	1-11/16"	Gray	10
LL-100	1"	1-3/4"	5-3/8"	2-21/32"	5-15/16"	1-15/16"	Gray	5
LL-125	1-1/4"	2-1/2"	6-5/8"	3-15/32"	6-7/8"	2-7/8"	Gray	2
LL-150	1-1/2"	2-1/2"	6-5/8"	3-15/32"	6-7/8"	2-7/8"	Gray	2
LL-200	2"	3-1/8"	8-1/2"	3-7/8"	9-7/32"	3-7/16"	Gray	1
LL-250	2-1/2"	4-9/16"	12-1/4"	6"	13-1/8"	4"	Gray	1
LL-300	3"	4-9/16"	12-1/4"	6"	13-1/8"	4-3/4"	Gray	1
LL-400	4"	5-7/16"	14-7/8"	6-1/4"	15-3/8"	5-1/2"	Gray	1





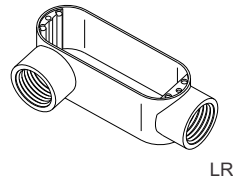
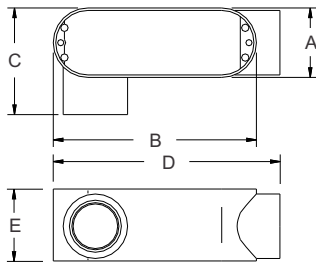
THREADED CONDUIT BODIES "LR" SERIES

Features:

- Die Cast Copper-Free Aluminum
- Without Covers



Cat. No.	Trade Size	DIMENSIONS - LR SERIES					Color	Std. Pkg.
		A	B	C	D	E		
LR-50	1/2"	1-5/16"	3-7/8"	2-3/64"	4-3/8"	1-7/16"	Gray	10
LR-75	3/4"	1-1/2"	4-5/8"	2-5/16"	5-1/8"	1-11/16"	Gray	10
LR-100	1"	1-3/4"	5-3/8"	2-21/32"	5-15/16"	1-15/16"	Gray	5
LR-125	1-1/4"	2-1/2"	6-5/8"	3-15/32"	6-7/8"	2-7/8"	Gray	2
LR-150	1-1/2"	2-1/2"	6-5/8"	3-15/32"	6-7/8"	2-7/8"	Gray	2
LR-200	2"	3-1/8"	8-1/2"	3-7/8"	9-7/32"	3-7/16"	Gray	1
LR-250	2-1/2"	4-9/16"	12-1/4"	6"	13-1/8"	4"	Gray	1
LR-300	3"	4-9/16"	12-1/4"	6"	13-1/8"	4-3/4"	Gray	1
LR-400	4"	5-7/16"	14-7/8"	6-1/4"	15-3/8"	5-1/2"	Gray	1



LR

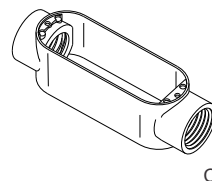
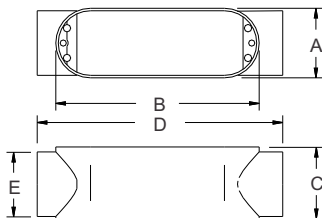
THREADED CONDUIT BODIES "C" SERIES

Features:

- Die Cast Copper-Free Aluminum
- Without Covers



Cat. No.	Trade Size	DIMENSIONS - C SERIES					Color	Std. Pkg.
		A	B	C	D	E		
C-50	1/2"	1-5/16"	3-7/8"	1-7/16"	4-29/32"	1-1/16"	Gray	10
C-75	3/4"	1-1/2"	4-5/8"	1-11/16"	5-1/2"	1-11/32"	Gray	10
C-100	1"	1-3/4"	5-3/8"	1-15/16"	6-7/16"	1-21/32"	Gray	5
C-125	1-1/4"	2-1/2"	6-5/8"	2-7/8"	8-7/16"	2-1/4"	Gray	2
C-150	1-1/2"	2-1/2"	6-5/8"	2-7/8"	8-7/16"	2-1/4"	Gray	2
C-200	2"	3-1/8"	8-1/2"	3-7/16"	10-3/4"	2-15/16"	Gray	1
C-250	2-1/2"	4-9/16"	12-1/4"	4"	14"	3-4/16"	Gray	1
C-300	3"	4-9/16"	12-1/4"	4-3/4"	13-1/2"	4-7/64"	Gray	1
C-400	4"	5-7/16"	14-7/8"	5-1/2"	15-29/32"	5-9/94"	Gray	1



C

Conduit Bodies

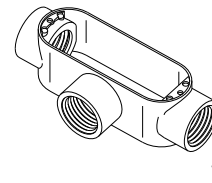
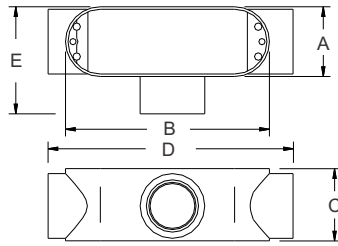
THREADED CONDUIT BODIES "T" SERIES

Features:

- Die Cast Copper-Free Aluminum
- Without Covers



Cat. No.	Trade Size	DIMENSIONS - T SERIES					Color	Std. Pkg.
		A	B	C	D	E		
T-50	1/2"	1-5/16"	3-7/8"	1-7/16"	4-29/32"	2-1/8"	Gray	10
T-75	3/4"	1-1/2"	4-5/8"	1-11/16"	5-1/2"	2-11/32"	Gray	10
T-100	1"	1-3/4"	5-3/8"	1-15/16"	6-7/16"	2-21/32"	Gray	5
T-125	1-1/4"	2-1/2"	6-5/8"	2-7/8"	8-7/16"	3-19/32"	Gray	2
T-150	1-1/2"	2-1/2"	6-5/8"	2-7/8"	8-7/16"	3-19/32"	Gray	2
T-200	2"	3-1/8"	8-1/2"	3-7/16"	10-3/4"	4-1/32"	Gray	1
T-250	2-1/2"	4-9/16"	12-1/4"	4"	14"	6-1/4"	Gray	1
T-300	3"	4-9/16"	12-1/4"	4-3/4"	13-1/2"	6-1/4"	Gray	1
T-400	4"	5-7/16"	14-7/8"	5-1/2"	15-29/32"	7"	Gray	1



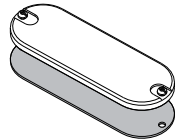
COVERS & GASKETS

Features:

- Die Cast Copper-Free Aluminum
- Neoprene Gasket



Cat. No.	Trade Size	Color	Std. Pkg.
CG-50	1/2"	Gray	100
CG-75	3/4"	Gray	50
CG-100	1"	Gray	50
CG-125/150	1-1/4" - 1-1/2"	Gray	25
CG-200	2"	Gray	10
CG-250/300	2-1/2" - 3"	Gray	10
CG-350/400	3-1/2" - 4"	Gray	5



CG

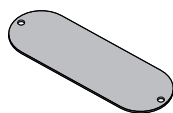
GASKETS

Features:

- Neoprene
- For use with Cast Aluminum & Malleable Iron Conduit Bodies



Cat. No.	Trade Size	Color	Std. Pkg.
G-50	1/2"	Black	100
G-75	3/4"	Black	100
G-100	1"	Black	50
G-125/150	1-1/4" - 1-1/2"	Black	50
G-200	2"	Black	50
G-250/300	2-1/2" - 3"	Black	25
G-350/400	3-1/2" - 4"	Black	25



G

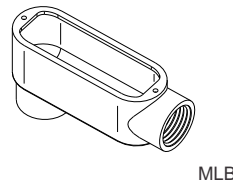
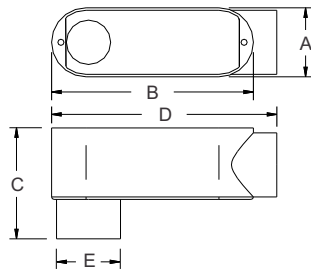


Conduit Bodies

RIGID STEEL THREADED CONDUIT BODIES "LB" SERIES



Cat. No.	Trade Size	DIMENSIONS - LB SERIES					Std. Pkg.
		A	B	C	D	E	
MLB-50	1/2"	1-3/8"	3-5/32"	2-9/32"	5-3/32"	1"	1
MLB-75	3/4"	1-5/8"	3-25/32"	2-1/2"	5-3/4"	1-7/32"	1
MLB-100	1"	1-7/8"	4-17/32"	2-29/32"	6-5/8"	1-15/32"	1
MLB-125	1-1/4"	2-5/8"	6"	3-3/16"	7-1/2"	2"	1
MLB-150	1-1/2"	3-1/8"	6"	4"	9-1/8"	2"	1
MLB-200	2"	4-3/8"	8-1/16"	4-13/16"	11-1/8"	2-9/16"	1
MLB-250	2-1/2"	4-3/8"	10-5/8"	6-1/8"	13-15/16"	3-11/16"	1
MLB-300	3"	4-3/8"	10-5/8"	6-1/2"	13-15/16"	3-11/16"	1
MLB-400	4"	5-1/2"	13-1/8"	7-13/16"	16-7/8"	4-7/8"	1

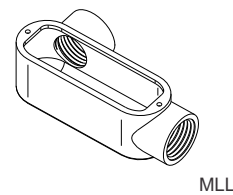
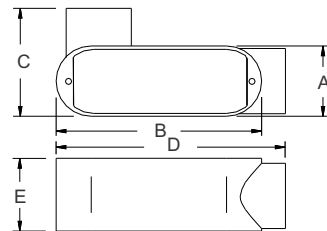


Electrical Fittings

RIGID STEEL THREADED CONDUIT BODIES "LL" SERIES



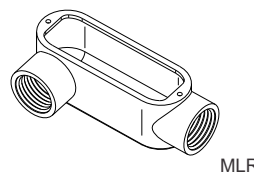
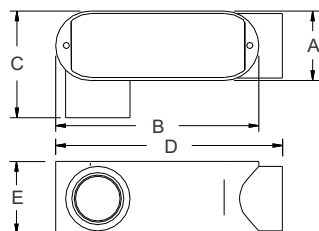
Cat. No.	Trade Size	DIMENSIONS - LL SERIES					Std. Pkg.
		A	B	C	D	E	
MLL-50	1/2"	2"	3-5/32"	1-3/8"	4-5/8"	1"	1
MLL-75	3/4"	2-3/16"	3-25/32"	1-5/8"	5-3/8"	1-7/32"	1
MLL-100	1"	2-9/16"	4-17/32"	2"	6-1/4"	1-15/32"	1
MLL-125	1-1/4"	3-1/2"	6"	2-5/8"	8-1/8"	2"	1
MLL-150	1-1/2"	3-1/2"	6"	2-3/4"	8-1/8"	2"	1
MLL-200	2"	4-3/16"	8-1/16"	3-1/2"	10-9/16"	2-9/16"	1



RIGID STEEL THREADED CONDUIT BODIES "LR" SERIES



Cat. No.	Trade Size	DIMENSIONS - LR SERIES					Std. Pkg.
		A	B	C	D	E	
MLR-50	1/2"	2"	3-5/32"	1-3/8"	4-5/8"	1"	1
MLR-75	3/4"	2-3/16"	3-25/32"	1-5/8"	5-3/8"	1-7/32"	1
MLR-100	1"	2-9/16"	4-17/32"	2"	6-1/4"	1-15/32"	1
MLR-125	1-1/4"	3-1/2"	6"	2-5/8"	8-1/8"	2"	1
MLR-150	1-1/2"	3-1/2"	6"	2-3/4"	8-1/8"	2"	1
MLR-200	2"	4-3/16"	8-1/16"	3-1/2"	10-9/16"	2-9/16"	1

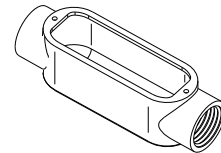
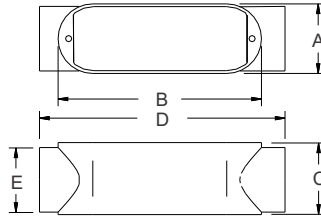


Conduit Bodies

RIGID STEEL THREADED CONDUIT BODIES "C" SERIES



Cat. No.	Trade Size	DIMENSIONS - C SERIES					Std. Pkg.
		A	B	C	D	E	
MC-50	1/2"	1-3/8"	3-5/32"	1-3/8"	5-3/8"	1"	1
MC-75	3/4"	1-5/8"	3-25/32"	1-5/8"	6-1/8"	1-7/32"	1
MC-100	1"	1-7/8"	4-17/32"	2"	7-1/8"	1-15/32"	1
MC-125	1-1/4"	2-5/8"	6"	2-5/8"	9-1/8"	2"	1
MC-150	1-1/2"	2-5/8"	6"	2-3/4"	9-1/4"	2"	1
MC-200	2"	3-1/8"	8-1/16"	3-1/2"	11-7/8"	2-9/16"	1

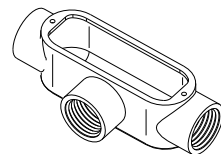
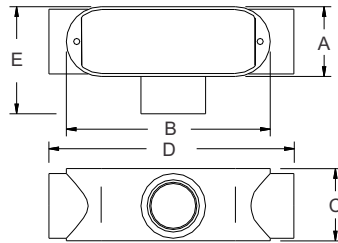


MC

RIGID STEEL THREADED CONDUIT BODIES "T" SERIES



Cat. No.	Trade Size	DIMENSIONS - T SERIES					Std. Pkg.
		A	B	C	D	E	
MT-50	1/2"	2"	3-5/32"	1-3/8"	5-3/8"	1"	1
MT-75	3/4"	2-3/16"	3-25/32"	1-5/8"	6-1/16"	1-7/32"	1
MT-100	1"	2-9/16"	4-17/32"	2"	7-1/8"	1-15/32"	1
MT-125	1-1/4"	3-1/2"	6"	2-5/8"	9-3/16"	2"	1
MT-150	1-1/2"	3-1/2"	6"	2-3/4"	9-3/16"	2"	1
MT-200	2"	4-3/16"	8-1/16"	3-1/2"	11-5/8"	2-9/16"	1



MT

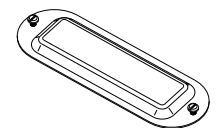
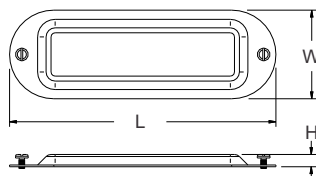
RAISED DOME STEEL CONDUIT COVERS

Features:

- Stamped Steel
 - Stainless Steel Screws
 - Gasket Not Included
- Gaskets on page D25**



Cat. No.	Trade Size	Dimension			Std. Pkg.
		L	W	H	
SC-50	1/2"	3-11/16"	1-3/8"	5/16"	1
SC-75	3/4"	4-1/4"	1-1/2"	5/16"	1
SC-100	1"	5"	1-3/4"	5/16"	1
SC-125/150	1-1/4" ~ 1-1/2"	6"	2-7/16"	5/16"	1
SC-200	2"	7"	3"	5/16"	1
SC-250/300	2-1/2" ~ 3"	9"	4-1/4"	9/16"	1
SC-350/400	3-1/2" ~ 4"	11"	5-1/4"	9/16"	1



SC

**EXTRA-LARGE MOGUL
RIGID CONDUIT BODIES
THREADED
TYPE LB**

Features:

- Copper-Free Aluminum Alloy
- Die-Cast Aluminum Cover
- Fiber Gasket



Electrical Fittings

Cat. No.	Trade Size	Std. Pkg.	Master Ctn.
LBM-125	1-1/4"	2	10
LBM-150	1-1/2"	-	1
LBM-200	2"	-	1



Set-Screw Conduit Bodies

EMT CONDUIT BODIES SET-SCREW TYPE LB

Features:

- Copper-Free Aluminum Alloy
- Plated Steel Set-Screws



Orbit Cat. No.	Trade Size	Std. Pkg.	Master Ctn.
SSLB-50	1/2"	10	100
SSLB-75	3/4"	10	50
SSLB-100	1"	5	25
SSLB-125	1-1/4"	2	10
SSLB-150	1-1/2"	2	10
SSLB-200	2"	1	5
SSLB-250	2-1/2"	-	1
SSLB-300	3"	-	1
SSLB-400	4"	-	1

EMT CONDUIT BODIES SET-SCREW TYPE LR

Features:

- Copper-Free Aluminum Alloy
- Plated Steel Set-Screws



Orbit Cat. No.	Trade Size	Std. Pkg.	Master Ctn.
SSLR-50	1/2"	10	100
SSLR-75	3/4"	10	50
SSLR-100	1"	5	25
SSLR-125	1-1/4"	2	10
SSLR-150	1-1/2"	2	10
SSLR-200	2"	1	5

EMT CONDUIT BODIES SET-SCREW TYPE LL

Features:

- Copper-Free Aluminum Alloy
- Plated Steel Set-Screws



Orbit Cat. No.	Trade Size	Std. Pkg.	Master Ctn.
SLL-50	1/2"	10	100
SLL-75	3/4"	10	50
SLL-100	1"	5	25
SLL-125	1-1/4"	2	10
SLL-150	1-1/2"	2	10
SLL-200	2"	1	5

EMT CONDUIT BODIES SET-SCREW TYPE C

Features:

- Copper-Free Aluminum Alloy
- Plated Steel Set-Screws



Orbit Cat. No.	Trade Size	Std. Pkg.	Master Ctn.
SSC-50	1/2"	10	100
SSC-75	3/4"	10	50
SSC-100	1"	5	25
SSC-125	1-1/4"	2	10
SSC-150	1-1/2"	2	10
SSC-200	2"	1	5

EMT CONDUIT BODIES SET-SCREW TYPE T

Features:

- Copper-Free Aluminum Alloy
- Plated Steel Set-Screws



Orbit Cat. No.	Trade Size	Std. Pkg.	Master Ctn.
SST-50	1/2"	10	100
SST-75	3/4"	10	50
SST-100	1"	5	25
SST-125	1-1/4"	2	10
SST-150	1-1/2"	2	10
SST-200	2"	1	5

RG6U CABLE STRAP 1-HOLE



Features:

- Stamped Steel
- Zinc-Plated



Orbit Cat. No.	Description	Trade Size	Std. Pkg.	Master Ctn.
S1-25	RG6U (Coaxial Cable) 1-Hole Strap	1/4"	100	1000

MC (BX) CABLE STRAP 1-HOLE



Features:

- Stamped Steel
- Zinc-Plated
- Corrosion-resistance



Cat. No.	Description	Trade Size	Std. Pkg.	Master Ctn.
S1-38	12-2, 12-3, 10-2, 10-3 MC (BX) 1-Hole Strap	3/8"	100	1000

EMT STRAPS 1-HOLE



Features:

- Stamped Steel
- Zinc-Plated



Cat. No.	Description	Trade Size	Std. Pkg.	Master Ctn.
SE1-50L	16GA, Standard Duty	1/2"	100	1000
SE1-75L	16GA, Standard Duty	3/4"	100	1000
SE1-50	14GA, Heavy-Duty	1/2"	100	1000
SE1-75	14GA, Heavy-Duty	3/4"	100	1000
SE1-100	14GA, Heavy-Duty	1"	100	500
SE1-125	12GA, Heavy-Duty	1-1/4"	100	500
SE1-150	12GA, Heavy-Duty	1-1/2"	50	500
SE1-200	12GA, Heavy-Duty	2"	50	500
SU1-250	9GA, Heavy-Duty	2-1/2"	25	100
SU1-300	9GA, Heavy-Duty	3"	25	100
SU1-350	7GA, Heavy-Duty	3-1/2"	25	100
SU1-400	7GA, Heavy-Duty	4"	25	100

EMT STRAPS 2-HOLE



Features:

- Stamped Steel
- Zinc-Plated



Cat. No.	Description	Trade Size	Std. Pkg.	Master Ctn.
SE2-50	18GA, Heavy-Duty	1/2"	100	1000
SE2-75	18GA, Heavy-Duty	3/4"	100	1000
SE2-100	16GA, Heavy-Duty	1"	100	500
SE2-125	16GA, Heavy-Duty	1-1/4"	100	500
SE2-150	16GA, Heavy-Duty	1-1/2"	50	500
SE2-200	14GA, Heavy-Duty	2"	50	500
SU2-250	13GA, Heavy-Duty	2-1/2"	25	100
SU2-300	13GA, Heavy-Duty	3"	25	100
SU2-350	10GA, Heavy-Duty	3-1/2"	25	100
SU2-400	10GA, Heavy-Duty	4"	25	100

Straps



RIGID STRAPS 1-HOLE



Features:

- Stamped Steel
- Zinc-Plated



RIGID STRAPS 2-HOLE



Features:

- Stamped Steel
- Zinc-Plated



MALLEABLE IRON 1-HOLE RIGID STRAPS



Features:

- Malleable Iron



MALLEABLE IRON CLAMP BACK SPACERS



Features:

- Malleable Iron



Cat. No.	Description	Trade Size	Std. Pkg.	Master Ctn.
SR1-50	14GA, Heavy-Duty	1/2"	100	1000
SR1-75	12GA, Heavy-Duty	3/4"	100	1000
SR1-100	12GA, Heavy-Duty	1"	100	500
SR1-125	12GA, Heavy-Duty	1-1/4"	100	500
SR1-150	10GA, Heavy-Duty	1-1/2"	50	500
SR1-200	10GA, Heavy-Duty	2"	50	500
SU1-250	9GA, Heavy-Duty	2-1/2"	25	100
SU1-300	9GA, Heavy-Duty	3"	25	100
SU1-350	7GA, Heavy-Duty	3-1/2"	25	100
SU1-400	7GA, Heavy-Duty	4"	25	100

Cat. No.	Description	Trade Size	Std. Pkg.	Master Ctn.
SR2-50	20GA, Heavy-Duty	1/2"	100	1000
SR2-75	20GA, Heavy-Duty	3/4"	100	1000
SR2-100	20GA, Heavy-Duty	1"	100	500
SR2-125	18GA, Heavy-Duty	1-1/4"	100	500
SR2-150	16GA, Heavy-Duty	1-1/2"	50	500
SR2-200	16GA, Heavy-Duty	2"	50	500
SU2-250	13GA, Heavy-Duty	2-1/2"	25	100
SU2-300	13GA, Heavy-Duty	3"	25	100
SU2-350	10GA, Heavy-Duty	3-1/2"	25	100
SU2-400	10GA, Heavy-Duty	4"	25	100

Cat. No.	Trade Size	Std. Pkg.	Master Ctn.
SRM1-50	1/2"	100	1000
SRM1-75	3/4"	50	500
SRM1-100	1"	25	250
SRM1-125	1-1/4"	20	200
SRM1-150	1-1/2"	10	100
SRM1-200	2"	10	50
SRM1-250	2-1/2"	-	25
SRM1-300	3"	-	25
SRM1-350	3-1/2"	-	10
SRM1-400	4"	-	10

Cat. No.	Trade Size	Std. Pkg.	Master Ctn.
CBS-50	1/2"	25	250
CBS-75	3/4"	25	250
CBS-100	1"	25	250
CBS-125	1-1/4"	10	100
CBS-150	1-1/2"	10	100
CBS-200	2"	5	50
CBS-250	2-1/2"	-	25
CBS-300	3"	-	10
CBS-350	3-1/2"	-	10
CBS-400	4"	-	10

Electrical Fittings



NAIL STRAPS

Features:

- Stamped Steel



Orbit Cat. No.	EMT Size	FLEX Size	Std. Pkg.	Master Ctn.
NS-50	1/2"	N/A	100	1000
NS-50/75	3/4"	1/2"	100	1000
NS-100	1"	3/4"	100	1000

UNIVERSAL STRUT CLAMPS

With Welded Studs

Features:

- Steel
- Zinc Electro-Plated



Cat. No.	EMT/RIGID Size	Std. Pkg.
ST-50	1/2"	100
ST-75	3/4"	100
ST-100	1"	100
ST-125	1-1/4"	100
ST-150	1-1/2"	50
ST-200	2"	50
ST-250	2-1/2"	50
ST-300	3"	25
ST-350	3-1/2"	25
ST-400	4"	25

EMT HANGERS WITHOUT BOLTS

Features:

- Steel
- Zinc Electro-Plated



Orbit Cat. No.	Trade Size	EMT Size	Pipe Size	Std. Pkg.	Master Ctn.
PH-50	#0	1/2"	1/2"	50	500
PH-75	#1	3/4"	3/4"	50	500
PH-100	#2	1"	1"	25	250
PH-105	#2-1/2	1-1/4"	-	25	250
PH-125	#3	1-1/2"	1-1/4"	50	250
PH-150	#4	-	1-1/2"	50	250
PH-200	#5	2"	2"	20	100
PH-250	#6	2-1/2"	2-1/2"	10	50
PH-300	#7	3"	3"	10	50
PH-350	#8	-	3-1/2"	10	50
PH-400	#9	-	4"	5	25

EMT HANGERS WITH BOLTS

Features:

- Steel
- Zinc Electro-Plated



Orbit Cat. No.	Trade Size	EMT Size	Pipe Size	Std. Pkg.	Master Ctn.
PH-50B	#0B	1/2"	1/2"	50	500
PH-75B	#1B	3/4"	3/4"	50	500
PH-100B	#2B	1"	1"	25	250
PH-105B	#2-1/2B	1-1/4"	-		
PH-125B	#3B	1-1/2"	1-1/4"	50	250
PH-150B	#4B	-	1-1/2"	50	250
PH-200B	#5B	2"	2"	20	100
PH-250B	#6B	2-1/2"	2-1/2"	10	50
PH-300B	#7B	3"	3"	10	50
PH-350B	#8B	-	3-1/2"	10	50
PH-400B	#9B	-	4"	5	25

Straps



STEEL SERVICE ENTRANCE STRAP 1-HOLE



Features:

- Stamped Steel
- Corrosion-resistant



Cat. No.	Description	Trade Size	Std. Pkg.	Master Ctn.
SES1-50	1-Hole Service Entrance Strap, Three #8, #6, #4	1/2"	100	500
SES1-75	1-Hole Service Entrance Strap, Three #3, #2	3/4"	100	500
SES1-100	1-Hole Service Entrance Strap, Three #1, #1/0, #2/0	1"	50	250
SES1-200	1-Hole Service Entrance Strap, Three #3/0, #4/0	2"	25	250

STEEL SERVICE ENTRANCE STRAP 2-HOLE



Features:

- Stamped Steel
- Corrosion-resistant



Cat. No.	Description	Trade Size	Std. Pkg.	Master Ctn.
SES2-50	2-Hole Service Entrance Strap, Three #8, #6, #4	1/2"	20	100
SES2-75	2-Hole Service Entrance Strap, Three #3, #2	3/4"	20	100
SES2-100	2-Hole Service Entrance Strap, Three #1, #1/0, #2/0	1"	20	100
SES2-200	2-Hole Service Entrance Strap, Three #3/0, #4/0	2"	20	100

SERVICE ENTRANCE CAPS CLAMP-TYPE

Features:

- Copper-Free Aluminum

Note:

- For Rigid & IMC Conduit 2" and above are also for EMT



Cat. No.	Trade Size	Std. Pkg.	Master Ctn.
EC-50	1/2"	15	90
EC-75	3/4"	10	60
EC-100	1"	7	42
EC-125	1-1/4"	5	30
EC-150	1-1/2"	4	24
EC-200	2"	4	8
EC-250	2-1/2"	1	3
EC-300	3"	1	3
EC-350	3-1/2"	1	2
EC-400	4"	1	2



PVC SERVICE ENTRANCE HEADS

Features:

- Heavy-Duty PVC
- Snap-on Covers



Cat. No.	Trade Size	Std. Pkg.	Master Ctn.
ECP-50	1/2"	5	10
ECP-75	3/4"	2	10
ECP-100	1"	2	10
ECP-125	1-1/4"	-	5
ECP-150	1-1/2"	2	10
ECP-200	2"	2	10



PVC SERVICE ENTRANCE CABLE CAPS

Features:

- Heavy-Duty PVC
- Snap-on Covers



Cat. No.	Description	Trade Size	Std. Pkg.	Master Ctn.
ECCP-50	PVC Service Entrance #8, #6, #4, #2 Cable Cap	1/2"	-	10
ECCP-100	PVC Service Entrance #1/0, #2/0 Cable Cap	1"	-	10
ECCP-200	PVC Service Entrance #3/0, #4/0 Cable Cap	2"	-	10



PVC SILL PLATE

Features:

- Heavy-Duty PVC



Cat. No.	Description	Std. Pkg.	Master Ctn.
SPP	#4-3 thru #3/0-3 PVC Sill Plate	5	15



Hubs & K.O. Seals

WATERTIGHT HUBS

Features:

- Die-Cast Zinc
- 105°C rated Throat Insulator



Cat. No.	Trade Size	Std. Pkg.	Master Ctn.
WH-50	1/2"	25	125
WH-75	3/4"	25	125
WH-100	1"	25	125
WH-125	1-1/4"	10	50
WH-150	1-1/2"	10	50
WH-200	2"	10	50
WH-250	2-1/2"	5	25
WH-300	3"	2	10
WH-350	3-1/2"	2	10
WH-400	4"	2	10

GROUNDING ZINC WATER TIGHT HUBS

Features:

- Die-Cast Zinc
- 105°C rated Throat Insulator
- Grounding Post & Screw



Cat. No.	Trade Size	Std. Pkg.	Master Ctn.
WHG-50	1/2"	25	125
WHG-75	3/4"	25	125
WHG-100	1"	25	125
WHG-125	1-1/4"	10	50
WHG-150	1-1/2"	10	50
WHG-200	2"	10	50
WHG-250	2-1/2"	5	25
WHG-300	3"	2	10
WHG-350	3-1/2"	2	10
WHG-400	4"	2	10

KNOCKOUT SEALS

Features:

- Stamped Steel
- Zinc Electro-plated
- For capping unused knockout holes
- Held by spring tension



Cat. No.	Trade Size	Std. Pkg.	Master Ctn.
KO-50	1/2"	100	1000
KO-75	3/4"	100	1000
KO-100	1"	100	500
KO-125	1-1/4"	50	100
KO-150	1-1/2"	50	50
KO-200	2"	25	25

3-PIECE KNOCKOUT SEALS

Features:

- Stamped Steel
- Zinc Electro-plated
- For capping unused knockout holes
- Embossed for quick self centering
- Installed using the screw and back strap



Cat. No.	Trade Size	Std. Pkg.	Master Ctn.
KO3P-50	1/2"	100	500
KO3P-75	3/4"	50	500
KO3P-100	1"	25	500
KO3P-125	1-1/4"	25	250
KO3P-150	1-1/2"	10	300
KO3P-200	2"	10	300
KO3P-250	2-1/2"	10	100
KO3P-300	3"	10	100
KO3P-350	3-1/2"	10	100
KO3P-400	4"	10	100

STRAIN RELIEF CORD-GRIP CONNECTORS



Features:

- Die-Cast Zinc
- Watertight



Cat. No.	Trade Size	Clamping Range (In.)	Std. Pkg.	Master Ctn.
CG-50-190/260	1/2"	0.190-0.260	25	100
CG-50-260/375	1/2"	0.260-0.375	25	100
CG-50-375/500	1/2"	0.375-0.500	25	100
CG-75-375/500	3/4"	0.375-0.500	10	50
CG-75-500/625	3/4"	0.500-0.625	10	50
CG-75-625/750	3/4"	0.625-0.750	10	50
CG-100-375/500	1"	0.375-0.500	10	50
CG-100-500/625	1"	0.500-0.625	10	50
CG-100-625/750	1"	0.625-0.750	10	50
CG-100-750/880	1"	0.750-0.880	10	50
CG-100-880/985	1"	0.880-0.985	10	50

NYLON STRAIN RELIEF CORD-GRIP CONNECTORS



Features:

- Nylon
- Watertight



Cat. No.	Trade Size	Clamping Range (In.)	Std. Pkg.	Master Ctn.
NGC-38-197/394	3/8"	0.197-0.394	25	100
NGC-50-384/551	1/2"	0.384-0.551	25	100
NGC-75-551/709	3/4"	0.551-0.709	10	50
NGC100-709/984	1"	0.709-0.984	10	50

Conduit Nipples

BOX TO BOX CONNECTOR

Features:

- Die Cast Zinc
- Meets Federal Spec. A-A-50553



Cat. No.	Description	Trade Size	Std. Pkg.	Master Ctn.
OF781	Box-to-Box Connector	1/2"	100	500

OFFSET NIPPLES 3/4" OFFSET

Features:

- Die-Cast Zinc
- Meets Federal Spec. A-A-50553



Cat. No.	Trade Size	Std. Pkg.	Master Ctn.
ON-50	1/2"	25	250
ON-75	3/4"	20	200
ON-100	1"	10	100
ON-125	1-1/4"	5	50
ON-150	1-1/2"	5	50
ON-200	2"	3	30

CONDUIT CHASE NIPPLES 1" LONG

Features:

- Die-Cast Zinc
- Meets Federal Spec. A-A-50553
- Concrete-Tight when taped only



Cat. No.	Trade Size	Std. Pkg.	Master Ctn.
CN-50L	1/2"	100	1000
CN-75L	3/4"	50	500
CN-100L	1"	25	250

CONDUIT CHASE NIPPLES

Features:

- Die-Cast Zinc
- Meets Federal Spec. A-A-50553
- Concrete-Tight when taped only



Cat. No.	Trade Size	Std. Pkg.	Master Ctn.
CN-50	1/2"	100	1000
CN-75	3/4"	100	1000
CN-100	1"	50	500
CN-125	1-1/4"	25	250
CN-150	1-1/2"	25	250
CN-200	2"	15	150

CONDUIT CHASE NIPPLES INSULATED

Features:

- Die-Cast Zinc
- Insulated Throat
- Meets Federal Spec. A-A-50553
- Concrete-Tight when taped only



Cat. No.	Trade Size	Std. Pkg.	Master Ctn.
CNI-50	1/2"	100	1000
CNI-75	3/4"	100	1000
CNI-100	1"	50	500
CNI-125	1-1/4"	25	250
CNI-150	1-1/2"	25	250
CNI-200	2"	15	150
CNI-250	2-1/2"	2	10
CNI-300	3"	2	10
CNI-350	3-1/2"	-	5
CNI-400	4"	-	5

Electrical Fittings

Bushings

REDUCING BUSHINGS

Features:

- Machined Steel
- Electro-Zinc Plated
- Meets Federal Spec. A-A-5053



Cat. No.	Trade Size	Length	Std. Pkg.	Master Ctn.
RB-50/38	1/2"	3/8"	100	500
RB-75/50	3/4"	1/2"	100	500
RB-100/50	1"	1/2"	50	250
RB-100/75	1"	3/4"	50	250
RB-125/50	1-1/4"	1/2"	20	100
RB-125/75	1-1/4"	3/4"	20	100
RB-125/100	1-1/4"	1"	20	100
RB-150/50	1-1/2"	1/2"	10	50
RB-150/75	1-1/2"	3/4"	10	50
RB-150/100	1-1/2"	1"	10	50
RB-150/125	1-1/2"	1-1/4"	10	50
RB-200/50	2"	1/2"	10	50
RB-200/75	2"	3/4"	10	50
RB-200/100	2"	1"	10	50
RB-200/125	2"	1-1/4"	10	50
RB-200/150	2"	1-1/2"	10	50

RIGID THREADED COUPLINGS

Features:

- Cast Steel
- Electro-Zinc Plated



Orbit Cat. No.	Description	Trade Size	Std. Pkg.	Master Ctn.
RC-50	1-1/16" OD x 1-5/8" L	1/2"	100	1000
RC-75	1-1/4" OD x 1-5/8" L	3/4"	50	500
RC-100	1-9/16" OD x 2" L	1"	30	300
RC-125	2-1/8" OD x 2" L	1-1/4"	20	200
RC-150	2-3/16" OD x 2-1/16" L	1-1/2"	20	100
RC-200	2-5/8" OD x 2-1/8" L	2"	20	100

Rigid Conduit Nipples

RIGID CONDUIT NIPPLES

Features:

- Galvanized Steel



Orbit Cat. No.	Trade Size	Length	Std. Pkg.
RN-50-C	1/2"	Close	25
RN-50-150	1/2"	1-1/2"	25
RN-50-200	1/2"	2"	25
RN-50-300	1/2"	3"	25
RN-50-400	1/2"	4"	25
RN-50-600	1/2"	6"	25
RN-50-800	1/2"	8"	25
RN-50-1000	1/2"	10"	25
RN-50-1200	1/2"	12"	25
RN-75-C	3/4"	Close	25
RN-75-150	3/4"	1-1/2"	25
RN-75-200	3/4"	2"	25
RN-75-300	3/4"	3"	25
RN-75-400	3/4"	4"	25
RN-75-600	3/4"	6"	25
RN-75-800	3/4"	8"	25
RN-75-1000	3/4"	10"	25
RN-75-1200	3/4"	12"	25
RN-100-C	1"	Close	25
RN-100-200	1"	2"	25
RN-100-300	1"	3"	25
RN-100-400	1"	4"	25
RN-100-600	1"	6"	25
RN-100-800	1"	8"	25
RN-100-1000	1"	10"	25
RN-100-1200	1"	12"	25
RN-125-C	1-1/4"	Close	25
RN-125-150	1-1/4"	1-1/2"	25
RN-125-200	1-1/4"	2"	25
RN-125-300	1-1/4"	3"	25
RN-125-400	1-1/4"	4"	25
RN-125-600	1-1/4"	6"	25
RN-125-800	1-1/4"	8"	25
RN-125-1000	1-1/4"	10"	25
RN-125-1200	1-1/4"	12"	25
RN-150-C	1-1/2"	Close	25
RN-150-200	1-1/2"	2"	25
RN-150-300	1-1/2"	3"	25
RN-150-400	1-1/2"	4"	25
RN-150-600	1-1/2"	6"	25
RN-150-800	1-1/2"	8"	25
RN-150-1000	1-1/2"	10"	25
RN-150-1200	1-1/2"	12"	25
RN-200-C	2"	Close	25
RN-200-250	2"	2-1/2"	25
RN-200-300	2"	3"	25
RN-200-400	2"	4"	25
RN-200-600	2"	6"	25
RN-200-800	2"	8"	25
RN-200-1000	2"	10"	10
RN-200-1200	2"	12"	10

Electrical Fittings



CONDUIT BUSHINGS

Features:

- Die-Cast Zinc
- Full Machine-Cut Internal Threads
- Meets Federal Spec. A-A-50553



Cat. No.	Trade Size	Std. Pkg.	Master Ctn.
CB-50	1/2"	100	1000
CB-75	3/4"	50	500
CB-100	1"	50	500

Electrical Fittings

CONDUIT BUSHINGS INSULATED

Features:

- Die-Cast Zinc
- Full Machine-Cut Internal Threads
- Insulated Throat
- Meets Federal Spec. A-A-50553



Cat. No.	Trade Size	Std. Pkg.	Master Ctn.
CBI-50	1/2"	100	1000
CBI-75	3/4"	50	500
CBI-100	1"	50	500

PLASTIC INSULATING BUSHINGS

Features:

- PVC
- 105° C Rated
- Meets Federal Spec. A-A-50553



Cat. No.	Trade Size	Std. Pkg.	Master Ctn.
PB-50	1/2"	100	1000
PB-75	3/4"	100	1000
PB-100	1"	50	500
PB-125	1-1/4"	25	250
PB-150	1-1/2"	25	250
PB-200	2"	10	100
PB-250	2-1/2"	10	100
PB-300	3"	-	20
PB-350	3-1/2"	-	20
PB-400	4"	-	10
PB-500	5"	-	10
PB-600	6"	-	10

Lock Nuts

CONDUIT LOCKNUTS

Features:

- Die-Cast Zinc
- Full-Cut Internal Threads
- Meets Federal Spec. A-A-50553



Cat. No.	Trade Size	Std. Pkg.	Master Ctn.
LN-50	1/2"	100	1000
LN-75	3/4"	100	1000
LN-100	1"	100	1000
LN-125	1-1/4"	50	500
LN-150	1-1/2"	50	500
LN-200	2"	25	250
LN-250	2-1/2"	10	100
LN-300	3"	5	50
LN-350	3-1/2"	5	50
LN-400	4"	-	25

STEEL CONDUIT LOCKNUTS

Features:

- Steel
- Zinc-plated
- Full-Cut Internal Threads
- Meets Federal Spec. A-A-50553



Cat. No.	Trade Size	Std. Pkg.	Master Ctn.
SLN-50	1/2"	100	1000
SLN-75	3/4"	100	1000
SLN-100	1"	100	1000
SLN-125	1-1/4"	50	500
SLN-150	1-1/2"	50	500
SLN-200	2"	25	250
SLN-250	2-1/2"	10	100
SLN-300	3"	5	50
SLN-350	3-1/2"	5	50
SLN-400	4"	-	25
SLN-500	5"	-	10
SLN-600	6"	-	10

STEEL SEALING LOCKNUTS

Features:

- Steel
- Zinc-plated
- Bonded with Molten Sealing Material
- Meets Federal Spec. A-A-50553



Cat. No.	Trade Size	Std. Pkg.	Master Ctn.
SSLN-50	1/2"	100	1000
SSLN-75	3/4"	100	1000
SSLN-100	1"	100	1000
SSLN-125	1-1/4"	50	500
SSLN-150	1-1/2"	50	500
SSLN-200	2"	25	250
SSLN-250	2-1/2"	10	100
SSLN-300	3"	5	50
SSLN-350	3-1/2"	5	50
SSLN-400	4"	-	25
SSLN-500	5"	-	10
SSLN-600	6"	-	10

Reducing Washers

STEEL
REDUCING WASHERS

Features:

- Galvanized Stamped Steel



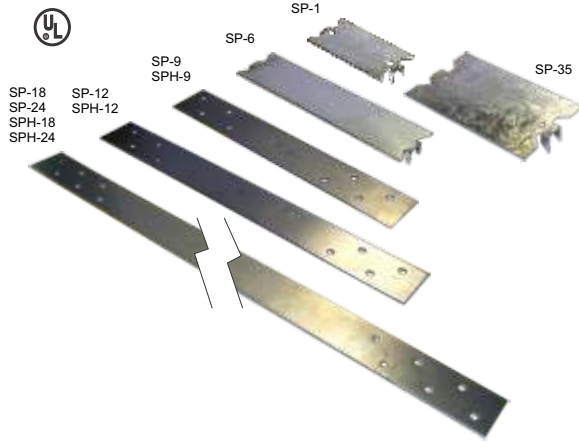
Cat. No.	Trade Size	Std. Pkg.	Master Ctn.
RW-75/50	3/4" ~ 1/2"	250	1000
RW-100/50	1" ~ 1/2"	250	1000
RW-100/75	1" ~ 3/4"	250	1000
RW-125/50	1-1/4" ~ 1/2"	100	400
RW-125/75	1-1/4" ~ 3/4"	100	400
RW-125/100	1-1/4" ~ 1"	100	400
RW-150/50	1-1/2" ~ 1/2"	-	100
RW-150/75	1-1/2" ~ 3/4"	-	100
RW-150/100	1-1/2" ~ 1"	-	100
RW-150/125	1-1/2" ~ 1-1/4"	-	100
RW-200/50	2" ~ 1/2"	-	50
RW-200/75	2" ~ 3/4"	-	50
RW-200/100	2" ~ 1"	-	50
RW-200/125	2" ~ 1-1/4"	-	50
RW-200/150	2" ~ 2-1/2"	-	50
RW-250/50	2-1/2" ~ 1/2"	25	100
RW-250/75	2-1/2" ~ 3/4"	25	100
RW-250/100	2-1/2" ~ 1"	25	100
RW-250/125	2-1/2" ~ 1-1/4"	25	100
RW-250/150	2-1/2" ~ 1-1/2"	25	100
RW-250/200	2-1/2" ~ 2"	25	100
RW-300/50	3" ~ 1/2"	-	25
RW-300/75	3" ~ 3/4"	-	25
RW-300/100	3" ~ 1"	-	25
RW-300/125	3" ~ 1-1/4"	-	25
RW-300/150	3" ~ 1-1/2"	-	25
RW-300/200	3" ~ 2"	-	25
RW-300/250	3" ~ 2-1/2"	-	25
RW-350/50	3-1/2" ~ 1/2"	-	10
RW-350/75	3-1/2" ~ 3/4"	-	10
RW-350/100	3-1/2" ~ 1"	-	10
RW-350/125	3-1/2" ~ 1-1/4"	-	10
RW-350/150	3-1/2" ~ 1-1/2"	-	10
RW-350/200	3-1/2" ~ 2"	-	10
RW-350/250	3-1/2" ~ 2-1/2"	-	10
RW-350/300	3-1/2" ~ 3"	-	10
RW-400/50	4" ~ 1/2"	-	10
RW-400/75	4" ~ 3/4"	-	10
RW-400/100	4" ~ 1"	-	10
RW-400/125	4" ~ 1-1/4"	-	10
RW-400/150	4" ~ 1-1/2"	-	10
RW-400/200	4" ~ 2"	-	10
RW-400/250	4" ~ 2-1/2"	-	10
RW-400/300	4" ~ 3"	-	10
RW-400/350	4" ~ 3-1/2"	-	10

Miscellaneous

NAIL SAFETY PLATES

Features:

- Provides protection from nail and screw penetration



Orbit Cat. No.	Description	Trade Size	Std. Pkg.	Master Ctn.
SP-1	16GA Safety Plate with prongs	1.5" x 2.75"	-	100
SP-1-500	16GA Safety Plate with prongs	1.5" x 2.75"	-	500
SP-1-500P	16GA Safety Plate with prongs in Pail	1.5" x 2.75"	-	500 in Pail
SP-35	16GA Safety Plate with prongs	3" x 5"	-	50
SP-6	16GA Safety Plate with prongs	1.5" x 6"	-	100
SP-9	16GA Safety Plate with Nail Holes	1.5" x 9"	-	50
SP-12	16GA Safety Plate with Nail Holes	1.5" x 12"	-	50
SP-18	16GA Safety Plate with Nail Holes	1.5" x 18"	-	50
SP-24	16GA Safety Plate with Nail Holes	1.5" x 24"	-	50
SPH-9	12GA Safety Plate with Nail Holes	1.5" x 9"	-	50
SPH-12	12GA Safety Plate with Nail Holes	1.5" x 12"	-	50
SPH-18	12GA Safety Plate with Nail Holes	1.5" x 18"	-	50
SPH-24	12GA Safety Plate with Nail Holes	1.5" x 24"	-	50

SWITCH BOX SUPPORT

Features:

- Bendable Tabs



Orbit Cat. No.	Description	Std. Pkg.	Master Ctn.
SBS	Switch Box Support, 20GA	-	100

5" ROUND CLOSURE PLATE

- Universal Mounting Strap
- For Covering Up Unused 3-1/2" or 4" Octagonal Boxes



Orbit Cat. No.	Description	Std. Pkg.	Master Ctn.
CP-5	Hard Aluminum 5" Dia. Blank Cover Plate; White	50	-

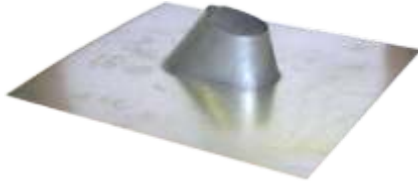
Roof Jacks

Electrical Fittings

ROOF JACKS

Features:

- 24GA Galvanized Steel
- Uninsulated
- For Service Entrance Conduit or Ventilation Pipe
- Fits Flat to 40°



Orbit Cat. No.	Trade Size	Std. Pkg.
RJ-50	1/2"	24
RJ-75	3/4"	24
RJ-100	1"	24
RJ-125	1-1/4"	24
RJ-150	1-1/2"	24
RJ-200	2"	24
RJ-300	3"	12
RJ-400	4"	12

SCREW KITS, PLASTIC ANCHOR KIT, & EASY ANCHOR KIT

in Plastic Partition Kits

Machine Screw Kits
Screw Count

Size	Qty.
3/4"	100
1"	75
1-1/4"	75
1-1/2"	50
2"	40
3"	30
Total	370

Cat. No.	Description	Trade Size	Screw Count/Kit	Std. Pkg.
KIT-632FH	6-32 Flat Head, 3/4" to 3", Slot	#6-32, Flat	370	10
KIT-632RH	6-32 Round Head, 3/4" to 3", Slot/Phillips	#6-32, Round	370	10
KIT-832RH	8-32 Round Head, 3/4" to 3", Slot/Phillips	#8-32, Round	370	10
KIT-10PAK	#10 x 1" Screws & Plastic Anchors, with Masonry Drill Bit	#10 x 1"	110	10
KIT-8EZ	#8 x 1-1/2" Zinc Dry Wall Easy Anchor Kit	#8 x 1-1/2"	50	10



KIT-632FH



KIT-632RH



KIT-832RH



KIT-10PAK



KIT-8EZ

Beam Clamps

STEEL BEAM CLAMPS

Features:

- Single Screw
- 2 Threaded Holes



Orbit Cat. No.	Description	Trade Size	Std. Pkg.	Master Ctn.
BC-25	1/4-20 Tap, 3/4" Jaw, 100 lb. Load	1"	50	250
BC-38	3/8-16 Tap, 7/8" Jaw, 200 lb. Load	2"	25	100

MALLEABLE IRON BEAM CLAMPS

Features:

- Single Screw
- 2 Threaded Holes



Orbit Cat. No.	Description	Trade Size	Std. Pkg.	Master Ctn.
BCM-25	1/4-20 Tap, 3/4" Jaw, 125 lb. Load	1"	50	250
BCM-38	3/8-16 Tap, 7/8" Jaw, 300 lb. Load	2"	25	100
BCM-50	1/2-13 Tap, 1" Jaw, 600 lb. Load	2-1/2"	10	50

Bar Hangers

FIXED BAR HANGERS

Features:

- Zinc Plated Steel
- For Stud and T-Bar



Cat. No.	Description	Master Ctn.
BHT-1	24" T-Bar bracket for use with boxes 1-1/2" or 2-1/8" Deep	50
BHT-1A	24" T-Bar bracket - 8" height adjustable	50
BH-1	24" Straight bar hanger for mounting ceiling boxes, Slotted, Includes 2 Stove Bolt / Unit	50
BH-1C	24" Straight bar hanger for mounting ceiling boxes, with BH-C Box Clip	50
BH-1S	20" Straight bar hanger for mounting ceiling boxes, Slotted, Includes 2 Stove Bolt / Unit	50
BH-1SC	20" Straight bar hanger for mounting ceiling boxes, With Box Clip BH-C	50
BH-2	21" Offset (1-1/2") bar hanger for mounting boxes with ring, Includes 2 Stove Bolt / Unit	50
BH-2NC	21" Offset (1-1/2") bar hanger for mounting boxes with ring, Slotted	50
BH-C	Additional box clip & screw set for use with BH-1, BH-1S & BH-2NC	100
BH-3	Straight bracket for architectural recess lights 25-1/4" long with notches 24" apart for use on T-Bar	50
BHT-C	Additional box clip & set screw for use with BHT-1 & BHT-1A	100

Electrical Fittings



Bar Hangers



ADJUSTABLE BAR HANGERS

Features:

- Zinc Plated Steel
- For Stud and T-Bar



Cat. No.	Description	Master Ctn.
BHA-1	Adjustable bar hanger with stud for joist spacing 16" to 24" with #3/8-18 NPS Threaded Stud	50
BHA-1C	Adjustable bar hanger with stud for joist spacing 16" to 24" with Box Clip	50
BHA-16	11" to 18" Adjustable box bracket - Mount Box with self-tapping screws on notches Ends bend and wrap around stud - Can be used with boxes 1-1/2" or 2-1/8" Deep	50
BHA-24	17" to 26" Adjustable box bracket - Mount Box with self-tapping screws on notches Ends bend and wrap around stud - Can be used with boxes 1-1/2" or 2-1/8" Deep	50
ABS	Far-Side Box Support for 1-1/2" & 2-1/8" Deep Boxes, For use with 4" Metal Studs	50
ABS-6	Far-Side Box Support for 1-1/2" & 2-1/8" Deep Boxes, For use with 6" Metal Studs	50
OWG	Clips and locks old-work steel boxes tightly to wall. 2 required per box.	100



Electrical Fittings



JACK CHAIN

Features:

- Zinc Plated Steel
- 25 lbs. Max. Load
- In Steel Reel



Cat. No.	Description	Trade Size	Std. Pkg.
JC-12	Jack Chain	12GA	100'

"S" HOOK

Features:

- Zinc Plated Steel
- 25 lbs. Max. Load



Cat. No.	Description	Trade Size	Std. Pkg.	Master Ctn.
SH-2	"S" Hook	12GA, 1-1/4"	100	1000

HANGER SCREW

Features:

- Steel
- Wood Screw Thread

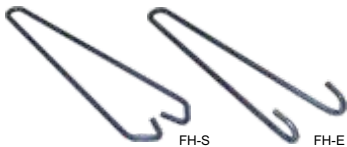


Cat. No.	Description	Dimension	Std. Pkg.	Master Ctn.
H-SCREW	Flat Hanger Screw	1/4" x 3"	100	500

FIXTURE HANGER

Features:

- Steel
- For Use with 2, 3, or 4 Light Fixtures



Cat. No.	Description	Mount Position	Std. Pkg.	Master Ctn.
FH-S	Fixture Hanger	Side Mount	100	500
FH-E	Fixture Hanger	End Mount	100	500

PORCELAIN WIRE HOLDERS

Features:

- Porcelain & Galvanized Steel



Cat. No.	Description	Trade Size	Std. Pkg.	Master Ctn.
PWH-L	With 2-1/4" Lag Bolt	2-3/4"	5	50
PWH-M	With Steel Clip for 1-1/4" to 3" Mast	1-1/4" to 3"	5	50

TIE WIRE

Features:

- Black Annealed Steel
- 16-1/2GA



Cat. No.	Description	Trade Size	Std. Pkg.
TW	Tie Wire	16GA, 400FT	20

Electrical Fittings