

twice**bright**

product range 2015 - 2016

# Why Choose Twice Bright Lighting?

Twice Bright Lighting's recessed lighting is

- » Innovative
- » Shallow
- » IC AT Small Aperture
- » High Quality
- » Energy Efficient
- » Easy to Install



Conventional small aperture downlighting is inefficient due to its inability to be completely covered by insulation. Some solutions do exist where they keep insulation away from fixtures by establishing a void area around the fixture, usually with a metal box. It's very ineffective in the fact that it moves insulation away from where it should be; next to your ceiling and directly on top of your recessed lighting. This is especially ineffective when you have a shallow cavity to work with and the other solutions reduce the R-value of the insulation to almost nothing above your downlights.

With Twice Bright Lighting's innovative designs you can eliminate these inefficiencies and still have modern, energy efficient lighting.

## Twice Bright Lighting's Recessed Lighting is...

- » **Innovative** - We bring the latest designs and trends from Scandinavia to the North American market.
- » **Shallow** - All of our fixtures are between 2 ½" and 4 ½" in height. Ideal for drop ceilings and low-clearance applications.
- » **IC AT Small Aperture** - Our fixtures can be installed directly into insulated ceilings. They are Air Tight per ASTM E283.
- » **High Quality** - Twice Bright fixtures are powder coated and are of solid steel construction.
- » **Energy Efficient** - Besides being highly efficient by allowing our fixtures to be covered directly by insulation and being Air Tight, we offer energy efficient solutions through integral LED fixtures and LED and IR Halogen lamps.
- » **Easy Installation** - Utilizing the sliding-arm system, butterfly clips and the quick connect terminals. Twice Bright fixtures reduce installation time to just minutes.

## Quick and easy installation!

Before you begin your installation, make sure you have chosen the correct model for your application. Twice Bright offers both line and low voltage options. Both have 120V input.

Our low voltage fixtures are all IC AT and are our shallowest solutions. They can be used almost anywhere!



*Completely installed in mere minutes!*

With our line voltage fixtures, we offer a complete range of IC AT and NON-IC fixtures. There are halogen and LED lamping options. We also offer integral LED fixtures in our XL series.

Pick your fixture, then enjoy the ease of installation of our downlights!



- 1 The hole is cut into the ceiling material with a hole saw and the wires are pulled through.
- 2 The wires are connected to the installation-friendly quick connector in the junction box.
- 3 Press the butterfly clips against the body of the fixture and push it through the hole.
- 4 Place the light source in the Twist Lock holder or directly into the fixture, depending on the model.



To see the installation video, please visit [www.twicebright.com](http://www.twicebright.com)

# 3 Innovation

## Certifications



Twice Bright Lighting prides itself in the innovation that we bring to the North American market. Drawing on European innovation, coupled with North American market demands, Twice Bright fills a void by offering IC AT remodel recessed lighting as well as offering the shallowest recessed lighting available.

Twice Bright Lighting also brings user friendly design and energy saving solutions to the North American market. We have halogen and LED energy savings solutions that will complement any modern lighting design.

All of Twice Bright Lighting's fixtures are tested and approved for the American and Canadian markets (UL1598, CSA22.2 No. 250.0). We use Intertek Testing Services to certify all of our fixtures so you can feel assured when installing our products.

### Reading our product codes: eg. CL 1220 TIF BZ

XL	3" Integral LED Recessed	TI	Tilting
CL	3" Low Voltage Recessed	TL	Twist Lock
SL	3" Line Voltage Recessed	TIF	Tilting Square
AL	4" Aluminum Reflector Recessed	TLF	Twist Lock Square
12, 35 or 120	Output Voltage	TI-TL	Tilting Twist Lock
25 - 50	Maximum Wattage		

### Colour Codes

WH	White
BS	Brushed Steel
BZ	Bronze
BL	Black
CH	Chrome

## Wet Location Twist Lock

Our WLTL accessory can be put into any of the following fixtures to make them rated for Wet Locations:

- |           |            |
|-----------|------------|
| CL1220TL  | SL12025TL  |
| CL1220TLF | SL12025TLF |
| XL3512TL  | SL12050TL  |
| XL3512TLF | SL12050TLF |



- Available in all finishes
- Clear or frosted lens

**WLTL** \_\_\_\_\_ - \_\_\_\_\_

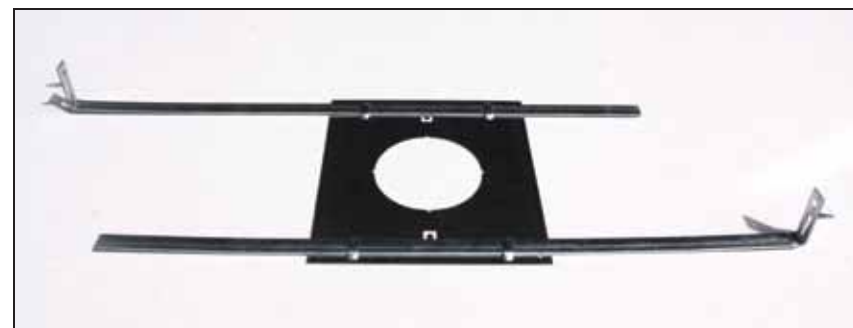
**FINISH**      **GLASS**

- |                    |              |
|--------------------|--------------|
| WH = WHITE         | CLR = CLEAR  |
| CH = CHROME        | FR = FROSTED |
| BZ = BRONZE        |              |
| BS = BRUSHED STEEL |              |
| BL = BLACK         |              |

eg. WLTL BS-FR

## Mounting Plates

For use in new construction. Our mounting plates allow you to plan where your fixtures will be and keep the wiring close to the hole. They come complete with a plate and two hanger bars.



**Ordering Code**

**Hole Diameter**

- |           |        |
|-----------|--------|
| NCMP 2500 | 2 1/2" |
| NCMP 2750 | 2 3/4" |
| NCMP 3000 | 3"     |
| NCMP 3125 | 3 1/8" |
| NCMP 3625 | 3 5/8" |

# 5 XL Series



- » High efficacy
- » Dimmable with a dimmer designed for use with an electronic transformer
- » Easy installation low voltage bi-pin connector

## XL SERIES MODULES

Available color temperatures (K) and lumens (lm):  
2700K / 880lm (CRI 80); 3000K / 915lm (CRI 80);  
4000K / 950lm (CRI 80); 5000K / 1010lm (CRI 75);  
2700K / 600lm (CRI 95); 3000K / 610lm (CRI 95).

## MLXL

XL LED Module

CRI

7 = CRI >70

8 = CRI >80

9 = CRI >95

CCT

27 = 2700K

30 = 3000K

40 = 4000K

50 = 5000K

Beam Angle

15 = 15°

24 = 24°

38 = 38°

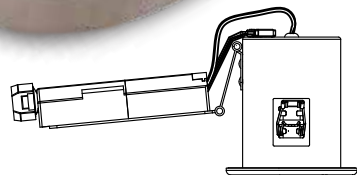
eg. MLXL83024



Trim Finishes \* » White » Brushed Steel » Bronze » Black » Chrome

# 2" IC AT Integral LED

- » For use on 120V circuit
- » Approved for feed-through wiring
- » Can be used with AWG 14 or AWG 12 wire



	XL3512 TL	XL3512 TLF
Module Retaining Mechanism	Twist-Lock	Twist-Lock
Trim Diameter	3 3/8" (85 mm)	3 3/8" (85 mm)
Hole Diameter	2 3/4" (70 mm)	2 3/4" (70 mm)
Height	3 1/2" (89 mm)	3 1/2" (89 mm)
Rated Location	Damp	Damp
Ceiling Type	Type IC	Type IC
Input Voltage	120 Volt	120 Volt
Output Voltage	35 Volt	35 Volt
Power Consumption (Total)	12 Watt	12 Watt
Module	XL Series	XL Series

\* Check for availability

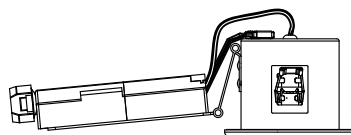


# 7 CL Series



Trim Finishes \* » White » Brushed Steel » Bronze » Black » Chrome

- » For use on 120V circuit/12V output (comes with integral electronic transformer)
- » Approved for feed-through wiring, quick-connect allows for daisy chaining of fixtures
- » Can be used with AWG 14 or AWG 12 wire



**CL 1220**




**CL 1220 TL**



**CL 1220 TLF**



	CL 1220	CL 1220 TL	CL 1220 TLF
Lamp Retaining Mechanism	C-Ring	Twist-Lock	Twist-Lock
Trim Diameter	3 3/8" (85 mm)	3 3/8" (85 mm)	3 3/8" (85 mm) <sup>2</sup>
Hole Diameter	2 1/2" (64 mm)	2 3/4" (70 mm)	2 3/4" (70 mm)
Height	2 1/2" (64 mm)	2 1/2" (64 mm)	2 1/2" (64 mm)
Rated Location	Damp	Damp	Damp
Ceiling Type	Type IC	Type IC	Type IC
Input Voltage	120 Volt	120 Volt	120 Volt
Lamp Base 	GU5.3	GU5.3	GU5.3
Output Voltage	12 Volt	12 Volt	12 Volt
Maximum Wattage	20 Watt **	20 Watt **	20 Watt **

IC AT





# 2" IC AT Low Voltage 8

- » Dimmable with a dimmer designed for use with an electronic transformer
- » Fixtures are not supplied with lamps
- » When using halogen lamps only use lamps with aluminum backed reflectors

CL 1220TI-TL***	CL 1220 TI	CL 1220 TIF
		
Twist-Lock (Tilt 35°)	C-Ring (Tilt 35°)	C-Ring (Tilt 35°)
3 3/4" (95 mm)	3 1/2" (89 mm)	3 3/8" (85 mm <sup>2</sup> )
3 1/8" (78 mm)	3" (76 mm)	3" (76 mm)
2 1/2" (64 mm)	2 1/2" (64 mm)	2 1/2" (64 mm)
Damp	Damp	Damp
Type IC	Type IC	Type IC
120 Volt	120 Volt	120 Volt
GU5.3	GU5.3	GU5.3
12 Volt	12 Volt	12 Volt
20 Watt**	20 Watt**	20 Watt**

\* Check for availability

\*\* Or recommended Soraa LEDs (pg. 16)

\*\*\* Only available in White and Brushed Steel finishes

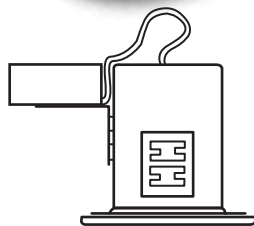


# 9 SL Series



Trim Finishes \* » White » Brushed Steel » Bronze » Black » Chrome

- » For use on 120V circuit
- » Approved for feed-through wiring, quick-connect allows for daisy chaining of fixtures
- » Can be used with AWG 14 or AWG 12 wire



**SL 12025**




**SL 12025 TL**



**SL 12025 TLF**



Lamp Retaining Mechanism	C-Ring	Twist-Lock	Twist-Lock
Trim Diameter	3 3/8" (85 mm)	3 3/8" (85 mm)	3 3/8" (85 mm) <sup>2</sup>
Hole Diameter	2 1/2" (64 mm)	2 3/4" (70 mm)	2 3/4" (70 mm)
Height	4 1/4" (108 mm)	3 1/2" (89 mm)	3 1/2" (89 mm)
Rated Location	Damp	Damp	Damp
Ceiling Type	Type IC	Type IC	Type IC
Input Voltage	120 Volt	120 Volt	120 Volt
Lamp Base 	GU10	GU10	GU10
Output Voltage	120 Volt	120 Volt	120 Volt
Maximum Wattage	25 Watt **	25 Watt **	25 Watt **

IC AT



## 2" IC AT Line Voltage

10

- » Dimmable with TRIAC dimmer (SL12011 non-dimmable)
- » Fixtures are supplied without lamps, excluding SL12011
- » If used for primary lighting we recommend using TCP dimmable LEDs (pg.16)
- » When using halogen lamps only use lamps with aluminum backed reflectors

SL 12025 TI	SL 12025 TIF
	
C-Ring (Tilt 20°)	C-Ring (Tilt 20°)
3 1/2" (89 mm)	3 3/8" (85 mm <sup>2</sup> )
3" (76 mm)	3" (76 mm)
4 1/4" (108 mm)	4 1/4" (108 mm)
Damp	Damp
Type IC	Type IC
120 Volt	120 Volt
GU10	GU10
120 Volt	120 Volt
25 Watt **	25 Watt **

\* Check for availability

\*\* or recommended TCP or Soraa LEDs (pg. 16)

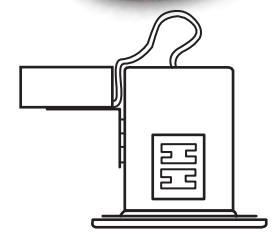


# 11 SL Series



Trim Finishes \* » White » Brushed Steel » Bronze » Black » Chrome

- » For use on 120V circuit
- » Approved for feed-through wiring, quick-connect allows for daisy chaining of fixtures
- » Can be used with AWG 14 or AWG 12 wire



### SL 12050




### SL 12050 TL



### SL 12050 TLF



	SL 12050	SL 12050 TL	SL 12050 TLF
Lamp Retaining Mechanism	C-Ring	Twist-Lock	Twist-Lock
Trim Diameter	3 3/8" (85 mm)	3 3/8" (85 mm)	3 3/8" (85 mm) <sup>2</sup>
Hole Diameter	2 1/2" (64 mm)	2 3/4" (70 mm)	2 3/4" (70 mm)
Height	4 1/4" (108 mm)	3 1/2" (89 mm)	3 1/2" (89 mm)
Rated Location	Damp	Damp	Damp
Ceiling Type	Type IC	Type IC	Type IC
Input Voltage	120 Volt	120 Volt	120 Volt
Lamp Base 	GU10	GU10	GU10
Output Voltage	120 Volt	120 Volt	120 Volt
Maximum Wattage	50 Watt **	50 Watt **	50 Watt **

NON-IC    

# 2" NON-IC Line Voltage 12

- » Dimmable with TRIAC dimmer
- » Fixtures are supplied without lamps
- » When using halogen lamps only use lamps with aluminum backed reflectors

SL12050 TI - SS ***	SL12050 TI	SL12050 TIF
		
C-Ring (Tilt 20°)	C-Ring (Tilt 20°)	C-Ring (Tilt 20°)
3 ½" (89 mm)	3 ½" (89 mm)	3 ¾" (85 mm <sup>2</sup> )
3" (76mm)	3" (76mm)	3" (76mm)
4 ¼" (108 mm)	4 ¼" (108 mm)	4 ¼" (108 mm)
Damp	Damp	Damp
Type NON-IC	Type NON-IC	Type NON-IC
120 Volt	120 Volt	120 Volt
GU10	GU10	GU10
120 Volt	120 Volt	120 Volt
50 Watt **	50 Watt **	50 Watt **

\* Check for availability

\*\* Or recommended TCP or Sora LEDs (pg. 16)

\*\*\* 316L grade Stainless Steel construction. 10 year rust-free warranty.



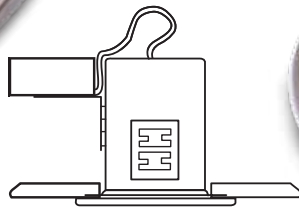
# AL Series

Trim Finishes » White » Brushed Steel

## 4" IC AT Line Voltage

- » For use on 120V circuit
- » Approved for feed-through wiring, quick-connect allows for daisy chaining of fixtures
- » Can be used with AWG 14 or AWG 12 wire

### AL12035



Lamp Retaining Mechanism	Bulb
Trim Diameter	4 1/8" (105 mm)
Hole Diameter	3 5/8" (92 mm)
Height	4 1/2" (115 mm)
Rated Location	Damp
Ceiling Type	TYPE IC
Input Voltage	120 Volt
Lamp Base	GU10
Output Voltage	120 Volt
Maximum Wattage	35 Watt *

\* or recommended TCP or Sora LEDs (pg. 16)





## With Every Fixture 14

### Included in the box...

*To make your installation easier we include a few items in the box:*



**Mounting Ring** - our mounting rings help reduce damage to softer ceiling materials and allow easier removal of the fixtures if they require adjustment or maintenance.



**Armored Cable Adaptor** - inside every box we include an armored cable adaptor which replaces the screw down clamp that you would use with regular wire.

## Recommended For Our Fixtures

### Halogen



### TCP Elite LED



### SORAA Brilliant



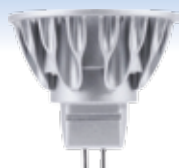
	Halogen	TCP Elite LED	SORAA Brilliant
Type	Halogen	LED	LED
Base	GU10	GU10	GU10
Voltage	120V	120V	120V
Wattage	20W - 35W - 50W	7W	7.5W
Lumens	180 - 280 - 450	500-550	475-525
Color Temperature	2700K	24-, 27-, 30-, 4100K	2700K, 3000K
CRI (Color Rendering Index)	99	80	80
Beam Spread	25°, 35°	20°, 40°	20°, 40°
Rated Life (hours)	2000	25,000	25,000
Dimmable	YES	YES	YES
Fixture Compatibility	SL & AL Series	SL & AL Series	SL & AL Series



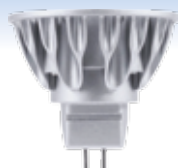
## Philips Energy Advantage IR



## SORAA Brilliant



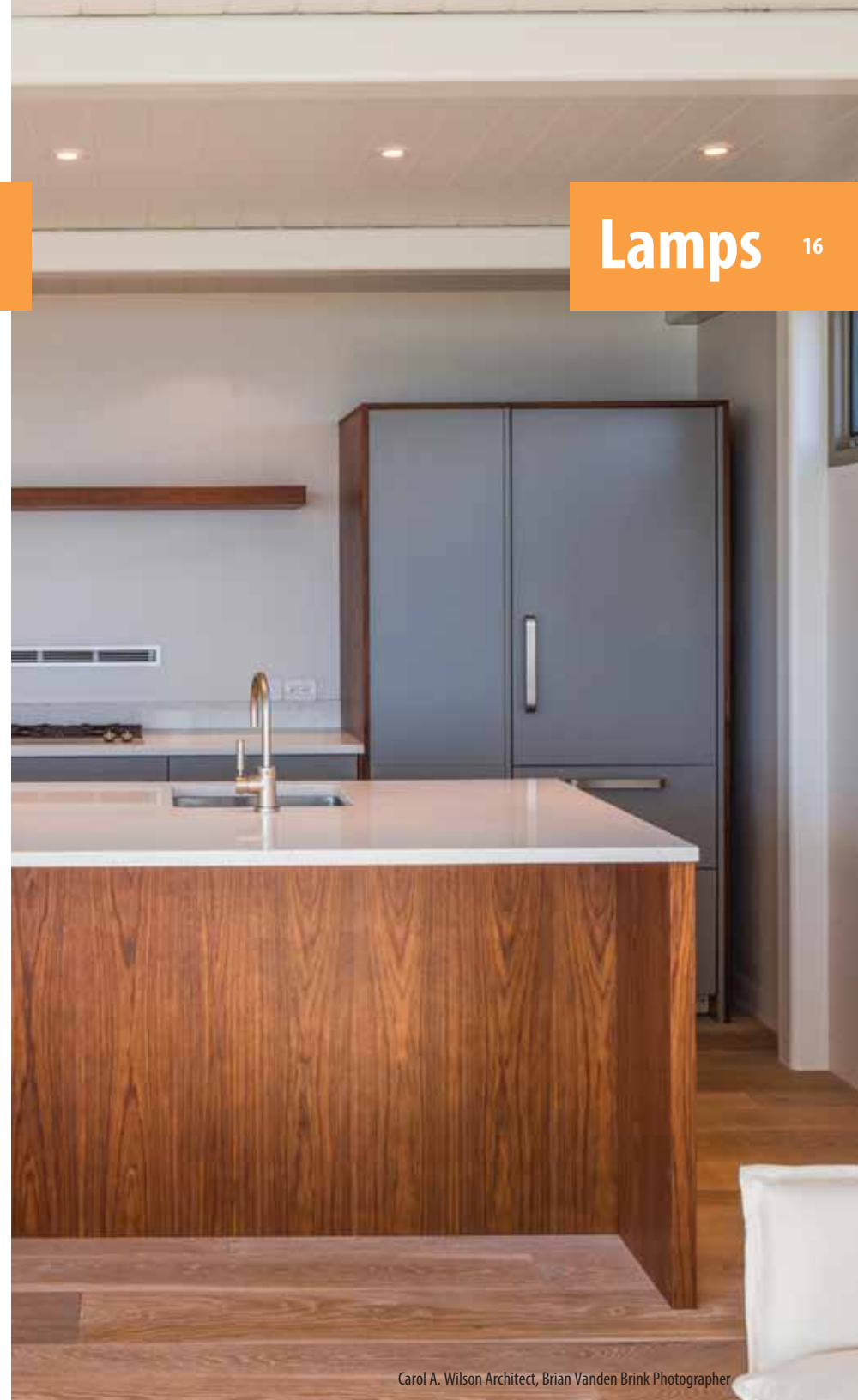
## SORAA Vivid



Halogen	LED	LED
GU5.3	GU5.3	GU5.3
12V	12V	12V
20W	9W	9W
325	560-590	465-490
3100K	2700K, 3000K	2700K, 3000K
99	80	95
8°, 36°	25°, 36°	25°, 36°
5,000	25,000	25,000
YES**	YES**	YES**
CL Series	CL Series	CL Series

\* Only works with TL fixtures

\*\* See our website for recommended dimmers  
[www.twicebright.com](http://www.twicebright.com)



## 17 LED Mirrors



Twice Bright Lighting's LED Mirrors are a must have item in today's luxury bathroom. High quality float glass with bevelled edges, electronic LED driver and superbright LEDs are standard with all our mirrors.

Extras can include: glass shelf, infrared sensor switch, demisting pad, digital clock, power socket, USB socket, RGB LED (remote included).

Make Twice Bright LED Mirrors a part of your residential or architectural project. Please check [www.twicebright.com](http://www.twicebright.com) or contact us for more information.

\* Mirrors may not be in stock. Please call for availability.

# LED Tape Light, Under Cabinet, Step/Wall Lights



Twice Bright Lighting offers a variety of LED tape light, under cabinet and step/wall light products.

Twice Bright LED tape light can be used in a multitude of applications. Whether for lighting up your kitchens, bathrooms or even closets we have an option for you. All Twice Bright tape is tightly binned and high CRI.

Our LED under cabinet lights are the perfect addition to a modern kitchen.

We have 12V and 120V LED step/wall lights which install into round or single, double and triple gang junction boxes. All are approved for Wet Locations.

Our 12V mini step/wall lights, which come in round and square trim options, are great for discreet step and wall lighting applications.

Please visit [www.twicebright.com](http://www.twicebright.com) to see our latest offering in these categories.





twice**bright**

**Twice Bright Lighting Co. Ltd.**

108 - 11860 Hammersmith Way

Richmond, BC Canada V7A 5G1

Tel: 1 (778) 297-2121

Fax: 1 (778) 297-2122

Toll Free: 1 (888) 484-7295

[www.twicebright.com](http://www.twicebright.com)