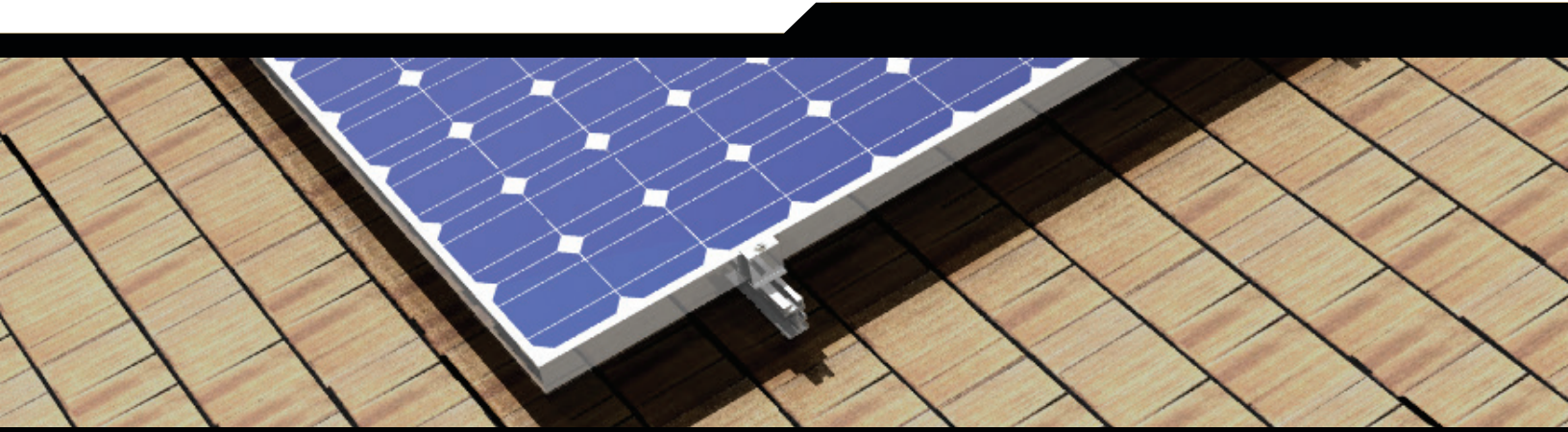


POWER RAIL™ CATALOG

PV Solar Roof and Structure Mounting System



-  COMMUNICATIONS
-  ENERGY
-  SPECIAL INDUSTRIES
-  SOLAR

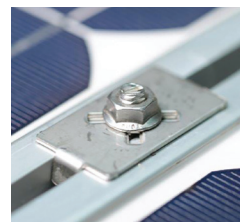
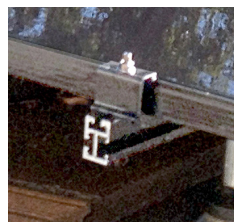
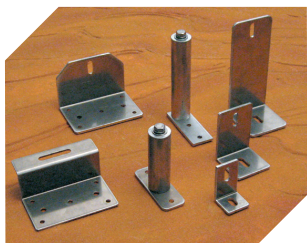


Table of Contents

POWER RAIL™ Module Mounting System	3	Low Profile Tilt Kits (One High Portrait Mounting)	
POWER RAIL™ Extrusions		P6 Low-Profile Tilt Kits	22
P4	4	P8 Low-Profile Tilt Kits	22
P6	6	Two-Tier Tilt Kits (Two High Portrait Mounting)	
P8	8	Two-Tier Tilt Kits–60 Cell	23
P14	10	Two-Tier Tilt Kits–72 Cell	23
D Series – XD/UD	12		
D Series – LD/MD	13		
POWER RAIL Mounting Attachments – P4, P6 and P8		Module Clamps	
D Series Mounting Base Brackets	14	Pre-Assembled Module Clamps w/RAD Hardware	24
P14 "L" Foot	14	Unassembled Module Clamps with RAD Hardware	25
"L" Feet	15	Pre-Assembled Purlin Through Hole Clamps	26
Tilted "L" Feet	15	Universal End Clamp	27
Easy Feet™	16	Pre-Assembled Module Clamps with WEEB Grounding	28
Roof Rod Mount	16		
Power Post™ Stanchions	17	Power Rail™ Accessories	
Easy Power Post™ Stanchions	17	Grounding Hardware	29
Offset Power Post™ Stanchions	18	Turn Bolts	29
Super Post Stanchions	18	Power Post Flashing	30
Corrugated Roof Mounts	19	Flat Roof Flashing	30
Easy Tile Hook	19	Wire Management Clips	31
Power Rail™ Splice Plate Kits	20		
Power Rail™ PV Flash	21		

Power Rail™ Module Mounting System



The PV module mounting system engineered to reduce installation costs and provide maximum strength for parallel-to-roof, tilt up or open structure mounting applications.

The Power Rail mounting system is designed with the professional PV solar installer in mind. The top-clamping rails utilize a single tool with a revolutionary patented RAD™ Fastener for faster bolt placement. The unique shape of the RAD provides an anti-rotation feature, locking the bolt in the proper orientation when installed.

The high strength rigid rails also include an integral wiring channel for securing cables and providing a professional finish. The system includes a wide selection of mounting options designed for secure and water tight attachments to any roof style.

Mounting Rail Options*

P4/P6	Engineered to save cost on shorter span applications
P8	Engineered for longer span and heavier snow conditions
P14	Engineered for commercial applications with greater distances between supports
XD/UD	Engineered to save cost on commercial and shade structure applications
LD/MD	Engineered for long span commercial and shade structure applications

*Reference Rail Span and Cantilever Charts located at www.dpwsolar.com.

Features

High Strength Reliable Design

- Engineered rail profiles for maximum strength-to-weight ratio
- Structural Marine Grade Aluminum rail construction
- High Strength stainless steel module clamps

Reduced Installation Time and Costs

- Single Tool Assembly – all 5/16" hardware
- RAD™ hardware for quick bolt placements that Lock-In-Place
- Wiring Channel for securing cables
- Standard lengths up to 27 feet eliminate costly rail splices
- AMP Clamp Integral module grounding

Flexible Mounting Options

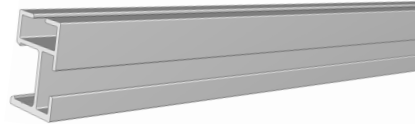
- “L” mounting feet – multiple heights
- Tilt Feet, 5 and 10 degrees
- Power Post™ – solid Aluminum stanchions
- Easy Feet™ attachment anywhere on metal or composite roof decking
- PV Flashing hardware
- Low Profile and Two-Tier Tilt Kits – up to 45 degrees

Power Rail™ Extrusions

Power Rail is an engineered profile extrusion made from Series 6000 structural marine grade aluminum. Standard finish is mill-finish aluminum. Clear and Black Anodized options available.

P4

Power Rail P4 – Extrusion



84" Standard Lengths

Length	84"		
Weight Per Unit (lbs.)	2.67		
Pricing per Quantities (Higher Volume Discount Available)			
Part #	Quantity	Finish	Price
P4-84	1-19	Mill	26.00
P4-84-BA		Black	35.10
P4-84-CA		Clear	29.90
P4-84	20-39	Mill	24.50
P4-84-BA		Black	33.08
P4-84-CA		Clear	28.18
P4-84	40-59	Mill	23.75
P4-84-BA		Black	32.06
P4-84-CA		Clear	27.31
P4-84	60-79	Mill	23.00
P4-84-BA		Black	31.05
P4-84-CA		Clear	26.45
P4-84	80-99	Mill	22.00
P4-84-BA		Black	29.70
P4-84-CA		Clear	25.30
P4-84	100+	Mill	21.00
P4-84-BA		Black	28.35
P4-84-CA		Clear	24.15

126" Standard Lengths

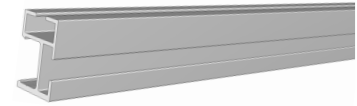
Length	126"		
Weight Per Unit (lbs.)	4.00		
Pricing per Quantities (Higher Volume Discount Available)			
Part #	Quantity	Finish	Price
P4-126	1-19	Mill	38.00
P4-126-BA		Black	51.30
P4-126-CA		Clear	43.70
P4-126	20-39	Mill	35.00
P4-126-BA		Black	49.28
P4-126-CA		Clear	41.98
P4-126	40-59	Mill	35.00
P4-126-BA		Black	47.25
P4-126-CA		Clear	40.25
P4-126	60-79	Mill	34.00
P4-126-BA		Black	45.90
P4-126-CA		Clear	39.10
P4-126	80-99	Mill	32.50
P4-126-BA		Black	43.88
P4-126-CA		Clear	37.38
P4-126	100+	Mill	32.00
P4-126-BA		Black	43.20
P4-126-CA		Clear	36.80

162" Standard Lengths

Length	162"		
Weight Per Unit (lbs.)	5.15		
Pricing per Quantities (Higher Volume Discount Available)			
Part #	Quantity	Finish	Price
P4-162	1-19	Mill	48.00
P4-162-BA		Black	64.80
P4-162-CA		Clear	55.20
P4-162	20-39	Mill	46.50
P4-162-BA		Black	62.78
P4-162-CA		Clear	53.48
P4-162	40-59	Mill	44.75
P4-162-BA		Black	60.41
P4-162-CA		Clear	51.46
P4-162	60-79	Mill	43.00
P4-162-BA		Black	58.05
P4-162-CA		Clear	49.45
P4-162	80-99	Mill	41.75
P4-162-BA		Black	56.36
P4-162-CA		Clear	48.01
P4-162	100+	Mill	40.00
P4-162-BA		Black	54.00
P4-162-CA		Clear	46.00

Reference www.DPWSolar.com for Span/Cantilever Charts.
Standard - Mill **BA**- Black Anodized **CA**- Clear Anodized

Power Rail™ Extrusions



Power Rail P4 – Extrusion

P4

204" Standard Lengths

Length		204"	
Weight Per Unit (lbs.)		6.48	
Pricing per Quantities (Higher Volume Discount Available)			
Part #	Quantity	Finish	Price
P4-204	1-19	Mill	60.00
P4-204-BA		Black	81.00
P4-204-CA		Clear	69.00
P4-204	20-39	Mill	57.50
P4-204-BA		Black	77.63
P4-204-CA		Clear	66.13
P4-204	40-59	Mill	55.75
P4-204-BA		Black	75.26
P4-204-CA		Clear	64.11
P4-204	60-79	Mill	53.50
P4-204-BA		Black	72.23
P4-204-CA		Clear	61.53
P4-204	80-99	Mill	51.00
P4-204-BA		Black	68.85
P4-204-CA		Clear	58.65
P4-204	100+	Mill	49.50
P4-204-BA		Black	66.83
P4-204-CA		Clear	56.93

242" Standard Lengths

Length		242"	
Weight Per Unit (lbs.)		7.60	
Pricing per Quantities (Higher Volume Discount Available)			
Part #	Quantity	Finish	Price
P4-242	1-19	Mill	70.00
P4-242-BA		Black	94.50
P4-242-CA		Clear	80.50
P4-242	20-39	Mill	67.25
P4-242-BA		Black	90.79
P4-242-CA		Clear	77.34
P4-242	40-59	Mill	64.50
P4-242-BA		Black	87.08
P4-242-CA		Clear	74.18
P4-242	60-79	Mill	62.00
P4-242-BA		Black	83.70
P4-242-CA		Clear	71.30
P4-242	80-99	Mill	59.75
P4-242-BA		Black	80.66
P4-242-CA		Clear	68.71
P4-242	100+	Mill	57.00
P4-242-BA		Black	76.95
P4-242-CA		Clear	65.55

282" Standard Lengths

Length		282"	
Weight Per Unit (lbs.)		8.95	
Pricing per Quantities (Higher Volume Discount Available)			
Part #	Quantity	Finish	Price
P4-282	1-19	Mill	80.75
P4-282-BA		Black	109.01
P4-282-CA		Clear	91.75
P4-282	20-39	Mill	77.75
P4-282-BA		Black	104.96
P4-282-CA		Clear	89.41
P4-282	40-59	Mill	75.00
P4-282-BA		Black	101.25
P4-282-CA		Clear	86.25
P4-282	60-79	Mill	72.00
P4-282-BA		Black	97.20
P4-282-CA		Clear	82.80
P4-282	80-99	Mill	69.00
P4-282-BA		Black	93.15
P4-282-CA		Clear	79.35
P4-282	100+	Mill	66.25
P4-282-BA		Black	89.44
P4-282-CA		Clear	76.19

324" Standard Lengths

Length		324"	
Weight Per Unit (lbs.)		10.29	
Pricing per Quantities (Higher Volume Discount Available)			
Part #	Quantity	Finish	Price
P4-324	1-19	Mill	91.75
P4-324-BA		Black	123.86
P4-324-CA		Clear	105.51
P4-324	20-39	Mill	88.25
P4-324-BA		Black	119.14
P4-324-CA		Clear	101.49
P4-324	40-59	Mill	85.75
P4-324-BA		Black	115.76
P4-324-CA		Clear	98.61
P4-324	60-79	Mill	81.25
P4-324-BA		Black	109.69
P4-324-CA		Clear	93.44
P4-324	80-99	Mill	78.25
P4-324-BA		Black	105.64
P4-324-CA		Clear	89.99
P4-324	100+	Mill	75.00
P4-324-BA		Black	101.25
P4-324-CA		Clear	86.25

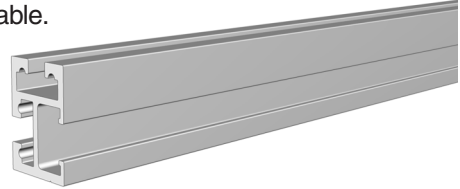
Reference www.DPWSolar.com for Span/Cantilever Charts.
Standard - Mill **BA**- Black Anodized **CA**- Clear Anodized

Power Rail™ Extrusions

Power Rail is an engineered profile extrusion made from Series 6000 structural marine grade aluminum. Standard finish is mill-finish aluminum. Clear and Black Anodized options available.

P6

Power Rail P6 – Extrusion



84" Standard Lengths

Length		84"	
Weight Per Unit (lbs.)		5.0	
Pricing per Quantities (Higher Volume Discount Available)			
Part #	Quantity	Finish	Price
P6-84	1-19	Mill	44.00
P6-84-BA		Black	59.40
P6-84-CA		Clear	50.60
P6-84	20-39	Mill	42.00
P6-84-BA		Black	56.70
P6-84-CA		Clear	48.30
P6-84	40-59	Mill	41.00
P6-84-BA		Black	55.35
P6-84-CA		Clear	54.00
P6-84	60-79	Mill	40.00
P6-84-BA		Black	54.00
P6-84-CA		Clear	46.00
P6-84	80-99	Mill	38.00
P6-84-BA		Black	51.30
P6-84-CA		Clear	43.70
P6-84	100+	Mill	36.00
P6-84-BA		Black	48.60
P6-84-CA		Clear	41.40

126" Standard Lengths

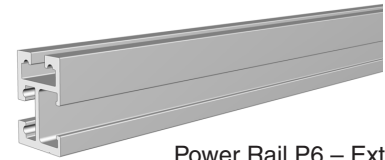
Length		126"	
Weight Per Unit (lbs.)		7.5	
Pricing per Quantities (Higher Volume Discount Available)			
Part #	Quantity	Finish	Price
P6-126	1-19	Mill	65.00
P6-126-BA		Black	87.75
P6-126-CA		Clear	74.75
P6-126	20-39	Mill	63.00
P6-126-BA		Black	85.05
P6-126-CA		Clear	41.98
P6-126	40-59	Mill	60.00
P6-126-BA		Black	81.00
P6-126-CA		Clear	40.25
P6-126	60-79	Mill	59.00
P6-126-BA		Black	79.65
P6-126-CA		Clear	67.85
P6-126	80-99	Mill	56.00
P6-126-BA		Black	75.60
P6-126-CA		Clear	64.40
P6-126	100+	Mill	54.00
P6-126-BA		Black	72.90
P6-126-CA		Clear	62.10

162" Standard Lengths

Length		162"	
Weight Per Unit (lbs.)		9.5	
Pricing per Quantities (Higher Volume Discount Available)			
Part #	Quantity	Finish	Price
P6-162	1-19	Mill	83.00
P6-162-BA		Black	112.05
P6-162-CA		Clear	95.45
P6-162	20-39	Mill	80.00
P6-162-BA		Black	108.00
P6-162-CA		Clear	92.00
P6-162	40-59	Mill	77.00
P6-162-BA		Black	103.95
P6-162-CA		Clear	88.55
P6-162	60-79	Mill	74.00
P6-162-BA		Black	99.90
P6-162-CA		Clear	85.10
P6-162	80-99	Mill	72.00
P6-162-BA		Black	97.20
P6-162-CA		Clear	82.80
P6-162	100+	Mill	68.00
P6-162-BA		Black	91.80
P6-162-CA		Clear	78.20

Reference www.DPWSolar.com for Span/Cantilever Charts.
Standard - Mill **BA**- Black Anodized **CA**- Clear Anodized

Power Rail™ Extrusions



Power Rail P6 – Extrusion

P6

204" Standard Lengths

Length	204"		
Weight Per Unit (lbs.)	12.0		
Pricing per Quantities (Higher Volume Discount Available)			
Part #	Quantity	Finish	Price
P6-204	1-19	Mill	103.00
P6-204-BA		Black	139.05
P6-204-CA		Clear	118.45
P6-204	20-39	Mill	99.00
P6-204-BA		Black	133.65
P6-204-CA		Clear	113.85
P6-204	40-59	Mill	96.00
P6-204-BA		Black	129.60
P6-204-CA		Clear	110.40
P6-204	60-79	Mill	92.00
P6-204-BA		Black	124.20
P6-204-CA		Clear	105.80
P6-204	80-99	Mill	88.00
P6-204-BA		Black	118.80
P6-204-CA		Clear	101.20
P6-204	100+	Mill	85.00
P6-204-BA		Black	114.75
P6-204-CA		Clear	97.75

242" Standard Lengths

Length	242"		
Weight Per Unit (lbs.)	14.0		
Pricing per Quantities (Higher Volume Discount Available)			
Part #	Quantity	Finish	Price
P6-242	1-19	Mill	120.00
P6-242-BA		Black	162.00
P6-242-CA		Clear	138.00
P6-242	20-39	Mill	116.00
P6-242-BA		Black	156.60
P6-242-CA		Clear	133.40
P6-242	40-59	Mill	111.00
P6-242-BA		Black	149.85
P6-242-CA		Clear	127.65
P6-242	60-79	Mill	107.00
P6-242-BA		Black	144.45
P6-242-CA		Clear	123.05
P6-242	80-99	Mill	103.00
P6-242-BA		Black	139.05
P6-242-CA		Clear	118.45
P6-242	100+	Mill	98.00
P6-242-BA		Black	132.30
P6-242-CA		Clear	112.70

282" Standard Lengths

Length	282"		
Weight Per Unit (lbs.)	16.5		
Pricing per Quantities (Higher Volume Discount Available)			
Part #	Quantity	Finish	Price
P6-282	1-19	Mill	139.00
P6-282-BA		Black	187.65
P6-282-CA		Clear	159.85
P6-282	20-39	Mill	134.00
P6-282-BA		Black	180.90
P6-282-CA		Clear	154.10
P6-282	40-59	Mill	129.00
P6-282-BA		Black	174.15
P6-282-CA		Clear	148.35
P6-282	60-79	Mill	124.00
P6-282-BA		Black	167.40
P6-282-CA		Clear	142.60
P6-282	80-99	Mill	119.00
P6-282-BA		Black	160.65
P6-282-CA		Clear	136.85
P6-282	100+	Mill	114.00
P6-282-BA		Black	153.90
P6-282-CA		Clear	131.10

324" Standard Lengths

Length	324"		
Weight Per Unit (lbs.)	19.0		
Pricing per Quantities (Higher Volume Discount Available)			
Part #	Quantity	Finish	Price
P6-324	1-19	Mill	158.00
P6-324-BA		Black	213.30
P6-324-CA		Clear	181.70
P6-324	20-39	Mill	152.00
P6-324-BA		Black	205.20
P6-324-CA		Clear	174.80
P6-324	40-59	Mill	146.00
P6-324-BA		Black	197.10
P6-324-CA		Clear	167.90
P6-324	60-79	Mill	140.00
P6-324-BA		Black	189.00
P6-324-CA		Clear	161.00
P6-324	80-99	Mill	135.00
P6-324-BA		Black	182.25
P6-324-CA		Clear	155.25
P6-324	100+	Mill	129.00
P6-324-BA		Black	174.15
P6-324-CA		Clear	148.35

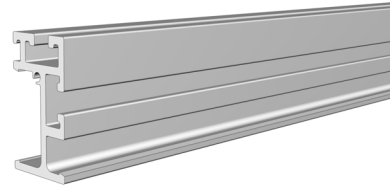
Reference www.DPWSolar.com for Span/Cantilever Charts.
Standard - Mill **BA**- Black Anodized **CA**- Clear Anodized

Power Rail™ Extrusion

Power Rail is an engineered profile extrusion made from Series 6000 structural marine grade aluminum. Standard finish is mill-finish aluminum. Clear and Black Anodized options available.

P8

Power Rail P8 – Extrusion



84" Standard Lengths

Length		84"	
Weight Per Unit (lbs.)		7.0	
Pricing per Quantities (Higher Volume Discount Available)			
Part #	Quantity	Finish	Price
P8-84	1-19	Mill	68.00
P8-84-BA		Black	91.80
P8-84-CA		Clear	78.20
P8-84	20-39	Mill	65.00
P8-84-BA		Black	87.75
P8-84-CA		Clear	74.75
P8-84	40-59	Mill	63.00
P8-84-BA		Black	85.05
P8-84-CA		Clear	72.45
P8-84	60-79	Mill	61.00
P8-84-BA		Black	82.35
P8-84-CA		Clear	70.15
P8-84	80-99	Mill	58.00
P8-84-BA		Black	78.30
P8-84-CA		Clear	66.70
P8-84	100+	Mill	56.00
P8-84-BA		Black	75.60
P8-84-CA		Clear	83.00

126" Standard Lengths

Length		126"	
Weight Per Unit (lbs.)		10.5	
Pricing per Quantities (Higher Volume Discount Available)			
Part #	Quantity	Finish	Price
P8-126	1-19	Mill	100.00
P8-126-BA		Black	135.00
P8-126-CA		Clear	115.00
P8-126	20-39	Mill	97.00
P8-126-BA		Black	130.95
P8-126-CA		Clear	111.55
P8-126	40-59	Mill	93.00
P8-126-BA		Black	125.55
P8-126-CA		Clear	106.95
P8-126	60-79	Mill	90.00
P8-126-BA		Black	121.50
P8-126-CA		Clear	103.50
P8-126	80-99	Mill	86.00
P8-126-BA		Black	116.10
P8-126-CA		Clear	98.90
P8-126	100+	Mill	83.00
P8-126-BA		Black	112.05
P8-126-CA		Clear	95.45

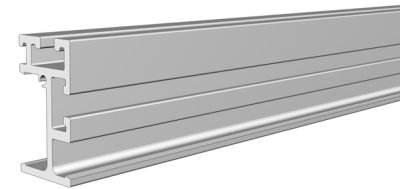
162" Standard Lengths

Length		162"	
Weight Per Unit (lbs.)		13.5	
Pricing per Quantities (Higher Volume Discount Available)			
Part #	Quantity	Finish	Price
P8-162	1-19	Mill	128.00
P8-162-BA		Black	172.80
P8-162-CA		Clear	147.20
P8-162	20-39	Mill	123.00
P8-162-BA		Black	166.05
P8-162-CA		Clear	141.45
P8-162	40-59	Mill	119.00
P8-162-BA		Black	160.65
P8-162-CA		Clear	136.85
P8-162	60-79	Mill	114.00
P8-162-BA		Black	153.90
P8-162-CA		Clear	131.10
P8-162	80-99	Mill	110.00
P8-162-BA		Black	148.50
P8-162-CA		Clear	126.50
P8-162	100+	Mill	105.00
P8-162-BA		Black	141.75
P8-162-CA		Clear	120.75

Reference www.DPWSolar.com for Span/Cantilever Charts.
Standard - Mill **BA**- Black Anodized **CA**- Clear Anodized

Power Rail™ Extrusion

Power Rail P8 – Extrusion



P8

204" Standard Lengths

Length		204"	
Weight Per Unit (lbs.)		17.0	
Pricing per Quantities (Higher Volume Discount Available)			
Part #	Quantity	Finish	Price
P8-204	1-19	Mill	159.00
P8-204-BA		Black	214.65
P8-204-CA		Clear	182.85
P8-204	20-39	Mill	153.00
P8-204-BA		Black	206.55
P8-204-CA		Clear	175.95
P8-204	40-59	Mill	147.00
P8-204-BA		Black	198.45
P8-204-CA		Clear	169.05
P8-204	60-79	Mill	142.00
P8-204-BA		Black	191.70
P8-204-CA		Clear	163.30
P8-204	80-99	Mill	136.00
P8-204-BA		Black	183.60
P8-204-CA		Clear	156.40
P8-204	100+	Mill	130.00
P8-204-BA		Black	175.50
P8-204-CA		Clear	149.50

242" Standard Lengths

Length		242"	
Weight Per Unit (lbs.)		20.2	
Pricing per Quantities (Higher Volume Discount Available)			
Part #	Quantity	Finish	Price
P8-242	1-19	Mill	184.00
P8-242-BA		Black	248.40
P8-242-CA		Clear	211.60
P8-242	20-39	Mill	178.00
P8-242-BA		Black	240.30
P8-242-CA		Clear	204.70
P8-242	40-59	Mill	171.00
P8-242-BA		Black	230.85
P8-242-CA		Clear	196.65
P8-242	60-79	Mill	164.00
P8-242-BA		Black	221.40
P8-242-CA		Clear	188.60
P8-242	80-99	Mill	158.00
P8-242-BA		Black	213.30
P8-242-CA		Clear	181.70
P8-242	100+	Mill	151.00
P8-242-BA		Black	203.85
P8-242-CA		Clear	173.65

282" Standard Lengths

Length		282"	
Weight Per Unit (lbs.)		23.5	
Pricing per Quantities (Higher Volume Discount Available)			
Part #	Quantity	Finish	Price
P8-282	1-19	Mill	214.00
P8-282-BA		Black	288.90
P8-282-CA		Clear	246.10
P8-282	20-39	Mill	206.00
P8-282-BA		Black	278.10
P8-282-CA		Clear	236.90
P8-282	40-59	Mill	198.00
P8-282-BA		Black	267.30
P8-282-CA		Clear	227.70
P8-282	60-79	Mill	191.00
P8-282-BA		Black	257.85
P8-282-CA		Clear	219.65
P8-282	80-99	Mill	183.00
P8-282-BA		Black	247.05
P8-282-CA		Clear	210.45
P8-282	100+	Mill	175.00
P8-282-BA		Black	236.25
P8-282-CA		Clear	201.25

324" Standard Lengths

Length		324"	
Weight Per Unit (lbs.)		27.0	
Pricing per Quantities (Higher Volume Discount Available)			
Part #	Quantity	Finish	Price
P8-324	1-19	Mill	243.00
P8-324-BA		Black	328.05
P8-324-CA		Clear	279.45
P8-324	20-39	Mill	234.00
P8-324-BA		Black	315.90
P8-324-CA		Clear	269.10
P8-324	40-59	Mill	225.00
P8-324-BA		Black	303.75
P8-324-CA		Clear	258.75
P8-324	60-79	Mill	216.00
P8-324-BA		Black	291.60
P8-324-CA		Clear	248.40
P8-324	80-99	Mill	207.00
P8-324-BA		Black	279.45
P8-324-CA		Clear	238.05
P8-324	100+	Mill	198.00
P8-324-BA		Black	267.30
P8-324-CA		Clear	227.70

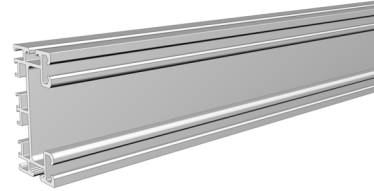
Reference www.DPWSolar.com for Span/Cantilever Charts.
Standard - Mill **BA**- Black Anodized **CA**- Clear Anodized

Power Rail™ Extrusions

Power Rail is an engineered profile extrusion made from Series 6000 structural marine grade aluminum. Standard finish is mill-finish aluminum. Clear and Black Anodized options available.

P14

Power Rail P14 – Extrusion



84" Standard Lengths

Length		84"	
Weight Per Unit (lbs.)		15.5	
Pricing per Quantities (Higher Volume Discount Available)			
Part #	Quantity	Finish	Price
P14-84	1-19	Mill	136.00
P14-84-BA		Black	Call for Pricing
P14-84-CA		Clear	Call for Pricing
P14-84	20-39	Mill	130.00
P14-84-BA		Black	Call for Pricing
P14-84-CA		Clear	Call for Pricing
P14-84	40-59	Mill	126.00
P14-84-BA		Black	Call for Pricing
P14-84-CA		Clear	Call for Pricing
P14-84	60-79	Mill	122.00
P14-84-BA		Black	Call for Pricing
P14-84-CA		Clear	Call for Pricing
P14-84	80-99	Mill	116.00
P14-84-BA		Black	Call for Pricing
P14-84-CA		Clear	Call for Pricing
P14-84	100+	Mill	112.00
P14-84-BA		Black	Call for Pricing
P14-84-CA		Clear	Call for Pricing

126" Standard Lengths

Length		126"	
Weight Per Unit (lbs.)		23.5	
Pricing per Quantities (Higher Volume Discount Available)			
Part #	Quantity	Finish	Price
P14-126	1-19	Mill	200.00
P14-126-BA		Black	Call for Pricing
P14-126-CA		Clear	Call for Pricing
P14-126	20-39	Mill	194.00
P14-126-BA		Black	Call for Pricing
P14-126-CA		Clear	Call for Pricing
P14-126	40-59	Mill	186.00
P14-126-BA		Black	Call for Pricing
P14-126-CA		Clear	Call for Pricing
P14-126	60-79	Mill	180.00
P14-126-BA		Black	Call for Pricing
P14-126-CA		Clear	Call for Pricing
P14-126	80-99	Mill	172.00
P14-126-BA		Black	Call for Pricing
P14-126-CA		Clear	Call for Pricing
P14-126	100+	Mill	166.00
P14-126-BA		Black	Call for Pricing
P14-126-CA		Clear	Call for Pricing

162" Standard Lengths

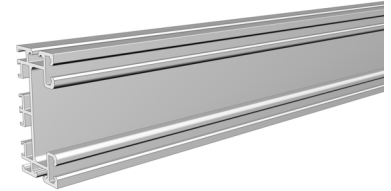
Length		162"	
Weight Per Unit (lbs.)		29.0	
Pricing per Quantities (Higher Volume Discount Available)			
Part #	Quantity	Finish	Price
P14-162	1-19	Mill	256.00
P14-162-BA		Black	Call for Pricing
P14-162-CA		Clear	Call for Pricing
P14-162	20-39	Mill	246.00
P14-162-BA		Black	Call for Pricing
P14-162-CA		Clear	Call for Pricing
P14-162	40-59	Mill	238.00
P14-162-BA		Black	Call for Pricing
P14-162-CA		Clear	Call for Pricing
P14-162	60-79	Mill	228.00
P14-162-BA		Black	Call for Pricing
P14-162-CA		Clear	Call for Pricing
P14-162	80-99	Mill	220.00
P14-162-BA		Black	Call for Pricing
P14-162-CA		Clear	Call for Pricing
P14-162	100+	Mill	210.00
P14-162-BA		Black	Call for Pricing
P14-162-CA		Clear	Call for Pricing

Reference www.DPWSolar.com for Span/Cantilever Charts.
Standard - Mill **BA**- Black Anodized **CA**- Clear Anodized

Super Post™ Stanchions may be used with the P14 Power Rail – refer to page 18.

Power Rail™ Extrusions

Power Rail P14 – Extrusion



P14

204" Standard Lengths

Length		204"	
Weight Per Unit (lbs.)		38.0	
Pricing per Quantities (Higher Volume Discount Available)			
Part #	Quantity	Finish	Price
P14-204	1-19	Mill	318.00
P14-204-BA		Black	Call for Pricing
P14-204-CA		Clear	
P14-204	20-39	Mill	306.00
P8-204-BA		Black	Call for Pricing
P14-204-CA		Clear	
P14-204	40-59	Mill	294.00
P14-204-BA		Black	Call for Pricing
P14-204-CA		Clear	
P14-204	60-79	Mill	284.00
P14-204-BA		Black	Call for Pricing
P14-204-CA		Clear	
P14-204	80-99	Mill	272.00
P14-204-BA		Black	Call for Pricing
P14-204-CA		Clear	
P14-204	100+	Mill	260.00
P14-204-BA		Black	Call for Pricing
P14-204-CA		Clear	

242" Standard Lengths

Length		242"	
Weight Per Unit (lbs.)		44.5	
Pricing per Quantities (Higher Volume Discount Available)			
Part #	Quantity	Finish	Price
P14-242	1-19	Mill	368.00
P14-242-BA		Black	Call for Pricing
P14-242-CA		Clear	
P14-242	20-39	Mill	356.00
P14-242-BA		Black	Call for Pricing
P14-242-CA		Clear	
P14-242	40-59	Mill	342.00
P14-242-BA		Black	Call for Pricing
P14-242-CA		Clear	
P14-242	60-79	Mill	328.00
P14-242-BA		Black	Call for Pricing
P14-242-CA		Clear	
P14-242	80-99	Mill	316.00
P14-242-BA		Black	Call for Pricing
P14-242-CA		Clear	
P14-242	100+	Mill	302.00
P14-242-BA		Black	Call for Pricing
P14-242-CA		Clear	

282" Standard Lengths

Length		282"	
Weight Per Unit (lbs.)		52.0	
Pricing per Quantities (Higher Volume Discount Available)			
Part #	Quantity	Finish	Price
P14-282	1-19	Mill	428.00
P14-282-BA		Black	Call for Pricing
P14-282-CA		Clear	
P14-282	20-39	Mill	412.00
P14-282-BA		Black	Call for Pricing
P14-282-CA		Clear	
P14-282	40-59	Mill	396.00
P14-282-BA		Black	Call for Pricing
P14-282-CA		Clear	
P14-282	60-79	Mill	382.00
P14-282-BA		Black	Call for Pricing
P14-282-CA		Clear	
P14-282	80-99	Mill	366.00
P14-282-BA		Black	Call for Pricing
P14-282-CA		Clear	
P14-282	100+	Mill	350.00
P14-282-BA		Black	Call for Pricing
P14-282-CA		Clear	

324" Standard Lengths

Length		324"	
Weight Per Unit (lbs.)		60.0	
Pricing per Quantities (Higher Volume Discount Available)			
Part #	Quantity	Finish	Price
P14-324	1-19	Mill	486.00
P14-324-BA		Black	Call for Pricing
P14-324-CA		Clear	
P14-324	20-39	Mill	468.00
P14-324-BA		Black	Call for Pricing
P14-324-CA		Clear	
P14-324	40-59	Mill	450.00
P14-324-BA		Black	Call for Pricing
P14-324-CA		Clear	
P14-324	60-79	Mill	432.00
P14-324-BA		Black	Call for Pricing
P14-324-CA		Clear	
P14-324	80-99	Mill	414.00
P14-324-BA		Black	Call for Pricing
P14-324-CA		Clear	
P14-324	100+	Mill	396.00
P14-324-BA		Black	Call for Pricing
P14-324-CA		Clear	

Reference www.DPWSolar.com for Span/Cantilever Charts.

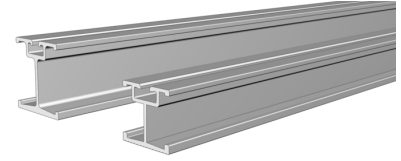
Standard - Mill **BA**- Black Anodized **CA**- Clear Anodized

Super Post™ Stanchions may be used with the P14 Power Rail – refer to page 18.

Power Rail™ Extrusions

Power Rail is an engineered profile extrusion made from Series 6000 structural marine grade aluminum. Standard finish is mill-finish aluminum. Clear and Black Anodized options available.

Power Rail XD and UD – Extrusions



XD

242" Standard Lengths

Length	242"
Weight Per Unit (lbs.)	16.1

282" Standard Lengths

Length	282"
Weight Per Unit (lbs.)	18.8

324" Standard Lengths

Length	324"
Weight Per Unit (lbs.)	21.6

Pricing per Quantities (Higher Volume Discount Available)

Part #	Quantity	Price
XD-242	1-19	162.00
	20-39	157.00
	40-59	150.00
	60-79	144.00
	80-99	139.00
	100+	133.00

Part #	Quantity	Price
XD-282	1-19	188.00
	20-39	181.00
	40-59	174.00
	60-79	168.00
	80-99	161.00
	100+	154.00

Part #	Quantity	Price
XD-324	1-19	324.00
	20-39	206.00
	40-59	199.00
	60-79	190.00
	80-99	182.00
	100+	174.00

UD

242" Standard Lengths

Length	242"
Weight Per Unit (lbs.)	26.0

282" Standard Lengths

Length	282"
Weight Per Unit (lbs.)	30.3

324" Standard Lengths

Length	324"
Weight Per Unit (lbs.)	34.8

Pricing per Quantities (Higher Volume Discount Available)

Part #	Quantity	Price
UD-242	1-19	264.00
	20-39	254.00
	40-59	244.00
	60-79	234.00
	80-99	225.00
	100+	215.00

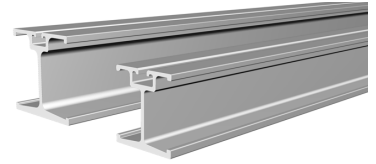
Part #	Quantity	Price
UD-282	1-19	305.00
	20-39	293.00
	40-59	282.00
	60-79	272.00
	80-99	261.00
	100+	250.00

Part #	Quantity	Price
UD-324	1-19	347.00
	20-39	334.00
	40-59	323.00
	60-79	308.00
	80-99	295.00
	100+	282.00

Power Rail™ Extrusions

Power Rail is an engineered profile extrusion made from Series 6000 structural marine grade aluminum. Standard finish is mill-finish aluminum. Clear and Black Anodized options available.

Power Rail LD and MD – Extrusions



LD

242" Standard Lengths

Length	242"
Weight Per Unit (lbs.)	34.2

282" Standard Lengths

Length	282"
Weight Per Unit (lbs.)	40.1

324" Standard Lengths

Length	324"
Weight Per Unit (lbs.)	46.1

Pricing per Quantities (Higher Volume Discount Available)

Part #	Quantity	Price	Part #	Quantity	Price	Part #	Quantity	Price
LD-242	1-19	350.00	LD-282	1-19	407.00	LD-324	1-19	462.00
	20-39	338.00		20-39	391.00		20-39	445.00
	40-59	325.00		40-59	376.00		40-59	430.00
	60-79	312.00		60-79	363.00		60-79	410.00
	80-99	300.00		80-99	348.00		80-99	393.00
	100+	287.00		100+	333.00		100+	376.00

MD

242" Standard Lengths

Length	242"
Weight Per Unit (lbs.)	43.8

282" Standard Lengths

Length	282"
Weight Per Unit (lbs.)	51.5

324" Standard Lengths

Length	324"
Weight Per Unit (lbs.)	59.1

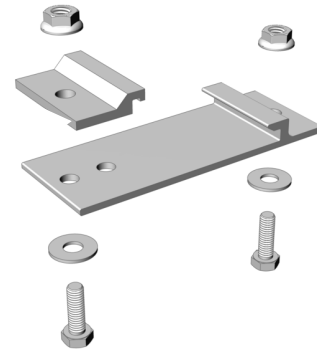
Pricing per Quantities (Higher Volume Discount Available)

Part #	Quantity	Price	Part #	Quantity	Price	Part #	Quantity	Price
MD-242	1-19	423.00	MD-282	1-19	492.00	MD-324	1-19	559.00
	20-39	409.00		20-39	474.00		20-39	538.00
	40-59	393.00		40-59	455.00		40-59	518.00
	60-79	377.00		60-79	439.00		60-79	497.00
	80-99	363.00		80-99	421.00		80-99	476.00
	100+	347.00		100+	403.00		100+	455.00

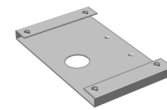
D Series Mounting Base Brackets

Mounting base brackets are fabricated from Series 6000 structural marine grade aluminum. 5/16" hardware included.

Part #	Description	Weight Per Unit (lbs.)	Quantity	Price
MBB-LD-MD	LD/MD Mounting Base Bracket	0.40	1-49	8.11
			50-99	7.83
			100+	7.40
MBB-XD-UD	XD/UD Mounting Base Bracket	.114	1-49	7.92
			50-99	7.62
			100+	7.20
MBBGC	Grounding Washer for MBB-LD-MD Base Bracket	.009	1-49	3.33
			50-99	2.88
			100+	2.44



Mounting Base Bracket with 5/16" Coated Hardware

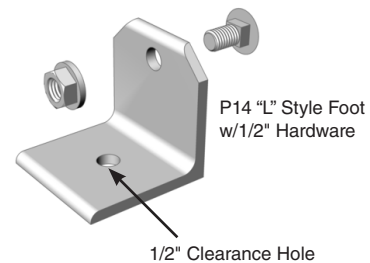


Grounding Washer

P14 "L" Foot

P14 "L" Feet are fabricated from high strength 1/4" Series 6000 marine grade aluminum. 1/2" hardware included.

Part #	Description	Weight Per Unit (lbs.)	Quantity	Price
P14-LF	Power Rail P14 L-Mounting Foot	0.50	1-49	14.25
			50-99	13.75
			100+	13.00



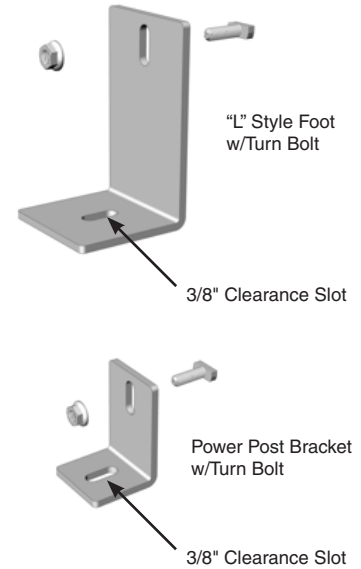
"L" Feet

"L" Feet are fabricated from high strength 3/16" aluminum and include a vertical slot for adjusting to irregular surfaces.

5/16" coated hardware included.

FOR ORDERING Stainless Steel Finish: ADD (-SS suffix)

Part #	Description	Weight Per Unit (lbs.)	Quantity	Price
LF2	2.5" Tall L-Mounting Foot	0.20	1-49	7.00
			50-99	6.50
			100+	6.00
LF3	3.5" Tall L-Mounting Foot	0.24	1-49	9.00
			50-99	8.50
			100+	7.00
LF5	5" Tall L-Mounting Foot	0.40	1-49	10.00
			50-99	9.25
			100+	8.50
LF6	6" Tall L-Mounting Foot	0.45	1-49	12.00
			50-99	11.00
			100+	9.75
PPB	Power Post Bracket	.09	1-49	6.50
			50-99	6.00
			100+	5.50

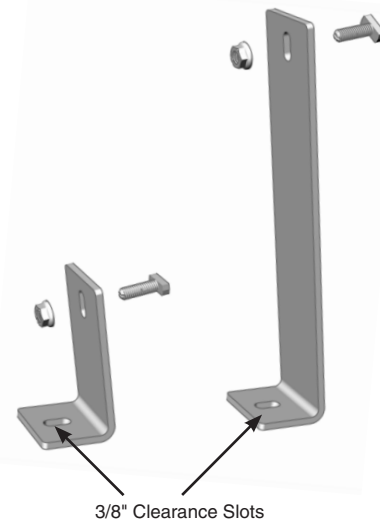


Tilted "L" Feet

"L" Feet are fabricated from high strength 3/16" aluminum. Tilted "L" Feet provide a low cost solution to increase module tilt angles by 5° or 10°.

5/16" coated hardware included

Part #	Description	Weight Per Unit (lbs.)	Quantity	Price
FF5	5° Front Foot	0.25	1-49	8.00
			50-99	7.50
			100+	7.00
BF5	5° Back Foot	0.50	1-49	12.00
			50-99	11.50
			100+	11.00
FF10	10° Front Foot	0.25	1-49	8.00
			50-99	7.50
			100+	7.00
BF10	10° Back Foot	0.75	1-49	16.00
			50-99	15.50
			100+	15.00

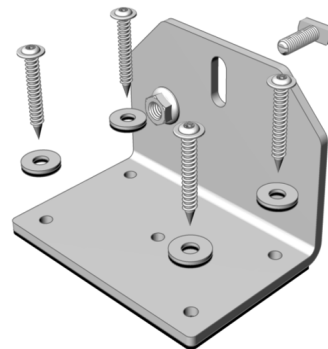


Easy Feet™

Easy Feet mount directly over metal and composite shingles into roof decking and do not require attachment to a roof structural member. Sealing butyl mastic backing and PHEinox™ RSS screws are included.

Part #	Description	Weight Per Unit (lbs.)	Quantity	Price
PEF-1.5	Pivot Easy Mounting Foot w/1.5" Screws	0.76	1-49	21.50
			50-99	20.50
			100+	19.00
PEF-2.0	Pivot Easy Mounting Foot w/2.0" Screws	0.78	1-49	22.00
			50-99	21.00
			100+	19.50
PEF-3.0	Pivot Easy Mounting Foot w/3.0" Screws	0.82	1-49	23.00
			50-99	22.00
			100+	20.50

PHEinox™ RSS screws are manufactured by GRK Fasteners.



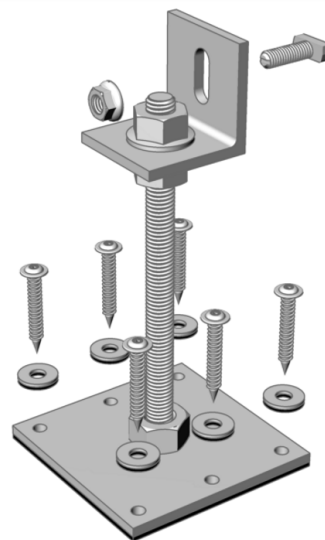
Butyl Mastic, Turn Bolt, Roof Screws and Neoprene Washers Included

Roof Rod Mount

Roof Rod mounts attach directly to the roof deck and are suitable for tile and other roofing materials. Simply, drill a hole through the roofing material. Sealing butyl mastic backing and PHEinox™ RSS screws included.

Part #	Description	Weight Per Unit (lbs.)	Quantity	Price
RRM	Threaded Rod Mount	1.5	1-49	30.00
			50-99	29.00
			100+	27.50

Maximum adjustment is 6 inches.

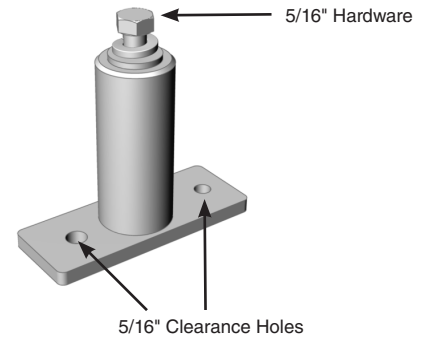


Butyl Mastic, "L" Foot, Turn Bolt, Roof Screws and Neoprene Washers Included

Power Post™ Stanchions

Power Posts offer high strength solid aluminum construction and may be used with flashing cones or with built-up roofs.

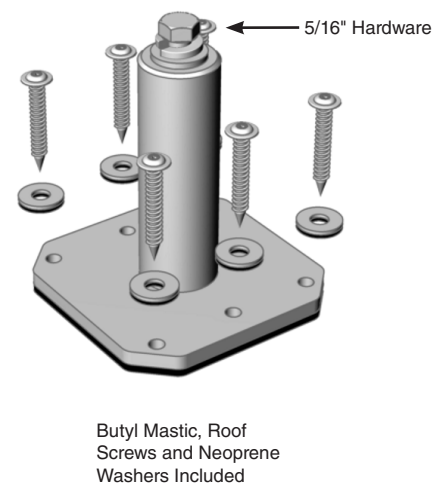
Part #	Description	Diameter	Weight Per Unit (lbs.)	Quantity	Price
PP3	3" Power Post	1.31"	0.55	1-49	20.50
				50-99	19.50
				100+	18.00
PP4	4" Power Post	1.31"	0.67	1-49	21.00
				50-99	20.00
				100+	18.50
PP5	5" Power Post	1.31"	0.81	1-49	21.50
				50-99	20.50
				100+	19.00
PP6	6" Power Post	1.31"	0.94	1-49	22.00
				50-99	21.00
				100+	19.50
PP7	7" Power Post	1.31"	1.1	1-49	22.50
				50-99	21.50
				100+	20.00



Easy Power Post™ Stanchions

Easy Power Posts mount directly to the roof deck. Sealing butyl mastic backing and PHEinox™ RSS screws are included.

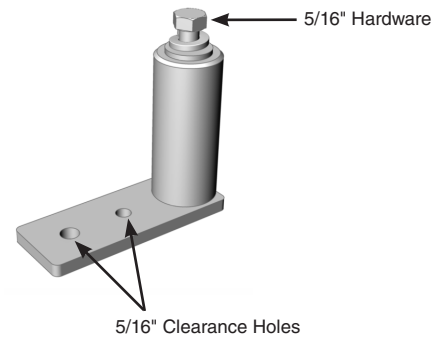
Part #	Description	Diameter	Weight Per Unit (lbs.)	Quantity	Price
EP3	3" Easy Post	1.31"	0.82	1-49	25.00
				50-99	24.00
				100+	22.50
EP4	4" Easy Post	1.31"	0.94	1-49	25.50
				50-99	24.50
				100+	23.00
EP5	5" Easy Post	1.31"	1.08	1-49	26.00
				50-99	25.00
				100+	23.50
EP6	6" Easy Post	1.31"	1.21	1-49	26.50
				50-99	25.50
				100+	24.00
EP7	7" Easy Post	1.31"	1.37	1-49	27.00
				50-99	26.00
				100+	24.50



Offset Power Post™ Stanchions

Offset Power Posts are made of high strength solid aluminum and center the flashing cone and avoid potential gaps with the Power Post base.

Part #	Description	Diameter	Weight Per Unit (lbs.)	Quantity	Price
OP3	3" Offset Mounting Post	1.31"	0.55	1-49	20.50
				50-99	19.50
				100+	18.00
OP4	4" Offset Mounting Post	1.31"	0.67	1-49	21.00
				50-99	20.00
				100+	18.50
OP5	5" Offset Mounting Post	1.31"	0.81	1-49	21.50
				50-99	20.50
				100+	19.00
OP6	6" Offset Mounting Post	1.31"	0.94	1-49	22.00
				50-99	21.00
				100+	19.50
OP7	7" Offset Mounting Post	1.31"	1.1	1-49	22.50
				50-99	21.50
				100+	20.00



Super Post™ Stanchions*

Super Posts offer high strength solid aluminum construction for larger arrays and higher roof clearance.

Part #	Description	Diameter	Weight Per Unit (lbs.)	Quantity	Price
SP7	7" Super Mounting Post	1.75"	2.4	1-49	40.50
				50-99	37.50
				100+	34.50
SP8	8" Super Mounting Post	1.75"	2.6	1-49	42.00
				50-99	39.00
				100+	36.00
SP9	9" Super Mounting Post	1.75"	2.9	1-49	43.50
				50-99	40.50
				100+	37.50
SP10	10" Super Mounting Post	1.75"	3.2	1-49	45.00
				50-99	42.00
				100+	39.00



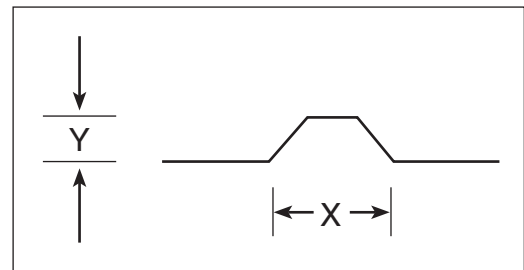
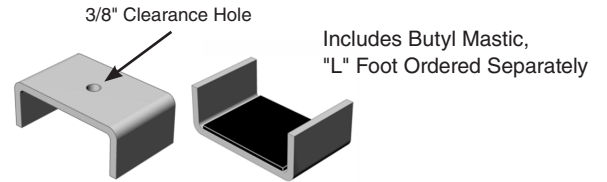
*May also be used with the P14 Rail.

Corrugated Roof Mounts

The CMB offers high strength solid aluminum and provides a mounting bridge over the peak of a metal corrugated roof keeping the penetration above the water diverting valleys. Includes Butyl Mastic, L-Foot not included.

Part #	Description	Quantity	Price
CMB	Mounting Bridge to Span Peaks of Corrugated Metal Roofs	1-49	13.50
		50-99	12.50
		100+	11.00

Note: Not all corrugated metal roofs are the same. Please contact DPW Solar to design mounting bridges that are specific to your application. Provide "X" and "Y" Dimensions for your roof. Pricing subject to change. "L" Foot not included.

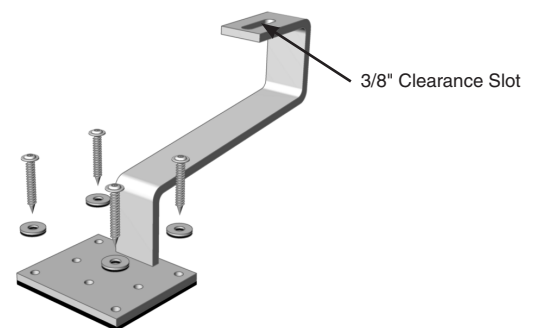


Easy Tile Hook

The all stainless steel Easy Tile Hook attaches underneath concrete/clay tiles and sweeps out from underneath, allowing for a PV module installation without the need to penetrate tiles. Includes Butyl Mastic and PHEinox™ RSS screws.

Part #	Description	Quantity	Price
ETH	Easy Tile Hook	1-49	60.00
		50-99	57.50
		100+	55.00

PHEinox™ RSS screws are manufactured by GRK Fasteners.

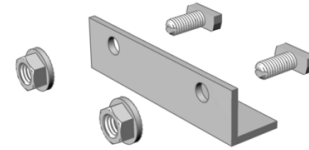


Power Rail™ Splice Plate Kits

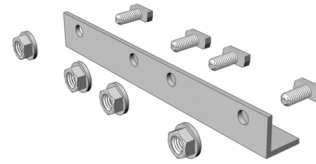
The Power Rail Splice Kits are made from High Strength Aluminum. Includes hardware.

Splice Plates

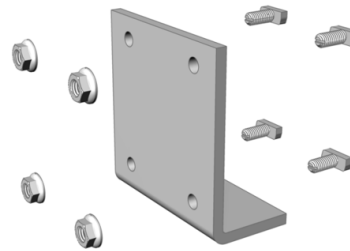
Part #	Description	Weight Per Unit (lbs.)	Quantity	Price
P4-SPK	Splice Plate for P4 Two Hole	0.20	1-9	6.00
			10+	5.50
P4-4HSPK	Splice Plate for P4 Four Hole	0.40	1-9	12.00
			10+	13.00
P6-SPK	Splice Plate for P6 Two Hole	0.20	1-9	7.00
			10+	6.50
P6-4HSPK	Splice Plate for P6 Four Hole	0.40	1-9	14.00
			10+	13.00
P8-SPK	Splice Plate for P8	0.55	1-9	8.00
			10+	7.50
P14-SPK	Splice Plate for P14	1.00	1-9	21.00
			10+	20.00
XD-SPK	Splice Plate Set for XD	0.20	1-9	12.50
			10+	11.50
UD-SPK	Splice Plate Set for UD	0.60	1-9	14.00
			10+	13.00
LD-SPK	Splice Plate Set for LD	0.37	1-9	16.00
			10+	15.00
MD-SPK	Splice Plate Set for MD	0.40	1-9	18.50
			10+	17.50



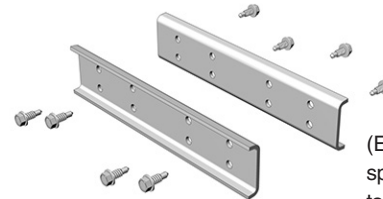
P4/P6 - 2-Hole Splice Plates



P4/P6/P8 - 4-Hole Splice Plates



P14 - Splice Plate



XD, UD, LD, and MD Splice Plates

5/16" Hardware Included

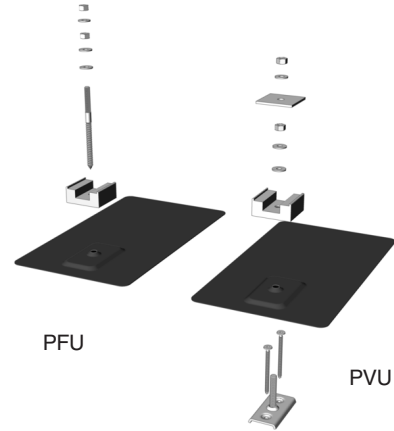
(Each kit includes 2 splice plates with self-tapping screws)

Power Rail™ PV Flash

Power Rail PV Flash includes one universal slotted compression block, and one 8" x 12" flashing in matte, black color. L-Foot ordered separately.

Part #	Attachment Hardware	Shipping Weight Per Unit (lbs.)	Qty.	Non-Discountable Price
PFU*	5/16" x 6" hangerbolt	0.80	10-49	14.00
			50-99	13.00
			100+	11.50
PVU*	Stainless Steel Base Plate and 3" Fasteners	1.00	10-49	16.00
			50-99	15.00
			100+	13.50

*MUST order in quantities of 10.



Low Profile Tilt Kits – One High Portrait Mounting

The all aluminum Low Profile Tilt Kits mount a set of Power Rail extrusions (sold separately) at the tilt angle specified. Tilt kits are designed for portrait module mounting and aid in increasing energy production.

P6 Low-Profile Tilt Kits

Part #	Description	Weight Per Unit (lbs.)	Quantity	Price
P6-OP15	Low Profile P6 15° tilt kit	6.5	1-49	85.00
			50-99	81.50
			100+	78.00
P6-OP25	Low Profile P6 25° tilt kit	7.0	1-49	90.00
			50-99	86.50
			100+	83.00
P6-OP35	Low Profile P6 35° tilt kit	7.5	1-49	95.00
			50-99	91.50
			100+	88.00
P6-OP45	Low Profile P6 45° tilt kit	8.0	1-49	100.00
			50-99	96.50
			100+	93.00



P6 Low-Profile Tilt Kit
Includes Strong Back, Fixed Leg, Mounting Feet, Rail Brackets and Hardware.

P6 Power Rail Extrusions ordered separately.

P8 Low-Profile Tilt Kits

Part #	Description	Weight Per Unit (lbs.)	Quantity	Price
P8-OP15	Low Profile P8 15° tilt kit	7.5	1-49	105.00
			50-99	101.50
			100+	98.00
P8-OP25	Low Profile P8 25° tilt kit	8.0	1-49	110.00
			50-99	106.50
			100+	103.00
P8-OP35	Low Profile P8 35° tilt kit	8.5	1-49	115.00
			50-99	111.50
			100+	108.00
P8-OP45	Low Profile P8 45° tilt kit	9.0	1-49	120.00
			50-99	116.50
			100+	113.00



P8 Low-Profile Tilt Kit
Includes Strong Back, Fixed Leg, Mounting Feet, Rail Brackets and Hardware.

P8 Power Rail Extrusions ordered separately.

Two-Tier Tilt Kits – Two High Portrait Mounting

The all aluminum Two-Tier Tilt Kits mount two sets of Power Rail extrusions (sold separately) at the tilt angle specified. Tilt kits are designed for portrait module mounting and aid in increasing energy production.

60 Cell Modules

Part #	Description	Weight Per Unit (lbs.)	Quantity	Price
P14-OP15-60	Two-Tier 15° tilt kit 60 Cell Module	28.12	1-49	172.00
			50-99	167.00
			100+	162.00
P14-OP25-60	Two-Tier 25° tilt kit 60 Cell Module	29.44	1-49	179.00
			50-99	174.00
			100+	169.00
P14-OP35-60	Two-Tier 35° tilt kit 60 Cell Module	30.75	1-49	186.00
			50-99	181.00
			100+	176.00
P14-OP45-60	Two-Tier 45° tilt kit 60 Cell Module	32.03	1-49	193.00
			50-99	188.00
			100+	183.00



Two-Tier Tilt Kit
Includes Strong Back, Fixed Leg, Mounting Feet, Rail Brackets and Hardware.

P8 Power Rail Extrusions ordered separately.

72 Cell Modules

Part #	Description	Weight Per Unit (lbs.)	Quantity	Price
P14-OP15-72	Two-Tier 15° tilt kit 72 Cell Module	32.53	1-49	227.00
			50-99	223.00
			100+	218.00
P14-OP25-72	Two-Tier 25° tilt kit 72 Cell Module	34.38	1-49	235.00
			50-99	230.00
			100+	225.00
P14-OP35-72	Two-Tier 35° tilt kit 72 Cell Module	35.89	1-49	242.00
			50-99	237.00
			100+	232.00
P14-OP45-72	Two-Tier 45° tilt kit 72 Cell Module	37.36	1-49	249.00
			50-99	244.00
			100+	239.00



Two-Tier Tilt Kit
Includes Strong Back, Fixed Leg, Mounting Feet, Rail Brackets and Hardware.

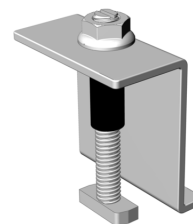
P8 Power Rail Extrusions ordered separately. Cross Bracing may be required. See Assembly Instructions.

Pre-Assembled Module Clamps with RAD™ Hardware

Module Clamps are Type 304 stainless steel for higher yield strength and durability. Pre-assembled module clamps feature no loose parts and a spacer that keeps free standing clamps in place for a quicker module installation. Patent Pending.

Pre-Assembled End Clamp with RAD Bolt Hardware

Part #	Hardware / Finish	Description	Weight Per Unit (lbs.)	Quantity	Coated or SS Price	Black Finish Price
PA- EC- [] -RAD	Coated	Pre-Assembled Module End Clamp w/RAD Hardware	0.15	1-19	6.30	7.88
				20-39	6.05	7.56
				40-59	5.85	7.31
PA- EC- [] -RAD-SS	Stainless Steel			60-79	5.60	7.00
				80-99	5.35	6.69
PA- EC- [] -RAD-B	Black			100+	5.10	6.38



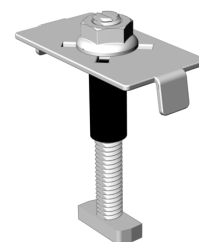
Pre-Assembled End Clamp w/RAD Bolt

Note: Replace [] with module depth from the Solar Module Specification Sheet.
 Example: PA-EC-46-RAD end clamp for Sharp NU-U240F1 modules

Pre-Assembled AMP™ Mid Clamp with RAD Bolt Hardware

The AMP Clamp eliminates the need for a separate bonding washer.

Part #	Hardware / Finish	Description	Weight Per Unit (lbs.)	Quantity	Coated or SS Price	Black Finish Price
PA-GMC-28-33-RAD	Coated	Pre-Assembled Module Mid Clamp for 28-33 mm Thick Frame	0.08	1-49	5.40	6.75
PA-GMC-28-33-RAD-SS	Stainless Steel			50-99	4.50	5.63
PA-GMC-28-33-RAD-B	Black			100+	3.90	4.88
PA-GMC-34-39-RAD	Coated	Module Mid Clamp for 34-39 mm Thick Frame		1-49	5.40	6.75
PA-GMC-34-39-RAD-SS	Stainless Steel			50-99	4.50	5.63
PA-GMC-34-39-RAD-B	Black			100+	3.90	4.88
PA-GMC-40-46-RAD	Coated	Module Mid Clamp for 40-46 mm Thick Frame		1-49	5.40	6.75
PA-GMC-40-46-RAD-SS	Stainless Steel			50-99	4.50	5.63
PA-GMC-40-46-RAD-B	Black			100+	3.90	4.88
PA-GMC-47-52-RAD	Coated	Module Mid Clamp for 47-52 mm Thick Frame		1-49	5.40	6.75
PA-GMC-47-52-RAD-SS	Stainless Steel			50-99	4.50	5.63
PA-GMC-47-52-RAD-B	Black			100+	3.90	4.88
PA-GMC-53-59-RAD	Coated	Module Mid Clamp for 53-59 mm Thick Frame		1-49	5.40	6.75
PA-GMC-53-59-RAD-SS	Stainless Steel			50-99	4.50	5.63
PA-GMC-53-59-RAD-B	Black			100+	3.90	4.88



Pre-Assembled AMP Mid Clamp w/RAD Bolt

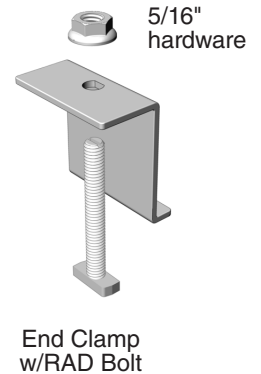
Unassembled Module Clamps with RAD™ Hardware

Module clamps provide a low profile design and slim 3/8" gap between modules for a professional appearance and higher module density. The standard hardware is ECOGUARD™ coated to provide corrosion resistance and to avoid galling. The patented RAD™ hardware locks in place for a more secure and reliable PV module attachment. All stainless steel construction or a black finish is also available.

RAD End Clamp with RAD Bolt Hardware

Part #	Hardware Finish	Description	Weight Per Unit (lbs.)	Quantity	Coated or SS Price	Black Finish Price
EC- <input type="text"/> -RAD	Coated	Module End Clamp w/RAD Hardware	0.15	1-19	5.25	6.56
				20-39	5.05	6.31
EC- <input type="text"/> -RAD-SS	Stainless Steel			40-59	4.85	6.06
				60-79	4.65	5.81
EC- <input type="text"/> -RAD-B	Black			80-99	4.45	5.56
				100+	4.25	5.31

Note: Replace with module depth in millimeters from the Solar Module Specification Sheet.
Example: EC-46-RAD end clamp for Sharp NU-U240F1 modules



AMP™ Clamp – Integrated Grounding RAD™ Mid Clamp

The AMP Clamp eliminates the need for a separate bonding washer.

Part #	Hardware Finish	Description	Weight Per Unit (lbs.)	Quantity	Coated or SS Price	Black Finish Price
GMC-28-33-RAD	Coated	Module Mid Clamp for 28-33 mm Thick Frame	0.08	1-49	5.40	6.75
GMC-28-33-RAD-SS	Stainless Steel			50-99	4.50	5.63
GMC-28-33-RAD-B	Black			100+	3.90	4.88
GMC-34-39-RAD	Coated	Module Mid Clamp for 34-39 mm Thick Frame	0.08	1-49	5.40	6.75
GMC-34-39-RAD-SS	Stainless Steel			50-99	4.50	5.63
GMC-34-39-RAD-B	Black			100+	3.90	4.88
GMC-40-46-RAD	Coated	Module Mid Clamp for 40-46 mm Thick Frame	0.08	1-49	5.40	6.75
GMC-40-46-RAD-SS	Stainless Steel			50-99	4.50	5.63
GMC-40-46-RAD-B	Black			100+	3.90	4.88
GMC-47-52-RAD	Coated	Module Mid Clamp for 47-52 mm Thick Frame	0.08	1-49	5.40	6.75
GMC-47-52-RAD-SS	Stainless Steel			50-99	4.50	5.63
GMC-47-52-RAD-B	Black			100+	3.90	4.88
GMC-53-59-RAD	Coated	Module Mid Clamp for 53-59 mm Thick Frame	0.08	1-49	5.40	6.75
GMC-53-59-RAD-SS	Stainless Steel			50-99	4.50	5.63
GMC-53-59-RAD-B	Black			100+	3.90	4.88



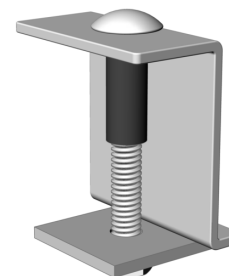
RAD™ Fastener is patented.

Pre-Assembled Purlin Through Hole Clamps

Purlin Through Hole clamps are Type 304 Stainless steel for higher strength and durability. The clamp allows for direct PV module mounting to purlins and other structural members. The patent pending Pre-assembled clamps eliminate handling small parts on the job site and provide for a faster installation.

End Clamp with Carriage Bolt Hardware

Part #	Description	Weight Per Unit (lbs.)	Quantity	Coated or SS Price	Black Finish Price
PA-EC- [] -PT	Module End Clamp w/Carriage Bolt Hardware	0.15	1-19	6.33	7.91
PA-EC- [] -PT-SS			20-39	6.13	7.66
			40-59	5.93	7.41
PA-EC- [] -PT-B			60-79	5.73	7.16
			80-99	5.53	6.91
			100+	5.33	6.66



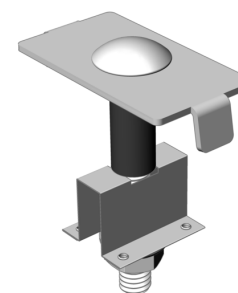
End Clamp w/Carriage Bolt

FOR ORDERING SPECIFY: Standard Coated Finish (-PT suffix), Black Finish (-B suffix), Stainless Steel Finish (-SS suffix)

Note: Replace [] with module depth in millimeters from the Solar Module Specification Sheet.
Example: PA-EC-46-PT end clamp for Sharp NU-U240F1 modules

Mid Clamp with Carriage Bolt Hardware

Part #	Description	Weight Per Unit (lbs.)	Quantity	Coated or SS Price	Black Finish Price
PAW-MC-28-33-PT	Module Mid Clamp for 28-33 mm Thick Frame	0.08	1-49	6.55	8.19
PAW-MC-28-33-PT-SS			50-99	5.46	6.83
PAW-MC-28-33-PT-B			100+	4.75	5.94
PAW-MC-34-39-PT	Module Mid Clamp for 34-39 mm Thick Frame	0.08	1-49	6.55	8.19
PAW-MC-34-39-PT-SS			50-99	5.46	6.83
PAW-MC-34-39-PT-B			100+	4.75	5.94
PAW-MC-40-46-PT	Module Mid Clamp for 40-46 mm Thick Frame	0.08	1-49	6.55	8.19
PAW-MC-40-46-PT-SS			50-99	5.46	6.83
PAW-MC-40-46-PT-B			100+	4.75	5.94
PAW-MC-47-52-PT	Module Mid Clamp for 47-52 mm Thick Frame	0.08	1-49	6.55	8.19
PAW-MC-47-52-PT-SS			50-99	5.46	6.83
PAW-MC-47-52-PT-B			100+	4.75	5.94
PAW-MC-53-59-PT	Module Mid Clamp for 53-59 mm Thick Frame	0.08	1-49	6.55	8.19
PAW-MC-53-59-PT-SS			50-99	5.46	6.83
PAW-MC-53-59-PT-B			100+	4.75	5.94



Mid Clamp w/Carriage Bolt

FOR ORDERING SPECIFY: Standard Coated Finish (-PT suffix), Black Finish (-B suffix), Stainless Steel Finish (-SS suffix)

Universal End Clamp

Universal End Clamps are Type 304 Stainless steel for higher strength and durability. The clamps secure a wide range of PV module frames and reduce SKUs

Universal End Clamp – Flange Mount – Bottom Access

Part #	Description	Weight Per Unit (lbs.)	Quantity	Price
P6-ECU	Universal End Clamp w/Set Bolt for P6	0.15	1-49	9.00
			50-99	8.50
			100+	8.00
P8-ECU	Universal End Clamp w/Set Bolt for P8	0.25	1-49	10.00
			50-99	9.50
			100+	9.00

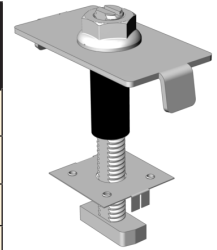


Pre-Assembled Module Clamps with WEEB Grounding

The patent pending Pre-assembled clamps eliminate handling small parts on the job site and provide for a faster installation. Includes grounding washer for penetrating and bonding PV modules to anodized or coated mounting rails.

Pre-Assembled Mid Clamp with RAD™ Bolt Hardware and WEEB-DPR

Part #	Description	Weight Per Unit (lbs.)	Hardware / Finish	Quantity	Coated or SS Price	Black Finish Price
PAW-MC-28-33-RAD	Pre-Assembled Module Mid Clamp for 28-33 mm Thick Frame	0.08	Coated	1-49	8.75	10.22
PAW-MC-28-33-RAD-SS			Stainless Steel	50-99	7.85	9.06
PAW-MC-28-33-RAD-B			Black	100+	7.25	8.63
PAW-MC-34-39-RAD	Module Mid Clamp for 34-39 mm Thick Frame		Coated	1-49	8.75	10.22
PAW-MC-34-39-RAD-SS			Stainless Steel	50-99	7.85	9.06
PAW-MC-34-39-RAD-B			Black	100+	7.25	8.63
PAW-MC-40-46-RAD	Module Mid Clamp for 40-46 mm Thick Frame		Coated	1-49	8.75	10.22
PAW-MC-40-46-RAD-SS			Stainless Steel	50-99	7.85	9.06
PAW-MC-40-46-RAD-B			Black	100+	7.25	8.63
PAW-MC-47-52-RAD	Module Mid Clamp for 47-52 mm Thick Frame		Coated	1-49	8.75	10.22
PAW-MC-47-52-RAD-SS			Stainless Steel	50-99	7.85	9.06
PAW-MC-47-52-RAD-B			Black	100+	7.25	8.63
PAW-MC-53-59-RAD	Module Mid Clamp for 53-59 mm Thick Frame		Coated	1-49	8.75	10.22
PAW-MC-53-59-RAD-SS			Stainless Steel	50-99	7.85	9.06
PAW-MC-53-59-RAD-B			Black	100+	7.25	8.63



Pre-Assembled Mid Clamp w/RAD Bolt and WEEB-DPR

Note: Pre-assembled Mid Clamps provide for a 3/8" gap between modules.

Grounding Hardware

Part #	Description	Weight Per Unit (lbs.)	Quantity	Non-Discountable Price
WEEB-DPF*	Module Grounding Clip	.003	10-99	1.50
			100-999	1.10
			1000+	.90
WEEB-11.5*	Splice Plate Grounding Clip	.003	10-99	1.50
			100-999	1.10
			1000+	.90
WEEBL-8.0-KIT*	Rail Grounding Lug	0.19	10-99	5.65
			100+	4.65
WEEB-8.0-RBJ-KIT*	Rail Bonding Jumper	0.11	10-99	7.80
			100+	6.45
ACC-PV*	ACME PV Cable Clip	0.006	10-99	.52
			100-999	.41
			1000+	.33
ACC*	ACME – 2 Cable Clip	0.006	10-99	.52
			100-999	.41
			1000+	.33

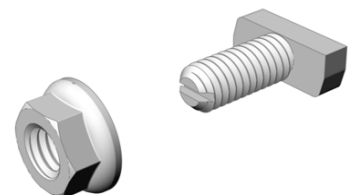
NOTE: Cable Clips snugly hold 1 or 2 designated cables.
 *MUST order in quantities of 10

FOR ORDERING SPECIFY: Standard Coated Finish (-PT suffix), Black Finish (-B suffix), Stainless Steel Finish (-SS suffix)



Turn Bolts

Part #	Hardware / Finish	Description	Weight Per Unit (lbs.)	Quantity	Price
TB	Coated	5/16" x 3/4" Turn Bolt w/ Flange Nut	0.05	100+	1.65
TB-SS	Stainless Steel				
TB-1	Coated	5/16" x 1" Turn Bolt w/ Flange Nut	0.06	100+	1.80
TB-1-SS	Stainless Steel				

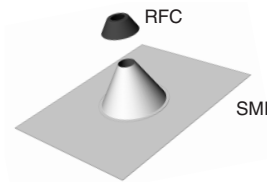


Power Post Flashing

Part #	Attachment Hardware	Weight Per Unit (lbs.)	Qty.	Non-Discountable Price
OF*	Oatey Flashing with Rubber Boot for 1.31" posts	0.66	12-47	5.15
			48-95	4.40
			96+	3.90
SMF*	Aluminum One Piece Flashing	1.15	12-47	10.40
			48-95	8.90
			96+	7.85
RFC*	Rubber Flashing Collar	0.05	12-47	2.00
			48-95	1.75
			96+	1.55



OF - Flashing with Rubber Boot



Rubber Flashing Collar (for use with solid metal flashing)

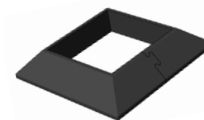
NOTE: Oatey No-Calk® NC-1 Solar flashing are galvanized with a UV Rubber Boot that fits onto the Power Post. Oatey flashing may be used on roofs with 0-45 degree angles.

*MUST order in quantities of 12

No-Calk® is a registered trademark of Oatey Co.

Flat Roof Flashing

Part #	Description	Weight Per Unit (lbs.)	Quantity	Non-Discountable Price
LPK4*	4" Lockin' Pocket	1.7	6-47	15.50
			48-95	14.50
			96+	13.50
LPK6**	6" Lockin' Pocket	2.6	4-47	23.00
			48-95	21.50
			96+	20.50
HFUS	Hurricane Force Universal Sealer	-	1	27.75
BPAG	Battery Powered Applicator Gun	-	1	690.00



Lockin' Pocket

NOTE: Lockin' Pockets and Hurricane Force Sealer are backed by a third party warranty on all flat roof penetrations.

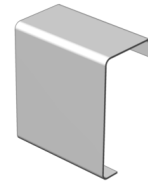
*MUST order in quantities of 6

**MUST order in quantities of 4

Wire Management Clips

Wire management clips are made from stainless steel and secure cables to PV modules and mounting rails to simplify wire management

Part #	Description	Weight Per Unit (lbs.)	Quantity	Price
XD-WC	XD Wire Management Clip	0.05	1-49	2.50
			50-99	2.25
			100+	2.00
UD-WC	UD Wire Management Clip	0.07	1-49	2.85
			50-99	2.60
			100+	2.35
LD-WC	LD Wire Management Clip	0.076	1-49	3.00
			50-99	2.75
			100+	2.50
MD-WC	MD Wire Management Clip	0.099	1-49	3.15
			50-99	2.90
			100+	2.65



XD/UD/MD/LD Clip



2716 Vassar Place NE
Albuquerque, New Mexico 87107 USA

Telephone: 505.889.3585
Toll Free: (800) 260.3792
Fax: 505.889.3548
Web site: www.DPWSolar.com
Email: info@dpwsolar.com

© 2016 Preformed Line Products
SL-ML-1034-9P
11.16.00

Preformed Line Products
(Canada) Limited
1711 Bishop St. N
Cambridge, ON N1T 1N5

Telephone: 519-740-6666
Fax: 519-740-7917
Web site: www.preformed.ca
Email: sales@preformed.ca