

SeleCCTable™ LED  
Retrofit Collection

**HALO**



**5**  
seleCCTable™  
colors

RL Recessed Downlight  
RA Adjustable Gimbal

**EATON**

*Powering Business Worldwide*

# HALO™ SeleCCTable Family



## RL SeleCCTable series



**RL4069S1EWH**  
4" LED Retrofit Baffle-Trim,  
600 lumen



**RL56069S1EWH / RL56099S1EWH**  
5" / 6" LED Retrofit Baffle-Trim,  
600 lumen / 900 lumen



**RL4099S1EWH**  
4" LED Retrofit Baffle-Trim,  
900 lumen



**RL56129S1EWH**  
5" / 6" LED Retrofit Baffle-Trim,  
1200 lumen

## RA SeleCCTable series



**RA4069S1EWH**  
4" LED Adjustable Gimbal



**RA56069S1EWH**  
5" / 6" LED Adjustable Gimbal



2700K • 3000K • 3500K  
4000K • 5000K

The HALO SeleCCTable family includes the RL LED recessed downlight and RA adjustable gimbal. The SeleCCTable technology puts flexibility at your fingertips. By using the switch located on the back of the fixture, the user can choose from a range of five color temperatures 2700K - 5000K.



# RL4 SeleCCTable Series

**600 Lumen**



**900 Lumen**



- 600 Series: up to 621 lumens<sup>1</sup>
- 900 Series: up to 1006 lumens<sup>1</sup>
- Use to replace 60W PAR16, 50W PAR20 or 40W R20 lamp
- 2700K, 3000K, 3500K, 4000K, 5000K CCT<sup>2</sup> all in one
- 90 CRI
- 600 Series: 7.6W, 120V
- 900 Series: 11.7W, 120V
- L70 @ 70,000 hrs
- HALO matte white finish
- Push-N-Twist universal installation clips pre-installed
- Compatible with most 4" recessed housings
- Dimmable to 5% with select dimmers
- Damp and wet location listed (shower rated)
- Rated for IC, ICAT and may be used in Non-IC housings
- AIR-TITE™ certified per ASTM-E283
- Diffusing, regressed lens
- Five-year limited warranty

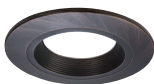
1. Lumens per selected CCT  
2. CCT - Correlated Color Temperature

## RL4 Designer Trims (Order Separately)



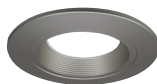
**RL4TRMWHB**  
White Baffle (Paintable)

**RL4TRMWH**  
White (Paintable)



**RL4TRMTBZB**  
Tuscan Bronze Baffle

**RL4TRMTBZ**  
Tuscan Bronze



**RL4TRMSNB**  
Satin Nickel Baffle

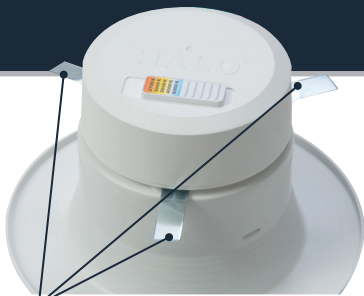
**RL4TRMSN**  
Satin Nickel

**OVER \$403<sup>Δ</sup> SAVINGS**

<sup>Δ</sup> Savings are over the life of the HALO RL4 luminaire. (600 series)  
Energy savings: \$315  
Replacement lamp savings: \$88  
Savings based on \$0.128 per kilowatt hour, average six hours use per day, 70,000 hours of lamp usage, and 60W PAR16 lamp lumen equivalent.



**600 Lumen**



**900 Lumen**

**Push-N-Twist**  
Universal Installation Clip

## Ordering Information

Sample Number: **RL4069S1EWH**

Order HALO housing separately.

### RL4 – 4" LED Retrofit Baffle - Trim

**RL4069S1EWH**= 600 lumen, 90 CRI, 2700K - 5000K CCT

**RL4099S1EWH**= 900 lumen, 90 CRI, 2700K - 5000K CCT

### LED Housings (Order Separately)

See Housing Compatibility section

### Accessories (Order Separately)

#### Baffle

**RL4TRMSNB**=Satin Nickel Trim Ring

**RL4TRMTBZB**=Tuscan Bronze Trim Ring

**RL4TRMWHB**=White Paintable Trim Ring

#### Splay

**RL4TRMSN**=Satin Nickel Trim Ring

**RL4TRMTBZ**=Tuscan Bronze Trim Ring

**RL4TRMWH**=White Paintable Trim Ring



**HE26LED**

Edison Base Adapter  
for retrofit (included)

**HE26LED**=Replacement screw base adapter (one included with unit)

RL4 Energy Data	600 Series	900 Series
<b>Max. Lumens</b>	621 @ 4000K	1006 @ 5000K
<b>Input Voltage</b>	120V	120V
<b>Input Frequency</b>	50/60 Hz	50/60 Hz
<b>Input Power</b>	7.6W	11.7W
<b>Input Current</b>	0.075A - 0.0875A (Per input power)	0.075A - 0.0875A (Per input power)
<b>Power Factor</b>	>0.90	>0.90
<b>THD</b>	<20%	<20%
<b>EMI/RFI</b>	FCC Title 47 CFR, Part 15, FCC Title 47 CFR, Part 15, Class B (Consumer) Class B (Consumer)	
<b>Sound Rating</b>	Class A	Class A
<b>Minimum Starting Temp</b>	-30°C (-22°F)	-30°C (-22°F)



Refer to ENERGY STAR® Certified Products List.

Can be used to comply with California Title 24 High Efficacy requirements. Certified California Title 20 Appliance Efficiency Database.



# RL56 SeleCCTable Series

**600 Lumen  
900 Lumen**

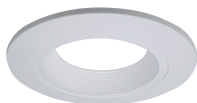


**1200 Lumen**

- 600 Series: up to 712 lumens<sup>1</sup>  
900 Series: up to 1006 lumens<sup>1</sup>  
1200 Series: up to 1272 lumens<sup>1</sup>
- 600 Series: use to replace 65W BR30 or 50W PAR30 lamp  
900 Series: use to replace 75W PAR30 lamp  
1200 Series: use to replace 90W BR40 lamp
- 2700K, 3000K, 3500K, 4000K, 5000K CCT<sup>2</sup> all in one
- 90 CRI
- 600 Series: 7.6W, 120V  
900 Series: 12.1W, 120V  
1200 Series: 14W, 120V
- L70 @ 70,000 hrs
- HALO matte white finish
- Torsion springs pre-installed
- Optional Push-N-Twist universal installation two piece clips
- Compatible with most 5" and 6" standard and shallow recessed housings
- Dimmable to 5% with select dimmers
- Damp and wet location listed (shower rated)
- Rated for IC, ICAT and may be used in Non-IC housings
- AIR-TITE™ certified per ASTM-E283
- Diffusing, regressed lens
- Five-year limited warranty

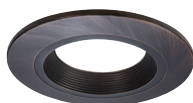
1. Lumens per selected CCT  
2. CCT - Correlated Color Temperature

## RL56 Designer Trims (Order Separately)



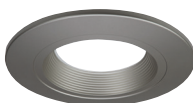
**RL56TRMWHB**  
White Baffle (Paintable)

**RL56TRMWH**  
White (Paintable)



**RL56TRMTBZB**  
Tuscan Bronze Baffle

**RL56TRMTBZ**  
Tuscan Bronze



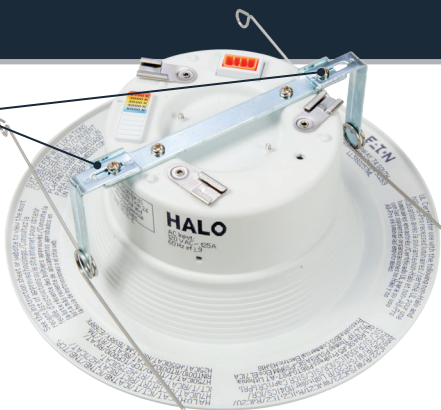
**RL56TRMSNB**  
Satin Nickel Baffle

**RL56TRMSN**  
Satin Nickel

**OVER \$409<sup>Δ</sup>  
SAVINGS**

<sup>Δ</sup> Savings are over the life of the HALO RL56 600 Lumen luminaire.  
Energy savings: \$348  
Replacement lamp savings: \$61  
Savings based on \$0.128 per kilowatt hour, average six hours use per day, 70,000 hours of lamp usage, and 65W BR30 lamp lumen equivalent.

**Torsion Springs**



Example:  
RL56-600 Series



**5 Inch housing position**



**6 Inch housing position**

**Push-N-Twist**  
Universal Installation Clip



Example:  
RL56-600 Series



To use the Push-N-Twist clips, the torsion springs must be removed. Do not remove the main bracket.



Once the torsion springs are removed, install the friction clips and make sure to rotate the clips into position before installing into the housing.

# RL56 SeleCCTable Series

## Ordering Information

Sample Number: **RL56069S1EWH**

Order HALO housing separately.

### RL56 – 5"/6" LED Retrofit Baffle - Trim

**RL56069S1EWH**= 600 lumen 90 CRI, 2700K - 5000K CCT

**RL56099S1EWH**= 900 lumen 90 CRI, 2700K - 5000K CCT

**RL56129S1EWH**= 1200 lumen 90 CRI, 2700K - 5000K CCT

### LED Housings (Order Separately)

See Housing Compatibility section

### Accessories (Order Separately)

#### Baffle

**RL56TRMSNB**=Satin Nickel Trim Ring

**RL56TRMTBZB**=Tuscan Bronze Trim Ring

**RL56TRMWHB**=White Paintable Trim Ring

#### Splay

**RL56TRMSN**=Satin Nickel Trim Ring

**RL56TRMTBZ**=Tuscan Bronze Trim Ring

**RL56TRMWH**=White Paintable Trim Ring

**OT400P**=Oversize Flat White Metal Trim Ring, 6" I.D. x 9-1/4" O.D.

(Ring slips behind RL56 ring in stepped configuration.)

**OT403P**=Oversize White Plastic Trim Ring, 6" I.D. x 8" O.D.

(Ring slips behind RL56 ring in stepped configuration.)

**TRM690WH**=Oversize Matte White Metal Trim Ring. Designed for RL56 ring to inset into oversize ring for an even (non-stepped) trim surface.

**HE26LED**=Replacement screw base adapter (one included with unit)



**HE26LED**

Edison Base Adapter for retrofit (included)

RL56 Energy Data	600 Series	900 Series	1200 Series
<b>Max. Lumens</b>	712 @ 4000K	1006 @ 4000K	1272 @ 5000K
<b>Input Voltage</b>	120V	120V	120V
<b>Input Frequency</b>	50/60 Hz	50/60 Hz	50/60 Hz
<b>Input Power</b>	7.6W	12.1W	14W
<b>Input Current</b>	0.15 A	0.15 A	0.15 A
<b>Power Factor</b>	>0.90	>0.90	>0.90
<b>THD</b>	<20%	<20%	<20%
<b>EMI/RFI</b>	FCC Title 47 CFR, Part 15, Class B (Consumer)	FCC Title 47 CFR, Part 15, Class B (Consumer)	FCC Title 47 CFR, Part 15, Class B (Consumer)
<b>Sound Rating</b>	Class A	Class A	Class A
<b>Minimum Starting Temp</b>	-30°C (-22°F)	-30°C (-22°F)	-30°C (-22°F)



Refer to ENERGY STAR® Certified Products List.

Can be used to comply with California Title 24 High Efficacy requirements. Certified to California Title 20 Appliance Efficiency Database.

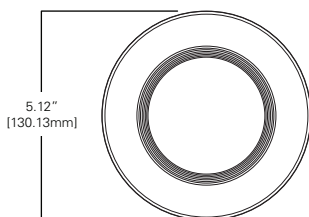
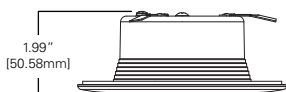




# RL4 / RL56 SeleCCTable Series

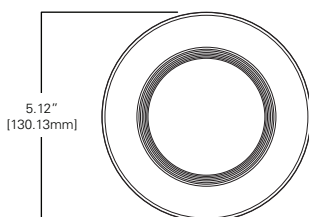
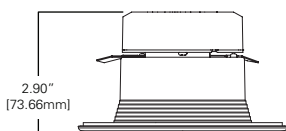
## RL4

600 Lumen



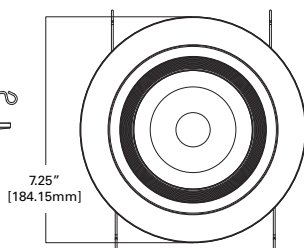
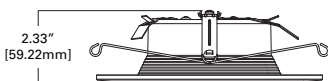
## RL4

900 Lumen



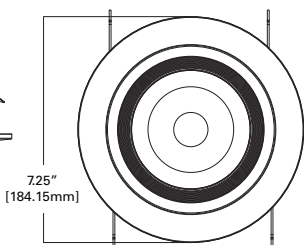
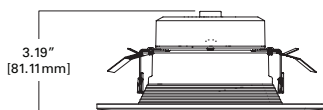
## RL56

600 Lumen / 900 Lumen



## RL56

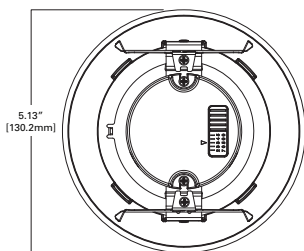
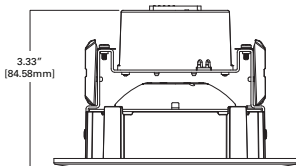
1200 Lumen



# RA4 SeleCCTable Series



- Adjustable Gimbal for accent, task, grazing and downlighting
- 35° Tilt, up to 360° rotation
- 615 lumens @ 3000K
- Use to replace 40W R40 lamp or 60W PAR16 lamp
- 2700K, 3000K, 3500K, 4000K, 5000K CCT all in one
- 90 CRI
- 600 Series: 7.8W, 120V
- L70 @ 70,000 hrs
- HALO matte white finish
- Compatible with most 4" recessed housings
- Flexible mounting with friction blades
- Dimmable to 5% with select dimmers
- Damp location listed
- Rated for IC, ICAT and may be used in Non-IC housings
- Five-year limited warranty



UP TO **\$596<sup>A</sup>**  
**SAVINGS**

<sup>A</sup> Savings are over the life of the HALO RA4 600 Lumen luminaire.

Energy savings: \$520

Replacement lamp savings: \$77

Savings based on \$0.128 per kilowatt hour, average six hours use per day, 70,000 hours of lamp usage, and 60W PAR16 lamp lumen equivalent.

Friction Blades



## Ordering Information

Sample Number: **RL4069S1EWH**  
Order HALO housing separately.

### RA4 – 4" LED Adjustable Gimbal

**RA4069S1EWH**= 600 lumen, 90 CRI, 2700K - 5000K CCT

### LED Housings (Order Separately)

See Housing Compatibility section

### Accessories (Order Separately)

**HE26LED**=Replacement screw base adapter  
(one included with unit)



**HE26LED**  
Edison Base Adapter  
for retrofit (included)

RA4 Energy Data	600 Series @ 3000K
Max. Lumens	615 @ 3000K
Input Voltage	120V
Input Frequency	50/60 Hz
Input Power	7.0W
Input Current	0.065A
Power Factor	>0.90
THD	<20%
EMI/RFI	FCC Title 47 CFR, Part 15, Class B (Consumer)
Sound Rating	Class A
Minimum Starting Temp	-30°C (-22°F)



Refer to ENERGY STAR® Certified Products List.

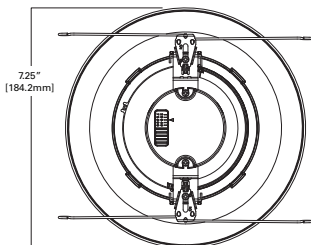
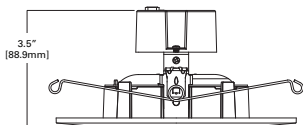
Can be used to comply with California Title 24 High Efficacy requirements. Certified to California Title 20 Appliance Efficiency Database.



# RA56 SeleCCTable Series



- Adjustable Gimbal for accent, task, grazing and downlighting
- 35° Tilt, up to 360° rotation
- 630 lumens @ 3000K
- Use to replace 65W BR30 lamp
- 2700K, 3000K, 3500K, 4000K, 5000K CCT all in one
- 90 CRI
- 600 Series: 7.0W, 120V
- L70 @ 70,000 hrs
- HALO matte white finish
- Compatible with most 5" and 6" recessed housings
- Flexible mounting with friction blades and torsion springs
- Dimmable to 5% with select dimmers
- Damp location listed
- Rated for IC, ICAT and may be used in Non-IC housings
- Five-year limited warranty



UP TO **\$604<sup>Δ</sup>**  
**SAVINGS**

<sup>Δ</sup> Savings are over the life of the HALO RA56 600 Lumen luminaire.

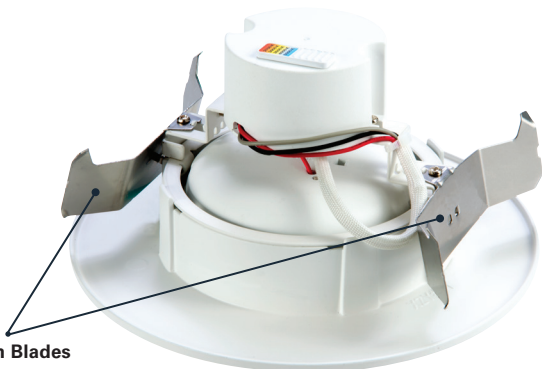
Energy savings: \$520

Replacement lamp savings: \$84

Savings based on \$0.128 per kilowatt hour, average six hours use per day, 70,000 hours of lamp usage, and 65W BR30 lamp lumen equivalent.



**Torsion Springs**



**Friction Blades**

## Ordering Information

Sample Number: **RL4069S1EWH**

Order HALO housing separately.

### RA56 – 5"/6" LED Adjustable Gimbal

**RA56069S1EWH**= 600 lumen, 90 CRI, 2700K - 5000K CCT

### LED Housings (Order Separately)

See Housing Compatibility section

### Accessories (Order Separately)

**HE26LED**=Replacement screw base adapter  
(one included with unit)



**HE26LED**  
Edison Base Adapter  
for retrofit (included)

### RA56 Energy Data

### 600 Series

<b>Max. Lumens</b>	630 @ 3000K
<b>Input Voltage</b>	120V
<b>Input Frequency</b>	50/60 Hz
<b>Input Power</b>	7.0W
<b>Input Current</b>	0.065A
<b>Power Factor</b>	>0.90
<b>THD</b>	<20%
<b>EMI/RFI</b>	FCC Title 47 CFR, Part 15, Class B (Consumer)
<b>Sound Rating</b>	Class A
<b>Minimum Starting Temp</b>	-30°C (-22°F)



Refer to ENERGY STAR® Certified Products List.

Can be used to comply with California Title 24 High Efficacy requirements. Certified to California Title 20 Appliance Efficiency Database.



# RL4/RA4 Housing Compatibility

**RL4/RA4 SeleCCTable LED are rated for installation in 4" HALO and other housings.**

**HALO LED<sup>1</sup>** H995ICAT, H995RICAT, H245ICAT, H245RICAT

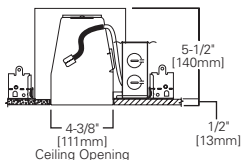
**HALO** H99ICAT, H99RTAT, H99TAT, E4ICATSB, E4TATSB, E4RTATSB

**Other Brands** The RL and RA SeleCCTable Series is UL Certified for use with any 4" diameter recessed housing constructed of steel or aluminum with an internal volume that exceeds 62.3 in<sup>3</sup> in addition to those noted above.

1 HALO LED housings are non-screw base, high-efficacy code compliant.

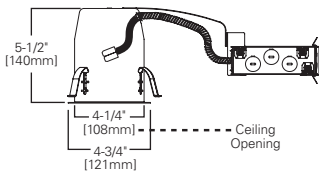
## H995ICAT

4" LED, IC, AIR-TITE,  
New Construction Housing



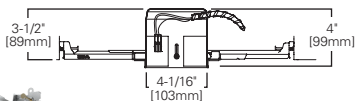
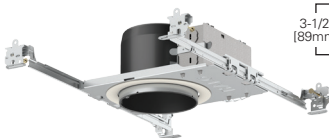
## H995RICAT

4" LED, IC, AIR-TITE,  
Remodel Housing



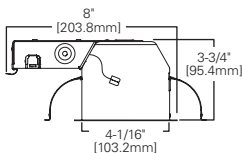
## H245ICAT

4" LED, Ultra-shallow, IC, AIR-TITE, New Construction Housing



## H245RICAT

4" LED, Ultra-shallow, IC, AIR-TITE, Remodel Housing



# RL56/RA56 Housing Compatibility

**RL56/RA56 SeleCCTable LED are rated for installation in 5" and 6" HALO and other housings.**

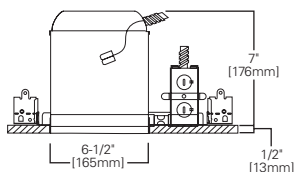
<b>HALO 5" LED<sup>1</sup></b>	H550ICAT, H550RICAT, E550ICAT, E550RICAT
<b>HALO 6" LED<sup>1</sup></b>	H750ICAT, H750RICAT, H750T, H750TCP, H2750ICAT, H2750RICAT, E750ICAT, E750RICAT
<b>HALO 5"</b>	H5ICAT, H5RICAT, H5ICATNB, H5T, H5RT, H25ICAT, H25ICATNB, E5TAT, E5RTAT, H5TNB, E5TATNB, E5ICAT, E5RICAT, E5ICATNB
<b>HALO 6"</b>	H7ICAT, H7RICAT, H7ICT, H7RICT, H7ICATNB, H7ICTNB, H7T, H7RT, H7TNB, H7TCP, H7UICT, H7UICAT, H27ICAT, H27RICAT, H27T, H27RT, E7ICAT, E7RICAT, E27ICAT, E27RICAT, E7ICATNB, E7TAT, E7RTAT, E7TATNB, E27TAT, E27RTAT
<b>HALO LED Retrofit</b>	ML7BXRFK, ML7E26RFK
<b>Other Brands*</b>	The RL SeleCCTable Series is UL Certified for use with any 5"/6" diameter recessed housing constructed of steel or aluminum with an internal volume that exceeds 107.9 in <sup>3</sup> in addition to those noted above.

\*When using RL56/RA56 torsion springs for retrofit some housings will not have torsion spring receiver brackets –use HALO ML7RAB retrofit adapter band (order separately)

1 HALO LED housings are non-screw base, high-efficacy code compliant.

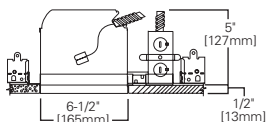
## H750ICAT

6" LED, IC, AIR-TITE, Standard New Construction Housing



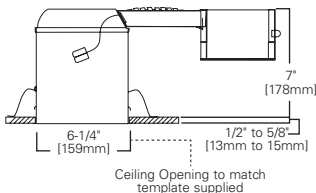
## H2750ICAT

6" LED, IC, AIR-TITE, Shallow New Construction Housing



## H750RICAT

6" LED, IC, AIR-TITE, Standard Remodel Housing



# Product and Photometric Data

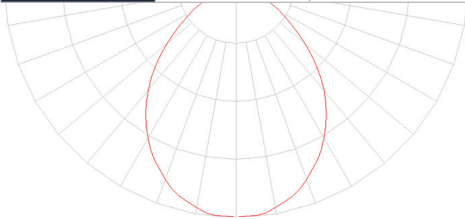


## RL4069S1EWHR

RL4 SeleCCTable - 600 SERIES

Cat No.	CRI	CCT	Lumens	Power (W)	LPW
RL4069S1EWH	91	2700K	549	7.6	72.3
	91	3000K	580	7.6	76.3
	94	3500K	610	7.6	80.3
	94	4000K	621	7.6	81.7
	92	5000K	598	7.6	78.6

RL4069S1EWHR-3000K		
Luminaire lumens		575
Input watts		7.6
LER (LPW)		75.7
Spacing Criteria	0-180	1.18
	90-270	1.18
	Diagonal	1.26
Beam angle (degrees)		93.1
Field angle (degrees)		141.1
Zonal lumen	Lumens	% Lumens
0-30	203	35.3
0-40	322	56
0-60	511	88.8
0-90	575	100



\* Tested in accordance with IES LM63. Field results may vary.

### Color Metric Summary

TM-30-15	R <sub>f</sub> = 91.1
	R <sub>g</sub> = 100.9
CRI/CIE	R <sub>a</sub> = 93.1
	R <sub>9</sub> = 64.9



CCT - Range of 2700K- 5000K



\*Additional photometric ies files available online.



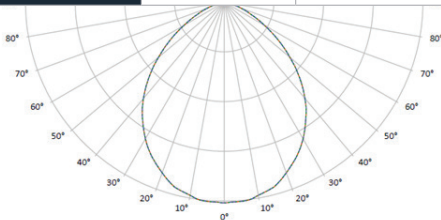
# RL4099S1EWHR

RL4 SeleCCTable - 900 SERIES



Cat No.	CRI	CCT	Lumens	Power (W)	LPW
<b>RL4099S1EWH</b>	92	2700K	891	11.7	76.2
	93	3000K	915	11.7	78.2
	94	3500K	951	11.7	81.2
	94	4000K	976	11.7	83.4
	91	5000K	1006	11.7	86.0

<b>RL4099S1EWH -3000K</b>		
<b>Luminaire lumens</b>		<b>915</b>
<b>Input watts</b>		<b>11.7</b>
<b>LER (LPW)</b>		<b>78.2</b>
<b>Spacing Criteria</b>	0-180	1.17
	90-270	1.17
	Diagonal	1.25
<b>Beam angle (degrees)</b>		<b>93.1</b>
<b>Field angle (degrees)</b>		<b>141.1</b>
<b>Zonal lumen</b>	<b>Lumens</b>	<b>% Lumens</b>
<b>0-30</b>	323	35.3
<b>0-40</b>	512	56
<b>0-60</b>	813	88.8
<b>0-90</b>	915	100



\* Tested in accordance with IES LM63. Field results may vary.

## Color Metric Summary

TM-30-15	R <sub>f</sub> = 91.1
	R <sub>g</sub> = 100.9
CRI/CIE	R <sub>a</sub> = 93.1
	R <sub>9</sub> = 64.9



CCT - Range of 2700K- 5000K



\*Additional photometric ies files available online.

# Product and Photometric Data

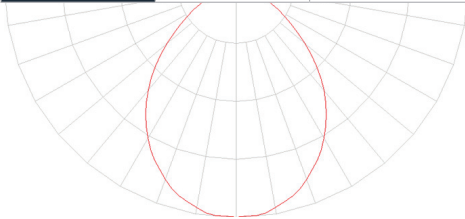
## RL56069S1EWH

RL56 SeleCCTable - 600 SERIES



Cat No.	CRI	CCT	Lumens	Power (W)	LPW
RL56069S1EWH	92	2700K	630	7.6	82.9
	92	3000K	665	7.6	87.5
	94	3500K	700	7.6	92.1
	94	4000K	712	7.6	93.6
	92	5000K	685	7.6	90.2

RL56069S1EWH-3000K		
Luminaire lumens		665
Input watts		7.6
LER (LPW)		87.5
Spacing Criteria	0-180	1.14
	90-270	1.14
	Diagonal	1.22
Beam angle (degrees)		87.8
Field angle (degrees)		139
Zonal lumen	Lumens	% Lumens
0-30	247	37.2
0-40	387	58.2
0-60	595	89.4
0-90	665	100



\* Tested in accordance with IES LM63. Field results may vary.

### Color Metric Summary

TM-30-15	R <sub>f</sub> = 89.8
	R <sub>g</sub> = 98
CRI/CIE	R <sub>a</sub> = 93.7
	R <sub>g</sub> = 69.1



CCT - Range of 2700K- 5000K



\*Additional photometric ies files available online.

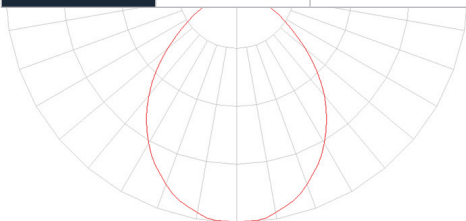
# RL56099S1EWH

RL56 SeleCCTable - 900 SERIES



Cat No.	CRI	CCT	Lumens	Power (W)	LPW
<b>RL56099S1EWH</b>	90	2700K	890	12.1	73.6
	90	3000K	940	12.1	77.7
	93	3500K	989	12.1	81.7
	93	4000K	1006	12.1	83.1
	91	5000K	969	12.1	80

<b>RL56099S1EWH-3000K</b>		
<b>Luminaire lumens</b>		940
<b>Input watts</b>		12.1
<b>LER (LPW)</b>		77.7
<b>Spacing Criteria</b>	0-180	1.16
	90-270	1.16
	Diagonal	1.22
<b>Beam angle (degrees)</b>		88.9
<b>Field angle (degrees)</b>		140
<b>Zonal lumen</b>	<b>Lumens</b>	<b>% Lumens</b>
<b>0-30</b>	345	36.7
<b>0-40</b>	541	57.5
<b>0-60</b>	838	89.1
<b>0-90</b>	940	100



\* Tested in accordance with IES LM63. Field results may vary.

## Color Metric Summary

TM-30-15	R <sub>f</sub> = 89.9
	R <sub>g</sub> = 97.7
CRI/CIE	R <sub>a</sub> = 93.1
	R <sub>9</sub> = 64.6



CCT - Range of 2700K- 5000K



\*Additional photometric ies files available online.

# Product and Photometric Data

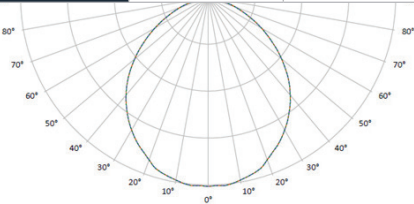
## RL56129S1EWH

RL56 SeleCCTable - 1200 SERIES



Cat No.	CRI	CCT	Lumens	Power (W)	LPW
<b>RL56099S1EWH</b>	91	2700K	1205	14	86.1
	93	3000K	1221	14	87.2
	94	3500K	1227	14	87.6
	95	4000K	1249	14	89.2
	93	5000K	1272	14	90.8

<b>RL56129S1EWH-3000K</b>		
<b>Luminaire lumens</b>		1221
<b>Input watts</b>		14
<b>LER (LPW)</b>		87.2
<b>Spacing Criteria</b>	0-180	1.21
	90-270	1.21
	Diagonal	1.31
<b>Beam angle (degrees)</b>		93
<b>Field angle (degrees)</b>		140
<b>Zonal lumen</b>	<b>Lumens</b>	<b>% Lumens</b>
<b>0-30</b>	345	31.7
<b>0-40</b>	541	51.5
<b>0-60</b>	838	85.5
<b>0-90</b>	940	100



\* Tested in accordance with IES LM63. Field results may vary.

### Color Metric Summary

TM-30-15	R <sub>f</sub> = 89.9
	R <sub>g</sub> = 97.7
CRI/CIE	R <sub>a</sub> = 93.1
	R <sub>9</sub> = 64.6



CCT - Range of 2700K- 5000K



\* Additional photometric ies files available online.

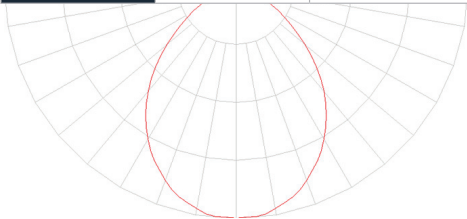
# RA4069S1EWH

RA4 SeleCCTable - 600 SERIES



Cat No.	CRI	CCT	Lumens	Power (W)	LPW
<b>RA4069S1EWH</b>	91	2700K	549	7.6	72.3
	91	3000K	580	7.6	76.3
	94	3500K	610	7.6	80.3
	94	4000K	621	7.6	81.7
	92	5000K	598	7.6	78.6

<b>RA4069S1EWHR-3000K</b>		
<b>Luminaire lumens</b>		575
<b>Input watts</b>		7.6
<b>LER (LPW)</b>		75.7
<b>Spacing Criteria</b>	0-180	1.18
	90-270	1.18
	Diagonal	1.26
<b>Beam angle (degrees)</b>		93.1
<b>Field angle (degrees)</b>		141.1
<b>Zonal lumen</b>	<b>Lumens</b>	<b>% Lumens</b>
<b>0-30</b>	203	35.3
<b>0-40</b>	322	56
<b>0-60</b>	511	88.8
<b>0-90</b>	575	100



\* Tested in accordance with IES LM63. Field results may vary.

## Color Metric Summary

TM-30-15	R <sub>f</sub> = 90
	R <sub>g</sub> = 98
CRI/CIE	R <sub>a</sub> = 95
	R <sub>9</sub> = 77



CCT - Range of 2700K- 5000K



\*Additional photometric ies files available online.

# Product and Photometric Data

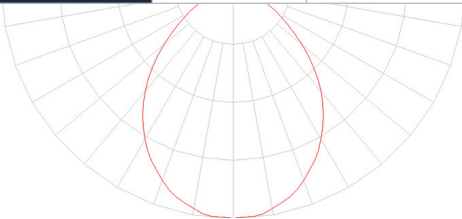


## R564069S1EWH

RA56 SeleCCTable - 600 SERIES

Cat No.	CRI	CCT	Lumens	Power (W)	LPW
RA56069S1EWH	92	2700K	630	7.6	82.9
	92	3000K	665	7.6	87.5
	94	3500K	700	7.6	92.1
	94	4000K	712	7.6	93.6
	92	5000K	685	7.6	90.2

RA56069S1EWH-3000K		
Luminaire lumens		665
Input watts		7.6
LER (LPW)		87.5
Spacing Criteria	0-180	1.14
	90-270	1.14
	Diagonal	1.22
Beam angle (degrees)		87.8
Field angle (degrees)		139
Zonal lumen	Lumens	% Lumens
0-30	247	37.2
0-40	387	58.2
0-60	595	89.4
0-90	665	100



\* Tested in accordance with IES LM63. Field results may vary.

### Color Metric Summary

TM-30-15	R <sub>f</sub> = 90
	R <sub>g</sub> = 98
CRI/CIE	R <sub>a</sub> = 95
	R <sub>9</sub> = 77



CCT - Range of 2700K- 5000K



- Downlight distribution
- Maximum spacing criteria
- Optimized design for general downlighting
- Exceeds 86% of light between 0-60° cone-of-light zone
- ENERGY STAR® and California Title 24 - zonal and efficacy requirements

## Lighting Control Solution

Eaton dimmers offer versatile options to set the mood and reduce energy consumption. These compatible LED dimmers are ideal for both residential and light commercial applications and are compatible with decorator (screw-less) style devices and wallplates. Refer to [www.eaton.com](http://www.eaton.com) for additional information.



**Decorator**  
WBSD-DEC-\*



**Slide**  
WBSD-SLD-\*



**Toggle**  
WBSD-TOG-\*



**Smart**  
WBSD-SMT-\*



## **Eaton**

1121 Highway 74 South  
Peachtree City, GA 30269  
P: 770-486-4800  
[www.eaton.com/lighting](http://www.eaton.com/lighting)

Canada Sales  
5925 McLaughlin Road  
Mississauga, Ontario L5R 1B8  
P: 905-501-3000  
F: 905-501-3172

### **Our Lighting Product Lines**

Ametrix  
AtLite  
Corelite  
Ephesus  
Fail-Safe  
HALO  
HALO Commercial  
Invue  
io  
IRiS  
Lumark  
Lumière  
McGraw-Edison  
Metalux  
MWS  
Neo-Ray  
Portfolio  
RSA  
Shaper  
Streetworks  
Sure-Lites

### **Our Controls Product Lines**

Fifth Light Technology  
Greengate  
iLight (International Only)  
iLumin  
Zero 88

### **Connected Lighting Systems**

Distributed Low-Voltage Power  
HALO Home  
iLumen Plus  
LumaWatt Pro  
WaveLinx

#### **Eaton**

1121 Highway 74 South  
Peachtree City, GA 30269  
P: 770-486-4800  
[www.eaton.com/lighting](http://www.eaton.com/lighting)

© 2018 Eaton  
All Rights Reserved  
Printed in USA  
Publication No. BR518046EN  
August 2018

Products, specifications and  
compliances are subject to  
change without notice.

Eaton is a registered trademark.

All other trademarks are property  
of their respective owners.



*Powering Business Worldwide*