

natural^{led}

Turning Light into Savings ▶▶▶



**LED LAMPS
& FIXTURES**

**Product Catalog
Edition XII**

▶▶▶
Turning Light into Savings

TABLE OF CONTENT

LAMPS

Filament.....	10
CRI 90 & Energy Star	Section 01
Candelabra & Globe.....	10
CRI 80 & Energy Star	Section 02
A19 & A21.....	11-12
CRI 80 & Energy Star	Section 03-04
A19 for Enclosed Fixtures.....	13
CRI 80 & Energy Star	Section 05
R/ BR Lamps.....	13-15
CRI 80 & Energy Star	Section 06-09
PAR Lamps.....	15
CRI 90 & Energy Star / CRI 80	Section 10-14
MR Lamps.....	18
CRI 80 & Energy Star	Section 15-16
Bi-Pin Lamps.....	19
Low Voltage and Line Voltage	Section 17-18
HID CornLights.....	20-21
CRI 80 (E26 and E39 Base)	Section 19-21
Elevator Lamps.....	21
	Section 22
Plug-in Lamps.....	22
Ballast Compatible / Multi-Wattage CRI 90	Section 23-24
Tubes T5/T8 Instant Fit.....	23
Instant Fit & DLC	Section 25-26
Tubes T8 Integrated Driver.....	24-25
Integrated Driver & DLC	Section 27-28
Liquid LED.....	25
4-Watt	Section 29

TABLE OF CONTENT

FIXTURES

Retrofit Recess Can.....	28-31
CRI 90 & Energy Star / CRI & Energy Star	Section 01-07
Under Cabinet.....	31
CRI 90, Energy Star, JA8-2016	Section 08
FMC Compact.....	32
CRI 80 & Energy Star	Section 09
FMR Round.....	32
CRI 80 & Energy Star	Section 10
FMS Streamlined.....	33
CRI 80 & Energy Star	Section 11
FMM Modern.....	33
CRI 80 & Energy Star	Section 12
Decorative Accent.....	34
CRI 80 & Energy Star	Section 13
Utility Strip Light.....	34-35
CRI 80 & DLC Premium	Section 14
Utility Wrap.....	35
CRI 80 & DLC Premium	Section 15
Flat Panel.....	36
DLC Premium / DLC Standard	Section 16-17
Troffer.....	37
DLC Premium / DLC Standard	Section 18-19
Vapor Tight.....	38
DLC Premium & IP65	Section 20-21
Linear High/Low Bay.....	39
DLC Premium / IP66	Section 22-23
High Bay.....	40
DLC Premium	Section 24
Round High Bay.....	40-41
DLC Premium / IP67 & Damp Location	Section 25-27
Gas Station.....	42
IP66	Section 28
Slim Canopy.....	43-44
DLC / Motion Sensor / IP65	Section 29-32
Traditional Wall Pack.....	45
DLC Premium & DLC Standard	Section 33
Slim Wall Pack.....	46
IP65	Section 34
Flood Light Compact.....	46
IP65	Section 35

TABLE OF CONTENT

FIXTURES

Flood Light..... IP65	47 Section 36
Slim Area Light..... IP65 (Dark Bronze/White)	48-49 Section 38-39
Shoebox..... IP65	50 Section 40-41
HID Retrofit Kit..... DLC Premium	51 Section 42
Security Light & Wall Lights..... DLC	51-52 Section 43-44
Jelly Jar	52 Section 45
Bulkhead Wall Light.....	53 Section 46
Up/Down Wall Sconce..... Decorative Indoor and Outdoor	53 Section 47
Security Flood Light..... Energy Star / Motion Sensor Included	54 Section 48-49

TABLE OF CONTENT

ACCESSORIES

Downlight Accessories.....	58 Section 01-02
Linear High Bay.....	59 Section 03
Flat Panel.....	59 Section 04
Slim Wall Pack	60 Section 05
Slim Area Light / Shoebox.....	60-61 Section 06-07
Under Cabinet.....	62 Section 08
Utility Wrap.....	62 Section 09
LED Emergency Driver.....	63 Section 10
Step Down Driver.....	63 Section 11
Portable Power Cable.....	63 Section 12
Flush Mount / DAL.....	64 Section 13
Microwave Photocell.....	64 Section 14
Aircraft Cable.....	64 Section 15
Button Photocell.....	65 Section 16
Traditional Wall Pack Shield.....	65 Section 17
Dusk to Dawn / Barn Light.....	65 Section 18
Security Light Sensor.....	66 Section 19
Jelly Jar.....	66 Section 20
PIR Photocell / Motion Sensor.....	66 Section 21
High / Low Bay Diffuser.....	67 Section 22
Slim Canopy.....	67 Section 23
LED Unit Inverter.....	67 Section 24

LAMPS

Turning Light into Savings ▶▶▶

www.mynaturalLED.com

01

Filament

CRI 90, Energy Star, JA8

TITLE
20

DIMMABLE

15,000
Rated
Life HoursJA8
2016

SKU Code	Product Code	Watts	Watt Equiv.	Lumens
▶ 5940	• LED4.5CAF/FIL/E12/30L/922	4.5W	40W	300
▶ 5941	• LED5CAF/FIL/E26/32L/922	5W	40W	325
▶ 5942	• LED5G25/FIL/35L/922	5W	40W	350
▶ 5994	LED6.5A19/FIL/45L/922	6.5W	40W	455
▶ 5995	LED6.5ST19/FIL/45L/922	6.5W	40W	450

▶ Energy Star • Wet Location



02

Candelabra / Globe

CRI 80 & Energy Star



DIMMABLE

25,000
Rated
Life Hours

SKU Code	Product Code	Watts	Watt Equiv.	Lumens
▶ 5837	LED5CAB/32L/E12/27K	5W	40W	325
▶ 5838	LED5CAB/32L/E12/30K	5W	40W	325
▶ 5839	LED5CAB/32L/E12/50K	5W	40W	325
▶ 5781	LED5CAB/32L/E26/27K	5W	40W	325
▶ 5814	• LED6G25/45L/27K	6W	40W	450

▶ Energy Star • 15,000 average life hours



03

A19 & A21

CRI 90 & Energy Star



A19

A21

JA8
2016

DIMMABLE

25,000
Rated
Life HoursTITLE
20BEAM
ANGLE
OMNI

SKU Code	Product Code	Watts	Watt Equiv.	Lumens
▶ 4522	LED5A19/45L/927	5W	40W	450
▶ 4523	LED5A19/45L/930	5W	40W	450
▶ 4524	LED5A19/45L/950	5W	40W	450
▶ 4525	LED9A19/81L/927	9W	60W	810
▶ 4526	LED9A19/81L/930	9W	60W	810
▶ 4532	LED9A19/81L/940	9W	60W	810
▶ 4527	LED9A19/81L/950	9W	60W	810
▶ 4513	LED12A19/110L/927	12W	75W	1,100
▶ 4528	LED12A19/110L/930	12W	75W	1,100
▶ 4533	LED12A19/110L/940	12W	75W	1,100
▶ 4529	LED12A19/110L/950	12W	75W	1,100
▶ 4514	LED17A21/160L/927	17W	100W	1,600
▶ 4530	LED17A21/160L/930	17W	100W	1,600
▶ 4531	LED17A21/160L/950	17W	100W	1,600

▶ Energy Star



04

A19 & A21

CRI 90, Energy Star, JA8, CEC



Limited Quantity
Please contact your sales rep while supplies last

SKU Code	Product Code	Watts	Watt Equiv.	Lumens
▶ 5946	LED6A19/48L/827	6W	40W	480
▶ 5919	LED6A19/48L/830	6W	40W	480
▶ 5947	LED6A19/48L/840	6W	40W	480
▶ 5948	LED6A19/48L/850	6W	40W	480
▶ 4512	LED6.5A19/48L/927	6.5W	50W	480
▶ 5920	LED9A19/80L/827	9W	60W	800
▶ 5976	LED9A19/80L/830	9W	60W	800
▶ 5921	LED9A19/80L/840	9W	60W	800
▶ 5922	LED9A19/80L/850	9W	60W	800
▶ 5859	LED10A19/80L/927	10W	60W	800
▶ 5860	LED12A19/110L/827	12W	75W	1,100
▶ 5977	LED12A19/110L/830	12W	75W	1,100
▶ 5831	LED12A19/110L/840	12W	75W	1,100
▶ 5832	LED12A19/110L/850	12W	75W	1,600
▶ 5957	LED15A21/160L/827	15W	100W	1,600
▶ 5962	LED15A21/160L/830	15W	100W	1,600
▶ 5963	LED15A21/160L/840	15W	100W	1,600
▶ 5964	LED15A21/160L/850	15W	100W	1,600

▶ Energy Star



SKU Code	Product Code	Watts	Watt Equiv.	Lumens
5807	LED6A19/50L/40K	6W	40W	500
5809	LHO9A19/85L/27K	9W	60W	850
5823	LED9.5A19/88L/50K	9.5W	60W	880



05

A19 for Enclosed Fixtures

CRI 90 & Energy Star



SKU Code	Product Code	Watts	Watt Equiv.	Lumens
▶ 4534	LED9A19/EC/81L/927	9W	60W	810
▶ 4535	LED9A19/EC/81L/GU24/927	9W	60W	810

Limited Quantity
Please contact your sales rep while supplies last

▶ 5980	LED9A19/EC/80L/827	9W	60W	800
▶ 5918	LED9A19/EC/80L/GU24/827	9W	60W	800



▶ Energy Star

06

R / BR

CRI 90 & Energy Star



SKU Code	Product Code	Watts	Watt Equiv.	Lumens
▶ 5834	LED8R20/50L/927	8W	50W	525
▶ 5982	LED8R20/52L/950	8W	50W	525
▶ 5835	LED9BR30/65L/927	10W	65W	650
▶ 5983	LED9BR30/71L/950	9W	65W	715
▶ 5904	LED9BR30/81L/927	9W	65W	810
▶ 5842	LED12BR30/90L/927	12W	75W	938
▶ 5893	LED12BR30/95L/930	12W	75W	950
▶ 5978	LED12BR30/90L/940	12W	75W	950
▶ 5984	LED12BR30/95L/950	12W	75W	950
▶ 5905	LED11BR40/100L/927	11W	85W	1,000
▶ 5836	LED15BR40/120L/927	15W	85W	1,200
▶ 5985	LED15BR40/130L/950	15W	90W	1,300



▶ Energy Star

07

R / BR CRI 90 & Energy Star



Limited Quantity
Please contact your sales rep while supplies last

SKU Code	Product Code	Watts	Watt Equiv.	Lumens
▶ 5936	LED7R20/52L/930	7W	50W	525
▶ 5986	LED14BR40/100L/930	14W	75W	1,000
5894	LED12BR30/80L/927	12W	65W	800
5896	LED14BR40/100L/927	14W	75W	1,000
5786	LED16BR40/100L/930	16W	100W	1,000



▶ Energy Star

08

R / BR CRI 80 & Energy Star



Limited Quantity
Please contact your sales rep while supplies last

SKU Code	Product Code	Watts	Watt Equiv.	Lumens
▶ 5782	LED7R20/55L/27K	7W	50W	550
▶ 5815	LED8BR30/65L/27K	8W	65W	650
5783	LED11BR30/85L/27K	11W	65W	850
5841	LED11BR30/85L/50K	11W	65W	850
5895	LED12BR40/105L/827	12W	75W	1,050
5707	LHO13R40/DIM/30K	13W	80W	880
5784	LED17BR40/140L/27K	17W	100W	1,400



▶ Energy Star

09

BR30 Energy Star (Twin Pack)



Limited Quantity
Please contact your sales rep while supplies last

SKU Code	Product Code	Watts	Watt Equiv.	Lumens
▶ 5886	LED8BR30/65L/827CP	8W	50W	610

▶ Energy Star



10

PAR Energy Star Rated CRI 90 & Energy Star



SKU Code	Product Code	Watts	Watt Equiv.	Lumens
▶ 5924	LED8PAR20/50L/FL/930	8W	50W	500
▶ 5925	LED8PAR20/50L/FL/950	8W	50W	500
▶ 5926	LED10PAR30/80L/FL/930	10W	75W	800
▶ 5927	LED10PAR30/80L/FL/950	10.5W	75W	800
▶ 5928	• LED10PAR30L/OD/80L/FL/930	10.5W	75W	800
▶ 5997	• LED10PAR30L/OD/80L/FL/940	10.5W	75W	800
▶ 5929	• LED10PAR30L/OD/80L/FL/950	10.5W	75W	800
▶ 5930	• LED15PAR38/OD/120L/FL/930	15W	100W	1,200
▶ 5998	• LED15PAR38/OD/120L/FL/940	15W	100W	1,200
▶ 5931	• LED15PAR38/OD/120L/FL/950	15W	100W	1,200

▶ Energy Star • Wet Location



11

PAR LED 30°/40° CRI 80



25,000
Rated
Life Hours



Limited Quantity
Please contact your sales rep while supplies last

SKU Code	Product Code	Watts	Watt Equiv.	Lumens
5788	LHO-7.5PAR20/54L/FL/40K	7.5W	50W	540
5789	LHO-7.5PAR20/54L/FL/50K	7.5W	50W	580
5856	LED7.6PAR20/50L/FL/840	7.6W	50W	500
5857	LED7.6PAR20/50L/FL/850	7.6W	50W	500
5862	LED9PAR30/80L/FL/840	9W	60W	800
5863	LED9PAR30/80L/FL/850	9W	60W	800
5790	LHO-9.5PAR30L/75L/FL/30K	9.5W	75W	750
5791	LHO-9.5PAR30L/75L/FL/40K	9.5W	75W	750
5792	LHO-9.5PAR30L/83L/FL/50K	9.5W	75W	830
5868	LED9PAR30L/80L/FL/840	9W	60W	800
5869	LED9PAR30L/80L/FL/850	9W	60W	800
5906	LED10PAR30L/90L/930	10W	75W	900
5907	LED12PAR38/110L/930	12W	85W	1,100



12

PAR LED CRI 80



25,000
Rated
Life Hours



Limited Quantity
Please contact your sales rep while supplies last

SKU Code	Product Code	Watts	Watt Equiv.	Lumens
5885	LHO13PAR30L/100L/FL/30K/277	13W	65W	1,000
5715	LHO12PAR30L/DIM/NFL/30K	12W	75W	830
5879	LHO18PAR38/125L/FL/27K	18W	150W	1,250
5880	LHO18PAR38/135L/FL/30K	18W	150W	1,350



13

PAR LED CRI 80



25,000
Rated
Life Hours



Limited Quantity
Please contact your sales rep while supplies last

SKU Code	Product Code	Watts	Watt Equiv.	Lumens
5630	LED14PAR30L/DIM/NFL/40K	14W	75W	870
5654	LED14PAR30L/DIM/FL/40K	14W	75W	870
5631	LED17PAR38/DIM/NFL/27K	17W	150W	1,050
5633	LED17PAR38/DIM/NFL/40K	17W	90W	1,050



14

PAR LED CRI 80 / Beam Angle: 25° & 40°



25,000
Rated
Life Hours



Limited Quantity
Please contact your sales rep while supplies last

SKU Code	Product Code	Watts	Watt Equiv.	Lumens
5754	LED9.5PAR20/50L/NFL/30K	9.5W	50W	500
5755	LED9.5PAR20/50L/NFL/50K	9.5W	50W	500
5756	LED14PAR30/88L/NFL/30K	14W	75W	880
5757	LED14PAR30/90L/NFL/50K	14W	75W	900
5764	LED14PAR30/80L/FL/30K	14W	75W	800
5765	LED14PAR30/86L/FL/50K	14W	75W	860
5758	LED14PAR30L/90L/NFL/30K	14W	75W	900
5759	LED14PAR30L/90L/NFL/50K	14W	75W	900
5767	LED14PAR30L/86L/FL/50K	14W	75W	860



15

MR Energy Star Rated CRI 80 & Energy Star



SKU Code	Product Code	Watts	Watt Equiv.	Lumens
5937	LED7MR16/50L/FL/830	7W	50W	500
5999	LED7MR16/50L/FL/850	7W	50W	500
5938	LED7MR16/50L/GU10/FL/830	7W	50W	500
5939	LED7MR16/50L/GU10/FL/850	7W	50W	500



Energy Star

17

BI-PIN Low Voltage / Line Voltage



SKU Code	Product Code	Watts	Base	Lumens
4510	LED2JC/16L/G4/830	2W	G4	160
4511	LED2JC/17L/G4/850	2W	G4	170
4508	• LED2JCD/18L/G9/830	2W	G9	180
4509	• LED2JCD/20L/G9/850	2W	G9	200



Dimmable

16

MR CRI 80 & Energy Star



Limited Quantity
Please contact your sales rep while supplies last

SKU Code	Product Code	Watts	Watt Equiv.	Lumens
5678	LHO-4MR11/NFL/50K	4W	10W	170
5802	LED7MR16/40L/FL/30K	7W	42W	400
5821	LED7MR16/45L/GU10/FL/50K	7W	50W	450



18

BI-PIN Low Voltage / Line Voltage



Limited Quantity
Please contact your sales rep while supplies last

SKU Code	Product Code	Watts	Watt Equiv.	Lumens
5828	LHO-JC1.6T4G4/30K	1.6W	20W	140
5848	LHO-JC1.6T4G4/50K	1.6W	20W	160
5826	• LHO-JCD3T4G9/30K	3W	30W	240
5830	• LHO-JCD3T4G9/50K	3W	30W	250



Dimmable

19

HID Retrofit Integrated Ballast CRI 80: E26 Medium Base



SKU Code	Product Code	Watts	Watt Equiv.	Lumens
4540	LED16HID/E26/190L/830	16W	50	1,900
4541	LED16HID/E26/190L/850	16W	50	1,900
5965	LED20HID/E26/220L/827	20W	70W	2,200
5966	LED20HID/E26/220L/850	20W	70W	2,200
4515	LED24HID/E26/270L/830	24W	100W	2,700
4516	LED24HID/E26/300L/850	24W	100W	3,000



20

HID Retrofit Integrated Ballast CRI 80: EX39 MOG Base



SKU Code	Product Code	Watts	Watt Equiv.	Lumens
▶ 4542	LED36HID/EX39/430L/850	36W	150W	4,300
▶ 4517	LED36HID/EX39/420L/850	36W	150W	4,200
▶ 4518	LED54HID/EX39/570L/830	54W	250W	5,700
▶ 4543	LED54HID/EX39/620L/850	54W	250W	6,200
▶ 4519	LED54HID/EX39/630L/850	54W	250W	6,300
▶ 4520	LED80HID/EX39/860L/850	80W	320W	8,600
▶ 4521	LED100HID/EX39/1200L/850	100W	400W	12,000
▶ 4544	LED100HID/EX39/1100L/850	100W	400W	11,000



▶ DLC

21

HID Retrofit Integrated Ballast CRI 80: E26 Medium/EX39 MOG



Limited Quantity
Please contact your sales rep while supplies last

SKU Code	Product Code	Watts	Watt Equiv.	Lumens
5967	LED28HID/E26/310L/827	28W	100W	3,100
5968	LED28HID/E26/310L/850	28W	100W	3,100
▶ 5969	LED27HID/EX39/300L/830	26W	100W	2,903
▶ 5944	LED27HID/EX39/300L/850	26W	100W	2,903
▶ 5970	LED36HID/EX39/400L/830	35W	150W	4,008
▶ 5972	LED54HID/EX39/600L/840	52W	250W	5,930
▶ 5949	LED54HID/EX39/600L/850	52W	250W	5,930
▶ 5973	LED75HID/EX39/800L/840	75W	320W	8,153
▶ 5950	LED75HID/EX39/800L/850	75W	320W	8,153

▶ DLC



22

LED PLUG IN INSTANT FIT Ballast Compatible



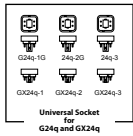
SKU Code	Product Code	Watts	Watt Equiv.	Lumens
▶ 4547	LED12PL/H/100L/4P/835/IF	12W	26	950
▶ 4548	LED12PL/H/100L/4P/840/IF	12W	26	1,000
▶ 4545	LED18PL/H/185L/4P/840/IF	18W	42	1,800
▶ 4549	LED12PL/V/100L/4P/835/IF	12.5W	26	950
▶ 4550	LED12PL/V/100L/4P/840/IF	12.5W	26	1,000
▶ 4546	LED18PL/V/185L/4P/840/IF	18W	42	1,800

▶ DLC



23

LED PLUG IN INSTANT FIT Ballast Compatible



Universal Socket for GX24q and GX24q



Base: G24q/GX24q

SKU Code	Product Code	Watts	Watt Equiv.	Lumens
▶ 4500	LED7PL/H/70L/4P/835/IF	8.5W	18W	650
▶ 4501	LED7PL/H/70L/4P/840/IF	8.5W	18W	700
▶ 4504	LED9PL/H/90L/4P/835/IF	10.5W	26W	850
▶ 4505	LED9PL/H/90L/4P/840/IF	10.5W	26W	900
▶ 4502	LED7PL/V/70L/4P/835/IF	8.5W	18W	650
▶ 4503	LED7PL/V/70L/4P/840/IF	8.5W	18W	700
▶ 4506	LED9PL/V/90L/4P/835/IF	10.5W	26W	850
▶ 4507	LED9PL/V/90L/4P/840/IF	10.5W	26W	900



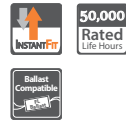
▶ DLC

24

LED PLUG IN INSTANT FIT CRI 90: Multi-Wattage



Rotatable base



Base: G24q/GX24q

Limited Quantity
Please contact your sales rep while supplies last

SKU Code	Product Code	Watts	Watt Equiv.	Lumens
5932	LED9PL/H/4P/935/IF	5W	13W	550
		7W	18W	650
		9W	26W	800
5933	LED9PL/H/4P/940/IF	5W	13W	550
		7W	18W	650
		9W	26W	800
5934	LED9PL/V/4P/935/IF	5W	13W	550
		7W	18W	650
		9W	26W	800
5935	LED9PL/V/4P/940/IF	5W	13W	550
		7W	18W	650
		9W	26W	800



25

LED Tube (T5) Instant Fit (UL Type A)



SKU Code	Product Code	Watts	Watt Equiv.	Lumens
▶ 5902	LED28T5/FR32/840/IF	28W	54W	3,200
▶ 5903	LED28T5/FR32/850/IF	28W	54W	3,200
▶ 5992	LED28T5/FR35/840/IF	28W	54W	3,500
▶ 5993	LED28T5/FR35/850/IF	28W	54W	3,500



▶ DLC

26

LED Tube (T8) Instant Fit (UL Type A)



Single

SKU Code	Product Code	Watts	Watt Equiv.	Lumens
▶ 5988	LED10T8/24FR12/840/IF	10W	17W	1,172
▶ 5989	LED10T8/24FR12/850/IF	10W	17W	1,208
▶ 4551	LED12T8/36FR14/840/IF	12W	17W	1,400
▶ 4552	LED12T8/36FR14/850/IF	12W	17W	1,400
▶ 4536	LED13T8/FR16/840/IF	13W	32W	1,600
▶ 4537	LED13T8/FR16/850/IF	13W	32W	1,600
▶ 5990	LED14T8/FR18/840/IF	14W	32W	1,875
▶ 5991	LED14T8/FR18/850/IF	14W	32W	1,794
▶ 5887	LED38T8/96FR44/840/IF	38W	75W	4,400
▶ 5888	LED38T8/96FR44/850/IF	38W	75W	4,400



▶ DLC

27

LED Tube (T5/T8)

Integrated Driver (UL Type B)



Single

R17d



SKU Code	Product Code	Watts	Watt Equiv.	Lumens
▶ 5943	LED25T5/FR35/850	25W	54W	3,500
▶ 5951	LED9T8/24FR10/840	9W	17W	1,119
▶ 5952	LED9T8/24FR10/850	9W	17W	1,133
▶ 4538	LED14T8/FR18/840/UNV	14W	32W	1,800
▶ 4539	LED14T8/FR18/850/UNV	14W	32W	1,800
▶ 5953	LED15T8/36FR16/840	15W	25W	1,600
▶ 5954	LED15T8/36FR16/850	15W	25W	1,600
▶ 5955	LED15T8/FR18/840	15W	32W	1,960
▶ 5956	LED15T8/FR18/850	15W	32W	1,945
▶ 5958	LED43T8/96FR55/840	43W	110W	5,500
▶ 5959	LED43T8/96FR55/850	43W	110W	5,500
▶ 5960	LED43T8/96FR55/R17D/840	43W	110W	5,500
5961	LED43T8/96FR55/R17D/850	43W	110W	5,500

▶ DLC



28

LED Tube (T5/T8)



Limited Quantity
Please contact your sales rep while supplies last

SKU Code	Product Code	Watts	Watt Equiv.	Lumens
5850	LED10T8/24FR11/835/IF	10W	17W	1,150
5851	LED10T8/24FR11/840/IF	10W	17W	1,150
5852	LED10T8/24FR11/850/IF	10W	17W	1,150
5914	LED15.5T8/FR18/840/IF	16W	32W	1,800
5915	LED15.5T8/FR18/850/IF	16W	32W	1,800
5844	LED17.5T8/FR19/835/IF	17W	32W	1,900
5846	LED17.5T8/FR19/850/IF	18W	32W	1,900
5778	LED10T8/24FR10/840	10W	17W	1,109
5774	LED10T8/24FR10/850	10W	17W	1,109
5779	LED10T8/36FR10/840	10W	17W	1,000
5780	LED10T8/36FR10/850	10W	17W	1,000



29

LIQUID LED

4 Watt



Limited Quantity
Please contact your sales rep while supplies last

SKU Code	Product Code	Watts	Watt Equiv.	Lumens
5546	LHO-4G12/WW	4W	10W	110
5547	LHO-4G12/CDL	4W	10W	140
5556	LHO-4T9/WW	4W	10W	110
5557	LHO-4T9/CDL	4W	10W	140



FIXTURES

Turning Light into Savings ▶▶▶

www.mynaturalLED.com

01

Retrofit Recess Can

CRI 90 & Energy Star, JA8



SKU Code	Product Code	Watts	Lumens
▶ 7688	LED4RL9-54L930	9W	540
▶ 7689	LED4RL9-54L940	9W	540
▶ 7690	LED4RL9-54L950	9W	540
▶ 7691	LED6RL15-110L930	15W	1,100
▶ 7692	LED6RL15-110L940	15W	1,100
▶ 7693	LED6RL15-110L950	15W	1,100

See page 58 for Accessories

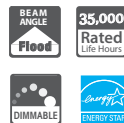
▶ Energy Star



02

Retrofit Recess Can

CRI 80 & Energy Star



Limited Quantity
Please contact your sales rep while supplies last

SKU Code	Product Code	Watts	Lumens
▶ 7172	LED4RL-56L40K	9W	560
▶ 7173	LED4RL-56L50K	9W	560
▶ 7174	LED6RL-88L40K	13W	880
▶ 7175	LED6RL-88L50K	13W	880

See page 58 for Accessories

▶ Energy Star



03

Retrofit Recess Can

CRI 80 & Energy Star



Limited Quantity
Please contact your sales rep while supplies last

SKU Code	Product Code	Watts	Lumens
▶ 7562	LED4RL-65L830	9W	650
▶ 7566	LED4RL-65L840	9W	650
▶ 7567	LED4RL-65L850	9W	650
▶ 7563	LED6RL-98L830	13W	980
▶ 7568	LED6RL-98L840	13W	980
▶ 7569	LED6RL-98L850	13W	980

See page 58 for Accessories

▶ Energy Star



04

Retrofit Recess Can

CRI 90 & Energy Star



Limited Quantity
Please contact your sales rep while supplies last

SKU Code	Product Code	Watts	Lumens
▶ 7580	LED4RL-58L927	9W	580
▶ 7578	▶ LED4RL-58L930	9W	580
▶ 7177	▶ LED4RL-55L930	9W	550
▶ 7581	LED6RL-88L927	13W	880

See page 58 for Accessories

▶ Energy Star • 35,000 hours
rated life hours/
3 years warranty



05

Retrofit Recess Can

CRI 90 & Energy Star, JA8



Limited Quantity

Please contact your sales rep while supplies last

SKU Code	Product Code	Watts	Lumens
▶ 7519	LED4RL-70L930-JA8	10W	700
▶ 7520	LED6RL-105L930-JA8	15W	1,050

▶ Energy Star

See page 58 for Accessories



07

Retrofit Recess Can

Energy Star - 2 PACK



Limited Quantity

Please contact your sales rep while supplies last

SKU Code	Product Code	Watts	Lumens
▶ 7198	LED4RL-56L827CP (2 pack)	9W	650
▶ 7093	LED4RL-56L830CP (2 pack)	9W	650
▶ 7199	LED6RL-88L827CP (2 pack)	13W	980
▶ 7095	LED6RL-88L830CP (2 pack)	13W	980

▶ Energy Star

See page 58 for Accessories



06

Retrofit Recess Can

120-277V



Limited Quantity

Please contact your sales rep while supplies last

SKU Code	Product Code	Watts	Lumens
7135	LED6RL-110L40K/MV	15W	1,100



08

UNDER CABINET

CRI 90 & Energy Star, JA8



SKU Code	Product Code	Watts	Lumens
▶ 7591	LED-FXUC4/9FR/930	4W	260
▶ 7592	LED-FXUC4/9FR/940	4W	260
▶ 7600	LED-FXUC7/18FR/930	7W	420
▶ 7601	LED-FXUC7/18FR/940	7W	420

▶ Energy Star

See page 62 for Accessories



09

FMC COMPACT

CRI 80 & Energy Star



SKU Code	Product Code	Watts	Lumens
▶ 7454	LED7FMC-70L830	10W	700
▶ 7455	LED7FMC-70L840	10W	700
▶ 7456	LED7FMC-70L850	10W	700
▶ 7055	• LED7FMC-110L830	17W	1,100
▶ 7056	• LED7FMC-110L840	17W	1,150
▶ 7057	• LED7FMC-110L850	17W	1,180

▶ Energy Star • E26 Adapter Included



10

FMR ROUND

CRI 80 & Energy Star



SKU Code	Product Code	Watts	Lumens
▶ 7058	LED8FMR-80L830	12W	800
▶ 7059	LED8FMR-80L840	12W	800
▶ 7142	LED12FMR-110L830	14W	1,143
▶ 7143	LED12FMR-110L840	14W	1,143
▶ 7156	LED12FMR-110L850	14W	1,143
▶ 7146	LED16FMR-160L830	22W	1,672
▶ 7147	LED16FMR-160L840	22W	1,672
▶ 7157	LED16FMR-160L850	22W	1,672

▶ Energy Star



11

FMS STREAMLINED

CRI 80 & Energy Star



Limited Quantity
Please contact your sales rep while supplies last

SKU Code	Product Code	Watts	Lumens
▶ 7418	LED11FMS-98L830-BZ	14W	980
▶ 7419	LED11FMS-98L840-BZ	14W	980
▶ 7421	LED15FMS-154L830-BZ	22W	1,540
▶ 7422	LED15FMS-154L840-BZ	22W	1,540
▶ 7424	LED11FMS-98L830-NI	14W	980
▶ 7425	LED11FMS-98L840-NI	14W	980
▶ 7427	LED15FMS-154L830-NI	22W	1,540
▶ 7428	LED15FMS-154L840-NI	22W	1,540

▶ Energy Star



12

FMM MODERN

CRI 80 & Energy Star



SKU Code	Product Code	Watts	Lumens
▶ 7430	LED12FMM-138L830-NI	18W	1,380
▶ 7431	LED12FMM-138L840-NI	18W	1,380
▶ 7433	LED14FMM-165L830-NI	22W	1,700
▶ 7434	LED14FMM-165L840-NI	22W	1,700
▶ 7533	LED16FMM-196L830-NI	26W	1,960
▶ 7534	LED16FMM-196L840-NI	26W	1,960
▶ 7596	• LED12FMM-138L840-NI/MV	18W	1,380
▶ 7597	• LED14FMM-165L840-NI/MV	22W	1,652
▶ 7598	• LED16FMM-196L840-NI/MV	26W	1,960

See page 64 for Accessories

▶ Energy Star
• 120-277V



13

DECORATIVE ACCENT

CRI 80 & Energy Star



SKU Code	Product Code	Watts	Lumens
▶ 7018	LED-FXDAL23/12FR/830/NI	23W	1,610
▶ 7019	LED-FXDAL23/12FR/840/NI	23W	1,610
▶ 7020	LED-FXDAL23/24FR/830/NI	23W	2,000
▶ 7021	LED-FXDAL23/24FR/840/NI	23W	2,000

See page 64 for Accessories

▶ Energy Star



14

UTILITY STRIP LIGHT

CRI 80 & DLC



SKU Code	Product Code	Watts	Lumens
▶ 7593	LED-FXUSL40/48FR/840/MV	40W	4,387
▶ 7594	LED-FXUSL40/48FR/850/MV	40W	4,518

▶ DLC



14

UTILITY STRIP LIGHT

CRI 80 & DLC



SKU Code	Product Code	Watts	Lumens
▶ 7796	LED-FXUSL20/24FR/40K/MV	20W	2,830
▶ 7798	LED-FXUSL24/48FR/40K/MV	24W	3,099
▶ 7799	LED-FXUSL24/48FR/50K/MV	24W	3,255
▶ 9200	LED-FXUSL40/48FR/40K/MV	40W	5,034
▶ 9201	LED-FXUSL40/48FR/50K/MV	40W	5,286
▶ 9202	LED-FXUSL64/96FR/40K/MV	61W	7,989
▶ 9203	LED-FXUSL64/96FR/50K/MV	61W	7,943
▶ 9204	LED-FXUSL80/96FR/40K/MV	80W	12,273
▶ 9205	LED-FXUSL80/96FR/50K/MV	80W	12,273

▶ DLC



15

UTILITY WRAP

CRI 80 & DLC



SKU Code	Product Code	Watts	Lumens
▶ 7074	LED-FXUW29/40K	29W	3,220
▶ 7075	LED-FXUW29/50K	29W	3,290

See page 62 for Accessories

▶ DLC



16

FLAT PANEL

DLC Premium



SKU Code	Product Code	Watts	Lumens
▶ 7101	LED-FXPNL32/1X4/840	29W	3,804
▶ 7100	LED-FXPNL25/2X2/840	23W	3,040
▶ 7102	LED-FXPNL40/2X4/840	38W	5,005

See page 59/63 for Accessories

▶ DLC Premium



17

FLAT PANEL

DLC



SKU Code	Product Code	Watts	Lumens
▶ 7721	LED-FXPNL40/1X4/835	40W	4,149
▶ 7675	LED-FXPNL40/1X4/840	40W	4,149
▶ 7686	LED-FXPNL40/1X4/850	40W	4,600
▶ 7720	LED-FXPNL40/2X2/835	40W	4,134
▶ 7674	LED-FXPNL40/2X2/840	40W	4,134
▶ 7685	LED-FXPNL40/2X2/850	40W	4,479
▶ 7722	LED-FXPNL50/2X4/835	47W	4,652
▶ 7676	LED-FXPNL50/2X4/840	47W	4,652
▶ 7687	LED-FXPNL50/2X4/850	48W	5,062

See page 59/63 for Accessories

▶ DLC



18

TROFFER

DLC Premium



SKU Code	Product Code	Watts	Lumens
▶ 7034	LED-FXTF20/2X2/835	20W	2,480
▶ 7035	LED-FXTF20/2X2/840	20W	2,480
▶ 7036	LED-FXTF20/2X2/850	20W	2,480
▶ 7037	LED-FXTF30/2X4/835	30W	3,930
▶ 7038	LED-FXTF30/2X4/840	30W	3,930
▶ 7039	LED-FXTF30/2X4/850	30W	3,930
▶ 7040	LED-FXTF49/2X4/835	49W	6,485
▶ 7041	LED-FXTF49/2X4/840	49W	6,485
▶ 7042	LED-FXTF49/2X4/850	49W	6,485

▶ DLC Premium



19

TROFFER

DLC



Limited Quantity
Please contact your sales rep while supplies last

SKU Code	Product Code	Watts	Lumens
▶ 7150	LED-FXTF38/2X2/835	38W	3,500
▶ 7183	LED-FXTF50/2X4/835	50W	4,800
▶ 7185	LED-FXTF50/2X4/850	50W	4,800
▶ 7153	LED-FXTF76/2X4/835	76W	6,903
▶ 7154	LED-FXTF76/2X4/840	76W	6,903

▶ DLC



20

Vapor Tight

DLC Premium & IP65 Rated



SKU Code	Product Code	Watts	Lumens
▶ 7677	LED-FXVTL29/48FR/PG/40K	28W	3,129
▶ 7678	LED-FXVTL29/48FR/PG/50K	28W	3,173
▶ 7681	LED-FXVTL58/48FR/PG/40K	57W	6,718
▶ 7682	LED-FXVTL58/48FR/PG/50K	57W	6,847
▶ 7679	LED-FXVTL29/48FR/PG/40K-SEN	28W	3,129
▶ 7680	LED-FXVTL29/48FR/PG/50K-SEN	28W	3,173
▶ 7684	LED-FXVTL58/48FR/PG/50K-SEN	57W	6,847



▶ DLC Premium

21

Vapor Tight

DLC Premium & IP65 Rated



Limited Quantity
Please contact your sales rep while supplies last

SKU Code	Product Code	Watts	Lumens
▶ 7448	LED-FXVTL29/40K	29W	3,238
▶ 7450	LED-FXVTL58/40K	58W	6,424
▶ 7582	LED-FXVTL29/40K-SEN	29W	3,238
▶ 7583	LED-FXVTL29/50K-SEN	29W	3,434
▶ 7584	LED-FXVTL58/40K-SEN	58W	6,424
▶ 7585	LED-FXVTL58/50K-SEN	58W	7,010



▶ DLC Premium

22

LINEAR HIGH/LOW BAY

DLC Premium



SKU Code	Product Code	Watts	Lumens
▶ 7406	LED-FXHBL75/22FR/840	75W	9,907
▶ 7407	LED-FXHBL75/22FR/850	75W	10,163
▶ 7408	LED-FXHBL100/22FR/840	100W	13,216
▶ 7409	LED-FXHBL100/22FR/850	100W	13,852
▶ 7410	LED-FXHBL150/22FR/840	150W	19,017
▶ 7411	LED-FXHBL150/22FR/850	150W	19,476
▶ 7488	LED-FXHBL150/22FR/850/480	150W	19,537
7442	LED-FXHBL162/22FR/840	162W	17,310
7443	LED-FXHBL162/22FR/850	162W	17,672
▶ 7412	LED-FXHBL210/44FR/840	210W	27,243
▶ 7413	LED-FXHBL210/44FR/850	210W	27,744
▶ 7417	LED-FXHBL300/44FR/850	300W	39,472
▶ 7486	LED-FXHBL300/44FR/850/480	300W	39,125

See page 59 for Accessories

▶ DLC Premium



23

LINEAR HIGH/LOW BAY

DLC Premium & IP66 Rated



SKU Code	Product Code	Watts	Lumens
▶ 7715	LED-FXHBL75/22FR/850/IP66	75W	9,750
▶ 7717	LED-FXHBL100/22FR/850/IP66	100W	13,000
▶ 7719	LED-FXHBL162/22FR/850/IP66	162W	21,060

See page 59 for Accessories

▶ DLC Premium



24

HIGH BAY DLC Premium



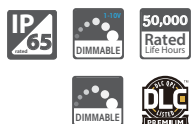
SKU Code	Product Code	Watts	Lumens
▶ 7771	LED-FXHBE110/24FR/850	106W	13,741
▶ 7772	LED-FXHBE162/24FR/850	161W	20,852



▶ DLC Premium

25

ROUND HIGH BAY DLC Premium



SKU Code	Product Code	Watts	Lumens
▶ 7759	LED-FX13HBR90/850/WH/IP65	90W	13,631
▶ 7760	LED-FX13HBR135/850/WH/IP65	135W	20,474

See page 67 for Accessories



▶ DLC Premium

26

ROUND HIGH BAY DLC Premium



SKU Code	Product Code	Watts	Lumens
▶ 7694	LED-FX16HBR75/90/840	75W	10,028
▶ 7695	LED-FX16HBR75/90/850	75W	10,222
▶ 7696	LED-FX16HBR100/90/840	100W	14,461
▶ 7697	LED-FX16HBR100/90/850	100W	14,319
▶ 7698	LED-FX16HBR162/90/840	162W	21,080
▶ 7699	LED-FX16HBR162/90/850	162W	21,636

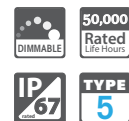
See page 67 for Accessories

▶ DLC Premium



27

HIGH BAY IP67 Rated & Damp Location



Limited Quantity
Please contact your sales rep while supplies last

SKU Code	Product Code	Watts	Lumens
7128	LED-FXHB100/40K	100W	10,100
7131	LED-FXHB165/40K	165W	13,900
7170	LED-FXHB200/40K	200W	20,000
7475	▶ LED-FXHB200/40K/IP67	200W	19,000
7476	▶ LED-FXHB200/50K/IP67	200W	20,000
P10027	WG-CBL18/WH		Wireguard

See page 67 for Accessories

▶ IP67 Rated



28

GAS STATION CANOPY

DLC Premium



SKU Code	Product Code	Watts	Lumens
▶ 7440	LED-FXGSC45/50K/WH	45W	5,513
▶ 7441	LED-FXGSC75/50K/WH	75W	8,997
▶ 7553	LED-FXGSC100/50K/WH	100W	13,279
▶ 7555	LED-FXGSC150/50K/WH	150W	20,041

▶ DLC Premium



29

SLIM CANOPY

DLC Premium & IP65 RATED



SKU Code	Product Code	Watts	Lumens
▶ 7468	LED-FXSCM28/40K/BK	28W	3,236
▶ 7469	LED-FXSCM28/50K/BK	28W	3,375
▶ 7470	LED-FXSCM42/40K/BK	42W	4,871
▶ 7471	LED-FXSCM42/50K/BK	42W	5,003
▶ 7472	LED-FXSCM59/40K/BK	59W	6,800
▶ 7473	LED-FXSCM59/50K/BK	59W	6,985
▶ 7495	LED-FXSCM28/40K/WH	28W	3,236
▶ 7496	LED-FXSCM28/50K/WH	28W	3,375
▶ 7497	LED-FXSCM42/40K/WH	42W	4,871
▶ 7498	LED-FXSCM42/50K/WH	42W	5,003
▶ 7499	LED-FXSCM59/40K/WH	59W	6,800
▶ 7500	LED-FXSCM59/50K/WH	59W	6,985

See page 67 for Accessories

▶ DLC Premium



30

SLIM CANOPY

DLC Premium/Motion Sensor Included



* Microwave Motion Sensor Included

SKU Code	Product Code	Watts	Lumens
▶ 7489	LED-FXSCM28/40K/BK-SEN	28W	3,236
▶ 7490	LED-FXSCM28/50K/BK-SEN	28W	3,375
▶ 7491	LED-FXSCM42/40K/BK-SEN	42W	4,871
▶ 7492	LED-FXSCM42/50K/BK-SEN	42W	5,003
▶ 7493	LED-FXSCM59/40K/BK-SEN	59W	6,800
▶ 7494	LED-FXSCM59/50K/BK-SEN	59W	6,985
▶ 7480	LED-FXSCM28/50K/WH-SEN	28W	3,375
▶ 7482	LED-FXSCM42/50K/WH-SEN	42W	5,003
▶ 7484	LED-FXSCM59/50K/WH-SEN	59W	6,985

See page 67 for Accessories

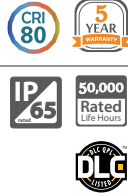
▶ DLC Premium



31

SLIM CANOPY

DLC & IP65 Rated



Limited Quantity
Please contact your sales rep while supplies last

SKU Code	Product Code	Watts	Lumens
▶ 7437	LED-FXSCM45/50K/WH	45W	4,150
▶ 7560	LED-FXSCM45/50K/BK-SEN	45W	4,150
▶ 7561	LED-FXSCM45/50K/WH-SEN	45W	4,150
7438	LED-FXSCM70/50K/BK	70W	5,900
7439	LED-FXSCM70/50K/WH	70W	5,900
7564	LED-FXSCM70/50K/BK-SEN	70W	5,900
7565	LED-FXSCM70/50K/WH-SEN	70W	5,900

See page 67 for Accessories

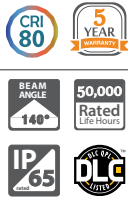
▶ DLC



32

CANOPY

DLC & IP65 Rated



Limited Quantity
Please contact your sales rep while supplies last

SKU Code	Product Code	Watts	Lumens
7166	LED-FXCCM40/40K/DB	40W	3,429
7538	LED-FXCCM40/40K/WH	40W	3,429
7167	LED-FXCCM40/50K/DB	40W	3,429
7539	LED-FXCCM40/50K/WH	40W	3,429
7084	LED-FXCCM60/40K/DB	60W	5,258
7085	LED-FXCCM60/50K/DB	60W	4,948
7090	LED-FXPG60/40K/DB	60W	6,964
7091	LED-FXPG60/50K/DB	60W	7,318

See page 67 for Accessories

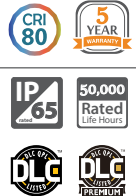
▶ DLC



33

TWP WALL PACK

DLC Premium & DLC Standard



SKU Code	Product Code	Watts	Lumens
7756	• LED-FXTWP28/30K/DB	28W	3,000
7466	• LED-FXTWP28/40K/DB	28W	3,004
7467	• LED-FXTWP28/50K/DB	28W	3,019
▶ 7775	LED-FXTWP38/40K/DB	38W	5,662
▶ 7776	LED-FXTWP38/50K/DB	38W	5,808
▶ 7777	LED-FXTWP55/40K/DB	55W	8,405
▶ 7778	LED-FXTWP55/50K/DB	55W	8,459
7757	LED-FXTWP42/30K/DB	42W	4,775
7076	LED-FXTWP42/40K/DB	42W	5,017
7077	LED-FXTWP42/50K/DB	42W	5,150
7088	LED-FXTWP60/40K/DB	60W	7,449
7089	LED-FXTWP60/50K/DB	60W	7,706
7765	LED-FXTWP95/40K/DB	95W	12,068
7766	LED-FXTWP95/50K/DB	95W	12,615
7767	LED-FXTWP120/40K/DB	120W	15,010
7768	LED-FXTWP120/50K/DB	120W	15,498

See page 65 for Accessories

▶ DLC Premium • Visor Included



34

SLIM WALL PACK

DLC & IP65 Rated



SKU Code	Product Code	Watts	Lumens
▶ 7462	LED-FXSWP15/40K/BK	15W	1,740
▶ 7463	LED-FXSWP15/50K/BK	15W	1,797
▶ 7452	LED-FXSWP29/40K/BK	29W	3,268
▶ 7453	LED-FXSWP29/50K/BK	29W	3,329
▶ 7548	LED-FXSWP50/40K/BK	50W	5,508
▶ 7549	LED-FXSWP50/50K/BK	50W	5,856
▶ 7464	LED-FXSWP15/40K/WH	15W	1,740
▶ 7465	LED-FXSWP15/50K/WH	15W	1,797
▶ 7460	LED-FXSWP29/40K/WH	29W	3,268
▶ 7461	LED-FXSWP29/50K/WH	29W	3,329
▶ 7550	LED-FXSWP50/40K/WH	50W	5,508
▶ 7551	LED-FXSWP50/50K/WH	50W	5,856
▶ 7572	LED-FXSWP15/40K/DB	15W	1,740
▶ 7573	LED-FXSWP15/50K/DB	15W	1,797
▶ 7574	LED-FXSWP29/40K/DB	29W	3,268
▶ 7575	LED-FXSWP29/50K/DB	29W	3,329
▶ 7576	LED-FXSWP50/40K/DB	50W	5,508
▶ 7577	LED-FXSWP50/50K/DB	50W	5,856

▶ DLC

See page 60 for Accessories



35

FLOOD LIGHT COMPACT

DLC & IP65 Rated



SKU Code	Product Code	Watts	Lumens
▶ 7761	LED-FXFDL10/50K/BK	10W	1,100
▶ 7762	LED-FXFDL20/50K/BK	20W	2,200
▶ 7763	LED-FXFDL27/50K/BK	27W	3,024
▶ 7764	LED-FXFDL48/50K/BK	48W	5,280

▶ DLC



36

FLOOD LIGHT

DLC & IP65 Rated



SKU Code	Product Code	Watts	Lumens
▶ 7783	LED-FXFDL50/66/40K/BK	50W	6,656
▶ 7784	LED-FXFDL50/66/50K/BK	50W	6,750
▶ 7785	LED-FXFDL75/66/40K/BK	75W	10,008
▶ 7786	LED-FXFDL75/66/50K/BK	75W	10,125
▶ 7787	LED-FXFDL100/66/40K/BK	100W	13,332
▶ 7788	LED-FXFDL100/66/40K/BK	100W	13,596

▶ DLC



37

FLOOD LIGHT

DLC & IP65 Rated



Limited Quantity
Please contact your sales rep while supplies last

SKU Code	Product Code	Watts	Lumens
▶ 7179	LED-FXFDL29/40K/DB-KNC	29W	3,336
▶ 7180	LED-FXFDL29/50K/DB-KNC	29W	3,521
▶ 7181	LED-FXFDL58/40K/DB-KNC	58W	6,735
▶ 7182	LED-FXFDL58/50K/DB-KNC	58W	7,008
▶ 7543	LED-FXFDL13/27K/BK	13W	1,300
▶ 7513	LED-FXFDL13/40K/BK	13W	1,301
▶ 7514	LED-FXFDL13/50K/BK	13W	1,319
▶ 7515	LED-FXFDL28/40K/BK	28W	3,010
▶ 7516	LED-FXFDL28/50K/BK	28W	3,084
▶ 7517	LED-FXFDL50/40K/BK	50W	5,621
▶ 7518	LED-FXFDL50/50K/BK	50W	5,741
▶ 7544	LED-FXFDL13/40K/WH	13W	1,301
▶ 7545	LED-FXFDL13/50K/WH	13W	1,319
▶ 7546	LED-FXFDL28/40K/WH	28W	3,010
▶ 7547	LED-FXFDL28/50K/WH	28W	3,084
▶ 7558	LED-FXFDL50/40K/WH	50W	5,621
▶ 7559	LED-FXFDL50/50K/WH	50W	5,741

▶ DLC



38

SLIM AREA LIGHT

DLC Premium & IP65 Rated



SKU Code	Product Code	Watts	Lumens
▶ 7616	LED-FXSAL29/40K/DB/3S	29W	3,517
▶ 7617	LED-FXSAL29/50K/DB/3S	29W	3,576
▶ 7620	LED-FXSAL50/40K/DB/3S	50W	6,241
▶ 7621	LED-FXSAL50/50K/DB/3S	50W	6,247
▶ 7752	LED-FXSAL75/30K/DB/3S	75W	8,738
▶ 7624	LED-FXSAL75/40K/DB/3S	75W	8,738
▶ 7625	LED-FXSAL75/50K/DB/3S	75W	9,011
7754	LED-FXSAL100/30K/DB/3S	100W	11,548
▶ 7628	LED-FXSAL100/40K/DB/3S	100W	11,548
▶ 7629	LED-FXSAL100/50K/DB/3S	100W	20,000
▶ 7769	LED-FXSAL150/40K/DB/3S	150W	20,000
▶ 7770	LED-FXSAL150/50K/DB/3S	150W	22,191
7746	LED-FXSAL180/30K/DB/3S	180W	22,191
▶ 7632	LED-FXSAL180/40K/DB/3S	180W	22,743
▶ 7633	LED-FXSAL180/50K/DB/3S	180W	29,794
7748	LED-FXSAL240/30K/DB/3S	240W	29,794
▶ 7636	LED-FXSAL240/40K/DB/3S	240W	30,274
▶ 7637	LED-FXSAL240/50K/DB/3S	240W	44,796
7750	LED-FXSAL360/30K/DB/3S	360W	44,796
▶ 7640	LED-FXSAL360/40K/DB/3S	360W	44,796
▶ 7641	LED-FXSAL360/50K/DB/3S	360W	45,878
▶ 7724	LED-FXSAL180/40K/DB/3S/480	180W	22,147
▶ 7725	LED-FXSAL180/50K/DB/3S/480	180W	22,717
▶ 7728	LED-FXSAL240/40K/DB/3S/480	240W	28,912
▶ 7229	LED-FXSAL240/50K/DB/3S/480	240W	29,546
▶ 7732	LED-FXSAL360/40K/DB/3S/480	360W	43,560
▶ 7733	LED-FXSAL360/50K/DB/3S/480	360W	44,405

See page 60-61 for Accessories

▶ DLC Premium



39

SLIM AREA LIGHT

DLC Premium & IP65 Rated



SKU Code	Product Code	Watts	Lumens
▶ 7618	LED-FXSAL29/40K/WH/3S	29W	3,517
▶ 7619	LED-FXSAL29/50K/WH/3S	29W	3,576
▶ 7622	LED-FXSAL50/40K/WH/3S	50W	6,241
▶ 7623	LED-FXSAL50/50K/WH/3S	50W	6,247
7753	LED-FXSAL75/30K/WH/3S	75W	8,738
▶ 7626	LED-FXSAL75/40K/WH/3S	75W	8,738
▶ 7627	LED-FXSAL75/50K/WH/3S	75W	9,011
7755	LED-FXSAL100/30K/WH/3S	100W	11,548
▶ 7630	LED-FXSAL100/40K/WH/3S	100W	11,548
▶ 7631	LED-FXSAL100/50K/WH/3S	100W	11,821
▶ 9232	LED-FXSAL150/50K/WH/3S	150W	20,604
▶ 9234	LED-FXSAL150/50K/BK/3S	150W	20,604
7747	LED-FXSAL180/30K/WH/3S	180W	22,191
▶ 7634	LED-FXSAL180/40K/WH/3S	180W	22,191
▶ 7635	LED-FXSAL180/50K/WH/3S	180W	22,743
7749	LED-FXSAL240/30K/WH/3S	240W	29,794
▶ 7638	LED-FXSAL240/40K/WH/3S	240W	29,794
▶ 7639	LED-FXSAL240/50K/WH/3S	240W	30,274
7751	LED-FXSAL360/30K/WH/3S	360W	44,796
▶ 7642	LED-FXSAL360/40K/WH/3S	360W	44,796
▶ 7643	LED-FXSAL360/50K/WH/3S	360W	45,878
▶ 7726	LED-FXSAL180/40K/WH/3S/480	180W	22,147
▶ 7727	LED-FXSAL180/50K/WH/3S/480	180W	22,717
▶ 7730	LED-FXSAL240/40K/WH/3S/480	240W	28,912
▶ 7731	LED-FXSAL240/50K/WH/3S/480	240W	29,546
▶ 7734	LED-FXSAL360/40K/WH/3S/480	360W	43,560
▶ 7735	LED-FXSAL360/50K/WH/3S/480	360W	44,405

See page 60-61 for Accessories

▶ DLC Premium



40

WALL PACK & FLOOD LIGHT

IP65 Rated



Limited Quantity
Please contact your sales rep while supplies last

SKU Code	Product Code	Watts	Lumens
7168	LED-FXFDL60/50K/480 (347-480)	60W	4,800
7012	• LED-FXWP35/57K	35W	2,788
7015	• LED-FXWP45/57K	45W	3,300



• 5 YEARS
35,000 RATED
LIFE HOURS

41

SHOEBOX

DLC Premium & IP65 Rated



Limited Quantity
Please contact your sales rep while supplies last

SKU Code	Product Code	Watts	Lumens
7118	LED-FXSB110/3S/40K/DB-SF	110W	8,574
7119	LED-FXSB110/3S/40K/DB-SB	110W	8,574
7120	LED-FXSB110/3S/40K/DB-EA6	110W	8,574
7121	LED-FXSB110/3S/50K/DB-SF	110W	8,574
7122	LED-FXSB110/3S/50K/DB-SB	110W	8,574
7123	LED-FXSB110/3S/50K/DB-EA6	110W	8,574
7169	LED-FXSB110/3S/50K/WH-EA6	110W	8,574
7176	LED-FXSB110/3S/50K/BK-EA6	110W	8,574
▶ 7193	LED-FXSB180/3S/40K/DB-SB	180W	19,073
▶ 7195	LED-FXSB180/3S/50K/DB-SF	180W	21,194
▶ 7197	LED-FXSB180/3S/50K/DB-EA6	180W	21,194
▶ 7403	LED-FXSB240/3S/50K/DB-SF	240W	25,638
▶ 7405	LED-FXSB240/3S/50K/DB-EA6	240W	25,638

See page 60-62 for Accessories

▶ DLC



42

HID RETROFIT KIT

DLC Premium



SKU Code	Product Code	Watts	Lumens
▶ 7608	LED-RKIT50HID/40K	50W	6,738
▶ 7609	LED-RKIT50HID/50K	50W	6,837
▶ 7610	LED-RKIT120HID/40K	120W	15,554
▶ 7611	LED-RKIT120HID/50K	120W	15,735
▶ 7612	LED-RKIT200HID/40K	200W	28,678
▶ 7613	LED-RKIT200HID/50K	200W	29,025
▶ 7614	LED-RKIT300HID/40K	300W	37,506
▶ 7615	LED-RKIT300HID/50K	300W	38,235



▶ DLC Premium

43

SECURITY LIGHT

DLC



Limited Quantity
Please contact your sales rep while supplies last

SKU Code	Product Code	Watts	Lumens
▶ 7190	LED-FXSECD28/40K	28W	3,076
▶ 7191	LED-FXSECD28/50K	28W	3,180
▶ 7477	LED-FXSECD38/40K	38W	4,158
▶ 7478	LED-FXSECD38/50K	38W	4,314
7140	LED-FXSECD37/40K	37W	2,753
7141	LED-FXSECD37/50K	37W	2,989

See page 65 for Accessories

▶ DLC



44

SECURITY WALL LIGHT

Energy Star & Photocell Included



SKU Code	Product Code	Watts	Lumens
▶ 7414	LED-FXSECW13/40K	13W	1,047
▶ 7415	LED-FXSECW13/50K	13W	1,047
▶ 7556	LED-FXSECWRT13/40K/MV (120-277V)	13W	1,040
▶ 7557	LED-FXSECWRT13/50K/MV (120-277V)	13W	1,040
▶ 7136	• LED-FXSECW20/40K	20W	1,420
▶ 7137	• LED-FXSECW20/50K	20W	1,420
▶ 7773	LED-FXSECW20/40K/MV (120-277V)	20W	1,800
▶ 7774	LED-FXSECW20/50K/MV (120-277V)	20W	1,800

▶ Energy Star • IP65 Rated



45

VAPOR TIGHT JELLY JAR

Energy Star & IP65 Rated



SKU Code	Product Code	Watts	Lumens
▶ 7604	LED-FXVTJ20/830/MV-WM	20W	1,700
▶ 7605	LED-FXVTJ20/840/MV-WM	20W	1,700
▶ 7606	LED-FXVTJ20/830/MV-CM	20W	1,700
▶ 7607	LED-FXVTJ20/840/MV-CM	20W	1,700

▶ Energy Star



See page 66 for Accessories

46

BULKHEAD WALL LIGHT

Energy Star



SKU Code	Product Code	Watts	Lumens
▶ 7024	LED-FXBWL10/830/BK	10W	900
▶ 7025	LED-FXBWL10/850/BK	10W	900
▶ 7062	LED-FXBWL10/830/WH	10W	900

▶ Energy Star



47

UP/DOWN WALL SCONCE

Energy Star



SKU Code	Product Code	Watts	Lumens
▶ 7026	LED-FXDWS10/830/BK	10W	700
▶ 7027	LED-FXDWS10/850/BK	10W	700
▶ 7064	LED-FXDWS20/830/BK	20W	1,400
▶ 7065	LED-FXDWS20/850/BK	20W	1,400
▶ 7068	LED-FXDWS10/830/WH	10W	700
▶ 7069	LED-FXDWS10/850/WH	10W	700
▶ 7070	LED-FXDWS20/830/WH	20W	1,400
▶ 7071	LED-FXDWS20/850/WH	20W	1,400
▶ 7022	LED-FXDWS10/830/NI	10W	700
▶ 7023	LED-FXDWS20/830/NI	20W	1,400

▶ Energy Star



48

SECURITY FLOOD LIGHT

Energy Star & Wet Rated Location



SKU Code	Product Code	Watts	Lumens
▶ 7082	LED-FXBFD20/830/BK	20W	1,400
▶ 7083	LED-FXBFD20/850/BK	20W	1,400
▶ 7672	LED-FXBFD20/830/WH	20W	1,400
▶ 7673	LED-FXBFD20/850/WH	20W	1,400



▶ Energy Star

49

SECURITY FLOOD LIGHT

Motion Sensor Included



* Microwave Motion Sensor Included

SKU Code	Product Code	Watts	Lumens
▶ 7030	LED-FXBFD20/830/BK-SEN	20W	1,400
▶ 7031	LED-FXBFD20/850/BK-SEN	20W	1,400
▶ 7066	LED-FXBFD20/830/WH-SEN	20W	1,400
▶ 7067	LED-FXBFD20/850/WH-SEN	20W	1,400
▶ 7032	LED-FXSFD20/830/WH-SEN	20W	1,400
▶ 7033	LED-FXSFD20/850/WH-SEN	20W	1,400

See page 66 for Accessories

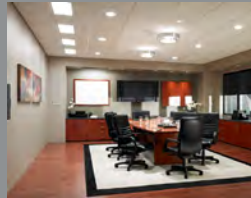
▶ Energy Star



ACCESSORIES

Turning Light into Savings ▶▶▶

www.mynaturalLED.com



01

DOWN LIGHT



SKU Code	Product Code	Color	Description
P10029	ADP-RLGU24-N	-	GU24 Socket Adaptor
P10170	RT-4RL9-BK	Black	4" Trim for Downlight
P10173	RT-6RL15-BK	Black	6" Trim for Downlight
P10176	RTS-4RL9-WH	White	4" Square trim for Downlight
P10177	RTS-6RL15-WH	White	6" Square trim for Downlight

Fits Downlight Retrofit Recess Can
4-inch Item#7688, 7689, 7690
6-inch Item#7691, 7692, 7693

02

DOWN LIGHT



Limited Quantity
Please contact your sales rep while supplies last

SKU Code	Product Code	Color	Description
P10029	ADP-RLGU24-N	-	GU24 Socket Adaptor
P10057	RT-4RL-BK	Black	4" Trim for Downlight
P10060	RT-6RL-BK	Black	6" Trim for Downlight
P10058	RT-4RL-CH	Chrome	4" Trim for Downlight
P10061	RT-6RL-CH	Chrome	6" Trim for Downlight
P10082	RT-4RL-CH-WH	White	4" Trim for Downlight
P10083	RT-6RL-CH-WH	White	6" Trim for Downlight
P10059	RT-4RL-BZ	Bronze	4" Trim for Downlight
P10062	RT-6RL-BZ	Bronze	6" Trim for Downlight
P10084	RTS-4RL-WH	White	4" Square for Downlight
P10085	RTS-6RL-WH	White	6" Square for Downlight

Fits Downlight Retrofit Recess Can
4-inch Item#7562, 7566, 7567, 7578, 7580, 7198, 7093
6-inch Item#7563, 7568, 7569, 7579, 7581, 7199, 7095

03

LINEAR HIGHBAY



SKU Code	Product Code	Description
P10092	MT-YK-HBL22	Yoke Mount 3/4" NPT for Rigid Pendant
P10093	MT-YK-HBL44	Yoke Mount 3/4" NPT for Rigid Pendant
P10094	WG-HBL22/WH	WireGuard
P10095	WG-HBL44/WH	WireGuard
P10086	SEN-LOS-509-SFG	Motion/Photocell On-Off Aisle Lens
P10088	SEN-LOD-500-SFG	Motion/Photocell 0-10V Aisle Lens
P10162	SEN-LRD-509-SFG	Remote Controllable Sensor 0-10V Aisle
P10087	SEN-LOS-509-SFC	Motion/Photocell On-Off Area Lens
P10089	SEN-LOD-500-SFC	Motion/Photocell 0-10V Area Lens
P10163	SEN-LRD-509-SFC	Remote Controllable Sensor 0-10V Area
P10164	SEN-SRP280	Remote Control for P10162 / P10163
P10153	SEN-LRD-609-SAC	Motion/Photocell 0-10V Internal 100-277V IP65

Fits our Linear Highbay (LHB) Series

*An additional installation fee will be applied per fixture

04

FLAT PANEL



SKU Code	Product Code	Description
P10096	MT-1X4BOX	1x4 Panel Surface Mount Kit
P10097	MT-2X2BOX	2x2 Panel Surface Mount Kit
P10098	MT-2X4BOX	2x4 Panel Surface Mount Kit
P10099	MT-PNL-HOOK-4PCS	Earthquake hook for 2x2 and 1x4
P10100	MT-PNL-HOOK-6PCS	Earthquake hook for 2x4
K7332189	FXPNL/BAEM/MT	LED Emergency Driver for 100-277V with a mounting plate for Panel

Fits Flat Panel Series

Item# 7721, 7675, 7720, 7674, 7722, 7676, 7687, 7101, 7100, 7102
Earthquake hooks are pre-installed

*An additional installation fee will be applied per fixture

05

SLIM WALL PACK



SKU Code	Product Code	Description
P10074	MT-SB-SWP/DB	Swivel Bracket for SWP -Dark Bronze
P10005	MT-SB-SWP/BK	Swivel Bracket for SWP -Black
P10019	MT-SB-SWP/WH	Swivel Bracket for SWP -White
P10076	MT-SF-SWP/DB	Slip Fitter Mount for SWP-Dark Bronze
P10007	MT-SF-SWP/BK	Slip Fitter Mount for SWP-Black
P10021	MT-SF-SWP/WH	Slip Fitter Mount for SWP-White
P10075	MT-KNC-SWP/DB	3/4" NPT Knuckle Mount for SWP - DB
P10006	MT-KNC-SWP/BK	3/4" NPT Knuckle Mount for SWP - BK
P10020	MT-KNC-SWP/WH	3/4" NPT Knuckle Mount for SWP - WH

Fits Slim Wall Pack

#7462,7463,7452,7453,7548,7549,7464,7465,7460,7461,7550,7551,7572,7573,7574,7575,7576,7577

06

SLIM AREA LIGHT



SKU Code	Product Code	Description
P10101	MT-SAL/SF/DB	Slip Fitter Mount for SAL (DB)
P10102	MT-SAL/SF/WH	Slip Fitter Mount for SAL (WH)
P10103	MT-SAL/SB/DB	Swivel Bracket Mount for SAL(DB)
P10104	MT-SAL/SB/WH	Swivel Bracket Mount for SAL (WH)
P10105	MT-SAL/EA6/DB	6" Extruded Arm for SAL (DB)
P10106	MT-SAL/EA6/WH	6" Extruded Arm for SAL (WH)
P10107	MT-SAL/DPB/DB	Dual Pendant Box 3/4" NPT (DB)
P10108	MT-SAL/DPB/WH	Dual Pendant Box 3/4" NPT (WH)
P10111	MT-SAL/YK9/DB	9" Yoke Mount 29-100W (DB)
P10112	MT-SAL/YK9/WH	9" Yoke Mount 29-100W (WH)
P10113	MT-SAL/YK15/DB	15" Yoke Mount 180-360W (DB)
P10114	MT-SAL/YK15/WH	15" Yoke Mount 180-360W (WH)
P10119	MT-SAL/4PA/DB	4" Round pole adaptor for SAL (DB)
P10120	MT-SAL/5PA/DB	5" Round pole adaptor for SAL (DB)
P10121	MT-SAL/6PA/DB	6" Round pole adaptor for SAL (DB)
P10122	MT-SAL/4PA/WH	4" Round pole adaptor for SAL (WH)
P10123	MT-SAL/5PA/WH	5" Round pole adaptor for SAL (WH)
P10124	MT-SAL/6PA/WH	6" Round pole adaptor for SAL (WH)

06

SLIM AREA LIGHT



SKU Code	Product Code	Description
K134115	PLT/SDB/SWC	Motion/PhotoCell 0-10V 3X C Lens for (29-100W) in Dark Bronze
K134116	PLT/SDB/SWD	Motion/PhotoCell 0-10V 2X D Lens for (29-100W) in Dark Bronze
K135115	PLT/SWH/SWC	Motion/PhotoCell 0-10V 3X C Lens for (29-100W) in White
K135116	PLT/SWH/SWD	Motion/PhotoCell 0-10V 2X D Lens for (29-100W) in White
K136115	PLT/LDB/SWC	Motion/PhotoCell 0-10V 3X C Lens for (180-360W) in Dark Bronze
K136116	PLT/LDB/SWD	Motion/PhotoCell 0-10V 2X D Lens for (180-360W) in Dark Bronze
K137115	PLT/LWH/SWC	Motion/PhotoCell 0-10V 3X C Lens for (180-360W) in White
K137116	PLT/LWH/SWD	Motion/PhotoCell 0-10V 2X D Lens for (180-360W) in White
K136178	PLT/LDB/9SWC	Remote Controllable Sensor 0-10V 3X C Lens (180-360W) Dark Bronze
K136179	PLT/LDB/9SWD	Remote Controllable Sensor 0-10V 2X D Lens (180-360W) Dark Bronze
K137178	PLT/LWH/9SWC	Remote Controllable Sensor 0-10V 3X C Lens (180-360W) White
K137179	PLT/LWH/9SWD	Remote Controllable Sensor 0-10V 2X D Lens (180-360W) White
K134178	PLT/SDB/9SWC	Remote Controllable Sensor 0-10V 3X C Lens (29-100W) Dark Bronze
K134179	PLT/SDB/9SWD	Remote Controllable Sensor 0-10V 2X D Lens (29-100W) Dark Bronze
K135178	PLT/SWH/9SWC	Remote Controllable Sensor 0-10V 3X C Lens (29-100W) White
K135179	PLT/SWH/9SWD	Remote Controllable Sensor 0-10V 2X D Lens (29-100W) White
P10164	SEN-SRP280	Remote Control
K141030	REC3PLK/PHO	Receptacle Mount/PhotoCell
P10053	SEN-PHO-LK-MT/SRT	Twist-Lock Mount Shorting Cap
P10141	REC3PLK	Receptacle Mount -3 prong
P10142	REC7PLK	Receptacle Mount -7 prong
P10127	LENS-SAL-SMALL-V	Type 5 Lens (29-100W)
P10128	LENS-SAL-LARGE-V/DB	Type 5 Lens (180-360W) DB
P10131	LENS-SAL-LARGE-V/WH	Type 5 Lens (180-360W) White
P10205	GSB-SAL-S/DB	Back Glare Shields for SAL- D.Bronze
P10206	GSB-SAL-S/WH	Back Glare Shields for SAL- White
P10213	GSF-SAL-S/DB	Front Glare Shields for SAL- D.Bronze
P10214	GSF-SAL-S/WH	Front Glare Shields for SAL- White

07

TRADITIONAL SHOEBOX



SKU Code	Product Code	Description
P10024	MT-SF/DB	Slip Fitter -Dark Bronze
P10025	MT-SB/DB	Swivel Bracket -Dark Bronze
P10026	MT-EA6/DB	6" Extruded Arm -Dark Bronze
P10080	MT-AA14/WH	14" Adjustable Arm -White
P10081	MT-AA14/DB	14" Adjustable Arm -Dark Bronze
P10046	MT-4PA/DB	4" Round pole adaptor -Dark Bronze
P10047	MT-5PA/DB	5" Round pole adaptor -Dark Bronze
P10048	MT-6PA/DB	6" Round pole adaptor -Dark Bronze
P10049	MT-4PA/WH	4" Round pole adaptor -White
P10050	MT-5PA/WH	5" Round pole adaptor -White
P10051	MT-6PA/WH	6" Round pole adaptor -White

08

UNDER CABINET



SKU Code	Product Code	Description
P10151	PWCQ-FXUC-10IN	10" Extended Quick Connector
P10152	PWC-FXUC-3FT	3 ft power cable for under cabinet
P10180	QC-FXUC-SRT	Quick connector for under cabinet

09

UTILITY WRAP



SKU Code	Product Code	Description
P10009	BALED-UWS29-DIM	Dimmable Driver
P10161	LENS-UW29	Replacement Lens
P10197	PLT-UWS/4FT/WH	Wire Cover

*An additional installation fee will be applied per fixture

10

LED EMERGENCY DRIVER



SKU Code	Product Code	Description
7332	BAEM8.4-60/MV-B	LED Fixture Emergency Driver 120-277V
7333	BAEM12-60BC/MV-B	LED Fixture Emergency Driver 120-277V
7334	BAEM15-48BC/MV-A	LED Fixture Emergency Driver 120-277V

*An additional installation fee will be applied per fixture

11

STEP DOWN DRIVER

347-480V



SKU Code	Product Code	Description
P10070	BA-PTM-0150-480220-7635	347-480V to 277V Driver for under 150W
P10069	BA-PTN-0250-480220-8645	347-480V to 277V Driver for under 250W
P10138	BA-GETR480/277-250W	347-480V to 277V Driver for under 250W - LINEAR
P10182	BA-10031A-240-22	Step Down Transformer

*An additional installation fee will be applied per fixture

12

PORTABLE POWER CABLE

S0 Cord



SKU Code	Product Code	Description
P10165	PWC-300V3-6ft	SO Cord 6ft for 300V 3 Conductor
P10166	PWC-300V3-10ft	SO Cord 10ft for 300V 3 Conductor
P10167	PWC-600V3-6ft	SO Cord 6ft for 600V 3 Conductor
P10168	PWC-600V3-10ft	SO Cord 10ft for 600V 3 Conductor
P10187	PWC-300V5-6ft	SO Cord 6ft for 300V 5 Conductor
P10188	PWC-300V5-10ft	SO Cord 10ft for 300V 5 Conductor
P10190	PWC-300V5-WH-10ft	SO Cord 10ft for 300V 5 Conductor White

13

FLUSH MOUNT/DAL

Flush Mount Modern/ Decorative Accent



SKU Code	Product Code	Description
P10117	• BAEM-184500-8C2.0	LED Emergency Driver for 120-277V FMM
P10077	SWCH-ZE109-NI	Pull String Switch Nickel
P10078	SWCH-ZE204A	Toggle Switch

*An additional installation fee will be applied per fixture

• for Flush Mount Modern only

14

MICROWAVE PHOTOCELL

Utility Wrap, Vapor Tight, Slim Canopy



SKU Code	Product Code	Description
P10091	SEN-UM05/ANT5	Motion/ Photocell 0-10V Internal 100-277V
P10148	SEN-MC031-IP66/WH	
K154091	PLT/MC05	

*An additional installation fee will be applied per fixture

15

AIRCRAFT CABLE

Flat Panel, Troffer, HighBay



SKU Code	Product Code	Description
P10144	MT-ACC-10FT	10ft Aircraft Cable
P10147	MT-ACC-4FT	4ft Aircraft Cable

16

BUTTON PHOTOCELL

Area Light, WallPack



SKU Code	Product Code	Description
P10036	SEN-PHO-BT-MT/MV	Button Photocell 120-277V

*An additional installation fee will be applied per fixture

17

TWP LENS/SHIELD

Forward Throw Wall Pack



SKU Code	Product Code	Description
P10055	CVR-TWP28/DB	Full Cut Off Shield for 28W
P10022	CVR-TWP40/DB	Full Cut Off Shield for 40W & 42W
P10023	CVR-TWP60/DB	Full Cut Off Shield for 59W,60W,80W,90W
P10002	LENS-28TWP	Borosilicate Glass Lens with Gasket for 28W
P10000	LENS-40TWP	Borosilicate Glass Lens with Gasket for 40 & 42W
P10001	LENS-60TWP	Borosilicate Glass Lens with Gasket for 59W, 60W, 80W, 90W

18

DUSK TO DAWN/BARN LIGHT



SKU Code	Product Code	Description
P10054	MT-DEA16	Dusk to Dawn 16" Extension Arm
P10030	SEN-PHO-LK-MT/MV	Twist-Lock Mount Photocell 120-277V
P10053	SEN-PHO-LK-MT/SRT	Twist-Lock Mount Shorting Cap

19

SECURITY FLOOD LIGHT

Motion Sensor (2 heads)



SKU Code	Product Code	Description
P10118	SEN-ES-180NX3-2VR/BK	Motion Sensor for 2-headed Security Light

20

JELLY JAR/VAPOR TIGHT



SKU Code	Product Code	Description
P10169	LENS-VTJ	Lens- Vapor Tight Jelly Jar

21

PIR PHOTOCELL/MOTION SENSOR



SKU Code	Product Code	Description
P10038	SEN-LOS-501-SED	Motion/PhotoCell On-Off 2X D Lens
P10039	SEN-LOS-501-SPD	Motion/PhotoCell IP66 On-Off 2X D Lens
P10040	SEN-LOS-501-SEC	Motion/PhotoCell On-Off 3X C Lens
P10041	SEN-LOS-501-SPC	Motion/PhotoCell IP66 On-Off 3X C Lens
P10042	SEN-LOD-500-SED	Motion/PhotoCell 0-10V 2X D Lens
P10043	SEN-LOD-500-SPD	Motion/PhotoCell IP66 0-10V 2X D Lens
P10044	SEN-LOD-500-SEC	Motion/PhotoCell 0-10V 3X C Lens
P10045	SEN-LOD-500-SPC	Motion/PhotoCell IP66 0-10V 3X C Lens

*An additional installation fee will be applied per fixture

22

ROUND HIGH BAY

Round High Bay Skirt



SKU Code	Product Code	Description
P10156	CVR-16HBR/LS/WH	High/Low Bay Skirt with Diffuser
K150148	PLT/HBR/MC31	Microwave Sensor for Round High LED
K7332160	FXHBR-BAEM-MT	Fixture Emergency Driver 120-277V for Round High Bay

23

SLIM CANOPY



SKU Code	Product Code	Description
P10195	PLT-SCM/14X14/WH	Plate for 14x14 WH
P10196	PLT-SCM/24X24/WH	Plate for 24x24 WH
P10126	LENS-SCM/DR9X9	Lens 9x9 drop Lens
P10125	LENS-SCM/FR9X9	Lens 9x9 frosted Lens

24

LED Unit Inverter



SKU Code	Product Code	Description
P10056	BAEM-IIS-375-LED	375W LED Unit Inverter

REFERENCE

Turning Light into Savings ▶▶▶

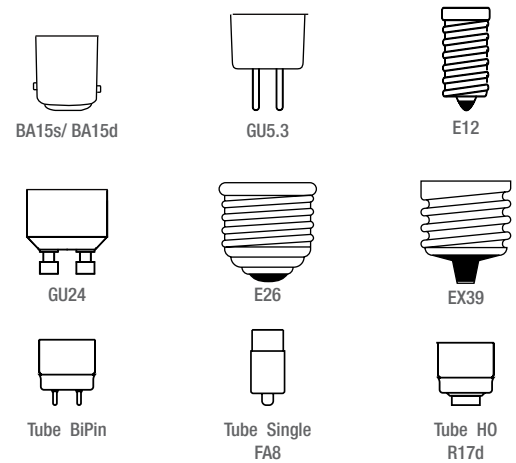
www.mynaturalLED.com



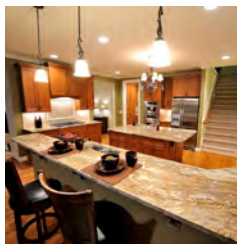
LED lamp shape



LED lamp base



LED color temperature



Soft White - 2700K



Warm White - 3000K



Cool White - 4000K



Daylight - 5000K

LED CRI



CRI80

CRI90

Color Rendering Index (CRI) describes how an object appears to the human eye based on ideal or natural light source. The CRI is an index, a measure, that tells something about how colors are represented by light coming from a certain light bulb, compared to how the colors are rendered with the light coming from a reference illuminant.

The CRI reports a unit less value, that can differ between 0 and 100. The value 100 means that there is no difference in color rendition between the light of the observed light bulb and the light of the reference illuminant. Lighting with a CRI of 85 to 90 is typically "excellent" at rendering colors of objects while CRI90 or greater are "superior".

FEATURE listings and ratings



ENERGY STAR

The federal government establishes minimum performance requirements for energy efficiency in lighting and other consumer products. More information can be found at www.energystar.gov



DLC

The DesignLights Consortium® promotes quality, performance, and energy-efficient commercial sector lighting solutions through collaboration among its federal, regional, state, utility, and energy efficiency program members, luminaire manufacturers, lighting designers, throughout the U.S. and Canada.



ETL INTERTEK LISTED

ETL Listed mark indicates that naturaLED products have been tested by Intertek and found in compliance with accepted national standards.



UL LISTED

UL is a product safety testing and certification. Manufacturers have had their merchandise tested for safety risks by safety certification organization to qualify as UL Listed.



DAMP LOCATION

These products are approved for use in interior locations protected from weather but subject to moderate degrees of moisture, such as some basements, some barns, and some cold storage warehouses.



WET LOCATION

These products can be used in wet locations, both indoor and outdoor. A wet location is an interior or exterior location in which water or other liquids may drip, splash, or flow on or against the electrical components of a lighting fixture or ceiling fan. Outdoor Wet Locations include open-air decks and patios, uncovered porches, outdoor dining areas, exterior walls, gazebos, pergolas, and walkways. Indoor Wet Locations include shower enclosures.

IP (Ingress Protection) Chart



IP65

The IP Code consists of letters IP followed by two-digits. The first digit represents Solids Protection & the second digit represents Liquid Protection. It classifies the degrees of protection against dust, accidental contact, and water in electrical enclosures. The standard aims to provide users more detailed information other than a single phrase Weatherproof.

6: Protected from total dust ingress.

5: Protected from low pressure water jets from any direction.



IP66

The IP Code consists of letters IP followed by two-digits. The first digit represents Solids Protection & the second digit represents Liquid Protection. It classifies the degrees of protection against dust, accidental contact, and water in electrical enclosures. The standard aims to provide users more detailed information other than a single phrase Weatherproof.

6: Protected from total dust ingress.

6: Powerful water jets against enclosure from any direction

First Digit - Solids

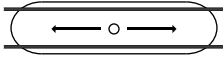
Level	Object Size Protected Against	Effective Against
0	Not Protected	No protection against contact and ingress of objects.
1	>50mm	Any large surface of the body, such as the back of the hand, but no protection against deliberate contact with a body part.
2	>12.5mm	Fingers or similar objects.
3	>2.5mm	Tools, thick wires, etc.
4	>1mm	Most wires, screws, etc.
5	Dust Protected	Ingress of dust is not entirely prevented, it must not enter in sufficient quantity to interfere with the satisfactory operation of the equipment; complete protection against contact.
6	Dust Tight	No ingress of dust; complete protection against contact.

Second Digit - Liquids

Level	Object Size Protected Against	Effective Against
0	Not Protected	No protection against contact and ingress of objects.
1	Dripping water	Dripping water (vertically falling drops) shall have no harmful effect.
2	Dripping water when tilted up to 15°	Vertically dripping water shall have no harmful effect when the enclosure is tilted at an angle up to 15° from its normal position.
3	Spraying water	Water falling as a spray at any angle up to 60° from the vertical shall have no harmful effect.
4	Splashing water	Water splashing against the enclosure from any direction shall have no harmful effect.
5	Water jets	Water projected by a nozzle (6.3mm) against enclosure from any direction shall have no harmful effects.
6	Powerful water jets	Water projected in powerful jets (12.5mm nozzle) against the enclosure from any direction shall have no harmful effects.
7	Immersion up to 1m	Ingress of water in harmful quantity shall not be possible when the enclosure is immersed in water under defined conditions of pressure and time (up to 1 m of submersion).
8	Immersion beyond 1m	The equipment is suitable for continuous immersion in water under conditions which shall be specified by the manufacturer. Normally, this will mean that the equipment is hermetically sealed. However, with certain types of equipment, it can mean that water can enter but only in such a manner that it produces no harmful effects.

LED lighting distribution types

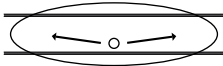
Type I



The type I distribution is great for lighting walkways, paths and sidewalks. This type of lighting is meant to be placed near the center of the pathway. This provides adequate lighting for smaller pathways.

Type I is a two-way lateral distribution having a preferred lateral width of 15 degrees in the cone of maximum candlepower. The two principal light concentrations are in opposite directions along a roadway. This type is generally applicable to a luminaire location near the center of a roadway where the mounting height is approximately equal to the roadway width.

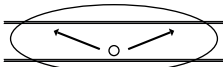
Type II



The type II distribution is used for wide walkways, on ramps and entrance roadways, as well as other long, narrow lighting. This type is meant for lighting larger areas and usually is located near the roadside. You'll find this type of lighting mostly on smaller side streets or jogging paths.

Type II light distributions have a preferred lateral width of 25 degrees. They are generally applicable to luminaires located at or near the side of relatively narrow roadways, where the width of the roadway does not exceed 1.75 times the designed mounting height.

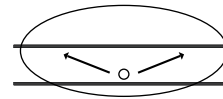
Type III



The type III distribution is meant for roadway lighting, general parking areas and other areas where a larger area of lighting is required. Type III lighting needs to be placed to the side of the area, allowing the light to project outward and fill the area. This produces a filling light flow.

Type III light distributions have a preferred lateral width of 40 degrees. This distribution is intended for luminaires mounted at or near the side of medium width roadways or areas, where the width of the roadway or area does not exceed 2.75 times the mounting height.

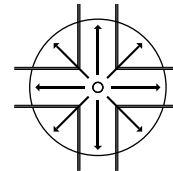
Type IV



The type IV distribution produces a semicircular light meant for mounting on the sides of buildings and walls. It's best for illuminating the perimeter of parking areas and businesses. The intensity of the Type IV lighting has the same intensity at angles from 90 degrees to 270 degrees.

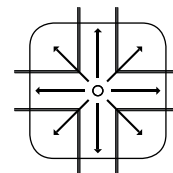
Type IV light distributions have a preferred lateral width of 60 degrees. This distribution is intended for side-of-road mounting and is generally used on wide roadways where the roadway width does not exceed 3.7 times the mounting height.

Type V



Type V produces a circular distribution that has the same intensity at all angles. This distribution has a circular symmetry of candlepower that is essentially the same at all lateral angles. It is intended for luminaire mounting at or near center of roadways, center islands of parkway, and intersections. It is also meant for large, commercial parking lot lighting as well as areas where sufficient, evenly distributed light is necessary.

Type VS (Square)



Type VS produces a square distribution that has the same intensity at all angles. Type 5S (square) LED Distribution pattern This distribution has a square symmetry of candlepower that is essentially the same at all lateral angles. It is intended for luminaire mounting at or near center of roadways, center islands of parkway, and intersections. It is also meant for large, commercial parking lot lighting as well as areas where sufficient, evenly distributed light is necessary. Type VS is used where the light pattern needs a more defined edge.

Locations:



California, USA

2000 S. Grove Ave, Bldg B,
Ontario, CA 91761



North Carolina, USA

2511 Reliance Ave,
Apex, NC 27539



Texas, USA

11011 Regency Crest Drive, Ste 800,
Dallas, TX 75238



Langley, Canada

5514 275th Street,
Langley, BC V4W 3X7

naturaLED®

www.naturaLED.com