



GREENCREATIVE

 LAMPS



CATALOG

2020 Q1



GREENCREATIVE

Your partner for professional lighting solutions

GREEN CREATIVE, founded in 2010, is a solid-state lighting development and manufacturing company based in Sanford, FL with an office in Shanghai. The company offers a comprehensive line of high-performance LED Lamp, Downlight and Track lighting solutions, widely adopted by some of the largest companies in the world.



Bringing you the latest in LED technology

Anchored by strong integrated R&D capabilities and patented technology, GREEN CREATIVE's innovation, performance and reliability have been recognized year after year by the Illuminating Engineering Society Progress Report, the LEDs Magazine Sapphire Awards, Edison Report, NAILD and more.

A complete line with national & international distribution

GREEN CREATIVE's full product line of ENERGY STAR®, DLC®, TITLE 20 & JA8 certified indoor retrofit and new construction lighting solutions serves the Retail, Hospitality, Food & Beverage, Office, Education & Industrial sectors through multiple distribution centers and sales networks across the USA.



TABLE OF CONTENTS

HALOGEN REPLACEMENTS

P1-6



PAR
P1-4



MR
P5-6

FLUORESCENT REPLACEMENTS

P7-32



TLED / EM DRIVER
P7-22



PLL / PL / PLS / PLO
P23-32

HID REPLACEMENTS

P33-36



BOLLARD / POST TOP
P33-34



HIGHBAY / LOWBAY
P35



WALLPACK
P36

INCANDESCENT REPLACEMENTS

P37-44



BR
P37-38



A TYPE
P39-40



WARM DIM
P41-42



FILAMENT
P43



DECO
P44

2020 FEATURED PRODUCTS



NEW!



P1-2

PAR REFINE

- Powered by TRUE CHROMA
- High color fidelity Rf 93, CRI 95
- Intense center beam candle power
- Minimal glare and maximum visual comfort

NEW!



P19

T8 HYB

- Suitable for line voltage and a wide range of ballasts
- Compatible with shunted and non-shunted sockets
- Available in standard and high output configurations

NEW!

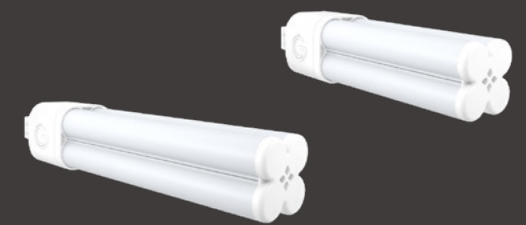


P20

EMERGENCY DRIVERS

- Meets or exceeds all National Electrical Code and Life Safety Code Emergency Lighting Requirements
- Compatible with select GREEN CREATIVE products
- Includes test switch with charging indicator light

NEW!



P31-32

PLO SERIES

- Lamps feature omni directional light distribution and replace 13W-26W CFL lamps
- DIRECT installation lamps are compatible with electronic ballasts
- HYBRID installation lamps are compatible with magnetic ballasts or line voltage (120-277V) power



Superior Light

- Powered by TRUE CHROMA
- Excellent color rendering
- High color fidelity Rf 93
- High CRI 95

Fresnel Technology

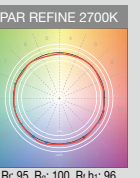
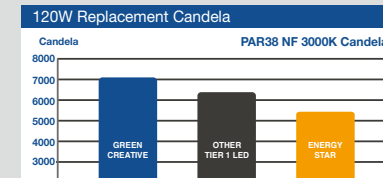
- Features Fresnel design to refine beam pattern
- Provides even light throughout the distribution with a crisp edge

Focus TIR Lens

- Maximizes delivered center beam candle power
- Increases system efficiency

Faceted Texture

- Minimizes glare
- Maximizes visual comfort



- New TRUE CHROMA standard achieves supreme color accuracy
- Proprietary optical system provides balanced distribution
- Intense center beam candle power with minimal glare
- Wide offering of CCTs, beam angles, and wattages

SPECIFICATIONS

Product	Model	CCT	Lumens	CRI (typ.)	LPW	CBCP	Dim	Equiv.	Beam Angle	Life (hrs)	Voltage	Encl.	TRUE CHROMA	ES / T20
34890	6.5PAR20DIM/927SP15	2700K	520	95	80	5,000	Yes	50W	15°	50,000	120V	Yes	C	√/N.A.
34891	6.5PAR20DIM/927NF25	2700K	560	95	86	1,800	Yes	50W	25°	50,000	120V	Yes	C	√/√
34892	6.5PAR20DIM/927FL40	2700K	560	95	86	1,100	Yes	50W	40°	50,000	120V	Yes	C	√/√
34893	6.5PAR20DIM/930SP15	3000K	550	95	85	5,300	Yes	50W	15°	50,000	120V	Yes	C	√/N.A.
34894	6.5PAR20DIM/930NF25	3000K	580	95	89	1,900	Yes	50W	25°	50,000	120V	Yes	C	√/√
34895	6.5PAR20DIM/930FL40	3000K	580	95	89	1,200	Yes	50W	40°	50,000	120V	Yes	C	√/√
34896	6.5PAR20DIM/940FL40	4000K	600	95	92	1,300	Yes	50W	40°	50,000	120V	Yes	No	√/√
34897	6.5PAR20DIM/930FL40/B •	3000K	580	95	89	1,200	Yes	50W	40°	50,000	120V	Yes	C	√/√
34898	11PAR30DIM/927SP15	2700K	950	95	86	10,000	Yes	75W	15°	50,000	120V	Yes	C	√/√
34899	11PAR30DIM/927NF25	2700K	950	95	86	4,500	Yes	75W	25°	50,000	120V	Yes	C	√/√
34900	11PAR30DIM/927FL40	2700K	950	95	86	1,700	Yes	75W	40°	50,000	120V	Yes	C	√/√
34901	11PAR30DIM/930SP15	3000K	990	95	90	10,600	Yes	75W	15°	50,000	120V	Yes	C	√/√
34902	11PAR30DIM/930NF25	3000K	990	95	90	4,700	Yes	75W	25°	50,000	120V	Yes	C	√/√
34903	11PAR30DIM/930FL40	3000K	990	95	90	1,750	Yes	75W	40°	50,000	120V	Yes	C	√/√
34904	11PAR30DIM/940FL40	4000K	1,030	95	94	1,850	Yes	75W	40°	50,000	120V	Yes	No	√/√
34905	11PAR30DIM/930FL40/B •	3000K	990	95	90	1,750	Yes	75W	40°	50,000	120V	Yes	C	√/√
34906	11PAR30SNDIM/927SP15	2700K	950	95	86	10,000	Yes	75W	15°	50,000	120V	Yes	C	√/√
34907	11PAR30SNDIM/927NF25	2700K	950	95	86	4,500	Yes	75W	25°	50,000	120V	Yes	C	√/√
34908	11PAR30SNDIM/927FL40	2700K	950	95	86	1,700	Yes	75W	40°	50,000	120V	Yes	C	√/√
34909	11PAR30SNDIM/930SP15	3000K	990	95	90	10,600	Yes	75W	15°	50,000	120V	Yes	C	√/√

• Black finish

SPECIFICATIONS

Product	Model	CCT	Lumens	CRI (typ.)	LPW	CBCP	Dim	Equiv.	Beam Angle	Life (hrs)	Voltage	Encl.	TRUE CHROMA	ES / T20
34910	11PAR30SNDIM/930NF25	3000K	990	95	90	4,700	Yes	75W	25°	50,000	120V	Yes	C	√/√
34911	11PAR30SNDIM/930FL40	3000K	990	95	90	1,750	Yes	75W	40°	50,000	120V	Yes	C	√/√
34912	11PAR30SNDIM/940FL40	4000K	1,030	95	94	1,850	Yes	75W	40°	50,000	120V	Yes	No	√/√
34913	11PAR30SNDIM/930FL40/B •	3000K	990	95	90	1,750	Yes	75W	40°	50,000	120V	Yes	C	√/√
34916	15.5PAR38DIM/927SP15	2700K	1,320	95	85	14,000	Yes	120W	15°	50,000	120V	Yes	C	√/√
34917	15.5PAR38DIM/927NF25	2700K	1,320	95	85	6,750	Yes	120W	25°	50,000	120V	Yes	C	√/√
34918	15.5PAR38DIM/927FL40	2700K	1,320	95	85	2,800	Yes	120W	40°	50,000	120V	Yes	C	√/√
34919	15.5PAR38DIM/930SP15	3000K	1,370	95	88	14,700	Yes	120W	15°	50,000	120V	Yes	C	√/√
34920	15.5PAR38DIM/930NF25	3000K	1,370	95	88	7,000	Yes	120W	25°	50,000	120V	Yes	C	√/√
34921	15.5PAR38DIM/930FL40	3000K	1,370	95	88	2,900	Yes	120W	40°	50,000	120V	Yes	C	√/√
34922	15.5PAR38DIM/940FL40	4000K	1,420	95	92	3,000	Yes	120W	40°	50,000	120V	Yes	No	√/√
34923	15.5PAR38DIM/930NF25/B •	3000K	1,370	95	88	7,000	Yes	120W	25°	50,000	120V	Yes	C	√/√
34924	15.5PAR38DIM/930FL40/B •	3000K	1,370	95	88	2,900	Yes	120W	40°	50,000	120V	Yes	C	√/√
34925	15.5PAR38DIM/930FL40/GU24	3000K	1,370	95	88	2,900	Yes	120W	40°	50,000	120V	Yes	C	√/√
34914	11PAR30/930FL40/277V	3000K	990	95	90	1,750	No	75W	40°	50,000	120-277V	Yes	C	√/√
34915	11PAR30/940FL40/277V	4000K	1,030	95	94	1,850	No	75W	40°	50,000	120-277V	Yes	No	√/√
34926	15.5PAR38/930FL40/277V	3000K	1,370	95	88	2,900	No	120W	40°	50,000	120-277V	Yes	C	√/√
34927	15.5PAR38/940FL40/277V	4000K	1,420	95	92	3,000	No	120W	40°	50,000	120-277V	Yes	No	√/√

• Black finish

PAR VALUE SELECT LINE

PAR HO LINE



- Suitable to replace 50W, 75W, 120W halogen
- Dimmable with forward and reverse phase controls
- Compact size 1:1 halogen form factor
- Suitable for use in wet locations

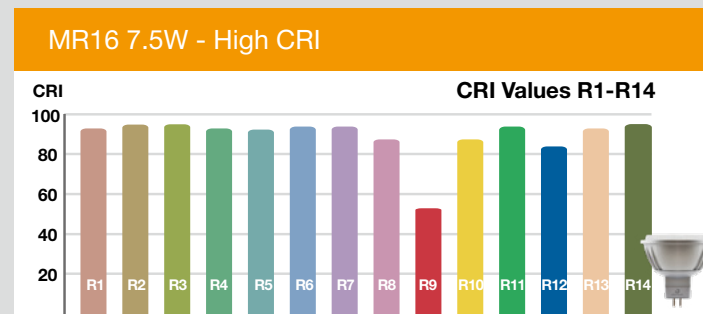
- Very high output lamps are suitable to replace 75W/250W halogen and 39W/70W CMH
- Exceptional color rendering CRI 92
- Richer reds and natural skin tones
- Direct line voltage 120-277V - Dimmable options available also

SPECIFICATIONS													
Product	Model	CCT	Lumens	CRI (typ.)	LPW	CBCP	Dim	Equiv.	Beam Angle	Life (hrs)	Voltage	Encl.	ES
34933	5.5PAR20DIM/830NF25/N	3000K	525	82	95	1,180	Yes	50W	25°	25,000	120V	No	✓
34934	5.5PAR20DIM/830FL40/N	3000K	525	82	95	595	Yes	50W	40°	25,000	120V	No	✓
34935	5.5PAR20DIM/840NF25/N	4000K	525	82	95	1,180	Yes	50W	25°	25,000	120V	No	✓
34936	5.5PAR20DIM/840FL40/N	4000K	525	82	95	595	Yes	50W	40°	25,000	120V	No	✓
34937	10PAR30DIM/830NF25/N	3000K	950	82	95	2,910	Yes	75W	25°	25,000	120V	No	✓
34938	10PAR30DIM/830FL40/N	3000K	950	82	95	1,315	Yes	75W	40°	25,000	120V	No	✓
34939	10PAR30DIM/840NF25/N	4000K	950	82	95	2,910	Yes	75W	25°	25,000	120V	No	✓
34940	10PAR30DIM/840FL40/N	4000K	950	82	95	1,315	Yes	75W	40°	25,000	120V	No	✓
34941	10PAR30SNDIM/830NF25/N	3000K	950	82	95	2,910	Yes	75W	25°	25,000	120V	No	✓
34942	10PAR30SNDIM/830FL40/N	3000K	950	82	95	1,315	Yes	75W	40°	25,000	120V	No	✓
34943	10PAR30SNDIM/840NF25/N	4000K	950	82	95	2,910	Yes	75W	25°	25,000	120V	No	✓
34944	10PAR30SNDIM/840FL40/N	4000K	950	82	95	1,315	Yes	75W	40°	25,000	120V	No	✓
34945	13.5PAR38DIM/830NF25/N	3000K	1,280	82	95	5,385	Yes	120W	25°	25,000	120V	No	✓
34946	12PAR38DIM/830FL40/N	3000K	1,150	82	95	2,235	Yes	120W	40°	25,000	120V	No	✓
34947	13.5PAR38DIM/840NF25/N	4000K	1,280	82	95	5,385	Yes	120W	25°	25,000	120V	No	✓
34948	12PAR38DIM/840FL40/N	4000K	1,150	82	95	2,235	Yes	120W	40°	25,000	120V	No	✓

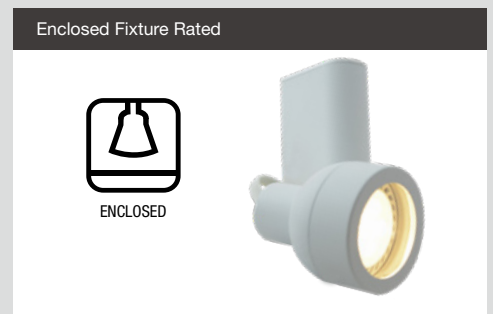
SPECIFICATIONS														
Product	Model	CCT	Lumens	CRI (typ.)	LPW	CBCP	Dim	Equiv.	Beam Angle	Life (hrs)	Voltage	Encl.	ES / T20	
98206	19.5PAR30HO/930NF25/277V/R	3000K	1,800	92	92	8,160	No	75W	25°	50,000	120-277V	No	✓/✓	
98207	19.5PAR30HO/930FL40/277V/R	3000K	1,800	92	92	3,400	No	75W	40°	50,000	120-277V	No	✓/✓	
98208	19.5PAR30HO/940NF25/277V/R	4000K	1,800	92	92	8,160	No	75W	25°	50,000	120-277V	No	✓/✓	
98209	19.5PAR30HO/940FL40/277V/R	4000K	1,800	92	92	3,400	No	75W	40°	50,000	120-277V	No	✓/✓	
35004	19.5PAR38HODIM/927NF25/277V	2700K	1,950	92	100	8,000	Yes	250W	25°	50,000	120-277V	No	✓/✓	
35005	19.5PAR38HODIM/930NF25/277V	3000K	2,000	92	103	8,200	Yes	250W	25°	50,000	120-277V	No	✓/✓	
35006	19.5PAR38HODIM/930FL40/277V	3000K	2,000	92	103	3,500	Yes	250W	40°	50,000	120-277V	No	✓/✓	
35007	19.5PAR38HODIM/935NF25/277V	3500K	2,000	92	103	8,200	Yes	250W	25°	50,000	120-277V	No	✓/✓	
35008	19.5PAR38HODIM/935FL40/277V	3500K	2,000	92	103	3,500	Yes	250W	40°	50,000	120-277V	No	✓/✓	
35009	19.5PAR38HODIM/940NF25/277V	4000K	2,000	92	103	8,200	Yes	250W	25°	50,000	120-277V	No	✓/✓	
35010	19.5PAR38HODIM/940FL40/277V	4000K	2,000	92	103	3,500	Yes	250W	40°	50,000	120-277V	No	✓/✓	
98223	25PAR38HO/927NF25/277V	2700K	2,400	92	96	10,000	No	250W	25°	50,000	120-277V	No	✓/✓	
98210	25PAR38HO/930NF25/277V	3000K	2,500	92	96	10,200	No	250W	25°	50,000	120-277V	No	✓/✓	
98211	25PAR38HO/930FL40/277V	3000K	2,500	92	100	4,800	No	250W	40°	50,000	120-277V	No	✓/✓	
98212	25PAR38HO/940NF25/277V	4000K	2,500	92	100	10,000	No	250W	25°	50,000	120-277V	No	✓/✓	
98213	25PAR38HO/940FL40/277V	4000K	2,500	92	100	4,800	No	250W	40°	50,000	120-277V	No	✓/✓	



- Suitable to replace 50W, 75W Halogen MR16 lamps
- Exceptional color rendering CRI 92
- Richer reds and natural skin tones
- Suitable for use in totally enclosed fixtures
- Compatible with most low-voltage electronic transformers
- Smooth dimming with most electronic low-voltage dimming controls



- Suitable to replace 20W, 35W, 50W, 60W Halogen MR16 lamps
- Compatible with most low-voltage electronic transformers
- Smooth dimming with most electronic low-voltage dimming controls
- Suitable for use in totally enclosed fixtures

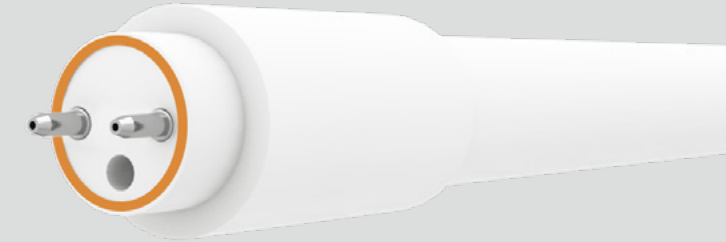
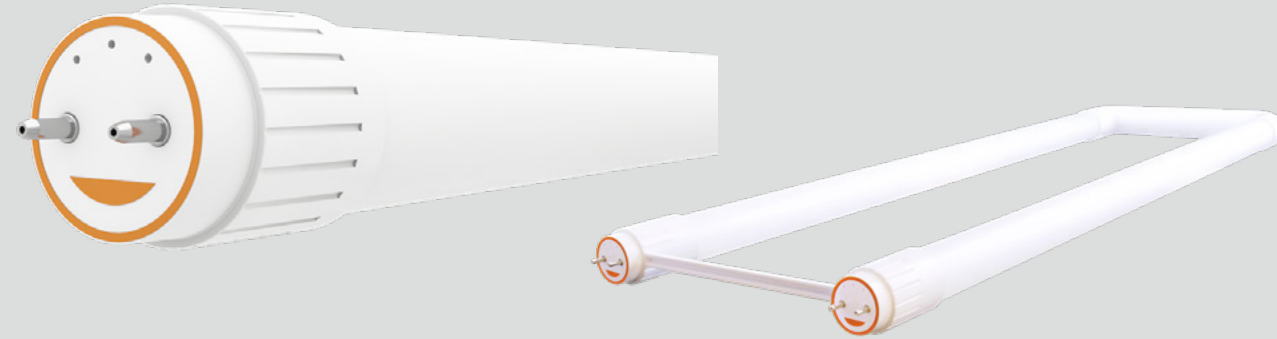


SPECIFICATIONS													
Product	Model	CCT	Lumens	CRI (typ.)	LPW	CBCP	Dim	Equiv.	Beam Angle	Life (hrs)	Voltage	Encl.	ES / JA8 / T20
98151	5.5GU10DIM/927FL35	2700K	450	92	82	800	Yes	50W	35°	25,000	120V	Yes	✓/✓/✓
98152	5.5GU10DIM/930FL35	3000K	470	92	85	850	Yes	50W	35°	25,000	120V	Yes	✓/✓/✓
98153	7MR16DIM/927FL35	2700K	530	92	76	1,350	Yes	50W	35°	25,000	12V	Yes	✓/✓/✓
98154	7MR16DIM/930FL35	3000K	550	92	79	1,400	Yes	50W	35°	25,000	12V	Yes	✓/✓/✓
98155	7MR16DIM/940FL35	4000K	570	92	81	1,450	Yes	50W	35°	25,000	12V	Yes	✓/ N.A. / ✓
98481	7MR16DIM/927SP15	2700K	580	92	83	5,850	Yes	75W	15°	25,000	12V	Yes	✓/✓/✓
98482	7.5MR16DIM/927NF25	2700K	580	92	77	2,800	Yes	75W	25°	25,000	12V	Yes	✓/✓/✓
98483	7.5MR16DIM/927FL35	2700K	580	92	77	1,600	Yes	75W	35°	25,000	12V	Yes	✓/✓/✓
98484	7MR16DIM/930SP15	3000K	580	92	83	5,850	Yes	75W	15°	25,000	12V	Yes	✓/✓/✓
98485	7.5MR16DIM/930NF25	3000K	580	92	77	2,800	Yes	75W	25°	25,000	12V	Yes	✓/✓/✓
98486	7.5MR16DIM/930FL35	3000K	580	92	77	2,800	Yes	75W	35°	25,000	12V	Yes	✓/✓/✓

SPECIFICATIONS														
Product	Model	CCT	Lumens	CRI (typ.)	LPW	CBCP	Dim	Equiv.	Beam Angle	Life (hrs)	Voltage	Encl.	ES	
40713	3MR11/827NF30	2700K	200	82	67	600	No	20W	30°	25,000	12V	Yes	N.A.	
40715	3MR11/840NF30	4000K	220	82	73	620	No	20W	30°	25,000	12V	Yes	N.A.	
58285	6MR16DIM/827FL35/35W/R	2700K	425	82	71	910	Yes	35W	35°	25,000	120V	Yes	✓	
58286	6MR16DIM/830FL35/35W/R	3000K	450	82	75	910	Yes	35W	35°	25,000	120V	Yes	✓	
57984	6MR16DIM/827FL35/R	2700K	480	82	80	1,350	Yes	50W	35°	25,000	12V	Yes	✓	
57985	6MR16DIM/830FL35/R	3000K	500	82	83	1,400	Yes	50W	35°	25,000	12V	Yes	✓	
57986	6MR16DIM/840FL35/R	4000K	520	82	86	1,450	Yes	50W	35°	25,000	12V	Yes	✓	
57987	6GU10DIM/827FL35/R	2700K	480	82	80	1,000	Yes	50W	35°	25,000	120V	Yes	✓	
57988	6GU10DIM/830FL35/R	3000K	500	82	83	1,050	Yes	50W	35°	25,000	120V	Yes	✓	
57990	6PAR16DIM/827FL35/R	2700K	480	82	80	1,000	Yes	60W	35°	25,000	120V	Yes	✓	
57991	6PAR16DIM/830FL35/R	3000K	500	82	83	1,050	Yes	60W	35°	25,000	120V	Yes	✓	

T8 DIR LINE

T5 DIR LINE



- Plug & Play installation
- Instant Start & Programmed Start ballast compatible
- Compatible with select 0-10V dimmable ballasts and controls
- Meets NSF requirements (use of a shatter guard required)

- Plug & Play installation
- Instant Start & Programmed Start ballast compatible
- Plastic construction meets NSF requirements
- Compatible with select 0-10V dimmable ballasts and controls

SPECIFICATIONS

Product	Model	CCT	Lumens	CRI (typ.)	LPW	Dim	Equiv.	Beam Angle	Life (hrs)	Voltage	Encl.	DLC
97841	8T8/2F/830/DIR/RC	3000K	1,300	82	163	Yes	17W	160°	50,000	120-277V	Yes	✓
97842	8T8/2F/835/DIR/RC	3500K	1,300	82	163	Yes	17W	160°	50,000	120-277V	Yes	✓
97843	8T8/2F/840/DIR/RC	4000K	1,300	82	163	Yes	17W	160°	50,000	120-277V	Yes	✓
98352	8T8/3F/830/DIR/RC	3000K	1,200	82	150	Yes	25W	160°	50,000	120-277V	Yes	✓
98353	8T8/3F/835/DIR/RC	3500K	1,200	82	150	Yes	25W	160°	50,000	120-277V	Yes	✓
98354	8T8/3F/840/DIR/RC	4000K	1,250	82	156	Yes	25W	160°	50,000	120-277V	Yes	✓
28397	10.5T8/4F/830/DIR/RD	3000K	1,650	82	157	Yes	32W	160°	50,000	120-277V	Yes	✓
28398	10.5T8/4F/835/DIR/RD	3500K	1,650	82	157	Yes	32W	160°	50,000	120-277V	Yes	✓
28399	10.5T8/4F/840/DIR/RD	4000K	1,700	82	162	Yes	32W	160°	50,000	120-277V	Yes	✓
28400	10.5T8/4F/850/DIR/RD	5000K	1,700	82	162	Yes	32W	160°	50,000	120-277V	Yes	✓
28403	13T8/4F/840/DIR/RC	4000K	2,050	82	158	Yes	32W	160°	50,000	120-277V	Yes	✓
28404	13T8/4F/850/DIR/RC	5000K	2,050	82	158	Yes	32W	160°	50,000	120-277V	Yes	✓
97958	16T8U6/830/DIR/R	3000K	2,200	82	138	Yes	32W	160°	50,000	120-277V	Yes	✓
97959	16T8U6/840/DIR/R	4000K	2,200	82	138	Yes	32W	160°	50,000	120-277V	Yes	✓
97960	16T8U6/850/DIR/R	5000K	2,250	82	141	Yes	32W	160°	50,000	120-277V	Yes	✓

SPECIFICATIONS

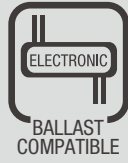
Product	Model	CCT	Lumens	CRI (typ.)	LPW	Dim	Equiv.	Beam Angle	Life (hrs)	Voltage	Encl.	DLC
57958	8T5HE/2F/830/DIR	3000K	950	82	119	Yes	14W	120°	50,000	120-277V	Yes	N.A.
57959	8T5HE/2F/835/DIR	3500K	950	82	119	Yes	14W	120°	50,000	120-277V	Yes	N.A.
57960	8T5HE/2F/840/DIR	4000K	1,020	82	128	Yes	14W	120°	50,000	120-277V	Yes	N.A.
57954	12T5HE/3F/830/DIR	3000K	1,420	82	118	Yes	21W	120°	50,000	120-277V	Yes	N.A.
57955	12T5HE/3F/835/DIR	3500K	1,420	82	118	Yes	21W	120°	50,000	120-277V	Yes	N.A.
57956	12T5HE/3F/840/DIR	4000K	1,500	82	125	Yes	21W	120°	50,000	120-277V	Yes	N.A.
97929	15T5HE/4F/830/DIR/R	3000K	2,200	82	147	Yes	28W	120°	50,000	120-277V	Yes	✓
97930	15T5HE/4F/835/DIR/R	3500K	2,200	82	147	Yes	28W	120°	50,000	120-277V	Yes	✓
97931	15T5HE/4F/840/DIR/R	4000K	2,250	82	150	Yes	28W	120°	50,000	120-277V	Yes	✓
97932	15T5HE/4F/850/DIR/R	5000K	2,250	82	150	Yes	28W	120°	50,000	120-277V	Yes	✓
98165	10.5T5HO/2F/830/DIR	3000K	1,500	82	143	Yes	24W	120°	50,000	120-277V	Yes	N.A.
98166	10.5T5HO/2F/835/DIR	3500K	1,500	82	143	Yes	24W	120°	50,000	120-277V	Yes	N.A.
98167	10.5T5HO/2F/840/DIR	4000K	1,600	82	152	Yes	24W	120°	50,000	120-277V	Yes	N.A.
98168	14.5T5HO/3F/830/DIR	3000K	2,050	82	142	Yes	39W	120°	50,000	120-277V	Yes	N.A.
98169	14.5T5HO/3F/835/DIR	3500K	2,050	82	142	Yes	39W	120°	50,000	120-277V	Yes	N.A.
98170	14.5T5HO/3F/840/DIR	4000K	2,200	82	152	Yes	39W	120°	50,000	120-277V	Yes	N.A.
97924	24T5HO/4F/830/DIR/R	3000K	3,450	82	144	Yes	54W	120°	50,000	120-277V	Yes	✓
97925	24T5HO/4F/835/DIR/R	3500K	3,450	82	144	Yes	54W	120°	50,000	120-277V	Yes	✓
97926	24T5HO/4F/840/DIR/R	4000K	3,500	82	146	Yes	54W	120°	50,000	120-277V	Yes	✓
97927	24T5HO/4F/850/DIR/R	5000K	3,500	82	146	Yes	54W	120°	50,000	120-277V	Yes	✓

T8 DIR VALUE SELECT LINE

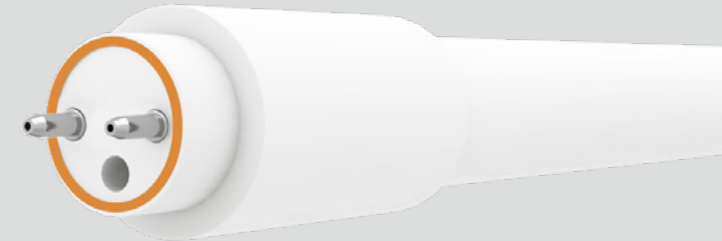
T5 DIR VALUE SELECT LINE



DIRect



DIRect



- Plug & Play installation
- Compatible with select Instant Start ballasts
- Meets NSF Requirements (use of a shatter guard required)

- Plug & Play installation
- Compatible with select Instant Start & Program Start ballasts
- Glass construction
- Compatible with select 0-10V dimmable ballasts and controls

SPECIFICATIONS

Product	Model	CCT	Lumens	CRI (typ.)	LPW	Dim	Equiv.	Beam Angle	Life (hrs)	Voltage	Encl.	DLC
98551	10.5T8/4F/830/IS/DIR	3000K	1,600	82	152	No	32W	160°	50,000	120-277V	Yes	✓
98552	10.5T8/4F/835/IS/DIR	3500K	1,600	82	152	No	32W	160°	50,000	120-277V	Yes	✓
98553	10.5T8/4F/840/IS/DIR	4000K	1,650	82	157	No	32W	160°	50,000	120-277V	Yes	✓
98554	10.5T8/4F/850/IS/DIR	5000K	1,650	82	157	No	32W	160°	50,000	120-277V	Yes	✓
98557	13T8/4F/840/IS/DIR	4000K	2,000	82	154	No	32W	160°	50,000	120-277V	Yes	✓
98558	13T8/4F/850/IS/DIR	5000K	2,000	82	154	No	32W	160°	50,000	120-277V	Yes	✓

SPECIFICATIONS

Product	Model	CCT	Lumens	CRI (typ.)	LPW	Dim	Equiv.	Beam Angle	Life (hrs)	Voltage	Encl.	DLC
98490	15T5HE/4F/830/GL/DIR	3000K	2,200	82	142	Yes	28W	120°	50,000	120-277V	Yes	✓
98491	15T5HE/4F/835/GL/DIR	3500K	2,200	82	142	Yes	28W	120°	50,000	120-277V	Yes	✓
98492	15T5HE/4F/840/GL/DIR	4000K	2,250	82	152	Yes	28W	120°	50,000	120-277V	Yes	✓
98494	24T5HO/4F/830/GL/DIR	3000K	3,450	82	144	Yes	54W	120°	50,000	120-277V	Yes	✓
98495	24T5HO/4F/835/GL/DIR	3500K	3,450	82	144	Yes	54W	120°	50,000	120-277V	Yes	✓
98496	24T5HO/4F/840/GL/DIR	4000K	3,500	82	146	Yes	54W	120°	50,000	120-277V	Yes	✓
98497	24T5HO/4F/850/GL/DIR	5000K	3,500	82	146	Yes	54W	120°	50,000	120-277V	Yes	✓



BYPass



UNIVERSAL



BYPass



FLICKER FREE



UNIVERSAL



- Integral driver suitable for 120-277V
- Compatible with non-shunted lamp holders only
- Extra high efficacy (up to 167LPW) option available
- Meets NSF requirements (use of a shatter guard required)

- Integral driver suitable for 120-277V
- Flicker Free light output
- Suitable for use in totally enclosed fixtures
- Meets NSF requirements (use of a shatter guard required)

SPECIFICATIONS

Product	Model	CCT	Lumens	CRI (typ.)	LPW	Dim	Equiv.	Beam Angle	Life (hrs)	Voltage	Encl.	DLC
98379	10.5T8/4F/830/BYP	3000K	1,650	82	157	No	32W	160°	50,000	120-277V	Yes	✓
98380	10.5T8/4F/835/BYP	3500K	1,650	82	157	No	32W	160°	50,000	120-277V	Yes	✓
98381	10.5T8/4F/840/BYP	4000K	1,750	82	167	No	32W	160°	50,000	120-277V	Yes	✓
98382	10.5T8/4F/850/BYP	5000K	1,750	82	167	No	32W	160°	50,000	120-277V	Yes	✓
98473	14.5T8/4F/840/BYP	4000K	2,200	82	152	No	32W	160°	50,000	120-277V	Yes	✓
98474	14.5T8/4F/850/BYP	5000K	2,200	82	152	No	32W	160°	50,000	120-277V	Yes	✓
34956	20.5T8/4F/840/BYP	4000K	3,000	82	146	No	40W*	160°	50,000	120-277V	Yes	✓
34957	20.5T8/4F/850/BYP	5000K	3,000	82	146	No	40W*	160°	50,000	120-277V	Yes	✓
98162	17T8U6/830/BYP	3000K	2,100	82	124	No	32W	140°	50,000	120-277V	Yes	✓
98163	17T8U6/840/BYP	4000K	2,300	82	135	No	32W	140°	50,000	120-277V	Yes	✓
98164	17T8U6/850/BYP	5000K	2,300	82	135	No	32W	140°	50,000	120-277V	Yes	✓

* Replace 40W T10/T12 lamps or 32W T8 lamps.

SPECIFICATIONS

Product	Model	CCT	Lumens	CRI (typ.)	LPW	Dim	Equiv.	Beam Angle	Life (hrs)	Voltage	Encl.	DLC
98191	8T8/2F/830/BYP/FF	3000K	1,000	82	125	No	17W	160°	50,000	120-277V	Yes	✓
98192	8T8/2F/835/BYP/FF	3500K	1,050	82	131	No	17W	160°	50,000	120-277V	Yes	✓
98193	8T8/2F/840/BYP/FF	4000K	1,050	82	131	No	17W	160°	50,000	120-277V	Yes	✓
98194	12T8/3F/830/BYP/FF	3000K	1,500	82	125	No	25W	160°	50,000	120-277V	Yes	✓
98195	12T8/3F/835/BYP/FF	3500K	1,500	82	125	No	25W	160°	50,000	120-277V	Yes	✓
98196	12T8/3F/840/BYP/FF	4000K	1,550	82	129	No	25W	160°	50,000	120-277V	Yes	✓
98197	13T8/4F/830/BYP/FF	3000K	1,600	82	123	No	32W	160°	50,000	120-277V	Yes	✓
98198	13T8/4F/835/BYP/FF	3500K	1,650	82	127	No	32W	160°	50,000	120-277V	Yes	✓
98199	13T8/4F/840/BYP/FF	4000K	1,700	82	131	No	32W	160°	50,000	120-277V	Yes	✓
98200	13T8/4F/850/BYP/FF	5000K	1,700	82	131	No	32W	160°	50,000	120-277V	Yes	✓
98201	16T8/4F/840/BYP/FF	4000K	2,050	82	128	No	32W	160°	50,000	120-277V	Yes	✓
98202	16T8/4F/850/BYP/FF	5000K	2,050	82	128	No	32W	160°	50,000	120-277V	Yes	✓

T8 BYP LINE - DIMMABLE

T8 BYP VALUE SELECT LINE



BYPass



DIMMABLE



BYPass



UNIVERSAL



- Integral driver suitable for 120V
- High efficacy up to 138 LPW
- Compatible with most forward and reverse phase dimmers

- Integral driver suitable for 120-277V
- Compatible with non-shunted lamp holders only
- Opaque glass body reduces glare and eliminates pixilation
- Meets NSF requirements (use of a shatter guard required)

SPECIFICATIONS

Product	Model	CCT	Lumens	CRI (typ.)	LPW	Dim	Equiv.	Beam Angle	Life (hrs)	Voltage	Encl.	DLC
98372	13T8/4F/DIM/830/BYP	3000K	1,700	82	128	Yes	32W	160°	50,000	120V	Yes	✓
98373	13T8/4F/DIM/835/BYP	3500K	1,700	82	128	Yes	32W	160°	50,000	120V	Yes	✓
98374	13T8/4F/DIM/840/BYP	4000K	1,800	82	138	Yes	32W	160°	50,000	120V	Yes	✓
98375	13T8/4F/DIM/850/BYP	5000K	1,800	82	138	Yes	32W	160°	50,000	120V	Yes	✓

SPECIFICATIONS

Product	Model	CCT	Lumens	CRI (typ.)	LPW	Dim	Equiv.	Beam Angle	Life (hrs)	Voltage	Encl.	DLC
34882	8T8/2F/830/GL/BYP	3000K	1,000	82	125	No	17W	160°	50,000	120-277V	Yes	✓
34883	8T8/2F/835/GL/BYP	3500K	1,000	82	125	No	17W	160°	50,000	120-277V	Yes	✓
34884	8T8/2F/840/GL/BYP	4000K	1,050	82	131	No	17W	160°	50,000	120-277V	Yes	✓
34886	12T8/3F/830/GL/BYP	3000K	1,500	82	125	No	25W	160°	50,000	120-277V	Yes	✓
34887	12T8/3F/835/GL/BYP	3500K	1,500	82	125	No	25W	160°	50,000	120-277V	Yes	✓
34888	12T8/3F/840/GL/BYP	4000K	1,550	82	129	No	25W	160°	50,000	120-277V	Yes	✓
34874	13T8/4F/830/GL/BYP	3000K	1,700	82	130	No	32W	160°	50,000	120-277V	Yes	✓
34875	13T8/4F/835/GL/BYP	3500K	1,700	82	130	No	32W	160°	50,000	120-277V	Yes	✓
34876	13T8/4F/840/GL/BYP	4000K	1,750	82	134	No	32W	160°	50,000	120-277V	Yes	✓
34877	13T8/4F/850/GL/BYP	5000K	1,750	82	134	No	32W	160°	50,000	120-277V	Yes	✓
34880	16T8/4F/840/GL/BYP	4000K	2,050	82	128	No	32W	160°	50,000	120-277V	Yes	✓
34881	16T8/4F/850/GL/BYP	5000K	2,050	82	128	No	32W	160°	50,000	120-277V	Yes	✓



Balanced Light Output



GREEN CREATIVE T5 BYPass



Other brand T5 BYPass

- Integral driver suitable for 120-277V
- Wide beam design 270° light emitting area
- Suitable for use in totally enclosed fixtures
- Plastic construction meets NSF requirements

SPECIFICATIONS												
Product	Model	CCT	Lumens	CRI (typ.)	LPW	Dim	Equiv.	Beam Angle	Life (hrs)	Voltage	Encl.	DLC
98287	9.5T5HE/2F/830/BYP	3000K	1,100	82	116	No	14W	120°	50,000	120-277V	Yes	N.A.
98288	9.5T5HE/2F/835/BYP	3500K	1,150	82	121	No	14W	120°	50,000	120-277V	Yes	N.A.
98289	9.5T5HE/2F/840/BYP	4000K	1,200	82	126	No	14W	120°	50,000	120-277V	Yes	N.A.
98290	12T5HE/3F/830/BYP	3000K	1,350	82	113	No	21W	120°	50,000	120-277V	Yes	N.A.
98291	12T5HE/3F/835/BYP	3500K	1,400	82	117	No	21W	120°	50,000	120-277V	Yes	N.A.
98292	12T5HE/3F/840/BYP	4000K	1,500	82	125	No	21W	120°	50,000	120-277V	Yes	N.A.
98293	14.5T5HE/4F/830/BYP	3000K	1,750	82	121	No	28W	120°	50,000	120-277V	Yes	✓
98294	14.5T5HE/4F/835/BYP	3500K	1,800	82	124	No	28W	120°	50,000	120-277V	Yes	✓
98295	14.5T5HE/4F/840/BYP	4000K	2,000	82	138	No	28W	120°	50,000	120-277V	Yes	✓

SPECIFICATIONS												
Product	Model	CCT	Lumens	CRI (typ.)	LPW	Dim	Equiv.	Beam Angle	Life (hrs)	Voltage	Encl.	DLC
98296	11.5T5HO/2F/830/BYP	3000K	1,350	82	117	No	24W	120°	50,000	120-277V	Yes	N.A.
98297	11.5T5HO/2F/835/BYP	3500K	1,400	82	122	No	24W	120°	50,000	120-277V	Yes	N.A.
98298	11.5T5HO/2F/840/BYP	4000K	1,500	82	130	No	24W	120°	50,000	120-277V	Yes	N.A.
98299	14.5T5HO/3F/830/BYP	3000K	1,800	82	124	No	39W	120°	50,000	120-277V	Yes	N.A.
98300	14.5T5HO/3F/835/BYP	3500K	1,850	82	128	No	39W	120°	50,000	120-277V	Yes	N.A.
98301	14.5T5HO/3F/840/BYP	4000K	1,900	82	131	No	39W	120°	50,000	120-277V	Yes	N.A.
98302	25T5HO/4F/830/BYP	3000K	3,200	82	128	No	54W	120°	50,000	120-277V	Yes	✓
98303	25T5HO/4F/835/BYP	3500K	3,200	82	128	No	54W	120°	50,000	120-277V	Yes	✓
98304	25T5HO/4F/840/BYP	4000K	3,200	82	128	No	54W	120°	50,000	120-277V	Yes	✓
98305	25T5HO/4F/850/BYP	5000K	3,200	82	128	No	54W	120°	50,000	120-277V	Yes	✓



BYPass



UNIVERSAL



BYPass



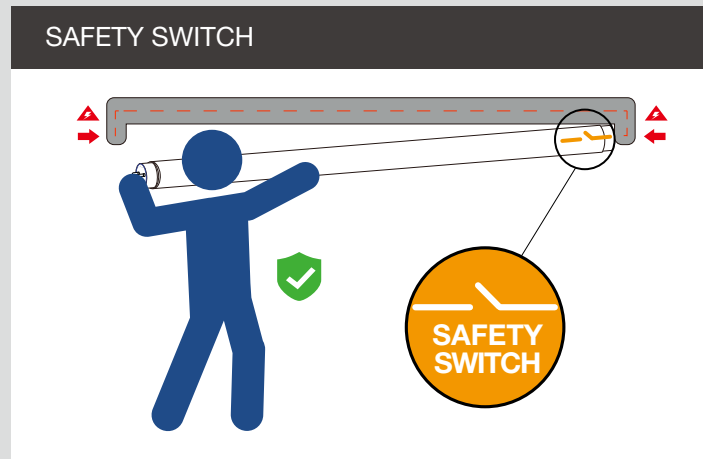
UNIVERSAL



R17d



Fa8



- Double-ended bypass installation – Wired at both ends
- Utilizes existing lamp holders – Non-shunted or shunted
- Extra high efficacy series up to 148LPW available
- Meets NSF requirements (use of a shatter guard required)

- Integral driver suitable for 120-277V
- Replaces 8ft F96T8/F96T12 fluorescent lamps
- Available in single pin & recessed double contact pin
- Double ended installation, no need to change existing sockets

SPECIFICATIONS

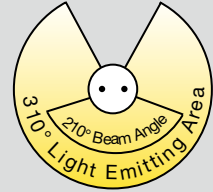
Product	Model	CCT	Lumens	CRI (typ.)	LPW	Dim	Equiv.	Beam Angle	Life (hrs)	Voltage	Encl.	DLC
97934	8.5T8/2F/830/DEB/RC	3000K	1,050	82	124	No	17W	160°	50,000	120-277V	Yes	✓
97935	8.5T8/2F/835/DEB/RC	3500K	1,050	82	124	No	17W	160°	50,000	120-277V	Yes	✓
97936	8.5T8/2F/840/DEB/RC	4000K	1,100	82	129	No	17W	160°	50,000	120-277V	Yes	✓
98340	12T8/3F/830/DEB/R	3000K	1,400	82	117	No	25W	160°	50,000	120-277V	Yes	✓
98341	12T8/3F/835/DEB/R	3500K	1,400	82	117	No	25W	160°	50,000	120-277V	Yes	✓
98342	12T8/3F/840/DEB/R	4000K	1,450	82	121	No	25W	160°	50,000	120-277V	Yes	✓
98435	14T8/4F/830/DEB	3000K	1,700	82	121	No	32W	160°	50,000	120-277V	Yes	✓
98436	14T8/4F/835/DEB	3500K	1,700	82	124	No	32W	160°	50,000	120-277V	Yes	✓
98437	14T8/4F/840/DEB	4000K	1,800	82	129	No	32W	160°	50,000	120-277V	Yes	✓
98438	14T8/4F/850/DEB	5000K	1,800	82	129	No	32W	160°	50,000	120-277V	Yes	✓
98433	17T8/4F/840/DEB	4000K	2,200	82	117	No	25W	160°	50,000	120-277V	Yes	✓
98434	17T8/4F/850/DEB	5000K	2,200	82	117	No	25W	160°	50,000	120-277V	Yes	✓
58272	11.5T8/4F/830/DEB/RC	3000K	1,650	82	143	No	32W	160°	50,000	120-277V	Yes	✓
58273	11.5T8/4F/835/DEB/RC	3500K	1,650	82	143	No	32W	160°	50,000	120-277V	Yes	✓
58274	11.5T8/4F/840/DEB/RC	4000K	1,700	82	148	No	32W	160°	50,000	120-277V	Yes	✓
58275	11.5T8/4F/850/DEB/RC	5000K	1,700	82	148	No	32W	160°	50,000	120-277V	Yes	✓
58270	14.5T8/4F/840/DEB/RC	4000K	2,100	82	145	No	32W	160°	50,000	120-277V	Yes	✓
58271	14.5T8/4F/850/DEB/RC	5000K	2,100	82	145	No	32W	160°	50,000	120-277V	Yes	✓

SPECIFICATIONS

Product	Model	CCT	Lumens	CRI (typ.)	LPW	Dim	Equiv.	Beam Angle	Life (hrs)	Voltage	Encl.	DLC
34869	43T8/8F/840/DEB/Fa8	4000K	5,500	82	128	No	F96T8 F96T12	160°	50,000	120-277V	Yes	✓
34870	43T8/8F/850/DEB/Fa8	5000K	5,500	82	128	No	F96T8 F96T12	160°	50,000	120-277V	Yes	✓
34871	43T8/8F/840/DEB/R17d	4000K	5,500	82	128	No	F96T8 F96T12	160°	50,000	120-277V	Yes	N.A.
34872	43T8/8F/850/DEB/R17d	5000K	5,500	82	128	No	F96T8 F96T12	160°	50,000	120-277V	Yes	N.A.



- Suitable for use with 120-277V power or with existing ballasts
- Utilizes existing lamp holders – Non-shunted or shunted
- Opaque glass provides glare free, even lighting with a 310° light emitting area
- Meets NSF requirements (use of a shatter guard required)



- Suitable for use with select GREEN CREATIVE products
- Dual voltage 120/277 VAC 60Hz input
- Constant power output in emergency mode for a minimum of 90 minutes
- Meets or exceeds all National Electrical Code and Life Safety Code Emergency Lighting Requirements

SPECIFICATIONS

Product	Model	CCT	Lumens	CRI (typ.)	LPW	Dim	Equiv.	Beam Angle	Life (hrs)	Voltage	Encl.	DLC
34979	12T8/4F/830/HYB	3000K	1,700	82	142	No	32W	210°	50,000	120-277V	Yes	✓
34980	12T8/4F/835/HYB	3500K	1,700	82	142	No	32W	210°	50,000	120-277V	Yes	✓
34981	12T8/4F/840/HYB	4000K	1,800	82	150	No	32W	210°	50,000	120-277V	Yes	✓
34982	12T8/4F/850/HYB	5000K	1,800	82	150	No	32W	210°	50,000	120-277V	Yes	✓
34983	15T8/4F/840/HYB	4000K	2,200	82	147	No	32W	210°	50,000	120-277V	Yes	✓
34984	15T8/4F/850/HYB	5000K	2,200	82	147	No	32W	210°	50,000	120-277V	Yes	✓

SPECIFICATIONS

Product	Model	Input Voltage	Output Power	Charge Time	Emergency Run Time	Battery	Approval
34958	5EMDRIVER	120-277V	5W	24 hours	90 minutes	Hi-temp rechargeable Lithium-Ion	UL 924 Listed for US and Canada, CSA C22 No. 141 Unit Equipment for Emergency
34959	10EMDRIVER	120-277V	10W	24 hours	90 minutes	Hi-temp rechargeable Lithium-Ion	UL 924 Listed for US and Canada, CSA C22 No. 141 Unit Equipment for Emergency

Note: This lamp may not work with all instant start ballasts. For detailed ballast compatibility information please visit www.greencreative.com.

T8 EXT LINE

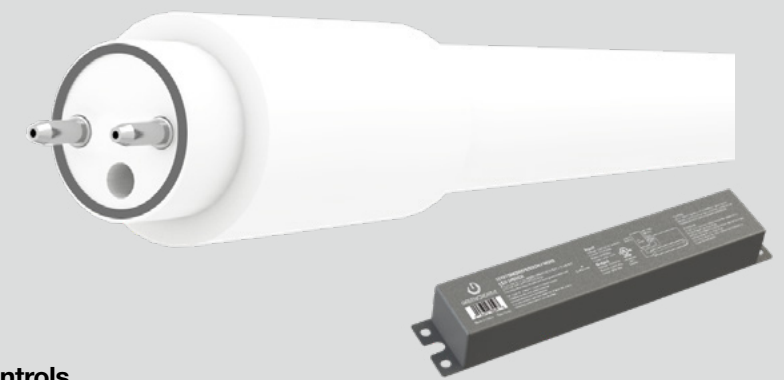
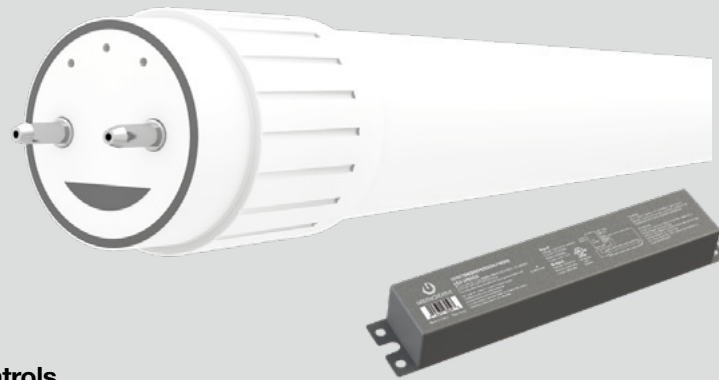
T5 EXT LINE



EXternal Driver



EXternal Driver



- Compatible with 0-10V controls
- Utilizes existing lamp holders – shunted or non-shunted
- Meets NSF requirements (use of a shatter guard required)

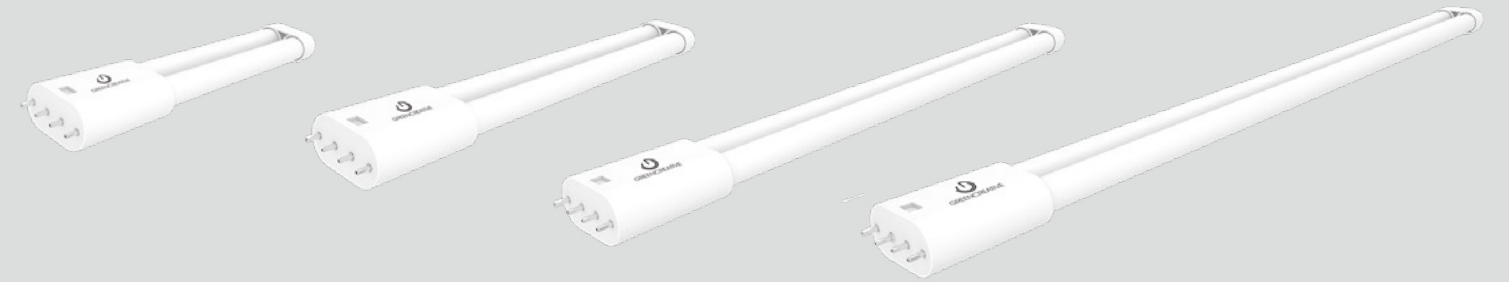
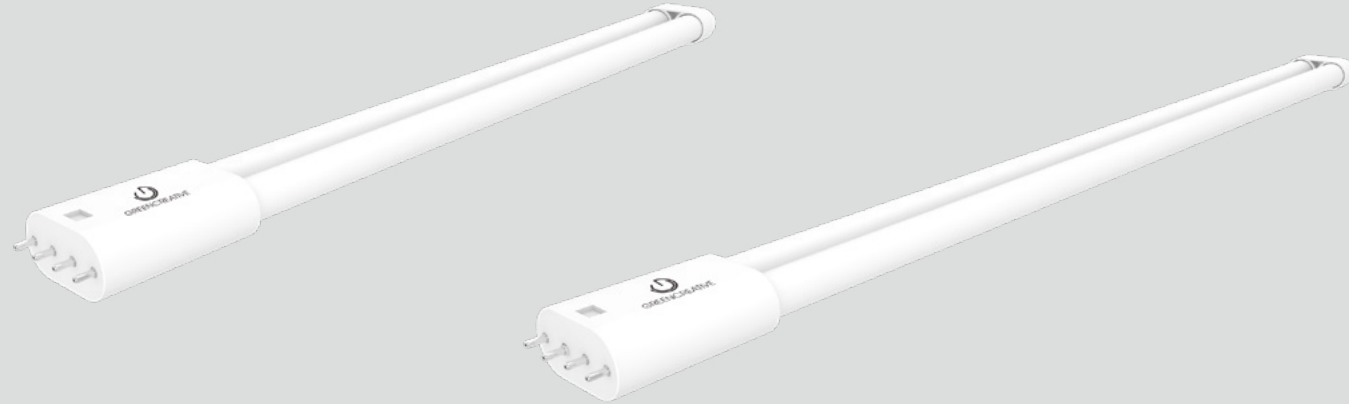
- Compatible with 0-10V controls
- Utilizes existing lamp holders – shunted or non-shunted
- Plastic construction meets NSF requirements

SPECIFICATIONS

Product	Model	CCT	Lumens	CRI (typ.)	LPW	Dim	Equiv.	Beam Angle	Life (hrs)	Voltage	Encl.	DLC
98325	9.5T8/2F/830/EXT	3000K	1,350	82	142	Yes	17W	160°	50,000	120-277V	Yes	✓
98326	9.5T8/2F/835/EXT	3500K	1,400	82	147	Yes	17W	160°	50,000	120-277V	Yes	✓
98327	9.5T8/2F/840/EXT	4000K	1,500	82	158	Yes	17W	160°	50,000	120-277V	Yes	✓
98328	10.5T8/3F/830/EXT	3000K	1,450	82	138	Yes	25W	160°	50,000	120-277V	Yes	✓
98329	10.5T8/3F/835/EXT	3500K	1,500	82	143	Yes	25W	160°	50,000	120-277V	Yes	✓
98330	10.5T8/3F/840/EXT	4000K	1,600	82	152	Yes	25W	160°	50,000	120-277V	Yes	✓
98331	11.5T8/4F/830/EXT	3000K	1,600	82	139	Yes	32W	160°	50,000	120-277V	Yes	✓
98332	11.5T8/4F/835/EXT	3500K	1,650	82	143	Yes	32W	160°	50,000	120-277V	Yes	✓
98333	11.5T8/4F/840/EXT	4000K	1,700	82	148	Yes	32W	160°	50,000	120-277V	Yes	✓
98334	11.5T8/4F/850/EXT	5000K	1,700	82	148	Yes	32W	160°	50,000	120-277V	Yes	✓
98335	14T8/4F/840/EXT	4000K	2,050	82	146	Yes	32W	160°	50,000	120-277V	Yes	✓
98336	14T8/4F/850/EXT	5000K	2,050	82	146	Yes	32W	160°	50,000	120-277V	Yes	✓
98337	14.5T8U6/830/EXT	3000K	2,000	82	138	Yes	32W	160°	50,000	120-277V	Yes	✓
98338	14.5T8U6/840/EXT	4000K	2,200	82	152	Yes	32W	160°	50,000	120-277V	Yes	✓
98339	14.5T8U6/850/EXT	5000K	2,200	82	152	Yes	32W	160°	50,000	120-277V	Yes	✓
98259	15T8T5HEDRIVER/2CH/R	120-277V with 0-10V Dimming External LED Driver for Use with 1-2 T8/T5 HE Lamps										
98260	15T8T5HEDRIVER/4CH/R	120-277V with 0-10V Dimming External LED Driver for Use with 3-4 T8/T5 HE Lamps										

SPECIFICATIONS

Product	Model	CCT	Lumens	CRI (typ.)	LPW	Dim	Equiv.	Beam Angle	Life (hrs)	Voltage	Encl.	DLC
98306	9.5T5HE/2F/830/EXT	3000K	1,350	82	142	Yes	14W	120°	50,000	120-277V	Yes	N.A.
98307	9.5T5HE/2F/835/EXT	3500K	1,400	82	147	Yes	14W	120°	50,000	120-277V	Yes	N.A.
98308	9.5T5HE/2F/840/EXT	4000K	1,500	82	158	Yes	14W	120°	50,000	120-277V	Yes	N.A.
98309	11T5HE/3F/830/EXT	3000K	1,500	82	136	Yes	21W	120°	50,000	120-277V	Yes	N.A.
98310	11T5HE/3F/835/EXT	3500K	1,550	82	141	Yes	21W	120°	50,000	120-277V	Yes	N.A.
98311	11T5HE/3F/840/EXT	4000K	1,600	82	150	Yes	21W	120°	50,000	120-277V	Yes	N.A.
98312	13.5T5HE/4F/830/EXT	3000K	1,800	82	133	Yes	28W	120°	50,000	120-277V	Yes	✓
98313	13.5T5HE/4F/835/EXT	3500K	1,850	82	137	Yes	28W	120°	50,000	120-277V	Yes	✓
98314	13.5T5HE/4F/840/EXT	4000K	2,000	82	148	Yes	28W	120°	50,000	120-277V	Yes	✓
98321	22T5HO/4F/830/EXT	3000K	3,200	82	145	Yes	54W	120°	50,000	120-277V	Yes	✓
98322	22T5HO/4F/835/EXT	3500K	3,200	82	145	Yes	54W	120°	50,000	120-277V	Yes	✓
98323	22T5HO/4F/840/EXT	4000K	3,400	82	155	Yes	54W	120°	50,000	120-277V	Yes	✓
98324	22T5HO/4F/850/EXT	5000K	3,400	82	155	Yes	54W	120°	50,000	120-277V	Yes	✓
98259	15T8T5HEDRIVER/2CH/R	120-277V with 0-10V Dimming External LED Driver for Use with 1-2 T8/T5 HE Lamps										
98260	15T8T5HEDRIVER/4CH/R	120-277V with 0-10V Dimming External LED Driver for Use with 3-4 T8/T5 HE Lamps										
98261	24T5HODRIVER/2CH/R	120-277V with 0-10V Dimming External LED Driver for Use with 1-2 T5 HO Lamps										
98262	24T5HODRIVER/4CH/R	120-277V with 0-10V Dimming External LED Driver for Use with 3-4 T5 HO Lamps										



- Plug & Play installation
- Instant Start & Programmed Start ballast compatible
- Plastic film prevents glass from shattering
- Installs into 2G11 sockets
- 14.5W dimmable with select 0-10V ballasts and controls

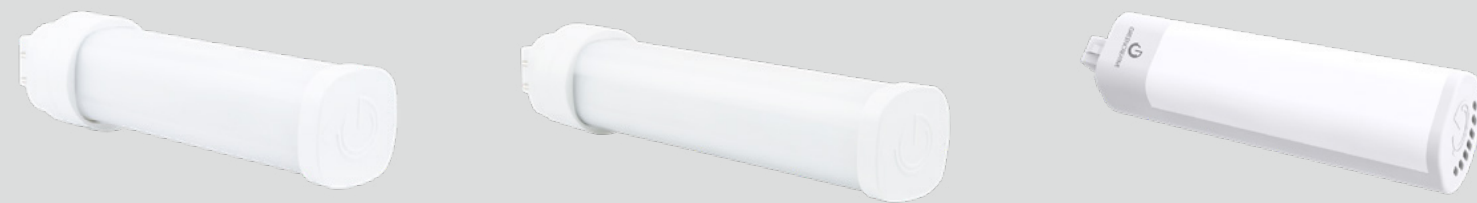
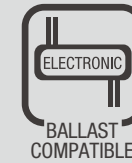
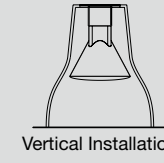
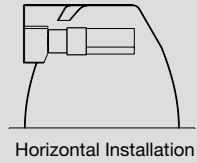
- Integral driver suitable for 120-277V
- Replaces 18W / 24W / 36W / 40W 4-pin (2G11) CFL lamps
- High efficacy up to 138 LPW
- 16W / 17W models suitable for use in enclosed fixtures

SPECIFICATIONS

Product	Model	CCT	Lumens	CRI (typ.)	LPW	Dim	Equiv.	Beam Angle	Life (hrs)	Voltage	Encl.	DLC
98477	13PLL/830/GL/DIR	3000K	2,050	82	158	No	40W	160°	50,000	120-277V	Yes	✓
98478	13PLL/835/GL/DIR	3500K	2,100	82	162	No	40W	160°	50,000	120-277V	Yes	✓
98479	13PLL/840/GL/DIR	4000K	2,100	82	162	No	40W	160°	50,000	120-277V	Yes	✓
98488	14.5PLL/835/GL/DIR	3500K	1,950	82	134	Yes	36W	160°	50,000	120-277V	Yes	N.A.
98489	14.5PLL/840/GL/DIR	4000K	2,000	82	138	Yes	36W	160°	50,000	120-277V	Yes	N.A.


SPECIFICATIONS

Product	Model	CCT	Lumens	CRI (typ.)	LPW	Dim	Equiv.	Beam Angle	Life (hrs)	Voltage	Encl.	DLC
34858	8.5PLL/835/GL/BYP	3500K	950	82	112	No	18W	160°	50,000	120-277V	No	N.A.
34859	8.5PLL/840/GL/BYP	4000K	980	82	115	No	18W	160°	50,000	120-277V	No	N.A.
34861	10PLL/835/GL/BYP	3500K	1,200	82	120	No	24W	160°	50,000	120-277V	No	N.A.
34862	10PLL/840/GL/BYP	4000K	1,250	82	125	No	24W	160°	50,000	120-277V	No	N.A.
34864	16PLL/835/GL/BYP	3500K	1,950	82	122	No	36W	160°	50,000	120-277V	Yes	N.A.
34865	16PLL/840/GL/BYP	4000K	2,000	82	125	No	36W	160°	50,000	120-277V	Yes	N.A.
34866	17PLL/830/GL/BYP	3000K	2,050	82	121	No	40W	160°	50,000	120-277V	Yes	✓
34867	17PLL/835/GL/BYP	3500K	2,150	82	126	No	40W	160°	50,000	120-277V	Yes	✓
34868	17PLL/840/GL/BYP	4000K	2,200	82	129	No	40W	160°	50,000	120-277V	Yes	✓




- Plug & Play installation (electronic ballasts only)
- Compatible with G24q & GX24q sockets
- 310° rotatable base allows light to be directed as needed
- Compatible with select 0-10V dimmable ballasts and controls
- Ballast Adaptive Technology allows one LED lamp to be powered by a range of fluorescent ballasts instead of restricting to one wattage rating

High Flexibility - Ballast Adaptive Technology		
Ballast Type	Lumens	Bare Lamp
13W	600	4.5W
18W	700	5.5W
26W	1020	8.5W

PL H 8.5W DIR 

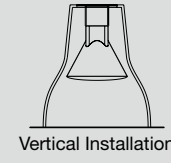
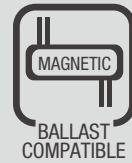
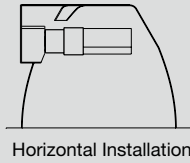
- Plug & Play installation (electronic ballasts only)
- Compatible with G24q & GX24q sockets
- Patented design
- Compatible with select 0-10V dimmable ballasts and controls
- Ballast Adaptive Technology allows one LED lamp to be powered by a range of fluorescent ballasts instead of restricting to one wattage rating

High Flexibility - Ballast Adaptive Technology		
Ballast Type	Lumens	Bare Lamp
13W	590	5W
18W	820	6W
26W	1020	9.5W

PL V 9.5W DIR 

SPECIFICATIONS												
Product	Model	CCT	Lumens	CRI (typ.)	LPW	Dim	Equiv.	Beam Angle	Life (hrs)	Voltage	Encl.	DLC
57895	5.5PLH/827/DIR/RC	2700K	520	82	95	Yes	13-18W	110°	50,000	120-277V	No	N.A.
57896	5.5PLH/830/DIR/RC	3000K	550	82	100	Yes	13-18W	110°	50,000	120-277V	No	N.A.
57897	5.5PLH/835/DIR/RC	3500K	550	82	100	Yes	13-18W	110°	50,000	120-277V	No	N.A.
57898	5.5PLH/840/DIR/RC	4000K	560	82	102	Yes	13-18W	110°	50,000	120-277V	No	N.A.
28366	8.5PLH/827/DIR/R	2700K	870	82	102	Yes	26W	110°	50,000	120-277V	No	✓
28367	8.5PLH/830/DIR/R	3000K	950	82	112	Yes	26W	110°	50,000	120-277V	No	✓
28368	8.5PLH/835/DIR/R	3500K	950	82	112	Yes	26W	110°	50,000	120-277V	No	✓
28369	8.5PLH/840/DIR/R	4000K	1,020	82	120	Yes	26W	110°	50,000	120-277V	No	✓
57903	10.5PLH/930/DIR	3000K	890	92	85	Yes	26W	110°	50,000	120-277V	No	N.A.
98244	14.5PLH/830/DIR	3000K	1,700	82	117	Yes	42W	110°	50,000	120-277V	No	N.A.
98245	14.5PLH/835/DIR	3500K	1,750	82	121	Yes	42W	110°	50,000	120-277V	No	N.A.
98246	14.5PLH/840/DIR	4000K	1,800	82	124	Yes	42W	110°	50,000	120-277V	No	N.A.

SPECIFICATIONS												
Product	Model	CCT	Lumens	CRI (typ.)	LPW	Dim	Equiv.	Beam Angle	Life (hrs)	Voltage	Encl.	DLC
28370	6PLV/827/DIR/R	2700K	600	82	100	Yes	13-18W	120°	50,000	120-277V	No	N.A.
28371	6PLV/830/DIR/R	3000K	620	82	103	Yes	13-18W	120°	50,000	120-277V	No	N.A.
28372	6PLV/835/DIR/R	3500K	620	82	103	Yes	13-18W	120°	50,000	120-277V	No	N.A.
28373	6PLV/840/DIR/R	4000K	640	82	107	Yes	13-18W	120°	50,000	120-277V	No	N.A.
28374	9.5PLV/827/DIR/R	2700K	950	82	100	Yes	26W	120°	50,000	120-277V	No	✓
28375	9.5PLV/830/DIR/RC	3000K	1,000	82	105	Yes	26W	120°	50,000	120-277V	No	✓
28376	9.5PLV/835/DIR/RC	3500K	1,000	82	105	Yes	26W	120°	50,000	120-277V	No	✓
28377	9.5PLV/840/DIR/RC	4000K	1,020	82	107	Yes	26W	120°	50,000	120-277V	No	✓
57918	11PLV/930/DIR/R	3000K	920	92	84	Yes	26W	120°	50,000	120-277V	No	N.A.
98248	17PLV/830/DIR	3000K	1,900	82	112	Yes	42W	110°	50,000	120-277V	No	✓
98249	17PLV/835/DIR	3500K	1,950	82	115	Yes	42W	110°	50,000	120-277V	No	✓
98250	17PLV/840/DIR	4000K	2,000	82	118	Yes	42W	110°	50,000	120-277V	No	✓



- **HYBRid installation - DIRect or BYPass**
- **Compatible with magnetic ballasts - DIRect installation**
- **Built-in universal voltage driver - BYPass installation**
- **310° rotatable base allows light to be directed as needed**

- **HYBRid installation - DIRect or BYPass**
- **Compatible with magnetic ballasts - DIRect installation**
- **Built-in universal voltage driver - BYPass installation**
- **Patented design**

SPECIFICATIONS

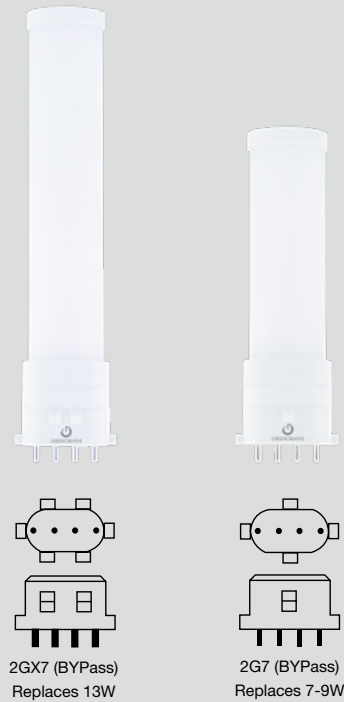
Product	Model	CCT	Lumens	CRI (typ.)	LPW	Dim	Equiv.	Beam Angle	Life (hrs)	Voltage	Encl.
98391	5.5PLH/835/HYBM	3500K	550	82	100	Yes	13-18W	110°	50,000	120-277V	No
98392	5.5PLH/840/HYBM	4000K	560	82	102	Yes	13-18W	110°	50,000	120-277V	No
98399	8PLH/827/HYBM	2700K	870	82	109	Yes	26W	110°	50,000	120-277V	No
98400	8PLH/830/HYBM	3000K	920	82	115	Yes	26W	110°	50,000	120-277V	No
98401	8PLH/835/HYBM	3500K	920	82	115	Yes	26W	110°	50,000	120-277V	No
98402	8PLH/840/HYBM	4000K	950	82	119	Yes	26W	110°	50,000	120-277V	No
98252	15.5PLH/830/BYP	3000K	1,700	82	110	Yes	42W	110°	50,000	120-277V	No
98253	15.5PLH/835/BYP	3500K	1,750	82	113	Yes	42W	110°	50,000	120-277V	No
98254	15.5PLH/840/BYP	4000K	1,800	82	116	Yes	42W	110°	50,000	120-277V	No

Note: PL H 15.5W BYP operates on line voltage only and is not compatible with magnetic ballasts

SPECIFICATIONS

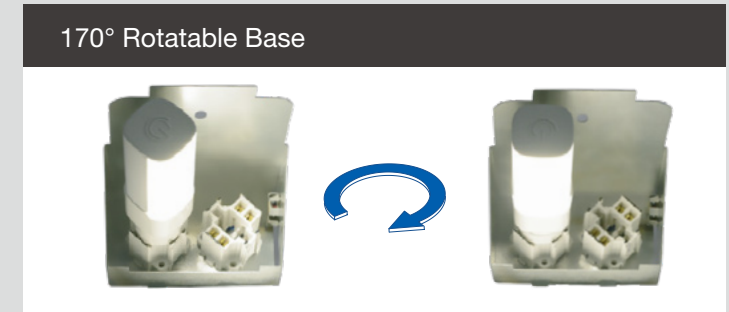
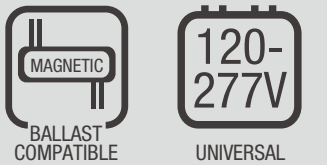
Product	Model	CCT	Lumens	CRI (typ.)	LPW	Dim	Equiv.	Beam Angle	Life (hrs)	Voltage	Encl.
98385	5.5PLV/835/HYBM	3500K	600	82	109	No	13-18W	120°	50,000	120-277V	No
98386	5.5PLV/840/HYBM	4000K	620	82	113	No	13-18W	120°	50,000	120-277V	No
98387	8.5PLV/827/HYBM	2700K	950	82	112	No	26W	120°	50,000	120-277V	No
98388	8.5PLV/830/HYBM	3000K	1,000	82	118	No	26W	120°	50,000	120-277V	No
98389	8.5PLV/835/HYBM	3500K	1,000	82	118	No	26W	120°	50,000	120-277V	No
98390	8.5PLV/840/HYBM	4000K	1,020	82	120	No	26W	120°	50,000	120-277V	No
98256	16.5PLV/830/BYP	3000K	1,800	82	109	No	42W	120°	50,000	120-277V	No
98257	16.5PLV/835/BYP	3500K	1,850	82	112	No	42W	120°	50,000	120-277V	No
98258	16.5PLV/840/BYP	4000K	1,900	82	115	No	42W	120°	50,000	120-277V	No

Note: PL V 16.5W BYP operates on line voltage only and is not compatible with magnetic ballasts



- **BYPass installation – Requires bypassing the ballast**
- **Suitable for use in totally enclosed fixtures**
- **180° rotatable base**
- **Compact form factor fits most fixtures**

SPECIFICATIONS											
Product	Model	CCT	Lumens	CRI (typ.)	LPW	Dim	Equiv.	Beam Angle	Life (hrs)	Voltage	Encl.
57818	3.5PLS/835/BYP/2G7	3500K	300	82	86	No	7-9W	180°	50,000	120-277V	Yes
57826	5.5PLS/835/BYP/2GX7	3500K	500	82	91	No	13W	180°	50,000	120-277V	Yes

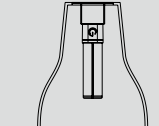
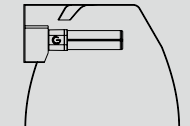


- **HYBrid installation - DIRect or BYPass**
- **Compatible with magnetic ballasts - DIRect installation**
- **Built-in universal voltage driver - BYPass installation**
- **Exceptional efficacy**

SPECIFICATIONS											
Product	Model	CCT	Lumens	CRI (typ.)	LPW	Dim	Equiv.	Beam Angle	Life (hrs)	Voltage	Encl.
57812	3.5PLS/827/HYB/G23	2700K	280	82	80	No	7-9W	120°	50,000	120-277V	Yes
57813	3.5PLS/830/HYB/G23	3000K	280	82	80	No	7-9W	120°	50,000	120-277V	Yes
57814	3.5PLS/835/HYB/G23	3500K	300	82	86	No	7-9W	120°	50,000	120-277V	Yes
57815	3.5PLS/840/HYB/G23	4000K	320	82	91	No	7-9W	120°	50,000	120-277V	Yes
98403	5.5PLSV/827/HYB/GX23	2700K	570	82	104	No	13W	120°	50,000	120-277V	No
98404	5.5PLSV/830/HYB/GX23	3000K	600	82	109	No	13W	120°	50,000	120-277V	No
98405	5.5PLSV/835/HYB/GX23	3500K	600	82	109	No	13W	120°	50,000	120-277V	No
98406	5.5PLSV/840/HYB/GX23	4000K	620	82	113	No	13W	120°	50,000	120-277V	No
98407	5.5PLSH/827/HYB/GX23	2700K	520	82	95	No	13W	110°	50,000	120-277V	No
98408	5.5PLSH/830/HYB/GX23	3000K	550	82	100	No	13W	110°	50,000	120-277V	No
98409	5.5PLSH/835/HYB/GX23	3500K	550	82	100	No	13W	110°	50,000	120-277V	No
98410	5.5PLSH/840/HYB/GX23	4000K	560	82	102	No	13W	110°	50,000	120-277V	No
57820	5.5PLS/827/HYB/GX23	2700K	450	82	82	No	13W	120°	50,000	120-277V	Yes
57821	5.5PLS/830/HYB/GX23	3000K	500	82	91	No	13W	120°	50,000	120-277V	Yes
57822	5.5PLS/835/HYB/GX23	3500K	500	82	91	No	13W	120°	50,000	120-277V	Yes
57823	5.5PLS/840/HYB/GX23	4000K	520	82	95	No	13W	120°	50,000	120-277V	Yes

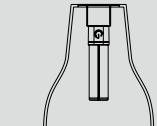
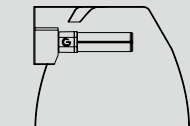
PLO DIR LINE

PLO HYBM LINE



Horizontal Installation

Vertical Installation

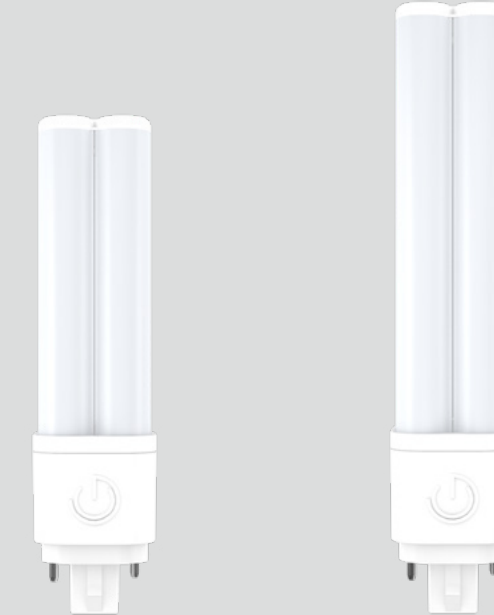
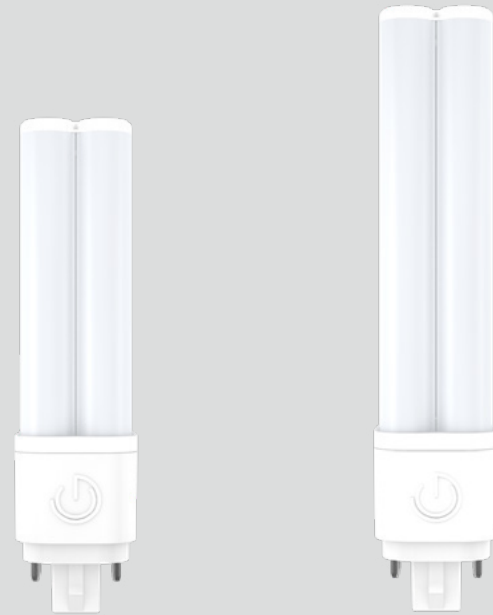


Horizontal Installation

Vertical Installation



Coming Feb. 2020



- Plug & Play installation (electronic ballasts only)
- Omni directional light distribution suitable for horizontal or vertical installations
- Replaces G24q & GX24q (4-pin) 13W-26W CFL lamps
- 0-10V dimming ballast compatible

- Compatible with magnetic ballasts - DIRect installation
- Built-in universal voltage driver - BYPass installation
- Omni directional light distribution suitable for horizontal or vertical installations
- Replaces G24q & GX24q (4-pin) or G24d & GX24d (2-pin) 13W-26W CFL lamps

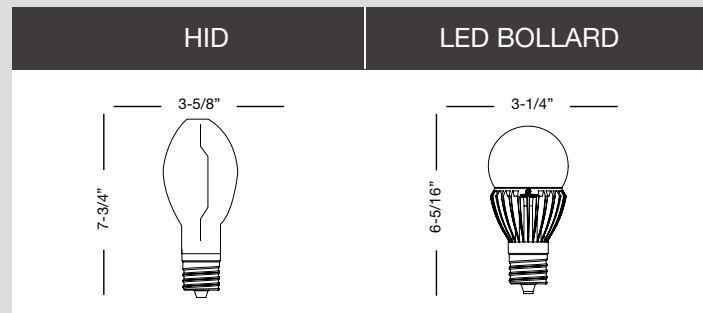
SPECIFICATIONS

Product	Model	CCT	Lumens	CRI (typ.)	LPW	Dim	Equiv.	Beam Angle	Life (hrs)	Voltage	Encl.
34988	6.5PLO/827/DIR	2700K	720	82	110	Yes	13-18W	360°	50,000	120-277V	No
34989	6.5PLO/830/DIR	3000K	740	82	113	Yes	13-18W	360°	50,000	120-277V	No
34990	6.5PLO/835/DIR	3500K	780	82	120	Yes	13-18W	360°	50,000	120-277V	No
34991	6.5PLO/840/DIR	4000K	800	82	123	Yes	13-18W	360°	50,000	120-277V	No
34992	9.5PLO/827/DIR	2700K	1,050	82	110	Yes	26W	360°	50,000	120-277V	No
34993	9.5PLO/830/DIR	3000K	1,100	82	115	Yes	26W	360°	50,000	120-277V	No
34994	9.5PLO/835/DIR	3500K	1,150	82	121	Yes	26W	360°	50,000	120-277V	No
34995	9.5PLO/840/DIR	4000K	1,200	82	126	Yes	26W	360°	50,000	120-277V	No

SPECIFICATIONS

Product	Model	CCT	Lumens	CRI (typ.)	LPW	Dim	Equiv.	Beam Angle	Life (hrs)	Voltage	Encl.
34996	7PLO/827/HYBM	2700K	770	82	110	No	13-18W	360°	50,000	120-277V	No
34997	7PLO/830/HYBM	3000K	790	82	113	No	13-18W	360°	50,000	120-277V	No
34998	7PLO/835/HYBM	3500K	820	82	117	No	13-18W	360°	50,000	120-277V	No
34999	7PLO/840/HYBM	4000K	850	82	121	No	13-18W	360°	50,000	120-277V	No
35000	9PLO/827/HYBM	2700K	1,100	82	122	No	26W	360°	50,000	120-277V	No
35001	9PLO/830/HYBM	3000K	1,150	82	125	No	26W	360°	50,000	120-277V	No
35002	9PLO/835/HYBM	3500K	1,200	82	130	No	26W	360°	50,000	120-277V	No
35003	9PLO/840/HYBM	4000K	1,250	82	133	No	26W	360°	50,000	120-277V	No

HID BOLLARD LINE



- Integral driver suitable for 120-277V
- E26 base – ENERGY STAR® certified
- EX39 base – DLC® qualified
- Suitable for use in totally enclosed fixtures

SPECIFICATIONS

Product	Model	CCT	Lumens	CRI (typ.)	LPW	Dim	Equiv.	Beam Angle	Life (hrs)	Voltage	ES / DLC
58238	16.5A21/830/277V/R	3000K	2,000	82	121	No	125W Inc.	330°	40,000	120-277V	✓ / N.A.
58239	16.5A21/840/277V/R	4000K	2,000	82	121	No	125W Inc.	330°	40,000	120-277V	✓ / N.A.
58240	16.5A21/850/277V/R	5000K	2,050	82	124	No	125W Inc.	330°	40,000	120-277V	✓ / N.A.
97972	25HID/830/277V/E26/R	3000K	3,200	82	128	No	200W Inc.	230°	50,000	120-277V	✓ / N.A.
97973	25HID/840/277V/E26/R	4000K	3,300	82	132	No	200W Inc.	230°	50,000	120-277V	✓ / N.A.
97974	25HID/850/277V/E26/R	5000K	3,400	82	136	No	200W Inc.	230°	50,000	120-277V	✓ / N.A.
97968	25HID/830/277V/EX39/R	3000K	3,200	82	128	No	70-100W HID	230°	50,000	120-277V	N.A. / ✓
97969	25HID/840/277V/EX39/R	4000K	3,300	82	132	No	70-100W HID	230°	50,000	120-277V	N.A. / ✓
97970	25HID/850/277V/EX39/R	5000K	3,400	82	136	No	70-100W HID	230°	50,000	120-277V	N.A. / ✓
16325	E26 EXTENDER	E26 Lamp Extender Adds 1.30" (33mm) to Lamp Height									
35050	EX39 EXTENDER	EX39 Lamp Extender Adds 1.70" (43mm) to Lamp Height									
97718	10SURGE/277V	10kV Surge Protector									

HID POST TOP LINE



- Integral driver suitable for 120-277V
- Fully omnidirectional beam angle
- Compatible with EX39 & E39 sockets
- Suitable for use in totally enclosed fixtures

SPECIFICATIONS

Product	Model	CCT	Lumens	CRI (typ.)	LPW	Dim	Equiv.	Beam Angle	Life (hrs)	Voltage	Encl.	DLC
98087	37HID/830/277V/E26	3000K	4,700	82	127	No	100-175W HID	320°	50,000	120-277V	Yes	N.A.
98088	37HID/840/277V/E26	4000K	5,200	82	141	No	100-175W HID	320°	50,000	120-277V	Yes	N.A.
98089	37HID/850/277V/E26	5000K	5,200	82	141	No	100-175W HID	320°	50,000	120-277V	Yes	N.A.
98084	37HID/830/277V/EX39	3000K	4,700	82	127	No	100-175W HID	320°	50,000	120-277V	Yes	✓
98085	37HID/840/277V/EX39	4000K	5,200	82	141	No	100-175W HID	320°	50,000	120-277V	Yes	✓
98086	37HID/850/277V/EX39	5000K	5,200	82	141	No	100-175W HID	320°	50,000	120-277V	Yes	✓
98090	54HID/830/277V/EX39	3000K	7,300	82	135	No	175-250W HID	320°	50,000	120-277V	Yes	✓
98091	54HID/840/277V/EX39	4000K	7,550	82	140	No	175-250W HID	320°	50,000	120-277V	Yes	✓
98092	54HID/850/277V/EX39	5000K	7,550	82	140	No	175-250W HID	320°	50,000	120-277V	Yes	✓
98097	68HID/840/277V/EX39	4000K	9,500	82	140	No	175-250W HID	320°	50,000	120-277V	Yes	✓
98098	68HID/850/277V/EX39	5000K	9,500	82	140	No	175-250W HID	320°	50,000	120-277V	Yes	✓
98100	100HID/840/277V/EX39	4000K	14,000	82	140	No	250-400W HID	320°	50,000	120-277V	Yes	✓
98101	100HID/850/277V/EX39	5000K	14,000	82	140	No	250-400W HID	320°	50,000	120-277V	Yes	✓
16325	E26 EXTENDER	E26 Lamp Extender Adds 1.30" (33mm) to Lamp Height										
35050	EX39 EXTENDER	EX39 Lamp Extender Adds 1.70" (43mm) to Lamp Height										
97718	10SURGE/277V	10kV Surge Protector										

HID HIGH BAY / LOW BAY LINE

HID WALL PACK LINE



Coming Apr. 2020
120HIDHB



Intentional Uplighting

All High Bay and Low Bay products feature a ring of LEDs mounted around the base to provide visible uplighting for improved aesthetics and comfort

- Integral driver suitable for 120-277V
- Visible uplighting
- Compatible with EX39 & E39 sockets
- Exceptional efficacy >126 LPW

SPECIFICATIONS												
Product	Model	CCT	Lumens	CRI (typ.)	LPW	Dim	Equiv.	Beam Angle	Life (hrs)	Voltage	Encl.	DLC
98121	35HIDLB/840/BYP/E26	4000K	4,400	82	126	No	100-175W HID	110°	50,000	120-277V	No	N.A.
98122	35HIDLB/850/BYP/E26	5000K	4,400	82	126	No	100-175W HID	110°	50,000	120-277V	No	N.A.
98118	35HIDLB/840/BYP/EX39	4000K	4,400	82	126	No	100-175W HID	110°	50,000	120-277V	No	N.A.
98119	35HIDLB/850/BYP/EX39	5000K	4,400	82	126	No	100-175W HID	110°	50,000	120-277V	No	N.A.
98124	65HIDHB/840/BYP/EX39	4000K	8,600	82	132	No	175-250W HID	110°	50,000	120-277V	No	✓
98125	65HIDHB/850/BYP/EX39	5000K	8,600	82	132	No	175-250W HID	110°	50,000	120-277V	No	✓
98127	90HIDHB/840/BYP/EX39	4000K	12,400	82	138	No	250-400W HID	110°	50,000	120-277V	No	✓
98128	90HIDHB/850/BYP/EX39	5000K	12,400	82	138	No	250-400W HID	110°	50,000	120-277V	No	✓
35059	120HIDHB/840/BYP/EX39	4000K	17,760	82	148	No	400-600W HID	110°	50,000	120-277V	No	N.A.
35060	120HIDHB/850/BYP/EX39	5000K	18,000	82	150	No	400-600W HID	110°	50,000	120-277V	No	N.A.

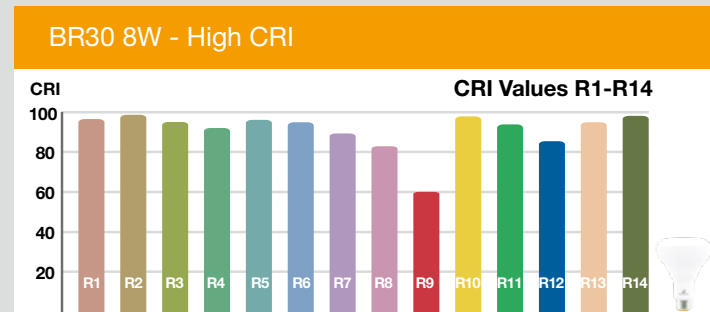


350° Rotatable Base

Horizontal lamp supports included

- Integral driver suitable for 120-277V
- Designed for horizontally-mounted wall pack applications
- Exceptional efficacy >140 LPW
- Suitable for use in totally enclosed fixtures

SPECIFICATIONS													
Product	Model	CCT	Lumens	CRI (typ.)	LPW	Dim	Equiv.	Beam Angle	Life (hrs)	Voltage	Encl.	DLC	
98179	20HIDWP/840/277V/E26	4000K	2,800	82	140	No	70-100W HID	120°	50,000	120-277V	Yes	N.A.	
98180	20HIDWP/850/277V/E26	5000K	2,800	82	140	No	70-100W HID	120°	50,000	120-277V	Yes	N.A.	
98183	40HIDWP/840/277V/E26	4000K	5,800	82	145	No	100-175W HID	120°	50,000	120-277V	Yes	N.A.	
98184	40HIDWP/850/277V/E26	5000K	5,800	82	145	No	100-175W HID	120°	50,000	120-277V	Yes	N.A.	
98185	40HIDWP/840/277V/EX39	4000K	5,800	82	145	No	100-175W HID	120°	50,000	120-277V	Yes	✓	
98186	40HIDWP/850/277V/EX39	5000K	5,800	82	145	No	100-175W HID	120°	50,000	120-277V	Yes	✓	
98189	54HIDWP/840/277V/EX39	4000K	7,800	82	144	No	175-250W HID	120°	50,000	120-277V	Yes	✓	
98190	54HIDWP/850/277V/EX39	5000K	7,800	82	144	No	175-250W HID	120°	50,000	120-277V	Yes	✓	



- Suitable to replace 65W incandescent lamps
- Dimmable with forward and reverse phase controls
- Suitable for use in totally enclosed fixtures
- Suitable for use in damp locations



- Suitable to replace 45W, 65W, 75W, 85W incandescent
- Energy efficient and environmentally friendly
- Provides comfortable, diffused light
- Dimmable with forward and reverse phase controls

SPECIFICATIONS

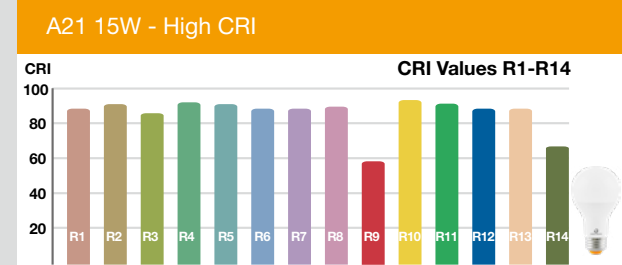
Product	Model	CCT	Lumens	CRI (typ.)	LPW	Dim	Equiv.	Beam Angle	Life (hrs)	Voltage	Encl.	ES / JA8 / T20
35048	8BR30DIM927	2700K	720	92	90	Yes	65W	120°	25,000	120V	Yes	✓/✓/✓/✓
35049	8BR30DIM927/GU24	2700K	720	92	90	Yes	65W	120°	25,000	120V	Yes	✓/✓/✓/✓

SPECIFICATIONS

Product	Model	CCT	Lumens	CRI (typ.)	LPW	Dim	Equiv.	Beam Angle	Life (hrs)	Voltage	Encl.	ES
98460	7.5R20DIM/827	2700K	525	82	70	Yes	45W	120°	25,000	120V	Yes	✓
98461	9BR30DIM/827	2700K	650	82	72	Yes	65W	120°	25,000	120V	Yes	✓
98462	9BR30DIM/830	3000K	650	82	72	Yes	65W	120°	25,000	120V	Yes	✓
98463	9BR30DIM/840	4000K	650	82	72	Yes	65W	120°	25,000	120V	Yes	✓
98464	11BR40DIM/827	2700K	950	82	86	Yes	75W	120°	25,000	120V	Yes	✓
98465	11BR40DIM/830	3000K	950	82	86	Yes	75W	120°	25,000	120V	Yes	✓
98466	15.5BR40DIM/827	2700K	1,100	82	71	Yes	85W	120°	25,000	120V	No	✓
98467	15.5BR40DIM/830	3000K	1,100	82	71	Yes	85W	120°	25,000	120V	No	✓



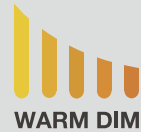
- Suitable to replace 60W, 75W, 100W incandescent lamps
- High CRI and R values (R9 57, R13 95)
- Suitable for use in totally enclosed fixtures
- Universal voltage 120-277V option for 60W



- Suitable to replace 40W, 60W, 75W, 100W incandescent lamps
- Provides comfortable, diffused light
- Dimmable with forward and reverse phase controls

SPECIFICATIONS												
Product	Model	CCT	Lumens	CRI (typ.)	LPW	Dim	Equiv.	Beam Angle	Life (hrs)	Voltage	Encl.	ES / JA8 / T20
98559	9A19DIM/927	2700K	800	92	89	Yes	60W	240°	25,000	120V	Yes	✓/✓/✓
98560	9A19DIM/930	3000K	820	92	91	Yes	60W	240°	25,000	120V	Yes	✓/N.A./✓
98561	9A19DIM/940	4000K	860	92	96	Yes	60W	240°	25,000	120V	Yes	✓/N.A./✓
98565	9A19DIM/927/GU24/R	2700K	800	92	89	Yes	60W	240°	25,000	120V	Yes	✓/✓/✓
98562	9A19/927/277V	2700K	1,100	92	89	No	60W	300°	25,000	120-277V	Yes	✓/N.A./✓
98563	9A19/930/277V	3000K	800	92	91	No	60W	300°	25,000	120-277V	Yes	✓/N.A./✓
98564	9A19/940/277V	4000K	820	92	96	No	60W	300°	25,000	120-277V	Yes	✓/N.A./✓
98141	11A19DIM/927	2700K	1,100	92	100	Yes	75W	240°	25,000	120V	Yes	✓/N.A./✓
98142	11A19DIM/930	3000K	1,150	92	105	Yes	75W	240°	25,000	120V	Yes	✓/N.A./✓
98143	11A19DIM/940	4000K	1,200	92	109	Yes	75W	240°	25,000	120V	Yes	✓/N.A./✓
98147	15A21DIM/927/N	2700K	1,600	92	107	Yes	100W	240°	25,000	120V	Yes	✓/✓/✓
98148	15A21DIM/930/N	3000K	1,650	92	110	Yes	100W	240°	25,000	120V	Yes	✓/N.A./✓
98149	15A21DIM/940/N	4000K	1,700	92	113	Yes	100W	240°	25,000	120V	Yes	✓/N.A./✓

SPECIFICATIONS												
Product	Model	CCT	Lumens	CRI (typ.)	LPW	Dim	Equiv.	Beam Angle	Life (hrs)	Voltage	Encl.	ES
97985	6A19DIM/827/R	2700K	480	82	80	Yes	40W	220°	25,000	120V	No	✓
97986	6A19DIM/830/R	3000K	480	82	80	Yes	40W	220°	25,000	120V	No	✓
98011	8A19DIM/827/R	2700K	800	82	100	Yes	60W	220°	25,000	120V	No	✓
98012	8A19DIM/830/R	3000K	800	82	100	Yes	60W	220°	25,000	120V	No	✓
98013	8A19DIM/840/R	4000K	800	82	100	Yes	60W	220°	25,000	120V	No	✓
97908	9A19DIM/827/GU24/R	2700K	800	82	89	Yes	60W	240°	25,000	120V	Yes	✓
97909	9A19DIM/830/GU24/R	3000K	820	82	91	Yes	60W	240°	25,000	120V	Yes	✓
97910	9A19DIM/840/GU24/R	4000K	860	82	96	Yes	60W	240°	25,000	120V	Yes	✓
98138	11A19DIM/827	2700K	1,100	82	100	Yes	75W	240°	25,000	120V	Yes	✓
98139	11A19DIM/830	3000K	1,150	82	105	Yes	75W	240°	25,000	120V	Yes	✓
98140	11A19DIM/840	4000K	1,200	82	109	Yes	75W	240°	25,000	120V	Yes	✓
98144	15A21DIM/827	2700K	1,600	82	107	Yes	100W	240°	25,000	120V	Yes	✓
98145	15A21DIM/830	3000K	1,650	82	110	Yes	100W	240°	25,000	120V	Yes	✓
98146	15A21DIM/840	4000K	1,700	82	113	Yes	100W	240°	25,000	120V	Yes	✓
98150	15A21DIM/827/GU24	2700K	1,600	82	107	Yes	100W	240°	25,000	120V	Yes	✓
98083	14A19/827/3WAY	2700K	1,000	82	125	No	75W	230°	15,000	120V	No	✓
			500		125		40W					
			1,500		107		100W					



All Warm Dim Lamps Feature 2700K-2200K CCT Dimming



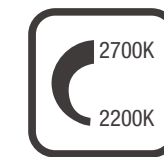
2200K

2700K

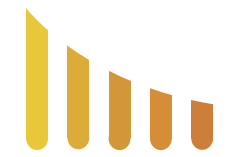
Lighting for Any Occasion



2700K-2200K Warm Dim



WARM DIM



WARM DIM

- Smooth dimming from 2700K-2200K CCT
- Dimmable with forward and reverse phase controls
- Exceptional efficacy
- Available in Downlight, BR, A19 & Candle lamps

SPECIFICATIONS

Product	Model	CCT	Lumens	CRI (typ.)	LPW	Dim	Equiv.	Beam Angle	Life (hrs)	Voltage	Encl.	ES
57884	5B11DIM/8CCTD	2200K-2700K	300	82	60	Yes	40W	230°	25,000	120V	Yes	✓
58001	6.5R20DIM/8CCTD	2200K-2700K	500	82	77	Yes	45W	110°	25,000	120V	Yes	✓
57885	9BR30DIM/8CCTD	2200K-2700K	650	82	72	Yes	65W	110°	25,000	120V	Yes	✓
57883	9.5A19DIM/8CCTD	2200K-2700K	800	82	84	Yes	60W	330°	25,000	120V	Yes	✓
58100	11DL6DIM/8CCTD	2200K-2700K	770	82	70	Yes	65W	110°	40,000	120V	N.A.	✓

CREATE THE PERFECT AMBIENCE



+ 2700K

- 2200K



These GREEN CREATIVE lamps feature 2700K-2200K CCT dimming designed to replicate the warm dimming effect of traditional incandescent light sources. As the lamp dims, its CCT gradually warms, helping to create the perfect ambience for all occasions.

FILAMENT LINE



Suitable for All Decorative Applications



- Micro-designed driver - No heatsink required
- Provides comfortable, diffused light
- Dimmable with forward and reverse phase controls
- 11S14 lamp is wet location rated and suitable for outdoor applications

SPECIFICATIONS												
Product	Model	CCT	Lumens	CRI (typ.)	LPW	Dim	Equiv.	Beam Angle	Life (hrs)	Voltage	Finish	ES / T20
98458	1FS14/820/A	2000K	35	82	75	Yes	10W	300°	15,000	120V	Amber	N.A. / N.A.
98457	1FS14/827	2700K	55	82	37	Yes	10W	300°	15,000	120V	Clear	N.A. / N.A.
98459	3FT6DIM/820/A	2000K	110	82	71	Yes	25W	300°	15,000	120V	Amber	N.A. / N.A.
57946	3.5FT10DIM/822/A	2200K	250	82	90	Yes	25W	330°	15,000	120V	Amber	N.A. / N.A.
98240	4.5FBA11DIM/820/FT/A	2000K	240	82	68	Yes	40W	300°	15,000	120V	Amber	N.A. / N.A.
98241	3.3FB11DIM/927	2700K	300	92	90	Yes	40W	300°	15,000	120V	Clear	✓ / ✓
98242	3.3FB11DIM/927/E26	2700K	300	92	107	Yes	40W	300°	15,000	120V	Clear	✓ / ✓
98456	3.8FB11DIM/827/FR	2700K	300	82	80	Yes	40W	300°	15,000	120V	Frosted	N.A. / N.A.
98454	5FB11DIM/827	2700K	500	82	107	Yes	60W	300°	15,000	120V	Clear	N.A. / N.A.
98455	5FB11DIM/827/E26	2700K	500	82	93	Yes	60W	300°	15,000	120V	Clear	✓ / N.A.
98239	4FST19DIM/820/A	2000K	300	82	90	Yes	40W	300°	15,000	120V	Amber	N.A. / N.A.
98357	5FA19DIM/820/A	2000K	340	82	92	Yes	40W	300°	15,000	120V	Amber	N.A. / N.A.
98376	5FA19DIM/827	2700K	450	82	63	Yes	40W	300°	15,000	120V	Clear	N.A. / N.A.
98450	5FA19DIM/827/FR	2700K	450	82	89	Yes	40W	300°	15,000	120V	Frosted	N.A. / N.A.
98448	7.5FA19DIM/820/A	2000K	600	82	94	Yes	60W	300°	15,000	120V	Amber	N.A. / N.A.
98278	7.5FA19DIM/827	2700K	800	82	91	Yes	60W	300°	15,000	120V	Clear	✓ / N.A.
98449	7.5FA19DIM827/FR	2700K	800	82	91	Yes	60W	300°	15,000	120V	Frosted	N.A. / N.A.
98358	7.5FA19DIM/827/SB	2700K	700	82	53	Yes	60W	N.A.	15,000	120V	Silver Bowl	N.A. / N.A.
98279	9FA19DIM/927	2700K	810	92	79	Yes	60W	300°	15,000	120V	Clear	✓ / ✓
98453	4FG16.5DIM/820/A	2000K	250	82	100	Yes	40W	300°	15,000	120V	Amber	N.A. / N.A.
98451	4FG16.5DIM/827	2700K	350	82	100	Yes	40W	300°	15,000	120V	Clear	N.A. / N.A.
98452	4FG16.5DIM/827/E26	2700K	350	82	88	Yes	40W	300°	15,000	120V	Clear	N.A. / N.A.
98378	4FG25DIM/820/A	2000K	250	82	88	Yes	40W	300°	15,000	120V	Amber	N.A. / N.A.
97826	4.5FG25DIM/827/SB	2700K	400	82	63	Yes	40W	N.A.	15,000	120V	Silver Bowl	N.A. / N.A.
98377	3.8FG25DIM/927	2700K	350	92	55	No	40W	300°	15,000	120V	Clear	✓ / ✓
57945	5FG40DIM/827	2700K	470	82	35	No	40W	330°	15,000	120V	Clear	✓ / N.A.

DECORATIVE LINE



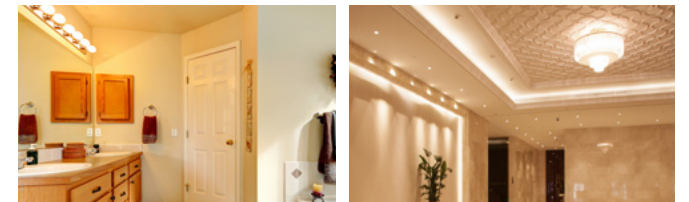
Coming Feb. 2020

4B11DIM

Coming Feb. 2020

6.5B13DIM

Suitable for All Decorative Applications



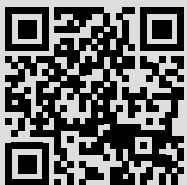
- Suitable to replace 40W / 60W incandescent lamps
- Suitable for use in totally enclosed fixtures
- Suitable for use in damp locations

SPECIFICATIONS													
Product	Model	CCT	Lumens	CRI (typ.)	LPW	Dim	Equiv.	Beam Angle	Life (hrs)	Voltage	Encl.	ES	
97729	6G25DIM/827/R	2700K	450	82	75	Yes	40W	275°	25,000	120V	No	✓	
34928	4B11DIM/827	2700K	300	82	75	Yes	40W	110°	25,000	120V	No	✓	
34929	4B11DIM/827/E26	2700K	300	82	75	Yes	40W	110°	25,000	120V	No	✓	
34930	6.5B13DIM/827	2700K	500	82	77	Yes	60W	230°	25,000	120V	No	✓	
34931	6.5B13DIM/827/E26	2700K	500	82	77	Yes	60W	230°	25,000	120V	No	✓	



GREENCREATIVE


Your Partner for Professional Lighting Solutions




Tel / Fax: (866) 774-5433

info@greencreative.com

www.greencreative.com

 / GREENCREATIVELED

 / GClightingLED

 / GREEN-CREATIVE

