

SAVE TIME • SOLVE PROBLEMS • GREAT LOOKS



Innovative Products for Installations of

Low Voltage • Audio • Video
Security • Datacom Systems



PRODUCTS FOR THE PROS

In addition to a wide variety of innovative electrical products and more than 200 active utility patents, Arlington manufactures special products for the digital technology market that are easy to install and use.

They look great. And your audio, video and electronic system installations will too.

Since 1949, Arlington has been the leader in the manufacture of non-metallic and metallic electrical products that save installers time and money, while delivering a good-looking installation. The products in this catalog are just a few of the over 1,400 line items we make. To learn more about our other electrical products, visit our website at www.aifittings.com.

TABLE OF CONTENTS



PAGE 3

LV1
Single-gang
Low Voltage
Mounting
Bracket

Mounting Brackets for
Class 2 Low Voltage Wiring



PAGE 5

LVK1

Recessed Low Voltage
Mounting Bracket for ENT



PAGE 8

LVD2


Combination Boxes for
Power and Low Voltage



PAGE 9

FLC430
CAM-BOX KIT

Security Camera
Mounting



PAGE 10

8161
series
Boxes

Security Camera
Mounting



PAGE 11

TVB713
TV BOX™

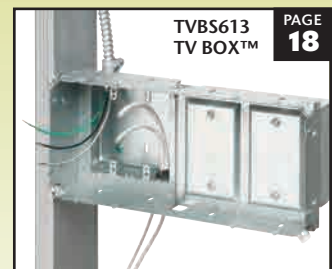
PLASTIC Combo Box
w/ Angled Outlet Boxes



PAGE 14

TVBU507
TV BOX™

PLASTIC 2-, 3-, 4-gang
Recessed Boxes



PAGE 18

TVBS613
TV BOX™

STEEL Power/Low Voltage
Combo Boxes



PAGE 17

TVBR2505K
TV Bridge™

Installation Kit
for Flat Screen TV's



PAGE 20

CED1 facing in

The SCOOP™ Reversible
Entrance Plates & Hoods



PAGE 22

TL50
The LOOP™
Cable Hanger

Cable Management



PAGE 24

DBK88C

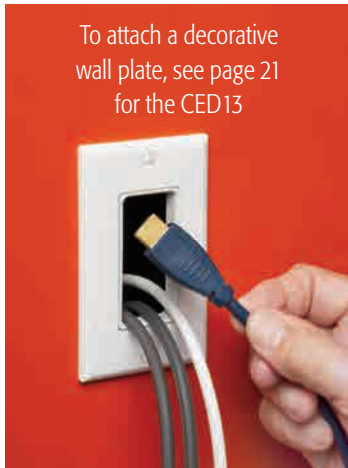
Weatherproof Keypad
Enclosure



Mounting Brackets for Class 2 Low Voltage Wiring

Fast, Easy Installation in Existing Walls!

**Installs in
3 minutes**



Wing Design

provides secure mounting of bracket – mounting wing screw holds bracket against wall when this screw is tightened

Recessed Screw Hole and Thin Front Lip

seat wall plate flush with wall surface

Notches

on four sides aid in centering and leveling

Oval Hole

For lining up and final straightening/shifting of device



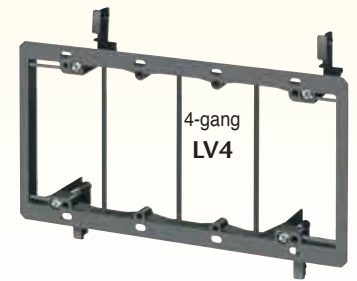
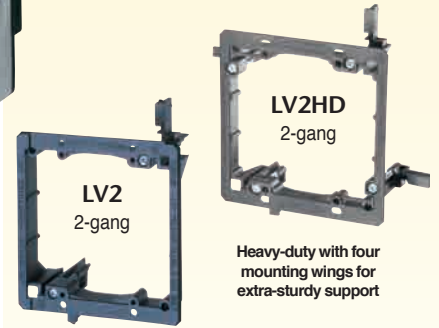
Arlington's non-metallic, Low Voltage Mounting Brackets are the time and money-saving solution for faster and easier mounting of Class 2 communications, computer and cable TV wiring.

The bracket is its own template.

Level the bracket on the wall, then use the bracket as a guide for the cutout by tracing a line around the inside of the bracket.

Designed to mount wall plates flush, our mounting brackets offer features – specially designed screw holes and more – that deliver a better-looking, easy-to-install job.

- LV1 through LV4 adjusts to fit 1/4" to 1" wall thicknesses; LVR1 fits thicknesses from 1/4" to 1-1/2"
- Horizontal or vertical mounting
- UL/CSA Listed



CATALOG NUMBER	UPC/DCI/NAED MFG. #018997	DESCRIPTION for Existing Construction	UNIT PKG	STD PKG
LV1	58175	Single-gang	10	100
LV1XL	58178	Single-gang/extra long screws	10	100
LV1LP	58177	Single-gang/low profile	10	100
LVK1	69110	Single-gang/for PVC ENT	10	100
LV1RP	58179	Single-gang/hole saw installation	25	25
LV2	10952	2-gang	5	50
LV2HD	20010	2-gang/heavy-duty	5	25
LV2LP	23102	2-gang/low profile	5	50
LV2RP	58183	2-gang/hole saw installation	25	25
LV3	09600	3-gang	5	50
LV4	09601	4-gang	5	50
LVR1	58185	Round	–	25

SPECIAL USE Mounting Brackets for:

- up to 5/8" double drywall
- cast concrete or block
- PVC ENT
- installation with a hole saw

Turn page for details.



View Video



LV1



Patented. Other Patents Pending.

SPECIAL USE Mounting Brackets for Class 2 Low Voltage Wiring

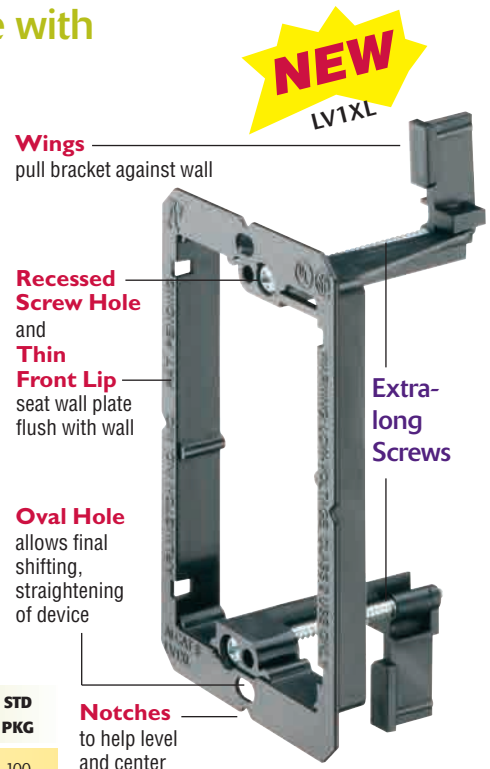
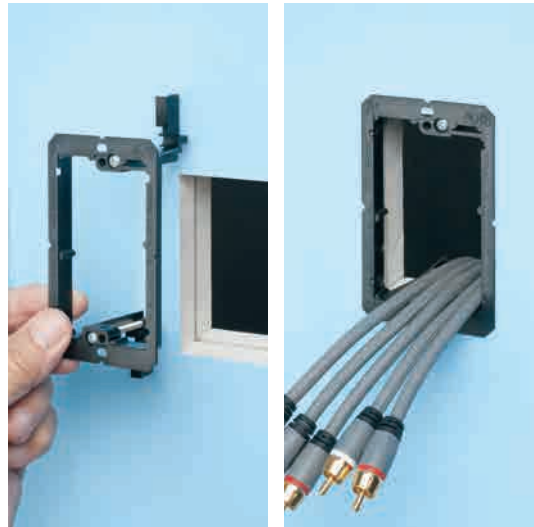
EXISTING CONSTRUCTION

The easy to install single-gang LV1XL offers the same great features as our popular LV series of mounting brackets, but the **screws are extra-long** to handle thick walls.

Built-in features like these deliver a better-looking job...

- For use with up to 5/8" double drywall or wall thickness up to 1-1/2"
- Wall plates mount flush to wall
- Mounting wing screws hold bracket securely against wall
- Easy to line up or straighten
- Mounts vertical or horizontal
- UL/CSA Listed

Extra-long screws allow for use with up to double 5/8" drywall



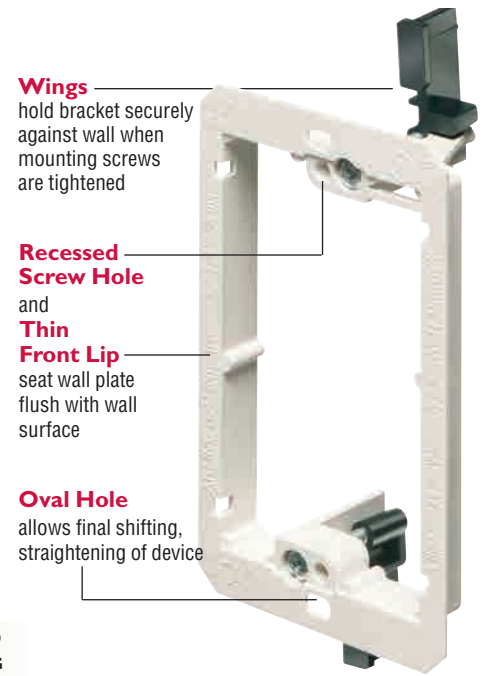
CATALOG NUMBER	UPC/DCI/NAED MFG. #018997	DESCRIPTION for Existing Construction	UNIT PKG	STD PKG
LV1XL	58178	Single-gang with extra-long screws for up to 5/8" double drywall	10	100

Our new **single-gang, low profile** mounting brackets make quick work of installations using 1/2" or 5/8" drywall installed on furring strips that are attached to concrete walls.

For existing construction, our low-profile, low-voltage non-metallic mounting brackets...

- Adjust to fit 1/4" to 1" drywall, wallboard or paneling
- Install faster – cost less than metal
- Single and two-gang styles
- UL/CSA Listed

Low profile mounting brackets for installations on cast concrete or concrete block walls



CATALOG NUMBER	UPC/DCI/NAED MFG. #018997	DESCRIPTION for Existing Construction	UNIT PKG	STD PKG
LV1LP	58177	Single-gang/Low Profile	10	100
LV2LP	23102	2-gang/Low Profile	5	50

LV2LP



SPECIAL USE Mounting Brackets for Class 2 Low Voltage Wiring

With a loop for use with ENT tubing



CATALOG NUMBER	UPC/DCI/NAED MFG. #018997	DESCRIPTION for Existing Construction	UNIT PKG	STD PKG
LVK1	69110	Single-gang, non-metallic, low voltage mounting bracket. Has knockout for use with PVC electrical non-metallic tubing	10	100

Patent Pending

Arlington's **LVK1** non-metallic low voltage mounting bracket is perfect for Class 2 wiring installations in existing walls with PVC ENT (electrical non-metallic tubing).

Easy, convenient installation

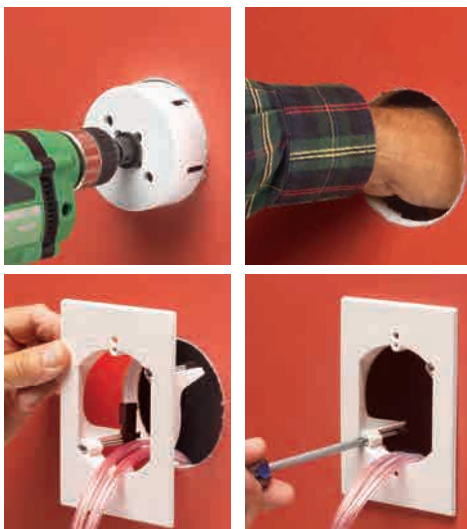
LVK1 has a knockout for 1/2" or 3/4" tubing and you can use it as the template to cut the hole. Plus, it adjusts to fit wallboard from 1/4" to 1" thick.

- Tighten mounting wing screws to pull the bracket securely against the wall
- Non-metallic – better than metal, costs less too
- UL/CSA Listed



LVK1

LV1RP installs in less than 1 minute with a hole saw!



CATALOG NUMBER	UPC/DCI/NAED MFG. #018997	DESCRIPTION for Existing Construction	UNIT PKG	STD PKG
LV1RP	58179	Single-gang	25	25
LV2RP	58183	2-gang	25	25

Patent Pending



LV2RP

LV1RP our super-sturdy, low-voltage mounting bracket, installs class 2 low voltage wiring with a 3.5" hole saw in less than a minute! *Also available, 2-gang LV2RP. It installs just as fast with a 4.5" hole saw.*

- Paintable front surface
- Adjusts to fit 1/4" to 1-1/2" wall thicknesses
- LV1RP finishes with any single-gang wall plate (use any 2-gang plate for 2-gang LV2RP)
- Easy to level by rotating the bracket, then tightening the screws
- UL/CSA Listed

Plus, mounting wings hold it securely against the wall when screws are tightened.

View Video



LV1RP

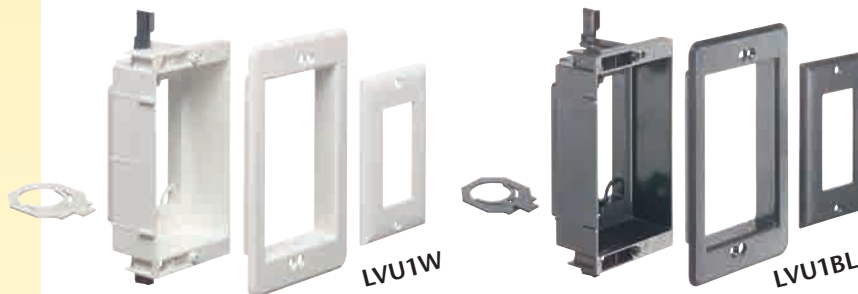
Recessed Mounting Brackets for Low Voltage Class 2 Wiring

LVU series for New or Existing Construction

NEW

- Recessed so low voltage connections stay inside
- Fast and easy installation
- Adjusts to fit 1/4" to 1-1/2" wall thicknesses
- Secure mounting... mounting wing screws tighten to hold bracket securely against wallboard
- Includes two attachable knockouts, paintable trim plate and cover plate
- UL/CSA Listed
- OPTIONAL cover available for single or two-gang styles – See DVFRC on page 15

Recessed design keeps low voltage connectors inside - without extending past the wall



View Video



LVU1

Installation in Existing Wall



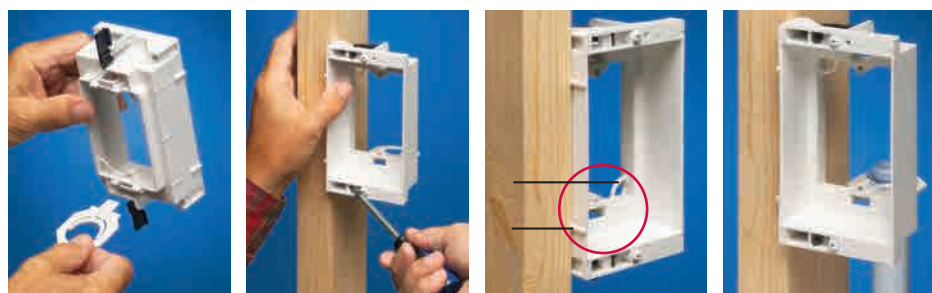
1 Determine bracket location. Use the front as a template. Level. Mark. Cut the hole.

2 Attach trim plate to bracket with supplied screws. Insert bracket assembly into opening.

3 Tighten mounting wing screws to hold bracket securely against wallboard.

4 Finished installation. Connectors stay inside this recessed low voltage mounting bracket.

New Work Installation



OPTION Insert knockouts in openings (back) if installing conduit.

Mount bracket to stud.

Note loops for tying off cable and positioning tabs for proper placement of bracket on stud.

OPTION Attach 3/4" or 1" conduit as desired (3/4" shown).

Knockouts fit 3/4" or 1" raceway. Use as shipped for 3/4". Break out center as shown for use with 1".



CATALOG NUMBER	UPC/DCI/NAED MFG. #018997	DESCRIPTION /COLOR	SIZE	UNIT PKG	STD PKG
LVU1W	00285	White	Single-gang	1	4
LVU2W	20011	White	2-gang	1	4
LVU3W	20012	White	3-gang	1	1
LVU4W	20013	White	4-gang	1	1
LVU1BL	00286	Black	Single-gang	1	4
LVU2BL	20014	Black	2-gang	1	4
LVU3BL	20015	Black	3-gang	1	1
LVU4BL	20016	Black	4-gang	1	1

Patented. Other Patents Pending.



LVU1
Recessed
Single-gang
Low Voltage
Mounting Bracket

Mounting Brackets for Class 2 Low Voltage Wiring

Nail or Screw on to wood or metal studs in new construction

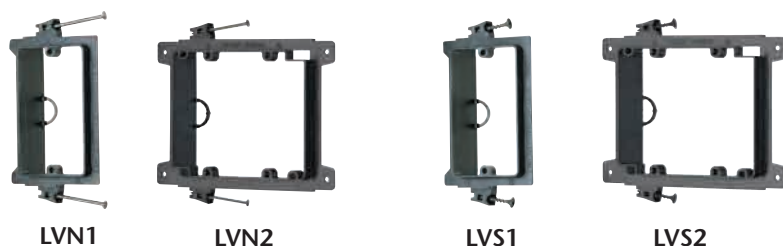
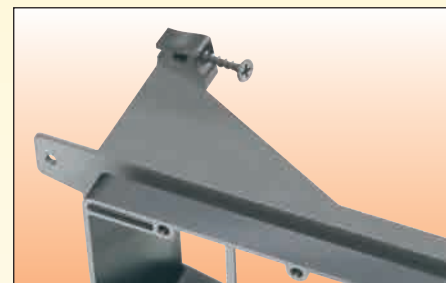


Just nail or screw these non-metallic brackets to a wood or steel stud – and you're ready to install low voltage Class 2 wiring!

- Lower cost than extension rings or mud rings
- Ready to install - nails or screws come parked-in-place
- Built-in loop for tying off cable
- Easy, secure mounting of bracket to studs with nails or screws
- Allows wall plate to mount flush with wall surface
- UL/CSA Listed

25% faster installation over steel or plastic mud rings!

Corners on the 3- and 4-gang styles are reinforced for added support against the stud.

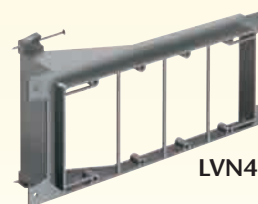


NAIL on low voltage mounting brackets:

CATALOG NUMBER	UPC/DCI/NAED MFG #01 8997	UNIT PKG	STD PKG	Height	Width	Depth
LVN1	Single-gang 00261	50	50	4.170	2.810	1.500
LVN2	2-gang 00275	25	25	4.170	5.492	1.500
LVN3	3-gang 00277	10	10	4.170	7.804	2.624
LVN4	4-gang 00278	10	10	4.170	9.617	2.624

SCREW on low voltage mounting brackets:

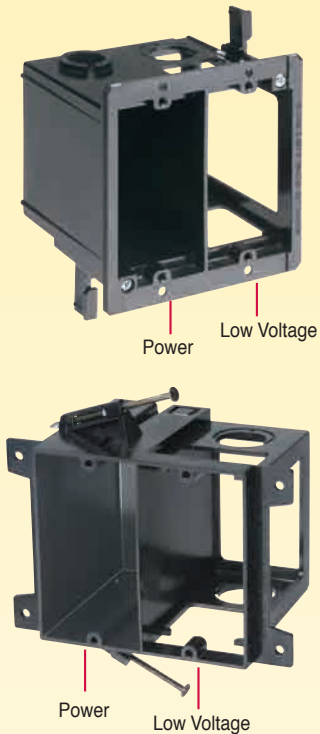
CATALOG NUMBER	UPC/DCI/NAED MFG #01 8997	UNIT PKG	STD PKG	Height	Width	Depth
LVS1	Single-gang 00262	50	50	4.170	2.810	1.500
LVS2	2-gang 00280	25	25	4.170	5.492	1.500
LVS3	3-gang 00282	10	10	4.170	7.804	2.624
LVS4	4-gang 00283	10	10	4.170	9.617	2.624



Patented. Additional Patents Pending.

Combination Boxes for Power and Low Voltage Class 2 Wiring

NEW & EXISTING CONSTRUCTION



LVDR2 For Existing Construction

- Fast and easy installation
- Adjusts to fit 1/4" to 1-1/2" thick wallboard, paneling or drywall
- For raceway, the low voltage side provides a combo 1/2" and 3/4" KO
- Protects cable from damage
- Mounting wing screws hold box securely in place
- Includes installed NM connector on power side

LVD2 For New Construction

- For wood stud installation, LVD2 features parked-in-place nails ready for use
- For metal stud installation, LVD2 features screw holes on either side of the front flange (screws not included)
- For raceway, the low voltage side provides a combo 1/2" and 3/4" KO

These non-metallic, combination power and low voltage boxes are designed to accommodate power and low voltage installations like phone/cable and fiber optic installations in the same box.

They offer the best way to neatly install power and phone/cable outlets together, in one location, saving time and money.

- Two hour fire rating
- UL listed



Simple, NAIL on Installation...



or SCREW onto Metal Stud!

CATALOG NUMBER	UPC/DCI/NAED MFG #01 8997	HEIGHT	WIDTH	CUBIC IN. POWER SIDE	UNIT/STD PKG
LVD2	10957	3.625	5.360	20.2	25
LVDR2	01000	4.250	4.185	17.0	25

Patented. Other Patents Pending.

CAM-KIT™

Installs in 2 minutes!

Secure, Universal Mounting to 3.5" and 4" Boxes



Arlington's new CAM-KIT™ security camera mounting kit offers the easy, secure way to install a security camera on a ceiling or wall.

- Includes a universal bracket, 5" mounting plate and mounting screws
- Fits ANY camera hole pattern because you drill the holes in the mounting plate
- Works with 3-1/2" and 4" fixture boxes and single-gang device boxes (also Arlington's FL430 fixture box)
- Secure attachment of low voltage or power security cameras to ceiling or wall-mounted boxes



1 Attach SC5 bracket to box.



2 Place assembly on bracket. Turn clockwise to lock. Install set screw. Done! Secure camera installation on ceiling or wall.



CATALOG NUMBER	UPC/DCI/NAED MFG. #018997	DESCRIPTION	MATERIAL	UNIT PKG	STD PKG
SC5	18058	Security camera mounting kit	Plastic	1	20

CAM-BOX™ KIT

Sturdy Security Camera Installation on a Suspended Ceiling



NEW!

[View Video](#)



FLC430

FLC430
CAM-BOX™ KIT
Plastic



Includes box, drop wire, (2) NM94 cable connectors (plastic box only) and mounting bracket and plate for camera



1 Cut hole in the ceiling with 4" hole saw.



2 Align box as necessary. Tighten mounting wing screws.



3 Wrap drop wire twice through loop on top of box and around a framing member above ceiling. Wrap wire around itself six times minimum in both instances.



4 Install supplied NM94 cable connector (1/2" or 3/4").



5 Install mounting bracket to inside of box

Note: Cameras with a base diameter from 4.5" to 7" mount directly to the box flange (do not require the mounting plate).



6 Mount camera to mounting plate. Place assembly on bracket. Turn clockwise to lock. Install set screw.

Done! Secure camera installation, and no sagging ceiling.

Use Arlington's CAM-BOX™ KIT to install any security camera (with base diameter up to 7") on a suspended or drywall ceiling panel. For power or low voltage, it installs FAST with a 4" hole saw, saving time and money.

It's a tested assembly that holds up to 50 lbs on a suspended or drywall ceiling. It fits any security camera hole pattern because you drill the holes in the mounting plate. Larger cameras (base diameter from 4.5" to 7") mount directly to the box flange.

Unlike most multi-piece assemblies, CAM-BOX™ KIT is rated for:

- Up to 50 lbs on a suspended ceiling (or drywall ceiling) in combination with drop wire for support
- Up to 10 lbs on a drywall ceiling without drop wire (not rated for fixtures)
- Up to 7 lbs on walls

CAM-BOX™ KIT includes a drop wire for overhead support; mounting wings for attachment of box to the ceiling; 1/2" and 3/4" knockouts in the box, two NM94 non-metallic cable connectors – and a mounting bracket and plate for the camera.

- Rotates in either direction for proper positioning of camera
- Non-metallic 27.0 cu. inch box
- Paintable white plastic flange

FLC430S
CAM-BOX™ KIT
Steel



Includes steel box, drop wire, mounting bracket and plate for camera

CATALOG NUMBER	UPC/DCI/NAED MFG. #018997	DESCRIPTION	MATERIAL	UNIT PKG	STD PKG
FLC430	09742	Security Camera Mounting Kit	Plastic	1	10
FLC430S	09743	Security Camera Mounting Kit	Steel box w/ plastic flange	1	10

Add suffix "GC" to catalog number when ordering plastic box with ground clip for use in Canada (i.e. FLC430GC)



8161 Boxes...The Easy Way to Mount Security Cameras, and more on Walls or Ceilings

EXISTING CONSTRUCTION

Arlington's **8161 series boxes** offer flexible solutions to mounting security cameras, detectors and other items outdoors! You can install a power or low voltage security camera – with mounting holes spaced wider than 4.5" apart – right on the box and mount it to a wall or ceiling.

These non-metallic boxes support security cameras, electrical accessories and fixtures up to 50 lbs on ceilings – 10 lbs on a wall. They have positionable threaded openings so you can install the camera where you need it now; then install additional cameras, etc. later.

- Use indoors or outdoors for dry, damp or wet locations
- UV rated for long outdoor life
- For cameras with base diameter smaller than 4.5" use our SC5 camera mounting kit (not included – see page 8)



The box with flexible installation options!



8161TR installation photos shown with SC5 CAM-KIT™ installed



Wall mounts up to 50 lbs, face down

8161BR includes sturdy, built-in wall-mount bracket, mounting screws and 3/4" to 1/2" reducing bushing.



Mounts up to 50 lbs, on a down rod

Includes installed threaded base plate and 3/4" to 1/2" reducing bushing for use with 1/2" or 3/4" NPT down rods. (Support pipe not included)



Corner mounts equipment up to 50 lbs

8161CB includes integral corner mount bracket.



Pole-mount – holds up to 50 lbs

Attaches to a round metallic or non-metallic pole with hose clamps. Includes integral mounting bracket. (Pole and hose clamps not included)



CATALOG NUMBER	UPC/DCI/NAED MFG. #018997	DESCRIPTION	WEIGHT RATING /MOUNTING	UNIT PKG	STD PKG
8161TR	00878	Box w/ threaded openings	50 lb/ceiling - 10 lb/wall	1	10
8161BR	08881	Box w/ built-in bracket	50 lb/wall mount	1	10
8161BP	08880	Box w/ built-in base plate	50 lb/on down rod	1	10
8161CB	01530	Box w/ corner-mount bracket	50 lb/corner	1	10
8161PM	09020	Pole mount Box	50 lb/pole	1	10

[View Video](#)



8161

Security camera not included



Patents pending

Add suffix "GC" to catalog number when ordering with ground clip for use in Canada (i.e. 8161TRGC)

PLASTIC

For Flush-to-Wall Mounting of Flat Screen TVs

TV BOX

RECESSED POWER & LOW VOLTAGE COMBO BOXES

Arlington's PLASTIC recessed combination power and low voltage boxes – TV BOX™ and Indoor IN BOX™ – offer the secure, easy way to mount flat screen TVs flush against a wall.

The job looks great because plugs and connections stay inside these boxes without extending past the wall.

Available in 2-, 3- and 4-gang styles for new or old work. Each offers power and/or low voltage in one or more of the other openings.

There's a box to fit nearly any application!

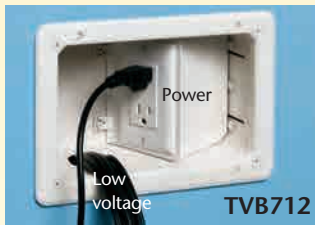
- Non-metallic box with paintable white or black trim plate
- In OLD work, mounting wing screws pull the box against the wall when tightened – In NEW construction, the box screw-mounts to a stud
- Easy to cover when not in use with (optional) covers
- UL/CSA Listed

We also offer TV BOX in steel for use in commercial, and other projects that use metal raceway. See pages 18-19.

Multiple Gang Combo Box with Angled Outlet Boxes

Designed for new or old work, these TV Boxes have angled outlet boxes that take convenience to a new level.

The versatile TVB712 offers power and/or low voltage. The larger



TVB713 has two angled outlet boxes that keep plugs behind the wall surface – and allow for the use of the new close-clearance TV mounting hardware. Now you really can mount a TV flush against a wall.

TVB713 has power and low voltage openings for video, audio and other datacom connections. It also includes a separate, interchangeable tray that you can use to hide the digital converter box, supplied by some cable companies, behind the TV.

- Non-metallic, paintable trim plate
- For new or old work
- Optional cover for unused 13" box
- Available with ground clip for use in Canada



4-GANG TVB713



TVB713 positions plugs behind the wall surface to allow for the use of the new close-clearance mounting hardware. Use the supplied tray to hide the digital converter box behind the TV.



View Video



TVB713



TVB712

Power and/or Low Voltage



TVB713

Interchangeable tray



TVB613C

Cover

See next page for TVB713 installation guidelines

Patent pending

Installation Multiple Gang TV BOX™ with Angled Openings

NEW & EXISTING CONSTRUCTION

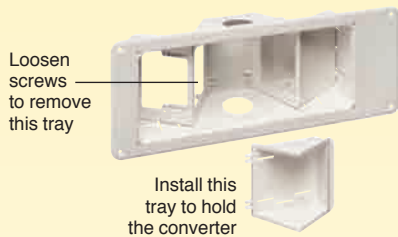
Installation of Arlington's TVB713 recessed TV BOX™ in new or old work is fast and easy.

The supplied interchangeable tray may be used to



Digital converter installed

hold the digital converter supplied by some cable companies.



Loosen screws to remove this tray

Install this tray to hold the converter

- Secure installation – TVB713 mounts between studs in new or old work. Positioning tabs for 1/2" wall thickness assure accurate placement on stud in new construction



- For retrofit, use enclosure (without trim plate) as a template for the wall opening



TVB712

as a template for the wall opening



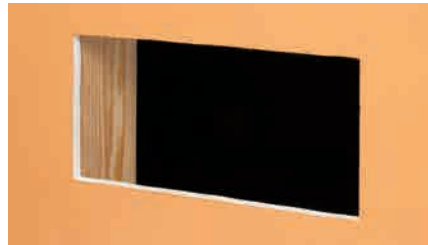
TVB712

CATALOG NUMBER	UPC/DCI/NAED MFG. #018997	DESCRIPTION	UNIT/STD PKG
TVB712	09712	Power and/or low voltage Recessed Box w/ Angled Openings	1
TVB713	09713	Power and multiple low voltage openings w/ interchangeable tray	1
TVB613C	09631	Non-metallic, blank cover for TVB713	5

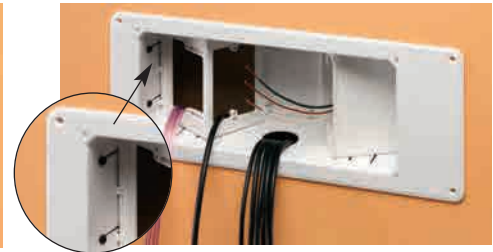
Add suffix "GC" to catalog number when ordering TV BOX with ground clip for use in Canada (i.e. TVB713GC)

TVB713

Old Work Installation



1 Cut hole next to stud (use enclosure, without trim plate, as a template). Pull wires. Insert box.



2 Attach assembled enclosure w/ trim ring to stud through slotted holes in the side walls.



3 Install enclosure assembly to wall with outer screws.



4 Install devices. Two low voltage, one power shown.

New Construction Installation



1 Attach box to stud through slotted holes.



2 Pull power and low voltage wire. After installing the wall, continue with OLD WORK steps 3 and 4 (above).



3 Make connections. Done...ready to accommodate close-clearance TV mounting hardware.



Patented. Other Patents Pending.

View Video



TVB713

4-gang Recessed Power and Low Voltage Electrical Boxes for Flat Screen TVs

PLASTIC

NEW & EXISTING CONSTRUCTION

Non-metallic TV BOX™



TVB613 includes recessed TV BOX w/ trim plate, low voltage separator, NM cable connector and installation screws



1 Install NM94 cable connector, and power and low voltage cables.



2 Install low voltage separator if using low voltage in two-gang box.



3 Install power and low voltage wiring devices.

Info/Video



TVB613



TVB613BL



Arlington's recessed TV BOX™ for new or old work allows flat screen TVs to mount flush against a wall.

Its double-gang design allows you to install two duplex receptacles or low voltage devices. Or you can use the supplied box separator to install one low voltage device and one duplex receptacle.

TV BOX also has two additional built-in mounts for low voltage, data/media connections (i.e. speakers or satellite TV).

The 13" wide, non-metallic TV BOX mounts between 16" o.c. studs for a secure horizontal or vertical installation.

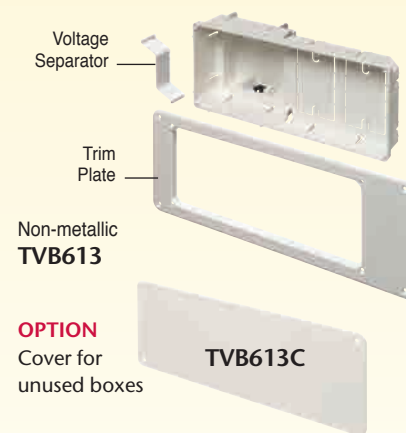
Looks great. Saves space.

Plugs stay inside the box without extending past the wall.

Textured, paintable trim plate covers edges of cut drywall.

UL/CSA Listed

See page 19
4-gang steel box



OPTION
Cover for unused boxes

CATALOG NUMBER	UPC/DCI/NAED MFG. #018997	DESCRIPTION PLASTIC TV BOX™	UNIT/STD PKG
----------------	---------------------------	-----------------------------	--------------

TVB613	09630	13" wide, recessed box (white) 2-gang, 26.2 cu. inch power/low voltage	1
TVB613BL	09634	(black) (Plus two low voltage mounts)	1
TVB613C	09631	Non-metallic blank white cover fits 13" TV Box	5

Add suffix "GC" to catalog number when ordering TV BOX with ground clip for use in Canada (i.e. TVB613GC)

Patented. Other Patents Pending.

PLASTIC

Indoor IN BOX™ Recessed Electrical Boxes

Arlington's recessed indoor IN BOX™ for new or old work, allows LCD and plasma TVs (furniture too!) to be placed flush against the wall.

For power or low voltage, indoor IN BOX mounts securely to the stud (new construction) or drywall (old work).

It's a recessed box so plugs don't extend past the wall, like they do in a regular box. You can mount TVs flush or push furniture closer to the wall.

- Positioning tabs for 1/2" wall thickness assure accurate placement on stud
- Mounting wings hold box securely against wall when screws are tightened
- Textured, paintable trim plate covers edges of cut drywall
- Horizontal or vertical mounting
- Available in one-, two-, three- or four-gang styles for new construction or old work (retrofit) in existing walls
- UL/CSA Listed

DVFR1BL
Single-gang indoor IN BOX



View Video



DVFR1

Single-gang



Also available in **BLACK**

View Video

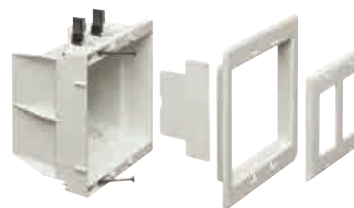


DVFR2

DVFR1W
Single-gang indoor IN BOX



DVFR2W
Two-gang indoor IN BOX



CATALOG NUMBER	UPC/DCI/NAED MFG. #018997	DESCRIPTION	COLOR	STD PKG
DVFR1W	14330	Single-gang Indoor IN BOX™	White	4
DVFR1BL	14329	recessed device box	Black	4
DVFR2W	14331	2-gang Indoor IN BOX™	White	4
DVFR2BL	14335	recessed device box	Black	4
DVFR3W	14340	3-gang Indoor IN BOX™	White	1
DVFR3BL	14341	for power and low voltage	Black	1
DVFR4W	14342	4-gang Indoor IN BOX™	White	1
DVFR4BL	14343	for power and low voltage	Black	1

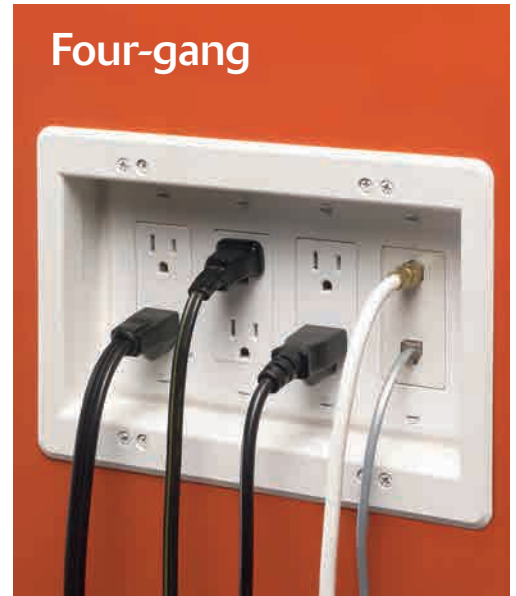
Add suffix "GC" to catalog number when ordering with ground clip for use in Canada (i.e. DVFR1WGC)

For **NEW** or **OLD** Work
Available in **White** or **Black**



Arlington

Patented. Other Patents Pending.



OPTIONAL Box Cover for IN BOX™, LVU or TV BOX™

Arlington's new optional box cover fits single- or 2-gang indoor IN BOX and 2-gang TV Box and LVU series recessed mounting brackets. Use it to keep unused boxes clean until you're ready to complete the installation. Unused boxes at eye-level look better and blend into the wall with an Arlington Box Cover.

- Easy press-on installation
- Available in paintable white or black

Fits single- or 2-gang
LVU, IN BOX™ and TV BOX™
(see pages 6, 14, 16, 18)



also available in **BLACK**
DVFRCL

CATALOG NUMBER	UPC/DCI/NAED MFG. #018997	DESCRIPTION	COVER COLOR	UNIT PKG	STD PKG
DVFRC	14337	OPTIONAL BOX cover fits unused single- or 2-gang IN BOX etc.	White	10	10
DVFRCL	14336		Black	10	10

PLASTIC Multiple gang TV BOX™

With Power AND Low Voltage in ONE easy-to-install recessed electrical box

NEW & EXISTING CONSTRUCTION

Arlington's recessed two- and three-gang TV BOX™ for new or old work allows you to mount LCD and plasma TVs, and other system components flush against the wall.

These combo boxes offer power and low voltage for Class 2 wiring of satellite or cable TV, speakers, etc.

Secure installation. Good looks. A great finish.

Mounting wings tighten against the wallboard to hold the box firmly in place. There's no wobble once the box is installed. In new construction, box mounts to stud for extra-secure support.

Plugs stay inside – don't protrude past the wall

- For walls up to 1-1/2" thick
- OPTIONAL blank covers for two-gang styles. See page 15
- UL/CSA Listed

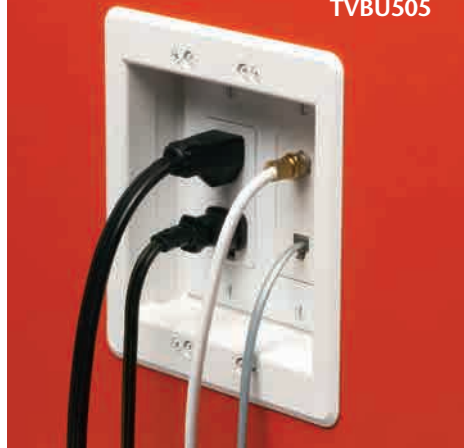
View Video



TVBU507

Two-gang combo box for NEW or OLD Work

TVBU505



Easy Installation! Three-gang for NEW or OLD Work

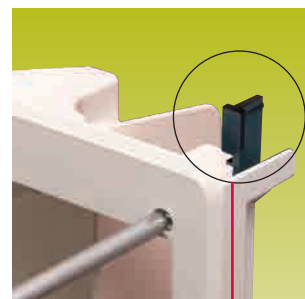
TVBU507



Old Work



New Construction



Mounting wings hold box secure

Fast and easy installation...

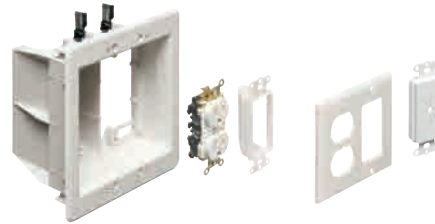
...of power and low voltage devices!



TVBU505 white

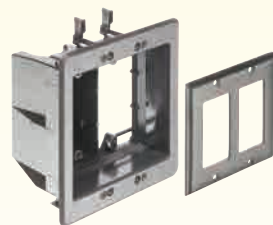


TVBU507 white

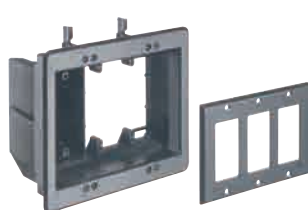


TVBR505K

Kit includes box, plus
 (1) tamper-resistant duplex receptacle
 (1) CEDH1 SCOOP™ Entrance Hood
 (1) CED130 Cable Entry Device
 (1) duplex decorator-style wall plate



TVBU505BL black



TVBU507BL black

CATALOG NUMBER	UPC/DCI/NAED MFG. #018997	DESCRIPTION Non-metallic TV BOX™	STD PKG
TVBU505	09636 (white)	2-gang, power/low voltage	4
TVBU505BL	14326 (black)	2-gang, power/low voltage	4
TVBR505K	09670 (white)	2-gang, power/low voltage kit	4
TVBU507	09661 (white)	3-gang, One power/two low voltage	4
TVBU507BL	09662 (black)	3-gang, One power/two low voltage	4

Add suffix "GC" to catalog number when ordering with ground clip for use in Canada (i.e. TVBU505GC)



Arlington

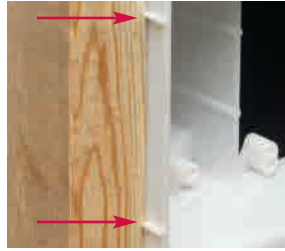
Patented. Other Patents Pending.

Multiple gang TV BOX™ One Power, Two Low Voltage recessed Combo box

New Work Installation



1 Attach box to stud. Note tabs for proper positioning of box for drywall.



Positioning tabs



2 Attach paintable trim plate with screws provided.



OPTIONAL for new work: Tighten mounting wing screws to pull the box securely against the wallboard and provide added box stability.

For installation in Existing Wall



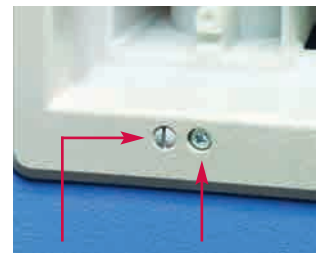
1 Determine box location. Use box (without trim plate) as template for hole.



2 Cut drywall. Attach trim plate to box. Install box assembly in opening.



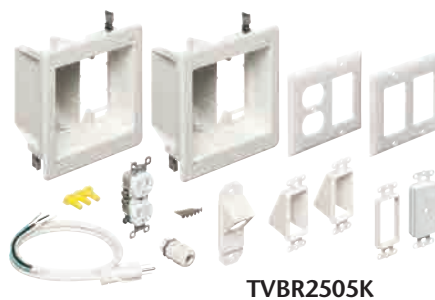
3 Tighten mounting wing screws to pull the box securely against the wallboard.



Trim plate screws

Mounting wing screws

TV Bridge™ – Complete, Easy-to-install Kit for Flat Screen TVs



TVBR2505K

What's included:

- (2) TVBR505 recessed dual voltage boxes
- (2) cover plates
- (2) CED1 entrance hoods
- (1) CED13 cable entry device
- (1) CED130 cable entry device
- (1) KD4550 45° knockout device
- (1) tamper-resistant duplex receptacle
- (1) 4 ft. 14 AWG cord
- (1) LPCG50W cord grip
- Installation screws
- (3) wire nuts

Arlington's **TVBR2505K TV Bridge™** includes TWO recessed power/low voltage combo boxes and all the connections you need (except NM cable) to install a flat screen TV and additional components.

The best part is, there's no need to run cable from a panel box – or cut holes in your framing members. Just cut two holes in the wall and access power from an existing, nearby source.

- Fast, easy, convenient – saves time and money!
- Secure installation. Good looks. A great finish.
- All wires stay hidden behind the wall – no messy wires running down the wall from TV to components
- Plugs stay inside the electrical box – don't protrude past the wall
- Mounting wings hold boxes securely against wall when screws are tightened
- Paintable trim plate
- 18.0 cubic inch recessed boxes

[View Video](#)



TVBR2505K

CATALOG NUMBER	UPC/DCI/NAED MFG #01 8997	DESCRIPTION	UNIT/STD PKG
TVBR2505K	09658	TV Bridge™	1
TVBR2505KGC	09108	TV Bridge™ with ground clip (for Canada)	1



STEEL Recessed TV Box for Use with Metal Raceway

TV BOX

RECESSED POWER & LOW VOLTAGE COMBO BOXES

Designed for use in commercial and other construction where metal raceway is used, Arlington's STEEL combination TV BOX™ provides power and/or low voltage in one or more of the openings.

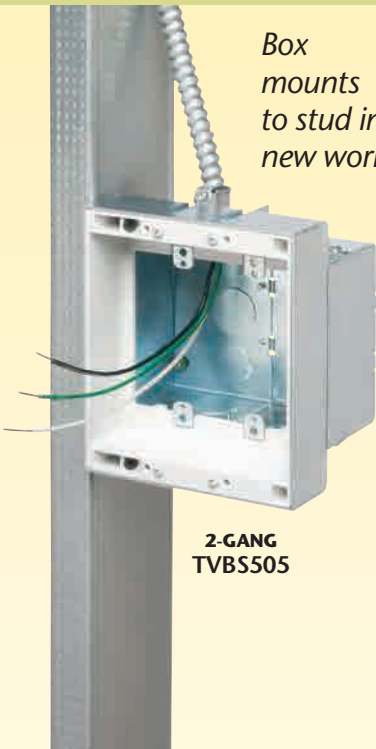
The recessed design of these steel boxes keeps plugs and connectors inside the box. Connections don't extend past the wall, so flat screen TVs mount flush against a wall.

TV BOX is available in 2-, 3- and 4-gang styles.

- Steel box with non-metallic paintable white or black trim plate
- Easy to install, secure installation
- Mounting wings on two- and three-gang styles hold boxes securely against the wall in retrofit projects
- Boxes screw-mount to stud in new construction
- Optional covers for unused boxes
- c UL us Listed

NEW & EXISTING CONSTRUCTION

Box mounts to stud in new work



2-GANG
TVBS505



4-GANG TVBS613
Steel combination power/low voltage box



3-GANG
TVBS507

In old work mounting wings secure box in wall



2-GANG
(voltage separator shown installed)
TVBS505



3-GANG
TVBS507

COVERS
for TVBS505
(2-gang) box



White cover
DVFRCL



Black cover
DVFRCLBL



Patented. Other Patents Pending.

Recessed Power and Low Voltage Electrical Boxes for Flat Screen TVs

STEEL

NEW & EXISTING CONSTRUCTION

Steel TV BOX™ Installation (3-gang TVBS507) – Existing Construction



Mounting wings hold 2- and 3-gang boxes securely in wall.

1 Cut hole. Use enclosure (without trim plate) as a template.



2 Pull cable. Insert box in hole. Tighten mounting wing screws to hold box securely against wall.

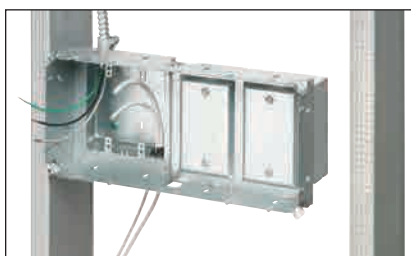


Note Install voltage separator for power and low voltage.



3 Install devices, then the wall plates.

Steel TV BOX™ Installation (4-gang TVBS613) – New Construction



1 Attach box to stud. Pull wire.



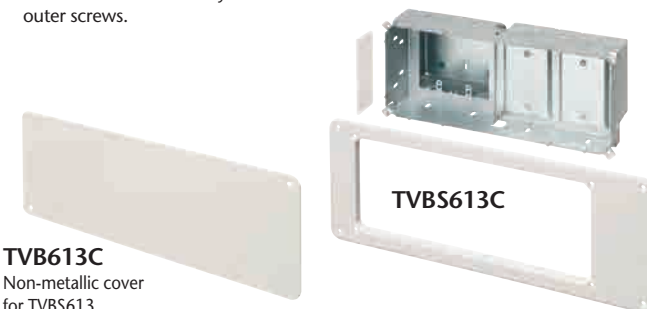
2 After drywall is installed, add trim plate, then install enclosure assembly to the wall with outer screws.



3 Install voltage separator.



4 Install devices and plates.



TVB613C
Non-metallic cover for TVBS613

View Video



Steel TV Box

CATALOG NUMBER	UPC/DCI/NAED MFG. #018997	DESCRIPTION	UNIT PKG	STD PKG
TVBS505	37955	2-gang, steel box w/ white non-metallic trim plate	1	4
TVBS507	37956	3-gang, steel box w/ white non-metallic trim plate	1	4
TVBS613	09633	2-gang, steel, power/low voltage (white trim plate) (Plus two low voltage mounts)	1	1
TVBS613BL	09660	2-gang, steel, power/low voltage (black trim plate) (Plus two low voltage mounts)	1	1
DVFRFC	14337	White non-metallic blank cover for 2-gang TVBS505	10	10
DVFRCL	14336	Black non-metallic blank cover for 2-gang TVBS505	10	10
TVB613C	09631	White non-metallic blank cover for 13" TVBS613	5	5

Patented. Other Patents Pending.



TVBS613

THE SCOOP™ series – Reversible Entrance Plates



NEW & EXISTING CONSTRUCTION

Get *The SCOOP™* reversible non-metallic, entrance hoods and plates. They not only protect cable, but deliver good looks and installation versatility.

- Easy to install facing IN or OUT
- Protect low voltage cable against damage
- Non-rusting white paintable or black plastic
- Best way to run low voltage cable where you need it

View Video



CE1

Arlington plates and hoods mount to a box or our LV1 thru LV4 series of low voltage mounting brackets. CED1 is designed especially for decorator style wall plates. In addition to great looks, you get installation versatility with the 'face in' or 'face out' orientation.

For added convenience and cost savings, you can fit HDMI and larger cable connectors through the single-gang horizontal style (CEH1) – without needing a 2-gang plate.

The lower plate on the CER1 and CER2 is removable for easier and quicker access to already installed cables.

PLATES that install facing IN or OUT



CATALOG NUMBER	UPC/DCI/NAED MFG. #018997	DESCRIPTION	PLATE COLOR	UNIT/STD PKG
CE1	10460	Single-gang	White	25
CE1BL	10470	Single-gang	Black	25
CE2	10461	2-gang	White	25
CE2BL	10471	2-gang	Black	25
CEH1	10480	Single-gang horizontal	White	25
CEH1BL	10481	Single-gang horizontal	Black	25



Includes screws that match plate color

PLATES with removable lower plate for easy access to already installed cables



CATALOG NUMBER	UPC/DCI/NAED MFG. #018997	DESCRIPTION	PLATE COLOR	UNIT/STD PKG
CER1	10473	Single-gang, w/ removable front plate	White	25
CER1BL	10475	Single-gang, w/ removable front plate	Black	25
CER2	10474	2-gang, w/ removable front plate	White	25
CER2BL	10476	2-gang, w/ removable front plate	Black	25

Includes screws that match plate color



CER2BL w/ lower plate removed

All SCOOP Plates available in White and Black

Mounts to LV Series Mounting Brackets (see page 3)



Patents Pending.

THE SCOOP™ series – Reversible Entrance Hoods

HOODS for use with decorator-style wall plates



for Horizontal Applications

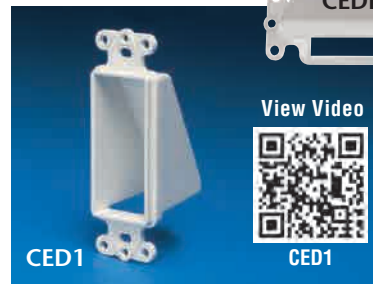


CED1 on LV3 Mounting Bracket (not supplied)

Available in white and black.

CATALOG NUMBER	UPC/DCI/NAED MFG. #018997	DESCRIPTION Non-metallic Entrance Hoods	PLATE COLOR	UNIT/STD PKG
CED1	10465	Single-gang	White	25
CED1BL	10472	Single-gang	Black	25
CEDH1	10478	Single-gang • Horizontal	White	25
CEDH1BL	10479	Single-gang • Horizontal	Black	25

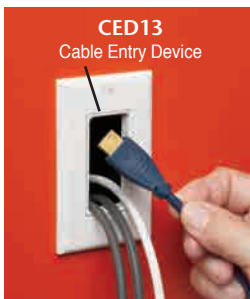
Includes #6 screws



NEW

CABLE ENTRY DEVICES

The attractive way to organize and protect cable



CATALOG NUMBER	UPC/DCI/NAED MFG #01 8997	DESCRIPTION Non-metallic Cable Entry	PLATE COLOR	UNIT PKG	STD PKG
CED13	13000	Device	White	25	25
CED13BL	13005	Device	Black	25	25
CED130	13015	Device w/ slotted cover	White	1	25
CE1RP	10560	Cable entry Bracket w/ reinforced slotted cover	White	25	25

Arlington's **Cable Entry Devices** provide an aesthetically pleasing installation, while organizing and protecting low voltage cable against abrasion. CED13 and CED130 have mounting holes that allow the attachment of a decorator-style wall plate to the low voltage side of a box...providing extra secure support for the installation.

For the best of both worlds, we added a slotted cover to our mounting bracket design to bring you a heavy-duty **Cable Entry Bracket with Slotted Cover**. Its reinforced, slotted cover holds a bundle of low voltage cable secure and allows the pass-through of even the largest HDMI connectors. It's the fastest way to install a bundle of Class 2 low voltage wiring, and installs quickly and easily with a hole saw, saving time and money! When tightened, mounting wing screws hold the bracket securely against the wall. Level or straighten the CE1RP bracket by rotating it, then tightening the screws.

- Installs with a 3.5" hole saw in less than a minute
- Adjusts to fit 1/4" to 1-1/2" wall thicknesses



The LOOP™ Cable Hanger

Hanger for communications cable support. For CAT 5, 6, 7 cable and fiber optic cable.

CATALOG NUMBER	UPC/DCI/NAED MFG #01 8997	LOOP SIZE	# CAT 5 CABLES	UNIT PKG	STD PKG	LENGTH	WIDTH	LOAD RATING
TL20	38084	2"	60	100	100	11.375	.652	25
TL25	38085	2-1/2"	100	50	50	12.250	1.500	25
TL50	38086	5"	300	25	25	22.500	5.000	75
TL20P*	38087	2"	60	100	100	11.375	.652	25
TL25P*	38088	2-1/2"	100	50	50	12.250	1.500	25
TL50P*	38089	5"	300	25	25	22.500	5.000	75

**P* indicates UV Rated. Patented.

Listed for use in environmental air handling spaces per 2011 NEC requirements 300-22(c).



View Video



The LOOP™



Non-Metallic Bushings for Metal Studs

These patented non-metallic bushings fit existing irregular shaped holes in metal studs. They alleviate the need to punch holes in the studs, and the possibility of weakening the structural member.

CATALOG NUMBER	UPC/DCI/NAED MFG. #018997	STUD SIZE	STD PKG
SB13	40115	2 x 4	500
SB130	40130	2 x 4	100

Snap-In Bushings

All-plastic, these snap-in type bushings protect cable as it runs through the knockouts in metal studs.

CATALOG NUMBER	UPC/DCI/NAED MFG #01 8997	TRADE SIZE	UNIT PKG	STD PKG
4400	04400	1/2	100	1000
4401	04401	3/4	100	1000
4402	04402	1	50	500
4403	04403	1-1/4	25	250
4404	04404	1-1/2	25	250
4405	04405	2	20	200
4406	04409	2-1/2	20	200



EMT50



EMT Bushings

Plastic Bushings for 1/2" to 4" EMT, rigid and PVC are Listed for air handling spaces.

CATALOG NUMBER	UPC/DCI/NAED MFG #01 8997	TRADE SIZE	UNIT PKG	STD PKG
EMT50	12200	1/2	100	1000
EMT75	12205	3/4	100	1000
EMT100	12220	1	100	100
EMT125	12225	1-1/4	100	100
EMT150	12230	1-1/2	100	100
EMT200	12235	2	50	50
EMT250*	12240	2-1/2	25	25
EMT300*	12245	3	25	25
EMT350*	12250	3-1/2	25	25
EMT400*	12255	4	25	25

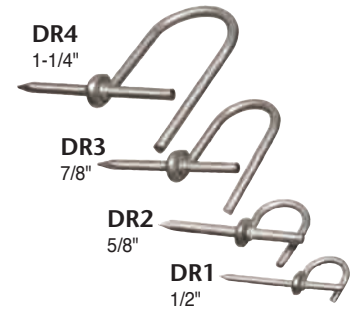
*Can also be used for rigid, IMC, and PVC rigid conduit.



Galvanized Drive Rings

Supports wire runs on walls, studs, rafters.

CATALOG NUMBER	UPC/DCI/NAED MFG #01 8997	DESCRIPTION	UNIT PKG	STD PKG
DR1	01551	1/2"	100	1000
DR2	01552	5/8"	50	500
DR3	01553	7/8"	50	500
DR4	01554	1-1/4"	25	250



Cable Standoffs

Positions non-metallic sheathed cable, phone/data cable, and coaxial cable. Installs with a screw or nail. Nail included with CS4.

CATALOG NUMBER	UPC/DCI/NAED MFG #01 8997	STD PKG	LENGTH
CS4	50174	100	4.100
CS7	71007	100	3.490



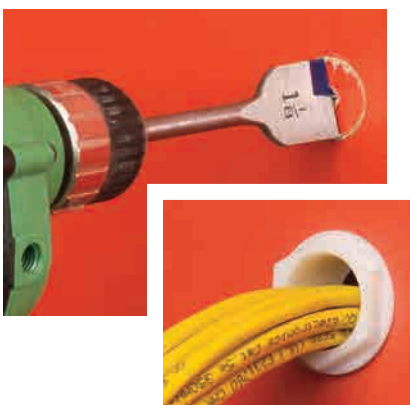
NOTE: For position only.



"D" Rings

Non-conductive. Smooth bearing surfaces for easy wire management.

CATALOG NUMBER	UPC/DCI/NAED MFG #01 8997	WIRING SPACE	STD PKG	HEIGHT	OUT TO OUT WIDTH	O.C. BETWEEN OUTER SCREW HOLES	O.C. BETWEEN INNER SCREW HOLES	INSIDE WIDTH
D22	40022	2.25 x 2	100	2.756	4.867	4.381	3.137	1.498
D33	40033	3.25 x 3.25	100	3.768	6.117	5.631	4.387	2.553
D35	40035	3.25 x 5	100	3.730	8.268	7.782	6.538	4.711



Wire Bushings

For installing low voltage wires/cables (such as speaker wire) through drywall.

- Use common drill and/or hole saw
- For single or double drywall thicknesses
- Provides smooth exit/entry of cables
- Protects drywall from chipping or flaking
- Made of high-impact plastic
- Color: Paintable (white)

CATALOG NUMBER	UPC/DCI/NAED MFG #01 8997	HOLE SIZE*	SIZE OF OPENING	STD PKG
WB500	52950	0.500	.43	100
WB875	52951	0.875	.75	100
WB112	52952	1.125	1.00	50
WB200	52953	2.125	2.00	50

* Drill or hole saw size



Weatherproof, Non-metallic Keypad Enclosure

Arlington's non-metallic keypad covers protect an exterior system keypad against bugs, moisture and weather, turning a keypad that's not weatherproof into a weatherproof enclosure – fast! They are suitable for interior systems too.

Our keypad covers accommodate single, two-gang or 4x4 boxes. That's important when local codes require a box or enclosure for power and low voltage applications.

Our keypad enclosures have a universal mounting pattern, so they mount horizontally or vertically. And, you can mount them without a box on flat surfaces for low voltage keypads.

- Enclosure is raintight **ONLY WHEN MOUNTED WITH LATCH AT BOTTOM**
- Easy, secure installation – attach to surface through four mounting holes to assure proper gasket seal (caulk as required)
- Accommodates most keypad styles
- Heavy-duty, clear or paintable white plastic cover
- White non-metallic base
- Inside dimensions:
DBK55: 5" x 5" x 1-1/2"
DBK88: 7-1/4" x 7-3/4" x 1-1/2"



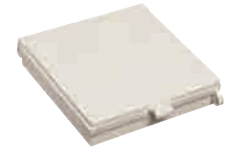
DBK88C
Patent pending



Locking feature



DBK88C
clear cover



DBK88W
white paintable cover



DBK55W
white paintable cover

CATALOG NUMBER	UPC/DCI/NAED MFG. #018997	DESCRIPTION	COVER COLOR	STD PKG
DBK88C	77662	7-1/2" x 7-3/4" x 1-1/2" (Inside)	Clear	5
DBK88W	77663	7-1/2" x 7-3/4" x 1-1/2" (Inside)	White	5
DBK55C	77664	5" x 5" x 1-1/2" (Inside)	Clear	10
DBK55W	77665	5" x 5" x 1-1/2" (Inside)	White	10



Arlington

1 Stauffer Industrial Park
Scranton, PA 18517
800/233.4717

Fax 570/562.0646
www.arlingtonlowvoltage.com

©2009 Arlington Industries, Inc.

REV0811/50M

